



# WELCOME RODEO FANS!

## ATTEND THE BEST LITTLE RODEO ON EARTH JULY 8-9-10

**NOSIN... With Pony**

The enthusiasm with which youngsters in the area made off with crepe paper to put together unique decorations for the big parade, we would certainly guess that this parade will be by far, the best parade ever staged in Earth.

Then judging from all the make ready for the big rodeo, one would have to guess it will be S-U-P-E-R.

So, folks, get into the spirit of the thing and enjoy each nightly performance. If you like rodeo's, you can't miss seeing the Earth Rodeo for it is indeed a dandy.

NOSIN

The big family picnic last Saturday in the City Park went over so big, that there is much conversation about setting it up as an annual affair.

Folks in small towns, the grassroots of America, so to speak, are not making the most

of the one commodity they have that Metropolitan areas can't boast of, and that is the friendly "one big family" attitude.

Earth folks got together and just had a fun time. Those who didn't participate, watched the efforts of their fine neighbors in the fun games.

The Young Homemakers, the Lions Club, Fire Department and Roping Club deserve much thanks for a fine performance in the fun games.

We understand that Gary Bulls and several other men worked faithfully to get the thing going.

Our thanks go to all those who worked to get the picnic and family fun time organized, and to those lovely folks who competed in the games.

Yes sir-e-e, it's rodeo time again in Earth. The 32nd annual Earth Amateur Rodeo will begin today.

Activities will be kicked off with a big downtown parade beginning at 5 o'clock. Theme for the parade is "Spirit of '76." Civic Clubs and organizations in Earth have been working night and day to make floats, decorate cans, bicycles, mini-bikes and what have you, for the parade which promises to be the best ever viewed in Earth.

Original ideas for decorating bicycles are coming from youngsters in the area who are meeting the challenge of making something unique for the parade.

The first place winner in the float division will receive \$75. The bicycles and mini-bikes will receive \$5 for first place, \$3 for second place and \$2 for third place. Trophies will be given to winning Roping Club riding in the parade.

The parade will form on the Earth Co-op Gin lot and move

south to the Baptist Church. There the parade will turn east and proceed across town to the street behind the old Shell Station. There the parade will turn south and enter the highway street and proceed westward all the way down Main Street.

A free barbeque dinner will be served in the Show Barn to all who purchase a ticket to the rodeo performance. Serving will end at 8:30 p.m.

The Earth Rodeo is one of the best rodeo's in the country.

There will be top performing cowboys from all over the country participating in the events.

The events include calf roping, bareback riding, saddle bronc riding, girl's barrel race, bull riding and team roping. There will also be an event for junior calf ropers.

To be sure spectators enjoy every minute of the nightly performances, there are two special attractions, the Pony Express race and the businessmen's calf roping. These two

events promise to add comedy to the performance.

Entrants under 21 years of age must have parental consent in writing.

Stock will be furnished by L. D. Ward of Trinidad, Colorado. Trophy buckles will be presented to first place winners in each event.

Performance will begin nightly at 9 o'clock. On Thursday night the new Rodeo Queen will be announced and will be crowned by the current Queen Miss Pam

Eagle. On Friday night a rug valued at \$150 will be given away free. The rug was donated to the Roping Club by Tom Lively, owner of Whites Auto Store in Earth.

Admission for the finest little rodeo on Earth is set at \$2.50 for adults and \$1.50 for children.

So, come on out, join the crowd, have fun, and see the best rodeo performance imaginable. See you there.

The NEWSpaper Dedicated to the Development of the World's Richest Irrigation Area



# The Earth News-Sun



A CONSOLIDATION OF THE EARTH NEWS & EARTH SUN OCTOBER 12, 1956

VOLUME 22

15¢ INCLUDING TAX

EARTH LAMB COUNTY, TEXAS, THURSDAY, JULY 8, 1976

24 PAGES IN TWO SECTIONS

NUMBER 45

### WINNER TO BE ANNOUNCED AT RODEO

## Earth Rodeo Queen To Be Crowned Tonight

Seven lovelies competed for the title of Earth Rodeo Queen in a contest judged Tuesday, July 6 by out of town judges. The Queen will be announced at the rodeo performance Thursday night. She will be crowned just prior to the performance by the current reigning Queen Pam Eagle.

Those competing in the contest were Petra Lewis, Susan Clayton, Loretta James, Wendy Branscum, Michelle Seeman, Shelly Pickrell and Tonya Ray. The girls were judged 60% on horsemanship and 40% poise and personality.

The queen will receive a belt buckle and an 8 x 10 photo of herself. First and second runners-up will receive charms.

The girls were judged Tuesday at 9:00 o'clock in the morning at the Rodeo Arena in riding clothing. They were judged a second time at a 1:00 o'clock luncheon in the Homemaking Cottage. The contestants were dressed in dressy dresses at the luncheon.

Contestants were honored Monday afternoon with a Coke party at the Bee Hive Mall. The event was to assist them in getting ready for the big day. Miss Lewis is a sophomore at Springlake-Earth School and the daughter of Mr. and Mrs. Thur-

man Lewis. She is sponsored by T-Bar Western in Earth.

Miss Clayton is a 16 year old Junior student at Springlake-Earth High School and the daughter of Mr. and Mrs. Donald Clayton. She is sponsored by Citizens State Bank.

Loretta James is a 13 year old Freshman at Springlake-Earth and the daughter of Mr. and Mrs. Jearl James. She is sponsored by the Bee Hive Mall.

Wendy Branscum is a 16 year old Junior student at Springlake-Earth and the daughter of Mr. and Mrs. Lexie Branscum. She is sponsored by the Earth Dry Goods.

Michelle Seeman of Littlefield is a 16 year old Junior and

the daughter of Mr. and Mrs. Kris Seeman. She is sponsored by the Dairy Queen in Littlefield.

Shelly Pickrell is a 15 year old Sophomore at Sudan High School and daughter of Mr. and Mrs. Gary Pickrell. She is sponsored by G and C Auto Supply of Sudan.

Tonya Ray is a 14 year old Freshman at Sudan and the daughter of Mr. and Mrs. Jerry Ray. The First National Bank of Sudan is sponsoring her.

The queen will be required to represent the Earth Roping Club on all occasions during the year. Attend the Earth Rodeo Thursday night and see the new Earth Queen crowned.

## ARE YOU THERE?

It has been called to our attention that several telephone numbers in the Springlake exchange have recently been changed. The informer stated the numbers were changed due to the telephone company

changing many of the 8-party lines to 4-party lines. The informer suggested if the former number didn't answer that it might be wise to call information for a new number.

## Picnic And Fun Time Saturday Was A Scream

Laughing families dotted the park Saturday eating lunch side by side with friends in an atmosphere of fun and fellowship. A setting like this is possible only in small rural areas of America, where families know and care for each other. The picnic and "Anything Goes Fun Time" was staged in connection with the 200th Birthday of our Nation, and was a tremendous success. Folks who for a long time had found themselves too busy to assemble together for a fun time with friends, found it to be a delightful experience bringing together young and old alike in a hilarious carefree evening.

A dunking board, sponsored by the local Lions Club was kept busy during the entire event and many folks, all great sports, found themselves on the bottom of the tank time and time again.

During the fun time, five events were staged with four teams competing in each event. Teams were composed of players from four civic clubs, The Earth Lions, Roping Club, Fire Department and Young Homemakers Club.

The first event was "Merry-Go-Round Basketball." Some players were busy pushing the equipment while forwards seated on the fast moving merry-go-round tried to catch water filled balloons, thrown them by a team member. They in turn were to drop it in large wastebaskets. The game was a hilarious experience with balloons busting in mid air while others flew by to break spilling water all over the players.

The second event was played with two players on each side using a Fire Department water hose to push the ball into position. The event was a wetting experience for players, as well as many spectators who stood near the court.

The third event was a doozy. Four girls were placed in swings with team members throwing them large balls as they swung high. The rules were to catch the ball with their feet while in motion, and swing out over a wastebasket and drop the ball in to score a point. The players worked hard and fast as there was a time limit on the game. Each team worked equally hard, but since there had been no



WINNING TEAM RECEIVES COMMODE LID... The Earth Fire Department team was winner by point system in the five events at the "Everything Goes" family picnic Saturday in the park. They are left to right, Richard and Tommye Bills, David Haberer, Kenneth Lowe, Debbie Haberer and Linda Lowe.

previous practice session, the game was unusually difficult and quite hilarious to observe.

The "Slide Ballgame" was the fourth event. Water hose were attached at the top of the slide with water flowing full speed down the slide. Players were to slide down the wet slide onto a Slip and Slide and catch a water filled balloon and run fast to place it in wastebaskets placed along the side of the slide. Those with the most balloons

in their basket was winner of the game. Winners were of little consequence in such games, as efforts of the players kept spectators in stitches as they viewed the sport.

The last event was a drive with slim winding roads staked off by stakes that would fall if hit with much speed. The driver was blindfolded. He was allowed a partner on the back who could give instructions for driving through the course. There

were four teams who attempted the course. This event could doubtless be named "Back Seat Driver" as the driver was helpless without instructions from the backseat partner.

A fireworks display at 9:30 p.m. concluded the evening of fun for those who had gathered at the City Park Saturday in connection with the local celebration of the birthday of the U. S. A.

## City Dads Offer Rate Increase To Telephone Co.

Earth City Dads met in regular session in the City Hall Tuesday, July 6. Two representatives of General Telephone Company were present to discuss a rate increase for the City of Earth.

Following a lengthy discussion and negotiations, city officials agreed to offer General Telephone Company a ten percent increase, over the present rate for business telephones and five percent increase over current rate for residential telephones.

The group reviewed current bills and approved them for payment. Minutes of the previous meet-

ing were read and approved as read.

Those present were Mayor E. C. Kelley, Aldermen, Jerry Been, Doug Parish, Raiford

Daniel, Glen Bulls, and W. B. McMillan. Also Water Superintendent Johnny Enloe, City Marshal Alvin Pittman and City Secretary Mrs. E. R. McAlpine.

## School Board Agenda

The Springlake-Earth School Board of Trustees will meet in regular session Monday, July 12 at 7:30 p.m. in the High School building to consider the following agenda:

1. Approval of minutes of June meeting
2. Approval of bills
3. Update school handbooks

4. Review insurance program
5. Discuss Drivers Education plan
6. Discuss school maintenance, supplies and equipment
7. Discuss preliminary basic planning
8. Evaluation and employment of personnel
9. Adjournment

## Cheerleaders Return From Camp

The Wolverine Cheerleaders returned home June 25 from a great week of work and fun in Cisco, Texas where they attended the South West Cheerleaders Camp. Their days were filled with classes on tumbling, skits, pom-pom routines and new school yells, and nights were filled with practice sessions and competition yells. Even with this crowded schedule the girls managed to have lots of fun and fellowship with those about them.

The local girls received one 3rd place ribbon, and four 1st place ribbons. They also brought the Spirit Stick home to be placed in the school trophy case among those of previous winners.

A few outstanding groups received special ribbons on Friday and the Wolverine Cheerleaders were one of these Super Squad Ribbon winners. It took much hard work and cooperation as a team to win the special group ribbons.

Cheerleaders attending were Debbie Daniel, Senior, Head cheerleader, Kim Clayton, Senior; Flora Rivas, Junior; Ranae Winders, Junior; Elaine Bills, Sophomore; Kim Haydon, Freshman and Sherri Winders, Senior, Wolverine Mascot.

## Mrs. Ann Kelley Attends Coke Party

Mrs. Ann Kelley, Grand Officer, attended a Rainbow Coke party in the Lodge Hall at Muleshoe. The party was to honor the Grand Officer from Mississippi who was in Muleshoe visiting the Muleshoe Rainbow Chapter.

Mrs. Kelley was reported to have enjoyed the event.

TOO MUCH FABRIC softener used in washing can make clothes such as diapers and towels non-absorbent. If this happens, decrease amount of fabric softener or occasionally omit using it, alternate washes with and without.



SPRINGLAKE-EARTH WOLVERINE CHEERLEADERS... Kim Clayton, Senior; Kim Haydon, Freshman; Debbie Daniel, Senior, Head Cheerleader; Elaine Bills, Sophomore and Ranae Winder, Junior. Seated, Flora Rivas, Junior and Sherri Winders, Wolverine Mascot.



## Winners In 4-H Dress Revue Named

The annual Lamb County 4-H Dress Revue was Tuesday, July 6, in the Lamb County Electric Co-op Willey Room in Littlefield.

Judging began at 10 a. m. and the public review began at 2:30 p. m.

Dawn Branscum of the Springlake-Earth 4-H Club narrated the program, which had as the theme "Declaration of Fashion." Each item entered was judged

on its own merit and ribbons were awarded.

Dress Revue divisions included Seniors, 14 and over; young Juniors, 9 to 11 years old and older Juniors, 12 to 13 years old.

Eleven girls participated in the Revue. Winner in the three divisions were Dawn Branscum of Springlake-Earth, winner in the Senior division; Kelli Smith, Olton, winner of the older Jun-



DAWN BRANSCUM

ior division and Amy Smith, Littlefield, won the young Junior division. Miss Branscum and Miss Smith will compete in the District 4-H Dress Revue scheduled in Lubbock on July 15. Rules are that winner of the young Junior division, do not compete in District, therefore Miss Smith will not compete further.

Alternates named were Judy Wiseman, Sudan, in the young Junior division, Wendy Wiseman, Sudan, in the older Junior division and Belinda Hampton, Springlake-Earth, Senior division.

Awards were presented by Judy Wiseman of the Sudan 4-H Club.

Those participating and winning awards were as follows: YOUNG JUNIORS-Amy Smith, Littlefield; Judy Wiseman, Sudan; Carmen Kelley, Springlake-Earth; and Shawn DeLoach, Sudan. All four girls were presented with blue awards ribbons.

OLDER JUNIOR division girls receiving blue ribbon awards were Wendy Wiseman, Sudan; and Kelli Smith of Olton, Cindy Ham, Sudan and Bridget Hampton, Springlake-Earth received red award ribbons.

SENIOR DIVISION girls Dawn Branscum, Springlake-Earth and Belinda Hampton, Springlake-Earth, both received blue ribbon awards and Susie Reed, Olton, received a red ribbon award.

## The Community Library In Earth Has New Books

The High Plains Bookmobile recently left seventy new books at the Community Library, located in the Farmers Union Insurance Office in Earth.

The Town and Country Study Club sponsors the library, however, the bulk of the books are loaned indirectly from the Lamb County Library, through the services of the Bookmobile.

This is the only satellite library from our County Library in any area. Since Springlake-

Earth Community is a great distance from the central supply, the County Library Advisory Board is glad to extend this service to our area.

The Friends of the County Library Association is now making their annual county drive for volunteer donations. This association is as old as the County Library. All funds contributed to Friends of the Library are used to buy books and other educational aids for the library.

## Party Line

Cheri Lynn Elam, daughter of Mr. and Mrs. Walter Elam of Frisco, is in Earth visiting her grandparents, Mr. and Mrs. Leon Foster. Cheri Lynn and her mother met Mr. and Mrs. Foster in Altus over the week-end and

Cheri Lynn returned home with them for a few weeks visit. Mr. and Mrs. Denton Talbert and son Frank of Scottsdale, Arizona and grandchildren Julie Christine and Brett Campbell were visitors in the home of Mr. and Mrs. Garland Stovall Sunday afternoon. They were enroute home after visiting relatives in the East.

**MONDAY, JULY 19**

**9 99¢**

KING SIZE WALLET CREATIVE COLOR PORTRAITS FOR ONLY

Kodak paper. For a Good Look at the Times of Your Life.

Extra Charge for GROUPS

We Use Kodak Paper

SHUGART COLOR PHOTOS PAY-N-SAVE

Highway 70 EARTH

ASK About Our FREE 8 x 10 OFFER

NO LIMIT

GET PICTURES MADE OF GRADUATION, BIRTH, WEDDING AND ALL THE LITTLE ONES AT THESE SAME LOW PRICES!

STUDIOS OF TEXAS

**The EARTH NEWS-SUN**

TEXAS PRESS ASSOCIATION 1975

Published at Earth, Texas 79031 every Thursday except the first Thursday following Christmas.

Second Class Postage paid at Earth, Texas 79031

SUBSCRIPTION RATE

Earth and Trade Territory, per year, \$6.00 plus tax

Elsewhere in United States, per year, \$7.00 plus tax

CLASSIFIED RATES

10¢ per word, first insertion, 8¢ per word thereafter

\$1.50 minimum.

ADVERTISING RATES GIVEN ON REQUEST

ROSS and POLLY MIDDLETON, Publishers

**It's Rodeo Time In Earth**

**Make Plans To Attend Thursday-Friday-Saturday**

LITTLEFIELD UPHOLSTERY

VAL JIMENEZ, Owner 512 West Delano

PHONE 385-3221 LITTLEFIELD, TEXAS 79339

## What do you do when the bugs start eating into your profits? Call your Cessna Ag Pro.

When you have to treat your crops fast, call on us. We can cover 14 acres per minute by air—do more work in an hour than most ground-rigs can do in a day.

We can do an accurate, effective job using less chemicals—usually for less money than a ground-rig.

While we're treating your crops you can use your time and equipment for other jobs; you can reduce your labor requirements and get the job done without soil compaction.

For more productivity, call on us, your Cessna Ag Pro.



# JONES

RT 1  
DIMMITT, TEX. 79027



Springlake...986-2786  
Sunnyside...846-2671

## SPRAYING SERVICE

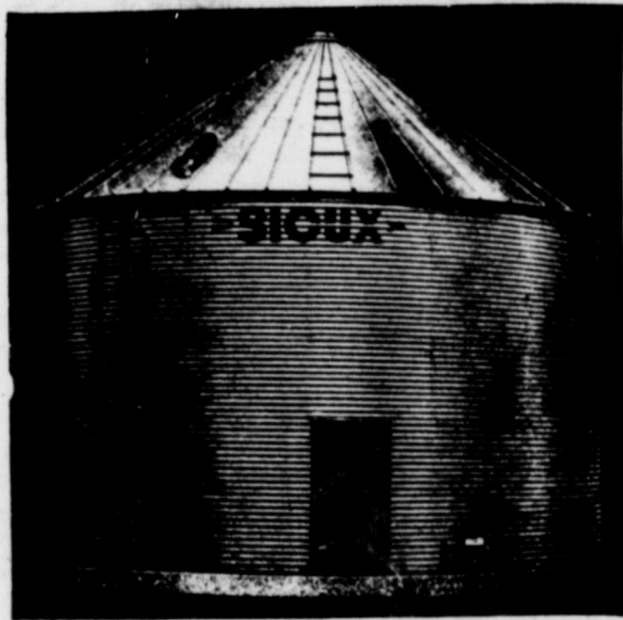
Owner, Charlie H. Jones



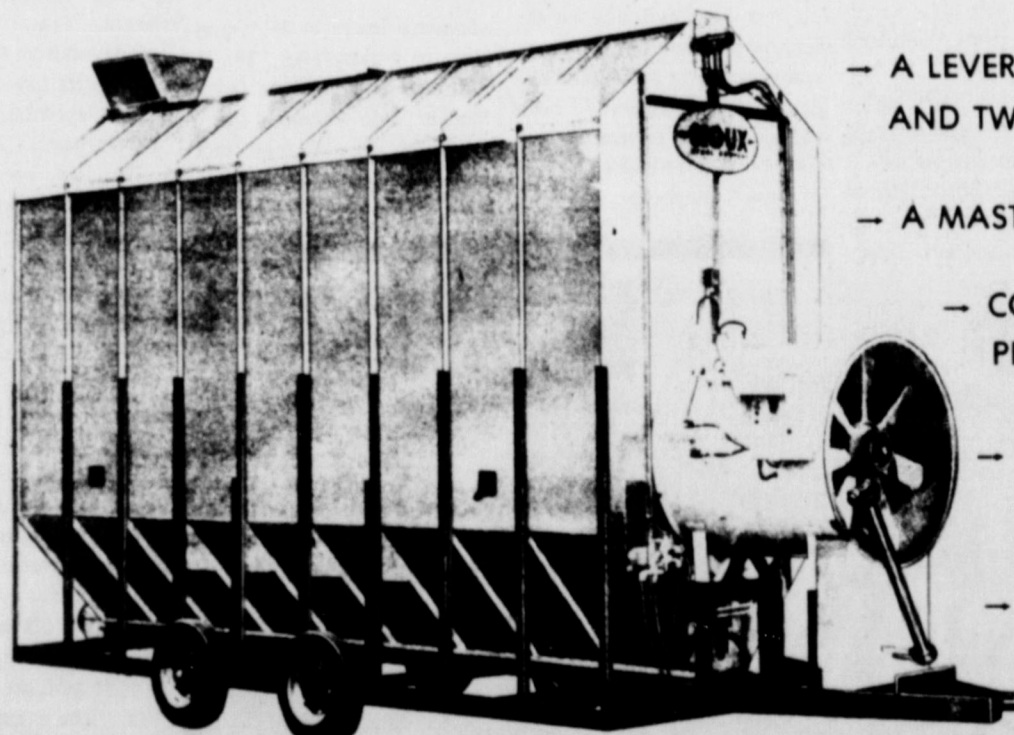
# MR. FARMER

CALL US FOR YOUR DRYING & STORAGE NEEDS

## 4 1/2 % SIMPLE INTEREST



# SIoux STORAGE BINS



MODEL NO. 7500

- A LEVER, A SWITCH, A TIMER, AND TWO GAUGES
- A MASTERPIECE IN SIMPLICITY
- COST CONSCIOUS IN ITS PRICE
- FAST, UNIFORM, SAFE DRYING
- DESIGNED FOR EFFICIENT AND DEPENDABLE OPERATION

J & L MILLRIGHT  
762-1762  
LUBBOCK, TX.



JERRY BONSAI  
938-2186  
HART, TEXAS





LACRETIA JAMES

**Dale Hollingsworth Is "Distinguished Student"**

Dale B. Hollingsworth of Hereford has earned "Distinguished Student" ranking at Texas A&M University. The announcement was made recently by registrar Robert A. Lacey.

The undergraduate honor is awarded students who have excelled academically. Recipients must earn at least a 3.25 grade point ratio (out of a possible 4.0) during the most recent

grading period. "Distinguished Student" ranking is limited to 10 percent of Texas A&M's undergraduate enrollment.

Hollingsworth, son of Mr. and Mrs. Alton Hollingsworth of Route 2, Hereford is an Agronomy Major. His grandparents are Mr. and Mrs. A. Hollingsworth and Mr. and Mrs. C. C. Barden, all of Springlake.

WE BID YOU  
**WELCOME**

TO  
EARTH'S  
Annual  
AMATEUR



**RODEO**

THURSDAY-FRIDAY-SATURDAY

**I'M GOING**



WHY DON'T YOU!

To

**EARTH'S ANNUAL  
AMATEUR RODEO**

THURSDAY - FRIDAY

and SATURDAY

**WOOD - JORDAN, INC.**

CALVIN WOOD  
EARL JORDAN  
EARTH



We Invite You To Attend Every Event

**PARADE - 5pm - BARBECUE - BUSINESSMEN'S  
CALF ROPING - CALF ROPING - BAREBACK  
RIDING - SADDLE BRONC RIDING - GIRL'S  
BARREL RACE - BULL RIDING - TEAM  
ROPING**



**WHILE IN EARTH FOR THE  
RODEO WE INVITE YOU TO COME  
VISIT WITH US AT**

**CITIZENS STATE BANK**

EARTH, TEXAS - MEMBER F. D. I. C.



## Two New Members Join Rainbow Girls

The Earth Rainbow Girls met Monday at 6:00 o'clock in the Masonic Hall with Brene Belew Worthy Advisor, presiding, assisted by Mother Advisor, Mrs. Earl Jordan.

The group voted by secret ballot to take two new members into the chapter. The two are Stacy Tunnell and LeAnn Haberer. Their initiation into the local Rainbow Chapter is set for July 19.

An announcement was made regarding a one-day school of instruction on August 9 in Lubbock. The school will be instructed by Mrs. Whitfield. Several of the local girls are expected to attend the school.

A financial report was given on the amount made from the sale of ice cream at the family picnic Saturday in the City Park. The proceeds will go into the carpet fund, to be used to purchase carpet for the Lodge

Hall. Following the meeting the girls worked on a float for the rodeo parade Thursday in Earth.

RAINBOW GIRLS ENTERTAIN SENIOR CITIZENS WEDNESDAY

Members of the local chapter of Rainbows entertained the Senior Citizens during their regular monthly noon day luncheon, Wednesday in the Community Room.

Piano solos were presented by Sheila Jordan and Merri Hausmann. A skit entitled "Pointers for Studying" was presented by Stephanie Parish, Teresa Lively, Stephanie Tunnell, Jodie Daniel, Sheila Jordan, Brene Belew, Rhonda Weaver and Mrs. Earl Jordan.

ATTEND THE BIG EARTH RODEO



MRS. SAMMY DON PARISH (nee Kathy Dale Wright)

## Wright-Parish Wedding Saturday 8p.m.

Miss Kathy Dale Wright and Sammy Don Parish were united in marriage Saturday evening at 8:00 o'clock, July 3 in the First Baptist Church of Springlake.

Parents of the couple are Mr. and Mrs. Kenneth Wright and Mr. and Mrs. K. B. Parish all of Springlake.

Rev. Glen Smith, pastor of the church, officiated the lovely double ring ceremony before a pedestal holding the memory candle accented with pale blue tapers on each side and greenery with baby's breath and blue ribbons. Spiral candelabras with pale blue cathedral tapers also accented with greenery and baby's breath flanked the altar area.

Mrs. Jean Craft, pianist, presented nuptial selections and accompanied Kelly Haydon as she sang "My Cup Runneth Over." The bride was impressive and lovely as she sang "The Lord's Prayer" also accompanied by Mrs. Craft.

Presented in marriage by her father, the bride wore a romantic candlelight gown of point d' gaze lace. It was designed in a princess silhouette style with a scoop neckline. The full bishop sleeves were em-

phasized by wide scalloped cuffs. Bordering the hemline were deep scallops of lace which swept into a full chapel train. She wore a matching bouffant, blushing veil made of imported silk illusion. It was edged in venice lace fleurettes and attached to a bonnet headpiece covered in venice lace and seed pearls.

She carried a tapered bouquet of white and blue stephanotis, roses and baby's breath.

For the traditional "Something old, new, borrowed and blue," the bride wore the blue garter that was worn by her mother-in-law in her wedding. It was made by the grooms grandmother. Her bridal gown was new and she borrowed a lovely necklace to wear. For luck she carried a penny in her shoe.

Miss Ruth Street, Earth, was maid of honor and Mrs. Cindy Whitlock of San Angelo and Vicki Wright, both sisters of the bride were attendants. They were gowned in identical powder blue gowns of poly sheer over taffeta, and designed with a fitted bodice featuring a portrait scoop neckline collared by layered ruffles which spanned the shoulders into a deep back scoop. A set-in midriff fell into a full A-line skirt ending with a deep hemline flounce.

The best man was Jeff Robinson of Hereford. Groomsmen were Danny Parish, brother of the groom and Hal Wood.

The ushers were Monte Watson, Lonnie Wilson and Charles Winder, all of Springlake.

The candlelighters were Kenny Wright, brother of the bride and Mark Parish, cousin of the groom.

Miss Stephanie Parish, cousin of the groom, registered the guests as they entered the church.

For her daughter's wedding, Mrs. Wright wore a formal length dress of blue knit. Mrs. Parish also wore a formal length gown of floral poly sheer over blue taffeta. The mother's corsages were orchids.

Immediately following the wedding, a reception was held in fellowship hall. The bride's table was laid with a fitted lace cloth over white satin. The lovely 3-tiered cake with punch, nuts and mints were served from silver and crystal appointments by Miss Kathy Winders and Miss Kelly Haydon. Miss Kim Jones presided at the groom's table which held the chocolate cake and coffee.

For a wedding trip to Colorado, the bride wore a light beige pant suit with a pale blue shell. She wore a corsage lifted from the bridal bouquet.

The bride graduated from Springlake-Earth High School with the class of '76. The groom is a 1974 graduate of Springlake-

## Notice

A wedding shower honoring Miss Shelley Gaston, bride-elect of Johnny Kelley will be held at the home of Mrs. M. G. Kellar on Saturday, July 17, from 4 o'clock to 5:30 in the afternoon.

Anyone wishing to be a hostess may contact, Mrs. Marvin Sanders at 257-3310 or 257-3965, Mrs. Calvin Wood at 257-2126, Mrs. Orville Cleavinger at 986-2624 or Mrs. J. J. Coker at 986-3073.

Bridal selections have been made at Whites Auto Store, Bee Hive Mall and Howell's 216 Floral.

## NOTICE

A bake sale will begin in Earth at 4 o'clock Thursday and continue during the big downtown parade. Booths will be set up in front of Whites Auto Store and Southwestern Public Service Company office. Delicious cakes and pies will be offered. Proceeds from the sale will go to the youth for their trip to Falls Creek Camp, later in July.

## PARTY LINE

Mr. and Mrs. Bob Usery and daughter Mrs. Linda McGulre and children Amy and Billy Bob returned Tuesday night from a week long vacation in Hot Springs, Arkansas.

Earth High School.

The couple will make their home near Springlake where the groom is engaged in farming.

## REHEARSAL DINNER

A rehearsal dinner for the entire wedding party was hosted Friday evening at the Methodist Church in Earth by the bridegroom's parents.

## Mrs. James Herriage Receives PA Charm

TOPS 891 met on Wednesday afternoon at 1:30 in the Earth Oil and Gas building downtown for a regular meeting.

Mrs. T. V. Murrell, leader, presided over the meeting. Those present repeated the TOPS Pledge and Rededication Pledge. Five members answered roll call.

Mrs. Fred Clayton was Queen of the Week for having lost the most weight.

Mrs. James Herriage received a perfect attendance charm for attending 8 weeks with no weight gain reported.

Florence Gover was Queen for

the Month and received the fruit basket.

Any lady or man who is interested in losing weight are invited to attend the meeting and enjoy the fellowship. All programs presented by this TOPS are interesting and informative. TOPS 891 meets every Wednesday at 1 p.m. in the Earth Oil and Gas building downtown.

Those attending the meeting were Mrs. T. V. Murrell, leader, Mrs. Fred Clayton, Mrs. Florence Gover, Mrs. Bud Jones and Mrs. James Herriage.

**OUR JULY CLEARANCE NOW IN PROGRESS!**

**ALL SUMMER MERCHANDISE**

**30% TO 50% OFF**

SIZES:

TALLS 8 THRU 22  
STOUTS WAIST SIZE  
32 THRU 40  
TOPS 36-54  
SMALL SELECTION DRESSES  
HALF SIZE 18 1/2 - 24 1/2

Ms. M's  
Tall & Stout Shop

216 PRINCE CLOVIS 762-2888  
OPEN 9:30 TO 5 DAILY

VISIT OUR WEDDING WORLD OF GIFTS

Miss Shelley Gaston

BRIDE-ELECT OF JOHNNY KELLEY WILL BE HONORED WITH A BRIDAL SHOWER IN THE M. G. KELLAR HOME SATURDAY, JULY 17 MISS GASTON HAS MADE SELECTIONS FOR HER NEW HOME AT...



The Daisy

IN THE BEE HIVE MALL IN EARTH

CARLILE Theatre  
Dimmitt, Texas

JULY 1976

THU

Irma Serrano  
Jorge Lavat  
SANTO Y EL AGUILAR  
REAL

FRI

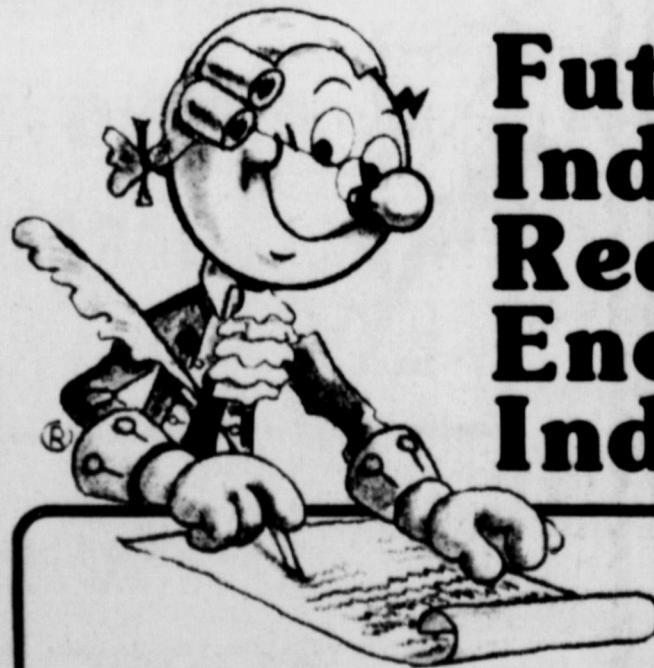
SAY

Walt Ellsbery  
Ride a Wild Pony  
MONDAY  
MON: CRAIG, JIM MELLON

SUN

MON

STREISAND & REDFORD  
THE VERY MERRY WIDOW  
CLOVIS



# Future Independence Requires Energy Independence!

This nation, now celebrating its 200th birthday of independence, must, if it is to enjoy future independence, develop its own sources of energy.

Militarily, economically, and socially, this nation's people must not be humbled by dependence on foreign oil cartels, friendly or unfriendly.

Without our own basic energy sources, we face the loss of jobs because it takes energy to move the factory wheels. Without our own basic energy sources, we are but putty in the hands of foreign militarists who would not hesitate to destroy us. Without our own energy sources, the

social gains of the past several years will be meaningless.

To properly develop our own energy sources is a complex job that will take time and money...but it's a job that must be done. It can be done by private enterprise working with the blessing and the cooperation of our government.

You can help by just simply understanding the need because that's the first step in solving the problem...the more people who understand and appreciate the need, obviously, the easier will be the massive job.

100 TO MANY PEOPLE  
930, 9005  
Equal Opportunity Employer



## Senior Citizens Entertained By Rainbow Girls

The Earth Senior Citizens met for their regular monthly noon day luncheon at the Community Center, Wednesday.

The Earth Rainbow Girls presented the program. Two piano solos were presented by pianist Sheila Jordan and Merri Hausmann. A comical skit was presented by several of the girls and their Mother Advisor, Mrs. Earl Jordan.

A brief business meeting was presided over by Mrs. Bonnie Haberer. She also read a patriotic article by news commentator Paul Harvey. The article

was entitled "What is Freedom?" Mrs. Dean Jones read an article "I Am America." The article was brought to the meeting by Mrs. R. C. Hyde, a pioneer woman of the area.

Those attending were Mrs. Ruby Hodge, Mrs. Beula Coker, Mrs. Gladys Goodman, Mrs. R. C. Hyde, Ruby Jones, Mrs. Ida Allen, Mrs. Carra Morgan, Mrs. Alice Martin, Mr. and Mrs. Frank Butter and Mrs. Bessie Cearley.

Also Mrs. Bessie Wood, Mrs. Lottie B. Orteg, Mrs. Joe Lee Truelock, Mrs. Opal Hasha,

Mrs. Velma Jones, Jack Hinson, Mr. and Mrs. R. W. Fanning, Mrs. Bonnie Haberer, Mrs. Lena Grace Griffin, Mr. and Mrs. Gene Jones and Mrs. Virginia Moore.

Others included Clifford Moore, Teresa Lively, Jodie Daniel, Sheila Jordan, Rhonda Weaver, Merri Hausmann, Mrs. Pat Jordan, Mrs. Bennie Prather, Mrs. Sharon Tunnell, Stephanie Tunnell and Stephanie Parish.

### Card of Thanks

We would like to express our sincere thanks and appreciation to our many friends and neighbors for your kindness shown during the loss of our loved one.

For the calls, flowers, memorials, and cards we shall always be grateful. May God's blessings be with each and everyone.

MR. & MRS. CARL TAYLOR  
MR. & MRS. ROBERT TAYLOR  
and FAMILY  
MR. & MRS. JERRY TAYLOR  
and FAMILY



MRS. ROGER PARRISH PINKERTON  
(nee Miss Lesa Lyn Helm)

## Helm - Pinkerton Vows Exchanged In Plainview

In an eight o'clock ceremony Friday evening, July 2, Miss Lesa Lyn Helm and Roger Parrish Pinkerton repeated nuptial vows in Garland Street Church of Christ with Gene Glaeser, minister, officiating.

Parents of the couple are Mr. and Mrs. J. E. Helm and Mr. and Mrs. H. O. Pinkerton, both of near Olton.

The nuptial area was centered with a Gothic style white can-

delabrum with white tapers, interspersed with tropical foliage. Candle tree, swirls, candelabra and tropical palms completed the setting. Pews were marked with white standards holding votive lights and garlands of gypsophila.

Wedding music was presented by a chorus from Lubbock Christian School. Eddie Chance was the director.

Given in marriage by her father, the bride wore a formal gown of nylon organza fashioned with a scalloped pearl-encrusted chantilace sabrina neckline and long petalpoint sleeves. The lace trimmed skirt revealed lace ruffles. A chapel length Watteau train complimented the gown. Her tiered bouffant veil was secured to a Camelot cap of minute pearls. She carried a colonial bouquet of pink sweetheart roses and gypsophila showered with satin love knots.

Mrs. David Nichols of Welch, Oklahoma, sister of the bride, was matron of honor. Mrs. Randy Sheets, Lubbock, and Mrs. Charlie Mickey of Houston were bridesmaids. A rainbow theme was carried out in their attire. One wore mint green, one pink, and one wore blue.

The gowns were floor length and softly gathered to a fitted

empire bodice with v-neckline enhanced by beaded appliques. Sheer chiffon capelets and matching picture hats complemented their attire. Each carried a nosegay of multi-colored spring flowers, also in the rainbow theme.

Flower girl and ring bearer, niece and nephew of the bridegroom were Monica Mallow of Arlington and Michael Flaherty of Savannah, Georgia.

James Pinkerton of Halfway, brother of the bridegroom, was best man. Another brother, John Pinkerton, of Savannah, Georgia and Lee Russell, Dallas, were groomsmen. Ushers were Loy Helm, brother of the bride, and Guy Mallow, Arlington, brother-in-law of the groom.

Miss Carole Baxter of Oklahoma City registered guests.

A reception in the fellowship hall of the church immediately followed the ceremony. Those assisting with hospitalities were Mrs. J. D. Helm of Austin, aunt of the bride; Mrs. Charles Mayfield of Lubbock; Mrs. John Pinkerton of Savannah; Mrs. Guy Mallow of Arlington, sister of the groom; Mrs. Mick Mason, aunt of the bride; Mrs. Robert Pinkerton and Mrs. Bill Pinkerton, aunts of the groom; Mrs. James Pinkerton and Mrs. Henry Snell. Melissa Mayfield distributed the rice bags.

The serving table was laid with a candlelight satin and net trimmed cloth. A candelabrum surrounded by bridal bouquets, a crystal punch bowl and tiered cake topped with fresh flowers decorated the table.

A wedding trip to Arizona followed the ceremony and upon return they will be at home at 8015 Belmont St., Lubbock.

Both Mr. and Mrs. Roger Pinkerton will be teaching this fall. Pinkerton will be working on his master's degree in geophysics at Texas Tech University and will be a teaching assistant in the geology department. Mrs. Pinkerton will be teaching in Idalou Public Schools.

Mrs. Pinkerton is a former teacher of Springlake-Earth. She is a 1971 graduate of Plainview High School and a 1975 graduate of Abilene Christian University where she was a member of Kappa Kappa Delta Pi, honorary education society; Alpha Chi and Omega Rho Alpha.

Pinkerton is a Plainview High graduate. He is a graduate of TTU where he was president of Sigma Gamma Epsilon and a member of Sigma Pi Sigma, Physics Honorary Society and the Geology Honorary Society.

### REHEARSAL DINNER

The rehearsal dinner was hosted Thursday evening at K-Bob's by Mr. and Mrs. H. O. Pinkerton.

### BRIDE HONORED

Pre-nuptial courtesies honoring the bride included a luncheon for bridal attendants given by Mrs. A. E. Lewellen and Mrs. S. J. Young at the Lubbock Club, also a party at Springlake-Earth.

**SHUGART COUPON**  
**MONDAY, JULY 19**  
**PAY-N-SAVE**

EARTH **9** WALLET SIZE COLOR PORTRAITS **99¢**

ASK About Our **FREE** 8 x 10 OFFER Extra charge for GROUPS

**Fish Dinner** **Dine Out!**  
**Every** **Buffet**  
**Friday Evening** **Style!**

**Fish and Chips**  
**All You Can Eat** **\$2.75**  
**For Only**

**Ann's Steak House Cafe**

DIMITT 674-5354

**A tempting offer on a gas grill.**

**SAVE \$30**

Right now, we're making you a tempting offer on gas grills with twin burners! Independently controlled twin burners never use more gas than you need. For big meals, use both burners. For smaller meals, save gas and money by using one burner and half the grill. A gas grill adds a new dimension to family meals and entertaining. It eliminates the fuss and bother of cooking outside while it keeps the flavor and the fun. And, because you take cooking heat out of the house and the burden off your air conditioning, you save energy, too.

**Buy one of these grills before August 1, 1976, and save.**

<p><b>Charmglow HEJ-1T Party Host Twin</b> List price \$239.90 NOW SAVE 30.00 Discount price \$209.90 5% sales tax 10.50 + Cash price \$220.40 + Budget price* \$266.76 Budget Terms: no down payment, \$7.41 per month for 36 months.</p>	<p><b>Arkie GRB-40 Flavor Twin</b> List price \$238.20 NOW SAVE 30.00 Discount price \$208.20 5% sales tax 10.41 + Cash price \$218.61 + Budget price* \$264.60 Budget terms: no down payment, \$7.35 per month for 36 months.</p>
--	--

Prices include normal post-type installation and 5% sales tax.  
\*Budget terms are available at 12.75% annual interest on declining balance.

**PIONEER NATURAL GAS COMPANY**  
(Division of PIONEER CORPORATION)

**Notice**

There will be a wedding coffee Thursday, July 15 from 10 to 11:30 a.m. honoring Mrs. Jimmy Alair in the Charley H. Jones home.

Mrs. Alair has made selections at the Bee Hive Mall and Earth Dry Goods.

Anyone wishing to assist with hostess duties may contact Julie Templeton at 257-3988 or Debbie Jones, 986-2786.

**Notice**

We invite you to worship with us and witness our vows as we begin our lives together, Saturday, July 10, 8:00 p.m. at the First United Methodist Church in Earth.

GARY DENNIS HAMILTON  
MARY ELIZABETH CAIN

**1¢ SALE**

**Over 7,000 Pairs**  
**Of Shoes**  
SALES START JULY 8

**Women's - Men's**  
**Children's**

**Open 8:00 a.m. to 7:00 p.m.**

**DATES SHOE STORE**  
TULSA, TEXAS  
147 E. Broadway

**Store Wide**  
**Summer**  
**Clearance**  
**In Progress**

At  
**Cox** FURNITURE & APPLIANCE  
1904 Hill Ave. Littlefield

**Shoe Clearance**  
**NOW IN PROGRESS**

**Cobb's**  
MULESHOE

**For Suspence Filled Entertainment**

**Attend The**  
**BEST**  
**LITTLE RODEO**  
**ON EARTH**

**Thursday-Friday-Saturday**

**COME TO THE PLACE AROUND THE CORNER**

**BUSY CORNER** **HAPPY PLACE**

PLAINVIEW  
NEXT TO BASKIN-ROBBINS



## Fosters Attend School Reunion In Oklahoma

Mr. and Mrs. Leon Foster were in Altus, Oklahoma during the July 4 week-end to attend the 3rd annual reunion of former students of the Martha School. Mr. and Mrs. Foster were reared in the Martha Community which is located north west of Altus. Both attended school there and the occasion for re-newing old friendships was en-

joyed. Over 300 former students and teachers attended the affair which was held in the Altus High School Cafetorium. Registration began at 1 p.m. and a banquet was served at 7 p.m. Mr. and Mrs. Foster were members of the 1936 and 1942 classes. There were 8 members from the 1936 class and 6 mem-

bers from the 1942 class present. The Fosters served as class parents of the 1944 Senior class. There were 7 members present from that class of 14 students.

Mr. Foster played on the Martha Tiger Baseball team and Mrs. Foster was a cheerleader in 1940 and '41 and a member of the Pep Club. They were both members of the Glee Club during their high school years.

Mrs. Foster reported a great time was enjoyed by everyone in attendance and that she enjoyed hugging some of the boys she attended school with and didn't dare hug them 34 years ago!

Mrs. Foster's seventh grade teacher and her high school History teacher attended the affair. Two of Mr. Foster's grade school teachers attended. Another reunion is planned for July 2, 1977.



MR. and MRS. BILLY GLEN GRIFFIS

## Vows Exchanged

Mary Elizabeth Jaure and Billy Glen Griffis, both of Dallas exchanged wedding vows at 8:30 a.m. on June 12 in a garden setting in the YWCA Park North

in Dallas. Rev. Gene Gordan, Dallas, officiated.

Parents of the couple are Rev. and Mrs. P. R. Jaure of Harlington and Mr. and Mrs. Earl Walker of Earth.

Mary Kinsey of Dallas served as bridesmaid. J. B. Griffis, Jr. served as best man.

Flower girls were Kim Lenor and Rachel Ford, nieces of the bride.

Following the ceremony a reception was held in the YWCA Chapel. The chapel was decorated in the brides chosen colors of yellow and white. Wedding cake, coffee and punch were served by Mrs. Betty Griffis, Dallas, Miss Mary Nell Walker of Amarillo and Mrs. James Thomas of Dennison.

The couple left for a brief wedding trip to South Padre Island. They are now at home at 2775 North Haven, Apartment 1038 in Dallas.

The groom is a coach at Thomas Edison Junior High in Dallas and the bride is a key punch operator at the John Deere Plant in Dallas.

## TOPS Have Program On Origin Of Club

Texas TOPS Club 217 met July 1, at 5 p.m. in the old Earth Oil and Gas Company building with 8 members present.

The meeting was opened with the TOPS Pledge and roll call.

Mrs. W. B. Hucks, leader, read an interesting and informative article taken from the Ladies Circle Magazine. The article explained the reason TOPS Clubs were organized. The paramount reason was because of the many crash diets being publicized which were detrimental. TOPS do not have any special diet, each member is to go to their doctor and allow the doctor to provide their individual diet.

Mrs. Gerald Inglis was Queen for the week.

The meeting was concluded by the group singing the TOPS Song.

Those present were Mrs. M. H. Been, Mrs. W. B. Hucks, Mrs. Larry Hausmann, Mrs. Gerald Inglis, Mrs. Carl Perkins, Mrs. Bob Robinson, Mrs. Ralph Rudd and Mrs. J. E. Shirey.

## You can BANK on it!

By MACKY McCARTY  
CITIZENS STATE BANK

Money, as any other commodity, is a marketable item, and the price of that money is the interest you pay for it.

Interest rates, as borrowers know, can fluctuate from month to month, even day to day, and are influenced by many factors.

Most authorities agree that long term interest rates are influenced by expectations as to the future value of money itself, and many lenders who see inflation ahead will not lend unless the return looks high enough to offset the use of the money and compensate for the probable decline in its value before the money is repaid.

Lending money is a business just as any other, and banks, as all businesses, expect to make a moderate profit. Banks are in the business to lend money. They aren't, however, in business to give it away without a reasonable return. They also have to "buy" money and pay interest for it.

It is this system of "buying and selling" that makes American banking one of the most stable in the world.

"The more you know about our business, the more we can help you!"

## HD Club Has Program On Care of Plants

Mrs. Myrtle Steinbock was hostess Tuesday to members of the Springlake Home Demonstration Club when they gathered at her home for a regular semi-monthly meeting.

President Mrs. Keith Boone called the meeting to order. Mrs. Steinbock gave a delightful devotional entitled "A Recipe for a Good Life."

Mrs. Herman Howard of Olton presented an interesting and informative program on "Tips for caring for all types of house plants."

The hostess gift went to Melanie Boone.

Delicious refreshments of marshmallow rolls, lemon cake and various tasty krisp vegetables on a relish tray were served with Cokes and coffee.

Those attending were two guests, Melanie Boone and Dianna Campbell. Members included Mrs. A. Hollingsworth.

Mrs. Keith Boone, Mrs. Hilbert Wisian, Mrs. Bob Boone and hostess Mrs. Steinbock. The next meeting will be in the home of Mr. and Mrs. Joe Stautenberger.

**Thinking Of Remodeling?**  
SEE US FIRST  
FOR CARPET ESTIMATES  
PRICES START AT  
**\$695** INSTALLED  
OVER PADDING  
**Son Carpet Center**  
805 Broadway-Phone 296-2761  
PLAINVIEW

ATTEND THE RODEO

**WHOA, NOW!**  
It's Time To Go To  
**EARTH'S ANNUAL RODEO**  
Thursday  
Friday  
Saturday  
**JOE COWEN INSURANCE**  
108 E. Jones DIMMITT

**1¢ SALE NOW IN PROGRESS**  
Congratulations AND Best Wishes ON YOUR ANNUAL RODEO  
THURSDAY-FRIDAY-SATURDAY  
LOOK UP!

**YOU'LL HAVE A BARREL OF FUN AT EARTH'S BIG RODEO**  
THURSDAY-FRIDAY-SATURDAY  
**FARMERS COOPERATIVE ELEVATOR**  
MULESHOE 272-4490  
113 N. 1st.

**COMPETITION PROMISES TO BE GREAT**  
AT  
**Earth's Annual Rodeo This Weekend**  
**FARMERS SPRAYING SERVICE, INC.**  
KEN RUSSELL-SOLE OWNER  
PHONE 272-3483 965-2624 or 965-2627  
MULESHOE LAZBUDDIE

**The New "Big Two" from International.**  
Similar in design... different in power

**INTERNATIONAL 1566 TURBO—160 PTO hp\***  
Most powerful International Farmall® tractor ever built. It can be equipped with every option you could possibly need to efficiently handle your type of farming.

**INTERNATIONAL 1568 V-8—150 PTO hp\***  
This is the tractor for the man who wants something truly different in farm tractor performance. And with its big V-8 engine, the 1568 really delivers the power you need when you need it.

**CLOSE OUT PRICES ON ALL 1976 MODEL 1566's**

- Controls at your fingertips mean you don't have to stretch to reach them. Each one is clearly marked, and in some cases, lighted, so that you're not guessing about your tractor driving, even at night. Convenient, of course, but also safer.
- Air conditioning is standard in every cab. It's a recirculating system, easily controlled for quick cool-downs. Not only will it keep you comfortable on long, hot summer afternoons, but it will make your International worth more when you trade. Tinted glass all around helps keep interior cool, too.
- Hydraulically adjusted seat provides the most comfortable seating available on any tractor. Raises and lowers with fingertip control, moves forward or back to match your leg length. Also features ride control for your weight, tilt angle control for lower back support. Contoured, thickly padded cushion, plus flip-up armrests.
- Tilt steering wheel is an option you'll undoubtedly want on your big International. It can be locked at any of five different angles to put the wheel exactly where you want it. Lets you change position during the day and helps other operators set the wheel at the position that suits them best.

**Wooley & Hurst Inc.**  
MULESHOE, TEXAS



## Castro County '76 Jubilee Set July 9

All Castro County residents, former residents, and others who are interested are invited to attend an old fashioned "Picnic on the Ground" with all the games, music, and singing reminiscent of the early days of our county.

The Sunnyside Community is hosting the Jubilee at a site about 1 1/4 miles west of the main community crossroads. The marked trail will lead to a site overlooking historic Running Water Draw. The ground will be worked over and readied by the Sunnyside Lions and relief stations will be provided. For safety's sake, parents are asked to attend with their children.

The area is large enough to accommodate activities such as volleyball, badminton, softball, horseshoe and washer pitching, frisbee, sack racing, or just about any other type game or competitive foolishness.

The trail should be well worn and dusty by about 6 o'clock p.m., as the pioneering spirited county residents begin to arrive. Games, exhibitions, demonstrations, and just plain visiting are scheduled for the first couple of hours of the evening. Chow time will begin around 8 o'clock and each family is asked to bring a picnic lunch



EASY DOES IT... Linda James displays grace and dignity under adverse circumstances as she slips into the cold water bath.



LINDA FORGETS DIGNITY... Seconds later as she emerges from the cold dip, and gasps for breath. It was great fun even if it did near strangle her.

## David Davis Receives Degree

David Eldon Davis, son of Mr. and Mrs. Eldon L. Davis of Route 4, Muleshoe, received the Degree of Doctor of Dental Surgery from the University of Texas Health Science Center at Houston on June 12. The graduation convocation was held in the Hofheinz Pavilion.

Dr. Charles A. Berry, President of the University of Texas Health Science Center at Houston, presided at the graduation. The University of Texas Longhorn Band conducted by Vin-

cent R. Dinino played for the processional and recessional. The convocation address was by Dr. Theodore Cooper, Assistant Secretary for the National Health, Education and Welfare Department.

Dr. and Mrs. Davis will reside in Houston where he has opened a practice. David attended the Springlake-Earth Schools through the seventh grade. He is a graduate from Muleshoe High School and received his B.S. degree from the West Texas State University.

## Party Line

Mr. and Mrs. Donnie Henderson were in Amarillo Monday. They picked up Mrs. Henderson's girl friend, Sue Fulmer at the airport. She arrived from Norwalk, California and will be visiting the local couple for two weeks.

Rev. and Mrs. David Burum are in Oklahoma on vacation this week at Lake Murray near Ardmore, Oklahoma. Before returning home they plan a trip to Six Flags near Dallas.

— PARTY LINE —  
Randy Williams, song leader for the First Baptist Church in Earth, entered the South Central Hospital in Plainview Monday. He is to undergo four days of tests.

Mrs. Melba Park and son Greg arrived here Monday for a week long vacation with her brother and family. Mr. and Mrs. Gerald Inglis and Toni. She will visit her dad, Jonas Inglis, also her sister and family in Olton.

HEY FOLKS

Its Rodeo Time  
In Earth



THURSDAY - FRIDAY  
and  
SATURDAY

STOVALL-BOOHER RADIATOR  
SALES & SERVICE

1019 Broadway - Plainview

The Best Little



THURSDAY  
FRIDAY

ON EARTH  
Is In Earth

and  
SATURDAY

McCORMICK  
UPHOLSTERY

1009 S. 1st --- MULESHOE --- Phone 272-4660



Attend The Best Little



Rodeo



ON EARTH... IN EARTH



THURSDAY-FRIDAY-SATURDAY

T-BAR WESTERN

EARTH

for their family. The Sunnyside Community will provide water, tea, and coffee all evening. No alcoholic beverages will be allowed, please. If the prospect of sitting on the ground seems too low, too rough, or too dirty, better bring along blankets and/or chairs to provide these comforts.

After the vittles and vessels have been put away, the campfire will be lit about 8:30 or 9:00 p.m. and the entertainment will begin. The 76's choir, bluegrass music, story telling, group singing, individual community histories, an impressive Pledge to the Flag Service, a bicentennial skit, and square dancing will be the entertainment features.

This good ole' folk type goings on will last until 12:00 midnight when again we will hit the trail back home and leave the moonlit prairie to the coyotes and prairie dogs and other wild life.

It is hoped that you will want to and can attend and participate in the whole evening's activities, but if you can't, you are welcome to come on out whenever you can.

If any one of you out there has

Tilleez  
PROCESSED CATTLE MANURE

Great for this year's crop  
... and the next and the next and the next.

Unlike raw manure, Tilleez nutrients are available for plant uptake for this year's crop. And, it builds the soil and moisture-retaining capacity for future crops.

Tilleez benefits your soil and gives it improved tilth. The bacterial mass developed in the Tilleez process makes use of the locked-up nutrients, already in your soil, by converting them to readily usable plant food.

And, with all of these advantages, you still get a good supply of nitrogen... usable nitrogen!

Tilleez is the result of a unique process of aerobic bacterial digestion that converts raw manure into a valuable soil conditioner and fertilizer. In the big million-dollar plant at Summerfield, aerobic microorganisms create the heat that kills weed seeds and changes the manure into a form that makes its natural nutrients readily available to plants.

Tilleez is a product of the BioCon Division of Searle Agriculture.

For more information call, collect,  
W. J. "Wop" Lueb, BioCon Division  
(806) 357-2252, Summerfield, Texas

SPECIAL  
INTRODUCTORY  
PRICE!

For the next  
90 days (until October 1),  
Tilleez is available at a special  
low price... competitive  
with commercial  
fertilizers.



It's Rodeo Time In Earth

We Congratulate  
Earth On Having  
One Of The  
Best Little  
Rodeos On  
Earth



THURSDAY-FRIDAY  
SATURDAY



W & C GRAIN, INC.

DIMMITT --- PHONE 647-2101



## Briscoe Names Watson To Council

Texas Panhandle Community Action Corporation has received notification that Larry Watson, administrator of the Emergency Shelter, has been appointed to the Texas Council for Input on Crime, Rehabilitation and Prevention.

The appointment was made by Governor Dolph Briscoe. Watson assumed his duties as administrator of the Panhandle Emergency Receiving Shelter on January 1 and is licensed by the Department of Public Welfare as a child care administrator.

The shelter is a short term placement for abandoned,

abused or neglected children. Watson has previously served as a juvenile probation officer in Potter County and as chief juvenile probation officer for Deaf Smith County.

He has a bachelor of science degree from Texas Tech University and a master's degree in criminal justice administration from Sam Houston State University. Watson is a member of the Texas Corrections Association and the National Association of Social Workers.

Watson's article, "Juvenile Probation's New Partner, NYPUM," appears in this

month's issue of the "Texas Journal of Corrections."

Watson is the son of Rev. and Mrs. Bill Watson of Earth.



"Well, back to the old marriage."



LARRY WATSON

ing in music fundamentals, song directing and sight-singing.

The young musicians also participated in a picnic, basketball, roller skating, miniature golf, softball, a variety show and a campfire devotional.

Music Camp is held each year for junior and senior high students under the direction of Dr. Wayne Hinds, head of the LCC Music Department. A staff of 15 instructed, while 18 LCC students were counselors for the teens who lived in the men's and women's dormitories.

The camp drew 210 participants from 10 states, including Alabama, Arizona, Colorado, Kansas, New Mexico, Nebraska, North Carolina, Oklahoma, Texas and Wyoming.

The youth participating was: Connie Dear of Rt. 3, Springlake.

## Unique Antique Gallery Opening Event Termed Successful

The three day grand opening event of the local Unique Antique Gallery in Earth, was a tremendous success according to owner-operators Mr. and Mrs. J. D. Webster. Mrs. Webster said, "folks dropped in regularly throughout the three day event to look at the antiques, while there several people made purchases."

Mr. and Mrs. Webster are indeed proud of the reception they have received in Earth and of the complimentary comment they received regarding the unusual antiques they have on display.

The Websters thank each of

you for attending the grand opening event and invite you to drop in from time to time as their merchandise will be changing from day to day. They have many unique antiques that will be shipped in the very near future.



Welcome

# RODEO

VISITORS  
To Earth's  
Annual  
Rodeo

WE'RE GLAD YOU  
COULD COME  
AND JOIN IN  
THE CELEBRATION

Thursday-Friday-Saturday

AFFILIATED

## Pay-n-Save

QUALITY AND SERVICE

EARTH

## Queen Pam To Crown New Queen



PAM EAGLE

Miss Pam Eagle, current reigning Rodeo Queen of Earth will crown the new Rodeo Queen Thursday night just prior to the opening rodeo performances in the Rodeo Arena.

Miss Eagle, daughter of Mr. and Mrs. J. B. Eagle of Springlake, expressed her happiness at having had the opportunity to be queen of the local Roping Club and be allowed to represent them at various events. She stated, "It has been a wonderful experience for me. I have enjoyed so much meeting new people and going places with the Club."

Miss Eagle, expressed thanks to the club, to her sponsor, the Citizens State Bank and to everyone who had so graciously made this year a very special year for her. She expressed her hope that the arena would be packed nightly with spectators enjoying the great rodeo performances.

**Local Youth Attends Music Camp**

One youth from Springlake was among those who participated

YIPPEE!  
IT'S A  
**RODEO**  
IN  
EARTH

**THURSDAY  
FRIDAY  
SATURDAY**

*Q-P Parts, Inc.*  
EARTH, TEXAS

Welcome

# RODEO

VISITORS  
TO  
Earth's Annual Rodeo

**MOVE & SAVE  
MORE WATER**

HOOK UP A  
**KMP**  
LAKE PUMP

"Full Prime All Time"

YOU CAN BANK ON

## KMP

LAKE PUMPS  
BOX 441-PHONE 257-3411  
EARTH, TEXAS

---AND---

**PARISH WINDMILL**  
In Production

*No matter how...* **BE SURE TO COME!**

**ANNUAL RODEO**

Thursday - Friday - Saturday

# GARY'S TV LAB

EARTH



## S-E Cheerleading Camp Is Smashing Success

The Wolverine Cheerleaders completed a week of summer camp for girls in the community from 3rd grade through 8th grade. The event concluded Friday, July 2.

The girls enrolled in cheering classes were taught many stunts, yells and pom-pom routines that the Wolverine Cheerleaders had learned at the cheerleading camp in Cisco.

It was an enjoyable week for all the cheerleaders and they wish to thank all the younger girls for their cooperation.

Parents and friends were invited to attend the final session on Friday to see the progress that students had made. The girls were judged on attitudes, ability and spirit. Some girls received blue superior ribbons while others received red outstanding ribbons. Cathy Cain,

Kelley Walden and Mitzi Dutton received Spirit Sticks for their outstanding spirit during the week long camp. The special award of Miss Love Light was awarded to Jennifer Wood for her continuous smile throughout the week.

A picnic lunch was enjoyed by all at the end of the session. The cheerleaders served homemade ice cream, cookies and punch to the group and to all visitors attending.

The cheerleaders wish to extend a special thanks to Mr. May for the use of the gym also for his assistance and cooperation in making the summer camp possible.

Those conducting the school were Debbie Daniel, Kim Clayton, Flora Rivas, Ranae Winders, Elaine Bills, Kim Haydon and Sherri Winders.



MERCY ME... No, Linda is not throwing a screaming, kicking fit, as it may seem. She's having fun at the family picnic. Mrs. James was one of the participants in the ball game played on a wet slide with players catching a balloon full of water. IF THEY COULD! (Virgil Gray, Judge is shown enjoying the fun.)

The city of Earth received a check for \$3,440.28 as their rebate from the state.

WITHOUT CONCENTRATED effort to bring about change, life is only an accumulation of habits.

For American homeowners to maintain and repair their heating and central air equipment it costs about \$950 million a year.

## 4-H Rally Day In Littlefield

The annual 4-H Club Rally for Lamb County is set for Monday, July 12, beginning at 5:30 p. m. in Crescent Park in Littlefield.

The cost per person is \$1.50. This fee covers the cost of the meal, insurance and swim. Guests who attend are to pay the same fee.

A trophy will be presented to the club with the most people attending. This will be figured on the percentage basis of members enrolled.

Different 4-H Clubs in the county will be in charge of the recreation and Brad Walden will lead the 4-H Pledge and Motto at the beginning of the program. Kelly Tooley will lead the invocation.

The 4-H Council members will provide the softballs and bats, the Littlefield 4-H'ers will be in charge of the tow sack races, the Spade 4-H Club will be in charge of the three-legged races and registration, the Sudan 4-H Club will take care of the attendance trophy

and vespers, and the Springlake-Earth Club will conduct the volleyball.

Persons wishing to play tennis are invited to bring their own equipment.

Included on the menu will be ham, provided by Earth and Littlefield Clubs; pinto beans, provided by the Sudan Club; potato salad, provided by the Amherst and Olton Clubs; drinks and bread, provided by the Spade Club; and ice cream, provided by the extension agents.

Records will also be due on Rally Day.

In the event the weather is bad, Rally Day will be conducted in the Lamb County Agriculture and Community Center.

### Party Line

Mr. and Mrs. Bill Anderson returned home Saturday from a week long vacation in Mobley, Missouri. They visited her parents Mr. and Mrs. Harold Roberts, there.

## Earth Receives \$3,440.28 Rebate Check

Comptroller Bob Bullock warned Tuesday that many Texas businesses are ignoring the use tax and may run into costly problems when visited by his auditors.

"It's called the sales and use tax," said Bullock. "But too many people don't understand what the second part of that means."

The Comptroller said the biggest part of the problem is with businesses that do not sell retail goods, have no sales and use tax permit, and never think about the tax when they buy equipment from outside the state.

"A bank, television, or radio station, or any business requiring specialized equipment may buy that equipment from out-of-state without paying the

Texas use tax on the total cost of the purchase."

In fact, said Bullock, the use tax is due on any goods bought from out-of-state and then put to business or personal use, without being resold.

The Comptroller said his office is conducting a public information campaign in an effort to clear up misunderstanding about the use tax.

Also Tuesday, Bullock mailed checks totaling \$48.9 million to 846 cities and towns as the June rebate of the one-cent city sales tax they collect.

City rebates for 1976 are running 12.5 percent ahead of 1975, he said. Rebates through June of 1975 totaled \$129.2 million, he noted, while they total \$145.4 million through June of this year.

**THURSDAY - FRIDAY and SATURDAY**

**WOLVERINE DRIVE IN MINI MART**

---AND---  
EARTH --- PHONE 257-2150

**COME ON OUT FOR A BIG TIME**

**IT'S RODEO TIME**

**IN EARTH THURSDAY-FRIDAY SATURDAY**

**CITY INSURANCE AGENCY**

EARTH --- PHONE 257-2114

From all of us!

**WELCOME**

**Rodeo Fans**

To

**EARTH'S ANNUAL RODEO**

**Thursday - Friday Saturday**

**LOWE SPRAYING SERVICE**

KENNETH LOWE - Owner



## Beef: A Part Of America's History

Talk with someone about typical American dishes and odds are you'll find yourself discussing beef. Beef is an important element in American cuisine and has been since America's birth 200 years ago, and even before that.

Cattle first came to the American Southwest with the Spanish in the 1500's and in 1624 with English settlers in New England. For early Americans cattle were an important food source; but in the chain of uses for cattle, meat was last. Cattle were, first, work animals; second, a source of milk; third, a source of hides; and lastly, meat.

Today, by-products are still valued but beef cattle are first a source of nutritious, versatile and tasty beef. The beef industry has improved cattle breeds, production methods, handling and transportation to the point where today's cook is guaranteed of the finest beef in the world. American beef is the world's standard for taste and tenderness. No wonder beef is America's favorite meat.

Beef recipes were originally passed from cook to cook, generation to generation, by word of mouth. The first cookbook to appear in America was published in 1742. Called "The

Compleat Housewife" it was edited from an earlier English work by E. Smith. The first truly American cookbook, called "American Cookery," was written and published in Connecticut in 1796 by Amelia Simmons. It was designed by the writer, herself an orphan, to help guide fellow orphans who had no one to teach them the skills of cooking.

Then, as now, beef was an important part of any cookbook. And recipes such as Colonial Steak and Kidney Pie or Beef Wellington have been preserved and improved upon for generations.



EATING IS MORE FUN... Under the shade of a tree, especially when the event is a community picnic and play time. Pictured are Mr. and Mrs. Robert Crofford and son Ricky, Mrs. Grace Stovall and Carla Marie and Mr. and Mrs. Donnie Henderson.

"The Bicentennial Beef Cookbook" published by the Beef Industry Council of the Meat Board features 100 of the best beef recipes from America's first 200 years. Colonial kitchen favorites to the early West's chuckwagon greats, Pilgrim's Pot Roast to Planked Porterhouse Steak and Beef Jerky to High-Rise Hamburgers, America's rich heritage of beef cookery is

captured in this 128-page book. It also includes fascinating historical information and helpful sections on cookery methods, storing of beef, carving and much, much more. The cookbook is available by mail only. Send \$2 (check or money order) to Bicentennial Beef Cookbook, Beef Industry Council, Dept. 76, 444 N. Michigan Ave.,

Chicago, Illinois, 60611.

## OSHA Extends Date For Machine Guarding Standards

Farmers and ranchers will have more time to meet safety requirements of the new Machine Guarding Standards for Agriculture. According to the Occupational Safety and Health Administration (OSHA), the June 7 effective date has been extended to October 25, 1976. This coincides with the scheduled effective date of the standard for roll-over protective structures on tractors.

"In assessing the importance of educational material to employers and employees, it is necessary to consider the uniqueness of agriculture as regards occupational safety and health," OSHA stated. In the past, few safety and health standards have applied to agriculture. Therefore, it is reasonable that a longer lead time is necessary to inform employers and employees about the standard than with other industries. Lead time for training is especially important considering the need to make equipment modifications in order to comply with the standard, OSHA reported.

To protect farm owners and

their employees from hazards associated with moving parts of farm machinery, the standard calls for placement of guards or shields on the power take-off drives and shafts of all farm and field equipment.



The average American hen lays 217 eggs a year—versus 203 for the average British hen!

## Tips On Safe Trailer Towing

This summer's vacation can turn into a disaster if that trailer you are pulling comes loose or is not handled properly.

For safety's sake, make sure you have a good sturdy trailer hitch, hook it up properly and take precautions when driving, points out Logsdon, county agent for the Texas Agricultural Extension Service.

"First of all, use a trailer hitch that is strong enough for the amount of weight you plan to tow. You may need heavy duty springs and shock absorbers for extra weight.

"Make sure the trailer hitch is properly attached to the car or truck with safety chain in place and lights hooked up," Logsdon adds.

Load the trailer with 60 percent of the weight in front of the trailer axle. This makes both the car and trailer more stable.

"Before going anywhere, check to see that the turn signals and

brake lights are working and that you can see on both sides of the trailer with the outside mirrors," cautions Logsdon.

When passing other vehicles, allow twice the space and time you would normally take to pass. Also, keep the proper distance between your car and the vehicle in front of you. A good rule to follow is to keep one car length for every 10 miles per hour you are traveling between you and the other car.

"Above all, keep alert and remember you're towing a trailer," emphasizes Logsdon.

The first Stars and Stripes, whose birthday we observe on June 14, was created on that date, in 1777, when, according to the U.S. Marine Corps Reserve, the Continental Congress resolved: "That the flag of the thirteen United States be thirteen stripes, alternate red and white; that the union be thirteen stars, white in a blue field, representing a new constellation."

## Confidence

Locks Horns

With

Confidence

As

DARING  
COWBOYS

Try To Outwit Their

OPPONENTS

At The

ANNUAL AMATEUR

RODEO

THURSDAY—FRIDAY—SATURDAY

EARTH FEED & SEED, INC.

EARTH



HI PARTNER!

WELCOME

Attend The Best Little

RODEO

ON EARTH... IN EARTH

Thursday-Friday-Saturday

R. J. "Skeeter" BROCK

FARMERS UNION INSURANCE EARTH

HAIL-FIRE-LIFE-ACCIDENT-CANCER INSURANCE



# THIS IS IT

THE  
Fun - Filled

EARTH  
RODEO

Thursday-Friday-Saturday

ENJOY YOURSELF AND RETURN  
AGAIN REAL SOON ...

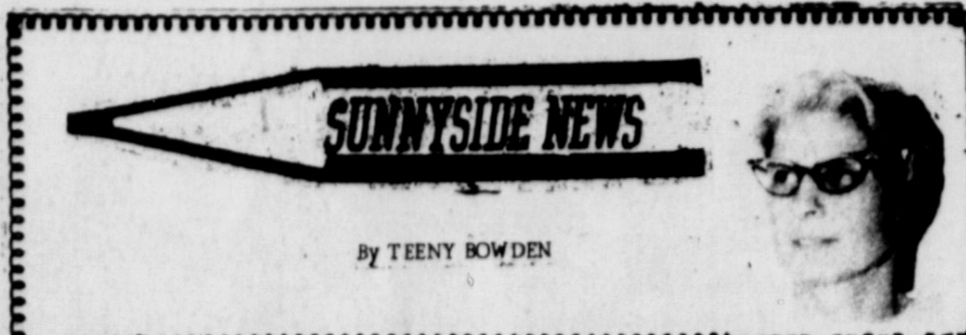
EARTH CO-OP GIN, INC.

JAMES SHEPARD-Manager





# CLASSIFIED ADS!



By TEENY BOWDEN

FOR SALE: Gearhead for irrigation well. 75 HP- 1 to 1 gear ratio. Contact Wilson Lewis, Phone 257-3333, Earth. 7/1/tfc

**KIRBY SALES AND SERVICE**  
Repairs while you wait. Harvey  
Boon Appliances - Muleshoe. 3/3/76/tfc

FOR SALE: Black and white, good, used television. Call 986-2421. 7/1/tfc.

Mrs. Maggie Seymore and her son Darrell Sutor of Abilene arrived last Friday to spend the week-end with the Sadler family here, and to be with her sister, Mrs. Pearl Sadler in the Dimmitt hospital. They spent Friday night and Saturday with

Mr. and Mrs. Embree Roy Sadler and Saturday night with Mr. and Mrs. Ezell Sadler. The David Sadler family and Gale Sadler family also visited with them.

Rebecca and Edward Parson of Houston came home with them. Ervin Parson of Muleshoe came Monday and visited until Saturday with them. Edwin Parson flew to Amarillo from Kansas City, Missouri Wednesday night to visit for awhile with them. Patricia Parson from Friona arrived Friday night and Laura Parson from Muleshoe came Saturday night to visit a few days.

Mr. and Mrs. Wayne Holbrooks and family of White River Lake visited Tuesday with Mr. and Mrs. J. C. Holbrooks. Mr. and Mrs. C. H. Holbrooks of Springtown spent the week-end with them. J. C. and C. H. are brothers. Mrs. Tiny Walling and Shane of Bovina visited with them Saturday evening.

Woodrow Powell of Boswell, Oklahoma, a former resident of Earth, and the father of James Powell of Dimmitt passed away in Wilson Jones Hospital in Sherman at noon Monday. The Powells were with him at the time of death. Mr. and Mrs. Ezell Sadler left Tuesday afternoon to attend the funeral services and burial at Van Alstyne, Texas. They returned home Thursday night.

**READY-MIX CONCRETE**

We do all types of concrete work.

Storm Cellars, Patios, House Foundations, Driveways, Sidwalks, etc.

**BACKHOE SERVICE**

Offices located at 106 Grant, Dimmitt  
Phone 647-3664

Carl Henderson, Manager

**HENDERSON FOUNDATIONS, INC.**

**OWENS ELECTRIC**

WE SPECIALIZE IN:  
Complete sales and service of electric motors (new and used), magnitos, starters and generator repairs.

**LOAN MOTORS AVAILABLE**  
809 E. 2nd. 364-3572 HEREFORD, TX.

Floating Tailwater Pump  
Conserve that water

Vertical Hollow Shaft

Electric Belt Driven Gear Head

"Guaranteed Satisfactory Service"  
Warren Owen.....Harvey Milton

Gwendolyn and Melinda Wilson have been presented plastic book marks for having read 10 books in the summer reading program. They also have built huge book worms and are working on their second one now. Rebecca Parson was presented her book mark this Sunday.

Mr. and Mrs. Jake King, Karl and Brenda of Hereford visited last Sunday with Mr. and Mrs. David Sadler. Melody went home with them Sunday night. Karl went home with Mr. King Thursday morning. Mrs. Sadler went after them Saturday when her father was hospitalized with a serious heart attack.

Mr. and Mrs. Carl Bradley, Kent, Kelly and Kyle attended the Tractor-Pull in Amarillo Friday night. Cindy Sadler went Saturday night.

Mr. and Mrs. Thomas Parson attended a homecoming and family reunion at Dennison Springs, and visited with their children and other relatives at Proctor Lake the last two weeks. Their grandchildren, James,

Michael Graham and Kevin Riley attended the District 2 4-H Leadership Lab in Littlefield last Wednesday through Friday.

Tommy Graham and Mrs. Gerald Graham attended the Lamb County 4-H Council in Littlefield last Tuesday night. Tommy is the secretary of the council. Michael attended the Lamb County 4-H Youth-Adult Subcommittee meeting while they were in the council meeting.

A trace of rain was received last Monday night with .20 inch recorded for last Tuesday night.

Dina Jo Hampton attended a horse clinic in Earth last Monday and participated in the Horse Show in Vega last Saturday. She won 1st place in poles, 3rd place in flag, 3rd place in barrels, and 4th place in reining. She participated in the District 2 4-H Horse Show in Lubbock on Tuesday and left Wednesday to spend the rest of the summer near Oklahoma City with a cousin helping with the horses and housework and attending horse shows each week-end. They were in Garnet, Kansas this week for a show there. Mrs. Ima Blewett and Belinda Hampton took her to Edmond, Oklahoma Wednesday night to the Kenneth Switzers and spent the night with them and returned home Thursday.

Mr. and Mrs. Lawrence Phelan of Weatherford attended the Gospel Concert with Mr. and

ATTENTION IRRIGATION FARMERS- Accidize your irrigation wells the easy and safe way. Proven results. Call Wayne Crittenden, Muleshoe, Texas, 272-4592, day or night. 3/18/tfc

SERVICE on all heating, air conditioning, washers, dryers, refrigerators, etc. Call collect. Loveless Electric, 285-2000 Olton 6/10/tfc

Winnboro Blue Granite White Georgia Marble and others, including Bronze for Memorial Park Specifications. See or Call Collect Percy Parson, Olton Phone 285-2621 or Frank Ellis Muleshoe, Phone 272-4574.

WANTED: Avon representatives. Call Lorena Weaver, 257-2071. 6/24/3tc.

FOR SALE: Good, used nylon carpet. Beige color. Phone 257-3875. 7/8/tfc.

**FOR SALE**

NEW AND USED Aluminum Pipe OF ALL SIZES

---ALSO--- SIDE-ROW Sprinklers

---AND--- UNDERGROUND Irrigation Systems

**Stateline Irrigation Company, Inc.**

LITTLEFIELD-MULESHOE LEVELLAND

**NEW WATER WELL ACID STICK**

For better water yields for summer irrigation. Irrigation wells should be treated at end of pumping season while water table is the lowest.

REX McFADDEN GO.  
792-4446 Lubbock - After hours-797-9653.

**PAINTING DOESN'T COST IT PAYS**

Call Wayne Simmons LITTLEFIELD 385-6175

TAPING ACOUSTICAL CEILING

BEDDING SPRAY WORK

**FOR SALE**

3 Bedroom Brick Home in Earth.

3 Bedroom Brick Home in Littlefield

ALSO

Lots on Green Belt Lake in Clarendon

**JOHNNY HABERER Real Estate**  
965-2206 or 257-2073

**Your Neighbors Trade At Stateline Irrigation Company, Inc.**

LITTLEFIELD-MULESHOE LEVELLAND

WHY NOT YOU?

**ROBBY'S GUITAR SHOPPE**  
809 MAIN CLOVIS "the music store."

**WE HAVE ALL TYPES OF STEEL IN STOCK AND PLENTY OF COTTON TRAILER MATERIAL**

Ed Wallace MANAGER HOME 385-5381

J. D. Hagler SALES REPRESENTATIVE For Cotton Trailers HOME 385-5150

**WEST TEXAS STEEL CO.**  
Old Clovis Road Littlefield 257-5125 (Former Littlefield Steel & Bolt Works)

**DEAD STOCK REMOVAL**

**7-DAYS A WEEK SERVICE**

Please Call As Soon As Possible

**MULESHOE BI-PRODUCTS**

PHONE 965-2429

**GUINNALL PRYOR CO., INC.**  
Automobile Parts Supplies & Equip. P.O. Box 567 Earth Texas

FOR SALE 16" Well Casing. New Steel 18 1/2 per pound. 6" and 8" Column Pipe. Highest prices for Junk Iron FARWELL PIPE and IRON Phone 481-3287 601 Ave. A Farwell, Texas

To Rest Assured use SAFETY DEPOSIT BOX Protection

FIRST STATE BANK Dimmitt, Texas

FOR SALE: Nice camper van, 283 V8 engine, stove, ice box, built ins. Sleeps 4-6. New paint job, good tires. Ready to go. Also Baha VW, tow bar. Sell together or separate. Call Cliff Brown, Sunnyside, phone 846-2341. 7/1/tfc

FOR SALE: 23 IBM Selectric typewriters. 20 at \$425 each (two years old) 3 at \$325 each. If interested, contact William L. Mann, Springlake-Earth School. Phone 257-3310 5/20/tfc

FOR SALE: One two bedroom house to be moved. See Ed Cox at Fry and Cox. Phone 272-4511 11/13/tfc.

**FOR SALE**

20' Hobbs Grain Bed 54" Boards 18 Ton Twin Ram Hoist Nylon Tarp All Like New

Call 257-3923

**TELEX Hearing Aids**

We Have Moved From 416 Mitchell To 403 E. 14th

**CLOVIS HEARING AID CENTER**  
Phone 763-6900 Clovis, N.M.

**SINGER SEWING MACHINES SALES AND SERVICE**

COMPLETE SERVICE ON ALL ALSO SINGER VACUUM CLEANERS

**ROBINSON SEWING MACHINE CENTER**

LITTLEFIELD 385-4621 308 W. 4th

**Williams Body Shop**

Willie Williams, Owner 26 Years Experience

WE SPECIALIZE IN ALL TYPES OF \*BODY WORK \*GLASS \*PAINTING

Employees: Kenny Williams Doug Polk Rocky Williams

1111 E. 9th Littlefield 385-4577

**Inventory Sale!**

SAVE \$2,359.18 24x60 3BR 2B (#2355) Double Wide Masonite Siding - Bay Window Dishwasher - Garbage Disposal Reg. \$17,267.39 Sale \$14,908.21

SAVE \$1,146.08 14x65 2BR 2B (# 2287) Reg. \$10,137.44 Sale \$8,991.36

SAVE \$1,002.39 14x70 3BR 2B (# 1645) Reg. \$ 9,541.50 Sale \$8,539.11

SAVE \$1,000.52 14x65 2BR 2B (# 2366) Reg. \$ 9,534.78 Sale \$8,534.26

• 15 Year FHA Loans • Complete Service • Write for Free Brochure • FHA Approved Park • Open Daylight to Dark and Sunday PM



**SUNNYSIDE**

(Continued from page 11)

guidance in the beginning of the next 100 years, of our nation.

Instead of the regular preaching service Sunday night, the pastor asked Milburn Haydon to speak on the subject "The Future of the Church." Mrs. L. B. Bowden on "The Future of America," and Cliff Brown on "The Future of the Christian." Rev. Raymond Jones read several scriptures before and between each topic.

After the Sunday night church services the group went to join those gathered at the community building for ice cream and a period of visitation. At sundown the flag was lowered to the sound of "taps" by Lynn Cox and at dark a fireworks display was set off on the gin yard across the highway from the community building. Several visitors were in both the morning and evening services.

Rev. and Mrs. Raymond Jones visited with their son and family. Mr. and Mrs. Eddie Jones and children Thursday through Saturday in San Angelo. They came back by Gordan City to visit with his uncle who recently underwent open heart surgery in Houston.

The Sunnyside Feeders met at the Dodd Dump in Dodd Thursday night for their annual supper and meeting.

L. B. Bowden was admitted to Plains Memorial Hospital Saturday night with a virus infection.

Euless Waggoner returned home Wednesday night from his farm in Arkansas for a visit with his family. He did some work on the museum in Dimmitt Thursday evening.

Jerri Kay Clark attended Horsemanship Camp in Hereford this week.

A BYW was organized Tuesday afternoon with four members present. They will elect officers at their next meeting which will be next Thursday afternoon. The Mission Friends met at the same time Tuesday, but will go back to their regular Thursday meetings next week.

Mrs. I. W. Hill of Dimmitt

taught the book, "Yes, A Woman's View of Mission Support" Wednesday morning to the Baptist Women at the church. The Baptist Women's Council met before the book study.

Mrs. Hershel Wilson took the G. A. girls to camp at Plains Baptist Assembly Monday through Thursday. Those attending were Carrie and Stacy Sadler, Rhonda Ross, Kay Owens and Dara Louder. Carrie won 1st place in archery, Stacy won 1st in 4th grade archery, Carrie 3rd in Frisby golf, and Dara 3rd in 5th grade archery. Mrs. Doug Louder helped get them to camp. Mrs. Larry Sadler helped them get home.

Mr. and Mrs. Ira Scott of Hereford, Mr. and Mrs. Edwin Morrison and children of near Hereford, Mr. and Mrs. Anthony Stanford and children of Amarillo, Mr. and Mrs. Gary Kriegerhauser and children of Hereford and Mr. and Mrs. Ray Riley of Dimmitt had dinner with Mr. and Mrs. Ray Joe Riley, Kevin and Jodie in observance of Father's Day.

Mr. and Mrs. Ray Joe Riley and boys were dinner guests of Mr. and Mrs. Ray Riley in Dimmitt the 4th.

Mr. and Mrs. Luther Thompson and boys of Hobbs, New Mexico visited Thursday and spent Thursday night with Mrs. Ed Thompson.

Tresa and Cheryl Powell of Dimmitt spent the week-end with Mr. and Mrs. Ezell Sadler and attended the Sunday morning church services with their grandmother.

Mr. and Mrs. M. H. Fowlkes of Lubbock visited with Mr. and Mrs. Embree Roy Sadler Wednesday.

Mr. and Mrs. Embree Roy Sadler took Gregory Sadler to his home in Lubbock last Thursday and Amy came home with them and spent Thursday night with them.

Mr. and Mrs. Hershel Wilson and Daneen, Greg George and the Singing Disciples sang at the Boswell Baptist Church in Plainview Sunday afternoon. They were in a community choir celebration in Abernathy Sunday night.

In England, it's believed that a double hazelnut carried in the pocket prevents toothache.



IT'S FUN PRACTICING... This group of gals were seen practicing during cheerleading school last week. They are left to right, Linda Jackson, Jeanne Haydon, Kim Haydon, Stephanie Parish, Jennifer Kellar, Cheryl Clayton and Darcy Randolph.

Adam Kemp, son of Mr. and Mrs. Bill Kemp of Lubbock spent a week in Earth visiting his grandparents, Mr. and Mrs. F. W. Bearden. He returned to his home Wednesday afternoon.

"Worry is interest paid on trouble before it falls due." W. R. Inge

**Construction To Begin On Lamb Highways**

LUBBOCK-Highway construction contracts let in June by the State Highway and Public Transportation Commission include work in Lamb, Terry, Gaines and Garza Counties.

The work will be supervised by District Engineer George C. Wall, Jr.

A contract was awarded to High Plains Pavers, Inc. of Plainview. Low bid was \$290,337.50.

The project, which will require an estimated 65 working days, will be under Supervising Maintenance Engineer William M. Pope, is for seal coat on U. S. Highway 385 from 1.5 miles south of Springlake, southwest 7.7 miles from 12.3 miles north of Littlefield to Spur 430; from Meacham Avenue in Littlefield to the Hockley County line;

from the north edge of Wellman to 0.2 mile north of the Gaines County line; on U. S. 62/385 from the north city limit of Seagraves to the south city limit of Seagraves; and on U. S. 380 from the Lynn County line, eastward 6.8 miles, a total distance of 42.5 miles.

**Party Line**

Mr. and Mrs. Marvin Sanders, Mrs. Clarence Kelley of Earth and Jeff Sanders of Katy went to Sarah, Oklahoma Saturday to visit their uncle, Don Sanders of Sarah. While there Mr. and Mrs. Marvin Sanders attended the Ex-Students Association meeting at Sweetwater School, Marvin's Alma Mater.

**WE GIVE GREEN POCKET**

IF YOU WANT GOOD OLE FASHION BEEF, COME TO THE KOUNTRY BOY SUPER MARKET. YOU'LL GET THE BEST IN THE WEST. WE WILL BE GLAD TO SPECIAL CUT ANY ORDERS.

<b>FABRIC SOFTENER</b> STA PUF CON 33 OZ	<b>87¢</b>	<b>INSTANT TEA</b> LIPTON 3 OZ	<b>\$1.29</b>
<b>FRUIT DRINKS</b> HI-C 46 OZ	<b>2/89¢</b>	<b>LUNCHEON MEAT</b> SPAM 12 OZ CAN	<b>99¢</b>
<b>BAR-B-Q SAUCE</b> KRAFT 18 OZ	<b>59¢</b>	<b>WHITE VINEGAR</b> HEINZ GALLON	<b>\$1.29</b>
<b>ALUMINUM FOIL</b> KIMBELL 75 SQ FT	<b>79¢</b>	<b>GELATIN DESSERT</b> JELLO 3 OZ	<b>5/97¢</b>
<b>TOWELS</b> BOUNTY JUMBO ROLLS	<b>49¢</b>	<b>ORANGE DRINK</b> BODEN'S RICH 'N' READY GALLON	<b>89¢</b>
<b>FLOUR</b> GLADIOLA 5 LB BAG	<b>59¢</b>	<b>MINATURE MARSHMELLOWS</b> KRAFT 1 LB	<b>49¢</b>
<b>TOMATO SAUCE</b> MT. PASS 8 OZ	<b>6/89¢</b>	<b>MEAT SPECIALS</b>	
<b>MIRACLE WHIP</b> KRAFT QT JAR	<b>89¢</b>	<b>CHUCK ROAST</b> USDA CHOICE BEEF	<b>LB 59¢</b>
<b>MIXED NUTS</b> TOM SCOTT 12 OZ	<b>89¢</b>	<b>SHOULDER ROAST</b> USDA CHOICE BEEF	<b>LB 79¢</b>
<b>LAUNDRY DETERGENT</b> SUPER SUDS GIANT SIZE	<b>59¢</b>	<b>ARM ROAST</b> USDA CHOICE BEEF	<b>LB 89¢</b>
<b>CRACKERS</b> ZESTA SALTINE 1 LB BOX	<b>49¢</b>	<b>RIB STEAK</b> USDA CHOICE BEEF	<b>LB 89¢</b>
<b>CORN</b> JOAN OF ARC WHOLE KERNEL OR CREAM STYLE 303 CAN	<b>4/51.00</b>	<b>GROUND BEEF</b> FRESH	<b>LB 55¢</b>
<b>SWEET PEAS</b> JOAN OF ARC 303 CAN	<b>4/51.00</b>	<b>FRANKS</b> GLOVERS 12 OZ PKG	<b>79¢</b>
<b>APPLESAUCE</b> DEL MONTE 303 CAN	<b>3/89¢</b>	<b>PORK CHOPS</b> VALU TRIM CENTER CUT LB	<b>\$1.79</b>
<b>PEACHES</b> VAL VITA 2 1/2 CAN	<b>2/89¢</b>	<b>PORK CHOPS</b> FAMILY PAC LB	<b>\$1.99</b>
<b>DAIRY SPECIALS</b>		<b>PRODUCE SPECIALS</b>	
<b>BISCUITS</b> KOUNTRY FRESH	<b>10/51.00</b>	<b>PEACHES</b> CALIFORNIA 3 LBS	<b>\$1</b>
<b>OLEO</b> MEADOWLAKE SOFT 1 LB	<b>39¢</b>	<b>SQUASH</b> WHITE, YELLOW, ZUCCHINI, OR ACORN 3 LBS	<b>\$1</b>
<b>BUTTERMILK</b> BELL'S 1/2 GALLON	<b>69¢</b>	<b>POTATOES</b> 10 LB BAG NO. 1	<b>\$1.00</b>
<b>COTTAGE CHEESE</b> BELL 24 OZ	<b>89¢</b>	<b>ARTICHOSES</b> LARGE CALIF 3 LBS	<b>\$1</b>
<b>FROZEN FOOD SPECIALS</b>		<b>APPLES</b> WASHINGTON EXTRA FANCY RED DELICIOUS 4 LBS	
<b>ENCHILADAS</b> PATIO BEEF OR CHEESE 22 OZ	<b>79¢</b>	<b>POT PIES</b> MORTON	<b>4/51</b>
<b>GOLDEN FRIES</b> ORE IDA OR CRINKLE CUT 2 LB	<b>69¢</b>	<b>ICE CREAM</b> BELL SQUARE 1/2 GALLON	<b>89¢</b>

**KOUNTRY BOY**

LITTLEFIELD PLAZA      MARSHALL HOWARD BLVD.

OPEN 8 A. M. TILL 9 P. M. 7 DAYS A WEEK

**Plan Now To Attend**

**EARTH'S ANNUAL AMATEUR RODEO**

**THURSDAY - FRIDAY and SATURDAY**

**H. S. SANDERS LUMBER**

EARTH



## Precautions To Prevent Rape

More mobility and independence have helped make women increasingly vulnerable to many crimes, including rape. The FBI says rape is the fastest-growing violent crime in the nation. Conservatively estimated, 60,000 rapes occurred in 1975. This large increase in reported rapes is due partly to changing societal attitudes toward rape victims and improved treatment facilities. However, some estimates say about two-thirds of all rapes go unreported. Women can cut down on these

staggering figures by making themselves less vulnerable. Here are some precautions compiled by the Texas Medical Association that should help cut down on any type of assault.

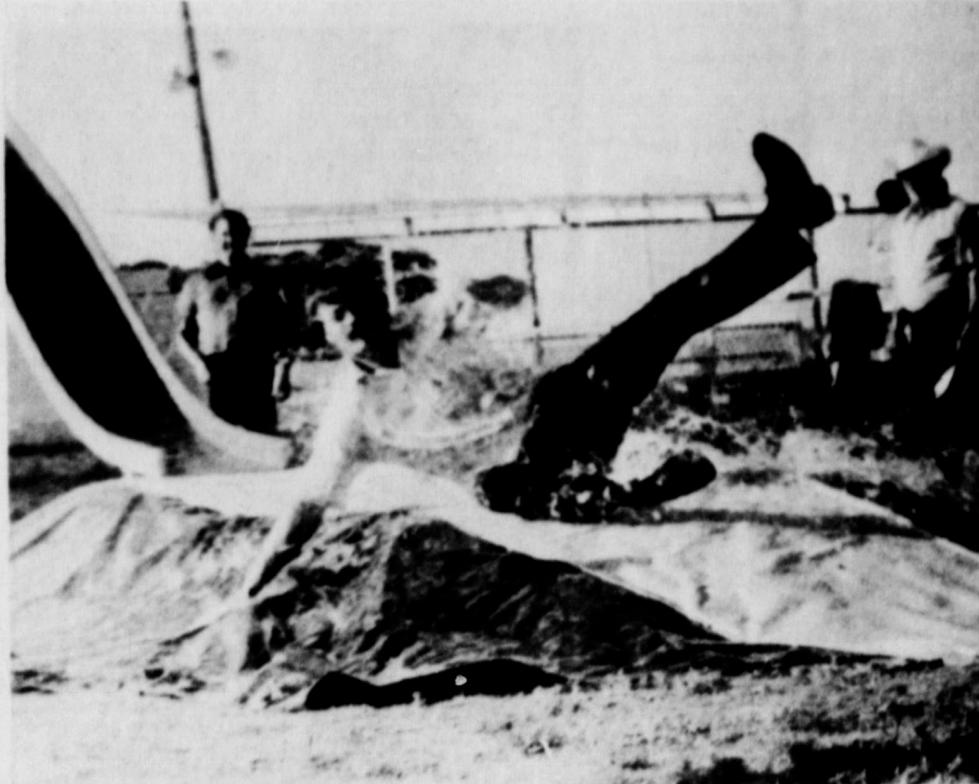
Police advise people not to hinder themselves with books, packages or clothing that could prevent quick movement in an emergency. Clog shoes and long dresses may be stylish but not practical if someone must walk at night.

Rape crisis centers often advise women to go to a lighted home

or business if they are followed.

If a threatening person has no weapon, some authorities advise fighting back. Hit, scratch, fight dirty; do anything to get free of and flee an attacker. Keys between the fingers, an umbrella, even a ballpoint pen can make an effective weapon to discourage an attacker. Some articles on rape prevention advise screaming, maintaining balance and being ready to run. Another point of view stresses keeping calm and reasoning with somebody in a threatening situation.

If the attacker has a weapon, much more caution is definitely



PUT YOUR LITTLE FOOT RIGHT OUT... Mike Caudill looks as though he is conducting a new exercise routine. However, he hadn't planned it this way, actually the pose is purely accidental due to the wet slide and small puddle of water at the end of the slide. His efforts to catch the water filled balloon was fruitless during this maneuver.

and having adequate outside lighting.

It also pays to be politely cautious with strangers and not let them in for any reason. But doing this will not cut out all danger. Some studies show about one-third of all rapes are committed by casual acquaintances.

A simple way to decrease this hazard is to avoid going to someone's residence on the first date if you are uneasy. Also, let the person know that someone, even a fictitious roommate, is expecting you home.

Of course it is impossible for people to cut themselves off from society to be completely safe but common sense and simple precautions will cut down on vulnerability.

Despite all precautions, rape sometimes occurs. Rape victims need medical attention, at least to have venereal disease tests. They also need someone to talk to about the experience. Studies show many women ex-

perience needless shame and guilt because they have fallen victim to a criminal.

### RAVEL TIPS AND TRICKS

If you're traveling with a friend and want to meet people, consider spitting up during a flight so that each of



you will have a chance to charm or be charmed by a stranger.

A key to hospitality all over the world may lie in your interests and professional connections. Before you leave home, you could write a club, association or organization that you're interested in. It could lead to all sorts of pleasant meetings.



# WELCOME

## RODEO FANS

YOU BE THERE  
THURSDAY—FRIDAY—SATURDAY

# JONES

RT. 1  
DIMMITT, TEX. 79027



Springlake...986-2786  
Sunnyside...846-2671

## SPRAYING SERVICE

Owner, Charlie H. Jones

advisable. Talk and try to keep the person calm. Offer money and, if possible, pretend you do not understand there has been a sexual threat.

Many persons are particularly vulnerable going to their vehicles. One rape crisis center advises using this routine: have all car doors locked, keep the keys between your fingers, get in the car quickly and lock all doors. When driving, keep windows up so a person cannot easily touch you when you are stopped. If someone follows you, go to an open business and either seek help inside or blow the horn to attract attention. Doing this can scare off a threatening person. Seeking help at a business also will keep someone from following you home.

Car trouble presents another potential problem. The safest procedure is to turn on the hazard lights, put up the hood and wait inside with doors locked. Wait for a policeman or an obviously safe person such as a man with his wife and children. A CB radio can be an invaluable aid for seeking assistance in this and many other situations.

Some precautions to take at home include putting only last names on a mailbox. Doing this and listing two last names on a mailbox will help keep potential intruders from knowing the number or sex of residents in a dwelling. Other safety measures include having deadbolt locks on doors, putting wooden poles in windows and sliding doors

# WELCOME

## YOU ALL!

TO

## EARTH'S

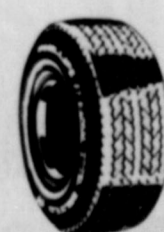
## BIG

## ANNUAL

# RODEO

Thursday - Friday

Saturday



Your Phillips 66 Jobber

Earth Oil & Gas Co., Inc.

Phone 257-3461---Earth



Happiness is  
Fun and  
Entertainment



at the

# RODEO

ANNUAL



TOM LIVELY

EARTH, TEXAS



## Separate Insurance Coverage Now Required For CB Radios

"Breaker, breaker one-nine, Pig pen, this here's the Rubber Duck... Come on."

So go the lyrics from a popular record which glorifies one of America's newest fads, citizens band (CB) radios.

No where is the fad more popular than in Texas where an estimated 206,000 CB operators chatter away on the 23 channels authorized by the Federal Commission for citizen broadcasts. As the popularity of the CB radio has increased, there has been a corresponding increase in theft of CB equipment.

During 1975, more than half a million dollars worth of CB radios were stolen in Dallas alone, and during one seven month period there were 1,638 reported CB thefts.

Houston law enforcement officials say they average 20 to 30 reports of stolen CBs each

day. In Corpus Christi, the number of reports of CB thefts jumped dramatically when a local car dealer started advertising that he would give away free CB radios with the purchase of a new car.

Apparently no one is exempt. A Fort Worth Assistant District Attorney had his CB radio stolen, as did the mayor pro tem of San Antonio, Secretary of State Mark White, and Texas Insurance Commissioner Joe Hawkins.

The problem became so severe late last year that the State Board of Insurance excluded CB radios from the standard comprehensive coverage portion of an automobile policy. (This exclusion also applies to two-way mobile radios or telephones, including accessories, equipment and antennas.)

If CBs had been left under that coverage, "there is no telling



YOUNGSTERS and ADULTS ENJOYED ICE CREAM... At the big Bicentennial celebration Saturday in the Earth City Park. The Rainbow Girls sold homemade ice cream to picnickers to make the event seem more folksy.

what it would have done to comprehensive rates," a board official recently told members of the Texas House Insurance Committee. "We may have saved a major comprehensive rate increase," he said.

While some CB owners object to having to pay additional premiums, insurance industry representatives say it is not right for the non-CB owner to face higher rates because of the CB boom.

The new ruling, which applies only to policies sold after January 1, means that unless the vehicle owner purchases coverage specifically for his CB, it will not be protected on his insurance policy.

Equipment valued up to \$750 may be insured for \$17 per year. For \$751-\$1,500 in coverage, it would cost \$27. For equipment worth more than \$1,500, it is \$53. Rates are set by the State Board of Insurance, which will review them periodically when there is additional statistical evidence.

These coverages may also be purchased under a different line of insurance, though the rates are generally higher.

Portable units that are moved from one car to another can be insured by a separate policy. Even if the radio is not insured, any damage done directly to an automobile by a thief comes under the standard comprehensive coverage of the policy.

A "hit" by a thief takes less time than it took for the owner of the CB to make the first payment. Typically, a thief goes to a large public function such as a basketball game looking for cars in the parking lot which sport a CB antenna.

It might take two and a half minutes to open a locked car. Once in the car, the thief uses a bolt cutter and screw driver to remove the unit. At home the serial number, which is often pasted on, will be removed and the unit sold to a "fence."

The Texas Automobile Insurance Service Office says there

are several ways to protect your property.

--First, record the serial number and date and place of purchase of CB equipment and keep the information with other valuables.

--Second, use an electric engraving tool or any sharp object to inscribe some identifying mark (such as a social security or driver's license number) on the back of the radio. Also, scratch your initials in some secret corner of the unit. The only way the police can return a stolen unit to you is if you are able to identify it properly.

--Third, if you park your car in a public place, remove the antenna and unit (if possible) and lock them in the trunk or take them with you.

--Fourth, buy CB equipment only from a franchised or reputable dealer. If it can be proven that you knew a unit was stolen when you bought it, you can be convicted as an accessory to the crime.

## Summer Rose Care Important

Roses are red, violets are blue; if you take care of them, they'll look good for you.

This is the philosophy of Everett Janne, a landscape horticulturist for the Texas Agricultural Extension Service.

He suggests taking good care of your roses in the summer so they will look good in the fall. "One important requirement of roses in the summer is adequate

water," Janne says. "If there is no rain, water them thoroughly at least twice a week. Try to keep the water off the leaves, and if possible, water roses in the morning."

It's also a good idea to fertilize roses with a 10-15-5 fertilizer. Spread the fertilizer evenly around the base of the plants and work it lightly into the soil, advises the Texas A&M

University System horticulturist.

"If you want a lot of blooms in October, prune rose bushes in August by cutting them back about one-third," suggests Janne.

He recommends practicing a preventive spray program to control blackspot and mildew. Benomyl is a good spray for controlling both these diseases,

## Attend The Best Little

# RODEO

THURSDAY-FRIDAY-SATURDAY

FREE BARBEQUE ON THURSDAY



## Gray's Garage

OLTON-Phone 285-2484



Welcome

# RODEO

VISITORS

To Earth's Annual Rodeo  
Thursday-Friday-Saturday

Western Auto  
Associate Store



ATTEND THE  
EARTH  
RODEO



THURSDAY - FRIDAY and SATURDAY

WE STOCK RUNNING GEAR PARTS

FOR STOCK TRAILERS

## Jack's Marine Supply

"Where Service is First"

E. Hwy 60

HEREFORD

364-4331

OUR MEN IN SERVICE

SGT. MORRIS D. PHILLIPS

LUBBOCK--Sergeant Morris D. Phillips, whose parents are Mr. and Mrs. Morris A. Phillips of Rt. 5, Muleshoe has graduated from the Air Training Command Noncommissioned Officer Leadership School at Reese AFB.

The sergeant, who was trained in military management and supervision, is an aircraft maintenance specialist at Reese.

Sergeant Phillips is a 1972 graduate of Pula High School. His wife, Debbie, is the daughter of Mr. and Mrs. G. C. Sitka, of Sudan.

\*\*\*\*\*

"Never injure a friend, even in jest." Cicero

HURRY-HURRY



Welcome  
EARTH RODEO

Thursday - Friday - Saturday

PARSON-ELLIS-SINGLETON FUNERAL HOME

Make Plans To Attend  
EARTH'S ANNUAL

# RODEO

THURSDAY-FRIDAY-SATURDAY



HALLS

LUMBER INCORPORATED

LIGHTING FIXTURES  
LUMBER, WIRE, PAINTS, OILS  
FLOOR COVERING & CARPETING

Drawer 886 • OLTON, TEXAS 79064 • Ph. 285-2293

READY MIXED CONCRETE



Everybody's Excited About

EARTH'S  
ANNUAL



WE HAVE MOVED TO OUR  
NEW LOCATION SOUTH OF  
TOWN ON THE SPADE HWY.



## OLTON PAINT and BODY SHOP

OLTON 285-3348





## Mowers Can Be Dangerous

The power mower has become a part of the family scene, but it can be as dangerous as a coiled rattlesnake.

There's no refuting the labor-saving qualities of mowers, but they should be handled as carefully as you would a rattler, says Dudley J. Johnson, chief of the Consumer Health Bureau of the Texas Department of Health Resources.

Cuts, bruises and puncture wounds are typical of the injuries which the machines can inflict. The gasoline used to power these mowers cause fires which have killed people and burned down the homes of others, says Johnson.

More than 50,000 adults and children are treated each year in hospital emergency rooms for injuries associated with power lawn mowers, says the US Consumer Product Safety Commission. These are the more serious injuries requiring medical treatment. There is no clear picture on the number of painful minor injuries treated at home.

Accidents can happen in many ways.

\* Nancy was mowing long, wet grass when it became clogged in the discharge opening. When she tried to dislodge it, the whirling blades struck her fingers. One finger was amputated.

\* Jim's father was mowing grass in a hickory tree grove. A nut struck by the blade ricocheted off the house and hit Jim, blinding the right eye.

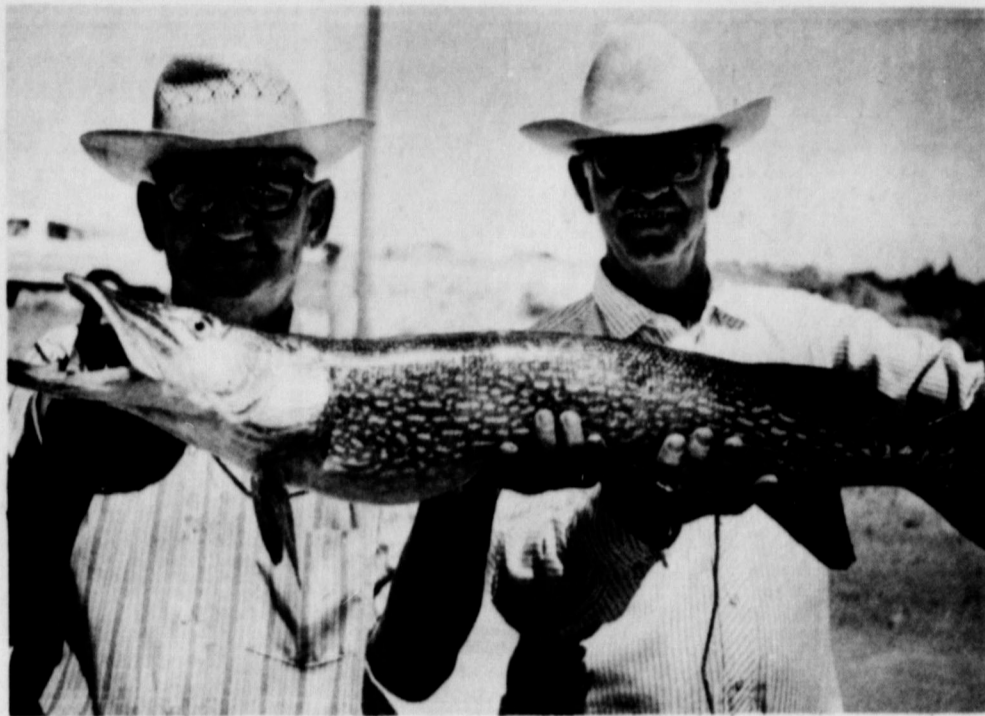
\* A man using a riding mower on a steep backyard terrace started a sideways turn. The machine rolled over. His left leg was so severely cut it had to be amputated.

\* Mr. Smith was mowing a lot with a garden tractor when he backed up, striking his son who had been playing behind the tractor. The boy's left foot was amputated.

Do any of these accidents sound familiar?

They are accident patterns which are repeated time after time. These patterns are:

1. Contact with the rotating



**PROUD FISHERMAN...** Bob Boone (left) of Springlake is the proud angler who hooked the 34 1/4 inch Northern Pike on June 23 while fishing at Elephant Butte Lake with his friend, Arcel Alsop of Truth or Consequences. Boone caught the 16-plus pounder with a rod and reel while using a topwater popper lure. Boone said he had real good luck during the entire fishing trip as he caught several bass at the lake. Mr. and Mrs. Boone returned home July 3 to brag about all the fish they caught. Boone's comment about the big fish were, "Fishermen eat your heart out." (Sentinel Photo by Absher)

blade. This often occurs when the victim is clearing the discharge chute; when the victim adjusts the machine without

turning it off and waiting for the blade to stop; or when the machine hits an obstacle such as a rock and the victim's foot slips under the housing.

2. Propelled objects, wire, rocks and twigs can be shot out either through the discharge chute or from under the housing. Many victims in these cases are bystanders.

3. Overturning--Riding mowers used on steep slopes are involved in this type of accident most often.

4. Mower running over the victim--This often occurs when a riding mower or garden tractor is being driven in reverse. Push type mowers are dangerous when the operator pulls the mower backward over the foot, or slips going uphill, allowing the mower to roll backward.

Experts at the Texas Department of Health Resources say that reel lawn mowers are safer than rotary lawn mowers, primarily because their blades move more slowly than those of rotary mowers. A common accident pattern with reel lawn mowers, however, is attempting to release the reel when it is jammed by a twig or other object without first shutting off the engine.

Since reel lawn mowers cannot cut tall grass efficiently, most consumers prefer rotary mowers. Almost 90 percent of all power lawn mowers manufactured each year are rotary mowers. Their blades can reach speeds of 200 miles per hour and can hurl objects 50 feet or more, unless the mowers are equipped with chute deflectors. If your mower has such a deflector, don't take it off and thereby invite an accident to happen.

How about the gasoline used to power your mower? It can be a time bomb just waiting to explode or catch fire.

One of the biggest "don'ts" in handling gasoline is: Don't store it in a glass container. And, keep it out of any garage or storage room in which a water heater is located. Gasoline fumes, in case of a spill, can be as explosive as a stick of dynamite.

Gasoline should be kept in a well-ventilated area (away from your living quarters) and in tightly-capped safety cans. Don't refuel a mower while it is running or while the engine is hot. And, never refuel a mower indoors because the unseen vapors may be ignited by a spark. Also, cigarettes and gasoline don't mix.

One other caution, never start your motor or work on it with the motor running in an enclosed area where carbon monoxide can collect.

The Department of Health Resources wants you to have a pretty lawn this summer, but above all safety comes first.

When you're traveling, you can find 1700 "familiar faces" around the world in the form of Holiday Inns which offer you American-style food (in addition to local) and reliable American standards of comfort and quality.

When traveling by car, a roomy handbag or basket will keep possessions together and reduce the jumble that accumulates on car seats.

# IT'S RODEO

**TIME IN EARTH**  
THURSDAY-FRIDAY-SATURDAY  
**EXCITEMENT FOR ALL AGES**



We Will Be Closed For Our Vacation July 7 thru July 16

## ORIGINAL TASTY TACO

RALPH MENDY-Owner---Phone 385-3764  
HALL AVE. - LITTLEFIELD

## COMPETITION PROMISES TO BE GREAT



---AT---



Earth's

**Annual Rodeo This Weekend**

THURSDAY, FRIDAY, & SATURDAY NIGHTS

Plains

AUTO PARTS

P. O. Box 586 MULESHOE, TEXAS 79347

**'THE OPENING OF THE PRAIRIE' WAS CHIEFLY ACCOMPLISHED BY MEN ON HORSEBACK**



**ATTEND EARTH'S ANNUAL**

# RODEO

**Thursday - Friday - Saturday**

**WEST TEXAS STEEL CO.**

Old Clovis Road

LITTLEFIELD

385-5128

(Former Littlefield Seed & Dolinting Bldgs.)

---NIGHT PHONES---

ED WALLACE 385-5381

J. D. HAGLER 385-5150

**Hold On To Your Hat...**

**IT'S RODEO TIME**

**In Earth, Texas**

**GILBREATH SEED and GRAIN CO.**

MULESHOE



**BUT YOU WON'T MISS**

**"That Good Old Country Feeling"**

**IF YOU COME TO**

**EARTH'S**

**ANNUAL**

# RODEO

**THURSDAY - FRIDAY - SATURDAY**

**WOOLEY-HURST, INC.**

MULESHOE 272-5514



*Oops, Missed Again*



## 4-H'ers Participate In Leadership Lab

Six Lamb County 4-H'ers were in Levelland June 16-18 to participate in the district leadership lab.

Nearly 200 4-H members from clubs in 20 South Plains counties met for the three-day summer workshop at South Plains College.

A team of older teens assisted in conducting sessions throughout the lab.

The youths, supervised by 4-H adult leaders and agents, per-

formed a variety of activities ranging from group learning and discussion sessions to game tournaments and special morning and evening ceremonies. Emphasis was placed on inter-personal relationships.

Activities were geared toward helping the young leaders to express themselves and their ideas, and to develop solutions to problems through group processes.

## A Visit To Rio Grande Spices Any Big Bend Trip

What had a greater wingspan than a modern jet fighter, probably glided with the skill of a turkey buzzard and dined on dinosaurs?

The Texas Pterosaur, that's what. And you probably knew the answer to that one if you were reading the papers last year when paleontologist Douglas A. Lawson announced he had found fragments of wing-bones from a flying reptile in Big Bend National Park. Lawson believes the pterosaur had a wingspan of 51 feet or more.

Fortunately neither the dinosaurs nor the pterosaurs inhabit Big Bend today, being extinct. A flock of pterosaurs soaring overhead might be a real threat!

If you are interested in learning about how the park looked several million years ago, stop by the fossil exhibit just north of the Tornillo Creek bridge on the road to Marathon.

The fossil exhibit is just one of several interesting places away from the Chisos Basin "heart" of the park that we talked about in an earlier story. Today, let's travel to other parks of big, big, Big Bend.

Aside from the Basin, the only place in the park where overnight lodging is available, and park headquarters at Panther Junction, much of the interest lies along the Rio Grande which separates the park and the U. S. from Mexico along a 107-mile border.

One developed area on the Rio is Rio Grande Village, a peaceful spot where you can fish, camp, picnic and explore the contrasts between the jungle-like river floodplain and the arid desert via self-guided nature trails. Evening naturalist programs are given outdoors in winter.

And across the river and a little downstream is the tiny Mexican town of Boquillas, a rustic community with a church, school, a couple of cantinas and a few adobe houses.

Four miles downstream from Rio Grande Village is Boquillas Canyon, one of three major canyons cut by the river. A short trail from the parking area takes you into the canyon.

Many, many miles upriver from Rio Grande Village is another developed area, Castolon. The road into Castolon offers spectacular views as it winds through the Chisos foothills.

Castolon is situated on a floodplain terrace overlooking the river and there are opportunities to fish, camp and picnic in the area. Supplies are also available at the store.

Eight miles from Castolon is Santa Elena Canyon, one of the deepest gorges cut by the river. From the parking area you can follow a short natural trail into the canyon.

In addition to the developed areas, Big Bend has a vast primitive backcountry and you



TEENS ATTEND 4-H LEADERSHIP LAB... Young leaders from Lamb County 4-H Clubs participated in a district 4-H leadership lab June 16-18. Site of the three-day summer workshop was South Plains Junior College. Those attending from Lamb County were (left to right) Birch L. Lobban, Assistant County Extension Agent; Troy Wayne Moss, Sudan, 4-H; Scott Churchman, Sudan 4-H; Kevin Riley, Springlake-Earth 4-H; Brad Pierce, Sudan, 4-H; Gary Brown, Sudan, 4-H; Michael Graham, Springlake-Earth, 4-H; and Dorothy Powell, County Extension Agent.

## Herpes II Can Cause Marital Problems

A group of Texas physicians has declared that herpes simplex type II is not necessarily a venereal disease. The Texas Dermatological Society, a group of more than 175 skin specialists, also states there is no proof that this virus infection of the genital area causes cancer.

"There is a lot of uproar about the spread of herpes II through sexual contact, but people overlook the fact that it can be spread other ways," says Dr. James Strauch, a San Antonio physician and president of the Texas Dermatological Society.

Herpes type II can cause skin eruptions very similar to cold sores or fever blisters. In fact, herpes type I is the virus that causes the familiar fever blister. The main difference between the two is that herpes II rarely occurs above the waist and herpes I rarely occurs below the waist. However, physicians increasingly are seeing both types above and below the waist.

Dr. Strauch says that herpes II may be spread through sexual contact but it is also possible for someone to get it other ways. The virus can live for a few hours on inanimate objects if temperature and moisture conditions are right. Conceivably someone could get it from handling objects an infected person has used.

"Non-sexual spread of herpes can happen and when it occurs can backpack for days on end. Float trips on the Rio are also possible.

There are also numerous primitive roads through the desert country, offering a variety of scenery and history.

It can create big problems," Dr. Strauch says. "The potential for marital discord is tremendous if someone thinks the spouse was unfaithful and got herpes through sexual contact."

"Another tricky thing about this disease is that people may get the virus and not know it. Then, years later obvious symptoms will show up. So someone faithful in marriage might exhibit symptoms from a virus they got before marriage," Dr. Strauch says.

Small children are also getting herpes II through non-sexual contact. Dr. Strauch stressed that, although herpes II in children is increasing, it is still rare. The major danger to children exists when a pregnant woman has an active infection. Herpes II can increase the likelihood of abortion or of infant infection. Physicians often use a cesarean section delivery to cut down on danger to infants if the mother has an active case of herpes at or near time of delivery.

As to herpes II causing cervical cancer, Dr. Strauch, echoing the sentiments of the Texas Dermatological Society, emphasized that, as of now, a massive amount of research has yet to prove it.

"The best protection for any woman, including those with herpes, is to have a Papanicolaou test annually. This simple test, if done regularly, should pick up signs of cancer before it gets too serious," Dr. Strauch says.

Although there is now no cure for herpes I or herpes II, the sores can go away without treatment. Some people with herpes have only mild symptoms. Others can have sores, fever,

pain during urination, generally tender genitals and fatigue. Stress, menstruation, exposure to sunlight or other circumstances may cause herpes symptoms to return. Physicians often can provide symptomatic relief during herpes flare-ups.



Some people believe that if you dream of eating grapes it will rain!

The word *panic* comes from the Greek god Pan, because sounds heard by night in the wilderness, which give rise to sudden and groundless fear, are attributed to him.



EARTH'S ANNUAL RODEO WILL BE

BETTER than EVER!



Thursday  
Friday  
Saturday

MORRISON OIL CO., INC.   
HERMAN MORRISON-Muleshoe 272-4688  
JIM ROBBINS-Earth 965-2389



We Want To  
Join In The  
Promotion of  
EARTH'S ANNUAL  
**RODEO**

THURSDAY-FRIDAY-SATURDAY

**MULESHOE LOCKER**

PHONE 272-4703

Welcome  
to Earth's  
Annual

**RODEO**



Thursday-Friday  
Saturday

**FLAGG GRAIN CO., INC.**

J. R. BROWN, Manager

**DODD ELEVATOR**

FOREST COLLINS, Manager

IT'S  
**RODEO TIME**



AT  
**EARTH**



**THURSDAY - FRIDAY - SATURDAY**

WE KNOW EVERYONE ATTENDING WILL SEE THE BEST

For Your Drying  
and Storage Needs

Call:

**MERLE L. LISTER  
& SONS Inc.**

144 West Third Hereford

★ CRANE RENTAL SERVICE

364-5352

Distributors For:

**CONRAD CORRUGATED  
STEEL BINS**

REDEX PORTABLE AND STATIONARY DRYERS  
KELLEY DUPLEX GRAIN HANDLING EQUIPMENT

All Types Grain Cleaners



## Lost Documents Should Not Prevent Servicemen From Benefits

AUSTIN--Comptroller Bob Bullock said Tuesday his office has rewritten sales tax procedures on agricultural exemptions to make them as easy to read as a mail-order catalog. "Inflation has squeezed the farmer and rancher tighter than a bale of wet hay," Bullock said. "Our new procedures are clear enough for them to be

able to take advantage of the sales tax exemptions to which they are entitled."

The new procedures will be effective about July 15, he said.

The Comptroller said the procedures clarify the fact that the following items are exempt from the sales tax: expendable supplies such as hand tools, baling wire, binders, twine,

hardware, tires and lubricants for farm machinery; fences, pens, gates, cattle guards and chutes; and structures that can be considered a piece of equipment, such as automated laying houses and farrowing houses.

However, most farm buildings, such as barns, garages, warehouses and family dwellings, are taxable, he said.



GENEVIEVE KELLAR WORKS HARD AT PLAYING... During the family fun time Saturday afternoon in connection with the national Bicentennial celebration. However, much of her efforts were fruitless as she found playing ball with water filled balloons while sliding down a wet slide was a bit different than on a basket ball court.

Exemptions for farm machinery and equipment and storage facilities will be clearcut, Bullock said, as well as the general exemption for all medications and tonics given to farm animals. In addition, he noted, the term "farm or ranch" has been clearly defined for the first time.

Bullock said the new procedures tie in with Internal Revenue Service regulations. Proof that the IRS has allowed an item as

an investment credit will be evidence that the item should be exempted from the sales tax, he said.

However, he emphasized, any farmer or rancher seeking an exemption must have an exemption certificate on file with the retailer at the time of purchase.

The Comptroller said that persons needing more information about the new procedures may call the Comptroller's Office toll-free at 1-800-292-9687.

### فakta dan Fancies



The hottest planet in our solar system appears to be Venus. A space probe discovered a surface temperature there of 885°F.

## Disaster Evidence Should Not Be Destroyed

Producers affected by crop damage should not destroy evidence of damage. Disaster program eligibility for wheat, feed grains, or cotton is dependent on evidence of crop damage.

A spokesman with the county agricultural stabilization and conservation service says that producers who believe they may

be eligible or may later become eligible for disaster payments should notify their county ASCS office of intentions to destroy acreage before actual destruction of any wheat, feed grains, cotton or rice acreage.

If a producer believes that the disaster has caused a substantial loss to his program crops, and he chooses not to carry a por-

tion of these crops through harvest he should notify the county office. He should not destroy the residue of these crops. Nor, in the case of feed crops residue should he graze, green chop, cut for silage, nor hay the residue, until he has notified his county ASCS office.

ATTEND THE RODEO

### Attend The Best Little

# Rodeo



ON EARTH...



IN EARTH

THURSDAY-FRIDAY-SATURDAY

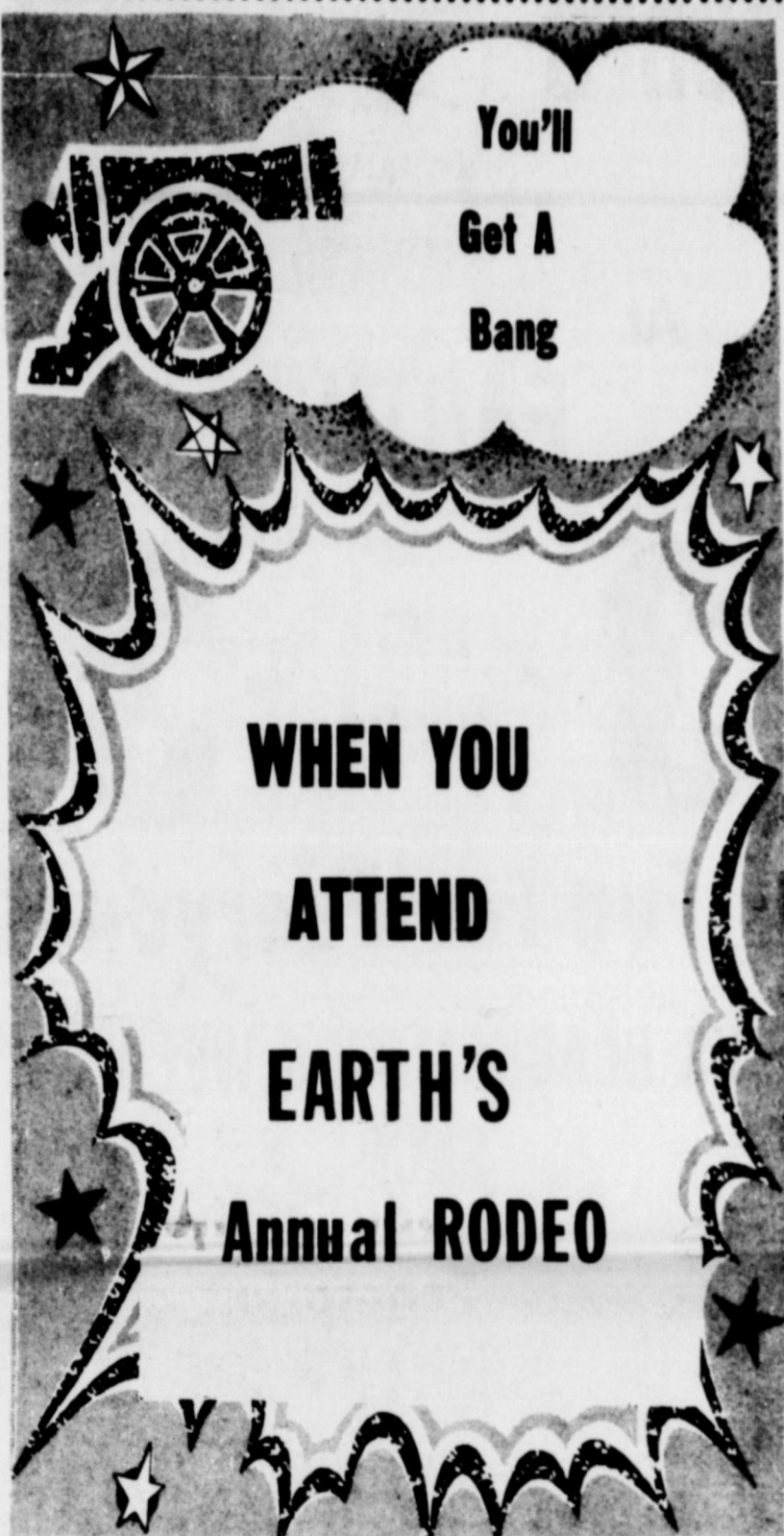
BE SURE AND DROP IN DURING ALL THE FESTIVITIES FOR A DELICIOUS MEAL IN COOL DINING COMFORT

---AT THE---

### CORRAL RESTAURANT

in MULESHOE

CALL 272-3182 FOR RESERVATIONS



WHEN YOU

ATTEND

EARTH'S

Annual RODEO

LAZBUDDIE CHEMICAL, INC.

Phone 965-2355

# RODEO TIME

IN EARTH

3 Fun Filled  
Nights Of



ACTIVITIES

Attend The Big Bar-B-Que After  
The Parade

## CROW MEAT CO.

So, HWY. 214---FRIONA---PHONE 247-3333

got a "yen"  
for  
something  
different?



THEN:



ATTEND EARTH'S

THRILLING - EXCITING ...

# RODEO

AVI INC. IRRIGATION SELF PROPELLED VALLEY

HEREFORD-806-364-6900--MULESHOE-806-272-4266--CLOVIS-505-763-4417



## Veterans May Be Entitled To Replace Auto Equipment

Disabled veterans who are entitled to purchase or replace adaptive equipment for their automobiles with government financial assistance should check first with the Veterans Administration to make certain the equipment has been approved, Jack Coker, VA Regional Office Director in Waco, said today.

New VA standards as to the quality and safety of such equipment went into effect on January 1, 1976.

Coker said an estimated 63,000 disabled veterans of World War II and thereafter are eligible or have already received assistance in the purchase and equipping of automobiles.

Under the VA program, a one-

time grant of up to \$3,300 is available to eligible veterans for the purchase of an automobile.

The VA will then provide financial assistance in purchasing special adaptive equipment which will allow the vehicle to be operated by paralyzed persons or amputees.

The VA program also provides



PRINCIPAL BILL VERDEN TAKES A BATH... The family picnic and "Anything Goes Play Time" was fun to everyone attending. Bill Verden was called to the dipping board and obediently crawled aboard as students paid to hit the gong that released the switch thus dipping Verden into the tank of cold water.

for the repair, replacement or reinstallation of such adaptive equipment.

Depending on the nature of the veteran's disability, the adaptive equipment can provide for hand control of brakes and accelerator, relocation of foot controls or power equipment for seats and windows.

The amount of VA financing for adaptive equipment is not fixed but depends on the needs of the individual veteran.

Eligibility for benefits under this program is limited to veterans of World War II and thereafter and current service personnel having service-connected loss, or permanent loss of use of one or both feet or hands, or permanent impairment of vision of both eyes to a prescribed degree.

Interested veterans should contact a VA benefits counselor or prosthetics representative at the nearest VA office, hospital or outpatient clinic, veterans county service officer, or a veterans organization service representative.

Keep your piano free from dampness, away from steam pipes or stoves, and out of drafts.

"It is wisdom to believe the heart." George Santayana

**EARN MORE THAN \$3.00 AN HOUR TO LEARN A SKILL WORTH EVEN MORE.**

The Army Reserve will teach you a trade, give you enough experience to master it, and the opportunity to put it right to use in civilian life. Your local Army Reserve unit has the details.



**THE ARMY RESERVE. PART OF WHAT YOU EARN IS PRIDE.**

ATTEND THE RODEO AND PARADE

Attend The **BIG RODEO**



At **EARTH...**

**3 - BIG DAYS - 3**

**Of Fun For Everyone!**

**LEO'S BLACKSMITH & WELDING SHOP**

310 W. AMERICAN BLVD.

MULESHOE

Looking For **SOME GOOD OLE FASHION FUN**



THEN DRIVE BY AND PICK-UP

**The Neighbors**

AND HEAD FOR

**EARTH'S**

**ANNUAL RODEO**

**Thursday-Friday-Saturday**

**PROTEIN PROCESSORS**

LAZBUDDIE---PHONE 965-2811

PLAN NOW TO ATTEND....

**EARTH'S Annual**

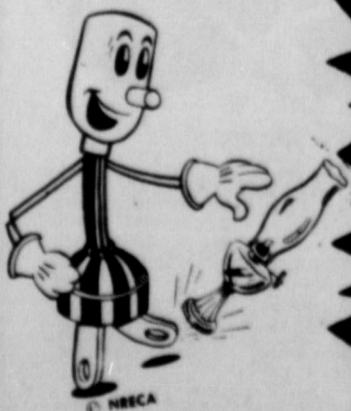
THRILLING - EXCITING ...

**RODEO**

Thursday

Friday - Saturday

THERE WILL BE FUN FOR EVERYONE



**BAILEY COUNTY ELECTRIC COOPERATIVE**

MULESHOE

Alaska May Be Bigger...

-BUT-

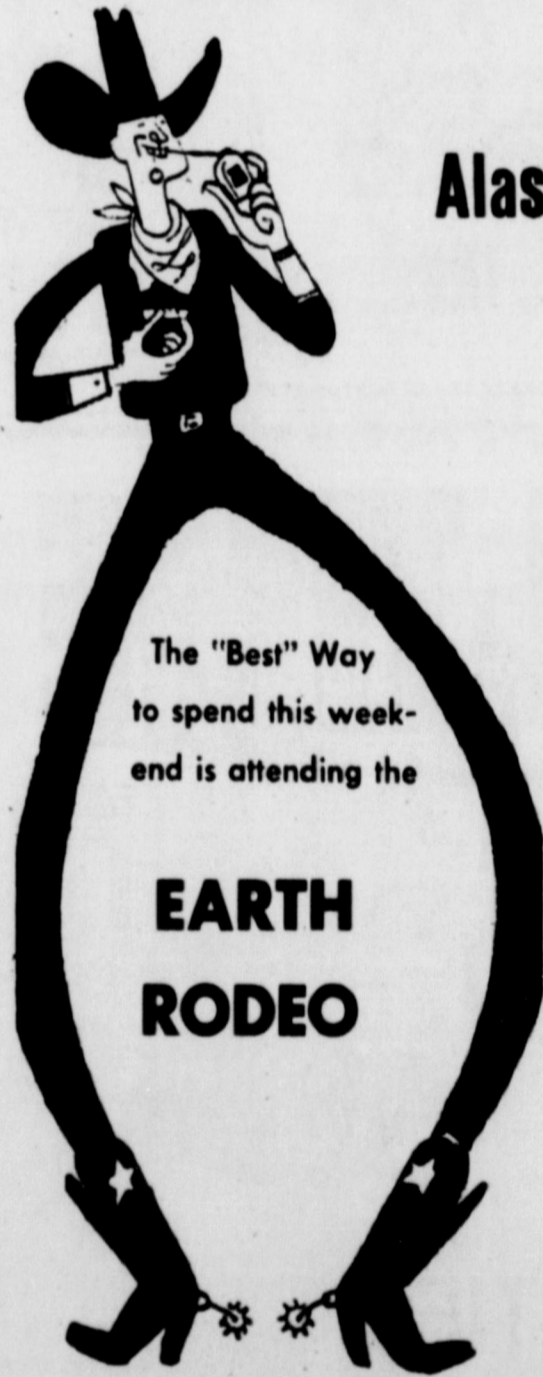
**EARTH, TEXAS**

Still Has The

**Biggest Amateur**

**RODEO**

ATTEND IT THIS YEAR AND FIND OUT



The "Best" Way to spend this weekend is attending the

**EARTH RODEO**

**THURSDAY-FRIDAY-SATURDAY**



**CURTIS WALKER-Manager**

**MULESHOE-272-3162**



## Patios Offer Additional Living Space

With summer well underway, many do-it-yourselfers are making plans for a variety of outdoor projects including recreation, yard and home improvements, including patio construction.

Adding a patio is one of the most popular do-it-yourself projects, especially where there is need to extend the use of interior space, and a well-planned patio can result in additional low-cost living space for dining, preparing foods, entertaining, and for recreation, says Mrs. Jane Berry, housing and home furnishings specialist with the Texas Agricultural Extension Service, The Texas A&M University System.

This is the first of a two-part series on patio construction, featuring Mrs. Berry's "how-to" instructions.

Although most patios consist of nothing more than a concrete slab adjacent to the house, those designed for maximum usage are similar to a room inside the home, since they consist of (1) a flooring or paving, (2) perimeter protection in the

form of walls, screens, fences or plantings, and (3) overhead protection.

### PATIO LOCATION

Selecting the best location for a patio is the step that deserves careful thought.

Where a home's design will not accommodate an attached patio, it may be located away from the house for privacy or to take advantage of a view.

You'll also want to orient the patio to take advantage of, or to block out, the sun. The patio facing south, for example, will likely need a roof and sun screen. An eastward-facing patio gets the morning sun, while a westward-facing patio will be exposed to the hotter midday sun.

An attached patio facing north will be shaded by the house during most of the day. Prevailing breezes should also be considered in the planning.

### PATIO DESIGN

As an extension of the home,

the patio should be planned to enhance existing design features. Consider size and shape of the patio in relation to the house and to the shape and size of the lot.

In most cases, a patio should be larger than the rooms inside the house to accommodate oversized lounging furniture. In some instances, however, a small, intimate, private patio may be preferred outside a master bedroom or even a bath.

In choosing materials for a patio, consider the setting as well as the architecture of the house.

Patterns, for example, can be created with flagstone or brick to harmonize with the terrain and textures of the natural surroundings and at the same time complement the lines and design features of the house. The patio should be an integral part of the house both aesthetically and functionally.

Other important factors to weigh in choosing outdoor building materials for a patio include their durability, ease of maintenance, quick drying



MICHELLE SEEMAN

and non-skid properties. Although concrete traditionally has been a favorite paving material for patios, many do-it-yourselfers prefer to work with brick, flagstone, tile and pre-cast aggregate modules which the individual can handle easily. Often a combination of two or more of these materials is used.

### BRICK PATIO

Brick, because of its color, pattern, abrasion resistance, availability and relative ease of working, is a highly desirable paving material for patios. Available in a variety of sizes and colors, brick can be set in a bed of mortar over a concrete slab, with mortar applied between joints, or it can simply be laid in sand or gravel over well-tamped, compacted earth. Many pleasing design variations are possible either way. (see figure 1.)

There are two basic types of bricks: common and face. Most patio and garden paving is done with common bricks because of their pleasant color and texture, and their lower price. Face bricks are more uniform in size and color and generally are not as widely available as common brick.

Drainage is an important factor in constructing a brick patio. When subjected to excessive moisture, brick may be susceptible to efflorescence or formation of a whitish crust caused by mineral salts in the brick rising to the surface. Stains, growth of fungi or molds, or disintegration caused

by freezing and thawing in the absence of moisture, also may plague brick when proper drainage is not provided.

To prevent drainage problems on brick patios, slope the surface at least one-eighth inch per foot away from buildings, retaining walls or other structures that will cause water to collect on the surface.

In areas free of extremely sharp temperature changes or severe winters, a brick patio may be made with no special foundation. Bricks can simply be laid in a bed of sand or gravel.

★ ★ ★ ★ ★ ★ ★ ★  
★ OUR MEN IN ★  
★ SERVICE ★  
★ ★ ★ ★ ★ ★ ★ ★



PVT. FRANK TREVINO

Marine Private Frank Trevino, son of Mr. and Mrs. Blas Trevino of Littlefield, has completed recruit training at the Marine Corps Recruit Depot,

## Expert Outlines Alternatives For Dealing With Housing Crunch

Families with inadequate housing can consider several ways to expand it, one expert says.

In more stable times, families moved when they outgrew their homes or when they found them San Diego.

During the 11-week training cycle, he learned the basics of battlefield survival. He was introduced to the typical daily routine that he will experience during his enlistment and studied the personal and professional standards traditionally exhibited by Marines.

He participated in an active physical conditioning program and gained proficiency in a variety of military skills, including first aid, rifle marksmanship and close order drill. Teamwork and self-discipline were emphasized throughout the training cycle.

A former student of Littlefield High School, he joined the Marine Corps in January 1976.

unsuitable for their lifestyles. Mrs. Dorothy Powell, County Extension agent, noted.

But times have changed, and it may no longer be in the best interest of the family, or the budget, to make a housing change.

More and more families will be taking a long, hard look at ways they can make their present home more suitable, rather than trying to cope with the current high cost of a new house, increasing rent and shortages of apartments and rental housing, she predicted.

When a family "outgrows" its home, there are several alternatives for expanding space, Mrs. Powell said.

One alternative is turning unused space into liveable space.

This involves finishing off existing space that the builder provided when the house was constructed.

Almost every house has at least some unused space that


the family can convert into living space, an attic, basement, space with high ceilings, an attached garage or a carport are some.

Another alternative might be an addition to the existing house, although that might create more of a financial burden, the agent said.

Still another possibility involves rearranging current living space.

Of the third idea, Mrs. Powell advised consumers to get rid of things that aren't really used and consider the addition of shelves, partitions, hanging devices and drawers, or other items that will help the family use every inch of space in the house.

Also, consider converting bar walls to storage walls," she said.




# C & S EQUIPMENT

## JOHN DEERE SALES & SERVICE


### PONTIAC - GMC - KRAUSE PLOWS

647-3324    DIMMITT    647-3323



**We Want To  
Join In The  
Promotion of  
EARTH'S ANNUAL  
RODEO**

THURSDAY-FRIDAY-SATURDAY





**IT'S RODEO TIME**

In Earth

Free Barbeque dinner with purchase of rodeo ticket on Thursday

**Thursday-Friday-Saturday**

# KOUNTRY BOY

## LITTLEFIELD PLAZA

CLARENCE SISEMORE-Mgr. - Phone 385-4639

**ARE YOU READY FOR ACTION?**


ATTEND THE EARTH RODEO

**Thursday-Friday-Saturday**




**FLOYCE PIERCE**  
LOCATED IN THE PRESCRIPTION DEPARTMENT OF  
**Littlefield Hospital** Phone 385-4491

**IT'S RODEO TIME**



**AT EARTH**

THURSDAY  
FRIDAY and  
SATURDAY

**Patt's Jewelry**  
5th & MT-LITTLEFIELD  
Phone 385-5125



## Carrot Beetle Population Monitored

LUBBOCK-Texas Agricultural Experiment Station entomologists are optimistic about sunflower growers getting by the carrot beetle again this year as they did last year. Reason for their optimism is a low beetle count showing up in light traps scattered across the High and Rolling Plains.

In 1973, a relatively small 5,000 acre sunflower crop was heavily damaged by the carrot beetle, a major insect pest of sunflowers, says Dr. Charles Ward, Experiment Station research entomologist at Lubbock. But in 1974, and again in 1975, when sunflower acreages mushroomed to about 250,000 acres, beetle populations declined.

"Fewer carrot beetles were caught in light traps at Lubbock in 1974 and 1975 than were caught in 1973 or any previous year for which records are available," Ward says. "And our counts this year also showed only moderate beetle numbers present. This may indicate a trend toward lower population

levels in the area.

"Historically, more carrot beetles are found in the Rolling Plains area and along the Caprock. Generally, the population levels decrease on the High Plains from Wilson north to Stratford," the entomologist adds.

Ward says some researchers believe abundance of beetles during adult activity periods in late summer reflects population trends the next spring. This theory was successfully applied to data collected in 1975 over the area, he says, and if last summer's adult beetle activity provides a good indicator of this spring's population levels, the technique would appear to be validated as a prediction method.

The Experiment Station entomologist says that light traps have been placed this year in many of the same locations as last year. Where possible, adjacently planted sunflowers have been monitored for carrot beetle damage in an attempt to correlate damage with beetle

numbers caught in light traps.

"We have some problem with people taking the light traps," Wards says. "Either they are doing this mischievously or they simply do not know why the light traps are there. In any case, when a trap goes missing, we lose a lot of valuable data and it becomes impossible to validate our findings."

Ward says individuals could help by looking out for the traps to make sure they're left standing. The instruments are about five feet high, having a fluorescent black light and a funnel type bin attached. The name "Texas Agricultural Experiment Station" is printed on the metal fins of the trap. Twenty of these traps are situated in or near fields across the High and Rolling Plains.

Ward says growers may be able to rely on monitoring of carrot beetles with light traps from one year to the next. Conventional insecticide applications are not effective in controlling the insects, and so far, sunflower varieties with



SHELLY MCKRELL  
**Dwarf Evergreens  
For Landscaping**

If you like the look of small, compact shrubs but don't want to spend hours pruning and caring for them, try landscaping with dwarf evergreens, suggests Logsdon, a county agent for the Texas Agricultural Extension Service.

Dwarf evergreens, which usually grow to be from three to four feet tall, are excellent for use as border along buildings or walkways, in mass plantings or as container plants. Most varieties are available in nurseries and garden centers and can be transplanted during any time of the year.

Logsdon says there are several kinds of dwarf evergreens that are attractive and easy to grow.

Wheeler's dwarf green pittosporum, a popular new variety, is readily available and easy to grow. It needs a well drained soil and several hours of direct sunlight a day. This plant should not be grown in the northern half of the state because it is susceptible to cold damage, says the county agent.

Dwarf youpon, another type of dwarf evergreen, grows well under a wide range of weather conditions.

Dwarf Chinese holly is an attractive border plant with large glossy leaves but should not be grown along walkways or other

## Organized Closet Promotes Better Appearance

Do you have problems finding closet room for your clothes, do you spend unnecessary time finding your favorite garment, then do you have to press it because it was crushed in the crowded closet?

"Then you can't display a 'closet face lift' any longer," Mrs. Becky Culp, area clothing specialist with the Texas Agricultural Extension Service, The Texas A&M University System, advises.

She suggested beginning by separating the wardrobe into categories, reasonable wear-

areas of pedestrian traffic, because of its prickly leaves.

Another attractive evergreen, Dwarf Indian Hawthorn, produces flashy pink flowers in the spring. "Grow this plant in well drained soil in an area that gets at least half a day's sun," Logsdon says.

ables, out-of-season wearables, unwearables with updating or repairing possibilities, and not salvageables.

"Give the not salvageables to a favorite charity or anyone who could use them. Usually if a garment hasn't been worn for a season, it won't be next season either, so it's best to discard or update it.

"Store garments with updating possibilities along with the sewing supplies for another day's project.

"Out-of-season wearables should be cleaned, repaired and then stored out of the way in the back of the closet, in a little-used closet or in other available suitable places where protected from dirt, lint and light," she advised.

Arrange seasonable wearables in a manner most logical and convenient for available space

and personal use. Many prefer grouping garments by type, such as pants, dresses or shirts, or by activity, such as dressy garments, active sportswear or work clothes, she noted.

"Closet aids such as padded hangers, tie racks or shoe bags help preserve garment shape and condition and make effective use of closet space.

"Use available wall and door space to maximum advantage with hooks, peg boards, racks, extra shelves and storage boxes," she suggested.

"Remember, a little time and effort periodically spent in managing the closet pays off in added convenience, ease in dressing and in preserving the life of the wardrobe," she said.

The major U.S. city with the highest recorded annual temperature is Honolulu, Hawaii, which averages 75.1°F a year.

## COMPETITION PROMISES

### TO BE GREAT

AT

### Earth's Annual Rodeo This Weekend

THURSDAY, FRIDAY, & SATURDAY NIGHTS



WE NOW HAVE TO OFFER YOU:

BURLINGTON HOUSE CARPET

VIKING - KITCHEN PRINTS

Vinyl Floor Covering And  
Ceramic Tile

We Do Our Own Installations Which  
Are Fully Guaranteed For 1 1/2 Years

SEE US AND SAVE!!!

### ROBISON UPHOLSTERY

Carpet Mgr. Charles Robison

PHONE 385-4621 LITTLEFIELD 308 WEST 4th ST.

# WELCOME SEE THE ALL-AMERICAN SPORT

## ATTEND THE

# Rodeo



## AT EARTH

### Thursday - Friday Saturday

JOIN IN THE FUN FOR BARBUCUE  
PARADE AND RODEO

DR. B.W. ARMSTEAD, and ASSOCIATES

Littlefield, Texas Phone 385-5147

HEY FOLKS

Its Rodeo Time  
In Earth

THURSDAY

FRIDAY

and  
SATURDAY

## FARMERS COOPERATIVE ASSOCIATION

Springlake - Phone 986-2661

"You Own A Business... Be Its Best Customer"



## Attend The Best Little

# Rodeo

## ON EARTH... IN EARTH

### THURSDAY-FRIDAY-SATURDAY

## Thompson Chevrolet Co.

OLTON



## Toys For Tots

"All work and no play makes Jack a dull boy" isn't just an old folk saying, Dorothy Taylor, a family life education specialist, contends.

She added that researchers have found that the time a child spends at play is not aimless or wasted, but is an important part of his development into mature adulthood.

Miss Taylor is with the Texas Agricultural Extension Service, The Texas A&M University System.

"Between infancy and age 2, it is play that does the most to bring out a child's natural interest in the world about him.

With properly chosen toys as his 'tools,' a child is encouraged to imagine, create and most of all, to have fun," she said.

Toys offer a variety of experiences. They give a child an opportunity to express his very own creativity and ideas. Toys foster imagination and invite a child to pretend.

"When a child dramatizes and imitates an adult, it helps him understand the world about him, it is sort of a trial or instant replay for children.

"But toys need not be costly nor numerous to provide constructive play. Probably the

only useless toy is the one a child is no longer interested in or one that is too advanced for his young age. It's important to select toys on the basis of interest and the ability of the child," she explained.

Parents often find it easy to buy toys for older children and grandchildren, but they are sometimes puzzled about buying for the small child of 1-3.

"What kind of toys are suited for the young child? The 1-2-year-old youngster enjoys creative toys such as a lacing boot, simple puzzles, building toys such as a house, a boat or building blocks.

"Toddlers need simple toys to work out problems at very slow speeds. Pull toys help toddlers



SUSAN CLAYTON

continue to develop the large muscles in their bodies and develop coordination.

"Toddlers and little children enjoy imitating mother in ironing, washing, dressing a baby, and make-believe household toys that are large enough to handle easily and big baby dolls are favorites of toddlers," she explained.

The infant enjoys a different kind of toy. He is learning everything. Toys of bright colors, shapes, textures and should appeal to the infant and help him discover colors, lines, forms, textures, shadows, space and sound. Care should be taken to eliminate the noises that are too harsh for young ears, she reminded.

The preschool child who is 3-6 years old has different needs in toys. A playhouse or telephones, that are life size and sturdy, and other creative toys are favorites for preschool

children. When selecting toys, be sure to check these points:

--Is the toy strong, durable, safe, sanitary and attractive?

--Can the child manage the

## Summer Wages May Not Be Taxed

Any student or summer employee who expects to make \$2,350 or less during the year need not pay any federal income tax, says Buddy Logsdon, county agent for the Texas Agricultural Extension Service.

"If a student or summer employee expects to earn \$2,350 or less and does not want income tax deductions taken out during the year, he can file a W-4E form with his employer certifying that there is to be no

tax deduction during the year," Logsdon says.

"However, if at any time after this form is filed, an employee earns more than \$2,350, he must file a regular tax withholding form and standard deductions will begin."

An employee who is eligible to file a W-4E form may prefer to have income tax deductions made during the year and then file for a tax refund after January 1, adds Logsdon.

An employee who earns more than \$2,350, has earned more than \$750 in unearned income such as tips or dividends, or is being claimed as a dependent by his parents must file a standard income tax return, notes Logsdon.

## Triumph of American Science

### ELIMINATING BUGS

Thousands of dollars and man-hours of labor are saved annually because of an experimental drilling rig at Gulf Science & Technology Co. in Harmarville, Pa.

This drilling building, far from the potential oil fields, permits testing under field conditions and the duplication of situations in which heavy equipment is used.

By eliminating the "bugs" at Harmarville, Gulf Oil is drilling wells throughout the world faster, straighter and cheaper.

Practical application of such research techniques means lower cost in developing more oil and gas for the American public.

"Life consists in what a man is thinking of all day." Ralph Waldo Emerson

Our Best  
WISHES  
To



# EARTH

On Your

# RODEO

Thursday

Friday

Saturday



LAZBUDDIE GRAIN, INC.

PHONE 965-2926

YOU'LL HAVE A BARREL OF FUN AT EARTH'S BIG RODEO

MULESHOE **Cobb's** MULESHOE

it's  
T  
I  
M  
E



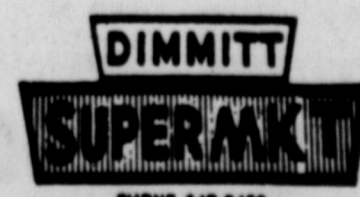
again

FOR THE

# EARTH AMATEUR RODEO

Thursday - Friday - Saturday

SEE YOU THERE....



PHONE 647-9486



IT'S RODEO TIME  
AT  
EARTH  
3  
BIG NIGHTS  
OF  
SUSPENSE  
FILLED ENTERTAINMENT

Taylor Feed Lots

JOE SMITH, Mgr. SUNNYSIDE 846-2751



## Myth of Perfect Marriage

Ideal marriages are a myth, but marriage "relationships" can work ideally, Mrs. Dorothy Powell, County Extension agent, says.

She said that many misconceptions limit most people's perspective of marriage.

One misconception is that only two types of marriages exist, the good and the bad. Actually, each marital relationship is usually a mixture of the two, with some marriages closer to one than the other.

She noted that almost every marital relationship has some problems. So a couple should consider the strengths and bind-

ing elements of their marriage, not view the relationship in rigid terms of all good or all bad. They can identify the patterns and incidents which prevent free communication or tend to destroy a loving relationship, she added.

Another myth is that marriage is satisfying only as long as two people are compatible. This suggests that a couple is either perfectly compatible, or is incompatible.

Similar values, interests and personal needs are necessary in any deep relationship. But each person will place a different strength on them, making every

marriage a 'mixed marriage' of sharing mutual interests and putting forth effort to iron out differences.

Often couples hide their differences to avoid conflict. This kind of too congenial marriage is passive. Marriage partners need a difference in values, interests and personal needs to challenge their own convictions, she noted.

Couples may think that "love makes or breaks a marriage." The problem with this myth is that it overlooks the importance of knowing how to relate to a spouse or to give love. Working at a marital relationship is as important as caring for each other. When a couple works for a loving relationship,



TANYA RAY

being taken for granted is never a threat, the agent said.

Patterns of relating can and do change among couples. Making changes is no easy task and may come only through intensive efforts of a couple to establish friendships, adjust work habits or re-evaluate mutual

expectations of each other that favor their relationship.

Intensive effort can lead a couple to discover things about each other that can change and strengthen their bonds of marriage, she said.

Make cooking and consuming a meal a learning experience, not just an emotional one. Keep a record of how long you roast your beef, or boil your beans, or stew your chicken. Remember how your family likes a certain dish and prepare it that way again.

Larry L. Love  
N. Little Rock, Ark.  
Holiday Inn

If you want to give a meal an oriental touch, try sukiyaki, a marvelous dish of sliced meat and vegetables stir-fried together and served with rice. Be very careful not to overcook the vegetables. The vegetables should be crunchy, munchy and with none of the nutrition cooked away.

Tatsuo Yamauchi  
Kyoto, Japan Holiday Inn

## Dangers of Overfeeding During Infancy

Urging baby to "drink the last drop" from the bottle may not be such a good practice, Mrs. Dorothy Powell, County Extension agent, says.

Increasing evidence shows that overfeeding during infancy may be related to obesity later in life.

During the early years, fat cells divide in number as well as increase in size. If overfeeding occurs during the period fat cells are dividing, the baby will have more fat cells than normal, and unfortunately, these remain with the person

throughout life, she explained. Whether bottle or breast feeding contributes more to the problem of obesity is yet to be determined. But most studies indicate bottle-fed babies gain more rapidly in weight and length during the first three-four months than breast-fed babies, she noted.

A breast-fed baby stops feeding when he is full. But bottle-fed babies often are encouraged to drain the last drop from the bottle, and this establishes an artificial endpoint, she explained.

Families who are concerned about overfeeding a baby should check with their doctor who can make recommendations to prevent this problem, she added. Skim milk generally isn't recommended for infant feeding. Although it may be good in the prevention of obesity, infants may not be getting enough calories for energy. Skim milk would provide a high-protein, low-fat beverage that might be inadequate for essential fatty acids, she noted.

Attend The Rodeo

HEY FOLKS



Its Rodeo Time  
In Earth

THURSDAY - FRIDAY

and

SATURDAY

FARMERS GRAIN CO.

SUNNYSIDE - HART

The Best Little



ON EARTH

Is In Earth



THURSDAY - FRIDAY

and

SATURDAY

THREE EXCITEMENT FILLED NIGHTS ARE IN STORE  
FOR SPECTATORS and PARTICIPANTS ALIKE

Farmers Co-Op Compress

LUBBOCK PHONE 763-9431

BE SMART

Attend The Best Little

RODEO

ON EARTH... IN EARTH

Thursday - Friday - Saturday

KILLINGSWORTH  
BUILDERS SUPPLY

S. HWY. 385

DIMITT

PHO. 647-3141

Confidence

Locks Horns

With

Confidence

As

DARING

COWBOYS

Try To Outwit Their

OPPONENTS

At The

ANNUAL AMATEUR

RODEO

THURSDAY - FRIDAY - SATURDAY

BIG T PUMP CO.

DIMITT --- Phone 647-3444





## Dwarfed Sweet Corn Plants Worry Gardeners

BY: BUDDY C. LOGSDON  
County Extension Agent

Some West Texas sweet corn growers and home gardeners may get a headache picking their early crop of sweet corn this year. The problem seems to be that varieties which normally bear their ears at waist height are pushing the ears out of the plant at a point lower than knee high on plants three to four feet tall.

Several weather factors combine to cause this phenomenon. Day length is one factor. Most sweet corn varieties are not acutely sensitive to day length, though some hybrids seem to be quite sensitive when planted early.

In the sensitive hybrids the period from plant emergence to flowering (tassel and silk formation) is shortened by short days and lengthened by long days. Practically speaking, this means that when these hybrids are planted in March and April, the plant flowers when the day length reaches 12 or 13 hours even if the plants are still small.

Temperature exerts a marked effect on corn growth. Active growth occurs in sweet corn only when the air temperature rises above 50 degrees Fahrenheit. There were many cold nights and cool days in April and May, and sweet corn made

little or no growth.

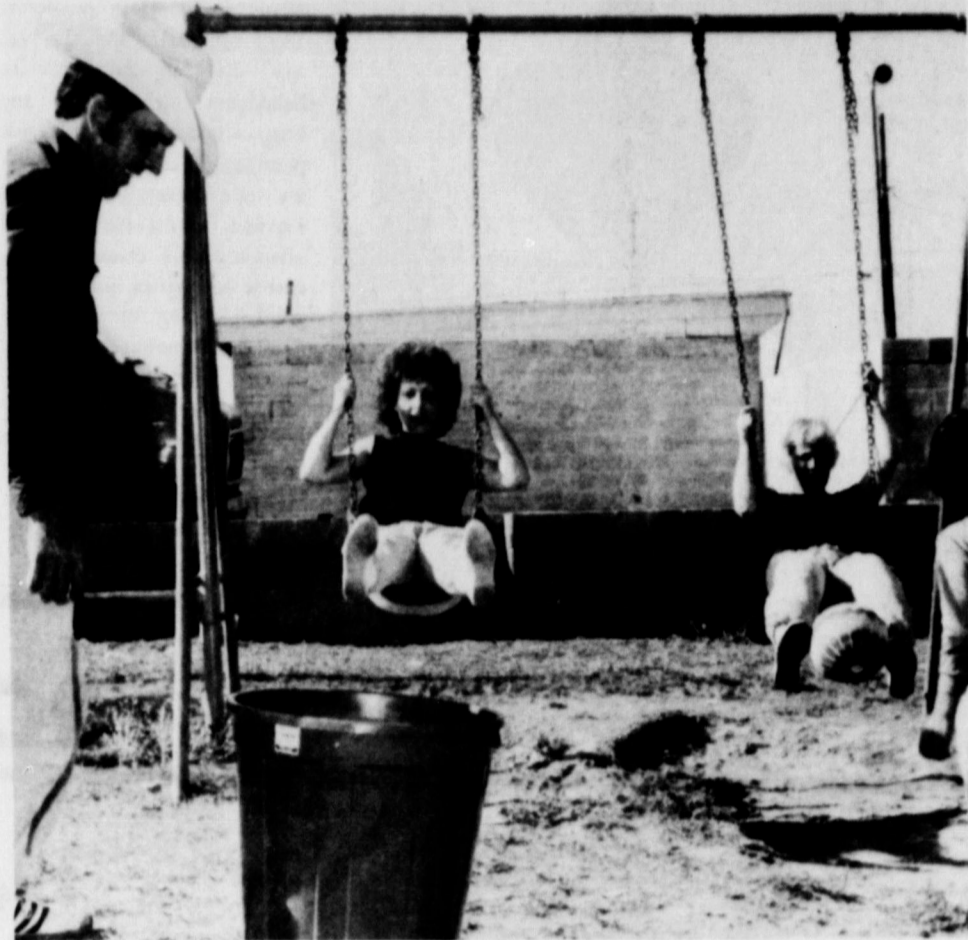
Sweet corn is very sensitive to soil moisture. We have been short of rainfall during the period of maximum growth for early sweet corn. Drought stress restricts plant height.

All of these limiting factors work together to produce a corn plant of relatively short stature. Later plantings of sweet corn will have taller plants if water and nutrients are applied properly. As long as the earlier plantings are fertilized and watered adequately, the ear will attain nearly normal size.

Later plantings of midseason and late hybrids should be sidedressed with nitrogen fertilizer at the time of tassel exertion. Ammonium nitrate-sidedressed at the rate of 100 to 125 pounds per acre (about one pound per 100 linear feet of row for home gardeners) will provide an adequate supply of nitrogen to the plant during the critical period of ear formation. In addition, irrigations must be scheduled only several days apart to prevent drought stress during ear development if rainfall is inadequate.

When you're creating cream soup, add the cream last for the correct consistency and flavor. It's not a hot idea to let it boil either; just heat it until it's the proper temperature for serving.

David Best  
Jasper, Ind. Holiday Inn



SWINGING BASKETBALL GAME... This complicated ball game was played while swings were in motion by gals catching the ball with their feet and swung high over a wastebasket and dropping the ball in to score a point. Pictured just seconds before the game are Mrs. Sonnye Randolph and Mrs. Jearl James as they attempt to practice one shot before the game. In the foreground is Don Randolph who was teammate for his wife. He threw the ball hoping she could catch it in her feet and make a drop in basket with success.



DON'T CRY DEBBIE... The picnic was indeed a rib tickling success. Judging from the expression on the face of Mrs. Debbie Haberer, one could get the idea of just how hilarious it really was. Debbie who always wears a glowing smile tried every way possible to catch the water filled balloon at any price and in her effort, the photographer caught this unusual expression.



Dress up your butter pats by dipping a fork in hot water and moving the tines across the pat from corner to corner. A sprig of parsley adds a decorative touch to the butter dish.

**Make Plans  
To Attend**

**EARTH'S BIG RODEO**

**Entertainment**

AT ITS BEST

**WILL BE FOUND**

**In Earth, Texas**

**THURSDAY**

**FRIDAY**

**SATURDAY**

**Shook Tire Co.**

1028 East 9th 385-5126

LITTLEFIELD



**Welcome  
RODEO FANS**



to  
**EARTH'S  
ANNUAL RODEO**

**THURSDAY - FRIDAY  
SATURDAY**

**Make Plans  
To Attend**

**When You Need  
Export Well Service**

See

**EARTH PUMP and MACHINE INC  
P & C DITCHING CO.  
- DISTRIBUTORS FOR -  
SIMMONS PUMPS**

**ARE YOU READY  
FOR ACTION?**



**THEN:** ATTEND THE  
EARTH RODEO



THERE  
ARE  
CHILLS,  
THRILLS,  
AND SPILLS.



**Thursday - Friday**

**Saturday**

**HIGGINBOTHAM-  
BARTLETT CO.**

EARTH

*Ride 'em*  
**COWBOY**

**TO EARTH'S  
ANNUAL RODEO**

**THURSDAY**

**FRIDAY**

**SATURDAY**



**HI-PLAINS**



364-6871 HEREFORD

We stock a complete line of parts and have factory-trained personnel to serve our customers.

WE HAVE MOVED FROM HIWAY 385 TO OUR NEW LOCATION ON HIWAY 60 E. 1 1/2 MILES EAST OF BIG DADDYS



## Careful Planning Makes Home Improvement Pay Off

Before planning home remodeling, homeowners should consider an objective evaluation of their neighborhood, design of the house, whether the project will be improvement or only maintenance and whether the scale of the project fits in with the rest of the house, Denise Beigbender, a housing and home furnishings specialist, said.

"Families usually consider home remodeling and improvement to make their present home liveable, but they also need to consider the return on their investment. Not all improvements add to the resale value of the house," she added. Miss Beigbender is with the Texas Agricultural Extension

Service, The Texas A&M University System.

"If the neighborhood is starting to 'go downhill' the homeowner would probably lose on any improvements he made. It does not pay to over-improve, regardless of the neighborhood. A sensible addition to the smallest house in the neighborhood will enhance its resale value as will any improvements made by neighbors," she said.

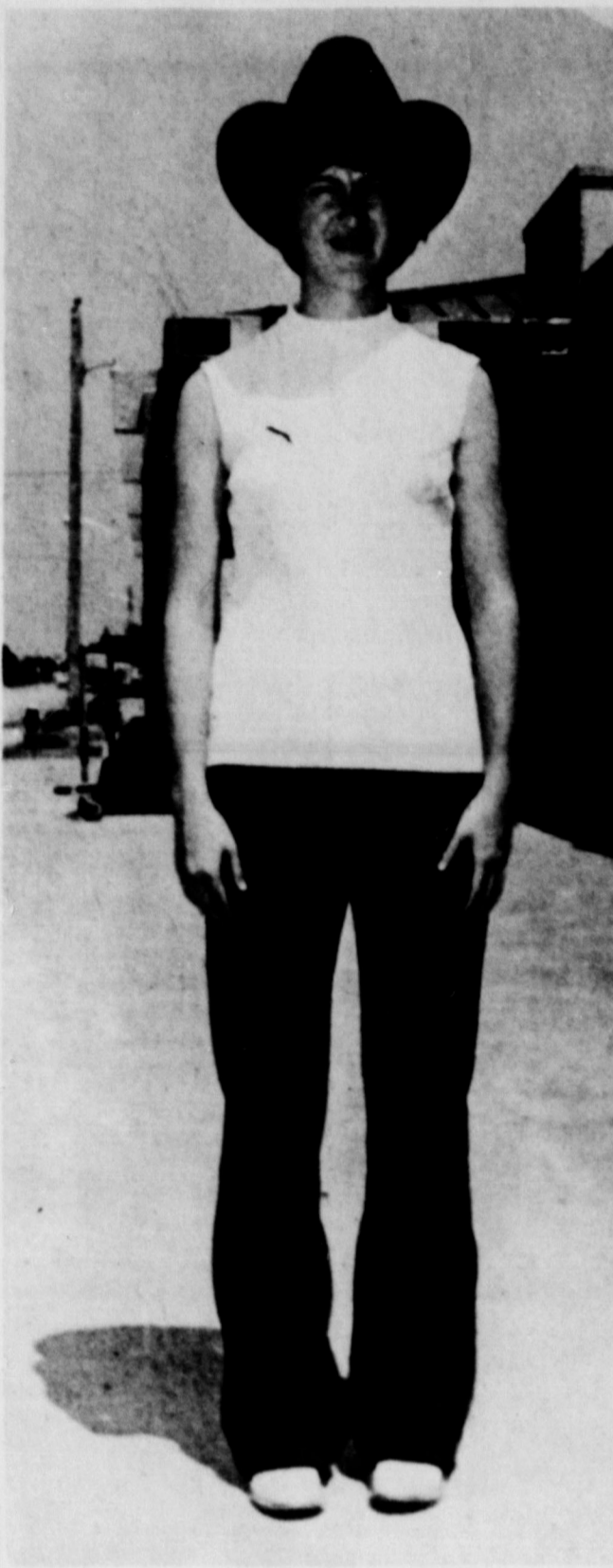
And she pointed out that homeowners will want to be careful that the changes don't violate local regulations, or the existing architectural or functional integrity of the house. Any addition should harmonize with the original plan and avoid blunders such as a new bedroom

that can be entered only through another room, she said.

"Regular maintenance items shouldn't be confused with remodeling improvements. Replacing the furnace, rewiring, changing the plumbing system, re-roofing, waterproofing or planting shrubbery are not considered home improvements. These things only bring the house up to the level that most buyers would expect," she explained.

And the scale of the remodeling in relation to the rest of the house is an important consideration, too. A kitchen appropriate for a \$70,000 house does not belong in a less expensive dwelling. Much of the investment will be lost at resale, she noted.

"The prospective buyer generally will not pay as much for a fifth or sixth bedroom as he would a third or fourth one. But if the house does not have some-



PETRA LEWIS

thing that its price might indicate, such as a garage on a \$50,000 house, this would probably depress the resale value," she said.

### Importance Of Prenatal Care

Pregnant women need to be more aware of the importance of prenatal care, the Texas Medical Association (TMA) says. If a woman takes good care of herself, she can avoid many problems for herself and her baby.

TMA says pregnant women should see a doctor regularly and follow the physician's orders. A woman's doctor can recommend a plan best suited for the health of both mother and baby. A doctor can determine whether a normal delivery can be expected. Certain tests for diseases that could affect a fetus and blood tests on the mother can help avoid any possible problems.

Yet the major responsibility for a healthy pregnancy rests with the woman. Studies indicate that the embryo during the first few weeks after conception is very susceptible to some drugs and certain viruses.

freely with their physicians about any possible problems. They especially should report any dizziness or persistent headaches, never take any drugs without their physician's permission and inform the doctor immediately when she is exposed to measles or other communicable diseases. Persistent headaches, unusual vaginal bleeding or discharge, swelling of the hands and feet, unusual abdominal pains, serious spells of vomiting and repeated fainting spells also must be reported. Calling the doctor's attention to anything different or unusual is the wisest guideline.

Another smart thing to do is find out how pregnancy affects travel, exercise, sexual relations and other areas of life. How much a woman should engage in all these practices basically depends on each individual's health. A doctor can offer good advice in any of these areas. Generally, reasonable travel during the period of pregnancy is acceptable. Extensive travel by either auto or train may need to be limited during the later months. Air travel is acceptable to the airlines if there is reasonable assurance that delivery will not occur in transit. Most problem pregnancies preclude travel.

Many women also have questions concerning sexual relations during pregnancy. As a general rule, most women may engage in sexual relations during pregnancy, but as a protection to the child it may be wise to avoid sexual activity during the last month or so before delivery. A woman's doctor should be asked about the proper handling of any special problem she may have concerning this or any other topic.

When primitive man discovered fire and heat, he was able to supplement his diet of fruits, nuts, berries and animal products with many cooked vegetables he would have had difficulty digesting raw.

**IT'S RODEO TIME**



**AT  
EARTH**



**BIG NIGHTS**

OF

**SUSPENSE FILLED ENTERTAINMENT**

**Thursday-Friday-Saturday**


---

**EXCITEMENT FOR ALL AGES**

---

**GRAIN HANDLING CORP.**

400 HWY 194-HART-PHONE 938-2304



**WHOA, NOW!**

It's Time To Go To

**EARTH'S ANNUAL RODEO**

Thursday  
Friday  
Saturday

**PLAINVIEW CO-OP COMPRESS**

2 1/2 Miles East Of Plainview

**RODEO FANS**

**The Biggest Little Rodeo On Earth is Starting Tonight**




**Make Plans To Attend THURSDAY-FRIDAY-SATURDAY**

**EARL LADD & SONS, INC.**


MULESHOE 272-3308


**HEAD 'EM UP...  
MOVE 'EM OUT...**

Attend The **BIG RODEO** IN EARTH



Thursday  
Friday  
AND  
Saturday





**WESTERN PUMP AND EQUIPMENT COMPANY**

HOLLY SUGAR ROAD      HEREFORD      364-3264