



### Services For Former Resident Held

Mrs. G. L. (Ba) Haley, 71, a former Earth resident, died at 7 p. m. Sunday at Waxahachie Hospital after a sudden illness. Services were at 2 p. m. Tuesday, February 4 at Boze-Mitchell Funeral Home Chapel in Waxahachie, with burial in Hillcrest Burial Park.

Mrs. Haley and her husband, Glen, moved here about four years ago from Idalou after his retirement there from the presidency of Idalou State Bank.

The couple had lived in Idalou for 15 years.

Mrs. Haley was a sister-in-law of W. R. Stockard. Mr. Haley was an employee of the Citizens State Bank before moving to Idalou.

Mrs. Haley was a member of the Waxahachie Baptist Church. Survivors other than her husband include one daughter, Mrs. Johnnie Armstrong of Waxahachie and one grandson,

### GSPA Meeting Planned

Glenn Weir, associate administrator of the USDA's Agricultural Conservation and Stabilization Service from Washington, D. C., will discuss government farm programs in a talk at the annual meeting of the



JOHN CLEAVINGER—Was vacuuming his lamb Wednesday morning and shaping it up for the big Livestock Show.

board of directors of the Grain Sorghum Producers Association March 6.

The GSPA board meeting will be held in conjunction with the Ninth Biennial Grain Sorghum Research and Utilization Conference March 4-6 at the Hilton Inn in Lubbock, Texas.

The meeting of the GSPA follows an award luncheon that climaxes activities at the utilization conference.

A. W. (Dub) Anthony of Friona, will preside at the GSPA board meeting. Anthony is president of the GSPA.

Other business slated for the board meeting includes an election of officers and a review of GSPA policies related to government farm programs and agricultural marketing practices.

Current GSPA officers in addition to Anthony are K. B. Parish, Springlake; Melvin Barton, Dimmitt; and Mabry Foreman, Felt, Oklahoma, all vice-presidents; Pat Northcutt, Silvertown, secretary-treasurer; and John Smith, Cameron; and Larry Abeldt, Hope, Kansas, directors.

Elbert Harp of Abernathy, is executive director of GSPA which has offices at 1708-A 19th St., Lubbock. Operating in five states through the High

### Census Bureau Will Survey Nursery School

A sample of households in this area will take part in a nationwide survey of preprimary education to be conducted the week

of February 17-21 by the Bureau of the Census. Percy R. Millard, Director of the Bureau's Regional Office in Dallas, said that interviewers will visit homes to obtain information about the number of children attending nursery school or kindergarten. There will also be questions on the use of day-care facilities.

These questions will be in addition to those asked regularly in the monthly survey on employment and unemployment. The survey is taken by the Bureau for the U. S. Department of La-

bor, which analyzes and publishes the results each month.

The Labor Department reported that the December survey showed the Nation's unemployment rose for the third straight month. The total number of unemployed increased by 560,000 to 6.5 million, and the jobless rate reached 7.1 percent, the highest since May 1961.

Local households in the survey are among the 50,000 nationwide that have been scientifically selected to represent a cross section of all households. Information supplied by in-

dividuals participating in the survey is confidential by law and results are used only to compile statistical totals. Census interviewer visiting households in this area is Rosemary McNeese of Amherst.

"When the lady next door told me she recently gave a short talk, I asked her what stopped her."



### DISC BEDDER



- Greater tractor speed can be maintained with Disc Bedder than by conventional shovel listing
- Note that optional ripper shanks can be added to deep till the root zone. This assures better root growth and moisture absorption into the bed
- Produces uniform beds with fewer clods
- Available in 4, 6 and 8 row widths
- 16 and 18 inch 10 gauge discs are standard, with 11/8" square shaft and triple sealed bearings
- Bedders adaptable to any 4" square tubular frame or any clamp to fit 1" x 3" shank

SPECIFY THE **Humby** COMPANY WHEN YOU BUY

**DENT FARM SUPPLY**

EARTH

### The annual meeting of the BAILEY COUNTY ELECTRIC COOPERATIVE ASSOCIATION

### AND FIVE AREA TELEPHONE COOPERATIVE, INC.

WILL BE HELD IN THE HIGH SCHOOL AUDITORIUM MULESHOE, TEXAS

SATURDAY, FEBRUARY 22, 1975 AT 1:30 P.M.

THERE WILL BE NO FREE LUNCH!! THERE WILL BE NO DOOR PRIZE DRAWING; but members who attend will receive the option of a \$10.00 credit on their electric account, or a \$10.00 check, whichever they prefer (one payment per membership). Members of the Five Area Telephone Cooperative, who are not members of Bailey County Electric Cooperative may receive their choice of \$10.00 credit on their telephone account or a check for \$10.00.

Registration will start at 12:30 and the Telephone meeting will begin at 1:30. The Electric Cooperative meeting will begin at 2:30 p. m.

#### TO TAKE ACTION UPON THE FOLLOWING:

1. To give members a financial report, progress report, general condition of the Cooperatives.
2. Elect three (3) directors for the Telephone Cooperative and elect two (2) directors for the Electric Cooperative.
3. Appoint a nominating committee for annual meeting to be held in 1976.
4. Consider change of Article VIII, Section 2 of Electric Cooperative's Articles of Incorporation (to lower quorum).
5. Consider and take action upon any other matter that might be presented or come before the meeting.

In connection with the election of three (3) directors for the Telephone Cooperative, the following members have been nominated:

DISTRICT NO. 5	DISTRICT NO. 6	DISTRICT NO. 7
J. F. FURGESON IKE WILLIAMS PETE TARTLTON	TOMMY KIRK R. E. BLACK J. C. SNITKER	RAY O'BRIEN JEHROME HOLLOWAY

For Electric Cooperative Directors:

DISTRICT NO. 3	DISTRICT NO. 6
IRVIN OTT WILLARD TIBBETS	BILL SOWDER J. D. ROWLAND

Additional nominations for directors may be made at the meeting

### Special Invitation Free Bar-b-que For Farmers & Wives

Interested in Center Pivot Irrigation?

Monday- February 17, 1975 7:30 pm  
At The High School Cafeteria

Special Guest Speaker &  
Three Screen Film Presentation

SPONSORED BY:

**AVI INC.**  
**VALLEY SPRINKLER DEALER**  
PLEASE CALL 272-4266 FOR  
RESERVATIONS, SO WE WILL  
KNOW HOW MANY TO  
PREPARE FOR.



CLOVIS HIWAY  
MULESHOE



Most popular cheese on the market in the U. S. is cheddar—seven out of 10 pounds of cheese is cheddar. It's known by many different names—American, longhorn or daisy—Mrs. Gwendolyn Clayatt, consumer marketing information specialist, Texas Agricultural Extension Service, The Texas A&M University System, explained.

# SPECIALS!

FOR THE MONTH OF FEBRUARY



**25% Off**

ON ALL  
COLOR TELEVISIONS



OUTSTANDING  
**\$AVINGS**  
ON  
ALL TYPES AND  
SIZES OF  
**TIRES**



PRICE REDUCED \$50.95  
**CATALINA 15 Cubic Ft.**  
**"NO FROST" UPRIGHT FREEZER**  
Adjustable Quick-Freeze Cold Control!  
Four Full Stationary Steel Shelves!  
Four Removable Frozen Package Racks!  
16 1/2 Sq. Ft. of Shelf Storage!  
5 Yr. Food Protection Warranty!

REGULAR \$347.95  
**\$299**

**WHITE STORES, INC.**

HOME OWNED AND OPERATED BY  
**Tom Lively & Son**  
Earth, Texas



MRS. BUSTER WATSON

## Townsend-Watson Exchange Vows

Mr. and Mrs. E. S. Townsend of Springlake wish to announce the marriage of their daughter Janice Lee to Buster, son of Mr. and Mrs. Bill Watson of Springlake.

The couple were united in

marriage on January 17 in Durant, Oklahoma.

Buster is employed as a welder for Reed Tool Co. in Sherman, Texas.

The couple are now living in Calera, Oklahoma.

## Boot And Shoe Repair Program Considered At TSTI

Possibility of a program in boot and shoe repair is being seriously considered by officials at Texas State Technical Institute, Mid-Continent Campus.

A meeting with potential advisory committee members and State Tech instructors was held Sunday afternoon on campus. Dr. Fred Lanphear, manager of instruction, outlined the procedure for establishment of a new program in a Texas technical school.

Phil Hurr, State Tech curriculum coordinator, presented data on a survey the school conducted confirming a job market for boot and shoe repairmen.

A curriculum will soon be designed, with the assistance of the advisory committee, and will subsequently be presented to the Texas Education Agency for approval.

Lanphear says he hopes the school will be able to start the program with the summer quarter in June. Wayne Cates, program chairman for Saddle and Tack Making, says,

"About half our 25 STM students have expressed a desire to take the boot and shoe repair course, and they'll finish this one in May."

It is possible that boot-making will also be incorporated or added to the course.

Advisors present for the meeting and tour of campus facilities Sunday were Herman Smith, Lubbock; Tom Draper, Amarillo;

Morris Barnwell, Amarillo; Tom Wilson, Amarillo; Ray Langston, Mesquite; Joe Pollinzi, Dallas; John Warrick, Lubbock and Ben Wright, Amarillo.

State Tech drafting and design instructor Bob Ross, who is also a boot and shoe repairman; and Korye Martin, director of public information, also attended the meeting.

### Company Outlines Plan for Minorities

The Quaker Oats Company has announced plans to provide 476 additional jobs worth \$4 million in annual wages for non-whites by 1976.

The new jobs, which will range from executive, managerial and scientific positions to assembly line jobs, will raise its minorities payroll from \$17 million to \$21 million annually.

Quaker employs some 18,000 persons at 34 major plants, of whom approximately 2,000 are blacks and other minorities.

The Company, widely diversified in food, chemical, toy production and a restaurant chain, carries about \$14 million in insurance with black companies and will add another \$7 million by 1976.

The new plan includes some \$2 million in construction that will go to black or non-white firms, and \$702,000 annually to go to minority-run advertising firms.

START AN "ecology cupboard" in your home. Store reusable items like string, paper, boxes, cartons, plastic containers, ribbon, yarn and reuse them before discarding.

## ATTEND THE S-E JUNIOR LIVESTOCK SHOW

### ATTENTION SENIOR CITIZENS

FREE TRANSPORTATION WILL BE AVAILABLE TO ALL SENIOR CITIZENS OF EARTH EVERY WEDNESDAY

FROM 9:00 a. m. TO 3:00 pm.

TRANSPORTATION IS PROVIDED TO ALL SENIOR CITIZENS OF EARTH CITIZENS 55 OR OLDER WITHOUT REGARD TO RACE, COLOR, CREED SEX OR NATIONAL ORIGIN.

FOR MORE INFORMATION CALL  
257 -2111

SPONSORED BY FARMERS UNION AND GREEN THUMB INCORPORATION WITH LAMB COUNTY SENIOR CITIZENS COMMITTEE AND THE LAMB COUNTY COMMUNITY ACTION BOARD

## ART TEX PAINT PARTY

IN THE  
**BEE HIVE MALL**

TUESDAY, FEBRUARY 18

**ALMA OTT**  
INSTRUCTOR

SERIES  
OF  
FIVE FREE  
LESSONS

ONE EACH WEEK  
FOR 5 WEEKS

SPONSORED  
BY

*Sassy  
Stitchin*



We Congratulate... Area  
Young People on their many  
Achievements...



Our Wish For Your Every Success... Not Only During  
This Show, But Also Your Future.

**ORVAL WATSON**

**Lincoln-Mercury-Ford**

HEREFORD

AT **St. Clair's**

**Hottest  
Item In The  
Market Today  
For Children  
And Adults**



## "PRINT WORKS"

It's A Heat Transfer Machine... That  
Transfers Stencils On To Tee Shirts, Jeans,  
Sweat Shirts, Or Any Item Of Fabric You So  
Desire.

Literally Dozens Of Novelty, And Comic Stencils, Flocked  
Letters & Numerals In Stock. Also Hundreds Of Assorted  
Shirts & Jeans To Be Personalized To Suit Your  
Individual Taste.

MOST TRANSFERS CAN BE COMPLETED IN A VERY FEW  
MINUTES... AND THE COST IS AMAZINGLY LOW.

**St. Clair's**

218 Main

Muleshoe

## Rainbow Girls Meet February 3

Miss Kelly Jo Wheatley presided over her first meeting as Worthy Advisor of the Earth Assembly No. 156 Order of the Rainbow for Girls, Monday, February 3 at 4:30 p. m. in the Masonic Hall.

Mrs. Cecilia Goodwin served as Mother Advisor in the absence of the Mother Advisor.

The hall was beautifully decorated in the Worthy Advisor's chosen colors of orchid and white. The seven pedestals were covered with the seven colors of the rainbow.

The minutes were read from the previous meeting and ap-

proved.

It was decided by the girls to have a "Merry Rainbow Initiation" at the next meeting.

Mrs. Lajuana O'Hair gave a very inspiring program on the "Art of Love" with references from several different passages from the Bible.

The meeting was closed in the regular form.

Christy Barlow served refreshments of Cokes and cookies to Miss Wheatley, Pam Eagle, Fonda Goodwin, Stephanie Parish Kleta Haberer, Donna Green, Mrs. Goodwin, Mrs. O'Hair and Ruel Fanning.



SPRINGLAKE-EARTH SENIORS-Were honored Tuesday with dinner by the Earth Church of Christ. This group couldn't make up their minds about what to select, so they took a little of everything.

## TOPS Members To Entertain Husbands

Texas TOPS 217 met Thursday, February 6 at 5:30 p. m. in the Medical building in Earth.

The meeting was opened with the TOPS pledge, followed by the roll call with eight members present.

The club discussed and planned a husband's night Valentine party for Thursday (tonight) at 7 p. m. in the home of Mr. and Mrs. W. B. Hucks.

The group also discussed and made plans to attend the SRD

in Abilene May 2 and 3. The meeting was closed with the TOPS song.

Anyone who is interested in joining the club may call 986-2221 or 986-3101 in Springlake for information.

## Dinner Honors Seniors

The 1975 Senior Class of Springlake-Earth High School was honored by the ladies of the Earth Church of Christ with a dinner Monday, February 11 in the Fellowship Hall.

The Valentine theme was used throughout the hall. The tables were overlaid with net cloths with centerpieces of cupid and red and white carnations. Red nut cups with white hearts with Seniors '75 in red completed the table setting. Over each table were three red hearts.

The Senior Class motto "Remember With Each Rising Sun Your Life Has Just Begun" was on one wall in bold red letters sprinkled with glitter.

The Hand Travelers of Lubbock Christian College provided the entertainment. The Hand Travelers consists of Tim McKenzie, James Hubbs and Robin Crawford. The group provided music ranging from rock to country throughout the dinner.

Special guests at the dinner were Bill Reese, minister of the Church of Christ, and his wife, Mr. and Mrs. Bob May, principal of Springlake-Earth High School, Bill Mann, Superintendent of Springlake-Earth Schools and Senior Class sponsors, Mrs. Cecil Slover and Bill Anderson.

The invocation was given by Bill Reese and the response was given by Doug Jones, President of the Senior Class.

A delicious meal was served consisting of fried chicken, tossed salad, fresh fruit salad, corn, green beans, twice baked potatoes, home-made bread, and a wide assortment of pies.

## O.F. Dent Honored On Birthday

O. F. Dent of Austin was honored Saturday, February 1 with a birthday dinner in the home

## Delta Kappa Gamma Meets In Olton

Epsilon Chapter of Delta Kappa Gamma met February 1 in the homemaking cottage at Olton High School.

Mrs. Monarae Cummings, president, presided over the 2:00 p. m. business meeting.

Mrs. Nan Ellen Largent from Littlefield presented a question and answer discussion on "Competence or Incompetence-Expanding Her Professional Participation."

Mrs. Ruth Ford from Littlefield led the group in vocal music. Olton members served dainty refreshments from a table beautifully decorated in the Valentine theme.

Mrs. Monarae Cummings and Mrs. Gladys Parish from Springlake-Earth were among the approximately fifty members present.

of his daughter and family, Mr. and Mrs. Lowell McGill and Dent of Olton.

Guests were the honoree and his wife, their son and granddaughter, Donnie Dent and Mendy of Amarillo and granddaughters, Mrs. Doug Messer of Midland, Mrs. Phil Middleton, also of Midland and Miss Toni Sanders of Lubbock. Mrs. Middleton was accompanied by her daughter, Kerl.

Other guests were the Dent's son-in-law and family, Mr. and Mrs. Tom Sanders and Cliff of Springlake. Also the host couple's daughter and family, Mr. and Mrs. Danny Cook and Lisa of Lubbock.

## Notice

A come and go baby shower honoring Mrs. Melvin Parish will be held Friday, February 14 from 3 to 5 p. m. in the Earth Community building.

If you care to be a hostess, contact Mrs. Johnny Murrell, phone 257-3932 or Mrs. Beulah Danforth, 257-2031.

## What's Cooking at School

Monday  
Fish Krispies  
Tarter Sauce  
Cole Slaw  
Scalloped Potatoes  
Cherry Cobbler  
Cornbread and Butter  
Milk

Tuesday  
Fried Chicken with Gravy  
Buttered Grits  
Blackeyed Peas  
Waldorf Salad  
Strawberry Shortcake

Hot Rolls and Butter  
Milk  
Wednesday  
Mexican Casserole  
Buttered Corn  
Tossed Salad  
Fruited Jello  
Cookies  
Cornbread and Butter  
Milk  
Thursday  
Chicken Fried Steak  
Gravy  
Creamed Potatoes  
Green Beans  
Carrot-Coconut Salad  
Wheat Rolls and Butter  
Cup Cakes  
Milk  
Friday  
Wolverine Burgers

## Notice

The Sunnyside Lions Club has scheduled a benefit "Pancake and Sausage Supper" for Saturday, February 15, beginning at 6:30 p. m. in the Sunnyside Lions Club building.

All proceeds from the supper will go to Joel Bradley, son of Mr. and Mrs. Lee Bradley who is in the Methodist Hospital in Lubbock.

All donations will be appreciated.

Fried Okra  
Carrot and Celery Sticks  
Peanut Butter Cup  
Orange Juice  
Milk

Every Bride Is Pleased With Gifts From Here...

MISS JEANIE PUTMAN  
BRIDE-ELECT OF DAVID WISLAN  
HAS MADE SELECTIONS HERE

Here shower is Saturday February 15 in The Home of Mrs Melvin Bock

Howell's 216 Floral  
EARTH

We're So Proud!  
We're Busting Our Buttons!

Our Customers Are OUR Valentines!  
WE LOVE YOU!

COME TO THE PLACE AROUND THE CORNER

BUSY CORNER  
NEXT TO BASKIN-ROBBINS Plainview  
HAPPY PLACE

OUR YOUTH OF TODAY...  
Our Nations Leaders Tomorrow

We Are Proud That Our Schools And Communities Offer These Youth The Opportunity To Join These Fine Organizations That Help Build Our Future.

ATTEND THE  
4-H - FFA STOCK SHOW  
RODEN DRUG

We Give Double Gold Band Stamps  
LITTLEFIELD On All Prescriptions PHONE 385-4250  
We Reserve The Right To Limit Quantities

OUR YOUTH OF TODAY...  
Our Nations Leaders Tomorrow

O.F. Dent Honored On Birthday

O. F. Dent of Austin was honored Saturday, February 1 with a birthday dinner in the home

Notice

A come and go baby shower honoring Mrs. Melvin Parish will be held Friday, February 14 from 3 to 5 p. m. in the Earth Community building.

If you care to be a hostess, contact Mrs. Johnny Murrell, phone 257-3932 or Mrs. Beulah Danforth, 257-2031.

MISS JEANIE PUTMAN  
BRIDE-ELECT OF DAVID WISLAN  
WILL BE HONORED WITH A BRIDAL SHOWER  
SATURDAY, FEBRUARY 15  
IN THE HOME OF MRSL MELVIN BOCK

MISS PUTMAN HAS MADE SELECTIONS OF GLASSWARE AND OTHER HOUSEHOLD ITEMS AT

The Daisy  
IN THE BEE HIVE MALL

THE ELECTRIC HEAT PUMP

SPACE HEATING

ASK ABOUT OUR BRIGHT STAR IN THE GALAXY OF ELECTRIC HEAT!

Electric heat, a wise use of precious energy is a clean, quiet, economical and efficient means of heating your "inner space" . . . Electric heat is 100% efficient at the point of use. Like to know how you can have the space heating of the future, today?

Call us this week for a free personalized electric heating cost survey.

The Future Is Electric!

ELECTRICITY IT DOES SO MUCH GOOD

The Electric Company  
FOR SO MANY PEOPLE

It's called the heat pump . . . because it actually pumps heat . . . "in" your home in the winter . . . "out" of your home in the summer . . . That's really quite an oversimplification . . . but, quite simply, that's just what the heat pump does . . . using otherwise wasted heat and electricity in cooling and heating your home. In fact, in heating the heat pump actually produces more energy than it uses. For more information on the heat pump . . . call us . . . we'll give you all the facts in a free personalized electric heat cost survey!

EQUAL OPPORTUNITY EMPLOYER

## Miss Annita Kelley Honored With Bridal Shower

Miss Annita Kelley bride-elect of Doug Taylor of Amarillo was honored with a bridal shower Saturday, February 1 in the home of Mrs. Phillip Haberer. Registering the guests was Annette Randall of Earth. The register table was covered with a white lace cloth. On the table was a large white beaded heart trimmed in red tulle featuring two white doves, bows and small butterflies trimmed in gold.

The serving table was covered with a candlelight cloth edged in lace. The centerpiece was a bouquet of lovely red silk roses and white flowers in a lovely crystal and gold container accented with two red tapers in crystal and gold candle holders. Serving punch, cake and nuts were Miss Fonda Goodwin and Miss Kareen Hulcy. Also assisting with hospitalities were Miss Sharla Haberer and Miss

Kleta Haberer. On the mantel in the den was a large arrangement consisting of white leaves, flowers, gold wedding bells, lilies of the valley accented with clear hobnail votage candles. This rested on white satin and a small bride and groom completed the decorations. Also in the den was an arrangement of red silk roses and white bells and fern and gold leaves with streamers coming down with the bride and groom's name and date of wedding.



WE'RE GOING TO A PARTY-This foursome were well prepared for the big "Gay 90's" banquet at the Earth Baptist Church Tuesday night. They are Mr. and Mrs. Buddy Adrian, Mrs. Everett "Matt" Paterson and Mrs. Lillian Hamilton.

A large red candle accented with bells, leaves, lilies of the valley and pearls decorated the room where the gifts were on display. Hostess gifts consisted of a complete set of 13 pieces of Faberware cooking ware, bedspread, pillows, toaster, lamp, electric bun warmer and many other useful household articles. The bride-elect and mother of the bride were presented lovely corsages. Hostesses for the occasion were Mrs. Gayle Littleton, Mrs.

Wylene Cleavinger, Mrs. Vivian Parish, Mrs. Sherry Haydon, Mrs. Sandy Daniel, Mrs. Helen Hulcy, Mrs. Connie Sanderson, Mrs. Evanel Winders, Mrs. Joy Haberer, Mrs. Zella Mae Rutherford, Mrs. Bernice Dutton, Mrs. Jennifer Bonick, Mrs. Wynnelle Angeley, Mrs. Dorthaphine Brown, Mrs. Kathie Shirey, Mrs. Lovelle Morris, Mrs. Vera Martin, Mrs. Elsie Hawkins, Mrs. Joy Runyon, Mrs. Mary Murrell, Mrs. Robbie Parish and Mrs. Dianne Carpenter. Others were Mrs. Millie Armstrong, Mrs. Gayle Jones, Mrs. La Juana O'Hair, Mrs. Cecelia Goodwin, Mrs. W. O. Wood, Mrs. Almer Barton, Mrs. Carol Smith, Mrs. Beth Kelley, Mrs. Lola Sanderson, Mrs. Pauline Hucks, Mrs. Beedie Welch, Mrs. Mary McInroe, Mrs. Leta Kelley, Mrs. Norman Hinchliffe, Mrs. J. I. Coker, Mrs. R. T. Hamilton, Mrs. Madell Simmons, Mrs. K. B. Parish, Mrs. Elroy Wisian and Mrs. James E. Winder. Also Mrs. Frances Watson, Mrs. Jean Haberer, Mrs. Zou Wilson, Mrs. Polly Middleton, Mrs. Lucille Campbell, Mrs. Gladys Laing, Mrs. Jeannette O'Hair, Mrs. Inez Inglis, Mrs. Fern Bock, Mrs. Nina Adrian, Mrs. Dora Belle Ivey, Mrs. Faye Miller, Mrs. Carl Jones, Mrs. Dorothy Wood, Mrs. L. G. Layman, Mrs. Naomi Burgess, Mrs. Helen Templeton, Mrs. Betty Anderson, Mrs. Ida Kellar and Mrs. E. C. Hudson.

IF YOU HAVE STAGE fright, seek out a friendly face in the crowd and carry on your public conversation with the owner of that face.

## BOOKMOBILE SCHEDULE

The High Plains Bookmobile will be in the area on the following dates:

Thursday, February 20  
Springlake #1 11:00-11:45  
Springlake #2 12:00-1:00  
Earth 1:15-3:45



in parts of England it's believed that a person who picks marigolds will take to drink.

## The EARTH NEWS-SUN



Published at Earth, Texas 79031 every Thursday except the first Thursday following Christmas.

Second Class Postage paid at Earth, Texas 79031

### SUBSCRIPTION RATE

Earth and Trade Territory, per year.....\$5.00 plus tax  
Elsewhere in United States, per year.....\$6.00 plus tax

### CLASSIFIED RATES

10¢ per word, first insertion, 8¢ per word thereafter....  
\$1.00 minimum.

### ADVERTISING RATES GIVEN ON REQUEST

ROSS AND POLLY MIDDLETON.....Publishers

## A WINNER!

Yes, everyone's a winner

at the...

## JUNIOR LIVESTOCK SHOW IN EARTH

MEN'S & LADIES

**BOOTS 20% OFF**

REGULAR PRICE



**Boots \* West**

Hwy 60 E HEREFORD, TEXAS 364-5961

Tex Watson talks about

## Natural Gas for the Future

I'm pleased to report to our customers that Pioneer purchased more gas during 1974 than we used. This new gas will be available for future use, of course.

As you know, Pioneer is having to pay more for new gas than we've ever paid before. The competition for the gas produced in our area has never been so fierce. But the higher prices are resulting in lots of new exploration and production. I know of numerous wells which could not have been drilled at prices prevailing three years ago.

The increase in field prices means that our customers will have to pay more for the energy they use in their homes — gas and electricity — but, more important, it means he'll have the gas he needs.

All energy will cost more in the future but gas will remain your best energy buy.

PIONEER NATURAL GAS COMPANY



## BE SURE TO ATTEND

## THE ANNUAL S-E FFA-4-H

## Junior Livestock Show

AT THE

## SHOW BARN in EARTH

THURSDAY & FRIDAY  
FEBRUARY 13-14



IT IS A PLEASURE TO COMMEND THE YOUNG PEOPLE OF THE SPRINGLAKE-EARTH AREA ON THEIR OUTSTANDING ACCOMPLISHMENTS...

Located near Tulia

**PRAIRIE CATTLE CO.**

Phone 627-3000

Everybody Come Out And Enjoy The

## S-E FFA-4-H Junior Livestock Show

Our Wish For Your Every Success... Not Only During This Show, But Also Your Future.

THURSDAY & FRIDAY

If you are interested in having a sale contact

L. D. HENDERSON

without any obligation

Specializing in Farm Machinery & Livestock

Conducting sales anywhere, anytime

**L. D. HENDERSON**

965-2446 257-3768

Mobil 385--5813

## Monty Price Completes Basic Training S-E Graduate Inducted Into Pharmacy Fraternity

Seaman Apprentice Monty Price, son of Mr. and Mrs. Larry Price graduated with honors from basic training at the Coast Guard Training Center at Alameda, California January 31.

Monty was honorman of his graduating class and also Recruit Company Commander.

He will be home March 15 for a ten day leave. On completion of his leave he will report to Governors Island, New York for Gunner's Mate schooling.



MONTY PRICE

KEEP YOUR ENGINE properly tuned (approximately every 10,000 miles). Encourage others to do the same. This cuts down on exhaust emissions and helps reduce air pollution.

AMERICAN MOTORISTS dump an average of 1305 pieces of litter per month on every mile of the nation's primary highways, nearly 16,000 pieces per mile per year.

WEATHERFORD, OKLAHOMA-Southwestern State University's Alpha Beta chapter of Kappa Epsilon, national women's pharmacy fraternity, has inducted 22 new members, increasing to 58 the number on its current active rolls. The chapter has also pledged 18 for a total of 76 young women in the professional school affiliated this semester with the fraternity, making it one of the largest, if not the largest, in the nation. New members are Susan Nichols, McAlester; Joan Watson, Shawnee; Lynn Ingram, Lubbock; SHERRY KELLEY, EARTH; Vicki Garms and Cheryl Wilms, Kingfisher; Carol Lawson, Odessa; Janet Smith, Willow; Rita Winsett, Greenville; Kathy Burchik, Pueblo, Colorado. And Janice Kratzer, Enid; Cathy Foreman and Eugene Ethel, Hydro; Charlotte Simer, Hooker; Ann Cody, Hurst; Karen Bowers, Dalhart; Janet Burt, Elgin; Laquita White, Springdale, Ark.; Cathy Prichard, Plainview; Debbie Rylee, Perryton; and Jeanne Steichen, Tonkawa. Pledges are Temple McClennen, Springdale, Ark.; Cathy Ingram, Fletcher; Pat Jones, Weatherford; Martha Black, Yukon; Peggy Bayne, Lawton; Chandra King and Shelley Willey, La Junta, Colo.; Becky Scott, Melrose, N.M.; Vicki Lambert, Fort Worth; Nancy Stiles, Henryetta; Karen Myers, Del City. And Debbie Middick, Davidson; Barbara Jones, Caddo; Carol Johnson, Edmond; Melissa Garrett, Muldrow; Paula Roberts, Dill City; Marianne Cammack, Hobbs, N.M., and Susan Davis, Lubbock.

## Parking Ticket Tax A No-No

Comptroller Bob Bullock said Friday that his office is looking into local handling of the state criminal justice tax, including reports that some courts mistakenly put the \$2.50 tax on parking tickets.

The tax, levied by the Legislature in 1971 to support the Criminal Justice Council, covers only moving traffic violation convictions, bond forfeitures on moving traffic citations and criminal law convictions.

Bullock said that taxes wrongly put on parking tickets are subject to refund to people who paid the tickets but that the burden for all refunds rests on the city and county courts which levied the tax by mistake.

The state, in turn, will reimburse the local courts upon proof that a refund was actually paid the ticket holder, Bullock said. Refunds to cities and counties will be in the form of credits on their next quarterly tax report.

Bullock said his review of local handling of the tax started following reports in the Fort Worth Star-Telegram that North Richland Hills charges the tax on parking tickets. Similar situations have since been found in other towns but apparently no large cities are involved.

The reports filed with the Comptroller by local officials show only the number of total convictions and amount of tax collected. There is no breakdown of convictions by type.

Taxes are handled by city officials for municipal courts and by county treasurers for justice of the peace, county and district courts. The city or county gets to keep a five per cent handling fee.

The tax raises about \$6 million a year for the Criminal Justice Council.

## Help Our Youth

**BUILD...**

**A Better**

**TOMORROW**



**Support Their Activities**

**Attend The**

**S-E FFA-4-H**

**Junior Stock Show**



DON LOAFMAN---OLTON

### THE WORD

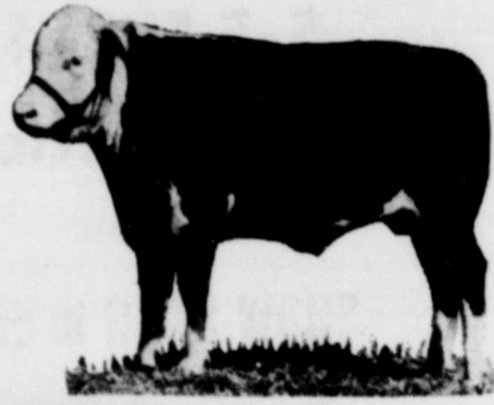
**CHAMPION...**

**Describes Many Things**

**Our Youth**

**And The Stock**

**They Will Be Showing**



AT THE

**S-E JUNIOR STOCK SHOW**

ANNOUNCING---

WE HAVE A NEW SERVICE TO OFFER YOU  
CUSTOM WELDING and SHOP WELDING  
LET US SERVE YOU WITH YOUR NEEDS...

### Davis & Pyle Pump And Drilling Co.

GEARHEAD REPAIR-WE PICKUP and DELIVER  
We Have The Peerless Dealership For This Area  
We Also Have Retco-Worthington-Fairbanks Morris  
And All Major Brands of Pumps  
Located In The Former B & W Pump Co. Building  
On North Highway 385 In Springlake  
L. T. DAVIS---Owners---FLOYD PYLE

### ★ ★ ★ ★ ★ ★ ★ ★ ★ OUR MEN IN ★ ★ SERVICE ★

SAN ANTONIO--Airman Gary A. Murrah, son of Mr. and Mrs. Gordon Francis Murrah of Rt. 2, Muleshoe, Tex., has been assigned to Keesler AFB, Miss., after completing Air Force basic training.

During his six weeks at the Air Training Command's Lackland AFB, Tex., he studied the Air Force mission, organization and customs and received special instruction in human relations.

The airman has been assigned to the Technical Training Center at Keesler for specialized training in the administrative field.

Airman Murrah, a 1969 graduate of Muleshoe High School, attended South Plains College and Texas Tech University.

His wife, Debbie, is the daughter of Mr. and Mrs. Boyd Landers of Rt. 2, Muleshoe.

### ★ ★ ★ ★ ★ ★ ★ ★

Jan. 17--Coast Guard Master Chief Gunner's Mate Delton L. Hughes, son of Mr. Roy L. Hughes of Muleshoe, reported for duty at the Coast Guard Training Center, Governors Island, New York City.

Gunner's mates operate and maintain missile launching systems, rocket launchers, guns, gun mounts, turrets and the electrical, mechanical and hydraulic systems involved.

A former student of Diablo Valley College, Concord, Calif., he joined the Coast Guard in June 1952.

### ★ ★ ★ ★ ★ ★ ★ ★

AN ACRE OF YOUNG, actively growing trees produce enough oxygen to keep 18 people alive and healthy for one year.



## Our Confidence

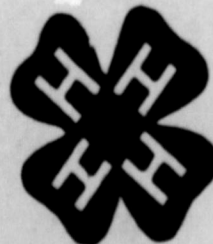
IS STRENGTHENED BY THE INTEREST  
AND TOP QUALITY PROJECTS OF OUR  
FUTURE FARMERS AND 4-H CLUB MEMBERS--



## Congratulations On A Sound Program & A Well Planned FAT STOCK SHOW

EVERYONE IS URGED TO ATTEND THE 4-H CLUBS AND FFA CHAPTERS FAT STOCK SHOW

BEST WISHES FOR A SUCCESSFUL SHOW THURSDAY FRIDAY



**OLTON STATE BANK**

MEMBER FDIC---OLTON



**Fine Youngsters**  
And  
**Fine Animals**



Will Be On Display

THURSDAY and FRIDAY

At

**SPRINGLAKE - EARTH JUNIOR LIVESTOCK SHOW**

AT THE SHOW BARN IN EARTH

**GRAY'S GARAGE**

PLAINVIEW HIGHWAY---OLTON

# MANOR NEWS

Visiting Dave Britt recently was his brother Jack Britt of Bovina and his sister-in-law Mary Britt

Mrs. J. F. Cole visited Suste Goyne this week.

Verlea and Floyd Edwards of Amherst visited her mother Lizzie Nicholson recently, Doris Mixson also visited.

Visiting Rosie Sanders this week was her daughter Mary Suttan and son Larry of Farwell.

Lorna Jeffery visited her grandfather, Lee Jeffery this week.

T. L. Bennett of Amherst visited his mother Maude Bennett Monday.

Chester Baker came to visit his father Willie Baker on Thursday.

Mrs. Homer Hukill visited her husband Homer recently.

Visiting Essie Griggs was her son, Mr. Griggs of Floydada and her son-in-law H. L. Nesley and Mrs. Snodgrass of Portales, New Mexico.

Aida Slate from Sudan is a new resident at Amherst Manor. We are all getting acquainted with her and hope she will be very happy with us. Visiting her this week were Tobe Vereen, Coleman Terrul, Mrs. Siman

Hay, Francis Farmsax, Ruby Mince, Mrs. Bruce Newman, Mrs. Bill Olds, Mrs. Edna Bellany, Mrs. W. V. Terry, all of Sudan, also Enna Patterson, and Sallie Roberson of Amherst and Jane O'Brian of Ft. Worth.

Mr. and Mrs. F. O. Mote of Spade visited Mike Mote recently.

Visiting Goldie Drake this week was her daughter Minnie Parish of Earth.

Visiting Flora Davis recently was her daughter, Mr. and Mrs. R. O. Dickson and her granddaughters, Jennie, Gay and Ann Pierson. Also Leona Blanton and Lottie Kasinger of Earth.

Visiting Effie Veach Sunday

Mrs. Henry Sager visited Daisy Brock Sunday, Daisy's husband Clyde visited Monday.

Mr. and Mrs. Charles Jones visited his mother Etta Jones and Aunt Ora Smith this week. Dorthy Abbot also visited them.

Visiting Hattie Doss recently were Mr. and Mrs. Walter Banens of Muleshoe, Mrs. Siman Hay Ruby Mince, Edna Bellamy, and Mrs. W. V. Terry of Sudan.

A. D. Lynch visited John Butler and others at Amherst Manor this week.

Visiting Lela Coffers Thursday was her brother Gerald Coffers.

Eddie Landers visited his sister Sue Landers recently.

Streptococci often cause severe sore throat ("strep throat"). Although redness and pus around tonsils and neighboring structure can often be seen, strep throat cannot be diagnosed just by looking. A throat culture must be taken and incubated overnight in the laboratory to confirm the strep diagnosis. With scarlet fever, a generalized rash will appear on the body, and this rash, in conjunction with the appearance of the strep throat, does establish streptococci as the cause. Fortunately strep and the other more serious illnesses it can produce will respond promptly to penicillin. Naturally, the sooner the treatment is initiated, the better.

Other bacteria can also cause sore throat. One of the most serious of these is Hemophilus influenza (no relation to the virus which causes viral influenza). This organism usually affects young children in the three-to-five-year-old bracket. It causes severe infection with inflammation and swelling of the epiglottis, the structure which guards the entrance to the larynx or windpipe. Epiglottitis, as this disease is called, produces severe sore throat and croup. Your physician should be notified at once as swelling can take place rapidly and obstruct the air passages. This type of sore throat illness is relatively rare, however, and although it does not respond to penicillin, it can be treated effectively with other agents.

Another serious disease which manifests itself in sore throat is infectious mononucleosis. In addition to causing severe sore throat, infectious "mono" causes swelling of the lymph nodes of the neck and changes in the white blood cells. This disease does not respond to antibiotics;

## My Neighbors



"First we skied, then we sat around the fire knocking parents."

### You're Looking Great!



AND THIS IS ONLY THE BEGINNING...

OUR BEST WISHES FOR YOUR EVERY SUCCESS--NOT ONLY DURING THIS SHOW, BUT ALSO YOUR FUTURE

**PARSON-ELLIS-SINGLETON FUNERAL HOME**

EARTH---PHONE 257-3350



## BEST WISHES

to the ENTRANTS in JUNIOR LIVESTOCK SHOW

SHOW THEM YOU ARE PROUD TOO, ATTEND THEIR SHOW



BO BRYANT DIMMITT

CURTIS WALKER MULESHOE

### Sore Throat, May Be Warning Signal

Sore throat is one of the more common discomforts that plague us from time to time. Because sore throat is such a common complaint, often accompanying a cold or flu, the Texas Medical Association reminds you that certain kinds of sore throat can be warning signals of more serious illness. This is particularly important to note if the sore throat does not pass in a few days but continues to persist even though other cold or flu symptoms may not materialize.

Sore throat can be a symptom, or beginning, of any of a wide range of diseases, including scarlet fever, diphtheria, leukemia, infectious mononucleosis, rheumatic fever and others. This is not to say that your sore throat necessarily indicates any of these diseases, but only to point out that sore throat can be caused by many factors and that there is no single treatment that is effective for all sore throats. Because of this, your physician may want to take a throat culture (swab test) and have it analyzed in a laboratory; then the cause of the sore throat will be pinpointed and appropriate treatment can begin.



We Are Proud To Add Our

**Congratulations & Best Wishes**

TO THE ENTRANTS

OF THE

S-E

FFA - 4-H

Junior Stock Show

THURSDAY AND FRIDAY



SHOW THEM YOU ARE PROUD TOO, ATTEND THEIR SHOW

**Bailey County Electric Cooperative**

MULESHOE

WE EXTEND OUR  
**Congratulations**  
**FFA and 4-H**  
**EXHIBITORS**



FOR THE FINE JOB YOU ARE DOING  
SHOW THE YOUNG PEOPLE OF OUR AREA THAT WE ARE PROUD OF THEM BY ATTENDING THE STOCK SHOW!

## PLAINVIEW CO-OP COMPRESS

PLAINVIEW---PHONE 296-7435

RESPECT YOUR BODY. Eat RETURN NUTRIENTS to the soil. Start a compost pile with leaves and grass clippings. sensibly, exercise and don't smoke. You'll feel better and reduce your risk of heart disease.

## Come Out to the Annual Livestock Show

THURSDAY & FRIDAY

FEBRUARY 13-14

SEE US FOR ALL YOUR SEED NEEDS

**DODD FERTILIZER**

Forrest Collins-Mgr. --Dodd Community



1974 AND '75 OFFICERS-of the Earth Volunteer Fire Department. From left to right present team captains, Gary Bulls and Danny Byers; Davey Haberer, secretary; Doug Parish, outgoing fire chief; James Wages, 1975 fire chief and Richard Moore, outgoing secretary.

### Sorghum Conference To Be March 4-6

The ninth biennial Grain Sorghum Research and Utilization Conference is March 4-6 at Lubbock.

A talk by a top official of the U. S. Department of Agriculture from Washington, D. C., will conclude the series of meetings.

Held in conjunction with the conference will be the annual meeting of the Grain Sorghum Producers Association, an awards luncheon and meetings of the Plains Nutrition Council and the Sorghum Improvement Committee of North America. C. C. (Pap) Reed of Kres, chairman of the Texas Grain Sorghum Producers Board, will serve as general chairman of the conference. A. W. (Dub) Anthony, Jr. of Friona, president of Grain Sorghum Producers Association, will preside over the GSPA meeting.

The conference starts with registration at the Hilton Inn at 4 p. m. March 4. A forum on plant disease follows at 7 p. m. with Dr. George Teetes of Texas Agricultural Experiment Station at Lubbock, and Dr. L. K. Edmunds of USDA's Agricultural Research Service at Manhattan, Kan., as co-chairmen. The following day's program starts at 9 a. m. with a discussion of world-wide exports by Jimmy E. Minyard of USDA's Foreign Agriculture Service, Washington, D. C., and a talk at 9:30 a. m. by Dr. J. D. Axtell of Purdue University at Lafayette, Ind., on energy improvement by Dr. Lloyd Rooney of Texas A&M University, College Station and an exposition on stubble utilization by Dr. John Ward of the University of Nebraska at Lincoln.

Dr. Bruce Maunier of Dekalb Ag Research at Lubbock will preside over the wrap-up session ending the morning program, and Dr. Dale Weibel of Oklahoma State University at Stillwater will be session chairman for the afternoon session on research. The morning program March 6 starts with a panel discussion on sorghum-corn relations with Dr. Bill Pope of Texas A&M University, College Station, as moderator. Members of the panel and their specialties are Dr. T. D. Tanksley, Jr. of Texas A&M University, College Sta-

### Panhandle Park Site Acquired

AUSTIN-A 13,500-acre park site in Briscoe County headed the list of land acquisitions made by Texas Park and Wildlife Commissioners at their monthly meeting in Austin January 24.

Pending a survey to establish exact acreage, commissioners gave final approval to complete the purchase of the Theo Geisler Estate for \$65 per acre. The new park site is equidistant between Lubbock and Amarillo, 95 miles from each. Lake Theo on the property is a clear, 100 to 130 surface-acre lake which has been managed for catfish and bass fishing since the early 1960s.

Texas Parks and Wildlife Department officials say that possibilities exist for development of additional water resources.

The Lake Theo park site shares many features with nearby Palo Duro Canyon State Park but is surprisingly different in character. It has two main canyons some 400 to 500 feet deep of the same Permian red beds as Palo Duro but is more delicately sculptured. A major archeological site is located on the park site.

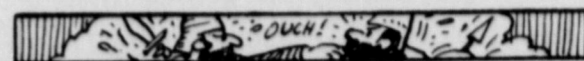
Wildlife include the aoudad sheep, an imported species from North Africa which has flourished in Panhandle canyons.

In other land acquisition matters, TP&W Commissioners accepted a donation of approximately 19 acres from the City of Rusk to be used as operational facilities and a terminal for the Texas State Railroad.

An additional three acres with improvements were purchased for inclusion at Meridian State Park for \$6,500.

P&W Executive Director Clayton Garrison was authorized by commissioners to trade a .33-acre tract of land at Palmetto Springs State Park with the Gonzales Warm Springs Association which hold a 99-year lease on the tract for a tract of equal size having better park potential.

SEPARATE YOUR household trash. Smash cans and put in one box; bottles in another; papers in another. Take them to the nearest recycling center.



It is said that Alexander the Great invented shaving so that the enemy could not grab his soldiers by their beards.



WE EXTEND OUR  
**Congratulations**  
**FFA and 4-H**  
**EXHIBITORS**



FOR THE FINE JOB YOU ARE DOING

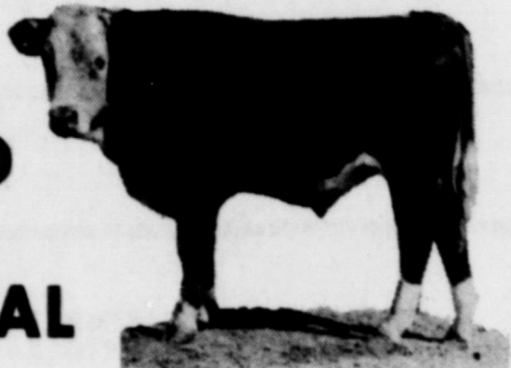
SHOW THE YOUNG PEOPLE OF OUR AREA THAT WE ARE PROUD OF THEM BY ATTENDING THE STOCK SHOW!

THURSDAY & FRIDAY

FEBRUARY 13-14

**WHITE AUTO STORE**

**BE SURE TO ATTEND THE ANNUAL**

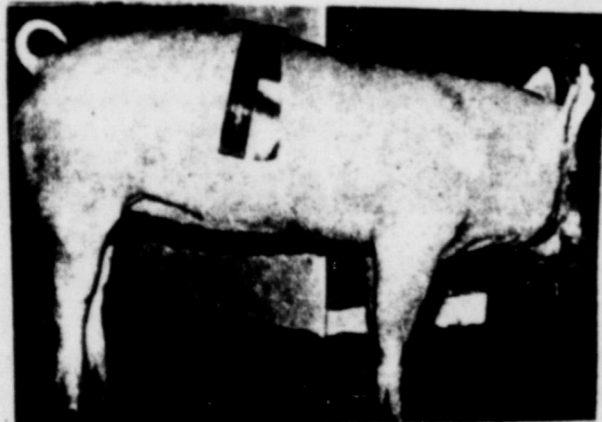


## FFA and 4-H CLUB JUNIOR LIVESTOCK SHOW



THURSDAY & FRIDAY  
**FEBRUARY**

13-14



**BIG T PUMP CO.**

DIMMIT



Attend The

## S-E FFA-4-H JUNIOR LIVESTOCK SHOW

THURSDAY & FRIDAY

FEBRUARY 13-14

COME AND EAT WITH US AT THE

**ORIGINAL TASTY TACO**

LITTLEFIELD

5th & XIT DRIVE

## Congratulations

4-H and FFA BOYS

Something to Crow About!



We're proud of your accomplishments

in raising fine quality

Livestock.

ATTEND THE LIVESTOCK SHOW

**FIRST NATIONAL BANK**

MEMBER OF F. D. I. C.

AMHERST



# SUNNYSIDE NEWS

BY TEENY BOWDEN



Mr. and Mrs. John Gilbreath returned home Tuesday from a six day Jamican tour with a group sponsored by Horizon Corn Seed. The temperature day and night was in the 80's so it was a little cold when they got home. Mr. and Mrs. R. S. Rogers of Gustine stayed with the boys while they were gone.

Carrie Little was transferred from Plains Memorial Hospital to South Hills Manor in Dimmitt last Friday to continue her recuperation from a recent stroke.

Joel Bradley was dismissed Saturday from Methodist Hospital in Lubbock. Mrs. Cliff Brown and Mrs. J. Paul Waggoner sat with them at the hospital Monday. Mrs. Charlie Hall Jones and Mrs. Lynn Cox Tuesday, Mrs. Gale Sadler and Mrs. Ila Haydon Wednesday.

Mrs. Gene Ross and Mrs. Hershel Wilson Thursday and Mrs. Thomas Parson Friday. Mrs. Ila Haydon also spent one night at the hospital with Mrs. Lillian Carson so Mrs. Lee Bradley could get a good night's rest.

Mrs. Noble Armstrong was dismissed from Plains Memorial Hospital Tuesday.

Mrs. Mary Fulfer was confined this week to Plains Memorial Hospital.

Otis Waggoner, a former resident of the community, passed away Wednesday in Glendale, California. He was the uncle of Eules and J. Paul Waggoner. Services were held in Bedford Street Church of Christ in Dimmitt Saturday afternoon. Mr. and Mrs. Eules Waggoner, Mr. and Mrs. J. Paul Waggoner, Ezell Sadler and L. B. Browden attended the services.

Mr. and Mrs. David Sadler and Ezell Sadler attended the funeral services in Lubbock Friday morning for a sister of Jake King of Hereford who passed away Wednesday. An uncle of Mrs. David Sadler passed away in California Tuesday also.

Lisa Orr was named to the Dean's Honor Roll for the fall semester at Wayland Baptist College. She is a sophomore majoring in biology.

Isabel Saucedo was on the Springlake-Earth high school all "A" honor roll for the first six weeks of the second Trimester.

Belinda Hampton and Arjella Saucedo were on the "A&B" honor roll for the Springlake-Earth 8th grade and Michael Graham, Kevin Riley and Kim Haydon were on the 7th grade "A&B" roll.

Junior Saucedo was one of the four Springlake-Earth students who were candidates for the basketball king.

Mrs. John Gilbreath, Mrs. Embree Roy Sadler and Mrs. L. B. Bowden attended a board meeting of the Plains Memorial Hospital Auxiliary at the hospital Wednesday afternoon.

Mrs. John Gilbreath worked with auxiliary duties at Plains Memorial Hospital Friday morning.

Gale Sadler, John Siever and Cliff Brown worked on the church cabin at Plains Baptist Assembly at Floydada Friday. Gale and John worked again Saturday.

Mr. and Mrs. Gale Sadler took Gregory Sadler back to Lubbock Wednesday and visited with his parents and Amy.

Edith Powers who is now Mrs. Raymond Baggett, a former resident of the community suffered a series of light strokes this week. She is in Eastland Memorial Hospital but expected to recover with no ill effects.

The Lion's Club is sponsoring a benefit pancake and sausage supper Saturday night at 6:30 at the community building to raise funds to help with the hospital bill of Joel Bradley.

Mr. and Mrs. Cecil Ginn of Dimmitt visited with Mrs. Pearl Sadler Friday afternoon.

Mr. and Mrs. Jake King of Hereford visited Thursday afternoon with Mr. and Mrs. David Sadler, Melody and Karla.

Mr. and Mrs. Larry Sadler, Mr. and Mrs. David Sadler and girls and Mr. and Mrs. Ezell Sadler attended the wedding of a cousin Jimmy Grisham in Rotan Saturday night. They came home Sunday night, after spending Saturday night at Breckenridge Lake.

(Continued To Page 10)

## Carpet Clearance Sale

PRICES START AT

ALL NYLON PILE CARPET

\$5.95 sq. yd.

Installed Over Padding

SCULPTURED SHAG

\$8.95 sq. yd.

Installed Over Padding

REDUCTIONS THROUGHOUT STORE  
Son Carpet Center

805 Broadway-Plainview-Pho. 296-2761

## NEWS ITEM

### NOW SALES

AND

### Services

ON NEW GMC

### Trucks and Pickups

LARGE INVENTORY IN STOCK

12 TONS---3/4 TONS

2 TONS WITH BED and HOIST PANEL VEHICLES

---ALSO---

4-WHEEL DRIVES

**DON RIERSON**

TOYOTA  
PONTIAC  
Cadillac

3110 OLTON ROAD

296 2788

PLAINVIEW

## HEARING Aids

**Clovis Hearing Aid Center**  
Batteries & Molds. Free Tests.  
Service All Makes.

416 Mitchell Phone 763-6900  
Clovis, N.M.

HAMMONS  
FUNERAL HOME

Ambulance Service

Phone 385-5121

LITTLEFIELD  
TEXAS

To Rest Assured  
USE SAFETY  
DEPOSIT  
BOX

Protection

FIRST STATE BANK  
Dimmitt, Texas

## MISSOURI BEEF PACKERS INC.

is Now Accepting Applications for Kill Floor Personnel. We Offer Your Round Employment Paid Vacations Paid Holidays Company Paid Group Hospital Insurance, Good Wages And No Experience Necessary. Apply At Personnel Office.

MISSOURI BEEF PACKERS INC.  
FRIONA, TEXAS

Four Miles West Of Friona  
On HWY 60  
Equal Opportunity Employer

## TEXAS TALK

By CALVIN WOOD

and EARL JORDAN

Q: What are some of the characteristics of a good breeding bull not necessarily required for good beef cattle?  
A: Most notable characteristics for breeding bulls not necessary in beef cattle include: a masculine appearance, breed markings, constitution and a good weight-to-age ratio.  
CONSTITUTION — Usually described as the positive tendency of an animal to perform well and survive during advanced age. Physical characteristics indicative of a good constitution are full development of the forequarters, wide-open and broad nostrils, a strong straight back and good body width and depth.  
MASCULINITY — Evidenced by the appearance of the bull. General features to look for are a full neck, strong horns (when this is a breed characteristic), full forehead with good development of chest and shoulders.

WOOD-JORDAN  
INC.  
EARTH

WE ARE STILL  
HERE  
and  
STILL WANT TO  
HELP  
YOU WITH  
YOU'RE  
IRRIGATION  
PROBLEM

STATE LINE  
IRRIGATION CO.,  
INC.  
Littlefield-Muleshoe

FOR SALE: 3/4" thru 10" PVC Plastic pipe, new and used aluminum pipe and side-rolls. STATE LINE IRRIGATION-Littlefield 385-4487-Muleshoe 272-3450.

11-28-tfc

### MONUMENTS

Winnboro Blue Granite White Georgia Marble and others, including Bronze for Memorial Park Specifications.

See or Call Collect

Percy Parson, Owner  
Phone 285-2621 or Frank Ellis  
Muleshoe, Phone 272-4574.

## DEAD STOCK REMOVAL

7-DAYS A WEEK  
SERVICE

Please Call As Soon

As Possible

MULESHOE  
BI-PRODUCTS

Phone 965-2429 LAZBUDDIE

## Machinery Auction Calendar

CONSIGNMENTS WELCOME

February 20th Richard Green Location  
5 1/2 Miles North Of Dimmitt 1/2 Miles West

February 25 Cullen Hay Location 7 Miles  
North Of Earth Then 2 Miles West

For Information On Sales Or To Consign  
Equipment Call Auctioneer

L. D. HENDERSON  
965-2446 257-3768 Mobil 385-5813  
If You Are Thinking About Any Type Of  
Auction, We Would Appreciate Visiting  
And Helping You, Without Obligation.

## Congratulations - Springlake-Earth FFA and 4-H Club Youth



Ranchers  
and  
Farmers  
Livestock  
Auction  
Co.

\* HORSE SALE  
EVERY 2nd AND 4th TUESDAY  
OF EVERY MONTH  
\* CATTLE SALES  
WEDNESDAY & FRIDAY

— Clovis, N.M. —

PHONE 762-4422

## THEY'RE ALL IN CLASSIFIED

FOUND-Stray yearling heifer with "C" brand behind right shoulder. Please claim. No collect calls accepted. Phone 986-2234.

2-13-2tc

FOR SALE: Good 1972 Ford XLT, 3/4 ton pickup, loaded. 965-2965.

2/6/2tc

HELP WANTED: Advertising salesperson, no experience necessary, will train. Also news writer. Apply in person at Earth News-Sun.

QUICKBALL PRYOR CO., INC.  
Automobile Parts  
Supplies & Equip.  
P.O. Box 567  
Earth Texas

Who cares about  
you and your taxes?  
**H & R BLOCK**  
Your nearest office  
is: 224 W. 2nd  
Muleshoe, Texas  
272-3283

## McCORMICK'S Upholstery

TRUCK SEATS Also furniture  
EXCHANGE Re-upholstered  
15 Minute Service

CHARLES POWELL OWNER PHONE 385-4550  
LITTLEFIELD

WE Will CUSTOM PROCESS  
YOUR BEEF TO YOUR SPECIFICATIONS



CALL OR COME IN TODAY!

CROW MEAT CO.

So. Hwy. 214

Friona, Texas

Phone 247-3333

**SUNNYSIDE**

(Continued From Page 9)

Mr. and Mrs. Hershel Wilson were in Pampa Saturday and Sunday for a pre-mission.

Mr. and Mrs. Noah Spencer were in Dallas Wednesday through Friday for his medical check-up. Mrs. V. E. Bearden accompanied them and visited with a brother while they were there. They have been staying with Mrs. Bearden in Hart at night again lately.

Reba and Harold Jarvis and Larry and Janelle Peoples all of Grand Prairie spent Thursday and Friday night with Mr. and Mrs. J. Paul Waggoner. They are grandchildren of Otis Waggoner.

Carrie, Stacy and Laura Sadler spent Saturday, Saturday night and Sunday with their grandparents, Mr. and Mrs. Tex Conard and Mr. and Mrs. James Powell and children of Dimmitt.

Milburn Haydon had charge of the Wednesday night prayer service.

Mr. and Mrs. John Spencer kept their great grandson this week while his brother Chris

was in the hospital. Mr. and Mrs. Clyde Akers of Lubbock spent the week-end with them. Mr. and Mrs. Chuck Lay and children visited with them Sunday.

.30 inch of rain was received Monday, .10 inch Tuesday and a trace of snow was received Wednesday.

Mr. and Mrs. Thomas Parson attended the Sunday afternoon services at Calvary Baptist Church in Friona.

Dr. Strauss Atkinson of Plainview filled the pulpit Sunday. He was a guest of Mr. and Mrs. Milburn Haydon.

Mr. and Mrs. Michael Tinsley of Canyon and Mr. and Mrs. Carmon Pigg and children of Dimmitt visited Saturday with Mr. and Mrs. Noah Spencer, Alan, Donnie and Lyle.

Mr. and Mrs. Milburn Haydon and Mr. and Mrs. Bill Ott of Hereford attended the Bill Gaither Trio concert in Lubbock Saturday night.

Mrs. S. A. Jeffcoat of Ropesville spent the week with Mr. and Mrs. Hershel Wilson, Debbie and Dancien. She is the grandmother of Hershel Wilson.

Debbie Wilson spent Saturday and Sunday with Cindy McAlpine of Earth. Dancien spent Saturday and Sunday with Mr. and Mrs. Richard Helzer.

Mr. and Mrs. Gerald Graham and Michael attended the solo and choir ensemble contest in Lubbock Saturday. Tommy Graham won 1 in solo, Lynn Brown and Dancien won 2 in solo. Dancien and Joe Fulfer won 2 in ensemble.

Lynn Brown and the Springlake-Earth 8th grade team lost in their last game of the season Thursday night. Their last scheduled game was Monday night. Thursday night was a make-up game.

Lee Brown and Junior Saucedo lost their game with Farwell Friday night in their regular schedule. They have a make-up game next week.

Mr. and Mrs. Alvin Upchurch and family from Petersburg, Mrs. Elvira Upchurch of Lubbock and E. A. Upchurch of Earth were dinner guests Sunday of Mr. and Mrs. Doug Loudder, Lyle and Dara.

Mr. and Mrs. Jim Bob Swinney and Dawn of Lubbock visited Sunday afternoon with Mr. and Mrs. Cliff Brown, Lee and Lynn.

Mr. and Mrs. Carl Bradley and boys spent Saturday night and Sunday in Amarillo with Mr. and Mrs. Charles Hedrick and boys. Mrs. Bradley and Mrs. Jess Matlock of Springlake were with them last Saturday when Brent underwent a liver biopsy to check the degree of liver damage from hepatitis he suffered earlier.

**Party Line**

Col. Owen Cupp of New York City is here visiting Mrs. Oattie Orteg. His mother is also here visiting from Lubbock.

Melvin Barton of Dimmitt visited last Saturday with his mother, Mrs. Almer Barton of Earth.

Mr. and Mrs. Thurman Lewis and family attended the funeral of her father Guy Mann of Hillsboro last week.



**ATTEND THE  
SPRINGLAKE-EARTH  
JUNIOR LIVESTOCK  
SHOW  
and**

**SHOP CAREFULLY!**  
There Are Many, Many Food Bargains Thruout the Store

KEEBLER  
**COOKIES**  
FUDGE STRIPES  
Package **69¢**

**DREAM WHIP**  
DESSERT TOPPING  
3 1/2 oz. Box **45¢**

RANCH STYLE  
BLACKEYED  
**PEAS**  
300 Size Can  
**4 For \$1.00**

SHURFINE FROZEN Whole Kernel  
**CORN** or Cut Green **BEANS** 10 oz. Pkg.  
**4 For \$1.00**

CLOVERLAKE Assorted Flavors  
**MELLORINE** 1/2 Gallon **79¢**

**HAIR SPRAY** AQUA NET 13 oz. Can **69¢**

**DETERGENT** IVORY LIQUID 22 ozs. **59¢**



TOWN HOUSE  
**CRACKERS**  
16 oz. Box **69¢**

TENDERCRUST  
BROWN and SERVE  
**ROLLS**  
2 Pkgs. **79¢**

TENDERCRUST  
**BREAD**  
1 1/2 Lb. Loaf  
**2 For 89¢**



GOLD MEDAL  
**FLOUR**  
5 Lb. Sack **79¢**  
25 Lb. Sack **\$3.99**

**COKE** 32 oz. Bottles **6 Pack Carton \$1.89** Plus Deposit

**DOG FOOD** 5 Lb. Sack **79¢**

DOUBLE STAMPS SATURDAY WITH \$7.50 PURCHASE OR MORE

*We Keep 'em Smiling with these*  
**MEAT**  
*Values!*

ARM **ROAST** Pound **\$1.09**

CHUCK **ROAST** Pound **99¢**

SHURFRESH **BACON** Lb. Pkg. **\$1.29**

SHURFRESH ALL MEAT **FRANKS** 16 oz. Pkg. **79¢**

OSCAR MEYER **LUNCHEON MEAT** PICKLE and PIMENTO 8 oz. Pkg. **69¢**

SPARKLING FRESH  
**PRODUCE**  
NO. 1 WHITES 10 lb. Sack **POTATOES 99¢**

SUNKIST **ORANGES** Pound **19¢**

CELLO PACKAGE **RADISHES** Each **10¢**

**TREET**  
LUNCHEON MEAT  
12 oz. Can **89¢**

PAY-N-SAVE  
GRADE A MEDIUM  
**EGGS**  
Dozen **59¢**

GREEN **ONIONS**  
Bunch **10¢**

**CELERY**  
HEARTS  
CELLO PACKAGE  
Each **49¢**

SHOP EARTH  
FIRST

SHOP OUR  
TUESDAY and  
WEDNESDAY  
SIZZLER

Pay-n-Save  
QUALITY AND SERVICE  
EARTH, TEXAS  
DOUBLE GUNN BROS. STAMPS TUESDAY & WEDNESDAY WITH \$7.50 PURCHASE OR MORE

**SPECIALS GOOD FEBRUARY 13 THRU FEBRUARY 19**

**Congratulations**

**FFA And 4-H  
Club Leaders  
of Tomorrow**

WE CONGRATULATE THESE YOUNGE  
PEOPLE ON THEIR ACHIEVEMENTS  
IN 4-H AND FFA

**Muleshoe Implement & Supply Co.**  
602 American Boulevard-Muleshoe  
(Formerly Ladd Pontiac)

**NOW  
AVAILABLE**



- 1 - NEW MF 1105 TRACTOR
- 1 - NEW MF 1505 4 WHEEL DRIVE TRACTOR
- 2 - NEW MF 1805 4 WHEEL DRIVE TRACTORS
- 14 Ft. & 21 Ft. TANDEM DISCS

4-NEW OLSON TRUSS TYPE SPRINKLERS IN STOCK  
Lease And Financing Programs Designed To Fit The Customers Needs

**MF** **CLOVIS FARM CENTER INC.**  
Hi-way 18 North Ph. 762-3726

## Backache Is A Common Ailment

Backache is such a common ailment among civilized man that there are very few adults who haven't had a touch of it now and then. Some physicians credit soft

beds, soft chairs and other comforts of modern civilization with an increase in the number of persons who suffer from low back pain, says the Texas Medical

Association.

Once called lumbago, back pain is often caused by poor posture, obesity, ill-fitting or inappropriate shoes, a sedentary life, overly strenuous work, or participating in sports. It may also be due to disease not directly relating to the back or to injury or strain.

Low back pain may occur at any age but it seems to bother middle-aged persons most. It occurs in both sexes and in all races, and is more common among people who do work that requires stooping or lifting. Good posture of the entire body is important in preventing low back pain.

Sit with head, shoulders and trunk erect. When standing, the spine should be straight. Not the military "ramrod" posture, but straight.

A soft, saggy bed and low, soft chairs contribute to backache. Chairs, ideally, should be firm, straight and have the contour of a normal back.

A low-heeled shoe is best for standing or walking. High-heeled shoes tend to throw the posture off balance and increase strain on the lower back. Loafers, ballet slippers and sneakers also may lead to backache if worn extensively.

In lifting heavy objects, keep the back straight and lift with knees and thigh muscles, rather than bending over and straining the spine.

Like many other ailments, backaches may be aggravated by emotional tension or anxiety.

Treatment of backache varies with the cause. When it's due to strain, usually rest, heat and a pain reliever will help. Massage, used in moderation, may help relieve discomfort. Your doctor also may recommend exercises to strengthen the muscles of the back and improve posture.

NEW NON-WOVEN FUSIBLE interfacings are available that stretch in one direction and are stable in the other. Selected in the proper weight for the fashion fabric, they create a soft, natural look yet with great shape ideal for many of today's fashions.

## Acne Can Be Treated

Acne is a common skin condition that afflicts most people during the teen years, sometimes into the 20s.

The Texas Medical Association points out that something can be done about acne. Waiting to "outgrow" acne can be a serious mistake. Treatment can improve appearance and minimize the problem of permanent scars.

Acne consists of blackheads, whiteheads, pimples and sometimes small boils. It appears most often on the face, but often also shows up on the back, chest, shoulders and neck.

Even though treatment includes washing frequently with mild soap and warm water, acne is not a disease of dirt. It begins under the skin, not on top of it.

Acne also is not primarily a dietary disease, but some patients find that certain foods, particularly chocolate and fats, make their acne worse. However, following the strictest diet will not, by itself, clear the skin.

Lotions and creams available at the drugstore may help somewhat. It's important to read the directions on the label and follow them carefully. If the skin becomes irritated, stop using the lotion.

Medicated preparations are available to cover the blemishes. Non-oily cosmetics usually are safer. All cosmetics should be removed at bedtime.

If acne persists despite good cleaning and proper use of lotions and creams, the physician may be able to help. He may prescribe a preparation to apply

to the skin to reduce oiliness and produce mild peeling. He may open the inflamed lesions and remove some of the blackheads. He most certainly will warn against picking, scratching, popping and squeezing the blackheads and lesions. This may make things worse.

Ultraviolet light treatment sometimes is used, as is X-ray therapy. Vitamins, antibiotics and hormones may be given. Along with any treatment good skin care is important to reduce the unsightliness of acne.

THE FAMILY THAT develops a satisfactory system for keeping records is likely to do a better job of planning and reaching family goals.

## Multi-Sized Patterns New In U.S.A.

Multi-sized patterns are now available in the U.S., one clothing specialist reported this week.


"Patterns of this kind accommodate figures that require two or more sizes to fit or that are in between regular sizes," Marlene Odle with the Texas Agricultural Extension Service, The Texas A&M University System, explained.

She said that homemakers in Europe have been able to purchase these kinds of patterns for years, but now U.S. pattern

companies are offering a multi-size pattern series, each pattern includes three sizes.

"They are available in men's, women's and children's clothing. The big advantage to this idea in children's clothing is that multi-size patterns provide room for growth, and one pattern suits different age brackets.

"The cost of these patterns is slightly more than one regular size, but more economical than buying three patterns at the regular size," Miss Odle said.



**Join Us At The Junior Livestock Show**

THURSDAY & FRIDAY

IRRIGATION AND YOUNG FUTURE FARMERS GO HAND IN HAND CONGRATULATIONS ON THE FINE JOB YOUR DOING IN YOUR AREA SEE US FOR ALL YOUR IRRIGATION NEEDS

**FARWELL**

2nd Ave A Irrigation Supply Ph. 481-3393

**Congratulations**

**4-H and FFA BOYS**

ON YOUR ENTRIES

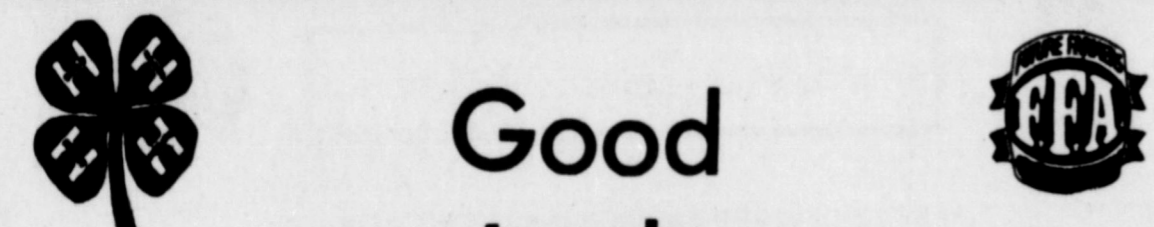
IN THE

**SPRINGLAKE - EARTH AREA JUNIOR LIVESTOCK SHOW**

THURSDAY & FRIDAY FEBRUARY 13-14

**BARRY and YOUNG EQUIPMENT CO.**

MULESHOE


**Good Luck**

On Your **Annual Stock Show**

Best Wishes To All Our FFA-4-H-FHA Youngsters In The Show

FEBRUARY 15-16

"Our wish is for your every success ... not only during this show, but also your future as a farmer and a rancher."

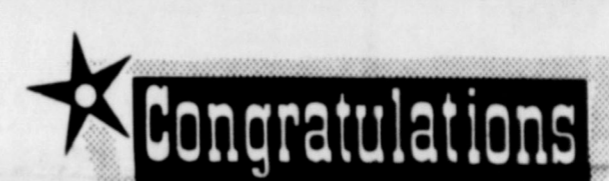


**CENTRAL COMPRESS**

SUDAN

**NICKELS GIN**

EARTH-PLEASANT VALLEY



**SPRINGLAKE - EARTH FFA-4-H**

On Your **Annual Stock Show**

Best Wishes To All Our FFA-4-H-FHA Youngsters In The Show

"Our wish is for your every success ... not only during this show, but also your future as a farmer and a rancher."


\*\*\*\*\*

**Let's All Go Out To The Show And Support Our Youngsters**

\*\*\*\*\*

**STATE LINE IRRIGATION Co.**

LITTLEFIELD---MULESHOE---LEVELLAND



## Old Paint Can Poison

Lead poisoning is a serious and crippling and killer of young children. At least 400,000 children today have elevated levels of lead in their blood. Every year around 100 children die from lead poisoning and 30,000 endure its symptoms. Betty's case is typical:

Two year old Betty was a lively, adventurous child. Then, her parents noticed that she was becoming less energetic and frequently had stomach aches. One day Betty's mother found her chewing on the peeling paint on the windowsill in the living room. Suspecting lead poisoning, her parents rushed Betty to the hospital emergency room where tests indicated she had an unusually high level of lead in her blood. After one week of treatment in the hospital, Betty was able to go home.

This example illustrates the most common source of lead poisoning, peeling and chipped leaded paint found on the windowsills, doors and walls of older homes. Some children, usually those from one to six years, apparently like to nibble around on peeling paint. If the poisoning is not caught and treated early, the Texas Medical Association warns that it can lead to irreversible brain damage and even death.

Other ways children are exposed to lead poisoning are by chewing or mouthing objects covered with lead paint such as children's furniture, toys and other playthings, and inhaling lead dust during restoration or repair of lead-painted homes. Adults are also susceptible to this type of lead poisoning and should avoid breathing lead dust.

## LET YOUR VOICE BE HEARD!



### CONGRESS NEEDS YOUR VIEWS

The new 94th Congress represents a different breed of "political animal."

An extraordinary number of its members—92 in the House, and 11 in the Senate—are new to Capitol Hill. Many have little or no prior political experience. Most have no business background.

Already, these lawmakers' desks are piled high with legislation on the action list for 1975. Among these are bills of crucial importance—national health insurance, welfare reform, tax reform to assist industry in acquiring needed capital for reinvestment, reform of Occupational Safety and Health Administration (OSHA) standards, standby authority for wage/price controls, regulatory reform measures and many more.

The outcome of these major issues must also be of immediate and deep concern to every American interested in the survival of our free enterprise system.

With so many new faces on both sides of the aisle this year, the American voter has a rare opportunity to let his voice be heard in the halls of Congress. The inexperienced legislator particularly needs your views on these and other problems facing our nation. His attitudes—and votes—will be determined by what he hears from you.

Don't miss your chance to speak out! A healthy national economy is everybody's business!

The Texas Medical Association offers these tips to lessen the dangers of lead paint poisoning:

1. Examine carefully the condition of all your painted walls, woodwork, windowsills and doors, especially those areas within the reach of children.
2. If the paint is cracking or peeling, contact your physician and have your children's blood lead level checked.
3. If you recondition your home yourself, there are several steps you can take to rid it of lead paint:

Scrape off chipped and cracking paint on windowsills, woodwork and doors. Sand and repaint the area; Strip and sand walls, and plaster holes before repainting. Or, instead of painting, cover walls with wallboard, plywood, or paneling; At all times, keep paint flakes and chips swept up. Dispose of them promptly so that children cannot eat them.

## Taxpayers Can Speed Up Refunds By Filing Now

The Old Times

Taxpayers expecting refunds on their income tax can speed up those refunds by filing now and using the pre-addressed label and envelope that came with their tax packages, the Internal Revenue Service (IRS) said today.

Walter Perry Director's Representative of the Internal Revenue Service (IRS) for the

4. To prevent inhalation of lead when removing old paint: Wear a face mask; Use a wet mop after clearing up debris; Don't eat or let others eat in a room where work is going on; Make sure that plates and eating utensils are not exposed to lead dust. If you know your children have eaten paint or if you even suspect that they have, you should take them to your doctor or local clinic immediately for a checkup. Lead poisoning must be treated early if it is to be cured.

Children who have lead poisoning may show unusual irritability, poor appetite, stomach pains and vomiting, persistent constipation, sluggishness or drowsiness.

Many victims, unfortunately, show no symptoms until it is too late. Only a doctor can tell if a child has lead poisoning.

Plainview area, said taxpayers filing their returns now can expect to receive their refund within four to five weeks. Those who wait until March or April to file, he said, could face a delay of up to 12 weeks.

Perry explained that the Austin Service Center can process returns faster if they arrive with the labels affixed and in envelopes provided by the IRS. The envelopes are magnetically coded for automatic sorting and

the pre-printed labels are designed to save time in the actual processing of the return.

Even if you have moved or some information is printed incorrectly on the label, the IRS prefers for the taxpayer to simply correct the label rather than discarding it.

"We're obviously very busy at this time of year," Plainview said, "but we try to get the refunds back to taxpayers as soon as possible. With many people



"Some people pay a compliment as if they expect a receipt."

a little short of cash right now, we hope taxpayers will help themselves by using these time saving features."

WE EXTEND OUR

## Congratulations FFA and 4-H EXHIBITORS

SUPPORT THE COMMUNITY'S  
YOUTH

Attend The Livestock  
Show

Thursday & Friday

Carlisle-Oldham Ford, Inc.

Littlefield

HOLD IT!  
Podnuh...



Attend The

Annual Jr. Livestock  
Show  
Good Luck

is our wish for all livestock showmen.

But win or lose, be proud of your entry and of the opportunity you have in America to have such a fine show as this.

FEBRUARY 15-16

McCORMICK'S UPHOLSTERY

CHARLES POWELL OWNER

LITTLEFIELD

BE SURE  
TO ATTEND  
THE ANNUAL

FFA and 4-H CLUB

JUNIOR LIVESTOCK SHOW



THURSDAY and FRIDAY FEBRUARY 13-14

SAFETY OF YOUR SAVINGS INSURED TO \$20,000



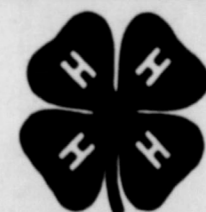
LITTLEFIELD FEDERAL  
SAVINGS AND LOAN ASSOCIATION



COME AND  
EAT AT THE

CORRAL RESTAURANT

MULESHOE



CONGRATULATIONS  
To FFA and 4-H Club Members

Participating In The

JUNIOR LIVESTOCK  
SHOW

AT THE

SHOW BARN IN EARTH  
THURSDAY AND FRIDAY

## Explosion In Sunflower Production Seen For Texas High Plains In 1975

In what could be one of the biggest jumps in crop acreage in recent years on the Texas High Plains, sunflower plantings for 1975 are expected to exceed 200,000 acres and could go as high as 400,000. This compares to only 5,000 acres grown last year.

These facts were reported by Dr. James Supak, an agronomist with the Texas Agricultural Extension Service, after a series of meetings this month with producers and county agents across the South Plains.

Supak said that industry officials had expected an increase, but the prospects of acreage in excess of 200,000 acres has probably caught many by surprise. He said that 200,000 acres of

sunflowers could gross between 30 to 50 million dollars.

The anticipated expansion of sunflower acreage, he added, means that many farmers will be planting this crop for the first time in 1975.

"They'll be hampered by many unknowns about this new crop," the agronomist predicted. "We don't have answers for insect control, yields under varying soil and climate conditions, disease resistance levels of new hybrids, and other important questions."

Reasons for the drastic increase in sunflower acreage this year, Supak explained, reflect producer concerns about market outlook and the need for additional cash crops with low water and plant nutrient requirements.

"What prompted many to consider jumping onto the wagon was the availability of firm, profitable contracts for sunflower seed, plus the recent development of sunflower hybrids, he said.

Before 1973, only open-pollinated varieties, largely of Russian origin, were available for commercial production. Since that time, several sunflower hybrids have been introduced in this area by commercial seed companies.

Supak noted that the hybrids provide high yields, and are more uniform in emergence, flowering, maturity and height, permitting more effective insecticide treatments and harvesting. Hybrids also exhibit some resistance to potentially damaging diseases.

He reported that industry spokesmen indicate that supplies of hybrid planting seed will be limited in 1975, but should be adequate after this year.

The most potentially dangerous risk farmers will face are insects, the agronomist said.

According to Dr. Robert McIntyre, Extension entomologist and co-worker of Supak, as many as 47 different insect species are known to feed on sunflowers.

Major insect pests of this area, McIntyre said, are the carrot beetle and sunflower moth. The moth can be successfully controlled with insecticides, but no effective control method has been found for the carrot beetle.

"During the period from 1962 to 1971," McIntyre reported, "the carrot beetle ranged at will over all trial plantings on the High Plains, virtually destroying most of them."

"But in 1972, 1973 and again last year, little damage from the beetle was reported. Commercial plantings were grown successfully in the Crosbyton, Petersburg, Hale Center, Post, Anson and Roscoe communities of the High Plains during 1974."

Continued McIntyre, "In contrast to these successful ventures, sunflowers had never been successfully grown at the Texas Agricultural Experiment Station at Munday until the fall of 1974.

The entomologist said that no insecticide has effectively protected sunflowers from severe carrot beetle damage. Researchers with the Texas Agricultural Experiment Station are now looking at cultural and biological control methods that might contain the pest.

"Thus far," McIntyre said, "manipulation of planting dates as a possible cultural control method for escaping beetle damage has not yielded conclusive results. Beetles can destroy a crop at any stage of development. And, biological control studies are not far enough along to tell us much."

Diseases also pose a potentially serious problem, said Supak. Although some of the new hybrids have varying degrees of resistance to some diseases, their tolerance to a multitude of disease organisms in widespread commercial plantings is yet to be fully evaluated.

He added that growers should avoid risking large amounts of land, labor and capital until they have gained experience in producing this new crop.

Sunflowers, he said, are generally adapted to any area where cotton, grain sorghum, corn and soybeans can be grown. They are considered a drought-tolerant crop, and seedlings are hardy plants which seem to tolerate higher levels of hail, wind and sand abrasion than other crops normally grown in this area.

Sunflowers are the world's second largest source of vegetable oil, ranking only behind soybeans. About one-half million acres of oil-types are grown in the U.S. annually. Last year, Texas had about 7,000 acres planted in oil-type sunflowers. There are other types grown for uses other than oil that are not included in these figures.

Supak said that dryland yields are expected to range from 500 to 1,000 pounds per acre depending on soil fertility and rainfall. Irrigated yields may range from 1,200 to 2,500 pounds per acre.

Processing of High Plains sunflower seed are done mostly by local oil mills.

## Unemployment Benefits Extended

The Texas Employment Commission began taking claims for extended unemployment benefits February 3.

Unemployed persons who have filed initial claims for benefits within one year prior to January 26, 1975, and who have exhausted those benefits, are eligible to file a claim.

Payments will be made at the same rate for regular unemployment insurance, but the total extended benefits will equal only 50 per cent of regular benefits. However, a new federal program may pay extended benefits in the same amount as regular extended state benefits.

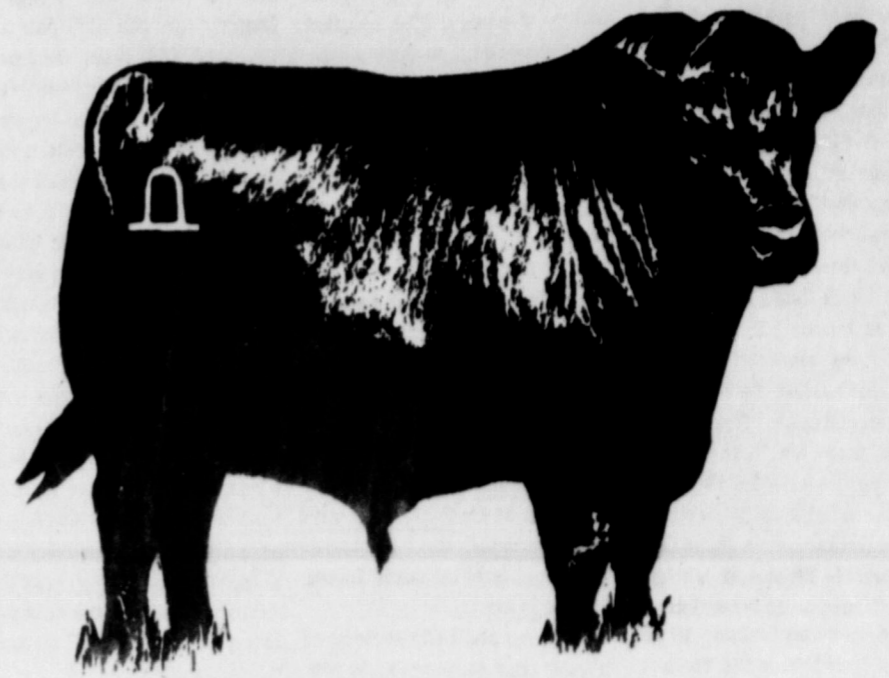
Persons claiming unemployment insurance benefits as servicemen or ex-Federal employees are also eligible for these extended benefits.

Extended benefits are available only so long as the rate of unemployment remains at levels specified by law.

Claimants who file for extended benefits on or before February 19 may file claims backdated to include January 26, 1975, if they meet the usual requirements for drawing unemployment insurance.

Claims for extended benefits may be filed at the nearest Texas Employment Commission office.

THE EARTH NEWS-SUN, THURSDAY, FEBRUARY 14, 1975  
ATTEND THE APPRECIATION BARBECUE FRIDAY 6 P. M.



The Future Of This Nation Rests  
On ...  
**YOUTH IN  
AGRICULTURE**

The 4-H Clubs And Future Farmers  
Of America Need Your Support

Attend The

**JR. LIVESTOCK SHOW**

IN EARTH

**BIG T PUMP CO.**

DIMMITT

**OUR YOUTH  
OF TODAY...**

**Our Nations  
Leaders  
Tomorrow**



We Are Proud That Our Schools And Communities Offer  
These Youth The Opportunity To Join These Fine Organizations  
That Help Build Our Future.

**ATTEND THE  
4-H - FFA STOCK SHOW**

**TEXAS ENERGY**

(Formerly Northern Propane Gas Co.)

DIMMITT



The Future Of Our  
Nation Rests With  
Our Youth  
**ATTEND  
THE  
JR. LIVESTOCK SHOW**

Your Training Through Such Activities Will Speed The  
Development Of The South Plains As One Of The Major  
Production Areas Of The State.

**DIMMITT AGRI INDUSTRIES, INC.**

DIMMITT

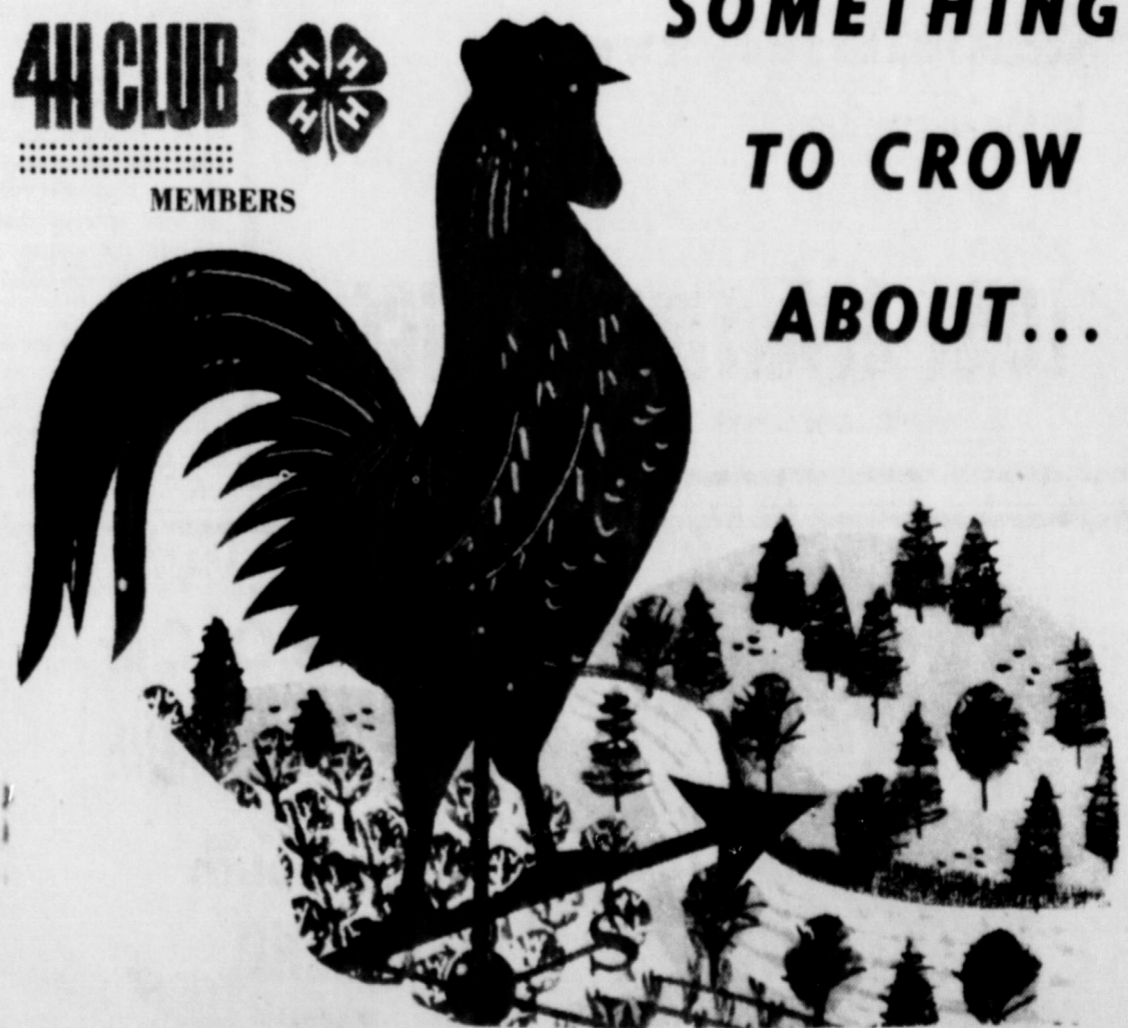
**FUTURE FARMERS**

AND

**4H CLUB**   
MEMBERS

**HAVE**

**SOMETHING  
TO CROW  
ABOUT...**



**Attend The Annual Stock Show**

WE APPRECIATE ALL OF OUR OLD BUSINESS FROM THE EARTH  
AREA AND ARE LOOKING FORWARD TO SERVING YOU IN THE  
FUTURE...

**Professional Livestock Supply, Inc.**

111 East Bedford-DIMMITT---320 West Cleveland-HALE CENTER

## Head Lice - A Problem in today's Society

"Head lice, they're getting into everyone's hair these days." While not literally true, this line from a new State Health Department film, "Head Lice: Questions and Answers," points to a continuing and growing problem in cities and towns throughout Texas, and the nation, for that matter.

School nurses and public health clinic nurses may see "pediculosis," an infestation with human lice, from time to time. Of late, this has been a more frequent occurrence. The general public may not hear so much about pediculosis, for those affected are reluctant to spread this information. And, it isn't a reportable disease, thus keeping it from public attention.

The person who does understand a louse problem is the victim. Pediculosis can be a night and

day torment with the itching and burning and discomfort which it causes. The constant scratching can produce an infection. And, it can be so distracting as to cause learning problems in school.

Human lice are a group of insect parasites which live on the bodies of their victims. They are known as sucking lice and depend on the blood for nourishment. The warm human body also provides warmth and moisture, says the Health Department.

The three types of human lice are: *Pediculus humanus capitis*, the head louse; *Pediculus humanus humanus*, the body louse; and the crab or pubic louse, *Phthirus pubis*.

The head and body louse have almost the same physical size and shape, but the crab louse

has a rounder body and its second and third pairs of legs are larger than the first pair near its head. All types are small, with adults ranging from 1/16th to 1/8th of an inch in length.

The eggs of lice, called nits, are attached to the hair shafts of their hosts with a cement-like substance. In the case of the body louse, the nit may be attached to clothing fibers.

Three types of lice infesting humans live only on humans. Animal lice, on the other hand, can't maintain themselves on humans. And, it's possible for a person to have more than one type of lice. Of the three kinds of human lice, only the body louse has been implicated as a vector of louse-borne relapsing fever and epidemic typhus in times past.

While head lice are being ex-

perienced more often in school situations, the other forms of lice also are prevalent in our society.

While lack of cleanliness may contribute to the spread of lice, it is possible for anyone to become infested.

Crab lice are very sluggish and dependent on man, dying within 24 hours of removal from the host. An infestation will spread slowly through a group of individuals such as a ship's crew or commune residents. They are spread chiefly by sexual contact, but often are acquired by such other means as infested toilet seats or beds and by close personal contact.

Body lice infest the clothing of man, particularly undergarments next to the skin. They are also known to wander about extensively. The habit of living mainly on clothing, and traveling to the skin for nourishment, has restricted body lice in civilized communities to a small minority of people who seldom wash or change their clothes. All forms of lice may be found on clothing, however.

The head louse attaches its nits (or eggs) to human hair, the nits resembling a stubby branch. The nit is cemented at an oblique angle, and this is helpful in distinguishing it from foreign substances in the hair.

The eggs, incubated by body heat, hatch in about a week. The louse nymphs undergo three growth stages requiring eight to nine days. Sexual maturity is reached in approximately two weeks.

While the presence of lice may be noted by the itching, the first visible signs of infestation may be the nits attached to the hair. Head lice and their nits usually are found in the hair behind the ears and along the nape of the neck. The eggs may be seen in clusters along the hair. However, it's possible that some other foreign substance such as globules of hair spray may be confused with nits. This has happened. Also, some investigators have observed that these nodules, which will slip up and down on the hair shaft, are mistaken for nits.

State Health Department authorities emphasize that the temporary presence of head lice isn't necessarily an indication of lack of personal hygiene. An infestation might be acquired by almost anyone.

Head lice may be spread in a number of ways. They spread from individual to individual may be accomplished by using the same comb, scarf or hat, or sleeping in the same bed since lice do come off on these objects. They also may be spread by upholstered head rests of chairs and couches and perhaps less frequently via the head rest of a school bus.

No matter how the head lice are acquired, they may be hard to get rid of. You'd think that swimming or washing your hair would get rid of the lice and nits. However, this isn't the

case. They resist water and ordinary soap and water.

Bathing or washing your hair at temperatures you can tolerate won't kill out the head lice. Some may wash off, however, but the nits will stay alive and hatch out.

Killing off head lice may turn into a family affair. If one person has head lice, the entire family needs to be treated at the same time. To rid household articles of lice, clothing, bedding, towels and washcloths should be laundered frequently in hot water. Washable head gear also should be laundered at the same time.

Combs and other hair-styling articles need thorough and frequent cleaning, and the home should receive a thorough vacuuming, including the bathroom.

Personal hygiene, frequent bathing and shampooing of hair are very important in preventing the establishment or re-establishment of lice.

But if you're infested, you'll need a louse-killing insecticide shampoo to rid yourself of them. These are available at drug stores. Your family physician may prescribe one, or you may receive the names of these products from your school nurse or public health clinic. Most drug stores have two or three brands in lotion, cream, gel or shampoo form.

It is important in treatment to follow the directions closely and continue the treatment for the prescribed time. Remember, you're dealing not only with lice but their eggs as well. Dead nits may be removed from the hair with a fine comb following proper treatment, which dissolves the tough cement binding the nit to the hair.

In a bulletin, "Twenty-three Most Frequently Asked Questions About Lice," the State Health Department gives some valuable hints on dealing with lice.

For instance, it states that lice seldom live longer than 48 hours

Continued to page 5-Section B

## MAKE A NOTE !

OF THE SPRINGLAKE-EARTH

### JUNIOR LIVESTOCK SHOW

THURSDAY & FRIDAY

FEBRUARY 13-14

AT THE SHOW BARN IN EARTH



We Invite everyone out to see these fine animals that our Young Men & Women have worked with hard and long to enter in the competition

## LOWE SPRAYING SERVICE

PHONE 965-2338 Res. 965-2987



The Future Of Our Nation Rests With

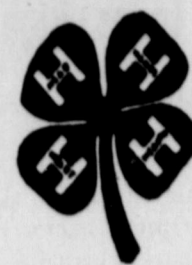
Our Youth ATTEND THE

JR. LIVESTOCK SHOW

Your Training Through Such Activities Will Speed The Development Of The South Plains As One Of The Major Production Areas Of The State.

**LAZBUDDIE FARM SUPPLY**

**Congratulations**



FFA And 4-H

Club Leaders

of Tomorrow

WE CONGRATULATE THESE YOUNG PEOPLE ON THEIR ACHIEVEMENTS

IN 4-H AND FFA

WE Will CUSTOM PROCESS YOUR BEEF TO YOUR SPECIFICATIONS



CALL OR COME IN TODAY!

**CROW MEAT CO.**

SO. HWY. 214

FRIONA, TEXAS

PHONE 247-3333

**Congratulations**

SPRINGLAKE-EARTH FFA-4-H



ATTEND THE

SPRINGLAKE-EARTH JUNIOR LIVESTOCK SHOW

THURSDAY & FRIDAY FEBRUARY 13-14

**Gry & COX**  
INC.

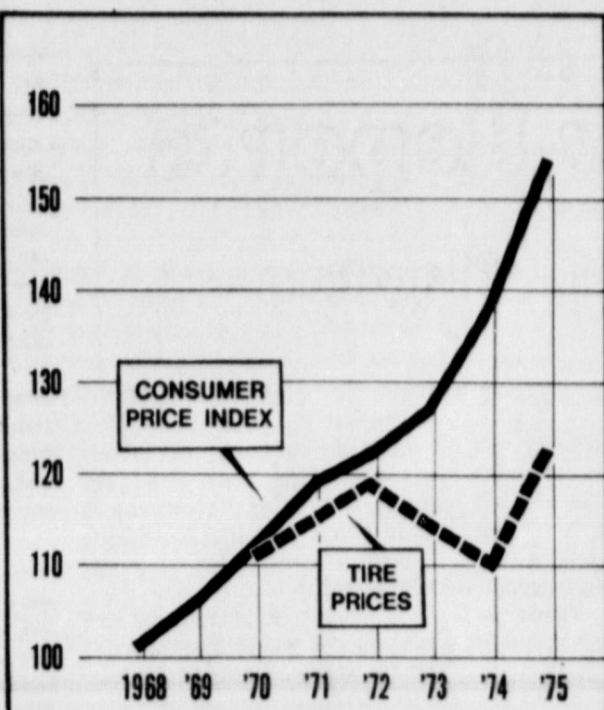
401 S. FIRST MULESHOE TEXAS 79347 PH. 272 4511

## Your Right to Smoke Stop at My Nose

"Yes, your right to smoke stops at my nose." That's part of the message nonsmokers want to help smokers understand. The week is sponsored by the National Interagency Council on Health and commemorates the first report 10 years ago by the Surgeon General on the health consequences of smoking. The State Health Department, which carries on an active educational campaign on smoking and health, is a member of the Texas Interagency Council. Support to NEWS is being given by Governor Dolph Briscoe, who has proclaimed the week "Education Week on Smoking and Health" in Texas to dramatize the need for greater awareness of the discomfort smokers may cause both to

themselves and to others. A full two-thirds of the people in the United States don't smoke. And, nearly a third of those nonsmokers have genuine medical allergies to tobacco smoke or conditions aggravated by smoke. What is in question in the smoking issue is not the right to smoke. Nonsmokers concede anyone's right to indulge. What is objected to, say nonsmokers is that they must breathe smoke-filled air without being given access to clean air. They feel that no one should have to breathe smokey air in places where people go to do business, handle legal matters or pursue one's routine affairs. Many areas are off limits to smoking in some cities, businesses and governmental agencies.

These may include elevators, public meetings, conference rooms and even hospitals, supermarkets and theaters in some cases. Some nonsmoking sections are designated in establishments used by the public, such as restaurants. Nonsmokers, says the Texas Interagency Council, do not feel vindictive or arbitrary in asking smokers to refrain temporarily, and most smokers are very considerate. Many fail to realize the discomfort smoking causes. Recent tests show that smoking increases the carbon monoxide content in air and that the nonsmoker inhales this poisonous gas just like the smoker. Merry-makers at a tightly closed Dallas nightclub were made sick recently by accumulated smoke in the building, which recycled



TIRE PRICES have not risen nearly as fast, or as high, as other consumer prices in recent years, according to the U.S. Bureau of Labor Statistics. So tires are still a bargain compared to many other products Americans buy. This chart shows how tire prices have lagged behind the consumer price index in recent years. From 1972 to 1974, tire prices actually declined. While they have risen in recent months, the increase is still less than prices in general.

lived as long as 32 days and female body lice have survived for 46 days; however, under normal conditions, even body lice seldom live longer than a day or two when deprived of their human host. Each female head louse may lay from 50 to 150 eggs in its lifetime while the female body or crab louse may produce 200 or more.

What effect does temperature have on lice? Hot temperatures will kill them. Such high temperatures are suitable for laundering purposes but not for shampooing the head or for bathing. Dry heat, steam or pressing with a hot iron will destroy lice since they can live only a few minutes at 120 degrees Fahrenheit. Most home water heaters supply water at 140 degrees to 165 degrees. Washing in cold or lukewarm water won't kill them.

How do head lice travel? They are transported by people and do not hop, jump or fly. They have powerfully developed legs, each provided with a claw and an opposing thumb-like process that is adapted for clinging. PUT METAL TABS from drink cans and plastic carriers for six-packs in trash cans. They are hazardous to animals as well as a litter problem.

### Congratulations

LET'S GIVE OUR SUPPORT TO THE 4-H and FFA YOUNGSTERS THIS WEEKEND

Attend The **S-E FFA-4-H JUNIOR LIVESTOCK SHOW**

THURSDAY & FRIDAY

**DIMMITT SUPERMARKET** FEBRUARY 13-14

PHONE 647-3488

### HEAD LICE

(Continued from page 4-Section B)

existing air without bringing in a fresh supply. Smoking 10 cigarettes in an enclosed car caused the carbon monoxide level in a nonsmoker's blood to double, just as it did in the smokers' blood. Cigarette smoke also contains nitrogen dioxide, hydrogen cyanide and acrolein (used to produce tear gas). Nor is the home immune from the effects of smoking. Children of smoking parents have twice the respiratory illnesses as children of nonsmoking parents. And, the rate is much worse for asthmatic children. Smoking and matches, say safety experts, are the leading cause of residential fires, accounting for more than \$55 million in losses annually. The Texas Interagency Council on Smoking and Health, like the State Health Department, wants all Texans to enjoy good health. State Health Department programs in many areas are geared to this purpose. It is working to inform Texans of the risks involved in smoking, when removed from the human body. Under ideal laboratory conditions, male body lice have

when removed from the human body. Under ideal laboratory conditions, male body lice have other they are a smoker or nonsmoker. Many of its programs are directed to young students to influence them against ever taking up the habit. Health authorities believe that everyone should have the right to good health and should take good care of their bodies. The Council provides information on smoking, as well as plans for smoking cessation clinics for those who want to kick the habit. If you would like a "Thank You For Not Smoking" sign or printed materials on smoking, you may write to the Texas Interagency Council on Smoking and Health, State Health Department, 110 West 49th St., Austin, Texas 78756.

## 4-H And FFA MEMBERS

WE BELIEVE THAT 4-H and FFA ARE WORTHWHILE

### ATTEND THE ANNUAL S-E JUNIOR STOCK SHOW

THURSDAY & FRIDAY

## Be Sure To Attend SPRINGLAKE - EARTH JUNIOR LIVESTOCK SHOW

THURSDAY & FRIDAY

COTTON SEED IS JUST COTTON SEED. RIGHT? WRONG?

THE DIFFERENCE IS

**Certified Rilcot Stripper N**

(U.S. Plant Protection applied For)

and

**Certified Rilcot 90**

**RILCOT SEED CO.**

Reliable Rilcot Seed developed by state registered plant breeder, Ray Joe Riley—is THE seed for standard or narrow row production on the High Plains. Why? Proven higher yield. Premium Micronaire of 3.5, up 100 per cent stormproofing. That's the difference. THAT'S the reason to look or buy your reliable Rilcot Seed from your ginster or dealer. NOW. Remember: OUR BEST ADVERTISING IS HARVESTED, NOT PRINTED.

Contact Buster Owens  
Box 1009, (Lubbock), Texas 79409  
AREA CODE 806  
OFFICE 264-0201 MOBILE 264-0202 HOME 264-0203

# Whoop-eee!

## HATS OFF TO THE FINE YOUNG PEOPLE WHO WILL BE PARTICIPATING IN THE JUNIOR STOCK SHOW THIS WEEKEND!

### FIRST STATE BANK

DIMMITT---MEMBER F. D. I. C.



# The Speaker Reports

by Bill Clayton

The need for this session of the Legislature to pass some form of school finance reform bill has been widely reported for months. It is the one issue everyone agrees will receive top priority.

Because of its importance, I believe the questions we will be considering in committees during the next four months should be thoroughly presented to the public.

Therefore, it is my goal to try to familiarize you with the past role Texas has played in school finance and what we will be considering this session.

A review of the recent history of public school finance in Texas shows that recent court decisions have greatly affected the significant role the Legislature must take in this area.

In 1971 a federal district court held unanimously in the case of

Rodriguez vs. The San Antonio Independent School District that the Texas system of financing public schools violated the federal and state constitutions.

The court said that depending heavily on local ad valorem taxes for financing schools made the quality of a child's education dependent on the wealth of his parents and neighbors.

However, in 1973 the U. S. Supreme Court reversed that decision saying it recognized the apparent inequities of the Texas system but could not agree with the lower court that the judicial system should take the responsibility of making school financing equitable.

Furthermore, the Supreme Court said that this responsibility clearly lay with the Texas Legislature.

It was shortly thereafter that the Legislature, Governor and many

complex. Inadequacies presently exist in the way money is raised and in the way it is dispersed. This session we will need to take into account that proposals striving to make the system fair do not interfere with the rights of local communities. Nor should we interfere with a taxpayer's ability to survive economically.

Some of the questions we will have to consider this session are:

—What pupil populations will be recognized for funding? In other words, will students in different grades and types of programs like vocational and special education be funded differently? The Governor has offered what he terms a weighted pupil approach to solve this problem. All considerations along this line should be given close examination.

—What type of student attendance figures will be used to

determine the amount of state subsidy given to a local community? The question here is whether to remain with an average daily attendance figure or move to some other means of determining a formula for state share.

—What types of staffs and staff salaries should school districts have? Presently wealthier communities have greater flexibility because they have more money to attract highly qualified people.

—What is considered a fair tax effort on the part of the local community? And should the local property tax assessments be regulated by uniform state standards?

—Will the Foundation School Program be financed from state or local revenues? This actually boils down to what percentage of public school financing should be the state's and what should be local?.

—To what extent can a school district raise money to enrich school programs above the minimum Foundation School Program? The interested groups began researching this problem.

The task for creating a sound school finance system is extremely obvious question to follow this one is how can we better equalize the amount of money rich and poor districts raise.

It is my hope that we will look long and hard at any proposal that restricts a local community's right to control the amount of local money it wishes to spend on making their school system the best it can be.

—The last consideration is whether a full market value tax assessment be placed on farm, ranch and timber land. I believe the approach we took in the Constitutional Convention in Finance Article VIII is a fair one. The article states that all real property and tangible personal property must be taxed equally and uniformly in proportion to market value. However, farm, ranch and timber land would fall under separate formulas so not to overly tax people with land in production.

Of course, these are not all the considerations, but I feel they are the main ones. All of them will have to be aired thoroughly, and hopefully with your input, we will come up with a

solid piece of legislation.

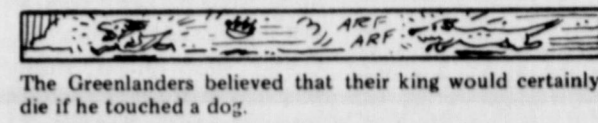
There will be many bills and proposals introduced to the Public Education Committee, and I'm sure the best parts will be taken from each to make a public school finance bill that will provide the children of this state with equal educational opportunities.

I want to stress to you that the problems facing us will not be fully solved this session, or next session, or the session after that. Public school financing will be an issue that requires updating and revision for years to come. However, I hope we can come up with a flexible and durable plan that will allow us to build on it in future years.

ATTEND THE  
LIVESTOCK  
SHOW

APPRECIATION  
BARBECUE

FRIDAY  
6 P.M.



The Greenlanders believed that their king would certainly die if he touched a dog.

Congratulations



4-H and FFA  
BOYS



ON YOUR ENTRIES

IN THE  
SPRINGLAKE - EARTH AREA  
JUNIOR LIVESTOCK SHOW

FLOYCE PIERCE

LOCATED IN THE PRESCRIPTION  
DEPARTMENT OF LITTLEFIELD  
HOSPITAL

401 W. 6th

385-4491

## Texas Youth Wins 4-H Commodity Marketing Trip

A Texas youth, who sold his 4-H livestock and garden for a profit, has been selected to attend the 24th 4-H Commodity Marketing Symposium in Chicago March 2-5.

Vance Fortenberry, 16, of Rt. 3, Box 72, Decatur, was among 25 winners selected to attend the symposium by the Cooperative Extension Service, which supervises 4-H work.

Young people from 39 states were eligible in the annual awards program sponsored by the Chicago Board of Trade, brings together 4-H'ers who have completed outstanding commodity marketing projects.

Fortenberry, son of Mr. and Mrs. Neal Fortenberry, is a high school sophomore and plans a career as a cattle rancher after attending college.

The Wise County youth said he enrolled in the commodity

marketing program because he wanted to "better understand the economic and financial problems of the nation and the man who works for himself." He added:

"I think that especially the man who works for himself should study commodity marketing. I know it has really given me a better understanding of the way things work and helped me to better manage my own affairs."

The youth raises registered Shorthorn heifers, swine and dairy cattle. His father operates a dairy farm.

The seven-year 4-H'er has learned to watch livestock prices closely as he markets his animals to assure a profit.

Fortenberry has also done well in the garden project, netting a profit of \$1,302 in 1974 through the sale of produce.

His 1974 tomato crop was threatened with blossom end rot, with tomatoes rotting as soon as they started turning pink. The youth began reading about the disease and learned that dry weather aggravates it. He began watering his tomatoes, which ripened without the rot.

His other 4-H projects have included junior leadership, horse and safety.

The purpose of the Chicago Symposium is to help the 4-H participants understand the basic principles of commodity marketing, and how these principles apply to commodities sold in cash markets, and traded in futures markets of major commodity exchanges.

The delegates will participate in seminars, tours and activities which explain the use of future markets as a management tool and aid them in adapting market information and knowledge of market functions to on-going 4-H projects.

Delegates will view audio-visual presentations on market-

ing topics, meet commodity traders, and brokers and tour the pit trading floor. There, they'll watch traders buy and sell cash and futures. The 4-H'ers will also meet top officials of the Chicago Board of Trade, and hear from floor traders and marketing officials.

Delegates and their chaperones will also tour Chicago points of interest and enjoy a special entertainment event.

The 4-H Commodity Marketing Symposium is arranged and announced by the National 4-H Service Committee.

## Some Veterans Benefits Not Taxable

Here are tips from the Veterans Administration on federal income taxes for veterans filing returns.

In general, Texas VA officials noted, veterans benefits are exempt from federal income tax, and need not be reported as income.

This income tax exemption applies to dividends and proceeds from government life insurance policies, but federal estate tax does apply to insurance proceeds. Also, interest earned on government life insurance dividends left on deposit or credit with VA is considered income and must be reported on federal income tax returns, it was explained.

Among major tax exempt veterans benefits are compensation, pension, GI Bill and

other educational assistance, including subsistence payments to vocational rehabilitation trainees.

Also exempt are grants to service disabled veterans eligible for specially adapted home and cars, and clothing allowances for veterans whose prosthetic devices tend to wear out or tear their clothing, VA officials advised.

ORGANIC MATERIALS (like cooking fat) clog plumbing and septic tanks, causing sewage overflow. Throw them out, not down your sink.

Congratulations

... To The  
Farming Youth  
Of This Area  
On Their  
Efforts  
Towards  
Another Great



JUNIOR LIVESTOCK SHOW

ATTEND THE SHOW THURSDAY & FRIDAY

Thompson Chevrolet Co.

OLTON

SEE YOU AT THE  
STOCK SHOW



BEST OF LUCK!

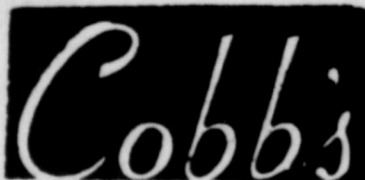
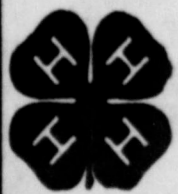
HIGGINBOTHAM-BARTLETT  
LUMBER  
EARTH

We Are Proud To Add Our  
Congratulations & Best Wishes

TO THE  
ENTRANTS OF THE S-E

FFA - 4-H

Junior Stock Show



218 Main

Muleshoe



The Future Of Our  
Nation Rests With

Our Youth  
ATTEND  
THE

JR. LIVESTOCK SHOW

TEXACO



PRODUCTS

JIM ROBBINS-Earth

SAM FOX-Muleshoe.

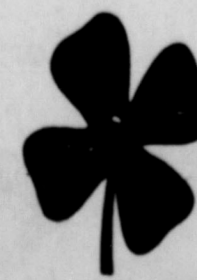
Help Our  
BUILD...  
A Better  
TOMORROW

Support Their Activities  
Attend The  
S-E FFA-4-H

Junior Stock Show



SHERLEY-ANDERSON  
LAZBUDDIE ELEVATOR



JOE MOORE-Manager



## New Decisions Needed On Harvesting Cotton

In the face of drastic changes in cotton price and the costs of cotton production, cotton producers should take a long, hard look at their capital investment in harvesters and at the way they use modern, high-speed pickers or strippers.

A new study by Cotton Incorporated shows that harvesting decisions based on possible gin jam-ups are almost as outdated as hand-picking.

"The modular system for harvesting, handling, storing and ginning seed cotton has liberated harvesting operations from restraints imposed by slow ginning," says J. K. ("Farmer") Jones, associated director of agricultural research for mechanization at Cotton Incorporated.

Cotton Incorporated is the research and marketing company of U. S. cotton growers. The new study was prepared by Dr. William Lalor, manager of systems and cost engineering in the agricultural research division.

"Any decision on harvesting speed and harvesting capacity involves a trade-off between the loss of unharvested cotton that remains in the field and the cost of enough harvesting equipment to prevent losses in the field," says Jones.

"In making these decisions, producers should carefully consider the new module system," Jones believes. "Seed cotton storage can mean more economical harvesting and ginning for the producer."

What is financially best for any producer will depend largely on whether he has high yielding or low yielding cotton.

The new study shows that a producer of high-yield cotton benefits most from very rapid harvesting made possible by a

storage system. Capital investments in added harvester capacity are quickly amortized.

"But producers of low-yield cotton will gain advantages with a storage system," Jones says.

"Low-yield cotton does not require rapid harvesting. It cannot produce revenues required to justify the capital investment in greater harvester capacity. But a storage system still allows a low-yield producer to operate the harvesters he does own at maximum capacity, thereby allowing him to spread his capital investment over more acres of cotton."

In the past, it was generally true that the faster the rate of harvesting, the greater the cost of ginning. The increased flow of seed cotton to the gin dictated ever increasing gin capacity, to the point of diminishing returns.

But the Cotton Incorporated study shows how seed cotton storage offsets the demand for increased gin capacity, and thus effectively cuts ginning costs. Ginning capacity need not match harvesting capacity.

"In addition, a module system for handling seed cotton will give any producer protection against bad weather and will lessen his vulnerability to changing market conditions," Jones claims.

"As we move closer toward a situation where two-shift ginning is no longer possible, or if annual gin volume should be reduced significantly, the benefits of a seed cotton storage system would take on even greater importance."

The Cotton Incorporated study has been released to the industry in the form of a new "Agro-Industrial Report" publication

entitled "Optimum Harvesting-Storing-Ginning Systems."

Jones said the report is available to anyone who would like more detailed information. Requests should be addressed to Dr. William Lalor, Cotton Incorporated Research Center, 4505 Creedmoor Road, Raleigh, N. C. 27612.

## '75 License Plates "Good" For 5 Years

A total of 35,096 sets of 1975 license plates are stored at the Lamb County Courthouse awaiting distribution starting February 1 of the new year.

And when you get your 1975 plate and number, you'll keep it for five years unless you change cars. The coming year is the first year of the five-year license plate plan.

The 1975 plates are the usual size. But for the next four years, motorists will receive small plastic-type stickers instead of new license plates. Each year one of the stickers will be affixed to the corner of the original plate.

The plan is an economy move, but not for drivers. Those little plastic stickers will still cost as much as a new plate.

Tax assessor-collector Herbert Dunn said it is estimated that Texas will save about \$3 million a year due to the stickers plus the fact that the plan will mean additional state revenue.

This is because Texas has contracted to make license plates for other states since Texas plates will not have to be manufactured during the four-year period.

For once, it sounds like somebody in Austin is on the ball.

## Interest Rates Lowered On VA Loans

The maximum interest rate on Veterans Administration GI home loans was dropped from 9 percent to 8.5 percent effective January 21, 1975. It was announced by Richard L. Roudebush, Administrator of Veterans Affairs.

Roudebush, who established the lower VA rate after consultation with the Secretary of Housing and Urban Development, noted that the reduction was the second since last November 24 when the maximum interest rate was 9.5 percent. The new 8.5 percent rate will also apply to FHA home loans,

he added.

The 8.5 percent rate is the lowest since April 1974 when the rate was increased from 8.25 to 8.5 percent. The rate was increased to 9 percent last July, then to 9.5 percent last August, and then was cut to 9 percent effective November 25, 1974.

The half-percent decrease would mean as much as \$9.90 per month savings to the typical veteran home buyer, and over the 30 year life of a \$27,500 VA loan, the total saving could be as much as \$3,535.

The VA Administrator said the VA home loan market was greatly expanded under legislation approved by the President December 31, 1974 when more than four million veterans whose GI home loans have been paid in full and the home disposed of became potentially eligible for new loans guaranteed by VA.

The legislation also increased the maximum VA loan guarantee amount from \$12,500 to \$17,500, authorized loans for the purchase of mobile home lots, increased the amount of mobile home loans and broadened the possibilities for guaranteeing loans on one-family condominiums.

\*\*\*\*\*  
If a relative or friend of yours is in the hospital, show your love by sending flowers. And be sure to specify to the florist to "please FTD it." When you do, you avail yourself of the services of the "extra touch" Florists Transworld Delivery Association network.

## USDA has New Food Stamp Rule for Students

A student who receives more than half of his support from a household which is ineligible for the food stamp program will also be ineligible for food stamps, under amended regulations announced today by the U. S. Department of Agriculture (USDA).

The change applies to any student, age 18 or over, who attends an educational institution beyond high school and is claimed as a tax dependent by an ineligible household (i. e.

receives over half of his support from a household where he does not reside. It applies only to the student who is claimed as a tax dependent; other members of the student's household can receive food stamps if they are eligible. The student will also have an opportunity to prove that he does not receive over half his support from an ineligible household.

The regulation is in line with a provision of the Agriculture

Appropriations Acts of 1975, approved December 31, 1974. A tax dependency criterion was published by USDA in July 1971 to implement a 1971 amendment to the Food Stamp Act. However, in USDA vs Murry (June 25, 1973) the Supreme Court ruled against USDA, citing a number of objections to the regulation as it stood. The regulation announced today is designed to eliminate those objections.

USDA's Food and Nutrition Service received 50 comments on the change after it was published for a 30-day public comment period on September 16, 1974. Twenty-five of those comments were in favor of the limitation, and 22 were not in favor. The final regulation will be published in the Federal Register of Friday, January 10, 1975 and will be effective immediately upon publication.

Congratulations

4-H and FFA

BOYS

ON YOUR ENTRIES

SPRINGLAKE - EARTH AREA JUNIOR

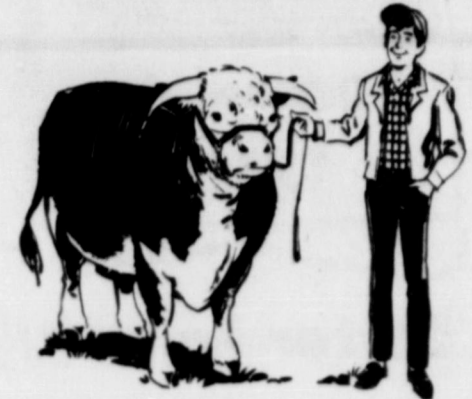
LIVESTOCK SHOW

THURSDAY & FRIDAY

FEBRUARY 13 - 14

GILBREATH SEED and GRAIN CO.

MULESHOE



Help Our Youth

BUILD

A Better

TOMORROW



ATTEND

The S-E JUNIOR STOCK SHOW

This Weekend

Support Their Activities

YOUR PHILLIPS 66 JOBBER

EARTH OIL & GAS CO., INC.

EARTH- PHONE 257-3461

SPRINGLAKE MOTOR SUPPLY

PHONE 986-2291



ATTEND THE

S-E

JUNIOR STOCK SHOW

THURSDAY & FRIDAY

FEBRUARY 13-14

GOOD LUCK TO THE PARTICIPATING

MEMBERS

OF THE F.F.A., 4-H,

and YOUNG FARMERS

H. S. SANDERS LUMBER

EARTH

GOOD LUCK TO THE PARTICIPATING

MEMBERS

OF THE F.F.A., 4-H,

and YOUNG FARMERS

ATTEND THE

S-E

JUNIOR STOCK SHOW

THURSDAY & FRIDAY

FEBRUARY 13 & 14

the WOOD - JORDAN, INC. the

CALVIN WOOD - EARTH - EARL JORDAN



## Can Drinking Water Cause Cancer?

The latest environmental alert is that drinking water may cause cancer. In November, the Environmental Defense Fund (EDF) reported the results of studies that indicate a possible link between certain cancers and the drinking water of the Mississippi River. The Environmental Protection Agency (EPA) con-

firmed the presence of several organic chemicals, some suspected carcinogens, in the New Orleans water supply. Studies conducted throughout the U. S. by other investigators indicate the probability of widespread contamination of water supplies. In the November 29, 1974 issue of *Science*, the weekly journal

of the American Association for the Advancement of Science, staff writer Jean L. Marx discusses the probability of contaminated drinking water. The EDF study, performed by Robert Harris of EDF and Talbot Page of Resources for the Future reported that the cancer mortality rate was 15 percent higher

among white males who drank water from the Mississippi than among those who drank from wells. (Groundwater supplying the wells is unlikely to be contaminated with chemicals.) While the study does not prove that the chemicals in drinking water cause cancer, Harris does think that the evidence is strong enough to warrant further study. According to EPA, the New Orleans water supply contains

traces of many organic chemicals. Chloroform and other possible carcinogens such as carbon tetrachloride and the pesticide dieldrin are present. Along with the growing concern about the safety of drinking water, said Marx, are reports that chlorination of water supplies may be a source of hazardous compounds. Chlorine destroys bacteria, such as those causing cholera and typhoid, but it may also react with hydrocarbons in the water to form their chlorinated derivatives. These derivatives are generally thought to be more carcinogenic than the parent hydrocarbons.

Russell Train, administrator of the EPA, has ordered a nationwide survey of water supplies to be conducted in several cities and preliminary results should be available in three to five months. In the second phase of the EPA study, investigators will attempt to discover and eliminate sources of contamination and remove existing contaminants from water supplies.

Evaluating the seriousness of the problem will be difficult. At present, compounds are screened for their carcinogenicity in animals, but their effect on man is uncertain. An additional complication is whether or not there is a threshold concentration below which a carcinogen has no effect. Further, chemicals in mixtures may interact with one another to enhance or diminish their capacity to cause cancer. Despite these uncertainties, Marx explains, most investigators would prefer to minimize or eliminate human exposure.

## Alaska Mosquitoes Are This Big Pipeliners Say

WASHINGTON-Almost everyone working on the Alaskan pipeline has a mosquito story, according to the American Petroleum Institute's magazine, *Petroleum Today*.

There's the one about the mosquito that landed at the North Slope's Deadhorse airport and was filled with 200 gallons of jet fuel.

And what one mosquito said to the other while holding a pipeline in his clutches: "Let's eat him here. If we carry him back the big guys will take him away from us."

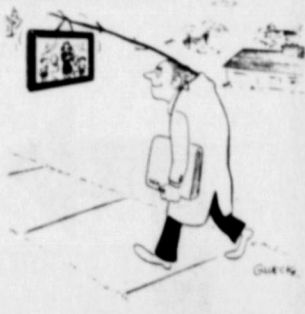
And why they have iron bars on the windows of the Prudhoe Bay refinery. To keep out the mosquitoes, of course.

## Paddlefish Certified As State Record

AUSTIN-Back on Halloween 1974, John Echols of Karnack hauled in his trotline set on the Big Cypress Bayou and found a paddlefish which weighed 16 pounds one ounce.

Recently certified as a state record, the fish was 50 1/2 inches long and 19 1/2 inches in girth.

## My Neighbors



Determination

# Don't Clown Around

Go On Down To The Annual Stock Show

Thursday-Friday

Good Luck! Show Entrants

**EARTH AG SUPPLY**  
**SPRINGLAKE GRAIN**



**Better Farm With SIMMONS PUMPS**

Help The Local Youth SUPPORT THEIR JUNIOR LIVESTOCK SHOW THURSDAY & FRIDAY AT THE Show Barn in Earth

**EARTH PUMP and MACHINE INC**

WENDELL CLAYTON DISTRIBUTORS FOR SIMMONS PUMPS

**IT'S TIME TO EXTEND OUR BEST WISHES TO THE 4-H and FFA EXHIBITORS OF S-E**



**SPRINGLAKE - EARTH JUNIOR LIVESTOCK SHOW**

TODAY Judging At 6 p.m.

FRIDAY Sale Begins At 7:30 p.m.

IT IS A PLEASURE TO COMMEND THE YOUNG PEOPLE WHO HAVE WORKED SO HARD GETTING THEIR FINE STOCK READY...

WE SHARE A PRIDE IN OUR YOUNG EXHIBITORS AND THEIR ADVISORS ON THEIR WORK IN THIS PROGRAM...

We Welcome You, Your Parents And Friends To The Stock Show

**CITIZENS STATE BANK**  
MEMBER F. D. I. C. - EARTH