

50¢

POSTMASTER: Send address changes to Cowboy Country News, Box 179, Plains, Tx. 79355

BAZE, BOOKBINDING
514 W 7TH AVE
AMARILLO, TX
ARCHIVES

79101
2

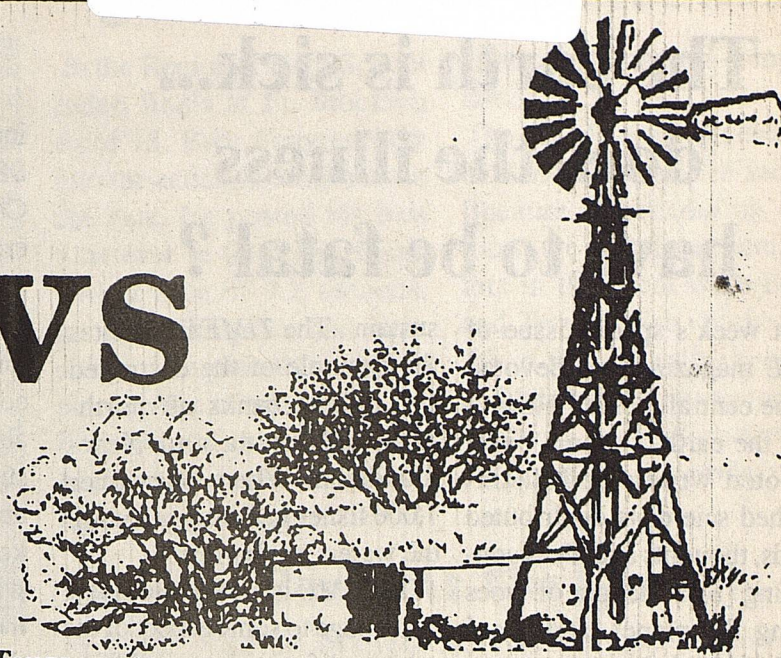
0514

Postage Paid
Texas

Cowboy Country News

Published each Wednesday in the county seat of Yoakum County, Plains, Texas

Volume VI, Issue 32, April 26, 2000



Rodeo Association studies changes for Old Settlers Reunion and Rodeo

Representatives of the Plains Lions Club, Chamber of Commerce and Roping Club met recently to discuss plans for the upcoming 47th annual reunion and rodeo. The three organizations jointly sponsor the annual three day rodeo and the Old Settlers reunion on Saturday in Stanford Park.

David Brunson, President of the Chamber and a Lions Club member, told Lions last Thursday several changes in the event are under consideration by the Rodeo Association.

"It has been increasingly difficult the past few years to find volunteers to prepare the barbecue lunch for the Reunion. It's not only a great deal of work doing the actual cooking, but calls for a lot of time and effort in gathering up all the meat and other food supplies, and then a lot more work in cleaning up the meal area af-

ter the lunch." He said no one to date had volunteered to head up the cooking detail.

Brunson said the three organizations representatives at the planning session had suggested exploring a possible catered barbecue meal.

One caterer has been contacted, and offered to supply barbecued brisket, potato salad and beans, plus all the condiments for \$3.90 per plate, with a negotiated guaranteed number of servings. The Association would have to provide iced tea and cobbles, slice the briskets and serve the meal.

The three organizations think the catered meal may be the only feasible way to continue the annual event, and it may be necessary to raise ticket prices for the Saturday meal. The Rodeo Association will have other meetings in the near future to determine all final plans.

U.I.L. Team wins regional meet... On To State!

See story Page --

"SPEED" Drug Bust Here

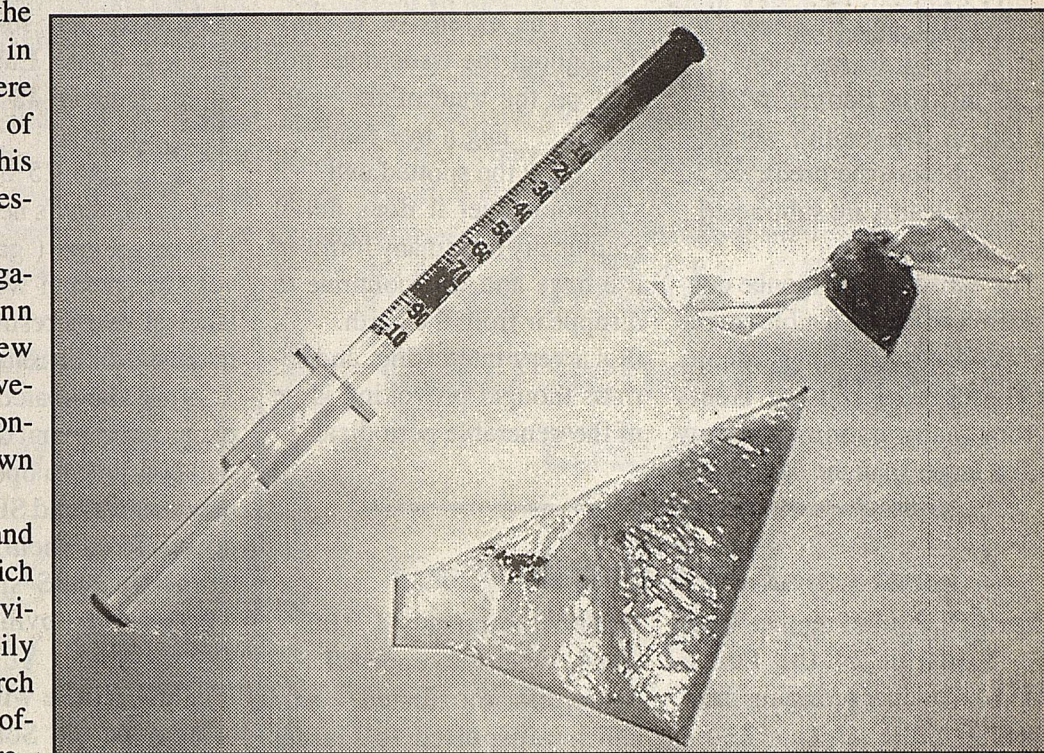
Despite very frequent reports in CCN and the Denver City Press of drug convictions in Yoakum County, there are still residents here who express their gratitude about the lack of drug problems in the two communities. This blissful myth took another beating last Tuesday morning.

Sheriff Deputy Jerry Howard and Investigator Rick Dickson arrested Jackie Lynn Townsend, 41, a resident of Tatum, New Mexico and the manager of Allsup's Convenience Store here, for possession of the controlled substance Methamphetamine, known as 'Speed' by users.

The two officers confronted Townsend and asked for permission to search the store, which she said she could not grant. Allsup supervisors were contacted by phone, and readily agreed and cooperated in the following search and interrogation of Townsend. The two officers indicated they felt no one in the store chain had any suspicion of drug presence in the store.

In the manager's desk they found a handful of medical syringes, one full of an amber colored liquid, and two cellophane bags of a granular substance. Field tests by Dickson revealed the syringe contained liquified Speed, and the bags contained the dry form of the drug.

Townsend was taken to jail, and later in the day was released under a \$7,500 bond set by Justice of Peace Melba Crutcher. Her 1992 Chevrolet auto was seized, and



forfeiture of the vehicle will be filed.

Dickson said the Speed was of very high quality. He said a user would probably pay about \$25 for a shot of the drug. Dickson said it appeared Methamphetamine is approaching flood level usage in West Texas. The drug is relatively easy and cheap to manufacture, and the "high" it produces lasts a little longer than a "snort" of cocaine.

Criminal District Attorney Richard Clark told CCN, "It's quite apparent the use of Speed in West Texas is accelerating. If the

drug ever really catches on here, it will turn into one of our very worst criminal nightmares."

Officer Dickson said, "I think the long investigation leading to this arrest is a great example of the support and cooperation we can always count on from the Sheriff Department. They are always ready to help me and the District Attorney when an investigation like this develops."

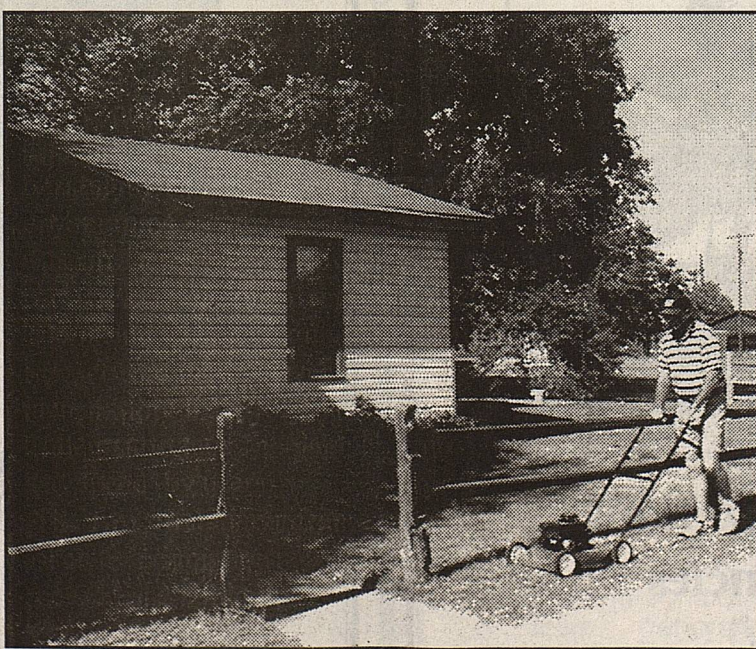
The case will later be heard in District Court as a second degree felony cause.

Pre Easter scenes about town

A number of governmental offices were closed on Good Friday. Here are a few shots of local folks enjoying the extra day off



PHS girls relaxed on swings in Stanford Park. Nicole Haynes, left pushes Michaela Traweek, Lesli Rowe helps Lexi Warren



City Administrator David Brunson catches up on mowing



PHS Math Instructor Brad Friesen works on addition to his home



Pam Burgess considers a selection from Bev's Nursery, assisted by Shay Allsup.

SPS selloff unlikely to affect LCEC customers in city and county

Recent articles in the *Lubbock Avalanche Journal* and *The Lovington Leader* chronicled details of Southwestern Public Service Company (SPS) plans to sell off a major portion of the company's generating capacity. A call was made to Mike Dreysspring, General Manager of Lea County Electric Cooperative in Lubbock, the power provider for Plains and a major portion of Yoakum County. Dreysspring made additional comments to those found in *The Lovington Leader* article written by W.H. Graham, Senior Staff Writer.

The major portion of the following is directly quoted from Mr. Graham's article in the April 20 issue of the *Leader*.

"SPS plans to sell at least 2,864 megawatt generating capacity in Texas and New Mexico. On the block is one or possibly both of its two plants in Lea County, Cunningham (511 megawatts) and Maddox (184 megawatts), both gas fired.

SPS, which last year merged with Public Service Company of Colorado to form New Century Energies, now contemplates yet another merger with

Northern States Power of Minneapolis to form Xcel Energy.

To get approval for the latest merger, New Energy had to meet the new "competitive" threshold adopted by the Texas Legislature in which no utility can own more than 20 percent of its generating needs in an operating area. So, the huge SPS plants are going on the block.

Dreysspring says Lea County Electric wasn't a part of these arrangements, and they have raised concerns for the local cooperative about the stability of its future power needs. LCEC is under contract to buy all its power from SPS through 2014.

"While they can assign our power requirements to somebody else, we want to make sure our power supply is not jeopardized," Dreysspring said, adding, "the development raises the 'potential of litigation' to protect the contract.

He also says it will oblige the cooperative to take a new look at how it obtains its power needs, and he said that could

Turn to Page 2, 'SPS'

The earth is sick... does the illness have to be fatal ?

Last week's special issue of *TIME* magazine was devoted to one central theme - How to save the earth. A large panel of noted writers and distinguished scientists contributed words, thoughts and ideas concerning a carnecopia of woes facing the planet, and it's 6 BILLION inhabitants.

The population itself is a major concern, according to *TIME*. Consider this; Each and every minute, that's sixty seconds, 247 newcomers join us on earth... that's 247 births per minute, per hour, per day, week and month, and 12 months after the first second ticks off, 130 million people will be added to the earth's surface. That's before the predicted 52 million deaths are subtracted... but do the math.

The earth's oceans, once considered an inexhaustible source of food, are in serious trouble. Commercial fishing fleets from many nations are now 40% larger than the oceans can

sustain. The *TIME* issue cites the example of the destroyed cod fishing banks off north-eastern Canada and Newfoundland. Where once over 7,000 fishermen made a living, the waters are barren.

The *TIME* issue devotes page after page to some aspect of the planets lifesystems, and there are serious, sobering problems with virtually all of them. A good deal of the material in this issue of *TIME* deals with the environment of much of the planets wild species, including insects, fish, birds and mammals. The extensive writing throughout the issue does not take on the tone of the perpetual " hug a tree fanatic", or " baby the spotted owl" syndrome, yet it does detail graphically hom many forms of life have and will continue to disappear from the earth.

It's a very interesting, and serious thought provoking issue of the venerable periodical.

From Page 1,
"SPS"

include buying one of the two SPS generating units in Lea County, or partnering with others in such a purchase."

Dreyspring told CCN on the phone, " Our board of directors are going to very carefully consider these options, but will also carefully keep in mind issues of both heavy cost and liability in such a purchase. The key questions for us are, how will it impact costs for our members, and the reliability of the plant equipment."

The Leader article continued, " SPS sent teams from its Amarillo headquarters to make announcements at the affected plants. They include Tolk Station, 1080 Mw (coal), Muleshoe; Harington Station, 1066 Mw (coal); Jones Station, 486 Mw (gas), Lubbock, and Moore County, 48 Mw (gas), Dumas.

SPS is also 25% owner of Golden Spread's new 448 Mw Mustang Plant (gas) at Denver City, which went on line late last year. Presumably, that interest will be retained.

It is not anticipated any of the plants will be shut down. They will continue to operate under new owners, and SPS will buy power from them, said Bill Crenshaw, SPS spokesman, who was in Lovington April 19.

The divestiture will radically change the old Southwestern Public Service profile, which dates back to its beginning in Roswell more than 50 years ago. SPS became one of the nation's most efficient generator of electricity, producing

Lea County Electric 51st Annual Meeting



The Lea County Electric Cooperative observed it's 51st year of operation last Saturday at the Lea County Fairgrounds in Lovington. Despite the pre-Easter date, almost 400 members signed registration forms, and most were accompanied by family members. LCEC officials estimated some 700 residents of Lea County and Yoakum County were present. They enjoyed a big barbecue lunch catered by JB's Barbecue of Lovington. Some forty valuable door prizes were drawn for. In the business session of the meeting, Robert Caudle, District One, and Dean Kinsolving, District 6, were re-elected as Directors of the cooperative.

J P Court

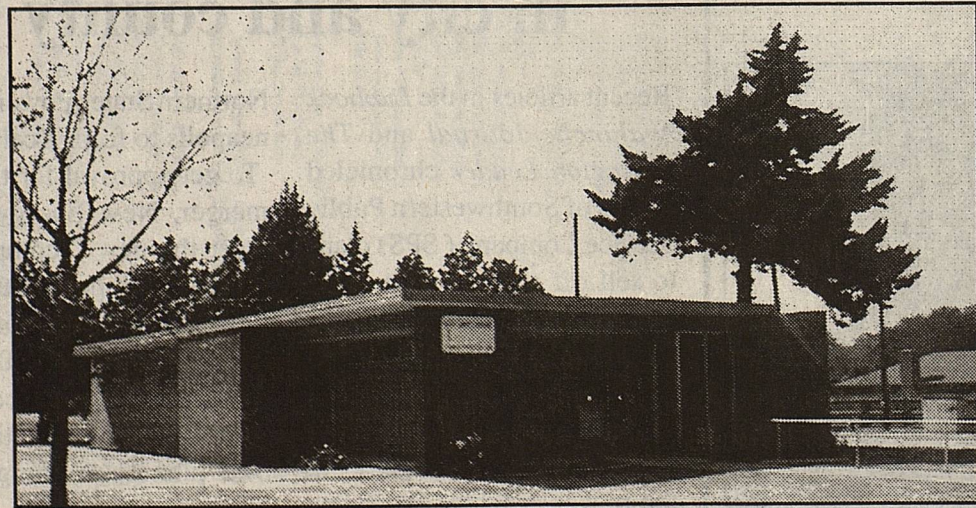
April 20, 2000- Precinct One, With Justice of the Peace Melba Crutcher presiding there were 44 traffic cases and 2 consumption of alcohol by minors filed.

Bonds set: False report to a Police officer - \$500.00 bond. Harboring a runaway - \$500.00 bond. Possession of a con-

trolled substance - \$7500.00 bond. Failure to appear/Driving while intoxicated - hold until transported to Gaines County. Motion to revoke probation - hold until hearing. Possession of marijuana - less than 2 oz. - \$500.00 bond. Driving while intoxicated - \$1,000.00 bond.

Yoakum County Plains Clinic

Is Now Open
Monday thru Friday,
8 A.M. to 5 P.M.



- * Family Practice * Immunizations
- * Minor Medical Emergencies
- * Texas Health Steps

Physician Assistant
Jolena Wall

will start practice at
the Plains Clinic on May 1st,
and Dr. Larry Boyd will be
available on a rotating schedule

Appointments are suggested
Please call 456 - 6365

Pain Management Services

*Specializing in the diagnosis and
treatment of Pain Syndromes*

David K. Hagstrom, M.D.
Anesthesiologist
Pain Management Specialist

Dr. Hagstrom will be at
Yoakum County Hospital
April 29th
Physical Therapy Department
612 W. Fourth, Denver City
Please Call For Appointment
1 - 800 - 878 -7812

On To State! UIL Team wins Region I academic meet

For the second time in the last three years, Plains High Academic students won the Region I UIL meet held in Abilene. Plains High School finished the meet with 193 points. The two runner-up schools were Stinnett-West Texas, 134 points, and Idalou, 85 points.

Qualifying team members will compete in the large and very tough state meet in Austin this weekend. Individual results from the Regional contest included:

Number Sense:

Kristen Gray 1st, Annaliesa O'Quinn 5th, Amanda Garcia 6th.

Poetry:

Emily Blair 1st, Krystle Blundell 4th.

Prose:

Lisa San Filippo 6th

Headline writing:

Annaliesa O'Quinn 3rd.

Feature Writing:

Nicole Haynes 4th

Science:

Kristen Gray 3rd

Computer Applications:

Kyle Sisson 3rd.

Computer Science:

Kristen Gray 3rd

Informative Speaking:

Krystle Blundell 1st

Math:

Kristen Gray 1st

Calculator:

Kristen Gray 1st

The PHS One Act Play, Trojan Women, also won Regional honors and will perform for the state championship in Austin this weekend.

Student of the Week

First student of the week is Kenia Molina, a sophomore and the daughter of Mr. and Mrs. Arturo Molina. Kenia was nominated by Mrs. O'Quinn who said, "Sometimes we limit ourselves to what we can do, and sometimes it's easy to make excuses when things seem too hard to do. Kenia has had an uphill battle since she entered high school a year later and a half ago. Not only did she



..... speak or write very little English, she knew she would be held accountable for her reading, writing, and math skills on the TAAS test this year. Instead of using her limited English as an excuse, she worked extra tutorials and class periods to learn as much as possible. Not only did she pass all three parts of the TAAS test on her first try, she scored a high mark on her writing. I am proud of Kenia."

..... Second student of the week is Kristen Gray a senior and the daughter of Mr. and Mrs. John Gray. Kristen was nominated by Mr. Friesen who said, "Kristen is a student that will never go unnoticed. She is extremely competitive. Her competitive spirit has helped her both academically and athletically. She has competed at the



state level in track and academics and has placed well in both. This year she qualified for state in academics in a record five events with a shot in 300m hurdles this weekend at regional. While academics and athletics seem to come easy for Kristen, she makes herself even better with her hard work and positive attitude. This combination of natural ability and dedication is rare among high school students."

Junior Rodeo Results

In the Region II High School rodeo finals at Ft. Stockton April 15, Brett Squyres went into the action in 9th place for the year. He posted his best time ever in tie-down roping with a time of 9.2 seconds, good for 3rd place and eight points. This placed him in 6th place for the season, and qualified for the state finals in Abilene the week of June 4. Brett has qualified for the finals both years of his competition. The High Plains Jr. Rodeo was held in Earth April 15 and 16. Because of scheduling conflicts, the only local competitors in the event were Blake and Troy Parrish. Blake was 5th in 9 to 12 calf touching, and 8th in break-away roping. Tro was 5th in 8 and under poles and 9th in barrels.

New Books At The Library

Fiction: Hugger Mugger. Robert Parker, Pegasus In Space..Anne McCaffrey..Hawk's Cove..Susan Wilson, Blind Instinct..Robert Walker, The Runner..Christopher Reich..Red Sky At Morning..Paul Garrison, Half Moon Street..Anne Perry, Lady Catherine's Necklace..Joan Aiken, Drop Zone..Michael Salazar, A Land Without Law: Saga Of The Sierras..Brock Thoene, The Beginning Of Sorrows..Gilbert Morris, **Non-Fiction:** Get Happy: The Life Of Judy Garland..Gerald Clarke, You've Got To Be Kidding, I Thought This Was The Great Tribulation!..Cathy Lechner, Ultimate Living!..Dee Simmons, A Lady's Day Out In West Texas..A Shopping Guide & Handbook (Lubbock, Midland, Odessa & Big Spring) Compiled by Sue Scoggin, Start Where You Are..Charles Swindoll, Stories For A Teen's Heart..Alice Gray

Yoakum County Federal Credit Union

Likes To Make **LOANS!**

* New & Used Vehicles * Vacations
Household Appliances * Carpets
Computers and
Many More Uses !

Come by our office, 808 Cowboy Way,
Plains, or call us, 456-2929

Congratulations
to all
Regional
and State
Qualifiers

Elect BRAD CRUMP
PISD School Board,
District 5

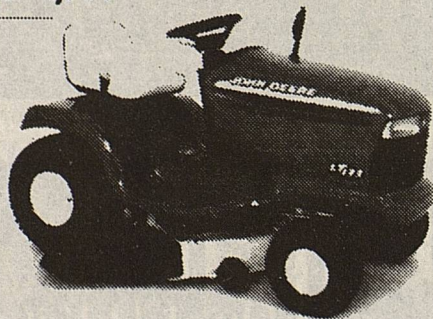
✓ Early voting April 19 - May 2
✓ Election Saturday, May 6
Your Vote and support Appreciated!

Political advertisement paid for by Brad Crump

TAKE HOME A JOHN DEERE WITHOUT LEAVING ANY MONEY.

NORMALLY, THIS IS CALLED STEALING. RIGHT NOW WE'RE CALLING IT, "NO MONEY DOWN."

LT133 Lawn Tractor
• 13 hp • 38-inch mower deck
• 5-speed shift-on-the-go transmission
Just **\$1,999**



GT225 Lawn and Garden Tractor
• 15 hp • 42-inch Convertible mower deck
• Automatic transmission
Now **\$3,849*** SAVE **\$250**



F510 Front Mower
• 14 hp • 38-inch mower deck
• 3-wheel design • 7.5-inch turning radius
Now **\$4,799***
Save **\$250**



JA60 Walk-Behind Mower
• 6 hp • 21-inch aluminum deck
Now **\$429***
\$70 OFF



Home Service Kit for Tractors

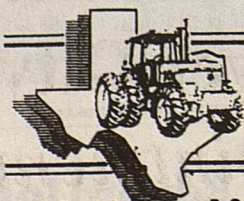
It includes oil, air, and fuel filters, foam pre-cleaner, spark plugs, and two quarts of oil.



During Deere Season 2000, you can take home the Deere of your dreams and leave no money down. Just visit your John Deere dealer before July 5, 2000, for details.



NOTHING RUNS LIKE A DEERE



TEXAS
EQUIPMENT
COMPANY, INC.

Lovington Hwy.,
Plains
806-456-2877

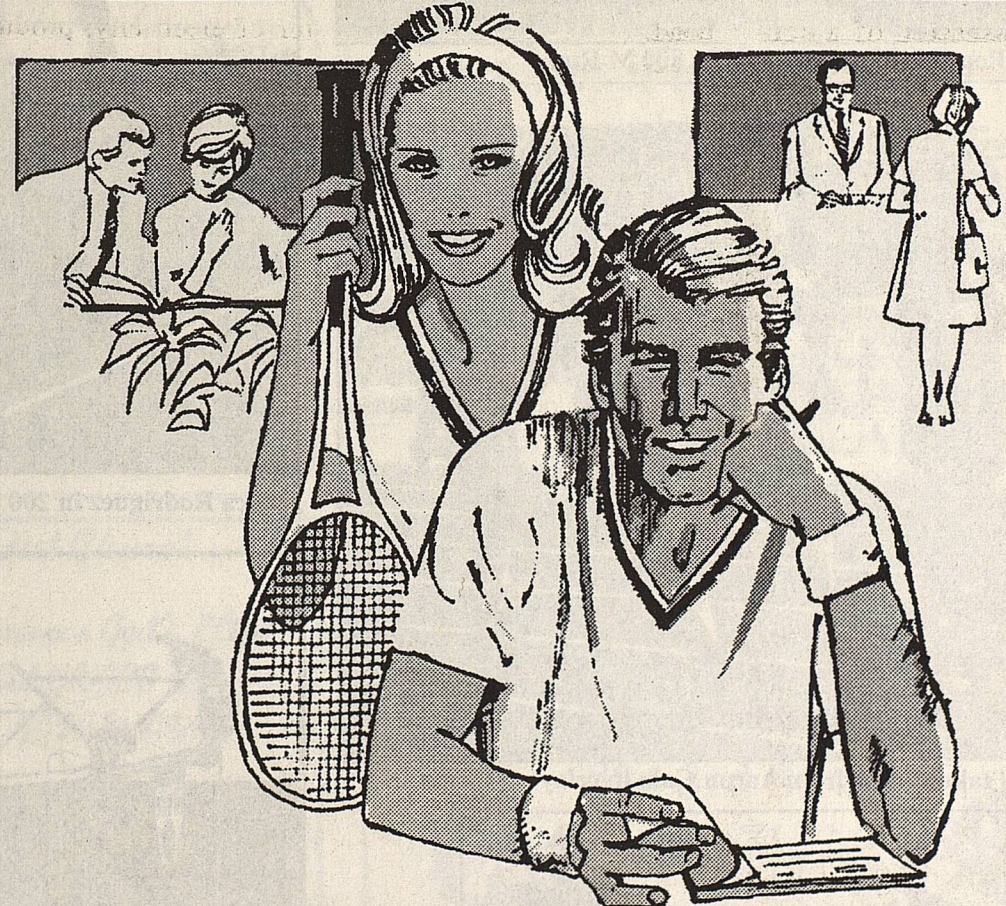
P. O. Box 810
Plains, TX 79355

P. O. Box 790
Seminole, TX 79360

P. O. Box 272
Pecos, TX 79772



*Offer ends July 5, 2000 and is subject to approval credit on John Deere. Excludes Regional Plan, financing, commercial use and. Available from participating dealers. Taxes, freight, setup and delivery not included. Savings advertised in all of states.



INVEST IN OUR GOOD TOWN

Our town. You work here. You play here. You live here. So do we. You have a personal stake in its future. So do we. Together we should invest our hard-earned money here.

Your money goes right to work for you. And right to work for our community too. The money you invest with us stays right here in town... generating new homes, recreational centers, schools, local improvements... loans for farmers and businessmen... more jobs, more growth.

We're dedicated to the fundamental principle that what's good for you is good for our town too. And we're good at what we do.

Our town. We've got a good thing going. And you can rely on it.

Good for You.
...And Our Community Too!

PLAINS STATE BANK
PSB

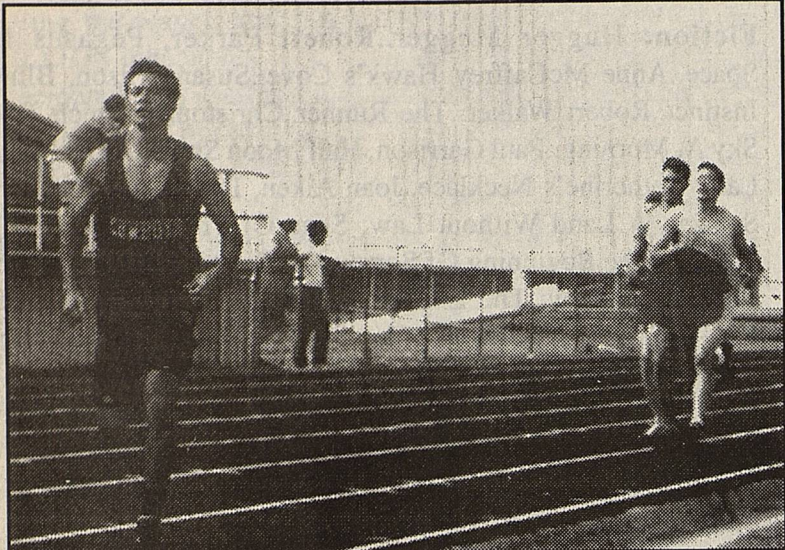
MEMBER
FDIC

601 9th Street • Plains • TX 79355
Telephone: 806-456-2022

Equal
Opportunity
Lender



Wendy Hernandez 3rd in 1600 M Run



David Granados led entire 800 M Run



Chelsea Blount, left, took second in 800 M Run



Jared Bell takes baton from Aaron Cain in relay



Moises Gonzales finishes 200 dash

District 3 - AA Track Meet

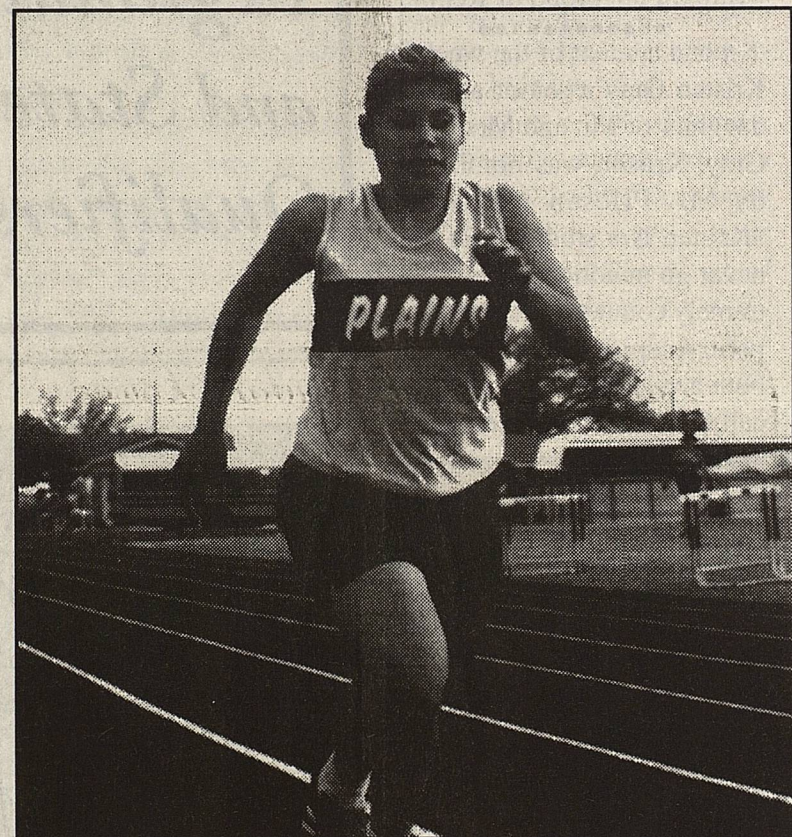
In an unusual scenario, the district track meet held at Seagraves on Monday, April 17, saw nearly perfect weather conditions, meaning no appreciable winds. The unusually hot day, however, did take its toll on the athletes.

COWGIRL RESULTS:

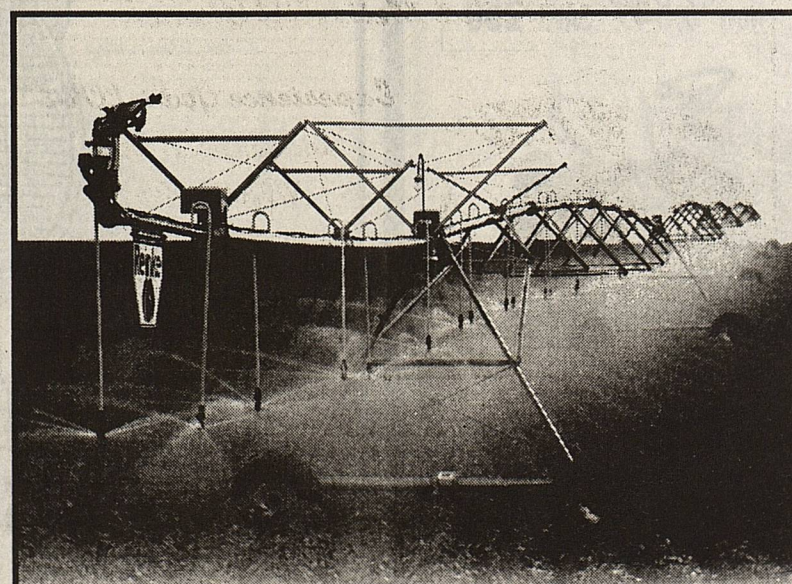
3200 M Run - Amanda Garcia 5th, 16:04.44
 400 Meter Relay - Anne Palmer, Michaela Traweek, Krystle Blundell, Kristen Gray 3rd, 52:34
 800 M. Run - Chelsea Blount 2nd, 2:42.26, Wendy Hernandez 3rd, 2:47
 100 M Dash - Anne Palmer 6th, 13:76
 800 M Relay - Kayla Willis, Anne Palmer, Krystle Blundell, Jessica Rodriguez 4th, 1:57.08
 400 M Dash - Chelsea Blount 6th, 1:10.12
 300 M Hurdles - Kristen Gray 2nd, 48.27
 200 M Dash - Michaela Traweek 4th, 27:05
 1600 M Run - Wendy Hernandez 3rd, 6:28.28
 Shot Put - Elizabeth Clanahan 4th, 29' 8.5"
 Team Totals - 1. Post - 162, 2. Coahoma - 153, 3. Tahoka - 117, 4. Plains - 60, 5. Stanton - 44, 6. Seagraves, 26.
 Chelsea Blount and Kristen Gray are the only Cowgirls who qualified for Regional action in Abilene this weekend.

COWBOYS:

400 M Relay - Joseph Rodriguez, Moises Gonzales, Aaron Cain, Jared Bell 3rd, 44:33
 800 M Run - David Granados 1st, 2:05.45
 110 High Hurdles - Nathan Hayes 6th, 17:99
 100 M Dash - Moises Gonzales 4th, 11:17
 400 M Dash - Jared Bell 2nd, 51:17
 200 M Dash - Moises Gonzales 4th, 23:32
 1600 M Relay - Jared Bell, Josh Bell, Joseph Rodriguez, David Granados 3rd, 3:34.87
 Discus - Josh Bell 6th, 113' 4"
 High Jump - Justin Bennett 4th, 5' 8"
 Shot Put - Josh Bell 2nd, 49' 4"
 Team Totals- 1. Tahoka, 176, 2. Stanton 160, 3. Plains 67, 4. Seagraves 59. 5. Coahoma, 47, 6. Post, 45
 Cowbys David Granados, Jared and Josh Bell will advance to the Abilene Regional meet.



Jessica Rodriguez in 200 dash



Better Design.

Reinke Irrigation Systems look different than other systems on the market today. Our systems are designed to be different - stronger, lighter and more flexible, so they glide through your fields, instead of muscling their way across. Stop and watch one operate sometime. You'll be impressed by the strong, lighter and more flexible design. See your Reinke Dealer today!

Jack Spears
 Drilling Company

Water Well Drilling & Pump Service
 456-4925 - 456-3845



The future of irrigation.
 www.reinke.com • 402-365-7251



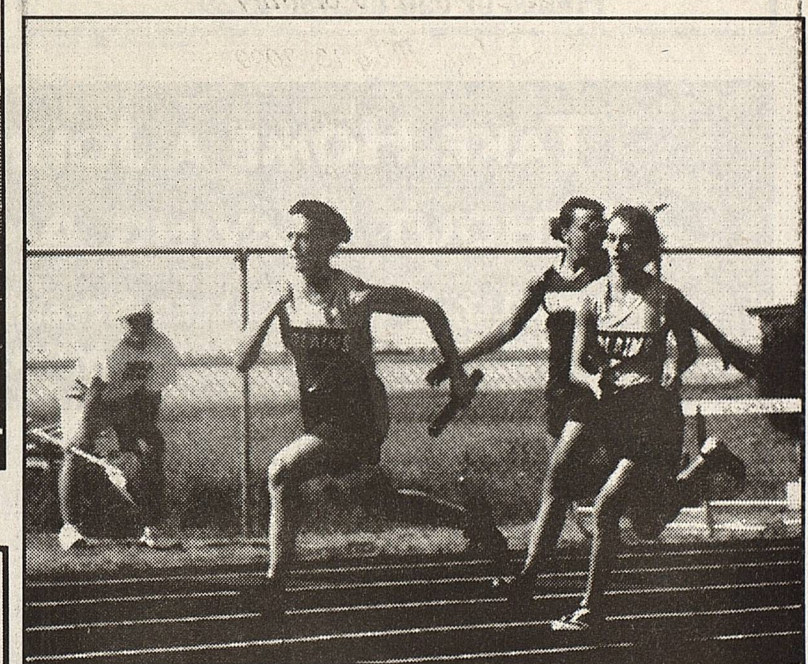
Krystle Blundell hands off to Jessica Rodriguez



Luis Hernandez tries hard to catch Post runner



Kayla Willis passes baton to Anne Palmer



Kristen Gray head home with baton

Compare Our CD Rates

Bank-issued, FDIC-insured to \$100,000

3 Months	5.85%	APY *
6 Months	6.15%	APY *
1 Year	6.70%	APY *
2 Year	6.90%	APY *
3 Year	7.10%	APY *

MINIMUM DEPOSIT \$ 5,000

* Annual Percentage Yield (APY) - Interest cannot remain on deposit; periodic payout of interest is required. Effective 3-29-2000



Call or stop by today.
 Wayne House
 PO Box 246
 1070 County Road 305
 Plains, TX 79355
 806-456-3900
 www.edwardjones.com

Edward Jones
 Serving Individual Investors Since 1871

TPA MEMBER 2000
 Cowboy Country
 News
TEXAS PRESS ASSOCIATION

Cowboy Country News
 Published Weekly each Wednesday at 1205
 Copeland Ave., PO Box 179, Plains, TX 79355
 Holly Dyer, Publisher Gary Dyer, Editor
 Subscription price in Zip Code 793 \$15 annually
 Other Zip Codes \$18 annually
 E-Mail us at ccn@hiplains.net
 ID # 017574 806-456-8451 FAX 806-456-2010

Lifelines & Styles

Annual Easter Egg Hunt



The Annual Filmtime Easter Egg Hunt was held Wednesday at the Library. The mothers brought punch and decorated cookies and suckers for the children. While the mothers hid the eggs, Librarian Opal Roberts read two books 'Clifford's Happy Easter' and 'Word Bird's Easter Words' to the children. The youngsters found lots of eggs and had a wonderful time!

Children attending Filmtime and the Easter Egg Hunt were: Bailey Rios, Sienna, Marisol and Percy Sosa, Marina Corrales, Lucas Hernandez, Clayton Gass, Whitney Davis, Jonathan Davis, Bethany Mares, Darian Gonzales, Kay'D Lamar, Morgan Marion, Bailey Winn, Micah St. Romain, Darryl Cox, Jaston Brink, Colby Bearden, Riley and Kenneth Earnest, Brittney Roper, Brock and Bryce McWhirter, Peyton McWhirter, Jaxon and Silas Williams, Haden Johnson, and Arista Davis.

Wedding Shower

honoring

Mrs. Cleve Bearden

(nee Jessa St. Romain)

Saturday, May 13, 2000

10:00 - 11:30 am.

in the home of

Mrs. Rickey Bearden

Selections: Dillard's, Target, Nelson's and Bayer's

Depot District Fun Run/Walk Slated

Mayor Windy Sitton plans to start Election Day this year with a bang. Mayor Sitton will fire the start pistol beginning the first 5K fun run/walk in the Depot District, May 6.

In an effort to promote the Depot District, Mayor Sitton and the Buddy Holly Center are hosting the Depot District Run for the Arts through the historic entertainment area. All proceeds will benefit Education Outreach Programs at the Buddy Holly Center. Run for the Arts is scheduled to start Saturday, May 6, at 9:00 a.m. Beginning on 19th Street and Buddy Holly Avenue, in front of the Cactus Theatre, the route travels through the Depot District and Downtown Lubbock.

The race will conclude at the Buddy Holly Center with refreshments, live entertainment and children's activities.

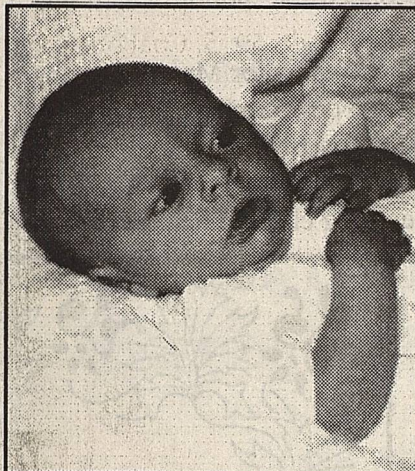
All participants will receive a race packet prior to the race that will include their race number, a race T-shirt, and information highlighting businesses in the Depot District.

Entry fee is \$10.00 before May 1st and \$12.00 after May 1st. Telephone registration is available through 5 p.m., May 5th by calling 767-3116. Race Day registration is from 7:30 to 8:45 a.m., May 6th in the Buddy Holly Center Courtyard.

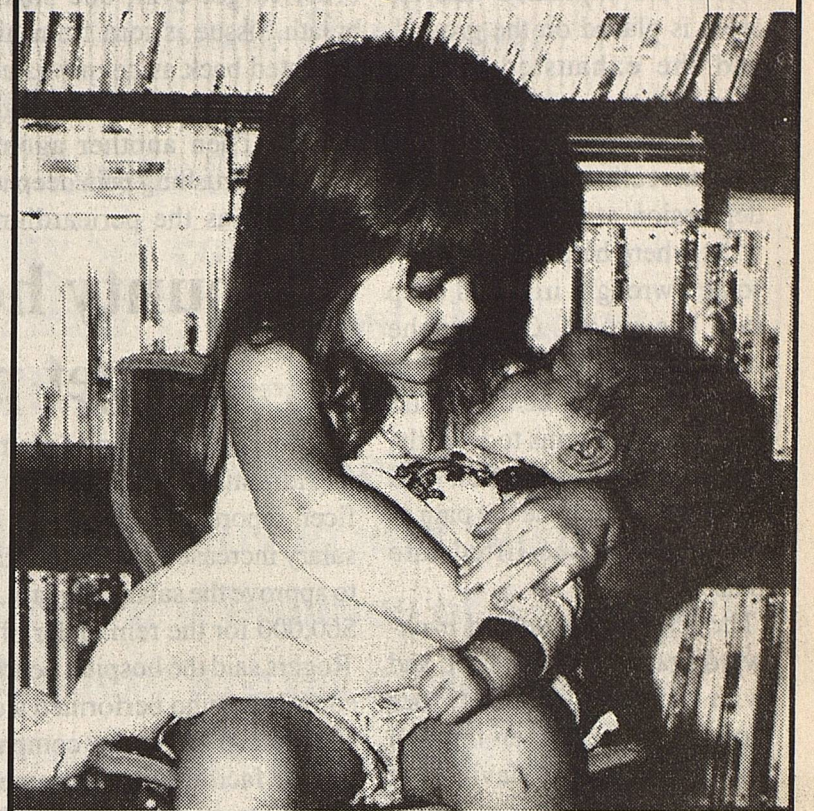
For more information call Lory Loppolo at 767-3116.

New Baby Girl!

Kyle and Raynee Andrews of Portland, Tx. announce the birth of their daughter, Delaney Rae, born on Friday, March 31, 2000 at 2:45 pm in Christus Spohn Hospital Sount in Corpus Christi, Tx. She weighed 6 lbs., 10 oz. and measured 21 inches long. She has one brother Ty Dean. Her grandparents are Dolores Davis of Plains and Lorelei and Dean Andrews of Liberty Hill. Her great-grandparents are Althea Lipsey of Longview and Louise and Howard Andrews of Childress.



New Baby In Town!



Braedon Lee Davis, Born March 7, 2000, weighed 7 pounds 2 ounces and was 20 inches long. Parents are John and Devona Davis, grandparents are Terry and Wadonna and Jenny McCune.

GARAGE SALE!
Sponsored by Yoakum
County Art Association.
Saturday, April 29,
9 am. - 2 pm.

FIRST BAPTIST CHURCH
Come Worship with Us!

Sunday School	9:30 AM
Morning Worship	10:45 AM
Discipleship Training	5:00 PM
Evening Worship	6:00 PM
Wednesday Night Supper	5:30 PM - 6:30 PM

It's Planting Time Again!
Bev's Nursery

Now Open
Tuesday thru Saturday
9 A.M. to 7 P.M.

804 3rd Street
456-7132



O+ medical

Equipment & Supply

P.O. Box 1347 * Denver City, Texas 79323
1-800-687-0037 - Pager * (806) 891-0656 - Cellular
(806) 592-1000 - Office * 592-3538 - Fax
TOLL FREE 1-877-592-1000

Serving the South Plains Region and BEYOND...
Denver City * Seminole * Plains * Brownfield * Lubbock * Midland
* Odessa * Andrews * Hobbs, NM * Lovington, NM
24-Hour Personal Service * 7 Days A Week

Pampered Chef Bridal Shower

Honoring

Shandi Willett

Sunday, April 30, 2000

2:00 p.m. - 3:30 p.m.

in the home of

Treon Ortega 704 Third Street

First United Methodist Church



Experience God's LOVE
and GRACE in a
NEW WAY.

1202 Avenue G-Plains
Sunday School-9:45 am.
Morning Worship-10:45 am.



THANK YOU for allowing me to serve on the Plains ISD Board of Trustees the last six years.

During this time, it has become very clear to me... residents in this school district are extremely fortunate. Year after year, our students of all three school campuses improve academically, achieve goals, set outstanding records in academics and athletics. I would like to continue to serve this district, the students, and our community. Your vote and support will be greatly appreciated!

Anna Gonzalez

Candidate For
Plains ISD Board of Trustees, District 1

Political advertisement paid for by Anna Gonzalez



BAYER LUMBER & HARDWARE

1018 Ave. E Plains, Tx 79355
806-456-4800 Voice & Fax



WE ACCEPT VISA, MASTER CARD, and DISCOVER

10% OFF ALL AMMUNITION

WD-40 \$1.98

PLUMB FIBERGLASS CLAW

HAMMER \$11.99

COME CHECK OUT OUR NEW SEED FOR YEAR 2000

The Real Crucifixion

The following was in our E-Mail, exact origin, unknown. The message, although Post Easter, is clear enough.
Although we have seen many paintings of Jesus' crucifixion, we really have no concept of what crucifixion is all about.

Recently I read a medical doctor's description of a crucifixion. He explained that the cross is placed on the ground, and the exhausted man is quickly thrown backwards with his shoulders against the wood. The executioner feels for the depression at the front of the wrist where he drives a heavy, square wrought iron nail deep into the wood. Quickly he moves to the other side and repeats the action, being careful not to pull the arms too tightly, but to allow some flex and movement. Imagine the pain as the cross is then lifted into place.

The left foot is pressed backward against the right foot, and with both feet extended, toes down, a nail is driven through the arch of each, leaving the knees flexed. The victim is now crucified. As he slowly sags with more weight on the nails in the wrists, excruciating, fiery pain shoots along the fingers and up the arms to explode in the brain—the nails in the wrists are putting pressure on the median nerves.

As he pushed himself upward to avoid this torment, he places

the full weight on the nail through his feet. Again he feels the searing agony of the nail tearing through the nerves between the bones of his feet. As the arms fatigue, cramps sweep through the muscles, knotting them in deep, relentless, throbbing pain.

As he fights to raise himself in order to get even one small breath, tissue is torn from his lacerated back as he moves up and down against the rough timber. Then another agony begins: a crushing pain deep in the chest as the pericardium

slowly fills with serum and begins to compress the heart; the tortured lungs make a frantic effort to gasp in small gulps of air. He can feel the chill of death creeping through his tissues. Finally he can allow his body to die.

All this is recorded in Mark 15:24 with the simple words, "And they crucified Him." And to think that during all this agony on the cross, Jesus said, "Father, forgive them. They do not know what they are doing." What wondrous love is revealed in these words!

County hospital staff to get pay boost

In Monday's session of Commissioners Court, County Hospital Administrator Ed Rogers and Clay Taylor, Chief Fiscal Officer, reported the hospital's board of directors had approved a salary increase for hospital staff members. They asked the court to approve the salary increase, which amounted to approximately \$60,000 for the remainder of 2000.

Rogers said the hospital board secured services of a management consultant who performed a detailed survey of present salaries at the hospital, and a comparison of salaries paid workers at similar facilities in the immediate area and state. The consultant recommended raising full staff salaries by almost \$240,000, but the hospital board pared the increase down to \$119,000 for a full year.

Pct. 3 Commissioner Jim Barron moved to approve the \$60,000 increase, and Judge Brewer seconded the motion which was approved unanimously.

Treasurer Toni Jones delivered her report for March showing a balance of \$11,949,573. Jones also delivered her first quarter investment report for the year. Excess funds invested in Tex-Pool accounts were earning about 6.4%, and other funds in Funds Management, Inc. were earning close to that rate.

Criminal cases heard in County Court

The following criminal cases were heard in County Court April 19 with Judge Dallas Brewer presiding, and Criminal District Attorney Richard Clark representing the state.

Charles Dean Gruben aka Chuck Gruben, pled true to the state's motion to revoke community supervision from a prior assault causing bodily injury cause. He received a 35 day jail sentence, with credit for 31 days served, and must pay \$190 delinquent community supervision fees. Paul Mansur was his attorney.

Mario Martinez Villegas agreed on state's motion to modify terms of his community supervision from a prior DWI case. He will serve an additional 50 hours community service at 16 hours per month, must attend AA meetings twice weekly, and attend out patient counselling for alcohol abuse as recommended by his supervision officer. He was represented by Attorney Belinda Lovel and.

David Laureles pled guilty to criminal trespass of a habitation. He was sentenced to one year in county jail with credit for 192 days served, fined \$1,000, and must pay \$210 court costs. Paul Mansur was his attorney.

Donnie Lee Ford pled guilty to a first offense DWI. His 90 jail sentence was suspended and probated 12 months. He

was fined \$500, must pay \$225 court costs, and serve 24 hours community service. He will serve 72 hours in jail with credit for 7 hours served, must complete the DWI first offenders program, and submit to a substance abuse evaluation. Jeff Nicholson was his attorney.

Sulema Velasquez Avila pled guilty to making a false statement to a police officer. A theft of firearm charge was dismissed. He must serve 50 hours community service.

Sixto Gomez Castaneda pled guilty to assault causing bodily injury. A 90 jail sentence was suspended and probated 18 months. He must pay \$210 court costs and a \$250 fine, attend AA weekly meetings, and complete the batterer's treatment program at his expense.

Lisa Carmel Holmes pled guilty to a subsequent DWI charge. Her 180 jail sentence was suspended and probated 24 months. She was fined \$800

and must pay \$199 court costs. She will serve 5 days in jail with credit for 2 days served. She must attend weekly AA meetings, and complete the DWI repeat offenders program. Her licenses was suspended 90 days, and she must install an interlock device on any vehicle she drives. She was represented by Attorney Bill Helwig.

Francisco Lozano pled guilty to a first DWI. He was fined \$500, and must pay \$199 court costs. A 90 day jail sentence was suspended 12 months. He must attend AA meetings, complete the first offenders program, serve 24 hours community service, and serve ninety hours in jail, with credit for 9 served. His attorney was Bill Helwig.

Juan Antonio Martinez pled guilty to driving while license suspended. He was fined \$250, must pay \$184 court costs and serve 6 days in jail, with credit for three served.

Field Scouts & Demonstration Technician

needed for Summer employment by Terry-Yoakum Pest Management Association and Texas Agricultural Extension Service. Reliable vehicle, proof of insurance and valid drivers license required. Any individual regardless of sex, age or race may pick up an application at the Terry County Extension Office. Applications will be accepted until May 5, 2000.

Elect BRAD CRUMP PISD School Board, District 5

- ✓ Early voting April 19 - May 2
 - ✓ Election Saturday, May 6
- Your Vote and support Appreciated!**

Political advertisement paid for by Brad Crump

Mary's Basket Cottage
1402 16th Street (806) 456-2813

Show someone you care, with a basket filled with an assortment of Candy, Nuts, Popcorn, Jams, Jellies, Seasonal Fruits, Cheese, Crackers, that are sure to please every time. Call to find out what other baskets are available. Come by and see the selections you can pick from, or have one special made for you. All you need is call or come by and give me a price range, and I will do the rest.

Turn South on Poplar St., white house with blue trim on left. Please use South door.

Gift Baskets, Gift Bags, Gift Mugs
Price's range from \$5.00 to \$100.00
Balloon's are \$1.00 & \$3.00
Monday-Friday 5:00pm to 7:00pm
Open Part-Time Only on Week Days

We strive to care for you... because WE CARE

Plains Memorial Chapel

Norman & Judy Head, Owners
910 Avenue E PO Box 40
Across from old couthouse 806-456-2152

Nelson's Prescription Pharmacy
"Your Business is always appreciated"
Use our Toll-Free Number
1-800-658-9604
For All Your Pharmacy Needs!!
805 Tahoka Rd. Brownfield, TX

TWO J-S Flying Service

Aerial Application Specialists
Plains Office 456-3580 or 456-7436
Lubbock 793-5004

Mike Cobb	Jack Cobb
456-7165 Home	456-7452
456-7511 Mobile	456-7512

HICKS
Carpet *Heating* Air Conditioning
Maytag Appliances
204 N. Main, Denver City
806-592-3973 or 592-3930
TRANE "Its hard to stop a TRANE!"

Do It Yourself!
We Carry Disposals * Faucets *
Sewer, Gas & Water Piping *
* Commodes
Sinks * Water Heaters
Starting at \$159.95 *
**ASK ABOUT OUR SENIOR
CITIZEN DISCOUNTS
AND REASONABLE RATES!**

G & R PLUMBING
618 N. MAIN, DENVER CITY
(806) 592-7575
CELL PH. (806) 893-0399

Lea County Electric Cooperative, Inc.

POWERSHIELD
We've Been Providing Your Power...
... Now Let Us Help Protect Your Investment!

Basic Packages Starting at \$6⁶⁹ per month

SURGE PROTECTION PROGRAM
Featuring Products By **LEVITON**

POWERSHIELD will "suppress" Voltage spikes BEFORE they can destroy your expensive electronic equipment!

"Owned By Those We Serve"
Michael A. DreySpring, General Manager

Tatum (505)398-2233	Lovington (505)396-3631	Plains (806)456-3322
---------------------	-------------------------	----------------------

Call Toll Free 1-800-510-5232
Visit our homepage: <http://www.lceconet.com>
Send us your comments and questions to: lceconet@lceconet.com

MULTI - PERIL CROP & CROP HAIL

STATE LINE INSURANCE

DANNY BELL
Office 456-3521 Home 456-6325
Mobile 456-7517

Lalitos
For Great Mexican Food

Hours: Tues.-Fri. 11:00 -9:00 Sat. 11:00 - 8:00
Sun. 11:00 - 2:00

All Major Credit Cards are Accepted
456-2233

From The Hack

The Easter season just past was commemorated by religious ceremonies around the world, with Christians celebrating the Crucifixion, but more importantly, the Resurrection, of Our Lord Jesus Christ. It was also celebrated in a lesser degree, a more commercial manner, by young ones eating ears off chocolate bunny rabbits, munching candy Easter eggs, and...

The Great Easter Egg Hunt! My most memorable egg hunt occurred in Eden, Texas, sponsored by First Baptist Church there (yes, Brother Bill, the site

you believe I was Baptised at, the other stuff you're still semi-debating).

I think I was 8, maybe 9. My groups Sunday School mentor had been working on us for weeks, honing our skills in important, memorable Biblical verses of scripture. She sat a goal for all of us, and if we met the goal, she would allow us to skip the normal Sunday School session and have an Easter egg hunt on the church grounds prior to preaching hour. Bad mistake on her part. I was a member of our 'memory team'. My remarkable memory faculties pulled us through, as I recall. At the last minute, prompted by Ms. Throckbottom, I added my favorite verse at the time, " Jesus Wept." I still easily recall it.

Eggs were hidden in the liveoak, mesquite and brush around the church. One guy screamed, " I found a baby skunk." A budding genius announced, "I got a horny toad!"

A few eggs were finally found, and it was time to go in. Our

teacher said if we hurried, and didn't make a mess, we could eat our Easter eggs before preacher took over. I was peeling away on mine, when a guy named Yule Johnson (it was rumored he was conceived on Christmas eve) screamed "AAAHHH , YUK", and held in his hands an egg as raw as mother nature and mother hen had ever produced. I heard later the culprit was a kid named Asa Farnsworth. Probably true, with a name like that.

Incidentally, another kid named Smithson Smeyers turned the horny toad loose during singing of " Bringing In The Sheaves ", which did little to add to the solemnity of the occasion.

It's quite apparent to me now the preacher in Eden had little of the qualities of a grizzly bear, which our present pastor is noted for.

.....

OXYMORONS;
' Act Naturally'
' Found Missing'
' Good Grief!'
' Almost Exactly'
' Resident Alien'

For Sale

Round Bale Elbon
Rye Hay
\$30 Bale or \$70 Ton
Also large
square bales
806-456-4925
Home 456-5005

For Sale

16 ft. Bass Boat
Ready for the water
Bill Nokes
456-3135
307 5th St.

Make 2 payments
and move in. 4/2
16x76

36 payments and
it is your home.
Clayton Homes
877-749-4063

Help Wanted

Equipment set up

Technician

John Deere Tractor
Technician

Bi-Lingual preferred

Both positions require
CDL & DMV report and
pre-employment drug
test, Good knowledge of
Plains & Denver City
farming area.
Tractor Technician must

Furnish Own Tools

Call 806-456-2877 for
interview appointment

Payments of \$113.00 for
NEW 4/2 16x76 home.

Don't miss this
Easter Special!

Clayton Homes
2005 N. University
877-749-4063

9.99% 192 months 10%
down LNL Bi-weekly

Jackies Welding

Specializing in
Irrigation Pivot
Systems & Farm
Equipment

Home Mobile
505-392-6280 806-893-3906

Heflin Custom Farming

CRP Grass Drilling*
Shredding* Breakout*

Harold Heflin
505-276-8431
Mobile 760-9171

Cody Heflin
505-356-3668
Mobile 760-1020

CROP INSURANCE MPCI - CRC - CAT - CROP HAIL FARM MACHINERY INSURANCE AG INSURANCE PLUS

Jim Brown 456-2788
Mobile 806-891-0449 or
891-0450
Home 592-3490

Jeff Lowrey
Mobile 806-891-3133
Home 456-3195

CRP

grass seeding
*shredding, crop
planting and
discing*
CALL

806-456-7450
456-7550 mobile

SUNDOWN

S T A T E • B A N K

Sundown * Levelland * Brownfield * Denver City

At Sundown State Bank, our
philosophy is simple, our customers
come first.

That's why we continue to offer
customer friendly, low cost checking
accounts with unlimited check writing
and no per item fees.

With our interest bearing and business
checking accounts, if a balance of \$1,000.00
is maintained, there are no monthly fees.
All of our accounts offer the ability to have
your original cancelled checks in your
monthly statements.

With local ownership, local loan
decisions, and unsurpassed local
knowledge, why would you want to bank
anywhere else.

We want to be your friendly, full
service bank with a hometown attitude.

Member FDIC



Equal Housing Lender

202 W. Broadway Denver City 592-9292

Dyck Pump Service Sales & Supply

P.O. Box 451
Seminole, Tx. 79360
Welding, Machine Work,
Fast Bailing, Well Drilling
915-758-5432
Mobile 758-9671

ZERO DOWN if you own land DON'T WAIT!

See Our
EASTER SPECIALS
Clayton Homes 2005
N. University
877-749-4063

Trailers For Sale:

New trailers at good
prices, from 8' to 20' in
length, can custom build
to meet your individual
needs, call 505-396-4192

Price Reduced!

3 Mi. N. of Plains on Hwy.
214. Extra Lge. 3 Br., 2 Ba., 2
car garage, basement, large
shop bldg. Must see to
appreciate all the extras.
Hunt Realty Office
806-592-3556
Fax 806-592-8489

* FOR SALE*

Two bedroom
home on 10 acres.
Two miles South of
Plains, Tx., \$32K
call 806-797-9072

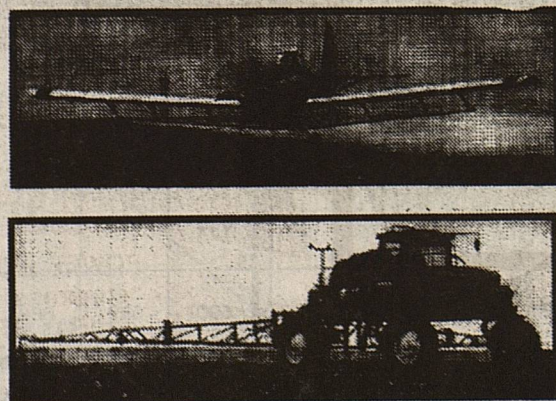
House For Sale

4 Br, 2 Bath
1508 Ave. G
For appointment
to see call Tim,
456-7195 or call
662-334-4416

Assistant Manager Trainee Needed

\$2,000 monthly full time
\$1,000 monthly part time
if qualified
Call for Information
806-766-7175

G. B. Aerial Application, Inc.



From
The
Air
or From
The
Ground

Professional, Licensed Ag Applications
At Affordable Rates !

806-456-6300 Office
806-456-6790 Fax

806-456-7536 David Mobile
806-456-7974 Sarah Mobile
806-790-3420 Dain Mobile

G & B

G & B



High Plains Internet



SERVING PLAINS, DENVER CITY, HIGGINBOTHAM & SURROUNDING AREA

Your Fastest,
Easiest, Most
Affordable
Access To:

WORLD WIDE WEB - E-MAIL - IRC CHAT -
WEB PAGES - NEWS GROUPS - AG INFO. -
WEATHER - SPORTS - NEWS - RESEARCH
LIBRARIES - BUSINESS & STOCKS, AND
MUCH, MUCH MORE.

UNLIMITED ACCESS JUST \$24.95 PER MONTH PLUS TAX !
Apple, Macintosh computers welcome

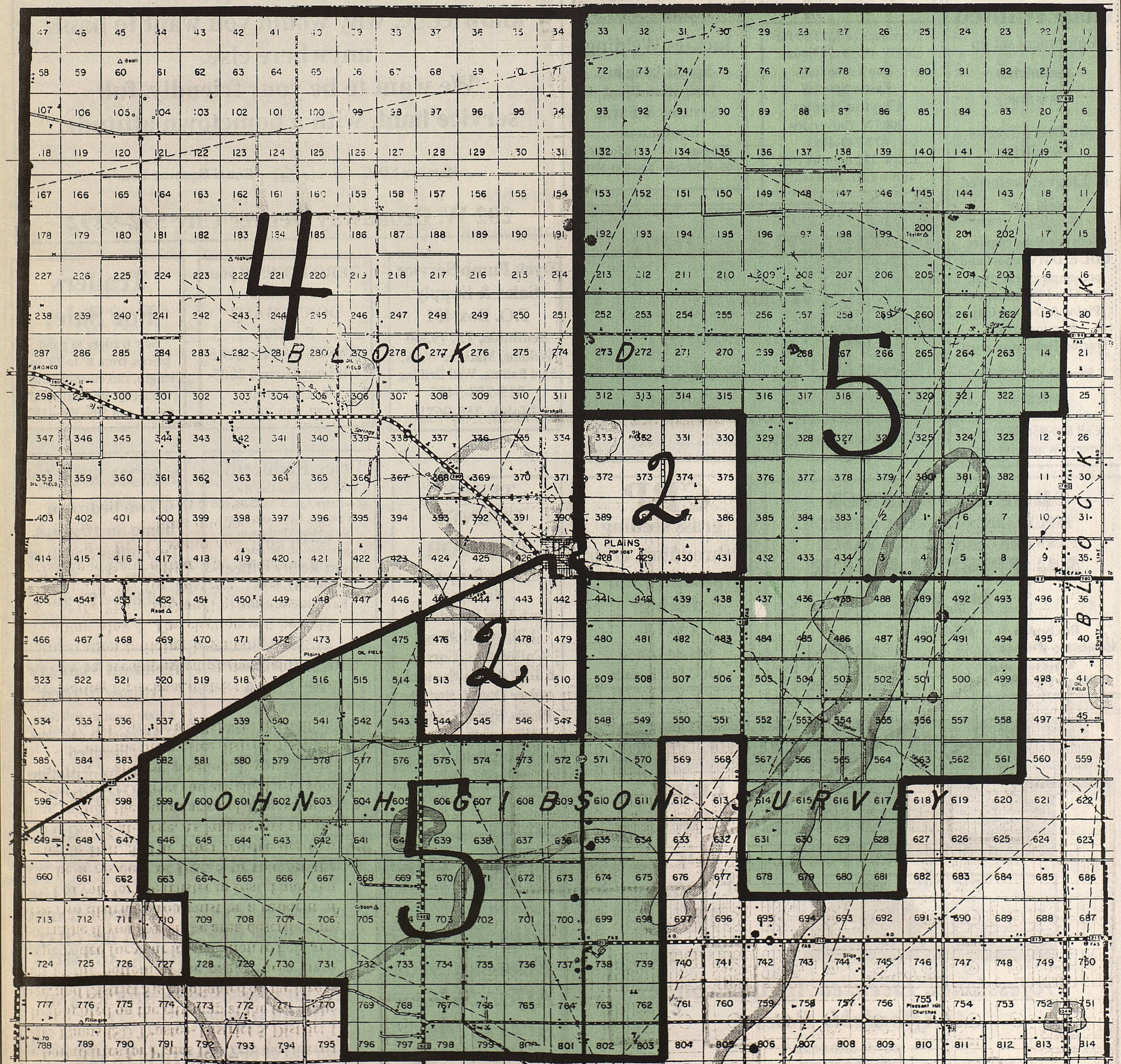
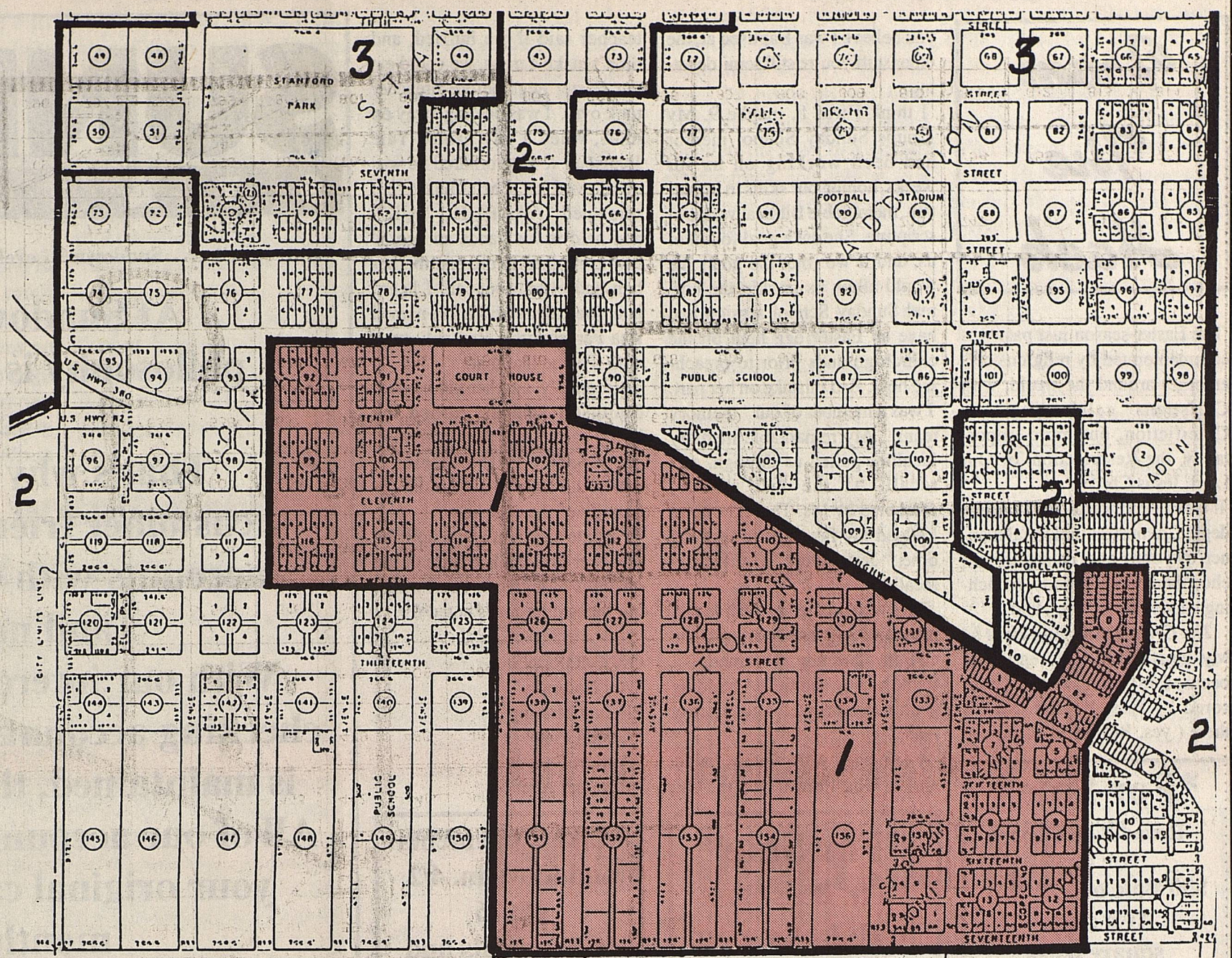
820 N. MUSTANG DR. 592-3359 DENVER CITY

Plains Independent School District Trustee Election Information

The two maps accompanying this article show the boundaries for Plains ISD Trustee District 1 and Plains ISD Trustee-District 5. District 1 is highlighted on the city map at the top of the page, and District 5 is highlighted on the larger map at the bottom of the page. These maps are provided for your information to help you determine if you live in the area described by these two districts. You must be a resident of Dist. 1 to vote for the trustee in Dist. 1 and you must be a resident of Dist. 5 to vote for the trustee in Dist. 5. The other trustee position open is Dist. 6 at-large. As long as you are residing within the boundaries of Plains Independent School District you are eligible to vote for the Dist. 6 at-large position. If you are unable to determine the trustee district in which you reside, help will be available at the polling place.

Early voting for school district trustee positions can be accomplished at the Plains ISD administration building beginning April 19 and ending May 2. The election will be held May 6 at the Plains ISD auditorium foyer.

The candidates for District 1 are Anna Gonzalez and Ramon Diaz. The candidates for District 5 are Brad Crump and John Gray. Brad Palmer is running unopposed for the trustee position of District 6 at-large.





If you've been by the CSW campus recently, you can see that we're really shaking things up! In order to better serve our students and community and to raise the bar of quality even higher, CSW is undergoing major reconstruction which will increase total campus square footage by a whopping 68%.



With Christian principles, free enterprise education, and sound academics at its core, CSW's mission provides the rock solid foundation upon which students may build lives of excellence through faith, success, and service.

COLLEGE OF THE SOUTHWEST - HOBBS
SUMMER SESSION I - MAY 30 - JUNE 26, 2000

MASTER OF SCIENCE IN EDUCATION COURSE OFFERINGS

COURSE NO.	CR	TITLE	DAY	TIME	ROOM	FACULTY
ADMINISTRATION						
EDA 5203	3	Educational Leadership and Supervision	M-F	7:45 - 9:45 am	L109	Staff
EDA 5303	3	Policies and Public Relations	M-F	7:45 - 9:45 pm	L109	Posey, B
EDA 5513	3	Theories of Administration	M-F	10:00 - Noon	S110	Cagle
COUNSELING						
EDC 5323	3	Advanced Theories of Psychological Counseling	M-F	3:00 - 5:00 pm	L109	Westbrook
EDC 5403	3	Group Processes	M-F	5:30 - 7:30 pm	S110	Posey, E
CURRICULUM & INSTRUCTION						
EDI 5203	3	Educational Leadership and Supervision	M-F	7:45 - 9:45 am	L109	Staff
EDI 5231	1	Professionalism and Ethics	M-F	7:45 - 8:30 am	CSWC	Staff
EDI 5303	3	Policies and Public Relations	M-F	7:45 - 9:45 pm	L109	Posey, B
EDI 5333	3	Reading Comprehension Across the Curriculum	M-F	12:30 - 2:30 pm	L109	Cagle
EDUCATION CORE						
EDU 5103	3	Instructional Strategies	M-F	10:00 - Noon	L109	Posey, E
EDU 5122	2	Current Issues in Education	M-F	8:30 - 9:45 am	CSWC	Staff
EDU 5213	3	Professional/Ethical Issues in Counseling	M-F	12:30 - 2:30 pm	S110	Sanders
EDU 5513A	3	Culturally Diverse and Special Needs Population	M-F	3:00 - 5:00 pm	S110	Smith, M
EDU 5513B	3	Culturally Diverse and Special Needs Population	M-F	7:45 - 9:45 pm	S103	Atherton

UNDERGRADUATE COURSE OFFERINGS

ACCOUNTING						
ACT 4343	3	Auditing Theory and Ethics	M-F	7:45 - 9:45 am	M-3	Stephens
ART						
ART 1103	3	Art Appreciation	M-F	12:30 - 2:30 pm	S113	Staff
ASTRONOMY						
AST 1104	3	Descriptive Astronomy	M-F	5:30 - 7:30 pm	S126	Staff
AST 110L	1	Astronomy Laboratory	M-F	7:45 - 8:45 pm	S126	Staff
COMPUTER SCIENCE						
CSI 2203	3	Educational Technology	M-F	3:00 - 5:00 pm	L108	Sagerty
CRIMINAL JUSTICE						
CRJ 4303	3	Criminal Justice Administration	M-F	5:30 - 7:30 pm	S108	Staff
ECONOMICS						
ECO 3203	3	Principles of Business in a Free Enterprise System	M-F	5:30 - 7:30 pm	L109	Staff
EDUCATION						
BIL 3102	2	Teaching English as a Second Language	M-F	12:30 - 1:45 pm	S103	Staff
BIL 4101	1	Research in Bilingual Education	M-F	1:45 - 2:30 pm	S103	Staff
EDU 2103	3	Foundations of Education	M-F	7:45 - 9:45 am	S124	Staff
EDU 3213	3	Survey of Multicultural and Exceptional Learners	M-F	12:30 - 2:30 pm	S124	Sagerty
EDU 4203	3	Diagnostic/Corrective Teaching	M-F	7:45 - 9:45 am	S121	Connell
EDU 4213	3	Teaching in the Secondary School	M-F	10 am - Noon	S113	Weiser
EDU 4413	3	Reading in the Content Area	M-F	3:00 - 5:00 pm	S124	Hunt, M
SPED 2103	3	Introduction to Special Education	M-F	10 am - Noon	S124	Hunt, K
SPED 3523	3	Assessment, Evaluation, Referral, and Placement of the Exceptional Learner	M-F	7:45 - 9:45 am	S103	Hunt, K
SPED 4101	1	Research in Special Education	M-F	3:00 - 3:45 pm	S103	Emery
SPED 4201	1	The Gifted/Talented Learner	M-F	4:00 - 4:45 pm	S103	Emery
ENGLISH						
ENG 2223	3	Life and Literature of the Southwest	M-F	7:45 - 9:45 am	L100	Clingman
ENG 3513	3	Children's Literature	M-F	10 am - Noon	L100	Clingman
ENG 3583	3	Masterworks of Literature	M-F	5:30 - 7:30 pm	L100	Clingman
FINANCE						
FIN 3403	3	Investments/Personal Financial Planning	M-F	7:45 - 9:45 pm	S108	Arnold
HEALTH/PHYSICAL EDUCATION						
HPE 4103	3	Kinesiology	M-F	12:30 - 2:30 pm	MFC	Staff
HPE 4203	3	Physiology of Exercise	M-F	10 am - Noon	MFC	Luallen
HISTORY						
HIS 1203	3	Western Civilization from 1716	M-F	10 am - Noon	S108	Sumruld
HIS 2223	3	Life and Literature of the Southwest	M-F	7:45 - 9:45 am	L100	Clingman
HIS 4703	3	Topics in History: Tudor and Stuart England, From Henry to the Glorious Revolution	M-F	7:45 - 9:45 am	S108	Sumruld
LINGUISTICS						
LIN 2253	3	Introduction to Linguistics	M-F	3:00 - 5:00 pm	S108	Vardeman
MANAGEMENT						
MGT 3403	3	Human Resource Management	M-F	7:45 - 9:45 pm	S110	Luallen
MGT 3503	3	Organizational Behavior	M-F	7:45 - 9:45 am	S110	Owensby
MGT 4162	2	Creating a Business Plan	M-F	10:00 - 11:15 am	M-3	Owensby
MATHEMATICS						
MAT 1103	3	College Algebra for General Education	M-F	10:00 - Noon	S121	Fox
MAT 2103	3	Principles of Probability and Statistics	M-F	7:45 - 9:45 pm	S121	Staff
MUSIC						
MUS 1103	3	Music Appreciation	M-F	7:45 - 9:45 am	S113	Studley
PSYCHOLOGY						
PSY 3403	3	Interpersonal Group Dynamics	M-F	12:30 - 2:30 pm	S108	Sweat
PSY 4403	3	Experimental Psychology	M-F	7:45 - 9:45 pm	S113	Barchenger
RELIGION						
REL 1203	3	New Testament Survey	M-F	3:00 - 5:00 pm	S113	Glasgow
SOCIOLOGY						
SOC 1103	3	Introduction to Sociology	M-F	5:30 - 7:30 pm	S124	Anderson
SOC 3303	3	Applied Sociology	M-F	10:00 - Noon	S103	Anderson

COLLEGE OF THE SOUTHWEST - HOBBS
SUMMER SESSION I -- MAY 30 - JUNE 26, 2000

Registration 9:00 am to 6:00 pm	May 25
Memorial Day	May 29
*Classes Begin	May 30
Last Day to Change Classes	June 1
Last Day for 100% Tuition Refund	June 5
Zero Percent Tuition Refund	June 6
Last Day to Withdraw with a "W"	June 13
Final Examinations for Session I	June 26

SUMMER SESSION II -- JULY 5 - AUGUST 1, 2000

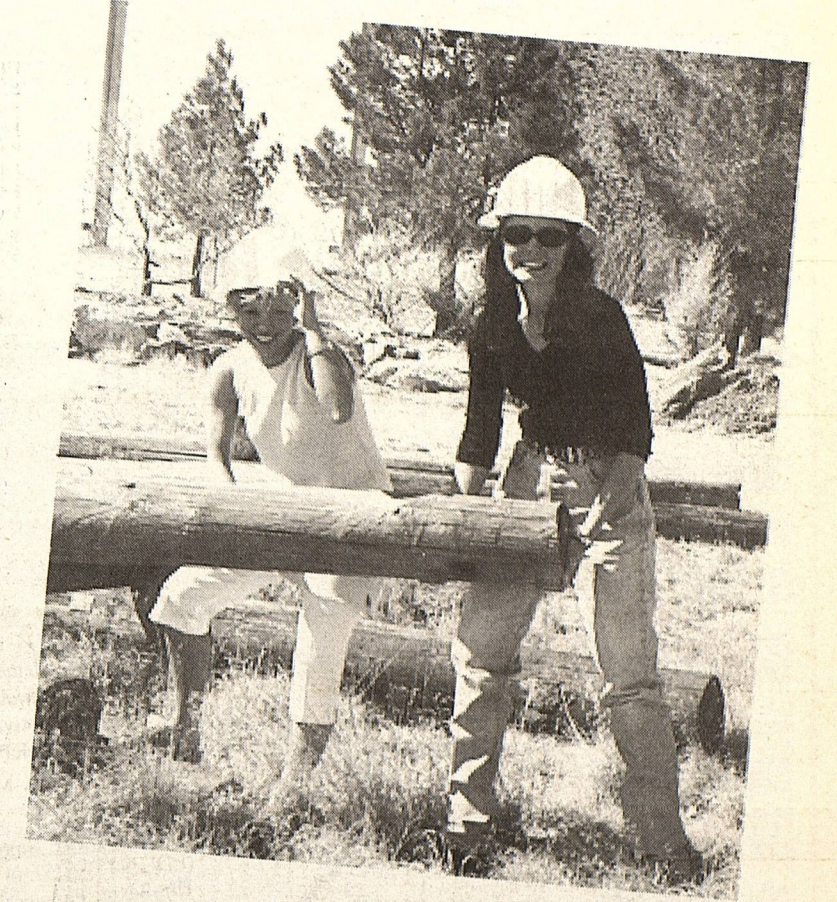
Registration 9:00 am to 6:00 pm	June 29
*Classes Begin	July 5
Last Day to Change Classes	July 7
Last Day for 100% Tuition Refund	July 11
Zero Percent Tuition Refund	July 12
Last Day to Withdraw with a "W"	July 18
Final Examinations for Session II	August 1
Dorms Closed	August 2

* The scheduled rates are set according to the day classes begin; therefore, refunds are not based on the date an individual registers or begins attending class.
NOTE: Tuition refunds for Special Course Offerings will not be made after classes have begun.

TUITION & FEES

Tuition Per Semester Hour	\$150.00
Graduate Tuition Per Semester Hour	158.00
Directed Studies Per Semester Hour	162.00
Audit Per Semester Hour	75.00
Application Fee (One-Time Fee)	25.00
Change of Course Fee (Per Change Slip)	20.00
<i>This charge made for any course changes other than those required by the College.</i>	
Student Service Fee for Summer Session (per semester)	20.00

NOTE: Fees are not refundable. A complete list of fees is contained in the 2000-2002 Bulletin. All tuition, housing expenses, and fees are due at the beginning of the semester. If a student's account is not clear by the twenty-first class day, the student will be dropped from classes with a financial indebtedness. CSW reserves the right to make such changes as it deems necessary.



CSW's Mustangs just keep hitting the mark with outstanding athletic programs! All of our teams, from Lady Mustang soccer and volleyball to Mustang baseball, are made of the very finest championship material: great students, great athletes, great coaching, and great heart!

COLLEGE OF THE SOUTHWEST - CARLSBAD
SUMMER SESSION -- JUNE 5, 2000 - JULY 28, 2000

Advisement, Pre-Registration	May 22 - May 26
Registration & Textbook Purchase	May 29 - June 1
Classes Begin	June 5
Last Day to Change Classes	June 12
Last Day for 100% Refund	June 12
Last Day for 50% Refund	June 19
Zero Percent Refund	June 20
Last Day to Withdraw with a "W"	July 5
Final Examinations End	July 28

* The scheduled rates are set according to the day classes begin; therefore, refunds are not based on the date an individual registers or begins attending class.

TUITION & FEES

Tuition Per Semester Hour	\$170.00
Directed Studies Per Semester Hour	182.00
Audit Per Semester Hour	85.00
Application Fee (One-Time Fee)	25.00
Change of Course Fee (Per Change Slip)	20.00
<i>This charge made for any course change(s) other than those required by the College.</i>	

NOTE: Fees are not refundable. A complete list of fees is contained in the 2000-2002 Bulletin. All tuition, fees, and other expenses are due at the beginning of the session. If a student's account is not clear by the fourteenth class day of the session, the student will be dropped from classes with a financial indebtedness. CSW reserves the right to make such changes as it deems necessary.



If you already have a baccalaureate degree, but you'd like to earn your master's in education, CSW has the perfect blueprint for your future. Lay plans today to earn your Master of Science degree in Educational Administration, School Counseling, or Curriculum & Instruction.



CSW's SIFE team has certainly climbed the ladder to free enterprise success over the years. Our Students in Free Enterprise team has consistently nailed down one of the top positions in national and international competition for the last 20+ years. Now that's true workmanship!



CSW's Theatre Department consistently constructs top quality productions for the enjoyment of the campus and regional community. Glynesse Floyd, Director of CSW's Theatre Department, is well known for producing two-thumbs-up hits that really raise the ceiling on entertainment!

COLLEGE OF THE SOUTHWEST - CARLSBAD
SUMMER SESSION 2000 -- JUNE 5 - JULY 28

COURSE NO.	CR	TITLE	DAY	TIME	FACULTY
ACCOUNTING					
ACT 3233	3	Governmental and Nonprofit Accounting	Th	6:00 - 9:00 pm	Lunsford
BIOLOGY					
BIO 4204	3	Entomology	W	1:30 - 4:30 pm	Breene
BIO 4201	1	Entomology Laboratory	W	4:30 - 5:30 pm	Breene
BIO 4304	3	Desert Ecology	Tu	1:30 - 4:30 pm	Breene
BIO 430L	1	Desert Ecology Laboratory	Tu	4:30 - 5:30 pm	Breene
BUSINESS ADMINISTRATION					
BUA 1103	3	Business and Society	Tu	6:00 - 9:00 pm	Lunsford
CRIMINAL JUSTICE					
CRJ 3403	3	Community Corrections	W	6:00 - 9:00 pm	Blenden
CRJ 4203	3	Issues in Ethics, Law, and Criminal Justice	M	6:00 - 9:00 pm	Blenden
ECONOMICS					
ECO 2103	3	Macroeconomics	Tu	6:00 - 9:00 pm	Connors
ECO 3203	3	Principles of Business in Free Enterprise System	M-F	5:30 - 7:30 pm	Staff
EDUCATION					
EDU 2103	3	Foundations of Education	Tu	1:30 - 4:30 pm	Wheeler
EDU 3203	3	Psychological Foundations of Teaching & Learning	M	9:00 - Noon	Hamel
EDU 3503	3	Communication Arts in the Elementary School	W	2:00 - 5:00 pm	Wittman
EDU 4203	3	Diagnostic/Corrective Teaching	F	9:00 - Noon	Schnoor
SPED 2103	3	Introduction to Exceptional Learners & Special Ed	W	9:00 - Noon	Denning
SPED 3323	3	Methods and Materials for Special Education	Th	9:00 - Noon	Hamberg
ENGLISH					
ENG 2223	3	Life and Literature of the Southwest	M	2:00 - 5:00 pm	Staff
ENG 3413	3	Classical Mythology	Tu	9:00 - Noon	Moore, J
ENVIRONMENTAL MANAGEMENT					
EMS 3102	2	Introduction to Environmental Management	Tu	6:00 - 8:00 pm	Beasley
EMS 4203	3	Energy Economics	W	6:00 - 9:00 pm	Scott
GEOGRAPHY					
GEOG 2103	3	Physical and Cultural Geography	W	9:00 - Noon	Vuk
HISTORY					
HIS 2223	3	Life and Literature of the Southwest	M	2:00 - 5:00 pm	Staff
MANAGEMENT					
MGT 2103	3	Principles of Management	W	6:00 - 9:00 pm	Beasley
MGT 3123	3	Ethics and Leadership	M	6:00 - 9:00 pm	Connors
MGT 4143	3	Supervision & Performance Eval. in Organizations	Th	6:00 - 9:00 pm	Beasley
POLITICAL SCIENCE					
POS 3303	3	American Presidency	F	9:00 - Noon	Vaughn
RELIGION					
REL 2103	3	World Religions	Tu	2:00 - 5:00 pm	Hammar
SPEECH					
SPE 1103	3	Principles of Speech	W	1:30 - 4:30 pm	Staff

COLLEGE OF THE SOUTHWEST - CARLSBAD
FALL 2000 SESSION "A" -- AUGUST 7 - OCTOBER 13

COURSE NO.	CR	TITLE	DAY	TIME	FACULTY
ACCOUNTING					
ACT 2204	4	Principles of Accounting I	M	6:00 - 9:00 pm	Lunsford
ACT 3133	3	Managerial Accounting	W	6:00 - 9:00 pm	Lunsford
ART					
ART 1103	3	Art Appreciation (ITV)	MW	1:00 - 2:20 pm	Staff
ART 2103	3	History of Western Art I (ITV)	MW	11:00 - 12:20 pm	Staff
BIOLOGY					
BIO 3503	3	General Ecology	Fri	1:00 - 4:00 pm	Breene
BIO 3513	3	Cell Biology	Tu	9:00 - Noon	Bierle, B
BIO 4223	3	Field Biology	Sat	9:00 - Noon	West
BUSINESS ADMINISTRATION					
BUA 3303	3	Professional Communication and Sales	Th	1:00 - 4:00 pm	Vandergriff
BUA 3313	3	Business Law I	Th	6:00 - 9:00 pm	Banks, D
CRIMINAL JUSTICE					
CRJ 3403	3	Community Corrections	W	6:00 - 9:00 pm	Blenden
CRJ 4203	3	Issues in Ethics, Law, and Criminal Justice	M	6:00 - 9:00 pm	Blenden
ECONOMICS					
ECO 2103	3	Macroeconomics	Tu	6:00 - 9:00 pm	Connors
ECO 3203	3	Principles of Business in a Free Enterprise System	M-F	5:30 - 7:30 pm	Staff
EDUCATION					
EDU 2103	3	Foundations of Education	Tu	1:30 - 4:30 pm	Wheeler
EDU 3203	3	Psychological Foundations of Teaching and Learning	M	9:00 - Noon	Hamel
EDU 3503	3	Communication Arts in the Elementary School	W	2:00 - 5:00 pm	Wittman
EDU 4203	3	Diagnostic/Corrective Teaching	F	9:00 - Noon	Schnoor
SPED 2103	3	Introduction to Exceptional Learners & Special Ed	W	9:00 - Noon	Denning
SPED 3323	3	Methods and Materials for Special Education	Th	9:00 - Noon	Hamberg
ENGLISH					
ENG 2223	3	Life and Literature of the Southwest	M	2:00 - 5:00 pm	Staff
ENG 3413	3	Classical Mythology	Tu	9:00 - Noon	Moore, J
ENVIRONMENTAL MANAGEMENT					
EMS 3102	2	Introduction to Environmental Management	Tu	6:00 - 8:00 pm	Beasley
EMS 4203	3	Energy Economics	W	6:00 - 9:00 pm	Scott
GEOGRAPHY					
GEOG 2103	3	Physical and Cultural Geography	W	9:00 - Noon	Vuk
HISTORY					
HIS 2223	3	Life and Literature of the Southwest	M	2:00 - 5:00 pm	Staff
MANAGEMENT					
MGT 2103	3	Principles of Management	W	6:00 - 9:00 pm	Beasley
MGT 3123	3	Ethics and Leadership	M	6:00 - 9:00 pm	Connors
MGT 4143	3	Supervision & Performance Eval. in Organizations	Th	6:00 - 9:00 pm	Beasley
POLITICAL SCIENCE					
POS 3303	3	American Presidency	F	9:00 - Noon	Vaughn
RELIGION					
REL 2103	3	World Religions	Tu	2:00 - 5:00 pm	Hammar
SPEECH					
SPE 1103	3	Principles of Speech	W	1:30 - 4:30 pm	Staff

COLLEGE OF THE SOUTHWEST - HOBBS
SUMMER SESSION II -- JULY 5 - AUGUST 1, 2000

MASTER OF SCIENCE IN EDUCATION COURSE OFFERINGS

COURSE NO.	CR	TITLE	DAY	TIME	ROOM	FACULTY
ADMINISTRATION						
EDA 5213	3	Theories of Curriculum Development	M-F	7:45 - 9:45 am	S110	Sanders
EDA 5313	3	Educational Law	M-F	10:00 - Noon	L109	Cagle
EDA 5403	3	Educational Finance and Facilities	M-F	12:30 - 2:30 pm	S110	Cagle
EDA 5523	3	Applied Educational Research	M-F	5:30 - 7:30 pm	S110	Staff
COUNSELING						
EDC 5313	3	Counseling Techniques for School Counselors	M-F	7:45 - 9:45 pm	L109	Salb
EDC 5423	3	Child and Adolescent Counseling	M-F	5:30 - 7:30 pm	L109	Salb
CURRICULUM & INSTRUCTION						
EDI 5213	3	Theories of Curriculum Development	M-F	7:45 - 9:45 am	S110	Sanders
EDI 5223	3	Advanced Assessment	M-F	3:00 - 5:00 pm	L109	Staff
EDI 5233	3	Advanced Classroom Management	M-F	12:30 - 2:30 pm	L109	Staff
EDI 5313	3	Educational Law	M-F	10:00 - Noon	L109	Cagle
EDI 5413	3	Program Development and Management	M-F	7:45 - 9:45 am	L109	Smith, M
EDUCATION CORE						
EDU 5203A	3	Theories of Learning and Human Development	M-F	10 am - Noon	S110	Sanders
EDU 5203B	3	Theories of Learning and Human Development	M-F	7:45 - 9:45 pm	S103	Staff
EDU 5413	3	Program Development and Management	M-F	7:45 - 9:45 am	L109	Smith, M

UNDERGRADUATE COURSE OFFERINGS

BIOLOGY						
BIO 4223	3	Field Biology	M-F	10 am - Noon	S126	Smith, T
BIO 4703	3	Topics in Biology: Ecology	M-F	7:45 - 9:45 am	S126	Smith, T
COMPUTER SCIENCE						
CSI 2213	3	Electronic Spreadsheets	M-F	12:30 - 2:30 pm	L108	Staff
CRIMINAL JUSTICE						
CRJ 3203	3	Understanding Criminal Behavior	M-F	5:30 - 7:30 pm	S121	Staff
EDUCATION						
BIL 2103	3	Introduction to Bilingual Education and Learning	M-F	3:00 - 5:00 pm	S103	Hunt, M
EDU 3203	3	Psychological Foundations of Teaching and Learning	M-F	3:00 - 5:00 pm	S113	Jamison
EDU 3222	2	Classroom Management and Organization	M-F	10:00 - 11:15 am	S124	Ayyagari
EDU 3503	3	Communication Arts in the Elementary School	M-F	7:45 - 9:45 am	S124	Emery
EDU 3523	3	Educational Measurement and Evaluation	M-F	12:30 - 2:30 pm	S121	Gage
EDU 4114	4	Teaching in the Elementary School	M-F	3:00 - 5:30 pm	S124	McPeters
SPED 3222	2	Classroom Management and the Exceptional Learner	M-F	12:30 - 1:45 pm	S103	Ayyagari
SPED 3323	3	Methods and Materials for Special Education	M-F	7:45 - 9:45 am	S103	Hunt, K
SPED 3423	3	Special Education Curriculum	M-F	3:00 - 5:00 pm	S110	Hunt, K
SPED 4211	1	The Physically-Impaired Learner	M-F	10:00 - 10:45 am	S103	Emery
SPED 4221	1	The Mentally-Impaired Learner	M-F	11:00 - 11:45 am	S103	Emery
ENGLISH						
ENG 2213	3	Creative Writing	M-F	10 am - Noon	L108	Sandle
ENG 4403	3	Advanced Composition	M-F	7:45 - 9:45 am	L108	Sandle
ENG 4533	3	Major American Author	M-F	12:30 - 2:30 pm	L100	Patton, K
FINANCE						
FIN 4413	3	Insurance and Risk	M-F	7:45 - 9:45 pm	L100	Stephens
FIN 4703	3	Topics in Finance	M-F	5:30 - 7:30 pm	L100	Staff
GEOGRAPHY						
GEOG 2303	3	The History and Geography of New Mexico	M-F	12:30 - 2:30 pm	S113	Huff
HISTORY						
HIS 1103	3	Western Civilization to 1715	M-F	5:30 - 7:30 pm	S108	Huff
HIS 2303	3	The History and Geography of New Mexico	M-F	12:30 - 2:30 pm	S113	Huff
MANAGEMENT						
MGT 4163	3	Topics in Management	M-F	12:30 - 2:30 pm	S108	Staff
MGT 4303	3	Industrial and Organizational Psychology	M-F	7:45 - 9:45 pm	S113	Dunn, T
MARKETING						
MKT 3503	3	Consumer Behavior	M-F	10:00 - Noon	S108	Owensby
POLITICAL SCIENCE						
POS 4223	3	Constitutional History	M-F	7:45 - 9:45 am	S108	Sumrud
PSYCHOLOGY						
PSY 3103	3	Principles of Behavior Management	M-F	7:45 - 9:45 am	S113	Anderson
PSY 3213	3	Developmental Psychology	M-F	12:30 - 2:30 pm	S124	Wolske
PSY 3503	3	Social Psychology	M-F	5:30 - 7:30 pm	S113	Anderson
PSY 4203	3	Abnormal Psychology	M-F	3:00 - 5:00 pm	S108	Wolske
PSY 4303	3	Industrial and Organizational Psychology	M-F	7:45 - 9:45 pm	S113	Dunn, T
RELIGION						
REL 1103	3	Old Testament Survey	M-F	3:00 - 5:00 pm	S121	Glasgow
SOCIOLOGY						
SOC 3203	3	Race and Ethnic Relations	M-F	3:00 - 5:00 pm	L100	Staff
SOC 3503	3	Social Psychology	M-F	5:30 - 7:30 pm	S113	Anderson
SPANISH						
SPA 3203	3	Spanish Grammar and Composition	M-F	10:00 - Noon	S113	Staff



Among independent 4-year colleges, College of the Southwest has designed the most affordable education in New Mexico. Better yet, CSW is one of the most affordable independent colleges in the entire United States!



CSW has really been building national recognition in recent years. We've been listed in *U.S. News & World Report* for campus diversity, in *Money* magazine's "Best College Buys for the Money," and in *Time/Princeton Review's* "The Best College for You!"

COLLEGE OF THE SOUTHWEST - HOBBS
FALL 2000 SCHEDULE -- AUGUST 21 - DECEMBER 11

MASTER OF SCIENCE IN EDUCATION COURSE OFFERINGS

Table listing Master of Science in Education course offerings with columns for Course No., CR, Title, Day, Time, and Room.

UNDERGRADUATE COURSE OFFERINGS

Table listing Undergraduate course offerings with columns for Course No., CR, Title, Day, Time, and Room.

Table listing Education course offerings with columns for Course No., CR, Title, Day, Time, and Room.

Table listing History course offerings with columns for Course No., CR, Title, Day, Time, and Room.

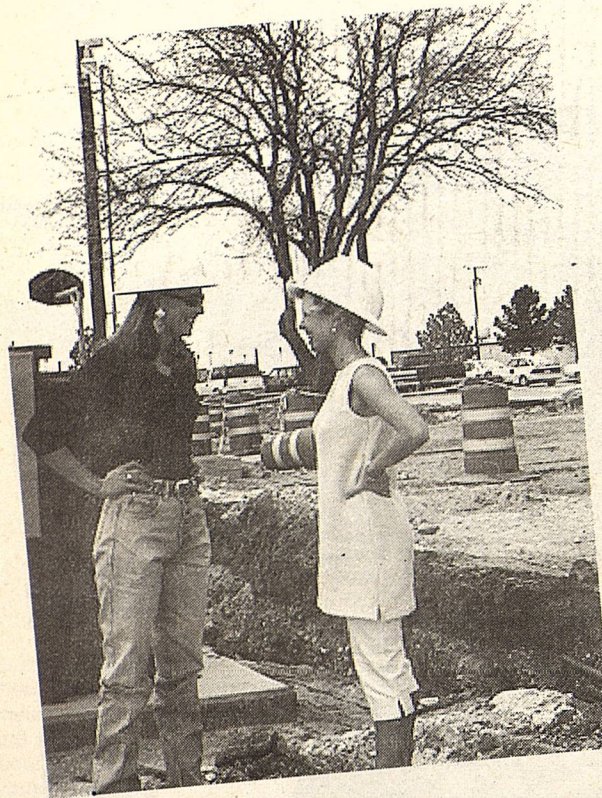
Table listing Linguistics, Management, and Marketing course offerings with columns for Course No., CR, Title, Day, Time, and Room.

Table listing Mathematics, Music, Philosophy, Physics, and Political Science course offerings with columns for Course No., CR, Title, Day, Time, and Room.

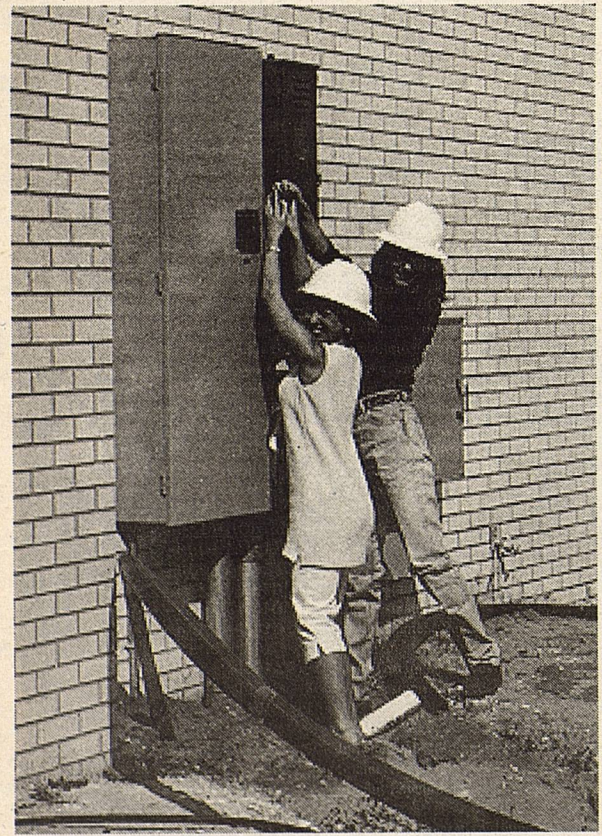
Table listing Psychology, Religion, and Sociology course offerings with columns for Course No., CR, Title, Day, Time, and Room.

Table listing Spanish and Theatre course offerings with columns for Course No., CR, Title, Day, Time, and Room.

Table listing Economics and Health/Physical Education course offerings with columns for Course No., CR, Title, Day, Time, and Room.



Last fall, CSW was named to the John Templeton Foundation's honor roll of 'Colleges that Encourage Character Development.' Two of our programs--LIFE and the Senior Seminar in Leadership and Ethics--were ranked with the top character-building programs in the U.S.!



CSW is indeed changing, but some things just can't get any better. Like the Distinguished Lecture Series. The DLS brings some of the nation's greatest movers and shakers right here to Hobbs!



The CSW-Carlsbad campus has carved out quite a niche for itself in Eddy County since its inception in 1992 at the request of area residents and civic leaders.



The Center for Educational Excellence (CEE) offers professional development free of charge for K-12 educators in Lea County.

NOTE: Room numbers may change; check with the Registrar's office.