

COWBOY COUNTRY NEWS



PUBLISHED EACH WEDNESDAY,
PLAINS, TEXAS
806 456-8451

Volume 1, Issue 18, Wednesday, January 4, 1995

CLINTON NAMES NEW AG HEAD

In White house ceremonies December 28, President Clinton nominated Dan Glickman as his choice for Secretary of Agriculture. In accepting the nomination, Glickman said in part, "I am honored to accept your nomination. The challenges are daunting, the opportunities immense. I look forward to meeting both."

"My highest priority will be meeting your commitment to our farmers and ranchers and everyone in rural America."

"I intend to keep the commitment ensure that America's consumers have the world's most abundant, wholesome food supply."

He added, in part, "Thanks to Mike Espy's initiative,

USDA is on the leading edge of reinventing Government. It is important we not overlook agriculture's many successes, its unique contributions to our economy and culture".

Glickman, U.S. Representative from Kansas' 4th District, is a 18 year veteran in the House. He has served on the House Permanent Select Committee on Intelligence.

He has served as Chairman of the subcommittee on General Commodities, and as a member of the Subcommittee on Ag Department Operations and Nutrition, and has been a key player in formulating the past four farm bills, and a number of other committees and subcommittees.

He replaces departing Mike Espy in the large and important Agriculture Department.

THANKS FROM US TO YOU

THE FIRST ISSUE OF THE COWBOY COUNTRY NEWS WAS PUBLISHED AUGUST 31, 1994. THIS, THE 18th ISSUE, BRINGS IN THE NEW YEAR, AND GIVES US THE OPPORTUNITY TO TELL YOU, OUR READERS, SUBSCRIBERS, ADVERTISERS, OUR FRIENDS, HOW MUCH WE APPRECIATE YOUR SUPPORT IN OUR YOUNG HISTORY. WE ARE NOW MAILING OUR PAPER TO SUBSCRIBERS IN NEW MEXICO, LOUISIANA, TENNESSEE, MARYLAND, INDIANA, MISSISSIPPI, VIRGINIA, CALIFORNIA, AND GEORGIA. OUR TEXAS SUBSCRIBERS ARE SCATTERED ALL OVER THE STATE, AND SOME THREE DOZEN FRIENDS ARE RECEIVING 'CCN' IN DENVER CITY. WE ARE THRILLED WITH THE RESPONSE WE HAVE RECEIVED TO OUR PUBLICATION, AND WE MAKE THIS NEW YEAR PLEDGE TO YOU---WE WILL MAKE EVERY EFFORT TO CONTINUE PUBLISHING A WEEKLY PAPER WHICH MEETS THE COMMUNITY NEEDS. THIS IS A FIRM COMMITMENT, FOR WE ARE PART OF THE COMMUNITY TOO!
HAPPY NEW YEAR !

DENVER CITY HONORS GARY WALKER

Newly elected State Representative, Gary Walker, Tenth Congressional District, was honored at a public reception December 29 in Denver City at the First National Banks' Community Room.

Many dozens of area citizens visited the reception to congratulate and wish Walker well in his new undertaking. He will be sworn in on January 10, and then will be able to start functioning as Yoakum County's first elected State

official. The reception was the original brain child of First National Director, Ron Hatfield. He was out of town during the affair. Clifford Hitt, Bank President, said, "We, the officers, directors and employees of First National Bank, are very pleased we had this opportunity to express our appreciation to Gary for his successful campaign, and wish him the best in Austin, where he will represent all of us in the District."



D.C. NEWSOM, GARY WALKER, & SHERIFF JIM RICE.

SHARP SAYS TEXAS ENJOYS LARGEST CASH BALANCE OF ANY STATE

(AUSTIN) "When the Texas Legislature convenes January 10, lawmakers will have a luxury they haven't seen in a long time--a \$2.2 billion cash balance," State Comptroller John Sharp said.

"But Texas isn't the only state that is reaping the benefits of economic growth. Almost every state ended its 1994 fiscal year with a balanced budget. Only California and Hawaii are expected to have serious financial problems next year," Sharp said.

"Because of a growing economy, rising sales tax collections and implementation of many of the cost-cutting recommendations of the Texas Performance Review, the state has collected more money than it has spent during the first year of the current biennium," Sharp explained.

"The success of the Texas Lottery also has contributed to the state cash surplus. Nearly \$800 million in lottery proceeds went into the state's general revenue fund during the 1994 fiscal year," Sharp said.

"I will issue the official Biennial Revenue Estimate when the Legislature convenes. I think it's going to be higher than anybody expects. If the current economic trends continue,

the state will have more money coming in during the next biennium.

"Lawmakers should have little trouble providing all of the necessary services and avoiding a tax increase, but they can't do it without adopting some of the \$2.1 billion in money-saving suggestions contained in Gaining Ground, the latest Texas Performance Review report," Sharp said.

During hard economic times in the early 1990s, many states were forced to expand their tax bases or raise taxes to keep state finances in the black. Now almost half of the states are considering tax cuts as economic recovery has caused state tax revenues to increase by an average of 6.7 percent in the first quarter of 1994, compared to the same period one year ago.

Job growth is spurring the economic recovery in Texas and other states. More than half of the states exceeded the national 2 percent job growth rate between June of 1993 and June of 1994. The fact that Texas has no corporate or personal income tax is a powerful incentive for businesses to locate here.

TURN TO PAGE 2, "STATE CASH"

A LETTER TO THE 21st CENTURY

BY LINDA GRAU POWELL

In our quest for bigger and better, 20th century states fought wars and ravaged the environment. Outer accumulations of degrees and wealth defined success for many citizens. Landing on the moon and nuclear weapons determined power.

The question for inhabitants of the 21st century is "AT what cost do we focus on the outer life and neglect the inner world of man?" Consider my plea to understand the thirst for love, security and peace. Whether one finds this "Oneness with the universe"

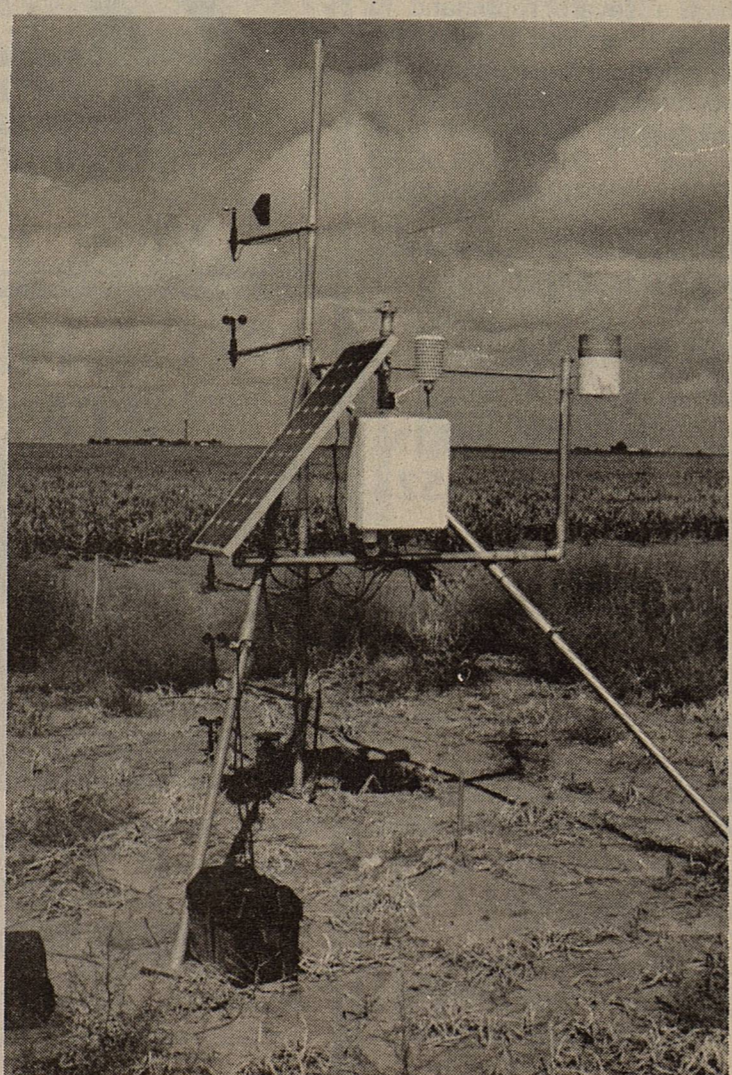
in church, meditation retreats, or riding a bicycle is irrelevant.

Quality of life is to end and means to fulfillment. States must provide an environment where food, shelter, and entertainment for citizens are accessible, but must also bring children into the world with care and concern. Improving self-concept and problem solving skills must be encouraged at an early age if youngsters are to say no to drugs and violence and yes to life, no to aloneness and despair and yes to participation.

However, individuality is to be valued and encouraged since group mentality restricts the soul's growth, compassion and concern for the sick, aged, and handicapped must be tempered with can-do spirit and responsibility.

In the future, travel to other countries should be mandatory within reason. As one views other cultures, one realizes the sameness of the human race and forgets the divisions of color, creed and language. The rich nations will not be able to solve the myriad of problems facing the poor. But third world countries may be able to solve their own problems of over-population, disease, and inflation with enlightened help.

Just as the ideological split of this century overshadowed foreign policy decisions, the future holds depletion of natural resources, irrational leaders, and economic rivalry as fractious elements. The 21st century will not be utopia nor will it be doomsday. It will be a struggle for temperance, compassion, protection, and good will. Neither would we wish for perfect individuals from petri dishes to inhabit the earth. Our plurality gives us new approaches to life and celebration of diversity lets us be unique, fearful of easy solutions, and proud of our heritage. But let us also learn the wisdom of



Solar Powered Data Collecting Weather Station on Bearden Farm

WIND SOIL EROSION TESTS RESUME.

Last years scientific study of County farm soil erosion caused by prevailing winds resumed recently when gathering sites were re-installed on two local farms, according to Mario Avila, District Conservationist, Natural Resources Conservation Service.

The soil gathering clusters were again installed on the Eddie Earnest and Ricky Bearden farms east of town.

On a periodical basis, technicians gather the sand and dust particles collected, and ship the samples to the USDA field office in Big Spring, where they are analyzed and weighed. In addition, computerized data is transferred from the weather station on the Bearden farm, which records minute by minute, day by day data on temperature, humidity, wind direction and velocity, rain fall, and even the number of sand particles hitting instruments at ground level.

The project is an attempt by the agency, working with local producers, to determine if current farm practices mandated by various USDA agencies are effective tools in combatting soil erosion, and to determine if producers should be allowed to follow other practices more effective in their individual operations.

It is likely the study will continue in the area a number of years.

TURN TO PAGE 2,

"21st CENTURY"

CONT'D. FROM PAGE ONE,
"STATE CASH"

Other factors contributing to business growth in Texas include an influx of new residents, the relatively low cost of doing business and increased trade with Mexico.

A large increase in sales tax revenues also has contributed to healthier state budgets. In the second quarter of 1994, nationwide sales tax revenues increased by 9 percent compared to the same period a year earlier. Consumer confidence is high in most regions, and that means strong retail sales, particularly of durable goods.

Proceeds from lotteries and casino gambling have also helped produce budget surpluses for some states. Fiscal year 1994 sales for the 34 lotteries in the U.S. increased by 13 percent, to \$28.5 billion, including \$2.7 billion in sales by the Texas Lottery.

However, budget experts warn state officials that it is dangerous to rely on gaming revenue. As more states legalize gambling, the market could become saturated with lotteries, casinos and other games of chance, reducing each state's share of the revenue available from gambling.

State spending across the nation is expected to increase by 4.4 percent next year. When the Texas Legislature convenes, lawmakers will face pressure to spend more on programs such as education, corrections and Medicaid. They are depending heavily on continuing economic growth to bring in the needed revenue, because state leaders have pledged not to increase taxes.

EMS CLASS DATE CHANGE

The Denver City EMS Classes reported in last week's paper, scheduled for January 23, will be held each Monday and Thursday, 6 PM to 10 PM, instead of Tuesday.

For more information, call 592-3600.

CONT'D. FROM PG. 1,
'21st Century'

ages and introspection necessary to feel a common bond with others trodding down life's path to the unknown. Let us concentrate this century on the inner being that may help us make sense of the technological wonders, dilemmas of science, and incongruity of poverty and wealth. For to neglect this part of ourselves is to limit the reasoning ability of humankind.

NICK HANNA IN DPS ACADEMY

Nick Hanna, son of Buddy and Lee Hanna, has received notice of his acceptance in the Department of Public Safety Training Academy. He will be enrolled in the mentally and physically grueling 26 week course on February 20.

Less than 125 DPS trainees were selected for Academy training, from a field of several thousand applicants.

Hanna graduated from Plains High School in 1984. He attended Angelo State University and joined the Big Spring Police Department in February, 1989. He served there as a Patrol Officer, and in the Detective and Narcotics Department. In December, 1992, he moved to Brady Police Department.

Hanna said, "I'm very proud to have been selected in the Academy. It's been a long wait for me, as I started the application process in October 1993. Becoming a DPS officer has been one of the main goals in my law enforcement career. Now I have to survive the Academy."

He and his wife Collette live in Brady with their three sons, Zane 9, Bryce 4, and Collin 3.

Upon graduation from the Academy, Hanna will be able to indicate his preferences for work assignments, and the Department will consider his request, subject to manpower needs in his choices of locations.

LOCAL GRAPE PRODUCERS VISIT FRANCE

Lavern and D.C. (Hoss) Newsom, who along with their son, Neal, supply Caprock Winery with Cabernet Sauvignon grapes from their two vineyards here, enjoyed a recent tour of the principal wine producing area of Southern France.

They departed Houston with a group of some 30 vineyard owners, wine makers and Horticulturists involved in viticulture, for a direct flight to Paris. They enjoyed a day and half touring the ancient and historical capitol city, then flew to their headquarter city in the wine country, Bordeaux, some 450 miles south, and just miles from the Atlantic Ocean.

The tour was organized by Dr. George Ray McEachern, Texas Agricultural Extension Service of Texas A & M. The group visited nineteen Chateau's in the Medoc, Sauterne, Graves and St. Emilion wine production areas surrounding Bordeaux. The coordinator in France for the group was Jean Louis Harberer, of the huge wine making and business conglomerate, Cordier.

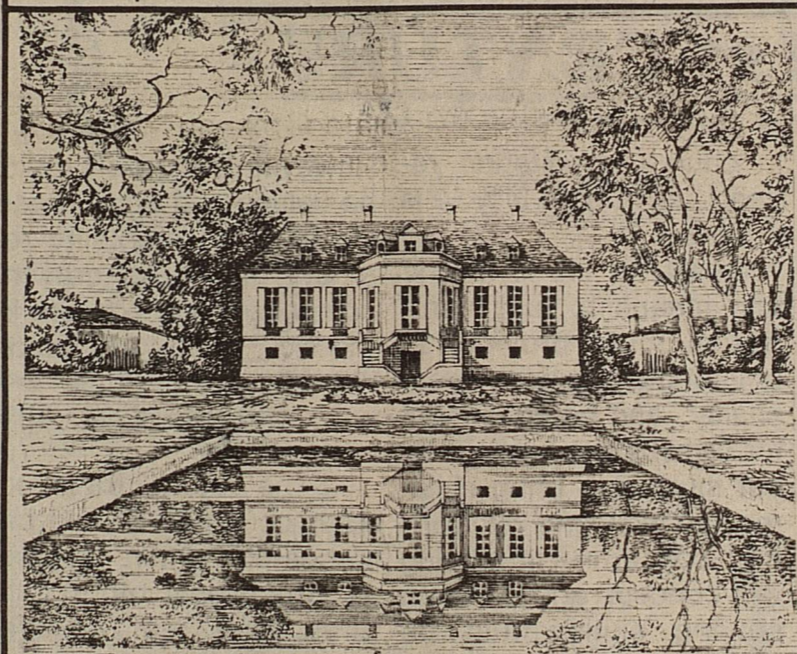
Both Lavern and Hoss were impressed with the

beauty of the country, the excellence of the wine, the fabulous chateaus, and the immensity of the grape growing area and some of the wineries.

Lavern told of one ancient winery they toured in the St. Emilion region. The original stone building was constructed by the invading Moors of North Africa about 300 AD. Under the building, they excavated three levels of caves totaling over 70 acres area. The caves serve as storage rooms for the winery's barrels of wine. At another winery they saw a store room containing over 4,000 barrels of aging red and white wines, each barrel containing 65 gallons.

The group tour included the 'Sitevinitech' wine production show, the largest in the world. "One show building measured one-fourth mile wide, a mile long, and the other was one-fourth mile square," Hoss said.

The local producers, recognized along with Neal by Caprock Winery for the quality of their grapes, still expressed wonder at many of the sights they enjoyed, but neither had much praise for the highly touted French cuisine served at many of the tonier restaurants. Lavern said she never wanted to see roast duck again, while Hoss said, "Our first chicken fried steak, barbecue and red beans were never better when we got home!"



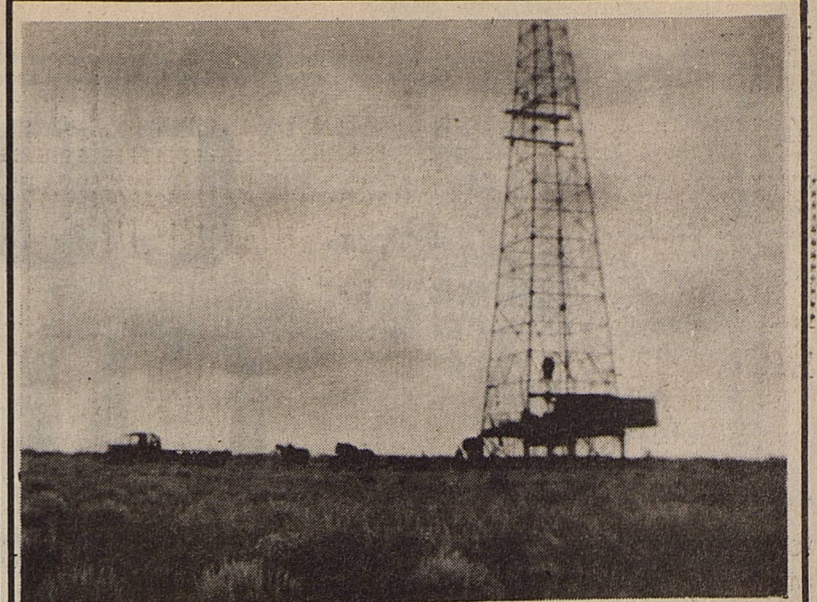
CHATEAU LA LOUVIERE, GRAVES AREA NEAR BORDEAUX, FRANCE

Jacksboro: The *Frontier Echo* reveals today that the local Lazy Man's Club has recently expelled two members and reprimanded a third for violating its rules. One of the expelled members was charged with looking on while another man laid the floor of a house. His explanation that he was not much interested was not deemed sufficient. The second member to be expelled had com-

mitted the offense of borrowing a newspaper and reading it himself.

One man received no more than a severe reprimand for cutting an armload of wood when he gave as his excuse that the wood was rotten and easily cut and that he had done it under protest.

THE TEXAS NEWS, DECEMBER 15, 1988



ERECTING OLD STANDARD DRILLING DERRICK, SOMETIME IN 1940

THIS PICTURE WAS TAKEN ON THE SUE STEVENS RANCH, NORTHWEST OF DENVER CITY. NOTE THE TEAM OF DRAFT HORSES STILL IN USE THEN TO ASSIST THE WINCH TRUCK IN PHOTO. THIS WAS ONE OF HUNDREDS OF NEW WELLS BEING DRILLED DURING THE FRANTIC PACED OIL BOOM.

FIRE AT PLAINS WELDING

Eight members of the Plains Volunteer Fire Department responded to an emergency call from County Commissioner, Jim Barron around one o'clock Monday, January 2, when he noticed smoke pouring from the welding shop owned by James Altman just west of town.

Altman said he and his son had just left the shop for lunch when the fire was reported. According to Dave Tedford, Fire Marshal from Denver City investigating the blaze, and local Fire Chief Charles Diamond,

an open heater was the probable cause of the fire.

Some welding equipment, tools and building insulation was destroyed, smoke damage appeared extensive. Altman said, "The damage could have been much worse if the fire fighters hadn't arrived as soon as they did. I really appreciate their work, and want to especially recognize Robert Loya. He was the first one in the building with his water hose, and he didn't do any more water damage than was absolutely necessary."

Chief Diamond said the smoke in the building was so thick it made the initial fire fighting work very difficult.

A SPECIAL THANK YOU TO THE COMMUNITY OF PLAINS FOR THEIR PRAYERS, LOVE, TELEPHONE CALLS, FOOD, FLOWERS, VISITS, AND ANY KIND OF MINISTRY DONE FOR OUR FAMILY DURING THE ILLNESS AND PASSING OF OUR LOVED ON, "EARL LYNN ELLISON".

FROM EARL'S FAMILY

Associated Farmers Delinting, Inc.



WHERE SERVICE TO OUR FARMER CUSTOMERS COMES FIRST
TOMMY & TERRY THRASH

Office: 1-800-292-7333

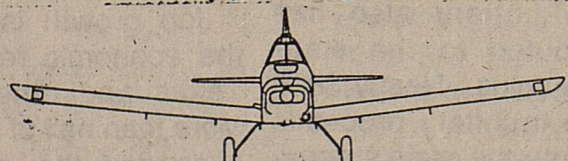
NELSON PRESCRIPTION PHARMACY

805 TAHOKA RD, BROWNFIELD

FOR ALL YOUR PHARMACY NEEDS. PAY US A VISIT... MANY OF YOUR FRIENDS DO. OR CALL TOLL FREE, 1-800-658-9604. WE APPRECIATE OUR PLAINS FRIENDS AND CUSTOMERS.

BOBBY & DOYLE

TWO J-S FLYING SERVICE



MIKE COBB **JACK COBB**
HM. 456-7165 HM. 456-7452
MOB. 456-7511 MOB. 456-7512

LUBBOCK
793-5004
OFFICE
456-3580
456-7436

AERIAL APPLICATION SPECIALISTS

W.E. (RED) BERRY

REAL ESTATE

DENVER CITY, TX

W.E. BERRY, BROKER - 210 N. MAIN
RES. 915-758-5200 - OFF. 592-3523
1-800-874-4576

SPECIALISTS IN RESIDENTIAL, COMMERCIAL, FARM & RANCH PROPERTIES
Gary Dyer Olivia Robertson Mel Foster
456-8451 592-2786 592-2715

PLAINS WELDING SERVICE

FARM & OIL FIELD WELDING

* & FABRICATION *

24 HR. EMERGENCY SERVICE

SAND BLASTING &

WINCH TRUCK

James Altman Ph. 806-456-8682
Owner Mobile 806-456-7575

PLAINS STATE BANK

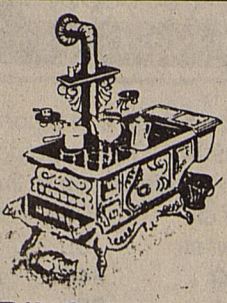
Serving Plains & Yoakum County
38 Years

INDEPENDENTLY AND LOCALLY OWNED

601 9th Street 806-456-2022

PSB
MEMBER FDIC

FOR OUR FEMME FRIENDS



FEEDING FRIENDS AND FAMILY FROM COWBOY COUNTRY KITCHEN

TEXAS CREAM PIE

1 pkg. unflavored gelatin
 1/4 cup cold water
 2 cup milk
 dash of salt
 1-1/2 tsp. flour
 1 cup sugar
 4 eggs
 1 tsp. vanilla
 1/4 tsp. cream of tartar
 1 cup heavy cream
 bitter chocolate, grated

Mix flour into 1/2 cup sugar; beat into egg yolks and stir in milk. Add salt and cook over low heat, stirring constantly, until it bubbles. Remove from heat and stir in gelatin (dissolved in cold water). Stir well; chill. Add cream of tartar to egg whites and beat stiff. Gradually add 1/2 cup sugar, beating well. Add vanilla. Fold the cold custard into this mixture. Pour into 2 baked pie crusts. Chill until firm. Top with whipped cream (you may use Cool Whip for whipped cream) and grated chocolate. Best loved pie by my family.

THE LOCAL CANCER SUPPORT GROUP MEETS THE 2ND WEDNESDAY OF EACH MO. IN THE FELLOWSHIP HALL OF THE FIRST UNITED METHODIST CHURCH 5:30PM. THE MEETINGS ARE OPEN TO ANYONE IN THE AREA.

BIRTHDAYS AND ANNIVERSARIES

January 4
 Bridget Bernal, Eric Ramos
 January 5
 Johnny Don Davis, Larry Mason, Noel & Beth Cianahan (A)
 January 6
 Jack Baucom, Jim Gray
 January 7
 Kyley Bearden, Joshua Aldan Bell
 January 8
 Isaac Ramon, Brenda Canada, Maxie McElroy, Melody Record, Diane Brown, Brent & Casey Stephens (A)
 January 9
 Dorris Tuggle, William & Helen Worsham (A)
 January 10
 Melba Bearden, Pat Henard

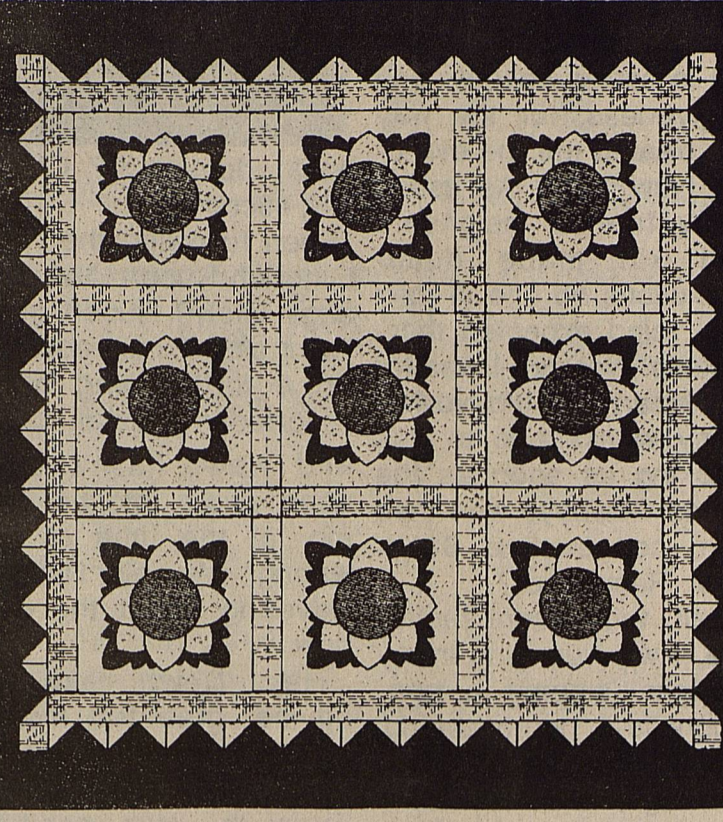
WILLIAMS' OBSERVE 59TH ANNIVERSARY

New Years Day marked the 59th wedding anniversary of James and Stella Williams. The couple were united in marriage January 1, 1936, in Hillsboro, Texas.

James farmed in the Hillsboro area 25 years, and moved to Yoakum County in 1961 to continue farming until his retirement in 1980.

The couple have two children, James Howard who farms in Gaines County, and Jean Patterson, Secretary at the State Department of Transportation here, who lives with her husband Jerry in Denver City.

SUNFLOWER FIELD



FABRICS AND SUPPLIES

Yardage based on 44-inch-wide fabric.

- 1/2 yard of beige print background fabric
- 3/8 yard of green fabric for leaves and pieced outer border
- 1/2 yard of gold print fabric for flower petals, corner blocks, and pieced border
- 1/8 yard of black print fabric for flower center
- 1/2 yard of small black plaid fabric for lattice and inner border
- 1/2 yard of large black plaid fabric for binding
- 1 yard of fabric for quilt backing
- 1 yard of 16-inch-wide paper-backed fusible webbing
- Quilt batting, at least 32 inches square

SIZE

Wall quilt: 28 inches square (unquilted)
 Finished block: 6 inches square.

HAPPY QUILTING

BEAUTY CONTROL COSMETICS

HOLLY DYER 456-8451

STEP AEROBICS BY DANA

Holiday Stuffing Got You Puffing ?

BURN OFF A FEW QUICK POUNDS IN ONE OF OUR FUN CLASSES!!

JOIN US!!

CALL DANA STRAWN, 592-3439 FOR MORE INFORMATION

LARRY C. BOYD, M.D.

FAMILY PRACTICE & OB.

OFFICE HOURS APPOINTMENTS PREFERRED
 EACH THURSDAY 11AM - 4PM

YOAKUM CO. CLINIC
 456-6365 OR 592-9501

PLAINS
 APPOINTMENTS PREFERRED

Yoakum County Florist & Gifts

Thank You, Friends & Customers!!

You have helped us make 1994 a very good year.

WE WILL BE CLOSED FROM DEC. 25 THRU JAN. 4, 1995
 SO OUR EMPLOYEES CAN SPEND TIME WITH THEIR FAMILIES.

REOPEN JAN. 5, 1995
 NOTICE

Now Taking Applications For Employment, part-time and full-time
 Yoakum County Florist & Gifts
 592-8067 Hwy 214
 Denver City

CLOSED DEC. 25 THRU JAN. 4

"Little Known" HOUSEHOLD HINTS

...that even your Grandmother probably didn't know!

- GENERAL**
- Rubbing alcohol will remove ball-point pen ink marks.
 - Candles chilled for 24 hours in refrigerator will burn longer and not drip.
 - Baking soda on a damp cloth will remove grime and grease from glass on oven door.
 - Window cleaner will clean and polish exterior of appliances — stove, refrigerator — also small appliances, taps, etc.
 - Mixture of half salt and half hot vinegar rubbed on brass will clean and polish.
 - To re-smooth Teflon pans, boil for 5 to 10 minutes in the pan, a mixture of 1 cup water, 2 tablespoons baking soda, 1/2 cup liquid bleach. Wash in suds and rinse thoroughly. Then before using, wipe the surface with salad oil.
 - To remove gum from hair, rub a plain chocolate bar in hair — then wash.
 - A cloth wrung out of a solution of 1 tablespoon cornstarch dissolved in one quart of water, will make windows and mirrors sparkle.
 - Cold tea, coffee grounds, or egg shells make a good fertilizer for house plants and act as insecticides, too.
 - Try waxing your ashtrays. Ashes won't cling, odors won't linger and they can be wiped clean with a paper towel or disposable tissue. This saves daily washing.
 - Stamp a few moth balls into the ground near flower beds to keep dogs away.
-

Thought for the Week

Love is a rare, eternal gift. It is something we can give away every day and still have enough left over to leave behind when we are gone.

It is easy enough to be pleasant, when life flows like a song. But the person worthwhile is the one who will smile when everything goes dead wrong.

--Ella Wheeler Wilcox--
 Prayer Concerns:
 Martha Guetersloh
 Pat Hennard

POTPOURRI MAKE YOUR OWN

- 1-qt Dried Rose Petals
- cup Lavender flowers dried
- 1/4 cup Geranium leaves dried
- 1/4 cup Sandal wood chips
- 1-t Cinnamon
- 1t-ground Cloves 1 -pinch
- Allspice
- 1-cup Orrisroot 1sm. Vile of Rose oil
- 1/2-cup Patchouli (granule)
- Mix in one gal. container
- 10-drops Rose oil with Orrisroot. Stir with hands until well mixed. Cover with tight lid for two weeks.

HOW STRESSES AFFECT ILLNESS

No one likes stress. It makes us anxious and irritable, but does it also make us more likely to have illnesses? It seems so, and not just for the things that come to mind such as ulcers and high blood pressure.

This is a field that is being studied extensively now, and researchers are learning how stresses affect our lives--especially in regard to such serious illnesses as heart disease and cancer.

It has been known for a long time that increased stresses in life make it more likely to have infections in the following months. The most serious stresses are deaths in the family, divorce, and major changes in life such as a change in residence or jobs.

Statistics have shown

that even what we consider to be good changes, such as a raise in pay or moving to a nicer home are enough of a stress that illnesses are more likely in the following year.

There is now evidence that stress significantly increases heart irregularities, blood pressure, and even affects our ability to fight cancers. Some studies have shown that tumors grew faster in patients who were under stress; defenses against tumor cells appeared to be decreased. Sudden death from irregular heart rhythms was more common in people under psychological stress. There is also good evidence that high blood pressure is increased by stress and there are even reports that stress can be related to diabetes and some forms of arthritis.

Just where this will end no one knows, but we do know that for a healthy and happy life it is good to keep stresses to a minimum.

ATTEND THE CHURCH OF YOUR CHOICE SUNDAY

FIRST BAPTIST CHURCH Pastor Bill Wright	SACRED HEART CATHOLIC CHURCH Fr. Glen Rosendale	FIRST UNITED METHODIST CHURCH Pastor Rick Doyle	CHURCH OF CHRIST Ray Young	TEMPLO BAUTISTA NUEVA VISION Pastor Jose Rodriguez	ASSEMBLY OF GOD CHURCH Perry Shuffield
---	---	---	--------------------------------------	--	--

TELCOT REPORT

A WEEKLY SUMMARY OF COTTON MARKETING NEWS

For The Week Ending December 29

Demand remained strong this week as the market saw a rapid movement upward due to large physical sales and rumors of continued foreign crop shortfalls and pipeline delays.

An output shortfall in Pakistan appears to be certain, but supply hoarding by farmers seeking higher prices continues to hide the true nature of the country's production.

Pakistan also is seeking supplies from the U.S., and USDA announced that \$35 million in fiscal 1995 GSM-102 export credit guarantees for Pakistan originally allocated to wheat and feed grains have been switched to cotton. According to some analysts, there is still a question of whether the funds will bring new business or be used for purchases already made since Pakistan has 154,700 bales already registered on the U.S. export report.

Earlier this year, Mexico's secretary of agriculture predicted that the country's imports would fall 50 percent as compared to a year ago, and this may be compounded by the recent devaluation of the Mexican peso. The peso has lost 40 percent of its value against the U.S. dollar in one week, making U.S. cotton prices exorbitant for Mexican buyers. U.S. apparel sales as well as raw cotton sales to Mexico could be in jeopardy due to the devaluation.

Cotton problems continue in China as the textile industry in that country has been plagued by cotton shortages after last year's disappointing harvest.

Meanwhile, according to one analyst, spot sales of Texas/Oklahoma cotton are 90 percent complete. Daily spot sales of Texas/Oklahoma cotton on TELCOT for the five trading days ending December 29 totaled 79,288 bales, down from the previous week's total of 114,444 bales due in part to the Christmas holiday. Average daily prices received by

producers selling on the electronic marketing system ranged from 76.40 to 79.07 cents per pound.

Regional cooperative cotton warehouses in Lubbock, Plainview, Sweetwater and Altus have received a combined total of 2,046,871 bales to date and have shipped approximately 30 percent as of this week. Weekly shipments at the four facilities are averaging a robust 30,342 bales.

Also on the home front, President Clinton nominated former U.S. representative Dan Glickman of Kansas to be the next secretary of agriculture. His credentials include experience on the House Agriculture Committee and involvement in the writing of the last four farm bills. Considerable anxiety continues over the 1995 farm bill as some worry that agriculture will suffer due to budget cuts. Perhaps Glickman's appointment is a good omen for those in the agricultural industry who would like to see a continuance of the marketing loan provisions of the recent farm bills.

A record 5,000 people are expected to attend the annual Beltwide Cotton Conference, sponsored by the National Cotton Council of America, on January 4-7 in San Antonio. William B. Dunavant, Jr., the world's largest private cotton merchandiser, headlines the conference January 4. Other reports will focus on the production/quality of the 1994 cotton crop, conservation compliance, environmental responsibility, crop protection, product development, boll weevil eradication, biotechnology and other topics concerning today's U.S. cotton industry.

USDA announced export sales of 1994-95 cotton increased a net 510,500 bales in the week ended December 22, up considerably from the previous week's total of 76,200. Featured buyers were China, Indonesia and Pakistan.

FROM THE HACK



Thank the powers that be New Year celebrations are over, and my bride is restored to sanity, sobriety and forgiveness, for the way she treated me the eve of the New Year. As usual, many friends, neighbors and kin made dumb resolutions no one in their right mind expected them to keep. Not me. I was far too smart, having vowed many weeks ago to quit smoking as soon as the Dallas Cowboys won their third consecutive Super Bowl. Remember?

Well, this recent festive eve, I was lounging in my lounge, sipping a non-alcoholic, non-fattening, non-pleasurable beverage, when I casually mentioned to bride I had very few days left before facing that worse than purgatory fate.

At this, she went into hysterics, rolling on the floor, spilling her fourth wine cooler.

"I knew it," she screamed, "I knew it all along. You figured Dallas would flop over like Humpty Dumpty and start losing right at the end of the season! You knew Cleveland and the Giants would whip up on 'em, and make 'em look like a sack of last years potatoes! I should have known you'd figure out a way to weasel out of that promise to quit those stinking things!"

Hey, come on now. How am I supposed to be such a psychic, a seer, a handicapper, a genius? Of course, if they somehow fail to cut the mustard this year, it does get me off the

hook, doesn't it? COME ON, 49ers!

Been following the Newt Gingrich-Rupert Murdoch saga lately? Rupert gives Newt a \$4.5 mill advance on a forthcoming book, reportedly a small book, and Newt hasn't even been sworn into his new job, at the time of this writing. It's said Newt is wavering about the deal now.

Hey, Newt, take my advice, grab the money and run, now, no matter how smelly the deal is. Even in your position amidst the power politics of Washington, it's gonna be pretty tough to steal that kinda dough in just four years, even with all your skills.

And, RUPERT, RUPERT, WHEREFORE ART THOU, DEAR RUPERT? (FOR YOU TABLE OF WISDOM DULLARDS, THAT'S SORT OF A PARAPHRASE OF SHAKESPEARE... YOU KNOW, THE OLD ENGLISH GUY YOU COULDN'T UNDERSTAND BACK IN HIGH SCHOOL).

Tell you what, Rupert old buddy, I'll write you a book to publish, on anything you want, me, family, local ministers, county and state officials, and you can tell me just how you want it, absolute truth or embellished a bit. Naturally I prefer the latter format, but it's your call... and you can even leave a few zeroes off the check.

LOVINGTON LIVESTOCK MARKET, INC.

LLMI sold 974 cattle, 117 sheep and goats, 54 hogs and 9 horses for 117 consignors Friday, December 30, 1994. On a ripping good market to a house full of buyers, this was an excellent sale to finish up

Ofelia Aranda	Hobbs	1 Char str	305	93.00
David Bilbrey	Crossroads	1 Blk wf str	705	72.50
Delores Davis	Monument	1 Rd str	645	84.00
Cowboy Jones	Hobbs	4 Blk str	281	97.00
Kress Jones	Hobbs	1 Rd mf str	280	101.00
A D Jones Estate	Tatum	1 Blk b	690	69.00
Double L Cattle Co	Lovington	3 Rd mf str	345	86.00
Odie Prather	Pinon	1 Rd str	390	84.50
Bryan prather	Pinon	2 Blk wf str	613	73.50
G L Sims	Hobbs	6 Corr str	641	49.00
Setzler Farms	Monument	2 Rd/Blk str	413	80.50
Bill Stevens	McDonald	4 Hol Str	765	51.00
S & W Cattle Co	Hobbs	3 Blk mf str	360	91.00
Jack Speers	Plains	1 Blk str	490	79.00
B & P Cattle Co	Lubbock	2 Corr str	430	350.00
Johnny Fitzgerald	Plains	8 Char hfr	432	78.50
Gary Jameson	Lovington	2 Hol hfrs	528	70.00
Arturo Ramirez	Lovington	3 Rd hfrs	727	64.00
Setzler Farms	Monument	7 Rd/Blk hfrs	416	75.00
S & W Cattle Co	Hobbs	4 Blk wf hfrs	294	82.00
Juan Villeneuve	Hobbs	3 Rd hfrs	823	63.25
J E Airhart	Lamesa	1 Rd c	head	630.00
Double A Cattle Co	Plainview	1 Rd pr	pair	810.00
C & C Farms	Lovington	7 Xbred c	head	635.00
C & C Farms	Lovington	10 Xbred c	head	630.00
Henry Evans	Hobbs	1 wf pr	pair	610.00
F & F Cattle Co	Ballinger	8 Mxd c	head	570.00
G & G Cattle Co	Brownfield	2 Rd c	head	600.00
Glenn Kidd	Lovington	1 Blk pr	pair	600.00
R & M Livestock	Plains	1 Rd pr	pair	750.00
Sterling Price	Tatum	4 Mxd c	head	525.00
Alexander Bros	McDonald	1 Hol c	1370	38.00
Double A Cattle Co	Plainview	1 Blk c	1140	43.50
Beestra Dairy	Hobbs	1 Hol c	1530	38.00
F & F Cattle Co	Ballinger	1 Blk c	1040	43.00
High Lonesome Dairy	Hobbs	1 Hol c	1240	39.50
Mack Kizer	Milnesand	1 Char c	1215	40.00
J & M Livestock	Brownfield	2 Wf c	913	40.50
Rockview Dairy	Hobbs	1 Hol c	1690	42.60
Ruch dairy	Hobbs	1 Hol c	1750	36.00
Arturo Ramirez	Lovington	1 Rd c	985	44.00
Alexander Farms	Lovington	1 Blk b	1495	52.60
High Lonesome Dairy	Hobbs	1 Hol b	1860	54.75
J & M Livestock	Brownfield	1 Blk b	1320	53.00
SHEEP & GOATS				
Randy Beasley	Stanton	2 Mxd g	head	43.00
R & B Livestock	Lamesa	1 Blk spt g	head	57.50
J D Brown	Carlsbad	1 Blk g	head	45.00
Raporto Cavasoz	Seminole	1 Spt n	head	47.00
Angel Hernandez	Carlsbad	1 Barb b	head	50.00
Paul Herrera	Bronco	1 Blk spt g	head	45.00
J & J Livestock	Hagerman	1 Rd g	head	45.00
William Kizer	Pep	11 Mxd g	head	45.00
Marilee Laas	Deming	2 Mxd n	head	170.00
Marilee Lass	Deming	1 Wht n	head	180.00
Bill Prather	Roswell	1 Brn g	head	60.00
Kevin Wilbanks	Eunice	1 Blk b	head	70.00
PIGS				
R & B Livestock	Lamesa	1 Wt sow	485	36.50
Johnny Mac Johnson	Hobbs	10 Mxd p	99	23.00
Terry Walker	Hobbs	2 Hamp h	210	33.50
HORSES				
Larry Davis	Hobbs	1 Bay g	1090	885.00
Cowboy Jones	Hobbs	1-2 yr Sorrg	950	620.00
J & J Livestock	Hagerman	1 Sorrg	1095	750.00
Sterling Price	Tatum	1 Buckskin g	940	680.00
John Simmons	Midland	1 App g	1025	875.00
Jim Wilson	Plains	1-2 yr Sorrg	885	560.00

Everyone here at the Lovington Livestock Market would like to wish everyone a very happy and prosperous New Year. As always your continued loyalty and support is greatly appreciated and we are looking forward to doing business with you in 1995. Remember to let us know of advance consignments as soon as possible so they can be better advertised, thus better marketed. Coming up next week: 2 loads of Xbred calves out of a really dry area, weighing 400-450 carrying lots of condition. For information about upcoming events or to consign livestock just call us anytime toll free at 1(800) 371-1755 or locally 396-5381. Also, for advance consignments on the radio, tune in to your favorite radio station Friday at: 6:10am KPQS-107.3 FM Post; 6:15am KLEA-101.7 FM Lovington; 6:05am W105-105.1 FM Maljamar; 6:20am KPER-95.7 FM Hobbs; 6:35am KSEL-95.3 FM Portales; 6:45am KCCC-930 AM Carlsbad; 7:00am (Tx) KIUN-1400 AM Pecos; 6:55am KTZA-92.9 FM Artesia.

THANK YOU!
1-800-371-1755
JIM GRAY HOME 806-522-6526 WAYNE KINMAN HOME 505-396-5548

PLAINS AUTOMOTIVE

MICKEY COWART, OWNER

YOUR AUTOMOTIVE REPAIR SPECIALIST FOR 25 YEARS

STATE SAFETY INSPECTIONS
811 AVENUE E
PH. 456-7152



WE NOW HONOR DISCOVER CARDS

LOST

LAND FOR SALE
480 acres, all or part. fenced grass land. for info, call Berry Real Estate, 592-3523, or gary dyer, Agt., 456-8451

LOTS FOR SALE

Lots 2,3,4, N. half of block, corner of 1st Street & Hwy. 214. Asking \$10,000. For info, call Berry Real Estate, 592-3523, or Gary Dyer, Agt, 456-8451

Male Dalmatian Dog
Reward Offered For His Return
Call 456-4101

FOR SALE
2 BR, 1Ba, brick, good neighborhood. Has FmHA assumable loan, possible no down payment for qualified lower income buyers. 1003 3rd St. To see, call Gary Dyer, 456-8451, or Berry Real Estate, 592-3523, Denver City

NEW LISTING

Older 3 Br, 2 Ba, 4 Car Covered Carport, Huge Den, 1 Yr. Old GALV-ALUM Roof, Steel Siding, on Approx. 2 Acres Land. Approx. 30 More Acres Available if Desired. Owner Will Finance w/ Approx. 1/4 Down Payment.
W.E. (RED) BERRY REAL ESTATE, 592-3523
TO SEE, CALL GARY DYER, AGENT, 456-8451

ENJOY GREAT MEXICAN FOOD AT OUR NEW LOCATION

RICARDO'S

900 MUSTANG AVENUE
SERVING 7am-2pm,
MONDAY THRU FRIDAY

WE BOOK PARTIES
CALL IN
ORDERS WELCOME
592-2096

BROWNFIELD NURSING HOME

510 SOUTH FIRST
BROWNFIELD, TEXAS 79316

We would love the opportunity to serve you and your loved ones with a well trained and committed staff. We offer a Caring Plus Program where our goal is Satisfied Customers! We are growing in the health care field by adding a new Out-Patient Therapy Program in addition to the wide range of services we already have in place. We are certified by the State to offer Medicare, Medicaid, and Private Pay. We are proud to offer a fully staffed in-house therapy department.

Brownfield Nursing Home offers a 24 hour admission policy for your convenience. Please call with any questions.
Shannon Wideman-Administrator
Sara Rodriguez-Director of Nurses
806-637-4307

ATTENTION RURAL RESIDENTS

HAVING SEPTIC TANK PROBLEMS?

CALL

FIVE STAR CONSOLIDATED LTD.
592-3113

WE ARE ONE OF FEW COMPANIES WITH FULLY LICENSED PUMP TRUCKS, AND LEGAL DISPOSAL FACILITIES.