

THE SLATONITE

Volume 3.

SLATON, LUBBOCK COUNTY, TEXAS: OCTOBER, 31 1913.

Number 9.

I. O. O. F. LODGE GIVES BANQUET

Slaton Lodge No. 861 I. O. O. F. entertained a large number of the friends of the Order at the Hotel Singleton Friday night with a banquet and literary program, there being something more than 60 persons present for which a cover was spread.

Invitations were issued and cards were presented at the door for admittance to the dining hall. Several visitors from nearby towns were present to participate in the program and to attend the banquet.

Those who were guests of the Odd Fellows on this occasion proclaim the event a notable success both from the standpoint of entertainment, and service rendered by the management of the Singleton.

The Odd Fellows Lodge of Slaton has made a remarkable showing during the year and a half of its organization, having won the Banner at Lubbock for the best work in the competitive degree contest in the South Plains Association a short time after it was installed and again won the Banner at Post City this year. The Lodge is on a sound financial footing, and has a membership of about 30 at the present time, a very large number for a new lodge in a new town.

OLDEST OF LIVING MEN

"Looks like pappy won't neber die," says the only living daughter of this one hundred and twenty-nine years "young" man. She speaks truly, too, for although Sam McKoy has long passed the century mark, he is hale and hearty, has splendid eyesight, never having worn glasses, good health and looks as if he was good for at least 25 more years of contented



life. Sam is a native of St. Pauls, N. C., where he came into this world on June 28, 1786. He has a wonderful memory, for he remembers distinctly when the first boat came up the Cape Fear river in 1799, but until a few years ago he had never seen a railroad locomotive. Sam is the father of 18 children, and his youngest child is now sixty years old. His grandchildren, great-grandchildren and great-great-grandchildren are scattered over the country from New York to Florida.

When a child Sam helped the first settlers clear the land in North Carolina. He has always been a user of tobacco and attributes his long life to the fact that he never worried about anything. This is the first photograph Sam has ever allowed to be made of himself. He has always been afraid of a camera, thinking it was some kind of an instrument that would harm him.

We're Gaining New Customers, but Want You!

Many Slaton people are finding out the desirability of trading at a store where there is embodied the Best Quality, Lowest Prices, Courteous Treatment Quick Reliable Service---combined with Sanitary surroundings and Fair, Honest Dealings. We are adding many new customers and our Liberal Store Policy is the magnetic attraction. You will ultimately patronize the "Clean Grocery"---why not start now? You'll be glad you did.

Slaton Sanitary Grocery

YOU ONLY PAY FOR WHAT YOU BUY, AND AT LOWER PRICES
"THE SANITARY WAY IS THE ONLY WAY"

WEEK OF PRAYER.

The Missionary Society will observe Week of Prayer at the Methodist church next week. The programs will be combined and only three meetings will be held. These will be Monday, Tuesday and Thursday at 2 p. m. All of the ladies of Slaton are cordially invited to be present. Following is a brief outline of the week's program:

Monday, Nov. 4.

Bible Study and Prayer
Leader, Mrs. Proctor.

Part 2. Orientals and Immigrants.

Leader, Mrs. Edwards. Helpers, Mesdames Spetter, Hudgins, Wadsworth, Adams, Campbell and E. L. Smith.

Tuesday, Nov. 5.

Orientals and Mines and Mountains.

Leader, Mrs. Joe Smith.

Helpers, Mesdames Twaddle, Barnes, Worley, Gus Robertson, Wadsworth, and Geer.

Part 2. Fields for Special Collections.

Leader, Mrs. Olive. Helpers, Mesdames Kuykendall and Blakeney.

Thursday, Nov. 7.

Papal, Florida Coast and City Missions.

Leader, Mrs. Spetter. Helpers, Mesdames Blanton, Leininger, Levy, Proctor.

Part 2. Papal Linds, Negro Work, Dependant an Delinquent Girls

Leader, Mrs. Hudgins. Helpers, Mesdames DeLoach, Edwards, Davis and Worley.

The Methodist ladies will hold their bazar on the 12, 13 and 14 of Nov.

COLORING THE MEERSCHAUM

Years ago expert smokers were employed to color meerschaum pipes, but the modern method of tinting meerschaums is by the use of machinery to which any number of these pipes can be attached. All are connected by tubes to the bellows, which draws the smoke steadily, and very slowly---just enough to keep the tobacco lighted. After one set of pipes is "smoked" out they are laid away to cool, and another set is attached. In this way the pipes may be colored in a few days without the slightest risk.

PRESERVING A HOBBLE SKIRT

Assuming that the hobble skirt, like the dodo, is doomed to extinction, and also for the enlightenment of the modiste of a few centuries hence, the women of Larkspur, a small town in California, hit on a novel plan to preserve for the generations to come a working model of the hobble skirt. This extreme bit of feminine apparel has been consigned along with copies of the San Francisco daily papers, the Bible, a list of the names of the town trustees, and other mementos of the day, to a crypt in the cornerstone of the new hall.

DEODALIAN CLUB IS ENTERTAINED

The Deodalian Club was very charmingly entertained Wednesday afternoon Oct. 22nd at the home of Mrs. S. H. Adams. The home was fragrant with the perfume of roses and sweet violets and chrysanthemums. The afternoon was spent in sewing pretty tokens for Christmas. Later in the afternoon the guests were entertained with music by Mrs. Briggs Robertson and readings by Misses Bertha Proctor and Frances Adams. After this the hostess served a delicious salad course consisting of chicken salad on lettuce leaves, bread and butter sandwiches, pickled peaches, cheese straws and hot tea. As each guest departed they expressed their having spent a very pleasant afternoon. Those present included Mesdames Page, Jordan, Robertson, Proctor, Olive, Spetter, J. H. Smith, Lewis Smith, Blanton, Wallace, Campbell, Parker, Hudgins, and Misses Spetter, Proctor and Vermillion.

AFRICAN GRAND GALAGOS

By the Portuguese the African great or grand galagos are known as "rats of the cocoa-nut palm," on account of their partiality for spending the greater part of their time amidst the fronds of the palm trees. They are extremely fond of palm wine, and, should the opportunity arise, will imbibe so freely as to quickly become intoxicated; and although under normal conditions their activity is so great as to render their capture very difficult, yet when under the influence of the wine they fall an easy prey. A peculiar feature about galagos is that they have the



power of partly folding up their ears so as to rest almost flat upon the head, and it has been suggested that this proceeding serves to protect the delicate membranes against exposure to wet and from getting lacerated while bounding through the dense foliage of their habitat. They are entirely nocturnal in habits and during the daytime usually roll themselves up into a ball while they slumber. When in search of their food, which consists of insects, small birds and their eggs and fruit, they leap from branch to branch with surprising agility and in such a noiseless manner that Sir J. Kirk has likened the proceeding to a wet piece of clay adhering to the object alighted upon.

WHERE MOTOR CARS ABOUND

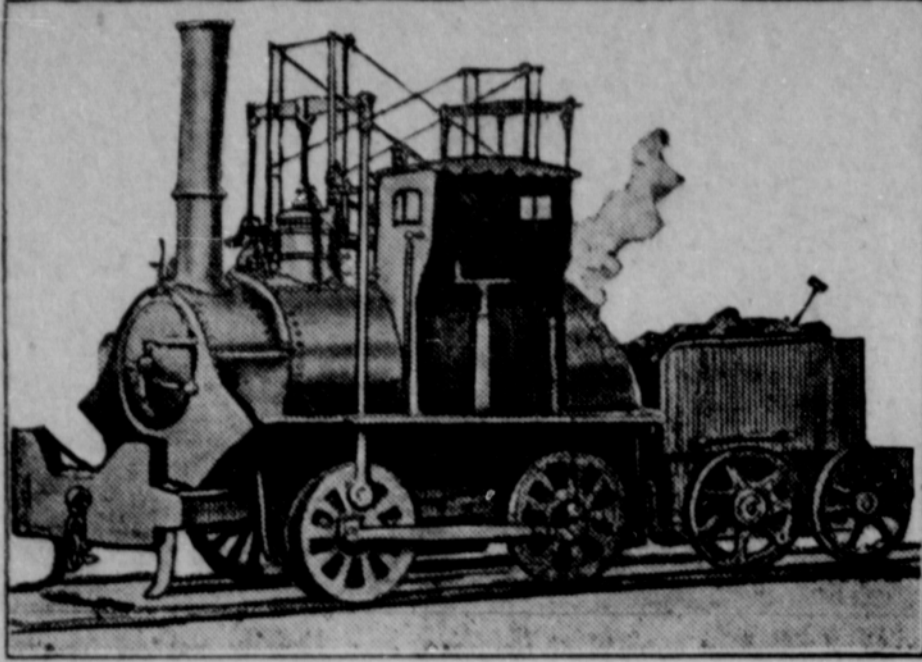
Few South American cities, in proportion to the number of inhabitants, show as many automobiles in use as Montevideo, Uruguay, yet the number is increasing very considerably, according to a recent consular report. Recently no less than 115 high-priced cars entered the port and were sold. There are now more than 1,300 licensed cars in Montevideo, about 2,000 being the total for the whole republic. The main cause of this large number is the 100 miles of macadamized road which traverses a fine agricultural country. A motor car can negotiate all parts of the republic when the streams are not in flood. Of the machines in use those of American manufacture number about one-half of the total.

MOST POPULAR GIRL IN TOWN



(Copyright)

Puffing Billy Still Works



"Puffing Billy" was the first successful steam locomotive ever constructed, having been built in 1812 by workmen at the Wylam colliery in England. In competition with Stevenson's "Rocket" in 1829 the latter was adjudged first place as an engine adapted to general purposes. But "Billy" has been at work ever since and is now doing duty at a colliery in Durham.

SOLDIERS WHO CHEW CORDITE

One of the troubles of most European armies is that those soldiers who can get hold of it, insist on using that terrible explosive, cordite, as if it were a sort of chewing gum.

Its popularity is due to the fact that when chewed in small quantities it has a stimulating and exhilarating effect, like small doses of alcohol. Its taste, too, is sweet, cordite being three-fifths nitroglycerin, an explosive which is sugary to the taste.

When chewed in large quantities cordite becomes more powerful in its effects, bringing on a blissful state of ecstasy, and sometimes making the victims of the habit see visions. But the real danger of the habit lies in the fact that, though nitroglycerin will

only explode when given a very hard blow or touched by an electric spark, there is always a possibility that the grinding of exceptionally hard teeth might provide the necessary hard blow. Within the last few years, at least three soldiers—two Germans and one American—have been blown to bits, the use of cordite as a chewing gum being the suspected cause.

The habit was not unknown in our own armies some years ago, till the military authorities took steps to stop it.

THREE FEET ON ONE LEG

A two-year-old heifer with three perfectly formed feet on the left fore-leg was a freak discovered at a pack-

ing plant at Fort Worth, Tex., by Dr. Louis Newberg, inspector of the United States bureau of animal industry. The heifer was sold to the packing company in an ordinary shipment of cattle. The deformity was not discovered until the animal was slaughtered. The three clustered feet were perfect in detail.

OLDEST CHURCH IN ENGLAND



The Church of St. Laurence, Bradford-on-Avon, was founded in the seventh century by St. Aldhelm, a bishop of Sherbourne, and a service is held annually in it on the anniversary of St. Aldhelm's death. The sacred character of the building had been forgotten, but was traced by a former vicar of Bradford. This is the oldest place of Christian worship in England.

RAINCOATS MADE OF GRASS

In certain provinces of both the Philippines and Mexico grass raincoats are commonly worn by the natives. In both countries the volume of the rainfall from the tropical showers is difficult of comprehension for people in the United States. The rain descends in almost solid sheets and ordinary umbrellas are of no use whatever. These rains sift through the best umbrellas in a fine, dense mist and soak the user as effectively as though he were uncovered. Not so

with the grass raincoat. Although apparently light and airy the grasses are so cleverly woven that the water never penetrates to the inside of the mesh. These grass coats give the native wearers a shaggy appearance, which baffles description. By reason of their "natural" color and appearance they also enable the hunter to successfully stalk game.

DREAMED OF PEARL; GOT IT

E. D. Wermuth, camping near La Crosse, Wis., dreamed he saw a large pearl lying on the bottom of the river. He was so much impressed by the vision that he dived into the water at the point where he had seen the pearl in his dream and brought two large clams to the surface. In one of them he found a pearl worth \$500 and in the other one worth \$50.

OUR AGRICULTURAL PRODUCTS CROSS OCEAN TO REACH FACTORY.

Each Consumer Should Call for Texas-Made Goods.

Texas Farmers Produce \$600,000,000 of Raw Factory Material Annually.

The farmers of Texas produce \$600,000,000 worth of raw material per annum which must pass through the factory before it is consumed, and \$100,000,000 is the raw material capacity of the Texas factories. The balance must journey to the foreign factory and a large per cent of our agricultural products cross the ocean to reach it. These statistics present a startling necessity for more factories and in defense of our growing country we must have them, but many of the factories we now have are compelled to seek out-of-state markets for their output and a few have had to shut down for want of a market.

Every consumer is a market-maker and can become a powerful factor in building up the manufacturing industry in Texas by calling for Texas-made goods. If we would patronize home factories, it would call for an investment of \$500,000,000 in the manufacturing industry, give employment to 400,000 people and provide a home market for the products of the farm, ranch and mine.

The federal census reports show 4,588 manufacturing establishments in Texas. The capital invested is \$216,876,000, there are 84,575 employes engaged in the business; the factory value of the annual output is \$272,896,000 and the value added to the raw material by manufacturing is listed at \$94,717,000. The four leading industries in the order of the value of their annual output are:

Slaughtering and meat packing, \$42,530,000; flour and grist milling, \$32,485,000; lumber and timber products, \$32,201,000; cottonseed oil and cakes, \$29,916,000.

During the past five years we show an increase in establishments of 1-130; in capital invested an increase of \$101,211,000 and an increase in employes of 26,683.

Again We Say

Subscribe for THIS PAPER.

reception was given at the home of the bride's parents. A sumptuous dinner was served with various refreshments to the guests.

Mr. and Mrs. Maeker received many handsome gifts as tokens of the high esteem in which they are held by their many friends.

They will make their homes in make their homes in the Wilson community.

The many friends of both the bride and groom wish them a happy voyage on the sea of matrimony.

Pay your School Taxes, which are now due, to J. C. Stewart at the Slatonite office.

If You Want

RESULTS

YOU can get them by advertising in this paper. It reaches the best class of people in this community.

Use this paper if you want some of their business.

Use This Paper

R. A. BALDWIN
ATTORNEY AT LAW
Office West Side of Square
Slaton, Texas

S. H. ADAMS
Physician and Surgeon
Office at Groner's Drug Store
Residence Phone 26
Office Phone 3

JNO. R. MCGEE
ATTORNEY AT LAW
LUBBOCK, TEXAS
Practice in all State Courts

DR. ORVILLE H. WESTLAKE
MEDICAL ELECTRICIAN
Practice limited to diseases of Ladies and Chronic Diseases of Men and Children.
Office at Residence, Phone No. 164, Lubbock, Texas.

J. G. WADSWORTH
Notary Public
INSURANCE and RENTALS

Fire, Tornado, Plate Glass, Automobile, Accident, Health and Burglary Insurance

Office at FIRST STATE BANK
Slaton - Texas

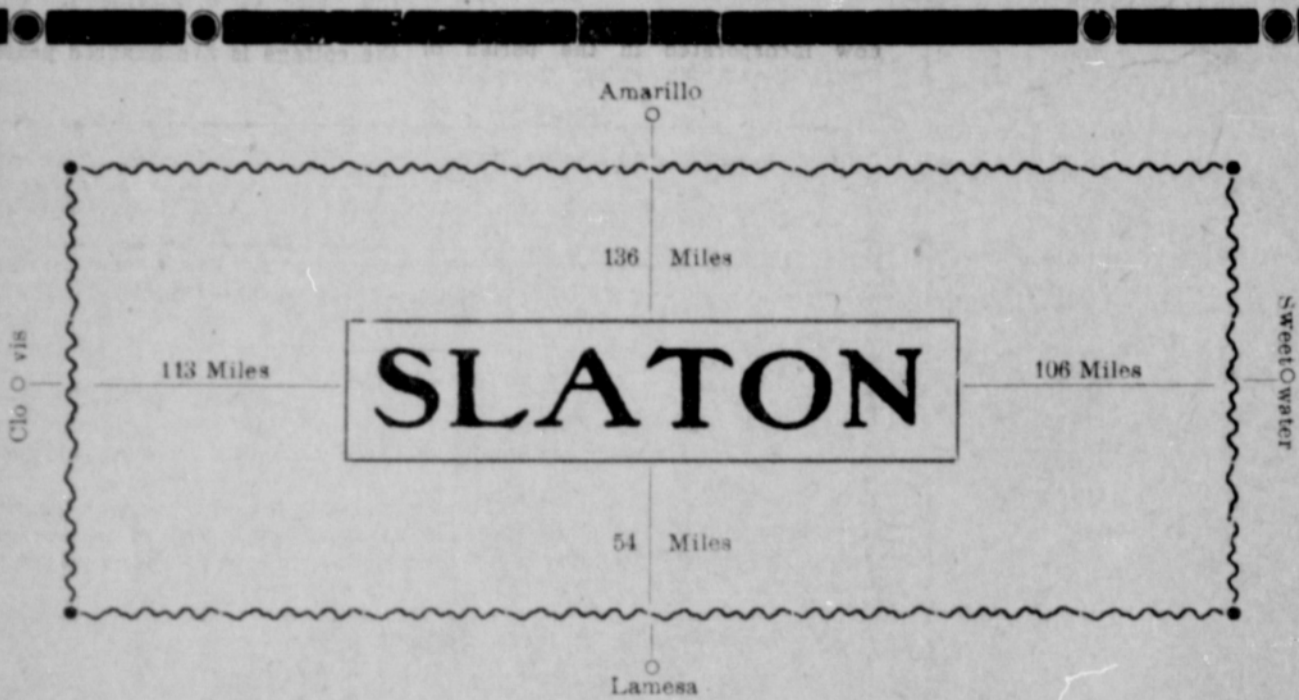
"Don't Walk Your Legs Off 'Looking' for that Fellow Brown—

The QUICKEST way to catch him is to sit still and extend your arm just far enough to grasp your



--then tell "central" you want to talk to Brown and--" "Hello, there's Brown already." So easy

Western Telephone Co. Y
Slaton, Texas



Founded and Owned by the Pecos & Northern Texas Ry. Company

SANTA FE SYSTEM

LOCATION--Southeast Corner of Lubbock County, Texas, in Central Section of the South Plains; on the new Main Trans-Continental Line of the Santa Fe System, of which the Clovis Extension is now under construction; connects North Texas lines of that system at Canyon, Texas, with South Texas lines at Coleman, Texas; junction of the Lamesa branch of that system.

ADVANTAGES AND IMPROVEMENTS--The Railway Company has completed Division Terminal Facilities at this point, constructed mostly of reinforced concrete material and including a Round House, a Power House, Machine and Blacksmith Shops, Coal Chute, a Sand House, Water Plant, Ice House, etc. Also have a Fred Harvey Eating House now open, and a Reading Room for Santa Fe employees. Have extensive yard tracks, preparatory to handling a heavy trans-continental business, both freight and passenger, between the Gulf and the Atlantic Coast and the Pacific Coast territories, and on branch lines to Tahoka, Lamesa and other towns.

3000 FEET OF BUSINESS STREETS are graded and macadamized and several residence streets graded; there are 26 business buildings of brick and reinforced concrete, with others to follow; 200 residences under construction and completed.

A FINE AGRICULTURAL country surrounds the town, with soil dark chocolate color, sandy loam, producing Kaffir Corn, Milo Maize, Cotton, Wheat, Oats, Indian Corn, garden crops and fruit. An inexhaustible supply of pure free stone water from wells 40 to 90 feet deep.

THE COMPANY OFFERS for sale a limited number of business lots remaining at original low list prices and residence lots at exceedingly low prices. For further information address

P. & N. T. RAILWAY CO., Owners.

SOUTH PLAINS LAND COMPANY, and HARRY T. MCGEE,
Local Townsite Agents, Slaton, Texas.

J. S. EDWARDS, President O. L. SLATON, Vice President P. E. JORDAN, Cashier

Condensed Statement of the
No. 754

FIRST STATE BANK OF SLATON SLATON, TEXAS

at the Close of Business October 31st, 1913

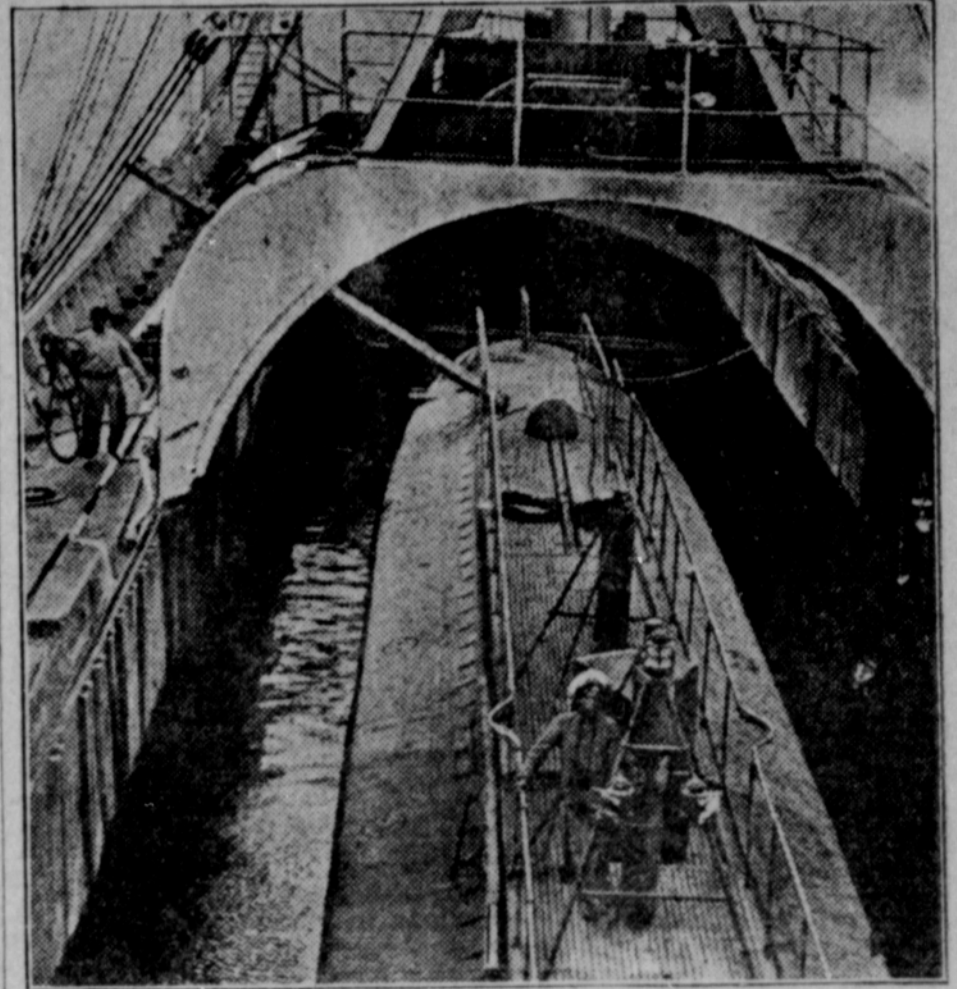
RESOURCES	LIABILITIES
Loans and Discounts.....\$22,382.39	Capital Stock.....\$15,000.00
Banking Premises.....5,000.00	Surplus and Profits.....1,631.76
CASH and EXCHANGE.....22,917.80	DEPOSITS.....33,668.43
Total.....\$50,300.19	Total.....\$50,300.19

The above statement is correct. P. E. JORDAN, Cashier

Notice our deposits and cash on hand. We are prepared to take care of all legitimate business offered, and invite the business of yourself and friends. Try us for yourself.

Guaranty Fund Bank

Hospital For Submarines



An interesting ship, specially built for the Peruvian navy, was launched the other day at Saint Mandrier, in the south of France. She bears the appropriate name of Kangaroo, and is designed for carrying submarines across the ocean, while at the same time she can be used as a floating dock for their repair. She is seen here with the submersible Palacios, an important addition to the Peruvian fleet.

KAISER'S PLAYING CARDS

The kaiser, who is fond of a game of cards now and then, has come to the conclusion that ordinary playing cards are scarcely good enough for so illustrious a personage as himself. He has accordingly had special packs designed for his own use. The four kings are represented by King George V., the czar, the Emperor Francis Joseph, and the king of Italy; while the queens

are, of course, the respective consorts of these monarchs, and the knaves are the ambassadors of the four countries at the Prussian court. It was impossible for France to be represented among the "picture cards," as she is a republic, but the kaiser has replaced the traditional aces by portraits of four of the most beautiful leaders of Parisian society, so that even the most ardent Chauvinist will not be able to fabricate an international "incident" out of the imperial pack of cards.

City Directory and Railway Guide.

CHURCHES.

METHODIST CHURCH.

J. P. Calloway, Pastor.
Sunday School every Sunday at 10 o'clock a. m. J. I. Mabry, Superintendent
Preaching services every second and fourth Sundays in the month at 11 o'clock a. m., and at 7:30 p. m.
Womans' Missionary Society meets every Monday afternoon at three o'clock.
Union Prayer Meeting every Wednesday evening at 8 o'clock at the Methodist church. Everyone welcome.

BAPTIST CHURCH.

J. R. Balch, Pastor.
Sunday School every Sunday at 10 o'clock a. m. J. W. Patterson, Superintendent.
Preaching services every first and third Sundays in the month at 11 o'clock a. m., and at 7:30 p. m.
Ladies Aid Society meets every Monday at 3 o'clock p. m.

PRESBYTERIAN CHURCH.

Rev. Word, Pastor
Preaching every fourth Sunday in the month at 11 o'clock a. m., and at 7:30 p. m.

SLATON COMMERCIAL CLUB.

R. J. Murray, president; R. C. Edgell, secretary. Club meets every Thursday evening at 8:00 o'clock at the MacRea Hall on Texas avenue.

INDEPENDENT ORDER ODD FELLOWS.

Slaton Lodge meets every Friday night at 7:30 o'clock in the MacRea hall. L. P. Loomis, Secretary. R. C. Edgell, N. G.

WOODMEN OF THE WORLD.

Slaton Camp 2871 W. O. W. meets 1st and 3rd Tuesday nights in each month at MacRea Hall. J. T. Bellomy, C. C., J. M. Simmons, Clerk.

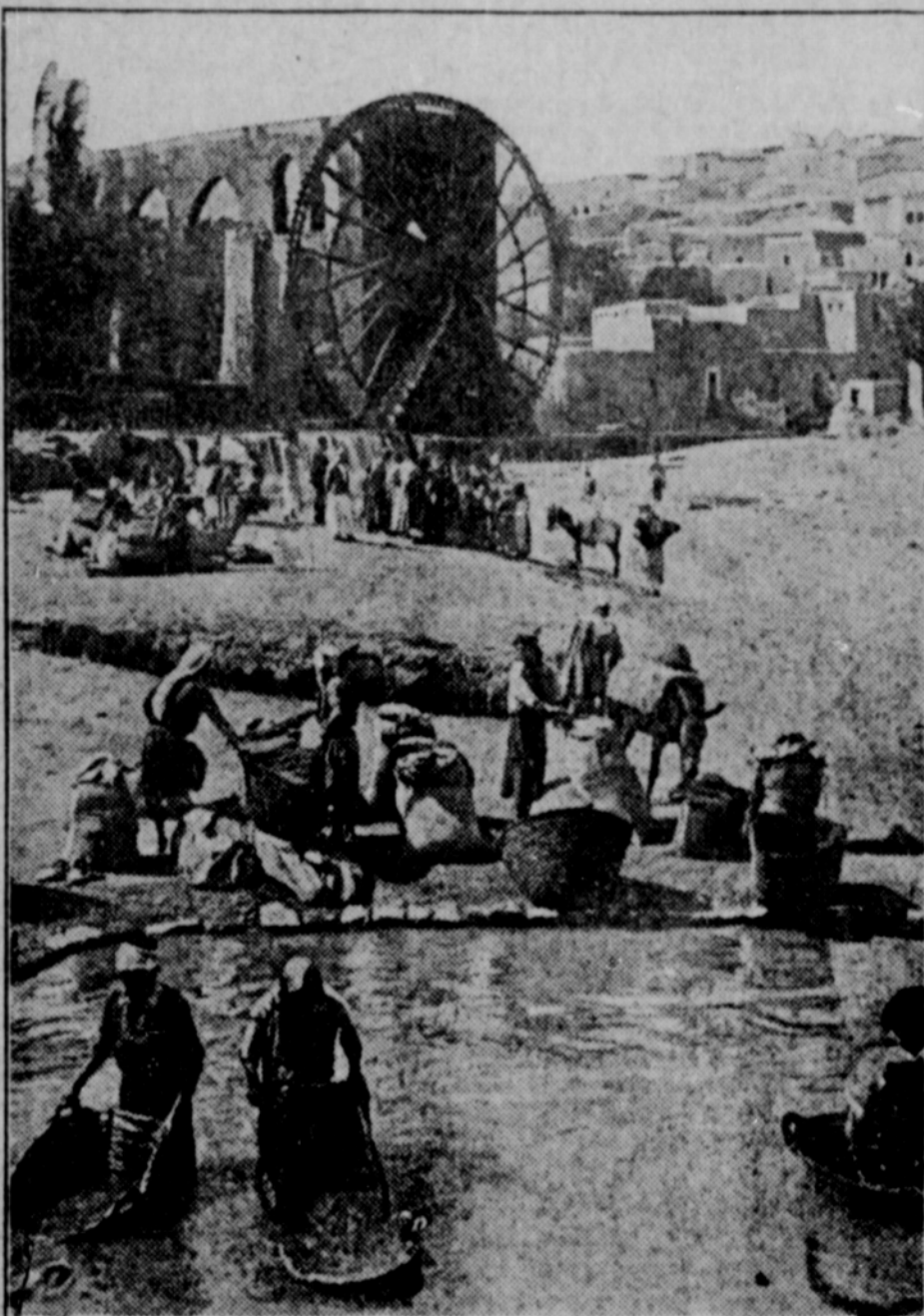
WOODMEN CIRCLE.

Slaton Grove Woodmen Circle No. 1320 meets on second and fourth Thursday evenings each month at 3:30 o'clock in the MacRea hall. Visitors cordially welcomed. Mrs. Ida Bellomy, Guardian. Mrs. Carrie Blackwell, Clerk.

RAILWAY TIME TABLE.--Santa Fe South Plains Lines

SOUTH BOUND.	
No. 27, Arrives from Amarillo.....	2:30 p. m.
" " Departs for Sweetwater.....	2:55 p. m.
NORTH BOUND.	
No. 28, Arrives from Sweetwater.....	10:40 a. m.
" " Departs for Amarillo.....	11:05 p. m.
AMARILLO LOCAL.	
No. 92, Arrives from Amarillo.....	5:15 p. m.
No. 94, Departs for Amarillo.....	6:00 a. m.
LAMESA LOCAL.	
No. 803, Departs for Lamesa.....	3:20 p. m.
No. 804, Arrives from Lamesa.....	11:30 a. m.

The Largest Water Wheel



Hama, in northern Syria, is justly famous for its huge water wheels. The city lies some 110 miles northeast of Damascus on the River Orontes, and upon its banks are four huge water wheels used for drawing up the water for irrigation purposes and also for supplying the town. The wheels are driven by the flow of the river on what is known as the undershot principle; that is to say, the wheel is moved by water passing beneath it. The largest—that shown in the illustration—has a diameter of 75 feet. (The great Laxey wheel, which drains the Marx lead mines, is 72½ feet in diameter.) Around the outer rim of this Syrian wheel are the buckets which raise the water to be deposited in the aqueduct at the top. It is undoubtedly the largest water-lifting wheel in existence and, like the others, is built of wood with an axle of iron. In winter and during early spring the flow of the stream is partially blocked to reduce the rapidity of the revolutions, but on no account are the wheels ever actually stopped. Their creaking is incessant, day and night, year in, year out.

AMBULANCE TRAINS

A railway in Germany has recently introduced ambulance trains into its service. Each train consists of three vehicles, namely, an ambulance car, a tool car, and a service car, the last-named being provided for the accommodation of the officials and men engaged, including doctors, members of the mechanical and permanent way departments, and a breakdown gang. The trains are stationed at suitable points on the railway, which latter is divided into special districts for this purpose. The ambulance cars have double sides, roofs and floors, and the space between the double floors is filled with cork in order to reduce noise and to act as heat insulators. They comprise a ward room, surgery, and have an operating table. The tool cars are fitted up with tools and appurtenances, including acetylene flare generators, re-railing devices, and a host of other appliances. The service cars are equipped with separate "rooms" for officers and men, telephone apparatus, a kitchen lavatory, etc.

QUEER CAR FOR LONG TRIP

A scientific research expedition commanded by Captain Kelsey and under the auspices of the British government is about to start on an automobile trip from the Cape to Cairo, and for its use a remarkable motor car has been built. The body is detachable and can be used as a pontoon for carrying the chassis, engine and baggage across



rivers and lakes. The car carries a searchlight for travel through the bush and provision is made for carrying a big supply of gasoil, etc.

MONTANA BADGER ROPED



Though Wisconsin is known as the Badger state, it has no monopoly of the badger. The fine specimen here shown, held by a rope, was caught in Montana. He is not nearly so fierce as he looks.

HOW FAR A BARBER SHAVES

Did it ever occur to you how far the average barber shaves ever year? As a general rule the writer shaves himself, but the other day he had occasion to visit the barber, and, being statistically inclined, counted the number of razor strokes made in the course of the artist's operations. For a clean shave—chin, cheeks and upper lip—the number was 236, and the time occupied, including the preliminary lathering and the final powdering, was exactly ten minutes. Taking the average razor stroke as being, say, one inch in length, the distance traveled by the blade in removing superfluous hair from the writer's face was six yards, one foot and eight inches.

The barber's shop hours are from eight a. m. to seven p. m.—11 hours. Deduct one and a half hours for meals, and it leaves nine and a half hours. Assume half of this time to be taken up with hair-cutting, shampooing, waiting for customers, etc., and it leaves four and three-quarter hours for shaving. As not every customer is clean-shaven, we must also make an allowance on the number of strokes and on the time occupied. Suppose we take the average number of strokes at 150, and the average time for each shave as eight minutes. This would give time for the scraping of about thirty-six customers, and the distance traveled by the razor would be 5,400 inches, or 150 yards.

The shop closes at one o'clock on Saturdays. Therefore, on the foregoing basis, the number of customers shaved per week will be about 196. Allow a fortnight for the summer holiday, and you have a total of 9,800 customers per year, with a razor stroke distance of 1,470,000 inches, which is equal to 23 miles, 353 yards, one foot!

Further investigation revealed the fact that when the writer shaves himself something like 696 strokes are required to produce a result equal to that obtained by the barber with his 236. The greater skill of the barber is thus represented by a saving in razor distance of no less than 12 yards, two feet, four inches! The time advantage to his credit was six minutes. So much for the results of specializing in industry.

Watch for Our Holiday Goods

You'll be surprised when you see the large assortment of Holiday Goods we have bought--almost \$1000.00 worth--and we got the Cream of the Whole Assortment, because we got there First, before the assortment had been broken. There will be no occasion for anyone to go out of Slaton this year to buy Holiday goods as we have presents for everyone, no matter what price you want to pay. And the prices are exceptionally low for the quality. The goods have been ordered shipped and will be displayed on arrival. Come in and begin making your reservations early, before the stock is picked over. Only a small deposit required.

R. L. BLANTON, Proprietor
RED CROSS PHARMACY

CHEAP HOG WIRE

Two Foot Hog Wire Fencing at only 20c per rod. This is a lower price than the mail order houses make for the same grade. If you contemplate fencing soon, do it now.

Forrest Hardware

SLATONITE

LOOMIS & MASSEY, Publishers.
Issued Every Friday Morning

SUBSCRIPTION, A YEAR \$1.00

Entered as second-class mail matter September 15, 1911, at the post office at Slaton, Texas, under the Act of March 3, 1879.

HORNETS' QUEER NEST



During a ramble at Skaralid, in southern Sweden, a traveler descended the boulder-strewn side of a deep ravine. While descending the precipitous slope he passed close to a beautifully formed hornets' nest attached to the under side of a boulder. For some minutes he watched the inhabitants passing in and out, and then, in case of a meditated attack, he charged and lit his pipe, which presently poured forth volumes of smoke that would have compared favorably with a factory chimney, and approached within five feet of the nest to set his camera in position, a rather risky operation on account of the very unstable condition of the debris--a movement of one stone would have set the nest in motion, to tumble down over the poor tourist into the valley below; the odds being greatly in favor of the hornets coming out of the ordeal in the better frame of mind. The nest, which was round, measured about nine inches in diameter at its widest part, and it will be seen by the proportionate size of the hornet at the entrance that the insects seem to thrive exceptionally well in this part of the country.

Don't Take The Wrong Medicine

If Your Liver Gets Lazy You Need a Liver Tonic, Not Merely a Laxative for the Bowels

Many people take a simple laxative when their livers are sluggish rather than take calomel, which they know to be dangerous. But a mere laxative will not start a sluggish liver. What is needed is a tonic that will liven up the liver without forcing you to stay at home and lose a day from your business.

You have such a tonic in Dodson's Liver Tone. Dodson's Liver Tone must do all they claim for it because they guarantee it to take the place of dangerous calomel and agree to hand back the money with a smile to any person who tries Dodson's Liver Tone and is not satisfied with the relief it gives.

Dodson's Liver Tone is a harmless vegetable liquid with a pleasant taste, and is a prompt and reliable remedy for constipation, biliousness, sour stomach, and the other troubles that come from a torpid liver.

The Red Cross Pharmacy give their personal guarantee and if you will ask about this guarantee you will protect yourself against imitations that are not guaranteed. Large bottle of Dodson's Liver Tone is 50 cents.

BANK STATEMENT.

Official statement of the financial condition of the FIRST STATE BANK at Slaton, State of Texas, at the close of business on the 21st day of October, 1913, published in the Slatonite, a newspaper printed and published at Slaton, State of Texas, on the 31st day of October, 1913.

RESOURCES

Loans and Discounts, personal or collateral	\$18,632.70
Loans, real estate	3,711.00
Overdrafts	151.67
Real Estate (banking house)	3,600.00
Furniture and Fixtures	1,400.00
Due from Approved Reserve Agts., net	\$18,351.15
Cash Items	384.25
Currency	3,109.00
Specie	444.80
Interest in Depositors Guarantee Fund	371.72
Other Resources as follows:	
Assessment for Guarantee Fund	49.02
Total	\$50,205.31

LIABILITIES

Capital Stock paid in	\$15,000.00
Surplus Fund	400.00
Undivided profits, net	1,231.06
Individual Deposits, subject to check	31,137.82
Time Certificates of Deposit	2,000.00
Cashier's Checks	436.43
Total	\$50,205.31

State of Texas,
County of Lubbock.
We, J. S. Edwards, as president, and P. E. Jordan, as cashier of said bank each of us, do solemnly swear that the above statement is true to the best of our knowledge and belief.

J. S. EDWARDS, President.
P. E. JORDAN, Cashier.
Sworn and subscribed to before me this 28th day of October, A. D. nineteen hundred and thirteen.

Witness my hand and notarial seal on the date last aforesaid.
J. G. WADSWORTH,
Notary Public, Lubbock Co., Texas
CORRECT--ATTEST:
O. L. Slaton,
J. S. Edwards | Directors.

TOOK HER KITTEN TO DOCTOR

A cat owned by Barreuther Brothers, merchants of Winsted, Conn., which is nursing four kittens, took one suffering with a badly inflamed eye to the office of a veterinary surgeon next door and left the afflicted kitten in a chair.

The doctor entered the office a few minutes later and was treating the kitten when the anxious mother returned. The feline waited patiently until the sore optic was open, purred contentedly, and then took her kitten back home.

A rope thrown to save a man's life, who had fallen down a crevasse, in the Alps, near Berne, Switzerland, the other day, got caught round the man's neck and strangled him. Three young Swiss climbers were attempting an ascent of this dangerous mountain without guides when one of them, Lietzer, of Berne, fell about 40 feet into the crevasse which was half covered up with snow. As he was joined to his comrades by a rope he remained hanging in the air. The rope, however, had become jammed in, and a second one, with a running knot, was thrown down to him. By this means he was eventually drawn up, but when brought to the surface he was dead, strangled by the rope catching him round the neck.

Pipe Fittings

Globe Valves

Cylinder Leathers

Cylinders, Etc.

B. C. MORGAN

WINDMILLS and PIPE

We Do All Kinds of Windmill and Pipe Work

Galvanized Tanks and Well Casing

SLATON

TEXAS

Every Town Has One Substantial Store. That Substantial Store Has a Satisfied Trade.

In Slaton It's

SIMMONS & ROBERTSON

The Newest in Dry Goods
The Freshest in Groceries

Phone 7

Free Delivery

Write

R. J. Murray & Co.

For Information About the City of Slaton and the Surrounding Country

Slaton

Texas

Slaton Auto Supply Comp'y.

BRIGGS ROBERTSON, MANAGER

Texas, Fordyce, and Pennsylvania Oils,
Gasoline and Greases

Agency Fisk and Goodyear Tires. Inner Tubes in Stock. The only supply house south of Amarillo.

Farm Mortgage Loans

Vendor's Lien Notes Bought and Extended
FRANK M. MADDOX

First National Bank Bldg.

Lubbock, Texas

SLATON PLANING MILL

R. H. TUDOR, Proprietor

Contracting and Building

Estimates furnished on short notice. All work given careful and prompt attention. Give us a trial.

North Side of the Square