

# THE ROPES PLAINSMAN

VOLUME XXXIV — NO. 28

ROPEVILLE, HOCKLEY COUNTY, TEXAS

10c A COPY

THURSDAY, DEC. 10, 1970

If there is an X in this box it is notice your subscription has expired and an invitation to renew.

## JEST SOME THOUGHTS —

How about this balmy weather — it's enough to make ole Santa trade in his sleigh for a convertible.

Well we have been under the weather again — this time with the flu. Those little commercials showing hammers pounding in the head, sandpaper for throats, and a hacking cough, are true let me tell you.

We are thinking of applying for Rudolph's job this Christmas Eve. We know his nose can't compare with ours when it comes to redness.

Guess the only problem would be our nose would light up the sky like a meteorite, and that would be too much.

We are feeling some better this Wednesday, and are now dreading the numerous fever blisters we know will follow.

Understand the Girl Scouts are cleaning up the town a bit. They are collecting beer cans for some project.

If you have a good imagination, it appears our little city is covered with snow early of a morning when its a bit hazy. Course its the lint and dust from the gin, but tha looks pretty too. What if we had no cotton, or gins.

Our dog, Tony, is quite perturbed over the Christmas tree at our house. As a rule, he sits on a stool in front of the picture window most of the day looking out (spying on the neighbors) and now the tree is in the way and his stool is in the utility room.

Usually there's not a car goes down our street that he doesn't know about, and if one should stop, we can always tell, cause Tony's tail goes wild. It doesn't just wag—it goes in circles, and that's no joke.

Heard from our sister-in-law in Port Neches Wednesday, and she sounded just like a grandmother. She even implied her grandson was as sweet as our grandchildren.

We had occasion to visit in the hub of the county last Saturday, and we must say that the Christmas decorations in Levelland are about the most attractive we have seen. We especially enjoyed the Christmas music played all afternoon loud and clear, floating from the courthouse.

So, we roll off the page for another week.

## SANTA CLAUS LETTERS

We urge you to get your letters to Santa to the Plainsman in the very near future, as we are sending Santa Claus a paper for the next two weeks.

## ON SICK LIST

Mrs. Roy Carpenter has been confined to her room this week suffering from a severe case of the flu.

## Report on United Fund Contributions

### COMMUNITY CHEST and UNITED FUND

General Chairman of the Ropes Drive for the United Fund, Roy Carpenter, states that the Ropes fund drive sponsored by the Lions Club will be completed this week.

Over 95 percent of the Ropes goal of \$400 has been collected. The drive in the school which was headed by Superintendent O. V. Fuller netted over \$135.00. The classes in each building which collected the most in donations were treated to a "Coke party" by the Lions Club. Those receiving this award were First grade Elementary; Fourth grade Junior High; Sophomores, Senior High.

Following is a list of known contributors:

Pete Pettiet	\$ 5.00
Jarred Shockley	5.00
T. J. Redman	5.00
J. T. Drake	2.00
Anonymous Total	9.31
Roy Carpenter	5.00
Mrs. L. S. Rosser	5.00
Mrs. G. C. Braden	10.00

O. V. Fuller	10.00
Mrs. Terry Redford	5.00
Mrs. Georgie Gambill	5.00
Mrs. John Ream	3.00
Mrs. Donald Blackman	5.00
James Means Jr.	5.00
School Classes	87.91
Ropes Farmers Co-Op	25.00
William R. Hall	5.00
W. M. Cain	10.00
Billy R. Martin	5.00
Cyanamid Farm Supply	100.00
A. T. & SF Railway	50.00
Joe Lemon	5.00
Mrs. W. E. Pierce	2.00
Mansfield Thomas	2.00
Higginbotham Bartlett	10.00
H. D. (Jack) King	5.00
Midge Rowland	1.00
Center Gin	10.00
Ropes Plainsman	5.00
Flora Martin	5.00

We would like to thank everyone who helped to make this drive a success. If you were not contacted and wish to contribute, please send your contribution to Hockley County United Fund, c/o Postmaster, Ropesville, Texas 79358.

## Training Course For Area Law Officers

The South Plains Association of Governments (SPAG) is offering the 2nd Unit of an initial 4 unit 160 hour basic training course for law enforcement officers of this region at South Plains College in Levelland. The first unit of training, held during the week of November 16th-20th at Wayland Baptist College in Plainview, initiated the South Plains Association of Governments' Law Enforcement Institute. Some 15 officers from eight area law enforcement agencies attended the first week of training. Certified as the training agency for the 15 county region by the Texas Commission on Law Enforcement Officer Standards and Education, SPAG will offer 160 hour training courses at Levelland, Lubbock and Plainview thereby giving officers three opportunities to receive training during the year. In addition to the basic training courses SPAG also plans to provide one or two day specialized seminars on subjects such as accident investigation, narcotic identification, communications, etc., as determined by the interest of region officers.

A new state law which went into effect September 1, 1970, requires and fulltime law enforcement officer hired after that date to become certified within one year of his original appointment by receiving 140 hours of Basic Police Training through an accredited training agency. SPAG anticipates the courses it offers will not only serve the certification requirement, but will also serve the officer once on duty.

The Unit No. 2 Course at Levelland began on December 7 and will continue through December 11. Classes begin every morning at 8:00 a.m. and end at 5:00 p.m. The training itself is held on the campus of South Plains Junior College in the conference room on the 2nd floor of the Library. There is no charge for the course. The course content of Unit No. 2 is as follows:

Review of Code of Criminal Procedures - 2 hours.  
Recent Court Decisions, 2

hours.  
General Principles of Criminal Law - 2 hours.  
Analysis of Specific Statutes - 12 hours.  
Liquor Laws - 2 hours.  
Laws of Evidence - 2 hours  
Juvenile Act & Handling of Juveniles - 2 hours.  
Firearms Training - 12 hours  
Jail Procedures - 2 hours.  
Review and Explanation - 2 hours.  
Total Hours - 40  
Area law enforcements are encouraged to send their personnel to this week of training. Unit No. 3 of the training program is tentatively scheduled at Wayland Baptist College in Plainview for the week of January 11th - 15th.  
City Marshal O'Neal Fox is among the 32 officers participating in the training school.

## BOOSTER CLUB NEWS

The Ropes Booster Club will meet each third Thursday of the month at 7:00 p.m. in the School Cafeteria, until further notice.

The next meeting will be on December 17th, and all members are asked to attend, as there is some urgent business to be attended to.

## POST OFFICE WINDOW SERVICE ON SATURDAYS

The Ropesville Post Office will offer window service for the delivery of packages and to accept parcel post mailing and sell stamps from 8:30 a.m. to 11:30 a.m. for the next 3 Saturdays, December 5, 12 and 19th.

## VISITING HERE

S/Sgt. and Mrs. J. T. Lott are here visiting her parents. Mr. and Mrs. Brice Kinnison. Sgt. Lott has just returned from a tour of duty in Vietnam, and will now be stationed at Selfridge AFB, Michigan.

## IN HOSPITAL

M. L. Roberts Jr. remains in the Veterans Hospital in Big Spring awaiting surgery on his leg which was injured in a car-motorcycle accident several weeks ago north of Ropes.

## MILITARY ADDRESSES:

Turn in the address of your loved ones in service so that friends and neighbors can send them a greeting card.

Following is the list we now have:

S/Sgt. and Mrs. J. T. Lott	4708 ABGp	Selfridge AFB, Mich. 48045
SP/5 and Mrs. Weldon P. Kinnison		1808 N. 8th. Apt. No. 14 Killeen, Texas 76541
SFC Doyle E. Odom	443-34-9055	HHC 41st Sig. Bn. APO San Francisco, Calif. 96238
Mr. and Mrs. Morris Goad	107 9th Street	Edwards AFB, Calif. 23523 (nee Jackie Nell Whitlock)
Mr. and Mrs. Fred Nance	5459 C. Street	Biloxi, Miss 39530 (nee Emma Jean Martin)
Sgt. and Mrs. August Kulms	2113 Ruth Street	Leesville, La. 71446
Mr. and Mrs. Waymon Morgan	1124 Highway 87 Lot 3	Springlake, N. C. 28390
PFC Robert L. Wright	573-76-3596	32nd Trans. Co. (GS) APO New York, 09028 (nee Trixie Wall's son; Tom Wall's grandson)
Lt. David Cain	1101-2 Falcon Dr.	Rantoul, Ill. 61866

## NOTICE:

Due to state regulations regarding the number of hours that shall constitute a school day. Ropes Schools will not be able to dismiss school for funerals that are held earlier than 3:00 p.m. School cannot dismiss earlier than 2:30 and still be counted as a full school day.

The school will continue to dismiss 30 minutes before funerals that are scheduled at 3:00 p.m. or later. Any pupil wishing to attend a funeral that is held prior to 3:00 p.m. may do so by faking the request to his or her principal.

## ROPE SCHOOL CAFETERIA MENU

Following is the menu for the Ropes School Cafeteria for the week of December 14-18:

MONDAY —
Fish Sticks with Catsup
Mixed Vegetables
Baked Potatoes
Chocolate Pudding
Hot Rolls Butter Milk
TUESDAY —
Fried Chicken
Candied Yams; Green beans
Spiced Apples
Peanut Butter on Crackers
Hot Rolls Butter Milk
WEDNESDAY —
Meat Loaf
Whipped Potatoes
Green Peas
Fruit Cobbler
Hot Rolls Butter Milk
THURSDAY —
Enchiladas
Buttered Beans; tossed salad
Applesauce; Molasses cookie
Cornbread Milk
FRIDAY —
Beef and vegetable Soup
Cornbread and Crackers
Cheese Wedge
Sliced Peaches Milk

GIFT SUGGESTIONS — Complete U.S. ZIP and AREA CODE DIRECTORY for \$1.00. Women's Society — Call the Methodist Parsonage 562-3881.

## Free or Reduced Lunch Program

Ropes Independent School District Announces New Free and Reduced Price Policy. Ropes Independent School District has long recognized the need for helping meet the nutritional needs of its students. The Ropes School Cafeteria serves a well-balanced nutritious lunch each school day. The charge to students who can pay is 35c. However, since some families find it difficult to pay this full price, the school will provide these lunches free of charge or at a reduced price to those children determined by the Principal of each campus to be unable to pay the full price for their lunches.

Families who feel that their children may be eligible for free or reduced price lunches may apply. Copies of the application form were sent home in a letter to parents earlier this week. Additional copies may be obtained at the Principal's office. The completed application, signed by an adult member of the family should be sent to the Principal of the designated campus, Ropesville, Texas. Such applications will be reviewed promptly and within three days the family will be notified in writing as to the decision made. All in-

formation provided on the applications will be held in the strictest confidence. Decisions for approval will be based on income.

Any unusual circumstances or hardships which affect the family's ability to pay for school lunches, such as prolonged illness in the family, unexpected expenses due to fire, flood, or any other disaster of this nature; seasonal unemployment and similar emergency situations, will also be considered.

If a family is not satisfied with the decision made on their application, it may request a hearing to appeal the decision. This request may be made orally or in writing to O. V. Fuller, Superintendent, at Ropesville, Texas, who will review the application with them and see if different arrangements can be made.

The school district's formal free and reduced price policy statement and the procedure that will be followed when a decision is appealed are on file in the Superintendent's office and may be reviewed by any interested person.

If anyone who is interested does not receive a letter, they may pick up an application blank at the Principal's office.

## Last Rites Held For Mrs. Copeland Saturday

Services for a long-time resident, Mrs. W. H. (Pearl Belle) Copeland, 85, were held at 3:00 p.m. Saturday in the First United Methodist Church here.

The Rev. Carrol Jones, pastor, and the Rev. Homer D. Henderson, pastor of St. Matthew's United Methodist Church in Lubbock, officiated. Burial was in Resthaven Memorial Park in Lubbock.

Mrs. Copeland died about 3 p.m. Friday in Methodist Hospital in Lubbock. She was born in Tarrant County and moved to the Ropesville area in 1903. She was a charter member of Ropes Methodist Church and a life-

time member of the W.S.C.S. Survivors include four daughters, Mrs. Flora Ardis of Ropesville, Mrs. Marta Evans of Riverside, California, Mrs. L. C. O'Bannon of Plainview, and Mrs. Ralph Krebbs of Lubbock; two sons, Floyd and William, both of Chandler; two brothers, Walter E. Clifford of Clarendon and George B. Clifford of Houston; one sister, Mrs. Lelia Clifford of Pampa; 21 grandchildren and 23 great-grandchildren.

Grandsons were pallbearers. The Plainsman and community extend sincere sympathy to the family in the time of their sorrow.

## Narcotics Seminar

### EDUCATION — CRIME AND NARCOTICS DANGERS — ADVISORY COMMISSION

Section 1. The Central Education Agency shall develop curricula and teaching materials for units of study on the dangers of crime and narcotics. The units of study shall be required for all students each academic year for grades five through twelve.

Section 2. (a) The Crime and Narcotic Advisory Commission is created. The advisory commission is composed of nine members, who shall serve for terms of two years expiring January 31 of odd-numbered years.

(b) The Governor shall appoint three members of the commission, with the following representation:

(1) a licensed physician;  
(2) an official of the Department of Public Safety; and  
(3) a narcotics official from the Federal Bureau of Narcotics and Dangerous Drugs.

(c) The Lieutenant Governor shall appoint three members of the commission, with the following representation:

(1) an official of a local-level law enforcement agency;  
(2) a group social worker;  
(3) a public school superintendent in a city with a population of over 200,000, according to the last preceding federal census.

(d) The Speaker of the House of Representatives shall appoint three members of the commission, with the following representation:

(1) a businessman;  
(2) a college student who is either a senior or a graduate student; and  
(3) a juvenile judge who serves in a city with a population of over 200,000, according to the last preceding federal census.

(e) The advisory commission shall meet when the chairman deems necessary. The commission shall elect its chairman, vice chairman, and any other officers it deems necessary. The commission shall adopt rules to govern the conduct of its business.

(f) Members of the commission shall serve without compensation, but each member is entitled to reimbursement of the cost of travel.

TURN TO PAGE 5





**People who cook with pride cook with GAS. Mrs. S. M. Smith does.**

Some of the world's best cooks are found in the kitchens of America, and they give themselves every cooking advantage, like gas range cooking. Good cooks like Mrs. Smith and nine out of 10 professional cooks agree that precise temperature control makes the difference in good cooking, and with gas you get exactly that. Gas also gives immediate response and constant temperature, so important in oven cooking.

So, give yourself every advantage and cook with gas. Remember, people who cook with pride cook with gas.

Here's one of Mrs. Smith's favorite recipes.



**RICE WITH QUAIL OR DOVE CASSEROLE**  
Mrs. S. M. Smith, 1300 Runnels, Big Spring

- 5 cups cooked rice (as directed on package)
- 4 sticks celery diced
- 4 diced pimentos
- 2 cans mushroom soup (undiluted)
- 1 small onion—grated
- 1 cup grated cheese
- 1 green pepper cut very fine
- 4 or 5 cups cooked quail or dove (cut in cubes)



Place 6 or 7 birds in a baking pan. Cover with water, add 2 sticks of butter, salt, pepper, 1 bay leaf, a sprinkle of rosemary. Cover. Place in oven and bake at 350 degrees for about an hour and a half or until tender. Cool and cube. Place in buttered casserole—rice, quail, pepper, onion, and pimento. Pour two cans of undiluted mushroom soup over mixture. Top with grated cheese. Cook in uncovered dish for about 45 minutes at 300 degrees. Serves 12 people. (Chicken or turkey may be used)

**ROPE INDEPENDENT SCHOOL DISTRICT SCHOOL CALENDAR FOR THE YEAR 1970-71 FIRST SEMESTER**

- December 22 — Semester Exams
- December 23 — Christmas Holidays Begin
- December 23 — Work Day
- January 3 — Christmas Holidays End
- SECOND SEMESTER:
- January 4 — First Day of Classes
- January 4 - February 12 — Fourth Six Weeks
- February 15-March 26 — Fifth Six Weeks
- March 26-May 21 — Sixth Six Weeks
- April 12 - April 16 — Easter
- May 21 — High School Graduation
- May 24, 25, 26, 27 — Work Days

—000—  
—000—  
—000—

**COCKROACHES - Rats, mice, termites, gophers and other household pests exterminated. GUARANTEED. Davidson Pest Control, 111 First St. or phone 894-3824. Levelland.**

—000—

**THE ROPES PLAINSMAN**

Published every Thursday at the Plainsman Office in Ropesville, Hockley County, Texas 79358.

Celeste Thomas, Publisher Editor

Entered as Second Class Matter at the Post Office in Ropesville, Texas 79358.

**Subscription Price**

One Year ..... \$4.00

Classified and Legal Notice rates: 15c line first insertion, 10c line all subsequent insertions. Count five words to line.

—000—  
—000—  
—000—

**M-SGT. AUBREY ROBERSON RECEIVES AWARD**

M-Sgt. Aubrey L. Roberson, son of Mr. and Mrs. J H Roberson of Lubbock and formerly of Lockettville, has been decorated with his second award of the U. S. Air Force Commendation Medal at Tan Son Nhut AB, Vietnam.

Sgt. Roberson distinguished himself by meritorious service as sergeant major of the U. S. Air Force Academy Preparatory School. He is now at Tan Son Nhut as a stenographic technician with the Seventh Air Force, a major component of the Pacific Air Forces.

The sergeant attended the Ropes High School and received his B.A. degree in 1955 from Texas Tech. His wife is the former Helen L. Coker.

**CARD OF THANKS**

I would like to express my deep appreciation to each and everyone who has sent me a card here in the hospital. You will never know how much they help, and I look forward to them each day.

A special thanks to each member of the Girl Scouts for their individual cards. I enjoyed every one.

M. L. Roberts, Jr.

**VISITING HERE**

Mrs. Kim Jones and daughter, Hallie, of Lubbock are here this week visiting in the home of Rev. and Mrs. Carrol Jones.

**HOBBY CLUB MEETS**

The Ropes Hobby Club met December 2 in the home of Peggy Frye.

Irene Armstrong demonstrated fitting slacks patterns. Pat Merkle was a guest at the meeting.

Our next meeting will be in the home of Kathleen Armstrong on January 14 when the club will crochet.

Peggy Frye

**BOWLING STANDINGS**

- Ropes Farmers Co-Op
- Bowers Liquefied Gas
- Jackson's Insurance
- Mansfield's Shell Service
- T & M Trucking
- Arnett Co-Op Gin

**HIGH TEAM SERIES**

- Mansfield's — 2464
- Bowers — 2318
- Ropes Co-Op — 2289

**HIGH TEAM GAME**

- Mansfield's — 886
- Ropes Co-Op — 836
- T & M — 806

**INDIVIDUAL HIGH SERIES**

- Hazel Bevers — 537
- Kidy Stalcup — 533
- Lavetta Bradshaw — 513

**INDIVIDUAL HIGH GAME**

- Kidy Stalcup — 210
- Don Thomas and Rosemary Henderson — 193
- Hazel Bevers and Lavetta Bradshaw — 191

**CLASSIFIED ADVERTISING**

A WHOLE HOUSE FULL OF BEAUTIFUL ANTIQUES CHINA CABINETS DEPRESSION AND CUT GLASS

Round Tables & Wash Satnds

105 Walnut

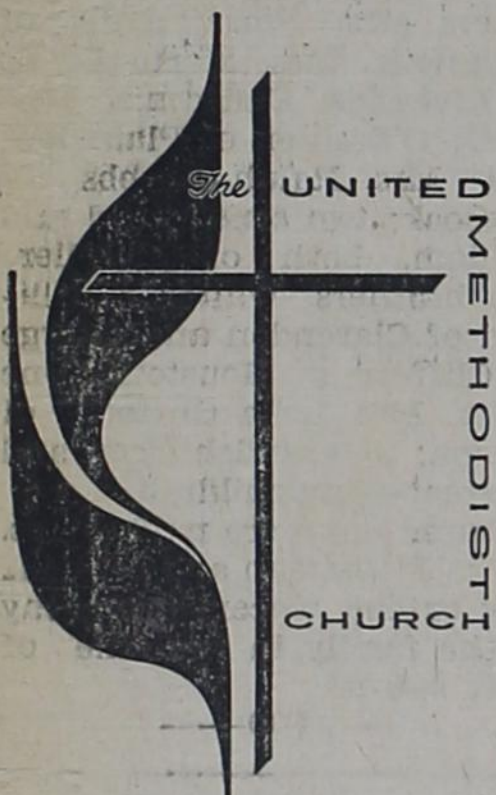
Levelland, Texas

FOR SALE — 3 Room House With Bath; Furnished; Also 50' x 150' Corner Lot; Anl Combine. Chester Contact Peck Rogers or B. J. Thomas.

All Watkins Products, Including Black Pepper and Vanilla may be purchased through the Ropes TOPS Club. Contact any member, or call Mabel Hobbs, 562-3478, Ropes.

FOR SALE — 3 BDRM. HOUSE & 2 LOTS IN N.W. ROPES. SEE OR CALL JIMMY SIMS; 562-4371.

**United Methodist News**



**FIRST UNITED METHODIST CHURCH**

P. O. Box 147 Phone 562-3381

Ropesville, Texas 79358

"Located on the Lubbock Road"

REV. CARROL M. JONES, Pastor

Sunday School ..... 10:00

Morning Worship ..... 11:00

Evening Worship ..... 6:00

**Advent and Christmastide**

This is the season of joyous anticipation when all of our plans point toward the wonderful drama of Christmas, that time when we celebrate the climatic event of history, God's incarnation to "dwell among us full of grace and truth". The Advent candles tell us only two more Sundays remain before Christmastide comes in all of its splendor.

Sunday evening, December 13, our congregation will join the congregation of St. Matthew United Methodist Church of Lubbock for a Christmas Cantata. The hour is 7:00 p. m. Reverend Jones will assist Reverend Homer Henderson, St. Matthew's pastor, in the service of worship.

Then on Sunday evening of December 20 when all of the Advent candles will be burning we will have our Celebration of Carols and Candles. The service begins with Christmas music and a message in film, LOVE AT CHRISTMAS. Next in pagentry, music, carols and poetry we go to Bethlehem; we stand in wonder and awe beside the MANGER to ask, "WHAT CHILD IS THIS"; then to watch with the shepherds and hear "the heavenly host praising God and saying, 'Glory to God in the highest, and on earth peace, good will toward men' ". II

**CAME UPON A MIDNIGHT CLEAR, you know.**

Finally, guided by the STAR OF THE EAST, we go with the WISEMEN to bring gifts to the new born King as we worship and sing, ANGELS FROM THE REALMS OF GLORY. And as the bright star fades we light our candles from the Candle of Light with, O COME, ALL YE FAITHFUL.

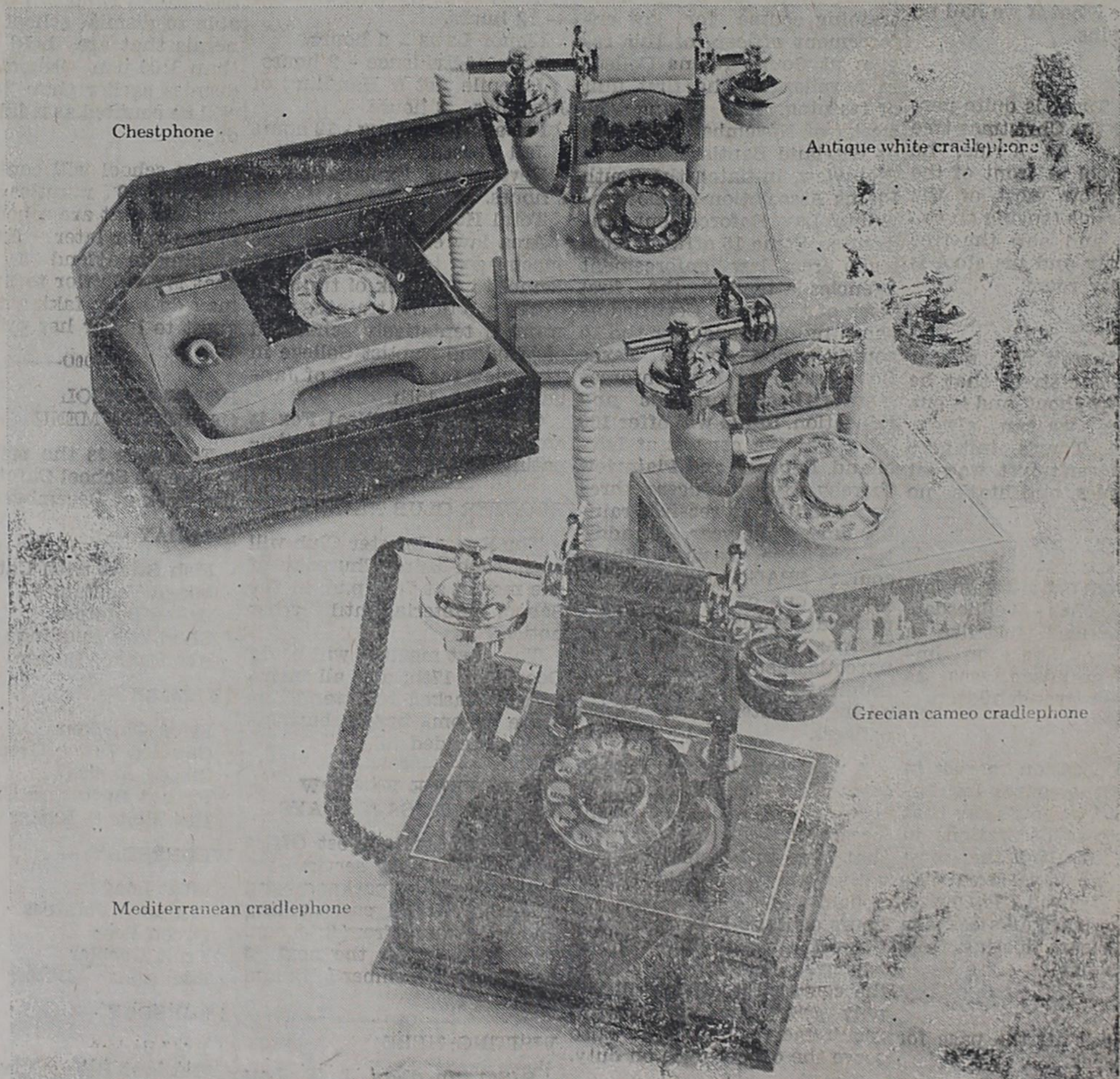
We close with the prayer hymn, HOLY SPIRIT, TRUTH DIVINE.

Sunday morning, December 27, we have our final congregational worship service of 1970. There will be no service at the church the evening of the 27th. Families are asked to make the most of Christmastide together in their homes or visiting with friends.

**Stomach upset by gas and acid?**

Di-Gel with Simethicone quickly relieves gassy-acid upset.

This unique discovery breaks up and removes painful gas-bubbles. Your relief is more complete because Di-Gel takes the acid and the gas out of acid indigestion. Get Di-Gel tablets or liquid today. Product of Plough, Inc.



**They're bound to cause talk.**

And not just among the neighbors. This is the kind of conversation people make over phones like these: "Ah, mon cherie je t'aime, je t'adore..." Or maybe: "Tell Schafhausen to call me from Beirut. In three days or the deal's off."

Call your General Telephone business office to order one of these glamorous new Decorator Telephones.

And if you only order the groceries over it, it'll still make peanut butter and milk sound like caviar and champagne.

**General Telephone**



# Soil Conservation - - A 'Must' For Our Future

## SOUTH PLAINS HARVEST NEARS COMPLETION

The South Plains cotton harvest neared completion as farmers had approximately 95 per cent of the crop out of the fields, according to W. K. Palmer, in charge of the Lubbock Cotton Classing Office of the U.S.D.A.

Samples from 1,239,000 bales of cotton had been received by the Lubbock, Brownfield, Lamesa and Levelland offices

through Friday, December 4. Samples from 258,000 bales were classed at the four area classing offices during the week ending Friday, December 4th. This brought the total classed this season to 1,115,000 compared to 652,000 at this time last year.

Strict Low Middling was the predominant grade at Lubbock last week with 28 per cent of all cotton classed. Middling Light Spotted made up 19 per

cent, Strict Low Middling light Spotted 25 per cent and all Spots and Tinges 15 per cent.

Staple length averaged between 31/32 and 1-Inch. Two thirds of the cotton classed at Lubbock had staple lengths of 31/32 and longer.

Fifty-nine per cent of the cotton "miked" in the Lubbock Office was in the 3.5 and better micronaire category, 13 per cent "miked" 3.3 and 3.4. 18 per cent was 3.0 through

3.2. 8 per cent was 2.7 through 2.9 and 2 per cent was 2.6 and below.

Eighty-five per cent of the cotton classed at Lubbock last week had Pressley readings of 80,000 pounds and higher. Pressley is an indication of fiber strength and the most desirable Pressley reading is 80,000 pounds and above.

Prices were slightly higher on most qualities. Prices ranged from the lean or near the

lean on high grade, long staple cotton up to \$40.00 per bale over the loan for low grade, low micronaire cotton. Most lots were selling in the narrow range of 18 to 20 cents per pound.

Prices quoted by the Lubbock Cotton Exchange for the most predominant qualities in the 3.5 to 4.9 micronaire range were: Strict Low Middling 15/16 - 19.65, Strict Low Middling 31/32 - 19.90, Strict

Low Middling 1-Inch - 20.55, Middling Light Spotted 15/16 - 19.75, Middling Light Spotted 31/32 - 20.10, Middling Light Spotted 1-Inch - 20.65, Strict Low Middling Light Spotted 15/16 - 19.50, Strict Low Middling Light Spotted 31/32 - 19.80 and Strict Low Middling Light Spotted 1-Inch - 20.10.

Cottonseed prices were steady and ranged from \$57.00 to \$62.00 per ton to the farmer.

—000—

The Key To Our Future Is To

## CONSERVE THE SOIL TODAY

Save For Your Future At

### LEVELLAND SAVINGS & LOAN ASSOCIATION

Phone 894 - 3145

1102 Austin

Levelland

For Growth Of The South Plains

## SAVE THE SOIL

Save On a New Or Clean Used Car at

### O'CONNOR - STRICKLAND MOTOR CO.

"A Good Deal For a Good Deal Less"

1006 5th St.

Dial 894-3232

Levelland

A Booster For Soil Conservation

## THE SPOT

"Just Good Food"

Where Friends Meet To Eat

PHONE 894-3416

306 College

Levelland

FOLLOW YOUR SOIL CONSERVATION PROGRAMS. YOU BENEFIT MOST.

## ELLIS PHARMACY

'TWO CONVENIENT LOCATIONS'

Hospital Clinic Pharmacy

Phone 894-3211

1213 Houston

Phone 894-7375

LEVELLAND

WE ENCOURAGE A SOIL CONSERVATION PROGRAM

## Opdyke Farmers Cooperative Gin

"Where Ginning Is An Art"

Route 2

Levelland, Texas

Phone 894-3315

YOUR FUTURE IS INSURED IF YOU SAVE THE SOIL

YOUR MONEY IS INSURED AT

## Levelland State Bank

Member F.D.I.C.

Your Account Insured Up To \$20,000

CALL 894-6111

824 Austin

Levelland

We Are Always Interested In

## SOIL AND WATER CONSERVATION

And The Welfare Of The Farmer

## General Telephone Co. of the Southwest

Brownfield



# You Protect Your Future By Conserving The Soil

## HOME HIGH LIGHTS

by: Jewel Robinson

### Continuation Of Better Ways To Feed Your Family for Less

Do substitute eggs or cheese for meat occasionally. One egg or one ounce of cheese is equivalent in protein to one ounce of cooked meat, fish or poultry.

Compare prices of different sizes of eggs. When the difference in price between any two sizes is eighth cents or more per dozen, buy the smaller size. It will give you more total weight of eggs for your money.

Grade B eggs are fine for cooking, scrambling, etc. They may have imperfectly formed (not cracked) shells, but the egg itself is as good as Grade A.

The color of the eggshell makes no difference in the egg's food value. If brown eggs are less expensive, buy them.

Bulk or store-sliced cheese generally costs less than packaged sliced or shredded cheese.

Mild Cheddar cheese is usually less expensive than sharp cheddar (agin increases the price).

If you find specials on hard

cheese, freeze them for future use in cooking. The texture will change after thawing, but this doesn't matter if cheese is used in grilled sandwiches, casseroles, etc.

Milk is usually less expensive by the gallon or half-gallon. Get the largest size you can use within three to four days.

If filled milk is available in your state, use it as an inexpensive substitute for whole milk. Imitation (non-dairy) milks usually do not have all the nutrients of milk, are not always a substitute.

Look for new nonfat milks fortified with vitamins A and D.

For drinking, get whole-milk flavor with nonfat dry milk by mixing equal parts relictified dry and whole milk. Or add an extra two to three tablespoons dry milk powder per quart of relictified milk.

Use relictified milk in from scratch puddings, cakes and gravies.

Add extra nonfat dry milk to casseroles, creamed dishes, etc. — extra protein for pennies.

Inexpensive evaporated milk can make creamy puddings, gravies and homemade ice

cream.

Use evaporated skimmed milk as you would evaporated milk; you'll save calories as well as money.

Use milk, not cream, on your cereal.

Mixing your own chocolate milk with relictified milk is cheaper than buying it ready mixed.

Substitute margarine in recipes calling for butter.

## NEWS OF AREA MEN IN SERVICE

**FT. ORD, CALIFORNIA (AH TNC) Oct. 29** — Army Private John P. Robertson, 20, son of Mr. and Mrs. Johnnie R. Robertson, Plains, recently completed an eight-week administration course at Ft. Ord, California.

He was trained in the preparation of Military Records and Forms. Instruction was also given in fundamentals of the Army filing system, typing and operation of office mach-

ines. He is a 1968 graduate of Plains High School.

**DUC PHO, VIETNAM (AHT NC) Oct. 23** — Harvey Stephens, 21, son of Mr. and Mrs. Harvey Stephens, Lamesa, recently was promoted to Army Sergeant in Vietnam, while assigned as an infantryman in Company C, 4th Battalion, 21 Infantry, American Division near Duc Pho.

Sgt. Stephens entered the Army in May 1969, received basic training at Ft. Bliss, Tex. and was last stationed at Ft. Ord, California.

He is a 1966 graduate of Lamesa High School.

## CONTRACT FOR SEAL COAT WORK LET

**AUSTIN** — A contract for seal coat work on 491.4 miles of highways in the Lubbock district was awarded by the Texas Highway Commission during its November meeting

here. The work will be under the supervision of District Engineer O. L. Crain. The contract includes work in Bailey, Castro, Cochran, Crosby, Dawson, Floyd, Garza, Hale, Hockley, Lamb, Lubbock, Parmer, Swisher and Terry counties.

High Plains Pavers, Inc. of Plainview was awarded the contract with a low bid of \$927,363.40. The work will take an estimated 80 working days to complete. James King of Lubbock is the Highway Department engineer in charge.

EQUIPMENT TO MOVE YOU ACROSS THE STREET OR ACROSS THE NATION FURNITURE DOLLIES

## MANSFIELD'S SHELL SERVICE

OPEN 6:30 A.M. TO 9:00 P.M.

Phone 562-9211

Closed Sundays

Ropesville

Save On a Vacuum Cleaner at

## THE KIRBY COMPANY

New and Rebuilt

We Service All Makes

See The New Kirby Classic 15" Nozil

More Leisure Time For You

Call 637-2606

1103 Lubbock Road

Brownfield

## AUTO SERVICE CENTER

LINE UP WITH BEAR

Engine Overhaul

Brakes

Automatic Transmission

CALL 894-3459

908 8th Street

Levelland

Save The Soil And Water For Progress

## JOHN'S IRRIGATION

Pumps Mfg. By Simmons

Repairs On all Makes

## GEAR HEADS

Call 894-4885

Morton Highway

Levelland

**SEWER ROOTER SERVICE**  
CLEANS SEWER LINES  
CALL  
C. M. THOMAS  
Phone (806) 873-2421  
Rt. 1 Shallowater, Texas 79363



"We accept burial policies of all companies"

**FRANKLIN-BARTLEY FUNERAL HOME**  
6302 36th Street Lubbock, Texas

Phone SWift 9-3666 collect

## ELLIS PHARMACY

1213 HOUSTON  
Phone 894-6056

411 AUSTIN  
Phone 894-3211

LEVELLAND, TEXAS

BUTANE

PROPANE

GASOLINE OIL DIESEL

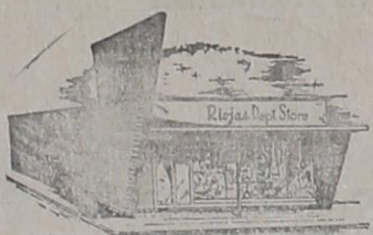
DISTRIBUTOR OF AMERICAN OIL COMPANY PRODUCTS

Atlas AntiFreeze \$1.39 Gal.

## BOWERS

LIQUEFIED GAS, INC.

Phone 562-3511  
ROPESVILLE



Lay Away Now For  
CHRISTMAS

RIOJAS DEPT. STORE

NO BRAG — JUST FACT

## PRESTON FRESH MILK

Is Still Your Best Milk Buy

THIS COUPON WORTH 10c

On Purchase of One Gallon

## PRESTON FRESH MILK

Reg. Price 89c Gallon

## THOMAS SHELL STATION

WITH COUPON 79c

Void After December 24

## ROPESVILLE CHURCH OF CHRIST

Schedule of Services:

Sunday Bible Classes:	10:00 A.M.
Worship Hour:	19:50 A.M.
Pew Packer's Class:	5:40 P.M.
Evening Service:	6:00 P.M.
Wednesday Ladies Class	2:30 A.M.
Wednesday Bible Classes:	2:30 P.M.

## SERVICES:

SUNDAY SCHOOL	9:45 A.M.
MORNING WORSHIP	10:45 A.M.
EVENING NYPS	6:00 P.M.
EVENING SERVICE	6:45 P.M.
PRAYER GROUPS	
MEN — TUESDAY	6:00 A.M.
WOMEN — TUESDAY	9:00 A.M.
FAMILY PRAYER — WEDNESDAY	7:30 P.M.

## ROPES CHURCH OF THE NAZARENE

Let Us Prepare  
and Serve Your  
HOLIDAY BANQUET  
JEAN'S CAFE

open seven days a week



**THE STATE OF TEXAS**

Plaintiff: JESSIE C. FORD  
Defendant, Greeting:

You are hereby commanded to appear before the Honorable 121st Judicial Dist. Court of Hockley County at the Court House thereof in Levelland, Texas, at or before 10 o'clock A.M. of the first Monday next after the expiration of forty-two days from the date of the issuance of this citation, same being the 4 day of January A.D. 1971, then and there to answer Plaintiff's Petition filed in said Court, on the 6 day of November A.D. 1970, in this cause, numbered 6364 on the docket of said court and styled Frances H. Ford Plaintiff, vs. Jessie C. Ford Defendant.

A brief statement of the nature of this suit is as follows, to-wit:

Divorce  
Discord & Conflict of Personalities  
No children under eighteen  
Equal division of Community property  
as is more fully shown by Plaintiff's Petition on file in this suit.

The officer executing this process shall promptly execute the same according to law, and make due return as the law directs.

Issued and given under my hand and the Seal of said Court, at office in Levelland, Texas this the 23rd day of November A.D. 1970.

Attest:  
RUBY BEEBE WILLIAMS Clerk,  
121st Dist. Court,  
Hockley County, Texas  
By Johnnie Roberts Deputy.  
(SEAL)

**DRUG SEMINAR FROM PAGE 1**

for actual and necessary expenses incurred in performing his duties, as provided by legislative appropriation.

Section 2. (a) The advisory commission shall:

(1) advise and assist the Central Education Agency in developing curricula and teaching materials for a course on the dangers of crime and narcotics;

(2) advise and assist the Central Education Agency in designating the number of hours that the course shall be taught; and

(3) assist local citizens' groups formed to combat unlawful use of and traffic in drugs and narcotics.

(b) The commission shall develop a research program designed to measure the effectiveness of the commission's activities and shall prepare a research report annually to facilitate planning and development.

(c) The commission shall cooperate and coordinate their activities with any other state agency or legislative committee or commission that is investigation or studying drug and narcotics activity, availability, or use in Texas

Section 4. (a) In order to keep the teachers abreast of the latest developments in the subject matter, the Central Education Agency the cooperation of the advisory commission shall provide by regulation for annual instruction sessions.

(b) Every person assigned to teach the course in the public schools shall attend the instruction sessions as required by regulation of the Central Education Agency

Section 5. This Act takes effect September 1, 1970.

The Texas Education Agency, through the Education Service Center, has conducted a Drug Education workshop in Lubbock to assist in orientation of area administrators, teachers and student representatives in ways to implement this law into the school's curriculum. Ropes was represented by Fred Satterwhite, Elvis Spradlin and Stanley Shockley in this 5-day workshop.

In an effort to gear an appropriate course of study for our community and remain in compliance with the law, school officials will be meeting with the local Lions Club on December 21. Also the opinions of local churches as well as other interested groups will be solicited in regard to what our particular needs in this area are.

When driving at night be especially careful, suggests Liberty Mutual Insurance Companies. Always be sure that your lights are clean to aid visibility and make sure your speed is reasonable for road conditions.

**UNDERGOES SURGERY**

W. C. (Bill) Patman entered Methodist Hospital in Lubbock Tuesday and underwent lung surgery Wednesday.

He is reported doing fine, and will be in the intensive care unit three days a more.

**IN HOSPITAL**

Lisa Evans, six-year-old daughter of Mr. and Mrs. Kenneth Evans is in Methodist Hospital in Lubbock this week undergoing tests.

We learned Wednesday night that Lisa has now returned home and is reported better.

**IN HOSPITAL**

James L. Means Sr. was admitted to Highland Hospital in Lubbock Tuesday, December 1, but is reported to be at home now, and improved.

**SUNDAY GUESTS**

Guests Sunday in the home of Mr. and Mrs. Shelby Evans were Mr. and Mrs. Loyd Wilson and two boys of Lubbock, and Mrs. Martha Pearl Evans of Riverside, California.

**4-H MEETING**

There will be a 4-H meeting Monday, December 14th right after school in the cafeteria. This will be the annual Christmas party and all members and their parents are invited to attend.

**ROPES EAGLE Basketball Schedule 1970-71**

12-10, 11, 12 Meadow Tournament		
12-15 Smyer	H	7:00
12-18 Anton	T	5:30
12-21 Seagraves	H	6:00
12-22 Sundown	T	5:30
12-29 Seagraves	T	6:00
1-2 Cooper	T	4:00
1-5 Wilson	H	5:30
1-7, 8, 9 Ropes Tournament		
1-14 Cooper	H	5:00
1-15 New Home	H	5:30
1-19 Southland	T	7:00
1-22 Meadow	H	5:00
1-26 Smyer	T	7:00
1-29 Sundown	H	5:00
2-2 Wilson	T	5:30
2-5 New Deal	H	5:00
2-9 New Home	T	5:30
2-12 Southland	H	7:00
2-16 Meadow	T	7:00
2-19 Smyer	H	7:00

B Team Games Start At 5:00 Or 5:30

A Team Games Start At 7:00

Ropes Tournament:  
Anton, Whitharral, Union, Meadow, Wellman, and Ropes



**When you're not like yourself, Lydia Pinkham understands**

All of a sudden you might feel you're changing—not a good feeling. You're tired, edgy, out of sorts and that's not you. Lydia Pinkham understands.

A long time ago, when ladies couldn't be as frank as we can today, Lydia Pinkham recognized the problem and set about finding a remedy. She knew it was not natural for women to have to suffer with what was obviously a natural process.

So she turned to nature for a remedy. She developed a marvelous compound of medicinal roots and herbs that turned the trick for the women she knew. Because it is a natural answer to your natural problems, it can turn the trick for you, too.

Try Lydia Pinkham's root and herb remedy to help you feel better, more like yourself.

**Lydia E. Pinkham**  
Available in Tablet and Liquid Form  
Pinkham Medicine Co.  
Lynn, Mass. 01904



**Support our Advertisers!**

**they Care enough to tell you**

**In This Week's Plainsman:**

- |  |  |
|--|--|
| THE KIRBY COMPANY, Brownfield                | THE ROPES FOOD STORE, Ropesville         |
| GENERAL TELEPHONE COMPANY of the S.W.        | JEAN'S CAFE, Ropesville                  |
| OPDYKE FARMERS CO-OP GIN, Rt. Levelland      | DAVIDSON PEST CONTROL, Levelland         |
| O'Connor-Strickland Motor Company, Levelland | RIOJAS DEPT. STORE, Ropesville           |
| JOHN'S IRRIGATION, Levelland                 | MANSFIELD'S SHELL SERVICE, Ropesville    |
| THE SPOT RESTAURANT, Levelland               | BOWERS LIQUEFIED GAS, INC., Ropesville   |
| AUTO SERVICE CENTER, Levelland               | ROPES CHURCH OF THE NAZARENE             |
| LEVELLAND SAVINGS & LOAN                     | ROPES UNITED METHODIST CHURCH            |
| LEVELLAND STATE BANK                         | ROPEVILLE CHURCH OF CHRIST               |
| ELLIS PHARMACY, Levelland                    | Franklin - Bartley Funeral Home, Lubbock |
| PIONEER NATURAL GAS CO.                      | PRESTON FRESH MILK                       |



# Specials For Thursday, Friday and Saturday

## Finest Quality MEATS

28 OUNCES SHURFINE

**Apple Butter** .33

18 OZ. Shurfine Strawberry  
**PRESERVES** .53

CARNATION

**Instant Breakfast** .59

303 S.F. Cream Style Golden  
**CORN** .17

GIANT SIZE DETERGENT

**TIDE** .79

TEN and a HALF OZS. SHURFINE

**TOMATO SOUP** ..... 07

FOUR OUNCES WILSONS FOUR FOR

**VIENNA SAUSAGE** ..... \$1

NO. 2 1-2 SHURFINE YELLOW CLING

**PEACHES** 3 FOR \$1

NO. 2 CAN SHURFINE SLICED

**PINEAPPLE** ..... 3 - \$1

FIVE POUNDS SHURFINE

**FLOUR** ..... .39

King size 6 bot. crt. Dr. Pep, Pepsi or 6 dep't.

**COKES** ..... .39

POUND SIRLOIN

**STEAK** .93

POUND PACKAGE All Brands

**BACON** ..... .69

POUND LITTLE PIG

**Spare Ribs** .49

TWELVE OUNCE PKG. ALL MEAT

**FRANKS** ..... .49

POUND PORK SHOULDER

**ROAST** .39

POUND CENTER CUT

**PORK CHOPS** ..... .79

POUND HALF or WHOLE

**Pork Loins** .55

POUND BONELESS

**STEW MEAT** ..... .69

POUND BABY BEEF

**Liver** .49

EIGHT OZ. SHURFRESH or PILLSBURY

**BISCUITS** 3 FOR .23

### Garden Fresh Vegetables

POUND NAVAL

**ORANGES** .19

CELLO BAG

**Carrots** .10

POUND TEXAS

**CABBAGE** ..... .05

POUND RUSSETT

**Potatoes** .07

PILLSBURY

**CAKE MIX** 3 FOR \$1

TWO POUNDS SHURFINE THREE FOR

**PANCAKE MIX**, ..... \$1

SIXTY COUNT NORTHERN

**NAPKINS** 2 FOR .25

TWIN PACK DELSEY BATH

**TISSUE** ..... .29

THREE POUND CAN CRISCO

**SHORTENING** ..... .83

GIANT SIZE JOY

**DISH SOAP** ..... .53

Pt. Jar Shurfine fresh Dill Chip

**PICKLES** ..... .33

12 x 25 FOOT FOIL

**REYNOLDS WRAP** ..... .29

### Quick Convenient FROZEN FOODS

TOTINOS

**PIZZA** .69

FOUR OUNCES

**COOL WHIP** .33

Fatio Mexican or Enchilada

**DINNERS** .49

SIX OUNCES SHURFINE TWO FOR

**ORANGE JUICE** ..... .39

TEN OUNCES SHURFINE

**STRAWBERRIES** ..... .29

Half Gallon SHURFRESH

**MELLORINE** .35

**save** Get specially marked regular size **free** when you buy One king size Bold



Save AS YOU SPEND WITH **GOLD BOND STAMPS!**



Reg. \$2.19 VOS

**HAIR SPRAY** \$1.89

FOUR LBS. BIG CHIEF

**Pinto Beans** .49

6 OZ. FOLGERS INSTANT

**Coffee** \$1.29

303 CAN SHURFINE

**Spinach, 2 for** .33

