

# THE ROPES PLAINSMAN

VOLUME XXXIII — NO. 25

ROPSVILLE, HOCKLEY COUNTY, TEXAS

5c A COPY

THURSDAY, NOVEMBER 20, 1969

**If there is an X in this box it is notice your subscription has expired and an invitation to renew.**

## ROPSVILLE EAGLES WALLOW MEADOW BRONCHOS 42 — 7 FRIDAY

The Ropes Eagles racked up an easy win and remained undefeated in District 5-B play at the expense of the Meadow Bronchos, 42 to 7, at Meadow Friday night.

Tano Lara ran 5 yards for the first Eagle touchdown in the first period. Kick for extra points failed. Sammy Belew added another six points with a 65-yard run. Ricky Braden ran the extras. Royce Borland, Ropes linebacker, intercepted a Meadow pass and took it for a 32 yard touchdown of Eagle variety. Braden ran the extras.

With this 22 point cushion, the Eagles got two more touchdowns in the second period. Braden made them both on runs of 30 and five

yards. Point try missed in each case.

Meadow got its touchdown in the second quarter. Terry Wilks rang it up on a 50-yard gallop. Wilks also kicked the extras.

In the fourth, Borland stole another aerial and ran it over from 15 yards away — his second theft of the night. Lara ran the extras.

The season marks for each: Meadow, 13 and 0-4; Ropes 53 and 4-0.

The final game of the season will be played on the Eagle gridiron this Friday night when the undefeated Eagles meet the undefeated Sundown Roughnecks. Come on out and support our home team for District.

## "Precision Cotton Production"; It Starts With Good Seed

"Precision cotton production" makes good sense when its done right. Use of bed shaping, high speed planting, combination of insecticides and herbicides and other things intended to maximize profits has great potential for increasing profits from cotton. Yet perfecting such a system has been a real problem.

The reason? Scientists from Texas A & M University and other leading cotton research centers point to one big reason: poor quality planting seed, the least cost item in the entire system. Good seed, they stress, is the cornerstone of any production system; unless a producer gets a uniform, evenly distributed stand of vigorous disease-free plants that are capable of setting a heavy crop of uniform big bolls, there is little opportunity to apply any other management skills.

In other words, the precision system is shot without good seed.

The "poor seed syndrome" is widespread. University studies show that much of the seed planted in West Texas is poor quality and results in stand failures and large numbers of weak, non-productive plants. It can cause re-planting, a costly practice which wastes time and money invested in other practices; also, yields and quality are sacrificed with late planted cotton. Just how much poor seed costs the cotton industry is questionable, but at the very least, the losses are phenomenal. In extensive studies by Texas A&M in West Texas, it was repeatedly shown that seed quality directly affected net profit; that crops produced from "farmer-saved" seed (the most common seed source in this area) produced as much as 116 pounds of lint an acre less than the same variety from pure seedstock.

Few decisions made by the cotton producer during the season will influence profit as much as does the selection of planting seed; the investment in seed that can be planted at low rates and produce a stand that will grow off vigorously with high yield and quality fiber. The importance of seed and its influence on profit isn't surprising when you consider the job seed must do. It must tolerate adverse field conditions along with withstanding the stresses caused by various combinations of insecticides and herbicides. In today's high speed, high investment farming, cotton producers should demand a plant from every seed placed in the soil. Not only must these seedlings emerge rapidly but they must develop and continue to grow uniformly to maturity. It takes good, high quality seed to meet such a demand.

With seed carrying this profit burden, it just makes economical good sense that the producer knows the history of his planting seed; where it comes from, how it was produced, any quality tests that would tend to prove the performance of the seed. Chief problem in seed quality, apparently, is the supply. There just isn't enough really good, proven, tested seed planted. Very little farmer-saved seed, whether grown by the producer or bought from a neighbor, can match the quality of pure seedstocks that have been produced strictly for seed. There is a world of difference in commercial cotton production, where yield is the main concern, and in seed production. It's a highly specialized business that requires very specific and careful planning and handling.

Within all possible limitations, planting seed should be produced under conditions that protect it from such normal quality damaging ha-

zards as: pre-harvest or field damage; mechanical damage during harvest; damage during trailer or bulk storage; mechanical damage during ginning and damage during acid delinting. Further, there must be extreme efforts to prevent "varietal mixture", a common and costly trait of farmer-saved seed.

A breakdown in any of the above can result in seed that germinate slowly and have slow seedling growth; non-uniformity in growth and development; greater susceptibility to adverse field conditions; skippy stands; higher percentage of abnormal seedlings. Results: higher production costs and lower yields. A natural weather hazard, such as the early freeze that nipped much of West Texas this year, can have a damaging effect on quality of seed cotton.

Need for quality seed — quality referring to the bred-in growing characteristics and fiber properties of the variety as well as the purity, germination and vigor of the seed itself — prompted a group of West Texas cotton producers to join together to insure themselves a supply of good seed. They formed a cooperative, Growers Seed Association, for the specific purpose of producing and supplying its members with quality planting seed at reasonable prices.

Cooperative is staffed and geared to handle the rigid and highly sophisticated requirement of quality seed production. It employs such elite production techniques as one variety farms, one variety gin, one variety trucking, one variety storage, handling big volumes for processing one variety and strict cleanup before another variety is handled. Thus, chances for varietal mixture are virtually eliminated. Further, the association is staffed with competent seed breeders and agronomists who personally handle each intricate phase of the business. After production, seed are subjected to various test and grow out procedures to assure the highest quality before being offered for sale.

Growers Seed has a unique method for distributing these quality seeds. It's called the Seed Bank. A producer goes to his local coop gin or elevator, looks over the available varieties (which is virtually every adaptable variety), checks the prices, decides which he wants and in what amount. He then applies for this seed, receives a "bank certificate" assuring him of the order. The association guarantees that this seed, "banked" and held for the producer, will be ready when he needs it next spring. Certificates are issued only for seed currently in stock. The producer can also indicate and receive any special custom treating of the seed that he wants.

Seeds are sold first come, first served. By signing up early, producers get the advantage of both price and wide choice of varieties. Seed banked now and paid for before next January 15, is sold at the lowest possible prices. Should the price drop after the producer has banked his seed, but before January 15, his price is adjusted downward. The early freeze that has much of West Texas this year has created an unusually strong demand for planting seed; thus, producers are urged to sign up for seed now to insure getting what they need.

Seed Bank, organized and supported by West Texas producers, is a key example where farmers recognized a critical problem and have taken steps to eliminate it.

## HIGH HOPES

- Don McWhorter

We all have high hopes about everything in our lives. We either want something to happen or to go just a certain way. We can never look at the events and tell exactly what the result will be, but we always hope for the best.

In anything we do we must go about it in such a way as we can plan for a great success. We have high hopes each year that our crops will be good, and we plant and we water and till the soil so that each and everything can point toward a good result in the end. This is how it must be, or we would be a society of pessimists. We would never think of anything being a success and would by virtue of our attitude toward the end result, mess up everything we do in preparation for the end. This would naturally cause the end result to be very bad.

Our attitude toward any event or action in our society will largely determine the success or failure. Whether it is our school team going to District playoffs and winning, or our preparation for a community service agency like the one being prepared and functioning in our city, or our personal relationships with those about us, we can see that our attitude toward the events and our relationship to these events can bear very heavily on the end result. Look on the bright side of every cloud and have high hopes toward the end result.

## The Observer and the Observed

by Dave K. Powers

For centuries questions have plagued mankind. Some have had more questions than others. There are many questions which can be answered in this life; others only in the life to come.

One question which has plagued man since the dawning of the ages is about the central core of human self. Not all theories have been entirely right nor have all been completely wrong. Some thinkers have questioned it like this — "Am I body mind and spirit? Or am I more 'body' than either of the other two?" Some philosophers believe the center of our being is our intellect, the capacity for thought. What distinguishes man from animal is the power of reason. We are thinking beings. But reason scarcely qualifies as the true center of personal existence.

Ovid wrote: "My reason this, my passion that persuades, I see the right, and I approve it, too; Condemn the wrong, and yet the wrong pursue." When there is a contest between passion and reason, reason always comes out second best.

Others believe the center of self is in the emotions, the "heart", that is, the feelings and desires. Reason is a part — emotion is a part. But neither must be taken alone as the whole.

To live by feelings, is to be captive to the whim of the moment and to wind up in aimless futility. To live by reason alone is to end up also in a blind alley. There is more to life than that which we can reason out.

That is why it is so important to believe in Almighty God. He has made the body and the soul to work together, not against each other. Unconfessed guilt often affects the physical body. That is why we "must get it off our chest." The guilty soul becomes suspicious, critical, touchy and defensive.

Whatever affection or idea has your will — possesses you.

## WEDDING SHOWER

Miss Jeannie Forbus and Bill McCormick will be honored with a wedding shower from 9:30 to 11:30 a.m. Saturday, November 22, in Fellowship Hall of the First Baptist Church. A cordial invitation is extended to all.

The bride-elect's selections are at Thoman's Jewlry in Levelland.

## FRIDAL SHOWER

Miss Joan Melcher, bride-elect of Mike Blackmon will be honored with a bridal shower Saturday, November 22 from 2:30 to 4:00 p.m. in the home of Mrs. Edward Jordan who lives seven miles east of Meadow on FM 211.

Everyone has a cordial invitation to attend.

## DAD'S NIGHT WILL BE FRIDAY SAYS BOOSTER CLUB

The Ropes Booster Club met on Tuesday night at 7:30 in the School Cafeteria. Friday night has been designated as Dad's Night at the Sundown game in Ropes.

All Ropes fans are asked to attend the pep rally Friday afternoon at 3:15 in the High School Gymnasium to support the boys on their way to district championship.

## DAD'S NIGHT

Dad's Night activities start at 7:10 p.m. Friday as all football players are asked to line up on the west side line facing the west stands.

Starting with the smallest number on the north end 35 yard line and go south as the numbers get larger and end up on the south end 35 yard line. Girls will hand out each boy's

number to him as all dads are requested to leave the stands and stand in front of their sons. As soon as they do this, the boys will pin their number on their dad's back.

Then the announcer calls each boys name and number. As he finishes the last name, all boys leave the field for their final instructions from Coaches Arthur and Spradling. The dads will stay on the field to be joined by the rest of the Eagle fans to form a line to bring the Eagles back on the field.

## BEAT SUNDOWN!

The next meeting night for the Booster Club will be announced at a later date.

## ROPSVILLE COMMUNITY SERVICE AGENCY IS NOW OPEN

The Ministerial Association of Ropesville, consisting of the pastors of the Baptist, Methodist and Nazarene churches, has begun the Community Services Agency which is set up to supply the needs in the way of food and clothing for our community members and those who come through during the temporary work seasons.

The agency consists of a Clothing Bank located in the basement of the Baptist Church which contains various items of clothing which may be received free of charge by applying through any one of the ministers; and a fund which is supplied to purchase groceries when families are out of work or for newly arrived families.

These funds may also be used for special clothing items needed to see that children are in school. This fund was initially started as the Thanksgiving Community Worship Service Offering held each year on Wednesday night before Thanksgiving.

The Community Service Agency needs used clothing for all ages. Especially shoes and items for school children; and staple items for the pantry. Flour, Sugar, Salt, Shortening, Dried Beans and Canned Goods, Also Personal Hygiene Items; Soap, Toothpaste, Tooth Brushes.

The CSA is Sponsored by the Ministerial Association Pastors of the Baptist, Methodist and Nazarene Churches

## PROCLAMATION

WHEREAS, this will be the first annual observance of a Community Week of Prayer; and

WHEREAS, it will be held in conjunction with World Wide Bible Reading Week; and

WHEREAS, every citizen of Ropesville has the right and the opportunity to dedicate this week in special prayer, and exercise the obligations of being Americans privileged to reside in a Christian country; and

WHEREAS, it is the duty of each person to co-operate with his respective Church, in a constant effort of improve the world we live in; and

WHEREAS, the City of Ropesville desires to express its belief that the answer to all problems lie in our Creator, and we are placed here to develop this belief in our youth, our visitors, and all humanity; now

THEREFORE, I, T. J. Redman, Jr., Mayor of the City of Ropesville, proclaim the week of November 23 through November 30, 1969, be designated as the First Annual Community Week of Prayer during this period in order that each resident give personal recognition to God.

Signed: T. J. Redman, Jr. Mayor, City of Ropesville

## WEDDING PLANS REVEALED

Mr. and Mrs. Edgar Melcher, of Route 1, Meadow have announced the engagement and approaching marriage of their daughter, Joan Catherine to Mr. Michael Blackmon, son of Mrs. Doyle Langford of Lubbock and Mr. Donald Blackmon of Ropesville.

Miss Melcher is a 1969 graduate of Meadow High School and Key-punch of Lubbock, Inc. She is employed by T.I.M.E.-DC in Lubbock.

Blackmon is a 1968 graduate of Ropes High School and is currently undergoing corpsman training at San Diego, California, where he is stationed with the U.S. Navy.

The couple plans to marry Friday, November 28, 1969 at 6:30 p.m. at Christ the King Catholic Church in Lubbock.

NOTICE — THE ROPES BARBER SHOP WILL BE CLOSED NOV. 21 THRU DEC. 2. OPEN DEC. 3.

## BID NOTICE

Ropes Independent School District will accept bids on a 1969 Chevrolet pickup until 7:30 p.m. December 1, 1969. Further information can be obtained upon request at the office of the Superintendent of Schools, Ropesville.

## NOTICE

Sealed bids will be accepted until December 8, 1969, on a 40'x110' barracks building to be moved. Bids may be turned in at the Ropes Farmers Co-Op Gin Office.

## 4-H CLUB NEWS

Ropes 4-H Club met Monday, November 10, 1969 at the School Cafeteria immediately after school. At this meeting each family made a trouble light.

Those attending the meeting include Cindy, Terry and Rodney Allen, Becky, Denise, David and Danny Carpenter, Sherri Collins, Kenny and Rex Darby, Jerry, Scott and Joel Drake, Daniel and Ramona Hamby, Johnny Mac and Sabra Hewlett, Donna Hurt, Paula McCormick, Allen Miller, Sherrie Morgan, Becky and Randy Pierce, Pam Ream, David Redman, Ricky and Tony Streety, Irene Thomas, Jerry White and Delisa and Kim Nobles.

Leaders present were Mr. and Mrs. John Ream, Mr. and Mrs. Roy Carpenter, Ronnie Stovall, Mrs. Keith Streety, Mrs. Doyle Darby and Mrs. Bennie White of Lyntegar Electric.

Or next meeting will be a Christmas party and we hope each of our members will attend.

Reporter, Becky Carpenter

## AN INVITATION

Mr. and Mrs. Edgar Melcher extend a cordial invitation to their friends to attend the wedding of their daughter, Joan Catherine, to Mr. Michael Ray Blackmon.

The couple plan to be married at 6:30 p.m., Friday November 28, at Christ the King Catholic Church in Lubbock. A reception will follow in parish hall.

## VISITS DOCTOR

Robert Mayfield was in Lubbock Monday for a medical checkup.

## ROPSVILLE RITES HELD FOR BEN STEPHENS SATURDAY

Services for Ben H. Stephens 76, a resident of Levelland since 1967, were conducted at 2:00 p.m. Saturday in the George Price Funeral Home Chapel in Levelland.

The Rev. S. L. Yeilding, pastor of the Friendship Baptist Church in Iamesa, officiated. Interment was in the Ropesville Cemetery.

Mr. Stephens, who was a native of Memphis, was dead on arrival at a Levelland hospital at 12:40 p.m. Thursday following an apparent heart attack at his residence.

Mr. and Mrs. Stephens were married May 31, 1913 at Lakeview in Hall County. They moved to Terry County in 1935, and to Ropes in 1937. They resided on one of the Lockett farms west of Ropes until his retirement in 1967 when they moved to Levelland.

Survivors include his wife, Carrie; two daughters, Mrs. Guy Olimb of Las Cruces, New Mexico and Mrs. Lee Diggs of Levelland; one sister, Mrs. Bertie Cassel of Amarillo; four grandchildren and two great-grandchildren.

Pallbearers were J. H. Roberson, William Bradshaw, Howard Bradshaw, Carroll Bradshaw, R. C. Hardin and Clois Cato.

The Plainsman family, and his many, many friends in this community offer our sincere sympathy to Mrs. Stephens and the family.

## NOTICE

Many items have been left on this week due to shortage of space.

## KLVT Radio Station in Levelland

1230 on your dial, will broadcast the Eagle-Roughneck football game this Friday from Ropes, beginning at 7:15 p.m.

## TO HOST HIGH SCHOOL

Members of the Ropes Church of Christ will host the Ropes High School students with entertainment at the Community Building following the football game Friday night.

## OPENS SHOP

Steve R. Russell has opened an electrical shop in Wolforth, offering repair service, and appliances. He has 27 years experience in the electrical field. Note ad in this issue.

## CAFETERIA MENU

Following is the Ropes School Cafeteria menu for Nov. 24-26:

Monday — Baked ham, buttered potatoes, peas and carrots, peach rice pudding, hot rolls, butter, milk.

Tuesday — Chili dogs, pinto beans buttered spinach, fruit Jello, milk.

Wednesday — Baked turkey, dressing and gravy, green beans, cranberry sauce, pumpkin pie with whipped topping, celery sticks, yeast rolls and milk

## BOWLING STANDINGS

C & C Gin  
Mansfields Service Station  
Bowers Butane  
Ropes Farmers Co-Op Gin  
Arnett Co-Op Gin  
Jackson Insurance  
T & M Trucking  
Cyanamid Farm Supply

## BOWLERS OF THE WEEK

Betty Watts  
Von Ayers  
Von Dalton

## ALTERNATES

Merle Robinette  
Glenda Sparks  
HIGH GAME SERIES  
Mansfields Service Station - 2501  
C & C Gin - 2351  
Bowers Butane - 2328

## HIGH TEAM GAME

Mansfields Service Station - 875  
C & C Gin - 844  
Bowers Butane - 816

## HIGH INDIVIDUAL SERIES

CLASS A  
Glenda Sparks — 536  
Betty Watts — 533  
Mary Ann Jones — 512  
Hazel Bevers — 512

## CLASS B

Joyce Shannon — 472  
Bobbie Mitchell — 443  
Charlene Sims — 441

BEAT SUNDOWN!

# Special SERVICES

DECEMBER 1 THROUGH 7 7:30 P.M. DAILY  
G. STEWART McWHIRTER, EVANGELIST  
CHURCH OF THE NAZARENE — ROPESVILLE

**SERVICES:**

SUNDAY SCHOOL	9:45 A.M.
MORNING WORSHIP	10:45 A.M.
EVENING NYPS	6:00 P.M.
EVENING SERVICE	6:45 P.M.
PRAYER GROUPS	
MEN — TUESDAY	6:00 A.M.
WOMEN — TUESDAY	9:00 A.M.
FAMILY PRAYER — WEDNESDAY	7:30 P.M.

## ROPEVILLE CHURCH OF THE NAZARENE

WELCOME TO ALL

Dave K. Powers, Minister Elwood & Timmons

Novembers 23, 1969 — Thanksgiving Offering for World Missions —  
"Others Need The Bread of Life."  
November 23-30, 1969 — National Bible Week.

**PROCLAMATION**

(The Board Members of the Church of the Nazarene have penned the following proclamation in observance of the Community Week of Prayer being held in connection with World-Wide Bible Reading Week, November 23-30.)

REALIZING the desperate and confused day in which we live; the dependence upon drugs and alcohol by many people; riots, famines, marches and demonstrations in our world — LET US AS THE

CHURCH of the NAZARENE of Ropesville, Texas send forth as urgent call for evangelistic preaching missionaries at home and abroad. May it be resolved that we

1. will pray until this need becomes a heavy burden on our hearts;
2. will pray privately and together for this desperate need till God answers;
3. will set aside another meal per week as a fast for the advancement of God's Kingdom;
4. will pray that God will lay a clear call to missions on some of our best evangelistic preachers in our churches, preachers with a real passion to see men saved and sanctified, preachers with a fervency that will penetrate darkened minds and hearts;
5. will pray that He will lay a heavy burden for missionary evangelism on some of our choice young people who are now in preparation for Christian service;
6. will pray for a renewed evangelistic emphasis through revival in our church, our colleges and our homes;

THEREFORE Let us declare OPERATION PEM in effect, Operation Prayer-EMer-gency. God can fill the need if we take the Bible admonition earnestly — "Pray ye therefore the Lord of the harvest, that He will send forth labourers into His harvest." (Matthew 9:38)

Signed:  
Dave K. Powers, Pastor  
Gwen West, Church Board Secretary  
T. J. Redman, Jr. Mayor.

**PRESENTED READINGS**

Mayor T. J. Redman and his family were each presented a book of Bible Readings by the Church of the Nazarene in connection with the Community Week of Prayer and World Wide Bible Reading Week, which is November 23-30.

**REVIVAL SERVICES**

Revival services will be held at the Nazarene Church December 1 through 7 at 7:30 p.m. daily. There will be no morning services. Evangelist G. Stewart McWhirter will bring the messages. Everyone has a cordial invitation to attend these services.

**NOW AT HOME**

Mrs. J. D. Beaty is now at home and doing fine after undergoing surgery last week in Lubbock Osteopathic Hospital.

**SEED BANKING**  
with  
**Johnny Cottonseed**  
see advertisement, this issue

**IN FLUVANA TUESDAY**

Mrs. J. C. Dorsett of Brownfield and Mrs. Emory obbs, accompanied by Mrs. Mary Jeffcoat of Lamesa and Mrs. Rachel Jeffcoat of Snyder, spent Tuesday in Fluvana visiting their old home place and seeing familiar landmarks. While there they visited in the home of Mr. and Mrs. Clyde Miller who have been residents there for 56 years.

**SHERIFF'S SALE**

THE STATE OF TEXAS )  
County of HOCKLEY )

NOTICE IS HEREBY GIVEN That by virtue of a certain order of sale issued out of the Honorable 99th District Court of Lubbock County, on the 13th day of October 1969, by J. R. Dever, Clerk of said Court for the sum of Two Hundred Five and No-100 (\$205.00) Dollars plus interest at 7 per cent per annum from October 13, 1966, plus \$75.00 attorney's fees and costs of suit, under a judgment, in favor of Municipal Investment Corporation in a certain cause in said Court, No. 59048 and styled MUNICIPAL INVESTMENT CORPORATION vs.

THE UNKNOWN HEIRS AND LEGAL REPRESENTATIVES OF J. E. ROBERTS, SR., DECEASED, et al, placed in my hands for service, I, WEIR CLEM as Sheriff of Hockley County, Texas, did, on the 5th day of November 1969, levy on certain Real Estate, situated in Hockley County, Texas, described as follows, to-wit:

Lot Twenty-One (21), Block Sixteen (16), Carter Addition to the City of Sundown, Hockley County, Texas;

and levied upon as the property of The Unknown Heirs and Legal Representatives of J. E. Roberts, Sr., Deceased and that on the first Tuesday in December 1969, the same being the 2nd day of said month, at the Court House door of Hockley County, in the City of Levelland, Texas, between the hours of 10 a.m. and 4 p.m., by virtue of said levy and said order of sale I will sell said above described Real Estate at public vendue, for cash, to the highest bidder, as the property of said The Unknown Heirs and Legal Representatives of J. E. Roberts, Sr., Deceased.

And in compliance with law, I give this notice by publication, in the English language, once a week for three consecutive weeks immediately preceding said day of sale, in the Ropes Plainsman, a newspaper published in Hockley County.

Witness my hand, this 5th day of November 1969.

WEIR CLEM  
Sheriff HOCKLEY County, Texas

**CITATION BY PUBLICATION**

THE STATE OF TEXAS  
TO: J. A. Gould, and if deceased, the UNKNOWN HEIRS and legal representatives of J. A. Gould, deceased, and to all persons claiming any title or interest in land under deed heretofore given to J. A. Gould, as Grantee, recorded in Volume 63, Page 190, Deed Records, Hockley County, Texas

Defendants, Greeting: You are hereby commanded to appear before the Honorable 121st District Court of Hockley County at the Court House thereof, in Levelland, Texas, at or before 10 o'clock A.M. of the first Monday next after the expiration of forty-two days from the date of the issuance of this citation, same being the 8th day of December A.D. 1969, then and there to answer Plaintiff's Petition filed in said Court, on the 23 day of September A.D. 1969, in this cause, numbered 6137 on the docket of said court and styled THE CITY OF SUNDOWN Plaintiff, vs. J. A. GOULD, ET AL Defendant.

A brief statement of the nature of this suit is as follows, to wit: to foreclose a valid assessment paving lien against real estate located in Hockley County, Texas. Such property being described as follows:

COCKROACHES - Rats, mice, termites, gophers and other household pests exterminated. GUARANTEED. Davidson Pest Control, 111 First St, or phone 894-3824. Levelland.

**THE ROPES PLAINSMAN**

Published every Thursday at the Plainsman Office in Ropesville, Hockley County, Texas 79358.

Celeste Thomas,  
Publisher Editor

Entered as Second Class Matter at the Post Office in Ropesville, Texas 79358.

Subscription Price  
One Year ..... \$3.00  
Classified and Legal Notice rates: 15c line first insertion, 10c line all subsequent insertions. Count five words to line.

Lots One (1) and Two (2), Block Eighteen (18), Carter Addition to the City of Sundown, Hockley County, Texas

as is more fully shown by Plaintiff's Petition on file in this suit.

The officer executing this process shall promptly execute the same according to law, and make due return as the law directs.

Issued and given under my hand and the Seal of said Court, at office in Levelland, Texas this the 29 day of October A.D. 1969.

Attest:  
Ruby Beebe Williams, Clerk  
121st District Court, Hockley County, Texas

**CITATION BY PUBLICATION**

THE STATE OF TEXAS

TO: Myrethia Edwards, and if deceased, the UNKNOWN HEIRS and legal representatives of Myrethia Edwards, deceased, and all persons claiming any title or interest in land under deed heretofore given to Myrethia Edwards, as Grantee, recorded in Volume 130, Page 494, Deed Records, Hockley County, Texas

Defendants, Greeting: You are hereby commanded to appear before the Honorable 121st District Court of Hockley County at the Court House thereof, in Levelland, Texas, at or before 10 o'clock A.M. of the first Monday next after the expiration of forty-two days from the date of the issuance of this citation, same being the 8th day of December A.D. 1969, then and there to answer Plaintiff's Petition filed in said Court, on the 23 day of September A.D. 1969, in this cause, numbered 6138 on the docket of said court and styled CITY OF SUNDOWN Plaintiff, vs. MYRETHIA EDWARDS, ET AL Defendant.

A brief statement of the nature of this suit is as follows, to wit: to foreclose a valid assessment paving lien against real estate located in Hockley County, Texas. Such property being described as follows:

Lots Fifteen (15) and Sixteen (16), Block Twenty-Three (23), Resurvey to the City of Sundown Hockley County, Texas.

as is more fully shown by Plaintiff's Petition on file in this suit.

The officer executing this process shall promptly execute the same according to law, and make due return as the law directs.

Issued and given under my hand and the Seal of said Court, at office in Levelland, Texas this the 29 day of October A.D. 1969.

Attest:

Ruby Beebe Williams, Clerk  
121st District Court, Hockley County, Texas

**CITATION BY PUBLICATION**

THE STATE OF TEXAS

TO: Dollie B. Williams, and if deceased, the UNKNOWN HEIRS and legal representatives of Dollie B. Williams, Deceased; J. M. Williams, and if deceased, the UNKNOWN HEIRS and legal representatives of J. M. Williams, Deceased, and to all persons claiming any title or interest in land under deed heretofore given to Dollie B. Williams, as Grantee, recorded in Volume 56, Page 551, Deed Records, Hockley County, Texas

Defendants, Greeting: You are hereby commanded to appear before the Honorable 121st District Court of Hockley County at the Court House thereof, in Levelland, Texas, at or before 10 o'clock A.M. of the first Monday next after the expiration of forty-two days from the date of the issuance of this citation, same being the 8th day of December A.D. 1969, then and there to answer Plaintiff's Petition filed in said Court, on the 23rd day of September A.D. 1969, in this cause, numbered 6139 on the docket of said court and styled THE CITY OF SUNDOWN Plaintiff, vs. DOLLIE B. WILLIAMS, ET AL Defendant.

A brief statement of the nature of this suit is as follows, to wit:

to foreclose a valid assessment paving lien against real estate located in Hockley County, Texas. Such property being described as follows:

Lots Nineteen (19), Twenty (20), Twenty-One (21), and Twenty-Two (22), Block Three (3), Carter Addition to the City of Sundown, Hockley County, Texas, as is more fully shown by Plaintiff's Petition on file in this suit.

The officer executing this process shall promptly execute the same according to law, and make due return as the law directs.

Issued and given under my hand and the Seal of said Court, at office in Levelland, Texas this the 29th day of October A.D. 1969.

Attest:  
Ruby Beebe Williams, Clerk  
121st District Court, Hockley County, Texas

**CITATION BY PUBLICATION**

IN LUBBOCK

Mrs. W. E. Walling has been in Lubbock daily this week attending the bedside of her sister, Mrs. Bob Abbott, who is undergoing tests and treatment at Methodist Hospital.

**ATTENDS CONTEST**

Miss Debbie Chaney attended a twirling contest in Andrews last Saturday and won two second and two third places. She is the daughter of Mr. and Mrs. Larry Chaney.

**COMMERCIAL AND DOMESTIC REFRIGERATION SERVICE AND TV REPAIR**

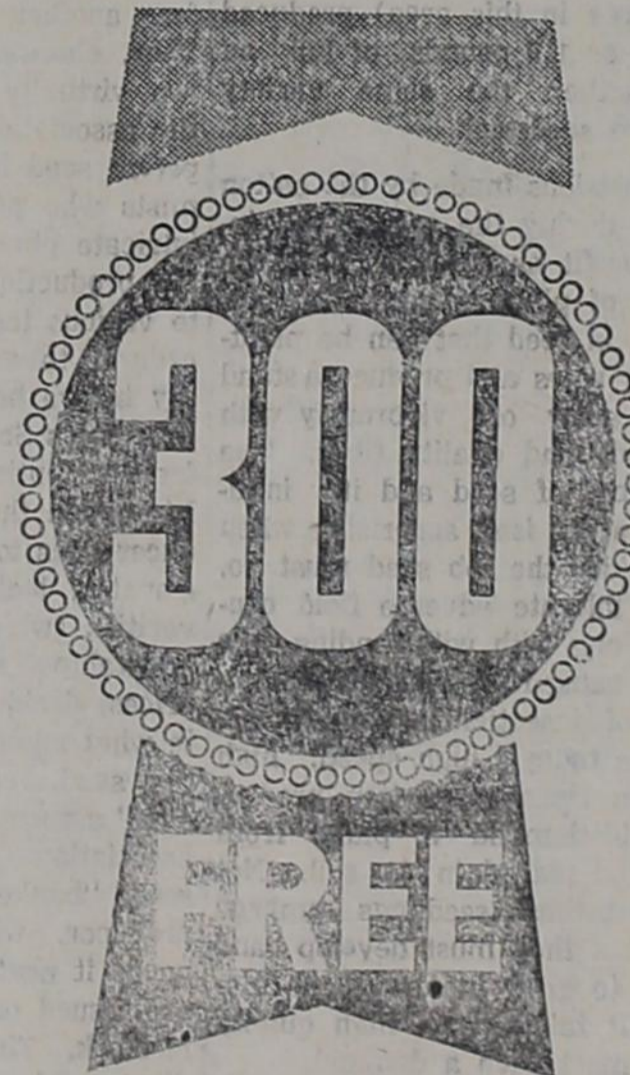
## Russell Sales & Service

APPLIANCES  
MAIN STREET WOLFORTH PHONE 866-4559

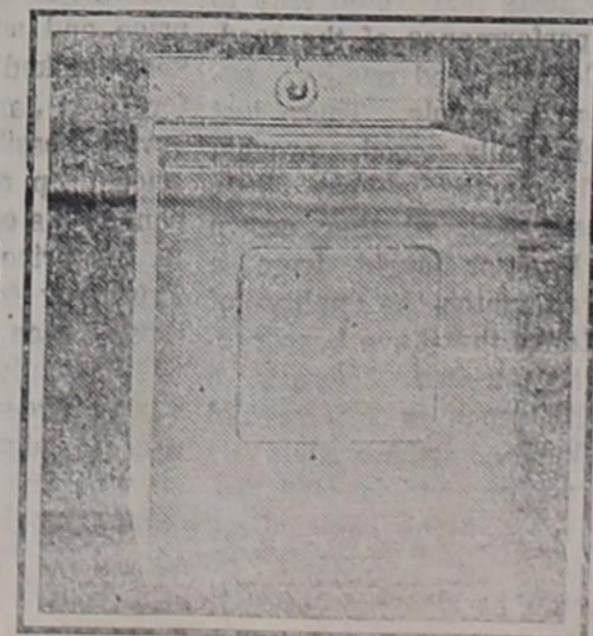
# 10% OFF SALE

Carolyn's Antiques

AND GIFT SHOP  
OPEN TUESDAY THROUGH SATURDAY 10:00 a.m. to 6:00 p.m.  
PHONE 562-4861 ROPESVILLE



**BE OUR GUEST... 300 LOADS FREE (A \$15.00 VALUE)**



Buy your new electric clothes dryer now and, as our customer, you will receive a \$15.00 certificate. At 5¢ a load, total operating cost, it's just like getting 300 loads dried free. Don't delay — buy now and take advantage of this valuable 300 offer.



## Meadow Barber Shop

OPEN SIX DAYS A WEEK

Don Borum, barber

## ELI'S PHARMACY

1215 HOUSTON Phone 894-8056  
411 AUSTIN Phone 894-3211  
LEVELLAND, TEXAS



**REPORTED IMPROVED**

Mrs. Wayne Morgan who is in Reese Air Force Base Hospital following surgery, is reported to be improved and is to return home this week.

**UNDERGOES SURGERY**

Doug Jones underwent surgery Thursday in Highland Hospital in Lubbock. He is reported to be going fine.

**VISITING HERE**

Mrs. Mildred Watts of LaPlace, Louisiana is here visiting in the home of her daughter, Mr. and Mrs. J. D. Beaty and Brady. She is helping care for Mrs. Beaty, who underwent major surgery last week in a Lubbock hospital.

**VISIT HERE**

Mrs. John Boone, Mrs. John Martin and Mrs. Hugh Goodlett of Plainview visited last week in the O. W. Dalton home.

**BEAT SUNDOWN!**

**CLASSIFIED ADVERTISING**

**BUSINESS OPPORTUNITY  
MAN OR WOMAN**

Reliable person from this area to service and collect from automatic dispensers. No experience needed... we establish accounts for you. Car. references and \$985.00 to \$1785.05 cash capital necessary. 4 to 12 hours weekly nets excellent monthly income. Full time more. For local interview, write, include telephone number, Eagle Industries, 4725 Excelsior Blvd., St. Louis Park, Minnesota 55416.

**FOR SALE - NICE FAT HENS.**  
50c EACH. R. E. Dorsey, PHONE 562-4911, ROPES.

**FOR SALE - LITTLE SISTER SINGER SEWING MACHINE.** FOR AGES 6 AND OVER. CALL MRS. JIMMY SIMS, 562-4371, ROPES.

**FOR SALE - O'Keefe & Merritt** cook stove, \$50; Leonard refrigerator, \$25; Frigidare dryer, \$40, all in good condition. 8 ft. pool table, like new, \$80. Call 562-3911.

**BEAT SUNDOWN!**

**METHODIST NEWS**



**FIRST UNITED  
METHODIST CHURCH**

P. O. Box 147 Phone 562-3881

Ropesville, Texas 79358

"Located on the Lubbock Road"

Sunday School ..... 10:00

Morning Worship ..... 11:00

Evening Worship ..... 6:00

Don McWhorter, Pastor

**GIFTS FOR  
All Occasions**

**Clothing and Shoes  
for Men, Women, Children**

**RIOJAS DEPT. STORE**

**Thanksgiving Dinner**

NOV. 27 - TURKEY, DRESSING, TRIMMINGS, DESSERT only \$1.50

**WALT'S CAFE**

OPEN SEVEN DAYS A WEEK 6:00 A.M. 'TIL 6

GOOD COFFEE COURTEOUS SERVICE DELICIOUS FOOD

WE NOW HAVE SHRIMP ON OUR MENU

VISIT US TODAY!

The Bible Class held its annual Thanksgiving luncheon Sunday in the Fellowship Hall. There were 22 present for the covered dish dinner.

Mrs. Edith Howard is still in the University Hospital where she has been confined since a slight stoppage in her heart valve caused her pain and weakness two weeks ago.

Mr. Robert Mayfield has received reports from his doctor that he is now able to resume some of his normal activities, which include driving his car.

Mrs. Thelma Wallace is up and around and doing quite well following hip surgery.

The ladies met at the church on Monday and sorted and repaired clothing for the Community Service Clothing Bank. The Bank is a community effort sponsored by the Ministerial Association and aided by the Baptist, Methodist and the Nazarene churches.

The clothes are located in the basement of the Baptist Church, and are accessible to all of the Ministers, who are prepared to help anyone needing clothing. There will be a continuing need for clothing and those who have used clothing they would like to donate are asked to bring it to any of the three churches.

The clothing is available in all sizes, and for anyone in the community who might have a need for any of the items. Anyone desiring clothing, or knowing of someone who is in need, should contact one of the pastors.

The Couples Class hosted a church wide dinner at Walt's Cafe at 6:00 p.m. Wednesday night. After the meal the group returned to the Church for a program presented by Judg N. C. Ledbetter of Morton. Entertainment was provided by a group of singers from South Plains College in Levelland.

**FORT WORTH STAR-TELEGRAM  
TEXAS' FINEST NEWSPAPER**

**BARGAIN  
DAYS** ANNUAL  
REDUCED  
MAIL RATES

NOW! FOR A LIMITED TIME YOU CAN SUBSCRIBE TO A LARGE METROPOLITAN DAILY BY MAIL—AND SAVE

MORNING EXCEPT SUNDAY REG. \$24 YOU SAVE

**\$7.05**

**\$16<sup>95</sup>**

6 DAYS A WEEK ONE YEAR BY MAIL

**\$21<sup>95</sup>**

7 DAYS A WEEK ONE YEAR BY MAIL

MORNING WITH SUNDAY REG. \$32 YOU SAVE

**\$10.05**

EVENING EDITION AVAILABLE AT FULL RATE

Expanded news coverage of the Star-Telegram, means a greater STATE newspaper for you than ever before, more sports coverage and women's news, too... more than any other Texas newspaper. There's more reading enjoyment for every member of the family. Large, easy-to-read type, too... that's why we say the Fort Worth Star-Telegram's "TOPS IN TEXAS." And if you subscribe now, you can save.

**BY MAIL IN TEXAS AND BORDERING STATES ONLY**

Fill out and mail to the Star-Telegram today or see your hometown agent

**FORT WORTH STAR-TELEGRAM**  
400 W. 7th, Fort Worth, Texas 76101

Sir: Attached is check or money order for \$ \_\_\_\_\_  
 Morning with Sunday  Morning without Sunday

NAME \_\_\_\_\_

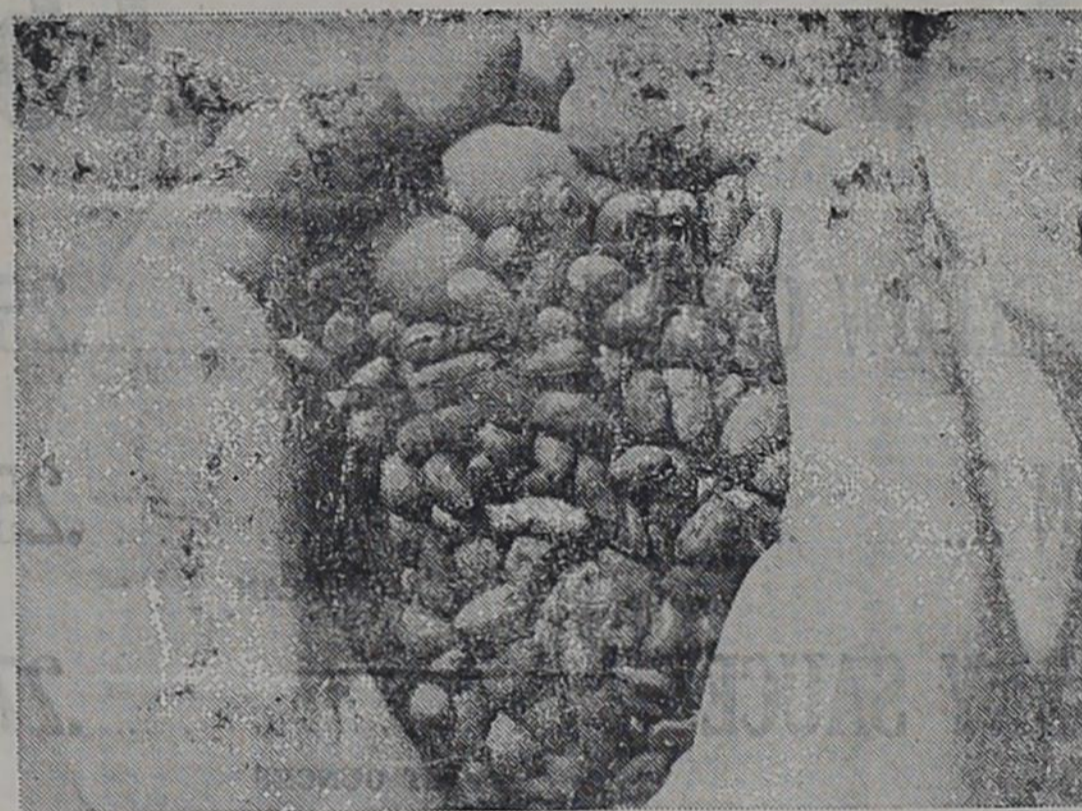
ADDRESS \_\_\_\_\_

CITY \_\_\_\_\_

STATE \_\_\_\_\_

ZIP \_\_\_\_\_

The FORT WORTH STAR-TELEGRAM...  
Now, even more so, Texas' Finest Newspaper

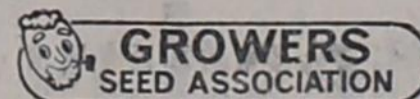


**"THE MAN WHO SAVES  
HIS OWN COTTONSEED"**

Let's call him Grower A. He knows what seed production is all about... how seed quality insures greater production of higher quality cotton. He produces his seedstock with these elite methods: one variety farm, one variety gin for handling seed cotton, one variety trucking, one variety storage, handles big volume for processing one variety with absolute cleanup at every stage of handling. He knows that seed can be mixed at many points such as the gin or delinting plant and that "varietal mixture", so common with farmer-saved seed, hurts his overall production. Further, he's aware of the genetics and agronomics of seed production.

We salute Grower A. He produces planting seed exactly the way it should be done... exactly the way every bag of Johnny Cottonseed is produced. If your seedstock is anything less, you should be concerned. But maybe we can help. If you don't have the time, facilities or desire to go into the seed production business, check into our unique SEED BANK program at your local coop gin or elevator. You can get your choice of varieties in both guaranteed quality and supply. It's a service offered by your own cooperative, Growers Seed Association.

Sign up now at your local coop gin or elevators.



ARNETT COOP GIN  
FARM CENTER COOP GIN  
COMMUNITY COOP GIN  
SOUTH SMYER COOP  
ROPES FARMERS COOP GIN

MEADOW FARMERS COOP GIN  
SLIDE COOP GIN  
NEW HOME COOP GIN  
FRENSHIP COOP ASSN.

# Specials for Friday & Saturday

## PLUS S & H GREEN STAMPS

WILSONS	WITHOUT BEANS	24 OUNCES	
<b>CHILI</b>			.69
ELLIS		JUMBO SIZE	
<b>TAMALES</b>			.45
WILSONS SAVORY SPICED		12 OUNCE CAN	
<b>LUNCHEON LOAF</b>			.39
DEL MONTE		20 OUNCES	
<b>CATSUP</b>			.35
FAMILY SCOTT		FOUR ROLL PACK	
<b>BATH TISSUE</b>			.39
BAKE RITE		THREE POUND CAN	
<b>Shortening</b>			<b>.59</b>
SHURFINE			
<b>VANILLA WAFERS</b>			.25
SHURFINE		POUND CAN	
<b>Coffee</b>			<b>.55</b>
HIPOLITE		SEVEN OUNCE JAR	
<b>MARSHMALLOW CREAM</b>			.25
PRESTO POP		IN A PAN	
<b>POPCORN</b>			.25
SHURFINE		300 CAN	
<b>CRANBERRY SAUCE</b>			.27
MOUNTAIN PASS		EIGHT OUNCES	
<b>TOMATO SAUCE, 2 FOR</b>			.19
GOLD MEDAL		FIVE POUNDS	
<b>FLOUR</b>			.49
GOLD MEDAL		TWENTY-FIVE POUND PAPER BAG	
<b>FLOUR</b>			\$2.35
AQUA NET		THIRTEEN OUNCES	
<b>HAIR SPRAY</b>			.55
BONUS		GIANT SIZE	
<b>DETERGENT</b>			.65
IVORY LIQUID		KING SIZE	
<b>Dish Soap</b>			.69
IMITATION FLAVOR		8 OUNCE BOTTLE	
<b>PAR VANILLA</b>			.15

### Finest Quality **MEATS**

USDA WHOLE		POUND
<b>FRYERS</b>		.29
USDA CHOICE SIRLOIN		POUND
<b>STEAK</b>		.98
PORK		POUND
<b>STEAK</b>		.59
BABY BEEF		POUND
<b>LIVER</b>		.39
FRESH GROUND		POUND
<b>HAMBURGER MEAT</b>		.43
PRESSED HAM		POUND
<b>LUNCH MEAT</b>		.49

### Garden Fresh **Vegetables**

CALIFORNIA NAVEL		ROUND
<b>ORANGES</b>		.15
WHITE		POUND
<b>ONIONS</b>		.10
NEW CROP		POUND
<b>YAMS</b>		.08

### Quick Convenient **FROZEN FOODS**

SHURFINE CUT WHOLE KERNEL		24 OUNCES
<b>CORN</b>		.29
SHURFINE CUT		20 OUNCES
<b>GREEN BEANS</b>		.29
SHURFINE	SIX OUNCES	EACH
<b>LEMONADE</b>		.08
TWELVE to FOURTEEN POUND NORBEST		POUND
<b>TURKEY HENS</b>		.45

## Wednesday Is Double Stamp Day

# THE ROPES FOOD STORE