

The



PLAINSMAN

Formerly The Ropes Plainsman



TEXAS PRESS
MEMBER
ASSOCIATION

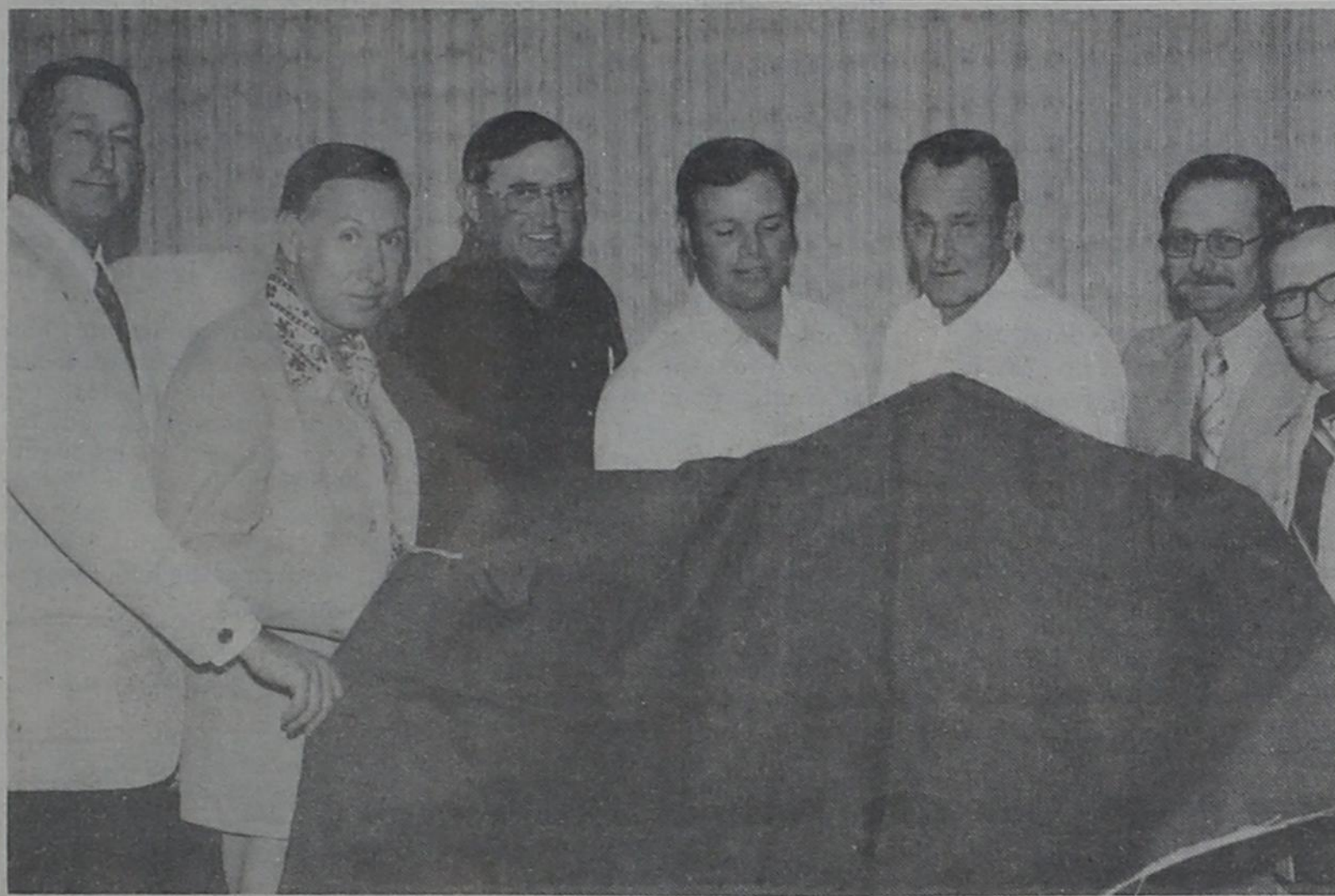
Eight Pages

Vol. 40, No. 51 - Thursday, May 27, 1976

Second Class Postage Paid at Wolfforth, Texas 79382

Ten Cents

Tractor Maintenance Short Course Scheduled in Ropes



FIRST YARD OF DENIM PRODUCED—The \$30 million denim plant under construction at Littlefield, Texas by American Cotton Growers, a farmer cooperative, has produced its first yard of indigo-dyed denim. When fully completed later this year, the spinning-weaving-finishing facility will produce heavyweight denim at the rate of 20 million yards of all-cotton denim annually. Above, admiring the first yard of ACG production, are directors of the 3,000-member cooperative (from the left): Harold Barrett, O'Donnell; L.C. Unfred, New Home, ACG President; Dallas Brewer, Plains; Doyce Middlebrook, Shallowater; T.W. Stockton, Crosbyton, ACG Vice President; Joe Leach, Plainview; and R.H. Whorton, Roscoe.

Solar Steam Engine



Researchers indicate widespread use of solar energy as an alternative to current sources of energy might be years away. But a group of Texas Tech students already has learned several practical applications of sunlight suitable for home use.

The students studied different applications of solar energy, then developed their own projects as part of a solar energy seminar in the department of mechanical engineering. The projects ranged from a simple solar-powered stove, steam engine and crop driers to water heaters and distillers.

According to Dr. Norman Sheridan, who directed the seminar, the purpose of the course was to give students experience with solar energy. Sheridan said one of the course requirements was an individual project involving an application of solar energy.

Sheridan said he received 24 projects from students in the seminar. He said the projects were inexpensive and constructed of common, readily available materials.

Randy Mayes, a senior from Lubbock, developed the solar-powered stove. He said he built the stove from several concentric circles he cut from a piece of masonite. He covered the rings with aluminum foil and cut notches in each ring to pull the rings into a cone. He held the cone together with two-by-fours.

The cone formed a solar energy collector. When Mayes focused sunlight on the center of the cone, the collector produced heat. The heat reflected two feet from the center of the collector and could boil a liter of water in about 15 minutes.

Mayes said he learned about the practicality of collectors from his project. He concluded a flat collector would be more practical than a cone-shaped collector.

A tractor maintenance short course for adult farmers will be held May 31-June 3 under the sponsorship of the Ropes High School Vocational Agriculture Department, according to Mr. Pritchard, teacher of vocational agriculture.

Mr. Norman K. Waggoner, tractor maintenance specialist with the Vocational Agriculture Division of the Texas Education Agency and the Department of Agricultural Engineering at Texas A&M University, will do

the instructing. He is headquartered at Texas A&M University.

Mr. Waggoner, a native of Michigan, received his B.S. degree in Agricultural Education from Michigan State University, in 1942 and his Master's degree in Ag. Economics in 1948 from the same institution. He taught vocational agriculture in Central Michigan five and one-half years. Since 1951 he has been associated with Ford Motor Company in several capacities in the Tractor & Implement Division. For three years prior to joining the Specialist Program, he trained service and sales personnel for the Ford Motor Company at Paris, Texas.

The short course at Ropes is scheduled to begin May 31 at 8:00 in the vocational agriculture building. Other meetings in the series of 4 will be held June 1, 2 and 3.

During the dates the short course is in progress, Mr. Waggoner will be available to assist farmers with individual tractor problems and to provide "on-the-farm" instruction, according to Mr. Pritchard.

Farmers interested in attending the short course should write or call Mr. Pritchard, Teacher of Vocational Agriculture. An entry fee of \$5 will be charged. Tractor Maintenance Short Course certificates are to be presented to each individual who attends all the training sessions.

Mr. Waggoner states that the key to longer tractor life comes from a full knowledge of the fundamentals of an engine and the application of the proper maintenance skills involving lubrication, fuels, carburetion, air cleaners, cooling systems, valves and ignition. Mr. Waggoner will cover the proper adjustments and maintenance of the above, with emphasis on the importance of each in obtaining a long tractor life, and improved performance. Throughout the short course, emphasis will be placed on "learning to do by doing" through the use of several demonstration tractors. All enrollees will have the opportunity to perform actual adjustments and maintenance on their own tractors. Safety and operating techniques will also be stressed.

"Short courses in tractor maintenance, as well as other subjects, are now available to farmers throughout the state under the new cooperative program between the Texas Education Agency and Texas A&M University," stated Bob Jaska, associate professor, Department of Agricultural Education at Texas A&M University who coordinates the program for Texas A&M.

"This cooperative program," states Jaska, "is designed to make the services of specialists available to conduct short courses under the supervision of public schools. Such a program will enable teachers of vocational agriculture to provide improved educational services to farm people."

Specialists are now available in the fields of Beef Production, Farm Wiring, Electric Motors, Farm Welding, Swine Production, Tractor Maintenance, Pasture, and Oxy-Acetylene Welding.

Continental Airlines List New Dallas Departure Times

Continental's schedules to Dallas/Ft. Worth will have new departure times on June 1 according to Tom O'Donnell, Continental's Regional Director. On that date, their four non-stop flights will leave at 7:00 a.m., 1:10 p.m., 3:25 p.m. and 6:05 p.m., earlier in each case than currently scheduled. According to O'Donnell, the changes are to make better connections in DFW to other airline's flights to Atlanta, New York and other cities. All of these flights will operate daily effective June 1.

Continental is also rescheduling their through flight to Oklahoma City and Tulsa on June 1. It will be leaving Lubbock much earlier, at 6:50 a.m., arriving Oklahoma City at 8:58 a.m. and Tulsa at 9:50 a.m. after stops at Wichita Falls and Lawton. This is being done to offer one day commuter service to these cities, according to O'Donnell.

Sheridan said Mayes probably learned something about the potential of solar energy collectors as heat generators. He said Mayes left the collector in a car part of a day. When Mayes returned to the car, the sunlight concentrated on the collector had reflected and burned a hole in the roof of the car.

Henry Kight, another Lubbock senior, constructed a solar-powered steam engine. He used a series of mirrors to focus sunlight on a metal tube heat converter filled with water. The heat and water produced steam, which was transferred through rubber tubing to power the engine.

"A student has to build a solar collection device to realize the problems of heat transfer," said Kight. "I think I understand better the problems that prevent solar energy from being a reality today."

Fred Hennighausen, a fifth-year architecture student from Roswell, N.M., used solar energy to produce distilled water. He filled an aluminum baking pan with water. He insulated the sides of the pan with wood and styrofoam and placed a roof-shaped plastic cover over the pan.

Sunlight caused the water to evaporate and collect on the sides of the cover. The distilled water dripped from the cover into collecting ducts. Sheridan said such distillers are practical for producing home drinking water. He said Hennighausen's small (about two feet square) distiller

Continued On Page Two

SOLAR STEAM ENGINE—Dr. Norman Sheridan, left, visiting professor of mechanical engineering at Texas Tech, discusses a solar-powered steam engine with student Henry Kight. Kight built the project as an assignment for a solar energy seminar taught by Sheridan. A series of mirrors focus light on a water-filled heat converter. The heat and water produce steam, which is transferred through rubber tubing to the engine. (Tech Photo)

The greatest force in chemistry is a pretty girl. Tolerance is the key to peace of mind.

PETE'S FEED BARN
 "Baby Chicks For Sale Every Week"
 Highway 179, Wolfforth, Texas, Phone 866 4244
 CUSTOM GRINDING AND MIXING
 Complete line of Purina Feeds and Animal Health Products
 OPEN 6 DAYS A WEEK 7:30 a.m. to 7:00 p.m.

The PLAINSMAN
 (Formerly The Ropes Plainsman)
 The Plainsman is an independent, privately owned newspaper, published weekly on Thursday except the first week in January and the next to the last week in July by Publication Service Company of Lubbock, Texas.
 Local office for The Plainsman is 818 9th Street. Address all mail and other correspondence to P. O. Box 549, Wolfforth, Texas 79382. Telephone A/C 806 866-4895.
 Lubbock address of the publisher is Publication Service Company, P. O. Box 225, Lubbock, Texas 79408. Telephone A/C 806 763-4883.
 Subscription Rates: One year in Lubbock and adjoining counties; \$4.50, elsewhere; \$5.00 per year.
 Second Class Postage Paid at Wolfforth, Texas 79382.
 Any erroneous reflection upon the character, standing or reputation of any person, firm or corporation, which may appear in the columns of this newspaper will be gladly corrected upon due notice of same being given to the managing editor personally at the office of the publisher in Lubbock, Texas, 816 Ave. Q.
 Publication Service Company, Publisher
 Norman L. Williamson, Managing Editor

"Extension Update"

From Georgia Doherty
Eat Nutritionally When Traveling
 Summer vacationers will be traveling in all directions from Lubbock in the next few weeks for family trips. But, remember to stay "on the go" throughout vacation traveling by being sure to eat nutritionally balanced meals and snacks.

This gives the family the zest and vitality necessary to have a good time — whether vacationing in the city, on the lake or at a camping site.

Just a little care and thought in selecting a variety of foods from each of the Four Food Groups — whether in a restaurant or camping — makes good nutrition easy.



If you have dandruff, you can get rid of it by shampooing more often, every day if necessary. No, daily shampooing won't make you lose your hair.

Family members should eat four or more servings from the fruit and vegetable group daily, including at least one serving of dark green or deep yellow vegetables and two or more servings of other vegetables or fruits, including potatoes.

Select two or more servings per day of meat, fish, poultry or meat alternate — peanut butter, dried peas or beans. One serving is two to three ounces of lean cooked meat. One half a serving of meat alternate would include one half cup cooked dry beans or peas and two tablespoons of peanut butter. Serve a main source of protein with a meat alternate each day.

Milk group foods are needed in different amounts by different family members. Adults require two or more cups; children, three or more cups. Milk group foods such as ice cream and cheese may be substituted for milk.

Four or more servings per day of whole wheat grain or enriched breads and cereals are required daily. A serving would include one slice of bread, three-fourths to one cup of ready-to-eat cereal, one-half to three-fourths cups cooked macaroni, noodles, rice or spaghetti.

Remember to check all Four Food Groups to be sure the family eats nutritionally on the vacation.

Seventeen Lubbock County 4-H'ers will be traveling to College Station this week to compete at the state level in method demonstration, grass judging, food show and riflery. These 4-H'ers won the right to compete at State 4-H Roundup on the A&M University campus on June 1 & 2 by winning various district contests.

Method demonstration competitors are: Cindy Mitchell and Becky Hand, Agronomy; Chris and Russell Young, Electricity;

Helps Shrink Swelling Of Hemorrhoidal Tissues

caused by inflammation
 Doctors have found a medication that in many cases gives prompt, temporary relief from pain and burning itch in hemorrhoidal tissues. Then it actually helps shrink swelling of these tissues caused by inflammation.
 The answer is Preparation H®. No prescription is needed for Preparation H. Ointment or suppositories.

Lisa Prosser, Lori Beyer and Terry Pectol, Family LIFE Education; and Wesley Burress, Forrestry.

Last December, Lynda Maunder was one of four overall winners selected at the District Food Show to compete at the state Food Show. This will be held the day before 4-H Roundup begins.

Grass Judging team members include: Terri Daniel, Sandra Patschke, Kayla Jones, and Sygale Rhodes. Members comprising the rifle team are: Ken Berry, Bobby Copelin, Dana Hagler, and Jeff Jones.

Congratulations are extended to each of these 4-H'ers.

Consumer Update
 Many food labels show nutrition information about the food product. This can help consumers compare nutritive values of different foods and learn what foods are good sources of different nutrients.

First commercial sewing patterns were for men's shirts and were started in 1864, in Massachusetts.

The fashion pendulum has swung back to elegant natural silk and synthetic silk-like fabrics. Leading designers and ready-to-wear manufacturers are highlighting silk and silk-looking stylish fabrics. Especially popular are crepe de chine, chiffon, broad cloth, shantung, medium weight twills and jersey.

Solar Heat . . .
 Continued From Page One
 could produce about a liter of distilled water each day.

Sheridan described another project he called a desert survival still. He said the still could be constructed by digging a hole and placing a can or other container in the center of the hole. The hole should be filled with leaves or other greenery and covered with a thin plastic, such as cellophane or polyethylene. The cover should be secured outside the hole and weighted in the center with a rock.

Sheridan said sunlight produces moisture from the greenery. The moisture collects on the plastic and drains into the can. According to Sheridan, a desert survival still can produce a liter of water per day for each square meter of hole.

Sheridan, a visiting professor from Australia, has worked with solar energy about 20 years. He said much of his work has involved the study of solar air conditioning. He said solar air conditioning is not yet economical for single-family homes. But he said he is optimistic about using solar air conditioning in multi-unit construction, such as motels.

The Australian also is involved with the design of a solar heating system for a Lubbock house. He said a local contractor will begin construction later this month and finish the house in September. He said the house will be sold after a month or two of demonstration to the public.

"We want to see if the public will buy a solar-heated house and know how to handle it," said Sheridan. "The demonstration is a good way of getting ideas out of the university and out where people can use them."

"The idea of solar energy demonstration projects is to learn how to produce them more economically. Industry is not now geared for their production. I hope such projects can become more common and cheaper."

REMEMBER THE Bargain Center
 When Looking For A BARGAIN!
SAVE ON —
 • EVAPORATIVE AIR COOLERS • PAINTINGS & LIGHTING • ROOM AIR CONDITIONERS
 • BUILT-INS • LAVATORIES • SINKS
 • DISHWASHERS • GAS & ELECTRIC RANGES • WASHERS & DRYERS
 • SOME DAMAGED • SOME SLIGHTLY USED • SOME DISCONTINUED
 \$5.00 DELIVERY CHARGE
1620 4th St. Across From Fields and Company

GENERAL REVENUE SHARING PLANNED USE REPORT

General Revenue Sharing provides federal funds directly to local and state governments. This report of your government's plan is published to encourage citizen participation in determining your government's decision on how the money will be spent. Note: **Any complaints of discrimination in the use of these funds may be sent to the Office of Revenue Sharing, Wash., D.C. 20226.**

PLANNED EXPENDITURES		
(A) CATEGORIES	(B) CAPITAL	(C) OPERATING / MAINTENANCE
1 PUBLIC SAFETY	\$	\$
2 ENVIRONMENTAL PROTECTION	\$	\$
3 PUBLIC TRANSPORTATION	\$ 5,264.	\$
4 HEALTH	\$	\$
5 RECREATION	\$	\$
6 LIBRARIES	\$	\$
7 SOCIAL SERVICES FOR AGED OR POOR	\$	\$
8 FINANCIAL ADMINISTRATION	\$	\$
9 MULTIPURPOSE AND GENERAL GOVT.	\$	\$
10 EDUCATION	\$	\$
11 SOCIAL DEVELOPMENT	\$	\$
12 HOUSING & COMMUNITY DEVELOPMENT	\$	\$
13 ECONOMIC DEVELOPMENT	\$	\$
14 OTHER (Specify)	\$	\$
15 TOTALS	\$ 5,264.	\$

THE GOVERNMENT OF WOLFFORTH TOWN

ANTICIPATING A GENERAL REVENUE SHARING PAYMENT OF \$5,264

FOR THE SEVENTH ENTITLEMENT PERIOD, JULY 1, 1976 THROUGH DECEMBER 31, 1976. PLANS TO SPEND THESE FUNDS FOR THE PURPOSES SHOWN.

✓ ACCOUNT NO. 44 2 152 005

WOLFFORTH TOWN 202
 CITY SECRETARY
 BOX 36
 WOLFFORTH TEXAS 79382

(D) Submit proposals for funding consideration by August 1, 1976
 to Frankie Pittman
 supporting documents, are open for public scrutiny
 at City Hall, Wolfforth, Texas

(E) ASSURANCES (Refer to instruction E) I assure the Secretary of the Treasury that the non-discrimination and other statutory requirements listed in Part E of the instructions accompanying this report will be complied with by this recipient government with respect to the entitlement funds reported hereon.

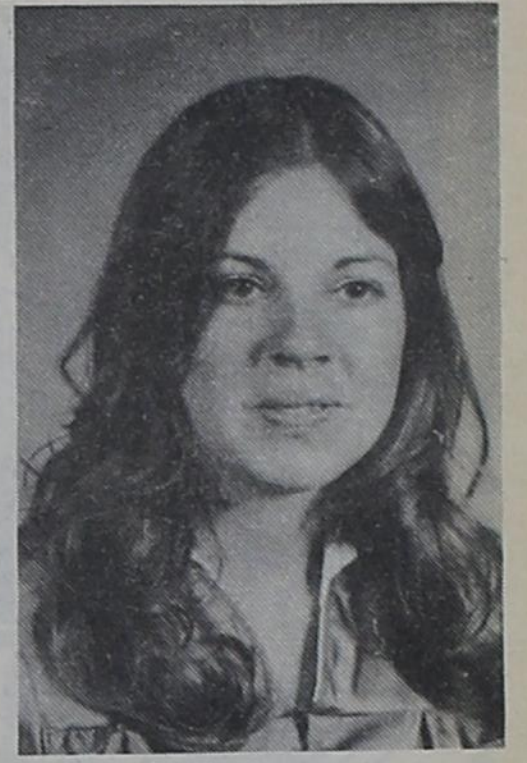
✓ James R. Vardy
 Signature of Chief Executive Officer
James R. Vardy, Mayor 5-20-76
 Name & Title — Please Print Date

\$ SWAT SMITH \$
LOANS
 We Loan Money
 On Anything
 Diamonds Our Specialty
 Licensed & Bonded
 All Loans Confidential
 Phone 763-4101
 815 Broadway
 Lubbock, Texas \$

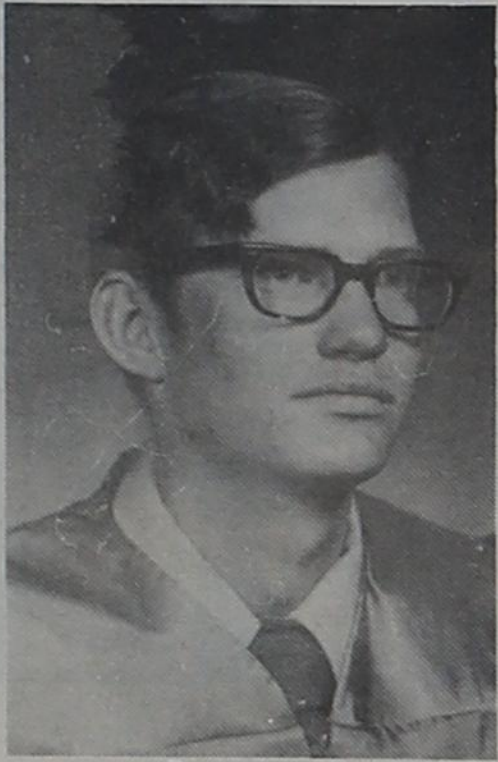
1976 FRENSHIP GRADUATING SENIORS



Rosa Acevedo



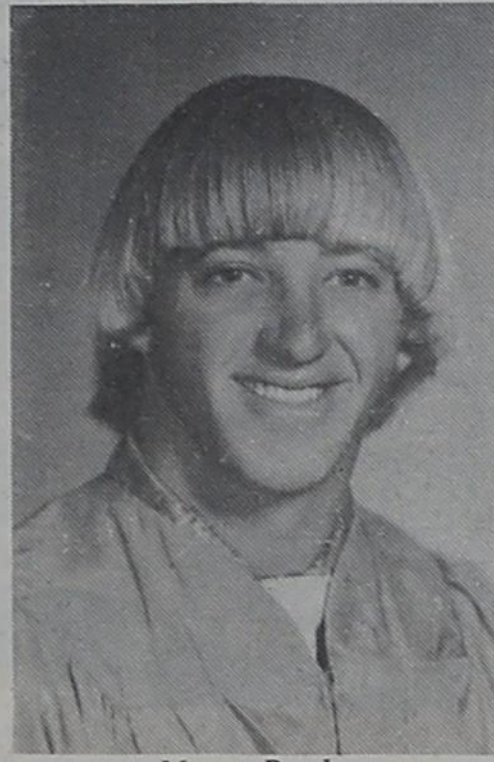
Sandy Barbee



Doug Bates



Cissy Beavers



Monte Booher



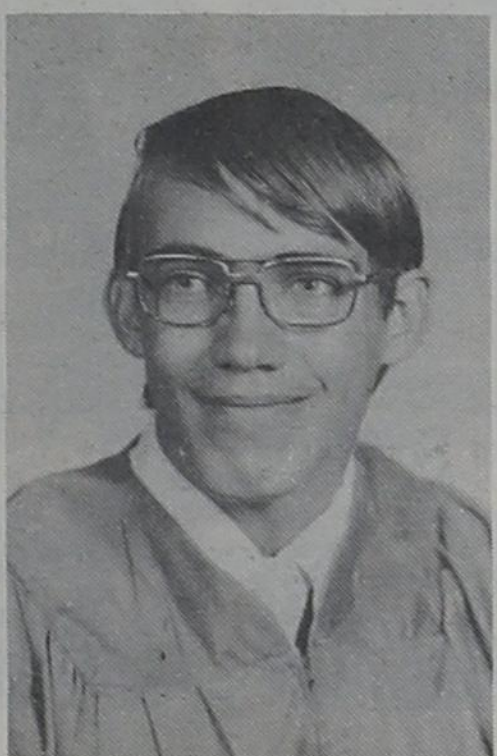
Ruth Davis



Sabrina Carroll



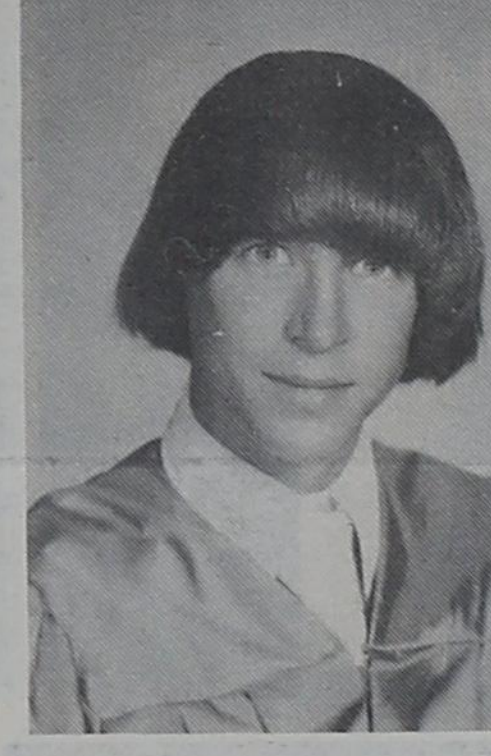
Yolanda Carrizales



Joe Catlett



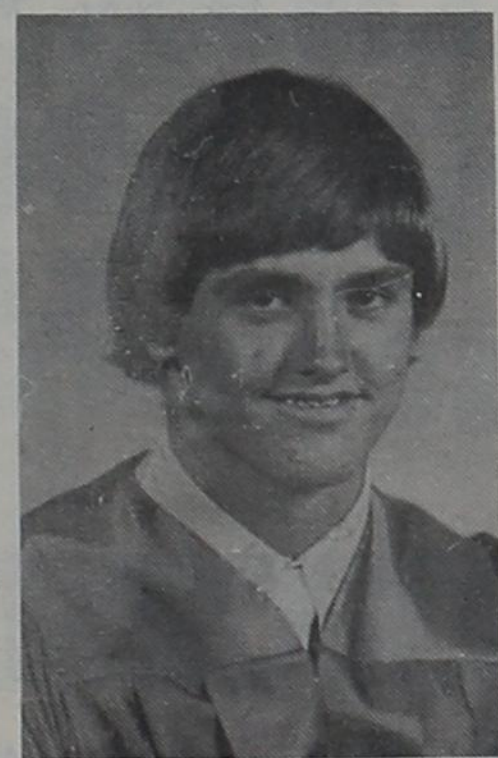
Pat Champagne



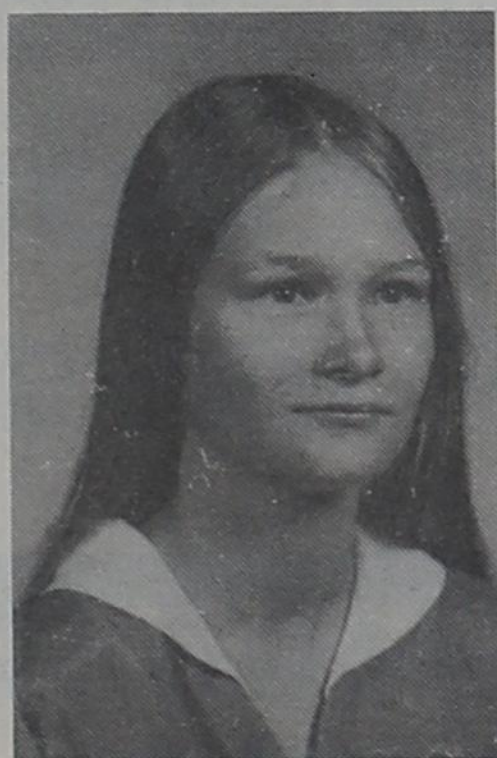
Phil Cheney



Kim Dabbs



Brent Drennan



Debbie Elliot



Teresa Esparza



Cindy Garth



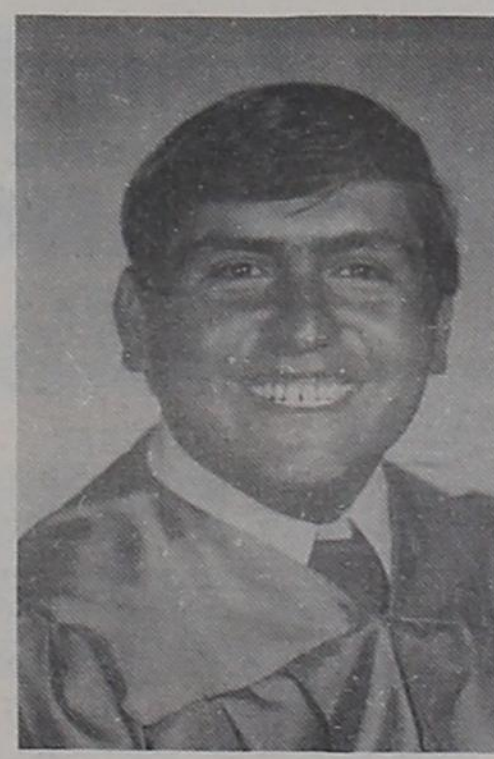
Petra Garza



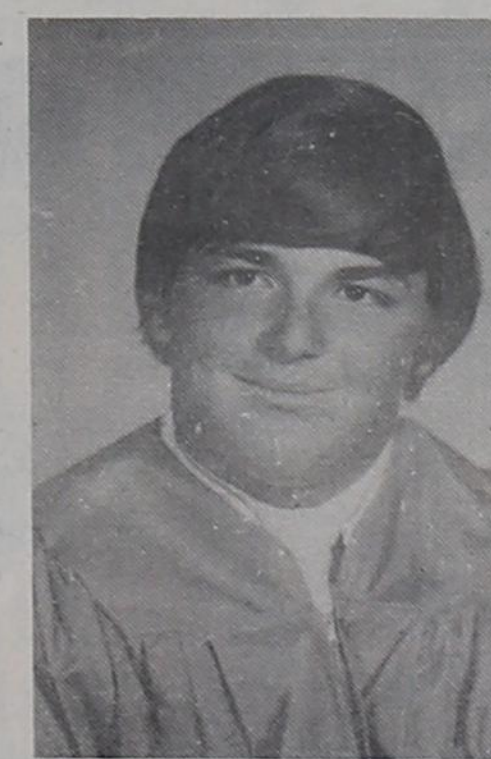
Rudy Gomez



Sandy Gonzales



Emundo Gutierrez



Danny Henderson



Donna Henly



PRICES GOOD
THRU
MAY 29TH

ENJOY MEMORIAL DAY .. BACKYARD

UNITED
SUPER MARKETS



CONTADINA WHOLE PEEL	TOMATOES	4	300 CANS
	BEANS RANCH STYLE	4	FOR
			300 CANS
	PEAS DEL HAVEN TENDER SWEET	4	303 CANS
	BEANS FINE FARE BLUE LAKE	4	303 CANS
	CORN FINE FARE GOLDEN WHOLE KERNEL OR CREME STYLE	4	303 CANS
	BEANS VAN CAMP PORK 'N	4	300 CANS

TAB OR
COKES

6 \$1.29 PLUS DEPOSIT

32 OZ. BTLS. BOTTLE CRTN.

UNITED HAMBURGER OR **CONEY BUNS**

3 \$1.39

8 CT. PKGS.

GEBHART & CHILI **HOT DOG SAUCE**

10 OZ. CANS 4 FOR \$1.00

FRENCH'S PREPARED **MUSTARD**

8 OZ. SQUEEZE BOTTLE 33c

MRS. TUCKER'S **SHORTENING**

3 LB. CAN 89c

HEINZ REG. 49c **RELISH** • SWEET • HOT DOG • INDIA • HAMBURGER

3 9 3/4 OZ. JARS \$1.00

PLATES DIXIE EASY DAY PAPER 50 CT. PKG. 98c

CUPS DIXIE EASY DAY PAPER LARGE 16 OZ. 18 CT. PKG. 59c



SHOP UNITED FOR QUALITY. . FO

VASELINE INTENSIVE CARE **LOTION** REGULAR OR HERBAL 10 OZ. \$1.09

HAIR SPRAY MISS BRECK 11 OZ. ALL VARIETIES 93c

SHAMPOO PROTEIN "21" 7 OZ. 25c OFF LABEL 98c

DEODORANT DIAL SOLID STICK 2 1/2 OZ. \$1.49

CENTRAL AMERICAN **GOLDEN RIPE BANANAS**

LB. 19c

"UNITED FARM FRESH PRODUCE"

SUNKIST NAVAL **ORANGES** LARGE SIZE LB. 19c

KY. GREEN **BEANS** LB. 39c

NEW RED **POTATOES** LB. 19c

VINE RIPE **TOMATOES** 4 CT. PLASTIC CARTON 39c

WEEKEND WITH UNITED'S FIXIN'S!



DELITE SOLID **OLEO**
1 LB. CARTON **4 FOR \$1**

MJB **COFFEE**
ALL GRINDS 1 LB. CAN **\$1.39**

UNITED'S TruTendr BEEF

ROUND OR RIB STEAK	LB.	98¢
RUMP ROAST	LB.	98¢
BONELESS STEW	LB.	98¢
EXTRA LEAN CUBES OF BEEF	LB.	98¢
WILSON'S CERTIFIED MEAT OR BEEF FRANKS	12 OZ. PACK	79¢
BONELESS WILSON'S CERTIFIED TENDA MADE HAMS	3 TO 4 LB. FULLY COOKED	\$2.49
SMOKED PORK CHOPS	WILSON'S CENTER CUTS	\$1.79

WILSON CERTIFIED BOLOGNA
MEAT OR BEEF
LB. **\$1.29**

WILSON CERTIFIED BACON
LB. **\$1.69**

UNITED'S TRU-TENDR BEEF RANCH

STEAK
CENTER CUT 7-BONE
LB. **98¢**

STEAK
CUBED
WASTE FREE BEEF
LB. **1.58**

CHUCK ROAST
BLADE CUT
LB. **68¢**

UNITED ASSORTED MELLORINE HALF GALLON **59¢**

NEW FANGLED POTATO CHIPS PRINGLES 9 OZ. PKG. 10¢ OFF LABEL **79¢**

BAMA PEACH PRESERVES 18 OZ. JAR **59¢**

1000 extra S&H Green Stamps
come make history in our big

BICENTENNIAL BONUS BONANZA

S&H GREEN STAMPS

pick up your card today!

DS AT LOW - LOW PRICES!

COME CELEBRATE OUR BICENTENNIAL BONUS BONANZA

FILL YOUR CARD AND GET 1000 extra S&H Green Stamps

S&H GREEN STAMPS

"UNITED FROZEN FOOD BUYS!"

BANQUET FRUIT PIES • APPLE • PEACH • CHERRY 9 OZ. SIZE **4 FOR \$1**

JENO'S REG. 98¢ PIZZA • HAMBURGER • PEPPERONI • SAUSAGE • CHEESE **79¢**

BANQUET FRIED CHICKEN 2 LB. BOX **\$1.89**

REG. \$2.98 HEAT & EAT

WE RESERVE THE RIGHT TO LIMIT QUANTITIES

UNITED

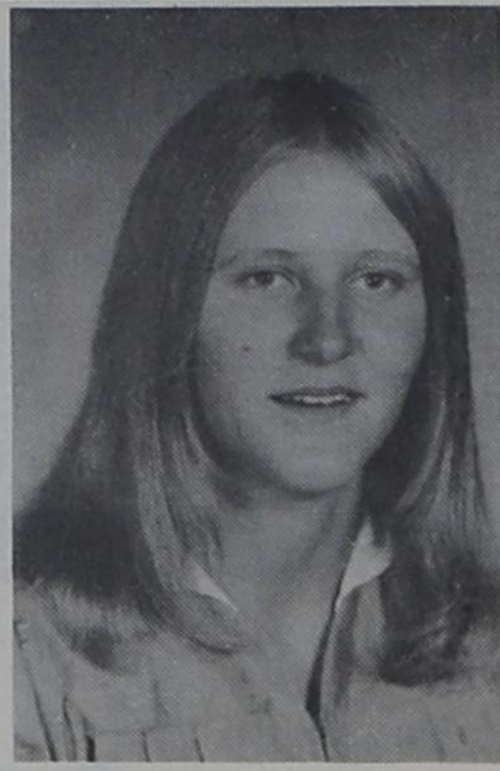
SUPER MARKETS

WE GIVE S&H GREEN STAMPS

PRICES GOOD THRU MAY 29TH



Teresa Hitt



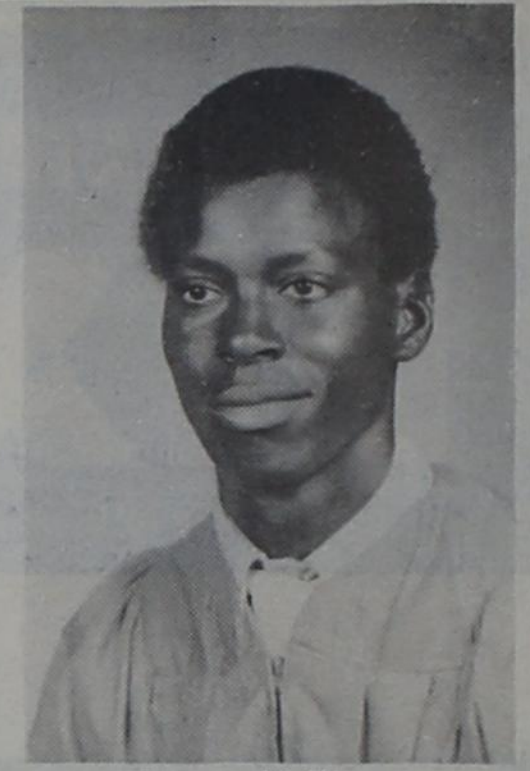
Jacque Howard



Robert Martinez



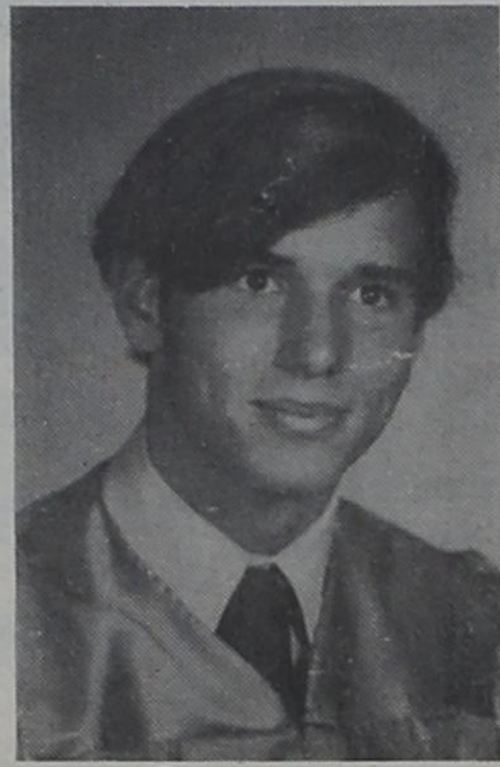
Connie McInroe



Vernon McKinney



Dauvin McNeely



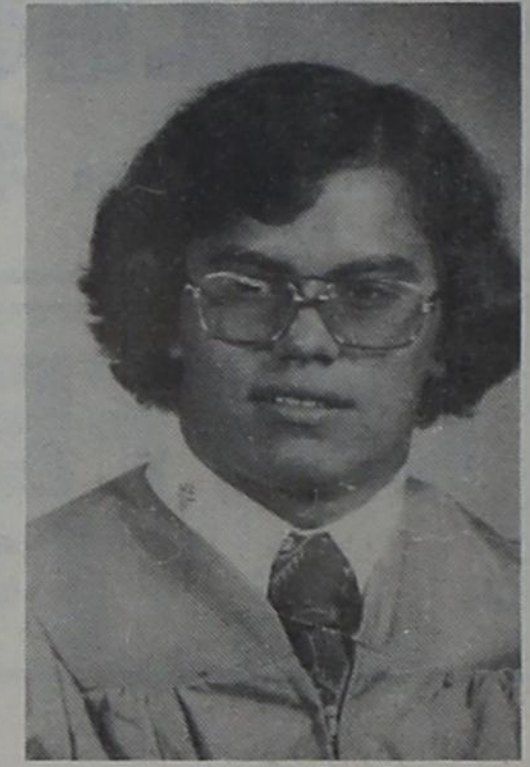
Don Partlow



Vicky Pena



Glenda Pool



Joe Johnny Rosales



Pat Rodriguez



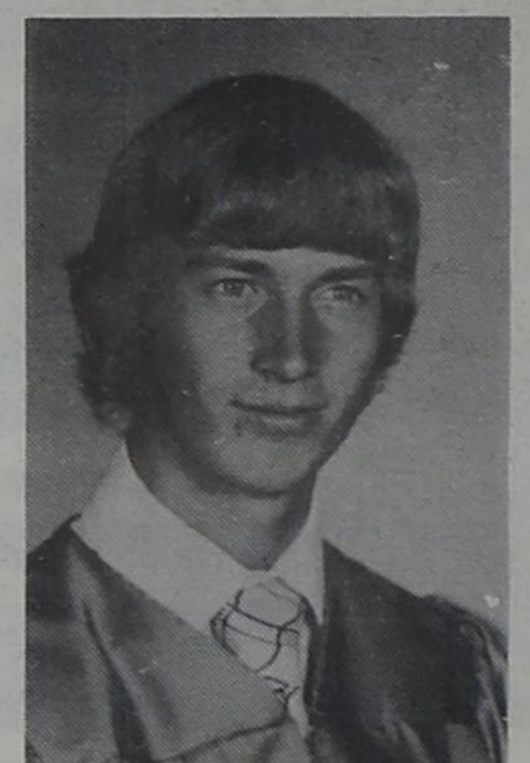
Raul Saenz



Christy Servantez



Bev Smith



Floyd Smith



Gary Snowden



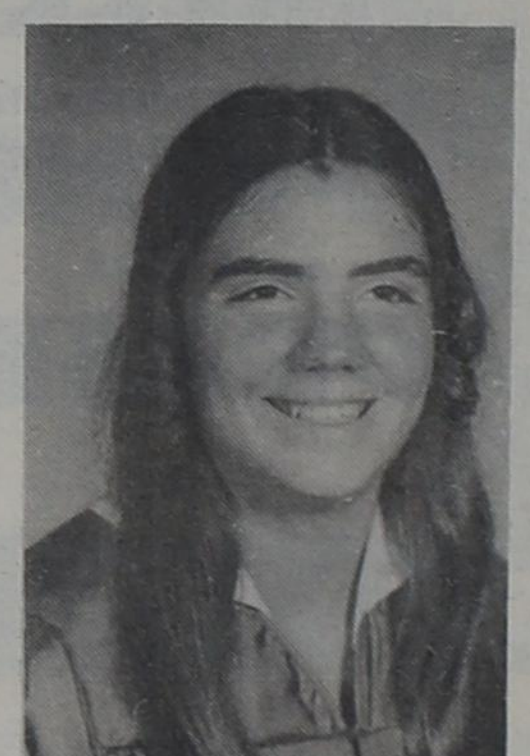
Patty Starr



Susan Sundet



Gloria Tobias



Judy Wampler



Debbie Welch



Debbie Wilson



Paul Wright

POEMS WANTED

The TEXAS SOCIETY OF POETS is compiling a book of poems. If you have written a poem and would like our selection committee to consider it for publication, send your poem and self-addressed stamped envelope to:

TEXAS SOCIETY OF POETS
3317 Montrose Blvd.
Suite 300
Houston, Texas 77006

Missionary to Speak Sunday at Shallowater United Methodist



Edgar Wilkinson, missionary to Southwest Indian School, near Phoenix, Arizona, will speak at First United Methodist in Shallowater Sunday, May 30, at 10:45 a.m. and 6:00 p.m.

The Wilkinsons serve with World Gospel Mission, an interdenominational sending agency with 335 missionaries and homeland staff, laboring in eighteen areas of the world. International headquarters is in Marion, Indiana.

Born in Panama City, Florida, Mr. Wilkinson is the son of missionary parents. He spent much of his boyhood in Kenya, Africa, and in Arizona, where his parents served as WGM missionaries. He studied at Glendale Community Junior College, Arizona, and received his Bachelor of Arts degree at Vennard College, Iowa.

Southwest Indian School, where the Wilkinsons have served for a term, is a Christian boarding school accommodating grades one through twelve. Its purpose is to provide a Christ-centered education, and to challenge students with the gospel of Christ, to the intent that the Indian young people will want to share their faith with parents on the reservations.

In the past year, SIS has had a record enrollment of 180 students. Some have come from as far as

Oregon and Montana, although most of them are from the Navajo and Papago reservations in Arizona. Since its beginning in 1952, the school has ministered to 34 tribes.

Mr. Wilkinson had many opportunities to give spiritual counsel to the boys in the dormitory, and he directed the athletic program of the school. Mrs. Wilkinson worked in the school office and assisted with the teaching load. Since July, 1974, she has kept busy caring for their twin babies, Shannon and Brad.

Mr. Wilkinson will show by message and pictures what World Gospel Mission is doing to reach these long-neglected Americans with the gospel of Christ. The Wilkinsons plan to return to the work in Arizona after a regular furlough.

CLASSIFIED ADS

Classified Ads may be placed in this newspaper at the rate of 5¢ per word. Minimum charge \$1.00. Contact your news editor or call 763-4883.

REAL ESTATE

Buy and sell TVs. Color and black & White. Also do quality upholstery, free estimates. 765-5696.

Fresh Bob White Quail eggs ready for setting. \$20.00 per hundred. Less quantity, priced higher. Call 745-1121 or 745-2702.

Under Construction: Pick your own colors. 1700 square feet, refrigerated air, fireplace, fenced. Call Mary Penny, Nelson Real Estate, 832-4587, Shallowater.

HUB CITY ELECTRIC

Residential and Commercial Service Calls
Licensed and Bonded
Danny Lesley
873-3453 - local

The Di-Gel Difference

Anti-Gas medicine
Di-Gel adds to its soothing Antacids.



Di-Gel.
The Anti-Gas Antacid.

MISCELLANEOUS FOR SALE

Singer Touch & Sew-Delux Models. These machines zig-zag, blind hem, make button holes, fill bobbin in machine, etc. Desk cabinets with drawer space. Used 3 months. Several left out of public school systems. Your choice \$65.00 each. Cash or terms. Fully guaranteed. Sewing Machine Service Center, 1801 34th Street, Phone 744-4618.

NOTICES

Get your air conditioner ready for summer. Call 832-4603.

Guitar and Banjo Lessons. Call 832-4031 in Shallowater.

FREE Kittens, 518 6th, Wolfforth, 866-4367.

One election every four years is enough.

Poultry Dressing: All poultry dressed, bagged and readied for your freezer. Rabbits also dressed by us. Call 385-5506, Lamb Co. Locker, Littlefield.

Beat the rush, get your air conditioner ready for the hot weather ahead. Call Taylor Plumbing, 832-4476 in Shallowater or CB KSY3810, Base, Channel 19.

Need a place to park your camper, or trailer when not in use? Call 832-4389 or check with Wayne or Billye Groce.

AUTOMOBILES USED

1964 Impala 4-dr., 1965 Chevelle 4-dr., 1974 Volkswagen, 1971 Volkswagen, 1973 Ford 4-dr., 1973 Vega Hatchback, 1970 LTD 4-dr., 1970 Chevy Station Wagon, 1967 Chev. Pickup, 1951 Chevy 4-dr. 16,000 miles!

AT CECIL'S AUTO
1802 Avenue J

CRAIG BUILDERS SUPPLY

4600 CLOVIS HIGHWAY-LUBBOCK

762-8719

Paint • Floor Covering • Lumber

Building Materials

NOW IN SOUTH PLAINS MALL

Hester's
office supply, inc.

793-0977

15th and Texas Ave. and South Plains Mall

An Open Letter to Precinct 1 Farmers on

FARM TAXES

I want to apologize to you for not making myself clear on the question of equalizing taxes. I AM NOT TALKING ABOUT FARM LAND. Farm land should never be taxed like other property, since its worth is in what it produces.

What I have been trying to say is that a farmer's house should pay the same COUNTY (not city) taxes on each dollar's value as a city residence, and homeowners should not be paying higher COUNTY taxes than businesses do.

All I'm seeking is fairness for all and adherence to the law, and the law provides for special exemptions for farm land taxes, as it should.

And I repeat that I offer Lubbock County experience with and knowledge of county government at a critical time in its history. Our county is losing two commissioners with 40+ years of experience just when it is facing its most serious challenges—hospital, jail, rising crime. Meeting these challenges will require common sense, experience, new ideas and strength of personality. I will do my best to offer you a combination of all these.

Yours for better county government,

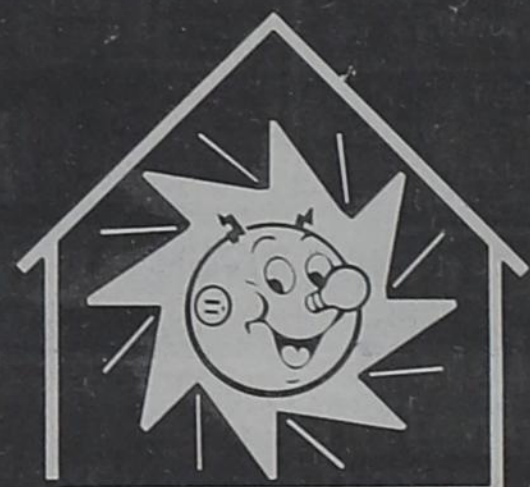
THE COUNTY COUNTS !

VOTE

W. Eugene Smith

COUNTY COMMISSIONER PRECINCT 1

PAID POL. ADV. by W. Eugene Smith Campaign Fund,
P.O. Box 62, Lubbock, Tx, 79408, LEE PENNINGTON, Treas.



ENERGY EFFICIENT HOME

EFFICIENT HOME

EFFICIENT HOME

EFFICIENT HOME

EFFICIENT HOME

EFFICIENT HOME

EFFICIENT HOME

EFFICIENT HOME

EFFICIENT HOME

EFFICIENT HOME

EFFICIENT HOME

EFFICIENT HOME

EFFICIENT HOME

EFFICIENT HOME

EFFICIENT HOME

EFFICIENT HOME

EFFICIENT HOME

EFFICIENT HOME

EFFICIENT HOME

EFFICIENT HOME

EFFICIENT HOME

EFFICIENT HOME

SAVE 40%



OR MORE ON YOUR HEATING & COOLING ...

It has been known for some time that methods existed to insure the building of ENERGY EFFICIENT HOMES. But inexpensive energy in the past made it logical to ignore the extra investment such a home would require. Now with energy costs rising, it becomes more and more important to use effectively every bit of energy we consume. The TOTAL ELECTRIC ENERGY EFFICIENT HOME has construction features which result in savings of 40% or more on heating and cooling costs when compared to previously accepted standards for total electric construction.

ELECTRICITY-IT DOES SO MUCH GOOD



The Electric Company

FOR SO MANY PEOPLE

The Future IS Electric!

EQUAL OPPORTUNITY EMPLOYER

MEMORIAL DAY '76

Throughout history, there have been many who dedicated themselves to upholding our nation's high ideals. They were from all backgrounds. But they had one common bond. They were Americans.

MAY
31



With deepest respect, we pause and pay tribute to the memory of all who are cherished.

<p>PINKIE'S LIQUOR STORES</p> <p>Tahoka Highway 745-2486 Also: Slaton Highway - Buffalo Lakes Road Canyon Highway Lubbock, Texas</p>	<p>RIVERSIDE CHEMICAL COMPANY</p> <p>562-3631 Ropesville, Texas</p>	<p>H&T HEATING & AIR CONDITIONING SERVICE SPECIALIST</p> <p>5006 40th St. 799-0412 Lubbock, Texas</p>
<p>LUBBOCK SCRAPER COMPANY</p> <p>Manufacturers of Earth-Moving Farm Scrapers 5601 19th St. 797-1067 Lubbock, Texas</p>	<p>SECURITY NATIONAL BANK</p> <p>Member FDIC Lubbock, Texas 34th & Slide Road - 5201 Brownfield Rd.</p>	<p>HUNT SEED COMPANY, INC.</p> <p>"Serving the Seed Trade Since 1942" 622 28th St. 744-4592 Lubbock, Texas</p>
<p>BOSS IRRIGATION</p> <p>Irrigation Pipe Lines - From Planning to Pumping Clovis Road 765-5559 Lubbock, Texas</p>	<p>STOKES MEAT COMPANY</p> <p>700 Block West Bridges 637-4636 Brownfield, Texas</p>	<p>ARMES & RAWLS EQUIPMENT COMPANY</p> <p>Now Open - Drop By and See Us New Facilities on Lubbock Highway 894-7343 Levelland, Texas</p>
<p>PLAINS PUMP SERVICE</p> <p>Complete Service Station Pump Repair 3045 Clovis Road 763-9239 Lubbock, Texas</p>	<p>FARMERS CO-OP GIN</p> <p>Marion Polk - Manager 299-4231 Whitharral, Texas</p>	<p>GLOVER EQUIPMENT COMPANY</p> <p>Dealers for Ditch Witch Trenching Equipment - Sales & Service 3123 Slaton Hwy. - 745-6866 - Lubbock, Texas</p>
<p>SUTPHEN'S BAR-B-Q</p> <p>We Cater Any Size Group - \$2.00 and Up 3626 50th St. 799-4374 Lubbock, Texas</p>	<p>EL CHARRO RESTAURANT</p> <p>Henry & Johnny Gonzales - Owners Mexican Foods Char-Broiled Steaks & American Dishes 1608 19th St. 762-5854 Lubbock, Texas</p>	<p>COUNTRY STORE</p> <p>Rick Mayfield - Owner Open 6 Days A Week 924-4471 New Home, Texas</p>
<p>ELECTRONICS SYSTEMS, INC.</p> <p>3506-D Avenue Q 744-9585 Lubbock, Texas Also: (505) 268-1744 Albuquerque, New Mexico</p>	<p>BENNETT AUTO PARTS & SERVICE</p> <p>State Inspections 212 Main Street 997-4214 Anton, Texas</p>	<p>J.W. EDWARDS & SON SHOP</p> <p>John Edwards - Owner Pumps & Blacksmithing 924-3571 New Home, Texas</p>
<p>FARMERS CO-OP COMPRESS</p> <p>3800 Southeast Drive 763-9431 Lubbock, Texas</p>	<p>BOSTICK'S AUTO & TRUCK SALES</p> <p>New and Used Cars and Trucks 2302 Texas Avenue 765-8332 Lubbock, Texas</p>	<p>BROADVIEW TRAILERS</p> <p>3 Miles Past Loop 289 - Clovis Highway 763-8237 Lubbock, Texas</p>
<p>WILSON STATE BANK</p> <p>Member FDIC Serving Wilson Since 1919 Wilson, Texas</p>	<p>CATTLEMEN'S COMMISSION CO.</p> <p>Morris Pruitt & Wayne May - Owners Sale Every Friday at 10:00 a.m. 3 Miles South Loop 289 on University Lubbock, Texas</p>	<p>ANDERSON GRAIN CORPORATION 894-4982 Levelland, Texas ANDERSON-SKAGGS Cattle Feeding Corporation 234-3261 Smyer, Texas</p>