

THE ROPES PLAINSMAN

VOLUME XXXIV — NO. 52

ROPESVILLE, HOCKLEY COUNTY, TEXAS

10c A COPY

THURSDAY, MAY 27, 1971

TASTY PRUNES

The word "prune" entered the English language when the Normans invaded England in 1066.

Before that time the English used only the word "plum". Today we make a distinction. All prunes are plums, but all plums are not prunes.

A prune is a variety of plum which can successfully be dried whole. Prunes refer to the fruit both in its fresh state and its dried form.

Today's prune that you buy at the store is softer, moister and more flavorful than ever before, due to modern processing innovations. It needs little or no cooking and is a delightful confection to eat "as is".

Give these PRUNE OATMEAL BARS a try:

2 cups pitted, plumped prunes
3-4ths cup sugar
3-4ths cup water
112 cup shortening
1 cup brown sugar, packed
1 1-2 cups flour
1 teaspoon soda
1-2 teaspoon salt
1 3-4ths cups quick-cooking oatmeal

Coarsely chop the prunes. To prepare the prune filling, cook prunes with sugar and water over low heat until thickened. Cool.

Cream shortening and brown sugar. Sift together flour, soda and salt, then add to the creamed mixture, along with the oatmeal.

Mix until crumbly. Pat half of the mixture into a greased and waxed paper-lined 13x9x2 inch pan. Spread with prune filling.

Top with remaining crumb mixture. Pat smooth. Bake in 350-degree oven for 25 to 30 minutes. Cut into bars. Makes 20 bars.

Food Marketing Tips:

One of the best ways to achieve economy is to consider closely food selections from each of the basic food groups, including milk and milk products, meats, fruits and vegetables, and breads and cereals.

Know what nutrients your family needs to keep physically fit.

—000—

Beginning Sunday, May 16, the following postage rates become effective.

First Class Mail in the United States, Mexico and Canada:

Letter rates — 8 cents per ounce or fraction of an ounce for pieces weighing 12 ounces or less; pieces weighing over 12 ounces are subject to priority mail rates.

Post or Postal Card — 9c.
Envelopes, small or large — 10c each up to 500.

Air Mail letters — 11c per ounce or fraction of an ounce for pieces weighing 8 ounces or less. Pieces weighing over 8 ounces are subject to priority mail rates.

Air Mail envelopes — 14c.

Second Class Mail:

Newspapers mailed by individuals — 6c for first 2 ounces and 1c for each additional ounce or fraction of an ounce.

Third Class Mail:

8c for the first 2 ounces or fraction of 2 ounces plus 2c for each additional ounce or fraction of an ounce.

Fourth Class Mail (Parcel Post) NO INCREASE in rates.

Special Fourth Class rates:

Books, etc. — 14c for the first pound and 7c for each additional pound.

Special Services:

Registered Mail — .00 up to \$100.00 value — 95c.

Special Delivery Mail:

First Class, up to 2 pounds, 60c; 2 pounds but not ten pounds, 75c over 10 pounds — 90c.

All Other Classes — Up to 2 pounds, 80c; 2 pounds but not 10 pounds, 90c; over 10 pounds, \$1.05.

This charge is in addition to the regular postage.

Your co-operation will be appreciated by your postal personnel.

33 Years Have Passed It Is Our Belief . . .

That probably the Ropes Plainsman is the oldest established business in our little city which is operated by the same family.

Even though it changed hands September 1, 1964, it is still under a member of the Morris clan.

Moving to Ropes in the spring of 1938, the Morris family consisted of Troy and Irene Morris, and their four children, twin girls, Lela and Lola, one son, Donald and yours truly, Celeste.

Many changes have been wrought in both the family and the town, since the first issue some thirty-three years ago.

Troy Morris departed this life January 5, 1967, at which time he was editor of the Levelland Daily Sun-News. Irene Morris still resides in Ropes and is employed by the Brownfield News. Lola Morris Whitfield lives in Lubbock, and Lela Morris Shanklis makes her home in Shreveport, Louisiana. Donald is an engineer in the Merchant Marines and has his home in Port Naches. Of course, we still abide in Ropes and print this little sheet, and serve as society editor for the Brownfield News.

Our first impression of this little town many years ago, was that it was small, there was no natural gas, and we became accustomed to a potbellied stove in the living room that heated with coal and cow chips. You also burned up on one side and froze on the other. The cooking was accomplished on a kerosene range.

Another "first" was the fact that we had no inside bath. This, and a small wash tub to bathe in took some getting used to. We well remember when we acquired a "double" tub. That was real luxury, except you had to heat twice as much water.

The Plainsman and Plainsman family were first located on Main Street, where Riojas Department Store is now located. The construction and cleanliness was somewhat

doubtful, and we remember staying back in Levelland one night, while the edifice was being fumigated.

Later the family moved to a big house on the highway, where the D. G. Kulms now reside. One of the large front rooms was turned into a newspaper office. Then, after a while, a two-room structure next door was purchased, and the Plainsman had its first private building, and the Morris family enjoyed their first private home since moving to Ropes.

A few years later, the home at 610 Timmons (where our mother still resides) was purchased. The small building housing the Plainsman was moved to the place where we live, and shortly, the first linotype machine was installed. Up to this time, every line of type had been set by hand.

Many years later, the present building was acquired and the Plainsman moved back to Main Street. Over the years, equipment has been added, a piece at a time, until we can now print most anything.

We have some subscribers on our subscription list who have been with us ever since we have been here. A lot of them have passed on, and their children and grandchildren take the paper.

Ropes has come a long way in the past thirty-three years. We know we do not have as many business places as we once did, but we now have natural gas, a water and sewer system, modern schools and churches, and some lovely homes.

We can remember the bank, the two-story hotel, skating rink, and three (sometimes four) grocery stores.

And so, we put the final issue of our thirty-third fiscal year to bed. Another milestone has been reached.

May we say a big thank you to our advertisers and commercial printing customers who have kept us in business — and to our faithful readers, without them, there would be no reason to print the paper.

ACCENT ON HEALTH

While vegetation helps sustain life, some common plants, trees and shrubs are potential killers, says the Texas State Department of Health.

We eat herbs and the fruits, leaves and roots of many plants in our daily diet, but some plants we deliberately cultivate are deadly.

To the average person the term "poisonous plant" usually brings to mind visions of poison ivy, or some similar plant that poisons or irritates upon contact. But most poisonous plants are harmful only when they are eaten. In fact, more than 700 species of plants in the United States are known to have caused death or illness. Every year about 12,000 children in this country chew or swallow potentially poisonous plants. A study conducted several years ago revealed that 10 per cent of all child poisonings were caused from eating toxic plants — yet over half of the parents were unaware of the dangers of the plants. Eighty-five per cent of all poisoning cases involving the poisonous plants involve children.

It is difficult to believe that one leaf of the graceful poinsettia could kill a child or that tea made from mistletoe berries has killed adults. Who would expect that the beautiful oleander bush — grown indoors and outdoors all over the country — contains a deadly heart stimulant similar to the drug digitalis? So powerful is this poison that a single leaf of an oleander can kill a child. And many people have died merely from eating steaks speared on oleander twigs and roasted over a fire.

It's easy to be deceived by plants, for one part may be edible while another is poisonous. All parts of the buttercup, rhododendron, and laurel are harmful. In other plants only certain parts are toxic. A classic example is the rhubarb which has a perfectly edible stalk, but the leaf contains a deadly poison.

In the strict sense of the word, poison ivy and its cousins are not really poisonous. They contain no poisonous substances and are termed "allergens" because, like goldenrod, they affect only persons who are allergic to them. But over 50 percent of those who handle these plants will develop mild to severe dermatitis, or skin irritation.

The "poisonous" plants do contain toxic agents which can cause direct harm when in contact with the skin or absorbed by the body. Poisonous saps and juices of some plants cause severe irritation on contact, actually burning the skin. However, most poisonous plants must be eaten to cause adverse effects.

—000—

Learn which foods supply similar amounts of each nutrient, so substitutions can be made without sacrificing food value.

Be a good judge of quality. Learn the edible yield of various foods — the number of servings that fresh, frozen and canned produce and specific cuts of meat will yield.

Be willing and able to read labels, comparing costs of various brands and forms of food.

Consider your family's food preferences; unless food is consumed, it is no bargain.

—000—

The Hockley County Health Nurse, Helen Brown, R.N., announced this week that the monthly immunization clinic is held at the Courthouse Annex in Levelland each fourth Wednesday of the month. It will be conducted April 27 this month, and May 26 next month.

—000—

The Hockley County Settlers Reunion will be held July 10 in Levelland. This will mark the tenth anniversary of the reunion.



Excuse The Paper

We're Gone To The

Doctor This Week

SAFETY RULES

When A Tornado Approaches, Immediate Action Can Save Your Life!

(The following article is published through the courtesy of George Mahon.)

A tornado watch means tornadoes are expected to develop. Keep a battery-operated radio or television set nearby, and listen for weather advisories—even if the sky is blue.

A tornado warning means a tornado has actually been sighted or indicated by weather radar. Seek inside shelter (in a storm cellar or reinforced building) and stay away from windows. Keep a battery operated radio or television nearby, and listen for further advisories.

In office buildings, go to an interior hallway on the lowest floor, or to the designated shelter area.

In homes, the basement offers the greatest safety. Seek shelter under sturdy furniture if possible. In homes without basements, take cover in the center part of the house, on the lowest floor, in a small room such as a closet or bathroom, or under sturdy furniture. Keep some windows open, but stay away from them.

In shopping centers, go to a designated shelter area (not to your parked car).

In schools, follow advance plans to an interior hallway on the lowest floor. In the building is not of reinforced construction, go to a nearby one that is, or take cover outside on low, protected ground. Stay out of auditoriums, gymnasiums, and other structures with wide, free-span roofs.

In open country, move away from the tornado's path at right angles. If there is not time to escape, lie flat in the nearest ditch or ravine.

Mobile homes are particularly vulnerable to overturning during strong winds and they should be evacuated when the strong winds are forecast. Damage can be minimized by anchoring in concrete footing.

Trailer parks should have a community storm shelter and a warden to monitor broadcasts throughout the severe storm emergency. If there is no shelter nearby, leave the trailer park and take cover on low, protected ground.

IMMEDIATE OPENINGS

TSgt. Al Weale, Area Supervisor for Air Force Recruiting announced today that the Air Force has immediate openings for young men between 18 and 27 who have not previously served in the Armed Services.

Persons enlisting in the Air Force are administered an aptitude test prior to enlistment and he test measures his ability to train in the Mechanical Administrative, General and Electronics areas. The applicant selects his area of preference prior to enlistment.

Sgt. Weale added that young men can enlist in the Air Force after receiving an induction notice, however they must be processed and enlisted one day prior to the induction date.

Information about the Air Force Program can be obtained at the local Recruiting Office, 1006 13th Street in Lubbock. Collect calls are accepted at 762-3359.

—000—

New Immunization Law

Parents with children who will begin school this fall are urged to have their immunizations brought up to date.

According to a new law, immunizations for Smallpox, Diphtheria, Whooping Cough, Tetanus, Measles, Rubella (3 day measles), and Polio are now required for admission to school.

The County Health Nurse suggests that these pre-school children be taken to their family physician in the near future in order that the series may be completed before the schools' opening.

Families of low income may receive immunizations free at the Health Department. Children living in Hockley County may receive these immunizations on the 4th Wednesday of each month between 1:30 and 4:30 p.m. The Health Department is located in the Courthouse Annex in Level-securing trailers with cables anchored in concrete footing.

The dates for the immunizations to be given at the Health Department in Level-land are as follows:

May 26, 1971 - 1:30 - 4:30 p.m.
 June 23 - 1:30 - 4:30 p.m.
 July 28 - 1:30 - 4:30 p.m.
 August 25 - 1:30 - 4:30 p.m.

LITTLE LEAGUE SCHEDULE — 1971

TEAM LISTED FIRST IS HOME TEAM

FIRST GAME 6:00 P.M.

DATE	FIRST GAME	SECOND GAME
May 23	Cubs vs. Dodgers	Red Sox vs. Yankees
June 1	Red Sox vs. Dodgers	Cubs vs. Yankees
June 4	Dodgers vs. Yankees	Red Sox vs. Cubs
June 8	Yankees vs. Red Sox	Dodgers vs. Cubs
June 11	Yankees vs. Cubs	Dodgers vs. Red Sox
June 15	Cubs vs. Red Sox	Yankees vs. Dodgers

SECOND HALF

June 18	Cubs vs. Dodgers	Yankees vs. Red Sox
June 22	Cubs vs. Yankees	Red Sox vs. Dodgers
June 25	Dodgers vs. Yankees	Red Sox vs. Cubs
June 29	Yankees vs. Red Sox	Dodgers vs. Cubs
July 2	Yankees vs. Cubs	Dodgers vs. Red Sox
July 6	Cubs vs. Red Sox	Yankees vs. Dodgers
July 9	Cubs vs. Dodgers	Yankees vs. Red Sox
July 13	Red Sox vs. Dodgers	Cubs vs. Yankees
July 16	Dodgers vs. Yankees	Red Sox vs. Cubs

Teams Not Ready To Take The Field At Game Time Will Forfeit The Game. Championship Will Be Determined 10 Days Before The All-Star Game.

GAMES SPONSORED BY THE ROPES LIONS CLUB.

Pond Raised

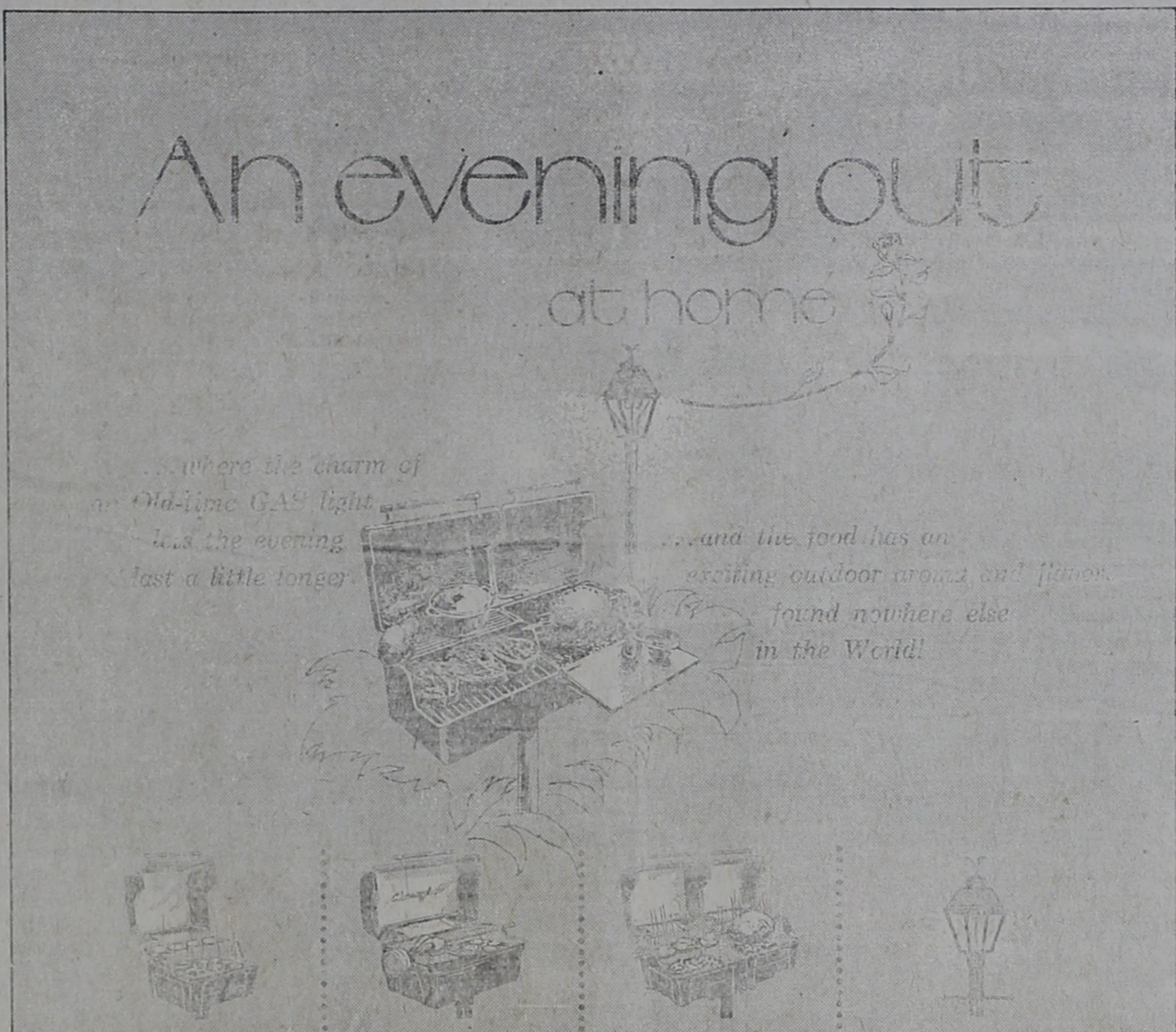
CATFISH

For Sale 1-3 Pounds

I. V. J. Melton

Phone 562-3678

Mon.- Saturday



- MASTER CHEF (AMK)**
The better grill
Cash price \$90.18
*Budget price \$109.08
Budget terms \$3.03 per mo. for 36 mos.
- PARTY HOST (HEJ)**
The professional one
Cash price \$107.90
*Budget price \$130.32
Budget terms \$3.62 per mo. for 36 mos.
Rotisserie extra
- CHEF'S CHOICE (CC-1)**
The outdoor range
Cash price \$142.30
*Budget price \$172.08
Budget terms \$4.78 per mo. for 36 mos.
Rotisserie extra
- GAS LIGHT, #300 BLACK-#325 WHITE**
Cash price \$60.41
*Budget price \$73.08
Budget terms \$2.09 per mo. for 36 mos.

Prices include normal post-type installation (up to 50 feet of line) and 4.25% sales tax. *Budget terms are available at 12.75% annual interest on declining balance.

A GAS outdoor grill gives food a tangy outdoor flavor without the time and bother of charcoal fire. Char-broiled flavor comes from the smoke of meat juices dripping on hot briquets. Charcoal itself provides no flavor. Permanent ceramic briquets in the gas grill reach cooking heat in a few minutes, and there is no long wait to start cooking. The heat is regulated manually so there is no need to move a grill up or down.

SAVE \$28.50 BY BUYING A PATIO PAIR.

	Cash Price	Budget Price	Budget Terms
Gas Light #300 or #325 AND...			
Master Chef (AMK)	\$120.88	\$146.16	\$4.06/36 mos.
Party Host (HEJ)	\$138.60	\$167.76	\$4.66/36 mos.
Chef's Choice (CC-1)	\$173.00	\$209.16	\$5.81/36 mos.

Patio Pair prices include normal post-type installation (up to 50 feet of line and both in same locality) and 4.25% sales tax. Budget terms are available at 12.75% annual interest on declining balance.

BUY A GRILL NOW AND RECEIVE FREE

your choice of either a handy aluminum SHELF or a vinyl plastic DUST COVER for your grill.

(Offer of a free shelf or cover expires July 31, 1971)

An outdoor GAS light adds a touch of safety and elegance to any patio or front yard.

Call Pioneer or ask a Pioneer employee about a gas light and grill for many memorable evenings out at home.



PIONEER NATURAL GAS COMPANY

SPECIAL NOTICE —

Boys who still have Little League baseball suits in their possession, are asked to return them as soon as possible to Larry Jackson, at Jackson Insurance Agency, so the Lions Club may prepare for another season of Little League play.

FOOTBALL TICKETS

Tickets are available to the Coaches All-America football game to be played in Jones Stadium on the Tech campus June 26 at 7:30 p.m. A section has been reserved for Ropes fans, and tickets may be purchased from Preston Reeves or Kenneth Means. They are \$7 per ticket. Ticket sales in this community is sponsored by the Lions Club.

NOTICE

A clean-up campaign is designated for the Ropes Cemetery on Memorial Day. Everyone is urged to bring garden tools and help clean up for another year.

ROPES INDEPENDENT SCHOOL DISTRICT SCHOOL CALENDAR

May 24, 25, 26, 27 — Work Days

THE ROPES PLAINSMAN

Published every Thursday at the Plainsman Office in Ropesville, Hockley County, Texas 79352.

Celeste Thomas, Publisher Editor

Entered as Second Class Matter at the Post Office in Ropesville, Texas 79352.

Subscription Price

One Year \$4.00
Classified and Legal Notice rates: 15c line first insertion, 10c line all subsequent insertions. Count five words to line.

THE STATE OF TEXAS

TO: THE UNKNOWN HEIRS AND LEGAL REPRESENTATIVES OF JUAN DE SANTIAGO AND MRS. JUAN DE SANTIAGO, BOTH DECEASED

GREETING:

You are commanded to appear by filing a written answer to the plaintiff's petition at or before 10 o'clock A. M. of the first Monday after the expiration of 42 days from the date of issuance of this Citation, the same being Monday the 21st day of June, A. D., 1971, at or before 10 o'clock A. M., before the Honorable 99th Dist. Court of Lubbock County, at the Court House in Lubbock, Texas.

Said plaintiff's petition was filed on the 1st day of March, 1971.

The file number of said suit being No. 65790.

The names of the parties in said suit are: MUNICIPAL INVESTMENT CORPORATION as Plaintiff, and THE UNKNOWN HEIRS AND LEGAL REPRESENTATIVES OF JUAN DE SANTIAGO AND MRS. JUAN DE SANTIAGO, DECEASED, ET AL as Defendant.

The nature of said suit being substantially as follows, to wit:

THIS IS A SUIT ON PAYING LIEN, DESCRIBED PROPERTY BEING: LOT TWELVE (12), BLOCK ONE HUNDRED (100), ORIGINAL TOWN OF LEVELLAND, HOCKLEY COUNTY, TEXAS.

If this Citation is not served within 90 days after the date of its issuance, it shall be returned unserved.

Issued this the 3rd day of May A. D., 1971.

Given under my hand and seal of said Court, at office in Lubbock, Texas, this the 3rd day of May A. D., 1971.

J. R. DEVER, DISTRICT Clerk, 99th Dist. Court, Lubbock County, Tex. By Shelia Nicholson, Deputy.

(SEAL)

ROPESVILLE CHURCH OF CHRIST

VBS May 31-June 4
8 p.m. Nightly

Schedule of Services:

Sunday Bible Classes:	10:00 A.M.
Worship Hour:	10:50 A.M.
Evening Service:	8:00 P.M.
Wednesday Ladies Class	8:30 A.M.
Wednesday Bible Classes:	8:00 p.m.

BOWERS

Distributors Of
American Oil Company Products
Top Quality Products
\$ at a low price \$
Phone 562-3511 — Ropesville

ELLIS PHARMACY

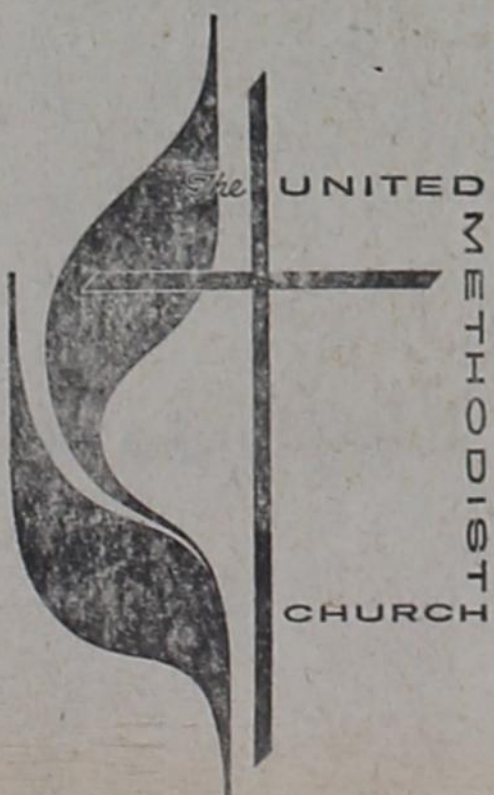
1213 HOUSTON Phone 894-6053
411 AUSTIN Phone 894-2711
LEVELLAND, TEXAS



"We accept burial policies of all companies"

FRANKLIN-BARTLEY FUNERAL HOME
4302 34th Street Lubbock, Texas
Phone SWilt 9-3666 collect

United Methodist News



FIRST UNITED METHODIST CHURCH

P. O. Box 117 Phone 562-3881

Ropesville, Texas 79358

"Located on the Lubbock Road"

REV. CARROL M. JONES, Pastor

Sunday School	10:00
Morning Worship	11:00
Evening Worship	6:00

GIFTS FOR

All Occasions

Clothing and Shoes for Men, Women, Children

RIOJAS DEPT. STORE

PICTURES FROM THE PAST

