

At Your Service for Regular Banking

We do not write insurance, make real estate loans, make abstracts, sell real estate, or carry any other side line.

It is our aim to give the very best banking service possible to this community, and we believe we can best do this by devoting our entire time to the banking business.



The First National Bank of Hansford, Texas

A Great Memorial

Soldiers and sailors of Texas, Oklahoma, Louisiana and New Mexico who served in the world war, are to be honored by the erection of a permanent memorial building at Southern Methodist University at Dallas.

the other for those who have returned or will return. Already more than 40,000 names are available, together with the names and addresses of their parents, who will be asked to subscribe to the erection of the memorial at ten dollars for each name to be inscribed on the bronze tablets.

All presiding elders of Texas, Oklahoma and many from Louisiana and New Mexico met last week in Dallas and completed plans for the campaign which will start July 27th and continue until the fifth week in August.

The Headlight family spent Sunday in Guymon.

Headlight and Southwest Plainsman one year, \$1.50.

Mrs. Henry Harrison was in from Ideal community Wednesday.

Alva Garner was in from his fine farm out southeast of town Wednesday.

New Ford for sale or trade. In good condition.

B. V. ANDREWS

Pay us \$1.50 on subscription and we will send you the Southwest Plainsman, published at Amarillo, one year absolutely free.

Barney Fitzsimmons, an old friend of Joe Welsh, arrived from California Wednesday and is a guest at the latter's ranch out west of town.

Miss Hazel Erwin came from her home in the Frisco community in Texas county the first of the week and is a guest of Mrs. Chas. Riley.

Bob Archer, John L. Hays, Sheriff Wilbanks and Jim Taylor went to Ochiltree Tuesday to see the picture show. They experienced considerable car trouble on the return trip, and finally finished the journey on foot.

R. P. Kern, who recently bought the Chas. Endleott farm out east of town, was in town Wednesday and invested in a brand new Fordson tractor. Mr. Kern is a progressive farmer and believes in staying abreast of the times.

The Panhandle Art Exhibit

With the close of the harvest of 1919 in the Panhandle of Texas, we will be able to show the greatest art exhibit ever presented to the human eye, of crops and every other industry of the soil, as it is found in living form upon these far flung plains.

Our address is Panhandle-Plains Chamber of Commerce, Amarillo, Texas.

Fake Stock Investments

In a recently issued bulletin the Treasury Department gives warning to the public against fake stock investments. Three hundred million dollars, it is stated, are garnered each year by promoters of "wildcat" stock enterprises, it being too often the man who, who by dint of saving, has gotten together a little capital, who is the duped investor.

Buy War Savings Stamps regularly.

Five passenger Ford for sale cheap. Call at Headlight office.

Cane sugar, 100 pounds, \$10.50. McLARTY, Guymon.

A. F. Barkley and family returned from a visit to relatives at Denton last Friday.

Misses Cora and Ora Lackey, of the Blodgett community, were shopping in the city Wednesday.

All kinds of tobaccos, way below what other houses charge you. Horse Shoe and Star, 80 cents per pound; Tinsley, \$1 per pound; Prince Albert, \$3 per carton or 12 1-2 cents per can. McLARTY, Guymon.

Miss Opal McGlellan, daughter of Mr. and Mrs. L. S. McClellan of Grand Plains, was taken to the Dalhart Sanitarium last week, where she underwent an operation for appendicitis. She withstood the operation well and was convalescing nicely, at last report.

E. J. Thayer and Cecil E. Winder made a trip to Booker the first of the week to see about the construction of a building in which to open up the First National bank of Booker, of which Mr. Winder will be cashier. They are putting up the first business house in Booker.

Mr. and Mrs. Milo Blodgett and daughter, Miss Thelma, were shopping in the city Wednesday and say that they are almost through harvesting their crop of grain, consisting of 1500 acres of wheat, oats and barley.

Kill the Grasshoppers

Grasshoppers are doing considerable damage to growing crops. They have destroyed many bushels of wheat and after it is harvested, will turn their attention to the row crops. The following grasshopper poison formula is taken from the Liberal News and is said to be a good one:

The poison formula for killing grasshoppers requires 20 lbs. of bran, one pound of Paris Green, white arsenic or London Purple, 2 quarts of cheap molasses, 3 or 4 pounds of newly chopped oranges or lemons, 3 1-2 gallons of water.

The hoppers can do very little damage to the present wheat crop, but may do great damage to row crops and fall wheat, and where they show up in large numbers they should be killed out now, if it is possible.

To Move County Seat

A petition is being circulated asking for an election to move the county seat from Ochiltree to Perryton. The moving of the county seat to Perryton is one more step toward making a good town of the latter.

Plenty of Kero at McLarty's, Guymon, only 80 cents per gallon.

Dan Archer fell from a binder one day recently and has two broken ribs as a result.

Mrs. R. W. Thompson, from six miles north of town, was shopping in the city Tuesday.

W. W. Groom was in from his fine ranch in the west end of the county Wednesday and purchased a brand new Ford through the Dillow and Son agency while in town.

Several enterprising Hansford citizens went out Wednesday and worked on the road leading east from town. The steep hill near town was almost impassable, but the boys fixed it up in pretty good shape.

The nice rains of the past week will delay harvesting and threshing, but will be of untold benefit to row crops and will also put the fields in shape for summer breaking. Farmers can now begin preparing their land for next year's big wheat crop.

Hugh E. James spent from Saturday until Wednesday with his family at Guymon and during his absence I. E. Cameron and George Gear of the City National bank of Guymon, looked after the interests of the Guaranty State bank of Hansford.

Herman Womble, who returned from France two weeks ago, and has been assisting with the harvest on the farm of his uncle, Madison Womble, out south of town, jumped from a fence Wednesday and severely sprained his ankle. He came to town and Dr. Gibner patched up the injuries.

J. R. Collard left Tuesday for an extended trip through northern Oklahoma and central Kansas. Mr. Collard expects to sell a large acreage of the Spearman lands in Hansford county, while on this trip and the Headlight wishes him much success. We need more farmers.

Wednesday was a big day in Hansford. The rains on Tuesday and Tuesday night stopped the harvesters and threshing machines and the crews came to town to purchase supplies and tell how fast they have been saving the wheat crop.

Clarence Winder, recently arrived from overseas, was discharged at Camp Bowie the 12th inst and arrived in Hansford Wednesday, much to the delight of his parents, Mr. and Mrs. J. P. Winder. Clarence was at the front in France when the armistice was signed and afterward was sent to Russia to help quell the riotous Bolsheviks. He has had many interesting experiences, but is glad to be home again.

THINK! REASON! ACT!

THINK about the opportunities that have slipped by because you did not have the money to handle them.

REASON for yourself and determine how a good bank account would remedy the situation.

ACT at once and lend your energies to the building of a bank account.

Guaranty State Bank

HANSFORD, TEX.

The Guaranty Fund Bank.

Capital and Surplus \$28,000.00



SUPERVISE PURITY OF MILK

List of Equipment Necessary to Furnish Laboratory is Sent Out by Dairy Division.

(Prepared by the United States Department of Agriculture.)

A letter has been sent by the dairy division of the United States department of agriculture to 1,500 health officers in cities having over 5,000 population urging the city governments to supply the health officers with proper laboratory equipment so they can adequately guard the city milk supply.

The work of supervising the safety, cleanliness and purity of its city milk supply is one of the most important duties of the modern health department.

DAIRY COW MOST PROFITABLE

Animal Never Fails to Return Profit for Feed and Care—Keep Her Comfortable.

The dairy cow is the most profitable animal on the farm if rightly managed, as, under ordinary conditions, she never fails to return a profit for her care and feed, if she is given the right kind of food and just the right quantity.

COOKING GRAINS FOR COWS

Act Does Not Ordinarily Add Much to Palatability—May Decrease Digestibility.

While some unpalatable feeds may be consumed by dairy cows in larger quantities if they are cooked, the cooking does not ordinarily add much to the palatability of the grains and may even decrease their digestibility.

Subscribe for the Headlight.

Coming Back to Hansford

C. E. Wilcox and family came out from Texhoma, where they are now temporarily located, and spent Monday with friends in Hansford. Mr. Wilcox sold a fine Hansford county farm, together with all household goods and machinery, about a year ago and moved to Arkansas and from there to Indiana, in search of a better place to live than Hansford county affords, but it could not be found, and he is back here looking for another location.

Mrs. Etta Cook, who has been employed as bookkeeper at the First National bank of Hansford, has accepted a position with the First National at Amarillo and will begin work there Monday. During her stay in Hansford Mrs. Cook has made many friends, and they sincerely regret that she is leaving, but wish her much success in her new home.

Hot weather is here. Don't make the entire residence uncomfortable by keeping a fire in the range. See those New Perfection oil stoves at the Hardware.

TANLAC

A splendid Tonic and system purifier.

Try it for your health's sake.

HANEY DRUG CO.

The People With the Goods

C. D. WORKS Lawyer and Abstracter

Will practice in all Courts. Special attention given to land practice and probate matter.

Have had experience in connection with two or three of the best Abstract offices in the state.

All Abstracts properly and promptly prepared. All papers and work in connection with Abstracts given proper and prompt attention.

Notary Public

C. D. Works HANSFORD

Ice Cream

We make the Ice Cream we serve at our fountain from

.. JERSEY CREAM ..

It is pure and wholesome and contains no glucose, gelatin, starch or other adulterations usually found in factory ice cream.

If you are particular and demand something JUST A LITTLE BETTER, patronize our fountain.

Hale Drug Company HANSFORD

The Store with the Up-Town Service

FARMS AND RANCHES

For Sale on Easy Terms. Improved or unimproved, and in any size tracts.

The choice lands near Spearman and Spearman town lots.

Farm Loans

An unlimited amount of money to loan on Hansford county land.

Call and talk the matter over if you need a loan.

What you want; the way you want it.

.. J. R. COLLARD ..

Write for information HANSFORD, TEXAS

**BUY YOUR
FORDSON TRACTOR**
NOW, F. O. B. factory \$750---a reduction of over \$125.

NOW is the logical and safe time to buy your Fordson Tractor. Farm tractor manufacturers know that more machines will be wanted during this coming year than can be supplied. This is particularly true in regard to the Fordson. Its popularity has created a demand that makes it certain that some farm-owners, desirous of obtaining the Fordson, must be disappointed. Get your order in early.

TAYLOR MOTOR CO.
Dealers in Tractors and Tractor Implements
STRATFORD, TEXAS
We sell the Fordson tractor in Hansford and Sherman counties. See one at the Hays Grocery in Hansford.

See me for your
HARVEST HARNESS
I will be prepared in time for harvest with Collars, Pads, Bridles, Breeching and all parts. Shoe work done quick and neat. A full line of shoe dressings of all colors.
D. A. ABBOTT
rices Right GUYMON

HARVEST
Begin now making preparations for the great harvest season. We have the new machinery and the repairs for your old machinery.
You will need a new WAGON. Let us figure with you. In fact, we can supply your every want in Hardware and Farm Machinery.

The Star Hardware Company
Guymon Okla

Guaranteed Tire Repair Co.
REBUILDERS and REPAIRERS
Save 40 to 50 per cent on your tires by having them repaired.
We have the largest shop in the Southwest, equipped with the latest tire rebuilding machinery.
Our re-treading is guaranteed for 3,500 miles, and all blowouts for life of tire.
::: USED TIRES FOR SALE :::
Guaranteed Tire Repair Co.
L. J. ALLEN, Manager
Two Doors North of Herald office GUYMON

PALO DURO HOTEL
PADDY DOYLE, Prop.
Our meals are the best to be purchased and are cooked and served in a manner that promotes appetite and gustatory enjoyment.
Every customer is cordially welcomed and courteously served. Your patronage is solicited.
Rates Reasonable HANSFORD

What You Need
McCormick Headers, Binders and Repairs and Emerson Listers and Lister Cultivators.
Windmills, Stock Tanks, Pipe, Casing, Wagons, Wire, Harness and Furniture
Everything for the Ranchman and Farmer
JACKSON BROTHERS
GUYMON

The Hansford Headlight
PUBLISHED EVERY FRIDAY
BY
HEADLIGHT PUBLISHING CO.
ORAN KELLY, EDITOR-MANAGER
\$1.50 Per Year in Advance

Entered as second-class matter at the post office at Hansford, Texas, under act of Congress of March 3, 1879.

ORPHANED LAMBS AND PIGS
Patience, Care and Good Nursing Have Brought to Maturity Many Unfortunate Animals.

(Prepared by the United States Department of Agriculture.)
Many weak "orphan" lambs and pigs, requiring too much care for the average farmer or ranchman to bother with are salvaged by the boys and girls belonging to the clubs organized by the United States department of agriculture and the state colleges. Patience, care and good nursing by a



A Club Boy and His Three Orphans.

youngster have brought to maturity animals which otherwise would not have survived infancy. As a result, the meat supply is increased and the boy or girl is enabled to earn money.
The father of a little girl in Anson county, N. C., who was very anxious to join a pig club, repeatedly refused to give her a pig. One of his pigs did not do well last year and he tried to sell the "runt" for \$1, but could not find a buyer. His wife persuaded him to give the friendless pig to the little girl. Care and careful feeding brought it to maturity. After a while the club member's herd was increased to six. The little girl traded the best two of the litter to her father for sole possession of the mother hog, and sold the other three for \$15. Having now acquired a membership in the pig club, she plans to continue in the work.

CO-OPERATIVE SHIPPING PLAN
Boys of Florida County to Market Their Pigs in Carloads—Engaged in Feed Contest.

(Prepared by the United States Department of Agriculture.)
The pig club boys of Madison county, Fla., are planning to market their pigs next fall in a co-operative carload shipment. These boys are now busily engaged in a feeding contest and are working for one of a number of prizes offered for the most successful feeders. Peanut meal and corn, with rape and rye pastures, make up the present rations of the club pigs. The local county agent has already informed a number of livestock commission companies of the plan of marketing the club pigs, and states that the buyer will have to bid above the market price to get them.

FATTENING ON SELF-FEEDERS
Hogs Fed in This Manner Save Feed and Labor and Are Fit for Market Much Earlier.

(Prepared by the United States Department of Agriculture.)
Fatten hogs on self-feeders as far as possible. Hogs fed in this way save labor, save feed in proportion to the gain in weight made, and are ready for market sooner than those which are hand fed. Less feed is actually required to fatten when hogs are self fed. The system is therefore economical in every respect.

LIVESTOCK NOTES

The horses should be given plenty of fresh water regularly every day.
Regular feeding is of paramount importance in keeping stock in a healthy condition.

Pasture lands devoted to sheep have greater possibility of their own sustenance than any other.

The rule is that it is better not to milk the cow before freshening unless it become absolutely necessary.

There is nothing like a self-feeder to give pigs a good start, and it is the start they get that tells in the wind-up.

By providing good pasture crops for lambs after weaning, a set-back in growth may frequently be avoided and the lambs marketed at an earlier age.

Have you gotten your New Perfection Oil Stove? Its at the Hardware now.

DAIRY DAIRY

GRAIN MIXTURES FOR CALVES

Wheat Bran Is Relished by Young Animals and Corn Has Excellent Physiological Effect.

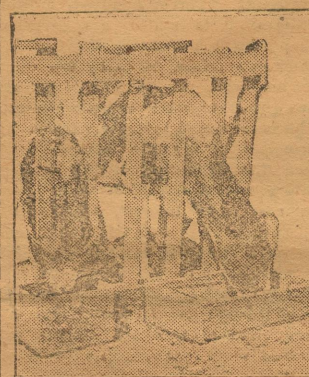
(Prepared by the United States Department of Agriculture.)

When the calf is in its second week it should begin to receive grain, and when one month old it should eat about half a pound a day. After this time the quantity of grain may be gradually increased, feeding all that the calf will eat until three pounds a day is reached, probably during the third month. Grain fed to supplement separated milk should never be mixed with the milk. It is questionable whether the preparation of grain in any way, such as soaking or boiling, is advisable under most circumstances.

Wheat bran is eaten readily by young calves. Corn has an excellent physiological effect and to a great extent may take the place of fat removed from skim or separated milk. Experiments tend to show that corn fed to calves should be cracked rather than finely ground. Ground oats are good in grain mixtures when available, but in many cases cost much more per unit of feed than corn and bran. The following grain mixtures are recommended by dairy specialists of the United States department of agriculture:

1. Three parts cracked corn and one part wheat bran.
2. Three parts cracked corn, one part wheat bran and one part ground oats.
3. Three parts cracked corn, one part wheat bran, one part ground oats, and one part linseed meal.
4. Five parts cracked corn, one part wheat bran, one part ground oats, and one part blood meal.
5. Oats, ground.

Clover hay, alfalfa hay, or the most palatable roughage available should be given the calf after the second week. Alfalfa is likely to cause scours, and should be fed sparingly at first and in-



A Good Method of Feeding Calves So That Each Will Get Its Share.

creased only after the calf gets accustomed to it. At first hay should be furnished only a handful at a time, and be placed so that it cannot be soiled. For the first six months, at least, the calf should receive all the roughage of good quality that it will eat up clean. When the calf has access to good pasture during the first six months it need not receive other roughage. It is not advisable, however, to have the calf under two months of age on pasture in the early spring.

GOOD BLOOD ASSISTED DAIRY
Good Dairy Bull, Purchased as Calf for \$100, Put at Head of Herd Is Good Investment.

(Prepared by the United States Department of Agriculture.)
A good dairy bull, purchased by a Montana county farm bureau member, cost \$100 as a calf; it was put at the head of a herd of ten cows, the average annual production of which was 4,800 pounds of milk and 260 pounds of butterfat. The daughters of the bull have now replaced the old cows in the herd and exceed the production of their dams by an average of 102 pounds butterfat and 1,828 pounds of milk per year. This improvement nets \$300 profit each year without taking into account the difference in value of the calves. A cow should "carry on" for at least six years, which would mean \$1,800 additional profit from the ten cows, because of the \$100 invested in the bull calf. "It was a bully good investment," says the farmer.

ENEMIES OF DAIRY INDUSTRY
They Are the Men Who Cause to Be Manufactured Poor Grade of Butter for Market.

There is a class of men who are more dangerous to the dairy industry than the men who use the substitute, and they are the men who cause to be manufactured a poor grade of butter. There is no substitute for first-class butter, but for butter made from old, stale cream there is not only danger of substitutes, but there is danger of many people not using butter at all.

Save Family Expenses. The dairy family under reasonable conditions... National Bank

REPORT OF THE CONDITION OF
The First National Bank of Hansford,
at Hansford, in the State of Texas, at the close of business on June 30th, 1919.

RESOURCES	
Loans and discounts (including rediscounts)	\$239,597 49
Notes and bills rediscounted (other than bank acceptances sold)	62,512 67—\$177,084 82
Overdrafts, unsecured	607 95
U. S. Bonds (Other than Liberty Bonds but including U. S. Certificates of Indebtedness)	
U. S. Bonds and certificates of Indebtedness owned and unpledged	1,000 00
Liberty Loan Bonds:	
Liberty Loan Bonds, 3-1-2, 4 and 4-1-4 per cent, unpledged	1,674 69— 1,674 69
Bonds, securities, etc. (other than U. S.)	
Stock of Federal Reserve Bank (50 per cent of subscription)	900 00
Lawful reserve with Federal Reserve Bank Cash in vault and net deposits due from National Banks	14,851 86
Checks on other banks in the same city or town as reporting bank, other than exchanges for clearing house	50,292 99
Checks on other banks in the same city or town as reporting bank, other than exchanges for clearing house	51 65
Total last two items	60,344 67
Checks on banks located outside of city or town of reporting bank and other cash items	475 30
War Savings Certificates and Thrift Stamps actually owned	6 49
TOTAL	\$257,035 72
LIABILITIES	
Capital stock paid in	\$ 25,000 00
Surplus fund	5,000 00
Undivided profits	536 51
Interest and discount collected or credited in advance of maturity and not earned (approximate)	433 01
Amount reserved for all interest accrued	32 33
Cashier's checks on own bank outstanding	6,717 96
Individual deposits subject to check	148,539 23
Certificates of deposit due in less than thirty days (other than for money borrowed)	3,000 00
Total of demand deposits (other than bank deposits) subject to reserve	151,539 23
Certificates of deposit (other than for money borrowed)	56,424 43
Other time deposits	11,292 25
Total of time deposits subject to reserve	67,716 68
Liabilities other than those above stated (payments received on Victory Loan)	50 00
TOTAL	\$257,035 72
Total contingent liabilities	62,512 67

Of the total loans and discounts shown above, the amount on which interest and discount was charged at rates in excess of those permitted by law exclusive of notes upon which total charge not to exceed 50 cents was made, was, none. The number of such loans was, none.
State of Texas, county of Hansford, ss:
I, E. J. Thayer, cashier of the above-named bank, do solemnly swear that the above statement is true to the best of my knowledge and belief.
E. J. THAYER, Cashier.
Subscribed and sworn to before me this 10th day of July, 1919.
[SEAL] P. A. LYON, Notary Public.
Correct—Attest:
JAMES H. GATOR, F. W. BRANDT, B. V. ANDREWS, Directors

**Removal
Announcement**
WE wish to announce to our friends and customers that we have moved our stock of Dry Goods, Men's and Boys' Furnishings, Etc. to our new home—the Summers building—where you will find a complete line in every department.
New goods are arriving almost daily and we will soon have this immense room overflowing with choicest bargains in everything to wear—for the women, the men and the kiddies.
Our removal sale was the greatest in the history of our concern and we wish to thank all the good people who gave us patronage and extend to each and every one a cordial invitation to visit us in our new location.
Latham Dry Goods Co.
GUYMON, OKLAHOMA

Photographs
of the better kind are our specialty. A visit to our studio will convince you that we know our business.
Outdoor work, Kodak Finishing, anything in photography.
PATE STUDIO
North Main Street GUYMON

ABSTRACTS and INSURANCE
Hansford Abstract Co.
Abstracts and Conveyances prepared. Titles examined and perfected.
Members Texas Abstracters Association, and American Association of Title Men.
Write Fire, Lightning, Tornado, Windstorm and Hail INSURANCE
Hansford, Texas.

such terms as may be provided by law; and the Legislature shall provide for the prompt collection, at maturity, of all debts due on account of University lands heretofore sold, or that may hereafter be sold, and shall in neither event have the power to grant relief to the purchasers. And, until such time as the University endowment fund shall be divided, in accordance with constitutional and statutory authority, the proceeds from the sale of lands, as realized and received into the Treasury of the State, together with such sum belonging to the funds as may now be in the Treasury, shall be invested as the permanent public free school fund is now or may hereafter be authorized by law to be invested; and the interest accruing thereon, and any income from the use of the said University lands, shall be subject to appropriation by the Legislature, and may be available for the redemption of bonds based on the University endowment and to be redeemed from the said interest and income from the use of land, as may be provided by law, to aid in the construction, equipment and maintenance of the University of Texas and the Agricultural and Mechanical College of Texas, and the total of such bond issues outstanding shall at no time exceed four and one-half million dollars, and the Legislature is hereby authorized to appropriate out of the general revenues of the State such moneys as may be necessary to cover deficiencies in the interest and sinking fund accounts of the bond issues herein provided for. Provided, that the one-tenth of the alternate sections of the lands granted to railroads, reserved by the State, which were set apart and appropriated to the establishment of "The University of Texas" by an Act of the Legislature of February 11, 1858, entitled "An Act to Establish 'The University of Texas,'" shall not be included in or constitute a part of the permanent University fund.

Sec. 13. The Legislature shall provide by appropriation for the equipment, maintenance and development of the University of Texas, and the branches of the said institution named in this Article and such other branches as may hereafter be established by law; for the Agricultural and Mechanical College of Texas and its branches as now or hereafter may be established by law; for the College of Industrial Arts for the education of white girls; for State Normal Schools; and for the Prairie View State Normal and Industrial College for colored youths.

Sec. 14. The Legislature shall give encouragement and direction to and make provision for the educational activities of the respective State Institutions provided for in this Article, and as may be adequate for the promotion of literature and the arts and sciences, pure and applied, and for instruction in the professions, of a University of the first-class; and for instruction in all those branches of learning which relate to agriculture, animal husbandry, the natural sciences, pure and applied, connected therewith, the mechanic arts and military science and tactics, requisite to the development of an Agricultural and Mechanical College of the first-class; and for the education of white girls in the literary branches, the arts and sciences, and in social and domestic economy of the age, as may be necessary to establish and maintain a College of Industrial Arts of the first-class for white girls, and for instruction in all the branches requisite to the development of normal schools of the first class.

Sec. 15. The Prairie View State Normal and Industrial College for the instruction of colored youths of the State, having been located at Prairie View, in Waller county, as a branch of the University of Texas, is hereby declared a branch of the Agricultural and Mechanical College of Texas. And in lieu of the separate apportionment of a part of the University endowment, as authorized in Section 11 hereof, the said Board of Directors of the Agricultural and Mechanical College may apportion to the Prairie View State Normal and Industrial College such part of any fund realized from any authorized bond issue by the Board for the purpose of permanent improvements as the Board may determine to be equitable and the fund so apportioned shall be available only for the purpose of constructing permanent improvements for the said Prairie View State Normal and Industrial College.

Sec. 2. The Governor of this State is hereby directed to issue and have published the necessary proclamation for the submission of this proposed amendment to the Constitution of the State, to the qualified voters of the State, said election to be held throughout the State on the first Tuesday in November, 1919, and all voters favoring the amendment shall have written or printed on their ballots the words:

"For the amendments to Sections 10, 11, 12, 13, 14 and 15 of Article VII of the Constitution of the State of Texas, fixing the constitutional status of the University of Texas, the Agricultural and Mechanical College of Texas, the College of Industrial Arts at Denton, Texas; the Sam Houston

Normal Institute at Huntsville, Texas; the North Texas State Normal at Denton, Texas; the Southwest Texas State Normal at San Marcos, Texas; the West Texas State Normal at Canyon, Texas, and the East Texas State Normal at Commerce, Texas, and other state educational institutions, and determining the interest, respectively, of the University of Texas, the Agricultural and Mechanical College of Texas, and the Prairie View State Normal and Industrial College in the University permanent fund; and providing for the support, direction, and development of State Educational Institutions."

Those opposing the amendment shall have written or printed on their ballots the words:

"Against the amendments to Sections 10, 11, 12, 13, 14 and 15 of Article VII of the Constitution of the State of Texas, fixing the constitutional status of the University of Texas, the Agricultural and Mechanical College of Texas, the College of Industrial Arts at Denton, Texas; the Sam Houston Normal Institute at Huntsville, Texas; the North Texas State Normal at Denton, Texas; the Southwest Texas State Normal at San Marcos, Texas; the West Texas State Normal at Canyon, Texas, and the East Texas State Normal at Commerce, Texas, and other State educational institutions and determining the interest, respectively, of the University of Texas, the Agricultural and Mechanical College of Texas, and the Prairie View State Normal and Industrial College in the University permanent fund; and providing for the support, direction and development of State educational institutions.

Sec. 3. The Governor is hereby directed to submit this amendment to the qualified voters at an election to be held throughout the State on the date herein specified, and the sum of Five Thousand (\$5,000.00) Dollars, or so much thereof as may be necessary, is hereby appropriated out of the general revenue not otherwise appropriated, for the purpose of issuing the proclamation and publishing the amendment as required by the Constitution and laws of this State.

GEORGE F. HOWARD,
Secretary of State.
(Attest—A True Copy.)

STATE HOSPITAL IS READY

New Institution Will Receive Patients in a Short Time.

Oklahoma City.—Between July 20 and August 1, the most complete and modern hospital in the entire southwest—Oklahoma's new state hospital—which will be known as the New University, will be thrown open to the public, according to Paul Fessler, superintendent. The building has been erected at a cost of \$200,000, and \$56,000 has been expended for furniture.

Accommodations for 150 patients will be available the first year of operation of the hospital, with this number increased to 200 for next year. Also, \$14,000 more is to be expended for equipment to complete the research laboratory. Fourteen acres of ground afford ample opportunity for the enlargement of the hospital, as it is found to be necessary.

Offices, main kitchen, nurses' cafeteria, negro wards and a large reception room occupy the space on the first floor. A doctor's register, showing if Dr. So-and-So is in or out, is also on this floor. And megaphones are to be found in every hall, with a telephonic attachment, with which any person may be paged from the office, the name being circulated to the remotest corners of the building.

McCurtain to Begin Dipping.

Idabel.—If the county commissioners heed the request of hundreds of little raisers and owners they will make the full levy for the purpose of eradicating the fever tick from McCurtain county. Petitions have been circulated and received hundreds of signers and these will be presented to the commissioners. McCurtain is one of the few counties in Oklahoma that has not commenced the tick eradication work.

Idabel will celebrate the return of McCurtain county soldiers and sailors with a big free barbecue on Thursday and Friday, July 24 and 25.

INDIANS HOLD GREAT DANCE

Sixteen Tribes Celebrate for a Week at Quapaw.

Miami.—Th great Indian picnic that was held every night for the week ending Saturday, July 5, was the best attended and most successful ever seen at Quapaw. Fully 8,000 persons attended on July 4 and a large attendance greeted the red men every night as they stomped, as in the early days.

Among the tribes represented were the Quapaws, Peorias, Miamis, Modocs, Wyandottes, Senecas, Ottawas, Shawnees, Caddos, Creek, Cherokees, Iowas, Powattomies, Delaware, Osages and Winnebagos. Most of the Indians were attired as other people but several of the full bloods strove to appear as they did in the early days, sewing on buckskin and feathers. Often the whole camouflage was destroyed by a 25-cent cigar peeping from the pocket of the pretender or the flash of a diamond from his finger.

Hides and Furs. High Grade Coal—2,000 Pounds Per Ton

.. The Commercial Exchange ..

PHILLIPS BROS., Successors to F. M. Phillips.
DEALERS IN

GRAIN, FLOUR, FEED AND COAL

MAKE OUR PLACE YOUR HEADQUARTERS

HAY and GRAIN
WAGON YARD

GUYMON, OKLA.

Always on the Job A Square Deal to All

Rogers Grain Co.

GUYMON, OKLAHOMA

BRING YOUR WHEAT TO MY ELEVATOR IN GUYMON AND RECEIVE THE HIGHEST MARKET PRICE FOR SAME.

Coal!

We cannot urge too strongly the necessity of putting in your winter supply of Coal Now, while it may be had. All conditions in connection with the coal industry point to the greatest shortage next winter the country has ever known. Heed the warning and don't be left out in the cold. We have a good supply on hand now; the best coal to be had, but it is going fast. Come in and get your supply.

Coal!

And don't forget that the Big Jo always has in stock the very best of everything in the way of Lumber and Building Material. Let us figure that bill for a new grainary, new sheds or a new residence. You get your money's worth when you trade at the Big Jo Lumber Yard at Guymon.

The Big Jo Lumber Company

GUYMON, OKLAHOMA

Why Pay Others More

Come to Our Store, Guymon, and Get Your Money's Worth

Read a Few of Our Bargains.

Regular \$1.75 Crackers, per box	\$1.15	Regular \$6.00 Panamas at	\$3.00
Regular \$4.00 Raisins, per box	3.25	Regular \$2.00 Sport Shirts at89
Regular \$1.35 Pickels, per gallon	1.00	Regular \$0.35 Lawn at25

We Sell for Cash
Therefore for Less

J. G. McLARTY, Grocer

DRY GOODS and CLOTHING

Come to See Us

GUYMON, OKLAHOMA

"Exide" BATTERY SERVICE

THE LIFE OF YOUR BATTERY Depends on the care and attention it receives. When it acts sluggish or lifeless it needs the attention of the battery doctor. Bring it to me for free advice and examination. My prescriptions always do the work.

ACETYLENE WELDING When you have a break of any kind bring it to me and learn what a real, up-to-date Acetylene welding outfit can do. Any and every kind of metal welded and made as good or better than new.

" NAT COX "
At City Garage GUYMON

We Protect Our Lumber By Sheltering It

It is no trouble to show you our materials, as they are made better by proper sheltering, and we invite you to call and see for yourself. Why not get the best your money will buy. Really, take it to yourself: If you have something that is good, you are desirous of sheltering it and taking extreme good care of it. We keep all of our lumber and building material in the dry.

Galbraith-Foxworth Lumber Company
W. M. KILLEN Manager BOB WOOD Assistant
TEXHOMA - TEXAS SIDE

We have secured the agency for the

" FORD "

the universal car, for Hansford county, and can furnish you one in any design you may wish, on short notice. The Ford is the best car at the lowest price. Give us your order today.

DILLOW & SON GARAGE
Oils, Gas and Accessories Hansford Texas

DRIVES MADE ANYWHERE ON EARTH

Gasoline and Motor Oils.
Miller Tires and Tubes.
Used cars bought, sold or traded.

Pointer Auto Company
North Main, Guymon
HOMER POINTER, Prop.
All Kinds of REPAIR WORK Guaranteed

I Will Buy Your HIDES

and HOGS and pay all they are worth. Have hides weighed at the Hansford Feed Store.
Hides - Hogs LUTHER CLINE.

DR. JARVIS DENTIST

Ochiltree and Hansford
At Ochiltree the weeks beginning with the First and Third Mondays of each month and at Hansford on Tuesday after the Second Monday of each month.

JACK ALLEN
LAWYER
OCHILTREE, TEXAS
Hansford County legal work given prompt and careful attention.

WALLACE G. HUGHES
Lawyer
Suites 3 and 4 First National Bank Building
Guymon, Oklahoma

List your LAND with
Litch Sparks
Dealer in Hansford County Real Estate.

I will sell your land on a reasonable commission. See me at
Hansford, - - Texas

Notice to the Public
I will sell wood for \$5.00 per four-horse load. It will be necessary to either phone or come to headquarters before getting the wood, otherwise you will be treated as trespassers.
Positively no hunting allowed.
W. T. COBLE,
Owner of the Turkey Track ranch.

Notice
No fishing or hunting will be allowed in the Howard Wilson pasture, on the headwaters of the Palo Duro. These lands are posted and trespassers will be prosecuted.
HOWARD WILSON, Owner.

Notice
No hunting or fishing will be allowed in the Diamond C pastures, on the headwaters of the Palo Duro. These lands are posted and trespassers will be prosecuted.
JAMES H. CATOR & SON.

No Fishing or Hunting
Fishing and hunting is positively forbidden on the lands controlled by the undersigned, located in Hansford and Ochiltree counties, and known as the O'Loughlin ranch, the Simons ranch and the Lindsay ranch. Trespassers will be dealt with as the law directs.
HUDSON & SNYDER.

Dr. E. L. Maxwell, specialist in diseases of eye, ear, nose and throat, will be at the Trans-Canadian Hotel (Inc.), Dalhart, on 13 and 14 and every two weeks thereafter.

CHURCH NOTES

PREACHING
Morning hour 11:00 a. m.
Evening hour 8:30 p. m.
Sunday School 10:00 a. m.

OFFICIAL BOARD
A. L. Barkley, Sunday School Supt.
(STEWARDS)
R. L. McClellan P. A. Shapley
R. F. Dennis B. F. Wallin
E. Dillow D. B. Kirk
A. M. Gore Jacob Mathews
A. F. Barkley W. M. Lieb
L. S. McClellan D. A. Cathcart
H. B. Parks

APPOINTMENTS

Location	Sunday	Hour
Hansford,	1st	11 a. m.; 8:30 p. m.
Lackay	1st	3:00 p. m.
Grand Plains	2nd	11 a. m.; 3:30 p. m.
Hansford	2nd	8:30 p. m.
Hansford	3rd	11 a. m.; 8:30 p. m.
Grand Plains	3rd	3:30 p. m.
Hansford	4th	8:30 p. m.
Lieb	4th	11 a. m.
Alpha	4th	3 p. m.

Kimball, Saturday night before second Sunday, at 8:30 p. m.
All Fifth Sundays are reserved.

Raise in Prices
Owing to advances in price of everything, we are compelled to raise our prices in accordance. Beginning July 1 our prices will be as follows:
Single meals . . . \$ 0.50
Board by the day . . . 2.50
Board by the month . . . 35.00
Meal tickets 8.00
PALO DURO HOTEL.

Threshing Machinery
We are agents for the Altman-Taylor Threshing machinery and can fit you up with a complete outfit on short notice. See us at our farm, in northwest corner of Hansford county, or address us,
SIMONSON BROTHERS,
Goodwell, Oklahoma.

Harvest Supplies
A few 12-foot McCormick sickles.
Canvasses for McCormick and Deering headers.
Good machine oil.
ANDREWS HARDWARE CO.

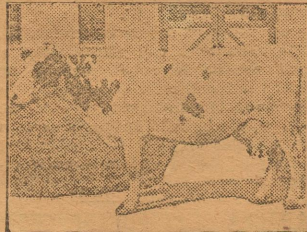
Notice to Creditors of Estate
Notice is hereby given that original letters of administration upon the estate of S. R. Spivey, deceased, were granted to me, the undersigned, on the 11th day of June, A. D., 1919, by the county court of Hansford county. All persons having claims against said estate are hereby required to present the same to me within the time prescribed by law. My residence and postoffice address is Hansford, Hansford county, Texas.
J. H. SPIVEY,
Administrator of the Estate of S. R. Spivey, deceased.

Fire Insurance
You can secure fire insurance on your grain, cut or uncut, in the shock in the stack or in the bin, at a very reasonable rate, for any period of time from one month up. See me at once.
A. F. BARKLEY,
Hansford, Texas.

NEW QUEEN AT BELTSVILLE
Calamity Wayne Pauline II Completes Year Test, Producing Eleven Tons of Milk.

(Prepared by the United States Department of Agriculture.)
A new queen reigns in the herd of Holsteins on the government experiment farm at Beltsville, Md. She is as unassuming and peace loving as any of her subjects, although she bears the name Calamity Wayne Pauline II, and has just completed a test in which she produced in a year more than 11 tons of milk. In 365 days she produced 22,547.8 pounds of milk which averaged 3.865 per cent butter fat, the total fat being 855.4 pounds.

This animal was selected by dairy specialists of the United States department of agriculture from a Michigan herd in July, 1917. She was brought to the Beltsville farm, where she produced a heifer calf, and was started on her test December 7, 1917, at the age of eight years. The test was run through the coldest winter that section had experienced in 40



Calamity Wayne Pauline II.
years, and a summer that was extremely hot. The test for advanced registry was conducted under the rules of the Holstein-Friesian association. During the year the animal was handled by two different herdsmen.

A son of Calamity Wayne Pauline II has been placed at one of the government substations, and one of her half-sisters is making a fine record at the Michigan Agricultural college. Calamity's 365-day record was 10,256.6 pounds of milk, averaging 3.7 per cent butter fat, making a total of 718.13 pounds of fat.

All the dairy cattle on the Beltsville farm are used for experimental purposes, and will be given at least two advanced registry tests to determine their capacity for production.

See in advance

WHAT ABOUT YOUR HARVEST GROCERIES

Come to our store and find the answer to the question. Groceries for harvest is an important item. We are prepared to take care of your wants. We do not sell for cost but are making some real, attractive prices. Quick Sales---Small Profits.

**Flour, Bacon
Hams, Potatoes
Syrups, honey
Apple Butter**

**Canned Goods
in Gallons**

Corn, Tomatoes, Beans,
Fruits, etc.

Special Prices on Case Lots

Fancy Dried Fruits of all Kinds.

Twine Better place your order for twine as early as possible, as it may run short. Make your estimate and see me at once. I believe I have enough to supply the trade, but can't tell.

John L. HAYS Mercantile Co.

Best Place to Trade in
HANSFORD

Weber Wagons

Fordson Tractors

Shoot a Dollar

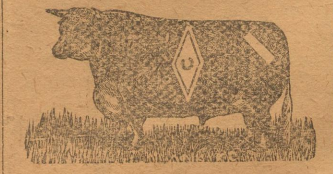
WHAT'S a dollar, anyhow? It used to be a day's pay, but now it won't buy a dinner pail and plain grub enough to fill it. HOWEVER that lonesome DOLLAR may be made to grow, but you must take the chance of losing it. BUT, what if you DO lose it? You'll only have lost the price of an hour's fun and you'll have had DAYS OF FUN watching what we do. And we MAY MAKE YOU A LOT OF MONEY. IT'S A GAMBLE. We don't want to mislead you. You may lose. BUT IF WE WIN WE'LL WIN BIG. IT'S THE GIANT.

100 Per Cent Sure if You're Quick

GIANT is an oil company, organized to drill a well on the Company's 8500 acres in the Texas Panhandle. WE BELIEVE we'll get oil. We want YOU to share the expense of drilling and take a proportionate share of the profit if we GET OIL. It's ten cents a share and you can buy ten shares for a dollar but we won't let any one person have more than \$100 worth of the stock. We only want you to put in that dollar or two that you'd spend for foolishness today anyway. Stake it on a big chance. A few shares might make you independent for life if we get a big well NOW!! To hurry matters, the first ones in will be given 100 per cent stock dividend—in other words, one extra share free for every share you buy. If you buy ten, we'll send you an extra ten. All stock will be issued between August 2 and 5th. Receipts will be sent at once. Hurry and get the bonus. Double stock means double profit. Hurry.

SEND YOUR MONEY NOW

Leavitt Brokerage Co.
General Agents
Famous Building, Fort Worth, Tex.



Brands: Diamond C on left side slash on left hip.
Ear Marks: Crop on left & under halter on right.
Range on headwaters of the Palo Duro.

J. H. Cator & Son, Hansford

All Around the Farm wear

The Overall and Jumper built like a Union Suit

The newest and best garment ever designed for farm work. It protects you from toe to chin, slips on or off in a minute and can be worn as a suit or over your regular clothing.

Union-All is made of extra quality material, sewed with triple reinforced seams, cut-rooney and comfortable, buttons securely fastened and will not come off. Large pockets conveniently placed. Comes in khaki, plain or checked blue.

Made in sizes for Men, Youths and Boys
Made by H. D. LEE MERCANTILE CO.,
Gateway Station, Kansas City
Sold by
MAIZE & CO.

Buick Model "Six-45"

" BUICK "

VALVE-IN-HEAD

and Chevrolet Cars

Kelly-Springfield and Pennsylvania Tires and Tubes.

Bargains in used Cars. Call and see us when you want an automobile.

L. W. BOOTH, Garage

If you want to buy a car write or phone me.

East Side Main GUYMON

AUCTION SALE

I WILL SELL FOR
LITCH SPARKS

at his farm, two and one-half miles south-east of Hansford, Texas,
on

Tuesday, July 22,

Beginning at 10 o'clock, a. m., the following property:

30 Head Horses, Mares,

Mules and Colts. All young stuff, well bred and gentle. Good brood mares and a few mule colts.

10 HEAD OF GOOD WORK STOCK

THREE MILK COWS

One heifer yearling and two good yearling bulls.

A Poland China Sow
with nine nice pigs.

A bunch of Chickens

Farm Implements

Two headers and one barge; one Monitor wheat drill, a good one; one 14-disc harrow; one two-section drag harrow; one Oliver lister; one two-disc plow; one two-row Rock Island lister; one one-row cultivator; one washing machine and other articles too numerous to mention.

.. LONGFELLOW ..

This splendid Jack can be bought worth the money at private sale.

Longfellow is a black Mammoth Jack, with white points, six years old and weighs 1000 pounds. There is not a better Jack in the country. Ask Doc Majors and other men who know.



Also offering at private sale 640 acres of fine farm land; 290 acres in cultivation; fenced and cross-fenced; good well and all improvements are new. Four miles from Spearman. See Litch Sparks.

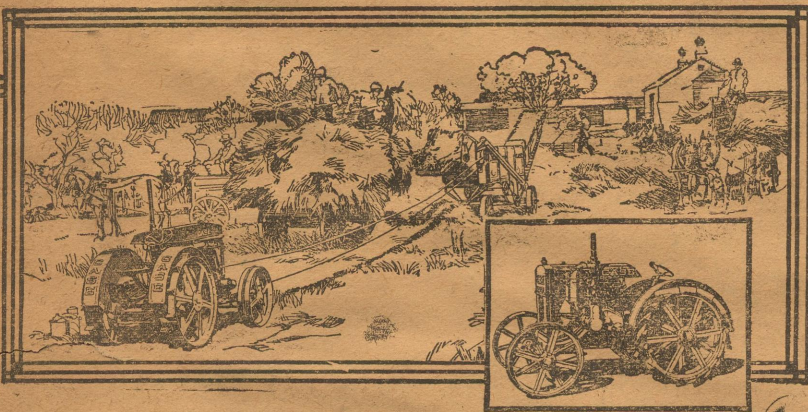
TERMS—On amounts under \$10 net cash. On amounts of more than \$10 a credit of six months' time will be given; purchaser to give note with approved security and notes to draw ten per cent interest from date; five per cent discount for cash. All property must be settled for before being removed from the premises.

C. K. WILMETH

AUCTIONEER

FREE LU H AT NOON

E. J. THAYER, Clerk



A Small Case Thresher and Tractor

This is the ideal outfit for the man who wants to be independent and do his own threshing, and other belt and drawbar work, exactly when he wants to, without waiting.

We picture a Case 10-18 Kerosene Tractor and a Case 20x28 Thresher. The tractor will handle all farm machinery requiring belt power up to its rated capacity.

It will pull easily a 2-bottom plow 7 to 8 inches deep, or an 8-foot

binder, a 22-shoe grain drill, a 5-section spike tooth harrow, an 8-foot double-action disc harrow or a large manure spreader.

For belt and field work, this small Case Tractor cannot be equalled. A Case Thresher is equally superior. Case Machinery has been famous for 76 years.

Let us tell you how you can decrease the hard work on your farm with Case machinery.

Andrews Hardware Co.

CASE
KEROSENE TRACTORS

LIVE STOCK

BEST AGE FOR WEANING PIGS

Good Plan to Let Porkers Nurse Until Twelve or Fourteen Weeks of Age—Keep Them Growing.

(Prepared by the United States Department of Agriculture.)

Too many farmers follow the practice of weaning pigs when too young, many being weaned at six and seven weeks of age. A good brood sow properly fed has a good flow of milk when the pigs are of this age. There is no better feed for growing pigs than their mother's milk, consequently it should be used to the greatest extent possible. When the pigs are of suckling age the sow should be on full feed. Unless there is some extraordinary reason for earlier weaning the pigs should not be weaned under the age of ten weeks, and it is better to let them nurse until they are twelve or fourteen weeks old.

Often serious results follow weaning at too early an age. An entire change of feed following weaning may create serious trouble. If, however, pigs have access to corn, shorts, middlings or tankage, or fish meal in a self-feeder placed in the open where they can eat at pleasure without being disturbed by other hogs, they can be weaned at the age of twelve or fourteen weeks, with very little change in their feed, by allowing them to continue on the self-feeder.

To obtain the best results pigs should gain continuously until they are ready for market. The best results will not be obtained unless pigs have access all the time possible to good forage crops, alfalfa and red clover preferred. If these feeds cannot be procured rye, oats, barley, cowpeas, rape or any other grain or grasses that will produce good forage in the locality should be sown. The pigs should be watched closely to see that they are on their feed. If they are not the feed should



Creep and Self-Feeders for Little Pigs—Youngsters Can Get in Pen Under the Fence, but Large Hogs Are Kept Out.

be changed, replacing corn with barley and using skim milk or buttermilk if possible. The pigs should be kept free from lice by the use of crude or good black oil. They must have access at all times to good, pure water. Shade must be provided during the hot summer months. Natural shade is always best, but where this is not obtainable temporary shade may be provided by setting posts and nailing boards on poles about three and one-half or four feet from the ground and covering with straw or grass.

SELECT PIGS FOR BREEDING

Animals Should Not Be Pushed, but Kept Growing Nicely to Develop Bone and Muscle.

Pigs selected for breeding purposes should be kept growing nicely, but they must not be pushed, for the whole object of their feeding is to make them stretch out and develop bone and muscle in place of fat. They should be continued on a growing ration. A little skim milk and shorts make a good ration. A small amount of ground oats and cracked corn will help develop and insure normal growth. But corn should be used sparingly as it is too fattening for pigs. Remember that these pigs should also have an abundance of green feeds.

ALFALFA BEST FORAGE CROP

Greatest Single Crop That Can Be Grown and Pays Handsomely—Unexcelled for Hogs.

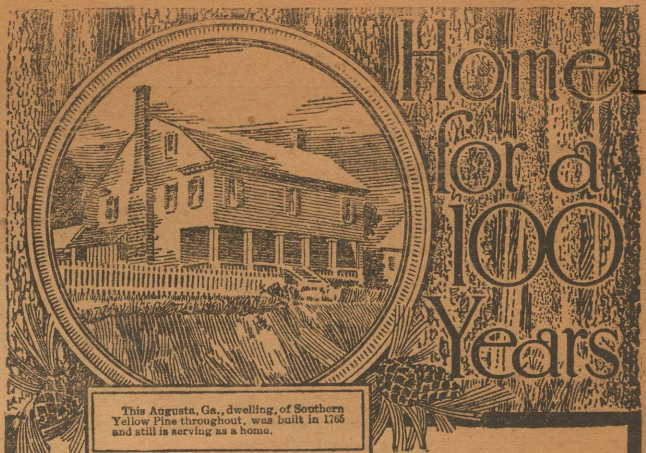
(Prepared by the United States Department of Agriculture.)

Every farmer, whether or not he raises hogs, should have some alfalfa if he can possibly get it. It is the greatest single crop that can be grown and pays handsomely where it is grown. As a forage crop for hogs it is unexcelled.

LIGHT HOGS ARE PREFERRED

Relative Marketability of Various Cuts Is Deciding Factor in Selling Animals.

A heavy hog will bring the producer more money than a 200-pound hog, but more. The relative value of the various cuts is



Home for a 100 Years

This Augusta, Ga., dwelling, of Southern Yellow Pine throughout, was built in 1768 and still is serving as a home.

WHEN you build a home, build substantially—build for a hundred years. There is just one material with which you can do that, and still keep cost down to bed rock. That material is

Southern Yellow Pine

"The Wood of Service"

Southern Yellow Pine is the most durable, workable and dependable high quality, low priced wood on the market today. It is inexpensive because it is plentiful.

We have the material of high grade Southern Yellow Pine that will make you a home to endure a century. Come in and let us show you how you can save at first and in the long run. See our detailed house plans. Take advantage of our free service of building helps. Come today. And bring your wife along.

COMLEY LUMBER COMPANY

W. N. GROMER
Manager

GUYMON, OKLA.

Your Personal Taste

IS THE DECIDING FACTOR

The garments you get from me are made for you—to conform to your own personal requirements.

You select your fabrics from our ample and varied stock of the finest woolsens. You specify the style most pleasing to your personality, from fashion plates of the newest modes—and we are at your service with skilled hands to convert your choice into garments of excellence.

.. Sid Clark, TAILORING BARBER ..

Associated with Lamm & Company
Chicago

West Side

Hansford

C. K. Wilmeth

Better known as "Rabbit Foot Bill"

AUCTIONEER

Twenty-seven years experience,
Make dates at Headlight office

Home address,

GUYMON, OKLAHOMA

Now Is The Time

To Paint your houses, barns, etc. I can save you money on Paint, Wall Paper, etc., and also do the work in a first-class manner.

Painter
Paper Hanger
Sign Writer

J. B. TOWER
HANSFORD, TEXAS

C. D. WORKS

HANSFORD

Real Estate and Cattle Commission

Farm and Ranch Loans. Have some special bargains in Land and Cattle NOW.

You Don't Need a Town Crier



to emphasize the merits of your business or announce your special sales. A straight story told in a straight way to the readers of this paper will quickly reach the ears of the thoughtful, intelligent buying public, the people who have the money in their pockets, and the people who listen to reason and not noise. Our books will show you a list of people you appeal to. Call and see them at this office.