

Meadow Goes To Frenship Today In Conference Game

The Meadow football team is scheduled to journey to Frenship this afternoon to play their first conference game of the season. The boys have had some hard luck in their games in the past, and now the chips are down, and they either must put forth or ELSE.

As many local fans as possible should go along and see the game.

Guess Who

The man we are describing this week is not such a large man, but holds down a pretty good sized job, as head of a local institution. Not an old man, but an old timer in Meadow. Guess who?

Last week, Fred Hinson.

Meadow People Win Ribbons At Co. Fair

The exhibitors of farm products in the Terry County Fair at Brownfield last week and did well, bringing home a liberal portion of the ribbons, as follows:

Gene Hendricks, blue ribbon on apples and a blue ribbon on pears; C. E. Hicks,



Spencer Tracy and Ingrid Bergman in a scene from "Dr. Jekyll and Mr. Hyde," currently playing at the Rialto Theatre. Tracy plays the dual title roles of the Stevenson story, with Miss Bergman cast as Ivy, the barroom singer who is the victim of Mr. Hyde's sadistic affections.



Here's the new spitfire, a highly sensational ride that will be one of the many fine entertainment features on the Beckmann and Gerety Shows midway at the Panhandle South Plains Fair at Lubbock October 6 to 11.

The rider largely controls antics of the carriage in which he rides. There are 26 other rides and 20 tent theaters on the 30-acre streamlined amusement trail on one of the world's largest and most beautiful midways.

Mrs. Mitchell Hostess To Meadow Study Club

The Meadow Study Club met Thursday, September 25 in the home of Mrs. Woodrow Mitchell. The following members responded to roll call: Burleson, Cadenhead, Copeland, Hand, Hartzog, Hedgspeth, Hinson, Lackey, Mitchell, Padgett, Peeler, Rackley, Sharp, Stearns, Thompson, Toombs, and Zachry. After two splendid talks by Mesdames Peeler and Cadenhead on the respective subject, "What Makes A House A Home" and "Does the Modern Home Fulfill Its Duty to Society," the hostess served a lovely plate.

The Club adjourned at 5:30.

Mr. and Mrs. W. O. Rucker of Anton are visiting in the James Rucher home.

blue ribbon on peanuts; Mrs. R. L. Wossum, blue ribbon on tomato catsup and red ribbon on pepper relish; Miss Joy Wossum, red ribbon on peach pickles; Mrs. Homer Dupree, blue ribbon on fancy work; Mrs. G. F. Parker, white ribbon on canned tomatoes; Mrs. J. T. Fulford, red ribbon on canned beans.

The Meadow exhibit placed sixth.

No School

Due to the extremely bad condition of the roads, and the inability of the busses to make their routes, no school was held Wednesday nor Thursday.

Coach Stephenson requests the Star to state that the football players will meet at the school house at 1 p. m. to go to Frenship for the ball game.

Oh! Johnny



Wee Bonnie Baker, reviver of Oh Johnny, Oh, Johnny, and other popular songs of the past, will be featured with Orrin Tucker's Band at the Cafe Esplanade in the Automobile Building. It has been announced here by George F. Smith of Fort Worth, who will operate the huge dine and dance place.

In addition to Miss Baker and Orrin Tucker, Mr. Smith will present a complete floor show three times daily.

Included in the floor shows at the Cafe Esplanade will be such stellar acts as Buster West and Lucille Page; A. Robbins, "The Banana Man," Hibbard Bird, and La Rue; the Nelson Sisters; Wilfred Du Bois, and Bud Hughes and his pals, and a line of twelve of Sam Rose's girls.

Meadow Bows To Morton

The Meadow football team felt ambitious last week, and stepped up out of their class and took on the Morton gang for an hour of football.

While the boys went down 12 to 0 at the hands of a larger and more experienced team, they did put up a battle.

Outside of one series of drives, which netted Morton a touchdown, the locals looked just as good as their competitors. Their defense was swell. Several times when Morton threatened to score they tightened up their defense and held them out as if they were a brick wall.

While some of the local fans who saw the game razed the boys a bit about their playing, they were all pleased with the way the team waddled into the big Morton lads, who were not too scrupulous in regard to their tactics of playing.

Right here we are going to name some of the defects we have observed in their playing during the three games we have seen them play. We are not doing it to criticize, or to make the boys feel dejected, but in the hope that it will help them to close up a few of the gaps.

Just one of the four touchdowns made against them this season was earned. The other three can be attributed to Meadow's inability to return punts. The team is especially weak both on getting off and returning punts. In the three games they have kicked only one good punt, and we have seen them pick up but very little yardage returning punts, most of them going out of bounds at the end of the field before

To page 2 please

RAIN RAIN

The rain, which began Sunday morning, and has continued almost continuously since then, has put out as much as five inches of moisture, according to the most conservative estimates, here in the Meadow community.

It is feared that the crops in this vicinity will be greatly damaged by such a long siege of rainfall. Already some farmers are reporting their feed sprouting on the stalk.

With some good warm sunshine, the cotton will soon be opening fast, but when will it get here?

First Bale In Meadow

Meadow has not ginned its first bale this season as yet, but Nick Durbin had one ready to go the last part of the week, when the rain started, so he brought it in to town and placed it in the Farmers Gin cotton house, and as soon as the sun comes out and it dries a bit, it will be ginned. So it is all but a fact that Nick got the first bale this season.



Jane Wyman and Arthur Kennedy carry the romantic interest in "Bad Men of Missouri."

Wallace Theatre Opens Friday In Ropes, Showing 7 Nights A Week

To those who have been inquiring about the re-opening of the Wallace Theatre, Mr. W. B. Blankenship and J. G. Thornhill owners of the theatre announces that the entire interior of the building is being re-decorated this week making ready for the opening Friday, October 3.

Mr. Johnny Jones, who has been connected with the Wallace Theatres for several years, has been employed as local manager.

Mr. Blankenship is from a pioneer Ropes family, he has

been in the theatre business for seventeen years, having his first theatre in Ropes, and needless to say is a very successful showman.

He has recently set up a new office in Dallas, Texas making possible a better system of booking and management, which assures a line up of the best pictures for the coming season.

With your continued patronage they will be able to show every night with Saturday and Sunday matinees, showing.

James Rucker

Red & White Grocery

Buy at the Red and White and Save

◆ WE APPRECIATE YOUR BUSINESS ◆

Kraut, No. 2 Std. .07¹/₂

Spinach, Crys. Pk. No. 2 .10

Shredded Ralston .12

Corn No. 2 R&W Country Gent .12

Mince Meat, R&W, 2 Pkgs .17

Grape Juice, R&W, Pint |.12¹/₂

Pineapple Juice, 46 oz. .29

Spuds 10 lbs No. 2 17

Lettuce head .03¹/₂

Bananas Doz. .10

COFFEE, R&W, 1 lb can .25

Dog Food 3 cans .17

We Have Plenty Cotton Sacks and Duck

Co-Op Brand Feeds

**A Friendly Bank
In A Friendly Community**

WE APPRECIATE YOUR BUSINESS

First State Bank

ROPESVILLE, TEXAS

Member F. D. I. C.

Meadow could get a hand on it. The boys are also very weak both on pass offense and defense.

We venture to say here, that if Meadow had been the equal of the opposition in punting and passing, both offensively and defensively, they would have had three wins on the ledger, instead of the other way around.

But don't think because we are ribbing them a little that we are down on the boys. No siree. In fact, here is our prediction Meadow will win the south half of this district, and perhaps the district.

You cannot expect a new coach to come in and take up a bunch of small, inexperienced boys, and start winning games against large experienced boys, some of them Class A material.

Soft Water

Makes Soap
Go Farther

**E-Z-Way
Laundry**

LINDSEY Lubbock

Prevue Sat Nite - Sun. thru Wed.

Oct. 5 - 8

Randolph Scott

Gene Tierney

"BELLE STARR"

Filmed in Technicolor in the
Jesse James' Country!

Thursday thru Saturday

Oct. 9 - 11

The Cavalry of the Clouds

"INTERNATIONAL

SQUADRON"

with Ronald Reagan, Olympe

Bradna, James Stephenson

William Lundigan

PALACE Lubbock

Prevue Sat. Nite - Sun. thru Tues.

Oct. 5 - 7

A Comedy of Terrors!

"THE SMILING GHOST"

With Wayne Morris

Brenda Marshall

TOWER Lubbock

Saturday thru Tuesday

Oct. 4 - 7

That All-American Laugh

team . . . Bud Abbott and Lou

Costello in

"HOLD THAT GHOST"

MAKE IT A DATE

THE 28th ANNUAL

PANHANDLE-SOUTH PLAINS

FAIR

AT LUBBOCK

6 Big Days **OCTOBER** **6 - 11** **Big Nights 6**

Finest Of Exhibits

Each Department will offer a
Wealth of Products. You will
want to see what your Neighbor
is doing to help fill the Nation's
Bread Basket.

TWO SCHOOL DAYS

Wednesday, Oct. 8

Thursday, Oct. 9

(Ask Your Teacher
For Details)

RODEO

Big Show Each Night

Featuring

200 Animals

(Bough and T&G)

and Championship

Riders and Ropers

Beckmann & Gerety
Shows

(One of World's Largest)

On The Midway

Plenty of Fun

Free Grandstand

Every Afternoon

Lots of Free Acts

For Your Entertainment

Notice To Public

We have quit charging feed or twine to any body. Please do not ask us to make a ticket on any purchase. If you need something in the feed line and do not have the ready cash we will take your check and hold it until you pay it off. But please do not ask us to make a ticket on any purchase.

Meadow Farmers Gin

Peanut Butter, 24 ozs. .22

Coffee Texas Lb. .19

Graham Crackers, Sunray, 2 lbs. .19

Mustard or Turnip Greens, 2 No. 2s .15

DREFT, Large Size .21

Oats, 3 Min. Small .09

Lemons, Doz. .15

Corn, Stokley No. 2 .12

Napkins, 2 pkgs .15

Corn Flakes, Camp. 2 for .15

Hardwater Soap, 4 bars .17

Macaroni or Spag. can .10

Hershey Cocoa 1 lb can .15

Tomato Juice, 3 cans .20

Rice, White House, 12 oz. .08

Baker's Coconut, 8 oz. .09

EGG SANDWICH

Dice boiled eggs, pimentos and cheese, season with salt, pepper and butter. Moisten with catsup enough to spread. Use whole wheat bread.

G. B. JONES

C O N O C O

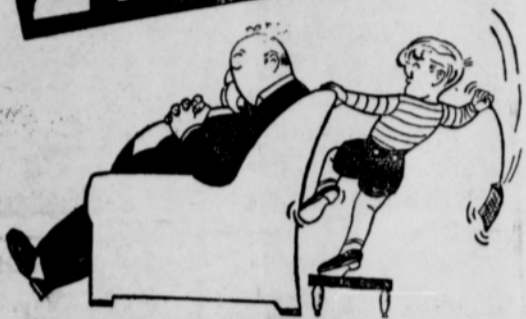
Binder Oil 60c per gallon Kerosene Oils Greases

Tires Tubes Batteries Accessories

Your Mileage Merchant

T. E. VERNER

**IT'S
2 for 1
AGAIN!**



We are again offering a SPECIAL 2 FOR 1 on TWO combination Floor and Pin-it-up Lamps.

GROUP 1...

We have 150 combinations of the Model 2130 3-light floor lamp, complete with parchment shade and G.E. Mazda bulb... and a modern Pin-it-up Lamp complete with bulb—the combination that was so popular last year... BOTH for the price of ONE.

GROUP 2...

We have 350 combinations of the new Model 2100 Floor Lamps and Pin-it-up Lamps. This floor lamp is of the latest style with a plated finish and linen shade, modern design, and is a most sturdy lamp. This beautiful floor lamp, complete with 3-way G. E. Mazda bulb and... the new modern Pin-it-up Lamp—BOTH for the price of ONE.

Last year the demand was so great for these combinations that a number of our customers were disappointed in not being able to purchase these lamps. So, this year, may we suggest that you visit our office early and make your selection so that you may be sure of delivery.

Ask any employee for a free over-night trial!

Texas-New Mexico Utilities Company



GROUP 1
MODEL 2130
(shown at right)
and the
MODERN PIN-IT-UP
LAMP
Both for
\$6.95

GROUP 2
MODEL 2100
FLOOR LAMP
and the PIN-IT-UP
LAMP
Both for
\$8.95
95¢ Down
\$1.00 per Mo.

MODEL 2130

COSDEN PRODUCTS

SNAPPY SERVICE STATION
HOMER WINSTON, Manager
Brownfield

Harris Motor Co.

Have your tractor and auto repaired by a shop that is prepared to do the job properly. Welding and machine work of all kinds.
Pho. 199 Brownfield

We Sell For Less

Beet	10 lb	
Sugar		.57
White	10 lbs	
Spuds		.15
344 Size	Dozen	
Oranges		.12¹/₂
Concho	Sour	Quart
Pickles		.14
RAISIN	Skinner's	
BRAN		.11
Admiration	1 lb.	
Coffee		.29
Rosebud	Large Carton	
Matches		.19
	Liberty Bell	
Crackers		.14
Mission	No. 2	2 for
Peas		.25
Tokay	Per Lb.	
Grapes		.05
	Bird Brand	
Shortening		.63
HAND		
GROCERY & MARKET		

Dr. A. F. Schoefield
Dentist
Brownfield, Texas

BENE NOELL
Used Cars Bought and Sold
We Carry Our Own Notes
7 years serving Lubbock and South Plains
907 Texas - Lubbock - Phone 2544

Card of Thanks

We sincerely appreciate the aid and sympathy extended us during the recent illness and death of our beloved Husband and Father.

Mrs. W. F. Mosteller and Family

Mrs. W. H. Hand is visiting relatives and friends in Abilene this week.



Francis Lederer, who stars with Judy Canova in the hit "Puddinhead."

FOR SALE - 5 burner oil cook stove 12 Ga. Remington Pump gun. See G. R. White.

FOR SALE - Good 3 burner oil stove. L. D. Joplin

Brownfield FUNERAL HOME
FUNERAL DIRECTORS AND EMBALMERS
Ambulance Service
Phone, day 25 Night 148

PROMPT PLACEMENT
Assure a wider choice of positions, prompt placements, and earlier promotion through Draughon's Summer School, South-wide placement service. Ask for Catalog No. 22

Draughon's BUSINESS COLLEGE
LUBBOCK

CHISHOLM HARDWARE

John Deere
Tractors and Equipment
A Full Line of Parts
Hammer Mills

WALLACE
Theatre Ropesville

OPENING PICTURE

11c **FRIDAY - SATURDAY** 22c

GENE AUTREY

IN

Melody Ranch

Gene finds music and romance. "Schizzle" (Jimmie Durante to you) discovers fresh air and sun shine. Vera Vague, and Ann Miller sing and tap on the wide open spaces. Plus first chapter of "RED RYDER" and "There's Music in Your Hair"

Prev. Sat. Nite, Sun. Mat. & Nite
11c **again Mon. Nite** 25c

Errol Flynn and Olivia DeHavilland
IN

"Santa Fe Trail"

With Raymond Massey, Ronald Reagan, and Alan Hale—on their way to Santa Fe and new glory. Law goes to Kansas and God gets off at "The Santa Fe Trail." Plus "Kitty Gets The Bird."

11c **TUES. WED. & THURS. Nites** 22c

JUDY CANOVA with BOB CROSBY
and his band in

"SIS HOPKINS"

Joined with this great cast—Susan Hayward, Jerry Callonna, Charles Butterworth, and many other funsters. Sis goes to college and the college goes crazy in the ALL OUT comedy of the year. PLUS
LITTLE THEATRE

All Prices Include Tax

- reading
- 'riting
- railroading



Education and Transportation are America's greatest institutions

There is no better example of the value of Santa Fe to your community than the taxes that we pay to support your schools. This support helps generally with your tax burdens, but especially in providing your community with one of its vital necessities—your schools.

Santa Fe is a part of your community and proud to share your tax burdens, but we need your help as much as you need ours. Ship and travel via Santa Fe. Your business makes Santa Fe taxes possible—let's work together.

For freight and passenger information—CALL
YOUR LOCAL SANTA FE AGENT

Every dollar you spend with Santa Fe helps you and your community.



days of rain, will like retard that quite a bit. His maize and hegari also look very fine. He has one patch that, if we are any judge, will yield several tons per acre.

And not only does he have some mighty good looking crops, but they are that way all over the community. It is not known just how much the crops are damaged by the rains, but here's hoping not too much.

Now You Can Take Lessons on

Violin Guitar Piano Voice Accordion Etc.

Call or See

Mark Whelan's

For Arrangements

Unlock the Unused Power in **YOUR GRAIN!**

THERE'S A LOT of feeding value in your own grain for raising chickens and making eggs, milk and pork. But you can get better production from it when it is ground and mixed with dependable grain-balancing concentrates such as our Approved Purina Custom Grinding and Mixing Service provide.

Drop in and we'll show you the Purina Approved Formula that will turn the key and release the greater producing power in your grain.

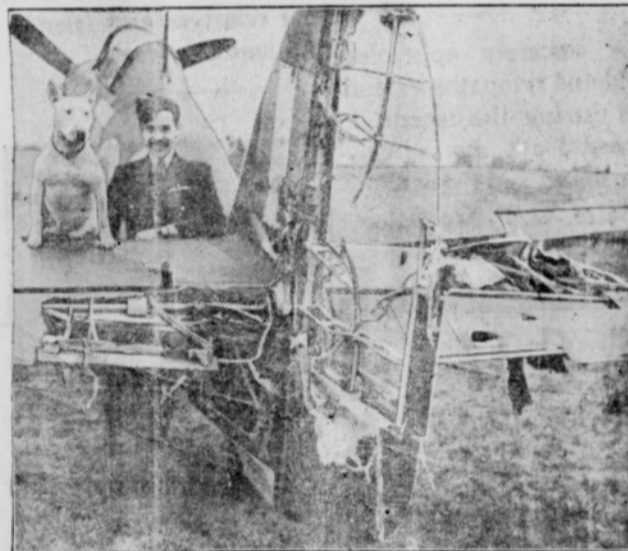


MEADOW Farmers Gin

J. M. Burleson came by last Friday morning and asked us to go to the farm with him, and we must say he has one of the best crops we have

seen this year. His cotton looked like it would be good for three quarters of a bale per acre, and was beginning to open, but the past few

They Didn't Build Them Like That in '18



IN the First World War, airplanes were flimsy structures of wood and canvas, which often caught fire and rarely survived a crash. Today their bodies are tough, light aluminum, welded or riveted to a skeleton of strong, hollow steel tubes, and they really can take it. This R.A.F. Hurricane fighter had most of its tail shot away in a raid over Occupied France—yet its pilot brought it back safely to England, 36 miles across the rough channel. The plane will be back in the air before long, a tribute to the genius and workmanship that produced it and a terror to the numerically superior but out-fought and out-gamed German Luftwaffe.



NEWS ITEM: SUBCONTRACTING SPREADS DEFENSE PRODUCTION TO THOUSANDS OF SMALL PLANTS

CHEAP INSURANCE

Is never good for any length of time. In buying Burial Policies, you should look to the future Rates should be adequate and management conservative. Our Reserve of over \$20,000.00 proves that we have both. For further information dial 4333, Lubbock.

Rix Burial Association

RIALTO

BROWNFIELD

FRIDAY SATURDAY



PREVUE SATURDAY

SUNDAY MONDAY



RITZ BROWNFIELD

SATURDAY PREVUE SUNDAY MONDAY



The World's Largest and Most Beautiful State Fair

Presents . . .

AMERICA'S GREATEST LIVESTOCK SHOW

A \$150,000 Livestock Show . . . includes the National Hereford Show and the National Aberdeen-Angus Show

★ ★

AMERICA'S GREATEST FARM SHOW

WORLD'S FAIR OIL EXHIBIT

A permanent addition to the State Fair of Texas showing a 57 years history of the oil industry

★ ★

Earl Carroll Vanities

IN THE AUDITORIUM
First time presented at Popular Prices
50c . . . 75c and \$1.00

Cafe Esplanade

presents
ORRIN TUCKER and
WEE BONNIE BAKER
and a huge Floor Show at Popular Prices

★ ★

ICE-CAPADES IN THE ICE ARENA

World Champion Skaters in a Beautiful Stage Presentation . . . a Cast of 100

★ ★

The State Fair Independent Midway

PRESENTS

A New Array of Stellar Attractions and the Latest Rides . . . including

Harley Sadler's Plunkett Family ★ Sally Rand's Nude Ranch
★ International Congress of Oddities ★ Bell's Hawaiian Follies ★ Hollywood Revue ★ An Eskimo Village ★ Sport Show ★ Sally Rand's Miss America ★ Anderson's Comedy Circus ★ A Negro Minstrel Show and Many Others . . .

★ ★

It's The Fair You Can't Afford to Miss!

STATE FAIR of TEXAS

DALLAS, OCTOBER 4th - 19th