

# The Meadow Star

Volume 5 Number 2

Meadow, Terry County Texas, Friday, Jan. 10 1941

\$1.00 per year

## Meadow, Ropes, Whiteface Lead In Tourney

### Social Security Man Here

Meadow employers who have not yet secured their social security identification number, including those who have only recently established business and others who are delinquent in securing a number, are receiving cooperation and assistance in making application for an identification number from the Social Security Board office at Lubbock, Texas, according to John R. Sanderson, a representative of that office who was in Meadow today.

"Not every individual who becomes an employer (of one or more persons) is aware that the Federal old-age and survivors insurance law requires that he secure an identification number," Sanderson states "and we are anxious to assist him in every way possible whether he is delinquent or just engaging in a new business enterprise."

It was explained by Sanderson that employers identification numbers are used in the quarterly reports made by all employers to the Bureau of Internal Revenue, (regardless of the number of persons employed).

A representative of the Lubbock office of the Social Security Board will be in Meadow once each month for the purpose of furnishing information and cooperating with employers and employees on any questions which they have pertaining to the Federal old-age and survivors insurance program. In case any individual in Meadow desires more specific information or a special appointment, Sanderson suggested that the request be made by letter post card addressed to the Social Security Board, 1309-A Texas Avenue, Lubbock, Texas.

Mrs. Chas. L. Padgett this week subscribed for the Star for her mother, Mrs. M. F. King of Pittsburg.

### Star Begins Fifth Year

Last week we began the fifth year in the publication of the Star. In the past four years we have enjoyed very liberal support from the people of this community.

When the paper was established a very frequent question to be asked the editor was "Do you think you will be able to make a go of it?" And they could not be blamed for their attitude, because several people had tried to make a living here with a newspaper, and each of them had failed.

The writer does not even claim to be a newspaperman, but we are still here, and each year our business gets better. We have furnished the merchants with a top-rate medium of advertising at an extremely reasonable rate, and have kept the subscription price so low that even the family of the most modest means could afford it; working on the idea that with a sufficient



### The Schedule -

**Friday 7 P. m. Grassland - Okla. Lane**  
**Friday 8 p. m. Union vs. Pettit**  
**Friday 9 - Meadow B vs. Sundown A**  
**Sat. 9 a. m. Union vs. Sundown B**  
**Sat. 10 a. m. Ropes vs. Whitharral**  
**Saturday 11 a. m. Whiteface vs. Sundown or Meadow B**

volume of business we could keep operating. We have evidence to believe the merchants are satisfied with our advertising service. There are three groceries here, and two of them have bought space in every issue that has come off the press, and the third one has advertised every week since it has been under the present management; and about all the other local firms consistently use our columns to reach the buy-

See Page 2

### Meadow Defeats Loop 29 - 12

The Meadow A string took a decisive lead over Loop in the early part of their game in the opening session of the All West Texas Girls Basketball Tournament here Thursday night, and came out with a definite win, 29 to 13.

Miss Alma Walker of Meadow was high point lady with a total of 12 points. Miss Hefner of Loop lead her team with 7 points. The score at the end of the first quarter was Meadow 12, Loop 3, at the half they lead 18 to 4, at the third quarter 22 to 8. In the last quarter Coach Kelsey ran in quite a number of recruits, and they too made a very nice showing, making 7 scores in that quarter while the visitors made 5 points.

### Ropes Nudges Out Wellman 25-23.

In the first game of the tournament Ropesville nudged out Wellman 25 to 23, only after Wellman had put up a terrific fight to the very last minute. Miss Webb of Wellman was high point with 9 scores. Harris lead Ropes team with 8.

At the end of the first quarter the score was tied 6 all. The next period both teams came back fighting, but Ropes took a slight edge, and at the half the score was 16 to 14. Coming back in the third quarter the Hockley County forwards turned loose a scoring attack and ran the score up to 23 to 16. But Wellman was not defeated at that stage of the game by any means, and came back fighting, and allowed Ropes to make only one field goal in the entire period, but this goal was the deciding point, Ropes winning 25 to 23.

### Whiteface Draws Forfeit

New Home failed to make their appearance in the second game, and thereby Whiteface took the game by forfeit. Whiteface has been picked by many of the fans to be a strong contender for the ornament honors.



No. 1,378,669  
FIGURE FOR BALLROOM DANCING PRACTICE  
THE OBJECT OF THIS INVENTION IS TO PROVIDE A FIGURE CAPABLE OF MOVEMENT OVER A FLOOR, WITH MEANS WHEREBY A STUDENT MAY BE PROPERLY ATTACHED THERE TO, ADJUSTABLE TO ANY SIZE STUDENT TO ASSIST HIM IN LEARNING TO MANEUVER A PARTNER ON A BALLROOM FLOOR!



THE MEADOW STAR

A. E. Richards... Editor and Owner

Entered as second class at the Post Office at Meadow, Texas, under act of Congress of March 3, 1879.

Published Every Friday.

NEW YEAR . . .

ing public. Such patronage and friendship makes us downright glad we live right here in Meadow.

The Star is one hundred percent for the things that help build Meadow. We will in the future, as we have in the past, cooperate with the schools, churches and civic organizations in every endeavor which is to benefit our town and outlying communities. Please call on us, and report your news.

Art Names will not play his picture show this on account of the Basket Ball tournament. But the show will be presented again at the tent in Meadow on Saturday of next week and the week following Art will produce a home

NOEL TAILOR  
AGENCY IN BARBER SHOP  
Suits, C & P .....50c  
Dresses.....50c Up

COSDEN PRODUCTS

SNAPPY SERVICE STATION  
Brownfield  
HOMER WINSTON, Manager

SEE US FOR FIRST GRADE CHICKENS

Chisholm HATCHERY

talent for the High School which will be presented at the auditorium.

Mr. and Mrs. A. L. Hartzog are the proud parents of a baby girl, Sharon Kay, born Monday January 6th.

|                                    |                                 |
|------------------------------------|---------------------------------|
| Cabbage, lb.                       | .01 <sup>1</sup> / <sub>2</sub> |
| Sugar, 10 lb pure cane             | .48                             |
| Spuds, 10 lbs                      | .12                             |
| Pintos, 4 lbs Col. CRC             | .15                             |
| Amaryllis or 24 lbs.               | .75                             |
| Bewleys FLOUR 48 lbs.              | 1.45                            |
| Pure Lard, Swifts, 4 lbs           | .29                             |
| Bliss Coffee, lb.                  | .18                             |
| Catsup, 14 oz. Wapco,              | .09                             |
| Mothers Cocoa 1 lb                 | .10                             |
| Pickles, Qt sour or dill           | .12                             |
| Spaghetti, SPANISH AMERICAN .3 for | .25                             |
| Rinso, 25c size                    | .18                             |
| P-Nut Butter, Puremaid, qt 21      |                                 |
| Crackers, 2 lbs                    | .14                             |

|   |           |
|---|-----------|
| Tomatoes No. 1                                    | 6 for .25 |
| No. 2   | .05 1-    |
| Spinach, No. 2 Diamond                            | .07       |
| Corn, No. 2 DX Field                              | .07       |
| Soap CAMAY, LUX OR PALM OLIVE                     | 3 for .17 |
| Apricots, No. 2 <sup>1</sup> / <sub>2</sub> Royal | .12       |
| Cream of Wheat, Lg.                               | .22       |
| Corn Flakes WHITE SWAN 13 OZS.                    | 3 for .22 |
| Oranges, 252 Size                                 | 12        |
| Lettuce, firm heads                               | .08       |
| <b>MARKET SPECIAL</b>                             |           |
| FOREQUARTER, lb.                                  | .12       |
| HINDQUARTER, lb.                                  | .12       |

Visit our Market. You will find choice fresh and cured meats

**YOUR FOOD STORE**

W. H. HANCOCK

Patronize The Advertisers Ad Save

The Star

50c

Per Year

IF.



IF YOUR CAR OR TRACTOR REFUSES TO START, OR IS NOT RUNNING AS SMOOTH AS IT SHOULD, BRING IT IN FOR A CHECK-UP.

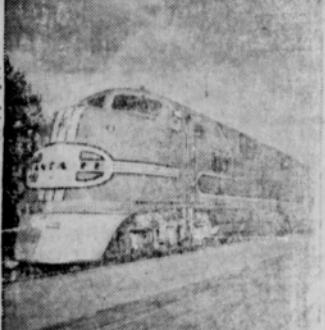
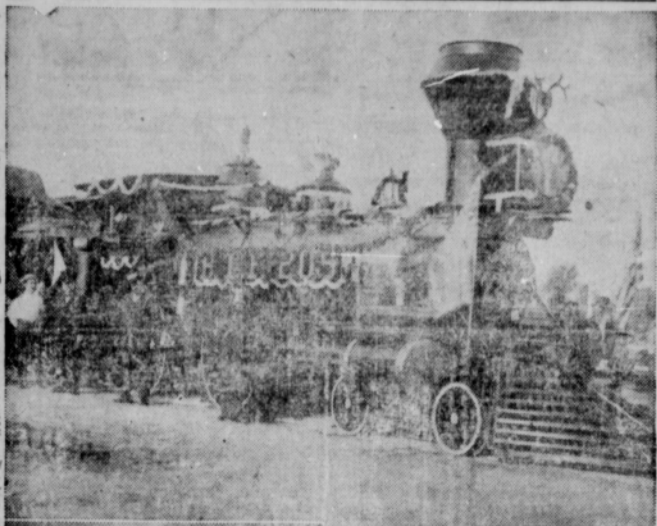
It will cost you more operate that car or tractor in a run-down, depleted condition than to have it repaired.

**Roy Bake**

AT LACKEY CHEVROLET COMPANY

IT PLEASES US TO PLEASE OUR CUSTOMERS

**REVIVE HISTORIC "SANTA FE TRAIL"**



(Santa Fe Railway Photos)  
Early day transportation, as furnished by this old time Santa Fe locomotive, in comparison with the modern, lightweight streamliner at the left, is vividly brought to mind in Warner Brothers' latest motion picture, "Santa Fe Trail," the premiere of which will be held at Santa Fe, New Mexico, December 13, 14 and 15. The locomotive was one of the first to reach Santa Fe, end of the historic trail, in 1880. Errol Flynn and Olivia de Havilland, who head the cast, and scores of other Hollywood celebrities will attend the premiere, arriving in the ancient desert city on a special Santa Fe train, the morning of December 13.

|                             |             |
|-----------------------------|-------------|
| Bananas each                | .01         |
| Bulk Ginger Snaps, lb       | .09         |
| Walnuts, lb.                | .17         |
| Magnolia Coffee, lb.        | .21         |
| Admiration Coffee, 3 lb Jar | .69         |
| Raisins, 2 lbs              | .15         |
| 25c Supersuds, 3 for        | .45         |
| Pinto Beans, 4 lbs          | .17         |
| Green Beans, No. 2, 3 for   | .25         |
| Armour's Milk, 3 tall       | .19         |
| Liberty Crackers, 2 lb      | .15         |
| 50 oz. K. C.                | .29         |
| Sour Pickles, qt.           | .14         |
| Mothers Oats, box           | .25         |
| <b>SPUDS, 10 pounds</b>     | <b>.13c</b> |
| Pork & Beans, Armour        | .04         |
| Field Corn, No. 2           | .07 1-2     |
| R & W Cleanser, 3 cans      | .13         |
| Mustard, qt jar             | .12         |
| Soap Flakes, 5lb Box        | .33         |
| Palm Olive Soap, bar        | .06         |
| Cranberries, lb             | .16         |

**Roland Evans**  
Red & White Grocery

**CONOCO**  
High Quality Gasoline, Kerosene, Oils and Greases Tires, Tubes, Batteries

*Your Mileage Merchant*

**CONOCO STATION      T. E. VERNER      ON HIGHWAY**

**Postoffice Receipts Show Big Gains**

Postmaster A. C. Finley informs the Star that postal receipts for 1940 were quite a bit higher than for 1939.

His figures are as follows: Stamps sold in 1939 \$2,452.02, in 1940, \$2,747.55. Stamps sold last quarter 1039, \$782.72, sold last quarter 1940, \$1,024.84.

Money Orders issued in 1939 \$19,403.96 Money orders issued in 1940, \$22,864.45.

R. H. Nowlin of Brownwood is a new reader of the Star as the compliments of Mr. and Mrs. Bartie Renfro.

B. F. Finley has been confined to his home this week. He has been having his teeth pulled.

Mr. and Mrs. H. I. Bass and son, Arthur, of Bailey County have moved to Meadow.

**New Lindsey**

**THEATRE — Lubbock**  
Prev. Sat. nite, Sun. thru Wed Gary Cooper, Madeleine Carrol and an All-Star cast "North West Mounted Police"

Thursday thru Saturday  
Jeanette MacDonald  
Nelson Eddy  
"Bittersweet"

**Palace -**

**THEATRE — Lubbock**  
Prevue Saturday Night  
Sun. — Mon. — Tues. —  
W. C. Fields  
"The Bank Dick"

Fri. and Sat.  
Cesar Romero as the 'Cisco Kid' in  
"Romance of The Rio Grande"

**Tower**

Prev. Sat. nite Sun. thru Wed.  
Tyronne Power  
Linda Darnell  
"The Mark of Zorro"

Thur. thru Sat.  
Pat O'Brien in  
"Knute Rockne - All American"

**January Specials**

|                               |     |
|-------------------------------|-----|
| Panties Ladies lace trim      | .19 |
| Panties misses sizes 14 to 18 | .19 |
| Turbans wrap around           | .15 |
| Socks men's slack pr.         | .10 |
| Socks ladies terry            | .15 |
| Knee Socks children's         | .15 |
| Sweat Socks                   | .29 |

**WATSON'S VARIETY STORE**

|  |        |
|--|--------|
| X-L Laying Mash                                    | \$1.85 |
| Meadow Maid Laying Mash                            | \$2.00 |
| Co-op Brand Laying Mash                            | \$2.15 |
| Sun Ray Laying Mash                                | 2.15   |
| Cottonseed Meal per 100 lbs.                       | 2.00   |
| "    " Five sack lots or more                      | 1.95   |
| Peanut Meal, per 100 lbs.                          | 1.80   |
| Sweet Feed, per 100 lbs.                           | 1.10   |
| 20 per cent Protein Dairy Feed                     | 1.80   |
| Yellow Corn, per 100 lbs.                          | 1.50   |
| Alfalfa Meal, per 100 lbs.                         | 1.35   |
| Meat and Bone Scraps, per 100 lbs.                 | 2.25   |
| Threshed Grain, ground heads, and buncles for sale |        |

**MEADOW FARMER'S GIN**

**A Friendly Bank  
In A Friendly Community**

WE APPRECIATE YOUR BUSINESS

**First State Bank**

ROPEVILLE, TEXAS

Member F. D. I. C.

**RIALTO**

BROWNFIELD

FRIDAY AND SATURDAY

**This Thing Called Love**

Also Big Stage Show Friday

PREVUE SATURDAY NIGHT  
SUNDAY AND MONDAY

Alice Faye      Bette Grable  
Jack Oakie

**Tin Pan Alley**

## Wood Slivers

Editor—Fred Hinson

Well old 1941 is on the track all oiled up and polished, with full steam ahead and ready to have us another year, but before it gets to far down the track we would just like to say that hope the journey will be a most happy one for everyone concerned. Not even a cinder in your eye the whole trip. Happy New Year.

The breast of every man is filled with a big desire a home to build; which may be punk poetry, but its the gospel truth. Come in and see us.

About the time a man loses faith in Santa Claus he begins to believe in hair restorers.

Planning to build this season better see us.

Homer Causeaux says if a man still has his appendix and tonsils, the chances are he is a doctor.

We know a man who invested in oil stock. We know another man who put his savings in a Mexican mine, and we know another fellow right here who invested in a home. Which of the three showed the best judgement? That is what we think too?

### AN OPPORTUNIST

One who meets the wolf at the door and appears next day with a fur coat. Meadow's New Year song of progress and let it go at that.

Cicero Smith Lumber Company

**STOP! and GAS**  
The Good GULF Way  
AT

**Roberts Hatchery**

**FOR TRUCKING**

Long or short distance  
See

**Albert Joplin and  
J. W. Cryer**

### Used Tires

Used Car and Trailer Tires  
Largest Stock in West Tex  
First Line Tires  
**GORDON BROS.**  
Safety Tire Shop  
Brownfield

### Used Cars

We Sell The Best and junk  
The Rest  
**Key Used Car Lot**  
East Side □ Brownfield

## N. Y. A. Official To Be Here Once Each Week

### Unemployed Boys From 16 to 24 Should See Him

In view of the large number of requests for NYA employment provisions have been made for NYA personnel to spend one day a week in those counties where NYA officials are not located to counsel with unemployed young people, as well as to receive their applications for NYA employment.

Recent developments have caused the National Youth Administration to greatly increase the number of boys assigned to the centers and shop projects.

Dan R. Mitchell, NYA Counselor-Supervisor, will be in Meadow at the High School on Wednesday of each week from 10 to 12 to advise with young men and women between the ages of 16 and 24 who are unemployed, out of school, and in need of the work experience and training being offered on NYA

### BENE NOELL

Used Cars Bought and Sold  
We Carry Our Own Notes  
7 years serving Lubbock and  
South Plains  
907 Texas - Lubbock - Phone 2544

### Dr. A. F. Schoefield

Dentist  
Brownfield, Texas

### Brownfield

**FUNERAL HOME**  
FUNERAL DIRECTORS AND  
EMBALMERS

### Ambulance Service

Phone, day 25 Night 148

### Warning -

Use Judgement in buying burial policies. Be sure that the Company is building up the necessary **MORTUARY FUND**. If it is not, the time will surely come when it will not be able to pay its claims.

You are taking no risk when you insure in

**Rix Burial Associa'on**  
Phone 500 Lubbock



|                        |                          |     |
|------------------------|--------------------------|-----|
| Crackers               | Sunshine Krispy<br>2 lbs | .24 |
| Chilli, Wolf, Lg.can   |                          | .19 |
| Pineapple Juice, 47 oz |                          | .29 |
| Spuds, 10 lbs.         |                          | .13 |
| Corn, Scott Co. No. 2  |                          | .08 |
| Catsup, CHB, 14 ozs    |                          | .15 |
| K. C. 25 ozs.          |                          | .18 |
| Post Toasties, 3 for   |                          | .25 |

## JONES HARDWARE

projects. These young people desiring NYA employment who are unable to meet with Mr. Mitchell may mail their applications to the Area Office, to Mr. Jennings T. Lewis, Area Director, Pox 1466, Lubbock, Texas.

### Specials

On our Cremel Permalents  
Also we have the Popular line of Cosmetics.  
Farrel Des in and Monique Make Up

**Rene & Toots Beauty Shoppe**

### Col-Tex Gasoline

**Your Business Appreciated**

**LESLIE GEORGE STATION**

## NOTICE

**I Want To Buy 100  
Tons Of Maize**

**A Few Sacks Of Sum-  
mour's Hi-Bred Cot-  
ton Seed From  
Georgia**

**J. M. Burleson**