

INSIDE

At the Movies	2	Out at the Lake	2
Among the Neighbors	4	From Where I Sit	7
Chamber Chatter	12	School Lunch Menus	2
Museum Musings	4	Extension News	5

**Drip Irrigation
Conferences**

**FBC to hold
Celebration**

HANSFORD COUNTY LIBRARY
0120 MAIN ST.
SPEARMAN, TX 79081-
EXPIRES 04/01/1996 THANK YOU

The Hansford County

Reporter-Statesman

Serving Hansford County Since 1907

Volume 87 • Issue 49

213 Main • Spearman, Texas 79081

Thursday, December 7, 1995

"Home For the Holidays"

Spearman Chamber of Commerce launches holiday promotion

The annual Christmas Home for the Holidays will be December 16, 1995, starting at 12:00 noon with a visit from Santa Claus at the Plains Shopping Center. Santa will be

There will be no admission charge for the movie. A concession will be available. The movie will begin at 2:00 p.m.

merchandise purchased from the following businesses.

Businesses participating in the Holiday promotion are: The Bunkhouse, Celebrate, Cates Men & Boys Wear, Michele's, Prairie Garden Flowers, JK Farm & Ranch Supply, Beedy Furniture, Hickerson Jewelers, Lady Fair, Kids' Stuff, Alco, All Occasion Flowers, Earl's TV & Appliance, and Gordon's Drug.

coming in, one of the Spearman fire trucks and will be ready to take all requests from the kids of Hansford County. The Lions Club will also be in front of the Alco Store with hot dogs and hot chocolate. Santa will be there for kids of all ages, 8 to 80!

As soon as mom and dad have taken the kids to the movie, the Spearman Retail Merchants Association will sponsor the Home for the Holidays drawing at 2:15 p.m. in front of the Chamber of Commerce Office, 211 Main St. There will be fourteen \$50 gift certificates given away at this time and you must be present to win. Tickets will be given for every \$10 worth of

The Spearman Retail Merchants Association wants to take this time to wish all of you a very Merry Christmas and a Happy New Year!

District Attorney Cross announces retirement of office at end of term

Stephen F. Cross announced today that he would not seek re-election as district Attorney for the 84th Judicial District. Cross has held the position of District Attorney from 1974-1984 and from 1988 to present.

Cross stated, "It has been an honor to serve the people of Hansford and Hutchinson Counties for almost twenty years. The district Attorney's Office has always enjoyed a close working relationship with all the law enforcement agen-

cies in both counties; and law enforcement and prosecution are indeed fortunate that, in our area of the country, they are supported by our citizens and courts."

Cross said that he was proud of the record that the 84th District Attorney's Office has compiled during his tenure. "Our office has handled some of the toughest cases around--Samuel Hawkins and Miguel Flores to name two--and has successfully prosecuted them," Cross stated. He said he was grati-

fied to see that the jury's 1978 verdict of death was finally carried out in the Hawkins case and that he hoped the appellate courts will move more quickly in the Flores capital murder case. That case is currently on appeal in the Federal court system. Once a capital murder case reaches the Federal appellate stage, the Texas Attorney General's Office takes over the appeals process.

Cross said, "Although I have enjoyed my years of service as District Attorney, it is time to move on to other endeavors."



GOING FOR THE BALL - The Spearman Lynx varsity played host to the Panhandle Panthers last Tuesday night. The Lynx were just narrowly defeated by the Panthers, 60-54, but Spearman had several good plays, like the one pictured above, as Dillon Miller (33) and Coyt Tigrett (42) grabbed this loose ball. (Photo by Chad Davis)

"Lights of Love" proves successful

Once again the "Lights of Love" Christmas Tree, Courtyard and Gazebo at Hansford Hospital are burning with lights and memories. The annual "Lights of Love" ceremony which is sponsored by Hansford Hospice, was held Monday, December 4, with approximately 50 people attending the reception and program. The First Baptist Church's Bell Choir performed a lovely selection of Christmas music. The program was concluded on the North lawn of Hansford Hospital with the lighting of the tree.

Thanks to everyone who has contributed a memorial or gift to the fund. Names of all honorees are being displayed on a beautiful Christmas tree in the entrance of First State Bank of Spearman.

Memorial contributions include: LoRee Booth - Clarence Weeks; Vireta Knight - Carlie N. Knight; Barbara Cook - A.F. Cook; Mrs. Lee Keys - Lee Keys; Gus and Clementine Renner - Juanita

Pierce; Betty and Irvin Davis - Everett and Carrie Clement and J.W. and Mattie Davis; Bonnie Nash - Mr. and Mrs. E.B. Sullins; Don and Gloria Knox - Don DeArmond; Don and Lorene Kunselman - J.C. Hackler; Mable Jameson - Leonard Jameson; Ester Weeks - Clarence Weeks; Dwayne and Shawn Thompson - Morgan Thompson; Hazel Lesly - Glen and T.D. Lesly; Mary Fern Terry - Ralph Loveless; Mrs. Joe Trayler - Joe Trayler; James and Faye Cunningham - Clay Gibner; Don Floyd, Donita and Ronnie Lusby and family, Peggy and Gary Culp and Chris, and Mike and Betsy Floyd and family - Elaine Floyd; Richey and Karen Thompson, Bonnie and Toby - Maxine Thompson; Louetta McClellan - Billy McClellan; Allene Close - Floyd Close and Myrtle Andrews; Eugene and Judy Yarbrough - James Lee Hendricks and Timmy Yarbrough; Ella O'Loughlin Carmody - Frank Carmody; R.D. O'Loughlin - Mary

C. O'Loughlin; Ray and Beth Phelps - Sam Wysong; Mr. and Mrs. J.T. McWhirter - Our Parents; Eddie Largent and Hannah - Elmer D. Young; Edith Womble - Don DeArmond; Mrs. Cleo George - Dennis George; Richard Kingsley - Evelyn Kingsley; Myrtle DeArmond - Don DeArmond; Betty Behne - Buck Behne; Mary Oolly - Hershel Oolly; Dorothy F. Donnell - Eugene Dwyer; Butch and Charlene Finley - Joy Elam; Pat Dear - Mona Beth Windom; Sandra Drake - Frances Stump; and Beulah and Sam Abston - Ab Abston.

Donations include: O.E. and Connie Gammill; Bill and Reba Hunter; Kenneth Burke; and John and Ynese Williams.

Honorarium contributions include: Thomas and Jean Gwin - Ruth J. Hill; Sandra Drake - Jeanne Gramstroof; and Irene Edwards - Jesse Edwards.

Hansford Happenings

Manor Empty Stocking Crafts Bazaar

Hansford Manor Crafts Bazaar will be December 8 from 9 a.m. to 3 p.m. in the Hansford Manor Activity Room. For more information contact Debby Sanford at 659-5535.

Home for the Holidays Promotion

The Christmas drawing for the holiday promotion will be Dec. 16th at 2:15 p.m. at the Spearman Chamber of Commerce Office, 211 Main. Call the Chamber at 659-5555 for more information.

Commodity Distribution

There will be NO commodity distribution for the remainder of 1995.

Home Tour

The Gladlola Flower Home Tour will be Dec. 10th from 2 p.m. to 5 p.m. Tickets are \$5 and can be purchased from club members or Main Street of Gruver.

Defensive Driving

Defensive driving courses will be held Dec. 13 and 14. For more information call the Spearman Chamber of Commerce Office at 659-5555.

Academic Excellence Indicator System Report

Pringle-Morse Consolidated Independent School District cordially invites the public to attend the Academic Excellence Indicator System Report to be presented during the regular December board meeting, Tuesday, 7:00 p.m. The report will be one of the first items on the December 12, 1995 agenda and is scheduled for approximately 7:30 p.m.

Windbreak Trees

The Hansford Soil and Water Conservation District will have "Earth Mat" available for the 1995 plantings. Orders for these seedling trees will be taken from now through March 8, 1996. Contact HSWCD at 659-2330 for more information.

Academic Excellence Indicator System Report

The Gruver I.S.D. will hold a public meeting in the high school building on Thursday, November 7, 1995 at 6:00 p.m. to receive the district's and campuses' Academic Excellence Indicator System report. The public is encouraged to attend.

Christmas Holidays

The Gruver schools will dismiss for Christmas on Wednesday, December 20, 1995 at 2 p.m. The buses will run at that time.

Immunization Clinic

An immunization clinic offering vaccines that give protection against several childhood diseases are scheduled for December 20 at the Texas Department of Health Office, 721 South Evans, Spearman from 9 a.m. to 11:30 a.m. and 1 p.m. to 3 p.m. The Texas Department of Health is charging money to help with the cost of keeping the clinic open. The amount of money charged will be based on family income and size, and the ability to pay.

Home Decorating Contest

The Gruver Chamber of Commerce will be holding its annual Home Christmas Decorating Contest. Judging will be Saturday night, December 16th. All of Hansford County is encouraged to decorate and win three of \$50 gift certificates to be given away!

Carper announces candidacy for D.A.

Assistant District Attorney, Roy Carper, announced today his candidacy for District Attorney, 84th Judicial District, on the Republican ticket.

Carper, who has been a Felony Prosecutor for the District Attorney's office for the past fifteen years, stressed his experience and success as a prosecutor, having ob-

tained convictions in all types of felonies from theft cases to drug delivery cases, and from burglaries to capital murders.

Carper states that in fifteen years if trials, he has never lost a felony jury case, and has never had a conviction overturned on appeal.

"I have worked extremely hard to establish and maintain the trust and respect of law enforcement and the Courts. I desire to continue the tradition of very strong and responsive prosecution that has become synonymous with the 84th district Attorney's office." Carper said, "If elected, the rights of victims of crime will continue to be of paramount importance to the D.A.'s Office."

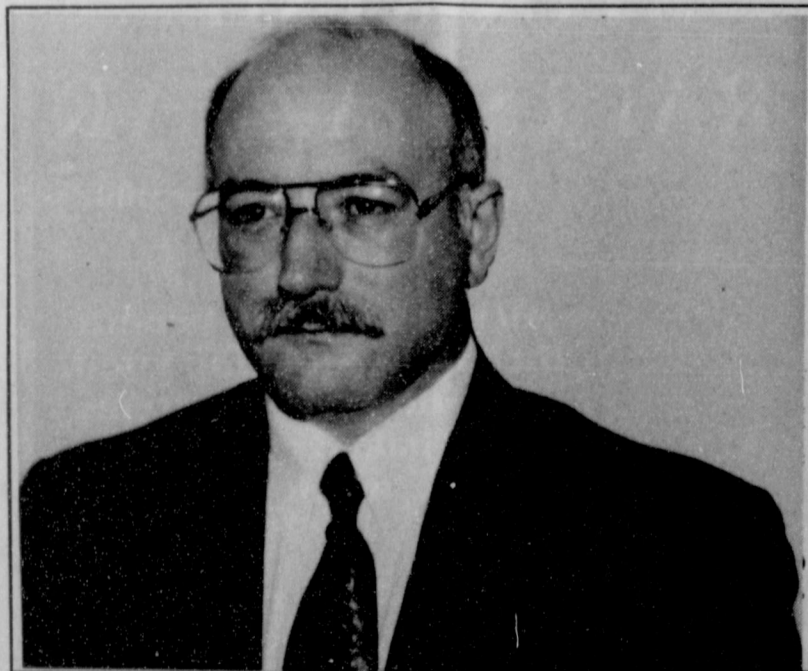
Carper obtained his undergraduate education at the United States Military Academy at West Point, graduating with a Bachelor of Science degree in 1971. He spent five years on active duty with the United States Army before working in the oil field technology industry with Hydril Corp., and in 1981 graduated from St. Mary's University School of Law in San Antonio,

Texas, with a Doctor of Jurisprudence degree.

Roy and his wife, Dee, have two children; Meredith, age 13; and Teresa, age 9.

Carper is past chairman of the Board of Directors of the Panhandle Regional Law Enforcement Academy, past President of the Borger Noon Lions Club, and is a member of the Advisory Board of the Panhandle Regional Planning Commission and the Salvation Army. He has held various offices in the Borger Bar Association, and has taught criminal justice courses at Frank Phillips College and Amarillo College, as well as being a lecturer in criminal law topics at State Bar seminars.

Carper has been recognized by the State Bar of Texas by being selected as a member of the College of the State Bar, and represented the State of Texas at the National District Attorney's Association Conference on Child Abuse held at Northwestern University in Chicago in 1992.



ROY CARPER

Lifestyles

Carthel places 4th with judging team

Justin Carthel, a sophomore plant science major from Gruver, is one of the four members of the West Texas A&M University Soil Judging

Team that placed fourth over all at the Region IV Soil Judging Contest held November 17 at Prairie View A&M University.

Fellow team mates include: Walt Berry, a junior agricultural business and economics major from Texhoma, OK, Rusty Gilbreath, a sophomore kinesiology major from Paducah, and Jose Mendoza, a senior plant science major from Paducah.

The Prairie View contest was a national qualifier and the first competition for the newly formed WTAMU Soil Judging Team.

"We did very well for our first year at soil judging," Dr. Clay Robinson, WTAMU assistant professor of agriculture and the WTAMU Soil Judging Team coach, said. "We competed well against the big schools. I am extremely proud of them."

The team competed against eight other universities, including Texas A&M University, University of Arkansas and Texas Tech University.

Mendoza won the first place individual trophy in the soil judging competition.

Gruver band students to play at All Regional

The Region I All Region High School and Jr. High band tryouts were recently held. Jr. High students making the band include: Daniel Hernandez - Tenor Saxophone, Kimberly Boyd - Flute, Ashleii Barrera - Clarinet, Mary Puebla - Clarinet, Isela Huerta - Cornet, Esmerelda Bravo - Baritone, and Cory Schneider - Snare Drum.

the band include: John Duncan - Alto Saxophone, Hailey Lamb - Baritone, and Wesley Miser - Trombone.

These students will be representing Gruver at the All-Region Clinic and Concert on January 19 and 20 at West Texas A&M University.

Congratulations go out to all who participated and to the ones who won positions in the band!!

Ulcers - kids get 'em too

Believe it or not, children get ulcers too.

"Children, like adults, get ulcers either from infection with the bacterium Helicobacter pylori, through reaction to certain drugs, or from stress due to serious injury, infection or disease," said Dr. Mark Gilger, an assistant professor of pediatrics and gastroenterology at Baylor College of Medicine in Houston.

H. pylori is a spiral-shaped bacterium that is thought to be transmitted through the oral-fecal route. According to Gilger, H. pylori is the most common cause of ulcers in children. Studies show that family members are often carriers of the bug.

"For example, we believe that a child may be infected by drinking out of the same glass as that of an infected family member," he said.

Ulcers may also be drug-induced. Certain non-steroidal anti-inflammatory drugs used to treat chronic

illnesses are a chief cause. Physical stress, not stress caused by anxiety, is another reason for ulcers in children. The strain placed on the body by a serious respiratory disease such as asthma, for example, can bring on ulcers.


Because children aren't good at pointing to the location of their pain, Gilger recommends that parents look for symptoms: abdominal pain that has occurred at least three times over a three-month period and which causes a change in the child's behavior; awakening at night due to abdominal pain; recurrent vomiting or vomiting with blood.

Treatment includes antacids and antibiotics. While most ulcers are treatable, work on a vaccine to H. pylori is in progress.

Gilger says that although children are less likely than adults to get ulcers, the pain and discomfort of the illness is just as severe and should be treated promptly.

BE A GOOD NEIGHBOR Volunteer.

American Heart Association
Fighting Heart Disease and Stroke



You are cordially invited to

A Baby Shower honoring
Richard Nolan Jarvis
son of
Will & Kristi Jarvis
Saturday, Dec. 9th
2 to 4 p.m.
First Baptist Church
Fellowship Hall



We will be closing this office December 20, 1995. Due to retirements and moving of employees, we will be unable to staff the Spearman office. We regret having to do this. We have enjoyed the Spearman and Gruver patients and hope you come over to Perryton to see us. If we can be of any help to you, let us know.

*Thanks for your loyalty,
God Bless You All!*

Area Eye Center
Dr. Billy Nowlin

You are cordially invited to a Wedding Shower honoring
Sally Donahue and Lance Swan
Saturday, December 9, 1995
2:00 to 3:30 p.m.
900 Maple Dr.
in the home of
Cindy Blackman
given by hostesses

Don't Miss Another Issue!

SUBSCRIBE NOW

\$19.95 in county
\$24.95 out of county

Spearman Reporter - Gruver Statesman

213 Main • P.O. Box 458 • Spearman, Tx. 79081
(806)659-3434 • 1-800-395-9482

BAKE SALE

Proceeds to Benefit
Ken Freeman
Saturday, Dec. 16th
Lowe's Marketplace
9 a.m. to ?

BLOOD PRESSURE PILLS ONLY WORK IF YOU TAKE THEM.

American Heart Association

© 1992 American Heart Association

Dec. 16th
12 p.m.
Santa Claus will be at the Shopping Center

2 p.m.
FREE movie for kids (12 & under • under 3 must be accompanied by paying adult) at the Lyric Theatre

2:15 p.m.
Christmas drawing at the Chamber Office, 211 Main

For every \$10 of merchandise purchased at these participating businesses, receive one ticket.

Cates Men & Boys Wear, Bunkhouse, Celebrate, Beedy Furniture, Kids' Stuff, Lady Fair, Gordon's Drug, Earl's TV & Appliance, Michele's, JK Farm & Ranch Supply, Alco, Prairie Garden Flowers, All Occasion Flowers, and Hickerson's

Gordon's DRUG

Bridal Gift Registry

COME BY & LET US HELP YOU SET UP YOUR SPECIAL GIFT TABLE

Couples Currently Registered

Sally Donahue & Lance Swan *Dec. 9th
Clint and Emily DeArmond *Nov. 11th

* Date of the Bridal Shower

314 MAIN PHONE 659-2141

Gordon's DRUG SPEARMAN TEXAS

School Lunch Menus

SPEARMAN ISD LUNCH MENU

Monday, December 11
Beef fajitas, sauteed bell peppers/onions, flour tortillas, refried pinto beans, shredded lettuce, diced tomato, sour cream, taco sauce, grated cheese, Spanish rice, pineapple tidbits, and milk.

Tuesday, December 12
Breaded beef patty on a bun, tator tots, spinach, steamed cauliflower with cheese sauce, cinnamon roll, and milk.

Wednesday, December 13
Chicken strips, cheese sticks, whipped potatoes, gravy (opt.), seasoned green beans, hot rolls, raisin pie, and milk.

Thursday, December 14
Beef stew, grilled cheese sandwich, dill spear, peaches, and milk.

Friday, December 15
Cheeseburger, French fries, shredded lettuce, sliced tomato, pickle, onion, pears, and milk.

BREAKFAST

Monday - Pancake, sausage on a stick, fruit, and milk.
Tuesday - Waffles, fruit, and milk.

Wednesday - Large cinnamon roll, fruit, and milk.
Thursday - Cereal, toast, fruit, and milk.

Friday - Blueberry muffin, fruit, and milk.

GRUVER ISD LUNCH MENU

Monday, December 11
Chicken fried steak, potatoes, gravy, carrots, pudding, roll, and milk.

Tuesday, December 12
Burrito, chili, cheese, salad, fruit, and milk.

Wednesday, December 13
"Christmas Dinner", Turkey,

potatoes, gravy, corn, roll, pumpkin pie, and milk.

Thursday, December 14
Pig in a blanket, beans, fruit, cowboy bread, and milk.

Friday, December 15
BBQ on a bun, French fries, fruit, peanutbutter cookie, and milk.

BREAKFAST

Monday - Breakfast pizza, juice, and milk.
Tuesday - Two pancakes, syrup, juice, and milk.

Wednesday - Cereal, muffin, juice, and milk.

Thursday - Breakfast burrito, hot sauce (opt.), juice, and milk.
Friday - Two cinnamon rolls, juice, and milk.

PRINGLE-MORSE CISD LUNCH MENU

Monday, December 11
Nachos, beans, salad, cornbread, fruit, and milk.

Tuesday, December 12
Oven fried chicken, potatoes, gravy, salad, rolls, fruit, and milk.

Wednesday, December 13
Hamburgers, French fries, fruit, and milk.

Thursday, December 14
Spaghetti, green beans, rolls, dessert, and milk.

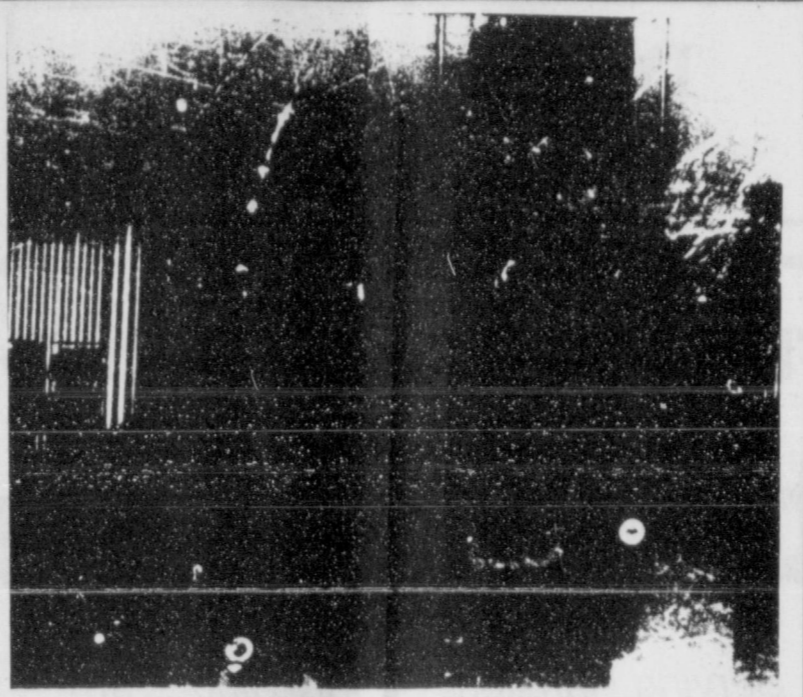
Friday, December 15
Grilled cheese sandwich, chicken noodle soup, salad, fruit, ice cream, and milk.

BREAKFAST

Monday - Muffins, toast, juice, and milk.
Tuesday - Cereal, toast, juice, and milk.

Wednesday - Pancakes, sausage, juice, and milk.
Thursday - Cinnamon rolls, toast, juice, and milk.

Friday - Biscuits, gravy, juice, and milk.



BOOK PRESENTATION - The Hansford County Library was presented two books by the U.S. Post Office this past Monday, Dec 4. Pictured above are (l to r): Mike Floyd, Gruver Postmaster; Sheri Benton, Librarian, and George Finley, Spearman Postmaster.

Historical Commission meets in regular session

The Hansford County Historical Commission met December 4 at the Zulu Stockade at 2:00 p.m.

Joel Lee Lackey, chairman, asked for committee reports.

The Historical Marker Committee reported that Joel Lee Lackey visited with Jack Hart about where the Zulu marker will be placed.

The Historical Preservation Committee "Museum" reported that Barbara Rojas has decorated the Museums for Christmas. Bill K. Jackson has finished with repair-

ing the foundation of the Stationmaster's House.

Cindy Blackman of the Historical Appreciation Committee, reported that she recently attended the RC&D Area Meeting.

Members present were J.D. Wilbanks, Bill K. Jackson, Joanne Eaton, Joel Lee Lackey, Jennie Blankenship, Harry Stumpf, Clementine Renner, Gus Renner, Johnnie Lee, Cindy Blackman, Helen Boyd, and Irvin Boyd.

At the movies...

Showing at The Lyric Theatre Friday, December 8 through Tuesday, December 12 on Screen 1 beginning at 7:30 p.m. is "Home For the Holidays", and on Screen 2 beginning at 7:45 p.m. is "Now and Then".

In "Home For the Holidays", it's season's greetings at the gates of purgatory for Holly Hunter when she heads home for Thanksgiving in this Jodie Foster-directed comedy.

Should be therapeutic for reluctant revelers.

"Home For the Holidays" is rated PG-13.

In "Now and Then", although Demi Moore and Co. receive top billing in this childhood remembrance, they only frame the story, which really features kid stars including Christina Ricci and Gaby Hoffman.

"Now and Then" is rated PG-13.

At The Lyric Theatre...

Friday, December 8 - Tuesday, December 12

**Bargain Nights Mon. & Tue. Adults - \$4
Fri., Sat., Sun., Adult \$5 - Child \$3 every night
Closed Wednesday & Thursday**

SCREEN 1 • 7:30 PM SCREEN 2 • 7:45 PM

Home For the Holidays
(PG-13)

Now and Then
(PG-13)

113 Main • Spearman

Out at the Lake

By Dorothy Hudson

Lake Depth--December 4, 1995--25 feet and 10.5 inches

Five of the R.V. spots were taken this Saturday--two by people from Dalhart, one from Sunray, one from Guymon, and one by the Harveys of Gruver. Jim Derrington reported a flock of forty to fifty white pelicans stopped overnight at the Lake. Using the telescopic eye piece on the new transit, Jim said those in the office got a close up look as the birds were preening.

I have had a chance to talk to Jack Hart about the mountain lion and found that he was about forty feet from the lion. Jack was standing in the midst of a torn down wooden barn, so the footing was so bad that he could not back to his pickup which was forty feet the other direction. He thought he did a lot of looking over his shoulder though!

In the November 9 column I wrote that the canyon on the south boundary of the Park that runs into

the Palo Duro Creek might be the loveliest canyon of all the canyons in the Park. Wilson Buchanan and others tell me they think some of those running into Horse Creek are more spectacular. I am eager to see them--if my knees hold out.

Jean Ann Behney gave me a beautiful walking stick last year. It is a work of art, but I resisted the temptation to put it on the wall and began using it. I had no idea of how really helpful a walking stick is, but I found it invaluable on climbing up and down in canyons.

The photos in last week's column were mistakenly identified as the home of Ollie Jarvis. The text properly identifies the home as that of the Frank Andrews family. The people standing on the porch of the Andrews home are Mrs. Andrews (Jennie), 10 year old Ollie, Mrs. Beck (Annie), and Ollie's sister Ann. Seated are Laura, daughter of the Andrews, Ollie's sister Eleanore, Judge, C.C. Beck, and Frank Andrews.



The tallest structure in America is a TV tower in North Dakota 2,063 feet high.

The Hansford County Reporter-Statesman

Serving all of Hansford County
Spearman • Gruver • Morse

USPS 509660 • 213 Main, Box 458 • Spearman, Tx. 79081
(806) 659-3434 • 1-800-395-9482 • FAX (806) 659-3368
Published weekly at 213 Main, Spearman, Texas

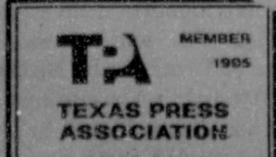
Owned & Operated by
Texas Independent Newspapers, Inc.
16607 Blanco Road #100 • San Antonio, Tx. 78232
(210) 492-8907

Second class postage paid at Spearman, Texas 79081

Any erroneous reflection upon the character of any person or firm will be gladly and promptly corrected upon being brought to the attention of the management.

Publisher - Deziree Torres
Editor/Advertising - Chad Davis
Gruver Correspondent - Bob Bort

The publisher reserves the right to revise or reject at its option any advertisement which it deems objectionable, either in subject or phraseology, or which it may deem detrimental to its business.



Subscription Rate: Hansford County, \$19.95; out of county, \$24.95 annually.
Postmaster: Send address changes to Hansford County Reporter-Statesman, Box 458, Spearman, Tx. 79081.
Advertising & Story Deadlines
Monday, 5:00 p.m.

GET THE ALICO Advantage



FREE

SECOND SET OF PRINTS EVERY TUESDAY!

Receive a second set of 3" or 4" prints FREE with any exposure roll of 35mm, disc, 110 or 126 color print film left for developing and printing at our everyday prices! C-41 process only.
(KODAK FINISHING SERVICES NOT INCLUDED)



DAILY:
9 a.m. to 8 p.m. M-F

SUNDAY:
12 p.m. to 5 p.m. S

ADDRESS -- CITY NAME, ST

SAGE SIGN CO.

SIGNS AND AWNINGS OF ALL KINDS

DESIGN • MANUFACTURING
NEON • INSTALLATION • SERVICE

601 S. TRAVIS AMARILLO, TEXAS 79101 PH. 374-8117

1-800-374-8117 FAX 806-371-0111

COUPON

10% OFF ANY AWNING OR SIGN
Expires 1-31-96

AMARILLO'S SIGN COMPANY

Boy Scout Troop 551 CHRISTMAS TREE SALES

205 Main Street

Monday thru Friday

5 p.m. - ?

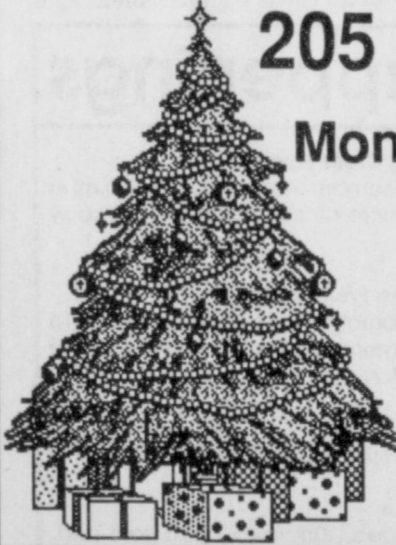
Saturday

9 a.m. - 5 p.m.

Call 659-3942

or 659-4123

after 6 p.m.



POLARIS
A Variable Annuity

A Happy, Secure Retirement

It can be yours if you start planning now!

Your retirement may last up to twenty years, so taking control of your financial future now is definitely a step in the right direction.

The Polaris Variable Annuity offers:

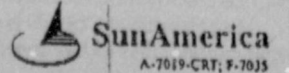
- Tax advantages
- A wide range of fixed and variable investments
- Option to receive income payable for life
- Additional programs to help you meet your retirement goals

For more complete information about the Polaris Variable Annuity and to obtain a prospectus including charges and expenses, call today!

John D. Fritzen
Registered Representative
SunAmerica Securities, Inc.
(806)852-4231
Supervisory Office:
3712 Walton Ave.
Ft. Worth, Tx. 76133

Read the prospectus carefully before you invest or send money. Polaris is issued in New York by First SunAmerica Life Insurance Company, New York, NY and in all other states by Anchor National Life Insurance Company, Los Angeles, CA.

Investment returns and value of principal will fluctuate, and an investor's shares, when redeemed, may be worth more or less than their original cost.
Distributed by SunAmerica Capital Services, Inc.



A-7019-CRT; 9-7035

MANOR EMPTY STOCKING CRAFTS BAZAAR

December 8, 9:00 - 3:00
Hansford Manor Activity Room
All proceeds will benefit the Empty Stocking Fund.
Donations of craft items and baked goods are needed.

Contact Debby Sanford for more information.
659-5535

Hansford Auxiliary kicks off Operation "Christmas Greeting"

It's time again to consider sending Holiday Greeting Cards to your friends. Once more, the Hansford Hospital Auxiliary is asking you to send them the money you would spend on cards and let them use it to benefit the Hansford Hospital and Manor.

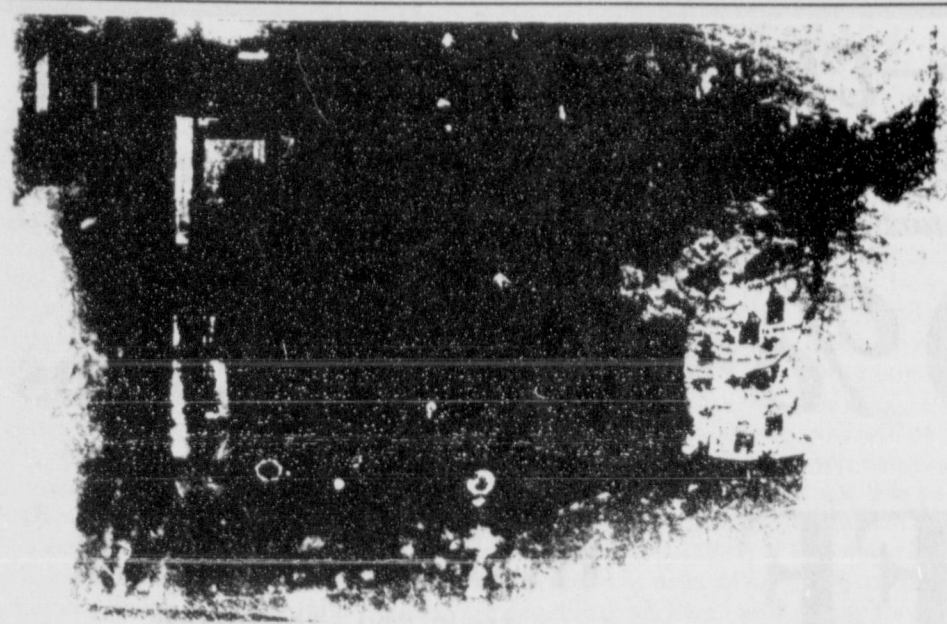
The Auxiliary has sponsored this project for the past twenty three years, and many dollars have been

donated for needed supplies and equipment. This is how it is done: send your donation to Mary Fern Terry, 906 Bernice, Spearman, Texas 79081 and list your names the way you wish them to appear in the Spearman paper. Your names will also be listed on a bulletin board at the hospital and manor.

We will appreciate your continued support for our Operation

Christmas Greeting fund raiser.

The following have donated: Gertrude Archer, Raymond and Grace Kirk, Gus and Clementine Renner, Mary Fern Terry, Helen Etter, Elsie Mathews, Gene and Frances Cudd, Dorothy Lusby, Marcus and Jo Larson, Tom and Beth Dortch, and Dude and Verna Brown.



HOLIDAY GREETING CARDS - Pictured are several Hansford Hospital Auxiliary Volunteers decorating the tree at Hansford Hospital.

Extension News

By Peggy Winegarner
Hansford County Extension agent

Holiday foods are among the many pleasures of the season. But for many, this presents a special challenge. During this time of the year people sometimes wonder how can they enjoy the holidays and still manage to maintain a healthful diet.

There's no need to panic. Most foods, even the traditional family favorites, can fit into a healthy eating plan. The secret is moderation and balance.

If you're bringing a dish to a friend's or relative's table, make a lowfat version of a family favorite. Once the food is on the table, you will have some healthful choices.

If second helpings are mandatory with your host or hostess, make your first helping small. That way, if you're enticed to take seconds, at least the total amount of food you eat may equal a normal-sized portion.

Choose skinless white meat of poultry. It has fewer calories and fat than dark meat.

Eating a roll is O.K. If it's fresh, you will not miss the butter or margarine.

The excitement and festival atmosphere of holiday parties can really take your attention away from what you are eating.

Here are some effective tips for holding the line at holiday stand-up events: Eat small, lower-calorie meals during the day so you can enjoy a special treat later. Eat a healthy sack right before the party. A hungry stomach can sabotage even the strongest willpower; when

you arrive at the party, don't rush to the food. Greet people you know, get a beverage and settle in first; Make only one trip to the buffet and be selective. Choose only the foods you really want to eat; keep portions small. Often, a taste is all you will need to satisfy a craving or your curiosity; skip the fried food, mixed nuts, cocktail sausages and other high fat tid-bits. Eat the crackers, bread, and fresh fruits and vegetables; if you want to nibble on cheese, take only one or two pieces;

fresh vegetables and fruits are always great low-calorie, lowfat choices. Halve a small dollop of dip, just enough to coat the end of a carrot stick, broccoli floret or tip of a strawberry; boiled shrimp or scallops and thin slices of lean roast beef are good choices. Choose cock-

tail sauce or lemon and horseradish as a condiment.

It's good to have celebration strategies, but be realistic. Trying to lose weight during holidays may be a self-defeating goal. Striving to maintain your weight, however, is a reasonable expectation. Forget the "all or nothing" mind-set. Depriving yourself of special holiday foods or feeling guilty over a particular food choice is not part of a healthful eating strategy. And, certainly not a part of the holiday spirit.

Remember to have fun. sharing food is an important way to spend holiday cheer. Enjoying a traditional meal or celebrating with family and friends need not destroy the healthy food habit you have nurtured all year.

NOTICE

The Spearman Housing Authority is now taking applications for residents. Eligible applicants will be placed on a community-wide waiting list. Families with the following incomes are especially needed for occupancy at the Housing Authority:

FAMILY SIZE	FAMILY INCOME
	From To
1 Person	\$11,800 \$18,850
2 Person	\$13,500 \$21,500
3 Person	\$15,150 \$24,250
4 Person	\$16,850 \$26,950
5 Person	\$18,200 \$29,100
6 Person	\$19,500 \$31,250
7 Person	\$20,900 \$33,450
8 Person	\$22,250 \$35,600

Rent is based on family income minus allowances for children and elderly occupants. For more information, contact Gary Ellsworth at Spearman City Hall or call 659-2524 from 8:00 a.m. until 5:00 p.m. Mondays through Fridays. The Spearman Housing Authority does not discriminate based on race, religion, sex, age, disability, national origin or other classification protected by federal and state laws.

SHOP SUNDAY!

Sunday • December 10 • 1:00 - 5:00 p.m.
in Gruver, Texas

GRUVER FLORAL
502 Main • 733-5632

MAIN STREET STORE
506 Main • 733-5040

COUSINS
CARDS & GIFTS
322 Main • 733-5420

LITTLE TIFFANIES
103 E. Broadway
733-5290

In Conjunction with
Doris Armes and the
Gladiola Flower Club
Home Tour

Tickets for the the Home Tour can be purchased from Main Street Store, any member of The Gladiola Flower Club or at the homes.

Shopping
j. Winston

Suits
Coats • Scarves
Slacks • Novelty
Dresses • Sequins
Gifts Galore • Velvet
Accessories • Sweaters
Christmas Fashions • Colors

j. Winston
of amarillo
women's fashion • gifts
2701 paramount 358-2457
1980 • 1981 • 1982

Christmas is coming

GATES CHRISTMAS SALE

Mens & Boys Wear

Poly/Wool Blend
Sizes: 38-50
Reg: \$149.95
\$119.95
Larger sizes higher

BLAZER SALE!

100% Wool
Sizes: 40-52
Reg: \$199.95
\$149.95



STYLE #1104
\$94.95

STYLE #404
\$94.95

STYLE #2231
SAFETY TOE
\$101.95

STYLE #2233
SAFETY TOE
\$96.95

STYLE #4441
INSULATED SAFETY TOE
\$129.95

STYLE #4412
INSULATED SAFETY TOE
\$114.95

Santa's Gift List

Suspenders...50 styles in stock
Robes...knee length, ankle length, hooded, reg, bigs & tall

Tabasco...ties, boxer shorts & socks

Wallets...two & three fold also money clips

Silk ties...regular & tall lengths
Coats...London Fog, Pacific Trail, Walls & Carhartt

Levi 550 Jeans...\$28.95

Levi 560 Jeans...\$29.95

Kids Justin Ropers & Lacers...**SALE PRICED**

221 MAIN, SPEARMAN....STORE HOURS: MON THRU FRI 8:30-6:00 & SAT 8:30 -7:00

Among The Neighbors

by Helen Fisher

Lometa Sparks attended the graveside services on Tuesday at Llano Cemetery in Amarillo for her brother-in-law, John Ellis Gill 77. Mr. Gill was remembered for being an outstanding football player, as captain and quarterback of the Amarillo High School the year they were State Champions. He was also quarterback for the Longhorns of Texas University. Many in Spearman were familiar with his career.

His wife of 54 years, the former Dixie Ruth Buckner, survives. She was a Spearman High School graduate and lived here until her marriage. He was survived by a son and daughter also.

Memorial services were held in Austin on Thursday, as they were residents of Austin.

Susie Hand underwent replacement of a hip joint replacement in Oklahoma City two weeks ago and is now in rehab. She is making good recovery and if all goes as is expected she can return home by December 14.

The month of hospitalization would be long indeed if it were not for the continued attendance of her family. Her husband, L.F. and son Bill and Laura, were with her for the surgery and a few days afterward. Mr. Hand spends weekends with her. Their daughter, Linda Wilkerson, spent Thanksgiving week with her. The Hand's other daughter, Barbara and Jim Bangston of Longmont, Colorado flew in their plane and spent several days with her. She is optimistic that this time the replacement will be successful. Cards will reach her at McBride's Bone and Joint Clinic, 1111 North Dewey, Room 206, Oklahoma City, 73103.

Two members of pioneer Hansford County families were laid to rest near their departed families at Hansford Cemetery on Monday.

Faye Wilbanks Klutts was the last survivor other generation of the Floyd Wilbanks family.

Lois Bowling Allison was a de-

scendant of the Martin family. Their complete obituaries appear elsewhere in this issue.

Myrtle DeArmond is recovering from surgery for Carpal Tunnel Syndrome performed at North Plains Hospital in Borger on Monday.

It was on her right wrist and since she is right-handed, this does present a handicap, but she is hopeful that healing will be rapid.

Bonnie Garner of Aline, Oklahoma and her aunt, Eula Pierce, of Lamont visited her aunt Ila Mae and J.B. Buchanan from Wednesday through Saturday.

It is gratifying to see the clearing of some of the squalid lots and old shacks in Spearman as a result of City action. It is good, also, to note the renovation of some of the business buildings and homes. An example is the Family Laundry at the site of the former Sparks Laundry. New equipment has been installed, a new sign erected, the building remodeled and painted, and the business is thriving. It is now owned by Ronnie Gibson and is serviced by Raye Gibson and Vi Hornsby.

One eyesore that has been eliminated is the old building on Main Street that caved in under the weight of snow several years ago.

The ruins have been removed and the lot cleaned. The area is much more attractive and next door Gordon's Drug Store shines in the sunlight. Jim Evans just might be tempted to open an outdoor tea room on the cleaned lot.

Now, if there was just some way of renovating a certain few antiquated individuals—before the Historical Society hangs a plaque on them. As for one (your neighbor) renovation will have to wait until the premises can be cleared of three liars—mirrors, scales and calendar!!!!

Additional Thanksgiving notes:

Annabell and Murl Pearson returned to Spearman in time for a happy family gathering on Thanksgiving in the home of their son Edwin and family. They were pleased that their son Calvin and family of Logan, New Mexico could join them as well as other family members.

Their greatest surprise was the arrival of their daughter, Theresa, and Larry Davis, early Thanksgiving morning after an all night drive from Owatonna, Minnesota. The Davis were here four days and also visited their son Scott Davis, Spearman, and daughter Toni and Neal Earle of Waka.

Mr. and Mrs. Pearson had visited the Davis in Owatonna in October. After Minnesota, they drove on to Grove City, Pennsylvania to be with some of her people. On the return trip they stopped over in Mount Vernon, Ohio where her brother lives.

After their trip, they went to Lake Texhoma for a couple of weeks fishing and report an excellent catch.

Since his retirement, the Pearsons have found great pleasure in their leisurely trips, as she so aptly puts it—"enjoying God's nature and beauty."

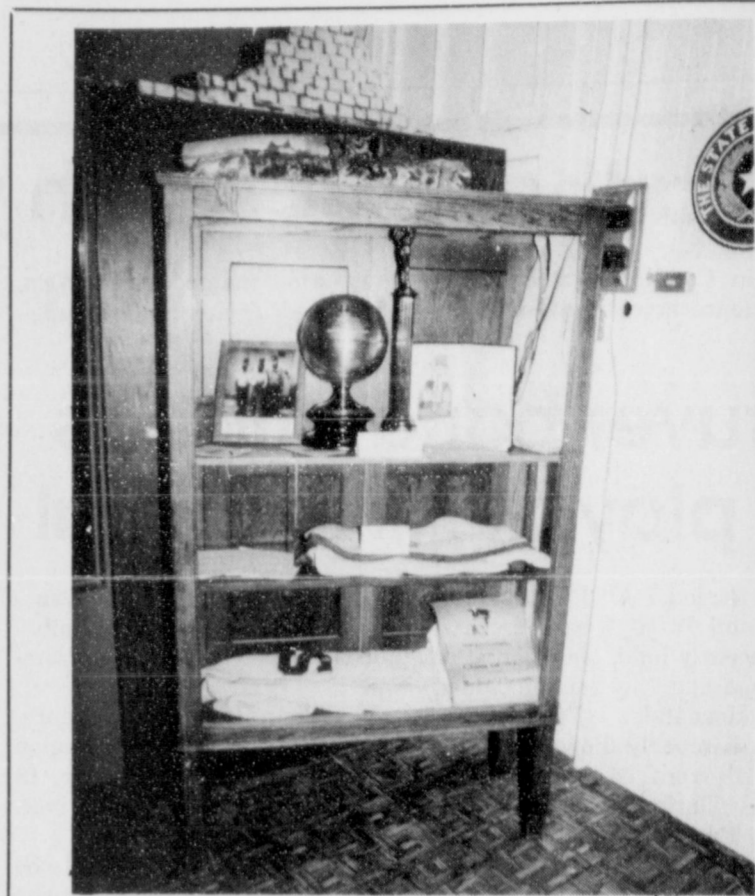
Mary Alice Gibner spent about a week in Houston in the home of Stinson and Thuy and little daughter, and also her cousin and family. She flew down before Thanksgiving and both families shared Thanksgiving Day. Adding to the usual joy in the holiday was being with the 20 month old granddaughter.

Stella Cummings had all her children at Thanksgiving—a rarity for them to be there at the same time. After a bountiful dinner, the time passed all too quickly. They enjoyed the games and fellowship, reminiscing and laughter of bygone days. Since the weather was ideal, the children had an afternoon of outdoor games.

Guests were David and Sharon Cummings with Kevin, Kacey and Perry, of Perryton; Joyce and Billy Pierce with Chris of Channing; Wayne and Carolyn Cummings with Kelly, Leo and Phyllis Cummings, Ed Cook all of Spearman.

Phyllis Owens returned the early part of the week form Thanksgiving holidays in Amarillo and Dallas. Mrs. Margaret Elliot of Bird City, Kansas came by Spearman and they drove to Amarillo. They met Judy and Bill Elliot and the next day all went to Dallas. They spent the next few days in the home of the Elliot's son and wife, and their other son from Houston joined them.

Janet Whitefield had a hurried but pleasant Thanksgiving when she drove to Matador late Wednesday evening to spend the day with her mother. Her daughter, Regina Paul, accompanied her and they returned on Friday.



LYNX MEMORIES - Pictured is the trophy case at the Museum. Shown are several souvenirs from bygone days including a Men's Championship Basketball trophy from 1930.

Museum Musings

by Joanne Eaton

Basketball goes back a long way in Hansford County. One display case at the Museum shows many souvenirs from bygone days.

In this case is a picture of the Men's Championship Basketball Team of 1930. Their trophy is also in the case. Winners of District I in 1930 were Carrol Owens, Orville Rippey, John Walker, Earl Riley, and Tip Windom. The coach of the team was Billy Jarvis.

A Lynxette basketball sweater, circa 1928-1930 is also on display. It was worn and owned by Virginia Patterson Sparks. There are other Lynx sweaters too.

An old annual called *The Wild Rose* has the date 1923 on the front. It includes the 1920, 1921, and 1922 supplements. It represents all Spearman grades plus a few smaller

schools in the county.

Several graduation programs also grace the case.

KIDS! KIDS! KIDS! Come to the Museum and find the mystery item!

Here's a contest for all elementary students. You must be accompanied to the Museum by an adult to win \$5.

Only one winner! The first person to correctly identify the mystery item will win the money. When you think you have found the item write your name, date, and the item on a piece of paper. Then seal it in an envelope and give it to Barbara. She will write the time on it. Good Hunting!

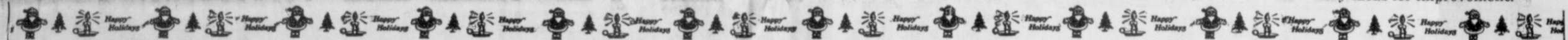
We're flavors four and oh so sweet.

To find us now Will be a treat.

Christmas season is a time to visit with friends. Our Museum Committee Members met at K-Bob's in Perryton for our annual Christmas dinner. We shared a lot of good fellowship and exchanged a lot of stories.

Members getting together were: J.D. and Rubyjo Wilbanks, Charles and Joanne Eaton, Joel Lee and Joyce Lackey, Irvin and Helen Boyd, Clementine and Gus Renner, and Bill K. and Estelle Jackson.

Barbara has decorated the Museum. She has done such a good job! Be sure to include a tour of the Museum in your holiday happenings. We appreciate all touring and any ideas for improvement.



HANSFORD

COUNTY HOSPITAL DISTRICT

A Note From Activities



NOVEMBER BIRTHDAYS - Those pictured celebrating birthdays are (l to r): Jane Meek, L.M. Shelton, and Minnie Chesser. Not pictured is Don Williamson.

Solid Gold Selection

Our featured resident for the month of December, Jean Close, was born December 12, 1926, in Lowell, KS, to Homer and Thelma Hart. Her parents farmed in Missouri and Kansas before coming to the Texas Panhandle. Jean said it was like being an outlaw; she was the only one of her five sisters and one brother born in Kansas!

After moving to Hansford County, her father worked for the Natural Resources Conservation Service.

Jean has fond memories of many bus rides and playing basketball for the Lynx.

She married Billy Close in 1956. He was a mechanic for a petroleum company, and she worked for the Hansford County Tax Office and later for the sheriff's office.

Mrs. Close has two daughters, one son, and five grandchildren. Her hobbies are painting, crafts, and playing Bingo.

Jean has lived at the Manor for seven months and says she likes it here, "It's the place to be!"

December at last! 'We Three Kings' in the Activity Department have been 'Dreaming of a White Christmas'. We have decided that we will wait until after we 'Deck the Halls' and then 'Let it Snow!'

The 'Twelve Days of Christmas' are going to be full of Holiday Activities. 'Oh Come All Ye Faith-

Welcome New Residents

Marilyn Parrish was admitted to the Manor on November 13, 1995. She has lived in Perryton a long time. She has two daughters, Suzy Hinds of Guymon, and Rana McDonald of Amarillo. Mrs. Parrish is a member of the First Christian Church. Marilyn told us that she already loves living at Hansford Manor.

ful' to our Christmas Bazaar on Friday, Dec. 8, from 9-5. The location has been moved from the Activity Room to the Manor Living Room. All proceeds will benefit the Manor Empty Stocking Fund.

'God Rest You, Merry Gentlemen', for you can be assured that there will be no 'Silent Nights' on Tuesdays this month, as the United

Beecher Dees moved to Hansford Manor from Borger on November 16, 1995. Beecher's wife, W.D., lives in Borger. He has three sons living in Fritch, Corpus Christi, and Branson, MO. Mr. Dees belongs to the Church of Christ.

We welcome these new residents and their families and friends!

Methodist Church will be sponsoring Bingo for our Residents. 'Hark the Herald Angels Sing' that our Christian Buffet sponsor is the Trinity Community Church.

Manor Residents will be asking 'What Child is This' throughout the month as school groups from 'Oh Little Towns of Morse, Gruver and Spearman' visit us from 'Away in A Manger' to bring 'Joy To The World.'

'Here Comes Santa Claus' and 'Rudolph the Red-Nosed Reindeer' for our Residents' Christmas party on Friday the 22nd. 'Silver Bells' will be ringing as we all gather around 'Oh Christmas Tree' at 2:00 p.m. Conversations

will be heard all over town such as: "Do You Hear What I Hear?" "Yes, I Heard The Bells" as we call our volunteers to make cookies for our residents to eat as they 'Rock Around The Christmas Tree' that afternoon.

'We Wish You a Merry Christmas', and hope that you 'Have a Holly Jolly Christmas'. We really do believe this to be 'The Most wonderful Time of The Year'. So to all of our friends and families we say 'Have Yourself a Merry Little Christmas', and we are expecting NO reports on 'The Night Before Christmas' that 'Grandma Got Run Over By Reindeer'!

Employee of the Month

Elsa Martinez was H.C.H.D. Employee of the Month for November. Elsa, who was born in Zacatecas, has worked here for eight years. We can always count on this housekeeping employee to be cheerful, friendly, and hard-working. No matter how busy she may be, she takes the time to smile at all of us and participate in District functions.

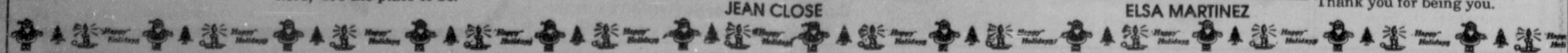
Elsa is married and has one child. Her hobby is reading magazines. We love you, Elsa, and we want you to know you deserve this honor! Thank you for being you.



JEAN CLOSE



ELSA MARTINEZ



From Where I Sit

by Judge Gary Ellsworth

Editors Note: This article is being rerun for those of you who missed it the first time. Two tickets have already been issued at the varsity gym for this very matter.

Picture this: You're driving home after work and suddenly remember you need a loaf of bread for tomorrow's lunches. As you pull your car into the parking lot of the local market, you discover that half of the residents in the county must have had the same idea and the closest parking spot seems to be beyond your range of vision. Bummer! Or maybe this is your situation: It's your turn to furnish snacks for the concession stand at the basketball game and you also have to be at a meeting across town for which you seem to be running late and again the parking lot is packed, but you just don't have time to walk a block and a half to deliver the treats. And besides it's raining.

If you're ever in one of these situations, you might say to yourself, "I'm only going to be in there a

minute, so what would be wrong with parking in the handicap parking space. It's right up close and I can just run in and be back before anyone notices or for that matter, before someone who needs the handicap parking space comes along." Hmmm.

The 74th Texas Legislature has basically said, "Parking in space provided for handicap persons is a MAJOR NO NO! if you are not transporting persons with disabilities." As of September 1, 1995, if you park in a space or area designated for handicap parking, and your vehicle does not have license plates or a parking placard issued to persons with disabilities you can be cited for the offense and punished by a fine of **not less than \$100 or more than \$200**. That is if it's the first time you've been cited for the offense. If it is shown in court that a person has previously been convicted one time of this offense, you will be punished by a fine of **not less than \$200 or more than \$300**. If it's your third time around the fine will

be **not less than \$300 or more than \$400**. If convicted a fourth time of this offense, a fine will be imposed of **not less than \$400 or more than \$500**. Now, if you appear before a judge and it is shown that you have been convicted four previous times for this offense your fine is going to be **\$500**. In addition to these fines you will be charged court costs. As you can see, the 74th Legislature saw this as a serious and growing problem and wrote a law designed to deter healthy people from parking in spaces designated specifically for persons with disabilities.

As the municipal judge in Spearman, I can safely say that 99% of the handicap parking offenses filed in my court are written during basketball season in the parking lots around the Varsity Gym. So I would encourage you to carefully check that "good parking space" before you leave your car to go shopping, to the game, or to pick someone up at the airport. If you don't, a conviction could put a handicap on your pocketbook.

"City of Light" musical celebration to be held at First Baptist Church

"City of Light" is the cantata selected by the Sanctuary Choir of First Baptist Church for presentation as their musical celebration of Christmas, 1995. Music from this work was presented by the choir at Hansford Manor Sunday, Dec. 3. The annual Christmas musical worship service led by the music ministry of FBC will be this Sunday, Dec. 10, at 6:00 p.m. in the sanctuary of the church. First Baptist Church is located at 123 Bernice in Spearman.

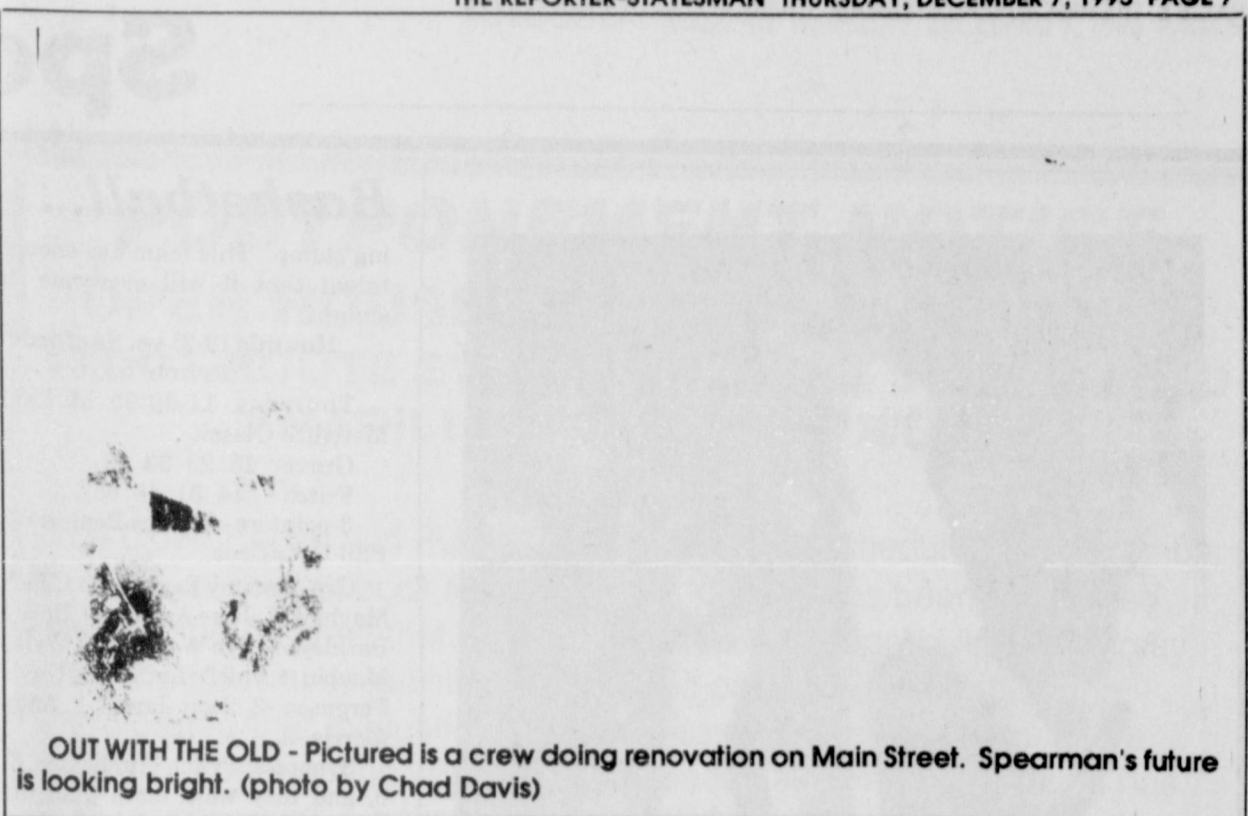
"City of Light" is a musical created and arranged by Tom Fettke and features dramatic sketches written by Reagan Courtney. Son Co. and Genesis Children's Choir will be featured in the presenta-

tion. The choirs will be under the direction of Carol Pack. Denise Bridges has served as rehearsal accompanist, and the musical will be presented with orchestral accompaniment track.

Portrayals of Isaiah, the Bethlehem innkeeper, and a modern day believer will be done by Kyle Henderson. Pam Cobb will play the part of Mary, and little Richard Jarvis, son of Kristi and Will, will be the Baby Jesus. Richard Coats will tell of the visit of the Wise Men as seen through the eyes of a shepherd lad who also had witnessed the Angels' announcement on the night of the birth of Christ.

Solos will be sung by Denise Bridges, Carolyn James, Kathy Archer, Troy James, Shane Swenn, David Furlow, and Wayne Biggs. Other ensembles will be presented by Becky Byers and Susan Kidder, and Debbie Stopper, Judy Whitworth, and David Furlow.

The public is cordially invited to attend this musical celebration of the Christmas Season. There will be a nursery provided for children ages 3 years and under.



OUT WITH THE OLD - Pictured is a crew doing renovation on Main Street. Spearman's future is looking bright. (photo by Chad Davis)

Cut the fat -- not the taste

If you're thinking about changing Grandma's "soul food" recipes into a low-fat version this holiday season, don't skimp on flavor, say nutritionists at Baylor College of Medicine in Houston.

"The family holiday dinner doesn't have to taste bland to be good for you. The key is using less fat and more spice," said Dr. Rebecca Reeves, an assistant professor of medicine at The DeBakey Heart Center's Nutrition Research Clinic at Baylor. "Opt for crushed black pepper, tabasco, garlic, and onion when seasoning vegetables and meats."

Many African-Americans celebrate the holiday Kwanzaa by eating leafy vegetables and whole grain foods derived from African culture. Kwanzaa is a seven-day ritual emphasizing family unity.

Other traditional dishes like collard greens, black-eyed peas, cornbread and sweet potato pie prepared the high-fat way are risk factors for heart disease, high blood pressure, and stroke.

According to the National Can-

cer Institute, a high-fat, low-fiber diet may be linked to cancers of the colon, breast, and prostate -- the leading causes of cancer deaths among African-Americans.

To reduce the risk, Reeves suggests preparing holiday foods with little or no fat. Traditional holiday foods can be adapted to low-fat, low-calorie and low-cholesterol.

"In many African-American households, salt pork is a common staple used to season greens, black-eyed peas and other vegetables," she said. "If you want the pork taste, use lean ham, and save the de-fatted stock to cook your vegetables in. The flavorful broth will give you tasty, low-fat vegetables without the salt."

If dessert is on the menu, Reeves says try making it more nutritious by using low-fat ingredients available in grocery stores, such as fat-free cream cheese, sour cream and egg substitutes. A graham cracker pie crust is a good substitute for high-fat pastry crust.

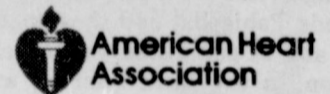
holiday food preparation can be fun with a little planning, says

Reeves.

"By making healthier food choices, you'll be giving your family the best gift this holiday season -- good nutrition," Reeves said.

To substitute the fat with healthier options, Reeves recommends you use: poultry without the skin and extra lean ground beef instead of high-fat meat; turkey thighs instead of ham hocks; vegetable oil or low-fat margarine instead of butter; low-sodium bouillon and broths instead of salty ones and; low-fat or skim milk instead of whole milk.

Research saves lives.



Holiday Open House

Thursday, December 21, 1995

7:30 a.m. to 6:00 p.m.

Refreshments Served All Day!

Get your picture taken with Santa from 1 p.m. to 5 p.m.



Don't miss out on the drawing from the "YOU FIRST BUCKS"

and win one of three \$200 cash prizes!

You could also be the winner of the "GIANT STOCKING"

Drawings are at 10 a.m. (need not be present to win)

We appreciate your business this past year and wish for all a very MERRY CHRISTMAS

and a

HAPPY and PROSPEROUS NEW YEAR

from the officers, directors and staff of the "BANK THAT ALWAYS PUTS YOU FIRST", First National Bank, Spearman.

We will be closed on December 25th for Christmas and January 1 for New Years.



729 W. 7TH
P O BOX 337
SPEARMAN, TEXAS 79081
(806) 659-5544

Member FDIC

Gladiola Flower Club invites all to annual Home Tour, December 10

The Gladiola flower Club invites you to the Annual Home Tour to be held December 10, 1995. This project allows the Club to give medical scholarships, assist local and area girl scouts, boy scouts, landscape nursing homes, bingo at nursing homes and other community needs.

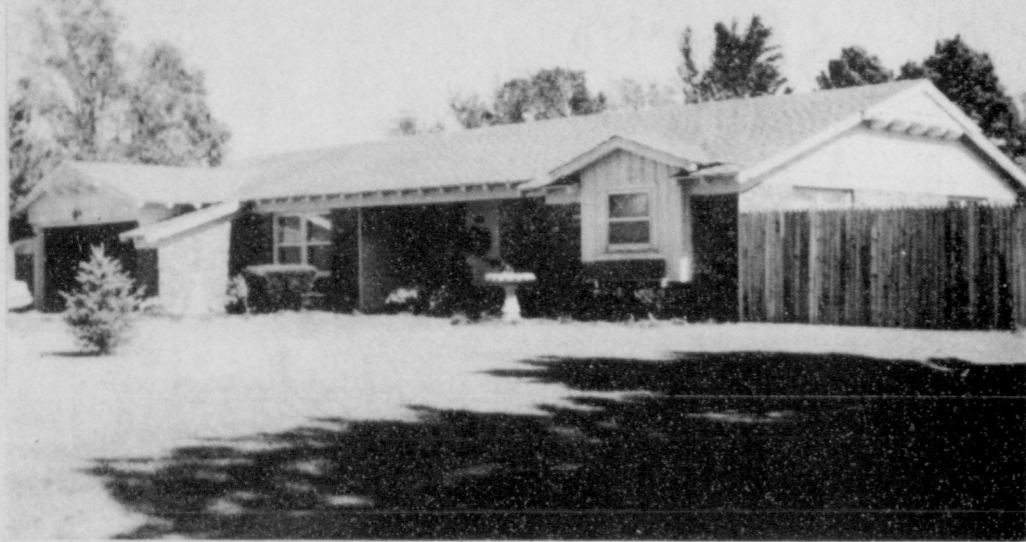
Homes this year are Ms. Doris Armes located at 407 Cluck in Gruver. This home was built in 1957 and recently purchased and remodeled by Doris. Her crafts can be

seen throughout this seven room home; the home of Mr. and Mrs. C.L. Crossland located at 303 S. Bernice in Spearman. This home was built in 1927 by W.L. Mathis and present additions were done in the 1940's by John R. Collard, Jr. The Crosslands recently purchased and remodeled the home; the home of Jackie and Randall Willis located at 706 Wilmeth Dr. in Spearman. This home was built in 1928 by Marion Glover. In 1954 Ralph and Joan Blodgett bought it and in

1962 converted the breezeway into a den and added a garage. The Willis' purchased this historic and interesting home in 1994 and have completely remodeled it. The large yard has an original metal fence and original trees.

Tickets are \$5 and may be purchased from members of the Gladiola Flower Club, the homes, and Main Street of Gruver.

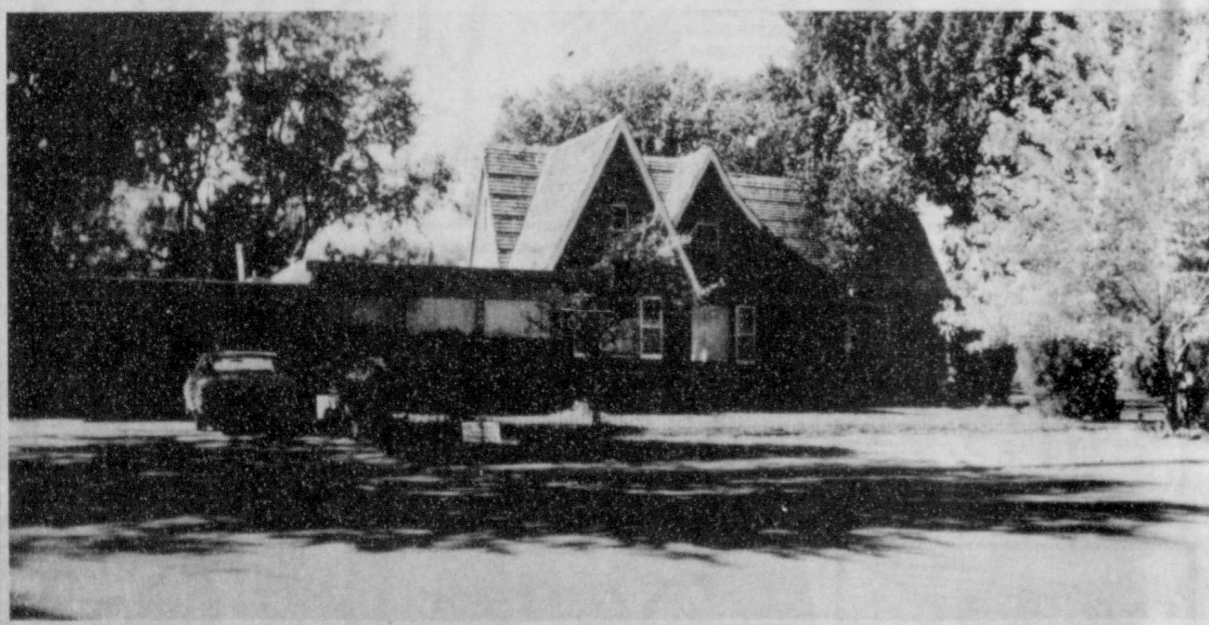
See you December 10 from 2:00 to 5:00 p.m.



DORIS ARMES - 407 CLUCK, GRUVER



MR. AND MRS. C.L. CROSSLAND - 303 S. BERNICE, SPEARMAN



MR. AND MRS. RANDALL WILLIS - 706 WILMETH DR., SPEARMAN

Pre-Christmas Special

Every week from now 'til Christmas
Sales start Thursdays (open 'til 7 p.m.) and end Wednesdays
This week's sale:

20% "GUESS" Fashions

Infants to Juniors and Young Mens

OFF KIDS' STUFF

719 W. 7TH • SPEARMAN

Hansford County Hospital District announces the opening of the clinic at 710 S. Roland

Dr. Raul C. Tamayo

Pediatrics
General Medicine

Office Hours: 8-12; 1-5
Call 659-5234 for appointment

Clinic Staff: Brenda Busch and Tanja Whitefield, LVN

Hansford County Hospital District announces the opening of the clinic at 702 S. Roland

Dr. Ahmed Iqbal

Internal Medicine
General Medicine

Office Hours: 8-12; 1-5
Call 659-2846 for appointment

Clinic Staff: Betty Pugh, Darlene Pierce, Helen Prachar, & Elizabeth Duncan, RN



Sharks attack men ten times more often than they do women.

PHEASANT HUNTERS BREAKFAST

Saturday, December 9th
5:30 a.m. to 7:30 a.m.
Gruver High School Cafeteria
Cost - \$5

Gun Raffle

\$5/ticket • 7:00 a.m.
Sponsored by Alpha Mu Psi

GRUVER INDEPENDENT SCHOOL DISTRICT Combined Balance Sheet - All Fund Types and Account Groups August 31, 1995

Data Control Codes	Assets	Governmental Fund Types		Proprietary Fund Types		Fiduciary Fund Types		Account Groups		Totals (Memorandum Only)
		100-199	200-499	500-799	800-899	901	902	903		
1110/50	Cash (Note C)	\$252,341.08	\$ 7,829.69	\$ 20,156.37	\$25,527.17	\$ -	\$ -	\$ -	\$ -	\$ 305,854.31
1170	Temporary investments, at cost (Note C)	609,336.87	-	-	-	-	-	-	-	609,336.87
1270	Receivables:	47,537.76	-	-	-	-	-	-	-	47,537.76
1260	Property taxes - delinquent (Notes D & E)	(30,369.95)	-	-	-	-	-	-	-	(30,369.95)
1230	Allowance for uncollectible taxes	-	8,742.31	-	-	-	-	-	-	8,742.31
1250	Due from state agency	-	-	4,573.97	-	-	-	-	-	4,573.97
1270	Sundry receivables	9,536.75	-	-	-	-	-	-	-	9,536.75
1270	Accrued interest receivable	11,785.02	-	-	-	-	-	-	-	11,785.02
1280	Due from other funds	11,733.86	-	-	-	-	-	-	-	11,733.86
1240	Due from other	33,676.94	-	-	-	-	-	-	-	33,676.94
1300	Inventories, at cost	-	6,516.01	-	-	-	-	-	-	6,516.01
1400	Other current assets	30,496.49	-	-	-	-	-	-	-	30,496.49
1510	Land, buildings, and equipment:	-	-	-	-	-	-	219,296.66	-	219,296.66
1520	Land (Note G)	-	-	-	-	-	-	1,822,359.67	-	1,822,359.67
1540	Buildings and improvements (Note G)	-	-	-	-	-	-	1,616,463.87	-	1,616,463.87
1540	Furniture and equipment (Note G)	-	-	-	-	-	-	1,616,463.87	-	1,616,463.87
1000	Total assets	\$576,076.78	\$23,059.88	\$ 25,030.34	\$25,527.17	\$ -	\$ -	\$5,658,122.20	\$ -	\$ 6,707,826.37
2110	Liabilities:	-	-	-	-	-	-	-	-	-
2110	Current liabilities:	-	-	-	-	-	-	-	-	-
2110	Accounts payable	\$ 5,166.56	\$ -	\$ 10,449.66	\$ -	\$ -	\$ -	\$ -	\$ -	\$ 15,616.22
2110	Payroll deduction and withholdings payable	926.08	365.94	-	-	-	-	-	-	1,292.02
2140	Accrued wages payable	131,563.55	6,969.17	-	-	-	-	-	-	138,532.72
2170	Due to other funds	11.57	11,733.86	-	-	-	-	-	-	11,745.43
2190	Due to student groups	-	-	-	25,527.17	-	-	-	-	25,527.17
2300	Deferred revenues	128,978.53	1,738.49	-	-	-	-	-	-	130,717.02
2000	Total liabilities	\$268,664.59	\$20,807.46	\$ 10,449.66	\$25,527.17	\$ -	\$ -	\$ -	\$ -	\$ 325,468.88
3100	Fund equity:	-	-	-	-	-	-	65,658,122.20	-	\$ 65,658,122.20
3100	Investments in fixed assets	-	-	-	-	-	-	-	-	-
3410	Investment reserves:	-	6,516.01	-	-	-	-	-	-	6,516.01
3430	Prepaid items	30,496.49	-	-	-	-	-	-	-	30,496.49
3430	Reserve for self-funded insurance	80,000.00	-	14,580.68	-	-	-	-	-	94,580.68
3510	Designated fund balances:	180,000.00	-	-	-	-	-	-	-	180,000.00
3540	Designated for construction	23,000.00	-	-	-	-	-	-	-	23,000.00
3600	Designated for equipment	392,913.30	(4,223.59)	-	-	-	-	-	-	388,689.71
3900	Undesignated fund balance	\$208,210.19	\$ 7,252.42	\$ 14,580.68	\$ -	\$ -	\$ -	\$5,658,122.20	\$ -	\$ 6,381,005.49
4000	Total fund equity	\$576,076.78	\$23,059.88	\$ 25,030.34	\$25,527.17	\$ -	\$ -	\$5,658,122.20	\$ -	\$ 6,707,826.37

The accompanying notes are an integral part of this statement.



GET BACK - The girls 7th grade teams of Spearman and Gruver were in action against each other last Monday night in Spearman. Seen here, several unidentified roundball players are seen getting ready for the bucket. (Photo by Chad Davis)

Basketball...

4, Autumn Bateman -2, Tara Shapley -2.

Synopsis: The Gruver ladies did not play that poorly - it's just that the Pantherettes are a very good team. Gruver took 2nd place in the Lake Meredith Classic, and Weslyn Maupin was named to the All-Tournament team. Gruver rallied from an early deficit to lead 23-22 midway through the second quarter. But the Pantherettes quickly grabbed the lead back. The Lady Hounds need not hang their heads. They will beat Panhandle this year.

Hounds (5-2) vs. Perryton
Saturday 12-02-95 at Lake Meredith Classic
Perryton 11 24 38 51
Gruver 16 31 46 52
3-pointers - Phil DeLaCruz, Josh Mayhew, Sammy Renteria.

Gru - Wylee Maupin -13, Sammy Renteria -10, Josh Mayhew -9, Travis Ferguson -7, Brant Armes -4, Tye Womble -4, Phil DeLaCruz -3, Juan Arreola -2.

Synopsis: The Hounds were in control the whole ball game, but Perryton rallied at the end. Gruver led 5-38 early in the 4th quarter, but Perryton scored ten straight points to trail 50-48. Wylee Maupin hit with 1:17 left, but Perryton scored to make it 52-50 with 1:04 left, on a pair of free throws. But Perryton then missed a chance to

tie as they hit only one of two free throws with 47 seconds left. Gruver then held on for the 52-51 victory. The Hounds were co-champions of the Lake Meredith Classic, and Sammy Renteria was named to the All-Tournament Team.

Lady Hounds JV (2-5) vs. Canadian
Thursday 11-30-95 at Gruver Tourney
Canadian 6 20 26 33
Gruver 5 12 13 21
Gru - Kathy Slough -7, Crystal Christian -6, Amber Roberts -3, Steffany Simon -3, Erika Salmans -2.

Lady Hounds JV (3-5) vs. Perryton
Friday 12-01-95 at Gruver Tourney
Perryton 6 11 21 28
Gruver 10 22 24 34
Gru - Erika Salmans -12, Amber Roberts -8, Steffany Simon -6, Crystal Christian -4, Erika Barrera -2, Jennifer Duggan -2.

Lady Hounds JV (3-6) vs. Stratford
Saturday 12-02-95 at Gruver Tourney
Stratford 10 21 28 39
Gruver 4 9 15 31
3-pointers - Crystal Christian -2.

Gru - Erika Barrera -7, Crystal Christian -6, Steffany Simon -6, Jennifer Duggan -5, Amber Roberts -4, Erika Salmans -3.

Hounds JV (2-5) vs. Canadian
Thursday 11-30-95 at Gruver Tourney
Canadian 4 12 26 40
Gruver 6 19 23 33
Gru - Jared Johnson -7, Buster McLain -5, Juan Bravo -4, Keith Cassidy -4, Matt Overbey -4, Jim Potts -3, Tucker Henson -2, Victor Luciano -2, Heath Tolleson -2.

Hounds JV (2-6) vs. Spearman
Friday 12-01-95 at Gruver Tourney
Spearman 8 22 33 42
Gruver 2 12 24 33
3-pointers - Keith Cassidy, Buster McLain
Gru - Jim Potts -14, Heath Tolleson -5, Juan Bravo -4, Rob Murrell -4, Keith Cassidy -3, Buster McLain -3.

Hounds JV (3-6) vs. Highland Park
Saturday 12-02-95 at Gruver Tourney
Highland Park 6 18 32 42
Gruver 11 22 35 47
Gru - Tucker Henson -14, Jim Potts -14, Heath Tolleson -10, Buster McLain -4, Rob Murrell -3, Keith Cassidy -2.

USE THE CLASSIFIED SECTION!

There's something for everybody in the Classifieds. Everything from autos to zoom lenses.

Call Today!

The Hansford County Reporter-Statesman
(806) 659-3434 or 1-800-395-9482

POSTPONEMENT NOTICE
OPEN HOUSE AND PUBLIC MEETING
TXDOT ROUTE STUDY - LUBBOCK TO IH-10 AND
AMARILLO TO THE STATE LINE

The Open House and Public Meeting originally scheduled for December 11, 1995, at the Lubbock Memorial Civic Center, has been postponed. It has been determined that the recent change in the speed limit laws may affect the freeway feasibility results being presented at the meeting. Therefore, further evaluation will be necessary before the results are finalized. The meeting will be rescheduled at a later date. Once it has been rescheduled, a notice will be published in this newspaper, in the Route Study Newsletter, and on the Route Study Telephone Hotline (1-800-661-3234). Questions regarding this postponement should be directed to the Public Information Officer at the Amarillo Texas Department of Transportation District Office (806-356-3256).

Dobson's Christmas Gift To You...

FREE PHONES!

100% Satisfaction GUARANTEED!

Dobson Cellular has always given you the best service...and NOW the PHONE is FREE!*
Sign up for service and choose from these quality Motorola phones:
• Flipless hand-held phone
• Transportable "bag" phone
• Vehicle-installed phone

To make a GREAT GIFT even BETTER, pre-pay for service and features!

The Difference Maker
DOBSON CELLULAR SYSTEMS
FOR MORE DETAILS CALL
1-800-882-4154

MOTOROLA
Authorized Dealer
The world's leading manufacturer of cellular products.
* Certain terms and conditions apply. Subscriber is responsible for monthly service charges and airtime use. Minimum service contract required. ©1995, Dobson Cellular Systems.

AUTHORIZED AGENTS:
Cellular Communications 659-3762
Gruver Cellular 733-2180
W.T. Services 273-2092

Sports



OVER THE BACK - The Lady Hounds were in action last Tuesday night, as they hosted the AAAA Borger Bulldogs. Seen here Weslyn Maupin is going up for a rebounded ball why a Borger girl tries to block her out. (Photo by Chad Davis)

Basketball...

ing slump. This team has enough talent that it will overcome its slumps.

Hounds (3-2) vs. Sanford-Fritch

Thursday 11-30-95 at Lake Meredith Classic
 Gruver 15 23 33 53
 Fritch 14 31 46 65
 3-pointers - Sammy Renteria -2, Phil DeLaCruz.

Gru - Sammy Renteria -11, Josh Mayhew -8, Juan Arreola -7, Bailey Barkley -6, Tye Womble -6, Wylee Maupin -4, Phil DeLaCruz -3, Travis Ferguson -3, Scott Jarvis -3, Andy Morris -2.

Synopsis: Fritch is unbeaten, 5-0, and they were more than the Hounds could handle for the second time this year. Gruver jumped out to a 15-11 lead, but the Eagles quickly regrouped and used their big height advantage to build a big lead. Fritch led by 17 at one point late. Not much positive to write about in this game for the Hounds, as the Eagles are a bigger classification school, and the Hounds best not worry about not being able to beat the Eagles this year. They may get another shot at them in the Perryton Lions Club Tourney.

but in this game it didn't matter. Coach Myatt is not ready to declare their shooting slump over, however.

Hounds (4-2) vs. Panhandle

Friday 12-01-95 at Lake Meredith Classic
 Gruver 8 20 37 56 63
 Panhandle 16 35 43 56 60
 3-pointers - Brant Armes -2, Josh Mayhew -2, Daniel Bort.

Gru - Josh Mayhew -14, Bailey Barkley -9, Wylee Maupin -9, Brant Armes -8, Juan Arreola -6, Sammy Renteria -5, Phil DeLa Cruz -4, Daniel Bort -3, Max Frick -2, Scott Jarvis -2, Travis Ferguson -1.

Synopsis: This was a great victory for the Gruver boys. According to Coach Garland, Gruver, down 15 points at halftime, caused a lot of turnovers in the second half and rallied for the overtime victory. Coach Garland noted that lack of depth probably hurt the Panthers, as they had only eight players and

a couple of them fouled out. Gruver did not play well in the first half, but Coach Garland noted they received contributions from all in the second half and overtime. Panhandle was ranked in the TABC Top Twenty in their pre-season poll.

Lady Hounds (5-2) vs. Panhandle

Saturday 12-02-95 at Lake Meredith Classic

Panhandle 20 34 46 64
 Gruver 15 25 38 57
 Gru - Kiki Carthel -21, Kaysha Cluck -13, Weslyn Maupin -11, Molly McLain -4, Amber Murrell -

See BASKETBALL, page 9

Basketball...

Lady Hounds (4-1) vs. Perryton

Thursday 11-30-95 at Lake Meredith Classic
 Gruver 8 16 28 43
 Perryton 19 23 34 41
 3-pointers - Cara Hathaway.

Gru - Weslyn Maupin -17, Molly McLain -8, Kiki Carthel -7, Cara Hathaway -5, Kaysha Cluck -2, Amy Gillispie -2, Amber Murrell -2.

Synopsis: The Lady Hounds are mired in a terrible two-game shooting slump. This was a Perryton Rangerettes team playing without Linda Pshigoda, and they opened up and 11 point first quarter lead. Then, in the third quarter, with 2:22 left, they led by 12 big points, 34-22. It really looked as though it was curtains for the Gruver ladies, who could not seem to buy a basket. But Amy Gillispie had a steal and a

layup to spark the beginnings of a comeback. Cara Hathaway and Weslyn Maupin followed with buckets, and it was down to 34-28 at the third quarter break. Molly McLain hit a driving layup with 3:30 left in the game to tie it 36-36. Then with 2:25 left, McLain hit from under the basket and the Lady Hounds led 38-36. But a Perryton girl nailed a trey to put them up 39-38, and that's when Hathaway had the key basket of the afternoon. She answered that trey with a trey of her own, and for a big girl, that trey for Cara was really impressive - especially that she had the nerve to take the shot trailing by one point with only 1:51 left in the game. The game was tied 41-41 with 58 seconds left, but Maupin hit the game winner, a jumper with 31 seconds left. Not to worry about the shoot-

Lady Hounds (5-1) vs. Sanford-Fritch

Friday 12-01-95 at Lake Meredith Classic
 Gruver 11 30 47 53
 Fritch 2 7 16 19

Gru - Kiki Carthel -12, Weslyn Maupin -10, Molly McLain -8, Kaysha Cluck -6, Cara Hathaway -4, Amber Murrell -4, Tara Shapley -4, Joni Hart -3, Autumn Bateman -2.

Synopsis: According to Coach Steve Myatt, the Lady Hounds played much better. The Lady Hounds took a 23 point lead at halftime, and won the game by 34 points. Coach Myatt has been staying up late trying to figure out how to help the Lady Hounds snap out of their slump, and it paid off in this game. The Lady Hounds did not shoot well from the free throw line,

DRIVER EDUCATION CLASSES
 Independent Driving School
 814 S. Main • Perryton
 (806)435-2579
 Lanny Hargrove

ALLSUP'S
Keep Truckin'
 WITH A TOY THAT PAYS FOR ITSELF*
 DIE-CAST COLLECTABLE METAL
PREMIER EDITION COLLECTORS SERIES
 *Die-cast trucks command \$1,000's in the collectable markets!
 Toy Tanker Truck features:
 • Friction Motorized Wheels
 • Working Doors and Parts
 • Die-Cast Metal Cab
 • Mold Injected Tanker
\$5.99 with fill up (8 gallon minimum)
\$8.99 without fill up
 Quality Gas **FINA** Convenience

THE BEST MINI-DISH ACTUALLY COSTS LESS!
PAY LESS. GET MORE.
 PRIMESTAR is the best mini-dish value you can get! There's nothing to buy, nothing to maintain. For a low \$149 installation fee and about a dollar a day, you get everything, including:
 • All-digital mini-dish and receiver
 • A great programming package including The Disney Channel (two feeds!)
 • 100-page full-color monthly guide
 • Neat, no-hassle professional installation
 • Worry-Free Warranty
 Forget about spending a small fortune on a mini-dish TV system. Get PRIMESTAR and get it all...for a lot less!
PRIMESTAR
 PRIMESTAR BY TCI
 In Spearman and surrounding areas,
CALL 1-800-716-0004
 or call Audio Video Electronics at 249-5019 or Sanders Satellite at 353-6706 (Amarillo) or Future Comm at 935-3482 (Dumas)
 Or call your authorized PRIMESTAR Retailer.
CALL TODAY AND ASK HOW TO SAVE \$60 MORE!

EFFECTIVE DEC. 3-9, 1995
 STORE LOCATION
 SAVE ON **Coca-Cola**
 Enjoy **Coca-Cola CLASSIC**

ALLSUP'S
 FRESH CHRISTMAS TREES
SCOTCH PINE
 FROM NORTHERN MICHIGAN
 5'-7' Tall
12.99
 Your Choice

ALLSUP'S HAM OR SAUSAGE, EGG AND CHEESE
Breakfast Burritos
 EACH
99¢

ALLSUP'S Barbeque Beef Sandwich
 EACH
99¢

LANA'S Pork Egg Roll
2\$1 FOR

RUSSET Potatoes
 10 LB. BAG
\$1.29

SANTA FE Flour Tortilla
 12 CT. PKG.
99¢

NABISCO® PREMIUM Saltine Crackers
 1 LB. BOX
99¢
 STORE SPECIAL

ALLSUP'S Homogenized Milk
 GALLON
\$1.99
 STORE SPECIAL

MELLO CRISP Bacon
 1 LB. PKG.
99¢
 STORE SPECIAL

Best Holiday Buys
 DORITOS® OR FRITOS® GRAB BAGS REG. 75¢ 2 FOR \$1.00
 CUDDLES 20 LRG. OR 26 MED. DIAPERS EACH \$4.99
 ALLSUP'S SANDWICH 1.5 LB. LOAF BREAD 69¢ EACH OR 2 FOR \$1.00
 OZARKA SPRING WATER 33.8 OZ. **99¢**

"IT'S FOR YOU"...

The Classifieds Have Something For Everyone!

The Home Seiler...
The Car Buyer...
The Do-It-Yourselfer...
The Mother's Helper...
The Job Seeker...
The Bargain Reaper...

When you want results, turn to The Classifieds.

The Hansford County Reporter-Statesman

Serving Hansford County Since 1907

Telephone: 1-800-395-9482 or (806)659-3434

JOB OPPORTUNITIES

OWN YOUR OWN APPAREL OR SHOE STORE, CHOOSE: Jean/sportswear, bridal, lingerie, westernwear, ladies, men's, large sizes, infant/children, petite, dancewear/aerobic, maternity, or accessories store. Over 2000 name brands. \$25,900 to \$37,900: inventory, training, fixtures, grand opening, etc. Can open 15 days. Mr. Loughlin (612) 888-6555. S1, 3tp

HELP WANTED: Semi truck drivers, CDL required. Must be 25 yrs. old. Conventional's new hopper bottom trailers. McCarty Trucking, 806/362-4807. S10, RTN

HELP WANTED: Caprock 1 is now taking applications for pen rider. Call Dave at 733-5043 or after 6 p.m. call 733-2880. S49, 2tc

HANSFORD COUNTY HOSPITAL DISTRICT HAS THE FOLLOWING POSITIONS AVAILABLE:
Business office opening for part-time insurance clerk with computer experience and good communication skills; Full-time experienced cook position in dietary with excellent benefits; 6-2 and 1-7 shifts available. For more information or to apply contact Linda Stalcup, Personnel Director, Hansford County Hospital District, 707 Roland, Spearman, Texas; 806/659-2535. S49, 2tc

AUTOMOBILES

FOR SALE: 1985 T-Bird with power windows and locks, nearly new tires, AM/FM cassette, looks good, runs good, would make good kid car. Available in December. \$2,700. Call 659-3846 after 6:00 p.m. S44, RTN

FOR SALE: 1984 Ford Truck with 20' van and lift. V-8 diesel engine. Excellent condition. For more information call 659-3432 or 659-2912. S52, RTN

FOR SALE: Good dump truck for sale. If interested call after 6:00 p.m., (806)249-5827. S35, RTN

FOR LEASE

FOR LEASE: 2 1/2 acres fenced in yard. 50x70 building with crane, office space on front of building, located at industrial area by old airport. \$500 per month. For more information call 316-626-8906 or 316-624-5358. S38, RTN

OSGOOD MONUMENT CO.

Amarillo, Texas

Dealers of Rock of Ages Granite, as well as all colored granites, marble and bronze memorials.

**Represented by
Boxwell Bros.
Funeral Home
519 S. Evans
659-3802**

Are You A Victim of Domestic Abuse . . .
Physical, Emotional or Sexual?
Call Toll Free
1-800-753-5308
We are in Spearman on the 1st, 3rd, & 5th Wednesdays of each month at the First Presbyterian Church, 1021 Cotter. On the 2nd & 4th Wednesdays we are at the First Christian Church at 510 King in Gruver. We can come to Spearman & Gruver any time upon request. We operate a safe place for victims & their children to stay in times of crisis.

Panhandle Crisis Center
Serving Hansford, Lipscomb & Ochiltree Counties
317 S. Main
Perryton, Tx.
Memorials Accepted

SERVICES

PITS CLEANED: Dragline or Loader. Call Lee Roy Mitchell, 733-2384 or 733-2175. S47, 1tc/RTN.

J & M Service Center 24-Hour Service-415
Collard, Spearman 79081. 659-5519 or 659-3352. Tires, flats, oil & lube, wash, brakes, batteries and minor repairs. Now selling gas. S27, 1tc/RTN.

LAUNDRY SERVICE: Special - 60¢ a pound. Mon., Wed., and Fri. Family Laundry. S40, RTN

SERVICES: Kathy's Gift & Accessory featuring Home Interior items. Call 882-4466 and leave message. S40, RTN

WANT TO LOSE WEIGHT WITHOUT GIVING UP YOUR FAVORITE FOODS? Want to be better nourished and slimmer? The solution is simple, and within easy reach. Just pick up the phone and call me: 1-800-311-6909. S46, 4tc

FOR SALE

FOR SALE: Bruce Jenner Powerwalk Plus treadmill and Sears 100 Body Shop Exerciser. Excellent condition. Priced to sell. 733-2724. S49, 3tc

FOR SALE: Brand new Nortrack Walk Fit. Paid \$600, will sell for \$350 to get rid of it. Call 659-2794. S48, 3tp

FOR SALE: A Mobile Air electric oxygen machine. Low hours. Call 659-3332 or 659-3580. S46, RTN

H&B ARCHERY: We have a good selection of archery equipment and now ordering black powder guns and accessories. Air rifles and gift certificates. Call for price of bows on closeout. H&B Archery, Amarillo, TX, (806)381-1666. S46, 6tc

FOR SALE: Queen size waterbed, good condition. Has headboard, mattress, pad, heater, and 12 underneath drawers. \$100. Call 659-2875 after 6 p.m. or leave message. S48, RTN

FOR SALE: Matua and Gala Brome. Call 659-3838. S49, 12tc

**JAN'S ETC.
NEW & USED & ANTIQUES
TOO**

Everything for home and family. Plains Shopping Center in Spearman

Open Monday - Saturday
- 10 a.m. til 6 p.m.

Tex SCAN

Statewide Classified
More than 300 Texas newspapers for \$250.
Advertising Network
Call this newspaper for details.

BUSINESS OPPORTUNITIES
ENTREPRENEURS DREAM! FIVE national companies make up one unique innovative opportunity. Concrete resurfacing architectural coatings, wall texturing, marble vanities, epoxy coatings. Protected area dealership now being offered. Realistic earnings, six figures plus. Call 1-800-854-8226, \$12,500 investment.

FULFILL YOUR DREAM... Own a ServiceMaster Franchise. Start today for as little as \$2,400 down plus working capital. World's leading professional cleaning company provides: •Stability of \$4 billion company •We serve 5.6 million customers •Continuous training •Ongoing market support. Let ServiceMaster fulfill your dream to own your own business. ServiceMaster 1-800-230-2360.

GOLF, ETC. HAVE you ever dreamed of owning your own golf shop? Turkey package, \$10,000 - \$30,000 initial investment. For information/free brochure. Call Bubba Keith, 1-800-806-8633.

DRIVERS WANTED
DRIVER - YOU DESERVE the best! Only 4+ months experience. Longhaul - \$600+/week average, 2,500 miles/week, excellent benefits. Generous bonus programs. Burlington Motor Carriers. 1-800-Join-BMC. EOE.

DRIVERS: FLATBED 48 state OTR. Assigned new conventionals, competitive pay, benefits. \$1,000 sign on bonus, rider program, flexible time off. Call Roadrunner Trucking 1-800-876-7784.

DRIVERS/OTR... \$1,000 sign-on bonus, new conventional equipment, great benefits, lease program. Earn up to 29 cents per mile. Students welcome. Cal-Ark International. 1-800-950-TEAM. 1-800-889-1030.

DRIVERS/OWNER OPERATORS with CDL-A and hazmat, ATS wants you! Enjoy top pay/benefits, high miles and much more. Call Anderson Trucking Service at 1-800-241-

ABSOLUTELY NO HUNTING will be allowed on the Jarvis place on Hwy 281. Trespassers will be prosecuted to the fullest extent. Don't ask and don't call. S46, 4tc

PUBLIC NOTICE

LEGAL NOTICE
The Spearman Independent School District is currently accepting and will continue to accept price quote proposals of athletic equipment and supplies for all sports. Please contact Troy Vanderburg at 659-2116 for specifications.

PUBLIC NOTICE

LEGAL NOTICE
As required by state law, the Spearman Independent School District is giving notice that it will be accepting sealed bids for the purchase of unleaded gasoline and diesel fuel at each meeting of the Board of Trustees. If you are interested in submitting a bid and have not been receiving the instructions to do so please contact Troy Vanderburg at 659-2116. S48, 1tc

PUBLIC NOTICE

LEGAL NOTICE
The Spearman Independent School District is currently accepting and will continue to accept price quote proposals of athletic equipment and supplies for all sports. Please contact Troy Vanderburg at 659-2116 for specifications.

PUBLIC NOTICE

LEGAL NOTICE
The Spearman Independent School District is currently accepting price quote proposals for the purchase of new computers and peripherals. The deadline for submission of proposals is December 14, 1995. Please contact Troy Vanderburg at 659-2116 for specifications. S48, 1tc

PUBLIC NOTICE

NOTICE TO ALL PERSONS HAVING CLAIMS AGAINST THE ESTATE OF BERNARD A. BYERS

Notice is hereby given that original Letters Testamentary for the Estate of Bernard A. Byers were issued on November 14, 1995, in Cause No. 2142 pending in the County Court of Hansford County, Texas, to Alvin Byers. The post office address of the Executor is #9 Golden Circle, Spearman Texas 79081. All person having claims against this estate, which is currently being administered, are required to present them within the time and in the manner prescribed by law. Dated the 14th day of November, 1995. John L. Hutchison Attorney for the Estate S49, 1tc

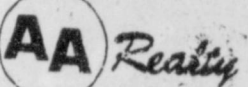
MUST SELL OR RENT SPEARMAN HOME NOW!

*Owners already relocated!
Ready to Bargain!!!*

2,000 sq. ft. brick house, 3 bedroom, 2 bath, double lot, garage apartment, 2 living areas, many built-ins, kitchen appliances, play-yard equipment, window treatments and ceiling fixtures included.

**Serious buyers only
Call collect
(812)331-8873
or call locally - Cecil Biggers
659-5531
Credit Check Required**

REAL ESTATE



Allen Alford - Broker - 659-3034
Julie Martin - Broker - 659-2425

1103 S. Townsend - 3/1 1/4 1, good loc.
613 Kenneth - 5 BR, 2 story, rock house
Good Hanger & Storage - Old Airport REDUCED!!!

NEW LISTINGS
2 LOTS at 7th & Barkley - Bldrs. Dream
1010 Haney - 3/1/1
160 Acres - S.E. of county
Gruver - 400 - W01 - Front Street
FOR QUALITY & SERVICE CALL US TODAY
We Need Your Listing.

REAL ESTATE

HOUSE FOR SALE: REDUCED!!! 5 lots fenced, 2 car carport, shed, hot tub, fish pond, 3 bedroom, 3 bath, handicap accessible, large living room, bar, and all contents, all or part and we take trades. Saturdays only, 12 til 7, 605 Archer, 659-2235. S46, RTN

FOR SALE: 5 acre vacant lot, agriculture zoned, N.E. side of Spearman. Call (806)659-2117 or 3762. S42, RTN

OFFICE & BUILDING FOR SALE: 2,600 sq. ft. office and 45x60 Morton Building setting on 2+ acres. Barn heated and fully insulated. Nice facility. Please call (806)659-2117 or 3762. Located in Spearman. S42, RTN

FOR SALE BY OWNER: Easy to buy nice brick 3 bedroom home for smaller family. Fenced, nice neighborhood. Assume loan at 6% interest \$2,000 to seller, \$320 payments, taxes and insurance included. Lease purchase option. Call (806)296-6727. S44, RTN

HOUSE FOR SALE OR RENT: Brick, corner lot, 3 bedroom, 1 1/2 bath. Den could be used as bedroom, storage building, deck, central heat and air. Call 659-5108 after 6 p.m. S47, 3tp

FOR SALE: 2,000 sq. ft. brick, 4 bedroom, 1 3/4 bath, double garage, central air/heat, lots of improvements, 18x27 Morton bldg in bak yard, new fence and gates. Call (home) 659-3071 or (work) 659-3027. S49, RTN

FOR RENT

FOR RENT: 2 bedroom house. Call 659-3260. S49, RTN

FOR RENT: Small efficiency apartment, very clean, in a good neighborhood. First house south of the radio station. Can be seen at 119 S. Snider or call 659-2039. S48, 1tp

FOR RENT: 1 bedroom efficiency apt. Call 659-3260. S49, RTN

FOR RENT: 412 Rowland, central air and heat. 3 bedroom, 1 bath, closed garage, fenced backyard. \$350/mo., \$250 deposit. Call 659-2245.

NEW TRAMPOLINES

Mats & springs
Resew trampoline mats.
Make new boat covers.
Call (806)659-2109
Harry Stumpf
301 W. 12th
Spearman, Texas

Century 21

GOLDEN SPREAD REALTY

Janye Helton Pointer, Broker Owner
435-5444

414 Hwy 760 - 3/1 3/4, large lol, roomy house & a pool!

205 Hazelwood - Great buy, excellent condition

315 1/2 N. Bernice: Lot for sale.

East 7th Street - Mobile homes, lots to lease!!

© and ™ trademarks of Century 21 Real Estate Corporation. Equal Housing Opportunity. INDEPENDENTLY OWNED AND OPERATED.

HOMETOWN REALTY

Selling Spearman!
List your home with the Real Estate Professionals that the BUYERS call!

Rex Hoover - Broker - 800-755-4291
Larry Trooper - Sales - 659-3491
Diana Hoover - Sales - 659-9113

711 Collier - 3 bedroom, 1 bath, garage, central heat, PRICED TO SELL!
4 1/2 Miles West of Spearman - 2,894 sq. ft., 3 bedroom, 2 1/2 bath, fireplace, basement, 11 acres.

908 S. Bernice - 1,355 sq. ft., 3 bedroom, 1 bath, hardwood floors, 2 living areas, ceiling fans, storage building.

6 Miles South of Spearman - 320 acres Irrigated Farm Land.

706 Collier Dr. - 1,344 sq. ft., 3 bedroom, 1 1/2 bath, alarm system, kitchen, extra 720 sq. ft. barn.

1013 Linn Drive - 1,000 sq. ft., 3 bed, 2 1/2 bath, nice screened porch.

730 Gibner - 1,900 sq. ft., 3 bed, 1 bath, large, beautiful lawn, yard, storage building.

Under Contract

We need and appreciate your listings!

Obituaries

KERMIT FORD SNYDER - Kermit George Ford, Scurry County native and longtime Snyder resident, died Monday morning, Nov. 27, 1995 in Cogdell Memorial Hospital after a lengthy illness.

Mr. Ford was born in Scurry County on Ennis Creek January 18, 1911 to Newton and Esther Kimbrough Ford, being the oldest of four sons.

He married Thelma Layne on November 29, 1930 in Ira. Officiating was the Rev. J.W. McGaha. The couple was to have celebrated their 65th wedding anniversary this Wednesday.

During the 1930s, Mr. Ford was an itinerant farmer. In the fall of 1940, the couple moved to western New Mexico where he worked in nickel and copper mines as a dynamite blaster during World War II. By the early 1950s the family returned to Scurry County where Mr. Ford retired with Universal Treating Company in the early 1970s.

Mr. Ford had been a longtime member of the Baptist Church and was a member and inactive deacon of Morningside Baptist church.

He was preceded in death by a son, Jerry Don Ford, and a granddaughter, Suzan Ford Pearce.

Mr. Ford is survived by his wife, Thelma of the home; two sons, Weldon Ford of Abilene and Leon Ford of Midland; two daughters, Joan Holladay and Kay Hickman, both of Snyder; 11 grandchildren; and 17 great grandchildren.

Funeral service for Kermit Ford were held Thursday, November 30, at 10:30 a.m. at Bell-Cypert-Seale Funeral Home Chapel. Officiating was the Rev. C.J. Smith of Ira and the Rev. Keith Prather of Paducah.

Burial will follow at Hillside Memorial Gardens Cemetery.

In lieu of flowers, the family requests donations to a favorite charity or to the Jerry Ford Scholarship Fund at Western Texas College.

RAY H. DONAHUE

SPEARMAN - Ray H. Donahue, 66, died Monday, December 4, 1995.

Services will be held Thursday, December 7, 1995, at 2:00 p.m. at the Spearman Church of Christ with Rev. Gaylord Cook and Rev. Arnis Pape officiating.

Mr. Donahue was born in 1929 in Holiday, Texas. He had lived in the Spearman area for 29 years moving from Amarillo. He married Martha McBride in 1950 at Irving, Texas. He owned and operated Donahue Ditching in Spearman from 1973 until the present. Mr. Donahue was a member of Spearman Church of Christ, Hansford Lodge #1040, and Scottish Rite in Dallas.

Survivors include: his wife Martha of Spearman; two sons, Ken Donahue of Perryton and Ross Donahue of Spearman; one daughter, Tammy Pugh of Beaver, OK; two brothers, Frank M. Donahue of Baytown, TX, and James Donahue

of San Francisco, Calif.; and five grandchildren.

LOIS R. ALLISON

SPEARMAN - Lois R. Allison, 77, died Friday, December 1, 1995.

Services were held at 2:00 p.m. Monday in Union church with the Rev. Calvin Springer officiating. Burial was in Hansford Cemetery by Boxwell Brothers Funeral Home.

Mrs. Allison was born in Las Animas, Colo. She lived in the Spearman area for nine years, moving from Topeka, Kan. She married Richard "Dick" P. Allison in 1939 at Borger. He died in 1993. She was a restaurant and motel operator before retiring. She was a member of the Union Church and the Order of the Eastern Star.

Survivors include a daughter, Suzanne McDaniel of San Diego, Calif.; two sons, Donald Allison of Topeka and Paul Allison of Spearman; a sister, Lela Mae Ritchie of Delta, Colo.; six grandchildren; 10 great-grandchildren; and two great-great-grandchildren.

FAY WILBANKS KLUTTS

SPEARMAN - Fay Wilbanks Klutts, 92, died Saturday, December 2, 1995.

Graveside services were held at 10:30 a.m. Monday in Hansford Cemetery with Terry Danley, minister of Perryton Church of Christ, officiating. Arrangements are by Boxwell Brothers Funeral Home.

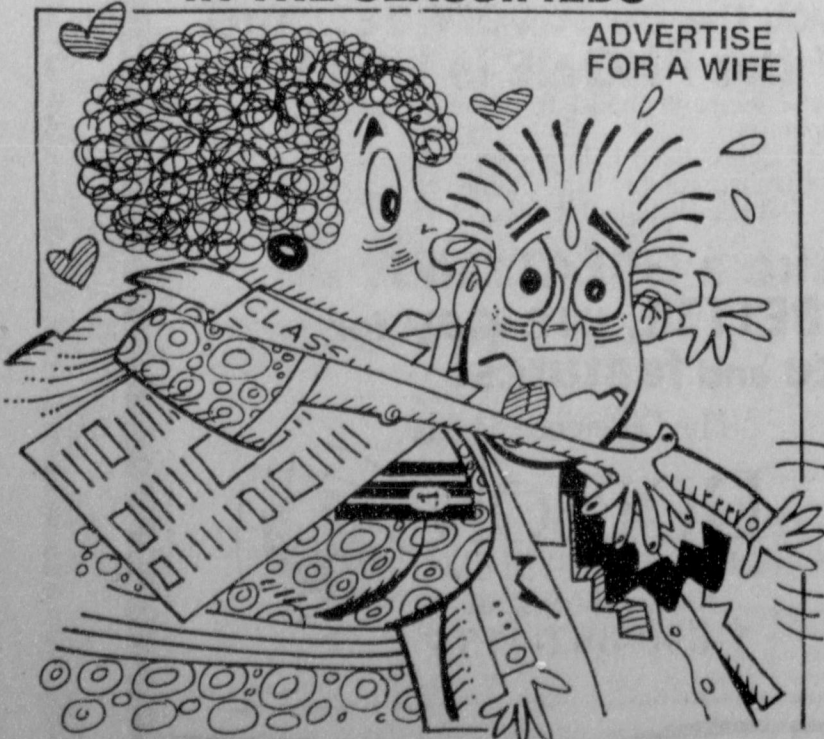
Mrs. Klutts was born in Haskell and lived in the Spearman area for 92 years. She married James Chesley "Ike" Klutts in 1926 at Spearman. He died in 1970. She was a restaurant operator and a farmer before retiring. She formerly owned and operated "The Club Cafe" in Dalhart and "The Cactus Cafe" in Amarillo. She was a member of the First Christian Church.

Survivors include two nephews, Henry Wilbanks of Canyon and Floyd Wilbanks of Grandview; and two nieces, Jane Traylor of Dumas and Margarette Evans of Spearman.



FAY WILBANKS KLUTTS

Where buyers and sellers meet... IN THE CLASSIFIEDS



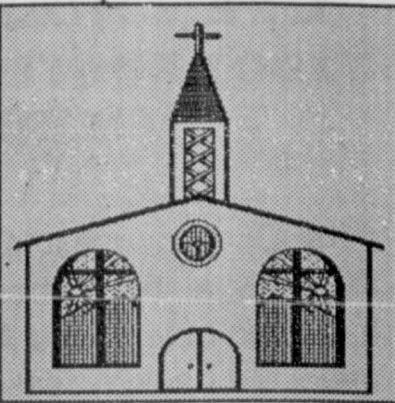
ADVERTISE FOR A WIFE

CALL TODAY . . .

THE HANSFORD COUNTY REPORTER-STATESMAN
213 Main • 800-395-9482 • 659-3434

Let us replenish the seed of faith through...

REGULAR CHURCH ATTENDANCE, DAILY BIBLE READING & PRAYER



Curtis' Hot Oilers
806-659-3432

"Taking Service to Perfection"
806-659-2912 P.O. Box 714
800-821-6714 Spearman, TX 79081

Palo Duro Supper Club

22 S. Archer
659-2232

C.O.'S SUPPLY CO.

Plumbing & Tire Sales & Service

421 W. Kenneth • Spearman
659-3781 or 659-3555

Bartlett's Ace Hardware

105 W. Broadway
733-2404

GILLASPIE

AUTO & TRUCK CENTER, INC.
DIESEL • OLDS • PONTIAC • BUICK
CHRYSLER • PLYMOUTH • DODGE
Hwy 207 South • P.O. Box 430 (806)659-2541
SPEARMAN, TEXAS 79081

THE HANSFORD COUNTY REPORTER-STATESMAN

Serving The Communities Of Spearman, Gruver & Morse
213 Main • 659-3434
1-800-395-9482

PORTER SATELLITE

TREY PORTER
806-659-3657
420 Davis
Spearman, Texas 79081

Gruver Cablevision

Quality Family Entertainment with
"the Disney Channel"
308 Main • 733-5295

Morse Implement Company

"Join us in church this week"

Boxwell Bros. Funeral Home

THE HANSFORD COUNTY REPORTER-STATESMAN

Serving The Communities Of Spearman, Gruver & Morse
213 Main • 659-3434
1-800-395-9482

CORONADO HOSPITAL

Pampa, Texas
(806)665-3721

Compliments of
G&G FOODLINER

516 Main • Gruver
733-2471

He Helped Me See Life Through... THE EYES OF GOD

I was a little girl, then. The pews at our church were rough wooden benches, and my feet wouldn't reach the floor.

But, as though it were yesterday, I remember his sermon. About a woman who poured oil on the feet of Jesus. Some people said this was a wasteful thing to do. The oil was expensive; the money might have been given to the poor...but Jesus wasn't angry with the woman!

"In the eyes of God," our old minister said, "the most precious treasure is the love in a human heart."

No single thought has influenced my life more than that one. Most of my happiness - all of my strength when sorrows come - have been somehow entwined with that simple truth. I shudder at times to think; what if that day I had not been there?

A sermon, a prayer, a Bible passage does not touch the same chord in every heart. But as you seek each Sunday to see life through the eyes of God, there will come mighty visions stirring the depths of your soul.



Sunday Matthew 24:29-44		
Monday 1 Thessalonians 2:17-3:13	Wednesday 1 Thessalonians 4:13-18	Friday 1 Thessalonians 5:12-28
Tuesday 1 Thessalonians 4:1-12	Thursday 1 Thessalonians 5:1-11	Saturday Psalm 126

Scriptures Selected by The American Bible Society
Copyright 1995, Keister-Williams Newspaper Services, P. O. Box 8005, Charlottesville, VA 22906

In Spearman...

- Apostolic Faith Church**
822 S. Dressen • 659-2870
Sunday School: 10 a.m.
Worship: 11 a.m.
Evening Worship: 6 p.m. Sun.
Wed. Prayer Meeting: 7:30 p.m.
Pastor James Brown
- Trinity Community Church**
717 W. 7th Ave. • 659-2671
Celebration of Praise 10:15
Worship Service and Children's Church 10:30
Sunday Evening 6:30 p.m.
Wednesday evening: 7 p.m.
Pastor Dan Carter
- First Assembly of God**
401 N. Bernice • 659-2295
Sunday School: 9:45 a.m.
Worship: 10:50 a.m.
Evening Worship: 7 p.m.
Wednesday Worship: 7:30 p.m.
Youth: 7:30 Wednesday
Pastor Walter Greaser, Jr.
- Faith Lutheran Church (ELCA)**
1101 Bernice • 659-2252
(Worships with First Presbyterian Church)
- First Presbyterian Church**
(Worships with Faith Lutheran Church)
1021 Cotter • 659-2033
Sunday School: 9:45 a.m. at Lutheran Church
Worship: 11 a.m. (alternates monthly between addresses above)
Pastor Beverly Cook
- First Baptist Church**
123 N. Bernice • 659-5557
Sunday School: 9:45 a.m.
Worship: 11 a.m.
Evening Worship: 7 p.m.
Jr. High Youth: 6 p.m. Wed.
High School Youth: 7 p.m. Wed.
Youth Choir: 6 p.m. Sun.
Pastor Kyle Henderson
- Church of Christ**
121 S. Haney • 659-3244
Sunday Bible Class: 9:45 a.m.
Worship: 10:30 a.m.
Evening Worship: 6 p.m.
Bible Study Wed. 7:30 p.m.
KRDF Radio Program
Living With Christ 7:50 a.m. M-F
Minister Arnis Pape
- Fellowship Baptist**
1102 S. Archer • 659-2783
Sunday School: 10 a.m.
Worship: 11 a.m.
Evening Worship: 6 p.m. Sunday
Youth & Adult Serv.: 7:30 Wed.
Pastor Tim Luttrall
- Primera Mision Bautista**
502 E. 7th • 659-3991
Sunday School: 9:45 a.m.
Worship: 11 a.m.; Evening: 6 p.m.
Wed. Prayer Meeting: 7 p.m.
Thurs. Visitation: 7 p.m.
Pastor Isaias Martinez.

In Gruver...
First Baptist Church
402 E. Broadway • 733-2411
Sunday School: 9:45 a.m.
Worship: 10:50 a.m.
Disciple Training: 6 p.m. Sunday
Prayer Meeting: 7:30 p.m. Wednesday
Pastor Larry Miller

Church of Christ
209 King • 733-2760
Sunday School: 9:30 a.m.
Worship: 10:20 a.m.
Evening Worship: 6 p.m.
Wed. Evening Worship: 7:30 p.m.
Minister Bob Setliff

First Christian Church
510 King • 733-2960
Sunday School: 9:45 a.m.
Worship: 11 a.m.
Wed. Bible Study: 7:30 p.m.
Youth: 6:30 Wednesday
Pastor Gary Gumfory

Oslo Lutheran Church (ECLA)
West of Gruver on Hwy 15 & N. FM 1162
339-7646
Sunday School: 9:45 a.m.
Worship: 11 a.m.
Morning Prayer: 9 a.m. Wed.
Pioneer Clubs (Grades 1-6):
4-5:30 p.m. Wednesday
Pastor John R. Chandler

Community Bible Church (Interdenominational)
Hwy. 15 • 733-2443
Sunday School: 10 a.m.
Worship: 11 a.m.
Wed. Prayer Meeting: 7 p.m.

First United Methodist
Broadway & Garrett • 733-2651
Sunday School: 9:45 a.m.
Worship: 8:30 a.m. & 10:50 a.m.
Evening Worship: 6 p.m.
Pastor Lewis Holland

In Morse...

Morse Baptist Church
Pastor Mike Martin
733-2757

"Your Home Away From Home"
Nursanickel Motel
815 Hwy. 207 S.
Phone: (806)659-3737 P.O. Box 115
Spearman, Texas 79081

BERRY CLEANERS
DAN DESIMONE - OWNER
Phone 659-3122 • P.O. Box 1017
207 Main St. • Spearman, Tx. 79081

GRUVER FORD
531 Main • Gruver • 733-2431

Interstate Savings & Loan
322 Main • Spearman • 659-2559

Hagerman Services
Backhoe • Dozer • Welding
North Hwy. 15 • Spearman
659-5131

Gordon Drugs
Dependable Prescription Service
314 Main • Spearman
659-2141
Jim Evans

Compliments of...
AGCO of Spearman, Inc.
"See you in Church"
659-3751

"WE SUPPORT OUR LOCAL CHURCHES"
CAPROCK #1 & #2
Bill Park, Gen. Mgr.
(806)733-5043 or 733-5025
"Custom Cattle Feeding"

Drip irrigation conferences scheduled

The High Plains Underground Water Conservation District No. 1, the Texas Agricultural Irrigation Association, the Texas Agricultural Extension Service (TAEX), and the USDA-Natural Resources Conservation Service (USDA-NRCS) are sponsoring two drip irrigation conferences in December.

One conference will be held December 19 in Lubbock at the Texas Tech University Center Ballroom, and the other will be held December 20 at the Amarillo Civic Center. The Lubbock conference is co-sponsored by the Texas Tech University Water Resources Center, Mesa Underground Water Conservation District, Sandy Land Underground Water Conservation District, and the South Plains Underground Water Conservation District. The Amarillo conference is co-sponsored by the North Plains Groundwater Conservation District No. 2 and the Panhandle Groundwater Conservation District No. 3.

Both conferences will be held from 8 a.m. to 5 p.m., and a hospitality hour is scheduled for 5 p.m. to 6 p.m. after each conference.

A \$20 registration fee will be charged for each conference, which includes the noon meal and refreshments. A \$10 late charge will be added to all registrations received after December 14.

In drip irrigation, buried lines and emitters are used to apply slow, frequent applications of water to the soil surrounding the plant roots. Water losses caused by evaporation, deep percolation, and runoff are virtually eliminated. Drip irrigation can save as much as 30 to 40 percent of the water required by some other types of irrigation to provide the plants with an equal amount of water.

"Producers who are thinking about the installation of a drip irrigation system can attend either one of these conferences to get informa-

tion about the set-up and management of the system for different cropping productions," says High Plains Water District Assistant Manager Ken Carver.

Speakers at both meetings will discuss a wide range of topics pertaining to drip irrigation.

At the Lubbock conference, Greg Sokora, USDA-NRCS Civil Engineer, will discuss drip irrigation design; Dr. Dan Krieg of the Texas Tech University Plant and Soil Science Department will discuss drip irrigation scheduling; Dr. Don Dorsett of Texas A&M University will discuss forage production; Kater Kake with the TAEX will discuss cotton production; Joe Henggeler with the TAEX will compare the cost of drip irrigation to other types of irrigation, such as center pivots and surge; and Dr. David Bender of the Texas Agricultural Experiment Station will discuss vegetable production. In addi-

tion, sales representatives from two drip irrigation manufacturers will discuss drip tape and filtration systems.

At the Amarillo conference, Dr. Arland Schneider of the USDA-Agricultural Research Station at Bushland (USDA-ARS) will discuss drip irrigation design; Leon New with the TAEX at Amarillo will discuss drip irrigation scheduling using weather data; and Dr. Steve Evelt of the USDA-ARS will discuss corn production under drip systems.

In addition, several drip irrigation dealers will display their products and answer producers' questions during both conferences.

To register for either conference, contact the High Plains Underground Water Conservation District No. 1, 2930 Avenue Q, Lubbock, Texas 79405-1499, or call (806)762-0181.

Chamber Chatter

by Cindy Blackman
Chamber Manager

Be sure to fill out your ballots and mail them back to the Chamber as soon as possible. We need your feedback to recognize the new board members. Nominees on the ballot are Arlene Paschel, Paschel irrigation; Worth Whitworth, First State Bank; Liz Hickerson, Hickerson Jewelers; and Jeff Beedy, Gillaspie Auto and Truck Center.

The Chamber is looking for someone to take Santa Claus pictures on Saturday, December 16. If you would like to help us out and make some extra Christmas money, give us a call.

All the Chamber's special events

and community events are seeking funding for 1996. If you are looking for advertising or high profile community promotion venues, the Chamber needs to talk to you! Call us and let us know. The Chamber will be sponsoring a special Heritage Days Celebration and the July 4th Fireworks at Palo Duro Lake. Now is a great time to sign up if you would like to help with either of these events. Look for the announcement of meetings for the 1996 Heritage Days Celebration. Several clubs have already called the Chamber with ideas for this year's birthday party!

Make your plans now to attend the Chamber's annual banquet in April. The evening will be filled with awards including Citizen of the Year and the Business of the Year.

A big thank you to Craig Vinson and Southwestern Public Service for putting the Christmas decorations up around town. Craig has spent a lot of time making sure they are all working. Thank You!!!

The Board of Directors and Staff of the Spearman Chamber of Commerce Wish You a Very Merry Christmas & Happy New Year!

Pythagoras used to say life resembles the Olympic Games: a few men strain their muscles to carry off a prize; others bring trinkets to sell to the crowd for a profit; and some there are (and not the worst) who seek no further advantage than to look at the show and see how and why everything is done.

—Montaigne

The Hunters Feed

Opening Day of The Pheasant Season

December 9th

11:00 a.m. to 2:00 p.m.

At The Fellowship Hall at The Church
of the Brethren, Waka, TX

Bring your hunting party in and eat with us

ALL YOU CAN EAT FOR \$5.50

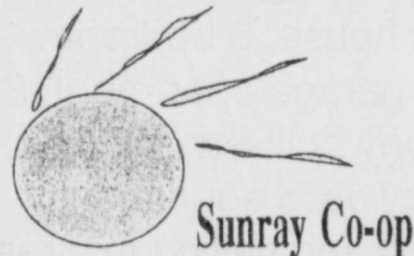


Kline's
Western Plaza Amarillo (806) 355-9268

MINX SALE

nobody but nobody has more styles, more fashions, bigger selections and more affordable prices than Kline's

- \$999.**
Mink Corde Jacket
Reg. to \$1495
- \$1799.**
Mink Stroller
Reg. to \$3595
- \$1999.**
Full Length Female Coat
Reg. to \$3995



3rd Annual Sales Exposition

Dec. 12th & 13th in Sunray

Dec. 14th in Gruver, at County Barn

9-5 Daily

Lunch

Your Once a Year Opportunity for

\$ BIG SAVINGS \$

- | | |
|----------------------------------|------------------------------------|
| Fertilizer, Seed, Crop Chemicals | Chemigation, Fertigation Equipment |
| Irrigation Parts, Accessories | Implement Parts, Accessories |
| Passenger, Truck, Tractor Tires | Fuel, Oil, Lubricants, Filters |
| Feed, Animal Health Supplies | Walls Coats, Boots, Wrangler Jeans |

5 CEU Credits for Appl. License Re-certification

HOPE TO SEE YOU THERE !



and this Year **ESPECIALLY** for the **LADIES** —

Arts & Crafts Show

Anita's - Formerly Anita's in Boots -n- Jeans
Seasonal Creations of Canyon
Mountain Man Candy Co.
Designs Unlimited
and More...
in Sunray each Day

Over \$2,000 in **DOOR PRIZES!**



Grand Prize