

THE NEWS

Israeli army set to quit Gaza after cabinet vote

Their bases dismantled and the Jewish settlements they guarded in ruins, Israeli troops were poised to withdraw from the Gaza Strip on Sunday and leave Palestinians a volatile testing ground for statehood.

Iraq govt closes Syria border

Iraq's government said it launched thousands of troops against rebels in the city of Tal Afar on Saturday and ordered the nearby border with Syria closed to stem what Baghdad calls an influx of foreign fighters.

Protestant crowds clash with police in N.Ireland

Protestant demonstrators clashed with police in Belfast on Saturday, hurling blast bombs, petrol bombs and bricks after a contentious parade by Orangemen near a nationalist area of the city.

Palestinians to press settlement issue at U.N.

A Palestinian speech to the U.N. General Assembly next week will appeal for pressure on Israel to halt the expansion of Jewish settlements, Foreign Minister Nasser al-Kidwa said on Saturday.

Rescuers collect dead but find fewer than feared

The official death toll from Hurricane Katrina rose slowly on Saturday, boosting hopes that the calamity would claim far fewer lives than the 10,000 that had been feared.

Cheney backed removing FEMA boss from Katrina duty

U.S. Vice President Dick Cheney on Saturday said he supported the decision to remove Michael Brown as head of the federal relief effort in the stricken Gulf Coast but refused to say if Brown would eventually be dismissed.

Red Cross says needs 40,000 Katrina volunteers

The American Red Cross said on Saturday it needs 40,000 additional volunteers in the next few weeks to replace worn-out relief workers helping Hurricane Katrina victims.

Katrina fallout, oil prices in spotlight

The fallout from Hurricane Katrina and high energy prices may crimp the outlook for company profits next week as investors await data on inflation that could sway the Federal Reserve's next move on interest rates, analysts said on Friday.

SEC mixed on options valuation

The chief accountant of the U.S. Securities and Exchange Commission said on Friday he had "significant doubts" about using a market-based approach to valuing stock options, a key question for many companies scrambling to comply with a new options accounting rule.

Judge to rule on WorldCom

A federal judge held a hearing on Friday to weigh approval of a roughly \$3.5 billion settlement between more than a dozen investment banks and investors in WorldCom Inc., with a ruling on the pact expected soon.

Zarqawi declares war on Iraq Shi'ites

A suicide bomber killed 114 people in a crowd of Shi'ite laborers in the bloodiest of a wave of attacks in Baghdad, and a statement attributed to Iraq's al Qaeda leader Abu Musab al-Zarqawi declared war on Shi'ites.

Iran president blasts US

Iranian President Mahmoud Ahmadinejad on Wednesday blasted U.S. unilateralism, militarism and privilege and called for the United Nations to promote spirituality.

Sharon meets Bush, says no peacemaking soon

Israeli Prime Minister Ariel Sharon said after talks with U.S. President George W. Bush on Wednesday that Washington realized there was no chance of resuming peacemaking with the Palestinians any time soon.

New Orleans residents sneak past checkpoints

In the Garden District of hurricane-battered New Orleans, the streets do not belong entirely to the stray cats any more.

Hurricane Ophelia pummels North Carolina coast

Hurricane Ophelia pummeled the North Carolina coast with heavy rains and gusting winds on Wednesday in a slow-moving assault that was expected to last for two days and trigger dangerous flooding.

Court says flag pledge violates U.S. Constitution

A California atheist who last year lost a Supreme Court fight to remove the phrase "under God" from the Pledge of Allegiance on Wednesday won an initial round as he revived his cause in the courts.

US airlines ask Congress to roll back jet fuel tax

U.S. airlines on Wednesday asked Congress to roll back the tax on jet fuel to make it easier for them to raise fares and counter sustained high fuel prices made worse by Hurricane Katrina.



The Hansford County Reporter-Statesman

PROUDLY SERVING HANSFORD COUNTY SINCE 1907

VOLUME 98 • ISSUE 37

THURSDAY, SEPTEMBER 15, 2005



Jessica Schmitt, Britta Vanderburg and Rachelle Holt were recipients of the Hansford County 4-H Gold Star Award.

Hansford County 4-H awards banquet held

The Hansford County 4-H Awards Banquet was held Sunday, August 28th at the Gruver Methodist Church Fellowship Hall with 4-H youth, their parents, volunteer leaders and supporters of the 4-H program in attendance.

Rachelle Holt and Jessica Vela presided over the event which carried out the theme "Blazing New Frontiers."

Addam Ferguson led the Pledge of Allegiance and Seth Thompson led the 4-H Motto and Pledge. Britta Vanderburg gave the Welcome and Rhett Renner introduced the guests. Justin Thompson recognized parents and volunteer leaders.

This year's Gold Star recipients were Jessica Schmidt, Rachelle Holt, and Britta Vanderburg. Jessica is the daughter of Emit and Monica Schmidt of Morse. Rachelle is the daughter of Kevin and Ronda Holt of Gruver. Britta is the daughter of Joe and Kim Vanderburg of Spearman. Jessica, Rachelle, and Britta will be honored at the District 4-H Gold Star Banquet November 5th in Canyon.

Jessica Schmidt received the Horse award for completing a record book for district competition where she placed 2nd in the contest.

Anna Sowder and Audrey Lieb received special awards for district fashion show competition.

JimmiLee McCloy was recognized for winning the District Share-the-Fun Musical competition and competing in the state contest. Tori Sheets and Jacob Lieb were recognized for participation in the District Share-the-Fun Musical competition. Sharon Haney and Ashley Keim received awards for Share-the-Fun Vocal. Aubrey Lieb, Wil McCloy and Maci Forrest were recognized for participating in Share-the-Fun Poetry competition. Photography awards were presented to Austin Benton for his blue ribbon in the State 4-H Photography contest and to Cody Benton for his red ribbon award in the district photography contest.

District Livestock Judging participants recognized were Charlie Slough, Casey Cator, Dakota Cator, Brenna Reid, Bailey Reid, Cleve Vanderburg, JimmiLee McCloy, Eva McCloy, Halli Mans and Katie Winter.

Year pins were presented by teen leaders Austin Benton, Jessica Schmidt, Abby Winegarner, Jessica Jarvis, Lynn Vela, Timber Barkley, and Victoria Vela to 4-H youth completing a project during the 2004-2005 year. 4-H gate signs were presented to all first year members.



On behalf of Rotary District 5730 Simplified Grant and Spearman Rotary Club, Gus Birdwell Elementary School was presented with a check in the amount of \$1,150.00 to benefit its Literacy Program. Funds from this grant will be used to purchase one hundred books for kindergarten through second grade. One hundred fifty children will have access to these books. In addition to the books, Gus Birdwell Elementary will be able to purchase one hundred forty new book titles for their Reading Recovery Program.

Another Literacy Project adopted by Spearman Rotary will benefit the Hansford County Library. \$500.00 will go toward the purchase of new children's books. At each Rotary meeting, the program speaker will sign a book that will be donated to the Hansford Library in honor of his/her name.

Listen to the Lynx

Since the hurried closing of KRDF-FM 98.3 in September of 2004 many of the Spearman Lynx and Lynxette fans have enjoyed the play-by-play broadcast of the games on spearmanlynx.com or able TV Channel 6. These broadcasts were made available with equipment purchased by the Lynx and Lynxette Booster Club.

For the 2005-2006 season, however, the football games will be aired on Cable TV Channel 3, instead of Channel 6. They will still be aired at spearmanlynx.com.

The Lynx and Lynxette Booster Club is bearing the cost of airing these games through sponsorships. If you are interested in helping to continue the broadcasts, please contact Lynna Renner at 659-3587 or 659-5408.

Whitson visits OPSU

Robert Whitson, Oklahoma State University's Vice-President, Dean and Director of Agriculture, made a return visit to Texas County this week to thoroughly explore the area's agricultural industry. The visit was coordinated by Roy Ehly, who chairs the Texas County Ag Supporters Committee, and the ambitious agenda kept Dr. Whitson and his wife, Linda, busy for three days.

His stay in Texas County included a number of service club meetings, facility tours, receptions, and meetings with agriculture industry leaders to discuss current issues. On Thursday afternoon, Dr. Whitson participated in a round table discussion with what he called a "blue-ribbon panel" of experts. Representatives from a variety of local agricultural concerns including wheat, beef, pork, sunflower, cotton, grapes and honey bees as well as agricultural leadership and rural housing presented short, topical issues for discussion.

Following the round table, Whitson said he had learned a lot, and plans to explore ways in which OSU might provide research data for alternative crops in the area. He also expressed the need for help from local producers, who can help anticipate needs and determine what research is necessary.

For well over 60 years, OSU's Oklahoma Panhandle research and Extension Center (OPREC), has provided expertise and research data to the local agricultural industry. The director of OPREC is a part-time faculty member at OPSU. Whitson said he is interested in exploring ways OSU might provide research and extension and partner with OPSU to enhance the existing strong alliance.

Gruver Elementary Students "Take A Walk Through Time"

The Gruver Elementary students are "Taking a Walk Through Time". They have been very busy decorating the halls of the elementary building to help the City of Gruver celebrate its 75th Anniversary.

The students have decorated the halls with memorabilia, pictures of previous teachers, letter jackets, drawings of the buildings on Main Street, family histories and many other items.

They invite you to view their history filled halls this Friday, September 16th from noon until game time (approximately 7:30) and Saturday, September 17th from 10:00 a.m. until 12:00 p.m.

WEEKEND WEATHER FORECAST

THURSDAY NIGHT - Partly cloudy. Lows in the upper 50s. Southeast winds around 10 mph.	SATURDAY - Partly cloudy. Highs in the mid 90s.
FRIDAY - Partly cloudy. Highs in the mid 80s. South winds 10 to 20 mph.	SATURDAY NIGHT - Partly cloudy. Lows in the lower 60s.
FRIDAY NIGHT - Partly cloudy. Lows in the lower 60s. South winds 15 to 20 mph.	SUNDAY - Partly cloudy. Highs in the lower 90s.
	SUNDAY NIGHT - Partly cloudy. Lows in the upper 50s.

DEADLINE NOTICE

The deadline to submit news and advertising to the Hansford County Reporter-Statesman is Monday at 5 p.m. Items submitted after the deadline will be published at a later date, as time and space permit.

Gruver celebrates 75th Anniversary



GRUVER, TEXAS. Gruver is on State Highway 15 and the Chicago, Rock Island and Pacific Railroad in central Hansford County. The town was named for Joseph Hezekiah Gruver and his son, Lawrence, who around 1907 established a ranch nine miles west of what is now the townsite.

About 1925 Gruver became a wheat and small-grain farming center. A post office opened there in 1927, and a school began in 1929, when the railroad reached the town.

Gruver incorporated in 1930, when it had a population of 650 and thirty-two businesses. By 1948 the town had declined to 350 residents and twenty-three businesses, but by 1954 its population reached 813 and by 1968, some 1,555. At that time Gruver had fifty-eight businesses. In 1988 Gruver had 1,199 residents and thirty-seven businesses. In 1990 it reported a population of 1,172.

BIBLIOGRAPHY: *Hansford County Historical Commission, Hansford County, Texas (2 vols., Dallas: Taylor, 1980?).* Doity Jones, *A Search for Opportunity: A History of Hansford County (Gruver, Texas: Jones, 1965).* Vertical Files, Barker Texas History Center, University of Texas at Austin.

Live, Laugh & Love



by Catherine R. Smith
cathysmith@antden.com

Friend Leslie Reynolds sent me the following "Advice" from Will Rogers. Will Rogers, who died in a plane crash with Wylie Post in 1935, was one of the greatest political sage this country has ever known.

Never slap a man who's chewing tobacco.
Never kick a cow chip on a hot day.
There are 2 theories to arguing with a woman...neither works.
Never miss a good chance to shut up.
Always drink upstream from the herd.
If you find yourself in a hole, stop digging.
The quickest way to double your money is to fold it and put it back in your pocket.
There are three kinds of men: The ones that learn by reading. The few who learn by observation. The rest of them have to pee on the electric fence and find out for themselves.
Good judgment comes from experience, and a lot of that comes from bad judgment.
If you're riding ahead of the herd, take a look back every now and then to make sure it's still there.
Letting the cat outta the bag is a whole lot easier'n puttin' it back.
After eating an entire bull, a mountain lion felt so good he started roaring. He kept it up until a hunter came along and shot him. The moral: When you're full of bull, keep your mouth shut.
The wind blows in many directions so be sure to spit down wind.

About getting older...
Eventually you will reach a point when you stop lying about your age and start bragging about it.
The older we get, the fewer things seem worth waiting in line for.
Some people try to turn back their odometers. Not me, I want people to know "why" I look this way.
I've traveled a long way and some of the roads weren't paved.
When you are dissatisfied and would like to go back to youth, think of Algebra.
You know you are getting old when everything either dries up or leaks.
I don't know how I got over the hill without getting to the top.
One of the many things no one tells you about aging is that it is such a nice change from being young.
One must wait until evening to see how splendid the day has been.
Being young is beautiful, but being old is comfortable.
Long ago when men cursed and beat the ground with sticks, it was called witchcraft. Today it's called golf.
If you don't learn to laugh at trouble, you won't have anything to laugh at when you are old.

May God bless and keep you; May He make his face to shine upon you, and be gracious to you; May the Lord lift up his countenance upon you, and give you peace. Numbers 6:24-26
Catherine :)

Priorities for the Poor?

by Elizabeth Green
Hurricane Katrina has shown us the depth of poverty in America. Even the mainstream media, not normally a voice for the "least of these," has reported on the vast needs of the poor with increasing alarm. But will we follow through with greater attention to the policy decisions that impact poor families?

For many, poverty is the grinding constant of daily life - it does not merely surface in times of tragedy or emergency. And not only is poverty a continual reality for many, it is growing. Our nation's spending and policy priorities do not seem to account for this.

The U.S. Census Bureau released its annual report a few weeks ago, and the statistics are grim: poverty numbers increased again. In 2004, 1.1 million more people fell into poverty, with 37 million total living in poverty in the United States.

There are also now more people without health insurance (a rise from 45 million uninsured in 2003 to 45.8 million in 2004), and more children in poverty than ever before - 17.8 percent of all of America's children were poor last year, a total of more than 13 million children.

What does it say about our national priorities when poverty has risen for four straight years while national leaders have passed tax cuts that primarily benefit the wealthiest of our society? During the crisis in the Gulf states, at a time of emergency and tragedy, our nation's lack of concern for the poor was very clear. But how have we considered the poor in other, more ordinary times?

It is clear that our national budget and spending priorities do not reflect the gospel's call to include the needs of poor people in our understanding of the common good. Many cuts in the federal budget have come at the expense of low-income families - such as the 2003 tax cut, which removed the low-income child tax credit from the bill at the last minute, excluding almost 12 million children from that benefit. Furthermore, if Congress extends the 2001 and 2003 tax cuts, which primarily benefit the wealthiest Americans, the national deficit will increase to a total of \$4 trillion over the next 10 years - which affects all of us, but the poor first. At the same time, programs that keep many low-income families out of poverty are in danger of \$35 billion in cuts - programs such as Food Stamps, Medicaid (health insurance for low-income families and kids), and housing vouchers that increase stability.

In addition to the \$35 billion in social cuts, Congress may cut taxes for the wealthy by \$70 billion. Can this be a real option when hurricane relief is projected to cost more than \$100 billion? And do we really think health care, housing, and other needs for those affected by Katrina will not also increase? We are ignoring the realities of these needs and how best to meet them if we do not stand up against both types of cuts. We must speak out against repeal of the estate tax, which is still on the table and would cost an additional \$1 trillion over 10 years. Further, although the Congressional Budget Office said this week that the House of Representatives' Social Security privatization bill (HR 3304) would "increase federal outlays by more than \$1 trillion" and "increase debt held by the public by 20% of GDP by 2063", Congressional leadership still plans to try to pass the bill this fall. With the deficit averaging roughly \$300 billion a year, we must examine how we invest in - or ignore - the common good.

Low-income families are hurt first and suffer the greatest damage in times of tragedy and disaster. In the aftermath of Katrina, people in poverty will have a much more difficult struggle in rebuilding, since many lack insurance and other supports that wealthier Americans often take for granted. Those with better means often have contingency plans - freedom to choose - in time of emergency. Too many low-income people simply have no choice, no alternatives, and no emergency income. They lack a "living family income" that would meet needs such as transportation, housing, and health care. They are left with whatever policies and priorities accompany - and also precede and follow - times of devastation.

People of faith must use this moment, when poverty is in the national spotlight, to call for a change in our country's priorities for the common good. Will we accept a federal budget that provides tax benefits to the wealthiest while deeply cutting vital programs for the poor, and all of us? Or will we use this opportunity to call for morally grounded budget and tax policies that help families escape the growing vise of poverty in times of crisis and "normalcy"?

Elizabeth Green is public policy associate for Call to Renewal.

Alva Monument Co.
Formerly Liberal Monument & Memorial Company
New Location:
111 Tucker Road
Liberal, Kansas
North of the New Wal-mart
Serving Kansas, Oklahoma & Texas for 93 years
(316) 624-4211 toll free # 888-654-9318

TOUGHER THAN ALL OUTDOORS.
GRIZZLY 660 AUTOMATIC 4X4
AS LOW AS \$49/MONTH FOR 24 MONTHS
AT 6.9% APR WITH NO MONEY DOWN ON ALL MOTORCYCLES, SCOOTERS, ATVs & PRO HAULERS
PLUS UP TO \$300 CASH BACK ON SELECT MODELS*

Five Star Equipment, Inc.
Hwy 15 West
Spearman TX 79081-0658
*Cash back offer good on select models. Finance offer available at participating Yamaha dealers on the Yamaha card, subject to credit approval. \$1,000 - \$1,500, on any new 2006 (or new year) Yamaha Motorcycle including TR models and Rhino 600, 800, or Scouter model. Annual Rate 6.9% APR and as low as \$49 monthly payment effective on these purchases for 24 months. If your account is kept current, Example: \$49 monthly payment based on \$12,000 with a purchase price of \$4,899. Thereafter a Standard Rate currently 12.99%, 14.99%, 16.99%, or 22.99% APR will apply and automatic monthly payments will be required as described in your credit card agreement. For accounts not kept current, the Standard Rate 14.99% will be applied to all balances. Minimum Finance Charge \$1.00. Certain rules apply to the allocation of payments and Finance Charge on your promotional purchase if you make more than one purchase on your Yamaha card. Call 1-888-367-4310 or visit your credit card agreement for information.
ATVs with engines 150cc or greater are recommended for juveniles 16 years and older. • Yamaha recommends that all ATVs riders take an approved training course. For safety and training information, see your dealer or call the ATV Safety Institute at 1-800-482-2887. • ATVs can be hazardous to operate. For your safety, always wear your seat belt, have fun, have no alcohol, wear a helmet, use proper and protective clothing. Never carry passengers. Never engage in stunts, racing, and other dangerous activities. Adult supervision required. And be particularly careful on difficult terrain. Yamaha Motor Co.

HYI FOR YOUR INFORMATION

Breast Cancer Screening Clinic
The Don and Sybil Harrington Cancer Center Comprehensive Breast Center will conduct a Breast Cancer Screening Clinic at Hansford County Hospital, 707 S Roland, in Spearman on September 26, 2005. Breast cancer affects one in eight women. The key to winning the battle against cancer is early detection by having an annual breast exam, mammogram and performing a breast self-exam each month. Funding is available through the Texas Department of Health for Texas residents who qualify for assistance. All exams are done by appointment only. Call (806) 356-1905 or 1-800-377-4673 for more info or to schedule appointment.

You're Never Alone - Narcotics Anonymous Group
Each year individuals struggling with drug and alcohol addiction make the resolution to quit using drugs. For many of them it is a resolution that they cannot keep. Narcotics Anonymous can help. Open meetings are held on Thursday nights from 8-9 p.m. at the First Christian Church (29 S. Bernice in Spearman) for the "You're Never Alone" group of Narcotics Anonymous. Anyone interested is invited to attend. Drug addiction can leave an individual feeling helpless and out of control.

Panhandle Crisis Center Outreach Office
Panhandle Crisis Center (PCC) has an Outreach Office in the Pittman-Shieldknight Building, 511 SW 11th Avenue, Suite 105, in Spearman. In case of emergencies, please continue to call the hotline, 1-800-753-5308. To schedule an appointment with a worker in Hansford County, please call 659-3391 to leave a message, or call the hotline number above. Panhandle Crisis Center serves victims of domestic violence and sexual assault. Call for more information regarding PCC's services.

Spearman 4-H Selling Roster Cards
The Spearman 4-H is selling roster cards to raise money for their scholarship fund. If you would like a roster for 7th, 8th, JV or Varsity Spearman Football teams, please contact the Extension Office at 659-4130. The cards are \$2.00 each. Thank you for your support!

American Legion Post 254 Seeking New Members
Attention! Hansford and Ochiltree County Veterans, American Legion Post 254 at Perryton is open to all veterans. First meeting for this year will be Monday, September 12, 2005 at the Senior Citizens Building, South of the Perryton Football Field at 7 p.m. If you are interested in joining the Post or you need more information, please contact Post Commander, Harry Stumpf at 806-659-2109 or Vice-Commander, Wayne Cummings at (806) 659-2106. In Perryton contact 18th District Vice-Commander, Robert Overton at (806) 648-1344.

Boy Scout Sign-up
Boys from age 11 through 15 are invited to sign up for Spearman Boys Scouts. If you are a boy who likes camping, hiking, swimming, fishing and eating, the Boy Scouts wants you. To find out more about becoming a Boy Scout, call George Young at 659-2378 or 330-0354 or Britt Jarvis at 659-2554 or 659-2444. Come join the Boy Scouts. It's fun! Meetings are on Tuesday from 7:00 to 8:30 p.m. The Scout Hall is located in the old community building at 5th and Hazelwood. Next meeting night is September 6th. Hope to see you there and bring your parents.

4-H Fun with Foods Project
Youth in 3rd grade or older may sign up now for the 4-H "Fun with Foods" project. Project meetings in Spearman will be after school on Thursdays, September 15, 22, 29, and October 6, at the Fellowship Hall of the Spearman Church of Christ. Project meetings for Gruver will be held after school on Mondays, October 3, 10, 17, 24, at the Fellowship Hall of the Gruver Methodist Church. Extension programs are open to all regardless of socioeconomic level, race, color, sex, religion, disability, or national origin. Please call Peggy Winegarner at 659-4131 or 733-2901 to enroll.

Extension Service- Fall Crop Tours
There will be a Fall Crops Tour on Thursday, September 22, 2005. The program will be at Oklahoma Panhandle Research and Extension Center in Goodwell, Oklahoma. Registration starts at 8:00 a.m. to 8:30 a.m. Meeting will last until 11:30a.m. For meal reservations call 580-349-5441 before September 16, 2005. Kim's ribs will serve the meal. Topics to be discussed are as follows: Bermuda grass for the High Plains; Drip Irrigation; Animal waste into no Till Rotations; Sunflowers; Cotton Variety Trial; Seeding rates for Irrigated Dual purpose wheat. Note: This will be an excellent for producers interested in cotton varieties or planting date studies. For more information call Burt Williams, Agricultural Agent, Texas Cooperative Extension, Hansford County 659-4130 or 733-2901.

Agape Prayer Shawl Ministry
Agape Prayer Shawl Ministry is interested in starting a group in Gruver to knit or crochet shawls as gifts to persons in need of comfort or encouragement. Not only do we need crafters but others to support the ministry by buying yarn, gift bags, making cards and prayer support. Knitting and crocheting lessons will be provided. An organizational meeting is scheduled for 9 am and 7 pm on Sept. 19th in the Gruver United Methodist Church Fellowship Hall. Contact Cathy Potts at 733-2329 or www.shawlministry.com for more information.

4-H Smoked Meat Sale
4-H members across Hansford County (Spearman, Gruver and Morse) are selling smoked meats for their annual fund raising efforts. Products available include smoked & spiral hams, turkey, peppered turkey breasts, smoked or peppered bacon, beef or chicken fajitas, chicken tenders, tamales, pork patties, breakfast burritos, sausage, pecan pie, Hunter's Package (sweet jalapeno flavored ham, peppered pork loin, smoked bacon and jalapeno summer sausage) and sausage links. Funds benefit the awards program and recognition banquet for all 4-H members. Orders must be received before October 17th, with delivery date before Thanksgiving. Please contact a 4-H member or call the County Extension Office 659-4130 or 733-2901 to place your order. If e-mailed it would be easier hansford-tx@tam.u.edu.

Gladiola Flower Club Selling Nuts
The Gladiola Flower Club has taken over the annual nut sale from the Holt Community Club. They will be offering the same quality products from the same company that you've had for years. Orders will be taken through October 10th with delivery before Thanksgiving. They are selling pecans (1lb) \$6.75; Walnuts (1 lb.) \$4.50 and Cashews (1 lb.) \$5.00. Orders may be taken by any club member such as: Pam Schnell 659-3398; Margarette Evans 659-2165; Kathleen Sutton 659-2676 or Judy Yarbrough 659-3526. Proceeds from this sell go to their annual scholarship fund.

Hansford County Library Collecting Empty Printer Cartridge
Hansford County Library is collecting empty printer cartridges for recycling. We have set up a box in the library where these may be placed. Any refunds or rebates collected from this project will go towards support of the library. We will appreciate any donations of empty cartridges that are received.

Panhandle Crisis Center Presents Puppet Show
On Tuesday, September 20 from 9:40 until 11:30 AM and again on Wednesday September 21st, from 12:30 until 2:30 Candy Boxwell and Janice Marshburn from the Panhandle Crisis Center will be presenting a puppet show at Spearman Elementary School. The show is called "Who Knows Strangers, Touches, Secrets and Hurts" The show will be held in Mrs. Womble's music room.

Gruver Schools Collects Tapes for Education
Gruver Schools are participating in the Lowe's Supermarket Register Tapes for Education Program. Please help them earn free educational equipment by collecting register receipts from Lowe's. Only receipts dated September 1, 2005- March 31, 2006 are eligible. You may deposit your tapes at the Elementary Office, Jr. High Library, City Library, Nite & Day Beauty Shop and the Hitchin Nail. Jo Alice Clawson will collect the tapes at 711 Womble or mail to PO Box 488, Gruver, TX 79040 or call Jo Clawson for pickup. If you have any questions, call her at 733-2247. Ask your neighbors, friends and co-workers to collect tapes, too!

Pringle-Morse Schools Collects Tapes for Education
Pringle-Morse Schools are participating in the Lowe's Supermarket Register Tapes for Education Program. Please help them earn free educational equipment by collecting register receipts from Lowe's. Only receipts dated September 1, 2005- March 31, 2006 are eligible. You may deposit your tapes at the Pringle-Morse CISD Office, or mail to PO Box 109, Morse, TX 790462. If you have any questions, call at 733-2507.

Canadian River Habitat Field Day in Canadian, Texas.
Ask any wildlife biologist what it takes to keep wildlife healthy, happy and close to home and they'll tell you it's all about having good habitat. Learn how to make your land suitable for wildlife by attending the National Wild Turkey Federation (NWF) and Texas Prairie River Region's (TPRR) Field Day October 7th at The Gene Howe Wildlife Management Area, Canadian, TX. The workshop is free and a catered lunch will be provided. The program will run from 8:30 am to 2 pm and participation is limited to the first 100 people registered. The deadline for pre-registration is October 4th. To register, contact TPRR at (806) 323-5397.

The Hansford County Reporter-Statesman
213 Main Street • Spearman, TX 79081
Phone - (806) 659-3434 • Fax - (806) 659-3368
cathysmith@antden.com
Mon.-Thurs. (Closed Fridays) 9 a.m.-12 p.m. & 1-5 p.m.
Gary & Catherine Smith - Publishers/Owners
Carolyn Cummings - Editor • Clayton Smith - Student Editor
Contributing Writers: Dorothy Hudson and Merry Sparks
Contributing Photographer: Charlie Johnson
Subscription Rates
In Hansford County - \$25.00 • Out of County - \$30.00
The Hansford County Reporter-Statesman (USPS 529660) is published weekly in Spearman, TX. Periodical postage paid in Spearman, TX. POSTMASTER: Send address changes to: The Hansford County Reporter-Statesman, 213 Main Street, Spearman, TX 79081.
Publication Policy
The deadline to submit news and advertising to The Hansford County Reporter-Statesman is Monday at 5 p.m. Items submitted after the deadline will be published at a later date, as time and space permit. Publication of all items is at the discretion of the editor.
Advertising
Open Display rates are \$4.00 per column inch. Classified Ads are \$5 for the first 25 words and 10¢ per word for each additional word. (Additional charge for boxed classifieds.) There is a \$1 charge per week if billed.
Member of
Gruver Chamber of Commerce
Spearman Chamber of Commerce
Texas Press Association and Panhandle Press Association
TEXAS PRESS ASSOCIATION
AWARD WINNER
2000

HANSFORD COUNTY EVENTS

SEPTEMBER 2005

- Sep 15 Spearman City Council meets @ 7 a.m. in the City Hall Chambers @ City Hall
- Sep 16 Registration deadline for Out-of-School TAAS or TAKS tests
- Sep 16 Picture Day @ Gus Birdwell Elementary
- Sep 16 Spearman Lynx @ Texhoma @ 7:30 p.m.
- Sep 16 Gruver Greyhounds vs Highland Park @ 7:30 p.m. (Homecoming)
- Sep 17 Gruver's 75th Anniversary Celebration
- Sep 21 Women's Division of the Spearman Chamber of Commerce meets @ noon
- Sep 23 First Six Weeks ends Spearman ISD, Gruver ISD
- Sep 23 Picture Day at Pringle-Morse CISD
- Sep 23 Spearman Lynx @ West Texas @ 7:30 p.m.
- Sep 23 Gruver Greyhounds @ Claude @ 7:30 p.m.
- Sep 24 Spearman Lynx/Lynxette @ Lubbock Cross Country Meet
- Sep 26 Second Six Weeks begins Spearman ISD, Gruver ISD
- Sep 26 Hansford County Commissioners Court meets @ 10 a.m. @ Hansford County Courthouse
- Sep 26 Breast Cancer Screening Clinic @ Hansford County Hospital
- Sep 27 Gruver ISD Board of Directors meets @ 6 p.m. in the Board Room @ Gruver High School
- Sep 28 Hansford County Hospital District Board of Directors meets @ 6:30 p.m. in the Board Room @ Hansford Hospital
- Sep 30 SHS Band Night, Senior Band Members will be honored at 7 p.m., prior to the Canadian Football Game; 8th Grade Band will join the High School band in the stands
- Sep 30 Spearman Lynx vs Canadian @ 7:30 p.m., Lynx Stadium
- Sep 30 First Six Weeks ends, Pringle-Morse CISD
- Sep 30 Gruver ISD Holiday
- Sep 30 Gruver Greyhounds OPEN

Happy Birthday!

Editor's Note: This Happy Birthday list is run as a public service by the Hansford County Reporter-Statesman. We apologize if any names are misspelled. If you know of a name that needs to be changed, added or deleted, please call 659-3434.

September 15
Birthday - Les Barkley, Dan Raiston, Karen Durham, Becky Byers, Misty Dawn Villarreal, Matt Jones, Audrey Winegarner, Debbie Dingman, Amanda Bowman, Matthew Jones, Arturo Huerta, Gary Vasek
Anniversary - M/M Bob Meek, Karen & Buford Babitzke
September 16
Birthday - Marcia Kuehl, Terrell Evans, Jarret Warren, Oscar Rojas Jr., Jason Evans, Leticia Salazar, Frank Galvin, Pauline Winger, Fannie Venneman, Silvia Lopez, Margo Schoenhals
Anniversary - M/M Charles Greenwood

September 17
Birthday - Hugh Bell, Krystle Deeds, Pablo Perez, Glenda Renner, Johnny White, Jan Allen, Helen Melton, Joe Wattier, Teresa Ford, Myrtle Eller, Janna Brock, Robbie Cochran, R.D. McLain, Judy Fredrick, Mario Molina, Dale Wofford, Andrew Cummings, Kayla Swink
Anniversary - M/M Larry Kennedy, M/M Ray Gressett
September 18
Birthday - Betty Davis, Alton Ellsworth, Pat Jackson, Scarlett Jackson, Cary Cates, Mrs. Don Ladd, Donna Phillips, Van Hamilton, David Baca, Jamie Townsen
Anniversary - M/M Scott Swan

September 19
Birthday - Sally Holt Meek, Carol Hester, Sue Jackson, Tildon Sparks, Don Kunselman, Jim Jones, Amadita Vargas, Alberto Vargas, Randy Kirk, Tammy Woodward, Julie Pittman, Cassidy Taylor
Anniversary - M/M Dennis Nelson, M/M Tindle Ramon
September 20
Birthday - Tiffanee Crane, Jerry Overbey, Karen Archer, Charles Shieldknight, Mrs.

Jimmy Watson, Dee Mayfield, Edrie Jones, Jessie Francis, Lance McMahan, Dora Salgado, Chris Womble, Beverly Vinson, Pedro Garza
September 21
Birthday - Amber Murrell, Teresa Sue Dodson, Mrs. Ola Davis, Lisa Pipkin, Sharon Craig, Millie Craig, Gary Thomas, Karen Goodman, Arthur Cantu, Cathy Brown, Paul Mahaffey, Ashlee Flowers, Allene Bayless, Callie Cazares, Francis Murrell, Jacie Baker, Mike Ladd

September 22
Birthday - Charlotte Bergin, Chelsie Beth Hicks, Leon Wilson, Robert Womble, Bobby Evans, Ray Brewer, Junior Avila, Terry Delozier, Lance Harnish, Sterling Alana Brown, Amber Conley, Janice Riley, Bonnie Cox, Haylee Miesner
Anniversary - M/M John Williams, M/M Pat Jackson

September 23
Birthday - Larry Babbs, Rodney Dale Clawson, Floyd Dry, Melissa Davis, Wilma Clark, Ray Ortega, Tony Papay, Will Black, Jan Hartsell, Luisa Volden, Karla Flowers, Amber Coombs, Kylie Cook, Jake Coates, Andrew Jacops, Melissa Lesly
Anniversary - M/M Harvey Atwood

September 24
Birthday - Amadeo Cazares, Martha Jo Hadley, Cindy Blackman, Deena Murrell, Tony Shapley, Amy TeBeest, Linda Venneman, Trevor Williams, Sherri Kay West, Danny McLaughlin, Mandi Lusby, Julie Hays, Dan Pearson, Jeff Hawkins, Wesley Miser, Roberta Cole, Amber Elliott, Kylie Cook, Amy Powers, Dustin Tomlin, Bradon French
Anniversary - M/M Bill Kuehl

September 25
Birthday - Brooke Salmons, Ann Taylor, Charles Martin, Jesse Renteria Jr., Cecil Slater, Stacy Lesly, Marcy Vitela, Pedro Vargas, Teresa Blan, Sandy Zamora, Chuck Cook, Edwin Percy, Andrew Dalton Raper, Erynn Saenz, Sally Pittman
Anniversary - Bob & Wanda Burke, M/M Steve Holton, M/M Arturo Vargas

Words from Faith & Grace

by Cecil R. Biggers, Lutheran Lay Minister

Who is Jesus Christ? Why do you follow Him? Our study this week is in Jonah 3:10-4:11, Psalm 145, Phillipians 1:20-30, and Matthew 20:1-16.

Jonah, a most reluctant prophet, is charged to preach repentance to a people he hates! What is worse, the hated people repent and God forgives them. God teaches Jonah that He loves all of His people, not just the "chosen people".

The Psalmist sings that "The Lord is good to all, and His compassion is over all that He has made." As a soldier, I learned in blood that God is not only my God, but also the God of my enemy. Study and learn well the sign of Jonah.

Paul is in prison unsure if he will feel the headman's axe or be set free. For Paul, Jesus is God. For Paul, to live is to guide and tend the struggling young faith community, to spread the Gospel of love; for Paul, to die is desirable because that is a direct entry into Christ's kingdom. Paul pleads with the Phillipians to stand side by side, to not be distracted by doctrinal disputes, to not be intimidated by persecution. Such is God's grace that he has given Jesus Christ to die for us, and by His Holy Spirit has given us the faith to believe in Him and for some to suffer with Him.

Jesus gives the parable of the landowner seeking laborers for his vineyard. It is time for harvest and the grapes must be gathered before the rains come and the grapes are spoiled. The landowner hires laborers about six o'clock and they contract for a standard day's wage. He goes out and hires more laborers at noon, at three o'clock, and again about five o'clock, telling them he will pay them "what is right".

For all these laborers, they must earn a day's pay or their families will go hungry. When the day is over the landowner tells his manager to pay the workers, starting with the last hired. Each laborer receives a day's wages allowing his family to be fed; yet, the first hired become dissatisfied since they had thought since the landowner was generous with the last hired, he would be more generous to them. Note that the first hired had a contract; the last hired just reported for work hoping to be paid. The landowner says to the first workers, "I do you no wrong, I am paying you as agreed". "Are you envious because I am generous to others?"

There is a message of grace here. The workers all receive a living wage regardless of the length or difficulty of their service. So it is with our dear Christian. We may come to Christ in our youth, in our adulthood, or in our old age; yet, we all serve and our reward is the same. God is joyful over all who come to Him whenever they come.

May the Holy Spirit strengthen your faith and by His grace may you understand that whether we live or we die, it is in Christ Jesus, Our Lord.

Texas crop and weather report

The following specific livestock, crop and weather conditions were reported by Panhandle Extension directors: Soil moisture is short to adequate. Isolated thunderstorms were reported. Corn kernels were dented in about 90 percent of the fields. Silage harvest continued. Cotton was rated fair to good; bolls continued to open. Bollworm and fall armyworms caused problems in many fields. Verticillium wilt, caused by fungi, was reported. Peanuts were rated fair to good; leaf spot was reported in isolated fields. Sorghum was 95 percent headed and 37 percent was coloring. Headworms were reported. Sorghum silage harvest continued. Soybeans were rated fair to good. Wheat was 40 percent planted. Rangelands were rated fair. Cattle were in good condition, but we're pestered by flies.

Clip & Save

Childers Brothers Inc.

The Leading Company for 35 Years

"Honest Free Estimates
"Injected Soil Treatment
"House Leveling and Foundation Stabilizing"

"The Oldest and Most Respected Name in the Business."

Serving a 300-mile Radius

Call Today! 800-299-9563

Not valid with any other offer. Limit 1 coupon per project. www.childersleveling.com

MONUMENTS

Boxwell Brothers Funeral Home

519 Evans • Spearman
659-3802

Dear friends,
When you buy a monument from us we make sure it is exactly what you want at a price you can afford. If it is not right, we will make it right. And you will not have to search the countryside to find us. We are here when you have a need.

Sincerely,
Bob Boxwell

Ralph Depee, D.D.S.

Member American Association of Orthodontists

Orthodontics For Children and Adults

- Free exam and estimate of cost
- Free second opinion
- Insurance filed

821 S. Amherst • Perryton, Texas
1-800-521-0831 • (806) 435-2320

VALOR TELECOM

Local and Long Distance phone service
High Speed DSL Internet service
Digital Satellite Dish Network TV

Stop by our new Perryton Retail store at
301 Amherst Street in Perryton or call
1-866-477-5498 for more information

alzheimer's association

Presented by TTUHSC-Amarillo
The Alzheimer's Association
The O'Loughlin Center
Hansford Hospice Volunteers

Alzheimer's Informational Seminar

October 3, 2005
The O'Loughlin Center
6:30 to 8:30pm
502 Brandt
Spearman, Texas

Refreshments will be served. Please pre-register, if possible, by calling 806-659-5811

The featured speaker will be Steven Berk, M.D., Regional Dean of the Texas Tech Medical School, Alzheimer's Outreach.
Jeff Price, with the Area Agency on Aging, will be on hand with information on the areas the agency offers assistance.
Roy Puente, the Regional Director for Alzheimer's Association, can answer your questions about Alzheimer's Association resources.

Replenish the seed of faith through . . .

DAILY BIBLE READING, PRAYER & REGULAR CHURCH ATTENDANCE

<p>Spearman</p> <p>Apostolic Faith Church 822 S. Drexler • 659-2870 Sunday School: 10 a.m. Worship Service: 11 a.m. Sun. Eve.: 6 p.m. Wed. Prayer Mtg.: 7 p.m. Pastor - Roland Haney</p> <p>First Assembly of God 401 N. Bernice • 659-2295 Sunday School: 9:30 a.m. Worship: 10:35 a.m. Kid's Church: 10:35 a.m. Evening Worship: 6 p.m. Wed. Worship: 7 p.m. Wed. Youth: 7 p.m. Pastor - Bob Elder</p> <p>First Christian Church (Disciples of Christ) 29 S. Bernice • 659-2036 Sunday School: 9:45 a.m. Worship: 10:50 a.m. Minister - Gary Smith</p> <p>First Baptist Church 123 N. Bernice • 659-5557 Sunday School: 9:45 a.m. Worship: 11 a.m. Evening Worship: 7 p.m. Men's Bible Study - Wed., 7 a.m. Children's Choir - Wed., 6 p.m. Adult Choir - Wed., 7 p.m. Wed. Bible Study: 7 p.m. Pastor - Jim Medley</p> <p>Church of Christ 121 S. Haney • 659-3244 Sunday Bible Class: 9:45 a.m. Worship: 10:30 a.m. Evening Worship: 6 p.m. Bible Study Wed.: 7:30 p.m. KRDF Radio Program Living W/Christ: 7:50 a.m. Minister - Leonard Harper</p>	<p>Sacred Heart Catholic Church 901 Roland • 659-2792 Sat. Night Mass: 5:30 p.m. Sun. Mass: 9 a.m. - English Sun. Mass: 11:30 - Spanish 1:30 p.m. - Gruver - Christo Renditor Mass - Spanish Rev. Guillermo Morales</p> <p>First United Methodist 407 S. Haney • 659-5503 Sunday School: 9:45 a.m. Worship: 8:30 & 11 a.m. Jr. High Youth: 5 p.m. Sunday High School: 6 p.m. Sunday Kids Club: 3 p.m. Wed. Pastor - Derrel Evins</p> <p>Grace Presbyterian Church (Worships with Faith Lutheran Church) 1101 Bernice • 659-2033 Pastor - Beverly Cook</p> <p>Faith Lutheran Church (ELCA) 1101 Bernice • 659-2252 Sunday School: 9:45 a.m. Worship: 11 a.m. (Worships with Grace Presbyterian Church) Pastor - Beverly Cook</p> <p>Union Church 31 S. Endicott • 659-2644 Sunday School: 9:45 a.m. Worship: 10:45 a.m. Evening Worship: 6 p.m. Bible Study: 7 p.m. Wed. Pastor - Dr. Timothy Minor</p> <p>Fellowship Baptist 1102 S. Archer • 659-2783 Sunday School: 10 a.m. Worship: 11 a.m. Sun. Evening Worship: 6 p.m. Youth/Adult Service: 7:30 Wed. Pastor - James Washburn</p>	<p>Primera Mision Bautista 502 E. 7th • 659-3991 Sunday School: 9:45 a.m. Worship: 11 a.m. Evening: 6 p.m. Wed. Prayer Meeting: 7 p.m. Thurs. Visitation: 7 p.m. Pastor Joe Garcia Jr.</p> <p>El Aposento Alto U.P.C.I. 1105 S. Roland Domingos: Escuela-Domical - 10 a.m. Culto Evangelistico - 7 p.m. Jueves: Oracion - 8 p.m. Mier. Estudio Biblico - 7 p.m. Pastor - A.G. Martell (806) 659-2153</p> <p style="text-align: center;">Gruver</p> <p>First Baptist Church 402 E. Broadway • 733-2411 Sunday School: 9:45 a.m. Worship: 10:50 a.m. Disciple Training: 6 p.m. Sunday Prayer Meeting: 7:30 p.m. Wednesday Pastor - Scott Curry</p> <p>Church of Christ 209 King • 733-2760 Sunday School: 9:30 a.m. Worship: 10:20 a.m. Evening Worship: 6 p.m. Wed. Worship: 7:00 p.m. Minister - Gaylord Cook</p> <p>First Christian Church 510 King • 733-2960 Sunday School: 10:00 a.m. Sunday Worship: 11 a.m. Youth: 7:30, Sunday Adult Bible Study: 7:30, Sun. Wed. Bible Study: 8:00 p.m. Pastor - Gary Gumlory</p>	<p>Gruver United Methodist Broadway & Garrett 733-2651 Sunday School: 9:45 a.m. Worship: 8:30 & 10:50 a.m. Eve. Worship & UMY: 6 p.m. Pastor - George Price</p> <p>Spanish Cristo Redentor Church Sunday Mass: 1:30 p.m. Friday Evening Mass Summer - 8:00 p.m. Fall/Winter - 7:30 p.m.</p> <p style="text-align: center;">Oslo</p> <p>Oslo Lutheran Church (ELCA) 6 Miles West & 12 Miles North of Gruver 339-7709 Sunday School: 9:45 a.m. Worship: 11 a.m. Pastor - Paul Fiske</p> <p style="text-align: center;">Waka</p> <p>Waka Church of the Brethren 435-4598</p> <p style="text-align: center;">Morse</p> <p>Morse Baptist Church 733-2757 Pastor - Mike Martin</p>
---	--	---	--

This feature is made possible through the sponsorship of these civic minded businesses.

Deakin ELECTRIC

OILFIELD • RESIDENTIAL • COMMERCIAL
321 S. MAIN • SPEARMAN
1-800-999-1506 Chris Deakin
806) 659-5016 President

Bartlett's Lumber & Hardware

105 W. Broadway • Gruver, Texas
(806) 733-2404

BERRY CLEANERS

Ann & Vernon Pipkin - Owners
Phone 659-3122 • P.O. Box 1017
207 Main St. • Spearman, TX

Morse Implement & Auto Supply

"Join us in church this week"
Tom Dortch 733-2668
P.O. Box 89 • Morse, TX 79062

PRAIRIE MOTORS INC.

Hwy. 207 South • P.O. Box 430
Spearman, TX 79081 • (806) 659-2541
www.prairiemotors.com

Gruver Cablevision

308 Main
Gruver, TX 79040
733-5295

Hansford County Reporter-Statesman

"Proudly Serving Hansford County Since 1907"
(806) 659-3434
213 Main Street • Spearman, TX

Interstate Bank, ssb

322 Main • P.O. Box 146
Spearman, TX • 659-2559



Gus Birdwell Elementary students and faculty would like to thank everyone who made donations to help the victims of Hurricane Katrina. Special thanks to the First United Methodist Church of Spearman, United Methodist Church of Gruver, Lowe's Marketplace, Dollar General, Hansford Implement and Trencor. Pictured are (L-R) Jake Willimon, Cynthia Mendoza, Katy Miser, Paige Pierson, Alfredo Rosendo, Ruben Carbajal, Daniel Grajeda, and Elementary Counselor Peggy Whitman.

Open Letter

Mr. Dodd:
My name is Kay Garten and I am Peggy Whiteman's sister. I am also a social worker at parkland Hospital in Dallas, Texas. On Friday, September 2, 2005, after learning of the expected influx of Katrina refugees to Dallas, I called my sister and asked for help for these good people.

My request was that she ask a few teachers for donated clothes and other items to help ease the plight of these victims of the worst natural disaster in Louisiana history. I was overwhelmed and grateful when later that Friday, my sister called and excitedly reported a tremendous outpouring of help from Spearman residents.

When I saw the enormous load of donated items on the trailer, tears sprang unbidden to my eyes as I viewed the incredible outpouring of caring and concern from your staff, students, and citizens of Spearman.

Thank you for your role in facilitating this donation effort. The citizens of your town have my gratitude and my admiration. I am grateful beyond measure to know that there are those in our world who are still willing to help others.

Again, thank you.
Sincerely,
Kay Garten, LMSW



Kelly, Camelin Announce Engagement

Mr. and Mrs. Kenneth J. (Kenny) Kelly of Perryton and Bedford are pleased to announce the engagement and approaching marriage of their daughter, Lauren Kathryn, to Daniel John (DJ) Camelin, son of Mr. and Mrs. Dan Camelin of Corinth.

Lauren graduated from Grapevine High School and has attended Tarrant College and North Central Texas College. She has plans to continue pursuing her education at Texas Women's University. Currently she works at Auntie's Beads in Grapevine. DJ graduated from Ryan High School in Denton and attended Lubbock Christian University. He is manager of Minute Man Press of Denton.

The wedding will take place Friday, November 4th in Hurst.

Dumas woman graduates



LaShera Denise McElhany of Waxahachie, graduated with a master of education degree from Dallas Baptist University in the summer commencement on August 5, 2005.

She was among the 208 graduates receiving undergraduate and graduate degrees.

Of those graduating, 131 received bachelor's degree and 77 earned master's degrees.

LaShera is married to Ryan McElhany. Her parents are Bobby and Kay Snider of Dumas. She is the granddaughter of Irene Snider and the late Vance Snider of Spearman.

Dallas Baptist University is a comprehensive Christ-centered university dedicated to producing servant leaders through the integration of faith and learning. With its main campus located in the foothills of southwest Dallas, a satellite campus located in North Dallas, and a new academic center located in Colleyville, DBU offers 56 undergraduate majors and 12 graduate degrees in a variety of fields, including a Ph.D. in leadership studies. DBU provides nationally recognized programs in adult education and online education.

Lynxette cross country results

The varsity Lynxettes finished 4th at the Wolf Creek CC Meet (Perryton). Tara Shields medaled in the Varsity division. Kendall Schneider medaled in the Junior Varsity division.

Varsity team results: 1) Dumas 73; 2) Dodge City, KS 82; 3) Borger, 89; 4) Spearman, 104; 5) Stratford, 137

Varsity Individual Results: 9) Tara Shields, 13:58; 22) Melissa Lesly, 14:31; 23) Jessica Diaz, 14:33; 24) Christy Lang, 14:33; 26) Bond Pittman, 14:37; 29) Tabitha Shields, 14:49; 47) Amy Brown, 15:47

Junior Varsity Team Results: Must have 5 JV runners to qualify-Spearman JV did not

Junior Varsity Individual results: 6) Kendall Schneider, 14:46; 17) Vicky Renteria, 16:46; 34) Destiny Fisher, 18:00; 35) Kylee Howard, 18:07

Junior High Team Results: 1) Spearman, 56; 2) Sunray, 59; 3) Stratford, 128; 4) Canadian, 152; 5) Follett, 164

Junior High Individual Results: 4) Suttan Garnett, 15:02; 8) Britani Vasquez, 15:30; 10) Preslee Baker, 15:34; 13) Leanna Espinosa, 15:43; 21) Julie Diaz, 16:12; 35) Whitney Maestas, 16:43; 38) Shi-Ann Bates, 16:49

This week the meet is the Amarillo ISD meet at Thompson Park.

It's A Girl!

Shannon and Justin Lane wish to announce the birth of their daughter, Jaylee Ann Lane. Jaylee was born at 1:45 p.m. on Wednesday, September 7th. She weighed 7 pounds, 11 ounces and was 20 inches long. Proud brothers are Tyhler and Jace.

Thank You

Thank you

I would like to thank of you that came or sent cards to help me celebrate my ninety birthday. I certainly enjoyed seeing all of you and appreciate all of the kind thoughts and best wishes. I want to especially thank my family for making this possible.

Ira Harbour

Proclamation

"National Preparedness Month"

By the Commissioners Court of Hansford County, Texas
Recognizing September, 2005 as being National Preparedness Month and encouraging our local residents to give heed to the purpose of this National Awareness Campaign.

WHEREAS, the U.S. Department of Homeland Security and the American Red Cross have united in their sponsorship of September 2005 as National Preparedness Month; and

WHEREAS, the goal of this nation-wide effort is to encourage residents to prepare for disasters in advance of those events so as to minimize the potential threat to their safety and wellbeing; and

WHEREAS, the Hansford County Commissioners' Court similarly supports the notion of "preparing in advance of the storm" in an effort to reduce personal injury, prevent the loss of life and to help in speeding recovery in the wake of a disaster; and

WHEREAS, in general, preparedness and awareness are key to the survival of communities and individuals in any type of disaster situation.

Now, Therefore, be it resolved by the Commissioners Court of Hansford County, Texas that:

1. The Commissioners' Court officially recognizes its support of September 2005 as being National Preparedness Month.

2. The Commissioners' Court encourages residents of the region to learn more about how they and their families can become better prepared to cope with disaster situations by 1) building an emergency supply kit, 2) making a family emergency plan, 3) being informed about different threats and 4) getting involved in preparing their communities.

3. The Commissioners' Court encourages local residents to consider volunteering their time and energy to supporting local and area preparedness efforts.

Considered and approved this 12th day of September, 2005.

Desert Reign in Concert

The First Assembly of God Church in Spearman will host a concert on Tuesday, September 20th featuring Desert Reign.

Desert Reign is a group of Country Gospel artists who have a deep drive to worship the Lord and exalt His name.

Their fantastic country sound offers a powerful gospel message, which is accomplished through outstanding songwriting, incredible harmonies and down-right good pickin'.

Their lighthearted humor and "non-plastic" approach has been called a breath of fresh air to the Body of Christ. If you have ever felt dry and thirsty in your soul, you will want to come and experience this event!

Public Notice

NOTICE TO CONTRACTORS OF PROPOSED TEXAS DEPARTMENT OF TRANSPORTATION (TxDOT) CONTRACTS
Sealed proposals for contracts listed below will be received by TxDOT until the date(s) shown below, an then publicly read.

CONSTRUCTION/MAINTENANCE/BUILDING FACILITIES CONTRACT(S)

Dist/Div: Amarillo
Contract 0041-01-039 for SEAL COAT in HARTLEY County, etc. will be opened on October 7, 2005 at 1:00 p.m. at the State Office.

Plans and specifications are available for inspection, along with bidding proposals, and applications for the TxDOT Prequalified Contractor's list, at the applicable State and/or Dist/Div Offices listed below. If applicable, bidders must submit prequalification information to TxDOT at least 10 days prior to the bid date to be eligible to bid on a project. Prequalification materials may be requested from the State Office listed below. Plans for the above contract(s) are available from TxDOT's website at www.dot.stat.tx.us and from reproduction companies at the expense of the contractor.

NPO: 17824

State Office
Constr./Maint. Division
200 E. Riverside Dr.
Austin Texas 78704
Phone: 512-416-2540

Dist/Div Office(s)
Amarillo District
District Engineer
5715 Canyon Drive
Amarillo TX 79105-2708
Phone: 806-356-3283

Minimum wage rates are set out in bidding documents and the rates will be part of the contract. TxDOT ensures that bidders will not be discriminated against on the grounds of race, color, sex, or national origin.
2(9-15-05)B

JIM HOLMAN CHEVROLET

'99 Ford Mustang



\$9,995

*\$175/mo

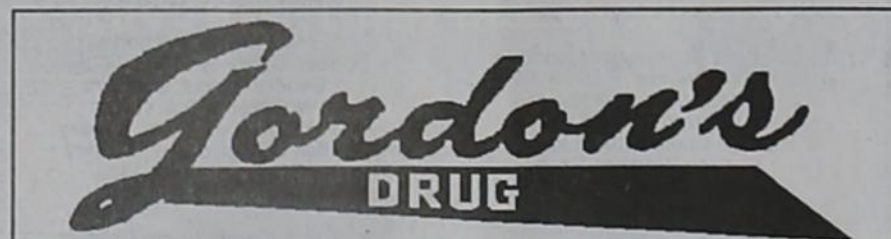
*8.00% at 72 mo. WAC

At Jim Holman Chevrolet we go out of our way to treat customers with respect

www.JimHolmanChevrolet.com

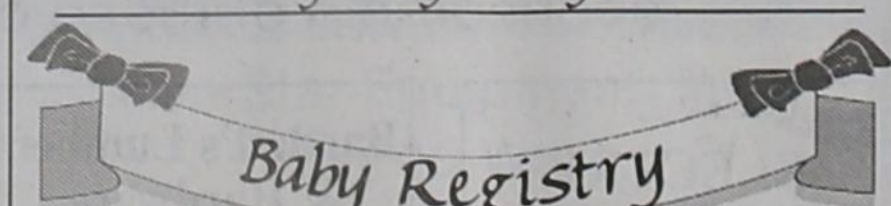
AN AMERICAN REVOLUTION

(580) 338-5900
Toll Free (800) 430-6081
823 E 12th, Guymon, OK



Couples Currently Registered

- Christina Kasko & Rhett Ruttman - 10/1
- Cassie (Butt) & Kevin Beckwith - TBA
- Krystal Waldron & Miguel Ortega - TBA
- Elissa Petersen & John Holt - TBA
- Lisa (Swink) & Eric Vasbinder
- Miranda (Thoreson) & Heath Hill
- Whitney Lilley & Billy Horton



- Jesse & Kimberly (Boyd) Tindell - 9/17 (Gruver)
- Clint & Brandy Sasser - 9/18
- Stephen & Lacey Salgado - 10/1



659-2141
314 Main Spearman

You're Invited

Brown, Graham and Company is hosting a farewell party for Monty Blackman in appreciation for his 32 years of service in our Spearman office. Monty is moving to work in our Austin office. We ask all clients and friends to join us at the O'Loughlin Center on Thursday, September 29th from 4:00 to 7:00 in the evening. Food and drinks will be provided. Please take time to come by and wish Monty well and meet Travis Wolf, the new Spearman office manager, and the rest of the staff.

"Singing Too Loud in Church"

by Sonny Donaldson

To order, send \$23 to:
Sonny Donaldson,
PO Box 8651,
Grangeland TX 77302

Celebrate

Gifts for all your celebrations!

Bridal Registry

- Whitney Lilley & Billy Horton - 9/10
- Christina Kasko & Rhett Ruttman - 10/1
- Elissa Petersen & John Holt - TBA
- Cassie (Butt) & Kevin Beckwith
- Randi Atwood & D.J. Warrick

Baby Registry

Kathryn (Gumfory) Mancini

Celebrate

203 Main St. Spearman, TX
(806) 659-3350 1-800-663-8026

by Dorothy Hudson
Out At The Lake



A young armadillo found at the Park

Lake Level--September 12, 2005--26.60 feet (-0.53)

The loss of slightly over 6 inches is over a 2 week period. During that time we did have a rain of 1.46 inches that has kept the Park green and in good shape. Fall flowers are coming out now.

This is Joan Hawkins' last week as Secretary or Administrative Assistant for the Palo Duro River Authority. She has ably filled this spot for over 20 years of continuous service, and we can add on 7 more years when she kept books part time for the Authority. She and husband Jeff have sold their home in Spearman and have bought one in Amarillo. The move was prompted by wanting to be near a little grandson. We will miss you, Joan.

Lucy Villa of Spearman is at the office this week for Joan to begin her training in the intricacies of the

position.

The young armadillo is probably one of several. I think armadillo babies come in sets of four and each set has all the same gender. Two weeks ago, I wrote of them being destructive as they root in the ground, but I enjoy seeing them. Since then, I have found that beavers, also on my list of animals with a bad behavior trait, not only cut down trees, but they may carry a parasite into the waters they inhabit.

Dr. Gott in his column in the Amarillo paper wrote of the infection caused from the tiny celled parasite giardia as being known as "beaver fever" in some parts of the country. Beaver harbor the parasite and pass it into streams and lakes. The infection is a common affliction of hikers, campers, and sportsmen who often drink from pristine streams, and then find they have contracted the giardia organisms. This usually leads to a bad case of diarrhea.

My first time to hear of giardia was when daughter Nancy and family were posted in Russia. They had to drink bottled water or use water boiled at least one minute. The parasite is worldwide, so the beaver family must have some help in spreading the infection.

MITCHELL THEATRES
NORTHRIDGE CINEMA 8

Guymon, Oklahoma

Movies beginning Sept 16.

JUST LIKE HEAVEN
PG-13 -- Reese Witherspoon

LORD OF WAR
R -- Nicolas Cage

SKY HIGH
PG -- Kurt Russell

EXORCISM OF EMILY ROSE
PG-13 -- Laura Linney

FOUR BROTHERS
R -- Mark Wahlberg, Tyrese Gibson

DUKES OF HAZARD
PG-13 -- Jessica Simpson, Johnny Knoxville

WEDDING CRASHERS
R -- Owen Wilson, Vince Vaughn

CHARLIE & CHOCOLATE FACTORY
PG -- Johnny Depp

FRESH POPCORN EVERYDAY!

Call for Showtimes

580-338-3281

www.northridge8.com

Office -- 580-338-8969

CASH & CREDIT CARDS ONLY

THANK YOU!

Manor Matters

by Merry Sparks

I am always so tempted to print as the Manor Turns. That is what us hard core employees around here say. We have our own little community here in the midst of the rest of the community. We have so much fun and so many things going on. The outside community coming in is what makes the Manor so very special. I just want to say THANK YOU to all of you that help here. We do appreciate you so!

We have had Resident Council on the 29th of August. The Residents addressed many different issues as well as reviewing the Resident Rights of each Resident. Irene Edwards was elected as the President of the Month and Todd Ware was elected as the CNA of the Month for September. They are well deserving.

We are still diligently practicing for the Golden Senior Olympics at Guymon. I trust that even as you read this we will be there competing with all of our might !! On the

30th during Happy Hour we had a special guest. Dolly Parton! Yes you heard it here a genuine Dolly Parton look-a-like came for an afternoon visit. She sang, told the Residents the story of her life and sang and sang again. We had a million laughs! She is a very interesting woman and I love one of her quotes. (She said this- I didn't) "I just hope that some day people will see that underneath all of this hair is a brain and underneath these big ole bussoms is an even bigger heart" We had a great fun afternoon. I won't reveal who played the role of Dolly but I will tell you that those high heeled boots were killing my feet!

Anne Whitaker has continued to bless us with her Bible studies. Thank you, Anne! Thank you also go out to the First Assembly of God church for bringing services to the Manor on the 11th of August.

We have had holidays, vacations, and illness in the Activities

department so everyone here has been on double time to keep up. We have had many, many volunteers coming in to help out with such as manicures on the 9th. Thank you to one and all. Among it all we also had a very good leadership training class for all employed on the 6th and 7th of Sept. It was led by Bruce Loeffler from Tennessee. Among other accomplishments he worked for Disney Corporation for 10 years training staff there for positive leadership positions. An ORCA grant funded most of the cost. The training that I was in was definitely excellent as the course title "Spirit of Excellence" portrays. Thank you to our leaders that provided such a wonderful training course.

We also had a fun Sing-A-Long on the 7th which many Residents attended. Music goes a long, long way in making our days brighter! We also had Coy Bennett of Perryton surprise us one afternoon with his harmonica and other instruments. Thank You, Coy!

"We Are the Body"
Fall Revival
with
Paul & Vanessa Cherry
September 25-28, 2005
First Baptist Church
123 S. Bernice St.
Nursery provided for children
3 years and under
Sunday Services
11:00 a.m. and 7:00 p.m.
Dessert Fellowship following evening service
Monday-Wednesday Services
Noon luncheon and 7:00 p.m.
Tuesday ~ Youth Pizza Bash 6 pm
Wednesday ~ Children's Supper 6 pm
(Pre-K through 6th grade)
Come and refresh your spirit!

PUBLIC NOTICE
BRIEF EXPLANATORY STATEMENTS OF PROPOSED
CONSTITUTIONAL AMENDMENTS
SPECIAL ELECTION NOVEMBER 8, 2005

PROPOSITION 1 (HJR 54)
HJR 54 would create a Texas rail relocation and improvement fund in the state treasury and would authorize grants of state revenue and issuance of public debt to relocate, rehabilitate, and expand privately and publicly owned passenger and freight rail facilities and to construct railroad underpasses and overpasses.
The proposed amendment will appear on the ballot as follows: "The constitutional amendment creating the Texas rail relocation and improvement fund and authorizing grants of money and issuance of obligations for financing the relocation, rehabilitation, and expansion of rail facilities."

PROPOSITION 2 (HJR 6)
HJR 6 would provide that marriage in Texas is solely the union of a man and woman, and that the state and its political subdivisions could not create or recognize any legal status identical to or similar to marriage, including such legal status relationships created outside of Texas.
The proposed amendment will appear on the ballot as follows: "The constitutional amendment providing that marriage in this state consists only of the union of one man and one woman and prohibiting this state or a political subdivision of this state from creating or recognizing any legal status identical or similar to marriage."

PROPOSITION 3 (HJR 80)
HJR 80 would provide that local economic development program loans or grants (other than debts secured by a pledge of ad valorem taxes or financed by the issuance of any bonds or other obligations payable from ad valorem taxes) do not constitute or create debt. Any provision of state constitutional law that may prohibit or limit the authority of a political subdivision of the state to incur debt does not apply to those loans or grants.
The proposition will appear on the ballot as follows: "The constitutional amendment clarifying that certain economic development programs do not constitute a debt."

PROPOSITION 4 (SJR 17)
SJR 17 would authorize a district judge to deny reinstatement of bail or new bail to a person accused of a felony, if the person's bail had been revoked or forfeited as a result of the person's violation of a condition of release related to the safety of a victim of the alleged offense or to the safety of the community.
The proposed amendment will appear on the ballot as follows: "The constitutional amendment authorizing the denial of bail to a criminal defendant who violates a condition of the defendant's release pending trial."

PROPOSITION 5 (SJR 21)
SJR 21 would authorize the Legislature to exempt commercial loans from state usury laws that set maximum interest rates. "Commercial loans" are loans made primarily for business, commercial, investment, agricultural, or similar purposes and not primarily for personal, family, or household purposes.
The proposed amendment will appear on the ballot as follows: "The constitutional amendment allowing the legislature to define rates of interest for commercial loans."

PROPOSITION 6 (HJR 87)
HJR 87 would increase the size of the State Commission on Judicial Conduct from eleven to thirteen members by increasing from four to five the number of public members and by adding a constitutional county court judge. The additions would ensure that the commission has an odd number of members, which is required by another provision of the state constitution.
The proposed amendment will appear on the ballot as follows: "The constitutional amendment to include one additional public member and a constitutional county court judge in the membership of the State Commission on Judicial Conduct."

PROPOSITION 7 (SJR 7)
SJR 7 would authorize new options for reverse mortgage agreements for senior homeowners allowing them to draw advances at unscheduled intervals, if and when needed, and only in the

amounts needed, during the loan term. These are in addition to options that would allow a lump sum payment after settlement or regular periodic, predetermined equal amounts over a term of years or the lifetime of the homeowner. Additionally, SJR 7 would: (1) prohibit the agreement from requiring the use of a credit card, debit card or similar device to obtain an advance; (2) prohibit the charge or collection of a transaction fee solely in connection with any debit or advance, after the time the extension of credit is established; and (3) prohibit the lender or holder from unilaterally amending the extension of credit.
The proposition will appear on the ballot as follows: "The constitutional amendment authorizing line-of-credit advances under a reverse mortgage."

PROPOSITION 8 (SJR 40)
SJR 40 would clear individual land titles by relinquishing and releasing all claims of state ownership interests, including mineral interests, in two local areas, namely, a roughly 4,600-acre area located roughly 14 miles southeast of Gilmer, Texas, and a separate 900-acre area located north of Tyler, Texas.
The proposed amendment will appear on the ballot as follows: "The constitutional amendment providing for the clearing of land titles by relinquishing and releasing any state claim to sovereign ownership or title to interest in certain land in Upshur County and in Smith County."

PROPOSITION 9 (HJR 79)
HJR 79 would authorize the Legislature to provide staggered six year terms of office for board members serving on regional mobility authorities, with no more than one-third of the board positions being appointed every two years.
The proposition will appear on the ballot as follows: "The constitutional amendment authorizing the legislature to provide for a six-year term for a board member of a regional mobility authority."

Published by Secretary of State Roger Williams, www.sos.state.tx.us, 1.800.252.8683.

THE WORLD'S TOUGHEST ATVs™
THE YEAR'S BEST DEALS.

FACTORY AUTHORIZED CLEARANCE
POLARIS

REBATE OF UP TO
\$500
AND
FREE
DOUBLE WARRANTY
AND
\$69 MO.
at 6.9% for 24 months*
ON SELECT POLARIS® ATVs.

HANSFORD IMPLEMENT CO.
South Highway 207
Spearman TX 79081
(806) 659-2568

"It's the first choice for treatment as far as I'm concerned."

THE STORY OF
Don Taylor
CANYON, TEXAS

AS A PATIENT NEEDING A STEM CELL TRANSPLANT from his brother, Don Taylor made the choice to stay at The Don & Sybil Harrington Cancer Center. In doing so, Don chose the only stem cell transplantation facility that treats leukemia, lymphoma and multiple myeloma. Don was also able to stay close to his family, church and work while going through treatment.

Today, Don is in remission. He would not think of going anywhere else, because at Harrington Cancer Center, everything he needs...including education, treatment, clinical research and support services including a lab and pharmacy...is right here.

MAIN CAMPUS:
(806) 359-4673
1-800-274-4673
1500 Wallace Blvd.
Amarillo, TX 79106

COMPREHENSIVE BREAST CENTER:
(806) 356-1906
1-800-377-4673
1310 Wallace Blvd.
Amarillo, TX 79106

COULTER CAMPUS:
(806) 354-0950
1301 Coulter, Ste. 100
Amarillo, TX 79106

THE DON & SYBIL HARRINGTON CANCER CENTER
Touching lives... right here.

www.harringtoncc.org

Public Notice

DOCUMENT 00030 REQUEST FOR COMPETITIVE SEALED PROPOSALS

1.1 OWNER
Spearman Independent School District; 403 E. Eleventh Avenue; Spearman, Texas 79081; Mr. Rodney Sumner, Superintendent

1.2 PROJECT
Additions & Alterations to Gus Birdwell Elementary and Spearman Junior High; 508 S. Townsend Street; Spearman, Texas 79081

1.3 ARCHITECT
Parkhill, Smith & Cooper, Inc.; Engineers + Architects + Planners; 4222 85th Street, Lubbock, Texas 79423; (806) 743-2200; (806) 743-3500 FAX

1.4 DESCRIPTION
Spearman Independent School District will receive sealed proposals for General Construction Work, including mechanical and electrical work for renovation of existing elementary school and new construction of additions and new junior high school all completed as one building.

1.5 BASIS OF PROPOSALS
A. Spearman Independent School District will be utilizing the competitive sealed proposals procurement method as authorized by the Texas Legislature in Senate Bill 1 and further defined by Senate Bill 583 and Texas Education Code, Chapter 44, Subchapter B. The selection criteria used to evaluate each proposer's proposal will include the following:

1. Price - Base Proposal price and all alternates.
 2. Resume of proposed job superintendent.
 3. Resume and references of office project manager.
 4. List of potential items from proposer that could reduce the cost of work, but result in the same end product. List shall include suggestions of materials/assemblies, but no price.
 5. Insurance claims and litigation during last three years.
 6. Construction time.
 7. List of subcontractors (delivered to Spearman Independent School District within 24 hours of proposed opening).
 8. Contractor phasing options which may shorten construction time or minimize disruptions to school operations without increasing proposal amount.
 9. Dunn and Bradstreet Credit Financial Statement for General Contractor.
- Selection of the Contractor will be based on a combination of the listed selection criteria determined to provide the best value to the school district.
- The budget for this project is approximately \$9,900,000.
- Proposals shall be made on a stipulated sum basis, using the enclosed Proposal Form. Segregated bids will not be accepted.

1.6 SUBMISSION: SUBMIT PROPOSALS AS FOLLOWS:

A. General: Prior to the proposal date and time, sealed proposals (prepared according to the Instructions to Proposers) may be sent to Mr. Rodney Sumner, at the address below. Proposals received prior to the time of proposal opening will be securely kept, unopened. Proposals received after the time set for opening will not be considered.

B. Address to: Spearman Independent School District; 403 E. 11th Avenue; Spearman, Texas 79081; Attn: Mr. Rodney Sumner

C. Proposal Opening Location: Spearman Independent School District; Administration Offices - High School Library; 403 E. 11th Avenue; Spearman, Texas 79081

D. Proposal Date: October 20, 2005

E. Proposal Time: 2:00 p.m. Local Time

1.7 PROPOSAL DOCUMENTS:

A. Proposal Documents will be available beginning September 22, 2005.

B. Proposal Documents may be examined at the Architect's office and at the following plan rooms:

1. Associated General Contractors; 1707 W. 8th Ave.; Amarillo, Texas 79105; (806) 374-1924
2. Associated General Contractors; 3004B 50th; Lubbock, Texas 79413; (806) 797-8898
3. Dodge Reports (Amarillo); 1707 W. 8th Ave.; Amarillo, Texas 79105; (806) 374-1924
4. Dodge Reports (Lubbock); 8302 Indiana #12; Lubbock, Texas 79423; (806) 793-0949; Fax (806) 793-0947
5. Texas Contractor; 2510 National Drive; Garland, Texas 75041; (214) 271-2693

C. Proposers may secure copies of the proposal documents as follows:

1. General Contractor: A maximum of three sets from Parkhill, Smith & Cooper, Inc., Engineers + Architects + Planners, 4222 85th Street, Lubbock, Texas, upon deposit of \$250.00 for each set. Deposits shall be Company check or cashier's check made payable to Parkhill, Smith & Cooper, Inc. Deposit is refundable as stipulated in the Instructions to Proposers.
2. Mechanical and Electrical Subcontractors may obtain one complete set with a plan deposit of \$250.00 per set. Deposit is refundable if returned as indicated above in item #1.
3. All plan deposits shall be made in the form of a company check made payable to Parkhill, Smith & Cooper, Inc. No cash will be accepted.
4. No partial sets will be issued.

1.8 MANDATORY PRE-PROPOSAL CONFERENCE
A mandatory pre-proposal conference will be held on October 6, 2005 at 1:00 p.m. Local Time, at Gus Birdwell Elementary School. Mandatory attendance is required from General Contractors who will be offering proposals.

1.9 PROPOSAL SECURITY
Proposal security in the sum of 5% of the greatest amount proposal and in the form of a cashier's check, certified check or Surety Proposal Bond, shall accompany each Proposal in accordance with the Instructions to Proposers.

1.10 OPENING OF PROPOSALS
Proposals will be publicly opened in the Administration Building Board Room immediately after closing of proposal time to identify the names of the proposer and their respective proposed contract amount. Other contents of the proposals will be afforded security sufficient to preclude disclosure of contents prior to award or rejection action.

After opening the Proposals, the Owner will evaluate and rank each Proposal with respect to the published selection criteria described under Section 1.5. After opening and ranking, an award may be made on the basis of the initially submitted Proposal, without discussion, clarification or modification, or the Owner may discuss with the selected proposer, offers for cost adjustment and other elements of the Proposal. Other than the data read at the Proposal opening, the Owner shall not disclose any information derived from the Proposals submitted by competing firms in conducting such discussions.

If the Owner determines that it is unable to reach a satisfactory agreement with the first ranked proposer, the Owner will terminate discussions with that proposer. The Owner will then proceed with negotiations with each successive proposer as they appear in the order of ranking until an agreement is reached, or until the Owner has rejected all Proposals. After termination of discussions with any proposer, Owner will not resume discussions with that proposer.

Immediately following the Owner's approval of the order of ranking of proposers and the Owner's contract award of Proposal rejection action, the proposers will be notified by facsimile message.

The Owner reserves the right to accept or reject any or all alternates or to accept any combination of alternates considered advantageous to the Owner.

The award or rejection action regarding this Proposal is at the sole discretion of the Owner and the Owner makes no warranty regarding this Proposal that a contract will be awarded to any proposer.

The Owner agrees that if the Contract is awarded, it will be awarded to the proposer offering the best value to the Owner. The Owner is not bound to accept the lowest priced Proposal if that

Proposal is judged not to be the best value for the Owner, as determined by the Owner.

1.11 FORMALITIES
The Owner reserves the right to waive irregularities and to reject all proposals.

1.12 APPLICABLE GOVERNING LAWS AND REGULATIONS
In accordance with the Instructions to Proposers, all bidders must comply with State Labor Laws concerning wage rates. 1(9-15-05)B

Wolf Creek Heritage Museum Notes by Virginia Scott

An Evening in Lipscomb

On Saturday, September 17, 2005 at 4 p.m. the action starts in Lipscomb. The Wolf Creek Heritage museum will open its door to host a reception for Zella Flowers Meeks and James Beard. At 5 p.m. the guests will be entertained with readings from James' Book Musings of Grace.

Following the program, the museum will serve refreshments while guests enjoy the private collection of Stirrups offered by Ms. Meeks and James will host a book signing of his books.

The museum will close at 7 p.m. with the invitation to all to venture downtown Lipscomb to enjoy the Dance Platform, to check out the newly relocated Ivanhoe bank and the landscaping project at our county church. The evening promises to be entertaining and relaxing.

James Beard, is a resident of Follett and has been a Science Teacher in Lipscomb County for over 30 years. He has written three book of Christian poetry. His third book will be released this fall.

Zella Flowers Meeks grew up in Canadian and still has many roots in this area. Her collection started as a way to decorate her sons bedroom and evolved into a lifetime passion. Don't miss this one of kind collection.

Museum Hours: Monday thru Friday 10 a.m. to 4 p.m., Sunday 2 to 4 p.m. Special hours upon request.
Museum Information: Hwy 305, Lipscomb; telephone: 806-852-2123; fax: 806-852-217; email: wolfcreek@amaonline.com; website: www.wolfcreekheritagemuseum.com

BEAUTICONTROL
The world's premier skin care and image company

Our product line has something for everyone. Our skin analysis helps to determine which skin care product is best for you.

To schedule your complimentary Skin Age Analysis, call Stephanie Brock at 659-1774

WINNING DEALS

Make An Offer

2003 Chevrolet Tahoe
Buckets, 4x4, 3rd Row Seats, Cloth, One Owner, 39,900 Miles!
Was \$26,900
NOW \$23,500

2004 Chevrolet Suburban LS
Buckets, Rear DVD, 4x4, Silver, XM Radio, Much More!
Was \$34,900
NOW \$31,500

2002 Chevy Ext. Cab Z71 Pickup
Two-Tone Blue/Pewter, 69,000 miles, One Owner, Cloth Buckets, LS Pkg.!!
Was \$19,900
NOW \$18,500

2005 Volkswagen Beetle
Turbo, Diesel, 5-Speed, 43 MPG, 12,000 miles, Loaded Up!
Was \$21,500
NOW \$19,995

1998 Ford Explorer XLT
Red, 62,500 miles, New Tires, 4x4, Nice
Was \$9995
NOW \$8995

2003 Chevy Tahoe
4x4, Leather, Loaded, 48,600 miles, XM Radio, 3rd Row Seats!
Was \$28,900
NOW \$24,900

2004 Pontiac Grand Am
Red, 30,800 miles, CD, Alum. Wheels, Very Nice!!
Was \$13,900
NOW \$12,995

2002 Chevy Silverado
Reg. Cab, 2WD, One Owner, Extra Nice, 36,000 miles!
Was \$14,900
NOW \$13,500

2001 Chevy Impala
White, 4Dr., 71,000 miles, V-6, Auto, A/C, Powered up!!
Was \$8995
NOW \$8495

2004 Chevy Blazer
4x4, 4Dr., 87,000 miles, V-6, Power, Air, Auto!
Was \$9495
NOW \$8995

2001 Dodge Ram
Quad Cab, 2WD, 37,000 miles, V-8, Auto, SLT Decor, One-Owner!
Was \$13,995
NOW \$12,900

Drive Your Car or Truck Home Today

See our ad in the Fiest Area-Wide Directory
Visit prairiemotors.com to see ALL in-stock vehicles!

Hwy. 207 South • (806) 659-2541 • Spearman, TX

NO HASSLE - NO HAGGLE PRICES!

CHEVROLET WILL BE THERE. BUICK The most dependable longest lasting trucks on the road.

\$19.95 FOR FAST INTERNET.

ANYTHING ELSE IS HALF-FAST OR TWICE THE PRICE.

VALOR has the lowest price in town for High-Speed Internet. With our DSL package, you'll enjoy instant, always-on access to the Internet where you can search, shop, e-mail, send and receive large photos, watch full-motion videos or play online games, all at blazing speeds and all for just \$19.95 per month. You'll also get a FREE DSL Modem and FREE activation.

Now you can save even more by combining our High-Speed Internet, Telephone and Digital Satellite TV services in one package, on one bill, for just \$79.95 per month.

Not a VALOR Telecom customer yet?

Switch your phone service to VALOR and receive a **\$100 sign-up credit.** You can keep your same phone number and there's no fee to switch.

Don't wait any longer! Come by the VALOR Store and schedule your installation today.

- Blazing fast, always-on connection to the Internet
- Surf and talk on the same phone line
- FREE DSL Modem—a \$99.95 value
- Includes e-mail addresses, Web space, SPAM and virus protection

\$100 CREDIT WHEN YOU SWITCH

Call Today! 1-877-628-2567

Visit the VALOR Telecom Store at 301 S. Amherst, Perryton
806-435-2050

valortelecom.com

VALOR TELECOM

Price does not include Subscriber Line Charge, taxes, fees and other surcharges. Bundle price is based on the best available service agreement. Sign-up bonus is available for new VALOR Telecom customers only. \$100 sign-up bonus will appear as a \$25 credit on the first four monthly bill statements. Limited time offer. Offer does not guarantee service availability on your individual phone line. DSL Internet service and DSL modem provided by VALOR Telecom. A \$100 fee will be assessed to VALOR accounts if services are terminated before the 12-month term. Other restrictions and limitations apply. VALOR Telecom is a registered trademark of Valor Telecommunications, LLC.

2005 GHS HOMECOMING

2005 GRUVER GREYHOUND VARSITY FOOTBALL TEAM

No.	Name	Ht	Wt	Pos	Class
2	Stephen Salazar	6'1"	190	TE/DE	Sr.
4	Ivan Briones	5'9"	155	HB/LB	Sr.
5	Crispin Borunda	6'0"	170	HB/LB	Sr.
6	Diego Luciano	5'11"	135	QB/DB	Jr.
10	Tucker Williams	5'6"	120	SE/DB	Jr.
12	Seth Thompson	5'7"	125	QB/DB	So.
15	Chandler Miner	5'6"	140	HB/LB	So.
20	Matt Messer	5'11"	160	QB/DB	Sr.
21	Tyler Lane	5'9"	155	HB/DB	Sr.
22	Tony Lora	5'7"	150	FB/LB	So.
23	Bryant Halley	6'0"	165	SE/DB	Sr.
24	Cesar Ortiz	5'10"	150	TE/DB	Sr.
25	Sammy Pena	5'7"	125	SE/DB	Sr.
34	Caleb Shults	5'7"	150	SE/DB	So.
44	Sheldon Atwood	5'10"	185	FB/LB	Sr.
50	Steve Villegas	5'8"	160	OL/DT	Sr.
52	Jake Wills	6'0"	185	OL/DT	So.
53	Reid Winger	6'4"	260	OL/DT	Sr.
54	Tanner Sherrill	5'8"	150	OL/DE	So.
55	Lorenzo Torres	5'9"	155	OL/LB	Sr.
57	Tanner Irwin	6'0"	210	OL/DE	Sr.
68	Justin Thompson	5'10"	150	OL/DE	Jr.
72	Charlie Slough	6'1"	200	OL/DT	Jr.
75	Travis McDowell	6'1"	255	OL/DT	Jr.
79	Francisco Sauz	5'7"	170	OL/DT	So.
80	Drew Grotegut	5'9"	135	TE/DB	Jr.

Athletic Director/Head Coach: Terry Felderhoff
Assistant Coaches: Jim Davis, John Duncan, Troy Seagler, Rod Been
Managers: Guy Paul Hintergardt, Scott Hintergardt, Aaron Felderhoff, Karsten Irwin, Kramer King, Kory Jackson, Cody Dahl



2005 JV HOUNDS

No.	NAME
3	Rey Gaspar
4	Tony Lora
5	Caleb Shults
15	Chandler Miner
20	Miles Messer
21	Justin Duby
22	Seth Thompson
25	Taylor Williams
28	Saul Hernandez
33	Jesse Bucknell
35	Gustavo Vega
51	Jake Wills
54	Tanner Sherrill
55	Francisco Sauz
56	Roberto Rodriguez
57	Roman Rodriguez
58	Jorge Soto
60	Matt Salazar
64	Jordan Hicks
70	Carlos Lopez
80	Payton Mitchell

Managers: Cody Dahl, Kory Jackson



2005 Queen Candidates

Senior Lindsey Clift, daughter of Traci Clift and Roger Clift
 Senior Callie Hargis, daughter of Kent and Robin Hargis
 Senior Madaline Reed, daughter of Rick and Kathy Barkley and the late Wesley Reed

2005 Alumni Schedule

Alumni classes honored 2005, 1995, 1985, 1975, 1965, 1955, 1945
 After game festivities will be at the following locations: Class of 1945, TBA; Class of 1955, TBA; Class of 1965, home of Marian (Jeffries) Tomlinson, 101 Van Kurt; Class of 1975, home of Clint Irwin, 205 Etling; Class of 1985, home of Holly (Holt) Key, 208 Cluck; Class of 1995, home of Debby Odom, 100 Broadway; Class of 2005, TBA
 Alumni dues of \$10.00 are payable at the supper or by mail to treasurer: Kathy Gillispie, Box 207, Gruver, Texas 79040. Dues support the GHS Alumni Scholarship Fund.

2005 GHS Marching Band

Drum Major:	Freshman:	Arnanda
Jimmie McCloy	Branning;	Jesse
Seniors: Luis Garcia;	Bucknell;	Cody Dahl;
Joel Gonzalez; Ofelia	Justin Duby;	Rey
Rodriguez; Josefa Trejo;	Gaspar;	Ever
Esteban Villegas	Hernandez;	Kory
Juniors: Baldomero	Jackson; Macy Jones;	
Garcia; Roman Gaspar	Perla Lopez;	Brenda
Jr.; Genesis Hernandez;	Mendoza;	Roberto
Gloria Lora; Diego	Mendoza;	Steve
Luciano; Ramona	Morales; Jorge Soto;	
Martinez; Maria	Gustavo Vega	
Mendoza; Marco	Flag Team: Senior -	
Moncayo; Artemio	Maria Ruiz; Junior -	
Mundo; Edna Pastrana;	Mayra Hernandez;	
Codie Scoggin; Jesus	Sophomore - Dalila	
Soto	Santillan; Freshmen -	
Sophomores: Sorrele	Miranda Baird; Esbeydi	
Blevins; Yadira Garcia;	Ramirez; Danielle	
Adriana Soto; Denise	Wheelock	
Villegas		

GHS Homecoming

Thursday, September 15th -
 Junior Varsity vs Sunray, Hounds Stadium, approx. 7:30 p.m.
 Burning of GHS, approx. 9:15 (following JV game)
Friday, September 16th -
 Snake Dance, 2:30 p.m.
 All-School Pep Rally, Hounds Stadium, 3 p.m.
 Chili Supper, School Cafeteria (\$5), 5-6:30 p.m.
 Alumni Coronation, Hounds Stadium, 6:45 p.m.
 Queen Coronation, Hounds Stadium, 7 p.m.
 Gruver Greyhounds vs. Highland Park, Hounds Stadium, 7:30 p.m.



Varsity Cheerleaders
 Kelly Sue Jones, Lindsey Clift, Callie Hargis
 Sarah Mireles, Kailee Reed, Dalila Santillan

Hansford Implement

Spearman • 659-2568
Plow 'em under!

Gordon's Drug & Photo

Spearman • 659-2141
Lookin' for a Photo finish win!

Hansford County Hospital District

Spearman • 659-2535
Give them a shot in the arm!

First State Bank

Spearman • 659-5565 • member FDIC
Invested in a victory!

Bartlett's Lumber & Hardware

Gruver • 733-2404
Nail down a win!

Paula's Creations

Morse • 733-2301
Sew up a victory!

Bort Agency

Gruver • 733-2456
Backin' the Hounds!

Panhandle Diner & Deli

Spearman • 659-3864
Serve up a win!

H&H Water Well

Spearman • 659-5577
Throw 'em in the well!

Lyric Cinema

Spearman • 659-2812
Picturing a win!

First National Bank

Spearman • 659-5544 • member FDIC
Cash in on a win!

Five Star Equipment Co.

Spearman • 659-3743
Make 'em see stars!

Gruver State Bank

Gruver • 733-5061 • member FDIC
Deposit another victory!

Rocking F Boot & Saddle Shop

Spearman • 659-3342
Boot 'em out!

H&H Credit Union

Stinnett • 878-2452
We're 'Interested' in Hound Football!

Vaquera Painting

Spearman • 659-5035
Roll 'em over!

El Vaquero

Gruver • 733-2407
Serve up a win!

Gruver Redi-Mix

Gruver • 733-2907
Cement a big win!

Hansford Co. Reporter-Statesman

Spearman • 659-3434
Supporting Hansford County!

Golden Spread Sales Co.

Spearman • 659-3776
Lookin' for a 'golden' win!

Interstate Bank, ssb

Spearman • 659-2559 • interstatebank.net
Bankin' on the Hounds!

Cates Men & Boys Wear

Spearman • 659-3426
Wranglin' for a victory!

MurMur's Cafe

Spearman • 659-3580
Fry 'em up!

Gruver Agri Industries, Inc.

Sew 'N Sew Designs by Alice
 Gruver • 733-5005
Keep 'em in stitches!

Prairie Motors, Inc.

Spearman • 659-2541
Drive away with a victory!

Gruver Parts & Supply

Gruver • 733-2070
Part the way for a victory!

2005 GHS *the* HOMECOMING

the BIG

G ★ A ★ M ★ E

**Gruver
Greyhounds
VS
Highland Park**

**Friday,
Sept. 16
7:30 p.m.
Hounds Stadium**



Farm Supply & Service

Gruver • 733-2496
Supply a victory!

Little Tiffanies

Gruver • 733-5290
Ring in a victory!

Celebrate

Spearman • 659-3350
Celebrate a homecoming victory!

Sunray Co-Op

Gruver Branch • 733-2481
Plant the seeds of victory!

GJH Red Team

No.	Name
3	Rito Mendoza
13	Adam Melendez
17	Jake Beasley
18	Payton Thoreson
20	Ramon Mendoza
25	Colton Moffett
45	Justin Bass
49	Munchie Trejo
59	Gonzalo Vega
61	Zach Logsdon
64	Zachary Saylor
70	Jesus Balderama
72	Joel Soto
74	Ruben Hernandez
77	Shane Atwood
79	Luis Lora

GJH Black Team

No.	Name
7	Drew Mireles
14	Blake Fitzgeard
28	Reagan Karlin
33	Tyler Wills
38	David Sanchez
54	Jorge Tarango
55	Alonso Martinez
56	Caleb Miller
58	Gabriel Mendoza
66	Rogelio Acosta
67	Ezequiel Perez
78	Cory Graves
80	Parker Grotgut
85	Rily Urban

Hansford County Veterinary Clinic

Spearman • 659-2100
Skin 'em!

Gruver Cablevision

Gruver • 733-5295
Supporting the Hounds!

Julie Williams Insurance Agency

Gruver • 733-2826
Insure us a win!

The Bunkhouse Restaurant

Spearman • 659-2089
Steak out a win!

Simple Simon's Pizza

Spearman • 659-9991
Slice up a win!

Brown, Graham & Co.

Spearman • 659-2538
Countin' on a win!

NOTICE

We are currently working your area
serving all of the Panhandle

And with our crew and equipment close by, we offering prompt service and reasonable rates to all area residents for a short time. Please call immediately if you are interested in having any asphalt paving done this year.

WE ARE NOW IN YOUR AREA!

- Parking Lots • Private Drives • Long Lanes
- We do House Driveways
- Hot Rubber Crack Filling
- Driveways Custom Installed
- Resurfacing Over Old Asphalt and Concrete
- Driveways Widened for Additional Parking
- We Lay Blacktop Pads for Boat and R.V. Parking
- Blacktop Approaches and Turnarounds
- Grading and Basework

**This Week
Receive
20% OFF
with this flyer!**

Best Buy Asphalt Paving

Asphalt Paving by Joe and John

Find us at SmartPages.com, your online Yellow Pages and Northwest Oklahoma FEIST Yellow Pages.

Maybe you have a big area you would love to have blacktopped but you can't afford to pave the whole thing right now. We install partial driveways. We can pave an area by your house just big enough to park your vehicles on. Or we can install as little as one load for you.

Tired of a Dust Bowl in the Summer?

And a Mud Hole in the Winter? DON'T FUSS — CALL US!

• Free Estimates • Fast Service • Quality Work

Cell: (405) 204-4496

(405) 495-8200

(800) 681-9383

Bethany, OK

Our Promise to You:

We will beat any other licensed asphalt contractor's written bid for the same job, if we do the job.

- Licensed • Insured
- Free Estimates • Fast Service • Quality Work



Maybe your Asphalt Surface just needs Sealcoating.

Call Us For Our Perryton References

• Cracking • Raveling • Oil Damage

Our Asphalt Sealer

• Protects • Beautifies • Preserves

Renews Old Damaged Asphalt Surfaces.

NOTICE OF PUBLIC MEETING TO DISCUSS

GRUVER INDEPENDENT SCHOOL DISTRICT'S STATE FINANCIAL ACCOUNTABILITY RATING

Gruver Independent School District will hold a public meeting at 8:00 a.m., September 23, 2005 in the High School Board Room, 601 Garrett Street, Gruver, Texas

The purpose of this meeting is to discuss
Gruver Independent School District's rating on the state's financial accountability system

Gruver Celebrating 75 Years

by Carolyn Cummings
 On September 17, 2005 the City of Gruver will officially recognize its 75th Anniversary.
 The history of Gruver really starts a little earlier than the official beginning date (February, 1930) of the city. That is the date of the first minutes of the City Council.
 The townsite of Gruver started with Mr. Ace P. Borger, the promoter who founded Borger and Stinnett, Texas, purchasing the land for the townsite from Mrs. J.H. Cooper on February 26, 1927. Mrs. Cooper retained their home and a few blocks around it, as the Cooper Ranch Headquarters were located there. The old Cooper home is still there, in good repair, at 314 Cator Street.
 The town was to have been named Cooper, but there was already a town in Texas by that name. Instead, the name of Gruver was chosen in honor of Mr. Joseph Hezekiah Gruver, a prominent farmer-stockman of the area.
 The first "new" building in the townsite was moved from Signal Hill in Hutchinson County in late 1927. This large sheet-metal structure was partitioned off to allow for the housing of the post office, the townsite office, and small living quarters for the townsite manager and his family. This building is still in Gruver and after several remodelings houses The Gruver Ford Company. (For many years it housed Universal Motors, which was owned and operated by the late Tillie Poston.)
 The Gruver Post Office was

opened November 15, 1927 with Miss Blanche Jones (later Mrs. E.H. Tabor) serving as postmistress until April 1929. A Mr. William T. McRee served for four years when Mrs. Tabor returned and assumed her duties serving until 1970. Doris Pinkerton served until 1993 followed by Mike Floyd who retired in 2002. Milana Reiswig is the current Postmaster.
 The records are scanty for the years 1927 through early 1929. However, it is known that there were three lumber companies established during this time awaiting the housing boom.
 Three grain elevators were also constructed: The J.H. Gruver and Son Elevator, Chapman Milling Co. and Borger Grain Company.
 It seems everything was done in three's because there were three filling stations, too. One was operated by Elmer Hayes, one by Norton Ogle and the last one operated by Howard Lee.
 Then there were the three grocery, market and general merchandise stores. The William N. Fletcher Store was owned and operated by three generations of family. It was sold and later closed its doors in 1972. Another market was the Fulton Grocery and General Merchandise which was sold to the Follis Grocery and stayed throughout the dust bowl era. The third grocery was the P. H. Westerfields. It served the community continuously until August 1977. It never changed ownership but a new generation came in after the death of Mickey Westerfield.

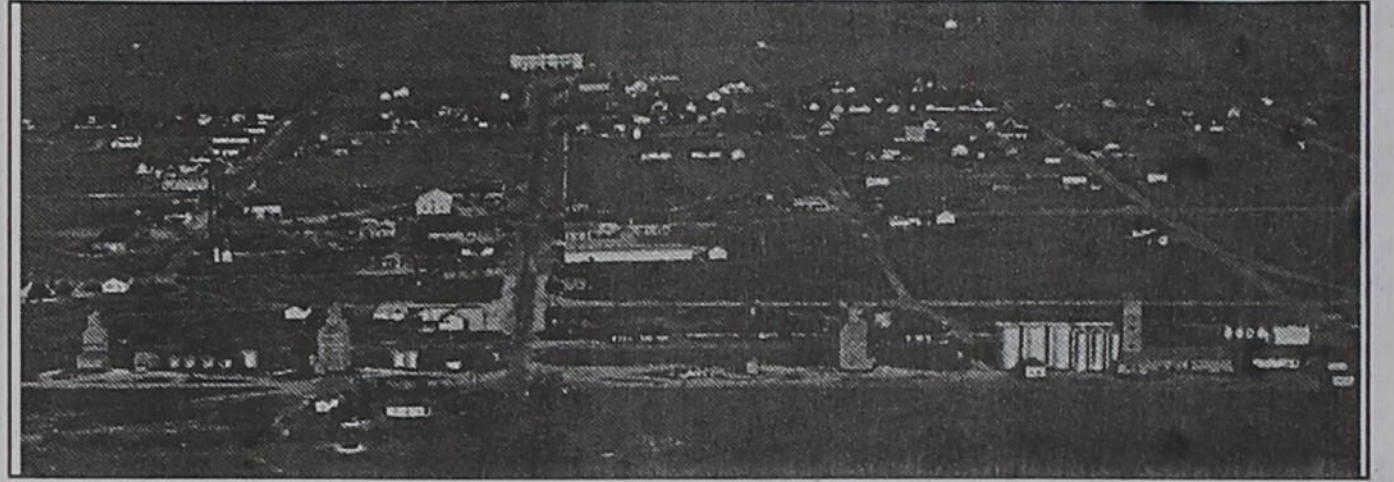
One of the larger employers of the late 20's and a few years of the 30's was Gruver Roller Bearing Factory. It was owned and operated by the Gruver's and was located at 802 Front Street. The business employed in excess of twenty employees most of which stated at a small cottage motel in the south part of Gruver. Proprietors of the cottage were "Uncle Sam" and Aunt Nannie Gruver.
 More new enterprises opened for business on March 1, 1929 than on any other day in Gruver's history. The First State Bank, the Gruver Hardware and Furniture Store, the International Harvester Company Agency, the Gruver Motor Company and The Gay Fletcher John Deere Agency all had their formal openings on this day (some had opened a few weeks before).
 March 1, 2005 was special in another way. It was the day that the Rock Island Railroad made its first regularly scheduled run from Amarillo through Gruver to as far as the Oklahoma State line. The train stopped for an hour so the entire crew, about fifty Amarillo boosters and several VIP's of the railroad could walk up town where a welcoming committee waited. The band presented a program to the gathered crowd at Broadway and Main.
 The Gruver Community Workers also made their debut that day as marvelous cooks and hostesses. They established a tradition that has been carried on by the Gruver women. The ladies were a civic minded group sparked by the lead-

ership of Devonna McClellan, Bonnie Fleck and Sallie McGee. They served a delicious dinner in the little white church house. People came from all around but the food supply was ample.
 On August 2, 1929 the Gruver Townsite conveyed a ten acre tract of un-platted land on the east part of the townsite property to the Gruver Rural High School District. The Gruver School system developed from a one-room one-teacher school in 1929 to its present day status.
 Gruver's quick progress, as well

as that of other cities across the nation, was not to last. By the end of 1929 the stock market had crashed and a major depression had set in. Several years of drought, almost total crop failures, wheat prices as low as 25 cents per bushel and livestock prices so low that it cost more to raise a hog or a cow than it would bring at market and a few years with no cash income brought apparently prosperous farmers to a state of almost poverty. However, the majority of the people of Gruver were a substantial breed with a well-balanced set of

values. They resorted to more conservative living and luckily owned their own cars, homes, farm equipment and some livestock. Fortunately for Gruver, there were a number of business men who were financially strong and generous enough to aid those less fortunate. No one was hungry, cold, without medicine nor suffered dire need in any form. However, their wants and needs were not supplied (as in the most recent times) for several years.

continued on page 10



1930 **City of Gruver** 2005

Happy 75th Anniversary!
 from
FIVE STAR EQUIPMENT, INC.
 Hwy 15 West • Spearman TX 79081-0658 • 806-659-3743

Happy Anniversary
Gruver

We're looking forward to 75 more!
\$ Interstate Bank, ssb
 A Full Service Bank FDIC Insured
 322 Main Street • Spearman, TX 79081
 Phone - (806) 659-2559 • Fax - (806) 659-3276

Congratulations!

Gruver, you're
 a wonderful community!
 from the gang at
Farm Supply & Service
 733-2427 • GRUVER • 733-2469

CONGRATULATIONS,
GRUVER,
ON 75 YEARS!

The Hansford County
Reporter-Statesman
 PROUDLY SERVING HANSFORD COUNTY SINCE 1907

Celebrating
 75 years of
 community
 and friendship.
 — **Thanks, Gruver!** —
Bartlett's Lumber & Hardware
 105 W. Broadway • Gruver, Texas • (806) 733-2404

HAPPY BIRTHDAY

Proud to be part of the
 75-year-old Gruver
 Community!
Little Tiffanies
 103 E Broadway • Gruver • (806) 733-5290

Gruver Celebrating 75 Years

Continued from page 9
 In addition to these hard times the building boom so looked forward to did not materialize. Even two of the lumber yards closed up and left Gruver.
 After surviving the depression next World War II came along with a different set of problems to face. All of the male faculty member of the school system and some of the more qualified women teachers left for better paying government service or actual military service. (The Superintendent was the only man left in the school system). Following the end of the war capable teachers began returning to the school system and it again began to progress especially with the annexation of outlying school districts forming the Gruver Independent School District.
 Over the years many businesses have come and gone while others steadily go along. All have enriched and enhanced Gruver making it a wonderful place to live, work and raise a family.

Some of the most notable changes that continue to influence the town are the Gruver Airport Facility which includes 168 acres of land two miles southwest of the town. Completed in 1978 it is owned by the City of Gruver and is equipped with low intensity landing lights and a non-directional beacon.
 The Gruver Memorial Building was given to the veterans soon after the end of World War II by the citizens of Gruver. It was later converted to the Senior Citizens Center.
 The Gruver Volunteer Fire Department was organized in 1947 with Buddy Gruver as the Fire Chief.
 The Meals on Wheels program was begun in 1978 and now is coordinated through the municipal offices at City Hall.
 With the incorporation of the town in February Of 1930 came the establishment of the municipal government with J. C. Richey as the first mayor.

Kenneth Irwin has served the longest length of time as Mayor from 1965 to 1979, and Merle Delano held the position of City Clerk, Tax-Assessor-Collector from 1962-1978. During this time has probably come the most changes to the city in recent times.
 Changes which occurred were the opening of the Etling addition; the building of the library; the beginning of the Gruver Ambulance Service; the sewage treatment plant; placement of street signs at intersections; organization of the weather watchers; construction of the tennis courts at the City Park; opening of the Fred Cooper addition; the Gruver Municipal Airport and the renovation of the American Legion Hall into the Senior Citizens Center.
 In 1977, the City Commission passed an ordinance establishing the office of City Manager. A.J. Ratliff was Chief of Police and he was selected to hold both positions.
 Other changes during this time span were the building of the two

apartment complexes and the completion of the new post office.
 On February 24, 1979 the City of Gruver celebrated it's 50th Anniversary with huge golden cake made by Josephine Gruver. The celebration included an array of "old" pictures and interesting program. It was enjoyed by several hundred well-wishers who crowded into a standing-room only Senior Citizens Center.
 As Gruver is preparing to celebrate a "shining silver" 75th anniversary it is good to remember the words written by Mrs. Beulah Bort in the Hansford County 1876-1929 history book: "The Gruver citizenry owe a great debt of gratitude to the many un-named heroes who have given so liberally of their time, talent and money to serve others. This would include all who have served on the the City Commission, the City planning and zoning board, the volunteer fire department, the weather watchers, the ambulance service, the Board of Education of the school system, the Airport Board, the Library Board, Church groups, Federated Clubs, Hansford County Livestock Board, Lions Club, etc. A special thank you is in order for the Alpha Mu Psi Sorority which do so much for the benefit of all the worthy causes as they present themselves."

Gruver's Namesake- J.H. Gruver



Joseph Hezekiah Gruver, for whom the town of Gruver was named, was born February 24, 1863 in Dixon County, Illinois to David and Hannah Brown Gruver.
 At age fourteen, Joe entered into his first business ventures consisting of water well drilling salesman and bridge and road construction.
 On November 25, 1885, he married Adeline (Addie) Medoria Reed, born to David W. and Mary Hellen Lea Reed, near the town of Chilhowee, Missouri. Joe and Addie had five children, a son Lawrence Harold, born November 17, 1886 in Chilhowee, MO and four daughters, Carrie

Lillian, Elza Mae, Mabel Hellen, another that died in infancy.
 In 1887, Joe, Addie and Lawrence went west by covered wagon to Poncha Springs, Colorado to farm potatoes. The venture proved very unsuccessful so they returned to Chilhowee where he farmed and later went into the Mercantile business. Joe heard of the flat plains of the Panhandle of Texas so he took a land excursion train to Guymon, Okla. The land broker took him to the breaks of Wolf Creek in Ochiltree County but Joe told him he wanted the flat land to farm on. He put down a deposit and went back to Chilhowee. In a few days, he received a letter with his deposit returned, and the broker had sold it to someone else for more money. He then made a second trip to Texas and bought 4 sections of land in Hansford County, five miles west of the present town of Gruver.
 In 1906, Lawrence came to Texas to farm the land. In 1907 the family shipped livestock, household goods and farm implements in two immigrant cars to Texhoma, Oklahoma, the nearest railroad. When they first arrived at their farm, the horses ran away with the buggy throwing Addie out and breaking her leg.
 J.H. Gruver, known to all his friends as "Uncle Joe", was one of the first to plant and harvest 100 acres of wheat. He always said, "This plains country of Texas Panhandle can produce more, on less rain, than any place I have ever seen."
 There were very few nights that they did not have travelers to spend the night.
 J.H. helped a Mr. Williams get the right of way for the Rock Island railroad and Mr. Williams named the town of Gruver in 1929 and Gruver was incorporated in 1930.
 Besides farming and cattle interests, Uncle Joe and Lawrence established the J.H. Gruver and Son grain elevator and a factory to make pulley's for V-belts on combines.
 Addie Gruver passed away in 1940. Uncle Joe Gruver passed away in 1962 at the age of 99 years and 10 months. He had lived during the time of the greatest changes in a lifetime, from covered wagon to a man in space.



Westerfield's Dry Goods and Grocery Store with several customers. In the foreground are Mr. and Mrs. S.V. Ayres, Irene Roper, Henry Roper, Buck Woodall; behind the counter are Helen Harvey and Mickey Westerfield. One of the five lads in the background is Keith Gross.

See us for:
 AUTO • HOME • CROP HAIL •
 FARM & RANCH • MULTIPERIL •
 LIVESTOCK

INSURANCE

BORT AGENCY, INC.
 510 Main St. • Gruver, TX
 (806) 733-2456

City of Gruver

75th Anniversary

CONGRATULATIONS!

from the
City of Spearman

30 SW Court
 659-2524

75 years

Flies

HAPPY ANNIVERSARY FROM FIRST STATE BANK

First State Bank

One NE Court • Spearman
 (806) 659-5565
 member FDIC

Congratulations

GRUVER, FOR
 75 GREAT YEARS!

Julie Williams Insurance Agency
 Gruver • 733-2826

*Happy
 Seventy-Fifth
 Anniversary*

from
HANSFORD IMPLEMENT COMPANY
 Hwy 207 South • Spearman, Texas

EARLY DAY MERCHANTS OF GRUVER, TEXAS



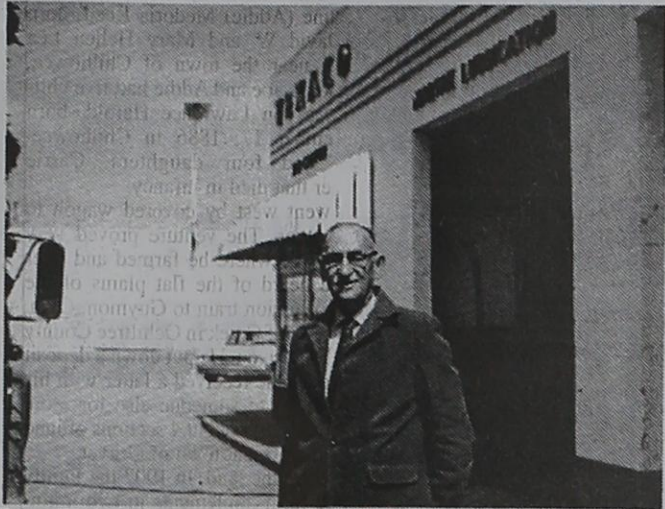
Autra Ward, 1929, First Gruver Hardware



Mickey Westerfield



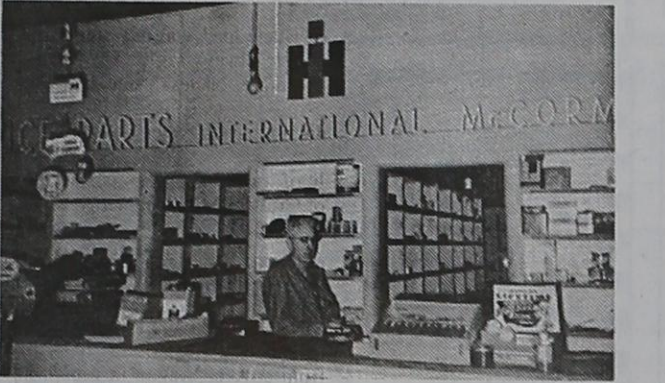
Gruver Motor Co., Ted McClellan



Texaco Wholesale Company, Dan Shrader



Gruver Drug, Don Gross



Autra Ward, 1959, Ward Supply.



Round Table at Gruver Drug, 1941. Margaret Gross Orman, Lil Fletcher, Mary Pat Orman, Cleo Gross & Laura Gross. Store owned by O.J. Gross family.

J.H. Gruver & Son Elevator

J.H. Gruver and Son Elevator was established in 1929 with a capacity of 26,000 bushels and operated until 1952 by them.

In 1947, the Gruvers built their first concrete elevator, and in 1954, Gruver Elevator, Inc. built the first annex and in 1948 their 2nd annex.

During the time of 1929 to 1952, they also had added storage with 11 warehouses on the property with the capacity of 25,000 each.

In 1952, the elevator sold to four businessmen, Sam and D.G. Cluck, Coy Holt and Ralph Bort.

It was leased to Continental Grain Company in 1969.

HAPPY BIRTHDAY GRUVER

from Brown, Graham & Co.

Professional Corporation Certified Accounts

P.O. Box 67 • Spearman, TX (806) 659-2538

Congratulations, Gruver!

from

Hansford Hospital Pharmacy - 659-2226

Dr. Mark H. Garnett, D.O. - 659-1778

Dr. John D. Hierholzer, M.D. - 659-5234

Linda Dodson, N.P. - 659-2846



Hansford County Hospital District

707 S. Roland • Spearman • (806) 659-2535 • (806) 659-5535

Steve Hartgraves, Hansford Hospital Administrator

Carol Sell, Administrative Assistant

Anne Snow, Hansford Manor Administrator

75th Anniversary

CONGRATULATIONS

from

BORT AGENCY, INC.

510 Main St. • Gruver, TX

(806) 733-2456



Congratulations

on

75 Years

from



GRUVER STATE BANK

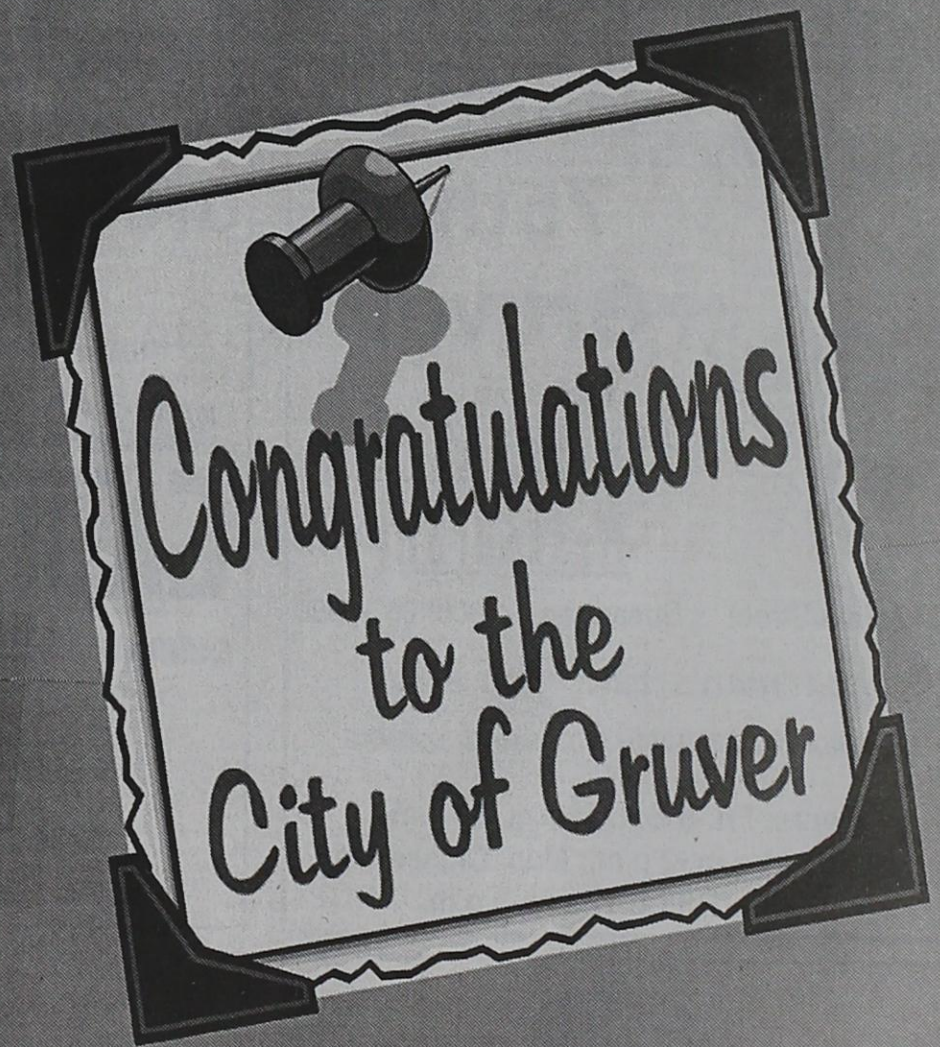
"The Most Bank For Your Money"

3 Main Plaza • PO Box 978 • Gruver, TX 79040

(806) 733-5061

email: gruverbank@gruver.net

visit us on the web at: www.gruverstatebank.com



75th ANNIVERSARY

from



Spearman, Texas 79081 Dumas, Texas 79029

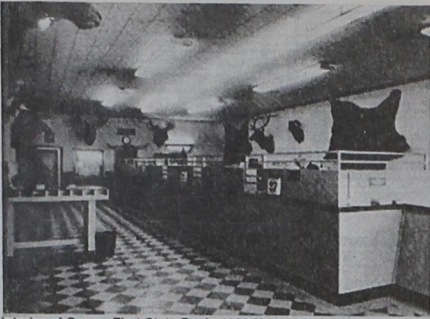
806-659-5544

806-934-8455

800-583-4196

866-583-4196

Member FDIC



Interior of Gruver First State Bank, 1966-Nov. 1972



Glen Ward - Ward Supply



Looking north up the Main Street of Gruver shows that the majority of the businesses were on the west side of the street and grass was still growing in front of the new bank building.



Autra Ward, 1959



Beulah Ben Bort, December 1929

**CONGRATULATIONS,
GRUVER,
ON 75 YEARS!**

PAULA'S CREATIONS
Embroidery and Catering
Morse TX • 733-2301

**Congratulations,
Gruver on
your 75th
Anniversary!**

from
Celebrate
Gifts for all your celebrations!
203 Main St. • Spearman, TX
(806) 659-3350 1-800-663-8026

**Congratulations, Gruver!
Happy 75th Anniversary!**

from
**AeroFlight
Tech Data**

Charlie Johnson
P.O. Box 854 • 433 Main Ave.
Gruver, Texas 79040
(806) 733-2483
1-800-756-0650
www.aftd.com

gruver.net
Gruver's Internet Service Provider

The **BEST** *of The* **BEST**

**City of Gruver
75 Years**

GRUVER REDI-MIX
1720 W. Hwy 15 • Gruver TX
733-2907

**Happy
75th,
Gruver**

from
**The Bunkhouse
Restaurant**

212 Main Street • Spearman • (806) 659-2089
Spearman's place for steak!
Junior & Stephanie Crossland, owners

Hours: Fri. & Sat. 11 a.m.-10 p.m.;
Sun 11 a.m.-2 p.m.; Mon. Closed;
Tues.-Thurs. 11 a.m.-9 p.m.

**Congratulations,
Gruver on 75 Years**

Home-Owned Cable for 25 Years
**GRUVER
CABLEVISION**

Quality Service Since October 18, 1980

308 Main Ave. • Gruver, Texas
(806) 733-5295 • Fax: 733-5502

Owners - Sonny & Skeeze Riley
Manager - Pat Morley

Happy Birthday

EL VAQUERO
425 Main Ave. • Gruver • 733-2407

**Thanks, Gruver
for 75 Years!**

We're looking
forward to 75 more!
from
Gruver Parts & Supply
733-2070

CONGRATULATIONS!

Here's to the next 75!

Gruver Agri Industries, Inc. Sew 'N Sew Designs by Alice
Gruver • 733-5005

REAL ESTATE FOR SALE

FOR SALE: 727 Wilbanks, Spearman - 3-4BR, 1 1/2B, office, living room, dining room, laundry room, central H/A, garage, lg. covered porch, lg. backyard, lg. carport, on 112 lots. New carpet, fresh paint inside & outside. Call 432-268-4746 or 432-264-7781. TFN(9-16-04)B

FOR SALE: 730 Gibner Dr., Spearman - 3BR, 2B home, attached garage, large lot. Call 659-3944. TFN(7-7-05)P4x

FOR SALE: 810 Womble, Gruver - 1700 sq. ft., detached garage, 4 1/2 lots. Call 806-733-2402 after 5 p.m. TFN(8-11-05)B

FOR SALE: 422 Haney, Spearman - 3BR, 1B, Utility, New paint; new carpet, nice paint- Call after 5 PM- 659-5913 (3/9-01-05)

FOR SALE: 703 E. 2nd Ave., Spearman - 3BR, 1 1/2 B, spacious kitchen, hardwood floors, central H/A (very energy efficient), backyard w/ 10x12 storage shed, PRICED TO SELL! Call 659-5957 for details. (3/9-01-05)B

FOR SALE: 103 ARCHER, 2 lots, Call 806-934-9195 4(9-8-05)B

FOR RENT/LEASE

OFFICE SPACE FOR RENT, SPEARMAN: Pittman-Shieldknight building - all sizes available. Call 659-5588 or 659-3399 for more information. TFN(01-27-05)B

FOR RENT, SPEARMAN: Recently remodeled 1BR, 1B apartment, utility allowance. Call 659-3889. TFN(03-03-05)B

FOR RENT, SPEARMAN: 2BR apartment, water paid. Call 659-9971. TFN(04-21-05)B

FOR RENT, SPEARMAN: Lg. 1BR apartment w/washer & dryer hook-up. \$375 deposit, \$375/month. 940-631-0894. TFN(8-11-05)B

FOR RENT, SPEARMAN: Beautiful 3BR apartment. Water paid, NO PETS! 659-9971. TFN(8-11-05)B

WANTED

LAND WANTED: 1/4 section or more for a dairy, house included is preferred. 300-500 g/m well needed. Dry land farm OK. Contact Spearman EDG at 659-5555. TFN(1-13-05)B

LAND WANTED: For small horse operation-40/160 acres. Grass preferable. Reasonable access to water and electric. Call 659-5754. TFN(9-15-05)

EMPLOYMENT

JANITORIAL SERVICES WANTED: The U. S. Department of Agriculture, Farm Service Agency's Hansford County USDA Service Center in Spearman TX will be accepting bids for janitorial services of approximately 4,750 square feet of office space located at 909 West 9th Ave in Spearman. Services will include restrooms and halls, all to be cleaned 5 days a week. Contract period is October 1, 2005 through May 31, 2009. Bid specification packages are available from 8:00 a.m. to 4:30 p.m. Monday through Friday at 909 West 9th Ave Suite B, Spearman TX. All applicants must furnish own equipment and supplies. References are required. Final date for submitting bids is September 16, 2005. Contact Rick Hargrove at (806) 659-3036 for further information. The Hansford County Committee reserves the right to reject any and all bids. FSA is an equal Employment Opportunity Employer. (3/9-01-05)B

HELP WANTED: IMMEDIATE OPENING for full-time receptionist/secretary needed. Telephone, light bookkeeping, computer, and good public skills necessary. Good benefits. Call 659-2538 for appointment or bring resume to Brown, Graham and Co., 200 W. Kenneth Avenue. (3/9-01-05)B

HELP WANTED: Full time help needed; Bernstein Elevator; Call 806-733-5067 (2/9-15-05)B

Blankenship Real Estate

659-3052 - 670-3774

SPEARMAN

NEW LISTING: Great Home with Income Property - 3BR, 2B, 2CG, basement - office - apartment - workshop - 1CG & RV port. 616 & 620 Evans.

Great Home with full finished basement, 4BR, 1 3/4B, 1CG, fireplace, lots of storage, covered patio.

3BR, 1B all-brick home, CHCA, close to Jr. High & Elementary 716 Cotter - PRICED RIGHT! 3BR, 1B, 1CG. Fixer upper - \$25,000

Eulalia Blankenship - Sales Eschol Blankenship - Broker New Listings Wanted

MARTIN & ASSOCIATES REALTY

Serving Hansford County for 14 years Julie Martin: Broker - 659-2425

IN SPEARMAN 1109 Haney - 3/717 - investment property, 715 Bernice - 3/2, dbl carport, lg rooms, central airheat 1/2 section of grass/farm land located approx. 10 miles SE of Spearman in Hutchinson County 1/2 section of grass/farm land located in Hutchinson and ... Counties, with highway frontage, just north of Holt Elevator. No minerals.

We'd Like Your Listing FOR QUALITY & SERVICE CALL US TODAY! Equal Housing Opportunity

HELP WANTED: First State Bank, Spearman, has a full time position open for Teller. Applicant must have a high school diploma or equivalent, typing and some ten-key skills required, customer relation and telephone skills are very important. Background in accounting, word processing and spreadsheets is helpful but not required. Bilingual preferred. Benefit program includes group hospitalization insurance, retirement, vacation pay, sick leave pay and holiday pay. Apply with Ginger Turner at First State Bank, PO Box 247, Spearman, TX. 79081, telephone # (806)659-5565. An Equal Opportunity Employer (2/9-15-05)B

AUTOMOBILES

FOR SALE: 1996 Ford Thunderbird - Clean on the inside and in good condition. Great for high schooler. For more information, please contact Robyn at 806-330-0277 or 806-330-0781. 4(9-08-05)B

GARAGE SALE

GARAGE SALE - SPEARMAN: Saturday, Sept. 17th, 8:00 a.m.-1:00 p.m.; 723 S. Steele-off back alley in metal building; most items 50 cents. 1(9-15-05)P



Seeking a full-time Maintenance Person with a wide knowledge of the maintenance field in carpentry, painting, plumbing, electrical H/A, grounds care and welding. Must have equivalent of high school or technical school diploma.

Seeking a full-time Clinic Manager. Must have prior management experience and demonstrate business acumen. Associate's degree in nursing preferred but not required or equivalent from two-year college. Two years experience working in a private physician office, or working closely with physicians preferred. (Rural Health Clinic experience preferred.)

Seeking a full-time Billing Clerk. Responsibilities include filing and follow-up of medical insurance claims and other misc. responsibilities.

Hansford Manor is taking applications for training classes for Nurse Aide Certification. Excellent benefits, salary commensurate w/experience. Apply at 707 S. Roland, Spearman, TX or contact Jackie Nelson, HR Mgr., at (806) 659-5841, or download application from our web site www.hchd.net. Equal Employment Opportunity Employer (2/9-15-05)B

Subscribe to the Reporter-Statesman. Call 659-3434 for details.

WHEN DOES YOUR SUBSCRIPTION EXPIRE?

SCR1 09/05 EXPIRES JOHN Q. PUBLIC PO BOX 123 SPEARMAN TX 79081

Expiration dates are printed on the top of all mailing labels. Our readers can help keep the cost of subscriptions down by mailing in renewals in the appropriate month.

Thank you, Catherine Smith

THE HANSFORD COUNTY REPORTER-STATSMAN 213 Main Street • Spearman, TX 79081 Annual Subscription Rates In Hansford County - \$25 Out of County - \$30

CASH NOW FOR STRUCTURED SETTLEMENTS, ANNUITIES and INSURANCE PAYOUTS (800) 794-7310 J.G. Wentworth means CASH NOW for Structured Settlements!

VIOXX Heart Attacks, Strokes & Sudden Cardiac Deaths. Willis Law Firm HOUSTON, TEXAS. BOARD CERTIFIED PERSONAL INJURY TRIAL LAWYER. DAVID P. WILLIS - ATTORNEY AT LAW. Toll Free 1-800-883-9858 www.Vioxx-Lawyers.com

Urgent news for people who took VIOXX. Many VIOXX users have been at increased risk for serious cardiovascular injuries, including strokes, heart attacks, blood clots and even death. If you or a loved one took VIOXX and had any of these problems, call us now toll free at 1-800-THE-EAGLE for a free consultation. We practice law only in Arizona, but associate with lawyers throughout the U.S.

VIOXX Bextra, Celebrex. \$253,000,000.00 awarded on first Vioxx trial! Those who suffered a stroke, heart attack or congestive heart failure, while taking VIOXX, may have a claim to compensation for injuries. Call for free consultation. Toll Free 1-800-TXLAWYER

GREENE LAW FIRM, P.C.: Principal Office: Houston, Texas WEINSTEIN LAW FIRM: Principal Office: Athens, Texas Not Certified by the Texas Board of Legal Specialization

HOME SCHOOLING? Come see why over 1,500,000 students use... A Beka Book • Character-Building Textbooks • Time-Saving Parent Materials A Beka Academy • Master Teachers on DVD • Complete K-12 Programs San Antonio—Sept. 20 San Antonio—Sept. 21 San Antonio—Sept. 22 El Paso—Oct. 11 San Antonio—Oct. 19 Display info: 1-800-874-3597, ext. 406 www.abeka.org/406

American Red Cross Together we can save a life. THE BEST WAY TO HELP is by making an online contribution to the Disaster Relief Fund at www.redcross.org. You can also help by calling 1-800-HELP-NOW. This fund enables the Red Cross to provide shelter, food, counseling and other assistance to those in need.

Eat & Be Merry At MONTELEONE'S BBQ & STEAK HOUSE. Hotline for Friday & Saturday Nights - 435-3945. We offer Priority Seating! Give us a call before leaving, and we will save you a place in the seating line. When you arrive, check in with the hostess. New Menu (10 new items) Wed. Night - All-You-Can-Eat Catfish

TEXAS STATEWIDE CLASSIFIED ADVERTISING NETWORK TexSCAN

TexSCAN Week of September 11, 2005 ADOPTION Note: It is illegal to be paid for anything beyond medical and legal expenses in Texas adoption. PREGNANT? THINKING ADOPTION? Talk with caring people specializing in matching birthmothers with loving families. BUSINESS OPPORTUNITY A CASH COW! 90 Vending Machine units/500 OK locations. ENTIRE BUSINESS \$10,670. HARRY FORTNA'S VENDING GROUP. 1-800-836-3464#B02428. ARE YOU MAKING \$1,710 per week? All cash vending routes with prime locations available now. UNDER \$9,000 investment required. Call Route Crafters, toll-free (24-7). 1-888-333-2254 DRIVERS DRIVERS/DRIVING SCHOOL graduates wanted. Tuition reimbursement. No waiting for trainers. Passenger policy. No NYC. Guaranteed home time. Dedicated and regional available. USA Truck, 1-866-483-3413. DRIVERS - FED EX GROUND Owner/Operator Permanent/Seasonal Teams. Sign-on bonus. \$94-\$1,10/mile. "Onsite Discount Fuel" \$1.25/gallon. CDL/A/TI experience required. 1-800-905-0283, Lnured@fedex.com. DRIVERS: \$4,000 SIGN-ON. Experienced. \$1,000 Sign-on/Grads. Approximately 2,500 miles/week. Experienced up to 42 cpm w/per diem. Grads \$1,800-\$69.9232. DRIVERS - NEW PAY PACKAGE Move freight - less sitting! Company Drivers, OTR and Regional freight. Class A CDL/Hazmat. Call Bob/Wendy, National Freight, 1-800-666-0380. DRIVERS - PAY INCREASE! \$1,000 sign-on for experienced OTR. Dedicated and Regional available also. Owner Operators, Teams & CDI, grads welcome. USA Truck, 1-866-483-3413. DRIVERS: RUN YOUR share of 2 billion miles/year! No experience? No problem - CDI training available. New pay and home time options. 1-888-709-2186, www.swifttrucking.com. DRIVERS: WE TAKE care of you from day one - paid orientation including hotel and meals. Starting pay based on experience, earn up to 43 cpm. Drive your assigned freighter to the house, home every 14 days. Full benefits package, steady miles, EOE/3 months, Class A required. 1-866-833-5627. \$1,500 SIGN-ON BONUS! Start \$800-\$900 a week! Company OTR drivers. 1-800-234-4395. Val, Ext. 3307; Espanol - Julio, Ext. 3101. www.bey.net. OO call Hey1 Truck Lines, Inc. RELIABLE DRIVERS & Owner/Operators wanted! Guaranteed Refrigerated Freight/great pay - good home time/Lease-Purchase available. 379 Peters or 899000/KV. Small company/Red Transportation. 1-800-817-5870 #229. SELECT FREIGHTLINERS & KENWORTHS, \$460 per zero down lease-purchase. \$1 buyout end of lease. No credit check. Call JCT at 1-800-528-3675 to learn more. WE HAVE DRIVERS projected to earn \$83,000 this year! How much will YOU earn? Excellent home time. We simply offer a whole lot more. Heartland Express. 1-800-441-4953, www.heartlandexpress.com. FINANCIAL SERVICES TOO MUCH DEBT? Don't choose the wrong way out. Our services have helped millions. Stick to a plan, get out of debt and save thousands. Free consultation. 1-866-866-9912. CareOne Credit Counseling. NOTICE: While most advertisers are reputable, we cannot guarantee products or services advertised. We urge readers to use caution and when in doubt, contact the Texas Attorney General at 1-800-621-0508 or the Federal Trade Commission at 1-877-FTC-HELP. The FTC web site is www.ftc.gov/bizsp

City of Gruver

Following are the minutes from the City of Gruver's first meeting.

Be it Remembered that on this the 4th day of February, A.D. 1930, that there was presented to me the returns of an election held within and for the proposed town of Gruver, Hansford County, Texas, on the first day of February A.D. 1930, and it appearing to me that heretofore and to-wit; the 17th day of December, A.D. 1929, there was presented to me a petition duly signed by Frank Fleck and 23 others praying that, I, C. W. King, as County Judge hear said petition and grant an order directing that an election be held within and for the town of Gruver for the purpose of determining whether or not the inhabitants residing within the limits of the proposed town of Gruver as set out in said petition and shown in the filed notes thereof as well as the accompanying map thereof, should be incorporated into a town under the name of the Town of Gruver, under a commission form of government, and whether at the same time and same place a mayor and town commissioners should be elected by the duly qualified voters residing within the limits of said proposed town, and

It further appearing to me that on the said 17th day of December, A.D. 1929, a due and proper order calling for an election was issued upon said petition after a hearing thereon, directing that an election be held within and for the proposed town of Gruver on the first day of February, A.D. 1930, and that in said order A.R. Bort and Darrell Cooper were appointed judges of said election, and that A. R. Bort was directed to be presiding judge thereof, and that Ed Vernon and Sam Snyder were appointed clerks of said election and,

Be it further remembered that it appears to me as County Judge from an inspection of the above election returns that said election

was in all things held in accordance with the above order for said election heretofore entered and ordered by me, at the time and placed therein stated, that the manner of holding said election and the returns thereof was and is in all respects in strict conformity to the requirements of law and the said order aforesaid, and,

And be it further remembered that it appears from an inspection of the said returns aforesaid that under and virtue of said election order aforesaid, so held as aforesaid that at said election there was cast the following votes for the office of mayor of the said town of Gruver

Frank Fleck received 25 votes,
Frank Shapley received 21 votes,
J.C. Richey received 28 votes,
and that at said election there was cast for each of the following the votes set opposite their respective names for the office of commissioner, to-wit;
Clarence Winder received 44 votes,
Gay Fletcher received 58 votes,
P. Westerfield received 21 votes,
Autra Ward received 13 votes,
Edd Vernon received 6 votes,
D. K. Hall received 6 votes,

and that from an inspection thereof the said J.C. Richey was elected to the office of Mayor for the town of Gruver, and that Clarence Winder and Gay Fletcher were elected commissioners of the said Town of Gruver, and the said J.C. Richey is hereby declared to have been duly elected to the office of Mayor and the said Clarence Winder and Gay Fletcher were elected to office, each respectively, to the office of Commissioner of the Town of Gruver, and that upon taking the oath of office and giving the bond required by law, each in the sum of Three Thousand Dollars, shall be entitled to receive their commissions as provided by law as mayor and commissioner respectively, of the Town of

Gruver. It is further ordered that a copy of the petition heretofore presented to me, and mentioned herein above, as well as the original order thereon made on the 17 day of December, together with the notice of said election printed or posted as the case may be, together with the return thereof, a copy of the returns of said election, and a copy of this order, shall all be recorded upon the minutes of the Commissioners' Court of Hansford County, Texas, and,

It is further ordered that a copy of this order, together with the copy of the plat of said town of Gruver shall be filed and recorded in the deed records of Hansford County, Texas.

Be it further remembered that from an inspection of the said returns that it is made to appear, and I find the same to be, that the proposition to incorporate the territory and the inhabitants thereof in the proposed town of Gruver, into a town with the commission form of government, there was cast at said election the following votes, to-wit:

For commission 66
Against commission 1
and that a majority of all votes cast, were cast for commission and that the territory and inhabitants thereof called for in the petition so presented to me, and as set out in the succeeding paragraph hereof are now, under and by virtue of said election and the returns thereof and by virtue of this order incorporated into a town under and by virtue of the laws of the State of Texas, and shall hereafter be known as the Town of Gruver, including all of the territory within the following metes and bounds, to-wit;

Field notes of 491.15 acres of land, the east portion of Survey No. 2 and the N.E. portion of Survey No. 3, Block No. 3, P.F.S., situated in Hansford County, Texas, as follows;
Beginning at a stone and four

pits, the S.E. Corner of Survey No. 2, the N.E. corner of Survey No. 3, Block, 3, 1552.4 feet pass a stone and two pits, the N.E. Corner of a ten acre tract subdivision. At 1782.4 feet a point in the East Line of Survey No. 3, Block 3, P.F.S.

Thence North 18 degrees 5'50" E. with said railroad, 241.4 feet to a Thence N. 89 degrees 24' W. 210.4 feet to a point in the west line of the Rock Island Rail Road right of way;

Thence North parallel with the east line of surveys 2 and 3 Block 3, P.F.S. 4514.6 feet.

Thence South 89 degrees 14' 40" E. at 582.4 feet the S.W. Cor. of the Cooper Addition to Gruver Texas.

Thence North 45'20" E. 970 feet to the N.W. Corner of the Cooper Addition.

Thence S 89 degrees 14' 40" E. 1130 feet to the N.E. Corner of the Cooper addition. Thence S. 45' 20" W. 970 feet.

Thence S. 89 degrees 14' 40" East 2579.8 feet to a stone and four pits

Thence S. with the east line of survey No. 2, Block 3, P.F.S. at 2950.8 feet to the place of beginning.

And to certify all of which witness my hand and seal of office at offices in the City of Spearman, Texas, this the 24th of February A. D. 1930.

C.W. King, County Judge.
Hansford County, Texas

The State of Texas,
County of Hansford.

Tammy's Creations

Cakes for any occasion

Call Tammy Mitchell
733-2175 - home
(806) 543-4574 - cell

Wilton school trained
references available

The
BEST
Of
BEST

The Bunkhouse Restaurant
Spearman's place for steak!
Steaks, Salads & Sandwiches • Prime Rib - Fri. & Sat.

Come & Get It!

SUNDAY LUNCH BUFFET
11:30 a.m. to 1:30 p.m.

Daily Lunch Specials

Tuesday-Saturday, 11 a.m. to 2 p.m.
Lunch Menu featuring new items and lower prices with the same great taste!

Now accepting reservations for Christmas parties.
Call for more information.

The Bunkhouse Restaurant
212 Main Street • Spearman • (806) 659-2089
Hours: Tues.-Thurs. 11 a.m.-9 p.m.;
Fri. & Sat. 11 a.m.-10 p.m.; Sun 11 a.m.-2 p.m.; Mon. Closed

•THE CLOTHES OUT•
GOING OUT OF BUSINESS SALE ENDS SOON!
NEW MARKDOWNS!

WOMEN'S CLOTHES, SHOES & ACCESSORIES - \$5 OR LESS!
CHILDREN'S CLOTHES, SHOES & ACCESSORIES - \$3 OR LESS!

OPEN SATURDAYS - 9 A.M. TO 5 P.M.

Old Kid's Stuff Building • 719 W. 7th • Spearman

Local • Long Distance • Cable TV • High Speed Internet

A New and Better Choice

Reliable Communications Services...People You Can Trust



PTCL is not an ordinary telecommunications company. We were established over 50 years ago, when no one else would provide service to small towns in the area. The people got together and created a phone company, for the good of everyone. That idea continues to drive PTCL today, while we strive to offer the most advanced communications services available. The bottom line? With PTCL you get "big city" technology with a friendly, home town touch.

Change your phone company not your phone number

- Local office, local people
- Local and long distance service
- Cable TV
- High Speed Internet
- Valuable calling features
- One Bill Convenience



Office Hours M-F
8:30am-12:30pm
1:30pm-5:30pm

Phone Number
1-800-562-2556

Address
721 W 7th Avenue
Spearman, TX 79081

ptcispearman.net