

## Spearhead Corporation nears fund-raising goal, community center project receives \$250,000 from Meadows Foundation

by Jean Ann Behney

Last Friday morning started off alarmingly for several Spearman civic leaders. One by one, they were summoned to First State Bank for "emergencies"—everything from people forging checks in their names to sudden legal tangles involving their testimonies.

When they had all arrived, however, it was time to pop the cork on the champagne, for Spearhead Corporation's President Verna Lee Shirley had wonderful news: the

organization, which has been raising money for a community center since 1989, had just been awarded a \$250,000 grant from the Meadows Foundation of Dallas.

"This brings us to within \$18,000 of our original \$1,068,455 goal," explained Shirley. "At this rate, we should be ground-breaking at the site by July first!"

The grant also brings to a total of three the large monetary awards by foundations. Amarillo Area/Harrington Foundation awarded

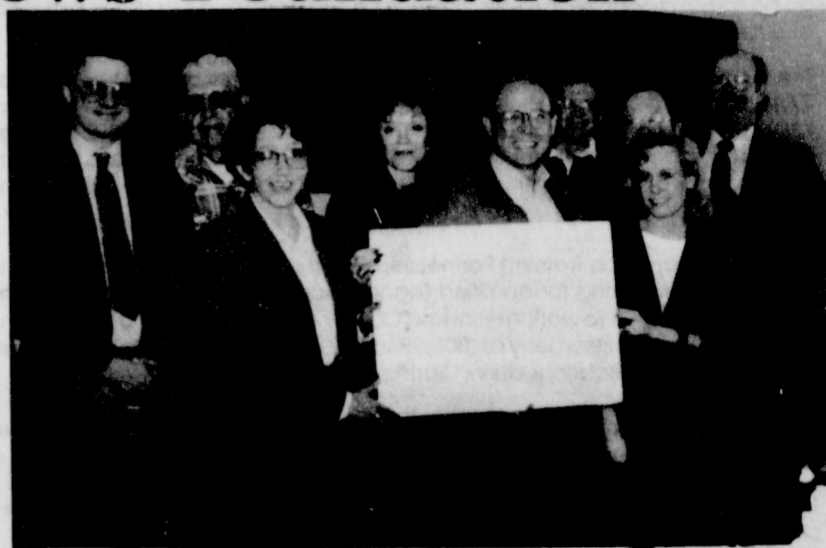
the Spearhead Corporation an \$85,000 challenge grant in November of 1990 and the Mabee Foundation of Tulsa awarded a \$200,000 challenge grant in April of 1992. (Challenge grant amounts stipulate that the total project costs remaining must be raised by the Spearhead Corporation, by April 15, 1993. The latest grant from the Meadows is also a challenging grant.)

"I actually found out about the Meadows award Thursday after-

noon. I called D. Matteson Pascal (senior program officer at Meadows) to report some new pledges we'd gotten and she said, 'You've got \$250,000 more than that!' The Meadows people had just met that afternoon and awarded us the money, \$50,000 more than we asked for," Shirley said.

"So here I was, Thursday afternoon," she continued, "and it dawned on me that everybody on

See Spearhead page 8



Spearhead Corporation Board of Directors met Friday morning, Feb. 19 to celebrate the news that the Corporation had received a \$250,000 grant from the Meadows Foundation of Dallas. This grant puts the Corporation within \$18,000 of having the monies necessary to start construction of a new activity center for Spearman. Board members pictured above are (l-r) Kevin Knauf, Charles Newcomb, Jackie Pearson, Verna Lee Shirley, Bob Boxwell, Bob Pearson, Mike Cudd, Cindy Blackman and Don Townsen.

# The Hansford County Reporter-Statesman

Serving Hansford County Since 1907

12 PAGES

VOL. 85, NO. 18

213 Main Spearman, Texas

HANSFORD COUNTY LIBRARY  
120 MAIN  
SPEARMAN TX 79081-2064

### INSIDE

Society Pages	4, 5
Sports	6, 7
Obituaries	10
Hansford Happenings	2
Want Ads	11
Spiritually Speaking	3
Honor Roll	9

### WEATHER

Day	Hi	Lo	Precip
Thu	31	07	.TR
Fri	71	27	.00
Sat	73	33	.00
Sun	52	28	.00
Mon	59	22	.00
Tue	40	20	.00
Wed	--	22	.00
1993 Precip			2.01

## Gruver school board purchases land

Gruver Board of Trustees approved the purchase of the ag farm land from Donald B. Hart for \$5,432.56.

Superintendent Barry Haenisch reported that the school had been leasing the land since 1972. It is the same ag farm, he added. The five acres of land is located two miles south of the high school.

Mr. and Mrs. Steve Gross were present at the meeting to discuss a problem they experienced collecting insurance after their son's (Fra's) knee surgery. Mr. Stan Seagler, board president, expressed the district's appreciation for bringing their to the board's attention. He also pledged the school's support and help in seeing that the school's insurance carrier meets its complete obligation in this case.

During the meeting several one year contract extensions were awarded.

One year contract extensions were awarded to Mr. Bob Burgoon, elementary principal and Mrs. Laura Blassingame, junior high principal. Mr. Lloyd Looper was awarded a multi-year contract last year, so no action was taken this year regarding his contract, explained Haenisch. Business Man-

ager Margaret Fry's contract was also extended for another year.

Mrs. Cathy Potts, the counselor for Gruver schools, discussed the TAAS Exit results. She reported a slight drop in Exit level scores this past fall and told of the ways the high school is working remediate the problem. She explained that testing this spring will give the district an opportunity to evaluate the efforts.

Business Manager Margaret Fry reported that a check from the CED for \$750,000 had been received and deposited. A discussion was then held on where to invest the funds and for how long.

In other business, the board heard from Coach Doug Frick regarding the football budget for 1993-94. After his report and discussion, the board voted to approve a football budget of \$31,807.15.

The board then heard from Coach Tim Garland regarding the boys basketball budget for 1993-94. After a discussion, the board voted to approve a \$17,600 budget for boys basketball.

A school calendar for 1993-94 was presented by the administration. The administration will re-

ceive information and suggestions from the board before the calendar's adoption in the March meeting, Haenisch said.

In other business, three proposals from auditing firms were reviewed. According to Haenisch, proposals were received from Billy Baker of Borger; Brown, Graham and Co. of Spearman; and J. Mack Hoel of Gruver. Haenisch added that the reviewing of the proposals from the firms was a preliminary step in awarding a contract to a firm to perform the districts 1992-93 audit.

The board voted to join TEX POOL. TEX POOL is an organization of governmental entities that pool funds for investment purposes, Haenisch explained.

The budget was amended by the board to reflect a gift of \$1,000 to the school from the Dozier Foundation. Also, the board approved a line item in the budget for nurse's travel.

In other business the board held the first reading of TASB Policy Update 43 and they reviewed school board training hours that had been credited to them this year.

Board members recognized Joey Garza as the Gruver High School

student of the Month. He was recognized for his work as an elementary ESL aide and his contributions and leadership in the high school band.

In the superintendent's report the group was informed of a Panhandle Area Association of School Boards that meet on Feb. 18.

Haenisch also reported on a workshop which was held in Amarillo on February 22 for prospective board members to educate them on the duties and responsibilities of board service.

The board was informed that the Board of Directors of the Education Service Center in Amarillo had a vacancy. The seat that represents Hansford County is up for election. That election will be held in March.

The final item of the superintendent's report was a report that \$5,490 had been contributed toward the purchase of the gym scoreboards. A list of individuals, families, businesses and clubs contributing was given to the board.

The board voted to pay bills in the amount to \$68,784.75 with J.W. Ward and Leon Chapman abstaining.

The board meeting adjourned at 6:40 p.m.

## H. C. Commissioner's Court... awards gravel contract

by Angela Jones  
Editor

The Hansford County Commissioner's Court awarded the gravel contract to Borger Sand & Gravel at the regular meeting held Monday, Feb. 22.

Borger Sand & Gravel was the only bid received, County Judge Jim Brown said. The bid was for approximately 3,000 tons of pea sand at \$8.45 a ton and the county does the hauling, Brown explained. The total bid amount is approximately \$2,535. Brown added that the county can make about two trips a day and that the bid covers all four precincts.

Bids for the Hansford County Depository Contract were also opened. All three banks in the county submitted a bid, Brown stated. He added the item was tabled for further study. "We will award the bid March 8," he explained.

Other business at the meeting was the discussion of digging a pit for the City of Spearman and the county residents. City Manager Kelvin Knauf and Spearman Mayor Burl Buchanan were present at the meeting to discuss the issue. The pit will be smaller than usual because it just has to get us by until the dump site closes in October,

1993, Brown said.

It was decided that the county will be responsible for digging the pit. According to Brown the commissioners are hiring James Hanning Construction to dig the pit. Brown explained that the commissioners were going to be busy with road repairs and could not dig the pit. James Hanning Construction will dig the pit for 84¢ a yard, Brown stated. He added that the pit is to be 4,800 yards. The total cost of digging the pit will be \$4,032.

The commissioners approved an agreement between the Hansford County and Ochiltree Juvenile Board on the Performance Reward Program Funds. They also approved using a satellite to tie the probation offices of the 84th Judicial District (Hansford, Ochiltree and Hutchinson counties) to the 316th Judicial District (the main office in Hutchinson County).

Discussion on chairs for the county barn was tabled. The commissioners appointed Elmer Bynum, court house custodian, to try to locate some of the chairs.

In regular business the commissioners approved the minutes from the previous meeting, payment of bills, and the treasurer report and investments.

## Gruver Chamber of Commerce ... to hold third annual Banquet

by Angela Jones  
Editor

Red, white and black is the color scheme of the Third Annual Gruver Chamber of Commerce Banquet being held Monday, March 1 at 7 p.m. in the Gruver school cafeteria.

Banquet Chairperson Linda Weller explained the reasons for the colors. "These are the colors of the Gruver Greyhounds and the Texas Tech Raiders." And what could be more appropriate since Texas Tech Head Football Coach Spike Dykes is the guest speaker for the event.

The evenings meal will be barbecue catered by the Williams Brothers of Gruver.

Tickets are \$10 each and can be

purchased at City Hall, from any chamber board member or at the door. "Advanced ticket purchases will be appreciated so that the final serving arrangements can be

## One car accident... injures two people

by Angela Jones  
Editor

Spearman resident Teresa Henson and Borger resident Steve C. Nicoson were involved in a one car accident on the night of Tuesday, Feb. 16.

The accident occurred on Texas Highway 207 approximately nine miles north of Stinnett, according to DPS Trooper Gordon Miller. The

made," Weller stated.

The chamber is hoping to have a big turnout. "We hope that everyone will come out and support the chamber of commerce," she said.

car exited the road and flipped, according to Miller.

Henson was transported to Golden Plains Community Hospital in Borger. On Monday, Feb. 22, a hospital spokesperson reported that she was doing much better.

Nicoson was transferred to Northwest Texas Hospital in Amarillo. He was dismissed on Tuesday, Feb. 23.

### Banking is...

## FNB assists with teaching

SPEARMAN, TEXAS—Typically, people have had to go to banks to learn about banking. The transition is being made, however, the banking representative assisting the teacher with the technical aspects of banking.

This is evident in the program, "BANKING IS..." which the First State Bank presented as a public service to the students at Spearman High School. Ginger Turner, AVP,

made the presentation on 2-2-93. Receiving the unit at Spearman High School was the Individual and Family Life class taught by Sandy Bailey and the Ag. Dept., taught by Bob McGaha.

In making the presentation, Ginger Turner said, "The program, 'BANKING IS...', gives the students firsthand experience with the basic banking activities they will use throughout their lives."

"Writing a check, applying for a loan, computing interest and using a bank's services are things most adults take for granted; we have done them all our lives. But these activities must be learned, and for many of today's students they can be foreign as any new endeavor", Ginger Turner said.

"Many adults learned banking by trial and error; but, in today's world of advancing technology, this is no longer a satisfactory solution. For instance, today check writing is as much a part of life as driving. Ninety percent of all financial transactions are made by check and the American public will write more than 37 billion checks this year. Yet, in spite of this, statistics show that less than 85% of the graduating high school seniors know how to write a check properly. So, it is easy to see that check writing is an activ-

See Banking page 12

### AD INDEX

Allsup's	6	Church ad	10
Lumber Mart	12	Stanton W. Cobb, DDS	7
FNB Honro Roll	9	Hansford Hospital	7
Kids' Stuff & Lady Fair	7	FmHA	6
Cate's Men & Boys Wear 2		Southwestern Bell	3

## Spearman City Council awards bid

by Angela Jones  
Editor

The Spearman City Council awarded the 1993 leak survey on the municipal gas system contact at the Tuesday, Feb. 16 meeting. Dan Fitzgerald & Associates received the bid for \$206 a day with the project to take between four to six days.

Four other companies placed bids for the contract. Three of these bids were higher than Dan Fitzgerald's, while one was lower. The lower bid was rejected because it did not meet the specifications. This bid was proposed by B & N Consultants in the amount of \$200 a day for a five day period.

Other bids received for the contract were as follows: North Texas Enterprises, \$360 a day for a 10 day period; Heath Consultants, \$250 a day for a 7 day period; and Southern Cross Corp., in the

amount of \$242 a day for a 10 day period.

Dan Fitzgerald & Associates were awarded the contract unanimously.

Other business at the meeting was the consideration of a contract with Hansford County for jail services. The council entered into a contract running February 1, 1993 through January 31, 1994. The contract allows the city to detain prisoners in the county jail at \$20 per prisoner and \$4.25 per meal, which is the same as last year.

In regular businesses, the council read and approved the minutes from the previous meetings, approved payment of monthly bills in the amount of \$340,764.27 and approved the revenue and expense report for January. The January fire, ambulance, police, municipal court and animal control reports were approved as presented.



## RADICAL LIVING

By Dan Carter, Pastor  
Trinity Community Church

### Unfair CompariSIN

Becky, my sister was an excellent student throughout her school years. Straight A's were normal for her. As I followed Becky in school, my mom was very wise. I never remember her comparing me to, or pushing me to be like my sister. Not that she didn't exhort me to excel. She did. But her encouragement was along the lines of, "That's good, but you have the ability to improve."

I have always appreciated my mom's gracious critiquing. But even more, I am grateful for my God's patience as He exhorts me to live up to the potential resident in me, by the Holy Spirit.

Parents who compare their children and their abilities to themselves, or gauge them against their siblings, can begin a pattern that has devastating results. It is unfair to score people against people.

Scripture teaches that each person is uniquely and beautifully engineered by God for His pleasure and purpose (Ps. 139:13-16). Not only that, but in comparing ourselves with others, in terms of temperament, job skills, possessions, education, etc., we prove we have no understanding (II Cor. 10:12,13). Comparison really is a sin. It traps us in a never ending struggle to be what we are not. All the while God, Who made and fashioned us, is robbed of the glory He made us to bring Him.

The apostle Paul speaks of the church as the body of Christ several times. In every instance he exhorts the saints of God to be satisfied with God's gifting and placement, to appreciate others and to serve them accordingly. If we fail to be ourselves, one of 3 miserable states await us: 1. Jealousy—someone else's life and position (shatters the 10th Commandment), 2. Despair—from considering someone else's life as better and unattainable (our God commands us to be hopeful) or 3. Pride—feeling ourselves to be more favored, wiser or spiritual than another (God never gives grace to the proud).

The only wholesome, profitable comparison is rating ourselves with regard to Who Jesus calls us to be. Peter wondered about John's life, death and ministry. Jesus simply said, "...what is that to you? You follow Me!" Are you?

Sponsored by Trinity Community Church, 717 W. 7th, Spearman

### EVALUATING GARMENT QUALITY AND WEARABILITY

This checklist can help you choose a garment that you will enjoy wearing or giving as a gift. If choosing a garment for yourself, check for fit in addition to the features listed below:

- **Color**—The color should be becoming to the intended wearer. Check to see if the color will fit into the wearer's wardrobe.

- **Fabric**—The fabric should be good quality and free from flaws. Check to see if fabric will shrink when washed or dry-cleaned, stretch out of shape, wrinkle, pill, pick, pull, or run during normal wear.

- **Fiber Content**—Make sure the fiber is durable enough for the garment's use. Fiber content should be comfortable (cool or warm, and absorbent).

- **Finishes**—See if there are special finishes on the fabric that make it a good choice for the person who is to wear it (durable press, water resistant, bacteria resistant, flame retardant, moth resistant).

- **Care**—What method does the care label indicate? Make sure the care method is appropriate for the intended use of the garment, and check to see if caring for the garment involves extra costs.

- **Style Features**—When considering style features, ask yourself these questions:

- Are the sleeve or leg openings sized suitable for the style and fabric? (cuffs, bands, elastic, no closure)

- Are the closures used for put-

## Karen's Kozy Korner

by Karen Babitzke Extension Agent

ting on and taking off the garment appropriate? (buttons, zipper, nylon loop fastener, hook and eye, snaps, grippers)

- Is the type of waist treatment suitable? (elastic, drawstring, fitted waistband).

- Are the number, style, size and placement of belt loops adequate?

- Is the type of sleeve used comfortable and suitable for the garment?

- Is the neckline comfortable and suitable for the garment?

- Are pockets needed for the intended garment use? If so, is the style of pocket suitable for the garment, and are they placed so they can be used?

- **Trim**—The trim should wear as long as the garment. Check to see if trim will require the same care as the garment and if the ribbing will maintain its shape.

- **Inner Fabrics and Notions**—When checking inner fabrics and notions, ask these questions:

- Are zippers, snaps, hooks, and other notions the correct type and weight for the garment?

- Do the interfacings support the outer fabric without making it stiff?

- Are elastic, pocket fabric, and other inner fabrics of good quality?

- Is the lining of good quality, requiring the same care as the outer fabric?

- **Construction**—There are many factors to consider when checking the construction of the garment. Ask these questions:

- Are garment pieces cut on the

grain?

- Do plaids or stripes match where possible?

- Is the fabric design matched, centered, or balanced?

- Is the fabric nap or one-way design all in the same direction?

- Does the hem lie flat and smooth and is the width even?

- Is the hem invisible from the right side (unless decorative)?

- Is the top edge of the hem finished to prevent raveling?

- Are darts smooth, tapered, and secured at the points?

- Are darts spaced evenly?

- Are the sleeves smooth, without puckers or with even gathers?

- Are pockets flat, smooth and evenly spaced?

- Are seams smooth and free from puckers? Are the seams and seam finishes the best for the wear the garment will receive? Are seams straight and even in width? Are they flat and smooth? Are seams reinforced where needed? (crotch, shoulder, neckline, underarm, pleats, pockets)

- Is stitching neat, continuous and straight?

- Does the thread match the garment?

- Are buttonholes neat and sturdy and the correct size for the buttons?

- Are buttons, hooks and eyes, and snaps securely attached?

- Is the zipper flat and smooth and the correct weight for the garment?

- Does the zipper work smoothly?

- Are trims neatly and securely

attached?

- Is the collar the same on both sides of the garment?

- Are collars, facings, waistband, cuffs, and area behind buttonholes and buttons interfaced for support and strength?

- Is the collar stitched and pressed so the under collar does not show?

- Are the lapels flat and smooth but not over-pressed?

- Are the facings concealed and are they flat and smooth?

- Are the outer edges of the facings finished?

- Is fusing smooth, with no bubbles?

- Are linings finished and attached so they don't show?

- Are gathers evenly distributed?

- Are pleats uniform and smooth?

- **Price**—Consider how the price relates to the overall quality of the garment—whether the price relates to the amount of wear the garment will receive. Consider whether the price is about the amount you expected to spend for this type of garment.

\*\*\*

Do not mistake a crowd of big wage-earners for a leisure class.

—Clive Bell

\*\*\*

A little levity will save many a good heavy thing from sinking.

—Samuel Butler

## Police Files

### Gruver Police Report

During the period from Wednesday, Feb. 10 to Tuesday, Feb. 23 the Gruver Police Department filed 13 activity reports. These reports involved unlocking two vehicles, checking out a suspicious person call just north of Gruver, assisting the Sheriff's Department on an accident scene, as well as the following:

Saturday, Feb. 13 - Officers investigated a minor traffic accident in the 200 block of Main. According to Police Chief Steve Gaines, a driver backed his automobile into a parked vehicle. No injuries were reported.

Monday, Feb. 15 - It was discovered that two male subjects, one 17-year-old and one 14-year-old, allegedly took a local vehicle, from behind the varsity gym. The vehicle was subsequently used to steal a car in Spearman. The two were apprehended by DPS north of Memphis on State Highway 287 and taken to Clarendon. The 14-year-old was transported to a juvenile detention facility. The 17-year-old was returned to Hansford County by the Hansford County Sheriff's Department and the District Juvenile Probation Department. Criminal charges were filed. According to Gaines, the 17-year-old is presently out on bond.

Wednesday, Feb. 17 - A minor traffic accident occurred in the 100 block of N. McCree in which a pickup backed into another pickup. No injuries were reported.

Thursday, Feb. 18 - The police department received a report of a possible truant from Gruver Junior High. The child was found to be at home ill, but the family had not contacted the school to report the child sick.

Saturday, Feb. 20 - A prowler was reported in the 300 block of East Sixth. No one was found in the area.

Also Saturday, a possible theft was reported by Allsup's. The clerk suspected that two male subjects in the store had shoplifted some items. The officer found the suspects, but did not find the items that were alleged to have been taken. According to the report, both denied taking anything.

An officer, investigating loud music in the 800 block of Richardson, discovered five minor females at the residence in possession of alcohol. The minors were brought to the police department where their parents were contacted to come pick them up. A sixth girl was present, but not in possession at the time. Charges were filed in Municipal Court against a male, age 17, who was subsequently convicted of furnishing alcohol to minors.

### Gruver EMS Report

February 15, 1993 - Transported a 71-year-old female with a medical complaint to Ochilree General Hospital.

February 21, 1993 - Transported a 71-year-old female with a medical complaint to Hansford Hospital. Transported a 53-year-old male with a medical complaint to Hansford Hospital.

### Spearman Police Report

During the reporting period running from Monday, Feb. 15 to Sunday, Feb. 21, the Spearman Police Department filed 32 activity reports.

An auto theft was reported to the Spearman Police Department at 9:41 a.m. on Monday, Feb. 15. The automobile was taken from the 400 block of W. 12th. Later that day the vehicle was located north of Memphis and the suspects were apprehended by a DPS Trooper, Spearman Police Chief Joe Raper said. Both individuals were from Gruver. Charges have been filed against the 17-year-old and the 14-year-old was referred to the juvenile probation office, according to Raper.

Also during the week the department received two reports of stolen firewood. The first was reported at 2:27 a.m. from the 1000 block of Wilmeth. Then the second report came from the 900 block of Wilmeth approximately one hour later, 3:25 a.m.

Other reports filed during the week included nine miscellaneous calls, two lockouts and one false alarm call.

Tuesday, Feb. 16 - At 8:22 a.m. a

minor fire was reported in the 200 block of N. James. The resident extinguished the blaze, Raper said.

Wednesday, Feb. 17 - Officers responded to a fire alarm. It was determined to be false, Raper reported.

Friday, Feb. 19 - Two suspicious calls were received. One involved three guys demonstrating vacuums and the other involved a telephone

call. No action was taken. A disorderly conduct call was also received by the department. Juveniles were involved and no charges were filed, according to Raper.

Saturday, Feb. 20 - Officers assisted on an ambulance call in the 800 block of Roland.

Sunday, Feb. 21 - The Spearman Police Department received a report on a hit-and-run accident.

Raper said that a vehicle which was legally parked in the 10 block of Archer was struck by an unknown vehicle. Less than \$500 in damage was reported. Also a suspicious vehicle was reported. It turned out to be a patrol car.

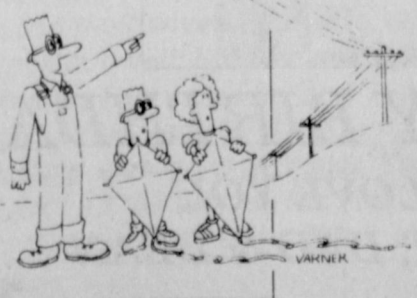
There were 11 animal control

See Files page 10

## Open House

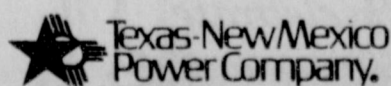
Monday, March 1, 1993  
Booker Chiropractic  
Kevin R. Walcher, D.C.  
105 Hwy 15 W. Booker, Tx. 79005  
806-658-9882  
New Hours: Mon.-Fri. 8:30-12 1:30-5:00  
Drawing to be held  
Complimentary Gifts  
Refreshments  
The Public Is Invited

### Line up the facts on power line safety



Give your children the right line on power line safety. You can help keep them safe by teaching them that it's dangerous to touch power lines with kite strings, tree limbs, ladders ... or anything. This same advice is good safety since for you too, especially if you're working in the yard with ladders, pruning tools or anything else that could come into contact with a power line.

For more information on power line safety, call or visit your local Texas-New Mexico Power Company office and ask for the free brochure, "Straight Talk about Electrical Safety."



Thanks to Three-Way Calling my sister, my mother, and I can talk, talk, talk.

As simple as one, two, three. Three-Way Calling lets you carry on a three-way conversation. It also lets you put one person on hold while you call another in private. And that's like having two phones in one.

Three-Way Calling is easy to use. And it's only a few dollars a month, plus a one-time installation fee. So call your Southwestern Bell Telephone Business Office today and ask for Three-Way Calling or our other Easy Options<sup>SM</sup> Services.

Southwestern Bell Telephone of Texas

"The One to Call On"

Available in most areas.

## Hansford Happening

**Spearman La Leche League Group will meet Friday, Feb. 26,** at 9:30 a.m. in the nursery room of First United Methodist Church, 407 S. Haney. The Group informally discusses different phases of breast-feeding, and offers mother-to-mother help, including the latest medical research. The topic for this meeting is Breast-feeding: The Healthy Choice. Expectant mothers are especially encouraged to attend. All women who are interested in breast-feeding are invited, as are their babies. For further information about the Spearman La Leche Group, call 659-2962. League information and helpful suggestions for any mother having difficulties is also available at 659-2962.

**The Gruver Chamber of Commerce Annual Banquet** has been scheduled for Monday, March 1. It will be held in the Gruver school cafeteria. The guest speaker will be Texas Tech's Head Football Coach Spike Dykes. The tickets will go on sale in a couple of weeks. They will be \$10 each and may be purchased at Gruver City Hall or from any chamber board member.

**The Morse Bass Club will hold their "Awards Fish Fry" at 6 p.m. Saturday, Feb. 27,** in the Morse Community Building. Future members or anyone interested in joining are welcome. 1st place - Lynn Davis, Morse; 2nd place - Travis Rieswig, Morse; 3rd place - Brent Bresnick, Sanford; 4th place - Charlie Sargent, Stinnett; 5th place - Gordon Cummings, Spearman; and 6th place - Pete Schumann, Morse.

**J.T.P.A. Program (Job Training Partnership Act)** through the Texas Employment Commission is looking for qualified (economically disadvantaged) students between 14 and 21 to work in Hansford County on the summer youth program. Please call Percilla Newberry at (806)274-3242 collect for an appointment. We will be taking applications during Spring Break (March 1-5).

**Gruver City Council** will be meeting at 7 p.m. Wednesday, March 10, in the Gruver City Hall.

**The Hansford County Commissioner's Court** will be meeting at 10 a.m. Monday, March 8, in the Hansford County Courthouse.

**Spearman Church Women will meet Friday, March 5** at the First Presbyterian Church, 11th and Cotter Dr. in Spearman. Fellowship and refreshments will be from 9:30 to 10 a.m. The World Day of Prayer program "People of God: Instruments of Healing," written by the women of Guatemala, will be presented by women from the various Spearman Churches. The offering will be divided between the local Panhandle Crisis Center and the Church Women United organization. The public is invited and a nursery will be provided.

**Defensive Driving** will be held Wednesday and Thursday, March 17 and 18. The cost is \$30 for chamber members and \$35 for non members. Sign up at the chamber office.

**Area Christian Singles Group** will be meeting at the Willie Room in the North Plains Electric Co-op at 7 p.m. Saturday, Feb. 27. Bring finger foods and games. Children need to bring games to play. For more information call Bernice at 435-4765.

**The Spearman School Board** will be meeting on Monday, March 15.

**The Gruver School Board** will be holding their next regular meeting on Wednesday, March 10, at 1 p.m.

## Chamber Chatter

by Cindy Blackman, Chamber Manager

I hope everyone saw the article about the Spearhead Corporation receiving 250 thousand dollars from The Meadows Foundation. This is just what we needed. Now we are asking that you help us complete the Spearman Community Center. If we all gave pledges of just \$10 or \$15 a month for three years we would be ready. Pledge cards can be picked up at the chamber office.

Our membership drive will be February 24 & 25. If for some reason you are missed and would like to join, please call the Spearman Chamber Office 659-5555 or come by 211 Main Street.

### 12 Objections/responses for not joining:

**#1—What is the purpose of the Spearman Chamber of Commerce.....**The overall purpose is to assure progressive, orderly community development, effective government at all levels, civic improvements to meet the growing needs of an increasing population, high educational standards, and a high favorable climate for a sound expanding economy.

**#2—No time for it.....**Not everyone has the time, but hundreds of requests for information or assistance to business and industry are being answered annually. If you are unable to support with both time and money, it is especially important for you to financially support these efforts. The volunteers who have the time make up the various committees, working in areas of tourism, economic development, education, governmental affairs, and many others.

**#3—I belong to too many clubs already.....**Your Spearman Cham-

ber of Commerce is not a social club. It is a partner to every business and every citizen. You belong in it as long as you are in business in this area because you are benefiting from its activities. Membership is actually an investment in our community's progress and prosperity.

**#4—We do our business outside of the area.....**Yes, but don't you make full use of our facilities? You would not call an out-of-town police or fire department, or make use of out-of-town utilities. Aren't your family, friends and interests here? You are a part of the community and your Spearman Chamber of Commerce deserves your support in its effort to make it a still better community.

**#5—I'm not interested.....**If you are interested in the prosperity of business, if you expect general industrial and commercial progress to react favorably upon your business, if you believe an organization of people can be more effective than an individual, then, you are interested in the business promotion of the Spearman Chamber of Commerce.

**#6—Can't afford it.....**(If the firm is going out of business, or is really in deep financial trouble, then move on. Usually, however, the prospect is telling you that you have not shown that the benefits are worth the investment.) We are not asking you to give away money, but to make an investment. Your return is the continued growth and pros-

perity of our community. You do not "contribute" when you are member of the chamber of commerce. You invest in your own business. The government recognizes that the Spearman Chamber of Commerce is a business expense, not a contribution. The Spearman Chamber of Commerce is the only organization in the area engaged in business promotion, in publicizing the area and in bringing more business and industry here.

**#7—I'm just a little guy.....**The best solution to your obtaining a larger share of business and to become bigger is to support the Spearman Chamber of Commerce, which is endeavoring to attract more industries, more trade, more people, more spendable income to make more business for you and me, and so make us bigger. The chamber is working to promote all these things.....for all of us.

**#8—The chamber is interested in large business.....**The majority of calls for service come from smaller concerns due to the fact that the larger ones generally have trained personnel to staff their various departments and require few direct services available through the chamber. Your firm has the same voice in the organization's affairs as the larger ones. You have the same opportunity to serve on committees and help form policies and direct activities.

**#9—We're just a branch office.....**Having opened a branch here is proof that your company considers this a good place to do

business. This is your home and you benefit from chamber of commerce activity. Through its branch, your company makes part of its living out of this community. You should give your home office reasons why it should joining the chamber on the grounds of mutual benefits.

**#10—I'm a professional, not a business person.....**Your greatest asset is your location in a prosperous growing community, where people are constantly moving in and the economic level is high. Your income is derived from activity within our area and your support is needed by our Spearman Chamber of Commerce to continue its high level of activity to encourage trade and industrial expansion.

**#11—What do I get out of the chamber.....**The general good—not the personal gain—must be the chamber's principal aim. The members who have made the chamber what it is today are those who have, by hard honest work, been successful in their own businesses and who are dedicated to promoting the prosperity and welfare of the whole Spearman area.

**#12—My business is new and is not established yet.....**I know what you mean. You have to be sure you get a return on every dollar you spend. Our chamber can provide you with an opportunity to make valuable business contacts at our meetings and provide you with several ways to publicize your business within the community.

## Letters to the Editor

To the Editor:

This letter is prompted by the frenzy of recent suicide deaths in which the so-called Suicide Doctor, Jack Kevorkian, "assisted." As I write this, Kevorkian has been involved in three such deaths in five days, and each death was accompanied by widespread coverage in all the media.

The great danger in this situation of media attention is that it may give terminally ill people the impression that Kevorkian's way is the only alternative to futile, expensive and often painful medical care. That is absolutely wrong.

For terminally ill patients and their families, there is another choice, and it is called hospice care. It is a form of care for the terminally ill that enables them to spend their last days in dignity, making peace with themselves and their loved ones.

Hospice treats all the needs of such patients through a team that includes physicians, nurses, counselors, therapists, clergy, aides and volunteers. In most cases, the patients can be cared for in the home, with a relative or close friend serving as the "primary caregiver." Hospice also tends to the needs of the patient's family, advising them how best to handle the many practical and emotional problems involved.

Hospice is becoming increasingly known and more widely used. Since June, 1991, for example, twenty terminally ill persons received hospice care in our community, and nationwide the total was well over 210,000 patients. Hospice has become so accepted that it is now covered by Medicare, Medicaid and most private insurers.

Unlike Dr. Kevorkian, hospice operates openly. Ours is a community-based organization that opens its arms to everyone. Further information about our service can be obtained by calling us at 806/659-2535, ext. 107, or writing to us at Hansford Hospice, 707 S. Roland, Spearman, TX, 79081.

Although our service is only provided to terminally ill patients, experience has taught us that the earlier hospice enters a case, the more effective our help can be. For this reason, and because it is also good personal planning, we invite all inquiries—even those where there may be no immediate need for hospice.

It is not our place our intention to pass judgment on Dr. Kevorkian or on the people whose desperation drove them to seek his services. But those who think his way is the only way should be advised they are wrong.

Sincerely,  
Albert LaRoche  
District Administrator  
Hansford County Hospital  
District

2535, ext. 107, or writing to us at Hansford Hospice, 707 S. Roland, Spearman, TX, 79081.

Although our service is only provided to terminally ill patients, experience has taught us that the earlier hospice enters a case, the more effective our help can be. For this reason, and because it is also good personal planning, we invite all inquiries—even those where there may be no immediate need for hospice.

It is not our place our intention to pass judgment on Dr. Kevorkian or on the people whose desperation drove them to seek his services. But those who think his way is the only way should be advised they are wrong.

Sincerely,  
Albert LaRoche  
District Administrator  
Hansford County Hospital  
District

## Spiritually Speaking

by Robin Snider  
First Assembly of God,  
Spearman

### TEN COMMANDMENTS Exodus 20:1-17 (NIV)

1. "You shall have no other gods before me."
2. "You shall not make for yourself an idol in the form of anything in heaven above or on the earth beneath or in the waters below."
3. You shall not misuse the name of the Lord your God."
4. "Remember the Sabbath day by keeping it holy."
5. "Honor your father and your mother."
6. "You shall not murder."
7. "You shall not commit adultery."
8. "You shall not steal."
9. "You shall not give false testimony against your neighbor."
10. "You shall not covet your neighbor's house."

For those who don't believe or don't know about Christ, and for those who believe in Christ, we need to read these commandments over and over. It is so easy to read them and say we follow them, but do we really? How about the time when God's name in vain slips out, or Sunday seems to be the only time we can get that extra work done? One that is easy to break is to make "false testimony," or gossip, about our neighbor.

These are just a few things that go against God's Word. Let's remember that in order to get to heaven and not hell, we must follow God's Word day to day and live a Christian life outside of the church, as well as in the church.

If being a Christian is embarrassing for us, remember there is a life in the fiery pit of hell that will be far more painful than taking a

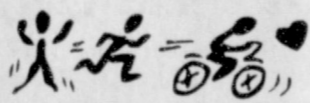
little criticism from those who don't believe in Christ.

Maybe it's time we get our Bibles out and read the commandments, whether it be for the first time or for the hundredth time.

### Trust fund for... Renteria children

A trust fund has been set up for Anthony and Victoria Renteria at First State Bank in Spearman. The children were injured in the automobile accident, Sunday, Feb. 14, that claimed the life of their parents Lupe and Jennifer Renteria.

The fund will be managed for the health, welfare and education of Anthony and Victoria according to Richey Thompson, trustee of the fund. Other trustees are Steven Poole and Buford Baker. Anyone wishing to donate may contact First State Bank.



### At The Lyric Theatre . . .

The Theatre will be **CLOSED** Friday, Feb. 26 through Thursday, March 4.

Coming March 5:

SCREEN 1                      SCREEN 2  
"Forever Young"      "No Where to Run"  
113 Main, Spearman



Men and Boys Wear

## FINAL CLEARANCE

# 70% OFF

## WINTER COATS, SHIRTS & ETC.

**Sweaters Valued to \$85**

**PRICED AT \$7.95**

**2 Sweaters • \$14<sup>95</sup>**  
**3 Sweaters • \$19<sup>95</sup>**  
**4 or More Sweaters \$5<sup>95</sup> each**

221 Main • Spearman    Open 9-6 • Mon. - Sat.

**THE BEST OF**

# MEN ON!

Starring Blaine and Antoine!

Tonight, it's a solid half-hour of "MEN ON!" classics!

**IN LIVING COLOR'S GREATEST BITS 8PM**

following an all-new episode of "MARTIN"



CABLE CH. 14 SPEARMAN

### The Hansford County Reporter-Statesman

*"Serving All Of Hansford County"*

USPS 509660  
213 Main, Box 458, 659-3434  
Spearman, TX 79081  
Published Weekly at 213 Main, Spearman, Texas  
Owned and Operated by:  
**Texas Independent Newspapers, Inc.**  
15915 Alsace  
San Antonio, TX 78232  
(512) 545-1739

Second Class postage paid at Spearman, Texas 79081.

Any erroneous reflection upon the character of any person or firm appearing in these pages will be gladly and promptly corrected upon being brought to the attention of the management.

**Publisher - Robert M. Hulett**  
**Editor - Angela Jones**  
**Bookkeeper - Sheila LaRoche**

**Subscription Rate:** Hansford County, \$19.95; out of county, \$24.95 annually.

**Postmaster:** Send address changes to Hansford County Reporter-Statesman, Box 458, Spearman, TX 79081.

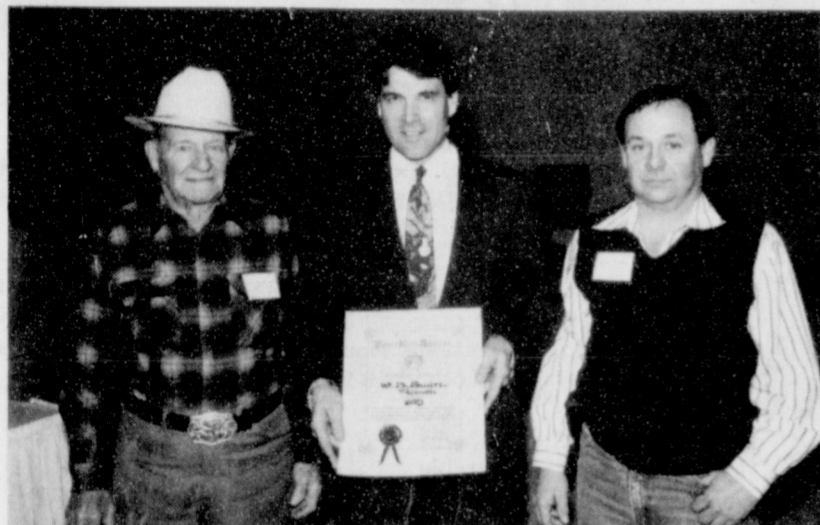
The publisher reserves the right to revise or reject at its option any advertisement which it deems objectionable, either in subject or phraseology, or which it may deem detrimental to its business.

**Advertising and Story Deadlines:**  
Tuesday, 12:00 p.m.

**TA** MEMBER  
TEXAS PRESS ASSOCIATION



**Students of the Week recognized -** For the month of February the following students were selected as "Citizen of the Month" for the Gruver Junior High School: Mary Puebla, 5th grade; Erika Salmans, 6th grade; Kathy Slough, 7th; and Lexy Spivey, 8th grade.



Pictured above Agriculture Commissioner Rick Perry, middle, presents William B. Smith (left) and son William M. Smith (right) with a Family Land Heritage certificate recognizing their Ranch for a century or more of continuous agricultural production.

### School Lunch Menu

**Gruver School Menu**  
**March 1 - 5**  
**LUNCH**  
**Monday** - Steak fingers, mashed potatoes with gravy, green beans, pudding, hot rolls and milk.  
**Tuesday** - Western burgers, corn, fruit and milk.  
**Wednesday** - Fried chicken, mashed potatoes with gravy, carrots, jello, hot rolls and milk.  
**Thursday** - Beef stew, cobbler, corn bread and milk.  
**Friday** - Chili cheese dog, french fries, fruit and milk.  
**Salad Bar** - Monday, Tuesday and Thursday.  
**BREAKFAST**  
**Monday** - Cereal, fruit, jelly rolls and milk.  
**Tuesday** - Biscuits and sausage, fruit, and milk.  
**Wednesday** - Donuts, fruit and milk.  
**Thursday** - Toast with peanut butter and jelly, fruit, and milk.  
**Friday** - Cinnamon rolls, fruit and milk.  
**Pringle-Morse C.I.S.D.**  
**MARCH 1-MARCH 5**  
**LUNCH**  
**Monday**—Chicken, potatoes, gravy, salad, corn, rolls, cake, milk.  
**Tuesday**—Beef enchiladas, rice, beans, salad, blond brownies, milk.  
**Wednesday**—Meat loaf, scallop potatoes, ravioli, salad, biscuits, blackberry cobbler, milk.  
**Thursday**—Turkey, dressing, potatoes, green beans, rolls, salad, pie, milk.  
**Friday**—Stew, grilled cheese sandwich, chips, fruit, milk, ice cream.  
**BREAKFAST**  
**Monday**—Cereal, toast, apple juice, milk.  
**Tuesday**—Muffins, toast, orange juice, milk.  
**Wednesday**—Waffles, sausage, grape juice, milk.  
**Thursday**—Honeybuns, cheese toast, apple juice, milk.  
**Friday**—Biscuits, sausage, orange juice, milk.  
 \*\*\*  
 Writing free verse is like playing tennis with the net down.  
 —Robert Frost

### All star kids' competition scheduled

What little girl and her mom doesn't dream of being "Miss America" one day? Or the young man who wants to be a movie star or on the cover of a leading magazine? This could be the beginning of having that dream come true. On Sunday, March 21, All Star Kids, will host a pageant at Perryton High School in Perryton.

Contestants will have the opportunity of being selected All star Beau or Babe (Girl or Boy 0-47 mos.). The babies will be presented on stage by an adult chaperone and we suggest you dress the baby in Sunday best wear. The winner of each division will receive a trophy and crown/medal and the 1st and 2nd alternate will receive a trophy.

Other categories are sportswear, beautiful babe/beau, photogenic and chaperone/baby presentation & special event.

The overall baby is determined by high point winner and will receive a 4'4 poster trophy, scepter, and overall banner. The age divisions for baby competition are: 0-11 mos., 12-23 mos., 24-35 mos., 36-47 mos. All winners are invited on to national competition to be held in Dallas, Texas.

For the kids ages 4-18 years, we will offer beauty/beau that will consist of competing in sportswear, interview and Sunday best/formal wear. During the interview the judges will also select prettiest/handsome that is separate from beauty and is based on facial features only. The judges will select model of the day during the on-stage presentation from each age division. Talent is offered to boys and girls who wish to present their talent presentation (not over 3 minutes) but this is a separate competition and you are not required to enter.

The age divisions are 4-6 years, 7-9 years, 10-12 years, 13-15 years, 16-18 years. The winners in beauty/beau and talent will receive trophies, crown/medal and their entry paid to national competition and the 1st and 2nd alternates will receive trophies. Photogenic is offered for all age divisions 0-18 years and we ask that you mail the photograph of your choice to our Dallas office where it will be judged by people in the print and media field that work with children. The photograph should be no larger than 8X10 color or b/w and done within the last 6 months. The photograph

### On The Go With Joy

by Joy Henderson

It looks as if I need to purchase a Fax machine since I am unable to keep a regular schedule for my newspaper job. Since doctors seem to need a couple of days on weekends for R and R, that leaves us to catch up with them again on Mondays. Now we have brother Bill Henderson back in the hospital waiting for tests to be diagnosed and we have played another waiting game in the Family Room of St. Anthony's.

As usual, the topic of conversation were the bitterly cold 5°-6° weather and the hospital food especially if you are on a soft, bland diet. B.H. was put on a no-salt, no-pepper light diet. Of course, on the tray was a packet of sugar, salt and pepper which B.H. promptly sprinkled on his sandwich. When the nurse came to remove his tray, she asked him "how was his dinner?" Then she noticed that the packets of salt and pepper had been

used. She chided him and fussed that he wasn't supposed to use them. He promptly told her, "Well I can't read either." Pretty good huh? Put salt and pepper and tray, then tell you that it is forbidden. That reminds me of when M.H. was in the hospital last year and his bland, no salt, no pepper diet included a thin slice of roast beef, instant mashed potatoes and instant gravy. M.H. said he could take the sole of his boots that he wears to the pig barn, boil them up good and they would be more tender than that roast beef. (Maybe more flavorful too! J.H.)

One thing for sure, when these Henderson brothers are in the hospital for a while, the nurses have a prayer meeting for a quick recovery for them.

Which brings me back to the subject of Fax machines. If I'm not mistaken, Paul Harvey mentioned a religious group is now accepting

Fax confessionals and some are now trying to Fax prayers to heaven.

Since we have spent more time in Amarillo than we have at home in Gruver, we have noticed a few odds and end problems happening to our car. We developed muffler noises and M.H. investigated and found the source of noise to be some rotting and it was coming loose. While he was having a new muffler installed, he noticed that some of the tires were wearing thin. So, that meant 2 new ones plus he had them mounted. Do you remember back at the end of the year when he told me not to have a flat too far away from a station because the spare do-nut tire wouldn't last long? Do you remember when I asked him why he hadn't had one of our other new tires mounted for a spare? What was the answer? Seems I had not bought a new rim or something to that effect. Boy! It

sure makes a difference when he doesn't want to be caught out in 5° weather to change a flat etc.

Back to the muffler. Did you hear about the fellow who always had bad luck? He must have forgotten to eat his black-eyed peas on New Year's Day. Once he found a magic lamp, rubbed it, and a genie appeared and gave him the Midas touch. For the rest of his life, everything he touched turned into a muffler.

Besides Bill Henderson being in the St. Anthony's hospital in Amarillo, Neal Williams is also a patient there. I do not know of any others at this time.

A lot of people are making plans for Spring Break which usually means Houston Stock Show and Ski weekends, but for me just hospitals. See you next week!

### William B. Smith Ranch... receives recognition in Land Heritage Program

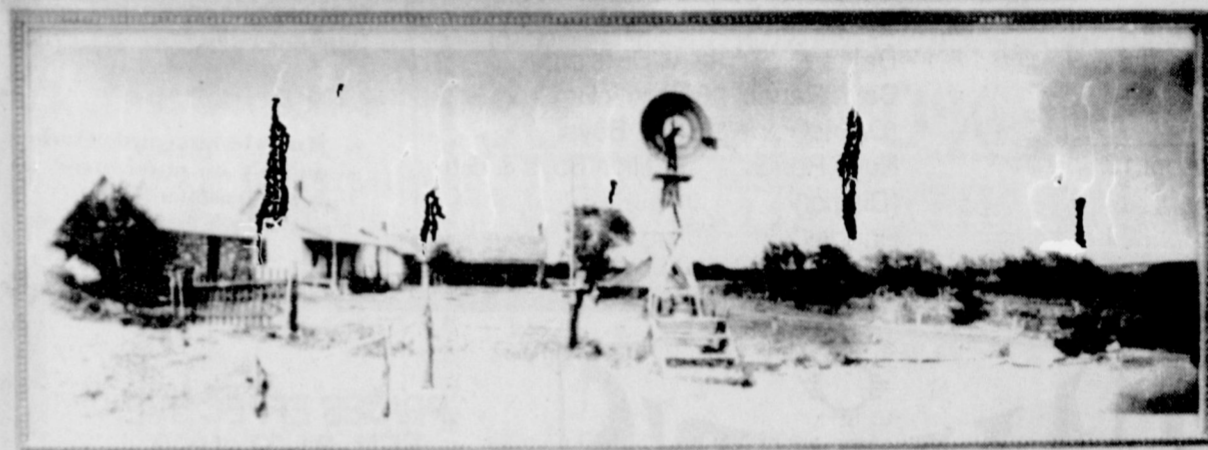
by Angela Jones  
 Editor

Let us take a walk back to 1871. The buffalo are still roaming the plains and Indians are frequently seen throughout the area when James H. "J.H." Cator and his brother, Bob, arrive to hunt buffalo in what is now Hansford County.

Now over 100 years later, J.H.'s grandson, William B. Smith, has been recognized through the Texas Department of Agriculture Family Land Heritage Program. In order to receive this honor a farm or ranch must have been in continuous agriculture production and remained in the hands of one family for 100 years or more.

It all began with J.H.'s father, who was a captain in the Royal Navy. He had sailed the seas under the British flag and was determined that his sons, J.H. and Bob, would not become sailors. With this in mind he sent them to America for a better life.

In 1873 the brothers built the Zulu Stockade, which was the first building in Hansford County. The stockade was located on the Palo Duro River five miles north of Morse and 12 miles southwest of Gruver. Its original purpose was a trading post for buffalo hunters,



The above Cator Home Stead was recognized by the Family Land Heritage Program.

but in December 1880 the stockade became the first post office.

It was during this time period, 1875, that J.H. Cator purchased 640 acres of land from Nancy Butler. On this land he built his dugout, the first building north of the Canadian river. He later added another 5,760 acres. In 1878 the brothers retired from buffalo hunting and began a cattle ranch. Other ranchers soon followed.

Then in 1882 J.H. began construction on his home. In the same year he was engaged to Edith Land.

The home, which is the oldest home in the county, was finished in 1886 and he married Edith in 1887.

They had three children, Edith, Louisa (Louie) and James (Jim) Fullerton.

Along with his family life, J.H., was also very involved in the county and held many offices. He was the County Judge in 1889-90, County Sheriff from 1890 to 1892 and in 1900 when Chas. Ketterman resigned as the County Treasurer, J.H. was appointed to complete the term.

His daughter, Edith married Mr. Willard Smith. Their children were William B., Olive, Allen, Luis, Bob, Jack and 'little' Henry, whom they lost.

Louie married L.G. "Gid" Nobles in 1917. They made their home on the ranch. Shortly there after Gid bought into the place. Jimmy Cator became his partner. Together they raised cattle, Smith said. He added that, they (Gid and Jimmy) grazed cattle on the ranch for approximately 30 years, from 1932-1962. Jim passed away in 1960. "The property was then divided shortly after his death," Smith explained. Louie received 3040 acres, which included the homestead.

When Louie passed away in 1961, her husband Gid acquired the 3040 acres. He continued to raise cattle and crops such as alfalfa and wheat.

Then in 1984, 1760 acres of the land went to William B. Smith. He, like his ancestors, is raising cattle on most of the land. He uses the other 300 acres to raise crops. Other Cator land and the homestead is owned by Lamoyne Cator, Smith reported.

Though William now lives in Hansford County, he said that he had moved away for awhile. "I went to California to work," he reported. He worked out there for 24 years. After that he moved to Nevada, where he worked for 18 years. But the family and 'homestead' ties kept drawing him and he returned to Hansford County in 1972.

Smith stated that he was really pleased to receive the award and represent his grandfather. He added, "The homestead needs some work. It hasn't been lived in for about 20 years. I don't know if the historical society would be interested in fixing it back up or not."

For more than 100 years this land has been owned by the Cators and their descendants. It is William B. Smith's hope that the Cator homestead and land will continue in their hands.

**Editors Note:** Some of the factual information in this article was obtained from A Search For Opportunity. A History of Hansford County by Doty Jones.

**MR. KING TO CELEBRATE 90TH**

Mr. George King of Goodwell, Oklahoma will be honored with a reception to celebrate his 90th birthday on Saturday, Feb. 27. Relatives and friends are invited to attend the come-and-go reception which will be held from 2 to 4 p.m. at the Goodwell Community Building, 122 S. Main in Goodwell.

Mr. King has lived in Goodwell for forty-seven years and has been a worker in carpentry, cabinet building and construction until his retirement in 1973.

Hosts and hostess for the celebration are his four sons and their wives. They are Wilfred and Paulagean King of Goodwell; Richard and Gail King of Woodward, Oklahoma; Fountain Lee and Hazel King of Hudson, Florida and Dow and Delilah King of Guymon, Oklahoma.

Mr. King was born at Waka, Texas in 1903 and has lived around the area all his life.

Mr. King requests no gifts, but would appreciate cards.

...the Pageant you have been looking for

**All Star**  
 BOYS & GIRLS

Babe ★ Beau  
 Sportswear ★ Special Event  
 0-11 months • 12-23 months • 24-35 months • 36-47 months

Beauty ★ Talent  
 4-6 years • 7-9 years • 10-12 years • 13-15 years • 16-18 years

PHOTOGENIC COMPETITION FOR ALL AGE GROUPS

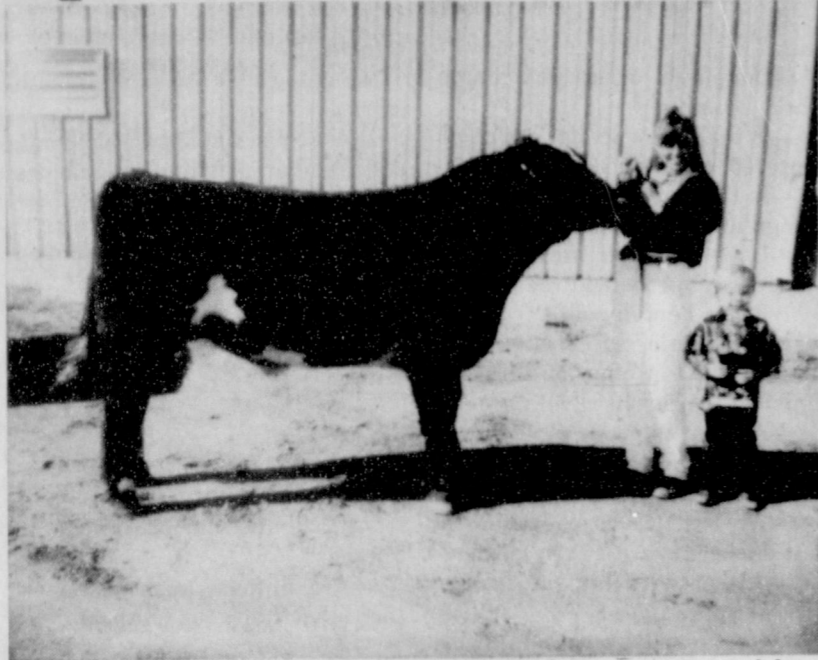
**MARCH 21**

CALL 806-354-9411  
 214-319-STAR

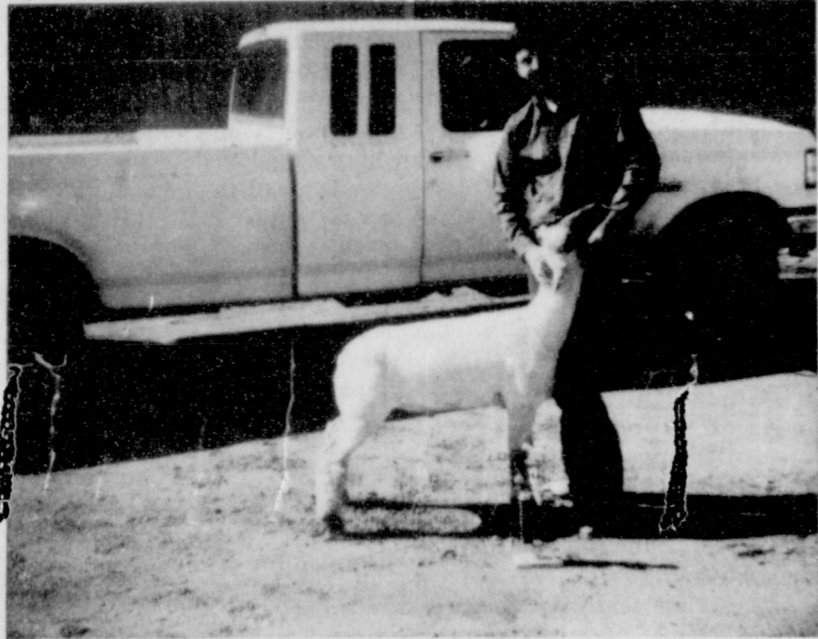
Mr. and Mrs. Dean Sparks  
 request the honour of your presence  
 at the marriage of their daughter

Jackie Jakay  
 to  
 Mr. Steven James Posey  
 son of Mr. and Mrs. Bob Posey  
 on Saturday, the sixth of March  
 nineteen hundred and ninety-three  
 at one-thirty in the afternoon  
 United Methodist Church  
 506 Broadway  
 Gruver, Texas

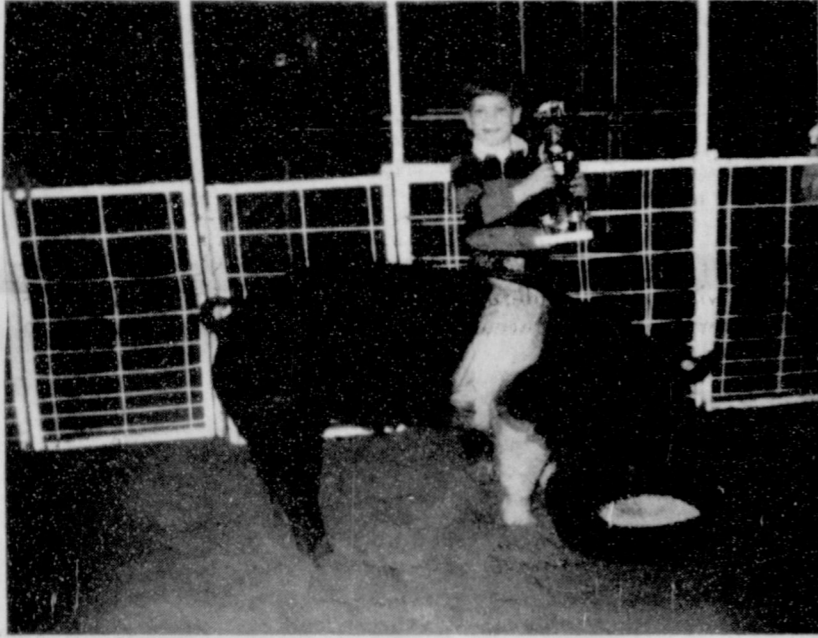
# Spearman releases show results



Pictured above is Randle Renner, her little helper and her Spearman Practice Show Grand Champion Steer.



Kevin Williams is pictured above with his Spearman Practice Show Grand Champion Lamb.



Tracy Brown beams as he holds his trophy for showing the Grand Champion Pig at the Spearman Practice Show.

Spearman held its practice show Saturday, Feb. 20 in the Spearman County Barn. Showing began at 10 a.m.

The results of the show were as follows:

- STEERS**  
 Randle Renner-Champion Steer, Tommi Latta-Res. Champion Steer, Reagan Renner-Junior Showmanship, Kevin Williams-Senior Showmanship  
**Lightweight**—Kevin Williams-1st, Clara Shieldknight-2nd, Kelly Shieldknight-3rd, Kacee Smith-4th  
**Mediumweight**—Randle Renner-1st, Tommi Latta-2nd, Kelly Shieldknight-3rd, Kacee Smith-4th  
**Heavyweight**—Tommi Latta-1st, Reagan Renner-2nd, Kevin Williams-3rd, Ronda Renner-4th  
**SHEEP**  
 Kevin Williams-Champion Lamb, Tommi Latta-Reserve Champion, Jeremy Mackie-Junior

Showmanship, Tommi Latta-Senior Showmanship

**Class I**—Kevin Williams-1st, Jason Harnish-2nd, Carrie Burton-3rd, Timmy Bynum-4th

**Class II**—Tommi Latta-1st, Kevin Williams-2nd, Misty Pearson-3rd, Priscilla Reichen-4th, Nancy Flores-5th

**Class III**—Tommi Latta-1st, Leah Mackie-2nd, Chelsea Nollner-3rd, Jeremy Mackie-4th

**Class IV**—Jeremy Thomas-1st, Timmy Bynum-2nd

**SWINE**

Tracy Brown-Champion Swine, Timmy Bynum-Res. Champion, Texana Clyburn-Junior Showmanship, Shane Goodson-Senior Showmanship

**Spots**—Kevin Williams-1st, Breed Champion; Shane Goodson-2nd, Res. Breed Champion; Coy Herrington-3rd

**Berks**—Kacee Smith-1st, Breed Champ; Jason Harnish-2nd, Reserve Breed Champ

**Chesters**—Keilee Goodheart-1st, Breed Champion; Jeremy Piatt-2nd, Res. Breed Champ; Jeremy Piatt-3rd

**Yorks**—Ricky Goodson-1st, Breed Champ; Misty Pearson-2nd, Res. Breed Champ; Joel Stark-3rd; Mike Cook-4th

**Durocs**

**Class I**—Josh Schumann-1st, Breed Champ; Tashi Schumann-2nd; Travis Brown-3rd

**Class II**—Chelsea Nollner-1st, Res. Breed Champ; Monty Herrington-2nd; Rhett Renner-3rd; Ashley Brown-4th

**Hamps**

**Class I**—Leah Mackie-1st, Jenn Schnell-2nd, Jeremy Mackie-3rd, Dustin Mackie-4th

**Class II**—Cameron Kunselman-1st, Jenn Schnell-2nd, Josh Bynum-3rd, Justin Turker-4th

**Class III**—Ronda Renner-1st, Reserve Breed Champ; Texana Clyburn-2nd; David Pipkin-3rd; Cody McCleod-4th; Kallie Smith-5th

**Class IV**—Tracy Brown-1st, Breed Champ; Reagan Renner-2nd, Texana Clyburn-3rd, Michael Cook-4th

**Crosses**

**Class I**—Timmy Bynum-1st, Breed Champ; Jeremy Mackie-2nd; Jenn Schnell-3rd; Misty Pearson-4th; Jeremy Mackie

**Class II**—Kevin Williams-1st, Reserve Breed Champ; Rhett Renner-2nd; David Pipkin-3rd; Brad Law-4th

**Class III**—Brandon Clyburn-1st, Leah Mackie-2nd, Kylie McGaha-3rd, Dan Kunselman-4th

**Class IV**—Kacee Smith-1st, Reagan Renner-2nd, Jeremy Mackie-3rd, Dustin Mackie-4th

## Hansford Hospice meets

The Hansford Hospice met in the LaCasita room of Gruver State Bank in Gruver with 12 members present. President Verna Lee Shirley conducted a short business meeting with discussion concerning a fundraiser. A garage sale was planned and the date tentatively set for April 24th. A very informative program was

## Among the Neighbors

by Helen Fisher

Wasn't that a heart warming letter in our paper last week from Mickey Blackmon, Criminal Investigator from Borger, regarding the Gruver boys and girls basketball teams? He was lavish in his praise of their conduct, appearance and courtesy at the ball games. Certainly it is a high compliment to these students, their parents, their school and community to merit such recognition from a stranger when they were away from home.

Pasty Isham of Denver was in Spearman for ten days with her parents, Cleo and Dennis George. Her daughter, Cindy Isham-Johnson of Pomfret, Connecticut joined them last week. Pasty's husband, Olin, from Denver came for a few days. Jerry George, a patient at the Veterans Hospital in Amarillo, was gravely ill. He has recovered slightly

### Hometown news

Seven Hansford County students were among the two hundred and ten students being named to the Dean's Honor Roll for the spring semester at Oklahoma Panhandle State University in Goodwell, Oklahoma.

The Gruver students named to the Dean's Honor Roll are Nancy Cotter, Davonna Daharsh, Sandra Gumfory, Katrina Hughes, Codi Mason, and Sandra Ross Watlington. Francis Pipkin from Spearman was also named.

## March Clinic Schedule

Immunization clinics offering vaccines that give protection against several childhood diseases are scheduled for March. Protection is against Polio, diphtheria, lock jaw (tetanus), whooping cough (pertussis), measles, rubella, mumps, and HIB (Haemophilus Influenzae Type B).

The Texas Department of Health is charging money to help with the cost of keeping the clinic open. The amount of money charged will be based on family income and size, and the ability to pay.

**March 4, 9-11:30 & 1-4 p.m.**—Spearman, Department of Health, 720 Archer Street.

**March 9, 10 - 12 Noon**—Perryton, Texas Department of Health Office, Ochiltree County Courthouse.

**March 9, 9-11:30 & 1-4 p.m.**—Borger, Texas Department of Health Office, 600 Cedar, Suite 400.

but is still seriously ill. Pasty left Monday to return to her work as manager at a large Denver Year-Round Christmas store.

Spearman's Krista Kirkland continues to win accolades for her basketball prowess. Her latest was being named to the GTE Women's Basketball Academic All-District VI team by the college sports information directors of America. Krista is a senior at Tech and carried a cumulative 3.5 grade point average while winning numerous awards in the sports field and making records. VI includes division I schools from six states.

Elmon Jacobs returned last Monday from Port Aransas where he has been wintering since September. He reports that in the early fall the weather and fishing were excellent, but in December the weather turned unpleasant.

He felt that winter was probably over and returned just in time for the snow and ice last week. He said in February the good fishing is usually over anyway.

Now, it happens that soon the college students will begin flocking to the beaches for their spring breaks. It just could be that Elmon felt that mixing and mingling with the thrill-seeking hordes with all the sights and sounds would be better remembered than shared, so he headed for home. Right, Elmon?

Mr. and Mrs. Leon Ferguson spent the weekend here with their son Tony Ferguson. They also visited her sister, Audene and Verlin Beck. The Fergusons are from Floydada.

A short visit last week with Hollie and Earl Riley in the Golden Plains Care Center in Canyon found them doing well. They are pleased with their care and surroundings. They are looking forward to the end of the inclement weather so they can return to their home here.

For the skeptics who questioned whether Bob Meek had actually worked that week he, R.L. McClellan and Forest Reichen, went to Baldwin, Louisiana with other Methodists to renovate damaged homes, well, here's proof that he did. The picture identifying him on the roof of a home, hard at work, in the Saturday edition of the Amarillo News is sufficient. Bob, you're vindicated.

Robert and Judy Moore announce the arrival of their son, Justin Robert, on Wednesday, Feb. 17 in Alexandria, Louisiana. He weighed 2 lb., 7 oz.

Grandparents are Marilyn and Mac Moore of Cincinnati, Ohio and Mr. and Mrs. Fran Rapt, also of Cincinnati. He has one great grandmother, Mrs. Pauline McGee of Spearman.

Justin Robert, the diminutive in size is immense in importance as he is the first great grandchild of Mrs. McGee, the first grandchild and the firstborn of his parents.

The Sunday Amarillo News-Globe carried an interesting article about W.B. Smith who is on the ranch formerly owned by his uncle,

Gid Noble and was part of the James Cator ranch. The Family Land Heritage had recognized him as part of the Century of Continuous Family Ownership of farms and ranches.

Does anybody else remember the Near-to-Nature Park on this ranch on the Palo Duro—the only recreation area in the county for so many years?

Reports from the ill: Friends of Melvin Ross, long time resident of Gruver, are relieved to learn that he was able to return home on Saturday. He had undergone arterial surgery the early part of February in Amarillo. He suffered a slight stroke in the surgery but expects full recovery.

He and Mrs. Ross are looking forward to resuming the work they have enjoyed since his retirement sharing the work of the Retired Baptist Men Camp Builders. This group travels, paying expenses themselves, to church camps that are in need of repair and renovation. Mr. and Mrs. Ross have found much pleasure as well as a sense of achievement, enjoyed the traveling, as well as reunions with old friends and making new ones.

Mrs. and Mrs. LeRoy Mitchell are also members of this group.

Enzie Copeland was brought home Friday from two weeks in High Plains Baptist Hospital after prolonged treatment.

The Copeland's daughter, Joe Linn and Bob Leland of Broomfield, Colorado have been with them and were able to stay until they were settled back at home. They returned to their home Sunday.

Brenda Wall, with her usual efficiency, made short shift of surgery last week. On Wednesday she was operated on at High Plains Baptist and returned home on Friday. She expects to return to her work at Hansford Hospice in a couple of weeks.

C. W. Kirk fell on the ice at his rural home last week and was transported by ambulance to Hansford Hospital where he was treated and released.

Fortunately no bones were broken. The Kirk's daughter, Karen and Bruce Fiedler with Mark and Jennifer, of Colorado City spent the weekend here with them.

Ed Garner underwent cataract surgery in Amarillo last Thursday. He was very pleased with the immediate improvement.

Leaving on Friday with anticipation and enthusiasm, 18 junior high Methodists left for a ski trip to Angel Fire. Exhausted and enervated, they returned early Monday morning. Dr. Jerrilyn Kissabeth, Frank Edwards and Norlan Winegarner sponsored them. They all appreciated the use of the Daily-McClellan cabin when they were not on the slopes. The skiing was generally excellent, although Saturday was extremely windy.

Even tho their teachers may have had to do a little prodding on Monday, the young people felt the weekend was very rewarding in good fellowship, camaraderie, and sport.

The families of Lupe & Jennifer (Sintas) Renteria would like to take this opportunity to thank everyone for their support during our time of sorrow for our beloved father, mother, son, daughter, brother and sister. Words cannot express our appreciation for all the food, cards, visits, prayers, flowers and memorials received.

A special thanks to the employees of Five Star and the staff at Ochiltree General Hospital for all their support to the Renteria and Sintas family. Lupe and Jennifer, you will always be in our hearts.

Anthony Lloyd & Victoria Renea Renteria  
 Jose & Oliva Renteria & Family  
 J.B. & Celina Sintas & Family

You are cordially invited

to a  
 Bridal Shower  
 honoring

Roney & VeAnn (Allsworth) Clark

Saturday, Feb. 27, 1993

2:00-3:30 p.m.

In the home of

Mary Dixon

1117 Linn Drive

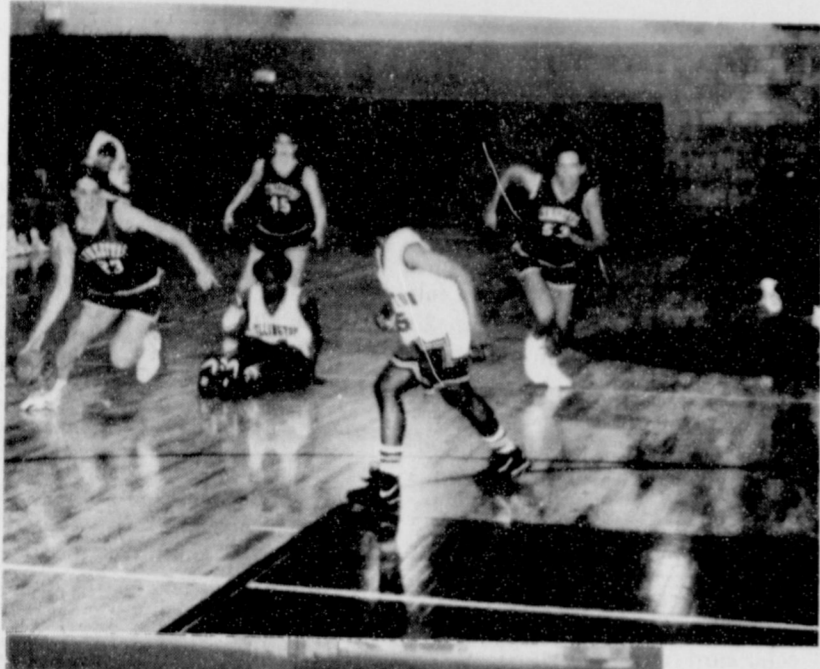
Selections: Gordon's, Celebrate

MY GOODNESS  
 LOOK WHO'S 40



HAPPY BIRTHDAY

LOVE YOU  
 MOM, DAD & DEAN



**Lynxettes run over Wellington but stall against Abernathy . . .**

It was off to the races for Lynxettes Michelle Garnett, Holly Jarvis and Lora Pearson in the top picture. Garnett picks up the loose ball and starts the fast break off a Wellington turn over. This seen was repeated all night long as a hustling, running and shooting Lynxette team ran over Wellington, 81-45, in their bi-district game Thursday, Feb. 18. In the second picture Kara Townsen shoots and makes one of the few shoots the Lynxettes took against their area opponents, Abernathy. The lack of Lynxette offense and hot shooting by Abernathy senior Lora Praether gave Abernathy the win 27-34.

**Spearman Basketball Roundup**

**Varsity Lynx Vs. Petersburg at Canyon 2/16/93**  
 SPR 45 - PET 57  
 Toby Thompson-6, Wes Dyess-3, Brady Reed-3, Jason Varnon-2, Troy Law-5, Cody Pipkin-14, Mike Hager-2, Russell Shaver-10  
 3 pt shots: Thompson-2, Reed, Law, Shaver

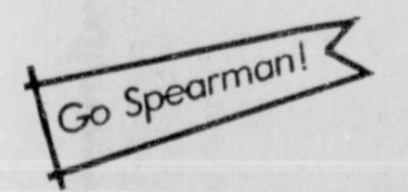
**Vs Chillicothe at Shamrock 2/20/93**  
 SPR 73 - CHI 70  
 Thompson-9, Lasater-5, Varnon-4, Pipkin-27, Hager-2, Shaver-24, Justin Boyd-2  
 3 pt shots: Thompson, Shaver-3  
 Record: 22-8

**Varsity Lynxettes Vs. Wellington at Tascosa 2/18/93**

**Bi-District SPR 81 - WEL 45**  
 Telie OQuin-2, Ashly Shieldknight-4, Jill Lusby-12, Mary Cook-4, Michelle Garnett-9, Kimbre Townsen-6, Kara Townsen-10, Holly Jarvis-9, Tracy Tigrett-2, Laura Pearson-16, Carrie Pearson-5  
 3 pt shots: Lusby-4, Garnett

**Vs. Abernathy at Tascosa Area Game SPR 27 - ABE 34**  
 Lusby-3, Cook-3, Garnett-6, Ka. Townsen-6, Jarvis-5, L. Pearson-4.

**Varsity Lynx To Play Bi-District Game**  
 When: Friday, Feb. 26 at 7 p.m.  
 Where: Borger H.S. Gym  
 Opponent: Memphis Cyclones  
 Ranked 7th - 24-4  
 Lynx are Home Team



**MODERN WOODMEN OF AMERICA Fraternal Life Insurance**

Seek individuals with outstanding sales management potential. Our rapid growth has created exceptional opportunities.

No insurance experience necessary; comprehensive 24 month training program available. Excellent starting income. If you consider yourself a high caliber individual, investigate this opportunity.

For interview write (Manager's name and address) giving past experience, address and phone number. Replies confidential.

**Spearman Little League receives charter**

by Mike Cudd  
 The Spearman Little League is proud to announce that it has recently been granted a new charter with the worldwide Little League Association, the world's largest youth sports program. Effective immediately, Spearman Little League under the direction of a new Board of Directors will assume control of all Youth Baseball and Softball programs for the City of Spearman. Based upon last year's participation and current expectations, close to 250 youth will be involved in the program starting this March.

Little League baseball is not new to Spearman. In its heyday, the 1960s, Little League baseball was the focal point of community activity and a great source of pride for those involved. Many of you probably remember those days, either as a youth playing for teams such as the John Deere Bucks of 1961 as pictured or as a coach or volunteer. For the sake of our youth, it's time to bring this time-honored program back to our community.

Based upon the past success of Little League Baseball in Spearman, expectations are high

that the organization integrity, and service to youth that Little League Baseball provides will be rejuvenated again. Helping to make this happen will be the new Board of Directors, consisting of Mike Cudd-President, Jeff Beedy-Vice President, Bob Meek-Secretary & Treasurer, B.J. Grayson-Player Agent, Bob Farr-Scheduling, Joey Wooley-Safety Director, Eugene Yarbrough-Umpire in Chief, Johnnie Waggoner, and Pam Barber.

Speaking about the program in general, the youth and parents participating can expect a well-organized program throughout all aspects including evenly divided teams, qualified coaches and umpires, well cared-for facilities, full concessions, and the full pageantry that accompanies Major League Baseball.

In order to pull this off, it is vital that Little League get full support from the community, both in monetary sponsorship of teams and general operations and volunteers to serve as coaches, umpires, P/A announcers, groundskeepers,

See Little League page 8

**1993 Spearman Track Meet Schedule**

February 27	Canyon	Varsity & J.V. Boys
March 5 & 6	Stratford	7th & 8th Boys & Girls Varsity Boys & Girls J.V. Boys
March 12 & 13	Canadian	7th & 8th Boys & Girls Varsity Boys & Girls J.V. Boys
March 19 & 20	West Texas	7th & 8th Boys & Girls Varsity Boys & Girls J.V. Boys
March 26 & 27	Fritch	7th & 8th Boys & Girls Varsity Boys & Girls J.V. Boys
April 2 & 3	Spearman	7th & 8th Boys & Girls Varsity Boys & Girls J.V. Boys
April 8 & 9	Dalhart	7th & 8th Boys & Girls Varsity Boys & Girls J.V. Boys
April 16 & 17	Boys Ranch (District)	7th & 8th Boys & Girls Varsity Boys & Girls J.V. Boys
April 30 & May 1	Abilene (Regional)	Varsity Boys & Girls
May 14 & 15	Austin (State)	Varsity Boys & Girls



Light travels 186,282 miles per second.

**Thank You Mansford County**

February is National Children's Dental Health Month. We would like to take this time to thank our patients for supporting our practice. Our dedication to family dentistry, treating children and adults has allowed our practice to enjoy continued growth over the last 9 years drawing patients from five states and across the panhandle to our community. We would enjoy treating you and your family and are accepting new patients. Your insurance is welcome at our office and we look forward to continued service to this community.

**Stanton W. Cobb, DDS**  
 Family Practice & Orthodontics  
 802 S. Roland, Spearman, TX  
 659-5515

**SPEARMAN LITTLE LEAGUE**  
**PLAYER SIGN-UP BEGINNING MARCH 1**  
**AT CATES MEN AND BOYS WEAR**

To be eligible, candidates must qualify as follows:

- They must reside within the established boundaries of Spearman Little League.
- They must have been born on or after August 1, 19\_\_.

Candidates must bring legal proof of age (Birth Certificate) and be accompanied by their parents.

Proof of age documents issued by Federal, State, Province, County, Parish Town, City, Borough or Village departments or bureaus having jurisdiction.

These may be original "Birth Certificates," notification of birth registrations or birth registration cards; or certified copies thereof.

Photostatic copies are not acceptable as such unless duly acknowledged as a true and correct copy by an authorized public official.

Little League Headquarters Statement in lieu of Birth Certificates are acceptable.

Baptismal Certificates are not acceptable.

After examination by the player agent and the league president, these documents will be returned immediately to the parents.

Mike Cudd, President  
 Spearman Little League

**FINAL MARKDOWN SALE**

Coats, Dresses, Sportswear  
 Women's & Children's Shoes & Boots

**50 - 60 - 70% OFF**

**ABSOLUTELY THE FINAL**

**REDUCTIONS ON ALL**

**SALE MERCHANDISE**

**KIDS' STUFF & Lady Fair**  
 In Spearman

**Jackie's FOOTPRINTS**  
**Betty's The Leprechaun**  
 In Perryton

**KIDS' STUFF**  
 In Guymon

**OPEN MONDAY - SATURDAY 9:30 - 5:30**

**HEART Smart**

**WORKING HARD TO SERVE THE MEDICAL NEEDS OF HANSFORD COUNTY**

**Hansford Hospital 659-2535 or 3746**  
**Hansford Manor 659-5535**  
**Hansford Hospital Pharmacy 659-2226 or 2647**  
**Hospice & Home Health Care 659-2535 or 733-2954**  
**Mammography**  
**Chemotherapy**  
**Durable Medical Equipment**  
**Physical Therapy**

**HANSFORD COUNTY HOSPITAL DISTRICT**  
 707 South Roland • Spearman

**HEART DISEASE ISN'T WOMAN'S BEST FRIEND**

If you think heart disease is only a man's disease, statistics destroy that long-held myth. More men may have heart attacks, but women are twice as likely to die from them within the first few weeks.

True, the statistics are gloomy. But the forecast is getting brighter. That's mainly because of medical advances and changing lifestyles, says the American Heart Association. From 1979-87, age-adjusted death rates for women declines 20 percent for coronary heart disease, 26 percent for stroke, and more than 14 percent for all cardiovascular diseases.

So think prevention. Learn about your risk factors—and which ones you can control.

Some risk factors cannot be changed. These are:

- Age**—The older you get, the more likely you are to develop heart disease.
- Sex**—More men have heart disease and develop it earlier than women. But women narrow the gap after menopause.
- Race**—Cardiovascular death rates of black women are much higher than those of white women. That may be mainly because of higher blood pressure levels.
- Heredity**—If your close blood relatives had heart disease, you're more likely to develop it.

You can control these risk factors.

**Smoking**—It's the most preventable cause of death and the most significant risk factor for heart attack. Cigarette smoking puts extra strain on and causes temporary changes to your heart. It also causes a shortage of oxygen in your heart. Women smokers are more than twice as likely as non-smoking women to have a heart attack. And women smokers increase their risk of heart attack and stroke even more when they use oral contraceptives. Recent studies suggest that new oral contraceptives with lower doses of estrogen are safer than high-dose pills that increase the risk of heart disease.

So if you don't smoke, don't start. Quit if you do.

**High blood pressure**—Blood pressure is the force exerted by the heart when it pumps blood through the arteries. It's too high if you have a series of readings over 140/90. The first number, called systolic, is the pressure while your heart beats or contracts. The second, diastolic, is the pressure in the arteries while your heart is filling and resting between beats.

So have your blood pressure checked often. You can help control it by eating a healthful diet, exercising regularly and limiting how much sodium you use. You also may need to take medicine.

**High blood cholesterol**—Cholesterol is a fat-like substance found in human and animal tissue. The higher your blood cholesterol level, the more likely that fat and cholesterol will build up in your artery walls. This process is called atherosclerosis. It slows blood flow or blocks off blood vessels completely, causing either a heart attack or stroke.

Get your blood cholesterol level checked by a health professional. If your level is too high, your doctor can help you control it. You first must reduce the cholesterol, total fat and saturated fatty acids in your diet and lose weight if necessary. You can reduce saturated fatty acids by eating less animal fat, coconut, palm and palm kernel oils. And you can reduce cholesterol in your diet by eating less fatty meat, egg yolks and whole-milk dairy products.

So think of heart disease as a killer of women that you can fight. Denial can be deadly.

## For the Sport of it

by Bob Bort

Coach Tim Garland of the Hounds and Coach Steve Myatt of the Lady Hounds will have a lot of talent to go through next year in deciding who plays on Varsity, and who on Junior Varsity and 9th grade. The 9th grade boys were 17-2 this past year, and there is a lot of talent there. There are even a

couple of eighth graders, next year's freshman, who have a shot at making the varsity - maybe a long shot, but nonetheless a shot. For the girls, they lose Holly Venneman, Trace Crawford, Cora Meyer and Kasey Davis, but there will be decisions to make concerning who fills those spots with the fine JV

talent of this year. The key would be playing time. If someone makes the varsity, they should play. Otherwise they should be on the JV, it they can get playing time there.

\*\*\*

Well, track season is upon us, and getting in shape is a pain for the athletes. Coach Doug Frick has 22 athletes out for track and field this year, but only 4 seniors - Jason Bartimus, Raul Villegas, Fabian Royval and Scott McCloy. Coach Jim Davis will know more about his team later this week, but it should be a very competitive Lady Hounds team. The first track meet will be held at Stratford the weekend of March 5-6. Golf and Tennis action will also arise as competitive sports after a long winter's hibernation. Coach Sheila Watley is the tennis coach. She will have quite a number of girls out for tennis - however, only six can go to a tournament. Tentatively, their first meet will be at Plainview March 12. Coach Garland is the golf coach, and he has the defending state champion in the girls singles back, Kim Boone. First meet is at Panhandle, March 1 for the girls, and March 2 for the boys. That's a look at the spring sports, just now getting underway.

\*\*\*  
Knowledge and timber shouldn't be much used till they are seasoned.  
—Oliver Wendell Holmes

## Gruver Lady Hounds manhandled by Panhandle

by Bob Bort

"Panhandle played at a level higher than we did," said a frustrated Coach Steve Myatt, following a 56-37 shellacking of the Gruver gals by the Panhandle Pantherettes, this past Friday night in a bi-district game at Tex Hanna Fieldhouse in Borger. "They are the defending state champions, and they played as a championship team will do," added Myatt. He continued, "We didn't play at the level we're capable of."

At the very start of the game both teams were extremely tight, and Panhandle has a 1-0 lead through the first five minutes of play. It was just a matter of time - one team would loosen up and start scoring, and they would be the victors. A three-pointer by all-state guard Angie Ogletree of the Pantherettes made it 4-0, and though Wynn Maupin answered with a jumper to make the score 4-2 with 2:10 left in the first quarter, the writing was on the wall. Panhandle found the openings, Gruver stayed tight, and the result was a lopsided loss for the Lady Hounds. The first quarter ended with Panhandle up 13-2, and the Lady Hounds were finished for the night.

"They are a senior-dominated team," continued Myatt. "They are the only team we've faced this year who didn't let us run our offense. The harder we tried, the worse it got."

Coach Myatt summed it up. "They are the favorite team I've ever coached. We tried hard all year. Despite the loss, and I hate losing Holly and the other seniors, I am pleased with the direction of the program. We'll be back."

Ogletree played an outstanding ball game, scoring 25 points, but even she was tight at the outset. Gruver managed a streak of four points straight only three times all night. Panhandle, once they tasted blood, never let up all night. They had the killer instinct.

Panhandle handled all phases of the game well. From the free throw line, Gruver was good with 10-14, but Panhandle was outstanding with 9-10. Turnovers were heavy with the Gruver gals, and their shooting percentage was not good, but the key was that Panhandle was holding down the Lady



Wyn Maupin gets off one of the few uncontested shots that the Lady Hounds got against Panhandle in their bi-district game Friday, Feb. 19.

Hounds shots, with a stifling man to man defense. Gruver's press didn't phase the Pantherettes, while the Panhandle press bothered the Lady Hounds.

The real cause of the loss, was that Gruver never got comfortable the whole night, and played tentatively - tight.

Panhandle's largest lead was 24 points, 56-32, shortly before the game ended. Wendy Rodriguez hit a 3-pointer, and Holly Venneman scored from under the basket, to make the final 56-37. Panhandle continues on in the play-

offs to the area game against Shallowater, while the Lady Hounds close their season with a 16-9 record.

Varsity Girls (16-9) vs Panhandle (23-5) 2-19-93 at Borger Bi-district game				
GRU	2	14	23	37
PAN	13	30	38	56

3-pointers - Sara Jones, Wynn Maupin, Wendy Rodriguez.  
GRU - Holly Venneman-13, Maupin-11, Julie Meyer-6, Rodriguez-4, Jones-3.

### 1993 Gruver Tennis Schedule

March 5 & 6	Hereford Team Tournament (Tenative)
March 16	Dual at Canadian
March 26 (Fri. only)	Gruver Team Tournament
April 2 (Fri. only)	Perryton Tournament
April 6 & 8	District Tennis at Spearman
April 9 & 10	Amarillo Relays Tournament
April 29 & 30	Regional at Abilene

### 1993 Gruver Track Meet Schedule

March 5 & 6	Stratford	All Divisions
March 12 & 13	Sunray	Varsity Boys & Girls J.V. Boys
March 19 & 20	W. Texas	All Divisions
March 26 & 27	Fritch	Varsity Boys & Girls J.V. Boys
March 27	Panhandle	Jr. High Boys & Girls
April 2 & 3	Spearman	All Divisions
April 8 & 9	Dalhart	All Divisions
April 16	Boys Ranch (District)	Varsity Boys & Girls J.V. Boys
April 17	Boys Ranch (District)	Jr. High Boys & Girls
April 24	Randall	Reg. Qual. Meet

# ALLSUP'S

305 W. KENNETH, SPEARMAN  
659-3135  
101 MAIN, GRUVER  
733-2953

OIL OR WATER PACK  
STAR-KIST  
TUNA  
6 1/8 OZ. CAN

**69¢**

HOMOGENIZED  
ALLSUP'S  
MILK  
GALLON

**\$1.99**

SAUSAGE  
& BISCUIT  
EACH

**69¢**

ALL VARIETIES  
ALPO  
DOG FOOD  
14 OZ. CAN

**59¢**

COMBO OF THE MONTH

TALLSUP & 2  
CHIMICHANGAS  
OR 2 BEEF & SALSA  
BURRITOS  
FOR ONLY

**\$1.99**

SHURFINE  
PORK 'N BEANS  
15.5 OZ. CAN

**4/\$1**  
WHILE SUPPLY LASTS

NEW AND DELICIOUS FRED'S  
EGG ROLL  
STRAWS

**2 FOR 89¢**

GATORADE  
THIRST QUENCHER  
16 OZ. BOTTLE

**69¢**  
WHILE SUPPLY LASTS

PRICES EFFECTIVE  
FEB. 21-27, 1993

PEPSI  
6 PACK  
12 OZ CANS

**\$2.19**

**GOTTA  
HAVE  
IT**

PEPSI

HOT FOODS MENU		AVAILABLE AT ALL ALLSUP'S LOCATIONS
BARBECUE BEEF SANDWICH	99¢	9 PIECE BOX CHICKEN \$5.99
BARBECUE PORK RIBS (LB.)	\$3.99	BEEF & CHEESE CHIMICHANGA \$1.19
BARBECUE WHOLE CHICKEN	\$3.99	(MEAT) CORN DOG 69¢
ALLSUP'S BURRITO	79¢	DELICIOUS HAMBURGER 69¢
BREAKFAST BURRITO	99¢	WILSON HOT LINKS 99¢
BURRITO BEEF & SALSA	\$1.19	SAUSAGE ON A STICK \$1.39
DELICIOUS CHEESEBURGER	89¢	SAUSAGE & BISCUIT 79¢
CHICKEN FRIED STEAK	\$1.59	SAUSAGE EGG & BISCUIT \$1.09
3 COUNT CHICKEN STRIPS	\$1.49	SAUTEED SAUSAGE 99¢
W/POTATO WEDGES/CHICKEN (2 PC.) BISCUIT	\$1.99	4 COUNT STEAK FINGERS \$1.00

CALL IN ORDERS WELCOME CHECK OUR WEEKLY SPECIALS

LIBBY'S  
VIENNA  
SAUSAGE  
5 OZ. CAN

**2 FOR 89¢**

SHUR SAVINGS  
SALTINE  
CRACKERS

**59¢**

SHUR SAVINGS  
SALTINES

SWANSON PREMIUM CHUNK WHITE  
CHICKEN  
5 OZ. CAN REG. 1.79 NOW

**99¢**  
WHILE SUPPLY LASTS

## Southwest Outdoors

with Mel Phillips

AND THE WINNERS ARE... Valentine Sunday night-Amarillo Civic Center...

The dust has settled and the huge crowds have returned home to sit out the sudden freezing weather and wait for the snow to melt. The beautiful boats and the magnificent RV's are gone. Just a memory. OUTDOOR WORLD '93 is history and all that remains is a montage of memories about the best outdoor show that has visited the heart of the Texas Panhandle.

Fishing and hunting seminars by fourteen world-class authorities have primed the pump for another year of outdoor activity.

The bass anglers eagerly listened to four experts and took notes on catching more big bass. The veteran club members of the bass wars were quietly making mental notes that might insure more victories in 1993.

Best suggestion for catching bigger bass came from MARK STEVENSON and DREABON

JOINER when they each recommended swimming a jig-N-pig as if it were a crankbait. Catching bass immediately after the spawn can be really tough. A swimming jig just might be the answer for those suspended bass.

Hundreds of crappie anglers crowded the KMML seminar center to listen to WALLY MARSHALL explain that some new 6 lb. Silver Thread fishing line will catch more and bigger crappie than that old 7 lb. line you put on during the summer of '88. Light lines, limber poles, and Fly-fly jigs are the tickets to success if catching crappie is your quest.

OUTDOOR WORLD concluded with several drawings for some great merchandise from area dealers. CONGRATULATIONS to DEANNA SCHAFFER of Canyon, who won the fishing boat donated by Lake Tanglewood Marine. NADENE SEAMAN of Ama-  
See Southwest page 12

FmHA  
FARMERS HOME  
ADMINISTRATION  
Farm Property  
for Auction

TWO TRACTS OF FARM REAL ESTATE IN HANSFORD CO.  
BOTH TRACTS ARE TO BE SOLD TOGETHER.

LEGAL DESCRIPTION:

TRACT 1: The East 120 acres of the S/2 of Section 37, Block 4-T, Original Grantee, Texas & New Orleans Railroad Co., Hansford County, Texas.

TRACT 2: The North 156 acres of E/2 of Section 1, lying South & East of the A.T. & S.F. Ry. Co. right-of-way, Block 3, Original Grantee, San Antonio & Mexican Gulf Railroad Co., Hansford Co., Texas.

The Farmers Home Administration (FmHA) will sell the above listed tracts at a Trustee's Foreclosure sale to the highest bidder or bidders, for cash, within 30 feet of the front door of the middle floor of the Main Street entrance of the courthouse in either the interior hallway or on the exterior steps of the Hansford County Courthouse at 10:15 A.M. on TUESDAY, MARCH 2, 1993.

FmHA minimum bid is \$51,201.00 for both tracts together

For specific information contact the Farmers Home Administration County Supervisor, James M. Heck, at 800 N. Main, Suite B, Perryton, TX 79070 or PHONE: (806) 435-6859.

## Amarillo Production Credit Ass'n... to hold stockholder meeting

Attribute to the past 60 years will be the focus when Amarillo Production Credit Association holds its annual stockholders' meeting this month.

The meeting will be held on Saturday, Feb. 27 at the Amarillo Civic Center's Grand Plaza. Registration for the meeting is at 2 p.m. The business meeting begins at 3 p.m. followed by a featured speaker, and a recognition dinner for long time stockholders. Fifty year and thirty-nine year plus stockholders will be honored.

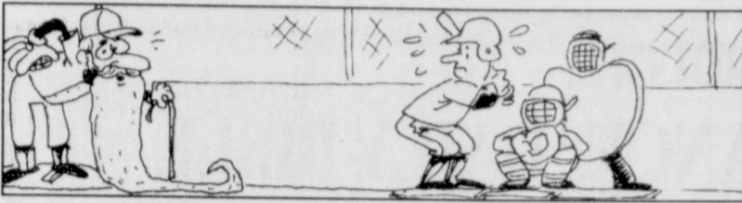
Speaking to the agricultural credit organization will be Dr. Wil-

liam F. Staats, the Louisiana Bankers Association Professor of Banking and Professor of Finance at Louisiana State University. Dr. Staats is a nationally ranked speaker in the areas of economics, finance and business.

The Amarillo Production Credit Association is an agricultural credit corporation chartered in 1933. The association provides complete credit services to its farmer and rancher stockholder borrowers located primarily in twelve Texas panhandle counties. The organization has offices in Amarillo and Dumas.

\*\*\*  
The greatest achievement of the human spirit is to live up to one's opportunities and make the most of one's resources.

—Vauvenargues



### Little League from page 7

scorekeepers and concession stand workers. Everyone is encouraged to contact any of the board members as soon as possible to pledge their support, whether it be a donation, a sponsorship, or to volunteer to help in one of the mentioned capacities.

Budgetary needs will be large this year as there is a need for new uniforms, safety equipment, insurance, and playing equipment. These expenses have to be covered with team sponsorships and general donations. Team sponsorships with imprinted shirts will cost \$300.00 per year. Steel, professionally-painted advertising signs, 3'x4' in size will be sold to place on the outfield fences at a cost of \$75.00 per sign, \$50.00 if sponsoring a team. Again, if any individual or business wishes to help out in this way, please contact any member of the board.

#### The tentative schedule for 1993:

March 1-31—Player sign-up, rules clinics

April 1-30—Player tryouts, organize teams, begin practice

May 1-31—Local League Play

June 1-30—Tournament Team

selection & practice  
July 1 - August 28—Tournament Play culminating in the Little League World Series at Williamsport, PA

Remember! Player sign-up begins March 1. All interested youth may sign up at Cates Men & Boys Wear, 221 Main Street.

Originally chartered in 1939, Little League Baseball has grown to where it conducts baseball and softball programs in seven divisions for more than 2 1/2 million youngsters between the ages of 6 and 18 years old in 62 countries around the world. It is the only sports program in the United States to hold Federal sanction under Congressional Charter. The values of Little League Baseball are many, with the balanced development of the child as the ultimate goal. Through Little League Baseball, youngsters develop and appreciate the need for teamwork, sportsmanship, and unselfish cooperation—disciplines to be beneficial a lifetime. Physical development of the child through Little League Baseball is a prime concern, under the safest and most time-tested rules ever adopted by a youth sports program.



The year is 1959—first year Little League was affiliated in here, the team is the John Deere Bucks, coached by Woody Beck & Ray Robertson. David Hester was the first LL player to hit a home run ball out of the park. Back row L to R: David Hester, Frank Shields, Steve Simpson, Dewayne Heaton, Johnnie Crawford; middle row: Danny Robertson, David Batson, Mickey Simpson, Jerry Holton; front row: Jerald Ray Scribner, Monty Lusby, Doug Lackey.

## Recognizing Academic Excellence In Hansford County

### Spearman Elementary

#### "ALL-A HONOR ROLL" for 4th six weeks

<b>5TH GRADE</b>	Chelsea Nollner	Brianne Burkhammer
Halee Beasley	Kara Pipkin	Matthew Francis
Stephanie Bynum	Sally Pittman	Wesley Hathaway
Brandi Campbell	Jenn Schnell	Dustin Mackie
Kathryn Murphy	Adrienne Simpson	Daniel Pape
Amber Ramon	Chelsey Villines	Lisa Powers
Reagan Renner	Dusty Vinson	Nicole Ramon
Audra Sanders	Brady Woolley	Zachary Renteria
Camille Smith	<b>3RD GRADE</b>	Kallie Smith
Janae Watley	Erin Boxwell	Lance Smith
Sydney Woodington	Monica Cantu	Amy Watley
<b>4TH GRADE</b>	Bethany Furlow	<b>1ST GRADE</b>
Timmy Bynum	Laura Gillaspie	Jentry Edwards
Cary Cates	<b>2ND GRADE</b>	Diana Flores
Brandon Clyburn	Daniel Baker	Ashlee Flowers
Daniel Ellis	Samantha Baker	Keilee Goodheart
Jared Freeman	Kevin Beedy	Marshall Hearon
Martin Griffin	Allison Behney	Phillip Lozano
David Holt	Travis Brown	Garrett Martin
Dib Kirk	Paul Bynum	Homero Martinez, Jr.
Erin Lozano	Jessica Crossland	Courtney Partney
<b>B.U.G. (Bring Up Grades) Awards</b>		Tatum Rice
<b>4TH GRADE</b>	<b>KINDERGARTEN</b>	Joshua Ridge
Stacy Einck	Osvaldo Lomeli	Cristina Salgado
<b>2ND GRADE</b>	Levi Schneider	Russell Sheets
Jeremy Vera	Orie Cooksey	Taylor Simpson
Leslie Goodson	Ginger Lopez	Holly Tercero
Nathan Rook	Cristal Alvarado	Claudia Vaquera
<b>1ST GRADE</b>	Edgar Fraire	<b>"A-B HONOR ROLL"</b>
Deidre Pope	Chase Schubert	for 4th six weeks

### GOOD CITIZEN AWARDS

<b>5TH GRADE</b>	Rodney Howell
Landon DeLozier	Anthony Heizer
Tommy Dewberry	Ryan Quillin
Maria Vela	Amber Morgan
Aaron Winegarner	Kim Vasquez
Audra Sanders	Leticia Anguiano
Sydney Woodington	Danny Robledo
<b>4TH GRADE</b>	Leslie Goodson
Richard Barnon	Terrance Baker
Leslie Widener	<b>1ST GRADE</b>
Cary Cates	Claudia Vaquera
Amanda Adams	Cristina Salgado
Julie Bravo	Garrett Martin
Jared Freeman	Amy Powers
<b>3RD GRADE</b>	Allan Thompson
Hector Diaz	Marcus Vasquez
Misti Hand	Fernando Ortiz
Katrina Cole	<b>KINDERGARTEN</b>
Serafin Morgana	Clay Moore
Jake Burch	Jessica Blau
Tammy Backus	Beremy Fleetwood
Clint Jackson	Matthew Tayloe
Jared Lozano	Chris Moore
<b>2ND GRADE</b>	Nicole Sander
Chris Heaton	Jeremy Burch
Brant Fuller	<b>EARLY EDUCATION</b>
Rachael Windholz	Laura Gomez

#### Awards from "THE FOUNDATION" PRINCIPAL'S LIST

<b>5TH GRADE</b>	<b>2ND GRADE</b>
Mickey Schoenhals	Travis Brown
Kelsey Henton	Mindee Gillaspie
Joseph Sintas	Samantha Baker
Jaime McDonald	Amy Watley
<b>4TH GRADE</b>	<b>1ST GRADE</b>
Glen Powers	Jentry Edwards
Robyn McClure	Eric Flores
Jenn Schnell	Fernando Ortiz
Jenny Longoria	Emily Longoria
<b>3RD GRADE</b>	<b>KINDERGARTEN</b>
Heather Garcia	Melissa Quillin
Sarah George	Chase Schubert
Sara Olsen	Austin Beck
Jennifer DeLaCruz	Linzi McCubbin

#### SPECIAL RECOGNITION PRINCIPAL'S LIST

Special recognition goes to the following students for giving the extra effort in participating in special Panhandle contests: **Bobby Lujan**, 3rd Grade, for winning the Southwest Airlines/La Quinta/Amarillo Globe-News "What Christmas Means to Me" essay contest; **Syd Woodington** and **Camille Smith** for having their artist work published in the Harrison Cancer Center's Christmas Card Contest.

### Spearman High School

#### Spearman High School 4TH SIX WEEKS "Superintendent's honor roll" (ALL grades 90 or above)

<b>12TH GRADE</b>	Chuck Cook
Brad Butler	John Holt
Amber Cates Coombs	Carrie Pearson
Donette Cates	Elizabeth Pipkin
<b>10TH GRADE</b>	Molly Blackman
Jennifer Covington	Kortney Henton
Michelle Garnett	Josh Howard
Holly Jarvis	Kristina Poole
Robert Needham	Heather Reimer
Laura Pearson	<b>9TH GRADE</b>
Cody Pipkin	Regan Boxwell
	Melanie Cook
	Haley Farber
	Katherine Pipkin
	Amy Schoenals

#### Principal's Honor Roll (Grades avg. 90 or above) FIRST SEMESTER

<b>12TH GRADE</b>	Heather Vinson
Shea Crawford	
Jeri Evans	
Mike Hager	
Sherman Jones	
Myrna Lopez	
Randie Renner	
Lore Rosales	
Sylvia Rosales	
Clint Townsen	
Kimbre Townsen	
<b>11TH GRADE</b>	
Kelli Butts	
Christina Fain	
Chad Gardiner	
Alisha LaRochelle	
Tommi Latta	
Brad Law	
Karina Magana	
Alma Martinez	
Trixie Pearson	
Jami Ralston	
Tamela Ricke	
Toni Snow	
Nikki Strawn	
Jason Swink	
Jason Varnon	
Rainey Whittington	
<b>10TH GRADE</b>	
Carey Beaty	
Darla Black	
Jill Clement	
Haley Eaton	
Cheile Ortiz	
Mika Pipkin	
Sandi Rich	
Bertha Vargas	

### Gruver

#### High School

#### "ALL-A HONOR ROLL" Fourth Six Weeks

<b>SENIORS</b>	Jana McCloy
Traci Crawford	Angela Meyer
Heath Gaines	Angela Overbey
Trevor Shipley	<b>FRESHMEN</b>
Sharlet Slough	Bailey Barkley
Kevin Spivey	Kiki Carthel
<b>JUNIORS</b>	Laura Gilleland
Justin Carthel	Joni Hart
Will Evans	Roxane Holt
Sara Jones	Scott Jarvis
Wynn Maupin	Sahala McCloy
Junior Rivera	Tara Shapley
<b>SOPHOMORES</b>	Jason Ward
Rosalio Arreola	Iye Womble
<b>"ALL-A WITH ONE B"</b>	
<b>SENIORS</b>	Carey Kauffman
Cody Barkley	Brady Pool
	Monica Ward
	<b>JUNIORS</b>
	Ruben DeSantiago
	Karlah Heath
	Kenton Odum
	Tammie Stevens
	Melissa Stewart
	<b>SOPHOMORES</b>
	Janyth Hart
	Kimberley Wagner
	<b>FRESHMAN</b>
	Cristy Marquez
	Jason Ward

### Gruver Junior High

#### "ALL-A HONOR ROLL" Fourth Six Weeks

<b>8TH GRADE</b>	Jeanne Swink	Matt Watlington
Mary Dawn Henson	Weslyn Maupin	<b>5TH GRADE</b>
Tucker Henson	Dauida Nash	Kyler Barkley
Amber Murrell	Jennifer Dahl	Annie Mayhew
Lexy Spivey	Wesley Miser	Brenda Soto
<b>7TH GRADE</b>	Jim Potts	Lindy Tolleson
Analisa Cruz	Erika Salmans	Britt Carter
Darby Johnson	Chase Carter	Candice Casdorph
Jill Odom	Jason TeBeest	Lesli Fiel
Mike Puebla		Mary Puebla
<b>"ALL-A WITH ONE B"</b>		
<b>8TH GRADE</b>	Amber Roberts	Sheri Fiel
Kelly Boone	Cody Cazares	Luke Johnson
John Duncan	Rob Murrell	Jennifer Lopez
Kristin Evans	Erika Alvarez	Lauren Miller
<b>10TH GRADE</b>	Stephanie Gaines	<b>5TH GRADE</b>
Amy Gillispie	Cesar Garcia	Dallas Henson
Julie Gumfory	<b>6TH GRADE</b>	Daniel Hernandez
<b>7TH GRADE</b>	Missy Johnson	Sandra Sanchez

### Spearman Junior High

#### "ALL-A HONOR ROLL" Fourth Six Weeks

<b>8TH GRADE</b>	Amber Morgan	<b>"A-B HONOR ROLL"</b>
Samantha Beasley	<b>6TH GRADE</b>	<b>8TH GRADE</b>
Blake Beedy	Casey Beaty	Shayla Barber
Clint Faries	Brittini Beedy	Frankie Dominguez
Dillon Miller	Kristin Beedy	Zach Furlow
Candice Pipkin	Chrissy Bensinger	Kelly Goodman
Britt Savage	Grace Davis	<b>7TH GRADE</b>
<b>7TH GRADE</b>	Betsy Holt	Tara Bruning
Mac Butts	Brian McLaughlin	Kasey Dunnihoo
Mike Butts	Landon Miller	Jocelyn Edwards
Misha Davis	Holly Pipkin	Jennifer Neff
Teresa Gomez	Nathan Pipkin	Lindsey Smith
Lena Harbour	Doran Schoenhals	Brooke Trantham
Brian Howell	Julie Scroggs	Manuel Vasquez
Maribel Martinez	Lisa Swink	<b>6TH GRADE</b>

729 W. 7TH  
P O BOX 337  
SPEARMAN, TEXAS 79081  
(806) 659-5544



"YOUR FIRST LOAN"  
1 - Stop Line of Credit

MEMBER FDIC



**Spearhead from page 1**

our board was scattered at ball games and what have you. That's when I decided I'd have to announce the news Friday morning." She confesses that the stunt pulled to get everyone down to the bank was her own idea and made the news even more exciting.

Board members Bob Boxwell and Don Townsen had been optimistic about a grant award from the Meadows Foundation, but, as Boxwell said, "The extra \$50,000 shocked me!"

Townsen said the idea for a local community center "has been around for 12 or 14 years." The main catalyst for the project in 1989 was the anonymous gift of \$150,000 to Spearman to seed a building fund, according to Townsen, and that was when the Spearhead Corporation was established. The O'Loughlin family, long-time Hansford County residents, were the first and strongest supporters of the project.

The proposed community center would be a facility available to local and area organizations for meeting and activity space as well as a place individuals and groups could use for private events, such as family

reunions and receptions. Immediately upon its establishment, the center would be administered by a full-time director. This director would also oversee programs developed and offered by the center itself. Spearhead board members said these could include athletic, cultural and educational events, from art shows and aerobics classes to a farmer's market or theatrical presentations.

"We just don't have a nice place for many of these things now," Boxwell emphasized. "The community center would be able to handle all kinds of events."

In terms of the actual construction phase itself, Townsen said Spearhead Corporation is under contract to an architectural firm which would oversee the building of the center. "The Spearhead board is already considering several contractors, and whenever possible, local people will be considered for subcontracting jobs."

As it now stands, Spearhead Corporation has until April 15, 1993 to come up with the remaining \$18,057.00 to fund the community center. Board members stressed

they are optimistic about getting this money. "When you're this close, you know it's really going to happen," said Boxwell. Individual pledge cards are available from Spearhead Corporation board members and the Spearman Chamber of Commerce Office for those who wish to donate to the project, he added.

In the meantime, Spearhead Corporation members are developing a new fund-raiser which would generate operating funds for the community center once it is open. Although the plan doesn't have an official name, perhaps "Adopt-a-Cow" would do! Dr. Tom and Linda Latta brought the idea to the board after seeing it work in Woodward, Oklahoma, to fund a rodeo.

"The concept is simple—Spearhead Corporation would buy cattle and parcel them out to farmers and ranchers to raise until market time. The care and feeding would be services donated by the ranchers," Shirley explained. After the cattle sell, the profits would be realized by the Spearhead Corporation and the rancher would get a tax deduction.

Boxwell said a dozen local ranchers attended a meeting at which this fund-raiser was introduced "and only three of those didn't sign up." Ideally, he said, the board would like to have 400 head in the fund-raiser. Dr. Latta has already volunteered to coordinate the program and to donate his veterinary services for the cattle.

Another iron in Spearhead Corporation's fire at this time is the application for a grant from the Governor's Office called the "Community Achievement Award," which is given annually to one winner in each population category towards beautification of the community. The amounts awarded vary with a ceiling of \$20,000. In Spearman's case, according to City Manager Kelvin Knauf, any award we receive would go towards beautifying and landscaping the community center grounds. Knauf said the application will be turned by early May and we will know whether or not Spearman wins an award by this summer.

"We hope that our excitement for the project will be contagious in the rest of the community, because this center is really going to happen and it will benefit the whole county," Shirley said.

**Minding Your Own Business**

by Don Taylor, Director, PSBDC

**Promoting Your Business**

I've learned two things from my small business adventures. First, there's never enough money and second, there's never enough time. The ever-present shortage of these two commodities cause every entrepreneur some heartburn about promoting their business.

There are dozens of good ways to promote any business. Some require large time commitments and others require heavy spending. For example, networking with potential customers at civic, chamber of commerce or social functions requires little money, but large amounts of personal time. Purchasing prime-time television commercials on the other hand, is very capital intensive, but takes minimal time. Usually, the more time you invest in any promotion activity the lower the cost in dollars, and vice versa.

Since most small businesses have limited amounts of time and money, promotion is often ignored for less important activities. This is unfortunate because promoting your products and services may be the best investment you can make in future business.

**Effective promotion**  
You should evaluate every promotion idea to ensure that it achieves specific results. Good promotions focus favorable attention on you and your business. They help create a positive image in your customer's mind. They also stimulate sales of your products or services. When you spend your promotion budget effectively, potential customers will see the benefits of doing business with you.

Even with these thoughts in mind, how to best promote your business is not an easy decision. I suggest that you balance your budgetary and time consumption factors.

Keep in mind the specific results we listed above, then balance your promotion ideas with your time and money budget. I'll try to get your thought process started by sharing three of my favorite promotion strategies.

**Low-cost strategies**  
My personal favorite in low-cost promotion strategies uses mini-billboards. Most folks call these little promotion gems by their more com-

monly recognized name—business cards. A good business card will always get a second look and will create a positive first impression.

My personal mini-billboard collection dates back more than 20 years. Some of the unique cards have made lasting impressions. For example, I have a 25-year-old ultra thin wooden card from a forest products company in California. I have a fiberglass card from a fiberglass maker. More recent cards that have made good impressions include a drive-in restaurateur's card with a tear-off coupon and an elegant, four-color card from a florist.

Unique, creative cards really stand-out in the clutter. Of course, no card is effective in a box or on the shelf at your office. Carry a supply everywhere you go and hand them out.

Another low-cost strategy is to create a 10-second commercial to

use with your mini-billboard. When you hand out cards, give your name, a brief positive description of your business and a benefit of doing business with you. Say something like, "Hi, I'm Bubba Jones with Jones Electronics. We specialize in finding and solving electronic problems when no one else can."

Another of my favorite low-cost strategies involves setting-up a booth at your local county fair or your community's business trade show. Make your booth business-like and easy to access. If you set a table across the front of your booth area, you place a barrier between you and your customer. Leave it open and invite folks in. Use a big spin with your company name and don't forget a good supply of business cards.

If you wish to submit your business card to the PSBDC, please see **Minding page 12**

**Senator Teel Bivins Reports**



AUSTIN - Consider this:

• During a family argument, a bottle of cologne is thrown through the TV set, making a small hole in the picture tube. The cologne spills into the tube, and when the TV is turned on, the alcohol in the cologne ignites the set and causes an explosion. The plaintiff sues the manufacturer, claiming the TV was defective.

• A man goes out to mow his lawn. He pulls on the cord to start the mower and suffers a heart attack. He sues, alleging the "excessive force" needed to start the mower caused his heart attack.

• A U.S. machinery manufacturer builds a machine in 1895 and sells it, never to see it again. The machine is bought and sold over the years by various people. Eighty-eight years later, the manufacturer is sued because the machine has become defective.

It's lawsuits like these that have made Texas a lawsuit heaven. We have the dubious distinction of living under one of the most anti-business products liability laws of any state. Our laws encourage consumers to sue sellers or distributors for defective products although they had nothing to do with their manufacture, and our laws penalize companies for improving the safety of their products.

This hurts the Texas economy in several ways: First, Texas businesses are cautious about introducing new products in the state, stifling economic development and dulling our competitive edge. Second, new businesses are hesitant to move to Texas. They don't want their operations in a state replete with lawsuits, so they take their jobs elsewhere. Third, the high cost of our liability system makes products more expensive, hurting Texas consumers already struggling to make ends meet.

In 1991, I sponsored a bill in the Senate to address this problem. Although the legislation didn't pass, the urgent need for reform was apparent. This prompted Lt. Gov. Bob Bullock to initiate a vigorous effort to reach a compromise prior to the current legis-

lative session. Months of negotiations among business representatives, consumers and personal injury lawyers followed.

The talks were often acrimonious, but Bullock kept all sides talking. Because of his efforts, a compromise was reached.

Sen. Carl Parker (D-Port Arthur) and I are carrying a bill in the Legislature that reflects this compromise. It's a fair approach to a controversial subject that affects everyone -- from consumers to retailers to manufacturers.

Senate Bill 4 addresses these problems in a manner that's fair to businesses and consumers alike:

1. It proposes more predictable rules that are easily understood and uniform with other state laws.
2. It protects product sellers from frivolous and costly lawsuits.
3. It encourages the development of new and innovative products by assuring that manufacturers who use the most economically and technologically feasible design available cannot be easily second-guessed in a lawsuit brought years later.
4. It contains the cost and encourages the development of AIDS and HIV vaccines and preventive vaccines for childhood diseases, such as polio, measles, and rubella -- as long as manufacturers and sellers give all legally required warnings.
5. It weeds out frivolous lawsuits against manufacturers and sellers of ordinary consumer products, like cigarettes and alcohol, that are well-known to be potentially dangerous when used as intended and for which all appropriate warnings are given.

This bill represents a compromise. No group got everything it wanted in the legislation, because Senate Bill 4 offers a balanced approach. It promotes responsible behavior on the part of manufacturers and consumers alike and reduces costs to both. That's fair.

Column No. 8  
February 19, 1993

**RED-LETTER DATES**

1989: Spearhead Corporation established and begins application for designation by the Internal Revenue Service as a tax-exempt charitable organization.

July 1989: First donations accepted in Spearhead Corp.'s behalf and placed in escrow.

February 1990: Spearhead Corp. reorganized with the following officers and board members: Don Townsen, president; Jackie Pearson, vice-president; Brett Whitford, secretary-treasurer; Verna Lee Shirley; Bob Pearson; Jim Murray; Larry Butler; Mike Cudd; and Lenis Simpson.

Spring 1990: Grant application writing process begun by Spearhead Corporation board members.

June 1990: IRS Grants Spearhead Corp. tax-exempt status.

July 1990: Lee Architects, Denver, Colorado, selected as community center project architectural firm.

August 10, 1990: Public announcement of the project and unveiling of building plans at First State Bank of Spearman.

Nov. 14, 1990: Spearhead Corp. awarded an \$85,000 challenge grant from Amarillo Area Foundation funded by the Don and Sybil Harrington Foundation.

May 1991: Spearhead Corp. and Spearman's Golden Spread Senior Citizens' Center agree to a "merger of sorts," under which plan the Golden Spread will fund the completed community center \$20,000/year in exchange for permanent meeting space. Three Golden Spread board members join the Spearhead Corp.'s board: Helen Etter, Charles Newcomb and Bob Boxwell.

April 17, 1992: The J.E. and L.E. Mabee Foundation of Tulsa, Oklahoma, awards Spearhead Corp. a \$200,000 challenge grant.

Fall 1992: Local fund-raising by Spearhead Corp. begins in earnest with an individualized pledge campaign. The board is made up of: Verna Lee Shirley, president; Mike Cudd, vice president; Jackie Pearson, secretary-treasurer; Don Townsen; Lenis Simpson; Helen Etter; Charles Newcomb; Bob Pearson; Bob Boxwell; Kelvin Knauf; and Larry Butler.

February 18, 1993: The Meadows Foundation of Dallas awards Spearhead Corp. a \$250,000 grant. Upon receipt of promised monies, Spearhead Corp. will be within \$18,057.00 of its total fund-raising goal of \$1,068,455.00.

July 1, 1993 (tentative): Ground-Breaking Date

Dec. 31, 1993 (tentative): Grand Opening Date

**AT A GLANCE...**

**LOCATION:** 13th & Cotter (Blodgett-Linn addition), directly east of the high school practice football field.

**PURPOSE:** to serve as a meeting place for public and private community activities and groups and to provide a program of cultural, educational and athletic events for the townspeople. Programs will be administered under the direction of paid, full-time director.

**FACILITY DESCRIPTION:** an 18,000-plus-square-foot building including a 100 feet by 80 feet multipurpose room (with indoor track and collapsible stage), commercial kitchen, work-out room with equipment, men's and women's dressing rooms and whirlpool/sauna facilities.

**Spearhead Corporation Fund-raising Report for Proposed Spearman Community Center February 19, 1993**

<b>CASH</b>	<b>\$339,988.</b>	
(includes money from three small grants by Pioneer Hybrid Seed, the Payne Foundation of Pampa and the Troy Mays Foundation of Amarillo)		
<b>PLEDGES</b>		
City	53,400.	(in kind services)
Community	38,510.	
LAND	83,500.	Donated by Ralph & Johanne Blodgett
<b>GRANTS</b>		
Harrington	85,000.	
Mabee	200,000.	
Meadows	250,000.	
<b>TOTAL</b>	<b>\$1,050,398.</b>	
<b>TOTAL FUND-RAISING GOAL: \$1,068,455.00</b>		
<b>BALANCE NEEDED: \$18,057.00</b>		

*If You have a story to tell,*

*Call us TOLL-FREE!*

The Hansford County  
**Reporter-Statesman**

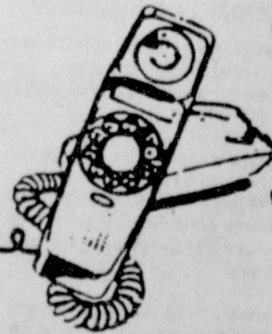
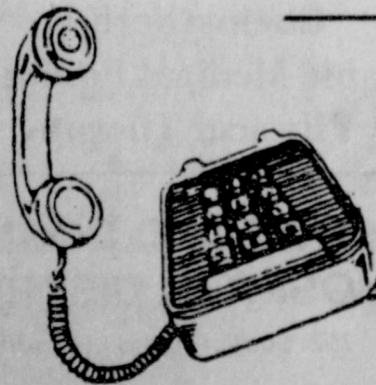
213 Main

Spearman, Hansford County, Texas

25¢

**1-800-395-9482**

**Dial 659-3434 in Spearman**



# WANT ADS WORK WONDERS!

## NOTICE

Deadline to place of cancel classified line ads is Tuesday noon for Thursday insertion.

### CLASSIFIED RATE

\$4.00 first insertion  
\$3.00 each additional insertion (30 words or less)  
13¢ each word over 30  
Legal Notices: 15¢ per word

Ads must be paid in full in cash before publication, unless advertiser has established credit with the Reporter-Statesman. Payment of out of state classifieds must be in the form of a money order or cashier's check. No tearsheets provided for classified ads. Tearsheets provide on request for legal notices.

## REAL ESTATE

**UNDERPRICED - Must sale** 620 + 620 1/2 S. Bernice on 2 lots with fence, large driveway, 12 X 18 detached garage, water softener, child's play yard, back house (1200 sq. ft.) zoned for day care facility (formerly Debbie's/Michelle's Day Care) or apartment. Main House (2400 sq. ft.) has full basement with 5 rooms upstairs and four rooms downstairs (includes 4 X 7 1/2 Fischer pool table + accessories). Everything \$40,000. 659-3328 or 659-3851 (Financial Aid Available). S18-1tcRTN

**For Sale: REDUCED Price or TRADE** large 4 bedroom, 3 bath home. 3100 sq. feet. 714 Gibner. Call 659-3398. S14-6tp

**2 Bedroom, 2 car garage, oversized lot, appliances included.** 310 S. Hoskins. Call 659-3934 and leave a message or call after 6 p.m. S16-4tp

**For Sale or Rent - 3 bedroom trailer.** Call (405) 254-3888. S17-6tc

**House For Sale - Three Bedroom, 1 bath.** Call 659-3523. S18-4tc

**1500 sq. ft. house for sale - 3 bedroom, 2 bathroom, large kitchen and dining area, large living room, utility room, new carpet, ceiling fans throughout, detached 16 X 24 garage or storage building with extra parking in rear, fenced yard.** 608 S. Bernice - \$26,500. Call 659-3851 for Ed Pearson or leave message. S18-1tcRTN

## FOR RENT

**House for Rent:** 3 bedroom, 1 1/2 bath with 2 car attached garage. A fenced back yard. See at 717 Steele Drive. Call 659-3017 for information. S18-1tp

## GARAGE SALE

**MOVING - Back yard sale. ONE day only.** Saturday, Feb. 27, 9 A.M. to ??? 106 S. Bernice. S18-1tp

## MISC. FOR SALE

**Lose Weight! Feel Great!** 100% Natural Herbs. Burns fat, increases metabolism, suppresses appetite; increases energy. Guaranteed!!! Call Rick or Lisa at (806) 435-6350. S15-4tc

## RVs & CAMPERS

**Motor Home Rentals.** plan now and reserve a deluxe motor home or a van for spring break, 3-day weekend, or vacation. Call Smith's Auto Sales and Wrecker Service. Loop 143 East, Perryton. Call (806) 435-5844 or 1-800-753-6330 - 24 hours. S15-4tc

## G & G ELECTRONICS

\*2-way radio \* Repeater \* Satellite  
\* Mobile Telephone \* Pagers  
\* Motorola Radius \* Kenwood  
\* Maxon \* Vertex \* Reim

**BRUCE DUNCAN**  
(806) 659-3125

**NOTICE**  
**Wallace Monument Co.**  
Monuments, Curbing,  
Grave Covers  
1-800-999-9506  
Local Representative  
**LEONARD JAMESON**  
Spearman, Texas

## HELP WANTED

### HOUSE INSPECTORS

No Exp. Necessary. Up to \$800 Wkly. Will train. Call (219)-769-6649 EXT H5396, 8 a.m. to 8 p.m. 7 days. S17-2tp

### FIREWOOD

**OAK - HICKORY - PINON**  
\$165 per cord. Fritch, Texas. 857-2035. Delivery Available. S13-4tpRTN

### SERVICES

**HANDYMAN - You want it done and can't or don't want to do it yourself!!!** Call Uncle Ed (Pearson), 659-3851 - Anytime - Anything!! House, yard, fence, car, garage, etc. (Cleanup, repair, paint, trim trees & bushes, etc.). S15-1tcRTN

### BICHSSEL HOME BUILDERS

Remodel, repair, additions, cabinets-tops, and window replacements. 406 W. Brillhart, Perryton. 435-2364 or 435-0125. S37-1tcRTN

**CALL YOUR LOCAL Used Car Dealer for 7 days a week stock removal.** 659-3544 or 1-800-692-4043. Serving Cattlemen for the past 20 years. G51-RTN

**CHILD CARE** in my home Monday-Friday Drop-ins welcome. Call 659-3204. S15-1tp

**IS DRINKING AFFECTING your life negatively?** Join us at AA or Al-Anon. Tuesdays at 8 p.m. at 30 Hwy 760 (Three blocks south of the Moose). Alateen meets Tuesdays at 7 p.m. at the same location. S13-10tp

### "Granny Auntes Child Care"

Old fashion T.L.C., reasonable rates, consider any hours. Close to school, 821 S. Townsend. Call Martha Mans, 659-3769. S13-6tp

### Smith's Propane

For all your deliveries and services. Now serving Texas and Oklahoma. Very competitive prices. 5% discount for cash. Also vehicle conversions. 24 hour emergency service available. Loop 143 East, Perryton, Texas (806) 435-5844 or 1-800-753-6330. S15-4tc

## PUBLIC NOTICE

### STATEMENT OF NONDISCRIMINATION

North Plains Electric Cooperative, Inc. is the recipient of Federal financial assistance from the Rural Electrification Administration, an agency of the U.S. Department of Agriculture, and is subject to the provisions of Title VII of the Civil Rights Act of 1964, as amended, Section 504 of the Rehabilitation Act of 1973, as amended, the Age Discrimination Act of 1975, as amended, and the rules and regulations of the U.S. Department of Agriculture

### Texas lottery number statistics

What's hot, what's not!!  
Three page computer printout.  
Send \$5 and SASE to  
TLS, Box 189, Gruver, Texas 79040.

### JAN'S ETC. NEW & USED & ANTIQUES TOO

Everything for home and family.  
Plains Shopping Center in Spearman.  
Open Monday - Saturday  
10 a.m. til 6:00 p.m.

## ADVERTISING PROVISIONS

1. Publisher reserves the right to reject, edit, revise and properly classify any advertisement at his sole discretion.
2. Advertiser assumes all liability for advertisements printed pursuant to his instruction and shall indemnify and hold the publisher harmless from and against any and all claims and damages, including all costs incurred by publisher in connection therewith. Advertiser represents that all advertising copy is truthful and not misleading. Advertiser shall indemnify and hold publisher harmless from any claim against publisher arising out of or in connection with publication of advertising (except for modifications made by publisher without Advertiser's approval) including, but not limited to, claims for libel, invasion of privacy, commercial appropriation of one's name or likeness, copyright infringement, trademark, trade name or patent infringement, commercial defamation, false advertising, or any other claim whether based in tort or contract, or on an account of any state or federal statute, including state and federal deceptive trade practices acts. If advertiser claims copyright ownership in any of the advertising published, advertiser must include proper notice of its copyright claim in the body of the advertisement, otherwise copyright ownership shall remain in the publisher.
3. Advertiser agrees to check advertisement in the first issue in which it appears and report any error at once as publisher assumes no responsibility for errors after the first insertion. For any error which is the fault of the publisher and of which publisher has been timely notified, publisher will reprint the corrected advertisement for one extra insertion or refund the proportionate cost of the advertisement containing the error. Publisher shall have no responsibility for errors appearing in the copy submitted by advertiser.

## PUBLIC NOTICE

which provide that no person in the United States on the basis of race, color, national origin, age, or handicap shall be excluded from participation in, admission or access to, denied the benefits of, or otherwise be subjected to discrimination under any of this organization's programs or activities. The person responsible for coordinating this organization's nondiscrimination compliance efforts is Pat McAlister, General Manager. Any individual, or specific class of individuals, who feels that this organization has subjected them to discrimination may obtain further information about the statutes and regulations listed above from and/or file a written complaint with this organization; or the Secretary, U.S. Department of Agriculture, Washington, D.C. 20250; or the Administrator, Rural Electrification Administration, Washington, D.C. 20250. Complaints must be filed within 180 days after the alleged discrimination. Confidentiality will be maintained to the extent possible. S18-1tc

The Spearman Independent School District is soliciting bids on Cafeteria Kitchen Equipment. Bids will be received until 1:00

## Oil & Gas Report

### NEW LOCATION, COMPLETION & PLUGGING REPORT

**Week Ending February 18, 1993**  
**Intentions to Drill**  
HEMPHILL (WILDCAT & HEMPHILL Granite Wash) Maxus Exploration Co., #6-54 French Arrington (644 ac) 1558' from North & 714' from East line, Sec. 54, A-2, H&GN, 14 mi S-SE from Canadian, PD 11050' (Box 400, Amarillo, TX 79188)

LIPSCOMB (WILDCAT & BECHTHOLD Tonkawa) Unit Petroleum Co., #1 Meyer (321 ac) 2400' from South & 1000' from East line, Sec. 26, 10, HT&B, 4 mi NE from Booker, PD 6300' (Box 702500, Tulsa, OK 74170)

MOORE (PANHANDLE) Comstock Oil & Gas, Inc., #3 Sneed M3-71 (420 ac) 2300' from South & 400' from West line, Sec. 71, M-3, G&M, 18 mi SE from Dumas, PD 3400' (5005 LBJ Freeway, Suite 1000, Dallas, TX 75244)

OCHILTREE (WEST PERRY-TON Morrow) Crawley Petroleum Corp., #2 Landrum (535 ac) 1320' from South & 990' from East line, Sec. 4, 12, H&GN, 1 mi SW from Perryton, PD 9550' (105 North Hudson, Suite 800, Okla. City, OK 73102)

**Oil Well Completions**  
GRAY (PANHANDLE) Beta-Tex, and Okla. Corp., #58 Parker Fee 'A', Sec. 16, H.A.W. Wallace Survey, elev. 2930 gr, spud 12-16-92, drlg. compl 12-24-92, tested 1-23-93, pumped 21 bbl. of 43 grav. oil + no water, GOR —, perforated 3037-3105. TD 3110' —

## OSGOOD MONUMENT CO.

Amarillo, Texas  
Dealers of Rock of Ages Granite, as well as all colored granites, marble and bronze memorials.

Represented by  
**BOXWELL BROS.**  
**FUNERAL HOME**  
519 S. EVANS  
659-3802

## Reporter-Statesman CLASSIFIEDS 659-3434

## PUBLIC NOTICE

p.m. on March 5, 1993, at 403 East 11th Avenue, Spearman, TX 79081. The Board of Trustees reserves the right to accept or reject any of all bids. Questions regarding the bid should be directed to Allen Alford, Business Manager, (806) 659-2116 or at 403 East 11th Street, Spearman, TX 79081. S16-1tc S18-1tc

The Spearman Independent School District is soliciting bids on computers and printers for the Middle School Computer Lab. Bids will be received until 1:00 p.m. on March 12, 1993 at 403 East 11th Ave., Spearman, Texas 79081. The Board of Trustees reserves the right to accept or reject any or all bids. Questions regarding the bid and specifications should be directed to Allen Alford, Business Manager, (806) 659-2116 or 403 East 11th Ave., Spearman, Texas 79081. S17-2tc

## CLASSIFIED ADS PAY OFF!

### Gas Well Completions

LIPSCOMB (NORTH MAMMOTH CREEK Cleveland) Enron Oil & Gas Co., #2 Lutie W. Gex Trust 963, Sec. 963, 43, H&TC, elev. 2410 gr, spud 10-7-92, drlg. compl 10-19-92, tested 1-13-93, potential 4000 MCF, rock pressure 3159, pay 7469-7502, TD 7630', PBD 6400' —

### Plugged Wells

CARSON (PANHANDLE) D.C.W. Production, Burnett 'A', Sec. 2, 5, L&GN (oil) — Form 1 filed in Power Petroleum Co., for the following wells: #7, spud 8-4-62, plugged 1-27-93, TD 3142' —, #15, spud 11-26-64, plugged 1-27-93, TD 3175' —, #16, spud 2-25-64, plugged 1-21-93, TD 3160' —

Nothing is so firmly believed as what we least know.

—Michel Montaigne

## Oil & Gas Reporting Service

Box 2052 • Pampa, TX 79065  
Providing the Oil & Gas Report for Hansford County Readers  
Doris Harrison • Phone 665-5800

## TexSCAN

Statewide Classified Advertising Network  
Advertise in 300 Texas newspapers for only \$250.  
Reach 3 MILLION Texans. Call this newspaper for details.

**MUSICIANS WANTED. UNKNOWN** promising amateurs for possible recording contract. Solo/voice/instruments. Call Tom 1-800-793-1006 Free call. Day/night. Amazing recorded message. No obligation.

**WATERLESS COOKWARE. QUIT** doing dinner parties after 30 years. Have some beautiful 17pc. 5/ply surgical stainless sets left. Not \$1,200.00 but \$389.00!! Call Annie 1-800-688-5748.

**HERSHEY'S DISTRIBUTORSHIP.** National manufacturing and distributing company seeks qualified local individual to service established route. No selling - restock displays and earn excellent income part time, full time. Training, equipments, established accounts. Minimum investment \$4k to \$12k, call now! Harold 1-800-940-2299.

**SINGLETON SUPPLY METAL** buildings: 24x30x10, \$2,975; 30x40x10, \$4,050; 30x60x12, \$5,850; 40x75x12, \$7,875; 50x100x14, \$12,990. Call for other sizes. Mini-warehouse systems. Competitive pricing. Fast delivery. 1-800-299-6464.

**PIONEER STEEL BUILDINGS:** 24x30x10, \$3,195; 30x40x10, \$4,280; 30x60x12, \$5,870; 40x75x12, \$8,295; 50x100x14, \$12,995. 26 gauge. Other sizes available. Erection priced separately. Mini storage specialist. 1-800-637-5414.

**DRIVERS - EXPERIENCED OTR flatbed,** assigned new conventional equipment, sign on bonus, benefits, flexible time off and more. Run 48 states. Call immediately. Roadrunner Trucking 1-800-876-7784.

**OTR DRIVERS TIRED** of the same old garbage? Want to drive a nice tractor? Work with good people and get good benefits? Call 1-800-888-7015 E.O.E.

**TRUCK DRIVERS - The relocation services division** of North American Van Lines, Inc. needs owner operators immediately. Up to \$5,000 contract signing bonus and \$200,000 guaranteed linehaul offering per year for top quality van operators with 2 yrs. exp. in household goods or electronic. \$100 contract signing bonus and tuition-free training available for those with no experience. Lease or purchase avail. 1-800-348-2147, Dept. JV-35.

**DRIVE TRACTOR/TRAILERS.** No experience necessary. Free truck driver training. Owner operators/lease operators. Mayflower is looking for ambitious, hard working people to join our growing fleet of owner operators. Our pay package is the best in the industry. Tractor purchase and/or lease programs available. If you are at least 21 years and interested in an exciting career in the trucking industry call for more information 1-800-648-7825 Ext. F-13.

**3 WEEK PROGRAM.** job placement before training. financing available. Call Tri-State semi driver training. Austin: 512-442-7364, El Paso: 915-598-

## PUBLIC NOTICE

The Spearman Independent School District is soliciting bids on software for computerization of the high School, Middle School, and Elementary School Libraries. Bids will be received until 1:00 p.m. on March 12, 1993 at 403 East 11th Ave., Spearman, Texas 79081. The Board of Trustees reserves the right to accept or reject any or all bids. Questions regarding the bid should be directed to Allen Alford, Business Manager, (806) 659-2116 or 403 East 11th Ave., Spearman, TX 79081. S17-2tc

The Spearman Independent School District is soliciting bids on computers and printers for the High School, Middle School, and Elementary School Libraries. Bids will be received until 1:00 p.m. on March 5, 1993 at 403 East 11th Ave., Spearman, Texas 79081. The Board of Trustees reserves the right to accept or reject any or all bids. Questions regarding the bid should be directed to Allen Alford, Business Manager, (806) 659-2116 or 403 East 11th Ave., Spearman, Texas 79081. S17-2tc

### HANSFORD (TEXAS)

HUGOTON) S.W. Herrmann Oil & Gas, #1A Thoreson, Sec. 12, 1, PSL Survey, spud 5-12-77, plugged 2-4-93, TD 2950' (gas) — Form 1 filed in Richome Oil & Gas HUTCHINSON (PANHANDLE) W.R. Edwards, Jr., #2 Melanie, Sec. 38, 47, H&TC, spud 6-8-80, plugged 1-18-93, TD 3110' (oil) —

### HUTCHINSON (PANHANDLE)

Gunn-Campbell Well Service, Inc., Tarbox, Sec. 8, X-02, L. Patillo Survey (oil) — for the following wells: #4, spud unknown, plugged 1-21-93, TD 3066' —, #9, spud 8-2-49, plugged 1-14-93, TD 3104' — Form 1 filed in Creslen Oil Co.

## REAL ESTATE

**4 Bedroom, 2 1/2 bath, 3 car** attached garage with electric opener both ends, 2 story, cellar, brick, new carpet throughout, 1 refinished hardwood floor, central air & heat, huge kitchen, laundry, family, bath. Approximately 2800 sq. ft. Abundant storage, dust-stopper windows & doors. MUST SEE! Call 659-2918. S10-1tcRTN

**House and Barn for Sale**  
3 bedroom, 2 bath house - 2340 sq. ft. Plus 2500 sq. ft. barn on 3.4 acres. Located on Spearman-Gruver Highway. Asking \$65,000. Contact FNB Spearman - Brian Gillispie. 659-5544 S46-1tc

**6 miles west of Spearman:** 3 bedroom, 2 bath country home, 2600 sq. feet, arena, barn, pipe corrals with 42 1/2 acres. Have moved, must sell. Make an offer. Call Jim Eakin, 1-800-375-6328 or 806-525-4221. S16-1tcRTN

**Nice 3 bedroom brick home with 1 1/2 baths.** Basement, large car port, and fenced yard with storage buildings. 424 S. Bernice. Call after 6 p.m. 659-2750. S16-2t

**4 BRM 1 1/2 bath home on large corner lot** near school. Has detached garage, car port, basement, central heat. Price reduced. 659-3944 after 5 p.m. S11-1tcRTN

## Are You A Victim of Physical Abuse?

Call Toll Free 1(800)753-5308  
We are in Spearman on the 1st, 3rd & 5th Wednesdays of each month at the 1st Presbyterian Church, 1021 Cotter. On the 2nd & 4th Wednesdays we are at the 1st Christian Church at 510 King-Gruver. We can come to Spearman & Gruver any time upon request. We operate a safe place for victims & their children to stay in times of crisis. Panhandle Crisis Center  
Serving Hansford, Lipscomb & Ochiltree Counties  
317 S. Main Perryton, TX.

# Obituaries

**J.H. (Jay) GORDON**  
ANSON - J.H. (Jay) Gordon, 71, died Wednesday, Feb. 17, 1993.

Services were Saturday, Feb. 20 in the Funeral Home Chapel with P.B. Middlebrook officiating. Burial was in Mount Hope Cemetery. Arrangements were by Lawrence Funeral Home.

Mr. Gordon, born in Miles, attended school in McLean. He married Normal Lee Mayfield Nov. 11, 1950 in Wellington. He was an insurance salesman for 30 years and Manager of Life Ins. Co. of Southwest. The couple lived in Lubbock and Amarillo before moving to Anson in 1987.

He was the exalted ruler of the Elks Lodge in Lubbock and member of the Masonic Lodge and V.F.W. post #8929. He was a veteran of WW II having served in the U.S. Coast Guard. He was a Baptist.

Survivors include his wife; two sons, Ricky Gordon of Spearman and Randy Gordon of Lubbock; two sisters, Nora Douglas and Polly Harless, both of Albuquerque, NM; and three grandchildren.

**JERRY BOWLING**  
KERRVILLE - Jerry Bowling, 59, of Kerrville, Texas died Wednesday, Feb. 17, 1993.

Services were held Saturday, Feb. 20 in the chapel of the Kerrville Funeral Home with Chaplain Will Biggott officiating. Burial was in Center Point Cemetery. Arrangements were by Kerrville Funeral Home.

Mr. Bowling was born in Estancia, N.M., and was a former resident of LaPorte, Texas. He married Elsie Dove July 18, 1980 in Kerrville. He was the co-owner of Elsie's Hair Fashions and was with Tenneco Oil Company for thirteen years. He was a veteran of the Korean Conflict and a member of the American Legion.

Survivors include his wife; a son, Joe Anders of Kerrville; three daughters, Brenda Steelman of El Campo, Sabreha Wyche of Midland and Darlene Holley of Kerrville; and a half brother, Jerry Bowling of Spearman.

Family requests that memorials be to the American Heart Association.

**MANUELA MARIA GONZALES GUYMON, OKLA.** - Manuela Maria Gonzales, 74, died Sunday, Feb. 21, 1993.

Rosary was recited Monday, Feb. 22 in St. Peter's Catholic Church. Mass was held Tuesday, Feb. 23 with the Rev. Roberto Quant officiating. Burial was in Durango Cemetery at Durango. Arrangements were by Bunch Roberts Funeral Homes.

Mrs. Gonzales, born in Durango, Mexico, had lived in Guymon for one year. She was a homemaker and a Catholic.

Survivors include her husband, Emeterio Gonzales of Mexico; seven children, Remberto Gonzales of Gruver, Gonzalo Gonzales of Dalhart, Martin Gonzales, Gerardo Gonzales and Maria Gonzales, all of Guymon, and Adrain Gonzales and Jesus Gonzales, both of Mexico; and 17 grandchildren.

**Files from page 3**  
calls during the week.

**Spearman Fire Report**  
On Tuesday morning, Feb. 16, the Spearman Volunteer Firemen were called out to James Street for a house fire. An investigation showed the fire started near a natural gas heater.

Then on Wednesday afternoon, Feb. 17, the alarms went off at the Hansford Manor but it was determined to be a false alarm upon arrival.

**Contest from page 5**

will be returned to you. The All Star Overall Kid will be determined by the high point winner and this winner will receive a trophy, scepter and overall banner.

Join in the fun on Sunday, March 21 when All Star Kids will present an opportunity to kids of all ages to pursue their dreams and also have the opportunity of advancing on to another level of competition. For more information and to receive an entry form please call (806) 354-9411 or our national headquarters at (214) 319-STAR.

\*\*\*

There is a pleasure annexed to the communication of one's ideas, whether by word of mouth or by letter, which nothing earthly can supply the place of.

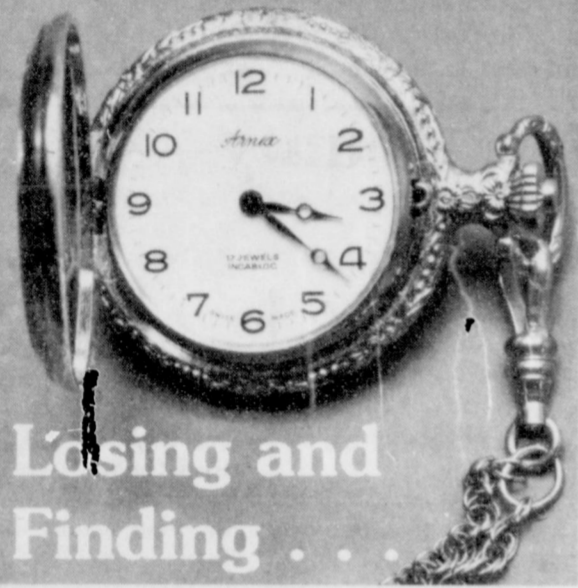
—William Cowper

## HENSON CHIROPRACTIC

410 S. Davis • Spearman, TX  
Call for Appointment • 659-5603

Office Hours: Mon, Wed, Fri - 9:00 to 5:00  
Tue, Thu - 9:00 to 11:30

Sunday  
1 Corinthians  
13:1-13  
Monday  
Revelation  
1:1-8  
Tuesday  
Lamentations  
3:1-33  
Wednesday  
Joel  
2:12-14  
Thursday  
John  
13:31-35  
Friday  
John  
15:1-17  
Saturday  
1 John  
3:11-18



Losing and Finding...

Lost something? Most of us have at one time or another. Frantically we search. There is a checking of pockets, rummaging through drawers and a continuous mumble of questions. Where could it be? Did it slip out of my pocket? Places like a sink drain, under a car seat or behind a pillow come to mind. We retrace our steps. Time passes and we wonder if it will turn up. We try to reassure ourselves that it will.

Losing money, a wallet or identification cards makes us feel terrible. The loss of a precious heirloom saddens us deeply. Many things can be replaced while others cannot.

Consider the consequences of losing your faith in God. If we grieve for the loss of earthly things and objects, how much more should we grieve for having lost all that is heavenly and eternal.

SEEK THE THINGS THAT ARE ABOVE.  
SEEK AND YE SHALL FIND.  
SEEK GOD IN HIS HOUSE THIS WEEK.

Scriptures selected by the American Bible Society  
Copyright 1993, Keister-Williams Newspaper Services, P.O. Box 8005, Charlottesville, VA 22906

## LET US REPLENISH THE SEED OF FAITH THROUGH... REGULAR CHURCH ATTENDANCE, DAILY BIBLE READING AND PRAYER

### IN SPEARMAN

**Trinity Community Church**  
717 W. 7th Ave. 659-2671  
Sunday School and  
Children's Church: 9:45 a.m.  
Worship: 11:00 a.m.  
Sunday Evening: 6:30 p.m.  
Wednesday evening: 7 p.m.  
Pastor Dan Carter

**Union Church**  
31 S. Endicott 659-2644  
Sunday School: 9:45 a.m.  
Worship: 10:45 a.m.  
Evening Worship: 6:30 p.m.  
Bible Study: 7:30 p.m. Wed.  
Youth: 7:30 p.m. Wed.  
Pastor Jeff L. Burress

### First United Methodist

407 S. Haney 659-5503  
Sunday School: 9:45 a.m.  
Worship: 11 a.m.  
Jr. High Youth: 5 p.m. Sun.  
High School: 6 p.m. Sun.  
Pastor Todd Dyess

### Faith Lutheran Church (ELCA)

1101 Bernice 659-2252  
worships with  
**First Presbyterian Church**  
1021 Cotter 659-2033  
Sunday School: 9:45 a.m. at Lutheran  
Worship: 11 a.m. (alternates  
monthly between addresses  
above)  
Pastor Beverly Cook

### IN GRUVER

#### First Baptist Church

402 E. Broadway 733-2411  
Sunday School: 9:45 a.m.  
Worship: 10:50 a.m.  
Disciple Training: 6 p.m. Sun.  
Prayer Meeting: 7:30 p.m. Wed.  
Pastor Larry Miller

#### Church of Christ

209 King 733-2760  
Sunday School: 9:30 a.m.  
Worship: 10:20 a.m.  
Evening Worship: 6 p.m.  
Wed. Evening Worship: 7:30 p.m.  
Minister Bob Setcliff

#### First Christian Church

510 King 733-2960  
Sunday School: 9:45 a.m.  
Worship: 11 a.m.  
Wed. Bible Study: 7:30 p.m.  
Youth: 6:30 Wed.  
Pastor Gary Gumfory

### Oslo Lutheran Church (ECLA)

West of Gruver  
On Hwy 15 & N. FM 1162  
339-7600  
Sunday School: 9:45 a.m.  
Worship: 11 a.m.  
Morning Prayer: 9 a.m. Wed.  
Pioneer Clubs (Grades 1-6):  
4-5:30 p.m. Wed.  
Pastor John R. Chandler

### Community Bible Church (Interdenominational)

Hwy. 15 733-2443  
Sunday School: 10 a.m.  
Worship: 11 a.m.  
Evening Worship: 7 p.m.  
Wed. Prayer Meeting: 7 p.m.  
Pastor Zane Gray

### First United Methodist

Broadway & Garrett 733-2651  
Sunday School: 9:45 a.m.  
Worship: 8:30 a.m. & 10:55 a.m.  
Sunday Evening: 7 p.m.  
UMY: 6 p.m.  
Pastor Lewis Holland

*This Feature is made possible through the Sponsorship of these Civic Minded Businesses.*

### IN SPEARMAN

**Apostolic Faith Church**  
822 S. Drensen 659-2870  
Sunday School: 10 a.m.  
Worship: 11 a.m.  
Evening Worship: 6 p.m. Sun.  
Wed. Prayer Meeting: 7:30 p.m.  
Pastor James Brown

**First Assembly of God**  
401 N. Bernice 659-2295  
Sunday School: 9:45 a.m.  
Worship: 11 a.m.  
Evening Worship: 7 p.m.  
Wednesday Worship: 7:30 p.m.  
Youth: 7:30 Wednesday  
Pastor Ray Cook

**First Christian Church (Disciples of Christ)**  
29 S. Bernice 659-2036  
Sunday School: 9:45 a.m.  
Worship: 10:50 a.m.  
Women's Bible Study: 2 p.m. Wed.  
Youth: Wed. 6 p.m. & Sun. 5 p.m.  
Pastor LaVern Draper

**Sacred Heart Catholic Church**  
901 Roland 659-2166  
Sat. Night Mass: 7 p.m.  
Sunday Mass: 9:30 a.m.  
C.C.D.: 10:30 a.m. Sun.  
Father Edward Kieran

**Church of Christ**  
121 S. Haney 659-3244  
Sunday Bible Class: 9:45 a.m.  
Worship: 10:30 a.m.  
Evening Worship: 6 p.m.  
Bible Study Wed. 7:30 p.m.  
KRDF Radio Program  
Living With Christ 7:50 a.m. M-F  
Minister Arnis Pape

**Fellowship Baptist**  
1102 S. Archer 659-2783  
Sunday School: 10 a.m.  
Worship: 11 a.m.  
Evening Worship: 6 p.m. Sun.  
Youth & Adult Serv.: 7:30 Wed.  
Pastor Rick Fincher

**First Baptist Church**  
123 N. Bernice 659-5557  
Sunday School: 9:45 a.m.  
Worship: 11 a.m.  
Evening Worship: 7 p.m.  
Jr. High Youth: 6 p.m. Wed.  
High School Youth: 7 p.m. Wed.  
Youth Choir: 6 p.m. Sun.  
Pastor Kyle Henderson

**Primera Mission Bautista**  
502 E. 7th 659-3991  
Sunday School: 9:45 a.m.  
Worship: 11 a.m.  
Pastor Guadalupe Carranza, Jr.

**HI-PLAINS AUTO SUPPLY, INC.**  
NAPA  
Mobile Oil For Irrigation & Industrial Purposes  
118 Main • Spearman  
659-2506 • (800)657-8742

**Lemon, Shearer, Ehrlich, Phillips and Good**  
"Attorneys and counselors at Law"  
Box 1066 • Perryton 79070  
(806)435-6544

**GSB GRUVER STATE BANK**  
FDIC  
Gruver, Texas 79070  
733-5061

**J & G S**  
LADIES READY TO WEAR  
306 Hancock • Spearman  
659-3424

**CO'S SUPPLY CO.**  
Plumbing & Tire Sales & Service  
301 S. Davis • Spearman  
659-3781

**GILLASPIE**  
AUTO & TRUCK CENTER, INC.  
CHEVROLET • OLDS • PONTIAC • BUICK  
CHRYSLER • PLYMOUTH • DODGE  
Highway 207 South • P.O. Box 427 • (806)559-2541  
SPEARMAN, TEXAS 79061

**FLOWERS**  
ALL OCCASION FLOWERS  
MARY MOORE  
OWNER  
MON. - FRI.  
9 a.m. - 5 p.m.  
Sat.  
9 a.m. - 12 noon  
PLAINS SHOPPING CENTER  
Spearman, TX • 659-5180

**GOLDEN SPREAD CARPET CLEANING**  
Don Moore  
659-3068  
"Not Forsaking The Assembling of Ourselves Together"  
HEBREWS 10:25

**GRUVER CABLEVISION**  
Quality Family Entertainment With  
"The Disney Channel"  
308 Main • Gruver  
733-5295

**TRUE VALUE HARDWARE**  
**B and B**  
205 DILLON  
SPEARMAN, TX.  
(806)559-2662  
FARM AND HOME SUPPLIES  
Attend The Church of Your Choice

**BOXWELL BROS. FUNERAL HOME**

**SPEARTEX GRAIN COMPANY**  
405 Collard • Spearman  
659-3711

**GOLDEN SPREAD SALES CO.**  
Petroleum Products  
Gasoline, Diesel, Propane, Farm Fertilizer  
LPG Bottle Filling  
414 S. Hwy. 207 • Spearman  
659-3776  
"Attend the Church of your Choice."

Compliments of  
**G & G FOOD LINER**  
516 MAIN • GRUVER  
733-2471

Compliments of...  
**AGCO**  
of Spearman, Inc.  
"See you in Church"  
659-3751

**GORDON DRUGS**  
Dependable Prescription Service  
314 Main • Spearman  
659-2141  
Jim Evans

"WE SUPPORT OUR LOCAL CHURCHES"  
**CAPROCK #1**  
Richard Winter, Manager  
(806)733-5043  
**CAPROCK #2**  
Jeff Rudolph, Manager  
(806)733-5025  
"Custom Cattle Feeding"

**HENTON & COMPANY**  
P.C. Certified Public Accountants  
221 Sanders • Spearman  
659-2518

**BERRY CLEANERS**  
DAY RESINING SERVICE  
Phone 678-1122 • P.O. Box 1017 • 207 Main St.  
SPEARMAN, TEXAS 79061

**GRUVER FORD**  
Ford FORD  
531 Main • Gruver, TX.  
(806)733-2431

**Interstate Savings & Loan**  
322 Main • Spearman  
659-2559

**GRUVER PRINTING COMPANY**  
"We put our customers FIRST!"  
434 MAIN • GRUVER  
(806)733-2662

**Nite & Day Beauty Shop**  
Open 8 a.m. - 5 p.m.  
Walk - Ins are WELCOME  
518 S. Main • Gruver  
733-2640

Ja  
62  
Ne  
207  
me  
501  
wo  
20  
sid  
31:  
714  
717  
703  
710  
111  
706  
717  
1114  
713  
cent  
700  
NEW  
1104  
FORC  
4 Bed  
garage  
story, c  
refinish  
huge kit  
mately  
stopper  
659-291  
S10-11  
House  
3 bedro  
2500 sq  
Spearman  
Contact  
659-554  
S46-1tc  
6 miles  
bath coi  
barn, pig  
moved, 1  
Eakin, 1-  
S16-1tcf  
Nice 3 br  
Basement  
with stora  
after 6 p.m.  
S16-2t  
4 BRM 1  
near sch  
basement  
3944 afte  
S11-1tcR  
We a  
mon  
4th V  
Gruver  
requ  
in tin  
Se  
317 S

**Southwest from page 6**

rillo won the new Raven pickup topper courtesy of Camper Roundup.

Special thanks to the Goodnight Trading Post, the First National Bank of Canyon, and T.E.X.A.S. each donated a one-year Texas Conservation Passport good at Texas Parks.

Lucky **DON YOUNG** of Plainview won a new G-Loomis graphite fishing rod and a state of the art Team Daiwa reel from the Golden Spread Bass Club.

Lots of free prizes, super semi-

nars, and the great deals on new RV's and boats were all overshadowed by the smiles of thousands of happy youngsters. They squealed with delight when catching delicious rainbow trout and reverently looked eye-to-eye at all the gamefish in the forty foot long Bass Tub.

All and all, **OUTDOOR WORLD '93** established a world class standard for outdoor entertainment. I can't wait to see the new goodies that **OUTDOOR WORLD** will bring to town next year.

**SPRING WINDS**

The March winds are blowing a little early this year. I am reminded of a childhood visit to the Squarehouse Museum in Panhandle. One of the docents conducted a fascinating tour that explained the agony endured by isolated early settlers living in dug-outs and suffering through the punishing windstorms that blew for weeks at a time. Last night just before falling fast asleep, the little

child in me listened to the gusty winds and wondered about the thoughts and dreams of our early ancestors.

If I owned a time machine, my first trip would be to a lonely family during a spring windstorm. Imagine their delight (and possible horror) upon learning of all the things that you and I now take for granted—the comfort of electricity, air conditioned autos, central heat, a microwave oven, a personal computer, video tape machines, CD players, Walkmans, cable TV, and income taxes.

The gusty winds also stir the aspirations of area anglers who have endured another long winter waiting for the local fishing to improve. Area lakes indicate that the fishing is still in the winter doldrums but will quickly improve as the water warms.

Increasing water temperature will affect different species of fish in a predictable sequence. Accord-

ing to my favorite ichthyologist, **Dr. Loren Hill** of Oklahoma University, gamefish turn on at the following water temperatures:

**Walleye—45-55 degrees:** Head to the rip-rap and use a countdown Rapala on the windy shorelines. Fishing from the bank at night can be terrific.

**White bass—50-55 degrees:** These open-water feeding fish are chasing the shad. Try throwing a chrome/blue back RattleTrap or the a Little George. A long cast covers more water and finds the schools of hungry sandbass.

**Crappie—55-65 degrees:** Look for gravel banks with brush piles and get ready for some fast action with a tiny jig tipped with a minnow. Daily depths will vary from 3 to 15 feet. Light line and limber poles are the tools of successful anglers.

**Smallmouth—60 degrees:** Find some big rocks near the pea-gravel banks with deep water (+20 feet) access. The action begins when you

use a jig tipped with a minnow. Don't forget to loosen the drag.

**Largemouth bass—Prime time** begins at 62-70 degrees: Bass spawn in the same coves year after year. Catch and release is a proven technique that improves the bass fishing in any lake. Use very small

lures and catch more bass.

The fun of springtime fishing is the surprises. Minnows on tiny jigs can catch every kind gamefish in the lake.

**WARNING—**Even on a warm spring day the water remains very cold. Wearing a life jacket will save your life in the event of an accident.

**Spencer's Incorporated... donating layettes gift boxes**

Spencer's Incorporated, manufacturer of infant and children's wear, is once again donating a gift box containing many layette items for a newborn baby to new parents. This offer is being made available through the American Red Cross.

To be eligible for this gift, the serviceman must have served overseas in Operation Restore Hope for

Somalia. Spencers has designated the dates of this program as December 8, 1992 through May 1, 1993. The birth of the baby must be within these designated dates.

Request for these layette items may be submitted to Bonita Campbell at the local chapter of the American Red Cross, 511 S. Main or call 435-8175 weekday mornings.

**Banking from page 1**

ity that students should understand if they are to take their places in the financial community."

"We hope our sponsorship of this program will help give students a more thorough and systematic understanding of these basic banking activities, the new services that are available, and help them in management of their personal financial affairs."

"We strongly believe that the more financially secure students

become through knowledge and practice of good banking, the better citizens they become; and the better our young citizens, the better our tomorrow.

In addition, Ginger Turner pointed out that as part of the program an officer of the bank is available for a follow-up classroom question-and-answer session and the students may be given a tour of the bank to see numerous financial operations at work.

**reach 3 million Texans**

Now you can run your classified ad in newspapers all across Texas for \$250. That's right—a 25 word ad costs only \$250 to run in 291 newspapers with a combined circulation of more than 1.8 million (that's more than 3 million readers) throughout the Lone Star State.

All you have to do is get ready for results.

Call this newspaper for details

**TexSCAN**  
Statewide Classified Advertising Network  
A service of the Texas Press Assn.  
718 West Fifth Street  
Austin, Texas 78701  
512-477-6755

**Minding from page 8**

ness card for possible induction into the "Mini-Billboard Hall of Fame," send it to "Mini-Billboard," c/o Minding Your Own Business, PO Box 67, Amarillo, TX 79105. All entries that include a self-addressed, stamped envelope will receive a free additional low-cost strategies and advertising tips by return mail.

**TEXAS**

*It's Like A Whole Other Country.*

**MARY KAY**  
FACE TO FACE BEAUTY ADVICE™  
*Leann Gillaspie*  
Beauty Consultant  
659-3889

**DIET MAGIC**  
**WILL POWER IN A BOTTLE!**  
FEEL THE DIFFERENCE WITH . . .  
**THERMOJECTICS**

1. Increases Metabolism
2. Totally Controls Your Appetite.
3. Burns Fat, So You Lose Inches Like Crazy!
4. Gives You An Enormous Amount Of Energy.

**DR. RECOMMENDED!**  
**GUARANTEED!**  
**YOU'LL LOVE IT**  
**CALL: (806)273-6226**  
**or 659-5058**

Trinity Community Church  
717 W. 7th  
South of ALCO

*Invites You To Our*

**LOW ON CASH?  
LAID OFF WORK?  
NEED ASSISTANCE?**

**WE WANT TO HELP!**

**GARAGE FREE**  
NOT CHEAP • FREE!

**SHOES  
COATS  
GOOD CLOTHES  
NON-PERISHABLE FOODS**

Saturday, Feb. 27 - Doors Open 3-3:15 p.m.  
**SHOP UNTIL FINISHED**

**LUMBER MART GIANT CABINET SALE**

**50% OFF LIST PRICE**

**Free Computer Drawing of Your Kitchen**



Open up a whole new world of beauty and convenience for your kitchen with Merillat cabinetry and accessories. Dynamic, dramatic or down-to-earth—your style is reflected among the many designs available. And you can create the kitchen that fits your lifestyle with a variety of Space-o-nom-i-cal accessories. Make every inch of space functional and attractive for years to come with Merillat.

**Merillat**  
AMERICA'S CABINETMAKER™

**Lumber Mart**  
Your Hardware and Home Center  
1401 N. Main Guymon, OK  
(405) 338-3344 1-800-736-3115

Store Hrs: Mon-Fri. 8:00-6:00  
Sat. 8:00-5:00 • Sun. 1:00-5:00

**Sale Ends**  
**Saturday, Feb. 27**