

COMP 1  
HANSFORD COUNTY LIBRARY  
0122 MAIN ST  
SPEARMAN TX 79081

15¢

THURSDAY  
OCTOBER 10, 2002

# REPORTER STATESMAN

213 MAIN ST • SPEARMAN, TX 79081

VOL. 94 • ISSUE 41

NEWS • SPORTS • PICTURES

SERVING HANSFORD COUNTY SINCE 1907

### Humor Specialist To Speak

All have heard the quote from Proverbs 17:22, "A merry heart doeth good like a medicine."

The O'Loughlin Center and Hansford Hospice will sponsor a program on the benefits of laughter on October 14, 2002, at 6:30 p.m. for the citizens of Hansford County and the surrounding area.

Writer Allen Klein has stated that everyone needs a daily dose of Vitamin "H" (humor). Victor Hugo said, "Laughter is the sun that drives winter from the human face." Pastor and writer Chuck Swindoll said, "Joyful people stay riveted to the present — the here and now, not the then and never."

In the United States, more than 500 laughter clubs exist. Many laugh-club members find themselves transformed into children again, and why not. The average preschooler laughs up to 400 times a day. The average adult? A sad seven to 15.

Coming from Amarillo to the O'Loughlin Center is Bev Harris, a Certified Laughter Leader. Recognizing both the psychological and physiological benefits of humor, Bev carries a heavy schedule of speaking engagements, teaching people to "Let go and Laugh again!" She speaks on various topics, but uses laughter to get everyone to reduce their stress level.

This program is free to the public. Refreshments will be served.

### Program to Offer Entertaining Ideas

Ideas for decorating, entertaining and gift-giving will be highlighted during the "Celebrate 2002" program to be presented by area Extension Agents Tuesday, October 22, at the Texas A&M Extension and Research Center, 6400 Amarillo Blvd., West, Amarillo, Texas.

The program will be presented twice on the 22nd with the first session beginning at 1:30 p.m. and the evening presentation at 6:30 p.m. Doors will open for registration 30 minutes before the scheduled program time.

Advance tickets for the program are now available for \$8 each from the Extension office, Hansford County Courthouse in Spearman. Local ticket sales will end at 4 p.m. on Monday, October 21st. Tickets will be sold at the door on the 22nd at a cost of \$10 per person.

Todd Williams, County Extension Agent for Agriculture and Natural Resources from Rockwell, Texas, will present a lively and educational demonstration on "Holiday Decorating with a Natural Flair."

In addition to Williams' presentation, 20 Extension Agents from the Panhandle District will display tables of prepared foods, decorating motifs and entertaining notions. Party ideas for all seasons will be featured, including, Autumn Harvest, Christmas and New Year's, Beach and Summer parties, and much more. Guests will have the opportunity to sample a variety of main dishes, desserts, appetizers and beverages. A packet of instructions, illustrations, and recipes will be given to each "Celebrate" guest.

Peggy Winegarner, Hansford County Extension Agent for Family and Consumer Sciences, will participate at the two identical sessions of the informative holiday program to be offered on the 22nd.

The "Celebrate 2002" program is sponsored by the Panhandle District Texas Association of Extension Family and Consumer Sciences. Proceeds from the event help to fund scholarships and enhance educational programming in the Panhandle area to improve quality of life.

For further information, call the local Extension office at 659-4130 or 733-2901.

Extension programs serve people of all ages regardless of socioeconomic level, race, color, sex, religion, disability or national origin.



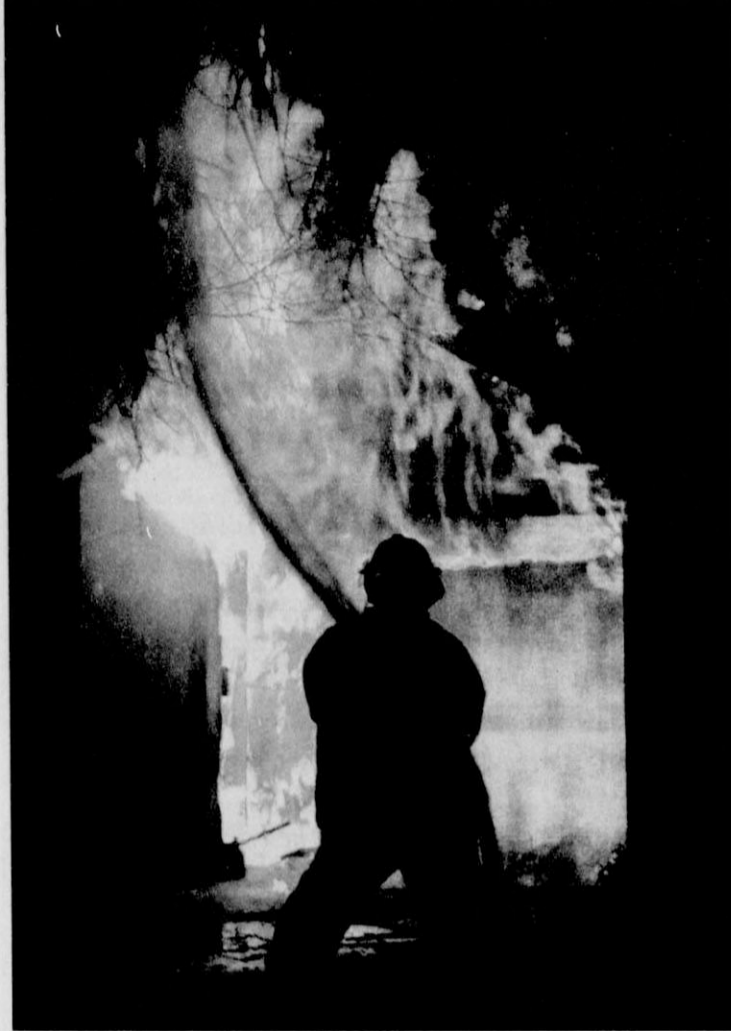
### Drill Night - Live Fire Training

**Fire Prevention, Fire Suppression, and Fire Rescue - it's more than some guys showing up in funny suits and squirting water. They may be responding to a fire at someone's home - working against those precious minutes between a total loss and saving a lifetime of memories and possessions. They may be responding to a vehicle accident with someone trapped inside the wreckage in desperate need of emergency medical care. It may be a grass fire, tank battery fire, vehicle fire, hazardous materials situation, gas leak, smoke smell or scare, fire inspection, public fire education...**

**Training is a vital part of any fire department. Firemen need to keep current on the latest and greatest, and go back to the basics for a refresher. The Spearman Volunteer Fire Department meets the 2nd and 4th Thursdays of each month for training, as well as attending several area schools each year.**

**These pictures are from a training exercise. This was an old, condemned house that was to be destroyed. The fire department was fortunate enough to be able to utilize it and several others for "Live Fire Training."**

Photos by Catherine Smith



## October - Fire Prevention Month

October is here. This means cooler weather, leaves in your yard, and football to almost everyone in the community.

To the fireman in the community October means Fire Prevention Month and Elementary students touring the fire station.

Cooler weather means all the green stuff outside turns brown and flammable. The days are shorter and people spend more time at home, furnaces and electric blankets are on and your chances for a fire in your home are higher.

The Spearman Volunteer Fire Department is responsible for providing fire and rescue services for the City of Spearman and half of Hansford County. They have mutual aid agreements with Gruver, Ochiltree County, Hutchinson County, Roberts County, and Texas County in the Oklahoma Panhandle. Their coverage area is approximately 450 sq. miles, not including the mutual aid agreements. They serve a total population of approximately 5900 people.

The fire department does not provide EMS services although several of our fire fighters are cross trained as EMT-Bs. They do, however, work closely with the local EMS service, H&S EMS. They

provide rescue services for them and respond with them as a support crew when needed.

Their motto is "Duty Our Pride" and their mission statement is simple: To protect the lives and property of the citizens.

The Spearman Volunteer Fire Department has an all volunteer staff. Currently there are 23 listed on the active roster and several reserve members.

Listed below are the active members of the Spearman Volunteer Fire Department: John Kunselman - Fire Chief, Ron Antalek - 1st Asst. Chief, Bret Burgin - 2nd Asst. Chief, Jim Younger - Captain Co. A, Ryan Wells - Captain Co. B, Roger Close - Captain Co. C, Bruce Stinson - Lt. Co. A, Randy Kirk - Lt. Co. B, Mike Bates - Lt. Co. C, Johnny Ring - Fire Marshal, and Fire Fighters Willis Boyd, Joey Etchison, Derek George, Ruben Gomez, Keith Goodman, Tobe Shields, Elbert (Dink) Dorton, Bobby Lujan, Damon Sibley, Slade Floyd, Cesar Moreno, Keith Reynard and Sergio Domingez.

Listed below are the members of the Gruver Volunteer Fire Department: Robert Blevins - Fire Chief, Wayne Kruse - 1st Asst. Chief, Lyn Boyd - 2nd Asst. Chief,

Sam Gruver - Training Officer, Matt Johnson - Treasurer, Chris Johnson - Secretary, Fire Fighters Jake McCullough, Chris Morris, Zack Christian, Robert Smith, Joe Morris, Marvin Sparks, Jimmy Taylor, Rick Freeman, Jerry Overbey, Keith Cassidy and Chris Homer, Cadets Aaron Boyd and Adam Stinar and Auxiliary Members Penny Kruse and Diane Boyd.

## A Fireman's Prayer

*When I am called to duty, God, wherever flames may rage  
Give me the strength to save some life, whatever be its age  
Help me embrace a little child before it is too late  
Or save an older person from the horror of that fate  
Enable me to be alert and hear the weakest shout  
And quickly and efficiently to put the fire out  
I want to fill my calling and to give the best in me  
To guard my every neighbor and protect their property  
And if according to Your will I have to lose my life  
Please bless with Your protecting hand my children and my wife*

Author Unknown

## Reaping The Wind

### County Commissioners Consider Options

by Harletta Carthel  
Hansford County Commissioners are considering their options in response to proposals presented by the Great Plains Windpower, LLC last week.

In light of the presentation, Hansford County Commissioners have been doing their homework on their own proposals in advance of an October 14th meeting with Great Plains Windpower representatives John Baum and Jay Lobit.

"We are running figures to see what would be best for Hansford County," Joe T. Venneman, senior commissioner said. During the September 30 meeting, Baum and Lobit asked for a ten year, 100% tax abatement for the construction of three 80 megawatt projects in northern Hansford County.

In return for the abatement, Great Plains Windpower offered \$1,000 per megawatt produced paid on a yearly basis for the ten years of the abatement. This was estimated to be an annual amount of \$180,000 - \$200,000.

Venneman pointed out that commissioners were not given a definite time schedule for the completion of a specified number of turbines.

"The best case scenario would be to have at least 80 turbines up and operating one year from now," Venneman said.

A federal tax incentive is now offered until December 2003 that would encourage rapid construction of the turbines.

"There is a chance that incentive could be extended until 2004," Venneman said.

The next step for the commis-

sioners court is to to decided what abatement, if any, would be offered to Great Plains Windpower. If commissioners decide to offer a tax break to the development firm, commissioners would then adopt a resolution indicating their intent to participate in an abatement.

A two-year tax abatement guideline and criteria would then be adopted by the commissioners which would be followed by a seven-day written notice to all taxing districts followed by a public hearing to designate a 'reinvestment' zone. The final step of actually adopting a tax abatement agreement would be approval by a majority vote at a regularly scheduled meeting of the commissioners.

Venneman stressed that should the commissioners choose to give an abatement to Great Plains Windpower that abatement could be extended to other development companies or it could be limited to only a specified company or companies. The court would also establish physical boundaries of the tax abatement. The tax break could be limited to a designated portion of Hansford County, or it could be extended to include all of the county.

The turbine project near White Deer, Texas which was also built by a private development company such as Great Plains Windpower, was given a seven year tax abatement of 100 percent.

Although Great Plains Windpower asked commissioners for a ten-year, 100% tax abatement, Venneman said commissioners were free to decide on any

combination of abatement such as a seven year, 90% tax abatement, a seven year, 100% tax abatement similar to that given at White Deer, or another combination. An abatement would have to be advantageous not only to Hansford County but also to investors of Great Plains Windpower.

Venneman was impressed by the fact that the turbine project would be non-polluting, would not deplete water resources, and would not require additional services such as fire and police services.

"Great Plains Windpower has leased the three sites in Hansford County for 50 years. That shows a company that is here for the long run," Venneman said.

Venneman also stated that wind turbine projects in the United States have a history of developing in clusters, and the securing of the proposed project could result in future expansion in the county.

With the life expectancy of the turbines estimated at 20 years, the turbines could be replaced and be of value again after the depreciation rate of the first turbines has expired.

"We will move as quickly as possible in our decisions," Venneman said.

Members of the commissioners who will be deciding that fate of the project are Danny Henson, Precinct 4; Kent Guthrie, Precinct 3; Butch Reed, Precinct 2; County Judge Jim Brown; and Venneman, Precinct 2.

(Next week: How will the proposed wind energy project affect the Gruver Independent School District and what options does the school district have?)

## Hansford County Library Plans 70th Anniversary Celebration

An idea, a few coins and sixty-five books marked the beginning of the Hansford County Library, located at 122 Main Street in Spearman, Texas.

Tracing the history of the library requires going back to the year 1932. Spearman was just fifteen years old, and there was not a paved road in town. There was, however, a Spearman Twentieth Century Club, and the dedicated women in it decided to sponsor a library for their town by holding a silver tea and book shower on November 1st. By the end of that event, the club members had collected a little money and sixty-five books, and the first library in Hansford County was born.

Today's Twentieth Century Club, together with the Library Board and staff are planning the 70th anniversary celebration for the Hansford County Library. An open house will be held on Sunday, November 3, 2002 from 2:00 to 3:30 p.m. in the library. This celebration is open to the public, and everyone is invited to attend.

If you haven't been in the library in some time, you will want to come by and see how it was changed! Mark your calendars now, and plan to attend the 70th Anniversary Open House at the Hansford County Library.

Laugh  
and  
Live



by Catherine R. Smith  
CathyRSmit@aol.com

This week, October 6-12, 2002, is National Newspaper Week. In honor of this, I would like to share with you the "Journalist's Creed." It was written by Walter Williams, founding dean of the University of Missouri School of Journalism (1908-1935).

## The Journalist's Creed

I believe in the profession of journalism.  
I believe that the public journal is a public trust; that all connected with it are, to the full measure of their responsibility, trustees for the public; that acceptance of a lesser service than the public service is betrayal of this trust.  
I believe that clear thinking and clear statement, accuracy, and fairness, are fundamental to good journalism.  
I believe that a journalist should write only what he holds in his heart to be true.  
I believe that suppression of the news, for any consideration other than the welfare of society, is indefensible.  
I believe that no one should write as a journalist what he would not say as a gentleman; that bribery by one's own pocketbook is as much to be avoided as bribery by the pocketbook of another; that individual responsibility may not be escaped by pleading another's instructions or another's dividends.  
I believe that advertising, news and editorial columns should alike serve the best interests of readers; that a single standard of helpful truth and cleanness should prevail for all; that the supreme test of good journalism is the measure of its public service.  
I believe that the journalism which succeeds best -- and best deserves success -- fears God and honors man; is stoutly independent, unmoved by pride of opinion or greed of power, constructive, tolerant but never careless, self-controlled, patient, always respectful of its readers but always unafraid, is quickly indignant at injustice; is unswayed by the appeal of privilege or the clamor of the mob; seeks to give every man a chance, and, as far as law and honest wage and recognition of human brotherhood can make it so, an equal chance; is profoundly patriotic while sincerely promoting international good will and cementing world-comradeship; is a journalism of humanity, of and for today's world.

May God bless and keep you; May He make his face to shine upon you, and be gracious to you; May the Lord lift up his countenance upon you, and give you peace.

Numbers 6:24-26

Catherine :)

## From The Doctor's Desk



Vibhu Sharma, M.D.  
710 Roland St.  
Spearman, Texas

### Hormone Replacement Therapy in Women

Recent data available has thrown into renewed controversy replacement of hormone therapy in postmenopausal women. This article tries to clarify some confusion associated with the availability of this new data. Hormone replacement is begun in the majority of cases to replace the deficit caused by decreasing hormonal output from the ovaries, the consequences of which are hot flashes, night sweats, mood swings, as well as rapid bone loss that leads to brittle

bones and an increased risk of fractures with minimal trauma. Most women with a uterus (those who have not undergone a hysterectomy) will be placed on a combination of Estrogen and Progesterone (Prempro) since Progesterone protects against Endometrial Cancer. Women who have had a hysterectomy on the other hand will typically be placed on Estrogen alone. These hormones effectively prevent Estrogen Deficiency symptoms.

What are the conclusions drawn from recent studies? First the use of Prempro for longer than five years is associated with an unacceptable increased risk of Breast Cancer, Strokes and Blood Clots. Second, the use of Estrogen alone, while preventing rapid bone loss does not prevent Heart Disease and may in fact increase the risk. The use of Estrogen ALONE has not THUS FAR been shown to have an adverse effect (such as that demonstrated with Estrogen and Progesterone: Prempro), but trials continue.

Based on data available previously that has been confirmed with more recent data, Hormone Replacement Therapy (HRT) will not be begun for the sole purpose of decreasing the risk of Coronary Artery Disease (i.e., Heart Attacks and Angina), and GENERALLY

will also not be begun for decreasing the rapidity of bone loss since there are other medications that will decrease this risk without increasing the risk of Breast Cancer.

For most otherwise healthy women who have not had a hysterectomy, beginning HRT with Prempro for hot flashes is appropriate in the short term (six months to five years), with the eventual goal being slow taper and eventual discontinuation. For women who have had a hysterectomy Estrogen alone is appropriate. For women in the perimenopausal age group (45 to 50 years) who also desire oral contraception, options with low dose estrogen are available.

Women who are not appropriate candidates to begin HRT include those with a personal history of

Breast Cancer, Stroke, Blood Clots, or Heart Disease. For women who have a family history of Breast Cancer or Strokes and/or those who smoke, a thorough understanding of the risks is mandatory. For women unable to discontinue HRT successfully without significant symptoms, alternatives exist which unfortunately are not as good as HRT. The uncomfortable truth for (thankfully) a minority of women unable to stop HRT without disabling symptoms is that there may be other alternatives than continuing with long term HRT in spite of the risks noted above.

Results of trials from Europe are expected in early 2007 and ongoing analysis of trials to include Quality of Life variable may change recommendations yet again. We will keep you updated. In the meantime, if you are on Hormones, you need to speak with your physician.

**Dr. Rick Sheppard, D.D.S.**

**1-800-687-2010**

•Family Dentistry •Braces

146 Pioneer • Booker, TX

**TEETH FOR A LIFETIME**

Let us replenish the seed of faith through . . .  
DAILY BIBLE READING, PRAYER & REGULAR CHURCH ATTENDANCE

### Spearman

**Apostolic Faith Church**  
822 S. Dressen • 659-2870  
Sunday School: 10 a.m.  
Worship Service: 11 a.m.  
Sun. Eve. 6 p.m.  
Wed. Prayer Mtg. 7 p.m.  
Pastor - Roland Haney

**First Assembly of God**  
401 N. Bernice • 659-2295  
Sunday School: 9:30 a.m.  
Worship: 10:35 a.m.  
Kid's Church: 10:35 a.m.  
Evening Worship: 7 p.m.  
Wed. Worship: 7:30 p.m.  
Youth: 7:30 Wednesday  
Pastor - Walter Greaser, Jr.

**First Christian Church**  
(Disciples of Christ)  
29 S. Bernice • 659-2036  
Sunday School: 9:45 a.m.  
Worship: 10:50 a.m.  
Minister - Gary Smith

**First Baptist Church**  
123 N. Bernice • 659-5557  
Sunday School: 9:45 a.m.  
Worship: 11 a.m.  
Evening Worship: 7 p.m.  
Wed. Fellowship Meal: 6 p.m.  
Wed. Disc. Time: 6:30 p.m.  
Wed. Youth Mtg.: 8 p.m.  
Pastor - Patrick Six

**Church of Christ**  
121 S. Haney • 659-3244  
Sunday Bible Class: 9:45 a.m.  
Worship: 10:30 a.m.  
Evening Worship: 6 p.m.  
Bible Study Wed.: 7:30 p.m.  
K.R.D.F. Radio Program  
Living W/Christ: 7:50 a.m.  
Minister - Leonard Harper

**Sacred Heart Catholic Church**  
901 Roland • 659-2792  
Sat. Night Mass: 5:30 p.m.  
Sun. Mass: 9 a.m. - English  
(aired on KRDF-FM 98.3)  
Sun. Mass: 11:30 - Spanish  
1:30 p.m. - Gruver - Christo  
Rendtorf Mass - Spanish  
Rev. Scott Raef

**Trinity Fellowship Church**  
717 W. 7th Ave. • 659-2671  
Sunday School: 9:30 a.m.  
Worship Service &  
Children's Church: 10:30 a.m.  
Pastor - Dennis Alger

### First Presbyterian Church

(Worships with Lutheran)  
1021 Cotter • 659-2033  
Sunday School: 9:45 a.m.  
Worship: 11 a.m.  
(alternates monthly between Lutheran &  
Presbyterian Church Bldg.)  
Pastor - Beverly Cook

### Faith Lutheran Church (ELCA)

1101 Bernice • 659-2252  
(Worships with  
First Presbyterian Church)  
**First United Methodist**  
407 S. Haney • 659-5503  
Sunday School: 9:45 a.m.  
Worship: 8:30 & 11 a.m.  
Jr. High Youth: 5 p.m. Sunday  
High School: 6 p.m. Sunday  
Kids Club: 3 p.m. Wed.  
Pastor - Ken Cole

### Union Church

31 S. Endicott • 659-2644  
Sunday School: 9:45 a.m.  
Worship: 10:45 a.m.  
Evening Worship: 6 p.m.  
Bible Study: 7 p.m. Wed.  
Pastor - Bill Sparks

### Fellowship Baptist

1102 S. Archer • 659-2783  
Sunday School: 10 a.m.  
Worship: 11 a.m.  
Sun. Evening Worship: 6 p.m.  
Youth/Adult Serv.: 7:30 Wed.  
Pastor - Gene Foster

### Primera Mision Bautista

502 E. 7th • 659-3991  
Sunday School: 9:45 a.m.  
Worship: 11 a.m.  
Evening: 6 p.m.  
Wed. Prayer Meeting: 7 p.m.  
Thurs. Visitation: 7 p.m.

### El Aposento Alto U.P.C.I.

1105 S. Roland  
Domingos  
Escuela-Domical - 10 a.m.  
Culto Evangelistico - 7 p.m.  
Jueves Oracion - 8 p.m.  
Mier. Estudio Biblico - 7 p.m.  
Pastor - A.G. Martell  
(806) 659-2153

### Waka

Waka Church of the Brethren  
435-4598

### Gruver

**First Baptist Church**  
402 E. Broadway • 733-2411  
Sunday School: 9:45 a.m.  
Worship: 10:50 a.m.  
Disciple Training: 6 p.m. Sunday  
Prayer Meeting: 7:30 p.m. Wednesday  
Pastor - Scott Curry

**Church of Christ**  
209 King • 733-2760  
Sunday School: 9:30 a.m.  
Worship: 10:20 a.m.  
Evening Worship: 6 p.m.  
Wed. Worship: 7:30 p.m.

**First Christian Church**  
510 King • 733-2960  
Sunday School: 10:00 a.m.  
Sunday Worship: 11 a.m.  
Youth: 7:30, Sunday  
Adult Bible Study: 7:30, Sun.  
Wed. Bible Study: 8:00 p.m.  
Pastor - Gary Gumfory

### Oslo Lutheran Church (ELCA)

6 Miles West & 12 Miles  
North of Gruver  
339-7709  
Sunday School: 9:45 a.m.  
Worship: 11 a.m.  
Pastor - Paul Fiske

### Gruver United Methodist

Broadway & Garrett  
733-2651  
Sunday School: 9:45 a.m.  
Worship: 8:30 & 10:50 a.m.  
Eve. Worship & UMY: 6 p.m.  
Pastor - Jerry Moore

### Spanish Cristo Redentor Church

Sunday Mass: 1:30 p.m.  
Friday Evening Mass  
Summer - 8:00 p.m.  
Fall/Winter - 7:30 p.m.

### Morse

**Morse Baptist Church**  
733-2757  
Pastor - Mike Martin



This feature is made possible  
through the sponsorship of  
these civic minded businesses.

Compliments of . . .  
**AGCO**  
of Spearman, Inc.  
"See you in Church"  
659-3751

**PRAIRIE**  
**MOTORS INC.**  
Hwy. 207 South • P.O. Box 430  
Spearman, TX 79081 • (806) 659-2641  
www.prairiemotors.com

**BOXWELL**  
**BROS.**  
**FUNERAL HOME**

Compliments of  
**G&G**  
**FOODLINER**  
516 Main • Gruver, TX  
733-2471

**COLUMBIA**  
Medical Center of Pampa  
One Medical Plaza  
Pampa, Texas 79065  
(806) 665-3721

**Palo Duro**  
**Supper Club**  
22 S. Archer • Spearman  
659-2232

**Bartlett's Ace**  
**Hardware**  
105 W. Broadway • Gruver,  
Texas  
(806) 733-2404

**BERRY CLEANERS**  
Ann & Vernon Pipkin - Owners  
Phone 659-3122 • P.O. Box 1017  
207 Main St. • Spearman, TX

**Morse Implement**  
**& Auto Supply**  
"Join us in church this week"  
Tom Dortch 733-2668  
P.O. Box 89 • Morse, TX 79062

**Gruver Cablevision**  
308 Main  
Gruver, TX 79040  
733-5295

**Deakin**  
**ELECTRIC**  
OILFIELD • RESIDENTIAL • COMMERCIAL  
321 S. MAIN • SPEARMAN  
1-800-999-1506 Chris Deakin  
(806) 659-5016 President

**Interstate**  
**Bank, ssb**  
322 Main • P.O. Box 146  
Spearman, TX • 659-2559

**CORNER SERVICE STATION**

We pay  
attention  
to Details!

Oil & Filter Changes  
Minor Repairs  
Vehicle Detail (by appointment)  
Free pick up & delivery

101 Main Street • Spearman, Texas  
(806) 659-2722 • Joe & Nita Bynum

The  
Hansford County  
**Reporter-  
Statesman**  
213 Main Street  
Spearman, TX 79081  
Phone - (806) 659-3434  
Fax - (806) 659-3368  
CathyRSmit@aol.com  
Mon.-Thurs. (Closed Fridays)  
9 a.m.-12 p.m. & 1-5 p.m.

**Gary Smith - Publisher**  
**Catherine Smith - Editor**  
Harletta Carthel - Assist. Editor  
Contrib. Writers: Helen Fisher, Jeff Beedy,  
Dorothy Hudson, Dwayne Mitchell  
Contrib. Photographer: Charlie Johnson

**Subscription Rates**  
In Hansford Co. - \$25.00  
Out of County - \$30.00

The Hansford County  
**Reporter-Statesman** (USPS  
529660) is published weekly in  
Spearman, TX. Periodical  
postage paid in Spearman, TX.  
**POSTMASTER:** Send address  
changes to The Hansford  
County Reporter-Statesman,  
213 Main Street, Spearman, TX  
79081.

**Publication Policy**  
The deadline to submit news  
and advertising to The  
Hansford County Reporter-  
Statesman is Monday at 5:00  
p.m. Items accepted after the  
deadline will be published at  
a later date, as time and  
space permit. Publication of  
all items is at the discretion  
of the editor.

**Letter Policy**  
The Hansford County  
Reporter-Statesman wel-  
comes letters to the editor on  
any subject. All letters must  
be signed and will be pub-  
lished with the name of the  
writer. Letters must include  
an address and telephone  
number for verification.  
Letters should be kept at a  
reasonable length. The edi-  
tor reserves the right to edit  
all letters. Any letter may be  
rejected for publication with-  
out reason. Letters that are  
libelous and/or slanderous  
will not be published. The  
deadline to submit letters is  
noon on Monday. Letters in  
support or opposition to pol-  
itical candidates will not be  
published. Persons wishing  
to publically support political  
candidates in this newspaper  
are invited to purchase an  
ad.

**Advertising**  
Open Display rates are  
\$4.00 per column inch.  
Classified Ads are \$5 for the  
first 25 words and 10¢ per  
word for each additional  
word. (Additional charge for  
boxed classifieds.)

Member of  
Texas Press Association and  
Panhandle Press Association

**T.P.A.**  
**TEXAS PRESS**  
**ASSOCIATION**  
AWARD WINNER

# Happy Birthday!

*Editor's Note: This Happy Birthday list is run as a public service by the Hansford County Reporter-Statesman. We apologize if any names are misspelled. If you know of a name that needs to be changed, added or deleted, please call 659-3434. Thank you, Catherine*

**October 10**  
**Birthday** - Matthew Brown, Jake Barkley, Kim Blevins, Steve Duncan, Jase Rudolph, Darrell Scroggs, Sherri Cook, Don McLain, Kortny Henton, Edwin Molina, Gary Flowers, Maribel Moreno, Mike Darnell, Jesse Tindell, Cason Finley, McCaully Jo Hart, Verlin Hagerman, Lyn Woolley, Toby Thomas, Kevin Kenney  
**Anniversary** - Mr. & Mrs. Mario Molina, Mr. & Mrs. Darrell Messer, Mr. & Mrs. Randy Karlin

**October 11**  
**Birthday** - Marco Favela, Doug Frick, Kadie Grotegut, Rod Holland, George C. Lowe, Jim Ratliff, Eleanor Davis, Orville Latham, Steve Mathews, Sonny Nollner, Kathy Lou Biggs, Sara Williamson, Jimmie Harris, Jim Ladd, Eddie Largent, Daniel Gonzales, Dick Smith, Jimmie Harris, Rosa Blan, Jason Blan, Adam Ferguson  
**Anniversary** - Mr. & Mrs. Del Roy Gammon

**October 12**  
**Birthday** - Erica Alvarez, Lee Bort, Sue Henson, Pat Holt, Jan Jarvis, Kathy Taylor, Lewis Frantz, James Reed Jr., Mendy Riggins, Misty Crooks, Danny Hamilton, Cody Mauldin, Marvin Byers, Louis Nava, Jimmy Garrard, Allen Howell, Paula Clemmons, Veronica Cenicerros, Donna Taylor, Jesus Briones  
**Anniversary** - Mr. & Mrs. Mack McLain, Mr. & Mrs. Mike Yanke

**October 13**  
**Birthday** - Hunter Novak, Andrea Mires, David Grotegut, Carrie Close, Burnell Kjos, Mrs. Albert Hahn, Sonny Parker  
**Anniversary** - Mr. & Mrs. Jon Jarvis, Mr. & Mrs. Don Evans

**October 14**  
**Birthday** - Jerry Hunt, Jennifer Morris, Jeanne Swink, Crockett Tidwell, Kristi Pearson, Roy Lynn Garrard, Jesse Lyn Cowan, Jimmy Snider, Melinda Davis, Michelle Graham Foster, Kyla Nelson Sell, Bert Sheppard, Eddie Whitefield, Gilbert Salgado, Anthony Bravo, Jim Brown, Sue White, Monty George, Charline Laxson, Carlos Trejo, Adrienne Simpson  
**Anniversary** - Mr. & Mrs. Bert

Wofford

**October 15**  
**Birthday** - Jess Wood, Jeffrey Miller, David Martin, Billy Martin, Verna Lee Shirley, Brandi Schneider, Chris Hornsby, Ann Martin, Martha Donahue, Anne Marie Pearson, Bonnie Woolan, Randy Janzen, Joe Garcia III, Allen Varnon, Betsy Holt, Keith Lamb, Allen Varnon  
**Anniversary** - Mr. & Mrs. Odell Genn, Mr. & Mrs. Lee Nichols, Mr. & Mrs. Mike Stedje, Mr. & Mrs. David Miner, Mr. & Mrs. Tim Fletcher

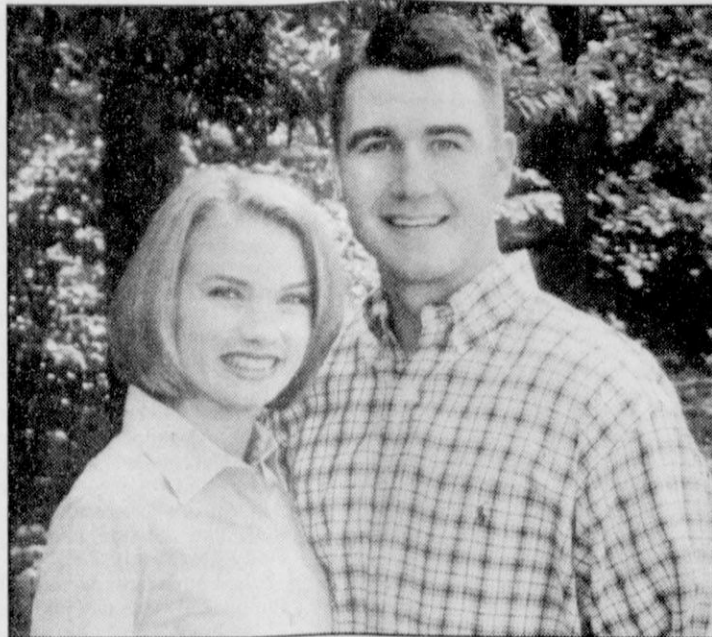
**October 16**  
**Birthday** - Buster Davis, Troy Miller, Tammy Benton, Virginia Fowler, Sammy Graham, Ann Pearson, Lola Newcomb, Joe Avila, James Riley, Landree Woodward, Julie Payne, Meghan Stork

**October 17**  
**Birthday** - George B. Odom, Byron Peddy, Jackie Smith, Brad Beedy, Jeff Beedy, Carol Short, Erica Garrison, Misha Davis, Joe Paul, John Sullivan, Oscar Ortiz, Carolyn McLeod, Jacob Burch, Mac McLaughlin, Sandra Soto, Hugo Villa Jr., Joyce Sparks, Debbie Jacobs, Regina Vernon  
**Anniversary** - Edward & Theah Beck, Sharon & David Swan

**October 18**  
**Birthday** - Taos Weldon, Don Knox, Wilson McClellan, Jeff Hutchison, Angelica Arjona, Floyd Dean Gatlin, Chris Williamson, Elaine Swan, David Parker, Jan Morgan, Marla Bullard, Courtney Baca, Kristian Faith Burke, Ramiro Morales, Mike Gift  
**Anniversary** - Mr. & Mrs. Dave Christian

**October 19**  
**Birthday** - Brian Gillispie, Joe Lopez Sr., Colton Mayfield, Carol Tolleson, Phyllis Owens, Joe Vanderburg, Marietta Davis, Ken Shufeldt, Calvin Garrard, Jeremy Blan, Harold Anderson, Brenda Lee Soto, Wayne Pierson, Kathy Bryant, Bill Park, Merry Wheelock, Doran Schoenhals, Kenneth Schufeldt  
**Anniversary** - Mr. & Mrs. Jimmy Traylor

**October 20**  
**Birthday** - Marilyn Been, Kelly Boone, Brock Irwin, Deanda Widener, Danny Ray Hendricks, Owen Montgomery, Melissa Cochran, Sid McAdams, Deborah Bishop, Billy Jones, Amy Stinson, Cara Nichols, Misty Volden, Jeffrey Swan, Carrie Cenicerros, Angela Vela, Ori Cooksey, Cindy Sasser  
**Anniversary** - Mr. & Mrs. George Jackson, Ladd & Cathy Gafford



## Engagement Announcement

Mr. and Mrs. Lan Leader of Tulsa, Oklahoma announce the engagement of their daughter Alyson Lee to Jace Paul Dawson. Jace is the son of Pat Dawson of Gruver and Larry Dawson of Arnett, Oklahoma.

The bride-elect is a graduate of Union High School and Oklahoma State University. She is an internal auditor with the City of Tulsa.

The prospective bridegroom is a graduate of Gruver High School and Oklahoma State University. He is director of marketing for Tech, Inc.

The wedding is planned for March 22, 2003, at the Lutheran Church of Our Savior in Tulsa.



## HOW LONG AFTER THE ANNOUNCEMENT DO YOU REMEMBER THE STORY?

Listen to more than just a thirty-second sound bite. Read your newspaper and hear today's events speak out.



National Newspaper Week  
 October 6-12

Expand your knowledge through reading, and watch your future unfold

## MONUMENTS

Boxwell Brothers Funeral Home  
 519 Evans • Spearman  
 659-3802

Dear friends,  
 When you buy a monument from us we make sure it is exactly what you want at a price you can afford. If it is not right, we will make it right. And you will not have to search the countryside to find us. We are here when you have a need.  
 Sincerely,  
 Bob Boxwell

## HANSFORD HAPPENINGS

### 4-H Smoked Meat Sale

Hansford County 4-H members are selling smoked meats for their annual fund raising efforts. Products available include smoked and spiral hams, turkey, peppered turkey breasts, smoked or peppered bacon, beef or chicken fajitas, chicken tenders, tamales, pork patties, breakfast burritos, sausage, egg and cheese biscuits, Hunter's Package (Smoked turkey breast, pork loin, smoked bacon and jalapeno summer sausage) and sausage links. Funds benefit the awards program and recognition banquet for all 4-H members. Orders must be received by October 17th, with delivery date before Thanksgiving. Please contact a 4-H member or call the County Extension Office at 659-4130 or 733-2901 to place your order.

### Benefits of Humor

You are invited to a program on the Benefits of Humor, given by certified Laughter Leader, Bev Harris. The program will be on October 14, 2002 at the O'Loughlin Center at 6:30 p.m. All persons in Hansford County and the surrounding area are invited to attend this enjoyable program sponsored courtesy of the O'Loughlin Center and Hansford Hospice. Refreshments will be served.

### Wesley Methodist Church's 22nd Annual Festival of Arts & Crafts

The Wesley United Methodist Church will host their 22nd annual Festival of Arts and Crafts on December 7, 2002 from 9 a.m. to 5 p.m., at the Community Center. Only a limited number of booths are available, with applications being screened. The booth fee is \$10. Applications may be obtained by writing to Ellen Collins, 801 Miles St., Hereford, TX 79045, or call (806) 364-0774.

### Free Power Point Presentation by Jimmy Hatley, CPA, IRS Taxpayer Education and Communication Specialist

The Spearman Chamber of Commerce is hosting a free Power Point presentation on Tuesday, October 22, 2002 from 10 a.m.-12 noon and 1-3 p.m. The presentation will be given by Jimmy Hatley, CPA, an IRS Taxpayer Education and Communication Specialist. Each presentation will last approximately 2 hours. They are free to the public and will touch many aspects of business topics that will offer good information for anyone interested in opening a business, or those already in existence. Please call the Chamber of Commerce office at 659-5555, or e-mail spearman@arn.net to sign up.

### Careers in Agriculture Scholarship Program

The Careers in Agriculture scholarship program sponsored by Agrilance, CROPLAN GENETICS and Land O'Lakes Farmland Feed annually awards \$1,000 scholarships to 50 high school seniors interested in livestock or agronomy-related studies. Candidates should: be a high school senior planning to enroll in a two- or four-year livestock or agronomy-related curriculum in the fall following high school graduation; demonstrate leadership and academic performance; and write an essay describing why he or she is interested in an agricultural career. To apply, print and complete the application form and mail it to the address on the form. Applications must be postmarked by March 3 of the student's senior year. Winners will be notified a few months later in early May.

### College Financial Program

Gruver and Spearman students and parents are invited to a new college financial program known as the 529 College Plan. The program will be held on November 4th, from 6:30-8 p.m. in the Gruver School Cafeteria.

### Wessler Bequest

City National Bank in Guymon, Oklahoma recently notified Oklahoma Panhandle State University of a bequest left to the University. Paul W. Wessler, a 1966 alumnus of Panhandle A&M College, left a significant portion of his estate to OPSU. Mr. Wessler specified that 75% of the amount be used for research and the remaining 25% for agronomy scholarships. OPSU will establish a scholarship in his name for the School of Agriculture.

### PLAN Test For Sophomores

Tenth graders have the opportunity to take part in ACT's PLAN Program on Tuesday, October 29th. This is the only time PLAN will be offered this year. PLAN, which is taken by nearly one million students in preparation for the ACT Assessment, includes academic tests and a survey of career interests. Participating in PLAN gives students a head start on career and educational planning. PLAN will be offered Tuesday, October 29th. The cost is \$8.50. Students can receive more information about PLAN or sign up by contacting Mrs. Guthrie or Mrs. Hart at Spearman High School.

### Union Church Welcomes Evangelist

Evangelist Ken Howe of Dallas will speak at the Spearman Union Church, 31 S. Endicott in Spearman, on Sunday at 11 a.m. and 6 p.m. and Monday through Wednesday at 7 p.m.

### Bible College Choir of Baxter Springs, KS To Perform

The Bible College Choir of Baxter Springs, KS will perform at the Apostolic Faith Church (corner of 9th and Dressen) at 7 p.m. on Thursday, October 17th.

### Spearman 4-H Roster Card Sale

The Spearman 4-H is selling roster cards to raise money for their scholarship fund. If you would like a roster for the 7th, 8th, JV or Varsity Spearman Football teams, contact the Extension Office at 659-4130. Cards are \$2.00 each. Thank you for your support!

### Child Find

Child find is the ongoing process of locating children (ages infant-21 years) with disabilities for special education services. If you know a child who shows signs of developmental delay, ongoing behavioral or medical problems that interfere with learning, find out how you can help by calling Gruver ISD at 733-2031, Spearman ISD at 659-2565, Pringle-Morse CISD at 733-2507, or the Child Find coordinator at Region 16 Education Service Center at (806)376-5521.

Becky Porter  
 Gone,  
 But not forgotten!  
 SHS Class of 1999

**LYRIC Cinema**  
 113 Main Spearman, Texas (806) 659-2812  
 On the Web @: [www.antden.com/newweek.asp](http://www.antden.com/newweek.asp)  
 Children 3 thru 11 - \$4.00 Adults - \$6.00  
 Sr. Patrons (65 & older) - \$4.00

**\*\* Movies at 7:00 p.m. - Friday thru Tuesday \*\***  
 Showing: October 11th thru October 15th

<p>Screen 1</p> <p><b>The Four Feathers</b></p> <p>Starring: Heath Ledger Kate Hudson</p> <p>Rated PG-13  <i>For Intense Battle Sequences,              Disturbing Images, Violence              &amp; Some Sensuality</i></p>	<p>Screen 2</p> <p><b>Serving Sara</b></p> <p>Starring: Elizabeth Hurley Matthew Perry</p> <p>Rated PG-13  <i>For Crude Humor, Language              &amp; Sexual Content</i></p>
--	---

For Ratings Conscience Parents: [www.screenit.com](http://www.screenit.com)

**Palo Duro Supper Club**

**Daily Lunch Buffet**  
 Sunday-Friday,  
 11:00 a.m. - 2:00 p.m.  
**\$5<sup>97</sup>**  
 Buffet is all-you-can-eat, and includes salad bar

Friday Buffet - Fresh Water Catfish  
 Kitchen Closes at 8:00 p.m.

**Palo Duro Supper Club**  
 22 S. Archer • 659-2232 • Spearman, TX

**Dunn's Fish Farms of Arkansas, Inc.**  
 P.O. Box 10 Monroe, AR 72108  
[www.dunnfishfarm.com](http://www.dunnfishfarm.com)

Channel Catfish, Bass, Hybrid Bluegill, Fathead Minnows, Koi, Crappie, and Triploid Grass Carp are now available for Pond and Lake Stocking. Permit required for Triploid Grass Carp.

- We furnish hauling containers!
- Liver Delivery Guaranteed!
- Discounts/Special Deliveries on large orders!
- Turtle Traps, Fish Feeders, Fish Traps
- Liquid Pond Fertilizer and Gift Certificates

Delivery will be Tuesday, October 15, 2002 at the times listed for the following towns and locations.

Briscoe - County Line Coop (806) 375-2321 - 8:00-9:00 a.m.  
 Canadian - Canadian Equity Coop (806) 323-6428 - 10:00-11:00 a.m.  
 Pampa - Lazy "S" Feed & Garden (806) 665-4189 - 12:00-1:00 p.m.  
 Borger - Borger Feed Barn (806) 274-2099 - 2:00-3:00 p.m.  
 Spearman - Spearman Equity (806) 659-2420 - 4:00-5:00 p.m.

To place your order or for more information contact one of our Aquatic Consultants, local dealer, or email [sales@dunnfishfarm.com](mailto:sales@dunnfishfarm.com).

Offices located in Oklahoma & Arkansas!  
 Mon-Fri 7 a.m.-8 p.m. CST • Sat 8 a.m.-6 p.m. CST  
 1-800-433-2950 • Fax 1-870-589-2029  
[www.dunnfishfarm.com](http://www.dunnfishfarm.com)

# Pipkin, Alexander Wed



**Mrs. Jim Alexander  
Elizabeth Pipkin**  
Elizabeth Marie Pipkin of Dallas  
and Jim F. Alexander Jr. of

Houston were married Saturday, Aug. 17, at the home of the bride's parents in Spearman. Jon M. Garnett officiated.

The bride is the daughter of Frances and Roy Pipkin of Spearman. Grandparents of the bride are Dorothy Pool of Amarillo and Doris Jean Pipkin of Spearman, both of whom attended the wedding, the late J.W. Pipkin and the late "Bunk" Pool.

Parents of the groom are Jane and Jim F. Alexander Sr. of Amarillo. Grandparents of the groom are Herb and Alice Gerstner of Amarillo, who attended the wedding, and the late James H. and Dolly Alexander.

Bridal attendants were Katherine Pipkin and Angela Pipkin, sisters of the bride.

Best man was Steven Anderson. Honorary groom's attendant was Nathan Pipkin.

The wedding reception was at the home of the bride's parents.

The bride is a graduate of Spearman High School and graduated from Brigham Young University in Provo, Utah, with a bachelor of arts degree. She also graduated from Harvard Law School in Cambridge, Mass., with a juris doctor degree. She is a judicial clerk for The Honorable Nancy F. Atlas, U.S. District Court for the Southern District of Texas.

The groom graduated from Tascosa High School and from Austin College in Sherman with a bachelor of arts degree. He also graduated from Fletcher School at Law and Diplomacy at Tufts University in Medford, Mass., with a master of arts degree. He is a presidential management intern for the office of the Secretary of Defense on detail to NASA.

The couple planned a honeymoon to Santa Fe, N.M. They reside in Houston.

## It's A Boy!

Ryan and Rebecca Mathews wish to announce the birth of their son, Cagan Dean Mathews. Cagan was born on September 24, 2002 at 5:05 a.m. He weighed 7 pounds, 8 ounces.

Proud grandparents are Royce and Betty Mathews and Byron and Diana Hill.

He was welcomed by big brother Coley.

## Thank You!

The Spearman High School Cheerleaders would like to thank Hansford Hospital for donating the frisbees, which are thrown at the Lynx Football games after every touchdown. We would also like to thank H&H Credit Union for donating the purple footballs, and the Lion's Club for donating the Lynx Banner Flag for Louie to wave at the games. We appreciate all of you very much.

SHS Cheerleaders

Jessica Crossland, Claudia Vaquera, Sami Cazares, Jentry Edwards, Macy Harbour, Dana McLaughlin, Miranda Paul, Britta Vanderburg and Jena Cherry

## Engagement Announcement

Bobby and Kay Snider of Dumas wish to announce the engagement of their daughter, LaShera Denise Snider to Ryan Patrick McElhany. Ryan is the son of Gary and Julie McElhany of Lancaster, TX.

The couple plan a November 23, 2002 wedding in Dumas. LaShera is a 1997 graduate of Dumas High School and a 2001 graduate of Southwestern Assemblies of God University in Waxahachie, TX with a degree in Early Childhood Education. She is a kindergarten teacher at Lancaster ISD.

Ryan is a 1998 graduate of Lancaster High School and a 2001 graduate of Southwestern Assemblies of God University in Waxahachie, TX with a degree in Business/Advertising. He is employed by the Southwestern Assemblies of God as a multimedia coordinator.

## Scholarship Program Offers \$1,000 to Ag Students

Students pursuing careers in agriculture are encouraged to apply for a scholarship from the Careers in Agriculture scholarship program, jointly sponsored by Agriliance, Land O'Lakes Farmland Feed and Croplan Genetics. High school seniors from throughout the country who will enroll in a two- or four-year agronomy or livestock curriculum in the fall of 2003 are eligible to apply. Fifty \$1,000 scholarships will be awarded.

"Students with leadership abilities and an interest in agriculture are needed to fill a variety of positions in our industry," said Annette Degan, scholarship committee chairperson. "The Careers in Agriculture scholarship program helps promising students gain the education they need to obtain these positions."

For the past 13 years, Careers in Agriculture has encouraged bright young students to pursue agricultural careers by awarding more than \$300,000 in scholarships.

To qualify for the program, students must meet the following criteria:

- \* Be a high school senior planning to enroll in a two- or four-year livestock- or agronomy-related curriculum in the fall of 2003;
  - \* Reside in one of the 50 states;
  - \* Demonstrate both leadership abilities and academic performance; and
  - \* Write an essay describing why he or she is interested in an agricultural career.
- Applications are available from participating local cooperatives or on the Agriliance web site at [www.agriliance.com](http://www.agriliance.com) in the

Careers section. All applications must be returned via regular mail by March 3, 2003, to be eligible. Winners will be notified by mail in May. For more information or to request an application, call 800-232-3639, ext. 4584.

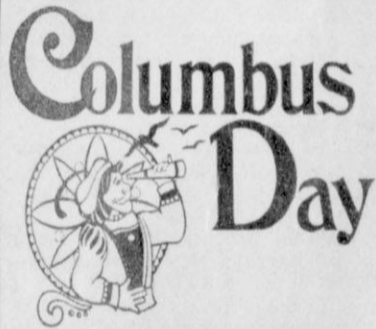
## Thank You!

Thank you for announcing the MS Walk in your paper. We had over 25 team members and raised around \$1500. The Walk raised over \$25,000.

Thanks again for your support,  
Kevin & Ronda Bynum

## First State Bank

will be closed on Monday, October 14th  
in observance of



The Bank that has  
the Tradition of  
Strength and Service

One NE Court  
Spearman, TX  
(806) 659-5565  
member FDIC

You are invited to a

Baby Shower

for

Emma Grace Barnes

daughter of Amy (Blan) & Tanner Barnes

on Saturday, October 26, 2002

from 2:00 - 4:00 p.m.

at the Waka Church of the Brethren

Waka, Texas

You are invited to a

Baby Boy Shower

for

Jacob Roman (due Nov. 21st)

future son of Joanna Clark & Tommy Brown

on Saturday, October 19, 2002

from 10:30 - Noon

at the home of Mary Ann George

711 Wilbanks • Spearman, TX

## Hansford Ag Management Inc.

"For All Your Forage Needs"

Fertilizer Application - Krause Landsman  
Wheat Planting (Conventional & No-Till)  
Sunflower Drill

12 Years Experience No-Till Planting

For more information, contact  
Will Jarvis

Res. (806) 659-5003

Mobile (806) 662-1375

## BOSS' DAY

October 16th

place your order now  
at

All Occasion Flowers

202 N. Bernice  
(across from the Post Office)

659-5180

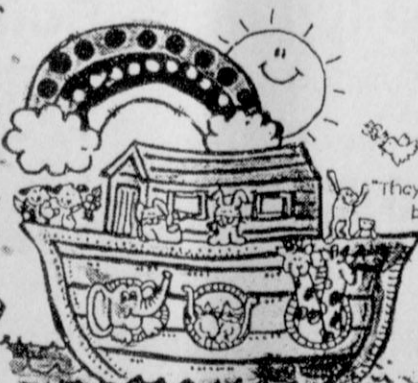
Baby Shower

for

NICOLE LOZAMO

Saturday, October 12<sup>th</sup>

10:00 - 11:30 am



COME AND GO

901 South Barkley

Home of Stephanie Brock

Selections at  
Kids Stuff +  
Toys R Us

## For The Bride & Groom

Come by and let us help you  
set up your special gift table

## Couples Currently Registered

Jeff Hutchison & Trilby Baldwin - Nov. 2

Michelle Schick & Wayne McCubbin

Dusty & Brooke (Lesly) Vinson

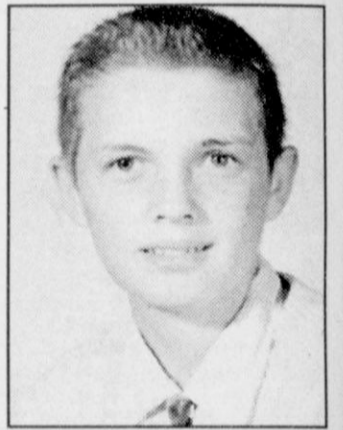
314 Main  
659-2141

**Gordon's**  
DRUG

Spearman,  
Texas

50 isn't old  
(If you're a tree!)

Happy  
Birthday!



## Bridal Registry

Kimberly Boyd & Jesse Tindell - Oct. 19

Terri Schroyer & Evan Stubbs - Oct. 26

Trilby Baldwin & Jeff Hutchison - Nov. 2

Julie (Jones) & Kent Hendrix - Nov. 23 (Morse)

Suzanne Sanders & Luke Bellsnyder

## Celebrate

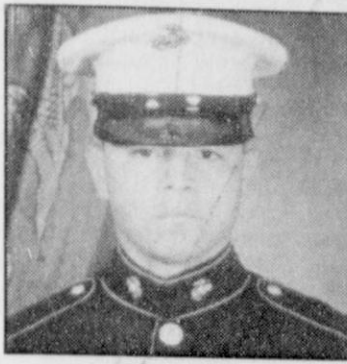
Gifts for all your celebrations!

203 Main St. • Spearman, TX

(806) 659-3350

1-800-663-8026

## Military News



Marine Corps Pvt. Uriel Garcia, son of Jose Garcia and Aidina Ousley of Perryton and the grandson of Ray and Guma Garza of Spearman, completed basic training at Marine Corps Recruit Depot in San Diego, CA on September 20, 2002.

Pvt. Garcia successfully completed twelve weeks of training designed to challenge Marine recruits both physically and mentally. Garcia's platoon was honor platoon 3103. Pvt. Garcia also made Rifle Expert on rifle training. Garcia and his recruits started

their training at 5 a.m. by running 2-3 miles and performing calisthenics. They attended a certain amount of hours in class and field assignments, which included water survival, marksmanship, combat training and martial arts, as well as other training activities. Recruits were presented the Marine Corps Emblem on September 20, 2002 and were addressed as "Marines" for the first time.

## Among The Neighbors

by Helen Fisher

The death of Omar Cotter last Monday came as a shock to most. Interment was at Hansford Cemetery on Thursday.

Omar was always interesting to talk with and very knowledgeable about Hansford County's past. He attended the one-room school at Hansford in the first few grades until a bus route closed the school. The main school had been moved to Spearman.

The building, which held seven grades in the one room, was moved to Spearman and still sits on the west side of Townsend Street at 5th Street, across from the Gus Birdwell Elementary.

Omar was in the Navy, serving in the Pacific in WWII, and had some extraordinary remembrances.

He was qualified to practice law, but preferred to farm and run cattle. Much sympathy is expressed to his family.

Don and Gloria Knox spent several days last week in New Mexico. They returned Tuesday after an enjoyable few days in and around Taos and Espanola. The fall colors had not yet started.

Babe Pendergraft enjoyed having her cousin, Bob Kirk, at her home for several days, recently. He lives at Marble Falls.

Cheryl Gibson, student at Southern Oklahoma University at Bethany, OK was here this weekend with her parents, Gregg and Gwen Gibson.

Another guest was Mrs. Reta Gibson, mother of Mr. Gibson, from Oklahoma City.

Audene and Verlin Beck had would-be guests this past weekend and instead of resting and sight seeing, their entertainment consisted of helping with the corn harvest!

Their grandson, Dustin Beck, student at Hardin-Simmons University in Abilene, brought with him two city boys (fellow students) from the Austin area. Working along with Dustin may have soured them on farming as an occupation. Others participating were Austin and Edward Beck of Amarillo.

Long time friends of the Becks,

Billy and Louise Jones of Eufaula, Ok came and are still here. He seems to be enjoying driving a corn truck.

Mr. Jones is retired from many years here in a managerial position with Getty Company.

Consolation is extended to the family of Mrs. Opal Schaefer.

Ginger and Loyall Turner are back at work after spending a week's vacation at the family lodge near Taos. A restful time, it was the ideal weather. The foliage was beautiful beyond description.

Kyle McLaughlin, student at John Tarleton University in Stephenville spent the recent weekend with his parents, Delinda and Danny McLaughlin. He brought friends, also students at the university, Ryan Hill and Cara Howard.

Dr. Tom and Linda Latta are back from a restful and enjoyable ten day vacation. They leisurely drove to Ely, MN. Ely is considered a

breakwater between Canada and the US on the north shore of Lake Superior. Dr. Tom had been there before and was much impressed.

The scenery was breath-taking with indescribable colored foliage. Through the Dakotas, results of the prolonged drought were depressing. The dryland corn was ruined, but the irrigated corn appeared productive.

Shelly and Jeff Beedy went to Dallas last weekend, spending one night there with Blake and Hillary Beedy. They then went on to College Station for the football game at Texas A&M, accompanied by Tanner and Holly Beedy, students.

Abby and Cody Pipkin of Morse accompanied them.

Weather report for week of September 30th through 7 a.m. on October 7th: the high temperature was on the 30th at 92 degrees; the low was on the 6th at 43 degrees. Moisture - Dwayne kept his promise with .65 on the 3rd; .15 on the 5th; and .45 on the 6th, a total 1.25.

## Cross Country Results

### Spearman JH Attends CC Meet

On Saturday, September 28th, the Spearman Junior High took first place at the Cross Country Meet at the Darouzett Golf Course.

Individual places are: 1st - Jessica Diaz, 2nd - Christy Lang, 3rd - Kelcee Rex, 6th - Amy Brown, 7th - Amy Boyd, 9th - Brittney Bradley and 10th - Jordanna Lozano.

### Lady Hounds Attend Lubbock CC Meet

The GHS Girls Cross Country team took 18th place in the Lubbock Cross Country Meet September 28.

Runners and their times were Meagan Knight - 13.41, Allison Reid - 15.16, Lindsey Clift - 15.17, Samantha Myatt - 14.40, Laci Fitzgearld - 14.32, Liz Lopez - 14.38, and Callie Hargis - 16.07.



### North Texas Information Systems

Spearman, Texas  
Scott Ermis • 664-3233

Computer Sales, Service & Repair  
Computer Networking  
House Calls, Pick up & Delivery  
References Available

• Microsoft Certified Professional •  
• CompTIA Certified Professional •  
Member Spearman Chamber of Commerce

Listen to  
**KRDF - 98.3 FM**

Hot Country Stereo  
'Till Midnight

### Alva Monument Co.

Formerly Liberal Monument  
& Memorial Company

New Location:  
111 Tucker Road  
Liberal, Kansas

North of the New Wal-mart

Liberal Alva  
1-888-654-9138 1-800-344-4605

### Spearman Retail Merchants' Stuff Your Stocking Christmas Promotion

\$10 Purchase	\$10 Purchase
\$10 Purchase	\$10 Purchase
\$10 Purchase	\$10 Purchase
\$10 Purchase	\$10 Purchase
\$10 Purchase	\$10 Purchase

Kick off the "Stuff Your Stocking" promotion during Moonlight Madness!

Have your stocking stamped for every \$10 spent with any participating business. When you collect ten stamps, enter your stocking for the "Stuff Your Stocking" drawings, held in December.

**START STAMPING NOW!**

# WANTED DEAD OR ALIVE

★ **\$150 REWARD** ★

For your active or inactive satellite dish.

WANTED FOR

No local channels ★ Fees for additional TVs ★ Equipment & repair costs ★ Long contracts

**GET CLASSIC CABLE AND STOP THIS VARMINT.**

CALL NOW FOR THIS LIMITED-TIME OFFER AND GET FREE INSTALLATION:

**800.999.6845**

**Classic CABLE**  
STAY HOME. GO FAR.  
www.classic-cable.com

Trade in your dish and receiver and get \$150 in discounts: \$12.50 per month for 12 consecutive months when you subscribe to Expanded Basic or greater level of service. New residential customers only. Taxes not included. Offer applies to services herein. Offer subject to expiration without notice. Not valid in conjunction with any other offer. Other restrictions may apply. Installation charges may apply for some digital services.

# The Gruver Grapevine

by Harletta Carthel

## Tailgate Party to Precede First District Game

A fan-tastic tailgate party beginning at 5:30 p.m. until game time Friday will grill up fun and food for Greyhound boosters.

The community is invited to bring their tailgate spread and decorations and compete for individual and business prizes in the annual event.

Fans may bring their own grills or use a large grill to be furnished by the Gruver Boosters.

Come grill up a great meal then stay to watch the Hounds grill the Stratford Elks.

## GHS Band to Compete

The GHS Houndsound Band will be competing in the Canadian Marching Contest on Saturday, October 11.

The competition will give the band the experience of presenting their routine before area competition October 19 at Dick Bivins Stadium.

In UIL band contests, bands may only advance to regional and state competition every other year, and Class A bands will be able to advance in 2002. Hence, the area contest October 19 will be an important day for the GHS band.

## Show Your Support, Write A Letter

GHS Head Football Coach Bruce Bryant is encouraging members of the Gruver community to write short letters of support to the Hounds football team as they begin their district season on Friday against the Stratford Elks.

Coach Bryant suggests including a personal athletic experience, a motivational quote, or other positive messages.

The letters will be given to the team to read before game time. Please leave letters in the high school office by 2:00 p.m. Friday.

Coach Bryant also wishes to thank the community for its support of the football teams and the continuing goal of building a football program of pride for our school and community.

## Flu Shot Clinic Slated

A flu shot clinic will be held at the Gruver Golden Age Center Wednesday, October 16, from 9-12 a.m.

Dr. Holland or Borger will be directing the clinic with Kathy Barkley and Elizabeth Duncan assisting.

The flu shot is provided free for those with Medicare cards and is \$20 for all others.

Residents of Spearman, Gruver, and Morse are welcome to attend the clinic.

## Gruver ISD Board Has Special Meeting

The Gruver ISD Board of Trustees met Monday, September 30 jointly with the Hansford County Commissioners to hear proposals from the Great Plains Windpower, LLC.

In addition to members Benny Wilson, Paul Stavlo, Jody Irwin, Mike Yanke, Buddy Lowe, Jr., Davin Winger, Terry Sherrill, and Interim Superintendent Joel Lynch, the following visitors were present Randy Reid, Jim Brown, Danny Henson, Joe T. Venneman, Butch Reed, Kent Guthrie, Jim Derington, Cindy Avila, John Hutchison, Wanda Wagner, Clay Schnell, Randall Sauer, Robert Patrick, Jay Lobit, and John Baum.

The meeting which lasted two hours and 45 minutes adjourned at 11:45 a.m.

## Gruver Schools Aid Foundation

Gruver Schools contributed \$310 to the Susan G. Komen Breast Cancer Foundation this week.

The money was raised by the contribution of Gruver faculty members who gave \$5 for permission to wear denim Friday, October 4.

Sharolyn Finley won two movie passes for being the faculty member to wear the most denim while Pat Overby won two movie passes in a drawing among participants.

The Susan G. Komen Breast Cancer Foundation is the result of a promise made by Nancy Goodman Brinker to her sister Susan, who was diagnosed with breast cancer in 1978, to do everything possible to bring an end to breast cancer. The request was the dying wish of Mrs. Komen.

Working through a network of affiliates and events like the Komen Race for the Cure, the Komen Foundation is fighting to

eradicate breast cancer as a life-threatening disease by funding research grants and meritorious awards and supporting education, screening, and treatment projects in communities around the world.

## College Fund Plan to be Presented

Gruver and Spearman students and their parents are invited to a college funding program known as the 529 College Plan November 4, from 6:30-8:00 p.m. in the Gruver Schools Cafeteria.

Mika McLain, 1994 graduate of GHS, will be presenting the program.

## Junior Varsity Suffers First Loss

The Sunray junior varsity downed the Hounds 26-0 Thursday in Sunray to give the Gruver team its first loss of the season.

The Hounds will get a second shot at the Cats on November 7 when they will host Sunray.

## Cats Claw Hounds

In this game, the score was 20 to 8. We lost to Sunray, but we'll beat them next time we play on November 7.

Tony Lora was a great tackler

and blocker. In the fourth quarter, Conrad Curry handed the ball to Treymayne Martinez, who ran for a touchdown. As he was running, Brian Johnson was there to make a block.

Shortly afterward Drew Grotegut made the two point conversion. (Thank you to Cason Finley in helping us with names.) Go Hounds!

Both the junior high and the junior varsity will travel to Stratford Thursday. With the junior high kick-off to be at 5:00 p.m., and the junior varsity following at approximately 6:30 p.m.

## City Reports Rainfall

An official report of .18 inch of rain was recorded in the early morning hours of Sunday, October 6.

## Harpers Welcome Daughter

Quentin and Kelly Harper proudly announce the birth of their daughter Laney Lee Harper.

The little miss was born Friday, October 4, 2002 at Baptist St. Anthony's in Amarillo. She weighed 8 pounds and 14 ounces and was 21 and 1/2 inches long.

Laney's grandparents are Fred and Brenda Shieldknight of Spearman, Mike and Lee Wilhelm

and Tony Harper, all of Gruver.

Great grandparents are Ben and Florence Wheeler of Clayton, New Mexico, Jimmy and Lois Shieldknight of Spearman, Olene and the late Bob Cluck of Gruver, and the late Carol and Joyce Harper of Spearman.

## Davis' Work Honored

Gerri Davis' Peacemakers Crazy Quilt won top dual awards at the Panhandle Quilt Show in Pampa held October 5 and 6.

Davis' entry won 'Quilt of the Century,' the shows top prize and also won the viewers' choice award which is selected by popular vote of visitors to the quilt show.

This is the third year that Davis has won top prize in the annual Pampa event.

## Fifth Quarter Planned

GHS students are invited to a fifth quarter fellowship at the United Methodist Church following the Gruver/Stratford football

game.

## Get Well Wishes

Please remember Margaret Odom as she continues to recuperate at IHS in Amarillo.

David Turner had successful pancreatic surgery last week in Amarillo.

Don Evans has a consultation with his doctor in Amarillo this week on possible future procedures...

The father of Lori Haight had heart bypass surgery recently.

## I Want to be A....

A display of kindergarten papers on the walls of Gruver Elementary revealed that the number one occupation cited by girls was cheerleader. The number one career listed by boys was doctor which may be a good idea since the number three occupation listed was bronc rider.

**October 14-18**

**Boss's Week**

Balloon Bouquets • Mugs  
Assorted Sweet Trays for the Office  
(Even Bigger) Big Cookies

*Jeanette's Sweet Creations*

315 1/2 Main • 659-3328 • Spearman  
We deliver - \$5.00 minimum

Subscribe to the Reporter-Statesman.  
Call 659-3434 for details.

**PARENT TALKS**  
over a cup of coffee with other parents

and Dr. Mark Garnett

Get a Great Start to Make Your Child's Year a Success

Tuesday, October 15, 2002  
8:00 - 8:30am  
Gus Birdwell Elementary Library

Good health is essential to school success. Good nutrition and the right amount of physical exercise are also important.

Presented by: Gus Birdwell Elementary and Spearman ISD Community Resource Program

Eat & Be Merry At

**MONEY'S**

**BBQ & STEAK HOUSE**

Hotline for Friday & Saturday Nights - 435-3945

We offer Priority Seating!  
Give us a call before leaving, and we will save you a place in the seating line.

When you arrive, check in with the hostess.

New Menu (10 new items)  
Wed. Night - All-You-Can-Eat Catfish

**\$\$\$\$ Super Sale**

**Zellers Jewelers**  
415 N. Main Guymon, OK

**50% OFF STOREWIDE**

Beginning Monday, October 14  
**Limited Time**  
Merchandise Will Not Last  
Shop Early for Christmas, Anniversary, Birthday

Fine Jewelry and Select Giftware for 55 Years in the Panhandle

**YOU'LL FIND ALL THE LOCALS AT THE CLASSIC CAFE.**

Get Classic Cable and you'll feel right at home with:

- Local news.
- Local sports.
- Local weather.
- Free basic cable on additional TVs.

**Classic Cable**

Get \$9.95 - **INSTALLATION** and an **ENTIRE YEAR** of basic cable for just \$9.95 - a month.

Call now for this limited-time offer.  
**800.999.6845**

**Classic CABLE**  
STAY HOME. GO FAR.  
www.classic-cable.com



Lake Level--October 7, 2002--31.12 feet

The level dropped under 2 inches, as the rain gauge on the office side showed .65 in the earlier 2-day rain and .28 from the Saturday night one.

Fishing was not too good, but Kent Rubble caught two blue cats weighing 16 and 16.5 pounds.

Camping continues despite the cooler weather. Friday and Saturday a group of five families from Gruver camped on the north side. They were the Ronnie and Rhonda Williams family, Johnny and Kristi Williams family, and the Buster and Krista Davis family, Steve and Bernie Ryan, and David and Pam Miner--all of Gruver. Tony Pacheco of Gruver camped on the office side Friday night and Ronnie Cogdill camped there on Saturday night.

Jim reports seeing 6 white pelicans on the Lake Saturday morning. The ducks are beginning to move in now. Birds are coming to the Derington's feeder. At one point they had a cardinal on one side and a scrub jay on the other. Robins were feeding on the ground in front of them. Jim thinks the scrub jays are much prettier than the bird book pictures show.

Both Spearman and Gruver have had late evening shows of buzzards enjoying the air currents above the towns. The ones at Spearman have been spending the night, too. It seems they prefer the area around Frances Pipkin's home, and she is being teased about what she might have buried in her back yard.

A few days ago Mrs. Scoggins of County Road O out from Spearman called me about a snake they had killed but could not identify. It was bluish black and about 4 feet long. The back was solid color--no pattern on it. Mrs. Scoggins had been raised in the Panhandle, but this was a new

snake to her.

I finally made a guess that it was what we called a blue racer, after she added that it was a slender snake. These snakes vary in color. Some are green, others blue, and some blue-black. A racer is a beautiful sight when you see one traveling away from you with that incredible speed.

Most of the racers we see are coachwhips. They are tannish, slender, and can be 6 feet long.

When I think of racers, I think of hoop snakes. Most young people have not heard how one of these racers can form a hoop by grabbing the tail with the mouth and then stiffen into a hoop that will roll right at you with lightning speed. A poisonous spine on the tail is then stuck into the victim.

I had been trying to find a reptile book that would brand the hoop snake as a myth or make me believe they existed. In my search at the Gruver Library I found Pat White subbing for Carolyn Fletcher. Pat had grown up at Coldwater, Kansas (south of Greensburg) and knew all about hoop snakes.

She suggested we look it up on the internet and find out the truth. Quickly she found the subject of hoop snakes and printed out a sheet that said there is no such thing as a hoop snake. If you still want to believe, get Don Hudson to tell you about a worker that encountered a hoop snake in the peony or strawberry fields of Sarcoxie, Missouri.

## Military News

### US Army

Army Pvt. Jason C. Villines has graduated from basic combat training at Fort Jackson, Columbia, SC.

During the nine weeks of training, the soldier studied the Army mission and received instruction and practice in drill and ceremony, marching, rifle marksmanship, armed and unarmed combat, map reading, field tactics, military courtesy, military justice system, physical fitness, basic first aid, Army history, tradition and core values, and special training in human relations.

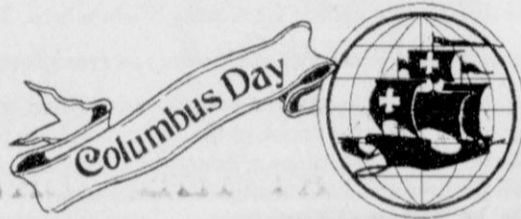
Villines is a 1996 graduate of Spearman High School.

### US Marines

Marine Corps Reserve Cpl. Luis R. Arreola, son of Rosa M. and Rosalio Arreola of Gruver, Texas, recently reenlisted for three years while serving with 4th Tank Battalion, 4th Marine Division, Amarillo, Texas.

Arreola is a 1995 graduate of Gruver High School of Gruver, Texas.

We will be closed on Monday, October 14th in observance of



**\$ Interstate Bank, ssb \$**

A Full Service Bank - FDIC Insured  
322 Main Street • Spearman, TX 79081  
Phone - (806) 659-2559 • Fax - (806) 659-3276

**IT'S BOSS' DAY**

October 16th

Ask about our Boss' Day Flower Arrangements

Prairie Garden Flowers

1-800-753-2389  
659-2212 • 659-3329  
209 Main St. • Spearman

### Gladiola Flower Club

The Gladiola Flower Club met in the home of Virginia Trindle on October 3, 2002 at 3 p.m.

President Verna Brown called the meeting to order. Roll call was given by each member saying something about the person on their right.

New officers for 2003 are: President - Margarette Evans, Vice-President - Gwen Smith, Secretary - Judy Yarbrough, Treasurer - Virginia Trindle, Historian - Pam Schnell, Flower Chairman - Dorothy Buzzard, Project Chairman - Estelle Jackson.

Delinda McLaughlin gave an interesting program about turning years of photos into a priceless scrapbook of photo albums. Delinda is the coordinator for Creative Memories. A quiz was handed out and winners for prizes were: Charlsie Baker, Ann Flowers, Gwen Smith, Verna Brown, and Betty Davis won the door prize.

Norma Jean Mackie won Specimen and Virginia Trindle won Pot Plant.

The next meeting will be held on October 17th at 9:30 a.m. in the home of Eloise Renner.

Members present were: Charlsie Baker, Verna Brown, Dorothy Buzzard, Betty Davis, Margarette Evans, Ann Flowers, Estelle Jackson, Lorene Kunselman, Norma Jean Mackie, Eloise Renner, Gwen Smith, Virginia Trindle and Judy Yarbrough.

## HANSFORD COUNTY GOLF COURSE CASH BALL

• **\$2500 Grand Prize** •

Saturday, October 12th - 7:00 p.m.  
O'Loughlin Center - Spearman, Texas

Steak Dinner • Live Band • Door Prizes  
\$50 per ticket

To purchase tickets, call 659-3939 or 659-2233.

# NEW CAR WARRANTY

## WITHOUT NEW CAR PRICE!

### 2002 Lincoln LS

White pearl, V8, automatic, loaded, tan leather. Only 18,000 miles. Balance of 4 year/50,000 mile warranty remains. ----- **Only \$29,900**

### 2002 Escort SE

4 dr, white, 4 cyl., automatic windows, locks, cruise. Only 14,000 miles. Balance of 3 year/36,000 mile warranty remaining. ----- **Only \$9,900**

### 2001 Lincoln Town Car

White with tan leather, remote entry, auto theft, dual power seats, etc., chrome pkg. Only 18,000 miles. Balance of 4 year/50,000 mile warranty remaining. ----- **Only \$25,900**

### 2001 Lincoln Town Car

Silver w/gray leather, remote entry, anti theft, dual power seats, etc., chrome pkg. Only 14,000 miles. Balance of 4 year/50,000 mile warranty remaining. ----- **Only \$25,900**

### 2001 Taurus SES

4 dr., white with gray cloth, power seats, windows, door locks, tilt, cruise, defogger, remote entry. Only 17,000 miles. Balance of 3 year/36,000 mile warranty remaining. ----- **Only \$12,900**

### 2001 Escort SE

4 dr, 4 cyl., automatic, red with tan cloth interior, very economical. Only 14,000 miles. Balance of 3 year/36,000 mile warranty remaining. ----- **Only \$8,900**

### 2001 Explorer XLT Sport 4x4

Teal with gray cloth. Only 6,700 miles - barely broken in! Balance of 3 year/36,000 mile warranty remaining. ----- **Only \$18,500**

### 2001 Mustang

Mineral gray with tan cloth, V6, automatic, air, tilt, cruise, power windows & locks, mag wheels, CD player. Only 19,000 miles. Balance of 3 year/36,000 mile warranty remaining. ----- **Only \$14,500**

### 1999 Mercury Grand Marquis LS

Spruce green with gray leather, chrome pkg., dual power seats, entry system, loaded, one owner (local). 68,000 miles. ----- **Only \$11,500**

### 1999 Ranger XLT Super Cab 4x4

Green, 4.0 V6, automatic windows, locks, tilt, cruise, high miles, but sound truck. ----- **Only \$6,500**

### 1998 Chevy S-10 LS Ext. Cab

Black, 4.3L V6, 5-speed manual transmission, air, aluminum wheels, tilt, cruise, CD player. Very clean - beautiful truck. ----- **Only \$7,250**

### 1996 Mercury Cougar XR7

2 dr., green with white, V6, automatic, air, tilt, cruise, power windows & locks. One owner. 73,000 miles. ----- **Only \$6,750**

### 1996 Olds Cutlass Cierra

4 dr., brown, 4 cyl., automatic. 60,000 miles. ----- **Only \$4,750**

### 1995 Lincoln Town Car

White with gray leather. Nice car with 79,000 miles. ----- **Only \$8,500**

### 1993 Mercury Grand Marquis LS

Metallic red with red leather. Loaded. Nice Car. ----- **Only \$4,500**

**Before You Buy, Give Us A Try!**



Darl Hergert

www.hergert-ford.com

Gordon Beagle

# Wildcats Stop Lynx, 21-13

by Kevin McDonald

Spearman's quest for another District 6-2A title took a detour last Friday night as the Canadian Wildcats outran the Lynx, 21-13.

The Wildcats (5-1 overall, 2-0 District 6-2A) used a speedy ground attack to overcome Spearman (4-2, 0-2), racking up 267 rushing yards on the night.

Balance was the name of the game for Spearman, as the Lynx posted 281 yards of offense-- 139 yards rushing and 142 yards passing.

Ironically, Canadian went through the air for their first score as Riley Morris hit Anthony Newcomb for a 64-yard touchdown. The first quarter strike was Morris' only completed pass in the game.

The Lynx wasted no time in responding to Canadian's early lead.

Paul Bynum scored his second touchdown in as many weeks, taking the ensuing kickoff 75 yards for the score. Clete Vanderburg tacked on the extra point attempt and tied the game at 7-7.

Spearman followed two defensive stands with offensive drives inside the Canadian 20 yard line. However, a goal-line interception

and a dropped pass on fourth down ended the Lynx scoring hopes.

Wildcat tailback Auston English proved to be a thorn in Spearman's side the entire game. English carried the ball 14 times for 181 yards to pace Canadian's ground game.

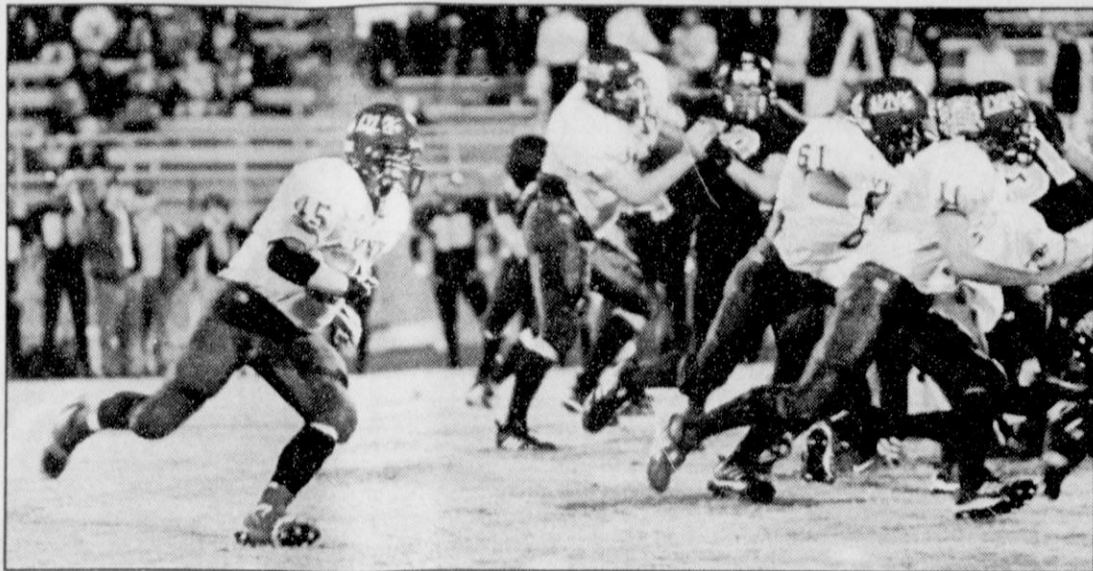
English busted loose for a 56-yard gainer, late in the second quarter, to set up the Wildcats deep in Lynx territory. Two plays later, Morris' 1-yard plunge gave Canadian a 14-7 lead at the half.

The Wildcats wasted little time in adding to their lead. At the 11:01 mark in the third quarter, English galloped 72 yards for a score.

Kevin Beedy helped the Lynx climb back into the contest, midway through the fourth quarter, hitting Lance Smith with a 67-yard pass. Colton Miller finished off the drive with a 2-yard TD burst.

Miller paced the Lynx ground game, carrying the ball 23 times for 80 yards and a touchdown. Lance Baker followed with seven carries for 41 yards; Smith, three carries for 11 yards; and Beedy, six carries for seven yards.

Beedy completed eight of 21 passes for 142 yards and two interceptions. Smith had a solid night receiving, grabbing five receptions



The Spearman Lynx Lance Baker receives help from the line as he makes a run for a first down during Friday night's game against the Canadian Wildcats. Photo by Gary Smith

for 112 yards. Baker had three catches for 30 yards.

Spearman hosts the West Texas High Comanches this Saturday night at 7:30 p.m., at Lynx Stadium.

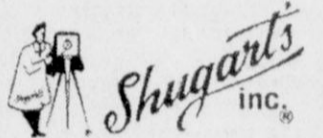
KID'S STUFF  
719 WEST 7<sup>TH</sup>  
SPEARMAN, TX

WEDNESDAY  
OCT. 23

PHOTO HOURS  
10-1 & 2-5

\$ 12<sup>99</sup>

plus tax  
due at pick-up  
1 - 10X13 \$1.99 sitting fee  
1 - 8X10 per person  
2 - 5X7s  
2 - 3X5s  
16 King Size Wallets  
8 Regular Size Wallets



WE USE KODAK PAPER, FILM & CHEMISTRY

*Thank You!*

We would like to thank everyone for the many acts of love and friendship expressed during the illness and death of our loved one. Thank you for the food, flowers, calls, cards and your prayers.

A special thanks to Bob Pearson and Leonard Harper for their words in Omar's memory.

The Family of Omar Cotter

Machine Quilting and Monogramming available at Jo's This 'N' That

214 Main St. • Spearman  
659-3999

Personalization & Custom Computer Designs Available

GET A **\$400** WARN WINCH OR PLOW for just \$69<sup>95</sup>

Grizzly 660

PLUS **0.0% INTEREST 0 DOWN AND 0 PAYMENTS** FOR 6 MONTHS

**Five Star Equipment, Inc.**

Spearman, TX 659-3743

2000 lb. Warn Winch/Plow offer available through participating Yamaha dealers only. June 14, 2002 - Dec. 31, 2002. Offer good on all new 2003 (or new prior year) Grizzly 660, Kodiak 450, Kodiak 430 4wd/2wd, Big Bear 430 4wd/2wd. Dealer participation may affect this offer. Installation not included. Finance offer available through participating Yamaha dealers only. July 1, 2002 - Dec. 31, 2002. Good on any 2003 (or new prior year) Yamaha ATV. On the Yamaha card, subject to credit approval. Finance charges will not be imposed on this purchase and payments will not be required during the 6 months promotional period if your account is kept current. Standard Rate 17.9% APR. For accounts not kept current the Default rate 21.9% APR will be applied to all balances. Minimum finance charge \$1.00. For the Yamaha dealer nearest you call 1-800-88-YAMAHA. Visit our website at www.yamaha-motor.com

ATVs with engine sizes of 90cc or greater are recommended for use only by those age 16 and older. Yamaha recommends that all ATV riders take an approved training course. For safety and training information, see your dealer or call the ATV Safety Institute at 1-800-887-2887.

**YAMAHA**

Do you ever feel overwhelmed by the struggles of life?

They bother us, too.

But we have found that fighting the battle together is easier than going it alone.

Come join the family.

**First Christian Church (Disciples of Christ)**  
29 S. Bernice • Spearman  
(806) 659-2036

Sunday School 9:45 a.m.  
Sunday Worship 10:50 a.m.

We will be closed on Monday, October 14th in observance of

**FNBANK** First National Bank Spearman  
A Full Service Bank

24 Hour Banking - ATM Machine  
729 W. 7th • Spearman • (806) 659-5544  
MEMBER FDIC

**NOTICE OF GENERAL ELECTION (AVISO DE ELECCION GENERAL)**

To the registered voters of the County of Hansford, Texas:  
(a los votantes registrados del Condado de Hansford, Texas:

Notice is hereby given that the polling places listed below will be open from 7:00 a.m. to 7:00 p.m., November 5, 2002, for voting in the general election to elect Members of Congress, Members of the Legislature, and state, district, county and precinct officers; and FOR the purpose of adopting or rejecting the proposed Constitutional Amendments as submitted by the 77<sup>th</sup> Legislature, Regular session, of the State of Texas.

(Notifiquese, por las presente, que las casillas electorales sitados abajo se abirán desde las 7:00 a.m. hasta las 7:00 p.m. el 5 de noviembre de 2002 para votar en la Eleccion General para elegir Miembros del Congreso, Miembros de la Legislatura, y oficiales del estado, distrito, condado y del precincto y PARA adoptar o rechazar la enmienda propuesta constitucional asi como fueron sometida por la 77<sup>th</sup> Legislatura Regular Sesion, de la Estado de Texas.)

**LOCATION(S) OF POLLING PLACES (DIRECCION(ES) DE LAS CASILLAS ELECTORALES)**

- Voting Precinct 1 - City Hall, City of Spearman. (Oficina de la Ciudad de Spearman)
- Voting Precinct 2 - Cristo-Redentor Catholic Church in Gruver. (Cristo Redentor Iglesia Catolica en Gruver)
- Voting Precinct 3 - Cristo-Redentor Catholic Church in Gruver. (Cristo Redentor Iglesia Catolica en Gruver)
- Voting Precinct 4 - Gruver High School Library. (libreria de la escuela secundaria de Gruver)
- Voting Precinct 5 - Assembly of God Church in Spearman. (Iglesia de Asamblea de Dios en Spearman).
- Voting Precinct 6 - Spearman High School. (la escuela secundaria de Spearman)
- Voting Precinct 7 - Oslo Lutheran Church. (La Iglesia de Oslo).
- Voting Precinct 8 - Early Voting, County Courthouse and Gruver City Hall. (La Casa de corte de Spearman y Oficina de la Ciudad de Gruver)
- Voting Precinct 9 - Pringle-Morse Community Building. (El edificio de Comunidad de Morse)

Early voting by personal appearance will be conducted each weekday at:  
(La votacion adelantada en persona se llevara a cabo de lunes a viernes en:)

**Hansford County Courthouse and at Gruver City Hall**  
(location) (sitio)

between the hours of 8:00 a.m. and 5:00 p.m., beginning on October 21, 2002 and ending on November 1, 2002.  
(entre las 8:00 de la mañana y las 5:00 de la tarde emperzando el Octubre 21, 2002 y terminando el Noviembre 1, 2002.

Applications for ballot by mail shall be mailed to:  
(Las solicitudes para boletas que se votaran adelantada por correo deberan enviarse a:)

**Kim V. Vera**  
(Name of Early Voting Clerk)  
(Nombre del Secretario de la Votacion Adelantada)

**P. O. Box 397**  
(Address) (Direccion)

**Spearman, Texas 79081-0397**  
(City) (Ciudad) (Zip Code) (Zona Postal)

Applications for ballots by mail must be received no later than the close of business on:  
(Las solicitudes para boletas que se votaran adelantada por correo deberan recibirse para el fin de las horas de negocio el:)

**October 29, 2002.**  
(date) (fecha)

Issued this the 7<sup>th</sup> day of October, 2002  
(Emitada este dia 7<sup>th</sup> day of Octubre, 2002)

*John A. Brown*  
Signature of County Judge (Firma del Juez del Condado)



# CLASSIFIED ADS

CALL TODAY!  
(806) 659-3434

## REAL ESTATE FOR SALE

**PRICE REDUCED:** 3BR house with basement, garage and shop on 10.5 acres. Located 1/2 miles west of Gruver. Call 733-2250. 7(9-12-02)B

**FOR SALE BY OWNER:** 3BR, 2B brick home on corner lot. Central H/A, new carpet & paint, 2-car garage. Call 662-2259 days, or 659-1757 after 6 p.m. TFN(9-19-02)B

**FOR SALE:** 3BR, 2B, 1 car garage, fenced back yard, central H/A, 708 Cotter. Call 659-2577 4(10-3-02)B

**FOR SALE IN GRUVER:** 3BR, 1 1/2B, large backyard, newly remodeled kitchen, 1 car attached garage, 1 car detached garage - \$67,400. Call (806) 934-1283. 4(10-3-02)B

**FOR SALE BY OWNER:** 5 miles NW of Gruver on paved road, 13 acres with 40x60 metal building. Call after 6 p.m., 733-2900. 2(10-10-02)NC

**FOR SALE IN GRUVER:** 3BR, 2B home, 2,000+ sq ft., new central H/A, roof, new siding, 201 Van Kurt. Call after 6 p.m. 468-1778 or David Bergin at 435-4071. TFN(8-8-02)B

**FOR SALE:** 3BR, 2B home on five acres of land in the GISD school district. Storm shelter, mature trees, 2-car garage, new roof, septic system, two water heaters, house well pump. Call 662-3968. 4(9-19-02)B

**PRICE REDUCED!** 4BR, 1 1/2B, 2 living areas w/freestanding fireplaces. Great backyard, corner lot, good neighborhood. Blankenship Real Estate at 659-3052. TFN(8-8-02)B

**FOR SALE BY OWNER:** 5 miles NW of Gruver on paved road, 13 acres with 40x60 metal building. Call after 6 p.m., 733-2900. 2(10-10-02)NC

**FOR SALE:** Large 3BR, 1 1/2B Formal living & dining, den w/fireplace, large finished basement w/fireplace, double garage, fenced corner lot. Blankenship Real Estate at 659-3052. TFN(9-19-02)B

## SERVICES

**HOUSE SETTLING?** Cracks in brick or walls? Doors won't close? Call Childers Brothers Stabilizing & Foundation Leveling. 1-800-299-9563 or 806-352-9563 Amarillo. 52(2-8-02)P

**Circle Heating & Air Conditioning**  
Commercial Refrigeration  
Randy Earle  
321 S. Highway 207 • Spearman  
PO Box 175  
(806) 659-3576

## AGRICULTURE

**WANTED:** Corn & Milo Harvesting wanted. John Deere equipment, 8- & 12-row corn & crop heads. Call Greg Schmidt at (580) 819-1496 or (580) 983-2703. 6(9-5-02)B

## FOR SALE

**FOR SALE:** 150HP Black Max motor. Has stainless steel prop. Excellent condition - runs good. Has an 18' 1984 Skeeter Bass Boat attached. Call 659-2275 for information. \$3399 OBO. 2(9-19-02)P

## GARAGE SALE

**2-FAMILY GARAGE SALE:** 1005 Barkley, Fri., Oct. 11, 8 a.m.-6 p.m. & Sat., Oct. 12, 9 a.m.-1 p.m. Paperback books, clothing, misc. items. 1(10-10-02)P

## LEGAL NOTICE

**LEGAL NOTICE** County Commissioner's Court will receive bids until 4 p.m. on Friday, October 11, on one new 2002 or 2003 1/2 ton or 3/4 ton pickup with/without trade-in for Precinct 2 and also for Precinct 4. Bids will be opened on Monday, October 14, 2002 at the regular Commissioners' Court meeting beginning at 10 a.m. Specifications are available in the County Judge's Office or by the County Auditor's office in the Hansford County Courthouse in Spearman. The Court reserves the right to accept or reject any or all bids.

Jim D. Brown  
Hansford County Judge  
3(9-26-02)B

**NOTICE TO CREDITORS**  
Notice is hereby given that original Letters Testamentary for the Estate of Ollie Jarvis, also known as Frances Olivia Jarvis, deceased, were issued on October 8, 2002, in Docket No. 2380, pending in the County Court of Hansford County, Texas, to Billy Britt Jarvis and Jon Matheny Jarvis.

The residence of the Executor is Hansford County, Texas; the post office address is: PO Box 515, Spearman, Texas 79081.

## FOR RENT/LEASE

**FOR RENT:** 1BR apartment. Call 659-5519. TFN(8-8-02)B

**FOR RENT:** 1BR apartment. Call 659-3260. TFN(8-8-02)B

**FOR RENT:** 2BR apartment. Call 659-9971. TFN(8-8-02)B

**FOR RENT:** 3BR, 1B home w/carpport, fence, W/D hookups, Central H/A. Located at 1010 Dressen. \$350/month, \$150 deposit. Call 659-9945 or (806) 293-7879. TFN(8-29-02)B

**FOR RENT IN GRUVER:** 307 Garrett - 3BR, 2B, central H/A, fenced yard. Call 733-2266. 4(9-26-02)P

## HELP WANTED

**HELP WANTED:** Kid's Korner is now hiring. First Aide/CPR a plus. Call Tabitha at 659-3179. TFN(9-19-02)

**HELP WANTED:** Prairie Motors is accepting applications for part-time office help. Apply in person. Call 659-2541 for more info. 2(10-10-02)B

**INCREASE YOUR INCOME!** Control your hours! Home-based business! Full training. FREE booklet. (888) 216-9068. www.healthwithwealth.com 3(10-10-02)P

**GET PAID!** For learning a new skill. We need Diesel Mechanics, Communication personnel, and Combat soldiers. ONE Weekend a month, two weeks in the summer! Up to \$8,000 signing bonus. Limited Free Tuition, monthly salary. DEFEND AMERICA FROM YOUR HOMETOWN. TEXAS ARMY NATIONAL GUARD. www.1800GOGUARD.com 2EOW(10-10-02)B

## VEHICLES

**FOR SALE:** 1995 LS Suburban - blue & autumn, 2-wheel drive, power w/l, CD/cassette, rear air, power driver seat, towing package. Exc. cond. - \$8,500. 659-3993.

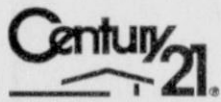
## HOME OF THE WEEK



### 507 Cluck

Family Life Thrives in this 3 bedroom, 2 bath home. The family room features a fireplace; it has a patio, large carport and a storage building in the back. *Inspect and make an offer.*

In Spearman - 905 S. Archer - 2BR, 2B



Golden Spread Realty  
200 S. Main • (806) 659-5444 • Perryton, TX  
©1992 and TM Century 21 Real Estate Corporation. Equal Housing Opportunity. INDEPENDENTLY OWNED AND OPERATED.

All persons having claims against this Estate which is currently being administered are required to present them within the time and in the manner prescribed by law.

DATED the 8th day of October, 2002.

The Jarvis Law Office, PC  
PO Box 515  
Spearman, Texas 79081  
Phone (806) 659-2554  
Fax (806) 659-3517  
Billy Britt Jarvis  
Attorney at Law  
State Bar #10585000  
Attorney for the Estate of Ollie Jarvis, also known as Frances Olivia Jarvis  
1(10-10-02)B

**NOTICE TO ALL PERSONS HAVING CLAIMS AGAINST THE ESTATE OF WORLEY J. SMITH**  
Notice is hereby given that original Letters Testamentary in the Estate of Worley J. Smith were issued to Colleen Feese, on October 3, 2002, in Cause No. 2378, pending in the County Court of HANSFORD County, Texas. All persons having claims against this estate are required to present them within the time and in the

manners prescribed by law. All claims should be sent to the following address: Colleen Feese, PO Box 706, Spearman, Texas 79081.

DATED October 3, 2002  
John L. Hutchison  
Attorney for the Estate  
1(10-10-02)B

## LEGAL NOTICE

Hansford County Commissioner's Court will receive bids on surplus county property until 4 p.m. on Friday, October 25, 2002. Bids will be opened and awarded at the regular Commissioners' Court meeting on Monday, October 28, 2002.

On October 16th, a list of surplus items will be available in the County Judge's office, and items can be seen at the Hansford County Courthouse at that time.

Jim D. Brown  
Hansford County Judge  
3(10-10-02)B

**CITATION BY PUBLICATION THE STATE OF TEXAS**  
TO: Peterson & Ervin,  
Defendants  
GREETINGS:

You are hereby commanded to appear by filing a written answer to the Plaintiff's Petition at or before ten o'clock a.m. of the first Monday after the expiration of forty-two days from the date of the issuance of this citation, same being Monday, the 18th day of November, 2002, before the Honorable 84th Judicial District Court, #1 Courthouse Square, at the Courthouse of said County in Spearman, Texas 79081. Said Plaintiff's Petition was filed in said court, on the 2nd day of October, 2002, in this cause, numbered 4584 on the docket of said court, and styled:

JONES ENERGY, LTD. Plaintiff vs. PETERSON & ERVIN and ROBERT STEMMONS, JR. Defendants

A brief statement of the nature of this suit is as follows, to wit: See PLAINTIFF'S APPLICATION FOR APPOINTMENT OF RECEIVER as is more fully known by Plaintiff's Petition on file in this suit.

The name and address of the attorney for the Plaintiff is: Mr. Jeff G. Shrader, PO Box 15008, Amarillo, Texas 79105.

The officer executing this process shall promptly execute the same according to law, and make due return as the law directs.

Issued and given under my hand and the Seal of said Court, at office in Spearman, Texas, this 2nd day of October, 2002.

Kim V. Vera - District Clerk  
84th Judicial District Court  
Hansford County, Texas  
4(10-10-02)B

## TEXAS STATEWIDE CLASSIFIED ADVERTISING NETWORK

NOTICE: While most advertisers are reputable, we cannot guarantee products or services advertised. We urge readers to use caution and when in doubt, contact the Texas Attorney General at 1-800-621-0508 or the Federal Trade Commission at 1-877-FTC-HELP. Call this Newspaper to Advertise Statewide or Regionally, or Call 512-477-6755.

## Schmidt Wins At Tri-State Bake Show

Jessica Schmidt of Hansford County claimed first place in the District 4-H Better Bake Show held Saturday, September 14, at the Tri-State Fair in Amarillo. The contest is sponsored annually by

the Tri-State Fair and Texas Wheat Producers Association in Amarillo. Arrowhead Mills of Hereford, and the Texas Cooperative Extension. Jessica is the daughter of Emit and Monica Schmidt of Morse and a freshman at Gruver High

Blakely Cartwright of Armstrong County, captured second place and April Morrison of Hutchinson County placed third in the contest. The top winners received a rosette and prizes that promote bread making from the Tri-State Fair, and a plaque from the Texas Wheat Producers Association.

The purpose of the contest is to

promote the use of wheat, which is one of the Panhandle's leading agricultural commodities. In addition, 4-H members have learned the techniques necessary to make nutritious and delicious baked products from wheat flour as well as the importance of grain products from wheat flour and the importance of grain products in a healthy diet.

For the contest, 4-H members prepared coffee cake using a recipe of their choice. Products were evaluated on appearance, color, texture, and flavor.



Jessica Schmidt displays her winnings from the District 4-H Better Bake Show

### Blueberry Streusel Coffee Cake

- 1 Cup fresh blueberries
- 2 Tablespoons, all purpose flour
- 1/2 Cup butter or margarine, softened
- 2 Cups all-purpose flour
- 2 Tablespoons baking powder
- 1/4 Teaspoon salt
- 1 Cup sugar
- 3/4 Cup milk
- 1 egg

Combine blueberries and two tablespoons flour, toss gently. Set aside. Combine butter and next five ingredients in a large bowl; beat at medium speed of an electric mixer two minutes. Add egg; beat one minute. Fold in blueberries. Spread batter evenly in a greased and floured 9-inch square pan. Sprinkle with topping. Bake at 350 degrees for 50 minutes. Yields nine servings.

### Streusel Topping

- 1/2 Cup sugar
  - 1/3 Cup all purpose flour
  - 1/2 Teaspoon ground cinnamon
  - 1/4 Cup butter or margarine, softened
- Mix first three ingredients, cut in butter until mixture resembles coarse meal. Yields one cup.



The family of Joe T and Linda Venneman hosted an open house recently for their new businesses, 3J Beef and the Clementine Guest Houses. Helping with the event were (Back Row, L-R) Clint Cooper, Kim Cooper, Clint Venneman, Traci Venneman, Holly Gifford and Justin Gifford; (Front Row, L-R) Morgan Venneman, Joe T. Venneman, Linda Venneman and Kennedy Venneman. Reservations for the guests houses or purchase of 3J Beef may be made by calling 806-898-4635.

### Reporter-Statesman Seeking Names of Military Personnel, Veterans

The Hansford County Reporter-Statesman is seeking to update our list of veterans and active military personnel and reservists from Hansford County.

Please call the newspaper office at (806) 659-3434, fax to (806) 659-3368, or e-mail information to CathyRSmit@aol.com.

For military personnel, please include the persons name, rank, address, and branch of service. Also include the name of relatives who live in Hansford County.

Names should be submitted by November 4, 2002.

### Spearman Chamber of Commerce Boss's Day Kahuna

Wednesday, October 16th

Spearman Chamber of Commerce will deliver Kahunas to your favorite boss!

**Prince/Princess Kahuna: \$5<sup>00</sup>**

Delivery of Boss's Day Card and Cookie

**King/Queen Kahuna: \$15<sup>00</sup>**

Delivery of a Boss's Day Card, Cookie, and singing telegram by the Kahuna Tun-a's

**The Royal Kahuna: \$25<sup>00</sup>**

Delivery of a Boss's Day Card, Cookie, Flower, Singing Telegram and \$6 meal certificate.

Deadline for Orders is Friday, October 11th at 5 p.m.

Fill out this form and drop with payment into the chamber night drop. The chamber office will be closed October 7-11 for vacation. Please call Sharion at 659-3711, Missie at 659-9707, Rosalee at 659-5565, or Rosi at 659-3776 during that time for more info. In town delivery only.

From:  
Boss's Name:  
Delivery address (working hours only):

Circle One (include payment): Prince/Princess - \$5  
King/Queen - \$15  
Royal Kahuna - \$25

## Spearman Merchants Association's



## Moonlight Madness

Monday, October 14 • 5 p.m.-...

Please visit these participating merchants for in-store savings.

**CDFS**  
CLOTHING  
QUALITY. SELECTION. SERVICE.

**Save Big!  
Come See!**  
5-9 p.m.

**Hickerson Jewelers**  
Foundation of Fine Jewelry

**Up to 50% Off  
ALL DAY**  
till 9 p.m.

**Celebrate**  
Gifts for all your celebrations!

**20% Off**  
5-8 p.m.

**Kick off the "Stuff Your Stocking" promotion during Moonlight Madness!**

Have your stocking stamped for every \$10 spent with any participating business. When you collect ten stamps, enter your stocking for the "Stuff Your Stocking" drawings, held in December.  
**START STAMPING NOW!**

**Lady Fair**  
**25% Off  
Storewide**  
5-9 p.m.  
(excluding candles, jewelry, Estee Lauder & Brighton)

**Kid's Stuff**  
**25% Off  
Storewide**  
5-9 p.m.