



The Hansford County
Reporter



Statesman

reporter@spearmanreporter.com

PROUDLY SERVING HANSFORD COUNTY SINCE 1907

VOLUME 100 • ISSUE 31

WWW.SPEARMANREPORTER.COM

THURSDAY, AUGUST 9, 2007

**Mayfield Graduates
from Texas DPS
Academy**

Ed Mayfield of Spearman graduated from the Texas Department of Public Safety's 132nd Training Academy on August 3, 2007.



State Representative Warren Chisum of Pampa, the chairman of the House Appropriations Committee, delivered the keynote address.

Texas Public Safety Commissioner Louis E. Sturns, spoke to the graduates during the ceremony. Lt. Col. David McEathron, DPS assistant director, also participated in the ceremony along with DPS training officers.

The 28-week school is the longest continuous training academy offered by any law enforcement agency in Texas, and one of the longest in the nation. The cadets entered the Academy in January and completed 1,214 hours of instruction - more than twice the training required by the Texas Commission on Law Enforcement Officer Standards and Education.

Instruction covered more than 100 subjects, including counter-terrorism, traffic and criminal law, arrest and control procedures, accident reconstruction, first aid and Spanish. They also received extensive use of force, communication skills, firearms, driving and criminal interdiction, cultural diversity and physical fitness training.

"These men and women will join the Department's proud tradition of outstanding law enforcement. They will be the face of integrity to our citizens," said Col. Thomas A. Davis Jr., director of the Texas Department of Public Safety. "They are willingly placing themselves in great danger so that all of us may enjoy safer lives here in Texas."

Trooper Mayfield will be assigned to the Texas Highway Patrol in Boyd.

Weather Forecast

THURSDAY NIGHT - Mostly clear. Lows in the lower 70s. South winds 10 to 15 mph.

FRIDAY - Mostly sunny. Highs around 102. South winds 10 to 15 mph.

FRIDAY NIGHT - Mostly clear. Lows in the lower 70s. South winds 10 to 15 mph.

SATURDAY - Mostly sunny. Highs around 102.

SATURDAY NIGHT - Mostly clear. Lows around 70.

SUNDAY - Mostly sunny. Highs around 102.

SUNDAY NIGHT - Mostly clear. Lows in the lower 70s.

MONDAY - Increasing clouds. Highs around 100.

MONDAY NIGHT - Mostly cloudy in the evening then becoming partly cloudy. Lows in the lower 70s.

TUESDAY - Partly cloudy. Highs in the upper 90s.

TUESDAY NIGHT - Partly cloudy. Lows in the upper 60s.

WEDNESDAY - Partly cloudy. Highs in the upper 90s.

**Local Farms Recognized by Texas
Department of Agriculture's
Family Land Heritage Program**

The Texas Department of Agriculture's Family Land Heritage Program recently honored owners of 126 farms and ranches from 76 counties for maintaining their property in continuous agricultural production within the same family for 100 years or more.

2007 honorees included the Holt Farm, located 21 miles northeast of Stinnett on FM 281, and the Holt-Eisenhauer Farm, also located 21 miles northeast of Stinnett on FM 281. (See related stories on page 5.)

The Family Land Heritage Program is designed to recognize and chronicle the unique history of Texas agriculture and the men and women who settled this great state and continue the tradition today.

Since the program started in 1974, the Texas Department of Agriculture has rec-

ognized more than 4,200 farms and ranches in 232 counties across Texas. Fayette County has the most Family Land Heritage

honorees with 129 properties, Houston County is next with 86 properties, Austin, Medina and DeWitt counties are tied with 84 properties each and Gillespie County has 83 properties.

In 2000, the Family Land Heritage Program started recognizing families who have kept their farm or ranch in agricultural production for 150 and 200 years. Since then, five ranches have been recognized for 200 years and 80 farms and ranches for 150 years of operation.

Each year a ceremony is held to recognize the farms and ranches accepted into the Family Land Heritage Program. Participants whose farm or ranch qualifies receive a certificate of honor in the name of the farm or ranch. They can also obtain a Texas Century Farm or Ranch sign to proudly display on their property and the family's agricultural history is documented in the Family Land Heritage Registry.



Agriculture Commissioner Todd Staples recently recognized Nolan Holt and Will Jarvis of Holt Farm at the Family Land Heritage ceremony in Austin at the Capitol. Holt Farm in Hutchinson County was honored for their acceptance into the Family Land Heritage Program for 100 years of agricultural operation. Holt Farm has been in continuous agricultural production since 1905 by the same family. (See related story on page 8.)



Agriculture Commissioner Todd Staples recently recognized George Edward Eisenhauer and Anita (Holt) Eisenhauer of Holt-Eisenhauer Farm at the Family Land Heritage ceremony in Austin at the Capitol. Holt-Eisenhauer Farm in Hutchinson County was honored for their acceptance into the Family Land Heritage Program for 100 years of agricultural operation. Holt-Eisenhauer Farm has been in continuous agricultural production since 1905 by the same family. (See related story on page 8.)

**Borger High Teacher Wins
Texas A&M Inspiration Award**

COLLEGE STATION, Aug. 2, 2007 - Wesley Jarvis, a retired chemistry and computer science teacher at Borger High School, will be presented the Texas A&M University Inspiration Award for Exceptional Education during summer commencement ceremonies Friday, Aug. 10, in Reed Arena.

Teachers selected to receive this unusual award - believed to be the first of its type by any university in Texas - are nominated by one of their former students who are about to graduate from Texas A&M.

Recipients of the award are recognized during commencement ceremonies at the university where they are presented a check for \$2,000. Their high school receives \$1,000.

As a university known for valuing excellence, leadership and service, the Office of the President sponsors the award as a way of recognizing those values in the teachers who have inspired and challenged their students to excel.

"I have never met another teacher who cared more about students than Mr. Jarvis," said Laura Cummings, who nominated Jarvis for the award. Cummings, who will graduate with both a bachelor of arts in accounting and a master's degree in finance, said she will be the first in her family to graduate from college. Jarvis, an Aggie from the Class of 1967, encouraged her to go to Texas A&M.

"He is the one who talked me into coming down here for AggieLand Saturday (a program that offers prospective students a chance to learn more about life at Texas A&M) and in a large part is responsible for me attending Texas A&M. He even kept in touch with me my freshman year to ensure everything was going well," she added.

"It is a very humbling and rewarding thing for a teacher to be honored in this way," Jarvis said when asked how he felt about the award.

"It doesn't surprise me at all but it does please me that this student has done so well. Laura has excelled in all her academic pursuits," he added.

Cummings said she wants Jarvis to know that he was an inspiration to all of his students. "I would love for him to know that all of his hard work and dedication to us as high school students did not go unnoticed, unappreciated or unrewarded," she said.

Jarvis certainly knows that now and, because award recipients are given the opportunity to present Texas A&M diplomas to the former student who nominated them - an honor normally retained by the university president - Cummings' wish will come true.

Jarvis taught for 14 years at Spearman High School and also taught for two years at Frank Phillips College before moving to Borger High School, where he taught for six years before retiring in 2002.

**Spearman ISD
Mandatory Drug Testing
Parent/Student Meeting**

Spearman ISD has a Random Student Drug Testing Policy for all students in grades 7-12 who are involved in extra-curricular activities. Consent to drug-use testing is mandatory for all students to participate in any extra-curricular activity.

Also, participating students and at least one parent/guardian must attend a required annual meeting. The meeting for this school year will be held in the High School Auditorium on August 14 at 6 p.m. and August 21 at 6 p.m. Failure of the student and/or parent/guardian to attend one of these meetings will prevent the student from extra-curricular activity participation.

If you have any questions, please contact Bill Belger, Principal, at 659-2584.

Night at the Lake

Pokey the Clown's Jr. Ranch Rodeo
Charlie Little Memorial Rib Cook-Off

The 2007 Pokey the Clown's Jr. Ranch Rodeo and Charlie Little Memorial Rib Cook-Off will be held on August 11th at Palo Duro Lake. Those attending are invited to spend the day at the lake enjoying live music and kids fishing, as well as other planned events.

"Pokey, the Clown" will conduct the WRCA Junior Ranch Rodeo for young people ages 4-16 years old. Information for teams (4 kids per team) and registration forms are available at the Spearman Chamber of Commerce Office.

"Pokey" introduced Junior Ranch Rodeo, mirrored after the adult ranch rodeo, in 1997. The goals of the rodeos are to teach young people about our western heritage and to keep the ways of the American cowboy alive. It also teaches young people to act as a team, which is a must for a working ranch.

There will be teams made up of four kids each. These teams will compete in four timed events, "Cow Doctoring", "Cow Milking", "Calf Branding", and "Pony Express". (All "live" stock is handmade wooden cows, steers and horses.)

In 1998 "Pokey's" Junior Ranch Rodeo's became a part of the WRCA World Championship Ranch Rodeo held each year in November in Amarillo, Texas. Approximately twelve rodeos are held around the four state area to qualify teams for the championships. There are usually thirty teams competing in Amarillo. In 2001, this event began receiving the sponsorship of The American Quarter Horse Heritage Center and Museum.

The young people will register at 4 p.m. at the covered picnic area at Palo Duro Lake. A table will be clearly marked for this purpose and adults will be there to help them. There is a \$5 entry fee per person (\$20 per team).

The Charlie Little Memorial Rib Cook-Off will also be held at this time. Categories include: Ribs - \$20 entry fee per team (turn-in time, 6 p.m.); Home-Made Ice Cream - \$10 entry fee (turn-in time 6:30 p.m.); Misc. (anything from calf fries to apple pie) - \$10 entry fee (turn-in time, 6 p.m.). Ribs must be cooked on location. All other food may be prepared ahead of time.

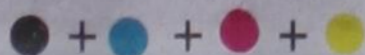
All proceeds from the Jr. Ranch Rodeo will go to Hansford Hospice and the proceeds from the Rib Cook-Off will go to the Spearman Scholarship Foundation. The event is being sponsored by Texas Farms, Inc.

For more information, please contact the Spearman Chamber of Commerce at 659-5555 or Judy Tindell at 659-2662.

Spearman Chamber of Commerce's
Yard of the Week

Rosa Ortiz - 404 Hazelwood
Jerry Holton - 20 Golden Circle
Pat Underwood - 723 Archer
Marlon Nollner - 202 Hazelwood
Lois Shieldknight - 724 Gibner
Marvin Wilkerson - 1018 Blodgett

If you have a yard you would like to nominate, please contact the Spearman Chamber of Commerce at 659-5555.



Lullabies, Legends & Lies

by Parson Smith, the Prime Minister of Laughter

The good Lord only knows how much I hate getting stupid emails. I often wonder why people find a need to forward such trash.

You would think that if people did not have enough intelligence to write, "Hello, I am thinking of you," they could at least refrain from forwarding trash.

A friend of mine has been feeling the same way. So, I was elated when he sent me the following. I hope you enjoy...

SUMMARY OF THE PAST YEAR ON MY COMPUTER

I must send my thanks to whoever sent me the one about rat poop in the glue on envelopes because I now use a wet towel with every envelope that needs sealing.

Also, now I scrub the top of every can I open for the same reason.

I no longer have any savings because I gave it to a sick girl (Penny Brown) who is about to die in the hospital for the 1,387,258th time.

I no longer have any money at all, but that will change once I receive the \$15,000 that Bill Gates/Microsoft and AOL are sending me for participating in their special e-mail program.

I no longer worry about my soul because I have 363,214 angels looking out for me, and St. Theresa's novena has granted my every wish.

I no longer eat KFC because their chickens are

actually horrible mutant freaks with no eyes or feathers.

I no longer use cancer-causing deodorants even though I smell like a water buffalo on a hot day.

I have learned that my prayers only get answered if I forward an email to seven of my friends and make a wish within five minutes.

I no longer drink Coca Cola because I've learned that it can remove toilet stains.

I no longer buy gasoline without taking someone along to watch the car so a serial killer won't crawl in my back seat when I'm pumping gas.

I no longer drink Pepsi or Dr. Pepper since the people who make these products are atheists who refuse to put 'Under God' on their cans.

I no longer use Saran wrap in the microwave because it causes cancer.

I now know that I can't boil a cup water in the microwave anymore because it will blow up in my face...disfiguring me for life.

I no longer check the coin return on pay phones because I could be pricked with a needle infected with AIDS.

I no longer go to shopping malls because someone will drug me with a perfume sample and rob me.

I no longer receive packages from UPS or FedEx since they are actually Al Qaeda in disguise.

I no longer shop at Target since they are French and don't support our American

troops or the Salvation Army.

I no longer answer the phone because someone will ask me to dial a number for which I will get a phone bill with calls to Jamaica, Uganda, Singapore, and Uzbekistan.

I no longer have any sneakers -- but that will change once I receive my free replacement pair from Nike.

I no longer buy expensive cookies from Neiman Marcus since I now have their recipe.

Thanks to my many internet friends, I can't use anyone's toilet but mine because a big brown African spider is lurking under the seat to cause me instant death when it bites my butt.

And thanks to the great advice ice, I will never pick up \$5.00 I dropped in the parking lot because it probably was placed there by a sex molester waiting underneath my car to grab my leg.

If you don't send this e-mail to at least 144,000 people in the next 70 minutes, a large dove with diarrhea will land on your head at 5:00 PM this afternoon and the fleas from 12 camels will infest your back, causing you to grow a hairy hump. I know this will occur because it actually happened to a friend of my next door neighbor's ex-mother-in-law's second husband's cousin's beautician...

Have a wonderful day....

Until the next time,
God bless.

State Capital



HIGHLIGHTS



by Ed Sterling

NEW WEB SITE TRACKS CONSUMER GAS SPENDING

AUSTIN — Now consumers have a way to find out if they got all they paid for at the gasoline pump.

Agriculture Commissioner Todd Staples on July 31 said the Texas Department of Agriculture is posting results of gas pump inspections on its Internet site, (www.tda.state.tx.us). Click on "public information reports."

"We want Texans to know our inspectors are on the front lines, ensuring they are receiving what they are paying for," Staples said.

The agriculture department employs 72 weights and measures inspectors who check more than 65,000 gasoline pumps a year, according to an agency news release.

If an inspector places an "out of order" tag on a pump, the station owner or operator must have the pump repaired by an agriculture department-licensed service company before the pump can be used to sell fuel.

Tested, properly operating pumps get a new seal placed by an agriculture department inspector.

More action on funding veto

The idea of getting Gov. Perry to undo his veto of \$154 million, a sizeable yet thin slice from the \$151 billion state budget, for community colleges may be gaining momentum.

Forty-seven members of the Texas House of Representatives called on Perry to restore the funding that in 2008-2009 would have been used to pay for employee health insurance at public junior and community college campuses.

Rep. Jim Dunning, D-Waco, one of the 47, went an extra step, asking House Speaker Tom Craddick to "join the call publicly and unequivocally to restore these critically needed funds and correct Gov. Perry's unwise decision."

No word yet from Perry or Craddick, but Lt. Gov. David Dewhurst has already said he wants to get lawmakers and higher education people together and see what can be done to restore the funding.

Dewhurst said he wanted to head off the need for colleges to raise tuition or fees in order to make up for money lost to the veto.

Dewhurst and Craddick are joint chairs of the Legislative Budget Board, a 10-member entity that has budget execution authority and can restore the funding.

The other eight members of the board are Sens. Steve Ogden, R-Bryan, Robert Duncan, R-Lubbock, John Whitmire, D-Houston, Judith Zaffirini, D-Laredo; and Reps. Warren Chisum, R-Pampa, Jim Keffer, R-Eastland, Fred Hill, R-Richardson and Sylvester Turner, D-Houston.

Judge says programs do comply

Senior U.S. District Judge William Wayne Justice of Austin ruled July 30 that public school bilingual pro-

grams, as currently delivered in Texas, comply with federal law.

The League of United Latin American Citizens and GI Forum in 2006 asked the judge to force the state to improve education programs for limited-English students.

The ruling means those programs need not be upgraded.

Judge Justice also said low test scores and high dropout rates among Hispanics cannot be linked to the state's bilingual and English as a Second Language programs, the Associated Press reported.

Air passenger traffic sets record

The City of Austin reports that June 2007 marked the highest number of passengers in a single month traveling through Austin-Bergstrom International Airport.

The airport broke the 800,000 passenger barrier for the first time, reaching 801,185, a total that is 8 percent greater than the June 2006 passenger count. The previous single month passenger record 781,855, set in May of the current year.

GOP picks Heflin for top post

The Texas Republican Party appointed Talmadge Heflin its executive director, replacing Jeff Fisher.

Heflin, 67, was a member of the Texas House for 22 years. He lost his Houston-area District 149 seat to Democrat Hubert Vo in 2004.

State to dedicate WWII memorial

The State of Texas will pay official tribute to its citizens who served in World War II with the dedication of the Texas World War II Memorial on the grounds of the Capitol.

The dedication is set for Aug. 15 at 10 a.m.

STATEPOINT SUDOKU PRESENTED BY Guinness World Records 2008 edition In Stores Now www.guinnessworldrecords.com

6							2		
		2				8	7		3
3	5								6
8		1	6			5			
					9				
			2			7	5		6
	9							5	1
5		7	1				8		
		3							4

© 2007, StatePoint Media, Inc. answer on classified page
Fill in the blank squares in the grid, making sure that every row, column and 3-by-3 box includes all digits 1 through 9.

Ralph Depee, D.D.S.
Member American Association of Orthodontists
Orthodontics For Children and Adults

- Free exam and estimate of cost
- Free second opinion
- Insurance filed

821 S. Amherst Perryton, Texas
1-800-521-0831
(806) 435-2320

These games are brought to you by the Hansford County Reporter-Statesman

THE BIG TOP

ACROSS

- And Circumstance
- Health resort
- Worth 2 or 3 in basketball
- D'Artagnan's weapon
- A boxer prefers this hard
- Flying pachyderm
- Hunted animal
- Corner chess piece
- Fast mail
- "The Greatest on"
- Arial, e.g.
- Senior
- Beneficial to
- Cirque du
- Tim Burton's circus fantasy
- Metal-bearing mineral
- Go away
- Archaic for "to"
- Long bones of forearms
- Lyric poem
- Its wood is resistant to underwater rot
- Program for training officers
- They throw water or confetti
- Known for its brown color
- Loud sleepers
- Frostiest
- moron
- Radio Flyer, e.g.
- Central Asian desert

DOWN

- Cribbage pieces
- Moonfish
- Sent interoffice
- Small child
- Water's end
- Peter in Russian
- Tau cross with loop at top
- Full of humor
- Sultanate on the Arabian Peninsula
- Death notice
- Politician
- It falls when the bough breaks
- Remove fog
- Exclude
- In good shape
- Spoils
- Acrylic fiber
- Slow in music
- Tea or beer
- Empower
- Spanish
- "Scalinata" in Rome
- German president Kohler

32. Plural of # 11 Down
33. "Much About Nothing"
36. They perform high above
38. Type of cravat

40. "The Beloved Country"
41. 7 a week
44. Napoleon's time on Elba
46. Impouring
48. Make broader
49. One who discriminates against elderly

50. Insolence
51. Egg-like
52. Big top
53. Stare amorously
54. Prune in previous life
55. Republic of Ireland
56. Indicates maiden name

CROSSWORD

1	2	3	4	5	6	7	8	9	10	11		
12				13				14				
15				16				17				
18				19				20				
				21				22				
23	24	25				26			27	28	29	
30				31		32	33			34		
35				36			37			38		
39				40				41		42		
43				44				45		46		
				47				48	49			
	50	51				52				53	54	55
56						57				58		
59						60				61		
62						63				64		

PRESENTED BY VolunteerMatch.org Where volunteering begins.

© 2007, StatePoint Media, Inc. answer on classified page

If it's happenin' in Post, Texas ... we've got the tickets!

POST TICKETS & Accommodations

1-866-360-9496

- theaters
- museums & shopping
- entertainment packages
- hotel/motel accommodations

The Hansford County Reporter-Statesman

213 Main Street • Spearman, TX 79081
Phone - (806) 659-3434 • Fax - (806) 398-9080
www.spearmanreporter.com
reporter@spearmanreporter.com
cathysmith@valomet.com

Mon.-Thurs. 9 a.m.-12 p.m., Mon.-Wed. & 1-5 p.m.
Closed Thurs. afternoon and all day Fri., Sat. & Sun.

Gary Smith - Publisher Catherine Smith - Editor
Contributing Writers: Dorothy Hudson, Jim Derington, Merry Sparks, Cecil Biggers
Contributing Photographer: Charlie Johnson

Subscription Rates
In Hansford County - \$30.00 • Out of County - \$40.00

The Hansford County Reporter-Statesman (USPS 529660) is published weekly in Spearman, TX. Periodical postage paid in Spearman, TX. POSTMASTER: Send address changes to: The Hansford County Reporter-Statesman, 213 Main Street, Spearman, TX 79081.

Publication Policy
The deadline to submit news and advertising to The Hansford County Reporter-Statesman is Monday at 5 p.m. Items submitted after the deadline will be published at a later date, as time and space permit. Publication of all items is at the discretion of the editor.

Advertising
Open Display rates are \$4.00 per column inch. Classified Ads are \$6 for the first 25 words and 10¢ per word for each additional word. (Additional charge for boxed classifieds.) There is a \$1 charge per week if billed.

Member of
Gruber Chamber of Commerce
Spearman Chamber of Commerce
Texas Press Association and Panhandle Press Association

Words from Faith & Grace

by Cecil R. Biggers, Lutheran Lay Minister

In the eleventh week of Pentecost, we study Genesis 15:1-6, Psalm 33:12-22, Hebrews 11:1-3,8-16, and Luke 12:32-40. We learn something of Faith and Grace as we consider these lessons. Abraham had just won a major battle and came through unscathed, but in Abraham's vision, God says, "Do not be afraid, Abram, I am your shield; your reward shall be very great." Abraham's fear was not of the terrors of war, but of his inability to produce an heir. God promises the ninety-something Abraham that he will have a son and many descendants. A saving faith is one which is focused on the person and work of Jesus Christ; Abraham's faith is focused on a son through whom blessing will come to the whole world. Of this faith Jesus said, "Your father, Abraham, rejoiced to see my day; and, he saw it, and was glad." (John 8:56). Abraham's faith was personal; Abraham's faith was propositional- it was based on the promises of God. Abraham's faith was practical, he did not believe in the abstract sense, he believed in a sense that necessitated action in everyday matters. From this, we learn that God seldom allows our faith to be general in nature. We each face crises which bring our faith from the abstract realms of thought to the here and now of our existence. The Psalmist sings that the "arm of flesh will fail you"; yet, the arm of the Lord is never too short to save.

In Hebrews we are told, "Now faith is the assurance of things hoped for, the conviction of things not seen." Dear Christian having faith does not mean that you will not have doubts, that you will not at times be uncertain; having faith does mean that regardless of the situation, you continue to believe. None of the patriarchs ever saw the fulfillment of the promise of God, but they all anticipated it. In this sense, all of us as believers are "strangers in a strange land". We live here but we are headed toward the kingdom of our God.

Jesus also tells us, "Do not be afraid." He directs us to lay up treasure in heaven. In the vernacular, "God is giving you the Kingdom, but you gotta be ready!" One of my minister friends once asked me, "Cecil, what will you be doing when Jesus comes?" My answer then and now, "I hope that He finds me working, using what talents He has given me". This passage in Luke refers to the second-coming of Christ, but when read generally, it refers to the time when God's summons enters into our life and calls us to prepare to meet our God. Dear Christian, "What will you be doing when Jesus comes?"

May the Holy Spirit grant you a faith like Abraham's so that by grace you may leave this strange land for the Kingdom of God.

It's A Girl!

Kelly and Lenny Pecha wish to announce the birth of their daughter, Marlyn Jean. Marlyn was born on August 6, 2007 at 5:03 p.m. in Dumas, TX. She weighed 7 pounds, 8 ounces and was 19 inches long.

Marlyn is welcomed home by her four-and-a-half year old big brother, Joel Ray.

Proud grandparents are Ron and Mona Kramer of Leoti, KS and Scott and Babby Simunek of Enid, OK. Great-grandparents are Claudia Weathers of Enid, OK, Shorty and Betty Pecha of Coltry, OK and Marlyn Langraff of Hawley, MN.

Thank You!

We would like to thank everyone for the food, flowers, compassion, offers of accommodations, expressions of concerns and the prayers in the loss of Louise Heddins. We would like to say a special thank you to all those responsible for preparing the delicious meal at the Gruber Baptist Church. Your expressions of thoughtfulness were greatly appreciated.

Don Heddins & Families

Thank You!

The Stationmaster's House Museum appreciates the thoughtful support received during the recent membership drive.

You are invited to a Bridal Shower honoring Misha Davis

(bride-elect of Duane Dorsey)

on Saturday, August 11, 2007

from 10:30 a.m. - 12:00 noon

in the home of Jackie Pearson

708 Wilmeth Drive

Spearman

The family of Aurora Vela

would like to invite you to a Come & Go-Party celebrating her 70th Birthday

on Sunday, August 12, 2007

from 2:00-4:00 p.m.

First State Bank Hospitality Room

1 NE Court

Spearman

No Gifts Please

Gordon's



Couples Currently Registered

Misha Davis & Duane Dorsey - 8/11

Camille Smith & Scott Prewett - 9/8

Laura Gomez & Richardo Plascencia

Daniele Catron & Randy Duffy

Amy Boorigie & Doran Schoenhals

Charlotte Procter & Tim Bynum

Bethany Harris & Nick Peterson

Syd Woodington & Don Coddling

Nikki Stewart & Brady Hart

Baby Registry

Ross & Kristi (Pearson) Renner - 8/11

Heath & Miranda (Thorson) Hill - 8/18

Clint & Brandy Sasser - 8/25

Justin & Grace (Davis) Calvert - 9/8

Kenton & Jodi Odom - 10/20

Crystal Boyd & Jason Gonzales - TB&

Mark & Brandea Allen

Ashley Rivas & Nic Cenicerros

Gordon's 659-2141
314 Main Spearman



60th Wedding Anniversary

Mr. and Mrs. Jack Henson recently celebrated their 60th Wedding Anniversary.

Jack Henson and Ola Florence "Sue" Dozier were married in the home of her parents, Mr. and Mrs. Tom Dozier, on July 25, 1947. This, also, happened to be Jack's 21st birthday!

A special evening to honor them for their 60th anniversary was held on Friday, July 27, with family and friends in Amarillo beginning with dinner at Abuelo's and a stay at the Ambassador Hotel.

Please join us for a 50th Wedding Anniversary in honor of our parents, Jim and Kay Vernon,

on August 18, 2007

from 3:00 to 5:00 p.m.

at the

First

Christian Church

of Spearman Texas

Jim, Lynn and Shari



Celebrate

Gifts for all your celebrations!

Bridal Registry

Shower Dates

Misha Davis & Duane Dorsey - 8/11

Courtney & Travis Ferguson - 8/26

Camille Smith & Scott Prewett - 9/8

Jenna MarLayne Albus & Chandler Bowers

Bethany Harris & Nicholas Peterson

Nikki Stewart & Brady Hart

Baby Registry

Kristi & Ross Renner - 8/11

Jodi & Kenton Odom - 10/20

Crystal Boyd & Jason Gonzales - TB&

Misti (Hand) & Jimmy Gayton - TB&

Macy & Taos Weldon

Courtney & Tye Womble

Brandea & Mark Allen

Celebrate

203 Main St. Spearman, TX

(806) 659-3350

1-800-663-8026

HYI FOR YOUR INFORMATION

NITRO

The NITRO high school youth group will not be meeting the rest of the summer. We will resume Monday, September 17th for the Back to School Hog Roast.

Spearman Blood Drive

Coffee Memorial Blood Center is hosting a blood drive in the Spearman area on Monday, August 13th, from 1-7 p.m. at The O'Loughlin Center, 502 S. Brandt Street in Spearman. Every eligible donor who presents to donate will receive a T-Shirt and be entered into a drawing to win 6 months of free milk from Gandy's! To schedule an appointment, please call 1-877-574-8800. ALL BLOOD TYPES ARE CURRENTLY NEEDED!

Rushing Wind Emmaus Community

Rushing Wind Emmaus Community will meet on Saturday, August 11, at the Waka Christian Center. A potluck meal will be served at 6 p.m., followed by a praise and worship service. Families and friends are invited to attend, and a nursery will be provided. Come and welcome the new members from the recent walks. Rushing Wind will sponsor a women's Walk to Emmaus during September 27-30 with Bobbie Cooper of Guymon serving as lay director. A men's walk will be held October 25-28 with lay director John Godino of Booker.

Yello Dyno to be in Perryton Parade

HEY KIDS! YELLO DYNO will be in the Perryton Parade on Saturday, August 25th. Would you like to be in the parade with YelloDino? If so, have your parents call Janice at the Panhandle Crisis Center, (806) 435-5008.

SHS Class of 1987 Holds 20-Year Reunion

The Spearman High School Class of 1987 will celebrate their 20-year High School Reunion on Saturday, August 18th. Please contact Shari (Vernon) Skaggs at 940-455-2308 or skaggsfam@verizon.net for more information, or if you can help us to locate any of the following members of the Class of 87: Diana Arjona, Kim Branstetter, Margaret Espinosa, Lynette Gomez, Diane Sorgi, Scott Taylor.

Perryton Activity Center - Football Registration

Youth Football Begins September 8th with the following divisions: Flag Football - 1st & 2nd Grades; Junior Football - 3rd & 4th Grades; Senior Football - 5th & 6th Grades. Fees are \$20 for PAC Members and \$50 for all non-members that live outside of Perryton. (Surrounding towns can form their own team or take part in our draft) The Deadline to sign up is August 10th. No late entries will be taken. Football Physicals and Weigh-In are August 14th 6:00 P.M. at Victory family Church. For more information please call Barry at (806) 435-3661.

Perryton Activity Center - Volleyball Registration

Youth Volleyball games will begin in early September for girls in grades 3rd-6th. Fees are \$20 for PAC Members and \$50 for all non PAC members. Deadline to sign-up is August 17th. For more information please call Barry at 806-435-3661.

Perryton Activity Center - Soccer Registration

Youth Soccer Fall League will begin in September. Games will be played on Saturdays and Mondays. Ages Pre K - 6th, boys and girls are encouraged to play. Fees are \$20 for PAC members and \$50 for non PAC members. The deadline to sign up is August 24th. For more information please call Barry at 806-435-3661.

Area Agency on Aging

There is a series of Lunch and Learns coming up beginning August 14 at the Women's Building at 1400 Wallace from 11-1. The Senior Fall Festival (Health Fair) will be held on October 11 at the Amarillo Civic Center. For more information, contact Laura Hershey at the Area Agency on Aging in Amarillo, at (806) 331-2227 or hershey@theprpc.org. the Website is www.theprpc.org/programs/aaa/aaa.htm.

Tuesday Night Golf Scrambles

The Spearman Golf Course holds Tuesday Night Scrambles, with a tee-time of 6 p.m. sharp. For more information, or to sign up, call 270-0157 or 659-2233.

You're Never Alone - Narcotics Anonymous Group

Each year individuals struggling with drug and alcohol addiction make the resolution to quit using drugs. For many of them it is a resolution that they cannot keep. Narcotics Anonymous can help. Open meetings are held on Monday and Thursday nights from 8-9 p.m. at the First Christian Church (29 S. Bernice in Spearman) for the "You're Never Alone" group of Narcotics Anonymous. Anyone interested is invited to attend. Drug addiction can leave you feeling helpless and out of control - we can help.

Spearhead AA Group

The Spearhead AA Group meets every Tuesday at 8 p.m. in the Pittman-Shieldknight building. Alcoholics Anonymous* is a fellowship of men and women who share their experience, strength and hope with each other to help solve their common problem and help others to recover from alcoholism. The only requirement for membership is a desire to stop drinking. There are no dues or fees for AA membership; we are self-supporting through our own contributions. Our primary purpose is to stay sober and help other alcoholics achieve sobriety. For information, call 662-1111.

by Jim Derington
Out at the Lake



Roadrunner

shelter, Friday night and Saturday.

I get a lot of calls about putting a boat on the lake. I always recommend a four wheel drive vehicle, when the lake is this low. The concrete boat ramp on Horse Creek is still being used, but it is steep. The caliche ramp, on the north side, is rough, but it seems to be the favorite. Most boats can be put in the water. Trying to pull them out of the water is difficult, without four wheel drive. Hazards such as trees, and shallow areas can cause problems. Slow speed and a close watch on the depth finder are important.

While writing this article, a noise distracted me. Yes, it is the Roadrunner, pecking at the window again! He or she runs back and forth, and pecks at his own reflection. I took several pictures, though I don't know if they will be good enough to put in the paper.

J. L. Pierce spotted the doe with three fawns recently. I also saw three fawns with a doe at the Palo Duro bridge. There is still a pool of water, north of the bridge, and deer can be seen there often.

Murrell Dowdy recalls a cougar sighting in about 1970. He saw a cougar (mountain lion) and a kitten. He took a friend back with him and saw them again. This time the little one was in a tree. If I understood him correctly, it was near the "Z" curve, north of the lake.

August 6, 2007 - Lake level - 24.60 feet

Summer has arrived! It is 99 degrees outside, as I write this article. Lake Palo Duro is not attracting many visitors on these hot days. Typically, this time of year it slows down at the lake. We have more early morning, evening, and night fishing when it is this hot. I saw a nice stringer of channel cats, that were caught Saturday night, with waterdogs for bait. John Fisher, from Stinnett, was camping on the south side, and caught these fish. I have seen some other small, but good eating size fish. I would guess that some fish are being caught at night, that we don't hear about. Dean Greene and family also camped on the lake side.

The campground behind the dam was busy over the weekend. Judge Benny and Jackie Wilson hosted a family gathering. They reserved three spaces and used one more, of the favorite back-in parking spots. We had three camp sites used, that did not have reservations. The River View Baptist Church, of Borger used nine spaces, for a total of sixteen R.V. campers. There were also a number of tent campers. The Borger church also used the

Andrews Family Reunion

by Cynthia DeArmond

The 50th Andrews Reunion was held Sunday, August 5, 2007 at the O'Loughlin Center in Spearman. Forty-two descendants of L.G. and Hattie Sheets Andrews were in attendance.

Marvin Andrews of Guymon, OK blessed the food, which was catered by Mr. and Mrs. Richard Wagner. A wonderful meal was enjoyed by all.

A short business meeting was conducted by Charlene Finley and Louetta McClellan, the hosts for the 2007 Reunion. The following were voted in as hosts for the 51st Reunion, which will be held August 2, 2008 at the O'Loughlin Center in Spearman - Billy and Cynthia DeArmond, Clint and Emily DeArmond and Jimmy and Shanna L. Kenney, who will serve as the primary host.

It was determined that Charles and Lola Newcomb be the honored guests at the 2008 Reunion and gifts will be purchased to honor them as the oldest living relatives of the original L.G. and Hattie Andrews family.

Mr. and Mrs. Newcomb will celebrate their 70th wedding anniversary on October 2, 2007 at Hansford Manor. Another celebration will be held at the First Christian Church on October 7, 2007. Everyone is invited and encouraged to attend this once-in-a-lifetime gala event.

Clint DeArmond was the auctioneer for the family auction, which was a great success. Jeannie Womble Bennett of Stratford, TX assisted with the bookkeeping duties, as did the hosts. Cooper DeArmond and Hunter Kenney assisted the auctioneer.

Births, deaths and marriages were recognized for the year. Updated changes of address are the responsibility of Ann Riley Northcutt of Amarillo, TX.

Traveling the farthest were the descendants of Charles and Lola Newcomb, Gia Phelps and Char Burns with their children and spouses. They traveled from Arizona. Cindy Womble Buchner with her children traveled from San Antonio, TX.

A wonderful time was had by all. Many of the children enjoyed swimming at the local pool.



Rojas' Visit Home

by Barbara Rojas

Amy and Juan Rojas of Richlands, NC, were in Spearman the week of July 4th to visit family and friends. They both serve in the United States Marine Corps. Juan has been in the Marines since 2001.

They brought one of their dogs with them, Sue. He is named after the song "A Boy Named Sue," by Johnny Cash. They have two other dogs, Buckley and Cooper.

Semper Fidelis! These words may not mean a lot, if anything, to most people. However there are a select few who live by this phrase. It is Latin for "Always Faithful," and is the motto for the United States Marine Corps.

Juan is the son of Barbara (Vela) Rojas and Eddie Rojas. He is the grandson of Aurora Vela and the late Willie Vela and Rosa Rojas and the late Oscar Rojas.

Amy is the daughter of Bonnie and Rick Grace and Gregg and Kathy Stamme, all of Metropolis, IL.

See us for:
AUTO • HOME • CROP HAIL •
FARM • RANCH • MULTIPER-
IL • LIVESTOCK

INSURANCE

BORT AGENCY, INC.
510 Main St. • Gruver, TX
(806) 733-2456

WE BUY LAND

Rural Acreage - Hunting Land
Agricultural Land - Timber

**LARGE TRACTS • 100+ ACRES
QUICK CLOSING**

512 745 6101

(806) 435-3945

MONEY'S

BBQ & STEAK HOUSE

Stan and Donna Zepp

**Under New Ownership
Same Great Service & Menu!**

14 SE 3rd Ave.
Perryton, TX

NOTICE OF PUBLIC MEETING TO DISCUSS BUDGET AND PROPOSED TAX RATE

The Gruver ISD will hold a public meeting at 7:00 PM, August 27, 2007 in Gruver ISD Board Room, Gruver, TX. The purpose of this meeting is to discuss the school district's budget that will determine the tax rate that will be adopted. Public participation in the discussion is invited.

The tax rate that is ultimately adopted at this meeting or at a separate meeting at a later date may not exceed the proposed rate shown below unless the district publishes a revised notice containing the same information and comparisons set out below and holds another public meeting to discuss the revised notice.

Maintenance Tax	\$1.040000/\$100 (Proposed rate for maintenance and operations)
School Debt Service Tax	\$0.000000/\$100 (Proposed rate to pay bonded indebtedness)
Approved by Local Voters	

Comparison of Proposed Budget with Last Year's Budget

The applicable percentage increase or decrease (or difference) in the amount budgeted in the preceding fiscal year and the amount budgeted for the fiscal year that begins during the current tax year is indicated for each of the following expenditure categories:

Maintenance and operations	(17.77%) decrease
Debt service	0.00 % increase
Total expenditures	(17.77%) decrease

Total Appraised Value and Total Taxable Value
(as calculated under Section 26.04, Tax Code)

	Preceding Tax Year	Current Tax Year
Total appraised value* of all property	\$ 437,887,968	\$ 445,410,725
Total appraised value* of new property**	\$ 130,354	\$ 221,113
Total taxable value*** of all property	\$ 363,720,845	\$ 438,073,828
Total taxable value*** of new property**	\$ 91,247	\$ 216,690

* "Appraised value" is the amount shown on the appraisal roll and defined by Section 1.04(8), Tax Code.
** "New property" is defined by Section 26.01(2)(17), Tax Code.
*** "Taxable value" is defined by Section 1.04(10), Tax Code.

Bonded Indebtedness

Total amount of outstanding and unpaid bonded indebtedness* \$0

* Outstanding principal.

Comparison of Proposed Rates with Last Year's Rates

	Maintenance & Operations	Interest & Sinking Fund*	Total	Local Revenue Per Student	State Revenue Per Student
Last Year's Rate	\$ 1.330000	\$ 0.000000	\$ 1.330000	\$ 11,979	\$ 1,732
Rate to Maintain Same Level of Maintenance & Operations Revenue & Pay Debt Service	\$ 1.000050	\$ 0.000000	\$ 1.000050	\$ 8,277	\$ 3,577
Proposed Rate	\$ 1.040000	\$ 0.000000	\$ 1.040000	\$ 8,596	\$ 3,431

* The Interest & Sinking Fund tax revenue is used to pay for bonded indebtedness on construction, equipment, or both. The bonds, and the tax rate necessary to pay those bonds, were approved by the voters of this district.

Comparison of Proposed Levy with Last Year's Levy on Average Residence

	Last Year	This Year
Average Market Value of Residences	\$ 50,037	\$ 47,983
Average Taxable Value of Residences	\$ 35,037	\$ 33,193
Last Year's Rate Versus Proposed Rate per \$100 Value	\$ 1.330000	\$ 1.040000
Taxes Due on Average Residence	\$ 465.99	\$ 345.21
Increase (Decrease) in Taxes		\$(120.78)

Under state law, the dollar amount of school taxes imposed on the residence homestead of a person 65 years of age or older or of the surviving spouse of such a person, if the surviving spouse was 55 years of age or older when the person died, may not be increased above the amount paid in the first year after the person turned 65, regardless of changes in tax rate or property value.

Notice of Rollback Rate: The highest tax rate the district can adopt before requiring voter approval at an election is \$1.029175. This election will be automatically held if the district adopts a rate in excess of the rollback rate of \$1.029175.

Fund Balances

The following estimated balances will remain at the end of the current fiscal year and are not encumbered with or by a corresponding debt obligation, less estimated funds necessary for operating the district before receipt of the first state aid payment.

Maintenance and Operations Fund Balance(s)	\$ 3,200,000
Interest & Sinking Fund Balance(s)	\$ 0

Notice of Public Hearing on Tax Increase

The Hansford Hospital District will hold a public hearing on a proposal to increase total tax revenues from properties on the tax roll in the preceding tax year by 8.93 percent (percentage by which proposed tax rate exceeds lower of rollback tax rate or effective tax calculated under Chapter 26, Tax Code). Your individual taxes may increase at a greater or lesser rate, or even decrease, depending on the change in the taxable value of your property in relation to the change in taxable value of all other property and the tax rate that is adopted.

The public hearing will be held on August 16, 2007 at 6:00 PM and August 20, 2007 at 6:00 PM at Business Office Board Room.

The members of the governing body voted on the proposal to consider the tax increase as follows:

FOR: Kevin Babbs, Pat Irwin, Ginger Pittman, Vicki Urban, Randall Sauer

AGAINST:

PRESENT and not voting:

ABSENT: Ryan Davis

Comparison of Proposed Budget with Last Year's Budget

The applicable percentage increase or decrease (or difference) in the amount budgeted in the preceding fiscal year and the amount budgeted for the fiscal year that begins during the current tax year is indicated for each of the following expenditure categories:

Maintenance and operations	4.84% increase
Debt service	0.00% increase
Total expenditures	4.84% increase

Total Appraised Value and Total Taxable Value
as calculated under section 26.04, Tax Code

	Preceding Tax Year	Current Tax Year
Total appraised value* of all property	\$761,707,565	\$741,200,031
Total appraised value* of new property**	\$799,344	\$1,255,374
Total taxable value*** of all property	\$638,437,579	\$626,900,934
Total taxable value*** of new property**	\$703,422	\$849,101

Bonded Indebtedness

Total amount of outstanding and unpaid bonded indebtedness \$0

Tax Rates

Adopted tax rate for the preceding tax year	\$0.248103 per \$100 in value
Proposed tax rate for the current tax year	\$0.255221 per \$100 in value
Difference in the proposed tax rate and the adopted tax rate for the preceding tax year	\$0.027118 per \$100 in value
Percentage increase or decrease in the proposed tax rate and the adopted tax rate for the preceding tax year	10.93 % Increase

These tax rate figures are not adjusted for changes in the taxable value of property.

Comparison of Residence Homestead Values

Average appraised and taxable values on residence homesteads are compared from the preceding tax year and the current tax year.

	Preceding Tax Year	Current Tax Year
Average residence homestead appraised value	\$42,971	\$42,064
Homestead exemption amount for the taxing unit (excluding special exemptions for persons 65 years of age or older or disabled)	\$8,794	\$8,794
Average taxable value of a residence homestead (excluding special exemptions for persons 65 years of age or older or disabled)	\$35,177	\$33,270

Comparison of Residence Homestead Taxes

The taxes that would have been imposed in the preceding tax year on a residence homestead at the average appraised value (excluding special exemptions for persons 65 years of age or older or disabled) are estimated to be \$87.28. The taxes that would be imposed in the current tax year on a residence homestead appraised at the average appraised value in the current tax year (excluding special exemptions for persons 65 years of age or older or disabled), if the proposed tax rate is adopted, are estimated to be \$91.57. The difference between the amount of taxes on the average residence homestead in the current tax year, if the proposed tax rate is adopted, and the preceding tax year would be an increase of \$4.29 in taxes.

Enhanced Indigent Health Care Expenditures

The Hansford Hospital District spent \$22,650 from July 1, 2006 to June 30, 2007 on enhanced indigent health care at the increased minimum eligibility standards, less the amount of state assistance. For the current tax year, the amount of increase above last year's enhanced indigent health care expenditures is \$11,720.

* "Appraised value" is the amount shown on the appraisal roll and defined by Section 1.04(8), Tax Code.
** "New property" is defined by Section 26.01(2)(17), Tax Code.
*** "Taxable value" is defined by Section 1.04(10), Tax Code.

Spearman Booster Club

Lynx Alley will be held August 10th at 7:30 p.m. and will be the first day the football boys will practice in pads.

Meet the Lynx and Lynettes will be held August 23rd at the High School Football Field.

There will be a community-wide tailgate party on the east side of the football stands, beginning at 7 p.m. Hotdogs, chip and drinks will be provided for anyone and everyone that wants to come meet the football players, cross country runners, cheerleaders and coaches.

Spearman Booster Club is raising funds for a Blowup Helmet for the football field and a tunnel to be used for basketball. The cost is around \$8000, so anyone that wants to donate to this

fund is asked to contact a member of the Spearman Booster Club.

We are also in the process of our annual membership drive. Membership dues are \$25 for businesses and \$10 for individuals and families.

If you would like to join the Spearman Booster Club, please contact Rhonda Baker at 659-5056.

The Spearman Booster Club is also selling Sports Sponsorship Packages. Quentin Shieldknight is going to broadcast the football and basketball games this year. He does a great job of making sure that all sponsors are put on every game.

The deadline to purchase a package is August 20th. Descriptions of the packages are as follows.

Sports Sponsorship Packages: 1) Sponsors - \$2000/year - includes 60-second taped commercials

aired during live broadcast, individual page listed on Cable TV, live broadcast promotion; 2) Super Booster - \$1000/year - Individual page listed on Cable TV, 30-second advertisement read from index card during live broadcast; 3) Booster - \$500/year - Name listed on Cable TV (running across bottom of screen), 15-second one-liner ad aired during live broadcast; 4) Signature Ads - \$50-\$200/year - Name listed on Cable TV

If you have not been called or contacted by a Senior, but want to join, please contact Rhonda Baker 659-5056. The deadline for football program ads, poster and basketball book ads is August 3rd.

More information is also available online at spearmanlynx.com.

2007-2008 Booster Club Board Members are: President - Rick Hargrove, Vice-President (Girls) - Rick & Jan Howard, Vice-President (Boys) - Bart Baker, Secretary/Treasurer - Tammy Benton, Membership - Rhonda Baker, Ways & Means - Patti Schnell.

Hansford County School News

SPEARMAN ISD COMMUNITY RESOURCE PROGRAM ADULT ESL CLASSES

Spearman ISD Community Resource Program and Region 16 ESC will sponsor Adult English Second Language classes beginning Tuesday, August 14, 2007. The classes will continue through May each Tuesday and Thursday nights from 7-9pm.

For more information contact Cindy Blackman, Community Resource Coordinator, at 659-3233.

GRUVER HIGH SCHOOL

Gruver High School registration and schedule confirmation will be August 16 from 9 a.m.-4 p.m. for Juniors and Seniors and August 17th from 9 a.m.-4

p.m. for Freshmen and Sophomores.

All students must confirm their schedule with Mrs. Curry on these dates.

GRUVER JR. HIGH AND ELEMENTARY

Elementary and Junior High registration will be held August 17 from 9 a.m.-12 noon and 1-4 p.m.

SPEARMAN HIGH SCHOOL

Spearman High School students may pick up their 2007-2008 class schedules on Tuesday, August 14, 2007 according to the following schedule: 8-9 a.m. - 9th Grade; 9-10 a.m. - 10th Grade; 10-11 a.m. - 11th Grade; 11 a.m.-12 noon - 12th Grade

New student registration will be held from 1-3 p.m. on August 13th. High School students who are new in the district may register during this time

SPEARMAN JR. HIGH

Spearman Jr. High students may register on August 22nd. Returning students register from 9 a.m. to 12 noon and new students may register from 1-4 p.m.

SPEARMAN ELEMENTARY

Spearman Elementary registration will be held August 9-10 and 13-17 from 8:30 a.m.-12 noon and 1-3:30 p.m. Elementary homework assignments will be mailed the week of August 13th.

Deadline Notice!

The deadline to submit news and advertising to the Hansford County Reporter-Statesman is Monday at 5 p.m. Items submitted after the deadline will be published at a later date, as time and space permit.

Advertisement for Flying X Steakhouse. Includes address: From Stinnett: Go West on Hwy. 152 17 miles - Turn Left at Big Red Cactus (About 2 miles on Gravel Road). Phone: (806) 935-9427. Sheree & Eddie Burgess.

Advertisement for Northridge Cinema 8. Lists movies: RUSH HOUR 3, STARDUST, THE BOURNE ULTIMATUM, UNDERDOG, BRATZ, HOT ROD, THE SIMPSONS, I PRONOUNCE YOU CHUCK & LARRY. Includes phone number 580-338-3281 and website www.northridge8.com.

Spearman ISD

Spearman ISD has the following fulltime positions open starting immediately:

JH/Elementary Cafeteria Cashier/Helper: Must have High School Diploma or GED; working computer knowledge; and, bilingual preferred. Job requires standing most of the day; heavy lifting, general kitchen duties from cooking to cleaning; approving free & reduced lunch applications; and help wherever needed. Contact Bernice Flores for more information. Deadline for applications is August 17, 2007.

JH/Elementary Cafeteria Custodian: Must have High School Diploma or GED. Job requires routine mopping and waxing of floors and cleaning cafeteria tables, and other equipment; assisting with lunchroom set up and arrangement of tables and chairs; disposal of trash; minor repair work; and help wherever needed. Must have ability to operate cleaning equipment (scrubber) and lift heavy equipment. Contact Ronnie Cogdill for more information. Deadline for applications is August 17, 2007.

Spearman ISD is an Equal Opportunity Employer

Posted August 7, 2007

NOTICE OF PUBLIC MEETING TO DISCUSS BUDGET AND PROPOSED TAX RATE

The Pringle-Morse CISD will hold a public meeting at 7:00 PM, August 21, 2007 in Board Room, Pringle-Morse CISD. The purpose of this meeting is to discuss the school district's budget that will determine the tax rate that will be adopted. Public participation in the discussion is invited.

The tax rate that is ultimately adopted at this meeting or at a separate meeting at a later date may not exceed the proposed rate shown below unless the district publishes a revised notice containing the same information and comparisons set out below and holds another public meeting to discuss the revised notice.

Table with 2 columns: Tax Type and Proposed Rate. Maintenance Tax: \$1.040000/\$100. School Debt Service Tax: \$0.000000/\$100.

Comparison of Proposed Budget with Last Year's Budget

The applicable percentage increase or decrease (or difference) in the amount budgeted in the preceding fiscal year and the amount budgeted for the fiscal year that begins during the current tax year is indicated for each of the following expenditure categories:

Table with 2 columns: Category and Percentage Change. Maintenance and operations: (2.78)% decrease. Debt service: 0.00 % increase. Total expenditures: (2.78)% decrease.

Total Appraised Value and Total Taxable Value

Table with 3 columns: Category, Preceding Tax Year, Current Tax Year. Total appraised value* of all property: \$219,171,932 vs \$180,617,183.

* "Appraised value" is the amount shown on the appraisal roll and defined by Section 1.04(8), Tax Code. ** "New property" is defined by Section 26.012(17), Tax Code. *** "Taxable value" is defined by Section 1.04(10), Tax Code.

Bonded Indebtedness

Total amount of outstanding and unpaid bonded indebtedness* \$0

* Outstanding principal.

Comparison of Proposed Rates with Last Year's Rates

Table with 5 columns: Category, Maintenance & Operations, Interest & Sinking Fund, Local Revenue, State Revenue. Last Year's Rate: \$1.303500, \$0.000000, \$11,590, \$1,979.

* The Interest & Sinking Fund tax revenue is used to pay for bonded indebtedness on construction, equipment, or both. The bonds, and the tax rate necessary to pay those bonds, were approved by the voters of this district.

Comparison of Proposed Levy with Last Year's Levy on Average Residence

Table with 3 columns: Category, Last Year, This Year. Average Market Value of Residences: \$25,711 vs \$24,505.

Under state law, the dollar amount of school taxes imposed on the residence homestead of a person 65 years of age or older or of the surviving spouse of such a person, if the surviving spouse was 55 years of age or older when the person died, may not be increased above the amount paid in the first year after the person turned 65, regardless of changes in tax rate or property value.

Notice of Rollback Rate: The highest tax rate the district can adopt before requiring voter approval at an election is \$1.040050. This election will be automatically held if the district adopts a rate in excess of the rollback rate of \$1.040050.

Fund Balances

Table with 2 columns: Category, Balance. Maintenance and Operations Fund Balance(s): \$1,737,344. Interest & Sinking Fund Balance(s): \$0.

NOTICE OF PUBLIC MEETING TO DISCUSS BUDGET AND PROPOSED TAX RATE

The Spearman ISD will hold a public meeting at 7:00 PM, August 13, 2007 in High School Library, Spearman Tx. The purpose of this meeting is to discuss the school district's budget that will determine the tax rate that will be adopted. Public participation in the discussion is invited.

The tax rate that is ultimately adopted at this meeting or at a separate meeting at a later date may not exceed the proposed rate shown below unless the district publishes a revised notice containing the same information and comparisons set out below and holds another public meeting to discuss the revised notice.

Table with 2 columns: Tax Type and Proposed Rate. Maintenance Tax: \$1.040000/\$100. School Debt Service Tax: \$0.225670/\$100.

Comparison of Proposed Budget with Last Year's Budget

The applicable percentage increase or decrease (or difference) in the amount budgeted in the preceding fiscal year and the amount budgeted for the fiscal year that begins during the current tax year is indicated for each of the following expenditure categories:

Table with 2 columns: Category and Percentage Change. Maintenance and operations: (0.26)% decrease. Debt service: 0.04 % increase. Total expenditures: (0.23)% decrease.

Total Appraised Value and Total Taxable Value

Table with 3 columns: Category, Preceding Tax Year, Current Tax Year. Total appraised value* of all property: \$460,671,356 vs \$403,188,188.

* "Appraised value" is the amount shown on the appraisal roll and defined by Section 1.04(8), Tax Code. ** "New property" is defined by Section 26.012(17), Tax Code. *** "Taxable value" is defined by Section 1.04(10), Tax Code.

Bonded Indebtedness

Total amount of outstanding and unpaid bonded indebtedness* \$11,480,000

* Outstanding principal.

Comparison of Proposed Rates with Last Year's Rates

Table with 5 columns: Category, Maintenance & Operations, Interest & Sinking Fund, Local Revenue, State Revenue. Last Year's Rate: \$1.370000, \$0.208300, \$8,415, \$2,916.

* The Interest & Sinking Fund tax revenue is used to pay for bonded indebtedness on construction, equipment, or both. The bonds, and the tax rate necessary to pay those bonds, were approved by the voters of this district.

Comparison of Proposed Levy with Last Year's Levy on Average Residence

Table with 3 columns: Category, Last Year, This Year. Average Market Value of Residences: \$42,078 vs \$40,579.

Under state law, the dollar amount of school taxes imposed on the residence homestead of a person 65 years of age or older or of the surviving spouse of such a person, if the surviving spouse was 55 years of age or older when the person died, may not be increased above the amount paid in the first year after the person turned 65, regardless of changes in tax rate or property value.

Notice of Rollback Rate: The highest tax rate the district can adopt before requiring voter approval at an election is \$1.265735. This election will be automatically held if the district adopts a rate in excess of the rollback rate of \$1.265735.

Fund Balances

Table with 2 columns: Category, Balance. Maintenance and Operations Fund Balance(s): \$1,778,856. Interest & Sinking Fund Balance(s): \$0.

Holt Farms Named to Family Land Heritage Program

HOLT/HOLT-EISENHAUER FARM

Benjamin Calvin "B.C." Holt was born in Douglas County, Missouri, on September 2, 1878. As an adult, he followed his relatives to the Texas Panhandle. They had reported good grazing and farming lands in Texas. The Land Acts of the Texas Legislature of 1897 permitted a settler to buy four sections of Texas Panhandle lands. As a result B.C.'s half-brother, William Thomas Coble, went to the Panhandle in 1899 and sent for B.C. and his two uncles, Andrew Jackson Johnson and James William Johnson, who moved to the Panhandle in the summer of that year. B.C. did not purchase land

immediately upon his arrival in Texas. He first located on Section 14 and worked seasonally on the Turkey Track Ranch. On February 9, 1900, he applied to purchase four sections of land in the region. Since few people lived in the county to witness his actual settlement, his application was denied. He refiled on October 1, 1901. At Turkey Track Ranch, several cowboys had smallpox, and B.C. almost lost his life to the disease. When it became apparent he would live, he realized he had lost most of his eyesight. To get money for medical treatment, he sold four sections of his land. He then went to Wichita, Kansas, where after several weeks of treatment, his sight was fully restored

to one eye and partially to the other. After his return from Wichita, B.C. acquired 1,280 acres in Hutchinson County from G.W. Seymour on January 30, 1905. B.C. later added 2,560 acres to his holdings. On November 7, 1905, he married Birda May Kirk, and they had six children -- Ora Calvin "O.C.," Maudie Marie, Myrle May, Joseph Newton, Benjamin Fredrick and Nolan C. The family raised wheat, barley, oats, grain sorghum, cattle, pigs, chickens, geese, horses and mules. In 1903 B.C. gave permission for the construction of a building on the southeast corner of Section 50 for a school that became known as the Holt School. Later, in 1917, B.C. and Birda May deeded 5 acres to the school and 5 acres to the Holt

Cemetery, adjacent to the school grounds. B.C., Birda May and their children endured the Dust Bowl of the 1930s and the drought of the 1950s. The family's mules comprised the freight team that pulled wagons to and from the railheads in Channing, Texas, and Texhoma, Oklahoma. The original horse and mule barn that B.C. constructed prior to 1911 to resemble barns in the area of Missouri where he grew up, and to depict his German heritage, still stands today in Section 50. The barn's first floor is low for today's use, but it is where B.C. cared for his horses and mules. The family constructed a separate barn for milking cows. After B.C. passed away on September 21, 1952, Birda May acquired 1,920 acres of his land. She continued

operation of the farm and enjoyed seeing the results of her emphasis on education, as her children became adults. Joseph Newton became a veterinarian, Maudie became a home

demonstration agent, Myrle became an attorney and the remainder of the sons became farmers. Birda willed the land to her children as an undivided interest.

HOLT-EISENHAUER FARM

Hutchinson County

Twenty-one miles northeast of Stinnett on FM 281.

Acres in original parcel: 1,280

Crops or livestock raised: 1905 — Wheat, barley, oats, grain sorghum, cattle, pigs, chickens, geese, horses and mules; 2006 — Wheat and cattle.

DATES OF OWNERSHIP

1905 - 1952
1952 - 1980
1980 - 1980
1980 - 2003
2003 - 2006

NAMES

Benjamin Calvin "B.C." Holt
Birda May (Kirk) Holt
Ora Calvin "O.C." Holt
Anita (Holt) Eisenhauer
Holt-Eisenhauer Farms L.L.C.
Anita (Holt) Eisenhauer
George Edward Eisenhauer
William Edmond Eisenhauer

As told by Anita Louise (Holt) Eisenhauer, granddaughter of the founder

In 1980 O.C. acquired 320 acres of his parents' land and later added 900 acres to his holdings. O.C. and his wife, Louise (Rorex), had one daughter, Anita (Holt) Eisenhauer. Before acquiring his land, O.C. was very active in several conservation efforts. He worked for the Soil Conservation Service when it commenced operation in Dalhart. Later he directed the planting of windbreaks by the Civilian Conservation Corps in Hereford. He later transferred to Spearman to establish the Water Facilities Program, which served a seven-county area.

Good conservation practices followed him to his own farm. The Hutchinson County Soil and Water District honored O.C. as Conservationist of the Year in 1983. O.C. also served as county commissioner of Precinct 4 in Hutchinson County for 28 years.

Anita acquired 320 acres of her family's land in 1980. She and her husband, Gene Edmond Eisenhauer, have two sons, George Edward and William Edmond. In 2003 Anita and her sons formed Holt-Eisenhauer L.L.C. Nolan C. Holt, Anita's uncle, currently manages the operation.

HOLT FARM

Hutchinson County

Twenty-one miles northeast of Stinnett on FM 281.

Acres in original parcel: 1,280

Crops or livestock raised: 1905 — Wheat, barley, oats, grain sorghum, cattle, pigs, chickens, geese, horses and mules; 2006 — Wheat, grain sorghum, corn, dairy goats, chickens and ducks.

DATES OF OWNERSHIP

1905 - 1952
1952 - 1980
1980 - 2006
1981 - 2006

NAMES

Benjamin Calvin "B.C." Holt
Birda May (Kirk) Holt
Nolan C. Holt
Larry Nolan Holt

As told by Larry Nolan Holt, grandson of the founder

Upon the settlement of Birda May's estate in 1980, Nolan C. acquired 320 acres of his parents' land. He and his wife, Georgia (Thompson), had two children, Linda Jean (Holt) Jarvis and Larry Nolan. The family raised wheat, grain sorghum, corn, soybeans, barley, cattle and hogs. Improvements made by the family include controlling wind and water erosion and consistently using chemicals to control bindweed. They also became involved in the Texas Farm Bureau, Perryton Equity and the North Plains Electric Cooperative. Nolan owns 305 acres of the west half of Section 50 and operates it with his son, Larry.

Larry acquired 15 acres of his family's land in 1981 and later added 1,073 acres to his holdings. He and his wife, Jan (Trindle), have four children -- Josie Mae (Holt) Hudson, John Benjamin, Betsy Jane and David Nolan. The Holt Farm operation includes wheat, grain sorghum, corn, dairy goats, chickens and ducks. Today, Larry and his family live in the house built in 1922 on Section 50 on the exact location of the dugout where Larry's grandfather, B.C., first lived.

Tong's Chinese Restaurant

511 S. Hwy. 207 • 659-2838 • Spearman

All-You-Can-Eat Buffet Specials

Tuesday - Steak	\$7 ⁹⁹
Thursday - BBQ Ribs	\$6 ⁵⁰
Friday - Shrimp	\$6 ⁵⁰
Saturday - Catfish	\$6 ⁵⁰
Mon., Wed. & Sat.	\$5 ⁵⁰

Buffet Hours: 11 a.m.-2:30 p.m. & 5:30-Close

Miss Vicky's Soul Food

817 SW 5th Street (Corner of 6th & Adams)
Amarillo TX • (806) 372-2247

Down Home Cooking at it's Best!

All-You-Can-Eat

Chicken, Pork Chops, Ribs,
Cheese Meat Loaf Fish, Smothered
Chicken, Chicken 'n Dumplings,
and Much More!
Vegetables, Home-Made Desserts
Kook-Aid

Hours: Monday-Tuesday, 11 a.m.-3 p.m.
Wednesday-Sunday, 11 a.m.-5 p.m.

Local Offices
Local People
Local Causes

\$13.5 Million invested in the Texas Panhandle since 2000

Over 100 miles of fiber buried

DEEP ROOTS



www.ptci.net

1-800-562-2556

Harvest Celebration

6 Month Jumbo CD Special

5.25% APY

(new money)

First National Bank, Spearman

806-659-5544 or 1-800-583-4196

Offer ends August 15th

Member FDIC