

SCR2
COMP
HANSFORD COUNTY LIBRARY
0122 MAIN ST
SPEARMAN TX 79081-2064



HANSFORD COUNTY

★ THE REPORTER-STATESMAN ★

THURSDAY,
FEBRUARY 25, 2010

CELEBRATING 103 YEARS OF SERVICE TO HANSFORD COUNTY
HANSFORD COUNTY'S ONLY NEWSPAPER

75¢

WWW.SPEARMANREPORTER.COM

VOLUME 103 • ISSUE 8

reporter@spearmanreporter.com

COME TO THE GAME

Gruver Greyhounds/Lady Hounds

The Gruver Greyhounds (22-5) will be playing Hale Center in the area playoff game at Amarillo High School on Thursday, February 25th at 7:00 p.m.

MARCH 2ND PRIMARY ELECTION

The Republican primary election will be held on March 2, 2010. Early voting will be held at the Hansford County Courthouse in Spearman and the branch office in Gruver City Hall through February 26th.

The primary election day will be Tuesday, March 2, 2010 from 7 a.m. to 7 p.m. at the following locations:

There are two locally contested races, both for County Commissioner, with all candidates running in the republican primary. Candidates vying for **Hansford County Commissioner, Precinct 2** are Darrell West, David Thomas and Carson Womble, all of Spearman. Candidates running in **Precinct 4** are Danny Henson of Gruver and Roney Clark of Morse. Other local candidates running for office include in the republican primary: **Hansford County Judge:** Benny Wilson, Incumbent; **County/District Clerk:** Kim Vera, Incumbent; **County Treasurer:** Wanda Wagner, Incumbent; and **Justice of the Peace:** Bob Davis, Incumbent.

State-wide candidates, and their party affiliation, include: **GOVERNOR:** Rick Perry (R), incumbent; Kay Bailey Hutchison (R), US Senator, Ex-State Treasurer, Ex-State Rep. & Attorney; Larry Kilgore (R), Texas Secession Activist, Telecommunications Worker; Koo-Hyun "John" Kim (R); Bill Lawrence (R); Debra Medina (R), Wharton County GOP Chair, Ron Paul Campaign Activist, Nurse & Rancher; Felix Alvarado (D), Teacher & Vietnam War Veteran; Bill Dear (D), Private Investigator; Farouk Shami (D), Businessman; Bill White (D), Houston Mayor, Ex-Deputy US Energy Secretary, Attorney & Ex-Congressional Aide; Jeff Daiell (Libertarian), Ex-State Party Chair, Businessman; Kenneth Griffin (Libertarian); Steve Nichols (Libertarian), Ex-Frisco City Councilman & Real Estate Appraiser; M.J. "Smitty" Smith (Libertarian); Ed Tidwell (Libertarian); David Carpenter (Independent); Fran Cavanaugh (Independent), Businessman & Realtor; Clement Glenn (Independent); Curtis "Tank" Hartfield (Independent); Kenneth Richardson (Independent); John Roland Ross (Independent); Les Sanderfer (Independent), Bartender & Army Veteran; Kevin Still (Independent - Conservative), Land Surveyor / U.S. Army Veteran

LIEUTENANT GOVERNOR: David Dewhurst (R), incumbent; Ronnie Earle (D), Ex-Travis County District Attorney, Ex-State Rep. & Ex-Municipal Judge; Marc Katz (D), Restaurant Owner

ATTORNEY GENERAL: Greg Abbott (R), incumbent; Ted Cruz (R), Ex-State Solicitor General & Attorney; Barbara Ann Radnofsky (D), Attorney, Community Activist & '06 US Senate Candidate; Barry Cooper (Libertarian), Businessman, Ex-Police Officer & Drug Legalization Activist; Jon Roland (Libertarian), Computer Programmer, USAF Veteran & '06/'02 Nominee

COMPTROLLER: Susan Combs (R), incumbent

STATE LAND COMMISSIONER: Jerry Patterson (R), incumbent; Bill Burton (D), Ex-Henderson County Justice of the Peace Judge, Real Estate Broker & Army Veteran

STATE AGRICULTURE COMMISSIONER: Todd Staples (R), incumbent; Curtis C. Coleman (D), Retired City of Dallas Employee, After 30 Years Service Employee of Dallas County for 4 Years; Kinky Friedman (D), Country Music Singer, Author & '06 Candidate; Hank Gilbert (D), Whitehouse School Board Member, Rancher, Teacher & '06 Nominee

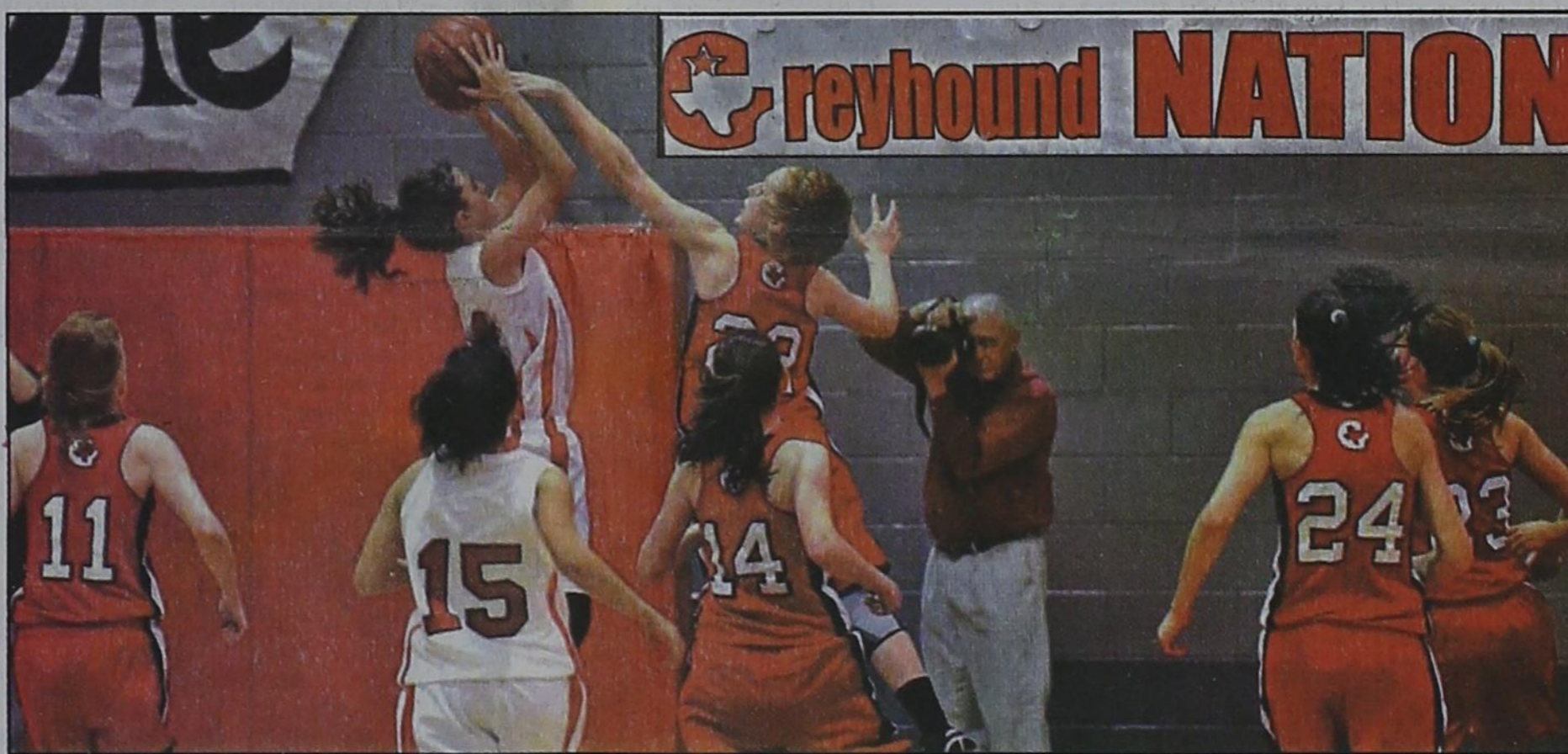
U.S. CONGRESS, District 13: Mac Thornberry (R), incumbent; Michael Barrett (R), Baptist Pastor & Navy Veteran; John Burwell Jr. (Libertarian)

Although Jessica Villegas has agreed to be the Democratic Party Chairman for Hansford County, it is too late for the Democratic Party to hold a primary election. If there is a state run-off election for any of the offices on the Democratic ticket, however, the run-off election will be held on April 13th.

Anyone voting in the Republican primary election, though, can only vote in the Republican run-off election. If you wish to vote in a possible Democratic run-off election, you cannot vote in the Republican primary election on March 2nd.



The Spearman Lynxettes defeated the Sonora Broncos on Friday, February 19, 2010 for the Area Championship. The Lynxettes were defeated by the Idalou Lady Wildcats on Tuesday, February 23, 2010 in a 2A regional quarterfinal game at Tascosa Activity Center. (Photo by Bonnie Bergan)



The Gruver Lady Hounds fought to the end, but just couldn't conquer the #1-ranked Wellington Lady Skyrockets. Pictured are (L-R) Katie Gibson (11), Shelley Gibson (14), Kaysha Bass (22), Mattie Yanke (24, and Madison McLain (23). (Photo by Lisa Johnson)

Patterson Wins at San Antonio Stock Show



Zane Patterson of Spearman, and his 1365 pound steer, "Long Ears," received Reserve Brangus Breed Champion honors at the Junior Market Steer Show on February 18th during the San Antonio Stock Show and Rodeo. Patterson is a member of the Hansford County 4-H Club.

The Junior Market Steer Show selected Brangus Breed Champions February 18, 2010 during the 2010 San Antonio Stock Show and Rodeo.

Kara Lucher of Poth, Texas, and the Poth FFA Chapter captured the Breed Champion award with her steer, "Five." Lucher enjoys spending time playing volleyball, running track and cross-country when she is not busy showing steers. Lucher would one day like to attend Texas State University to run track.

Reserve Breed Champion honors belong to Zane Patterson from Spearman, Texas, and his 1365 pound steer, "Long Ears." Patterson is a member of the Hansford County 4-H Club. In his free time he enjoys competing in rodeos.

This year the San Antonio Stock Show & Rodeo has committed \$8.1 million to education. The amount represents scholarships, grants, endowments, junior livestock auctions, Calf Scramble program, and show premiums paid to youth in the state of Texas. This brings the total amount that the organization has committed since the inception of the Scholarship Fund in 1984 to over \$96 million.

For more information, visit www.sarodeo.com or call 210-225-5851.

Weather Forecast

THURSDAY NIGHT - Mostly cloudy. Slight chance of light rain and light snow in the evening - then a slight chance of light snow after midnight. Lows in the upper 20s. North winds 10 to 15 mph. Chance of precipitation 20 percent.

FRIDAY - Mostly cloudy. Highs around 50. North winds 10 to 15 mph.

FRIDAY NIGHT - Partly cloudy. Lows in the upper 20s. Northwest winds 5 to 10 mph shifting to the west after midnight.

SATURDAY - Mostly cloudy. Highs in the mid 50s.

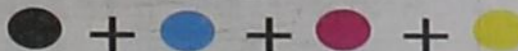
SATURDAY NIGHT - Mostly cloudy. Chance of light rain in the evening - then a chance of light rain and light snow after midnight. Lows in the lower 30s. Chance of precipitation 30 percent.

SUNDAY - Cloudy. Chance of light snow and light rain in the morning - then a chance of light rain in the afternoon. Highs around 40. Chance of precipitation 50 percent.

SUNDAY NIGHT - Cloudy with a 30 percent chance of light snow. Lows in the mid 20s.

Texas Crop & Weather

The following specific livestock, crop and weather conditions were reported by Panhandle Extension directors: Soil moisture levels continued to improve from snow melt. Some dryland wheat, whose emergence had been delayed by cold temperatures, did come up thanks to added moisture and a few days of warm weather. Producers put field preparation for spring crops on hold due to wet field. Fields and roads were muddy and cattle had to be pulled off wheat pastures due to the damage being done. Beef producers continued to provide supplemental feed to cattle due to lack of grazing. Winter has been hard and wet, so most feed intake has gone to sustaining livestock body condition rather than gains.



Wolf Creek Heritage Museum Notes

MUSEUM HAPPENINGS
The stories are coming in and we are excited about that. It is not too late, so keep writing! We have no limit on the number of stories. Remember also you can purchase memorials, ads, etc. The details are on our brochures. Target date for all stories is April 1st.

I traveled to Snyder and Lubbock last week to represent the museum and our region at the Texas Plains Trail meeting and the meeting of the Northwest Texas Museum Association. These meetings give us the opportunity to network with other organizations and share ideas. Membership in the Plains Trail is based on your counties population and this fee assists in all the marketing and promotional costs that the group does.

Visitors to the museum has been slow mainly due to the weather. We are staying open as much as we can. When the weather is bad, just call before traveling our way.

We are preparing for next month's exhibit. It is the BRA TALK Art Collection from the Amarillo Area Breast Health Coalition.

This exhibit is to raise awareness of the importance of breast health. We will have a reception to celebrate breast cancer survivors. Date to be announced. If you know a breast cancer survivor, send us their name so we can invite them to the reception. If you haven't seen this exhibit, please plan to attend.

HISTORICAL MUSINGS
Even though we observed President's Day last Monday, This Monday was George Washington's birthday. It was in 1971 that Pres. Nixon combined Lincoln's birthday, February 12 and Washington's birthday, February 22 into one single federal public holiday, Presidents Day, to be observed on the third Monday of February.

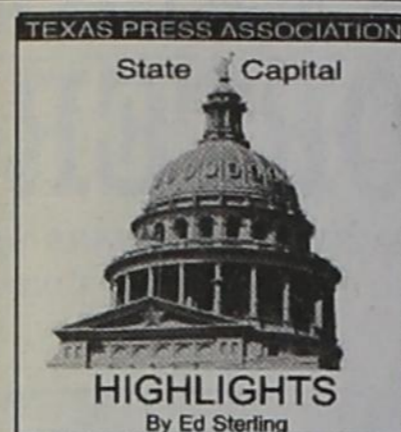
Washington served two terms as President and turned down a third term. His birthday was celebrated during his terms as President and legends were told of him which have never been proven, but emphasized his strength and honesty. The most famous was the story of him cutting down the cherry tree and

admitting to his father that "I cannot tell a lie, I did it with my hatchet." This story made cherry pie a favorite dessert to celebrate his birthday.

Washington held a contest to design the "President's Palace." Thomas Jefferson submitted a design, but did not win. The winner was James Hoban who won \$500, a piece of land, and of course the honor of having designed the President's residence.

Americans referred to the residence as the President's House because the word "palace" reminded them of the monarchy that they recently broke away from. The official name was the "Executive Mansion" from 1818-1902. Today's name "The White House" is said to have began after it was painted white after being burned by the British in 1812. Washington never had the chance to stay in the house. He died on December 14, 1799, one year before the White House was completed (during the Presidency of John Adams).

Lincoln's and Washington's birthdays are still celebrated with pageants and reenactments of their milestones.



STATE CAPITAL HIGHLIGHTS

By Ed Sterling



by Ed Sterling

OFFICIALS UNITE IN RESISTANCE TO GREENHOUSE GAS FINDING

AUSTIN — Gov. Rick Perry, Attorney General Greg Abbott and Agriculture Commissioner Todd Staples on Feb. 16 announced the state had filed legal papers to challenge the EPA's endangerment finding.

The issue for Texas, the three officials said, is that tighter regulations would be damaging to energy-sector industries, farmers, ranchers, small businesses, and to the economy at large.

In December, the U.S. Environmental Protection Agency published the endangerment finding showing evidence that carbon dioxide and other greenhouse gases have negative effects on human health. The finding opened the door to tighter regulations on the release of greenhouse gases under the federal Clean Air Act.

The Texas officials' challenge also suggests the endangerment finding is not to be trusted because the EPA outsourced its scientific assessment to the International Panel on Climate Change, a research organization that has been accused of using phony data overstating the effects of human activity on the world climate.

"With billions of dollars at stake, EPA outsourced the scientific basis for its greenhouse gas regulation to a scandal-plagued international organization that cannot be considered objective or trustworthy," Abbott said.

Plane hits office building, 2 dead

About 10:30 a.m. on Feb. 18, a solo pilot identified as Austin resident Joseph Stack, 53, steered his single engine Piper Cherokee into the seven-story Eche-

lon I office building in the northwestern part of the city.

The plane exploded on impact and ignited a fire that endangered the lives of dozens of office workers and resulted in the deaths of Internal Revenue Service employee Vernon Hunter, 67, and Stack. Thirteen others reportedly were injured.

Stack, a computer engineer, operated a personal Web site where writings that likely were his own railed against the IRS, the Catholic Church and other entities.

The matter is under investigation by the Federal Bureau of Investigation.

Lawmaker: Inaction unacceptable

State Rep. Patrick Rose, chairman of the House Human Services Committee, on Feb. 12 called a state agency's record in taking action to nursing home complaints unacceptable.

Rose, D-Dripping Springs, said the Texas Department of Aging and Disability Services' backlog in response to complaints and incidents at nursing homes "must be cleared swiftly and the state must also ensure, moving forward, that deficiencies found in nursing homes are addressed."

Rose said he expects to hear a progress report from the agency's new chief executive Chris Traylor when the committee meets in March. Traylor was named commissioner of the agency effective Jan. 1.

Decennial redistricting

lies ahead

The House Redistricting Committee met Feb. 10 to consider matters relating to the upcoming 2010 Census and population estimates used to forecast Congressional apportionment and redistricting.

Based on the recent population surge putting the state population near 25 million, the Texas delegation in the U.S. House of Representatives could grow to 36 members from 32.

A four-seat gain would be the biggest between decades for Texas since at least 1900. The state gained three seats after the 1930, 1980 and 1990 censuses. Texas gained two seats after the 2000 census.

A total of 38 Local Census Offices are operating across Texas.

Road safety campaign begins

The Texas Department of Transportation in mid-February launched a campaign with advice for toll road users, such as:

- Slow down in toll plaza cash lanes and on exit ramps; never back up to change lanes on a toll road; avoid driver distractions, such as talking or texting on cell phones; and if you find yourself in the wrong lane, just keep driving through and you'll get a bill in the mail for your tolls.

Also, watch for stopped vehicles in cash lanes and when driving through a cash plaza, only travel through lanes marked with a green arrow.

Republicans Consider Five Propositions on the 2010 Primary Ballot

AUSTIN — Early voting for the 2010 Republican Primary begins Tuesday, February 16, and along with candidates for offices from courthouses to the state house, voters will have the chance to weigh in on five ballot propositions. The propositions were placed on the GOP primary ballot by the State Republican Executive Committee during its December 2009 meeting in Austin. The non-binding propositions are intended to gauge voter interest in issues, as well as inform our elected officials where the party's grassroots stand on the issues.

"These ballot propositions are Texas Republicans' chance to be heard on issues facing our state," said Republican Party of Texas Chairman Cathie Adams. "All five of the propositions came up from the grassroots through the SREC to address serious concerns. Voters should study the questions and then use their vote to speak directly to their elected officials."

Noting that the Democrats have no propositions on their primary ballot, Republican Party spokesman Bryan Preston added: "Apparently the Democrats don't want to know what their primary voters think about, say, ObamaCare or the cap and tax bill. If they put those questions on the ballot, they might find out that their own primary voters are just as disenchanted with Washington Democrats as the rest of us. Or, that they're still on the big

government bandwagon — and therefore out of touch with the rest of Texas. So in their case, apparently it's best just not to ask."

The five ballot propositions are as follows:

Ballot Proposition #1: Photo ID - The Texas legislature should make it a priority to protect the integrity of our election process by enacting legislation that requires voters to provide valid photo identification in order to cast a ballot in any and all elections conducted in the State of Texas.

Ballot Proposition #2: Controlling Government Growth - Every government body in Texas should be required to limit any annual increase in its budget and spending to the combined increase of population and inflation unless it first gets voter approval to exceed the allowed annual growth or in the case of an official emergency.

Ballot Proposition #3: Cutting Federal Income Taxes - In addition to aggressively eliminating irresponsible federal spending, Congress should empower American citizens to stimulate the economy by Congress cutting federal income taxes for all federal taxpayers, rather than spending hundreds of billions of dollars on so-called "federal economic stimulus".

Ballot Proposition #4: Public Acknowledgement of God - The use of the word "God", prayers, and the Ten Commandments should be allowed at public gatherings and public

educational institutions, as well as be permitted on government buildings and property.

Ballot Proposition #5: Sonograms - The Texas Legislature should enact legislation requiring a sonogram to be performed and shown to each mother about to undergo a medically unnecessary, elective abortion.

The primary vote is March 2, 2010.

TO ROTH OR NOT TO ROTH

5.00% APY
INSURED/CD

4.01% APY
LIQUID ACCOUNT INSURED

3.75% APY
INSURED IRA/CD

FIRST FIDELITY
Financial Group, LLC
Your Safe Money Solution®
1800 Washington, Suite 110 • Amarillo, TX
806-373-9480
1-800-371-9201
By appointment only

THE OSCARS

- ACROSS**
- Not final or absolute
 - Arabic garment
 - *Christopher Plummer's role
 - Core remover, as in for apples
 - *This McKellen was nominated twice
 - Bird of prey nest
 - Ancient Greek marketplace
 - Banned pesticide
 - They are lifted at weddings
 - *She played an abusive mom
 - Barest or scantiest
 - Shark sign
 - Abnormal body growth
 - Brassiere
 - Farmer's storage
 - Kind of metrical foot, poetry
 - *"Dance" won for music and lyrics in 1978.
 - Chinese-American secret society
 - *This Flennes was nominated for "The English Patient" in '97
 - 2009 movie "He's Just Not That ___ You"
 - Traditionally heard in the mountains
 - Between larva and adult
 - Stallion's cry
 - Opposite of knit
 - Button on the radio
 - Cause to run off tracks
 - Prayer leader in mosque
 - *1989's "A ___ White Season" received one Oscar nomination
 - It is typically written versus oral
 - Barkeeper on "The Simpsons"
 - *Directors Jason or Ivan
 - *Tarantino's character
 - Love intensely
 - *E.T. transporter (1982)
 - Spasms of pain
 - Tennessee footballer
 - *"This Mr. is Fantastic"
 - Popular disinfectant
 - Gregory Hines' skill
 - A fast food staple
 - Big bang theory's original matter

- DOWN**
- Cancelled
 - Type of ore
 - Sans-___ font
 - Inhabitants of country north of Saudi Arabia
 - ___-de-camp
 - *He has a crazy heart
 - Opposite of calm
 - Suggestive look
 - Cleveland, OH lake
 - Olive and canola ___
 - Computer-Aided Manufacturing
 - *It received nine nominations
 - NYC time
 - Oneness, as in state
 - Pressure unit
 - Passage
 - *"___ Side"
 - Wife of a raja
 - On the move
 - Pilot's stunt
 - Atlas contents
 - "...___ and tat-toed"
 - Like the highest deck, e.g.
 - Like nervous person's hands
 - "Animal House" party
 - Cold transmitter
 - South American camelid
 - *Nicholson in "Prizzi's Honor" and Bardem in "No Country for Old Men", e.g.
 - Actress Thompson
 - More often than not
 - Type of film to be avoided
 - ___ alcohol, a.k.a. ethanol

These games are brought to you by the Hansford County Reporter-Statesman

- Square looking
- Gaelic
- Dining ___
- Ctrl+Alt+___
- *"No Country ___ Old Men" won 4 Oscars

CROSSWORD

1	2	3	4	5	6	7	8	9	10
11				12			13		14
15				16			17		
18				19			20		21
22				23					
24	25	26	27	28		29	30	31	32
34				35			36		37
39				40			41		42
43				44			45		46
47				48			49		50
53				54			55		
56	57	58	59				60		61
64				65			66		67
68				69			70		
71				72			73		

PRESENTED BY

VolunteerMatch.org
Where volunteering begins.

© 2010, StatePoint Media, Inc. answer on classified page

The Hansford County Reporter-Statesman
213 Main Street • Spearman, TX 79081
Phone - (806) 659-3434 • Fax - (806) 398-9080
www.spearmanreporter.com
reporter@spearmanreporter.com
cathysmith@valonnet.com

Mon.-Thurs. 9 a.m.-12 p.m., Mon.-Wed. & 1-5 p.m.
Closed Thurs. afternoon and all day Fri., Sat. & Sun.

Gary Smith - Publisher Catherine Smith - Editor
Contributing Writers: Dorothy Hudson, Jim Derington,
Merry Sparks, Cecil Biggers
Contributing Photographer: Charlie Johnson

Subscription Rates
In Hansford County - \$30.00 • Out of County - \$40.00

The Hansford County Reporter-Statesman (USPS 529660) is published weekly in Spearman, TX. Periodical postage paid in Spearman, TX. **POSTMASTER:** Send address changes to: The Hansford County Reporter-Statesman, 213 Main Street, Spearman, TX 79081.

Publication Policy
The deadline to submit news and advertising to The Hansford County Reporter-Statesman is Monday at 5 p.m. Items submitted after the deadline will be published at a later date, as time and space permit. Publication of all items is at the discretion of the editor.

Advertising
Open Display rates are \$4.00 per column inch. Classified Ads are \$6 for the first 25 words and 10¢ per word for each additional word. (Additional charge for boxed classifieds.) There is a \$1 charge per week if billed.

Member of
Gruver Chamber of Commerce
Spearman Chamber of Commerce
Texas Press Association and Panhandle Press Association

TA **TEXAS PRESS ASSOCIATION**
AWARD WINNER

Happy Birthday!

February 25
Birthday - Marian Tomlinson, Lynna Renner, Don Schmer, Mike Brown, Leslie Paul, Crystal Carson, Loree Viola, Tabettha Thoms
Anniversary - Bob & Jackie Pearson

February 26
Birthday - Debbie Davis, Bruce Knight, Suzie Womble, Burl Buchanan, Pam Edwards, Margie Schubert, Lynn Pierce, Marinell Webster, Deziree Hughes, Carol Poole, LaQuita Evans, Bob Meier, Kip Francis, Denise Paschel, Tony Holquin, Nicholas Cenicerros, Kay Ann Miller
Anniversary - Britt & Linda Jarvis

February 27
Birthday - Roy Diaz, Colby Weldon, Sharon Sutton, Cindy Jenkins, Adrian Barrera, Rosie Jackson, Melinda Hall, Winnie Vernon, Clint Goodman, Lance Wood, Vanessa Vela, Lacey Salgado
Anniversary - M/M Gilbert Salgado, Tim & Jackie Nelson

February 28
Birthday - Robert Blount, Max Davis, Karen Sparks, Shannon Bowling, Debbie Carter, James Lair, Sammy Don Jones, Edna Anderson, Willie Shields, Hal Bennett, Davis Nash, Parker Grotegut
Anniversary - M/M Gilbert Salgado, Tim & Jackie Nelson

February 29
Birthday - Clifton Harden, Michael Holt

March 1
Birthday - Lori Swink, Justin Ooley, David Stafford, Michael Rosales, Gary Cates, Ruby Mitchell, Mary Saldavar, Nora Baca, John Duncan, Peggy Robinson, Caleb Miller, Danny Parker, Colt Close
Anniversary - M/M Robbie Dewberry, M/M Harold King, Norlan & Linda Winegarner, Jeffrey & Danielle Jackson

March 2
Birthday - Wynn (Maupin) Essler, Justin Thompson, Tonni Yanke, Olive "Babe" Pendergraft, Wayne Barber, Matthew Baker, Carma Dorton, Bob Farr, Robin McCullough, Rachelle Moreno, Josh Winegarner, Ryan Hill, Sammy Renteria
Anniversary - M/M Joel Lackey

March 3
Birthday - Sue Smith, Jackie Womble, Vicky (Papay) Cummings, Doris Brogdon, Kim Scroggs, Kelley Hart, Cass Lasater, Andy Scarborough, Brian Black, Darla Black, Amber Fox, Allan Taylor, Denise Schuman, Crystal Harris, Richard Melton, Paxton Pittman, Matti Wheelock, Pam Schnell, Sandra Reeves
Anniversary - M/M Bobby Mosier

March 4
Birthday - Evelyn Dahl, Don Evans, Tanner Sher-

rell, Tommy Hahn, Jon Garnett, Virgil Jones, Chuck Taylor, Jose Renteria, David Harbour, Ron Fox, Judy Park, Brenda Red, Ronald Kirby, Heather Hamilton, Lucio Vela, Carrie Guthrie, David Rosser, Don Townsend

March 5
Birthday - Ron Dunning, Beth Swink, Barry Beck, Brooks Beck, Mark Garnett, Mary Garza, Mike Cowan, Trixie Pearson, Mike Garrard, Alexis Johnson, Benny Brandvick, Steve TeBeest, Shelby Williams, Ramon Garcia, JJ Anaya, Cleo Hughes, Ashley Vasquez
Anniversary - M/M Ramiro Morales, Mark & Jamie Brown

March 6
Birthday - Brenda Hart, Charlie Slough, Marcie Womble, Bobby Archer, Tommy Barkley, Travis Patterson, Janet Reger, Doran Dulana, Kenneth Slough, Lindsey Cliff, Nancy Evans, Mick Sharp
Anniversary - M/M A.R. Cazares

March 7
Birthday - David Imke, Dee Dee Shelton, Mike Garnett, Molly Turner, Bernice McBride, Viola Boyd, Donald Lane, Beulah Harris, Howard Thompson
Anniversary - M/M Danny Bass, M/M Anres Ortiz, Pete & Juanita Vera

March 8
Birthday - Patty Cator, Drew Grotegut, Mike McLain, Bill Harnish, Melvin Swene, Kirby McAdams, Deana Shields, Dee Allen, Steve Cruse, Candi Delozier, Ben Cook, Colby Red, Eric Olsen, Rae Lynn Cook, Cindee Thomas, Christi Cliff, Michelle Schick
Anniversary - M/M Richard Wagner

March 9
Birthday - Roy Byrd, Craig Cooper, Tommy Henson, Elizabeth Holt, John Brown, Mary Lou Vela, Amy Tucker, Jerry Younger, Cole Ivey, Aletha Lesley, Deann Turner, Karla Acton, Brandon Hathaway, Vickie Urban, Nita Byrd, Vernon Pipkin
Anniversary - M/M John Knowles, M/M Shawn Thompson, M/M Kermit Boone, M/M Dwayne Thompson, M/M Dan Wheelock

March 10
Birthday - Shanna Jarvis, Sandy Kirby, Debby Odum, Perry Lamb, Tucker Williams, Roy Uptergrove, Ricky Reger, Reba Ooley, Pam Hart, Shane Pearce, Eugene Barnes, Jr. Barnes, Felipe Lozano, Michael Lozano, Melinda Taylor, Sandy Spivey, Curtis Pearson, Jennifer Keim, Summer Fernandez, Kellyn King
Anniversary - M/M Bobby Mosier

Words from Faith & Grace



by Cecil R. Biggers, Lutheran Lay Minister

As we contemplate the basics of our faith and of our nature, we study Genesis 15: 1-12, 17-18, Psalm 27, Philippians 3:17-4:1, and Luke 13: 31-35.

Abraham is concerned because he has no heir, no son, to continue his line. God reassures Abraham that his descendants will be as numerous as the stars. When Abraham seems doubtful God commands him to bring a heifer three years old, a female goat three years old, a ram three years old, a turtledove and a young pigeon. Abraham cuts the larger animals in half and places them in a line, half to half, and the birds opposite one another. When the sun went down, Abraham sees a smoking fire pot and a flaming torch pass between the animal pieces. And the Lord made a covenant with Abraham that his descendants should have the land from the river of Egypt to the great river, Euphrates. Understand that the smoking fire pot and the flaming torch are symbols of the presence of God. Understand that in Abraham's time parties making a contract would offer animals as sacrifice and walk between them to symbolize their contract. This also carries the context that if the parties were to break their contract, they would become like the animals, cut in two! We are told that Abraham believes God and God counts this as righteousness. Thus, Abraham's future was not secured by land or riches but only by faith in God.

The Psalmist sings a song of trust, a prayer for deliverance, and a lament. He sings, "The Lord is my light and my salvation; whom shall I fear?" The Psalmist seeks only to live in the house of the Lord all the days of his life. He advises us to "wait for the Lord, be strong, and let your heart take courage." We can take from this that God has a steadfast love for us, his children. God will preserve; God will rescue. We as believers must wait for the Lord. We so often fail when we attempt to handle life's difficulties "our way"; we succeed when we wait for God and allow Him to handle our difficulties in His way.

Paul uses the athletic image of a runner striving for the finish line when he says, "I press on toward the goal for the prize of the heavenly call of God in Christ Jesus". Paul is encouraging the Philippians to be mature in their faith, to remember that their citizenship is in Christ's Kingdom. He reminds them (and us) that Christ is transforming us to his glory. The Philippians are then warned of the perverseness of those who are enemies of the cross of Christ. Consider that there were in Philippi those who claimed to be Christian, but who believed that since God forgives sin, that they could sin as much as they wanted without harming their relationship with Christ. Paul condemns them. Paul calls the Philippians his "crown" and the word used is for the crown of a victorious athlete who has won the race. He commands the Philippians to "stand fast" in their faith using the words of the military. Jesus is warned by some friendly Pharisees that Herod Antipas, the ruler of Galilee, is seeking to kill him. But Jesus is on a course that cannot be interrupted; he is on his way to Jerusalem to die. Jesus tells the Pharisees to tell that 'fox' that he is going to continue his ministry and he is going to Jerusalem. The fun part of Jesus' answer is that Herod considered himself a 'lion', but Jesus tags him as a 'fox'. The fox was held to be the slyest of animals, the most destructive of animals, and was used as a symbol of a worthless and insignificant man. Jesus did not fear the earthly king.

May the Holy Spirit enable you to "wait" for God that your future may be secure.

Our Sympathy

SIBYL JONES

OLTON - Sibyl Jones, 86, died Sunday, Feb. 21, 2010. Services will be 10 a.m. Thursday in First Baptist Church in Olton with Patrick Hamilton officiating. Burial will be in Olton Cemetery by Ramage Funeral Directors.

Mrs. Jones was born March 16, 1923, in Cranfills Gap to Emil and Beulah Smith Sorley. She married Owen Jones July 20, 1941, at Valley View Church.

Survivors include a son, George Jones of Paris, Texas; two daughters, Marilyn Carson of Dalhart and Valda Burkhalter of Spearman; two brothers, Grady Sorley of Bovina and Gene Sorley of Lubbock; a sister, Anita Powell of Somerville; eight grandchildren; and 13 great-grandchildren.

The family suggests memorials be to First Baptist Church, P.O. Box 408, Olton, TX 79064; or Runningwater Draw Care Center, P.O. Box 409, Olton, TX 79064. Leave online condolences at www.ramagefuneraldirectors.com.

ROBERT R. "BOB" HARDY

SPEARMAN - Robert R. "Bob" Hardy, 74, died on Monday, February 22, 2010.

Funeral services will be held on Friday, February 26, 2010 at 11 a.m. at the First United Methodist Church in Spearman with Rev. Neely Landrum officiating. Interment will be in Mountain View Cemetery near Elmwood, OK at 2:30 p.m. Arrangements are under the direction of Boxwell Funeral Home of Spearman.

Bob was born in Amarillo on January 6, 1936 to Raymond and Mildred Hardy.

Bob completed high school in Amarillo and went on to graduate from Texas A&M University. Bob's 27-year career in education included positions as football coach, counselor, special ed and drivers ed teacher. He was an avid Golfer and enjoyed sports of all kinds. As a young man, Bob was baptized in the Church of Christ and with faith believed we all would go to a better place.

He was preceded in death by his parents, Raymond and Mildred Hardy of Amarillo, and a son, Gary Hardy of Dallas in 2000.

Survivors include his wife of 27-years, Claudine of Spearman; two daughters, Lynne Brock and Johnanna Dear, both of Perryton; two stepsons, Allen Gardiner and Chad Gardiner, both of Frisco; a stepdaughter, Stacia Hunzeker of McKinney; a sister, Judy Perales of Amarillo; 10 grandchildren; and 2 great-grandchildren.

The family requests memorials be to the Hansford County Golf Course.

MONUMENTS

Boxwell Brothers Funeral Home

519 Evans • Spearman
659-3802

Dear friends,
When you buy a monument from us we make sure it is exactly what you want at a price you can afford. If it is not right, we will make it right. And you will not have to search the countryside to find us. We are here when you have a need.

Sincerely,
Bob Boxwell

DIRECTV SAVE \$29/MO FOR A YEAR!

PLUS: **FREE** 1-4 Room System

FREE Standard Installation

FREE HD DVR Receiver Upgrade

FREE 3 MONTHS SHOWTIME & Starz

No start costs! Local installs!
ASK HOW! CALL DIRECTSTARTV

Toll Free **800-214-7110**

ARE YOUR ENERGY COSTS OUT OF CONTROL?

Join over 1 million people who have made the switch to **Just Energy!**

Get a Fixed Rate Plan from **just energy**

Plus! **Green Energy Solutions**

CALL NOW to Lock in your Rate

877-540-3806

HOME PHONE SERVICE

1st Month FREE

Starting at \$3.99/mo

\$14/mo including appropriate taxes and fees

\$0 Deposit • NO Credit Check

NO Contracts • Everyone Approved!

Restrictions May Apply.

NEWTALK 866.934.3448

Need Electricity?

Limited Time Offer:

\$0 DEPOSIT*

Includes 1st 30 days electricity

NO Credit / NO ID

Hablamos Espanol

1st Month as low as \$89**

1-866-934-3446

PaylessPower

Replenish the seed of faith through . . . DAILY BIBLE READING, PRAYER & REGULAR CHURCH ATTENDANCE

<p>Spearman</p> <p>Apostolic Faith Church 822 S. Drexler • 659-2870 Sunday School: 10 a.m. Worship Service: 11 a.m. Sun. Eve.: 6 p.m. Wed. Prayer Mtg: 7 p.m. Pastor - Roland Haney</p> <p>First Assembly of God 401 N. Bernice • 659-2295 Sunday School: 9:30 a.m. Worship: 10:40 a.m. Evening Worship: 6 p.m. Wed. Worship: 7 p.m. Wed. Youth: 7 Pastor - Jerry Pollard</p> <p>First Christian Church (Disciples of Christ) 29 S. Bernice • 659-2036 Sunday School: 9:45 a.m. Worship: 10:50 a.m. Minister -</p> <p>First Baptist Church 123 N. Bernice • 659-5557 Sunday School: 9:45 a.m. Worship: 11 a.m. Evening Worship: 7 p.m. Men's Bible Study - Wed., 7 a.m. Children's Choir - Wed., 6 p.m. Adult Choir - Wed., 7 p.m. Wed. Bible Study: 7 p.m. Pastor - Jim Medley</p> <p>Church of Christ 121 S. Haney • 659-3244 Sunday Bible Class: 9:45 a.m. Worship: 10:30 a.m. Evening Worship: 6 p.m. Bible Study Wed.: 7:30 p.m.</p>	<p>Sacred Heart Catholic Church 901 Roland • 659-2792 Sat. Night Mass: 5:30 p.m. Sun. Mass: 9 a.m. - English Sun. Mass: 11:30 - Spanish 1:30 p.m. - Gruver - Christo Rendontor Mass - Spanish Rev. Guillermo Morales</p> <p>First United Methodist 407 S. Haney • 659-5503 Sunday School: 9:45 a.m. Worship: 8:30 & 11 a.m. Jr. High Youth: 5 p.m. Sunday High School: 6 p.m. Sunday Kids Club: 3 p.m. Wed. Pastor - Neely Landrum</p> <p>Grace Presbyterian Church (Worships with Faith Lutheran Church) 1101 Bernice • 659-2033</p> <p>Faith Lutheran Church (ELCA) 1101 Bernice • 659-2252 Sunday School: 9:45 a.m. Worship: 11 a.m. (Worships with Grace Presbyterian Church) Pastor - Cecil Biggers, PLM</p> <p>Union Church 31 S. Endicott • 659-2644 Sunday School: 10:00 a.m. Worship: 11:00 a.m. Bible Study: 7 p.m. Wed. Youth Service: 6 p.m. Wed. Pastor - Don Baltazor</p> <p>Fellowship Baptist 1102 S. Archer • 659-2783 Sunday School: 10 a.m. Worship: 11 a.m. Sun. Evening Worship: 6 p.m. Sun. Evening Spanish Worship: 7:30 p.m. Youth/Adult Service: 7:30 Wed. Pastor - Phillip Hudson</p>	<p>Primera Misión Bautista 522 E. 7th • 659-3891 Sunday School: 9:45 a.m. Worship: 11 a.m. Evening: 6 p.m. Wed. Prayer Meeting: 7 p.m. Thurs. Visitation: 7 p.m. Pastor Joe Garcia Jr.</p> <p>El Aposento Alto U.P.C.I. 1105 S. Roland Domingos: Escuela-Domical - 10 a.m. Culto Evangelistico - 7 p.m. Jueves: Oracion - 8 p.m. Mier: Estudio Bíblico - 7 p.m. Pastor - A.G. Martell (806) 659-2153</p>	<p>Gruver United Methodist Broadway & Garrett 733-2851 Sunday School: 9:45 a.m. Worship: 8:30 & 10:50 a.m. Eve. Worship & UMY: 6 p.m. Pastor - George Price</p> <p>Spanish Cristo Redentor Church Sunday Mass: 1:30 p.m. Friday Evening Mass Summer - 8:00 p.m. Fall/Winter - 7:30 p.m.</p>
<p>Oslo</p> <p>Oslo Lutheran Church (ELCA) 6 Miles West & 12 Miles North of Gruver 339-7646 Sunday School: 9:45 a.m. Worship: 11 a.m. Pastor - Arlen Lloyd</p>	<p>Gruver</p> <p>First Baptist Church 402 E. Broadway • 733-2411 Sunday School: 9:45 a.m. Worship: 10:50 a.m. Disciple Training: 6 p.m. Sunday Prayer Meeting: 7:30 p.m. Wednesday Pastor - Scott Curry</p> <p>Church of Christ 209 King • 733-2760 Sunday School: 9:30 a.m. Worship: 10:20 a.m. Evening Worship: 6 p.m. Wed. Worship: 7:00 p.m. Minister - Gaylord Cook</p> <p>First Christian Church 510 King • 733-2960 Sunday School: 10:00 a.m. Sunday Worship: 11 a.m. Youth: 7:30, Sunday Adult Bible Study: 7:30, Sun. Wed. Bible Study: 8:30 p.m. Pastor - Gary Gumfory</p>	<p>Morse</p> <p>Morse Baptist Church 733-2757 Pastor - Mike Martin</p>	<p>Waka</p> <p>Church of Christ 300 Rogers Ave. 202-7126 Sunday Worship: 6 p.m. Wednesday Bible Study: 6 p.m. Preacher - James Gordon</p>

He has showed you, O man, what is good. And what does the LORD require of you? To act justly and to love mercy and to walk humbly with your God. Micah 6:8

This feature is made possible through the sponsorship of these civic minded businesses:

<p>Deakin ELECTRIC</p> <p>OILFIELD • RESIDENTIAL • COMMERCIAL 321 S. MAIN • SPEARMAN 1-800-999-1506 Chris Deakin (806) 659-5016 President</p>	<p>Bartlett's Lumber & Hardware</p> <p>105 W. Broadway • Gruver, TX (806) 733-2404</p>	<p>BERRY CLEANERS</p> <p>Ann & Vernon Pipkin - Owners Phone 659-3122 • P.O. Box 1017 207 Main St. • Spearman, TX</p>	<p>Morse Implement & Auto Supply</p> <p>"Join us in church" Tom Dortch 733-2668 Box 89 • Morse, TX 79062</p>
<p>PRAIRIE MOTORS INC.</p> <p>Hwy. 207 South • P.O. Box 430 Spearman, TX 79081 • (806) 659-2541 www.prairiemotors.com</p>	<p>MurMur's Cafe</p> <p>100 Roland St Spearman, TX. 659-3580</p>	<p>Hansford County Reporter-Statesman</p> <p>"Proudly Serving Hansford County Since 1907" (806) 659-3434 310 Barkley • Spearman, TX</p>	<p>INTERSTATE BANK, sbb</p> <p>www.interstatebank.net 322 Main • P.O. Box 146 Spearman, TX • 659-2559</p>

HYI

FOR YOUR INFORMATION

Medical Fund for Bruce Duncan

A medical fund has been established for Bruce Duncan at First National Bank, Spearman. If you would like to make a donation you may make a deposit with any teller or mail a donation to First National Bank, Bruce Duncan Medical Fund, PO Box 337, Spearman TX 79081.

March 4th Primary Early Voting

Applications for ballots by mail for the March 2nd Republican Primary must be received on or before Tuesday, February 23rd. Early voting will be held at the Hansford County Courthouse in Spearman and the branch office in Gruver City Hall from February 16th-26th, from 8 a.m.-5 p.m. The primary election day will be Tuesday, March 2, 2010 from 7 a.m. to 7 p.m.

Late Night Voting Information

Late night voting for the March 2, 2010 Republican Primary Election will be available on Thursday, February 25th until 8 p.m.

12th Annual "Pot O' Gold" Dinner, Dance & Calcutta
The 12th Annual "Pot O' Gold" Dinner, Dance and Calcutta will be held on Saturday, March 27th at 7 p.m. at The O'Loughlin Center, 502 S. Brandt in Spearman. Tickets are \$60 per person. A Tenderloin meal will be provided, with entertainment by "Insufficient Funds." A Grand Prize of \$2,500 will be awarded with consolation prizes and calcutta. Call 659-3030 for more information.

O'Loughlin Center Announces New Hours

Beginning March 1, 2010, The O'Loughlin Center will be open for the following hours: Monday-Thursday, 6:00 a.m.-8:00 p.m.; Friday, 6:00 a.m.-6:00 p.m.; and Saturday, 9:00 a.m.-12:00 p.m. (noon). For more information, contact Jada Breden, Manager, The O'Loughlin Center, 502 S. Brandt, PO Box 733, Spearman TX 79081, 806-659-3030.

Miss Irish Rose Pageant

Once again, Shamrock, TX will be hosting their annual St. Patrick's Celebration on March 19-21, 2010. One of the many highlights of this celebration is the crowning of Miss Irish Rose. This Scholarship Pageant is open to all young ladies who are between the ages of 14-19 and enrolled in high school. None of the contestants need to live in the Shamrock area, nor do they need to be currently holding a title or reign. The 2010 Miss Irish Rose, along with her three runner-ups and Miss Congeniality, will be receiving a scholarship to the college of her choice. For further information, please send a S.A.S.E. to Gaylynn Otts at PO Box 107, Shamrock TX 79079 or call Gaylynn at 806-256-5188. You can also call the Chamber of Commerce Office at 806-256-2501. The deadline for entry forms to be received is March 3, 2010.

Stock Show Sale, Add-Ons & Goat Share Donations

If you were unable to come to the stock show sale, add-ons and goat share donations can be taken at any time by email until March 15, 2010 at hansfordstockshow@gmail.com.

Ochiltree County Grain Sorghum Meeting

Texas AgriLife Extension will be sponsoring a grain sorghum meeting at the Ochiltree County Expo Center on Monday, February 22, 2010 for area producers. Registration begins at 9 a.m. Topics covered will include Sorghum Management, Insect Management, Hybrids, and Market Outlook. This meeting will offer 3 CEU's. For more information contact Ochiltree County Extension Agent Scott Strawn at 806-435-4501.

BBBS Walk for Kids' Sake 2010

Walk for Kids' Sake, the annual fundraiser benefiting Big Brothers Big Sisters, will be held Saturday, February 20, 2010 at the Ochiltree County Expo Center. Anyone who would like to serve as a team captain or who needs more information should call 434-0016.

Concealed Handgun Course Offered

A concealed handgun course will be offered on Saturday, March 6th (9 a.m.-5 p.m.) and Sunday, March 7th (2-6 p.m.) at Mur Mur's Cafe in Spearman. The cost is \$125 for the instructional course with a certificate and targets provided. (The State fee is dependent on age and/or occupation and ranges from \$25-\$140 for a 5-year license.) If interested in attending this class, please contact Dee Mayfield at (806) 330-0269

Gruver Memorial Tournaments

The 5th and 6th grade Debby Chisum Memorial Basketball Tournament is Feb. 18th-20th. Everyone is invited to come and support the future Hounds and Lady Hounds!!

SHS All School Reunion July 2 & 3, 2010

The Spearman High School All-School Reunion will be held July 2nd & 3rd, 2010. If you have information regarding a specific class reunion, please contact the Hansford County Reporter-Statesman. We will list the specific information for each class reunion, as well as the information for the All-School Reunion in the newspaper as we receive it. Information may be mailed to: Reporter-Statesman, 213 Main Street, Spearman TX 79081; e-mailed to: reporter@spearmanreporter.com; faxed: 806-398-9080; or phoned in: 806-659-3434.

Spearman Chamber of Commerce Banquet

The Spearman Chamber of Commerce Banquet will be held on Thursday, March 11, 2010 at The O'Loughlin Center, 502 S. Brandt, in Spearman. Further information will be available as the date grows nearer.

SPWA Seeks Volunteers

The Southwest Pioneer Windmill Association is seeking the next generation of volunteers to continue the work of restoring and maintaining the windmills of the SPWA. If you have an interest in windmills and their upkeep, and/or maintenance of the park, you are needed. For information, call Dwayne Mitchell, 270-0291 or Don Reed 330-0745.

Fire Department Donations

Persons wishing to make donations to the Fire Departments in Hansford County may do so at the following addresses: Spearman Fire Dept., Box 37, Spearman TX 79081; Gruver Fire Dept., Box 947, Gruver TX 79040 or Morse Fire Dept., Box 28, Morse TX 79062

March 2nd Primary

Editor's Note: The Hansford County Reporter-Statesman presented each contested candidate in the March 2nd Republican Primary Election with a questionnaire. There are two locally contested races, both for County Commissioner. Candidates vying for **Hansford County Commissioner, Precinct 2** are Darrell West, David Thomas and Carson Womble, all of Spearman. Candidates running in **Precinct 4** are Danny Henson of Gruver and Roney Clark of Morse.

Following are the responses for each of the candidates. (Darrell West did not return the questionnaire.)

DAVID THOMAS

Family Members: My wife, Suzanne, and I have been married for 26 years. Our children are John and his wife, Brianne, Mark, Bryan and Jeffrey.

Place of Employment: I have been self-employed for 37 years.

Position/Occupation: I own and operate a farm northwest of Spearman.

Background/Education: I attended Spearman schools, graduating in 1973. I then attended Liberal Vo-Tech in Liberal, KS for one year.

What organizations do you presently belong to and what positions do you hold with them, if any? I am a member of Farm Bureau. I served on the Farm Bureau Board for 13 years. I served as president of the Farm Bureau Board in 1988 and 1989.

Church Affiliation: I am a member of the First Baptist Church in Spearman.

Hobbies/Interest: I enjoy hunting with my sons and spending time with family.

Excluding the Bible, name at least three books you have read within the last year. What newspaper, magazines, television or radio programs you regularly access for news? I have read *The 5000 Year Leap* by W. Cleon Skousen and *Glen Beck's Common Sense*. I read the *Hansford County Reporter-Statesman*, *Amarillo Globe-News*, *Successful Farming*, and *Farm Journal*. I view Fox News both on television and the Internet. I read the *High Plains Observer* on the Internet. I also listen

to KXDJ for local news.

What do you view as the role of a Hansford County Commissioner? A commissioner should first serve the county by hands-on service as well as make policy and budget decision. A commissioner must assure that county roads are maintained. A commissioner votes with the County Judge to set the budget for all county departments and adopt a tax rate.

What special qualities or qualifications do you process which would make you an efficient Commissioner? I have always felt the need to serve others, to help in any way I can. I enjoy working with others toward a common goal. As a self-employed farmer I know it takes hard work and cooperation to make sure things operate efficiently. I have had to set a budget, supervise employees and work with them to get the job done. I know what it takes to maintain property and would work hard to assure it is performed efficiently and economically. As a property owner, I am concerned about taxes. I would work diligently to keep taxes low by promoting growth and financial stability in our county.

If elected, what criteria would you use to determine if you are successful in your position? If elected, I would consider myself successful if I have fought to keep tax rates low and attracted new businesses to the county. I would feel successful if I have worked hard to maintain our county roads and ensured financial stability for the county.

Please explain your opinion and your views regarding the proposed monument for the Hansford County Courthouse. Please also include your thoughts about the separation of church and state. First and foremost, I am a Christian. I believe the Bible is the inerrant Word of God. I am not ashamed of the Gospel of Jesus Christ. In reading the Bible, specifically Romans 13, you will find that we, as citizens, are to follow the laws given by the governing authorities. If, in disobedience to the law, the county allowed the Ten Commandments or other religious symbols, it would open the door to lawsuits and many religious beliefs

that are contrary to mine. I would not want my family exposed to those beliefs. In many situations, it only takes one person to call and complain. The county would then be held responsible for legal costs and ramifications if they were to be sued. I am aware of other communities that have faced similar problems. Recently, in Kentucky, a ruling was made to allow the Ten Commandments to be displayed as an historical document. If that can hold true as legal in Hansford County, then we should be able to display the monument in a similar fashion. I believe if we want to allow those things we hold true, we must work with others to change the laws, but until then we must abide by the law.

Name the most important problem you will face if elected and describe how you will seek to solve it. I believe the greatest challenge we face is the tax rate. I know that in this present economy people don't need the added burden of higher taxes. I would strive to work with elected officials to maintain low taxes and a strong tax base to promote growth in the county. I would encourage financial stability, efficiency and effectiveness to keep the high standard of living we have enjoyed over the years.

Additional Comments: I would like to thank Gary and Catherine Smith for the opportunity to share my views in the Hansford County Reporter-Statesman. I would also like to express my sincere appreciation to the voters for their encouragement and support. If elected, I will do my best to serve with honesty and integrity and to always listen to your concerns. I know that I will be working for you. I would appreciate your vote for me as Hansford County Commissioner, Precinct 2.

CARSON WOMBLE
Family Members: My wife is Shelley, my kids are Wyatt (8 years old) and Tatum (5 years old). I have been married for 11 years. My parents are W.C. "Dub" and Betty Womble.

Place of Employment: Self employed, and representative for Superior Livestock Auction

Position/Occupation: Farmer/rancher

Background/Education: I was raised in Morse, TX in southern Hansford County. I graduated from Spearman High School in 1989, and then graduated from Texas Tech University in 1993 with a degree in Business Finance.

What organizations do you presently belong to and what positions do you hold with them, if any? 2nd Vice President of Panhandle Livestock Association, Member of Southwestern Texas Cattle Raisers Association, Member of National Cattlemen's Beef Association, and a Life Member of the NRA.

Church affiliation: Member of the First United Methodist Church in Spearman since 1982.

Hobbies/Interest: Hunting, fly fishing, golf, and raising Angus cattle

Excluding the Bible, name at least three books you have read within the last year. What newspaper, magazines, television or radio programs or internet sources you regularly access for news? *Arguing with Idiots* by Glenn Beck, *Winning Is Only Part of The Game* by Bobby Bowden, *The Snowball* by Warren Buffett. I am a busy person with not a lot of time for reading books or watching TV. I do watch Fox News periodically. I listen to various conservative talk radio programs at work and monitor the commodity and stock markets constantly. I scan through the *Amarillo Globe-News*, *High Plains Observer* and *Hansford County Reporter-Statesman* weekly.


Continued on Page 5

City Cafe & Donuts

417 Hwy. 207 S.
Spearman TX
(806) 644-6444

7-Days-A Week, 4 a.m.-2 p.m.
Donuts & Burritos
Lunch Buffett
New Burgers
New Toppings

Thursday & Friday, 5-8 p.m.
Supper Specials
Fish on Fridays



Come see
Jeanie Hand
serving Spearman
with a smile for a
long, long, long,
long time.

You are invited to a
Baby Boy Shower
honoring
Jenni & Josh Winegarner
on Sunday, February 28, 2010
from 2:00-3:30 p.m. at the home of
Brenda & Verlan Winegarner
321 S. Barkley Spearman TX

Thank you!

The family of Sullivan Ross Walker would like to express their deepest appreciation to all the many friends and family for all the wonderful acts of kindness they have shown. It might have been prayers, calls, visits, food, flowers or just being there for us. What a warming comfort and you will all hold a special place in our hearts. A special thanks to Dr. Hasham, Gruver EMS, Panhandle Health Care, Hansford Hospice. All of your support and taking care of daddy will never be forgotten. God Bless All of you.

Sincerely,
The family of Ross Walker

Thank you!

I would like to take the opportunity to tell the community of Gruver and Hansford County how appreciative the Gruver FFA & Jr. FFA is of the tremendous support two local men gave to the county stock show just a few weeks ago. As we all know we had some extreme weather right before the Hansford County Stock Show. David Teal and Mike Yanke played a pivotal role in allowing the county stock show to go off with such success.


The Friday morning the county show was to begin these two individuals help not only us, but the entire county as they took several hours out of their day to help move snow around the county barn. Mr. Teal and Mr. Yanke used heavy equipment for several hours donating their time, money and energy towards the efforts of having another successful county show. Without any questions asked these men voluntarily gave of their own to help out our local youth.

If you get a chance please pat these two on the back and tell them thank you for their contribution to the Hansford County Stock Show.

Thank you,
Weston Born, Gruver AST

Spearman Housing Authority

Projects for 2010



The Spearman Housing Authority is currently considering the following projects for 2010 pertaining to its 5 duplex apartment buildings and grounds:

- Repairing/Cleaning/Re-painting metal roofs
- Repairing/Caulking/Re-painting of soffets & trim & installation of covered guttering system
- Re-modeling front porches and sidewalks of 9 apartment entrances to improve accessibility
- Replacement of windows with Simonton Generations series welded vinyl replacement windows, or close equivalent (quote for each building)
- Replacement of cook stoves (gas, with electric ignition), overhead vent hoods with light, water heaters (tall, 30-gal., electric), refrigerators (17 c.f.) (All quotes for appliances should include delivery/installation charges and 48-hour service guarantee.)
- Installation of 4 separate sewer lines
- Installation of Housing Authority-wide watering system
- Installation of storm shelter (for up to 30 persons)

In addition, Spearman Housing Authority from time to time has need of electricians, plumbers, a/c & heating specialists, carpenters, general handymen and lawn care individuals/contractors. Interested parties may specify availability and apply to be added to our call list. Contact Beverly Cook at (806) 659-9990; leave message on answering machine, if necessary.

Spearman Housing Authority - (806) 659-9990

March 2nd Primary

Continued from Page 4

What do you view as the role of a Hansford County Commissioner?

The role of a Hansford County Commissioner is to work with the other 3 Commissioners and the County Judge on the commissioner's Court. A Commissioner votes with the county judge to set the budget for all county departments and adopt a tax rate. A Commissioner is also responsible for maintaining county roads and many more county management responsibilities. In many counties the County Judge does almost all of the budget work and merely presents it for approval to the commissioners. However, after attending a regular court meeting, I have become aware that this is not the case in Hansford County. Our commissioners are involved in every step of the way in making sure their precincts individual budgets are well designed. Our commissioners are also responsible for funding all rural fire protection in the county, all the different departments in the county, and fund a share of the expenses incurred by the county's ambulance service. I was very aware of the pride each of them take in participating to this extent and would embrace their philosophy if elected.

What special qualities or qualifications do you process which would make you an efficient Commissioner? I have a degree in Business Finance with formal training in financial statement analysis and projecting pro-forma statements. This is very helpful to the budget process that Commissioners deal with. I have managed a successful business in farming and ranching for 17 years. I have served a full term on the Hansford County Appraisal Review Board, which gives me insight into property tax issues. I don't waste time at work and don't come home until I have accomplished what I walked out the door to do that day. I always listen to different perspectives and consider all options before making decisions. I enjoy working with people. I just try to use a lot of "common sense" in all my decisions.

If elected, what criteria would you use to determine if you are successful in your position? First of all, by being able to balance the budget without increasing the tax rate. I think this is always the first goal of a responsible commissioner. Next, by being able to overcome unforeseen challenges. Unfunded state mandates can represent such an unforeseen challenge that could only be addressed well by a commissioner willing to look for innovative solutions that keep the county's costs to a minimum. I also realize the importance of maintaining

the roads of Precinct #2 in a manner that satisfies the citizens that depend on them every day. I would initially rely heavily on former Commissioner Joe T. Venneman's experience in the precinct as a guide for my decisions. Lastly, I would determine my success based on my ability to listen to the feedback of the residents of my precinct and not just give them therapy, but positive solutions.

Please explain your opinion and your views regarding the proposed monument for the Hansford County Courthouse. Please also include your thoughts about the separation of church and state. I will answer it directly and will not veil my opinion. I am a Christian. I think that the monument including the Ten Commandments should be allowed at the courthouse in Hansford County. I think it should be allowed at every courthouse in the United States. This country was founded by God fearing men that knew the importance of the Christian faith as the foundation of our society. That insight led to the success of our nation in the past, present, and will also in the future. We are truly blessed to live in a part of the country that can generally agree about this matter. The first amendment does not include the term Separation of church and state." It says *Congress shall make no law respecting an establishment of religion, or prohibiting the free exercise thereof.* It is my opinion that the First Amendment protects people of different religions from our governments authority to mandate a national religion or to persecute them for their religious or non-religious preferences. A monument at the courthouse that includes the Ten Commandments does neither. I am sure that many of you read *The Hansford County Reporter-Statesman* articles on this subject last week. It reminded me that my opinions might not be shared with future U.S. Supreme Court decisions. It is for this reason that other historical information should be included on the monument and only private funds should be used in its establishment. The county does not need a costly lawsuit.

Name the most important problem you will face if elected and describe how you will seek to solve it. The most important problem that will consistently come up is trying to attract industry that could increase our county's tax base. New Industry would add stability and increase diversity in our local economy. The benefits of being able to add new businesses to the county are numerous. Increasing our tax base helps our schools, hospital, county, provides jobs, and allows us to keep property

tax rates low. Without a railroad or a major highway it is very difficult to appeal to investors. I think wind energy is our strongest and best option to overcome our exposure to volatility in the commodity markets and ultimately increase our tax base significantly. As a commissioner I would be a promoter of well designed tax incentives to attract new wind projects. As it currently stands, the tax base in Hansford county is over 600 million dollars, approximately 65% of that is oil and gas, and the balance is mostly agriculture and its related industries. Wind energy could easily become a third major component of our local economy and we all know that we have the wind around here.

Additional Comments: I simply believe that I am the best qualified of the candidates for this office, and know that I am dedicated to this county which would include Spearman, Gruver, Morse, and the rest of rural Hansford County. I am a native of Hansford County and have its collective best interests in mind. I also think it is very important to let the people of Hansford County know what a good commissioner's court we currently have. Joe T. Venneman is retiring after 35 years of distinguished service to our county. All of the members of the court work well together and have done a terrific job of keeping our county's finances in order and serving the community. While in attendance at the court, I used the opportunity to familiarize myself with procedure and the budget. The county's cash reserves are much greater than the state requirements. This is evidence to me of good fiscal management that is the result of many years of effort by this court. It will enable the county to weather unforeseen challenges in the future. If elected, I will strive to protect this cash reserve as the court has done. I am willing and able to handle the duties of a commissioner and would enjoy the opportunity to work for the people of Hansford county.

DANNY HENSON
Family Members: wife - Mary Jane; son - Dallas Henson; daughter and son-in-law, Michael and Mary Dawn McEnany; granddaughter - Lily McEnany; parents - Jack and Sue Henson

Position/Occupation: farmer, County Commissioner for Precinct 4

Background/Education: 1991 graduate of Gruver High School, 1976 graduate of Texas Tech University with a BBA

What organizations do you presently belong to and what positions do you hold with them, if any? Gruver Booster Club, Texas Association of

Church Affiliation: Gruver United Methodist
Hobbies/Interest: Golf, fly fishing, watching sports, reading, following Gruver and Texas Tech sports teams

Excluding the Bible, name at least three books you have read within the last year. What newspaper, magazines, television or radio programs or internet sources you regularly access for news? *Da Vinci Code* by Dan Brown, *Deception Point* by Dan Brown, *Divine Justice* by David Baldacci, *Amarillo Globe-News*, *Amarillo TV stations*, *Fox News*, *HPO*,

What do you view as the role of a Hansford County Commissioner? As a Hansford County Commissioner, I am part of the process of setting policies for the county, approving and setting budgets for tax rates, approving all bills, and maintenance of county roads.

What special qualities or qualifications do you process which would make you an efficient Commissioner? I listen to the concerns people have and try to do something about it. I have the experience to handle many of these concerns. If I do not know the answer, I try to find it. Also, I am a landowner and very interested in maintaining a fair tax rate.

If elected, what criteria would you use to determine if you are successful in your position? The criteria is the response of the citizens saying "thank you" or "good job." If complaints are not heard and compliments are given, you feel you made the right decision.

Please explain your opinion and your views regarding the proposed monument for the Hansford County Courthouse. Please also include your thoughts about the separation of church and state. The monument proposed is to be a historical monument. It was proposed that way by the Hansford County Historical Commission. As long as it is historical in nature, I am for it. As a County Commissioner, I cannot support a religious monument that is not historical in nature. The laws of the U.S. were influenced by religious ideals. The laws are equal to all people regardless of religious affiliation. I feel the separation of church and state was made so that no one special interest could influence all laws.

Name the most important problem you will face if elected and describe how you will seek to solve it. The apparent decline in natural gas prices will certainly effect the appraisals on which we base the county's revenue. Budgets will have to be examined carefully to keep taxes as low as possible.

Additional Comments: I have been blessed to serve the citizens of Hansford County for 15 years. I feel I have, to the best of my ability, tried to do a good job. I would like to continue to serve the citizens of Precinct 4.

RONEY CLARK
Family Members: wife, VeAnn; sons Reese and Ry
Place of Employment: Jon Deere Credit and County Line Farms
Position/Occupation: Crop Adjuster
Background/Education: Graduate of Spearman High School; Associates Degree in Ranch Management from Clarendon College; involved in agriculture all my life

What organizations do you presently belong to and what positions do you hold with them, if any? Board Trustee for Pringle-Morse CISD; Hansford County Stock Show Board
Church Affiliation: Morse Baptist Church
Hobbies/Interest: Hunting with my sons, Reese and Ry; attending their sporting events; cooking

Excluding the Bible, name at least three books you have read within the last year. What newspaper, magazines, television or radio programs or internet sources you regularly access for news? *Day Late and a Dollar Short*, *40 Years Gathering*, *The Worst Hard Times*, *KXDJ Radio*, *High Plains Observer* and *The Hansford County Reporter-Statesman*.

What do you view as the role of a Hansford County Commissioner? make sure all roads are safe and well maintained; stay within the budget

What special qualities or qualifications do you process which would make you an efficient Commissioner? I get along with people and have experience with all equipment used in building and maintaining roads.

Please explain your opinion and your views regarding the proposed monument for the Hansford County Courthouse. Please also include your thoughts about the separation of church and state. I think the monument should be built. I think we need to get back to the basics. Our country was started with God, family and hard work. I think we need to get back to our grass root.

Name the most important problem you will face if elected and describe how you will seek to solve it. Being able to meet all the needs of the precinct and stay within the budget during the failing economy.

CONCEALED HANDGUN CLASS

Saturday, March 6th - 9 a.m.-5 p.m.
 Sunday, March 7th - 2-6 p.m.

MurMur's Cafe
 100 Roland St. - Spearman TX

Instructional Fee - \$125*

For more information, or to register for the class, call Dee Mayfield at 806-330-0269.

Concealed Handgun Licensing

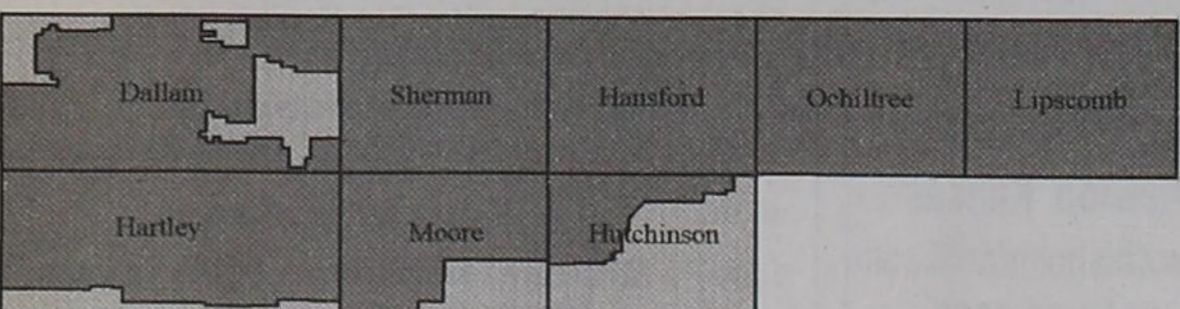


* Does not include Texas Department of Public Safety Concealed Handgun Licensing Fee.

Attention irrigation water well owners in North Plains Groundwater Conservation District (NPGCD).

Production Reports are due in the office at 601 E 1st Street, Dumas, TX 79029 by 5 p.m., Monday, March 1, 2010.

NPGCD includes all or part of Dallam, Hartley, Sherman, Moore, Hutchinson, Hansford, Ochiltree, and Lipscomb Counties. See map:



If you have an irrigation well in one of these counties, but are not sure if you need to file a production report, please call the office at

806-935-6401

Office hours are:
Monday - Friday
8 a.m. - 12 noon and 1 - 5 p.m.
 You may drop completed reports in the mail slot at the office anytime.

Vote for


Carson

WOMBLE

for County Commissioner, Precinct 2

- Hansford County Native
- Conservative
- Hard Working
- Common Sense Leadership

Available To Work For You!



VOTE

March 2nd Primary

Political Ad Paid for by Shelley Womble, Treasurer

Hansford County Sports

Gruver rolls after slow start

By Les Giles, Amarillo Globe-News

The Gruver Lady Hounds used a 15-2 run that bridged the first and second quarters to take charge of their Class 1A Division I basketball area playoff matchup against Lockney's Lady Horns on Thursday, February 18th at Randall.

Lockney scored the game's first nine points and appeared to be in command, but things changed quickly as Gruver used the big run as a catalyst in its 50-32 victory that sends it into next week's regional quarterfinals.

"We didn't panic at our slow start," Gruver head coach Rod Been said. "We hadn't played a meaningful game in a while, so I tried to prepare our girls for that kind of start."

"We have a lot of girls on this team that were part of our state cross country championship team, so I knew what they could do. Once we got into a rhythm, we were fine."

Lockney's Bethany Wilson hit two 3-pointers and one 2-point basket during the opening two minutes to give the Lady Horns a 9-0 advantage. Gruver scored only one basket in the first quarter and after eight minutes trailed 12-7 after making five of eight free throws.

The Lady Hounds were trailing 12-3 with 2:36 remaining in the first quarter. They scored the final four points of the period before beginning the second quarter on a 11-2 run that gave them an 18-14 lead. Gruver led 20-17 at halftime.

The third quarter proved to be decisive as Gruver went on a 15-4 run to take a 35-21 lead with just less than two minutes to play.

Mattie Yanke, who scored a game-high 22 points to lead the Lady Hounds, keyed that third quarter run with nine.

"We turned the ball over too much after getting off to a quick start," Lockney head coach Lisa Schumacher said, "and they started making their shots. Once they got the lead, we never were able to get any kind of momentum back."

Gruver led by 21 points in the fourth quarter at 46-25 with 1:27 remaining.

Madison McLain added nine points and Katie Gibson eight for Gruver. Lockney was led by Wilson's 10 points and nine from Kortney Williams.

GRUVER (28-4): Katie Gibson 3 2-3 8, Leigh Anne Winger 0 1-2 1, Kaysha Bass 3 0-0 7, Madison McLain 3 2-2 9, Mattie Yanke 8 6-11 22,

Daniela Luciano 1 1-2 3, Shelley Gibson 0 0-0 0. Totals: 18 12-20 50.

LOCKNEY (22-10): Bethany Wilson 4 0-0 10, Devin Caballero 1 0-0 2, Malory Johnson 3 2-4 8, Lezlie Jackson 1 1-3 3, Kortney Williams 2 5-8 9, Quinn Jackson 0 0-0 0, Sunny Williams 0 0-0 0. Totals: 11 8-15 32.

Score by Quarters: Gruver 7 20 37 50, Lockney 12 17 22 32. **3-point goals:** Gruver 2 (Bass 1, McLain 1), Lockney 2 (Wilson 2). **Total fouls:** Gruver 16, Lockney 15. **Fouled out:** None. **Attendance:** 400. **Records:** Gruver is 28-4. Lockney finishes 22-10.

Wellington holds off Gruver

By Les Giles, Amarillo Globe-News

Skyler Warrick's rebound basket with 1:10 remaining and two free throws by Amber Thornberry with 48.2 seconds to play sealed a come-from-behind 37-31 victory for the No. 1-ranked Wellington Lady Rockets against No. 4 Gruver in a Class 1A Division I regional quarterfinal game before about 1,850 fans at the Tascosa Activity Center.

Wellington, which won its 22nd straight game to improve to 30-1, defeated Gruver for the third straight year in this matchup to advance to this weekend's regional tournament at Levelland that begins Friday.

This one didn't come easy for the Lady Rockets, who trailed by as many as nine points (16-7) late in the second quarter and by as many as six (21-15) early in the third.

They took the lead thanks to a 10-0 scoring run during a span of just over two minutes of the third period, and when the fourth quarter began had a 28-24 advantage.

Gruver hung tough and led 30-29 with 3:33 remaining to play following a free throw by Mattie Yanke.

But Wellington closed the game on an 8-1 scoring run.

The big play came when Warrick rebounded a missed shot and scored to

put the Lady Rockets up 35-31 with just more than a minute remaining.

"I was in the right place at the right time," Warrick said. "We were determined and focused to win, but so was Gruver. It was a game between two very good teams, and it's a shame one of us had to lose."

Gruver, which ended its season 28-5, hurt itself by missing six free throws in the second half, including four in the fourth period.

"I think we kind of got fatigued late in the game," said Gruver head coach Rod Been. "Wellington appeared to be fresher than we were at the end. I probably should have substituted differently so we would have had fresh legs at the end."

"This game went a lot like the previous two. We had a lead in the third quarter but couldn't hold it. Give them a lot of credit. They are a good team and made some big shots when they counted most."

Bailey Long and Amber Thornberry scored 13 points to lead Wellington, while Warrick had eight. Yanke led Gruver with 12, while Madison McLain had eight and Kaysha Bass seven.

GRUVER (28-5): Katie Gibson 1 2-4 4, Leigh Anne Winger 0 0-0 0, Kaysha Bass 2 1-2 7, Madison McLain 3 1-2 8, Mattie Yanke 2 6-8 12, Shelley Gibson 0 0-0 0. Totals 8 10-16 31.

WELLINGTON (30-1): Bailey Long 4 2-3 13, Felicia Hernandez 1 0-0 2, Skyler Warrick 4 0-4 8, LaChrista Nash 0 0-0 0, NaKisha Nation 0 1-2 1, Amber Thornberry 4 3-3 13.

Score by Quarters: Gruver 10 16 24 31, Wellington 4 13 28 37. **3-point goals:** Gruver 5 (Bass 2, McLain 1, Yanke 2), Wellington 5 (Long 3, Thornberry 2). **Total fouls:** Gruver 12, Wellington 17. **Fouled out:** Nash. **Attendance:** 1,850.

A Note from Coach Been

I'm very proud to report that in our locker room Tuesday night there were no tears. No tears because we have no regrets.

My girls gave an effort that I am sure all were proud to witness. Mistakes, we made too many - free throws we made too few, but in the end it was a game that they played with every ounce that they had to give.

Each of you know my graduating seniors, Mattie Yanke, Katie Gibson and Leigh Anne Winger, they have been the driving force behind returning Lady Hound Basketball to the state playoffs, and the past three years the area championship. They have placed an unbelievable priority of doing so, and in that they have achieved their goal.

They have given to the program at a level that all future "lady hounds" will be compared. They have set a standard for work ethic, dedication, commitment and self sacrifice that will be tough to follow, but if you ask them they will all say "well worth it."

They leave a legacy behind of "FEAR REGRET" not failure! I sent a text last night before I went to bed to these three: no regrets! sweet dreams. They responded: (Leigh Anne - nope, Katie - NONE!, Mattie - That's right!) That is why there were..... no tears!

I caught Madison McLain and Shelley Gibson as they were headed down the hall to their first period class, stopped them and had them look out the "observation port" at our new gym project. I told them we would be playing right there next year in new uniforms.....

Shelley grinned and said, "Looks like it's gonna be a pretty nice place to play." The future of Lady Hound Basketball is bright with anticipation of great years to come!

Coach Rod Been

Spearman beats Sonora, 61-40; Lady Hornets fall

By John Hasselmeier

The Spearman Lynxettes dominated Sonora much of the way in a Region I-2A high school girls basketball area playoff Friday night, February 19th, but they had their lead cut to six in the third quarter.

Spearman head coach Junior Ashmore called a timeout, and the Lynxettes

responded with a 10-2 scoring run to defeat the Lady Broncos, 61-40, at Coronado High School.

"I thought we were a little too fast with everything that we were doing," Ashmore said. "We told them to slow down, take a deep breath and do things at our speed."

Spearman (25-6) will face Idalou in a Region I-2A quarterfinal at a time and site to be determined. Sonora (25-6) lost to Spearman in the playoffs for the second season in a row.

The Lynxettes appeared firmly in control with a 33-19 lead on Leanna Espinosa's 3-pointer with 6:32 left in the third period.

"If we had shot the ball at all in the first half, we'd have had a more comfortable lead," Ashmore said. "We've been a good defensive team all year, and that will get you through some bad shooting spurts."

Sonora then got baskets from Morgan Smith, Amy Hernandez and Cassie Kreig and a pair of free throws from Hernandez to pull within 33-27 with 2:36 left in the period. That's when Ashmore called a timeout.

"In basketball games, you have some ups and downs, and we've learned how to handle it when the downs come," said Spearman's Morgan Ashmore, the coach's daughter, who scored eight of the 10 points during the key run. "I just knew we needed to step up and put the game away."

Gately Garnett started the run with a basket to make it 35-27. Ashmore sank two free throws for a 37-27 lead with 7:46 left to play.

Hernandez interrupted the run with a pair of free throws, but Ashmore hit back-to-back 3-pointers to put the Lynxettes up, 43-29, with 6:26 left. Sonora never got closer than nine points after that.

Ashmore scored a game-high 22 points. Espinosa scored 16 points, and Shelby Hanna added 10.

Hernandez led Sonora in scoring with 21 points.

Spearman's attention now turns to the regional quarterfinal round, a round in which the Lynxettes lost to Shallowater a year ago.

"It feels good," Morgan Ashmore said. "We want to go to regionals and go as far as we can."

SONORA (25-6): Amy Hernandez 7 7-9 21, Morgan Smith 2 4-4 8, Cassie Krieg 2 1-1 5, Maraya Dunn 1 0-2 2, Chesley Lou Campbell 1 0-2 2, Hunter Jennings 0 2-6 2, Avery Nolen 0 0-0 0, Karina Trevino 0 0-0 0, Leandra Castaneda 0 0-0 0. Totals: 13 14-24 40.

SPEARMAN (25-6): Morgan Ashmore 5 9-12 22, Leanna Espinosa 6 2-4 16, Shelby Hanna 4 2-6 10, Kyla Walker 1 3-4 5, Gately Garnett 1 1-2 3, Tylo Farrar 1 0-0 2, Andi Linn Scarborough 1 0-0 2, Malory Martin 0 1-1 1, Britani Vasquez 0 0-0 0, Rosa Ortiz 0 0-0 0, Natalie Saldivar 0 0-0 0, Lexi Batton 0 0-0 0. Totals: 19 18-29 61.

Score by Quarters: Sonora 10 15 27 40, Spearman 15 27 33 61. **3-point goals:** Sonora 0, Spearman 5 (Ashmore 3, Espinosa 2). **Total Fouls:** Sonora 21, Spearman 18. **Fouled Out:** None. **Records:** Spearman, 25-6; Sonora 25-6.

Idalou Topples Spearman

Brittany DeLeon scored 11 points and Bailey Thiel had 10 to lead the Idalou Lady Wildcats past the Spearman Lynxettes, 49-40, in a 2A regional quarterfinal game at the Tascosa Activity Center.

Idalou trailed 10-8 after one quarter but outscored the Lynxettes 12-4 in the second to grab a 20-14 lead at halftime.

Morgan Ashmore scored 19 points and Shelby Hanna had 11 to lead Spearman, which ended its season 24-7.

Score by Quarters: Idalou 8 20 30 49, Spearman 10 14 25 40. **Scorers:** I-Brittany DeLeon 11, Bailey Thiel 10, S-Morgan Ashmore 19, Shelby Hanna 11. **Records:** Idalou 23-8, Spearman 24-7.

Lynx Lose To Mules, 54-52

The Spearman Lynx lost a hard-fought game to the Muleshoe Mules, 54-52, on Tuesday, February 23, 2010.

PRINGLE-MORSE CONSOLIDATED ISD STATEMENT OF REVENUES, EXPENDITURES, AND CHANGES IN FUND BALANCE GOVERNMENTAL FUNDS FOR THE YEAR ENDED AUGUST 31, 2008

Data	10		Total
Control	General	Other	Governmental
Codes	Fund	Funds	Funds
REVENUES:			
5700	Total Local and Intermediate Sources	\$ 1,910,120	\$ 28,768
5800	State Program Revenues	677,331	6,306
5900	Federal Program Revenues	-	110,333
	Total Revenues	2,587,451	145,407
5020	Total Revenues	2,587,451	2,732,858
EXPENDITURES:			
Current:			
0011	Instruction	877,248	49,952
0012	Instructional Resources and Media Services	43,227	-
0013	Curriculum and Instructional Staff Development	7,764	8,294
0023	School Leadership	76,620	-
0031	Guidance, Counseling and Evaluation Services	874	-
0033	Health Services	11,241	-
0034	Student (Pupil) Transportation	115,050	-
0035	Food Services	-	108,601
0036	Extracurricular Activities	22,540	-
0041	General Administration	143,930	-
0051	Facilities Maintenance and Operations	217,726	-
0053	Data Processing Services	77,494	-
0061	Community Services	994	-
Intergovernmental:			
0091	Contracted Instructional Services Between Schools	919,764	-
0093	Payments to Fiscal Agent/Member Districts of SSA	9,799	12,677
	Total Expenditures	2,524,271	179,524
1100	Excess (Deficiency) of Revenues Over (Under) Expenditures	63,180	(34,117)
OTHER FINANCING SOURCES (USES):			
7915	Transfers In	-	34,117
8911	Transfers Out (Use)	(34,117)	-
	Total Other Financing Sources (Uses)	(34,117)	34,117
1200	Net Change in Fund Balances	29,063	-
0100	Fund Balance - September 1 (Beginning)	1,802,256	-
3000	Fund Balance - August 31 (Ending)	\$ 1,831,319	\$ 1,831,319

MITCHELL THEATRES

NORTHRIDGE 8

Guymon, Oklahoma
www.northridge8.com
580-338-3281

SOUTHGATE 6

Liberal, Kansas
www.southgate6.com
620-624-5573

CHISHOLM TRAIL 8

Newton, Kansas
www.chisholmtrail8.com
316-283-0555

SEQUOYAH 8

Garden City, Kansas
www.sequoyah8.com
620-275-7707

FRESH POPCORN EVERYDAY!
-PARTY ROOM & ARCADE-

REAL ESTATE

FOR RENT: 1BR furnished apartment and 2BR furnished apartment. Bills paid, free laundry services. Call 659-2247.
TFN(7/16/10)
WINDMILL COURTYARD APARTMENTS: 2BR, 1B unfurnished apartments. Central heat and air, new appliances. Pets allowed with additional deposit. Utilities not included. \$500/month rent with \$500 deposit. Inquire about applications at Deakin Electric, 321 Main St., Spearman. TFN(7/16/09)B
READY FOR MOVE-IN! 3 BR home, central H/A, hardwood floors, new paint & lighting, large bath w/2 sinks + tub/shower, lots of built-in storage, laundry rm, attached garage, huge fenced yard, 1017 Townsend St. **REDUCED TO \$59,500!** Call 659-5293 or 330-0384. TFN(1/21/10)B

HELP WANTED

HELP WANTED: First United Methodist Church, Spearman is currently taking applications for a nursery worker. Need to be available for Sunday church services and various times throughout the week and for funerals. If interested, please come by the church to pick up an application. (407 S. Haney, Spearman, 806-659-5504) 4(2/4/10)B
HELP WANTED: Spanish-speaking LVN needed for pediatric patient. Call 806-355-1899. Fax resume to 806-355-4312. Position available immediately. 3(2/11/10)
HELP WANTED: Seeking experienced rig operator for Sunray area. Send resume to PO Box 1422, Pampa TX 79066. 2(2/18/10)

SERVICES

CLICK PAINTING & HOME REPAIR Painting, Texturing, Drywall Repair, Fencing & General Carpentry. Serving Perryton, Spearman & Gruver. Don Click, 648-1480, or 202-1391 (cell). TFN(10/15/09)
HOOCHY POOCHY PARLOR Call us for all your pet's grooming and boarding needs. Call now for reservations! 806-273-2724. TFN(11/2/07)

AUTOMOBILES

2006 HUMMER H3 yellow, 24" wheels, excellent condition; leather. \$16,995. For more information, call Devin or Mandy at 806-878-3944. TFN(12/10/09)
2005 NISSAN ARMATA excellent condition inside and out; entertainment, navigation and leather. \$15,995. For more information, call Devin or Mandy at 806-878-3944. TFN(12/10/09)

GARAGE SALE

4-FAMILY GARAGE SALE: Saturday, February 27th, 9 a.m.-2 p.m., Kid's Stuff Building, 714 7th Street, Spearman (next door to PTCI). Furniture, clothes, children's clothes, toys, knick-knacks, miscellaneous. 1(2/25/10)

PUBLIC NOTICE

NOTICE TO ALL PERSONS HAVING CLAIMS AGAINST THE ESTATE OF ELIZABETH A. BAKER, DECEASED
 Notice is hereby given that original Letters Testamentary for the Estate of ELIZABETH A. BAKER were issued to Barton James Baker and Tina Adams, in the County Court of Hansford County, Texas, in Cause No. 2591, on the 1st day of February, 2010. All persons having claims this estate which is currently being administered are required to present them within the time and manner prescribed by law. All claims should be sent to:

Barton James Baker, 1120 Archer Street, Spearman TX 79081 or to Tina Adams, PO Box 653, Spearman TX 79081.
 John L. Hutchison, PO Box 506 Spearman TX 79081 Attorney for the Estate 1(2/25/10)B

NOTICE TO BIDDERS
 Notice is hereby given that the City of Spearman, Texas, will receive sealed proposals for the depository and custody of the City funds from any banking corporation, association, or individual banker doing business within the City of Spearman, on March 11, 2010, at 11:00 a.m. at City Hall. Any banking corporation, association, or individual banker doing business in the City of Spearman desiring to submit a proposal to be designated as the depository for the funds of the City of Spearman shall deliver to the City Manager, on or before the date and time specified, its proposal for depository and custody of such funds, which must be accompanied by a statement of assets and resources of the applicant. The proposals must comply with the applicable statutes and be subject to the laws governing depositories. The City of Spearman reserves the right to reject any or all bids, to waive informalities and to accept the bid deemed to be the most advantageous to the City. All bids received after the above closing hour will be returned unopened. All bids shall be sealed and marked on the outer envelope of the type of bid being submitted. Specifications and bidding documents may be secured from City Hall, P.O. Box 37, Spearman, Texas 79081. 2(2/18/10)B

N	S	I	A	B	A	L	E	O
C	O	R	E	R	I	A	N	E
A	G	O	R	A	D	D	T	V
M	O	N	I	Q	U	E	S	P
F	I	N	O	C	Y	S	T	
B	R	A	S	I	L	O	I	A
L	A	S	T	T	O	N	G	R
I	N	T	O	Y	O	D	E	L
N	E	I	G	H	P	U	R	L
D	E	R	A	I	L	I	M	A
R	E	I	T	M	A	N	M	O
R	E	I	T	M	A	N	M	O
A	D	O	R	E	U	F	O	T
T	I	T	A	N	F	O	X	L
T	A	P	F	R	Y	L	E	M

5	7	1	4	8	6	3	2	9
3	8	2	1	5	9	6	7	4
9	4	6	3	7	2	8	1	5
6	3	5	8	2	1	9	4	7
2	9	7	5	3	4	1	6	8
4	1	8	9	6	7	5	3	2
8	2	3	6	4	5	7	9	1
1	5	4	7	9	3	2	8	6
7	6	9	2	1	8	4	5	3



Go Painlessly
Thera-Gesic
 For Real Pain Therapy...
Thera-Gesic Pain Cream
 It Really Works...Compare and SAVE.

up to **\$8,000 Cash Back!**
 First-time home buyers can qualify for tax credits up to \$8,000, or \$6,500 for repeat buyers! With ZERO down and no payments for 6 months, there's never been a better time to build. Call today to learn more!

 United-Bilt Homes
 14 locations in Texas
 800.756.2506
 HomeMade just for you.

"Pot O' Gold"
 Dinner, Dance & Calcutta
 Saturday, March 27 • 7 p.m.
 The O'Loughlin Center
 502 S. Brandt • Spearman
 Tickets - \$60 per person
 Tenderloin Meal
 Entertainment by "Insufficient Funds"
 Grand Prize - \$2,500
 Consolation Prizes & Calcutta
 Call 659-3030 for more information.



Blankenship Real Estate
 659-3052 - 670-3774
 4BR/2B/2CG Home - Basement, pool, central H/A, fireplace
 3BR/2B Home - 1500 sq. ft, brick, 2CG, patio, walk-in closets
 3BR/2B Home - 1460 sq. ft, brick, 2CG, patio, walk-in closets.
NEW LISTINGS WANTED!
 Eulalia Blankenship - Sales
 Eschol Blankenship - Broker

Properties
 Shirley Howard
We NEED listings!
 Call us now to help YOU sell your home for top dollar!
 501 Barkley - Spearman: 2,490sf, 3-4BR, 1 1/2 BATH, 2 att gar, 3rd CONTO 31 base-mech, plus wood shop! VERY modern and updated!
 902 9th - Gruver: Horse Stables FOR SALE! 18 pens, circular training pen, arena, & 4500 sf barn on 10.42 acres! **PRICE REDUCED!!**
 712 Womble - Gruver: 1070sf, 3 BR, 1 B, Central Heat, Lrg Corner Lot! **REDUCED!**
 Shirley Howard, Broker/Owner
 806-886-6536, Cell
 Melinda McCullough, Realtor
 (806) 733-5678
 We would LOVE to sell your HOUSE!
CALL US!

MARTIN & ASSOCIATES REALTY
 Serving Hansford County for 15 years
 Julie Martin: Broker - 659-2425
PRICE REDUCED ON BOTH 804 & 806 Wilbanks
 New Construction. Call for your private showing!
We'd Like Your Listing!
FOR QUALITY & SERVICE CALL US TODAY!
 Equal Housing Opportunity

This ad is just a small sample of the properties that we currently have for sale.
 Please check our Web site and give us a call! We need your listings both large and small, all types of ag properties (ESPECIALLY CRP).
DALLAM CO. - Three adj. sections of dryland, some native grass, irrigation in area (two new wells across the road).
SWINE PRODUCTION FACILITY - Moore Co., TX. - 1200 sow capacity, capable of running 28,000 pigs annually, computerized feed mill, flex-flo feeding system, management in place. **PRICED TO SELL!**
RITA BLANCA RANCH - Dallam Co., TX. - 4,055 acres, 4 circles, 375 acres CPR, good fencing, pens and water. Priced to sell.
DALLAM CO. - 2 1/2 sections CRP.
HARTLEY CO., TX. - 640 ac. 10 miles to Hilmar Cheese plant, on pvtm., dairy permit, 3 pivots, home, barn, grain storage.
OCEANS OF WATER II - Hansford Co., Texas. - 4 sections, strong water, dev. with sprinklers, wells, feedyard, home, barns, pvtm., 2 mi. hwy. frontage.
SEE OUR WEBSITE OR CALL US!
www.scottlandcompany.com
 Shawn Gillispie 806/922-5532
 Ben G. Scott, Broker
 1-800-933-9698 day/eve
 TFN(2-04-10)

See us for:
 AUTO • HOME • CROP HAIL • FARM & RANCH • MULTIPERIL • LIVESTOCK
INSURANCE
BORT AGENCY, INC.
 510 Main St. • Gruver, TX
 (806) 733-2456

hchd
 Hansford County Hospital District
Openings at Hansford Hospital

RN: 7pm-7am. Graduate of an accredited School of Professional Nursing. Currently licensed in the State of Texas. BCLS, ACLS and TNCC preferred. CPR required.


Openings at Hansford Clinics
Clinic Receptionist: Accurate communication skills. Patient appointments, working closely with Provider and other departments of HCHD. Bilingual preferred.

Openings at Hansford Manor
LVN: Graduate of an approved LPN/LVN program. Must be able to make independent decisions when circumstances warrant. Must possess the ability to deal tactfully with residents, family and public.

CNA: CNA certification required. Must be able to provide assigned residents with routine daily nursing and services in accordance with the resident's assessment and care plan, and as may be directed by your supervisor.

Great working environment and staff, quality facility providing opportunities for professional growth. Great benefit package. Apply at 707 S. Roland, Spearman, TX or contact Jackie Nelson at 806-659-5841. Download application at www.hchd.net
 EEOE (2-18-10)B

BUY HERE! PAY HERE!
We Finance!
CLASSIC CLOSED CARS, INC.
 Devin Cook
 Manager
 (806) 878-3944
 724 S. Main Street
 Stinnett TX 79083



United States Census 2010
 It's In Our Hands
Apply Now!
 Temporary, part-time jobs now available.
 Census Takers
 Crew Leaders
 Crew Leader Assts.
 Recruiting Assts.
 Census Clerks
Census jobs offer:
 ✓ flexible hours up to 40/wk
 ✓ mileage reimbursement
 ✓ work near home
You may qualify if you:
 ✓ are 18 or older
 ✓ have a valid SSN
 ✓ pass a background check
 ✓ take a written test
 ✓ can work up to 40 hrs per week in the evening and on weekends
www.2010censusjobs.gov
1-866-861-2010
 The U.S. Census Bureau is an Equal Opportunity Employer.

TEXAS STATEWIDE CLASSIFIED ADVERTISING NETWORK
TexSCAN Week of February 21, 2010
ADOPTIONS
A CHILDLESS, MARRIED couple in our 30's seeks to adopt your newborn. Teacher Mom and Preflighter Dad. Financial security. Expenses paid. Jill & Christopher. 1-888-810-8661.
BUSINESS OPPORTUNITIES
ALL CASH VENDING! Do you earn \$800 in a day? Your own local candy route. 25 machines and candy. All for \$9,995. 1-888-825-5481. Multi Vend, LLC.
DRIVERS
CDL-A TEAMS WANTED! Calladon company drivers and owners operators! Paid vacation. Great pay, benefit and home time. 1 year verifiable TT experience. 1-800-729-9770. www.Calladon.com
DRIVERS-HIRING DEDICATED drivers. Average \$850-\$1250 per week. Great benefits! Home every 1-2 weeks. 1 year tractor-trailer experience and HS diploma or GED required. Call 1-888-605-5238 or apply online at www.aeritractor.com. Equal opportunity employer.
DRIVERS INDUSTRY'S! Lease purchase program! Low monthly payments, high % pay package, no credit checks! Owner operator welcome! 1-800-767-6918. www.falchit.com
EQUIPMENT FOR SALE
NEW NORWOOD SAWMILLS. Lumber Mate-Pro handles logs 34" diameter, mill boards 28" wide. Automated quick-cycle-feeding. Increase efficiency up to 40%! www.NorwoodSawmills.com(300N, 1-800-661-7746. Ext. 300N)
HELP WANTED
MEDICAL SALES executive. Home Care. Delivered is expanding into Texas and seeks entrepreneurial sales executive. Visit us online at www.homecaresales.com for more information.
NOTICE: While most advertisements are reputable, we cannot guarantee products or services advertised. We urge readers to use caution and when in doubt, contact the Texas Attorney General at 1-800-621-0508 or the Federal Trade Commission at 1-877-FTC-HELP. The FTC web site is www.ftc.gov/idthelp.
Extend your advertising reach with TexSCAN, your Statewide Classified Ad Network.

by Dorothy Hudson

Out at the Lake



Jim Derington
Palo Duro River Authority
P.O. Box 99
Spearman, TX 79081
806-882-4401
pdra@dishmail.net



Lake Level--February 22, 2010--15.87 feet (-0.12)

The Lake has been mostly thawed out. Jim saw 2 fishermen out. It is snowing again this Monday with more snow predicted for Thursday.

Jim is still seeing the 8 bald eagles part of the time. He noted the Mountain Bluebirds and Cedar Waxwings being near the office at times.

Jim had a meeting with the Panhandle Regional Water Planning Group today in Amarillo. They were hoping to get their new plan adopted today.

Lucern Hotel

Before we start the column on the merger of the brick Etling building and the Lucern Hotel, Allen Walker has brought pictures and new information on both the Etling building and Lucern. He has a picture of the teacher and seven students at the Lucern school. The date was 1910. Fred Hoskins, one of the students, later moved to Spearman and spent the rest of his life there. His family writeup in Hansford County History Vol. I has more on the town of Lucern.

He also has a picture of a pool hall being run by his grandfather, Orville Walker. He had been told by family that it was the

Etling building. Harry Barkley, Orville, and Ben Beck are in the picture along with a young boy identified as Roy Walker, Orville's third son and the father of Allen.

Leon Bagwell has brought a picture of the hotel as it stood on west Main north from The Fletcher's Grocery and the picture shows a building built by the Cooper Brothers in 1929.

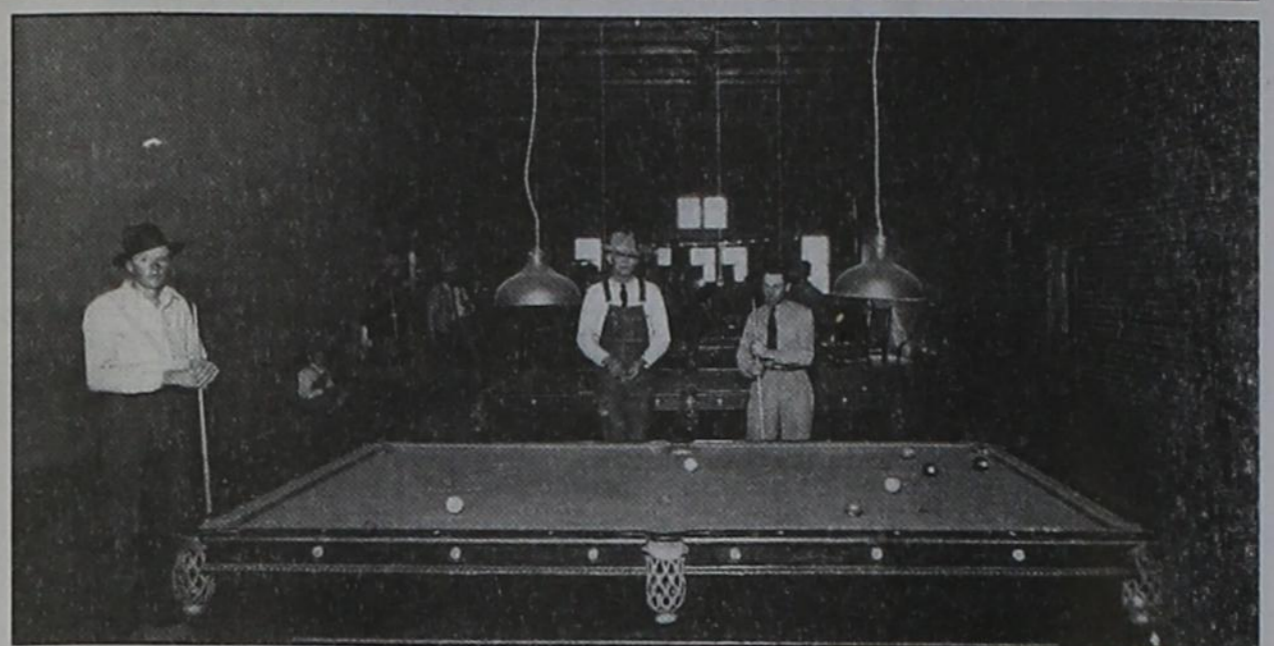
To understand the merger of the buildings, we need to know more about the I. W. Ayres, Sr. family. In 1925, Irvin White and Maude Ayres visited the Dozier family in Hansford County. Mr. Ayres liked this country. In 1926, he and Maude bought a half section of land southwest of Gruver and moved here from Cooke County, leaving all their family behind except eleven year old I. W. Jr. Mr. Ayres was confident most of his family would join them later. Join them, they did, all but one of the seven children. Son J. M. with wife Ruby came in 1927. Two of the girls lost their husbands. Charmian, who had married Roy Odom, moved with him and two children, Farena and George Paul, to the Gruver area in 1928. Roy died of diabetes in 1932. Charmian remarried in 1935 to Carl Lyle.

Pauline, married to Val Winger, did not move here until after the death of her husband, Val Winger. He was killed in 1941 when his horse fell with him. Pauline's twin sister, Aline, with her husband Alfred, had lived in the county briefly and moved away, but in 1932 they came back to stay.

In 1944, Mr. and Mrs. Ayres, Mr. and Mrs. J. M. Ayres, Mr. and Mrs. Alfred Henderson, Mr. and Mrs. Carl Lyle, and Pauline Winger saw a need for a better hotel and coffee shop in Gruver. With this in mind, they formed a partnership with 5 parts. They bought the brick Etling building and the hotel that had been moved to Gruver across from the Phillips Service Station. They hired Ed Pinkerton, Sr. to dismantle the hotel, as they thought it would be cheaper to save and use the lumber rather than buy new. George Paul Odom said they realized when they were through it would have been just as cheap to have gone to the lumberyard.

They built the second floor to fit the brick base, and then added a slightly smaller third floor of eight rooms.

(To be Continued)



Students in the Diesel Technology program at Seward County Community College/Area Technical School recently participated in SkillsUSA competition. From left, are Eric Hernandez, second, Ulysses, 1,367 points; Ramiro Rivera, first, Morse, Texas, 1,622 points; Cara Nelson, third, Guymon, Okla., 1,278; Cody Brennon, fourth, Beaver, Okla., 1,270; Leonardo Amador, fifth, Guymon, Okla., 1,265; and Brandon Bruner, sixth, Hooker, Okla., 1,264. SkillsUSA is a partnership of students, teachers and industry representatives, who work together to ensure America has a skilled work force.

Congratulations!



Gruver Greyhounds



Gruver Lady Hounds



Spearman Lynx


Spearman Lynxettes

Show your support for the
Gruver Greyhounds,
Gruver Lady Hounds,
Spearman Lynx and
Spearman Lynxettes!

Include your name or business in the
Congratulations ad in next week's edition
of The Hansford County Reporter-Statesman.
Call 659-3434 or e-mail
reporter@spearmanreporter.com for details.

The O'Loughlin Center

602 S. Bank • Spearman TX
 (806) 659-8080
 Jada Bracken, Manager



NEW HOURS

Monday-Thursday, 6 a.m.-8 p.m.
Friday, 6 a.m.-6 p.m.
Saturday, 9 a.m.-12 noon.


WHEN DOES YOUR SUBSCRIPTION EXPIRE?

SCR1
01/10 EXPIRES
 JOHN Q. PUBLIC
 PO BOX 123
 SPEARMAN TX 79081

Expiration dates are printed on the top of all mailing labels. Our readers can help keep the cost of subscriptions down by mailing in renewals in the appropriate month.

Thank you, Catherine Smith

THE HANSFORD COUNTY REPORTER-STATESMAN
 213 Main Street • Spearman, TX 79081
Annual Subscription Rates
 In Hansford County - \$30
 Out of County - \$40
 E-Subscription - \$35 (sent through e-mail)



North Plains ELECTRIC COOPERATIVE

The Home Team Advantage

Since 2000, almost \$60,000 of scholarships have been invested in the youth of the North Plains Electric Cooperative service area.

Past local recipients include:

2004	Jenny Hart	Gruver	2005	Monica Cantu	Spearman
2005	Brittanie Osbourne	Gruver	2005	Macy Christine Harbour	Spearman
2006 & 2007	Timber Barkley	Gruver	2006	Tonya Hart	Spearman
2002	Clara Shieldknight	Spearman	2006	Maribel A. Moreno	Spearman
2003	Monica Cantu	Spearman	2007, 2008 & 2009	Emily Hood	Spearman
2004	Katie Clyburn	Spearman	2008	Dane Harbour	Spearman
2004	Claudia Vaquera	Spearman	2009	Taylor Williams	Gruver
			2009	Brett Winegarner	Spearman

Is it your turn? Visit www.npec.org for details or contact Bill Carson (806) 435-5482 or (800) 272-5482