



# HANSFORD COUNTY THE REPORTER-STATESMAN

CELEBRATING 103 YEARS OF SERVICE TO HANSFORD COUNTY  
HANSFORD COUNTY'S ONLY NEWSPAPER

SCR2  
COMP  
HANSFORD COUNTY LIBRARY  
0122 MAIN ST  
SPEARMAN TX 79081-2064

THURSDAY,  
AUGUST 26, 2010

75¢

WWW.SPEARMANREPORTER.COM

VOLUME 103 • ISSUE 34

reporter@spearmanreporter.com

## USDA Reminds Producers of Approaching Sign-Up Deadline for CRP

The USDA Farm Service Agency (FSA) reminds producers that the deadline to enroll in the Conservation Reserve Program (CRP) general sign-up is quickly approaching. Farmers and ranchers have until close of business on Friday, Aug. 27, 2010, to offer eligible land for CRP's competitive general sign-up. Applications can be completed by land owners at the FSA county office where their farm records are maintained. The 2008 Farm Bill authorized USDA to maintain CRP enrollment up to 32 million acres.

In addition to producers signing up for the first time, CRP participants with existing contracts that are scheduled to expire on Sept. 30, 2010, may elect to re-enroll under a new 10-15 year contract. Cropland that is highly erodible, or within a national or state Conservation Priority Area, or is covered under an expiring CRP contract is generally eligible to be enrolled into CRP, provided all other eligibility requirements are met.

Contracts awarded under this 39th sign-up are scheduled to become effective Oct. 1, 2010.

CRP is a voluntary program that helps farmers, ranchers and other agricultural producers protect their environmentally sensitive land. Producers enrolling in CRP plant long-term, resource-conserving covers in exchange for rental payments, cost-share and technical assistance.

In addition to the general sign-up, CRP's continuous sign-up program is ongoing. Continuous acres represent the most environmentally desirable and sensitive land.

For more information on the general CRP sign-up, or the continuous CRP sign-up, producers should contact their local FSA county office, or visit <http://www.fsa.usda.gov/crp>.

## Lusby Competes in National Kidney Foundation Transplant Games



Mandi Lusby took home six medals in swimming, volleyball and 3-on-3 basketball from the National Kidney Foundation Transplant Games.

by Catherine Smith

Mandi Lusby of Spearman recently competed in the National Kidney Foundation Transplant Games in Madison, WI.

The event is held every other year and is designed to give transplant recipients a chance to celebrate the gift of life through sports and fellowship with one another. The Games also offer donor family members and living donors the opportunity to meet others who have gone through similar experiences.

Mandi, who received a heart/lung transplant on September 13, 2009 at The Methodist Transplant Center in Houston, took home six medals in swimming, volleyball and 3-on-3 basketball.

"I never thought after my transplant that I would be taking part in an event like this," Mandi said. "The whole experience has been a life-changing for me. Meeting so many wonderful transplant patients made me feel like I wasn't alone in what I went through."

Mandi and her mother, Donita, had been living in Houston since August of 2008 waiting for a transplant.

Mandi was diagnosed in 2003 at the age of 26 with Primary Pulmonary Hypertension, a disease that causes high blood pressure in the lungs. The heart is also affected by having to work extremely hard against the pressure.

Mandi was told at the time there was no cure. The only solution would be a double lung and heart transplant. For the last five years she has had a catheter inserted into her heart with a pump supplying continuous medicine. At the time of the diagnosis there were only three options of medication available. Now there are four or five options, but still no cure. After several years of adjusting her medications and treatments, she is now left with the last option of a double lung transplant.

Mandi and her family were notified on Saturday afternoon (September 12th) that



Mandi Lusby, second from right, and her mother, Donita, second from left, are pictured with her transplant doctors at The Methodist Transplant Center in Houston a week after competing at the National Kidney Foundation Transplant Games in Madison, WI.

a match had been found from a young man between 18-25 years old. They were notified on Sunday morning that the donor organs were perfect, which began the actual transplant process.

Continued on Page 7

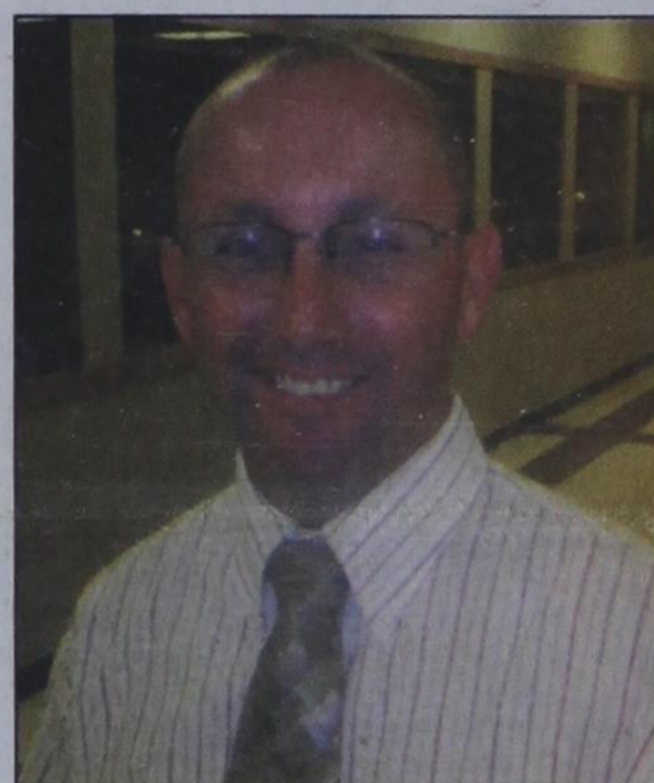
## Shane Whiteley Named Region 16 Principal of the Year

Shane Whiteley, Principal of Spearman Junior High School, has been selected as the Region 16 Principal of the Year by the Texas Association of Secondary School Principals. TASSP recognizes outstanding principals from the twenty region Education Service Centers in the state. School administrators are nominated and chosen by their peers within their region. Nominations are based on exemplary performance and outstanding leadership. As a Region 16 winner, Shane is eligible to compete for the state title of Texas Principal of the Year.

Shane Whiteley, a 9 year principal, has served as K-12 principal at Follett ISD, elementary principal at Booker Elementary School and has been a member of the leadership team at Spearman Junior High School since 2006. He grew up in Wheeler, Texas and attended West Texas State University and earned a BS degree in education. He later attended West Texas A&M University where he was awarded a Masters of Education in Administration. Shane is first to give credit for his success to a wonderful and dedicated staff at Spearman Junior High School. Under his leadership, his campus has earned numerous achievements including being named by the Texas Middle School Association as the Elmer Watson Outstanding Middle School Award for the past two years in a row; Title I Distinguished Performance School (only junior high to receive this award in the Panhandle); Just for Kids High Performing School in Science & Reading; and for the past two years his campus has earned an EXEMPLARY rating from the Texas Education Agency.

When the news reached Mr. Whiteley that he received this award, he downplayed the accolade. One of his teachers said in typical fashion he gave all the credit to us his staff, and said he could not have gotten this award without their hard work. He added that the staff makes him look good!

According to Rodney Sumner, Superintendent of Schools, Shane and his staff have made some remarkable accomplishments and have a positive impact on the climate and culture of the Junior High School. Sumner said the junior high campus has strong instructional prac-



tices resulting in the lowest discipline numbers, the highest passing rates and the best achievement on the TAKS test in the district. According to Sumner, this has not always been the case, and he believes that SJH is the best junior high school in the State of Texas!

Shane is a devoted family man and has been married for thirteen years to his wife Starla, an English as a Second Language teacher at SJH, who has also earned some notoriety for coaching the Lynettes to the back-to-back 2-AA State Cross Country Championships! He has two children, Shaylyn (8) and Shad (5) who both attend Spearman schools.

Each of the region winners will be recognized during the Texas Heroes Award Dinner on Tuesday, June 14, 2011. Each will be presented with an award and recognized in a commemorative booklet entitled Texas Principals, Texas Heroes. The TASSP Workshop will be held June 15-17, 2011, at the Austin Convention Center.

## COME TO THE GAME

SPEARMAN LYNX vs Nazareth  
9/28  
7:00 p.m.  
at Bivins Stadium, Amarillo

Gruver Greyhounds vs West Texas  
9/27  
7:30 p.m. at Gruver

## Weather Forecast

THURSDAY NIGHT - Mostly clear. Lows in the lower 50s. South winds 5 to 10 mph.

FRIDAY - Mostly sunny. Highs around 90. South winds 10 to 20 mph.

FRIDAY NIGHT - Mostly clear. Lows in the lower 60s. South winds 15 to 20 mph.

SATURDAY - Mostly sunny. Highs around 90.

SATURDAY NIGHT - Partly cloudy. Lows in the lower 60s.

SUNDAY - Partly cloudy. Highs around 90.

SUNDAY NIGHT - Partly cloudy with a 20 percent chance of showers and thunderstorms. Lows in the mid 60s.

MONDAY - Partly cloudy with a 20 percent chance of showers and thunderstorms. Highs in the lower 90s.

MONDAY NIGHT - Partly cloudy with a 20 percent chance of showers and thunderstorms. Lows in the mid 60s.

TUESDAY - Partly cloudy. Highs in the lower 90s.

TUESDAY NIGHT - Partly cloudy. Lows in the mid 60s.

WEDNESDAY - Partly cloudy. Highs in the upper 80s.

Read more: <http://www.city-data.com/forecast/w-Spearman-Texas.html#ixzz0xgJSWQKT>

## Texas Crop & Weather

The following specific livestock, crop and weather conditions were reported by Panhandle Extension directors: Most of the region received some rain, with accumulations ranging from a trace to 4 inches. Randall County received from 2-4 inches of rain with most falling within about an hour. Soil moisture was mostly adequate. Corn was mostly in fair to good condition and was still being irrigated. Cotton was fair to good condition, but needed more hot days to mature. Peanuts were in good condition. Sorghum was 70 percent to 100 percent headed with some coloring. Soybeans were in fair to good condition. There was some wheat planted for early grazing. Cattle were in good condition. Horn flies were a problem.

## Donate Life!

There is a critical shortage of organs, tissues and eyes available for donation. There are more than 96,000 patients in the United States awaiting transplantation—more than 7,000 are Texans.

Every 13 minutes, a new name is added to the national transplant waiting list. Every day, 17 people die waiting for a life-saving organ transplant.

The Glenda Dawson Donate Life - Texas Registry is the official state organ, tissue and eye donor registry.

Historically, while signing a donor card and placing the "donor" sticker on your driver license served as an important symbol of your intent, it did not place you on any official list or registry.

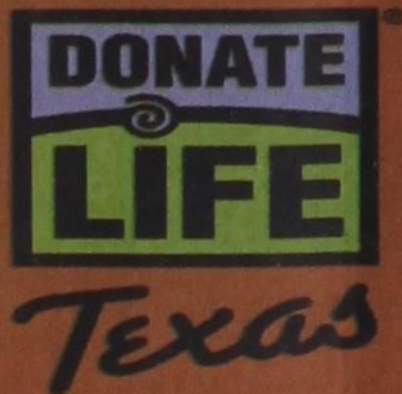
In 2005, Texas joined 40 other states in the country by creating its own state donor registry.

Registering to become an organ, tissue and eye donor helps ensure your wishes will be carried out after you die.

You have the power to donate life. Sign up today to become an organ, tissue and eye donor. Your generosity can save up to eight lives through organ donation and enhance another 50 through tissue donation.

For general registry and organ donation information at: Glenda Dawson Donate Life - Texas Registry, Texas Department of State Health Services, PO BOX 149347 / Mail Code 1938, Austin TX 78714.

For registry customer service and technical assistance at: Customer Service, Glenda Dawson Donate Life - Texas Registry, 30 Lanidex Plaza West, P.O.Box 685, Parsippany NJ 07054.



YOU HAVE THE POWER TO DONATE LIFE.  
Be an organ, tissue and eye donor.

[www.DonateLifeTexas.org](http://www.DonateLifeTexas.org)

In Texas alone, more than 7,000 people are on the waiting list for life-saving transplants.

You can help. Register as an organ, tissue and eye donor. Sign up online or when you renew your driver license.



### Donor FAST Steps

Find answers to your questions about donation on our website.

Act now to make a life-saving difference. It takes less than five minutes.

Sign up to be on the Texas donor registry.

Tell your family about your decision to donate.

### Glenda Dawson Donate Life - Texas Registry

Organ, tissue and eye donors are listed on a state database. The Registry is funded by a \$1 voluntary contribution that Texans can make when applying for or renewing their driver license or identification card, or when registering their vehicle.

### Quick Facts

- Being a donor never interferes with your own medical care. You can expect the same life-saving efforts that anyone else would receive.
- Organs are distributed on the basis of medical information, such as blood type, tissue match or severity of illness, not a person's income, race, age or celebrity status.
- Most major religions support organ, tissue and eye donation.



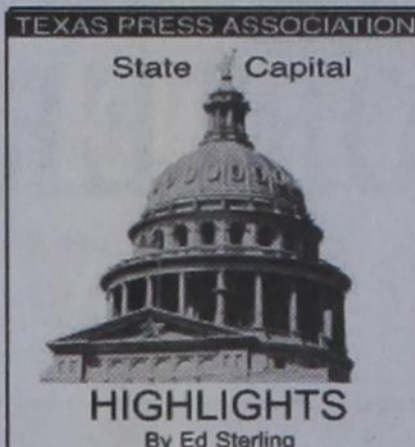
PHOTO: JEFFREY...

**Wolf Creek Heritage Museum Notes**

by Virginia Scott  
**MUSEUM HAPPENINGS**  
 It has been a busy week with archive chores. Georgia completed her processing of our Kilo Mugg glass slides and we shipped them off to Denton for digitalizing and prints. It should be a great photo exhibit when they are returned. We are also cleaning and preparing for the Lipscomb County garage sale (as well as performing our usual chores).  
 The week ended with our Saturday reception for Elaine Littau and Warren McClenahan, authors, and Sam Sidders, artist. Over 60 people came to see, visit, and purchase books, postcards, and paintings. It is always enjoyable at these receptions because there is a nice mix of new visitors with veteran visitors, and both discuss our exhibits as to the content, or changes that we have made to the different displays. One comment is always expressed - they love the brightness of our museum. Thanks to all of you and for your comments. It is the best gift we receive for our work.  
 The end of the month is approaching fast and the September/October exhibit will be honoring Dord Fitz and will feature a number of pieces that Dord did in his early years. His sister Elma Lue Case of rural Lipscomb has loaned several

pieces. Some are coming from his nephew Norvie Dord Fitz of Shattuck. If you were a student of Dord Fitz, we would encourage you to bring a piece or two to include in our exhibit for these two months. We would also love to have any photos taken during his classes or any gathering with Dord. If you have a favorite story about Mr. Fitz, this would also be appreciated.  
 Amy Winton, one of our current artists, will be interviewed this Thursday on PBS at 7 p.m. about one of her mentors.  
 Lastly, my husband, Ed, and I attended a Texas Historical Commission workshop on Oral Histories this past weekend in Wheeler. This workshop is held across the state to provide historians, historical commissions, museums, and individuals with the tools to conduct oral histories in their communities. Their present focus is on World War II veterans and the home front activities. They are assessing each county for war sites such as air fields, camps, USOs, victory gardens, ration headquarters, etc. Stay tuned for the dates of our visit.  
**HISTORICAL MUSINGS**  
 In 1963, on the 28th of August, over 200,000 people gather in Washington, D.C. to rally for passage of

a tough civil rights law. The day's high point came late in the afternoon when one of the speakers, Dr. Martin Luther King, Jr., departed from is text and elaborated on the theme, "I have a dream."  
 "I have a dream that one day this nation will rise up and live out the true meaning of its creed...I have a dream that one day on the red hills of Georgia the sons of former slaves and the sons of former slave-owners will be able to sit down together at the table of brotherhood."  
 There have been occasions when his dream has come true and we continue to make progress in our struggle for equality in this country for all races, sexes, religions, ages and lifestyles.  
 This week in 1913, Congress authorized the parcel post system, which changed the way people shopped and gave an enormous boost to mail order enterprises like Montgomery Ward and Sears, Roebuck.  
 The memories of those "Dream Books" are present in every family. In a short 97 years we have grown from mail order catalogs using paper and pen to on-line and television shopping using telephones and computers. Share your Montgomery Ward and Sears and Roebuck memories with someone today.  
 Have a great week.



**STATE CAPITAL HIGHLIGHTS**



by Ed Sterling

**Election day inches closer with no public encounter between Perry, White**

AUSTIN — Gov. Rick Perry on Aug. 19 called for lawmakers to enact tougher penalties for the crime of human trafficking in Texas. Lawmakers will meet next week when the 82nd Texas Legislature convenes at noon on Jan. 11, but more pressing is Election Day, Nov. 2, only two months away.  
 Former Mayor Bill White of Houston, a Democrat and incumbent Gov. Perry's main challenger, also says he wants tougher penalties for human trafficking.  
 Even if Perry and White agree on human trafficking, other topics of interest to Texans — the state budget, health care reform, highway construction, education, public safety prisons, border security and more topics of interest — remain undebated by the two.  
 Well, they do manage to point out differences in their approaches to those subjects in press releases, but Perry is still standing back from White's call for a live debate until White makes public more of his personal income tax returns.  
 White released his mayor-era tax returns in June, but the Perry campaign demanded White's tax returns from the span of time in 1993-1995 when White served as deputy U.S. Energy secretary in the Clinton Administration.

**Test scores show improvement**

Class of 2010 Texas high school seniors posted a higher average score on ACT mathematics and science tests than any other class of seniors in the last decade, the Texas Education Agency reported on Aug. 18.  
 The class of 2010 scored 21.4 on math and 20.9 on science.  
 The average overall composite score for the class of 2010 matched the class of 2009 at 20.8.  
 The Texas Education Agency said 92,615 high school seniors took the ACT this year, while 82,640 from the class of 2009 took the test last year. That's a 12 percent increase in the rate of participation.  
 The ACT is a standardized test for high school achievement and college admissions.

are taxable. Ellis wrote the legislation to create the sales tax holiday in 1999, and Strama helped pass an expansion to the list of tax-free items.

**Energy forum to be held in Mexico**

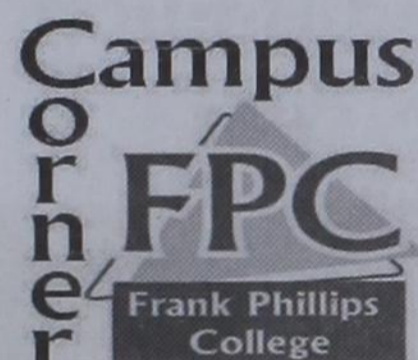
Land Commissioner Jerry Patterson on Aug. 18 promoted the 17th annual U.S.-Mexico Border Energy Forum to be held Sept. 30 and Oct. 1 in Chihuahua, Mexico.  
 The city of Chihuahua is about 215 miles south of Juarez, Mexico.  
 Forum programs will focus on "clean" energy including natural gas, wind, solar and geothermal.  
 "This forum is all about maximizing our energy dollars while minimizing our environmental impacts and in the process, sharing our knowledge and expertise with our friends and neighbors," Patterson said.  
 More than 200 leaders from the U.S. and Mexico representing industry, government, education and environmental organizations are expected to attend.

**Legislators promote tax 'holiday'**

Texas Comptroller Susan Combs predicted shoppers would save \$59.3 million in state and local sales taxes during the sales tax holiday.  
 State Sen. Rodney Ellis, D-Houston, and state Rep. Mark Strama, D-Austin, held a Capitol press conference on Aug. 17 to kick off the statewide Back-to-School Sales Tax Holiday, which ran August 20-22.  
 Ellis and Strama said the state would realize a net gain in sales tax receipts because shoppers also will purchase many items that

**Agency reports no uptick in jobs**

The rate of joblessness in Texas stayed at 8.2 percent in July, the Texas Workforce Commission reported on Aug. 20.  
 In May and June, the rate also was 8.2 percent.  
 Texas has gained 168,900 jobs, total, since January, according to the commission.



**Allen Campus News and Information**

Start Here... Go Anywhere!

Greetings from the Northernmost Facility of Higher Education in the Great State of Texas! After 11 months of the 2009-2010 academic year, the Allen Campus served 4,191 students and other residents of Perryton and the surrounding area. Academic classes account for 284 of these students, while Continuing Education classes have served 1,319 students and Community Service classes and events have served an additional 2588 people.  
 During late summer and early fall, the Frank Phillips College Allen Campus is offering a wide variety of continuing education and community service classes. Starting August 23, 2010 is our Certified Nursing Assistant classes. They will be on Monday, Tuesday, and Thursday nights from 5:30-9:30 p.m. Tuition is \$295, which includes the state

testing fee for your certification. Call or come by for more information, or to register.  
 On August 31st there will be a Coffee Memorial Blood Center Blood Drive in the Conference Center from 11 a.m.-7 p.m. All eligible donors will receive a Boots versus Badges T-shirt and can vote for their favorite local hero—firefighter or law enforcement officer. Donors can also register to win a \$2,500 cruise voucher sponsored by Coffee Memorial Blood Center. You can also register to win a cruise sponsored by members of the Perryton Community.  
 GED classes have started and there is still room for enrollment. They are on Thursday nights from 6-9 p.m. and are free of charge.  
 In September we will be having Fodant Cake Decorating classes as well as a Concealed Handgun class

(both new and renewal). Space is limited, so call or come by the Allen campus to register. Also in September, there will be a Beginners Photography class taught by Tamara Stiles. Cost of this class is \$100.  
 In October the Allen Campus will be hosting a community-wide Pumpkin Decorating Contest. Please be on the lookout for more information for this event during the month of September. Also in October there will be Basic Computer, Microsoft Excel, and Adobe Photoshop classes.  
 We are currently working on hosting a women's retreat "Principles of Simple Abundance" that will consist of a 2 hour seminar with refreshments. Some of the other things we are working on include Introduction to EBay, Craft & Woodworking, Workplace Spanish, Nutrition, Cajun Cooking, Web Page Design, and Basic Crochet classes.

For more information on any of these classes, or if you would like to teach a class, please contact Jaci Geheb at the Allen campus (806-648-1450).

**Advice: take hot weather seriously**

For weeks, temperatures across the state have been hitting 100 degrees or higher and older people, young children, people with chronic diseases and those without access to air conditioning are most at risk of heat-related illness.  
 The Texas Department of State Health Services is reminding the public to take actions such as these to prevent heat-related problems:  
 • Find and stay in an air conditioned area, either at home or at public places like malls, libraries or community centers.  
 • Never leave anyone in a parked vehicle, even for a short time.  
 • Call 911 if you see an unattended child in a vehicle. Check often on older friends, neighbors and family members. Drink plenty of water and avoid alcohol, caffeine and sugary drinks.

**SUDOKU**  
 PRESENTED BY  
  
 Where volunteering begins.

1	9		7		5
3		5	9	4	
	5				
			4	7	
2	8			5	9
	1	2			
					9
	5		3	6	8
4		1		2	6

© 2010, StatePoint Media, Inc. answer on classified page  
 Fill in the blank squares in the grid, making sure that every row, column and 3-by-3 box includes all digits 1 through 9.

**The Hansford County Reporter-Statesman**  
 Mailing Address - 213 Main Street • Spearman TX 79081  
 Physical Address - 310 Barkley Street • Spearman TX 79081  
 Phone - (806) 659-3434 • Fax - (806) 398-9080  
 www.spearmanreporter.com • reporter@spearmanreporter.com  
 Mon.-Thurs. 9 a.m.-12 p.m., Mon.-Wed. & 1-5 p.m.  
 Closed Thurs. afternoon and all day Fri., Sat. & Sun.

**Gary Smith - Publisher** Catherine Smith - Editor  
 Contributing Writers: Dorothy Hudson, Jim Derington, Merry Sparks, Cecil Biggers  
 Contributing Photographers: Charlie Johnson, Lisa Johnson, Tammy Batton, Bonnie Bergan

**Subscription Rates**  
 In Hansford County - \$30.00 • Out of County - \$40.00  
 E-Mail Subscription - \$35.00

The Hansford County Reporter-Statesman (USPS 529660) is published weekly in Spearman, TX. Periodical postage paid in Spearman, TX. **POSTMASTER:** Send address changes to: The Hansford County Reporter-Statesman, 213 Main Street, Spearman, TX 79081.

**Publication Policy**  
 The deadline to submit news and advertising to The Hansford County Reporter-Statesman is Monday at 5 p.m. Items submitted after the deadline will be published at a later date, as time and space permit. Publication of all items is at the discretion of the editor.

**Advertising**  
 Open Display rates are \$4.00 per column inch. Classified Ads are \$6 for the first 25 words and 10¢ per word for each additional word. (Additional charge for boxed classifieds.) There is a \$1 charge per week if billed.

Member of  
 Gruver Chamber of Commerce  
 Spearman Chamber of Commerce  
 Texas Press Association and Panhandle Press Association



**BACK TO SCHOOL**

- ACROSS**
- India's sacred flower
  - \*Parent-involvement organization
  - Marching insects?
  - Novelist \_\_\_\_\_ Wharton
  - Jet \_\_\_\_\_
  - Astonish
  - Gateway to Japanese temple
  - Uniform Resource Identifier
  - Times New \_\_\_\_\_
  - \*A welcome break
  - \*Personal storage
  - \_\_\_\_\_ the President's Men
  - \*Arts & crafts material
  - Benatar or Boone, e.g.
  - Cold cuts store
  - Elizabeth Short, a.k.a. The Black \_\_\_\_\_
  - EU money
  - Unagi, pl.
  - African American civil rights organization
  - \*Non-written exam
  - Shish \_\_\_\_\_
  - \_\_\_\_\_ to My Lou
  - One born to Japanese immigrants
  - "Will be," as sung by Doris Day
  - A devilish place
- DOWN**
- \_\_\_\_\_ It Be
  - \*First thing to hit you when entering a locker room
  - It can make a great swing
  - Neighbor of Carthage, Tunisia
  - Protection from a sword?
  - \*Arithmetic operation
  - It is applied before feathers
  - Like a good athlete?
  - Wildly
  - \*Given in roll call
  - Ivan the Terrible, e.g.
  - Senator's abbreviation
  - \*Inverse function of tan
  - Like gelled hair
  - Not new or borrowed or blue
  - Small nut-bearing tree common in Europe
  - Galley slaves
  - Derived from gold
  - Spam destination
  - Bruce and Spike, e.g.
  - \*Function to convert large number to a small integer
  - Kobe Bryant, e.g.
  - In a cold manner
  - \*Gift for teacher
  - Butter substitute
  - Hindu woman's dress
  - Plural of basso
  - Salt of iodic acid
  - Island flower necklace
  - \*Famous 1970s TV teacher
  - Wesley Snipes' 1998 movie
  - \*Can break your bones, singular
  - \*Head of a college
  - Fourth largest Great Lake
  - She was a \_\_\_\_\_

**These games are brought to you by the Hansford County Reporter-Statesman**

- \*Boys' nickname for each other
- \*Not allowed when taking SAT
- Her counterpart
- \*Boys' nickname for each other
- \*Not allowed when taking SAT
- Her counterpart

**CROSSWORD**

1	2	3	4	5	6	7	8	9	10	11	12
13					14			15			
16					17			18			
19					20			21	22		
23					24						
25	26	27	28	29	30	31	32	33	34		
35		36		37		38		39			
40				41				42		43	
44			45		46			47			
48			49		50			51		52	
53				54				55		56	
57	58	59			60			61	62		
63				64	65			66			67
68				69				70			
71				72				73			

PRESENTED BY  
  
 Where volunteering begins.

© 2010, StatePoint Media, Inc. answer on classified page

# Happy Birthday!

**August 26**  
**Birthdays** - Wayne Kruse, Debbie Davis, Chayci Dominguez, Mike Cudd, David Archer, Juanita Tucker, Mary Thompson, Kimberly Slater, Ashley Patterson  
**Anniversary** - M/M Eddie Clemmons, M/M Vernon Morris

**August 27**  
**Birthdays** - Amy Grubbs, Brian Hoel, Pat Ochoa, Juna Jackson, Donald Rhea, Gregg Weaver, Chad Davis, Patricia Bevera, Virginio Ortega Jr., J. T. Sanders, Bertha Watts, Gabriel Moreno, Krystal Vela, Christopher Abernathy, Cassidy Odegaard, Dara Faries, Jean Snider  
**Anniversary** - Jim & Pamela Morrison, M/M Jerry Bowling

**August 28**  
**Birthdays** - KiKi Carthel Brabham, Amy Gillispie, Mika McLain, Linda Nunez, Kory Sheppard, Mike Pearson, Joe Bravo, Keith Burgess, Andy Jones, Mabry Sutterfield, Penny Sumner, Alana Marie George

**August 29**  
**Birthdays** - Rodney Clawson, Ginny Grotegut, Monica Ward, Mark Crooks, Bill Strawn, Richeardo Espinosa, Dusty Vinson, Linda Lou Lewis, Tony Cazares, Holly Brack, Katie Bynum  
**Anniversary** - M/M Robert Blevins

**August 30**  
**Birthdays** - Joshua Blount, Roy Dale Karr, Van Lewis, Jeff Nicholson, Chelly Rigdon, Christa Urban

**August 31**  
**Birthdays** - Jill Hoel, Roger Dean Close, Estella Arjona, Mildred Lewis, Chad Wilkerson, Justin Eslick, Lonnie Shields, Danny Herrington, Bob Boxwell, Dale Jones, Clay Neff  
**Anniversary** - M/M Brian Pressley, M/M Kent Guthrie

**September 1**  
**Birthdays** - Sahala (McCloy) Galliard, Kathy (Nelson) Dumbold, Mrs. Don Allen, Eugene Yarborough, Irma Arjona, Pete Vera Jr., Jessica Williams, Rita Lindley, Erin Wafford, Misty Bynum, Hugo Villa, Richard Shad, Jessica Shad, Laura Bridges, Jace Lang, Ann Pipkin, Dane Harbour, Sandra Blankenship  
**Anniversary** - M/M Daniel Boyd

**September 2**  
**Birthdays** - Kelly Sue Jones, Melyn Johnson, Archie Smith, Felipe Lomelli, Carlos Mendoza Jr., Larry Gallimore  
**Anniversary** - M/M Ron Antalek

**September 3**  
**Birthdays** - Josh Mayhew, Isabel Martinez, Ruth Lackey, Kory Brown, Sheryl Meek, Sandy Russell, Janet Sandavol, Jessie Moore, Brandon Baker, Michelle Evens, Elena Vargas, Jason Quillin, Coy Herrington  
**Anniversary** - M/M John Booth, George & Virginia Young

**September 4**  
**Birthdays** - Val Winger, Peggy Frick, Jimmy Haden, Kathy Bowen, Marty Karr, Laci Murray, Darlene Pierce, Rodney Pointer, Tina Cator, Lighthouse Torres, Alix Boyd, Halee Beasley, Kristi Vasquez, Jarry Francis, Jerri Lane  
**Anniversary** - M/M Ron Fox, Don & Wanda Reed

**September 5**  
**Birthdays** - Kilee Ryan, Cathy Potts, Pat Minter, Dawn Brown, Mavis Floyd, David West, Mark Garcia, Betty Thomas, Mary Alice Gibner, Andy Riley, Sonya Tidell, Willie Wallis, Joyce Sharp, Lorenzo Sauz, Connor Odegaard, Daniel Swink, Stephen Lane  
**Anniversary** - M/M Chuck Ball, Mr. and Mrs. Don Reed, M/M Bobby Hicks

**September 6**  
**Birthdays** - Brad Hart, Mickey Nash, Ty Williams, Jennifer Profit, Josh Owens, Cheryl Green, Jonas Heath, Osbaldo Lomely, Alison Smith  
**Anniversary** - George & Tina Rex, M/M Bill Wink, Judy & David Martin, M/M Kenneth Stewart

**September 7**  
**Birthdays** - Alice Peddy, Kim Boone, Teal Armes, J.L. Brock, Richard Montgomery, Juanita Terceo, Melvin Willis, Kermit McKee, Jennifer Whitefield, Mardell Strawn  
**Anniversary** - M/M Charlie West, M/M Jim Davis, M/M Ronnie Bullard

**September 8**  
**Birthdays** - Kevin Hart, Vernon Edens, Teresa Byrd, Richard Davis, Cindy Scarborough, Macy Holton, Suzanne Sanders, Beronica Borounda, Wynette Mullins, Monica Cenicerros, Linda West, Justin Tucker, Bill Miller  
**Anniversary** - M/M Roger Odegaard, M/M Clarence Zable

**September 9**  
**Birthdays** - Jantzen Dahl, Brian Kaugman, Dora Salgado, Doug Hohertz, Dariana Arjona, Kitty Edwards, Krystal Lackey, Debbie Abston, Jeannie Swan, Brian Payne, Merle Arthur, Alvin Byers, Tina Baumgardner, Dikell Boyd, Kitty Edwards, Nykeli Vera Moore, Andrew James Burch

# Our Sympathy

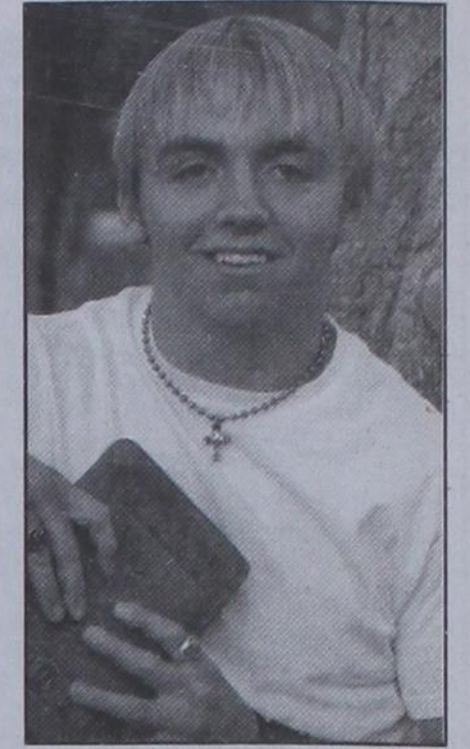


Martin "Papo" Ochoa

**MARTIN OCHOA SR.**  
**SPEARMAN** - Martin Ochoa Sr., 81, died Friday, Aug. 20, 2010.  
 Funeral services were Monday, August 23, 2010 at 10 a.m. at the Sacred Heart Catholic Church in Spearman with Rev. Gregory Bunyan officiating. Burial was in Hansford Cemetery under the direction of Boxwell Brothers Funeral Home of Spearman.  
 Martin was born in San Bartolo, Durango, Mexico on February 20, 1929. He had lived in the area since 1969, moving from Panhandle. He married Jovita Aguilera on Feb. 9, 1956 in Gomez Palacio, Mexico.  
 He worked as a farm hand and also worked for Baker and Taylor. He came to the United States of America through the Braccero Program.  
 He was a loving father, husband, grandfather and was known by his grandchildren as Papo. As a favorite hobby, he loved to play dominoes.  
 He was preceded in death by five brothers and sisters. He is survived by his wife, Jovita Ochoa; four daughters, Amadita Vargas and husband, Joe, of Spearman, Alicia Lopez and husband, Paul, of Lawton, OK, Pat Ochoa of Canyon, and Maria Carbajal and husband, Louis, of Spearman; two sons, Martin Ochoa Jr. of Canyon and Pete Ochoa, and wife, Mary, of Spearman; a sister, Irene Ochoa of Mexico; and 7 grandchildren.  
 The family requests memorials be to Hansford Hospice, 707 Roland Street, Spearman TX 79081.

# SHeldon ROSS ATWOOD

**GRUVER** - Sheldon Ross Atwood, 22, formerly of Gruver, died Saturday, Aug. 14, 2010.



Services were at 10:30 a.m. Friday in First Baptist Church with the Rev. Scott Curry officiating. Burial was in Gruver Cemetery by Boxwell Brothers Funeral Home of Spearman.  
 Sheldon was born Dec. 7, 1987, in Amarillo. He was a graduate of Gruver High School and moved to Canyon three years ago.  
 Sheldon worked at Cactus Feedyard as the fabrication shop office manager. He lived life to the fullest.

He was a very special person and was loved by all. He touched many lives and loved the Lord.

Sheldon never pretended to be more than he was, and he was so much more than he ever imagined himself to be.

Sheldon's ambition as listed on his senior yearbook profile was "to have a positive impact on each person I come in contact with," and he definitely did. Sheldon was true to himself and true to his word.

As he described himself on MySpace, "I'm a very easy-going, easy to get along with, go-with-the-flow kind of guy. I know I'll end up exactly where God wants me to be. So, I'm basically just taking my life one step at a time and lovin' every minute of it. I'm trying my best to stop this whole growing up thing, but nothing seems to work, so the least I can do is always try to stay young at heart. I have some of the greatest friends and family ever, and I know they are gonna be there for me if I ever need it. I'm always gonna be myself, what you see is what you get. So be prepared."

Sheldon ended up exactly where God wanted him to be, but it was much too soon for those of us left behind. We will miss him more than can be put into words.

He also loved writing music and playing the guitar and attending concerts.

He was the most sincere person who stayed true to himself.

He was preceded in death by his grandfather, Fredrick A. Camp.

Survivors include his father and stepmother, Scott and Tasha Atwood of Vega; his mother, Frances Atwood-Frost of Amarillo; a brother, Shane Atwood of Vega; a stepbrother, C.J. Hess of Vega; and his grandparents, Phyllis and Harvey Atwood of Gruver and Helen Camp of Kenedy.

The family suggests memorials be to Sheldon Ross Atwood Memorial Scholarship Fund, c/o Gruver State Bank, P.O. Box 978, Gruver, TX 79040.

## Big D's Cafe

### This Saturday!

**All-You-Can-Eat Calf Fries**  
**\$14.95**  
 Includes calf fries & all the trimmings

Don't forget our home-made pies!

## Big D's Cafe

103 Peery Street  
 Hardesty, OK  
 580-888-4405

## MONUMENTS

### Boxwell Brothers Funeral Home

519 Evans • Spearman  
 659-3802

Dear friends,  
 When you buy a monument from us we make sure it is exactly what you want at a price you can afford. If it is not right, we will make it right. And you will not have to search the countryside to find us. We are here when you have a need.  
 Sincerely,  
 Bob Boxwell

## Replenish the seed of faith through . . .

### DAILY BIBLE READING, PRAYER & REGULAR CHURCH ATTENDANCE

- |  |  |   |   |
|--|--|---|---|
| <p><b>Spearman</b></p> <p><b>Apostolic Faith Church</b><br/>             822 S. Dressen • 659-2870<br/>             Sunday School: 10 a.m.<br/>             Worship Service: 11 a.m.<br/>             Sun. Eve.: 6 p.m.<br/>             Wed. Prayer Mtg: 7 p.m.<br/>             Pastor - Roland Haney</p> <p><b>First Assembly of God</b><br/>             401 N. Bernice • 659-2295<br/>             Sunday School: 9:30 a.m.<br/>             Worship: 10:40 a.m.<br/>             Evening Worship: 6 p.m.<br/>             Wed. Worship: 7 p.m.<br/>             Wed. Youth: 7 p.m.<br/>             Pastor - Jerry Pollard</p> <p><b>First Christian Church</b><br/>             (Disciples of Christ)<br/>             29 S. Bernice • 659-2036<br/>             Sunday School: 9:45 a.m.<br/>             Worship: 10:50 a.m.<br/>             Minister -</p> <p><b>First Baptist Church</b><br/>             123 N. Bernice • 659-5557<br/>             Sunday School: 9:45 a.m.<br/>             Worship: 11 a.m.<br/>             Evening Worship: 7 p.m.<br/>             Men's Bible Study - Wed., 7 a.m.<br/>             Children's Choir - Wed., 6 p.m.<br/>             Adult Choir - Wed., 7 p.m.<br/>             Wed. Bible Study: 7 p.m.<br/>             Pastor - Jim Medley</p> <p><b>Church of Christ</b><br/>             121 S. Haney • 659-3244<br/>             Sunday Bible Class: 9:45 a.m.<br/>             Worship: 10:30 a.m.<br/>             Evening Worship: 6 p.m.<br/>             Bible Study Wed.: 7:30 p.m.</p> | <p><b>Sacred Heart Catholic Church</b><br/>             901 Roland • 659-2166<br/>             Sat. Night Mass: 5:30 p.m.<br/>             Sun. Mass: 9 a.m. - English<br/>             Sun. Mass: 11:30 a.m. - Spanish<br/>             Rev. Gregory Bunyan</p> <p><b>First United Methodist</b><br/>             407 S. Haney • 659-5503<br/>             Sunday School: 9:45 a.m.<br/>             Worship: 8:30 &amp; 11 a.m.<br/>             Jr. High Youth: 5 p.m. Sunday<br/>             High School: 6 p.m. Sunday<br/>             Kids Club: 3 p.m. Wed.<br/>             Pastor - Neely Landrum</p> <p><b>Grace Presbyterian Church</b><br/>             (Worships with Faith Lutheran Church)<br/>             1101 Bernice • 659-2033</p> <p><b>Faith Lutheran Church (ELCA)</b><br/>             1101 Bernice • 659-2252<br/>             Sunday School: 9:45 a.m.<br/>             Worship: 11 a.m.<br/>             (Worships with Grace Presbyterian Church)<br/>             Pastor - Cecil Biggers, PLM</p> <p><b>Union Church</b><br/>             31 S. Endicott • 659-2644<br/>             Sunday School: 10:00 a.m.<br/>             Worship: 11:00 a.m.<br/>             Bible Study: 7 p.m. Wed.<br/>             Youth Service: 6 p.m. Wed.<br/>             Pastor - Don Baltazor</p> <p><b>Fellowship Baptist</b><br/>             1102 S. Archer • 659-2783<br/>             Sunday School: 10 a.m.<br/>             Worship: 11 a.m.<br/>             Sun. Evening Worship: 6 p.m.<br/>             Sun. Evening Spanish Worship: 7 p.m.<br/>             Youth/Adult Service: 7:30 Wed.<br/>             Pastor - Phillip Hudson</p> | <p><b>Primera Mision Bautista</b><br/>             502 E. 7th • 659-3991<br/>             Sunday School: 9:45 a.m.<br/>             Worship: 11 a.m.;<br/>             Evening: 6 p.m.<br/>             Wed. Prayer Meeting: 7 p.m.<br/>             Thurs. Visitation: 7 p.m.<br/>             Pastor - Joe Garcia Jr.</p> <p><b>El Aposento Alto U.P.C.I.</b><br/>             1105 S. Roland<br/>             Domingos: Escuela-Domical - 10 a.m.<br/>             Culto Evangelistico - 7 p.m.<br/>             Jueves: Oracion - 8 p.m.<br/>             Mier: Estudio Biblico - 7 p.m.<br/>             Pastor - A.G. Martell<br/>             (806) 659-2153</p> | <p><b>Gruver United Methodist</b><br/>             Broadway &amp; Garrett<br/>             733-2651<br/>             Sunday School: 9:45 a.m.<br/>             Worship: 8:30 &amp; 10:50 a.m.<br/>             Eve. Worship &amp; UMY: 6 p.m.<br/>             Pastor - George Price</p> <p><b>Spanish Cristo Redentor Church</b><br/>             Hwy 15 806-659-2166<br/>             Gruver, TX<br/>             Sun. Mass: 1:30 p.m. - Spanish<br/>             Rev. Gregory Bunyan</p> |
|--|--|---|---|

He has showed you, O man, what is good. And what does the LORD require of you? To act justly and to love mercy and to walk humbly with your God.  
 Micah 6:8

This feature is made possible through the sponsorship of these civic minded businesses:

- |   |  |  |   |
|---|--|--|---|
| <p><b>Deakin ELECTRIC</b><br/>             OILFIELD • RESIDENTIAL • COMMERCIAL<br/>             321 S. MAIN • SPEARMAN<br/>             1-800-999-1506 Chris Deakin<br/>             (806) 659-5016 President</p> | <p><b>Bartlett's Lumber &amp; Hardware</b><br/>             105 W. Broadway • Gruver, TX<br/>             (806) 733-2404</p> | <p><b>BERRY CLEANERS</b><br/>             Ann &amp; Vernon Pipkin - Owners<br/>             Phone 659-3122 • P.O. Box 1017<br/>             207 Main St. • Spearman, TX</p>                | <p><b>Morse Implement &amp; Auto Supply</b><br/>             "Join us in church"<br/>             Tom Dortch 733-2668<br/>             Box 89 • Morse, TX 79062</p> |
| <p><b>PRAIRIE MOTORS INC.</b><br/>             Hwy. 207 South • P.O. Box 430<br/>             Spearman, TX 79081 • (806) 659-2541<br/>             www.prairiemotors.com</p>                                      | <p><b>MurMur's Cafe</b><br/>             100 Roland St<br/>             Spearman, TX.<br/>             659-3580</p>          | <p><b>Hansford County Reporter-Statesman</b><br/>             "Proudly Serving Hansford County Since 1907"<br/>             (806) 659-3434<br/>             310 Barkley • Spearman, TX</p> | <p><b>INTERSTATE BANK, sssb</b><br/>             www.interstatebank.net<br/>             322 Main • P.O. Box 146<br/>             Spearman, TX • 659-2559</p>       |

**DIRECTV's Best Package FREE for 5 months!**

**PLUS: FREE Standard Installation**

**FREE HD for LIFE!**

No start costs! Local installs!

ASK HOW! CALL DIRECTSTARTV An Authorized DIRECTV Dealer  
**Toll Free 800-214-7110**

---

**FREE HD FOR LIFE!**  
 Only on DISH Network

- Lowest Price in America!
- \$ 24.99/mo for over 120 channels!
- \$500 Bonus!

**Call Now!**  
**1-866-799-8039**

**285+ Channels**  
**160 HD Channels**

**DIRECTV 5 MONTHS FREE**

Direct Sat TV  
**1-800-577-1322**  
 Local installers!

Includes:  
**HBO** **SHOWTIME** **STARZ** **CINEMA**

When you get NFL SUNDAY TICKET for \$59.99 a month for 5 months  
**2 FREE Upgrades - HD DVR & HD Receiver - Ask How!**

**HOME PHONE SERVICE**  
**NO Pre-Payment • NO Deposit Required!**

**Rates from \$6.99 per month\***  
 (\$17/month including approximate taxes & fees)

**FREE 1st Month of Service**  
 Caller ID & Call Waiting included in Packages\*\*

**New-Talk 866.934.3448**

\*\$6.99/month with auto pay. \*\*Requires silver or gold package.

## TSWCD Hosts Regional Meeting

From feral hogs to the Gulf oil spill to irrigation practices, members of the South Central region of the National Association of Conservation Districts (NACD) recently covered a wide array of topics at an annual three-day meeting. The focus of the meeting was to update participants on NACD news, legislative outlooks and various conservation issues facing the region.

Soil and water conservation district board members from Arkansas, Louisiana, Oklahoma and Texas meet each year to discuss issues and policies concerning soil and water conservation.

"We were excited to have the opportunity to host this year's meeting," said Scott Buckles, president of the Association of Texas Soil and Water Conservation Districts. "This meeting is about dissemination of information, discussing issues and updating members."

NACD CEO Jeff Eisenberg and NACD president elect, Gene Schmidt, both stressed the influence a grassroots organization can have on legislative action. Schmidt mentioned the significant contribution agriculture makes to the American economy and commended conservation districts for their financial transparency.

"Dollars spent for conservation are among the most accountable dollars spent period," Schmidt said. "We do have some friends in Washington (D.C.) and they are fighting for our cause but we must continue to stand up

and speak out about conservation."

Josh Winegarner, Texas Cattle Feeders Association director of government relations, spoke to the audience about upcoming Environmental Protection Agency agendas and regulations along with legislation concerning agriculture, conservation and environmental issues.

Participants heard reports on measures soil and water conservation districts in Louisiana are taking to combat the Deepwater Horizon oil leak and its impact on natural resources. An invasive species panel with members from all four states gave reports on various threats to natural resources from respective areas including Eastern Red Cedar trees and feral hogs.

"The ecological landscape of Texas is as diverse as the citizens so developing an idea of what is truly an invasive species is challenging," said panel member Johnny Oswald, Texas State Soil and Water Conservation Board - Water Quality Enhancement Program supervisor. "Feral hogs, Carrizo Cane Chinese Tallon, Giant Salvinia and salt cedar trees are on the top of most Texans list of invasive species. Hearing about other states' challenges allows productive discussions to occur."

Don Gohmert, state conservationist for USDA's Natural Resources Conservation Service (NRCS) in Texas reported on NRCS programs and the continued need for more statewide conservation

awareness.

In addition to the sessions, field trips to the USDA Agricultural Research Service Center in Lubbock and to a local cotton producer's farm gave the participants the opportunity to see conservation practices and research in action.

"The sessions were extremely productive and having the meeting here in Lubbock gave folks a chance to see some things they might not normally see," said Buckles, citing the above average rainfall causing higher projected cotton yields.

The group had the opportunity to visit with a cotton producer who is implementing conservation practices on his farms and is also using efficient irrigation technology to reduce water runoff.

The Texas State Soil and Water Conservation Board is the lead agency for planning, implementing, and managing programs and practices for preventing and abating agricultural and silvicultural non-point source water pollution. The Texas State Soil and Water Conservation Board also coordinates the programs of the state's 216 soil and water conservation districts and administers a Water Supply Enhancement Program.

For more information about the Texas Association of Soil and Water Conservation Districts visit <http://www.tsswcb.state.tx.us/en/swcds/atwcd>. For more information about NACD visit [www.nacd-net.org/](http://www.nacd-net.org/) or call (202) 547-NACD (6223)

### Hansford County Flood Insurance Outreach Program

submitted by Ron Antalek, Hansford County EMS

Nearly everywhere you look the grass is lush and green a very unusual site in late August. As many residents of Hansford County will attest, this has been a very wet year. Sometimes the rainfall has been a bit overwhelming to say the least, causing flooding in residences across the county.

Flooding in Hansford County is normally not an issue, but this year many citizens suffered losses of property as a result. Although not a major concern many residents had asked their insurance companies for flood insurance prior to this year and were told that flood insurance could not be purchased since the property was not in a "flood zone". This is a misconception as anyone may purchase flood insurance.

If you are interested in flood insurance provisions and regulations, three meetings have been set up to address property owner and insurance agents concerns to the National Flood Insurance Program. The meetings begin in the morning on Tuesday August 31 in Morse at the Community Building. The second meeting will be in Gruver at the Golden Age Center at 1:30 PM.

The final meeting will be at the Spearman Fire Station at 7 PM. All three are open to the public and will allow for attendees to ask questions.

A representative of FEMA (Federal Emergency Management Administration) will conduct the meetings as an outreach of the NFIP. All citizens are encouraged to attend to learn about flood insurance availability and coverage. Everyone should consider flood insurance even when not in a flood zone. Many of those that experienced losses during this year will probably agree.



#### Medical Fund for Bruce Duncan

A medical fund has been established for Bruce Duncan at First National Bank, Spearman. If you would like to make a donation you may make a deposit with any teller or mail a donation to First National Bank, Bruce Duncan Medical Fund, PO Box 337, Spearman TX 79081.

#### Ted & Barbara Scroggs Fund

One couple experienced excessive flooding of their home during the rains and flooding in June 2010. Ted & Barbara Scroggs home, located at Old Hansford near the Palo Duro Creek, was flooded not only in the basement, but also the water went up to about 13" in the main part of the house. (Barbara had tried to buy flood insurance many times, but could not get it due to the government rules on flood areas. The government had placed their home in a non-flood area.) A fund has been set up to help them with the costs of repairing their home. If you would like to contribute to this fund take or mail your contribution to The First State Bank, PO Box 247, Spearman, Tx 79081.

#### Hansford Gun Club Rifle Shoot

The Hansford Gun Club holds a .22 rifle shoot on the second Sunday of each month, starting at 1:30 p.m. at the gun range (located on Hwy. 15 between Spearman and Gruver). Everyone is invited to join the fun.

#### Hansford Golf Club Hosts Tuesday Night Scrambles

The Hansford County Golf Club has begun their Tuesday Night Scrambles. Tee-time is at 6 p.m. sharp. The cost is \$10 per person. Teams are drawn. For more information, or to sign up, call 659-2233.

#### Fire Department Donations

Persons wishing to make donations to the Fire Departments in Hansford County may do so at the following addresses: Spearman Fire Dept., Box 37, Spearman TX 79081; Gruver Fire Dept., Box 947, Gruver TX 79040 or Morse Fire Dept., Box 28, Morse TX 79062.

#### SPWA Seeks Volunteers

The Southwest Pioneer Windmill Association is seeking the next generation of volunteers to continue the work of restoring and maintaining the windmills of the SPWA. If you have an interest in windmills and their upkeep, and/or maintenance of the park, you are needed. For information, call Dwayne Mitchell, 270-0291 or Don Reed 330-0745.

#### O'Loughlin Center Hours

The O'Loughlin Center is open for the following hours: Monday-Thursday, 6:00 a.m.-8:00 p.m.; Friday, 6:00 a.m.-6:00 p.m.; and Saturday, 9:00 a.m.-12:00 p.m. (noon). For more information, contact The O'Loughlin Center, 502 S. Brandt, PO Box 733, Spearman TX 79081. (806-659-3030)

#### Perryton Parkinson's Disease Support Group

The Perryton Parkinson's Disease Support Group meets the 2nd Friday of each month at 12 noon in the Perryton Menonite Church, 2821 S. Ash. The next meeting will be October 9th. Anyone interested is invited to attend.

#### Take Off Pounds Sensibly Meets

Take Off Pounds Sensibly (TOPS) meets on Tuesday morning at 8:30 a.m. at the First Christian Church in Gruver. Anyone interested is invited. Call Marilyn Been at 806-733-2087.

#### Child Find

Your school district is looking for children ages 3-21 years who may be slow in developing communication skills, social interactions, walking skills and/or have major physical disabilities. We want to give your child the chance to receive the extra help he/she needs, if the disability interferes with his/her education. Please call your elementary campus to get more information or call Perryton SSA, 435-4412.

#### Beware of FAFSA Web Scam

Seniors, senior parents, and parents of college students should use the web site [www.fafsa.ed.gov](http://www.fafsa.ed.gov) when filling out their Free Application for Federal Student Aid (FAFSA) online. There is currently a website that has found an interesting way to get in the college-bound's pocket. Known as [fafsa.com](http://fafsa.com), the website charges a fee for submitting the application. There is no fee for submitting the form on the [www.fafsa.ed.gov](http://www.fafsa.ed.gov) site.

#### Region 16 ESC offers Free GED Preparation Software

Region 16 ESC is offering free GED preparation software for students interested in obtaining a GED. You will also have access to a free online GED prep program through the public library. If you are interested in finding out more information about these services, please contact: Cindy Blackman at 659-3233, Maria Carbajal or Margaret Ruttman at 659-2231 or stop by the Hansford County Library.

#### Panhandle Crisis Center Outreach Office

Panhandle Crisis Center (PCC) has an Outreach Office and Resale Store at 306 Hancock, in Spearman. In case of emergencies, please continue to call the hotline, 1-800-753-5308. To schedule an appointment with a worker in Hansford County, please call 659-3391 to leave a message, or call the hotline number above. Panhandle Crisis Center serves victims of domestic violence and sexual assault. Please call for more information. Hours for the Spearman Resale Store are: Mon., Tues., Thurs. & Fri., 10 a.m.-5 p.m.

### Atwood Dies in Two-Car Accident Near Canyon

On Saturday, August 14, 22-year-old Sheldon Ross Atwood was killed in a traffic accident in Randall County, TX. The accident happened at approximately 9:40 p.m. at the intersection of FM Road 1062 and City Lake Road.

According to local news reports, Atwood was traveling east on FM 1062, when his vehicle was struck by a Ford Escape in the intersection. Reports indicate that the driver of the Ford Escape was travelling south on City Lake Road and failed to yield at a stop sign. Atwood was pronounced dead at the scene. The driver as well as three passengers from the Escape were taken to local hospitals.

### Thank You!

The family of Martin Ochoa would like to thank everyone for the cards, flowers, food, memorials and, most of all, the prayers. Thank you to Dr. Garnett, Hansford Manor, the staff at Hansford Hospital, and Hansford Hospice for your care.

The Martin Ochoa Family

Jovita Ochoa; Amadita & Joe Vargas & Family; Alicia & Paul Lopez & Family; Pat Ochoa & Family; Maria & Louis Carbajal & Family; Martin Ochoa Jr. & Family; and Pete & Mary Ochoa

## Life is Good.

See for yourself how *Good Life* can be at *The Craig Retirement Community*. The Craig offers a lifestyle that you deserve after working so hard to prepare for your retirement. You choose what you'd like to do. We take care of the details like housekeeping, maintenance and meal preparation. You're free to celebrate life with good health and well-being.

Our residential apartments are spacious, filled with natural light and offer beautiful views. Dine like royalty restaurant style, or you can whip something up in your own kitchen. Want to go to the mall, your doctor or The Symphony? We'll provide transportation. You'll find a bank, pharmacy, post office, library, hair salon, fitness facility, country store and chapel only steps from your front door.

Living in a retirement community is proven to extend life. We're not surprised because life at The Craig is vibrant and peaceful. You can catch a 32 inch fish at Craig Lake and never leave home. Participate in stimulating, planned activities and parties, join your friends for coffee or simply relax.

Choose health. Choose easy. Choose freedom. Life is Good. We know you'll love it at The Craig.

Come on over and have lunch with us.

Call: 352-7244

5500 W. 9th Ave.  
Amarillo, Tx 79106  
[www.sears-methodist.com](http://www.sears-methodist.com)



## We Know.

### Couples Currently Registered

- Taleigh Lechinger & Lance Smith - 9/12
- Kylee Howard & Jeremy Frost - TBA
- Mona Sandoval & Kelcey Servantez
- Blanca Valtierra & Julian Gallegos
- Esmerelda Bernal & Heriberto Navarrete
- Jessica Cornell & Hunter Bevell
- Michelle Waide & Jarick Howard
- Callie Hargis & Brian Hensley
- Kathryn Murphy & Christopher Allen
- Laura McCloy & Daniel Harris
- Racquel (Waide) & Ben Hardesty
- Adrienne Hood & Kevin Baker
- Shea Lowe & Brian Lair
- Luci Alvarez & Gerardo Hernandez

- Betsy & Tucker Henson - 9/8
- Brandy Luther & Mario Salazar - 9/26
- Erin & Bailey Reid
- Sammie (Stavlo) & Wade Harkey
- Kara (Pipkin) & Jon Taylor

659-2141  
314 Main Spearman

# Third Annual Big Fun Run 5K Race and Family Fun Walk Benefits Big Brothers Big Sisters

The third annual Big Fun Run and Family Fun Walk to benefit the Wheatheart Satellite of Big Brothers Big Sisters, was held in conjunction with Perryton's Wheatheart Celebration on Saturday, August 21st.

Eighty-four runners and walkers from Perryton, Spearman, Follett, Amarillo, Guymon, Dalhart, Booker, Canyon, Hardesty, Sayre, Plains and Liberal participated. The youngest participant was 7 years old and the oldest runner was 70!

The overall first place winner in the 5K was Fabian Mercado, Perryton, second place overall was James Graff, Dalhart, and third place overall was Chris Campbell, Guymon. Mercado set a new record finish time of 16:57.

Prizes were awarded to male and female first and second place winners in each of four divisions. 14 & under: first male, Alex Bond, second male, Ryan Roberts; first female, Peyton Harrell, second female, Katelyn Starks. 15-25: first male, Fabian Mercado, second male, James Graff; first female, Tylo Farrar, second female, Sarah Snider. 26-40: first male, Ben Butler, second male, Zach Heflin; first female, Shawna Schulte, second female, Sara Hoover. 41+: first male, Chris Campbell, second male, Jackie Cannon; first female, Ellen Bourquin, second female, Jean Snider.

The race also featured the "Sweet Dreams" division. This category allowed "runners" to sleep in while still supporting the program. They also received a t-shirt



The top three finishers in the Big Fun Run were (L-R) James Graff, Chris Campbell and Fabian Mercado.



The top finishers in each age division in the Big Fun Run were: (Back, L-R) Ryan Roberts, Alex Bond, Jackie Cannon, Ben Butler, Zach Heflin, Ellen Bourquin, Chris Campbell, Sara Hoover, James Graff, Fabian Mercado; (Front, L-R) Shawna Schulte, Peyton Harrell, Katelyn Starks, Jean Snider, Sara Snider, and Tylo Farrar.

for their "effort."

Event sponsors helped make the fundraiser a success. BP America-Anadarko Asset was the major event sponsor. Booker Grocery supplied the finish line refreshment table. Lemon Law Firm underwrote the awards.

This is the second race in the Big Brothers Big Sisters race series. The first 5k was held in Spearman in May. Runners who participated in both events received finishers' medals. Plans are underway to include a third race in the series in Liberal in 2011.

The combined net proceeds of the Spearman and Perryton races was just over \$4,500. The money is used to recruit, enroll, train and support volunteers who work with at risk children in the local area.

Event organizers recognized the following for their support: the City of Perryton, Sheriff Terry

Bouchard, Perryton High School, Lone Star Runners Club, Southwest Fun Time Runners (SWFTR), TXDOT, and the Wheatheart Celebration Committee.

Race coordinator was Starla Whiteley; Matt Bartosiewicz was the assistant race coordinator. The event was staffed by Big Brothers Big Sisters' Advisory Committee members; volunteers from Spearman High School helped throughout the morning as well.

The local Big Brothers Big Sisters' office serves Perryton, Spearman, and Gruver. Over 100 children have been matched with caring mentors in school and community based programs this year. For more information about the program call BBBS at 806-434-0016.

## Water District

### Notice of Public Hearing on Tax Rate

The Palo Duro River Authority will hold a public hearing on a proposed tax rate for the tax year 2010 on September 14, 2010 at 2:00 pm at Palo Duro River Authority Office. Your individual taxes may increase or decrease, depending on the change in the taxable value of your property in relation to the change in taxable value of all other property and the tax rate that is adopted.

<b>FOR the proposal:</b>	Jack Lane	Jay Goodwin
	Don Savage	Arthur Davidson
	Margarette Evans	Paul Stavlo
	Les Taylor	

**AGAINST the proposal:**

**PRESENT and not voting:**

<b>ABSENT:</b>	Keith Christie	Rod Barkley
----------------	----------------	-------------

The following table compares taxes on an average residence homestead in this taxing unit last year to taxes proposed on the average residence homestead this year.

	Last Year Adopted	This Year Proposed
Total tax rate (per \$100 of value)	\$0.065761/\$100	\$0.076726/\$100
Difference in rates per \$100 of value		+\$0.010965/\$100
Percentage increase/decrease in rates (+/-)		+16.67%
Average appraised value	\$54,529	\$55,830
General exemptions available (excluding senior citizen's or disabled person's exemptions)	\$5,000	\$5,000
Average taxable value	\$49,529	\$50,830
Tax on average residence homestead	\$32.57	\$39.00
Annual increase/decrease in taxes if proposed tax rate is adopted (+/-) and percentage of increase (+/-)		+\$6.43 +19.74%

#### NOTICE OF TAXPAYERS' RIGHT TO ROLLBACK ELECTION

If taxes on the average residence homestead increase by more than eight percent, the qualified voters of the district by petition may require that an election be held to determine whether to reduce the operation and maintenance tax rate to the rollback tax rate under Section 49.236(d), Water Code.

Specializing in one-of-a-kind mums.

Matching mums and armbands, custom-made for you and your date.

Spearman Homecoming September 17

All Occasion Flowers

202 N. Bernice (across from the Post Office) 659-5180 • Spearman

Faithfully serving Hansford County since 1992.

**MITCHELL THEATRES.COM**  
GUYMON, OK • LIBERAL, KS • NEWTON, KS

**NORTHRIDGE 8**  
Guymon, Oklahoma  
www.northridge8.com  
580-338-3281

**SOUTHGATE 6**  
Liberal, Kansas  
www.southgate6.com  
620-624-5573

**CHISHOLM TRAIL 8**  
Newton, Kansas  
www.chisholmtrail8.com  
316-283-0555

**SEQUOYAH 8**  
Garden City, Kansas  
www.sequoyah8.com  
620-275-7707

FRESH POPCORN EVERYDAY!  
-PARTY ROOM & ARCADE-



Palace Theatre

MOVIE SHOW TIMES  
Friday-Thursday - 7 p.m.  
Sunday - 2 p.m.  
Closed Sunday Night

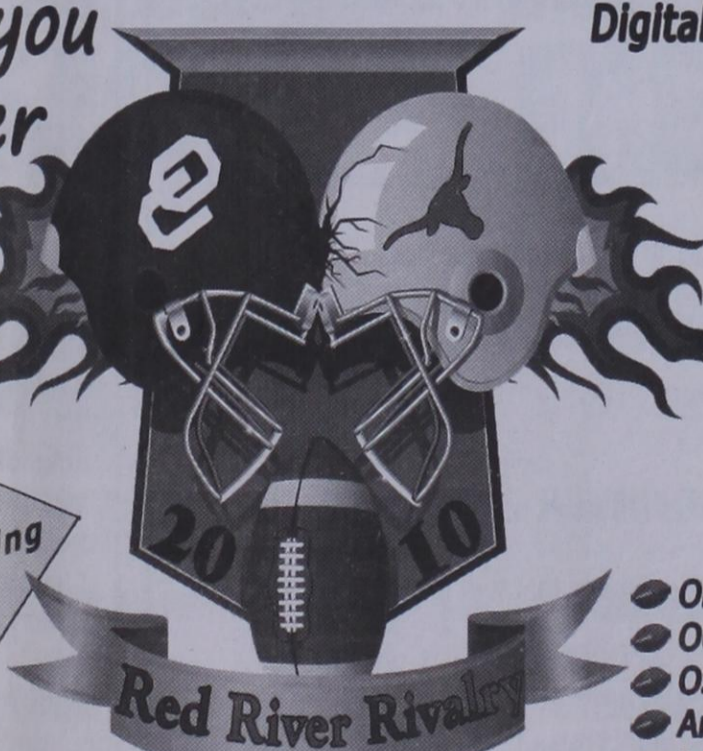
FRESH POPCORN & DRINKS!  
PARTY ROOM & ARCADE  
MOVIE RENTALS

Palace Theatre  
210 Main Street  
Canadian TX 79014  
806-323-5133  
www.palacetheatre.com

The Palace Theatre meets Lucasfilm THX specifications for site and sound quality.

Let PTCI send you to the Red River Rivalry game on Oct. 2, 2010

Sign up for new Digital TV service Aug. 23 - Sept. 24 & your name goes into a drawing for two tickets to the game!



Digital TV with HD

\$29.99 per month for 6 mos.



- OKC Networks in HD
- OU Sooners Sports News
- OSU Cowboys Sports News
- Amarillo Networks in HD
- Local High School Football
- NFL Network

721 W 7th in Spearman - 1-800-562-2556 - www.ptci.net  
Services not available in all areas. Some restrictions apply.



# Meet the Lynx

Presale tickets for the Spearman football game in Amarillo (Bivins Stadium) VS. Nazareth, August 28th at 7 p.m. will be sold in the H.S. office. Presale prices are Adult \$5 and student \$2. All tickets purchased at the game will be \$6.



## Notice of Tax Revenue Increase

The Hansford Hospital District conducted public hearings on August 19, 2010 and August 25, 2010 on a proposal to increase the total tax revenues of the Hansford Hospital District from properties on the tax roll in the preceding year by 9.55 percent.

The total tax revenue proposed to be raised last year at last year's tax rate of \$0.255369 for each \$100 of taxable value was \$1,940,910.

The total tax revenue proposed to be raised this year at the proposed tax rate of \$0.284577 for each \$100 of taxable value, excluding tax revenue to be raised from new property added to the tax roll this year, is \$2,124,931.

The total tax revenue proposed to be raised this year at the proposed tax rate of \$0.284577 for each \$100 of taxable value, including tax revenue to be raised from new property added to the tax roll this year, is \$2,131,615.

The Hansford Hospital Board of Directors of Hansford Hospital District is scheduled to vote on the tax rate that will result in that tax increase at a public meeting to be held on September 2, 2010 at Hansford Manor Activity Room, 707 S Roland, Spearman, Tx 79081 at 6:00 pm.

## PUBLIC NOTICE OF NONDISCRIMINATION IN CAREER & TECHNOLOGY EDUCATION 2010 - 2011

The Gruver Independent School District offers Career & Technology Education programs in Agricultural Science, Business Education, Family & Consumer Science Education, Skills for Living and Technology Applications. Admission to these programs is based on classification of student, age or prerequisites in some programs.

It is the policy of Gruver ISD not to discriminate on the basis of race, color, national origin, sex or handicap in its educational and vocational programs, service or activities as required by the Title VI of the Civil Rights Act of 1964, as amended; Title IX of the Education Amendments of 1972; and Section 504 of the Rehabilitation Act of 1973, as amended.

It is the policy of Gruver ISD not to discriminate on the basis of race, color, national origin, sex, handicap, or age in its employment practices as required by Title VI of the Civil Rights Act of 1964, as amended; Title IX of the Education Amendments of 1972; the Age Discrimination Act of 1975, as amended; and Section 504 of the Rehabilitation Act of 1973, as amended.

Gruver ISD will take steps to assure that lack of English language skills will not be a barrier to admission and participation in all educational and vocational programs.

For information about your rights or grievance procedures, contact the Title IX Coordinator, David Teal, at 601 Garrett Street, Gruver, Texas 79040, (806) 733-2001, and/or the Section 504 Coordinator, David Teal, at 601 Garrett Street, Gruver, Texas 79040, (806) 733-2001.

### FORMA DE MUESTRA

El Distrito Independiente de Gruver ofrece programas vocacionales en Agrícola Science, Business Education, Family & Consumer Science Education, Skills for Living and Technology Applications. La admisión a estos programas esata basada en la edad y la prebia preparacion del estudiante en aread relacionadas con los ya mencionados oficios.

Es norma de Gruver ISD no discriminar por motivos de raza, color, origen nacional, sexo, impedimento o edad, en sus procedimientos de empleo, tal como lo requieren el Título VI de la Ley de Derechos Civiles de 1964, según enmienda; al Título IX de las Enmiendas en la Educación, de 1972, la ley de Discriminación por Edad, de 1975, según enmienda, y la Seccion 504 de la Ley de Rehabilitacion de 1973, según enmienda.

Gruver ISD tomará las medidas necesarias papa asegurar que la falta de habilidad en el uso de las lengua inglés no sea un obstáculo para la admisión y participación en todos los programas educativos y vocacionales.

Para información sobre sus derechos o procedimientos para quejas, comuníquese con el Coordinador del Título IX, David Teal, en 3601 Garreett Street, Gruver, Texas 79040, (806) 733-2001, y/o el Coordinador de la Sección 504, David Teal, en 601 Garrett Street, Gruver, Texas 79040, (806) 733-2001.

# Lusby Competes in National Kidney Foundation Transplant Games

*Continued from Page 1*

The surgery only took three hours from the time Mandi was taken into the operating room until she was taken to ICU.

By Sunday night she was already doing 70% of her own breathing with the ventilator helping out the other 30%.

Mandi sat up and enjoyed a big breakfast early on Wednesday morning. Between breakfast and the 11 a.m. visiting hours, she walked down the hall and back.

"This was quite a feat," said her mother, Donita, "since she hadn't walked in four weeks. She said her legs were shaking like a newborn kitten's."

Mandi's coordinator at the Methodist Transplant Center suggested that she compete at the Transplant Olympic Games only two months after her transplant. The TEAM TEXAS coordinator began making calls to Mandi in March. Mandi was hesitant, but as she became stronger she made the decision to compete and began training.

Mandi's mother, Donita, her daughter, Taylor, sister, Jill, brother-in-law, Ben, and nephew, Bo, as well as Alvin, Becky and Haley Byers, attended the games to help support Mandi.

The registration of the athletes was held on Friday, July 30, 2010. Mandi met with the rest of TEAM TEXAS and their families.

"The proof of Mandi's amazing resilience was never so profound as when she participated in the Transplant Olympic Games," said Donita.

"The first thing I became aware of were the big smiles on everyone's faces," continued Donita.

"All the organ recipients seemed to meet and greet one another like they had known each other forever. They all shared a common LIFE thread.

"The presence of God was electrifying," continued Donita. "Everyone I visited with gave HIM the glory for their successful transplant and the journey they traveled to end up in Wisconsin."

The swimming events began on Friday, and Mandi swam the 100 yd. Individual Medley, and won the silver medal!

"Needless to say, we were so excited," commented Donita. "I cried and laughed. It's been 25 years since I have watched her swim in a competition. It was especially exciting for Taylor to watch her mother not only swim, but to step up on the winner's podium and receive a silver medal."

Sunday was even more amazing as Mandi and her three other teammates won a total of 22 medals! They, as you the saying goes, "kicked butt and took names!"

The opening ceremonies were held on Sunday evening. 48 states were represented as their teams marched into the coliseum carrying their state banner. As the donor families entered the stadium to applause that lasted until the last family was seated. The Alliant Center was filled with transplant athletes, living donors and donor families who gave the ultimate sacrifice by donating the organs of their loved one to a stranger.

The opening ceremonies were concluded by the Lighting of the Living Torch, A symbol of The

Gift of Life continuing because of donors throughout the world.

While eating supper on Sunday night, Mandi's phone rang. One of the girls on the co-ed 3-on-3 basketball team broke her ankle in a game. They desperately needed a sub to come play the rest of the tournament. Mandi explained she hadn't played since her Sophomore year in high school, but agreed to help out. (Mandi scored 6 points in the first game.)

Mandi's other teammates were a 13-year-old boy who was blind in one eye and another with a broken toe and a broken rib. This scrappy team won the bronze medal, to everyone's disbelief.

Mandi also competed in the Volleyball Tournament, and her team was eliminated after four games.

"The trip was an experience I'll never forget," said Donita. "Not just for my own daughter's enjoyment of the experience, but for the opportunity to meet with the wonderful families of organ donors. I saw such joy in their faces as they watched these athletes perform. They walked among the athletes encouraging and cheering for them everyday at each of the events and glowed from the love they received back. One donor's mother made the comment to me that she felt her son's presence and he was telling her 'Good job, Mom!'"

Mandi is approaching her one-year anniversary, which she now refers to as her "new birthday."

After her one-year check-up Mandi will be allowed to write a letter to her donor's family and



Team Mandi was on hand to cheer for her during the Transplant Games. Pictured are: (Back, L-R) Ben and Alvin Byers; (Middle, L-R) Jil, Taylor Varnon, Mandi Lusby, and Becky Byers; (Front, L-R) Haley Byers and Bo.

hope that they will be ready to meet her. If they aren't quite ready, then she will pray for peace for them until the day they are ready to meet their son's grateful recipient.

"Competing in the Games is evidence that transplant patients can go on to live normal lives," said Methodist Transplant Center director Dr. A. Osama Gaber. "To think

that heart and lung transplant patients will die in a year without a transplant and now they are healthy enough to physically compete is a triumph for these amazing people."

## WELCOME BACK

# Students, Teachers & Staff!

### Pringle-Morse CISD

Spearman ISD • Gruver ISD

Spearman Homecoming - September 17th  
Gruver Homecoming - September 17th

---

## HANSFORD COUNTY FLORAL COMPANY

300 MAIN • SPEARMAN, TX • 806-644-4000

**WHERE EXPERIENCE COUNTS**

**Prices Good Thru 9/4/10**

## PUMP, DRINK & WIN

**PURCHASE A TANK OF GAS (OVER 8 GALLONS) AND A 20 OZ. PEPSI BRAND PRODUCT, AND YOU'LL RECEIVE A SCRATCH-N-WIN GAME PIECE. YOU COULD WIN SNACK ITEMS, FUEL, AN HDTV OR ANY NUMBER OF OTHER PRIZES.**

## POWER OF ONE EVENT

**BUY A 20 OZ. PEPSI PRODUCT TOGETHER WITH ANY \$1.29 VALUE FRITO-LAY BAG PRODUCT FOR \$2.00**

305 W. Kenneth  
Spearman • 659-3135

101 Main Ave.  
Gruver • 733-2953

## BACK to SCHOOL

**KING SIZE BLUE BUNNY CONES EACH**

**\$1.99**

**ASSORTED ARMOUR LUNCH MAKERS**

**2 \$2.00 FOR 2**

**JALAPENO CORN DOGS**

**2 \$2.00 FOR 2**

**BUY ONE RICE KRISPIES TREATS BIG BAR GET ONE FREE**

### ////// MORE SPECIALS! ////

PEPSI ASSORTED 8 PACKS / 1 @ REG. PRICE OR	<b>2 \$5.00 FOR</b>	ALLSUP'S SANDWICH BREAD 24 OZ. / 79¢ EACH OR	<b>2 \$1.29 FOR</b>
PEPSI ASSORTED 20 OZ. / 1 @ REG. PRICE OR	<b>2 \$2.50 FOR</b>	ALLSUP'S WHEAT BREAD 24 OZ. / 99¢ EACH OR	<b>2 \$1.49 FOR</b>
SOBE LIFE WATER 20 OZ.	<b>99¢</b>	FOLGER'S CLASSIC ROAST 33.9 OZ.	<b>\$5.99</b>
AQUAFINA 20 OZ.	<b>99¢</b>	WESTERN FAMILY BATHROOM TISSUE 4 ROLL PKG.	<b>99¢</b>
AMP OR ROCK STAR 16 OZ. / 1 @ REG. PRICE OR	<b>2 \$3.00 FOR</b>	WESTERN FAMILY MOPPER TOWELS SINGLE ROLL PKG.	<b>99¢</b>

**Application of Southwestern Public Service Company to Amend a Certificate of Convenience and Necessity for a Proposed 230 kV Transmission Line Within Hansford and Ochiltree Counties, Texas**  
**PUBLIC UTILITY COMMISSION OF TEXAS (PUC)**  
**DOCKET NO. 38524**

Southwestern Public Service Company (SPS) is intending to secure a Certificate of Convenience and Necessity (CCN) amending its certificate to construct a new 230 kV transmission line in Hansford and Ochiltree Counties, Texas. SPS has filed an application with the Public Utility Commission of Texas (PUC or Commission) (Docket No. 38524 - Application of Southwestern Public Service Company to Obtain or Amend a Certificate of Convenience and Necessity for a Proposed 230 kV Transmission Line Within Hansford and Ochiltree Counties, Texas) and is requesting the approval of the Commission for this project.

The proposed project will provide a new 230 kV source to the Perryton, Texas area through the construction of approximately 38-50 miles of new 230 kV transmission line from the existing Hitchland Substation located in the northern/central Texas Panhandle region near the Texas-Oklahoma state line to a proposed new substation known as Ochiltree County Substation to be located near Perryton, Texas. The existing Hitchland Substation is served from SPS's 345 kV transmission lines (Circuit J06 and J07). This project is one part of nine in the Texas North Transmission (TXN) Upgrades required to serve load growth in the Texas and Oklahoma Panhandle areas. The substation upgrades required for the project will be located at Hitchland Substation and the proposed Ochiltree County Substation.

The substation upgrade required at Hitchland Substation will include the addition of a new 230 kV circuit breaker terminal and associated relays, switches, and bus work. The proposed Ochiltree County Substation will consist of a new 230/115 kV - 150 MVA autotransformer along with four 115 kV circuit breaker terminals. The existing 115 kV lines from Perryton Substation to Cole Substation and Texas Farms Substation will be re-configured and routed through the proposed new Ochiltree County Substation.

The proposed transmission line project is presented with a preferred route and four alternate routes consisting of a combined 22 links. Depending on the route chosen, the proposed line will be between 38 and 50 miles in length.

SPS plans to construct the line with single-pole steel structures and will use direct burial structures on tangent structures and drilled pier foundations on all angle and corner structures. SPS chose single-pole steel structures over wood structures, in part, because of the low maintenance cost, strength of the line during adverse conditions, resistance to fire damage, and increased span lengths. The proposed transmission line will be constructed on new right-of-way consisting of a proposed easement width of 70 feet.

SPS is a member of, and its entire transmission system is located within, the Southwest Power Pool (SPP). As a Regional Transmission Organization, the SPP determined the need for this transmission line as a part of their regional studies. The SPP issued a Notification to Construct this line as a result of this determination. Specifically, the proposed new 230 kV project will provide a new stronger transmission source to the Perryton, Texas area and will improve reliability on the existing 115 kV transmission system.

A copy of the map illustrating SPS's preferred and alternate routes has been provided to directly impacted landowners. This map may be reviewed at SPS's office located at 600 S. Tyler, Amarillo, Texas, by contacting Brad Sparks at (806) 378-2132. Persons wishing a copy of the map should contact James Bagley at (806) 378-2868.

Depending on the route selected, the total estimated cost of the project, including the transmission line and substation costs, is approximately \$26,572,869.

Persons with questions about the transmission line may contact SPS's representatives Brad Sparks at 806-378-2132 or James Bagley at 806-378-2868. Persons who wish to intervene in the docket or comment on SPS's application should mail the original and 10 copies of their requests to intervene or their comments to:

**Public Utility Commission of Texas**  
 Central Records  
 Attn: Filing Clerk  
 1701 N. Congress Avenue  
 P. O. Box 13326  
 Austin, Texas 78711-3326

Persons who wish to intervene in the docket must also mail a copy of their request for intervention to all parties in the docket and all persons that have pending motions to intervene, at or before the time the request for intervention is mailed to the PUC.

The deadline for intervention in the docket is October 1, 2010, and the PUC should receive a letter from anyone requesting intervention by that

date. The PUC has a brochure titled "Landowners and Transmission Line Cases at the PUC." Copies of the brochure are available from Brad Sparks at (806) 378-2132 or James Bagley at (806) 378-2868 or may be downloaded from the PUC's website at www.puc.state.tx.us. To obtain additional information about this docket, you may contact the PUC's Customer Assistance Hotline at (512) 936-7120 or (888) 782-8477. Hearing and speech-impaired individuals with text telephones (TTY) may contact the PUC's Customer Assistance Hotline at (512) 936-7136 or toll free at (800) 735-2989. In addition to the intervention deadline, other important deadlines may already exist that affect your participation in this docket. You should review the orders and other filings already made in the docket.

All routes described below will begin at the existing Hitchland Substation and end at the proposed Ochiltree County Substation. The existing Hitchland Substation is located near the Texas state line approximately fifteen miles north of Gruver, Texas, in north central Hansford County. The existing Hitchland Substation is located approximately two miles northwest of the intersection of County Road (CR) B and State Highway 207. The Hitchland Substation is located in the northeast quadrant of Section 10. The proposed Ochiltree County Substation is located north of the City of Perryton, Texas in the southeast corner of Section 19.

The following is a description of each of the Links:

Route Number	Links
1 (Preferred Route)	A-E-U-V-W-M-O-P-R
2	A-E-U-H-M-O-Q
3	A-E-F-G-T-Y-X-O-P-R
4	A-E-F-G-T-Y-Z-Q
5	A-B-C-G-J-L-N-Y-Z-Q

**LINK A** - Link A begins at the existing Hitchland Substation located in the northeast quadrant of Section 10. The Link travels in a southeasterly direction for approximately 1,960 feet through the eastern portion of Section 10 terminating at the southern boundary of Section 10 and the intersection of Links A, B, and E. The Link parallels the east side of an existing SPS 115 kV transmission line (Circuit T88) for approximately 1,440 feet.

**LINK B** - Link B begins at the intersection of Links A, B, and E. The Link travels in an easterly direction for a distance of approximately 6,600 feet from the northeast corner of Section 30 through the northwest corner of Section 31 to the northeast corner in a semicircle following the outer limits of the irrigation system located in Sections 11 and 31. A row of wind turbines follows this same alignment. From the northeast corner of Section 31, the Link intersects the southern boundary of Section 11 and north of Section 60 heading east along and parallel to CR B along the north side for approximately 14,650 feet to its intersection with CR 17 on the east side of an abandoned rail line. This portion of the Link parallels the southern boundary of Sections 11, 12, and 13. The Link ends at the intersection of Links B, C, and D.

**LINK C** - Link C begins at the intersection of Links B, C, and D and at the intersection of CR B and CR 17. The Link heads due east starting at approximately 520 feet east of CR 17 and an abandoned rail line. The Link continues parallel to the north side of CR B traveling due east to the intersection of CR B and CR 20, a total of approximately 12,720 feet and along the southern boundary of Sections 13, 14, and 15 crossing one wetland, one waterbody, CR 19, a pipeline, and one stream. The Link then turns due south at the northwest corner of Section 37 paralleling the east side of CR 20 and the western boundary of Section 37 for approximately 5,120 feet. This portion of the Link crosses a pipeline and a tributary of Hackberry Creek ending on the north side of FM 1261. The Link ends at the intersection of Links C, F, and G.

**LINK D** - Link D begins at the intersection of Links B, C, and D. The Link travels in a southwesterly direction through the middle of Section 48 paralleling the east side of an abandoned rail line and CR 17 for approximately 5,600 feet. The Link ends at the intersection of Links D, E, F, and U.

**LINK E** - Link E begins approximately 1,960 feet south of the existing Hitchland Substation, at the intersection of Links A, B, and E. The Link travels approximately 5,440 feet in a southeasterly direction through Section 30 to the southwest corner of Section 31. This portion of the Link parallels the east side of an existing SPS 115 kV transmission line (Circuit T88). The Link then turns due east parallel to the southern boundary of Sections 31, 60, 61, 48, and Section 1 for a distance of approximately 18,160 feet to the east side of an abandoned rail line and CR 17. This portion of the Link crosses SH 207. Wind turbines are situated along the common boundary of Sections 31 and 32. The Link terminates at the intersection of Links D, E, F, and U.

**LINK F** - Link F begins at the intersection of Links D, E, U, and F on the east side of an abandoned rail line and CR

17. The link travels due east along the southern boundary of Sections 48, 47, and 38 crossing an unnamed tributary, two pipelines, and three unnamed streets, for approximately 14,640 feet to the east side of CR 20. A portion of this Link parallels the north side of a pipeline for approximately 6,000 feet. The Link ends at the intersection of Links C, F, and G.

**LINK G** - Link G begins at the intersection of Links C, F, and G at the east side of CR 20 on FM 1261. The Link heads due east parallel to the southern boundary of Section 37 for approximately 4,160 feet. The Link then crosses the section line to parallel the northern boundary of Sections 36, 27, 24, 14, and 11 for approximately 22,255 feet crossing Hackberry Creek and a pipeline and paralleling the south side of FM 1261 before ending at the northwest corner of Section 2. The Link terminates at the intersection of Links G, I, J, and T.

**LINK H** - Link H begins at the intersection of Links U, V, and H at the southwest corner of Section 50. The Link heads south along the western boundary of Section 51 and parallel to the east side of CR 17, for approximately 5,080 feet to the southwest corner of Section 51 crossing one tributary of Hackberry Creek. The Link then turns due east for approximately 42,600 feet paralleling the southern boundary of Sections 51, 44, 41, 34, 29, 22, 16, and 9, crossing three tributaries of Hackberry Creek, Hackberry Creek, a pipeline at the southeast quadrant of Section 41, CR 20 and CR 22, another pipeline at the southeast quadrant of Section 29 and one in the southeast quadrant of Section 9. The Link terminates on the east side of FM 3214 and the north side of CR F and the intersection of Links H, M, and W.

**LINK I** - Link I begins at the intersection of Links G, J, I, and T, extending due south along the western boundary of Sections 2 and 3 and parallel to the east side of FM 3214 for approximately 10,760 feet. The Link terminates at the southwest corner of Section 3, at the intersection of Links V, I, and W.

**LINK J** - Link J begins at the intersection of Links G, T, I, and J at the northwest corner of Section 2. The Link travels due north approximately 5,485 feet parallel to the western boundary of Section 1 and FM 1261. It continues through Section 19, and into Texas County, Oklahoma for approximately 3,985. The Link crosses the Texas-Oklahoma state line approximately 9,570 feet from where the link begins. The Link continues north approximately 10,900 feet north of the Texas-Oklahoma state line crossing two tributaries of Hackberry Creek and an east-west pipeline and paralleling the western boundaries of Sections 36 and 25 along the east side of County Highway 16. The Link then turns due east for approximately 26,160 feet paralleling the southern boundary of Sections 24, 19, 20, 21, and 22, crossing several tributaries of Hackberry Creek. At that point, the Link turns due north for approximately 5,080 feet paralleling the eastern boundary of Section 22, crossing two unnamed streams and one tributary of Palo Duro Creek. The Link travels due east parallel to the south side of County Highway 14 for approximately 21,080 feet paralleling the northern boundary of Sections 23, 24, 19, and 20, crossing Palo Duro Creek, two small unnamed tributaries, two tributaries of Cottonwood Creek, and Cottonwood Creek. At the northeast corner of Section 20, the Link heads due south parallel to the eastern boundary of Sections 20 and 29 crossing two tributaries of Cottonwood Creek and Cottonwood Creek twice for approximately 10,400 feet. The Link terminates at the intersection of Links J, K, and L.

**LINK K** - Link K begins at the intersection of Links J, L, and K and in the southeast corner of Section 29. The Link extends due east for approximately 5,560 feet parallel to the southern boundary of Section 28 and parallel to the north side of EO340 and then turns south parallel to the western boundary of Section 34 along the east side of County Highway 10 approximately 5,440 feet, intersecting a pipeline at approximately 560 feet from where it turns south. The Link then turns due west for approximately 1,480 feet parallel to the south side of EO350 (Road) to the Texas-Oklahoma state line. The Link terminates at the intersection of Links K, L, and N.

**LINK L** - Link L begins at the intersection of Links J, K, and L. The Link heads due south

for approximately 5,520 feet, crossing Cottonwood Creek and a pipeline, paralleling the eastern boundary of Section 32 and the north side of N1110 to the Texas-Oklahoma state line. The Link then travels due east for approximately 4,200 feet paralleling the Texas-Oklahoma state line crossing Cottonwood Creek, paralleling the northern boundary of Section 9 along the Texas-Oklahoma state line. The Link terminates at the intersection of Links L, K, and N.

**LINK M** - Link M begins at the intersection of Links H, W, and M at the southwest corner of Section 4. The Link extends due east parallel to the north side of CR F for approximately 16,100 feet along the southern boundary of Sections 4, 16, 17, 18, 19, and 20 and the H.C. Day, T.J. Sparks, and W.J. Mitchell Surveys for a total of approximately 52,720 feet. The Link crosses several unnamed streets, Palo Duro Creek, and a tributary of Palo Duro Creek. The Link crosses a pipeline in the southwest quadrant of the H.C. Day Survey approximately 18,080 feet west of its termination point at the intersection of Links M, O, and X, and the intersection of CR F and CR 5.

**LINK N** - Link N begins at the intersection of Links K, L, and N. The Link extends due south parallel to the east side of CR 5 for approximately 17,360 feet, crossing an unnamed street and a tributary of Chiquita Creek. The Link ends at the north side of CR E, at the intersection of Links N, T, and Y.

**LINK O** - Link O begins at the intersection of Links M, X, and O. The Link travels due east for approximately 16,480 feet parallel to the north side of FM 1267 and the southern boundary of the GF Sage and JJ Ware Surveys, crossing one tributary of Chiquita Creek, Chiquita Creek and two pipelines. The Link then continues along the north side of FM 1267 crossing the northeast corner of Section 26 in a southeasterly direction for approximately 3,640 feet and crossing CR 8 to the approximate midpoint of the southern boundary of Section 116. At that point, the Link extends due east along the north side of FM 1267 for approximately 13,180 feet parallel to the southern boundary of Sections 116, 105, 94, and 83 and crossing CR 10 and one pipeline. At this point, the Link crosses to the south side of FM 1267 and parallels the northern boundary of Section 71 for approximately 3,950 feet crossing CR 11 and CR 12. The Link then crosses back to the north side of FM 1267 and parallels the north side of FM 1267 and the southern boundary of Sections 61, 50, 39, and 28 crossing CR 13 and an existing SPS 115 kV electric transmission line. Approximately 1,043 feet from its termination point, the Link turns southeasterly and crosses to the south side of FM 1267. The Link ends at the intersection of Links O, P, Q, and Z and the intersection of FM 1267 and CR 15.

**LINK P** - Link P begins at the intersection of CR 15 and FM 1267 and the intersection of Links O, P, Q, and Z. The Link

heads due east parallel to the northern boundary of Section 18 along the south side of FM 1267 for approximately 4,040 feet. The Link terminates at the intersection of Links P, R, and S.

**LINK Q** - Link Q begins at the intersection of Links O, P, Z, and Q. The Link travels due south along the west side of CR 15 parallel to the eastern boundary of Sections 27 and 26 for approximately 7,200 feet crossing one unnamed street and one unnamed stream. At the southeast corner of Section 26, the Link turns due east parallel to the southern boundary of Section 19 and the north side of an existing SPS 115 kV transmission line (Circuit T02), for approximately 3,880 feet. The Link ends at the proposed Ochiltree County Substation, at the termination of Links Q, R, and S.

**LINK R** - Link R begins at the intersection of Links P, S, and R. The Link heads due south parallel to the western boundary of Sections 5 and 4 for approximately 7,360 feet. The Link terminates at the north side of the proposed Ochiltree County Substation at the termination of Links Q, R, and S.

**LINK S** - Link S begins at the intersection of Links P, R, and S. The Link travels due east along the south side of FM 1267 and the northern boundary of Section 5 for approximately 3,400 feet. The Link turns due south for approximately 7,560 feet along the eastern half of Sections 5 and 4. The Link turns to the west paralleling the north side of an existing SPS 69kV electric transmission line along the southern boundary of Section 4 for approximately 2,840 feet before terminating on the east side of the proposed Ochiltree County Substation at the termination of Links Q, R, and S.

**LINK T** - Link T begins at the intersection of Links J, G, I, and T. The Link travels due east for approximately 32,040 feet along the northern boundary of Sections 2, 6, 7, 8, 9, and 10 crossing a pipeline, several unnamed streets, Sand Draw, a tributary of Sand Draw, and Palo Duro Creek. The Link turns south for approximately 8,840 feet, paralleling the eastern boundary of Sections 10 and 11 crossing a tributary of Palo Duro Creek and an unnamed street. The Link travels due east paralleling the northern boundary of the H.C. Day and T.J. Sparks Surveys, for approximately 14,120 feet crossing one tributary of Palo Duro Creek, then along the south side of CR E on the northern boundary of the W.J. Mitchell Survey of approximately 4,760 feet, for a total of approximately 18,880 feet. The Link terminates at the intersection of Links N, T, and Y.

**LINK U** - Link U begins at the intersection of Links D, E, F, and U. The Link extends in a southwesterly direction parallel to the east side of CR 17 and an abandoned rail line for approximately 3,720 feet through the northwest corner of Section 49 crossing a pipeline. The Link then leaves the abandoned rail line and travels due south along the east side of CR 17 for approximately 7,100 feet along the

western boundary of Sections 49 and 50 crossing a pipeline and one unnamed stream to its intersection with an unnamed east-west street at the southwest corner of Section 50. The Link ends at the intersection of Links H, V, and U.

**LINK V** - Link V begins at the intersection of Links U, H, and V at the southwest corner of Section 50. The Link extends due east for approximately 42,360 feet along the southern boundary of Sections 50, 45, 40, 35, 28, 23, 15, and 10. The Link crosses Hackberry Creek, CR 20, CR 22, FM 3214, and three pipelines. The Link terminates at the southwest corner of Section 3 at the intersection of Links I, V, and W.

**LINK W** - Link W begins at the intersection of Links W, V, and I at the southwest corner of Section 3. The Link travels due south along the western boundary of Section 4 and parallel to the east side of FM 3214 for a distance of approximately 5,280 feet to the southerly corner of Section 4 at CR F. The Link terminates at the intersection of Links H, M, and W.

**LINK X** - Link X begins at the intersection of Links Y, Z, and X and at the intersection of CR E and CR 5. The Link runs in a southerly direction parallel to the east side of CR 5 to the intersection of CR 5 and CR F for approximately 6,960 feet. It terminates at the intersection of Links M, O, and X.

**LINK Y** - Link Y begins at the intersection of Links T, Y, and N. The Link travels due east parallel to the south side of CR E to its intersection with CR 5 for approximately 2,000 feet. The Link terminates at the intersection of Links X, Y, and Z.

**LINK Z** - Link Z begins at the intersection of Links X, Y, and Z. The Link extends due east for approximately 7,482 feet parallel to the south side of CR E and the northern boundary of the GF Sage Survey, crossing two tributaries of Chiquita Creek and CR 6. The Link then extends due north parallel to the east side of CR 6A for approximately 3,280 feet. The Link then turns due east for approximately 9,360 feet, crossing one tributary of Chiquita Creek, Chiquita Creek, and two pipelines. The Link heads due north for approximately 2,560 feet parallel to the west side of CR 8 to the intersection of CR 8 and CR D, crossing another tributary of Chiquita Creek. The Link then travels due east for approximately 34,480 feet along the north side of CR D, crossing through Section 10, and along the southern boundary of Sections 120, 101, 98, 79, 76, 57, 54, 35, and 32, crossing four identified wetland features, one tributary to Chiquita Creek, CR 10, CR 13, one pipeline and an existing SPS 115 kV transmission line (Circuit T02) in Section 35. At CR 15, the Link turns due south parallel to the west side of CR 15 and the eastern boundary of Sections 31, 30, 29, and 28 for approximately 15,000 feet. The Link terminates at the northeast corner of Section 27 and the intersection of Links O, P, Q, and Z.

1(8/26/10)B

**HUGE INVENTORY CLEARANCE SALE**  
 Great Savings  
 on all Kinds of Items!  
 Come see us and SAVE!!!  
*Gordon's*  
 DRUG  
 314 Main • Spearman • 806-659-2141

**Small Taxing Unit Notice**

The City of Gruver will hold a meeting at 6:00 P.M. on September 8, 2010, at City Hall; 201 E. Broadway in Gruver, Texas, to consider adopting a proposed tax rate for tax year 2010. The proposed tax rate is \$0.3621 per \$100 of value.

The proposed tax rate would increase total taxes in City of Gruver by 7.4 percent.



REAL ESTATE

HOUSE FOR SALE: 721 S. Haney, Spearman - 2BR, 2B, 2CG, Lg. dining room & kitchen, 2 living areas, lg. office, fenced yard, storage bldgs. and 1BR apartment behind house. Call (806) 202-5929 or 659-2276.

HELP WANTED: Panhandle Health Care, Inc. is seeking applicants for the following position - PT administrative assistant. For more information, or to apply, please call our office at (806) 659-3110. 11/8/26/10

FOR SALE

FOR SALE: 3-piece sectional with 2 recliners - \$200. Triple Dresser - \$50. (806) 330-0494. 1/8/26/10/B

SERVICES

MARTIN'S AUTO DETAIL Call 270-0456 (cell) or 644-1229 (home). TFN(6/10/10)

CLICK PAINTING & HOME REPAIR Painting, Texturing, Drywall Repair, Fencing & General Carpentry. Serving Peryton, Spearman & Gruver. Don Click, 648-1480, or 202-1391 (cell). TFN(10/15/09)

HOCHY POOCHY PARLOR Call us for all your pet's grooming and boarding needs. Call now for reservations! 806-273-2724. TFN(11/2/07)

HELP WANTED

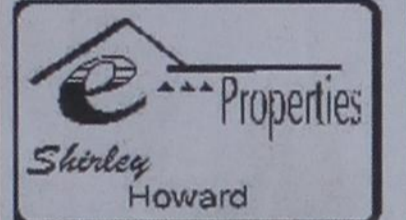
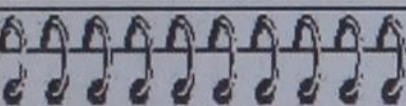
MYSTERY SHOPPERS WANTED: National Market Research company seeks individuals to evaluate customer service in Spearman, TX. Apply FREE: www.bestmark.com or call 1-800-969-8477. 2/8/19/10

Blankenship Real Estate 659-3052 - 670-3774

4BR/2B/2CG Home - Basement, pool, central H/A, fireplace. Price Reduced!

NEW LISTINGS WANTED!

Eulalia Blankenship - Sales Eschol Blankenship - Broker



We NEED listings! Call us now to help YOU sell your home for top dollar!

902 9th - Gruver: Horse Stables FOR SALE! 18 pens, circular training pen, arena, & 4500 sf barn on 10.42 acres! PRICE REDUCED!! 13125 Co Rd 18A - 1,463 PLUS 504 Basement, 3BR, 1B, CACH, 2C Det Gar, 6.2 Ac, 1,800 sqft Barn!

Shirley Howard, Broker/Owner 806-886-6536, Cell Melinda McCullough, Realtor (806) 733-5678

We would LOVE to sell your HOUSE! CALL US!

French & Co., Realtors 273-7355

Beautiful 3 BR, 2B home in Morse, Texas. 1.06 acres. Updates Galore, Gorgeous tile & wood floors, stunning trim, custom paint, 28x33 garage & separate shop. Call Michele for details. 806-273-7355

This ad is just a small sample of the properties that we currently have for sale.

Please check our Web site and give us a call! We need your listings both large and small, all types of properties (ESPECIALLY CRP).

HANSFORD CO, TX - 2 1/2 miles from town, on pvm., 640 acres, choice land, 1/2 mile sprinkler, excellent location for dairy.

SWINE PRODUCTION FACILITY - Moore Co., TX. - 1200 sow capacity, capable of running 28,000 pigs annually, computerized feed mill, flex-lo feeding system, management in place. PRICED TO SELL! INVESTORS WELCOME!

OCEANS OF WATER II - Hansford Co., Texas - 4 sections, strong water, dev. with sprinklers, wells, feedyard, home, barns, pvm., 2 mi. hwy. frontage.

SEE OUR WEBSITE OR CALL US! www.scottlandcompany.com Shawn Gillispie 806/922-5532 Ben G. Scott, Broker 1-800-933-9698 day/eve TFN(6-24-10)

FIREWOOD FOR SALE Cedar firewood for sale. Delivered & stacked, or self pickup. Call (806) 658-2573. 15/8/12/10/P

AGRICULTURE

FOR SALE: Hatcher, TAM 111, TAM 112, Beardless Wheat, Forage Type Triticale, Deliver - Bulk or Bagged, 806-258-7394. Gayland Ward Seed, Hereford TX. 8/8/5/10

WANTED: Want corn to haul from field to elevator. Have one semi. Call Adam Nusz at 620-326-7808 2/8/12/10

PUBLIC NOTICE

NOTICE TO BIDDERS

Sealed proposals for a one year contract for bulk fuel will be received by the City of Spearman, Texas, until 11:00 a.m., September 8, 2010, and then publicly opened and read. The City reserves the right to reject any or all bids, to waive informalities and to accept the bid deemed to be the most advantageous to the City. All bids received after the above closing hour will be returned unopened.

All bids shall be sealed and marked on the outer envelope "Bulk Fuel". Specifications and bidding documents may be secured from PO Box 37, Spearman, Texas 79081. 2/8/19/10/B

NOTICE TO CONTRACTORS OF PROPOSED TEXAS DEPARTMENT OF TRANSPORTATION (TXDOT) CONTRACTS

Sealed proposals for contracts listed below will be received by TXDOT until the date(s) shown below, and then publicly read. CONSTRUCTION/ MAINTENANCE/ BUILDING FACILITIES CONTRACT(S)

Dist/Div: Amarillo Contract 0904-00-145 for CRACK POUR in Patter County, etc will be opened on September 08, 2010 at 1:00 pm at the State Office.

Plans and specifications are available for inspection, along with bidding proposals, and applications for the TXDOT Prequalified Contractor's list, at the applicable State and/or Dist/Div Offices listed below. If applicable, bidders must submit prequalification information to TXDOT at least 10 days prior to the bid date to be eligible to bid on a project. Prequalification materials may be requested from the State Office listed below. Plans for the above contract(s) are available from TXDOT's website at www.txdot.gov and from reproduction companies at the expense of the contractor. NPO: 33804

State Office Constr./Maint. Division 200 E. Riverside Dr. Austin, Texas 78704 Phone: 512-416-2540

Dist/Div Office(s) Amarillo District District Engineer 5715 Canyon Dr. Amarillo TX 79105-2708 Phone: 806-356-3283

Minimum wage rates are set out in bidding documents and the rates will be part of the contract. TXDOT ensures that bidders will not be discriminated against on the grounds of race, color, sex, or national origin. 2/8/19/10/B

Word search grid with words like LOTUS, PTA, ANTS, EDITH, LAG, AMAZE, TORII, URT, ROMAN, RECESS, LOCKER, ALL, FEEL, PAUL, DELTA, DAHLIA, EURO, KEYS, NAACP, ORAL, KERRA, SKIP, NISEI, SERA, BELL, SCHOOL, RISK, RYE, DEBIT, SOS, DETAIL, LITTLE, BERET, APE, TOOTH, RAISE, DEW, ENNUJ, ONES, END, REGIS

Number grid for word search: 1 6 9 3 4 7 8 2 5, 3 7 2 5 9 8 4 6 1, 8 5 4 6 2 1 9 3 7, 5 3 6 9 1 4 7 8 2, 2 4 8 7 6 3 5 1 9, 7 9 1 2 8 5 6 4 3, 6 1 7 8 5 2 3 9 4, 9 2 5 4 3 6 1 7 8, 4 8 3 1 7 9 2 5 6

NOTICE TO CREDITORS Notice is hereby given that original Letters Testamentary for the Estate of Mary Lou Barnes, Deceased, were issued on Aug. 17, 2010, in Cause No. P02606, pending in County Court of Hansford County, Texas, to: Douglas Edward Barnes.

All persons having claims against this Estate which are currently being administered are required to present them to the undersigned within the time and in the manner prescribed by law: c/o Cecil Biggers Attorney at Law PO Box 342 13 W. Kenneth Street Spearman TX 79081 DATED the 17th day of August, 2010.

Cecil R. Biggers Attorney for Douglas Edward Barnes State Bar No.: 02308500 PO Box 342 13 W. Kenneth Street Spearman TX 79081 Telephone: (806) 659-5531 Facsimile: (806) 659-5531 1/8/26/10/B

CAUSE NO. P02604 IN THE MATTER OF THE ESTATE OF BILLIE K. ALLEN, DECEASED.

IN THE COUNTY COURT OF HANSFORD COUNTY, TX NOTICE TO CREDITORS Notice is hereby given that original Letters Testamentary for the Estate of Billie K. Allen, Deceased, were issued on August 10, 2010, in Cause No. P02604, pending in County Court of Hansford County, Texas, to: Linn Riley, Independent Executor.

All persons having claims against this Estate which are currently being administered are required to present them to the undersigned within the time and in the manner prescribed by law. Presentation of such claim shall be made to the Independent Executor of the Estate of Billie K. Allen, Deceased, through her attorney at the following address: Linn Riley c/o Jessica McCallie Ehrlich & McCallie, PLLC PO Box 1257 Peryton TX 79070 DATED the 13th day of August, 2010.

Linn Riley, Independent Executor 1/8/26/10/B

Are You A Victim of Domestic Violence, Sexual Abuse or Physical, Emotional or Sexual Assault?

Call Toll Free Hotline 1-800-753-5308

We can see individuals from Hansford County anytime upon request. Call 435-5008 or 1-800-753-5308 to set up an appointment in Hansford County. We operate a safe place for victims and their children to stay in times of crisis. Battering Intervention & Anger Management Available

Panhandle Crisis Center Serving Hansford, Lipscomb & Ochiltree Counties 301 S. Ash • Peryton, TX Memorials Accepted

M&D Aerial, LLC David & Megan George P.O. Box 520 Spearman, Texas 79081 David: (806) 202-2360 Megan: (806) 202-2358 mdaerial@yahoo.com

DROUGHT INSURANCE RAINFALL INSURANCE PROGRAM BROKEN ARROW CROP INSURANCE FOR MORE INFORMATION AND A PERSONALIZED QUOTE Larry Schickedanz 806.898.8930 OUR SPECIALTY IS THE USDA RANGELAND PROGRAM: Serving Rangeland Policies for over 4 Years DEADLINE: SEPTEMBER 30TH WWW.BACROP.COM

Visit us at... FAMILY POOL FUN.COM Wholesale prices on quality winter pool supplies, pool kits & accessories. Deep discounts on Inground Safety Covers. Save money on all Aboveground & Inground Mesh and Winter Covers. Call Today! 800-250-5502

Fund Raising Request your FREE catalog and information packet. 1-800-311-9691 or www.RadaCutlery.com NOTE: Dept A10CNA Your School, Church, Club, Team or Youth Group will work directly with the manufacturer to make 40% profit. Your supporters receive a tremendous value on remarkable kitchen knives, utensils and gift sets (quick mixes, cookbooks, soy wax candles and stoneware too)! Our proven Fund Raising system guarantees your success.

MULTI-PARCEL REAL ESTATE AUCTION 1,197+/- Acres Recreation/Hunting/Crop Land 2875 FM 217, Jonesboro, TX 76538 Wed., Sept. 22 On-Site at 11:00 AM SELLER FINANCING AVAILABLE! Inspection Sat. Aug. 14 10:00 AM until 4:00 PM Info: www.WestFarmAuction.com OR 1(800)460-2078

TEXAS STATEWIDE CLASSIFIED ADVERTISING NETWORK TexSCAN TEXSCAN Week of August 15, 2010 ADOPTION ADOPTION: LOVING, WARM educated family will give your baby the best in life. Expenses paid, please call Roslyn, 1-866-298-8070 AUCTION BANK-OWNED HOMES for sale including properties in this area. Now is the time! The market, interest rates and opportunities could not be better. New properties added daily! Bid now online: www.OnlineBidNow.com; Hudson & Marshall, 1-866-539-4174 FORECLOSED HOME AUCTION 130+ homes, August 31st. Open house: 8/21, 8/28 & 8/29. View full listings: www.Auction.com, REDC/RE # 0580708 AUTOS STOP PAYING THE Mechanic! 130,000 miles or less? 100% covered repairs paid! Roadside assistance, rental cars, towing, etc. Auto protection as low as \$1/day. Free quote. 1-888-364-1655. FYC, Inc. DRIVERS DRIVER: CDL-A Stay loaded and earn big! Our drivers run more miles. \$500 Sign-On bonus. 2011 Freightliner Cascadia have arrived. Flatbed division CDL-A, TWIC Card and good driving record. Western Express; 1-866-863-4117 DRIVER CDL-A: TEXAS regional company drivers: Home most weekends, make good money. Run I-35 corridor. CDL-A, 8 month OTR experience. Limited positions! deBoer Transportation, 1-888-730-9312 DRIVER-WEEKLY HOMETIME average 2,400 miles/week. Local orientation. New trucks! Daily or weekly pay. Healthcare benefits. CDL-A, 6 months OTR experience. 1-800-414-9569. www.driveknigh.com DRIVERS-LOOKING for an outbound freight opportunity in your area? 7 FE weeks OTO's and company drivers. Class A-CDL and 1 year experience. Call 1-214-819-5680 or recruit@fex.net NATIONAL CARRIERS needed OTO's. Lease purchase. Company drivers for it's expanding fleet. Offering Regional/OTR runs. Outstanding pay package, excellent benefits, generous hometime. 1-888-707-7729 www.nationalcarriers.com REGIONAL DRIVERS WANTED! More 81.56 ACRES, south of Sonora. End of road, hometime, top pay, excellent benefits, newer Deep canyon, endless views. Exotics, hugs, equipment. Up to .41-mile company drivers. \$995/acre, owner financing. 1-800-876-9720; Heartland Express, 1-800-441-4953. www.hillcountryranch.com QUALITY DRIVE-AWAY, Inc. needs CDL drivers to deliver trucks out of Texas. Rate is 43¢/mile with fuel, tolls and permits paid. Call 1-866-764-1601 or 1-800-654-8586 for more information. 676 ACRES-REEVES County, 15 Miles North Pecos. River frontage. Call Jack 1-214-755-6224. \$106 MONTH BUYS land for RV, MH or cabin. Gated entry. \$690 down. (\$6900/10.91%/7yr) 90 days same as cash. Guaranteed financing. 1-936-377-3235 LAKEFRONT LOT- NEW RELEASE. Athens premiere lakefront community. Over one acre with the best view on the lake. 267' of lake frontage. This is an absolute steal for only \$89,900. Excellent financing available. 1-866-730-0755. TREES, TREES & VIEWS, 1 acre \$29,900. High oak trees, access to pool and lake, private gated community. Won't last, financing available. Call 1-866-756-4040. SCHOOLS/TRAINING AIRLINES ARE HIRING Train for high paying aviation career. FAA approved program. Financial aid if qualified, job placement assistance. Call Aviation Institute of Maintenance, 1-877-523-4531 CAN YOU DIG IT? Heavy equipment school. 3 week training program. Backhoes, Bulldozers, Tractors. Local job placement assistance. Start digging dirt now. 1-866-362-6497 HIGH SCHOOL DIPLOMA graduate in 4 weeks! Free brochure! Call now! 1-866-562-3650, ext. 55. www.southeasternHS.com Run Your Ad In TexSCAN! Statewide Ad.....\$500 307 Newspapers, 1,018,288 Circulation North Region Only.....\$230 99 Newspapers, 270,048 Circulation South Region Only.....\$230 107 Newspapers, 601,889 Circulation West Region Only.....\$230 101 Newspapers, 248,581 Circulation To Order: Call This Newspaper direct, or call Texas Press Service at 1-800-749-4793 Today!

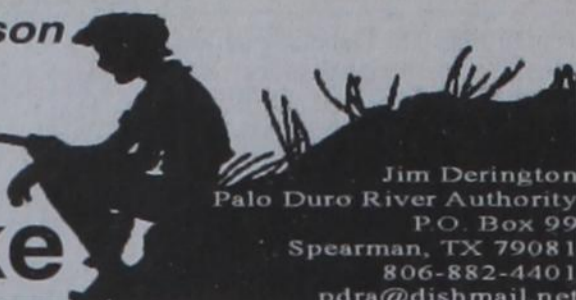
MARTIN & ASSOCIATES REALTY Serving Hansford County for 15 years Julie Martin: Broker - 659-2425 PRICE REDUCED ON BOTH 804 & 806 Wilbanks New Construction. Call for your private showing! We'd Like Your Listing! FOR QUALITY & SERVICE CALL US TODAY! Equal Housing Opportunity

McLarty Roofing Specializing in re-roofs Roofing TX and NM for 30 years For all your roofing needs 806-224-8947 - 806-224-9630 Bonded and insured mclartyroofing.com

Extend your advertising reach with TexSCAN, your Statewide Classified Ad Network.

by Dorothy Hudson

# Out at the Lake



Jim Derington  
Palo Duro River Authority  
P.O. Box 99  
Spearman, TX 79081  
806-882-4401  
pdra@dishmail.net



This is a Great Egret, near Horse Creek.

Lake Level--August 24, 2010--55.41 feet (-0.62)

Last week, as Jim was giving me the weekly report, we thought the rains near Spearman and on Horse Creek would reach the Lake.

However, today Jim said that Horse Creek did run, but the flow was not strong enough to reach the Lake. He had 1.18 inch in his gauge.

This morning (Tuesday) we are having gentle rains that have amounted so far to .57 inch here in Gruver.

Jim's picture is of some Great Egrets he found in Horse Creek. He explained to me that he can tell the difference in this egret with the Snowy Egret by the color of their beaks and legs. The Snowy Egret has

a black bill, blackish legs, but yellow feet, whereas the Great Egret has a yellow beak and black legs and feet.

The Great is the larger. Both egrets are rare summer and fall visitors. We don't have any account of either one nesting in the Panhandle.

Cattle egrets are a common summer and fall visitor. They are smaller and not easily confused with the Great and Snowy Egrets. They do not stay near or in the water but are found in fields or pastures with livestock.

There were 2 RV campers and some tent campers, but little activity.

**Are Black Lions Real?**  
I had planned to write on how mustangs were cap-

tured by "creasing or nicking". I took time off to eat lunch and found an article in the September Texas Parks and Wildlife entitled What Was That? It dealt with 5 mythological creatures thought by some to be found in Texas. The first three were chupacabras, Bigfoot, and lechuzas.

"Two other mythical Texas creatures are at least halfreal--the black panther and the black lion. The real description includes a long tail, four legs, and whiskers. The unreal description is the color, or lack thereof."

Mike Cox, author of the article, quotes John Young, Texas Parks and Wildlife mammalogist, for his evidence. Young thinks the black panthers that were reported historically were melanistic phases of the jaguar, but he doesn't think mountain lions have a melanistic phase.

He thinks a possible explanation is that most mountain lions are seen in the evening under poor lighting conditions, and that a normal-colored mountain lion can look black in the twilight. Given that the average duration of a sighting is less than 60 seconds there's no time for intensive study.

The only way to prove otherwise is to present a dead black mountain lion to authorities.

It took quite a few sightings for many people to agree that we had mountain lions in the county. Yet I still have not seen a picture of one--let alone a dead one.

# Circle of Friends

Just around the corner, the Hansford County Circle of Friends will be hosting their annual membership party. As a membership appreciation, guests will be treated to a wonderful rib eye meal catered by the Wagner Family and there will also be silent and live auctions and some great raffle items. It's not too late to join us, so please send in your reply card or call Holly McLain 806-733-2268 or Tonni Yanke 806-733-2008 for tickets. Tickets are \$35 for a couple and \$20 for a single.

The Circle of Friends is a non-profit organization dedicated to helping cancer patients and their families in times of need. Through its affiliation with Harrington Cancer Center, the Circle of Friends develops and implements fund raising activities to provide financial assistance and patient care and support programs for those affected by cancer. The Circle of Friends also works with Harrington Cancer Center to provide cancer educational opportunities for people throughout the region. Examples of Circle of Friends sup-

port of Harrington Cancer Center patients includes:

- Two furnished apartments for out-of-town patients to use when going through treatment
  - Pediatric Patient/Family Gatherings (a day at Wonderland Park, Christmas Party, etc.)
  - Supplies for weekly support groups
  - Materials for chemotherapy classes, new patient books
  - Refreshments for patients during treatment
  - Assistance with patients' travel, insurance premiums, rent or mortgage payments, medication, nutritional supplements, utilities and breast prosthesis
- We are currently looking for committee members to help with this event. For more information on the Hansford County Circle of Friends or if you are interested in attending and/or volunteering to help with the event please contact Holly McLain (806) 733-2268 (hollymclain13@yahoo.com) or Tonni Yanke (806) 733-2008.



## Circle of Friends

Come join us for a great time and thank you Hansford County for your continued support!

**Hansford County Circle of Friends**  
Annual Membership Party  
Saturday, August 28, 2010  
7:00 p.m.  
The O'Loughlin Center

## Tong's Chinese Restaurant

(806) 644-2838  
22 Archer Street • Spearman

### Daily Buffet

Lunch - 11 a.m.-2:30 p.m. • Dinner - 5:30-9 p.m.  
Open Wednesday-Monday - Closed Tuesday

# NEW

## Sushi on Sunday Buffet

2010-2011  
Pringle-Morse CISD  
Calendar  
Board Approved 5-20-10

91 Days First Semester      176 Instructional Days      85 Days Second Semester  
11 Staff Development Days

<p><b>S M T W T F S</b></p> <p><b>August</b></p> <p>1 2 3 4 5 6 7 8 9 10 11 12 13 14 15 16 17 18 19 20 21 22 23 24 25 26 27 28 29 30 31</p>	<p><b>S M T W T F S</b></p> <p><b>September</b></p> <p>1 2 3 4 5 6 7 8 9 10 11 12 13 14 15 16 17 18 19 20 21 22 23 24 25 26 27 28 29 30</p>	<p><b>S M T W T F S</b></p> <p><b>October</b></p> <p>1 2 3 4 5 6 7 8 9 10 11 12 13 14 15 16 17 18 19 20 21 22 23 24 25 26 27 28 29 30 31</p>
<p><b>S M T W T F S</b></p> <p><b>November</b></p> <p>1 2 3 4 5 6 7 8 9 10 11 12 13 14 15 16 17 18 19 20 21 22 23 24 25 26 27 28 29 30</p>	<p><b>S M T W T F S</b></p> <p><b>December</b></p> <p>1 2 3 4 5 6 7 8 9 10 11 12 13 14 15 16 17 18 19 20 21 22 23 24 25 26 27 28 29 30 31</p>	<p><b>S M T W T F S</b></p> <p><b>January</b></p> <p>1 2 3 4 5 6 7 8 9 10 11 12 13 14 15 16 17 18 19 20 21 22 23 24 25 26 27 28 29 30 31</p>
<p><b>S M T W T F S</b></p> <p><b>February</b></p> <p>1 2 3 4 5 6 7 8 9 10 11 12 13 14 15 16 17 18 19 20 21 22 23 24 25 26 27 28</p>	<p><b>S M T W T F S</b></p> <p><b>March</b></p> <p>1 2 3 4 5 6 7 8 9 10 11 12 13 14 15 16 17 18 19 20 21 22 23 24 25 26 27 28 29 30 31</p>	<p><b>S M T W T F S</b></p> <p><b>April</b></p> <p>1 2 3 4 5 6 7 8 9 10 11 12 13 14 15 16 17 18 19 20 21 22 23 24 25 26 27 28 29 30</p>
<p><b>S M T W T F S</b></p> <p><b>May</b></p> <p>1 2 3 4 5 6 7 8 9 10 11 12 13 14 15 16 17 18 19 20 21 22 23 24 25 26 27 28 29 30 31</p>	<p><b>S M T W T F S</b></p> <p><b>June</b></p> <p>1 2 3 4 5 6 7 8 9 10 11 12 13 14 15 16 17 18 19 20 21 22 23 24 25 26 27 28 29 30</p>	<p><b>S M T W T F S</b></p> <p><b>July</b></p> <p>1 2 3 4 5 6 7 8 9 10 11 12 13 14 15 16 17 18 19 20 21 22 23 24 25 26 27 28 29 30 31</p>

Staff Devel./Student Holiday     
  Bad Weather Day     
  Comp Day/ Student Holiday  
 Begin six weeks     
  End six weeks     
  School Holiday     
  Report Cards Out  
 Graduation     
  TAKS Test     
  Early Out for Everyone     
  Early Out Students/Parent Conf

## Mark Your Calendar!

# Annual Health Fair

## October 14, 2010

### 7 a.m. - 1 p.m.

Sponsored by

**Hansford County Hospital District**  
PTCI  
**O'Loughlin Center**  
**Golden Spread Senior Citizens**

*Helicopters, Fire Trucks  
and Much More*

*If you would like to donate a door prize and get your business name on a T-shirt to be given out at the Health Fair, please call Hansford County Hospital District at 806-659-5841.*