



THE HANSFORD COUNTY

HANSFORD COUNTY LIBRARY
0120 S. MAIN ST.
SPEARMAN TX 79081
comp



Reporter-Statesman

Serving Hansford County Since 1907

Look for Spearman on the Internet at <http://www.webtex.com/Spearman>

THURSDAY, FEBRUARY 6, 1997

213 MAIN • SPEARMAN, TEXAS, 79081

VOLUME 90, ISSUE 6

Hansford Happenings

Spearman Blood Drive

The Coffee Memorial Blood Center will hold a blood drive on Monday, February 10 from 4:00-7:00 p.m. at the Sacred Heart Catholic Church Parish Hall in Spearman, TX. There will be free Valentine Treats for each donor. Blood Donors may give every 56 days. Please contact the Blood Center at 358-4563, if you are unsure of your eligibility to donate.

Recycling Program Offered To Groups Or Clubs

Lora Hoffman, Recycling Coordinator for Subregion II (which includes Perryton, Booker, Canadian, Darruzzett, Follett, Gruver, Higgins, and Spearman) is offering a program on recycling for any groups or clubs that are interested. The program is entitled "The Magic of Recycling" and is about 10-15 minutes in length. Please contact your City Hall to set up a program date.

Hansford Hospice Volunteers To Host Soup/Stew Luncheon

The Hansford Hospice Volunteers will have a Soup and Stew Luncheon w/combread and homemade pie. It will be Wednesday, February 26, 1997 from 11:00 a.m. - 2:00 p.m. at the Sacred Heart Catholic Church Parish Hall in Spearman. Cost will be \$5.00 (children under 6 years eat free) (For take-out orders come by Parish Hall by 11:00 a.m.)

TAES Computer Workshop

Area farmers and ranchers can start registering for an upcoming computer shortcourse offered in Gruver by the Texas Agricultural Extension Service on March 3rd and 4th. The workshop, using Quicken 6 for Windows 95, will be taught by Dr. Steve Amosson, Extension economist who specializes in farm and ranch management. The registration fee is \$75. Couples are encouraged to attend the workshop and will be charged only on registration fee if they share one computer. Class size will be limited to 14 to provide hands-on experience for all participants. Each session will begin at 9 a.m. and end at 3:30 p.m., and will be held in the La Casita Room of Gruver State Bank. To register, send a check with the registration form to reserve a place in the course. Checks should be made payable to Texas Agricultural Extension Service, Texas A&M Research and Extension Center, 6500 Amarillo Boulevard West, Amarillo, TX 79106. To obtain more information about this and future classes with the Extension Service traveling computer lab, call any county agricultural agent in the Panhandle or the Extension Service District Office in Amarillo at (806) 359-5401 and ask for Regina Linder.

Calling All Future Band Boosters

Band Boosters are having a no cost membership drive. Starting Thursday, February 6th the Band Boosters will meet every 1st Thursday of the month to support our band program. We need support at all levels junior high and high school. Come out and join a growing enthusiastic program. Our kids need your support. Join us at the high school cafeteria February 6th at 7:00 p.m. Refreshments will be served.

Community First Aid & Safety Course Offered

The American Red Cross will be conducting a Community First Aid and Safety course on February 17-18. The adult CPR and Child CPR portion of the course will be conducted Monday, February 17 from 6-10:30 p.m. The Infant CPR and the Standard First Aid will be conducted Tuesday from 6-10:30 p.m. For more information or to sign up call the Red Cross office weekday mornings, 435-8175.

Spearman Elementary Turns Box Tops Into Extra Bucks

To help raise money for their school, local students at Spearman Elementary are participating in a unique program from General Mills, maker of popular cereals like Cheerios and Wheaties, called Big G Box Tops for Education. The school will receive 15 cents for every qualifying General Mills cereal box top collected between now and March 31, 1997. A qualifying box top is the top flap of any General Mills cereal box that has the 1996/1997 "Big G Box Tops for Education" symbol.

February Immunization Clinics

Immunization clinics offering vaccines that give protection against several childhood diseases are scheduled for February. Protection is against Polio, Diphtheria, Lock jaw (Tetanus), Whooping Cough (Pertussis), Measles, Rubella, Mumps, and HIB (Haemophilus Influenzae Type B). The Texas Department of health is charging money to help with the cost of keeping the clinic open. The amount of money charged will be based on family income and size, and the ability to pay. In Dumas they will be at the Texas Department of Health Office, 804 N.E. 4th Street, on February 14 from 9 - 12 a.m. and 1 - 4 p.m.; and on February 25 from 9 - 12 a.m. and 1 - 4 p.m. In Borger they will be at the Golden Plains Community Health Center, 600 Cedar on February 11 from 9 - 12 a.m. and 1 - 4 p.m.; and on February 25 from 9 - 12 a.m. and 1 - 4 p.m.

Pet Sterilization Program of the Panhandle

The Pet Sterilization Program of the Panhandle, a reduced cost pet spay/neuter program based in Amarillo, is observing February as spay/neuter education month. PSPP is a not for profit corporation. The purpose of this corporation is to reduce the number of unwanted cats and dogs in this area and to educate people as to the benefits of owning a sterilized pet. The PSPP reduced cost program is made available to anyone who has a pet in need of sterilization and has been utilized by clients in Texas, Oklahoma, and New Mexico. This program is unique in that it is open to everyone who has a pet in need of sterilization, regardless of the individual's income. For more information about PSPP, please call 372-7777 or write to: PSPP, 4414 West 2nd, Amarillo, Texas 79106.

College Financial Aid Officials To Answer Questions

If you want to apply for scholarships or other financial aid to help you attend college or get job training after high school, when should you begin and what forms are required? Financial aid officials from schools and colleges in Texas can help you answer your questions, even if you are not yet a senior, and even if you are considering schools outside Texas. Call the Financial Aid Information Line February 8th and 9th between 10:00 a.m. and 6:00 p.m. CST. The toll-free number is 1-800-323-3961.

College Financial Aid Information Line

If your family gets solicitations from companies that offer to help you find sources of financial aid for college which otherwise will go unclaimed, should you pay for their help? You can ask that question this weekend when financial aid officials from Texas schools and colleges are sponsoring a Financial Aid Information Line. Call between 10 a.m. and 6:00 p.m. CST February 8th and 9th. The toll-free number is 1-800-323-3961.

Hansford County Stock Show Slated

by Harletta Carthel

The 1997 Hansford County Stock Show will kick-off Friday, February 7, with approximately 175 exhibits. The lamb show will begin the annual event at 9:15 a.m. in the Spearman County Barn. Judge for the event will be Paul Smith of Friona.

Immediately following the lamb show, Carl Wheeler of Muleshoe will judge the steer exhibits. The day will conclude with a weigh-in of swine at the conclusion of the steer show.

The swine show, which tops Saturday's agenda, will begin at 8 a.m. Judge for the swine show will be Kim Brock of Stillwater, Oklahoma. Following the swine contest, judging teams from Texas, Oklahoma, and New Mexico will compete for honors.

The naming of showmanship winners, commercial steer awards, and judging team winners will be announced at 6:30 p.m. Saturday evening, followed by the annual auction of the top-placing animals from the show.

Hansford County Stockshow Schedule

The Hansford County Stockshow will be held on Friday and Saturday, February 7th and 8th at the Hansford County Barn in Spearman.

Friday, February 7, 1997

Weighing will begin on the following schedule:

7:00 a.m. to 8:00 a.m. Steers and all lambs
Immediately following steer show Swine
9:00 a.m. Grand Opening of Show
9:15 a.m. Lamb Show
Immediately following lamb show Steer Show
1:30-2:30 (or immediately following steer show) weigh swine

Saturday, February 8, 1997

8:00 a.m. Pens & stalls must be clean and rubbish removed
8:00 a.m. Swine Show
1:00 p.m. Judging Contest
6:30 p.m. Floor prizes will be auctioned, Presentation of Showmanship Awards & Commercial Steer Awards

Immediately following presentation of awards the auction sale of lambs, swine and steers. Sell in order 1 lamb, 1 swine, 1 steer, etc.

Evans To Perform In Big Texan Opry

Spearman's own La Quita Evans will be a featured performer on the nationally award winning Big Texan Opry, Tuesday, February 11th.

"La Quita is one of the most popular performers to appear on the Opry", Neoma Nelson, Opry Director said. "She sings a lot of the older songs that are such favorites of our audiences and has such a unique voice. Her personality also makes a big hit with all her fans", Mrs. Nelson added.

The Big Texan Opry celebrates it's fourth year anniversary this month and was the recipient of the prestigious American Eagle Award by the Country Music Associations of America as "Opry Of The Year 1996". Two of the Big Texan Opry performers also brought back top awards from this competition in Las Vegas in November - Sharla Lee Hayes captured the "Rising Star Award" (this is the same award won by Lee Ann Rimes just two years ago), and Harvey Kinikin,

Dumas, Texas won the "Male Vocalist of the Year" award. "These awards were won over stiff competition from state winners from 47 states, so we are very proud of being a part of these young performers success, as well as the recognition for our show", Mrs. Nelson said.

Another Big Texas Opry performer, Dino Valverde is skyrocketing to the top, having just signed with Warner Brothers and "Fiesta Texas". He will be touring with "Fiesta Texas" and appearing at such places as Disneyland, San Antonio, and Six Flags.

"We want to invite all of La Quita's friends to come and cheer her on. We are so pleased to have her as part of our "Big Texan Opry Family", Mrs. Nelson said.

The show is free with dinner and early reservations are recommended by calling 806-372-OPRY. Anyone interested in performing on the show should contact Mrs. Nelson at the same number for information.

Lending Cooperatives Join Forces

Three Federal Land Bank Associations in the Texas High Plains joined together February 1 to become the Panhandle-Plains Federal Land Bank Association (FLBA).

The merger of the three member-owned lending cooperatives is the result of overwhelming approval last December by members of the FLBAs of Amarillo, Caprock-Plains in Plainview and High Plains in Pampa. It culminates two years of study and preparation by the boards of directors of the three associations.

The combined association has approximately \$135 million in loans outstanding to more than 1,300 farmers, ranchers and agribusinesses in 16 Texas Panhandle counties.

"These Federal Land Bank Associations have long been a part of the agricultural business economy in the area and by joining together as Panhandle-Plains FLBA, we are really marking the start of a new era of agricultural financing for our customers," said Robert R. Williams, chief executive officer. "Our members reap the benefits of combining

three strong associations into one that's even stronger, better capitalized and more diversified, without losing any of the local service and ownership. And, it allows us to centralize administrative functions thereby freeing up the lending staff to spend more time with customers."

The association is under the direction of a nine-member board of directors, comprising of three members from each of the former FLBAs. They include Larry E. Fairchild of Adrian; C.L. Edwards, Panhandle; Ervin J. Davis, Happy; Ronnie N. Hopper, Petersburg; Dean Turner, Matador; Jerry K. Oswald, Abernathy; Jon "Mike" Garnett, Spearman; Dean H. Burger, Pampa; and John C. Duke, Follett.

No changes are anticipated in office locations. The Amarillo office will be managed by Gregory S. Lloyd, who has been president of the Amarillo FLBA. Kenneth L. Hooper, formerly vice president of the Caprock-Plains association will manage the Plainview office. Sandy Justice will continue as manager of the Perryton office. The Pampa office will be managed by Alan Eubank.

Senator Bivins Receives Award



Senator Teel Bivins (second from left) receives the "Golden Apple" award from Supt. Dawson Orr, Pampa (second from right) and other superintendents from senate district 31.

State Senator Teel Bivins received the prestigious Golden Apple Award from the Texas Association of Mid-size Schools (TAMS) this morning in Austin. Senator Bivins, chairman of the Senate Education Committee, has long been recognized by education leaders as a strong advocate for children and public education.

The actual presentation of the award was made by representatives of the twelve mid-sized schools in Senator Bivins' legislative district on behalf of all members of TAMS. These schools include Andrews, Borger, Dalhart, Denver City, Dumas, Greenwood, Hereford, Kermit, Pampa, Perryton, River Road, and Seminole.

In announcing the Golden Apple Award, TAMS President Dr.

Wayne Pierce stated, "Teel Bivins is a champion for children. He is known as a tenacious advocate for education, and will not hesitate to stand up for what is right. Texas is fortunate to have him as chairman of the important Senate Education Committee."

In receiving the award Senator Bivins said, "I am as honored by this award as I am humbled by the enormity of the challenges that we face setting policy for public education in Texas."

TAMS is an organization of mid-sized public schools and represents over 750,000 Texas children. The Golden Apple award is reserved for those public officials who have demonstrated exemplary support and leadership on behalf of the children of Texas.

Lawman And The Ladies Select Make-A-Wish Foundation AS Recipient Of Fundraiser

by Gayl Henderson

The Lawman and the Ladies have selected Make-A-Wish Foundation as the next recipient of their dinner theater production fundraiser.

Several months ago, a local area chapter, for Ochiltree, Hansford, Hemphill and Lipscomb counties, was formed by Harold and Joyce Courson. The mission of the Make-A-Wish Foundation is to ensure that wishes are granted to children who have life-threatening illnesses. In the face of major illness and death, we are all reminded that waking up each day is a miracle and it is these children who remind us that life is a gift and love is its substance! Make-A-Wish hopes to

provide these children and their families with some special memories, not just images of hospitals, doctors and equipment, during a time of turmoil for a family, a "wish" provides a welcome retreat. Because the family unit is of the utmost importance to the Foundation, the family is never separated during a wish. The foundation can not send a child to the moon, but it will do its best on earth to make a dream come true. In a time that is often financially stressful, these wishes are "carefree" as Make-A-Wish covers all the expenses for the "wish". The Foundation gives a child that may not have many tomorrows, a special wish, today.

The Lawman and the Ladies, Continued on Page 4

Laugh and Live

by Gary C. Smith

gcs@arn.net



Friends from the best school in Texas sent me the following story. I don't know why, but somehow I seem to be able to relate to it.

A seaman meets a pirate, and they take turns to tell their adventures on the seas. The seaman notes that the pirate has a peg-leg, a hook, and an eye patch.

The seaman asks "So, how did you end up with the peg-leg?"

The pirate replies "We were in a storm at sea, and I was swept overboard into a school of sharks. Just as my men were pulling me out, a shark bit my leg off."

"Wow!" said the seaman. "What about the hook?"

"Well," replied the pirate, "We were boarding an enemy ship and were battling the other sailors with swords. One of the enemy cut my hand off."

"Incredible," remarked the seaman. "How did you get the eye patch?"

"A seagull dropping fell into my eye," replied the pirate.

"You lost your eye to a seagull dropping?" the sailor asked incredulously.

"Ar, well..." said the pirate, "... it was my first day with the hook..."

Until Next Time,
May God Bless!
GCS

Thank You

The American Heart Association would like to thank everyone in Hansford County for their support.

We would also like to say a special *Thank You* to the Knights of Columbus for cooking, and to the waiters and those who helped serve.

You are invited to attend a
Wedding Shower
for
Ragina Paul and D.J. Pollard

on Thursday, February 13
from 7:00-9:00 p.m.
at the Union Church Fellowship Hall
31 S. Endicott • Spearman, TX

You are invited to attend a
Lingerie Shower
for
Cindy Rice
bride-elect of Freddy Walton

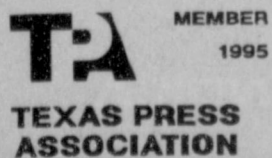
on Friday, February 7
at 7:30 p.m.
303 S. Bernice
Given by hostesses

The Hansford County Reporter-Statesman

213 Main St. • Spearman, TX 79081
Open Monday-Friday, 9:00 a.m.-12:00 p.m. & 1:00 p.m.-5:00 p.m.
Closed Wednesday Afternoon (1:00 p.m.-5:00 p.m.)

Serving Spearman, Gruver and Morse
and all of Hansford County
Published weekly in Spearman, TX
Owned and operated by Gary and Catherine Smith

Gary Smith - Publisher • Catherine Smith - Editor
Barbara Rojas - Assist. Editor •
Harletta Carthel - Assist. Pub. (Gruver) / Sales Rep.
Allen Varnon - Sports Photographer • Mindy Davis - Sports Photographer
Periodical Postage Permit USPS 509660
Postage paid in Spearman, TX



MEMBER 1995
Annual Subscription Rates
In Hansford County, \$20.00
Out of County, \$25.00

Advertising and Story Deadlines
Tuesday 12:00 noon

Museum Usings



Dana McLaughlin

by Joanne Eaton

It is so great when the younger generation is interested in the Museum. One of my younger friends, Dana McLaughlin, was my first trivia winner last year. Dana is a fourth grader and is very interested in the Museum.

Recently, I was taking a Creative Memories class from Dana's mother, Delinda. (In case you don't know what this is, it's a class where you learn to preserve your pictures on acid-free paper.) Dana had created a page in her album about the Museum.

Dana went to the Museum with her 4-H photography class. She took pictures of different things in the museum that caught her interest, cut them out in silhouette form, and arranged them on her album page. I saw things in her pictures I had not noticed. I had never noticed a

water fountain attached to the coke machine.

Thanks, Dana, for being such a support to us.

We do have several books for sale at the Museum. One book, *Dining During the Depression*, was mentioned in the Amarillo Daily News. The reporter, Chip Chandler, read our column. He did a good job of quoting what was said in his interview. He is young, so a lot of the recipes were quite humorous to him. I know you'll all enjoy this book. Chip planned to ask his mother to fix dandelions in ham gravy for Christmas dinner. Wonder if he got that accomplished?

We also received more copies of *Prairie Bouquet*, by Jeanne Williams. This is the fiction book that mentions the Catons. Jeanne autographed these books so that makes them even more special.

There are two volumes of the Hansford County History books. These make wonderful gifts for anyone. The copies of *Life of Billy Dixon*, by Olive K. Dixon, arrived also. This book is a very good history of this region. I enjoyed it and know many others will also.

All of these books are for sale at the Museum.

I've been busy with grandchildren. I do appreciate everyone saying they missed me. The nice compliments from readers make the writing worthwhile. Hopefully baby world will not be quite so hectic now.

I had a ball during our last
Continued on Page 4



Lera Langston is the eldest resident at Hansford Manor. She became 99 years old on January 8th, 1997. She is the mother of 9 children and grandmother of 27 grandchildren. Lera has 60 great-grandchildren and 4 great-great-grandchildren.

Lera moved to Spearman at age 50. She ironed and did baby sitting. She was still ironing for the public at age 92. She really enjoyed crocheting and quilting. She was an active member of the First Baptist Church of Spearman.

Mrs. Langston moved to Hansford Manor in May 1995. Lera still enjoys visiting and recently her brother came to visit her. He is 94 years old from Elgin, Oklahoma.

The Spearman 5th Grade Science Fair will be held Wednesday, February 12th from 9:00-10:30 a.m. in the All-Purpose Gym. The theme for this year's science fair is inventions. The public is encouraged to attend.

At the Lyric Theatre . . .

113 Main St • Spearman
Friday - Tuesday • Closed Wednesday & Thursday

denzel WASHINGTON The Preacher's Wife	whitney HOUSTON JERRY MAGUIRE	TOM CRUISE JERRY MAGUIRE
---	---	------------------------------------

Screen 1 • 7:45 p.m. Screen 2 • 7:30 p.m.

Adults - \$5.00, Children - \$3.00
Bargain Nights Mon. & Tues.: Adults - \$4, Children - \$3.00

You are invited to attend a Bridal Shower

to honor
Mendy Lasater
bride-elect of Chad Riggins

on Saturday, February 8
from 2:00-3:30 p.m.
at the home of Tom and Linda Latta,
1101 S. Barkley
Given by hostesses

Selections at
Gordon's Drug and Celebrate

For The Bride & Groom

Come by and let us help you
set up your special gift table

Couples Currently Registered

Mendy Lasater & Chad Riggins - February 8th
D.J. & Gina (Paul) Pollard - February 13th
Lacy Lasater & Bobby Murray - February 22nd
Chuck Smith & Holley Jackson - March 9th
Holly Venneman & Justin Gifford

Date of Shower
Date of Wedding

314 Main **Gordon's** Spearman,
659-2141 **DRUG** Texas

<h3>New Arrivals</h3> <p>It's A Girl!</p> <p>Kyle and Jennifer Keim of Spearman are proud to announce the birth of their daughter, Klara Christin. Klara was born January 27, 1997 at Perryton, Texas. She weighed 5 pounds, 15 ounces.</p> <p>Klara Christin is welcomed home by her little sister Ashley. Proud grandparents are Glen and Kyra Keim of Clovis, New Mexico, and Loyd and Ginger Turner of Spearman. Great-grandparents are Jewel Turner, Josephine Schneider, Jack Crum, and Verna Gail Keim all of Spearman and J.R. Keim of New Mexico.</p>	<h3>New Arrivals</h3> <p>It's A Girl!</p> <p>Andrew and Tamra Clawson of Satanta, Kansas, are proud to announce the birth of their daughter, Jacqueline Nichole Clawson, born Friday, January 24th, 1997, at Southwest Medical Center, Liberal, Kansas, at 3:43 p.m.</p> <p>Jacqueline weighed 9 pounds 5 ounces and was 21 3/4 inches long. Jacqueline's brother, Cooper Face, is excited to welcome her home. Her grandparents are Mr. and Mrs. Kirby Clawson, Satanta, Kansas, and Mr. and Mrs. Tom Stephens, Guymon, Oklahoma. Great grandparents are Mr. and Mrs. C.H. Clawson, Gruver, and Mrs. Emma Weeks, Guymon, Oklahoma.</p>
--	---

Hansford County Community Calendar February 6-16

- Thursday, February 6**
6:00 p.m. - Gruver ISD Board of Directors Meets
7:00 p.m. - Spearman Band Boosters meet - High School Cafeteria
- Friday, February 7-Saturday, February 8**
Hansford County Livestock Show - Spearman County Barn
- Friday, February 7**
Spearman ISD & Gruver ISD School Holiday
5:00 p.m. - Gruver JV Girls vs. Claude - H
6:00 p.m. - Spearman JV Girls vs. Guymon - T
5:00 p.m. - Spearman JV Boys vs. Boys Ranch - T
5:00 p.m. - Gruver JV Boys (B) vs. Claude - H
7:30 p.m. - Spearman Varsity Girls vs. Guymon - T
6:30 p.m. - Gruver Varsity Girls vs. Claude - H
7:30 p.m. - Spearman Varsity Boys vs. Boys Ranch - T
8:00 p.m. - Gruver Varsity Boys vs. Claude - H
- Saturday, February 8 - Boy Scout Day**
High School Vocal Solo/Ensemble Contest at WTAMU in Canyon
9:00 a.m.-1:00 p.m. - Grand Opening for Spearman Industrial Engines
- Sunday, February 9 - Candlemas/Groundhog Day**
3:00 p.m. - Hansford Manor Church Service
- Sunday, February 9-Saturday, February 15**
National Crime Prevention Week
National FHA Week
- Monday, February 10 - Clean Out Your Computer Day**
10:00 a.m. - Commissioner's Court
2:00 p.m. - Museum Board Meets - Ft. Zulu
4:00-7:00 p.m. - Spearman Blood Drive at Catholic Parish Hall
6:30-9:30 p.m. - English as a Second Language Classes at Spearman H.S.
6:30-9:30 p.m. - GED Classes at Spearman H.S.
7:00 p.m. - Spearman ISD Board Meeting
- Tuesday, February 11**
2:00 p.m. - Palo Duro River Authority Meets
6:30 p.m. - Bingo at Hansford Manor
8:00 p.m. - Pringle-Morse CISD Board Meets
- Wednesday, February 12 - Lincoln's Birthday; Ash Wednesday**
12:00 p.m. - Women's Division Executive Board Meets
5:00 p.m. - Gruver City Council Meets
7:00 p.m. - FUMC of Spearman's Ash Wednesday Service
- Thursday, February 13**
12:00 p.m. - Spearman Chamber of Commerce Board Meets
7:00 p.m. - Hansford County Hospital Board Meets
- Friday, February 14 - St. Valentine's Day**

February Monthly Outlook

- African-American History Month • America Heart Month
- American History Month • Canned Foods Month
- International Embroidery Month • Ramadan
- National Cat Health Month • National Cherry Month
- National Children's Dental Health Month
- National Snack Food Month • National Weddings Month
- National Wild Bird Feeding Month • Potato Lovers Month
- Responsible Pet Owner Month

Happy Birthday!

February 6 Birthdays - Erica Blount, Larry Ielbeck, Mrs. Nell Patterson, Carlos Espinosa, Cora Lesly, Ruben Vera, Bradley Laxton, Ofelia Zamora, Courtney Jo Myers, Wayne Shook, Betty Allen, Kimberly LaFarr, Becky Brown, Moses Lomeli

Anniversaries - Mr. & Mrs. Jeff Hohertz, Patsy & Jerry Hunt, Mr. & Mrs. Curt Fitzgerald

February 7 Birthdays - Alicia Barkley, Chris Johnson, Buddy Lowe, Mike Stedje, Monique Yancy, Dennis Cline, Virginia Poole, Toby Kuehl, Tracy Taylor, Calvin Pearson, Jill Havens, Kay Atkinson, Michelle Bass, Janice Noble, Kerry Fulce

February 8 Birthdays - Louise Etter, Bobby Mosier, Ben Vaughn, Domingo Salazar III, Ruth Hill, Al Tucker, Verlin Beck, Dorothy Karns, Jesse Brisenio, Verlene Bass, Zachary Logsdon

Anniversaries - Mr. & Mrs. Daniel Sheets, Mr. & Mrs. Tony Herndon

February 9 Birthdays - Lorene Dahl, Andy Hoel, Elena Salazar, Carole Hall, Sara Avila, Paula Garza, Doris Breedon, Jackie Pearson, Linda Rodriguez, Lori Williams, Rossetta Barrera, Michelle Laughlin, Armando Borunda, Garrett Rex, Elena Salazar, Drew Mireles

Anniversaries - Mr. & Mrs. Martin Ochoa, Bill & Alice Miller, Mr. & Mrs. Cecil Reynolds, Mr. & Mrs. Travis Davis, Mr. & Mrs. Dwayne TeeBeest

February 10 Birthdays - Karen Cotter, Mark Irwin, Tammy White, Robbie Cator, Nina Evans, Mary Ann Lassater, J. Travis Garnett, Evelina Martinez, Gregory Brand, Jimmy McLeod, Clay Fowell, Charles West, Fanetta Pierce, Josie Holt

Anniversaries - Mr. & Mrs. Perry Dixon

February 11 Birthdays - Angie Clawson, Craig Schuman, Kari Lou Russell, Joan McClellan, Jo McAdams, Denise Harbour, James Hargis, Willard Davis, Steve Ryan, Lillian Cooksey, Roy Harbour, Merle Holt, Leigh Anne Winger

Anniversaries - Mr. & Mrs. Herb McClellan

February 12 Birthdays - Rod Been, Lynn Burk, Louise Evans, Josephine Fletcher, Brian McClenagan, Brandon Reagon, Kaci Renveria, Sister Criselda Vela, Mae Hargis, Kelly Goodman, Anselmo Vela, Mary Dixon, Glynn & Lynn Pattison, Jennie Lou Connely, Jana Hawkins, Roy Sutton, Mary Virden, Jo Fletcher, Troy James, Derrick Burnett, Clayton Vanderberg

Anniversaries - Mr. & Mrs. Buck Tidwell, Mr. & Mrs. Gary Evans, Mr. & Mrs. Roy Lee Uptergrove, Mr. and Mrs. Larry Ross

February 13 Birthdays - Rick Barkley, Rasi Chisum, Kristi Williams, Sherry Lee, Faye Holt, Richard Cooley, Bill Watson, Catalina Espinosa, Esther Vargas, Mari Ann Bartimos

Anniversaries - Mr. & Mrs. Eddy Rojas

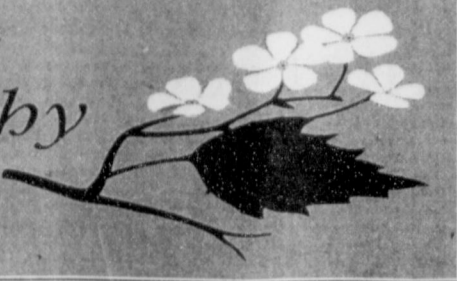
February 14 Birthdays - Alice Goodman, Ti Harbour, Nick Nelson, Janice Holt, C.W. Kirk, Tommy Thomas, Laura Umphress, Bubba Smith, Donna Ball, Lena Kathryn Harbour, Betsy Sutterfield, Kenneth Baker, Josiah Lee Vasquez, Courtney Wood

Anniversaries - Mr. & Mrs. Kip Francis, Mr. & Mrs. Rom Clark, Ricky & Cindy Dowdy, Hal & Jeanie Bennett, Terry & Tammy Burch, Mr. & Mrs. Omar Sutton, Mr. & Mrs. Tommy Saltzman

February 16 Birthdays - Mike Babbs, Johnny Pat O'Connell, David Parker, Jimmy Kirkland, Mikel Larson, Lynda Owens, Ismael Vela, Timothy Peck, Maylynn Ayers, Cliff Lang

Anniversaries - Mr. & Mrs. Jesus Espinosa, Mr. & Mrs. Charles Chritton, Mr. & Mrs. Augustine Mejia, Mr. & Mrs. Bobby Hohertz, Mr. & Mrs. Gene Fletcher

With Deepest Sympathy



Mary Ann Kirby

Mary Ann Kirby, 62, died Saturday, February 1, 1997. Memorial services were at 2 p.m. Tuesday, February 4th in the Church of Christ with the Reverend Martin Gauby, pastor of Waka Church of the Brethren, officiating. Arrangements were by Boxwell Brothers Funeral Home of Spearman.

Mrs. Kirby was born in Ponca City, Oklahoma and had lived in the Spearman area for 20 years, moving from San Angelo. She married Gordon Kirby in 1954 at Oklahoma City.

She was a bookkeeper at Equity Elevator in Waka for many years. Survivors include her husband; three daughters, Debbie Lamonica of Krum, Barbra Fight of Spearman and Jo Lynn Still of Bakersfield, California; a sister, Ella Sue Opella of Inola, Oklahoma; a brother, Jimmy Carter of Newalla, Oklahoma; and seven grandchildren.

Fred Raymond Paschel

Fred Raymond Paschel, 95, of Amarillo, died Sunday, February 2, 1997.

Prayer services were held at 7 p.m. Monday, February 3 at the Immaculate Conception Catholic Church at Vega with the Reverend Bert Horvath, parochial vicar, officiating. Mass was at held at 10 a.m. Tuesday, February 4, 1997 at the church in Vega with the Reverend Pat Carathers, pastor, officiating. Burial was in St. Anthony's Cemetery in Hereford by Vega Funeral Home.

Mr. Paschel was born in Mission, Kansas, and had lived in Amarillo since 1989. He had lived in Lawrence, Kansas, before moving to Hereford in 1942, where he had lived until moving to Prairie View, Arkansas, in 1955. He was a farmer and rancher. He was a Catholic and a member of Knights of Columbus.

He married Margaret Elizabeth Schalk in 1927 at Lenexa, Kansas; she died in 1957. He then married Clara Kramers in 1958 at Prairie View; she died in 1989.

Survivors include two sons, Raymond Paschel of Maryville, Tennessee, and Anthony Paschel of Hereford; two daughters, Gerry Fangman and Mary Acker, both of Amarillo; a brother, George Paschel of Vega; a sister, Martha Rohrbach of Prairie View; Richard Paschel, one of his grandsons of Spearman, Texas, 21 grandchildren; 57 great-grandchildren; and seven great-great-grandchildren.

The family requests memorials be to St. Anthony's Cemetery or a favorite charity.

Open Letter

During the past few months, the Spearman Girl Scouts have undergone a lot of change. Membership has increased greatly.

Our new leaders are as stands, Daisy's, Brownies, Audria Thomas, Juniors Cheryl Sander. Little House Chair person is now Debbie L. Hornsby.

The Little House is where the girls meet. It is located across the street from the Union Church. In the next few weeks and months you will see us doing lots of different fund raisers.

We would like to take the time to say thank you to each and every one that has helped with a bill, or a remodeling project in the past.

So, when you see our sign out, "Help the little House" you will know what we are trying to do. If you see a car at the little house and would like to look and see what we have done, please stop and come in and see us. We would love to have you.

We would like to say thank you to Jo Ann Farr, too. She is our cookie drop. She is the one person who is responsible for all Spearman's cookies. Thank you, Jo Ann!

Thank you for your help and time. I know this means a lot to our girls!

Debbie L. Hornsby
P.S. To Carolyn Cummings - Thank you for all your past years of service to the Little House and to the Girl Scouts of Spearman.

Thank You

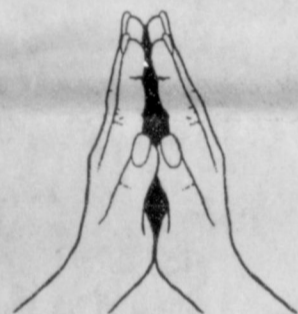
The family of Ed Garner would like to thank everyone for the food, flowers, plants, cards, calls, visits, and loving concern expressed to us in the loss of our husband, father and grandfather. Most of all, we thank you for your prayers.

May God bless each of you,
Alva Garner; Pam Dunlap & Family; and Kathy Brown



Pablo Ibarra, left, and Travis McDowell, display snowflakes that Mrs. Frick and Mrs. Roberts' second grades fashioned by using sixteen plastic six-pack canned drink holders.

CASKET SPRAY
4 doz. Carnations \$99.00
All Occasion Flowers
517 Plains Shopping Center



This feature is made possible through the sponsorship of these civic minded businesses.

All American Insurance
423 S. Main, Suite 106
Gruver, TX • (806) 733-2002
"Our Only Business is YOU"

Gary Johnson Charlotte Hill
249-4555 273-6060

Boxwell Bros. Funeral Home

COLUMBIA Medical Center of Pampa
One Medical Plaza
Pampa, Texas 79065
(806) 665-3721

Compliments of
G&G FOODLINER
516 Main • Gruver, TX
733-2471

Bartlett's Ace Hardware
105 W. Broadway • Gruver, TX
733-2404

BERRY CLEANERS
DAN DESIMONE • OWNER
Phone 659-3122 • P.O. Box 1017
207 Main St. • Spearman, TX

Let us replenish the seed of faith through... DAILY BIBLE READING, PRAYER & REGULAR CHURCH ATTENDANCE

Focus On The Family

QUESTION: Some educators have said we should eliminate report cards and academic marks. Do you think this is a good idea?

DR. DOBSON: No, academic marks are valuable for students in the third grade or higher. They serve as a form of reinforcement—as a reward for the child who has achieved in school and as a nudge to the youngster who hasn't.

It is important, though, that marks be used properly; they have the power to create or to destroy motivation. Through the elementary years and in the required courses of high school, a child's grades should be based on what he does with what he has. In other words, we should grade according to ability. A slow child should be able to succeed in school just as certainly as a gifted youngster. If he struggles and sweats to achieve, he should be rewarded with a symbol of accomplishment even if his work falls short of an absolute standard.

By the same token, the gifted child should not be given an A just because he is smart enough to excel without working. Our primary purpose in grading during the elementary and junior high school years should be to reward academic effort. On the other hand, college preparation courses in high school must be graded on an absolute standard. An A in chemistry or Latin is accepted by college admission boards as a symbol of excellence, and high school teachers must preserve that meaning. But then, Slow Joe and his friends need not be in those difficult courses.

These questions and answers are excerpted from the book, *Dr. Dobson Answers Your Questions*. Dr. Dobson is a psychologist, author and president of *Focus on the Family*, a nonprofit organization dedicated to the preservation of the home. Send your questions to Dr. Dobson c/o *Focus on the Family*, P.O. Box 444, Colorado Springs, CO 80903 (c) 1982 Tyndale House Publishers, Inc.

Focus on the Family is brought to you weekly by Gillaspie Auto & Truck Center.

"WE SUPPORT OUR LOCAL CHURCHES"
CAPROCK #1 & #2
Kirk Lippincot, Gen. Mgr.
(806) 733-5043 or 733-5025
"Custom Cattle Feeding"

In Spearman...

- Apostolic Faith Church**
822 S. Dessen • 659-2870
Sunday School: 10 a.m.
Worship: 11 a.m.
Evening Worship: 6 p.m., Sun.
Wed. Prayer Meeting: 7:30 p.m.
Pastor - James Brown
- First Assembly of God**
401 N. Bernice • 659-2295
Sunday School: 9:45 a.m.
Worship: 10:50 a.m.
Evening Worship: 7 p.m.
Wed. Worship: 7:30 p.m.
Youth: 7:30 Wednesday
Pastor - Walter Greaser, Jr.
- First Christian Church (Disciples of Christ)**
29 S. Bernice • 659-2036
Sunday School: 9:45 a.m.
Worship: 10:50 a.m.
Evening Bible Study
Worship: 6:30 p.m., Sun.
Interim Pastor - Ernie Williams
- First Baptist Church**
123 N. Bernice • 659-5557
Sunday School: 9:45 a.m.
Worship: 11 a.m.
Evening Worship: 7 p.m.
Jr. High Youth: 6 p.m., Wed.
High School Youth: 7 p.m., Wed.
Youth Choir: 6 p.m., Sun.
Pastor - Kyle Henderson
- Church of Christ**
121 S. Haney • 659-3244
Sunday Bible Class: 9:45 a.m.
Worship: 10:30 a.m.
Evening Worship: p.m.
Bible Study Wed.: 7:30 p.m.
KRDF Radio Program
Living With Christ: 7:50 a.m., M-F
Minister - Arnis Pape
- Sacred Heart Catholic Church**
901 Roland • 659-2792
Sat. Night Mass: 7 p.m.
Sunday Mass: 8:45 a.m. - English
(8:45 a.m. Service on KRDF 98.3 FM)
Sunday Mass: 11:15 - Spanish
1:30 p.m. - Gruver - Christo
Rendontor Mass - Spanish
Rev. Scott Raef
- Trinity Fellowship Church**
717 W. 7th Ave. • 659-2671
Sunday School: 9:45 a.m.
Worship Service & Children's Church: 10:30 a.m.
Pastor - Johnny Taylor
- First Presbyterian Church (Worships with Faith Lutheran Church)**
1021 Cotter • 659-2033
Sunday School: 9:45 a.m. at Lutheran Church
Worship: 11 a.m. (Alternates monthly between Lutheran and Presbyterian Church Buildings)
Pastor - Beverly Cook
- Faith Lutheran Church (ELCA)**
1101 Bernice • 659-2252
(Worships with First Presbyterian Church)
- First United Methodist**
407 S. Haney • 659-5503
Sunday School: 9:45 a.m.
Worship: 11 a.m.
Jr. High Youth: 5 p.m. Sunday
High School: 6 p.m. Sunday
Rainbow Kids Club: 3:00 Wednesday
Pastor - Jeff Lust
- Union Church**
31 S. Endicott • 659-2644
Sunday School: 9:45 a.m.
Worship: 10:45 a.m.
Evening Worship: 6 p.m.
Bible Study & Prayer Mtg.: 7 p.m. Wed.
Pastor - Jerry Pollard
- Fellowship Baptist**
1102 S. Archer • 659-2783
Sunday School: 10 a.m.
Worship: 11 a.m.
Evening Worship: 6 p.m. Sunday
Youth & Adult Serv.: 7:30 Wed.
Pastor - Gene Foster
- Primera Mision Bautista**
502 E. 7th • 659-3991
Sunday School: 9:45 a.m.
Worship: 11 a.m.; Evening: 6 p.m.
Wed. Prayer Meeting: 7 p.m.
Thurs. Visitation: 7 p.m.
Pastor - Isaias Martinez

In Gruver...

- First Baptist Church**
402 E. Broadway • 733-2411
Sunday School: 9:45 a.m.
Worship: 10:50 a.m.
Disciple Training: 6 p.m., Sunday
Prayer Meeting: 7:30 p.m., Wednesday
Pastor - Scott Curry
- Church of Christ**
209 King • 733-2760
Sunday School: 9:30 a.m.
Worship: 10:20 a.m.
Evening Worship: 6 p.m.
Wed. Evening Worship: 7:30 p.m.
Minister - Bob Setliff
- First Christian Church**
510 King • 733-2960
Sunday School: 9:45 a.m.
Worship: 11 a.m.
Wed. Bible Study: 7:30 p.m.
Youth: 6:30, Wednesday
Pastor - Gary Gumfory
- Oslo Lutheran Church (ECLA)**
6 Miles West & 12 Miles North of Gruver
339-7709
Sunday School: 9:45 a.m.
Worship: 11 a.m.
Pastor - John R. Chandler
- Gruver United Methodist**
Broadway & Garrett • 733-2651
Sunday School: 9:45 a.m.
Worship: 8:30 a.m. & 10:50 a.m.
Evening Worship & UMY: 6 p.m.
Pastor - Jerry Moore
- Spanish Cristo Redentor Church**
Sunday Mass: 1:30 p.m.
Friday Evening Mass
Summer - 8:00 p.m.
Fall/Winter - 7:30 p.m.

In Morse...

- Morse Baptist Church**
733-2757
Pastor - Mike Martin

Morse Implement Company

"Join us in church this week"

Gruver Cablevision

308 Main
Gruver, TX 79040
733-5295

GILLASPIE

AUTO & TRUCK CENTER, INC.
CHEVROLET • OLDS • PONTIAC • BUICK
CHRYSLER • PLYMOUTH • DODGE
Hwy. 207 South • P.O. Box 430
Spearman, Texas 79081
(806) 659-2541

C.O.'S SUPPLY CO. Plumbing & Tire Sales & Service

421 W. Kenneth • Spearman, TX
659-3781 or 659-3555

Palo Duro Supper Club

22 S. Archer
659-2232

GRUVER FORD

531 Main • Gruver • 733-2431

Interstate Savings & Loan

322 Main • Spearman • 659-2559

Compliments of...
AGCO
of Spearman, Inc.
"See you in Church"
659-3751

The Hansford County Reporter-Statesman
Serving The Communities Of Spearman, Gruver & Morse
213 Main • Spearman, TX
(806) 659-3434

Deakin ELECTRIC
OILFIELD • RESIDENTIAL • COMMERCIAL
321 S. MAIN • SPEARMAN
1-800-999-1506
(806) 659-5016
Chris Deakin
President

Among The Neighbors

by Helen Fisher

Mason William is the name given to the new arrival to the family of Carrie and Mack McLain, Gruver. He weighed 7 pounds, 3 ounces when born at Northwest Texas Hospital, Amarillo, on Saturday, January 25.

His sister, Madison, joins in his welcome. Grandparents are Gwen and Don McLain, Spearman and Nan and Larry Hulsey, Perryton.

Great grandparents are Mrs. Alton Boxwell, Perryton and L.S. McLain, Spearman.

Arlene and Richard Paschel returned Sunday from a most interesting trip which also served as a celebration of their 21st wedding anniversary. They left January 26th for Tampa, Florida where they attended a convention of Reinke Irrigation System.

They then embarked on a Caribbean cruise on the Carnival line. They spent some time in the Bahamas, especially Nassau, the capital. The time there was relaxing with shopping and sight-seeing. They also enjoyed the noted Blue Lagoon Isle.

Monday morning they returned to their duties at home, rested and relaxed.

Mrs. Lucile Crawford was taken by ambulance to Hansford Hospital on Friday evening after being found on the floor in her home. Her daughter, Floydene Gatlin, came in after work to find her on the floor, and was unable to lift her. Apparently she had been there more than an hour - after her knees gave way. She was in pain and conscious, but fortunately had no broken bones. She was treated for bruises and abrasions and released the next day.

Five year old Caleb Odegaard underwent a medical procedure, with a name longer than he is, on January 28. He had a adenoidectomy-tonsillectomy as an out-patient at High Plains Baptist hospital in Amarillo. He recovered rapidly and is now enjoying all foods.

Rhonda and Troy Vanderburg are proud to announce the arrival of a daughter, Annie Kate. On January 28 she was born at Northwest Texas Hospital in Amarillo, weighing 8 pounds 12 1/2 ounces.

Greeting her with mixed emotions is 22 month old brother, Jack Alexander. Grandparents are Donna and Jack Vanderburg, Dalhart and Ron and Sallie Anz, Lubbock.

Great grandparents are Bill and Marguerite Anz, San Antonio and Helen Alexander, also of San Antonio.

Paternal great grandparents are Marguerite and Roscoe Nelson and Louise Vanderburg, Spearman.

She has a great, great grandmother - Mary Ulmer of Green Ridge, Missouri.

Richard Jarvis, 15 month old son of Will and Kristi Jarvis, was hospitalized in Hansford Hospital for several days last week with pneumonia. He is back at home and making good recovery.

Carla and Mark Brown had a pleasant, relaxing long week-end in Las Vegas the last week-end in January. They left early Saturday morning and returned late Tuesday night.

Some of the shows they especially enjoyed were the Rockettes and the jousting tournament of King Arthur's court.

Elizabeth Carr, with friend Jackie Clark, drove over from Miami on Friday for the ground hog meal by the United Methodist Women's Society.

It could be that Elizabeth felt that she was entitled to some of the credit for the delicious meal - after all didn't she teach sister Virginia how to cook? Virginia Head was chairman of the group who prepared and served the meal.

On Monday, Virginia and Alva Garner attended the ground hog meal put on by the United Methodist Church in Guymon, - except in Guymon it is the Methodist men who prepare and serve the meal. Although Virginia was complimentary about it, she felt that the Texas ladies were the better cooks.

Virginia expresses appreciation to all those who had a part in the project here. Their interest and efforts made it the success it was.

She also thanks all the guests who ate with them.

Late Monday evening, the Spearman Firemen were called to extinguish a blaze in the home of Joyce Jennings in the 300 block of Roland street. The early arrival and efficiency of the firemen is credited with containing the fire to the living room. There was extensive smoke and water damage, and the cause is undetermined at this time.

Mrs. Jennings was unavailable for comment, but all the neighbors express sympathy and hope the damage will be repaired soon.

February 1st marked the end of the first year for Cathy, Gary and Clayton Smith as owners and publishers of this newspaper. If they have been tempted to pack-up and head back south, they won't admit it. In fact, they insist that they like Hansford County and its people and have never regretted their decision to come here.

Smiths - it has been a pleasure for your neighbor to be associated with you all this past year.

This past week, those early risers who could raise the shades, or leave the television were treated to some spectacular and brilliant sunrises.

by Linda Wilkerson

On Tuesday, Jan. 28, the 1997 Basketball Homecoming game between the Spearman Lynettes and the Sunray Lady Bobcats ended with district win number four for the Lynettes. Spearman romped over the Lady Bobcats 66-40. Macy Shieldknight, daughter of Charles Shieldknight and Hazel Shieldknight, was crowned the 1996-97 Basketball Queen.

The Lynettes took the lead from the first basket and never fell short. The first quarter brought 12 points to Sunray's 5. Lindsey Smith supplied 6 while Shayla Barber, Keisha OQuinn, and Tara Butt helped out with 2 each. The second quarter was an evenly fought battle as the scoring ended at 16-15 with the Lynettes narrowly outscoring the Lady Bobcats. This quarter post Misha Davis worked the boards for 7 points, guard L. Smith swished for 5 and Macy Shieldknight and OQuinn tapped in 2 each. The Lynettes were only up by 8 at halftime with a score of 28-20.

The second half was Lynettes all the way though as they outscored the Lady Bobcats 18 points. The third quarter proved to be the Lynettes highest scoring quarter of the night. They totaled 20 points with L. Smith rallying with 10 points, Butt and OQuinn posted up for 4 points each, and Barber hit the bucket for two. Fourth quarter was packed with offense too as the Lynettes found the hoop for 18 more points. Davis contributed 6 points with 4 of those coming from the charity stripe. Shieldknight had a basket and 2 free throws, Jennifer Neff drove for 2 points and picked up two free throws, and Camille Smith added 4 more points. The Lynettes outscored the Lady Bobcats 38-20 the second half.

Scoring is not the only thing that wins ball games though. It takes a sound defensive attack and teamwork. With the ball handling skills of point guards Samantha Beasley and Brooke Trantham, as well as the subs from the bench, everyone contributed in winning this ball game. Each Lynette played and contributed offensively, defensively or both in this homecoming victory.

Lindsey Smith finished the night with the game high 21 points. She had ten field goals and 1 free throw. Misha Davis was second high with 13 points. She had 4 baskets and was 5 of 8 from the charity stripe. The scoring was rounded out with OQuinn adding 8 points, Shieldknight and Butt 6, and

Lynette Basketball

Barber, Neff, and C. Smith with 4 each. The Lynettes were 14 of 22 for 64% from the free throw line. The Lady Bobcats were only 1 of 3 for 33%.

The Lynettes improved their district record to 4-2 with this victory and prepared to meet the WT Lady Comanches for their next game.

The trip to WT on Friday night brought home a very disappointing district loss for the Lynettes. This determined team fought hard the entire ball game, but came up 9 points short with a final score of 65-74.

The Lynettes not only had the challenge of playing in the WT gymnasium, they also had to contend with the whistle signaling a total of 61 fouls. The fouls were distributed evenly with the Lynettes picking up 31 and the Lady Comanches 30. Bottom line though, 61 times the whistle blew and disrupted the flow of the game. The Lynettes lost 4 players to fouls and the Lady Comanches sat down 3.

The first quarter of the ball game put the Lynettes in the lead. The scoring was evenly distributed with Barber being 2 for 2 from the free throw line and 1 basket for a total of 4 points, OQuinn added 4 more, Davis, Butt and L. Smith popped in 2 each. The second quarter the Lynettes were outscored 19-10. Barber tallied 3 more free throws, L. Smith a basket and a free throw, and Trantham and Davis a basket each. At halftime the Lady Comanches led by only five points, 29-24.

Third quarter brought some hard luck to the Lynettes as they lost starting post, Keisha OQuinn early to five fouls. Also, the Lady Comanches outscored the Lynettes 22-14 in this quarter. Free throws accounted for 10 of those 14 points. Davis was 6 of 8 and Butt was 4 for 4. Davis and L. Smith found the hoop for 1 basket each. At the beginning of 4th quarter the Lynettes were down 13 points.

The die hard Lynettes simply adjusted their game plan and came back to score an outstanding 27 points. This quarter brought the loss of two more starters, Samantha Beasley and Lindsey Smith to fouls. It also sat down Tara Butt who came off the bench and played a great ball game. Before fouling out late in the quarter L. Smith simply exploded for a gutsy 18 points. She shot from down town making 2 three pointers, had 3 of her baseline jumpers, and was 6 of 7 from the

free throw line. Jennifer Neff swished the net with a 3 pointer, Butt connected for 1 basket, and free throws were tossed in by Barber 1 for 1, Shieldknight 2 for 2, and Davis 1 of 2. When the buzzer sounded, the Lynettes had outscored the Lady Comanches 27-24 but was still short 9 points. The Lynettes left with their third district loss of 65-74.

Due to the intensity of this game and the loss of key players to fouls, the Lynette bench had to step up to meet the challenge. Some players without a lot of previous floor time were called upon to fulfill big roles. These dedicated Lynettes were able to meet the challenge and did a terrific job. Wing-guard-post Jennifer Neff was able to do this with great success. She had to adjust to several positions Friday night and deserves to be commended for her effort. She was very effective defensively and sunk a big three to give the Lynettes that needed confidence. Tara Butt contributed offensively and defensively as well as Macy Shieldknight. Kristin Beedy, Camille Smith and Mindy Tigrett also had to hit the floor and help keep those offensive and defensive plays going. All of these players contributed with assists and rebounds.

Starting point guard Samantha Beasley worked very hard to set up the offense with assists. Somehow all 5'2" of her would even come up with much needed rebounds. Her ball handling skills and defensive quickness helped to make those key steals. Brooke Trantham and Camille Smith subbed in as point guard. They also did a good job of pacing the ball game.

Junior wing Lindsey Smith finished the night with the game high 25 points. She had a total of 2 threes, 6 field goals, and was 7 of 12 from the charity stripe. Misha Davis was second high with 13 points. She swished for 6 points and was 7 of 10 with free

throws. Butt and Barber followed with 8 points each, OQuinn finished with 4, Neff had a three pointer, and Shieldknight and Trantham had 2. The Lynettes were 26 of 41 for 65% from the free throw line and WT was 28 of 43 for 74%.

The Lynettes did hold guard Stacie Sullivan to only 5 points. She had 26 points in their first game. Jody Avent picked up 14 points but received half of those from the charity stripe. These two top players were controlled, but three other Lady Comanches, Missy Wood, Courtney Monden, and Christen Lacey stepped up and contributed. In the first game they scored 5, 3, and 2 respectively. This game they walked away with 15, 10, and 13 points each.

Coach Marcia Shieldknight was extremely proud of the Lynettes. She felt it was a tough loss but now all focus must be on the Lady Elks. She praised the team for the effort they put forth to try to win the ball game. Tuesday night will bring on the final game of the 1996-97 district season when the Lynettes meet the Stratford Lady Elks here in Spearman. The Lynettes will travel to Guymon Friday night to play a non district game with the Lady Tigers. The Lynettes district record is now 4-3. A win Tuesday night will keep their play off chances alive.

JV Scores
Spearman-25 -vs- Sunray-29
Kristi Carbajal 7, Leslie Holton 5, Halee Beasley 3, Brittini Beedy 3, Syd Woodington 2, Amber Ramon 1
Spearman-30 -vs- West Texas-23
Brooke Lesly 8, Halee Beasley 6, Kristi Carbajal 6, Lisa Swink 4, Holly Pipkin 4, Brittini Beedy 2

MARY KAY
Beauty Consultant
Leann Gillaspie
659-3889
America's best selling brand

Forever yours...

Send the FTD® Be Mine™ Bouquet for Valentine's Day, February 14.



Send the FTD® Romance™ Bouquet for Valentine's Day, February 14.



Extended Hours
Week of February 10-14

Orders will be filled in sequence they are received.

Prairie Garden Flowers

209 Main Street • 659-2212 • 659-3329 • Spearman, TX

Life is full of people who mean the world to you. Remember them all with a Valentine from your card-carrying friends at Hallmark.



Celebrate

203 Main St. • Spearman, TX • (806) 659-3350 • 1-800-663-8026
Gifts for all your celebrations!



WATER WELL SERVICE
Box 917 • Gruver, Texas 79040
(806) 733-5113

Benny McCullough

Jake McCullough

- Submersibles • Windmills •
- Complete Repairs & Service •
- For Home and Livestock Needs •

DUKE'S CHIROPRACTIC CENTER

- Covered by most Insurance, including automobile and bodily injury
- Covered by Workers' Compensation
- Family Chiropractic Care
- Open 9:00 a.m.-5:00 p.m., Monday-Friday

11 WEST KENNETH • 659-5505 • SPEARMAN, TEXAS

SPECIALTY ADVERTISING...

PENS, PENCILS, CAPS, JACKETS, T-SHIRTS, CALENDARS, KEYCHAINS, AUTO DECALS, BALLOONS, BANNERS, BUMPER STICKERS, GOLF BALLS & TEES, RAIN GAUGES and 1000's of more items!

THE NEWTON LINE

Representing
Newton Mfg. Co.
Newton, Iowa 50208

Glenn D. Crain
435-9124 • Mobile 435-0040

GRAND OPENING

Spearman Industrial Engines

February 8, 1997
9:00 a.m. - 1:00 p.m.

Free Coffee & Donuts

Everyone welcome.

We sell and service all types of irrigation engines.

Under New Ownership - Delbert Balzer



Jamie Townsen

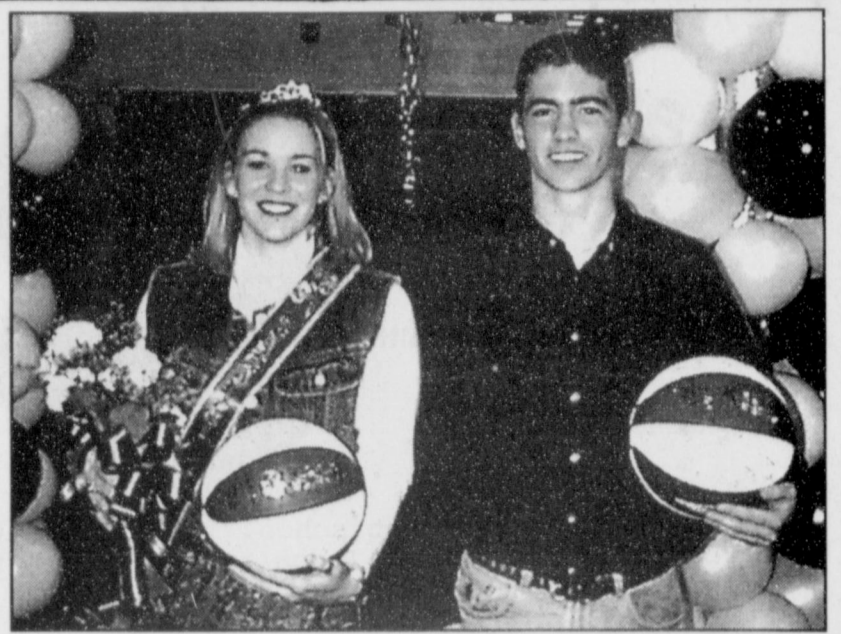
Lynx Basketball

Tuesday night, January 28, at the Varsity Gym, the Lynx took on the Sunray Bobcats, hoping to increase their record to 6-1. The Lynx were able to do just that as they defeated the Bobcats, 79-51. Three Lynx players were in double figures. Jake Howard, on the strength of four 3-point shots, scored 20 for the game. Jamie

Townsen, the Lynx 6'6" post, put in 16 from that position. Dillon Miller, another outstanding post player, added 12 points for the Lynx. Blake Beedy contributed 7 points, Frankie Dominguez, Michael Lusby and Eric Varnon all contributed 6 points each. Savage finished the night with 4 and Eric Cudd put in 2 to round out the team effort. The Lynx led

offensively throughout the game. They took a 31-20 lead in at halftime and never looked back as their third quarter score equaled the total scoring for the night of the Bobcats.

The Lynx follow-up game on Friday, January 31, had them traveling to Stinnett to meet the West Texas High Comanches. The Lynx had defeated the Comanches in their prior meeting in overtime, 68-65. The Lynx team knew they had their hands full going to Stinnett. At first quarter's end, the Lynx held a narrow lead, 18-14. The team went in at halftime leading 36-28. Still not feeling comfortable about the outcome of the game, the Lynx came out fired up and ready to finish the Comanches off. A strong performance by Lynx post, Eric Varnon, who had 8 quick points in the third quarter, sparked the Lynx to a 53-41 lead going into the deciding quarter of the game. Momentum was definitely in the Lynx' favor as they poured in a whopping 25 points in the fourth quarter alone. The Comanches fell to the Lynx, 77-60. Four Lynx players scored in double figures for the night. Lead scorer was Jake Howard with 18, followed closely by Dillon Miller with 16 and Eric Varnon with 15. Jamie Townsen came through with 10 and Blake Beedy added 8. Other Lynx scorers were Britt Savage with 4, Frankie Dominguez and Michael Lusby each added 3. The Lynx overall record now stands at 19-3, 17-1 in district play.



Basketball Homecoming festivities were held at an all-school pep rally at 2:50 in Varsity Gym Tuesday to boost the Lynx and Lynxette players into the final games of the district race and to crown the 1996-97 Basketball Homecoming King and Queen. King candidates were seniors Blake Beedy, Eric Cudd, Frankie Dominguez, Jake Howard, Dillon Miller, Britt Savage and Eric Varnon. Queen candidates were seniors Shayla Barber, Samantha Beasley, Tara Butt, Macy Shieldknight and Mindy Tigrett. The newly elected Homecoming King and Queen were Eric Cudd, son of Mike and Pat Cudd, and Macy Shieldknight, daughter of Hazel and Charles Shieldknight. All-school pep rallies are a wonderful way to boost school and community spirit for these athletes who spend countless hours after school practicing their sport and representing our school in such an honorable way. Congratulations to both teams and their athletes! You make us all very proud!

Museum Usings

Continued from Page 3

snow. It was 16 degrees outside, with snow still falling, when I drug out our sled. I called my grandson, Blayne Schroeder, to see if he wanted to brave the outdoors to play in the snow. (After all, a grandma looks pretty silly out on a sled, playing in the snow by herself.) Blayne's four, so I didn't have to beg.

With many layers of clothing on, we ventured into the elements for an hour. My husband asked me if I'd lost my mind. I told him I was "making a memory."

That's what we do at the museum. We preserve memories! Everything we save brings back a memory to someone. Come by and see what memory comes to your mind.

J. D. Wilbanks, a certified tutor with the Amarillo Area Adult Literacy Council, has been teaching twice a week at the museum. He is getting more out of the program than his students. He loves it! This is a volunteer program on his part so that makes this even a bigger blessing. I cannot imagine a life without the ability to read or write. Thanks, J. D., for donating your time this way.

Special tours to the Stationmasters House Museum can be arranged by calling Rubyjo or J.D. Wilbanks at 659-3084, Clementine Renner at 659-2335, or Helen Boyd at 733-2777. Museum hours are Tuesday-Saturday, 1:00-5:00 p.m.

Make-A-Wish

Continued from Page 1

along with the Make-A-Wish Foundation invite you to enjoy another chapter of "Memories of Gold", March 15th at the Expo Center with dinner at 6:30 p.m. and the theater production to follow. Tickets go on sale February 1st and are \$20.00 per person. All proceeds go to the local charter of the Make-A-Wish Foundation. Tickets may be purchased by calling Helen Etter at 659-2651 in Spearman and Mandy Derington at 733-2018 in Gruver.

Are You A Victim of Domestic Abuse, Violence or Sexual Assault . . .

Physical, Emotional or Sexual?

Call Toll Free

1-800-753-5308

We are in Spearman each Wednesday afternoon at the First Presbyterian Church, 1021 Cotter. We can see individuals from Hansford County anytime upon request. We operate a safe place for victims & their children to stay in times of crisis.

Panhandle Crisis Center

Serving Hansford, Lipscomb & Ochiltree Counties
317 S. Main • Perryton, TX
Memorials Accepted

Dr. Rick Sheppard, D.D.S.

1-800-687-2010

• Family Dentistry • Braces •

146 Pioneer • Booker, TX

EMERGENCY NO.
658-9831

Diagnosis & treatment of the hard-to-fit denture patient.

WANTED

Unique Items At Affordable Prices

See The Classifieds

You are invited to a

Baby Shower

honoring

Codi Cheyenne Evans

the newborn of Jeri Lyn Evans

Sunday, February 9, 1997

from 2:00-3:30 p.m.

at First National Bank

Given by hostesses

Happy Eightieth Birthday

The Family of
Willard Davis
invite you to share in honoring him on his 80th birthday.

A reception is being held on Saturday, February 15, 1997 in the Fellowship Hall of the First Christian Church from 2:00-5:00 p.m. Your presence will be your gift.

Hosted by:
Judy Gochnauer - North Bend, OR
Mickey Gribble - Centralia, WA
Ann Temple - Spearman, TX
Ned Davis - Thornton, CO

and loving wife:
Jettie Davis - Spearman, TX



piece of chocolate
Lasts About 5 Seconds.

peace of mind
Lasts A Lifetime.
(With a lot less fat.)



It's Dependable
Dobson Service
That Makes the
Difference.

Valentine's
Special!

RED Hand-
Held Nokia
Phone

Only \$49.95*

PLUS:
All Incoming
Calls FREE
For 60 Days!*

DOBSON
CELLULAR SYSTEMS

The DifferenceMaker

1 - 8 0 0 - 8 8 2 - 4 1 5 4

Offer Available at these Locations:

Cellular Communications • 659-3762
Gruver Cellular • 733-2180

* Limited time offer. Certain terms and conditions apply.

NOKIA
CONNECTING PEOPLE

© 1997, Dobson Cellular Systems, Inc.

by Harletta Carthel

Friday will be a holiday for Gruver Schools as 4-H and FFA students will be participating in the Hansford County Stock Show which will be in Spearman this year. The lamb show will start at 9:15 on Friday with the steer show immediately following. The swine show is set for 8 a.m. Saturday. The sale of the animals is scheduled for 6:30 p.m. and will also be at the Spearman County Barn.

Brian and Tracy (Robinson) Brogdon and family were in Gruver for several days last week. Brian, who is an ordained minister, officiated at the wedding of Dorothy Wells and Marvin Sparks. The Brogdon family, which now resides in Floydada where Brian is on the police force, enjoyed visiting Tracy's parents, Joe and Kay Robinson, and her grandparents, John and Mary Jo Robinson.

Two 1996 graduates of GHS have been seen on television recently. Max Frick was spotted in the WTAMU weight room as his new football coach was interviewed, and super fan Wylee Maupin caught the camera's eye during the Texas Tech/Kansas game broadcast last Wednesday.

The high school office is sporting a pair of new drapes with metal tiebacks fashioned in the Gruver "gambler G". The attractive holders were made by Brant Armes and T.J. Bayless in the FFA shop. Stop by the office and see the craftsmanship of these two young men.

The person in the mystery picture discovered in the remodeling of the varsity gym has been identified by two sources: Joyce Johnson of the Oslo community and junior high librarian, Glenda Renner. The mystery person is William (Bill) Kindy. Glenda, who was a classmate of Mr. Kindy, reports that he now resides in Alaska. Kindy was a 1952 graduate of GHS and grew up at the Phillips plant north of Gruver. The picture found beneath the old bleachers of the gym will be returned after its 57 year absence to Mr. Kindy's mother who resides in Perryton. Thanks to Glenda and Joyce for their information and to Joyce Simon, GHS secretary, for bringing the picture to our attention and for checking out leads on the photo. Another mystery item also surfaced in the remodeling project at the gym last summer. A pair of fifties-style Lady Hound basketball shorts. The tiny pair of shorts have a belted front, a 22 inch waist, and bear the number "25". They are on display in a collector's case in the

The Gruver Grapevine

high school office. If you can guess the wearer of these shorts, we will publish the mysterious person's name next week.

I was able to visit with Johnny Gilbert (Johnny UPS) in the mall Saturday. He informed me that his daughter, Tabitha, who was diagnosed with leukemia, has completed her first of three scheduled rounds of chemotherapy. Tabitha (Pittman) now lives in the Dallas area and had only been married three months when her disease was discovered. Johnny was deeply-touched by the prayers and concern of the Gruver community for his daughter.

Several ladies of our community were in attendance at Hansford Extension's program on recycling men's ties into crafts and fashions. Sharon Barkley had a nice display of items she had made and also shared her expertise with the group. Kristi (King) Medford and her daughter Ashton enjoyed the program with Kristi's mother, Sandy Foster. Kristi and her husband reside in Amarillo where he is associate pastor for the San Jacinto Methodist Church.

Jerry and Rita Williams have enjoyed the company of their young granddaughter, Ashby, this week while her parents, Trevor and Cynthia and sister, Brooks, were at the Fort Worth Stock Show. Trevor, who was active in Gruver FFA and 4-H in high school, is a vocational agriculture teacher in Dumas.

James and Ann Dorman have returned from an interesting and extended trip. After spending Christmas in Colorado, the two traveled to Florida where they viewed Cypress Gardens, the Bok Tower, and other attractions. From there, the Dormans visited Ann's brother and his family in Thomasville, Georgia, where they viewed vintage summer mansions originally built by wealthy Northerners and a hunting and sporting plantation. They then detoured to Nashville where their son, Stefan, who is stationed in nearby Fort Campbell, Kentucky, joined them. The three took in the Grand Ole Opry, Opry Hall of Fame, and other Nashville specialties. The Dormans related that Stefan will complete his duty with the Army in April and will be enrolling in Texas Tech.

Bernice Dudley, mother of Brian Dudley, is gravely ill and is currently in the Lubbock Methodist Hospital.

Word has been received of the death of former Gruver resident, Rejone Arrington. Her funeral was held in Wolfforth. We extend sympathy to Joby White in the death of her grandmother, Mildred White of Colorado.

Upcoming community events include a youth Valentine banquet on February 15, and an adult banquet on February 16, at the First Baptist Church.

The United Methodist Church will have the singing group, "Common Bond" at both the morning and evening services on February 16.

A fine arts spring concert, sponsored by the GHS Student Council, will be presented on April 2, at 9:30 to 10:30 for kindergarten through 6th grade and at 1:30 to 2:30 for grades 7 through 12. The play "Macbeth" will be performed by the Amarillo College of Theatre Arts and Dance on Thursday, April 3, for grades 8-12 in the GHS Auditorium at 10 a.m. The public is also invited to attend this event which is sponsored by the GHS Student Council.

Two Gruver basketball players were injured in action last week. Kevin Harris, junior varsity Hound, suffered a deep bruise to the growth plate in his knee. He is doing exercise therapy for rehabilitation. Amber Murrell, GHS Lady Hound, sustained a minor knee injury in the Gruver/Guymon game on Friday. Another Lady Hound, Weslyn Maupin, sat out Friday night's game to rest a knee problem. Both Lady Hounds are expected back in the lineup this week.

Two March events of which area residents need to be aware are a dinner theatre to benefit Make A Wish Foundation on March 15, with the proceeds going to aid children of our area, and a bowl-a-thon fundraiser to aid Big Brothers/Big Sisters organization of our area at a time to be announced in March. More details will be forthcoming.

Aaron Frick placed third in the shot put at McNeese University in Lake Charles, Louisiana, this past weekend with a throw of 51'3". Since Aaron threw a new

personal best in the McNeese's meet, it looks to be a promising season for the former Gruver standout.

Hansford County youths fared well at the Fort Worth Stock Show this weekend. The exhibitors and their placings were Nick Slough, 3rd heavyweight Duroc; Brad Holt, 5th lightweight cross; Kathy Slough 7th heavyweight York; Casey Smith 7th heavyweight Duroc; Tracey Brown 18th lightweight Hamp; and Greg Slough 22nd heavyweight York. Travis Brown placed 2nd in the European Crosses with lightweight steer. Tyrell King of Morse placed 16th with his swine entry, but I don't have information on the breed class. Mel Shields took 40th in the lamb division.

Gruver was well-represented at the Texas Tech/Kansas basketball game last Wednesday night. In the crowd were Tony and Lanetta Shapley, Diane Brown, Joyce Simon, Pat Irwin, and Rick Barkley.

Cute kid quote: At the recent wedding of Chris and Nicki Stork, the young ringbearer, Drew Grotegut excused himself at the dinner/dance to go to the restroom. When he returned, he handed his tie to his mother Angela with the explanation, "I just found out, this tie is too long." No further details were needed.

Some researchers brought out that eagles courtship flights can be some of the most spectacular of birding events to watch. The pairs mate for life, and in their aerial courtship displays, they often lock talons and somersault toward the ground.

We arrived at the Lake a little after ten in the morning, so we

by Dorothy Hudson
Lake Depth--February 3, 1997--
41 feet and 4 inches

Activity is picking up at the Lake with the warmer days. A few campers and fishermen are back, and Sunday brought out a lot of lookers. Two men from Pampa came over with a boat, but they got trapped in the mud trying to get the boat in the water. Jim says there are a lot of places to get stuck. He didn't find any fishermen that had good luck fishing.

The turkeys have not been much in evidence this winter, but Jim saw a flock in Dedication Park last Thursday.

After hearing Jim's report of sighting 21 eagles, a friend and I went out the next morning to the Lake, hoping to see them. We only found 3, but we were fortunate to see 2 of them doing a ballet in the sky. In one part the lower eagle did a somersault as they flew in tandem.

Some researchers brought out that eagles courtship flights can be some of the most spectacular of birding events to watch. The pairs mate for life, and in their aerial courtship displays, they often lock talons and somersault toward the ground.

We arrived at the Lake a little after ten in the morning, so we

Out At The Lake

were in time to watch the geese come in from feeding. While the bigger share were Canada geese, the flocks of snow geese provided the loveliest picture. They came in at least 3 groups. They would fly to the west, and then turn east and fly into the sun as they landed on the Lake. There is something about sunlight on the feathers of white birds that makes them glisten, and as the big flocks reversed, these big shining birds made a beautiful moving picture.

We estimated between 500 and 1000 snow geese and many more of the Canada geese, but we also realized that nothing in our backgrounds had trained us to count geese in flight or in the water.

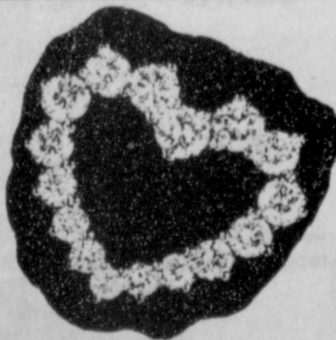
Pain may be eliminated for millions

(SPECIAL)--A drug that is exciting researchers in the treatment of pain has been formulated into a new product known as "Arthur Itis," and is being called a "Medical Miracle" by some, in the treatment of debilitating conditions such as arthritis, bursitis, rheumatism, painful muscle aches, joint aches, simple backache, bruises, and more. Although the mechanism of action is unclear, experiments indicate that Arthur Itis, relieves pain by first selectively attracting, and then destroying the messenger chemical which carries pain sensations to the brain, thus eliminating pain in the affected area. Arthur Itis, is available immediately without a prescription in an odorless, greaseless, non-staining cream or new easy applicator liquid form. Arthur Itis, is guaranteed to work or your money back.

Use only as directed.
© 1996, Stellar Health Products, Inc.
AVAILABLE AT:
Gordon's Drug
314 Main St. • (806) 659-2141
Spearman, TX

SWEETHEART SALE

"STOREWIDE"
30% OFF



Here's to always falling,
and never landing

Falling in love with her was the sweetest thing
you've ever known. This Valentine's Day,
give her fine jewelry... and keep right on falling.

Foundation of Fine Jewelry



222 S. Main
Perryton, Texas 79070
806-435-2495

721 W. 7th
Spearman, Texas 79061
806-659-3566

1-800-800-1716

Excluding Fossil watches, Arthur Court and Syma

SALE!

60% off

All
Fall & Winter
Fashions



j-winston
of amarillo

women's fashion • gifts

2701 paramount 358-2457

10:00 a.m. - 5:30 p.m. Monday - Saturday

We're Freezing PRICES at Gillaspie Auto & Truck Center

- 1996 Chevrolet Suburban
2 Dr., 5900 Miles, Dealer Demo,
Full Warranty, Fully Loaded
- 1996 Pontiac Bonneville
White, 4 Dr., V-6, Automatic, A/C, AM/FM
Cass., Power Windows/Locks, Much More
\$18,900⁰⁰
- 1996 Buick Century
Light Blue, Power Windows & Locks,
Tilt & Cruise, AM/FM Cass., More
\$14,995⁰⁰
- 1996 Buick Skylark
Bright Red, 4 Dr., Automatic, A/C,
AM/FM Cass., Much More
\$10,900⁰⁰
- 1996 Buick Skylark
Dark Red, A/C, Automatic, AM/FM
Cass., Power Windows/Locks
\$12,995⁰⁰
- 1996 Oldsmobile 88
Light Blue, Fully Loaded,
Automatic, V-6, A/C
\$19,550⁰⁰
- 1995 Pontiac Grand Prix
Bright Red, V-6, Automatic, AM/FM Cass.,
Power Windows/Locks, Much More
\$14,995⁰⁰
- 1990 Dodge Caravan L.E.
V-6, Auto Trans., A/C, Power Windows
and Door Locks, AM/FM Cassette,
7 passenger seating
\$5,995⁰⁰

GILLASPIE

AUTO & TRUCK CENTER, INC.

CHEVROLET, OLDS, BUICK, CHRYSLER, PLYMOUTH, DODGE, PONTIAC
Highway 207 South • P.O. Box 430 • Spearman, TX 79081 • (806) 659-2541

All vehicles advertised above come with the remainder of the factory warranties and our service promise:
"If you have a problem with your car, we'll take care of it."

Check out our used car line for competitive prices on all previously owned cars and trucks.

At Gillaspie Auto & Truck Center in Spearman

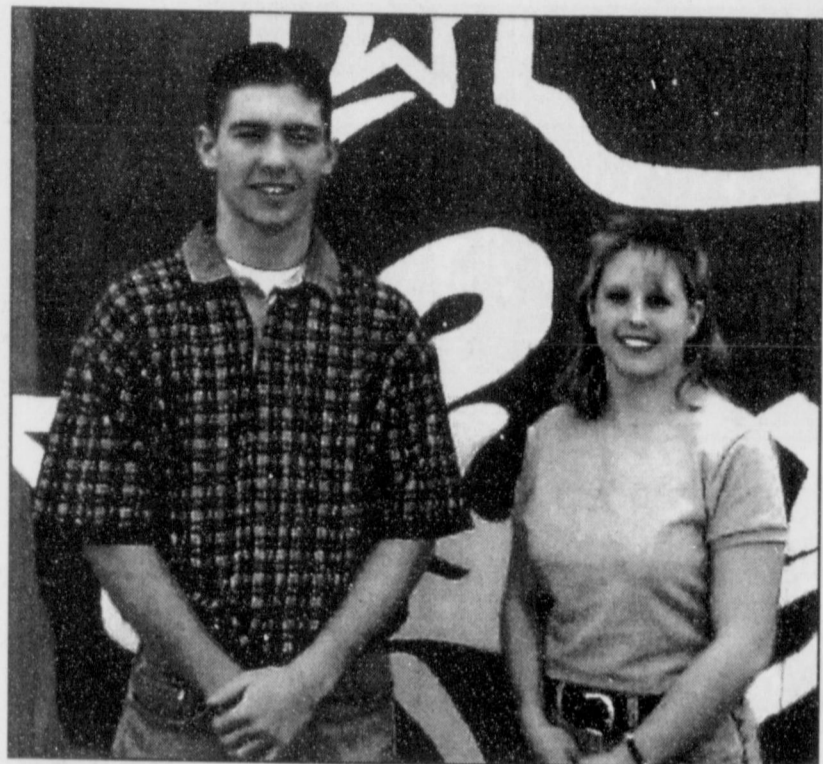
"We Don't Want Your Business Once, We Want Your Business For A Lifetime!"



Spearman Lynx Lines



A publication of the Spearman High School Journalism Department



January Students of the Month Announced

By BRANDI WILLIS

Spearman High School would like to congratulate January's Students of the Month Mandy Lusby and Eric Cudd for their hard work and excellence.

Mandy Lusby, senior, is the daughter of Ronnie and Donita Lusby. Mandy excels athletically as well as academically, as she has been a cheerleader for 5 years and participated in basketball and track in grades seventh through tenth. In school, Mandy has been on the SHS Annual Staff for two years and received the 1995-96 accounting award. The Lion's Club has chosen her the Lion's Club Sweetheart for two years. She has worked at Lady Fair for the past two-and-a-half years. Mandy is also a member of the United Methodist Church and FCA.

In the future, Mandy plans to attend college at West Texas and major in elementary education.

Eric Cudd, senior, is the son of Mike and Pat Cudd. He has excelled academically as he has received Academic All-district honors and scored in the top 10 of his class on the TAAS Test. Athletically, the Amarillo Globe News awarded him the Amarillo Globe News Super Team award. The newspaper also awarded him the title of 1st team All-district Defensive Back for 1996-97. Eric was also voted to the Youth Leadership Team of the Methodist Church. Another accomplishment is his appearance in the "Who's Who" of American high school students and his recognition in the United States Achievement Academy.

Eric's primary future goal is to attend Texas Tech University and graduate with a degree in business. He would also like to try to play football on the college level.

Words of Wisdom

The TAAS Test will be given on February 25, 26, and 27. The writing part will be given on the 25th, the math part on the 26th, and the reading part on the 27th.

SENIORS- If you need to take the TASP test and have not, you need to do that as soon as possible. Also, if you have not taken the ACT you need to take it soon.

Mrs. Guthrie would like to remind students that if they have free time, they are welcome to come down to her office and use the computer to find college and career information. There is also access to the internet so that students can look for college and career information.

"No one can make you feel inferior without your consent."

Eleanor Roosevelt

SJH Student Council Sponsors Talent Show

A total of eighteen students participated in the Bizzare Christmas Variety Show held December 20 in the little gym. The variety show was sponsored by the SJH Student Council.

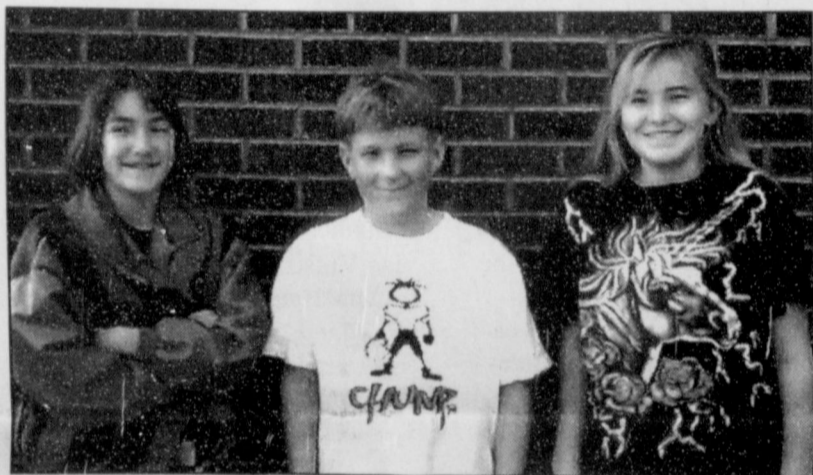
To participate, students had to do something related to Christmas. Three judges were brought in and first, second, and third place prizes were awarded. The judges were Denise Bridges, Kyle Henderson, and Pauline McGee.

First place went to Mindee Gillaspie who sang "Some Children See Him." She received \$50. Second place went to Megan Dorton who placed

"Jolly Old St. Nickolas" on the clarinet, and she received \$35. Brett Widener won third place and received \$20. He played "O Come All Ye Faithful" on the tuba.

Other students who participated were: Melissa Banks, Erin Boxwell, Katrina Cole, Jessica Crossland, Cheryl Gibson, Laura Gillaspie, Jamie Kunselman, Brandi Nava, Angela Pipkin, Adriana Rios, Nathan Rook, Tashi Schumann, Kallie Smith, Robyn Townsend, and Lexie Woodward.

The teachers also took part in the variety show. They performed a unique version of the "Twelve Days of Christmas."



Pictured here are the Bizzare Christmas Talent Show winners Mindee Gillaspie, Brett Widener, and Megan Dorton.

One-Act Play

By LACEY MIESNER

It's time again for the One-Act Play. This year the play will be by William Shakespear's *Twelfth Night* directed by Mrs. Francis Pipkin. *Twelfth Night* is a classical comedy with a commedia dell'arte style. Fifteen openings will be available. Although Mrs. Pipkin is looking for particular strengths, all passing 9th-12th graders with an interest in theater are welcome to try-out. Spearman has never before performed a play by Shakespear, but Mrs. Pipkin hopes the play will be filled

with high-energy, entertainment, and good times. She knows it will be challenging, but she is sure the students will do well. Auditions for *Twelfth* were Thursday, January 9th, and UIL competition will be March 27th in Canyon, Texas.

Club News

The National Honor Society will hold an induction ceremony on February 5, 1997 at 2:30 PM in the SHS Auditorium. Everyone is invited to attend.

CUDD AND SHEILDKNIGHT NAMED SHS HOMECOMING ROYLITY

By JENNIFER LAXSON

Spearman High School's Basketball Homecoming was a huge success this 1997 school year. Tuesday, January 27, an all school pep rally was held at the varsity gym. The band did an excellent job of playing entertaining music. The queen and king candidates were announced and escorted down to center court. The queen candidates were Macy Sheildknight, Mindy Tigrett, Shayla Barber, Tara Butt, and Samantha Beasley. The king

candidates were Britt Savage, Dillon Miller, Eric Cudd, Eric Varnon, Blake Beedy, and Frankie Domiguez. Macy Sheildknight, daughter of Charles Sheildknight and Hazel Sheildknight, was crowned homecoming queen and Eric Cudd, son of Mike and Pat Cudd, was crowned homecoming king. Later that night, the Lynx and Lynxettes came out victorious! Congratulations Eric and Macy!!!



Landree Woodward Competes for Texas All-State Choir

By MARIBEL MARTINEZ

On Friday, January 10, Landree Woodward traveled to Odessa, Texas to compete against twenty other 1st Sopranos for a position in the Texas All-State Choir.

Landree, a sophomore and president of the B day choir, competed with students from 3A, 4A, and 5A schools. Competition included sight-reading from a song the judges picked. Landree also had to sing college level music. These songs were "Singet dem Herrn ein neues lied (Bach)", "Hymn to the Creator of Light", and "Agnus Dei". Landree did well and came out

with 13th chair.

"I had a great time and even though I didn't make it this year, I'm not very disappointed because I know I have two years left," Landree said.

Mrs. Byers, SHS choir teacher, said Landree did great and with her fighting spirit she'll make it next year.

Landree had to undergo a series of four auditions to reach state. She has a position in the All-Region Choir and recently won the Pre-Area Competition. Landree is the daughter of John and Tammy Woodward.

YOU SAID IT

WE ASKED:

If you had the chance to go on a date with any celebrity, who would it be and why?

YOU SAID:

CANDICE PIPKIN
SENIOR

Sean Connery - he is the epitomy to the sexy man!

ERIC TEEL
JUNIOR

Jenny McCarthy because she's all that and a bag of chips!

FELIPE NAVARRETE
SOPHOMORE

Pamela Anderson because she's neat.

KATHERYN MURPHY
FRESHMAN

Jared Leto. I could get lost in his eyes forever!

Coming Up Next

FEBRUARY

3 GRUVER -H-
7th/8th/9th G 5:00
BOYS RANCH -T-
7th & 8th B 5:00
4 STRATFORD -H-
VG 6:00 VB 7:30
5 NATIONAL HONOR
SOCIETY INDUCTION
AT THE HIGH SCHOOL
AUDITORIUM

7 NO SCHOOL
GUYMON -T-
JVG 6:00 VG 7:30
BOYS RANCH -T-
JVB 5:00 & VB 7:30
9th G 6:30
8 CHOIR COMPETITION
AT
14 END 4th SIX WEEKS
VALENTINES DAY
17 BEGIN 5th SIX WEEKS
25-27 TAAS TEST-EXIT
LEVEL
28 NO SCHOOL
CAMPUS STAFF DE-
VELOPMENT/PRE-
PARATION

Spearman ISD School Menu

Breakfast
Monday, February 10
 Cereal, Toast or Breakfast Hot Pockets, Fruit or Fruit Juice; Milk
Tuesday, February 11
 Cereal, Toast or Donuts, Fruit or Fruit Juice; Milk
Wednesday, February 12
 Cereal, Toast or Waffle Sticks, Fruit or Fruit Juice; Milk
Thursday, February 13
 Cereal, Toast, or Biscuits, Breakfast Sausage Patti, Fruit or Fruit Juice; Milk
Friday, February 14
 Cereal, Toast, or Elfin Bread Loaves, Fruit or Fruit Juice; Milk
Lunch
Monday, February 10
 Chicken Nuggets, Sausage Pizza, Hamburger Basket; *Side Items:* Whipped Potatoes, Seasoned Green Beans, Shredded Lettuce, Hot Rolls, Butter, Jelly, Crackers, Grated Cheese, Croutons-Bacon Bits; Milk
Tuesday, February 11
 Rib Bar-B-Q on a Bun, Pepperoni Pizza, Hamburger Basket; *Side Items:* Potato Wedges, Baked Beans, Shredded Lettuce, Crackers, Grated Cheese, Croutons-Bacon Bits, Birthday Cake; Milk
Wednesday, February 12
 Taco Salad in Edible Bowl, Sausage Pizza, Hamburger Basket; *Side Items:* Pinto Beans, Spanish Rice, Lettuce, Diced Tomato Salad, Shredded Lettuce, Pineapple Tidbits, Crackers, Croutons-Bacon Bits; Milk
Thursday, February 13
 Submarine Sandwich w/Sandwich Spread, opt., Pepperoni Pizza, Hamburger Basket; *Side Items:* Tator Tots, Pears, Shredded Lettuce, Grated Cheese, Crackers, Crouton-Bacon Bits, Pickles, Sliced Tomato, Sliced onion; Milk
Friday, February 14
 Dixie Crunch Fish Strips, Sausage Pizza, Hamburger Basket; *Side Items:* Fried Okra, Whole Kernel Corn, Rice Krispie Treats, Shredded Lettuce, Crackers, Grated Cheese, Croutons-Bacon Bits; Milk

by Sheri Benton

If you haven't stopped by the Hansford County Library in the last month or so, you are missing out on some of the new items that we have to offer. We currently have about 250 videos in our collection, and the response has been great! These videos are educational not the popular movies. We have everything from travel to pet care, from how to do various things to informational tapes on medical problems, from history to help with your math homework! Our videos check out for three days and may be rechecked once. The fine on an overdue video is \$3.00 per day, and there is no one-day grace period. Come by and check some of these out to find out what you've been missing.



Library Booknotes

We also have a new piece of equipment called a personal reader for anyone with vision problems. This reader will magnify any print and display it on the screen or monitor. There are varying degrees of magnification available. This equipment came to us through a program with the Texas State Library's Print Access for Texans. We have a collection of large print books to meet some of the needs of the visually impaired, but with this reader, this group would have access to any print materials rather than just those available in large print.

We now have two PCs set up for public use. We have many

reference materials available on CD-ROM and both of these computers have a word processing program. One of these will be our Internet computer, but Harrington Library Consortium is still having connection problems so we currently have only the limited access to text on our public access on-line catalog terminal. Hopefully, we will have our full access line in before too much longer.

We have expanded our collection of talking books. These are a really "hot" item in most libraries today. So many of us spend a lot of time on the go, that these are ideal to listen to in the car while you travel. If you walk or exercise, you can listen to a book-on-tape while you do so. Some stay-at-home moms like to listen while they clean house, iron or do other somewhat boring tasks.

Next time you find yourself with a little time when you can't read, but you could listen, why not try one of these audio books!

New books in our library

include *Silent Honor* by Danielle Steel. We may often think of the atrocities of the German prison camps, but we seldom remember the Japanese relocation camps of the same period in our own backyard. Steel has taken the theme of these relocation camps and written this latest novel. A college-age Japanese woman comes to the U.S. to honor her father's wish that she attend school here. Her arrival shortly before Pearl Harbor involves her and her relatives that she is living with in one of the camps. There is also a romance between this woman and an American. This novel tells a good story about life in the camps without being

too graphic.

Another new book is *Remember When* by Judith McNaught. This is the story of Cole Harrison, a stableboy-made-good, and Diana Foster, a spoiled rich girl who winds up rescuing the family fortune. Each one has a reason why they need to be married. Cole, however, doesn't trust women who tend to pursue him for his money, and Diana, even though she runs a magazine on being domestic, has no time to practice the idea. Be prepared to read a while on this one because it's hard to put down once you start.

These are just a couple of the new books in our library. Why not stop in and check one out?

Gruver ISD School Menu

Breakfast
Monday, February 10
 Cereal, Muffin, Juice; Milk
Tuesday, February 11
 Oatmeal, Toast, Jelly, Juice; Milk
Wednesday, February 12
 Biscuit, Sausage, Juice; Milk
Thursday, February 13
 Two Pancakes, Syrup, Juice; Milk
Friday, February 14
Lunch
Monday, February 10
 Chicken Nuggets, Mashed Potatoes w/Gravy, Green Beans, Chocolate Cake, Hot Roll; Milk

Tuesday, February 11
 Frito Pie, Cheese, Tossed Salad w/Crackers, Fruit, Cinnamon Roll; Milk
Wednesday, February 12
 Chicken Noodle Soup, Peanut Butter & Jelly Sandwich, Carrot Sticks, Pickle Spears, Fruit; Milk
Thursday, February 13
 Macaroni & Meat Sauce, Corn, Applesauce, Garlic Bread Sticks; Salad Bar; Milk
Friday, February 14
 Steak Sandwich, French Fries, Lettuce, Pickle, Fruit, Vanilla Ice Cream; Milk

Pringle-Morse CISD School Menu

Breakfast
Monday, February 10
 Cheese Toast, Toast, Juice; Milk
Tuesday, February 11
 French Toast, Toast, Juice; Milk
Wednesday, February 12
 Cereal, Toast, Juice; Milk
Thursday, February 13
 Cinnamon Rolls, Toast, Juice; Milk
Friday, February 14
 Biscuits, Gravy, Juice; Milk
Lunch
Monday, February 10
 (A) Tamale Pie, (B) Taco, Beans, Rice, Salad, Cornbread, Fruit; Milk

Tuesday, February 11
 (A) Chicken Salad, (B) Steak Fingers, Potatoes, Gravy, Corn, Salad, Rolls, Fruit; Milk
Wednesday, February 12
 (A) Sloppy Joe, (B) Pizzaburger, Tator Tots, Pork-n-beans, Fruit; Milk
Thursday, February 13
 (A) Turkey/Dressing, (B) Hamburger Steak, Scallop Potatoes, Green Beans, Rolls, Pie; Milk
Friday, February 14
 (A) Stomboli, (B) Grill Cheese, Beef Stew, Salad, Dessert; Milk

Prairie Garden Flowers
 209 Main Street
 Spearman, Texas
 659-2212 • 659-3329

Call us for all of your Sporting Needs!
Just About Sports
 1028 Megert Shopping Center
 Borger, Texas
 273-9708

REMEMBER YOUR VALENTINE
 with a Special Gift from *Little Tiffanies*
 Diamonds • Crystal
 Precious Moments
 Sterling Silver
 Carpentree
 Scripture Prints
Little Tiffanies
 103 E. Broadway • Gruver, TX
 (806) 733-5290

Comptroller of the Currency Administrator of National Banks

REPORT OF CONDITION

Consolidating domestic subsidiaries of the **First National Bank of Spearman**
 In the state of Texas, at the close of business on December 31, 1996, published in response to call made by Comptroller of the Currency, under Title 12, United States Code, Section 161. Charter Number 18609, Comptroller of the Currency, Southwest District.

Statement of Resources and Liabilities	Dollar amounts in thousands
ASSETS	
Cash and balances due from depository institutions:	
Noninterest-bearing balances and currency and coin	1,141
Interest-bearing balances	9,777
Securities:	
Held-to-maturity securities	5,131
Available-for-sale securities	6,527
Federal funds sold	5,050
Securities purchased under agreements to resell	
Loans and lease financing receivables:	
Loans and leases, net of unearned income	29,118
LESS: Allowance for loan and lease losses	444
LESS: Allocated transfer risk reserve	0
Loans and leases, net of unearned income, allowance, and reserve	28,674
Assets held in trading accounts	0
Premises and fixed assets (including capitalized leases)	649
Other real estate owned	0
Investments in unconsolidated subsidiaries and associated companies	0
Customers' liability to this bank on acceptances outstanding	0
Intangible assets	0
Other assets	1,255
Total assets	58,274
Losses deferred pursuant to 12 U.S.C. 1823(j)	0
Total assets and losses deferred pursuant to 12 U.S.C. 1823(j)	58,274
LIABILITIES	
Deposits:	
In domestic offices:	
Noninterest-bearing	6,081
Interest-bearing	47,239
Federal funds purchased	0
Securities sold under agreements to repurchase	0
Demand notes issued to the U.S. Treasury	0
Trading liabilities	0
Other borrowed money:	
with original maturity of one year or less	0
with original maturity of more than one year	0
Mortgage indebtedness and obligations under capitalized leases	0
Bank's liability on acceptances executed and outstanding	0
Subordinated notes and debentures	417
Other liabilities	0
Total liabilities	53,737
Limited-life preferred stock and related surplus	0
EQUITY CAPITAL	
Perpetual preferred stock and related surplus	0
Common stock	1,000
Surplus	1,000
Undivided profits and capital reserves	2,501
Net unrealized holding gains (losses) on available-for-sale securities	36
Total equity capital	4,537
Losses deferred pursuant to 12 U.S.C. 1823(j)	0
Total equity capital and losses deferred pursuant to 12 U.S.C. 1823(j)	4,537
Total liabilities, limited-life preferred stock, equity capital, and losses deferred pursuant to 12 U.S.C. 1823(j)	58,274

We, the undersigned directors, attest to the correctness of this statement of resources and liabilities. We declare that it has been examined by us, and to the best of our knowledge and belief has been prepared in conformance with the instructions and is true and correct.

I, Tindle Ramon

Sr. Vice President & Controller of the above-named bank do hereby declare that this Report of Condition is true and correct to the best of my knowledge and belief.

Bill Piffman
 Bill Piffman
Don Hansen
 Don Hansen
Gene Judd
 Gene Judd

Tindle Ramon
 Signature

January 30, 1997
 Date

Winter Clearance Sale
 Nike Jackets 40% Off
 Selected Shoes 25% Off
 & Discounts Throughout the Store!
NIKE T-SHIRTS & SHORTS HAVE ARRIVED!
The Locker Room
 & UPS Shipper
 621 South Main • Perryton, Texas • 435-3196

Show Her Your Heart

Brighton ACCESSORIES
 National Brighton Week
 February 8th thru 14th
 20% Off all Brighton
 40% Off 1 rack of belts
 Daily Drawing for Brighton Products
 Grand prize - Brighton Purse - Drawing February 14th
Main Street In Gruver
 506 Main Ave. • 733-5040 • Gruver, Texas

By S
 woul
 Janu
 Mont
 Cudd
 excel
 M
 daugh
 Lusby
 cally
 as sh
 for 5
 bask
 seve
 scho
 SHS
 and
 coun
 Club
 Club
 She
 for
 year
 ber
 Chu
 In
 atter
 and
 catio

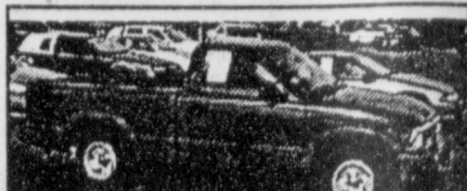
T g
 a
 w
 tl
 2
 p
 S
 th
 tl
 A
 th
 it

OUTRAGEOUS SAVINGS ON QUALITY PRE-OWNED VEHICLES AT **BOB JOHNSON MOTOR CO.**



**1993 MITSUBISHI
DIAMANTE**
\$10,548

M2217A Plus TTL



**1995 CHEVROLET
S-10 Pickup**
19,000 miles
\$9,775

D1782A Plus TTL



1993 FORD TEMPO
\$6,340

Q0528A Plus TTL



**1993 FORD
CROWN VICTORIA**
\$8,930

F8273A Plus TTL



**1994 CHEVROLET
CAMARO**
White
\$10,780

I0308A Plus TTL



**1996 FORD
TAURUS Used
Program Units**
3 to choose from
\$14,980

Plus TTL



**1995 DODGE
STRATUS Used
Program Unit**
Gold **\$11,995**

Q5208 Plus TTL



**1995 FORD
F-150**
\$11,580

F 1807A Plus TTL



**1996 CHEV.
Supercab**
\$19,621

F9694A Plus TTL



**1996 FORD
RANGER XLT**
Red **\$12,980**

Q6416A Plus TTL



**1991 FORD
EXPLORER 4X4**
Blue/White
\$12,302

Q4934A Plus TTL



1994 CHEVROLET
Flareside, Blue
\$15,976

D 1782 A Plus TTL



**1996 LINCOLN
TOWNCAR Used
Program Cars**
\$25,260

2 to choose from Plus TTL



**1995 TOYOTA
PASEO**
29,000 miles
\$9,980

D6559B Plus TTL



**1994 MITSUBISHI
ECLIPSE**
\$10,780

Q7215A Plus TTL



**1993 FORD
AEROSTAR Mini Van**
\$7,690

Q5880A Plus TTL



**1991 DODGE
DAKOTA**
\$5,972

D 2894A Plus TTL

**WE DEAL WHILE
OTHERS SHUFFLE**
Toll Free
1-888-220-2545



1995 MUSTANG GT
Black, V-8, Leather
\$17,486

Demo Plus TTL



1995 EXPLORER
2 door, 4x4 Sport
\$18,995

Demo Plus TTL



**1993 FORD
Supercab**
\$11,078

F3186A Plus TTL



**1994 MERCURY
COUGAR, with top**
38,000 miles, Red
\$11,986

M4418A Plus TTL



1989 JEEP CJ5
4X4
\$8,296

Q 9882B Plus TTL

Bob Johnson
MOTOR COMPANY

**ALWAYS
OPEN
SUNDAY
1-6
CLOSED SATURDAY**

1300 W. WILSON - BORGER, TX
1-888-220-2545 273-7541

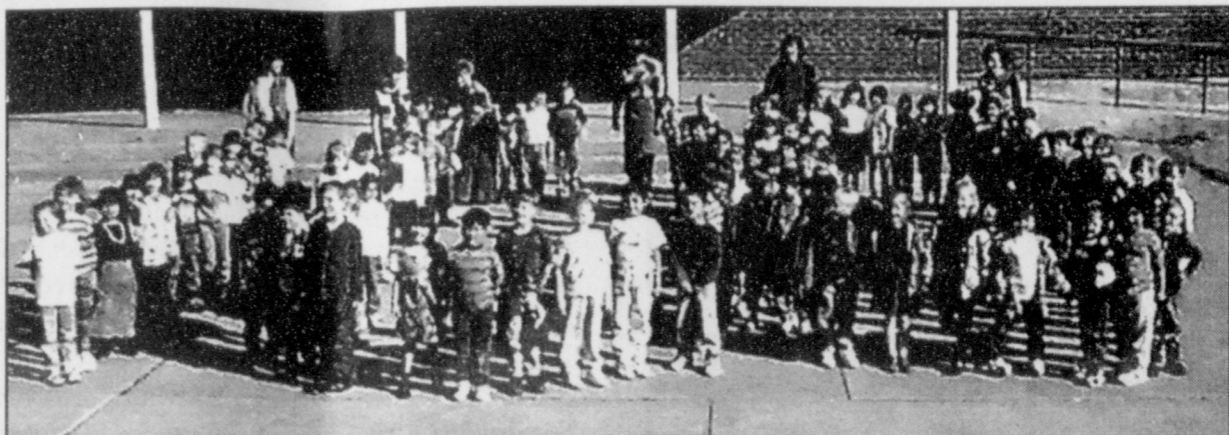


Spearman Lynx Lines



Pictured here is Mrs. Linda Winegarner, our school nurse, helping a student. Wednesday, January 22 was National School Nurse Day. We would like to take this opportunity to thank Mrs. Winegarner for all the loving care she has given us throughout the years.

Elementary Celebrates 100 Days of School



Students Rewarded For Academic Recognition On TAAS Test

A total of 18 students were rewarded for receiving Academic Recognition on the Exit-Level TAAS Test with a trip to the Pizza Hut for the lunch buffet on January 31.

To receive Academic Recognition on this test, a student must get at least ninety-five percent of the items correct and must score a four on the written composition.

Students who received Academic Recognition are: Ashley Brown, Mac Butts, Mike Butts,

Misha Davis, Kasey Dunnihoo, Jocelyn Edwards, Teresa Gomez, Clint Goodman, Lena Harbour, Brian Howell, Maribel Martinez, Zach McCammond, Amber Morgan, Keisha O'Quin, Karen Paschel, Josh Shute, Jamie Townsen, Manuel Vasquez, and Nicholas Vinson.

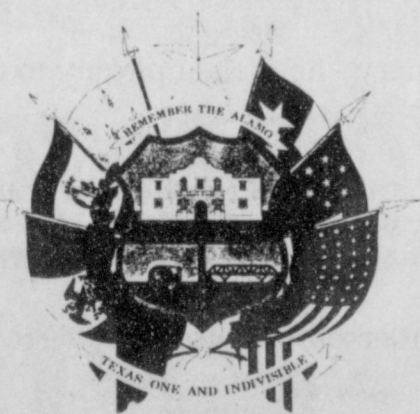
Mrs. Butts, Mrs. Guthrie, Mr. Rowland, and Mrs. Whitefield accompanied the students to the Pizza Hut.



Seen here are some students and teachers who are wearing 100 items to celebrate the 100 days of school on Tuesday, January 21.



Wacko, a cartoon character from *Animatics*, was contributed by junior Alfonso Silva.



THE STATE OF TEXAS

The Office of the Secretary of State

To all to whom these Presents shall come,
Greetings: Know ye, that this certificate is presented to

Spearman I.S.D.

in recognition of its participation in and successful completion of the 1996 Project V.O.T.E. mock election. Spearman I.S.D. is to be recognized and commended for preparing today's students for tomorrow's responsibilities.



In testimony whereof, I have hereunto signed my name and caused the Seal of the State of Texas to be affixed at the City of Austin, this the 8th day of January, A.D. 1997.

Antonio O. Garza, Jr.
Secretary of State



Pictured here are a group of kindergarten students that celebrated the 100 days of school by reading 100 words.

STUDENTS PARTICIPATE IN PROJECT V.O.T.E.

By BECKY PORTER

Have you ever wondered what it would be like to be able to vote? What it is like voting or just how much STRESS is under voting? Well, the Spearman High School got a chance to.

Project vote is a state-wide program designed to educate young Texans about the importance of voting. Spearman was one of the original pilot-sites when this program first began. The state provides curriculum for K - 12 and teachers use it on a voluntary basis. As part of Project V.O.T.E., a secretary of state has visits the high school. In 1992, John Hannah Jr. came and in 1996,

Tony Garza came. This year, in Spearman, Bob Dole won but in state, Bill Clinton won.

"I hope this will help young people vote and it is a right that many young people have died for. It's a real tragedy that I take. Some people take it for granted. It is extremely precious," stated Mrs. Mathews.

Next time voting time comes, I hope each of you will remember the rights that were brought in after the 1920's. And take into consideration the rights of the candidates.

MOCT PROFILES

BY JULIE SCROGGS

Name: Judith Hernandez
Grade: 11

Parent's Name: Maria Hernandez

Where do you work? I work at Celebrate.

What do you do there? I help customers find what they need, price merchandise, and put items on display.

How long have you worked there? I have worked there 5 months in February.

On the average, how many hours do you work a week? I work about 21 hours a week.

What are the ups and downs of MOCT? The ups are you get out of school early and you get a chance to find a job if you don't already have one. The downs are you still have to do paperwork.

What are your plans for the future? I want to finish high school, go to college, and become a teacher.

Name: Eric Teel
Grade: 11

Parent's Name: Ed and Janice Pearson

Where do you work? Pizza Hut

What do you do there? I cook.

How long have you worked there? 2 months

On the average, how many hours do you work a week? About 35

How do you feel about the MOCT program? I feel it is a chance for the students to get job training skills through the school. I really enjoy the opportunity to be in the program.

What are your plans for the future? I want to go to college or the Marines.

Do you have a personal motto? If so, what is it and why? Be kind to nerds and geeks, ten years from now they will be the ones with all the money.

Lynx Lines Staff Box

Publisher	Mr. Rowland
Editor-In-Chief	Mrs. Whitefield
Editor	Teresa Gomez
Business Manager	Maribel Martinez
News Editor	Staff
Productions	Brandi Burch
	Jennifer Laxson
	Becky Porter
	Julie Scroggs
	Brandi Willis
Reporters	Stacy DeLaCruz
	Rachel Burch
	Lacey Mesner



Hansford County's ONLY locally owned and operated Realty.

Julie Martin
Broker - 659-2425
Kym Williams
Sales Assoc. - 733-5163

160 Acres - SE of County
807 S. Haney - 3/1 1/2, great home, large lot
Lots: make your dreams come true - build your own home on one of several lots.

711 S. Collier - 3/1/1, New Paint
811 S. Roland - 3 bedroom, 1 bath. Let's make a deal
611 S. Evans - 3/1 1/4 - priced to sell.

NEW LISTINGS
121 S. Dressen - 2/1, central air/heat, double garage w/1 bed apartment
400 Front St. - 2/1, extra nice inside

NEW LISTINGS IN GRUVER
Harris Addition Let and mobile under contract - \$5,500
2212 Hwy. 15 - 3/2, brick, central air/heat
607 King - 2/1, plus 1/1 efficiency apt.

We'd Like Your Listing FOR QUALITY & SERVICE

"Village Treasures"
Antiques & Collectibles Crafters Mall
112 Main in Perryton (806) 435-7112



Selling Spearman!
List your home with the Real Estate Professionals that the BUYERS call!

Rex Hoover - Broker • 800-755-4291
Larry Trosper - Sales • 659-3491
Diana Hoover - Sales • 658-9113
Tanya Close - Sales • 659-2534

NEW LISTING - 1108 S. Dressen - 3 BR, 1 B. Fenced back yard, single car garage. Nice & cozy. Priced to sell.

NEW LISTING - 203 N. Bernice Large 2 Story Wood Frame Home - 4 BR, 2 B, extra nice. Large fenced back yard, 2 storage buildings. Very nice property owner willing to work with buyer. Must see to appreciate.

NEW LISTING - Little Fort Worth Area (West Crawford Addition) - 2 large lots, piped fence, corrals, water, elect. Let's talk.

NEW LISTING - 721 Wilbanks - Immaculate large 3BR, 2B, large family room, central H/A, fireplace, fenced in back yard. Good location.

NEW GRUVER LISTING - 703 King - 2BR, 1 1/2B, formal living area, central heat/air, lots of storage, 2 car garage, extra large storage building/workshop, sits on extra large lot, immaculate condition.

NEW LISTING - 704 Dressen - Large 4 BR, 2 B, X-large family room, storm shelter, corner lot. Lots of space, large rooms. Let's talk.

NEW GRUVER LISTING - 207 Richardson - 3BR, 1 1/2B, storage building, 1 car garage, large family/game room. Priced to sell.

210 Bernice - 3 BR, 1B, central heat/air, w/basement, extra large fenced-in, closed yard. Owner wants to talk business.

515 Evans - 2,000 sq. ft. 3BR, 2B single car garage, central heat, air, fireplace, large living room, some hardwood floors, new roof, fresh paint. Let's make a deal.

Large Metal Building & Property - 40x60 Metal Building, Contents and Fixtures. Good location - 202 N. Bernice. Make an offer.

We need and appreciate your listings!



GOLDEN SPREAD REALTY
JANYE HELTON POINTER, BROKER OWNER
435-5444

Sales Associates
Janice Flathers 435-2156
Dana Burnett 435-2698
Sherrie Ryna 435-3294
Gina Deal 435-2772

1013 Linn - 3/1 1/4, excellent value!
205 Hazelwood - Great buy, excellent condition!
East 7th Street - Mobile Homes, lots to lease!!!

Hwy. 207 South - Great potential for new or existing business!
LOWERED PRICE - 1117 Dressen - 4/2, Finished Basement!

GRUVER
503 E. 10th - 4 BR, 2B UNDER CONTRACT
18 Mi. N.W. of Gruver - Three bedroom home on 5 acres!

© and ™ trademarks of Century 21 Real Estate Corporation. Equal Housing Opportunity INDEPENDENTLY OWNED AND OPERATED



COUNTRY HOME FOR SALE
By Owner
Priced Well Below Appraised Value
3500 Total Sq. Ft.
3/4 (+) Acre Lot
3 Bedroom - 3 1/2 Bath
Sunken Living Room w/Fireplace
Balcony & Cathedral Ceiling
Two Story - Formal Dining Room
Office - Basement - Utility
Fenced Back Yard - Lots of Storage
Garage - Patio - 2 Storage Bldgs.
Central Heat & Air
Private Water Well - New Septic System
Satellite System
806-659-2681 or 659-2808
By Appointment Only
Serious Inquiries Only

Harshman's Repair
VCR Repair - \$55
Camcorder Repair - \$85
CD Player Repair - \$35
Cassette Repair - \$30
Most Models
Mon.-Sat.: 10 a.m.-6 p.m.
(806) 274-4704
1032 Coble Borger, TX

Jay's Waterwell Service
Domestic Well Troubleshooting
Sales & Service
Large Inventory on Hand

2 Service Rigs in Spearman Area
Submersibles, Windmills,
Solar Pumps, Pressure
Tanks, Pressure Pumps,
Complete Systems Available
Prompt Service

NEW SERVICE AVAILABLE
Live downhole video camera
with recording, playback
capability for almost all
wellbores, for those problem
waterwells

Hansford, Sherman County Representative
Spencer Correll, RFD
659-3908 or 659-2401

Thanks for your business!
Call us anytime!
Jay Cox, Perryton, owner

CLASSIC CABLE HAS A POSITION FOR CUSTOMER SERVICE REPRESENTATIVE IN SPEARMAN, TX

We offer competitive wages, excellent benefits and a friendly work atmosphere. Prospective candidates should possess:

- A. High School Diploma or equivalent
- B. Customer service experience required
- C. Must have ability to communicate effectively, both verbally and in writing.
- D. Computer experience helpful

Prospective candidates are requested to send resume with letter or application to:

CLASSIC CABLE
PO. BOX 429
PLAINVILLE, KS. 67663
FAX: 913-434-2614

Resumes will be accepted until February 10, 1997.

CLASSIFIEDS

HOMES FOR SALE

NEW LISTING: 3 bedroom, 2 baths, central heat and air, recently remodeled kitchen, covered patio, attached garage, good location. Priced to sell. 1008 S. Barkley. Call 659-3847 nights.
TFN(1-9-97)B

FOR SALE: 2700 sq. ft. split level brick home. 3 bedrooms, 1 3/4 bath, living room, large den with fireplace, playroom, laundry room, 3 car garage, 2 central heat and air conditioning units, lots of storage, corner lot. Call 659-3052 or 659-3215.
RTN(11-14-96)B

MAKE US AN OFFER: Great brick home in great location. 2,200 sq. ft., 4 bedrooms, 3 baths, big den with fireplace, basement, double car garage. 702 Gibner. Call and let's make a deal! 659-3838 or 733-5555.
RTN(2-15-96)B

FOR SALE - to be moved - 1984 Celtic double wide mobile home - 52' x 28' - 3 bedroom/2 bath with central heat and air (air conditioner new) all in very good condition - \$22,000.00 if interested please call 659-3123.
TFN(11-14-96)B

FOR SALE: 2 BR, 2 B Mobile home w/ or without lot. 214 Archer. 659-2288 or 659-2383.
RTN(12-5-96)B

FOR SALE: 1506 sq. ft. framed home, 4 bedrooms, 1 3/4 bath, central heat hard wood floor living room and hall. Attached garage, fenced back yard with storage shed, located at 327 N. Hazelwood, call 659-3940 or 659-2378 after 5:00 p.m.
RTN(2-6-97)B

MOVE TO THE COUNTRY: 1996 28x62 (1736 sq. ft.), 3BR, 2 B, Central AC/Heat, on 22 Acres. New sewer, new well, all improvements less than 1 year old. Located on Hwy. 759, 10 miles east of Spearman. Call 659-1725 or 898-5163.
TFN(12-12-96)B

FOR SALE: 3 BR, 2 B, red brick house. Hardwood floors, formal living room, large family room, utility room, ceiling fans, storm windows, newly insulated, steel trim, 2 door attached garage, high board backyard fence, 1770 sq. ft. (12"x14" steel storage building). Call (806) 733-2272 or see at 102 Maupin, Gruver, TX.
FOR SALE OR RENT: Former Sears Building, 517 Plains Shopping Center. Call L(806) 659-2819.
4(1-23-96)P

FOR SALE: 24x64 Mobile/Modular Home - 3BR, 2B, den w/woodburning fireplace and many other extras. Call 733-2366 for more information.
4(1-16-97)B

LOTS FOR RENT/SALE

RENT LOT: Trailer house lot for rent or sale. Call 659-2245.
RTN(2-22-96)B

FOR RENT

FOR RENT: Furnished 1 Bedroom House, Furnished 1 Bedroom Apartment & 2 Bedroom House. Call 659-3260.
RTN(4-1-96)B

FOR RENT: Furnished 2 bedroom & 1 bedroom. \$285.00 & \$210.00 a month. Six month lease. \$100.00 deposit & bills paid. Located agt 107 N. Endicott. Call 659-2404.
2(1-30-97)P

FOR SALE

FOR SALE: 1986 Peterbilt sleeper, wet kit, 350 Cummins. Good condition. Call 733-2746 or 733-2340.
RTN(1-9-97)B

FOR SALE: Phone system & cash register. Call 659-5016 or see at 315 Main.
TFN(10-10-96)B

FOR SALE: 5 piece blue sectional couch with hide-a-bed, priced \$150. call 659-3782 ask for Toni.
1(2-6-97)B

INSTRUCTOR/FIELD SPECIALIST - ECI, PERRYTON

QUALIFICATIONS: Bachelor's degree required. Experience with families in child development and family dynamics; record keeping, case management and parent training. Skills in program development & ability to work with individuals.
JOB GOAL: To provide instructional services for eligible developmentally delayed children and their families.
Call Marsha Murphy, Director of Special Education 435-4412

EMPLOYMENT

HELP WANTED: Students Welcome and others. Up to \$9.00 Conditions Exist. Call between 11-5, M-F, 358-2559. Interview in Amarillo, work in Spearman.
4(1-16-97)B

HELP WANTED: *ATTN: SPEARMAN* Postal positions. Clerks and sorters. No experience required. Benefits. For exam, salary, and testing information call 1-630-906-5570, ext. 5199, 8 a.m.-8 p.m.
DO NOT APPLY AT LOCAL POST OFFICE.
3(1-23-97)P

HELP WANTED: Secretary/Bookkeeping position available. Must be computer literate, preferably with knowledge quickbooks. Apply in person at Perryton Redi Mix, Hwy. 15 E. (HCR 3, Box 77R), Perryton, TX.
2(1-30-97)B

SERVICES

PRIMESTAR SATELLITE TV SYSTEM: \$99 down - 1st month basic programming free, with approved credit. Call for details. (806) 659-3058 or 800-279-4904. See display at All Occasion Flowers, 519 Plains Shopping Center.
TFN(10-3-96)B

NOTICE

CHURCH OF CHRIST PRAYER LINE - 659-5334. Requests kept confidential.

AUTOMOBILES

FOR SALE: 1988 Nissan Pathfinder, V6 4x4, Auto transmission w/A.C. \$6500 firm. Call 435-2363 or 898-64484.
4(1-16-97)P

FOR SALE: '85 Jimmy and '83 Cougar, also have a brand new blue couch and love seat for sale \$500., come by 715 Collier after 6:00 p.m.



ADOPTION: A BRITISH/American couple long to adopt new born to share warm, loving and secure family in London, England. Call Jane and Neil's attorney at 1-800-440-9185. It's illegal to be a paid for anything beyond medical/legal assistance.

BUSINESS OPPORTUNITIES: AN AMAZING OPPORTUNITY, Coke Frito Lay, Nabisco, great local routes - excellent earning potential. For free info call 1-800-321-7690. Investment required \$3,500.

EASY MONEY: \$50 investment to start. Long distance. 9.9¢ per min. 24 hrs., 7 days. For personal use, to make money ... or both, pay later. 1-800-334-2638 agent no. 3039.

LOCAL CANDY ROUTE: 30 Vending machines. Earn approx. \$800/day. All for \$9,995. Call 1-800-998-VEND.

PEPSI/HERSHEY ROUTE: Top, local sites! All cash business! Keep present job! \$1,500+ weekly potential. Minimum investment \$10,800 = immediate cash flow. Call: 1-800-617-6430, Ext. 5900.

OWN YOUR OWN apparel, shoe, westernwear, lingerie, bridal, gift or \$1.00 store. Includes inventory, fixtures, buying trip, training. Minimum invest \$17,500.00. Call Paul at Liberty Fashions. 501-327-8031.

DRIVERS WANTED: ARROW TRUCKING COMPANY *flatbed and van operation *regional or long haul *four terminals in Texas *assigned conventionals *experienced drivers - owner operators. 1-888-277-6937, in-experienced training available. 817-246-3733. EOE!

DRIVER - CALARK INTERNATIONAL offers great pay, benefits and the chance to get home more often! Must be 22 with CDL and HazMat endorsement. 1-888-422-5275.

DRIVERS - BE A success with Arctic Express, seeking company/regional drivers also lease purchase opportunities with no \$ down, call now 1-800-927-0431. EOE.

DRIVERS COVENANT TRAINERS earn over \$70,000. Covenant teams earn over \$100,000 and run 225,000 miles a year. Make money and get the most miles. Call today. Experienced drivers and owner/operator teams 1-800-441-4394. Graduate students 1-800-338-6428.

DRIVERS EXPERIENCED OR inexperienced, North American Van Lines has owner operator openings in their relocation services division. Tuition-free training! *Tractor purchase programs, no trailer maintenance expenses, pay for performance plans and much more! 1-800-348-2147, Dept. A-36. *Subject to certain conditions.

DRIVERS - FLATBED 48 state OTR. Assigned new conventionals, competitive pay, benefits. \$1,000. Sign on bonus.

ADoption: A BRITISH/American couple long to adopt new born to share warm, loving and secure family in London, England. Call Jane and Neil's attorney at 1-800-440-9185. It's illegal to be a paid for anything beyond medical/legal assistance.

ADOPTION: A BRITISH/American couple long to adopt new born to share warm, loving and secure family in London, England. Call Jane and Neil's attorney at 1-800-440-9185. It's illegal to be a paid for anything beyond medical/legal assistance.

Call this newspaper for details on how to advertise statewide.

FOR SALE: 1995 4x4 Suburban. Loaded, under 42,500 miles, excellent condition. New price. Call (Days) 800-435-0370, or (nights) 806-435-5309.
TFN(1-23-97)B

MISCELLANEOUS

FREE: Free Cigarettes, 1-800-254-0811.
6(1-16-97)P

FARM & RANCH

SPRING OAT SEED: Call Gayland Ward Seed, 800-299-9273, Hereford.
4(1-23-97)B

BUSINESS OPPORTUNITY

MAKE MONEY taking orders from friends and relatives for Avon. Call Billie Simmons, independent, advanced unit leader. 1-800-447-2967.
TFN(1-23-97)B

PETS

FREE PUPPIES: Mother is a Blue Heeler. Come by 121 N. Hazelwood after 5:00 p.m.
FREE: 2 dogs and 4 puppies. Call (806) 733-2197.

LOST

LOST: Fluffy, beige colored Siamese male cat with gray legs & paws, gray ears & face, with bright blue eyes. Strayed from 600 block of S. Bernice. Please call 659-2973 and leave message. Thank you. Reward is offered.

DON E. The Chimney Sweep
• Reliable • Experienced
• Clean Jobs • Friendly
TO INSURE THE SAFETY OF YOUR HOME, CALL...
806-435-4316
Since 1989 • Perryton, TX

For Sale By Owner
620 S. Bernice - 2000 Sq. Ft.
Upstairs - 2 BR, 1 B, large kitchen, family room, walk-in closets, hardwood floors, all wood cabinets, central H/A, storm windows, large utility porch with entrance to basement, 20x24 storage building, large driveway.
Basement - 3 large finished rooms (tile, paneling, etc.), 1 large unfinished room (built to add 2nd bath).
620 1/2 S. Bernice - 1200 Sq. Ft.
1 BR, 1 1/2 B, kitchen, dining & family room together in one large room. Currently rented @ \$245.00/ month on HUD contract.
Two houses on two lots - \$45,000.00
Call Edwin or Janice Pearson 659-3851

- Farm Equipment -
WE ARE RETIRING FROM FARMING, & ARE OFFERING THE FOLLOWING ITEMS FOR SALE:

1980 Case 4690 4WD	\$18,500
1981 Chev. 2-ton fuel pincher, diesel, 18-ft. grain bed	\$12,500
1986 Ford 2-ton with 2,000 gal. aluminum tank	\$ 7,500
35-ft. chisel plow	\$ 4,500
65-ft. Noble spingtooth crustbuster	\$ 4,500
(6) Shafter 20-ft. one-way plows (Sets of 3)	Each Set: \$ 1,800
(3) Krause 20-ft. oneways, Set of 3	\$ 2,400
(3) John Deere 8300 disc drills, set of 3 with hitch	\$ 7,500
(2) I.H.C. 5100 disc drills	Ea.: \$ 2,500
(3) I.H.C. 10-disc drills, set of 3 with hitch	\$ 2,400
Hydraulic working chute for calves	\$ 600
1,000 Gal. water tank on 4Wh. trailer	\$ 500

PHONE (806) 435-9728

Morse Morsels

by Mildred Lewis

Our big snow didn't affect our students up at school much. They just had to start school one hour later than they usually do.

Our basketball boys and girls played Hartley last Monday night. We're sorry our girls lost to Hartley 15 to 36, and our boys lost 33 to 40.

We have the Pee Wee Tournament soon, so that will be a real treat.

Linda and Wirt Davis went back to Panama on Wednesday, January 15th. Dwight and Jack Gillispie took them back to Amarillo airport. I am sure they enjoyed their stay with relatives and friends. They are Missionaries.

We are having cottage prayer meetings on Wednesdays.

We are to have a Valentine's Banquet February 15th. We will be getting more details soon.

We will soon start our new Community Building.

Dwight, Suzanne and Gina Gillispie, Bob and Susie Womble went to a 25th Wedding Anniversary party Sunday for Jimmy Dale and Zo Womble. He went to school at Morse years ago. His daddy was Jim Womble, who was a Trustee in the Morse School. Gill and Jean Patriske, Susan's mother and daddy from Farwell, Texas were visiting Rex and Susan McCloy and family Sunday. They came to church with them.

We have a new video place in Morse. Phil De La Cruz is running it, so if you need something to do, watch a movie. Come on down to Phil's place.

Sorry I didn't get my news in week before last. Our big snow storm was partly the cause. We had 5 inches of snow.

We have a student from Morse who goes to West Texas High and plays rather good basketball. They played Sunray JV last night and Shelby Rieswig, the student, made 19 points. Go, Shelby, go!

Our Morse Baptist church had a good crowd at church Sunday,

January 26th. The Chaplin Wayne Horton from Amarillo Prison came. He gave us a good speech.

We had some visitors. Lucy and Frank Pittman, Mrs. Burnam and family from Gruver. She is the 1st grade teacher at the school. Her husband teaches over at Gruver. Lori Schroyer, one of our college students from Stephenville, was also present.

We had lunch at noon. We all enjoyed the day.

Cottage Prayer meeting was in Thane and Sue McCloy's home last Wednesday.

Some of our Pringle-Morse high school boys and girls made this fall semester honor roll. They are Dustin Parks, Markus Schick-Seniors; Eva Schick, Heather Knox - Juniors; Ashley Phillips - Sophomore; Tap Giblin, Natalie Tarango - Freshman. They all go to West Texas High in Stinnett.

Holly McCloy is a Sophomore in Gruver. She also made the honor roll.

Congratulations to Heather Knox. She was chosen 1st runner up in Teen Miss Lake Meredith. She goes to West Texas High. We still claim her for one of our kids from Morse. She graduated from Pringle-Morse school.

Michelle Martinez - Miss Texas came to the school on Thursday, January 23rd. She gave the children a speech, played the piano, and sang a song. They really enjoyed that. She will compete in the Miss America contest in September.

Our 4-H had their fat stock show last Saturday. Ashley Phelps had 3 pigs for the show. She placed - two seventh, one-4th place; Chase Phillips 2nd, 4th, and 5th; Reserve Champion Lamb, Colton King - Reserve Grand Champion Calf. J Swine showmanship - 1st calf showmanship; Alan Thomas - 4th place calf; Tye King - 2nd place calf; Kirby Johnson - Grand Champion calf; 5th place pig, Breed Champion Lamb; Robert Gilmore - 2nd place pig; Felix Dela Cruz - 3rd place pig; Magen Yearby - 10th place pig, Hugo Hernandez - 7th place pig, Amanda Apodaca - 1st place Lamb; and Donnie Davis 4th and 8th place pigs.

We had two of our students in the Gruver stock show. Bailey Reid - 1st place Reserve Grand Champion; Seth Clemmons got Jr. Showmanship - 2nd pig. (Hope we have this right - if not we will write more on this next week.)

PUBLIC NOTICE

LEGAL NOTICE

First State Bank is accepting bids on a 1988 Ford extended cab pickup and a 1983 Ford extended cab pickup. Bids must be in written form and will be accepted until February 7, 1997. For further information, contact Worth Whitworth at 659-5565. Vehicles may be inspected anytime during business hours. First State Bank has the right to refuse any or all bids.

2(1-30-97)B

NOTICE OF APPLICATION

NOTICE IS HEREBY GIVEN that the Applicant, DISCOVERY OPERATING INC., 800 N MARIENFELD STE 100, MIDLAND TX 79701, has made application for a spacing exception permit under the provisions of Railroad Commission Statewide Rule 37 (16 Tex. Admin. Code Section 3.37). Applicant seeks exception to the lease line requirement to drill Well No. 1, O'Loughlin Jr A Lease, 653 Acres, Sec. 60, Blk. 45, H & TC RR CO/O'Loughlin Survey, A-1146, Wildcat, Twin (Morrow), Spearman E (Council Grove) and Spearman E (Morrow Middle) Field (s), Hansford County, being 12 miles in a northeast direction from Spearman, Texas. The location of this well is as follows:

330' from the south line and 467' from the east line of lease.

330' from the south line and 467' from the east line of survey.

Field rules for the wildcat, Twin (Marmaton) Twin E (Tonkawa),

Spearman NE (Douglas), Spearman E (Council Grove) and Spearman E (Morrow Middle) fields are 467\1200, 40 acres.

Field rules for the Twin (Tonkawa) field are 990\1980, 640 acres. Field rules for the Spearman N (Lansing KC) field are 660\1650, 160 acres. Field rules for the Twin (Cleveland) field are 660\1320, 640 acres. Field rules for the Twin (Des Moines), Spearman E (Atoka) fields are 660\1320, 80 acres. Field rules for the Twin (Morrow) field are 660\1200, 40 acres. This well is to be drilled to an approximate depth of 7500 feet. PURSUANT TO THE TERMS OF Rule 37 (h) 2 (A), this application may be granted administratively if no protest to the application is received. An affected person is entitled to protest this application. Affected persons include owners of record and the operator or leasees of record of adjacent tracts and tracts nearer to the proposed well than the minimum lease line spacing distance. If a hearing is called, the applicant has the burden to prove the need for an exception. A protestant should be prepared to establish standing as an affected person, and to appear at the hearing either in person or by qualified representative and protest the application with cross-examination or presentation of a direct case. The rules of evidence are applicable in the hearing. If you have questions regarding this application, please contact the Applicant's representative, W. Jeffrey Sparks/Vice President, at (915) 683-5203. If you have any questions regarding the hearing procedure, please contact the Commission at (512) 463-6748.

IF YOU WISH TO REQUEST A HEARING ON THIS APPLICATION,

YOU MUST FILL OUT, SIGN AND MAIL OR DELIVER TO THE AUSTIN OFFICE OF THE RAILROAD COMMISSION OF TEXAS THE ENCLOSED NOTICE OF INTENT TO APPEAR IN PROTEST. A COPY OF THE INTENT TO APPEAR IN PROTEST MUST ALSO BE MAILED OR DELIVERED ON THE SAME DATE TO APPLICANT AT THE ADDRESS SHOWN ABOVE. THIS INTENT TO APPEAR IN PROTEST MUST BE RECEIVED IN THE RAILROAD COMMISSION'S AUSTIN OFFICE BY March 10, 1997. IF NO PROTEST IS RECEIVED WITHIN SUCH TIME, THE REQUESTED PERMIT WILL BE GRANTED ADMINISTRATIVELY, TO BE EFFECTIVE THE DAY FOLLOWING THE TERMINATION OF SUCH THREE-WEEK PERIOD.

4(2-6-97)B

INVITATION FOR BIDS

The City of Spearman will receive sealed bids until 4:00 p.m., on Friday, February 28, 1997, at 30 SW Court, Spearman Texas 79081, at which time, bids will be opened on one (1) High Density Balere.

Full information and bid proposal packages may be obtained from the City by phoning (806) 659-2524. All bids must be submitted on the forms provided in the bid proposal package. The City reserves the right to accept or reject any or all bids and to waive any formalities and irregularities in the bid process.

1(2-6-97)B

APPLICATIONS BEING ACCEPTED

The City of Spearman is now accepting applications for the

Continued on Page 14

We listen to

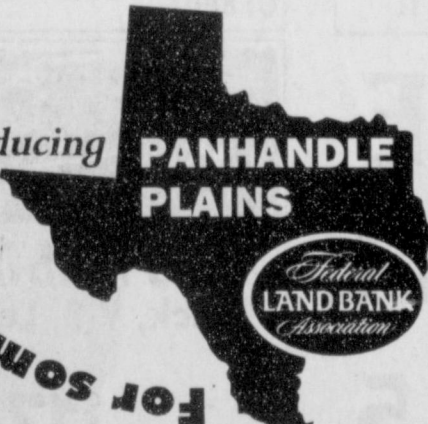
KRDF

98.3 FM

Hot Country Stereo 'Till Midnight



For someone with a new name, we sure have been around awhile!



Introducing **PANHANDLE PLAINS**

Federal Land Bank Association

For 80 years, in fact. This month's merger of three of the oldest and strongest agricultural lenders on the Texas High Plains may mean a new name. Otherwise, we're the same familiar faces — in the same locations — that Panhandle farmers, ranchers and agribusinesses have trusted for years. In this area, we've earned a reputation for fair, fast and friendly ag financing as the High Plains Federal Land Bank Association in Pampa and Perryton.

Now we join forces as one cooperative—with the FLBAs of Amarillo and Caprock-Plains in Plainview—to begin a new era of agricultural financing. We're still member-owned, member-directed with a commitment to complete and efficient loan service. The kind of service that's old hat to us. The only thing new is the name.

Stop by or call any of our offices when you're in the market for long-term agricultural financing. We're one locally owned lender who was here yesterday, and will be here tomorrow.

PANHANDLE-PLAINS FEDERAL LAND BANK ASSOCIATION

AMARILLO 3615 S. Georgia 353-6688	PAMPA 2526 Perryton Parkway 669-1126	PERRYTON 506 S. Main Street 435-4319	PLAINVIEW 629 Baltimore Street 296-5579
--	---	---	--

Valentine VALUES



Chuck Wagen COMBO MEALS

COMBO OF THE MONTH
Chimichanga or Beef & Salsa Burrito & Tallsup

\$1.69

<p>COMBOS OF THE QUARTER</p> <p>Sausage or Canadian Bacon, Egg & Biscuit, Hashbrowns, & 22 oz. Soft Drink or 16 oz. Coffee</p> <p>WITHOUT EGG \$1.79</p> <p>\$2.09</p>	<p>COMBOS OF THE QUARTER</p> <p>Sauteeya, Western Style Potato Wedges & Tallsup</p> <p>\$2.29</p>	<p>COMBOS OF THE QUARTER</p> <p>BBQ Beef Sandwich, Western Style Potato Wedges & Tallsup</p> <p>\$2.29</p>
<p>Enjoy Coca-Cola CLASSIC</p> <p>ALL VARIETIES</p> <p>Coca-Cola 3 Liter</p> <p>\$1.89</p>	<p>Fritos Original</p> <p>ALL VARIETIES</p> <p>Fritos REG. \$2.19</p> <p>\$1.69</p>	<p>DECKER FRANKS</p> <p>DECKER Meat Franks 12 OZ. PKG.</p> <p>79¢</p>
<p>PAPE TOWE PAPER TOWELS</p> <p>VALLEY FARE</p> <p>Paper Towels JUMBO ROLLS</p> <p>2 FOR \$1</p>	<p>SAVE ON</p> <p>Mello Crisp Bacon 1 LB. PKG.</p> <p>\$1.39</p>	<p>DECKER</p> <p>DECKER Cooked Ham 10 OZ. PKG.</p> <p>89¢</p>

You'll Find All This and More at Your Allsup's Store

305 W. Kenneth • Spearman • 659-3135 • 101 Main Ave. • Gruver • 733-2953

Potatoes - 10 lb. Bags 2/\$1.00

ALLSUP'S

Always

LOW PRICES, GREAT PRODUCTS

24 HOURS A DAY

Prices Effective Feb. 6th-19th OFFER GOOD WHILE SUPPLIES LAST

Public Notice

Continued from Page 12

following summer jobs: Pool Manager - \$7.00/hour; Maintenance Worker - \$6.25/hour; Lifeguard - \$5.25/hour. Applications may be picked up at Spearman City hall from 8:00 a.m. until 5:00 p.m., Mondays through Fridays.

2(2-6-97)B

NOTICE TO ALL PERSONS HAVING CLAIMS AGAINST THE ESTATE OF ANNA ROSE COOPER, DECEASED

Notice is hereby given that original Letters Testamentary for the Estate of Anna Rose Cooper, were issued on July 29, 1996 in Cause No. 2168, pending in the County Court of Hansford County, Texas, to: Fern Alene Cooper Bell and Betty C. Owens.

The residence of Fern Alene Cooper Bell is Parmer County, Texas, and the residence of Betty C. Owens is Swisher County, Texas and the post office address is:

Fern Alene Cooper Bell and Betty C. Owens
c/o Aldridge, Aycock & Atkinson, L.L.P.
P.O. Box 286
Farwell, Texas 79325

All persons having claims against this Estate which is currently being administered are required to present them within the time and in the manner prescribed by law.

DATED the 5th day of August, 1996.

ALDRIDGE, AYCOCK & ACTKINSON, L.L.P.
P.O. Box 286
FARWELL, TEXAS 79325
TELEPHONE NO. 806/481-3361
TELECOPIER NO. 806/481-9060
BY CHARLES F. AYCOCK
STATE BAR NO. 01458000
1(2-6-97)B



Miniscopic Deep-Canal Hearing Instrument Now Available

Our office is happy to announce that we are currently fitting a completely in-the-canal hearing instrument. This remarkable new hearing instrument is discreet and comfortable to wear. It's placement deep in the canal of the ear (see illustration at top) makes it barely visible. Others may not recognize you are wearing a hearing aid. The Miniscopic is the smallest hearing instrument ever manufactured by NU-EAR. Call now to schedule an appointment for your hearing assessment and consultation.

Hearing tests are for hearing aid selection and not for medical diagnosis of hearing loss. © 1994 NU-EAR/01/02/03/04/05/06/07/08/09/10/11/12/13/14/15/16/17/18/19/20/21/22/23/24/25/26/27/28/29/30/31/32/33/34/35/36/37/38/39/40/41/42/43/44/45/46/47/48/49/50/51/52/53/54/55/56/57/58/59/60/61/62/63/64/65/66/67/68/69/70/71/72/73/74/75/76/77/78/79/80/81/82/83/84/85/86/87/88/89/90/91/92/93/94/95/96/97/98/99/00/01/02/03/04/05/06/07/08/09/10/11/12/13/14/15/16/17/18/19/20/21/22/23/24/25/26/27/28/29/30/31/32/33/34/35/36/37/38/39/40/41/42/43/44/45/46/47/48/49/50/51/52/53/54/55/56/57/58/59/60/61/62/63/64/65/66/67/68/69/70/71/72/73/74/75/76/77/78/79/80/81/82/83/84/85/86/87/88/89/90/91/92/93/94/95/96/97/98/99/00/01/02/03/04/05/06/07/08/09/10/11/12/13/14/15/16/17/18/19/20/21/22/23/24/25/26/27/28/29/30/31/32/33/34/35/36/37/38/39/40/41/42/43/44/45/46/47/48/49/50/51/52/53/54/55/56/57/58/59/60/61/62/63/64/65/66/67/68/69/70/71/72/73/74/75/76/77/78/79/80/81/82/83/84/85/86/87/88/89/90/91/92/93/94/95/96/97/98/99/00/01/02/03/04/05/06/07/08/09/10/11/12/13/14/15/16/17/18/19/20/21/22/23/24/25/26/27/28/29/30/31/32/33/34/35/36/37/38/39/40/41/42/43/44/45/46/47/48/49/50/51/52/53/54/55/56/57/58/59/60/61/62/63/64/65/66/67/68/69/70/71/72/73/74/75/76/77/78/79/80/81/82/83/84/85/86/87/88/89/90/91/92/93/94/95/96/97/98/99/00/01/02/03/04/05/06/07/08/09/10/11/12/13/14/15/16/17/18/19/20/21/22/23/24/25/26/27/28/29/30/31/32/33/34/35/36/37/38/39/40/41/42/43/44/45/46/47/48/49/50/51/52/53/54/55/56/57/58/59/60/61/62/63/64/65/66/67/68/69/70/71/72/73/74/75/76/77/78/79/80/81/82/83/84/85/86/87/88/89/90/91/92/93/94/95/96/97/98/99/00/01/02/03/04/05/06/07/08/09/10/11/12/13/14/15/16/17/18/19/20/21/22/23/24/25/26/27/28/29/30/31/32/33/34/35/36/37/38/39/40/41/42/43/44/45/46/47/48/49/50/51/52/53/54/55/56/57/58/59/60/61/62/63/64/65/66/67/68/69/70/71/72/73/74/75/76/77/78/79/80/81/82/83/84/85/86/87/88/89/90/91/92/93/94/95/96/97/98/99/00/01/02/03/04/05/06/07/08/09/10/11/12/13/14/15/16/17/18/19/20/21/22/23/24/25/26/27/28/29/30/31/32/33/34/35/36/37/38/39/40/41/42/43/44/45/46/47/48/49/50/51/52/53/54/55/56/57/58/59/60/61/62/63/64/65/66/67/68/69/70/71/72/73/74/75/76/77/78/79/80/81/82/83/84/85/86/87/88/89/90/91/92/93/94/95/96/97/98/99/00/01/02/03/04/05/06/07/08/09/10/11/12/13/14/15/16/17/18/19/20/21/22/23/24/25/26/27/28/29/30/31/32/33/34/35/36/37/38/39/40/41/42/43/44/45/46/47/48/49/50/51/52/53/54/55/56/57/58/59/60/61/62/63/64/65/66/67/68/69/70/71/72/73/74/75/76/77/78/79/80/81/82/83/84/85/86/87/88/89/90/91/92/93/94/95/96/97/98/99/00/01/02/03/04/05/06/07/08/09/10/11/12/13/14/15/16/17/18/19/20/21/22/23/24/25/26/27/28/29/30/31/32/33/34/35/36/37/38/39/40/41/42/43/44/45/46/47/48/49/50/51/52/53/54/55/56/57/58/59/60/61/62/63/64/65/66/67/68/69/70/71/72/73/74/75/76/77/78/79/80/81/82/83/84/85/86/87/88/89/90/91/92/93/94/95/96/97/98/99/00/01/02/03/04/05/06/07/08/09/10/11/12/13/14/15/16/17/18/19/20/21/22/23/24/25/26/27/28/29/30/31/32/33/34/35/36/37/38/39/40/41/42/43/44/45/46/47/48/49/50/51/52/53/54/55/56/57/58/59/60/61/62/63/64/65/66/67/68/69/70/71/72/73/74/75/76/77/78/79/80/81/82/83/84/85/86/87/88/89/90/91/92/93/94/95/96/97/98/99/00/01/02/03/04/05/06/07/08/09/10/11/12/13/14/15/16/17/18/19/20/21/22/23/24/25/26/27/28/29/30/31/32/33/34/35/36/37/38/39/40/41/42/43/44/45/46/47/48/49/50/51/52/53/54/55/56/57/58/59/60/61/62/63/64/65/66/67/68/69/70/71/72/73/74/75/76/77/78/79/80/81/82/83/84/85/86/87/88/89/90/91/92/93/94/95/96/97/98/99/00/01/02/03/04/05/06/07/08/09/10/11/12/13/14/15/16/17/18/19/20/21/22/23/24/25/26/27/28/29/30/31/32/33/34/35/36/37/38/39/40/41/42/43/44/45/46/47/48/49/50/51/52/53/54/55/56/57/58/59/60/61/62/63/64/65/66/67/68/69/70/71/72/73/74/75/76/77/78/79/80/81/82/83/84/85/86/87/88/89/90/91/92/93/94/95/96/97/98/99/00/01/02/03/04/05/06/07/08/09/10/11/12/13/14/15/16/17/18/19/20/21/22/23/24/25/26/27/28/29/30/31/32/33/34/35/36/37/38/39/40/41/42/43/44/45/46/47/48/49/50/51/52/53/54/55/56/57/58/59/60/61/62/63/64/65/66/67/68/69/70/71/72/73/74/75/76/77/78/79/80/81/82/83/84/85/86/87/88/89/90/91/92/93/94/95/96/97/98/99/00/01/02/03/04/05/06/07/08/09/10/11/12/13/14/15/16/17/18/19/20/21/22/23/24/25/26/27/28/29/30/31/32/33/34/35/36/37/38/39/40/41/42/43/44/45/46/47/48/49/50/51/52/53/54/55/56/57/58/59/60/61/62/63/64/65/66/67/68/69/70/71/72/73/74/75/76/77/78/79/80/81/82/83/84/85/86/87/88/89/90/91/92/93/94/95/96/97/98/99/00/01/02/03/04/05/06/07/08/09/10/11/12/13/14/15/16/17/18/19/20/21/22/23/24/25/26/27/28/29/30/31/32/33/34/35/36/37/38/39/40/41/42/43/44/45/46/47/48/49/50/51/52/53/54/55/56/57/58/59/60/61/62/63/64/65/66/67/68/69/70/71/72/73/74/75/76/77/78/79/80/81/82/83/84/85/86/87/88/89/90/91/92/93/94/95/96/97/98/99/00/01/02/03/04/05/06/07/08/09/10/11/12/13/14/15/16/17/18/19/20/21/22/23/24/25/26/27/28/29/30/31/32/33/34/35/36/37/38/39/40/41/42/43/44/45/46/47/48/49/50/51/52/53/54/55/56/57/58/59/60/61/62/63/64/65/66/67/68/69/70/71/72/73/74/75/76/77/78/79/80/81/82/83/84/85/86/87/88/89/90/91/92/93/94/95/96/97/98/99/00/01/02/03/04/05/06/07/08/09/10/11/12/13/14/15/16/17/18/19/20/21/22/23/24/25/26/27/28/29/30/31/32/33/34/35/36/37/38/39/40/41/42/43/44/45/46/47/48/49/50/51/52/53/54/55/56/57/58/59/60/61/62/63/64/65/66/67/68/69/70/71/72/73/74/75/76/77/78/79/80/81/82/83/84/85/86/87/88/89/90/91/92/93/94/95/96/97/98/99/00/01/02/03/04/05/06/07/08/09/10/11/12/13/14/15/16/17/18/19/20/21/22/23/24/25/26/27/28/29/30/31/32/33/34/35/36/37/38/39/40/41/42/43/44/45/46/47/48/49/50/51/52/53/54/55/56/57/58/59/60/61/62/63/64/65/66/67/68/69/70/71/72/73/74/75/76/77/78/79/80/81/82/83/84/85/86/87/88/89/90/91/92/93/94/95/96/97/98/99/00/01/02/03/04/05/06/07/08/09/10/11/12/13/14/15/16/17/18/19/20/21/22/23/24/25/26/27/28/29/30/31/32/33/34/35/36/37/38/39/40/41/42/43/44/45/46/47/48/49/50/51/52/53/54/55/56/57/58/59/60/61/62/63/64/65/66/67/68/69/70/71/72/73/74/75/76/77/78/79/80/81/82/83/84/85/86/87/88/89/90/91/92/93/94/95/96/97/98/99/00/01/02/03/04/05/06/07/08/09/10/11/12/13/14/15/16/17/18/19/20/21/22/23/24/25/26/27/28/29/30/31/32/33/34/35/36/37/38/39/40/41/42/43/44/45/46/47/48/49/50/51/52/53/54/55/56/57/58/59/60/61/62/63/64/65/66/67/68/69/70/71/72/73/74/75/76/77/78/79/80/81/82/83/84/85/86/87/88/89/90/91/92/93/94/95/96/97/98/99/00/01/02/03/04/05/06/07/08/09/10/11/12/13/14/15/16/17/18/19/20/21/22/23/24/25/26/27/28/29/30/31/32/33/34/35/36/37/38/39/40/41/42/43/44/45/46/47/48/49/50/51/52/53/54/55/56/57/58/59/60/61/62/63/64/65/66/67/68/69/70/71/72/73/74/75/76/77/78/79/80/81/82/83/84/85/86/87/88/89/90/91/92/93/94/95/96/97/98/99/00/01/02/03/04/05/06/07/08/09/10/11/12/13/14/15/16/17/18/19/20/21/22/23/24/25/26/27/28/29/30/31/32/33/34/35/36/37/38/39/40/41/42/43/44/45/46/47/48/49/50/51/52/53/54/55/56/57/58/59/60/61/62/63/64/65/66/67/68/69/70/71/72/73/74/75/76/77/78/79/80/81/82/83/84/85/86/87/88/89/90/91/92/93/94/95/96/97/98/99/00/01/02/03/04/05/06/07/08/09/10/11/12/13/14/15/16/17/18/19/20/21/22/23/24/25/26/27/28/29/30/31/32/33/34/35/36/37/38/39/40/41/42/43/44/45/46/47/48/49/50/51/52/53/54/55/56/57/58/59/60/61/62/63/64/65/66/67/68/69/70/71/72/73/74/75/76/77/78/79/80/81/82/83/84/85/86/87/88/89/90/91/92/93/94/95/96/97/98/99/00/01/02/03/04/05/06/07/08/09/10/11/12/13/14/15/16/17/18/19/20/21/22/23/24/25/26/27/28/29/30/31/32/33/34/35/36/37/38/39/40/41/42/43/44/45/46/47/48/49/50/51/52/53/54/55/56/57/58/59/60/61/62/63/64/65/66/67/68/69/70/71/72/73/74/75/76/77/78/79/80/81/82/83/84/85/86/87/88/89/90/91/92/93/94/95/96/97/98/99/00/01/02/03/04/05/06/07/08/09/10/11/12/13/14/15/16/17/18/19/20/21/22/23/24/25/26/27/28/29/30/31/32/33/34/35/36/37/38/39/40/41/42/43/44/45/46/47/48/49/50/51/52/53/54/55/56/57/58/59/60/61/62/63/64/65/66/67/68/69/70/71/72/73/74/75/76/77/78/79/80/81/82/83/84/85/86/87/88/89/90/91/92/93/94/95/96/97/98/99/00/01/02/03/04/05/06/07/08/09/10/11/12/13/14/15/16/17/18/19/20/21/22/23/24/25/26/27/28/29/30/31/32/33/34/35/36/37/38/39/40/41/42/43/44/45/46/47/48/49/50/51/52/53/54/55/56/57/58/59/60/61/62/63/64/65/66/67/68/69/70/71/72/73/74/75/76/77/78/79/80/81/82/83/84/85/86/87/88/89/90/91/92/93/94/95/96/97/98/99/00/01/02/03/04/05/06/07/08/09/10/11/12/13/14/15/16/17/18/19/20/21/22/23/24/25/26/27/28/29/30/31/32/33/34/35/36/37/38/39/40/41/42/43/44/45/46/47/48/49/50/51/52/53/54/55/56/57/58/59/60/61/62/63/64/65/66/67/68/69/70/71/72/73/74/75/76/77/78/79/80/81/82/83/84/85/86/87/88/89/90/91/92/93/94/95/96/97/98/99/00/01/02/03/04/05/06/07/08/09/10/11/12/13/14/15/16/17/18/19/20/21/22/23/24/25/26/27/28/29/30/31/32/33/34/35/36/37/38/39/40/41/42/43/44/45/46/47/48/49/50/51/52/53/54/55/56/57/58/59/60/61/62/63/64/65/66/67/68/69/70/71/72/73/74/75/76/77/78/79/80/81/82/83/84/85/86/87/88/89/90/91/92/93/94/95/96/97/98/99/00/01/02/03/04/05/06/07/08/09/10/11/12/13/14/15/16/17/18/19/20/21/22/23/24/25/26/27/28/29/30/31/32/33/34/35/36/37/38/39/40/41/42/43/44/45/46/47/48/49/50/51/52/53/54/55/56/57/58/59/60/61/62/63/64/65/66/67/68/69/70/71/72/73/74/75/76/77/78/79/80/81/82/83/84/85/86/87/88/89/90/91/92/93/94/95/96/97/98/99/00/01/02/03/04/05/06/07/08/09/10/11/12/13/14/15/16/17/18/19/20/21/22/23/24/25/26/27/28/29/30/31/32/33/34/35/36/37/38/39/40/41/42/43/44/45/46/47/48/49/50/51/52/53/54/55/56/57/58/59/60/61/62/63/64/65/66/67/68/69/70/71/72/73/74/75/76/77/78/79/80/81/82/83/84/85/86/87/88/89/90/91/92/93/94/95/96/97/98/99/00/01/02/03/04/05/06/07/08/09/10/11/12/13/14/15/16/17/18/19/20/21/22/23/24/25/26/27/28/29/30/31/32/33/34/35/36/37/38/39/40/41/42/43/44/45/46/47/48/49/50/51/52/53/54/55/56/57/58/59/60/61/62/63/64/65/66/67/68/69/70/71/72/73/74/75/76/77/78/79/80/81/82/83/84/85/86/87/88/89/90/91/92/93/94/95/96/97/98/99/00/01/02/03/04/05/06/07/08/09/10/11/12/13/14/15/16/17/18/19/20/21/22/23/24/25/26/27/28/29/30/31/32/33/34/35/36/37/38/39/40/41/42/43/44/45/46/47/48/49/50/51/52/53/54/55/56/57/58/59/60/61/62/63/64/65/66/67/68/69/70/71/72/73/74/75/76/77/78/79/80/81/82/83/84/85/86/87/88/89/90/91/92/93/94/95/96/97/98/99/00/01/02/03/04/05/06/07/08/09/10/11/12/13/14/15/16/17/18/19/20/21/22/23/24/25/26/27/28/29/30/31/32/33/34/35/36/37/38/39/40/41/42/43/44/45/46/47/48/49/50/51/52/53/54/55/56/57/58/59/60/61/62/63/64/65/66/67/68/69/70/71/72/73/74/75/76/77/78/79/80/81/82/83/84/85/86/87/88/89/90/91/92/93/94/95/96/97/98/99/00/01/02/03/04/05/06/07/08/09/10/11/12/13/14/15/16/17/18/19/20/21/22/23/24/25/26/27/28/29/30/31/32/33/34/35/36/37/38/39/40/41/42/43/44/45/46/47/48/49/50/51/52/53/54/55/56/57/58/59/60/61/62/63/64/65/66/67/68/69/70/71/72/73/74/75/76/77/78/79/80/81/82/83/84/85/86/87/88/89/90/91/92/93/94/95/96/97/98/99/00/01/02/03/04/05/06/07/08/09/10/11/12/13/14/15/16/17/18/19/20/21/22/23/24/25/26/27/28/29/30/31/32/33/34/35/36/37/38/39/40/41/42/43/44/45/46/47/48/49/50/51/52/53/54/55/56/57/58/59/60/61/62/63/64/65/66/67/68/69/70/71/72/73/74/75/76/77/78/79/80/81/82/83/84/85/86/87/88/89/90/91/92/93/94/95/96/97/98/99/00/01/02/03/04/05/06/07/08/09/10/11/12/13/14/15/16/17/18/19/20/21/22/23/24/25/26/27/28/29/30/31/32/33/34/35/36/37/38/39/40/41/42/43/44/45/46/47/48/49/50/51/52/53/54/55/56/57/58/59/60/61/62/63/64/65/66/67/68/69/70/71/72/73/74/75/76/77/78/79/80/81/82/83/84/85/86/87/88/89/90/91/92/93/94/95/96/97/98/99/00/01/02/03/04/05/06/07/08/09/10/11/12/13/14/15/16/17/18/19/20/21/22/23/24/25/26/27/28/29/30/31/32/33/34/35/36/37/38/39/40/41/42/43/44/45/46/47/48/49/50/51/52/53/54/55/56/57/58/59/60/61/62/63/64/65/66/67/68/69/70/71/72/73/74/75/76/77/78/79/80/81/82/83/84/85/86/87/88/89/90/91/92/93/94/95/96/97/98/99/00/01/02/03/04/05/06/07/08/09/10/11/12/13/14/15/16/17/18/19/20/21/22/23/24/25/26/27/28/29/30/31/32/33/