

INSIDE

Happenings	2
Rotary/Lions	6
Sororities	10
Want Ads	11
Obituaries	12

The Hansford County Reporter-Statesman

Serving All of Hansford County

12 pages

WEATHER

Day	HI	Lo	Precip
Thu	50	31	.00
Fri	53	27	.00
Sat	47	26	.00
Sun	56	30	.00
Mon	55	27	.00
Tue	56	40	.00
1992 Precip			1.02

VOL. 84, NO. 16

213 Main

Spearman, Hansford County, Texas

25°

THURSDAY, FEBRUARY 13, 1992

GISD superintendent . . .

Cathey submits resignation

by JoAnn Morton
Editor

Tom Cathey has resigned his position as superintendent of Gruver Independent School District, effective June 30.

The GISD Board of Trustees accepted Cathey's resignation at its Wednesday, Feb. 5 meeting. Cathey said he will seek a similar position at another school, but has no firm plans for the future.

The board discussed the replacement of Cathey as superintendent, and will accept applications for the superintendent's position until about April 3, said Cathey.

The Gruver school board also heard a report from Bob Burgoon, District Educational Improvement Committee chairman. The committee is charged with looking at the district's 1992-93 budget and making recommendations for possible budget cuts. Five recommendations for budget cuts were presented by the committee, including:

- (1) Co-curricular activities reduction;
- (2) Instructional program reduction;
- (3) Staff reduction;
- (4) Salary freezes; and
- (5) Above-base increment reduction.

The board took no action on the recommendations, but will study the proposed budget cuts for possible future action.

The GISD School Board election

was set for Saturday, May 2.

Benny McClenagan, senior, was recognized as Gruver High School Student of the Month. He is the son of Dean and Rosie McClenagan.

Margaret Fry, business manager, presented 1992-93 budget worksheets to board members and discussed the current year's budget with them. She also informed the board about investment of district funds.

Board members discussed 1992-93 athletic budgets with the head football and basketball coaches but took no action at this meeting.

Cafeteria bids were opened and were awarded to San Jacinto Foods and Ben E. Keith. Property insurance was discussed and tabled for action at the next meeting. Yvette Miller was approved for inclusion in the 1991-92 substitute teachers list. Approval was also given to payment of bills in the amount of \$46,215.16.

After an executive session to discuss personnel matters, the board voted to renew the contracts of Barry Haenisch, high school principal, and Bob Burgoon, elementary principal. The board had hired Laura Blassingame for the junior high principal's position at the previous meeting. She will replace Bill Duncan, who is scheduled to retire at the end of this school year after 37 years.

Board members discussed a district policy update, to outline tu-

ition charges for out-of-district students who attend GISD schools.

School board members' training hours were reviewed, and the board also reviewed a schedule which compares staff salaries in Gruver with those in other area districts.

A new law, which will become effective Sept. 1, was discussed. The law states that each school district in the state shall develop and implement a plan for site-based decision making, and submit its plan to the commissioner of education for approval. Each district's plan must establish school committees, must deal with campus performance objectives and outline the role of the school committees regarding decision making.

Cathey explained that the committee formed by GISD was the District Educational Improvement Committee. Committee members include two representatives from each school campus and one representative from school administration.

Bob Burgoon, administration representative, serves as the committee chairman. Other committee members include Diane Brown and Kay Hobbs, elementary representatives; Charles Haight and Pat Dawson, junior high representatives; and Debbie Odom and Lloyd Looper, high school representatives. The superintendent serves as a moderator and liaison between the committee and the school board.



Elder Roger Odegaard and Minister Arnis Pape stand at the pulpit of the recently completed chapel of the Spearman Church of Christ. A special dedication service and open house will be held Sunday, Feb. 16. The church will have an appreciation dinner for members of the Lutheran and Presbyterian churches, who allowed the Church of Christ congregation to use their building while the new one was being built.

Lady Hounds capture district

by Bob Bort

"I've never coached a team that's improved so much from the first day of school, to this point," says Gruver Lady Hounds coach Steve Myatt. "This team can go as far as they want to go - it's just that I don't know what they believe, yet."

The Gruver Lady Hounds took the first step to going as far as they want to go, with a district championship clinching 50-32 victory over the Booker Lady Kiowas Tuesday, Feb. 11 at Booker.

The Lady Hounds started slow

the first half, leading only 19-18 at halftime, but came out roaring in the second half.

"We came out determined to play in the second half," states Myatt. Julie Meyer scored the first seven points of the half for the Gruver ladies, and they went on a 15-0 run to make a 22-20 game 37-20.

"Believing in themselves is the key," says Myatt. "This team can play at a level they haven't reached yet. They are really young. But I have to say that they are great kids to work with, and it's been a lot of

fun working with them."

This is Myatt's third district championship in four seasons as head coach, all at different schools.

"At the start of the year, we were picked first, second or third, depending on where you looked, and we ended up dominating district," says Myatt. That is a credit to how hard the Gruver girls have worked.

Mika McLain had a really nice night, hitting consistently from about 16 feet, and scoring 14 points.

See ladies page 8

Livestock practice show held

Members of the Spearman 4-H and FFA organizations gathered at the Hansford County Barn in Spearman Saturday, Feb. 8, to show livestock at the Spearman Practice Show.

The event gave the participants the opportunity to see how their animals compare with their fellow competitors. The participants can then be better prepared for the County Junior Livestock Show, to be held March 10 and 11.

Taking Grand Champion honors in the swine show was Reagan Renner. His Hampshire pig also captured Breed Champion as well.

Capturing Reserve Grand Champion Swine was the Cross-breed pig shown by Ronnie Ring. Taking Showmanship ribbons were Jeremy Mackie, Junior, and Barry Eddleman, Senior.

In the lamb division, the lamb shown by Tommi Latta took the Grand Champion trophy. Leslie Latta's lamb was declared Reserve Grand Champion. The Showmanship ribbons were taken by Mackie, Junior, and Leslie Latta, Senior.

In the steers, Ashley Brown showed the Grand Champion. Reagan Renner showed the Reserve Grand Champion. Junior Showmanship honors were taken by Cody Brooks and Senior Showman-

ship was awarded to Kevin Williams.

Following is a listing of the rest of the entrants and how they finished as supplied to the Reporter-Statesman by the Hansford County Extension office.

SWINE

Chester-York: 1st - Melissa Baker - Breed Champion; 2nd - Misti Pearson - Reserve Breed Champion; 3rd - Jeremy Piatt; 4th - Nancy Flores; 5th - Clay Scribner;

6th - Camille Smith; 7th - Clay Scribner.

Duroc - Class #1: 1st - Shane Schneider; 2nd - Dustin Mackie; 3rd - Jennifer Schnell; 4th - Cameron Kunselman; 5th - Clint Schnell.

Class #2: 1st - Tashi Schumann - Breed Champion; 2nd - Mark Eakin; 3rd - Chelsea Nollner; 4th - Lindsey Smith.

See show page 8

Reporter-Statesman to increase copy price

As you, our Hansford County readers, know the cost of living and doing business in this area has increased in the last 10 years, yet the price of the newspaper has stayed the same.

Because of the increase in the cost to produce the paper, it is necessary that the cost of the Hansford County Reporter-Statesman will increase to 50 cents on March 5, 1992.

This step was taken after much discussion by the staff and the owners of the paper. With the tough economic times here in Hansford County it is a step taken reluc-

tantly. But if the paper is to continue to record the history of Hansford County with words and pictures, it must support itself.

The price of advertising in the Reporter-Statesman and the cost of a yearly subscription to the paper will not increase at this time. Yearly subscribers to the paper will continue to pay only \$19.95/yr. in county and \$24.95/yr. out of county.

Advertising space will continue to sell at our regular inch rate of \$2.90 per column inch. Classified and invitation ads will still cost the same as they have for the last six years.

Greyhounds are district champs

by Bob Bort

For the fourth consecutive year, the Gruver Greyhounds are the champions of District 1-A.

The Greyhounds defeated the Booker Kiowas 52-39 at Booker Tuesday, Feb. 11, for their 10th consecutive victory. The Hounds will now prepare for their bi-district match against the District 2-A runners-up Claude Mustangs in a couple of weeks, following their

season finale at home against Wheeler this Friday.

"This team is stronger defensively than we've ever been these past four seasons," says Hounds coach Tim Garland, "and for that reason I think we can go as far or farther than the other teams did. This may be the best defensive club that Gruver has ever had."

The past three years, the Hounds have advanced to the Regional

Tournament at Levelland.

Garland goes on, "This team is a team of winners. I can't say enough about the unity of the team - that is the key to our success, this team is a unit, an extended family."

The Hounds are currently ranked sixth in the state of Texas. In addition to their 10 straight wins, they will be going for their 14th

See Hounds page 8

Republican candidates listed

On the Republican side of the Primary ballot there are two offices which have more than one candidate running. They are County Commissioner Precinct I and Republican Precinct I Chairman.

Running for Precinct I County Commissioner are Worley Smith and J.P. Davis. For the Republican Precinct I Chairman position Randy Kirk is running against

Carla Woodington.

The help the Republican voters of Hansford County decide on who to vote for, the Reporter-Statesman is running the answers to our questionnaire, submitted by these candidates.

These are the last of the candidate answers and profiles of contested races in the primary that the paper received.

Jerry Pat Davis

I think taxes are the number one concern of the people in our immediate area. I believe the citizens of Hansford County are sick and tired of the cost of living getting higher and higher every year. And I believe this escalation in cost of living is due largely to taxes. I would address this issue open mindedly, but also with a conservative approach.

I don't believe there are any radical changes that need to be made. I'm not running for County Commissioner to oust any elected official, but rather to fill a spot vacated by the death of my good friend, Garland Head. I don't plan on making waves, but I do plan on standing up for the people in my precinct, and doing my best to see to it that they get a fair shake on the issues

that they are most concerned with. There is a lot of oil and gas production in my precinct, and I believe the roads need to be in good shape so the producers can get to their leases. There are also many dirt and caliche roads in my precinct that need attention, so the farmers and ranchers can get to their places of business.

The quality of life in our county is a very important issue that concerns us all. I believe that we need to always be mindful of the immediate future, and certainly the future of our children. The county needs to be run like any good business, and with the insight that will allow growth and prosperity for all. Yet, I am very conservative by nature, and will have to be very convinced before I could agree to spend money on projects that may affect the quality of life of my grandchildren.

I believe the attributes that I possess that will enable me to serve Hansford County Precinct I are: an open minded willingness to see both sides of every issue; the desire to serve and the ability to serve, as I know this county very well, since I am a lifelong resident; I will have a very conservative approach, yet will

See candidates page 7



(photo courtesy Hansford County Extension Service)

Tommi Latta poses with her Grand Champion Lamb.



(photo courtesy Hansford County Extension Service)

The Grand Champion Steer was shown by Ashley Brown.

Chamber Chatter

by Cindy Blackman
Chamber Manager

There is so much going that it is hard to report on anything! Our Chamber Banquet is coming along and it is going to be lots of fun and the Women's Division is doing a really good job on the decorations. The tickets are still on sale at the Chamber office or call any of the directors and they will see to it that your tickets are delivered. The phone at the Chamber office is 659-5555 or come by 211 Main St. Tickets can be purchased until Saturday morning, February 22.

Work has already started on the Hansford County Round-up that will be held June 5-6. We are looking for people to help with the different activities that are being planned so if you would like to help just give me a call. Craig and Beverly Vinson are chairmen of the parade. There are a few new ideas about the barbecue. We will be letting you know what we are doing there later on.

A lot of good things came out of our last board meeting and 1992

looks like it will be a good year for Spearman with some new activities being planned.

Remember the Chamber of Commerce Banquet, Saturday, February 22 at 7 p.m. in the high school cafeteria. Ivey's Hungry Cowboy will be catering the meal and Laquita Evans will be the entertainment for the evening. Tickets are \$17.50 for chamber members and \$20.00 for non-members.

RETAIL MERCHANTS

Spearman Retail Merchants met Wednesday, Feb. 5 at the Chamber of Commerce office with the President, Eulalia Blankenship, presiding.

A Spring Style Show is being planned for Sunday, March 22. There will be refreshments served. Cheryl Sander volunteered to be chairman, and thanks were expressed to her.

Anyone wishing more information is invited to call the Spearman Chamber of Commerce office at 659-5555.

Hansford Happenings

USDA commodities will be distributed to those eligible on Wednesday, Feb. 19 from 1 to 5 p.m. at the Hansford County Barn in Spearman. Anyone not recertified by this date will not be able to receive commodities. No new applications will be accepted on this date.

Hansford Hospice Volunteers will meet Monday, Feb. 17 at 7 p.m. in the Community Room of First State Bank of Spearman.

Spearman La Leche League Group will meet Friday, Feb. 21 at 9:30 a.m. at 407 S. Haney in the First United Methodist Church nursery room. The group informally discusses different phases of breastfeeding and offers mother-to-mother help, including the latest medical research. The topic for this meeting is "The Birth of Your Baby and Baby's First Weeks." Expectant mothers are especially encouraged to attend. All women who are interested in breastfeeding are invited, as are their babies. More information about the Spearman La Leche League Group can be obtained by calling 659-2962.

Women's Division of the Spearman Chamber of Commerce will meet Wednesday, Feb. 19 at noon at the First State Bank Hospitality Room for a brown bag lunch.

Hansford County Extension Service is offering training for anyone between the ages of 8 and 19 who would like to become a better consumer. Current 4-Hers are asked to attend, but an invitation is also extended to anyone not currently enrolled to find out what this project is all about. The project will begin Thursday, Feb. 13 at 4 p.m., meeting at the Extension office in the basement of the Hansford County Courthouse, for approximately one hour. No experience is necessary.

Spearman Chamber of Commerce's annual banquet is scheduled for Saturday, Feb. 22 at 7 p.m. in the Spearman High School cafeteria. Featured speaker will be Bill Brown of Lubbock. Awards to be presented include Citizen of the Year, Citizen Over the Years, Women's Division Member of the Year, Rotary Club Employee of the Year and the Spearman Volunteer Fire Department Fireman of the Year. Tickets are priced at \$17.50 for chamber members and \$20 for non-members. Tickets are available by calling 659-5555.

Gruver High School students who are interested in a European educational tour this summer can obtain information from Cathy Potts, school counselor. An informational meeting of interested students and their parents is scheduled for Thursday, Feb. 13 at 7 p.m. in the Gruver High School library.

Perryton Family Services Center is now scheduling appointments in Spearman, in the lobby of the Baker Hotel, 420 Davis, for mental health services to residents of Hansford County. John R. O'Nan is director and therapist for Perryton Family Services Center. Appointments can be scheduled by calling 435-3671.

A Valentine Dance for 7th and 8th grade students will be held Friday, Feb. 14 from 8 to 11 p.m. at the Hansford Activity Center, 501 S. Hazelwood in Spearman. Admission is \$3 per person.

"Noonliffing" is scheduled for Tuesdays at noon in the Extension Homemakers clubroom, 309 N. Bernice in Spearman, beginning Tuesday, Feb. 11. Those attending are asked to bring a sack lunch. Drinks will be provided. "Noonliffing" in Gruver is set for Wednesdays at noon in the LaCasita Room of Gruver State Bank beginning Wednesday, Feb. 19.

Police Files

Spearman Police Department During the week of Feb. 3-9, the Spearman Police Department logged a total of 30 calls for service.

Included in those calls were one report of larceny/theft, one report of DUI, four reports of suspicious activity, one vehicle fire, one alarm response, one ambulance call, two miscellaneous calls for officers, three vehicle lockouts and one family fight. Animal control calls totaled 15.

Included in incident reports for those calls was one reported theft from a motor vehicle. Thirty-one compact discs and a carrying case were reported stolen from a vehicle parked at the junior high school on Feb. 4.

On Feb. 7, the Spearman Police Department received a report that a 19 year old woman was assaulted by a 29 year old man. The man was later arrested in Perryton on the assault charge, according to the police department's incident report.

A 44 year old man was arrested for DUI on Feb. 7 at the city limits on Highway 15 East.

Units from the Spearman Fire Department and the Spearman Police Department responded to a vehicle fire in the 600 block of East Kenneth on Feb. 7. The fire was ruled accidental, according to a police incident report.

Gruver Police Department

Gruver police received a complaint from a resident in the 400 block of Front, regarding telephone harassment, on Monday, Feb. 3.

Also on Feb. 3, police were called to unlock a vehicle in the 500 block

of Richardson.

On Tuesday, Feb. 4, Gruver police investigated a minor traffic accident in the parking lot at Gruver Junior High School.

A vehicle in the 300 block of Cooper was unlocked on Wednesday, Feb. 5.

On Friday, Feb. 7, Gruver police were asked by the Hansford County Sheriff's Department to go north on Highway 136 out of Gruver and attempt to locate a semi tractor-trailer rig which was reported to be leaking an unknown substance onto the highway. The truck was not located.

Also on Feb. 7, police received a complaint from a resident about men selling firewood. The resident reported that after having reached an agreement with the men and paying them for a certain amount of firewood, the men left only about one-third the amount of wood that was agreed upon. The resident located the men and recovered his money, the men picked up their wood and apparently left Gruver. Police were unable to locate the men after the report.

A vehicle in the parking lot behind the varsity gym was unlocked on Friday, Feb. 7.

On Saturday, Feb. 8, police and Gruver ambulance responded to a sick call in the 300 block of Richardson. A woman was taken to Memorial Hospital suffering from the effects of inhaling toxic fumes.

Gruver Police Chief Steve Gaines reports that one citation was issued for disregarding a stop sign, and one warning was issued for defective equipment.

Morse Lions set program

Eck Spahich of Borger, former resident of Communist Yugoslavia, is concerned for people in his native Croatia, currently struggling for freedom, democracy and international recognition.

He will make an appeal to members and guests of Morse Lions Club, at 7 p.m. Tuesday, Feb. 18, in the Pringle-Morse School cafeteria.

Spahich, a Realtor and journalist, grew up in the communist country, coming to the United States as a teenager after a special bill was introduced and passed in Congress under the sponsorship of former U.S. Rep. Walter Rogers of Pampa. He joined his father in Dumas, after more than 15 years of separation.

Ed Papay, program chairman, said Spahich will share the story of

Croatian people, who are suffering from Communist aggression.

Last June, Croatia and neighboring Republic of Slovenia seceded from the central Communist government in Belgrade, and fighting has ensued.

Thousands of persons have been killed and more than 700,000 have been forced to flee their homes in Croatia seeking refuge away from fighting.

"We feel this is a timely program for our community due to the current violent situation in former Yugoslavia, which worsens with each passing day," Papay said.

Papay invites area residents to hear the guest speaker. Reservations may be made by calling Papay at 733-2797, or Pringle-Morse School 733-2507.

Public Notice

Southwestern Bell Telephone Company recently filed an application with the Public Utility Commission of Texas (PUC) for approval to redefine the location of the demarcation point, or demarc. The demarc is where Southwestern Bell Telephone wiring connects with customer-maintained wiring.

This request will not increase customers' service rates. This request simply changes the point within the wiring where Southwestern Bell's maintenance responsibility ends and the customer's maintenance responsibility begins. As before, customers will be able to connect their own wiring directly to Southwestern Bell's network at points up to the new demarc.

Southwestern Bell is seeking approval of this new demarc location to bring its tariff into compliance with a Federal Communications Commission Order in CC Docket 88-57.

More information will be included in customers' bills beginning February 1, 1992. Persons who wish to comment on the application should notify the PUC by March 20, 1992. Requests for further information should be mailed to the Public Utility Commission of Texas, 7800 Shoal Creek Blvd., Suite 400N, Austin, TX 78757, or you may call the PUC Public Information Office at (512) 458-0256 or (512) 458-0221, teletypewriter for the deaf.



Southwestern Bell Telephone

The Problem of Theft

by Charles H. Ridge, M.D.

My wife and I went to lunch once in the best hotel in Angeles City. The manager, hoping to impress us with the quality of his accommodations, boasted:

"See that air-conditioner? We got it from the base." He also told us that all the tables and chairs came from the same place. And, he added, "We get all our food from the base." He wasn't the least bit embarrassed about having stolen all these items from the U.S. military.

Once, while we were there, about \$75,000 worth of new electronic and radar equipment was placed in a storage shed. One morning, when the building was opened, all the equipment was gone. The base commander went to only one source to recover the items. He saw the Mayor of Angeles City.

"If by tomorrow," he told the mayor, "all the equipment is not back where it was, I'll declare all of Angeles City off limits to all U.S. military personnel." This would have been an economic catastrophe for the city. The next day, when the building was opened, all the equipment was there.

The worst theft was committed, not by the desperately poor, but by the wealthy and powerful. One of my patients, who was in a key

position in the supply section, told me that the amount of U.S. government property stolen in the Philippines amounted to approximately a million dollars a month. That figure did not include personal property lost by U.S. citizens.

We had a saying at Clark: "Everything on the base has been stolen. They just haven't picked it all up yet."

Our government never informed the public about this aspect of our military presence in the Philippines. We were simply told how important it was for us to have bases there.

At the movies . . .

Beginning Friday, Feb. 14 and running through Tuesday, Feb. 18 at the Lyric Theatre in Spearman, "Father of the Bride" will be shown on Screen 1 at 7:30 p.m. Held over for the second week on the Lyric's Screen 2 at 7:15 p.m. will be "Hook."

Steve Martin takes over for Spencer Tracy in "Father of the Bride," a modernization of the 1950 classic about pre-wedding chaos.

Diane Keaton co-stars as Martin's wife, while Kimberly Williams is their daughter the bride, a role played in the original by Elizabeth Taylor.

In this new version, Martin's George Banks is a politically correct, sensitive dad who cannot bear to see his only little girl tie the knot, even though she has nearly completed her studies and has already traveled abroad.

In this household, Mom wears the pants, maintaining her composure, while Dad is a basket case. Thrown in for good measure are some wacky in-laws and an effete, foreign-born wedding consultant.

Martin is very funny, his expressions speaking volumes as he tries to cope against the sweeping force of his daughter's impending nuptials. Keaton's timing and delivery are on the money, and she and Martin make a winning screen couple.

In her film debut, Williams holds her own as daughter Annie. Martin Short commits Grand Theft Celluloid as Franck (pronounced "Fronk"), the wedding consultant from an unknown country.

"Father of the Bride" is rated PG.

At The Lyric Theatre . . .

Friday, Feb. 14 - Tuesday, Feb. 18
Bargain Nights Mon. & Tue. All Seats \$3
Closed Wednesday & Thursday
Screen 1 - 7:30 p.m. Screen 2 - 7:15 p.m.



113 Main, Spearman

THE SIMPSONS
VALENTINE'S DAY
7:00 PM
CABLE CH. 22 GRUVER / 14 SPEARMAN

90210
VALENTINE'S DAY
8:00 PM

The Hansford County Reporter-Statesman

"Serving All Of Hansford County"

USPS 509660
213 Main, Box 458, 659-3434
Spearman, TX 79081
Published Weekly at
213 Main, Spearman, Texas
Owned and Operated by:
Texas Independent Newspapers, Inc.
15915 Alsace
San Antonio, TX 78232
(512) 545-1739

Second Class postage paid at Spearman, Texas 79081.

Any erroneous reflection upon the character of any person or firm appearing in these pages will be gladly and promptly corrected upon being brought to the attention of the management.

Publisher - Robert M. Hulett
Editor - JoAnn Morton
Bookkeeper - Sheila LaRochelle

Subscription Rate: Hansford County, \$19.95; out of county, \$24.95 annually.

Postmaster: Send address changes to Hansford County Reporter-Statesman, Box 458, Spearman, TX 79081.

The publisher reserves the right to revise or reject at its option any advertisement which it deems objectionable, either in subject or phraseology, or which it may deem detrimental to its business.

Advertising and Story Deadlines: Tuesday, 12:00 p.m.

MEMBER
TEXAS PRESS ASSOCIATION

Karen's Kozy Korner

by Karen Babitzke
Extension Agent

The Meaning of Money

At a very early age, as soon as they can react to foods they like or don't like to taste, children influence family spending practices. Children's wants are part of the family budget.

Children are constantly getting messages from friends, television, radio, music and movies - and sometimes they hear their parents' messages about money and making decisions about its use. They learn more about money by watching their parents than by hearing what their parents say about money.

However, families who talk about money and make decisions together help children develop skill in making decisions about money. Teaching children to be responsible for money is a critical life skill learned in the family. How can you help your children become responsible money managers?

As preschoolers, they learn by touching and choosing. Let your child choose among three items in a store. Accept the child's decision. Give your child the money to hand to the salesperson. If disappointment results from the choice made, don't give more money. Learning occurs from failures as well as success.

Small children can begin to understand how jobs and money work together to meet family needs. Let children do small chores without pay to learn that every family member shares the workload at home ... like keeping their room straight, washing dishes or carrying out trash. Pay only for jobs you would pay someone else to do, like cleaning rooms other than their own. Be certain "jobs for pay" are safe and appropriate for the child's motor skill and judgement.

As they enter school age, some children hoard money. This just means they have figured out that money is a limited resource. An allowance can be used to let children learn to plan for spending, sharing and saving. For example, if a young child is given \$1 a week for an allowance, plan with them to decide how much they will save to buy gifts or something special they want. Let them decide how much they can spend when they go to the store with you, and how much they might give to church or charity. Help them practice math skills being learned at school to track how savings add up and how spending reduces resources.

As youth develop skills and accept responsibilities for money management, involve them in planning their personal and school expenses. Help them find opportunities to earn part of their money needed to meet their needs and wants. Involve them in deciding how much their allowance should be, according to their needs. Avoid paying for good grades, chores well done, or good behavior. Payment for these blocks their "inner sense of accomplishment."

As children move toward their teen years, they can understand family spending. Let them help with shopping to see how choices have to be made between products to meet as many needs and wants as possible with the money available. Shopping for food and clothes with a budget limit helps youth understand the buying power and limits of the family's income.

The teen years are a time when youth are developing increased responsibility and self-reliance while still dependent on their family for basic needs. They want and need to decide how to spend their money.

They need to experience the consequences of their decisions. Complement their goals being reached.

When mistakes are made, remember that positive guidance is still more powerful than punishment or criticism. Don't make up their losses. Help them think through what happened, their options for resolving any problem they may be facing, and how they could choose differently if they face the same consumer decision again.

Teens need to be involved in making family financial decisions. Involve them in planning for their education or career preparation. Let them help keep family financial records, balance the checking account and figure the full cost of things your family buys with credit. Have them figure the cost of owning and operating the family car. These are realistic ways teens can learn to become responsible adults.

Teaching children about money helps all family members work together to reach goals with the resources they have. Planning together helps children learn early that choices have to be made and goals can be reached by planning and making informed choices.

New Product Makes Dairy Food Consumption Easier

Are you one of 30 to 60 million people who can't stomach dairy foods? Have you ever had a problem with your digestive tract when you drink milk or eat dairy products? Today many lactose-intolerant consumers can enjoy dairy products by using one of several commercial products containing an acid-active lactase (drops) to pre-treat milk products to reduce lactose content.

Remember if for this reason you have not eaten milk products - the most appropriate source of calcium - then start eating the recommended number of servings daily.

PLA sets annual meeting in Amarillo

The Panhandle Livestock Association, the oldest organization in Northwest Texas, will hold its 77th annual meeting Saturday, Feb. 22 at the Harvey Hotel in Amarillo.

Nancy McIntyre, president of the organization, said the convention will begin at 9 a.m. with registration in the atrium. At 10:30 a.m. the board of directors will meet. At noon there will be a luncheon and fashion show, by Images in Pampa. Models will be Association members' wives. The guest speaker will be Jack Moreman, director of Clarendon College Ranch and Feedlot Management School.

The Panhandle Livestock Association was formed in 1915 when 18 well-known Panhandle cattlemen got together to form the Buyers and Sellers Livestock Association. The Association began when rail service came to Amarillo.

In 1908, the Santa Fe Railroad made application to the Texas Legislature for permission to abandon its line from Panhandle to Washburn and construct a shorter line from Panhandle to Amarillo. The attorney for Santa Fe appeared before the lawmakers in support of the Panhandle-to-Amarillo route, but the proposition was voted down by a large majority of the legislators.

A prominent cattleman, J.H. Avery, then asked 198 Amarilloans to write legislators to request reconsideration of Santa Fe's application. On the second vote the proposition passed by a large margin.

With the coming of the rail line, it was necessary for the cattlemen to organize. Avery wrote of the situation at the time:

"From 1901 to 1909 the livestock

shipments over the Santa Fe Railroad from West Texas, New Mexico, Arizona and Oklahoma was in a deplorable state, and most cattlemen were held up from a few days to two weeks at shipping points, waiting for stock cars, and a small percent were unable to get shipments out and had to return to their ranch, resulting in a long list of lawsuits."

Finally, the area cattlemen formed the Buyers and Sellers Livestock Association, soon changing its name to the Panhandle Livestock Association. Since then, the PLA has served the interests of Panhandle cattlemen, including through conventions.

This year a new purpose seemed appropriate for the Association. A scholarship will be started at Clarendon College Ranch and Feedlot Management School for a young man or woman interested in the ranching industry. A silent auction, held during the cocktail party, will fund this scholarship. The cocktail party and auction will begin at 6:30 p.m. A dance will follow beginning at 7:30 p.m. The Khiva Shrine Western Swing Band will provide the music. Breakfast will be served at 11 p.m., ending the day's events.

Reservations must be made by Feb. 17. Reservations for the entire day will be \$50 per person. Annual membership dues in the PLA are \$25. For additional information, contact Nancy McIntyre at 806-659-2083.

Hometown news

LUBBOCK - More than 2,500 Texas Tech University students qualified for the academic honors lists at the end of the 1991 fall semester.

Students on the President's List earned a perfect 4.0 (A) grade point average while enrolled in 12 or more credit hours of classwork. Students finishing 12 or more hours with a grade point average of 3.5 to 3.9 qualified for the Dean's List.

Students making the honor rolls include Jill Denise Garrett of Gruver, senior mathematics major, Dean's List; Holly Kaye Meyer of Gruver, senior family studies major, Dean's List; Carrie Ann Guthrie of Spearman, senior public relations major, Dean's List; Krista Lea Kirkland of Spearman, junior exercise and sports sciences major, Dean's List; Laci Ann Lasater of Spearman, junior mathematics major, Dean's List; Thomas Kevin Nelson of Spearman, senior accounting major, Dean's List; Lori Lynette Williams of Spearman, senior early childhood major, Dean's List; Camila Leann Butts of Spearman, freshman finance major, President's List; Kyla Denann Nelson, sophomore, President's List; and Marci Jean Womble of Morse, freshman, Dean's List.

LUBBOCK - More than 1,500 students at Texas Tech University received degrees during December commencement exercises. Degree recipients included Tracy Dawn Saltzman of Gruver, bachelor of arts in multidisciplinary studies; and Allen Wayne Gardiner

of Spearman, bachelor of business administration in finance and economics.

Army Sgt. Morton C. Conley, a cannon crewman, has arrived for duty at Fort Richardson, Alaska.

He is the son of Sandra J. Mills of Stinnett and Bobby F. Conley of Kimmell, Ind.

The sergeant is a 1983 graduate of Stinnett High School.

CANYON - Debra S. Davis and Alice N. Schroyer, both of Morse, are among 591 West Texas State University undergraduates named to the Deans' List for the 1991 fall semester.

Students on the Deans' List achieved a semester grade point average of 3.250 (of a possible 4.000) or better with a minimum class load of 12 undergraduate hours.

Davis is a senior reading major and Schroyer is a senior accounting major.

SAN MARCOS - Duane A. Barker of Spearman is among the 1,588 students whose 1991 fall semester grades earned them a place on the dean's list at Southwest Texas State University.

To qualify for the academic honors listing, an undergraduate student must have earned a grade point average of at least 3.5 during the semester while taking at least 12 semester hours of course work.

TEXAS

It's Like A Whole Other Country.



PHIL BLACK

Republican
for

84th District Court Judge

VOTE
MARCH 10
REPUBLICAN
PRIMARY

- 14 YEAR AS AN ACTIVE PRACTICING ATTORNEY
- FORMER CITY PROSECUTOR
- FORMER ASSISTANT DISTRICT ATTORNEY
- INSTRUCTOR OF CRIMINAL LAW AND CIVIL LITIGATION AT FRANK PHILLIPS COLLEGE
- BORN AND RAISED IN THE TEXAS PANHANDLE

Felony Prosecution Experience

PHIL BLACK Has It All....
The EXPERIENCE...The DEDICATION...
The GOOD JUDGMENT...The ABILITY...
The COMPASSION...The MATURITY!

Phil Black Is A Credit to the Texas Panhandle's 84th Judicial District!

A firm hand...
A just hand...
Elect Phil Black

Pol. Adv. Pd. for by the Committee to Elect Phil Black, Tom Snider, Treas. P.O. Box 3335, Borger, TX.

SPECIALS GOOD WHILE SUPPLIES LAST. PRICES EFFECTIVE FEB. 13-19, 1992

WE ACCEPT FOOD STAMPS AND MANUFACTURERS' COUPONS
MONEY ORDERS 29¢

305 W. KENNETH, SPEARMAN
101 MAIN, GRUVER

DUBUQUE FRANKS
12 OZ. PKG.
69¢

MELLO-CRISP BACON
1 LB. PKG.
99¢

PEPSI
ALL TYPES PEPSI-COLA
6 PACK/12 OZ. CANS
\$1.89

FAMOUS ALLSUP'S BURRITOS
BUY ONE GET ONE FREE

ALL PURPOSE GOLD MEDAL FLOUR
5 LB. BAG
79¢

SAUSAGE, EGG & BISCUIT
EACH
89¢

HOT FOODS MENU AVAILABLE AT ALL ALLSUP'S LOCATIONS

BARBECUE BEEF SANDWICH	99¢	9 PIECE BOX CHICKEN	\$4.99
BARBECUE PORK RIBS (LB.)	\$3.99	BEF & CHEESE CHIMICHANGA (MEAT)	\$1.19
BARBECUE WHOLE CHICKEN	\$3.99	CORN DOG	69¢
ALLSUP'S BURRITO	79¢	DELICIOUS HAMBURGER	59¢
BREAKFAST BURRITO	99¢	WILSON HOT LINKS	99¢
BURRITO BEEF & SALSA	\$1.19	SAUSAGE ON A STICK	\$1.59
DELICIOUS CHEESEBURGER	79¢	SAUSAGE & BISCUIT	79¢
CHICKEN FRIED STEAK	\$1.59	SAUSAGE, EGG & BISCUIT	\$1.09
3 COUNT CHICKEN STRIPS	\$1.49	SAUTEED SAUSAGE	\$1.09
W/POTATO WEDGES/CHICKEN (2 PCS) BISCUIT	\$1.99	4 COUNT STEAK FINGERS	\$1.00

CALL-IN ORDERS WELCOME CHECK OUR WEEKLY SPECIALS

ALLSUP'S 32 OZ. REFILLABLE MUGS
VARIETY OF COLORS
\$1.99
FIRST REFILL FREE/59¢ THEREAFTER

SHURFINE GREEN BEANS OR WHOLE KERNEL CORN
16 OZ. CAN
3/\$1.00

BARBARA DEE SANDWICH COOKIES
VARIETY OF FLAVORS
16 OZ. PACKAGE
99¢

BASEBALL CARDS
ALL 59¢ CARDS
3/\$1.00

CALIFORNIA SMALL PITTED OLIVES
2/\$1.00

BEER NUTS
1.25 OZ.
3/\$1.00



A warm friend to have around the house

Insulation can be your home's friend in the winter - and in the summer.

With insulation, your heater doesn't have to work as hard to keep your home warm, so you save energy. In the summer, your air conditioner works more efficiently. Because of this, insulation can be one of the best investments you make in a home.

For more information on insulation and energy management, call or visit your local TNP office today.

Texas-New Mexico Power Company.
Neighborhood Professionals
Offering You The Best Choice

Among the Neighbors

by Helen Fisher

There is a rumor that odds are being given on the date when the first collision will occur at the parking area at the new post office. The parking area is entirely inadequate and it is incredible that the original engineering could allow such a small space. Petitions are being circulated to bring this to the attention of the proper authorities and ask for improvement.

The rumor concerns only when - not who - you know who the who will be - the Widow Needmore herself!!!

On Wednesday Dan Vaughn and his wife drove over from Amarillo for a brief visit with old friends in Spearman. Dan still lives at Canyon Lake near New Braunfels, but they are seldom there as he is a salesman.

Information in this column is based on facts from knowledgeable sources as much as possible, but slipped last week by using skimpy information from uninformed sources. Graveside services were held for Vestal Prater from California, not Vivian Prater from Oregon as stated.

Any inconvenience caused by this error is sincerely regretted.

Friends of Martha Clawson were delighted that she was here for a brief few days last week. Martha was a resident of Gruver and Spearman for several years and is well remembered for her activities with the Wagon Train and with dealing in the "Donkey & Mule" business. Martha authored a book dealing with her wagon train experiences entitled "Trails 'N' Tales of the Texas Wagon Train," published in 1987.

She is now employed at the Mirage Hotel-Casino in Las Vegas, Nevada. Her latest book, published in 1991 is "The Casino Business Through the Eyes of Change."

Among friends enjoying her visit were Jeanette Allen, Hollie and Earl Riley, Mona Pugh and John Gibson of Gruver.

Altha Groves is at home now after a busy ten days down state. First she flew to Waxahachie where she was met by old friends, Mr. and Mrs. Kenneth Nelson and later joined by Jerry and Margaret Malone Evans at Burleson on Friday.

Many in Spearman recall former residents, the Malones, as the father was the pastor of the First Baptist Church here for years. Members of the Malone family took Altha to Mineral Wells where she visited in the home of a cousin. He was seriously ill in the hospital. Later her cousins from Stratford brought her home and she is ready for a rest.

A compliment on the late Garland Head appeared in the Thursday issue of the Amarillo News in the "Short Putt" column of Putt Powell. It referred the Garland's prowess on the basketball court at Texas Tech.

In spite of the recent eye surgery of Cleo George in Pampa, she and Dennis are enjoying the visit of their daughter, Patsy Isham. She came from her home in Denver for the surgery. Patsy recently returned from Dallas, and just earlier from Chicago where she had been to markets. She is a manager of some shops in Denver.

Walter and Patti Spoonmore returned a couple days ago from a month in Florida. They drove down, and spent the month at Destin, near Panama City in the Panhandle of Florida. This is called Emerald Coast and is true to its name with the beautiful color of the sea. The weather was varied, some rain, some chilly, but warm enough that Patti enjoyed many a stroll along the beach.

Roy Lee Uptergrove stayed over in Matamoros to finish some work started last week by a group from the First Baptist Church here. They go down every year and do some

See neighbor page 7



Mr. and Mrs. Terry Monzingo of Amarillo and Mr. and Mrs. Pat McCravery of Germany announce the engagement and approaching marriage of their daughter Stephanie Lynn McCravery to Bob Cook, son of Mr. and Mrs. Lynn Cook of Spearman. The bride-elect is a 1988 graduate of Memphis High School and will graduate in May from Amarillo College School of Nursing. The prospective groom is a 1985 graduate of Spearman High School and is employed at Golladay & Associates of Amarillo. The couple will be married Friday, Feb. 21 at the Wedding Chapel in Amarillo. They will make their home in Amarillo.



Phil and Shelll Lair of Spearman announce the engagement and approaching marriage of their daughter, Haley Marie, to Monte Morris, son of Vernon and Sandy Morris of Spearman. The bride-elect is a 1990 graduate of Spearman High School and is currently attending Texas Tech University. The prospective groom is a 1986 graduate of SHS and will graduate in May from Texas Tech. The couple will be married Saturday, May 30 at The Wedding Chapel of the Southwest in Lubbock.



MR. AND MRS. CARL CURRY

Graham, Curry wed

Mechelle Graham of Spearman and Carl Curry of LaRue, Texas were married Friday, Jan. 24 in the First Baptist Church of Spearman. The Rev. Russ Gibbs officiated the evening ceremony.

Parents of the bride are Mr. and Mrs. Preston Graham of Spearman. The groom's parents are Mr. and Mrs. Don Curry of LaRue, Texas.

Vows were exchanged amid church decorations featuring brass candelabra with greenery and teal green ribbons; ferns on pedestals; and teal green and ivory tulle bows accenting the pews.

Mark Hill, friend of the bride from Hardin Simmons University, sang "I'll Be Loving You" and "Saviour Like A Shepherd Lead Us." Pre-wedding music and the traditional wedding march were provided by Carol Pack. Following the exchange of vows, a recording of "The Lord's Prayer," sung by the bride, was played.

Aprill Graham served as her sister's maid of honor. Don Curry served as his son's best man. Sammy Graham, brother of the bride, was usher. Other members of the wedding party included Rachel Curry, Sara Spears and Abby Spears, who helped with the bride's book and handing out rice bags.

Escorted to the altar and given in marriage by her father, the bride wore a simple ivory floor length gown with a straight skirt and elegant tailored bodice. She carried a bouquet of freesia, monte casino and lilies with miniature carnations.

The maid of honor wore a teal green dress trimmed in ivory, and carried stems of lilies and monte casino. The men in the wedding party wore dark navy tuxedos with ivory accents.

The mother of the groom chose a teal green dress and wore an ivory corsage of lilies. The bride's mother wore a teal green dress with purple trim and also wore an ivory corsage of lilies.

Out-of-town guests included Mr. and Mrs. Joe Curry and Racheal, brother of the groom and family; Sharon Blood, Mr. and Mrs. A.J. Nix, Mr. and Mrs. E.G. Scarborough, friends of the groom; Mr. and Mrs. Fred Spears, Mr. and Mrs. Troy Spears, Mr. and Mrs. Rusty Spears and Sara, Abby and Emily, relatives of the bride; Pat and Pam Dean, friends of the bride; and various friends from Hardin Simmons and Texas A&M.

Following the ceremony, guests gathered for a reception. A traditional wedding cake decorated with swirls of ivory and teal ribbons, along with ivory colored punch, were served from a table covered with an ivory tablecloth trimmed in teal green. Hostesses for the reception were Beverly Vinson, June Day and Audene Beck. Jan Crawford of Spearman and Shonda Meek of Canadian served guests.

As her going-away ensemble, the bride chose a black corduroy knee length skirt with a royal blue tailored bodice trimmed with black corduroy. Her outfit was accented with an ivory corsage of lilies and miniature carnations.

The bride attended Hardin Simmons University and is presently attending West Texas State University at Canyon, majoring in music education. She was named Miss Texas Farm Bureau 1991, Miss Abilene 1991, and Miss Hansford County 1988.

The groom is a graduate of LaPoinor High School and is a December 1991 graduate of Texas A&M University. He is currently employed as health manager of Wrangler (Division of Cactus) Feeders. He has earned the American Farmer's Degree and received the DeKalb Award.

The couple will reside in Happy, Texas.

You are invited to a
Baby Shower
Honoring
Denise Gregurek

Saturday,
February 15
from
3:30 to 5 p.m.
First State Bank
Spearman

Senior Citizen
\$1 Hearing Test
Thursday & Friday, Feb. 20 & 21
Testing Thursday 1 to 4 p.m.
Friday 9 a.m. to 4 p.m.

If you have trouble hearing or understanding, this Test (which uses the latest electronic equipment) will determine your particular loss. Test is performed by State Licensed Hearing Aid personnel. You will see a hearing Aid so tiny it fits totally within the ear canal.

Miracle-Ear®
America's Better Hearing Centers™

Corner Drug
122 South Main • Perryton
435-3637 • Call for appointment to avoid waiting

THANK YOU

We would like to thank everyone for coming to our Ground Hog Dinner.

All the friends and fellowship made it a great success.

Methodist U.M.W.

THANK YOU
MORSE LIONS CLUB

We extend to you our grateful thanks for the monetary gift and great support to help with Chuck's medical bills from Dr. Walters of Pampa and the Dan McGee Eye Clinic in Oklahoma City.

May God Bless Your Good Work.

Charles & Lola Newcomb
Spearman
Chuck Newcomb
Morse

FOR A SPECIAL
VALENTINE

Roses are red,
Violets are blue.
For 34 years I've been
In Love with You.
Happy Valentine's Day,
Me

You are cordially invited to celebrate the
25th Anniversary
of
Cub Scout Pack 578
7:00 p.m.
February 15, 1992
First United Methodist Church
407 S. Haney



(photo courtesy Gruver Junior High School)

Selected as "Citizens of the Month" for February at Gruver Junior High School were Lauren Miller, fifth grade; Amber Lynn Weller, sixth grade; Scott Stedje, seventh grade; and Memory Ross, eighth grade. Students were nominated by their teachers as the students who best exemplify those qualities necessary to be a good citizen. These students daily exhibit qualities of proper attitude, self-motivation, friendliness, and the drive to succeed in whatever is presented to them.

GJHS participates in talent search

Five students from Gruver Junior High School have qualified and applied for participation in this year's Talent Search for mathematically and verbally advanced students sponsored by Duke University's Talented Identification Program (TIP). The program identifies highly able seventh-graders from a 16-state region in the south, southwest, and midwest.

To be eligible, students must have scored at the 97th percentile or better on an in-school achievement or ability measure. They will sit for the ACT Assessment, normally taken only by college-bound juniors and seniors, in February. Many of these students score as well or better than the average college-bound senior on these mea-

asures. All participants receive Certificates of Merit and some become eligible for state-wide recognition ceremonies or a variety of educational programs.

TIP, established in 1980, has provided thousands of students with information about their abilities and educational options. The purposes of the program are to help academically bright students develop their special abilities, to assist schools in working with their brightest students, and to understand the nature of exceptional mathematical and verbal ability.

The following students from Gruver Junior High School are applicants for the 1991-92 Talent Search: John Duncan, Mary Dawn Henson, Tucker Henson, Amber Murrell and Lexy Spivey.

SOCIETY NEWS POLICY

In order to serve the public better and to avoid misunderstandings, it is necessary that certain guidelines be followed when submitting an article for publication in the Reporter-Statesman.

Deadline for running stories in the Reporter-Statesman is noon Tuesday.

For club reports and other general news stories, an article will not be published more than two weeks after the event.

Wedding stories and birth announcements will not be published more than three weeks after the event; however, a wedding story without photo will be published up to four weeks after the event.

Engagements should be announced four to six weeks before the wedding.

Anniversary announcements and articles will only be written for local residents celebrating their 25th, and every fifth year after that.

Birthday celebrations will only be written for local residents who are 70 years old or older. All other birthday wishes may be submitted to the advertising department.

There is no charge for publishing weddings, engagements, anniversaries or any other article in the Reporter-Statesman, provided they are turned in by the deadline. The Reporter-Statesman has forms available upon request for weddings, engagements and birth announcements.

In the area of photographs, color prints will be considered, but as a general rule, black and white reproduce better.

The Reporter-Statesman reserves the right to reject or edit any and all copy submitted.

To submit an article or obtain more information, contact the Reporter-Statesman, from 8 a.m. to 5 p.m. Monday through Friday, at 659-3434 in Spearman or 1-800-395-9482 outside Spearman.



(photo courtesy PSU)

Student teachers for spring 1992 in Texas from Panhandle State University in Goodwell, Okla., include (front row, l-r) Amber Henton, Booker; Sonya Womack, Perryton; Paula Mueggenborg, Gruver; Norma Jones, Perryton; Cynthia Pshigoda, Perryton; (back row, l-r) Daniel Ellis, Perryton; Ty Barker, Follett; Terry Davis, Gruver; and Juan Rodriguez, Mesquite.

On The Go With Joy

by Joy Henderson

Since February is traditionally known as "Sweetheart," "Love," and "Heart" month, I tried to gather some thoughts that would pertain to those subjects. The most important one that I could think of is found in the Bible, John 3:16. "For God so loved the world, that he gave his only begotten Son, that whosoever believeth in Him shall not perish, but have everlasting life."

Another "love" phrase I thought of is "Love is not having to say you're sorry." After having read the book and seen the movie, I believe they are trying to convey the message that if we love someone, we won't require them to say they are sorry. However, I believe that if I love someone and I have wronged them in some way, then I should tell them I'm sorry. Love is a two-way street.

Other ideas I've had were to make some cute pillows for little "sweethearts" or decorate your favorite friends a sweatshirt with red hearts using "Wonder Under" or a similar product. Or bake a heart-shaped cake for your adopted Grandpa & Granny. Just some little thing will really mean a lot to someone.

The American Heart Association uses the month of February for fund raising activities and since I am a five year survivor of a triple bypass and having a stroke two days after surgery, I am always on the lookout for ways to improve my health. Those in the preventive side of bad health are stressing nutrition more and more every day, and a lot of publicity is being given to better foods and better ways of preparing them.

I have a new set of recipes from the editors of Prevention and they are in a cookbook called Natural Healing Cooking School. These recipes are rated for lowering cholesterol, weight loss, better blood pressure, cancer prevention, stronger immunity, stronger bones, blood building, and muscle building.

This recipe for Wild Rice Salad is rated for everything except muscle building and stronger bones.

- 4 c water
- 1 c wild rice, rinsed
- 2 T pine nuts
- 1 sweet red pepper, thinly sliced
- 1 yellow pepper, thinly sliced
- 2 scallions, minced
- 1 shallot, minced

- 1 clove garlic, minced
- 1 T minced fresh basil or 1 t dried basil
- 1 1/2 t fresh thyme or 1/2 t dried thyme
- 2 T red wine vinegar
- 1 T lemon juice
- 2 t olive oil
- Pinch of dry mustard
- Lettuce leaves
- 2 T crumbled feta cheese (optional)

1. Bring water to a boil in a 2-qt. saucepan. Add the rice and boil, uncovered, for 35 minutes or until rice is tender but still a bit chewy. Drain well & set aside.

2. Heat a no-stick frying pan over medium heat. Add the pine nuts and shake the pan over the heat for 2-3 minutes to toast the nuts. Take care that they don't burn.

3. In a large bowl combine the pine nuts with the rice, red & yellow peppers, scallions, shallots, garlic, basil & thyme.

4. In a small bowl, whisk together the vinegar, lemon juice, oil & mustard. Pour over rice mixture and toss well to combine. Serve warm or chilled over lettuce leaves, sprinkle with cheese.

Here is nutrition at a glance per serving:

Calories: 164; Fat: 5.6 g; Saturated Fat: 1 g (1% of calories); Cholesterol: 2 mg; Sodium: 31 mg; Vitamin A: 56% of RDA; Vitamin C: 123% of RDA; Iron, 14% of RDA.

This is probably a good recipe for those with diabetic restrictions.

We have a little bit of community news this week. Ila Faye Dozier who I wrote about last week is temporarily a resident of the Hansford Manor. She is having rehab therapy after breaking her hip recently.

Eva Dozier had knee surgery recently in Amarillo. Be sure to send cards or visit and wish her well.

It was nice to see some of our college students home for a little while. Included were Ron Green and Laneida Burnam. Laneida will be participating in a church campaign in British Columbia during her spring break.

Visiting with Hugh and Marie Bell was grandson Kale Steed and his friend Matt from Canadian. Also in attendance was the Bells' daughter Glenda.

The Larry Millers had guests

recently. They were Tex and Sherry York and children Ashley and Beau from Crandall, Texas.

Leona Harris had quite a few visiting her over the week-end. They were Bill and DeVonna Harris from Guymon and their daughter Bonnie and Brian Hunt from Dumas.

Guests in the home of Gary and Diane Doty were their daughter, Denise, and Scott Miller from Amarillo.

Welcome to our world is given to the new son of Ralph and Beverly Miral's. He is Andrew Jess, born Feb. 9 at High Plains Baptist in Amarillo. Proud sisters are Sarah and Lindsey and proud grandparents are Tom and Phyllis Rasor.

Hometown news

ALVA, Okla. - Fall semester honor roll listings have been released by the office of the vice-president for academic affairs at Northwestern State University at Alva.

Listed on the Vice President's Honor Roll for undergraduate students is Roy McCloy of Gruver.

Listed on the President's Honorable Mention Honor Roll for graduate and post-graduate students is Frieda Burgess of Farnsworth.

Those on the president's honor roll earned all As, or a 4.0 grade point average, in a minimum of 14 undergraduate or 12 graduate hours. Those on the vice-president's honor list had grade averages of 3.5 or better in a minimum of 14 undergraduate or 12 graduate hours.

Students on the 4.0 honorable mention list had all As in a minimum of three and a maximum of 13 hours.

Gordon Stedje hopes to be home soon after having surgery recently at St. Anthony's. We wish him a speedy recovery.

Those enjoying the second Monday meeting on Feb. 10 were James and Ada Joyce Stedje, True and Frankie Leatherman, Ralph and Beulah Bort, I.W. and Maylynn Ayres, Leona Harris, Jessie Spivey, Charmian Lyle, Pauline Winger, Vivian Green, LaMoine Cator, Delphine Etling, Bill Etling, Verna Finley, Fay Blount, Adalyn Barnes, Jim Strawn, Polly Jones, Eva Boyd, Twila Boyd, Ida Hendrick, Fred Davidson, Faye Cluck and Nurse Christine Garza, who took blood pressure.

DQ

BASKET VALUES!

ON SALE FEBRUARY 9 - 23, 1992

COUNTRY BASKET*

\$1.99

Four beef steak fingers, country gravy, fries, Texas toast

CHICKEN FILLET BASKET

\$2.99

Four chicken fillet strips, country gravy, fries, Texas toast

DQ IS VALUE COUNTRY

At participating Dairy Queen stores. © Reg. U.S. Pat. & Tm. Off. Am. D.Q. Corp. *TM Reg. U.S. Pat. & Tm. Tx. D.Q. Op. Coun. © Tx. D.Q. Op. Coun.

SAVE SAVE SAVE SAVE SAVE SAVE

1/2 OFF

On All Winter Merchandise

Great savings on every rack

JG's
306 Hancock • Spearman, Texas
659-3424



Proven - 11 Years Elected Prosecutor & 16 Years Continuous Law Practice



Elect Bill Smith

84th District Judge

He's Served Well.
Let's Elect Him To Serve Us Now.
"A+ For The Court"

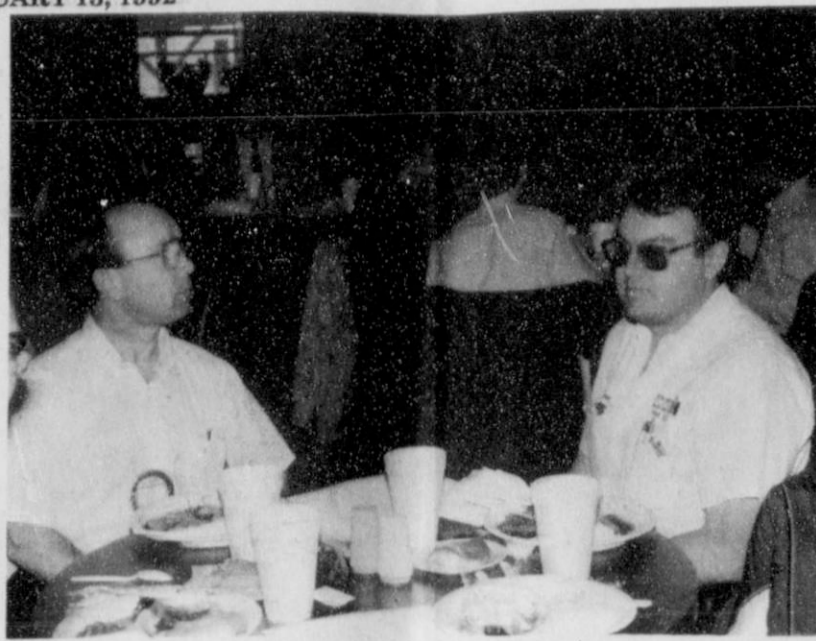
Pd. Pol. Adv. by Bill Smith Campaign, Mark Dill, Treas. 515 Austin, Borger, TX 79007

DPS gives accident stats

The Texas Department of Public Safety Highway Patrol has announced accident statistics for the month of December 1991 and for the year of 1991.

Sgt. Timothy Thompson of Borger said that in Hansford County, troopers investigated no

accidents in December 1991. For the year of 1991, troopers investigated no fatal accidents, seven personal injury accidents and 12 property damage accidents. There were seven persons injured in these accidents, said Thompson.



Richey Thompson, Lions Club president, and Steve Benton, Rotary Club president (left photo), presided over the joint meeting of the two Spearman organizations. The groups met on Monday, Feb. 10 to listen to Dr. Robert E. Gulde, M.D. Dr. Gulde is a heart specialist with the Heart Institute of Amarillo. He spoke on how to adjust lifestyles for a healthier heart and longer life.



Red Cross appeals for donations

by Bonita Campbell
chapter manager

PERRYTON - The American Red Cross is appealing to the public to help with disaster funding for the flooding which has hit the Austin, Houston, Dallas and Waco areas in the last few months. A total of 45 counties and 3,591 families have been affected by this flooding.

Red Cross had opened up 18 shelters by Jan. 10, 1992, with 1,972 persons utilizing these shelters and over 34,800 meals having been served. With only six months of the fiscal year passed, we have expended or committed 127 percent of the disaster relief operating budget (\$17.8 million) and all contributions that have been received to date.

As most of you know, national level disaster activity was unusually high in fiscal year 1991 compared to previous years. Over the last five years, the number of nationally administered jobs (those above \$250,000) fluctuated between 11 to 15, but jumped dramatically to 32 in 1991. At the same time, the average cost of these jobs fluctuated between \$520,000 and \$1 million (excluding Hugo and the California earthquake) and maintained an average cost of over \$1.1 million in 1991. We faced not only a larger number of disaster operations, but expensive ones as well.

Further complicating our financial picture in 1991 was the unusual pattern of disaster activity throughout the year. In the four years prior to 1991, a combined total of \$13.5 million of disaster expenses originated from national disaster jobs which occurred in the last four months of those years. In contrast, over \$16.8 million of disaster expenses in 1991 were the result of disasters which occurred after March 1. As a result, not only were early estimates of actual expenses to be incurred in fiscal year 1991 low, but budget projections for fiscal year 1992 based on these figures were also low.

All chapters will be assigned a quota and funds raised by chapters in conjunction with national disaster jobs are remitted to national sector by chapters. These funds are supplemented by any disaster contributions received directly by national to enable chapters to reach their goals.

The combination of dramatically higher expenses and relatively lower fund raising for national jobs resulted in a fiscal 1991 shortfall of \$32.8 million in the disaster operating budget. To compensate for this shortfall, we were required to deplete the \$20.9 million disaster relief fund and to use \$11.9 million of undesignated cash reserves. As a result the national sector has minimal cash reserves at this time. The only funds available for disaster relief in the national sector, therefore, are those which were included in the operating budget for disaster relief and any contributions which are received throughout the year.

In order to provide some level of "insurance" to cover excess disaster relief expenses, on Oct. 1, the national sector implemented strict cost containment measures, including a hiring freeze, a ban on the purchase of new equipment, and restrictions on overtime and agency assistance. Even if these measures are fully successful, however, we will require additional disaster relief funds.

Therefore, effective immediately, all chapters must establish a goal of raising 100 percent of job costs for every level II (non-recurrent) and higher level disaster that occurs within their jurisdiction, and must make every effort to reach that goal.

Kenneth and Linda Williams, disaster chairman, Penny Money, chapter chairman, and Bonita Campbell, chapter manager, would like to appeal to this community for their help in this situation.

Persons wishing to make a contribution may do so by mailing your checks to the Ochiltree County Chapter, 511 S. Main, Perryton, TX 79070.



WINTER SALE
50%
TO
75% OFF

FINAL WEEKS!!

Women's Fashion

2701 Paramount
Amarillo, 359-2457
Mastercard and Visa Welcome

Going skiing? Remember Mary Kay SunEssentials

Leann Gillaspie
Beauty Consultant
659-3889

Sun Screen Products!

Mary Kay COSMETICS

OUT-OF-TOWN MAIL ORDERS WELCOME

FINAL **9** DAYS

WE SAVED THE BEST FOR LAST

John Lee Furniture

Closes Forever In Perryton!!

With A

DAILY

PRICE RIOT

- Hundreds of items will be reduced daily before opening.
- Open for selling 6 hours only, daily: Noon - 5 P.M. Monday - Sunday
- Due to staffing limitations, only 25 people in the store at one time, please.
- Cash and approved checks only.
- Nothing is held back. Everything must go, regardless of cost or loss!

John Lee Furniture

221 S. Main, Perryton, Texas (806) 435-2762

Neighbor from page 4

repair and improvements at an orphanage there.

In addition to Roy Lee, the group giving a week to this much needed cause were Bob Vinson, David Furlow, James Cunningham, Joe Garcia, Arthur Cantu, Guadalupe Corranza, Doyle and June Jackson and Doug Dubois of Pampa.

Steven Greever returned from a ten day ski trip to Ruidoso on Friday. He joined his sister Billie Jo and Leslie Reynolds from San Antonio for an enjoyable stay. The weather and ski conditions were excellent.

Phyllis Owen spent a pleasant week in Canadian with her brother, Ralph Longhofer. She enjoyed visiting with other relatives and again seeing her childhood home, near Canadian, and still in her family.

There is a great deal of discussion and many opinions and even more questions regarding the proposed hospital bond issue. In order for every interested person to air opinions and ask questions, a public meeting will be held February 13, at 7 p.m. in the First State Bank building.

Certainly the local tax-payers are beginning to feel saturated with bonded indebtedness. In addition to existing hospital bonds, there is the county roads, school, city, Palo Duro Water District and the plethora of state issues. So each tax-payer is entitled to the facts regarding the cost effectiveness and any advantages for voting for the issue.

It has been this writer's experience that each hospital board member is serving as he best interprets the interests of the community - and that each is a tax-payer in the area and will share in any tax increase - and, generally, each is responsive to personal interviews.

There should be a good attendance at the meeting, judging from all the comments.

That devoted couple, Ellen and Cecil Reynolds, were so happy that so very many friends and relatives attended their 45th wedding anniversary reception Sunday afternoon.

It was a busy, exciting day for them as out-of-town friends whom they had not seen for years surprised them.

The reception was hosted by their daughters, Becky Hall, Amarillo and Katherine Coventry, St. Louis and was held in the community room of Ivey's Hungry Cowboy.

Katherine and her husband, Mark, had been here several days. Ellen's sister, Sammy and James McNulty of Yuma, Arizona also had

been guests of the Reynolds for the week.

Congratulations, Ellen and Cecil!

Christi Keith and little daughter were in Spearman several days this last week visiting her grandparents, Mr. and Mrs. Bill Whitford and Sara Dossett.

Christi, who had moved to Vibron, Missouri, has been in Amarillo with her parents, Sharon and Bernard Dossett for a week. Sharon came over with her. Christi and the little child drove alone the 1400 miles from Vibron without mishap.

Club news

SPEARMAN BOOK CLUB

The Spearman Book Club met February 4 in the home of Athalie Trayler.

After refreshments were served, a short business meeting was held.

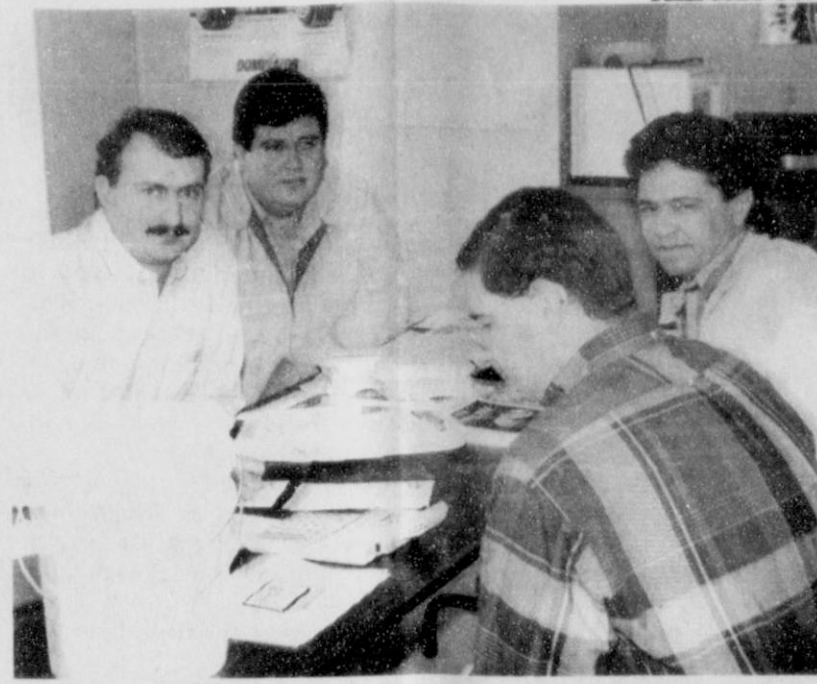
Patty Shepherd gave a very interesting review of the book "Growing Up Isn't Hard To Do If You Start Out As A Kid," by David Keller.

Members present were Georgiann Hutchison, Freda Sheets, Altha Kirk, Nina Hefner, Jo Copeland, Athalie Trayler, and Virginia White.

PERRYTON - Singles Together Around Christ (STAC) will celebrate Susan B. Anthony Day on Saturday, Feb. 15.

A special program is scheduled for 7 p.m. that day in the Willie Room of North Plains Electric on Highway 83 about one mile north of the railroad tracks in Perryton. Those attending are asked to bring finger food.

More information can be obtained by calling 435-5008, weekdays from 9 a.m. to 5 p.m.



Jim Turner takes a break from meeting with farmers during the Spearman Equity Service Center open house.

Candidates from page 1

be very fair.

I have lived in Hansford County all my life. My parents Irvin and Betty Jean are also lifelong residents. I married Gina in 1976, and her parents are Roy Bulls and Charlene Dodson. We have three children, Grace Maria, 11; Charles Everett, 8; and Mattie Beatrice, 2. We are members of the First United Methodist Church and love living in Spearman. We own a home and other property in Spearman, and we have businesses which include: Cellular Communications of Spearman, Diamond Cattle Co., Red Neck Ostrich Ranch, and Superior Exotic Auction Co. So as you can see, we are very involved with all aspects in Hansford County and are deeply committed to its future. I would appreciate your vote for Hansford County Commissioner Precinct 1. Thank you.

Worley J. Smith

The most important concern of the voters in Hansford County is to have county commissioners who will listen to their problems and try to help them with those problems. I will listen. I am retired and devote full time to the job of county commissioner precinct 1.

As a new member, I should gain some experience before attempting to make changes in the operation or function of the office.

A. The adoption of a tax rate. I would try to see that taxes would be fair and equal, and that the revenue would be spent wisely, fairly, and prudently.

B. Public Health and Recreation. I would work to promote health facilities, juvenile facilities, and recreational facilities. This should create jobs.

C. Roads. I would try to see that roads are kept in good condition. Roads where school busses travel are essential, and all rural roads are of special importance.

I am honest. I am mature. I will devote as much time as is necessary to the job because I like Hansford County and the people who live here.

I was raised in Spearman, and I have lived in Hansford County all of my life except for four years in the Air Force, college, and three years teaching elsewhere. When I retired, I had taught 21 years in Spearman High School. I have farmed and raised cattle on a place 10 miles south of Spearman since

See candidates page 12

La Leche League seeks members

by Melba Olsen

The Spearman La Leche League will meet Friday, Feb. 21, at 9:30 a.m. at the First United Methodist Church nursery room.

La Leche League is an organization founded 35 years ago by seven women who wanted to make breastfeeding easier and more rewarding for both mother and child.

The organization reaches more than 100,000 mothers monthly through a network of more than 9,000 accredited leaders who work on a volunteer basis, offering information and encouragement through personal help to those women who want to breastfeed their babies.

La Leche League is active in 46 countries, and La Leche League International serves as a Non-Governmental Organization consultant to the United Nations, a registered Private Voluntary Organization for the Agency of International Development.

ment, and is an accredited member of the US Healthy Mother/Healthy Baby Coalition. LLL has a Health Advisory Council of 42 professionals for consultations on medical problems and evaluation of new research.

LLL meetings are informal discussion groups following a planned schedule of topics that cover the practical, physical, and psychological aspects of breastfeeding.

LLL membership is \$30 yearly and benefits include a one year subscription to New Beginnings, an informative magazine, a 10% discount on purchases from the LLLI catalogue, and participation in LLLI special events, including local and international conferences, with a member's discount on registration fees.

La Leche League is a non-profit organization and is entirely supported by donations, memberships, and sales of materials. For information on becoming a member of Spearman La Leche League, contact Melba Olsen, 659-2962.

CLASSIFIED ADS PAY OFF!

REAL ESTATE OPPORTUNITIES

Sealed Bid Offering

Sec. 8, Blk. JT, TWNG Survey, Ochiltree County, Texas - NO MINERALS. Location: 2 Miles South of Farnsworth, Texas on Farm & Market Road 376. Description: 180 acres farmland. 110 acres of C.R.P. w/6 years remaining on contract. 350 acres in wetlands. Contact: Neal Flathers for sealed bid information. Phone 435-7015 or come by 200 S. Main, Perryton, Texas. Owner's Option: Owner can take or reject any or all bids. Accepted bids will have the right to raise bids against accepted bids. Contract Facts: Escrow deposit of 5% will be required on Date of Contract. Bids will be opened 2-28-92.

FARM & RANCH LAND FOR SALE

640 acres of excellent dryland wheatland. Small farm house and buildings. Located East of Perryton. 2 Sections of excellent, rolling grassland with some minerals. Beautiful Wolf Creek caprock grassland. Excellent fences & good watering facilities. Located 1 mile from Wolf Creek Park. 2 & 1/4 Sections of excellent grassland located Southeast of Perryton. 2 Sections excellent dryland wheatland. Located in Southeast Ochiltree County.

FARM & RANCH DIVISION

NEAL FLATHERS DEPT. MANAGER/SALES ASSOC. Phone 806-435-7015 Eves. Ph. 806-658-4418 SALES ASSOCIATES: BETH DEHTAN 806-435-5444/Eves: 806-658-9358 JANET TREGELLAS Day/Eve. 806-658-2290

Century 21 GOLDEN PRAIRIE REALTY 200 S. Main - Perryton 435-5444

© 1991 Century 21 Real Estate Corporation a franchise of the NAR. Equal Housing Opportunity. Each office independently owned and operated.

REGIONAL EYE CENTER
GEORGE R. WALTERS, M.D., P.A.
 Is Pleased To Announce The Association Of
MARK F. HOLLINGSWORTH, M.D.
 In The Practice Of General Ophthalmology Diseases And Surgery Of The Eye.
 107 W. 30th Street
 1-806-665-0051
 Out Of Town Patients 1-800-322-3931

When It Comes To Long Term Savings a CD Can't Hold a Candle To The Deferred Annuity

Consider These Dramatic Differences Between a CD and an Annuity

Current Interest Rate**	7.0%	4.5%
Interest Earnings	Tax-Deferred	Currently Taxable
Surrender Charges Limited To 8 Years**	Yes	No
Partial Free Withdrawals**	Yes	No
Safety	Reserves Established by Insurance company	FDIC
30 Year After-Tax Accumulation***	\$278,122	\$130,159
30 Year After-Tax Monthly Income****	\$2,439	\$915

The above chart is for comparative purposes only. Call your county Farm Bureau office for your personal FLEX II Profile.

Southern Farm Bureau Life Insurance Company offers Flex II, a Flexible Premium Retirement Annuity designed to help accumulate wealth for the future. And, it's backed by one of the strongest companies in the country. Southern Farm Bureau Life has been rated A+ (Superior) by Best, since the inception of this rating system.

*FLEX II current rate is not guaranteed, subject to change periodically. Once the annuity is established, current rate is guaranteed for one year. The guaranteed rate is 4% for the life of the policy. CDs offer no long term guarantee beyond CD maturity. Banks/CD rates above are hypothetical interest rates. Call your bank for a current rate.

**Up to 10% of accumulation value on contracts with value of \$5,000 or more is available each year with no company surrender charge after first year. Such withdrawals of interest are taxable and withdrawals occurring prior to age 59 1/2 may be subject to IRS penalties. Bank/CD withdrawals may occur without penalty only after CD maturity. CD penalties remove withdrawal CD resources.

***30 year accumulation assumes a \$50,000 single premium, interest rates shown above, and 25% tax bracket. The 4% tax bracket is used for the FLEX II accumulation. Monthly income from FLEX II based on company's current payment option rates for a male age 65, 10 years certain and life and interest not guaranteed. This policy is assumed. Monthly income is guaranteed for life. CD monthly income based on company's current annualized annuity rates, 10% certain and life and interest not guaranteed. Payments received directly from bank/CD are not guaranteed as to amount or length of interest received.

The A.M. Best Company is an independent commercial insurance company rating organization and information used is based primarily on each insurance company's annual financial statement. Best assigns its highest rating to those companies which in their opinion have achieved superior overall performance when compared to the terms of the life and health insurance industry. Best ratings, however, are not a warranty of an insurer's ability to meet its contractual obligations.

Froy James, WITCO
 AGENCY MANAGER

HUTCHINSON / HANSFORD COUNTY FARM BUREAU
 P. O. BOX 578 • SPEARMAN, TEXAS 79081

Hansford Office: 659-3133 Home Phone: 659-3004 Hutchinson Office: 578-3040

Farm No: 6102 (2/92) Helping You is What We Do Best!



Southern Farm Bureau Life Insurance Company
 JACKSON, MISSISSIPPI

Get In On the Dobson Cellular VALENTINE'S DAY DEAL!

Buy your sweetheart a cellular phone and enjoy a♥-to♥ talk with 100 MINUTES of FREE Air Time!

This Valentine's Day, a cellular phone from Dobson is definitely in the cards! Get that special someone a cellular phone and you'll not only be getting a great deal, but a great deal more: 100 minutes of FREE air time!

Get in on the Valentine's Day Deal at Dobson, where we're ready to make you a 'sweetheart' of a deal on the cellular phone and air time plan of your choice.



1-800-882-4154



Authorized Dobson Cellular Dealers
 Cellular Communication
 659-3762

*Available at all Dobson Cellular Systems stores and participating Cellular Providers. Limit terms and conditions apply. Subject to credit approval.

Ladies from page 1
The Lady Hounds were 12-16 from the free throw line.

The Gruver JV girls beat Booker to win district, in a low-scoring game, 19-16. The JV girls are 16-5 on the season, 5-0 in district.

Last Friday, the Lady Hounds played one of their finest games of the year, obliterating the Shamrock Lady Irish 58-17.

Gruver took a 12-2 lead with 3:30 left in the first quarter on a steal and bucket by Wynn Maupin, and this one was no contest. Maupin had an outstanding ball game, along with Mika McLain and Holly Venneman. Maupin scored 18, and hit consistently under the basket, as well as with her short jumper. McLain was awesome with her 15-20 foot jumpers, at one point hitting four consecutively. Venneman scored the first six points of the game, and had 12 by half-time.

Anissa Ryan and Julie Meyer each played well also, providing assists and playmaking. Sara Jones, in her first game of the year as a varsity team member, canned her only shot, a 3-pointer.

The Lady Hounds will close the district season this week with a home game against the Wheeler Lady Mustangs. Then they will prepare to play the Valley Lady Patriots, the runners-up in District 2-A, in their bi-district game next week.

An added note - if the Lady Hounds beat Wheeler, they will be 20-9 on the season, and it will be their first 20-win season in 28 years.

In the JV game, the Lady Hounds defeated the Lady Irish 52-24 to improve their record on the season to 15-5, and in district play to 4-0.

G (18-9) 15-25-43-58
S (8-16) 5-9-13-17
3-point shots: Sara Jones, Anissa Ryan

G - Wynn Maupin-18, Mika McLain-12, Holly Venneman-12, Anissa Ryan-9, Julie Meyer-4, Sara Jones-3

G (19-9) 12-19-37-50
B (12-12) 9-18-22-32
3-point shots: Traci Crawford
G - Mika McLain-14, Julie Meyer-10, Anissa Ryan-7, Wynn Maupin-6, Cora Meyer-4, Holly Venneman-4, Traci Crawford-3, Tisha Ralston-2



Aggressive rebounding by the Gruver Lady Hounds helped them beat Booker and win the District 1-A championship. Here, Holly Venneman (54), Anissa Ryan (12) and Wynn Maupin (40) "block out" the Booker player from the rebound. Mika McLain (42) moves to cover a long rebound.

Show from page 1

Reserve Grand Champion; Junior Showmanship - Jeremy Mackie; Senior Showmanship - Barry Eddleman.

Class #3: 1st - Jeremy Mackie; 2nd - Rhett Renner; 3rd - Josh Schumann; Shane Schneider - Reserve Breed Champion.

Hamp - Class #1: 1st - Leah Mackie; 2nd - Brandon Close, 3rd - Barry Eddleman; 4th Matt Eakin.

Class #2: 1st - Kevin Williams - Reserve Breed Champion; 2nd - Jeremy Thomas; 3rd - Brandon Sutton; 4th - Jennifer Schnell; 5th - Lance Smith.

Class #3: 1st - Reagan Renner - Breed Champion; 2nd - Shane Goodson; 3rd - Randie Renner; 4th - Clint Sasser.

Cross - Class #1: 1st - Clint Schnell; 2nd - Brad Law; 3rd - Randy Burress; 4th - Monte Herrington; 5th - Eddie Herrington; 6th - David Pipkin.

Class #2: 1st - Jeremy Piatt; 2nd - Monte Herrington; 3rd - Troy Law; 4th - Brad Law; 5th - Chris Brooks; 6th - TaDawn Elliott; 7th - Monte

Eakin.
Class #3: 1st - Cameron Kunselman; 2nd - Kara Pipkin; 3rd - Candice Pipkin; 4th - Juan Rojas; 5th - Jared Brown; 6th - Clint Davis.

Class #4: 1st - Reagan Renner; 2nd - TaDawn Elliott; 3rd - Travis Brown; 4th - Kallie Smith; 5th - Reagan Renner; 6th - Timmy Bynum; 7th - Kacee Smith.

Class #5: 1st - Ronnie Ring; 2nd - Randie Renner; 3rd - Ashley Brown; 4th - Josh Bynum; 5th - Misty Pearson; 6th - Eddie Herrington.

Reagan Renner - Breed Cham-

See show page 9

Gruver roundball roundup

Gruver Girls - J.V. at Shamrock, 2\7
Gru. 52 - Sha. 24
Andee Salmans - 2, Shanna Jarvis - 2, Wendy Rodriguez - 9, Gin Hoel - 2, Janelle Haenfer - 4, Kim Venneman - 4, Sharlet Slough - 2, Jana McCloy - 5, Kayce Haenisch - 2.
Record 15-6

Gruver Girls - 9th West Texas Tourney
Feb. 6-8
Vs. West Texas
Gru. 32 - W.T. 49
Toby Setliff - 3 (1-3 pt.), Angela Overbey - 2, Carmen Ortega - 5 (1-

Hounds from page 1

straight at Greyhound Gym this Friday - the last home loss for the Hounds was Dec. 31, 1990, against Berger. The Hounds are 9-0 at home this year.

Tuesday night at Booker, the Hounds maintained the lead for the whole game, after a 12-0 run in the first quarter turned a 6-3 deficit to a 15-6 lead. The Kiowas closed to within 38-32 in the fourth quarter, but the Hounds reeled off 10 unanswered points for a 48-32 lead, and the game was over.

Brady Pool had a nice night of ball handling and scoring, with 13 points. Kevin Spivey led Gruver with 14, and Matthew Hoel chipped in 12.

For the year, the Hounds are 24-4, 5-0 in district.

The Hounds JV also clinched the district championship with a 47-24 victory over the Kiowas, to go 15-9 on the season, 5-0 in district play.

Friday, Feb. 7, the Hounds met the Shamrock Irish in Gruver, and for the second time this year the Irish played some of their best basketball against Gruver, finally losing by 17, 62-45. Shamrock played aggressively on defense, with a ball control offense, and a lot of good ball movement. Just before the end of the first half, they led Gruver 21-20.

But the Hounds just wore them down. The Irish would have played their five starters the entire ball game, had one not fouled out with 2:13 left to play in the game. The Hounds took advantage, and outscored them 13-0 into the second half, to lead 36-22. From that point, the only question was the margin of victory, and the Irish cut that down considerably in the fourth quarter.

Shannon Pool played an outstanding ball game - time and again



Shannon Pool cuts to the basket from the left side for the lay-up basket. Matthew Hoel (34) and Chad Brown (14) move into position to cover a rebound.

getting a rebound and putting it up and in. He came close to getting a "triple double" - going into double figures in scoring and rebounding, but falling short in assists.

The Hounds are probably happy they will not see the Irish again this year.

In the Hounds JV game, the JV improved their record to 14-9 on the season, 4-0 in district, with a 49-32 victory over the Irish JV.

G (23-4) 9-25-53-62
S (7-15) 11-22-29-45
3-point shots: Brady Pool-2,

Kevin Spivey-2
G - Shannon Pool-16, Kevin Spivey-12, Matthew Hoel-8, Brady Pool-8, Trent Seagler-8, Carey Kauffman-4, Chad Brown-2, Rex Ralston-2, Marty McCloy-1, Luke Miller-1

G (24-4) 13-23-38-52
B (20-7) 6-16-25-39
3-point shots: Matthew Hoel-2, Brady Pool-2, Kevin Spivey

G - Kevin Spivey-14, Brady Pool-13, Matthew Hoel-12, Trent Seagler-8, Carey Kauffman-2, Marty McCloy-2, Shannon Pool-1

Gruver Girls - 8th, 2\10 Red Team at West Texas
Gru. 29 - W.T. 9
Socorro Ortega - 2, Cristy Marque - 2, Roxana Holt - 2, Cori Lowe - 3, Virginia Barrera - 4, Amy Grubbs - 6, Robbi Mathews - 2, Memory Ross - 2, Imelda Arzate - 6.

Black Team at W.T.
Gru. 33 - W.T. 31
Molly McLain - 7, Josie Pool - 4, Tara Shapley - 2, Kiki Carthel - 17, Julie Aguilar - 2, Hailey Lamb - 6.

Gruver Girls - 7th at West Texas, 2\10
Kaysha Cluck - 4, Erika Barrera - 2, Erica Blount - 6, Amber Murrell - 10, Cara Hathaway - 4, Kellie Boone - 3.

Gruver Boys - 9th West Texas Tourney
Feb. 6-8
Vs. West Texas
Gru. 29 - W.T. 22
Fabian Salazar - 4, J.D. Christian - 2, Ryan Atwood - 7, Grant Odom - 2, Ronra Tomlinson - 2, Eric Wright - 4, Will Etheridge - 8.

Vs. Spearman
Gru. 23 - Spr. 29
Salazar - 2, Jake McCullough - 2, Atwood - 4, Odom - 1, Wright - 6, Andy Jones - 2, Etheridge - 4.

Vs. Sanford - Fritch
Gru. 39 - S.F. 42
Salazar - 6 (1-3 pt.), McNett - 3 (1-3 pt.), Atwood - 7, Tomlinson - 2, Wright - 9, Etheridge - 12 (1-3 pt.).

Vs. West Texas, 2\10
Gru. 24 - W.T. 12
Salazar - 6, McNett - 1, Atwood - 9, Tomlinson - 2, Wright - 4, Etheridge - 2.

Gruver Boys - 8th
Vs. West Texas, 2\10
Gru. 33 - W.T. 29
Ferguson - 6, Barkley - 5, Maupin - 11, Renteria - 4, Frick - 4.

Gruver Boys - 7th
Vs. West Texas, 2\10
Gru. 44 - W.T. 24
Keith Miller - 2, Jarrod Hoel - 17, Josh Mayhew - 17, Heath Tolleson - 6.

Elect Phil Black 84th District Judge
Phil Ad. Pol. for by Chris. 10 Elect Phil Black. Tom Smiley. Treas. P.O. Box 3335, Berger, TX

Hansford Activity Center
501 S. Hazelwood Spearman, Texas

February

Sun	Mon	Tues	Wed	Thurs	Fri	Sat
						1
2	Aerobics 6:15-7 AM Tumbling 5:30-6:00 OPEN 7-8 PM	3 Aerobics 6:30-7:30 Tumbling 5:30-6:00 Karate 6:30-7:30 OPEN 7-8 PM	4 Aerobics 6:15-7 AM Tumbling 5:30-6:00 Karate 6:30-7:30 OPEN 7-8 PM	5 Aerobics 6:15-7 AM Tumbling 5:30-6:00 Karate 6:30-7:30 OPEN 7-8 PM	6 Aerobics 6:15-7 AM Tumbling 5:30-6:00 Karate 6:30-7:30 OPEN 7-8 PM	7 Aerobics 6:15-7 AM Tumbling 5:30-6:00 Karate 6:30-7:30 OPEN 7-8 PM
9	Aerobics 6:15-7 AM Tumbling 5:30-6:00 OPEN 7-8 PM	10 Aerobics 6:15-7 AM Tumbling 5:30-6:00 Karate 6:30-7:30 OPEN 7-8 PM	11 Aerobics 6:15-7 AM Tumbling 5:30-6:00 Karate 6:30-7:30 OPEN 7-8 PM	12 Aerobics 6:15-7 AM Tumbling 5:30-6:00 Karate 6:30-7:30 OPEN 7-8 PM	13 Aerobics 6:15-7 AM Tumbling 5:30-6:00 Karate 6:30-7:30 OPEN 7-8 PM	14 Aerobics 6:15-7 AM Tumbling 5:30-6:00 Karate 6:30-7:30 OPEN 7-8 PM
16	Aerobics 6:15-7 AM Tumbling 5:30-6:00 OPEN 7-8 PM	17 Aerobics 6:15-7 AM Tumbling 5:30-6:00 Karate 6:30-7:30 OPEN 7-8 PM	18 Aerobics 6:15-7 AM Tumbling 5:30-6:00 Karate 6:30-7:30 OPEN 7-8 PM	19 Aerobics 6:15-7 AM Tumbling 5:30-6:00 Karate 6:30-7:30 OPEN 7-8 PM	20 Aerobics 6:15-7 AM Tumbling 5:30-6:00 Karate 6:30-7:30 OPEN 7-8 PM	21 Aerobics 6:15-7 AM Tumbling 5:30-6:00 Karate 6:30-7:30 OPEN 7-8 PM
23	Aerobics 6:15-7 AM Tumbling 5:30-6:00 OPEN 7-8 PM	24 Aerobics 6:15-7 AM Tumbling 5:30-6:00 Karate 6:30-7:30 OPEN 7-8 PM	25 Aerobics 6:15-7 AM Tumbling 5:30-6:00 Karate 6:30-7:30 OPEN 7-8 PM	26 Aerobics 6:15-7 AM Tumbling 5:30-6:00 Karate 6:30-7:30 OPEN 7-8 PM	27 Aerobics 6:15-7 AM Tumbling 5:30-6:00 Karate 6:30-7:30 OPEN 7-8 PM	28 Aerobics 6:15-7 AM Tumbling 5:30-6:00 Karate 6:30-7:30 OPEN 7-8 PM
						29

AEROBICS MW: 6:15-7 AM, J&B Logistics, low-impact, strength & flexibility training
AEROBICS MW: 6:30-7:30 PM, Wanda Archer, low-impact and strength training with rubber bands
AEROBICS TH: 6:30-7:30 PM, Wanda Archer, includes super circuit weight lifting
TUMBLING TH: 5:30-6:00 PM, Mel Floyd Burgess, for 3 yrs. - 5th grade
KARATE TH: 6:30-7:30 for 4th and 5th grade, 7:45-8:45 for 6th, 7th, and 8th grade, Dave O'Neil

HERGERT
SPEARMAN, TEXAS

WINTER CLEARANCE SALE

91 Lincoln Town Car - 4 Dr - Silver Rose - Burgundy Cloth
14,000 miles! Factory warranty remaining! Keyless entry, auto light dimmers, dual power seats, windows, locks, tilt, cruise, AM/FM cass, rear defroster, Michelins & mags. Compare with new at \$35,000!
CASH \$22,900

91 Ford Aerostar XLT Extended Van - Light Met. Brown
12,000 miles! Factory warranty remaining! 4.0 liter V6, lumbar seats, rear air, power windows & locks, tilt, cruise, AM/FM cass, rear defroster, 8 pass. seating, Michelins & mags.
CASH \$15,900

91 Ford T-Bird - 2 Dr - Metallic Red - Gray Cloth
10,600 miles! Factory warranty remaining! 3.8 EFI V6, power seat, windows, locks, tilt, cruise, AM/FM stereo.
CASH \$12,500

90 Chevy Corsica LTZ - 4 Dr - Bright Met. Blue - Gray Cloth
20,000 miles! Factory warranty remaining! 3.1 EFI V6, mag wheels, power windows, locks, tilt, cruise, AM/FM cass, luggage rack, rear defroster.
CASH \$9950

90 Ford Mustang LX - 2 Dr - White - Burgundy Cloth
39,000 miles! Factory warranty remaining! 4 cyl EFI, automatic, air, cruise, AM/FM cass. This would make an excellent, economical, school car!
CASH \$7250

89 Buick Regal Limited - 2 Dr - Gold - Saddle Tan Cloth
50,000 miles! Factory warranty remaining! V6, power seat, windows, locks, tilt, cruise, AM/FM cass, rear defroster, wire wheels.
CASH \$8950
Compare with new at \$21,000!

89 Mercury Sable GS - 4 Dr - Gold - Tan Cloth
50,000 miles! Factory warranty remaining! 3.8 EFI V6, power seat, windows, locks, tilt, cruise, AM/FM cass, rear defroster, mag wheels.
CASH \$8500

87 GMC Safari SLE Minivan - Charcoal/Silver - Gray Cloth
62,000 miles! 4.3 EFI V6, 8 pass seating, power windows & locks, tilt, cruise, AM/FM cass, trailer hitch, rally wheels, new steel radials.
CASH \$8500

87 Olds Clera Cutlass Cruiser Wagon - 4 Dr - Charcoal
47,000 miles! 2.8 EFI V6, power seat, windows, locks, tilt, cruise, AM/FM cass, 3rd seat, luggage rack, mag wheels.
CASH \$5950

86 Buick Century Limited - 4 Dr - White - Saddle Tan Cloth
58,000 miles! V6, automatic, air, power seat, windows, locks, tilt, cruise, AM/FM cass, wire wheels, Michelins. This would be an excellent, economical school car!
CASH \$4950

85 Chevy Impala - 4 Dr - Metallic Brown - Saddle Tan Cloth
77,000 miles! 305 V8, power steering, brakes, air, tilt & cruise. This car is good & dependable transportation!
CASH \$3250

82 Ford Thunderbird - 2 Dr - Gold/Tan - Saddle Tan Cloth
Only 50,500 miles! Economical V6, tilt, cruise, AM/FM stereo, Landau vinyl top, wire wheels! You've got to see this one. This would make a great school car!
CASH \$3250

TOP QUALITY CARS & TRUCKS ... AT AFFORDABLE PRICES!!

HERGERT MOTORS
Donnie Hergert, Owner
S. Hwy. 207 - Box 425 - (806) 659-3723
SPEARMAN, TEXAS 79081

B & B FARM INDUSTRIES, INC.

10% Discount given on all Corn and Grain Sorghum Sales if bill is paid by 10th of the month following billing.
Extra Discount given for Prepayments.

We have a good supply of:

CHILLOCO OAT SEED

ROX ORANGE CANE

EARLY SUMAC (RED TOP)

HEGARI

SORGO-SUDAN CROSS

G4673B - FUNK'S CORN

ASGROW TOPAZ

ASGROW A504 (EARLY CREAM)

HI-PERFORMER CHEROKEE

659-5507
703 COLLARD • SPEARMAN, TX



Read Cates' sixth grade Social Studies class at Spearman Junior High School added to its studies about Europe with a castle building contest. Two anonymous judges picked six castles as the best. The castles, along with the students who built them, are in front. They include Kasey Duniho, first; Vanessa Seese, second; Ashley Brown, third, Keisha O'Quin, fourth; and Brian Howe, fifth.

Spearman roundball

Spearman Girls - Varsity
Vs. Guymon, 2\11
Spr. 39 - Guy. 28

Lasater - 4, Lusby - 3, Gafford - 17 (3-3 pt.), Schumann - 3, T. Townsen - 6, Pearson - 6.

Spearman Girls - J.V.
Vs. Guymon, 2\11
Spr. 29 - Guy. 24

Lillard - 5, Shieldknight - 6, Pearson - 8, Sanders - 2, Jarvis - 4, OQuin - 4.

Record: 16-5

Spearman Girls - 9th
West Texas Tourney
Feb. 6-8

Vs. Sanford-Fritch
Spr. 17 - S.F. 22

Mandi Lair - 2, Traci Martin - 1, Lyndee Cook - 1, Mica Pipkin - 6, Sandi Rich - 5, Heather Reimer - 2.

Vs. Gruver

Spr. 39 - Gru. 19

Lair - 2, Martin - 11, Cook - 15, Pipkin - 2, Kiki Kelp - 5, Reimer - 2.

Vs. W.T.

Spr. 27 - W.T. 31

Lair - 2, Martin - 3, Cook - 2, Pipkin - 8, Rich - 3, Kelp - 9.

Vs. Canadian, 2\10
Spr. 41 - Can. 16

Lair - 8, Martin - 5, Cook - 10, Rich - 2, Kelp - 14, Reimer - 2.

Record: 5-9

Spearman Girls - 8th
Vs. Stratford, 2\10
Spr. 21 - Str. 16

Laci Baker - 2, Kelly Shieldknight - 2, Kara Townsen - 18, Tiffany Bruning - 6.
Record: 16 - 1

Spearman Girls - 7th
Vs. Stratford, 2\10
Spr. 30 - Str. 17

Shayla Barber - 13, Samantha Beasley - 10, Tara Butt - 6, Mandi Lusby - 1.
Record: 9-6

Spearman Boys - Varsity
Vs. Boys Ranch, 2\17
Spr. 45 - B.R. 39

Cody Pipkin - 6, Brian Beck - 11 (1-3 pt.), Russell Shaver - 13 (1-3 pt.), Khris Kelp - 12 (2-3 pt.), Brady Reed - 1, Mark Eakin - 2.

Vs. Guymon, 10\11
Spr. 58 - Guy. 54

Pipkin - 21, Beck - 15 (1-3 pt.), Shaver - 8, Kelp - 8 (1-3 pt.), Reed - 2, Hawkins - 4.

Record: 16-12 (6-1)

Spearman Boys - J.V.
Vs. Boys Ranch
Spr. 50 - B.R. 27

Chuck Cook - 2, Troy Law - 2, Wes Dyess - 6, Toby Thompson - 6, Matt Archer - 4, Jason Swink - 3, Sherman Jones - 2, Jason Varnon - 4, Clint Schnell - 6, Brandon Vanderburg - 8, Justin Boyd - 7 (1-3 pt.).

Vs. Guymon, 10\11
Spr. 43 - Guy. 38

Dyess - 16, Thompson - 8, Jones - 5, Varnon - 9, Vanderburg - 2, Schnell - 3.

Spearman Boys - 9th
West Texas Tourney
Feb. 6-8

Vs. Sanford-Fritch
Spr. 31 - S.F. 37

Garcia - 12 (1-3 pt.), Wilkerson - 13 (2-3 pt.), Schneider - 2, Furlow - 2, Moore - 2.

Vs. Gruver

Spr. 31 - Gru. 23

Garcia - 12, Wilkerson - 11 (1-3 pt.), Schneider - 2, Furlow - 2, Stark - 2.

Vs. West Texas
Spr. 24 - W.T. 14

Garcia - 8, Wilkerson - 5 (1-3 pt.), Schneider - 3, Furlow - 8.

Vs. Canadian, 2\10
Spr. 25 - Can. 19

Garcia - 10 (1-3 pt.), Wilkerson - 7 (1-3 pt.), Schneider - 6 (2-3 pt.), Stark - 2.

Spearman Boys - 8th
Vs. Stratford, 2\10
Spr. 30 - Str. 15

M. Sanders - 4, Neff - 2, Pittman - 5 (1-3 pt.), Collins - 5, P. Sanders - 4, Garrett - 2, Tigrett - 2, McLeod - 2, Covington - 2.

Spearman Boys - 7th
Spr. 25 - Str. 6

Cudd - 2, Faries - 2, Howard - 4, Beedy - 8, Savage - 2, Miller - 3, Lair - 2.

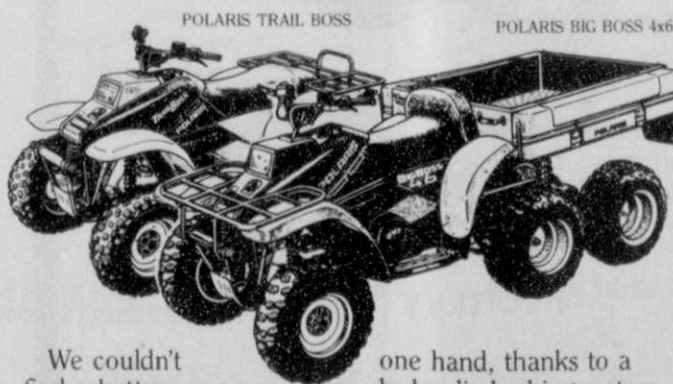


(photo courtesy Hansford County Extension Service)
Reagan Renner stands with his Grand Champion Swine.



A four-ounce glass of orange juice fulfills an adult's daily requirement for vitamin C—about 60 milligrams.

Introducing The New Polaris ATVs. And The Newest Dealer Who Sells Them.



We couldn't find a better ATV to handle, and neither will you. Just turn the key, push the throttle and go.

You don't have to do the shifting, because it's automatic. And you get all the power you need from dependable 250cc air & 350cc liquid cooled engines. You can stop with just

one hand, thanks to a hydraulic braking system that slows all wheels evenly. And the Polaris ATVs can turn on a dime.

Now that we have them all, maybe you should have one. The Polaris ATVs. See them here today at your newest Polaris dealer.

POLARIS
Believe It.

Hansford Implement

Highway 207 South
Spearman, Texas
659-2568 733-2088

WARNING: ATVs can be hazardous to operate. These are full-sized machines designed to be ridden only by adults aged 18 and older. For your safety, always wear a helmet, eye protection and protective clothing. Be particularly careful on difficult terrain. Polaris recommends that all ATV riders take a training course. For safety and training information, see your dealer or call Polaris at 1-800-342-3764.

SOUTHWEST OUTDOORS



Mel Phillips

Ole Palo Duro Phil, that grumpy ole groundhog who lives near light house rock in Palo Duro Canyon, ventured forth last Sunday and failed to see his shadow. Old timers know that this means the winter of 1992 will only last another month and a half. Of course, if Phil sees his shadow then winter will last a full six weeks.

What happened to winter? Some weather guessers on TV blame El Nino in the Pacific Ocean. Enjoy the warm weather because I have a feeling that pipes will freeze before spring really arrives.

One great benefit of mild weather is sneaking off to Lake Meredith and catching a mess of walleye without wearing four layers of clothes and two pairs of gloves. The prime time to catch this delicious fish is February through March.

Check out the face of the dam, main lake points, and my favorite

Show from page 8

pion - Grand Champion; Ronnie Ring - Reserve Breed Champion - LAMBS

Class #1: 1st - Jeryme Piatt; 2nd - Clint Schnell; 3rd - Kara Pipkin; 4th - Jenn Schnell; 5th - Sean Baker; 6th - Ashley Baker; 7th - Sean Baker; 8th - Ashley Baker.

spot, a sunken point off Rattlesnake Island. Slowly, and I mean s-l-o-w-l-y, work a minnow from about three feet down to twenty-five feet deep. Walleye are notorious for changing depth depending upon barometric pressure, light conditions, and other factors known only to water breathing animals.

Experts, like profession walleye angler Stan Berry, recommend a delay in setting the hook. Wait for that second tap or until the bait starts "swimming off," and then just sweep the rod while turning the reel handle. "Flippin sticks" are out; that old fiberglass rod is perfect for walleye.

Bass fishermen need to UNLOCK their drag settings and start using some six to eight pound test Magna-Thin by Dupont. Lighter line means feeling more fish. Frequent retying knots and checking for line abrasions will get those fish in the boat.

An added benefit of light line fishing for walleye is the frequent excitement of a feisty smallmouth, trying to steal a rod and reel.

Lake Meredith locals like Deputy Sheriff Mike Harber claim that the really good walleye and smallmouth fishing is done "at night when a blue northern blows through!" It's hard to verify this report because I am usually snipe hunting in a windmill tower during those weather conditions.

Mexico Bass: El Paso native Billy Chapman, Jr., has put together some of the best world class fishing packages, and he reports that Lake El Salto is the hottest new lake in Mexico. If catching 20 bass per day over five pounds sounds like fun, give Billy a toll free call at 1-800-468-2347. His family has over 32 years experience in the Mexican bass fishing business and they know how to take care of any border crossing problems.

Class #2: 1st - Jeremy Mackie; 2nd - Kacee Smith; 3rd - Jacob Harbour; 4th - Chris Jenkins; 5th - Lena Harbour.

Class #3: 1st - Leah Mackie; 2nd - Mandy Vernon; 3rd - Matt Eakin; 4th - Dustin Mackie; 5th - Candice Pipkin; 6th - Kallie Smith.

Class #4: 1st - Leslie Latta; 2nd - Kevin Williams; 3rd - Brandon Vanderburg; 4th - Katrina Brooks; 5th - Shannon Burke; 6th - Clancy Vanderburg; 7th - Cody Brooks.

Class #5: 1st - Tommi Latta; 2nd - Leslie Latta; 3rd - Kevin Williams; 4th - Chad Gardiner; 5th - Matt Eakin; 6th - Clayton Vanderburg.

Tommi Latta - Grand Champion; Leslie Latta - Reserve Grand Champion; Junior Showmanship - Jeremy Mackie; Senior Showmanship - Leslie Latta.

STEERS

Class #1: 1st - Cody Brooks; 2nd

- Chris Brooks; 3rd - Lana Martin; 4th - Traci Martin - 5th - Misty Pearson.

Class #2: 1st - Brandon Vanderburg; 2nd - Jason Harnish; 3rd - Kacee Smith; 4th - Brian Howell; 5th - Clint Sasser.

Class #3: 1st - Ashley Brown; 2nd - Kevin Williams; 3rd - Grady Cline; 4th - Jeremy Thomas; 5th - Carrie Burton.

Class #4: 1st - Reagan Renner; 2nd - Brandon Close; 3rd - Tommi Latta; 4th - Ashley Brown; 5th - Mandy Vernon.

Class #5: 1st - Reagan Renner; 2nd - Leslie Latta; 3rd - Bruce Howell; 4th - Bethany Cline; 5th - Randie Renner.

Ashley Brown - Grand Champion; Reagan Renner - Reserve Grand Champion; Junior Showmanship - Cody Brooks; Senior Showmanship - Kevin Williams.

BE A GOOD NEIGHBOR

Volunteer.

American Heart Association

SMITH'S PROPANE SERVICE

(formerly Rutz Oil Co.)

Now Serving Texas & Oklahoma Both Residential & Commercial Including "Keep Full" Deliveries to: farms, Homes, Ranches, Oil Fields, Etc. Call Us For All Your Propane Needs. Very Competitive Prices. 5% Cash Discount To Customer Own Tanks.

We Also Have Tanks If Needed. 30 Day Terms With Good Credit. 24 Hour Emergency Service

We Serve Perryton, Booker, Spearman, Turpin, Beaver & Surrounding Areas.

WE ALSO OFFER:

- Propane Vehicle Conversions
- LP Parts & Equipment
- We Service LP Gas Appliances
- We Make House Calls

SMITH'S PROPANE & MOTOR HOME RENTALS

806-435-5844 OR TOLL FREE 1-800-753-6330



NORTHROP KING

NK DEALER

Deduct 10% on all grain sorghum and corn seed if bill is paid by 10th of the month following bill.

Deduct another 5% if prepaid by February 29th: 10 + 5 = 15%

Deduct another 2% if prepaid by April 30th: 10 + 2 = 12%

CORN SEED:

NK9540 - P30 80,000 Kernels \$70.00
NK7759 - P30 80,000 Kernels \$50.00

GRAIN SORGHUM SEED:

NK383Y CREAM - Early Maturing \$45.00

NK714Y CREAM - Medium Maturing \$43.00

NK300 - Long Season \$42.50

*Add \$10.00 per bag for Concept Safened Grain Sorghum

B&B FARM INDUSTRIES INC.



659-5507

703 COLLARD • SPEARMAN, TX

Local sororities announce their 1992 Valentine Queens



Jane Meek

Laureate Gamma Gamma

Laureate Gamma Gamma of Beta Sigma Phi has selected Jane Meek as their 1992 Valentine Queen.

Jane was born on Nov. 1, 1911 in Chicago, Ill. She attended Kansas State University in Manhattan, Kan. and is an active alumnus of Alpha Delta Phi.

She married Norris Meek on Feb. 7, 1934. They had two children, Judy Meek Martin, and Robert (Bob) Meek. The family moved to Spearman in 1946. Jane was widowed in May, 1951.

She has been a member of the United Methodist Church for 42 years, serving on various committees, including 20 years as an active member of U.M.W.

Jane is a past member of the

20th Century Club and the Spearman Book Club.

"To Pave the Way," Jane was the first woman to serve on the Spearman School Board, serving two terms (1955-61).

Jane was invited to become an Honorary Member in Beta Sigma Phi. Then in 1989, Jane received the ritual and became an active member, serving on various committees.

Her family has grown to include son-in-law Ray Martin, daughter-in-law Sheryl Driscoll Meek, five grandchildren and 10 great-grandchildren.

Jane is a true example of Beta Sigma Phi - interested in the social, cultural and finer things in life.



Holly Simpson

Xi Zeta

Xi Zeta's 1992 Valentine Queen is Holly Simpson.

The Lubbock native moved to Spearman in 1978 and has made Spearman her home the last 14 years. She has been active in Beta Sigma Phi for eight years, holding numerous offices including currently serving as Vice President of

the Xi Zeta Chapter.

Holly and her husband, Lenis, have two children, Adrienne and

Taylor. She is a graduate of Panhandle State University and is a Certified Public Accountant with Brown, Graham and Company, P.C.



Stephanie Crossland

Rho Rho

Stephanie Crossland is the 1992 Rho Rho Valentine Queen.

Stephanie graduated from Spearman High School in 1977. Her parents are Don and Wanda Reed of Spearman. She is married to Jr Crossland and has a beautiful 7 year old daughter named Jessica.

Stephanie has been employed by Hansford Implement for the last

10 years. She is currently serving as Rho Rho President and has held other offices, such as 2nd Vice President and Service Chairman.

Stephanie is also actively involved in the Spearman Chamber of Commerce and is now serving as Vice President. She enjoys snow skiing and has recently taken up the game of golf.



Cindy Blackman

Preceptor Upsilon

Preceptor Upsilon has chosen Cindy Blackman as their 1992 Valentine Queen.

Cindy was born in Spearman on Sept. 24, 1952 and graduated from Spearman High School in 1971. Her parents are Ed and Pat Dear.

After high school she attended West Texas State University. She has been active in sorority since 1973 and is currently serving as vice-president of her chapter.

Cindy and her husband Monty have four children: Brandi, a fresh-

man at W.T.S.U.; Monica, a senior at Spearman High School; and Molly and Schane, both freshmen at Spearman High School.

Cindy is executive vice-president and director of the Spearman Chamber of Commerce and is a partner in The Bunkhouse. She is active in Women's Division, and retail merchants. Cindy is also on the Spearhead Corporation Board and is an active member of the Spearman Lions Club.

Hometown news

GOODWELL, Okla. - The President's and Dean's Honor Rolls for the fall semester at Panhandle State University have been announced.

The President's Honor Roll contains the names of those students who earned a perfect 4.0 grade average and carried at least 12 hours of university courses. The Dean's Honor Roll contains the names of those students who earned a 3.30 grade average and carried at least 12 hours of university courses.

Included on the President's Honor Roll are Nancy J. Cotter of Gruver, and Linda J. Sales and Cynthia Lucille Shackelford, both of Spearman.

Listed on the Dean's Honor Roll are Johnnie L. Fuller, Frances L. Pipkin, Daniel Douglas Ellis, Gina L. Hamilton, Tina Breeden Huddleston, Linda D. Sanders and Cayla L. Schroeder, all of Spearman; and Shelah Ladon Heath, Clifton W. Barkley, Davonna A. Daharsh, Terry Max Davis, Amy Leigh Lewis, Joanna Lynn White and Sandra G. Gumfory, all of Gruver.

AMARILLO - Margaret Yates of Spearman, a student of automated office technology, was recently named to the Texas State Technical College-Amarillo President's Honor Roll with a 4.0 grade point average for the fall quarter.

LOTTERY BULLETIN!

If you're a retailer and want to sell

TEXAS LOTTERY TICKETS...

you can get a jump on the license application process by attending our special

LOTTERY RETAILER SEMINAR

THURS., FEB. 20
2:00 P.M.

HOLIDAY INN CIVIC CENTER

801 AVENUE Q
LUBBOCK



FOR RESERVATIONS, CALL 1-800-37-LOTTO

SEED PIONEER CORN

Pioneer logo circa 1960

The Tradition Continues

Pioneer Days
February 10-15, 1992

Save 6% on high performing Pioneer brand products.

See your Pioneer sales representative.

Billy Logsdon Spearman, TX 806-733-2803	Andy Watley Spearman, TX 806-659-3838
Keith Gibson Gruver, TX 806-733-2376	

BRAND PRODUCTS

All sales are subject to the terms of labeling and sale documents.
® Registered trademark of Pioneer Hi-Bred International, Inc.
COM-91-24-2

School menu

SPEARMAN ISD
FEB 17-21
LUNCH

Monday - pizza burger, tater tots (spicy potato wedges at high school), black-eyed peas, fruit, cake, milk

Tuesday - salmon croquettes, macaroni & cheese, cut broccoli, hot rolls, butter & almond butter, fruit, milk

Wednesday - meat & cheese nachos, lettuce-tomato salad, buttered corn, rice pudding, milk

Thursday - chicken & noodles, sweet peas, raw vegetables, ranch dressing, biscuits, jelly, butter, milk

Friday - charco-burger, french fries, lettuce, tomato, pickle, onion, cookie, milk

PRINGLE-MORSE CISD
FEB. 17-21
BREAKFAST

Monday - toast, cereal, orange juice, milk

Tuesday - donuts, cheese toast, apple juice, milk

Wednesday - pancakes, syrup, sausage, grape juice, milk

Thursday - oatmeal, toast, apple juice, milk

Friday - bacon & eggs, toast, orange juice, milk

LUNCH
Monday - corn dog, frito pie, baked potato with cheese & broccoli sauce, fruit, milk

Tuesday - Salisbury steak, potatoes, gravy, carrots, salad, rolls, cherry over cake, milk

School menu

Wednesday - hamburgers, tater tots, trimmings, fruit, milk

Thursday - fish, macaroni & cheese, spanish, fruit, chocolate chip cookie, milk

Friday - sandwiches, noodle or tomato soup, chips, fruit, milk
NO SCHOOL FEB. 24-28.
SPRING BREAK

GRUVER ISD
FEB. 17-21
LUNCH

Monday - steak fingers, macaroni & tomatoes, fruit, corn bread, milk

Tuesday - pizza, corn, tossed salad, milk

Wednesday - chicken patties, potatoes, vegetables, jello, hot rolls, milk

Thursday - deli sandwiches, shaved ham & cheese, homemade bread, pickle spears, fruit, cookies, milk

Friday - corn dogs, beans, fruit bars, milk

Salad bar Monday through Wednesday only.

BREAKFAST
Monday - oatmeal & cinnamon bread, juice, milk

Tuesday - blueberry muffins, fruit, milk

Wednesday - toast, peanut butter & jelly, fruit, milk

Thursday - french toast sticks, syrup, fruit, milk

Friday - cinnamon rolls, fruit, milk



Beat the Spring price increase!

Buy during our Open House
February 13, 14, 15, 1992

Hwy 287 North
Dumas, Texas



MORTON BUILDINGS
806-935-6881

WANT ADS Work Wonders!

Reporter-Statesman CLASSIFIEDS 659-3434

NOTICE

Deadline to place or cancel classified line ads is Tuesday noon for Thursday insertion.

CLASSIFIED RATE
 \$4.00 first insertion
 \$3.00 each additional insertion (30 words or less)
 13¢ each word over 30
 Legal Notices: 15¢ per word

Ads must be paid in full in cash before publication, unless advertiser has established credit with the Reporter-Statesman. Payment for out of state classifieds must be in the form of a money order or cashier's check. No tear sheets provided for classified ads. Tear sheets provided on request for legal notices.

REAL ESTATE

THREE BEDROOM STUCCO home with detached 36 x 24 garage on three lots, 55 x 140. Located at 30 S. Brandt, Spearman. Call 659-3683 after 5 p.m., ask for Albert (Butch) Baker. S14-4tp

DRY WHEATLAND, north of Gruver. Priced right at \$325/acre, but will consider all offers. Presently Farmed. (602) 420-1498, leave message. S16-2tp

FOR RENT

FOR RENT - 3 bedroom, 2 bath house, Harris Addition, Gruver. Call 733-2517. S08-RTN/c

FURNITURE

DIVAN & CHAIR for sale, also kitchen table, washing machine, bedroom suite (dresser, bed & night stand). 659-3236. S16-1tp

AUTOMOBILES

1983 WELDING TRUCK for sale. Good rubber, Hobart diesel welder. Call 659-5565, ask for Larry. S15-3tc

LIVES/OCK

40TH ANNUAL Panhandle State University Performance Tested Bull Sale. Saturday, February 22, 1992, 1:00 p.m. CST, University Farm, Goodwell, Oklahoma. Bulls have been fed a Growing Ration. Selling 100 Bulls - Angus, Charolais, Hereford, Salers, Simmental. Bulls will be Fertility Tested. (405) 349-2611 Ext 262 or 221, (405) 349-2514 (Home). S14-4tc

FARM PRODUCTS

Hard Red Spring Wheat
Spring Oats
Watley Seed Co.
 Spearman, Texas
 1-800-338-2885

MISC. FOR SALE

NEW TRAMPOLINES
 Mats and springs. Resew trampoline mats. Make new boat covers.
 Call 806-659-2109
 Harry Stumpf
 301 W. 12th
 Spearman, Texas

JAN'S ETC.
NEW & USED & ANTIQUES TOO
 Everything for home and family.
 Plains Shopping Center in Spearman.
 Open Monday - Saturday
 9:30 a.m. til 6:00 p.m.

SPECIAL NOTICE

THE KNACK SHOPPE
 A Video Specialty Store
 Wide Selection of Movies
 • VCR & TV Rentals
 • Nintendo Games & Units
 • Sega Genesis Games & Units
 • Blank Tapes • Popcorn • Snacks
 317 Main St.
659-5046 Spearman

Today's Best Buys

BASEBALL CARDS
 All 59¢ Cards 3/\$1.00
ALLSUP'S CONVENIENCE STORE

PERSONAL

IS DRINKING AFFECTING your life negatively? Join us at AA or Al-Anon. Tuesdays at 8 p.m. at 30 Hwy 760 (three blocks south of the Moose). S06-17tp

LOST & FOUND

REWARD OFFERED for return of two missing adult boxers, one male, one female. 435-5758. S16-2tp

JOB OPPORTUNITIES

WANTED: MARKETING EXECUTIVES with an Inc. 500 Company. Unlimited potential. Free training. Full or part-time help needed. Excellent income available. Orientation at Golden Age Center, 105 E. Broadway, Gruver, TX, Feb. 20, 8:00 p.m. Presented by Chad Wilson. Everyone invited. S16-2tp

SITUATION WANTED

WILL DO HOUSEWORK. Call 659-2042, Beverly Wagner. S15-2tp

SUZUKI & TRADITIONAL piano lessons for children 3 years old and older, as well as adults. For more information contact Kristi Holt at 659-2473. S16-1tp

GARAGE SALES

GIANT MOVING SALE!
 Bedroom suite, flotation king waterbed, clothes, recliner, exercise bike, color TV, VCR and much more. PLUS 1978 Ford LTD, runs great! Call 659-2619 on big items. Regular garage sale 1/2 day only! Saturday, Feb. 22, 8-12. 802 S. Dressen. S16-2tp

SERVICES

HANDYMAN - You want it done and can't or don't want to do it yourself!! Call Uncle Ed (Pearson), 659-3328 - Anytime - Anything! House, yard, fence, car, garage, etc. (Clean up, repair, paint, trim trees & bushes, etc.) S15-1tcRTN

BATHTUB & SINK refinishing, countertop recoloring. Cedric Cryer, 1-800-743-7451. S15-4tp

JACK OF ALL TRADES! We do anything and everything: Painting, tree trimming, mowing, yard work & clean up, landscaping, roofing, fence building (all types). You need it done, call David Pearson at 659-3352. S43-1tcRTN

Stay in touch!
 with
G & G ELECTRONICS
 Cellphone USA
 *2-way Radio
 *Mobile Telephones
 \$35/month No Air Time
 *Repeater Spaces
 *Pagers
 *Satellite Work
 Call Bruce Duncan (806) 659-3673

NOTICE

Wallace Monument Co.
 Monuments, Curbing,
 Grave Covers
 1-800-999-9506
 Local Representative
LEONARD JAMESON
 Spearman, Texas

PUBLIC NOTICES

LEGAL NOTICE

TO THE PROPERTY AND LAND OWNERS WITHIN THE BOUNDARY OF THE NORTH PLAINS GROUNDWATER CONSERVATION DISTRICT NO. 2.
 NOTICE IS HEREBY GIVEN that a hearing will be held March 2, 1992 at 7:00 p.m. on the top floor of the Hansford County Courthouse in the District Courtroom.
 The purpose of the hearing is for the Board of the District to receive testimony in support of or opposition to the annexation of a certain portion of Dallam County in to the North Plains Groundwater Conservation District No. 2.
 S16-1tc13.20

NOTICE TO BIDDERS

Notice is hereby given that the City of Spearman, Texas, will receive sealed proposals for the depository and custody of the City funds from any banking corporation, association, or individual banking doing business within the City of Spearman, on March 6, 1992, at 2:00 p.m. at City Hall. Any banking corporation, association, or individual banker doing business in the City of Spearman desiring to submit a proposal to be designated as the depository for the funds of the City of Spearman shall deliver to the City Manager, on or before the date and time specified, its proposal for depository and custody of such funds, which must be accompanied by a statement of assets and resources of the applicant. The proposals must comply with the applicable statutes and be subject to the laws governing depositories.
 The City of Spearman reserves the right to reject any or all bids, to waive informalities and to accept the bid deemed to be the most advantageous to the City. All bids received after the above closing hour will be returned unopened.
 Specifications and bidding documents may be secured from the office of the City Manager, P.O. Box 37, Spearman, Texas 79081. S16-1tc29.25

Spearman Independent School District is accepting sealed bids for Repairs to Roof on Varsity Gym for the period February 17, 1992 through March 27, 1992. Required bid forms, specifications and additional information may be obtained by writing or calling Allen Alford, Spearman Independent School District, 403 East 11th Street, Spearman, TX 79081 (806) 659-2116. Bids should be marked "Roofing Bid" and mailed to the address above or delivered to 403 East 11th Street, Spearman, TX 79081 by 1:00 p.m. on March 27, 1992 at which time they will be opened. S16-1tc11.70

J.L. Hamilton and Reba Kay Hamilton, John Randall Hendrickson and Donna Jo Hendrickson have made application with the Texas Alcoholic Beverage Commission for a Private Club Registration Permit to be located at 22 S. Archer, city of Spearman, county of Hansford, and operated under the trade name of Palo Duro Supper Club. S15-2tp7.50

REPORTER-STATESMAN CLASSIFIEDS WORK!

SERVICES

CALL YOUR LOCAL Used Cow Dealer for 7 days a week dead stock removal. 659-3544 or 1-800-692-4043. Serving Cattlemen for the past 20 years. G51-RTN

OSGOOD MONUMENT CO.
 Amarillo, Texas
 Dealers of Rock of Ages Granite, as well as all colored granites, marble and bronze memorials.
 Represented by
BOXWELL BROS.
FUNERAL HOME
 519 S. Evans
 659-3802

Are You A Victim of Physical Abuse?
 Call Toll Free 1-800-753-5308
 We are in Spearman on the 1st and 3rd Wednesdays of each month from 9:30 to 11:30 a.m. Call for an appointment. Also, we can come to Spearman at any time upon request. We also operate a safe place for victims and their children to stay in times of crisis.
Panhandle Crisis Center
 Serving Hansford, Lipscomb and Ochiltree Counties
 317 S. Main Perryton, TX

PUBLIC NOTICES

NOTICE OF SHERIFFS SALE

THE STATE OF TEXAS
 COUNTY OF HANSFORD
 By virtue of an Order of Sale issued out of the Honorable 84TH Judicial District Court of Hansford County, on the 6 day of Feb., 1992 by the Clerk thereof, in the case of HANSFORD COUNTY VS. FOX, J.W. JR., Cause #269, and to me, as Sheriff, directed and delivered, I will proceed to sell, at 1:00 O'CLOCK P.M. on the 3RD DAY OF MARCH, 1992 which is the first Tuesday of said month, at the OFFICIAL door of the Courthouse of said Hansford County, in the City of SPEARMAN Texas, the following described property, to wit: Lot 1, Block 11 of the Glover Terrace Addition to the City of Spearman, Hansford County, Texas Levied on the 7 day of Feb. 1992 as the property of J.W. FOX, JR. BY VIRTUE OF A WARRANTY DEED IN VOLUME 69, PAGE 473, OF THE OFFICIAL RECORDS OF HANSFORD COUNTY, TEXAS to satisfy a judgment amounting to \$15,894.45 with interest from the 3RD DAY OF OCTOBER, 1991 at 10 per cent, per annum, and all costs of suit in favor of CITY OF SPEARMAN, SPEARMAN INDEPENDENT SCHOOL DISTRICT AND HANSFORD COUNTY. GIVEN UNDER MY HAND THIS 7 day of Feb., 1992.
 R.L. McFarlin, Jr., SHERIFF
 HANSFORD COUNTY, TEXAS
 BY -s- Dennis Cline, DEPUTY
 S16-3tc30.00

NOTICE OF SHERIFFS SALE

THE STATE OF TEXAS
 COUNTY OF HANSFORD
 By virtue of an Order of Sale issued out of the Honorable 84TH Judicial District Court of Hansford County, on the 6 day of Feb., 1992 by the Clerk thereof, in the case of HANSFORD COUNTY VS. HARGROVE, HILOUS, Cause #461, and to me, as Sheriff, directed and delivered, I will proceed to sell, at 1:00 O'CLOCK P.M. on the 3RD DAY OF MARCH, 1992, which is the first Tuesday of said month, at the OFFICIAL door of the Courthouse of said Hansford County, in the City of SPEARMAN Texas, the following described property, to wit: All of Lot Number Three (3), Block Number Twenty (20), Original Town of Spearman, Hansford County, Texas
 Levied on the 7 day of Feb. 1992 as the property of HILOUS HARGROVE BY VIRTUE OF ANY INTEREST HE MAY CLAIM IN THE PROPERTY SET OUT HEREINBELOW to satisfy a judgment amounting to \$1,023.13 with interest from the 3RD DAY OF OCTOBER, 1991 at 10 per cent, per annum, and all costs of suit in favor of CITY OF SPEARMAN, SPEARMAN INDEPENDENT SCHOOL DISTRICT AND HANSFORD COUNTY. GIVEN UNDER MY HAND THIS 7 day of Feb. 1992.
 R.L. McFarlin, SHERIFF
 HANSFORD COUNTY, TEXAS
 BY -s- Dennis Cline, DEPUTY
 S16-3tc29.55

Count on the Classifieds to Do the Job

Oil & Gas Reporting Service
 Box 2052 • Pampa, TX 79065
 Providing the Oil & Gas Report for Hansford County Readers
 Doris Harrison • Phone 665-5800

TexSCAN

Statewide Classified Advertising Network
 Advertise in 283 Texas newspapers for only \$250.
 Reach 3 MILLION Texans. Call this newspaper for details.

DEER HUNTERS SPECIAL: 25 acres, \$795/acre, wooded, excellent hunting, adjoins paved road. Texas veteran or owner financing, prime acreage. Fox Realty, 500 Buchanan Dr., BURNET, TX 1-800-725-3699.

ARE YOU COLLECTING PAYMENTS on real estate you've sold? We'll give you cash now for these payments! Call National Fidelity Corporation today! 1-800-364-1072.

WOLFF TANNING BEDS: New commercial-home units from \$199. Lamps, lotions, accessories. Monthly payments low as \$18. Call today. FREE NEW color catalog. 1-800-228-6292.

"NOTE TELEPHONE NUMBER CORRECTION:" LAST CHANCE TO BUY your own little stretch of Texas at 4% interest, 30 years, 0 down, \$92/mo. Deal ends Feb. 29, 1992. Call 1-800-275-REPO.

DRIVERS: KLLM INC., Dallas and Houston terminals are now hiring experienced tractor trailer drivers to run 48 states and Canada! Call 1-800-925-5556, Monday-Friday.

MAKE A FRIEND... FOR LIFE! Scandinavian, European, Yugoslavian, Australian high school exchange students arriving in August. Host families needed! American Intercultural Student Exchange. Call tollfree 1-800-SIBLING.

DRIVERS - WE'RE GROWING and need more teams. We offer competitive pay and benefits, bonuses, modern tractors, good freight. Call today!!! Celadon 1-800-729-9770.

Oil & gas report

WEEK ENDING FEB. 6
Intentions to Drill
COLLINGSWORTH (WILDCAT) Meridian Oil, Inc. #320 CPS-320, 994' from South & 78' from East line, Sec. 97, 16, H&TC, 6 mi S-SW from Shamrock, PD 500' (400 N Sam Houston Pkwy. East, Suite 1200, Houston, TX 77060) Catholic Protection Well

COLLINGSWORTH (WILDCAT) Meridian Oil, Inc. #1390 CPS-1390, 773' from South & 62' from East line, Sec. 91, 16, H&G&N, 6 mi S-SW from Shamrock, PD 500'. Catholic Protection

HUTCHINSON (WILDCAT & ARRINGTON Granite Wash) Arrington CJM, Inc. #16 West Turkey Track (3634.43 ac) 757' from South & 1500' from East line, Sec. 21, M-25, TCRR, 10 mi NE from Stinnett, PD 6600' (Box 608, Canadian, TX 79014)

LIPSCOMB (BRADFORD Tonkawa) Walsh & Watts, Inc. #3 Booth (53 ac) 1320' from North & East line, Sec. 639, 43, H&TC, 7 mi west from Lipscomb, PD 9200' (1111 Seventh St., Wichita Falls, TX 76301)

MOORE (PANHANDLE Red Cave) Richmond Petroleum, Inc. #2 G. Thompson '19' (320 ac) 467' from North & West line, Sec. 19, 44, H&TC, 11.2 mi S-SE from Dumas, PD 4027' (2651 N. Harwood, Dallas, TX 75201)

Plugged Wells
CARSON (PANHANDLE) Adobe Operating Co., Berry, Sec. 2, 4, I&G&N (oil) - Form 1 filed in Four C's Oil Co., for the following wells:

HANSFORD (WILDCAT) Phillips Petroleum Co., #3 Holloman, Sec. 2, 1, PSL, spud 11-8-91, plugged 11-26-91, TD 7355' (dry)

HEMPHILL (N.W. CANADIAN Douglas) Maxus Exploration Co., #3-99 Frass, Sec. 99, 42, H&TC, spud 1-8-92, plugged 1-21-92, TD 7100' (dry) -

HEMPHILL (S.E. HORSE CREEK Cleveland) Phillips Petroleum Co., #2 Brainerd 'A', Sec. 25, 43, H&TC, spud 8-3-75, plugged 1-11-92, TD 8621' (oil) -

HUTCHINSON (PANHANDLE) Phillips Petroleum Co., #1 Christian 'E', Sec. 55, M-23, TCRR, spud 6-8-81, plugged 11-23-91, TD 3325' (oil) -

ADVERTISING PROVISIONS

1. Publisher reserves the right to reject, edit, revise and properly classify any advertisement at his sole discretion.
 2. Advertiser assumes all liability for advertisements printed pursuant to his instruction and shall indemnify and hold the publisher harmless from and against any and all claims and damages, including all costs incurred by publisher in connection therewith. Advertiser represents that all advertising copy is truthful and not misleading. Advertiser shall indemnify and hold publisher harmless from any claim against publisher arising out of or in connection with publication of advertising (except for modifications made by publisher without Advertiser's approval) including, but not limited to, claims for libel, invasion of privacy, commercial appropriation of one's name or likeness, copyright infringement, trademark, trade name or patent infringement, commercial defamation, false advertising, or any other claim whether based in tort or contract, or on account of any state or federal statute, including state and federal deceptive trade practices acts. If advertiser claims copyright ownership in any of the advertising published, advertiser must include proper notice of its copyright claim in the body of the advertisement, otherwise copyright ownership shall remain in the publisher.
 3. Advertiser agrees to check advertisement in the first issue in which it appears and report any error at once as publisher assumes no responsibility for errors after the first insertion. For any error which is the fault of the publisher and of which publisher has been timely notified, publisher will reprint the corrected advertisement for one extra insertion or refund the proportionate cost of the advertisement containing the error. Publisher shall have no responsibility for errors appearing in the copy submitted by advertiser.

Obituaries

Leta I. Rogers
WAKA - Leta I. Rogers, 70, died Friday, Feb. 7.

Mrs. Rogers, born in Crawford, Okla., had been a Perryton resident for 51 years. She married Frank Rogers in 1941 at Dallas. She worked for her husband as a secretary at Rogers Sales and Service, an irrigation pipe business. She was preceded in death by a daughter, Carolyn, in 1964.

Survivors include her husband; a daughter, Linda Close of Spearman; three grandchildren; and three great-grandchildren.

Funeral services were conducted Monday, Feb. 10 in Waka Church of the Brethren with the Rev. Martin Gauby, pastor, and the Rev. Todd Dyess, pastor of the First

United Methodist Church in Spearman, officiating. Burial was in Ochiltree Cemetery.

The family requests memorials be to the American Cancer Society.

Mildred Bandy
BORGER - Mildred Bandy, 80, died Saturday, Feb. 8 in Ardmore, Okla.

Mrs. Bandy, born in Sarcoxie, Mo., moved to Borger in 1942 from Gruver. She moved to Ardmore in 1977. She was a member of First United Methodist Church, Order of the Eastern Star and Borger Music Club, and was past president of the bowling league. She was preceded in death by her husband, Ralph Bandy, in 1976.

Survivors include a daughter,

Barbara Jones of Ardmore; two grandchildren; and a great-granddaughter.

Funeral services were conducted Monday, Feb. 10 in Minton Memorial Chapel with the Rev. Dr. Ihsan Ardhuerumly, pastor of First United Methodist Church, officiating. Burial was in Westlawn Cemetery.

Marie Crawford
Marie Crawford, 84, of Spearman, died Friday, Feb. 7.

Mrs. Crawford, born in Greer County, Okla., moved to Hansford County 61 years ago. She married Carter Crawford in 1933 at Spearman. She was a homemaker and a member of Spearman Church of Christ.

Survivors include her husband; two daughter, Elaine Odegaard of Spearman and Mary Louise Thompson of Paris, Texas; a sister, Bessie Frances of Mangum, Okla.; three grandchildren; and three great-grandchildren.

Funeral services were conducted Monday, Feb. 10 in the Church of Christ with Arnis Pape, minister, officiating. Burial was in Hansford Cemetery.

Hospital Notes

ADMISSIONS

Thursday, Feb. 6 - none
Friday, Feb. 7 - Ernestine Gray
Saturday, Feb. 8 - none
Sunday, Feb. 9 - Phillip Jenkins, Vina Hawpe, Annie Allen
Monday, Feb. 10 - Marguerite Jenkins, Linda Walters

Tuesday, Feb. 11 - Sam Wysong

DISMISSALS

Thursday, Feb. 6 - Vina Hawpe
Friday, Feb. 7 - Bill Henderson
Saturday, Feb. 8 - Leonard Jameson, Ernestine Gray
Sunday, Feb. 9 - none
Monday, Feb. 10 - none

PATIENT CENSUS

Wednesday, Feb. 12 - Vina Hawpe, Linda Walters, Sam Wysong, Annie Allen, Phillip Jenkins, Marguerite Jenkins



Students in Cindy Clyburn's and Kristi Ramon's classes at Spearman Elementary School opened their studies of the Olympic Games with their own version of carrying the torch by making their own torch and carrying it around the school yard.

ADELA'S

511 Hwy. 207 S.



Our huggable, lovable, bear is your best buy for Valentines Day

Red Tulips, Azaleas, hyacinths, gloxinias big assortment of green plants - fresh flower bouquets

Call or come by Free city-wide delivery

Vanderburg announces commissioner candidacy



Ernie Vanderburg

Ernie Vanderburg has announced his candidacy for Hansford County Commissioner Precinct 1. He will be seeking this position as a candidate in the March 10th Democratic Primary subject to the voters action.

Vanderburg, 45, has been a lifelong resident of Hansford County. He graduated from Spearman High School, went on to attend two years of college at Lubbock Christian College. From there he attended Amarillo College and received an Associates Degree. While at Amarillo College he served as President of the Student Council.

He is engaged in farming and ranching and is employed by Mark

Sheets. In the past he worked as Shop Manager at Hergerts until their closing.

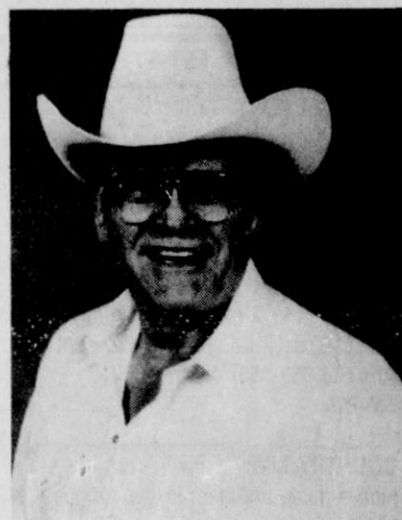
He has served on Perryton Equity Advisory Board and also has been an Advisory Board Member of New Mexico Junior College General Motors Training Center.

Vanderburg and his wife Joyce have been married twenty-one years and live seven miles southwest of Spearman. She is employed by Charolette Ford Trucks. They are active members of Spearman Church of Christ.

Living in the country he drives at least twenty-five miles or more a day on Precinct 1 roads and knows the conditions they are in. Infected he will take the time to check all roads in Precinct 1 on a regular basis for trouble spots that need maintaining.

Being a taxpayer in Hansford County for twenty-five years makes him very concerned about how our tax dollars are spent and current tax increases. He believes your tax dollars should be cost effective and used wisely and does know the importance of sticking to a budget. He is able to work closely with everyone that serves on the Commissioners Court and will listen to all the concerns of the voters. Your vote will be greatly appreciated.

(Pd. Pol. Adv. by Ernie Vanderburg, HCR 2 Box 2A, Spearman, TX 79081)



Vance Snider Correction

The Reporter-Statesman was unable to publish a photo of Vance Snider along with the story about his candidacy for Hansford County Commissioner, Precinct 1, Democrat. We regret any inconvenience.

Candidates from page 7
1940. I also worked for the public for several years. I have three children. My twin daughters are now teaching, and my son is in college.

I am a Methodist. I was president of the Hansford Gun Club for two years, and I am a member of the Hansford Retired Teachers Association. I have a Bachelor of Science degree and a Masters degree from West Texas State University.

Randy Kirk

As a candidate for Precinct #1 chairman on the Republican ticket, I resolve to stand for the conservative issues facing us in these times. I believe in God; I believe the traditional family is the foundation of our society; I believe in the right to live, even to the unborn; I believe that we should balance the budget by controlled spending; I believe that we must return to representation of the people, for the people, and by the people.

Winter Clearance Sale

-Ends Saturday, February 15th-

Up To **80%** Off

- Furniture • Accessories•
- Whirlpool Appliances•
- RCA Electronics•

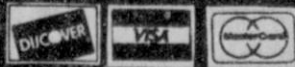
- No Holds • No Lay-a-ways•
- No Phone Orders•
- No Refunds • No Special Orders•

Boody

FURNITURE CO.

723 w. 7th plains shopping center spearman, texas

ALL ITEMS SUBJECT TO PRIOR SALE



FINANCING AVAILABLE WITH APPROVED CREDIT
WHIRLPOOL FINANCIAL CORP.
BANK RATE FINANCING
90 DAYS SAME AS CASH

Store Hours:

Mon.-Sat. - 8:30-5:30

HENSON CHIROPRACTIC

410 S. Davis • Spearman, TX

Call for Appointment • 659-5603

Office Hours: Mon, Wed, Fri - 9:00 to 5:00
Tue, Thu - 9:00 to 11:30

The Church of Christ in Spearman is pleased to announce our Dedication and Open House February 16, 1992

Schedule:

- 9:45 Bible Classes
- 10:30 Dedication Assembly
- 12:00 Fellowship Dinner
- 2:00-5:00 Open House*
- 6:00 Evening Assembly

*During Open House we will have periods of congregational singing followed by breaks for refreshments and guided tours of the facility.

Everyone is invited to attend all or part of the day's activities.

We would also like to publicly thank the Community for their support and encouragement during this time. We want to especially mention the Faith Lutheran Church—their graciousness in allowing us use of their building was a tremendous blessing to our congregation.