

Inside

At the Movies	2	Chamber Chatter	4
Lunch Menus	2	For The Sport of It	11
Among the Neighbors	5	Classifieds	13
Out at the Lake	7	Obituaries	14

Honor Rolls

Pages 2&8

WEATHER FOR WEEK OF 11-24 THRU 11-30

Day	Hi	Lo	Precip	Day	Hi	Lo	Precip
Thu	62	37	.00	Mon	50	21	.00
Fri	46	28	.00	Tue	48	28	.00
Sat	69	40	.00	Wed	--	26	.00
Sun	48	33	.00	Total Precipitation			19.97

The Hansford County Reporter-Statesman

Serving Hansford County Since 1907

Volume 86 • Issue 58

213 Main • Spearman, Texas 79081

Thursday • December 1, 1994

HANSFORD COUNTY LIBRARY
0120 MAIN ST. SPEARMAN, TX 79081-2064
EXPIRES 04/15/1995 THANK YOU



FOOTBALL HEROS - The 1994 All District Football selections were made recently and Spearman managed to have 10 of these all-stars on their team. They are: (Back Row l to r) Matt Gafford, 2nd team offensive lineman; Clay Neff, 1st team defensive end; and Dillon Miller, 1st team offensive tight end. (Second Row l to r) Tom Kirk, 2nd team defensive lineman. Jason Holton, offensive 2nd team lineman; Brent Collins, honorable mention punter; and Cody McLeod, defensive honorable mention linebacker. (Front Row l to r) Shawn Moore, running back 2nd team and linebacker 1st team; Jeremy Blan, honorable mention secondary; and Chad Wilkerson, quarterback 2nd team and secondary 2nd team.



FOOTBALL STANDOUTS - The 1994 Gruver Greyhounds were a force to reckon with during District 1-2A football season. The reason for the GHS success was carried by the following Greyhound football players who were recently named to the District 1-2A All-District Team. Named to this year's standout squad were (not in order) Wylee Maupin, Eric Wright, Max Frick, Juan Arreola, Jace Dawson, Ricardo Soto, Aaron Frick, Joe Bravo, Isaacs Arzate, Sammy Renteria, and Ryon Atwood.

Local standouts named to 1-2A team

The 1994 1-AA All District Football selections were made recently, and although neither of the Hansford County teams did not make the playoffs, several members were chosen from Spearman as well as Gruver.

The Lynx had 10 all-stars who possessed enough talent to make it on the list, and only three of these were on the first team. Sophomore receiver Dillon Miller, who caught just about everything that was thrown to him, was the only Lynx player to make the first team offense.

Coming in on the second team offense were: the captain of the Lynx, senior Chad Wilkerson; sensational senior running back Shawn Moore; junior 160 pound quick lineman Jason Holton; and giant 225 pound Matt Gafford. To some, second team is not quite as an honor as the first team, but with a team as young as the Lynx were this year

and the district crammed full of all kinds of talent, this is indeed quite an honor.

On defense, the Lynx racked up several names, including, again, just two seniors and the rest underclassmen. Moore was again on the list of talented players, as he took first team on the linebacker position. Junior Clay Neff also appeared on the first team for his strength as a defensive end.

Being just a sophomore did not stop Tom Kirk from taking the second team honors as a defensive lineman, and for putting out his efforts, Kirk, with the exception of Miller, was the only sophomore to make the honor. Wilkerson's familiar name appeared again, and thanks to his quick reactions and legs, he earned a spot on the defensive secondary.

Cody McLeod, who led the Lynx in assisted tackles this year, was given honorable mention for the

linebacker position. Jeremy Blan, who came in and brought Spearman out of many tight situations, also received honorable mention for his well done job in the Lynx secondary.

Fortunately, Brent Collins is just a junior this year. Since Collins was in pain all year from his shoulder, and due to his final blow to it in Stratford, he was forced to end his season early. Collins, especially in the Perryton game, came through for the Lynx several times as a running back and a fabulous punter, but as far as All-District, he received honorable mention as punter.

An unbelievable 8 out of the 10 players selected for the honors were underclassmen for the Lynx, which should prove for an outstanding football season next year. Also, seniors Moore and Wilkerson really had a fantastic year, and it is a shame that they will not be around next year to add their talents to an already-talented Lynx team. However, Coach Ric Smith will definitely use this strong team next year to prove to Spearman his excellent coaching abilities.

As for Gruver, they proved that

they too were hot stuff as they also received 11 players on the honor list.

Junior tight end Wylee Maupin used his catching ability to be the only Gruver tight end chosen for first team offense. Eric Wright, the man who can catch anything, also made first team offense, but his was in the category of wide receiver. Only one lineman, junior Max Frick, muscled his way up to be chosen for the first team offense.

The biggest surprise of all the picks was 200-pound senior running back Aaron Frick. Frick had one of the greatest years of all running backs in this district, but as far as offense, Frick was only chosen to be on the second team.

Junior Juan Arreola also made the list. He came in as an honorable mention for the center position.

According to the selections, Gruver's defense dominated most of the games this year, as the Hounds had most of the 11 on the defensive side. Ricardo Soto, a 170-pound senior, made top honors, as he brought in one of the linemen

See TEAM, page 12

Library conducting county-wide survey

The Hansford County Library wants to know what you think.

Members of the library's long range planning committee want to meet your needs according to Librarian Sheri Benton. So the Hansford County Library is conducting a survey to see what is needed in order to meet the public's needs.

Questionnaires are available asking residents nine questions about the library.

Committee members are asking that Hansford County residents take time out to answer those questions and to make comments or suggestions about ways to improve the library.

Some of the questions listed on the questionnaire are as follows: How satisfied are you with our books and other services? How helpful is our staff? How easy is it to find what you need? How important is

the library to you? If you are not presently a library user, why not? How often do you visit the library for help? How often do you ask the librarian for help? Are there other things you would like the library to offer?

The survey is being conducted county-wide in an effort to assess the library's current and future needs and services. Questionnaires will be sent home with all school students and distributed throughout various businesses. Some of the places where the forms will be available are: the library, Lowe's, Interstate, Gordon's, O'Loughlin Center, G&G Foodliner, banks, Morse Implement, and Alco.

The questionnaires may also be returned to drop boxes at any of those businesses. Deadline for participating in the survey is Saturday, December 17.

Spearman police have busy holiday

The Spearman Police Department started the holiday of with a real live car chase.

Friday, November 25 at 3:58 a.m. Officer Bruce Goehring of the Spearman Police Department attempted to stop a 1992 Thunderbird on a traffic violation. The vehicle, occupied by two juveniles, was traveling east on Highway 15 coming into Spearman. The vehicle fled Officer Goehring and traveled one mile north on highway 15. The juveniles stopped the vehicle, jumped out and fled on foot.

Backup units from the Hansford County Sheriff's Department, the Ochiltree County Sheriff's Department, and the City of Spearman

were called to assist the search of the surrounding area for the suspects.

The suspects surrendered to an Ochiltree County unit at 7:20 a.m. Friday morning. The juveniles were later transported to the Juvenile Detention Center in Dumas.

The 1992 Thunderbird the suspects were diving was stolen from Jesse Lile Ford of Booker.

At 3:30 p.m. Friday afternoon, Spearman police officers were dispatched to Fifth and Barkley Street. A 1989 Mercury Cougar driven by a juvenile, age 16, struck a pedestrian, age 14. The pedes-

See POLICE, page 6

Hansford Happenings

Meals-On-Wheels Service

To sign up for Meals-On-Wheels Service or to receive information, call Ernestina Salgado at 659-2535, ext. 226 between 8 a.m. and 5 p.m.

Home Tour

The Gladiola Flower Club will be having their annual home tour on December 4 from 2 - 5 p.m. Tickets are \$5.00.

D.A.R.E. Raffle

Raffle tickets for a D.A.R.E. Classic Jacket with leather sleeves, estimated value \$150.00, are now available for \$1 a piece at the Police Department or from D.A.R.E. Officer Jamie Downs. Drawing will be held during halftime of the Spearman/Perryton varsity boys basketball game. You do not have to be present to win.

Conservation District Tree Sales

The Hansford Soil & Water Conservation District now has order forms for windbreak and landscaping trees. The District is again offering bare rooted and potted evergreen trees. Sign-up time is now and until March 15, 1995. Anyone interested, may come by the office at 909 W. 9th, Spearman.

Gruver Music Club

The Gruver Music Club Christmas on the Plains Stew and Cornbread fundraiser to benefit the Music Club Scholarship will be December 6 from 11 a.m. to 1:30 p.m. in the Gruver United Methodist Fellowship Hall. Tickets are \$5.

Quilt Raffle

Twelve Days of Christmas quilt raffle tickets are available. \$2 each or 3 for \$5. Call 659-3866 or any Senior Citizen member.

Hunters Feed

The Church of the Brethren in Waka, TX will be holding a Hunters Feed on December 10, 1994, from 11 a.m. to 2 p.m.. OPENING DAY OF PHEASANT SEASON. All you can eat for \$5.50. We welcome all hunters, friends and community to enjoy a meal with us. Proceeds for the Hunters Feed will be used for the new heater-air conditioner fund.

Tree Lighting Ceremony

Hansford Hospice will hold its Tree Lighting Ceremony December 5 at 6:00 p.m. Please come by Hansford Hospital for fellowship, Wassall, and to remember former Hospice patients and families.

Gruver I.S.D. Public Meeting

The Gruver I.S.D. will hold a public meeting at 1 p.m. on Wednesday, December 7, 1994 to hear the Academic Excellence Indicator System report. The meeting will be held in the board room located in the high school building, and it will be during the December school board meeting.

Crafts Bazaar

The Crafts Bazaar to benefit Hansford Manor's empty stocking fund will be held December 9, 1994 from 10 a.m. to 3 p.m. in the Hansford Manor Activity Room. Donations of craft items and baked goods are needed. Please contact Debby Sanford at the Manor, 659-2535.

24 days 'till Christmas

School Lunch Menus

Spearman School Lunch Menu
Monday, December 6
 Sausage pizza, combo-salad, sweet peas, apple-raisin cobbler, and milk.
Tuesday, December 7
 Submarine sandwich, tomato soup, crackers, dill pickle spear, carrot sticks, pineapple tidbits, and milk.
Wednesday, December 8
 Taco salad: edible salad bowl, seasoned ground beef, shredded lettuce, diced onion, shredded cheese cup (cheddar), taco sauce; refried beans, peaches, and milk.
Thursday, December 9
 Steak fingers, whipped potatoes, gravy (optional), seasoned green beans, hot rolls, butter, pears, and milk.
Friday, December 10
 Cheeseburger, french fries, shredded lettuce, sliced tomato, onion, pickle, cherry cobbler, and milk.
SISD Breakfast
Monday - Two pancakes, fruit juice and milk.
Tuesday - Two cinnamon toast, fruit juice and milk.
Wednesday - Pancake pup, fruit juice and milk.
Thursday - Scrambled egg, hash browns, toast, juice and milk.
Friday - Cereal (two boxes), juice and milk.

3rd-12th: baked potato, pinto beans, sour cream/butter, cheese, peaches, cinnamon roll, and milk.
Thursday, December 8
 Chicken noodle soup, cheese sticks, carrot sticks, fruit, crackers, and milk.
Friday, December 9
 Sloppy joe, tator tots, fruit, and milk.
GISD Breakfast
Monday - Cereal, muffin, juice and milk.
Tuesday - Two slices toast, jelly, peanut butter, fruit and milk.
Wednesday - Two pancakes, syrup, juice and milk.
Thursday - Breakfast burrito: scrambled eggs with ham, juice and milk.
Friday - Two cinnamon rolls, juice and milk.
PRINGLE-MORSE SCHOOL LUNCH
Monday, December 5
 Enchiladas, beans, rice, salad, cornbread, cookie, and milk.
Tuesday, December 6
 Bar-B-Q chicken, potato salad, pork-n-beans Texas toast, fruit, and milk.
Wednesday, December 7
 Hamburger, french fries, lettuce, ect. brownie, and milk.
Thursday, December 8
 Potpie, salad, biscuits, jello with fruit and milk.
Friday, December 9
 Fish, tator tots, salad, hot rolls, ice cream, and milk.
PMISD Breakfast
Monday - Toast, cheese toast, juice and milk.
Tuesday - Cereal, toast, juice, and milk.
Wednesday - Pancakes, sausage, juice, and milk.
Thursday - Cinnamon rolls, toast, juice, and milk.
Friday - Eggs, toast, juice, and milk.

Gruver School Lunch Menu
Monday, December 5
 Chicken fried steak, mash potatoes with gravy, cooked carrots, cake, hot roll, and milk.
Tuesday, December 6
 Burrito, chili/cheese, tossed salad, fruit, and milk.
Wednesday, December 7
 K-2nd: hot dogs, potato chips, peaches, pickle spear, cinnamon roll, and milk.

Spearman students make elementary honor rolls

The Gus Birdwell Elementary School students are sitting in good shape at the beginning of the third six weeks. The students on the second six weeks honor roll are:
"A" HONOR ROLL
 First Grade - Abbi Aderholt, Jessica Brown, Cory Cook, Jarry Francis, Callie Hargis, Lance Henderson, Jarick Howard, Bobby Johnson, Maribel Moreno, Melissa Pape, Silvia Pinon, Garrett Rex, Melissa Richards, Travis Sander, Mathew Sandoval, Taysia Stephens, Brooke Thomas, Britta Vanderburg, Steven Vaquera, Jeffrey Whitworth, Joey Winchell, Abby Winegarner, and Lynette Woodard.
 Second Grade - Cristalina Alvarado, Austin Beck, Jessica Freeman, Macy Harbour, Mark Laughlin, Dana McLaughlin, Amy Powers, and Cayla Smith.
 Third Grade - Jentry Edwards, Ashlee Flowers, Garrett Martin, Homero Martinez, Tatum Rice, Russell Sheets, Daniel Simpson, and Claudia Vaquera.
 Fourth Grade - Daniel Baker, Kevin Beedy, Travis Brown, Paul Bynum, Michael Griffin, Wesley Hathaway, Kallie Smith, and Lance Smith.
 Fifth Grade - Erin Boxwell, Mat-

thew Duniho, Steven Haney, Randa Morris, and Chad Scarbrough.
"A" AVERAGE HONOR ROLL
 First Grade - Jeremy Burch, Alejandro Rios, Maria Briseno, Daisy Fraire, Andrew Correll, Kaylee Miesner, Janet Mayo, Jared George, Rebekah Goodson, Tyson Dettmann, Jeta Cherry, Brian Close, Andrew Young, and Mike Rodriguez.
 Second Grade - Rossilyn Bulls, Roy Wilmeth, Maira Davila, Eric Flores, Melissa Quillen, Wayne Gibson, Felicia Martinez, Linzi McCubbin, Jessica Blan, and Tracy Brown.
 Third Grade - Christopher Cudd, Courtney Wall, Cristina Salgado, Keilee Goodheart, and Phillip Lozano.
 Fourth Grade - Daniel Pape, Matthew Francis, Lucila Davila, Mindee Gillapsie, Samantha Baker, Dustin Mackie, Nicole Ramon, Jeffrey Swan, Colton Miller, Adam Cherry, David Pipkin, Brianne Burkhammer, and Jessica Crossland.
 Fifth Grade - Sarah George, Amber Elliot, Cheryl Gibson, Marty Miesner, Tanner Beedy, Monica Cantu, Bethany Furlow, Clara Shieldknight, and Laura Gillaspie.

PMISD students named to honor rolls

Pringle-Morse students are off to a good start the third six weeks. The honor roll students for the second six weeks are:
SUPERINTENDENT'S HONOR ROLL
 Third Grade - Douglas Singer, Sarah Martin, Crystal Martinez, and Amanda Apodaca.
 Fourth Grade - Allison Behney, Evan Schmidt, and Monica Behney.
 Eighth Grade - Ashley Phillips

ALL "A" HONOR ROLL
 Third Grade - Bronson Odell, Crystal Martinez, Amanda Apodaca, Douglas Singer, and Sarah Martin.
 Fourth Grade - Andrew Behney and Elizabeth Papay.
 Fifth Grade - Lacy Odell, Mikala Reising, Evan Schmidt, Andrew Martin and Monica Behney.
 Sixth Grade - Donald Davis
 Eighth Grade - Stephanie DeLaCruz and Ashley Phillips.

A AVERAGE HONOR ROLL
 Second Grade - Chase Phillips, Brennan Eudy, and Krystal Sage.
 Third Grade - Kenneth Wolfe
 Fourth Grade - Ross Womble
 Fifth Grade - August Schuman
 Sixth Grade - Felix DeLaCruz and Kirby Johnson.
 Seventh Grade - Tap Giblin.
 Eighth Grade - Phillip Creel, Brittini Sampley, and Brenda Hernandez.
AB AVERAGE HONOR ROLL

SECOND GRADE - Seth Clemmons, Bailey Reid, and Miguel Lora-Acosta.
 Fourth Grade - Jeffery Evans
 Fifth Grade - Jerry Miers, Erica Mendoza, Amber Crowl, and Shawna Odneal.
 Sixth Grade - Jason Shoulders, Allen Thomas, Amy Vasquez, Desiree Wattier, and Hugo Hernandez.
 Eighth Grade - Ignacio Gaspar, Shelby Reising, Crece Gaspar, Stephanie Bowling, and Earl Wattier.

Gruver Elementary honor rolls

The Gruver Elementary school children are back to the books for another six weeks. The second six weeks is already over and it is time to see who made the honor roll, they are:

Victoria Vela, Tucker Williams, and Courtney Wood.

KINDERGARTEN
 Rebecca Abernathy, Alicia Barkley, Paake Eckhardt, Mason Fletcher, Bonnie Frick, Baldomero Garcia, Drew Grotegut, Brian Johnson, Britney Montgomery, Charles Slough, Justin Thompson,

FIRST GRADE
 Timber Barkley, Lauren Bergin, Ivan Briones, Bradley Clawson, Laci Fitzgeard, Colby Griffin, Rachelle Holt, Justin Horton, Tanner Irwin, Kelly Jones Lizette Lopez, Matt Messer, Sarah Mireles, Samantha Myatt, Cesar Ortiz, Rafael Perez, Allison Reid, Stephen Salazar, Jessica Vela, and Reid Winger.

GJHS students make six weeks honor rolls

The Gruver Jr High is ready to get on with the third six weeks now that they have the second one behind them. The honor roll students for the second six weeks are:

and Janae Watley.

PRINCIPAL'S HONOR ROLL
 Holly McCloy, Luke Johnson, Brooke Beville, Holly Hart, and Kade Carthel.

Eighth Grade - Jennifer Duggan, Luke Johnson, Holly McCloy, Lauren Miller, Wesley Miser, Jason TeBeest, and Matt Watlington.

ALL "A" HONOR ROLL
 Fifth Grade - Kade Carthel, Jennifer Renteria, James Duggan, and Steve Salazar.

AB HONOR ROLL
 Fifth Grade - Brittany Morris, Annie Houghton, and Kaylee Holt.
 Sixth Grade - Kallie Cluck, Monalisa Garcia, Sammie Stavlo, Kimberly Boyd, Brad Holt, and Richard Stewart.
 Seventh Grade - Esmeralda Bravo, Candice Casdorff, Krystle Deeds, Lacie Osbourne, Randi Atwood, Dallas Henson, Chelsie Hicks, Cayla Simon, and Brenda Soto.
 Eighth Grade - Teresa Crow, Missy Johnson, Erika Salmans, Jim Potts, and Charlie Stavlo.

Sixth Grade - Shea Lowe, Brooke Beville, Casie Bridwell, Cory Schneider, Tessa Yanke, Holly Hart, DeAnna Johnson, Brooke Salmans, Gisela Soto, Chad TeBeest, and Miranda Thoreson.
 Seventh Grade - Mary Puebla, Sandra Sanchez, Annie Mayhew,

Letter to Editor

Dear Editor,
 Will you please print this letter in your newspaper for the interest of any of your readers who may have ancestral roots in Anson County, N.C.?
 Anson County is in the process of gathering material for a Heritage Book. It will contain family genealogies, church and business histories along with other interesting tidbits relating to the history of

Anson County.
 It is suggested that persons wishing to order a book and submit a story on their Anson County ancestors should do so as soon as possible. To receive a free brochure please contact the Anson County Heritage Book Committee, P.O. Box 417, Wadesboro, N.C., 28170.
 Thank you
 Steven Bailey

ALCO CUSTOMERS
 Due to manufacturing problems, the Little Tikes® Big Loader #6680 on page 14 of this week's circular will not be available. Ask at the service desk for an Instant Rain Check that entitles you to 20% off the regular price of another item.
 We regret any inconvenience to our customers.
ALCO STORES, INC.

The Right One
 for quality drycleaning and laundry service.
SHIRTS-JEANS STARCHED.
PERRYTON CLEANERS & LAUNDRY
 1-800-232-5370

At The Lyric Theatre...
Friday, Dec. 2 - Tuesday, Dec. 6
 Bargain Nights Mon. & Tue. Adults - \$4
 Fri., Sat., Sun., Adult \$5 - Child \$3 every night
 Closed Wednesday & Thursday
 SCREEN 1 • 7:30 PM SCREEN 2 • 7:45 PM
Stargate (PG-13)
The River Wild (PG-13)
 113 Main • Spearman

The Hansford County Reporter-Statesman
 Serving all of Hansford County
 Spearman • Gruver • Morse
 USPS 509660 • 213 Main, Box 458 • Spearman, Tx. 79081
 (806) 659-3434 • 1-800-395-9482 • FAX (806) 659-3368
 Published weekly at 213 Main, Spearman, Texas
 Owned & Operated by
 Texas Independent Newspapers, Inc.
 16607 Blanco Road #100 • San Antonio, Tx. 78232
 (210) 492-8907
 Second class postage paid at Spearman, Texas 79081
 Any erroneous reflection upon the character of any person or firm will be gladly and promptly corrected upon being brought to the attention of the management.
 Publisher - Daniel Ramos
 Office Manager - Deziree Torres
 Staff Writer - Cora Thompson
 Staff Writer - Chad Davis
 The publisher reserves the right to revise or reject at its option any advertisement which it deems objectionable, either in subject or phraseology, or which it may deem detrimental to its business.
 Subscription Rate: Hansford County, \$19.95; out of county, \$24.95 annually.
 Postmaster: Send address changes to Hansford County Reporter-Statesman, Box 458, Spearman, Tx. 79081.
Advertising & Story Deadlines
 Monday, 5:00 p.m.

Get More Value with the **ALCO Advantage**
2nd Set FREE! On Tuesday
3" Prints

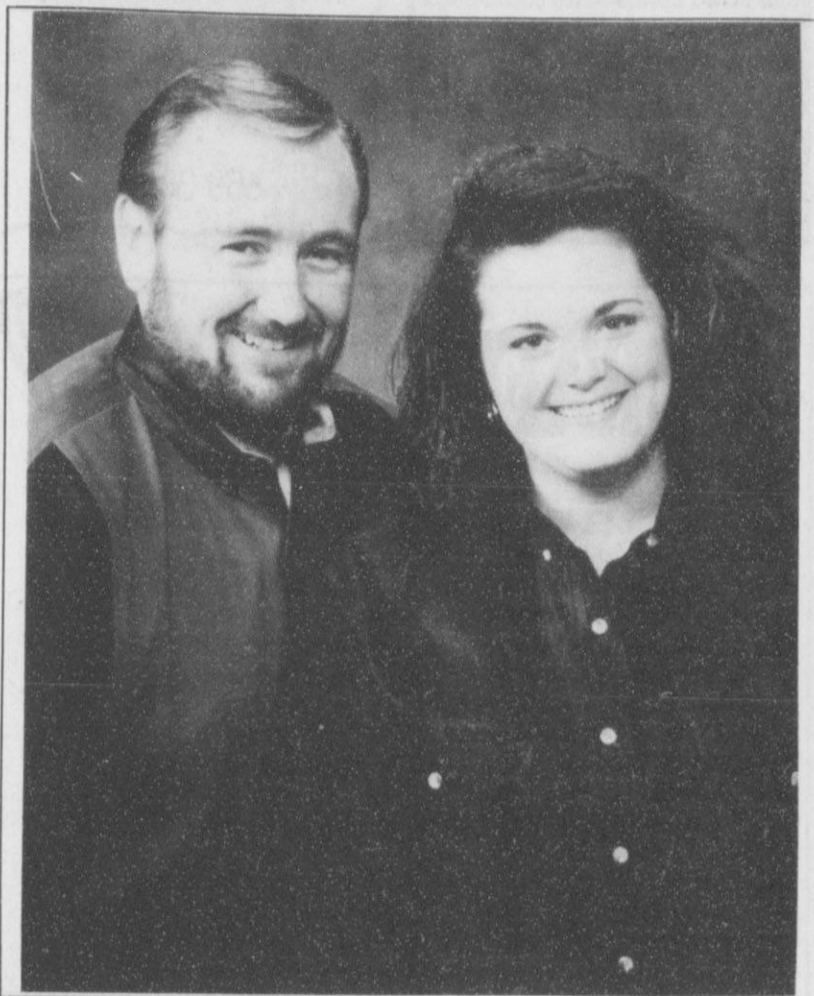
 From your original C-41 process roll of 110, 126, disc or 35mm full frame color print film. Excludes larger 4" size prints and photo galaxy.
Early Bird Special!
 through 11/22/94
Holiday Photo Greeting Cards

 10 Free Cards when you order 20 \$9.99
 15 Free Cards when you order 40 18.99
 20 Free Cards when you order 60 26.99
 25 Free Cards when you order 100 39.99
 Made from irary color negative, slide or print. (If print is submitted, a copy negative charge will be added.) Photo Cards returned glossy finish ... no matte finish available.
ALCO 224
 521 • HWY 207 • SPEARMAN, TX 79081
 Mon. - Sat. 9 a.m. to 8 p.m.
 Sun. 12 p.m. to 5 p.m.

DUKE'S CHIROPRACTIC CENTER
 EVENING HOURS AVAILABLE
 Headaches / TMJ
 Neck Pain / Stiffness
 Low Back Pain
 Shoulder / Arm Pain
 Hip / Leg Pain
 Family Health Care
 Pediatrics
 Athletic Injuries
 Numbness
 Gentle Treatment
 AUTO ACCIDENTS • WORK INJURIES (Most Insurance Accepted)
 New Hours:
 2-6 p.m. Mon. thru Fri.
659-5505
 Darrell D. Duke DC
 11 W. Kenneth • Spearman, Tx.



Lifestyles



DAVID TUCKER AND TRACI JONES

Tucker and Jones plan Feb. wedding

John and Judy Griffin of Amarillo would like to announce the engagement and upcoming wedding of their daughter Traci Michelle Jones to David Lee Tucker.

Tucker is the son of June Tucker, and the late Buck Tucker of Spearman.

The wedding will be held Febru-

ary 18, 1995 at the Coulter Road Baptist Church in Amarillo.

The bride-elect is a graduate of West Texas A&M in Canyon with a BBA in management and works for Southwest General Contractors, Inc. in Amarillo.

The prospective groom is employed as a sales manager for GCR Truck Tire Center in Amarillo.

Merchants to conduct "Holiday Homecoming"

Local merchants will again be providing area residents with a little excitement during the month of December as they conduct their annual "Holiday Homecoming" campaign.

Sixteen Spearman businesses will be participating in "Holiday Homecoming" which features weekly drawings for \$50 gift certificates.

Drawings will be held on each Saturday beginning December 3 and ending on December 24. The location of the drawing will alternate between the Chamber office (downtown) and the Plains Shopping Center. It (the drawing) will be conducted at 11 a.m., and persons must be present to win.

On December 17, local children are invited to come out to visit with Santa Claus as he makes his annual pre-Christmas appearance here in Spearman. He will be around

the shopping center area.

Starting November 28, persons shopping at any of the participating businesses who spend at least \$10 or more will receive a ticket for the drawings. Those tickets placed in the hopper will remain in the hopper until the end of the Christmas shopping campaign. So the more you shop, the more chances you have at winning.

Each Saturday three or four \$50 gift certificates will be drawn for according to Chamber Manager Cindy Blackman.

Participating in the "Holiday Homecoming" are Jo's This 'N That, Cates' Men and Boys Wear, Celebrate, J.G.'s, The Bunkhouse, Beedy Furniture, Gordon's Drug, Kids Stuff, Lady Fair, Prairie Garden Flowers, Hickerson Jewelers, All Occasion Flowers, Earl's TV & Appliance, Alco, First State Bank, and Attic Antiques.

Swans enjoy holiday with special guests

Thanksgiving day guests in the home of Bill and Bessie Swan were their children and grandchildren except one grandson, Carrey and Amy Uyhely, San Antonio.

Guests were: Ronald and Elaine Swan and their family, Scott, Leann, Jeffery and Ashley all of the home, Stacie Swan from Amarillo and her guest, Levi Keenan from Guymon, Oklahoma and Jarret Swan from Canyon whose a student at WTAMU and Leslie Swan from Enid, Oklahoma, whose a stu-

dent at Phillips University.

Other guests include David and Sharron Swan from Hugoton, Kansas and their sons, Lance and London Swan from Canyon who are both student at WTAMU, Glenda and Bob Uyhely also from Canyon where Glenda is a student at WTAMU and their children, Wade and Michelle. Other guests were Elaine Swan's mother Dorothy Longly and Sharron Swan's father Curly Davis. Lots of food and fellowship was enjoyed by all.

Holt inducted into WTAMU honor society

Josie M. Holt, a former Spearman High School grad, is one of 100 students who was recently inducted into the WTAMU's Alpha Chi National Honor Society.

Holt, a junior plant science-agronomy major from Spearman, joined the other West Texas A&M University students in becoming new student members in the honor society.

Membership to Alpha Chi is by invitation and is limited to juniors and seniors with an overall grade point average of 3.5 or higher and rank in the top ten percent of their class.

The purpose of Alpha Chi is to recognize students who have maintained a high level of scholarship, according to Dr. Duane Rosa, asso-

ciate professor of economics, director of the Office of Planning and Institutional Effectiveness and Alpha Chi faculty sponsor.

"It is a significant accomplishment for students to have obtained this honor at this point in their academic careers," Rosa said.

Other faculty sponsors of Alpha Chi are Dr. Peter Peterson, professor of history, and Dr. Lana White, professor of English.

Dr. M. Joleen Walsh, head of the Division of Nursing, spoke to the students who attended the induction ceremony about the importance of scholarship and service.

There are 280 chapters of Alpha Chi in the United States. The Texas Zeta Chapter at WTAMU, started in 1923, is the sixth oldest in the nation.

Biggs to perform with OPSU Concert Choir

Oklahoma Panhandle State University Concert Choir will be the featured performing group for the annual tree-lighting on the OPSU campus, Monday, December 5. The concert begins at 7:30 p.m. in the OPSU Student Union Ballroom.

Vanessa Biggs of Spearman will be one of the many students on the choir who will be performing in the concert.

Also performing will be the select Madrigal ensemble. Pianist will be Heather Jinkens, freshman from Canton, Oklahoma.

The final three selections for the

program will be "And the Glory of the Lord," "Since by Man Came Death," and the "Hallelujah" chorus from "The Messiah" by Handel. The choir is inviting anyone who has sung the selections to bring a score, or call (405) 349-2611, ext. 314, to reserve a score and perform with the group on these final three selections.

The lighting of the plaza trees will follow immediately after the concert.

The OPSU Concert Choir is made up of students from Texas, Oklahoma, Kansas and Colorado.

Hall to graduate from Southwest Texas State University in December

David S. Hall will graduate cum laude December 17 from Southwest Texas State University, San Marcos.

He will receive a Bachelor of Science in Interdisciplinary Studies Generic Special Education. He is

currently employed by the Baptist Academy. He is a 1981 graduate of Spearman High School. Hall and his wife, Melinda reside in San Marcos. His parents are Charles and Carole Hall, Spearman, and a sister Rhonda Valdez, Perryton.

Need A Hand This Christmas?
 Let Pape Designs print your Christmas Letters!
 25 Letters for \$15
 50 Letters for \$20
 Pape Designs (806) 659-3098

You are cordially invited to attend the Lighting of Hansford Hospice
Lights of Love Tree
 (6:00 p.m.)
 Monday, December 5, 1994
 Hansford Hospital Lawn 707 S. Roland Street Spearman, Texas
 Wassail served in the Gazebo following Lighting

CHRISTMAS OPEN HOUSE
 FEATURING
Home Interiors & Gifts
 by **DEBBIE SEARS**
 Saturday, December 3, 1994
 10:00 a.m. - 5:00 p.m.
 303 Third St. • Morse, TX
 (806) 733-5004
 (Order now for Christmas!)

Mr. and Mrs. Mike Babbs and Mr. and Mrs. Mike Haynes request the honour of your presence at the marriage of their children
Angela Micheal
 and **John M. Haynes, Jr.**
 on Saturday, the third of December Nineteen hundred and ninety-four at five o'clock in the evening
First Christian Church
 510 King Street
 Gruver, Texas
 Reception immediately following
 Golden Age Center
 105 E. Broadway

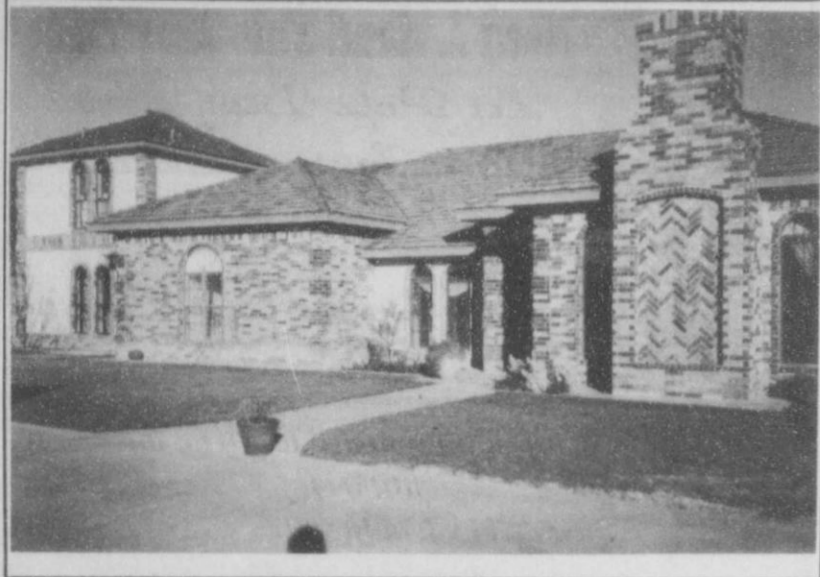
Gordon's DRUG
Bridal Gift Registry
 COME BY & LET US HELP YOU SET UP YOUR SPECIAL GIFT TABLE
Couples Currently Registered
 Brad Brown & Tiffany Kemp
 * Date of the Bridal Shower
 314 MAIN PHONE 659-2141
Gordon's DRUG SPEARMAN TEXAS

Give Yourself The Gift That Gives You A Lifetime Of Comfort
MAKE YOUR HOUSE A HOME

Custom Trim For Brick Homes
 Insulated Steel & Vinyl Siding
 Insulated Steel Garage Doors Singles Start At \$299 Doubles Start At \$499
 Replacement Windows
 Storm Windows
 Shutters & Window Awnings
 Seamless Gutters
 Financing Available W.A.C.

...by involving the professionals at Exteriors Plus, great savings can be yours TODAY! We consistently save home owners 20% to 40% off Sears & Pacesetters best prices.
EXTERIORS PLUS
 •Pampa 669-0099 •Amarillo 371-PLUS
 •Borger 274-2873 •Toll Free 1-800-852-3692

You Are Invited to the
80TH BIRTHDAY PARTY
 Honoring
JOYCE DUNCAN
 Saturday
 December 3, 1994
 2:00 to 4:00 p.m.
 in the home of
Gene and Fran Duncan
 107 Etling Ave.
 Gruver, Texas



LENIS AND HOLLY SIMPSON, 27 GOLDEN CIRCLE DRIVE



RICK AND CHERYL SANDER, 718 GIBNER DRIVE

Simpson, Sanders homes also on flower club home tour list

There are only two more homes left on the Gladiola Flower Club's Home Tour on December 4. They belong to Lenis and Holly Simpson and Rick and Cheryl Sander.

The home of Lenis and Holly Simpson is located at 27 Golden Circle Drive and was built in 1985 by Charles Elliott. Remodeling of the kitchen and the addition of a bedroom and bathroom have occurred since the home was featured on the home tour in December of 1986. The kitchen has been expanded to encompass the sunroom on the original floor plan and the home now has four bedrooms and three and half bathrooms.

The Sander family wishes to extend a warm invitation to their

home at 718 Gibner Drive during the upcoming tour of homes.

Rick and Cheryl bought their home from Earl and Bobby Novak in 1992. Roscoe Nelson built the house in the early 60's and sold it to Jimmy Lynn. The Novaks bought the house in 1970. The house has four bedrooms, three bathrooms, and has been newly remodeled. Collectors will be intrigued by Cheryl's various collections from old books to rabbits, to her herd of holsteins.

Tickets are available from Gladiola Flower Club members or will be sold at the house being shown. The homes will be shown December 4 from 2-5 p.m.

Chamber Chatter

by Cindy Blackman
Chamber Manager

We want to welcome Golden Spread Carpet Cleaning and Lynn Woolley Arbonne Products as new chamber members. We appreciate your investment and hope we can continue to be of service to you and your business.

Seaboard Farms of Guymon is currently seeking hog producers to

supply the new killing operation in Guymon. On Tuesday, November 29, the chamber will be attending a meeting at the Harvey Hotel in Amarillo. For more information, contact Carl Treiber at 405-338-1470 in Guymon, Oklahoma.

I have had several calls concerning the SBA economic injury disaster loans available for Hansford County. The loans are available to help businesses meet normal operating expenses that cannot be met due to effects of a disaster. Farmers and ranchers are not eligible for this loan program, but may be through other federal programs. Nurseries may apply. For details contact the SBA Center at 1-800-366-6303. Filing deadline is May 23, 1995.

Don't forget the first "Holiday Homecoming Christmas drawing will be Saturday, December 3 at 11 a.m. at the Plains Shopping Center. Bring your tickets for a chance to win. A total of \$800 in gift certificates will be awarded during this Christmas season and don't forget! Santa Claus will be at the drawing on the 17th of December.

New Year's Eve in Spearman! Call the chamber for more information.

Guymon Community Theater to perform "A Christmas Carol"

Guymon Community Theatre will be opening its 16th season with "A Christmas Carol" which was adapted by Cora Wilson Greenwood from the story of the same name by Charles Dickens.

The story recounts the adventures of miserly old Ebenezer Scrooge at Christmas time. On Christmas Eve, as he falls asleep in his dingy quarters, his partner, Marley, who has been dead seven years, comes to him bound in ghostly chains and warns him that he will

be visited by three ghosts.

The ghosts come and reveal the wrong-doing of his life and what will happen if he continues his evil ways.

Patty Singleterry, director of this play, said, "This is a play for the entire family. It also reminds each of us what the true meaning of Christmas is supposed to be; sharing without expecting something in return."

Performance dates for "A Christmas Carol" are December 1 at 8

p.m., December 2 at 8 p.m., December 3 at 2 p.m. and 8 p.m., December 9 at 8 p.m., December 10 at 8 p.m. and December 11 at 2 p.m. Tickets are \$5 per person. Reservations can be made by calling 405-338-0019; leave your name, date of the play and time, the number that will be attending, and your phone number. Reserved tickets should be picked up 15 minutes before performance time at the Guymon Community Theatre lobby, 413 N. Main Street, Guymon, Oklahoma.

Mission Cable conducting toy drive for area needy children

An exciting and fulfilling holiday season for children and families is the goal of one company's annual Christmas promotion.

Mission Cable's annual Toys for Tots campaign provides toys to children in need in the area. The annual campaign is always the most successful of the year for the cable company and one that make employees pleased that their efforts go to a great cause.

"Our Toys for Tots campaign is unique because we donate the toys we receive locally. Last year we

were able to put smiles on the faces of hundreds of children. Our customer service representatives enjoy the fact that this campaign is so worthwhile," said Bruce Berkinshaw, Regional Marketing Manager.

"We do, however, rely on the donations of our customers. This year we will offer a \$5 cable installation when a new customer donates a \$10 new toy. Current subscribers can donate a \$10 new toy and receive a free upgrade to a premium channel. We thank this is an ideal holiday promotion because a per-

son can give a toy and receive a great present as well."

The toys we collect will be donated locally for further distribution.

Mission Cable is a local cable company serving the surrounding area. Anyone interested in donating to the toy drive may call 1-800-783-5701 or 1-800-783-5778.

Correction - Cortney Valdez is thee granddaughter of Charles and Carole Hall not Wall.

Family Style
Freshwater Catfish
Cole Slaw-2 sauces-baked potato-french
tries-lemon-drinks-\$5 a person
Sutphen's BBQ
(in the Pahandle for 44 years)
806/273-6442
303 N. Cedar

MARY KAY
FACE TO FACE BEAUTY ADVICE™
Leann Gillaspie
Beauty Consultant
659-3889

CRAFTS BAZAAR
to benefit
Hansford Manor's
Empty Stocking Fund
December 9, 1994
10 a.m. to 3 p.m.
Hansford Manor
Activity Room
Donations of craft items and baked goods are needed. Please contact Debby Sanford at the Manor, 659-2535.

SANTA'S VISIT
Thursday, December 1, 1994
2:30 to 5:30 p.m.
La Casita Room
in Gruver State Bank
EVERYONE WELCOME!
We will be selling polaroid pictures with Santa for \$2 each.
Sponsored by Alpha Mu Psi

WE HAVE A PULSE
Waiting for You
We are pleased to offer our customers Pulse cards on their savings & checking accounts. These cards may be used at the corner of Avenue A and Endicott or any nationwide Pulse ATM.
Interstate Savings AND LOAN ASSOCIATION
HOME OFFICE: 3rd & MAIN • PERRYTON, TEXAS 79070
BRANCHES: SPEARMAN, TEXAS 79061
Interstate Savings & Loan Association - Your Hometown Savings & Loan Friend

NOW IN GRUVER - - - THE VERY LATEST IN AUTOMATED FUELING - -
GOPHER'S **CONOCO**
SPEARMAN - GRUVER HIGHWAY
YOU'RE INVITED!!!
MEET US THURSDAY AND FRIDAY, DECEMBER 1st AND 2nd, 10:00 - 7:00 P.M. TO APPLY FOR YOUR **CONOCO** CREDIT CARD. FOR THOSE WHO APPLY FOR OR USE A CONOCO CARD, WE WILL HAVE **\$.89⁹**
UNLEADED GASOLINE (LIMITED TO ONE PASSENGER AUTOMOBILE, ONE FILL UP, NO CASH PURCHASES). Just present a bank card (Visa, MC, Discover, AmEx) or any oil company card for application.
FEATURING
*CONVENIENCE OF CREDIT CARD OPERATION. JUST INSERT YOUR CONOCO CREDIT CARD, GET YOUR FUEL AND YOUR RECEIPT AND BE ON YOUR WAY.
*24 HOUR OPERATION, WELL LIGHTED AND VISIBLE FROM THE HIGHWAY.
*ACCURATE RECORDS. YOUR ITEMIZED TRANSACTIONS BILLED MONTHLY. RECEIPTS AT TIME OF FUELING.
*EVERYDAY DISCOUNTED PRICING WITH YOUR CONOCO CREDIT CARD.
FOR MORE INFORMATION CALL 806-733-5288
OR APPLY FOR YOUR CONOCO CARD 1-800-764-9500

Guild to conduct meeting on Dec. 14

Guild will be held at the home of Margie Fagan on Wednesday, December 14th. Along with the business meeting, there will be a fat quarter fabric exchange and the handmade ornament exchange.

At the November business meeting held on November 9, the guild voted to make M'Laine Tyree, now of Caldwell, Texas, a lifetime member. This honor included a guild pin, a certificate, a membership booklet, and newsletter. The honor they bestowed in appreciation of Tyree's work in founding the quilter's club in 1988.

A get-well card was sent to Ruby Oblander, and recently, a group went to Amarillo to take former member Chris Scott to lunch and to give her the Grandmother's Fan wall hanging made by the guild members. Maxine Roper Nyland's wall hanging was mailed to her new home in Florida.

Faye Sell, Jean Powell, and Margie Fagan will serve on a committee to plan the 1995 Block of the Month program. Also, Carl Campbell built a new quilt frame for the guild to use in quilting raffle quilts.

Gruver FFA members attend special events

By KIKI CARTEL
This year the Gruver Future Farmers of America (FFA) Chapter held two special events to reward all FFA members who paid their annual FFA dues.

First of all, the chapter sponsored a luncheon for every member who paid his or her dues. The Ag department furnished and cooked the meal, which was held in the Ag Building November 1 during the lunch hour. Approximately 45

Sue Kemp shared an afghan jacket and a quilted vest with Grandmother's Fan accents, and Faye Sell brought a doll quilt, a stuffed heart garland, and a pumpkin decoration to show.

Martha Pulis won the fat quarter for wearing her name tag, and Viola Cone won the door prize brought by Gail White. Lois Bartz gave out the membership booklets, which are a new feature this year. They profile the membership, history, and programs of the guild for the year.

The monthly program was given by Margie Fagan on how to use various rotary rulers and the rotary cutter, and also how to cut half-triangles, quarter square-triangles, and bias squares. In demonstrating the techniques, Fagan showed the members how to cut and sew a "White House Christmas Tree" wall hanging using a special ruler called the Easy Angle II.

Members present other than those mentioned were Lillian Miller, Thelma Stark, Georgia Allen, Sandy Drake, Evelyn Cain, Zella Mae Wauhob, Reta Baldwin, Lana Pulpan, Ruth Scarth, and Bonita Campbell.

members attended the luncheon.

On Saturday, November 5, all members who had paid his or her dues by October (the preliminary deadline) were invited to attend the West Texas A & M University vs Eastern New Mexico University football game. Advisor Mr. Montgomery and sponsors Mr. and Mrs. J.W. Ward took a bus of about 25 members to watch the game in Canyon. Members reported that they survived the changing weather conditions and had an enjoyable day.

Among the Neighbors

by Helen Fisher

Sincere sympathy is extended to Mr. and Mrs. Doug Connelly on the untimely passing of their son Brent, 35. His obituary appears elsewhere in this issue.

Donnie and Ann Thoreson were expected back in Gruver this week. They have been in Rochester, Minnesota where he underwent major surgery at the Methodist hospital connected with the Mayo Clinic.

Bart Thoreson of Gruver and Candy Golden of Amarillo flew back last week.

On Saturday Mrs. Fronze Close and Joe Mack attended the 50th wedding anniversary reception for daughter Elnora and Jack Batson. The announcement and picture appeared in last week's issue of this paper.

Their wedding was in Spearman 50 years ago, and at this reception they renewed their vows with their local pastor presiding.

Others from Spearman attending the affair were Mr. and Mrs. James Riley, Mrs. Dimple Jetton,

Ruth Mary Whitson and Bill, W. R., Eulalie and Steve Greever.

Marve and Bob Hohertz spent Thanksgiving in Amarillo with her mother, Mrs. Petree.

Mr. and Mrs. James Riley enjoyed Thanksgiving in the home of their daughter, Betty and Thomas Davis. His mother, Mrs. Tommi Deweis, formerly of Spearman, now of Beaver, joined them. His brother, Buzzy Davis, of Borger and their son Terry and family of Elk City completed the gathering.

Thanksgiving time brought two new reasons for thanks to James and Sue (April) Forsha with the arrival of two little granddaughters. One came Thursday before and the other the Monday before Thanksgiving. His son Chris and Christy Forsha of Fritch welcomed their second daughter and his daughter Michelle and Rex Crouch's new little daughter joined their little son. They live at Chesapeake Bay, Virginia.

Sue and James were guests of Bonnie and Bill Cox for the holiday.

Lucile Hagerman went to Amarillo and joined Valarie Huber and family and Cathy Hagerman and went on to Plainview. Verla Kunselman and family and Leon Hagerman and family live there and hosted the family Thanksgiving. Other family members were the Steve Hagermans of Roscoe and Larry Hagermans of Austin.

Don and Wanda Smith spent Thanksgiving in Two Buttes, Colorado with their son Don. He has been seriously ill and underwent major surgery recently, but is now well enough to be at home. Apparently he is recovering but lost 70 lbs. during his ordeal.

Janice Phelps spent Thanks-

giving with her parents, Beth and Ray Phelps. She is from Dallas.

Thanksgiving guests in Spearman homes:

The Hoskins family gathered at the home of Sada Hoskins. She is a resident of Hansford Manor and had planned to join them but was unable to do so. Present were: Freddie and Sharlie Hoskins, Hurricane, West Virginia; Sada Ruth and Howard Long, their daughter, Sara and Terry Covey and family, Bartlesville; Craig Hodges and family, Burleson; David Thompson and family, Friona; Winifred and J. D. Hester and daughters, Texline; their daughter, Jeni, who is on leave from work in Columbia, South America accompanied them. Jock Lee, Fritch; Richard Kilgore, Den-


See NEIGHBORS, page 7

Please join us during our

HOLIDAY OPEN HOUSE

featuring a unique selection of extraordinary gifts, decorative accents, and fine furnishings to add warmth and beauty to any home...
...as well as a dazzling collection of distinctive jewelry from Duncan & Boyd Jewelers of Amarillo

Thursday, December 8th
10:00 a.m. to 8:00 p.m.
11th & Quinn, Guymon, OK



BROWN, GRAHAM & COMPANY, P.C.
and
KERRY L. HENTON, C.P.A.
are pleased to announce the combining of
accounting practices.

We are committed to providing Hansford County with the best in accounting services and invite you to visit Kerry Kenton, Monty Blackman, Holly Simpson, Travis Wolf, Anne Marie Pearson, and Don Aderholt at:

BROWN, GRAHAM & COMPANY, P.C.
200 W. KENNETH AVENUE
SPEARMAN, TEXAS
(806) 659-2538

IT TAKES CARING PEOPLE LIKE US TO WORK IN A SPECIAL PLACE LIKE THIS!



We at NPHH pride ourselves in having skilled, caring and COMPASSIONATE personnel. We believe that a patient is not just a patient, but they are SOMEONE SPECIAL. Each of our staff considers their work more of a calling than a job. Our local employees are dedicated to making health care in the home more convenient and comfortable. That is what makes NPHH a special place with special people. Here are a few of the services we offer our patients:

- NURSING SERVICES • HOME CARE AIDES • PHYSICAL THERAPY • SOCIAL SERVICES•

NORTH PLAINS HOME HEALTH

733-5808 or 1-800-996-2000
(answered 24 hours a day)

Medicare Certified • Private Insurance • Workmens Compensation

We file your Insurance and Medicare

We welcome your calls for additional information at the numbers listed above.

You may ask to speak to Vera Dominguez or Lana Patterson.

Panhandle Crisis Center Report

by Mary Frances Ellzey

Heigh-oh, the merry-oh! I've got the go signal for buying new play equipment for the children who are served by the Shelter. And without any quilt feeling about impeding the purchase of new computer, for, bless us, we've received the funds for that too! Thanks to all you wonderful people out there who not only recognize the value of our work, but who are able and willing to help support us.

We're finding opportunities to help young people who are not, or not yet, in an abusive situation. For example, our Executive Director, Cindy Smith, will speak to groups of youth about How to Detect a Potential Abuser. Already she has been pledged to a church group. She would like also to speak to school groups. Cindy, who is still a fairly young person herself, is an engaging someone who can readily relate to young people. They're bound to enjoy and appreciate her. I thank I'll go to that church group, even if I have to hide in the closet,

Wells takes part in FFA leadership conference

Dorothy Wells, member of the Gruver chapter of Future Homemakers of America recently participated in a weekend leadership training conference held at Lowes Anatole Hotel Dallas, Texas, November 18-20, 1994.

The Dallas meeting was the fifth in a series of five nationally sponsored training conferences, called Cluster Meetings, held this fall. Chapter adviser Penny Ralston accompanied the members to the Dallas meeting.

"Youth at Its Best" was the theme chosen to highlight the activities and programs of this year's Cluster Meetings. The 3,400 young men and women and their adult adviser dealt with issues involving family, self-image and teen violence.

Throughout the Cluster Meeting activities, members and advisers celebrated Future Homemakers of America's golden anniversary. The anniversary theme, "50 Years Leading the Way--Families, Careers, Communities," was highlighted during general sessions and workshops as FHA/Hero members made plans for the coming year and prepare for the future.

The meeting's program emphasis was on examining how teens can take action and make a difference in the present and the future. The "Youth at Its Best" theme was reinforced by Friday's powerful general session, where meeting attendees experienced a three-screen multimedia presentation and geared up a variety of leadership training opportunities offered during the weekend. Keynote speaker Mike Smith challenged and motivated attendees with his energy, humor and enthusiasm.

During Saturday morning's workshops, teens learned how to tackle issues and take action. In the afternoon they chose from approximately 10 different workshops designed to expand their leadership capabilities. Participants learned how to use FHA/HERO's national programs to build support and enthusiasm and increase participation in their local chapters.

Leadership workshops covered such areas quality chapter programs, community service, peer education, financial management and communication.

In addition to motivational speaker Joe Cavanaugh's keynote address, "Respectfully Yours," Sunday's activities concentrated on officer training, leadership skills and preparing for the organization's highly successful STAR Events (Students Taking Action with Recognition) competition.

Future Homemakers of America is a dynamic and effective national student organization that helps young men and women become leaders and address important personal, family, work and societal issues through vocational home economics education. The organization has involved over nine million youth since its founding in 1945.

for I am not at all sure I have all the necessary answers. Neither is Cindy, but she has a very good start.

Is it possible that even the potential abuser himself (herself?) knows that such a potential resides inside his (her) skin? I have become aware of such persons, and have even come to recognize some of the signals. But those signals are subtle. When you're in love, they're even more difficult to detect.

It is just here that so many disparate problems come into play. For one thing the victim of the abuse may be so unhappy or uncomfortable at home that she'll marry almost anyone to get away. What kind of self esteem will such a woman have? Certainly a weak one. This in turn may cause her to become so determined to "make the marriage work" that she'll accept a large sum of abuse, physical and/or verbal, before taking any kind of self-protecting action. Furthermore, she's liable to be all too eager to accept an apparently sincere apology and a promise never-never to do that again. Don't get me wrong: such apologies and promises can be sincere. But both parties will profit by a support system that helps them through the initial stages.

Let me emphasize that the PCC does not press for divorce or even long-term separation. Through its support groups it may be able to help the victim discover the ability to convince her partner that she'll no longer accept the situation as it is. But that she will be glad to help the relationship become mutually respectful and gratifying. Now that's quite an accomplishment. Believe it or not, we've many times succeeded in doing just that.

You know, our culture is beginning to understand that the parenting techniques employed during our childhood contribute to the development of a "victim" personality and/or to an "abusive" personality, as well as to one that is wholesome. A low self-esteem may be behind all abusive or victim be-

havior. Match these two together and Oh, my! A low self-esteem, or a healthy one, is produced by one's upbringing. The cheering fact is that this low self-esteem can always be remedied. But it usually requires help.

Someone else: It isn't necessarily harsh atmosphere that produces an abuser. A child can have been so devotedly "loved" that he/she thinks of him/herself as being incapable of error, and as deserving total submission and unquestioned authority from all those around him/her. This person is highly distressed in the presence of an urge of the "significant other" to "be his own man" or "own woman." (Boy, I'm sure getting the genders mixed up here!)

By now you're seeing something of how complex the entire problem can be. Actually, our work is only a drop in the bucket compared to what needs to be done. At the same time, that bucket will indeed eventually be filled if the drops continue to be dripping.

Have a soul-satisfying Thanksgiving!

The PCC offers services free of charge to men and women who are victims of domestic violence, whether physical or "merely" verbal. We give counseling, support, and information to these victims, plus a shelter to those who feel themselves to be in danger at home. We are available for help 24 hours a day, at 435-5008. If you want information only, call us from 9 a.m. to 5 p.m. For those who call long distance, use the toll-free number: 1-800-753-5308.



CLASS FAVORITES -The Gruver High School students have chosen their class favorites for the 94-95 school year. The students chosen were: seniors, Roma Tomlinson and Julie Meyer; juniors, Daniel Bort and Molly McLain; sophomores, Heath Tolleson and Kaysha Cluck; freshman, Brant Armes and Jill Odom. (photo by Cora Thompson)

Police

CONTINUED FROM PAGE 1

trian only received bruises, but was not taken to the hospital.

The Spearman Police were called to Dillon and Hancock at 12 p.m., where a 1991 black GMC Sonoma pickup driven by a 17-year-old, Spearman juvenile had gone through a stop sign and hit a 1988 Chevy pickup. Michael Shane Howard, age 18, of Stinnett, the driver of the 1988 Chevy pickup, was transported to the Hansford County Hospital.

HENSON CHIROPRACTIC

410 S. Davis • Spearman, Tx.

Call for Appointment • 659-5603

OFFICE HOURS:

Monday, Wednesday & Friday 9:00 to 5:00
Tuesday & Thursday 9:00 to 11:30

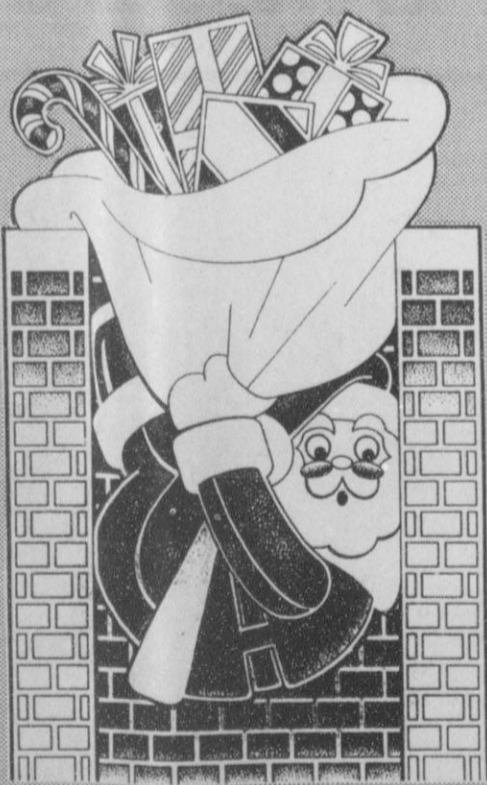
Please come to our 6th Annual Christmas Hot Dog Cookout on Wednesday, December 7th ...at First State Bank!

December 7, 1994

11:00 a.m.

to

2:00 p.m.



"...the Christmas season is a wonderful time to renew old friendships...a time to take a little extra time to say hello to our friends and neighbors, and to wish you and your family the best of holidays.

"...please join us on Wednesday, December 7th, for our Annual Hot Dog Cookout at First State Bank."

FSB
First State Bank

One NE Court • Spearman
(806)659-5565
MEMBER FDIC

STOP BY AND CHECK OUT THE GREAT BUYS AT YOUR HOMETOWN DEALER...

GILLASPIE AUTO & TRUCK CENTER

1993 CHEVROLET CAPRICE--\$12,900

4 door, V8 automatic, pwr windows/locks, A/C, AM/FM stereo w/cass., 23,000 miles, factory warranty remaining.

1993 CHEVROLET CAVALIER--\$8,900

4 door, air, automatic, pwr door locks, tilt/cruise, 2 to choose from, EZ monthly payments, factory warranty remaining.

1993 CHEVROLET LUMINA--\$10,900

4 door, white, very well equipped including V6 automatic, A/C, AM/FM cassette.

1993 CHEVROLET CORSICA--\$9,500

4 door, V6 automatic, A/C, AM/FM cassette, tilt/cruise, factory warranty remaining, bucket seats, EZ monthly payments.

1992 FORD TEMPO--\$6,500

2 to choose from, great gas mileage, EZ payments!

1991 FORD TAURUS GL--\$7,500

56,000 miles, V6 automatic, tilt/cruise, cassette, pwr windows/locks, maroon.

1990 OLDS CUTLASS SUPREME--\$5,900

White and gray, tilt/cruise, AM/FM cassette.



HOLIDAY GIFT IDEAS !!

Come by the Parts Department to pick out your selection of our collector series toys & banks, the perfect gift for your Christmas shopping list!!!

GM ACCELERATED EARNINGS NETWORK **10%**
The GM Card Up to On Parts & Service



GILLASPIE

AUTO & TRUCK CENTER, INC.
CHEVROLET, OLDS, BUICK, PONTIAC,
CHRYSLER, PLYMOUTH, DODGE
Highway 207 South • P.O. Box 430
Spearman, Texas 79081

Neighbors CONTINUED FROM PAGE 5

ver; Kate Siebert and children, Midland; from Spearman-Joan and Johnnie Lee and Frances Kilgore. Their Thanksgiving lasted for five days. *****

Virginia Head hosted Catherine and Zane Hall, Pampa; Elizabeth and Gary Carr, Miami; Danny and Cathy Ballard, with Christi, Borger; Ronnie and Della Head with Kaci, Drew and Stephanie, Carlsbad; and from Spearman Aleta and Roy Jackson; Marsha and Lee Shaver with Russell; Danny McLaughlin and children.

On Friday evening Virginia and the McLaughlins shared an early Christmas with Ronnie and his family. *****

Paul and Betty Hazlewood - their daughter Debbie and Danny Needham with two children, his father, Cap Needham, Billy Paul and Cathy Hazlewood and two children, Amarillo; Cathy's niece of St. Louis, Missouri, Christina Ornelas, Amarillo; Gregg Hazlewood and two sons of Valley Mills; Lily Palmer, Spearman. *****

Gloria and Don Knox-son Danny came on Monday in order to go quail hunting with Don; his wife Cathy and children came from Odessa on Wednesday for Thanksgiving. They left late Saturday. *****

Ben and Marian Upchurch had their children-Gail and Harvey Whitefield with two children, Canadian; Glenda and Dusty Bouker with son, Amarillo; Gary and Nancy Upchurch and sons, Colorado Springs, all here for week-end.

Glenda will remain here with her parents for a couple of weeks as she is recovering from injuries received in an automobile accident. The previous week she and Dusty had gone to Tulsa and both were injured there in the accident. Glenda received numerous broken bones and lacerations. Dusty is less seriously injured. Due to their inability to drive, Gail and Harvey brought them from Tulsa. *****

Guests of Roy and Ann Flowers were her mother, Mrs. Mary Bennett, Canadian; Jane Kingston, with Justin and Carli, Amarillo; Beth and Rob Reedes, Grapevine; Jan and Steve Blackwell with Chassiti, Kyle, and Jessica of Liberal. *****

Danny and Tanya Close had his father Joe Mack Close and his grandmother, Mrs. Fronye Close, Mr. and Mrs. Danny Boyd and children, all of Spearman; Mrs. Ruby Collingsworth of Perryton. She is a sister of Fronye Close. *****

Maxine Banister's guests were her niece, Cathy and Sonny Herding and three children. They are from Denver. *****

Some Spearman folk and some ex-Spearman folk gathered for Thanksgiving in Perryton in the home of Larry and Jane Whitford, assisted by Lacey and Melissa. *****

From Spearman were Larry's parents, Mr. and Mrs. Bill Whitford, Mrs. Margaret Harnish and Sara Dossett. From Guymon were Mr. and Mrs. John Allen, Jane's parents from Amarillo Sharon and Barnard Dossett, their son, Jeff and Clara Dossett and in Perryton Jody and Bill Harnish and family. *****

Mrs. Inez Holland returned Sunday from more than two weeks at Cedar Creek Lake, southeast of Dallas. She went to attend the funeral of Cathy, 53, wife of her oldest son, Jerry who passed away after a lengthy illness. The services were held on November 12. Mrs. Holland stayed on with her son and attended Thanksgiving at Corsicana with relatives.

Both she and Jerry were very appreciative of the care and comfort provided by members of the Hospice and were warm in their praise. *****

Mary Alice Gibner enjoyed an exceptionally pleasant Thanksgiv-

ing in Houston with Stinson and Thuy Gibner. Making this an outstanding Thanksgiving was helping eight month old granddaughter, Alexandra, to participate in her first Thanksgiving. Relatives of Mary Alice and their families shared the Thanksgiving, a total of about 20. *****

Later Mary Alice visited in the home of her cousin Joan and Jerry Clark. She flew back, refreshed and ready to start back to school. *****

John and Tammy Woodward and children went to Albuquerque to spend Thanksgiving with his mother. They had a good Thanksgiving and started home on Saturday. The transmission went out on their van near Santa Rose, and since it was on a week-end, they were stranded. However they were rescued by his father, John Woodward, also of Spearman who came for them. They reached home at 3 a.m. Sunday, but still thankful for all the positives of the holiday. *****

Gary Evans, with sons Chris and Matt, spent the entire week with his parents, Kenneth and Margarette Evans. They came from Houston. *****

Guests of Peggy and Alton Ellsworth were Robert and Martha Gobel, Troy and Betty Mays, Stacy Sharp and four children, all of Amarillo. From Spearman were Archie and Gayle Smith and girls, Gary and Jana Ellsworth, Mrs. Ethel and Wayne Ellsworth and T.D. Sansing. *****

Lorene McGuire's company were her son, J.L. McGuire, with his two daughters, Megan and Shannon, of Amarillo; others were her granddaughter, Patti Hick and Trevis Jarmer of Garden City.

Her son David is also here. He retired from his work at Basalt, Colorado and decided to spend the winter here with his mother in a warmer climate. *****

Out at the Lake

By DOROTHY HUDSON
Lake Depth--November 28, 1994--21 feet.

The lake is 14 inches below the depth at this time last year.

The thrill of seeing the big flocks of sandhill cranes and geese flying overhead has a down side that surprised me. Bill Logsdon and Kenneth Evans have both told me that the sandhill cranes are a real pest in the irrigated wheat fields east of Spearman. Although geese and cranes both feast on green wheat, the cranes are much more destructive because of their big feet. They travel in big flocks and like to find wet ground where a little water is standing. They leave the spot as if it had had a pen of hogs on it. Farmers try shooting to scare the birds, but they just flutter up and then back down. Often the farmers have to rebuild their furrows before they can row irrigate.

These long-neck, long-legged birds with a bald red forehead and a wingspread of 6 to 7 feet are one of our largest birds. Of the wading birds the whooping crane is the only one larger. In the Panhandle the hunting season of these cranes, also known as prairie geese, started November 12 and ends February 12 with a bag limit of three. I have never eaten the meat from one of these birds, and I am curious if most hunters dress them out and cook them.

Archie Nelson called to say that he had spotted a pair of white-tailed eagles while he was fishing at the lake. I drove out Saturday just before sunset and did not see them, but I did get to see a pair of golden eagles and a mule deer. As we have both whitetail deer and mule deer at the park, I have been trying to learn to distinguish between them.

At least now I know that when the deer is running away from you, if the tail is held up in the air like a white plume, that is a whitetail deer, but if the tail (tipped with black) is held close to the haunches that is a mule deer. When the Wildlife people spotlighted for deer in the area a month ago, they got a count of 44 whitetail and 4 mule deer.

ATTENTION!

When using your mobile or cellular telephones to call the 911 emergency number remain calm & identify the TOWN and LOCATION you are calling from so the 911 operator may direct your call properly.

This is a public service message from this newspaper and your local police department.

TODAY'S
THE DAY

Stop Smoking.

American Heart Association

SUTPHEN'S BBQ

303 N. Cedar • Borger, TX
806/273-6442

Catering

25 People or More
\$5 per plate
(choice of 2 meats)

• BBQ Brisket • BBQ Chicken • Polish Sausage • Ham • BBQ Chicken Strips •

With all the trimmings!

• Onion Rings • Potato Salad • Cole Slaw • Beans • Coffee or Tea

* Fruit Cobblers Available *

CHRISTMAS DINNER

Turkey & Smoked Dressing and all the trimmings plus dessert for \$7 per person.

AUCTION

Thursday, December 8, 1994 • 10:00 a.m.

LOCATED: From Sunray, Texas, 4 1/2 miles East on F.M. Highway 281

GARY MOORE FARMS & MRS. GARY KEISLING--Owners

Telephone: Gary Moore (806) 948-5358 OR

Auctioneers: Jim Sumners (806) 864-3611 or Jimmy Reeves (806) 864-3362

Due To The Death Of Gary Keisling, The Following Will Be Sold At Public Auction:

TRACTORS--1-1992 John Deere 4760 diesel tractor, cab, A/C, htr., radio, P/S trans., 3-Hyd., Wts., 18.4x42 rubber, duals (1,420 hrs.) (shedded - 1 owner); 1-1991 Case-IH 7140 M.F.W.D. diesel tractor, cab, A/C, htr., radio, P/S trans., 4-hyd., wts., 14.9x28 front rubber, 18.4x42 rear rubber, duals (4,168 hrs.) (still in warranty); 1-1980 Case 2390 diesel tractor, cab, A/C, htr., radio, P/S trans., Th.H., wts., 18.4x38 rubber; 1-1975 case 1370 diesel tractor, cab, A/C, htr., radio, P/S trans., D.H., wts., 18.4x38 rubber (engine good, rear end bad); 1-1973 Case 1370 diesel tractor, cab, A/C, htr., P/S, wts., D.H. 18.4x38 rubber; 1-1971 International 1026 diesel tractor, W.F., 3-pt., D.H. hydrostat, 18.4x38 rub. w/nt. 2350 hyd. F.E. loader.

COMBINE, CORNHED, GRAIN CARTS--1-1991 Case-IH 1680 Axial Flow Combine, Cab, A/C, htr., AM-FM Radio w/Case-IH 1010, 30' grain header, 30.5Lx32 rubber (1,690 hrs.); 1-John Deere 645, 6 row-40' cornhead; 1-Set Concaves for IHC 1480 combine; 8-Hesston Headhunter pickup units; 1-Kinze 840 grain cart w/extensions & tarp, 900 bu. (shedded); 1-big 12, 600 bu. grain cart; 1-P&W, 650 bu. grain cart; 1-A&L 650-T, T.A. grain cart, 650 bu.; 2-A&L 425, S.A. grain cart, 425 bu.

SUBURBAN, PICKUPS, TRUCKS--1-1984 Chev. Suburban, 6.2 diesel eng. A/T, P/S, P/B, dual A/C-htr.; 1-1982 Chevrolet Silverado, 1/2 ton pickup, 305 eng., A/T, P/S, P/B, A/C, L.W.B.; 1-1980 Ford 1/2 ton P.U., 351 ing., A/T, P/S, P/B, L.W.B. (engine needs repair); 1-1979 Chevrolet 1/2 ton pickup, custom deluxe, 250 eng., 4 sp. trans., P/S, P/B, L.W.B., C/O toolbox; 1-1977 Chevrolet 3/4 ton pickup w/utility bed, 350 eng., A/T, P/S, P/B, L.W.B.; 1-1976 Chev. 1 ton dually, 454 eng., 4 sp. trans., P/S, P/B, A/C; 1-1972 GMC 1/2 ton pickup, 350 eng., A/T, L.W.B.; 1-1976 International Cab-Over-T.A. truck tractor, 350 Cummins, 10 sp. trans., 10x20 rubber; 1-1972 GMC S.A. Grain truck, V-8 en., 4 sp., 2 sp., 16' bed, hoist.

EQUIPMENT--1-Kinze D.T., 16 row - 20' row planter, D.D., 2 liquid fert. tanks, plateless, V's, hyd. folding row markers; 1-Kinze 3 pt., 8 row - 32' row planter, D.D., plateless, V's, hyd. folding markers; 12-John Deere 71 Flex planter, D.D.; 1-Hamby 3 pt., 8 row - 40' rod weeder, D.S.B., L.T.M., D.C.D., 1,000 RPM, G.W.; 1-Hamby 3 pt., 8 row - 32' rod weeder, hyd. drive, D.S.B., L.T.M., G.W.; 1-Lilliston 3 pt., 8 row - 40' rolling cultivator, big bar, 5 tine, G.W.; 1-Lilliston 3 pt., 8 row - 32' rolling cultivator, S.B., 4 tine; 1 Lilliston 3 pt., 6 row - 32' rolling cult., big bar, 4 tine; 1-International 8 row - 40' rolling cultivator, big bar, 4 tine, 2 sets G.W.; 1-Roll-A-Cone 3 pt., 9 row - 40' lister, 4"x7" toolbar w/2 1/4 bar behind, G.W.; 1-John Deere 3 pt., 9 row - 32' lister, 5"x7" toolbar w/Bigham Bros. hyd. folding row markers, G.W.; 1-Hamby 8 row - 40' inner row ripper, T.S.B., L.T.M., 2 sets G.W. (B&W sub mulch ripper shanks); 2-Hamby 3 pt., 28' A.A. fertilizer rigs, T.S.B., L.T.M., nitrolator, pull hitch, G.W.; 1-M&W 8 row rotary hoe; 1-Hamby 8 row - 32' water furrow rig, D.S.B., L.T.M., G.W.; 1-Hamby 3 pt., 28', 8 row - 40' cultipacker, S.S.B., L.T.M.; 1-big 12, 3 pt., 21' cultipacker, S.S.B.; 1-John Deere 520, 3 pt., 21' - 34 disc grain drill, D.D., 6 2/3" space; 1-tie 28", 8" spaced grain drill; 1-Krause 1470, 18' offset disc; 1-Quinstar Follow Master D.T., 42' hyd. F.W. chisel/sweep plow w/readers; 1-Flex King D.T., 7 shank, 5' v-sweep plow, hyd. fold, readers; 2-S&S D.T., 39' Spring Shank Field cultivators, lift mulch harrow, hyd. front end; 1-Hamby 3 pt., 28' T.S.B. chisel/sweep plow, noble lift mulch harrows, G.W.; 1-Hamby 3 pt., 21' T.S.B. chisel/sweep plow, noble lift mulch harrows, D.G.W.; 1-S&S 28', 3 pt., T.S.B. chisel/sweep plow; 1-John Deere 900, 3 pt., 13 shank v-ripper plow, D.G.W.; 1-International 140, 4-18" spinner mouldboard; 1-Rhino GR-84, 3 pt., 2 row shredder w/2 tails wheels; 1-Caldwell 114, 3 pt., 2 row shredder w/2 tail wheels; 1-Laney D.T., 10' box blade dirt scraper; 1-John Deere 3 pt., 9' hyd. blade; 1-Caldwell 3 pt., 7' hyd. blade; 1-Servis Big Rhino 3 pt., 6' blade; 1-Noble D.T., 1 Shank big sweep plow, C.C.; 1-Woods 3 pt., cyl. control lift boom; 1-Howard 4', 3 pt., rotovator; 1-Eversman D.T., 6' C.C. v-ditcher; 2-Meyer D.T., 6' v-ditcher; 1-Orthman 3-pt., disc ditch filler; 2-King 3 pt., disc ditch fillers; 1-Hamby 3 pt., disc ditch filler.

SPRAY EQUIPMENT--1-Wylie 3 pt., 500 gal. ply tank sprayer w/8 row hyd. folding boom; 2-Wylie belly Mt., twinn 200 gal. trimline poly spraty tanks w/frame; 1-Wylie 3 pt., 150 gal. poly tank sprayer; 1-Wylie 16 row sprayer; 1-6,500 gal. liquid fertilizer T.A. transport trailer, 10x22 rubber (A.A. converted).

TRAILERS, TANKS, AUGER--1-Wilson 40' T.A. Cattle Pot Trailer; 1-2,000 gal. metal fuel tank; 1-1,000 gal. metal tank; 1-pickup bed trailer; 1-Benco G/N, 16' hyd. lift grain trailer, T.A.; 1-Wylie 1,000 gal. T.A. water trailer w/2' trans. pump; 1-1,000 gal. T.A. water trailer w/2' pump & Honda motor (coil link axes); 1-Red Ewald H/C 1,000 gal. F/G liquid fert. trailer; 2-500 gal. fuel trailers w/tu/hill 12 volt pump (coil link axes); 1-prior D.T., H/C adj. width chassis; 1-S.M. 3 wheel chassis; 1-Donahue 28' lowboy imp. trailer; 1-S.M. 4' Camelback imp. trailer w/2-chain hoists, S.A.; 1-S.M. 16' T.A. utility trailer; 1-S.M. 8' S.A. utility trailer; 1-T.A. 200 bu. seed auger wagon; 1-500 gal. propane tank on 4 wheel trailer; 1-M&W, 4'x10' hyd. grain drill fill auger; 1-500 gal. propane tank, 250 PSI; 1-81 gal. propane tank (for pickup); 1-60 gal. twin propane tanks (for pickup).

IRRIGATION--3-Moline HD-800 irrigation engines; 3-International 446 irrigation engines (needs O/H); 1-Chevrolet 454 irrigation engine (needs O/H); 1-Ford 300 irrigation engine (for parts); 1-chevrolet 292 irrigation engine (for parts); 1-Ford 170, 6 cyl. irrigation engine w/P.T.O. pump; 1-Chrysler 413 irrigation engine w/8' Berkeley tailwater pump; 2-Ford 170, 6 cyl. irrigation engines w/Randolph tailwater pumps; 2-Amarillo 125 H.P. hearheads (1-5:6 ratio, 1-4:5 ratio); 100-Jts. 8"x20' PVC gated pipe, 40' rows (slide gates); 80-Jts. 7"x20' PVC gated pipe, 32' rows; 65-Jts. 8"x20' gated pipe, 40' rows; 40 Jts. 8"x30' gated pipe, 32' rows; 50-Jts. 7"x20' gated pipe, 40' rows (screw gates); 6-Jts. 8"x30' gated pipe, 40' rows; 8-Waterman 12"x8" hydrants; 8-Waterman 12"x7" hydrants; 1-Lot 6", 7" & ** irrigation fittings (T's, elbows, end caps); 1-Lot Moline HD-800 Well Motor Parts; 1-Lot Well Motor frames; 8-Well Motor driveshafts; 2-2 wheel 30' pipe trailers.

TRACTOR & TOOLBAR MAKEUPS--1-set 18.4x38 axle duals (J.D. 4440, 10 hole); 3-sets 18.4x38 axle duals (2-case, 1370, 1-case 2390); 1-Hamby 21' 3 pt. double square bar tool carrier; 10-Orthman inner row ripper shanks (for 4x4 barbar); 3-Case Cat. III Quick Hitches; 14 J.D. suitcase front weights w/bracket; 1-15' - 4"x7" toolbar; 1-10' - 4"x7" toolbar; 1-lot hydraulic cylinders; 1-lot rolling cult. parts; 1-lot used discs, sweeps & chisels.

NON-CLASSIFIED--1-Lincoln 225 amp portable welder; 1-Chev. 305 motor w/700-R4 auto. trans.; 1-pacer 2" pump w/B&S 3 H.P. eng.; 1-lot crossover & sidemount pickup toolboxes; 2-7' round livestock water tubs; 1-lot electric fence posts; 1-lot tires and wheels.

Note: Any Announcement Sale Day Takes Precedence

Five Star Auctioneers

OFFICE PHONE: (806) 296-0379

BOX 1030 - PLAINVIEW, TEXAS 79073-1030

JAMES G. CRUCE (806) 296-7252
MERVIN W. EVANS (806) 293-8195
JIM SUMNERS (806) 864-3611
JIMMY REEVES (806) 864-3362

NOT RESPONSIBLE FOR ACCIDENTS
WE ARE AGENTS AND AGENTS ONLY
NOTE: PLEASE BRING YOUR OWN CHECK BOOK
- Terms of Sale: CASH
All Accounts Settled Day Of Sale
Lunch Will Be Available

Do you sometimes feel you need to work longer and smarter just to stay even?

Then you need to attend our upcoming seminar:

Wednesday, December 7, 1994
7:00 p.m. to 9:45 p.m.

O'Loughlin Center
502 South Brandt

RSVP by December 5, 1994

Call Carrie or Don Townsen at 659-5544.

Lee Todd of Red Wing Business Systems will be in town to demonstrate with concrete examples how a computer can benefit your farming and/or ranching operation. Key areas to be covered:

General Ledger • Payroll • Crop Production • Cow/Calf Production

Please do yourself a favor. Come to our Red Wing seminar. Be introduced to a nationally preferred computerized agricultural business system that will convince you never to go back to doing it by hand.



729 W. 7th Spearman, Tx. 659-5544
Member FDIC



THREE LITTLE INDIAN BOYS - The kindergarten classes at Gus Birdwell Elementary School in Spearman put on a Thanksgiving concert before the holidays last week. With several parents armed with camcorders so they would not miss a single moment, the kids sang many songs, including the little Indian boy and girl song. As shown here, they also dressed up as Indians and Pilgrims to recreate the very first Thanksgiving. (Photo by Chad Davis)

Spearman High School honor rolls announced

Spearman High School Honor rolls are calculated and figured for another six weeks the honors go to:

ALL 'A'S'
Freshmen - Mac Butts and Misha Davis.

Sophomores - Lela Gentry and Britt Savage

Juniors - Erin Atwood, Carrie Burton, Brent Collins, and Haley Farber.

Seniors - Molly Blackman, Kortney Henton, Sara Paschel, Kristina Poole, Heather Reimer, and Josh Winegarner.

ALL 'A' and ONE 'B'
Freshmen - Ashley Brown, Mike Butts, Lena Harbour, Zach McCammond, Keisha OQuin, Sylvia Ortega, Karen Paschel, Lindsey Smith, and Brooke Trantham.

Sophomore - Samantha Beasley, Blake Beedy, Clint Faries, Kelly Goodman, Amanda Lomeli, Dillon

Spearman Jr. High honor rolls released

Spearman Jr High has named its second six weeks honor roll students, and the students are happy to get another grading period behind them. The honor roll students are as follows:

SIXTH GRADE

Amanda Adams, Travis Atwood, Cary Cates, Brandon Clyburn, Daniel Ellis, Jared Freeman, Jimmy Gaytan, Martin Griffin, Jacob Harbour, David Holt, Dibrell Kirk, Michelle Laughlin, Haley Lombard, Erin Lozano, Kyle McLaughlin, Chelsea Nollner, Denise Paschel, Kara Pipkin, Sally Pittman, Jennifer Schnell, Adrienne Simpson, Richard Varnon, Chelsey Villines, Ty West, and Brady Woolley.

SEVENTH GRADE

Dustin Barber, Halee Beasley, Stephanie Bynum, Brandi Campbell, Tommie Dewberry, Cynthia Goodman, Kelsey Henton, Brooke Lesly, Jeremy Mackie, Lacey Miesner, Kathryn Murphy, Amber Ramon, Reagan Renner, Stephen Salgado, Audra Sanders, Camille Smith, and Sydney Woodington.

EIGHTH GRADE

Brittni Beedy, Kristin Beedy, Chrissy Bensinger, Kristal Burkhammer, Texana Clyburn, Grace Davis, Krista Dement, Betsy Holt, Dawn Loomis, Gale Mayfield, Brian McLaughlin, Landon Miller, Holly Pipkin, Doran Schoenhals, Quentin Shieldknight, Lisa Swink, Clancy Vanderburg, Miranda Vernon, Brandi Willis, Cami Winegarner, and Julie Scroggs.

Miller, and Candice Pipkin.

Juniors - Cari Babitzke, Lucas Biggs, Regan Boxwell, Matt Gafford, Cody McLeod, Bill Pittman, Phillip Sanders, Amy Schoenhals, and Kelly Shieldknight.

Seniors - Josh Furlow and Mika Pipkin

A'S TWO B'S

Freshmen - Teresa Gomez, and Maribel Martinez.

Sophomores - Bruce Howell and Orlando Ortiz.

Juniors - Jarod Huddleston, Lee Jarvis, and Gabriel Rodriguez.

Seniors - Kiki Kelp and Ronda Renner.

GHS students make school honor rolls

The Gruver High School students are back to the books for another six weeks. Honor roll students for the second six weeks are:

ALL 'A' HONOR ROLL
Freshmen - Analisa Cruz, Weslyn Maupin, Jill Odom, Amber Roberts, and Autumn Roberts.

Sophomores - Kristin Evans, Mary Henson, Tucker Henson, Josh Mayhew, Amber Murrell, and Lexy Spivey.

Juniors - Bailey Barkley, Kiki Carthel, Laura Gilleland, Joni Hart, Roxanne Holt, Scott Jarvis, Cristy Marquez, Sahala McCloy, Tara Shapley, Jason Ward, and Jon Womble.

Seniors - Aaron Frick, Janyth Hart, Jana McCloy, Julie Meyer, Tisha Ralston, and Kimberley Wagner.

ALL 'A' and ONE 'B' HONOR ROLL

Freshmen - Brant Armes, Darby Johnson, and Buster McLain.

Sophomores - Erikka Barrera, Kelly Boone, Erin Derington, John Duncan, Amy Gillispie, and Julie Gumfory.

Junior - Imelda Arzate

Seniors - Jace Dawson, Kayce Haenisch, John Holland, Angela Overby, Wendy Rodriguez, and Toby Setliff.


Get A Rebate For Getting Comfortable.




Texas-New Mexico Power Company provides power, plus rebates to help you save money without sacrificing comfort.


★ We'll give you a rebate for a new heat pump with a Seasonal Energy Efficiency Ratio (SEER) of 12.0 or higher. Units equipped with a two-speed or variable-speed compressor need a minimum SEER of 11.0 to qualify. ★ For more information, call or visit your local TNP office.



Texas-New Mexico Power Company.

Be an  and help fill

our  of  for 

and get Cable TV for small 

Donate a \$10 toy and receive a free cable installation. Toys will be donated locally. Help support our

Toys for Tots Drive!

Call  MISSION CABLE

659-3363

NOW!

When you add a Southwestern Bell service to your phone, this becomes the receiver.



One of Southwestern Bell's favorite subjects


is high schools. To prove it, we've created the School Bell Program. For every Call Waiting, Call Forwarding, Three-Way Calling or Speed Calling

service you buy between now and April 28, 1995, we'll make a \$2 donation to the board of trustees of the high school listed below nearest you.

Help your school earn up to \$1,500 from

Southwestern Bell Telephone to purchase anything from fine arts programs to computer software to band uniforms. Call 1-800-234-BELL and

order one of our EasyOptionsSM phone services today. The sooner you pick up your receiver, the sooner your high school becomes one.

 Southwestern Bell Telephone

"The One to Call On"

Alamo Independent School District High School, Arroyo High School, Barton High School, Bixby High School, Bristow High School, Canyon High School, Colorado High School, Fort Davis High School, Fort Stockton High School, Granddallas-Royalty High School, Gruver High School, Florida High School, Hale Center High School, Herford High School, Hermingway High School, High Frontier High School, Hillsboro High School, Itasca High School, Kermit High School, Lampasas High School, Letour High School, Liberty Hill High School, Lockhart High School, Lockney High School, Marathon High School, Maria High School, Mansfield High School, Pampa High School, Planeta High School, Rockdale High School, Rusk High School, Slaton High School, Southville High School, Snyder High School, Sweetwater High School, Taylor High School, Temple High School, Tiro High School, West Texas High School, Westbrook School, White Deer High School, Wink High School, York High School

Agri-Business



UNVEILING - While attending a Case Corporation business meeting held recently in St. Louis, MO., Richey Thompson of Five Star Equipment in Spearman, witnessed the unveiling of this new Case IH Axial-Flow combine.

Thompson attends Case IH meeting

ST. LOUIS, MO. - Richey Thompson of Five Star Equipment in Spearman recently attended a Case dealer's meeting for an in-depth look at the latest in Case IH agricultural equipment.

Among other products, Thompson saw the next generation of Case IH Axial Flow combines.

The first Axial-Flow combines, introduced nearly 20 years ago, redefined a good harvest, providing better quality grain and more of it from an exceptionally dependable machine. According to Thompson, the new 2100 Series machines provide the same superb grain handling and reliability while setting new industry standards for operator comfort and convenience.

Thompson explained that the new 2144, 2166 and 2188 combines feature an all-new cab, as well as upgraded electronics, hydraulics

and power train. "I'm looking forward to getting these out in the field with my customers," he said.

At the dealer meeting, Thompson received an update on Case, including its business and product-development plans. Earlier this year, Case stock was sold in a public offering for the first time in many years. Immediately prior to that, the company appointed a new president, Jean-Pierre Rosso, who has been spearheading important changes to improve product development and distribution, and customer service.

Thompson and other attending Case IH dealers also had the opportunity to involve their parts and service personnel in seminars on more than 30 subjects, as well as a parts trade fair featuring the latest products and services from suppliers allied with Case.

GHS Ag teacher named to 'Who's Who' list for 1994-95

By ANDY JONES

Gruver Ag teacher William Clay Montgomery received a very special honor from the Who's Who Among America's Teachers last month. Any lack of previous recognition in this paper is entirely the fault of this young writer. All apologies to Mr. Montgomery. 66,500 teachers have been selected to be included in the third edition of Who's Who Among America's Teachers.

When asked how he felt about this honor, Mr. Montgomery responded, "It certainly is an honor because the process by which the teachers are selected."

The process Mr. Montgomery is talking about is the fact that the entries for Who's Who Among America's Teachers are chosen by former students who were previously listed in Who's Who Among America High School Students or The National Dean's List. This makes the honor all the more special for Mr. Montgomery who went on to say, "I influenced a student. That gives some validity when a teacher impresses a student and influences the student in a positive way because that is what our job is and sometimes we don't get recognized for that."

Mr. Montgomery concluded by saying, "Teachers have a hard time evaluating what our impact is. This gives us something concrete to know that we actually did something for the student. A lot of teachers have

influenced students and they have all put a brick in the wall, and taking out a brick might cause it to fall. It is one of the biggest honors for me and I have had many honors."

Mr. Montgomery is currently in his fourth year as Ag teacher at Gruver High School and continues to put bricks in the walls of all those who experience the Gruver Ag Department.



WILLIAM MONTGOMERY

Private applicator courses to be offered

Continue Education Unit (CEU) classes will be offered in five area locations for private applicator license holders who need CEU credits to keep their license. The following meetings have been approved to provide CEU credits.

November 30 at 9:30 a.m. at the Amarillo Civic Center (Grand Plaza Room) 2 CEU credits.

December 6 at 10 a.m. in Perryton at the Expo Center (Worker Protection) Sponsored by Equity. 5 CEU credits.

December 7 at 8:30 a.m. Spearman at the Farm Bureau Office. Sponsored by Texas Farm Bureau and Texas Agricultural Extension Service. 5 CEU credits.

December 12 - Registration at 8 a.m., meeting starts at 8:30 a.m. at Spearman County Barn. Sponsored by Equity Elevators. 5 CEU credits.

December 14 at 10:30 a.m. in Spearman at Ivy's Hungry Cowboy. Corn Management Seminar. Sponsored by Watley Seed. CEU credits will be given.

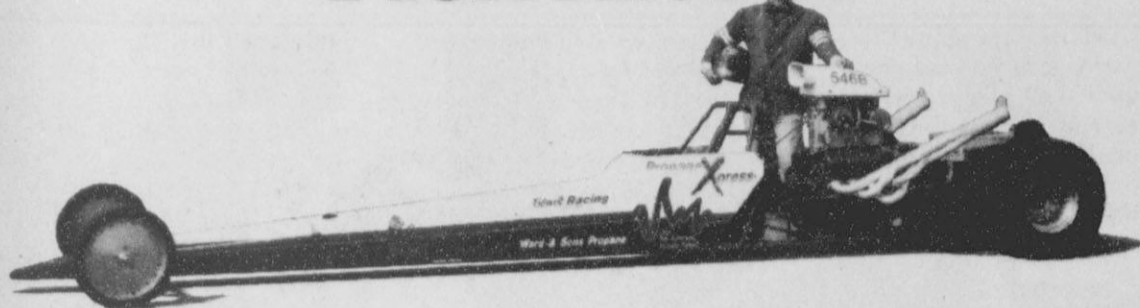
January 5 at 10 a.m. in Gruver. (Place to be announced) Worker Protection. Sponsored by Texas Agricultural Extension Service and Texas Department of Agriculture. 5 CEU credits.

Producers who need a private applicator license can obtain the license by attending a license school, December 5 at 9 a.m. in the Extension Homemakers Clubroom, 309 N. Bernice in Spearman. If you have any questions about the above meeting call Hansford County Extension office at 659-2136 or 733-2901.

Educational programs of the Texas Agricultural Extension Service are open to all citizens without regard to race, color, sex, disability, religion, age or national origin.

**For Your
BBQ or Smoked Turkey
call
Sutphen's BBQ**
(in the Pahnandle for 44 years)
806/273-6442
303 N. Cedar
Borger, TX

Humble.



It's hard to be humble when propane propels a winning dragster down the quarter mile at 160 mph. But we try. And so we humbly ask you to consider propane to fuel your private, government or school district fleet vehicles. Propane is a low-cost, high-octane alternative fuel. It will keep your fleet running economically and help you meet state and federal clean-air mandates. Propane. The clean choice. The clear choice. There's no way you can lose.

PROPANE

THE CLEAR ALTERNATIVE

RAILROAD COMMISSION OF TEXAS

James E. (Jim) Nugent, Chairman ■ Mary Scott Nabers, Commissioner ■ Barry Williamson, Commissioner
For more information about propane, call us at 1-800-64-CLEAR

BOB JOHNSON MOTOR COMPANY IN BORGER



**For all your Dodge truck needs come by and visit
JOHN CRAWFORD,
1993-1994 SALESMAN OF THE YEAR
at Bob Johnson Motor Company
in Borger, TX.**



273-7541 **Bob Johnson** West Hwy. 136 **SALES (800)753-5370**
MOTOR COMPANY **PARTS (800)999-3042**



With Call Forwarding, he only has to know one number to find you any number of places.

It's not impossible for someone to learn the phone numbers of all the places you might be. But it is unnecessary. Because with Call Forwarding from Southwestern Bell, you can have your home phone number ring wherever you go. And when your number keeps up with you, it's easier for your family and friends to do the same. To order, or for more information on this and other EasyOptions™ calling services, call 1-800-234-BELL.

Southwestern Bell Telephone

"The One to Call On"™

Available in selected Southwestern Bell Telephone areas.

School Bell Program

From now until April 28, 1995, Southwestern Bell Telephone will donate \$2 to the board of trustees of your local high school when you purchase the Call Forwarding service. Your school can earn up to \$1,500 to help purchase anything from fine arts programs to computer software to band uniforms.

Sports

Panhandle Panthers outscore the Spearman Lynx, 91-61

The Spearman Lynx basketball team apparently ate too much turkey this past Thanksgiving, as they were stuffed by their host, the Panhandle Panthers, last Tuesday night, 91-61.

Panhandle led the game every quarter by outscoring Spearman in the first, 23-13; the second, 20-10; third, 22-19; and the fourth, 26-19.

Heath Archer led the way for the Lynx by putting in 3 field goals in the first quarter, 2 in the second, 1 in the third, and a 3-pointer and a field goal in the fourth, to give him a total of 18 points.

The two big inside men for the Lynx, Shad O'Quin and Jarod Huddleston, finished their game with 13 points each. O'Quin's points came in the second and third quarters by going 3 for 3 from the penalty line and by knocking in 5 field goals. Huddleston's points came in the first, third and fourth quarters of the game. He put in 6 field goals and went 1 for 3 from the free shot line.

points, which one was only a field goal and the rest free shots. Sophomore, not freshman, Eric Cudd also used his great shooting ability by coming in on the fourth quarter and sinking a 3-pointer. Coyt Tigrett made some fourth quarter points also by putting in 1 field goal and 2 free shots to give him 4 points. Justin Tucker, who put in a field goal in the fourth, and Dillon Miller, who put in a field goal in the third and a free shot in the fourth, put in

their talents to help the Lynx effort. Panhandle's Gorham shocked everyone by slamming down 28 unbelievable points. Three other players, Bertrand, Brinkley, and Minter, all made double digits on scoring.

The Lynx will travel with the Lynxettes to the Miami Tournament, in hopes of winning more games to add to their record.

1994-95 Pringle-Morse Basketball Schedule

DATE	GAME	PLACE	TIME	Day
December				
5	PMISD verses Booker	Home	6 p.m.	Mon.
January				
5	PMISD verses San Jancinto	Home	6 p.m.	Thurs.
9	PMISD verses Gruver B	Home	6 p.m.	Mon.
12-14	PMISD at Spearman Tournament	TBA		Th-Sat.
19	PMISD verses San Jancinto	Away	5 p.m.	Thurs.
23	PMISD verses St. Andrews	Away	6 p.m.	Mon.
February				
2	PMISD verses White Deer	at Skellytown	6 p.m.	Thurs.



FAST BRAKE - The Spearman Lynxettes and the Gruver Lady Hounds baffled it out for the first time on the roundball court this year last Monday in Gruver. In the picture above, Erika Salmans, for the Lady Hounds, drives the ball hard down the court, while Holly Pipkin, Kristin Beedy, and Lisa Swink pursue her. Coming in to help Erika are Kadie Grotogut and Missy Johnson, who scored 15 points, which included a last second winning shot, to give the Lady Hounds the 33-32 victory. (Photo by Lewis Holland)

Lady Hounds and Hounds lose to Borger Bulldog basketball teams

If anything, the Lady Hounds can look on their stunning 43-42 loss to the Borger Lady Bulldogs at the Tex Hanna Fieldhouse this past Tuesday, November 29, as a character building defeat. When you lose and are the far superior team, and the referees are not on your side, you can chalk it up to experience. It was like the movie "Aladdin" - the Lady Bulldogs rubbed their magic lamps, and the referees appeared to grant their every wish.

The Lady Hounds opened up by blitzing the Lady Bulldogs to the tune of 18-4 through the first quarter, and just into the second quarter. They were playing awesome defense, and they were hitting their shots. They were simply the far superior team. Then something went wrong. Yes, the Lady Hounds still had a 13-point lead at half-time, 23-10; and their defense had played superbly, holding the Lady Bulldogs to only 10 points for the first half - but the reality of the matter is that they should have had a 35-10 lead. The referees had simply thrown the Lady Hounds out of sync, and only their defense was in tune.

The second half was simply a stunner. Wendy Rodriguez hit a nice score from under the basket, was fouled, and sank the free throw for the 3-point play to put some spark into the Lady Hounds, giving them a 30-18 lead midway through the third quarter, after Borger had cut the lead to nine. The score by Rodriguez in the third quarter was followed by one more field goal for the Gruver girls for the entire duration of the game! That covered a time frame of over 12 minutes! Kaysha Cluck hit on a jumper with 4:12 left in the game, to give Gruver a 38-34 lead, after Borger had cut it to two. That was the last field goal of the game for the Lady Hounds.

With 3:12 left in the game, Borger finally caught the Gruver girls 38-38. With 1:58 left in the game, they finally took the lead 39-38. Julie Meyer was awesome in the clutch, 6-6 from the free throw line in the 4th quarter. Julie hit two free throws to give Gruver the lead 40-39 with 1:40 left in the game. Then Meyer hit two more free throws to give Gruver the lead back again 42-41 with only 22 seconds left in the game. But the Lady Bulldogs scored on a driving lay-up by their little point guard with 4 seconds left in the game, and that was the winner, 43-42. Gruver got one last shot, by Meyer, but it was off the rim.

Yes, the referees played a large part in the decision. In the fourth quarter, the normally reticent Coach Steve Myatt of the Lady Hounds jumped up to protest - the referee had missed an obvious backcourt violation and instead had called a foul on a Gruver girl. Em-

barrassed and humbled, he retreated cross court. A minute or so later, when Coach Myatt again jumped up to protest another obvious blown call, the referee called a technical foul on Coach Myatt, who had risen from his humble position to upstart the referee. From that point on, it seemed the calls were so bad, and all directed against the Lady Hounds, that the referee may have been trying to seek justification, and was intentionally giving Coach Myatt and the Lady Hounds a rough time.

But the bell has tolled now, and the Lady Hounds need not ask for whom it is tolling - not after the Borger loss. Yes, the competition has marked the Lady Hounds, and everyone will be playing better against them this year. But the referees have also marked the Lady Hounds, and they are not only going to have to be better than the competition, they are going to have to be better than the referees. The Lady Hounds know they have a long way to go if they want to be in the State playoffs in March.

Lady Hounds JV (2-3) vs Borger

Tuesday 11-29-94 at Borger

Gruver 2 8 15 44
Borger 13 25 37 51

Gruver Mary Dawn Henson-13, Joni Hart-12, Jill Odom-7, Amy Gillispie-4, Autumn Bateman-3, Crystal Christian-2, Robbi Mathews-2, Kathy Slough-1.

Synopsis: The Gruver girls really came through in the fourth quarter, outscoring Borger 29-14 to almost have a shot at winning this game, after falling way behind.

Lady Hounds (3-1) vs Borger

Tuesday 11-29-94 at Borger

Gruver 14 23 32 42
Borger 4 10 28 43

Gruver - Julie Meyer-15, Kaysha Cluck-10, Wendy Rodriguez-8, Tisha Ralston-4, Amber Murrell-3, Kiki Carthel-1, Weslyn Maupin-1.

This past Tuesday night, November 29, at the Tex Hanna Fieldhouse in Borger, the Gruver Greyhounds came out charging as they always do; but as has been the case often this year, they simply ran out of gas, and succumbed to the Borger Bulldogs 61-46. It was a tale of two halves.

Gruver drove to a 19-10 lead early in the second quarter, and seemed on their way to a stunning upset. But the Bulldogs rallied, outscoring the Hounds 14-2, to take a 24-21 lead. A trey by Roma Tomlinson tied the score 24-24, but the Hounds were simply playing on their spare tank of gas already in the second quarter.

Just before the half, the Hounds held a 28-27 lead, but a Borger boy hit a trey at the first half buzzer for the 30-28 Bulldog halftime lead.

To start the second half, Jace Dawson hit a jumper to tie the game 30-30, but then the roof caved in on the Hounds. Borger outscored the Gruver boys 23-3 over the next 12 minutes or so, as the Hounds had only three free throws, to take a 53-33 lead midway through the final period.

Gruver has great potential. They simply are not in 100% tip-top shape

See HOUNDS, page 12

Lynxettes caged by the Panthers, 62-47

After a short holiday away from the roundball court, the Spearman Lynxettes laced up their high tops again last Tuesday night, as they were hosted and beaten by the Lady Panthers of Panhandle, 62-47.

Despite a domination by the Lynxettes in the first quarter, with a score of 16-12, Panhandle outscored Spearman in the second, 9-18; third, 10-14; and fourth, 12-18, quarters.

Kara Townsen, who carries on the Townsen family tradition of great athletes, scored a remarkable 22 points. Townsen had 3 field goals in the first quarter, 1 field goal in the second, 3 field goals in the third, and 2 field goals and went 4 for 4 from the penalty stripe in the fourth.

Ashly Shieldknight, who almost always hits double digits, went on to score 13 sensational points.

Shieldknight's points came on 2 field goals in the first quarter of play, a 3-pointer and a field goal and went 2 for 3 from the free shot line in the second, a field goal in the third, and went scoreless in the fourth.

One of the youngest girls on the team, Shayla Barber, helped out her teammates by scoring 6 points. Macy Shieldknight, Tara Butts, and Keisha O'Quin all ended the ball game with a field goal each.

Panhandle's superstars had two girls who racked up enough points to reach double digits. C. Brunkley led the two by knocking in 20 outstanding points. Her teammate, J. Humphrey, followed her closely by contributing 16 points.

Although this loss is very heart-breaking to the Lynxettes, they will try to make up for it by taking the Miami Tournament. Times for their games are still to be announced.

ALLSUP'S Pre-Holiday Savings

Prices Effective Nov. 27-DEC. 3, 1994
Gruver, Spearman, Perryton, & Booker Only

SAVE ON COCA-COLA

6 pk. • 12 oz. cans

\$1.89

ALLSUP'S SAUSAGE, EGG, & BISCUIT FOR ONLY

99¢

ALLSUP'S HOT LINKS FOR ONLY

69¢

DECKER MEAT FRANKS 12 OZ. PKG.

69¢

DECKER COOKED HAM 4" X 6" 10 OZ. PKG.

\$1.99

FRITOS CHEETOS FUNYUNS

FRITO LAY GRAB BAGS REGULAR 69¢

2 \$1 FOR

ALLSUP'S HOMOGENIZED MILK GALLON

\$1.99

SUNSHINE VIENNA FINGERS OR HYDROX COOKIES 16 OZ. PKG.

\$1.99

WESTERN FAMILY IBUPROFEN PAIN RELIEVER 100 CT.

\$1.99

Basic Diapers 20L & 30M

\$4.49

SHURFINE TOMATO KETCHUP 28 OZ. SQUEEZE BTL.

99¢

FRESH COOKED TURKEY

COOKED DAILY \$10.99

Christmas Trees

AS LOW AS \$10.99

• New Mexico Mountain Trees 'Fir, Balsam & White Fir'

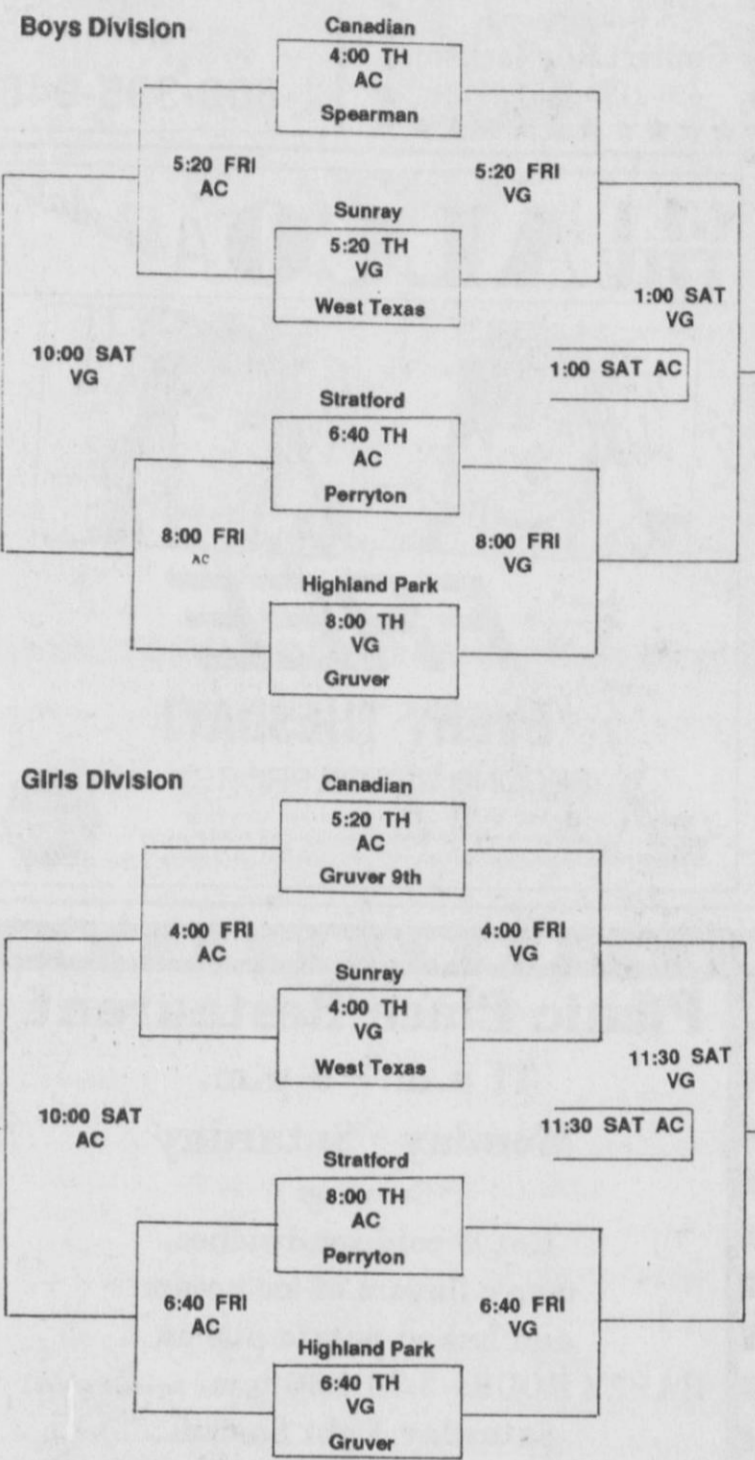
• Northern Michigan 'Scotch Pine'

GRUVER JUNIOR VARSITY BASKETBALL TOURNAMENT

DECEMBER 1, 2 & 3

For The Sport Of It

by Bob Bort



Here are the details on some more tournaments for the Hounds and Lady Hounds this month.

The Gruver Junior Varsity Tournament will be held this week, Thursday-Saturday, December 1-3. Both the Hounds and the Lady Hounds will be participating, and in addition the Lady Hounds Ninth Grade team will be participating, replacing the Lynxette JV. Eight teams are entered. On Thursday the Hounds and Lady Hounds will open against the Highland Park Hornets teams; the Lady Hounds at 6:40 P.M., the Hounds at 8:00 P.M., both in the Varsity Gym. The Lady Hounds Ninth Grade will open Thursday at 5:20 P.M. in the Activity Center against the Canadian Lady 'Cats. Other teams in the tournament besides Gruver are Canadian, Spearman, Sunray, West Texas, Stratford, Perryton, and Highland Park.

At the same time, Thursday-Saturday, December 1-3, the varsity Hounds and Lady Hounds will be participating in the Lake Meredith Classic at Fritch. The Lady Hounds will open Thursday at noon against Sanford-Fritch; the Hounds will follow Thursday at 1:30 P.M., also against Sanford-Fritch. It is a round robin tournament; on Friday the two teams will play Perryton at 3/4:30; on Saturday the two teams will play Panhandle at 10/11:30; then also on Saturday they will play West Texas at 6/8:30.

The Perryton Lions Club Tournament will be Thursday-Saturday, December 8-10 for the Hounds.

That tournament will have eight teams. The Hounds will open on Thursday at 7:30 P.M. against the host Perryton Rangers. Other teams in the tournament are Sanford-Fritch, Hooker JV, Liberal, Borger, Dumas, and Woodward.

I am planning on leaving Gruver and moving in the summer of 1996. That is when my last two children, Daniel and Yuki, will have graduated from high school here. You don't have a prayer of guessing where I am planning on moving. If you can, I'll send you a Christmas card. Just send your guesses to Box 736 in Gruver. I have already sent my first two letters of inquiry, to the U.S. Consul General and to the Department of Information.

Just guess the name of the country - that will be good enough. Here are two hints that will make it much easier to guess. The country has three forms of government - republic, principality, and something very rare, a suzerainty. The other clue is that the national language is Catalan, although two other languages are spoken there, neither of which is English.

The five month date after Molly McLain's ACL surgery is January 29. She has been told she can return at that time, according to Lady Hounds Coach Steve Myatt. That means her first game back would be February 3 at Stratford, and she would miss the first three district games.

But, according to Coach Myatt, Molly has also been told she may be able to return as early as January 17 - the first district game with the Lady Elks at Gruver - if she passes a test on December 29. That test will be one where they measure and compare the strength in both legs.

She will know on December 29. If you saw the first three Lady Hounds games, you know they have an outstanding team. But you also know they need Molly McLain back to assure winning district and advancing in the playoffs. Molly is sorely missed at this time.

Team CONTINUED FROM PAGE 1

spots for first team defense. This time it was no surprise, as Aaron Frick made the first team on defense as a linebacker. Jace Dawson, who is also known for his running back abilities, was one of the three players chosen for the first team defensive ends. Due to the fact that Joe Bravo was light on his feet all year, he was picked for the secondary spot on the defensive first team.

As for the second team defense, 180-pound senior lineman Isaias Arzate came through for Gruver as the only lineman to make the second team. Max Frick not only appeared on the first team offense, but he also showed up as a linebacker for this year's second team defensive selections. Also making the linebacker position was Sammy Renteria. Renteria, like many of the Hounds' players, also had a very great year, but his name only appeared once on the honor list. Ryon Atwood, the 170-pound senior secondary man, also made the second team.

Arreola, who was already named as honorable mention for his cen-

tering abilities, was the only Hound player to make it on the honorable mention for defense. This time, Arreola made it as a defensive end.

Aaron Frick, who has already been mentioned twice, was picked as this year's best kicker.

Coach Doug Frick will have his hands full next season, as he will be losing most of the players picked for all district. However, he will be having some players returning next year, as well as some underclassmen who will come in and fill the shoes of those gone, which will balance out the team. Gruver will definitely be a major contender for next year's district title.

For Your BBQ or Smoked Turkey call
Sutphen's BBQ
 (in the Panhandle for 44 years)
 806/273-6442
 303 N. Cedar
 Borger, TX

Basketball . . .

Lady Hounds (2-0) vs. Sanford Fritch
 Friday 11-18-94 at Greyhound Gym

S-F 8 21 28 35
 Gru 11 22 30 47
 3-Pointers - Julie Meyer, Tara Shapley.

Gru - Julie Meyer - 19, Cara Hathaway - 6, Amber Murrell - 6, Kiki Carthel - 4, Weslyn Maupin - 4, Kaysha Cluck - 3, Tara Shapley - 3, Wendy Rodriguez - 2.

Lady Hounds 7th Black (2-0) vs. Guymon, Ok.
 Monday 11-21-94 at Guymon
 Gru 13 26 34 46
 Guy 4 6 10 20
 Gru - Janae Watley - 18, Krystle Deeds - 11, Lindy Tolleson - 7, Annie Mayhew - 4, Chelsie Hicks - 2, Leah Shults - 2, Amanda Scheinder - 2.

Hounds 7th (2-0) vs. Boys Ranch
 Monday 11-21-94 at Boys Ranch
 Gru 6 10 25 44
 Br 8 19 28 36
 Gru - Bray Armes - 21, Dallas Henson - 9, Derik Grotegut - 6, Colby Hunt - 4, Dan Odom - 4.
 Synopsis: Bray Armes scored a remarkable 15 points in the fourth quarter, leading the Hounds to a big comeback victory.

Hounds 8th (0-2) vs. Boys Ranch
 Monday 11-21-94 at Boys Ranch
 Gru 10 16 24 37
 Br 11 17 29 43
 Gru - Jim Potts - 12, Matt Watlington - 8, Charlie Stavlo - 7, Jason TeBeest - 4, Jeff McClure - 2, Clint Robinson - 2, Dustin Ross - 2.

Hounds 9th (0-5) vs. Boys Ranch
 Monday 11-21-94 at Boys Ranch
 Gru 8 11 13 28
 Br 6 21 27 31
 Gru - Jared Johnson - 15, Arturo DeLaCruz - 9, Michael Minter - 4.

Lady Hounds (3-0) vs. Claude
 Tuesday 11-22-94 at Greyhound Gym

Cla 10 27 37 47
 Gru 16 28 42 61
 3-Pointers - Kiki Carthel, Julie Meyer, Wendy Rodriguez.
 Gru - Julie Meyer - 17, Kiki Carthel - 10, Weslyn Maupin - 8, Cara Hathaway - 6, Wendy Rodriguez - 6, Amber

Murrell - 5, Kaysha Cluck - 4, Tara Shapley - 4, Tisha Ralston - 1.

Lady Hounds 7th Black (3-0) vs. Spearman
 Monday 11-28-94 at Greyhound Gym

Spm 2 4 10 16
 Gru 2 6 12 14
 Gru - Lacy Osborn - 6, Dusty Echardt - 4, Candaci Barrera - 2, Randi Atwood - 2.

Spm - Maria Vela - 5, Cindy Goodman - 2, Nacy Flores - 6, Irene Vaquera - 2, Marcy Villalobos - 2.

Lady Hounds 8th Black (3-0) vs. Spearman
 Monday 11-28-94 at Greyhound Gym

Spm 6 16 19 32
 Gru 2 9 19 33
 Gru - Missy Johnson - 15, Sabrina Cookenour - 6, Erika Salmans - 4, Jessica Favela - 3, Kadie Grotegut - 2, Kelley Ogilvie - 2, Holly McCloy - 1.

Spm - Kristin Beedy - 13, Grace Davis - 2, Leslie Holton - 4, Holly pipkin 4, Lisa Swink - 5, Krista Boyd - 5, Gayle Mayfield - 4.

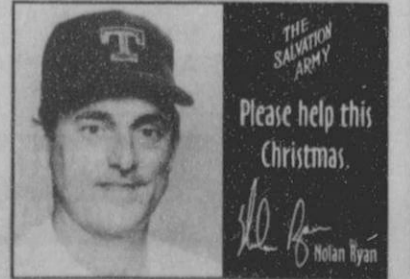
Synopsis: Missy Johnson scored 15 points including the game winning shot - a short jumper with just 2.0 seconds left in the game. Gruver rallied after trailing three times; 6-2, then led 9-6; 16-9, then led 19-18; and 26-19, then won 33-32.

Lady Hounds 8th White (2-1) vs. Spearman
 Monday 11-28-94 at Activity Center

Spm 3 6 14 20 22
 Gru 4 10 14 20 20
 Gru - Heather Gammon - 8, Jennifer Lopez - 4, Bobbi Christian - 2, Teresa Crow - 2, Kaydee Jordan - 2, Lauren Miller - 2.

Spm - Dynell Vera - 4, Sonya Salgado - 4, Mandy Vernon - 2, Kristi Carbajal - 11, Syd Woodington - 2, Randi Burch - 1.

Synopsis: The Lynettes managed to hold on to a 2-point lead at the end of the overtime quarter.

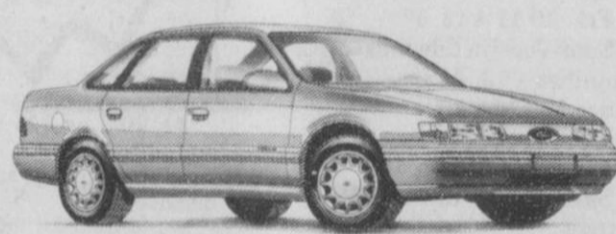


THE SANITATION ARMY
 Please help this Christmas.
 [Signature]

Life Is Complicated.



2.9% Is Simple.



Ford Taurus
 America's Best-Selling Car



Ford F-150
 America's Best-Selling Truck

NOW GET 2.9% APR FINANCING FOR 48 MONTHS OR CASH BACK⁽¹⁾ ON TWO OF AMERICA'S BEST-SELLERS!⁽²⁾

Lots of things are complicated. But 2.9% financing on Ford Taurus and Ford F-Series trucks is simple. 2.9% can mean great savings on a huge selection of Taurus[®] or get \$1000 cash back on Taurus SHO, \$750 cash back on Taurus sedans and wagons or \$750 cash back on Ford F-150 regular cabs with 4.9L engines and manual transmissions.

HURRY. 2.9% OR UP TO \$1000 CASH BACK ON TAURUS/\$750 CASH BACK ON F-SERIES ENDS SOON!

POLLARD FORD

Lubbock, Texas
 806/797-3441

1. 2.9% APR financing for 48 mos. or \$1000 cash back on '94/'95 Taurus SHO's. \$750 on Taurus GLX/SE. 2.9% APR financing for 48 mos. or \$750 cash back on '94/'95 F-150 regular cab w/4.9L engine and manual trans. Excludes SuperCabs. Varies by credit worthiness of consumers as determined by Ford Credit. 2.9% APR for 48 months at \$22.09 per month per \$1,000 financed with 10% down. Dealer participation may affect savings. Take new retail delivery from dealers stock by 1/4/95 for Taurus, 12/3/94 for F-150. Residency restrictions apply. See dealer for details. 2. Based on 1994 calendar year to date R.L. Polk Registrations.

Jordan named new Gruver Police Chief

The Gruver City Commissioners hired Nick Jordan, 27, as police chief at their regular meeting November, 16.

Jordan is a 1985 graduate of Claude High School and a 1994 graduate of the Panhandle Regional Law Enforcement Academy, Amarillo. He worked for the Armstrong County Sheriff's Department before coming to Gruver. Jordan started out as a jailer and a dispatcher at the Armstrong County Sheriff's Department and worked his way up to Jailer Administrator.

Jordan has four years experience in law enforcement to aid him in his new position.

He also worked on the Claude Volunteer Ambulance Service for five years. He was Vice President of the Emergency Medical Technician (EMT) Association. He is presently the EMT Intermediatet and is in charge of the ambulance service in Gruver.

Jordan is the son of Jerry and Bettye Jordan of Claude, Texas. He is married and has one daughter.



NICK JORDAN

GAME NIGHT
By LeAnn Earle, Bethany Furlowe, Annie Johnson, Tony Wrinkle and Clara Shieldknight.

The frantic fans yell and scream for the Lynx football team. Cheerleaders cheer and pom-poms fly

The crowd loudly starts to cry:
Go Lynx
Come on Lynx !

The coaches send good players in Hoping to get a win.
One quiet player doesn't hear--
His heart's beat is too near
For him to listen and see
The crazy crowds that buzz like bees.

For him, the game is still undone.
He wishes HE were on the run
On the field--but he is not.
He sits and waits. He is unsought.

FROGS
By Alexa Kuehl, Marty Miesner, Amber Moore, Erasmo Macias, and Eric Trejo.

Frogs can jump and frogs have humps.
They can jump all around on the ground.
Frogs have humps to slow them down so I can catch them all around

Frogs can croak ribbit and plop into the pond and swim to the top.

★ Jackson Welding Service ★
★ Agricultural & Oil Field ★
★ Welding ★
★ 17 Years Pipe Welding ★
★ Experience ★
★ Fully Insured ★
★ Contact Roy Jackson ★
★ 659-2137 or 659-5129 ★

Advertising Pays \$\$\$\$\$\$
Call 659-3434
or
1-800-395-9482

GET THE ALCO Advantage

FREE EVERY TUESDAY!
SECOND SET OF PRINTS

Receive a second set of 3" prints FREE with any exposure roll of 35mm, disc, 110 or 126 color print film left for developing and printing at our everyday prices! C-41 process only. Excludes larger 4" size prints, and photo galaxy.

Weller appointed to Gruver city positions

Linda Weller was appointed Gruver City Records Management Officer, by the Gruver City Commission November 16, at their regular meeting.

Weller worked in banking before she took this position. She worked at the Gruver State Bank for three years and at a bank in Groom, Texas before that.

She was also appointed Municipal Court Clerk. She was sent to the Texas Municipal Courts Education Center in Austin for a week. Weller was certified as Municipal Court Clerk for the city of Gruver.

Weller will be taking the place of Marlyn Been when she retires at the end of the year.

Weller is married to Dwain Weller, he is the Hansford County Area Supervisor at the Texas Department of Transportation in Gruver. She has two children, Amber, age 14, and Aaron, age 11.

Weller and her family came to Gruver from Groom where both her and her husband were born and raised.



LINDA WELLER

Basketball...

Lady Hounds 9th (3-2) vs. Spearman
Monday 11-28-94 at Greyhound Gym

Spm 4 5 13 21
Gru 9 12 14 26

Gru - Virginia Barrera - 7, Steffany Simon - 6, Amber Roberts - 5, Darby Johnson - 4, Brandy Morris - 4.

Spm - Kasey Dunnihoo - 9, Ashley Brown - 8, Lena Harbour - 2, Andee McGaha - 2.

Synopsis: The Lady Hounds had only 5 players throughout the whole game who did not stop playing, yet they still held on for the victory.

Hounds 7th Red (2-1) vs. Spearman
Monday 11-28-94 at Spearman

Gru 5 7 13 22
Spm 9 25 31 39

Gru - Dan Odum - 7, Bray Armes - 3, Jared Christian - 2, Derik Grotegut - 2, Dallas Henson - 2, Daniel Hernandez - 2, Colby Hunt - 2, Gilbert Perez - 2.

Synopsis: According to Coach John Duncan, the Hounds were just too short, and the Lynx are good!

Gru - Luke Johnson - 12, Wesley Miser - 8, Rodney Grice - 4, Clayton Henson - 4, Adam Red - 2.

Spm 11 8 13 7 39
HP 4 4 11 7 26

Spm - Jocelyn Edwards - 3, Kasey Dunnihoo - 23, Gena Kunselman - 4, Ashley Brown - 6, Andy McGaha - 3.

Lady Hounds 7th vs. Spearman 7th A
Monday 11-28-94 at Gruver

Spm 4 2 11 5
Gru 13 14 6 6

Spm - Brooke Lesly - 2, Camille Smith - 9, Kristi Wall - 5, Halee Beasley - 6.

Gru - Krystle Deeds - 2, Lindy Tolleson - 14, Janae Watley - 16, Annie Mayhew - 4, Chelse Hicks - 2

Hounds 7th White (2-0) vs. Spearman
Monday 11-28-94 at Spearman

Gru 4 6 10 14
Spm 2 5 9 13

Gru - Darren Duran - 8, Jesus Rodriguez - 4, Trevor Ferguson - 2.

Hounds 9th (1-5) vs. Spearman
Monday 11-28-94 at Spearman

Gru 9 22 24 36
Spm 7 16 22 28

3-Pointer - Kevin Harris.

Gru - Jared Johnson - 16, Arturo DeLaCruz - 8, Michael Minter - 4, Harris - 3, Keith Cassady - 2, Kyle McNett - 2, Jody Robinson - 2.

Synopsis: Gruver won their first ninth grade game in two years. They deserve to have three or four wins this year.

Lynxette 9th vs. Stratford
Monday 11-21-94 at Spearman

Spm 12 6 11 12 41
Str 2 8 9 4 23

Spm - Jocelyn Edwards - 6, Kasey Dunnihoo - 8, Ashley Brown - 3, Andy McGaha - 2, Misha Davis - 6, Lindsey Smith - 6, Brooke Trantham - 2, Jennifer Neff - 4, Keisha O'Quin - 4.

Hounds

CONTINUED FROM PAGE 10

yet. They run and run hard, playing great defense, making sharp passes, and shoot well. Then they grow tired, and they are falling to the extremely tough competition they are facing. Down the road, the Hounds are going to be a fine, fine team.

Hounds 8th Red (1-2) vs. Spearman
Monday 11-28-94 at Spearman

Gru 6 11 21 26 34
Spm 6 12 20 26 29

3-Pointer - Matt Watlington.

Gru - Jim Potts - 18, Jeff McClure - 7, Watlington - 6, Charlie Stavlo - 2, T.J. McClure - 1.

Lynxette 9th vs. Borger
Thursday 11-17-94 at Perryton

Torney

Spm 4 2 6 6 18
Bor 7 8 6 19 36

Spm - Jocelyn Edwards - 5, Kasey Dunnihoo - 6, Leah Mackie - 1, Ashley Brown - 2, Andee McGaha - 5.

Lynxette JV vs. Panhandle
Tuesday 11-29-94 at Panhandle

Spm 8 2 11 14 35
Pan 8 14 4 21 47

Spm - Misha Davis - 12, Brooke Trantham - 10, Lindsey Smith - 9, Lacie Baker - 4.

Hounds JV (4-2) vs Borger
Tuesday 11-29-94 at Borger

Gruver 16 37 60 73
Borger 19 49 60 78

3-Pointer - Daniel Bort, Tucker Henson, Tye Womble.

Gruver - Juan Arreola - 21, Brant Armes - 16, Bort - 11, Bailey Barkley - 9, Scott Jarvis - 8, Womble - 5, Henson - 3.

Hounds 8th White (1-0) vs. Spearman
Monday 11-28-94 at Spearman

Gru 10 18 26 30
Spm 6 12 16 18

Lynxette 9th vs. Fritch
Friday 1-18-94 at Perryton

Torney

Spm 9 8 9 7 33
Fri 10 11 4 12 37

Spm - Jocelyn Edwards - 5, Kasey Dunnihoo - 13, Ashley Brown - 6, Andee McGaha - 9.

As little as \$25 a month can add up to a major investment if handled properly, as millions are discovering.

Synopsis: Of the four games played Tuesday night, this game, this team, was most impressive. They simple don't know how to quit. They actually came back and took a 64-63 lead in the fourth quarter. This is a fine, fine team.

Hounds (1-3) vs Borger
Tuesday 11-29-94 at Borger

Gruver 17 28 32 46
Borger 10 30 40 61

3-Pointers - Roma Tomlinson - 3, Phil DeLaCruz.

Gruver - Tomlinson - 9, Aaron Frick - 7, DeLaCruz - 6, Ricardo Soto - 6, Jace Dawson - 4, Wylee Maupin - 4, Max Frick - 3, Josh Mayhew - 2, Kevin McNett - 2, Sammy Renteria - 2, Travis Ferguson - 1.

***** FIVE STAR EQUIPMENT, INC. *****

What: Winter Service Special
Where: Five Star Equipment - Spearman, Texas
When: November through February

Options Listed Below:

Option 1 - A 10% Discount on all Case IH Parts and in shop labor when the total bill reaches \$1000. The job must be committed to us by December 31, 1994. Payable on the 10th of the month following billing.

Option 2 - A 5% Discount on all Case IH Parts and in shop labor when the total bill reaches \$1000. The job must be committed to us by February 28, 1995. Payable on the 10th of the month following billing.

Option 3 - A July 10th Payment due date with approved credit with a 1.5% per month finance Charge beginning March 1, 1995 or 1st of the month following completion of the job. The job must be committed to us by February 28, 1995 with a minimum balance of \$1000.

FREE HAULING ONE WAY WITHIN 50 MILES OF SPEARMAN

Winter Service Special includes all of your Case IH tillage, harvesting, and planting equipment.

Call Today So We Can Start Saving You Money!

FIVE STAR EQUIPMENT 659-3743 Highway 15 W.

Picnic Place Restaurant
11 a.m. - 8 p.m.
Monday - Saturday

Serving:
Hot & cold sandwiches,
many flavors of ice cream
and baked potato pile-on

HAPPY HOUR: 3:30-4:30 p.m. (special prices)

Saturday Night Special
Senior Citizens Discount Night
(65 years & older)

Discounts on everything (except pie)
5 p.m. - 8 p.m.

Mexican Fiesta Plate - Friday
BBQ Plate - Wednesday

217 Main
For Take-Out Call 659-3864

Look The Competition is About to Copy Us Again...

Interchangeable Structural Components

- Mainline pipes are universal and can be located anywhere in any span.
- Common Truss Supports.
- Universal Truss Rods.
- Interchangeable Tower Tops and Flexjoints.

Come see Booth #3212 at the Amarillo Farm Show, Nov. 29, 30, and Dec. 1 from 10 a.m. to 6 p.m. each day.

Paschel Irrigation Inc.

Richard & Arlene Paschel Hwy 15 W. • P.O. Box 69
(806)659-5228 Spearman, TX 79081

First in Innovation and Technology

© 1994 REINKE MFG. CO., INC. RNK 2/94



"IT'S FOR YOU"...

The Classifieds Have Something For Everyone!

- The Home Seller...
- The Car Buyer...
- The Do-It-Yourselfer...
- The Mother's Helper...
- The Job Seeker...
- The Bargain Reaper...

When you want results, turn to The Classifieds.

The Hansford County Reporter-Statesman

Serving Hansford County Since 1907

Telephone: 1-800-395-9482 or (806)659-3434

REAL ESTATE



Allen Alford - Broker • 659-3034
Julie Martin - Sales • 659-2425
Larry Trosper - Sales • 659-3491

1017 Townsend: 3/2/1 - New lower price!

1103 S. Townsend - 3/1 3/4 1, good loc.
510 S. Endicott - 3-2, 2 story
417 S. Dressen - 3, 1 1/4, garden, pati.

NEW LISTING

613 Kenneth - 5 BR, 2 story, rock house
1117 Townsend - 3, 2, w/basement
1107 S. Barkley - 3, 1 1/4, 2, BELOW APPRAISAL!

Good Hanger & Storage - Old Airport
1017 Wilmett Dr. - 5/2/2, two story w/bmsr
412 Roland - 3/1/1, make offer
FOR QUALITY & SERVICE CALL US TODAY
We Need Your Listing.

FOR SALE BY OWNER - 3 bedroom, 1 1/2 bath, storm door and windows, fireplace, ceiling fans, 14 closets, 1 car garage, 1728 sq. ft. \$35,000 - 605 Cluck, Gruver. Call 733-2015. S28, 3tp RTN

Three Bedroom Brick, two baths, double garage, lots of trees, 1.8 acres, horse barn, 26 by 36 shop. 205 E. 10th, Gruver, Texas. Call J.W. Whitaker at 733-2433. Also 1983 Coachman Motor-home. S30, 1tp/RTN.

FOR SALE: Brick, 3 bedroom, 1 1/2 bath, storm windows, elec. fans, attached garage, store room, RV shed, fenced yard. 659-3353. S55, 1tp

THREE ADJACENT HOUSES FOR SALE - A. 620 S. Bernice, 2400 sq. ft., \$30,000 - currently occupied by seller. B. 620 1/2 S. Bernice, 1200 sq. ft., \$15,000 - currently rented at \$300/mo. C. 608 S. Bernice, 1500 sq. ft., \$27,500 - currently rented at \$300/mo. Properties A&B together \$39,500; All three properties as a unit, \$65,000. Assumable loans. For more information contact Ed Pearson at 806/659-3851. S31, 1tp RTN

GREAT HOUSE IN GREAT LOCATION FOR SALE
2100 sq. ft., basement, double car garage, 4 bedrooms, 3 baths, big den, fireplace, living room, ceiling fans, central heat and air. 702 Gibner. Call 659-3838, 659-3970, or 733-5555. S42, RTN

FOR SALE-No Sign: 3 bedroom, 1 3/4 bath, 1450 sq. ft., remodeled kitchen, 12x12 covered deck, \$31,500. Not for rent/407 W. 12th. Call 659-3956. S48, RTN

HOUSE FOR SALE: 3 bedroom, 1 bath with attached garage, private fenced back yard, built-in appliances. Call 659-3523. S53, RTN

HOUSE FOR SALE: REDUCED!!!! 5 lots fenced, 2 car carport, shed, hot tub, fish pond, 3 bedroom, 3 bath, handicap accessible, large LR, bar. \$29,000. 605 S. Archer, 659-2235. S55, RTN

HOUSE FOR SALE: 3 bedroom, 1 bath, attached garage, nearly new heating and cooling unit, with major appliances and furniture. 408 S. Barkley, call 659-3464. S57, 6tp

REAL ESTATE



GOLDEN SPREAD REALTY

Janye Helton Pointer, Broker Owner
435-5444

712 Collier - 2/1/2, Owners anxious to sell!

117 Brandt - 3/1, REDUCED to \$27,500--immediate possession!

Crawford Addition:

- 2 - 1 3/4 • Will look at all offers!
- 2 - 1 • Small and affordable!

205 Hazelwood - Great buy, excellent condition.

315 1/2 N. Bernice: Lot for sale.

East 7th Street - 9 mobile home lots. Buy one or all!

© and ™ trademarks of Century 21 Real Estate Corporation. Equal Housing Opportunity INDEPENDENTLY OWNED AND OPERATED

HOME FOR SALE: REDUCED, REDUCED, REDUCED!!!! 2400 sq. ft. 3 bedroom, 3 bath, large living area, inside grill, two door refrigerator, dishwasher, furniture (opt.), 6 ft. picket fence-steel posts. Garden area 640 sq. ft. Self sustaining pond 13x15, 300 sq. ft. deck with hot tub, walking and bicycle track, cabanna bar, out building, 160 sq. ft. storage, 9 hole golf course with 210 ft. stream and 5 ponds. Large carport, 24x24. Total under roof 3000 sq. ft. Property offered at \$29,000. Shown by appointment 806/659-2235. S56, RTN

HOME FOR SALE: 1,100 sq. ft., 3 bedroom, Lubbock built home to be moved by March 15, 1995. All offers considered. Call Tommy or Sharon Saltzman at 806/733-2809. S57, 14tc

3 1/4 sections all in Blk. 1, WCCR survey, Hansford Co.,

SW/4 SEC. 1 - 160.91 ac. m1, 1 - 8" irrig well, row watered.

SEC. 2 - 648 ac. m1, 197 ac. CRP, \$20/ac./yr. to buyer, expires 1998, bal. native grass.

SEC. 3 - 646 ac. m1, 1 - " irrig. well, row watered, 400 ac. cropland, bal. pasture w/ windmill.

SEC. 11 - 646 ac. m1, 632.8 ac. CRP, \$20/ac./yr. to buyer, expires 1997.

Co. listed with Bob Pratt Real Estate Guyton, OK. 405-338-6779.

PONDER LAND COMPANY

935-5145

FOR RENT

FOR RENT

4 BDR. 3 B. 2 living areas kitchen/dining area utility room with cabinets, panel sunroom, storm cellar, fenced backyard. \$500/month at 703 Steele Dr. Call 802-365-9742.

FOR RENT

FORRENT: Trailer park spaces for rent. Located on S.E. 7th and Loop road, Spearman. \$30 per month. Call 435-5080. S23, 1tc/RTN.

FOR RENT: One bedroom newly decorated, furnished apartments, utilities paid. Call 659-3260. S47, RTN

RENT TO OWN: 3 bedroom, 1 bath, brick, carport, central air and heat, fenced back yard. See at 1004 Townsend or call 659-2245 or 435-8746. S50, RTN

FOR RENT: Small efficient apartment, very clean, nice neighborhood. Can be seen at 119 S. Snider or call 659-2039. S56, 1tp

FOR RENT OR FOR SALE: Three bedroom, 1 3/4 bath, attached two car garage, fenced back yard. Call 659-3017. S54, 1tp

OFFICE SPACES FOR RENT!!!! 1-Newly remodeled 439 sq. ft. office, \$200 per month. 2-144 sq. ft. offices, \$75 each month. 1-240 sq. ft. office, \$125 per month. All bills are furnished. Please call 659-3133 or come by 307 W. Davis. S56, 3tp

FOR RENT: 3 bedroom, 1 bath, full carpet, central heat, ceiling fans, attached garage. 510 S. Barkley. 659-2184. S58, ?

COUNTRY HOME FOR RENT: 3 bedroom, 2 full baths, \$500 per month, all utilities paid. (806) 659-2103. S58, 5tp

SERVICES

SERVICES: Willing to do your Christmas decorating indoor or outdoor. Hanging lights, ornaments, etc. Call Ashley Baker at 659-2634. S57, 1tp

PITS CLEANED: Dragline or Loader. Call LeeRoy Mitchell, 733-2384 or 733-2175. S47, 1tp/RTN.

CALL YOUR LOCAL Used Cow Dealer for days a week stock removal. 659-3544 or 1-800-692-4043. Serving Cattlemen for the past 20 years. G51/RTN.

CLIFCO WINDSHIELD REPAIR SERVICE
Don't replace your damaged windshields. Mobile service: 435-0126. Home phone: 435-9149. And toll free at 1-800-753-9849. Ask for Clifford Cox. S43, RTN

Free Bible Correspondence Course. Write P.O. Box 604, Perryton, TX 79070. S46, RTN

EXPERIENCED CHILD CARE PROVIDER: References available. Call 659-3435. S56, 3tp

J & M Service Center 24-Hour Service 415 Collard, Spearman 79081. 659-5519 or 659-3352. Tires, flats, oil & lube, wash, brakes, batteries and minor repairs. Now selling gas. S27, 1tp/RTN.

WEIGHT WATCHERS is now meeting every Thursday in Gruver. For more information, please call 1-800-359-3131.

MISC. FOR SALE

MOTORCYCLE FOR SALE: Honda Twin Star 200, maroon red, 13,161 miles, tires in great shape, and new chain. Asking \$550. Call 659-3649 or see at 303 S. Hazelwood. S56, 3tp

BUY DIRECT FROM GROWER: Locally grown poinsettias, florist quality at wholesale prices, quantity discounts. D&C Greenhouse, 806/659-5171. S55, 4tc.

FOR SALE

FOR SALE: 6 man hot tub, like new \$2500. Call 5016. S53, RTN

FOR SALE: Six-piece sectional couch. Includes queen sleeper, recliner and ottoman. Call 733-2271. S57, 2tp

AUTOMOBILES

FOR SALE: 1984 Ford Truck with 20' van and lift. V-8 diesel engine. Excellent condition. For more information call 659-3432 or 659-2912. S52, RTN

FOR SALE: 1979 Chevy Fleetside pick-up with new GM issue 350 motor, twin fuel tanks, custom rear bumper for trailer towing, 410 gears, AC, automatic transmission and nearly new tires. Asking \$3750. Call 659-3649 or see at 303 S. Hazelwood. S56, 3tp

MUST SELL!!!! 94 Chevrolet Silverado 4x4 Sub. "Has Everything!" No old contract to assume! No back payments to make. Just need responsible person to make reasonable monthly payments. Ask for Kenneth in the Business Dept. Phone (806) 935-6424 Murphy Olds GMC • Dumas, TX.

MUST SELL!!!! 91 Olds 98 Elite, 4 door, luxury!
No old contract to assume! No back payments to make. Just need responsible person to make reasonable monthly payments. Ask for Kenneth in the Business Dept. Phone (806) 935-6424 Murphy Olds GMC • Dumas, TX.

MUST SELL!!!! 91 Buick LeSabre Limited- Like new!
No old contract to assume! No back payments to make. Just need responsible person to make reasonable monthly payments. Ask for Kenneth in the Business Dept. Phone (806) 935-6424 Murphy Olds GMC • Dumas, TX.

FOR SALE: 1984 Ford pickup, auto., V8, \$1,800. 1985 Olds 88, brown, loaded, new tires and shocks, clean, \$1,850. Call 659-2448. S58, 2tc

HELP WANTED

HELP WANTED: Hiring two flaggers and laborers for state highway work, \$6.50 an hour. Work starts Dec. 5, 1994. Leave Name and phone number at City Hall, 108 E. Broadway, Gruver, TX 79040. S57, 2tc

HELP WANTED: Feed truck driver needed at Palo Duro Feedyards. Apply in person, Hwy 136 South, Gruver, TX. S58, 3tc

DRIVER NEEDED: Home daily, Class A CDL with hazmat required. Tanker experience necessary. Call 1-800-531-5960. S56, 4tc

ROUTE SALES SCHWAN'S HOME FOOD SERVICE
Paid Vacations/Excellent Benefits. No prior experience necessary. Must be at least 21 years of age. Good driving record and work history. For interview appointment call: 1-800-437-2068
An Equal Opportunity Employer

PUBLIC NOTICE

NOTICE TO ALL PERSONS HAVING CLAIMS AGAINST THE ESTATE OF EVELYN MARIE GUTHRIE
Notice is hereby given that original Letters Testamentary for the Estate of EVELYN MARIE GUTHRIE were issued on November 23, 1994, in Cause No. 2116, pending in the County Court of Hansford County, Texas: To KENT GUTHRIE. The residence of such Executor is Spearman, Hansford County, Texas. The post office address is 711 Lee Dr., Spearman, Texas 79081. All persons having claims against this Estate which is currently being administered are required to present them within the time and in the manner prescribed by law.
Dated the 23rd day of November, 1994.
Cecil R. Biggers
Attorney for Estate of EVELYN MARIE GUTHRIE, Deceased.
S57, 2tc

HELP WANTED

OWN YOUR OWN APPAREL OR SHOW STORE Choose: Jean/Sportswear, Bridal, Lingerie, Maternity, or Accessories Store. Over 2000 name brands. \$24,900 to \$36,900: inventory, training, fixtures, grand opening, etc. Can open 15 days. Mr. Loughlin (612) 888-6555. S47, 2tp

HELP WANTED: Sales manager for office machine dealer. Unique advancement opportunities. Must relocate. Call 1-800-233-1247. Ask for personnel recruiter. S56, 3tc

EXPERIENCED PUMPER: Strat Land Exploration Company has immediate opening for an experienced oil field pumper. Minimum experience 3 to 5 years. Must be willing to locate in Spearman or Gruver. Salary and benefits are commensurate with experience. Please call 806/435-7292 or write P.O. Box 790, Perryton, TX 79070. S57, 2tc

RN's and LVN's
Join the staff of one of the Panhandle's finest facilities. SNF certified. Excellent LVN and CNA staffing. Non-profit with hospital attached. Outstanding survey history. Highly competitive salary and benefit package. Relocation and commuting assistance. Great quality of life for families. Send resume to:
Linda Sanders, Personnel Director,
Hansford County Hospital District,
707 S. Roland, Spearman, TX 79081
806/659-2535

LOST & FOUND

LOST: Large, light colored Lab dog lost in the south part of Holt Community. Please call 878-2656. S57, 2tp

MISCELLANEOUS

ARE FLEA MARKETS YOUR BUY? - Give us a call at 659-3030 or write P.O. B. 33, Spearman, TX 79081. S57, 2tc

GARAGE SALE

INDOOR GARAGE SALE: Saturday, Dec. 3, Home Demonstration Clubroom. 9 - 2 p.m. Vacuum sweeper, color TV, sewing machine, drapes, and lots of good winter clothes. S58, 1tp

WANT TO BUY

COINS WANTED: We need collector type coins-silver or gold bullion coins, collective or equivalent. Appraisals upon request. To buy/sell/trade call 806/658-4591. S57, 6tc

PUBLIC NOTICE

REQUEST FOR BIDS ON TEXAS HIGHWAY CONSTRUCTION
Sealed proposals for 202.118 miles of seal coat at various locations on US 385, US 287, SH 207, SH 15, SH 136, FM 283, SH 102, FM 1913, FM 1262, FM 281, FM 1319 and FM 3044 covered by CPM 41-2-9, CPM 66-3-30, CPM 308-1-8, CPM 355-1-41, CPM 355-4-31, CPM 355-6-27, CPM 379-1-37, CPM 797-1-13, CPM 1141-2-15, CPM 1244-2-15, CPM 1336-1-9, CPM 1885-2-12, CPM 2437-2-7 and CPM 2972-1-4 in Hartley, Sherman, Hansford, Lipscomb, Ochiltree, Hutchinson, Roberts, Dallam, Moore and Hemphill Counties, will be received at the Texas Department of Transportation, Austin, until 1 p.m., December 13, 1994, and then publicly opened and read. Plans and specifications, including minimum wage rates as provided by Law, are available for inspection at the office of Kenneth Corse, Area Engineer, Dalhart, Texas, and at the Texas Department of Transportation, Austin, Texas. Bidding proposals are to be requested from the Division of Construction and Contract Administration, D.C. Greer State Highway Building, 11th and Brazos Streets, Austin, Texas 78701. Plans are available through commercial printers in Austin, Texas, at the expense of the bidder. The Texas Department of Transportation hereby notifies all bidders that it will insure that bidders will not be discriminated against on the grounds of race, color, sex or national origin, in having full opportunity to submit bids in response to this invitation, and in consideration for an award. Usual rights reserved.
S57, 2tc

JAN'S ETC. NEW & USED & ANTIQUES TOO

Everything for home and family. Plains Shopping Center in Spearman

Open Monday - Saturday 10 a.m. til 6 p.m.

Precision Sweep Airseeding

Quick, Economical, Minimum Tillage -200 Acres (\$6.25/A) +200 Acres (\$5.75/A) Bob Williams 435-4835

OSGOOD MONUMENT CO. Amarillo, Texas

Dealers of Rock of Ages Granite, as well as all colored granites, marble and bronze memorials.

Represented by Boxwell Bros. Funeral Home 519 S. Evans 659-3802

PUBLIC NOTICE

NOTICE TO BIDDERS

Sealed bids for the purchase of one (1) Type III Modular, Ford E 350 138" W.B. Ambulance will be received by the City of Spearman, Texas up until 2:00 p.m. on December 21, 1994, then publicly opened and read.

The City reserves the right to reject any or all bids, to waive informalties and to accept the bid deemed to be the most advantageous to the City. All bids received after the above closing hour will be returned unopened.

Specifications and bidding documents may be secured from City Hall, P.O. Box 37, Spearman, Texas 79081. S57, 2tc

PUBLIC NOTICE

TO ALL PERSONS INTERESTED IN THE ESTATE OF MATTIE ALZINA REED, DECEASED

You are hereby commanded to appear before the Honorable District Court of Hansford County, Texas, at the Courthouse in Spearman, Texas, at or before 10:00 a.m. of the first Monday next after the expiration of 42 days from the 10 of November, 1994, the date of issuance of this citation, by filing a written answer to the Petition filed by Charles Brillhart, Administrator, with Will Annexed in the Estate of mattie Alzina Reed, Deceased, Numbered 4072 on the docket of the Court, an entitled ESTATE OF MATTIE ALZINA REED. A brief Statement of the nature of this suit is as follows: A Petition for Declaratory judgement by Administrator for Construction of Will, and a request that this court construe Decedent's will to determine the right, obligations and legal relations of all parties by virtue of the Last Will of mattie Alzina Reed, and in particular to determine the following questions: (1) (a) under the provisions of the will do legatees take the bequests as therein set forth? (or) (b) was the will a contingent will conditioned on the Decedent's husband perishing with her in an accident or passing away within sixty days after her death, so that on the failure of either of such events, heirs inherit the Decedent's Estate? (2) If the Court determines that the will was a contingent will, that the court determine who are the heirs and only heirs of mattie Alzina Reed, Deceased, the heirs' respective shares and interests under the laws of the state, if any, in the Estate of mattie Alzina Reed, (c) was the gift to West Amarillo Christian Church of a residence attempted by the sale of the property by Mattie Alzina Reed prior to death, all as is more fully shown by the Petition on file in this cause. If this citation is not served within 90 days after the date of its issuance, it shall be returned unserved. The officer executing this writ shall promptly serve it and make due turn according to requirements of law. And the mandates of this citation. Issued under my hand and the seal of the court at Spearman, Texas, on the 21st day of October, 1994. Amelia C. Johnson, District clerk, Hansford county, Texas. By Kim V. Vera Deputy

Are You A Victim of Physical Abuse?

Call Toll Free 1-800-753-5308

We are in Spearman on the 1st, 3rd, & 5th Wednesdays of each month at the First Presbyterian Church, 1021 Cotter. On the 2nd & 4th Wednesdays we are at the First Christian Church at 510 King in Gruver. We can come to Spearman & Gruver any time upon request. We operate a safe place for victims & their children to stay in times of crisis.

Panhandle Crisis Center

Serving Hansford, Lipscomb & Ochiltree Counties
317 S. Main Memorials Accepted Perryton, Tx.

NEW TRAMPOLINES

Mats & springs
Resew trampoline mats.
Make new boat covers.
Call (806)659-2109
Harry Stumpf
301 W. 12th:
Spearman, Texas

Obituaries

Brent Connelly
SPEARMAN - Brent Connelly, 35, died Saturday, November 26, 1994.

Services were conducted at 10:30 a.m. Monday, November 28 in First Baptist Church with the Rev. Kyle Henderson, pastor, officiating. Burial was at Hansford Cemetery by Boxwell Brothers Funeral Home.

Connelly was born in Friona. He had lived in Spearman for 33 years. He was a truck driver for Celadon Transportation of Indianapolis. He graduated from Spearman High School in 1978 where he played football and basketball.

Survivors include his parents, Doug and Mary Connelly of Spearman; a sister, Sarah Martin of Hardesty, Oklahoma; and his grandmother, Essie Autrey of Willsboro.

The family requests memorials

be to Don and Sybil Harrington Cancer Center or Hansford Hospice in Spearman.

Helen Wood

GRUVER - Helen Wood, 75, died Wednesday, November 23, 1994.

Services were at 1:30 p.m. Saturday in First Baptist Church with the Rev. Larry Miller and Richie Fletcher officiating. Burial was in Gruver Cemetery by Boxwell Brothers Funeral Home in Spearman.

Wood was born in Chickasha, Oklahoma, and had lived in the Gruver area for 46 years. She married Jerroul Wood in 1938 at Chickasha. He died in 1948. She was a retired retail saleswoman and waitress. She was a member of the First Baptist Church.

Survivors include a son, J.J. Wood of Lubbock; and two grandchildren.

Helpful holiday hints for Christmas tree preservation

Are you tired of the traditional holidays sayings? Here's a new saying for the holiday season to share with your family and friends: Water your Christmas tree, and don't forget to turn out the lights!

The suggestion comes from the Texas Commission on Fire Protection, a state agency involved in various aspects of fire prevention and fire suppression.

"When you consider the tens of thousands of natural Christmas trees sold in Texas each year, there are amazingly few Christmas tree fires," said Michael E. Hines, executive director of the Commission on Fire Protection. "However, because dried-out trees are so combustible, it's like keeping a six-foot stack of kindling in your living room. When a fire does start in a Christmas tree, it is usually devastating, occasionally fatal to anyone at home."

In 1993, about 75 fires start in Christmas trees, according to the Texas Fire Incident Reporting System. Five people died in those fires, one of the highest death rates for a single fire cause.

To assure that your Christmas tree will still be standing when Santa arrives and to prevent other common holiday fires, the Commission of Fire Protection recommends the following steps:

1. Keep natural trees well-watered and moist.

Natural trees require special care. According to fire statistics, natural trees used as decorations in the home are three times as likely as artificial trees to be involved in fires.

Water the tree daily. Letting the water supply run out even once can keep the tree from drawing any more water through the trunk. Heaters dry the air, which dries natural trees. Use a humidifier to replace air moisture.

As the tree dries, don't leave lights on for extended times. Never leave a lighted tree unattended.

2. Use electric lights safely.

Faulty or unattended electrical lights cause about half of all accidental Christmas tree fires each year, according to fire statistics. Be sure someone is at home and awake whenever decorative lights are on. Turn off all of the lights before going to sleep.

Read and follow the directions that come with the light set. The directions on the box usually tell how many sets can be connected together safely. Hint: Use permanent marker to label the cord. For example, if the package says "Do not connect more than six light sets, mark the plug with "6."

Don't overload extension cords. Use a separate extension cord for each group of connection lights.

3. Dispose of natural trees and decorations safely.

The largest number of Christmas tree fires occur during January when the trees have been put out for trash collection. Take used trees and branches to recycling centers or landfills. This will keep children from being tempted to experiment with matches and the dried greenery.

4. Be careful with candles in holiday decorations.

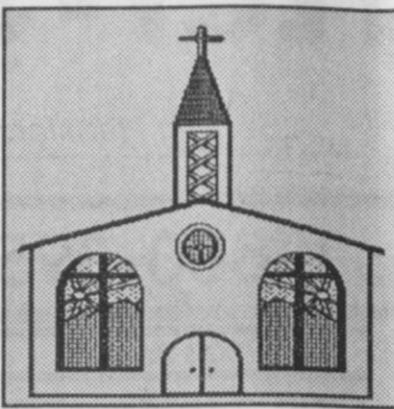
Fire statistics show that candles are a common cause of holiday-decoration fires. The best option is to replace wax candles with battery-operated candlesticks. If wax candles are used, be sure that someone is in the room whenever the candles are burning. Use glass mantles with all candle holders. Put out all candles before going to sleep or leaving the home.

5. Remember home fire safety. Be sure there are working smoke alarms near all bedrooms. Give smoke alarms as gifts to those who don't have smoke alarms or who need to replace old smoke alarms.

Don't leave cooking unattended, such as leaving a turkey in the oven while everyone is out shopping. Plan and practice a home fire drill, especially when overnight guests are in the home.

Let us replenish the seed of faith through...

REGULAR CHURCH ATTENDANCE, DAILY BIBLE READING & PRAYER



Curtis' Hot Oilers
806-659-3432

"Taking Service to Perfection"
806-659-2912 P.O. Box 714
800-821-6714 Spearman, TX 79081

Palo Duro Supper Club

22 S. Archer
659-2232

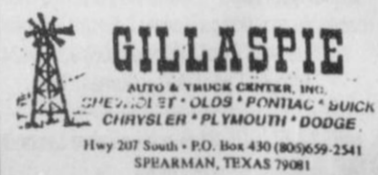
C.O.'S SUPPLY CO.

Plumbing & Tire Sales & Service

421 W. Kenneth • Spearman
659-3781 or 659-3555

Bartlett's Ace Hardware

105 W. Broadway
733-2404



1107 207 South • P.O. Box 430 (806)59-2541
SPEARMAN, TEXAS 79081

TELELECTRICAL
OILFIELD • RESIDENTIAL • COMMERCIAL
519 Plains Shopping Center
Spearman, TX 79081
1-800-999-1506 (806)659-5016

REINKE IRRIGATION SYSTEMS **Paschel Irrigation**
(806)659-5228 • 1-800-659-6580
Corner Airport Rd. & Hwy 15 West
Spearman, Tx.

Gruver Cablevision
Quality Family Entertainment with
"the Disney Channel"
308 Main • 733-5295

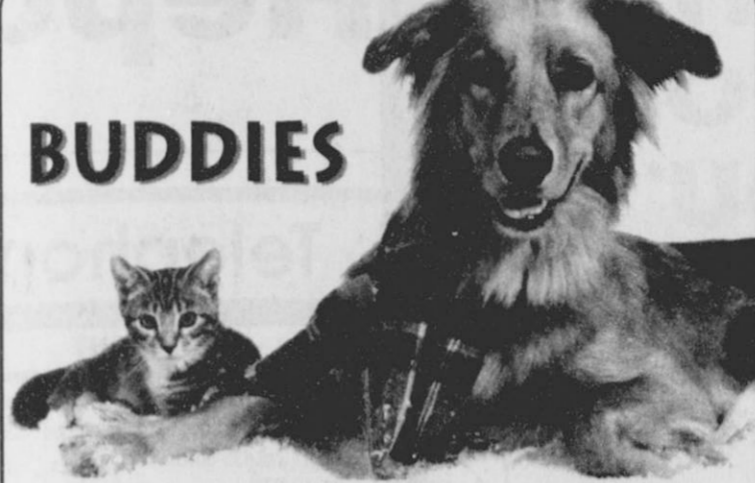
Morse Implement Company
"Join us in church this week"

Boxwell Bros. Funeral Home

THE HANSFORD COUNTY REPORTER-STATESMAN
Serving The Communities Of Spearman, Gruver & Morse
213 Main • 659-3434
1-800-395-9482

CORONADO HOSPITAL
Pampa, Texas
(806)665-3721

Compliments of **G&G FOODLINER**
516 Main • Gruver
733-2471



BUDDIES

No, we didn't confuse the title and the photograph, though it may appear so. These fuzzy buddies seem to feel right at home in each other's company, putting no consideration into any apparent dissimilarities.

In 1 Timothy 4:4, we read, "Every creature of God is good." Each creature is from the same Source...the Great Originator of all existence. In that sense we are kin. We are one, our hearts keeping time with the primal rhythm of life itself.

As we sit in the House of our Almighty Creator this Sabbath, may we take a moment to search God's sanctuary...and to capture the sense of sanctuary as we experience His warmth reflected in the eyes of our fellow worshipers, touch it with our soul, and join in that singular sacrament, the worship of our Father in Heaven.

Scriptures Selected by The American Bible Society
Copyright 1994, Keister-Williams Newspaper Services, P. O. Box 5005, Charlottesville, VA 22906

Sunday	Monday	Tuesday	Wednesday	Thursday	Friday	Saturday
Jeremiah 33:1-18	Jeremiah 33:19-26	Isaiah 12:1-6	Isaiah 55:1-13	Ephesians 1:1-14	Zechariah 9:9-17	Zechariah 10:1-12

In Spearman...

Apostolic Faith Church
822 S. Drensen • 659-2870
Sunday School: 10 a.m.
Worship: 11 a.m.
Evening Worship: 6 p.m. Sun.
Wed. Prayer Meeting: 7:30 p.m.
Pastor James Brown

First Assembly of God
401 N. Bernice • 659-2295
Sunday School: 9:45 a.m.
Worship: 11 a.m.
Evening Worship: 7 p.m.
Wednesday Worship: 7:30 p.m.
Youth: 7:30 Wednesday
Pastor Todd Lillard

First Christian Church (Disciples of Christ)
29 S. Bernice • 659-2036
Sunday School: 9:45 a.m.
Worship: 10:50 a.m.
Women's Bible Study: 2 p.m. Wed.
Youth: Wed. 6 p.m. & Sun. 5 p.m.
Pastor LaVern Draper

First Baptist Church
123 N. Bernice • 659-5557
Sunday School: 9:45 a.m.
Worship: 11 a.m.
Evening Worship: 7 p.m.
Jr. High Youth: 6 p.m. Wed.
High School Youth: 7 p.m. Wed.
Youth Choir: 6 p.m. Sun.
Pastor Kyle Henderson

Church of Christ
121 S. Haney • 659-3244
Sunday Bible Class: 9:45 a.m.
Worship: 10:30 a.m.
Evening Worship: 6 p.m.
Bible Study Wed. 7:30 p.m.
KRDF Radio Program
Living With Christ 7:50 a.m. M-F
Minister Arnis Pape

Fellowship Baptist
1102 S. Archer • 659-2783
Sunday School: 10 a.m.
Worship: 11 a.m.
Evening Worship: 6 p.m. Sunday
Youth & Adult Serv.: 7:30 Wed.
Pastor Rick Fincher

Primera Mission Bautista
502 E. 7th • 659-3991
Sunday School: 9:45 a.m.
Worship: 11 a.m.
Pastor Guadalupe Carranza, Jr.

Trinity Community Church
717 W. 7th Ave. • 659-2671
Celebration of Praise 10:15
Worship Service and Children's Church 10:30
Sunday Evening 6:30 p.m.
Wednesday evening: 7 p.m.
Pastor Dan Carter

Faith Lutheran Church (ELCA)
1101 Bernice • 659-2252
(Worships with First Presbyterian Church)

First Presbyterian Church (Worships with Faith Lutheran Church)
1021 Cotter • 659-2033
Sunday School: 9:45 a.m. at Lutheran Church
Worship: 11 a.m. (alternates monthly between addresses above)
Pastor Beverly Cook

First United Methodist
407 S. Haney • 659-5503
Sunday School: 9:45 a.m.
Worship: 11 a.m.
Jr. High Youth: 5 p.m. Sun.
High School: 6 p.m. Sun.
Pastor Jeff Lust

Union Church
31 S. Endicott • 659-2644
Sunday School: 9:45 a.m.
Worship: 10:45 a.m.
Evening Worship: 6:00 p.m.
Bible Study & Prayer Meeting: 7:00 p.m. Wed.
Pastor Billy Stanford

Sacred Heart Catholic Church
901 Roland • 659-2792
Sat. Night Mass: 7 p.m.
Sunday Mass: 8:45 a.m. - English (8:45a.m. Service on KRDF 98.3 FM)
11:15 a.m. - Spanish
1:30 p.m. - Gruver - Christo
Rendontor Mass - Spanish
Rev.. Fernand Couture

This feature is made possible through the Sponsorship of these Civic Minded Businesses

"WE SUPPORT OUR LOCAL CHURCHES"
CAPROCK#1 & #2
Mike Heard, Gen. Mgr.
(806)733-5043 or 733-5025
"Custom Cattle Feeding"

In Gruver...

First Baptist Church
402 E. Broadway • 733-2411
Sunday School: 9:45 a.m.
Worship: 10:50 a.m.
Disciple Training: 6 p.m. Sunday
Prayer Meeting: 7:30 p.m. Wednesday
Pastor Larry Miller

Church of Christ
209 King • 733-2760
Sunday School: 9:30 a.m.
Worship: 10:20 a.m.
Evening Worship: 6 pm.
Wed. Evening Worship: 7:30 p.m.
Minister Bob Setliff

First Christian Church
510 King • 733-2960
Sunday School: 9:45 a.m.
Worship: 11 a.m.
Wed. Bible Study: 7:30 p.m.
Youth: 6:30 Wednesday
Pastor Gary Gumfory

Oslo Lutheran Church (ECLA)
West of Gruver on Hwy 15 & N. FM 1162
339-7646
Sunday School: 9:45 a.m.
Worship: 11 a.m.
Morning Prayer: 9 a.m. Wed.
Pioneer Clubs (Grades 1-6):
4-5:30 p.m. Wednesday
Pastor John R. Chandler

Community Bible Church (Interdenominational)
Hwy. 15 • 733-2443
Sunday School: 10 a.m.
Worship: 11 a.m.
Wed. Prayer Meeting: 7 p.m.

First United Methodist
Broadway & Garrett • 733-2651
Sunday School: 9:45 a.m.
Worship: 8:30 a.m. & 10:50 a.m.
Evening Worship: 6 p.m.
Pastor Lewis Holland

In Morse...

Morse Baptist Church
Pastor Mike Martin
733-2757

Henton & Co., P.C.
Certified Public Accountants
221 Sanders • Spearman • 659-2518

BERRY CLEANERS
DAN DESIMONE • OWNER
Phone 659-3122 • P.O. Box 1017
207 Main St. • Spearman, Tx. 79081

GRUVER FORD
531 Main • Gruver • 733-2431

Interstate Savings & Loan
322 Main • Spearman • 659-2559

Hagerman Services
Backhoe • Dozer • Welding
North Hwy. 15 • Spearman
659-5131

Gordon Drugs
Dependable Prescription Service
314 Main • Spearman
659-2141
Jim Evans

Compliments of... **AGCO**
of Spearman, Inc.
"See you in Church"
659-3751

Don't Miss Another Issue!

SUBSCRIBE NOW

\$19.95 in county
\$24.95 out of county

Spearman Gruver
REPORTER-STATESMAN
213 Main • P.O. Box 458 • Spearman, Tx. 79081
(806)659-3434 • 1-800-395-9482