



The Hansford County

# REPORTER STATESMAN

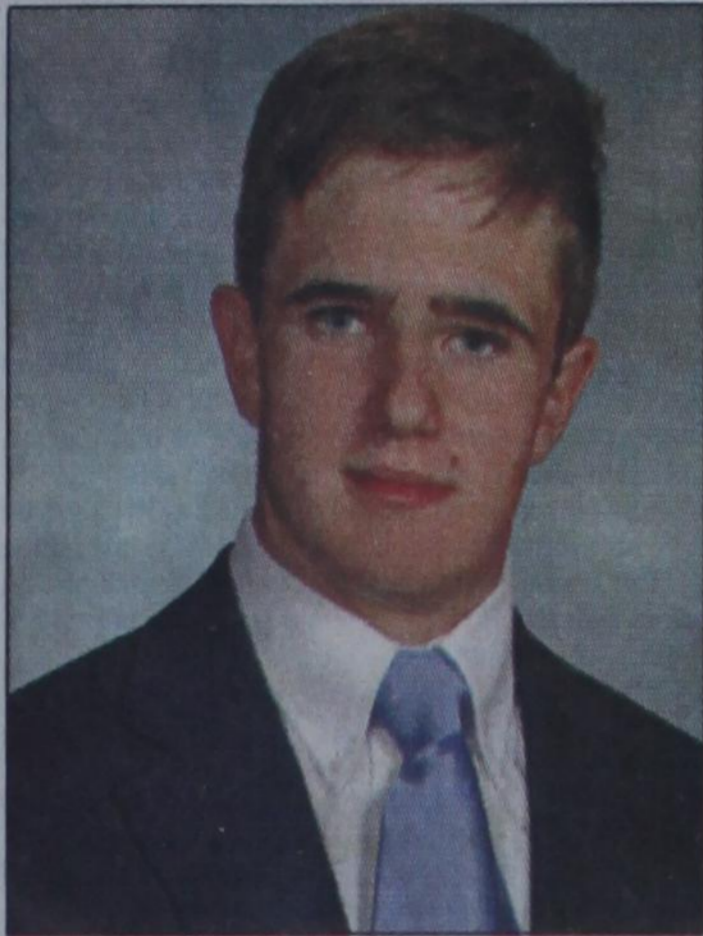
213 Main St • Spearman TX 79081  
reporter@spearmanreporter.comCelebrating 100 Years of  
Service to Hansford County(806) 659-3434 • (806) 398-9080 fax  
Proudly Serving Hansford County Since 1907

VOLUME 100 • ISSUE 21

WWW.SPEARMANREPORTER.COM

THURSDAY, MAY 24, 2007

# Hansford County Graduates

Justin Thompson  
GHS ValedictorianGruver  
High School

Gruver High School Commencement Exercises for the Class of 2007 will be held Friday, May 25, 2007, at 8:00 p.m. in the school auditorium.

Justin Owen Thompson, valedictorian, and Victoria Gwynn Vela, salutatorian, will lead a class of 31 students.

Other honor graduates include Sydney Dyan Been\*, Conrad Scott Curry\*, Bonnie Lynn Frick\*, Drew Michael Grotegut\*, Genesis Hernandez\* Graciela Hernandez, Mayra Azucena Hernandez\*, Brian Scott Johnson, Gloria Lora, Jimmie Mae McCloy, Maria De Los Angeles Mendoza, Charles Henry Slough, Mattie Lauren Urban\* and Tucker Lynn Williams\*.

Other graduating seniors include Jose Pedro Bonilla, Baldomero Garcia, Roman Gaspar Jr., Travis Wayne Hodge, Charlene Lopez, Diego Luciano, Isela Martinez, Travis James McDowell\*, Artemio Mundo, Beatriz Ortiz, Edna Patricia Pastrana, Mariah Patricia Rodriguez\*, Codie Lynn Scoggin, Jesus Noc Soto, and Heriberto Villanueva. (\* indicates candidates for Distinguished Achievement Program)

The procession will be presented by pianist Kathy Gillispie with Tony Lora and Jake Wills presenting the colors.

After the National Anthem, the Sydney Been will give the invocation followed by the salutatory address presented by Tyler Lane.

Bonnie Frick will give the class history, followed by the valedictory address will be given by Justin Thompson.

After the awarding of scholarships by Glenda Ujhely (high school counselor, the seniors will be presented by high school principal Mike King as they are awarded their diplomas by superintendent David Teal and school board president Dwayne Thompson.

Following the school song, Bryan Johnson will give the benediction.

Serving as honor guards will be junior students Maydeli Ortiz and Seth Thompson with Adriana Soto, Chandler Miner, Abbi Yanke and Tanner Sherrill serving as ushers.

A reception honoring the seniors will be held in the school cafeteria following graduation.

The Gruver ISD Board of Trustees include Mr. Dwayne Thompson (president), Brent Stedje (vice president), Jeff Graves (secretary), Curt Fitzgearld, Lee Bob Harper, Traci Venneman, Jeff Purvine, and Paul Stavlo (retiring).

Gruver High School faculty includes Carmelo Acevedo, Rod Been, Weston Born, Sarah Clark, Darlene Curry, Wynn Essler, Terry Felderhoff, Kathy Gillispie, Sandra Gumfory, Kristi Holt, Kimberly Irwin, Cody Martindale, Gwen Parker, Todd Parker, Troy Seagler, Cherri Sherrill, Annelle Teal, Amy Tebeest, and Jill Watson.

Senior sponsors are Weston Born, Sarah Clark, Darlene Curry, and Annelle Teal.

## GHS Class Officers

President - Victoria Vela, Vice-President - Justin Thompson, Secretary - Lauren Urban, Treasurer - Sydney Been

Class Favorites: Drew Grotegut and Genesis Hernandez

Mr. and Miss GHS: Drew Grotegut and Lauren Urban

Most Likely to Succeed: Victoria Vela and Justin Thompson

Most Handsome and Most Beautiful: Pedro Bonilla and Genesis Hernandez

Most Athletes: Lauren Urban and Tucker Williams

Friendliest: Noc Soto and Victoria Vela

Victoria Vela  
GHS Salutatorian

## Thompson named National Merit Scholarship Winner

Justin Thompson was among the more than 2,200 winners of Merit Scholarship awards financed by colleges and universities. The announcement was released on Wednesday, May 23, 2007 by National Merit Scholarship Corporation (NMSC). Officials of each sponsor college selected their scholarship winners from among Finalists in the 2007 National Merit Scholarship Program who plan to attend their institution.

This year over 194 higher education institutions are underwriting Merit Scholarship awards through the National Merit Program. Sponsor colleges and universities include 115 private and 79 public institutions located in 44 states and the District of Columbia.

The winners announced yesterday are among approximately 8,200 distinguished high school seniors of 2007 who will receive Merit Scholarship awards worth \$34 million for college undergraduate study.

More than 1.4 million juniors in over 21,000 high schools entered the 2007 Merit Scholarship competition when they took the 2005 Preliminary SAT/National Merit Scholarship Qualifying Test (PSAT/NMSQT\*), which served as an initial screen of program entrants. Last fall, some 16,000 Semifinalists were named on a state representational basis, in numbers proportional to each state's percentage of the nation's high school graduating seniors. Semifinalists were the highest scoring program entrants in each state and represented less than one percent of a state's seniors.

To advance to the Finalist level of competition, Semifinalists had to submit a substantial amount of information and fulfill additional requirements. Each Finalist presented an outstanding academic record; was endorsed and recommended by a school official; earned SAT scores that confirmed the qualifying test performance; and provided an essay describing activities, interests, and goals. About 15,000 Semifinalists met requirements for Finalist standing, and more than half of this group will be Merit Scholarship winners in 2007.

Saylee Flowers  
SHS ValedictorianJordanna Lozano  
SHS Salutatorian

Spearman High School

Commencement exercises for Spearman High School will be held Friday, May 25, 2007 at 7:00 p.m. in the Spearman High School Auditorium.

Saylee Flowers, valedictorian, and Jordanna Lozano, salutatorian, will head a class of 45 students.

The procession and recessional will be played by Anna Marie Holland with Byrnr Garnett giving the invocation.

Superintendent Rodney Sumner will introduce special guests, followed by the salutatory address by Jordanna Lozano.

Saylee Flowers will give the valedictory address, followed by the Class of 2007 History, read by Stuart Martin.

High School Counselor Krista Baird will recognize both the honor students of the class and the scholarship recipients, with Jason Cantrell presenting the Spearman Foundation Scholarships.

The presentation of diplomas will be by Dwayne Mitchell, president of the Spearman School Board and Bill Belger, High School Principal.

Following the Charge to the Class of 2008 by Jordanna Lozano, Blayne Baker will accept the charge on behalf of his classmates, the class of 2008.

After the school song, Kelcee Rex will give the benediction.

Honor graduates include Sara Elizabeth Barnes\*, Callie Lee Cazares, Eduardo Chairiez\*, Saylee McCall Flowers\*, Jonathan Brynr Garnett\*, Collin Chase Gillispie, Cara Nicole Gwinn, Sharon Rose Hancy, Trudy Kathleen Hart\*, Carina Hernandez\*, Emily Dawn Hood, Lance Garrett Huddleston, Christina Ann Hunger\*, Jessica Lynn Jarvis, Jordanna Rachelle Lozano\*, Wilhema Elizabeth Macias\*, Aaron Erik Maestas, Stuart John Martin, Zackery Jett Nollner\*, Mira Jasmine Ortiz\*, Ryan Tindle Ramon, Rhett Reed Renner, Anthony Lloyd Renteria, Kelcee Anne Rex, Noemi Rodriguez\*, and Bryan Worth Thomas.

Other graduating seniors include Luis Almanza, Gladis Atocha Arana, Karla Lizeth Baca, Francisco J. Brisenio, Casey Robert Cator, Nicholas Cenicerros\*, Brandon Scott Cogdill, John Forrest DeSha, Gabriel Enriquez, James Britt Fleetwood, Roberto Flores, Jr., Cindy Flores George, Hannah Hope Haddock, Cruz Hernandez, Cesar Macias, Driftin Ray Roberts, Eduardo Jose Soto, Keith Gilleland Sumner, Trevor Lee Tindell. (\* indicates candidates for Distinguished Achievement Program)

Junior escorts for graduation will be Brooke Barton, Blayne Baker, Kim Bergan, Austin Benton, Mattie Davis, Colby Odegaard, Clara Kern and J.J. Rojas.

Senior class sponsors are Junior Ashmore, Doug Bowles, Diann Crawford, Mollie Holton, Sherry Johnson, Doug Murdock, Glenn Robinson and Cheryl Whitefield.

## SHS Class Officers

President - Jordanna Lozano, Vice-President - Kelcee Rex, Secretary - Brynr Garnett, Treasurer - Ashlee Flowers

Class Favorites: Jordanna Lozano and Cesar Macias

Mr. and Miss SHS: Kelcee Rex and Bryan Thomas

Best Personality: Karla Baca and Cesar Macias

Most Spirited: Christina Hunter and Trevor Tindell

Most Likely to Succeed: Jordanna Lozano and Aaron Maestas

Most Talented: Kelcee Rex and Ryan Ramon

## DEADLINE

We will close at noon on Monday, May 28th in observance of Memorial Day. We will also be closed Wednesday, May 30th through Friday, June 1st. We will open for regular business hours on Monday, June 4th.

The deadline to submit news and advertising to the Hansford County Reporter-Statesman is Monday at 5 p.m. Items submitted after the deadline will be published at a later date, as time and space permit.

For more information, please contact Catherine Smith at 659-3434, or e-mail reporter@spearmanreporter.com.

## Swimming Pools To Open

The City of Spearman has announced that the Spearman Swimming Pool's 2007 season will begin on Monday, May 28th. Hours will be Monday-Sunday from 1-5 p.m.

The cost for children up to 11 years old will be \$1.50, 12 years and older will be \$2.00.

A season pass for children up to 11 years of age is \$105 (if bought May 28th), and a season pass for children 11 years of age and older is \$147 (if bought May 28th). Passes are pro-rated 25¢ less each day for 10 and under, and 50¢ less each day for 11 and older, and are available through June 11th.

The swimming pool is available for rent for \$65 (2-hour minimum) for 2 lifeguards and up to 50 people, \$85 (2-hour minimum) for 3 lifeguards and 51-75 people, and \$100 (2-hour minimum) for 4 lifeguards and 76-100 people.

Family night will be held again on Thursday nights from 7:30-10 p.m.

Ladies aerobics will be held Monday, Tuesday and Thursday from 6:30-7:30 p.m., beginning May 30th. The fee per class is \$1.50 (If small children must

accompany the participant, they will need to stay in the kiddie pool area, and will also be charged. No older children will be allowed in the pool area during the aerobics class.)

The pool manager is Ryan McDaniel, assistant manager is Courtney Worley, and lifeguards are Tayshia James, Cara Gwin, Amy Brown, Kyla Reed, Destiny Fisher, Kylee Howard, Amee Boyd and Kendall Schneider.

The Gruver City Pool will open for the summer season on May 28, 2007. Regular swimming pool hours will be: Monday-Saturday, 1-6 p.m and Sunday 2:00 to 6:00 pm.

The cost for children 12 and under is \$1.50, 13 & up \$2.00 children under 2 years are free.

Ladies hour will be held from 12 noon-1 p.m. and 6-7 p.m. If there are not enough women in attendance, these classes will be combined to the one with the most in attendance.

The pool manager will be Teal Armes, lifeguards are Sydney Bean, Lynn Vela, Lindsey Mircles, Develyn Reynolds and Amy Boyd.

## WEATHER FORECAST

THURSDAY NIGHT - Partly cloudy in the evening then becoming mostly cloudy. A 20 percent chance of showers and thunderstorms. Lows in the upper 40s. Southeast winds 5 to 10 mph.

FRIDAY - Mostly cloudy with a 30 percent chance of showers and thunderstorms. Highs in the upper 70s. South winds 10 to 15 mph.

FRIDAY NIGHT - Mostly cloudy with a 30 percent chance of showers and thunderstorms. Lows around 60. South winds around 15 mph.

SATURDAY - Mostly cloudy with a 20 percent chance of showers and thunderstorms. Highs around 80.

SATURDAY NIGHT - Mostly cloudy with a 30 percent chance of showers and thunderstorms. Lows in the upper 50s.

SUNDAY - Mostly cloudy with a 30 percent chance of showers and thunderstorms. Highs in the lower 80s.

SUNDAY NIGHT - Mostly cloudy with a 20 percent chance of showers and thunderstorms. Lows in the lower 60s.

MEMORIAL DAY - Partly cloudy. Highs in the

lower 80s.

MONDAY NIGHT - Partly cloudy with a 20 percent chance of showers and thunderstorms. Lows in the upper 50s.

TUESDAY - Partly cloudy with a 20 percent chance of showers and thunderstorms. Highs in the mid 80s.

TUESDAY NIGHT - Partly cloudy with a 20 percent chance of showers and thunderstorms. Lows in the upper 50s.

WEDNESDAY - Partly cloudy. Highs in the lower 80s.



### Lullabies, Legends & Lies

by Parson Smith, the Prime Minister of Laughter

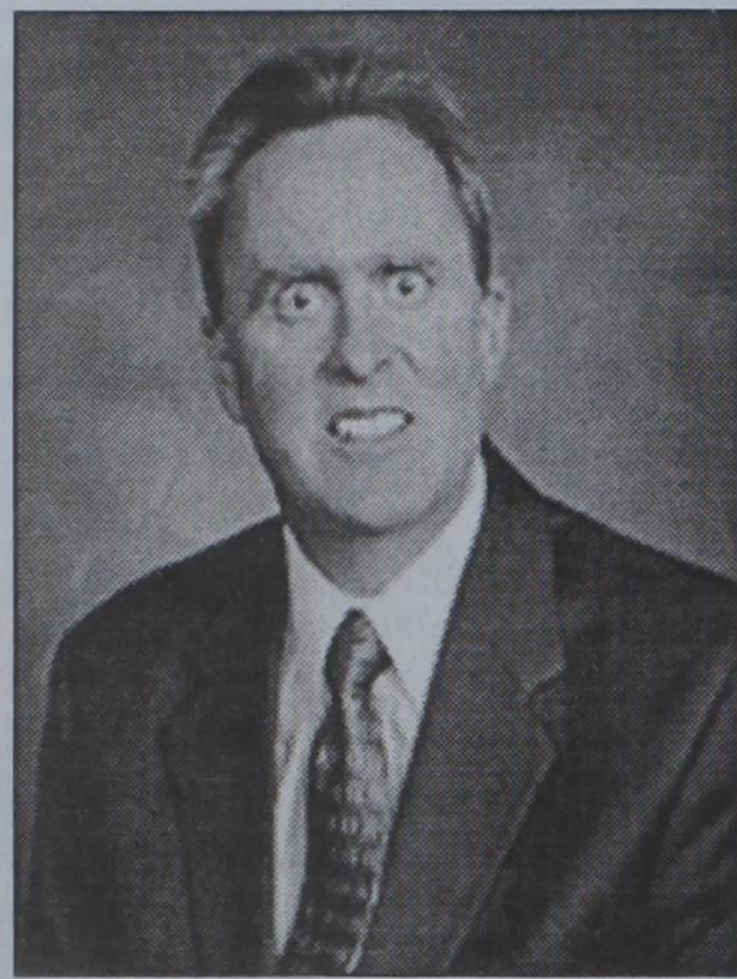
Once again, graduation time has rolled around. Speakers at graduation, baccalaureate and any other speech gathering that folks can coerce you in to attending, will give you tons of advice. You will remember very little of it. That's a good thing, as much of the advice is weak, to say the least.

I have strained my brain to try to offer some sage advice. Unfortunately, I have failed.

I did however think of one thing.

When you are being photographed... SMILE.

You never know who is going to see your picture and you don't want to look like this...



Now, smiling is not that hard. You are probably doing it right now. (If not, you could be lacking a sense of humor, but that is a tip for another time.)

Some people do not smile because they think that smiling makes them look dorky. Trust me. You look dorkier when you don't smile.

So smile. It doesn't cost all that much, and it could pay great dividends. At the very least, you will not look as bad as you do now.

SUDOKU  
PRESENTED BY

**VolunteerMatch.org**  
Where volunteering begins.

3			5	7				2
		7			2	4		9
	4		3	9			8	
4	3			6		9	2	5
	6	1		3		8	7	
2	7	5		4			6	3
	9			5	7		4	
5		6	4			7		
7				2	9			8

© 2007, StatePoint Media, Inc. answer on classified page  
Fill in the blank squares in the grid, making sure that every row, column and 3-by-3 box includes all digits 1 through 9.

These games are brought to you by the  
**Hansford County Reporter-Statesman**

CROSSWORD

1	2	3	4		5	6	7		8	9	10	11								
12					13				14											
15					16				17											
18					19				20											
					21				22											
23	24	25					26			27	28	29								
30					31		32	33				34								
35					36			37			38									
39								40			41		42							
43								44			45		46							
								47			48	49								
								50	51				52				53	54	55	
56								57					58							
59								60					61							
62								63					64							

PRESENTED BY

**VolunteerMatch.org**  
Where volunteering begins.

© 2007, StatePoint Media, Inc. answer on classified page

## BABY STEPS

- |  |  |
|--|--|
| <p><b>ACROSS</b></p> <ol style="list-style-type: none"> <li>1. Wood file</li> <li>5. "___-a-dub-dub"</li> <li>8. Snob</li> <li>12. Upon</li> <li>13. Dial in on a radio</li> <li>14. Pay hike</li> <li>15. A-bomb particle</li> <li>16. Chieftain in Arabia</li> <li>17. French school</li> <li>18. Don't leave home (with your baby) without it</li> <li>20. Repeat a passage</li> <li>21. License for absence from a religious house</li> <li>22. Great Britain's airforce</li> <li>23. Beaches in Mexico</li> <li>26. Par for the course</li> <li>30. He likes green eggs?</li> <li>31. Course for expecting parents</li> <li>34. Abounding with elm trees</li> <li>35. Concerning, archaic</li> <li>37. Retirement investment</li> <li>38. Where mobiles hang out, pl.</li> <li>39. Swimmer's row</li> <li>40. Away from intended path</li> <li>42. Clinton ___ Rodham</li> <li>43. Traditional deliverer</li> <li>45. What #38 Down does</li> <li>47. Chronic drinker</li> <li>48. Sibillic</li> <li>50. Mountain lake</li> <li>52. Popular eating place for babies</li> <li>56. Mushroom top, pl.</li> <li>57. Abel and Cain's father</li> <li>58. Fairytale start</li> <li>59. Three-stringed violin</li> <li>60. Greek salad cheese</li> <li>61. Contains a hydroxyl group bonded to a carbon atom</li> <li>62. Native-American storytelling tradition</li> <li>63. The little one cried, "Wee! Wee! Wee! All the way home!"</li> <li>64. PlayStation maker</li> </ol> | <p><b>DOWN</b></p> <ol style="list-style-type: none"> <li>1. One less traveled</li> <li>2. Not in favor of</li> <li>3. Roofed colonnade</li> <li>4. Quarrelled with Caesar and fled to Egypt</li> <li>5. Cuban dance</li> <li>6. Member of Uniati Church</li> <li>7. Titanic enemy</li> <li>8. Baby soother</li> <li>9. Heavy metal band "Quiet ___"</li> <li>10. A small island</li> <li>11. "___ whiz!"</li> <li>13. Nobel Prize-winning nun</li> <li>14. Summary</li> <li>19. Glorify</li> <li>22. Dark bread</li> <li>23. A sacred song</li> <li>24. Hawaii veranda</li> <li>25. Set right</li> <li>26. Russian monarch</li> <li>27. "Crazy" singer</li> <li>28. Public alert</li> <li>29. Recuperations</li> <li>32. Expense, cost</li> <li>33. Open to interpretation</li> <li>36. Supplanted by TV news</li> <li>38. Faultfinder</li> <li>40. At the stern</li> <li>41. Causes wheezing</li> <li>44. Not Doric nor Corinthian</li> <li>46. Voices in a tunnel</li> <li>48. It "killed the radio star"</li> <li>49. Impure form of quartz</li> <li>50. Wedding cake layer</li> <li>51. Actress Jessica</li> <li>52. Weapon handle</li> <li>53. The A in A.D.</li> <li>54. Desktop picture</li> <li>55. To bank on</li> <li>56. Play for pay</li> </ol> |
|--|--|

### State Capital

by Ed Sterling

## HIGHLIGHTS

### PERRY VETOES HOUSE VERSION OF TOLL ROAD LEGISLATION

AUSTIN - On May 18 Gov. Rick Perry vetoed HB 1892, legislation that would have preserved local control over toll road projects in the North Texas and Houston regions and placed a two-year moratorium on the governor's massive new toll road plan.

Perry wants a bill that will centralize control through the Texas Department of Transportation. TxDOT would execute his Trans Texas Corridor plan, a statewide matrix of toll road projects to be built and run by Zachry, a San Antonio-based firm, and Cintra, a Spanish company.

In his explanation of the veto, Perry said HB 1892 "jeopardizes billions of dollars of infrastructure investment and invites a potentially significant reduction in federal transportation funding."

"Projects important to fast-growth communities would be placed on hold without alternative financing mechanisms to get them constructed. Even more egregiously, the bill serves to break up the state highway system by permitting local control over state assets," Perry said.

Perry's hopes are now pinned to SB 792, a bill similar to HB 1892 but amended to address highway infrastructure issues in a manner more acceptable to him. The House passed SB 792 with amendments. The Senate did not concur with the House amendments, so the bill will be considered by a conference committee.

The governor has threatened to call a special session if the final version of the bill doesn't suit him.

**Little time left to deal with bills**  
Countdown to the May 28 end of the 80th regular session of the Texas Legislature is in single digits.

Various deadlines governing the fate of bills come almost daily. There is competition to get bills placed on House and Senate floor calendars before it's too late.

**Keffer files to run for speaker**  
Beyond the bubbling vat of bills is a race for speakership of the House. Rep. Jim Keffer, R-Eastland, on May 15 announced his intention to challenge standing Speaker Tom Craddick, R-Midland, for that high office. Keffer suggested three terms are enough for anyone to be speaker. Craddick is completing his third term.

But Craddick, 63, made it plain he wants a fourth term, putting to rest any speculation that he feels like he has had enough time on the roller-coaster. His wife approves. "I have talked to Nadine and I fully intend to run for speaker. The paperwork was already filed last February," Craddick said.

The announcement by Keffer means a long campaign to wage until the 2009 session. And, it is likely Keffer won't be the only House member challenging Craddick. Names that come easily to mind are Reps. Jim Pitts, R-Waxahachie, and Brian McCall, R-Plano.

Pitts and McCall already attempted to unseat Craddick at the beginning of the present session. They could try again.

**Jessica's Law heads to governor**  
The House and Senate agreed to compromise language on HB 8, "Jessica's Law" legislation enacting new charges and tougher penalties for sexually violent acts against children younger than 14.

The bill, by Rep. Debbie Riddle, R-Houston, will make sexually violent offenders subject to penalties ranging from a 25-year minimum sentence on a first offense to the death penalty for repeat offenses.

Certain offenders also would be denied parole and subjected to GPS monitoring should they ever be released from prison, the author said.

And, HB 8 directs the Texas attorney general's office to support local prosecutors in pedophile cases.

Gov. Perry is expected to sign the bill, which is written to take effect Sept. 1.

In a related matter, Perry already has signed another piece of legislation that requires the Department of Public Safety to collect detailed information on sexual assaults that occur in Texas.

HB 76 by Rep. Elliott Naishtat, D-Austin, and Sen. Judith Zaffirini, D-Laredo, addresses a lack in statewide statistics on sexual assault. Under their bill, what will be collected is information about the offender, the offender's relationship to the victim, any weapons used and any injuries sustained by the victim.

**Wipe out up to 60% of your Credit Card Debt!**

Never pay back a penny of the debt settled for you.

Call Debt Relief of America for a **FREE** Consultation & **FREE** Information.

1-800-711-9313

**STOP LEG CRAMPS BEFORE THEY STOP YOU.**

Calcet's triple calcium formula is designed to help stop low calcium leg cramps. Just ask your pharmacist.

CAL-06901 Rev 009060 © 2006 Mission Pharmaceutical Company. All rights reserved.

## Mesothelioma

EXPERIENCE COUNTS  
Lawyers with over 80 years combined expertise.

may occur 30 to 50 years after exposure to asbestos. Many workers were exposed from the 1940s through the 1970s. Industrial maintenance and operators are among those at risk for mesothelioma, throat cancer or lung cancer. Call us for professional insight.

Ryan A. Krebs, M.D., J.D.  
Doctor-Lawyer in Full-time Law Practice  
Richard A. Dodd, L.C.  
Timothy R. Cappolino, P.C.  
Board Certified Personal Injury Trial Law and Civil Trial Law by the Texas Board of Legal Specialization  
NO FEE FOR FIRST VISIT  
CAMERON, TEXAS

1-800-460-0606

www.AsbestosLaw.com

PERSONAL CHECKS ACCEPTED!

DIRECTV FREE

4 Room System!  
250+ Channels!  
Starts \$29.99/month!  
FREE HBO/Cinemax!  
FREE Showtime!  
FREE DVR/HD Receiver!  
Call 1-800-214-7110

SIGN UP FOR A FREE SCOOTER

One Scooter Given Away Each Month

Toll Free 800-606-9860

www.medcaremedicalsupply.com

ATTENTION NURSES/NURSES AIDS

who worked for temporary agencies.

You may be entitled to overtime pay.

1-877-677-5333

Weinstein Law Firm,  
518 E. Tyler St., Athens, TX 75751

JUNE 13

in concert

BOB WILLS BAND, JAY BOY BANDS, BERT MARTINDALE BAND, RECKLESS KELLY

www.postcitytexas.com

YOUR ROAD TO A NEW CAREER!

- Paid CDL Training!
- No Experience Needed!
- Earn \$40 - \$75K Yearly!

Stevens Transport offers the best comprehensive training program for new drivers! Get your career rolling and enjoy exceptional earnings and great benefits from the #1 premier transportation carrier!

For more information, call 800-333-8595

www.stevenstransport.com

The Hansford County Reporter-Statesman

213 Main Street • Spearman, TX 79081  
Phone - (806) 659-3434 • Fax - (806) 659-3368  
cathysmith@valormet.com  
Mon.-Thurs. (Closed Fridays) 9 a.m.-12 p.m. & 1-5 p.m.

Gary Smith - Publisher      Catherine Smith - Editor  
Contributing Writers: Dorothy Hudson, Jim Derrington, Merry Sparks, Cecil Biggers  
Contributing Photographer: Charlie Johnson

Subscription Rates  
In Hansford County - \$30.00 • Out of County - \$40.00

The Hansford County Reporter-Statesman (USPS 529660) is published weekly in Spearman, TX. Periodical postage paid in Spearman, TX. POSTMASTER: Send address changes to: The Hansford County Reporter-Statesman, 213 Main Street, Spearman, TX 79081.

The deadline to submit news and advertising to The Hansford County Reporter-Statesman is Monday at 5 p.m. Items submitted after the deadline will be published at a later date, as time and space permit. Publication of all items is at the discretion of the editor.

Advertising  
Open Display rates are \$4.00 per column inch. Classified Ads are \$6 for the first 25 words and 10¢ per word for each additional word. (Additional charge for boxed classifieds.) There is a \$1 charge per week if billed.

Member of  
Gruver Chamber of Commerce  
Spearman Chamber of Commerce  
Texas Press Association and Panhandle Press Association



# Happy Birthday!

**Editor's Note:** This Happy Birthday list is run as a public service by the Hansford County Reporter-Statesman. We apologize if any names are misspelled. If you know of a name that needs to be changed, added or deleted, please call 659-3434.

Thank you, Catherine

**May 24**  
**Birthday** - Roy Edwards, Steve Gross, Faye Harris, Patti Bellows, Wanda Jones, Betsy Martin, Kimberly Gross, Shirley Heffley, Manuel Ortiz, Billy Brown, Shane Sumner, Walter Goodknight, Chris Schmehr, Brittany Morris, Carson Williams, Jan Williamson  
**Anniversary** - Earl & Trudi Goodheart, Pamela & Gary Cates, M/M Dwain Weller

**May 25**  
**Birthday** - Brett Rudolph, Mrs. J.C. Rhea, Ozzy Osbourne, Bart Baker, Waurayne Cope, Betty Uptergrove, Kara Lee, Becky Myers, Alfonso Munez, Kimberly Groves, Brandi Burch, Lynette Campbell, Lindsey Wright, Josh Reed, Dan Wheelock  
**Anniversary** - Andy & Sheila Watley, M/M James Terry, M/M Curtis Covington

**May 26**  
**Birthday** - Garrett Gumfory, Tessa Dawn Thoreson, Roger Buchanan, Gloria Arjona, Mike Owens, Don Savage, Marc Morris, G.A. Rodriguez, Michelle Robinson, Jason Varnon, Wanda Gift, Manda Michelle Lewis, Louis Miesner  
**Anniversary** - Don & Teresa England, M/M Jesus Favela, M/M Nick Holt, Mark & Margy Schoenhals

**May 27**  
**Birthday** - Jamie Casdorff, Rachelle Holt, Andee Salmans, Julie Stedje, Chris Tomlinson, Julie Latta, Mary Ann George, Darrell West, Debbie Cook, Cindy Hendrick, Roy Black, Jim Myers, Ronnie Thompson, Gloria Perez, Laurcen Williams, Bonnie Thompson, Christian Fisher  
**Anniversary** - M/M Allen Davis, M/M James George, M/M Herb Hager, M/M Jerry Moore, Bobby & Kay Snider

**May 28**  
**Birthday** - Randy Brown, Lee Schubert, Kevin Nelson, Ramiro Arjona Sr., Nita Barnes, Brandi Blodgett, Martin Ketrone, Barbara Sharp, Connie Gammill, Vera Dominguez, Gloria Perez, Crystal Miller, Victoria Vela  
**Anniversary** - M/M Sammy

Don Jones, Jr. & Nita Barnes, Lewis & Delores Moreno, Dr. & Mrs. Scot Martin

**May 29**  
**Birthday** - Camile Miller, Mrs. Richard Holton, Dayton Edwards, Wilma Francis, Danny Dry, Wayne Groves, Jesus Espinosa, John Allen, Jana Wright, Allen Alfred, Linda Pearson, Cody Thoms, Clint Schnell, Virginia Cates  
**Anniversary** - M/M Stan Seagler, M/M Kevin Holt, M/M Gary Gumfory

**May 30**  
**Birthday** - Orvil Brumett, Sharon Cook, Patty Hudson, Lynanne Maize, Phillip Atwood, Kimberly Nelson, John Brinkley, Terri King, Ramero Arjona, Rick Holt, Bobby Lesley, Connie Ross, Marie Hernandez, Richard Paschel  
**Anniversary** - M/M Matt Johnson, M/M David Tomlinson

**May 31**  
**Birthday** - Jessica Favela, Buster McLain, Virginia Taylor, Jeri Lynn Maize, Brandon Reed, Ronnie Lusby, John Sutterfield, Carl Cook, Shauna Poole, Curtis Newman, Olena Shelton, Brent Fuller, Tommie Dewberry  
**Anniversary** - Mike & Michelle Davis, M/M Wayne Garrett, M/M Chet Pittman

**June 1**  
**Birthday** - Lexy (Spivey) Glass, Kevin Rook, Avo Gray, Ken Pracher, Kim Reed, Bryon Sutterfield, Phil Sanders, Ivonne Sullivan, Jean Zable, Anthony Arjona, Evan Cudd  
**Anniversary** - Jim & Donetta Greene, M/M Doyle Jackson, M/M Dale Hendricks, Steven & Susan Poole, M/M Craig Cooper, Joe & Debbie Clement, Don & Mavis Floyd

**June 2**  
**Birthday** - Weslyn Maupin, Lance Williams, Helen Dickson, A.D. Reed Jr., Johnny Reed, Scotty Reed, Don Fisher, Tyson Dettman, Buddy Newman, Hope Baker, Bessie Swan, Blayne Baker  
**Anniversary** - M/M James Cunningham, M/M Wesley Brinkley, M/M Larry Evans

**June 3**  
**Birthday** - Parthena Harvey, John Lopez, Anne (Polts) Jackson, Joe T. Venneman, Tonja Kay Whitefield, Mary Nava, Manuela Vela, Robert Renteria, Zach Nollner  
**Anniversary** - Carl & Janeen Baumgardner, M/M Albert Graves, Robert & Jackie Graham, Sara & Mark Eisfeld

## Words from Faith & Grace

by Cecil R. Biggers, Lutheran Lay Minister

We begin the season of Pentecost, "Lord show us the father." We begin the study of the Holy Spirit in Acts 2:1-21, Psalm 104:24-34,35b, Romans 8:12-25, and John 14:8-27.

The Feast of Pentecost comes fifty days after the Passover, it celebrates the giving of the law to Moses and the barley harvest. One hundred twenty believers were assembled in a large upper room when the Holy Spirit descended upon them; immediately they start speaking in tongues and go forth with the "good news". The first recorded Christian sermon is Jack Webb-like, "Just the facts, Ma'am, Just the facts". Peter tells the crowds that they have witnessed the "Day of the Lord", the day God has broken into human history. To paraphrase a nineteenth century theologian, "to set the world on fire for Christ, you must first burn a little yourself". Note in this scripture that with the Apostles there are 108 lay people sharing the gospel. In modern day Namibia, in Africa, 50% of the people are Lutheran Christians, 85% of the people are Christian. This is a higher ratio of believers than we have. This fire of the Spirit was not solely the result of the first two missionaries to appear, but of the two villagers who went back to their villages to share the gospel of hope they had found, and each villager then shared, etc. The Psalmist sings of the greatness of God, the Creator, the Master of the Sea. A reminder that the nature of God appears to us in the nature of His creation.

Paul assures us that all who are "led" by the Spirit are children of God. He uses the legal example of Roman adoption whereby the adopted child 1) lost all rights to his old family, received all rights in his new family; 2) became an heir to the estate of the new parent; 3) in law, the old life is completely "wiped out"; 4) the child becomes absolutely the child of the adoptive parent. Similarly in the Spirit we are dead to our old life, we are heirs of the Kingdom, we are absolutely the children of God. Our "adoption" is complete when we are received in Heaven. Know that "sanctification" is the process by which we are moved from sinner to saint, a child of God.

Peter has just asked Jesus, "where are you going?" Thomas asks, "how will we know the way?" John next shows us Philip saying, "show us the father". Jesus explains that the Father is in Him and He is in the Father. For those unable to grasp this, He says, "believe me because of the works themselves". In Jesus, God has shown us that he is not ashamed to live as a man, to be tempted, to reveal his true nature. Jesus assures us that anything we ask in his name; He will do. Consider dear Christian that the test of love is obedience. The word used for "name" is the Hebrew "Shem" which has the meaning of all the accumulated testimony of the character of the man "named". Hence if we live in love, in obedience to Christ Jesus our prayers will be "in" Him and not like Janis Joplin's "O Lord won't you buy me a Mercedes-Benz?" We are then promised that we will not be left to face the world alone, we have an advocate, the Holy Spirit. This Spirit gives us the peace that passes all understanding, Shalom!

### Thank You!

Dear Friends,  
 Thank you for all the blessings you have shared with our family since the death of our loved one. Hansford County is such a wonderful place to live. May God continue to bless you.

Sincerely,  
 The Aubrey Rasor Family

## Our Sympathy

CLETA COPENHAVER CASDORPH



GRUVER - Cleta Copenhaver Casdorff, 81, died on Sunday, May 20, 2007.

Funeral services were held on Wednesday, May 23, 2007 at 11 a.m. in the Church of Christ in Gruver with Gaylord Cook officiating. Interment was in Gruver Cemetery under the direction of Boxwell Brothers Funeral Home.

Cleta was born on April 1, 1926 in Sayre, Oklahoma. She married Charley Adam Casdorff on September 28, 1946 in Sayre, OK.

She was a homemaker and a member of the Church of Christ in Gruver.

She was preceded in death by her parents, Rollie and Dollie Copenhaver, and her husband, Charley, in 1993.

Survivors include two sons, Charley Casdorff, Jr. and Rex Casdorff, both of Gruver; three daughters, Brenda Pratt of Gruver and Judy Martin and Renee McWhirter, both of Dalhart; a sister, Nadie Burks of Amarillo; nine grandchildren; and 19 great-grandchildren.

The family requests memorials be to Hansford Hospice, 707 S. Roland, Spearman TX 79081 or the American Cancer Society, 3915 Bell, Amarillo TX 79109.

### Thank You!

Our family would like to express our deep appreciation and gratitude to each and every one of you for your support, prayers, and most importantly, for your shoulder to cry on. We were so humbled by the love shown to us. We knew Homer was special to us but had no idea of just how many people he was special to. May God bless and keep you and your loved ones.

The Armando Munoz family

**Hansford Golf Course**  
**Memorial Day 4-Person Scramble**  
 Monday, May 28th • 1:30 p.m.  
 Teams will be drawn.

**Ralph Depee, D.D.S.**  
 Member American Association of Orthodontists  
**Orthodontics For Children and Adults**

- Free exam and estimate of cost
- Free second opinion
- Insurance filed

821 S. Amherst Perryton, Texas  
 1-800-521-0831  
 (806) 435-2320

**WHEN DOES YOUR SUBSCRIPTION EXPIRE?**

SCR1  
 05/07 EXPIRES  
 JOHN Q. PUBLIC  
 PO BOX 123  
 SPEARMAN TX 79081

Expiration dates are printed on the top of all mailing labels. Our readers can help keep the cost of subscriptions down by mailing in renewals in the appropriate month.

Thank you, Catherine Smith

**THE HANSFORD COUNTY REPORTER-STATESMAN**  
 213 Main Street • Spearman, TX 79081  
**Annual Subscription Rates**  
 In Hansford County - \$30  
 Out of County - \$40

**MONUMENTS**  
**Boxwell Brothers**  
**Funeral Home**  
 519 Evans • Spearman  
 659-3802

Dear friends,  
 When you buy a monument from us we make sure it is exactly what you want at a price you can afford. If it is not right, we will make it right. And you will not have to search the countryside to find us. We are here when you have a need.

Sincerely,  
 Bob Boxwell

### Replenish the seed of faith through . . . DAILY BIBLE READING, PRAYER & REGULAR CHURCH ATTENDANCE

- Spearman**
- Apostolic Faith Church**  
 822 S. Dressen • 659-2870  
 Sunday School: 10 a.m.  
 Worship Service: 11 a.m.  
 Sun. Eve.: 6 p.m.  
 Wed. Prayer Mtg: 7 p.m.  
 Pastor - Roland Haney
  - First Assembly of God**  
 401 N. Bernice • 659-2295  
 Sunday School: 9:30 a.m.  
 Worship: 10:35 a.m.  
 Kid's Church: 10:35 a.m.  
 Evening Worship: 6 p.m.  
 Wed. Worship: 7 p.m.  
 Wed. Youth: 7  
 Pastor - Bob Elder
  - First Christian Church**  
 (Disciples of Christ)  
 29 S. Bernice • 659-2036  
 Sunday School: 9:45 a.m.  
 Worship: 10:50 a.m.  
 Minister -
  - First Baptist Church**  
 123 N. Bernice • 659-5557  
 Sunday School: 9:45 a.m.  
 Worship: 11 a.m.  
 Evening Worship: 7 p.m.  
 Men's Bible Study - Wed., 7 a.m.  
 Children's Choir - Wed, 6 p.m.  
 Adult Choir - Wed, 7 p.m.  
 Wed. Bible Study: 7 p.m.  
 Pastor - Jim Medley
  - Church of Christ**  
 121 S. Haney • 659-3244  
 Sunday Bible Class: 9:45 a.m.  
 Worship: 10:30 a.m.  
 Evening Worship: 6 p.m.  
 Bible Study Wed.: 7:30 p.m.
- Sacred Heart Catholic Church**  
 901 Roland • 659-2792  
 Sat. Night Mass: 5:30 p.m.  
 Sun. Mass: 9 a.m. - English  
 1:30 p.m. - Spanish  
 5:30 p.m. - Gruver - Christo  
 Rector: M. Morales - Spanish  
 Rev. Guillermo Morales
- First United Methodist**  
 407 S. Haney • 659-5503  
 Sunday School: 9:45 a.m.  
 Worship: 8:30 & 11 a.m.  
 Jr. High Youth: 5 p.m. Sunday  
 High School: 6 p.m. Sunday  
 Kids Club: 3 p.m. Wed.  
 Pastor - Neely Landrum
- Grace Presbyterian Church**  
 (Worships with Faith Lutheran Church)  
 1101 Bernice • 659-2033  
 Pastor - Beverly Cook
- Faith Lutheran Church (ELCA)**  
 1101 Bernice • 659-2252  
 Sunday School: 9:45 a.m.  
 Worship: 11 a.m.  
 (Worships with Grace Presbyterian Church)  
 Pastor - Beverly Cook
- Union Church**  
 31 S. Endicott • 659-2644  
 Sunday School: 9:45 a.m.  
 Worship: 10:45 a.m.  
 Evening Worship: 6 p.m.  
 Bible Study: 7 p.m. Wed.  
 Pastor - Dr. Timothy Minor
- Fellowship Baptist**  
 1102 S. Archer • 659-2783  
 Sunday School: 10 a.m.  
 Worship: 11 a.m.  
 Sun. Evening Worship: 6 p.m.  
 Youth/Adult Service: 7:30 Wed.  
 Pastor - James Washburn
- Primera Mision Bautista**  
 502 E. 7th • 659-3991  
 Sunday School: 9:45 a.m.  
 Worship: 11 a.m.  
 Evening: 6 p.m.  
 Wed. Prayer Meeting: 7 p.m.  
 Thurs. Visitation: 7 p.m.  
 Pastor Joe Garcia Jr.
- El Aposento Alto U.P.C.I.**  
 1105 S. Roland  
 Domingos: Escuela-Domical - 10 a.m.  
 Culto Evangelistico - 7 p.m.  
 Jueves: Oracion - 8 p.m.  
 Mier: Estudio Biblico - 7 p.m.  
 Pastor - A.G. Martell  
 (806) 659-2153
- Gruver**
- First Baptist Church**  
 402 E. Broadway • 733-2411  
 Sunday School: 9:45 a.m.  
 Worship: 10:50 a.m.  
 Disciple Training: 6 p.m. Sunday  
 Prayer Meeting: 7:30 p.m. Wednesday  
 Pastor - Scott Curry
  - Church of Christ**  
 209 King • 733-2760  
 Sunday School: 9:30 a.m.  
 Worship: 10:20 a.m.  
 Evening Worship: 6 p.m.  
 Wed. Worship: 7:00 p.m.  
 Minister - Gaylord Cook
  - First Christian Church**  
 510 King • 733-2960  
 Sunday School: 10:00 a.m.  
 Youth: 7:30, 11 a.m.  
 Sunday: 7:30, Sunday  
 Adult Bible Study: 7:30, Sun.  
 Wed. Bible Study: 8:00 p.m.  
 Pastor - Gary Gumfory
- Gruver United Methodist**  
 Broadway & Garrett  
 733-2651  
 Sunday School: 9:45 a.m.  
 Worship: 8:30 & 10:50 a.m.  
 Eve. Worship & UMY: 6 p.m.  
 Pastor - George Price
- Spanish Cristo Redentor Church**  
 Sunday Mass: 1:30 p.m.  
 Friday Evening Mass  
 Summer - 8:00 p.m.  
 Fall/Winter - 7:30 p.m.
- Oslo**
- Oslo Lutheran Church (ELCA)**  
 6 Miles West & 12 Miles  
 North of Gruver  
 339-7646  
 Sunday School: 9:45 a.m.  
 Worship: 11 a.m.  
 Pastor - Arlen Lloyd
- Morse**
- Morse Baptist Church**  
 733-2757  
 Pastor - Mike Martin
- He has showed you, O man, what is good. And what does the LORD require of you? To act justly and to love mercy and to walk humbly with your God.  
 Micah 6:8

**First State Bank**  
 will be closed on **Monday, May 28th** in observance of **MEMORIAL DAY**

The Bank that has the Tradition of Strength and Service

**FSB** One NE Court Spearman, Texas (806) 659-5565 member FDIC

We will be closed on **Monday, May 28th** in observance of **MEMORIAL DAY**

**FNBANK** First National Bank

Spearman, Texas 79081 Dumas, Texas 79029  
 806-659-5544 806-934-8455  
 800-583-4196 806-583-4196

**BOSS INDUSTRIES**  
 A Total Solution Provider  
 214 S. Main Street  
 Spearman, TX 79081  
 (806) 659-3322

**PRAIRIE MOTORS INC.**  
 Hwy. 207 South • P.O. Box 430  
 Spearman, TX 79081 • (806) 659-2541  
 www.prairiemotors.com

**Bartlett's Lumber & Hardware**  
 105 W. Broadway • Gruver, Texas  
 (806) 733-2404

**Gruver Cablevision**  
 308 Main  
 Gruver, TX 79040  
 733-5295

**BERRY CLEANERS**  
 Ann & Vernon Pipkin - Owners  
 Phone 659-3122 • P.O. Box 1017  
 207 Main St. • Spearman, TX

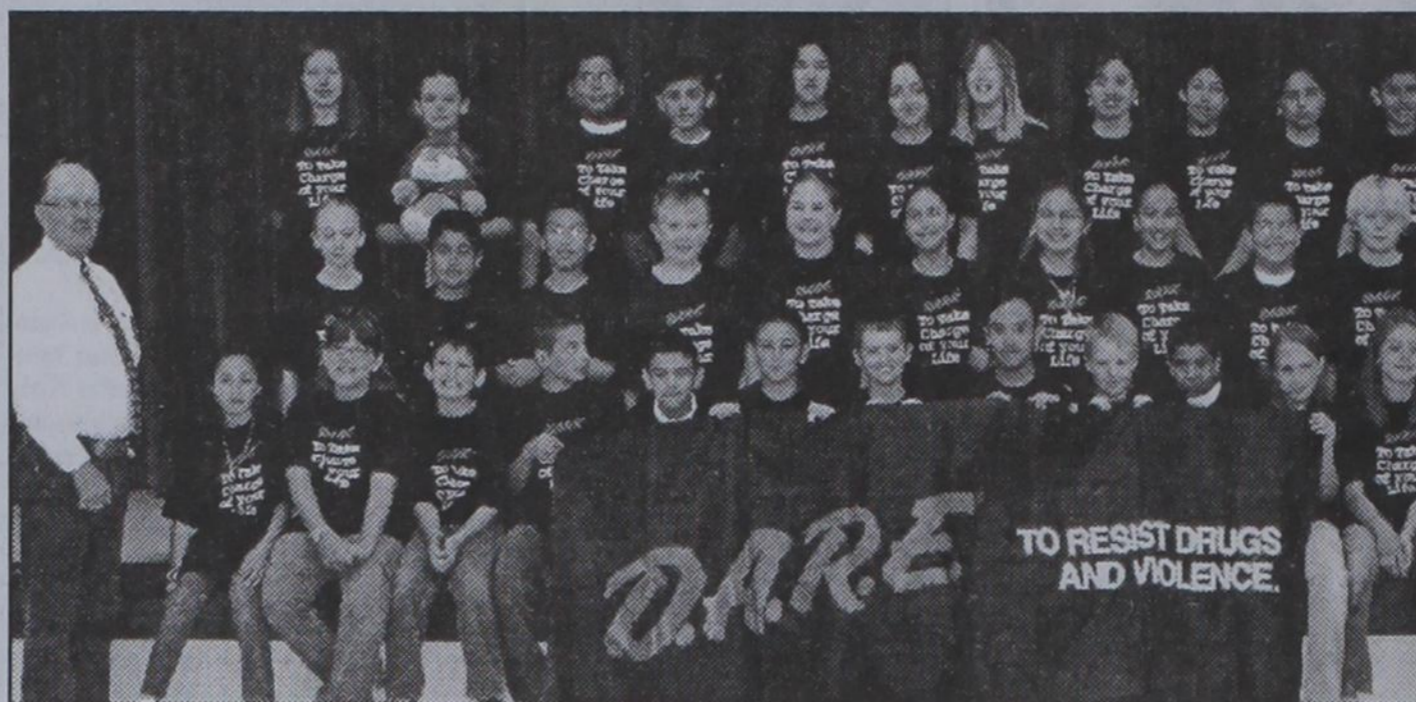
**Hansford County Reporter-Statesman**  
 "Proudly Serving Hansford County Since 1907"  
 (806) 659-3434  
 213 Main Street • Spearman, TX

**Morse Implement & Auto Supply**  
 "Join us in church this week!"  
 Tom Dorich 733-2668  
 P.O. Box 89 • Morse, TX 79062

**Interstate Bank, sbb**  
 322 Main • P.O. Box 146  
 Spearman, TX • 659-2559



# Hansford County Sheriff's Office Holds D.A.R.E. Graduation



Sheriff Evans and Deputy Garrett with the entire D.A.R.E. Graduating Class

the things they have learned over the course of the program. This essay is not only for the D.A.R.E. program but also counts as a grade for the students. The top D.A.R.E. essay winner is recognized by the Hansford County Sheriff's Office and given the D.A.R.E. lion Darren, the D.A.R.E. mascot. Every student receives a Graduation Certificate and a D.A.R.E. t-shirt.

This year's winning D.A.R.E. essay was written by Haylee Seay. Below is a copy of Haylee's winning essay.

"I've learned that drugs are really, really bad for us. The D in dare stands for Define, A stands for Asses, R stands for Respond, E stands for Evaluate.

Also I've learned that there are 200 different poisons in drugs. And there are lots of people who like beer, right. Well see it has as much alcohol as one glass of wine! Crazy, right? Well tobacco is not very cool for you either. Tobacco can mess your brain. And that's not GOOD! Marijuana and alcohol do that too. I did not know that marijuana could do things to you like soars in your mouth and throat, lungs, and liver until the day the Dare Officer came to our classroom. And all I know is to never do them.

All the skills I know is not to smoke when someone asks you to, just say NO! But if you see someone like your friend doing them tell them to do the right thing. If they don't listen forget them tell your parents and leave from there.

Well my pledge is to say, I promise to be drug free. Happy about my self and always say NO! to who ever ask to do drugs. And I know that the dare officer has done so much to help us on being drug free. And I know all of us 5th graders didn't know any thing about drugs. Thank you, Dare Officer."

The Hansford County Sheriff's Office along with the Spearman Independent School District would like to honor the entire class of Spearman Elementary 5th grade for graduating from the D.A.R.E. (Drug Abuse Resistance Education) program. 41 Students took the pledge to stay off drugs as the graduate on May 21, 2007.

The D.A.R.E. lessons taught by Deputy Gary Garrett focus on four major areas: providing accurate information about alcohol and drugs, teaching student decision making skills, showing them how to resist peer pressure and giving them ideas for alternatives to drug use and violence. D.A.R.E. began in 1983 and now is taught in more than 300,000 classrooms in all 50 states and 53 countries around the world. The Hansford County Sheriff's Office and the Spearman Independent School District implemented the D.A.R.E. program this year to address violence and drug use.

At the end of the lessons students write a D.A.R.E. essay about



Sheriff Gary Evans and Deputy Gary Garrett present Haylee Seay with her Graduation Certificate and Darren, the D.A.R.E. mascot.



**You're Never Alone - Narcotics Anonymous Group**  
Each year individuals struggling with drug and alcohol addiction make the resolution to quit using drugs. For many of them it is a resolution that they cannot keep. Narcotics Anonymous can help. Open meetings are held on Monday and Thursday nights from 8-9 p.m. at the First Christian Church (29 S. Bernice in Spearman) for the "You're Never Alone" group of Narcotics Anonymous. Anyone interested is invited to attend. Drug addiction can leave you feeling helpless and out of control - we can help.

**Spearhead AA Group**  
The Spearhead AA Group meets every Tuesday at 8 p.m. in the Pittman-Shieldknight building. Alcoholics Anonymous\* is a fellowship of men and women who share their experience, strength and hope with each other that they may solve their common problem and help others to recover from alcoholism. The only requirement for membership is a desire to stop drinking. There are no dues or fees for AA membership; we are self-supporting through our own contributions. Our primary purpose is to stay sober and help other alcoholics to achieve sobriety. For more information, call 662-1111.

**Al-Anon**  
If you are concerned with someone else's drinking or addiction, the Al-Anon program can help you. Each Al-Anon Family Group has but one purpose - to help families and friends of alcoholics and addicts. The Spearhead Al-Anon Group meets every Tuesday night at 8 p.m. in the Pittman-Shieldknight Building, 511 SW 11th Avenue, Spearman. For more information, call 806-330-0349.

**Panhandle Crisis Center Outreach Office**  
Panhandle Crisis Center (PCC) has an Outreach Office and Resale Store at 306 Hancock, in Spearman. In case of emergencies, please continue to call the hotline, 1-800-753-5308. To schedule an appointment with a worker in Hansford County, call 659-3391 to leave a message, or call the hotline number above. Panhandle Crisis Center serves victims of domestic violence and sexual assault. Call for more information regarding PCC's services. Hours for the Resale Store in Spearman are: Monday, Tuesday, Thursday & Friday from 10 a.m.-5 p.m.

**Project Graduation**  
The parents of the Spearman High School Senior Class of 2007 will sponsor and host a "Project Graduation Party" following commencement exercises Friday, May 25th. Graduates will be provided with food, games, activities, and fun! In addition, to encourage the graduates to stay the entire night, door prizes are awarded throughout the evening. The graduation party will culminate with the distribution of grand prizes. Prizes, gift certificates, and cash are needed for the evening's gifts. If you would like to make a donation, please contact Teresa Maestas, 659-1025, or Lynna Renner, 659-3587. Contributions can be mailed to: Teresa Maestas, PO Box 337, Spearman, TX. 79081.

**Tuesday Night Golf Scrambles**  
The Spearman Golf Course has begun their Tuesday Night Scrambles. Tee-time will be at 6 p.m. sharp. For more information, or to sign up, call 270-0157 or 659-2233.

**Gruver College Fund**  
The Gruver Lion's Club is in charge of the Gruver College Fund, which raises money for scholarships for Gruver graduates. The gifts are tax-deductible and no amount is turned away. The committee will try to contact every potential donor by phone, but some will be missed. So don't wait if you would like to make a contribution send your check today to: Gruver Lion's Club, PO Box 566, Gruver, TX 79040 or a committee member: Benny Wilson, Terry Sherrill, Kermit McKee or Bob Gillispie.

**Hansford County Library Spring Sale**  
Hansford County Library staff has begun to clean the store room and is eager to share its many valuable finds with the public. For an indefinite time, paperback grab bags and individual surplus hardback books will be on sale at the library. Grab bags, sorted into Romance, Fiction and Western categories, are on sale for \$5 each. Each grab bag contains approximately 20 books. Hardback books are priced at \$1 each.

**Hansford Hospice Community Golf Scramble**  
The Hansford Hospice Community Golf Scramble for Guys and Gals will be held on Saturday, June 2, 2007 (shotgun start 8:30 a.m. and 1:30 p.m.) at the Hansford Golf Club. The entry fee is \$30 per player, and includes green fees and lunch. This is a 2-person scramble. Players must be at least 18 with no high school eligibility left. Players furnish their own carts. PRIZES: Cash Payback - Hole -In-One Prize for Every Hole-In-One on #7 & #16. Bush Hot Estate Riding Mower Donated by Five Star Equipment. Lots of Door Prizes to Be Given Away! All Proceeds to Benefit Hansford Hospice. Call one of these numbers to register your team: Pat Sutterfield-659-3637 or Verna Lee Shirley 659-5345 or Hansford Hospice 659-5811.

**Hansford Hospice Raffle**  
Hansford Hospice Volunteers are selling raffle tickets for a Gas Cooker donated by B&B Sales. Co. & for a Traeger Cooker donated by Hansford Implement Company. The tickets are \$5.00 each and there will be two drawings. The first drawing will be for the Gas Cooker donated by B&B Sales. Co. and the second drawing will be for the Traeger Cooker donated by Hansford Implement Company. The drawings will take place at the Hansford Hospice Golf Tournament and you do not need to be present to win. If you would like to buy a raffle ticket, please contact any Hansford Hospice Volunteer or the Hansford Hospice Office at 659-5811. All funds raised will benefit our local Hansford Hospice program. (Reminder to Hospice Volunteers to pick up your raffle tickets at the Hospice Office and to bring all ticket stubs to the golf tournament for the drawing.)

## ON THE AGENDA

- Spearman Fire Department meets every Thursday at 7 p.m. at the Spearman Volunteer Fire Department.
- Gruver Fire Department meets the first, second and fourth Tuesday of each month.
- American Legion and Auxiliary Post 254 meets the first Monday of each month at 7 p.m. at the Senior Citizen Center in Perryton.
- Gruver Chamber of Commerce meets the first Tuesday of each month at 12 noon at the El Vaquero.
- Hansford County Commissioners Court meets the second and fourth Mondays at 10 a.m. at Hansford County Courthouse.
- Stationmaster's House Museum Board of Directors meets the second Monday at 2 p.m. at the Stationmaster's House Museum.
- Spearman ISD Board of Trustees meets the second Monday of each month at 7 p.m. in the Spearman High School Library.
- Hansford Hospice meets on the second Monday of each month at 7 p.m.
- Palo Duro River Authority meets on the second Tuesday of each month at 2 p.m. at the P.D.R.A. office.
- Genealogy Club meets on the second Tuesday of each month at 7 p.m. in the home of Velma Sanders, 1015 Linn Drive, in Spearman.
- Women's Division of the Spearman Chamber of Commerce Board of Directors meets the second Wednesday of each month at noon.
- Gruver City Commission meets the second Wednesday of each month at 5 p.m. in Gruver City Hall.
- Spearman Chamber of Commerce Board of Directors meets the second Thursday of each month at noon.
- Pringle-Morse CISD Board of Trustees meets the second Thursday of each month at 7 p.m.
- Spearman City Council meets the third Tuesday of each month at 7 a.m. in the City Hall Chambers at City Hall.
- Women's Division of the Spearman Chamber of Commerce meets the third Wednesday of each month at noon.
- Gruver ISD Board of Directors meets the fourth Tuesday of each month at 6 p.m. in the Board Room at Gruver High School.
- Hansford County Hospital District Board of Directors meets the fourth Wednesday of each month at 6:30 p.m. in the Board Room at Hansford Hospital.
- Hansford County Historical Commission Board of Directors meets the first Monday of January, April, July and October at 2 p.m. in the Zulu Museum building.

## Out at the Lake

by Dorothy Hudson  
Lake Level--May 21, 2007--20.48 feet (-0.26)

This is another Monday evening when there is rain on the Palo Duro Creek and Horse Creek watershed. I can't report amounts, but I can hope some of the showers are in amounts that will help.

This weekend the Dumas Church of Christ had 11 of the RV stations and also locations for some tents. They also used the shelter.

Although Jim didn't hear of any big fish being caught, he said that fish were being hooked. He and Ramon are both seeing bucks with 2 or 3 inch nubs for the start of the new antlers that the bucks are now growing. Jim has seen a turkey hen with one poult and suspects others have been hatched.

Those of you who know the Mississippi Kites will be glad to see them back in the Parks behind the dam. This gray bird with a white head and longish black tail is possibly the most graceful of the hawk family. Some places such as

golf courses and city areas have had troubles with kites becoming mean and diving at people who invade their territories, but I haven't heard any reports of campers at the Lake being bothered.

Another one of the birds to watch for is the scissortail. It may be found anywhere in the Park, but usually some are nesting near the entrance to the office. This bird belongs to the flycatcher family. As I wondered what they found to nest in at the entrance, I checked a bird book and found that they like to build a nest on a horizontal limb of a tree or the top of a telephone pole.

The Yucca are almost in full bloom. The flower stalks seem unusually long. Yellow flowers cover vast areas of the countryside, and it is fun to see the small beds of purple dot the prairie. Two of my favorites are found in the Park near the paved roads on the office side. The purple loco and the scurfy pea are more vibrant with color than usual.

You are invited to a **Bridal Shower** honoring **Kristi Carbajal** (bride-elect of David Valdez) on **Saturday, May 26, 2007** from **10:00-11:30 a.m.** in the **Church of Christ Fellowship Hall** 121 Haney St. Spearman

**Gordon's**  
Your place for **Bridal Registry**  
Couples Currently Registered

- Kristi Carbajal & David Valdez - 5/26
- Daniele Catron & Randy Duffy - 6/19
- Amy Boorigie & Doran Schoenhals - 6/23
- Charlotte Procter & Tim Bynum - 6/23
- Bethany Harris & Nick Pwterson - 6/30
- Laura Gomez & Richardo Plascencia - TBA
- Brooke Salmans & Michael Condry
- Jenni Beck & Josh Winegarner
- Staci Leonhard & Lee Jarvis
- Jesse & Brooke (Trantham) Allen
- Rowena May Apacible & Dustin Wade Parks
- Julie Gumfory & Gregory Sherrod
- Daniel & Wendy (Woolley) Jarvis
- Matt & Allison (Haney) Rodgers
- Janae Watley & Kyle Igo

**Baby Registry**  
Linzi McCubbin - 5/26  
Nekisha Whitefield - 6/10  
Schane & Brienne Schneider - 6/23  
Jennifer Ferel & Jeff Coates - 6/23  
Tye & Cortney Wombel - 6/30

**Gordon's** 659-2141  
314 Main Spearman

**Celebrate**  
Gifts for all your celebrations!  
**Bridal Registry**  
Shower Dates  
Kristi Carbajal & David Valdez - 5/26  
Daniele Catron & Randy Duffy - 6/19  
Jennifer Watts & Jay Tracy - 6/19  
Charlotte Procter & Tim Bynum - 6/23  
Amy Boorigie & Doran Schoenhals - 6/23  
Bethany Harris & Nicholas Peterson - 6/30  
Syd Woodington & Don Codding - 7/14  
Lynsee Williams & Ross Womble  
Rowena Apacible & Dustin Parks  
Jenni Beck & Josh Winegarner  
Mindee Gillaspie & Trampus Woodward  
Brooke Salmans & Michael Condry  
Janae Watley & Kyle Igo

**Baby Registry**  
Linzi McCubbin - 5/26  
Nekisha Whitefield - 6/10  
Brienne & Schane Schneider - 6/23  
Courtney & Tye Womble - 6/30  
Dana Sharp

**Celebrate**  
203 Main St. Spearman, TX  
(806) 659-3350 1-800-663-8026



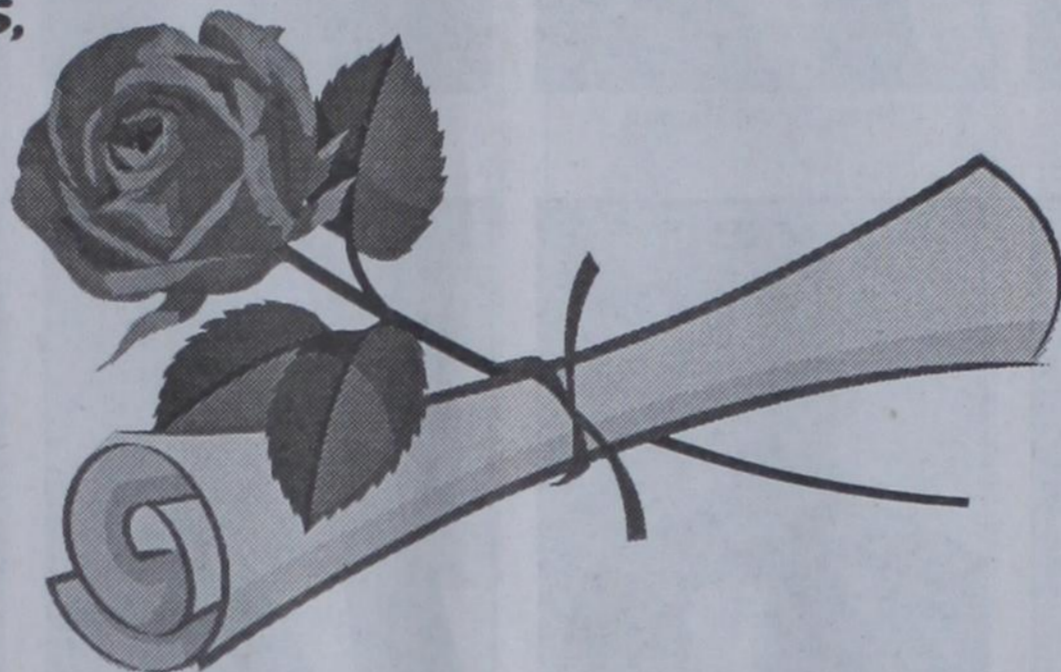
First National Bank • First State Bank • Gruver State Bank and  
The Hansford County Reporter-Statesman

Proudly Present

# Spearman & Gruver High School Graduating Class of 2007

## Please Join Us

With great happiness,  
we, the Graduating  
Class of 2007



invite you to  
join us on Friday,  
May 25, 2007

Spearman High School  
at 7:00 p.m.  
in the Spearman High School Auditorium

Gruver High School  
at 8:00 p.m.  
in the Gruver High School Auditorium



# SHS

# Senior Class of 2007



Luis Almanza



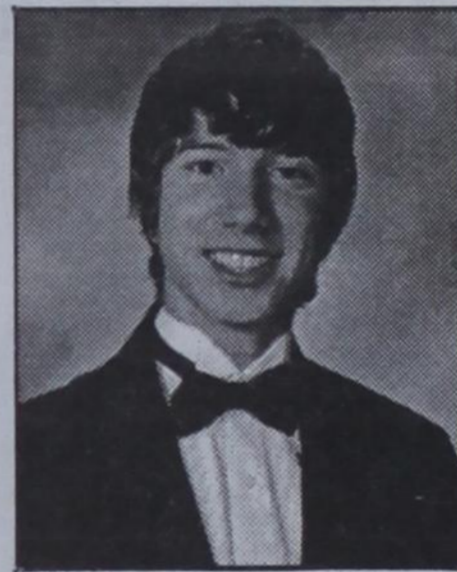
Gladis Atocha Arana



Karla Lizeth Baca



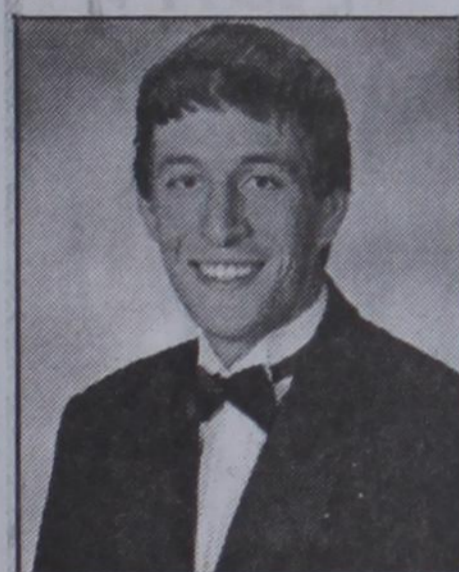
Sara Elizabeth Barnes



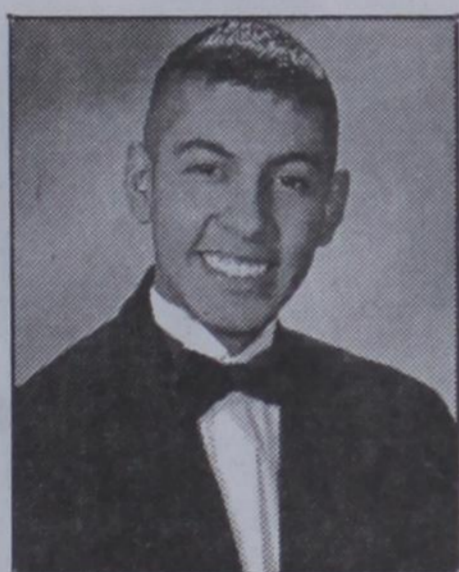
Casey Robert Cator



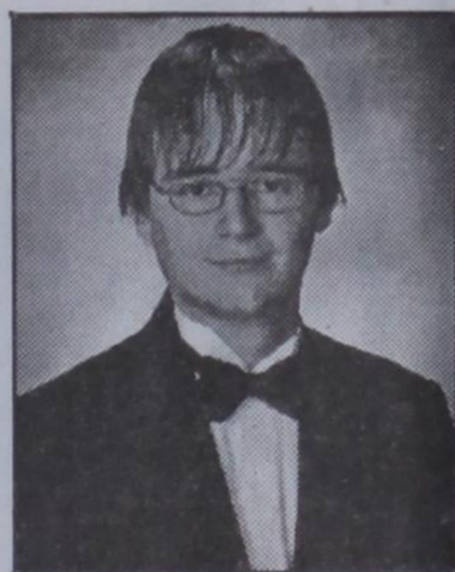
Callie Lee Cazares



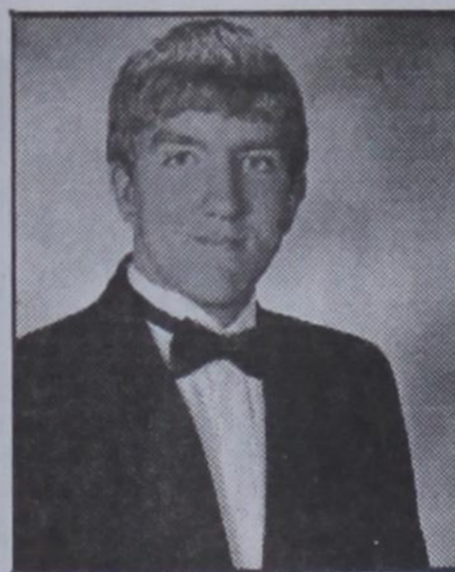
Nicholas Lackey Cenicerros



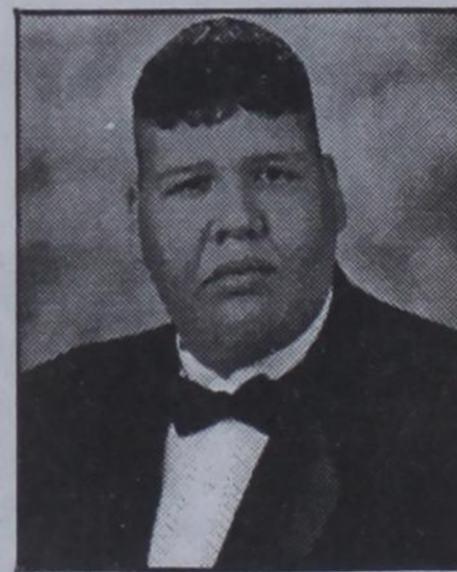
Eduardo Hernandez Chairez



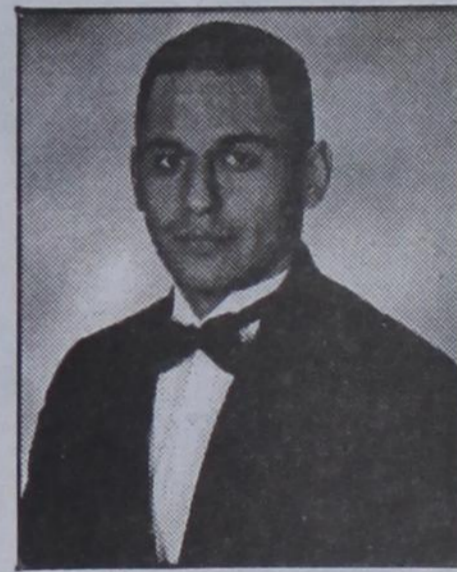
Brandon Scott Cogdill



John Forrest Desha



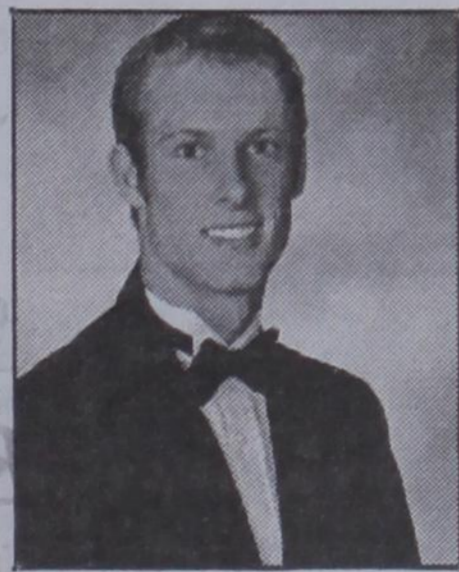
Gabriel Enriquez



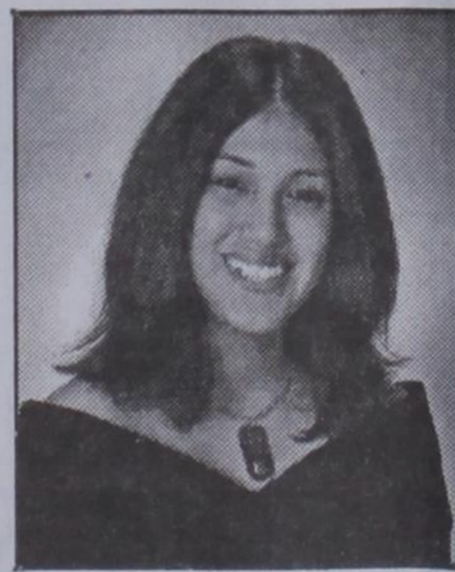
Roberto Flores



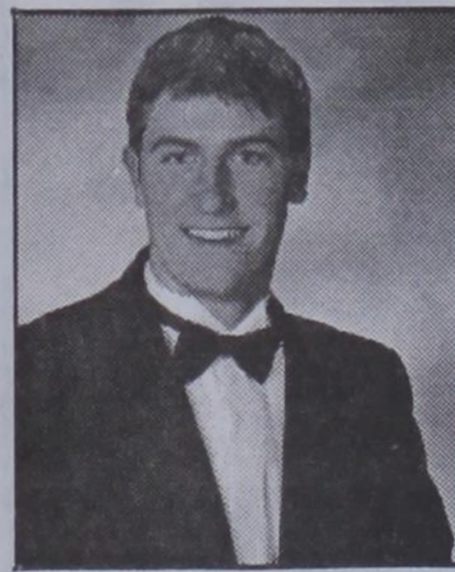
Saylee McCall Flowers



Jonathan Brynr Garnett



Cindy George



Collin Chase Gillaspie



Cara Niciole Gwin



Hannah Hope Haddock



Sharon Rose Haney



Trudy Kathleen Hart



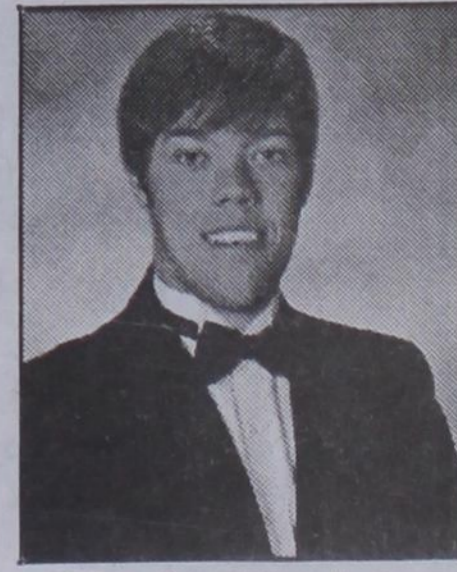
Cruz Hernandez



Karina Hernandez



Emily Dawn Hood



Lance Garrett Huddleston

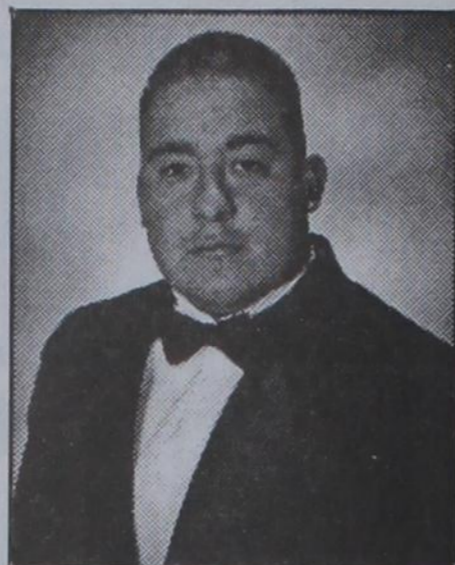




Christina Ann Hunter



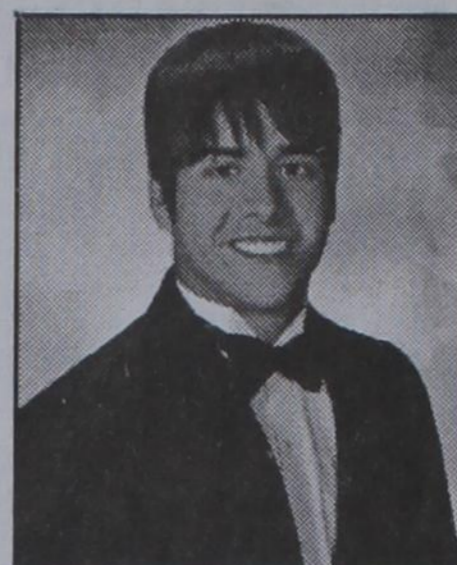
Jordanna Rachelle Lozano



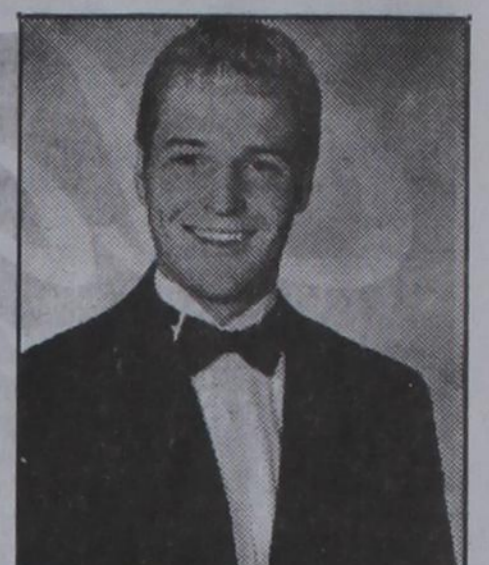
Julio Cesar Macias



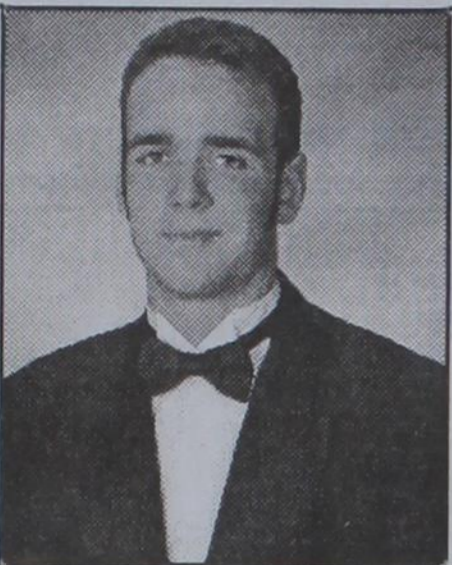
Wilhma Elizabeth Macias



Aaron Erik Maestas



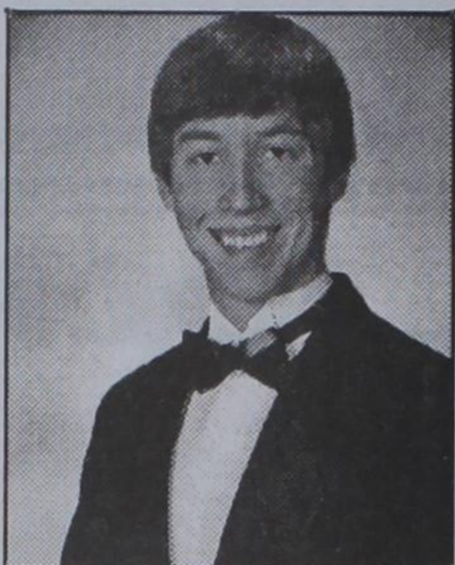
Stuart John Martin



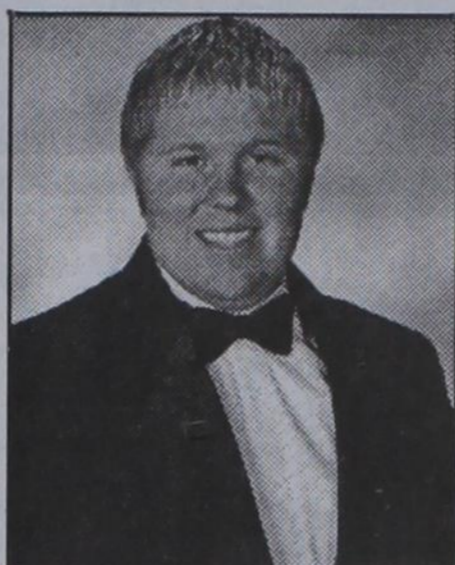
Zackery Jett Nollner



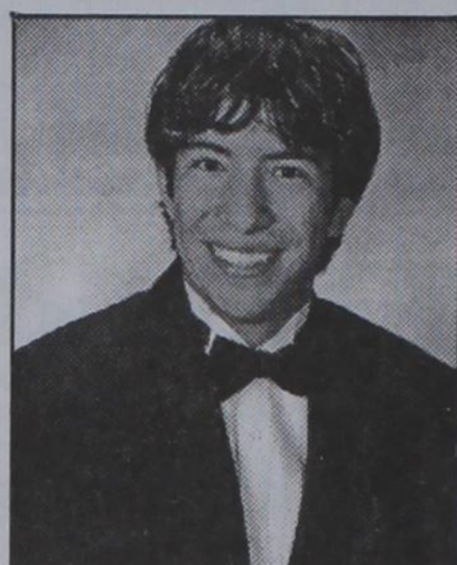
Mirna J. Ortiz



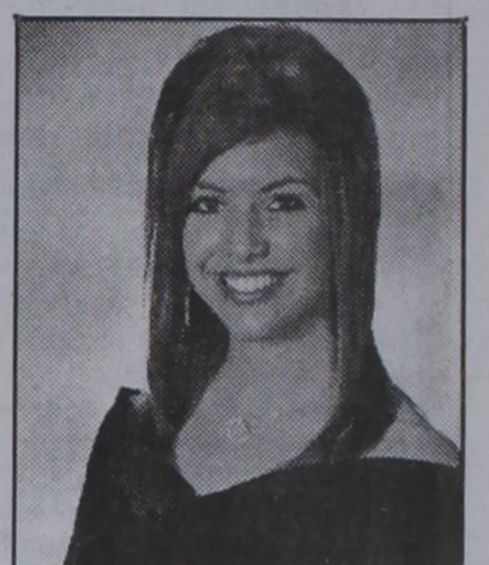
Ryan Tindle Ramon



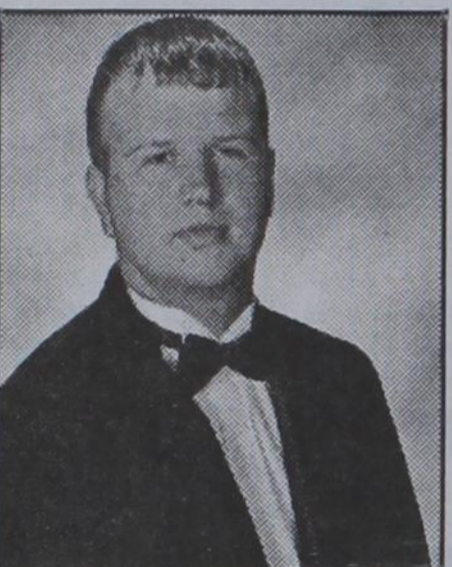
Rhett Reed Renner



Anthony L. Renteria



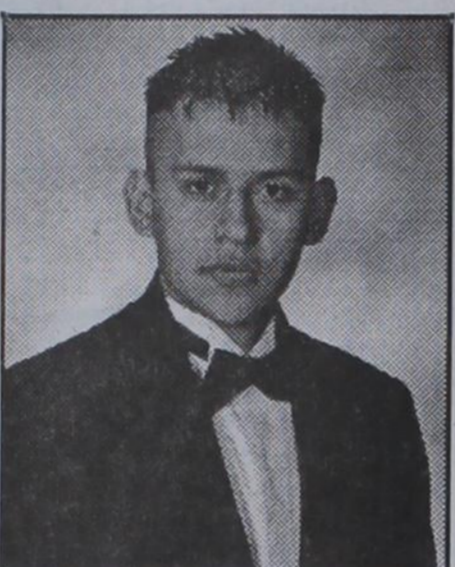
Kelcee Anne Rex



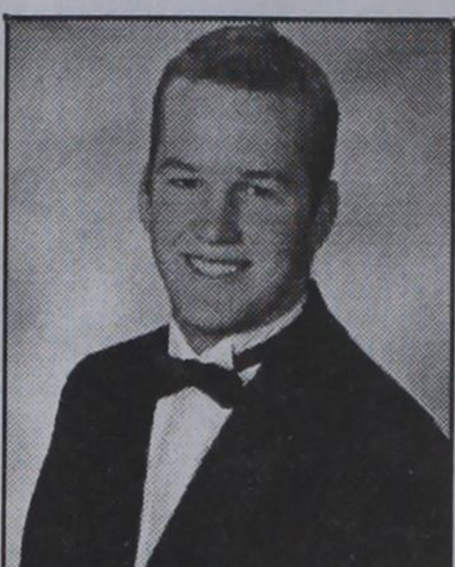
Driftn Ray Roberts



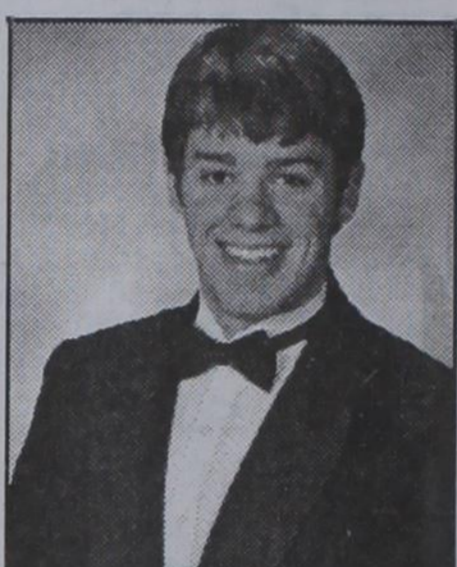
Noemi Lunan Rodriguez



Eduardo Jose-Antonio Soto



Keith Gilleland Sumner



Bryan Worth Thomas

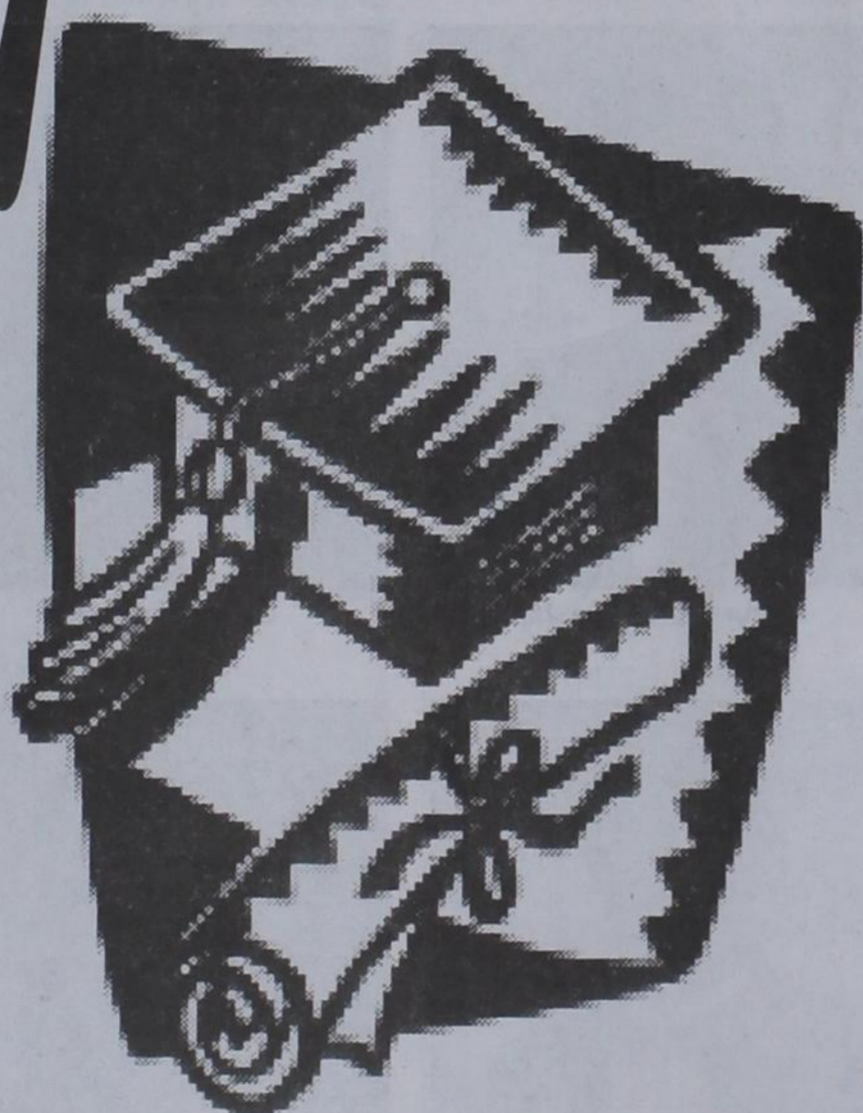
\* Honor Graduate  
 \*\*Historian  
 \*\*\*Salutatorian  
 \*\*\*\* Valedictorian  
 + Distinguished Achievement Program  
 Not pictured are Francisco Briseno, Britt Fleetwood and Trevor Tindell

# CONGRATULATIONS

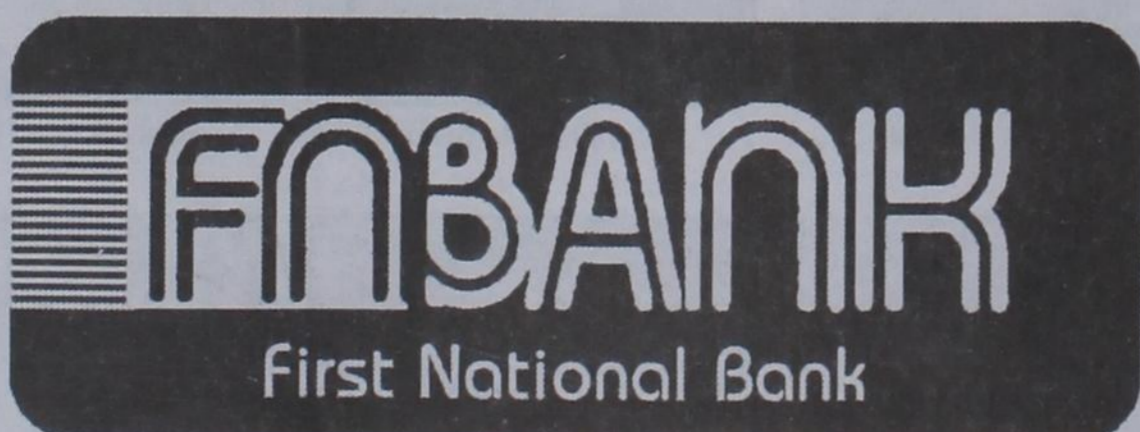
To The  
Class  
of

# SHS

# 2007



from



Spearman, Texas 79081    Dumas, Texas 79029  
 806-659-5544                806-934-8455  
 800-583-4196                866-583-4196  
 Member FDIC

# Congratulations, Graduates

# Class of 2007!

# FSB

## First State Bank

1 NE Court • (806) 659-5565 • Spearman, TX

Member FDIC

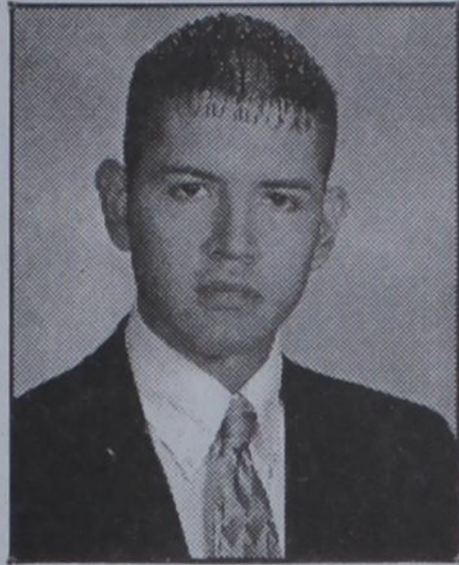


# Class of 2007

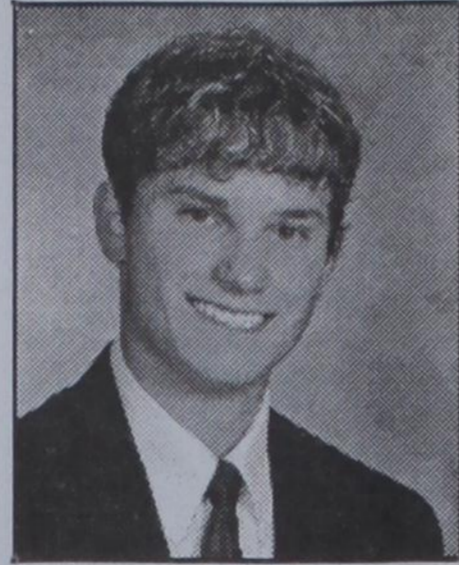
# GHS



\*Sydney Dyan Been+



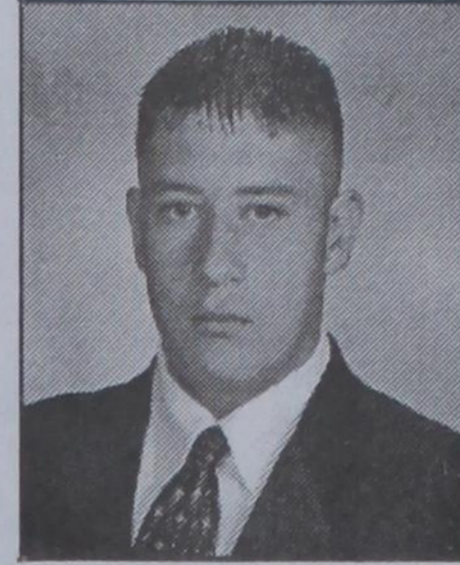
Jose (Pedro) Bonilla



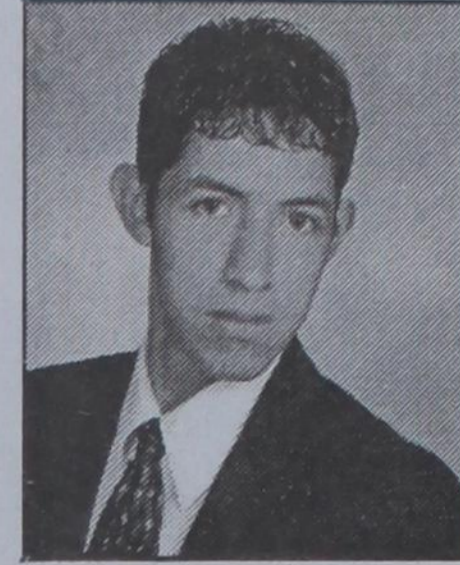
\*Conrad Scott Curry+



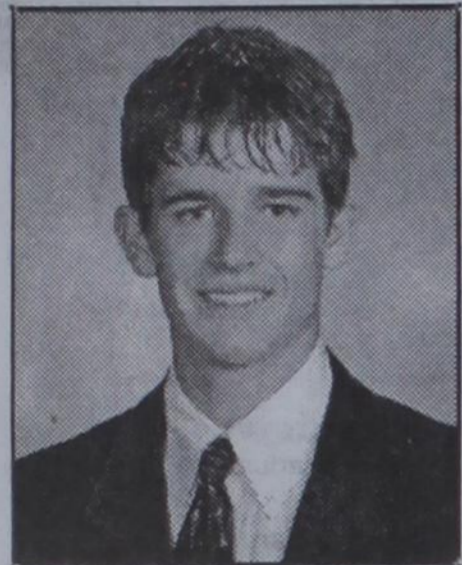
\*\*Bonnie Lynn Frick+



Baldomero Garcia



Roman Gaspar, Jr.



\*Drew Michael Grotegut+



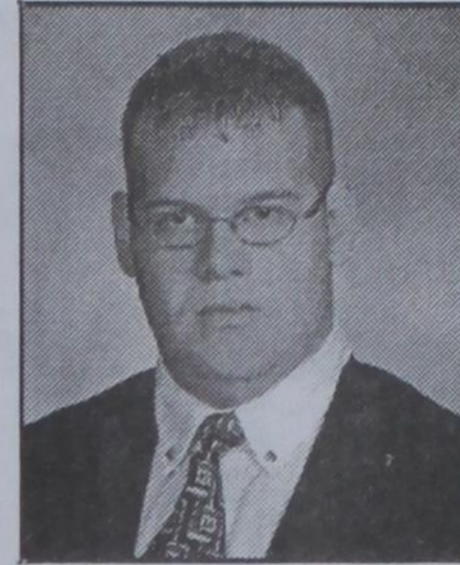
\*Genesis Hernandez+



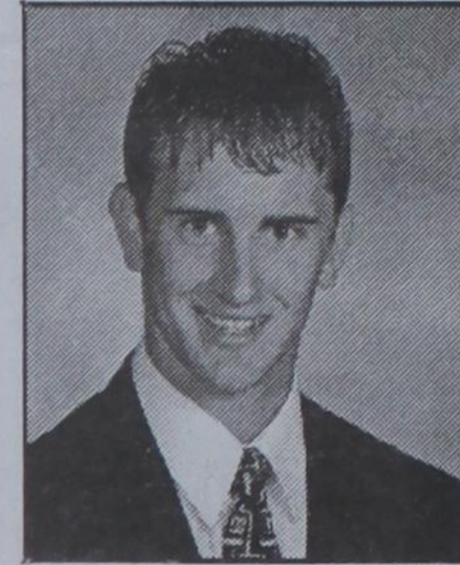
\*Graciela Hernandez



\*Mayra Azucena Hernandez+



Travis Wayne Hodge



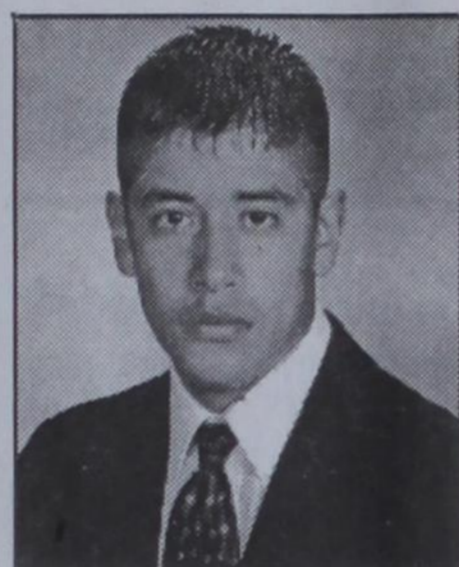
\*Brian Scott Johnson



Charlene Lopez



\*Gloria Lora



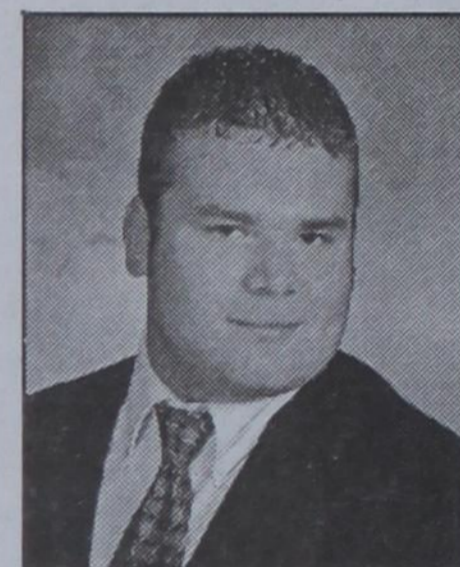
Diego Luciano



Ramona (Isela) Martinez

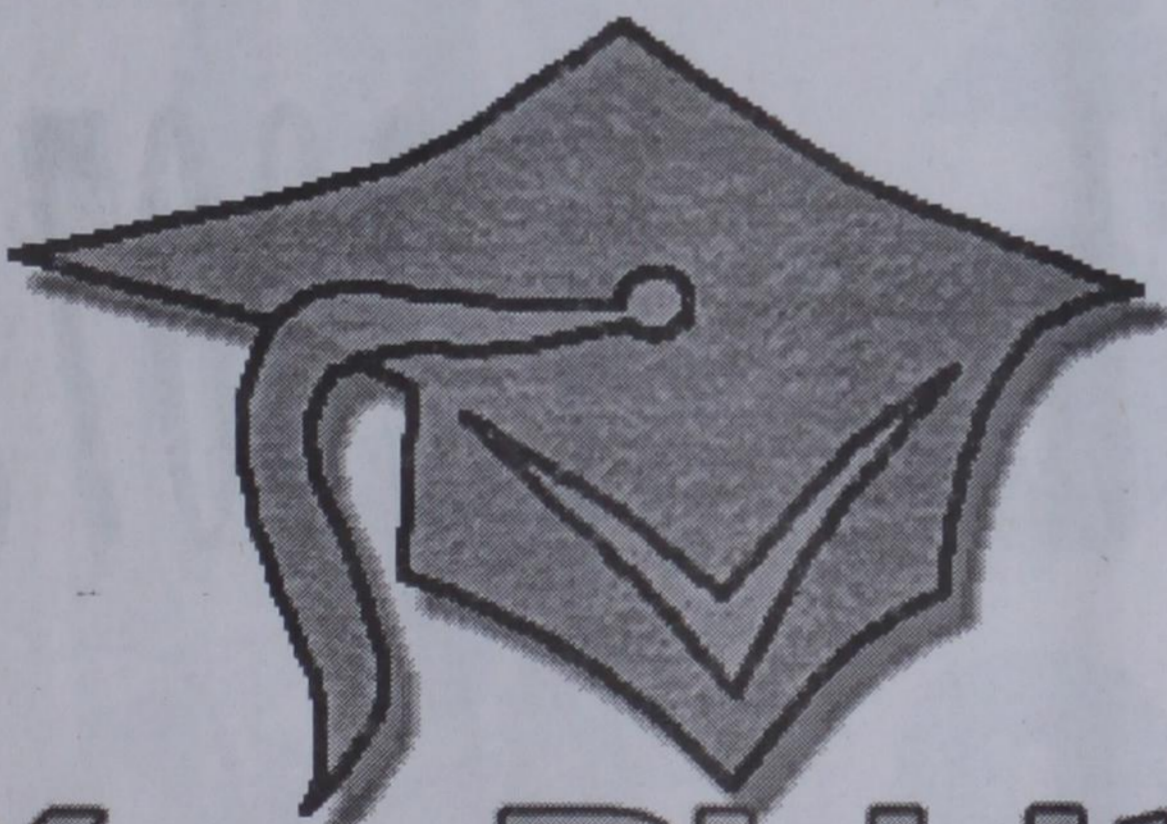


\*Jimmie Mae McCloy



Travis James McDowell+

## CONGRATULATIONS GRADUATES!



### You Did It!



## Gruver State Bank

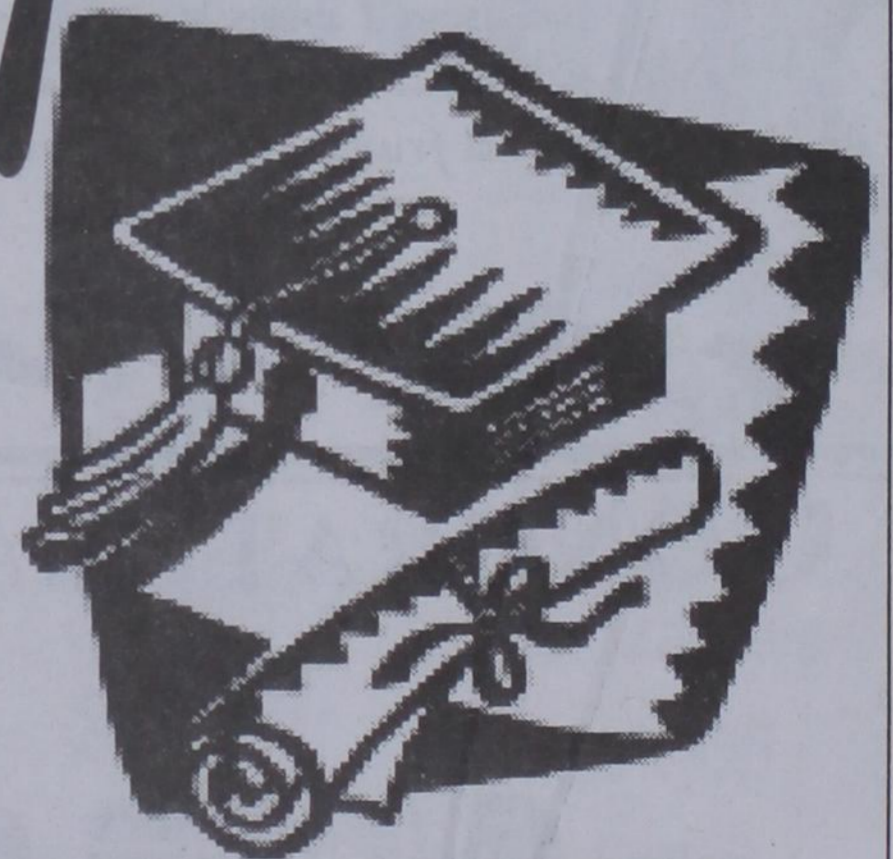
3 Main Plaza • (806) 733-5061 • Gruver, TX  
Member FDIC

## CONGRATULATIONS

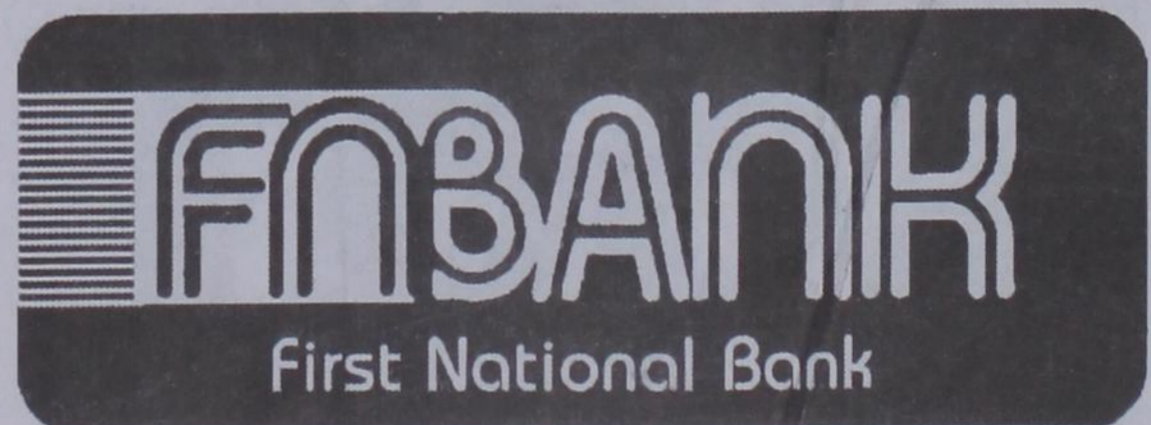
To The Class of

# GHS

# 2007



from

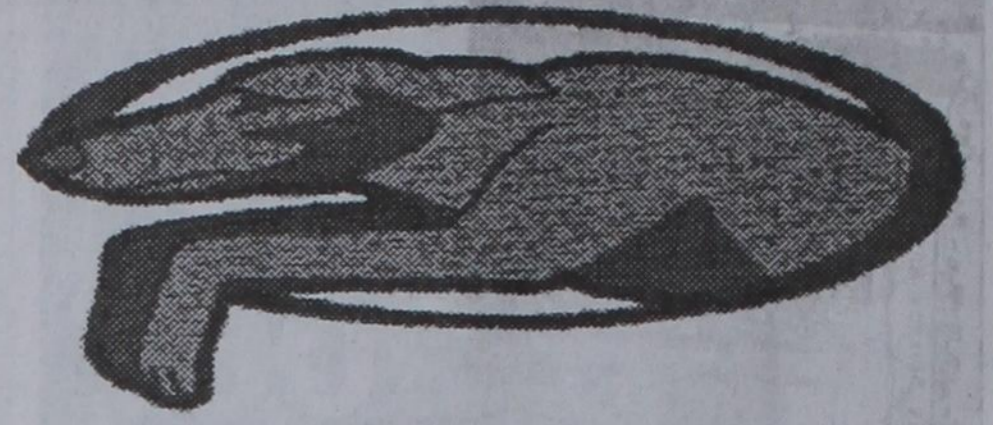


Spearman, Texas 79081    Dumas, Texas 79029  
806-659-5544    806-934-8455  
800-583-4196    866-583-4196  
Member FDIC



# Class of 2007

# GHS



\*Maria De Los Angeles Mendoza



Artemio Mundo



Beatriz Ortiz



Edna Patricia Pastrana



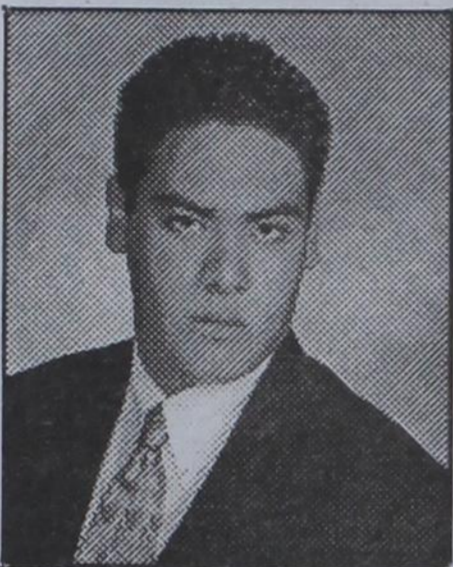
Mariah Patrisia Rodriguez+



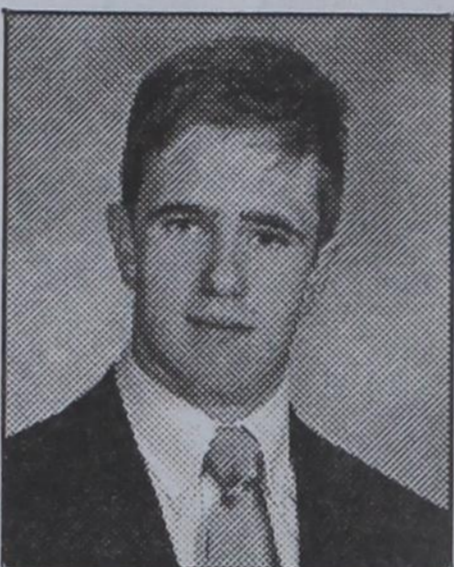
Codie Lynn Scoggin



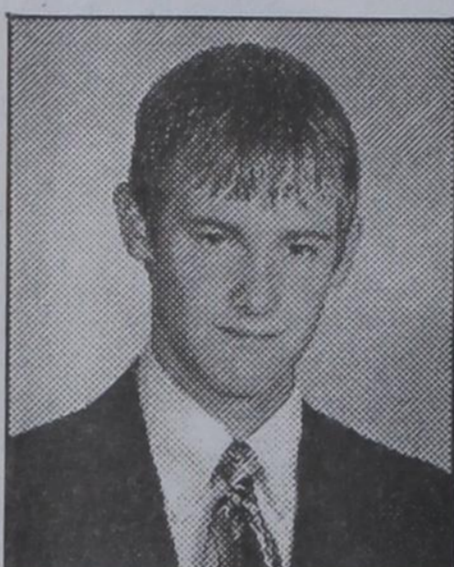
\*Charles Henry Slough



Jesus (Noe) Soto



\*\*\*\*Justin Owen Thompson+



\*Tucker Lynn Williams+

# 20 Class of 07



\*Mattie (Lauren) Urban+



\*\*\*Victoria Gwynn Vela+



Heriberto (Eddie) Villanueva

\* Honor Graduate  
\*\*Historian

\*\*\*Salutatorian  
\*\*\*\* Valedictorian

+ Distinguished Achievement Program

From the Class of 2007

We came to this place together to learn, to grow and to share. In growing, we have shared. In learning, we have found friendship. We continue to grow, to learn, and seek but for now we pause to celebrate. We do not fear the future, for we are the future because of what we have achieved and what we will achieve. Each of us has different talents, different dreams and different destinations, yet we all have the power to make a new tomorrow. We have our own ambitions and our own kind of dreams to pursue. With the help of many we are prepared to meet tomorrow's challenges. Time and space may separate us but wherever our pathways lead us, we'll always be the Class of 2007. We would like to thank our parents, administration, faculty and friends for the wonderful memories they have given us.

**Congratulations Graduates!**

*Class of 2007!*

**FSB**  
First State Bank

1 NE Court • (806) 659-5565 • Spearman, TX  
Member FDIC

**CONGRATULATIONS**  
to the  
**class of 2007**

from  
The Hansford County Reporter-Statesman  
213 Main Street • Spearman, Texas  
Phone: (806) 659-3434 • Fax: (806) 659-3368



# Holt Community Selling Historical Afghan

The Holt community was established in 1899 when Ben Holt settled in a dugout on land about 15 miles south of the present city of Spearman. The next year, John McQuatty Archer built a house just a few miles north of the Holt dugout.

The Holt Community Extension Club decided that there was enough history in this area that they could commission an afghan to be woven by the Riddle company in North Carolina. The company was very helpful in their guidance and sent pictures of afghans that they had manufactured. None of the exam-

ples seemed to fit the situation so the club determined to design their own. Everyone in the community was urged to attend the planning meetings and make suggestions. This planning went on for almost a year.

Everyone agreed that the Holt school house should be featured because it figured prominently in community gatherings. Other points of interest were a hand dug well; a dugout; one of the first houses built; the Jeffry Post Office (the spelling is correct); historical markers in the vicinity and the names of the first settlers. The first

design was sent to the Riddle company who wove one afghan and sent it to the club for approval. Several design changes were made before an order was placed in the fall of 1996.

Club members were hesitant to commit themselves for the minimum order of 75 because no one was sure of the community interest. They reasoned, however, that with a membership of 20 everyone could buy at least 2 and they could at least get their money back.

To their surprise and delight, the first shipment sold immediately and another order was placed.

Before the market was saturated, almost 400 afghans had been sold.

The profit from the sale of the afghans enabled the Club to establish a scholarship fund to be used for deserving Spearman seniors. To date, ten \$500.00 scholarships have been given.

The Riddle company recently notified the Club that the original design was still available and a minimum order of 32 would be accepted if it was turned in before June 30th. Cost per unit is \$35.00 and orders may be turned in to Jan Holt, Ruth Ann Jones or any member of the Club.



MITCHELL THEATRES  
NORTHEDGE CINEMA 8  
Guymon, Oklahoma

Movies beginning 5/25

ON TWO SCREENS  
PIRATES: AT WORLD'S END  
PG-13 - Johnny Depp  
THURSDAY SHOW @ 8 P.M.

SHREK THE THIRD  
PG - Animated

THE INVISIBLE  
PG-13 - Marcia Gay Harden

DELTA FORCE  
PG-13 - Larry the Cable Guy

GEORGIA RULE  
R - Lindsay Lohan, Jane Fonda

SPIDERMAN 3  
PG-13 - Tobey Maguire, Kirsten Dunst

FRESH POPCORN EVERYDAY!  
-PARTY ROOM & ARCADE-

Call for Showtimes  
580-338-3281  
www.northridge8.com  
Office -- 580-338-8969  
CASH & CREDIT CARDS ONLY  
THANK YOU!

## MAY 2007

### PRINGLE-MORSE CISD EVENTS -

- 24 - Early out at noon; parent conferences in afternoon
- 25 - Texas Day in the morning; School dismisses at 12 noon; Last day of school

### SPEARMAN ISD EVENTS

- 24 - Final Exams, HS 1B, 2B, 3B; Last Day of School, All Campuses; JH Graduation, HS Auditorium, 6:30 p.m.
- 25 - Graduation Practice, HS Auditorium, 10 a.m.; Pizza Lunch for Seniors, Church of Christ, Noon; HS Graduation, HS Auditorium, 7 p.m.; Project Graduation, HS Cafeteria, 10 p.m.-5 a.m.

### GRUVER ISD EVENTS

- 24 - 1/2 Day of School, 8 a.m.-12:30 p.m.; HS 5th Hour Final, 8:15-10 a.m.; HS 8th Hour Final, 10:05-11:55 a.m.
- 25 - 1/2 Day of School, 8 a.m.-12:30 p.m.
- 26 - Teacher Work Day
- 28 - Memorial Day; Band Event

# Congratulations, You Did It!

# SHS 2007

# GHS 7

## Interstate Bank, ssb

A Full Service Bank - FDIC Insured  
322 Main Street • Spearman, TX 79081  
Phone - (806) 659-2559 • Fax - (806) 659-3276

## A Time To Celebrate

### SHS Class of '07

Luis Almanza	Jonathan Bryn Garnett	Aaron Erik Maestas
Gladis Atocha Arana	Cindy George	Stuart John Martin
Karla Lizeth Baca	Collin Chase Gillaspie	Zackery Jett Nollner
Sara Elizabeth Barnes	Cara Nicole Gwin	Mirna J. Ortiz
Casey Robert Cator	Hannah Hope Haddock	Ryan Tindle Ramon
Callie Lee Cazares	Sharon Rose Haney	Rhett Reed Renner
Nicholas Lackey Ceniceris	Trudy Kathleen Hart	Anthony L. Renteria
Eduardo Hernandez Chairez	Cruz Hernandez	Kelcee Anne Rex
Brandon Scott Cogdill	Karina Hernandez	Drifin Ray Roberts
John Forrest Desha	Emily Dawn Hood	Noel Lunan Rodriguez
Gabriel Enriquez	Lance Garrett Huddleston	Eduardo Jose-Antonio Soto
James Britt Fleetwood	Christina Ann Hunter	Keith Gilleland Sumner
Roberto Flores	Jordanna Rachelle Lozano	Bryan Worth Thomas
Saylee McCall Flowers	Julio Cesar Macias	Trevor Lee Tindell
	Wilhma Elizabeth Macias	

### GHS Class of '07

Sydney Been	Travis Hodge	Edna Pastrana
Jose (Pedro) Bonilla	Brian Johnson	Mariah Rodriguez
Conrad Curry	Charlene Lopez	Codie Scoggin
Bonnie Frick	Gloria Lora	Charles Slough
Baldomero Garcia	Diego Luciano	Jesus (Noe) Soto
Roman Gaspar, JR.	Ramona (Isela) Martinez	Justin Thompson
Drew Grotegut	Jimmilee McCloy	Mattie (Lauren) Urban
Genesis Hernandez	Travis McDowell	Victoria Vela
Graciela Hernandez	Maria Mendoza	Heriberto (Eddie) Villanueva
Mayra Hernandez	Artemio Mundo	Tucker Williams
	Beatriz Ortiz	

The Seniors have made their gift selections - now it's your turn to help make their wishes come true.

## Celebrate

Gifts for all your celebrations!  
(806) 659-3350 • 203 Main St. • Spearman, TX • 1-800-663-8026

# MAY SPECIALS

Buy One Yankee Candle at regular price and Buy 2nd Candle at 50% Off!

Spring Wreaths 25% Off

*Offers good May 1-31, 2007*

Spend \$75 or more on gifts and receive 25% Off Entire Purchase!

Where gift-giving is effortless & FUN!

## Gordon's DRUG

314 Main Spearman 806-659-2141





# 10 Years of Summer Fun!

## Spearman ISD Kids Kamp 2007

**May 29-June 1:** Spearman Lynx Basketball Camp - Lynx basketball coach Junior Ashmore will host Lynx basketball camp for boys of all ages. The camp will stress fundamentals of basketball and how to use the fundamentals in all different situations of the game. Price includes a basketball, 9 a.m.-Noon for all ages, Varsity Gym, \$50

**June 4-7:** LYNXETTE Basketball Camp - For grades 2-9 will teach fundamentals of basketball that include shooting, passing, and ball handling along with TEAMWORK. Sponsored by Coach Nan Cook and staff. T-shirts will be included in the fee. Camp will be held at Varsity Gym. Session I-grades 2 to 6, 9 a.m. - Noon, \$50; Session II-grades 7-9, 1-4 p.m., \$50

**June 5:** Sail Away With Books - Hansford County Library summer reading program. Note there is one time for all ages Age 5 to Grade 2, 10-11 a.m., no charge

**June 12:** Swim Into Reading - Hansford County Library summer reading program. Age 5 to Grade 2, 10-11 a.m., no charge

**June 13:** Meteorology Camp! - This camp for children 8-12 yrs. Is an exciting introduction to the world of weather. During this camp, students will explore the how and why of weather systems, learn about different types of storms, and even how to create their own basic forecast. Steve Kersch, K VIII meteorologist will present this camp, 9 a.m. - Noon, Spearman High School Cafeteria, \$10

**June 14:** Grandma and Me In The Kitchen - Come spend the morning cooking with your Grandmother making special treats. This camp is for boys/girls grades 3-6. Early registration required, 10-11:30 a.m., Spearman High School, \$15

**June 19:** Fly Into Reading - Hansford County Library summer reading program. One session for all ages. Age 5 to Grade 2, 10-11 a.m., no charge

**June 19:** So Sew! - This easy, step-by-step sewing class is designed for students in grades 4-8. Instructors Peggy Winegarner and Karen Babitzke will supervise two projects that will be completed in this two-day camp. Early registration is required for this camp. 9:30 a.m. - Noon, Spearman High School, \$10

**June 25:** Beginning Junior Golf - Students will be taught grip, stance, swing and the rules and etiquette of the game of golf. Get an early start on a hobby that can last a lifetime. Don Schreder, Mikal Williamson and Travis Wolf will instruct boys and girls in grades 4-9. Golfers are to bring a sack lunch, 9 a.m. - 2:30 p.m., Hansford County Golf Course, \$20

**June 26:** Sail Into Reading - Hansford County Library summer reading program Age 5 to Grade 2, 10-11 a.m., no charge

**June 27:** Breakfast With The Arts Tea Party - This breakfast is for girls and their moms (grandmothers, aunts or that special lady in their life). "Celebrity Cooks" will serve breakfast to them and they will enjoy a project with high school art instructor JoJene Clement. This camp is limited to the first 12 who register. The camp will be held in the home of Judy Nelson, Nelson Addition, Gruver Hwy. It is for ages 4-8, 9:30-11:00. The cost is \$25.

**July 2:** Lyric Matinee will begin at 10:30am. The movie will be an age appropriate movie for \$6. This included admission, coke and popcorn for grades K-5.

**July 10:** Money Smart For Kids - This fun camp will introduce children to the way money works and how to manage money wisely. Students will learn principals of money management and begin to develop good financial habits for life. They'll learn about why saving is important and how interest works. Instructors will be First State Bank of Spearman employees. Grades 4-8, 10-11:30 a.m., Spearman High School, \$5

**July 11 & 12 - Jr. EMT -** this camp is sponsored by Spearman EMS. Justin Boyd and other EMTs will instruct students in grades 2-5 on basic first aid and emergency procedures. A great class for kids who are "home-alone", 9:30-11: a.m., Spearman Ambulance Station \$5.00

**July 16-17:** It's Tool Time For Mom and Son(s) - Boys along with their Mom will rule in this construction camp. Contractor Chad Knowlton will supervise the boys to learn the basics of tool time. A hands-on project will be completed to take home. The second day of this camp, Gina Gillispie will instruct the students in painting their project at Zulu Art Academy. Completed grades 1-5, Spearman High School/Zulu Art Academy, 10-11:30 a.m., \$25 (supplies included)

**July 19:** Puppy Kindergarten - for puppies 4 months and up to 12 months. Give your puppy a good start by teaching the basic commands to make your puppy feel like a useful member of the family. Audra Thomas, owner of The Mut Hut, will instruct kids how to care for their puppies. Dogs must be on a non-retractable leash, 10-11:30 a.m., Spearman High School, \$5.00

**July 23-25:** Art Camp - A fun and exciting introduction to drawing, painting, and use of color with the use of various art materials. Will give students the opportunity to use their natural imagination in new and creative ways while learning some basics about art. Students may also learn how to "see" in new ways. Camp taught by JoJene Clement who has been teaching art in G/T programs for several summers and is now the Spearman High School art teacher. Registration is limited. Grades 4 & 5, Spearman High School, 9-11 a.m., \$40

**August 1-3:** LYNX Football Camp is for incoming 4-9th graders. This 3-day camp focuses on the fundamentals of football. The camp is sponsored by Coach/A.D. Ritchie Thornton and the Lynx coaching staff and will be held at the Lynx Stadium practice field. Early registration is required for t-shirts. The cost of camp is \$15. Grades 4-6, 9-10 a.m.; Grades 7-9, 11 a.m.-1 p.m.

**August 1-3:** We've Got Spirit... Yes We Do! Spearman High School Cheerleaders Cheer Camp. Registration is the first day of camp at 8:30am, Spearman High School Cafeteria. The other two days camp will start at 9:00am. \$10 per day or \$25 for all three days

**August 21:** Lyric Matinee will start at 10:30am. The movie will be age appropriate for grades K-5. The price is \$6 and includes admission, coke and popcorn.

# Local Students Receive Cargill Scholarship

Cargill is proud to support the potential of young people in our community. Cargill contributes more than \$36 million each year to civic and charitable organizations in the Cargill community. Ryan is the son of Kristi and Tindie Ramon of Spearman. Zack Noller is the son of Jennifer and Kyle Noller of Spearman. Rhet is the son of Lynna and Phillip Renner of Spearman High School.

Each year, the Cargill Community Scholarship Program awards \$1,000 scholarships to 350 students living in communities nationwide where Cargill has a business presence. Students are selected based on academic achievement and leadership in extra-curricular and civic activities. The National FFA Organization administers the program on behalf of Cargill. "We are pleased to recognize First with a Cargill Community Scholarship," said Sales CSR, Martina Miller in Spearman. "Cargill has a long-standing commitment to education, and our

**INSURANCE**  
AUTO • HOME • CROP HALL • FARM & RANCH • MULTIPLE RISK LIFESTOCK  
See us for:  
BORT AGENCY, INC.  
510 Main St. • Gruver, TX  
(806) 733-2456

He had good intentions. He switched services from PTCI when he got the job at...the other place.



One dark night in the Panhandle, a detective takes a walk. The thought of it... the betrayal. He confided it all in me. Like a fool. I listened.



He left me with only one choice. Quality and dependability that can't even be beat by employee rates! But he gave it all up, even the employee discounts. The service his company offered just was not enough! So he went back to PTCI.

**PTCI**  
Bringing your world... home.  
www.ptcinet.com

**TRY IT TODAY! 30-DAY SATISFACTION GUARANTEE!**  
VERY VERY FAST LANE  
SIGN UP TODAY!  
HIGH-SPEED BROADBAND \$19.95 PER MONTH WITH QUALIFYING SERVICES  
GET ONLINE FAST WITH HIGH-SPEED INTERNET!  
ASK US ABOUT \$5 FREE MODEM (AFTER REBATE / WITH AGREEMENT)  
CALL, ORDER ONLINE OR VISIT A STORE NEAR YOU  
1.877.312.WIND | WINDSTREAM.COM/BUYNOW  
Windstream  
Grow places  
DIGITAL TV  
BROADBAND  
PHONE  
LIFE LINE IS YOUR SAFE • SECURE RELIABLE

limited-time offer. Subject to availability. Satisfaction guarantee: If customer cancels within the first 30 days, first month fee will be refunded and cancellation fee will be waived. Modern equipment must be returned upon termination. Shipping and handling fees are non-refundable. Pricing: Price good only for Broadband and that Broadband service will be uninterrupted or error-free. Free Modem: Available after 495 instant credit. 550 mail-in rebate and 1-year Broadband agreement. A 99 shipping and handling fee applies. Additional information: Taxes, fees and other charges, including Universal Service Fund, apply. Credit approval required and pre-payment may be required. Activation fee may apply. If any required bundle component is disconnected, all remaining components convert to pay-as-you-go service. Other restrictions may apply. Offers are subject to the Windstream Terms and Conditions available at any Windstream store or at windstream.com. Contact a Windstream representative for details.



# Congratulations Grads!

## Hansford County Graduates!

From these Hansford County Businesses:

<p><b>First National Bank</b> Spearman • 659-5544 member FDIC</p>	<p><b>Gruver Dairy Queen</b> Gruver • 733-2913</p>	<p><b>Celebrate</b> Spearman • 659-3350</p>	<p><b>Prairie Garden Flowers</b> Spearman • 659-2212</p>	<p><b>Hansford Abstract Co.</b> Spearman • 659-2516</p>
<p><b>Palo Duro Supper Club</b> Spearman • 659-2232</p>	<p><b>Mark Sheets Truck, Inc.</b> Spearman • 659-2773</p>	<p><b>Hansford County Farm Bureau - Bob Gillispie</b> Spearman • 659-3133</p>	<p><b>Interstate Bank, ssb</b> Spearman • 659-2559</p>	<p><b>Britt &amp; Linda Jarvis</b> Spearman</p>
<p><b>H&amp;H Water Well</b> Spearman • 659-5577</p>	<p><b>Spearman Equity</b> Spearman • 659-2420</p>	<p><b>Gruver State Bank</b> Gruver • 733-5061</p>	<p><b>Sparks Brothers Spraying, Inc.</b> Gruver • 733-2972</p>	<p><b>Little Tiffanies</b> Gruver • 733-5290</p>
<p><b>Lowe's Marketplace</b> Spearman • 659-2522</p>	<p><b>Spearman Dairy Queen</b> Spearman • 659-3324</p>	<p><b>Schneider Welding Service</b> Spearman • 659-3811</p>	<p><b>Rocking F Boot &amp; Saddle Shop</b> Spearman • 659-3342</p>	<p><b>J&amp;S Signs &amp; Engraving</b> Spearman • 736-7020</p>
<p><b>Frontier Feedyard</b> Spearman • 882-4251</p>	<p><b>Berry Cleaners</b> Spearman • 659-3122</p>	<p><b>Morse Implement</b> Morse • 733-2668</p>	<p><b>Gordon's Drug</b> Spearman • 659-2141</p>	<p><b>Barb's Beauty Salon</b> Spearman • 659-2813</p>
<p><b>El Vaquero Restaurant</b> Gruver • 733-2407</p>	<p><b>Hansford Implement Co.</b> Spearman • 659-2568</p>	<p><b>John L. Hutchison, Atty.</b> Spearman • 659-3703</p>	<p><b>Bartlett's Ace Hardware</b> Gruver • 733-2404</p>	<p><b>Hansford County Feeders</b> Gruver • 733-5025</p>
<p><b>Simple Simon's • Anita's Video Madness</b> 659-9991 • 659-5046</p>	<p><b>Farm Supply, Inc.</b> Gruver • 733-2427</p>	<p><b>Boxwell Brothers</b> Spearman • 659-3802</p>	<p><b>Gruver Cablevision</b> Gruver • 733-5295</p>	<p><b>Prairie Motors</b> Spearman • 659-2541</p>
<p><b>Spearman Chamber of Commerce</b> Spearman • 659-5555</p>	<p><b>Farm Supply &amp; Service</b> Spearman • 659-5519</p>	<p><b>Golden Spread Sales Co.</b> Spearman • 659-3776</p>	<p><b>Pizza Hut</b> Spearman • 659-2547</p>	<p><b>CJ's Pizza</b> Gruver • 733-2313</p>
<p><b>Golden Spread Carpet</b> Spearman • 659-3068</p>	<p><b>Watley Seed Co.</b> Spearman • 659-3838</p>	<p><b>Cargill Inc.</b> Spearman • 659-3554</p>	<p><b>The Grocery Store</b> Gruver • 733-2471</p>	<p><b>Dr. James Pinkerton, DDS</b> Spearman • 659-3315</p>
<p><b>Panhandle Water Well</b> 659-2686 • 806-662-3894</p>	<p><b>Speartex Grain Co.</b> Spearman • 659-3711</p>	<p><b>Bort Agency</b> Gruver • 733-2456</p>	<p><b>Hansford County Vet Clinic</b> Spearman • 659-2100</p>	<p><b>Main Street Barber</b> Spearman • 659-2280</p>
<p><b>Gigot Agra Products Inc.</b> Spearman • 659-3121</p>	<p><b>Cates Men &amp; Boys</b> Spearman • 659-3426</p>	<p><b>Five Star Equipment</b> Spearman • 659-3743</p>	<p><b>Sunray Co-Op Gruver Branch</b> Gruver • 733-2481</p>	<p><b>Gruver Ford</b> Gruver • 733-2431</p>
<p><b>Hansford County Pharmacy</b> Spearman • 659-2226</p>	<p><b>Rod Sumner</b> Spearman ISD Superintendent</p>	<p><b>Hungry Cowboy</b> Spearman • 659-5151</p>	<p><b>Panhandle Diner &amp; Deli</b> Spearman • 659-3864</p>	<p><b>Hansford County Reporter-Statesman</b> Spearman • 659-3434</p>
<p><b>Sergio's Body Shop</b> Spearman • 659-5217</p>	<p><b>MurMur's Cafe</b> Spearman • 659-3580</p>	<p><b>Hi-Plains Auto</b> Spearman • 659-2506</p>	<p><b>Lyric Cinema</b> Spearman • 659-2812</p>	<p><b>Congratulations, Tucker Williams!</b> Thank you for the wonderful 18 years you have shared with us! Dad, Mom and Taylor</p>
<p><b>Transpetco I</b> Spearman • 659-2596</p>	<p><b>First State Bank</b> Spearman • 659-5565 member FDIC</p>	<p><b>Junior Lusby Cats</b> Spearman • 659-3766</p>	<p><b>Linda &amp; Buck Tidwell</b> Congratulations!</p>	
	<p><b>All Occasion Flowers</b> Spearman • 659-5180</p>	<p><b>Dreamers</b> Spearman • 659-9907</p>		



# WALLS PRE-INVENTORY SALE

CARPET WAREHOUSE

ELK CITY OK - SHAWNEE OK - STILLWATER OK - PERRYTON TX

**KRYLON H2O SPRAY PAINT**

- 6 Colors to choose from
- Soap & Water Clean up
- Low Odor
- Indoor or Outdoor use
- Use on Wood, Metal Wicker & More
- Fast Dry Durable Finish

WE MAY ONLY SELL THIS ITEM TO PERSON OVER 18 YEARS OLD

**LIMIT 6**

OUR REGULAR **99¢** **67¢**

**WHITES & OFF-WHITES GALLON PAINT**

FAMOUS BRANDS - WE JUST CAN'T SAY THE NAMES

Your Old House or Windmill will look like a Home Improvement Diva just visited. We have several different tints of Off-White and Whites. If they still had the Famous Names on the cans you could pay as much as \$32.00 per gallon. Save up to 75%

FIRST QUALITY GALLON PAINTS

**\$4.97**

**100' FOOT MEDIUM DUTY GARDEN HOSE**

A chain of Home Improvement Stores decided to close some stores that weren't showing a profit. These hoses had been selected before the decision was made and the wholesaler got stuck with them. Other stores have 1 1/2" hoses for as low as \$16.00, but we don't think you will find a 5/8" hose for less than \$20.00 anywhere in town. Reinforced Rubber Vinyl Construction will last for years and not get brittle under intense heat or cold. So get a better hose for less at Walls Carpet Warehouse.

**swan**

5/8" INNER DIAMETER  
ALL-WEATHER  
REINFORCED RUBBER VINYL  
KINK RESISTANT  
SOLID BRASS COUPLINGS  
KNIT REINFORCING & ABRASION-RESISTANT  
PROTECTIVE COLLAR

**\$10.88**

LIMIT 2

**QUICKSET TRADITIONAL Char-Broil GAS BARBEQUE GRILL**

Model #163366000

Three Stainless Steel Burners  
BTU VersaFlame™ 36,000 BTU Cooking System  
Flick-Up (Locked) Propane  
Cooking Surface 403 Square Inches  
Premium Porcelain Cast Iron Grates for durability  
608 Square Inch Total Cooking Area  
275 Square Inch Single Side Storage Rack  
28,000 Volt FastStart™ Electronic Ignition

Pre-Assembled Module  
Two Side Tables with built in BBQ Tool Holders  
Stainless Steel Control Panel.

Those Hardware Lumberyard Superstores get \$219.00 for these

**\$122**

LIMIT 1  
NO TOOLS REQUIRED FOR SET UP

**SPECIAL-PURCHASE FAMOUS BRAND 40 OUNCE TEXTURED SAXONY**

THIS HEAVY CUT PILE CARPET COMES IN SOLID COLORS ONLY. THE MANUFACTURER IS CHANGING OUT THEIR LINE AND THIS WILL BE A ONE TIME SALE ONLY - WE CAN NOT SPECIAL ORDER 12 FOOT WIDE IN SEVERAL COLORS.

5 COLORS to Choose From

**88¢** PER SQUARE FOOT

REGULAR RETAIL \$14.95 PER YARD

**\$7.88** SQUARE YARD

LIMITED TO STOCK IN STORE - NO SPECIAL ORDERS

**RED TAG SALE SELECT GROUP LAMINATE FLOORING**

SELECTION DIFFERENT IN EVERY STORE

PRICES REDUCED **15% TO 30% OFF WALLS**

REGULAR PRICES LIMITED TO INSTOCK SELECTION

**RED TAG SALE CERAMIC & PORCELAIN SELECT GROUP TILE**

SELECTION DIFFERENT IN EVERY STORE

PRICES REDUCED **15% TO 30% OFF WALLS**

REGULAR PRICES LIMITED TO INSTOCK SELECTION

**BRIGGS & STRATTON POWER WASHER**

SPEED CLEAN LINE - GAS POWERED

THIS 2000 PSI WASHER HAS A BRIGGS & STRATTON 3.75 HORSE POWER ENGINE AND SPRAYS AT 100 GPM. INCLUDES ADJUSTABLE SPRAY NOZZLE, STAINLESS STEEL SPRAY WAND, 25' HIGH PRESSURE HOSE AND HAS A DETERGENT INJECTION SYSTEM.

2000 PSI

RECONDITIONED

MART STORES GET USE UP TO **\$188.** 80% LESS WATER

**\$127**

LIMIT 1

**TIMBERLAND ENGINEERED HARD WOOD FLOORING**

OUR REGULAR **\$2.44** Square Foot

SALE PRICE **\$1.97** Square Foot

**NO GLUE Needed MY-FLOOR® 6mm LAMINATE FLOORING**

DURABLE SURFACE PROVIDES FADE, WEAR, STAIN & IMPACT RESISTANCE FOR LASTING BEAUTY. GLUELESS LOCKING SYSTEM MAKES INSTALLATION A SNAP. EASY CARE & MAINTENANCE.

EACH BOX CONTAINS 10 PLANKS

28.6 S/F BOX

3 COLORS to Choose From

15 YEAR WARRANTY

**98¢** PER BOX

**\$27.99** PER BOX

**RED TAG SALE SPECIAL GROUP CARPET**

EACH STORE WILL HAVE AT LEAST 40 ROLLS ON SALE

SELECTION DIFFERENT IN EVERY STORE

PRICES REDUCED **20% TO 40% OFF WALLS**

REGULAR PRICES LIMITED TO INSTOCK SELECTION

**ASSORTED-STYLES & COLORS WALL PAPER**

PRINTS - SOLIDS - FLORALS

Thousands of Rolls In Stock. You can see, feel and buy them today. No waiting weeks for delivery. We also have most of the supplies that you will need to Do-It-Yourself.

SOLID VINYL WALL COVERINGS  
PRE-PASTED  
SCRUBBABLE  
STRIPPABLE

32 FEET X 20 INCH ROLLS  
OUR REGULAR \$3.58 ROLL

**\$2.17**

BORDERS OUR REG \$1.39 **\$1.47**

**SALVAGE DEAL LIQUID NAILS**

PROJECTS & CONSTRUCTION

When you drive a 12' trailer under a 11.5' bridge, Salvage Happens. Especially when it is raining. These tubes have been wet and some may show some rust, but the product inside is in perfect condition.

10.5 FLUID OUNCES  
EXCEEDS ASTM C-557  
BONDS MOST BUILDING MATERIALS

**\$2.39** Value

LIMIT 12

**67¢**

**HALBERD-16FT-HIGH-QUALITY TAPE MEASURE**

WITH HIGH IMPACT RUBBER COATING

30% THICKER BLADE TRIPLES DURABILITY, & ALLOWS FOR EXTRA LONG STANDOUTS, UP TO 5'-2" WITHOUT BENDING UNDER ITS OWN WEIGHT. DESIGNED TO FIT HAND COMFORTABLY.

**\$1.47**

LIMIT THREE

**DAP®-PLUS-ACRYLIC-LATEX CAULK + SILICONE**

BRILLIANT WHITE  
INDOOR/OUTDOOR USE  
MILDEW RESISTANT  
PAINTABLE  
EASY WATER CLEANUP

OUR REGULAR \$1.49 TUBE

10.1 FLUID OUNCES

**88¢**

**ASSORTED CABINET DOORS**

LOTS OF STYLES & SIZES, BUT LIMITED QUANTITIES

**\$1.97**

**STORE HOURS**

**9-til-6**

MON. - SAT.

CLOSE ON SUNDAY

**WALLS CARPET WAREHOUSE**

909 S Ash Perryton

(806)648-2850

www.wallsbargaincenter.com

VISA M.C. DISCOVER



**REAL ESTATE FOR SALE**

**FOR SALE 712 Wilbanks Dr., Spearman:** 3BR, 2B, 2CG, newly fenced backyard w/shed. Call 605-484-1705.  
TFN(1-18-07)B

**FOR SALE OR LEASE 703 E. 2nd, Spearman:** 3BR, 1 1/2B, 1CG, 13,000+ sq. ft., refrigerator - \$49,000. Will lease for \$500/month plus \$500 deposit. Owner financing available. Call Cindy at Century 21, 806-435-5444 or Cathy at 903-714-2638 for more information.  
4(04-12-07)P

**FOR SALE 422 Haney, Spearman:** 3BR, 1B, utility room, nice location and price. Call 659-5913 after 5 p.m., or 659-5544.  
2(05-03-07)B

**EMPLOYMENT**

**HELP WANTED:** Cates Men & Boys is looking for a motivated individual to work part-time. Apply in person at Cates Men & Boys, 221 Main Street, Spearman.  
TFN(4-26-07)B

**HELP WANTED:** Frontier Feedyard has job openings for qualified people in the following positions: Pen Riders, feed Truck Drivers, Equipment Operators, Mill Operators, and Processors. Frontier Feedyard offers excellent benefits, health, insurance and competitive starting pay. EOE.  
TFN(5-03-07)B

**HELP WANTED:** Frontier Feedyard is accepting applications for office help. We need someone with computer and accounting skills. Cattle knowledge is preferred. Contact JD at 806-882-4251, or come by. EOE.  
TFN(5-03-07)B

**HELP WANTED:** Housekeeper need - full-time. Call or come by Nursanickel Motel, Hwy. 207 S., Spearman. 806-659-3737.  
4(4-26-07)P

**HELP WANTED:** If you are looking for a part-time job with the potential to earn full-time wages, the Panhandle Diner is now accepting applications for all positions. Please apply in person at 217 Main Street in Spearman.  
TFN(5-10-07)B

**HELP WANTED:** DQ General Manager - DQ has been serving Texans for 60 years and you may be part of our bright future! Managers earn salary plus monthly bonus potential. Benefits include free stock ownership, health and life insurance, and paid vacation. Applicants must have two or more years of management experience. Call Megan at 806-786-3702.  
2(5-17-07)B

**HELP WANTED:** Gruver Branch of Sunray Coop is hiring SUMMER HELP. Good hourly wage with time and a half over 40 hours. 45-100 hrs/week. Multiple positions available. Must be 18 yrs. Apply in person 221 W. Hwy 15- Gruver.  
2(5-17-07)B

**HELP WANTED:** Make up to \$3,000 in 11 days. Looking for enthusiastic adult to manage a fireworks stand outside Spearman June 24 through July 4. No investment required. Phone 10 a.m. thru 5 p.m. for more info, 210-622-3788 or 800-364-0136.  
6(5-17-07)B

**HELP WANTED:** Farm Employee, full-time, \$6.50/hour, South of Spearman Experienced in all farm and ranch jobs. AJB (41843906) Mail resume to: Attention D or 221-93179; 700 North Pearl St., Suite 510; Dallas TX 75201; Fax 214-237-9116.  
3(5-17-07)B

**HELP WANTED:** Shop Manager/Maintenance: Wolf Creek Feedyard, located in Perryton, TX, is accepting applications for a Shop Manager/Shop Maintenance position. Duties include scheduling and performing services and general maintenance on all vehicles, rolling stock and equipment. Duties also include record keeping and inventory of service items and parts. Computer experience would be helpful. Benefits include competitive wages, excellent health insurance and retirement plan, with year-end bonus. Please call 435-5697 and ask for Walt if you have any questions or come by the office for an application.  
2(5-17-07)B

**HELP WANTED:** Hansford County Library is currently accepting resumes to fill a part-time position. Contact Maria Carbajal or Margaret Rutman at 806-659-2231, or come by the library.  
3(5-17-07)B

**FOR SALE**

**FOR SALE:** 1995 Chrysler LHS, \$3000. Day - 659-3802, Evening - 659-3450.  
TFN(5-17-07)B

**HELP WANTED**

The City of Spearman is accepting applications for a Maintenance Worker II position which in the Utilities Department. A high school diploma or equivalence and two to four years related experience and/or training in gas, water and/or wastewater is preferred, but not required, bilingual beneficial. A Texas drivers license will be required.

The City has an excellent fringe benefit program which includes retirement, group hospitalization insurance, vacation, holidays, and sick leave.

Applications may be obtained at City Hall, 30 SW Court, until position is filled. The City of Spearman is an EOE.

1(05-24-07)B

claims should be sent to Shannon Tinsley, 519 Butternut Drive, Garland TX 75044.  
John L. Hutchison, Attorney for the Estate  
1(5-24-07)B

**LEGAL NOTICE**

Hansford County Commissioners Court will receive bids for the purchase of two new 40' side-dump trailers with tandem axles, with tarps.

Bids will be received until 4 p.m. on June 8th, and will be opened during the regular Commissioners' Court meeting on June 11th, beginning at 10 a.m.

Mail or deliver all bids to: Hansford County Judge, 16 NW Court St., Spearman TX 79081-2052.

The County reserves the right to accept or reject any or all bids.

Benny Wilson  
Hansford County Judge  
3(5-24-07)B

**FOR RENT/LEASE**

**FOR LEASE: 729 Acres of Land in Ochiltree County** - taking offers - dryland or irrigated, section 23, west Ochiltree County. Call 903-725-6733, Howard Swink.  
TFN(9-28-06)B

**OFFICE SPACE FOR RENT, SPEARMAN:** Pittman-Shieldknight building - all sizes available. Call 659-5588 or 659-3399 for more information.  
TFN(01-27-05)B

**FOR RENT:** 2BR apartment, \$375.00 per month, water paid. Call Larry O'Neal at 580-772-5617.  
TFN(7-06-06)B

**FOR RENT:** 1BR efficiency apartment. Utilities paid. Call 659-2247.  
TFN(5-24-06)B

**LEGAL NOTICE**

**Case Manager I-III; MH Service Coordination/Child (Regional)**

Salary: \$23,933.04-\$31,617.33/yr. with generous benefit package

Child/Adolescent Case Manager for Perryton/Regional MH clinics. Responsible for case management duties: coordinating treatment, linking to community services, skills training with client and legal guardian, treatment planning, and providing ongoing assessment. Will also fill in at other regional sites when needed. Will be responsible for providing after hour crisis prevention on rotation. Must be able to respond within one hour. Qualifications: Bachelor's degree from an accredited college or university with a major in Psychology or Human Service field. One (1) year experience for CM II and two (2) years experience for CM III. Prefer two (2) years working with children and their families. Bilingual a plus.

Please apply at Texas Panhandle MHMR 901 Wallace Blvd Amarillo TX 79106  
806-358-1681.  
An Equal Opportunity Employer  
2(05-24-07)B

**PUBLIC NOTICE**

Notice is hereby given that the annual return (Form 990-Pf) of the Karl A. Nielson and Karen J. Nielson Scholarship Fund will be available for inspection at the First State Bank, Spearman, Texas during regular business hours by any citizen who requests inspection within 180 days after the date of this notice. The person to contact for inspection is Clay Schnell at the First State Bank, One NE Court, Spearman, Texas, (806) 659-5565.  
1(5-24-07)B

**PUBLIC NOTICE**

Notice is hereby given that the annual return (Form 990-Pf) of the Karl A. Nielson and Karen J. Nielson Scholarship Fund will be available for inspection at the First State Bank, Spearman, Texas during regular business hours by any citizen who requests inspection within 180 days after the date of this notice. The person to contact for inspection is Clay Schnell at the First State Bank, One NE Court, Spearman, Texas, (806) 659-5565.  
1(5-24-07)B

**PUBLIC NOTICE**

Notice is hereby given that the annual return (Form 990-Pf) of the Karl A. Nielson and Karen J. Nielson Scholarship Fund will be available for inspection at the First State Bank, Spearman, Texas during regular business hours by any citizen who requests inspection within 180 days after the date of this notice. The person to contact for inspection is Clay Schnell at the First State Bank, One NE Court, Spearman, Texas, (806) 659-5565.  
1(5-24-07)B

**PUBLIC NOTICE**

Notice is hereby given that the annual return (Form 990-Pf) of the Karl A. Nielson and Karen J. Nielson Scholarship Fund will be available for inspection at the First State Bank, Spearman, Texas during regular business hours by any citizen who requests inspection within 180 days after the date of this notice. The person to contact for inspection is Clay Schnell at the First State Bank, One NE Court, Spearman, Texas, (806) 659-5565.  
1(5-24-07)B

**CITATION BY PUBLICATION**

**CVO4830**

**STATE OF TEXAS**

**COUNTY OF HANSFORD**

**TO: TRENT RIVERA**

**NOTICE TO DEFENDANT**

**"YOU HAVE BEEN SUED, YOU MAY EMPLOY AN ATTORNEY, IF YOU OR YOUR ATTORNEY DO NOT FILE A WRITTEN ANSWER WITH THE CLERK WHO ISSUED THIS CITATION BY 10 A.M. ON THE MONDAY NEXT FOLLOWING THE EXPIRATION OF 42 DAYS AFTER YOU WERE SERVED THIS CITATION AND PETITION, A DEFAULT JUDGMENT MAY BE TAKEN AGAINST YOU."**

You are hereby commanded to appear by filing a written answer to the Plaintiff's Petition at or before 10 o'clock a.m. on the Monday next after the expiration of 42 days after the issuance of this citation before the Honorable William D. Smith 84th District Court of Hansford County, at the courthouse in October 2006, in the above entitled cause.

A brief statement of the nature of this suit is as follows: **SUIT AFFECTING THE PARENT - CHILD RELATIONSHIP**

As is more fully shown by Plaintiff's Petition on file in this suit, ISSUED AND GIVEN UNDER MY HAND AND SEAL of said Court in Hansford County, Texas, on May 17, 2007.

Attorney for Plaintiff:  
Cecil R. Biggers  
P.O. Box 332  
Spearman, Texas 79081  
Kim V. Vera, Clerk  
Hansford County  
#15 NW Court  
Spearman, Texas 79081  
1(5-24-07)B

**Blankenship Real Estate**  
659-3052 - 670-3774

**NEW LISTING - 3/2/1 brick home - central h/a, hardwood floors, back yard with storage building. Low maintenance. Great location!**

**Crawford Addition - 3/2 oversized detached 2-car garage, stormshelter!**

**BRICK 3/1/1 - good carpet, new paint. Ready to move in! PRICE REDUCED!**

**BRICK 3/1/1 - Great location.**

Eulalia Blankenship - Sales  
Eschol Blankenship - Broker

**NEW LISTINGS WANTED!**

**Real Estate & Rental**

**HOME OF THE WEEK**

**Spearman Property**  
307 Archer - Newly updated  
3 BDR, 2 BATH, 2 CAR GARAGE, lot, cellar

**EX - 504 Roland - 3BR, 2B**  
storm shelter, stg bldg.

**Gruver Property**  
901 Womble - 3-4BR, 2B,  
ORDER CONTRACT, 1st floor  
ment - loan is assumable  
w/approved credit

313 Richardson - 2BR, 1B -  
BIG REDUCTION!  
302 Womble - 2-3BR, car-  
port, corner lot

**Real Estate & Rental**  
for all your real estate needs!  
Melinda McCullough, Realtor  
(806) 733-5678

**Immediate Opening**

In the Canadian and Spearman areas for a Gas Utility Distribution Service Technician. Salary based on experience. Company benefits available.

Applications available at:  
West Texas Gas, Inc., 411 S. 2nd Street, Canadian, Texas or mail resume to WTG, Inc., PO Box 1005, Canadian, Texas 79014.  
EOE

**Century 21**

**Golden Spread Realty**

13121 CR 18, SPEARMAN - 3BR, 2B, 2CG brick house (2,109 sq. ft.) located on 5 acres. **PRICE REDUCED!**

Deana Foster, Realtor  
(806) 435-5444, office  
(806) 202-1061, cell

1104 Dressen, SPEARMAN - 3BR, 1B, 1 attached garage.  
Janice Flathers, Realtor  
(806) 435-5444, office  
(806) 202-0745, cell

INDEPENDENTLY OWNED & OPERATED.  
©1992® and™ Century 21 Real Estate Corporation. Equal Housing Opportunity.  
EOW(1-11-06)B

**hchd**  
Hansford County Hospital District

**Immediate Full-Time Openings at Hansford Hospital**

**Respiratory Therapist - must be licensed in the state of Texas.**

**Maintenance person with a wide knowledge of the maintenance field in carpentry, painting, plumbing, electrical H/A, grounds care and welding.**

**Administrative Assistant - full time.**

**Openings at Hansford Manor**

**Housekeeping - part-time**

**LVN - full-time and part-time. Must all be licensed by the State of Texas.**

**CNA's - full-time and part-time.**

**Medical Records Clerk - full-time.**

Great working environment and staff, quality facility providing opportunities for professional growth. Great benefit package. Apply at 707 S. Roland, Spearman, TX or contact Jackie Nelson at 806-659-5841. Download application at www.hchd.net  
EEOE  
2(5-24-07)B

**NOTICE TO ALL PERSONS HAVING CLAIMS AGAINST THE ESTATE OF GLENDA BAXTER**

Notice is hereby given that original Letters of Administration for the Estate of Glenda Baxter were issued to Stephanie Clark and Shannon Tinsley, on May 22, 2007, in Cause No. 2502 pending in the County Court of Hansford County, Texas. All persons having claims against this estate, which is currently being administered, are required to present them within the time and in the manner prescribed by law. All

**Innovative Staffing Solutions, LLC**

**NOW HIRING**

**Scale Operator**

Will be grading grain, they are willing to train, need to have some knowledge on computers. Pay is around \$6.50/hour will be through harvest.

**General Operator**

Will be helping load and unload trucks. Pay is around \$8.00/hour.

Contact Us Today!  
417 S. Amherst  
Perryton, Texas 79070  
806-435-6429  
877-738-8411  
www.issllc.com  
NO FEES TO APPLICANTS!  
EEO EMPLOYER

RASP	RUB	PRIG
ONTO	TUNE	RAISE
ATOM	EMIR	ECOLE
DIAPER	BAG	CITE
EXEAT RAF		
PLAYAS	TYPICAL	
SAM	LAMAZE	ELMY
ANENT	IRA	CRIBS
LANE	ASTRAY	NEE
MIDWIFE	SNEERS	
SOT VATIC		
TARN	HIGHCHAIR	
PILEI	ADAM	ONCE
REBEC	FETA	ENOL
ORAL	TOE	SONY

3	8	9	5	7	4	6	1	2
6	5	7	8	1	2	4	3	9
1	4	2	3	9	6	5	8	7
4	3	8	7	6	1	9	2	5
9	6	1	2	3	5	8	7	4
2	7	5	9	4	8	1	6	3
8	9	3	1	5	7	2	4	6
5	2	6	4	8	3	7	9	1
7	1	4	6	2	9	3	5	8

**REAL ESTATE AUCTION**

**Saturday, June 2nd • 10:00A.M.**

**602 Womble Avenue • Gruver, TX 79040**

**Nice Corner Lot! (Lot 1-2 BLK 59)**

**3 BDR / 1 BA, Single Car Garage**

**Terms: 10% Buyer's Premium**

**Owner Will Accept or Reject Final Bid!**

**For More Info Call**  
**Bentley & Associates, LLC**

**TX License # 8151 800-841-4087**

**www.bentleysauction.com**

**FSB**  
**First State Bank**

P.O. Box 247  
Spearman, TX 79081  
Telephone 806-659-5565  
Member FDIC

Planning to buy a home, but not sure if you can get an affordable mortgage?  
Interest too high on your present mortgage?  
Want to do business with a local bank?

**We can help!**

**Come by First State Bank, Spearman.**

Check out our competitive fixed and adjustable rate mortgages for terms up to 30 years.

We can work with you to find a mortgage that fits your needs and help you buy or refinance your home.

Contact Ginger Turner and find out more.

**Bunkhouse Restaurant**

**New Hours**

**Tuesday-Thursday - 5:00-8:00 p.m.**

**Friday & Saturday - 5:00-9:00 p.m.**

**Sunday Lunch Buffet - 11:00 a.m.-2:00 p.m.**

**Bunkhouse Restaurant**

212 MAIN STREET • SPEARMAN  
(806) 659-2089



### Spearman Junior High



Graduation ceremonies for Spearman Junior High will be held at 6:30 p.m., Thursday May 25, in the high school auditorium.

Mrs. Sheryl Meek will play the processional as the fifty-five eighth grade graduates enter the auditorium.

Laura Hernandez will lead the Pledge of Allegiance with Pastor Bob Elder giving the invocation.

A graduation address will be given by Bob Elder, following the welcome by principal Shane Whiteley.

The salutatory address will be given by Nikki Boyd with Rosa Pinon presenting the valedictory address.

Other honor students are Laura Hernandez, Yesenia Romero, Seth Salgado, Natalia Saldivar, and Nidia Terrazas.

Spearman junior high eighth grade graduates are Ariana Lorena Fernanda Aguilar, Juan Uriel Aguilera, Luis Almanza, Martin Almanza, Jesus Anaya, Michael Avila, Shi-Ann Bates, Travis Bennett, Cody Benton, Nikki Boyd, William Boyer, Jose Brisenio, Jessica Bueno, Alberto Camacho, Elizabeth Carmona, Jesus Carrasco, Allysa Comp, Stevie Couch, Kelsey DeLuna, Sharon Dominguez, Everado Flores, Ramon Garcia, Trent Goodheart, Paulo Gudino, Laura Hernandez, Leslie Hernandez, Adrian Hernandez, Tiffany Hodges, Matthew Jarvis, Candy Johnson, Joel Kern, Amber Martinez, Cameron Meddock, Joel Mendoza, Jose Mendoza, Timothy Minor, Rojelio Moreno, Nathan Nava, Lexi Painter, Jessica Pinon, Anthony Quintero, Yesenia Romero, Nataalia Saldivar, Seth Salgado, Dora Sarahi Samaniego, Blayne Schroeder, Mariah Sheppard, Breanna Smith, Sawyer Sutterfield, Joselyn Castillo, Nidia Terrazas, Brittini Torres, DeDee Vaquera, Martin Vela and Dale Wilson.

Shane Whiteley will recognize the honor students, and Superintendent Rodney Sumner and members of the Board of Trustees will present certificates. The benediction will be given by Bob Elder. Mrs. Meek will play the recessional as the graduates leave the auditorium.

Seventh graders ushers are Malory Martin, Gately Garnett, Jace Swan and Kyler Cator.

### Gruver Junior High



Thirty-one students will graduate from Gruver Junior High in ceremonies to be held at 8:00 p.m., Thursday May 25, in the school auditorium.

Mariela Barrera will lead the Pledge of Allegiance with Cambry Cooper giving the invocation.

The salutatory address will be given by Mary Hart with Zach Logsdon presenting the valedictory address.

Principal Kevin Black will present the awards, followed by the presentation of diplomas by superintendent David Teal. Brianne Mitchell will close with the benediction.

Eighth grade graduates include Rogello Anaya, Janet Ayala, Jesus Balderrama, Brenda Barrera, Gabriela Barrera, Mariela Barrera, Justin Bass, Jake Beasley, Cambry Cooper, Makenzie Crane, Alejandra Cuellar, Mary Hart, Matison Jones, Jack Karlin, Zach Logsdon, Rito Mendoza, Brianne Mitchell, Colton Moffett, Mariela Mundo, Blanca Ortiz, Hugo Ortiz, Dani Ramos, Brenna Reid, Erik Rosales, Samantha Sanchez, Zachary Saylor, Payton Thoreson, Juliana Trejo, Angelica Valverde, Shelby Wagner, Shelby Williams.

Seventh graders Shelley Gibson and Madison McClain will serve as escorts while Kaysha Bass, Taylor Felderhoff, Kramer King and Ali Tyler will be greeters.

### Pringle-Morse CISD



Fourteen students graduated from Pringle-Morse Junior High in ceremonies held at 7:00 p.m., Tuesday, May 22, in the school auditorium.

Sol Pittman welcomed guests, followed by the invocation by Wil McCloy.

A salutatory address was given by Maci Nicole Forrest and Jesus Manuel Lopez with Haden Victor Hart presenting the valedictory address.

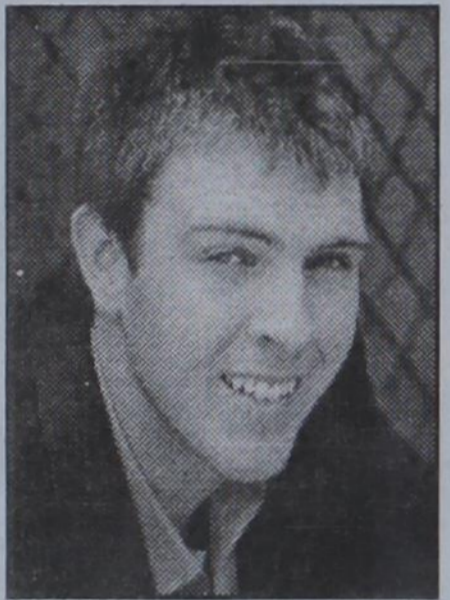
The class history was given by Tori Sheets. Eighth grade graduates were Danny Bonilla, Maci Nicole Forrest, Haden Victor Hart, Jacob Dean Lieb, Jesus Manuel Lopez, Wil Carson McCloy, Uriel Ortega, Sol Emmett Pittman, Kaitlyn Alexandra Poole, Tori Diane Sheets, Cheyenne Brittany Sparks, Shyloh Tiffany Sparks, Guadalupe Daniel Trejo and Samatha Taylor Ward.

Several awards were presented during the ceremony, including Athletic Award, by Jeff Forrest; Band Award, by Anna Marie Holland; President's Education Award, by Kent Hargis; Service Award, by Kent Hargis; and the Kathy Stedje Memorial Award, by Cindy Lieb.

Following the presentation of diplomas by Jerry Hart, Pringle-Morse CISD Board of Trustees President, and Kent Hargis, Principal/Superintendent, Guadalupe Trejo and Uriel Ortega gave an acceptance of the diplomas. Jacob Lieb gave the benediction.

Seventh graders ushers were Katelyn Wilson and Jace Hunter. Following the graduation ceremony, the members of the class of 2007 and their parents invited those in attendance to a reception held in their honor in the school cafeteria.

### Mires Signs Letter of Intent for Division I NJCAA Golf Scholarship



Lamar Community College in Lamar, Colorado has signed Alek Mires to a Division I NJCAA Golf Scholarship for the academic 2007-2008 year.

Coach Roy Dewbre, PGA at LCC indicates that Alek will be a solid addition to the Lopes program and is looking forward to his attending Lamar Community College in southeastern Colorado next fall.

LCC competes in Region IX against Otero CC, Trinidad CC, Eastern Wyoming and McCook CC and a District which includes most of Kansas community colleges and parts of Nebraska and Iowa.

Alek is the son of Allen Mires of Lamar, Colorado and Mitzi Mires of Spearman. He attended kindergarten in Perryton and grades 1-8 in Spearman, returning to Perryton for his high school career. He was involved in football and track his freshman and sophomore years. After playing golf with friends the beginning of his junior year, he decided to try out for the golf team. He became part of the team and played for two years. The team advanced to regionals this year.

Alek has worked the past two years while playing golf and is an active member of Community Worship Center.

### Pringle-Morse CISD Receives Loss Prevention Grant

Pringle-Morse CISD has been awarded a loss prevention grant of \$3000 from the Texas Association of School Boards' Risk Management Fund. Grant monies will help implement loss prevention and safety initiatives to reduce the potential for property losses and on-the-job injuries and raise safety awareness. A total number of 214 public school districts and education entities received grants of \$565,000 from the Fund this year.

"The safety and well being of all employees and prevention of losses are crucial issues in the workplace. The Fund is dedicated to partnering with its members to save valuable resources and do everything we can to help educate staff to provide for a healthier work force and create a safer work environment," said Edwin Thompson, director of TASB Loss Prevention Services. "We are quite proud that the Fund has been able to award much-needed resources to our members over the years," he said.

The 2007 grants were awarded to 202 school districts, two regional education service centers, two county appraisal districts, four colleges, and four educational cooperatives. Workers' compensation grants focused on fall prevention, personal lifting devices, and personal protective equipment. Facilities security initiatives, driver

improvement, and vehicle safety were the primary areas receiving grants under the property casualty program area.

"This year there was a significant interest in grants for automated external defibrillators (AEDs). With the recent UIL mandate, pending Texas legislative activity, and the health of everyone on their campuses in mind, members sent in 60 applications for AEDs. The Fund recognized the life-saving importance of these devices and approved \$129,500 in grants to purchase 79 of them," Thompson said.

"We were extremely pleased to receive a record number of grant applications, and member response has increased each year since the program's inception. Applicants did a superb job of analyzing their hazardous exposures, loss prevention needs, and developing loss prevention initiatives to mitigate their impact on district resources," Thompson said. "The review and evaluation process covered almost two months and was extremely difficult given the wealth of well-adjusted applications submitted,"

he said.

"Raising awareness and reducing injuries and losses is a win-win situation and this highly successful program will continue to be an integral part of the Fund's overall focus," Thompson said. "We applaud participating districts and education organizations for their commitment to saving valuable local resources and increasing productivity. Safety in the workplace and loss reduction have been major objectives in the Fund's Loss Prevention Grant Program since its inception. The Fund remains steadfast in its pledge to provide continued support of our members' efforts to achieve their loss prevention and safety goals," he said.

The TASB Risk Management Fund is the largest risk sharing pool for school districts and one of the largest public entity risk pools in the nation. Created in 1974, the Fund provides comprehensive risk management coverage and services in the areas of workers' compensation, property/casualty, and unemployment compensation. More than 1,100 school districts, education cooperatives, junior colleges, edu-


cations service centers, and county appraisal districts participate in one or more of the Fund's programs.

TASB is a voluntary nonprofit association established in 1949 to serve local Texas school districts. School board members are the largest group of publicly elected officials in the state. The districts they represent serve more than 4.5 million public school students.

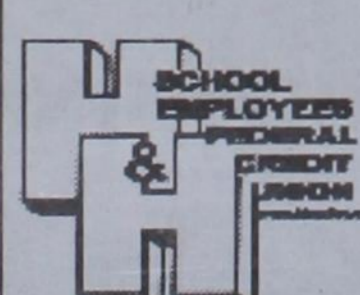
**Hansford Golf Course**  
**Memorial Day**  
**4-Person Scramble**  
**Monday, May 28th**  
**1:30 p.m.**  
**Teams will be drawn.**


**CONGRATULATIONS**  
 to the  
**Hansford County Graduates!**

*the Class of 2007*

from  **PTCI**  
 721 W 7th Spearman 800-562-2556  
*Bringing Your World...Home*  
 Telephone • Internet • Television


**Congratulations**  
 to the  
**Class of 2007**  
 from

 **SCHOOL EMPLOYEES FEDERAL CREDIT UNION**  
 PO Box 1187 • 102 N. Main Stinnett • www.hhsefcu.org  
 (806) 878-2452 • 1-800-882-1740  
 We Do Business In Accordance With the Federal Fair Housing Law and Equal Credit Opportunity Act.

 **NCUA**  
 EQUAL HOUSING LENDER

**Congratulations,**  
**You Did It!**

**20**  
**Class of**  
**07**

 **hchd**  
 Hansford County Hospital District  
 707 South Roland • Spearman, Texas  
 Phone: (806) 659-2535