

INSIDE

At the Movies	2	Out at the Lake	5
Among the Neighbors	4	For the Sbord of It	6
Chamber Chatter	2	School Lunch Menus	2
City Lites	2	Extension News	9

Honor Rolls

Page 5 & 6

Choir Pictures

Page 12

HANSFORD COUNTY LIBRARY
0120 MAIN ST.
SPEARMAN, TX 79081-
EXPIRES 04/01/1996 THANK YOU

The Hansford County Reporter-Statesman

Serving Hansford County Since 1907

Volume 87 • Issue 48

213 Main • Spearman, Texas 79081

Thursday, November 30, 1995



NEW TRAINING - Frank Lozano of Five Star Equipment in Spearman, attended a training session like this on MAGNUM tractor hydraulic and electrical servicing, held recently at the Case Corporation Training Center in Memphis, Tenn. Lozano is among 3,000 Case IH and Case dealer service personnel from across North America attending similar sessions this year. (Courtesy Photo)

Lozano completes training

Frank Lozano of Five Star Equipment in Spearman recently completed a one-week training program on servicing Case IH Magnum tractors. The program is one of 23 different courses of technical study offered throughout the year for Case IH and Case service personnel at

three dedicated training centers in North America. This year nearly 3,000 people will complete one or more of the week-long technical sessions, which combine hands-on and classroom training to make sure dealership technicians are familiar with the latest methods for fast, accurate diagnostics and service.

Magnum Hydraulics/Electrical Systems, the session Lozano attended at the Case Corporation Service Training Center in Memphis, Tenn., includes a detailed explanation of components, settings and calibrations, and troubleshooting recommendations for the hydraulic, electronic hitch control and electrical systems on the tractors.



HOT DOG STUDENTS - Last week, the students at Spearman Elementary and Junior High were given a special treat on their early day out for Thanksgiving. The students, who did excellent on the TAAS test, were given hot dogs, ice cream, and cokes for their efforts. The students were also treated to a huge cake that resembled a certificate of accomplishment from Governor George Bush Jr. In the photo above, several students, parents, and teachers cram the cafeteria at the Junior High to take part in the celebration.

Don and Sybil Harrington Cancer Center to host Open House

The Don and Sybil Harrington Cancer Center circle of Friends will host an Open House December 3rd, from 3 until 4 p.m. at the Harrington Cancer Center, 1500 Wallace Blvd. to announce the winners of the 1996 Caring Touch Collection Christmas Card contest.

The Purpose of the Caring Touch Collection is to raise funds for those whose lives have been touched by cancer. Cards in the Caring Touch Collection are designed by students in the Texas Panhandle who care about the needs of cancer patients and their families.

The cards were judged on November 13th by Sheri Brosier and Jenny Babb of Amarillo, and Reese Beddingfield of Panhandle. The contest had 2200 entries from area elementary, middle school, and high schools. Of those entries, 8 winners and 30 honorable mentions were chosen. The card categories included: Religious, a Christmas

photocard, traditional, Texas Christmas, contemporary, and a southwest Christmas.

The following students were named as winners of the 1996 Caring Touch Collection Christmas Card contest:

Angle Card - Haley Acker, Grade 1, Grandview Hopkins; Boot Card - Erin Willard, Grade 9, Panhandle High School; Three Kings Card - Alberto Trevizo, Grade 9, Spearman High School; Southwest Card - Michelle Moore, Grade 12, Vega High School; 7 Angels Card - Korbi Tomah, Grade 11, Spearman High School; Christmas Tree Card - Jenn Allen, Grade 12, Amarillo High School; Santa Claus Card - Sarah Myers, Grade 8, Crockett Middle School; and Photo Card - Rosie Alzarez, Grade 11, Spearman High School.

The Circle of Friends, a non-profit membership organization, is

dedicated to helping cancer patients and their families in times of need. Through its affiliation with the Don and Sybil Harrington Cancer Center, The Circle of Friends develops and implements fundraising activities primarily to provide financial assistance and patient care and support for those affected by cancer. The Circle of Friends works with the Harrington Cancer Center to provide educational opportunities for people throughout the region.

The 1995 Christmas cards are on sale for \$13.00 for a package of 25. To receive a brochure or further information on the unique card collection contact Charlotte Rhodes at (806)359-4673 or Mary Lynn Garth at (806)935-6330. The 1995 Christmas cards are currently sold at the Harrington Cancer Center in Amarillo, Neiman Marcus in Dallas, Images in Pampa, Lady Fair in Spearman, and Jackies in Perryton.

Hansford Happenings

Manor Empty Stocking Crafts Bazaar

Hansford Manor Crafts Bazaar will be December 8 from 9 a.m. to 3 p.m. in the Hansford Manor Activity Room. For more information contact Debby Sanford at 659-5535.

Home for the Holidays Promotion

The Christmas drawing for the holiday promotion will be Dec. 16th at 2:15 p.m. at the Spearman Chamber of Commerce Office, 211 Main. Call the Chamber at 659-5555 for more information.

Commodity Distribution

There will be NO commodity distribution for the remainder of 1995.

Home Tour

The Gladlola Flower Home Tour will be Dec. 10th from 2 p.m. to 5 p.m. Tickets are \$5 and can be purchased from club members or Main Street of Gruver.

Defensive Driving

Defensive driving courses will be held Dec. 13 and 14. For more information call the Spearman Chamber of Commerce Office at 659-5555.

Lights of Love

Hansford Hospice "Lights of Love" Christmas tree lighting will be Dec. 4th from 6 to 7 p.m. by the Hansford Hospital gazebo. Reception following in the Hansford Manor Living Room.

Windbreak Trees

The Hansford Soil and Water Conservation District will have "Earth Mat" available for the 1996 plantings. Orders for these seedling trees will be taken from now through March 8, 1996. Contact HSWCD at 659-2330 for more information.

Academic Excellence Indicator System Report

The Gruver I.S.D. will hold a public meeting in the high school building on Thursday, November 7, 1995 at 6:00 p.m. to receive the district's and campuses' Academic Excellence Indicator System report. The public is encouraged to attend.

Christmas Holidays

The Gruver schools will dismiss for Christmas on Wednesday, December 20, 1995 at 2 p.m. The buses will run at that time.

American Heart Association

The American Heart Assoc. will meet on Tues., Dec. 5th at noon at the Picnic Place. All members are urged to be there. Anyone interested in becoming a member please contact Darlene Pierce at 659-2673 or Rosemary Brown at 659-3079, or any member of the American Heart Association.

Open House

The Morse Post Office invites you to their Annual Open House and Customer Appreciation Day, Wednesday, December 6, 1995, 9 a.m. to 4 p.m., U.S. Postal Service.



SCHOLARSHIP RECIPIENT - Will Evans, a 19 year old graduate from Gruver, was recently presented with the Sheriff's Association of Texas Scholarship Award. The \$500.00 Will received is presented to the associations' officers' kids throughout the state. Will, who is majoring in mechanical engineering and is now holding a 3.65 grade point average as a sophomore at Texas Tech University, is the son of Chief Deputy Gary Evans and Nelle Evans. In the photo above, Will is receiving the scholarship check from Sheriff R.L. McFarlin and his dad, Chief Deputy Evans. (Photo by Chad Davis)

Lifestyles



LANCE SWAN and SALLY DONAHUE

Donahue and Swan plan January wedding

Diana Parker of Tahoka and Judge and Mrs. Kenneth Donahue of Perryton announce the engagement of their daughter, Sally Donahue to Lance Albert Swan. The bride-elect is the granddaughter of Newell and Dickie Allen and Ray and Martha Donahue of Spearman.

Swan is the son of David and Sharon Swan of Hugoton, Kansas. The prospective groom is the grandson of Bill and Bessie Swan and J.E. Davis of Spearman.

The couple plans to be wed January 6 at the Church of Christ in Spearman.

The bride-elect attends West Texas A&M University. She plans to graduate in May with a Bachelor of Science in nursing. She also works for Amarillo Area Hospital Home Care in Amarillo.

The prospective groom also attends West Texas A&M University. He plans to graduate in May with a Bachelor of Science degree in Kinesiology. He works for Furniture Gallery in Canyon.

Born Howell memorial fund established

A memorial fund for Cynthia Born Howell has been set up at the First National Bank in Spearman.

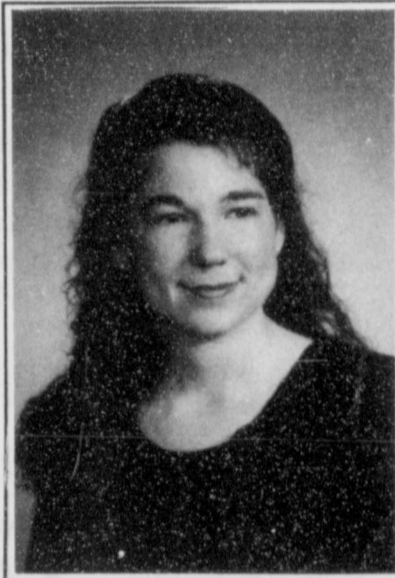
The fund, which has been set up by Cynthia's parents, will benefit local area kids, as the monies being

used will go for scholarships.

Anyone wanting to donate the fund can come by the bank, located on Hwy. 207 South, or mail them at Cynthia Howell Memorial Fund, First National Bank, Box 337, Spearman, Tx. 79081.



OUTSTANDING CITIZENS - The following students were selected as "Outstanding Citizen's" for the second six weeks for the Gruver Junior High: (Back Row l to r) Esmeralda Bravo 8th and Isela Huerfa 7th (Front Row l to r) Dallas Henson 6th and Dan Villegas 5th.



JOSIE HOLT

Holt wins first place in contest

Josie Holt, a senior agronomy major, from Spearman was awarded first place in the nation wide National Manuscript Contest held recently in St. Louis, Mo. This contest was one part of the National ASA Convention. ASA is the American Society of Agronomy of which universities throughout the United States are members. Josie's paper was written over a study done at the Ag Research Center at Bushland. Along with the first place plaque, she was awarded \$350.



AMY GUMFORY

Gumfory gets 2nd runner-up for queen

Amy Gumfory, formerly of Gruver, was selected as second runner-up in balloting for the 1995 Homecoming Queen for Wayland Baptist University. She was presented during ceremonies Saturday night.

Miss Gumfory was one of 14 candidates for the crown. She is a 20-year-old Theater major from Gruver. Miss Gumfory is the daughter of Mr. and Mrs. Gary Gumfory. She represented the International Choir.

Come join in worship services with Calvin Springer of Rockdale

Noon Lunch and Devotional
Monday, Dec. 4th thru Wednesday, Dec. 6th

7:30 p.m. Evening Services
Sunday, Dec. 3rd thru Wednesday, Dec. 6th

UNION CHURCH
31 S. Endicott

We will be closing this office December 20, 1995. Due to retirements and moving of employees, we will be unable to staff the Spearman office. We regret having to do this. We have enjoyed the Spearman and Gruver patients and hope you come over to Perryton to see us. If we can be of any help to you, let us know.

*Thanks for your loyalty,
God Bless You All!*

Area Eye Center
Dr. Billy Nowlin

You are cordially invited to a Wedding Shower honoring **Sally Donahue and Lance Swan** Saturday, December 9, 1995 2:00 to 3:30 p.m. 900 Maple Dr. in the home of Cindy Blackman given by hostesses

Santa's Visit

Saturday, December 2, 1995



Polaroid Pictures • \$2 each

Gruver State Bank
La Casita Room
2:30 p.m. to 5:30 p.m.

You Are Invited To

A Musical Christmas Kick-Off

Presented by the students and friends of Dacia Lust

Sunday, December 3
First United Methodist Church
2:30 p.m. Dress comfortable
Refreshments Following

You are cordially invited to attend the

Lighting of *Hansford Hospice Lights of Love Tree and Open House*

(6:00 to 7:00 p.m.)
Monday, December 4, 1995

Hansford Hospital Lawn
707 S. Roland Street
Spearman, Texas
Refreshments Served

Gordon's
DRUG
Bridal Gift Registry

COME BY & LET US
HELP YOU SET UP YOUR
SPECIAL GIFT TABLE

Couples Currently Registered

Sally Donahue & Lance Swan *Dec. 9th
Clint and Emily DeArmond *Nov. 11th

* Date of the Bridal Shower

314 MAIN
PHONE
659-2141

Gordon's
DRUG
SPEARMAN
TEXAS

School Lunch Menus

SPEARMAN ISD LUNCH MENU
Monday, December 4
 Sausage Pizza, combo salad, whole kernel corn, apple cobbler, and milk.
Tuesday, December 5
 Steak Fingers, whipped potatoes, seasoned green beans, hot rolls, butter, jello, and milk.
Wednesday, December 6
 Beef enchiladas, pinto beans, spanish rice, shredded lettuce, taco sauce, diced onion, pineapple, and milk.
Thursday, December 7
 Jumbo Corn dog, macaroni and cheese, sweet peas, pears, and milk.
Friday, December 8
 Hamburger, french fries, shredded lettuce, sliced tomato, pickle-onion, peaches, and milk.
BREAKFAST
Monday - Banana loaf, fruit, and milk.
Tuesday - Biscuit, sausage, fruit, and milk.
Wednesday - Cereal, toast, fruit juice, and milk.
Thursday - Ham and egg hot pocket, fruit, and milk.
Friday - Cheese toast, fruit, and milk.

GRUVER ISD LUNCH MENU
Monday, December 4
 Baked ham, macaroni and cheese, green beans, apple cobbler, and milk.
Tuesday, December 5
 Nachos, pinto beans, carrot sticks, fruit, cronbread, and milk.
Wednesday, December 6
 Fried chicken, potatoes w/gravy, corn, jello, biscuit, and milk.
Thursday, December 7
 Beef stew, cheese sandwich, fruit, and milk.
Friday, December 8
 Chili dog, cheese, french fries, fruit, and milk.
BREAKFAST
Monday - Cereal, toast, juice, and milk.
Tuesday - 2 pancakes, juice, and milk.
Wednesday - cereal, muffin, juice, and milk.
Thursday - Bk. burriot, hot sauce, juice, and milk.
Friday - 2 cinn. rolls, juice, and milk.

City Lites

by Kelvin Knauf, Spearman City Manager

Last October, the City sent out a questionnaire to 100 citizens, chosen at random. These citizens picked out of the utility billing register. Of the 100 questionnaires sent out, 26 were returned. These questionnaires asked citizens to measure the quality of city services, if they read the City Lites column, and if they watch Cable Channel 30. Finally, the questionnaire asked how long they had lived in Spearman. The following are the results of the survey.

Question 1. How would you rate City Services?

Excellent	21%
Good	58%
Fair	17%
Poor	4%

Question 2. Which City services need improving the most (circle as many as you think need improving)?

Department	Number
Administration	4
Police	6
Sanitation	5
Streets	12
Parks	1
Municipal Court	1
Recreation (inc. swim pool)	1
Water	1
Sewer	3
Gas	2
Alleys	3

Question 3. In the past year, do you think that City services have:

Gotten better	21%
Gotten worse	13%
Stayed about the same	66%

Question 4. Do you watch Channel 30?

Often	12%
Sometimes	50%
Rarely	19%
Never	19%

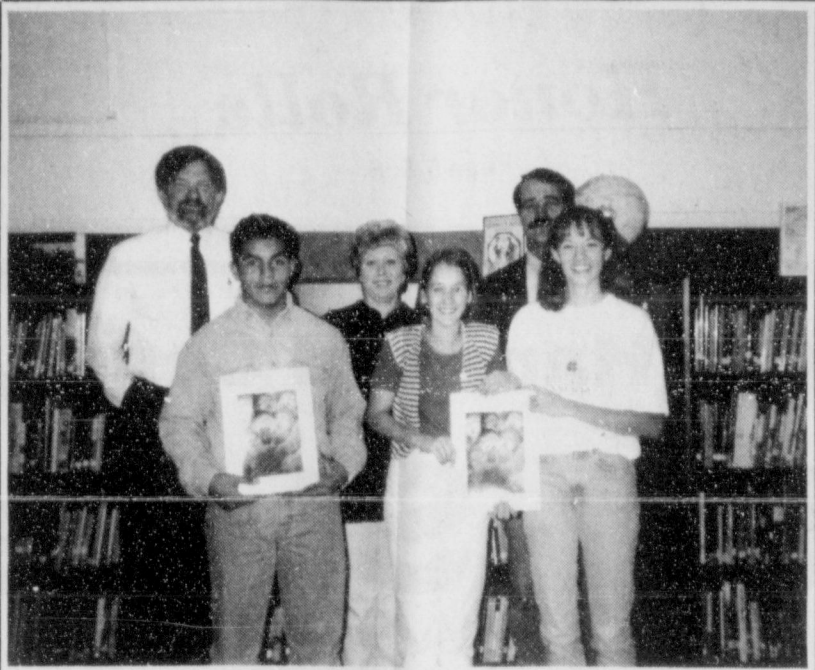
Question 5. Do you read the City Lites column?

Often	25%
Sometimes	37%
Rarely	21%
Never	17%

Question 6. How long have you lived in Spearman?

0-5 years	12%
6-10 years	8%
11-15 years	12%
16-20 years	4%
21-25 years	4%
26-30 years	19%
30+ years	41%

We will probably send out the questionnaires to another 100 randomly selected citizens sometime next March. If you get one of the questionnaires, please answer the questions and return the questionnaire to City Hall. After all, it's your city and your opinions are important.



BOOK PRESENTATION - The Spearman Junior High Library was presented two books by the U.S. Post Office last week. Pictured above in the presentation are (l to r): Mike Floyd, Gruver Postmaster; Jimmy Gayton, 7th grader; Claudine Hardy, Librarian; Clara Shieldknight, 6th grader; George Finley, Spearman Postmaster; and Camille Smith, 8th grader.

Chamber Chatter

by Cindy Blackman
 Chamber Manager

Once again it is time to elect two new directors to the Spearman Chamber of Commerce. Each director will serve a three year term. Nominees for this year's election are Liz Hickerson; Hickerson Jewelers, Arlene Paschel; Paschel Irrigation, Worth Whitworth; First State Bank, and Jeff Beedy; Gillaspie Auto and Truck Center. Chamber members received ballots this week in the mail and should return these to the Chamber office no later than Friday, December 15th. Directors whose terms have expired are Steve Benton; Five Star Equipment, Don Schroeder; Speartex Grain, Lynna Renner; Renner Farms, Travis Wolf; Brown, Graham and Co., and Arbeta Nobles, First National Bank, W.D.S.C.C. president. The officers for 1996 will be elected at the December meeting. President for 1996 will be Judy Tindell; B&B Sales Co. Other directors will be Tindle Ramon, First National Bank, Bret Burgin; First State Bank, Mark Thomas; Hansford Co Hospital, Norlan Winegarner; Hansford Implement, Brian Gillispie; First National Bank, George Young; KRDF-FM Radio, George Finley; Spearman Post Office, and Irene Baker, First State Bank, W.D.S.C.C. President.

Pringle 4-H holds Nov. meeting

By Ruth Shields
 Pringle 4-H Reporter
 The Pringle 4-H met November 6, 1995 in the Morse community building at 7:00 p.m. President Tobe Shields called the meeting to order. Robert Gilmore led the club in the American Pledge. Tap Giblin led the 4-H Pledge and Motto. Donnie Davis took roll call and read the minutes of the last meeting. Tyrel King gave a report on the Hi Plains Vet Clinic tour in Borger. Ruth Shields gave a report on the farm tour of Oran Burton. Entry dues for the Hutchinson County Jr. Livestock Show is set for January 10th. Kyna, Melody, and Ruth Shields gave a short presentation on egg safety and marinating. County Food Show was November 11th, at Fritch. From the Pringle Club qualifying to go to district were Tyrel and Colten King, Kyna, Melody, and Ruth Shields. Tobe reported when all the upcoming weigh-ins are scheduled. Meeting was adjourned at 7:30 p.m. The next meeting will be December 4th at 3:45. Attending were 19 regular members, 3 new members, and 13 parents.

Those of you who have not yet ordered the Spearman Heritage Throws, need to call the office. The navy blankets have sold out and there are only a few green and burgundy left. They are \$40 and can be picked up from the Chamber office. (THERE ARE ONLY 17 THROWS THAT REMAIN TO BE SOLD)

Remember the Home for the Holidays Christmas Promotion. At participating businesses, for every \$10 worth of merchandise sold, you receive one ticket. Drawings for \$700 in gift certificates will be Saturday, December 16. Starting at 12:00 noon, Santa Claus will be in front of the Alco Store and the Lions Club will offer hot dogs and hot chocolate. Then at 2:00 p.m. the Lyric Theatre will be showing Free Willy II as a free movie to kids.

At the movies...

Showing at The Lyric Theatre Friday, December 1 through Tuesday, December 5 on Screen 1 beginning at 7:30 p.m. is "Get Shorty", and on Screen 2 beginning at 7:45 p.m. is "Now and Then". In "Get Shorty", this hilarious comedy based on Elmore Leonard's best seller about a loan shark turned film producer stands on its own. In "Now and Then", although Demi Moore and Co. receive top billing in this childhood remembrance, they only frame the story, which really features kid stars including Christina Ricci and Gaby Hoffman.

At The Lyric Theatre...
 Friday, December 1 - Tuesday, December 5
Bargain Nights Mon. & Tue. Adults - \$4
Fri., Sat., Sun., Adult \$5 - Child \$3 every night
 Closed Wednesday & Thursday

SCREEN 1 • 7:30 PM SCREEN 2 • 7:45 PM

Get Shorty
(R)

Now and Then
(PG-13)

113 Main • Spearman

INSIDE & OUT CONCEPTS
 HWY 136 DEL RANCHO Rd.
 (between Borger & Fritch)

OPEN HOUSE & GRAND OPENING
 DEC. 2
 5:30 TO 7:00

PATIO SHOP & GREENHOUSE, LOTS OF BEAUTIFUL POINSETTIAS, WATERFALLS, LANDSCAPPING STONE, VICTORIAN YARD LIGHTS, MAIL BOXES, LARGE SILK ARRANGMENTS, GIFT & MUCH MORE!

Boy Scout Troop 551
CHRISTMAS TREE SALES

205 Main Street
Monday thru Friday
5 p.m. - ?
Saturday
9 a.m. - 5 p.m.

Call 659-3942 or 659-4123 after 6 p.m.

The Hansford County Reporter-Statesman
 Serving all of Hansford County
 Spearman • Gruver • Morse
 USPS 509660 • 213 Main, Box 458 • Spearman, Tx. 79081
 (806) 659-3434 • 1-800-395-9482 • FAX (806) 659-3368
 Published weekly at 213 Main, Spearman, Texas
 Owned & Operated by
 Texas Independent Newspapers, Inc.
 16607 Blanco Road #100 • San Antonio, Tx. 78232
 (210) 492-8907
 Second class postage paid at Spearman, Texas 79081
 Any erroneous reflection upon the character of any person or firm will be gladly and promptly corrected upon being brought to the attention of the management.
Publisher - Deziree Torres
Editor/Advertising - Chad Davis
Gruver Correspondent - Bob Bort

The publisher reserves the right to revise or reject at its option any advertisement which it deems objectionable, either in subject or phraseology, or which it may deem detrimental to its business.

Subscription Rate: Hansford County, \$19.95; out of county, \$24.95 annually.
Postmaster: Send address changes to Hansford County Reporter-Statesman, Box 458, Spearman, Tx. 79081.
Advertising & Story Deadlines
Monday, 5:00 p.m.

MOUNTAIN MAN CANDY
 BY Judy Irlbeck
 will be on display and distributed with samples: Sugar Free Candy, Chocolates, Trail Mixes, Party Snacks & LOTS, LOTS MORE!

Community Craft Fair
 Stinnett Community Building
 Saturday, Dec. 2nd
 9 a.m. to 6 p.m.

MANOR EMPTY STOCKING CRAFTS BAZAAR

December 8, 9:00 - 3:00
Hansford Manor Activity Room
All proceeds will benefit the Empty Stocking Fund.
Donations of craft items and baked goods are needed.

Contact Debby Sanford for more information. 659-5535

1995-96 GREYHOUNDS & LADY HOUNDS BASKETBALL SCHEDULE

Date	Location	JYG	JVB	VG	VB
Nov 14	DUMAS	5:00	5:00	6:30	8:00
Nov 16-18	PERRYTON JV TOURNAMENT	TBA	TBA		
Nov 17	AT FRITCH			6:00	7:30
Nov 21	AT CLAUDE	4:00	5:15	6:30	8:00
Nov 28	BORGER	5:00	5:00	6:30	8:00
Nov 30					
Dec 2	LAKE MEREDITH CLASSIC			TBA	TBA
Dec 5	GRUVER JV TOURNAMENT	TBA	TBA		
Dec 7-9	PERRYTON AMARILLO PIZZA HUT/TOOT N TOTUM INVITATIONAL	5:00	5:00	6:30	8:00
	PERRYTON LIONS INVITATIONAL			TBA	TBA
	BORGER JV SHOOT-OUT		TBA		
Dec 12	AT GUYMON	4:00	5:15	6:30	8:00
Dec 15	HIGHLAND PARK	5:00	5:00	6:30	8:00
Dec 21	CANYON @ FRITCH			TBA	
Dec 28-30	LUBBOCK CAPROCK INVITATIONAL			TBA	
Dec 29	TEXLINE		3:00		4:30
Dec 30	AT BOOKER		3:00		4:30
JAN 2	AT HOOKER	5:00	5:00	6:30	8:00
JAN 4-6	STRATFORD INVITATIONAL	TBA			TBA
JAN 5	AT RANDALL			TBA	
JAN 9	SUNRAY	5:00	5:00	6:30	8:00
JAN 12	*BOYS RANCH		5:30		7:00
JAN 16	*AT STRATFORD	4:00	5:15	6:30	8:00
JAN 19	*WEST TEXAS	5:00	5:00	6:30	8:00
JAN 23	*AT SPEARMAN	5:00	5:00	6:30	8:00
JAN 26	TEXHOMA	5:00	5:00	6:30	8:00
JAN 30	*AT BOYS RANCH		5:30		7:00
FEB 2	*STRATFORD	5:00	5:00	6:30	8:00
FEB 6	*AT WEST TEXAS	5:00	5:00	6:30	8:00
FEB 9	*SPEARMAN	5:00	5:00	6:30	8:00



GOING FOR THE BALL - The Spearman Lynx varsity played host to the Panhandle Panthers last Tuesday night. The Lynx were just narrowly defeated by the Panthers, 60-54, but Spearman had several good plays, like the one pictured above, as Dillon Miller (33) and Coyt Tigrett (42) grabbed this loose ball. (Photo by Chad Davis)



GET BACK - The girls 7th grade teams of Spearman and Gruver were in action against each other last Monday night in Spearman. Seen here, several unidentified roundball players are seen getting ready for the bucket. (Photo by Chad Davis)

Basketball...

Lady Hounds JV vs. Borger
Tuesday 11-28-95 at AC
Borger 8 21 33 45
Gruver 8 12 20 23
Gru - Jill Odom - 6, Erika Salinas - 6, Crystal Christian - 4, Erika Barrera - 2, Steffany Simon - 2, Kathy Slough - 2, Amber Roberts - 1.

Hounds JV Borger
Tuesday 11-28-95 at Greyhound Gym
Borger 19 41 64 84
Gruver 12 25 50 67
3-Pointers - Kevin Harris, Buster McLain.
Gru - Heath Tolleson - 15, Jared Johnson - 14, Jim Potts - 11, Buster McLain - 7, Kevin Harris - 5, Tucker Henson - 5, Rob Murrell - 4, Matt Overbey - 3, Juan Bravo - 2, Victor Luciano - 1.

Lady Hounds (3-1) vs. Borger
Tuesday 11-28-95 at Greyhound Gym
Borger 6 17 37
Gruver 10 18 25 35
Gru - Kiki Carthel - 15, Kaysha Cluck - 6, Weslyn Maupin - 6, Molly McLain - 4, Tara Shapley - 2, Autumn Bateman - 1, Cara Hathaway - 1.
Synopsis: At the risk of being too hard on the Gruver ladies, the less said about this game, the better.

When they play well, you can read about it here. For the second year in a row, Gruver picked the Borger Lady Bulldogs to play their worst game of the year against. Yes, it was as though the basket had a lid on it, and with any luck at all, the Gruver ladies would have won this game. But the turnovers were not caused by the basket having a lid on it.... The Lady Rangers of Perryton better prepare themselves for the worst, as they will be the unfortunate victims of the Lady Hounds wrath in their next game.

See BASKETBALL, page 8

ALLSUP'S

Keep Truckin'

WITH A TOY THAT PAYS FOR ITSELF*

PREMIER EDITION COLLECTORS SERIES
*Die-cast trucks command \$1,000's in the collectable markets!

Toy Tanker Truck features

- Friction Motorized Wheels
- Working Doors and Parts
- Die-Cast Metal Cab
- Mold Injected Tanker

\$5.99

with fill up (8 gallon minimum)
\$8.99 without fill up

Quality Gas Convenience

Hansford County Hospital District
announces the opening of
the clinic at 710 S. Roland

Dr. Raul C. Tamayo

Pediatrics
General Medicine

Office Hours: 8-12; 1-5
Call 659-5234 for appointment

Clinic Staff: Brenda Busch and Tanja Whitefield, LVN

NOVEMBER BLOW OUT

OVER 1,000 NEW VEHICLES AND 200 USED VEHICLES IN THE IRWIN NETWORK TO CHOOSE FROM

BUY AT HOME FOR THE BEST PRICE AND FOR THE BEST SERVICE

EXAMPLE #95105
95 CAMARO Z28
LEATHER INTERIOR, POWER SEAT, T-TOP WITH SHADES, POWER WINDOWS & LOCKS, AM-FM CD PLAYER, 5.7 LT1 V8, PERFORMANCE AXLE, ACCELERATION SLIP REGULATION AND MUCH MORE

LIST \$25,545.00
DISC 4,600.00
BEST PRICE \$20,945.00

BEST PRICE GUARANTEE

SHOP UNTIL YOUR HEARTS CONTENT, BRING US YOUR BEST DEAL SIGNED BY A MANAGER AND WE WILL BEAT IT OR WE WILL SEND YOU ON A *FREE CARIBBEAN CRUISE*

IRWIN AUTO CO.

409 S. Main • Perryton, TX
806-435-3663

* See Manager for Details

First Place Program to meet Dec. 4th

In August a group of 10 ladies began a program called first Place. The program started by First Baptist church in Houston includes Bible study, small group support, a proven common-sense nutrition plan, a text, a method of record keeping, discipline and many other elements in order to be an effective

health program. The aim of First Place is for growth in all areas of life: spiritual, mental, emotional and physical. Some of the testimonies from members of the group are as follows: "The 'Live-it' (not 'Die-it') plan is a food exchange plan that helps you have good balanced eating habits."

"God has used First Place to hold me accountable every week. This helps me to be disciplined in every area of my life—the spiritual as well as the physical."

Through First Place the group has learned about being in good condition—spiritually, physically, mentally and emotionally. It is a

total Christ-centered health program, emphasizing balance in all four areas. The First Place program has nine commitments which help in establishing a solid and consistent Christian life.

On Monday, December 4 at 7:00 p.m. there will be an informational meeting for First Place groups to begin in January. The informational meeting will be held in the activity building of First Baptist Church, Gruver. For more information call Janice Adams 733-5553 or Sharon Seagler 733-2411. Cost of the 13 week program is \$60 which includes all materials.

HAVE A DESIRE TO EAT HEALTHIER?
WANT TO BE IN GOOD CONDITION
SPIRITUALLY, MENTALLY,
EMOTIONALLY, & PHYSICALLY?
FIRST PLACE
COULD BE THE ANSWER!
INFORMATIONAL MEETING
MONDAY, DEC. 4 AT 7:00 P.M.
ACTIVITY BLDS, FIRST BAPTIST
COST \$60.00 Includes materials
for 13 week program.
FOR INFORMATION
CALL JANICE ADAMS 5553
SHARON SEAGLER 2411

High heels were invented by a woman who had been kissed on the forehead.

—Christopher Morley

Extension News

By Peggy Winegarner
Hansford County Extension agent

The Thanksgiving to New Year's eat-a-thon is upon us. The average weight gain over the holiday season is seven pounds. But let's be realistic. Most people find it can become all but impossible to stick to sensible eating when faced with tempting high-fat and high-calorie entrees, gooey appetizers, thick sauces, creamy dips and rich desserts.

To prevent weight gain, plan holiday menus wisely. Holiday menus usually include too many meats, cheeses, sweets, nuts and sauces.

Learning to trim recipes of needless ingredients can save you calories and at the same time allow you to eat hearty portions of foods that are tasty and nutritious.

Because fat is so densely packed with calories the key to adapting recipes to make them less fattening lies in reducing or eliminating butter, margarine, oil, mayonnaise, lard and salad dressing.

Contrary to popular thought, regular margarine is just as fattening as butter. In fact, all fats have about 100 calories per tablespoon. Try whipped diet margarine for greasing baking dishes. It also can be successfully used in rice mixed and on vegetables, and adds only half the calories of regular margarine.

Reduce calories by shaving fat from desserts. In adapting your favorite recipes, start by experimenting with cutting fat by a third or a half. If a muffin recipe suggests one cup of oil, try three-fourths cup. If that works, use only two-thirds cup the next time around.

Purees of fresh or dried fruit can become standard stand-ins for fat in baked goods, but some work best in certain recipes. In most cases, you can replace up to seven-eighths of the butter or shortening called for in a traditional recipe with one of these substitutions: Fresh fruit purees, such as mashed bananas and applesauce, work best in light cakes and muffins; make raisin "paste" to replace butter or oil in dense, chewy cookies like oatmeal or chocolate-chip. Mash raising in a food processor until they have the same consistency as butter; Prune puree works especially well in chocolate cake, brownies, cookies, muffins and fruit cakes. It's not suited for light-colored cakes like lemon chiffon and angel food cake. Of course, you have to like prunes because baked goods have a noticeable prune flavor.

It may take some trial-and-error to get your favorite recipe to suit your taste, but it will be worth it. Half a cup of butter has 91 grams of fat, while fruit purees have non,

and only a fraction of the calories. When making crumb crusts for pies and other desserts, start with half the margarine your recipe calls for, then add only as much fat as you need to moisten the crumbs.

Before cooking meat, trim the fat. Fatty, calorie-laden meats include bacon, sausage, many cold cuts and fat-marbled cuts of beef, lamb and pork. Try substituting skinless poultry, veal, fish and lean cuts of meat. All of these protein foods can be stretched in recipes by slicing them thinly and adding more vegetables.

When roasting a turkey, baste it with chicken broth or vegetable juice instead of its own drippings. When roasting or broiling any meat or poultry, place it on a rack in a pan so it doesn't soak in its own fat.

Fat-less methods of browning meats, fish and poultry include placing them under the broiler or pan-broiling them in no-stick pans. Once cooked, chill gravies, soups and casseroles. Let them stand overnight in the refrigerator, if time allows. The fat will harden and can be easily removed before reheating.

CPR
can keep your love alive



Foundation of Fine Jewelry



South of Plains Shopping Center
721 W. Seventh • Spearman, Texas 79081 • Phone 659-3566

*Like woolly sweaters warm as a hug.
Like hot chocolate by the hearth and the gathering of family
and friends. Like the pleasures of giving, and receiving,
the perfect gift. At Hickersons Jewelers we love the part
we play in making your holidays special
and wish you the very best in this season of joy.*

You're Invited To
**"OUR HOLIDAY
OPEN HOUSE"**
Friday, Dec. 1st & Saturday, Dec. 2nd
9 a.m. to 7 p.m.

Special Sales Throughout the Store
"Just For You"

MARY KAY
FACE TO FACE BEAUTY ADVICE™
Leann Gillaspie
Beauty Consultant
659-3889

Dobson's
Christmas Gift
To You...

FREE PHONES!

100% Satisfaction GUARANTEED!

Dobson Cellular has always given you the best service...and NOW the PHONE is FREE!*
Sign up for service and choose from these quality Motorola® phones:

- Flipless hand-held phone
- Transportable "bag" phone
- Vehicle-installed phone

To make a GREAT GIFT even BETTER, pre-pay for service and features!

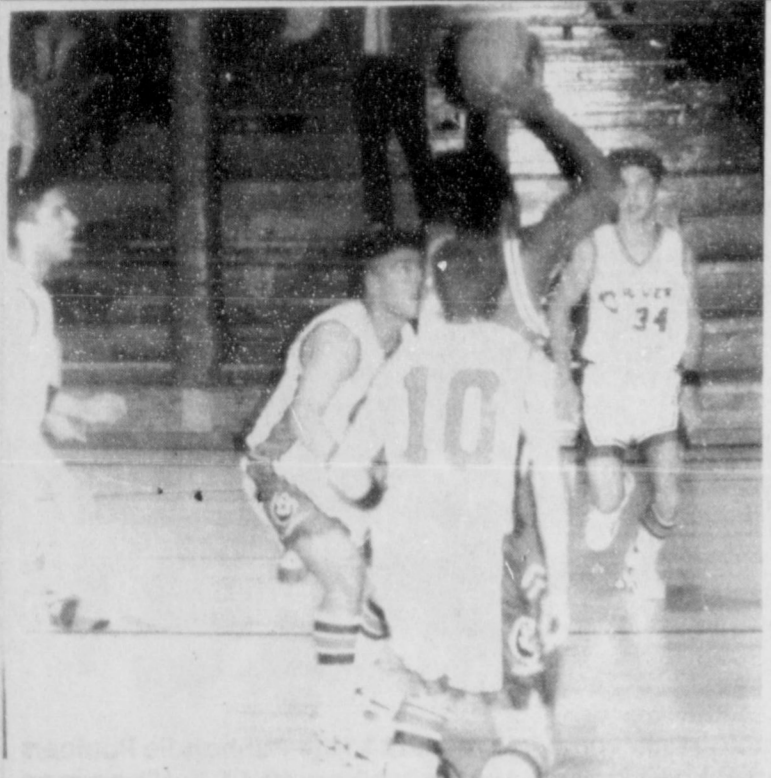
The Difference Maker
DOBSON
CELLULAR SYSTEMS
FOR MORE DETAILS CALL
1-800-882-4154

MOTOROLA
Authorized Dealer
The world's leading manufacturer of cellular products

* Certain terms and conditions apply. Subscriber is responsible for monthly service charges and airtime use. Minimum service contract required. ©1995, Dobson Cellular Systems

AUTHORIZED AGENTS:

Cellular Communications	659-3762
Gruver Cellular	733-2180
W.T. Services	273-2092



COMING IN - The Hounds were also in action at home against the Bulldogs of Borger. Seen here Brant Armes (10), Wylee Maupin (34), and Sammy Renteria, are waiting for a Bulldog shot to come down off the boards. (Photo by Chad Davis)

Basketball

Hounds (3-1) vs. Borger
Tuesday 11-28-95 at Greyhound Gym

Borger 11 26 46 61
Gruver 11 27 46 62
3-Pointers - Brant Armes - 2, Phil De La Cruz.
Gru - Wylee Maupin - 12, Brant Armes - 10, Bailey Barkley - 10, Josh Mayhew - 8, Travis Ferguson - 8, Phil De La Cruz - 6, Daniel Bort - 3, Juan Arreola - 2, Max Frick - 2, Sammy Renteria - 1.

Synopsis: The Hounds won a thriller. There were innumerable key instances in this game. The Hounds led by 8 points, 25-17, in the second quarter. But the Bulldogs rallied to trail only 27-26 at halftime. Then, in the second half, the largest lead for either team was a 59-55 Borger lead with two minutes to play. But the Hounds scored 7 straight points to win the game. Wylee Maupin, with 1:40 left, hit a jumper to make it 59-57. Then with 55 seconds left, Travis Ferguson nailed a shot from under the basket, and it was 59-59. With 33.6 seconds left, Sammy Renteria

nailed the second of two free throws, really pressure-packed, for a 60-59 Hounds lead. Maupin then nailed two free throws for a 62-59 lead with 12.9 seconds left, then Borger got the last shot, an attempted trey which was missed, and on the rebound they scored, but it was not enough, and the Hounds ran out the clock. The Bulldogs were without several players still with the football team in the playoffs, but they are a large enough school - AAAA - that it shouldn't have mattered. It was a wonderful victory for the Hounds.

Lynxette JV vs. Panhandle JV

11-28-95 at Spearman
Spearman 10 14 19 40
Panhandle 7 28 36 48
Spm - Kristin Beedy - 18, Jennifer Neff - 8, Grace Davis - 5, Mindy Tigrett - 5, Rebecca Howard - 4.

Synopsis: The Spearman girls were trailing by 17 at the end of the third quarter, but they had a fantastic final quarter, in which they answered back with 21 points to Panhandles' 12. Kristin Beedy really had a fantastic game, including 8 fourth quarter points, but the

Basketball . . .

efforts were a little too late in this one.

Lynx JV (5-1) vs. Panhandle
11-28-95 at Spearman
Spearman 14 31 42 51
Panhandle 0 12 19 34
3-Pointer - Michael Lusby.

Spm - Carlos Hernandez - 11, Blake Beedy - 8, Britt Savage - 7, Eric Varnon - 7, Dusty Vinson - 5, Jamie Townsen - 4, Michael Lusby - 4, Alonzo Winegarner - 2, Zach Furlow - 1, Mike Butts - 1, Frankie Dominguez - 1.

Synopsis: This Spearman team was the only successful team all night against Panhandle. Of course, they would be successful, after they held the Panthers to real low scoring through 3 quarters, including blanking them in the first. The Lynx have 15 players to give them depth, and all but 4 of them put points on the board. They are a team not to be messed with.

Lynxettes (0-3) vs. Panhandle

11-28-95 at Spearman VG
Spearman 13 19 33 45
Panhandle 8 21 37 51
3-Pointer - Lindsey Smith.

Spm - Kara Townsen - 12, Keisha O'Quin - 9, Lindsey Smith - 9, Macy Shieldknight - 6, Tara Butt - 4, Sam Beasley - 3, Carrie Burton - 2.

Synopsis: To say that the Lynxettes are suffering from a bad case of bad luck would be an understatement. This team is really very good, and they've got the great coaching too, but sometimes things just don't work out. Of course, in this game, the strongest plans of attack fell short. Smith was the only Lynxette to hit a trey all night, and that didn't come until the final quarter. Plus, there's the free throw line. Spearman had only 11 chances at the painted stripe, but they missed 5. On the other hand, Panhandle had a whopping 25 times at the line, and made 16. There was also the fact of turnovers. Now that things have hit rock bottom on the luck scale, they can only go up from here.

Lynx (2-1) vs. Panhandle

Synopsis: At the end of the first half, three Lynx players were tied for high point, Heath Archer, Jarod Huddleston, and Sheld O'Quin.

However, the tie was just at 4 points each. That's just one of the many things that hurt Spearman in this ball game. As was the case with the girls, the Lynx were cold in the shooting, free throws, and turnover department. Not one Lynx hit a trey all night, and they only had 14 opportunities at the line, in which they made 10, compared to Panhandle's 19 attempts and 13 makes. Also, the Panther's, Chad Bertrand had a really hot night, with 5 treys and 26 points, three more points than the top two scorers of the Lynx combined. Although this game was a losing one, the Lynx were playing a very good team, a state rated team.

DRIVER EDUCATION CLASSES
Independent Driving School
814 S. Main • Perryton
(806) 435-2579
Lanny Hargrove

PHEASANT HUNTERS BREAKFAST

Saturday, December 9th
5:30 a.m. to 7:30 a.m.
Gruver High School Cafeteria
Cost - \$5

Gun Raffle
\$5/ticket • 7:00 a.m.
Sponsored by Alpha Mu Psi

Hansford County Hospital District announces the opening of the clinic at 702 S. Roland

Dr. Ahmed Iqbal

Internal Medicine
General Medicine

Office Hours: 8-12; 1-5
Call 659-2846 for appointment

Clinic Staff: Betty Pugh, Darlene Pierce, Helen Prachar, & Elizabeth Duncan, RN

CELLULARONE® VAN

Wednesday, December 6 • 10 a.m. to 4 p.m.
Gillaspie Auto & Truck Center
Hwy 207 South • 659-2541

FREE AT&T Cellular Bag Phone

with 12 month contract

NO ACTIVATION FEE
Wednesday, Dec. 6th ONLY

FREE NIGHT & WEEKENDS!

DO IT NOW!



PRE-SEASON OR POST-SEASON MAINTENANCE PAYS DIVIDENDS THROUGHOUT THE YEAR!

Take advantage of our Winter Service Specials NOW.
Make sure your combine is ready for next season by having our trained technicians perform a complete inspection of all vital areas before you go to the field.
We offer Case IH specialists who know your equipment and genuine, value-priced

Case IH parts engineered for your machinery. And now a **6-month parts warranty that begins on your season of use date.***

Call Stephen Poole at (806) 659-3743 for more information or to schedule your inspection appointment.

Total Product Support — You Deserve Nothing Less!

* Extended warranty available only on parts installed by servicing dealer.

FIVE STAR EQUIPMENT, INC.
P. O. BOX 658
SPEARMAN, TX. 79081

(806) 659-3743



Spiritually Speaking

By Dan Carter, Pastor Trinity Fellowship Church
THE GIFT WHO KEEPS ON GIVING

"He Who did not spare His own Son but gave Him up for us all, will He not also give us all things with Him?" Romans 8:32

It's amazing! Christmas is upon us again. As Charles Dickens observed another time, "It's the best of times. It's the worst of times."

Everyone is fascinated with the advent of this particular holiday. We all know that we are somehow obligated to be cheerful and generous at Christmas. But the reality is that psychologists and counselors report more depression and anxiety at this time of year than at any other.

Superficially we could explain such melancholy by the pressure to buy just the right gift for each person, our inability to pay for that particular gift, the added responsibilities of scheduling all the extra activities, or the very real pain of estranged relations during a period when family togetherness is the norm. Still, the real reason for such depression resides at a deeper level.

The Reason for Giving

Our ability to give, and to give of ourselves, is dependent upon a personal understanding that God has given Himself to us without reserve. God's giving, unlike Santa's, is not conditioned on whether we've been naughty or nice. Certainly we've all been very naughty. Instead, God gives out of His very nature of love. This is what Paul the apostle is speaking of in the Scripture quoted at the head of this article. God is fully revealed and given to humanity in the Person of Christ Jesus.

Naturally for Christmas we'd prefer to receive what we want rather than what we need. That's why, husbands, it's usually not wise to give your wife a vacuum cleaner for Christmas, unless it's diamond-studded. But God is so gracious and powerful that in giving us what we need, mercy and life in Christ

Jesus, He also transform us until our wants and needs are one.

Gifts Are For Opening

In order to protect ourselves and our loved ones from preying depression this Christmas we need to receive and unwrap the Gift of God. Jesus is the gift of God to the whole world (John 3:16). He is received in our believing (John 1:12) that He is God, and that He has been raised from the dead in order that we might stand before God, free and unashamed as His very own children.

God wanted to make sure that we would not be afraid to approach Him in order to receive His gift, so He came as a baby. We may be intimidated by adults. Some are very scary! But who would ever be afraid of a baby in a crib. God came gently, but He came.

However, the value and grandeur of God's Gift were not fully realized until He was completely unwrapped on the Cross. There the love, compassion, and infinite mercy of God was exposed for all the world and all the ages to see, and receive.

To Whom?

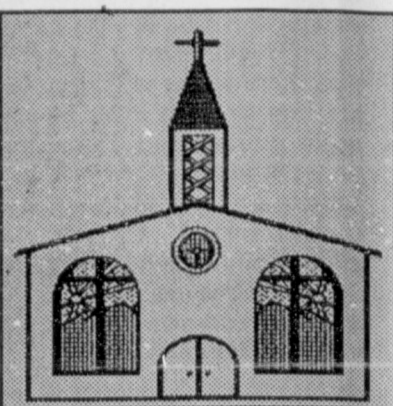
No one is normally satisfied with a beautifully wrapped box. They want to open it! The reason for so much depression at Christmas is because many have never seen their name on the package: FROM GOD, To _____ (place your name in the blank).

Sometimes we may give or receive knickknacks as presents. Some have even received Jesus as such. They put Him on a "shelf" somewhere, and forget they have Him. But Scripture is very plain that Jesus is very "Utilitarian." When received rightly, Jesus gives and keeps on giving; love, joy, peace, mercy, strength for living every day of our lives. He is the Gift of God. He is the Reason for the Season.

Have you forgotten the One Who loves you and gave Himself to you? Go back to where you left Him. Take Him down. Dust Him off. Embrace Him anew as life. Christmas is about receiving Him, and giving yourself to Him.

Let us replenish the seed of faith through...

REGULAR CHURCH ATTENDANCE, DAILY BIBLE READING & PRAYER



Curtis' Hot Oilers
806-659-3432

"Taking Service to Perfection"
806-659-2912 P.O. Box 714
800-821-6714 Spearman, TX 79081

Palo Duro Supper Club

22 S. Archer
659-2232

C.O.'S SUPPLY CO.

Plumbing & Tire Sales & Service

421 W. Kenneth • Spearman
659-3781 or 659-3555

Bartlett's Ace Hardware

105 W. Broadway
733-2404

GILLASPIE
AUTO & TRUCK CENTER, INC.
SHEVROLET • OLDS • FORD • BUICK
CHRYSLER • PLYMOUTH • DODGE
Hwy 207 South • P.O. Box 430 (906)659-2541
SPEARMAN, TEXAS 79081

DEALIN COLLECTOR'S
OILFIELD • RESIDENTIAL • COMMERCIAL
321 Main Street
Spearman, TX 79081
1-800-999-1506 (806)659-5016

PORTER SATELLITE
TREY PORTER
806-659-3057
420 Davis
Spearman, Texas 79081

Gruver Cablevision
Quality Family Entertainment with
"The Disney Channel"
308 Main • 733-5295

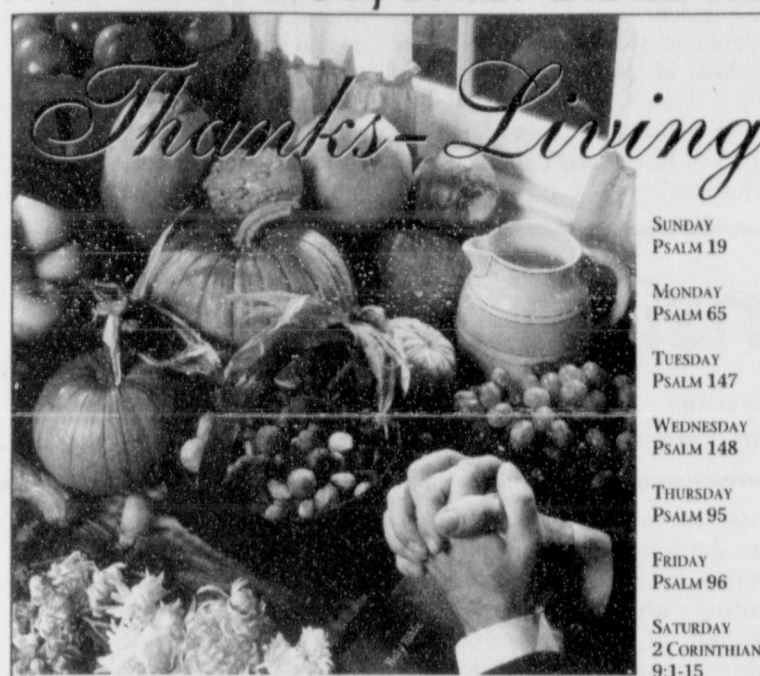
Morse Implement Company
"Join us in church this week"

Boxwell Bros. Funeral Home

THE HANSFORD COUNTY REPORTER-STATESMAN
Serving The Communities Of Spearman, Gruver & Morse
213 Main • 659-3434
1-800-395-9482

CORONADO HOSPITAL
Pampa, Texas
(806)665-3721

Compliments of
G&G FOODLINER
516 Main • Gruver
733-2471



Thanks-Living

The poet both haunts and helps at Thanksgiving time when he wrote:
"Don't let it be forgot, that once there was a spot,
for one brief shining moment that was known as Camelot."
A place, a time, a person, it makes little difference.
Camelot has come to mean "the height of something special." And Thanksgiving is a time of recalling one's Camelots. It is the reality (or memory) of little children gathered around an open fire in the den finding expressed delight in identifying flickering flames as "rabbit ears" or "teddy bear's feet."
Camelot is turkey served full-bodied to family members, but it is more.
Camelot is gratitude for life, and the life-giver without whose daily presence there would be no Camelots. It is thankfulness that God is actively, creatively, and redemptively at work in our world and in us.
Thanksgiving is reviewing the Camelots along the path and expressing gratitude for each. It is hearing the surgeon say "benign" instead of "cancer"; a kindly soul who rings your doorbell to enlighten the load; a letter with words that send doldrums scurrying for cover, and it is the reality of knowing that God cares; that He is the Source and Resource of all we shall ever need.
But Thanksgiving is better pronounced "Thanks-Living," the only true way to celebrate this Thanksgiving, Camelot Season.

Scriptures Selected by The American Bible Society
Copyright 1995, Keister-Williams Newspaper Services, P. O. Box 8005, Charlottesville, VA 22906

In Spearman...

- Apostolic Faith Church**
822 S. Dressen • 659-2870
Sunday School: 10 a.m.
Worship: 11 a.m.
Evening Worship: 6 p.m. Sun.
Wed. Prayer Meeting: 7:30 p.m.
Pastor James Brown
- First Assembly of God**
401 N. Bernice • 659-2295
Sunday School: 9:45 a.m.
Worship: 10:50 a.m.
Evening Worship: 7 p.m.
Wednesday Worship: 7:30 p.m.
Youth: 7:30 Wednesday
Pastor Walter Greaser, Jr.
- First Christian Church (Disciples of Christ)**
29 S. Bernice • 659-2036
Sunday School: 9:45 a.m.
Worship: 10:50 a.m.
Evening Bible Study Worship: 6:30 p.m. Sundays.
Pastor LaVern Draper
- First Baptist Church**
123 N. Bernice • 659-5557
Sunday School: 9:45 a.m.
Worship: 11 a.m.
Evening Worship: 7 p.m.
Jr. High Youth: 6 p.m. Wed.
High School Youth: 7 p.m. Wed.
Youth Choir: 6 p.m. Sun.
Pastor Kyle Henderson
- Church of Christ**
121 S. Haney • 659-3244
Sunday Bible Class: 9:45 a.m.
Worship: 10:30 a.m.
Evening Worship: 6 p.m.
Bible Study Wed. 7:30 p.m.
KRDF Radio Program
Living With Christ 7:50 a.m. M-F
Minister Arnis Pape
- Fellowship Baptist**
1102 S. Archer • 659-2783
Sunday School: 10 a.m.
Worship: 11 a.m.
Evening Worship: 6 p.m. Sunday
Youth & Adult Serv.: 7:30 Wed.
Pastor Tim Luttrall
- Primera Mision Bautista**
502 E. 7th • 659-3991
Sunday School: 9:45 a.m.
Worship: 11 a.m.; Evening: 6 p.m.
Wed. Prayer Meeting: 7 p.m.
Thurs. Vistation: 7 p.m.
Pastor Isaias Martinez.
- "WE SUPPORT OUR LOCAL CHURCHES"**
CAPROCK #1 & #2
Bill Park, Gen. Mgr.
(806)733-5043 or 733-5025
"Custom Cattle Feeding"
- Trinity Community Church**
717 W. 7th Ave. • 659-2671
Celebration of Praise 10:15
Worship Service and Children's Church 10:30
Sunday Evening 6:30 p.m.
Wednesday evening: 7 p.m.
Pastor Dan Carter
- Faith Lutheran Church (ELCA)**
1101 Bernice • 659-2252
(Worships with First Presbyterian Church)
- First Presbyterian Church**
(Worships with Faith Lutheran Church)
1021 Cotter • 659-2033
Sunday School: 9:45 a.m. at Lutheran Church
Worship: 11 a.m. (alternates monthly between addresses above)
Pastor Beverly Cook
- First United Methodist**
407 S. Haney • 659-5503
Sunday School: 9:45 a.m.
Worship: 11 a.m.
Jr. High Youth: 5 p.m. Sun.
High School: 6 p.m. Sun.
Pastor Jeff Lust
- Union Church**
31 S. Endicott • 659-2644
Sunday School: 9:45 a.m.
Worship: 10:45 a.m.
Evening Worship: 6:00 p.m.
Bible Study & Prayer Meeting: 7:00 p.m. Wed.
Pastor Billy Stanford
- Sacred Heart Catholic Church**
901 Roland • 659-2792
Sat. Night Mass: 7 p.m.
Sunday Mass: 8:45 a.m. - English (8:45a.m. Service on KRDF 98.3 FM)
11:15 a.m. - Spanish
1:30 p.m. - Gruver - Christo Rendentor Mass - Spanish
Rev. Fernand Couture

In Gruver...
First Baptist Church
402 E. Broadway • 733-2411
Sunday School: 9:45 a.m.
Worship: 10:50 a.m.
Disciple Training: 6 p.m. Sunday
Prayer Meeting: 7:30 p.m. Wednesday
Pastor Larry Miller

Church of Christ
209 King • 733-2760
Sunday School: 9:30 a.m.
Worship: 10:20 a.m.
Evening Worship: 6 p.m.
Wed. Evening Worship: 7:30 p.m.
Minister Bob Setliff

First Christian Church
510 King • 733-2960
Sunday School: 9:45 a.m.
Worship: 11 a.m.
Wed. Bible Study: 7:30 p.m.
Youth: 6:30 Wednesday
Pastor Gary Gumfory

Oslo Lutheran Church (ECLA)
West of Gruver on Hwy 15 & N. FM 1162
339-7646
Sunday School: 9:45 a.m.
Worship: 11 a.m.
Morning Prayer: 9 a.m. Wed.
Pioneer Clubs (Grades 1-6):
4-5:30 p.m. Wednesday
Pastor John R. Chandler

Community Bible Church (Interdenominational)
Hwy. 15 • 733-2443
Sunday School: 10 a.m.
Worship: 11 a.m.
Wed. Prayer Meeting: 7 p.m.

First United Methodist
Broadway & Garrett • 733-2651
Sunday School: 9:45 a.m.
Worship: 8:30 a.m. & 10:50 a.m.
Evening Worship: 6 p.m.
Pastor Lewis Holland

In Morse...
Morse Baptist Church
Pastor Mike Martin
733-2757

"Your Home Away From Home"
Nursanickel Motel
815 Hwy. 207 S.
Phone: (806)659-3737 P.O. Box 115
Spearman, Texas 79081

BERRY CLEANERS
DAN DESIMONE - OWNER
Phone 659-3122 • P.O. Box 1017
207 Main St. • Spearman, TX 79081

GRUVER FORD
531 Main • Gruver • 733-2431

Interstate Savings & Loan
322 Main • Spearman • 659-2559

Hagerman Services
Backhoe • Dozer • Welding
North Hwy. 15 • Spearman
659-5131

Gordon Drugs
Dependable Prescription Service
314 Main • Spearman
659-2141
Jim Evans

Compliments of...
AGCO
of Spearman, Inc.
"See you in Church"
659-3751

Neighbors

CONTINUED FROM PAGE 4

Jim David and Sandy Crawford of Edmond spent part of the holidays with his parents Joan and Jeff Hawkins. The also spent a couple of days with her parents in Turpin.

Thanksgiving day guests of the Hawkins were daughters, Jana and Vickie and her sister, Joyce Shockley and Loretta Boyd, all of Amarillo.

Mrs. Ruth Hill enjoyed having Joe Mack and Karla Hill from Abilene to spend Thanksgiving with her. They came Wednesday and left Friday, and also visited her parents in Dumas.

The previous week, Jean Gwen, had come from Angel Fire and taken her mother for some doctor's appointments. Later they enjoyed an early Thanksgiving.

NOTICE

The Spearman Housing Authority is now taking applications for residents. Eligible applicants will be placed on a community-wide waiting list. Families with the following incomes are especially needed for occupancy at the Housing Authority:

FAMILY SIZE	FAMILY INCOME
	From To
1 Person	\$11,800 \$18,850
2 Person	\$13,500 \$21,500
3 Person	\$15,150 \$24,250
4 Person	\$16,850 \$26,950
5 Person	\$18,200 \$29,100
6 Person	\$19,500 \$31,250
7 Person	\$20,900 \$33,450
8 Person	\$22,250 \$35,600

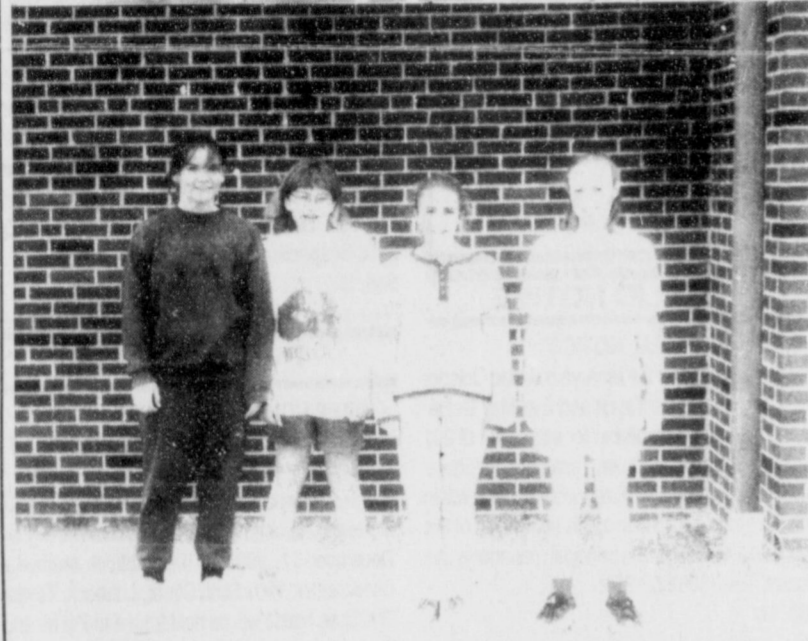
Rent is based on family income minus allowances for children and elderly occupants. For more information, contact Gary Elsworth at Spearman City Hall or call 659-2524 from 8:00 a.m. until 5:00 p.m. Mondays through Fridays. The Spearman Housing Authority does not discriminate based on race, religion, sex, age, disability, national origin or other classification protected by federal and state laws.

Don't Miss Another Issue!

SUBSCRIBE NOW

\$19.95 in county
\$24.95 out of county

THE HANSFORD COUNTY REPORTER-STATESMAN
213 Main • P.O. Box 458 • Spearman, TX 79081
(806)659-3434 • 1-800-395-9492



SINGING PRAISES - The All Region Choir did excellent at Region. Pictured from Spearman High School are (top): Yolanda Ortiz, Landree Woodward, Jose Tarango, Phillip Navareti, Amy Schoenhals, Carol Alvarado, Carl Babitzke, Lisa Tarango, Jennifer Laxson, Lucas Biggs, and Amanda Lomeli. Pictured from Spearman Junior High are (left): Angela Pipkin and Maranda Fight. Good Job!

Hansford Hospice to burn "Lights"

Once again the "LIGHTS OF LOVE CHRISTMASTREE" will be burning with lights and memories as we celebrate the season of love, peace, and joy. You can help Hansford Hospice turn on the Christmas lights and the same time, honor or remember special people by making a gift to illuminate the LIGHTS OF LOVE. Names of all honorees will be displayed on special trees in

the entrance of Hansford County Hospital and at First State Bank, and acknowledgments of the gifts will be sent to donors, honorees, and/or their families.

The program will be Monday, December 4, at 6 p.m. in the Hansford Manor living room and will include Christmas music and refreshments. It will conclude with the lighting of the Christmas tree

located on the north grounds of Hansford Hospital by the gazebo.

Light up a "Tree of Love" for someone special, in celebration of the birth of a child, in loving memory of a friend or relative, or in honor of someone special who lives.

Contact Hansford Hospice at 659-2535, or 733-2954, Extension 107, for more information.

CEU opportunity for local farmers

A CEU opportunity for private and commercial pesticide applicators is set for Saturday, December 2 at the Ochiltree County Expo Fairgrounds in Perryton.

Farmers throughout the area are urged to attend both sessions, but coming to one is acceptable.

The first session is from 8 a.m. until noon. The second one will be from 1:00 until 6:00 p.m. Both sessions will have 1 hour talks on Integrated Pest Management, 2 hours on Laws and Regulations, and the first one will have 1 general hour, while the second will have 2 general hours.

The cost is \$10 per person for one or both sessions.

This program is in support of Texas Agricultural Extension ini-

tiatives Health and Safety, Environmental Education, Water Conservation and Quality and Ag Competitiveness.

For more information contact J.R. Sprague, Lipscomb County Extension Agent or Scott Strawn, Ochiltree County Extension Agent.

A "Center" Piece

The members of the Golden Spread Senior Citizens at 502 South Brandt Wish to Thank the First National Bank and all the employees for a wonderful Thanksgiving Dinner. They served us enough food to have almost fed the town. THANK YOU ALL.

Thanksgiving Day has past and we hope everyone had a nice safe vacation.

Thanks also goes to Margie Fagan for an informative program

on recycling. She thoroughly explained the program and gave many hints on how to reuse some of the things not recyclable.

To those who are ill or with physical problems, or family illness may they be blessed with a speedy recovery according to GOD's will. Those who are unable to attend the functions of the center are really missed.

MAY GOD BLESS OUR COUNTRY



SHOWING OFF - The Willis' will open their doors to the public during the Gladiola Home Tour December 10th.

Willis home scheduled for Gladiola Home Tour

This spacious family home will be included on the Home Tour Dec. 10. Jackie and Randy Willis invite you to visit them Sunday 2:00 - 5:00 p.m. They are happy to be included with Doris Armes of Gruver and Mr. and Mrs. C.L. Crossland of Spearman on the Gladiola Flower Club annual Home Tour.

This is the only large project the

Club has to raise monies for the Scholarship Fund, and the many local community projects they support.

Tickets are \$5.00 and may be purchased from Club members, Main Street in Gruver and homes the day of the Tour.

See you Dec. 10th 2:00 - 5:00 p.m.

As Your Employees, we wish to Thank all Customers for Doing Business with Your Business in 1995!

We Look Forward to Working for You in 1996, in our Continuing Effort to Provide "Excellent" Customer Service.

Let us Help You with our Many Services

Grain Marketing
Crop Production Department
Farm & Home Center
Automotive Service Center
Fuel Department
Country Store
New Customers are Always Welcome!

Capps 806-948-4151
Etter 806-966-5424
Gruver 806-733-2481

3rd Annual Sales Exposition

Your BEST OPPORTUNITY to SAVE on Crop Inputs and Farm Supplies!!!

Dec. 12th & 13th - Sunray
Dec. 14th - Gruver at the County Barn

9-5 Daily 5 CEU's Offered Both Days in Sunray Lunch

Sunray Co-op

Ph: 806-948-4121

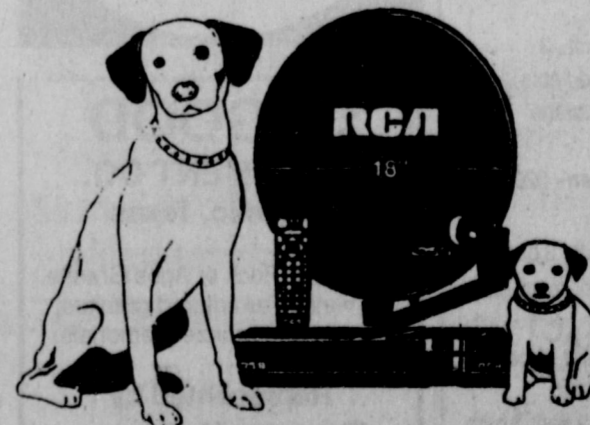
HOPE TO SEE YOU THERE !

this year FOR THE LADIES!

Arts & Crafts Show
Both Days in Sunray

Anita's - formerly Anita's in Boots-n-Jeans
Seasonal Creations of Canyon Mountain Man Candy Co.
Designs Unlimited
and more...

Don't Miss our 3rd Annual SALES EXPOSITION!!!



Grand Prize