

Karen's Kozy Korner .....	2
Gruver baseball .....	8
Spearman swim meet .....	12
Classifieds .....	13
Obituaries .....	14

# The Hansford County Reporter-Statesman

Serving All of  
Hansford County

14 pages

Vol. 82, No. 35

213 Main

Spearman, Hansford County, Texas

25¢

Thursday, June 28, 1990

## Spearman council vacancy filled

Ed Garner is the newest alderman for the City of Spearman.

The Spearman City Council, at its June 19 meeting, voted to appoint Garner to fill a vacancy created by the recent city elections. His term of office will be for one year. The council then appointed Alderman Mike Cudd as Mayor Pro-Tem.

In other business, the council considered a resolution which authorizes Spearman to participate in a Hansford County Texas Community Development Program (TCDP) application. The applica-

tion is submitted to the Texas Department of Commerce for the city's community development fund.

Jim Murray, city manager, told the council that this project is the same one that the county has applied for the past two years, and is for the water and sewer improvements in the Crawford Addition. He said the city will receive more benefit from the cash match than if the city installed the improvements alone.

He explained the sewer project

would ensure that the water system will remain environmentally safe from the unapproved septic system that exists in the Crawford Addition.

The total application for grant funds is in the amount of \$245,609, and the city's cash match is \$24,561. After discussion, council members voted to participate in the application.

The council also considered a contract with the Hansford County Appraisal District for 1990-91

assessment and collection of taxes. Murray stated that the contract is the same as it has been the last several years, and the council voted to enter into the contract.

Regular business included approval of monthly departmental reports, approval of monthly bills payable and current cash position, and approval of monthly revenue and expense report.

Meeting dates for the month of July were set for the 10th and the 24th.

## Catholic mission to open in Gruver

by Bob Bort

Bishop Leroy Matthiesen of Amarillo and Rev. Norbert Kieferle, pastor of Sacred Heart Church in Spearman, have announced that a Spanish language Catholic mission will open in Gruver on Sunday, July 8.

On that date at 12:30 p.m. Bishop Matthiesen will preside at the Celebration of the Mass, and a pot luck luncheon will follow with refreshments and fellowship.

The facility which will be used weekly for the Catholic mission will be the old ceramic shop across

from the El Vaquero restaurant, at 418 Main Street. Each Sunday, a worship service will be held with singing, reading of scriptures, prayer, teaching and distribution of Holy Communion. It will be entirely in the Spanish language.

Jesus Ruiz, a deacon, will preside at the worship service each Sunday, for now.

"It is a very flexible program to start," states Father Kieferle. "We will have to see where the Spirit moves us."

Father Kieferle adds, "The plan is to bring the Gospel to people who

have either wandered away, or who are not able to come to the Parish church in Spearman."

Worship service will be each Sunday at 12:30 p.m. In addition to Deacon Ruiz and his wife Ramona, other leaders will be: Jesus and Chole Favela, Jose and Elodia Bravo, Solomon and Armida Tarango and Felix and Hope Lopez. All leaders are "Servidores de Cristo."

Father Kieferle notes, "The Bishop has phrased it this way:

'The plan is to form a Catholic community, and to let our people know that the Gospel is Good News.'

The hope is that there will be, eventually, a Catholic priest to serve Gruver. "We are beginning with a prayer and worship service, and eventually we will go to whatever would best serve the community of Gruver," states Father Kieferle.

All concerned are genuinely excited about the new project, and hope the religious community in Gruver will welcome it with as much excitement.

## \$10,000 Bash coming

Spearman Chamber of Commerce announces the coming of its "\$10,000 Bash" Saturday, July 28.

The \$10,000 Bash will be held at 7 p.m. that evening in the Spearman High School cafeteria.

Brett Whitford, the chamber's executive vice president, explained the Bash. "For a \$100 donation to the Spearman Chamber of Commerce, the donor receives a ticket which admits two persons to a drawing to be held that night," he said. "The first ticket drawn wins the donor a trip to Las Vegas!"

Whitford added that the winner can choose an alternate destination if desired, and that the value of the trip is \$400.

He continued, "We'll keep drawing out tickets, and the holder of every 25th ticket drawn wins \$100. Those winners have the option of donating that prize money for another ticket and a chance on our grand prize."

The last ticket drawn wins the donor a \$10,000 cash prize, said Whitford.

In a consolation drawing, all the non-winning tickets will be put back into the hopper and will be eligible to win one of five \$100 cash prizes. The consolation drawing will be held at the conclusion of the

\$10,000 drawing, he said.

Food and entertainment will be provided prior to the drawing on the special evening. Featured entertainer will be magician Lyndon Phillips.

The Bash was kicked off Monday, June 25, when Spearman resident Newell Allen and his wife Dickie presented chamber secretary Sharron Swan with the first \$100 donation and received Ticket #1 in exchange.

Area residents who want to be part of the Spearman Chamber of Commerce \$10,000 Bash can make donations and receive tickets at the chamber office, located at 211 Main in downtown Spearman. Donations can also be made at Interstate Savings and Loan, First State Bank Spearman, First National Bank Spearman, Kids' Stuff or Spearman Jack & Jill.

In addition, ticket information is available from Spearman Chamber of Commerce Board of Directors members Jackie Pearson, Lenis Simpson, Don Townsen, Helen Melton, Jim Murray, George Young, Sheri Benton, Gina Davis, Kevin Bynum, Stephen Poole, Cindy Rice, Clay Schnell, Brenda Pierson and Randy Kirk; or from \$10,000 Bash Committee members Brett Whitford and Craig Downing.



Newell Allen and his wife Dickie present a \$100 donation to Brett Whitford (right) and Sharron Swan (left) of the Spearman Chamber of Commerce.

## Gruver city fathers work short agenda

A short agenda with three regular business items occupied the time of the Gruver City Commission at its Wednesday, June 20 meeting.

The commission voted to authorize the mayor to enter into a contract with the Hansford County Appraisal District for the assess-

ment and collection of taxes.

Commission members also voted to pay bills for the month of May and to approve minutes of the commission's May 23 meeting.

Attending the meeting were Mayor Keith Gibson, Commissioners Mark Irwin and Buster Davis and City Manager A.J. Ratliff.

## Retail sales increase in April

Retail sales in April 1990 increased from April 1989 in both Spearman and Gruver, as shown by city sales tax rebate checks sent from the State Comptroller's office.

Gruver's June check from the comptroller's office, reflecting April retail sales, was in the amount of \$3,772.43, a whopping 63.53 percent increase from last June's check totaling \$2,306.88. The June check to Spearman was in the amount of \$11,567.72, an increase of 9.94 percent over last year's receipts of \$10,522.01.

1990 payments to date to Spearman total \$88,118.23, a decrease of 5.22 percent from 1989 payments to

date of \$92,971.95; while 1990 payments to date to Gruver total \$23,851.66, an increase of .14 percent from last year's payments to date of \$23,818.92.

State Comptroller Bob Bullock said that his office sent checks totaling \$83.3 million in local sales tax rebates to cities and counties in Texas.

"We're seeing another month of strong sales tax figures and that's good news for Texas," Bullock said.

Checks to cities totaled \$74.9 million, an increase of almost 13 percent over rebates to cities last June, Bullock said. So far this year,

total rebates to cities are up 7.8 percent.

Houston received \$12.6 million, the state's largest payment while Dallas received the state's second largest payment of \$8.2 million. San Antonio received \$4.5 million and Austin received \$3 million.

Rebate checks to counties totaled \$8.4 million this month for an increase of nearly 17 percent over last year's total payments at this time. The increase is partly due to more counties collecting sales tax now, Bullock said.

This month's checks include taxes collected on April sales and reported in May by businesses filing monthly tax returns.

Also included with this month's checks are quarterly payments

See sales page 14

## WEATHER

High Low Prec.

June 20	89	60	0.0
June 21	99	60	0.0
June 22	84	55	0.0
June 23	92	59	0.0
June 24	103	65	0.0
June 25	100	63	0.0
June 26	107	71	0.0



Christopher Kauffman, Elda Pando, Amanda Hiller and Ginger Sasser attended the Farm Bureau's Citizenship Seminar June 11-15.

## Four students attend annual TFB seminar

SAN ANGELO--Attending the Texas Farm Bureau's 28th annual Citizenship Seminar here June 11-15 were Christopher Kauffman, Amanda Hiller, Elda Pando and Ginger Sasser.

Sponsored by the Hansford County Farm Bureau, they were among approximately 400 high school junior and senior students from 160 counties across the state.

Purpose of the seminar is to provide the students with a better understanding of their American heritage and the capitalistic free enterprise system, according to Billy Brown of Spearman, county Farm Bureau president.

Speakers at this year's seminar and their subjects are as follows:

Jack Jackson of Fort Worth, president of Jackson Associates, "Price of Free Enterprise"; Dr. Lynne Thibodeaux of College Station, an Extension 4-H specialist, "Becoming a Winning Citizen"; Robert H. Rowland of Oklahoma City, President of National Education Program, Enterprise Square, "Free Enterprise".

Also, Steve Pratt of American Fork, Utah, a constitutional expert, "Freedom in the Nineties"; Basilio Bachor, a Polish immigrant now living in Corpus Christi, "Selling America - Two Great Champions".

Vernie R. Glasson of Waco, TFB executive director, also addressed the students.

## Unemployment low

Hansford County again boasted one of the lowest unemployment rates in the State of Texas, with a jobless rate of 2.1 percent for the month of May as reported by the Texas Employment Commission.

TEC labor force estimates for the month of May reflected a total civilian labor force of 3,895 persons in Hansford County, with 3,815 of those persons employed and only 80 without jobs.

Statewide, "The news is discouraging again," TEC Commissioner Mary Scott Nabers said. "Simply put, Texans are entering our labor market faster than jobs are being created and our statewide jobless rate is climbing again," she explained.

"The newly released 6.2 percent unemployment rate is discouraging and indicates that the economic upturn we keep trying to statistically document has just not stabilized yet," Commissioner Nabers declared. The May rate is up from 6.0 percent in April and up from 5.9 percent one year ago.

Although some of the increase can be attributed to the entrance of summer job seekers into the labor

market, a city to city comparison of this month compared to one year ago reveals a definite slowing of the state's economy. "Of particular concern in the fact that even the service industries in the state showed a decline in jobs for the month," Nabers said.

A modest 1,400 nonfarm salaried jobs were created in May, increasing the total to 6,919,600 which is 110,000 above the May 1989 level. Manufacturing continued to be sluggish, experiencing a decrease of 3,500 jobs over the month, and the finance and real estate and service industries also lost jobs. The losses served to offset seasonal increases in trade, construction and transportation.

Nabers pointed out that because people are entering the labor market in Texas faster than jobs are being developed, that is pushing up the number of unemployed Texans. Total unemployment in mid-May 1990 is estimated at 522,000, up by almost 24,000 from April and over 27,000 above the year ago level.

## Street work begins

The City of Spearman will begin its annual sealcoat of city streets Thursday, June 28. City officials explain that it will take the contractor approximately five days to complete the work.

Residents are asked for cooperation on the following items during the sealcoating period:

1. Keep all vehicles and trailers off the street;
2. Park vehicles in driveways and as close to the home as possible;
3. City officials ask that residents not water lawns for the next few days in order to keep water out of the curb and gutter areas.

Streets scheduled for the sealcoat project this year include:

- \*All of Airport Industrial Road
- \*All of East "D" Avenue
- \*A portion of East "A" Avenue between N. Hoskins and N. Brandt
- \*A portion of First Avenue between Hwy. 207 and Townsend and between Barkley and S. Hazelwood
- \*A portion of Second Avenue between Roland and Barkley, S. Bernice and S. Endicott, and S. Hazelwood and S. Brandt
- \*A portion of Third Avenue between Dressen and S. Bernice
- \*A portion of Fourth Avenue bet-

ween Townsend and Haney

\*A portion of Fifth Avenue between Hwy. 207 and Roland

\*A portion of Sixth Avenue between Roland and Archer

\*A portion of Eighth Avenue between Townsend and S. Bernice

\*A portion of Ninth Avenue between Hwy. 207 and Roland and Townsend and S. Bernice

\*A portion of Tenth Avenue between Archer and Barkley

\*All of Coble

\*A portion of Archer between W. Kenneth and Second Avenue and Fifth and Eleventh Avenues

\*The paved alley in the 400 block of Haney and S. Bernice

\*The paved alley behind Plains Shopping Center

\*All of Cooke

\*A portion of Dressen between Eighth and Tenth Avenues

\*All of Golden Circle Drive

\*All of Gibner Drive

\*All of Lee Drive

\*All of Glover Drive

City officials noted that residents' cooperation in this matter will be greatly appreciated. Anyone with questions concerning these items can contact Spearman City Hall at 659-2524.

### DEADLINE CHANGED

The Hansford County Reporter-Statesman office will be closed Wednesday, July 4 so that the staff may enjoy the Independence Day holiday.

Because of the holiday, the Thursday, July 5 edition of the Reporter-Statesman will be published on Tuesday, July 3.

Deadline for advertising and stories for the Thursday, July 5 edition is Monday, July 2 at noon. Thank you for your cooperation.

Please have a safe and happy holiday!



## Firehazard increased

The month of June has been a very dry one, as most Hansford County residents know. Because of the lack of precipitation, there is an increased risk of fires being started accidentally.

The volunteer fire departments of both Spearman and Gruver are asking for help from Hansford County and area residents to make this July 4 holiday a safe and fire-free holiday.

It is pointed out that the Gruver Chamber of Commerce will spon-

sor a fireworks display, to be held Wednesday, July 4 at dusk at the Gruver football stadium. Spearman and Gruver Volunteer Fire Departments ask that all Hansford County and area residents attend a public fireworks display if possible.

This request is made in the hope of reducing the possibility of accidental fires resulting from improper use of home fireworks. Residents who set off fireworks at home are urged to use caution and follow directions.





## Karen's Kozy Korner

by Karen Bablitzke

### STOP, THIEF: LIGHTING FOR LOW COST SECURITY

A burglary occurs somewhere in the country every 11 seconds, resulting in an average loss of \$1,000. To make matters worse, only 14 percent of the burglars are caught and convicted. And, even if they are caught, the stolen belongings are usually lost forever.

Lighting dark corners and shadowy areas can help provide security against break-ins, theft and vandalism by assisting security patrols and neighbors in spotting trespassers. A burglar does not expect the lights to go on when he creeps up to a window. Music or lights going on unexpectedly tend to keep intruders away.

Lighting companies consider residential outdoor lighting as an important consumer need and have applied the latest technology to help. Crime prevention experts agree that lights, special timing devices for lights and motion sensors—which turn lights on when a person enters their detection area—add an element of surprise.

Some outdoor lighting devices include photoelectric cells, which come on at dusk and go off at dawn, automatic timers, and solar cell lighting devices that do not need to be wired to the electric system, but will absorb solar energy during the day and provide 6 to 8 hours of light at night.

Here are some types of lighting to look for:

% Mercury vapor lamps or fixtures give off a familiar bluish-white color, and have an average life of five years.

% High-pressure sodium lamps or fixtures have a golden-white color and an average life of four or five years.

% Tungsten halogen/quartz lamps or fixtures generate a high-intensity white light and can be directed where needed. Average life is about 2,000 hours.

% Fluorescent outdoor wall-mounted lighting fixtures can be used for lighting small areas.

Sensor switches are somewhat new for home security. Using passive infrared technology, a sensor switch automatically turns on lights when it senses heat in motion, such as that produced by a person approaching a house, door or walkway.

### PREVENT MOTH INFESTATION

Cedar wood storage closets and chests are commonly believed to keep woolens and furs safe from clothes moths and carpet beetles. Most authorities believe cedar wood has no moth-proofing value at all. This includes cedar wood shavings, blocks, and paneling. The best way to prevent infestation of moths and carpet beetles is to keep the

house, furnishings, carpets and rugs, and clothing clean. Clean items according to care label instructions before storing them in closets or drawers.

### CHOLESTEROL IN THE BODY FOR GOOD HEALTH

Everyone is born with a propensity toward a certain level of cholesterol. Without cholesterol a person wouldn't survive. As a building block for cell walls and hormones, it serves other vital functions.

Heart attacks due to high blood cholesterol are brought on when the supply of cholesterol overpowers the demand, building up in the bloodstream and clogging arteries. The liver eliminates excess cholesterol not utilized by the body. Saturated fatty acids can slow down this elimination process, and they are the key word.

Cholesterol tests are not as accurate as they should be. So if you have a reading of 200 or above, have it checked several times. Cholesterol levels vary with the season, peaking in December and dropping to a low in June. Infections drive cholesterol levels down, as do hypothyroidism and anemia. On the other hand, some drugs such as those for hypertension may raise the cholesterol level. In fact, heart specialists are now recommending that several cholesterol tests be made before embarking on major lifestyle changes.

The concepts of dietary versus blood cholesterol are still a source of confusion to the public. Nancy Ernst, nutrition coordinator of NIH's Heart, Lung, and Blood Institute, is concerned that many people when dieting may not consume enough red meats or dairy products. These people may become so obsessed with cholesterol and fats they forget about total nutrition.

Ernst mentions that certain cuts of beef, such as eye of round and top round, are low in saturated fatty acids—as low or lower than fish such as mackerel or herring. Skim or one-half percent milk gives less fat but still provides an excellent source of calcium and high-quality protein as 2 percent or whole milk.

With all food, the current consensus is that saturated fatty acids matter more for blood cholesterol control than total fat content. For example, potato chips which include mostly unsaturated fatty acids, are not a threat to blood cholesterol levels.

Non-cholesterol foods can still be high in saturated fatty acids, which raise blood cholesterol levels more than dietary cholesterol does. Ernst believes that the key to managing cholesterol levels is moderation and variety.

## Nine firefighters receive training

Nine volunteer firefighters, seven from Spearman and two from Stinnett, received management training in a three-day course held in Spearman.

Instructor Billy Marquis of the Texas A&M University Engineering Extension Service conducted the course, entitled Volunteer Fire Service Management, from June 25 through June 27 at the Spearman Volunteer Fire Department. The course was made possible by the Federal Emergency Management Agency through the National Fire Academy.

Volunteer firefighters learned basic management techniques applicable to the effective administration of a volunteer fire department. Techniques learned were in the areas of planning, controlling, organizing, problem solving and motivating volunteers.

The techniques were applied in individual and small group discussion during the course.

The Spearman Volunteer Fire Department has been busy with practical application of firefighting techniques as well.

On Tuesday, June 19 at 10:27 p.m., the SVFD responded to a call

at the Turkey Track Ranch, where grass and trees along a creek were ablaze.

That fire reignited Thursday, June 21 and the SVFD returned to the Turkey Track Ranch. Firefighters fought to extinguish the burning vegetation twice that day, at 12:45 p.m. and again at 12:00 a.m.

At 4 p.m. Friday, June 22, the trip to the Turkey Track Ranch was made again by the SVFD when the grass fire flared up once more.

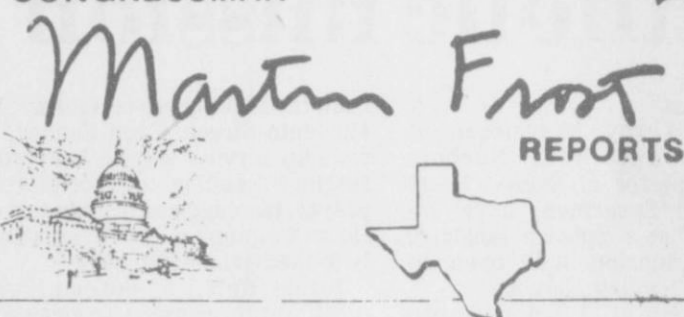
For a change of pace, firefighters were called to the scene of a vehicle accident on Highway 281 in Ochiltree County at 4:58 p.m. Friday, June 22. A cattle truck turned over, requiring a fire truck and rescue unit at the scene. The trailer was cut away to release cattle from the wreckage.

Spearman volunteer firefighters were sitting in for Dumas firefighters Saturday, June 23 while the personnel from Dumas were attending the funeral of the Dumas Fire Chief. The stand-ins were called to the scene of a grass fire at Plum Creek near Lake Meredith that afternoon, as was one unit from the SVFD.



Freida Burgess and Ellen Graham of Spearman Elementary School successfully completed a workshop entitled "Electrical Circuits and Motor Theory" held at the Expo-Center in Perryton on June 20. The course was sponsored by the Texas Agri-Business Electric Council and Texas-New Mexico Power Company. The workshop was taught by Customer Services Representative Ann Laughlin and Home Economist/Customer Services Representative Gloria Roberts. Sixteen area teachers attended the workshop and received Advanced Academic Credit approved by T.E.A.

### CONGRESSMAN



### by Congressman Martin Frost

At a time when people in our society have come to expect a cure for every ailment, AIDS — the Acquired Immune Deficiency Syndrome — continues to confound the experts.

It is estimated that one million Americans, including a growing proportion of infants and minorities, have contracted the Human Immunodeficiency Virus (HIV), which is closely linked to the onset of the usually fatal AIDS disease.

Increasingly, as the burden of providing health care and other services to HIV-infected individuals and AIDS patients shifts from the private to the public sector, the resources of many states and localities are being stretched to the breaking point.

To address this public health crisis, the House of Representatives last week voted overwhelmingly to provide emergency relief to areas hardest hit by the AIDS epidemic, and approved grants for overburdened states, cities and health care providers to help stem the spread of AIDS.

Because there is as yet no vaccine for AIDS, public health experts agree that the best available tool for slowing the spread of the disease has been education regarding means of avoiding exposure and transmission.

In recognition of the effectiveness of these efforts, much of the spending authorized in the House legislation would go for preventive health programs, including AIDS testing and counseling services, and drug treatments for AIDS patients at early stages of the disease.

In the past, many well-meaning AIDS education campaigns have been hampered by the erroneous belief that the disease affects only homosexuals. The surge in the incidence of HIV infection among Black and Hispanic intravenous drug users demonstrates the need to do a better job at reaching out to many different populations in the fight against AIDS.

One of the most heartbreaking results of the spread of the disease

is the growth in the number of infants contracting AIDS from infected mothers. In response to this troubling development, the House bill would establish a demonstration program to provide improved research and clinical care for pediatric AIDS patients.

Since 1981, federal funding for AIDS research and prevention has increased from \$200,000 to \$1.6 billion in the current fiscal year. While we have yet to find a vaccine or a cure for this deadly and complex virus, we have learned the effectiveness of education and prevention programs, how to alleviate the suffering of AIDS patients, and even how to extend their lives.

Both Congress and the Bush Administration have identified AIDS as one of our nation's most urgent public health priorities. The AIDS Prevention Act of 1990 is an important first step on the road to a comprehensive national strategy for addressing the epidemic.

## Loan applications being accepted

Applications for emergency farm loans for losses caused by the tornadoes and severe weather on May 31, are being accepted at the Farmers Home Administration (FmHA) office located in Perryton, FmHA County Supervisor James M. Heck said.

Hansford, Lipscomb and Ochiltree counties were recently named by Secretary of Agriculture Clayton Yeutter as eligible for loans to cover part of actual production losses resulting from the severe storms and tornadoes.

Heck said farmers may be eligible for loans of up to 80 percent of their actual losses or the operating loan needed to continue in business or \$500,000, whichever is less. For farmers unable to obtain credit from private commercial lenders, the interest rate is 4.5 percent.

As a general rule, a farmer must have suffered at least a 30 percent loss of production to be eligible for an FmHA emergency loan.

Farmers participating in the PIK or Federal Crop Insurance programs will have to figure in proceeds from those programs in determining their loss. Applications for loans under this emergency designation will be accepted until February 8, 1991, but farmers should apply as soon as possible.

FmHA is a credit agency of the U.S. Department of Agriculture. It is authorized to provide disaster emergency loans to recognized farmers who work at and rely on farming for a substantial part of their living. Eligibility is extended to individual farmers who are U.S. citizens and to farming partnerships, corporations or cooperatives in which U.S. citizens hold a majority interest.

The FmHA office in Perryton is located at Six Southwest Third in Perryton and is open from 8:30 a.m. to 4:30 p.m. Monday through Friday.

## Hospital Notes

### ADMISSIONS

Thursday, June 21 - Lucille Crawford  
Friday, June 22 - None  
Saturday, June 23 - None  
Sunday, June 24 - None  
Monday, June 25 - Elsie Mae Peddy  
Tuesday, June 26 - None

### DISMISSALS

Thursday, June 21 - None  
Friday, June 22 - None  
Saturday, June 23 - none  
Sunday, June 24 - Ida Shubring  
Monday, June 25 - None  
Tuesday, June 26 - None



The first Presidential news conference to be televised was held by President Eisenhower on Jan. 19, 1955.

**RHO RHO SORORITY FIREWORKS STAND**  
Open: Wednesday, June 27 - Wednesday, July 4

June 27-29	4-10 p.m.	Location: Hwy 207 South in front of Horizon Oil & Gas
Hours: June 30	10 a.m.-10 p.m.	COME CHECK OUT OUR
July 1	2-10 p.m.	DAILY SPECIALS AND
July 2-4	10 a.m.-10 p.m.	DISCOUNTS!

Rho Rho is a LOCAL organization that supports and is involved in many LOCAL activities. Please come and see us and **THANK YOU** for your support.

### THANK YOU

We want to thank everyone who so graciously and lovingly came to help us after the devastating tornado. We all appreciate every little and big chore.

Words are inadequate. We couldn't have ever gotten it cleaned up without all your help.

God Bless you all,  
Mary Schumann and family  
Lee & Melva Nichols

Come Join the Fun in Gruver the 4th of July

Little Tiffanies  
416 Main, Gruver  
733-5290

The BACK PORTY by Lex Graham

"Yes, as a matter of fact, he did scare me!"

Don't let your finances scare you. You will be prepared for any event if you have opened a savings account at **FIRST STATE BANK**. Your money is insured to \$100,000 by F.D.I.C. and is there for you to use at any time. We pay the highest interest rates available.

**FSB**  
First State Bank

One NE Court  
659-5565

FDIC

**The Hansford County Reporter-Statesman**  
"Serving All Of Hansford County"

USPS 509660  
213 Main, Box 458, 659-3434  
Spearman, TX 79081

Published Weekly at  
213 Main, Spearman, Texas

Owned and Operated by:  
**Texas Independent Newspapers, Inc.**  
16607 Blanco Road, Suite 701  
San Antonio, TX 78232  
Second Class postage paid at  
Spearman, Texas 79081.

Any erroneous reflection upon the character of any person or firm appearing in these pages will be gladly and promptly corrected upon being brought to the attention of the management.

Publisher - Robert M. Hulett  
Copy Editor - JoAnn Morton  
Bookkeeper - Cayla Eaton

Subscription Rate: Hansford County, \$19.95; out of county, \$24.95 annually.

Postmaster: Send address changes to **Hansford County Reporter-Statesman**, Box 458, Spearman, TX 79081.

The publisher reserves the right to revise or reject at its option any advertisement which it deems objectionable, either in subject or phraseology, or which it may deem detrimental to its business.

Advertising and Story Deadlines: Tuesday, 12:00 p.m.

**TA**  
TEXAS PRESS ASSOCIATION



## Hansford Happenings

A representative of the Pampa Social Security office will be in Spearman Thursday, July 12. The representative will be at the Hansford County Courthouse from 10 a.m. until 11:30 a.m. that day, but no visits are scheduled in August or September. The representative will assist county residents with Social Security matters, however, almost all Social Security matters can be handled by telephone. Social Security has a toll free number, 1-800-2345-SSA, available 24 hours per day, seven days a week.

Contributions to the Paul Trosper Memorial Fund may be made at First State Bank of Spearman, Box 247, Spearman, TX 79081, attention Rhonda North.

All Spearman school ex-students from the classes of 1921 through 1930 will meet Saturday, July 7 from 2 p.m. to 5 p.m. in the Hospitality Room of the First State Bank of Spearman.

There will be a pistol silhouette shoot Sunday, July 1 at 1:30 p.m. at the Hansford Gun Club range.

Entries are now being accepted for the Texas Farm Bureau Queens Contest. The contest is scheduled for July 23. Prior to that date there will be a coke party, a directors' dinner and a rehearsal. In the contest there is a talent portion for boys and girls. Entrants are invited to sign up now at the Farm Bureau office, 307 W. Davis in Spearman.

The Spearman All-School Reunion is scheduled for Friday and Saturday, July 6 and 7. There will be many ex-students coming to Spearman from outside the area, and they will need housing during the reunion. Any ex-students needing housing or anyone who will have housing available during the reunion should contact Nell Patterson at 659-2114 or Pearl Pierce at 659-3866 or 659-3503.

Friends and neighbors of Mrs. Lucille Hagerman have established a fund in her name at First National Bank of Spearman. Contributions to the fund will be used to help defray expenses incurred during recent medical care and emergency surgery.

## Child labor law violations found

In light of recent child labor law infractions discovered by the U.S. Department of Labor, Commissioner Mary Scott Nabers of the Texas Employment Commission admonished Texas employers to refresh their knowledge of the rules concerning hiring minors.

"Texas employers received more citations than employers in other states during the D.O.L.'s recent sweep," lamented Nabers. "Considering the fact that Texas is facing such monumental problems with illiteracy and student drop-out rates, employers and parents in our state need to reaffirm a commitment to abide by these laws which were, after all, enacted to ensure that all children have an unobstructed opportunity for a good education."

Employers should be aware of these basic guidelines:

### NONAGRICULTURAL JOBS:

- (1) Youths 18 years or older may perform any job, whether hazardous or not, for unlimited hours;
- (2) Youths 16 and 17 years old may perform any NON-HAZARDOUS job, for unlimited hours;
- (3) Youths 14 and 15 years old may work OUTSIDE SCHOOL HOURS in various NON-

### MANUFACTURING, NON-MINING, NONHAZARDOUS jobs

- (a) no more than 3 hours on a school day,
- (b) no more than 18 hours in a school week,
- (c) no more than 8 hours on a nonschool day,
- (d) no more than 40 hours in a nonschool week,
- (e) work may not begin before 7 a.m., nor end after 7 p.m., except from June 1 through Labor Day when evening hours are extended to 9 p.m.
- (f) 14 and 15 year olds who are enrolled in an approved Work Experience and Career Exploration Program (WECEP) may be employed for up to 23 hours in school weeks and 3 hours on school days (including during school hours.)

(4) Fourteen is the minimum age for most nonfarm work. At ANY AGE, however, youths may DELIVER NEWSPAPERS, WORK FOR PARENTS in their solely-owned nonfarm businesses (except in manufacturing or on hazardous jobs) or GATHER EVERGREENS and make evergreen wreaths. Children of any age may perform in RADIO, TELEVISION, MOVIE, or THEATRICAL PRODUCTIONS. There are, however, state regulations concerning child actors which must be followed. Employers in this industry may obtain a copy of the rules and regulations by contacting the State Office of the TEC, Office of Special Counsel.

### FARM JOBS:

- (1) Youths 16 years and older may perform any job, whether hazardous or not, for unlimited hours;
- (2) Youths 14 and 15 years old may perform any nonhazardous farm job outside of school hours;
- (3) Youths 12 and 13 years old may work outside of school hours in nonhazardous jobs, either with parent's written consent or on the same farm as the parents;
- (4) Youths under 12 may perform jobs on farms owned or operated by parents, or with parents' written consent, outside of school hours in nonhazardous jobs on farms not covered by minimum wage requirements.
- (5) Minors of any age may be employed by their parents at any time in any occupation on a farm owned or operated by their parents.

For information concerning what constitutes "hazardous" and "nonhazardous" jobs, employers should contact their local Wage-Hour Office of the U.S. Department of Labor.

### DPS gives stats

Capt. Rusty Davis, district supervisor of the Amarillo Highway Patrol district comprised of 31 counties said, "For the month of May, our troopers investigated five fatal accidents, 75 personal injury accidents and 94 property damage accidents. There were six persons killed and 128 persons injured in these accidents."

Sgt. Timothy Thompson of Borger stated, "In Hansford county, our troopers investigated no fatal accidents, one personal injury accident and no property damage accidents in the month of May. No persons were killed and one person was injured in these accidents."

## Panhandle Events

### RANGE RIDERS RODEO - AMARILLO

The 49th Annual Will Rogers Range Riders Rodeo kicks off July 5-7 at the Range Riders Arena in Amarillo.

The Texas Cowboy Rodeo Association sanctioned rodeo draws contestants from five states, and offers them a chance at some \$50,000 in prize money plus trophy buckles in the events.

A calf scramble will be held nightly for children 12 years and younger, with a gift certificate for the winners.

The three night stand begins Thursday, July 5 and will continue with nightly performances through Saturday, July 7. The events being at 8:00 nightly.

Advance tickets and a limited number of reserved box seats are available by writing Will Rogers Range Riders, Box 333, Amarillo, Texas 79105.

General admission tickets will be sold at the gate beginning at 7:00 nightly.

### GOLF FORE SIGHT

The Texas Society to Prevent Blindness offers its Amarillo/Panhandle area golf card at \$10. The card is good for one round at each of seven (7) courses:

Hansford Golf Course, Clarendon Country Club, North Plains Country Club, Palo Duro Creek Golf Course, Panhandle Country Club, Perryton Municipal Country Club and Southwest Golf Course.

The card is valid from July 1, 1990 through June 30, 1991. For information, call 806/359-4431.

### BASKETBALL CAMP-PSU

Panhandle State University is hosting the Panhandle State University 1990 boys' and girls' basketball camp in Goodwell, Okla. One session is set for July 15-20 for 13 to 18 year olds (girls and boys).

Room, board, camp certificate, picture and t-shirt is included in the \$150.00 fee for the over-nighters. The commuter fee of \$125.00 includes camp certificate, picture, and t-shirt. Boys and girls commuting must bring a lunch or money for lunch and dinner that will be served in the college cafeteria.

Registration is between 5 p.m. and 7 p.m. on Sunday, July 15. The camp will end on the following Friday at 1:30 after the parent and student awards at the Oscar Williams Field House (gym).

For more information and registration forms call Steve Hudson at (405) 349-2611 EXT. 231, after 5 p.m. at 349-2530.

August 2-4 - Third Annual XIT Rodeo & Reunion, Dalhart. This annual reunion is fun for old-time cowboys and greenhorns alike. XIT, the world's largest ranch under fence, is the homecoming site for old-time XIT ranch hands and the world's largest free Barbecue. Side-dishes include stew and watermelon. Wild cow milking, team roping, a pony express race, antique car show, street parade, a dance with big name musical entertainment and, of course, nightly amateur rodeo events are all part of the stampede. Contact XIT Rodeo, P.O. Box 967, Dalhart 79022 (806/249-5646).

## 78/68 Two numbers that can save energy

By setting your thermostat at 78 in the summer and 68 in the winter, you can keep your home comfortable without wasting energy.

If you're tempted to raise or lower the setting, consider this: for each degree you adjust your thermostat, your energy use increases by about 6 to 8 percent.

For more ways to save energy with more common sense than dollars and cents, visit your TNP office for a free brochure.



## A Five Star Bank



Where Personal Service is the Key



Lobby Tellers: Darlene Farris, Jennifer Cherry, Wilma Hamilton, Tanya Close, Nancy Kelly, Cindy Holton

Lobby Banking: 9 a.m. - 3 p.m.

- Checking Withdrawal & Deposits
- Cashier's Checks
- Money Orders
- Travelers Checks
- Customer Service
- Savings Withdrawal & Deposits
- Safety Deposit Boxes

Drive Up Window: 7:30 a.m. - 4:30 p.m.



Drive Up Tellers: Frankie Donnell, Cyndi Pearson

- Checking Withdrawals & Deposits
- Savings Withdrawals & Deposits
- Check Balance
- 5 Lanes for Service
- Pulse's Nationwide Network
- 24 Hours - 7 Days a Week
- Deposits & Withdrawals

MEMBER FDIC



One NE Court, Spearman, TX 79081

## Take Part in the Activities

in Gruver on the 4th of July



G & G FOODLINER

516 MAIN 733-2471 GRUVER, TEXAS

## BASHAW'S

## S & H ROOFING & SUPPLIES



RESIDENTIAL COMMERCIAL APARTMENTS

- SHAKE
- CEDAR
- COMPOSITION
- SPANISH TILE
- SKYLIGHTS



BONDED - LICENSED - INSURED FOR YOUR PROTECTION  
37 YEARS EXPERIENCE - REFERENCES AVAILABLE  
FREE ESTIMATES - 24 HOURS

A HOLE IN YOUR ROOF... OR A WHOLE NEW ROOF

Call: 1-800-395-4852  
(806) 435-3829  
(806) 383-9672

SEVEN DAYS A WEEK

PULLMAN ACRES NO 2 RT 2 BOX 787-B



# Among the Neighbors

by Helen Fisher

Mr. and Mrs. Art Arselson of Windsor, Colo. spent four days last week with Olive and Owen Pendergraft. Mrs. Arselson is a niece of Owen's. They accompanied the Pendergrafts to Amarillo for a couple of days where Olive was undergoing tests.

J.L. and Juanita Pierce attended the Woody family reunion in Oklahoma City last weekend. This is the family of J.L.'s mother. In addition to J.L. and Juanita, their daughters, Rosa and Jamie attended as did Bobby Jack Pierce and Marlene Cook.

J.L. and Juanita were distressed to learn that the home of their daughter, Karen and Quint Hardy, was heavily damaged by fire. Quint and their son Derek were at home when the fire ignited, the result of some grease left on the stove. Then the next afternoon the fire again flared up and caused more damage. The Hardys are in an apartment while their home is being repaired. They live in Chesapeake, Virginia.

Rubijo Wilbanks returned from Globe, Ariz. last Tuesday. She had visited her sister for nearly a week. Rubijo, as she has done many times, drove thru alone with no mishaps.

The descendants of Claude and Nannie Sheets held a reunion at Lake Buchanan last weekend from Friday thru Sunday. They stayed in cabins and had the gatherings in the rec hall. Between 70 and 80 were there most of the weekend. Time passed quickly in fishing, swimming, games and fellowship.

During the reunion, Martin and Inez Sheets observed their 50th anniversary. Their son, Jack and his family, had made the preparations and a number of their friends from the area attended.

Nine of the 11 first generation were able to attend. S.B. Sheets of Spearman and Alice Johnson of Stinnett were the absent members. Alice, in preparation of going to the reunion, fell and broke her hip and wrist.

From Spearman were Mr. and Mrs. Gene Cudd, the Daniel Sheets, the Claude Sheets, the Mark Sheets and family, and Pat Cudd and sons.

All the friends of Mandi Lusby

will be interested in learning that she is having a very unusual summer and her activities will be curtailed for some time.

Mandi, 11 year old daughter of Donita and Ronnie Lusby, underwent a very serious and rare bone operation at Baylor Hospital in Dallas last Thursday. Reports are that after a slow beginning, her recovery is progressing and she will be home in a few days.

Enzie and Joe Copeland attended the Copeland family reunion in Oklahoma City last weekend. They were pleased to have their daughter, Joe Lynn, of Broomfield, Colo. accompany them. After the reunion, they went to Muskogee and Drumright to spend some time with members of Joe's family.

Patti and Walter Spoonmore returned a few days ago from a 17 day, 5000 mile trip to the West Coast. They left early the morning of the tornado and were in Loflin, Nev. when they learned about the storm when they unexpectedly met Pam and Jim Ivy.

Lancaster, Calif. was the Spoonmores' destination where they spent a week with their son Kurt and his wife. Kurt took a vacation and showed them around. Lancaster is on the edge of the Mojave Desert, but it is just a short drive to the coast. Among the points of interest was the Hearst Castle at San Simeon.

The next week Walter and Patti took Highway #1 to Monterrey, Carmel and other cities. At Mendocino they were interested to see where the TV series "Murder She Wrote" is filmed. At Sonoma in the wine center, at a motel at 3 a.m. Patti was wakened by an earth tremor measuring 3.5 on the Richter scale.

They returned by way of Sedona, Ariz., stopping for a time at Lake Tahoe, and reached home just in time for the heat wave.

Little Miss Krista Boyd joins her parents, Willis and Sherry Boyd in welcoming her new sister. Amy Lee, weighing 7 pounds, 7/8 ounces, was born on June 18 in Northwest Texas Hospital in Amarillo.

Amy Lee's paternal grandparents are Helen and Irvin Boyd of Gruver and great-grandmother, Mrs. Eva Boyd, also of Gruver.

Maternal grandparents are Bobby and Beth McBeth, Plainview; Glynda and Jerry Yerby, Dumas; great-grandmothers Mrs. J.S. McBeth, Hale Center and Mrs. Marie Stewart, Lubbock.

J.B. and Ila Mae Buchanan returned late Saturday from a three day convention at Portales. It was the second annual Windmills Trade Fair. The attendance was double that of last year and included an increasing number of young people. The ladies were entertained with a brunch and style show.

After their return, it took Ila Mae a few days to reduce J.B. back to normal status after his reign as "windmill king" and celebrity treatment. He is considered the "grandfather" of windmill interest and has the oldest and largest collection and is surprisingly well-known.

Trudie Schneider and Joyce Byers attended the Southwestern National Street-Rod Convention last weekend, held at the Oklahoma City fairgrounds. An arts and crafts show was in connection, and Trudie took her hand crafted clay jewelry and air fresheners, and Joyce some of her dolls.

The vintage car show, open only to cars at least 40 years old, created a tremendous lot of interest as evidenced by 1363 cars being shown. Among them was the 1939 Oldsmobile shown by Sam Abston. He and Leslie Needham drove the perfectly operating car. Next year the National Street-Rod show will be in Oklahoma City and at least 12,000 cars are expected.

Sam plans to attend the Rocky Mountain National Street-Rod convention at Pueblo next weekend.

Anyone intending to complain about the heat had better avoid four ordinarily cool ladies - Emmy Lou Collins, Pearl Pierce, Adelyn Barnes and Rosalie Butt.

They had been in Amarillo where they assisted in the Yesterday's Children benefit, and coming home Sunday afternoon, they stopped in Stinnett for gas - and noted the thermometer showed 110. The car, a fairly new model, started routinely but soon they discovered there was no air conditioning nor other electronic functions. Worst of all, the windows wouldn't roll down. Never did Spearman seem so far away.

It can be said that four ladies shut up in a closed car, no air and 110 degree temperature, may have

lost their enthusiasm for their good works.

Grace Johnson sadly announces that she will be moving to Amarillo soon after the first of July. Her new address will be Beverly Apartments, 2700 Arcadia, Apt. #105. She has friends already living there.

Grace regrets very much leaving Spearman, but her health requires closer medical attention. She has lived in Spearman since 1974 and has enjoyed her friends, her church and considers it her home. She invites friends to visit her in Amarillo.

Mr. and Mrs. Dave Hand Jr. bought her home at 412 Townsend after theirs was destroyed by the tornado.

Guests of Verna and Woodville Jarvis for a brief visit on the weekend were her niece and husband of Longview, Wash.

They came to check on her mother, Mrs. Oklamee Key, who lives at the Hansford Manor.

Previous guests of Mrs. Key were her son, his wife and three children. They are returning to Moretan, Togo, West Africa. They are missionaries and have been on a year's furlough.

Family members of Lloyd Buzzard report that as of this writing Tuesday morning, he may be showing some slight gain in strength. Lloyd is still in I.C.U. at St. Anthony's and is considered to be in grave danger. Last Thursday he underwent his third bypass surgery during which complications occurred. Family members are constantly at his side.

The grief of the Trospers family is the grief of the community with the tragic passing of Paul Trospers.

Rarely, if ever, has a short 13 year life span left such an impact on so many. From numerous sources come comments on his dedication, intelligence and character. The devotion and esteem for him and his family was manifested by the packed auditorium and even the halls at his funeral rites. For many years to come his influence will be felt in the lives of his fellow students.

Sincere sympathy is extended to his family.



Mr. and Mrs. Jimmy McLeod of Spearman announce the engagement and approaching marriage of their daughter, Sandi Kay, to Mike Pearson, son of Mr. and Mrs. Dan Pearson of Spearman. The bride-elect is currently employed at Ochiltree General Hospital in Perryton. The prospective groom will graduate from West Texas State University in May with a bachelor's degree in agricultural business and economics. The couple plans an August 13 wedding and will reside in Spearman.

## Family holds reunion

During the week of June 16, Willie and Neoma Wilkerson enjoyed a family reunion in their home at 722 E. 2nd in Spearman. This was the first time in many years that all of their eight children and families have been together.

Their children traveled from California, Michigan, Louisiana, New Mexico, and Texas for the reunion. There was also family from Oklahoma who attended.

Their son W.L. Dowdy and his wife, Diane, flew in from Woodland, Calif. Their daughter, Susan, was unable to come with them. Roddy Woodson and his wife Stef with daughter Reagan drove in from Garland, Texas. Roy Woodson and his wife Melinda flew in from Lewisville, Texas.

Another son, William Wilkerson and wife Boots drove with their son Chancy from Houma, La. William and Boot's other son Mike and daughter Missy along with Mike's wife Leigh and son Austin flew in from Houma, La. also.

Ronald Wilkerson and his wife Doreen flew down from Grand

Rapids, Mich. Their children Jefferson, Marissa, Willie Reeves and Hadley were unable to attend. The Wilkerson's only daughter, Darlene Taft, came from Raton, N.M. with her husband Bob and daughter Stephanie Innis.

Other sons, Anthony and Marvin Wilkerson, live in Spearman. Anthony's family is wife Linda and sons Scott and Chad. Marvin's family is wife Bonny with daughter April and son Clayton.

Also enjoying the reunion were Neoma's sister Letha Brigance and husband Bud from Muskogee, Okla.

Wilkerson family members said they really enjoyed visiting and seeing everyone again. The family had fun touring the new Palo Duro Dam site and Adobe Walls, as well as skiing and fishing Lake Fryer and Lake Meridith.

They also visited in the homes of brothers Anthony and Marvin, and enjoyed swimming in Marvin's pool. All of the family members are looking forward to the next Wilkerson family reunion.



You are invited to a  
Wedding Shower for

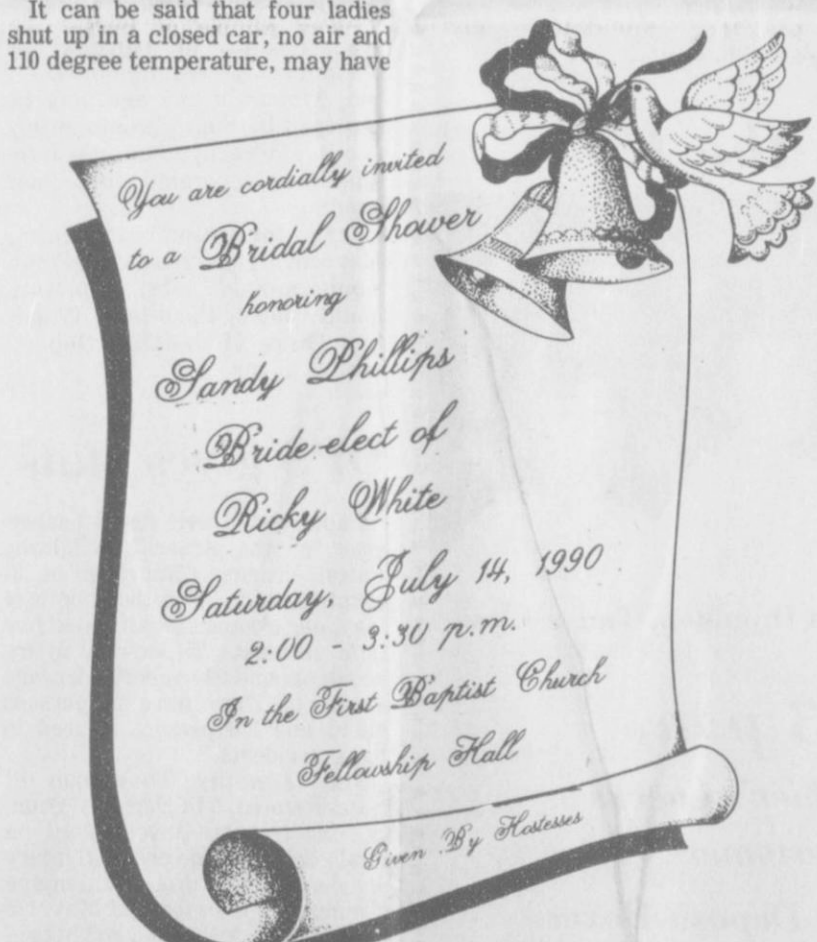
*Cindy Caldwell*  
(nee *Cindy Hendrick*)

Bride of *David Caldwell*

Saturday, June 30, 1990  
10:00 - 11:30 a.m.

First Baptist Church  
Fellowship Hall

Given by Hostess



You are cordially invited  
to a Bridal Shower  
honoring

*Sandy Phillips*  
Bride-elect of  
*Ricky White*

Saturday, July 14, 1990  
2:00 - 3:30 p.m.

In the First Baptist Church  
Fellowship Hall

Given By Hostess



Bridal Shower  
Honoring

*Lori Payne*  
Bride-Elect of  
*Rick Desimone*

Saturday, June 30, 1990  
2:00-3:30p.m.

Fellowship Hall  
at First Christian Church  
Selections at Sacks, Cha-Lor's

Given By Hostess



You Are Invited To A  
Bridal Shower Honoring

*Jan Davis*  
Bride-Elect of  
*Kevin Thibeau*

Saturday, July 14, 1990  
10:00 - 11:30 a.m.

In the Fellowship Hall of the  
First Baptist Church

Given By Hostess

## Club News

### RAINBOWS & RANGLERS

On Saturday, June 23, five squares danced to the calls of Gary Schick of Borger.

Those attending from Borger were James and Shirley Bruce, David and Joyce Walton, Steve and Tammy Dowell and Gib Gibbons; from Fritch were Shorty and Leola Albert; and from Booker were Tommy and Imogene Williams.

Dancers from Perryton were Ed and Lois Merydith, Glenda Bryant, Gennie Pilcher, June Kindy and Leroy and Paula Hall.

Attending from Spearman were Joe and Wanda Archer, Sonny and Marlane Nollner, Joyce and Benny Byers, Alvin Byers, Worley Smith, Carol Short, Danny and Debbie Herrington, Becky Lusby, Ronnie and Vicki Bullard, Victor and Debbie Schumann, Samme Goehring, Charles Bartz, Bonnie Ball, Jim and Martha McWilliams, Rusty and Judy Tindell, Jimmy and Donetta Greene and Jim and Kathy Morley.

The group's next dance will be a "plus" dance on July 12, with Murry Beasley of Texhoma calling.

### SERVITORS

Servitors met June 21 at Spearman City Hall. The meeting was called to order by President Kim Vera, and roll call was taken. The group discussed old business and heard the treasurer's report.

Programs and the general budget for the coming year were discussed under the heading of new business. Bylaws were read, and some adjustments made by majority vote. It was decided to have the membership drive in July, and an ice cream social in August to welcome new members.

Servitors sent "Thank You" notes to Spearman Jack & Jill, Ned and Tammy Kiger, Pizza Hut, Hansford Hospital and KRDF for their help and donations of food and drinks for the group's recent Scotchball golf tournament.

Members present at the meeting were Kim Vera, president; Cindy Avila; Eva Baca; Paulina Close; Linda Cummings; Cheryl Freeman, treasurer; Cheryl Gibson, historian; Donna McCubbin, secretary; Hope Moore; Maria Ochoa; Lee Schubert; Charlotte Sheets, vice president; and Sall Vaquera.



You are cordially invited to a  
Bridal Shower  
Honoring

*Lana Carter*  
Bride-Elect of  
*Travis Patterson*

Saturday, June 30, 1990  
2:00-4:00p.m.

at  
First State Bank in Spearman.

Given by Hostess  
Selections at Sacks Third Avenue and Cha-Lor's



# Sparks to address Flame Fellowship

Marlon Sparks of Perryton is the scheduled speaker for the Friday, July 6 Flame Fellowship meeting.

Sparks, a 1980 graduate of Rhema Bible training Center in Broken Arrow, Okla., entered full time ministry at the age of 18. He has ministered in over 40 states as well as several foreign countries.

His ministry in song has been displayed in two Gospel recordings, entitled "Sozoed" and "Bring It To Jesus." Sparks and his wife Kathy, also a Rhema graduate, have been pastoring Calvary Temple Outreach Center in Perryton since 1982 and are currently serving in that capacity.

The public is invited to attend this month's Flame Fellowship meeting, as well as each monthly meeting. Flame Fellowship meets on the first Friday of each month at 7 p.m. in the Homemakers Demonstration Building at 305 N. Bernice in Spearman. Meetings are

open to both women and men of all ages and denominations.



Marlon Sparks

## Hometown News

ENID, Okla. - Tandra L. Seal, junior accounting major, daughter of Ed Seal of Gruver, was among more than 90 full-time students named to the Dean's Honor Roll at Phillips University for the spring 1990 semester.

To be named to the honor roll, students must maintain a 3.50 grade point average on a 4.0 scale.

LUBBOCK - More than 1,400

Take Part in the Activities in Gruver on the 4th of July



GRUVER FORD, INC.  
Box 767 • 531 Main Street  
Gruver, Texas 79040  
Bus. Phone (806) 733-2431

Take Part in the Activities in Gruver on the 4th of July



MAIN STREET STORE  
733-5040  
506 Main  
Gruver

students at Texas Tech University received degrees in spring 1990 commencement exercises.

Degree recipients included Stacy Gwynn Poole of Morse, who received a bachelor of science degree in horticulture; Carlee Jane Dixon of Spearman, who received a bachelor of arts degree in journalism; and Teresa Sue Tindell of Spearman, who received a bachelor of science degree in education.

LUBBOCK - The Texas Tech University chapter of Alpha Lambda Delta, the national academic honor society for freshman college students, has initiated 150 new members selected for superior classroom performance during the 1989-90 school year.

Ginger A. Pearson, advertising major, daughter of Bob and Jackie Pearson of Spearman, and Christy D. Brown, finance major, daughter of Randy and Diane Brown of Gruver, were chosen as new freshman honorary initiates from Texas Tech's class of more than 6,000 full-time freshman students.

There have been 212 Alpha Lambda Delta chapters established in the United States since the honor society was established in 1924. The Texas Tech chapter was established in 1949.

LUBBOCK - More than 2,000 Texas Tech University students qualified for the academic honors lists at the end of the 1990 spring semester.

Students making the Dean's List included Brooke Holt, junior accounting major from Gruver; Anne Marie Potts, senior secondary education major from Gruver; and Maranda Linn Loomis, sophomore arts and sciences student from Spearman.

Students on the President's List included Krista Lea Kirkland, sophomore exercise and sports science student from Spearman; Christy Diane Brown, sophomore general business major from Gruver; and Julie Kristen Latta Stedje, senior elementary education major from Gruver.

Students on the President's Honor List earned a perfect 4.0 (A) grade point average while enrolled in 12 or more semester hours of class work. Students finishing 12 or more hours with a grade point average of 3.5 to 3.9 qualified for the Dean's Honor List.

## On The Go With Joy

by Lav Henderson

You know, when we were a young family - Mom, Dad and the four children - packing suitcases for a vacation was a real problem. With two girls, two boys and very little room in the car for extras, we were limited to three cases, or four at the very most, and a small bag for toiletries. I always thought that the purpose of the luggage was to transport our clothes needed for a week and then I would have to take one day just to do the laundry. And I learned early from experience that Mom needed to check after the kids had done their own packing, to make sure items such as socks and underwear were not left at home.

Traveling for a visit to Granny and Grandpa's farm now is not what it used to be. For instance, one grandson arrived with three pieces of luggage this weekend and I thought he was pretty smart to be so well prepared. Wrong! As his mother headed out the door to return home W.T. headed to the bedroom to unpack. He left one suitcase and his skateboard tucked away in a corner of the living room. When I peeked in to see if he needed any help, he was stretched out in the floor viewing his own personal T.V. and had it hooked up to the Nintendo. I just prayed he had decent jeans (no holes in the knees) and clean shirts for church.

Later that afternoon, W.S. and J.S. arrived for a few days, dragging in their heavy luggage. Usually they arrive with all their "Star Wars" vehicles, nice men, bad men, etc. for entertainment. Included also are tape players for each one and their own tape cases. Naturally, this will include ear-phones for private listening so they won't disturb each other. When they get here, it is usually with a couple of changes of good clothes and umpteen pairs of "jams," all wrinkled. Of course they have to change several times a day due to getting everything wet, or swimming, etc. They haven't learned yet, to pack a light weight coat or jacket because it can be pretty cold early in the morning when going out with grandpa to work cattle.

When our sons attended the Houston Livestock Shows back in their high school days, it never dawned on me to check their suitcases before leaving Gruver. I always wondered why they seemed so heavy until I found out they contained no clothes, just record players, speakers, girly magazines, etc.

Imagine my surprise when I found their clothes and necessities in the show boxes with jars of soap, combs, etc. to groom their livestock. The clothes were wadded up, and I discovered four pairs of brand new jeans that had to be ironed were missing the legs. They had been cut off so they could be used as cut-offs for the swimming pool. I fumed and sputtered for a whole year on account of that stupid stunt. In fact, I am still fuming.

The boys weren't the only ones to pack all that stuff. I can remember the girls as they left for college and beauty college. First things in their cars were the suitcases full of portable phonographs, records, etc.

As I was lamenting all this nonsense, "someone" declared, "Now hold on there, Mrs. Hot-shot Newspaper Reporter! How about when you go somewhere? You not only pack the two biggest suitcases for yourself you also pack an overnight bag and a toiletry case.

That is just for winter and summer clothes. You believe in being prepared clothes-wise, but you also load the car full of your afghans and yarn, you carry your photography equipment all of your fabric paints and pictures. Then, just so you and Vickie can compare arts and crafts, you pile in your quilt books, cross stitch, etc. and on, and on . . ."

Friends, just between you and me, he has threatened to make me unload everything on arrival and when we return home same deal. Also, he never offers to take me on a trip, anymore if he thinks Vickie will be there. Just kidding.

As you have already guessed, my house is wall-to-wall with kids, and more are expected tomorrow included are Shari Whitefield and son Wayne Thomas from Canyon, Dana Warren and Jared Stovall from Duncanville, Paula and Dustin Henderson of Amarillo and Angela, who has come to help adopted grandpa with chores.

Derek Mack, former Gruver Junior High student, is here visiting in the home of Lee Bort. He and his mother Julie Kierman now live in Brewer, Maine. Derek will be a senior in Brewer High School, and Julie has the general store and restaurant there.

Doug and Jenny Goldsmith are visiting with Belle Goldsmith and other relatives in the Gruver area. They are from Mooreland Okla, which is in the Woodward vicinity.

Gwyn Murray is guest of Brenda Dahl, and they performed at the church services at the Methodist Church.

Brad and Mary Cluck are visiting with parents Del and Barbara Cluck.

Frank and Lucy Pittman went to check up on her mom, "Ma Norman." She recently suffered a stroke, and underwent heart surgery a couple of years ago.

Georgia Holt's brother George Buzzard has had bypass surgery.

Lamoyne Cator is in Bivins Rehabilitation Center in Amarillo. She apparently was too weak after knee surgery to be taken to her daughter's home for recovery.

Mozelle McClellan has had quite a lot of problems after being bitten by an insect and developing Lyme disease. She was on a trip to visit relatives in Pennsylvania or someplace back east.

Haley Kimble of Borger and Tyler Weldon of Lubbock are visiting Jack and Mary Weldon. I'm not sure, but that sounds like grandkids and grandparents to me.

Mr. and Mrs. Jeffrey Thacker and son Brad from Roaring Springs, Texas are visiting in the home of Jerry and Pat Overbey. I think Mrs. Jeffrey Thacker is Pat's twin sister.

I guess that is enough until I have time to get my facts straight.

### Birth Announcement

Kirk and Sherry Thompson announce the birth of a daughter, Courtney Lynn, on June 11.

She weighed eight pounds, four ounces and was 20 inches long at birth. Waiting to welcome her home were her big sisters Emily Beth and Kady Anne. Her grandparents are Jimmy and Donetta Greene.

# Gruver Mobile Meals requests donations

Gruver's Mobile Meals program began in September 1978, when volunteers started delivering meals to several Gruver residents needing the service.

The organization sprang from the need for meals by two Gruver residents, and later it was discovered there were others needing help in meal preparation. A group of women from Dumas came to Gruver to explain how their Meals on Wheels program operated, and several interested Gruver citizens met with the Dumas women to organize and mobilize the operation in Gruver.

Volunteers deliver meals three days per week to those needing the service. During the organization's first few years, meals were brought from the Hansford Hospital in Spearman, but nowadays most meals come from the Gruver School Lunchroom during the school year.

In the summer months, the food has been prepared by individuals and by Gopher's convenience store.

Mobile Meals are presently being taken to 15 individuals in Gruver.

Financing the operation has historically been accomplished through donations from Gruver residents and civic organizations. Some funding is provided by the Theta Sigma Phi sorority, which goes "trick or treating" each Halloween and donates the collected money to Mobile Meals.

During the school year, the Gruver School Lunchroom has provided meals at a cost of \$1.50 per plate, and in the summer months, Gopher's has been preparing the meals at a cost of \$2.94 per plate. Food costs are rising, and for the first time in its history Gruver Mobile Meals is experiencing financial difficulty. The organization is now requesting assistance from Gruver residents to keep the program rolling.

Marilyn Been, chairperson of Mobile Meals, says that donations would be appreciated, and can be taken to her at Gruver City Hall.

She commented, "Our thanks go to you for the generosity you've shown in the past, and we know you will continue supporting Mobile Meals."

## Winger appointed

Val Winger, Hansford County commissioner, has been appointed by Texas Governor Bill Clements to one of 24 regional committees set up to review applications for federal block grants.

Winger's term on the committee for the Panhandle region extends through January 1, 1991.

The committees review applications for federal block grants used to finance public facilities and to provide housing assistance.

"These review committees are

vital because they allow an element of local control to the federal budget process," Governor Clements said.

Recommendations from the regional committees ultimately will be forwarded to the State Community Development Review Committee. That panel, in turn, submits the funding recommendations to the Texas Department of Commerce. The governor has final approval of all federal grants awarded under the program.

Going... Going... GONE...

There's only a few more weeks left in our QUITTING BUSINESS SALE, So don't miss these Bargains ...

40% OFF STOREWIDE  
Holiday merchandise save 60%  
Begins Thursday, June 28  
Balloon Bouquets Excluded.

The Best of Times

512 N. Main • Guymon, OK  
9:30-5:30 Mon.-Sat.

## Public Notice

TO ALL FORMER AND CURRENT INTRASTATE WIDE AREA TELECOMMUNICATIONS SERVICE (WATS/800) SUBSCRIBERS:

Southwestern Bell Telephone Company has instituted a Class Action Lawsuit seeking judicial approval of a settlement reached in Docket No. 7297, an inquiry of General Counsel of the Public Utility Commission of Texas into possible overcharges which occurred between September, 1976, and February, 1987, due to rounding practices, on bills of intrastate WATS/800 customers sent by Southwestern Bell and other telephone companies which concur in Southwestern Bell's tariff. The suit is styled "Southwestern Bell Telephone Company, Plaintiff, vs. MCI Telecommunications Corporation, A Member of the Class of Texas Intrastate WATS and 800 Service Customers Who Paid Overtime Charges From September 1976 Through February 1987, Defendant," and identified as Cause No. 471,460 in the 126th Judicial District Court of Travis County, Texas.

Pursuant to the settlement, while not admitting liability, Southwestern Bell, the other local exchange telephone companies in Texas, and AT&T Communications of the Southwest, Inc. have agreed to pay refunds to those WATS/800 customers who paid overtime charges attributable to the rounding practices for intrastate WATS/800 services at any time between September, 1976, and February, 1987. The refunds will be based upon either the actual or estimated amount of overtime charges attributable to such rounding practices. An exact refund will be determined for customers able to produce copies of their WATS/800 service bills. For customers who do not have copies of their WATS/800 service bills to establish actual overtime charges paid, an average refund of \$4.53 to \$5.95 per WATS/800 service line per month will be applied. All claims will be subject to verification. The refunds will also include interest at the rate of 7.80% per annum.

### Claim Forms And Additional Information

Those customers who think they may be entitled to a refund or who desire more information must call 1-800-782-3026, 8:30 a.m.-4:30 p.m., Monday through Friday, or write to WATS Refund Pool Administrator, One Bell Plaza, Room 670, P. O. Box 650376, Dallas, Texas 75265-0376, to request a WATS Refund Information Package. The WATS Refund Information Package will contain further information regarding the lawsuit and eligibility for a refund, a description of documentation required to support a customer's claim for refund, and a refund claim form to be filled out and submitted requesting a refund. REQUESTING A WATS REFUND INFORMATION PACKAGE DOES NOT OBLIGATE YOU IN ANY WAY.

All claims for a refund must be received by the Refund Pool Administrator by Friday, October 5, 1990, and all rejections of the settlement (that is, requests for exclusion from the class action lawsuit) must be received by the Court by Wednesday, September 5, 1990. Only those who respond by filing a claim or by filing a rejection of the settlement, as explained in the WATS Refund Information Package, will receive notice of future developments in this proceeding.

Persons who wish to obtain further information may also contact the Public Utility Commission, Public Information Division, at (512) 458-0257 or (512) 458-1221, teletypewriter for the deaf.



THE BEST NEWS UNDER THE SUN FROM

ERNO LASZLO

WE'VE ADDED FOUR NEW SKIN PROTECTIVE PRODUCTS TO OUR INCREDIBLE COLLECTION.

SEA MUD BODYSKIN POLISHER. With only natural exfoliants, this extremely mild cleansing scrub gently smooths away dead cells, leaving skin soft, polished, ready for sun or no-sun tanning!

SELF-TANNING LOTION SPF 8 is a luxurious tan-activating formula that bronzes skin to a natural, golden glow without sun, without streaking. Recommended for use after Sea Mud Bodyskin Polisher.

SENSITIVE AREA PROTECTOR SPF 18 is a creamy, concentrated spot protector for lips, nose, ears, any delicate area. In its own mirrored compact, it stays soft, yet doesn't melt in the sun.

DUAL SHADE BRONZING POWDER offers a unique, two-color bronzing system that brushes on a progressive tan or light-to-dark highlighting.

j. Winston of amarillo

feminine fashion 2701 paramount visa-mastercard american express

*St. Elizabeth's*

1940 Anniversary 1990

In honour of the Fiftyeth Wedding Anniversary of

Mr. and Mrs. John C. Robinson

their children and grandchildren

request the pleasure of your company

at a reception

on Saturday, the thirtieth of June

nineteen hundred and ninety

at two until four in the afternoon

Gruver Methodist Church Gruver, Texas

No gifts please



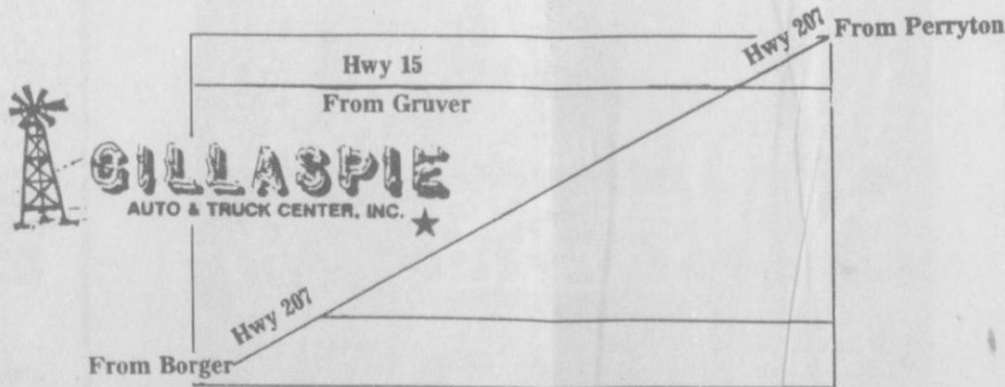
# Announcing A New Hot Spot For Driving Excitement!



We're the dealer you've just got to see.  
Because we're out to get you into some serious driving excitement... Pontiac excitement!

Test drive the new Grand Prix™ Sports Sedan: The first four-door Grand Prix in Pontiac history. It's Pontiac's ultimate expression of what a personal driver's car should be... in a Sedan!

And while you're at it, take a look at our full line-up of 1990 Pontiac excitement, including Grand Am®, Bonneville®, Sunbird®, LeMans, Firebird®, Pontiac 6000 and the new Trans Sport®—the Pontiac of Minivans! Test ride one today!



**GILLASPIE Auto & Truck Center, Inc.**  
Highway 207 South Spearman, Texas (806)659-2541







### Back To Small Town Traditions

by Roy Harris  
Superintendent  
Pringle-Morse CISD

After the first game of the regional tournament, my dad asked my brother, Ronny, and I to go with him out to the family cotton farm near Sundown, Texas. My grandparents were dead, and their children had leased the farm to a local farmer. The old irrigation well needed a new motor and pump, so the family had left it to the renter to get one. Dad wanted to see how the project was coming along.

It was late afternoon and the air was clear and sharp. When we arrived the renter pulled up on a large, green John Deere tractor. He was pulling a large plow equipped with chisels and the freshly turned red sandy loam had a sweet damp smell.

After some business talk, Dad began to chuckle and said, "See that farm across the road? That's the old Hughes place."

I could tell he had one of his famous stories ready to tell and wouldn't be denied. My hunch was right.

My father began, "My Dad and Mr. Hughes couldn't get their farming done for debating the scriptures. Dad was a Baptist Deacon; Mr. Hughes was a Church of Christ Elder, and they both loved to fuss with one another over the scriptures."

Pointing to the "turn row" across the road, Father continued, "Mr. Hughes had an old fence there and when he made a round he would come to the fence, lean on the post, and wait for Dad to get to the end of his row. Dad would see him, pull the mules to a halt, stroll over to the fence, and the debate would begin."

Mr. Hughes would throw out some bait by saying, "Terrible thing about those Children of Israel out there in the wilderness, ain't it?"

"How's that Brother Hughes?" Dad would say, taking the bait.

"Well, they wandered in the wilderness forty years until they died. Never did get to the Promised Land cause they sinned against the Lord. What's worse, is they all went to Hell."

"Now Brother Hughes, you don't know all those folks went to hell. Some of 'em might-ah-been saved. Surely, some of 'em were good God fearin' people."

The premises had been established and thirty minutes of intense debate followed. When it seemed an impasse had been reached, both men returned to their mules, plowed in opposite directions, deep in thought concerning the issue. After several rounds, Brother Hughes would look up and there would be Dad leaning on the post. Mr. Hughes would stop his team and come to the fence.

"Brother Hughes, I got a question fer ya. If all those Children of Israel died and went ta Hell, what are ya gonna do about Moses?" Dad would ask with a sly grin.

"What do you mean?" Mr. Hughes would counter.

"Well, Moses sinned against God when he struck that rock and sour water come a pourin' out, didn't he?"

"He did."

"And God never let him enter the Promised Land, did He?"

"Well, no."

"Ya think God sent Moses to Hell like the rest of them sinners?"

Mr. Hughes would scratch his head, kick a few clods, and then reply, "Good question. I'll have to study on it awhile."

Both men would return to their plowing and thinking.

Late in the evening, just before sundown, Mr. Hughes would be at the fence again and Dad would come over.

"Tell ya what I'm gonna do with old Moses," Mr. Hughes would say.

"What's that?"

"I'm gonna leave him right there on Mount Nemo where they buried him," Mr. Hughes would say with confidence.

Dad would look at his watch, see that it was supper time, and say, "Well, that's a good-ah-place as any, I guess. Looks like quittin' time. Think I'll go see what's fer supper."

With that the men would part. Tomorrow would be a new day to plow, debate, and enjoy one another's company.

# DPS announces extra patrol

AUSTIN - The Texas Department of Public Safety has estimated that as many as 15 persons will be killed in traffic accidents during the brief July 4th period in Texas.

DPS Director Colonel Joe Milner reminded motorists that the traffic volume increases during holidays, raising the chances for fatal collisions.

"Even though July 4th falls on Wednesday this year, we believe additional patrol hours are necessary," Milner said. "All available troopers will be on duty, closely watching for the most life-threatening violations - DWI and speeding over-the-limit."

Milner said that the DPS 30-hour fatality counting period will start at 6 p.m. on Tuesday, July 3, and continue until midnight on July 4th.

Last year, the Independence Day driving period ran 102 hours. Thirty-four traffic fatalities were reported during the extended counting time, far below the DPS estimate of 52.

"We're hoping for the same result this July 4th," Milner added.

"And we're relying on the motorists who respect Texas officers and traffic laws to help us meet the challenge."

Major V.J. Cawthon, regional commander of the Texas Department of Public Safety said, "Everyone looks forward to happy holidays, especially the 4th of July; but the sad thing about all holidays is that a number of people will lose their lives in traffic accidents."

He stated that as in years past, the Department of Public Safety will conduct "Operation Motorcade," whereby all available state troopers will be on the streets and highways attempting to make them a safe place for the Texas traffic to travel.

Cawthon stated, "Our troopers will be especially watchful for

those hazardous drivers who refuse to slow down, run stop signs, pass in no passing zones, and who drink and drive."

He encouraged all drivers and passengers to buckle up to reduce the chances of death or injury in case of an accident. He stated that this practice should go hand in hand with the voluntary compliance with traffic laws.

"If you, as a motorist, would

drive and treat your fellow motorists as you would like to be treated on the roadway, you can help in making this a safe holiday. Remember to slow down and 'Drive Friendly, The Texas Way,'" stated Major Cawthon.

Keep in mind to "Slow down a little and live a lot," "Don't Drink and Drive" and "Buckle Up" at all times, he said.



The New York Public Library adds nearly a million items to its collections each year.

**HENSON CHIROPRACTIC**  
 410 S. Davis Spearman, TX  
 Call For Appointment 659-5603  
 Office Hours: Mon., Wed., Fri. 8:30-5:00  
 Tue., Thu. 8:30-11:30

**FOUNDATION PROBLEMS?**  
**CHIFFERS BROTHERS**  
 House & Floor Leveling  
**Signs To Look For . . .**  
 • Cracks in Ceilings & Walls Above doors & windows  
 • Doors that won't close  
 • Shaky or bouncy floors  
**150 MILE RADIUS FREE ESTIMATES**  
**352-9563**

## Introducing Gillaspie Auto & Truck Center, Inc. a new sign on the Great American Road.

**GILLASPIE**  
**AUTO & TRUCK CENTER, INC.**

**BUICK**

Gillaspie Auto & Truck Center, Inc., the newest Buick dealer in the country, is proud to be one of the brightest new signs on the Great American Road.

And we can't wait to help you become part of a special group of people: Buick owners. Buick has long enjoyed its reputation as a premium American motorcar. Gillaspie Auto & Truck Center, Inc. is pleased to continue that reputation in presenting the 1990 Buicks. Buick offers everything from the highly affordable Skylark, to the sporty and elegant Reatta.

Come in and look around. We're sure you'll like what you see.

Gillaspie Auto & Truck Center, Inc. offers you quality service, knowledgeable and courteous salespeople and an attractive lineup of Buicks at prices you will find to be quite attractive.

So come in to Gillaspie Auto & Truck Center, Inc. soon. We'd like to meet you and introduce you to the 1990 Buicks. Gillaspie Auto & Truck Center, Inc. It's the new sign to look for on the Great American Road.

The Great American Road belongs to **BUICK**

See your dealer for terms and conditions of the limited warranty. ©1989 GM Corp. All rights reserved. Let's get it together. buckle up.

### Spearman resident chosen as outstanding

Richey Glenn Thompson of Spearman has been selected for inclusion on the list of Outstanding Young Men of America for 1989.

His complete biography will appear in the annual awards publication Outstanding Young Men of America.

The Outstanding Young Men of America program seeks to recognize the achievements and abilities of men between the ages of 21 and 40. These men are being honored for their outstanding civic and professional contributions to their communities, their states and their nation.

Thompson, along with fellow Outstanding Young Men throughout North America, was selected after 150,000 nominations were received from political leaders, university and college officials, clergymen, business leaders and various civic groups and community organizations.



**GILLASPIE**  
**AUTO & TRUCK CENTER, INC.**



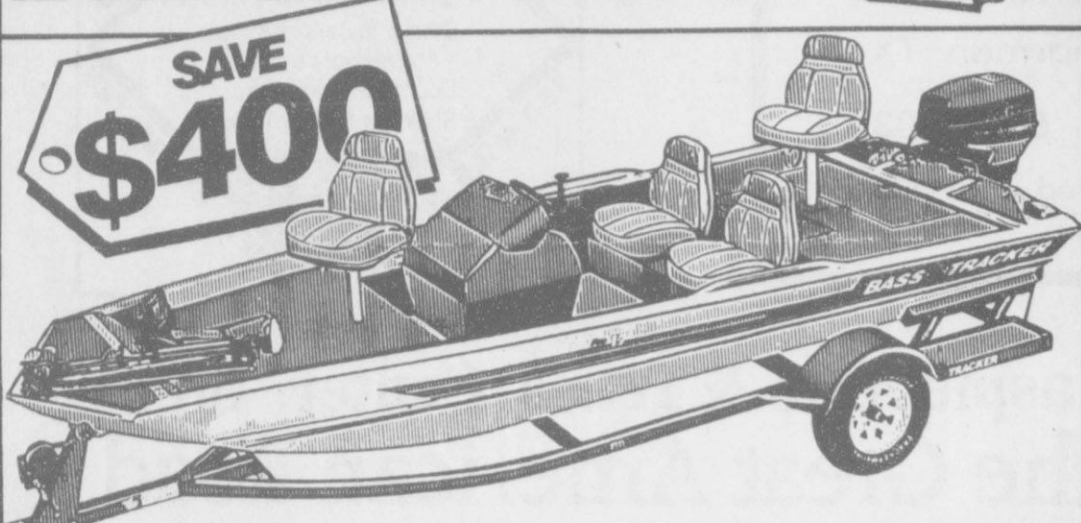
# Have a Safe & Happy 4th of July!

From The Reporter-Statesman Staff

## TRACKER®

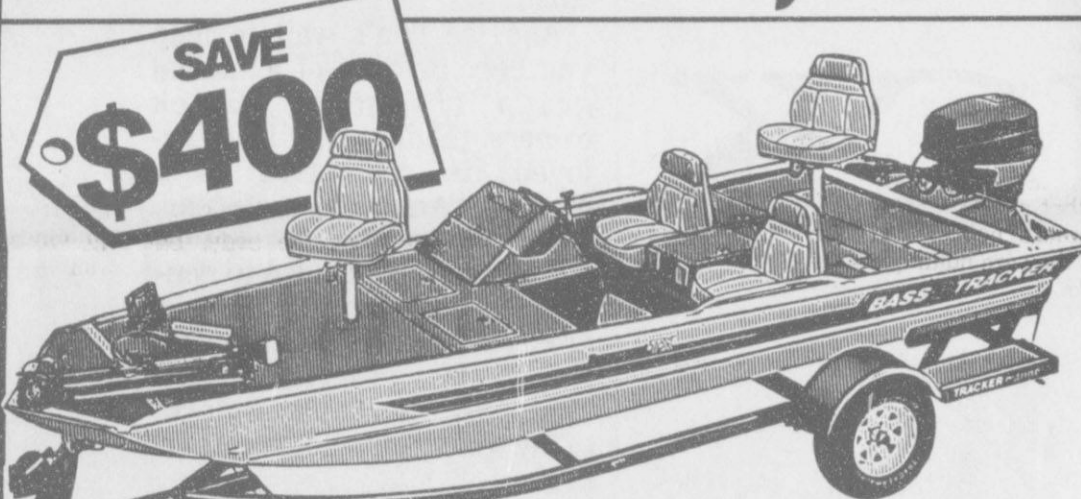
# SIZZLIN' SUMMER SALE

BUY NOW.. UP TO \$400 AND SAVE \$400 SUPER HOT DEALS



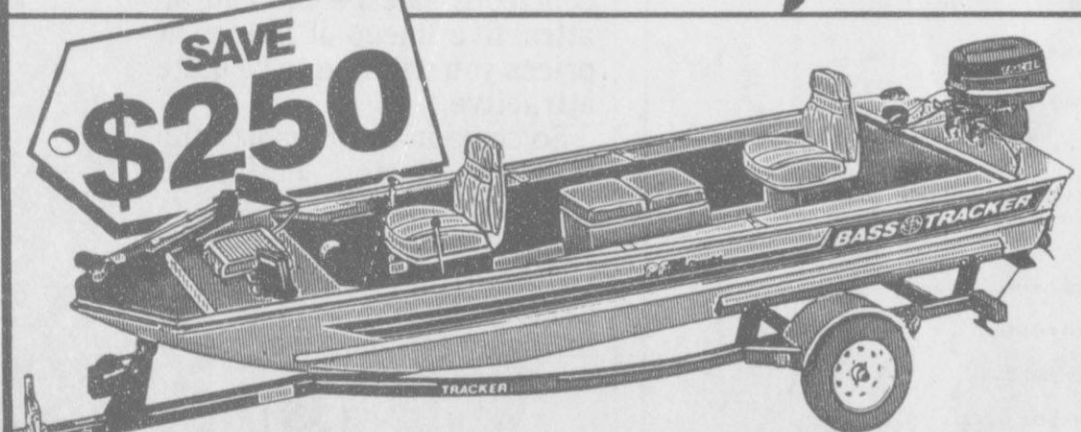
**PRO 17** The Pro 17 has a long list of standard features including a deluxe wraparound console, elevated bow & stern fishing decks, aerated livewell, removable pedestals and much more. Complete package includes TRACKER® 25 H.P. electric start outboard with oil injection, trolling motor with remote foot control, 1000 LCG by Eagle®, and custom trailer.

REGULAR \$4,995  
**\$4,595\***



**TX 17** Loaded with great features like the deluxe wraparound console, elevated bow and stern fishing decks, contoured fishing seats and much more, this is our best TX value ever. Complete with 40 H.P. TRACKER® outboard, weedless trolling motor with remote foot control, 1000 LCG by Eagle® and custom drive-on trailer.

REGULAR \$5,995  
**\$5,595\***



**PANFISH SPECIAL** Any fishing enthusiast can see themselves seated comfortably in the forward command post, an arsenal of fish-catching tools within easy reach.

Imagine. Without ever leaving your seat, you can fire up and run the perfectly TrackerMatched™ Pro Series 25 H.P. outboard, or maneuver with the powerful TRACKER® trolling motor.

You can drop anchor or lift anchor, operate the fish finder, reach into the patented combination livewell/baitwell for another minnow or to drop in your latest catch, even grab a cold one from the built-in portable cooler - all without leaving your forward command position.

REGULAR \$4,595  
**\$4,345\***

**HURRY! SALE ENDS JULY 15, 1990**

\*Plus dealer prep and freight. Prices may vary depending on optional equipment to include Big Catch Package on stock models. Sale prices apply to selected 1990 models while quantities last.

**UP TO \$500 SAVINGS ON OTHER SELECTED MODELS!**

## TOP-O-THE-LINE MARINE

205 West 1st Borger, TX 806/273-5507

"Financing Available"

Fish the Finest!



## For The Short Of It

by Bob Bort

For the second week in a row, I begin my column with details of a Little League ball game. Again it is the A's vs. the Pirates - this time, their second meeting, June 22. Wylee Maupin and Bailey Barkley turned in super pitching performances - a double one-hitter!!! Through four and a half innings, the score was 0-0, and the only hit of the ballgame came in the second inning, by the Pirates' Max Frick. Twice the pitcher for the Pirates, Maupin, had turned the A's away with the bases loaded and two outs. Both times, in the second and in the fourth, he induced A's leadoff batter Brant Arnes to pop out to first baseman Frick. Arnes, however, turned in a stellar defensive show at shortstop.

Then, in the bottom of the fifth, the A's Daniel Bort and Jarrod Hoel walked, and both scored on the only hit of the ballgame off of Maupin - a ground single to right field by Barkley. Barkley also scored, and the final score was 3-0. For the second game in a row Barkley was the hero, this time with a one-hit shutout, the only hit, and the game winning RBI.

Next time these two meet will be Monday, July 2. The A's are 6-0, and the Pirates are 4-2. In all sense of fairness, I'll be pulling for Wylee Maupin and the Pirates! I hope a lot of people turn out to see this game! (Since my son plays for the A's, I can't honestly say I'll be pulling for the Pirates - but it was a nice thought...)

An added note: I arrived late at the game described above - in the second inning - and I am informed that I missed one of the key plays of the game. It came in the second inning on the single by Frick to centerfield. Jason TeBeest made an outstanding play on the ball, which was very hard-hit, and fired the ball into second base, holding Frick to his single. It is plays like that which make the difference in close ball games.

It is hard to believe that football season is only eight weeks away - September 2 is the opening for the NFL.

The Meech Lake Accord is dead, and Quebec nationalism is alive and well. It is my guess that the

Canadian province of Quebec, with its strong ties to France, will secede from Canada, and there will be two nations to our north. At Meech Lake, Quebec in April 1987, Prime Minister Brian Mulroney met with the 10 provincial premiers, and they decided on the minimal amount of special power which would be granted to Quebec to prevent it from leaving Canada.

The idea for Quebec was to preserve its linguistic and cultural heritage. They even want to ban the use of English language signs, not just in schools.

The deadline for the accord passed this week, and the other provincial leaders failed to approve these special powers. Thus, the path is left open to secession. It would be the beginning of the end of Canada as we know her.

One of President Bush's Cabinet officials, Secretary of HUD Jack Kemp, also a leading Republican, is not about to give Nelson Mandela carte-blanche in this country yet. Mandela, jailed for 28 years as a Black nationalist in South Africa, shared with the public this week his kinship with Fidel Castro, Colonel Muammar Qadhafi of Libya and Yasir Arafat, PLO leader. Kemp and a lot of other Americans are very uneasy about Mandela and his so-called "friends."

But I will say this about that. Mandela is the first honest-to-goodness black hero this country has ever known, to the blacks themselves. Yes, that includes people like Jesse Owens, Ali, Mike Tyson, George Washington Carver, Booker T. Washington, W.E.B. Du Bois, Duke Ellington, Martin Luther King, etc., etc., etc. You see, Mandela represents the black heritage, because he is from South Africa. I would even go so far as to say that now, as Mandela is visiting the U.S. for the first time, he is being received by Black America as the Catholics receive the Pope. The other "heroes" were all Blacks in White America, somehow overshadowed by our own white heroes, such as the 41 presidents. This past week on ABC's "Nightline," Mandela overshadowed the anchor, Ted Koppel. In a way, he even overshadows President Bush. He has become a "God-Like"

figure to black Americans. Without my stating a position, I ask you, "Is this good or bad? Does his friendship with known terrorists make him someone to be feared? Would it be bad for America to have a stronger, more self-confident black population, rather than one which is weak, suffers badly from the drug problem, and has no heroes like Mandela? If our enemies (Qadhafi-Castro-Arafat) were his friends while he was jailed, shouldn't we have supported him better, rather than the oppressive South African apartheid government? Why is it we always seem to support the wrong people in our foreign policy dealings?"

I leave it up to you.

Gruver's outstanding basketball player, Troy Seagler, a 1990 GHS graduate, will be attending Hardin-Simmons University this coming fall. Seagler will be trying out for the basketball team, but he does not have a scholarship. He has talked with head coach Dennis Harp, and knowing Troy, he will work hard and eventually get that scholarship. Hardin-Simmons was 18-12 last year, and they should have a good team again this year. All of us wish Troy the best of luck!

While I may have some sympathy for our "teeming masses yearning to be free," I do not have much sympathy for those who advocate gay rights, or abortion rights. I do not mind stating my opinion concerning these issues. Abortion is just flat-out wrong, and homosexuality is unfortunate, but just as wrong. Now that I have commented on all the issues in the news this week, I had better shut up.

Except to state that I enjoy quoting Robert Frost as much as I do Carl Sandburg: "I never dared to be radical when young, for fear it would make me conservative when old."

Coach Tim Garland is busy this week, hosting Gruver's first ever boys' basketball camp. He has 44 boys, 4th through 9th graders, participating.

## Hammerin' Hounds see action

by Bob Bort

Richard DeSantiago pitched a beautiful three-hitter and Kenton Odom delivered a clutch two-strike single in the fourth inning to break up a 0-0 ball game as the Gruver Hammerin' Hounds pounded the league-leading Perryton Falcons 11-1.

The Gruver team scored 10 runs in that awesome fourth inning of the June 19 drubbing of the Falcons. That game, which was Gruver's first home game, coupled with a Canadian defeat at the hands of the Perryton Lions, gave Gruver sole possession of first place with four victories and one loss.

Steven Flowers led off the bottom of the fourth with a walk, and stole second base. Odom then delivered his clutch hit, plating the first run of the game. The hit parade continued after Jace Dawson walked, DeSantiago doubled, Trevor Shipley walked, Victor Lopez singled on the infield, Will Etheredge walked, Matt Etheredge walked, Aaron Frick walked, Flowers was safe on an error, Odom singled, Dawson singled, and the Gruver team had a 10-0 lead.

Each team scored a run in the

fifth inning, and the game was stopped because of the 10-run rule.

F-0 0 0 1-1  
G-0 0 1 0-11

The Gruver Hammerin' Hounds blitzed Beaver 27-5 at Beaver Saturday, June 23 to maintain their first place standing in the Top O' Texas Babe Ruth League. The game lasted only four innings before being called.

Victor Lopez had three hits and five runs scored to lead Gruver. Aaron Frick had three hits and four runs scored, Will Etheredge had two hits and three runs scored, and Jace Dawson had two hits and two runs scored. Matt Etheredge and Steven Flowers each had only one hit, but scored four runs each.

Others with one hit were Kenton Odom, Calvin Rasor and Kevin Flowers. Those who scored one run were Odom, Rasor, Roma Tomlinson, Kevin Flowers and Ryon Atwood. All told, Gruver scored 27 runs on 15 hits.

Gruver has a one-game lead on the Perryton Falcons in the loss column of the standings, so each game from here on in is vitally important.

All of the Hounds' remaining games are at home. The home game with Beaver which was cancelled earlier this month was to be played as part of a doubleheader with Beaver this past Saturday night, but Beaver agreed to forfeit the game so it was a double-victory for Gruver at Beaver.

Gruver	15	5	3	6	-27
Beaver	3	1	0	1	-5

Monday, June 25 was not a good night for the Gruver Hammerin' Hounds.

Canadian came into town and was not impressed by Gruver's first place standing in the Top O' Texas Babe Ruth League and six game win streak. That came to an end as the Canadian team won a doubleheader from Gruver, 9-8 and 13-7.

Canadian threw their two top pitchers at Gruver, but Gruver manager Doug Frick was somewhat handicapped by having so many makeup games this week, and he was forced to use pitchers who hadn't pitched this year to save some for the other games this week.

Gruver held a 5-2 lead in the first game, but a big four-run bottom of the fourth put Canadian on top 7-5. The Hounds rallied in the top of the fifth to go ahead 8-7. Key play was a bloop single to right by Richard DeSantiago, scoring the tying run; then, when DeSantiago was caught between second and third, he forced a rundown, enabling the go-ahead run to score.

But Canadian tied with one run in the fifth and won with one run in the sixth. There were two outs when the winning run scored.

In the second game, Canadian took a five-run lead in the first inning, and they were never headed. Gruver scored four in the first and trailed 5-4, but they couldn't catch up.

A two-run, slicing home run to right field, inside the park, by Calvin Rasor pulled the Hounds to within 8-6 in the bottom of the third, but Canadian pulled away to win 13-7.

G	2	2	1	0	3	0	8
C	2	0	1	4	1	1	9
C	5	0	3	3	2	13	
G	4	0	2	1	0	7	

See Hounds page 9

# A&K Roofing & Painting

## Free Estimates Licensed & Bonded REASONABLE RATES

Wood, Composition, Hot Tops  
Home Owned and Operated

Call Collect:  
**358-4296**

4412 W. 3rd  
Amarillo, Texas



**STANDINGS**  
Through Monday, June 25

1. Perryton Falcons	7-2
2. Gruver	6-3
3. Perryton Lions	5-4
4. Canadian	4-4
5. Perryton Bullets	3-5
6. Spearman	2-5
7. Beaver	1-5

**T-Ball Boys**

1. Rangers	4-1
2. All-Stars	3-2-1
3. Cards	4-3
4. Tigers	2-2-1
5. Giants	0-5

**Little League Boys**

1. A's	6-0
--------	-----

2. Pirates	5-2
3. Cubs	1-5
4. Braves	1-6
T-Ball Girls	
1. Orioles	4-1
2. Astros	3-2
3. Phillies	1-5
Softball Girls	
1. Bobby Sox	2-1
2. A's	1-2

**Results (Tue. June 19)**

Cards 16, Giants 8
A's (g) 20, Bobby Sox 4
A's (b) 11, Braves 3

**(Thu. June 21)**  
Rained out

**(Fri. June 22)**

Tigers 24, Giants 14
Orioles 20, Astros 19
Rangers 16, Cards 8
A's 3, Pirates 0
(Sat. June 23)
Rangers 14, All-Stars 13
Orioles 17, Phillies 11
Braves 7, Cubs 3

**(Mon. June 25)**

Astros 22, Phillies 20
Cards 16, All-Stars 14
Pirates 19, Braves 9

**(Tue. June 26)**

Rangers at Giants
Bobby Sox at A's (girls)
Cubs at Pirates

## Fireworks injure childrens' eyes

Sometimes the Fourth of July "bombs bursting in air" are the last things a child's eyes will ever see. Last year more than half of all fireworks-related eye injuries happened to children, warns the Texas Society to Prevent Blindness.

Fireworks injuries of all kinds soared 10 percent in 1988, up to a new total of 10,200. Eye injuries in particular tend to be severe. In one study, 40 percent of the reported cases caused permanent eye damage, visual disability or destruction of the eye.

"No fireworks are safe in childrens' hands," said William Carpenter, president and chief executive officer of the Society. "Even sparklers, which burn at temperatures of more than 1800 degrees F, can cause serious burns to the eyes and skin, and can easily ignite clothing. Sparklers alone accounted for more than half of all fireworks injuries reported last year."

Consumer Product Safety Commission statistics show that in 1988, 45.6 percent of fireworks eye injuries requiring hospital emergency room treatment struck children 5 to 14 years old. This is a sharp in-

crease from the year before, when the same group accounted for 32.9 percent nationwide. Even very young children were injured. Last year 7.6 percent of fireworks-related eye injuries occurred to tots under the age of 5, up from 6.1 percent in 1987.

Most injuries result from mishandling fireworks. Accidents occur when they are held in the hand, when attempts are made to relight apparent "duds" or when bending directly over fireworks to ignite them.

While a number of states have banned the private use of fireworks, most still permit Class C devices to be used. This category includes pieces that contain no more than 50 mg. of black powder. Bottle rockets, roman candles and sparklers are common examples. Together these have caused the overwhelming majority of serious injuries to the eyes.

The Texas Society to Prevent Blindness warns against the private use of fireworks. Unfortunately, the range of state laws and illicit market make fireworks readily available. If you are going to use fireworks, the following safety rules are recommended.

\*\*Check local laws regarding use

of fireworks. It may be illegal to use fireworks within the city limits, or within the county in which you live.

\*\*Never allow children to use fireworks. Even sparklers are dangerous.

\*\*Fireworks should only be used outdoors in a clear area away from homes, buildings and combustible materials.

\*\*Be sure others are out of range before lighting fireworks. Many fireworks injuries occur to innocent bystanders.

\*\*Never handle or attempt to relight a firework that does not go off. Keep water nearby for emergencies and for dousing malfunctioning fireworks. Drench thoroughly before discarding the dud firework.

\*\*Never ignite fireworks in a container. Glass and metal containers can easily shatter.

For more information on preventing blindness and preserving sight, call the Amarillo/Panhandle Branch of the Texas Society to Prevent Blindness at 359-4431. The National Center for Sight, an information resource of the National Society to Prevent Blindness, also has a toll free number: 1-800-221-3004.



Jim Tucker of Gruver High School (right) recently attended a two-day seminar in swine production and management sponsored by the Department of Agricultural Services and Development at Tarleton State University. Howard Parrish (center), a nationally known swine breeder and judge from Edon, Ohio, conducted the workshop along with Dr. Don Knotts (left), chairman of the department. (TSU News Service photo)

## Minding Your Own Business

**Avoiding Business Stress**  
by Don Taylor  
Director, PSBDC

On the way to work, you remember that the sales tax report is due today. Next, you recall that your fall inventory order must be in the mail by 5:00 p.m. As you sit down to get an early start on a full day's paperwork, the telephone rings. An unhappy customer burns your ear for ten minutes about the poor treatment he received from your top employee.

You call that employee in, but, before you can discuss the unhappy customer, the employee tells you that she is leaving and gives two weeks' notice. Then, the bank calls; they are holding one of your checks. . . Welcome to the real world of small business stress.

Stress is defined as a physical, chemical or emotional factor that causes bodily tension. It exists in varying levels in every small business and, if ignored, can lead to dysfunction and disease. Many serious illnesses are linked to stress and others are aggravated by constant high-level tension.

**Learn More About Stress**

What can you do? Sign up for a stress avoidance class or attend a stress workshop. When you fully understand the stress cycle, you can more easily avoid lasting damage.

Much of the stress which entrepreneurs encounter comes from the business environment. Overdue reports, unhappy customers, underreager employees and cash shortages may all exist as part of your day-to-day activities.

These environmental stressors lead to psychological stress where we let our feeling take over. We

get angry, feel hurt and threatened or perhaps sad and depressed. We may remain calm on the outside but, inside, we are churning and boiling.

Our bodies react to this psychological stress by increasing the heart and respiratory rates. Chemical and sugar levels increase in our blood system. These changes can lead to illness and lower productivity if the pattern is not arrested.

**Just Say "No!"**

Of course, you should say "no" to drugs, but that is probably not your stressor. Learn to say "no" to unnecessary activities. Say "no" to non-essential meetings. Say "no" to too many clubs or service organizations. Say "no" to things that do not have to be done by you (delegate). Say "no" to busy work activities that do not help build your business.

If you use non-prescription drugs (alcohol and tobacco included), experts recommend complete elimination. Medical research has proven that the harm outweighs any potential benefit.

**Plan and Get Organized**

One of the best hour stretchers and stress avoidance techniques is good organization. Walter P. Chrysler, who founded Chrysler Corporation, has been credited with a simple technique for prioritizing the work to be done. Mr. Chrysler made a list every day of the tasks to be accomplished. He moved the most important task to the top of the list and threw all of his energy into it. He stayed with that job until it was completed. Frequently, he found time to tackle most of the tasks on the list.

His secret, I believe, was taking

time to plan and get organized. Only so many things are going to be done. Plan out a few critical projects and execute them effectively.

**Don't Worry; Be Healthy!**

Exercise may be one of the best stress relievers. Take a walk, ride a bicycle or play racquet ball. Transfer some of your aggression to the dandelions or your golf game. Exercise can help us deal with our lives in a logical and rational manner.

Dietary habits should also be modified to control sugar, carbohydrate and calorie intake. Obesity not only causes physical stress on the body, but also tends to cause psychological problems, as well.



## Department of Veterans Affairs

**EDITOR'S NOTE:** Following are representative questions answered daily by VA counselors. Full information is available at any VA office.

Q—I understand the Department of Veterans Affairs recently announced a change regarding service-connection for illnesses related to exposure to Agent Orange. Is that correct?

A—On March 29, 1990, the Secretary of Veterans Affairs ruled that Vietnam veterans stricken with non-Hodgkin's lymphoma, a rare form of cancer, are entitled to disability payments based on their service in Vietnam. The decision is not based on a finding that this condition was caused by Agent Orange exposure. The Secretary acted following the release of study results by the U.S. Centers for Disease Control. That study showed an increased risk of non-Hodgkin's lymphoma among veterans who served in Vietnam compared to veterans who served elsewhere during the Vietnam Era.

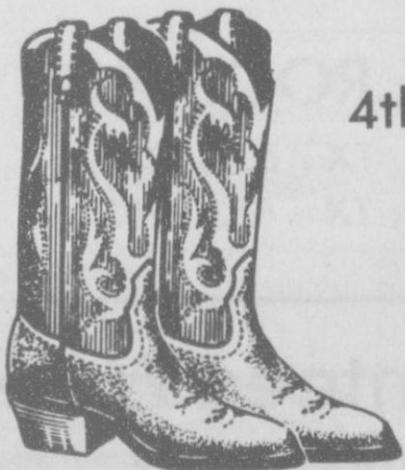
The CDC study did not point to Agent Orange or any other factor as causing the increased risk. VA will identify and reopen claims filed by veterans who served in Southeast Asia and who alleged that their development of non-Hodgkin's lymphoma resulted from Agent Orange exposure. VA will extend as much latitude as possible to award retroactive benefits and to assist widows and children of veterans who died as a result of non-Hodgkin's lymphoma. Since 1981, VA has provided free, priority health-care services to Vietnam veterans who believe their health was affected by Agent Orange exposure. Since 1978, VA has also conducted a program offering free, comprehensive physical examinations to Vietnam veterans. More than 230,000 have taken advantage of the program, and a registry containing their addresses will be used to make follow-up contact concerning the Secretary's ruling.

Come Join the Fun in Gruver the 4th of July



**GRUVER CABLEVISION**  
308 MAIN  
GRUVER, TEXAS  
Phone 733-5295

Come Join the Fun in Gruver on the 4th of July



**The Gift Registry**

Bridal Registry - Gifts - Bath

Linda Hiller

103 E. Broadway (806) 733-2914  
Gruver, Texas 79040 Open 9 a.m. - 5 p.m.

Take Part in the Activities in Gruver the 4th of July



**GRUVER LUMBER CO.**

Manager 105 W. Broadway Bus: (806) 733-2404  
Ron Dunning Home: (806) 733-5215

Wish You Were Here...Call And I'll Tell You Why!

GRUVER, TEXAS HIGH GROUND

Come Join in the Fun in Gruver the 4th of July



**BORT AGENCY INC.**

510 North Main - P.O. Box 649

Gruver, Texas 79040 - 806-733-2456



# Crisis Center Reports

by Mary Frances Ellzey

You readers familiar with us may skip this paragraph, and start with the next one. The PCC offers services to men or women who are victims of domestic violence, whether verbal or physical. We give counseling, support, and information to these survivors, plus a shelter to those who feel themselves to be in danger at home. The services are free of charge. If you want information only, call us at the office from 9:00 a.m. to 5:00 p.m. We are available for immediate help at any time, 24 hours a day. Our number is 435-5008. For you who must call long distance, we have a toll-free number: 1-800-753-5308.

Isn't summer supposed to be the time for leisure? That's what I thought! But since we've moved to the ranch for the summer, nearly every weekend has had one shindig or another, from the Crisis Center picnic to our branding, to two or three other affairs. Fun, sure. But busy? Oh, my! So that's why I'm late with the monthly Panhandle Crisis Center report.

May saw an increase over the preceding month in the number of clients we served: Eleven face-to-face clients and 18 information and referral calls.

Several very nice things have happened: The Don Neufelds gave us a stereo set, which greatly enhances the home atmosphere of the Shelter, and two high school youth groups made a donation, for which we are very grateful, both for the practical value of the gift and for this indication of a rising awareness of the need in our community and the benefit we provide. In addition, the John Lee Furniture Company donated 4 coffee tables

and 6 end tables, which make both the Shelter and the offices more conveniently furnished. Many thanks to all of you. Furthermore, Enron has provided a "yard care" volunteer, making him eligible for their annual \$1,000 gift to a non-profit organization, which in this case is us!

We have yet to hear from the governor's office whether or not our proposed VOCA (Victims of Crime Act) grant has been approved, but the proposal did receive a recommendation from the Panhandle Regional Planning Commission.

We had some anxiety that the state funds for the Department of Human Services (which helps us pay our bills) would be cut because of this-n-that current expense. But the word has come that the cut will not be made. Hallelujah!

We've taken a short vacation

from the Parenting Classes, which were very well received. Now that I've caught my breath, we'll begin them again. Meantime, the P.T.A. at Morse, Texas, has scheduled me to present the program at their September meeting. We rejoice that the word has spread about the very real help these classes provide. Wouldn't it be great if every parent would learn the techniques that help him/her enjoy parenting, as well as helping their children enjoy being parented? Remember, these classes are not just for those who are having difficulties, but for everyone who is active in nurturing children, including grandparents. What a blessing for first-time parents, who have not yet established a pattern of less-than-the-best!

So - all of you - come join the crowd!



## Ask the Vet

Dr. John Paul



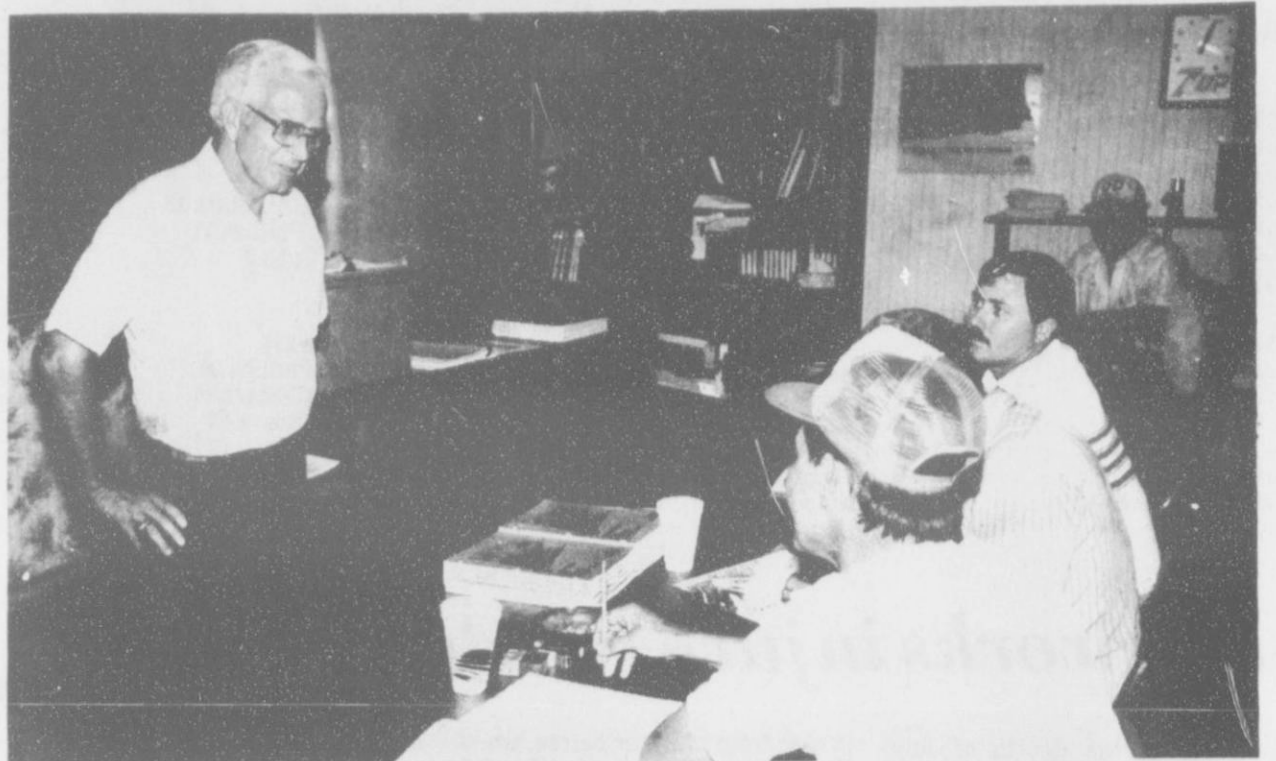
Dear Dr. Paul,

I have heard conflicting stories about rotating dewormers in my horses or using the same product each time. What do you recommend?

I recommend rotating among the different chemical classes of dewormers each time you deworm. A good rotational program

will probably be the most effective method and should offset any development of resistance to dewormers. However, you can't tell the class of a chemical by the trade name. For instance, panacur, Safe-Guard, Telmin, and several other products are from the same chemical class, benzimidazoles. Equalan and Zimectrin have the same active chemical ingredient, ivermectin. Check with your veterinarian if you are not sure about the chemical entity of the dewormers you use. Most experts recommend deworming foals at two months of age and deworming every two months thereafter for the duration of the horse's life.

If you have questions for Dr. Paul, write to him at: Ask the Vet, P.O. Box 20421, Kansas City, Mo 64195 or call 316/347-8689.



Billy Marquis of Texas A&M University's Engineering Extension Service (standing) explains management techniques to Spearman volunteer firefighters during a three-day seminar held recently in Spearman.

## 1989 record year for fed cattle

Feedlots within the area served by Southwestern Public Service Company (SPS) during 1989 fed the highest number of cattle on record, according to SPS's annual Fed Cattle Survey.

Feedlots in the SPS service area fed 5,468,350 head of cattle, a 2.5 percent increase over the 1988 total of 5,335,603. The previous record was set in 1987 with 5,406,975 cattle fed.

The survey also showed that the one-time total capacity of area feedlots in 1989 was 2,785,475 head, up from the one-time total capacity in 1988 of 2,758,662 head.

"The 1989 study shows how important cattle feeding is to the area's economy," said Dave Krupnick, SPS manager of agricultural and wholesale marketing.

"Although prices for feeder cattle remain up, 1989 was still a record year for this area."

SPS annually prepares a Fed

Cattle Survey covering feedlots in its service area. The electric utility serves a 52,000-square-mile area comprising the Texas and Oklahoma panhandles, the Texas South Plains, eastern and south-eastern New Mexico, and south-western Kansas.

Additionally, the survey found that 4,694,852 cattle were slaughtered last year at 13 beef-packing plants in the SPS service area, Krupnick said. The facilities have an annual slaughter capacity of 4,818,320 head.

"Each year feedlots and packing plants are very cooperative in supplying information for this survey, and we really appreciate that," Krupnick said. "We continue to receive requests from across the United States for this survey, and it helps highlight this area's agriculture and food-

processing industries."

The report also shows that the total number of feedlots in the area has grown to 117, and the one-time capacity of these lots is still on the increase. The report also includes a chart on the 10-year history of fed cattle and the one-time capacity of surveyed feed lots, as well as information on the number of feedlots with 5,000 head capacity or above and a county breakdown of lot capacity and numbers fed.

Copies of the report and survey are available at SPS offices across the company's service area or may be obtained by contacting Dave Krupnick (806-378-2175) or Greg Boggs (806-378-2178) at the SPS headquarters building, Tyler at Sixth Street, Amarillo, Texas, 79170.

## SBA loans available

LUBBOCK-Walter Fronstin, district director of the U.S. Small Business Administration's (SBA's) Lubbock office, announced that SBA has further expanded its declaration for Economic Injury Disaster Loans (EIDLs) to small businesses that have sustained economic injury losses as a result of severe storms, flooding and tornadoes in Texas occurring April 15 through June 4, 1990.

The additional Texas counties eligible for the EIDL loans in the area served by the Lubbock office are Hansford, Crane, Hemphill, Hutchinson, Lipscomb, Moore, Ochiltree, Roberts, Sherman and Ward. A total of 108 Texas counties have now been designated under this EIDL declaration, Fronstin said. Additional adjacent counties in Arkansas, Louisiana and Oklahoma may also be eligible for

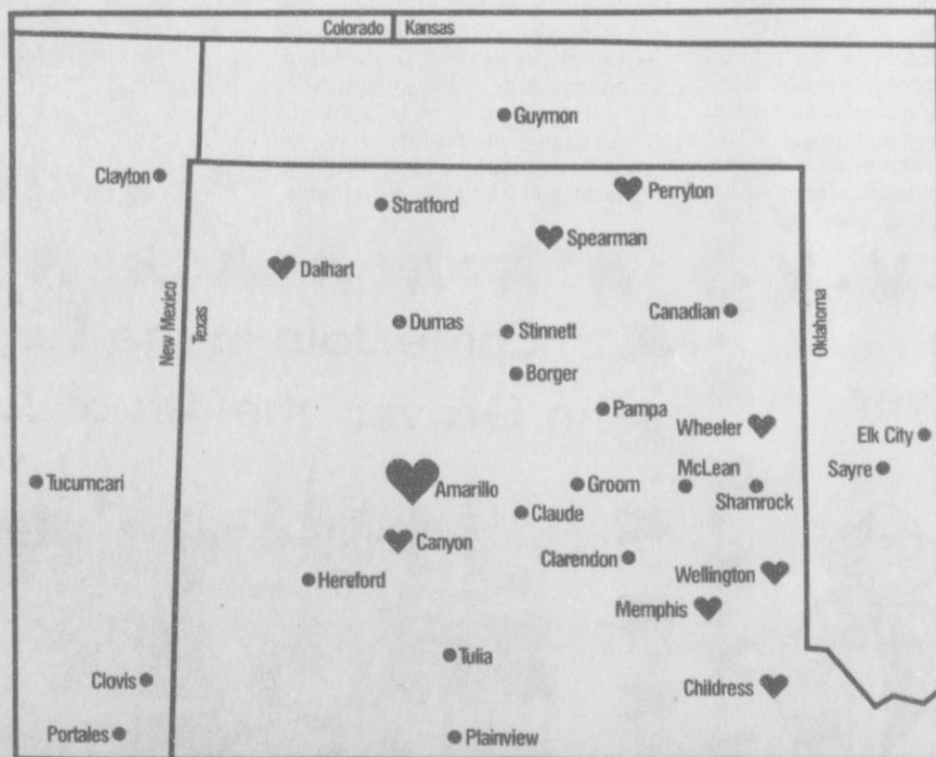
assistance from the SBA.

Fronstin said the EIDL loans are not to cover physical losses. But, if a small business was normally able to meet its bills and pay its operating expenses and cannot do so now as a direct result of the disaster, it may be eligible.

Economic injury loans are limited to the financial needs of the applicant based on the actual injury and may be made for up to \$500,000. The interest rate on the EIDL loans is 4 percent. Based on repayment ability, a loan may extend to 30 years. The deadline for filing for the EIDL loans is February 4, 1991.

The EIDL loan program is available only to small businesses which are able to meet SBA size standards and which do not have credit available from other sources.

# We've put Emergency Cardiac Care on the Map



St. Anthony's Hospital proudly announces a breakthrough in preventing death by heart attack — the Saints' Emergency Heart Network.

Designed to reduce the time between the onset of heart attack symptoms and advanced medical treatment, Saints' Emergency Heart Network links hospitals in the Amarillo area with the cardiac specialists at St. Anthony's Hospital, the Panhandle's recognized leader in cardiac care.

Saints' Emergency Heart Network provides to member hospitals the latest, most effective medicines used in treating heart attacks, training in sophisticated new treatment techniques, and 24-hour direct communication with cardiologists at St. Anthony's Hospital.

Getting immediate treatment when a heart attack occurs can double your chances of survival and greatly improve your odds for a full recovery. For people in outlying communities, having the resources for early treatment can be the difference between life and death. And saving lives is what Saints' Emergency Heart Network is all about.



## Saints' Emergency Heart Network

...Another Caring Touch of St. Anthony's Hospital

200 N.W. Seventh Street • Amarillo, Texas 79107 • 806-376-4411

Member Hospitals:

- Hansford Hospital — Spearman
- Hall County Hospital — Memphis
- Ochiltree General Hospital — Perryton
- Palo Duro Hospital — Canyon
- Coon Memorial Hospital and Home — Dalhart
- Childress General Hospital — Childress
- Collingsworth General Hospital — Wellington
- Parkview Hospital — Wheeler

Putting the best cardiac care within everyone's reach

I am no longer associated with Anthony Electric, Inc.

Call Verlin Behne for electrical, or handyman (light carpentry, shingling, etc.) work.

Reasonable prices. Licensed electrician.

Call 659-3404 or 659-3971 evenings.

## SAM'S ROOFING

Booker, TX 658-9234

Higgins, TX 852-2203

## Guaranteed Work

- Composition•
- Wood•Shakes•

Many Spearman References

Thanks Sonny Stucko



# Permits increased

AUSTIN—A total of 1,265 drilling permits were issued by the Railroad Commission in May, according to RRC Chairman Kent Hance. In April, the total was 1,241. May 1989's total was 1,244.

The May total included 751 permits to drill new oil and gas tests, 51 to re-enter existing well bores, 40 to deepen existing holes, 168 to plugback existing holes, and 99 for other wells. Operators were also issued 156 amended drilling permits.

Hance said permits issued for new oil and gas holes in May included 51 in the San Antonio area (District 1), 44 in the Refugio area (District 2), 43 in Southeast Texas (District 3), 60 in deep South Texas (District 4), 18 in East Central Texas (District 5), 51 in East Texas (District 6), 80 in West Central Texas (District 7B), 76 in the San Angelo area (District 7C), 130 in the Midland area (District 8), 81 in the Lubbock area (District 8A), 97 in North Texas (District 9), and 20 in the Panhandle (District 10).

In the first five months of 1990, the Commission has issued 6,318 drilling permits, a 14 percent increase from the 5,418 issued during the same period of 1989.

The 1,265 permits issued in May included 600 oil permits, 215 gas permits, 391 oil and gas permits, 24 injection permits, seven disposal permits, and 28 other permits.

Texas oil and gas operators reported 262 gas and 403 oil completions in May, according to Hance. In April the total was 231 gas and 490 oil completions. May 1989's total was 254 gas and 450 oil com-

pletions.

Gas completions in May included 11 in the San Antonio area (District 1), 36 in the Refugio area (District 2), 25 in Southeast Texas (District 3), 72 in deep South Texas (District 4), 12 in East Central Texas (District 5), 28 in East Texas (District 6), 12 in West Central Texas (District 7B), 30 in the San Angelo area (District 7C) 10 in the Midland area (District 8), one in the Lubbock area (District 8A), eight in North Texas (District 9), and 17 in the Panhandle (District 10), according to Hance.

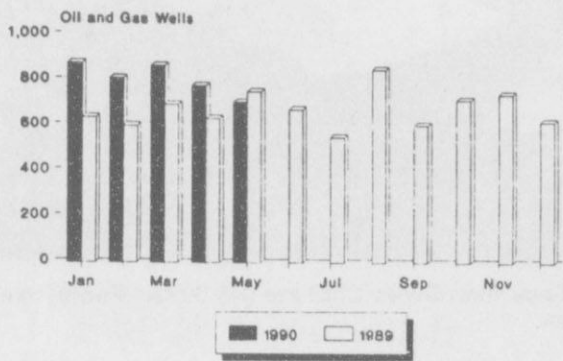
Oil completions included 47 in the San Antonio area (District 1), eight in the Refugio area (District 2), 23 in southeast Texas (District 3), 16 in deep South Texas (District 4), eight in East Central Texas (District 5), 16 in East Texas (District 6), 50 in West Central Texas (District 7B), 31 in the San Angelo area (District 7C), 102 in the Midland area (District 8), 43 in the Lubbock area (District 8A), 36 in North Texas (District 9), and 23 in the Panhandle (District 10)

Total completions reported in May included 403 oil, 262 gas, and 41 service completions. In May 1989, operators filed 450 oil, 254 gas, and 50 service completion reports.

In the first five months of 1990 the Commission has recorded a total of 4,046 well completions recorded during the same period of 1989.

Hance said operators reported 898 holes plugged in May, compared to 901 in April. A total of 153 dry holes were reported in May, compared to 190 in April.

Texas Well Completions Monthly, 1989-1990



## Oil & gas report

### New Location, Completion & Plugging Report

#### Intentions to Drill

**HANSFORD (WILDCAT & CLEMENTINE** Upper Morrow) Bracken Energy Co., #1-31 Santa Fe (640 ac) 933' from South & East line, Sec. 31,1,WCR, 18 mi NE from Gruver, PD 6900' (6106 N. Western, Okla. City, OK 73118)

**HEMPHILL (WILDCAT & ALLISON PARKS** Upper Morrow) Kerr-McGee Corp., #1 Riley-George (640 ac) 2065' from North & 660' from West line, Sec. 10, M-1, H&GN, 18 mi SE from Canadian, PD 15000' (Box 25861, Okla. City, Ok 73125)

**LIPSCOMB (MAMMOTH CREEK** Morrow) Princess Three Corp., #1 Schultz (640 ac) 1980' from South & 1500' from East line sec. 1068,43,H&TC, 2 mi south from Follett, PD 9750' (Box 1983, Henderson, TX 75652)

**Application to Deepen**  
**GRAY (PANHANDLE)** American Exploration Co., #8 C.C. Cook (90 ac) 330' from North & 6600' from West line, Sec. 30, B-2, H&GN, 2 mi westerly from Lefors, PD 3225' (2100 NCNB Center, Houston, TX 77002)

**Application to Plug-Back**  
**HANSFORD (NORTH HANSFORD** Kansas City) Courson Oil & Gas Co., #1 H.T. Cline (160 ac) 1980' from North & West line, sec. 1,2,SA&MG, 10 mi NW from Spearman, PD 7150' (Box 809, Perryton, TX 79070)

**HUTCHINSON (WILDCAT & WEST LIPS** Cleveland) Natural Gas Anadarko Co., #1-12 Brainard (640 ac) 1830' from North & 1320' from West line, Sec. 12,XO,H&OB, 17 mi NE from Stinnett, PD 8319' (Box 809, Perryton, TX 79070)

**Oil Well Completion**  
**HUTCHINSON (PANHANDLE)** J.M. Huber Corp., #20 Lucas, Sec. 7,-,J.M. Swisher, elev. 3350 kb, spud 2-15-90, drig. compl 2-20-90, tested 6-7-90, pumped 5.25 bbl. of 40 grav. oil & 41 bbls. water, GOR--

perforated 3346-3358, TD 3450', PBTD 3406'

**Gas Well Completions**  
**HUTCHINSON (WILDCAT** Tonkawa) Strat Land Exploration Co., #2 Ownbey, Sec. 25,-,Z.C. Collier, elev. 3155 gl, spud 3-31-90, drig. compl 4-11-90, tested 5-14-90, potential 1900 MCF, rock pressure 1372, pay 5032-5038, TD 6075', PBTD 5350'

**OCHILTREE (PERRYTON** Lower Novi) Datagas, Inc., #1 Perry 'J', Sec. 926,3,H&TC, elev. 2943 kb, spud 5-8-90, drig. compl 6-1-90, tested 6-5-90, potential 3100 MCF, rock pressure 740, pay 7432-7436, TD 8080', PBTD 7507'

**Plug-Back**  
**Plugged Wells**  
**HANSFORD (WILDCAT)** Strat Land Exploration Co., #1-12 Harbour, Sec. 12,3,SA&MG, spud 6-3-87, plugged 4-19-90, TD 800' (oil) - Form 1 filed in Ladd Petroleum

**HUTCHINSON (PANHANDLE)** Holco Oil & Gas, #13W Holco Whittemburg, Sec. 15,X-02, L.A. Patello, spud 1-2-56, plugged 4-9-90, TD 3080' (swd) - Form 1 filed in Holt Brothers

**HUTCHINSON (PANHANDLE)** T.S.P.I., Inc., #3 Peanut, Sec. 30,47,H&TC, spud 6-5-81, plugged 5-24-90, TD 3000' (oil)-  
**LIPSCOMB (LIPSCOMB** Cleveland) Maxus Exploration Co., #3 Florence Guipel, et al, Sec. 799,43,H&TC, spud 6-22-65, plugged 5-19-90, TD 7762' (oil)-

**LIPSCOMB (MAY** Basal Morrow) Apache Corp., #1 Weinette B, Sec. 1123,43,H&TC, spud 2-20-81, plugged 5-25-90, TD 9482' (gas) - Form 1 filed in Cotton Petroleum

**OCHILTREE (KIOWA CREEK** Upper Morrow) Dyco Petroleum Corp., #3-937 Schoenhals, Sec. 937,43,H&TC, spud 12-28-85, plugged 5-14-90, TD 8857' (oil)-  
**OCHILTREE (SCHULTZ** Lower Morrow) Zinke & Trumbo, Ltd., #1-120 Stewart Trust, Sec. 120,10,HT&B, spud 2-19-90, plugged 3-22-90, TD 8750' (dry)-

**Oil & Gas Reporting Service**  
Box 2052 Pampa, TX 79065  
Providing the Oil & Gas Report for Hansford County Readers.  
Doris Harrison Phone 665-5800

GOOD THRU JULY 3 IN PERRYTON ONLY

# HAVE A 4TH OF JULY BOMB BLAST

## UNITED

★ Supermarket ★

# BOMB BLAST

# TRIPLE FREE COUPONS!

SEE STORE FOR DETAILS

PRICES GOOD THRU TUES. JULY 3RD

WED.	THUR.	FRI.	SAT.	SUN.	MON.	TUES.
27	28	29	30	1	2	3

**THIS WEEK!**  
JUNE 27-JULY 3

**KRAFT BARBECUE SAUCE**  
ASSORTED

# .59

18 OZ.

LIMIT 2 with \$10.00 or more purchase, excluding cigarettes or tobacco. THEREAFTER .79

**DOLE GOLDEN RIPE BANANAS**

# 5 \$1

LBS. FOR

With \$10.00 or more purchase

**DECKER MEAT FRANKS**

**Free Picnic Offer With Coca-Cola**

See Store Display For Details

LIMIT 3 with \$10.00 or more purchase, excluding cigarettes or tobacco. THEREAFTER .59 PKG.

# .39

12 OZ. PKG.

**RUFFLES CHIPS**  
ASSORTED

# \$1.49

15 OZ.

LIMIT 2 with \$10.00 or more purchase, excluding cigarettes or tobacco. THEREAFTER \$1.79

**UNITED EXTRA LEAN BONELESS BRISKET**

# \$1.39

MARKET TRIMMED LB.

LIMIT 3 with \$10.00 or more purchase, excluding cigarettes or tobacco. THEREAFTER LB. \$1.59

**ASSORTED BOUNTY TOWELS**  
JUMBO ROLL

# .59

LIMIT 2 with \$10.00 or more purchase, excluding cigarettes or tobacco. THEREAFTER .69

the personal touch



# Spearman hosts swim meet

Spearman Swim Club played host to teams from Cimarron, Ulysses and Garden City, Kan. and Guyton, Okla. Saturday, June 23 at the Spearman Swim Meet.

Results included the following:

**Girls 8-under 100 free relay**  
Spearman, 4th - Amber Elliott, Amber Ramon, Audrey Winegarner, Michelle Elliott

**Boys 8-under free relay**  
Spearman, 3rd - Kirby Hergert, Ryan Gibbs, Dib Kirk, Brandon Hataway

**8-under Girls 25 free**  
Audra Sanders, 1st (20.98); Halee Beasley, 2nd; Adrienne Simpson, 6th;

**8-under Boys 25 free**  
Jordan Brock, 1st (18.83); Aaron Winegarner, 3rd

**9-10 Girls 50 free**  
Janna Brock, 1st (34.91 new pool record); Brooke Trantham, 3rd

**9-10 Boys 50 free**  
Mason Kuehl, 5th

**8-under Girls 25 back**  
Audra Sanders, 1st (24.13); Adrienne Simpson, 2nd

**8-under Boys 25 back**  
Aaron Winegarner, 1st (22.35); Jordan Brock, 2nd

**9-10 Girls 50 Back**  
Janna Brock, 1st (42.53 new pool record)

**9-10 Boys 50 back**  
Mason Kuehl, 4th

**8-under Girls Butterfly**  
Halee Beasley, 1st (22.63); Audra Sanders, 3rd; Adrienne Simpson, 5th

**8-under Boys Butterfly**  
Jordan Brock, 1st (21.71)

**9-10 Girls 50 Butterfly**  
Janna Brock, 1st (39.02 new pool record); Brooke Trantham, 3rd

**8-under Girls Breaststroke**  
Halee Beasley, 2nd

**8-under Boys Breaststroke**  
Aaron Winegarner, 3rd; Ryan Gibbs, 4th

**9-10 Boys Breaststroke**  
David Zabin, 5th

**9-10 girls Breaststroke**  
Brooke Trantham, 3rd

**8-under Girls I.M.**  
Audra Sanders, 1st (2:04.77); Halee Beasley, 3rd

**8-under Boys 100 I.M.**  
Jordan Brock, 1st (1:45.20); Aaron Winegarner, 2nd

**9-10 Girls 100 I.M.**  
Janna Brock, 1st (1:27.48, new pool record); Brooke Trantham, 2nd

**10-under Girls 100 freestyle**  
Janna Brock, 1st (1:19.95 new pool

record); Ashley Brown, 6th

**10-under Boys 100 freestyle**  
Dan Kunselman, 6th

**8-under Girls 100 Medley Relay**  
Spearman, 3rd - Audra Sanders, Halee Beasley, Amber Elliott, Adrienne Simpson

**8-under Boys 100 Medley Relay**  
Spearman, 2nd - Jordan Brock, Ryan Gibbs, Dib Kirk, Aaron Winegarner

**9-10 Girls Medley Relay**  
Spearman 2nd - Brooke Trantham, Cami Winegarner, Ashley Brown, Michelle Elliott

**9-10 Boys Medley Relay**  
Spearman, 4th - David Zabin, Josh Schumann, Landon Miller, Dan Kunselman

**11-12 Boys 200 Free Relay**  
Spearman, 3rd - Greg Elliott, Brent Collins, Tom Kirk, Dillon Miller

**11-12 Boys 50 Free**  
Phillip Sanders, 1st (30.40 new pool record); Martin Sanders, 3rd; Clayton Hergert, 4th; Kevin Baker, 6th

**15-18 Girls 50 free**  
Suzanne Sanders, 1st (33.25)

**11-12 Boys 100 Back**  
Phillip Sanders, 1st (1:23.02); Clayton Hergert, 3rd; Kevin Baker, 4th

**13-14 Girls 100 Back**  
Kristina Poole, 4th

**13-14 Boys 100 Back**  
Josh Winegarner, 6th

**11-12 Boys 100 Butterfly**  
Phillip Sanders, 1st (1:15.6 new pool record); Greg Elliott, 4th

**15-18 Girls 100 Back**  
Suzanne Sanders, 1st (1:25.20)

**11-12 Boys 100 Breast**  
Martin Sanders, 2nd; Greg Elliott, 3rd

**13-14 Girls 100 Breast**  
Kristina Poole, 1st (1:41.27)

**15-18 Girls 100 Breast**  
Jessica Woolley, 3rd

**11-12 Boys 200 I.M.**  
Martin Sanders, 1st (3:25.06); Greg Elliott, 2nd; Tom Kirk, 6th

**13-14 Boys 100 I.M.**  
Josh Winegarner, 2nd

**11-12 Boys 100 free**  
Phillip Sanders, 1st (1:09.24 new pool record); Kevin Baker, 4th; Greg Elliott, 5th; Clayton Hergert, 6th

**11-12 Girls 200 Free**  
Shauna Poole, 4th

**11-12 Boys 200 Free**  
Martin Sanders, 2nd; Kevin Baker, 3rd; Chris Jenkins, 6th

**13-14 Girls 200 Free**  
Kristina Poole, 1st (3:08.49)

**13-14 Boys 200 free**  
Josh Winegarner, 2nd

**11-12 Boys Medley Relay**  
Spearman, 1st - Phillip Sanders, Martin Sanders, Kevin Baker, Clayton Hergert

**15-18 Girls Medley Relay**  
Spearman 2nd - Suzanne Sanders, Jessica Woolley, D'edra Martin, Joy Gafford

**Open Boys 500 Free**  
Josh Winegarner, 6th

**Open girls 500 Free**  
Kristina Poole, 2nd



Competitors, officials and spectators get ready for the start of a race during the Spearman swim meet.



Moms lending an extra helping hand to the Spearman Swim Club are (l-r) Susan Poole, Janet Scarborough, Linda Winegarner and Stephanie Brock.

## Top steers shown

Several Spearman residents posted top placement in the Golden Spread Classic Steer Show, conducted last weekend at the Tri-State Fairgrounds in Amarillo.

In Sunday show results, Reagan Renner of Spearman was named fourth-place winner in Class 1 of the Angus division of the Prospect Steer Show. Tommi Latta of Spearman took fifth place in Class 3 of the same show.

Chris Brooks of Spearman had

the Breed Champion Brangus steer at Sunday's show. Randie Renner showed the sixth-place steer in Simmental Class 1, while Kevin Williams and Leslie Latta took fourth and fifth places, respectively, in Class 2 of the same show.

Sixth place in Chianina Class 4 was won by Brandon Close of Spearman. Ronda Renner placed fifth in Class 2 of the All Other Breeds division in Sunday's show.



## Team issues report

An Interagency Hazard Mitigation Team report has now been issued on the springtime floods, tornadoes and severe weather which swept through Texas beginning on April 15 and ending on June 4.

Brad Harris, director of Region VI of the Federal Emergency Management Agency (FEMA) and Ed Laundry, state coordinating officer of the Texas Division of Emergency Management (DEM) accepted the report and issued it. The team is created by mandate of federal statutes. It was organized and convened to study the series of weather catastrophes declared on May 2 by President Bush to be a major disaster. The disaster area extends to some 63 counties at this time.

The team was made up of representatives of all agencies with responsibilities in the affected counties, or which are concerned with averting or coping with natural disasters.

Team members toured portions of the disaster area and have considered measures to prevent future damages as a result of floods, storms and tornadoes, and ways to minimize their extent and effects.

The report of the Interagency Hazard Mitigation Team recommends positive steps that can be taken by specific agencies or officials to protect persons and property in Texas in the future. Copies of the report are being given to local officials in the affected counties and to the agencies involved.

In addition, some federal funds may become available. The Disaster Relief Act permits FEMA to participate with the State in approved mitigation projects. FEMA can contribute mitigation funds which are equal to 10 percent of the total federal contribution for repair or replacement of publicly-owned facilities such as roads, bridges and the like, in the same disaster. Such federal funds for mitigation must be matched by an equal payment by the state or local governmental units which benefit from them.

Hansford County residents are reminded that FEMA has set up a toll free number to receive applications for emergency assistance. Storm victims should call 1-800-782-6681 to apply for assistance.



**Greg Elliott**  
Greg Elliott is the son of Charles and Melanie Elliott. Greg, age 12, is in his third year of swimming.

**Michelle Elliott**  
Michelle Elliott is the 10 year old daughter of Charles and Melanie Elliott. 1990 is the third year Michelle has been a member of the Spearman Swim Team.



**Candice Pipkin**  
Candice Pipkin is the daughter of Richard and Lisa Pipkin. 1990 marks the second year of swimming competition for Candice, age 11.



**D'edra Martin**  
D'edra Martin, niece of Janet Scarborough, is competing this summer as a member of the Spearman Swim Team. D'edra is 15 years old.

**The Bunkhouse Summer Clearance Sale Starting July 2nd**

All summer merchandise 30-50% off

Ship-n-Shore Close Outs 1/2 off

Student and Boys 13MWZ's \$9.75

Summer Straw Hats 25% off

One Group Rocky Mountain Jeans \$19.95

Help us Celebrate our 3rd Anniversary July 1-3

Rent 3 movies..... get the 4th one FREE.

We will be closed July 4, 1990.

# Video Hut

Plains Shopping Center 659-2973

**THANK YOU**

Thank you dear friends and neighbors for giving so generously of your time and prayers when we lost Tom.

Your cards and calls, flowers, memorials and food helped to provide solace and comfort during a sad time for us and we do appreciate each and every one of you.

Helen Etter and family

Miss Hansford Pageant Committees  
Thank Local Merchants

We would like to take this time to say Thank You to all the people, businesses, and organizations who helped to make the 1990 Miss Hansford Pageant a big success.

A special thank you to the Spearman Jaycees, Rotary, Lions Club, Servitors, the Moose Lodge, Spearman Chamber of Commerce and Womens Division for their donation to our scholarship fund.

Also, we want to thank the four Spearman Chapters of Beta Sigma Phi for their scholarship to Miss Hansford.

Thanks again to all who served on committees. Hats off to a job well done!

Cindy Blackman-Chairman  
Kari Russell-Co-Chairman



# WANT ADS Work Wonders!



**SEEDS FROM THE SOWER**  
Michael A. Guido  
Metter, Georgia

He was a dependable person. You could always depend upon him to do the wrong thing. One day I asked him, "Why be a victim when you can be a victor?"

"I can't help it," he said. "I can't change myself."  
"But Christ can change you," I answered.

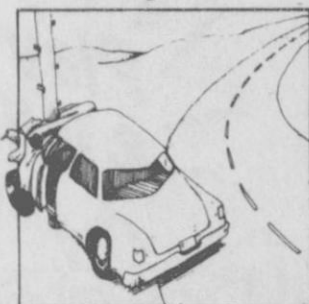
One day He said to a paralyzed man, "Pick up your stretcher and go home." Did the man say, "It's hopeless to try?" No, he trusted, picked up his stretcher and went home.

To a woman caught in adultery, He said, "Go and sin no more." Did she say, "I tried, but was overcome?" No, she trusted and overcame.

No one and nothing is hopeless with the Lord.



Have a blast this July 4th



Just don't get BLASTED!

A message from the Texas Department of Public Safety

## REAL ESTATE

**FOR SALE:** Beautiful 3 BR, 2 1/2 bath home with basement and office, large fenced yard with fruit trees, patio. See at 1015 Wilmet, Spearman or call 806-659-3436 or 806-659-2040 evenings. S21-1tc RTN

**FOR SALE:** Steel building on Highway 15 West, about 2,000 square feet enclosed, 150 feet highway frontage, depth in 190 feet. Emmett R. Sanders, Realtor, 659-2516, nights 659-2601. S25-RTN

## REAL ESTATE

**FOR SALE:** 3 Bedroom, 2 bath home. Sunken living room, parquet floors, fireplace, covered patio, 2 car garage, sprinkler system, 2193 sq. ft. living space, excellent location. Call 659-3587 or 659-5022. S33-RTN

**FOR SALE:** Nice 3 bedroom brick home, garage, central heat/air. Large fenced backyard. Close to school. Priced to sell. Call 659-2263 after 5 p.m. S32-1tcRTN

## MISC. FOR SALE

**FOR SALE:** 7 toning tables for sale. Call 659-3629. S29-1tcRTN

**JAN'S ETC. NEW & USED & ANTIQUES TOO**  
Everything for home and family. Plains Shopping Center in Spearman. Open Monday - Saturday, 9:30 a.m. til 6:00 p.m. S16-RTN

**STEEL BUILDINGS**  
Building only or turnkey construction Serving 11 states - since 1976 For Best Quality & Price Call K-SYSTEMS, TEXHOMA, OK (800) 237-7003

S35-4tp

## HELP WANTED

**HELP WANTED:** Need an experienced welder for yard maintenance. Apply at Caprock #1 or call 733-5043. S34-2tc

**HELP WANTED:** Full or part time help as attendant homemaker. Contact Caprock Home Health, Monday through Friday, 9 a.m. to 5 p.m. (806) 352-8480. S35-1tc

**HELP WANTED:** Telephone solicitors to make appointments for a steel siding and metal roof company. Right person(s) to call from your home in Spearman and Gruver. Call 624-2042. S34-2tp

**ATTENTION: EARN MONEY TYPING AT HOME!** \$2,000/yr income potential. Details: (1) 602-838-8885 Ext. T-4514. S34-3tp

**ATTENTION - HIRING!** Government jobs - your area. Many immediate openings without waiting list or test. \$17,840 - \$69,485. Call 1-602-838-8885. EXT R4514. S34-3tp

**ATTENTION: POSTAL JOBS!** Start \$11.41/hour! For application info call (1) 602-838-8885. Ext. M-4514, 6 a.m.-10 p.m., 7 days. S35-3tp

**ATTENTION: EARN MONEY READING BOOKS!** \$32,000/year income potential. Details: (1) 602-838-8885 Ext. Bk4514. S35-3tp

**ATTENTION: EASY WORK EXCELLENT PAY!** Assemble products at home. Details: (1) 602-838-8885 Ext. W-4514. S35-3tp

## SERVICES

**CALL YOUR LOCAL** used cow dealer for 7 days a week dead stock removal. 659-3544 or 1-800-692-4043. Serving cattlemen for the past 20 years. S51-RTN

**HARGUES PAINTING**  
Painting - Interior, Exterior  
Taping & Texture  
435-6018  
S33-4tp4.35

## GARAGE SALES

**YARD SALE** Saturday, July 1st 9 a.m. till 5 p.m. five miles east of Spearman on Perryton Highway. S35-1tp

## SITUATION WANTED

**LOOKING FOR FARM JOB.** Experienced and dependable. Call 733-2097 or 733-2914. S35-1tp

## PETS

**FREE PUPPIES** Small, cute puppies, 8 weeks old. Call 659-2278 or see at 422 s. Endicott, Spearman. S35-1tp

**KITTENS** To give away. Call 659-3093. S35-1tc

## PUBLIC NOTICES

### PUBLIC NOTICE

**FARMERS HOME ADMINISTRATION** will be soliciting for quotations for a farm loan making and servicing contract for the period from 10-1-90 to 9-30-91 in Hansford, Lipscomb and Ochiltree Counties. If interested, make inquiries to Farmers Home Administration, Six Southwest Third, Perryton, TX 79070. Telephone: (806) 435-6859, prior to July 3, 1990. S35-1tc6.50

### PUBLIC NOTICE

**FARMERS HOME ADMINISTRATION** will be soliciting for quotations for Farm Real Estate and/or Residential Property Appraisal Services for the period 10-1-90 to 9-30-91 in Hansford, Lipscomb and Ochiltree Counties. If interested, make inquiries to Farmers Home Administration, Six Southwest Third, Perryton, TX 79070. Telephone: (806) 435-6859, prior to July 3, 1990. S35-1tc6.50

### PUBLIC NOTICE

**FARMERS HOME ADMINISTRATION** will be soliciting for quotations for an exclusive broker for the period from 10-1-90 to 9-30-91 in Hansford, Lipscomb and Ochiltree Counties. If interested, make inquiries to Farmers Home Administration, Six Southwest Third, Perryton, TX 79070. Telephone: (806) 435-6859, prior to July 3, 1990. S35-1tc6.85

## 703 GIBNER DRIVE

For Sale: One owner home. 2153 sq. ft. 3 BR, 2 1/2 baths, LR, DR, Kitchen w/breakfast area, Utility. Central heat and air. Stone fireplace. Attic storage. Heated garage. 8 x 10 Storage house. Nicely landscaped fenced yard w/large trees. 14 x 19 covered Patio. To see call Brad or Dodie Beedy at 659-3701 or 659-2605 evenings.

### NEW LISTING

**FOR SALE:** 3 BR, 2 Bath Home. Recently Redecorated, Great Location, Nice Yard. New central heat and air, 4 ceiling fans. 1008 S. Barkley. Call Jeff Beedy, 659-2541 or 659-3847. S27-1tc RTN

**HOUSE FOR SALE.** 308 S. Hazelwood. \$20,000. Call 659-2764. S33-1tcRTN

**HOME FOR SALE:** 311 Womble - Gruver. 2348 Sq. ft., 3-4 BR, 2-bath, Brick Large BRs, kitchen, family room with fireplace; spacious closets; 2-car garage with openers, workbench, storage. Call 733-2989 or 2626. S33-4tp

**FOR SALE:** Three bedroom brick home on 1 1/2 lots. 1360 sq. ft. living space. Large fenced backyard. Great for kids. Priced low 30s. Call 659-3697 or 659-2024. Can see at 819 S. Archer, Spearman. S33-4tp

## FARM FOR SALE

North of Waka - Section 20, Block 4-T, T&NO Survey, Ochiltree County.  
3 Irrigation Wells, 2 1/2 miles Underground Pipe, Good Yields and Grain Base.

Contact Owner's Exclusive Agent  
P.O. Box 726, Hereford, TX 79045

**AFFORDABLE HOMES!!** 100% complete or delivered thru sheetrock - you finish out and SAVE thousands - 100% Financing available.

Lubbock Redi-Built Homes  
1-800-658-2627

## AUTOMOBILES

**FOR SALE OR TRADE** 1984 Jeep Cherokee for storm-damaged vehicle of same value - \$4900. Call 622-0271. S34-2tc

## SPECIAL NOTICE

**\$5,000 GOLD CARD**  
No turndowns! No deposit needed! Cash advances! Also fast, easy VISA/MC, no deposit! Free info! 1 (800) 234-6741, anytime. S25-13tp

**DON'T WAIT UNTIL SEPTEMBER** to start your career! Liberal Academy of Hair Design offers enrollment every month beginning with the July 10 class. Federal aid is available to qualifying applicants.

Call or write for a complimentary brochure. (Oklahoma and Texas licensing also available.)  
Liberal Academy of Hair Design  
530 S. Kansas  
Liberal, Kansas 67901  
(316) 624-3271  
S34-5tc

## Are You A Victim of Physical Abuse?

Call Toll Free  
**1-800-753-5308**  
Trained counselors can help you on the road to an abuse-free life. We also operate a safe place for victims and their children to stay in times of crisis.

**Panhandle Crisis Center**  
Serving Lipscomb, Hansford and Ochiltree Counties  
315 1/2 S. Main  
Perryton, TX.

**NOTICE**  
Wallace Monument Co.  
Monuments, Curbing,  
Grave Covers  
1-800-999-9506  
Local Representative  
**LEONARD JAMESON**  
Spearman, Texas  
35s-rtm

## OSGOOD MONUMENT CO.

Amarillo, Texas  
Dealers of Rock of Ages Granite, as well as all colored granites, marble and bronze memorials

represented by  
**BOXWELL BROS.**  
**FUNERAL HOME**  
519 S. Evans  
659-3802

**FOR SALE:** Trailer house at 108 Wanda Drive. Call 659-3445. Best offer! S35-1tcRTN

**FOR SALE:** 3 BR brick home with storage house. Can see at 1007 S. Bernice or call, 659-3402. Price reduced. S12-RTN

Offered by  
**EMMETT R. SANDERS**  
REALTOR  
Owner's 2 bedroom home plus 3 rental units Good investment package.  
**EMMETT R. SANDERS**  
REALTOR  
659-2516, nights 659-2601

**Real Estate Sampler**  
Allen Alford-Broker-659-3034  
Hester Crawford-659-2074  
Dennis Nelson-Sales-659-3608  
Larry Trosper-Sales-659-3491  
**THREE BEDROOM HOMES**  
727 Wilbanks- Office, 1 1/2 B.  
715 Steele- Fireplace  
1108 Archer- 2 B., Dbl. Gar.  
412 T UNDER CONTRACT  
805 Archer- Close to School  
904 Linn Dr.- 1 yr. old-3/2/2  
522 Evans- 3/2/1  
1021 S. Townsend- Affordable!  
**ACREAGE**  
15 Acres- Crawford Addition  
Check for other listings.  
**WE WANT TO BE YOUR REALTOR**



**GOLDEN SPREAD REALTY**  
Janey Helton Pointer, Broker  
Owner, 435-5444  
Jennifer Nollner, Sales  
Associate, 659-5243

**Old Hansford Location- 4/2.** Quality home on approx. 5 acres! Price reduced!  
515 S. Bernice-4/1 1/4, extra large lot & close to school!  
605 Archer-3/2, large rooms plus deck and hot tub!  
101 E. 12th- 3/1 1/2, move-in condition. Great location!  
619 S. Evans-3/2, this well maintained home has a basement, room off of garage and a covered patio.  
18 S. James-3/2, extra features include basement & building in back!  
701 Collier-4/1 1/2, affordable 3 year old home!  
20 S. James-2/1, well maintained!  
319 Bernice-2/1, immaculate house, yard with sprinkler system.  
611 S. Evans-3/1 1/4, affordable!  
118 Townsend-4/2, apartment included! \$12,000 price reduction!  
610 Haney - Needs work! Cheap price!  
522 S. Haney-Priced to sell quickly!  
315 1/2 N. Bernice-Lot for sale!

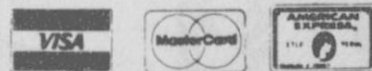
© 1989 by the Century 21 Real Estate Corporation  
Equal Housing Opportunity  
INDEPENDENTLY OWNED AND OPERATED



## BODY SHOP

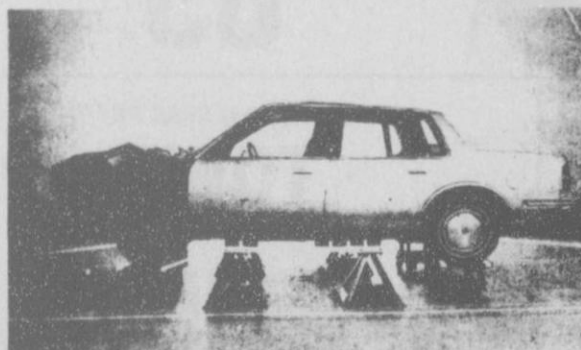
We Work On All Makes & Models Domestic Only

For 17 years we have satisfied insurance companies & customers all over the Panhandle! Customer Satisfaction has always been our #1 goal! (And...Always will be!) We're proud of our quality and you will be too! On deductibles we accept cash, check or these credit cards.



For Estimates - See Darl Hergert at Don Hergert Motors - 435-3686...or Castulo Rosales, Hergert Body Shop - Spearman - 659-3723.

- 4 Body Technicians To Serve You!
- Windshield Installation
  - Inspection Stickers
  - Mig Welding



Hergert Body Shop



Mr. Goodwrench  
**DON HERGERT MOTORS, INC.**  
420 S. MAIN - PERRYTON, TX 79070

- Complete "Classic" Restoration
- Complete Paint Work
- Large Windshield Inventory
- Large Sheet Metal Inventory
- Rental Cars Available
- Unitized & Conventional Frame Straightening Equipment
- Computerized Parts Ordering of Genuine GM Parts.
- Front End Alignment - (2 & 4 Wheel)
- No Job Too Large or Small

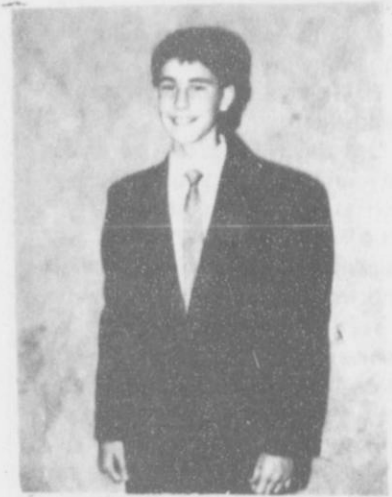


435-3686 Perryton  
659-3723 Spearman



# Obituaries

**Paul Lee Trosper**  
 Paul Lee Trosper, 13, died Tuesday, June 19 in Borger.  
 Born in Amarillo, he had lived in Spearman 11 years. He was a 1990 graduate of Spearman Junior High School, where he participated in basketball, football, track, golf and University Interscholastic League scholastic competition. He was an active member of 4-H and played



Paul Lee Trosper

Babe Ruth baseball.  
 He participated in the Perryton Young Men's Christian Association basketball program. He was a member of First Christian Church of Spearman, where he served as a junior deacon. He was also a member of the thirtysomething Bible Study Program.

Survivors include his parents, Larry and Janett Trosper of Spearman; a brother, Dallas Trosper of the home; and grandparents Cecil and Emma Trosper of Booker and Casto and Vera Callen of Mangum, Okla.

Funeral services were conducted Friday, June 22 in the Spearman High School auditorium with the Rev. LaVern Draper, pastor of the First Christian Church, and John Scott, minister of the Church of Christ, officiating. Interment was in Hansford Cemetery.

The family requests memorials be to the Paul Trosper Memorial Fund in care of First State Bank of Spearman, Box 247, Spearman, TX 79081.

**Vernon Morris**  
 DUMAS - Vernon Morris, 79, died Monday, June 25 at High Plains

Baptist Hospital in Amarillo.  
 Born at Gray, Okla. July 29, 1910, Mr. Morris was a retired, longtime farmer and rancher. He had been a resident of Dumas since 1965. Prior to moving to Dumas, he had been a Sherman County resident since 1931.

He was preceded in death by his wife, Lois Virginia Morris, in 1966, and a son, Mercer Leon Morris, in 1958.

Survivors include two sons, Vernon Leroy Morris of Dumas and Lawrence Ray Morris of Tyler; five daughters, Virginia Leonor Brooks of Holton, Mich., Helen Elaine Rodgers of Morse, Nettie Belle Tillotson of Snyder, Texas, Verna Lois Rose of Georgetown, Texas and Naomi Ruth Kruger of Dumas; one brother, Walter V. Morris of Hartley; 29 grandchildren; and 30 great-grandchildren.

Funeral services were conducted Wednesday, June 27 from the Church of Christ in Sunray with Joe Crenshaw, elder, officiating and Loye McRae assisting. Burial was at Lane Memorial Cemetery in Sunray.

The family requests memorials be to Panhandle Health Services, 801 S. Bliss, Suite 107, Dumas, TX 79029.

**Glenn Dale Reynolds Sr.**  
 AUSTIN - Glenn Dale Reynolds Sr., 64, died Saturday, June 23. He was born April 22, 1926 in Prague, Okla. and received his B.S. degree in teaching from West Texas State College. He was a veteran of World War II and had been a 23-year resident of Austin.

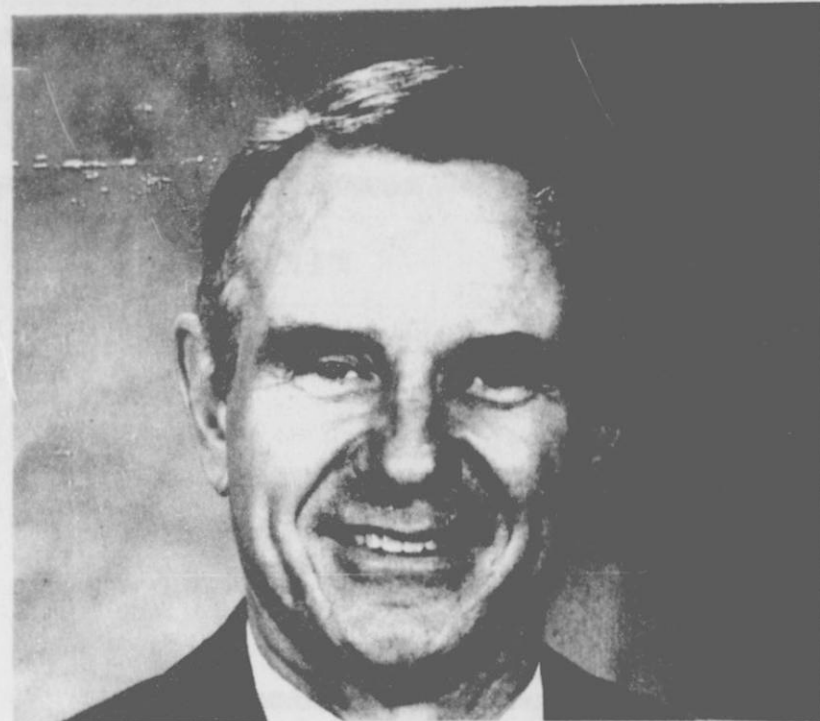
Reynolds began his teaching career at Plains, Texas in 1950, followed by Henrietta, Lockhart, Columbus and Leander and concluding at Pflugerville from 1975 to

1985. While in Columbus he owned and operated a piano business, beginning an alternate vocation in music sales which continued throughout his career. At First Baptist Church in Columbus he was the music director, and he was a member of Crestview Baptist Church in Austin.

He is survived by his wife, Nell LaRue Reynolds of Austin; sister, Carol Ann McCormack of Hollis, N.Y.; daughter and son-in-law, Rachel Lynn and Tom Taylor of Red River, N.M.; son and daughter-in-law, Donald W. and Linda K. Reynolds of Humble, Texas; daughter, Marian Laine Reynolds of Austin; son, Glenn Dale Reynolds Jr. of Austin; and grandchildren, Mark Douglas and Cheryl Lynn Henry and Clinton C. and Emily A. Reynolds.

Funeral services were held Tuesday, June 26 in the Colonial Chapel at Cook-Walden Funeral Home Lamar location, with the Rev. Logan Cummings officiating. Pallbearers were Phil Armstrong, Robert Conklin, Ken Ersch, Joe Michel, Lee Boyd Montgomery and Skip Skinner. Entombment was in Capital Memorial Gardens Mausoleum. Arrangements were by Cook-Walden Funeral Home of Austin.

The family requests that in lieu of flowers, memorial contributions be made to the American Cancer Society.



Spearman native Howell Phelps has been appointed to the position of president for Video Associates Labs, Inc., an Austin based company. The announcement was made by Henry Mistrot, who moves from the post of president to become the firm's CEO. Phelps brings to Video Associates more than 20 years of experience in the computer systems and computer hardware and software arena. Prior to joining Video Associates Labs, Inc. Phelps was director of marketing for KMW Systems; president of Innovative System; and held marketing and engineering management positions with Texas Instruments. Phelps has a masters degree in electrical engineering from Texas Technological University and is active in the American Electronics Industry Association. He resides in Austin.

**Area Eye Center**  
**Dr. Billy Nowlin**  
 Optometrist  
 706 Main  
 659-3109  
 Selection of Frames and contact lenses  
 serving this area for 13 years.

### Sales from page 1

totaling \$130 million for the state's six metropolitan transit authorities and one city transit department. The payments to MTAs reflect taxes collected in February, March and April.

Merchants collect the sales taxes and send them to the Comptroller's office with their tax returns. The state keeps its 6 percent share and each month sends cities and counties their portion of the sales taxes.

All local sales taxes must be approved by local voters and may be used for any legal city or county expenses. Most areas put the money in their General Fund and use it for operations like fire fighting, maintaining roads and law enforcement.

## Ask Bob Bullock

**Editor's note:** Bob Bullock, Texas Comptroller of Public Accounts, answers questions from taxpayers in his monthly column, "Ask Bob Bullock." If you have a question about state taxes, write to: Bob Bullock, Comptroller of Public Accounts, Austin, Texas 78774, or call 1-800-252-5555.

Dear Bob Bullock:

I returned a coffee pot to the store where I bought it. I was given a refund on the purchase price, but told I'd have to write to your office for the sales tax, because it already had been sent to you. Do I?

J.B.  
 Austin  
 Dear J.B.:

No, you don't have to write to this office. When stores give full refunds on returned items, the sales tax also should be refunded.

The store than takes a tax credit on the next tax return to this office.

Dear Bob Bullock:

I was surprised to be charged sales tax on an extended service policy for our new refrigerator. Why is this?

A.W.  
 China Grove  
 Dear A.W.:

The extended service policy is payment in advance for repair or maintenance of your refrigerator. The service is taxable.

Dear Bob Bullock:

We have so many wonderful cooks among our church members that we've decided to sell lunches to raise money for our building fund. Do we charge sales tax on the meals?

M.C.  
 Lubbock  
 Dear M.C.:

Meals sold by a church aren't taxable.

Dear Bob Bullock:

If a patient is released from the hospital but needs a medical alert medallion to wear at home, in the event of emergency, is the medallion service taxable?

C.P.  
 Houston  
 Dear C.P.:

It depends on who provides the service. If the service is provided by a hospital owned by a city, county or hospital district, the service isn't taxable. But if it's provided through a private hospital—profit or non-profit—it's a security service and is taxable.

**American Heart Association**  
 Texas Affiliate

**LETTERS TO THE EDITOR**  
 The Hansford County Reporter-Statesman welcomes letters to the editor on subjects of interest to its readers. Short letters are most likely to be chosen for publication, but the use of any material is at the discretion of the editor.  
 Editing may be necessary for space and clarity or to avoid obscenity, libel or invasion of privacy, but ideas will not be altered.  
 Upon request, editors will use initials only, but only rarely and for compelling reasons. A signed letter carries more weight with readers.  
 Letters do not necessarily reflect the editorial policies or beliefs of this newspaper.  
 All letters must bear the handwritten signature of the writer and include address and phone number(s) for verification purposes (address and phone number will not be printed.)

**HOT ROOFS WOOD COMPOSITION ROOF REPAIRS**  
 FREE ESTIMATES  
**Lone Star Roofing Co.**  
 LICENSED & BONDED  
 Call collect: (806) 353-0717

The globefish staves off predators by gulping a large quantity of water, till it becomes simply too large to be swallowed by its enemies.

**Play & Win**  
**Convenient Cash**  
 Stop by your favorite Allsup's Store to pick up your game piece and game rules. Up to \$50,000 in cash and over 400,000 free instant prizes will be given away. You can win one of 5 top cash prizes of \$1,000 playing Allsup's Convenient Cash. Come play Allsup's Convenient Cash and become a winner with us.

**Over 400,000 Prizes Available Win Up To \$1000 In Cash!**

**ALL VARIETIES COKES 6 PACK-12 OZ. CANS \$1.99**

**PEACH & GREEN APPLE JUICE FULL CANDY 3 FOR \$1**

**ASSTD. FLAVORS KOOL-AID 2 QT. PKGS. 5 FOR \$1**

**SUNDAE CONES DRUMSTICKS 2 FOR \$1**

**KRAFT ASSTD. BARBECUE SAUCE 18 OZ. BTL. 89¢**

**MELLOW-CRISP BACON lb. 99¢**

**MARDI GRAS PAPER TOWELS JUMBO ROLL 69¢**

**PILGRIM'S PRIDE EGGS 18 ct. 99¢**

**ALLSUP'S CONVENIENCE STORES, INC. 305 W. KENNETH SPEARMAN, TX 79081**  
 Also Effective in GRUVER ALLSUP'S

**BEF & CHEDDAR/PEPPERONI HAM & CHEESE HOT POCKETS EACH 99¢**

**FRESH...HOT SAUSAGE & BISCUIT EACH 59¢**

PRICES EFFECTIVE JUNE 27-JULY 3, 1990

**FULL MEAL DEAL!**

**\$2.99** SALE PRICE JUNE 18 thru JULY 8, 1990  
 With the Full Meal Deal, you get a juicy, 1/4 lb. Homestyle Hungry-Buster® golden fries, a 16 oz. soft drink, and a 5 oz. Dairy Queen sundae.

**ON SALE IN DQ COUNTRY**

\* Reg. U.S. Pat. & Tm. Off. Am. D.Q. Corp. Reg. U.S. Pat. & Tm. Tx. D.Q. Co. Coun. Tx. D.Q. Op. Coun. Prices good at participating Dairy Queen stores. †Pre-cooked weight.