

INSIDE

Hansford Happenings page 12
Social Scene pages 4 & 5
School Scene pages 9 & 10
Classifieds page 11
Obituaries page 12

The Hansford County Reporter-Statesman

Serving All Of
Hansford County

12 pages

Vol. 82, No. 28

213 Main

Spearman, Hansford County, Texas

25¢

Thursday, May 10, 1990

Hospital lauds volunteers

Hansford Hospital held a reception and tea on Sunday, May 6 to honor the volunteers that work with the hospital and manor.

Hospital Administrator Albert LaRoche started the program at about 2 p.m. with a welcoming speech. He was followed by an invocation led by John Scott from the Spearman Church of Christ.

The presentation of the Outstanding Volunteer awards by both the hospital and the manor followed the invocation. The event ended with refreshments being served.

As everyone enjoyed the cookies, fresh fruit, coffee and punch made with fruit yogurt and ginger ale, they were entertained by Charles Brillhart and his band.

The first awards presented were to the Outstanding Volunteers in the hospital. Kay McFarlin, director of nursing for the hospital, presented five awards which went to members of the Hospital Auxiliary.

According to McFarlin, the Auxiliary displays such "ingenuity and high standards that one day is not enough recognition." The five women chosen for this year's Outstanding Volunteers to the Hospital are Edith Smith, June Jackson, Maria Avila, Myrt

Bohanan and Mary Fern Terry. Jody Harnish, director of activities for the manor, presented 16 awards for the manor. She started with the women of the Hospital Auxiliary organization. They are Mary Fern Terry, Virginia Head, Edith Smith, Rosa Lee Butt, Betty Jean Davis, Verna Maupin, Eddie Largent and Jo Larson.

Next to be honored was a Bible study class from the Church of Christ of Gruver. According to Harnish, they come every Wednesday without fail and conduct a Bible study with the residents of the manor. They are Elene Green, Vivian Green, Pauline Winger and Charmian Lyle.

The next group to be honored by the manor was a group of ladies from the First Baptist Church of Spearman. The residents wanted to honor them for coming to the manor and giving manicures to the residents. They are Wanda Widener, Dorothy Woolley, Betty Uptergrove and Mary Ruth Connelly.

Harnish concluded by giving honorary outstanding volunteer awards to three individuals for giving time to entertain the residents, and to two businesses for donating goods and employee time to serv-

ing the residents of the manor. The three entertainers were Laquita Evans for singing, Coy Bennett of Perryton for piano playing and Charles Brillhart for piano playing and singing.

The first business to be recognized was the First State Bank of Spearman. Harnish said the residents voted this award to the bank for donating food and employee time to prepare cookouts for the residents. The bank also provides presents for each of the residents on their birthdays. Kathy Boyd accepted the award on behalf of all the employees of the bank.

Prairie Garden flower shop was the second business to be honored. According to Harnish they donate flowers, sometimes at a moment's notice, to the manor residents for special occasions. Wanda Reed and Mary Mayfield accepted the honors for the flower shop.

Brillhart and his band concluded the entertainment for the afternoon. The members of his band are John and Mary Barnes. They played bass and lead guitar, respectively. Joe Hill played guitar, violin and banjo. They featured their theme song, a gospel number titled "Had It Been."



Hansford County Hospital and Manor "Outstanding Volunteers" award winners pose here with the plaques displaying their names.

SISD board okays recent election

In a specially called meeting on Monday, May 7 the SISD Board of Trustees canvassed the election held Saturday, May 5 and accepted the results.

In further action they hired a new head boys basketball coach for the next school term.

Larry Butler, SISD superintendent, reported that during the special school board meeting, the board reviewed the election results and declined to exercise its option to call for a recount. He further stated that the newly elected board members would take the oath of office and the board will elect new officers at the next regularly scheduled board meeting.

Butler stated the reason for the delay was an interpretation of a new law that requires newly elected officials to be registered in

Austin before being officially sworn in. That meeting will be Monday, May 14.

According to the election report given by Butler, new board members will be Karl Kunselman, who garnered the most votes, and Craig Schumann. They will replace current board members Don Townsen and Phillip Renner.

Butler further reported on the results from the Waka election. The item of interest on that ballot was whether that school district would consolidate with SISD or with the Perryton ISD. By a narrow margin the voters in Waka chose to consolidate with Perryton, 35 to 33.

Butler reported to the board on the impact school reorganization bills now being considered by the special legislature meeting in Austin would have on the Spear-

man school district. (Editor's note: For more details on this, see the SISD Says column in this issue.)

Finally, Butler reported that the board hired Wendell Neff as the new head boys basketball coach for the next school year. According to Butler he is not only a good coach but an excellent math teacher as well.

According to Neff's resume he is currently the Athletic Director at Jayton-Girard ISD. He has been with that district since 1976. In the last nine years of coaching boys basketball, he has had eight playoff teams, six consecutive district titles, five bi-district titles, four area titles, four regional quarterfinalists and three regional semifinalists.

City utility fees increase

When customers of city services in Spearman received their bills for the month of April, they may have noticed an increase in their gas, sewer and water charges. The city council voted in its April 24 meeting to raise those fees, effective with the April billing.

According to Jim Murray, city manager, the city raised its gas service charge from 85 cents per thousand cubic feet (MCF) to 95 cents per MCF. The raise, says Murray, is the first one since September 1981. It was necessitated by a projected shortfall of expected gas revenues totaling \$20,000.

According to Murray, the city figures its operating budget for the year based on the amount of revenue generated in previous years. Because of an extremely warm winter, (January was the warmest since 1895) less gas was used than expected. Therefore, the income for the city from gas sales is projected to be \$20,000 less than the city needs to operate the service for the rest of the year.

Murray reported that even with the increase, city gas customers are paying less for their gas than national or state averages. According to Murray the new cost per MCF to city customers in April will be \$3.18. The average cost per MCF across the nation is \$5.95, and across the state it is \$5.98. Murray says the price of gas will vary from month to month, based on the supply and the amount used. But, he feels sure that the

price city customers pay will always be less than in other communities.

In further action on April 24, the board changed the fee structure for figuring water and sewage charges. According to Murray a city customer was charged \$5.05 for the first 3,000 gallons of water used. This was the minimum charge. The new rate will be \$5 for the first 1,000 gallons. Murray indicated that this change will generate \$32,000 a year in additional revenue for the city.

According to Murray the additional money will be used to pay for needed capital improvements to the water and sewage system. These improvements include enlarging some undersized mains and replacing deteriorated pipe. These improvements are needed to bring the system up to state minimum requirements, says Murray.

The final rate increase voted by the council was to increase the sanitation rate by 5 1/2 percent. Murray says the residential charge will go from \$6.30 per month to \$6.65 per month. This rate increase was necessitated by an increase in fuel costs and use at the city landfill.

According to Murray, because of the new rules governing landfill operation the city had to stop burning garbage at the dump. Because the city can no longer burn the garbage, the new rule also requires the city to cover and compress the garbage to a greater degree. In order to comply, the

city must use more earth moving equipment for longer periods of time. This added expense due to fuel usage, according to Murray, necessitated the fee increase.

Finally, Murray reported that the council opened and accepted \$15,819.66 in bids for confined space safety equipment. Murray says the city will only have to pay \$8,662.59 of the cost because Spearman is part of a consortium including three other municipalities in the area, namely Dumas, Gruver and Perryton. The equipment is to be used when city workmen are doing maintenance in the underground pump stations which are part of the city sewer system. Murray says workmen are down these holes two to three times a week doing routine maintenance.

According to the bid tabulation sheet compiled at city hall, Vallen Safety Supply Company of Odessa submitted the lion's share of the bids. They submitted bids of \$1,869.79 for breathing apparatus, \$2,081.64 for confined space equipment and \$8,039.23 for monitoring equipment.

The Plank Company of Dallas had the lowest bid on shoring equipment. They were the only company to bid. Their bid was \$3,551.00.

Daco Fire Equipment of Lubbock got the ladder and clamps order, with a bid of \$278. This was not the lowest bid but the other bidders either left out essential equipment or did not include delivery to the city.

Buchanan declared mayor

Burl Buchanan was declared the new Mayor of the City of Spearman and Bob Boxwell and Don Reed were declared as Aldermen for two-year terms at the May 8 Spearman City Council meeting.

Mayor Bob Pearson read the results of the city election, which was held May 5. Ballots were canvassed, with the following final results announced: Bob Boxwell received 272 votes for alderman, Don Reed received 262 votes for alderman and Burl Buchanan received 284 votes for mayor. Pearson stated that there were 325 voters casting ballots in the city election, and congratulated the successful candidates.

In other business Jim Murray, city manager, stated that the city received a statement from the county for expenses incurred in a 1989 drug investigation. The amount of the statement was

\$18,548.29. Murray told council members that the City of Gruver was uncertain about whether it would participate in the reimbursement. After discussion, the council voted to pay half the expenses, totaling \$9,274.15.

Alice Peddy, chief appraiser for the Hansford County Appraisal District, presented the district's audit for the fiscal year ending Sept. 30, 1989 and answered questions from the council. She presented a check to the city in the amount of \$1,297 for appraisal and collection refunds for that fiscal year. The council voted to accept the HCAD's audit.

Council members voted to engage Brown, Graham & Co. to perform a fiscal and compliance audit for the city. The audit will be for the fiscal year ending Sept. 30, 1990.

The council adopted a resolu-

tion which suspends operation of proposed rate schedules filed by Texas-New Mexico Power Co. for 90 days beyond the date the schedules would otherwise go into effect. Council members authorized the City of Spearman to participate in a rate case with other cities served by TNMP.

The city's mosquito control program came under discussion, and the council voted to contract with Southwest Aerial Services Inc. of Plainview to perform aerial application of a chemical mosquito control program. According to the city manager, the company's charge for this year's program would be the same as that for last year.

A recent accident involving a pickup and a young bicycle rider prompted a request from the boy's

by Jean Ann Behney

Tom Dortch of Morse and James Cunningham of Spearman have been putting Hansford County on the map for fans of the Fina Greatrace Texas and Interstate Batteries' Great American Race.

In April, Tom drove his Fort Worth partner Jack Renfro's 1957 Cadillac in the Fina Greatrace Texas. With Jack doing the navigating during the 1500-mile old car competition, the pair won the race in the post World War II class and were also named "Rookie Team of the Year."

James was the navigator for his brother-in-law, Zeke Neeley of Amarillo, in Zeke's 1936 Oldsmobile sedan in the pre-World War II class of the same race. These gentlemen placed fifth in the competition.

For the past four years, James has also competed in the cross-country Great American Race as navigator in Zeke's car. This team has placed in the top 10 for the last three years. With the largest old car rally prize purse of \$500,000, this competition has been called a "deadly serious" event and involves only cars manufactured through 1936.

Both the Great American Race and the Texas Greatrace (the latter had its inception only this year, and is a much shorter precursor to the long Great American Race) are "rallies" and not really races at all. In a rally, the driver-navigator teams try to match a target speed for each leg of the competition's course. The team most closely matching that target speed wins. Each entered car's odometer is covered during the event, so the driver-navigator team does not know how many miles it has covered.

As James explains, "You also don't know where you're going! There are no maps!" The teams travel paved back roads, following tersely-worded instruction sheets and watching for signs (stops, street names, curves, etc.) as route

guides. At the same time, the speed the driver should be going is dictated by the instruction sheet with incredible precision: "Curve Warning Sign 40 MPH, Commence Average Speed 35 for 26 seconds."

As Tom asserts, one miscalculation on the part of the navigator or the driver can cost that team the race. He and his navigator won the Fina Greatrace Texas last month by only one second!

So one might well ask how two Hansford County fellows, who laughingly describe themselves as "green as can be" during their first competitions, came to out-drive and out-navigate scores of other old car rally teams. Many of these teams, in fact, are paid professionals.

Tom was born and reared in Morse, where his father Mack established Morse Implement in 1945 after working for McClellan Grain many years. After graduating from Morse High School in 1951, he says he "drove a truck, then joined the Army and served in France for two years."

Upon his return to Morse, Tom claims he "just waited for Beth to grow up so I could marry her." Beth Dortch was Beth Blankenship, daughter of Mr. and Mrs. A.L. Blankenship. Her father worked at the Gruver Foodliner for many years and her mother was a school teacher in Morse and Gruver.

Many Morse residents can recall the impromptu drag races teenaged Tom Dortch ran along Main Street. As Beth recalls, "Here he'd come, fast and furious, and the mothers would grab their kids and yell 'Tom's comin'!" When asked how fast he drove at such times, her husband shrugs and says sheepishly, "Well, those old cars only went up to 100."

His first car was a 1935 Ford "abandoned" by his Daddy, which 14-year-old Tom tinkered with until it ran. He says he learned the mechanics of cars by "hanging around down there at the shop." The first car he purchased was an

11-year-old 1939 Mercury coupe, but his favorite cars were Ford Thunderbirds. Twenty-two years ago, Tom spied an advertisement for a '55 T-bird in the Pampa newspaper and jumped on the deal for \$2,500.

He had the T-bird restored and did all the mechanical work himself, and today this car is worth over \$30,000. "They only made this model of T-birds from '55 to '57," Tom says, "because after that they came out with a family car T-bird with a back seat in it." It was while attending old car events in the '55 T-bird that Tom met Jack Renfro, the owner of the '57 Cadillac in which the pair would go on to win the Greatrace Texas this year.

Tom also owns a '59 Cadillac and '54 Crown Victoria Ford. He says he is planning to restore the '54 Ford soon. Prior to competing with Renfro in the Greatrace Texas, he drove his '55 T-bird in an event called the Old Car Lap of Texas with Dub Womble accompanying him as navigator.

When Jack Renfro invited Tom to go as driver of his '57 Cadillac in the first Greatrace Texas, Tom thought of himself as an "old country boy that didn't know anything about car rallies." The professionals in the race, most of whom travel the country competing year-round, initially regarded them with amused tolerance, but that soon changed to amazement and respect when Jack and Tom came in second place at the end of the first day.

Each day of the four-day event, cars must pass through several checkpoints, at which a computerized videocamera records the exact time they pass. Computers also calculate how closely each competitor places to the time set for the course. Driving/navigating takes most of each day and the teams roll into towns to crash in motel beds each night for a few

See Dortch page 7



Karen's Kozy Korner

by Karen Babitzke

THE BEST RETURN ON YOUR MONEY IS PAYING OFF CREDIT CARD DEBT

The Tax Reform Act of 1986 changed the rules on consumer interest deductibility, but it's unclear whether consumers have altered their credit habits accordingly. Only 20 percent of the finance charges paid on consumer loans will be deductible for 1989. In 1990, just 10 percent of the total will be deductible and in 1991, none of the finance charges will be deductible. That means with the national average interest rate of 18.66 percent on credit cards, every \$100 of debt costs \$18.66 per year in interest.

Investors would have to have spectacular returns on their investments in order to match the return on repaying debt. A person in the 28 percent tax bracket would have to earn \$25.92 before taxes from a \$100 investment in order to match it. Those in the 33 percent tax bracket would have to earn \$27.85 per \$100 before taxes to pay the interest on \$100 of credit-card debt.

The reality is that few people earn high yields without major risk. The average yield on a one-year bank certificate of deposit is currently 8 percent. Paying off credit-card debt and other consumer loans makes mathematical sense, so much so that some financial advisers are urging people to pay cash or forego items.

Avoiding interest on consumer debt is not as simple as it sounds. To get maximum benefit, consumers would have to invest the money they would otherwise be spending on monthly payments. In the words of one adviser, "99 percent of the world doesn't have the discipline."

CHECKING YOUR CREDIT REPORT

Before applying for a loan, it pays to check your credit report. Many financial counselors advise reviewing credit reports every

several years regardless of whether a loan is needed.

Consumers can obtain a copy of their credit report for a fee (usually under \$20) from local credit agencies listed in the yellow pages of the telephone book. Consumers applying for a loan may want to ask the lender which credit bureau will be used and obtain a copy of the specific report from that bureau, since credit information may differ slightly from agency to agency. Reviewing credit reports not only allows reporting and challenging of errors, but can also allow preparation of explanations which will be required regarding existing or past credit problems.

Without a fresh supply of water, we would die in only a few days. To keep functioning, the human body needs approximately 2½ quarts of water a day. Some of this water comes from foods, but six to eight glasses of pure liquid are needed to make up the balance.

The average person in an American home uses from 20 to 80 gallons of water each day for activities such as drinking, cooking, bathing, washing clothes and dishes, flushing toilets, and watering lawns and gardens. Although our use of water continues to increase, the total quantity of water available for use remains the same.

Water covers 75 percent of the earth's surface. Despite this abundance, all but 3 percent is seawater. Three percent isn't much, but it's all we've had since the beginning of time. Water recycles over and over as rain or snow falls to earth, percolates into the ground or evaporates into the atmosphere, and returns again to earth.

Because of the very large amount of water in ground storage, there is no overall shortage. There are, however, many problems of local and regional supply because the needed amount of water is not always in the right place at the

right time or of the right quality. The demand for water continues to increase as more people use more water in more ways every day.

The widespread availability of groundwater in most parts of the country, its dependability in times of drought and its relatively good quality have led to an increase in groundwater withdrawals of nearly 190 percent in the past 30 years.

Groundwater is one of the nation's most valuable resources, and many find it one of the most difficult to understand. Once contaminated, water may remain contaminated for generations. Yet we must rely on it for survival. It provides 35 percent of the fresh water withdrawn for municipal water supplies, 97 percent of rural drinking water, 40 percent of irrigation water, and about 26 percent of the water used by industry, excluding thermoelectric power uses. Groundwater is now the source of drinking water for more than 50 percent of the population.

Water carries dissolved materials such as salts, metals, organic substances, naturally occurring radioactive substances, and suspended materials such as bacteria, viruses and sediment. Any or all of these may cause it to be unusable for many purposes. Human activities may further degrade water quality by adding other dissolved and suspended substances or changing natural properties, such as temperature.

Polluting substances can enter surface and groundwater at readily identifiable sites (point sources) or over large areas (non-point sources). Point source pollution can include discharge of liquid, industrial or municipal waste. The most severe point source pollution of surface water occurs where the largest waste loads are generated in the heavily populated and industrialized parts of the nation.

Water in the less densely populated areas of the country does not escape pollution. Almost every home contributes to point source pollution in the way it generates and disposes of waste.

Non-point pollution contaminates groundwater or surface water over a broad area rather than in a specific locality. Examples include drainage of contaminated runoff from agricultural land or from urban areas into streams, leakage from urban sewer pipes or septic systems into shallow aquifers, and the downward transport of

See Karen page 3

Letter To The Editor

To the Editor:

I must write a letter of retaliation to the alleged "Gregg Smith" of Amarillo who wants Phillip Renner off the S.I.S.D. board of trustees so badly. First of all, "Mr. Smith", when you write a letter intending to damage the character of someone (conveniently printed in the paper just prior to the city and school elections), you'd better be prepared to state all the facts of your allegations. Since you apparently do not recall all these facts, I'll help you out:

1. Yes, Phillip Renner did purchase some land from the Gus O. Birdwell Estate while a member of the board of the S.I.S.D. but

a. The price paid was a very fair price for the quality of land purchased; and

b. The other members of the S.I.S.D. board all approved this sale, Phillip Renner abstaining from voting because of a conflict of interest.

2. Yes, the business partner of Phillip Renner's, who also happens to be the executor of Mr. Birdwell's estate, did not open the sale of this land to public auction, but

a. Then there would be additional costs to the estate for the auctioneer, advertising, etc.;

b. Mr. Birdwell's will had very broad powers and stipulated that the executor could sell the land to whomever he chose at whatever price he chose; and

c. The executor of Mr. Birdwell's estate was also a very close friend of Mr. Birdwell's, and they had many discussions regarding the distribution of his estate after he was gone. Mr. Birdwell was fully aware that Phillip Renner was going to buy part of his property and intended for him to have it.

It seems to me, "Mr. Smith," that if you had a problem with Mr. Renner purchasing this property, you should have taken it before the school board. They are a very fair, very wise group of men, and I'm sure they would have liked to hear about your complaint.

You could have also talked to the executor of the estate. He's been more than willing to discuss the matter and has publicly invited anyone who wished to come in to his office and examine the will and the records of this transaction. (All of this is public record anyway.)

Better yet, "Mr. Smith," you could have shown the courage to speak with Phillip Renner about it personally. He is a good, hardwork-

ing, honest man, and I'm sure he would have told you anything you wanted to know.

Personally I think the petty, cheap-shot manner in which you handled your complaint is disgraceful. You need to think about how many people you have hurt from this one little ad in our local paper. You have hurt Phillip, his wife and children, his parents, friends and family who care about him very much and are very proud of him and his accomplishments as a member of the board of trustees of the S.I.S.D.

You have also hurt Phillip's friend, the executor of the Birdwell Estate, his wife and daughters, his friends and family who care deeply about him and are especially proud of the manner in which he's handled the Birdwell estate.

I have always believed, "Mr. Smith," that what goes around, comes around, and someone who has nothing better to do than to sit around and think of ways to hurt people has a lot coming 'round.

I welcome your comments.
Sincerely,
Bambi Torres

Dear Editor:

This is to all "Beauty and the Beast" fans in the Gruver area. The Christian Broadcasting Network's Family Channel will rerun the two and a half seasons of "Beauty and the Beast" for one year, beginning next September.

There will be two shows weekly on the same night, and the three unaired episodes of the last season will be included.

"B & B" fans should ask the Gruver cablevision service for CBN so this beautiful, literate, quality television series won't be missed.

Mrs. D.L. LaBorde

Dear Editor:

Please consider this personal tribute to J.C. Phillips, longtime editor and manager of the Borger News-Herald, who died May 1, 1990, at a nursing home in Panhandle, Tex.

Mr. Phillips will be remembered as a great American patriot who for years fought communism, and became one of the nation's best-known anti-communist crusaders. He consistently fought communism through the years even at times when it appeared unpopular to do so.

He was also a deeply concerned

man for his country, state's rights, and his community, Borger, where he had lived for 48 years. He remained a booster of Borger all his professional career, and strongly believed in the future of Borger.

Mr. Phillips hired me as a young reporter upon my return from the Vietnam War. The late Amarillo Daily News editor Wes Izzard had sent me to apply for a job at the News-Herald, and Mr. Phillips hired me and asked me to work the same day at the News-Herald. It was a pleasure to be a part of his editorial team.

His family including his sons Gene Phillips of Panhandle and Jimmy Phillips of Albuquerque, and his daughter, Courtney Durham of Slidell, La., his grandchildren and great-grandchildren can be proud of him...for he was truly a good Christian and great American patriot.

The memory of J.C. Phillips of Borger, Texas shall never die.

Eck Spahich
Borger, Texas

Dear Editor,

Earth Day has come and gone. Some thoughts are in order after the hoopla and hype of the need for protecting the environment. It seems that everyone is in favor of a clean and healthy environment, so why the big push for government controls? Is voluntarism out of fashion?

The most eloquent part of the D.C. Earth Day Rally for the cleaning up of the environment was the many tons of trash left on the Mall by the Earthites. Let the taxpayers clean up the mess was their final message. This message on a global scale is downright frightening. Lost jobs and bankruptcies also seem to be part of the message as a result of "earth" control.

After hearing and reading the other messages of the Earth Day leaders calling for an international body with authority to force compliance, one can conclude that Earth Day can be compared to a sour watermelon. It is green on the outside (innocent children and duped adults with good intentions) and red on the inside (international tyranny). Although it looks good, it tastes bitter.

When the innocents have to taste the fruit of their efforts, they will surely find the bitterness of international socialist control of private property and the destruction of liberty difficult to swallow. Let us hope that Americans will be alert to the great deception and reject it. It is not a hidden agenda, the Mother Earth worshippers are quite open with their intentions. There must be a better way.

Sincerely,
L.M. Cole

PUBLICATION COPY - COMMERCIAL AND SAVINGS BANKS
CONSOLIDATED REPORT OF CONDITION (Including Domestic and Foreign Subsidiaries)

LEGAL TITLE OF BANK: First State Bank, Spearman, Texas 79081
STATE BANK NO: 1107-37
FEDERAL RESERVE DISTRICT NO: 11 13 17844
CITY: Spearman, COUNTY: HANSFORD, STATE: Texas, ZIP CODE: 79081
CLOSE OF BUSINESS DATE: March 31, 1990

ASSETS	Dollar Amounts in Thousands	Bill			Mill	Thous	
1. Cash and balances due from depository institutions					1,916	1a	
					100	1b	
2. Securities					37,457	2	
3. Federal funds sold & securities purchased under agreements to resell in domestic offices of the bank & of its Edge & Agreement subsidiaries, & in IFB's					1,700	3a	
					-0-	3b	
4. Loans and lease financing receivables:							
a. Loans and leases, net of unearned income	26,619					4a	
b. LESS: Allowance for loan and lease losses	381					4b	
c. LESS: Allocated transfer risk reserve	-0-					4c	
d. Loans and leases, net of unearned income, allowance, and reserve (item 4a minus 4b and 4c)					26,238	4d	
5. Assets held in trading accounts					-0-	5	
6. Premises and fixed assets (including capitalized leases)					1,238	6	
7. Other real estate owned					58	7	
8. Investments in unconsolidated subsidiaries and associated companies					-0-	8	
9. Customers' liability to this bank on acceptances outstanding					-0-	9	
10. Intangible assets					-0-	10	
11. Other assets					1,483	11	
12. Total assets (sum of items 1 through 11)					71,690	12a	
b. Loans deferred pursuant to 12 U.S.C. 1823(j)					-0-	12b	
c. Total assets and losses deferred pursuant to 12 U.S.C. 1823(j) (sum of items 12a and 12b)					71,690	12c	
LIABILITIES							
13. Deposits:							
a. In domestic offices:							
(1) Noninterest-bearing	7,055				59,767	13a(1)	
(2) Interest-bearing	52,712				-0-	13a(2)	
b. In foreign offices, Edge and Agreement subsidiaries, and IFB's					-0-	13b	
(1) Noninterest-bearing	-0-				-0-	13b(1)	
(2) Interest-bearing	-0-				-0-	13b(2)	
14. Federal funds purchased and securities sold under agreements to repurchase in domestic offices of the bank & of its Edge & Agreement subsidiaries, & in IFB's					-0-	14a	
a. Federal funds purchased					-0-	14a	
b. Securities sold under agreements to repurchase					-0-	14b	
15. Demand notes issued to the U.S. Treasury					-0-	15	
16. Other borrowed money					-0-	16	
17. Mortgage indebtedness and obligations under capitalized leases					-0-	17	
18. Bank's liability on acceptances executed and outstanding					-0-	18	
19. Notes and debentures subordinated to deposits					623	19	
20. Other liabilities					60,389	20	
21. Total liabilities (sum of items 13 through 20)					-0-	21	
22. Limited-life preferred stock					-0-	22	
EQUITY CAPITAL							
23. Perpetual preferred stock (No. of shares outstanding)	-0-				-0-	23	
24. Common stock (No. of shares: a. Authorized, b. Outstanding)	200,000				1,000	24	
	200,000				2,000	25	
25. Surplus					81,352	26a	
a. Undivided profits and capital reserves					(51)	26b	
b. LESS: Net unrealized loss on marketable equity securities							
27. Cumulative foreign currency translation adjustments							
28. Total equity capital (sum of items 23 through 27)					11,301	28a	
b. Losses deferred pursuant to 12 U.S.C. 1823(j)					-0-	28b	
c. Total equity capital and losses deferred pursuant to 12 U.S.C. 1823(j) (sum of items 28a & 28b)					11,301	28c	
29. Total liabilities, limited-life preferred stock, equity capital, and losses deferred pursuant to 12 U.S.C. 1823(j) (sum of items 21, 22, and 28c)					71,690	29	
MEMORANDA: Amounts outstanding as of Report Date							
1. Standby letters of credit: Total					5	1a	
1. b. Amount of standby letters of credit in memo 1 a. conveyed to others through participations					-0-	1b	

NOTE: This report must be signed by an authorized officer(s) and attested by not less than three directors other than the officer(s) signing the report. If the undersigned officer(s) do hereby declare that this Report of Condition has been prepared in conformity with official instructions and is true and correct.

SIGNATURE OF OFFICER(S) AUTHORIZED TO SIGN REPORT: Robert C. Schnell, Assistant Vice President
DATE SIGNED: 5-7-90
AREA CODE PHONE NO: (806) 639-5565

We, the undersigned directors, attest the correctness of this Report of Condition and declare that I has been examined by us and to the best of our knowledge and belief and has been prepared in conformity with official instructions and is true and correct.

SIGNATURE OF DIRECTOR: [Signatures]

(MAKE MARK FOR State of Texas County of Hansford
NOTARY SEAL: Sworn to and subscribed before me this 7 day of May 1990
and I hereby certify that I am not an officer or director of this bank
My commission expires 1-2-1993 Signature Notary Public

Ask the Vet

Dr. John Paul

Dear Dr. Paul, last spring I lost a couple of cows to bloat after putting them on a legume pasture. How can I prevent having the same thing happen this year?

You can start by feeding cattle dry hay just before turning them out on lush legume pasture. I also recommend that you give them short intervals of grazing on new pastures. The most practical method to prevent bloat, however, is to provide cattle with a supplement of an anti-bloat compound, beginning on the first day of grazing. There are two commercially available compounds to prevent bloat. The first, poloxalene is available in various products. A newer and probably more effective compound is polyoxyethylene or Laureth-23, a medicated feed block, which is available under the trade name Bloat Blox. Dear Dr. Paul, I've been hearing a lot lately about pseudorabies. There haven't been any cases reported in my area, but I'd like to know how to prevent them and just how they get into hog operations to begin with.

First of all, don't confuse pseudorabies (false rabies) with the dreaded rabies disease. Pseudorabies is caused by a virus. The main effects in sows are abortions and stillbirths, while a high death rate also occurs in young pigs. Pigs that do survive the infection become carriers of the virus without showing clinical symptoms. Under stressful conditions,

such as shipping, introducing pigs to a new facility and farrowing, carrier pigs shed the virus and transmit the disease to susceptible pigs. Carrier pigs can be identified by having a veterinarian conduct blood tests. Also, vaccines are now available and are used to prevent death losses in infected herds as well as to prevent the introduction of the virus in clean herds located in high-risk areas.

Dear Dr. Paul, I'd like to have my mare bred, but she won't come into heat. I'd appreciate any advice you could give me.

Your mare may not be coming into heat because of the time of year or due to a reproductive problem caused by a hormonal imbalance or physical deformity. You may even find that she is cycling and coming into heat without showing the typical signs. This condition is called silent heat. Your veterinarian can diagnose this and other problems by using rectal palpations, modern diagnostic equipment and blood tests to measure hormone levels. Depending on the situation, the veterinarian may use hormonal products to help your mare. For mares that cycle irregularly, a progestin called Regu-Mate-- administered by mouth--would be beneficial.

If you have questions for Dr. Paul, write to him at: Ask The Vet, P.O. Box 20421, Kansas City, Mo 64195.

ANNOUNCING

Lile's Hearing Aid Service will be giving Free Hearing Tests Monday, May 14th From 9:00 a.m. - 3:30 p.m. at Dr. Billy Nowlin's office, 206 Main, Spearman

Watch For Our Grand Opening
Lile's Hearing Aid Jerry Lile, H.A.S.

The Hansford County Reporter-Statesman

"Serving All Of Hansford County"

USPS 509660
213 Main, Box 458, 659-3434
Spearman, TX 79081

Published Weekly at
213 Main, Spearman, Texas

Owned and Operated by:
Texas Independent Newspapers, Inc.
16607 Blanco Road, Suite 701
San Antonio, TX 78232
Second Class postage paid at
Spearman, Texas 79081.

Any erroneous reflection upon the character of any person or firm appearing in these pages will be gladly and promptly corrected upon being brought to the attention of the management.

Publisher - Robert M. Hulet
Copy Editor - JoAnn Morton
Bookkeeper - Gayla Eaton

Subscription Rate: Hansford County, \$19.95; out of county, \$24.95 annually.

Postmaster: Send address changes to Hansford County Reporter-Statesman, Box 458, Spearman, TX 79081.

The publisher reserves the right to revise or reject at its option any advertisement which it deems objectionable, either in subject or phraseology, or which it may deem detrimental to its business. Advertising and Story Deadlines: Tuesday, 12:00 p.m.

TA MEMBER
TEXAS PRESS ASSOCIATION

Karen from page 2

agricultural pesticides to the water table.

Runoff from agricultural land (including fertilized cropland, pastureland and animal feedlots) commonly contains high concentrations of nitrogen and phosphorus and may contain high concentrations of herbicides and insecticides. Runoff from urban areas commonly contain heavy metals and petroleum products.

Hazardous substances can be added to groundwater from wastes in solid or liquid form. Solid waste placed on improperly designed landfills and dumps is leached by water from rain or by other liquids that percolate through the landfill. The leachate then moves downward into the water table and disperses into slowly moving groundwater. Some landfills extend below the water tables, allowing groundwater to interact directly with the waste material. In either case, water becomes contaminated. These wastes can also enter groundwater directly through industrial waste disposal.

Rain or snow, too, may be viewed as an extensive non-point source when it deposits nitrate and sulfate ions, a phenomenon known as acid rain.

Acid gases in the atmosphere come from natural sources such as volcanoes and forest fires, but especially from activities such as the burning of fossil fuels in power plants and motor vehicles. These gases, through interaction with sunlight, water and dust particles, can be changed chemically into strong acids, including sulfuric and nitric acid.

Polluting substances can enter surface and groundwater at readily identifiable sites (point sources) or over large areas (non-point sources). Point source pollution can include discharge of liquid, industrial or municipal waste. The most severe point source pollution of surface water occurs where the largest waste loads are generated in the heavily populated and industrialized parts of the nation.

Water in the less densely populated areas of the country does not escape pollution. Almost every home contributes to point source pollution in the way it generates and disposes of waste.

Non-point pollution contaminates groundwater or surface water over a broad area rather than in a specific locality. Examples include drainage of contaminated runoff from agricultural land or from urban areas into streams, leakage from urban sewer pipes or septic systems into shallow aquifers, and the downward transport of agricultural pesticides to the water table.

Runoff from agricultural land (including fertilized cropland, pastureland and animal feedlots) commonly contains high concentrations of nitrogen and phosphorus and may contain high concentrations of herbicides and insecticides. Runoff from urban areas commonly contain heavy metals and petroleum products.

Hazardous substances can be added to groundwater from wastes in solid or liquid form. Solid waste placed on improperly designed landfills and dumps is leached by water from rain or by other liquids that percolate through the landfill. The leachate then moves downward into the water table and

disperses into slowly moving groundwater. Some landfills extend below the water tables, allowing groundwater to interact directly with the waste material. In either case, water becomes contaminated. These wastes can also enter groundwater directly through industrial waste disposal.

Rain or snow, too, may be viewed as an extensive non-point source when it deposits nitrate and sulfate ions, a phenomenon known as acid rain.

Acid gases in the atmosphere come from natural sources such as volcanoes and forest fires, but especially from activities such as the burning of fossil fuels in power plants and motor vehicles. These gases, through interaction with sunlight, water and dust particles, can be changed chemically into strong acids, including sulfuric and nitric acid.

Recycling, reusing and conserving water will be essential if the economy is to expand, agricultural production is to be maintained, and cities are to have adequate water supplies for new residents and new industries. Though 90 percent of water supplied to industries and homes is available for reuse, only half of the water withdrawn for agriculture is returned. Encouraging more widespread adoption of water-saving systems would help sustain irrigated agriculture where water supplies are diminishing, curb ecological damage to overtaxed rivers and streams, and help the growing number of farmers faced with rising water costs to stay in business.

We must carefully conserve and protect our water resources to assure an adequate and safe supply of water for future use. Our children and grandchildren are depending on it.

Hansford Happenings

Gruver Lions Club's Junior Olympics will be held Saturday, May 19 at the Gruver football stadium. Competition will begin at 10 a.m. and will include junior olympians, both boys and girls, from Kindergarten through sixth grade. Admission to watch the sporting event will be priced at \$1 for adults and 50 cents for students. Proceeds will be used to cover the cost of ribbons and awards for the athletes. The public is invited and encouraged to attend.

Palo Duro Cowboy Camp Association will hold its fifth annual camp meeting June 7-10. The Palo Duro Cowboy Camp is described as "a Christian camping experience for all ages," and the public is invited to participate. More information may be obtained by contacting Gene Fletcher at 733-2363.

Spearman Ex-Students Association will have a meeting Tuesday, May 15 at 7 p.m. at IV's Hungry Cowboy. All exes are invited and encouraged to attend.

The Spearman bands will present their spring concert at 7:30 p.m. Monday, May 14 in the high school auditorium. The 5th, 6th, 7th and high school bands will be featured. Admission is free and the public is invited.

Spearman FFA's 1990 Awards Banquet will be held Thursday, May 17 at 7 p.m. in the Spearman High School cafeteria. On the schedule for the evening are dinner, a guest speaker, entertainment, presentation of awards and introduction of next year's officers. Spearman FFA expressed gratitude to buyers and supporters of the Hansford County Stock Show. The group also extended congratulations to Traci Scribner on her recent election to district office, and wished the best of luck to Haley Lair as she attends the Area Talent contest in Lubbock May 11 and 12.

Recent **Skate Night winners** at Hansford County Activity Center include Limbo winners Brooke Lesley, Leah DeArmond, Haley Beasley and Monica Behney. Skate Race Winners include Michael Gallegos and Blake Beedy.

A **biathlon from Gruver to Spearman** will highlight the 1990 Hansford Round-Up Saturday, June 9. The biathlon consists of a 10 mile bike ride followed by a three mile run. Age categories are 13-under, 14-16, 17-19, 20-24, 25-29, 30-34, 35-39, 40-44, 45-49, 50-54, 55-59 and 60-over. Entry fee is \$10 if paid by May 25 or \$12 if paid after May 25. Early registration is encouraged. More information can be obtained from Joe or Wanda Archer, 403 S. Barkley, Spearman, TX 79081, (806) 659-3519.

The **Spearman Chamber of Commerce Open Tennis Tournament** is set for Saturday and Sunday, May 19 and 20, at the Spearman High School Omni Courts. Starting time is 8:30 a.m. May 19. Tournament proceeds will benefit the Spearman Chamber of Commerce. Entry fee is \$8 per single event and \$16 per doubles team. Entry deadline is Thursday, May 17 at 9 p.m. Call-in entries will be accepted by and more information can be obtained from tournament directors Jeff Beedy, 659-2541 or 659-3847, and Scott Beedy, 659-2518 or 659-3885.



The athletes of the host country of the Olympic Games enter the Olympic stadium last.

Chamber Chatter

by Brett Whitford

This month is passing by in a hurry like the ones before. The Chamber office is busy at this time of year.

The Miss Hansford entries are all in and we have a good group of girls competing this year. We wish them all the best of luck.

The Chamber of Commerce Tennis Tourney has been set for Saturday, May 19 and Sunday, May 20. This year the tourney is put together by Scott and Jeff Beedy. Scott and Jeff are doing a fine job getting the Chamber Tennis Tourney going! It will be at the Spearman High School's Omni Court. The proceeds go to the Spearman Chamber of Commerce, and cost is \$8.00 per single event and \$16.00 per doubles team. Starting time is 8:30 a.m.

All matches will be two out of three sets with a 12 point tie-breaker at 6-all. No-add scoring will be used through the semi-finals and regular scoring in the finals. Limit is two events per person. The tournament directors reserve the right to re-classify and combine divisions when necessary.

Send entries to Scott Beedy, Box 522, Spearman, Texas 79081 or you can call the Chamber office to find out more. Let's get out and enjoy a great Tennis Tourney on May 19 and 20.

The Round-Up dates are getting close, so be sure and put them on your June calendar. The rodeo is on June 2 and 3. The rodeo dance is on June 2, at the Hansford County Activity Center on Hazelwood. The carnival will be in town to set up on

June 4 and will be here all that week.

Then on Friday night, June 8, the Miss Hansford County Pageant will be held at the Spearman High School auditorium. Then on Saturday, June 9 the fun begins with an early morning breakfast at City Hall, free of charge.

The Biathlon starts at 8:00. For more information or an entry form contact the Chamber office or Joe or Wanda Archer. There will be dancers on Main Street, and The Outlaws will be performing again this year.

The food and games booths open at 11:00. The parade line up will start at 10:00 with the parade getting underway at 11:00. The Palo Duro Players are getting together a variety show of our local talent to start at 1:30. At 3:00 is the dedication of the Lindburg marker on Hiway 207 South, just past the Lloyd Buzzard home.

On Sunday we will have our community wide church service. Also during this time, at the Old Hansford location, the Palo Duro Cowboy Camp meeting will be taking place. Their dates are June 7, 8, 9 and 10. They have a lot of activities planned including camp fire singing and trail rides.

There is a lot going on in Hansford County this month and the first part of June. So be proud to be a part of such a great place to live, right here in Spearman. Put these dates on your calendar now and enjoy the fun of Hansford Round-Up 1990.

HENSON CHIROPRACTIC
 410 S. Davis Spearman, TX
 Call For Appointment 659-5603
 Office Hours: Mon., Wed., Fri. 8:30-5:00
 Tue., Thu. 8:30-11:30

UT M. D. Anderson Hospital
Cancer Information Service
 1-800-4-CANCER

MAY CALENDER OF EVENTS

To put dates on this calendar, please call the **Spearman Reporter** Phone 659-3434.

SUNDAY	MONDAY	TUESDAY	WEDNESDAY	THURSDAY	FRIDAY	SATURDAY
		1	2	3	4	5
	*Spearman Rotary	*Spearman Lions Club	*Gruver Lions Club	*SVFD 7 p.m.	*Flame Fellowship 7 p.m.	
6	7	8	9	10	11	12
*Attend the church of your choice	*Spearman Rotary	*Spearman Lions Club		*Chamber board 7 p.m. Chamber office *Gruver FFA Area Convention Lubbock	*SHS track State meet *Gruver FFA Area Convention Lubbock *GHS Holiday	*SHS track State meet *Spearman Music Festival *Gruver FFA Area Convention Lubbock
13	14	15	16	17	18	19
*Mother's Day *Attend the church of your choice	*WDSCC Conf. Comm. 5:15 Chamber office *GHS Athletic banquet *Spearman Rotary	*Spearman Choir Concert *Gruver Methodist Church Senior banquet *GHS Drama Play 12:22 p.m. *Spearman Lions Club	*WDSCC Home Demo. Bldg. noon *Gruver First Christian Church Senior Luncheon *Gruver Lions Club	*Miss Hansford Modeling Clinic *Gruver Band Trip *Gruver Senior Trip *SVFD 7 p.m.		*Spearman school make-up day *Gruver Band Trip *Armed Forces Day *Spearman Chamber tennis tourney *Jr.-Sr. Prom *Gruver Senior Trip *Hansford Golf Club Men's Ind. Tourney
20	21	22	23	24	25	26
*Gruver Senior Trip *Attend the church of your choice *Gruver Band Trip *Chamber tennis tourney	*Miss Hansford Comm. 5:30 Spearman Chamber office *Gruver FFA banquet *Spearman Rotary	*Spearman music awards banquet *GHS awards assembly 7 p.m. *Spearman Lions Club	*Spearman Methodist Church choir banquet *GHS Baccalaureate 8 p.m.	*Gruver band concert 7 p.m. *SVFD 7 p.m.	*Spearman Athletic banquet *Gruver FFA Softball 4 p.m. *Pringle-Morse last day of school	
27	28	29	30	31		
*Attend the church of your choice *Spearman Baccalaureate	*Memorial Day *GHS Holiday *Hansford Golf Club Memorial Day Scramble *Spearman 8th grade graduation *Spearman Rotary	*SHS graduation *Spearman Lions Club		*Gruver Jr. High Graduation *GHS last day of school		

THIS COMMUNITY CALENDER OF EVENTS IS BROUGHT TO YOU AS A PUBLIC SERVICE BY:

BETTER SERVICE FOR YOUR HEARING AID...

Charlene Blalock Hearing Specialist

...MEANS BETTER HEARING FOR YOU.

Ask For FREE Hearing Test

Be sure to visit our next Service Center.

Thursday, May 17, 1990
 Hansford Manor
 707 S. Roland
 Spearman, Texas
 10:00 a.m.-12:00 Noon

Golden Spread Hearing Aid
 Formerly Beltone
 27-B Medical Dr
 Amarillo 352-8961

Good for You

Open Thurs.
 4p.m. - 6 p.m.

FNBANK

First National Bank of Spearman

729 W. 7th 659-5544

"Your Full Service Bank"

Member FDIC

Spearman Social Scene...

Among the Neighbors

by Helen Fisher

W.R. and Eulalie Green returned late Sunday from a ten-day absence. They visited friends in Duncan, Okla., with whom they had often shared vacations.

Then they spent several days at Plano with their daughter Helen and David Batson. They drove over to Dallas for some time with W.R.'s cousin, Ward and Mrs. Redus. Everywhere they saw the appalling results of the flooding.

The indefatigable Ora Lee Blackburn's recent activities can hardly be condensed in a few sentences. On April 9, her daughter Elaine and Bill Cessnum of Kenai, Alaska, arrived for several weeks here and Ora Lee shared in all the entertainment for them.

For Easter, additional guests were a niece, Allouez Blackburn of Halley, Tx. and Ora Lee's sister-in-law, 85-year-old Mrs. Conner of Hamilton, Tx. Bodil Stackhouse of Amarillo, Bill Cessnum's mother of Dalhart and the Bob Barnetts of Perryton, all shared Easter in the home of Judy and Joe Hutchison.

After Easter, they spent some time at Angel Fire and in Amarillo, in addition to considerable entertaining in Ora Lee's home. The Cessnams left last Tuesday and visited in Dalhart and downstate before returning to Alaska.

Then Ora Lee joined Mr. and Mrs. C.E. Blackburn to go to Abilene to see her granddaughter in the high school tennis matches. Whew!

Wasn't it interesting to see the picture of Rajan Traftan in the Sunday edition of the Amarillo News Globe on the society page? She will be a model for the style show presented to benefit the Children's Learning Center. Rajan is the pretty daughter of Judy and Ray Martin.

Mary Dixon returned from a week in Lubbock with their daughter, Carlee. Last Sunday night Carlee was in an automobile wreck and was injured but did not require hospitalization. She was bruised and has been on crutches, but plans to return to school this week. A passenger in her car, a girl from Amarillo, was more seriously injured but has been released after five days in the hospital. Carlee's car was totaled, and she attributes the use of seat belts in preventing further injury.

Carlee will be graduating from

Texas Tech shortly.

An interesting trip just concluded was that taken by Kevin and Ronda Bynum and Everett and Dixie Tracy.

They were in San Francisco from Wednesday through Saturday. The men were attending the Marketers Conference sponsored by Phillips Petroleum. It was the first time in San Francisco for the Bynums and they especially enjoyed the Deluxe tour whereby they saw all the sights and scenes they had always heard about.

Probably the single most memorable experience was experiencing their first (and last?) earthquake.

Both couples were in the new Marriott Hotel, tallest building in San Francisco. The Bynums were on the 39th floor near a window when they felt the first tremor—4.6 on the scale. It lasted only a few seconds and at first they didn't realize what was happening.

The Tracys were napping in their room on the 21st floor, a corner room with a window facing the bay on one side and a magnificent view of the city on the other. Seeing the movement, Dixie thought she was dizzy, but upon rising, she no longer felt nor saw any movement. Everett napped through it and only when the t.v. broke in with a news bulletin was he convinced.

Dixie's brother, who is with the San Francisco Chronicle, soon joined them and wasn't very impressed with the tremors.

The Tracys have often visited in San Francisco but this was their first earthquake.

A number of Spearman folk have been in hospitals this last week. Douglas Clyburn is back at home recuperating from ruptured disc surgery performed last Thursday at High Plains Baptist Hospital.

Mr. Clyburn, who is general manager of the Palo Duro Feeders and Texas Beef Producers, will not be able to return to his duties for at least two more weeks. His father, Truman Clyburn of Whitsette, Tx., spent a week with them, and this week, Mrs. Truman's mother, Mrs. Satute Dickerson of Quemado in the Rio Grande Valley, is up here lending them a hand.

The Clyburns extend sincere appreciation to all those who have expressed their concern with cards and calls.

Friends of Steve Mathews were much concerned when he had to undergo emergency surgery for a blood clot on Saturday morning. He was at St. Anthony's and in neuro-intensive care for several days. The family is relieved to report that he is coming home and is recovering in fine shape. For Steve it is a first experience. He had never been a patient in a hospital before.

Don Maize is expected to be at home recuperating by the time this issue is out. He underwent emergency surgery last Thursday at St. Anthony's hospital. Though unexpected, the surgery was a complete success and he is pleased by his rapid recovery.

Friends who have checked on

Oscar Donnell report that at this writing he is still in intensive care at St. Anthony's hospital. He has been there several days and it is indefinite as to how long he will be there. Oscar was in Hansford Hospital several days with pneumonia when complications developed and he was taken to Amarillo.

Ray Gibson is recovering from cataract surgery performed last Thursday in Pampa. He is recovering rapidly but will be away from his duties at Thriftway Grocery for a week.

Robert Eaton returned Sunday after undergoing neck vertebra surgery last Wednesday. He had a bone graft from his hip and expects to be six months recovering.

Bob and Marva Hohertz are relaxing and reminiscing about their recent week in Florida.

They met her sister and husband, Annette and Benny Lippold, of Canyon in Amarillo and the two couples flew to Orlando for sight-seeing and entertainment. Epcott Center the Cyprus Gardens, beaches, all were fascinating, but the highlight was their witnessing the lift-off of the Hubble Shuttle. It defies description and viewing it on TV doesn't capture the undercurrent of excitement - nor the spectacular display as it rises into the sky.

The weather was ideal but they were dismayed at the loss of the orange groves due to the untimely freeze in Florida.

Teresa Vela is deserving of congratulations as she has been awarded a scholarship by the Women's Guild of the Sacred Heart Catholic Church here. This award is made each year to the high school senior who has participated on a regular basis for the 12 years in the Religious Education Classes and who submits the winning essay. Teresa has had perfect attendance for 12 years and has been active in the church. She is the daughter of Mrs. Aurora Vela.

Sympathy is extended to the family of Nelda Cook whose services were held on Thursday in the Assembly of God Church with interment in the Hansford Cemetery.

Faye and Nolan Holt returned Tuesday from a very interesting trip to Vermont and a five day visit with her son, Micheal Palmer and family. Micheal practices law in Middlebury, Vermont, which is in the northwestern part of Vermont.

Their trip was timed so they could attend the performance of the Community Players in the production of "The Sound of Music" in which a granddaughter, Ava, participated. The other granddaughter, Ester, entertained the Holts as a family hostess.

The Holts stayed in one of the noted "Bed and Breakfast" Inns there - which are historical old

See Neighbors page 12

Club News

SERVITORS

Servitors voted to donate money to the Miss Hansford Scholarship Fund and to have a beverage booth at the Hansford Round-Up. The votes were taken at the Servitors April 19 meeting.

Members will decide at a later date on which beverages to serve at the Round-Up. The group's donation to the Miss Hansford Scholarship Fund is in the amount of \$50.

In other business, the group set dates for the Adult-Child Golf Tournaments for June 16 and September 15. Members voted to eliminate the office of second vice-president, and election of officers for the 1990-91 year was conducted.

Officers elected include Kim Vera, president; Charlotte Sheets, vice president; Cheryl Freeman, treasurer; Donna McCubbin, secretary; and Cheryl Gibson, historian. "Secret sisters" will be chosen at the group's May meeting, and the membership drive date will be set in May.

Members attending this meeting included Cindy Avila, Dalene Baker, Pauline Close, Cheryl Freeman, Cheryl Gibson, Donna McCubbin, Hope Moore, Maria Ochoa, Marcia Olivias, Lee Schubert, Charlotte Sheets and Kim Vera.

Council from page 1

parents for a change in residential area speed limits. The concerned parents had suggested that speed limits in residential areas be lowered from 30 mph to 20 mph. A report prepared by the police department stated that in the accident, the pickup failed to yield right-of-way, causing the accident, and that excessive speed was not the cause.

A memorandum from Joe Raper, director of public safety, recommended that the speed limit remain the same. After discussion, council members voted not to change the speed limit in residential areas.

Regular business for the council included approval of the minutes of the April 24 council meeting and approval of monthly police, municipal court and animal control reports. Fire and ambulance reports will be presented at the next regular meeting.

Those attending this meeting were Mayor Bob Pearson; Aldermen Wilson McClellan, Burl Buchanan, Mike Cudd, Bob Boxwell and Don Reed; City Manager Jim Murray; City Secretary Cheryl Gibson; and visitor Alice Paddy.

WEATHER

	High	Low	Preci.
Thu.	44	39	.98
Fri.	63	38	.02
Sat.	66	41	0
Sun.	77	42	0
Mon.	83	51	0
Tue.	87	51	0
Wed.	61	48	0
Total Preci.			6.57



Shelly Knox of Hart, Texas (center) was crowned District 2T-1 Queen at the Lions Annual Convention, held recently at Dumas. Knox was chosen from a group of 29 contestants representing Lions Sweethearts of the District. Congratulating her are her grandparents Gloria Knox (left) and David Knox (right), both of Spearman.

Club News

Dahlia Flower Club

Gladiola Flower Club

The Dahlia Flower Club met with Ethel Ellsworth Monday, May 7.

The president, Marjorie Curtis, conducted the business meeting, during which the group voted to make a donation to the Hansford Manor.

An arrangement of varicolored iris brought by Cleo Denman and a specimen of purple iris displayed by Ethel Ellsworth were the winners in the flower show.

Flowers for the Celebration made from tissue paper were made by all the members. Club members welcomed a new member, Sara Dossett.

Refreshments were served by the hostess to Sada Hoskins, Louise Archer, Wanda Smith, Sarmmie Bishop, Cleo Denman, Mabel Edwards, Marjorie Curtis, Hollie Riley, Sara Dossett, Ruth Mary Whitson and Ethel Ellsworth.

RAINBOWS & RANGLERS

On Tuesday, April 17, the Rainbows and Ranglers Square Dance Club had a "Mexican Pile-On" Supper held in the Home Demonstration Club Room. The evening was spent enjoying good food, good fellowship and playing games.

Those attending from Perryton were Dwayne and Martha Thurman, Leroy and Dixie Hargues, LeRoy and Paula Hall, Donald Newman, Greta Lowery, Janet Broxson, and Gwen Shuler.

Those attending from Spearman were Johnny and Virginia White, Benny, Joyce and Marvin Byers, Alvin Byers, Danny, Debbie, Monty, Coy and Eddie Herrington, Rusty and Judy Tindell, Sonny and Marlane Nollner, Worley Smith, Carol Short, Charles Bartz, Jim McWilliams, Joe and Wanda Archer, Ronnie and Vicky Bullard, Bruce, Sarmmie and Richard Goehring, Vangie and T.J. Johnson, Bonnie Ball, Jim and Kathy Morley and Mary Schumann.

There will be a students' Graduation Dance in the County Barn on May 11 with Murray Beasley of Texhoma doing the calling.

The Gladiola Flower Club met Friday, May 4 in the home of Rose Cummings.

Lorraine Kunselman called the meeting to order and roll call was answered with each member naming their favorite flower.

Scholarship applications were read and voted on. The winner of the 1990 scholarship for the Gladiola Flower Club will be announced by the school at graduation.

Club members also elected an alternate for the scholarship.

Dickie Allen reported on the home tour and passed around work plans for the club members. She advised there will be five homes on the tour, including the country home of Roy and Denise Harbour.

In town, the other four homes are Mrs. and Mrs. Monte Blackmon, Mr. and Mrs. Frosty Hickerson, Mr. and Mrs. Jerry Pat Davis and Mr. and Mrs. Verlin Hagerman.

She noted there will be a work day for members on Monday at her house to finish up the signs and start the publicity posters.

June Jackson gave a report on the publicity for the home tour.

President Lorraine Kunselman read a letter from the Chamber of Commerce and appointed Dorothy Haner to attend a food servers meeting.

Club members were served refreshments by hostess Rose Cummings before leaving for their club program at Phil Lair's Country Garden greenhouse east of town.

Those attending were Mesdames: Newell Allen, Wally Berner, John Brown, Lloyd Buzzard, Irvin Davis, Kenneth Evans, Roy Flowers, Ed Haner, Don Hergert, Bill K. Jackson, Doyle Jackson, Don Kunselman, Don Smith and John Trindle.

Gwen Smith won with a home grown arrangement and also a specimen. Rose Cummings won with a pot plant.

Next meeting will be in the home of Wanda Brown May 17 at 9:30 a.m.

THANK YOU

The family of James White would like to thank everyone for the food, flowers, thoughts and prayers during the loss of our loved one.

Your kind expressions of caring are deeply appreciated.

The family of James White

Something Special for Mother's Day

Three Stone Mother's Ring \$79.90

Extra Stones \$15 each

Order Now for Mother's Day

Other ring styles available

Foundation Of Fine Jewelry

South of Plains Shopping Center 721 W. Seventh Spearman, Texas

Hickerson Jewelers

•Visa •Mastercard •Discover •American Express (806) 659-3566

You are cordially invited to a Bridal Shower honoring Jill McLain Bride-elect of Dusty Hodge Saturday, May 19, 1990 2:00 - 4:00 p.m. In the home of Norma Beth and Sonny Windsor, 119 Linn Dr.

You are invited to attend a bridal shower honoring Kerri Holt bride-elect of Todd Guthrie Saturday, May 26, 1990 3:00 - 5:00 p.m. in the home of Linda Jarvis Given by hostesses

Gruver Social Scene...

Britt-Hacker vows read Club News



Mrs. Michael Hacker

Vicki Britt and Michael Hacker were united in marriage April 21, 1990 at 2 p.m. at St. Hyacinth's Catholic Church in Amarillo with Father Ken Keller and the Reverend Tom Fuller officiating.

The bride is the daughter of Frank and Hazel Britt of Gruver. The groom's parents are Morris and Gwen Hacker of Hereford.

Wedding party members included maid of honor Missy Britt of Amarillo, who is sister of the bride, and the groom's father, Morris Hacker, as best man. Brothers of the groom Greg Hacker of Plainview and Keith Hacker of Hereford served as ushers, as well as Don Hargrove of Dimmitt, uncle of the bride, and Bill Kerschen of Albuquerque, N.M.

Music at the formal double ring ceremony was provided by organist Marie Howard of Amarillo, flutist Shannon Hacker, sister of the groom and Hereford resident, and soloist Paul Frederiksen of Amarillo.

The bride wore a white satin gown featuring a basque bodice with an open sweetheart neckline. The hand-beaded embroidered gown had a chapel length train and a fan-shaped tiered bustle on its full skirt and cut-out sleeves with rosette trim. Her flowers were three stems of calla lilies with miniature white bridal roses, baby's breath and pearls with white and teal satin streamers.

Her attendant wore a full-length teal satin gown with a scooped neckline. Two bows at the base of the bodice in back formed a tiered bustle. The maid of honor's flowers were a smaller version of the bridal bouquet.

The church was decorated with three silk garland-draped candelabra, Boston ferns on brass stands, a kneeling bench draped with silk garlands and white satin bows, and a unity candle similarly draped. The center aisle of the sanctuary had pews draped with silk garlands and white satin bows and aisle candelabra with votive candles.

The wedding ceremony was followed by a dinner and dance

reception. The menu included assorted finger sandwiches, deviled eggs, fresh fruit and vegetables, Tex/Mex dip with chips, and ham and beef with miniature rolls. Champagne was served from gold trays.

In the reception area, the small round tables were covered with teal cloths and decorated with balloon bouquets in teal, silver and white. Boston ferns on pillars and poles and screens draped with silk garlands completed the decorative theme.

The bride's table featured a white lace floor-length cloth, teal-colored napkins embossed with the couple's names and silver appointments. The table's centerpiece was an arrangement of roses, lilies and baby's breath in a crystal vase along with the unity candle from the sanctuary.

The bride's cake was a white, three-tiered confection decorated with scallops inset with lace and beaded leaves. A porcelain bride and groom topped the cake.

The groom's table was draped with a scalloped teal throw over a white lace cloth and decorated with the groom's collection of Tom Clark's Gnome Train Set surrounded by green smilax. The cake was German chocolate. Appointments of gold completed the ensemble.

Dinner and dance music for the reception was provided by Ronnie Black of Sight and Sound Entertainment.

The bride and groom left for Miami, Florida, to begin a honeymoon cruise of the Western Caribbean.

The bride is a Gruver High School graduate who also trained at the St. Anthony's Hospital School of Nursing in Oklahoma City. She is a member of Beta Sigma Phi sorority and currently works as a registered nurse in critical care at High Plains Baptist Hospital in Amarillo.

The groom is a Hereford High School graduate and studied at Texas Tech in Lubbock. He is employed as a signal man for the Santa Fe Railroad in Amarillo. The couple will live in Amarillo.

GRUVER MUSIC CLUB

The Gruver Music Club, a member of the State and National Federation of Music Clubs, held its regular meeting April 24.

The collect from club women was read, and Frances Murrell, president, presided over the regular order of business.

A current musical note was given by Carolyn Hicks, and the program was introduced by Ada Joyce Stedje, vice president and program chairman. The program was given

by students of Jesse Hankla from Panhandle State University.

Piano numbers were given by Bobby Buhr and Nancy Meyer. The meditation was given by Marguerite Nelson. A poster contest observing National Music Week, May 6-13, will be held among the sixth graders. Prizes of \$10, \$7.50 and \$5.00 will be given to the winners.

Hostesses for the afternoon were Frances Murrell and Ada Joyce Stedje.

Hometown News

Holly Holt of Gruver was graduated cum laude with a bachelor of fine arts degree in studio art in fall 1989 commencement exercises at Texas Tech University in Lubbock.

Holt was among more than 1,300 students at Tech receiving degrees in fall 1989 commencement exercises.

Several area students attending Panhandle State University in Goodwell, Okla. are scheduled to receive degrees.

Eldon Dean Sparks of Gruver will receive a bachelor of business administration in accounting.

Lillian Sue Cooksey of Spearman and Brian Wayne Watley of Spearman will receive a bachelor of science in agronomy.

Receiving a bachelor of science in agribusiness is Craig Noble Cooper of Gruver.

Army Spec. Timmy D. Hertel has participated in exercise "Team Spirit '90" in the Republic of Korea.

The exercise involved personnel from all military services of the Republic of Korea and the United States. The purpose is to increase the defensive posture of the Republic of Korea and United States support forces through training in combined operations.

The operations included the reception, staging, employment and redeployment of out-of-country United States augmentation forces.

He is an infantryman with the 25th Infantry Division, Schofield Barracks, Hawaii.

Hertel is the son of Larry J. and

Diane M. Hertel of 711 Grenough, Stinnett, Texas.

The specialist is a 1986 graduate of Stinnett High School.

LUBBOCK—Several Spearman and Gruver students were among more than 2,000 Texas Tech University students who qualified for the academic honors lists at the end of the 1989 fall semester.

Students on the President's Honor List earned a perfect 4.0 (A) grade-point-average while enrolled in 12 or more semester hours of class work. Students finishing 12 or more hours with a grade-point-average of 3.5 to 3.9 qualified for the Dean's Honor List.

Spearman students on the President's List include Thomas Kevin Nelson, sophomore, finance major; Ginger Ann Pearson, freshman, advertising major; and Teresa Sue Tindell, senior, secondary education major. Gruver students on the President's List include Brooke Holt, sophomore, accounting major; Holly Holt, senior, studio art major; and Julie Kristen Latta Stedje, junior, elementary education major.

Spearman students on the Dean's List include Keith Lee Clark, freshman, pre-pharmacy major; Rhonda Shawn Mathews, senior, early childhood major; and Kristi Dawn Wright, senior, early childhood major. Gruver students on the Dean's List include Christy Diane Brown, sophomore, general business; and Anne Marie Potts, senior, secondary education major.

Hospital notes

Thursday, May 3
No Admissions. Dismissed: Mary Lovell

Friday, May 4
No admissions. Dismissed: Mary Cates

Saturday, May 5
No admissions and no dismissals.

Sunday, May 6
No admissions. No Dismissals.

Monday, May 7
No admissions, no dismissals.

Tuesday, May 8
No admissions. Dismissed: Pat Ross

Wednesday, May 9
Admissions: Don Knox. No dismissals.

Lookin' Back

10 Years Ago

Gruver's own Darla Armes was chosen for first team Class A unit in this year's girls' all state basketball team.

15 Years Ago

At Mrs. Ed Rafferty's Sr., a wonderful family group including Mr. and Mrs. Charles Black of Liberal, Kansas; Mr. and Mrs. David Hand, Joel, Joanna, and Jeffrey; Mr. and Mrs. Warren Jeffries, all of Spearman; Mr. and Mrs. Rex Shapley, Bart and Darla; Mr. and Mrs. Ed Rafferty, Jr. gathered for a scrumptious Easter dinner following church services.

On The Go With Joy

by Joy Henderson

Dustin Scott Henderson arrived at 6:18 a.m. Saturday morning May 5, 1990. He made his presence known at N.W.T.H. in Amarillo weighing 6 pounds and 12 1/4 ounces and is 19 1/2 inches long.

Scott and Paula Henderson, formerly of Gruver are the proud parents, and almost as proud grandparents are Lewis and Joy Henderson. Another set of grandparents, the Dale Whites of Fritch, will share in the TLC along with a host of aunts, uncles and cousins by the dozen.

With the birth of Dustin, we experienced a whole new idea of "in hospital" care of a newborn. I'd heard of this concept but didn't know I'd get to hold the baby without fear of exposing him to germs from the outside world. But they wheeled him to "Mom's" room and we took turns holding him.

I was afraid he would be spoiled already because he wasn't put back in the crib until the nurse came to get him several hours later.

Since this is the week and month that we will be remembering Moms, Grannies and Great-Grannies I thought I would share this tribute with you about "When God Created Mothers..."

When the good Lord was creating mothers, he was into his sixth day of overtime when an angel appeared and said, "You're doing a lot of fiddling around on this one."

And the Lord said, "Have you read the specs on this order? She has to be completely washable, but not plastic...have 180 movable parts - all replaceable...run on black coffee and leftovers...have a lap that disappears when she stands up...a kiss that can cure anything from a broken leg to a disappointed love affair...and six pairs of hands."

The angel shook her head slowly and said "Six pairs of hands? No Way!"

"It's not the hands that are causing me problems" said the Lord. "It's the three pairs of eyes that mothers have to have."

"That's on the standard model?" asked the angel.

The Lord nodded. "One pair that sees through closed doors when she asks, 'What are you kids doing in there?' when she already knows. Another pair in the back of her head that sees what she shouldn't but what she has to know. And, of course, the ones in front that can look at a child when he goofs up and say 'I understand and I love you' without so much as uttering a

word."

"Lord," said the angel touching his sleeve gently, "go to bed. Tomorrow is another..."

"I can't," said the Lord. "I'm so close now. Already I have one who heals herself when she is sick, can feed a family of six on one pound of hamburger, and can get a nine-year-old to stand under a shower."

The angel circled the model of a mother very slowly. "It's too soft," she sighed.

"But tough!" said the Lord excitedly. "You cannot imagine what this mother can do or endure."

"Can it think?"

"Not only think, but it can reason and compromise," said the Creator.

Finally the angel bent over and ran her finger across the cheek. "There's a leak," she pronounced.

"It's not a leak," said the Lord. "It's a tear."

"What's it for?"

"It's for joy, sadness, disappointment, pain, loneliness and pride."

"You are a genius," said the angel.

The Lord looked somber. "I didn't put it there."

The author of the above is unknown to me nor the date of writing but I suspect we had better give the Lord more credit for his understanding of things. We have been created in his image and good mothers and fathers are the personification of God and His feelings. God feels the same about his children as we do with ours. Tears are shed for joy, sadness, disappointment, pain, loneliness and pride.

We have had a chance to visit with Charlie Casdorff after his heart surgery last week. He is looking forward to when he can return home to Gruver.

Verna Finley and Leona Harris had a dream trip to Hawaii; Weldon and Elene Green joined other family members in Florida; then Josephine Ayers and others from Hansford County traveled through the Ozark Country of Arkansas to check out the flea markets and tourist attractions. Bob and Connie Burgoon, along with Linda Walters, spent a few days in the Lubbock area. The bad part of turning my news in on Monday is, that doesn't give me much time to get many details. However, I will try to have more on these trips next week.

Word has been received that Gary Doty is still having some serious problems and now they are treating him for lung infection.



Ninety-nine percent of all forms of life that have existed on Earth are now extinct.



If you keep losing valuable items or misplace papers, perhaps it is time that you exchange frustration for serenity and rent a safety deposit box from **FIRST STATE BANK.**

Our low yearly rates will please you.



I want to go to **PAMPERED PETS** for:

GROOMING

- Available Tuesdays and Fridays
- Includes: Bath, express anal sacs, clean ears, clip nails and brush out or clipping
- Small, medium or large dogs

DOG DIPPING

- Includes: Shampoo and dip.

BOARDING

- For Dogs and Cats
- Appointments encouraged
- Current vaccinations required

PAMPERED PETS
South of Hansford Co.
Veterinary Hospital
659-3755

Growing Gifts for **M**other **D & C** Greenhouse

Hanging Baskets \$5.99 & Up
Excellent selection bedding plants
Large geraniums \$1.99
Beautiful Mixed Pots

All locally grown check our quality!

2 mi. West on Gruver Hwy.
Open 8-6 Mon.-Sat.
1-5 Sun.



Young CINCO De Mayo celebrators scramble for the candy as it falls from a pinata.

Celebration geared toward unification

In an attempt to more closely unify the community through mutual understanding of cultural heritages, the Pringle - Morse CISD celebrated the Mexican Independence Day, Cinco de Mayo, one day early on Friday May 4. "We are trying to bring the Hispanic population into the community," said Roy Harris, superintendent of Pringle-Morse CISD.

The event gave the students firsthand experience in the cultural heritage of a foreign country. The event was organized by Esmeralda Renteria with assistance from Sadie Delacruz. The different programs and events were staged and prepared by the Hispanic and Anglo parents of the community. The students decorated the school cafeteria and hallways, and some wore Mexican costumes to school.

According to Renteria, the celebration began in the morning with Hispanic parents who went to each classroom dressed in authentic Mexican costumes and talked to the students about what the celebration means to the Hispanic people. She said it was a celebration of the day Mexico won its independence from France, May 5, 1862.

Renteria said that the celebration continued with a lunch at the Pringle-Morse Cafeteria. The

lunch was made up of a variety of traditional Mexican dishes. All of the dishes were prepared by the Hispanic mothers of the community. Some of the dishes they prepared were milo, rice and beans, menudo, tamales, enchiladas, chalupas, bunellos and Sopiapillas.

According to Renteria the afternoon featured a parade. In the parade, the "celebration princess" was presented. She is Elia Hernandez. She was accompanied in the parade by a fire engine, kids on bikes and horses. The kids on the horses were Evan Schmidt and Brandon and Toby Tull.

The celebration wound up with the traditional pinata. This is a hollow paper likeness of an animal, person or object filled with candy. Children take turns being blindfolded and striking at the paper object with a stick until it bursts, spilling all the candy. The kids scramble to retrieve as much of the candy as they can.

By the end of the day everyone connected with the celebration agreed that it was a complete success. Renteria wanted to give a special thanks to the parents of the Pringle - Morse CISD for their help in making their Cinco de Mayo celebration such a success.

For The Short Of It

by Bob Bort

1984-86 were indeed good years for Gruver sports teams. In 1984 and in 1985 the boys had outstanding golf teams, with the 1985 team finishing second at state. This year's golf team will be the first team of that calibre since the 1985 team. Coach Mike Banks should be proud of the 1990 boys golf team.

In last week's issue, the boys 1600 meter mile relay team of Dan McCloy, Gannon Harris, Kyle Haenisch and Troy Seagler was absent from the Regional Track Results section, as they did not make the finals. But according to Coach Steele they did a fine job, running with the fifth fastest time in the prelims. Due to the way that finalists were selected, Gruver missed out even though there were teams in the finals with slower times than Gruver.

Also, Janelle Haefner should have been listed in that section for competing in the 100 meter hurdles.

The 1990 Gruver Greyhounds football schedule has been released by Head Coach David Steele, and non-conference games will be played against Texhoma, Turpin, Stratford, Clarendon and Sunray. Conference games will be against Wheeler, Memphis, Shamrock, Claude and Booker. Several of these teams are coming off good years, including Gruver's opening opponent, Texhoma. But according to Coach Steele, they have lost a lot from last year. Sunray had an outstanding team last year, and Shamrock surprised in AA.

Gruver last played the Texhoma Red Devils from 1972-1977, splitting six games. But in 1964-65, Gruver swept two games from the Devils, so they lead the overall series 5-3. It is the renewal of an interesting matchup.

Who said your vote doesn't really make a difference? Just ask Jack Weldon and Buster Davis!

Bart Shapley, Chad Logsdon, Bret Hobbs, Trevor Williams, Rod Been and Kelon Morley will never forgive me if I didn't mention their names. They were members of the 1985 golf team that garnered second place in Austin.

It started with just an idle comment two weeks ago, that this year's golf team would be our first team to go to Austin since 1985 boys

track team. Then I discovered the 1986 state champion track team, then the tennis doubles team in 1985, then the golf teams of 1984-85; and, of course, the fantastic football team of 1984 and the basketball team of 1985 that advanced as far as regionals. It takes a lot of research to do this job well! Thanks to Marian Tomlinson for helping to get it straight.

Coach Doug Frick is ready for the summer Babe Ruth season to start, for boys 13-15 years old. Last year Gruver won the championship in the Top O' Texas Babe Ruth League, and this year they should do better. The only gripe I had with last year's set-up is that I wish they would allow the championship team to advance in the playoffs, rather than taking a league all-star team. Nothing is perfect...

Special thanks to Mindy Davis, who took some outstanding pictures for the Reporter-Statesman at the Regional Track Meet in Levelland. Having the right "touch" with a camera in hand is a valuable talent, and I haven't found that touch yet. Thanks, Mindy!

It is becoming the great debate of the 1990's - a debate about the future of America. The question concerns the increasing cost of education in public schools, and that cost to the taxpayer. I believe children are our future, and the politics of this issue should be set aside. This is one issue where the citizens of Gruver are so much better off than the citizens of cities and towns throughout these United States.

The quality of education in Gruver is excellent, but Gruver is in a wealthy school district. The quality of education in North Omaha, or South Bronx, is not nearly so good. It is not nearly as good in towns in West Texas, if you want to stick closer to home.

If Bush wants to be known as the "Education President," or if Richards or Williams want to be "Education Governor," they must all realize that the money has to come from somewhere. If that means raising taxes, then so be it.

We must not fool around with politics when the education of our children is concerned.



Elia Hernandez

Dick, the Graduate
See Dick.
See Dick sun.
Sun. Dick sun.
Sun. sun. sun!
Hey Dick! How about
looking for a job!

Gifts for Grads

- Car rods
- Luggage
- Lap desks
- Towels
- Stationery
- Scrap books
- Spearman Lynx shirts and pencil bags

Sacks Third Ave.

203 Main

Spearman

Make a Million \$\$\$
Save 50 million dollars in a savings plan for the day and collect more.
For a \$500 savings bond and hold it until March, 24/37.
\$10,000 cash draw with 8888.
We have more. More 100,000.
See us.

Ceramic Mug

INSTRUCTIONS FOR USE:
1. Fill with dirty clothes.
2. Take home to mom.

Laundry Bag



Rodeo results

GRUVER TRI-STATE HIGH SCHOOL RODEO

RIBBON ROPING
2. Marty McCloy, Gruver - 9.720
8. Mark Eakin, Spearman - 12.752

5. Mark Eakin, Spearman/Marty McCloy, Gruver - 8.996

7. Mark Eakin, Spearman/Randy McEntire, Wheeler - 12.234
BREAKAWAY ROPING
4. Kelly McCloy, Gruver - 4.356
6. Leslie Morton, Gruver - 12.356

Statement of Intent to Change Rates

In accordance with the regulations of the Public Utility Commission of Texas, Texas-New Mexico Power Company announces the Company's intent to change rates for its entire Texas operations. The effective date of such change is May 18, 1990. All classes of customers will be affected by said proposed changes. The proposed rates will produce an increase in gross revenues to the Company over test year revenues adjusted for test year customer growth and annualization of test year rate increases of \$54,879,334, or 17.00%. TNP is proposing an alternative rate base treatment for Unit 1 of TNP One, the first unit of the Company's generating facility located in Robertson County, Texas. Under this alternative, the costs of Unit 1 will be included in rate base in a three (3) step, ten (10) year phase-in plan. If adopted, the phase-in plan results in an increase in gross revenues of \$43,074,934 or a 13.34% increase over adjusted test year revenues during the first year of the plan. Texas-New Mexico Power Company provides electrical service to more than 163,083 customers located within the state of Texas.

A complete copy of the requested rate filing package is on file with the Public Utility Commission of Texas in Austin, Texas, and with all cities served by Texas-New Mexico Power Company which have retained original jurisdiction. You may inspect a copy of the filing during normal business hours at each business office of Texas-New Mexico Power Company in your area.

Persons who wish to intervene or otherwise participate in these proceedings should notify the Commission as soon as possible. A request to intervene, participate, or for further information should be mailed to the Public Utility Commission of Texas, 7800 Shoal Creek Boulevard, Suite 400N, Austin, Texas 78757. Further information may also be obtained by calling the Public Utility Commission Consumer Affairs Division at (512) 458-0223 or (512) 458-0227, or (512) 458-0221 teletypewriter for the deaf.



Congratulates!

WINNERS IN THE NATIONAL GRAIN SORGHUM PRODUCERS ASSOCIATION IRRIGATED YIELD & MANAGEMENT CONTEST

National 3rd Place, New Mexico 1st Place: Byron Mayfield
NC+ 271

Oklahoma 1st Place, Texas County: Tom Stephens
NC+ 272

Texas 3rd Place, Hansford County: Tommy Saltszman
NC+ 371

Way to Go!

NC+ DEALERS:

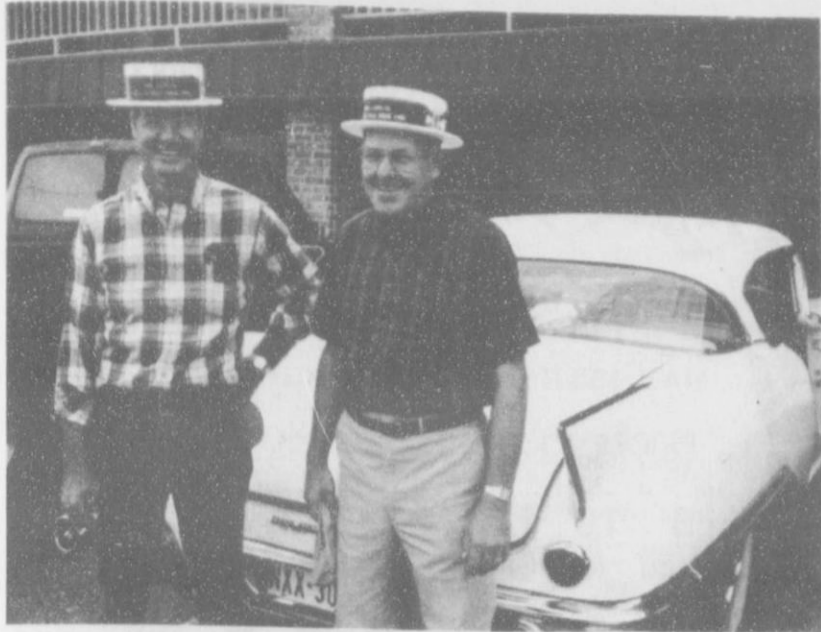
AGCO - Spearman

Mike Grotegut - Gruver

Clement's Farms - Spearman

Carol Redwing - Perryton

America's
down to earth
seed company



Tom Dortch and Jack Renfro of Fort Worth with Jack's '55 Cadillac.

Dortch from page 1

hours. Beth claims there must have been "an angel sitting on Tom's shoulder" during the race, because the front end of the Cadillac "just gave in" at nine in the morning of the second day. Tom nonetheless managed to complete that day's leg of the race and spent several hours that night in Odessa welding to get the car back in alignment.

By the third day of the race, Tom knew he and Jack had a good shot at winning, because they were only 11 seconds off the time they needed to match, which gave them the first place for that day. The pair went on to win the race the following day, four minutes and ten seconds off the official time and only one second ahead of the second place finisher.

Tom credits this win to intense

concentration ("I really worked at it") and the skill of his navigator. He is already planning to compete in next year's Greatrace Texas, perhaps in his own '55 T-bird. He says a big part of the excitement for him in this rally was the challenge of it and "the nice people that you meet," adding that there are some husband-wife teams and one man, 76 years old, who drove a '37 Dodge.

In the meantime, Tom keeps very busy with his business in Morse, which sells farm equipment, used cars and offers "the best free coffee in town."

The Dortches have two daughters, Theresa Kirk of Spearman and Vicki Urban of Morse, and four grandchildren.



Larry Butler, Superintendent Spearman I.S.D.

SISD Sayso

The majority of people in Spearman are aware of the delightful exploits of Robin Hood and his merry men. The hero of Sherwood Forest was applauded and honored for his aide to the poor and less fortunate. By now you are asking, "what does this have to do with Spearman Independent School District?" The reason being is that "Robin Hood" could ride through panhandle schools with a vengeance, collecting state school funds to give to the less fortunate.

Legislators have been plodding through political forests for two special sessions searching for an answer to the school funding equity decision. During this course of action, many different approaches Legislators have been plodding through political forests for two special sessions searching for an answer to the school funding equity decision. During this course of action, many different approaches have emerged, only to be defeated for one reason or another. The most recent defeat came about because of an obstinate governor and ultra-conservatives bombarding a 1/2 cent sales tax increase.

True, the mandates and accountability regulations were atrocious, but the funding mechanism was the most equitable and reasonable solution. So, the political game with public schools came to another impass. Another special session was called and the burning of the forests began in hopes of smoking

the answer out. You guessed it, "Robin Hood" emerged. As usual, omnipotent legislators passed the buck and decided to level down education in the wealthier districts by reducing their funds and reallocating them to poorer districts. Some of these so-called poor districts have tax rates of less than .80 cents. Ours currently stands at .9566 cents. This means local school districts must bear the tax burden by increased ad valorem property taxes. The legislators can come home bragging that they did not raise taxes. How nice of them!

This is the "Robin Hood" approach. It could become grim reality. The special session is currently considering this approach in a bill sponsored by Mr. Schoolcraft. It is gaining momentum and support by the day.

I alert you to this because under the bill Spearman I.S.D. would be robbed of \$144,191. dollars of state monies. That relates to a .07 cent tax increase for that money only. Include increases for workers compensation, unemployment, FICA, hospitalization, and general upkeep, and we could be considering over a .10 cent increase.

Before Robin Hood rides into our forest to bag the riches, I would strongly encourage you to call, write or visit our legislators. Enough is enough and this could be the arrow that fatally wounds many small, rural schools.

Basketball coach hired



The new coach and his family - Wendell Neff, wife Jenny, daughter Jennifer and son Clay.

Larry Butler, SISD superintendent, announced Tuesday, May 8 that the SISD board of trustees voted to hire Wendell Neff as head boys basketball coach and math teacher for the next school term.

According to Butler, Neffs duties will be to coordinate the boys basketball program, assist in coaching football, help out with spring sports and teach advanced math courses at the high school.

"We are as excited about his math teaching abilities as about his coaching record," said Butler about the hiring. He reported that the superintendent at the Jayton-Girard ISD said that Neff is one of the top two classroom teachers in the district. Neff has been a teacher, coach and administrator in that district since 1976.

Born in Crosbyton, Texas, Neff is a graduate of McAdoo High School in McAdoo, Texas. He holds an associate of arts degree from South

Plains Junior College in Levelland and a bachelor of science degree from West Texas State University. He has also attended Texas Tech Graduate School, where he completed 24 hours of mid-management study.

The 39 year old educator coached at the high school and junior high school at Spur, Texas for several years before his association with Jayton High School. He served as head boys basketball coach for 11 years and as head girls basketball coach for nine years at JHS, and has been athletic director of Jayton-Girard ISD for the past seven years.

His accomplishments as a coach include a career record of 347 wins and 292 losses. He was named District 9A Coach of the Year in 1986 and served on the TABC Board of Directors in 1985-86.

Neff and his wife Jenny Ann are the parents of 12 year old Clay and 10 year old Jennifer.

Corn measure passes

DIMMITT--Texas corn producers have approved a statewide referendum to establish a half-cent per bushel checkoff to fund corn research and market development.

The referendum was conducted under guidelines of the Texas Commodity Referendum Law. The measure passed with 68 percent of those voting casting a "for" vote.

The checkoff has been in effect in a seven-county area of the Panhandle-South Plains area for 10 years. The Texas Corn Producers Board, made up of growers from the seven-county area, requested for research and other assistance from growers in other producing areas of Texas.

With the passage of the referendum, the board was expanded from nine to 15 members. Three previous board positions were up for election at the same time as the referendum. These posts, along with six other at-large positions, were also voted upon by producers casting ballots in the referendum.

The nine producers elected to the board included: Carl King of Dimmitt, Weldon Davis of Kress and Bert Williams of Farwell, all of whom were members of the previous board; John Baker of Temple, Jimmy Barger of El Campo, Neal Burnett of Plainview, Gerald R. Donaldson of Boling, Jack Thompson of Hartley, and Robert Young of Dalhart.

King, who has promoted Texas corn for nearly 20 years, initiated the establishment of the seven-county checkoff. He has been suc-

cessful in creating new markets for the region's high quality corn. He has also been successful in obtaining clearance for use of certain pesticides and herbicides vital to Texas corn production, especially in the food grade area.

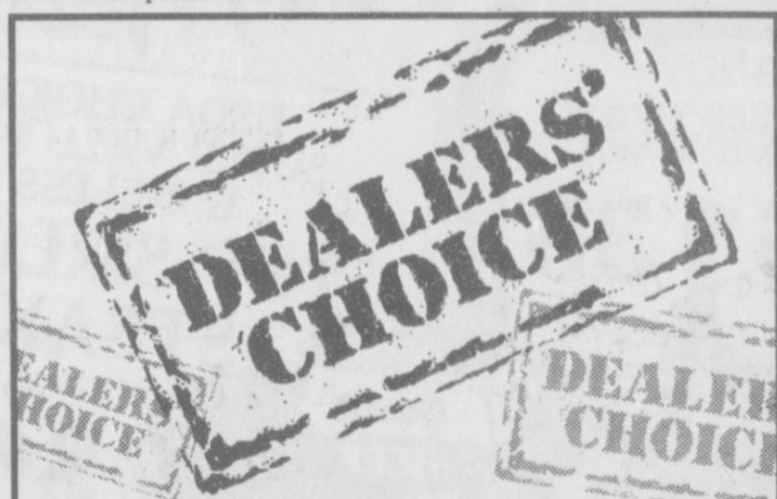
With the expansion of the checkoff area, King says future board projects will likely include research into finding methods of offsetting aflatoxin, a serious problem for some growers in South Texas. The checkoff will also enable the board to broaden its market development efforts.

Sign owners face deadline

AMARILLO--Owners of signs along Interstate and certain U.S. and State highways (federal-aid primary) face a September 5 deadline for annual renewal of permits for all outdoor advertising signs which were issued prior to September 5, 1985. In addition, if the previously issued permit plate has become illegible or detached from the sign structure a replacement plate will be required.

The State Department of Highways and Public Transporta-

tion is preparing to notify sign owners of active permits of record which will require renewal. Individuals and/or companies who have recently purchased signs should ensure that proper transfer has been made through the Highway Department.



The top heating and cooling dealers recommend the Dual Fuel Heat Pump above all the rest.



Benny Wilson
Benny Wilson Electric
Gruver, TX

With every type of heating and cooling system to choose from, the top specialists recommend the Dual Fuel Heat Pump to their customers. It's electric, but works with gas - making the most efficient use of both. As a result, you heat and cool more economically, dependably and cleaner.

Contact your nearest Dual Fuel Heat Pump dealer.

Dual Fuel Heat Pump DEALERS CHOICE

© SPS 1990



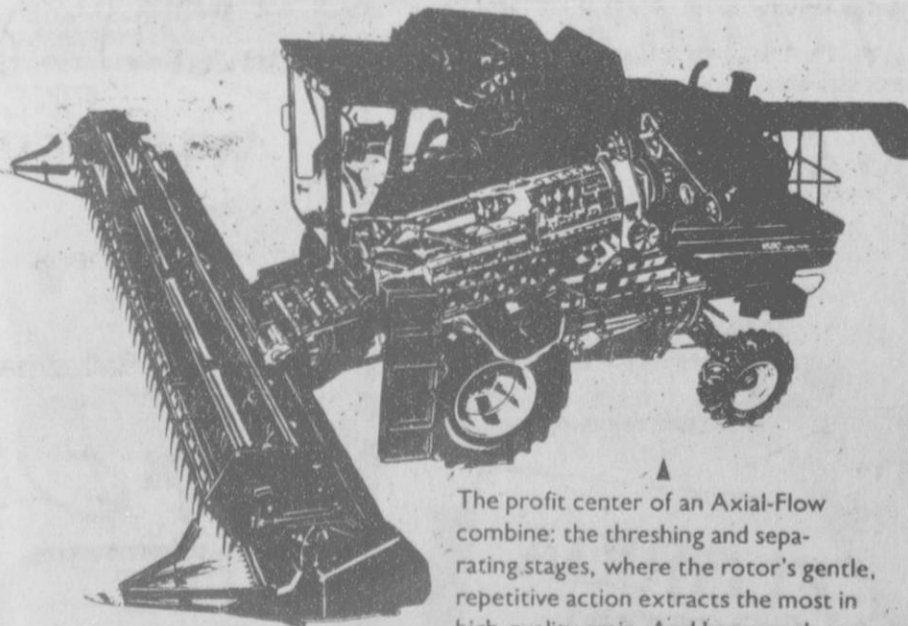
ONLY ONE thing means more to me than this farm.

And that's knowing he can farm it next.

It'll be his choice when he's old enough. Just like it was mine, 12 years ago. I consider it my role, my duty, to do everything I can to make sure he has the opportunity.

Make It Happen With Case

1680 Axial-Flow Combine



The profit center of an Axial-Flow combine: the threshing and separating stages, where the rotor's gentle, repetitive action extracts the most in high-quality grain. And because the rotor is the only moving part in this process (compared to 16 in a conventional cylinder-and-concave system), downtime is sharply reduced.

case FIVE STAR EQUIPMENT, INC.

Highway 15 West
Box 656
Spearman, Texas 79081

Phone: 659-3743

SATISFACTION GUARANTEED or 100% of your purchase price refunded



- Pulls T-posts or steel post up to 7/8"
- Light weight - 8 1/2 lbs.
- Saves back strain
- Heat-treated open hook
- Reinforced for greater strength

Available at:
B&B Sales
Spearman
Hansford Supply
Gruver
Hansford Implement
Spearman



Happy Mother's Day!

PRICES GOOD THRU MAY 15TH IN PERRYTON ONLY

PRICES GOOD THRU TUES. MAY 15TH

WED.	THUR.	FRI.	SAT.	SUN.	MON.	TUES.
9	10	11	12	13	14	15

Grocery

FINE FARE MACARONI & CHEESE
7.25 OZ. PKG. FOR **5.99**

FINE FARE SALAD DRESSING 32 OZ. **.89**
FINE FARE SQUEEZE MUSTARD 16 OZ. **2.99**

COKE, 7-UP OR DR. PEPPER 6-12 OZ. CANS **\$1.79**

FINE FARE FAMILY TEA BAGS 24 CT. PKG. **\$1.29**

FINE FARE CRACKERS 16 OZ. **2.99**

FINE FARE SNACK CRACKERS 11 OZ. GRAHAM CRACKERS 16 OZ. **.69**

FINE FARE HAMBURGER DILL SLICES 32 OZ. JAR **.89**
FINE FARE LONG GRAIN RICE 2 LB. BAG **2.99**

FINE FARE HOMINY WHITE OR GOLDEN 15 OZ. CAN **4.99**

FINE FARE VEGETABLE OIL 48 OZ. BTL. **\$1.49**
FINE FARE CAKE MIX WHITE-YELLOW DEVIL'S FOOD 18 OZ. PKG. **.59**

FINE FARE APPLE JUICE 64 OZ. BTL. **.99**
FINE FARE MICROWAVE POPCORN REG. OR BUTTER 10.5 OZ. PKG. **.99**

FINE FARE CUT GREEN BEANS 16 OZ. FOR **3.99**
FINE FARE PORK & BEANS 16 OZ. CAN **3.99**

Nonfood

Health & Beauty

Meat

FINE FARE BLEACH GAL. **.79**
FINE FARE FABRIC SOFTENER GAL. **\$1.19**

FINE FARE FOIL 25 FT. **2.99**
FINE FARE TALL KITCHEN BAGS 15 CT. **.99**

BRACH'S CANDY
•CIRCUS PEANUTS •RED TWISTS
•ORANGETTES •FRUIT BUNCH
BONUS PACK **\$1.39**

USDA CHOICE SUPER VALU PAK BONELESS TOP SIRLOIN STEAK LB. **\$2.98**
UNITED CHOICE BEEF
SINGLE PAK LB. **\$3.19**

MANAGER SPECIAL

HY-TOP LAUNDRY DETERGENT 147 OZ. **\$3.59**

Frozen HYTOP PIZZA 7 OZ. **2.99**
•HAMBURGER •SAUSAGE •PEPPERONI •COMBINATION

Produce

RED OR GREEN LEAF LETTUCE 3 BUNCHES FOR **\$1**

FINE FARE WHIPPED TOPPING 8 OZ. **2.99**

WRIGHT'S BACON STACK PAK 3 LB. PKG. **\$3.78**

FLORIDA CORN 5 EARS **\$1**

Dairy FINE FARE MARGARINE 3 LB. TUB **.99**
UNITED HOMO MILK GALLON **\$2.19**

FARMLAND EXTRA TENDER SUPER VALU PAK PORK CHOPS CENTER CUT LB. **\$2.18**
REGULAR PAK LB. **\$2.38**

COUNTRY PRIDE GRADE A SPLIT FRYER BREAST LB. **\$1.49**

Gruver

School Scene

Kindergartners to enroll Tuesday

Gruver Elementary School Kindergarten Pre-Registration and Screening has been scheduled for Tuesday, May 15. The pre-registration will be held at the Church of Christ Fellowship Hall, 209 King Street, due to space limitations at the elementary building.

In order to be eligible to enroll for kindergarten, children must be at least five years old as of September 1, 1990. Parents are asked to bring their child's birth certificate, immunization records and Social Security Number to the pre-registration.

The children will be given a pre-

school screening assessment which will help determine their readiness level in three areas. The assessment will require approximately one hour per child. Parents are asked to bring their children to 209 King Street according to the following time schedule:

Last name: A through C - 9:30; D through K - 10:30; L through R - 1:00; and S through Z - 2:00.

Early childhood specialists from Region XVI Education Service Center in Amarillo will be on hand to assist local school personnel and volunteers with the assessment and to discuss screening results with parents.

Gruver Menu

May 14 - May 18

Monday, May 14

Salisbury Steak with Gravy
Mashed Potatoes
Corn
Vanilla Pudding with Vanilla
Wafers
Hot Rolls
Milk

Tuesday, May 15

B.B.Q. Weiners
Beans
Fruit
Corn Bread
Milk

Wednesday, May 16

Steak Fingers
Mashed Potatoes
Carrots
Chocolate Cake
Hot Rolls
Milk

Thursday, May 17

Soft Shell Tacos
Cheese

Lettuce
Peaches
Cookies
Milk

NO NACHOS OR SALAD BAR

ON THURSDAY

Friday, May 18

Hamburgers
French Fries
Lettuce Pickles Cheese

Rice Crispies
Milk

BREAKFAST

Monday

Cereal, Muffins, Juice, Milk

Tuesday

Toast, Peanut Butter, Jelly, Fruit,
Milk

Wednesday

Cowboy Bread, Fruit, Peanuts,
Milk

Thursday

Sausage, Biscuits, Fruit, Milk

Friday

Cinnamon Rolls, Fruit, Peanuts,
Milk

Gruver High School holds prom

Boys in tuxes and girls in long evening gowns were the order of the night at the Gruver school cafeteria on Saturday, May 5. It was the night the Gruver High School Junior Class hosted the Senior Prom. It was titled "In the Heat of the Night."

"In the Heat of the Night" began at 7 p.m. with dinner featuring roast beef as the entree. The meal was served by the freshmen and sophomore classes. The seniors were entertained as they dined, by Connie Burgoon playing selected tunes on the piano.

After dinner a program was presented by junior class members and faculty. Kyle Haenisch, junior class president, delivered a welcoming speech to the senior class and their guests. Troy Seagler, senior class president, responded with the senior class's thank you. Kevin Babbs, junior class student council member, continued the speeches with the thanksgiving.

The program continued with the song "Don't Know Much" sung by Chris Kauffman and Amanda Hiller. The entertainment turned funny with a visit and a comedy monologue by "Edith Ann," played by Betty Chisum. After the monologue the seniors were treated to a slide show consisting of pictures tracing the maturing of the seniors from when they were babies right up to the present. This concluded the program.

At the end of the program the dinner tables were moved out of the room by the freshmen and sophomore waiters to make room for the seniors and their guests to dance. Music for the dance was provided by Gary Ellsworth and his sound system. The dance was scheduled to last until 1 a.m. After the dance, according to senior class president Seagler, the seniors were headed for more celebrating at "after prom" parties hosted by parents.

Decorations and arrangements for the prom were done by the junior class, their officers and sponsors. The junior class officers

were Kyle Haenisch, president; Gretchen Lowder, vice president; Jennifer Terry, secretary; Elda Pando, treasurer; and Kevin

Babbs, student council. The class sponsors are Meredith Runyan,

Debby Odom, Lloyd Looper, Todd Parker, Shane Reagan and David Steele.

The senior class was represented by its officers and sponsors. The class officers are Troy Seagler, president; Theron Park, vice presi-

dent; Russ Royval, secretary; Brent Stedje, treasurer; Vance Scarborough, historian; and Manda Winger, student council. The sponsors are Lance Sparks, Ann Dorman, Pennye Ralston, James Dorman, Doug Frick and Jim Tucker.

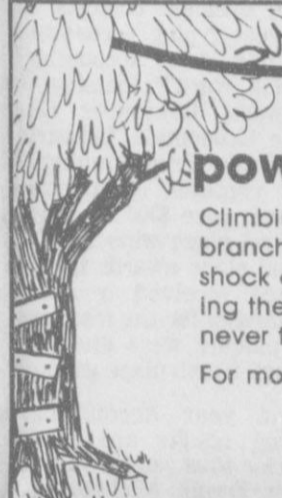


[left to right] Kyle Haenisch, Kevin Babbs, Chris Kauffman, Amanda Hiller, and Troy Seagler all played key roles in the program for the Junior-Senior Prom, held May 5, 1990 at the Gruver School

Cafeteria. Haenisch gave the welcome, Seagler gave the response, Babbs gave the thanksgiving, and Kauffman/Hiller sang.




America's first compulsory education law was passed in Massachusetts.



Climbing trees near power lines isn't child's play

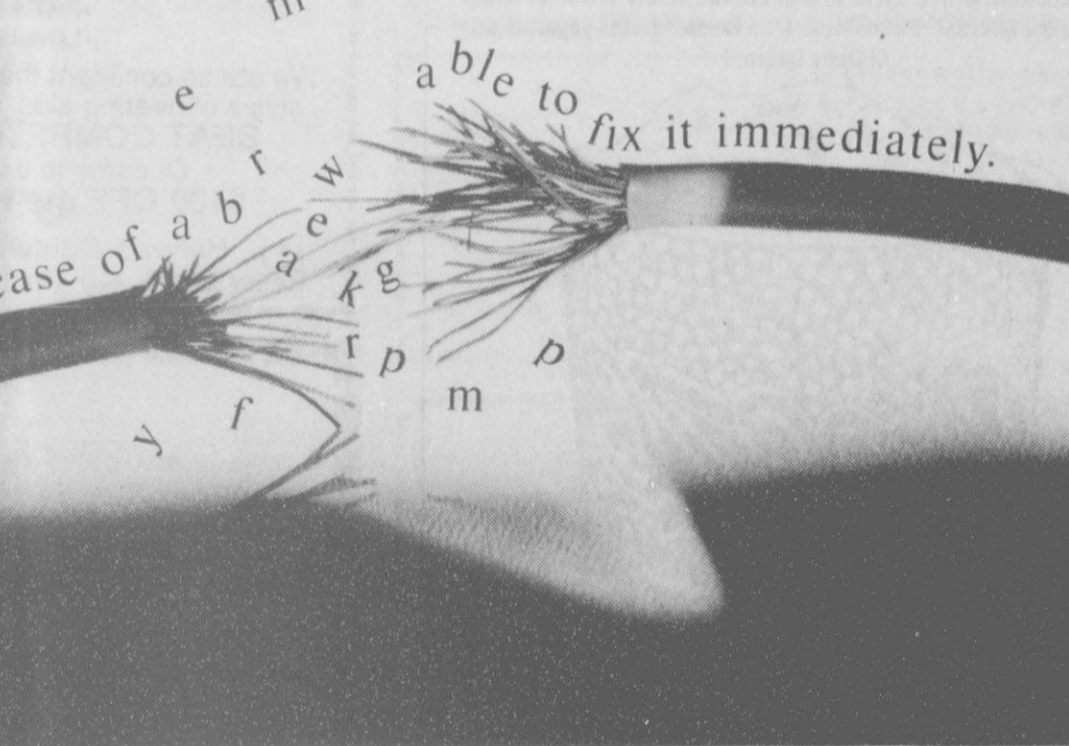
Climbing a tree near a power line is dangerous business. A branch touching the power line can energize the tree and shock anyone who touches it. Protect your children by reminding them not to play in trees near power lines. Remember, too, never to prune trees that could touch power lines.

For more information on electrical safety, call TNP today.



Texas-New Mexico Power Company.
Neighboring Professionals
Offering You The Best Choice

We monitor your phone line 24 hours a day so in case of a b r a k e a b l e to fix it immediately.



3:42 a.m. You're sleeping. Suddenly, your phone line goes dead. Could be a frayed cable. Or even a curious squirrel.

Chances are, it won't be broken long enough for you to find out. Because our new 4-Tel computer

monitoring system is already identifying the problem by remote control, or dispatching a GTE technician to the actual site of the break.

In other words, we're fixing the problem before it becomes a problem.

So you'll always get a dial tone the first time you pick up the receiver. And a ring each time someone tries to call you. Any time of day. Or night.

Of course you might take all this for granted already. After all, we're always trying to get people

not to notice us. You see at GTE, it's not just communications we offer, it's solutions. And just because there's a break in your phone line doesn't mean you have to hear about it.



THE POWER IS ON

Spearman

School Scene ...

SHS honor students recognized

Laura Dyess was named Valedictorian and Cacy McGill was named Salutatorian for Spearman High School's graduating class of 1990.

The two were recognized Thursday, May 3 at an assembly at SHS, where honor awards were presented to several outstanding students.

Other "top 10" students from the class of 1990 are: 3) Bonnie Jarvis; 4) Laci Lasater; 5) Daryl Hawkins; 6) Maria Gomez; 7) Michelle Cook; 8) Chris Volden; 9) Nora Garcia; and 10) Rebeca Rosales.

Frank Salgado was named "All-Around Boy," and the "All-Around Girl" for 1989-90 is Michelle Cook. Recipients of the "I Dare You" Award were Daryl Hawkins and Cacy McGill.

Dwayne Mitchell, senior English teacher and yearbook sponsor, was chosen by the student body as "Teacher of the Year" for 1989-90.

Five SHS seniors received the University Interscholastic League "UIL Scholar Award." The award is presented to students who graduate in the top 10 percent of their classes and have also participated in a UIL academic, music or athletic contest. Recipients were Laura Dyess, Cacy McGill, Bonnie Jarvis, Laci Lasater and Daryl Hawkins.

Outstanding student in English I is Laura Pearson; in English II is Karla Kunselman; in English III, Cam Butts; and English IV, Laura Dyess. Top students in Correlated L.A. I, II, III and IV are, respectively, Ruben Rojas, Buck Hughes, Andy DeLaRosa and Ruben Vela.

Receiving awards for outstanding performance in Spanish I and II were Alfonso Martinez and Patty Puentes. Dustin Irlbeck received an award for Fundamentals of Math; and honored for Consumer Math was Betty Burk. Honored in Pre-Algebra was Lore Rosales; and receiving honors in Algebra I and II were Cody Pipkin and Jarret Swan.

Honor award winners in Geometry, Trigonometry and Elementary Analysis were Joy Gaffard, Maria Gomez and Bonnie Jarvis, respectively.

Other honor awards and their recipients included World History, Alfonso Martinez; U.S. History, Kyla Nelson; Government, Laura Dyess; Economics/Free Enterprise, Scott Wilkerson; Health, Wesley Dyess; Boys' P.E., Eugene Munoz; Girls' P.E., Ofilia Zamora; Band, Aprill Graham; Chorale, Ross Jarvis; and Chorale, Misty Savage.

Also honored were Jada Mocaby, Physical Science; Mona Sandoval, Introductory Biology; Holly Jarvis, Biology I; Maria Gomez, Biology II; Alfonso Martinez, Chemistry; Daryl Hawkins, Physics; Cam Butts, Computer Science I; Daryl Hawkins, Computer Science II; and Chris Porter, Micro-computer Applications.

Others include Typing, Dezi Pearson; Accounting, Ginger Sasser; Office Procedures, Rosi Reyes; Public Speaking, Maria Munoz; Theater Arts, Cacy McGill; Art I, Ginger Sasser; Art II, Edward Mayfield; and Art III, John Hughes.

Outstanding students also included Denise Arnold, Advanced Food Science; Bette Burk, Interior Design; Mary Cook, Comprehensive Home Ec.; Sally Donahue, Housing Design and Furnishings; Carla Greene, Advanced Child Development; Josie Holt, Apparel; John Hughes, Textile and Apparel Design; Maria Munoz, Food Science; Patty Puentes, Individual and Family Life; and Misty Savage, Consumer and Family Economics.

Other honor award winners and their categories included Brooks Beck and Dannin Irlbeck, Ag. Metal Fabrication; Chris Brooks, Applied Ag. Science and Tech.; Mark Brown, Wildlife Management; Clint DeArmond, Animal Science; Mark Eakin, Introduction to Ag. Mech.; Bonnie Jarvis and Joel Shields, Equine Science; Edward Mayfield, Ag. Business and Marketing; Temp Sheppard, Ag. Power Technology; and Sonya Tindell, Ag. Science.

In addition, Presidential Academic Fitness Awards were presented to several students.

Recipients of these awards must maintain an 85 or above GPA, score at the 80th percentile in testing and have 12 credits in new basic courses.

These award winners are Laura Dyess, Bonnie Jarvis, Daryl Hawkins, Michelle Cook, Nora Garcia, Nancy Ivey, Anna Pacheco, Aprill Graham, Scott Wilkerson, Jeff Spencer, Cacy McGill, Laci Lasater, Maria Gomez, Chris Volden, Rebeca Rosales, Ted Miller, Daena Smith, Haley Lair and Denise Arnold.

In order to encourage regular attendance during the school year, First State Bank of Spearman presented a \$100 savings bond to one student drawn from each class. These students have not missed more than one time through the school year. These were eight

freshmen, three sophomores, seven juniors and three seniors who fit this category. Winners of the savings bonds included freshman Sherman Jones, sophomore Mendy Lasater, junior Edgar Nava and senior Ann Zamora.

The awards assembly also featured the introduction of 1989-90 student council members. They included seniors Cacy McGill, president; Michelle Cook, vice president; Frank Salgado; and Laci Lasater. Junior student council members included Ross Jarvis; Kyla Nelson, secretary-treasurer; Joel Shields; and Cam Butts. Sophomores are Suzanne Sanders, Dallas Trospen, Mendy Lasater and Darian Hawkins; and freshman are Sherman Jones, Mary Cook, Randie Renner and Holly Jarvis.

Contest winners listed

Results have been tabulated and winners announced from the 67th Scholastic Excellence Contest recently held at Panhandle State University.

The Business contests included first year Typing, second year Typing, first year Accounting/Bookkeeping, Word Processing, General Business, Computer Literacy, Home Economics, Industrial Arts and Basic Programming. All of these contests, except math and science, gave \$300 scholarships to the first place winners. First and second place awards in math and science received a full tuition scholarship for the freshman year and plaques were given for first through fourth place winners.

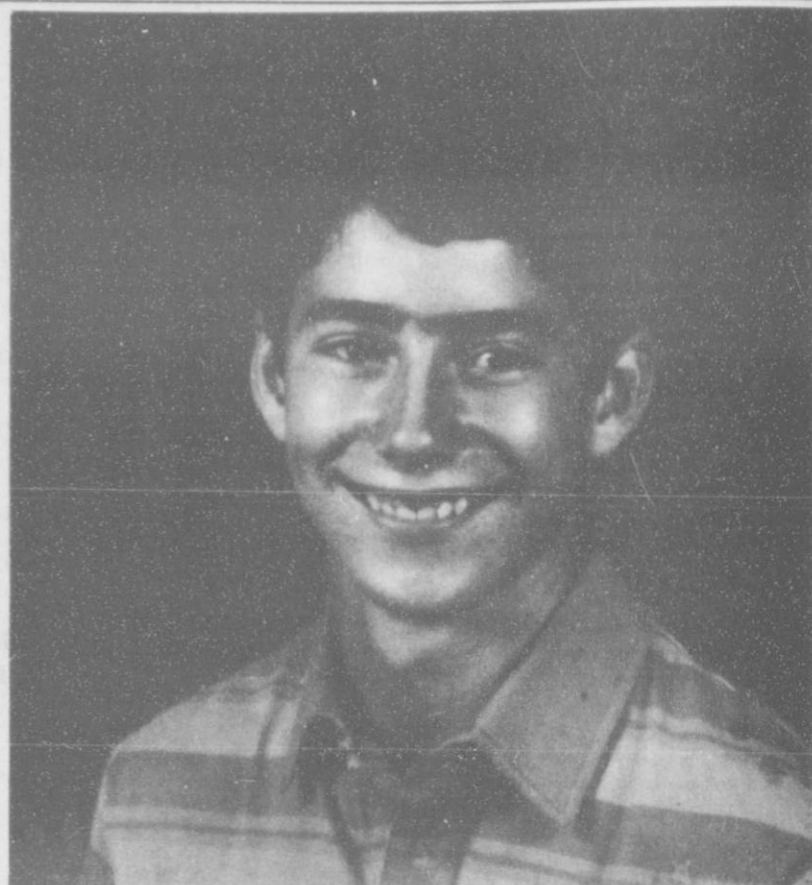
First year Accounting/Bookkeeping results are as follows: Superior Plus rating went to Kara Pelton, Turpin. Michelle Cook and Maria Gomez, both of Spearman, received Superior ratings along with Kelly Chestnut, Texhoma; Ruth Ann Nichols, Arnett; Ginger Sasser, Spearman; Heather Hussman, Stratford; Pam Wills, Sanford; and Julie Baugh, Texhoma.

Chris Porter, Spearman, and Andy Owen, Cimarron, were co-winners in the Word Processing contest with a Superior Plus rating. In the BASIC Programming con-

test, Superior Plus ratings went to five teams. The Spearman team consisted of Daryl Hawkins, Monica Blackman and Camila Butts. Canyon team members are Mikey Duggan, David Rice, and Mark Adkins. John Roelker, Wes Waugh, and T.J. Catlin represented Buffalo. Follett had Mandy Saunders and Marissa Ferguson. Goodwell was represented by Eric Anderson, Shawn Strain, and Chris Ouellette.

Computer Literacy awarded its Superior Plus rating to Daryl Hawkins of Spearman. Doug Sahler, Springfield; Mark Adkins, Canyon; Traci Harding, Sanford-Fritch; John Fleming, Elkhart; Candle Cox, Sanford-Fritch; Glenda Turner, Elkhart; Austin Weis, Hooker; Cam Butts, Spearman; Bobby Turner, Texline; Neely Smith, Sanford-Fritch; and Kelby Harke, Tyrone; all received Superior ratings.

In the Math and Science Contest, the winner was Sean White of Hooker. Sean will receive a full tuition scholarship for his freshman year for winning the contest as will Richard Burrow of Guymon, as he finished second. Laci Lasater of Spearman and Jay Lollar and Brandon Riggs, both of Turpin, all finished in a tie for third place.



Amarillo was host for the annual Texas Panhandle Hugh O'Brien Youth Leadership Seminar April 27-29 at the Camelot Inn. Dallas Trospen represented Spearman High School at the seminar, which is conducted for outstanding sophomore students. Trospen, son of Larry and Janette Trospen of Spearman, was selected to attend on the basis of his outstanding leadership and attitude, among other criteria.

Spearman Menu

High School Menu
May 14 - May 19

- Monday
on a Stick
Pinto Beans
Salad Bar
Cornbread
Milk
- Tuesday
Chicken Strips
Mashed Potatoes/Gravy
Salad Bar
Hot Rolls/Butter
Milk
- Wednesday
Chili Dog
Fries
Salad Bar
Cake
Milk
- Thursday
Ravioli w Meat Sauce
Mozarella Cheese Cup
Florentine Mix
Hot Rolls/Peanut Butter Blend
Milk
- Friday
Cattlemans Bar B.Q. on Bun
Fries
Salad Bar
Cookie
Milk
- Saturday
Submarine Sandwich
Chips
Fruit
Fresh Vegetable Sticks
Milk

Jr. High-Elementary Menu
May 14 - May 18

- Monday
Sausage on a Stick
Pinto Beans
Zucchini-Tomato
Cornbread
Pineapple Tidbits
Milk
- Tuesday
Chicken Strips
Mashed Potatoes/Gravy
Green Beans
Hot Rolls/Butter
Pears
Milk
- Wednesday
Chili Dogs
French Fries
Pork 'n Beans
Pickle Relish/Diced Onion Cups
Cake
Milk
- Thursday
Ravioli w Meat Sauce
Mozarella Cheese Cup
Italian Blend Vegetables
Hot Rolls/Peanut Butter Blend
Peaches
Milk
- Friday
Hamburger
Fries
Lettuce/Tomato
Pickle/Onion
Cookie
Milk
- Saturday
Cafeteria Closed

Hometown News

ABILENE - Outstanding music students were recognized in an award ceremony by the Hardin-Simmons University School of Music on April 25 at Woodward-Dellis Recital Hall.

Winners included Mechelle Graham of Spearman, who received a B. Reeves scholarship award.

Mechelle Graham is the daughter of Mr. and Mrs. Preston Graham. She is a member of the HSU Concert Choir and the Pioneer Drive Baptist Church University Choir and Sunshine People. Graham is also a member of Sigma Alpha Iota honorary music fraternity.

NEW AT DQ! FROZEN YOGURT!

THE BIGGEST TASTE TO HIT DQ COUNTRY
SINCE THE BLIZZARD®! Start with great-tasting vanilla yogurt. Nonfat. Cholesterol-free! Blend in your favorite flavors of fruit or candy, just like the Blizzard® Flavor Treat. It's a Breeze® frozen yogurt treat! At Dairy Queen®!



THIS IS
DQ
COUNTRY

*Our vanilla yogurt is nonfat and cholesterol-free.
© Reg. U.S. Pat. & Tm. Off. D.Q. Corp. © T. D.Q. Co. Con.

COUPON

HIGH PLAINS HEARING AID CENTER

Serving the Panhandle Area More Than 14 Years

- Service on All Makes
- FREE Hearing Test
- FREE Trial Period
- Lowest Battery Prices on Best Brands

We are so confident that you will prefer our brands and styles of hearing aids, and of our service, that we will **BEAT COMPETITORS PRICE BY 10%**

Or come to us first, and we will take **\$100 OFF the Hearing Aid You Buy!**

14 S. Haney • Golden Spread Center • 659-3866
Every 2nd & 4th Tuesday, 2:00 p.m. to 4:00 p.m.

Moms

Are They Forgetting Your Day?



Send them to **The Country Peddler**

& Jo's This & That 216 Main, Spearman

Friday, 10 a.m. - 5:30 p.m.

Saturday, 10 a.m. - 5 p.m.

- You tell us how much the kids (or husband) can spend
- We help them make that unique choice
- We wrap the gift - Free!

Sweep Mom Off Her Feet!

Eureka Upright

- Carpet Height Adjustment
- Edge Kleener® (Both Sides)
- Power Driven Beater Bar
- Brush Roll
- Top-Fill Bag
- Powerful Lifetime Lubricated Motor



\$59.95

SAVE \$40

Model 1432

THE BOSS Special Price!

SPEARMAN AUTO ACE HARDWARE

South Hwy. 207

659-2588

WANT ADS Work Wonders!

Oil & Gas Report

Intentions to Drill

(CALLIE JOE Upper Morrow) Mewbourne Oil Co., #1 Augustson (665 ac) 2180' from South & 1550' from East line, Sec. 306,43,H&TC, 20 mi south from Perryton, PD 9600' (Box 7698, Tyler, TX 75711)

OCHILTREE (WILDCAT & WEST McGARRAUGH Upper Morrow) Phillips Petroleum Co., #3 Swink 'C' (389 ac) 2305' from North & 510' from East line, Sec. 121,13,T&NO, 15 mi south from Farnsworth, PD 9300' (Box 358, Borger, TX 79008)

Applications to Plug-Back HANSFORD (DILLEY Upper Morrow) Strat Land Exploration Co., #1 Harvey (640 ac) 660' from North & West line, Sec. 281,2,GH&H, 9 mi N-NW from Gruver, PD 7110' (Nine East Fourth, Suite 800, Tulsa, OK 74103)

OCHILTREE (HORIZON Cleveland) Apache Corp., #1 McGarraugh (160 ac) 1980' from North & West line, Sec. 135,13,T&NO, 21 mi SW from Perryton, PD 8450' (6120 S. Yale, Suite 1500 Tulsa, OK 74136)

Oil Well Completions HANSFORD (HORIZON Cleveland) BHP Petroleum, Inc., #2 McGreevy, Sec. 7,1H&GN, elev. 3115 kb, spud 12-31-90, drlg. compl 1-18-90, tested 4-13-90, pumped 45 bbl. of 46 grav. oil & 1 bbl. water, GOR 1067, perforated 6440-6468, TD 8850', PBTD 7300'

HUTCHINSON (PANHANDLE) J. M. Huber Corp., #5-5 Huth, Sec. 5,M-24, TCRR, elev. 3366 kb, spud 1-20-90, drlg. compl 1-26-90, tested 3-30-90, pumped 28 bbl. of 39 grav. oil & 152 bbls. water, GOR 2964, perforated 3116-3336, TD 3450', PBTD 3440'

MOORE (PANHANDLE) Anadarko Petroleum Corp., #25 Sneed 'D', Sec. 70,3,G&M, elev. 3336 kb, spud 2-26-90, drlg. compl 3-4-90, tested 4-8-90, pumped 57 bbl. of 40 grav. oil & 10 bbls. water, GOR 88, perforated 3179-3336, TD 3450', PBTD 3440'

MOORE (PANHANDLE) Anadarko Petroleum Corp., #26 Sneed 'D', Sec. 65,3,G&M, elev. 3348 kb, spud 3-6-90, drlg. compl 3-11-90, tested 4-11-90, pumped 31 bbl. of 40 grav. oil & 469 bbls. water, GOR 677, perforated 3195-3345, TD 3450', PBTD 3354'

WHEELER (FRYE RANCH Granite Wash 'A') Gifford Operating Co., #1 Frye 'D', Sec. 2,5,B&B, elev. 2389 kb, spud 4-25-90, drlg. compl 3-13-90, tested 4-25-90, flowed 65 bbl. of 56 grav. oil & 97 (frac) bbls. water thru 48/64' choke on 24 hour test, csg. pressure

25# tbg. pressure-, GOR 7692, perforated 12128-12366, TD 12500', PBTD 12454'- form 1 filed as Frye 'B'

Gas Well Completion SHERMAN (PALO DURO CREEK Penn. Lime) Phillips Petroleum Co., #3 Kathryn 'A', Sec. 8, 3-B, GH&H, elev. 3419 rkb, spud 1-31-90, drlg. compl 2-24-90, tested 3-19-90, potential 7250 MCF, rock pressure 660, pay 5329-5408, TD 5508', PBTD 5445'-



A fellow was asked, "Why did you pick out Helen for a girlfriend?" "Because," explained Bill, "she's different." "In what way?" came the question.

"She's the only girl who'd have me," said Bill. Really, you're different. There's only one like you. And there'll never be another you. So you're important.

And the Lord will have you. He wants to do through you what He hasn't done through anyone else. If you fail to let the Lord have His way with you, you'll leave a big hole in life.

Only the Lord can make you what you're intended to become. Why don't you let Him have His way with you?



PUBLIC NOTICES

Donald S. Bloyd, Sectional Center Manager/Postmaster, Lubbock, TX, has announced that the Automotive Mechanic examination for the Amarillo, TX office will be open to the general public May 14 through May 18, 1990. Starting salary is \$25,275 per year. Interested persons may apply between 8 a.m. and 4:30 p.m. at the Lubbock Personnel Office, 1515 Avenue G, Lubbock, TX, or at the Amarillo Personnel Office, 2300 Ross St., Amarillo, TX. No applications will be accepted before or after these dates. S28-2t n/c

REAL ESTATE

HOUSE FOR SALE: 112 King - Gruver - Three BR - Two Bath - Single Car Garage - Large living area attached to dining room & kitchen. Call Merry Shelton - 733-2769 or 659-5515. Reasonable. S24-4tp

FOR SALE: 3 Bedroom, 2 bath home. Fireplace, large living area, drapes, mini-blinds, completely remodeled and large deck patio. Nice neighborhood. 1110 S. Barkley. Call 659-3800. S36-RTN

REAL ESTATE

FOR SALE: Beautiful 3 BR, 2 1/2 bath home with basement and office, large fenced yard with fruit trees, patio. See at 1015 Wilmeth, Spearman or call 806-659-3436 or 806-659-2040 evenings. S21-1tc RTN

FOR SALE: Steel building on Highway 15 West, about 2,000 square feet enclosed, 150 feet highway frontage, depth in 190 feet. Emmett R. Sanders, Realtor, 659-2516, nights 659-2601. S25-RTN

GARAGE SALES

HANSFORD COUNTY FLEA MARKET Saturday, May 19 601 Main Gruver, Texas 8 a.m. - 5 p.m. Call (806) 733-2433 for space Every third Saturday of each month S27-3tc

HUGE SALE: Saturday, May 12, at 9 a.m. and Sunday, May 13 at 1 p.m. at the County Barn. Lots of clothes, furniture, baby things and household goods. Good IBM typewriter. S28-1tp

MISC. FOR SALE

PIANO FOR SALE WANTED - responsible party to assume small monthly payments on piano. See locally. Call Credit manager at 1-800-233-8663. S24-6tp5.19

FOR SALE: 16 1/2 ft. Falcon Tiger fishing boat, 60 hp Chrysler outboard motor, Mag 18 MinnKota trolling motor, depth finder - \$850.00 Call 659-2838. S27-2tc

USED EVERETT PIANO for sale. Has just been checked by a professional piano service man. Is in very good condition. Call 659-3105 for further information. S28-2tp

HELP WANTED

MECHANIC NEEDED: Apply at Speartex Grain Co., Box 248, or 405 Collard, Spearman, Texas, or call 659-3711. S28-2tc

ARCHAEOLOGY HELPERS needed for Palo Duro Dam Project, no experience necessary. 12 positions available. \$5/hr., full-time, all summer. Begins June 6, please send letter of interest to Mariah Associates, Inc., 1700 South Lamar, Suite 240, Austin, TX 78704. Equal Opportunity Employer. S27-4tp5.20

ATTENTION - HIRING! Government jobs - your area. Many immediate openings without waiting list or test. \$17,840 - \$69,485. Call 1-602-838-8885. EXT R 4514. S27-3tp

ATTENTION: EARN MONEY TYPING AT HOME! 32,000/yr income potential. Details: (1) 602-838-8885 Ext. T-4514. S27-3tp

ATTENTION: Excellent income for Home Assembly work. For info. Call 504-646-1700 Dept P6392. S26-3tp

APPLY NOW to operate a fireworks stand in the Spearman area June 24-July 4. Must be over 20. Make up to \$1,500. Call 1-800-955-1023 or (512)429-3808, 10 a.m. to 5 p.m. S28-6tc

SERVICES

CALL YOUR LOCAL used cow dealer for 7 days a week dead stock removal. 659-3544 or 1-800-692-4043. Serving cattlemen for the past 20 years. G51-RTN

Are You A Victim of Physical Abuse?

Call Toll Free 1-800-753-5308 Trained counselors can help you on the road to an abuse-free life. We also operate a safe place for victims and their children to stay in times of crisis.

Panhandle Crisis Center Serving Lipscomb, Hansford and Ochiltree Counties 315 1/2 S. Main Perryton, TX. 35s-rtn

NOTICE

Wallace Monument Co. Monuments, Curbings, Grave Covers Local Representative LEONARD JAMESON Spearman, Texas 35s-rtn

OSGOOD MONUMENT CO.

Amarillo, Texas Dealers of Rock of Ages Granite, as well as all colored granites, marble and bronze memorials.

represented by BOXWELL BROS. FUNERAL HOME

519 S. Evans 659-3802

Count on the Classifieds to Do the Job

703 GIBNER DRIVE

For Sale: One owner home. 2153 sq. ft. 3 BR, 2 1/2 baths, LR, DR, Kitchen w/breakfast area, Utility. Central heat and air. Stone fireplace. Attic storage. Heated garage. 8 x 10 Storage house. Nicely landscaped fenced yard w/large trees. 14 x 19 covered Patio. To see call Brad or Dodie Beedy at 659-3701 or 659-2605 evenings.

FOR SALE: 3 Bedroom, 2 bath home. Sunken living room, parquet floors, fireplace, covered patio, 2 car garage, sprinkler system, 2193 sq. ft. living space, excellent location. Call 659-3587 or 659-5022. S33-RTN

FOR SALE: Two houses on five lots. One is a corner lot in Gruver. Call Ida Hendrick at 733-2665. S28-3tp

FOR RENT

TRAILER SPACE FOR RENT in Spearman, \$50 a month. Call 435-5080. S43S-RTN

FOR RENT: 1 BR furnished bachelor apt. Bills paid. Also: 2 BR house, unfurnished. Call after 6 p.m., 659-3185. S28-1tp

MOBILE HOMES

FOR SALE: 1980 14 x 70 Fleetwood. Customized 1 BR, 2 bath, extra large rooms, lots of storage, new carpet, mini-blinds. Central heat/air. All gas. To be moved. Located near Hardesty, Okla. Call (316) 355-7145. S27-3tp

AUTOMOBILES

GOVERNMENT SEIZED vehicles from \$100. Corvettes, Chevys, Porsches, and other confiscated properties. For Buyers Guide 1-(800)448-2562 ext 5199. Also open evenings & weekends. S28-1tp3.75

BUSINESS OPPORTUNITIES

MAKE MONEY taking orders from friends and relatives for Avon. Call Billie at 857-3772 in Fritch. S24-6tc

SITUATION WANTED

EXPERIENCED Full time farm help available. Call 659-5013. S28-1tp

NEED YOUR YARD burnt off? Call "Smokey" Shieldknight. 659-3751 days, 659-2714 nights and weekends. S27-2tp



Allen Alford-Broker-659-3034 Hester Crawford-659-2074 Dennis Nelson-Sales-659-3608 Larry Trospen-Sales-659-3491 THREE BEDROOM HOMES 727 Wilbanks-Office, 1 1/2 B, 715 Steele-Fireplace 729 Wilbanks-1 3/4 Baths 1108 Archer-2 B., Dbl. Gar. 412 Townsend-Affordable! 805 Archer-Close to School 904 Linn Dr.-1 yr. old-3/2/2 522 Evans-3/2/1 TWO BEDROOM HOMES 811 Townsend-Dbl. Garage ACREAGE 15-Acres-Crawford Addition OTHERS Apt. Complex-Profitable! Check for other listings. WE WANT TO BE YOUR REALTOR

FOR SALE OR RENT with option to buy. Three bedroom, good location. 901 Townsend. Call 659-2794 or 659-5066. S18-1tc RTN

FOR SALE: 3 Bedroom, 2 bath, garage, storm windows, central heat/air. Call 659-3096. S22-1tc RTN

FOR SALE: 3 BR brick home with storage house. Can see at 1007 S. Bernice or call 659-3402. Price reduced. S12-RTN

FOR SALE: Three bedroom brick home on 1 1/2 lots. 1360 sq. ft. living space. Large fenced backyard. Great for kids. Priced low 30s. Call 659-5057 or 659-2024. S26-3tp

NEW LISTING

FOR SALE: 3 BR, 2 Bath Home. Recently Redecorated, Great Location, Nice Yard. New central heat and air, 4 ceiling fans. 1008 S. Barkley. Call Jeff Beedy, 659-2541 or 659-3847. S27-1tc RTN



GOLDEN SPREAD REALTY Janye Helton Pointer, Broker Owner, 435-5444 Jennifer Nollner, Sales Associate, 659-5243

Old Hansford Location- 4/2, Quality home on approx. 5 acres! 515 S. Bernice-4/1 3/4, extra large lot & close to school! 605 Archer-3/2, large rooms plus deck and hot tub! 101 E. 12th- 3/1 1/2, move-in condition. Great location! 18 S. James-3/2, extra features include basement & building in back! 701 Collier-4/1 1/2, affordable 3 year old home! 20 S. James-2/1, well maintained! 611 S. Evans-3/1 3/4, affordable! 118 Townsend-4/2, apartment included! 522 S. Haney-Priced to sell quickly! 315 1/2 N. Bernice-Lot for sale! 315 Townsend-2/1, small price tag!

Oil & Gas Reporting Service

Box 2052 Pampa, TX 79065 Providing the Oil & Gas Report for Hansford County Readers.

Doris Harrison

Phone 665-5800

Offered by EMMETT R. SANDERS REALTOR Owner's 2 bedroom home plus 3 rental units. Good investment package. EMMETT R. SANDERS REALTOR 659-2516, nights 659-2601

BOB HARDY REALTY 803 Wilmeth Dr. 659-3440

NEW LISTINGS

713 Steele Dr. - 3 BR, 2 Bath, Nice, Reasonable. Colorado Property For Sale. Robert Hardy - Broker

NEEDED

DYNAMIC, PERSONABLE, PROFESSIONAL APPEARING individual as a sales representative for the Hansford County newspaper.

Receive: car allowance, base salary and commission.

Apply at the HANSFORD COUNTY REPORTER-STATESMAN offices,

213 Main, Spearman, Texas

S20-RTN n/c

Neighbors from page 4

homes and most comfortable.

Alva and Ed Garner spent last week down in the wet country. They left to visit old friends in Jacksboro, their childhood home. Driving down, between Electra and Wichita Falls, the deluge caught them. The rain came in sheets, visibility was zero and speed was barely possible at less than 30 miles per hour - it seemed they couldn't go on; they couldn't stop; they couldn't go back. Water was beginning to rise on all the roads when they finally and thankfully reached their destination. Immediately Jacksboro was entirely surrounded by water and all roads closed. Their trip to Decatur to visit Alva's sick aunt was delayed, but by a circuitous route, they were able to be with her a few days.

Howard and Sarah Garnett stopped in Spearman a few days this week to be with his brother, Wesley and Magda Garnett. They were enroute from Austin to their home in Seattle. After Howard's business in Austin was concluded, they stopped in Waco for a visit with Anita Garnett and later in Amarillo with his sister, Estella Morris, and family.

Howard, considered to be one of the most successful alumni, in two different careers, is planning to return for the all school reunion in July.

His old classmates may have to regenerate Howard's Panhandle vocabulary and diction - in a recent conversation, not once did he drawl "y'all!"

Sad tho' the occasion, it was good to greet again Tommy White and other members of the family who no longer live here. The death of their brother, James Willis White, brought the family together as his services were held at the First Methodist Church on Thursday. Interment was in Hansford Cemetery.

James grew up in Spearman and reared his family here. Other information was included in his obituary last issue.

Dale Rumley spent the weekend here with her parents, Mary and Henry Cornelius. Dale now lives in Wichita Falls, where she is the Texas State Inspector of Nursing Homes for District 6.

Hollie and Earl Riley attended Pioneer Days Celebration in Guyton as they have every year since the first celebration. They were joined by their grandsons, Tab Smith of Houston and Tim Smith of Amarillo. The boys had their mules and wagon in the parade.

Edith and John Pipkin returned Saturday from Greenville, S.C. where they attended the graduation of their grandson, Tom Mays, Jr. from Bob Jones University. He completed the four year course in three years.

Edith had flown to Boston on April 19 where she visited her brother, Wilbur Fullbright. She went on to Ingersoll, Ontario where her daughter, Betty and Bart Clifford and family live. Next on her itinerary was Andover, N.J. where another daughter, Pauline and Tom Mays live. She accompanied them to South Carolina, where John flew up and met them.

Mr. and Mrs. T.C. Kitchens spent last week at Tahoka looking after the family of their daughter, Barbara Jaquess. Barbara, a teacher in the school, was in Minneapolis with some of her students who had qualified to go to the National Finals in the field of Computer Science.

There were 3500 contestants there, and Barbara was indeed proud that one of her students placed 6th in her division - that of computerized accounting and business math.

It will be a losing battle to anyone trying to top Gloria and Don Knox in Grandparents Bragging Rights.

Last Friday they attended the Lions Club District Convention in Dumas where a "Queen of Sweethearts" was selected. The results were carried in the previous issue of this paper and it was noted that Shelli Knox of Hart, their granddaughter, was the winner. She will be going on to Wichita Falls to be in the Regional Contest.

Shelli is very versatile - in addition to being a beautiful and poised young lady, she has a long list of honors and awards. She won the school district in debate; in fact, after the contest in Dumas,

Obituaries

Thelma Moreland
PLAINVIEW - Thelma Moreland, 86, died Saturday, April 28 in Colorado Springs, Colo.

Mrs. Moreland was born in Moore, Okla. She moved to Hale County in 1908 and attended schools in the Erick, Okla. community and in Plainview. She married Guy Lawson Moreland in 1921 at Tulsa.

In 1940 she moved to Borger from Floyd County. She worked at the Hutchinson County courthouse from 1958 to 1966. Her husband died in 1956. She moved to Plainview in 1982 and to Colorado Springs in March.

She was a member of Ninth and Columbia Church of Christ and was a member of Hale County Senior Citizens Center.

Survivors include three sisters, Ruth Lackey of Spearman, Eathyl Marble of Plainview and Donna Nell Broadhurst of Friona; a brother, C.W. "Dub" Murphy of Plainview; two grandchildren; and four great-grandchildren.

Funeral services were conducted Tuesday, May 1 in Ninth and Columbia Church of Christ with Dean Brookshire, associate minister, officiating. Interment was in Lockney Cemetery.

Oscar Riemer

Oscar Riemer, 73, of Amarillo died Monday, May 7.

Born in Spearman, Mr. Riemer married Angie Walker in 1975 at Clayton, N.M. He was a U.S. Navy veteran of World War II. He had been the building manager for Prochemco Co. and was retired.

Survivors include his wife; two daughters, Paulette Lee of Enterprise, Ala. and Janie Maple of Mineral Wells; two sons, Jimmy D. Riemer of Lubbock and Oscar M. Riemer of Mineral Wells; three sisters, Mathilda Entekin of Spearman, Mary Ansley of Lockney and Ottomae Cooke of Albuquerque, N.M.; eight grandchildren; and nine great-grandchildren.

Funeral services were pending Wednesday with Blackburn-Shaw Memorial Chapel of Amarillo.

she took a chartered flight to Abilene where she was in the regional debate contest and tied for first.

Shelli won the district in tennis, was on the All-State girls basketball team, was a member of the All-State Band. In addition, she is an honor student and a member of the National Honor Society. She was selected as a delegate to Girls' State this summer. Shelli was the Hart Football Queen and Miss Castro County. There are other honors but space prevents mentioning them all. She is the daughter of David and Rita Knox of Hart and a junior in the school there.

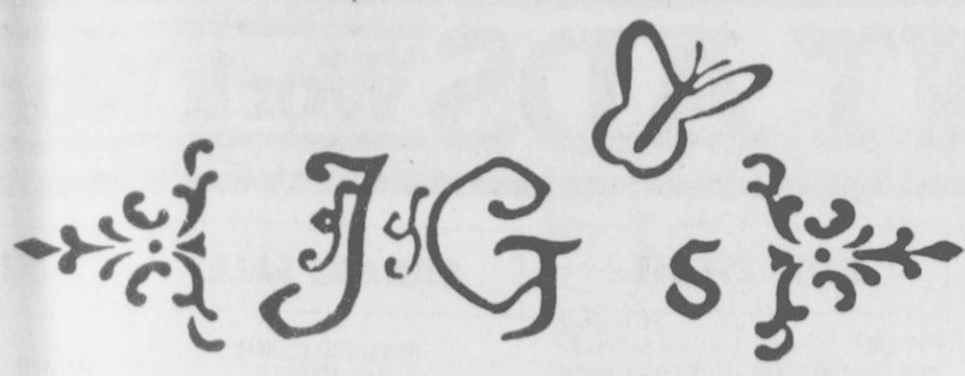
Among the many Spearman folk attending the retirement reception held for the Reverend Wesley and Beth Daniels at Littlefield last Sunday were Verna Gail Keim, Mr. and Mrs. John Trindle and Mr. and Mrs. Louis Lemons. Verna Gail went by Clovis and Kyra Keim accompanied her.

Here to attend the funeral of Tom Etter were his nephews, Andy and Mrs. Etter of Olathe, Kan. and Tom and Mrs. Etter of Gainesville, Texas. Others were Helen's brother, Arnold and Betty Richardson and sons, Steve and Tom of Lubbock, Phil of Houston and Louis of Valencia, Calif.

Tom Etter, whose passing marked the end of an era, came here in 1938 and initiated the soil conservation programs. In those long ago dust bowl days, this was a totally new concept in soil management, and to introduce new practices undoubtedly required much convincing and persuasion. Tom appreciated the soil, and respected it and was a good steward of the earth. He was deserving of this tribute - that this country was benefitted by his life and knowledge - there are practices followed and taken for granted now that are the results of his efforts - many are those who benefit from his legacy and do not recognize from whence it came.

When one remembers Tom, the word Gentleman comes to mind - and intelligence and kindness and with it all a wry humor.

Of recent years Tom's health deteriorated and it is likely he would have been lost to the community much sooner were it not for Helen, his wife and friend, patient, devoted and understanding.



306 Hancock

Spearman

Saluting Academic Excellence in Hansford County

"ALL A " HONOR ROLL

PRINGLE-MORSE CISD

Clayton Curry
Kirby Johnson
Heather Knox
Holly McCloy
Jason Redwine
Ashley Stovall-Phillips

Toby Tull
Scott Jarvis
Sahala McCloy
Jana McCloy
Lori Schrayner

SPEARMAN ISD

seniors

Bonnie Jarvis
Daryl Hawkins
Laura Dyess
Michelle Cook
Cacy McGill
Maria Gomez

juniors

Cam Butts
Kyla Nelson
Haley Shieldknight
Ginger Sasser
Jarret Swan
Ross Jarvis

sophomores

Joy Gafford
Alfonso Martinez
Josie Holt
Karla Kunselman
Darian Hawkins
Mendy Lasater
Maria Munoz
Dezi Pearson

freshmen

Cody Pipkin
Laura Pearson
Randie Renner
Michelle Garnett
Mary Cook
Jennifer Covington
Brad Butler
Kimbire Townsen
Jill Lusby
Sylvia Rosales
Clint Townsen
Holly Jarvis
Chris Hornsby
Mike Hager

eighth grade

Matt Archer
Melissa Baker
Regina Biggers
Christina Fain
Alisha LaRochelle
Cass Lasater
Alma Martinez
Carrie Pearson
Trixie Pearson
Elizabeth Pipkin
Clint Schnell
Nikki Strawn
Rainey Whittington

seventh grade

Molly Blackman
Haley Eaton
Kortney Henton
Josh Howard
Amy McCubbin
Mika Pipkin
Heather Reimer
Sandi Rich
Stuart Riggins

sixth grade

Regan Boxwell
Tiffany Bruning
Carrie Burton
Cory Butler
Michael Covington
Carey Fulce
Matt Gafford
Cody McLeon
Mark Parker
Katherine Pipkin
Martin Sanders
Kara Townsen
Jason Villines

GRUVER ISD

seniors

Lacey Gresham
Jeffrey Hand
Debbie Hathaway
Kelly McCloy
Vance Scarborough
Sanna Sinisalo
Brent Stedje
Shelley Stedje
Klint Venneman
Manda Winger

juniors

Christopher Kauffman
Dan McCloy
Elda Pando
Meredith Runyan
Jennifer Terry
Katie Williams

sophomores

Matthew Hoel
Carey Kauffman
Luke Miller

freshmen

Cody Barkley
Traci Crawford
Kasey Davis
Scott McCloy
Trevor Shipley
Sharlet Slough
Mariquit Viola
Monica Ward

eighth grade

Will Evans
Mark Viola
Justin Carthel
Anissa Ryan
Sara Jones
Wynn Maupin
Kenton Odom
Tammie Stevens
Hart Derington
Ruben DeSantiago
Steve Pando
Dawn McCullough
Mika McLain
Gina Hoel
Traci Smith

seventh grade

Kimberly Wagner
Grant Odom
Janyth Hart
Tisha Ralston
Jace Dawson
Julie Meyer
Will Etheredge
Kayce Haenisch
Ryyon Atwood
Angela Overbey
Carmen Moreno
Lacy Barkley
Wendy Rodriguez
Dorothy Wells
Gloria Moreno
Hilda Moreno
Monica Garcia
Kim Venneman

sixth grade

Roxane Holt
Kiki Carthel
Bailey Barkley
Travis Ferguson
Tara Shapley
Jennifer Stevens
Amy Grubbs
Imelda Arzate
Joni Hart
Memory Ross
Jason Ward
Sammy Renteria
Molly McLain
Cristy Marquez
Wylee Maupin
Janet Morales
Hailey Lamb
Andy Morris

fifth grade

Mary Dawn Henson
Tucker Henson
Amy Gillispie
Amber Murrell
Kristin Evans
Lexy Spivey
Josh Mayhew
Kelly Boone
Luis Trujillo
Heath Tolleson
Kaysha Cluck
Julie Gumfory
Matt Overbey
Michelle Bass
Erin Derington

"A AVERAGE" HONOR ROLL

PRINGLE-MORSE CISD

Kasis Anderson
Fidel Cervantes
Donnie Davis
Felix DeLaCruz
Lily Duran
Tap Giblin
Jared Johnson
Colton King
Tyrel King
Elizabeth Owens
Michelle Schick
David Schick
Richard Stewart

Jesus Vargas
Dustin Parks
Elizabeth Runyan
Markus Schick
Timmy Hoyt
Brandon Tull
Tye Womble
Maria Gonzalez
Andy Jones
Susie Hernandez
Shanna Jarvis
Tessa Payne
Robert Womble

GRUVER ISD

sophomores

Trent Seagler
Kenny Slough

juniors

Jennifer Hart
Gretchen Lowder
Mitch Meier
Marci Roberts
Ashley Wagner

seniors

Justin Armes
Stefan Dorman
Kyle Irwin
Theron Park
Troy Seagler
Lance Sparks
Heather Young

freshmen

Brandy Brown

SPEARMAN ISD

seniors

Laci Lasater
Nancy Ivey
Rebeca Rosales
Anna Pacheco
Nora Garcia
Denise Arnold
Vonda Benson

juniors

Marci Womble
April Wilkerson
Beverly Burton
Sally Donahue
Ron Whittington
Cecely Porter
Joel Shields
Edgar Nava
Brandi Schneider
Rosi Reyes

freshmen

Chris Brooks
Jeri Evans
Justin Boyd
Gwen Benson
Shea Crawford
Mona Sandoval
Landon Swan
Lore Rosales
Myrna Lopez
Sophia Salgado
Donette Cates
Sonya Tindell
Tracy Tigrett
Ofilia Zamora
Curtis Pearson
Wesley Dyess
Sherman Jones
Robert Needham
Amber Cates

sixth grade

Carol Alvarado
Lucas Biggs
Brent Collins
Gavin Crum
Haley Farber
Clayton Hergert
Bill Pittman
Summer Riggins
Gabriel Rodriguez
Phillip Sanders
Kelly Shieldknight
Misty Vigil

seventh grade

Kristina Poole
Ashly Shieldknight
Josh Winegarner

eighth grade

Kelli Butts
Chad Gardiner
John Holt
Lisa Lillard
Jami Ralston
Toni Snow
Leslie Swan
Jason Swink
Toby Thompson
Jason Varnon

sophomores

Melodie Schumann
Tricia Sangalang
Leslie Latta
Monica Blackman
Olivia Salgado
Lori Lieb
Brian Beck
Carla Greene
James Macias
Suzanne Sanders
Tim Dooley
Karen England