

INSIDE

Hansford Happenings page 3
Social scene pages 4 & 5
Sports scene page 7
School scene page 2
Classifieds page 9

The Hansford County Reporter-Statesman

Serving All Of
Hansford County

10 pages

Vol. 82, No. 26

213 Main

Spearman, Hansford County, Texas

25°

Thursday, April 26, 1990

Radiothon . . .

\$5,125 pledged

by Pearl Pierce

Golden Spread Center's 13th annual radiothon was held Thursday, April 14. A total of \$5,125 was pledged as of Monday, April 23.

The radiothon receipts are used to finance activities at the center such as arts and crafts, game times, exercises, help with problems, insurance, Medicare, Medicaid and the usual operating expenses incurred by a "business."

Golden Spread Center expressed gratitude to radio station KRDF and its staff; Brenda and Pete Wall, coordinators; Buelah Abston, bookkeeper; Claudine Laxton, Carolyn Cummings, Garland Hopper and Adalyn Barnes, phone personnel; all the people who performed this year; and the people who donated to the center.

Contributions are still being accepted at the center, since pledges fell short of the \$10,000 goal.

Prizes, their donors and winners included:

1. Manicure from A Kut Above - Melissa Beck
2. Shampoo and set from Barb's

3. Two week gift certificate from Inch by Inch - Betty Pugh
4. Dinner for two at Ivey's Hungry Cowboy - Grace McDade
5. VCR tape from Earl's TV and Appliance - Margaret Harnish
6. Gift sack of goodies from Country Peddler - Carolyn Davidson
7. Shampoo and set by Noreen at Cinderella Beauty Salon - Ruth Bryan
8. Car wash from Davis Chevron Gulf - Beth Phelps
9. Large pizza from Pizza Hut, manicure by Eddie Largent at Cinderella Beauty Salon and two week gift certificate from Inch by Inch - Kathy Beck
10. Shampoo and set from A Kut Above, \$50 gift certificate from Jack and Jill Grocery and steak dinner from Cattleman's Supper Club - Marsha Boyd
11. Gift sack of goodies from Country Peddler and signature diamond watch from Hickersons Jewelers - Sharron Swan
12. VCR tape from Earl's TV and Appliance and large pizza from Pizza Hut - Betty Uptergrove



WHEELS FOR LIFE - 82 young bikers line up in front of Gruver Junior High for the start of the St. Jude's "Wheels for Life" Bikeathon, held Friday, April 20. The weather was perfect and the turnout

pleased all concerned, especially coordinator Dave Karlin, who will have final figures on the amount of money raised for children's cancer research later this week.



At the Golden Spread Radiothon, awards were presented to Emma Lou Collins (left), Volunteer of the Year, and Floydean Gathing (right), Senior Citizen of the Year. Pearl Pierce (center) presented the awards.

TNP asks for increase

FORT WORTH - Texas-New Mexico Power Company filed a retail rate increase application with the Public Utility Commission of Texas and the Texas cities it serves April 11.

Included in this application, TNP filed a proposed phase-in plan that would limit the increase to 13.34 percent or \$43,074,934 during the first year of the plan. This plan calls for a three-step, 10-year phase-in of rates to lessen the overall cost impact to customers. Without the phase-in, the company's filing requests a 17 percent rate increase, or an increase of \$54,879,334 over ad-

justed test year revenues.

Under the phase-in plan, a residential bill for 1,000 kilowatt hours would increase by \$12 a month, compared to an increase of \$14 a month if the increase is approved without the plan.

The rate increase is necessary partially to recover the costs of a 150-megawatt power plant unit being constructed for TNP in Robertson County, Texas, said Jack Chambers, company vice president of Contracts and Regulation. The unit is designed to burn lignite, western coal or natural gas and is 99 percent

complete.

When the first unit is placed in service, the company will become less dependent on the purchased power rates of other utilities. This transition should ultimately give TNP greater control over its rates, Chambers said.

The PUC is expected to establish a schedule for the case within the next two to three weeks. The company anticipates the hearing on the merits of the case to begin in late July.

The proposed effective date of the increase is May 18.

Santa Fe sells rail line to Southwestern Railways

Courtesy of the Perryton Herald

Atchison, Topeka and Santa Fe Railways announced Thursday that the 102 mile section of track between Morse and Shattuck, OK, which passes through Spearman had been sold to Southwestern Railways Company of Ogden, UT. The purchase price was not disclosed. Southwestern will take possession of the rail line next month.

"The process of selling branch lines to short line railroad operators is an ongoing effort to ensure continued rail service in areas where independent operators can improve productivity and efficiency," said Lee F. Fox, assistant vice president-Asset Management for Santa Fe. "When possible Santa Fe tries to sell branch lines to short line operators who should be able to run efficient and profitable operations more tailored to local customers' needs than we are able to do."

Also included in the purchase by

Southwestern was a 17 mile section of track in Santa Rita, NM and a 17 mile section in Deming, NM. In the past month, Santa Fe has sold 27 miles of track in Floydada, 47 miles in Lehman and 64 miles in Seagraves to AMERAIL.

"We intend to operate the rail line"...

The sales are part of a three to five year plan of Santa Fe to sell 3,000 miles of branch lines to independent operators. The company will concentrate on the operation of main lines and other interests.

Southwestern Railway is a subsidiary company of Western Railroad Builders, Inc., also of Ogden, UT. Western operates a total of 800 miles of short line railroads in Oregon, Arizona, Idaho, Wyoming and Colorado. The acquisition is the company's first in Texas.

"We intend to operate the rail line," said John Nevins, vice presi-

dent of operations for the company. "It is our intention to haul freight and make a profit."

Current plans call for Southwestern to continue rail service between Spearman and Shattuck. The remainder of the line, Spearman to Morse, may be abandoned because of the lack of traffic on the railroad.

"We will not pull up any track until we consult with the shippers and communities on that part of the line," said Nevins. "If we can haul even a couple of carloads a year, we will keep that part of the line in service."

Southwestern will use three to four locomotives to move cars on the line. "We will employ 10 people for our crews and locate our offices in the existing Santa Fe depot in Perryton," Nevins said.

Western Rail Road Builders is owned by Dave Durbano, who

serves as chairman of the company, and Phil Scott, president. Western began in 1970 as a manufacturer and installer of rubber rail road crossing systems. Durbano has the patent on the rubber crossing system.

The company then became involved in the rebuilding and maintenance of railroads. In 1987 Western began buying short line systems from various major railroad companies. In 1989 the company posted revenues of \$10 million and has assets of \$40 to \$50 million.

Perryton Equity Exchange is the major shipper using the local rail line. "We supply about 75 percent of the traffic on the rail line," said Marcus Jacobsen, director of grain operations for Equity. "We are hopeful that the company (Southwestern) is successful. They have promised better service, but we are concerned about the availability of rail cars during the

harvest season. If Santa Fe has a shortage of cars, we wonder if they will want to put cars on a system they do not own."

Jacobsen also said that the rates charged for shipping by rail would not change. "They (Southwestern) will charge the same rate as Santa Fe. We will have to ship with them because we have no other choice," said Jacobsen.

Other major rail customers on the local line are Speartex Grain, Haliburton and local implement dealers.

"We will not pull up any track until we check with shippers..."

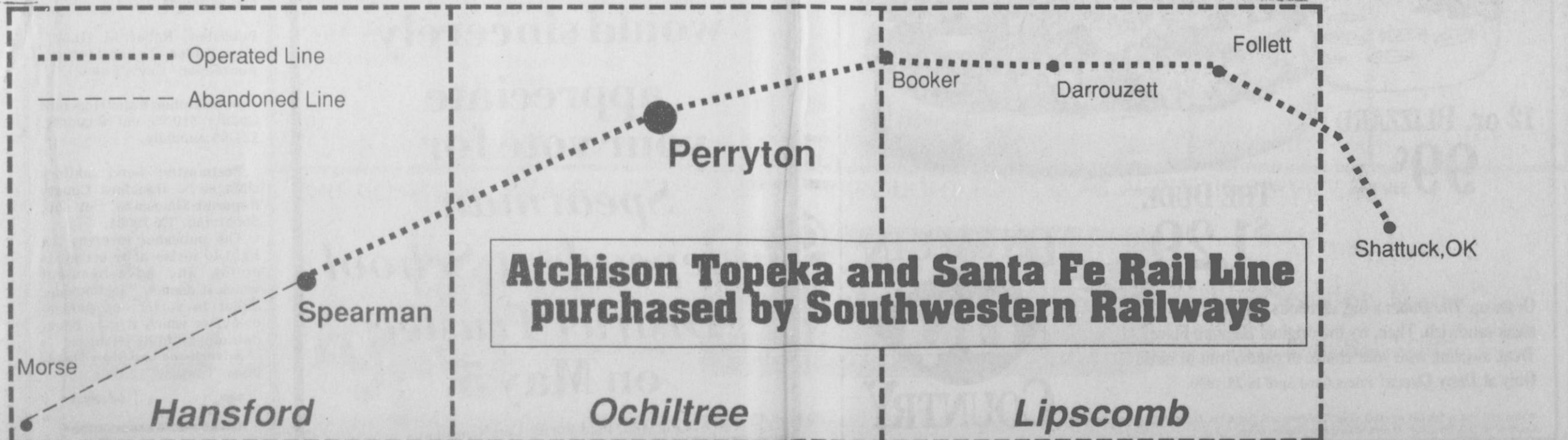
In Hansford County, the businesses most affected are the grain shippers. According to Carl Archer of Speartex, the new owners of the line have not told him their plans for the Spearman part of the line. He foresees no impact on his business if service remains the

same as in the past. According to Archer, Speartex ships several hundred cars of grain a year.

The implement dealers in Spearman do not make much use of the line. According to Mike Cudd of Hansford Implement, the loading and unloading facilities are inadequate. Richey Thompson of Five Star Equipment said the expense of shipping and the frequency of vandalism to equipment became too high for his business to use the railroad line.

Although both men said the operation of the railroad line did not affect them directly, poor operation or closing of the line would have a generally bad effect on the county's economy.

The part of the line that runs on to Morse has been out of service for several years. According to sources in Morse, all rail trade goes out by way of a Rock Island line that runs south and west from Morse. The burning of a trestle between Pringle and Morse makes the line useless without major repairs.



School Scene . . .



The Spearman Junior High student council made a recent trip to tour the new Clements Unit of the Texas Department of Corrections at Amarillo. Student council members included Melissa Baker, eighth grader (left) and Brent Collins, sixth grader (right). Of the tour, Baker commented, "It was pretty much what I had expected, except they (prisoners) had more privileges than I thought they would have. It didn't scare me, but it made me positive that I wouldn't want to be there." Collins' impression of the facility was, "It was pretty sad. They have no privacy, they only get to go outside about an hour a day, and they only get to see their families twice a month. Even when they get to see their families, there can be no contact with their wives, only their children. I thought it was a dull place, and scary." Both students agreed a tour of a prison could serve as a deterrent to crime.

GHS students compete

A group of seven Gruver High School students won the right to compete at Levelland earlier this month, and that competition at regional level was held this past week.

Manda Winger won district in the chemistry competition, and she competed in the Biology-Chemistry-Physics competition at Levelland. There, she placed 14th out of 31 competitors. In the other UIL Literary events, Benny McClenagan placed fourth out of 24 in

the persuasive speaking category, and he will be an alternate to state at Austin. Benny also competed in literary criticism.

Clay Gillispie finished eighth out of 24 in the informative speaking category, Marci Roberts competed in both feature writing and ready writing, Traci Crawford competed in spelling, Chris Kauffman competed in accounting, and Amanda Hiller was an alternate in both feature writing and informative speaking.

FFA land team takes 11th place

The Gruver FFA Land Judging team of Joe Sotelo, Ashley Wagner, Sharlet Slough and Cody Barkley, along with instructor Jim Tucker, were down at Tarleton State University in Stephenville Thursday, April 19 in competition at the State Land Judging Contest.

Gruver had won first place at Texas Tech, which won them the right to compete at Tarleton State. The Gruver team competed against approximately 50 teams, and came away with 11th place at state.

This week, on April 26, the Gruver Dairy Foods team of Jeffrey Hand, Vance Scarborough, Garrett Gumfory and Billy Crawford will be competing at Texas A&M University in College Station for competition at the state level. They will compete on Saturday, April 28.

In other FFA news, Sharlet Slough has won the top first year ag student award - District Greenhand Award - and she will compete at the Area FFA Convention at Lubbock Monterey High School on May 11-12. Also, Ashley Wagner has won election to Area FFA office, and she'll run for the Area President, also at Lubbock Monterey on May 11-12.



The Gruver Dairy Foods team (l-r) Vance Scarborough, Jeffrey Hand, Garrett Gumfory and Billy Crawford will be competing at Texas A&M University on Saturday, April 28.

Spearman Menu

JR. HIGH-ELEMENTARY MENU
APRIL 30-MAY 4

MONDAY
Meat Sauce/Spaghetti
Garden Salad
Blackeyed Peas
Bread Sticks
Canned Purple Plums

TUESDAY
Jumbo Corn Dogs
Macaroni/Cheese
Breaded Okra
Pineapple Tidbits
Birthday Cake
Milk

WEDNESDAY
Cod Fish Sticks
Pinto Beans
Cole Slaw
Corn Bread
Pear Halves
Milk

THURSDAY
Pizza
Shoestring Fries
Buttered Corn
Cinnamon Rolls
Milk

FRIDAY
Hamburgers
French Fries
Lettuce/Tomato
Pickles/Onion
Cookie
Milk

HIGH SCHOOL MENU
APRIL 30-MAY 4

MONDAY
Meat Sauce/Spaghetti
Blackeyed Peas
Salad Bar
Bread Sticks
Canned Purple Plums
Milk

TUESDAY
Corn Dogs
Breaded Okra
Salad Bar
Birthday Cake
Milk

WEDNESDAY
Fried Fish
Pinto Beans
Salad Bar
Pears
Milk

THURSDAY
Pizza
Shoestring Fries
Salad Bar
Cinnamon Rolls
Milk

FRIDAY
Hamburger
French Fries
Salad Bar
Cookie
Milk



Americans spend nearly 250 million visitor days in our national forests each year.

Youth seminar slated

Amarillo will host the annual Texas Panhandle Hugh O'Brian Youth Leadership Seminar April 27-29 at the Camelot Inn. The seminar is held for outstanding sophomore students.

Representing Gruver High School is Trent Seagler, and representing Spearman High School is Dallas Trospen. Also attending is Cacy McGill from Spearman, volunteering as Junior Counselor.

The seminar will be conducted in 84 locations across the United States with the purpose of bringing a select group of students together with groups of distinguished leaders in business, government, education, and the professions so they can discuss present and future issues, using an informal question and answer format. The specific goals are to: seek out and reward leadership potential in high school sophomores; encourage and assist students in their quest for self-development and self-identification; introduce potential leaders to recognized leaders of today through give-and take discussions on a variety of current and critical topics; and provide through this exposure the opportunity to explore America's incentive system and our democratic process.

Seven seminar sessions will be conducted with a panel of speakers with evening management games and talent show.

The Hansford County Reporter-Statesman

"Serving All Of Hansford County"

USPS 509660
213 Main, Box 458, 659-3434
Spearman, TX 79081

Published Weekly at
213 Main, Spearman, Texas

Owned and Operated by:
Texas Independent Newspapers, Inc.
16607 Blanco Road, Suite 701
San Antonio, TX 78232
Second Class postage paid at
Spearman, Texas 79081.

Any erroneous reflection upon the character of any person or firm appearing in these pages will be gladly and promptly corrected upon being brought to the attention of the management.

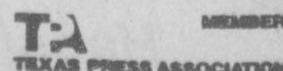
Publisher - Robert M. Hulett
Copy Editor - JoAnn Morton
Bookkeeper - Cayla Eaton

Subscription Rate: Hansford County, \$19.95; out of county, \$24.95 annually.

Postmaster: Send address changes to **Hansford County Reporter-Statesman**, Box 458, Spearman, TX 79081.

The publisher reserves the right to revise or reject at its option any advertisement which it deems objectionable, either in subject or phraseology, or which it may deem detrimental to its business.

Advertising and Story Deadlines: Tuesday, 12:00 p.m.



**Work now
Enjoy later**

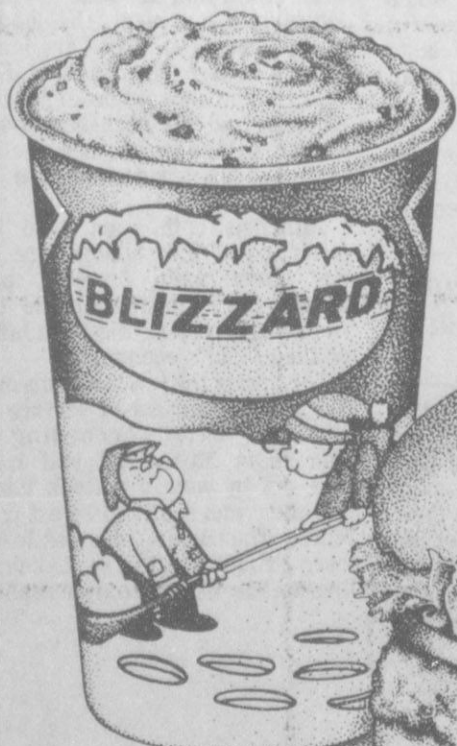
If you don't mind buying a home that wastes energy, buying a home is easy. If your standards are higher than that, buying a home takes work - asking the right questions, finding the right answers.

The reward for that work is a home you can truly enjoy... a home that's as functional as it is livable.

For more information on steps you should take before building or buying a home, call your local Texas-New Mexico Power Company office.



Neighborhood Professionals
Offering You The Best Choice 70189



DOUBLE DEAL!

12 oz. BLIZZARD
99¢
Sale Price

THE DUDE*
\$1.29
Sale Price

ON SALE IN
DQ
COUNTRY

Order up *The Dude*: a big, delicious chicken fried steak sandwich. Then, try the original *Blizzard* Flavor Treat, swirling with your choice of candy, fruit or nuts. Only at *Dairy Queen*! Prices Good April 16-29, 1990.

* Reg. U.S. Pat. & Tm. Off. Am. D.Q. Corp. TM Reg. U.S. Pat. & Tm. Tx. D.Q. Op. Coun. © Tx. D.Q. Op. Coun. At participating Dairy Queen stores.



Spearman elementary student Sidney Woodington (right) poses with writer and entertainer John Erickson. Erickson was at the elementary school as part of a free assembly the kids won for raising the most money in the Amarillo area during the MS Readathon held in November. Woodington read 200 books to raise \$320.

Carl Kunselman

would sincerely appreciate your vote for **Spearman Independent School District Trustee** on May 5.

Pol Adv. Paid For by Carl Kunselman

A Centerpiece

by Ernestine Gray

Isn't this lovely weather. It's so nice when we don't have to run the heat or air either. Let's enjoy it while we can. The only thing that would make it even more enjoyable would be some good showers. We start thinking of vine ripened tomatoes in the future. We hope for an abundance of garden goodies and maybe some will have more than they can use and share with some of us who can not grow a garden. Some will bring things to us here at the Center and we'd enjoy it. We have heard many positive comments regarding the Radeothon. How enjoyable the day was! We have wonderful talent in our own and they are so willing to give of their time.

A special thanks to George

Panhandle Events

PODEO-STINNETT
The junior class of West Texas High School in Stinnett will sponsor its third annual Tri-State High School Rodeo, with performances scheduled for Friday, April 27 at 7:00 p.m. and Sunday, April 29 at 2:00 p.m.
The Hutchinson County Invitational All Ranch Rodeo will be held Saturday, April 28 at 1:30 p.m.
A rodeo parade is scheduled for 11:00 a.m. Saturday, April 28, and a bar-b-que is set for Sunday, April 29 in the West Texas High School cafeteria from 11:00 a.m. to 2:00 p.m.
Dances are also scheduled for Saturday, with an adult dance beginning at 8:00 p.m. at the Borg American Legion building and a student dance beginning at 8:00 p.m. at the Stinnett Community Center.
Admission prices for the rodeo performances are \$3 for adults and \$1 for students. Admission to the audience is \$5 per person, and admission to the student dance is \$2 per person. Price for the bar-b-que dinner is \$5 per person.
More information is available by calling 806-878-2457, or by writing to West Texas Junior Class, Drawer Y, Stinnett, TX 79083.

DINNER-BORGER
Natural Gas Pipeline Company will hold its annual service award dinner on Thursday, April 26 at the Borg Country Club (Huber). Name tags will be distributed during the social hour beginning at 5:45 p.m. The formal dinner will start at 6:30 p.m. followed by the program and award presentations.

CIRCUS-PERRYTON
Cason & Barnes five-ring circus will be in Perryton Friday, May 4. Two shows will be presented that day, at 4:30 p.m. and 8:00 p.m. at the Ochiltree County fairgrounds.
The circus' trip to Perryton is sponsored by the Perryton Lions Club.
Advance tickets may be purchased from the sponsors or at local businesses. Tickets will also be sold at the circus box office on the showgrounds on circus day.

"GREASE" - Amarillo
The smash Broadway musical "GREASE" will play May 4, 5, 6, 11, 12, and 13 at the Amarillo Little Theatre.
This production is being partially underwritten by Mervyn's and J.L.S. Radio.
For ticket information contact: Amarillo Little Theatre Box Office at 35-9991.

Jun 8-10 - Tri State High School Rodeo Finals, Dumas. Come see future rodeo champions at this three-day event, north of Amarillo in the Texas Panhandle. More than 175 high school cowboys and cowgirls will compete for top qualifying positions in each rodeo class. Competition is the culmination of a year-long series of events for young people from Texas, New Mexico and Oklahoma. Spectators are also welcome to kick up their heels at the rodeo dance honoring the competitors. For information, contact Dumas Chamber of Commerce, Box 735, Dumas 79029 (806/935-2123).

Young and KRDF for their contribution and Pete and Brenda Wall for all the work they put into it. To the volunteers answering the phones and so many others working behind the scenes - thanks so much to each one giving to help our Center continue to be a place of service in our community - please know we appreciate it. A note of congratulations to two deserving people who were recognized as Volunteers of the Year—Emma Lou Collins and Floydene Gatlin as Senior Citizen of the year, each very deserving.

Remember that Linda Butt is exercising with us on Mondays and Wednesdays at 9:00 a.m. Come join the fun and get in shape.
See You Next Month!!!

AAPDA
The Amarillo Area Parkinson Disease Association (AAPDA) and the American Parkinson Disease Association are sponsoring a Walk-A-Thon Saturday, April 28 at Western Plaza, east entrance, 8 a.m. to 9:45 a.m.
The fund raising event is for research and development. Part of the money stays in Amarillo for information and referral.
AAPDA meets every second Tuesday, September through May at 7 p.m. at the Good Samaritan Retirement Center, 2200 W 7th, Amarillo. Special meetings are planned through the summer months. Area residents are welcome to attend the meetings or request information.
For further information, contact: AAPDA, P.O. Box 19721, Amarillo, TX 79114; Jack Bryant - 806-355-3259 or Bonita Christian - 806-352-4627; American Parkinson Disease Association - 1-800-223-2732; or Parkinson's Disease Information and Referral Center, Texas Tech University Health Sciences Center - 806-743-2647.

Palo Duro Players are sponsoring "Read My Lips," a lip-sync contest for area students of all ages. The contest will be staged at Gruver High School auditorium on Thursday, May 10 from 7:30 p.m. to 9:30 p.m. and proceeds will benefit the non-profit Palo Duro Players. Students who wish to enter can pick up entry forms at their schools. There are three age categories for entrants, and a \$50 prize will be awarded for the best act in each category. Three judges will be present, all from Clarendon College. Contest winners will also perform at Hansford County's Round-Up on June 9. Both solo and group acts are invited to enter the contest. All entries must be received by Tuesday, May 1. Entrants will have a dress rehearsal Tuesday, May 8 from 7 p.m. to 9 p.m.

A dance to benefit the **Hansford County Activity Center** will be held Saturday, April 28 at the Activity Center, 501 S. Hazelwood in Spearman. The dance, for all age groups, will begin at 9 p.m. and end at 1 a.m. A variety of Spanish music will be provided by the local group "Los Turrys." Admission price is \$5 for advance tickets and \$8 at the door. Advance tickets may be purchased by calling 659-5050.

A training to enable Hansford County farmers and ranchers to obtain a **private applicators license** is scheduled for Tuesday, May 8. Training will begin at 9 a.m. and should conclude by 3:30 p.m. The meeting will be held in the Extension Homemakers Clubroom at 309 N. Bernice in Spearman. New regulations taking effect January 1, 1990 concerning the buying and application of hazardous or restricted use pesticides will affect many farmers and ranchers in the county. Anyone having a need for this license should contact the Hansford County Extension Office at 659-2136 or 733-2901.

Spearman students qualifying for **regional UIL Literary events** competition traveled to Abilene Saturday, April 21. The Regional UIL Literary Meet was held at Abilene Christian University. Cam Butts placed fourth in Ready Writing at regionals, and will be first alternate for State competition in Austin May 3, 4 and 5.

"**Family Violence: The Silent Crime**" will be the subject of discussion at a meeting Monday, April 30 at 7:00 p.m. in the First State Bank of Spearman reception room. Bernice Lawson, director for the Panhandle Crisis Center for Hansford, Ochiltree and Lipscomb counties will present a short video and discuss ways in which all area residents are involved in family violence, directly or indirectly, and ways to effect change. The public is invited and encouraged to attend the meeting. Hansford County Board of Directors for the Panhandle Crisis Center includes Marsha Murphy, Denise Harbour, Eddie Largent, Beth Dortch and Ginger Pittman.

Hansford Happenings

Spearman Elementary School's annual **Kindergarten Round-Up**, an orientation program for next fall's kindergarten students and their parents, will be Friday, April 27. Children currently attending kindergarten will not have school this day. Parents and prospective kindergartners who received a blue name badge in the mail will attend the morning orientation session from 9 a.m. to 10:15 a.m. Those who received a red name badge will attend the afternoon session, from 1 p.m. to 2:15 p.m.

Palo Duro Players are sponsoring "Read My Lips," a lip-sync contest for area students of all ages. The contest will be staged at Gruver High School auditorium on Thursday, May 10 from 7:30 p.m. to 9:30 p.m. and proceeds will benefit the non-profit Palo Duro Players. Students who wish to enter can pick up entry forms at their schools. There are three age categories for entrants, and a \$50 prize will be awarded for the best act in each category. Three judges will be present, all from Clarendon College. Contest winners will also perform at Hansford County's Round-Up on June 9. Both solo and group acts are invited to enter the contest. All entries must be received by Tuesday, May 1. Entrants will have a dress rehearsal Tuesday, May 8 from 7 p.m. to 9 p.m.

A dance to benefit the **Hansford County Activity Center** will be held Saturday, April 28 at the Activity Center, 501 S. Hazelwood in Spearman. The dance, for all age groups, will begin at 9 p.m. and end at 1 a.m. A variety of Spanish music will be provided by the local group "Los Turrys." Admission price is \$5 for advance tickets and \$8 at the door. Advance tickets may be purchased by calling 659-5050.

A training to enable Hansford County farmers and ranchers to obtain a **private applicators license** is scheduled for Tuesday, May 8. Training will begin at 9 a.m. and should conclude by 3:30 p.m. The meeting will be held in the Extension Homemakers Clubroom at 309 N. Bernice in Spearman. New regulations taking effect January 1, 1990 concerning the buying and application of hazardous or restricted use pesticides will affect many farmers and ranchers in the county. Anyone having a need for this license should contact the Hansford County Extension Office at 659-2136 or 733-2901.

Spearman students qualifying for **regional UIL Literary events** competition traveled to Abilene Saturday, April 21. The Regional UIL Literary Meet was held at Abilene Christian University. Cam Butts placed fourth in Ready Writing at regionals, and will be first alternate for State competition in Austin May 3, 4 and 5.

A reception is set for Friday, May 11 to honor **George Snider** upon his retirement after 30 years of teaching. Snider has taught math at Pringle school and at Pringle Morse junior high after the consolidation. The reception will be from 7:00 p.m. to 8:30 p.m. at the school in Morse. All former students and friends of George and Pat Snider are invited to attend.

Pringle-Morse CISD is offering a free clinic for children 3, 4 and 5 years old by September 1, 1990. The clinic, for children in the Pringle-Morse school district, is to help identify children who may have problems with hearing, vision, large/small muscle movements, or concept/communication skills. Parents who suspect their child has a problem in one or more areas should come to the Pringle-Morse elementary gym Monday, April 30 from 9:00 a.m. to noon.

Letter To The Editor

Our family cat Cocoa has been a member of the family for over eight years. As many others, we have learned to love and have received love back from this beautiful Siamese cat.

You are probably asking "So What?" Over the weekend of April 20 someone decided to brutally abuse this cat. We want the person or persons responsible to know the pain their actions brought to us. Only someone with a sick mind could do something so cruel.

We feel this is not an isolated incident. The evening before, we discovered another Siamese, abused in the same manner, alongside the farm road that runs behind our house. At that time we thought "How sad," but when our cat managed somehow (even though he was blinded by the injuries and could hardly breathe due to his damaged jaw) to find his way home, we realized someone out there is doing this on purpose and should be stopped.

No one is asking you to like cats or dogs, but for those of us that do, please allow us the right to have our pets without broken jaws and lacerated eyes.

I would like to ask others in the community who might discover other animals that have been treated in such a cruel manner, to phone me at 659-3956 or call the police. If the police are not alerted to these incidents no one knows how truly serious the problem might be.

To the person who abused our cat, if you are reading this, I want you to know how much suffering you have caused and that "what goes around comes around." Your turn will come.

We want to thank Clint Irwin and the police for responding soon enough to save Cocoa's life.

Cocoa's Family
Mick and Karen Reimer
Jennifer Reimer

HENSON CHIROPRACTIC
410 S. Davis Spearman, TX
Call For Appointment 659-5603

Office Hours: Mon., Wed., Fri. 8:30-5:00
Tue., Thu. 8:30-11:30

MAY CALENDER OF EVENTS

To put dates on this calendar, please call the **Spearman Reporter** Phone 659-3434.

SUNDAY	MONDAY	TUESDAY	WEDNESDAY	THURSDAY	FRIDAY	SATURDAY
		1 *Law Day	2	3 *Pringle-Morse Pee Wee Track Meet *National Day of Prayer	4 *Spearman Track State Qualifiers *Flame Fellowship 7:00 p.m.	5 *Cinco de Mayo
6 *Attend the Church of your choice	7 *Spearman Rotary	8 *VE Day *Spearman Lions Club	9 *Gruver Lions Club	10 *SVFD 7 p.m.	11	12 *Spearman Track State Meet *Spearman Music Festival
13 *Mother's Day *Attend the Church of your choice	14 *Spearman Rotary	15 *Spearman Lions Club	16 *Gruver Lions Club	17	18	19 *Armed Forces Day *Hansford Golf Club Men's Ind. Tourn.
20 *Attend the Church of your choice	21 *Spearman Rotary	22 *Spearman Lions Club	23	24 *SVFD 7 p.m.	25 *Pringle-Morse last day of school	26
27 *Attend the Church of your choice	28 *Memorial Day *Hansford Golf Club Memorial Day Scramble *Spearman Rotary	29 *Spearman Lions Club	30	31		

THIS COMMUNITY CALENDER OF EVENTS IS BROUGHT TO YOU AS A PUBLIC SERVICE BY:



Open Thurs.
4p.m. - 6 p.m.



729 W. 7th

659-5544

"Your Full Service Bank"
Member FDIC

Spearman

Social Scene...

Among the Neighbors

by Helen Fisher

Not in the ordinary routine is the work being done by some employees of Baker-Taylor Drilling company in Central America. Baker-Taylor sold a rig to J.C. Richardson, of Cal-Tex Amarillo and moved in to Belize where they will be involved in the drilling, Belize, formerly British Honduras, is in the northern part of Central America.

Roy Bulls of Baker-Taylor identified the local men who will be working there as Larry Dunn, truck superintendent; Pat Underwood, welding superintendent; Robert Rogers and Jim Thomas, drivers; and from the Canadian force—a driver, three drillers, three derrick men, a rig manager and another rig manager from Amarillo. The balance of the crew will be natives, a requirement. Max Banks is with the project at this time.

The men left Amarillo on Thursday and hauled the rig to Houston. It was then towed by barge to Big Creek, Belize, where it was unloaded on a dock owned by a banana plantation. It was then hauled 16 miles into the interior to the drilling site.

They are most anxious to get set up and started before the rainy season sets in. The annual rainfall there is 100 inches.

It will be interesting to learn of their experiences when they return.

Greg Reimer, who attends Southwestern Oklahoma State University at Weatherford, Okla. will remember this Easter long after others are forgotten.

About 9 a.m. Saturday morning, he awakened to find his living room ablaze. The flames spread rapidly to other rooms in his duplex. He just barely escaped, with his hair and beard singed. He had no smoke inhalation nor other injury, but will have to adjust to a new hair style and the loss of his beard. The fire department arrived in a few minutes and saved the structure, but all the contents were lost. He salvaged only a few clothes and personal items. The cause was undetermined but it was surmised that a heater somehow was the cause.

Mick and Karen Reimer, his

THANK YOU

I want to thank all who called, came to visit, sent prayer grams and food during my recent hospital stay.

Your thoughtfulness is appreciated very much. May God bless all of you.

Thanks again,
Lucille Hagerman



"What do you mean if cattle go down you'll have to rob a bank. If cattle go down you HAVE robbed a bank!"

You don't have to rob a bank to have money. We are in the business of making loans. Come in and see us today about getting that extra money whether it is for a new car, personal reasons, a new appliance or any other purpose. You'll like our rates and prompt service.



One NE Court
659-5565

parents, and Jennifer, his sister, drove to Weatherford on Saturday to assist him in relocating.

Mary and Henry Cornelius spent a few days during Easter in the east. They flew to Dulles airport, then went to Manassas, Virginia. They shared the 20th birthday of their granddaughter, Leslie and her 17 year old brother, Doug. Leslie and Doug are the children of the late Sam Cornelius.

Their mother, Lynda Hester and Col. Paul Hester, Air Force, are being transferred to Japan for three years. Part of their stay will be on Okinawa.

Doug will be going with him, but Leslie will remain in Virginia until she finishes her college work.

Several tiny new arrivals are the object of considerable attention this week.

Amber Newman just returned last week from Cookville, Texas for the first glimpse of her first grandchild.

Tyler Keith Grigsby was born on March 21, weighing 8 pounds. He is the son of Misty and Brian Grigsby.

Grandparents other than Amber and Buddy Newman are Terry and Jackie Grigsby of Mt. Pleasant.

Great-grandparents are Muriel Grigsby, Mt. Pleasant; Mr. and Mrs. Buck Self, and Mrs. Opal Newman, all of Cookville.

Mae Wofford spent several days in Portales, leaving on Friday. She made the acquaintance of their newest granddaughter, Cristen Anne Wofford, who arrived on April 19, weighing 7 pounds, 4 ounces, and 19 1/2 inches long.

Cristen won't be lonesome as she will have sisters, Katie and Callie, and brother Keenan to keep her company.

On Sunday Mae attended the dedication of Cristen into the Church of the Nazarene in Portales.

A number of out of town relatives and guests were here this weekend to share in the solemnity of the dedication of little Ryan Patrick Schwab into the First Methodist Church on Sunday.

He is the son of Patrick and Patricia Schwab. Patrick's parents, Penny and Donald Schwab of Copeland, Kan.; his grandparents, Don and Faye Schwab, Levelland; sister, Rebecca Schwab, Canyon; friends Frankie Clancy, Copeland; Randy and Leah Atchley, with Emily of Amarillo also witnessed the ceremony.

Verlin and Audrie Behne returned recently from Pueblo, Colo. where they had their first visit to granddaughter, Kyra Angelinda Burnham, daughter of Jocelle Burnham. She now weighs 6 pounds, after weighing just 3 pounds, 2 ounces on her birth, February 6.

Verlin's sister, Nancy Tucker and her son Gary of Amarillo accompanied them.

Ray and Helen Gibson attended the funeral of his brother last Tuesday. It was held in Chillicothe, and he had been ill a long time.

Carrie Marie Berry's granddaughter, Karen and mother, Marilyn Berry of Odessa spent the weekend here. Karen, who graduated from Spearman High School, is a student in University of Texas Permian Basin.

She will be graduating May 12, Summa Cum Laude.

Guests of Todd and Shyrle Dyess and family during the weekend were old friends, Nadine and Woodrow Slims. They are from Shamrock.

Virginia and Garland Head were in Muskogee, Okla. a few days last week. They visited her brother James Willis White, who has been



Anne Marie Jarvis

Anne Marie Jarvis, daughter of Britt and Linda Jarvis of Spearman, was one of 19 senior students recently honored at Texas A&M's Senior Merit banquet on April 7. The College of Agriculture at Texas A&M University awarded certificates to these outstanding seniors on the bases of nominations from professors and the results of interviews held with a board of professors. Jarvis was also honored by Gamma Sigma Delta, a professional agriculture fraternity composed of seniors, graduate students and faculty. She also received one of two senior scholarship awards given in the College of Agriculture.

Later the same day, the Agricultural Economics Department held a banquet. Jarvis was recognized as a Senior Merit Award winner and was also recognized as the student that will represent Texas A&M University at the American Agricultural Economics Association Meeting, to be held August 4-8 in Vancouver, B.C., Canada.

There she will present a professional paper she prepared while doing agricultural research for Dr. Carl Riester.

Later this month she will be inducted into Phi Kappa Phi, a national collegiate honor society founded in 1897 which requires a minimum grade point average of 3.5 and is limited to the top 10 percent of seniors.

Jarvis will graduate Summa Cum Laude on May 11 from Texas A&M University with a B.S. in Agriculture Economics. She currently has a grade point average of 3.96 on a 4.0 scale.

Her grandparents are Billy and Ollie Jarvis of Stinnett and Nolan and Faye Holt of Spearman.

seriously ill. He is in the Regional Medical Center, but is now out of ICU.

Catherine and Zane Hall of Pampa also have been at his bedside.

Lena Beeson underwent cataract surgery last Thursday in Pampa and is recovering nicely.

Easing the unpleasantness was the presence of her sister Gayle and Dean Compton who spent the week with her. They are from Goodman, Missouri and left on Monday.

On Sunday guests came for the day to visit with them, Lena's nephew James and Mrs. Beard from Follett, her niece Maria Kenney, from Gage, Okla. and from Spearman Mozelle Sparks, Milly Ford, Jim and Lynda Beeson with Kaye.

Greg and Carol Van Buskirk with sons Chance and Sheldon spent a long weekend here with his parents, Fred and Sarah Van Buskirk. They live at Lamar, Colo.



Heather Barkley

Heather Barkley, daughter of Bill and Tommie Barkley of Amarillo and granddaughter of Freeman Barkley of Spearman, will be graduating summa cum laude from Baylor University on May 19, with a B.A. in English.

A National Merit Scholar, she has been named Phi Beta Kappa at Baylor with an overall grade point average of 4.0. She also received the Kerr Award, which is given to the outstanding graduating English major.

Barkley represented Baylor in the fall when she presented her original work, "Chaucers Female Portraits" at Ball State University in Muncie, Ind. and at Rice University in Houston.

She has been accepted for Ph.D. work in Medieval Studies at Yale University beginning in the fall. She has received a four-year University Fellowship from the school.

Scouts hold final meeting

On Tuesday, April 17, the final pack meeting of the 1989-90 year was held at the County Barn. The boys competed in the "Raingutter Regatta in both appearance and speed.

The judges were Wayne Biggs, Kelly Fuller, and Verlin Winegarner. The winners for appearance were David Parker, first; Devin Delozier, second; Landon Delozier, third; David Zabin, fourth; and Micah Antelek, fifth.



Kevin Nelson of Spearman has been selected as a member of Cardinal Key for the academic year 1990-91 at Texas Tech University in Lubbock. Cardinal Key is composed of the top one percent of the incoming junior class at Tech. Membership requirements are based upon an overall GPA of 3.00 or better, as well as upon the areas of leadership, scholarship and service. The latter three areas must be exemplified not only on the Tech campus, but also inside the Lubbock community or within the selectee's hometown. New initiates were recognized Sunday, April 22.

Club News

The Gladioli Flower Club met Thursday, April 19 in the home of Margarette Evans.

Mrs. Don Kunselman presided over the business meeting. Roll Call was answered with a pet peeve.

The club members decided to contribute \$25.00 to the Golden Spread Center radiothon.

Dorothy Buzzard won with a home grown arrangement of red tulips and Mike Hergert won with a specimen of red tulips. Margaret Evans won with a pot plant.

Wanda Brown gave a report on the scholarship committee, and Virginia Head reported the home tour committee had secured five homes to be toured. It was noted two homes would be very interesting, as they have been redone, and three are new homes.

Head advised the publicity committee would have more on this at a later date as the home tour date of May 20 gets closer.

Mrs. Terry Butts gave a very interesting program on the Panhandle Transit System. Rose Cummings was in charge of the program.

Next meeting will be May 3 with Rose Cummings as hostess.

Mrs. Evans served refreshments to the following Mesdames: Billy Baker, Wally Berner, John Brown, Lloyd Buzzard, Gordon Cummings, Garland Head, Don Hergert, Bill K. Jackson, Don Kunselman, Don Smith, and guest Terry Butts.

Jewel Turner was hostess to the Dahlia Flower Club at its recent meeting.

Marjorie Curtis, president, presided over a short business meeting. She introduced the speaker, Linda Butt, who is in charge of the Panhandle Transit of Spearman. Her program was very informative as well as beneficial to many people.

Flowers that were judged first place included an Imperial Red Tulip specimen taken by Sarmie Bishop and an arrangement of narcissus, shown by Marjorie Curtis.

The spring colors were carried out with the refreshments served by Jewel Turner to the following members: Louise Archer, Mabel Edwards, Wanda Smith, Marjorie Curtis, Sada Hoskins, Ruth Mary Whitson, Cleo Denman and Annie Bishop.

The next meeting is with Ethel Ellsworth on Monday, May 7.

Hometown News

Kerry Foster of Gruver and Cheryl Whitefield of Spearman are recent initiates into the Panhandle State University Oklahoma Zeta Chapter of Alpha Chi. Alpha Chi is a national college scholarship honor society.

To be eligible for active membership, student must be a junior and in the top 10 percent of his or her class. Panhandle State University is located in Goodell, Okla.



Winners in the race part of the competition were Mario Salazar, first; Brace Scroggs, second;

Micah Antelek, third; Glen Powers, fourth; and Chris Cummings, fifth. Trophies will be awarded at the Blue and Gold Banquet to be held in the High School cafeteria on April 30. Trophies will also be awarded for the winners in the Dad-Lad Cake Bake and the Pinewood Derby competition.

Country Garden Greenhouse

- vegetable plants ● flowers
 - bedding plants
- Contract Growing Available

Location: 13 miles east of Spearman on FM 759-Then 1 mile south
Come See Us For All Your Spring Gardening Needs

Phil Lair-Owner-659-3466
Sherri Correll-Manager-659-2401
FREE Delivery to Spearman and Gruver

Gruver

Social Scene . . .



Travis LaDuke

Church sets revival

First Baptist Church of Gruver extends an invitation to the public to attend a series of revival meetings called "Here's Hope: Jesus Cares For You." The revival meetings, part of the Southern Baptist Home Mission Board's 1990 Simultaneous Revival Emphasis program, are scheduled for May 6-11. Featured speaker will be Travis LaDuke, pastor of First Baptist Church of Dalhart. Sunday, May 6 evening services will feature special youth music, and Monday, May 7 has been

designated as "Sunday Schooi Night." Tuesday is "Bring-A-Friend" evening, and Wednesday evening is "Youth Night," with food served that evening. "Children's Night" is Thursday, with "tube steak" being served, and Friday evening is reserved for the church's "Victory Celebration." Services Monday through Friday will be held from 12:00 noon to 1:00 p.m. and at 7:30 p.m. Sunday evening services are at the regular worship hour, 7:00 p.m.

Johnson presents paper

Melyn Johnson of Gruver recently read a historical paper she had researched and written to the sixty-seventh annual meeting of the West Texas Historical Association. Johnson began oral interviews and research into the Oslo Community a year ago, reading old newspaper and magazine clippings, school records and church records to find information for her paper. Johnson read her paper on

April 6 in San Angelo. The President of the WTHA for the past year, David Murrah, is a native of Gruver. At the banquet he announced that 19 years ago, he read his first paper at the WTHA in San Angelo. Speaker for the banquet was Dr. Joe B. Frantz, director of the Oral History Project at the Johnson Presidential Library in Austin and one-time Johnson presidential aide. Dr. Frantz has written several books about LBJ and his political days. Dr. Murrah gave the luncheon talk entitled "Back to the Future: The State of West Texas History," on Saturday, following handing the presidential gavel to the Texas novelist Elmer Kelton, WTHA's new president.

Hometown News

Ramon Vasquez of Gruver has been named as an outstanding technical-vocational-occupational student for March at South Plains College in Levelland. Vasquez is one of 33 students representing SPC's TVO division who recieved such an honor. He is studying drafting technology at the school. "We wanted to recognize outstanding students in the technical-vocational division for their achievements in the classroom and for their contributions to South Plains College as a whole," said Frank Hunt, dean of the TVO division. "We began the initial recognition series last year and plan to continue again this year," he said.

UT M. D. Anderson Hospital
Cancer Information Service
 1-800-4-CANCER



Happy Birthday John!
 From:
Mom (Marilynn) & Grandma (Elodia)

On The Go With Joy

by Joy Henderson

Well, I have heard through the grapevine from census takers, "Just hang on to your census forms, there will be somebody come and pick them up." Of course, I didn't talk to them personally, but overheard one talking to someone else. So - I go check to see if mine is still in the same location or maybe if it has been picked up while I was gone. It will be just my luck that no one will be home and the census taker will have to make more than one trip.

This past weekend, I "goofed off" the whole Saturday going to flea markets and garage sales. As I would leave, I'd comment that I was just gathering stuff up for my garage sale and I'd just charge 50 cents more than what I'd paid. Sometimes, that would get a laugh, but most times not-especially after I'd haggle over the price. I finally got to the point where I'd just offer to trade my junk for some of theirs. I'm not much of a "horse trader," but some of these people who go to garage sales are known for their penny-pinching shrewdness.

That's the kind of guy my friend Joe is. One clerk said "When he pays me, I have to squirt machine oil in his hand to get the money loose." Most of the swappin' Joe was most successful at was with dogs. He could take a dog-pound refugee and pass him off as a prince. What is so amazing is the fact he could keep the same customers and deal over and over with them.

I asked Joe to let us in on some of his trade secrets. "The trick is never to lie to the person you're swappin with," Joe begins. "What you say doesn't necessarily have to mean what you think, but it's got to be the truth." Such as?

"You know that old blue-tick I sold yesterday? I told the fellow that bought him that I treated the dog like family."

"But you half-starved the dog, you made it sleep under the house, and I never saw you offer it a kind word or pat on the head," I argue. "How can you say you treated it like family?"

"I was thinking of my mother-in-law," says Joe.

Like I say, you have to watch out for swappers like Joe. He promised me more tricks of the trade at our next scheduled flea market. Maybe, I can round up some of these scroungy dogs and let him show me how to swap and make some money.

Reports are still coming in about the Easter celebrations. There was a good number of visitors in the

home of Rosalie Cator for an "egg hunt" for the little ones. Included were D.A. and Patty Cator and family, Kelly and Casey Cator, Tina and Rick DeLuna and Audrey. From Spearman visiting was Patty's mother Helen Pracher.

Bill and Dorothy Cator, Loyd and Davonna and their friends were there, as were Amy and Mike Babbs with Shell and Eva, Mike's parents, Ed and Ellen Babbs from Spearman, Larry and Nancy Babbs with sons Wes and Kevin were included, along with Angie and Ted Poole with Josie and Shannon from Farwell, and Chet and Cora Pittman with Brent and Christy. Additional visitors were Nelle and Kristin Evans and Rebecca Westerfield. There was some speculation as to who had the most fun, the "hidlers" or "seekers."

Other holiday travelers for Easter were: Jill (Riley) and Kim Love and Sloane of Amarillo, Roy, Denise, Macy and Dan Harbour; Bill, Ginger, Bill Jack and Sally Jo Pittman all of this area. Ross and Edna Marie Walker had her sister and nephew as guests in their home.

Several students from college were taking R&R from studies. Andrew Burgoon, Bret Hobbs, and Victoria. Several of the Weldon Green family were in Florida for several days enjoying Disney-world and we hope to report on their activities next week. Also, a few of our "senior age" ladies are scheduled to return from a dream trip to Hawaii today (Monday). I hope they brought grass skirts home as souvenirs and will give us a few lessons on the hula. I've heard that if you want to learn the story, watch their hands, but my eyes never get that high up.

We are happy to see Nell Thoreson back in Gruver after spending some time in the hospital.

Roy Wells suffered an eye injury when a metal sliver entered his eye and caused severe damage to retina etc. He has gone to Oklahoma City for treatment.

Charlie Casdorff was stricken with a heart attack last week, and is at High Plains Baptist in Amarillo. Further tests are being conducted to determine the course of treatment.

Word has been received from Diane Doty about Gary after he was transferred to Colorado. I know they will appreciate to hearing from friends in Texas.

GJHS student poetry

THE 80s WERE GREAT??

by Hart Derington

In this day and age of going here and there, It's funny how some people don't really care. They start selling drugs out on the street Always begging for a place to sleep. They walk in a store and pull out a gun, All they want is a little fun.

All those pollutants that are in the air, The people down here don't really care. With all those fumes and all those gasses, Now the air's more like molasses. We run out plants and spray our sprays, Now we can't block the sun's mighty rays.

All those people out on the street, Wish they had something good to eat. They find a box, that is their bed, Wake up in the morning-oh, what a dread. They can't go to school, they have not a dime, For they're in misery most all of the time.

"The 80s were great," we say aloud, Let's have a look at the other crowd. We have to stop drugs-it's a real killer, All those pollutions-not a real thriller. Help the homeless-you'll feel good, I really think everyone should.

STONES

by Paul Renteria

An emerald is green as grass a ruby as red as blood. a sapphire shines so blue as blue as the heaven above. A diamond is a brilliant stone, To catch anyone's desire. An opal holds a fiery spark of love - Stones come in all shapes and colors. They bring joy to me and many others.

Words of the Wise

by Heath Meier

I woke up early one day And this is what I had to say, "The sun is so, so bright, Just like a flourescent light, The sky is oh, so blue And so is my love for you. I am feeling so much better today, Because you have gone away."

Love

by Alyce DeLaFuenta

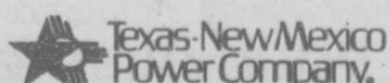
Love is a word that cannot be explained. It also causes lots of worry and pain. It is sensitive and special, But never angry and selfish. Sometimes it can break a heart Yet sometimes it will never start. Love will come in awhile Sometimes on a face it will bring a smile. When love is found, don't let it go Because when it comes, it will let you know.

Statement of Intent to Change Rates

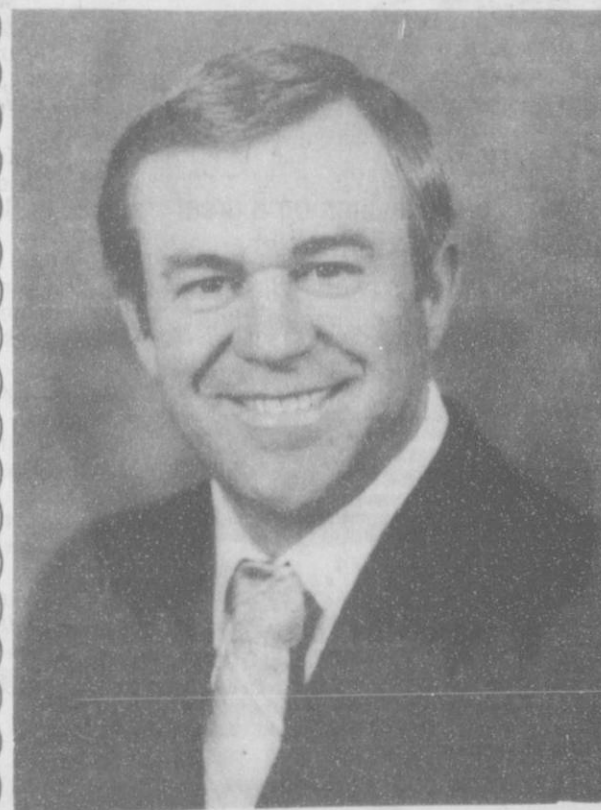
In accordance with the regulations of the Public Utility Commission of Texas, Texas-New Mexico Power Company announces the Company's intent to change rates for its entire Texas operations. The effective date of such change is May 18, 1990. All classes of customers will be affected by said proposed changes. The proposed rates will produce an increase in gross revenues to the Company over test year revenues adjusted for test year customer growth and annualization of test year rate increases of \$54,879,334, or 17.00%. TNP is proposing an alternative rate base treatment for Unit 1 of TNP One, the first unit of the Company's generating facility located in Robertson County, Texas. Under this alternative, the costs of Unit 1 will be included in rate base in a three (3) step, ten (10) year phase-in plan. If adopted, the phase-in plan results in an increase in gross revenues of \$43,074,934 or a 13.34% increase over adjusted test year revenues during the first year of the plan. Texas-New Mexico Power Company provides electrical service to more than 163,083 customers located within the state of Texas.

A complete copy of the requested rate filing package is on file with the Public Utility Commission of Texas in Austin, Texas, and with all cities served by Texas-New Mexico Power Company which have retained original jurisdiction. You may inspect a copy of the filing during normal business hours at each business office of Texas-New Mexico Power Company in your area.

Persons who wish to intervene or otherwise participate in these proceedings should notify the Commission as soon as possible. A request to intervene, participate, or for further information should be mailed to the Public Utility Commission of Texas, 7800 Shoal Creek Boulevard, Suite 400N, Austin, Texas 78757. Further information may also be obtained by calling the Public Utility Commission Consumer Affairs Division at (512) 458-0223 or (512) 458-0227, or (512) 458-0221 teletypewriter for the deaf.



TNP-4/90



Craig Schumann

SISD Trustee Candidate

I would appreciate your support in the Saturday, May 5 election. I encourage everyone to get out and vote.

Pol. Adv. Paid For By Craig Schumann

Gruver golfers off to state

by Bob Bort

Last year the Gruver High School boys golf team did not qualify anyone for regionals, and the girls had no one participating in the sport. This year, six GHS golfers qualified for regionals, five boys and one girl.

The boys team surprised one and all by charging forward on the second day of competition to improve a sixth-place standing and wind up in second place by the slimmest of margins (one stroke). Thus, they qualify for the state golf meet in Austin on May 10-11.

Team members are Stefan Dorman, Kyle Irwin, Chad Brown, Justin Armes and Kevin Babbs.

Gruver's District 1-A Golf Medalist Kim Boone did not finish in the running for regional medalist, but shot a fine 94-96, 190-14 strokes behind the regional medalist, Dee Dee Dorman of

Wheeler.

But Boone is only a freshman and has excelled in her first year of competition.

For the boys, it was noteworthy that they finished ahead of third-place perennial powerhouse Booker. For Gruver, here are the results: Stefan Dorman 92-84, 176; Kyle Irwin 95-93, 188; Chad Brown 88-89, 177; Justin Armes 95-87, 182; and Kevin Babbs 117-117, 234. Team standings: 1. Claude 365-351, 716; 2. Gruver 370-353, 723; 3. (tie) Paducah A 370-354, 724; 4. Booker 359-365, 724; 11 others.

All this exciting action took place on April 24-25 at Levelland Country Club for the boys and at Sundown Municipal Golf Course for the girls. The Gruver boys golfers become the first Hounds team to advance past regionals to Austin since the 1985 track team, which finished second at state.



Proudly displaying their ribbons are the Spearman Special Olympic Team members. Standing on the back row (l-r) are Wayne Fleming, Joseph Sintas and Sylvia Ortega. Kneeling in front, (l-r) are Marvin Byers, Patrick Wyrick and Jeffrey Wyrick.

Special athletes win ribbons

Spearman sent six athletes to compete with athletes from eight other Panhandle towns at the WTSU Special Olympics.

The event was held on the WTSU campus in Canyon Saturday, April 22. The athletes were accompanied by two coaches and various family members to cheer them on. According to a news release from Sue Sloan Woolley, the team did very well.

Woolley reported the team competed in two age divisions. Wayne Fleming, Sylvia Ortega, Joseph Sintas, Jeffrey Wyrick and Patrick Wyrick competed in the 8-11 age group. Marvin Byers was in the 16-21 age group. According to Woolley the older age group had some very tough competition. The winners in each age group event were given ribbons on a winners' platform. According to the release the team brought home a total of 12 ribbons. They won seven first place, three second place and two

third place ribbons.

The team members and the ribbons they won are as follows:

- Sylvia Ortega
- 1st-50m walk
- 2nd-softball throw
- Wayne Fleming
- 1st-50m dash
- 1st-softball throw
- Joseph Sintas
- 1st-50m dash
- 1st-softball throw
- Jeffrey Wyrick
- 1st-50 m dash
- 2nd-high jump
- Patrick Wyrick
- 2nd-50m dash
- 1st-high jump
- Marvin Byers
- 3rd-100m dash
- 3rd-softball throw

The team was coached to victory by Woolley and her assistant, Wayne Fleming Sr. The family members accompanying the team were Benny and Joyce Byers, Alvin Byers, Becky Keating and Alice Thomas. Other family were Beatriz, Liz and Ruth Ann Flemming and J.B. and Celina Sintas.

In the release, Woolley expressed thanks to the following people for their support of the Special Olympics team: the athletes' families for their tremendous help and support at the meet; Lynelle Williams, who Woolley describes as "a competent and compassionate paraprofessional," for her patience and good ideas; and Mrs. Anita Clemmons, Wendy and Jessica Woolley for making the team banner. Thanks went to grades 4 and 5 classes for the reception at school; Cates Men's and Boy's Wear for the team uniforms; Mr. Gage for his support and backing; and to Mr. Butler and the school board for their recognition, support, and providing transportation.

Woolley reports the team will be in competition again the weekend of April 28 in Perryton and the weekend of May 12 in Borger.

GHS tracksters go to regional

by Bob Bort

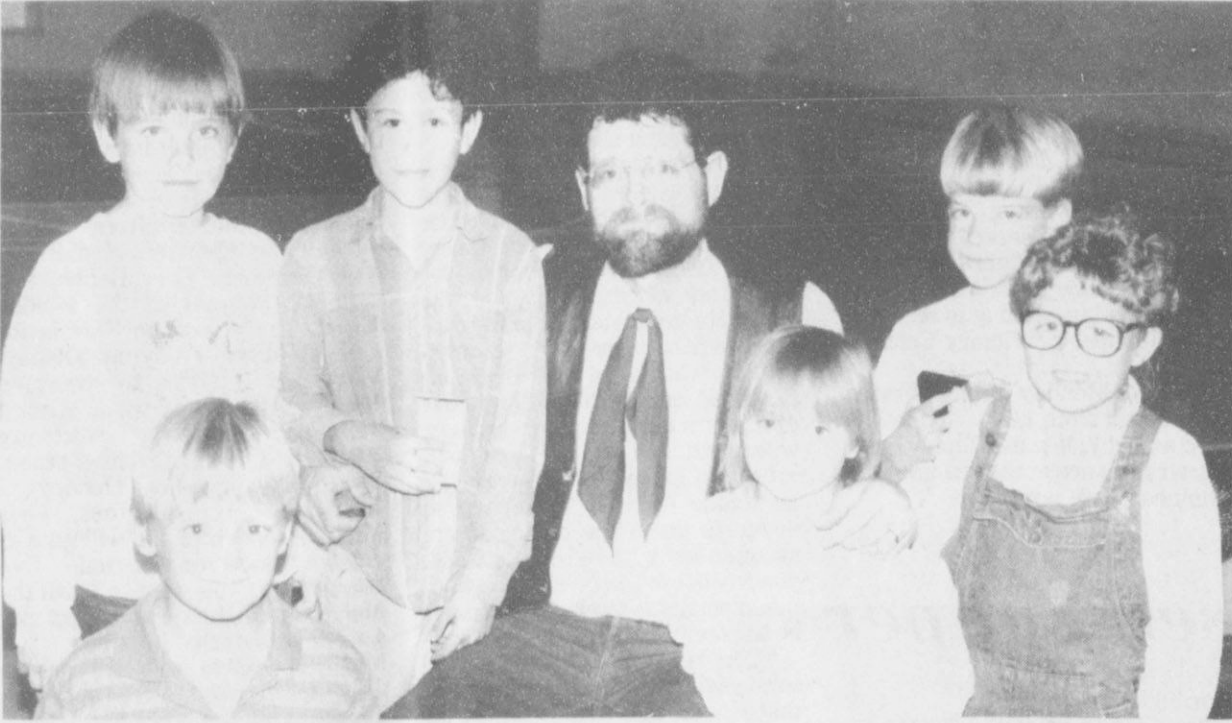
The 1990 District 1-A Champion Gruver Greyhounds and Gruver Lady Hounds will depart for regional competition Thursday, April 26, and will compete there on Friday-Saturday, April 27-28. Twenty competitors will be going, with the coaches, and the chances for a group of state qualifiers are very good.

Gruver tuned up for the regional competition with a qualifiers meet at Randall High School this past weekend.

For the boys, here are the team members: 1. Brice Goldsmith (shot put - he threw his best of the year this past Saturday at Randall); 2. Chris Spivey (discus); 3. Theron Park (high jump, 1600 Run, 3200 Run, 400 Relay-alternate); 4. Troy Seagler (high jump - alternate, 800 Run, triple jump, 400 Relay-alternate, 1600 Relay); 5. Dan McCloy (100 Dash, 200 Dash, 1600 Relay); 6. Kyle Haenisch (1600

Relay); 7. Gannon Harris (1600 Relay, 400 Relay-alternate); 8. Jason Haefner (400 Relay-alternate); 9. Crockett Tidwell (selected alternate).

For the girls, here they are: 10. Holly Venneman (high jump, 400 Relay-alternate, 800 Relay, 1600 Relay); 11. Elda Pando (800 Run, 3200 Run, 1600 Relay); 12. Brandy Shelton (400 Run, 800 Run, 1600 Relay-she is on the Amarillo Globe News Area Girls Track Honor Roll for the 400 and the 800, and she broke the Gruver High School all-time record in the 800 three times this year); 13. Janelle Haefner (100 Hurdles, 400 Relay-alternate, 800 Relay); 14. Shelley Stedje (100 Hurdles, 400 Relay-alternate, 800 Relay); 15. Angela Sistrunk (200 Dash, 800 Relay); 16. Cora Meyer (400 Run, 1600 Relay); 17. Kasey Davis (400 Run-alternate); 18. Stacey Williams (400 Relay-alternate); 19. Sandra Royval (selected alternate); 20. Monica Ward (selected alternate).



These Readathon assembly winners each won a "Hank the Cowdog" story tape. Pictured are (left to right) Casey Noble, Ricky Goodson, Victor Favela, John Erickson, Katrina Cole, Dustin Beck and Amber Ramon.

Advantage: Dodge.



Take advantage of big cash lineup of 1990 Dodge stock. Come in, take a good look and you'll find... Advantage: Dodge.



\$2000 Cash Back*

IF YOU WANT THE BIGGEST PICKUP CASH BACK AROUND, IT'S ADVANTAGE: DODGE.

1990 DODGE FULL-SIZE PICKUPS. The tough trucks with unbeatable standard payload and the highest standard towing - half-ton, three-quarter, or one-ton diesel! ** Plus, an unmatched \$2000 cash back on regular full-size pickups. \$1500 on Club Cabs, \$1000 on diesels.



\$1000 Cash Back*

WITH MORE HORSEPOWER THAN 4-DR. NISSAN SENTRA XE, IT'S ADVANTAGE: DODGE.

1990 DODGE SHADOW. Leaving Sentra in the dark, and far behind, Shadow overpowers the competition with nearly four dozen standard features, and more horsepower than 4-dr. Nissan Sentra XE. Plus you get \$1000 cash back.



\$1000 Cash Back*

WITH THE HIGHEST TORQUE OF ANY DIESEL PICKUP, IT'S CLEARLY ADVANTAGE: DODGE.

1990 CUMMINS TURBO DIESEL. Experience the power of the hardest working diesel pickup there is. Blasting the competition with turbocharged excitement, and more torque than any other diesel pickup around. Plus get \$1000 cash back for big savings now.



\$1000 Cash Back*

WHEN IT COMES TO VALUE, COMPARE WITH NISSAN MAXIMA GXE! AND YOU'LL FIND ADVANTAGE: DODGE.

1990 DODGE SPIRIT ES. A sedan with plenty of performance, and plenty of value too, beating out Nissan Maxima GXE Sedan with more passenger room, and a lower price! ** Get \$1000 cash back now!

*Must buy from stock for guaranteed cash back. Get details & claim form at dealer. **Comparisons of comparable models. †Based on comparably equipped sticker price comparison. ††Base sticker price comparison. Std. equip. levels vary.

For Guaranteed Cash Back Savings, It's... Advantage: Dodge.

770 BUCKLE UP, AND PLEASE DRIVE SAFELY.



GILLASPIE
AUTO & TRUCK CENTER, INC.
CHRYSLER, PLYMOUTH, DODGE
Highway 207 South P.O. Box 427 (806) 659-2541
SPEARMAN, TEXAS 79081



Sales taxes disbursed

The City of Spearman received a check for \$12,057.16 and the City of Gruver received a check for \$2,946.02 in the April disbursement of city sales taxes from the State Comptroller's office.

As compared with the same month last year, the tax rebate to Spearman increased 20.25 percent, from \$10,026.87. Gruver's receipts for April reflected a decrease of 17.31 percent from the

\$3,562.93 received in the same month last year.

Year-to-date total receipts for Spearman are \$59,850.92, down 1.05 percent from the 1989 year-to-date receipts of \$60,485.87. Gruver has received a total of \$15,358.60 in returned city sales taxes this year, a decrease of 9.85 percent from the \$17,036.46 received in the first four months of 1989.

State Comptroller Bob Bullock said that his office sent checks totaling \$74 million in local sales tax rebates to cities and counties in Texas.

"That's a healthy increase over last April's payments and good news for the state's cities and counties," Bullock said.

Checks to cities totaled almost \$67 million, an increase of 7 percent over last year's total payments at this time, Bullock said.

Houston received \$11.7 million, the state's largest payment while Dallas received the state's second largest payment of \$7.6 million. San Antonio received \$3.9 million and Austin received \$2.8 million. Rebate checks to counties total-

ed \$7 million this month for an increase of nearly 16 percent over last year's total payments at this time. The increase is partly due to more counties collecting sales tax now, Bullock said.

This month's checks include taxes collected on February sales and reported in March by businesses filing monthly tax returns.

Merchants collect the sales taxes and send them to the Comptroller's office with their tax returns. The state keeps its 6 percent share and each month sends cities and counties their portion of the sales tax.

All local sales taxes must be approved by local voters and may be used for any legal city or county expenses. Most areas put the money in their General Fund and use it for operations like fire fighting, maintaining roads and law enforcement.



ATTENTION MUSIC BOOSTERS!

Musical Festival is coming up May 12th. There will be a concession stand there. Also, Music Banquet is May 22nd.

There will be a general meeting on May 1st at 7:30 p.m. for both of these events, at the high school band hall.

Please attend.

Kay's Cafe

210 Main
Spearman

will be one year old

Tuesday, May 1.

To celebrate we'll have

Free Coffee and Donuts that day.
Come by and celebrate with us!

We appreciate
your business.



For The Short Of It

by Bob Bort

In the January 18 issue of the Gruber Statesman, I reported in my column the rumored trade between the Dallas Cowboys and the San Francisco 49ers, which would have had backup quarterback Steve Walsh going to the 49ers for defensive back Tim McKyer, and running back Terrence Flagler. Of course, I reported that the trade "would never happen." But the Cowboys at least had their eye on Flagler, as they just obtained him from the 49ers for a couple of draft picks. They also picked up defensive end Dan Stubbs from the 49ers in the deal. The acquisition of Flagler probably satisfies their need for a running back in tomorrow's (it is now Saturday) draft. I will have more on the draft later in this column. The Cowboys still draft 21st and 26th in the first two rounds.

Cindy Barkley of Gruver, a freshman at West Texas State, defeated Michelle Hunter of Texas A&I 7-5, 4-6, 6-2 in the quarterfinals of the Lone Star Conference Tennis Tournament at Amarillo Tennis Center this past weekend; then she was defeated by Niki Ritt of Cameron 7-5, 6-0 in the semifinals. In doubles competition, Rodriguez-Love of Texas Women's University defeated Barkley-Herring of WTSU 6-4, 7-5. All of us wish Cindy the best of luck this year at Canyon.

Pardon me, while I vent a little anger and frustration. Several months ago, my automobile insurance rates were jacked up, so I complained by writing a letter to the State Insurance Board in Austin. That was a mistake. After several months, the end result is that my rates were jacked up again, and I was told, in no uncertain terms, that I could take it or look for better rates elsewhere. This little segment of my column is not intended to be good PR for insurance companies.

Tomorrow is not only NFL draft day, it is also Earth Day! I'll bet that thrills most everyone! Actually, over 200,000,000 people worldwide are going to celebrate the 20th anniversary of the first Earth Day, in 1970. Our children will be 100 times as concerned about the environment as we were when we were school age. Hopefully, it will all result in a bipartisan effort in stemming the continuing destruction of our planet by those who live here.

Back to the insurance gripe - my beef is with an insurance company, not with any local agent or agency. Some of my best friends are insurance agents, but there is only so much you can do to help - especially when you get someone like me who goes over everyone's head and writes to the State Insurance Board...

The Randall High Regional Track Qualifiers Meet was held this past Saturday, and several Gruver

competitors placed. Dan McCloy placed third in the 200 meter dash with a time of 23.16 seconds, and Gruver's boys 1600 relay team, without Troy Seagler, finished third with a time of 3:35.02. And Brandy Shelton placed third in the 800 meter run, with a time of 2:26.2. For the third time this year, with that mark in the 800, Brandy has broken the all-time Gruver High School Girls record in the 800 meter run. Her two previous best results were 2:29.45 and 2:29.81, so she broke her own record by more than three seconds. She is ready for regionals!

I mentioned above that Troy Seagler did not compete at Randall this past weekend. That is because he was in San Antonio with Coach Tim Garland. Troy was honored to be selected to play in the Texas High School Optimists Basketball All-Star Game on Saturday, April 21. It is in conjunction with the Texas Association of Basketball Coaches (TABC), and perhaps Troy will be impressive enough that he will come out of this season with a good scholarship offer. We wish Troy the best of luck!

Crockett Tidwell really feels honored to have been selected as a member of the regional track team by Coach David Steele. Tidwell will be an alternate for the Sprint (400 meter) Relay, and he couldn't be happier about the trip to Levelland.

The St. Jude's "Wheels for Life" Bike-a-thon was held this past Friday, April 20, and they had an outstanding turnout, with 82 bikers taking part. Coordinator Dave Karlin won't know until later this week how much money was raised, but it will turn out to be a very significant amount.

Well, as much as I dislike Jimmy Johnson and Jerry Jones, I have to admit they may be putting together the pieces well for the Dallas Cowboys. They have made a group of trades during the off-season, including signing some Plan B free agents, and now appear to be putting together a backfield for quarterback Troy Aikman. They acquired Terrence Flagler, as noted earlier in this column, and now have traded up to the number 17 pick in the NFL draft, and have selected running back Emmitt Smith, who is also a good receiver, from Florida. The only negative about Smith is his agent, who last year held a player out until October, looking for top dollar. The Cowboys better be prepared to pay for Smith, who comes out of this draft as one of the many juniors who were available this year. With their second pick, the 26th overall, the Cowboys selected Alexander Wright, a speed-burning wide receiver out of Auburn. The Cowboys offense is really starting to come together.

Last year, I openly stated I had hoped the Cowboys would finish

0-16, because I disapproved of the way they dumped Tom Landry and Tex Schramm. They finished 1-15. This year, I am already predicting that they won't finish last in the East. The Phoenix Cardinals will finish last. I am more sympathetic toward Jones and Johnson this year, after they got mugged by the NFL last year, and I will even root for them - on occasion. The big question - is anybody willing to pick against the 49ers this year????

Clayton Williams, Republican candidate for Governor of Texas, is trying to talk himself out of victory before the race even gets heated up, admitting Sunday he paid prostitutes for sex as a young man, 35 years ago. Organizations like NOW will be hot on his tail after this, and especially after his joke about rape last month.

It is hard to tell if his desire to be just a "Good Ol' Down Home Boy" from Texas will turn out to backfire on him, but I am fed up with these two candidates, and this entire race. We all make mistakes, but maybe I'm just not "Texan" enough to appreciate the glib comments of Williams, about "coming of age." And Ann Richards has problems with her own past, as a recovering alcoholic and, perhaps, at one time, as a drug abuser.

As I said, we all make mistakes in growing up, and I am certainly not one to hold someone's past against them. People grow in different ways, throughout their lifetimes. It is mostly the lack of tact and good sense that concerns me about Williams, and a lack of character or conscience that concerns me about Richards. But, it is for sure, that there are those out there who know me, who might question my own tact-good sense-character-conscience, so you can take my comments for what they are worth.

In the end, I will vote, by the way ... You see, voters are not required to be perfect, but the candidates are looked at, always, as role models, and need to be better than the norm.

I can't let this last part of my column go, without an afterthought...Even though they are political candidates, and open themselves up to public criticism, I shouldn't be so harsh on Clayton Williams and Ann Richards. We all live in a world where we are victims of our own environment, I believe (Has anyone else read Les Miserables?), and with the media as it is, it is next to impossible to find an unstained political candidate. In past years, a lot less was known about our public officials, and the media treated them more "honorably." Besides, finding fault with Williams and Richards sounds too "preachy," and leans toward being hypocritical.

So, please disregard this whole column...



Ready for regionals are Spearman tracksters (l-r) Suzanne Sanders, Jill Lusby and Joy Gafford.

Regional meets held in Abilene

The regional track, golf and tennis meets were scheduled to be held in Abilene Wednesday, April 25, with several representatives from Spearman competing.

Traveling to the regional golf meet is the SHS girls team of Sunshine Smith, senior; Nancy Ivey, junior; Marci Womble, junior; Monica Blackman, sophomore; and Kyla Nelson, junior, alternate.

Ten tennis players are making the trip to the regional meet in Abilene this year. Spearman is sending two girls doubles teams, Cam Butts, junior/Tamri Townsen, sophomore; and Kimbre Townsen, freshman/Shea Crawford,

freshman. Competing in singles will be Brandi Schneider and Adrian Blackburn. This is the second year for Butts/Townsen to compete at the regional level, as well as for Schneider.

Spearman's representatives in boys doubles are teams composed of freshmen. The teams are Clint Townsen/Wesley Dyess, #1; and Russell Shaver/Mike Hager, #2.

The Spearman track teams are sending seven girls and two boys. Chris Williamson, junior, will be competing in the 100 m dash and John Hughes, senior, will compete in discus and shot put.

The mile relay team of Laci

Lasater, senior; Joy Gafford, sophomore; Sonya Nitschke, sophomore; and Jill Lusby, freshman is competing, with Shannon Holton and Mendy Lasater going as alternates.

High jump competitors for Spearman include Suzanne Sanders, sophomore; and Jill Lusby, freshman. Lasater will run the 400 m dash, Gafford will run the 100 and 300 m hurdles, and Lusby will compete in the 800 m run. This is the second year of regional competition for all the sophomores from Spearman, and the fourth year of competition for Lasater.

ELK CITY REGIONAL QUALIFIERS TRACK MEET VARSITY LYNXETTES

- 100 M Hurdles
- Joy Gafford, 3rd - 16.3
- 200 M Dash
- Sonya Nitschke, 4th - 27.24
- 300 M Hurdles
- Mendy Lasater, 2nd - 48.3
- Joy Gafford, 3rd - 48.8
- 800 M Run
- Mary Cook - 2:40
- 4 x 200 Relay
- Mendy Lasater, Shannon Holton, Jill Lusby, Laci Lasater, 3rd - 1:50.16
- 4 x 400 Relay
- Shannon Holton, Sonya Nitschke, Laci Lasater, Jill Lusby, 1st - 4:07.5
- 3200 M Relay

Shannon Holton, Jill Lusby, Sonya Nitschke, Mary Cook, 2nd - 10:37.7

HEREFORD TRI STATE RODEO SUNDAY, APRIL 22

- BOYS
- RIBBON ROPING
- 6. Marty McCloy, Gruver-9.96
- 8. Sage Britian, Gruver-12.55
- TEAM ROPING
- 8. Clint DeArmond, Spearman-Jake Monroe, Dumas-12.32
- GIRLS
- BARRELS
- 8. Kelly McCloy, Gruver-14.48
- POLE BENDING
- 2. Leslie Morton, Gruver-20.66
- BREAKAWAY ROPING
- 7. Kelly McCloy, Gruver-23.69

HANSFORD GUN CLUB

At the Hansford Gun Club Shoot Sunday, April 22, in .22 cal. rifle the winners were:

- SENIOR
- Match winner - Aaron Brown
- 1st A class - Paul Stanley
- 1st AA - Aaron Brown
- 2nd AA - J.L. Musick
- 1st AAA - Jerry Younger
- JUNIOR
- Match Winner-Brad Brown
- 1st B - Clint Sasser
- 2nd B - Keith Winegarner
- 1st A - Trey Porter
- Last week at the Texas State Action Pistol Championship, Rex Reid won 1st expert class. The match was held in Dallas.

Going Strong In The 90s . . .

HANSFORD HOSPITAL & MANOR

Sometimes in the routine and the rush of every day, we forget: Caring is what this nursing facility is about. If it were not for our community involvement in this hospital district, we would not have the quality facilities we have. We would like to thank these clubs, businesses, organizations and individuals for their support:

- Hansford Hospital Auxiliary
- Ministerial Alliance (Spearman & Gruver)
- Golden Spread Senior Citizen Center
- Spearman Rotary Club
- Gladiola Flower Club
- Happy Homes Extension Club
- Chamber of Commerce Women's Division
- Perceptor Epsilon Zeta
- Twentieth Century Club
- Northern Natural Retirees
- Laureate Gamma Gamma
- First National Bank
- Town & Country Extension Club
- Lady Fair
- Laquita Evans
- Charles Brillhart
- Vivian Green
- Charmian Lyle
- Wanda Widener
- Mary Ruth Connell
- Spearman Ind. School District
- Claudine Clark
- Spearman Chamber of Commerce

- Spearman Lions Club
- Spearman Jaycees
- Rho Rho Sorority
- Spearman Study Club
- Dahlia Flower Club
- Xi Zeta Upsilon
- Servitors
- First State Bank
- Moose Lodge
- Prairie Garden
- Sacks Third Avenue
- Cates Men and Boys
- Bunkhouse
- J.G.'s
- Coy Bennett
- Elene Green
- Pauline Winger
- Dorothy Woolley
- Betty Uptergrove
- 4-H Club
- Alma Ward
- Girl Scouts

We would like to invite you to our Outstanding Volunteers Awards Presentation on Sunday, May 6th, 1990, from 2:00 to 4:00 in the dining room of Hansford Manor.

Please come say thank you! Everyone is welcome!

By supporting our local hospital and nursing home, you can assure your loved ones access to health care services. During Texas Hospital Week, May 6-12th and National Nursing Home Week, May 13-19th we recognize the valuable contributions made to our community by you. The residents and patients count on us! We count on you!

GREAT OUTDOORS & SWEEPSTAKES

Prices good through 4/30/90
SWEEPSTAKES EXPIRES 05/31/90

REGISTER NOW!
No purchase necessary. See store for details.

NAPA Gas Deluxe Heavy Duty SHOCKS \$12.99 EACH

All 94000 Series

Get these heavy-duty gas shocks at a special price. And you'll get ultra-smooth superior control and a lifetime limited warranty.

Mac's Injector Care Fuel Injector Detergent #6600 99¢ ea.

NAPA OIL *74¢ per quart

Limit one case per address. *after rebate

10W-30, 10W-40, HD SAE 30

NAPA Oil Filters \$1.99 (After \$2.00 mail-in rebate)

Air Filters \$2.00 (mail-in rebate)

Fits Most Cars & Light Trucks

GRAND PRIZE
Salmon fishing trip for two to Alaska.

FIRST PRIZE
Quail/Phasant hunting trip for two to Texas.

Trip includes:
• Three nights deluxe accommodations
• Round trip airline tickets
• Guides, meals and more!

CHAMPION Lawn Mower Spark Plug CJ-8 99¢ ea.

BELDEN 50' Extension Cord #15158 \$7.99

NAPA Lawn & Garden Tractor Battery \$21.95 (with trade-in)

*8221 (Group U1-L7) Reg. \$33.27 w/Trade-In

Available at these and other participating NAPA stores. Ask about NAPA's National Warranty Program

AMARILLO, (BROOKS) 358-6841	DALHART 249-4563	PANHANDLE 537-3587
AMARILLO, (FLEET) 358-6273	GROOM 248-7471	SHAMROCK 256-3251
BEAVER, (OK) 625-4556	GUYMON, (OK) 338-2539	SPEARMAN 659-2506
BORGER 274-5327	HOOKER, (OK) 652-2484	

Do you have a NAPA/VISA card yet?

Most Major Credit Cards Accepted

For the finest automotive repair visit NAPA AUTOCARE CENTERS or GARAGES where quality NAPA parts are installed.

Because there are no unimportant parts.™



PRICES GOOD THRU MAY 1ST IN PERRYTON ONLY. WE GLADLY ACCEPT FOOD STAMPS, W.I.C. CARDS & MANUFACTURER COUPONS

APRIL SAVINGS

Grocery

CRISCO SHORTENING
REGULAR
4.5 LB. CAN
\$2.99

PETER PAN PEANUT BUTTER
30¢ OFF LABEL SMOOTH OR CRUNCHY
18 OZ. JAR
\$1.69

PEPSI ALL VARIETIES
6-12 OZ. CANS
\$1.79
3 LITER.....\$1.39

OREO'S REGULAR OR DOUBLE STUFF
20 OZ. PKG. FUDGE COVERED
14 OZ. PKG.
\$1.99

NABISCO PREMIUM CRACKERS
REGULAR LOW SALT UNSALTED TOPS WHOLE WHEAT
16 OZ. BOX
.99

QUANTITY RIGHTS RESERVED • NO SALES TO DEALERS

HUNT'S KETCHUP
44 OZ. JUG
\$1.59

FINE FARE WHOLE TOMATOES
16 OZ. CAN
FOR **2.89**

GLADIOLA FLOUR
5 LB. BAG
.89

LIPTON TEA BAGS
100 CT. PKG.
\$2.99

the personal touch
UNITED SUGAR
5 LB. BAG
\$1.69

Nonfood

CHARMIN BATH TISSUE
ASST. 4 ROLL
.99

BRAWNY TOWELS
ASST. JUMBO ROLL
.69

Health & Beauty

AQUA NET HAIR SPRAY
9 OZ.
.79

MANAGER SPECIAL

BUY 2 LB. CARTON SADDLERS BAR-B-Q BEEF
GET 1 PINT CARTON POTATO SALAD FREE

Frozen

FINE FARE ORANGE JUICE
12 OZ. CAN
\$1.19

BANQUET POT PIES
BEEF CHICKEN TURKEY
7 OZ. FOR **3 \$1**

USDA CHOICE SUPER VALU PAK BOTTOM ROUND STEAK
BONELESS TENDERIZED
UNITED CHOICE BEEF
SINGLE PAK \$1.98 LB.
\$1.78

Produce

RED RIPE TOMATOES
2 LBS.
\$1

USDA CHOICE BONELESS RUMP ROAST
UNITED CHOICE BEEF
LB.
\$1.98

COUNTRY PRIDE GRADE A FRYER BREAST TENDERS
Fresh Chicken Tenders
LB.
\$3.19

Dairy

TEXAS YELLOW ONIONS
NEW CROP
2 LBS.
\$1

UNITED HOMO MILK
1/2 GAL. CTN.
\$1.09

SHEDD'S SPREAD COUNTRY CROCK
3 LB. TUB
\$1.59

FARMLAND PORK ROAST
BOSTON BUTT
LB.
\$1.38

WANT ADS Work Wonders!

Oil & gas report

NEW LOCATION, COMPLETION & PLUGGING REPORT
GRAY (PANHANDLE) OXY USA, Inc. #15 Shields 'A' (218 ac) Sec. 151, 3, I&GN, PD 3475'.
HANSFORD (TEXAS HUGOTON) Brawley Petroleum Corp., #2 Dozier (640 ac) Sec. 129, 2, GH&H, PD 3300'.
LIPSCOMB (WILDCAT & SPERRY Morrow) Medallion Petroleum, Inc., #1 Kunka (268.5 ac) PD 9350'.
OCHILTREE (WILDCAT & Alpar St. Louis) Strat Land Exploration Co., #6 Pearson (640 ac) Sec. 105, 4-T, T&NO, PD 8640'. Rule 37.
SHERMAN (WILDCAT & CARLANDER Morrow) Phillips Co., #3 Bush 'A' (160 ac) Sec. 212, 1-T, T&NO, PD 5400'.
SHERMAN (WILDCAT & CARLANDER Morrow) Phillips Petroleum Co., #2 Bush 'B' (160 ac) Sec. 212, 1-T, T&NO, PD 5450'.
WHEELER (WEST KEY Upper Morrow & ALLISON-BRITT) Apache Corp., #4 Key (640 ac) Sec. 11, 1, B&B, PD 16500'.
Application to Deepen
GRAY (PANHANDLE) Rio Petroleum, Inc., #5 J.S. Morse 'D' (40 ac) Sec. 54, 25, H&GN, PD 3100'.
Oil Well Completions
LIPSCOMB (HARMON Mar-maton) Willford Energy Co., #1 Bechthold, Sec. 116, 10, HT&B, elev. 2810 gr, spud 12-13-89, drlg. compl 2-8-90, tested 3-4-90, pumped 15 bbl. of 42.2 grav oil & 48 bbls. water, GOR 4267, perforated 7350-7450, TD8597', PBTD 8160'-Plug-Back.
OCHILTREE (FARNSWORTH-CONNER Des Moines) TXO Production Corp., #2 Cudd, Sec. 66, 11, W. Ahrenbeck, elev. 2957 gr, spud 10-25-89, drlg. compl 11-6-89, tested 2-6-90, pumped 11 bbl. of 40.8 grav. oil & 5 bbls. water, GOR 1818, perforated 6688-6920, TD 8575', PBTD 7090'-Plug-Back.
OCHILTREE (HORIZON Cleveland) Apache Corp., #1 McGarraugh, Sec. 135, 13, T&NO, elev. 3053 df, spud 1-22-90, drlg. compl 2-26-90, tested 2-26-90, pumped 8 bbl. of 41.4 grav. oil & 6 bbls. water, GOR 3750, perforated 6962-6982, TD 8450', PBTD 7016'-Plug-Back
Plugged Wells
GRAY (PANHANDLE) PRODUCTION Consultants, Inc., #814 Southwest Pampa Dolomite Unit, Sec. 128, 3, I&GN, spud 4-19-37, plugged 2-23-90, TD3301' (oil)-Form 1 filed in Dancinger Oil & Refineries
OCHILTREE (HERMANN Upper Morrow) New London Oil, Inc., #1 W.C. Bryan, Sec. 1097, 43, H&T, spud 1-7-82, plugged 2-23-90, TD9500' (oil)-Form 1 filed in Falcon Petro.

PUBLIC NOTICES

Site Needed For
Spearman, TX 79081-9998
 Main Post Office

The United States Postal Service is seeking a suitable site upon which to build a new Post Office Building at Spearman, Texas.

- The preferred area for site consideration is:
- North within 1/2 mile from existing post office
 - South within 1/2 mile from existing post office
 - East within 1/2 mile from existing post office
 - West within 1/2 mile from existing post office

The desired site size is 37,975 square feet or a lot with dimensions of 155 by 245 feet; however, both smaller and larger sites will be considered, particularly those with a corner location.

Copies of the advertisement for sites may be obtained from the Postmaster at Spearman, TX 79081-9998.

Property owners are asked to submit their site offerings no later than the close of business, May 18, 1990 to:

Bob Tipton, Real Estate Specialist
 United States Postal Service
 4811 Louisville Avenue
 Lubbock, TX 79402-9311

LEGAL NOTICE
 NOTICE OF PUBLIC HEARING
SPEARMAN PLANNING AND ZONING COMMISSION

Date: May 15, 1990
 Time: 2:00 p.m.
 Place: City Council Chambers, 30 S.W. Court, Spearman, Texas
 Purpose: To consider in public hearing the rezoning of the tract of land listed below plus one-half of all bounding streets, alleys and public ways:

A 75' x 150' Lot in the South Corner of Tract B, Outlot 40, Original Town, City of Spearman, Texas, with a street address of 220 E. D Avenue.

If the Planning and Zoning Commission favorably considers the request or the applicants file a written appeal with the City Secretary by 5:00 p.m., May 17, 1990, the City Council will hold a public hearing to consider the proposed change as follows:
 Date: May 22, 1990
 Time: 7:30 p.m.
 Place: City Council Chambers, 30 S.W. Court, Spearman, Texas

For additional information call 659-2524
 -Cheryl Gibson
 City Secretary

S26-1tc

REAL ESTATE

HOUSE FOR SALE: 112 King - Gruver - Three BR - Two Bath - Single Car Garage - Large living area attached to dining room & kitchen. Call Merry Shelton - 733-2769 or 659-5515. Reasonable. S24-4tp

TERRIFIC OPPORTUNITY

To own a nice home!
1017 S. TOWNSEND

Priced to sell by First Baptist Church, **\$6,500 BELOW** appraised value.

This is a unique situation and you can benefit. Talk to us:

Craig Vinson, 659-2326
 Richard North, 659-5068
 S25-2tc

FOR SALE: 3 Bedroom, 2 bath, garage, storm windows, central heat/air. Call 659-3096. S22-1tc RTN

FOR SALE 3 bedroom, 2 bath home Fireplace, large living area, drapes, mini-blinds, completely remodeled and large deck patio. Nice neighborhood. 1110 S. Barkley. Call 659-3800. S36-rtn

FOR SALE OR RENT with option to buy. Three bedroom, good location. 901 Townsend. Call 659-2794 or 659-5066. S18-1tcRTN

FOR SALE: 3 Bedroom house at 207 Etling, Gruver. Call 733-2958 after 5 p.m.

S21-1tc RTN

FOR SALE: 3 bedroom, 2 bath home. Sunken living room, parquet floors, fireplace, covered patio, 2 car garage, sprinkler system, 2193 sq. ft. living space, excellent location. Call 659-3587 or 659-5022. S33-Rtn

FOR SALE: 3BR brick home with storage house. Can see at 1007 S. Bernice or call 659-3402. Price reduced S12-RTN

FOR SALE: Beautiful 3 Bdrm, 2 1/2 bath home basement and office. Large fenced yard with fruit trees, patio. See at 1015 Wilmeth, Spearman or call 806-659-3436 or 806-659-2040 Evenings. S21 1TC RTN

FOR SALE: Steel building on Highway 15 West, about 2,000 square feet enclosed, 150 feet highway frontage, depth in 190 feet. Emmett R. Sanders, Realtor, 659-2516, nights 659-2601. S25-RTN

FOR SALE: Three bedroom brick home on 1 1/2 lots. 1360 sq. ft. living space. Large fenced backyard. Great for kids. Priced low 30s. Call 659-5057 or 659-2024. S26-3tp

Count on the
Classifieds
 to Do the Job

Real Estate Sampler

Allen Alford-Broker-659-3034
 Hester Crawford-659-2074
 Dennis Nelson-Sales-659-3608
 Larry Trosper-Sales-659-3491
THREE BEDROOM HOMES
 727 Wilbanks-Office, 1 1/2 B.
 715 Steele-Fireplace
 1116 UNDER CONTRACT 1e
 729 Wilbanks-1 1/4 Baths
 1108 Archer-2 B., Dbl. Gar.
 412 Townsend-Affordable!
 805 Archer-Close to School
 904 Linn Dr.-1 yr. old-3/2/2
 522 Evans-3/2/1
TWO BEDROOM HOMES
 811 Townsend-Dbl. Garage
ACREAGE
 15 Acres-Crawford Addition
OTHERS
 Apt. Complex-Profitable!
 Check for other listings.
WE WANT TO BE YOUR REALTOR

HELP WANTED

GRUVER LIONS CLUB is taking bids for the care of our softball park for the summer. Age 15 or older. Equipment furnished. Contact Wes Maupin, 733-2988 after 6 p.m. S26-1tc

DISTRICT REPRESENTATIVE HIGH CALIBER PERSON

Sales career position with management opportunities in growing organization. Intensive training program. Excellent income. No experience necessary. Outstanding group insurance and retirement benefits. Relocation not necessary.

For confidential personal interview, call 806-435-9448 or write Richard Lamberson, Box 602, Perryton, TX 79070.

NEEDED - DYNAMIC, personable and professional appearing individual as a sales representative for the Hansford County newspapers. Receive: car allowance, base salary and commission. Apply at the **Spearman Reporter** offices, 215 Main, Spearman, TEXAS. S20-RTN n/c

"ATTENTION: POSTAL JOBS! Start \$11.41/hour! For application info call (1) 602-838-8885, Ext. M-4514, 6 a.m. - 10 p.m., 7 days." S24-4tp

ATTENTION: EARN MONEY TYPING AT HOME! 32,000/yr income potential. Details: (1) 602-838-8885 Ext. T-4514. S27-3tp

ATTENTION: Excellent income for Home Assembly work. For info. Call 504-646-1700 Dept P6392. S26-3tp

MISC. FOR SALE

FOR SALE: Formal, Waltz length, size 10 or 12. See Cleo Denman, 321 W. 3rd. S26-2tc

We Buy & Sell Good Used Pianos - Ph. 316-624-8422 - **Brier & Hale** Music - Liberal, Ks. S24-3tc

PIANO FOR SALE
WANTED- responsible party to assume small monthly payments on piano. See locally. Call Credit manager at 1-800-233-8663 S24-6tp5.19

Jan's Etc. New & Used & Antiques Too. Everything for home and family. Plains Shopping Center in Spearman. Open Monday thru Saturday 9:30 a.m. til 6 p.m. S16-Rnt



GOLDEN SPREAD REALTY
 Janye Helton Pointer, Broker
 Owner, 435-5444
 Jennifer Nollner, Sales Associate, 659-5243

Old Hansford Location- 4/2. Quality home on approx. 5 acres!

515 S. Bernice-4/1 1/4, extra large lot & close to school!
 605 Archer-3/2, large rooms plus deck and hot tub!

101 E. 12th- 3/1 1/2, move-in condition. Great location!

18 S. James-3/2, extra features include basement & building in back!

701 Collier-4/1 1/2, affordable 3 year old home!

20 S. James-2/1, well maintained!

611 S. Evans-3/1 1/4, affordable!

118 Townsend-4/2, apartment included!

522 S. Haney-Priced to sell quickly!

315 1/2 N. Bernice-Lot for sale!

315 Townsend-2/1, small price tag!

Equal Housing Opportunity
 INDEPENDENTLY OWNED AND OPERATED

PETS

TO GIVE AWAY- Two six week old puppies. One black male and one white female available. Call 659-2774 after 5 p.m. S25-3tc

FOR SALE: Shar-Pei female, 1 1/2 yrs. old; male, 1 yr. old; male, 9 wks. old. Asking \$500 or reasonable offer. Call 405-225-3941, leave number. S25-3tp

SERVICES

CALL YOUR LOCAL used cow dealer for 7 days a week dead stock removal. 659-3544 or 1-800-692-4043. Serving Cattlemen for the past 20 years. G51-rtn

Are You A Victim of Physical Abuse?

Call Toll Free
1-800-753-5308

Trained counselors can help you on the road to an abuse-free life. We also operate a safe place for victims and their children to stay in times of crisis.

Panhandle Crisis Center
 Serving Lipscomb, Hansford and Ochiltree Counties
 315 1/2 S. Main
 Perryton, TX.

\$5,000 GOLD CARD
 No turn downs! No deposit needed. Cash advances! Also fast, easy VISA/MC, no deposit! Free info! 1(800)234-6741, anytime. S25-4tp

BUSINESS OPPORTUNITIES

MAKE MONEY taking orders from friends and relatives for Avon. Call Billie at 857-3772 in Fritch. S24-6tc

SITUATION WANTED

CUSTOM FARMING wanted. Call Ed Papay, 733-2797. S25-2tc

FOR RENT

TRAILER SPACE FOR RENT: in Spearman, \$50 a month. Call 435-5080. S43S-RTN

NOTICE

Wallace Monument Co. Monuments, Curbing, Grave Covers
 Local Representative
LEONARD JAMESON
 Spearman, Texas
 35s-rtn

BOB HARDY REALTY

803 Wilmeth Dr.
 659-3440

NEW LISTINGS

412 S. Davis - Commercial Building, partially rented, good return investment. Approximately 25 x 40. \$15,000.

713 Steele Dr. - 3 BR, 2 Bath, Nice, Reasonable.

Colorado Property For Sale.
 Robert Hardy - Broker

OSGOOD MONUMENT CO.

Amarillo, Texas

Dealers of Rock of Ages Granite, as well as all colored granites, marble and bronze memorials.

represented by

BOXWELL BROS.

FUNERAL HOME

519 S. Evans

659-3802

GARAGE SALES

GARAGE SALE: Tuesday, May 1, 9 a.m. - 4 p.m. 1108 Wilmeth, Spearman. S26-1tp

LOST & FOUND

LOST: Answers to the name of Chelsea. Tan three month old Boxer wearing brown nylon collar. Last seen at 213 N. Brandt. If found, call: before 5, 659-5046; after 5, 659-3469. Very important that dog is found. S26-1tp

PUBLIC NOTICES

CITATION BY PUBLICATION THE STATE OF TEXAS

TO: JAMES PAUL STARR
RESPONDENT Greeting: YOU ARE HEREBY COMMANDED to appear before the 84th District Court of Hansford County at the Courthouse thereof, in Spearman, Texas, by filing a written answer at or before 10 o'clock A.M. of the first Monday next after the expiration of forty-two days from the date of the issuance of this citation, same being the 28 day of May A.D. 1990, to Plaintiff's Petition filed in said court, on the 23 day of October A.D. 1989, in this cause, numbered 2452 on the docket of said court and styled **IN THE INTEREST OF JAMES KEVIN STARR and MANDI MAE STARR, Minor Children.** A brief statement of the nature of this suit is as follows, to-wit: **MOTION TO TRANSFER SAID CAUSE TO EL PASO COUNTY, TEXAS.**

The officer executing this writ shall promptly serve the same according to requirements of law, and make due return as the law directs.

Witness, Amelia C. Johnson, Clerk of the 84th District Court(s) of Hansford County, Texas

Issued and given under my hand and the seal of said court at Spearman, Texas, this 9th day of April A.D. 1990.

Amelia C. Johnson, Clerk,
 84th District Court
 Hansford County, Texas.

CLASSIFIED ADS PAY OFF!

Offered by
EMMETT R. SANDERS
 REALTOR
 Owner's 2 bedroom home plus 3 rental units. Good investment package.
EMMETT R. SANDERS
 REALTOR
 659-2516, nights 659-2601

Oil & Gas Reporting Service

Box 2052 Pampa, TX 79065

Providing the Oil & Gas Report for Hansford County Readers.

Doris Harrison

Phone 665-5800

AMARILLO LIVESTOCK AUCTION

GRAND OPENING SPECIAL

STOCKER & FEEDER SALE

MAY 15, 9:00 A.M.

\$3000⁰⁰ TOTAL PRIZE MONEY

DIVIDED AMONG HIGHEST SELLING LOTS OF 25 OR MORE IN THE FOLLOWING CATEGORIES

STEERS	300 to 399lbs.	HEIFERS	300 to 399 lbs.
STEERS	400 to 499	HEIFERS	400 to 499
STEERS	500 to 599	HEIFERS	500 to 599
STEERS	600 to 699	HEIFERS	600 to 699
STEERS	700 & Up	HEIFERS	700 & Up

CALL 806-373-7464 FOR MORE INFORMATION

TERRY JONES MGR. (806) 379-7522

CHARLIE ALFORD ASST. MGR. (806) 499-3403

EVERYONE IS CORDIALLY INVITED TO VISIT OUR NEW ULTRA-MODERN FACILITY



FIVE YEARS OLD - Employees and officers of First National Bank of Spearman gathered Tuesday, April 24 at an open house celebrating the bank's fifth birthday. In the picture are the three employees who have been with the bank since its inception. They are Don Townsen, Bill Pittman and Tindle Ramon.



Pre-schoolers visit Hansford Hospital and Manor on Wednesday to see posters they colored as part of Texas Hospital and National Nurses Weeks, May 6th - 19th. Pictured here are (left to right) Amanda Apadaca, Christina Ochoa, Maxie Stayton, Steven Vaquera, Claudia Vaquera, Coby Kygar and Michael Lozano.

Spotters trained

by Dale Moyer
Asst. Chief, SVFD

On April 17 the Spearman Volunteer Fire Department, Spearman Police Department and the Spearman E.M.S. attended a severe storm training program.

Robert Robledo of the National Weather Service of Amarillo presented the program. Robledo trained these departments to be storm spotters for the Spearman area in identifying and reporting severe storms.

When bad weather comes to Hansford County there are county weather watchers stationed around Gruver, Morse, Oslo and Spearman. The Guymon Civil Defense and the Sheriff's office also aid in the weather watches.

When weather threatens the Spearman area, there are city weather watchers, including Spearman Police Department, Spearman Fire Department, and the Spearman E.M.S. These units are positioned at different locations surrounding the city.

Storm shelters in the city of Spearman are the courthouse base-

ment and the Spearman High School. These buildings are open to the public in the event of severe weather.

The Spearman and Hansford County weather watchers strive to warn the public of severe weather as soon as possible.

DPS gives stats

Capt. Rusty Davis, district supervisor of the Amarillo Highway Patrol District comprised of 31 counties, said, "For the month of March, our troopers investigated one fatal accident, 92 personal injury accidents and 141 property damage accidents. There was one person killed and 152 persons injured in these accidents."

Sgt. Timothy Thompson of Borger stated, "In Hansford County, our troopers investigated no fatal accidents, no personal injury accidents and one property damage accidents in the month of March. No persons were killed and no persons were injured in these accidents."

First annual Moose Chili Cookoff held

The first annual Moose Chili Cookoff was held at the Spearman Moose Lodge Saturday, April 21. There were 25 entries from Spearman, Amarillo, Perryton and Dimmitt.

Winners in the Overall Chili were: 1st Place - Marshall Young, Dimmitt; 2nd Place - Audrie Behne, Spearman; 3rd Place - Donna Hendrickson, Spearman; 4th Place - J.L. Griffin, Spearman; and 6th Place - Kay Hamilton, Spearman.

Winners of the Moose Chili com-

petition were: 1st Place - Audrie Behne, Spearman; 2nd Place - Kay Hamilton, Spearman; and 3rd Place - Donna Hendrickson, Spearman.

Winners in the Peoples Choice competition were: 1st Place - Melody Bell, Amarillo; 2nd Place - Kelly Burkhart, Amarillo; and 3rd Place - Audrie Behne, Spearman.

Winners in the Showmanship Competition were: 1st Place - J. L. Griffin, Spearman; 2nd Place - Red Hamilton, Spearman; and 3rd Place - Stan Jenkins, Spearman.

The cooks were preliminary judges, and final judges were all from Spearman. They were Rocky Randall, Jack McMullan, Curley Davis, Jimmy Morley, Jim Brown, Melinda Sasser, Joan Schneider and Sharon Cook. Judges for Peoples Choice were Larry McCoy, Jamie Pierce, Fred VanBuskirk, Greg VanBuskirk, Ron Cook, Judy Hendrickson and Dean Delp.

Moose Coordinators were Verlin Behne and Pat Jackson.

The Moose Lodge extended thanks to all the judges and to the merchants who donated door prizes.

WEATHER			
	High	Low	Pred.
Thu.	70	44	.05
Fri.	77	54	
Sat.	84	44	
Sun.	85	57	
Mon.	87	58	
Tue.	82	54	.10
Wed.	74	48	1.22



GUESS WHO'S 18!!!!

Hansford Round-Up . . .

Schedule announced

Spearman Chamber of Commerce has issued a schedule of events for the 1990 Hansford County Round-Up. Featured events for the Round-Up will include rodeo performances, a carnival, a parade and other entertainment for the entire family.

A rodeo performance will start things off Saturday, June 2 at 6:00 p.m. Immediately following the rodeo there will be a dance featuring the sounds of "Little Davy and the 98s."

On Sunday, June 3 there will be a church service at the Oscar Archer Rodeo Arena for rodeo participants

and anyone else who wants to attend. The afternoon rodeo performance will start at 2:00 p.m.

A carnival with rides, games and more will be in Spearman the week of June 4-9, and on Friday, June 8 the 1990 Miss Hansford Pageant will be staged at 7:00 p.m. in the Spearman High School auditorium.

The Round-Up really begins Saturday, June 9 with an 8:00 a.m. start for biathlon competition. At 9:00 a.m., a free breakfast of coffee, donuts and orange juice will be served at Spearman city hall.


Main Street Spearman will hold activities beginning at 9:00 a.m. Saturday, with the Main Street merchants' annual sidewalk sale. Students from Carla's Dance Studio and Paula's Rhythm and Dance will perform on Main Street

at 9:30 a.m. At 10:30 a.m., the Rainbows and Ranglers Square Dance Club will perform on Main Street.


The parade line up will be at 10:00 a.m., and the parade starts at 11:00 a.m. Also at 10:00 a.m. will be an "Outlaws Gun Fight" and a cholesterol screening test. Food and game booths open at 11:00 a.m.

Local talent will be featured in a variety show at 1:30 p.m., and at 3:00 p.m. the Hansford County Historical Commission will dedicate the Lindburg marker south of Spearman.

Sunday, June 10 will wind up the celebration with a community wide church service at Spearman High School auditorium. More information can be obtained by contacting the Spearman Chamber of Commerce at 659-5555.



The top heating and cooling dealers recommend the Dual Fuel Heat Pump above all the rest.




Benny Wilson
Benny Wilson Electric
Gruver, TX

With every type of heating and cooling system to choose from, the top specialists recommend the Dual Fuel Heat Pump to their customers. It's electric, but works with gas - making the most efficient use of both. As a result, you heat and cool more economically, dependably and cleaner.

Contact your nearest Dual Fuel Heat Pump dealer.

Dual Fuel Heat Pump



© SPS 1990

NEEDED

DYNAMIC, PERSONABLE, PROFESSIONAL APPEARING individual as a sales representative for the Hansford County newspaper.

Receive: car allowance, base salary and commission.

Apply at the HANSFORD COUNTY REPORTER-STATESMAN offices, 213 Main, Spearman, Texas

S20-RTN n/c

Standing Tall For You.

FRONTIER

HYBRIDS, INC.

Full line of corn, milo & foliage sorghum hybrids specially bred for this area at competitive prices.

In the Hansford County area, contact **Wes Maupin, 733-2988**

1 1/2 mi. east of Gruver on Spearman Hwy.

Frontier is a registered trademark of Frontier Hybrids, Inc., Abilene, Texas.