

VALLEY WEATHER				
DATE	HI	LO	PREC	
AUG 30	87	64	-----	
AUG 31	89	64	-----	
SEP 1	87	62	-----	
SEP 2	89	63	-----	
SEP 3	96	62	-----	
SEP 4	92	63	-----	
SEP 5	75	64	.20	



Bruce + Betty  
with Pure

50¢  
per copy

# THE VALLEY TRIBUNE

VOLUME 41 NUMBER 12

8 PAGES

BRISCOE COUNTY

QUITAQUE, TEXAS 79255

THURSDAY, SEPTEMBER 6, 2001



## STATE BISON HERD GROWING BY LEAPS AND BOUNDS AT CAPROCK CANYON STATE PARK

(Taken from The Amarillo Globe-News by Rick Storm)

The State Bison Herd located at Caprock Canyons State Park has increased this year with the births of nine baby buffaloes. "We thought we had eight, but we had one fool us and got a late calf," said Danny Sweptson, Texas Parks and Wildlife Department district manager. "It's hard to tell when they're pregnant."

Sweptson said calving season lasts from the end of June to mid-September with a nine to 9 1/2 month gestation period.

The buffaloes belong to the historic State Bison herd, which was started in the late 1870's when pioneer cattleman Charles Goodnight, sensing the demise of the great southern bison herd, roped two buffalo calves. "Goodnight had the foresight to preserve the herd," Sweptson said. "He also saw economic possibilities." The herd grew to as many as 250 and roamed free on the JA Ranch until 1997, when JA owners donated the herd to the state.

The herd represents the only known genetically pure animals remaining from the great southern bison herd, once thought to have numbered more than 60 million head. The herd now numbers 40-18 males and 22 females, said C.L. Hawkins, TP&WD park ranger. Hawkins cares for the herd on a daily basis.

This year marks an important year for the herd, Sweptson said, because one heifer calved that was only 2 months old when it was moved to the park from the ranch. In 2002, Sweptson said officials expect two heifers that were born at the park to become mothers. "Bison are 2 years old before they calf," Sweptson said.

According to Barry Hutcheson, TP&WD interpretive planner said public viewing of the State Bison Herd should be available about January 2003. The hope is to strike a balance between maintaining the integrity of the herd and the public's desire to see the herd. An interpretive center will have an observation post for the public to watch the buffaloes in their natural state.

### Jr Class To Sponsor Pre-Game Supper

The Valley High Junior Class will be sponsoring a pre-game supper for the first home game. The supper will be held in the Valley School Cafeteria on Friday, September 7 from 5:30 p.m. until 7:00 p.m.

Mexican Stack will be served along with dessert and iced tea. The Junior Class is raising money for class projects. They would like to invite everyone to stop by before the first home game and enjoy some Mexican Stack.

### Psalms IV Gospel Quartet In Concert

The Psalms IV gospel quartet of Amarillo, Texas will perform in concert Saturday, September 8, 2001 in Turkey, Texas at the Gem Theatre. The proceeds from the concert will go to the historical Turkey Roost Museum project. The concert is scheduled to start at 7 p.m.

### Bee Traps In Briscoe County

By Brandon McGinty, CEA-Ag

If you have been traveling from Turkey to Silvertown or Silvertown to Tulia on Highway 86, you have probably seen the blue, pink, or yellow "boxes" on the fence line. These "boxes" are bee traps. With the advancement of the Africanized Honey Bees into Lubbock County, the Texas Cooperative Extension is trapping bees in counties North of Lubbock. Lubbock County is under quarantine to move bee hives out of Lubbock County. The traps along Highway 86, do not trap just the Africanized Honey Bee, but all types of bees. DO NOT bother the traps or you could disturb the bees in the trap.

There is no way to tell whether or not the trap contains the Africanized Honey Bee until specimens from the traps have been sent to a lab in College Station. There is no way to identify the differences between a Honey Bee and the Africanized Honey Bee without proper training and equipment.

The traps will be checked periodically and specimens tested for the Africanized Honey Bee. There is no need for alarm. This is a procedure to keep us and the public aware of the movement.

### FSA County Committee Elections Approaching

The Farm Service Agency (FSA) is seeking candidates for the locally led County Committee election to be held this fall. Elections will be held in Hall County in the local administrative area (LAA) 1 (one) which is primarily the north half of Hall County and includes Lakeview, Brice, Lesley, and Plaska areas. The eastern boundary line for LAA 1 somewhat parallels Indian Creek to the Red River, and the southern boundary from that point following the Little Red River back to the western county line. A map of the LAA boundaries are available in the Hall County FSA if anyone wishes to view them. All FSA County Offices are seeking candidates for the County Committee elections, so check with the County Office(s) in which you are involved with for further details.

Nomination forms can be obtained from FSA County Offices. Completed nomination forms are due back to the FSA office by October 29, 2001. FSA will notify nominees and mail election ballots to eligible voters in mid-November. Completed ballots must be returned to FSA offices and postmarked by December 3. Elected members and alternates will take office January 1, 2002.

FSA County Committees provide local guidance and make decisions on issues including: commodity price support loans and payments; establishment of allotments, yields and marketing quotas; farm loans; conservation programs; incentive, indemnity and disaster payments for some commodities; and other disaster program assistance. County Committees have served as the eyes, ears and voice of farmers and ranchers nationwide for more than 60 years.

The County Committee plays an integral role in the delivery of Farm Service Agency services. We'd like the County Committee to reflect a diverse cross-section of the local agriculture community by including representation from nontraditional farming operations, small farmers or ranchers, specialty crop producers, minority producers, spouses or business partners-anyone who would be willing to add new or different perspectives to the County Committee.

For more information contact your local USDA Farm Service Agency office.

## Applicants Denied 1998 Crop Loss Disaster Assistance May Now Be Eligible

Producers who previously did not qualify for benefits under the 1998 Crop Loss Disaster Assistance Program (CLDAP) may now be eligible. Eligibility for CLDAP benefits under the multi-year option required crop losses by producer identification number in at least three of five years from 1994 through 1998.

The revised legislation gives individuals previously ineligible for multi-year program payments the opportunity to submit their application and potentially receive CLDAP benefits. The deadline for applicants to submit a completed CCC-540MY, Crop Loss Disaster Assistance Program Application form for multi-year benefits is September 14, 2001. No applications for benefits will be accepted after this date.

Applications will be accepted from individual producers only Joint operations or entities in which you may have had an interest in during 1994 to 1998 are not eligible; however your share of the indemnities received by the joint operation or entity during that period is what is now being revisited. The revised eligibility requirements provide that producers who otherwise would have qualified for the 1998 CLDAP multi-year benefit in the absence of restructuring of their farming operation, or may have operated under multiple entities in the years 1994 through 1998, may qualify for program benefits.

Eligible producers include those that either previously filed an application and did not meet eligibility requirements; or producers who received a payment for single-year losses, but did not initially qualify for multi-year benefits. Additionally, producers who restructured their business or changed their farming operations from an individual to an entity changed identification (ID) numbers, or had crop losses, but operated under different ID numbers in the years 1994 through 1998, and did not meet the minimum crop loss history requirement necessary to receive a multi-year benefit might qualify for CLDAP benefits as well.

FSA recommends that any producer who suspects that he or she might qualify for CLDAP program benefits contact the County FSA Office immediately to confirm their eligibility considering the window of opportunity for application is very short.

VALLEY TRIBUNE  
E-Mail Address  
vtaylor@caprock-spur.com

### Valley School Receives Praise From Texas Speaker Of The House

Turkey-Quitaque CISD recently received a letter of congratulations and certificate of commendation from Texas House of Representatives Speaker, James E. "Pete" Laney for being named an exemplary school district. They were also commended for being named an exemplary campus on the state's accountability ratings recently issued by the Texas Education Agency.

In his letter, Texas Speaker Laney expressed his appreciation to all of the students, parents, teachers, staff and school board members for their hard work in helping the district and school achieve this year's excellent ratings. He went on to say that the achievement of Valley School shows that small school districts are very successful in preparing our students to meet the challenges of the twenty-first century.

Valley Superintendent Jerry Smith stated "We have ALL worked very hard as a team to accomplish this goal and it is an honor to be recognized by the state for our efforts."

Valley Patriot  
Pep Rally  
Friday, Sept. 7  
at  
3:00 p.m.  
in the  
Valley Gym  
Go Valley!

### Warm Memories Of Grandparents

By Earlyne Jameson

The impetus for a National Grandparents Day originated with Marian McQuade, a housewife in Fayette County West Virginia. Her primary motivation was to champion the cause of the lonely and elderly in nursing homes.

Each year for the past 23 years now, September has meant more than the beginning of school and the onset of autumn. September is now the home month of Grandparents Day this year the observation falls on September 9.

In 1978, President Jimmy Carter proclaimed that National Grandparents Day would be celebrated every year on the first Sunday after Labor Day.

I looked forward to my summer vacations when I visited by paternal grandparents, Mr. and Mrs. J.R. Laughlin. I adored my grandmother Laughlin!

She and other grandmothers during this era of time knew the value of laughter. Their pleasures were in the simple things of life that some people see as chores, caring for chickens, a garden, pressure canning, mending clothes and cooking from scratch three meals a day.

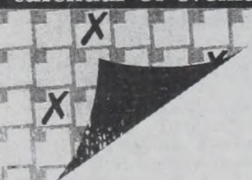
I'll always cherish the memories of the big front porch with the swing and a heavenly breeze when playing guessing games with grandmother and helping her shell black-eyed peas and snapping green beans. My brother, Gary was off getting into mischief down the street.

She found joy in attending church services and other religious meetings, quilting parties and having all her children and families visit on special occasions.

She had strength of character and a happy attitude right up to her death. She was an important part of my life.

May you share and recall cherished memories on this Grandparents Day.

### Calendar of events



#### September 6

-4-H County Bake Show at Briscoe County Courthouse County Courtroom @ 7 p.m.  
-Town Hall Meeting with Texas Agriculture Commissioner from 12 noon-1:30 p.m. at Floyd Co. Community Center in Muncy  
-Valley J.V. Patriots vs Happy @ 6:30 in Happy  
-Valley Jr. High vs Happy @ 5:00 p.m. in Happy

#### September 7

-Quitaque Senior Citizens  
-Jr Class Mexican Stack Dinner @ 5:30 p.m. in the school cafeteria before the Valley Game.  
-Valley Patriots vs Wellman-Union @ 7:30 p.m. at Valley

#### September 8

-4-H District Fall Forum in Miami from 9 a.m. to 2 p.m.  
-Psalms IV Quartet at the Gem Theatre @ 7 p.m.

#### September 9

-Grandparents Day

#### September 10

-Valley Board of Trustees  
-Quitaque City Council  
-Quitaque Fire Department  
-Turkey Lions Club

#### September 11

-We The Women

#### September 12

-Quitaque EMT Meeting

#### September 13

-Turkey City Council

-Matador Masonic Lodge

Here's A Texas  
You Can Mess With!

The Original  
**TEXAS**  
**CROSSWORD** (Mess with it all you want)

The Texas Crossword Puzzle  
is proudly sponsored every week by:  
**Quitaque Producers Co-op**  
Quitaque, Texas 1-806-455-1388

Page 5



Larry Clark, 64, of Texas was held Thursday, September 6, 2001 at Quaker Church of Christ with Elgin Conner and Elmore Johnson officiating. Burial was at Dreamland Cemetery in Turkey, Texas. He died, September 4, 2001, at his residence. Arrangements were under the direction of Franklin Bartley Funeral Home.

He was born May 30, 1937, in Turkey, Texas. He had been a resident of Lubbock, Texas, since moving from Turkey in 1955.

He married Ruth Chadwick, February 25, 1956, in Childress, Texas. He graduated from Turkey High School and attended Texas Tech University for two years. He was the owner of Flex Marketing, an Insurance Agency, for twenty years. He was the second President of Monterey Optimist Little Dribbler's Basketball Association. He was a member of Kiva Duffers for several years, Monterey Optimist Club, and Quaker Avenue Church of Christ.

Survivors include his wife, Ruth Clark of Lubbock; two sons, Ricky Lane Clark of Odessa and Russell Lance Clark of Lubbock; a daughter, Jeanne Denise Evans of Lubbock; a brother, Birt Lane of Plainview; a stepmother, Bonnie Clark of Lubbock; and six grandchildren.

He is preceded by his father, Dr. Lawrence "Butch" Clark; his mother, Ruth Lane Clark, and his adopted parents, Leon and Lillie Lane of Turkey, Texas.

The family suggests memorials be sent to Vista Care Family Hospice, 7606 University, Lubbock, Texas 79423.



Anniversary Party

Bruce & Betty Price celebrated their 50<sup>th</sup> Wedding Anniversary with family and friends Saturday, September 1<sup>st</sup>, at the El Camino in Tulia.

Bruce married the former Betty Stewart on September 1<sup>st</sup>, 1951, in Happy, TX.

Children of the couple and their spouses are Stan Price of Quitaque, Connie and Norman Mullin of Amarillo, Steve and Cathy Price of Stinnett, and Sandy and Pat Wilhelm of Happy. The couple have 8 grandchildren and 3 great grandchildren.

### Hall County Historical Commission Continue Work On Monument Project

The Hall County Historical Commission met on August 27, 2001 for their regular meeting. Discussion and planning for the Lone Star Rising program was completed. The show will be at the Memphis High School Auditorium on Tuesday night September 18 at 7 p.m. Tickets for this event are \$10 for adults and \$5 for children. The proceeds from this performance will go toward the Veterans' War Monument project.

A vote was taken on the location of the Veterans Monument. By a majority of seven to six, the northeast corner of the Hall County Courthouse was selected over a location on the west side of the courthouse. The Historical Committee has chosen the raising of the American Flag on Iwo Jima as depicted by Joe Rosenthal's historic photograph, along with Keith Wells' picture engraved in bronze, to be in the center of the monument, flanked by a World War II monument on the right and Korea, Vietnam and Persian Gulf on the left. The names of those who lost their lives will be listed on the monuments. Keith Wells' platoon raised the flag on Iwo Jima. He was born and raised in Lakeview Hall County, Texas; therefore, the reason for honoring him.

The other veterans will be eligible to have their names on bricks on the Walk of Honor. These bricks are not limited to Hall County residents, and will be available in sizes 4"x12" for \$50; 6"x12" for \$75; and 12"x12" for \$150. Any veteran who received an honorable discharge from military service can have a brick purchased in his or her name. This is also a great way for friends and families to honor these special people who have risked their lives for our freedom. The Historical Commission needs your help to honor the Greatest Generation, our American heroes, by giving a donation toward building the veterans' monument. Your donation is tax deductible.

Plans for the Hall County Picnic were made. The Historical Commission will have a booth where they will be taking donations for the drawing for a beautifully hand sewn quilt. Tickets for Lone Star Rising will be available for sale at the booth. They will also have on hand "Ordeal By Sea", the tragedy of the USS Indianapolis, for sale. These books will autographed by one of the survivors of the USS Indianapolis. All proceeds will go to the monument fund. A silent auction will be conducted during the day for a USS Indianapolis cap, all you have to do is stop by their booth and write down your bid for a chance to win.

The Hall County Historical Commission wants to invite everyone to stop by during the Hall County Picnic and visit with them. They will be on the site where the monument will be placed on the northeast corner of the courthouse square.

LOOK WHO'S NEW



### Hunter William Sturgess

Paige and Chris Sturgess of Seminole are proud to announce the arrival of their first born son Hunter William Sturgess. He weighed in at a whopping 9 lbs. 10 1/2 ounces and was 21 1/2 inches long. He was born on Tuesday August 28, 2001 at 7:27 p.m. at Seminole Memorial Hospital. Proud grandparents are Kellye and Jerry Payne of Quitaque and Teresa Sturgess of Seminole. Great-grandparents are Mr. and Mrs. W. E. Hawkins of Quitaque and Mr. and Mrs. A. L. Sturgess of Seminole and Mr. and Mrs. Roger Nielsen of San Angelo. Great-great-grandparents are Artie Mae Gilbert of Turkey and C. F. Garman of Clarendon. Little Hunter is a fifth generation baby for GrannyBo Gilbert and Granddad Garman!

**MEMBER 2001**  
**TEXAS PRESS ASSOCIATION**

**THE VALLEY TRIBUNE**  
Successor to The Quitaque Tribune, Established at Quitaque in 1960  
Published Every Thursday at Quitaque, Texas 79255  
Vince F. Taylor, Owner/Publisher  
Laura Taylor, Editor  
Earlyne Jameson, Reporter

**SUBSCRIPTION RATES PER YEAR**  
**BRISCOE, HALL, MOTLEY, FLOYD COUNTIES.....\$18.50**  
**ELSEWHERE.....\$21.50**  
Advertising rates upon request. Classified advertising, minimum charge is \$4.50 for 30 words or less, then 15 cents a word after the first 30 words. Any erroneous reflection upon the character, standing or reputation of any person, firm or corporation which may appear in the columns of the The Valley Tribune will be gladly corrected upon its being brought to the attention of the publisher. The publisher has the right to reject advertising and edit copy and reserves the right to cancel any advertisement at any time.

POSTMASTER: SEND ADDRESS CHANGES TO  
**THE VALLEY TRIBUNE, BOX 478, QUITAQUE, TEXAS 79255**  
(806)-455-1101

### THE VALLEY TRIBUNE OBITUARY POLICY

The policy of The Valley Tribune has always been to print obituaries in a standard format. If you wish an obituary to contain information other than the standard, it will be placed in a display format, and charged accordingly.

Open 6 am - 9 pm  
**QUITAQUE'S CAPROCK CAFE** M - Sat  
201 Main St. Try our 806-455-1429  
**"All You Can Eat"**

**Fried Chicken Buffet with Livers & Gizzards**  
EVERY THURSDAY from 11 to 2 & 5 to 8:30

**Red Beans & Cornbread 5-9 p.m.**  
With all the Trimmings - EVERY Wednesday

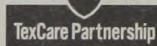
**And don't forget Friday Night 5-9 p.m.**  
All you can eat! "Catfish Fillets"

**Saturday "All Day Mexican Food"**  
Featuring - **Homemade Flour Tortillas!**

Call Ahead or Just Drop In. Your Business is Always Appreciated!

**TexCare Partnership:** connecting Texas families with children's health insurance for \$18 a month or less.

Call 1-800-647-6558 for information or to apply.



AMERICAN LUNG ASSOCIATION of Texas  
**YOUR Gift IS A WAY TO CONQUER LUNG DISEASE**  
Find out how you can help...  
**1-800-LUNG-USA**  
www.texaslung.org

**ANNOUNCING Turkey Service Center Now Washing Cars and Pickups "Inside & Out" Call 423-1257 For Appointment!**

### LETTERS to the Editor

Hi,  
Just got off the phone talking to you this p.m. You were so nice, hope you enjoy these words of wisdom. Have a good day, I'll be looking for my paper to enjoy. Thanks again.  
Brad

\*\*\*  
Wise men ne'er sit and wait their loss, but cheerly seek how to redress their harms.  
—William Shakespeare, Henry VI, Part 3  
\*\*\*

\*\*\*  
It is not enough to do good; one must do it the right way.  
—John, Viscount Morley of Blackburn  
\*\*\*

**SMALL TAXING UNIT NOTICE**  
The City of Turkey will hold a meeting at 7:30 P.M. on September 13th at the Senior Citizen's room to consider adopting a proposed tax rate for the tax year 2001. The proposed tax is .497 per \$100 of value.  
  
The proposed tax rate would increase total taxes in the City of Turkey by 7.3 percent.

**NOTICE**  
The children of Texas come in all sizes, shapes, colors, and abilities. They do not all learn the same way, but they ALL do learn. Do you know of an infant, child, or young adult who does not learn easily or has an impairment that might affect his/her success in life? Do you know that public school programs can serve these children from birth to age 22? For more information, call the Special Education Director in your school district, or contact the Child Find Coordinator at the Education Service Center at 806-792-4000. PUBLIC EDUCATION IN TEXAS IS FOR EVERY CHILD. DON'T LEAVE ANY CHILD BEHIND.

Los niños de Tejas vienen en diferentes tamaños, formas, colores, y habilidades. Ellos no aprenden en la misma manera, pero todos aprenden. Conocen un infante, niño pequeño, o un joven que tiene problemas para aprender o tiene un empeoramiento que le afecta a el/ella para tener éxito en sus vidas? ¿Sabía que la escuela publica puede servir los niños de recién nacidos hasta la edad de 22? Para mas información, llame al Director De Programas Especiales en su distrito, o contacte el Coordinador de Encontrando Niños en el Education Service Center el telefono es 806-792-4000. LA EDUCACIÓN PUBLICA DE TEJAS PERTENECE A TODOS LOS NIÑOS. NO EXCLUYAN A NINGUN NIÑO.

### Happy Birthday

- September 6**  
Makenzie Elizabeth Coker, Kaylene Morrison, Jennifer Irby, Colby Lee Lane, Kerri Scoggins, Butch Hughes
- September 7**  
Deanna Lane, Jamie Bren Edwards, Faye Hulsey Crosby, Bryan Buchanan, Nelta Green, Bill D. Washington
- September 8**  
Aaron Cruz, Gunner Cole Linhart
- September 9**  
Camber Musgrave, Cassie Farley, Evan Dudley, Everett Dudley
- September 11**  
Jim Majors, Robyn Lane Cranmer, Lauren Young
- September 12**  
Jean Mullin, Sandra Barclay, Leigh Ann Neilson, Jayton Lynn Smith
- September 13**  
Revis Farley, Lacie Lynn Fuston, J.D. Schnitker, Jacob Landon Hancock, Florence Cobb
- September 14**  
Duke Woods, Barbara Reed, Ray Whitaker

### Happy Anniversary

- September 8**  
Mr & Mrs Wade Cagle  
Mr & Mrs Barry Wheeler
- September 9**  
Mr & Mrs Larry Don Price  
Mr & Mrs Cal Farley
- September 11**  
Mr & Mrs Gene Fuston  
Mr & Mrs Joe Mark Davis

\*\*\*  
Creative minds always have been known to survive any kind of bad training.  
—Anna Freud  
\*\*\*

## Celebrate National Grandparents Day Sunday, September 9, 2001



Each day brings new challenges and new opportunities linking the past with the future to recognize, to realize the possibilities of each sunrise and each dawn to act, to share oneself and to touch the billowing white clouds in in the blue sky above.

### HUG A GRANDPARENT TODAY!

**FIRST NATIONAL BANK**  
MEMBER FDIC  
806-455-1441  
QUITAQUE  
P.O. BOX 540  
EQUAL HOUSING LENDER

"Dependable Services Since 1920"

The Valley Tribune  
Juice Not Always  
Panicke...  
young children, it should  
come close to containing  
formula is still the best so  
can add vitamin C to the  
protein and other vitamins  
cant overall contribution  
food Guide Pyramid  
consume at least 2  
ing equals six ounces  
sweetened juice blend  
child is gaining the right  
getic, and isn't sick too  
getting enough nutrients

**Saving Energy A Switch**  
The hot summer temp  
Here are some tips on sa  
lights when you leave the  
Replacing ordinary incand  
ones is another way to h  
most one of these easy wa  
for almost half of a home  
those areas can really im  
air conditioner's setting ca  
can also save energy by  
Also try keeping the openi  
mum and by appliances  
been rated the most ener

**New Safety Regu**  
As of September 1st T  
tor vehicles will change  
know about them. Safete  
safer roads in Texas for  
state that no one under  
public roads. Children yo  
must ride in a federally ap  
system. Children under 1  
ties for not following thes  
and safety belt systems ra

**Texas Agricultural**  
The Texas A&M Univer  
Provided by: Brandon Me  
Briscoe County Extension

**Texas' Major Cotto**  
**Losing \$433 Million**  
A dry, hot summer has  
Losses total 433 million doll  
doned more than one quart  
acreage will probably be los  
fer from drought. Rains ar  
and came too late to benefi  
low prices of the last six y  
comes. Many producers a  
government program paym  
production and income sh  
frustration, and some in  
jobs elsewhere.

**Dual Purpose Wh**  
**agement**  
Producers who utilize  
can improve efficiency and  
This means managing all  
cert with one another, ra  
grated management work,  
and commodity values for  
Then they must manage t  
tradition. The ultimate go  
spend as little as possible  
and spring forage for beef  
ing to produce more veget  
duce as many pounds of b  
able grain crop a few mo  
ment also adds flexibility t  
will bring higher returns

**Turkey T**  
Yvonne Donaldson  
Ark. spent one night last w  
Louis and Oleta Randall.  
is Louis' niece.

"SERVING TH  
W  
**MONUM**  
Mon  
Surface  
Contact Barry L  
Drawer N

**GM**  
**US**  
'00 Pontiac Sur  
'00 Pontiac Gr  
'00 Buick LeSa  
'01 Pontiac Gr  
'01 Pontiac Bo  
'01 Montana V  
'01 Buick Cent  
'01 Buick Rega  
'01 GMC Jimm  
'01 Grand Prix

**CITY**  
**AUTO**  
Buick-Pontiac



### Texas Agricultural Extension Service

The Texas A&M University System  
 Provided by: Cory Payne, CEA-FCS  
 Briscoe County Extension Services

#### Juice Not Always Beverage Of Choice

Panicked parents of picky eaters may think fruit juice is the answer to their nutritional prayers. While fruit juice is part of a healthy diet for young children, it should not become the beverage of choice. Juice doesn't come close to containing as many essential nutrients as milk. Milk or formula is still the best source of vital nutrients for young children. Juice can add vitamin C to the diets of children. However, because of its lack of protein and other vitamins and minerals, juice does not make a significant overall contribution to a healthy diet. When it comes to juice the food Guide Pyramid recommends a child between two and six years should consume at least two daily servings from the fruit group. One fruit serving equals six ounces of juice. Offer children 100 percent juice instead of sweetened juice blends or sport drinks. Don't worry too much. If the child is gaining the right amount of height and weight, is typically energetic, and isn't sick too often, parents can rest assured that he or she is getting enough nutrients.

#### Saving Energy Costs At Home Easy As Flipping A Switch

The hot summer temperatures have caused many energy bills to rise. Here are some tips on saving money while staying cool. Turning off the lights when you leave the room saves electricity and lowers energy bills. Replacing ordinary incandescent bulbs with energy efficient fluorescent ones is another way to help lower costs. Homeowners can benefit from most one of these easy ways to save money. Heating and cooling accounts for almost half of a home's energy usage, which means saving energy in those areas can really impact utility bills. Just a 2 degree increase in the air conditioner's setting can save 30 to 50 dollars each month. Homeowners can also save energy by flushing the hot water tank every six months. Also try keeping the opening and closing of the refrigerator door to a minimum and by appliances with the Energy Star label, because they have been rated the most energy efficient.

#### New Safety Regulations Go Into Effect Sept. 1

As of September 1st Texas laws governing occupant protection in motor vehicles will change. Anyone who is a driver or passenger should know about them. Safety experts say these changes will contribute to safer roads in Texas for residents, drivers, and passengers. The changes state that no one under the age of 18 can ride in open beds of pickups on public roads. Children younger than four or less than 36 inches in height must ride in a federally approved, age and size appropriate child restraint system. Children under the age of 17 may not ride unrestrained. Penalties for not following these new regulations concerning child safety seat and safety belt systems range from one to two hundred dollars.

### Texas Agricultural Extension Service

The Texas A&M University System  
 Provided by: Brandon McGinty, CEA-Ag  
 Briscoe County Extension Services



#### Texas' Major Cotton Farming Communities Losing \$433 Million This Year Due To Drought

A dry, hot summer has taken its toll on the 2001 Texas cotton crop. Losses total \$433 million dollars. By August 1st cotton producers had abandoned more than one quarter of the acres planted this year. Additional acreage will probably be lost because many dryland crops continue to suffer from drought. Rains in mid-August were scattered across the state and came too late to benefit dryland cotton. The continued drought and low prices of the last six years has left crop farmers with depressed incomes. Many producers and related rural businesses are depending on government program payments to survive another year. With continued production and income shortfalls pressure is mounting on agriculture infrastructure, and some individuals are looking to leave rural towns for jobs elsewhere.

#### Dual Purpose Wheat Requires Integrated Management

Producers who utilize wheat as a dual purpose grain and grazing crop can improve efficiency and profitability through integrated management. This means managing all resources within a production system in concert with one another, rather than as separate entities. To make integrated management work, producers must know all of the production costs and commodity values for all phases of a dual purpose wheat system. Then they must manage the system according to economics, rather than tradition. The ultimate goal is sustainable profitability. Producers try to spend as little as possible getting a wheat crop up, so they can provide fall and spring forage for beef calves. The ideal system includes earlier planting to produce more vegetative forage growth, grazing that forage to produce as many pounds of beef as possible, and then harvesting a marketable grain crop a few months after grazing ends. Integrated management also adds flexibility to the operation. Most years, dual purpose wheat will bring higher returns than grain or grazing alone.

#### Turkey Talk

Yvonne Donaldson of Scotland Ark. spent one night last week with Louis and Oleta Randell. Yvonne is Louis' niece.



### CAPITOL COMMENT

U.S. SENATOR  
**KAY BAILEY HUTCHISON**



#### TRUCK STOP

It's no news to most Texans that the North American Free Trade Agreement, NAFTA, has been a driving force in our state's strong economy. NAFTA is the most productive trade alliance in the world, with nearly 400 million people producing close to \$10 trillion worth of goods and services — and Texas has benefitted greatly from being situated at the very center of that whirlwind of economic activity. By 1999, the value of Texas exports to Mexico had reached \$41.1 billion, up from \$23.8 billion in 1994. In fact, 47 percent of all U.S. exports to Mexico originate in Texas. This has brought us thousands of highly skilled, well-paid positions in electronics, high technology and other industries.

However, the trade agreement's potential has yet to be realized in its entirety. Under the 1994 accord, Mexican trucks and drivers were given access to border zones in 1995. By 2000, foreign-owned trucks were to have full access to all U.S. highways, which hasn't happened because NAFTA does not and cannot require the United States to admit vehicles that don't meet American standards. Concerns over safety and other issues have postponed full implementation of NAFTA's trucking provisions.

Texas is at the center of the ongoing NAFTA truck debate, as well. Nearly 70 percent of current truck traffic coming from Mexico into the United States enters Texas, impacting our roads and state inspection facilities to a greater extent than any other state. Texas witnessed 2.4 million crossings of Mexican trucks last year. That number stood at 510,000 the year NAFTA was passed.

One of the major stumbling blocks to full implementation is the absence of resources that would allow U.S. and Texas officials to thoroughly inspect and monitor trucks operating on our roads and highways.

To accomplish that, we need:

- Inspection facilities with the capacity to handle the increased traffic.
- Adequate numbers of well-trained inspection personnel.
- The ability to enforce weight limitations; Mexican trucks are permitted to carry a maximum gross weight, including the truck itself, of 117,000 pounds, compared to a limit of 80,000 pounds for U.S. trucks.
- The ability to collect reliable information on and monitor the safety records of all trucking firms and their drivers, regardless of their country of origin.

Right now we are able to inspect only a small percentage of trucks that cross into U.S. commercial zones along the border. Of the ones that are inspected, a third are turned away for safety violations. Clearly, additional inspection facilities and staff are needed immediately.

Congress and the President are moving forward to make the NAFTA trucking provisions a reality. The Senate Appropriations Committee last month approved a measure I outlined that provides \$100 million for border inspection stations, inspectors and other border infrastructure improvements, the lion's share of which would go to our state. It only makes sense for these resources to be located in places where they will be most effective.

This legislation reflects Congress' commitment to full implementation of NAFTA, and to keeping American highways safe at the same time. It outlines rigorous safety oversight requirements that cannot be met unless we also provide the resources needed for quick, comprehensive monitoring of all commercial trucks and buses.

I voted for NAFTA and I support free trade. But we cannot throw open our borders completely until we have put in place the personnel and facilities necessary for conducting large-scale, routine inspections at all trucks that cross our border.

### Turkey Roost Nuseum News

By Margie Pinkerton

Fall is a busy time for a lot of different groups trying to raise money for their projects. This is certainly true for the Turkey Roost Museum project and we have gotten an early start with two new activities. On August 4th we were the host for the meal at the Turkey Jamboree. I was unable to be there because of Ying's illness, but Marie Cruse and many others took over. These ladies did a great job and Ying's comment was "they do it for me, they all my friends'! How true this was.

This Saturday September 8th we will be the sponsor of the Psalms IV Quartet at the Gem Theater. Members of this gospel quartet are Tim Forrest, Pete Talley, Lyndon Latham, and Ron Loe all from the Amarillo and Canyon area. We hope everyone will come out and support us in this effort. They do a wonderful job and we feel you will really enjoy the concert.

Our other fund raising activities for this fall are our sucker pull at the Halloween Carnival and our Christmas in November. If you have gifts you would like to donate to either of these activities please let me or any of the others who are helping with these activities know. For more information call 806-423-1240.

#### 4-H Fall Forum

The District Fall Forum will be held in Miami on Saturday, September 8 beginning at 9 a.m. and ending at approximately 2 p.m.. At this forum, there will be a volunteer leader training and meeting, and the Distinguished Leader Award Luncheon. They will also offer training sessions covering Fashion & Fabric Design, Entomology, Clover Kids, Horticulture & Nutrition, and Pork Quality Assurance. Jon Etta Ziegler, our Briscoe County 4-H Distinguished Leader, will be recognized at the luncheon. Both adult leader delegates and county council delegates should attend this meeting.

### Cotton News

By Shawn Wade

from Plains Cotton Growers, Inc.

#### T-Yield Update Would Harm Many Growers

The USDA Risk Management Agency is considering an update to the county transitional yields, commonly referred to as T-yields, for Upland cotton and many growers may be big losers if the changes are implemented as initially proposed.

The past ten years have been an anomaly in terms of crop losses and duration of drought conditions on the Texas High Plains and Rolling Plains.

Many dryland cotton producers, caught in the fallout from this extended period of dry weather, have seen their Actual Production History (APH) yields drop significantly, and had to absorb the added consequences of increased premium rates for crop insurance and lowered coverage levels.

It appears that RMA's decision to update T-yields in Texas after having left them in place since at least 1997 will create a sudden and significant hardship to many growers.

The proposed update would be the first since 1997. That revision changed T-yield to reflect the crop years 1986-1995.

Since that time weather conditions have forced many growers to rely on the established T-yield and the associated yield floor as the safety net to maintain available insurance coverage at levels that allow them to recoup some portion of the production expenses associated with planting and establishing a crop.

While providing a modest level of protection, the yield floor and associated coverage available to growers does not provide enough protection to cover a full season of expenses.

The proposed changes will reduce coverage levels to a point where many growers will not be able to adequately insure these early season costs in the future.

The lower T-values will also impact the grower's ability to obtain financing for operating loans. The ability to recoup, through insurance, the expenses associated with establishing a crop provides financial institutions a means to extend credit to growers.

Based on PCG's understanding of current provisions the T-yield change proposed by RMA will impact growers in two significant areas.

First, it will impact the grower's APH calculation when 60 percent of the T-yield is substituted for low yields or zero production incurred in disaster years.

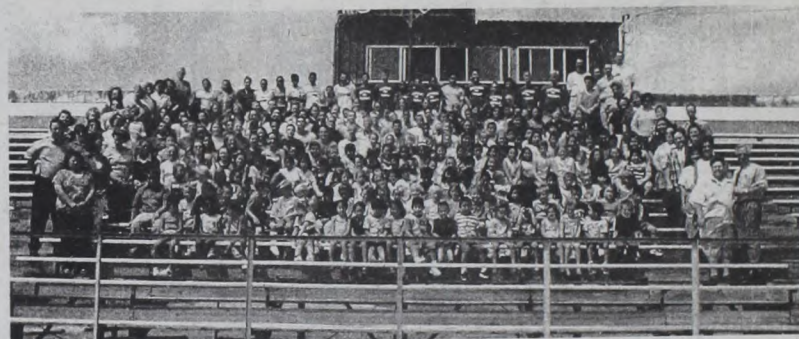
Second, it will reduce the Yield floor (80 percent of T-yield) that establishes minimum coverage levels for all producers.

The Agricultural Risk Protection Act of 2000 defines the term "transitional yield" as "the maximum average production per acre or equivalent measure that is assigned to average for a crop year by the Corporation in accordance with the regulations of the Corporation whenever the producer fails - (A) to certify that acceptable documentation of production and acreage for the crop year is in the possession of the producer, or (B) to present the acceptable documentation on the demand of the Corporation or an insurance company reinsured by the Corporation".

Possible remedies include redefining the T-yield as the average production per harvested acre in a county to better reflect the long-term productive capability of farms in the county; instituting a "cup" to prevent T-yields from dropping more than ten percent from one year to the next; and, retention of the "cup" on decreases to a growers approved APH calculation when substituted yields are used in calculation.

RMA has not yet determined a solution to the problems posed by the update. The final determination must be reached before December of this year in order for any change to be effective in 2002.

## ~ EXEMPLARY ~



## CONGRATULATIONS VALLEY C.I.S.D. STUDENTS & FACULTY

WE HERE AT THE CAP ROCK TELEPHONE COOPERATIVE ARE EXTREMELY PROUD OF ALL THE EFFORT AND HARD WORK IT TOOK TO BE AWARDED

## THE STATE'S HIGHEST ACADEMIC RATING

By: THE TEXAS EDUCATION AGENCY



Telephone Cooperative, Inc.  
 1-800-692-4242  
 Spur, Texas 79370

"SERVING THE PANHANDLE SINCE 1930"

**WALLACE MONUMENT COMPANY**  
 Monuments - Grave Slabs  
 Surface Burial Vaults & Curbing  
 Contact Barry Long 423-1295 Turkey, Texas  
 Drawer N Clarendon, Texas 79226

#### GM PROGRAM USED CARS

- '00 Pontiac Sunfire 4-Dr.....\$9,888
- '00 Pontiac Grand Prix SE 4-Dr.....\$13,988
- '00 Buick LeSabre Custom.....\$14,988
- '01 Pontiac Grand Am 4 Dr.....\$13,200
- '01 Pontiac Bonneville SE.....\$15,988
- '01 Montana Van Rear A/C.....\$18,800
- '01 Buick Century.....\$13,488
- '01 Buick Regal (Leather).....\$14,800
- '01 Buick LeSabre Custom.....\$17,600
- '01 GMC Jimmy SLE 4x4.....\$18,500
- '01 Grand Prix GT 4 Dr.....\$15,988

Many More To Choose From!  
**983-3767**  
 Floydada  
 Toll Free: 1-888-CITY AUTO  
 www.cityautoinc.com  
**City Auto Buick-Pontiac-GMC**





# The Patriot

NEWS OF AND ABOUT VALLEY SCHOOL

## SCHOOL LUNCH MENU

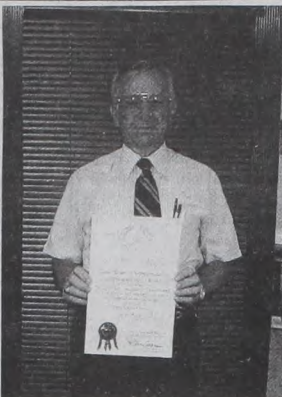
- Monday, September 10**  
 Breakfast  
 Blueberry Breakfast On-A-Stick  
 Syrup/Orange Slices  
 OJ & Milk  
 Lunch  
 Pizza  
 Mixed Vegetables  
 Salad  
 Vanilla Wafers/Peaches  
 Milk
- Tuesday, September 11**  
 Breakfast  
 Cereal  
 Toast  
 OJ & Milk  
 Lunch  
 Mexican Stack  
 Pinto Beans  
 Salad/Cheese  
 Pears  
 Milk
- Wednesday, September 12**  
 Breakfast  
 Waffles/Syrup  
 Sausage Patties  
 OJ & Milk  
 Lunch  
 Lasagne  
 Caesar Salad  
 Mixed Vegetables  
 Garlic Bread  
 Milk
- Thursday, September 13**  
 Breakfast  
 Cinnamon Toast  
 Apple Sauce  
 OJ & Milk  
 Lunch  
 Chicken Strips & Gravy  
 Mashed Potatoes  
 Green Beans  
 Hot Rolls  
 Fruit  
 Milk
- Friday, September 14**  
 Breakfast  
 Bacon & Toast  
 Fruit  
 OJ & Milk  
 Lunch  
 Corn Dogs  
 French Fries & Tater Tots  
 Pork & Beans  
 Cake  
 Milk



The Cafeteria Ladies: Nancy Johnson, Linda Silva, Pat House, Erma Washington, and Barb Reed.



(Clockwise): Kristen Jenkins, Kaitlyn Brown, Roxanne Trout, Jordan Espinosa, Emily Edmonson, and Courtney Galvan work on ornaments to take to the fair



Superintendent Jerry Smith proudly displays the certificate of commendation recently received from Texas Speaker "Pete" Laney.



(Clockwise): Jose Valdez, Juan Mendoza, Enrique Mendoza, Fidel Valdes, and Jesus Mora are taking a break from ornament making.

**Admission Price for Valley Football Games**  
 Varsity \$3-Adults  
 \$2-Students  
 J.V. & Jr. High \$2-Adults  
 \$1-Students

You don't make a poem with ideas, but with words.  
 —Stéphane Mallarmé

## Children's Health Alert

Obesity or just baby fat? What every parent should know about diet and exercise

Dr. John Hellerstedt, MD, FAAP

If your child is spending the summer in front of the TV and snacking on junk food, he could become one of the 25-30 percent of school age children who are overweight.

Although rapid growth and weight gain are part of adolescence, many children gain weight because they consume too many calories and don't exercise enough. Check with your child's doctor. If the problem is moderate - changes in eating habits and increased physical activity are likely the key. If your child is more than 40 percent overweight, a doctor-guided weight-loss program may be suggested.

The Children's Health Alert is presented as a public service by this newspaper and the TexCare Partnership, connecting Texas families with children's health insurance for \$18 or less.

Call 1-800-647-6558 for information or to apply.

Dr. John Hellerstedt is the Medical Director of the Children's Health Insurance Program.



## Second Graders Get Crafty

By Skylar Clifton

This year, just like every other year, the Personal Family Development Class is doing a unit on child development. As part of this unit they are helping out some crafty second graders. The freshmen in this class are helping the Valley CISD second graders make salt dough ornaments for the crafts division in the South Plains Fair. The second graders were kneading some help so the freshmen pitched in. Good Luck at the Fair Guys!



According to folklore, when a candle gives forth a spark, a letter is coming to the person sitting nearest it.

# ALLSUP'S

## QUITAQUE & TURKEY

# ALLWAYS LOW PRICES

Sept. 9 thru Oct. 6, 2001

12 OZ. CANS  
**DR PEPPER**  
 6 PACK  
**\$1.59**

2 ALLSUP'S FAMOUS BEEF & BEAN BURRITOS & 20 OZ. BOTTLE  
**DR PEPPER**  
**\$1.49**

REGULAR OR CAJUN  
**CATFISH**  
 3 FOR **99¢**

SHURFINE  
**CHARCOAL**  
 10 LB.  
**\$2.29**

SHURFINE  
**LIGHTER FLUID**  
 32 OZ.  
**\$1.29**

ASSORTED  
**TOM'S CHIPS**  
 REG. 99¢  
**89¢**

**ALLSUP'S COMBO MEALS**

COMBO NO. 1	2 BEEF & BEAN BURRITOS & 32 OZ. TALLSUP	\$2.19
COMBO NO. 2	CHICKEN BITES & 32 OZ. TALLSUP	\$2.19
COMBO NO. 3	BBQ SANDWICH, HOWLERS & 32 OZ. TALLSUP	\$2.29
COMBO NO. 4	BREAKFAST BURRITO, HASH BROWN & 12 OZ. COFFEE	\$1.89

BAR S  
**BACON**  
 12 OZ.  
**\$1.99**

ALLSUP'S "MOO"  
 BUY 12 GALLONS OF FRESH ALLSUP'S MILK... GET ONE FREE!

The Valley Tribune  
 FLOM  
 A man bought a horse  
 but would go only when you  
 you said, "Amen".  
 The man got on the horse  
 off at a gallop. The horse  
 the man noticed he was head  
 yelling, "Whoa! Stop! Whoa  
 Finally the man remem  
 "Amen!" The horse skidd  
 The man wiped his ar  
 the Lord!"  
**Rainfall and Cooling  
 Relief for**  
 Recent rainfall and cool  
 provided a great relief to  
 prompted pasture growth,  
 low stock tank water suppl  
 water. Wheat planting act  
 weevil eradication sprayin  
 weevil moisture for the m  
 National Weather Service V  
 Kelly Meyer-Matacor: 4.70  
 ton-Whiteflat: 3.05 and Ton  
 Kathy and Clois Shorter  
 day until Thursday.  
 Among the tourist attrac  
 of National Science and  
 the Bill Gaither's Homecom  
 nic Red Rocks Amphitheater  
 toured Estes Park enjoyin  
 \*\*\*\*\*  
 Art Green moved from F  
 in the Bill Koon rent house  
 visiting and helping with  
 yon, Mrs. Joan Helms of F  
 Amarillo, Billy and Cindy  
 Whiteflat and son, Ryan, st  
 Visiting the families, Sunda  
 Brenda and Darrell Crus  
 and Bennie Maracle of Sny  
 bock, Mark, Kathleen and D  
 day night in the home of th  
 They had a happy birthday  
 Charla, Kathleen and Leah.  
 Guests of Mr. and Mrs.  
 were Cory Franks of Bastro  
 bock, and Cara Franks of Ca  
 Washington.  
 Mr. and Mrs. Seab Wash  
 and Sunday and enjoyed the  
 County Park. Their grandso  
 ington of Childress, who is  
 one happy boy when told he  
 remission.  
 Mrs. Gwen Mandrell, Sha  
 and Sunday in the home of M  
 Luncheon guests of Mr. a  
 Mrs. Joey Lee of Clarendon,  
 key and Roger Lee, Josh and  
 Mrs. Janice Hughes was  
 removed following recent fo  
 Lubbock with her sister, M  
 family, Billy, Becky and Bre  
 of their father and grandfat  
 in Lubbock.  
 Mr. and Mrs. Michael St  
 Canyon and Mrs. Jackie Da  
 weekend with Mr. and Mrs.  
 Starkey. L.T. Starkey of Ra  
 Marilee and Fred Cooper  
 Mr. and Mrs. Wilburn Merit  
 Buck Johnson of Floydca  
 Sunday.  
 Ronnie Rogers of Lubbo  
 Mrs. Howard Rogers and D  
 Angelia and Larry Clay,  
 from Thursday until Mond  
 Anderson Hospital.  
 Keane Cruse returned to  
 Texas Tech for the fall sem  
 Mrs. Christi Milam and F  
 day with her parents, Mr. a

**GRAHA**  
 Your He  
 \* Hardware  
 \* Furniture  
 \* Appliances  
 \* Floor Coverin  
 \* TV's, VCR's  
 \* Fencing Supp  
 \* Water Tubs  
 \* Lawn & Gard  
 \* Nice Gift Sele  
 Downtown Roa

**WA**  
 Live  
 Paid on  
 LIVE  
 Weight  
 Restrictions App  
 1-888.



# FLOMOT NEWS

by Earlyne Jameson

## OVERHEARD

A man bought a horse from a minister, who said it was a good horse but would go only when you said, "Praise the Lord" and stop only when you said, "Amen".

The man got on the horse and said, "Praise the Lord". The horse took off at a gallop. The horse headed out into the countryside and before long the man noticed he was headed straight for a cliff. I panic, the man started yelling, "Whoa! Stop! Whoa! The horse kept running."

Finally the man remembered what the minister told him and yelled, "Amen!" The horse skidded to a stop right at the edge of the cliff.

The man wiped his arm across his brow and sighed with relief, "Praise the Lord!"

## Rainfall and Cooler Temperatures in August Provide Relief for Motley County Residents

Recent rainfall and cooler temperatures the last two weeks in August provided a great relief to residents in Motley County. The rains have prompted pasture growth, eased the stress on cotton, has helped some low stock tank water supplies and given producers a break from hauling water. Wheat planting activity has increased because of rain. The boll weevil eradication spraying had begun.

Total moisture for the month of August reported by Motley County National Weather Service Volunteers: Buzz Thacker-Roaring Springs: 2.69; Kelly Meyer-Matador: 4.70; Betty Simpson-Northfield: 2.53; Jim Stockton-Whiteflat: 3.05 and Tommie Jo Cruse-Flomot: 2.50 inches.

## Vacation Trip

Kathy and Clois Shorter enjoyed a vacation trip to Colorado from Sunday until Thursday.

Among the tourist attractions in Denver were the U.S. Mint, Museum of National Science and the Denver Zoo. Tuesday night, they attended the Bill Gaither's Homecoming Friends Concert held at the beautiful scenic Red Rocks Amphitheater west of Denver. Before returning home, they toured Estes Park enjoying its many tourist attractions.

Art Green moved from Flomot to Matador Saturday. He will be living in the Bill Koon rent house north of the Texico Station. Family members visiting and helping with the transition were Jean and Don Lewis of Canyon, Mrs. Joan Helms of Flomot and daughter, Mrs. Seritha Pearce of Amarillo, Billy and Cindy Green of Matador, Kelli and Hal Martin of Whiteflat and son, Ryan, student at Tarleton University in Stephenville. Visiting the families, Sunday was Steve Green of Pampa.

Brenda and Darrell Cruse, daughter, Leah Cruse of Lubbock, Charla and Bennie Marracle of Snyder and daughter, Shahala Marracle of Lubbock, Mark, Kathleen and Dalton of Casper, Wyoming were guests Saturday night in the home of their mother, Mrs. Marihelen Wason of Matador. They had a happy birthday celebration with all the trimmings honoring Charla, Kathleen and Leah.

Guests of Mr. and Mrs. Coy Franks during the Labor Day holidays were Cory Franks of Bastrop, Cary Franks and Sorrel Schmidt of Lubbock, and Cara Franks of Canyon. They also visited Mr. and Mrs. Bill D. Washington.

Mr. and Mrs. Seab Washington joined friends in Andrews Saturday and Sunday and enjoyed the Blue Grass Festival held at the Andrews County Park. Their grandson, Conner, son of Mr. and Mrs. Todd Washington of Childress, who is under medical treatment for leukemia was one happy boy when told he could attend school as his condition is in remission.

Mrs. Gwen Mandrell, Shae and Peyton of Lubbock visited Saturday and Sunday in the home of Mr. and Mrs. Doyle Calvert.

Luncheon guests of Mr. and Mrs. Orville Lee, Sunday were Mr. and Mrs. Joey Lee of Clarendon, Mrs. Teresa Willey, Kellan and Kacee of Turkey and Roger Lee, Josh and Brandon of Flomot.

Mrs. Janice Hughes was in Plainview, Wednesday and her cast was removed following recent foot surgery. She visited overnight Friday in Lubbock with her sister, Mrs. Marsha Blake. She also visited son and family, Billy, Becky and Brennan Hughes. They celebrated the birthday of their father and grandfather, Clyde Rogers with a luncheon Saturday in Lubbock.

Mr. and Mrs. Michael Starkey and granddaughter, Taylor Stalling of Canyon and Mrs. Jackie Davis and Michael of Fritch visited during the weekend with Mr. and Mrs. Jack Starkey, Mrs. C.W. Starkey and Johnie Starkey. L.T. Starkey of Ralls visited the families Saturday.

Marilee and Fred Cooper of Borger visited Sunday with her parents, Mr. and Mrs. Wilburn Martin.

Buck Johnson of Floydada visited Mr. and Mrs. Bill D. Washington, Sunday.

Ronnie Rogers of Lubbock visited during the weekend with Mr. and Mrs. Howard Rogers and Donnie Rogers.

Angelia and Larry Clay, Tanner, Kelsey and Sarah were in Houston from Thursday until Monday for Angelia's medical treatment at M.D. Anderson Hospital.

Keane Cruse returned to Lubbock, Thursday where he has enrolled at Texas Tech for the fall semester.

Mrs. Christi Milam and Emily of Petersburg visited Sunday and Monday with her parents, Mr. and Mrs. Clois Shorter.

# Cooks Corner

By Virginia Salsbury

When time is short and your family is hungry, ground meat and potatoes are a duo to get on the table fast. Meat Loaf Hamburgers with an easy side dish of Microwave German Potato Salad are sure to satisfy hearty appetites. Finish the meal with Cool Almond Cream and they will think you were in the kitchen for hours! All three dishes are ready to eat in 30 minutes.

## MEAT LOAF HAMBURGERS

- 1 1/2 pounds ground beef
- 1 cup sour cream
- 1 1/4 cups crushed cornflakes
- 1 tablespoon diced onion
- 1 teaspoon salt
- 1/4 teaspoon pepper
- 8 hamburger buns
- Lettuce and tomato

In large bowl, mix first six ingredients; shape into 8 patties. Grill, broil or pan-fry until meat is no longer pink. Serve on buns with lettuce and tomatoes.

## MICROWAVE GERMAN POTATO SALAD

- 2 pounds red potatoes, cooked and sliced
- 3 hard-cooked eggs, chopped
- 1/2 cup chopped onion
- 1/2 cup chopped celery
- 6 bacon strips, diced
- 2 tablespoons sugar
- 4 teaspoons flour
- 2 tablespoons vinegar
- 1/2 teaspoon salt
- 1/8 teaspoon pepper
- 3/4 cup milk

In large bowl, combine potatoes, eggs, onions and celery; set aside. Place bacon in a microwave safe bowl; cover with a paper towel and microwave on high for 2 minutes. Stir. Microwave 3-4 minutes longer until bacon is crisp, stirring each minute. Remove bacon to paper towel to drain. Reserve 2 tablespoons drippings. Stir sugar, flour, vinegar, salt and pepper into drippings until smooth; gradually add milk. Microwave on high 5-6 minutes, stirring every 2 minutes until thickened. Pour over potato mixture; toss. Top with bacon and serve immediately. 8 servings.

## COOL ALMOND CREAM

- 1 package (3.4oz) instant French vanilla pudding
- 2 1/2 cups cold milk
- 1 cup whipping cream
- 1/2 teaspoon almond extract

3 cups seasonal fruit such as strawberries, grapes, bananas, or mandarin oranges.

In large mixing bowl combine pudding and milk. Beat on low speed for 2 minutes; set aside. In a small mixing bowl, beat cream and extract until stiff peaks form. Fold into pudding. Spoon into shallow 2-qt. serving dish. Chill. Top with fruit just before serving 8 servings.

## TURKEY SENIOR CITIZENS NEWS

By Oleta Randell

The Turkey Senior Citizens had 21 members at the last meeting Tuesday night. Margie and Billy Pinkerton were back for the first time in several weeks after taking care of Ying Lyles during her long hospital stay and death. Margie and Don did the blood pressure checks. Bob Warner led the prayer for the food after which we partook of a bountiful meal. Then table games were played. Several of our members are sick, and we sure miss them! Hurry and get well all of you. The next meeting will be September 11 at 6 p.m., so come on out and join in the fun, food, and fellowship!

# QUITAQUE PRODUCERS CO-OP

"Standing Together ~ Standing Strong"

Were working hard to help you with all your "Farm and Fuel Supplies" by offering these services; Minor Tune-ups, Oil Changes, Tires, Batteries, Auto Parts, Supplies and Service. Call or come by today, Were here to help with your Farm and Automotive needs. Your Business is Always Appreciated at Quitaque Producers Co-op. 1-806-455-1388

## ACROSS

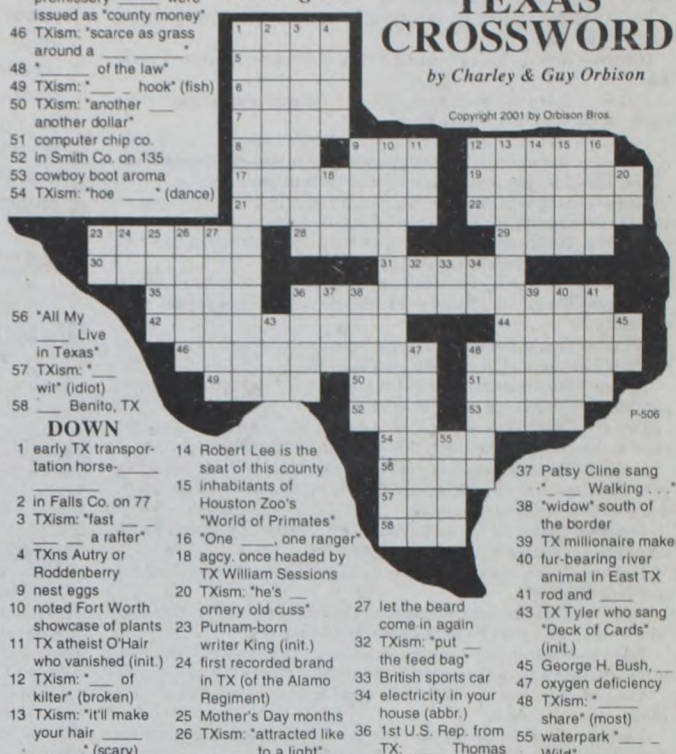
- 1 Guadalupe St. next to UT: "The \_\_\_\_\_"
- 5 TX Willie 79 film
- 6 TXism: "cold \_\_\_\_\_"
- 7 TXism: "seein' eye to eye" (agree)
- 8 Mav or Spur org.
- 9 TX Perot was sales- man for this co.
- 12 TX Benton won this as director of 30-across
- 17 TXism: "\_\_\_\_\_ the same bolt" (related)
- 19 TXism: "hog heaven"
- 21 former Mav coach
- 22 TXism: "don't \_\_\_\_\_ more than you can handle"
- 23 this Hedy was in "Boom Town" with TX Chill Wills
- 28 Leaning Tower city
- 29 TXism: "stirred up a hornet's \_\_\_\_\_"
- 30 "\_\_\_\_\_ vs. Kramer"
- 31 TXism: "got tumbleweed blood in his veins"
- 35 TX "Heaven on Earth" ins are run by Maharishi Mahesh \_\_\_\_\_ disciples
- 36 TX Jamie Foxx sitcom with "in"
- 42 the "S" in TX Bush's SDI

## The Original

# TEXAS CROSSWORD

by Charley & Guy Orbison

Copyright 2001 by Orbison Bros.



## DOWN

- 1 early TX transportation horse
- 2 in Falls Co. on 77
- 3 TXism: "fast \_\_\_\_\_ a rafter"
- 4 TXins Autry or Roddenberry
- 9 nest eggs
- 10 noted Fort Worth showcase of plants
- 11 TX atheist O'Hair who vanished (init.)
- 12 TXism: "\_\_\_\_\_ of kilter" (broken)
- 13 TXism: "it'll make your hair \_\_\_\_\_" (scary)
- 14 Robert Lee is the seat of this county
- 15 inhabitants of Houston Zoo's "World of Primates"
- 16 "One \_\_\_\_\_, one ranger"
- 18 agcy. once headed by TX William Sessions
- 20 TXism: "he's \_\_\_\_\_ ornerly old cuss"
- 23 Putnam-born writer King (init.)
- 24 first recorded brand in TX (of the Alamo Regiment)
- 25 Mother's Day months
- 26 TXism: "attracted like \_\_\_\_\_ to a light"
- 37 Patsy Cline sang "\_\_\_\_\_ Walking \_\_\_\_\_"
- 38 "widow" south of the border
- 39 TX millionaire maker
- 40 fur-bearing river animal in East TX
- 41 rod and \_\_\_\_\_
- 43 TX Tyler who sang "Deck of Cards" (init.)
- 45 George H. Bush, \_\_\_\_\_ oxygen deficiency
- 47 TXism: "\_\_\_\_\_ share" (most)
- 55 waterpark "\_\_\_\_\_ Wild"

## RIM ROCK CANYON



## By Clint Harmon



## NEXT OF KIN



## By Clint Harmon



## By Clint Harmon



# GRAHAM SUPPLY

Your Headquarters for ...

- \* Hardware
- \* Furniture
- \* Appliances
- \* Floor Covering
- \* TV's, VCR's
- \* Fencing Supplies
- \* Water Tubs
- \* Lawn & Garden Supplies
- \* Nice Gift Selection

- Quality
- Service
- Selection
- Savings

Downtown Roaring Springs ~ 806-348-7216

# WANTED Live Wild Boar

Paid on LIVE Weight



\$20 Head Bonus on hogs 101+ lbs.

Restrictions Apply - prices subject to change

1-888-535-1835

## Law Office Of TEMPIE T. FRANCIS

(Formerly known as the Law Office Of Tempie T. Hutton)

- Divorces
- Family Law
- Wills
- Real Estate



- Probate
- Contracts
- Leases
- Gen. Bus. Law

806-347-2004

Main and Dundee Street Matador, Texas

(Located in the courthouse across from the bank)

Licensed by the Texas Supreme Court. Not Certified by the Texas Board of Legal Specialization

# DIABETICS!

IF YOU HAVE MEDICARE OR PRIVATE INSURANCE YOU MAY BE ELIGIBLE TO RECEIVE YOUR DIABETIC SUPPLIES AT LITTLE OR NO COST!

FOR INFORMATION, CALL EASY ACCESS MEDICAL SUPPLY

WE ALSO CARRY NEBULIZER MEDICATION & IMPOTENCE PRODUCTS

1-800-679-1623

\*CERTAIN RESTRICTIONS MAY APPLY. NO IDMS PLEASE

## Rope In The Savings!

Call This Newspaper For More Information

TEXAS STATEWIDE CLASSIFIED ADVERTISING NETWORK

## DEBORAH'S COLLECTION

Pharmaceutical grade aloe vera products for health, skin and beauty.

Tammy Salinas, Consultant Home (806) 675-1512 email: dc\_tammy@hotmail.com Pager 1-800-448-1973

\* Free Delivery \* Free Samples Available \* Free Demonstration or Contact me to earn extra \$ Money \$ See and Feel the Difference!

## THE VETERAN'S WALK OF HONOR HALL COUNTY COURTHOUSE SQUARE MEMPHIS, TEXAS

Your \$50.00 donation will allow your name to be engraved on a 4' x 12' brick and placed in the VETERAN'S MONUMENT on the HALL COUNTY COURTHOUSE SQUARE. You will be a part of a great memorial to all veteran's of the CONFEDERACY, WWI, WWII, KOREAN, VIETNAM and PERSIAN GULF wars. This will give all who participated in the ARMED SERVICES, the opportunity to become recognized.

Please Print: Name: \_\_\_\_\_ Rank: \_\_\_\_\_ Branch of Service: \_\_\_\_\_ Sample: Cleatus Lebow Survivor U.S.S Indianapolis WWII

MAKE CHECKS PAYABLE TO: VETERAN'S MEMORIAL FUND P.O. BOX 96 MEMPHIS, TEXAS 79245

ORDERED BY:

NAME: \_\_\_\_\_ ADDRESS: \_\_\_\_\_ CITY: \_\_\_\_\_ STATE & ZIP: \_\_\_\_\_ PHONE: \_\_\_\_\_



Make You Go Hmmm...

...ing this week from Brad and thought it was worth

**I BELIEVE**

...That we don't have to change friends if we understand that change.

...believe--That no matter how good a friend is, they're going to hurt you very once in a while and you must forgive them for that.

I believe--That true friendship continues to grow, even over the longest distance, same goes for true love.

I believe--That you can do something in an instant that will give you heartache for life.

I believe--That it's taking me a long time to become the person I want to be.

I believe--That you should always leave loved ones with loving words, it may be the last time you see them.

I believe--That you can keep going long after you can't.

I believe--That we are responsible for what we do, no matter how we feel.

I believe--That you control your attitude or it controls you.

I believe--That regardless of how hot and steamy a relationship is at first, the passion fades and there had better be something to take it's place.

I believe--That heroes are the people who do what has to be done when it needs to be done, regardless of the consequences.

I believe--That money is a lousy way of keeping score.

I believe--That my best friend and I can do anything or nothing and have the best time.

I believe--That sometimes the people you expect to kick you when you're down, will be the ones to help you back up.

I believe--That sometimes when I'm angry I have the right to be angry, but that doesn't give me the right to be cruel.

I believe--That just because someone doesn't love you the way you want them to doesn't mean they don't love you with all they have.

I believe--That maturity has more to do with what types of experiences you've had and what you've learned from them and less to do with how many birthdays you've celebrated.

I believe--That it isn't always enough to be forgiven by others, sometimes you have to learn to forgive yourself.

I believe--That no matter how bad your heart is broken the world doesn't stop for your grief.

I believe--That our background and circumstances may have influenced who we are, but we are responsible for who we become.

I believe--That just because two people argue, it doesn't mean they don't love each other, and just because they don't argue, it doesn't mean they do.

I believe--That you shouldn't be so eager to find out a secret, it could change your life forever.

I believe--That two people can look at the exact same thing and see something totally different

I believe--That your life can be changed in a matter of hours by people you don't even know you.

I believe--That even when you think you have no more to give, when a friend cries out to you, you will find the strength to help.

I believe--That the people you care about the most in life are taken from you too soon.

Send this to the people you believe in...I just did.

Hmmm...

**SCRIPT PRINTING & OFFICE SUPPLY**  
 108 S. MAIN Floydada, Tx.  
 PHONE 806-983-5131 FAX 806-983-2414  
 printing- office supplies  
 copiers - calculators - fax - typewriters - furniture

*Keeping an Eye on Texas*

**Where We Stand**

Texas ranks 47th among the 50 states in literacy. Four million Texans, about 25 percent of the adult population, are unable to read basic signs and maps. Volunteer to help others learn to read through local library literacy programs.

**ILLITERACY IN TEXAS CITIES**

El Paso	19.43%
San Antonio	15.05%
Houston	13.56%
Dallas	11.89%
Austin	6.80%

SOURCES: Carole Keeton Rylander, Texas Comptroller (www.window.state.tx.us) and IDRA Research.

**Walk Across Texas Update**

**By Cory Payne**

Participants in Texas cooperative Extension's Walk Across Texas program have been going strong for two weeks. Two additional teams have been added: "Ankle Express" including Diana Ivory, Clarence Ivory, Jackie Mercer, Felipa Martinez, Josephine Limon, Jerry Baker, Faye Perkins, and Mary Ramirez, and "Agape" including Betty Stephens, Skylar Stephens, Christina Stephens, Pat Davis, Tina Davis, Joe Davis, Juanita Stephens, and Eudean Crow. The "Fairmont Flyers" have also completed their team with Bill Brooks, Donna Pigg, Mary and Catherine Pigg, and Paula Montague.

At the end of the first week, the "Road Warriors" were in the lead with 187.38. Next were "The Early Birds" with 145.9 miles and closely following "Dolls & Guy" with 142.5 miles. The other teams fell in as follows: "The Sweat & Stress Team"- 92 miles, "Ankle Express"-77 miles, "The Wanna-bes"-76.75 miles, "ASKEBA T"- 73.5 miles, "Feisty Young Speed Walkers"- 62.45 miles, "Agape"- 57.5 miles, "The Nutty Fruits"- 51.5 miles, and "The Fairmont Flyers"- 47.5 miles.

At the end of the second week, the "Road Warriors" are still in the lead with 265.36 miles. Moving into second was "ASKEBA T" with 226.3 miles. Following them were "The Early Birds" with 145 miles, "The W anna-bes" with 81.5 miles, "The Nutty Fruits" with 64 miles (minus 1 members total), "The Fairmont Flyers" with 54 miles, and "Agape" with 39 miles. Team miles not seen were not reported in time. Keep up the good work!

**Turkey Warned Of Nitrate, Advised To Protect Infants**

The Texas Natural Resource Conservation Commission (TNRCC) has tested Turkey water samples, and found that Nitrate/Nitrite is 13.40 mg. This is a high enough level to cause concern among parents of very young infants.

The TNRCC sets drinking water standards and has determined that nitrate poses an acute health concern at certain levels of exposure. Nitrite is used in fertilizer and is found in sewage and wastes from human and/or farm animals and generally gets into drinking water from those activities.

Excessive levels of nitrate in drinking water has caused serious illness and sometimes death in infants under six months of age. The serious illness in infants is caused because nitrate is converted to nitrite in the body. Nitrite interferes with the oxygen carrying capacity of the child's blood. This is an acute disease in that symptoms can develop rapidly in infants. In most cases, health deteriorates over a period of days.

Symptoms include shortness of breath, and blueness of the skin. Clearly expert medical advice should be sought immediately if these symptoms occur.

Letters have been sent out to notify Turkey residents of the results of the nitrate test, to encourage parent and other responsible parties to provide infants with an alternate source of drinking water. Local and state health authorities are the best source for information concerning alternate sources of drinking water for infants.

TNRCC has set the drinking water standard at 10 parts per million (ppm) for nitrate to protect against the risk of these adverse effects. It has also set a drinking water standard for nitrite for 1 ppm. To allow for the fact that the toxicity of nitrate and nitrite are additive, TNRCC has also established a standard for the sum of nitrate and nitrite at 10 ppm. Drinking water that meets the TNRCC standard is associated with little to none of this risk and is considered safe with respect to nitrate.

\*\*\*  
 The art of being wise is the art of knowing what to overlook.  
 \*\*\*  
 —William James

**CONGRATULATIONS TO CORY & STACY PRICE OF TURKEY, TX THEY WERE THE WINNERS IN THE RUIDOSO VACATION GIVEAWAY**

**PAT CARSON**

**INSURANCE**

806-423-1289 Turkey  
 806-455-1181 Quitaque  
 888-343-1289 TOLL FREE  
 patcarsoninsurance.com

**CHURCH OF CHRIST**  
 Turkey, Texas  
 Minister: Stuart Smith  
 Weekly Schedule Meetings  
**SUNDAY**  
 Morning Service.....10:30 a.m.  
 Evening Service.....5:30 p.m.  
**WEDNESDAY**  
 Evening Service.....8:00 p.m.

**FIRST BAPTIST CHURCH**  
 Turkey, Texas  
 Pastor: Melvin Clinton  
 Weekly Schedule Meetings  
**SUNDAY:**  
 Sunday School.....9:45 a.m.  
 Morning Worship.....11:00 a.m.  
 Singing.....5:00 p.m.  
 Training Union.....6:00 p.m.  
 Evening Worship.....6:00 p.m.  
**MONDAY**  
 Women's  
 Missionary Society.....4:00 p.m.  
**WEDNESDAY**  
 Prayer Meeting.....8:00 p.m.

**MT. OLIVE BAPTIST CHURCH**  
 Turkey, Texas  
 Pastor: Samuel Holloway,  
 Plainview, Texas  
 Weekly Schedule Meetings  
 Pastoral Days...1st & 3rd Sundays  
**MONDAY**  
 Mission.....4:00 p.m.  
**WEDNESDAY**  
 Prayer Meeting.....8:00 p.m.

**UNITED METHODIST CHURCH**  
 Turkey, Texas  
 Pastor: Julius Earl y  
 Weekly Schedule Meetings  
**SUNDAY**  
 Morning Worship.....9:30 a.m.  
 Church School.....10:30 a.m.  
 Evening Worship  
 1st & 3rd Sundays.....6:00 p.m.  
**MONDAYS (1st & 3rd)**  
 United  
 Methodist Women.....4:00 p.m.

**ST. ELIZABETH ANN SEYON CATHOLIC CHURCH**  
 Turkey, Texas  
 Sister Joyce Blum, F.S.P.A.  
**SUNDAY**  
 Sunday School.....11:00 a.m.  
 Mass.....12:00 p.m.

**FAIRMONT MISSIONARY BAPTIST CHURCH**  
 Fairmont  
 Pastor: Arnie Smith  
**SUNDAY**  
 Worship.....11:00 a.m.

**Valley Farm Store**  
 Quitaque, TX

**Paymaster Gin**  
 Quitaque, TX

**Turkey Branch Memphis State Bank**  
 Turkey, TX

**Caprock Home Center**  
 Quitaque, TX

**Karol's Kountry Korner**  
 Quitaque, TX

**Valley Peanut Growers**  
 Turkey, TX

**First National Bank**  
 Quitaque, TX

**THE PEOPLE WHOSE NAMES APPEAR BELOW SPONSOR THIS MESSAGE WITH THE HOPE OF PROMOTING A BETTER CHRISTIAN COMMUNITY**

**Lighthouse Electric Cooperative, Inc.**  
 Floydada, TX

**Turkey Branch Memphis State Bank**  
 Turkey, TX

**Caprock Telephone Cooperative, Inc.**  
 Spur, TX

**Hawkins Insurance**  
 Quitaque, TX

**Just Because**  
 Quitaque, TX

**UNITED METHODIST CHURCH**  
 Quitaque, Texas  
 Pastor: Julius Early  
 Weekly Scheduled Meetings  
**SUNDAY**  
 Church School.....9:45 a.m.  
 Morning Worship.....10:50 a.m.  
 Evening Worship.....6:00 p.m.  
**WEDNESDAY**  
 Bible Study.....7:00 p.m.

**CHURCH OF CHRIST**  
 Quitaque, Texas  
 Minister: Delos Johnson  
 Weekly Scheduled Meetings  
**SUNDAY**  
 Morning Worship.....10:30 a.m.  
 Evening Worship.....5:00 p.m.  
**WEDNESDAY**  
 Bible Study.....7:00 p.m.

**FIRST BAPTIST CHURCH**  
 Flomot, Texas  
 Pastor: Nathan Mulden  
 Weekly Scheduled Meetings  
**SUNDAY**  
 Sunday School.....10:00 a.m.  
 Worship Service.....11:00 a.m.  
 Discipleship Training.....5:30 p.m.  
 Worship.....6:30 p.m.  
**WEDNESDAY**  
 Prayer Meeting.....7:30 p.m.

**FIRST BAPTIST CHURCH**  
 Quitaque, Texas  
 Pastor: Lance Cypert  
 Weekly Scheduled Meetings  
**SUNDAY**  
 Sunday School.....9:30 a.m.  
 Morning Worship.....10:30 a.m.  
 Training Union.....5:00 p.m.  
 Evening Worship.....6:00 p.m.  
**WEDNESDAY**  
 Missions Program.....5:00 p.m.  
 Prayer Meeting.....6:00 p.m.

**CHURCH OF CHRIST**  
 Flomot  
**SUNDAY**  
 Worship.....10:30 a.m.

**IGLESIA BAUTISTA La TRINIDAD CHURCH**  
 Pastor Salvador Bernal  
 Sunday School.....10:00 a.m.  
 Church.....11:00 a.m. & 6:00 p.m.  
 Wednesday.....7:00 p.m.

A remarkable trait of our young people is their apparent inability to realize that they will not stay young forever. This has resulted in the "generation gap" with the belief that the elderly are hopelessly out of touch with reality. Indeed, spending time with their grandparents is often regarded as a painful duty, and this is a real tragedy because their attitude prevents both young and old from gaining a better understanding and a greater tolerance of each other's generation. However, families who attend their House of Worship together have a good chance of correcting this, because every faith commands respect for the elders. When your children learn that with only one alternative we will all be old some day, they will treat their grandparents with all the love and reverence due them; seeing their own future in the process.

*I grow old ever learning many things*  
 —Solon

*"Remember the days of old, consider the years of many generations."*  
 —Deuteronomy 32:7

The Valley Tribune, Q

**VAL**

2001 Valley Varsity Football Schedule

Sept. 7	Wellman-Union	A-6.30
Sept. 14	Wilson	A-6.30
Sept. 21	Fr. Elliot	H-7.00
Sept. 28	Cotton Center	H-7.00
Oct. 5	Miami	A-7.00
Oct. 12	*Groom	H-7.00
Oct. 19	*Hedley	A-7.00
Oct. 26	*Happy	H-7.00
Nov. 2	*Sammorwood	A-7.00
Nov. 9	*Silverton	H-7.00
	* District Games	
	* Homecoming	

2001 Valley J.V. Football Schedule

Sept. 6	Happy	A-6.30
Sept. 13	Chillicothe	H-6.30
Sept. 20	Silverton	H-6.30
Sept. 27	Cotton Center	A-6.30
Oct. 4	Miami	H-6.30
Oct. 11	Amarillo Trinity	A-6.30
Oct. 18	Hedley	A-6.30
Oct. 25	Happy	H-6.30
Oct. 25	Spade	H-6.30
Nov. 1	OPEN	
Nov. 8	Silverton	A-6.30

2001 Valley Jr. High Football Schedule

Sept. 6	Happy	A-5:00
Sept. 13	Chillicothe	H-5:00
Sept. 20	Cotton Center	A-5:00
Sept. 27	Miami	H-5:00
Oct. 4	Miami	H-5:00
Oct. 11	Amarillo Trinity	A-5:00
Oct. 18	Hedley	A-5:00
Oct. 25	Happy	H-5:00
Nov. 1	Sammorwood	H-5:00
Nov. 8	Silverton	A-5:00

City  
 Floydada, T

John  
 Silverton,

Silvert  
 Silverton,

Mayfield  
 Lubbock,

First Na  
 Cultaqu  
 Men

Flom  
 Flomct,

Karol's K  
 Cultaqu

Oden  
 Floydada, T

The Val  
 Cultaqu  
 Vln

Lee's  
 Turkey,

Lacy  
 Turkey,

Valley  
 Cultaqu  
 Jim

Capro  
 Spur, TX

Robert  
 Jayton, T  
 Oldsmoble



# VALLEY PATRIOT FOOTBALL



## 2001 Valley Varsity Football Schedule

Sept. 7	Wellman-Union	H - 7:30
Sept. 14	Wilson	A - 7:30
Sept. 21	Ft. Elliot	A - 7:30
Sept. 28	Cotton Center	H - 7:30
Oct. 5	Miami	A - 7:30
Oct. 12	*Groom	A - 7:00
Oct. 19	*Hedley	H - 7:00
Oct. 26	*Happy	A - 7:00
Nov. 2	*Samnorwood	A - 7:00
Nov. 9	*Silverton	H - 7:00
* District Games		
\$ Homecoming		

## 2001 Valley J.V. Football Schedule

Sept. 6	Happy	A - 6:30
Sept. 13	Chillicothe	H - 6:30
Sept. 20	Silverton	H - 6:30
Sept. 27	Cotton Center	A - 6:30
Oct. 4	Miami	H - 6:30
Oct. 11	Amarillo Trinity	A - 6:30
Oct. 18	Hedley	A - 6:30
Oct. 25	Happy	H - 5:15
Oct. 25	Spade	H - 6:30
Nov. 1	OPEN	
Nov. 8	Silverton	A - 6:30

## 2001 Valley Jr. High Football Schedule

Sept. 6	Happy	A - 5:00
Sept. 13	Chillicothe	H - 5:00
Sept. 27	Cotton Center	A - 5:00
Oct. 4	Miami	H - 5:00
Oct. 12	Groom	H - 5:00
Oct. 18	Hedley	A - 5:00
Oct. 25	Happy	H - 4:00
Nov. 1	Samnorwood	H - 5:00
Nov. 8	Silverton	A - 5:00



### ROSTER

Player	Ht.	Wt.	Yr.	Pos.
Wes Henson	6-4	195	Sr.	QB/DE
Darryl Hinojosa	5-8	150	Sr.	RB/CB
Justin Lucero	5-11	190	Sr.	DE/WR
Gary Chavez	5-8	190	Sr.	RB/CB
Christopher Taylor	6-2	160	Sr.	G/DT
Derrick Cruse	6-0	170	Jr.	RB/S
Manuel Chavez	5-9	170	Jr.	RB/S
J.C. Pigg	5-8	170	Jr.	C/DE
Justin Wilkes	5-10	160	Jr.	QB/S
Chase Maynard	5-8	145	So.	QB/S
Tyler Messer	5-8	165	So.	RB/LB
Robert Mendoza	5-7	170	So.	RB/LB
Jose Mora	5-8	155	So.	DE/CB
Rodney Fuster	5-8	185	So.	C/DE
Ramiro Ramos	5-9	215	So.	OL/DE
Frankie Rodriguez	5-7	140	So.	OL/DE
Keller Roberts	5-8	150	So.	RB/CB
Adam Ortiz	5-9	160	So.	QB/CB
Anthony Ortiz	6-0	165	So.	OL/DE
Juan Reigado	5-8	150	So.	OL/CB
Cliff Yeary	5-9	180	So.	RB/LB

### GLANCE

**Head Coach:** Bret Tyler.  
**Assistant Coaches:** Greg Ramsey, Thomas Clay & Troy Fry.  
**2000 Record:** 6-5.  
**Returning Experience:** Two offensive and three defensive starters.  
**Players to Watch:** Wes Henson, C; Justin Lucero DE; Derrick Cruse RB.  
**Returning Newcomers:** Rodney Fuster DE; J.C. Pigg C.  
**Basic Drives:** I.  
**Basic Defense:** 2-3.  
**Player History:** 1978, 1979, 1980 (quarterfinals), 1983 (quarterfinals), 1984, 1985 (zone), 1986 (regional), 1990, 1991 (quarterfinals), 1992 (regional), 1993 (regional), 1999, 2000.

### OVERVIEW

Last season the Valley Patriots made a successful debut into six-man play by making the playoffs. Coach Bret Tyler's Patriots dropped a 46-26 decision to Follett in bi-district play. Valley returns a good foundation from last year's 6-5 team, having five starters coming back. Of course it will be almost impossible to replace all state running back Justin Davis, who rushed for almost 2,000 yards last year. Senior Derrick Cruse will more than likely have to fill those shoes. Tyler will move him from quarterback to tailback. Last year Cruse rushed 1,198 yards and 16 touchdowns. Another key move will be moving senior Wes Henson from center to wide receiver. The 6-foot-4, 195-pound Henson will make a big target. Last year he caught 11 passes for 127 yards and three touchdowns. Junior Justin Wilkes will step in at quarterback duties. The defense returns all-district end Justin Lucero, Cruse at safety and sophomore Cliff Yeary at linebacker. Tyler admits his team could make another run for the playoffs. "We will be young, but talented. If we could get off to a good start, it could be a good year," said Tyler.

### Superintendent:

Jerry Smith

### Principal:

Jon Davidson

### Head Coach:

Bret Tyler

### Asst. Coaches:

Greg Ramsey, Thomas Clay & Troy Fry

### Cheerleaders:

Amanda Roys, Tessa Kelley, Lydia Valdez, Ashley Cagle, Chelsea Wheeler, Christine Walls

### Mascot:

Scarlett Sperry



### City Auto

Floydada, TX 806-983-3767

### Johnson Gin

Silverton, TX 823-2224

### Silverton Oil Co.

Silverton, TX 823-2451

### Mayfield & Associates

Lubbock, TX 800-527-1870

### First National Bank

Quitaque, TX 455-1441  
Member FDIC

### Flomot Gin

Flomot, TX 469-5294

### Karol's Kountry Korner

Quitaque, TX 455-1174

### Oden Chevrolet

Floydada, TX 806-983-3787

### The Valley Tribune

Quitaque, TX 455-1101  
Vince & Laura

### Lee's Insurance

Turkey, TX 423-1020

### Lacy Dry Goods

Turkey, TX 423-1155

### Valley Farm Store

Quitaque, TX 455-1105  
Jim & Barbara

### Caprock Cellular

Spur, TX 806-271-3344

### Robert Hall Chevrolet

Jayton, TX 806-237-2182  
Oldsmobile-Genuine Chevrolet

This page sponsored by these individuals, merchants, and businesses.

We're with you all the way, Patriots!

### Wilburn & Zelda Leeper

### Turkey Branch Memphis State Bank

Quitaque, TX 423-1321  
Member FDIC

### Jack's Automotive

Quitaque, TX 455-1243  
Jack, Debbie, Jamle, Richard, Dyan, & Jessica Wellman

### Caprock Telephone Cooperative, Inc.

Spur, TX 1-800-692-4242

### Hammond Sheet Metal

Floydada, TX 806-983-2849

### Thayer & Washington

455-1087 Quitaque, TX 983-3121

### Quitaque Producers Co-op

Quitaque, TX 455-1388

### Red Ball Gin

Boaring Springs, TX 806-348-7221

### Texas Horse Dads

Quitaque, TX 455-1265  
Ramon & Norleen, Christine Walls

### Dayne Family Pharmacy

Floydada, TX 800-345-7961

### Midway Drive-In

Memorial Day to Labor Day 423-1414

### Lighthouse Electric Co-op Inc.

Floydada, TX 806-983-2814

### Hagelbotham Bartlett Lumber Co.

Matador, TX 806-347-2445

### City of Turkey

423-1033

### Briscoe Implement

Silverton, TX 823-2486

### Sportsman

Quitaque, TX 455-1200

### Griffin Oil

Quitaque, TX 455-1250

### Valley Peanut Growers

Turkey, TX 423-1484

### Cruse Spraying

Flomot, TX 469-5395

### Caprock Home Center

Quitaque, TX, 455-1193  
Jim & Misti Messer-Roland & Donna Hamilton

### Merrell Food

Quitaque, TX 455-1282

### City Bank Silverton

Silverton, TX 823-2426  
Member FDIC

### ADM Daymaster

Quitaque, TX 455-1440

### Hotel Turkey

Turkey, TX 423-1151

### Turkey Grocery

Turkey, TX 423-1330

### Carson Insurance

Turkey, TX 423-1289  
Pat & Tina

### Just Because

Quitaque, TX 455-1410



