

51 JUNE 30, 2002
 BURNS MRS. LESLIE C.
 10902 VAN RUITON S.
 NORWALK CA 90650

VALLEY WEATHER			
DATE	HI	LO	PREC
MAR 28	77	36	-----
MAR 29	88	54	-----
MAR 30	75	47	.10
MAR 31	52	37	.35
APR 1	71	40	-----
APR 2	86	47	-----
APR 3	55	32	-----



50¢
per copy

THE VALLEY TRIBUNE

VOLUME 41 NUMBER 41

BRISCOE COUNTY

QUITAQUE, TEXAS 79255

THURSDAY, APRIL 4, 2002



WOMAN OF THE YEAR-DELENE TYLER

Lone Star Rising Returning To Turkey Gem Theatre

Award winning director, Neil Hess, is bringing his Lone Star Rising singers and dancers back for another performance at the Gem Theatre in Turkey on Monday, April 15, 2002. The show will begin at 7:30 p.m. Admission for adults will be \$8 and children 12 and under \$4. The theme for this show is Sinatra classics, rock and roll, Broadway and more! This is a very talented and wonderful group of young people and we would like to have a lot of local teenagers come to see this show. We plan to feed the cast after the show and any teenagers who wish are welcome to stay and have snacks and get acquainted with these young performers. We hope to see you there!

Daylight Savings Time Begins
 Sunday, April 7
Remember
 To Set Your Clocks Forward 1 Hour

Calendar of events

- April 4**
 -Senior Citizens Exercise Program at Quitaque Senior Citizens Building @ 6:30 p.m.
 -Hwy 70 Meeting at Roaring springs Community Center @ 7:30 p.m.
- April 5**
 -Valley School-End of Six Weeks
 -Early Voting Ends Today
 -Quitaque Senior Citizens @ 5 p.m.
- April 6**
 -Caprock Canyon State Park Spring Birding @ 9 a.m.
 -Caprock Canyon State Park Evening Intrepretive Program @ 8:30 p.m.
- April 7**
 Daylight Savings Time Begins-Set Your Clock Ahead 1 Hour!
- April 8**
 -Turkey Lions Club at Hotel Turkey @ 7 p.m.
 -Valley School- Start of 6th Six Weeks
 -Valley Board of Trustees Meeting
 -Quitaque City Council at City Hall @ 5p.m.
 -Quitaque Firemen Meeting at Fire Hall
- April 9**
 -Remember To Vote Today in Run-Off Primary Election
 -We the Women at the Quitaque United Methodist Church @ 12 noon
 -Senior Citizens Exercise Program at Quitaque Senior Citizens Building @ 6:30 p.m.
 -Flomot Do Gooders Meeting
 -Turkey Senior Citizens Meeting @ 6 p.m.
- April 11**
 -Senior Citizens Exercise Program at Quitaque Senior Citizens Building @ 6:30 p.m.
 -Turkey City council Meeting at City Hall @ 7 p.m.

Remember To Vote In The April 9th Run-Off Election

Early voting ends tomorrow, Friday, April 5 at 5 p.m. at Briscoe and Hall County Courthouses in the Primary election run-off races. The Run-Off election will be held Tuesday, April 9. Voting times will be from 7 a.m. to 7 p.m.

Voting sites for Briscoe County Precincts 2 & 6 Republicans will be at the Quitaque Catholic Center. The Briscoe County Precinct 2 & 6 Democrats will vote at the Quitaque Community Center.

Hall County Republicans will vote at the Hall County Courthouse in Memphis. Hall County Democrats will cast their votes at the Bob Wills Center in Turkey.

Republicans in both counties are voting for the following seats. Justice Supreme Court Place 2 between Elizabeth Ray and Dale Wainwright; Judge, Court of Criminal Appeals, Place 1 between Tim Taft and Tom Price; Judge, Court of Criminal Appeals Place 2 between Paul Womack and David Richards; and Judge, Court of Criminal Appeals, Place 3 between Cathy Cochran and Guy Williams.

Democrats in Hall County will be deciding on the County Judge race between Jacky Martin and J.H. "Jimmy" Bownds. They will also vote on the United States Senator race between Ron Kirk and Victor Morales.

Democrats in Briscoe County Precincts 2 & 6 will vote only the the United States Senator race between Kirk and Morales.

Chamber Banquet A Huge Success!

The Quitaque Chamber of Commerce Banquet, held last Thursday evening, was a huge success! This years event was an evening to be remembered. Guests arrived to a Patriotic theme at the Quitaque Community Center. As guests stood in line to registered for a chance at one of the many door prizes, the wonderful smell of mesquite grilled steaks wafted through the air, making the guests hungry with anticipation.

A meal of mesquite grilled steaks, lovingly prepared by "master grillers" Warren Lee Merrell and Dale Smith and supervised by Sid McFall, was served with all the trimmings. Guests were greeted by Chamber President Phil Barefield and Randy Stark introduced the evenings guests.

Amber Stark, a senior at Valley High School, was introduced as the recipient of this years Chamber sponsored Essay Contest, by Mayor Roland Hamilton. Amber then presented her essay to the group.

Phil Barefield then announced this year's recipients of the coveted Golden Heart Award and Citizen of the Year Award.

Ann Chadwick was awarded the Golden Heart Award. Ann is a person who is never home, she is always busy with some project. She plays 42, is a wonderful cook, counselor, nurse and chauffeur. Ann substitutes at Valley School as well as being a wife and grandmother. She is always helping anybody in any way she can. She has a Big Heart in fact a "Golden Heart".

Delene Tyler was named the Citizen of the Year. Delene is involved in all phases of community activities. She is a driving force in getting things done in our community. She, just like Ann is never home, some project is always in need of attention and Delene is there. She is active in We The Women, The Thrift Shop, Quitaque Chamber of Commerce, and the Relay for Life. Delene is also the pianist at the United Methodist Church and assists with the children's choir there. Delene is an example we should all try to follow as she diligently works to promote a better Quitaque for all of us.

Guests were then entertained by "Doppler" Dave Oliver. Dave provided a very interesting and hilarious look at the life of a weather man. He kept the guests in stitches and left them wanting more of his unique perspective on West Texas weather.

Merchants providing door prizes for the guests were: Helms Irrigation, Karol's Kountry Korner, First National Bank, Caprock Cafe, Merrell food, Just Because, The Valley Tribune, Texas Horse Pads, Midway Drive-In, Allsup's (Mary Ham), Back to Basics, Heads and Heels, Paymaster Gin, Valley Farm Store, Griffin Oil, Quitaque Producers Co-op, Turkey Grocery, Turkey Service Center, Quitaque H₂O, Caprock Home Center, Caprock Public Library, Thrift Shop, Caprock Canyons State Park, Debbie's, Barbara's Nails, Hotel Turkey, Turkey Branch Memphis State Bank, Hilltop Cafe, Galvan's, Carson Insurance, Jack's Automotive, Sportsman Bar & Grill, Laura's Shop, Adobe West, Circle Dot Ranch, Queen of the Valley Tours, Country Trader, and Precision Concrete.



GOLDEN HEART AWARD-ANN CHADWICK

Caprock Canyons State Park Announces Trailway Challenge

Are you a hiker, biker, or horseback rider? Well, the Trailway Challenge may be just what you are looking for this spring. The Trailway is 64 miles long, and if you are one of the first 100 people to travel the entire Trailway, you are entitled to a patch and certificate as a reward for your accomplishment.

Caprock Canyons State Park currently manages the old railroad that once ran from Estelline, Texas on Hwy 287, to South Plains, Texas, near Floydada. The Trailway, as it is now named, has been converted for use as a hiking, biking, and horseback riding trail that spans 64 miles of scenic and historic countryside. The Trailway passes through Turkey, home of Bob Wills, the King of Western Swing and Quitaque, home of Caprock Canyons State Park and the Texas State Bison Herd.

Caprock Canyons has installed etched plates between the seven parking lots along the Trailway for the Challenge. As evidence that you have traveled the entire length, you can make a rubbing of each of the etched plates and send them in for verification. Call ahead to let the staff know your intentions to take the challenge, and they will send you a detailed map and the exact locations of the etched plates.

Caprock Partners Foundation, the park's friends group, is hosting the Trailway Challenge Kick-Off on April 27, Bob Wills celebration weekend in Turkey. The Kick-Off is an event for bikers who want to ride the Trailway in one day. There is a \$25 registration fee for the Kick-Off event that includes refreshments along the way, a sag wagon, dinner at the end of the trail, and a shuttle back to your vehicle. The Kick-Off will begin at the South Plains Terminal of the Trailway and end at the Estelline Terminal. Call the state park office at 806-455-1492 for a registration form.

This spring, if you are looking for something challenging, rewarding, and fun, find a friend and take the Trailway Challenge. For more information on the Trailway Challenge, Caprock Canyons State Park and Trailway, or programs and facilities, call 806-455-1492 or visit Texas Parks and Wildlife's website at www.tpwd.state.tx.us. Caprock Canyons State Park is located 3.5 miles north of Quitaque.



Wes Henson will be playing in the Golden Spread All-Star Game in Amarillo tomorrow.

Valley Student To Play In All-Star Game

Valley High School's Wes Henson has been elected to participate in this week's Golden-Spread All-Star games. Henson, a 6'4" senior, will play at 8 p.m. Friday for the East team in a game against the South.

The games are designed to help area seniors get one last look at college coaches, along with promoting basketball in the area. The Championship game will be played at 8 p.m. Saturday night.

Henson, a four year varsity player, enjoyed his best season this year when he averaged 12 points and 10 rebounds per game. Henson started every game for the Patriots and was named Team Captain.

"Wes definitely deserves this honor," Coach Clay said. "All-Star games should be for the athletes that work hard and represent their school well, and Wes fits that criteria. Not to mention, he's a pretty darn good ball player."

Henson has also been named Honorable Mention All-District, Academic All-District, and the first alternate on the Six-Man Coaches Association All-Star team. He will be one of three seniors graduating from this year's team.

"We will miss Wes next year," Coach Clay said. "It's been a few years since there has been a Valley basketball game without Wes being in it. It has been an honor to coach such an outstanding young man."

Fall Cattle Drive New Goal Of Texas 70 Association

A tentative date for a Fall Cattle Drive along Texas 70 has been set for the Columbus Day week. Many details remain to be worked out, but consensus of those attending the Texas Highway 70 Association meeting on March 7 was that the idea has merit in attracting paying tourists to the area.

The 70 Mile Garage Sale is planned for May 4 and 5. Advertising will begin in earnest next month to attract visitors to the downtown areas of the towns along the route, from Spur to Turkey. Reservations for individual, vendor, or business slots can be made through the Spur Chamber of Commerce, the City of Roaring Springs, the Motley County Chamber of Matador, and Hotel Turkey.

A website created by Ronnie Austin of Spur featuring text and photographs from the Association communities submitting promotional material. Austin plans to activate the site soon, but needs more photos representing the communities of Spur, Roaring Springs, Matador, and Turkey for the opening home page. Austin's E-mail address is texashuy70.com.

Here's A Texas You Can Mess With!
 Page 3
 The Original TEXAS CROSSWORD (Mess with it all you want)
 The Texas Crossword Puzzle proudly sponsored every week by:
THE SPORTSMAN BAR & GRILL
 Quitaque, America 1-806-455-1200



Mr. & Mrs. Dick Young
Old Sweetheart Story

Little did anyone know the twists and turns that were to come in the lives of Alpha Joyce Mullin, (daughter of Horace and Lillian Mullin) and Dickey Lynn Young, (son of Doc and Tabitha Young) of Turkey, Texas.

Dick and his family, lived in the Bridle Bit area until his fourth grade year. He and Joyce were classmates and friends in Turkey until the 8th grade when they deepened their friendship by becoming sweethearts for two years.

After a parting of the ways, Joyce married Jim Guest and Dick wed Eloise Stephens (one of Joyce's best friends). They went on to produce families of their own: Dick's daughter Lisa Hogan, grandchildren Garrett and Holley Hogan; Joyce's two daughters Cyndy Reid, grandchildren Katie and Matthew Reid, Daughter Jan Augburger, grandchildren Austin, Elisha and April Augburger.

Many times they lived in the same areas but were unaware if it. For 45 years they did not see each other. Each were attending and working in the same church but in different places.

Jim Guest died in '95, Eloise in 2001. After Dick's sister, Gladys Hanna, mentioned to Joyce about Weezy's death, Joyce contacted Dick to express regret over Eloise's death. They caught up on each others lives, then more telephone calls ensued. Dick decided to make a trip to Turkey - and that was the beginning of this love affair. Having known each other all their lives made it easy to get acquainted and to fall in love all over again.

On Saturday, 1:00 p.m. these two people exchanged marriage vows at the Turkey Church of Christ with Randy Mullin, minister, officiating. A special prayer was delivered by Mid McKnight.

Granddaughter Katie Reid played Rondo in D as Dick was ushered in by his grandson Garrett Logan, and Joyce by her grandsons Matthew Reid and Austin Augburger. The couple were flanked by grandchildren Matt and Katie Reid, Elisha, April and Austin Augburger, Holley and Garrett Logan; Children Lisa Hogan, Jan and Ellis Augburger, Cyndy and David Reid.

The bride's bouquet was made up of single flowers presented by each of the daughters, granddaughters, nieces and great-nieces. Daughter, Jan Augburger completed the bouquet with ribbons. Lisa Hogan presented her Dad with a boutonniere.

Flowergirl was Brooke Nicole Mullin, Clayton and Carly Howard ringbearers. Amanda Mullin, Jamie Wilkey and Lindsey Mullin presided at the guest book and passed out a poem written for the couple by Lawana Cruse. Ushers were Rick Mullin, Ron Wilkey, Russell Howard, Michael Mullin and Adam Mullin. Rod Mullin emceed the event.

Cyndy Reid sang two selections: "Endless Love" and "Unchained Melody". Dick dedicated the song "I Will If You Will" to Joyce.

After pronouncing Dick and Joyce husband and wife, the entire group attended a reception at the Hotel Turkey. Many friends and relatives traveled distances to share in this event.

Hawaii was the destination of the couple following the reception. After a brief time in Turkey, the couple will be living in Ellijay, Georgia.

OBITUARIES

Lena Mae Hawkins

Funeral services for Lena Mae Payne Hawkins of Wichita Falls, Texas were held Monday, April 1, 2002 at Lunn's Colonial Chapel with Dr. Issac Butterworth, officiating. Burial was in Quitaque Cemetery with Rev. Julius Early officiating.

Lena Mae Hawkins, 89, passed away Thursday, March 28, 2002 in Clay County Memorial Hospital.

She was born on November 14, 1912 in Lone Oak, Texas. Her family was one of the Pioneer families of Quitaque. She was married to Hank Richard Hawkins on December 23, 1933 in Quitaque. Frank and Lena ran the Compress in Quitaque for many years before moving to Lockney. Lena Mae was a member of the First United Methodist Church of Lockney, TX. She was very involved in the Senior Citizens Organization and United Methodist Women's Association in Lockney. She moved to Wichita Falls from Lockney 12 years ago.

Mrs. Hawkins was preceded in death by her husband Frank Richard Hawkins in 1987 as well as two brothers and two sisters.

She is survived by one son: Joe Frank Hawkins and family; two sisters: Jimmie Kinard of Lubbock, TX and Dorothy Young of Midland, TX; three brothers: Bobby Payne of Wichita Falls, TX, John Payne of Seven Points, TX, and L.D. Payne of Ft. Worth, TX; by 7 nieces, 9 nephews, 13 great nieces, and 9 great nephews.

The family suggests memorials to First United Methodist Church in Quitaque or Lockney.

Roy Patrick

Funeral services for Roy Patrick, 67, of Quitaque will be held at 2:00 p.m. this afternoon Thursday, April 4, 2002 at the First Baptist Church in Quitaque. Rev. Patrick Six of the First Baptist Church in Spearman will officiate. Burial will be in Resthaven Cemetery in Quitaque by Myers-Long Funeral Directors of Quitaque.

Roy Patrick was born on May 7, 1934 at Quitaque, Texas. He passed away on April 2, 2002, at Spearman, Texas at the age of 67 years, 7 months, and 25 days. He was an accountant and served in the U.S. Army.

Survivors include 2 sons: John Patrick of Coppell and Robert Patrick of Spearman; by 2 brothers: Earl Patrick and Arthur Patrick both of Quitaque; by a sister: LaRue Golden of Lubbock and by 6 grandchildren.

John Morgan

Graveside services for John Morgan, 37, of Turkey were held Tuesday, April 2, 2002 at the Bell Ranch Cemetery. Mr. Elgin Conner of Levelland will officiate. Arrangements were by Myers-Long Funeral Directors of Turkey.

John Morgan was born on February 14, 1965 at Plainview, Texas. He passed away on March 30, 2002 at Amarillo, Texas at the age of 37 years, 1 month and 16 days.

Survivors include his parents: Jerry and Ginger Morgan of Turkey; a brother: Rex Morgan; his grandmother: Frankie Bell of Turkey; by a niece, a nephew, and three uncles including Cody Bell of Turkey.

The family suggests memorials be to Crown of Texas Hospice or to a favorite charity.

Rex L. Anderson

Funeral services for Rex L. Anderson, 56, of Quitaque will be at 10:00 a.m., Friday, April 6 at the First United Methodist Church in Quitaque. Rev. Don McMahan and Mr. Jimmy Davidson will officiate. Burial will be in Flomot Cemetery by Myers-Long Funeral Directors of Quitaque.

Rex L. Anderson was born on May 30, 1945 at Matador, Texas. He passed away on March 2, 2002 at Amarillo, Texas at the age of 56 years, 9 months and 2 days. He graduated from Quitaque High School in 1963 and then attended Clarendon Junior College and West Texas State University. He was a farmer.

Survivors include his father: Denver Anderson of Quitaque; a sister: Ginger Thurman of Amarillo; and 2 nephews: Shannon and Jason Foster.

Trash Off This Saturday

The Texas Trash Off will be held this weekend, Saturday, April 6. Both Quitaque and Turkey Lions will be participating in this event. Any interested citizens who wish to participate are encouraged to do so.

The Turkey Lions will meet at 8:30 a.m. in front of the Byron Young service station in Turkey.

MEMBER 2002

TEXAS PRESS ASSOCIATION

THE VALLEY TRIBUNE
Successor to The Quitaque Tribune, Established at Quitaque in 1960
Published Every Thursday at Quitaque, Texas 79255
Vince F. Taylor, Owner/Publisher
Laura Taylor, Editor
Earlyne Jameson, Reporter

SUBSCRIPTION RATES PER YEAR
BRISCOE, HALL, MOTLEY, FLOYD COUNTIES.....\$18.50
ELSEWHERE.....\$21.50

Advertising rates upon request. Classified advertising, minimum charge is \$4.50 for 30 words or less, then 15 cents a word after the first 30 words. Any erroneous reflection upon the character, standing or reputation of any person, firm or corporation which may appear in the columns of the The Valley Tribune will be gladly corrected upon its being brought to the attention of the publisher. The publisher has the right to reject advertising and edit copy and reserves the right to cancel any advertisement at any time.

POSTMASTER: SEND ADDRESS CHANGES TO
THE VALLEY TRIBUNE, BOX 478, QUITAQUE, TEXAS 79255
(806)-455-1101

THE VALLEY TRIBUNE OBITUARY POLICY

The policy of The Valley Tribune has always been to print obituaries in a standard format. If you wish an obituary to contain information other than the standard, it will be placed in a display format, and charged accordingly.

31st Annual Bob Wills Celebration Coming Soon

The 31st Bob Wills Day Celebration is just right around the corner. So be sure and mark Saturday, April 27 on your calendar. There will be at least thirty-five to forty of the most famous and talented musicians in the Country present this year. Don't miss this chance of a lifetime. The program will consist of many former Texas Playboys & Playgirls. This will be one of the largest groups of Texas Playboys ever assembled at one time!

Dr. Charles R. Townsend, Grammy Award Winner and Author of "San Antonio Rose" The Life and Music of Bob Wills, will also be present and will be the M.C. for the afternoon program. His book has been purchased by a movie studio and Dr. Townsend will be a consultant on this movie.

Mark it on your calendar and we'll see ya'll there April 27!

QUITAQUE PRODUCERS CO-OP
"Standing Together - Standing Strong"
Randy Pointer ~ Manager
Phone 1-806-455-1388 FUEL & FARM SUPPLIES
Your Business is Always Appreciated at Quitaque Producers Co-op.

All hands that show up will pick up trash from the station to the Briscoe County Line.

The Quitaque Lions will meet at 9:00 a.m. at the west edge of Quitaque. They will be picking up trash 2 miles west of town and 3 miles north of town. All needed supplies will be furnished by the Department of Transportation. Please join us April 6th to help keep our communities beautiful.

Welcome to STANTON
HOME OF 3000 FRIENDLY PEOPLE
AND A FEW OLD SOREHEADS

Art, antiques, and everything else!

OLD SOREHEAD TRADE DAYS
2002
April 13&14, June 8&9, Oct. 12&13
Stanton, Texas
(915)756-2006
www.stantonfolks.com

LETTERS
to the
Editor

Valley Tribune,
Thank you for renewing my paper. I love to get the hometown news.

Lola Eudy

Happy Birthday

April 4
Lance Fulbright, Kay Calvert, Evan Reed, Jessie Price

April 5
Alice Shivers, Jeremy Taylor, JR Payne

April 6
Cindy House, Billy Roy Fuston, Bonnie Hill, Hector Reyna, Zachary Ramsey

April 8
Brandi Gaddis

April 9
Audry Hill, Hilary Flowers, Jimmy Davidson

April 10
Ron Eudy, Jarret Pigg, Tommy Pinkerton, Dustin Morrow, Jo Patrick

April 11
Jana Guest, Dewayne Davis, Jim Saul, Chase Maynard, Dewayne Davis, Erika Morrison

April 12
Lowell Proctor, Louis Randell, Jackie Sperry

Happy Anniversary

April 5
Mr & Mrs W.E. Hawkins

April 9
Mr & Mrs Billie Farley

April 12
Mr & Mrs Woodrow Mullin
Mr & Mrs Lee Tapp

Killing A Business In 10 Easy Steps

1. Don't Advertise! Just pretend everybody knows what you have to offer.
2. Don't Advertise! Tell yourself you just don't have the time to spend thinking about promoting your business.
3. Don't Advertise! Just assume everybody knows what you sell.
4. Don't Advertise! Convince yourself that you've been in business so long customers will automatically come to you.
5. Don't Advertise! Forget that there are new potential customers who would do business with you if they were reminded and urged to do so.
6. Don't Advertise! Forget that you have competition trying to attract your customers away from you.
7. Don't Advertise! Tell yourself that it costs too much to advertise and that you don't get enough out of it.
8. Don't Advertise! Overlook the fact that advertising is an investment in selling - not an expense.
9. Don't Advertise! Be sure not to provide an adequate advertising budget for your business.
10. Don't Advertise! Forget that you have to keep reminding your established customers that you appreciate their business.

Advertising Works
Call 455-1101
We can help with all your Advertising needs!

The Valley Tribune
(Voice of the Caprock Canyons)

**IF YOUR IN A HURRY IT'S SO
"FAST & EASY"
TO BANK FROM THE
"COMFORT"
OF YOUR CAR WHEN
YOU USE OUR
"CONVENIENT"
~ DRIVE-UP WINDOW ~**

FIRST NATIONAL BANK

455-1441 P.O. BOX 540 QUITAQUE TEXAS 79255

MEMBER FDIC EQUAL HOUSING LENDER

FLOR

BY

If you like the idea of...
end, credit Ben Franklin...
Daylight Saving Time...
You may commend or...
synchronize all your...
hour earlier than you...
Windy Conditions
Windy conditions p...
every direction. After...
were going in field...
across Motley County...
porarily, but no compl...
Motley County Nat...
ture for March: Buzz Th...
dor 1.38; Betty Simp...
and Tommie Jo Cruse, F...
Starke
The children and fam...
union during the Easter...
joyed cookouts, Easter...
Among the 140 attend...
Lockney, L.T. Starkey...
Hanna of Warner, OK, I...
Austin, Johnie Starkey...
Mrs. Starkey's brother...
CO, and sisters, Jomet...
Olton.
They traveled here fr...
Missouri, Colorado, New...

Mr. and Mrs. Wilburn...
with Mr. and Mrs. J.C. M...
Mrs. Judy Renfro of M...
ton.
Visiting Easter holid...
were Mr. and Mrs. Scott B...
of Lubbock, Mrs. Caroly...
Dallas.
Easter day guests in...
and Roegan Cruse, Keane...
key, Chaney and Christy...
of Clarendon; Regina...
Goldthwaite; Leah Cruse...
of Floydada; Derinda, M...
ton; Darla, James, Fanni...
Plainville; Dana Browni...
nie and Judy Cruse, Dar...
Visitors during the East...
Mr. and Mrs. Lance Barce...
Cody Barclay, Lane and A...
and Cayden of Matador...
Shae Lynn Reed and fri...
Saturday with Mr. and M...
Visiting the family Satur...
Foster of Lubbock.
Guests in the home of T...
Easter Sunday and enjoy...
way, Lucy, Mickey and Cale...
Schmidt of Lubbock; Cara...
ton and new baby son, Br...
and Bill and Erma Washi...
Visiting during the East...
ton, Mrs. Edith Washing...
Chadwick were Mrs. Todd...
of Childress.

Spring

BLUE RIBBON SPONSORS
\$5000+
Graves Harley-Davidson
Classic Rock 101

RED RIBBON SPONSORS
\$2500+
Santia Fe Restaurant
Shawn Callison, Edg...
Aaron/Nathan & Laura Love

WHITE RIBBON SPONSORS
\$1500+
Midnight Rodeo
Lubbock
Avalanche Journal

PURPLE RIBBON SPONSORS
\$1000+
Bigham Brothers
Ben Courville

SHIRLE
is no
INCO
SE
COME IN AN...
WITH
OFFICE
HOME P...
STO...
Mon...
9:30 - 12:0

FLOMOT NEWS

BY EARLYNE JAMESON

OVERHEARD

If you like the idea of gaining an hour to sleep, work or relax this weekend, credit Ben Franklin. He is the one who first suggested the idea of Daylight Saving Time (DST).

You may commend or condemn Mr. Franklin. Either way, unless you synchronize all your timepieces before retiring Saturday night, it is an hour earlier than you think. Enjoy!

Windy Conditions Prevailed During Month Of March

Windy conditions prevailed during the month of March and blew from every direction. After a light snow March 2nd, rain March 19th tractors were going in fields with Trellon and fertilizer rigs and listing land all across Motley County. Rain March 30th stopped farming operations temporarily, but no complaints, because as a rule moisture is always needed. Motley County National Weather Service Volunteers report total moisture for March: Buzz Thacker, Roaring Springs 1.25; Kelly Meyer, Matador 1.38; Betty Simpson, Northfield 1.38; Jim Stockton, Whiteflat 1.50 and Tommie Jo Cruse, Flomot 1.32.

Starkey Easter Family Reunion

The children and families of Mrs. C.W. Starkey held their annual reunion during the Easter holidays at the Starkey homestead. They enjoyed cookouts, Easter egg hunts and hiking.

Among the 140 attending were eight of her children, Margie Cypert of Lockney, L.T. Starkey of Ralls, Nola Long of Winnewood, OK, Bobbie Hanna of Warner, OK, Lola Jewel Starkey of Clyde, Phylis Gladson of Austin, Johnie Starkey and Jack Starkey of Flomot. Also attending was Mrs. Starkey's brother and family, Mr. and Mrs. Curtis Malone of Denver, CO, and sisters, Jometa McLain of Hart and Nadene and Bill Weaver of Olton.

They traveled here from Kansas, Nebraska, North Dakota, Oklahoma, Missouri, Colorado, New Mexico and throughout Texas.

Mr. and Mrs. Wilburn Martin visited Tuesday and Wednesday in Anson with Mr. and Mrs. J.C. Moss and Mrs. LaRay Gilbert.

Mrs. Judy Renfro of Matador visited Saturday with Mary Ellen Barton.

Visiting Easter holidays in the home of Mr. and Mrs. Johnny Turner were Mr. and Mrs. Scott Blount and Skylar and Mr. and Mrs. Cobey Turner of Lubbock, Mrs. Carolyn Luckenbach of Silverton and Bill Crowell of Dallas.

Easter day guests in the home of Mrs. Tommie Jo Cruse were Talon and Roegan Cruse, Keane Cruse, Deidra, Larry and Skylar Clifton of Turkey; Chaney and Christy Cruse and Brandon, Jodi and Branson Cruse of Clarendon; Regina, Chad, Allison, Quaid and Macy Seward of Goldthwaite; Leah Cruse of Lubbock; Monica, Tanner and Cutter Smith of Floydada; Derinda, Mark, Thor, Tory, Teah and Tally Patten of Silverton; Darla, James, Fannin and Danielle Gwinn of Whiteflat; Tim Lane of Plainview; Dona Browning and Mary Ann Browning of Rising Star; Donnie and Judy Cruse, Darrell, Brenda and Derrick Cruse of Flomot.

Visitors during the Easter holidays of Mr. and Mrs. Jerry Barclay were Mr. and Mrs. Lance Barclay, Kayla and Colton of Lubbock, Mr. and Mrs. Cody Barclay, Lane and Ashton of Borger, Ms. Beatrice Skaggs, Catlin and Cayden of Matador.

Shae Lynn Reed and friend, Sarah Lee of Lubbock visited Friday and Saturday with Mr. and Mrs. Doyle Calvert, Glen Calvert and Dustin Reed. Visiting the family Saturday night and Sunday were Mr. and Mrs. Dan Foster of Lubbock.

Guests in the home of Tim and Deana Washington of Russellville Camp Easter Sunday and enjoying Easter egg hunts and flying kites were Conway, Lacy, Mickey and Caleb Clarey of Matador; Cary Franks and Sorrel Schmidt of Lubbock; Cara Franks of Canyon; Matt and Ashley Washington and new baby son, Brazos of Roaring Springs; Susan Gahr of McAdoo and Bill and Erma Washington and Connie and Coy Franks of Flomot.

Visiting during the Easter holidays with Mr. and Mrs. Seah Washington, Mrs. Edith Washington and in Quitaque with Mr. and Mrs. Buck Chadwick were Mrs. Todd (Stachia) Washington, Cam, Clay and Connor of Childress.

COOK'S CORNER

BY VIRGINIA SALSBUARY

How about a tasty way to use the rest of the leftover Easter ham? Ham Veggie Casserole, Wheat Yeast Rolls, and Extra Chocolate Cake can fill your dinner plates for only 81 cents each!

HAM VEGGIE CASSEROLE
1 can(103/4 oz.) cream of mushroom soup, undiluted
1/2 cup milk
1/4 teaspoon dried thyme
1/4 teaspoon salt
2 cups diced cooked ham
1 can(16 oz.) whole kernel corn, drained
1 can(16oz.) cut green beans, drained
2 cups sliced cooked potatoes

In a large bowl, combine the soup, milk, thyme, and pepper. Stir in ham, corn, beans, and potatoes. Pour into a greased 1-1/2 qt. baking dish. Bake uncovered at 400 for 15 minutes until heated through.

WHEAT YEAST ROLLS
1 package (1 Tablespoon) dry yeast
1 cup warm water(110-115)
1/3 cup vegetable oil
3 tablespoons sugar
1 teaspoon salt
1-1/2 cups whole wheat flour
1-1/2 to 2 cups flour

In a mixing bowl, dissolve yeast in water. Add oil, sugar, salt, and wheat flour; beat until smooth. Add enough flour to form a soft dough. Turn onto a floured surface; knead 6-8 minutes until smooth and elastic. Place in a greased bowl, turning once to grease top. Cover and let rise in a warm place until doubled, about 1 hour. Punch dough down. Divide into 12 pieces. Shape into desired roll. Place 3 inches apart on greased baking sheet. Cover and let rise until doubled, about 30 minutes. Bake at 375 for 15-20 minutes until golden. Serve hot.

EXTRA CHOCOLATE CAKE
1 cup flour
1 cup sugar
1cup hot water
1/2 cup baking cocoa
1teaspoon baking powder
1 teaspoon baking soda
1 egg
1/4 cup butter or margarine, melted
Powdered sugar to dust top

GOD BLESS AMERICA!

THE SPORTSMAN BAR & GRILL

!!! WE NEED MORE HOGS !!!

The other day a chicken and a hog were walking down the street and stopped in front of a cafe advertising "Breakfast Special - Ham & Eggs". The Chicken said "That sounds good - let's go in." The Hog said "Hey - hold on a minute - That Ham & Eggs deal is just a token gesture for you - for me it's a TOTAL COMMITMENT!"

!!! WE NEED MORE HOGS !!!

We at the Sportsman Bar & Grill are *totally committed* to serving you lots of really good food at reasonable prices in a clean and friendly atmosphere.

Come in and eat with us, we believe you will like it.

!! WE WILL REMAIN OPEN DURING THE CONSTRUCTION !!

QUITAUQUE, AMERICA 79255 ~ (806) 455-1200

ACROSS

- 1 poker type
- 5 skin itcher
- 6 use a keyboard
- 7 TXism: "plain as the top line on eye chart"
- 8 explosive
- 9 TXism: "let the cat out of the bag"
- 10 Houston refused to take Confederacy allegiance
- 16 TXism: "busier than boomtown"
- 19 La Grange is seat of this county
- 21 TXism: "safe as a squirrel up"
- 22 mountain ranges
- 27 TX handyman Al Carrell helps
- 28 fish cleaner
- 29 actress Marilyn in TX-made "Silkwood"
- 30 TXism: "beats a poke in the sharp stick"
- 32 TX Charley Pride's "Where I Put Her Memory"
- 33 TX Bubble Puppy tune: "Hot Smoke and"
- 36 TX Vikki Carr's "Hombres"
- 37 Fenix
- 38 took a siesta
- 39 George H. Lips line: "No _____"
- 42 "in the hole"
- 43 real

DOWN

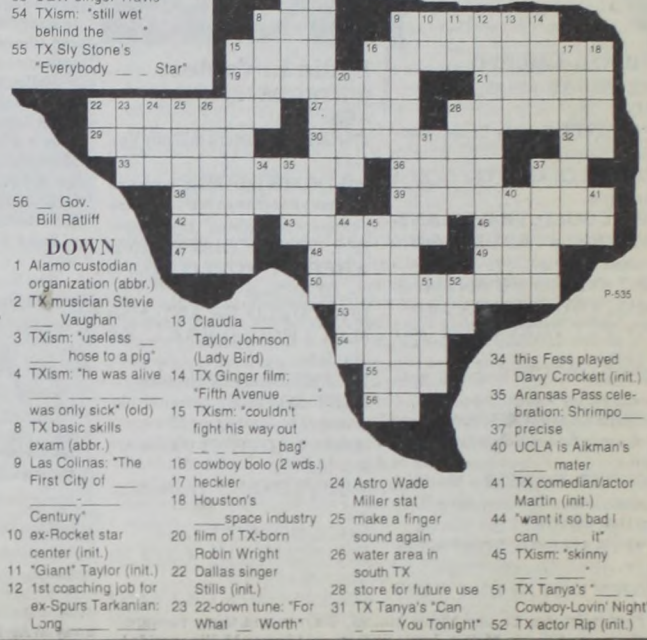
- 1 Alamo custodian organization (abbr.)
- 2 TX musician Stevie Vaughan
- 3 TXism: "useless as a pig"
- 4 TXism: "he was alive was only sick" (old)
- 8 TX basic skills exam (abbr.)
- 9 Las Colinas: "The First City of _____"
- 10 ex-Rocket star center (init.)
- 11 "Giant" Taylor (init.)
- 12 1st coaching job for ex-Spurs Tarkanian: Long _____
- 13 Claudia Taylor Johnson (Lady Bird)
- 14 TX Ginger film: "Fifth Avenue"
- 15 TXism: "couldn't fight his way out of a bag"
- 16 cowboy bolo (2 wds.)
- 17 heckler
- 18 Houston's _____ space industry
- 20 film of TX-born Robin Wright
- 21 Dallas singer Stills (init.)
- 22 down-tune: "For _____ What _____ Worth"
- 24 Astro Wade Miller stat
- 25 make a finger sound again
- 26 water area in south TX
- 28 store for future use
- 31 TX Tanya's "Can Cowboy-Lovin' Night"
- 34 this Fess played Davy Crockett (init.)
- 35 Aransas Pass celebration: Shrimpo _____
- 37 precise
- 40 UCLA is Aikman's _____ mater
- 41 TX comedian/actor Martin (init.)
- 44 "want it so bad I can _____ it"
- 45 TXism: "skinny _____"
- 51 TX Tanya's _____
- 52 TX actor Rip (init.)

The Original

TEXAS CROSSWORD

by Charley & Guy Orbison

Copyright 2002 by Orbison Bros.



Turkey Gems Shine At Dedication Ceremony In Memphis Last Saturday

The Turkey Jamboree house band, The Turkey Gems, provided entertainment at the City Park in Memphis Friday evening, March 29 preceding the unveiling and dedication of the War Monument on the Court-house square March 30th. The Jamboree is very proud of this band and as usual they put on a good show. The members are Bennie Brown, and Rick and Brenda Suddeth from Amarillo, Clifton and Joy Stodgill from Silverton, Lucy Dean Record from Lockney, Pat Seigler from Matador, Louis and Oleta Randall from Turkey, and sometimes Henry Baker from Waurika, Ok. and Michael Grace from Turkey. Anytime you get the chance you should hear this great group. You will not be disappointed!

West Texas A&M Pursues Four New Degree Programs

West Texas A&M University in Canyon is in the final stages of adding four new degree programs to their list. Two of them Bachelor of Arts (B.A.) Bachelor of Science (B.S.) Degree in Pre-law Studies and B.S. Degree in Athletic Training are on the agenda for consideration at the University's Board of Regents meeting. If approved there, the two programs will be presented to the Texas Higher Education Coordinating Board.

"We're on the downhill side of the approval process for pre-law and athletic training," Dr. Flavius Killebrew, provost and vice president for academic affairs, said. "Classes, faculty and resources are in place, and if all goes as expected, we'll introduce these two programs this fall."

The remaining two programs, B.S. in Mechanical Engineering and Ph.D. in Agriculture still face an uphill climb. "I would like to have these programs in place by fall 2003. That's ambitious but not impossible," Killebrew stated.

BASKETS of BARGAINS

Assorted Hunts	Santa Fe
BBQ Sauce.....18oz 89¢	Tortilla Chips.....20oz \$1 ⁹⁹
Shurefine Instant Chocolate	Assorted Del Monte
Drink Mix.....32oz \$1 ⁸⁹	Tomatoes.....14.5oz 79¢
Orange or Apple	Light Only Kraft
Shurefine Juice.....46oz. \$1 ²⁹	Miracle Whip.....32oz \$2 ⁴⁹
Cantalopes.....2lbs/\$1 ⁰⁰	Shurefine Semi Sweet or Milk Chocolate
Cello	Baking Chips.....12oz 99¢
Carrots.....1 lb pks 2/\$1 ⁰⁰	Hills Bros.
Cucumbers.....2/\$1 ⁰⁰	Coffee.....34-39oz \$4 ⁹⁹
Green	Coronet
Bell Peppers.....2/\$1 ⁰⁰	Paper Towels.....roll 59¢
Yellow or Zucchini	Suavitel
Squash.....99¢/lb	Fabric Softener.....64oz \$2 ⁹⁹
Baking	Shurefine
Potatoes.....2lbs/\$1 ⁰⁰	Corndogs.....1lb pkg \$1 ⁵⁹
Texas 1015 Sweet	Boneless
Yellow Onion.....2lbs/\$1 ⁰⁰	Sirloin Pork Chops.....\$1 ⁹⁹ lb
Jalapeno	Shurefine V.P.
Peppers.....99¢/lb	Sliced Bacon.....11b pkg \$2 ¹⁹
Snowwhite	Shurefine
Cauliflower.....\$1 ⁶⁹ each	Meat Weiners.....12oz 69¢
Dole Classic Greener Selection	Preferred Trim
Salad.....12oz \$1 ⁵⁹ each	T-Bone Steak.....\$4 ⁹⁹ /lb
Red Ripe	Shurefine
Tomatoes.....89¢/lb	Bologna.....12oz. 79¢
	Shurefine
	Cooked Ham.....12oz \$2 ⁶⁹
	Pilgrims Pride
	Whole Fryer.....59¢/lb
	Shurefine Assorted
	Frozen Dinners.....9oz. 89¢
	Shurefine Frozen
	Fried Chicken.....25oz \$2 ⁸⁹
	Jose Ole Assorted
	Frozen Entree's.....12oz \$1 ⁹⁹



PRICES EFFECTIVE April 5-6, 2002
NOT ALL ITEMS AVAILABLE AT ALL STORES
WE RESERVE THE RIGHT TO LIMIT
NOT RESPONSIBLE FOR TYPOGRAPHIC OR PICTORIAL ERRORS

MERRELL FOOD

QUITAUQUE, TEXAS



4th Annual Blue Ribbon Rally
benefiting
Family Outreach Center of Lubbock, Inc.
at **Midnight Rodeo**
7301 S. University
APRIL 6, 2002 • 7:00 p.m.-10:00 p.m.
\$30 per ticket
Fajitas • Silent Auction • Cash Bar
Featuring **MASTERPIECE**
Drawing will be held for a
2002 HARLEY-DAVIDSON XLH SPORTSTER 883
For more information or to buy a ticket call
806/747-5577 or go by Graves Harley-Davidson

BLUE RIBBON SPONSORS \$5000+
Graves Harley-Davidson
Classic Rock 101

RED RIBBON SPONSORS \$2500+
Santa Fe Restaurant
Shaun Callison, EdD
Aaron/Nathan & Laura Lowe

WHITE RIBBON SPONSORS \$1500+
Midnight Rodeo
Lubbock
Avalanche-Journal

PURPLE RIBBON SPONSORS \$1000+
Bigham Brothers
Ben Courville

SHIRLEY HAWKINS
is now offering
INCOME TAX SERVICE
COME IN AND LET US HELP YOU WITH YOUR TAXES!
OFFICE PHONE 455-1464
HOME PHONE 455-1130
STORE HOURS
Monday - Friday
9:30 - 12:00 and 1:00 - 5:00

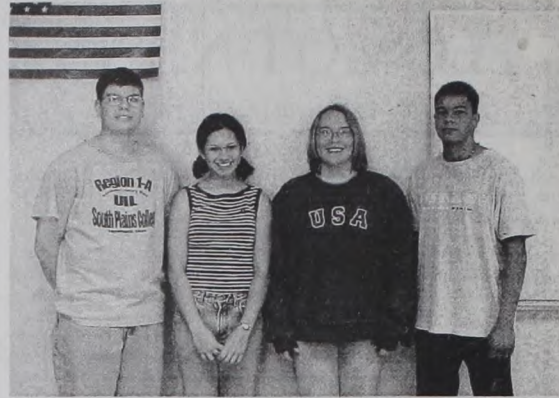


The Patriot

NEWS OF AND ABOUT VALLEY SCHOOL

**Effective April 1
The Valley Gym
Will Close
At 9 p.m. Daily**

**NATIONAL POISON
CONTROL HOTLINE
1-800-222-1222**



Skylar Clifton, Lydia Valdez, Scarlett Sperry & Adam Ortiz.

SENIOR SPOTLIGHT Patriots Claim Silverton Title



Justin Lucero
BIRTHDAY: 1-26-83
AGE: 19
PARENTS: Freddie Lucero, Connie Hinojosa
FAVORITE QUOTE: I'll do it tomorrow.
IF I COULD TRAVEL ANYWHERE, I WOULD GO... around the world.
IF I COULD BE ANY ANIMAL, I WOULD BE A... tiger.
MY PET PEEVE? Two-faced people.
BEST ADVICE? No matter what happens, keep on trying.
WORST ADVICE? Your parents will never find out about your parties.
WORST HABIT? Messing around with more than one girl.
ROLE MODEL? Bill Clinton
I'M THANKFUL FOR? Waking up to the freedom that I have.
WHEN I GROW UP, I WANT TO BE A... Father that can provide for his families needs and well being.
BEST CHARACTERISTIC? FAVORITE HIGH SCHOOL MEMORY: To this day is walking out onto the football field on Friday Nights to the smell of wet grass and fresh paint and the excitement of all the Patriots fans as we played our hearts out for another victory. Due to Coach Tyler's encouragement and love for the game is what made us true Patriots!



Lydia L. Valdez
BIRTHDAY: July 20, 1984
AGE: 17
PARENTS: Edward & Cindy Valdez
FAVORITE QUOTE: "Love like you have never been hurt & dance like no one is watching!" anonymous
IF I COULD TRAVEL ANYWHERE, I WOULD GO... to the African coast
IF I COULD BE ANY ANIMAL, I WOULD BE A... Kola Bear.
MY PET PEEVE? Hypocrites
BEST ADVICE? Live like life everyday is your last one.
WORST ADVICE? No one will ever find out!
WORST HABIT? Procrastinating.
ROLE MODEL? My mom
I'M THANKFUL FOR? My family and friends.
WHEN I GROW UP, I WANT TO BE ... national news anchor.
BEST CHARACTERISTIC? My outlook on life
FAVORITE HIGH SCHOOL MEMORY: Going to South Padre Island for Cheerleading Camp.

The Valley Patriots ran away with the team title at the Hoot and Scoot Relays held last Thursday in Silverton. Valley scored 130 points to outpace second place Kress by 43 points.

The team got off to a fast start in the field events as Derrick Cruse placed first in the High Jump with a jump of 6'. Douglas Payne jumped 5'8" in the same event and placed third.

In the Shot Put Ramiro Ramos threw 42' 2 1/4" to place second, Robert Mendoza threw 41' 9 1/2" to place third, and Rodney Fuston threw 40' 4 1/2" to place sixth.

Clif Yeary jumped 19' 5" to place fourth in the Long Jump, while Justin Wilks jumped 36' 6" to place fifth in the Triple Jump.

In the running events, Juan Mendoza got the point scoring spree started by placing second in the 3200 meter run. Mendoza's time of 12:58 was 1 1 seconds faster than teammate Jose Chavez ran to place third. Mendoza and Chavez came back later in the day to place third and fourth in the 1600 meter run with times of 5:49 and 5:56.

Valley had a big day in the Hurdles as Tyler Messer ran a 17.62 to win the 110 meter High Hurdles and Justin Wilds ran a 45.57 to win the 300 meter Intermediate Hurdles. Messer also placed third in the 300 Hurdles with a 47.53, while Wilks placed second in the 110 Hurdles as Chase Maynard placed fourth in the 110 Hurdles and Clif Yeary placed fourth in the 300 Hurdles.

Daniel Alanis ran a 2:22 to place 2nd in the 800 meter run while Kellen Roberts ran a 2:27 to place sixth in the same event. The 400 meter Relay of Yeary, Cruse, Justin Valdes, Adam Ortiz, and Gary Chavez placed second.

The Valley Patriots Track team travel to Canyon Randall High School tomorrow to compete in the District 3-A Track Meet.



Science Team: Sammie-Dee Ross, Jana Merrell, Christopher Taylor, Justin Wilks, Cydni Walden & Erika Chavez.

Valley High UIL Compete At District

Twenty three Valley High School students traveled to Lazbuddie, March 21, to compete in the District 3 Region 1 UIL Academic District Meet. Two students qualified to advance to Regional competition in Levelland on April 19, 2002. Skylar Clifton placed first in Lincoln-Douglas Debate and Scarlett Sperry placed third in Lincoln-Douglas Debate.

Other students who placed in the District meet were: Christopher Taylor 4th in Science, Adam Ortiz 6th in News Writing and Lydia Valdez 6th in Prose Interpretation. Christopher Taylor, Cydni Walden and Jana Merrell had the top 3 highest scores from the Valley Science Team, thus placing second in Team Science. Also on the Science Team were Justin Wilks, Sammie-Dee Ross and Erika Chavez. Christopher Taylor also placed 4th in Calculator Applications.

Other students attending the meet were: Juan Regalado, Amber Stark, Douglas Payne, Tyler Messer, Katherine Pigg and Sara Fierro.

A man can be destroyed but not defeated. —Ernest Hemingway

On The Menu

- Monday, April 8**
Breakfast: Cinnamon Toast, Apple Sauce, OJ/Milk
Lunch: Tacos, Salad, Spanish Rice, Fruit, Milk
- Tuesday, April 9**
Breakfast: Sausage, Biscuits, Jelly, OJ/Milk
Lunch: Enchiladas, Salad, Refried Beans, Spanish Rice, Cookies, Milk
- Wednesday, April 10**
Breakfast: Cereal, Orange Slices, OJ/Milk
Lunch: BBQ Chicken, Mac & Cheese, Green Beans, Fruit, Biscuits, Milk
- Thursday, April 11**
Breakfast: Buttered Toast, Jelly, OJ/Milk
Lunch: Beef & Cheese Nachos, Pinto Beans, Lettuce, Tomatoes, Pudding, Milk
- Friday, April 12**
Breakfast: Breakfast on a Stick, Apple Slices, OJ/Milk
Lunch: Hoagies, Chips, Lettuce, Tomatoes, Pickles, Sherbert/Ice Cream, Milk

New Central Hotline For U.S. Poison Control Centers

Americans for the first time can use a single toll-free telephone number to reach a poison control center anywhere in the nation, officials announced recently.

Officials launched the national hotline, 1-800-222-1222, and applauded it as an overdue coordination of the country's 65 separately run centers. Callers dialing the number will be automatically linked to the closest poison center.

PEOPLE WHO READ NEWSPAPERS ARE BETTER INFORMED VOTERS

It all starts with Newspapers

E-Mail The Valley Tribune vtaylor@caprock-spur.com

Clay's Plays Of The Week

By Coach Thomas Clay

Henson Perfect For Big Game

Tomorrow Big Wes will play in the Golden Spread All-Star game in Amarillo. This game is for the Panhandle's best senior basketball players and Big Wes definitely qualifies. Andrew Francis from Silverton will join Big Wes in the game.

You may wonder why I refer to Wes as Big Wes. Well, the most obvious reason is he's Big. At 6'4", Wes towers over most people at Valley High School. In addition to being tall, Wes is thick. I think he qualifies as Big.

Many times this year Wes came up Big for us. He made Big shots, made Big blocks, and was Big on the boards. He had a Big season averaging 12 points and 10 rebounds per game. Wes also had a Big football season. He made Big tackles, Big blocks, and Big catches. Anyone who watched the Happy game can testify that Wes was Big that game.

Wes also has a Big heart. Wes' Big heart is actually shown in two different ways. From an athletic standpoint, Wes can dig deep and find that something special that is referred to as having a lot of heart. From a life standpoint, Wes cares deeply for people.

Wes is also Big on character. His moral fiber allows Wes to live in a world of temptation and still do the right thing. Wes isn't perfect. None of us are. But his desire to do what is right makes it easy to overlook any teenage faults.

Wes has Big dreams. I sat in the locker room one day and listened to Wes as he told me that he not only wants to Pastor his own church, but he wants to have services three to four times a week.

Wes is a Big part of our church. Not only does Wes attend church every time the doors are open, but he takes an active role by teaching the youth on Wednesday nights and the kids on Sunday nights.

When this year started Wes told me that I was his third basketball coach in his four years of high school. How unfortunate I thought. Poor Wes had to deal with three different styles and three different personalities.

Two weeks ago I walked into my Sunday School class and saw Coach Saul sitting there. Within minutes, Coach Calaway had walked in. There in that one room was Wes' three coaches. In a small piece of irony, Wes brought the message in church that day.

I couldn't help but think about what Big courage Wes had to stand up in front of the church and as a 17 year old kid, deliver a sermon. It reminded me more of the quality of this kid and the Big future he has before him. It was during that service that I thought that while it was unfortunate that Wes had had three coaches in four years, the three of us were very fortunate.

Big Wes, thanks for being a positive role model, for having a positive attitude, and for making my first year at Valley so positive. Good Luck and stay Big.



This Week In Texas History!

- April 6, 1830**
Law passed by Mexican Congress prohibiting further colonization from the United States and any importation of blacks into Mexican territory.
- April 8, 1822**
Dr. James Long, imprisoned in Mexico City after his capture on October 8, 1821, was shot "accidentally."
- April 8, 1864**
Battle of Mansfield, Civil War.
- April 9, 1865**
General Robert E. Lee surrendered to the Union Army at Appomattox.
- April 10, 1722**
Mission Nuestra Senora del Espiritu Santo de Zuniga founded about two miles from the presidio of Nuestra Senora de Loreto at Matagora Bay. Mission moved 25 miles inland to the Guadalupe River near Victoria four years later. In 1749 the mission was moved to Goliad.

Customer Notice

Cap Rock Telephone Cooperative, Inc. (Cap Rock or the Cooperative) has filed a request with the Public Utility Commission of Texas (Commission) seeking approval to implement minor rate changes to residential and business Monthly Local Exchange Access Line Service, Pay Telephone Access Service, Rotary Service, and PBX Trunk Service. In addition, Cap Rock proposes to bundle its residence and business Monthly Local Exchange Access Line Service rates and Tone Dialing charges. Residential customers who presently do not have Tone Dialing Service and who currently pay \$7.10 in Dickens, Matador, Quitaque, Roaring Springs, and Turkey Exchanges will pay \$7.80 until the customer(s) move or change service. Cap Rock also proposes to remove Outside Base Rate Area charges and Key System Service from its tariff. Current Key System Service customers will be moved to Rotary Service since these two services are technologically similar, and those Key System Service customers who are moving to Rotary Service will see a rate decrease. The proposed effective date for the proposed rate changes is July 1, 2002 for all exchanges served by the Cooperative. The estimated annual revenue decrease recognized by the Cooperative is \$41,193 for the first year of service, which is 1% of the Cooperative's gross annual intrastate revenues.

Current and proposed rates are:

	Current Rates				Proposed Rates *			
	(1)	(2)	(3)**	(4)	(1)	(2)	(3)**	(4)
Residence	\$ 7.90	\$ 8.90	\$ 7.10	\$ 8.20	\$ 8.65	\$ 8.65	\$ 8.65	\$ 8.65
Tone Dialing	0.00	0.00	0.00	1.50	1.50	0.00	0.00	0.00
Business	12.50	14.00	18.35	21.30	13.75	13.75	13.75	13.75
Tone Dialing	0.00	0.00	0.00	2.00	2.00	0.00	0.00	0.00
Rotary Access		17.50	19.00	-	19.00	19.00	-	-
PBX Trunk	26.10	27.60	29.40	34.55	27.60	27.60	27.60	27.60

	Current Rate	Proposed Rate
(1) Affon and Flomot Exchanges	(1)	(1)
(2) Dry Lake, Girard, Hackmont, Jayton, Peacock, Spur, Verbena, and White River Exchanges	(1)	(1)
(3) Dickens, Matador, Quitaque, Roaring Springs, and Turkey Exchanges	(1)	(1)
(4) Paducah Exchange	(1)	(1)

	Current Rate	Proposed Rate
Pay Telephone Service	\$22.15	\$22.10


	Current Rate	Proposed Rate
Outside Base Rate Area	\$ 2.00	Remove
Key Access Service *	22.00 22.00 25.50	19.00 19.00 19.00

* Existing Key Access Service customers will move to Rotary Service and will pay the lower Rotary Service rate of \$19.00.

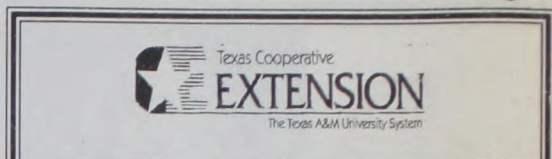
Customer Notice (Continued)

Persons with questions or who want more information on this application may contact the Cooperative at P.O. Box 300, Spur, TX 79370-0300 or call (800) 692-4242 during normal business hours. A complete copy of the application is available for inspection at the address listed above. The Commission has assigned Tariff Control Number 25636 to this application. Persons who wish to formally participate in the Commission's proceedings concerning this application, or who wish to express their comments concerning this application should contact the Public Utility Commission of Texas, Office of Customer Protection, P.O. Box 13326, Austin, Texas 78711-3326, or call the Public Utility Commission's Office of Customer Protection at (512) 936-7120 or toll free, at (888) 782-8477. Hearing- and speech-impaired individuals with text telephones (TTY) may contact the commission at (512) 936-7136 or reach the Commission's toll free number through Relay Texas at (800) 735-2988. Requests to participate in the proceedings and comments should reach the Commission no later than May 31, 2002. If the Commission receives a complaint(s) relating to this application signed by the lesser of 5% or 1,500 of the affected local service customers to which this application applies by May 31, 2002, the application will be docketed. The 5% limitation will be calculated based upon the total number of customers of record as of the calendar month preceding the Commission's receipt of the complaint(s).

The Valley Trib
Cott
By Shaw
Texas State
Approves 2
Texas cotton produc
and promotion efforts ca
Board.
One of the most s
rated is the State Supp
returns 5 percent of the
ing states each year for
directed research and p
Members of the Texa
tin, March 26, to review
be carried out in the 200
ing for projects totaling
Within the Texas Sta
formula that includes s
deemed relevant to the
divided among the nine
percentage of statewide
growing seasons.
Based on this allocat
lected projects for 2003
listing of approved proje
nal funding levels, by Co
ures are approved later
Cotton states receive
centage of Research and
ducers in each state. Col
equivalent to their share
TCP Elects
Representatives from
that make up Texas Cott
to discuss cotton relate
organization's 2002-2003
Ronnie Riddle, a cotton
tarsburg, Texas cotton pr
dent in 2002.
Elected Vice Presiden
Johnna Oman, Executive
ducers organization was
for 2002-2003.
Briscoe Cou
The Briscoe County 4-H
days at 4 p.m. The first
School Home Ec room. W
At our five after school
Personal Grooming, Fads
chasing. We will also ha
blankets for hospitals as
we will also make bath r
please call the Extension
ments. Clover 4-Hers are
8).
Only two things are in
not sure about the for

Cotton  **News**
By Shawn Wade
from Plains Cotton Growers, Inc.

FARMING OUR GREAT STRENGTH



Texas State Support Committee Approves 2003 Research Projects

Texas cotton producers get a number of benefits through the research and promotion efforts carried out by Cotton Incorporated and the Cotton Board.

One of the most successful programs carried out by Cotton Incorporated is the State Support Program. The State Support Program (SSP) returns 5 percent of the total CI operating budget back to cotton producing states each year for the purpose of carrying out additional producer directed research and promotion activities.

Members of the Texas State Support Program Committee met in Austin, March 26, to review research proposals concerning projects that will be carried out in the 2003 calendar year. The committee approved funding for projects totaling some \$740,000 for 2003.

Within the Texas State Support Program funds are allocated based on formula that includes specifying one half of available funds for projects deemed relevant to the entire State. The remaining money is further divided among the nine growing regions in the state based on each region's percentage of statewide production averaged over the most recent three growing seasons.

Based on this allocation structure High Plains producer leaders selected projects for 2003 funding totaling an estimated \$225,000. A final listing of approved projects will be compiled and released, along with final funding levels, by Cotton Incorporated staff as soon as CI budget figures are approved later in the year.

Cotton states receive their share of the SSP funds based on the percentage of Research and Promotion Program money collected from producers in each state. Collectively cotton importers also receive SSP funds equivalent to their share of total collections.

TCP Elects 2002-2003 Officers

Representatives from the nine regional cotton producer organizations that make up Texas Cotton Producers, Inc. met March 27, 2002 in Austin to discuss cotton related regulatory and legislative issues and to elect the organization's 2002-2003 officer's.

Ronnie Riddle, a cotton producer from Abilene, Texas was elected President for the 2002-2003 growing season. Riddle takes the reins from Petersburg, Texas cotton producer Ronnie Hopper who served as TCP President in 2002.

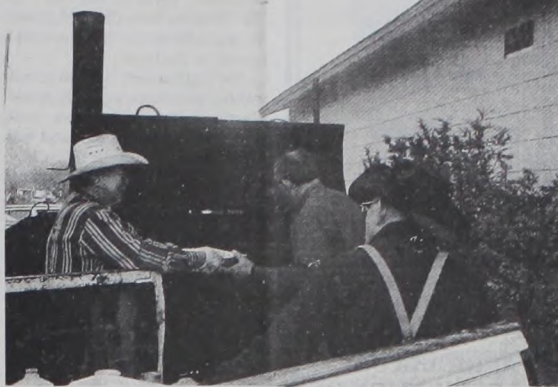
Elected Vice President was Larry Turnbough, of Balmorhea, Texas. Johnna Oman, Executive Vice President of the Rolling Plains Cotton Producers organization was selected to serve as the organization's Secretary for 2002-2003.

Briscoe County 4-H Clothing Project

The Briscoe County 4-H Clothing Project will begin meeting on Wednesdays at 4 p.m. The first meeting was Wednesday, April 3 at the Silverton School Home Ec room. We will alternate the location between the schools. At our five after school meetings we will cover Creative Construction, Personal Grooming, Fads & Fashion, Clothing & Care, and Clothes Purchasing. We will also have a one day workshop where we will make baby blankets for hospitals as a community service project. At our workshop we will also make bath robes. If you need a ride to any of the meetings, please call the Extension Office at 823-2131, and we will make arrangements. Clover 4-Hers are welcome to participate in this project (ages 5-8).

Only two things are infinite, the universe and stupidity—and I'm not sure about the former.

—Albert Einstein



Sid supervises as Warren Lee and Dale fix rib-eye steaks for the Chamber Banquet.



Guests at the Chamber Banquet enjoyed winning the many door prizes.



Amber Stark presents her winning Essay

By Cory Edwards, Briscoe County Extension Agent, FCS Briscoe County 4-H Photography Project

For the 4-H Photography Project this year we will have a Photography Fun Day on Saturday, April 6. Silverton 4-Hers will need to meet at the Courthouse at 9:00 a.m. We will meet any interested Valley 4-Hers at The Sportsman Bar & Grill in Quitaque at 9:20 a.m. We'll spend the morning at Caprock Canyon State Park honing our photography skills and experimenting by taking different pictures. We'll then go the Walmart in Plainview and have our pictures developed at the One-Hour Photo Lab. While the film is being developed we'll eat lunch. Then we'll return to the Photo Lab to pick up our pictures and learn about film processing. Hopefully we'll be able to visit a portrait studio and then return home. Photography Fun Day is BYOC-Bring Your Own Camera. Disposable cameras are fine. 4-Hers will need to bring money to pay for lunch and the film processing. Please RSVP to the Extension Office by Thursday, April 4 if you're interested in participating. A few parents will be needed to provide transportation. Photography contest entries are due to the Extension Office by April 10. Entry categories are: People, Animals, Landscape and Scenic, Flora and Plants, Humor, Promote 4-H, Career, and Digital Photography. Classes are color and black and white. All categories except for the digital must be 8"x10" in size and mounted on white or black mat or foam board the same size as the print. Digital photos must be 5"x7" and mounted in the same way.

Urgent! 4-H County Camp Deposits Due!

I mistakenly thought that 4-H County Camp deposits weren't due until May 1, but they were due April 1. They have allowed a few more days for us to get our deposits in. The camp will be July 1-3 (which is Monday through Wednesday) at the Texas 4-H Center at Lake Brownwood. Participants will rotate through sessions including canoeing, riflery, archery, dance, swimming, games, etc. The total cost of the camp is \$93. A \$30 deposit is due to the Extension Office by Thursday, April 4, no later than 4 p.m. to reserve your slot. We have made reservations for 18 females (to include 2 adult chaperones) and 9 males (to include 1 adult chaperone). We will hold fund-raisers to cover the cost of the \$63 balance per person. Please call the Extension Office with any questions.

Mobile Dairy Classroom Visits Schools

The Briscoe County 4-H and Youth Development Committee sponsored the Mobile Dairy Classroom as a curriculum enrichment program for the local schools on Wednesday, March 20, 2002. The Mobile Dairy Classroom is part of a dynamic educational program sponsored by the Southwest Dairy Museum, Inc. The 26 foot mobile classrooms feature fully operational milking parlors. Each of the classrooms carry a live cow to schools and fairs throughout the southwest.

Instructor Todd Griffin gave a 45 minute oral presentation on the modern milking process, characteristics and anatomy of dairy cows, the importance of dairy foods in a healthy diet, and modern environmental and food safety practices. He concluded his presentation with a milking demonstration. Teachers were provided with printed educational materials, and the library was provided with a video and posters. Students received erasers, pencils, and coloring books.

By: Brandon McGinty, CEA-Ag, Briscoe County Briscoe County 4-H Rifle Club

The 4-H Rifle Club has started again this year! The first meeting was on March 25. Meetings will be held on Monday afternoons beginning at 3:30 p.m. The next meeting will be April 8 at Ted and Jennifer Daugherty's. To get there, turn south off of Highway 86 onto FM 2464 and cross Highway 145; keep going down the county road approximately 2 miles to the first cattle guard on the left. The Daugherty's have a canyon that will help block the wind and help make shooting easier. Don't worry if you can't be there right at 3:30. Come when you can, and we'll rotate everyone through!

In art, economy is always beauty.
—Henry James

New Tax Relief For Farmers & Ranchers

According to John Fuston, State Executive Director for the Texas Farm Service Agency, there is new legislation that offers immediate tax relief through additional depreciation on farm or ranch equipment and property.

The most significant provision for farmers is a 30% additional first year depreciation allowance. Signed into law by President Bush on March 9, 2002, the Job Creation and Worker Assistance Act of 2002, is retroactive to 2001 allowing capital investments from the previous year to be depreciated.

Under current law, farmers, ranchers and other small businesses can immediately deduct up to \$24,000 of the cost of investment in qualifying machinery and equipment. This is scheduled to increase to \$25,000 by 2003. The remaining amount is depreciated under the Modified Accelerated Cost Recovery System (MACRS).

In addition to the existing expensing provision, the Act provides an additional first year depreciation deduction equal to 30% of qualified property for investments made after September 10, 2001 and before September 11, 2004. Most depreciable farm or ranch property would be considered qualifying property, including farm machinery and equipment, crop storage facilities and single purpose agricultural and horticultural structures.

Since the provision is retroactive to 2001, farmers and ranchers can immediately benefit from the change on their 2001 returns although they may need to file an amended return. For 2002, the amount of farm capital investment that could be written off is estimated to increase by about 15% or \$1.8 billion as a result of this provision. Annual tax savings in 2003 and 2004 are expected to be only slightly smaller at just under \$500 million per year.

To illustrate the potential benefits of this legislation assume that after September 10, 2001, a farmer purchases a combine that costs \$100,000. The farmer would be able to expense \$24,000 under the section 179 expensing election. Under the new law, the producer would then be allowed an additional first year depreciation deduction of \$22,800, which is equal to 30% of the remaining cost (basis) of \$76,000 (\$100,000 - \$24,000). Finally, the remaining cost (basis) of \$53,200 (\$76,000 - \$22,800) could be depreciated under the current depreciation rules.

This would permit an additional depreciation deduction of \$7,980. Thus, the producer would be able to deduct a total of \$54,780 of the \$100,000 investment in the first year. This is an increase of \$19,380 as a result of the 30% additional first year depreciation provision. Assuming the producer is in the 15% Federal marginal income tax bracket, the Federal income and self-employment tax savings would equal \$5,440.

Fuston said, "Although this is not a farm program, our agency administers many programs to support farm and ranch income and we want to make sure that producers are aware of this legislation so that they can take advantage of the tax savings." Fuston added that producers should consult with their accountant to discuss the application of the new legislation to their individual situation.

If you think nobody cares if you're alive, try missing a couple of car payments.
Earl Wilson

NOTICE
A **BURN BAN** IS IN EFFECT FOR BRISCOE COUNTY EFFECTIVE 3-11-02 THRU 6-11-02

Texas Boll Weevil Eradication Foundation
HIRING SOON!

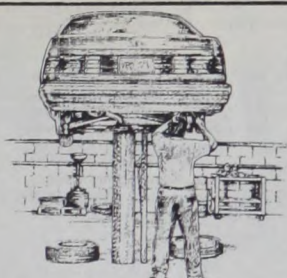
Seasonal Positions Available

- Airport Recorders
- Trappers
- Team environment
- Outdoor work
- At least 18 years old.
- Must have valid driver's license and be insurable under foundation fleet insurance policy.
- No experience necessary.
- Ag background helpful.

For more information, apply in person:

Childress 15760 FM 164 940-937-8017	Memphis 1415 N. 20th St. 806-259-3751	Paducah 919 Easley St. 806-492-2560
Turkey 610 Alexander 806-423-1202	Wellington 807 West Ave. 806-447-0108	Vernon 1430 Laurie St. 940-553-3543

Cotton...a Texas tradition
EOE/Drug-free Workplace
www.txbollweevil.org
Pre-employment drug testing required



CSI (Customer Satisfaction Index) is a measurement by which General Motors & its dealers keep track of how well a GM dealer is satisfying their customers in both sales & service. Since the inception of the index, City Auto has always ranked as one of the best CSI dealers in the GM South Central Region. One year even being one of the top twenty in the United States!!

Don't neglect your vehicle - check out some of our service specials:

FREQUENCY	SERVICE	PRICE
3,000 Miles	Oil & Filter Change (5 qts. Oil & Filter/in stock)	\$19.95
7,500 Miles	Lubricate suspension - Check fluid levels - Check belts & hoses Rotate Tires	\$12.00
25,000 Miles	Replace Fuel Filter	\$39.95
25,000 Miles	Flush & Change Differential Fluid	\$36.00 (Labor Only)
25,000 Miles	Clean & Repack front wheel bearings (2WD) (Inspect Brakes)	\$48.00
6 Months	Replace interior pollen filters	\$35.95
50,000 Miles	Change Transmission Fluid & Filter	\$74.95
50,000 Miles	Replace engine Accessory drive belt (single)	\$39.95
50,000 Miles	Flush cooling system & replace coolant (Green Fluid) 100,000 Miles (Pink Fluid)	\$36.00 (Labor Only)
When Needed	Adjust headlight alignment & aim	\$16.00
When Needed	Replace front brake pads	\$84.95
When Needed	Replace rear brake pads	\$131.95
When Needed	Replace rear brake shoes	\$134.95
When Dirty	Hand wash & vacuum	\$17.50

Most GM vehicles & gas engines. Prices do not include tax & environmental fees. Prices may vary by model. Subject to change without notice.

BUICK - PONTIAC - GMC WWW.CITYAUTOINC.COM
CITY AUTO - FLOYDADA - 983-3767



***** HALL COUNTY NATIVE * HALL COUNTY PROUD *****

I AM KNOWLEDGEABLE ABOUT FARMING AND AGRICULTURE PROGRAMS. I CANNOT PROMISE TO GO BEYOND LEGISLATION OF THE U.S. CONGRESS TO IMPROVE THE AGRICULTURAL SITUATION IN OUR COUNTY, BUT I DO PROMISE THAT I WILL WORK WITHIN THE PROVISIONS OF THE OFFICE OF COUNTY JUDGE AND THE STATE AND FEDERAL LAWS TO ADDRESS THE PROBLEMS OF OUR LOCAL ECONOMY. I WILL BE PHYSICALLY IN HALL COUNTY AVAILABLE TO THE CITIZENS. TRIPS TO THE STATE CAPITOL WILL BE MADE ONLY WHEN REQUIRED, THUS SAVING TAX DOLLARS THAT MIGHT BE SPENT ON UNNECESSARY TRAVEL.

IF WE RESORT TO GRANTS TO MEET OUR NEEDS, WE COULD SUFFER THAT INDEBTEDNESS WITHOUT BEING ABLE TO HAVE A FREE HAND IN HOW OUR MONEY IS SPENT, OR BEING ABLE TO DETERMINE WHICH NEEDS ARE MET FIRST. GRATUITIES WHICH BURDEN OUR CHILDREN AND GRANDCHILDREN ARE NO BARGAIN FOR ROUTINE FINANCING. I BELIEVE WE STILL HAVE THE RESOURCES TO TAKE CARE OF OUR OBLIGATIONS.

I HAVE ATTEMPTED TO TALK WITH EVERY VOTER DURING THIS CAMPAIGN. IF YOU HAVE ANY QUESTIONS I HAVE NOT ANSWERED, PLEASE CONTACT ME.

VOTE CONSCIENTIOUSLY FOR RESPONSIBILITY - MATURITY - EXPERIENCE

***** JIMMY BOWNS *****

The RIGHT CHOICE for HALL COUNTY JUDGE
VOTE FOR JIMMY BOWNS IN THE APRIL 9th RUNOFF ELECTION

Pol.Ad.Pd. by Jimmy Bowns

The Valley Tribune, Quitaque, Texas, Thursday, April 4, 2002
Agricultural Waste Pesticide Collection

Open to all Texas residents FREE OF CHARGE from 8 a.m. to 1 p.m. on Monday, April 8, 2002 in Childress, Texas at the Old City Maintenance Barn (from Highway 287 turn North on Commerce St., located in the Park).

We CAN accept: banned or unwanted pesticides, properly rinsed plastic pesticide containers, used motor oil, oil filters, lead acid batteries, and household hazardous wastes. Household items accepted include pesticides, herbicides, paints and thinners, gasoline, anti-freeze, and other automotive products, household and batteries, cleaners, aerosol cans, pool chemicals, photographic chemicals, fluorescent bulbs, and mercury.

Contact your County Extension Agent for more details.

April Non-Local Subscriptions Due ~\$21.50 Per Year~

- Childress Veterinary-Childress, TX
- Vance Brownlee-Crowell, TX
- Martha Crumley-Amarillo, TX
- Susan Messer-Amarillo, TX
- Ron Brady-Hale Center, TX
- J.H. McDoland-Pampa, TX
- Tom Kallenberg-Princeton, TX
- Wayne Self-Tyler, TX
- Betty Hall-Tyler, TX
- Darlene Dickman-Arlington, TX
- Jimmy Don Davidson-Sterling City, TX
- Lonnice D. Richmond-Cypress, TX
- Jack Jordan-Kerrville, TX
- Randy Powell-Pettus, TX
- Lela Mae Hutcheson-Round Rock, TX
- Dan M. Hall-Metaire, LA
- Marlene Musgrave-Edmond, OK
- Caprock Telephone - Spur, TX

April Local Subscriptions Due ~\$18.50 Per Year~

- Bennie Fitzgerald
- Coye Payne
- Todd Oberheu
- Randel Hamilton
- Joe Edd Smith
- Dale Ramsey
- Just Because
- D.J. Anderson
- Lynn C. Davis
- Billy Pinkerton
- Laverne Hamner
- Danny Stewart
- Silverton Oil-Silverton
- H.C. McElyea-Floydada
- J.T. Swim-Roaring Springs

Immunization Clinics For April

Immunization Clinics offering vaccines that give protection against several childhood diseases are scheduled for April. Protection is against Polio, Diphtheria, Lock Jaw (Tetanus), Whooping Cough (Pertussis), Measles, Rubella, Mumps and HIB (Haemophilus Influenza Type B) and Varicella (Chickenpox).

A charge for vaccination will be assessed based on family income, family size, and the ability of the individual or family to pay, however no one will be turned away if not able to pay. These charges are necessary in order to help defray the cost of keeping the clinics operating.

Immunizations will be available at the Texas Department of Health Office in Tulia at 219 E. 2nd Street on April 10, 2002 from 9:30 a.m. to 1:30 a.m. and 1:00p.m. to 3:30 p.m then again on April 24 from 1:00 p.m. to 3:30 p.m.

Immunizations will be available at the Texas Department of Health Clinic at Clarendon at Medical Drive #5 on April 16, 2002 from 9 a.m. to 12 Noon and 1:00 p.m. to 4:00 p.m.

All times are subject to change or cancellation due to weather or scheduling conflicts.

Survey: Public Willing To Pay For Smaller Classes

The state-mandated 22 to 1 student-teacher ratio for grades K through 4 should be maintained and taxpayers are willing to help foot the bill, according to a recent Scripps Howard Texas Poll.

The survey of 1,000 Texans found that 71 percent would be willing to pay more in taxes to maintain smaller classes in elementary schools. And 77 percent of those surveyed say that the Legislature should not repeal the law, which mandates smaller classes, as a means of addressing the state's budget shortfall. The survey had a margin of error of +/- 3 percent.

"This should send a clear message to Legislators and policymakers," said Doug Rogers, executive director of the Association of Texas Professional Educators (ATPE). "There is sufficient evidence showing that students do better in school when they are in smaller classes, and it's clear the public has gotten the message."

With 100,000 members statewide, ATPE is the largest educator group in Texas. Its members consist primarily of classroom teachers, but also includes paraprofessionals, administrators, college students and retired educators.

For a detailed summary of the survey, visit www.atpe.org and click on "newsroom".

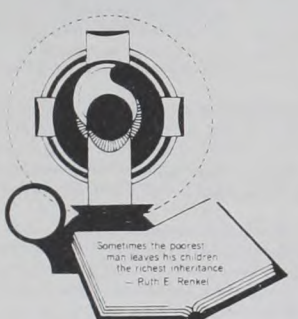
STAY INTENSE ABOUT YOUR KID'S EDUCATION. Keep in touch with the teacher. Visit the school. And help your child on the path to success.

CALL 1-800-261-1313 FOR MORE TIPS

SUCCESS IN SCHOOL = SUCCESS IN LIFE

- CHURCH OF CHRIST**
Turkey, Texas
Minister: Stuart Smith
Weekly Schedule Meetings
SUNDAY
Morning Service.....10:30 a.m.
Evening Service..... 5 p.m.
- FIRST BAPTIST CHURCH**
Turkey, Texas
Pastor: Melvin Clinton
Weekly Schedule Meetings
SUNDAY:
Sunday School.....9:45 a.m.
Morning Worship.....11:00 a.m.
Singing.....5:00 p.m.
Training Union.....6:00 p.m.
Evening Worship.....6:00 p.m.
- MT. OLIVE BAPTIST CHURCH**
Turkey, Texas
Pastor: Samuel Holloway,
Plainview, Texas
Weekly Schedule Meetings
Pastoral Days...1st & 3rd Sundays
MONDAY
Mission.....4:00 p.m.
WEDNESDAY
Prayer Meeting.....8:00 p.m.
- UNITED METHODIST CHURCH**
Turkey, Texas
Pastor Don McMahan
Weekly Schedule Meetings
SUNDAY
Morning Worship.....9:30 a.m.
Church School.....10:30 a.m.
Evening Worship
1st & 3rd Sundays.....6:00 p.m.
- ST. ELIZABETH ANN SEIGN CATHOLIC CHURCH**
Turkey, Texas
Sister Joyce Blum, F.S.P.A.
SUNDAY
Sunday School.....11:00 a.m.
Mass.....12:00 p.m.
- FAIRMONT MISSIONARY BAPTIST CHURCH**
Fairmont
Pastor: Arnie Smith
SUNDAY
Worship.....11:00 a.m.

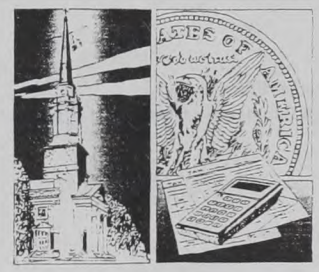
- Caprock Telephone Cooperative, Inc.
Spur, TX
- Karol's Kountry Korner
Quitaque, TX
- Valley Peanut Growers
Turkey, TX



- MACEDONIA BAPTIST CHURCH**
Pastor Willie J. Windom
Sunday School.....10 a.m.
Morning Worship.....11 a.m.
- THE PEOPLE WHOSE NAMES APPEAR BELOW SPONSOR THIS MESSAGE WITH THE HOPE OF PROMOTING A BETTER CHRISTIAN COMMUNITY**

ALL WORK AND NO PLAY MAKES JACK PAY EVER HIGHER TAXES

Though money can't buy happiness, with purchases we like to flaunt we are enabled to possess. The kind of misery we want: Yet lessons of our faith imply that hoarding of excessive wealth results in taxes much too high. And often, damage to our health. According to a Bible phrase: The love of money is the root of evil. Till we mend our ways. And make our faith a substitute. So give your loved ones what they need. But spend more time with them alone. Because they are, as you'll concede. The greatest treasure you could own.



- Valley Farm Store
Quitaque, TX
- Caprock Home Center
Quitaque, TX
- Lighthouse Electric Cooperative, Inc
Floydada, TX
- Hawkins Insurance
Quitaque, TX

- Turkey Branch Memphis State Bank
Turkey, TX
- The Sportsman
Quitaque, TX
- First National Bank
Quitaque, TX

- UNITED METHODIST CHURCH**
Quitaque, Texas
Weekly Scheduled Meetings
SUNDAY
Church School.....9:45 a.m.
Morning Worship.....10:50 a.m.
Evening Worship.....6:00 p.m.
- CHURCH OF CHRIST**
Quitaque, Texas
Minister: Delos Johnson
Weekly Scheduled Meetings
SUNDAY
Morning Worship.....10:30 a.m.
Evening Worship.....5:00 p.m.
- FIRST BAPTIST CHURCH**
Flomot, Texas
Pastor: Nathan Mulden
Weekly Scheduled Meetings
SUNDAY
Sunday School.....10:00 a.m.
Worship Service.....11:00 a.m.
Discipleship Training.....5:00 p.m.
- FIRST BAPTIST CHURCH**
Quitaque, Texas
Pastor: Lance Cypert
Weekly Scheduled Meetings
SUNDAY
Sunday School.....9:30 a.m.
Morning Worship.....10:30 a.m.
Training Union.....5:00 p.m.
- CHURCH OF CHRIST**
Flomot
SUNDAY
Worship.....10:30 a.m.
- IGLESIA BAUTISTA**
La TRINIDAD CHURCH
Pastor Salvador Bernal
Sunday School10:00 a.m.
Church.....11:00 a.m. & 6:00 p.m.
Wednesday.....7:00 p.m.

The Valley Trib
Rainf
Critic
Dryland cotton farm
chance of producing pr
Plains agronomist.
"Saving and manag
sor of Agronomy at Tex
designed to reduce wat
"Our long term ann
percent of that total
window we see a str
mid-July.
"If our fields ar
critical, yield-produc
Many dryland produ
follow, bare row. In the
rows, but some are now
"If we leave a barren
past few years, we hav
sperred with grain sorgh
adjacent strips to produ
residue helps reduce wi
by reflecting heat and su
impact of raindrops.
Krieg said this syste
by as much as 100 poun
He also advised prod
When planting, think in
between three and four
(weeds) that rob product
ents when rainfall occur
Spring rains will activat
tests, and remember the
of cotton." Look at othe
too. Compare staple leng
advantage in producing
4.0 average micronaire."
Krieg challenged dryl
and then manage it" to
Plains have been essentia
advantage by adopting
quality potential."

Highway 70 Mile Garage
"A 70 Mile Garage
70 corridor from Spur
has been set for the w
According to Alex C
organization, the emp
the downtown areas of
businesses will set up
nity for a small fee to h
newspapers. Plans are
siders to the area.
For more informati
806-348-7336, Barbara
Jewell Holder in Spur
at 806-423-1151.

AL
COKE, D
COKE O
SPRITE
6 PK. / 3 LIT
\$1.79 \$1.79

Tom's
Hot
Chips
SOUP

HOMOGENIZED, 2
ALLSUP
MILK
GALLON
\$2.29

AND STILL BUY 12 G
GET ONE GALLON

VANILLA, CHOCOLAT
NEAPOLITAN
ALLSUP
ICE CREA
1/2 GALLON SQUA
\$1.79

The Valley Tribune, Quitaque, Texas, Thursday, April 4, 2002

Rainfall Management Seen Critical For Dryland Cotton

Dryland cotton farmers who manage their crop to make the most of rainfall and soil moisture stand a better chance of producing profitable yields than those who simply bank on adequate rainfall, according to a South Plains agronomist.

"Saving and managing soil moisture is the name of the game in dryland cotton," said Dr. Dan Krieg, Professor of Agronomy at Texas Tech University. "As a result, we must use cotton production systems and techniques designed to reduce water stress during the plant's critical development stages."

"Our long term annual rainfall averages somewhere around 20.4 inches. Most years, we receive about 70 percent of that total - or 13.5 inches - between April and October," Krieg said. "Inside that April-October window we see a strong relationship between dryland yields and the amount of rain that falls from mid-June to mid-July."

"If our fields are set up to bank that moisture, we can provide dryland cotton with a much needed drink of critical, yield-producing moisture."

Many dryland producers rely on a skip row system where two 40 inch rows of cotton are separated by a fallow, bare row. In theory, the fallow, or skip, rows in this system act as a moisture bank for adjacent cotton rows, but some are now questioning the wisdom of this system, Krieg said.

"If we leave a barren row of ground out there, we have created a zone with high evaporation potential. In the past few years, we have seen better, more consistent yields from cotton planted on 30 or 32 inch rows interspersed with grain sorghum," he added. "In this system, we plant several rows of cotton and grain sorghum in adjacent strips to produce a field that is two-thirds cotton and one-third grain sorghum."

"We can rotate crops easily in this system and manage soil moisture at the same time. The grain sorghum residue helps reduce wind erosion and boosts rainfall infiltration. It also reduces evaporation of soil moisture by reflecting heat and sunlight, and reduces the incidence of soil sealing after a pounding rain by softening the impact of raindrops."

Krieg said this system of combining crop rotation with soil moisture management could boost yield potential by as much as 100 pounds per acre.

He also advised producers to think beyond "maximizing yield" by focusing on plant health and fiber quality. When planting, think in terms of "plants per foot of row" rather than pounds per acre. "Planting to achieve between three and four plants per foot of row is ideal. Higher plant densities encourage barren cotton plants (weeds) that rob productive plants of moisture and soil nutrients." Time fertilizer applications to supply nutrients when rainfall occurs. "Pre-plant fertilization with about 40-50 pounds of nitrogen per acre is a good bet. Spring rains will activate the nitrogen and carry it down to the plant roots. Base fertility on yield goal and soil tests, and remember the rule of thumb that it takes 30-50 pounds of actual nitrogen per acre to produce one bale of cotton." Look at other factors besides yield potential when evaluating varieties. "Look at lint quality ratings, too. Compare staple length, fiber strength, and micronaire (fiber fineness and maturity). There is an economic advantage in producing lint that rates 34 plus in staple length, with 28-30 grams per text (staple strength) and 4.0 average micronaire."

Krieg challenged dryland producers at the Caprock Cotton Conference to "choose varieties for fiber quality and then manage it" to optimize both soil moisture and yield potential. "Dryland cotton yields on the South Plains have been essentially flat over the last 30 years. But we can realize a yield advantage and an economic advantage by adopting production systems that preserve soil moisture and rainfall for crops with real fiber quality potential."

Highway 70 Association Sets 70 Mile Garage Sale For May 4-5

"A 70 Mile Garage sale" to lure visitors to the Texas Highway 70 corridor from Spur to Roaring Springs to Matador to Turkey has been set for the weekend of May 4-5.

According to Alex Crowder, president of the Texas Highway 70 organization, the emphasis will be on a flea market concept for the downtown areas of the four towns. Individuals, vendors, and businesses will set up booths in a central location in each community for a small fee to help cover advertising in regional and area newspapers. Plans are to make this an annual event to draw outsiders to the area.

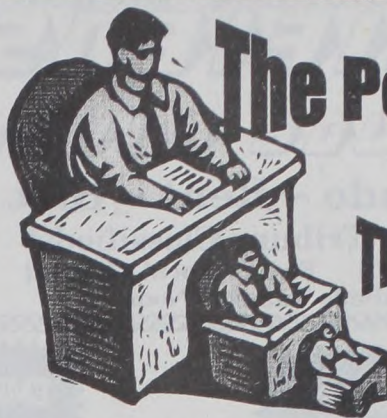
For more information, call Alex Crowder in Roaring Springs at 806-348-7336, Barbara Armstrong in Matador at 806-347-2968, Jewell Holder in Spur at 806-271-3940 or Mona Boles in Turkey at 806-423-1151.

Turkey Senior Citizens News

By Oleta Randell

23 members and one guest, Dick Young of Ellijay, GA, met for the last Senior Citizens meeting. Margie Pinkerton administered the blood checks. G.P. Driskill led the prayer for the food. Table games were played after the dinner. The next meeting will be April 9th. So come on out and enjoy the fun, food and fellowship!

☆☆☆☆☆☆☆☆☆☆



The People

THE LAW

THE HALL COUNTY JUDGE

Every person must bring his own tools to his profession. My toolbox contains the following for the people of Hall County:

Public School Certificate in Public School Administration - Many of the same laws affect the County as well as the School District - such as public hearings, preparing budgets, and evaluating personnel, knowing the laws such as freedom of information laws and the open meetings laws such as posting agendas. Certificate in public school finance.

Skills: such as writing, computer skills, I do all my own campaign ads by using computer graphics from my own computer, public speaking, and know how to locate help for this area by accessing different agencies in the State of Texas.

Personal Contacts with both State and Federal Representatives.

MY EXPERIENCE OF WORKING AS AN EDUCATOR - is very important working with juveniles and our youth.

I want to thank both of the other candidates that have run for the office of Hall County Judge for maintaining a good clean campaign. They are both good honorable Hall County Citizens.

The balance between how we have done in the past and what we are going to do in the FUTURE now rests with the voters on April 9th, the runoff election.

PLEASE VOTE FOR
JACKY MARTIN

FOR FUTURE GROWTH AND CHANGE.

Pol. Ad. Ed. by Jacky Martin

ALLSUP'S

Always LOW PRICES

March 31, 2002 thru April 27, 2002

COKE, DIET COKE OR SPRITE

6 PK. / 3 LTR.
\$1.79 \$1.69



CANDY BARS
ASSORTED HERSEY'S REG.

4 \$1



BAR 5 FRANKS
12 OZ.
79¢

TENDERCRUST HOT DOG BUNS
8 CT.
59¢



CREST TARTER & REGULAR TOOTH PASTE
4.6 OZ.
\$1.79



HORTENSIA BATH TISSUE
4 ROLL
79¢



HORTENSIA PAPER TOWELS
SINGLE ROLL
69¢



SHURFINE CHARCOAL
10 LB. BAG
\$2.99



SHURFINE CHARCOAL LIGHTER FLUID
32 OZ.
\$1.29



WHITE CORN TORTILLA, AUTHENTIC TORTILLA ROUNDS, CORN CHIPS, NACHO TORTILLA, BACON CHEDDAR FRIES, NACHO RINGS, POTATO CHIPS OR RIPPLE POTATO CHIPS

TOM'S CHIPS
reg. \$1.89
2 FOR \$3

ALLSUP'S "MOO" GET ONE FREE!

BUY 12 GALLONS OF FRESH ALLSUP'S MILK...

Collect Self Stick "Moo" Stamps Today & You Could Win FREE Milk For A Year!

HOMOGENIZED, 2%, 1% ALLSUP'S MILK
GALLON
\$2.29



VANILLA, CHOCOLATE OR NEAPOLITAN ALLSUP'S ICE CREAM
1/2 GALLON SQUARE
\$1.79



ALLSUP'S COMBO MEALS

COMBO NO. 1	2 CORN DOGS & 32 OZ. TALLSUP	\$1.99
COMBO NO. 2	2 HOT LINKS W/BREAD & 32 OZ. TALLSUP	\$1.99
COMBO NO. 3	3 TAMALES, HOWLERS & 32 OZ. TALLSUP	\$1.99
COMBO NO. 4	SAUSAGE/EGG BISCUIT & 16 OZ. COFFEE	\$1.29

ASSORTED SOBE
20 OZ.
2 FOR \$2



GOOD HUMOR KING CONE
4.6 OZ.
79¢



CLASSIFIEDS

GET THE JOB DONE!

Buy ~ Sell ~ Trade ~ Rent ~ Hire
Do it all in the Valley Tribune Classifieds!
Call Toll Free 1-877-655-1101 Fax or Local 455-1101
Deadline for Classifieds Tuesday Noon.

Puzzle Solution

SASSAFRAS

NOTICE

NOTICE

A notice of Change in Bank Control has been filed with the Comptroller of the Currency, Washington, D.C. 20219 by Randall B. Stark to acquire a controlling interest in First National Bank, Quitaque, Texas. The notice was filed pursuant to 12 USC 1817 (j) of the Federal Deposit Insurance Act and/or Part 5 of the regulations of the Comptroller of the Currency that require parties who wish to acquire control of a national bank to notify the Comptroller of the Currency in writing 60 days prior to the proposed acquisition. Unless extended by the Comptroller of the Currency, the 60-day review period expires on May 26, 2002. Be advised that: (i) a letter of nondisapproval can be issued in advance of the close of the statutory period; (ii) the Comptroller of the Currency may extend the period of review consistent with the provisions of 12 USC 1817(j) and/or 12 CFR 5.50; and (iii) the remaining portion of the notice will be kept confidential until the Comptroller of the Currency has acted, but at that time certain additional summary information will be released and made available, upon the request of any person, consistent with the Freedom of Information Act, 5 USC 552 ("FOIA") and 12 CFR 5.50.

Any persons desiring to comment on this proposed acquisition should submit their written comments within 20 days of the date of this publication to: Licensing Manager, Comptroller of the Currency, 1600 Lincoln Plaza, 500 N. Akard, Dallas, TX 75201. The public file is available for inspection in the district office during regular business hours.

Application has been made with the Texas Alcoholic Beverage Commission for a Private Club Registration Permit by The Sportsman Club dba. The Sportsman Club to be located at 114 W. Main St., Quitaque, Briscoe County, Texas. Officers of The Sportsman Club are President - Raymond G. Roy; Vice-President - Kevin D. Huyck and Secretary/Treasurer - Cheryl L. Roy.

40-2tp

SERVICES

CRUSE SPRAYING FOR ALL your agricultural spraying needs. Trellan application and others. Call Darrel at 269-7395 11-1tn

REAL ESTATE

Briscoe Co. 3915 Acres Timber Lake Ranch, Prairie Dog Fork on South, Battle Creek on North-West Pastures. 5 Wells, 3 Dirt Tanks. Small House & Barns. VERY PRIVATE LOCATION. Lots of Game. Call Jim Garland Real Estate at 1-800-530-4396

41-ctfn

THANK YOU

I would like to thank all of the voters in Precinct 2, who supported me in the March 12 Primary. I enjoyed visiting with each of you over the past few months. I will work hard to earn your trust and support.

Lee Smith 41-1tc

FOR SALE



For Sale 1995 Chevy Pickup 1/2 Ton-Long Bed, V-8 automatic with Overdrive, P.S., P.B. A/C, Grill guard, Sunfighter Headache Rack, Crossover Tool Box, Duel Fuel-Gad & Propane. A Good Clean Truck! \$4,500. Call 455-1226, days or 455-1475, evenings.

41-4tc

For Sale: 1978 Chevy Blazer, 350 4-wheel drive, removable top, Hooker headers, Rally wheels, needs work. Call 455-1101 or 348-7522.

HELP WANTED

HOMEWORKERS NEEDED \$635 weekly processing mail. Easy! No experience needed. Call 1-888-517-2362 Ext 3640 24Hrs

40-4tp

EMPLOYMENT

POSTAL SERVICE JOBS
CALL TO APPLY FOR JOBS IN THE CHILDRESS, TX AREA
DIAL: 1-866-999-8777 (TTY 1-800-800-8776)
ENTER: Exam Announcement #18268
FROM: 03/25/02 - 09/20/02
JOBS: Rural Carrier Associate

Offices included in the Childress Area are: Childress, Chillicothe, Clarendon, Crowell, Memphis, Paducah, Quahak, Silverton, and Lakeview. Rural Carrier associated are non-career employees who sort, deliver, and collect mail along a rural route. They generally provide their own vehicle, but are given an equipment maintenance allowance. Salary is \$13.51 per hour.

Applicants must pass a written examination and a pre-employment drug screening, and have a valid state driver's license, a safe driving record, and at least two years of driving experience. Call today!

UNITED STATES POSTAL SERVICE
Equal opportunity Employer

Turkey Medical Clinic

6th & Lyles St. Turkey, TX.
* Providers on Duty *
~ Sidney Ontai, M.D., MBA ~
~ Rene' Funkhouser, RN, FNP-C ~

1-806-423-1324
After Hours Call;
Don Turner
1-806-930-4358

Hours of Operation
Mon - Tues - Thur - Fri
9:00 A.M. - 12:00 P.M.
Wednesday 1:30 - 4:30 P.M.

Jack's Automotive

Now the Official Vehicle Inspection Station
For All Your Vehicles & Motorcycles

Diagnostics a Specialty - Brake Lathe on Site
Mr. T's Cleaners Pick-up - Movie Rental Center
Call 455-1243 Day or 455-1469 at Night
Monday - Saturday 8:00 a.m. - 6:00 p.m.

FEN-PHEN Pondimin & Redux

LAW SUIT FILING DEADLINES RUNNING SOON!
HEART PALPITATIONS, RACING HEART, SWELLING IN FEET & ANKLES, SHORTNESS OF BREATH, FATIGUE
If you took these diet drugs for 2 months or longer AND you are having any of these symptoms, then call for a FREE CONFIDENTIAL CONSULTATION. If eligible, a FREE ECHOCARDIOGRAPHIC TEST (non-invasive) will be set up for you and your test results will be kept confidential.

WILLIS LAW FIRM **BOARD CERTIFIED**
DAVID P. WILLIS **PERSONAL INJURY**
Attorney at Law **TRIAL LAWYER**
Houston, Texas **Texas Board of Legal Specialization**
Call 1-800-883-9858 or 713-654-4040

PAT CARSON



INSURANCE

806-423-1289 Turkey
806-455-1181 Quitaque
888-343-1289 TOLL FREE
patcarsoninsurance.com

DIET PILLS & VIAGRA

Delivered by 'Fed Ex' Air.

CALL Toll Free! 1-866-GET-MOJO
(1-866-438-6656)

www.IntegraRX.com
Visa/Mastercard/Amex/Discover

ATTENTION - OWNERS WHO PURCHASED HOUSES OR OTHER STRUCTURES AFTER MAY 3, 1993, WITH LOUISIANA-PACIFIC EXTERIOR INNER-SEAL SIDING INSTALLED BEFORE JANUARY 1, 1996.

THIS NOTICE MAY AFFECT YOUR RIGHTS. PLEASE READ IT CAREFULLY.
If this Notice does apply to you, you may be eligible to assert of the LP National Siding Claims Administrator if you do opt out of this class action settlement, you will no longer be eligible to receive any benefits under the settlement agreement. You would be permitted, however, to pursue whatever legal remedies may be available to you.
The deadline for filing an Opt Out Request form is June 17, 2002. To request additional information from which you can determine whether you are eligible to opt out of the class action settlement or to request either a Claim Form or an Opt Out Request form, you may contact the LP Siding Litigation Claims Administrator. If you have damaged LP siding that is eligible for compensation under the settlement agreement and desire to file a claim, you must complete a Claim Form and return it to the LP Siding Litigation Claims Administrator postmarked on or before December 31, 2002.

For information contact: LP Siding Litigation Claims Administrator
P.O. Box 3240 Portland, OR 97208-3240
Toll-Free: 1-800-245-2722 www.lpsidingclaims.com

E-Mail
The Valley Tribune
vtaylor@caprock-spur.com

It isn't the mountain that wears you out—it's the grain of sand in your shoe.
—Robert Service

- ★ COOKING
- ★ HEATING
- ★ WATER HEATING
- ★ MOTOR FUEL

MEREDITH
Gas & Supply
24-Hour Service
Propane tanks
& Supplies

PROPANE
ENERGY FOR THE LIFE YOU LIVE
Roaring Springs (806) 348-7332

GRAHAM SUPPLY

- Your Headquarters for ...
- * Hardware
 - * Furniture
 - * Appliances
 - * Floor Covering
 - * TV's, VCR's
 - * Fencing Supplies
 - * Water Tubs
 - * Lawn & Garden Supplies
 - * Nice Gift Selection
- Quality Service Selection Savings**
- Downtown Roaring Springs ~ 806-348-7216

AUTISM

New medical evidence shows children diagnosed with autism may have developed this disease as a result of a mercury preservative used in children's vaccines. Decades of science show that mercury causes harm to children's neurological development. Call us for professional insight.

Ryan A. Krebs, MD, JD
Doctor-Lawyer in full time Law Practice

Richard A. Dodd, L.C.
Timothy R. Cappolino, P.C.
Board Certified Personal Injury Trial Law & Civil Trial Law, Texas Board of Legal Specialization

1-800-460-0606
www.bjrhtraumalaw.com

HEALTH BENEFITS

For your peace of mind, we offer you ...
For Your Entire Family
only **\$74** Per Month (No Deductible)
* FLAT RATE * GUARANTEED ACCEPTANCE!
* SELF-EMPLOYED OR NOT-NO INCREASE!
* MEDICAL DISCOUNTS!
* Doctor * Dental * Vision * RX & More!

Call-1-888-369-1739

TEXAS STATEWIDE CLASSIFIED ADVERTISING NETWORK

TexSCAN

TexSCAN Week of March 31, 2002

DRIVERS - EXPERIENCE 30-45 yrs. IMMEDIATE CASH THE power of 100,000 sq. ft. for structural, residential, commercial, and more. 100% on track freight, state notes, private mortgage notes, and more! (1-800-233-1047) G. Whisenand, (1-877-6471253)	MANUFACTURED HOMES ASK ME HOW?? 1300 sq. ft. 1000 sq. ft. 1200 sq. ft. 1400 sq. ft. 1600 sq. ft. 1800 sq. ft. 2000 sq. ft. 2200 sq. ft. 2400 sq. ft. 2600 sq. ft. 2800 sq. ft. 3000 sq. ft. 3200 sq. ft. 3400 sq. ft. 3600 sq. ft. 3800 sq. ft. 4000 sq. ft. 4200 sq. ft. 4400 sq. ft. 4600 sq. ft. 4800 sq. ft. 5000 sq. ft. 5200 sq. ft. 5400 sq. ft. 5600 sq. ft. 5800 sq. ft. 6000 sq. ft. 6200 sq. ft. 6400 sq. ft. 6600 sq. ft. 6800 sq. ft. 7000 sq. ft. 7200 sq. ft. 7400 sq. ft. 7600 sq. ft. 7800 sq. ft. 8000 sq. ft. 8200 sq. ft. 8400 sq. ft. 8600 sq. ft. 8800 sq. ft. 9000 sq. ft. 9200 sq. ft. 9400 sq. ft. 9600 sq. ft. 9800 sq. ft. 10000 sq. ft. 10200 sq. ft. 10400 sq. ft. 10600 sq. ft. 10800 sq. ft. 11000 sq. ft. 11200 sq. ft. 11400 sq. ft. 11600 sq. ft. 11800 sq. ft. 12000 sq. ft. 12200 sq. ft. 12400 sq. ft. 12600 sq. ft. 12800 sq. ft. 13000 sq. ft. 13200 sq. ft. 13400 sq. ft. 13600 sq. ft. 13800 sq. ft. 14000 sq. ft. 14200 sq. ft. 14400 sq. ft. 14600 sq. ft. 14800 sq. ft. 15000 sq. ft. 15200 sq. ft. 15400 sq. ft. 15600 sq. ft. 15800 sq. ft. 16000 sq. ft. 16200 sq. ft. 16400 sq. ft. 16600 sq. ft. 16800 sq. ft. 17000 sq. ft. 17200 sq. ft. 17400 sq. ft. 17600 sq. ft. 17800 sq. ft. 18000 sq. ft. 18200 sq. ft. 18400 sq. ft. 18600 sq. ft. 18800 sq. ft. 19000 sq. ft. 19200 sq. ft. 19400 sq. ft. 19600 sq. ft. 19800 sq. ft. 20000 sq. ft. 20200 sq. ft. 20400 sq. ft. 20600 sq. ft. 20800 sq. ft. 21000 sq. ft. 21200 sq. ft. 21400 sq. ft. 21600 sq. ft. 21800 sq. ft. 22000 sq. ft. 22200 sq. ft. 22400 sq. ft. 22600 sq. ft. 22800 sq. ft. 23000 sq. ft. 23200 sq. ft. 23400 sq. ft. 23600 sq. ft. 23800 sq. ft. 24000 sq. ft. 24200 sq. ft. 24400 sq. ft. 24600 sq. ft. 24800 sq. ft. 25000 sq. ft. 25200 sq. ft. 25400 sq. ft. 25600 sq. ft. 25800 sq. ft. 26000 sq. ft. 26200 sq. ft. 26400 sq. ft. 26600 sq. ft. 26800 sq. ft. 27000 sq. ft. 27200 sq. ft. 27400 sq. ft. 27600 sq. ft. 27800 sq. ft. 28000 sq. ft. 28200 sq. ft. 28400 sq. ft. 28600 sq. ft. 28800 sq. ft. 29000 sq. ft. 29200 sq. ft. 29400 sq. ft. 29600 sq. ft. 29800 sq. ft. 30000 sq. ft. 30200 sq. ft. 30400 sq. ft. 30600 sq. ft. 30800 sq. ft. 31000 sq. ft. 31200 sq. ft. 31400 sq. ft. 31600 sq. ft. 31800 sq. ft. 32000 sq. ft. 32200 sq. ft. 32400 sq. ft. 32600 sq. ft. 32800 sq. ft. 33000 sq. ft. 33200 sq. ft. 33400 sq. ft. 33600 sq. ft. 33800 sq. ft. 34000 sq. ft. 34200 sq. ft. 34400 sq. ft. 34600 sq. ft. 34800 sq. ft. 35000 sq. ft. 35200 sq. ft. 35400 sq. ft. 35600 sq. ft. 35800 sq. ft. 36000 sq. ft. 36200 sq. ft. 36400 sq. ft. 36600 sq. ft. 36800 sq. ft. 37000 sq. ft. 37200 sq. ft. 37400 sq. ft. 37600 sq. ft. 37800 sq. ft. 38000 sq. ft. 38200 sq. ft. 38400 sq. ft. 38600 sq. ft. 38800 sq. ft. 39000 sq. ft. 39200 sq. ft. 39400 sq. ft. 39600 sq. ft. 39800 sq. ft. 40000 sq. ft. 40200 sq. ft. 40400 sq. ft. 40600 sq. ft. 40800 sq. ft. 41000 sq. ft. 41200 sq. ft. 41400 sq. ft. 41600 sq. ft. 41800 sq. ft. 42000 sq. ft. 42200 sq. ft. 42400 sq. ft. 42600 sq. ft. 42800 sq. ft. 43000 sq. ft. 43200 sq. ft. 43400 sq. ft. 43600 sq. ft. 43800 sq. ft. 44000 sq. ft. 44200 sq. ft. 44400 sq. ft. 44600 sq. ft. 44800 sq. ft. 45000 sq. ft. 45200 sq. ft. 45400 sq. ft. 45600 sq. ft. 45800 sq. ft. 46000 sq. ft. 46200 sq. ft. 46400 sq. ft. 46600 sq. ft. 46800 sq. ft. 47000 sq. ft. 47200 sq. ft. 47400 sq. ft. 47600 sq. ft. 47800 sq. ft. 48000 sq. ft. 48200 sq. ft. 48400 sq. ft. 48600 sq. ft. 48800 sq. ft. 49000 sq. ft. 49200 sq. ft. 49400 sq. ft. 49600 sq. ft. 49800 sq. ft. 50000 sq. ft. 50200 sq. ft. 50400 sq. ft. 50600 sq. ft. 50800 sq. ft. 51000 sq. ft. 51200 sq. ft. 51400 sq. ft. 51600 sq. ft. 51800 sq. ft. 52000 sq. ft. 52200 sq. ft. 52400 sq. ft. 52600 sq. ft. 52800 sq. ft. 53000 sq. ft. 53200 sq. ft. 53400 sq. ft. 53600 sq. ft. 53800 sq. ft. 54000 sq. ft. 54200 sq. ft. 54400 sq. ft. 54600 sq. ft. 54800 sq. ft. 55000 sq. ft. 55200 sq. ft. 55400 sq. ft. 55600 sq. ft. 55800 sq. ft. 56000 sq. ft. 56200 sq. ft. 56400 sq. ft. 56600 sq. ft. 56800 sq. ft. 57000 sq. ft. 57200 sq. ft. 57400 sq. ft. 57600 sq. ft. 57800 sq. ft. 58000 sq. ft. 58200 sq. ft. 58400 sq. ft. 58600 sq. ft. 58800 sq. ft. 59000 sq. ft. 59200 sq. ft. 59400 sq. ft. 59600 sq. ft. 59800 sq. ft. 60000 sq. ft. 60200 sq. ft. 60400 sq. ft. 60600 sq. ft. 60800 sq. ft. 61000 sq. ft. 61200 sq. ft. 61400 sq. ft. 61600 sq. ft. 61800 sq. ft. 62000 sq. ft. 62200 sq. ft. 62400 sq. ft. 62600 sq. ft. 62800 sq. ft. 63000 sq. ft. 63200 sq. ft. 63400 sq. ft. 63600 sq. ft. 63800 sq. ft. 64000 sq. ft. 64200 sq. ft. 64400 sq. ft. 64600 sq. ft. 64800 sq. ft. 65000 sq. ft. 65200 sq. ft. 65400 sq. ft. 65600 sq. ft. 65800 sq. ft. 66000 sq. ft. 66200 sq. ft. 66400 sq. ft. 66600 sq. ft. 66800 sq. ft. 67000 sq. ft. 67200 sq. ft. 67400 sq. ft. 67600 sq. ft. 67800 sq. ft. 68000 sq. ft. 68200 sq. ft. 68400 sq. ft. 68600 sq. ft. 68800 sq. ft. 69000 sq. ft. 69200 sq. ft. 69400 sq. ft. 69600 sq. ft. 69800 sq. ft. 70000 sq. ft. 70200 sq. ft. 70400 sq. ft. 70600 sq. ft. 70800 sq. ft. 71000 sq. ft. 71200 sq. ft. 71400 sq. ft. 71600 sq. ft. 71800 sq. ft. 72000 sq. ft. 72200 sq. ft. 72400 sq. ft. 72600 sq. ft. 72800 sq. ft. 73000 sq. ft. 73200 sq. ft. 73400 sq. ft. 73600 sq. ft. 73800 sq. ft. 74000 sq. ft. 74200 sq. ft. 74400 sq. ft. 74600 sq. ft. 74800 sq. ft. 75000 sq. ft. 75200 sq. ft. 75400 sq. ft. 75600 sq. ft. 75800 sq. ft. 76000 sq. ft. 76200 sq. ft. 76400 sq. ft. 76600 sq. ft. 76800 sq. ft. 77000 sq. ft. 77200 sq. ft. 77400 sq. ft. 77600 sq. ft. 77800 sq. ft. 78000 sq. ft. 78200 sq. ft. 78400 sq. ft. 78600 sq. ft. 78800 sq. ft. 79000 sq. ft. 79200 sq. ft. 79400 sq. ft. 79600 sq. ft. 79800 sq. ft. 80000 sq. ft. 80200 sq. ft. 80400 sq. ft. 80600 sq. ft. 80800 sq. ft. 81000 sq. ft. 81200 sq. ft. 81400 sq. ft. 81600 sq. ft. 81800 sq. ft. 82000 sq. ft. 82200 sq. ft. 82400 sq. ft. 82600 sq. ft. 82800 sq. ft. 83000 sq. ft. 83200 sq. ft. 83400 sq. ft. 83600 sq. ft. 83800 sq. ft. 84000 sq. ft. 84200 sq. ft. 84400 sq. ft. 84600 sq. ft. 84800 sq. ft. 85000 sq. ft. 85200 sq. ft. 85400 sq. ft. 85600 sq. ft. 85800 sq. ft. 86000 sq. ft. 86200 sq. ft. 86400 sq. ft. 86600 sq. ft. 86800 sq. ft. 87000 sq. ft. 87200 sq. ft. 87400 sq. ft. 87600 sq. ft. 87800 sq. ft. 88000 sq. ft. 88200 sq. ft. 88400 sq. ft. 88600 sq. ft. 88800 sq. ft. 89000 sq. ft. 89200 sq. ft. 89400 sq. ft. 89600 sq. ft. 89800 sq. ft. 90000 sq. ft. 90200 sq. ft. 90400 sq. ft. 90600 sq. ft. 90800 sq. ft. 91000 sq. ft. 91200 sq. ft. 91400 sq. ft. 91600 sq. ft. 91800 sq. ft. 92000 sq. ft. 92200 sq. ft. 92400 sq. ft. 92600 sq. ft. 92800 sq. ft. 93000 sq. ft. 93200 sq. ft. 93400 sq. ft. 93600 sq. ft. 93800 sq. ft. 94000 sq. ft. 94200 sq. ft. 94400 sq. ft. 94600 sq. ft. 94800 sq. ft. 95000 sq. ft. 95200 sq. ft. 95400 sq. ft. 95600 sq. ft. 95800 sq. ft. 96000 sq. ft. 96200 sq. ft. 96400 sq. ft. 96600 sq. ft. 96800 sq. ft. 97000 sq. ft. 97200 sq. ft. 97400 sq. ft. 97600 sq. ft. 97800 sq. ft. 98000 sq. ft. 98200 sq. ft. 98400 sq. ft. 98600 sq. ft. 98800 sq. ft. 99000 sq. ft. 99200 sq. ft. 99400 sq. ft. 99600 sq. ft. 99800 sq. ft. 100000 sq. ft. 100200 sq. ft. 100400 sq. ft. 100600 sq. ft. 100800 sq. ft. 101000 sq. ft. 101200 sq. ft. 101400 sq. ft. 101600 sq. ft. 101800 sq. ft. 102000 sq. ft. 102200 sq. ft. 102400 sq. ft. 102600 sq. ft. 102800 sq. ft. 103000 sq. ft. 103200 sq. ft. 103400 sq. ft. 103600 sq. ft. 103800 sq. ft. 104000 sq. ft. 104200 sq. ft. 104400 sq. ft. 104600 sq. ft. 104800 sq. ft. 105000 sq. ft. 105200 sq. ft. 105400 sq. ft. 105600 sq. ft. 105800 sq. ft. 106000 sq. ft. 106200 sq. ft. 106400 sq. ft. 106600 sq. ft. 106800 sq. ft. 107000 sq. ft. 107200 sq. ft. 107400 sq. ft. 107600 sq. ft. 107800 sq. ft. 108000 sq. ft. 108200 sq. ft. 108400 sq. ft. 108600 sq. ft. 108800 sq. ft. 109000 sq. ft. 109200 sq. ft. 109400 sq. ft. 109600 sq. ft. 109800 sq. ft. 110000 sq. ft. 110200 sq. ft. 110400 sq. ft. 110600 sq. ft. 110800 sq. ft. 111000 sq. ft. 111200 sq. ft. 111400 sq. ft. 111600 sq. ft. 111800 sq. ft. 112000 sq. ft. 112200 sq. ft. 112400 sq. ft. 112600 sq. ft. 112800 sq. ft. 113000 sq. ft. 113200 sq. ft. 113400 sq. ft. 113600 sq. ft. 113800 sq. ft. 114000 sq. ft. 114200 sq. ft. 114400 sq. ft. 114600 sq. ft. 114800 sq. ft. 115000 sq. ft. 115200 sq. ft. 115400 sq. ft. 115600 sq. ft. 115800 sq. ft. 116000 sq. ft. 116200 sq. ft. 116400 sq. ft. 116600 sq. ft. 116800 sq. ft. 117000 sq. ft. 117200 sq. ft. 117400 sq. ft. 117600 sq. ft. 117800 sq. ft. 118000 sq. ft. 118200 sq. ft. 118400 sq. ft. 118600 sq. ft. 118800 sq. ft. 119000 sq. ft. 119200 sq. ft. 119400 sq. ft. 119600 sq. ft. 119800 sq. ft. 120000 sq. ft. 120200 sq. ft. 120400 sq. ft. 120600 sq. ft. 120800 sq. ft. 121000 sq. ft. 121200 sq. ft. 121400 sq. ft. 121600 sq. ft. 121800 sq. ft. 122000 sq. ft. 122200 sq. ft. 122400 sq. ft. 122600 sq. ft. 122800 sq. ft. 123000 sq. ft. 123200 sq. ft. 123400 sq. ft. 123600 sq. ft. 123800 sq. ft. 124000 sq. ft. 124200 sq. ft. 124400 sq. ft. 124600 sq. ft. 124800 sq. ft. 125000 sq. ft. 125200 sq. ft. 125400 sq. ft. 125600 sq. ft. 125800 sq. ft. 126000 sq. ft. 126200 sq. ft. 126400 sq. ft. 126600 sq. ft. 126800 sq. ft. 127000 sq. ft. 127200 sq. ft. 127400 sq. ft. 127600 sq. ft. 127800 sq. ft. 128000 sq. ft. 128200 sq. ft. 128400 sq. ft. 128600 sq. ft. 128800 sq. ft. 129000 sq. ft. 129200 sq. ft. 129400 sq. ft. 129600 sq. ft. 129800 sq. ft. 130000 sq. ft. 130200 sq. ft. 130400 sq. ft. 130600 sq. ft. 130800 sq. ft. 131000 sq. ft. 131200 sq. ft. 131400 sq. ft. 131600 sq. ft. 131800 sq. ft. 132000 sq. ft. 132200 sq. ft. 132400 sq. ft. 132600 sq. ft. 132800 sq. ft. 133000 sq. ft. 133200 sq. ft. 133400 sq. ft. 133600 sq. ft. 133800 sq. ft. 134000 sq. ft. 134200 sq. ft. 134400 sq. ft. 134600 sq. ft. 134800 sq. ft. 135000 sq. ft. 135200 sq. ft. 135400 sq. ft. 135600 sq. ft. 135800 sq. ft. 136000 sq. ft. 136200 sq. ft. 136400 sq. ft. 136600 sq. ft. 136800 sq. ft. 137000 sq. ft. 13720
---	---