

Band Wins Second!!!

24 hr. prayer
service, 659-2911

THE GRUVER STATESMAN

VOLUME 14, NUMBER 6

THE GRUVER STATESMAN, GRUVER, TEXAS 79040

THURSDAY, NOVEMBER 14, 1985

Greyhounds Host Wheeler Mustangs

Even though the Gruver Greyhounds lost to Claude at Claude Friday night, 22-14, it really doesn't matter. 'cause the big game will be in Gruver this Friday night, when the Dogs host the Ponies from Wheeler.

In the Claude game, all of the scoring took place in the first half. Claude scored first on a 13 yard pass from Whelchel to Dziuk. Gruver battled back to a 14-6 lead in the first period on Kip Pittman's TD runs of 30 and 2 yards.

In the second period, Claude scored 16 points on a 46 yard run by Whelchel and a 62 yard interception return by Mark Hall.

It was a heartbreaker for the Hounds, but no disgrace as Claude, along with Wheeler and Phillips have outstanding football teams.

Fans will get to see possibly the best class A team in high school football this week-end when Wheeler comes to town. There is a good chance of the game being played on a muddy field, and possibly even some snow, and the Hounds will be ready for this final game, determined to close out the season in great fashion. Don't miss seeing the Hounds and Mustangs at Gruver this Friday night. 7:30 p. m.

Mail Truck Turns Over

The mail truck that runs between Gruver and Spearman turned over at 5:30 a. m. Wednesday morning. The driver was not injured. The truck had apparently already delivered the mail to Gruver and local P. O. employees in Spearman assisted in bringing the mail on to town.

Gruver Band will Perform Here Friday Night

U.S.D.A. cheese will be distributed November 20, from 1 to 5 p.m. in the County Courthouse. Low income families who qualify for these surplus goods are eligible.

City Meeting

The City of Gruver hereby gives notice that a regular meeting of the governing body of the above named City will be held on the 14th day of November, 1985 at 2:00 in the City Hall at 108 E. Broadway, Gruver, at which time the following subjects will be discussed, to wit: 1. Open Meeting, 2. Read and Approve the minutes of the October 17th, 1985 meeting, 3. Discuss letting Denny O'Hara place a mobile home at the airport, 4. Approve replacing Carla Gurfory with Dorothy O'Connell on the Library Board, 5. Approve Ordinance #192, setting date for public hearing to annex property, 6. Approve the bills for the month of October, 1985. Dated this 11th day of November, 1985

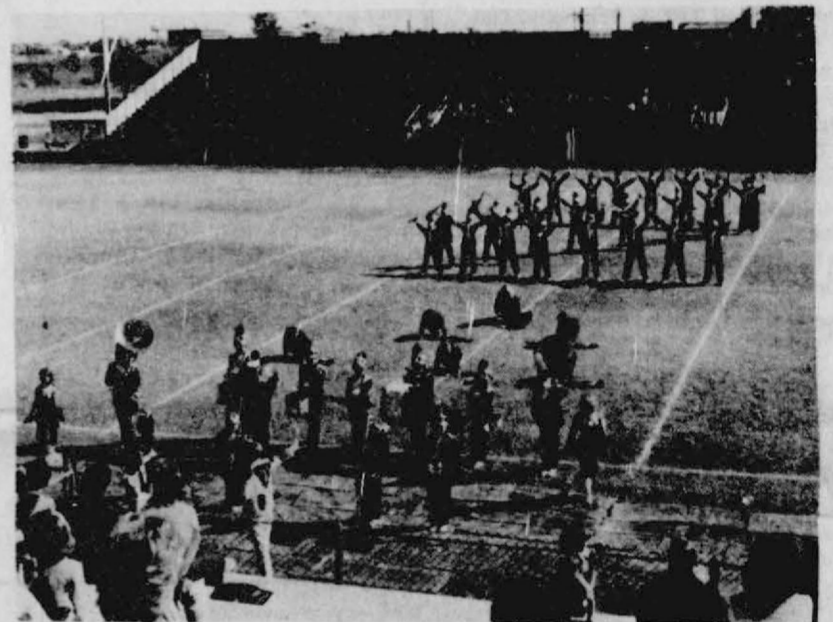
Jodie A. Knudson services held

Jodie A. Knudson 75, a former area farmer, died Saturday, Nov. 2nd.

Services were held Tuesday at 10 a.m. at Our Savior's Lutheran Church in Whitney with the Rev. Max Dommer, pastor, officiating. Graveside services were held at 9 a.m. Wednesday in Oslo Cemetery in Gruver. Arrangements were by Clifton Funeral Home.

Mr. Knudson was born in Cranfills Gap. He was a farmer in the Texas Panhandle until he retired in 1977, when he moved near Lake Whitney. He was married to Ruth Bredeson in Borger.

Survivors include his wife; a son, John of Spearman; three daughters, Janice Porter of Troy, Judy Goff of Boise, Idaho and Sharon Slatzman of Gruver; three brothers, Morris and Roy, both of Whitney, and Wendell of Cranfills Gap; three sisters, Rudell Leeth and Minerva Thomas, both of Hamilton, and Imogene Miller of Rosenberg; and nine grandchildren.



The classy Gruver Greyhound Marching Band, under the direction of Bruce Collins, won a 2nd in state, according to unofficial reports. We were unable to contact any of the band members, but ec any of the band officials, but word around Gruver was that the band did win a second in the state contest over the week-end. The U. I. L. State Marching contest was held in Austin Monday, November 11th. The band will be featured at the big Gruver-Wheeler football game in Gruver Friday night. That is if the weather permits!

HAVE FUN



Come Dance

The Boots and Slippers will dance tonight, November 14th, 8:00 p.m. at the Golden Age Center in Gruver with Murry Beasley calling. Come join the fun!!!

Basketball

The Gruver Greyhounds will open basketball season at Stinnett November 18th. On November 19th Stinnett will play in Gruver.

Gruver Wins FFA Contest

About 750 Future Farmers of America members from 48 chapters in the Texas Panhandle competed for district awards Saturday at the leadership conference at Clarendon Junior College.

In Junior Farm Skills, Gruver won first prize: Members of the Sr. Skills Team-1st District include Ross Renner, Tim Stedje, and Michael Booth. They will compete at area contest at Clarendon Jr. College on Nov. 23, 1985.

Members of the Jr. Skills team are Brent Wagner, Amy Sparks and Brian Payne.

Farm Radio members include Trey Roberts, Loyd Cator and Gary Murry. Quiz team members include Hector DeSantiago, Tony Sotelo and Ruben Gyzman.

The twenty-six Panhandle counties produced 41% of the states' record 187,200,000 bushel wheat crop this year. Nine of the top ten was in the twenty-six county area.

Hansford County was number one with 7,555,000 bushels. Parmer, 6,643,000; 3. Sherman, 6,405,000, 4 Deaf Smith, 6,145,000; 5. Ochiltree, 6,038,000; Moore, 5,997,000, Dallam, 5,720,000, Hill, 4,802,000; Hale, 4,727,000; and 10 Swisher, 4,007,000.

These figures are from the Texas Coop Livestock Service.

Hansford is No. 1 Wheat Producer!

Bob Hunicutt and Danny Gamble will show in Gruver Nov. 14-15

Bob Hunicutt sculptor, and Danny Gamble, Western artist, will be showing their works at the La Casita Room in the Gruver State Bank, Thursday & Friday from 10 a.m. to 4:30 p.m. Nov. 14 & 15th.

These artists also had a show last year at the Gruver Bank which was well attended.

Everyone is invited to come and view these artist's outstanding work.

EXPO '85



Officials at Dumas Co-op in Dumas announced this week that EXPO-85 will be held at the Dumas Co-op, 600 Twitchell Ave., Dumas, Friday and Sat. Nov. 15 and 16th.

Storewide discounts and special other discounts will be featured during the EXPO-85.

More than 86,000 items will be offered at greatly reduced prices. Farmers, Ranchers and city folks are urged to check the many values at the Dumas Co-op this week-end. Check the full page advertisement in this Gruver Paper for complete details!

TWENTY-THIRD ANNIVERSARY

Beedy Furniture Co. will celebrate their 23rd anniversary in Spearman this week, with a big sale. Check both the Spearman and Gruver papers for the information and sale specials. Our congratulations to Brad and all of those employed at Beedys for 23 years of outstanding service to Hansford County.

Notice to Parents

Effective this date the Board of Trustees has adopted this amendment to the Gruver school bus policy: "Any Gruver student is eligible to ride a school bus to any scheduled stop if adequate space is available."

Outstanding 4-H members



Trevor Williams of Gruver and Deana Turner of Spearman were honored at the District I Gold Star Banquet.

The District I Gold Star Banquet was held in Canyon on the West Texas State University Campus. The banquet took place Saturday, November 2 at 6:00 p.m. Those who were honored from Hansford County were Trevor Williams, son of Mr. & Mrs. Jerry Williams of Gruver and Deana Turner, daughter of Mr. & Mrs. Phillip Turner of Spearman.

The banquet is sponsored by the Rural Cooperatives of the Texas Panhandle. It is given to honor the counties outstanding 4-H members. The Gold Star is the highest honor to be received in the county.

C.T. Gosselt was the guest speaker for the evening. As a former 4-H'er, he was explaining to the 4-H'ers what he felt was the method of success. He ended by congratulating each one on their honor.

The District I 4-H Council conducted the banquet. Canyon High School's Show Choir presented the entertainment. Special guests were introduced. Those attending from Hansford County were Judge & Mrs. R.L. McClellan, Mr. & Mrs. Jerry Williams, Mr. & Mrs. Phillip Turner, and Mr. & Mrs. Buford Babitzke.

Mel Levine, Rep. (D-Calif): "Our defense bill was a very good bill as it left the House. Now it is significantly flawed."

Shimon Peres, Israeli's Prime Minister: "I call on King Hussein that we continue to work together in order not to miss the opportunity that has been created."

Computer Shopping

Computer shopping is coming; the only question is how fast. The latest innovation is a subscription videotex service.

Owners of personal computers can utilize this service to do their shopping for various goods or services. One of the newer offerings is a discount travel service.

Cruises which aren't fully booked by a certain time, or which seek to fill vacant cabins at the last minute, can be booked from the home computer day or night.

Computer owners can now order gourmet foods, or even

electronic equipment. (The cruise bookings are arranged by a clearing house representing many cruise lines.)

Small city and town computer owners, and rural owners, are likely to be able to tie in with computer shopping possibilities via telephone lines.

Shopping by home computer is not just something of the future. It's here now and, like television and computers, expansion of this service is probably going to be dramatic. Smart retailers will keep an eye on the trend.

Phil Fry, offensive tackle



The term drawing room is a shortening of the word withdrawing, for the room to which guests withdrew.

Phil Fry, a 1981 graduate of Gruver High School, is playing offensive tackle for the Eastern New Mexico University Greyhounds this season. Fry lettered for the Hounds last year, and is enjoying another productive season this year. A 6-6, 250-pound senior, Fry is the son of Mr. and Mrs. Edward Fry.

ENMU is a member of the NCAA Division II Lone Star Conference.



Food. Ask to see typical menus for a week and, if possible, sample a meal.

Sesquicentennial group meets



Karen Babitskie, Mrs. Stumpf, Mrs. J. D. Wilbanks, and Albert Graves enjoyed a Sesquicentennial meeting at the Cattleman's last week-end. The group is making plans to sell calendars, belt buckles, and other memorabilia to the public.

In observing the Upcoming Texas Sesquicentennial the Stationmaster's House Museum has recently issued a 15-month calendar, with each month depicting photographs of Hansford County memorabilia.

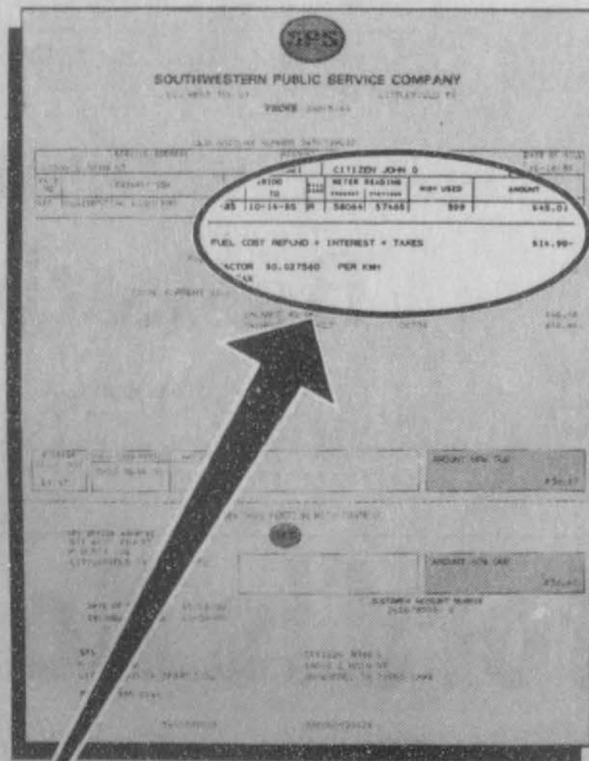
These calendars are for sale at the following businesses: The Desk Set; First State Bank; First National Bank and the Museum.

Definition Friends: People who dislike the same people. -Count, Los Angeles.

Small cheer and great welcome "makes a merry feast." -Shakespeare.

Texas Customers of SPS.*

Check your electric bill carefully this month.



Your share of our fuel-cost savings.**

You will find a credit on your electric bill this month. It's your share of savings resulting from our management's decision to use coal fuel instead of gas for generating electricity. We also saved by working out cheaper fuel and fuel transportation contracts.

At SPS, we work to keep the cost of electricity as low as possible.



SOUTHWESTERN PUBLIC SERVICE COMPANY

*SPS customers in New Mexico, Oklahoma and Kansas have already been enjoying reduced fuel costs through their automatic fuel-cost adjustments. **This is a one-time credit. It reconciles an over-recovery of fuel revenue resulting in Texas from a fixed fuel factor set in October 1983. The credit you find on this month's bill was figured exactly as your actual electricity usage, on a per kilowatt-hour basis. We're returning this savings to you with interest at 11.50%.

CREATIVE HOLIDAY APPETIZERS

Variety—it's the spice of life. In cooking and baking, variety is essential. A good cook is always looking for ways to turn out creative, interesting and great-tasting foods that invite compliments.

Developed by home economists in the Betty Crocker Kitchens, these recipes offer several unique uses for a conventional item—pie crust mix or sticks. Ideal for holiday entertaining, Cheddar Blossoms, Cheese Straws, Pastry Pinwheels and Empanaditas are hot appetizers sure to please any crowd.

And they're versatile. Different ingredients and flavorings can be substituted for a variety of combinations.

Let your imagination take over, and come up with even more variations!

Cheesy Pastry Appetizers

1 package Betty Crocker pie crust sticks or mix
1 cup shredded sharp natural Cheddar cheese

Heat oven to 450°. Prepare pastry for Two-Crust Pie as directed on package except—add cheese with the water. Shape into Blossoms or Straws as directed below. Bake until golden brown, 8 to 10 minutes. 45 to 48 appetizers.

Blossoms: Shape pastry into 1-inch balls. Place about 2 inches apart on ungreased cookie sheet. Press thumb deeply in center of each ball. Just before serving, fill indentations with softened cream cheese, mushroom caps, olives or sliced pimientos.

Straws: Roll pastry into rectangle, 15x9 inches, on



lightly floured board. Place on ungreased cookie sheet. Cut pastry lengthwise into thirds with sharp knife. Cut each third crosswise into 15 strips (do not separate). Sprinkle with salt, caraway or poppy seed and paprika.

Pastry Pinwheels

1 package Betty Crocker pie crust sticks or mix
1 can (4 1/2 ounces) deviled ham

Prepare pastry for One-Crust Pie as directed on package except—roll into rectangle, 13x11 inches. Spread with deviled ham. Roll up, beginning at 10-

inch side. Wrap and refrigerate until chilled, at least 1 hour.

Heat oven to 400°. Cut roll into 1/8-inch slices. Bake on ungreased cookie sheet until golden brown, 10 to 12 minutes. 3 dozen appetizers.

Empanaditas

1 package Betty Crocker pie crust sticks or mix
Chicken Filling or Ham Filling (below)

Heat oven to 425°. Prepare pastry for Two-Crust Pie as directed on package except—roll each round of pastry into 13-inch circle; cut each into 2 1/2-inch circles. Place scant teaspoonful Chicken Filling on

each circle. Fold circles in half; press edges together with fork to seal. Bake on ungreased cookie sheet until golden brown, about 12 minutes. Serve warm. About 3 dozen appetizers.

Chicken Filling: Mix 3/4 cup chopped cooked chicken, 3 tablespoons chili sauce and 1/8 teaspoon chili powder.

Ham Filling: Mix 1 can (4 1/2 ounces) deviled ham, 2 teaspoons prepared horseradish, 2 teaspoons prepared mustard and 1/4 teaspoon pepper.

Note: Empanaditas can be prepared up to 8 hours ahead of time and refrigerated. Bake as directed.

NOTICE

On page 9 of this week's sale circular, the prices of the blankets are incorrect. The correct prices are regular 5.99 to 74.99 now only 4.49 to 58.24. We regret this oversight and apologize for any inconvenience it may have caused.



FOR MORE HELP

If you need more help or information on this or other consumer problems, contact your nearest Attorney General Consumer Protection Office (in Austin, Dallas, El Paso, Houston, Lubbock, McAllen and San Antonio). The Attorney General's Office is the people's law firm. We're here to help you.

• Atmosphere. The residents should be treated with dignity, like honored guests. You may want to talk to the residents and those who have relatives living there.

NURSING HOME HOTLINE

The Texas Department of Health's Bureau of Long Term Care can tell you which nursing homes in your area have been awarded a "superior" rating and will try to answer any questions you may have about a particular home. Their toll free number is 1-800-252-9106.

• Cleanliness. The home should be orderly and reasonably free of unpleasant odors. The employees should be clean and well groomed.

WANT ADS

SERVICES

New to Area
Give Us A Try
Call Your Local
USED COW DEALER
As Soon As Possible
659-3544
659-3545
1-800-692-4043
22-rtm

NOTICE
Wallace Monument Co.
Monuments, Curbing,
Grave Covers
Local Representative
LEONARD JAMESON
Spearman, Texas
40-rtm

OSGOOD MONUMENT CO.
Amarillo, Texas
Dealers of Rock of Ages
Granite, as well as all
colored granites, marble
and bronze memorials.
represented by
BOXWELL BROS.
FUNERAL HOME
519 S. EVANS
659-3802

Hansford County
Planned Parenthood
412 Davis
659-2483
Spearman
Mon. - Fri.
8:30 - 12:30

Sewing done-little darling and
Cinderella dress types a special-
ity. Call Joy 733-2517.
nc

Hay Swathing & Baling done - Call
733-2517 or Dennis at 733-5214.
31-rtm nc

Sewing wanted, alterations etc.
Baking and decorating cakes. I now
have the He-Man Pan for birthday
cakes. Call Joy at 733-2517.
52-rtm-nc

PUBLIC NOTICE

Guymon Elks Supper Club is
open to the public. Our hours are
Wednesday-Thursday 6-10 p.m.
Friday-Saturday 6-10:30 p.m. We
have a prime rib special every
Friday.
51-rtm

COMPUTE-A-DATE
For singles of all ages.
Serving surrounding areas.
For more information
Call 806-435-4145 or
write P.O. Box 239
Perryton, Tx. 79070
52-2tc 4-1tc

LOST

LOST in Gruver, black male
Lavador very friendly. Call 733-
2878 or 659-3316 or 659-2759.
6-1tp

MISC. FOR SALE

For Sale: RCA 19" Color T.V. with
Time of Day, Chanel display, 3
years old. Brand new remote
control. \$300. call 733-2517
45-rtm

FOR SALE: Good quality ground
alfalfa. Delivered 100 tons-5,000 tons,
contact J.O. Talbert, ulysses, Kansas.
Phone 316-356-9268.
48-12tc

FOR SALE: Registered red heeler
cowdog. 659-2121 or 659-2081.
49-rtm

FOR SALE: SMALL GREEN DIVAN.
Call 733-5024.
3-rtm

FOR SALE: 500 barrel horizontal
storage tank with pedestal. Suit-
able for anything. \$1500.00 Call
435-9384, 435-5002 or 435-8164.
5-2tp

PIANO FOR SALE
Wanted: Responsible party to
assume small monthly payments on
piano. See locally. Call credit
manager 1-800-447-4266.
5-3tc

The Board of Trustees of the
Waka Independent School District
will be taking bids on 15-refrigerat-
ed Air Conditioners, 5-Furnaces
(two furnaces have cooling coils),
and various band instruments (2-
trombones, 3-cornets, and 8-clari-
nets and other assorted instru-
ment's). All items are available for
inspection at the Waka School
between 8:00 a.m. and 4:00 p.m.
each school day. Bid procedures
and a list of items may be obtained
at the Administration office during
school hours. All bids must be
received by 4:00 p.m. on Monday,
December 2, 1985. The Board of
Trustees of the Waka Independent
School District reserves the right to
accept or reject any and / or all
bids.
6-3tc

WANTED

Would like to lease approx. 1
section of farmland in Gruver area.
Contact 733-2070
5-2tc

"Wallpaper hanging, interior-
exterior painting, ceiling and wall
repair and texturing, wood finish-
ing and refinishing. Joe Potts,
733-2329."
1-rtm

AUTOMOBILES FOR SALE

FOR SALE- 75 Buick Riviera
runs good 659-3327.
4-2tc

BUSINESS OPPORTUNITIES

OWN YOUR OWN JEAN-SPORTS-
WEAR, LADIES APPAREL, CHILD-
RENS, LARGE SIZE, COMBINA-
TION STORE, PETITES, MATER-
NITY, ACCESSORIES, JORDACHE,
CHICK, LEE, LEVI, E Z STREET,
IZOD, ESPRIT, TOMBOY, CALVIN,
KLEIN, SERGIO VALENTE, EVAN
PICONE, LIZ CLAIBORNE, MEM-
BERS ONLY, GASOLINE, HEALTH-
TEX, OVER 1000 OTHERS. \$13,300
TO \$24,900 INVENTORY, TRAIN-
ING, FIXTURES, GRAND OPENING,
ETC. CAN OPEN 15 DAYS. MR.
LOUGHLIN (612)888-6555.
4-2tc

REAL ESTATE

FOR SALE IN GRUVER - Brick home,
3 bdrm., 2 bath, double car garage,
large fenced back yard, about 1,800
sq. ft., 1 blk. from school. Mid \$50's.
Call 733-2964
1-rtm

FOR SALE: Well improved acre-
age. 9 acres or 20 acres with 4
bedroom house in excellent condi-
tion. Good well, 40x90 Behlen
Building, steel cattle working pens.
Near Gruver. Delano Realty. Phone
733-5000. Home phone 733-2291.
52-8tp

HOUSE OR OFFICE SPACE FOR
SALE: - 720 S. Roland - 3 bedroom,
Central heat and air, Call 659-2820
or After 6 p.m. call 659-2283
5-3tc Reasonably priced!

FOR SALE: Remodeled country home,
white stucco, great location, 1 1/4 miles
west of Gruver on Stratford highway.
10 acres, lots of trees, corrals living
area, office, formal dining room,
kitchen with ceiling fan, dishwasher,
disposal, electric stove and breakfast
area. 3 bedrooms, 1 large full bath,
drapes stay, walk in closets, utility,
basement, central air and heat, double
car garage with storage apartment.
Call 733-2815.
49-rtm

FOR SALE IN SUNRAY AREA-

160 acres, Barn, One - 8 inch
irrigation well - Underground Pipe.

160 Acres, 8 inch well, T.W.P. and
U.G.P.

320 Acres, Two - 8 inch wells,
TWP, and UGP.

These Farms are on the highway-
Excellent water - good soil.

East Moore County - 640 Acres - 3
wells - 2 tail water pits - UGP- Lays
perfect - Has highway on 2 sides.
5-2tp

We have buyers and need listings
in this area.

Call Joe Bomar and Associates -
Amarillo, Tx. - 806-359-5416.

4-4tc

CARD OF THANKS

Perhaps you sent a lovely card,
or sat quietly in a chair.

Perhaps you sent a floral piece. If
so we saw it there.

Perhaps you spoke the kindest
words, as any friend could say;

Perhaps you were not there at
all, just thought of us that day.

Whatever you did to console our
hearts, We thank you so much
whatever the part.

The Family of Elmer Thompson

Notice to Creditors
Notice is hereby given that
original Letter Testamentary for the
Estate of ELIZABETH BECK
McCLELLAN, deceased, were is-
sued on the 11th day of November,
1985, in Docket No. 1804, pending
in the Probate Court of Hansford
County, Texas, to: ANNE M.
SANDERS, ELMO M.
McCLELLAN and LAWRENCE
RAY McCLELLAN.
The residences of the Independ-
ent Executors are in Hansford
County, Texas, and their post office
addresses are:

Anne M. Sanders, P. O. Box 66,
Spearman, Texas 79061
Elmo M. McClellan, P. O. Box 266,
Gruver, Texas 79040
Lawrence Ray McClellan, P. O.
Box 434, Gruver, Texas 79040

All persons having claims
against this Estate which is current-
ly being administered are required
to present them within the time and
in the manner prescribed by law.
DATED the 11th day of Novem-
ber, 1985.

MICHAEL R. SANDERS 17601000
Attorney for the Estate

2-2tc

Menu

NOV. 15th
FRIDAY
Hamburgers
French Fries
Lettuce, Pickles, Cheese
Cookies, Milk

Nov. 18th thru 22nd

Monday Nov. 18
Fish
Green Beans
Macaroni and cheese
Corn Bread
Chocolate Pudding
Milk

Tuesday Nov. 19
Western Burger
Corn Tossed Salad
Jello
Milk

Wednesday Nov. 20

Chicken Fried Steaks or Roast Turkey
with Gravy
Mashed potatoes
Carrots
Apple Cobbler
Hot Rolls
Milk

Thursday Nov. 20

Stew
Cheese Sandwich
Fruit Cocktail
Milk

Friday
Nov. 21

Sloppy Joes
French Fries
Lettuce Pickles and Cheese
Cookies
Milk

Gruver Menu
Nov. 25th and Nov. 26th

Monday Nov. 25

Frito Pie with Cheese
Tossed Salad
Peaches
Milk

Tuesday Nov. 26

Corn Dogs
Tater Tots
Fruit Cocktail
Cookies
Milk

PUBLIC NOTICE

A report showing how Revenue
Sharing funds which were received
during Entitlement Period 16 (Octo-
ber 1, 1984 - September 30, 1985)
and previous periods have been
spent during fiscal year 1985 is on
file at the City Hall, 108 East
Broadway Street, for examination by
the general public during
normal business hours.

Golden Gleams

Revolve to be merry though the
ship were sinking.
-Susanna Centivire.

Be always merry as ever you can,
For none delights in a sorrowful
man.
-Thomas Fuller.

A merry fellow was never yet a
respectable man.
-Lord Chesterfield.

Children and fools have merry
lives.
-John Ray.

The Gruver Statesman

PUBLICATION (USPS 9598-6000)
GRUVER, TEXAS 79040
Box 796 659-3434
Owner-Publisher..... William M. Miller
Editor..... Joy Henderson, Gruver, Tx.
Second Class postage paid at Gruver,
Texas 79040

Any erroneous reflection upon the charac-
ter of any person or firm appearing in these
columns will be gladly and promptly
corrected upon being brought to the
attention of the management.

POSTMASTER: Send address changes to
Gruver Statesman, Box 796, Gruver, Tx.
79040.

SUBSCRIPTION RATE: Hansford, adjoining
counties, \$13.14 per year.

MEMBER

Texas Press Association

In earlier times, pills were gilded to make them more
palatable.



Bob Hunnicut

Bronze Sculpture

Danny Gamble

Western Artist

Will be at the

La Casita Room

Gruver State Bank

Thursday and Friday

from 10 a.m. - 4:30 p.m.

November 14th and 15th

Location. How close and how
easy is it for family and friends to
visit? But don't pick the first home you
visit just because it is close.

Layout. The design and the con-
dition of the home are important. Is it
safe, well designed and well maintain-
ed? Does each resident have space for
personal possessions and have privacy
when necessary?

Note of Thanks

Thank you to the people of Hansford
County and surrounding areas. This
month marks the end of our first year of
serving you. We appreciate our patients
support and look forward to helping
others in the years to come.

Stanton W. Cobb D.D.S.

Phil 2:4

Family Practice of Dentistry

802 S. Roland

Spearman, Tx. 79081

659-5515

Farm & Ranch Protection Pac

AN INSURANCE POLICY DESIGNED FOR YOUR
OPERATION... BECAUSE YOU DESIGN IT YOURSELF.

PROTECTION PAC is a new concept that allows you to
select from a series of coverages and limits to match your
own needs.

Coverage in one compact package for your home and its
contents... your livestock, hay and grain... farm machinery
and equipment... plus liability and property damage cov-
erage, including payment of medical costs.

Frank Miller

Life-Home-Business-Crop Hall

511 D Plains Shopping Center
P.O. Box 191
Spearman, Texas 79081

Phone: (806) 659-3875

National Farmers Union Insurance Companies

Farm income first priority

The only answer to the crisis in the troubled Farm Credit System is a fair price to farmers for their products. Federal assistance to financial institutions is only treating a symptom of the disease without directly addressing the problem of low prices for comparable products, Joe Rankin of Ralls, president of the Texas Farmers Union said today.

Representatives from 20 state Farmers Union organizations spoke today calling for fair prices to farmers as the cure to the nation's farm and lending crisis.

In testimony before the Congressional subcommittee, NFU President Cy Carpenter said, "The National Farmers Union must stand opposed to a refinancing or underwriting for the Farm Credit System and other lenders, unless that plan also provides for restoring income to farm families to repay those debts, any re-financing could at best be only temporary, and would eventually destroy the Farm Credit System."

"Recognizing the need for emergency action, however, is not a blanket endorsement of a simple 'bail-out' of the lending institutions, cooperative or private," Carpenter said.

The Texas Farmers Union is supportive of the Farm Credit System and the role it has played in the success of the farmer, but it is poor business to temporarily help out the lending institutions and leave the farmers with declining income and no prospect for commodity income improvement, according to Rankin.

A bail-out of the Farm Credit System or any other lending institution would not change the financial situation of a single Texas farmer or rancher, Rankin said.

"Ask any farmer or rancher in Texas today to define his or her problem, and he or she will answer that it is not credit, it is lack of income. We recognize the absolute necessity for credit, but only in proper balance with other factors," Rankin said.

Commodity prices are 20 to 25 percent below a year ago, national net farm income is expected to drop to between \$23 and \$27 billion this year, farm purchasing power is 16 percent below a year ago, and the farmer's return on equity is expected to be negative for the fifth consecutive year.

"That is why income must be the foundation for building the farm financial system back to health," he said.

TFU suggests these provisions to be considered before action is taken concerning the nation's struggling agricultural lenders and their farming investors:

- 1 - Adequate funds at reasonable costs should be confirmed through the Federal Reserve System for all agricultural banks.
- 2 - Increases must be made by Congress in the Farmers Home Administration's appropriation for low interest direct operating loans, which can only be provided by Congress.
- 3 - Direct appropriations for interest rate buy-downs must be provided by Congress.
- 4 - A federally chartered corporation should be established to assume temporary control of farm and ranch land which has been foreclosed and forfeited to any lending institution.

PRPC Sponsored Workshop Held For Job Training Personnel

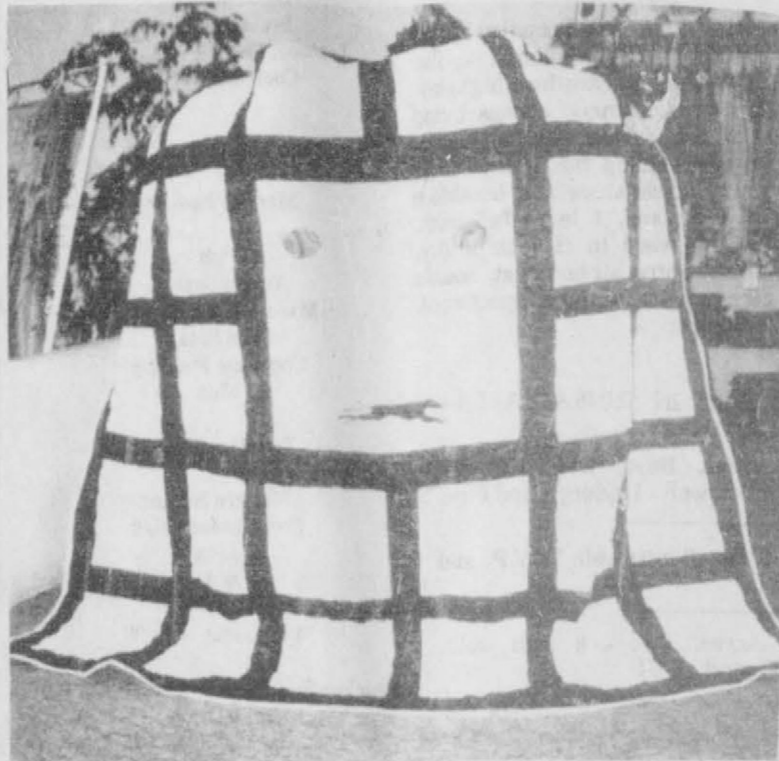


Elaine Shelton, an Austin based educational consultant, conducted a workshop on competency based instruction and testing staff of the Panhandle Service Delivery Area in September. Representatives of the Texas Employment Commission, TSTI, Amarillo College, Amarillo ISD, and Panhandle Community Services, and PRPC attended the workshop.



One of the speakers at the recognition banquet for Ombudsman Task Force Volunteers was Charles Warner with the Austin offices of the Texas Department of Human Services. Warner's office is involved with the certification of some of the elderly who receive services in area nursing homes.

Xi Psi Kappa giving away Quilt



Xi Psi Kappa met November 5, 1985 in the home of Linda Venneman. Members of the sorority have made a quilt to be given away at halftime of the Wheeler-Gruver football game, Friday, November 15. All members of the High School football teams, cheerleaders, High School band, coaches, sponsors, and the sorority. Presence not required to win. If

anyone is interested in purchasing a ticket, please call 2156 or check with members.

The hostess gifts of the day were won by Marian Shapley and Mary Jo Cluck. Members present were; hostess, Linda Venneman, Judy Stedje, Fran Duncan, Mary Jo Cluck, Sally Jones, Mandy Derrington, Kathy Stedje, Terry Edling, Regina Barkley, Shanley

Advertising between now and Christmas will sell a world of goods.

Tough times ahead

(AUSTIN)—Combination punches dealt by state and federal budget cuts and the no pass-no play rule enacted by the Legislature's massive education reforms have dealt a hard blow to vocational agriculture education, according to Jay Eudy, director of Vo-Ag Education with the Texas Education Agency.

In a recent interview in *Texas Future Farmer*, the publication issued by the state FFA office, Eudy stressed the need for vocational education in the schools.

"Vocational education is teaching free enterprise and entrepreneurship," he said. "For many students there is no other place to receive that leadership training. The project program is probably one of the greatest teaching experiences of free enterprise known anywhere."

Eudy explained why he believed the FFA seemed to be the organization in vo-ag education catching all publicity.

"Probably the reason we were picked on is that we are big and we have good and very visible programs," he said. "The people who are picking on FFA aren't necessarily enemies of the program, but are misinformed of the activities we have."

Part of the legislature's educational reform package included the elimination of the position of area supervisors for vocational ag education. Eudy said that while problems may arise, they won't be insurmountable.

"We lost area supervisors because someone believed that some of the program wasn't necessary, but that will not cause much of a difference in the way the state vo-ag program is run," he said. "However, there won't be any newsletters going to teachers and inservice meetings for teachers won't be the same as in the past. The big thing affecting FFA members will happen when it comes time to fill out the award and degree applications in the spring."

In the past, large numbers of these applications were filled out because area supervisors were aware of the outstanding students and encouraged teachers to help their students complete the forms. Without area supervisors to organize the selection of outstanding students, Eudy predicted that there may be some confusion.

"We anticipate having over \$526,000 worth of scholarships to give again next year, and we think it will be difficult for us to make the selection without the help of area supervisors. Students are going to have to be more aggressive in looking toward finding scholarships and awards and meeting the deadlines."

Despite the problems, Eudy predicted that the FFA will survive it all. "The FFA will not die! Unless we all agree to shoulder our share of the load and get something turned around, we will see a reduction in the Texas FFA," he said. "Vocational education may need to be tuned up, but it certainly doesn't need to be thrown away."

On tap ...

MONEY FOR THE THINGS YOU WANT

Everybody Needs Extra Money

It takes more money to buy that new car or pickup truck, to add furniture, go on vacation, or send a graduate to college. That's when we can help. We'll loan the extra money you want, for the things you really want. And we'll work with you on terms you can handle.

We Loan Money Faster

You often need money in a hurry, once you've made that important decision to buy or to add-on or to invest. That's when it is to your advantage to have a personal banker who knows you and your family, understands your situation and is ready to move quickly.



First National Bank invites you to talk with our personal loan officers before you go to buy. That way you'll have your financing arranged in advance. Come by or call loan officers Roger Monzingo, Quentin Rizley, or Leiby Crane, in the main lobby. Open 9:00 to 3:00, Monday through Friday.

Our of State
1-817-334-3871



Office
1-817-338-3376

Home Owned and Home Operated

SALE EVERY THURSDAY
AT 10:00 AM



Clarence Hull...

Just One More Reason
Why We're No. 1 !!

Remember Clarence Hull?

After more than 27 years Truck Parts experience, Clarence is **SELLING TRUCKS** and any other vehicle you might want to buy!!

Long-time resident of Borger, Clarence and Beulah Hull have touched the lives of many people. Besides raising one child and two grandchildren, they are active in the First Baptist Church and Kiwanis Club.

When you think Big Truck, Call Clarence!



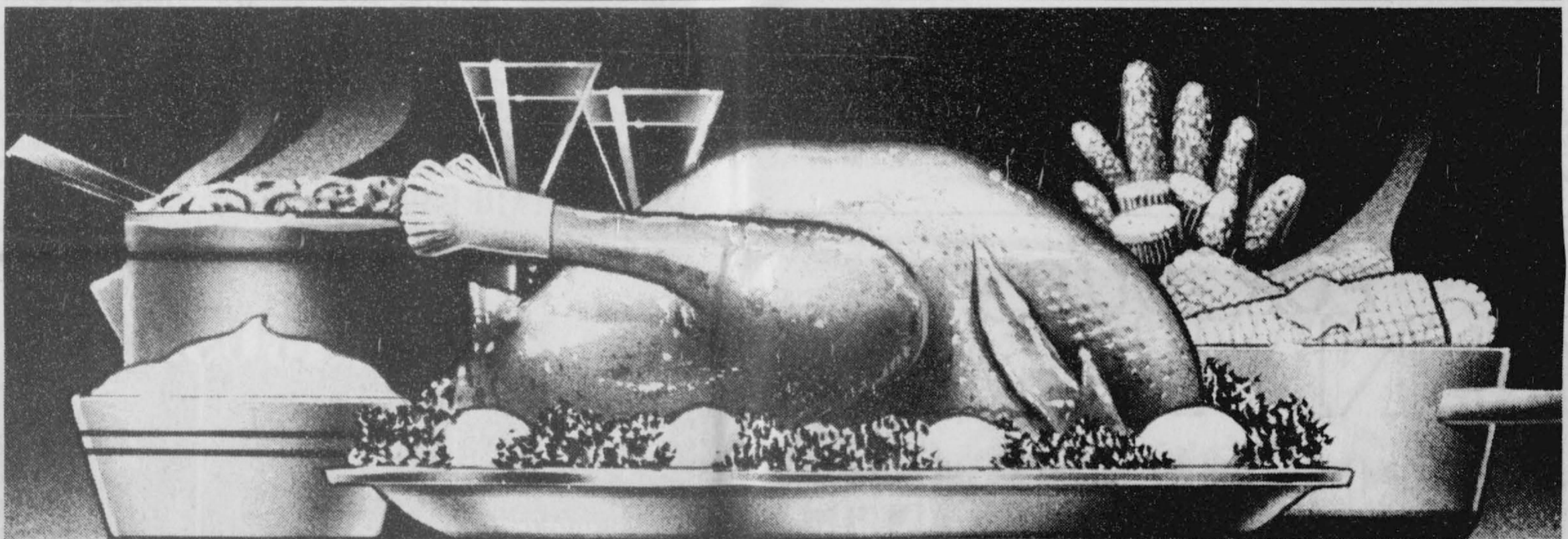
First National Bank
Perryton, Texas
806/435-3676
Member FDIC

Receive A... **FREE BOOK OF STAMPS**

**WITH THE PURCHASE
OF A TURKEY OF
YOUR CHOICE FROM
UNITED!**



We at United and S&H Green Stamps would like to say **THANK YOU!** to all our customers that have made this a very good year. We are thankful you have allowed us to serve you and look forward to seeing you again soon!



FREE BOOKS OF STAMPS lead to **FREE GIFTS** from S&H Green Stamps. You'll not only brighten yours' or someone else's Holiday table with a delicious turkey, but you'll be making big gains in affording that nice, **FREE GIFT** from your local S&H Green Stamp Redemption Center. This offer is good through November 30th. There is no limit on number of purchases. Enjoy a fine traditional Holiday meal from United Supermarkets.

RECEIVE TWO 600 STAMP "HOLIDAY SPIRIT" CERTIFICATES WORTH 1200 STAMPS WITH EVERY PURCHASE AND

ON ALL BRANDS OF WHOLE FROZEN & SMOKED

TURKEYS

The 1200 Extra S&H Green Stamps are in addition to your regular issue of Stamps.



Gift Ideas

**EXTRA GIFTS WHICH
REALLY HELP THE
FAMILY BUDGET
THIS TIME OF YEAR.**



**UNITED OFFERS
DOUBLE
STAMPS**

**ON WEDNESDAYS
WITH \$2.50 PURCHASE OR
MORE EXCLUDING
CIGARETTES
WE GIVE
STAMPS
EVERYDAY!**



Turkey prices higher this year

You may have to spend a few cents more to put a Thanksgiving turkey on the table this year, but it shouldn't break your budget or your diet.

"Producers are raising more turkeys in 1985 than 1984," says Texas A&M University Agricultural Extension Service poultry specialist Dr. David Mellor, "although increased supplies won't necessarily result in lower retail prices."

Last year's price for larger, unbasted store brand turkeys was about 60 cents per pound, while basted, national brand turkey sold for 90 cents to a dollar a pound.

Mellor says that prices could be as much as 10 cents per pound higher than last year.

But the specialist concedes that prices are hard to predict because many retailers offer specials on holiday birds to attract shoppers to their stores.

"To keep your costs down, select a plain turkey rather than a pre-basted bird," suggests Mellor.

National brand turkeys will also be more expensive than store brands, he says.

Extension nutritionist Marilyn Haggard also reminds consumers that turkey is a highly nutritious food and can be eaten on a low-calorie diet.

A three-ounce serving of turkey breast meat, without the skin contains 157 calories, while a similar serving of dark meat has 187 calories.

"For the dieter, it's most important to watch the dressing, gravy and trimmings that go along with the turkey, since they add the greatest share of the calories in a Thanksgiving meal," she says.

Human nature is what encourages individuals to find an excuse for what they happen to desire.

Alpha Mu Psi

Alpha Mu Psi met November 5, 1985 at the First Christian Church for the annual pledge luncheon and ritual to welcome the new members.

A delicious salad luncheon was enjoyed by all. There was even a box of pink and blue frosted cookies to pass for dessert with Amy TeBeest taking the first bite.

After lunch, Jody Irwin, Angela Grotgut, Teresa Weldon, Pam Harns, and Tonni Yanke were welcomed to Alpha Mu Psi with the pledge ritual.

A short business meeting was conducted by Glenna Hunt, president, Gail Etheredge, service chairman reported that \$2731.44 were raised for mobile meals. Kelly Armes, ways and means chairman, handed out tickets for chances on a Browning Citori shotgun which will be given to the lucky winner on December 14th at the Pheasant Hunter's Breakfast. Tickets are \$5. each and can be purchased from any Alpha Mu Psi member. Linda Tidwell and Connie Gammill presented the program on the "Vial of Life" medical emergency card plan. The next meeting will be held November 19th at the home of Gail Etheredge.

Those attending included Teresa Weldon, Jody Irwin, Amy TeBeest Nancy Koons, Tracy Beville, Kelly Hart, Glenna Hunt, Kelly Armes, Cynthia Henson, Phyllis Hoel, Angela Grotgut, Melanie Zimmer, Gail Etheredge, Pam Harris, Tonni Yanke, Marsha Lowe, Debbie Breland and Ginny Grotgut.

Lincoln At Gettysburg

On November 19, 1863, Abraham Lincoln helped dedicate a national cemetery at Gettysburg -- a seventeen acre cemetery where thousands of Civil War soldiers were then buried (Confederate dead were later removed to Richmond).

Lincoln wasn't the main speaker--Senator Edward Everett of Massachusetts had that honor. But Lincoln's brief words have become perhaps the most famous in American history.

In his message, Lincoln continued his international and national public relations campaign to turn the war into a crusade against slavery--"all men are created equal...government of the people, by the people and for the people," etc.

That was part of Lincoln's campaign to win moral support around the world. The South, of course, was fighting for independence (Lincoln didn't propose to abolish slavery when he took office as president in 1860) and the war began on the issue of secession--the right of a state to secede from the Union.

A popular idea today is that the Civil War was a great conflict over ending slavery. Not really true--at least, that's not how it began, though slavery was a hot

political issue. Lincoln, the famous humanitarian, stressed the anti-slavery theme increasingly only after he ordered an invasion of the South; he launched full-scale war after South Carolinians fired on the flag, a poor bit of strategy which inflamed the North.

But even in Lincoln's Emancipation Proclamation (Jan. 1, 1863), he didn't free slaves in non-southern states, or in cities and counties which were Union-occupied, such as New Orleans, Norfolk and several occupied counties in Virginia.

Lincoln, of course, was ahead of most of his contemporaries in his devotion to individual freedom and broader democracy; and he assured victory for the Union by turning world opinion against the South with the slavery issue.

Once the world saw the war as one between pro-slavery and anti-slavery forces, the outcome was inevitable. The South's only chance lay in winning diplomatic recognition from England and/or France, whereby those countries' navies would insure delivery of food and supplies to a blockaded Confederacy. Lincoln's, then, was no small accomplishment.

PARENT GUIDE

By Nancy Moore Thurmond

FEVER: Fever almost always is the baby's response to infection. You can usually tell a baby with a fever by his listlessness, irritability, and, above all, hot skin.

Before you use a rectal thermometer, gently shake it down until it reads well below 97 degrees F. Grease the round bulb of the thermometer with petroleum jelly so it will insert easily.

Hold your child face down, or on your lap or on a bed, or you may want to have him lie on his side.

Gently insert the rectal thermometer one inch to one-and-a-half inches into your baby's rectum and hold it in that position from two to three minutes.

Avoid sudden movements which could cause the thermometer to break, injuring your baby.

Each Time

Experience is a wonderful thing. It enables you to recognize a mistake when you make it again.

-Democrat, Davenport.

Hansford Manor visited by Brownie and Jr. Girl Scouts

Brownie and Jr. Girl Scouts visited Hansford Manor and treated the residents with pictures they had drawn, baked goodies and a center piece they had made. They also sang Halloween songs. Upon returning to Gruver the girls enjoyed celebrating the founder of Girls Scouts, Juliet Losses birthday with cake and punch served by leaders Sandi Foster and Mary Shook.

Attending Brownies of Troop 74 were: Kaisi Foster, Denise Henesee, Monica Lara, Monica Garcia, Amy Grubbs, Memory Ross, Angela Overbey.

Attending Jr. Troop 72 were:

Jennifer Baker, Tina Camp, Mariquit Viola, Dawn McCullough, Kalee Shook, Traci Smith.

We plan to attend the Silver Anniversary of the Girl Scouts at Guymond, Ok. on Nov. 16, 1985.

No Spunk

Wife to Husband: "I wish you had the spunk the government has--they don't let a little debt keep them from spending."

-News, McAlester, Okla.

A merry heart maketh a cheerful countenance.

-Proverbs 15:13.

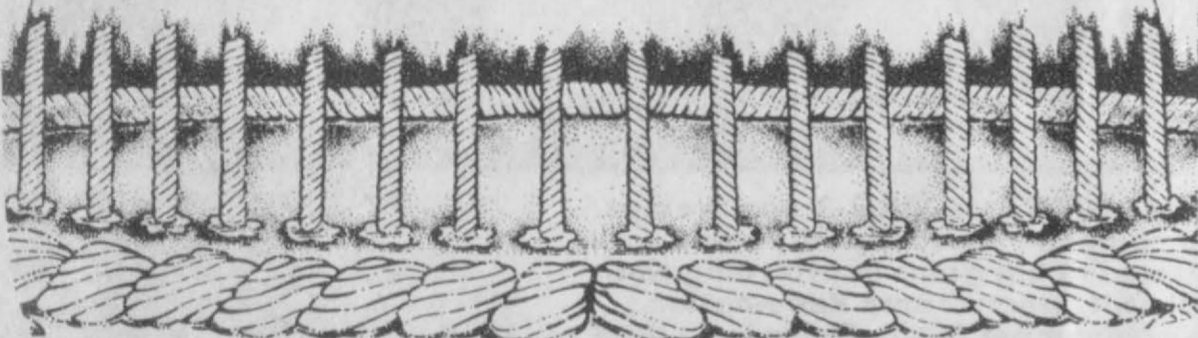
SMILES

Who's A Fool
He (angrily)--Do you believe everything every fool tells you?

She (sweetly)--Oh, no, darling, but sometimes you do sound so plausible.

Willpower?
Guy: "Hey, I thought you were on a diet."
Gal: "I am."
Guy: "Then, why did you order a banana split?"
Gal: "Just to test my willpower."

FOR OUR ANNIVERSARY



SALE

November
14 - 15 - 16

20% Off

Everything excluding Jeans

Drawing Daily

Open 9 to 5:30

The
MAIN STREET
Store
Gruver, Texas

WHILE SUPPLIES LAST



PRICES EFFECTIVE
NOV. 14-16, 1985

ICE-SOFT DRINKS-SELF SERVE GAS-SNACKS-PICNIC SUPPLIES-
GROCERIES-FRESH COOKED FOODS-BREAD-MILK

 LAY'S REGULAR, BBQ, SOUR CREAM & ONION, UNSALTED POTATO CHIPS 7 OZ. BAG \$1.09	 DECKER GOLD BEEF BOLOGNA, SALAMI, P.P.P. LUNCHEON LUNCH MEATS 8 OZ. PKG. 89¢
--	--

FALL WAREHOUSE SALE

 CITRUS HILL SELECT FROZEN ORANGE JUICE 12 OZ. CAN 97¢	 BLACK LABEL HORMEL BACON 1 LB. PKG. \$1.47	 FOR THE LAUNDRY AJAX DETERGENT FAMILY SIZE BOX \$3.69
 BRACH'S CHOCOLATE COVERED CHERRIES 8 OZ. PKG. \$1.49	 BORDEN'S CHOCOLATE MILK QUART CTN. 69¢	 BORDEN'S ASSORTED ICE CREAM 1/2 GAL. RND. CTN. \$1.59
 ALLSUP'S HOT CHOCOLATE CUP 30¢	 ALLSUP'S CORN DOGS 2 FOR 89¢	 FILLED WITH YOUR FAVORITE SOFT DRINK ALLSUP'S TALLSUP CUP 49¢
MOVIE & VCR RENTALS The Very Best in Home Video Entertainment! ALL YOU NEED IS YOUR TV!		CAFFEINE FREE, CHERRY, CLASSIC, DIE, NEW COKE, OR TAB  \$1.79 12 oz. cans 6 PAK.

Public forum held

An effort has begun in the Texas Panhandle to unite elected state and federal officials in order to deal with the federal government. A public meeting and forum was conducted in Pampa Tuesday night regarding the Panhandle's famous oil and gas dispute. The issue, which began as the so-called "White Oil" dispute, now involves numerous major oil and gas companies, independent oil producers, state and federal regulatory agencies, and dozens of lawsuits.

It was announced at the meeting that mineral and royalty owners were being organized across the entire seven county field, a field consisting of more than a million acres. One of the major functions of that organization, according to Slover, is to begin documenting the movement of tank trucks which, he alleges, many times are transporting stolen liquid hydrocarbons.

Slover, in addition to organizing the mineral and royalty owners as the third party to the dispute, is now forming a group of elected officials from the state and federal level to represent the State of Texas in, hopefully, removing an independent federal regulatory agency from the affairs of Texas. That agency is the Federal Energy Regulatory Commission (FERC), which is now playing a significant role in the entire oil and gas dispute. He stated that FERC is now heavily involved in activities which would normally be decided wholly within the State of Texas, then went on to say that FERC would not have had the foothold in Texas had it not been for the refusal of the Railroad Commission of Texas to testify, when invited to do so, at hearings before the FERC more than a year ago. He said that as a result of the inaction of the elected Railroad Commissioners of Texas, they've now placed an independent federal regulatory agency in the position of replacing them in their important role of regulating the oil and gas industry of Texas, perhaps in such areas as determining oil well or gas well

classifications, completions and production.

Slover refers to the FERC's imposition into the matter as "THE MOST SIGNIFICANT VIOLATION OF STATE'S RIGHTS IN THE HISTORY OF TEXAS, AND THE MOST COSTLY". He said the group of elected officials is being formed for one purpose only...to get FERC out of the business of the State of Texas.

Among the speakers at the Pampa meeting, either the elected official, or a spokesman, expressed the significant concerns of two area state representatives, one state senator, a congressman, the agriculture commissioner, lieutenant governor and governor.

Four elected officials have now agreed to serve on the group being organized by Slover to deal with the FERC. All have expressed major concerns about implications upon the future of Texas, due to the FERC being involved in the issue at all. Each of the officials have committed to helping remove FERC, in the interest of the entire state of Texas. Slover said the group will be expanded, hopefully, to a point that all, or nearly all, of the statewide officials are calling for the removal of FERC.

Recent state and federal budget cuts have threatened the extent to which the Future Farmers of America (FFA) will be able to reach out to students across the state. Such cuts may signal a significant curtailment in the number of participants in state fairs and expositions, such as the young woman shown with her grand champion steer at the 1985 Austin Livestock Show last March.

Blueberries have a promising future in Texas, according to all the indications cited in the Texas Department of Agriculture's blueberry report. The berry grows well in the sandy and acid soil found in East Texas.

Employment changes

Of all the many changes that have taken place in the United States in recent years, few have had more widespread impact than changes in employment. There are very few individuals who are not directly affected by their jobs. For this reason, changes in patterns of employment are a significant concern for most Americans. While there have been major changes in patterns of American employment since 1973, there have also been major changes in patterns of employment in Texas and in Hansford County during this same period of time.

The number of jobs in the United States increased very substantially from 80,237,000 in 1973 to 99,139,000 in 1983 or by 23.5%. Since the national population increased by only 11.2% during this period, it is apparent that the growth of employment was greater than population growth. The number of jobs in Texas increased from 4,462,942 in 1973 to 6,828,578 in 1983 or by 53.0% while the state's population increased by 29.6% during this period. The number of jobs in Hansford County declined from 2,342 in 1973 to 1,982 in 1983 or by 15.4%. At the same time, the population of Hansford County increased by 6.6%.

Private (non-government) wage and salary jobs continued to provide employment for the overwhelming majority of Americans in 1983 just as it had in 1973. In 1973, 76.4% of all Americans were employed in private wage and salary jobs. This proportion had declined to 74.1% by 1983. Private wage and salary employment provided 74.8% of all jobs in Texas in 1973 and 75.5% of all jobs in the state in 1983. Private wage and salary employment accounted for 56.8% of jobs in Hansford County in 1973 and 53.0% of all jobs in the county in 1983.

One of the most striking changes that occurred in American employment during this period has been the change in the composition of private wage and salary employment. In 1973, manufacturing provided the largest single source of private wage and salary employment in the United States. By 1983, employment in service occupations had become the largest single source of private wage and salary jobs. Nationally, manufacturing accounted for 32.3% of private employment in 1973 and 24.9% of private employment during 1983. Service occupation amounted to 19.3% of private employment in 1973, but had increased to 26.3% by 1983. The number of manufacturing jobs available in the United States was actually smaller in 1983 than it had been in 1973. There were 19,769,681 manufacturing jobs in American in 1973 and 18,263,000 by 1983. At the same time, the number of jobs available in service occupations increased from 11,830,536 in 1973 to 19,293,000 by 1983.

This same trend was not apparent in Hansford County. However, manufacturing employment plays a very limited role in the local economy. In 1973, manufacturing employment accounted for 0.6% of private employment in Hansford County while service occupations provided 2.1% of private employment in the county. In 1983, manufacturing provided 1.7% of private employment in the county, while service occupations provided 9.2% of local private employment.

This trend was apparent in Texas where the proportion of private employment provided by manufacturing declined from 23.5% in 1973 to 19.0% by 1983 while the proportion of private employment provided by service occupations increased from 7.1% in 1973 to 22.7% by 1983.

A number of reasons have been cited for this trend. Most economists feel that its leading causes are technological changes and foreign competition. While economists are divided in their opinion regarding the

long term effects of the decline in American manufacturing employment, most other observers are frankly alarmed.

Another significant change in American employment since 1973 has been the increase in retail trade employment. The number of retail trade jobs nationally increased from 12,378,033 in 1973 to 15,757,273 in 1983 or by 27.3%. During this same period, the number of retail trade jobs in Hansford County declined from 327 in 1973 to 313 in 1983 or by 4.3%. Retail trade employment nationally has tended to increase at a greater rate than overall employment. This was clearly not the case in Hansford County.

The total proportion of national private wage and salary employment in agriculture, mining, construction, transportation and utilities, wholesale trade, and finance occupations remained largely unchanged over the period. These occupations accounted for 27.7% of total private employment nationally in 1973 and 28.1% of total private employment in 1983. The proportion of private employment provided by these occupations in Hansford County declined from 67.5% in 1973 to 59.2% by 1983. Most of this was a result in the decline of local mining employment (which includes gas and oil extraction) from 348 jobs in 1973 to 189 jobs in 1983. It should be kept in mind that agricultural employment does not include most farmers who are classified as self-employed. This classification generally consists of wage employees of farmers.

Government employment also increased from 12,245,000 jobs nationally in 1973 to 17,406,000 jobs in 1983 or by 42.1%. Government employment as a proportion of total employment increased during the period from 15.3% in 1973 to 17.6% by 1983. Almost all of the growth in government employment was accounted for by state and local governments rather than federal government employment. Total federal employment increased by only 7.8% over the period. However, state and local government employment increased substantially during this time. Total

government employment in Hansford County increased from 12.4% of all county employment in 1973 to 16.3% of all county employment in 1983. Government employment on all levels in Texas increased from 14.3% of total employment in 1973 to 16.0% of total state employment during 1983.

Self-employed individuals continue to be a major economic factor both nationally and in Hansford County. These accounted for 7.4% of total employment in the United States and 26.2% of total employment in Hansford County in 1973. By 1983, self-employed individuals accounted for 8.3% of total employment in the United States and 30.7% of total employment in Hansford County. Self employed individuals accounted for 8.5% of total employment in Texas in 1973 and 8.5% of total state employment in 1983.

Self-employed individuals are considered to have a much greater economic significance than is indicated by their proportion of total employment. A large proportion of this group is made up of farmers and various professional groups, accountants, attorneys, and physicians among others. However, most new industries are originally begun by self-employed proprietors. The computer industry provides an excellent example of this type of development. Both the government and economists generally devote considerable attention to the economic health of this segment of employment.

Changes in employment patterns in Hansford County appear to have differed sharply from changes in national employment patterns from 1973 through 1983. This is not entirely surprising. Employment patterns in Hansford County have tended to differ sharply from national employment patterns for some years. Under these circumstances, it is most likely that changes occurring in local employment patterns will differ to some extent from changes in national employment patterns.

SEARS

HURRY IN...
COMPARE PRICE
COMPARE FEATURES

**HOME
ELECTRONICS**

SALE



SAVE \$90
VHS VCR
\$304.99

With wireless remote. 14-day/1-program record. Wireless infrared 8-function remote.



OUTSTANDING VALUE

Remote control console color television

- 105 channel cable compatible tuner.
- Stereo adaptable
- Simulated wood-grained cabinet.

ONLY 589⁰⁰

<p>SAVE \$90</p>  <p>Dual cassette compact stereo</p> <p>NOW \$154.99</p>	<p>SAVE \$100</p>  <p>Dual cassette compact stereo</p> <p>NOW \$199.99</p>	<p>SAVE \$210</p>  <p>Dual cassette rack stereo 30 watt</p> <p>NOW \$289.99</p>	<p>VALUE</p>  <p>Console TV with remote</p> <p>NOW \$539.99</p>
<p>VALUE</p>  <p>13-inch color TV</p> <p>NOW \$174.99</p>	<p>SAVE \$60</p>  <p>13-inch, remote color TV</p> <p>NOW \$234.99</p>	<p>OUR LOWEST PRICE EVER</p>  <p>19-inch color TV 117 channel</p> <p>NOW \$279.99</p>	<p>OUR LOWEST PRICE EVER</p>  <p>19-inch color TV with remote</p> <p>NOW \$349.99</p>

Prices include shipping... Console TV's priced with delivery and installation.

Phone 659-2573
Most merchandise available for pick-up within a few days

517 S. Hwy. 207
SPEARMAN
FREE PARKING

STORE HOURS
Men. - Sat.
9 a.m. - 5 p.m.

Satisfaction guaranteed or your money back
©Sears, Roebuck and Co., 1985

There's more for your life at
SEARS

Satellite

15th Annual

Art-Craft Festival



LOCATION:
Ochiltree County
Exposition Center
Fair Grounds
Over 200 Booths —

DATES: TIME:

Saturday, 9 AM - 7 PM
November 23

Sunday, 11 AM - 5 PM
November 24

FEATURING — Area Artists & Craftsmen —

Sculptures, Macrame, Toys, Dolls, Jewelry,
Quilts, Baked Goods, Frames, Games,
Paintings, All Handmade Items.

Food & Refreshments: Wheatheart Shrine Club
REACT: Night Watch
Lions Club: Accounting & Clean-Up

Rocking Horse Ranch: Free Babysitting for Arts & Crafts Shoppers Sat., — 10-7 and Sun. — 2-5.

A question of burning

Underfoot (Paul, 2 1/4 years)

How It Happened

Dinner was late and the kids were starving. Paul was playing on the kitchen floor. He loved his red blocks and pushed them around as if they were big red cars, like the ones that whizzed by outside the window. He also loved being near his mother.

While the spaghetti boiled, Mrs. Rudell prepared the salad. "Put your blocks away, Paul," she said. Paul did not answer. He appeared not to hear. "Put them away, I said." Still no reply.

Two more minutes. Just two more minutes, and the spaghetti would be ready. "Go into the other room with your sister, Paul, and play there," Mrs. Rudell said.

"No, I want to stay in here with you," Paul said. "I'm too busy

now, Paul, please," his mother answered.

When the salad was ready, she put it on the counter and walked over to the stove. She picked up the pot of boiling spaghetti and carried it toward the sink to drain it.

One of Paul's red blocks was lying in the middle of the floor. A foot away, Paul was kneeling, picking up the other blocks. Mrs. Rudell didn't notice that single red block. Whoosh! She tripped. The pot tipped and spilled boiling water on top of Paul. He was covered from the head down.

Mrs. Rudell screamed and put the pot down. Paul wailed. She picked him up and sat him on the edge of the sink where she loosened his clothes and ran cool water on his burns. Paul's sister ran into the room to see what happened. She

soaked some towels in cool water and placed them on the burned areas that couldn't be reached by running water from the faucet. Then they called an ambulance. Questions

Do you think there is any way Mrs. Rudell could have persuaded Paul to pick up his blocks sooner?

If a young child wants to be in the kitchen while food is being prepared, what ideas do you have for preventing serious accidents from occurring?

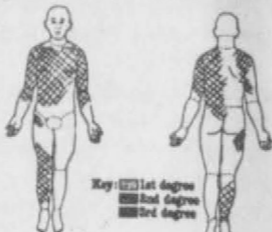
Medical Record
2nd and 3rd degree burns on 65% of his body surface.

Hospitalization
Two Months.

Paul underwent two skin grafting operations for his third-degree burns. One year later he had plastic surgery. Permanent scars remain.

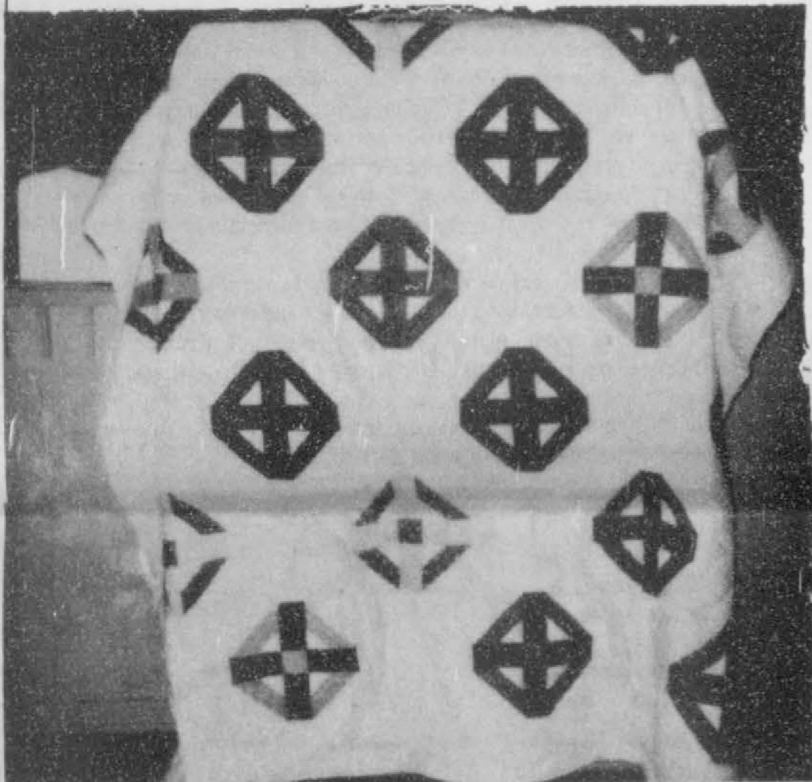


The Portuguese regard wild strawberries and asparagus as food fit only for the very poor.



Key: 1st degree
2nd degree
3rd degree

Annual Bazaar sponsored by Waka Women's Fellowship



The Waka Women's Fellowship will have their Annual Bazaar Saturday, November 16 from 9 a.m. to 4 p.m.

They will be serving stew and cornbread from 11:30 a.m. to 1 p.m.

This year there will be a pieced quilt along with the tacked quilts. Also many handmade items as well

as baked goods and candy. This is a fund raising event for the group to aid them in support of their projects.

Karen's Kozy Korner

No magic formula exists for creating the "perfect family". But after years of studying families broken by divorce, drug and alcohol abuse, troubled children and family crises, researchers have begun to focus their attention on what makes a family successful.

Since November 24-30, is National Family Week, let's look at what the experts say are characteristics of strong families.

It starts with family members who are close. They value their family bond, and want to spend time working and playing together.

Members of strong families respect individual differences. They don't expect each other to have the same interests or appearance. Individuals are encouraged in their separate pursuits knowing that the family stands behind them.

Strong families share a basic set of values that provides direction for day-to-day decisions. They are clear about their values, yet tolerant of individual differences and respect the values of others. Most recent research studies indicate that families with strong values also tend to have a high degree of religious orientation.

Parents in strong families take their leadership responsibilities seriously. Mothers and fathers share leadership and both actively teach, lead, guide and discipline, but do not attempt to be peers or friends with their children.

These families tend to face

problems openly and realistically. They are flexible in seeking solutions to problems and willing to try something else when a rest-try does not work. As a result, strong families are the most capable of adapting to crisis situations.

Strong families have bonds of love that reach out to less effective families, and contribute to many community activities. They help others.

Strong families laugh together. They create and nurture family jokes and patterns of play. They use laughter and teasing for transitions at difficult moments, but do not indulge in hostile or painful kidding.

Evidently, strong bonds of love, lots of caring and sharing, mixed with fun and laughter adds up to strong families. During National Family Week resolve to recognize and build on the strengths of your family.

EDUCATIONAL PROGRAMS CONDUCTED BY THE TEXAS AGRICULTURAL EXTENSION SERVICE SERVE PEOPLE OF ALL AGES REGARDLESS OF SOCIO-ECONOMIC LEVEL, RACE, COLOR, SEX, RELIGION, HANDICAP OR NATIONAL ORIGIN.

Frank Annunzio, Rep. (D-III):

"As long as consumers are willing to use their credit cards and pay the record rates, the rates will not only stay high, but I predict will go even higher."

Michael Evans, economist, on employment:

"This report sets the tone for a very bullish month. Factories are hiring back workers and they are increasing production."

Library News

Gruver Library has just received forty-two titles in large print on loan from the Amarillo Public Library for our patrons usage. Many of these titles are quite current, and there is a varied selection from mystery to romantic suspense. If you enjoy the large print, or know of someone who might benefit from these books, please stop and make your selection. This packet of books will remain in our library until the first of March, and then will be rotated with another selection of titles in large print. Another way to serve you - our patrons. A new Book just received and on the best-sellers list currently is Danielle Steel's Secrets.

Danielle Steel, America's number-one best-selling novelist, has held millions spellbound with such novels as Family Album, Full Circle, and Changes. But with Secrets she takes her readers beyond the tightly knit world of the family, into the heart of the nation's most glamorous industry: television.

Here is the drama behind the Creation of Manhattan, a first-of-its-kind, prime-time television series produced by Melvin Wechsler. Tempered by tragedy, seasoned by success, a man with a Midas touch, Mel Wechsler will assemble a dazzling cast:

Sabina Quarles at forty-five has managed to maintain - by dint of spunk and surgery - the body of an eighteen-year-old. Tough, spirited, and self-sufficient, she has survived twenty years in Hollywood, never marrying, never quite succeeding, never deigning to work in television. Yet Manhattan may bring her both the stardom she craves - and the security her very special needs require.

Jane Adams is an earthy thirty-nine year old beauty. Devoted to her children, dominated by her abusive and violent husband, forced to choose between her marriage and her acting career, Jane may find that her role in Manhattan has cost her everything



BIBLE VERSE

Blessed is the man that doeth this, and the son of man that layeth hold on it, that keepeth the sabbath from polluting it, and keepeth his hand from doing any evil.

1. Who is the author of the above statement?
2. What was his position in Israel?
3. What is one of the greatest national sins today?
4. Where may this verse be found?

Tops Meets

Our October meetings were opened with the TOPS Pledge and called to order by our leader Rhonda Reichen. Roll was called by Louise Evans with Ina Soapes, Louise Evans, Ida Hendricks and Phyllis Razor the winners of the fruit bowl for the weeks best loss. Ida Hendricks was the winner of the Sewing Basket Contest. Louise Evans was crowned Queen of the Month for the most weight lost in October. She also voted Inspirational Angel for that month. Congratulations are in order to these gals. Meetings were closed with the Serenity Prayer.

Vance Hall Sporting Goods
Dumas, Texas

SKI EXTRAVAGANZA

SKIS, BOOTS, BINDINGS
All on Sale at Pre-Season Prices!
SPECIAL SKI PACKAGES
Up to 50% Off!

SKI ACCESSORIES
Up to 70% Off!

Free Mounting with Purchase of Skis and Bindings While You Wait!

Plus Special Group of Athletic Items On Sale
Largest Pre-Season Ski Sale Ever!

315 S. Dumas Ave. in the OTASCO Building
Thursday Nov. 14 9 a.m. till 8 p.m. Saturday Nov. 16 9 a.m. till 7 p.m.
Friday Nov. 15 9 a.m. till 8 p.m. Sunday Nov. 17 12 noon till 5 p.m.

VANCE HALL
DUMAS SKI SALE
ROSSIGNOL
HEAD ALPINA

On the Go with Joy

that matters most.

Zack Taylor, the leading man, is a paragon of professionalism. Yet beyond the smooth good looks, the easy warmth, and the sly charm of the eligible bachelor, he remains an enigma.

The charming ingenue, Gabrielle Thornton-Smith, seems to have appeared out of the blue. Beautiful, talented, and on the brink of success at twenty-five, what can she have to hide? Set in Los Angeles and New York, Secrets carries the reader behind the scenes into the making of a major television series. Probing even deeper beneath the polished surfaces, the media, confront today. She paints a vivid compelling picture of a sophisticated world. Here Danielle Steele delineates her richest and most complex cast of characters, people forced together by extraordinary circumstances who must perform even when they're torn apart by their deepest secrets.

Texas is on the threshold of celebrating our Sesquicentennial year in 1986! A recent workshop was held at Amarillo Public concerning this, and many ideas and suggestions were given on reading material available for this "special" celebration of Texas history. You will be hearing and reading more about the role of your community library in this celebration, and some of our goals and objectives to serve the public during this Sesquicentennial observance in our state. We challenge you to enjoy the color and excitement of the Lone Star Story! To experience a personal commemoration of our state's 150th anniversary by reading! And perhaps to share this excitement by donating a Texas book to your library! We suggest you begin to get ready for this big event by first learning to pronounce "Sesquicentennial!"

Gruver City Library
2:00-6:00
Monday thru Friday



WHO KNOWS

1. How many quarts of milk does it require to make a pound of butter?
2. When was Standard Time adopted?
3. In what year was the Washington monument dedicated?
4. What is the significance of the flag when raised with the stars at the bottom.
5. How far from home plate is the pitcher's mound?

Answers to Who Knows
1. About 10 quarts.
2. November 18, 1883.
3. In 1885.
4. A signal of distress.
5. Sixty feet and six inches.

Did you ever walk into a room, and see your husband off to one side and in jolly conversation with another man. As you and a friend observe them from the doorway, your husband suddenly stretches his arms wide, and you wonder if he is talking about a fishing trip and about the one that got away, or about you and the width of your hips ought to be a law against, certain subjects being discussed. Especially, the subject of being overweight or even being moderately obese.

One friend asked me the other day. "How is the turkey trot coming?" Well, I had already forgotten my vow to get into shape for next year, but I have been exercising more. Actually I've worked up to 2 miles at 20 mph. on my exercise bike once a week. That is super good for me. Sometimes I ride 1 mile on the bike once or twice a week. But really there is a lot of different types of exercise that I'm involved in, that no one ever sees me do. I came across a very rigid creative exercise program developed by the Air Force designed especially for those in sedentary positions who find it difficult to stay in shape. So instead of watching Richard Simmons or Jack La Lanne or maybe Jane Fonda, when it is time for Aerobics, forget about the wheezing and struggling to complete the laps before exhaustion sets in, and use the following guide to burning calories.

Beating around the bush	100
Jumping to conclusions	125
Climbing the walls	100
Passing the buck	150
Throwing your weight around (depending on your weight)	50-300
Dragging your heels	75
Pushing your luck	175
Making mountains out of molehill	500
Hitting the nail on the head	100
Wading through paperwork	150
Bending over backwards	200
Jumping on the bandwagon	125
Balancing the books	25
Running around in circles	225
Climbing the ladder of success	175
Pulling out the stops	250
Adding fuel to the fire	100
Some tasks have the opposite effect, for instance: Eating crow	250
Opening a can of worms	125

Experts disagree on which category bears checking out: Swallowing your pride 250
As you can see most of these tasks can be performed every day, regardless of weather, year around. You may have some other form of exercise you could pass on to stay in shape.

- Answers to Bible Verse**
1. Isaiah.
 2. He was one of Israel's outstanding prophets.
 3. The desecration of the Sabbath.
 4. Isaiah 56:2.

These



mean

Look for these signs before you dig. If you see one of these markers, don't dig in that area without calling us first. We can quickly tell you the exact location of any of our natural gas pipelines. And call our 24-hour toll-free safety line immediately if you notice anything unusual near a marked pipeline, such as a hissing or roaring sound, blowing dust, bubbling water, dying plants, or a peculiar odor. Leave the area right away. Keep these phone numbers handy. Help us keep natural gas a safe and dependable source of energy.

Call before you dig

Panhandle Eastern Pipeline Safety Number:
1-800-821-5486

Panhandle Eastern
PIPE LINE COMPANY.
3000 Bissonnet/Houston, Texas 77005

EXPO '85

Dumas Co-Op 2nd Annual Expo

**FRIDAY AND SATURDAY,
NOVEMBER 15 and 16**
•More Than 86,000 Items
At Greatly Reduced Prices



Oster Electronic 10-Speed KITCHEN CENTER
blend, grind, slice, shred, cut, mix... even make homemade bread! Juice fresh oranges, grapefruit, lemons and limes, too!

HARDWARE SPECIAL
FREE Oster CITRUS JUICER PACKED INSIDE... A \$15.00 VALUE!

980-36 Almond

Kitchen Center Reg. \$251.02 Special \$164.08

from \$25.95 Down to \$10.21
Moon Boots

CF&I Baler Wire \$35.85

Electric Fence Wire

1/4 Mile 14 Gauge Reg. \$15.58 SALE \$13.82

1/2 Mile 14 Gauge Reg. \$24.47 SALE \$21.72

FRIDAY 1:00 P. M. till 7:00 P. M.
SATURDAY 9:00 A. M. till 7:00 P. M.
November 15 and 16
MORE THAN 86,000 ITEMS
AT GREATLY REDUCED PRICES
FREE BLOOD PRESSURE BOOTH
*FREE COFFEE, COKES, POPCORN DONUTS
*REGISTER FOR 15 DIFFERENT DOOR PRIZES
*LUNCH SERVED Saturday by Dumas 4-H Club

LIVESTOCK HANDLING EQUIPMENT

Latest Design in Sweep Pens

WALLS - For all Sizes
COVERALLS - Reg. \$49.62 - Special \$44.06

Chain Saw Reg. \$73.83 SALE \$54.69

McCulloch

BOOTH DISPLAYS BY
*OSTER
*FARMLAND
*AMARILLO HARDWARE
*WEST TEXAS SUPPLY
*WYLIE SPRAYER
*MAKITA TOOLS
*SURETOLD MFG.
*BIG VALLY LIVESTOCK
*V. P. G. CHEMICALS
*SERVE TECH CROP CUSULTANTS
*BARGAIN BOOTHs

COATS all discounted

3-Piece Round Bale Feeder Bolt Together 18-Gauge Reg. \$135 SALE \$115

Reg. \$135 SALE \$115

CORRAL PANELS
Take Our "Quik-Corral" To The Cattle

12 foot - Reg. \$40.95	Special \$36.36
10 foot - Reg. \$34.10	Special \$30.28
8 foot Reg. \$27.30	Special \$24.24
Continuous Panels Reg. \$37.50	Special \$33.30

VEST - Reg. \$15.20 Special \$13.49

Indian Blanket Seat Covers

Reg. \$36.89
SALE \$30.29

*BOOKINGS
*ANYHDROUS AMMONIA
*OILS
*CHEMICALS
*FEEDS
*SEED

•Oster Products At Rock Bottom Prices During Expo Only
•Register For 15 Different Door Prizes
•Free Coffee, Donuts, Popcorn and Cokes
EXPO '85 ... BIGGER AND BETTER

OTHER ITEMS DISCOUNTED

- *Automotive
- *SPRAY PARTS
- *LAWN AND GARDEN
- *WESTERN TACK
- *HARDWARE
- *TRAILER PARTS
- *CLOTHING
- *FENCE CHARGERS
- *WESTERN BELTS
- *WESTERN BUCKLES
- *MOON BOOTS
- *LIVESTOCK SHOW EQUIPMENT

ANTI FREEZE
Gallon....2.99
55 gal....2.72 gal.



The term drawing room is a shortening of the word withdrawing, for the room to which guests withdrew.

750 voters approve water plan

A total of 750 Hansford County voters approved the Texas Water Plan during Tuesday's general election.

Proposition 1, was 650 for and 58 against, and proposition 2, 614 for and 92 against.

This is approximately 22 percent of the eligible voters. Hansford County has approximately 3,300 voters registered in the county.

Proposition 1 and 2 together from the Texas Water Plan, which will allow the state to take a greater role in the creation of water resources for counties.

The passage of the water amendments statewide should improve our chances of getting the Palo Duro dam built. Johnny Lee, PDRA director was out of town this week, but has been saying that the PDRA was among the first that would get help under the water plan if it passed.

Other propositions and their votes include:

Proposition 3, 339 in favor and 311 against. This amendment

would allow the relocation of water laterals on private property by public funds.

Proposition 4, 422 in favor and 238 against. This amendment allows proceeds from the sale of permanent school fund land to acquire other land for the permanent school fund.

Proposition 5, 224 in favor and 427 against. This proposition enables the legislature to regulate the provision of health care by hospital districts.

Propositions 6, 453 in favor and 207 against. Under this amendment, prisoners from the state of Texas can be transferred to another state prison for confinement.

Proposition 7, 371 in favor and 208 against. Senate Joint Resolution 9 allows the commissioners court of Chambers County to divide Chambers County into no more

22% turn out for Hansford County

than six justice precincts.

Proposition 8, 423 in favor and 237 against. This amendment grants an additional \$500 million in bonding authority to the veterans' housing assistance program.

Proposition 9, 335 in favor and 304 against. Under this proposition, the legislature would be permitted either to enact a statute or to attack a rider to the General Appropriations Act to require prior approval of the expenditure of emergency transfer of any funds appropriated by the legislature to state governmental agencies.

Proposition 10, 419 in favor and 248 against. This new amendment authorizes the legislature to provide for the issuance of general obligation bonds.

Proposition 11, 425 in favor 197 against. This new amendment de-

leats certain technical requirements as to the form of writes and processes in the courts.

Proposition 12, 443 in favor and 183 against. Under this amendment, the Texas Supreme Court and the Texas Court of Criminal Appeals Jurisdictions of state law certified from federal appellate courts.

Proposition 13, 293 in favor and 306 against. A board would be created under this proposition with responsibility of reappointment of judicial districts.

Proposition 14, 394 in favor and 175 against. This amendment abolishes the office of County Treasurer in Andrews County and transfers the duties to the office of County Auditor.

JUNIOR VARSITY	Date	Location	Time
Sept.	9-12	Booker	Here 7:30
	9-19	Groom	Here 6:00
	9-26	Dalhart 9th	There 7:30
Oct.	10-3	Open	
	10-10	Wheeler	There 7:00
	10-17	Phillips	Here 6:00
	10-24	White Deer	There 6:00
Nov.	10-31	Phillips	There 7:00
	11-7	Open	
	11-14	Wheeler	Here 7:00

DALLAS COWBOYS	Date	Time
PRESEASON	Aug. 15	at GREEN BAY 8:00
	Aug. 17	at SEA DAVE 8:00
	Aug. 24	at CHICAGO 8:00
LEAGUE SEASON	Sat. Aug. 31	at HOUSTON 8:00
	Sat. Sept. 7	at WASHINGTON 8:00
	Sun. Sept. 15	at CLEVELAND 12:00
Sun. Sept. 22	at NEW YORK GIANTS 8:00	
Sat. Sept. 29	at PITTSBURGH 12:00	
Sun. Oct. 6	at MINNAPOLIS 12:00	
Sat. Oct. 13	at ST. LOUIS 8:00	
Sun. Oct. 20	at WASHINGTON 3:00	
Sat. Oct. 27	at PHILADELPHIA 8:00	
Sun. Nov. 3	at ST. LOUIS 3:00	
Sat. Nov. 10	at CINCINNATI 8:00	
Sun. Nov. 17	at PHILADELPHIA 12:00	
Sat. Nov. 24	at ST. LOUIS 3:00	
Sun. Dec. 1	at CINCINNATI 12:00	
Sat. Dec. 8	at PITTSBURGH 12:00	
Sun. Dec. 15	at ST. LOUIS 3:00	
Sat. Dec. 22	at PITTSBURGH 12:00	
Sun. Dec. 29	at WASHINGTON 3:00	
Sat. Jan. 5	at NEW YORK GIANTS 8:00	
Sun. Jan. 12	at CINCINNATI 12:00	
Sat. Jan. 19	at PITTSBURGH 12:00	
Sun. Jan. 26	at NEW YORK GIANTS 8:00	
Sat. Feb. 2	at PITTSBURGH 12:00	

1985 7th and 8th	Date	Location	Time
September	9-12	Booker	Here 6:00
	9-19	Follett	There 6:00
	9-26	Phillips	Here 5:30
October	10-3	Open	
	10-10	Wheeler	There 6:00
	10-17	Booker	There 6:00
	10-24	Follett	Here 6:00
November	10-31	Phillips	There 5:30
	11-7	Open	
	11-14	Wheeler	Here 5:30



The first indoor ice skating rink was built at Madison Square Garden in New York in 1879. It measured 6,000 square feet of surface.

Rx for Flu or Chicken Pox: Kindness

Be good to yourself when you've got the flu or chicken pox. Take it easy. Get plenty of rest. Viral illnesses such as these are usually self-limiting. Time will cure them.

Check with your doctor about using medications to treat flu or chicken pox. For children—including teenagers—medications such as aspirin and aspirin-containing products may not be a good idea. A rare but dangerous condition called Reye syndrome may develop in young people just when they appear to be recovering. Studies suggest a link between the development of Reye and the use of aspirin to treat the flu or chicken pox.

So, treat yourself right when you've got the flu!

—A message from the Food and Drug Administration



Gruver farmer honored

In recognition of outstanding sales achievements during the 1984-85 sales year, Henry Grotegut, of Gruver, has been selected for membership in PAG Seeds' elite 1985 Key Dealer Club.

The award was presented as part of a special business meeting held October 17-19 at the St. Anthony Hotel in San Antonio, Tx. The Key Dealer Club is made up of the top twenty-five percent of PAG dealers in the southwest.

"The 3-day program was an opportunity for qualifying dealers to meet with PAG sales, marketing, and technical personnel, to review PAG programs and discuss overall trends in agriculture," says PAG Territory Manager, Larry Skinner. "We are honored to have Henry & Rosalie Grotegut as members of PAG's dealer organization and congratulate them on a job well done in 1985."

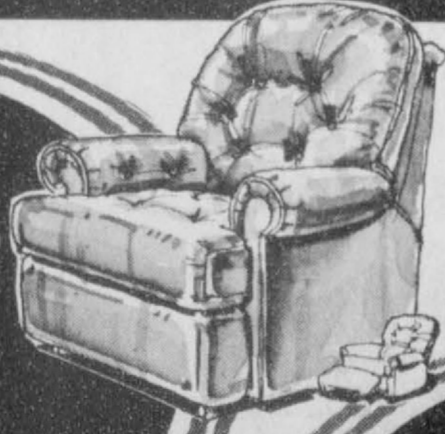
PAG Seeds is a major marketer of corn, grain sorghum, forage, sunflower, alfalfa, and grass seed throughout the U.S.

STARTS THURSDAY, NOV. 14 THRU WEDNESDAY, NOV. 27

23rd ANNIVERSARY Sale

All Leather Sofas, Chairs, Recliners & Ottomans
By Leathercraft & Lane
Reduced ...

30%



Over 15 Styles of Dining Room Suites

by Tell City, Thomasville, Broyhill, Burlington, Chromcraft, & Cal-Style
Reduced ... **25% to 40%**



Entertainment Centers & Wall Units
Up To ... **40% off**

Curios by Pulaski & Butler
Reduced ... **25%**

Over 50 Swivel Rockers by La-Z-Boy, Best, Chadwick to Choose From, Reduced ... **25% to 40%**

Occasional Tables
Reduced ... **25% to 50%**

Rustic Oak Bedroom
By Harrison

50% off

Bedroom Suites
By Thomasville, Broyhill, Burlington, Harrison & Lea

Reduced **25% to 50%**

Over 100 LA-Z-BOY & LANE Action Recliners In Stock Reduced ...

25%

Over 10 Different Styles of Sectionals to Choose From
Reduced ... **25% to 40%**

Over 150 Lamps to Choose From, Reduced ... **25% to 50%**

Over 50 Different Sofas to Choose From, Reduced ... **25% to 50%**

Over 15 Styles of Sleepers To Choose From, Reduced ... **25% to 40%**

Table & Wall Accessories Reduced ... **25% to 50%**



Mastercard and Visa Accepted

Hours:
8:30 a.m.-5:30 p.m.
Monday thru Saturday

Beedy FURNITURE CO.