

Wednesday November 20, 1963

Hounds

continued from page 1

kick back from the 25 to the 45 for Gruver. Riley then passed 18 yards to Gillispie and Gruver had a first on the Stratford 37. Cooksey gained five and then passed to Gillispie for another first on the 22. A fumble on the next play was recovered by Stratford.

The Elks, staying mostly on the ground, punched the ball 78 yards for a TD. The last 23 yards came on a pass to Hudson.

Gillispie ran the Stratford kick back to the 39 and Gruver again started a drive. After two incomplete passes, Sam Tipton came in fired 13 yards to Gillispie for a first on Stratford 48. Cooksey was caught seven yards behind the line on the next play but Leatherman moved the ball down to the Stratford 45. Tipton hit Gillispie with a 17 yard pass and the hounds had a first on the Elk 28. After two incomplete passes Stratford intercepted at the 15 to stop the drive.

A 39 yard pass play to Pittman moved the Elks to the Gruver 46 but four passes fell incomplete and Gruver took over again. Cooksey gained four and five to get to the Stratford 45 and Tipton passed nine yards to Gillispie on the 36. A 15 yard penalty moved the ball down to the 21. Another fumble was recovered by Stratford at this point. Stratford completed a 25 yard pass as the half ended. After receiving the second half kick, Stratford marched 66 yards to score with Hudson going over from the seven. The conversion try

failed leaving the score 18-6.

Cooksey ran the kick back to the Gruver 40 and roughing penalty put the ball down on the Stratford 45. The hounds however fumbled two plays later and Stratford took over at the Gruver 49. The Elks fumbled a few plays later and Hoel jumped on the ball for Gruver at the 30. The Hounds lost yardage on four plays but Leatherman booted the ball an amazing 71 yards and it rolled out of bounds at the Stratford two.

The Elks moved down to the Hound 38 but Gillispie intercepted a pass at the Gruver 25 and raced it all the way back to the Elk 39. Cooksey ran five straight times to move the ball down to the 19 but it went over on fourth down to the Elks at the 20.

Stratford pushed to the Gruver 20 but Riley stopped the drive with an interception at the 11. Four plays later Gruver punted out to the forty-eight.

Stratford ran the ball down to the 30 in four plays then two straight completions put the ball on the Gruver three with only seconds left to play. On the second try Hudson went in for the score. A pass to Pittman made the final score 26-6.

Thus Gruver ended the season with a 4-6 record winning the first four and losing the last six.

HIGHLIGHTS

continued from page 1

elevator skidded and slipped into ditches. In town Mrs. Bort was hurrying to have supper prepared for the hands and parents of two of the hands who were also coming. The storm knocked out the telephone. The lightning struck the highline to take out the electricity, for hours. Of course Mrs. Bort's stove was electric, to cause much more of a problem. By candlelight, Mrs. Bort also discovered that the sewer line was either full or clogged, as her sink was backing up. The men came in from the field, wet, muddy and hungry. The young hands were-frisky as mules and full of teasing while the older ones were quite upset. With the sewer stopped no baths could be taken, but at last though muddy from head to toe the hands were bedded down for the night.

Another harvest had come and gone. But during the night of that final day the frisky young lads would awake with the shrill refrain which will never be forgotten of "We've been working on the combines all the live long day"

The Ralph Borts have two daughters, both of whom are graduates of Gruver High School and Southern Methodist University, Barbara Jean, the elder married Delano Cluck who is also a native of Hansford County and is the son of Mr. and Mrs. S.R. Cluck of Gruver. They have a daughter Nanette and a son Brad, and make their home in Gruver where Delis engaged in farming. Peggy Lou married James H. Jones a native of Arkansas who is now vice president of the Republic National Bank in Dallas where they reside. They have one son James Bort.

Mr. and Mrs. Bort have been active in Civic affairs since the beginning of Gruver. Mrs. Bort was chosen in 1955 as the Woman of the Year by the Gruver Chamber of Commerce. Mr. Bort aside from his farming, is a four-way partner in the Gruver Elevators, Inc., with elevators in Gruver, Capps Switch and Sunray. He has recently opened, a feed lot just west of Gruver and traffic in the cattle industry. This closes another of the outstanding pioneer family's histories, as they have been a part of the community and have helped to see it strive to the community it is today.

Dinner guests in the home of Mrs. Pauline Winger were the Skeezie Rileys, Ray Kelly and the Ronnie Rileys, the Monte Harbors of Spearman, the Val Wingers and Kay Winger of Amarillo. The dinner was held on Sunday.

THE GRUVER INDEPENDENT

BOB BAILEY
DOTTY JONES
Editor & Publisher
Business Manager

Entered as second class matter at the post office in Gruver, Hansford County, Texas under the act of March 8, 1879.

Classified and Legal Rates--4¢ per word first insertion, 3¢ per word on all following insertions. Display advertising rates available on request.

Subscription Rates--\$3.00 per year in Hansford and adjoining counties. \$3.50 per year outside first zone

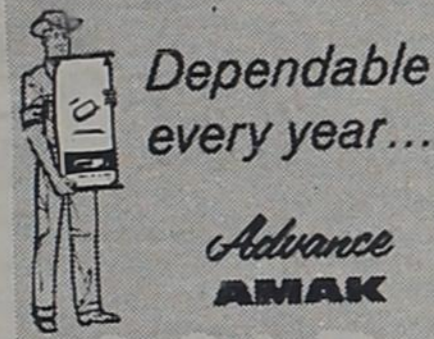
Published every Wednesday.



WHO'S NEW

Proud parents are Mr. and Mrs. Dale Harris with the birth of a baby girl weighing eight pounds and four ounces Friday November 15th. The little lassie is named Dianne and was born in the North Plains Hospital of Borger.

Proud grandparents are Mr. and Mrs. Ben Harris of Gruver and Mr. and Mrs. Herbert Walker of Orange, Texas.



Dependable every year...

Advance AMAK

GOLD TAG

HYBRID SORGHUMS

Advance seed research builds champions!

NEW! Gold Tag Advance 14
Yields of 9% to 31% higher than RS-608, RS-610. Fastest emergence and early growth vigor of any hybrid available. Strong stalked, highly lodge resistant, quick-drying. Medium-early maturity.

NEW! Gold Tag Advance 51
Heavy yielder! Red-seeded, produces non-fading red grain, but is YELLOW endosperm, high Vitamin A and carotene. Semi-open head. Quick dry, quick harvest. Early to mid-early maturity.

Advance Gold Tag AMAK R-10
The industry leader! Widest adaptation. Best double cropper! Heavy yielder. Excellent seedling emergence and plant vigor. Top standability. Best for dry-land farming. Early to medium early.

Advance Gold Tag AMAK R-12
The nation's outstanding yielder! Unsurpassed for high test-weight gain. Extremely strong stalked, highly lodge resistant. Excellent exertion and threshability. Medium maturity.

BOOK NOW!

Products of Advance Seed Company, Phoenix, Arizona

STRAWN FARM & RANCH
GRUVER ELEVATOR
Gruver Texas

SCHOOL MENU

Monday November 25
Chili with beans, celery and carrot sticks, fruit cup, cinnamon rolls, and milk.

Tuesday November 26
Turkey, Dressing and gravy, candied yams, Cranberry sauce, green beans, fruit delight, hot rolls milk and butter.

Wednesday November 27
Hamburgers, french fries, tossed salad, ice cream and milk.

School will be dismissed Wednesday November 27th at 3:45 p.m. for the Thanksgiving Holidays. It will resume on Monday December 2nd.

Mr. and Mrs. Larry Lee Cline and children were accompanied by Mr. and Mrs. Floyd Cline to Denison, Texas over the past weekend. They celebrated their 28th wedding anniversary at the same place they were married. The group returned home last Tuesday.

Mrs. Walker Hosts Club

Mrs. O.V. Walker Sr. hosted the Grandmother's Canasta Club November 13 in her home.

Alice Walker and Jamie Wilmeth held high score for the afternoon.

Those attending were Mesdames Maude Ayres, Thelma Davis, Jla Cline, Edna Bayless, Jamie Wilmeth, Pauline Fox and Margie Barkley and the hostess.

42 PARTY HELD

Mr. and Mrs. C.C. Heath were hosts for a forty-two party Thursday night November 14th.

Attending were the Foy Perkins, B.W. Renners, B.J. Renners, Charmin Lyle, Vivian Green, Alfred Whites C.C. Heath Jr. and family, Ken Wilmeths and the hosts Mr. and Mrs. C.C. Heath Sr.

HORIZON
HYBRID
SORGHUMS

THIS NEW HYBRID THIS YEAR -

- HORIZON 80**
- *Somewhat less in maturity than full season and longer than mid-season.
 - *High Yield potential
 - *Good Standability
 - *Smut Resistance
 - *Easy to Thresh
 - *Especially adapted for North Plains

Book your seed now
Limited supply this year

STRAWN FARM & RANCH
Spearman SUPPLY Gruver

GRUVER MOTOR CO.
offers you these three services:



NEW CARS

COMPLETE MECHANIC SERVICE



JOHN DEERE



THE BEST TRACTOR ON THE MARKET.

APPLIANCES

GENERAL ELECTRIC

Heating & Air Conditioning

Offering to our customers insallation and service for all Industrial, Commercial & Residential

M-25 Electric Mixer
All Purpose
Special \$16.95

CONTRACTING-FIXTURES-REPAIRS

ANTHONY ELECTRIC

Phone 659-2441 or 659-2721
Plains Shopping Center Spearman

Jr. Class of Christian Church Meets

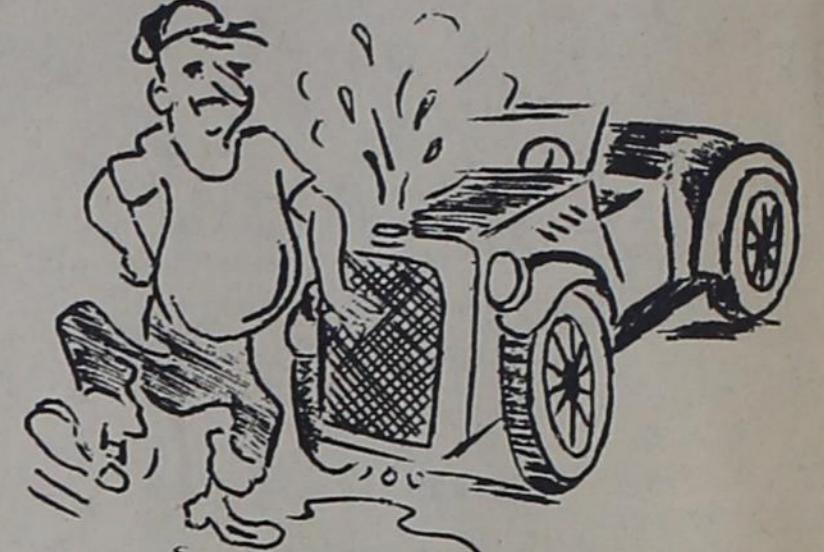
The Junior Class of the First Christian Church met last Thursday for their regular meeting.

Mrs. R.Y. Jones is sponsor for the group of young people.

Business taken care of during the afternoon was the

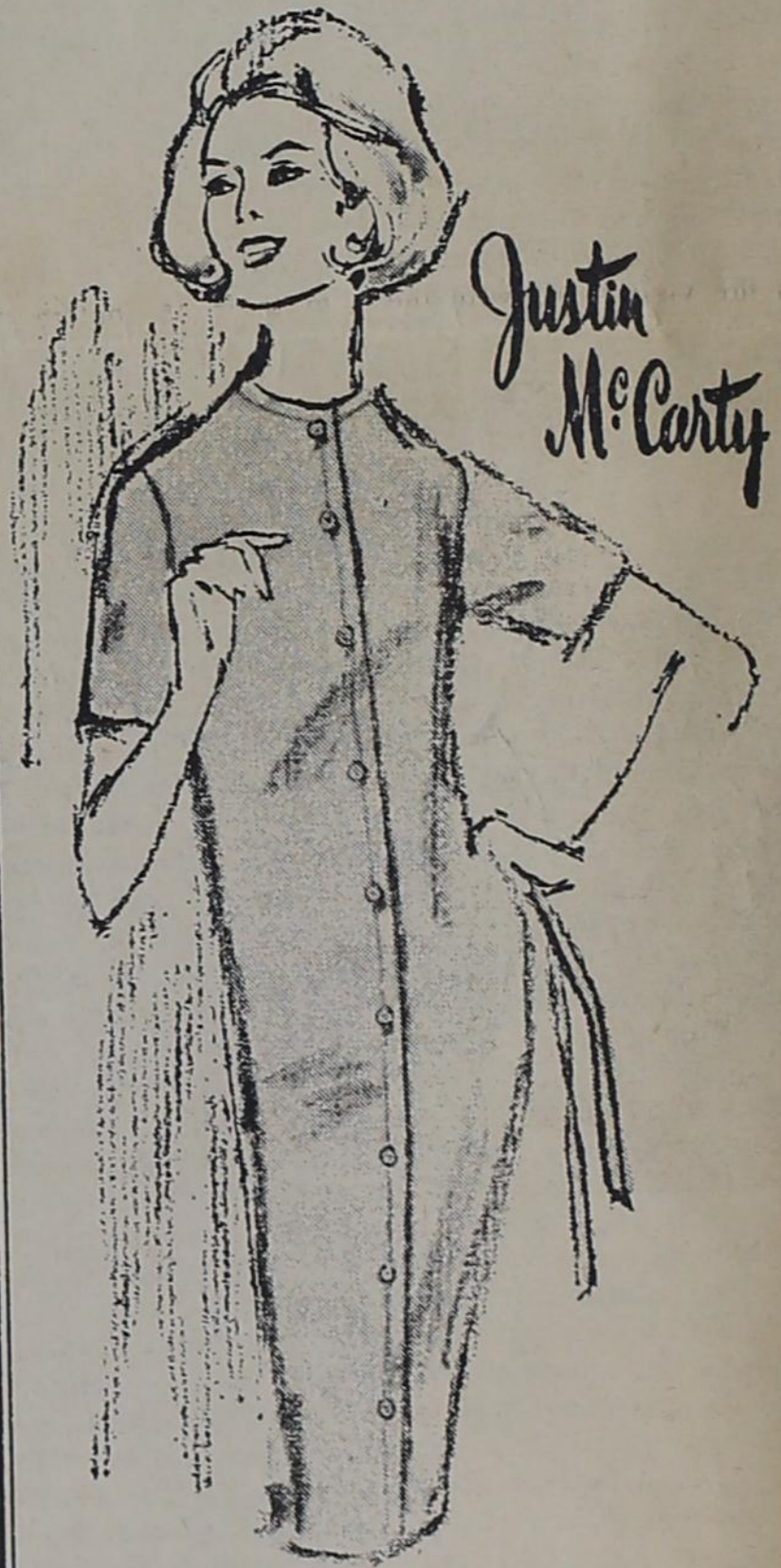
appointment of Linda Crawford to the President's post in the place of Judy Scribner who moved away. Miss Patty Porterfield was elected to the Vice-President position which Miss Crawford held.

Repair your radiator before the winter months arrive



Complete Radiator Sales & Service (Industrial & Automotive)
BAMAC SUPPLY CO.
Spearman, Tex.
East Hi-way 15 659-2446

We Proudly Announce our appointment as your dealer for this truly outstanding and leading clothing line.



THE HOLIDAY SHIFT WITH A SURPRISE INSIDE!

Justin McCarty gives you 100% wool knit shift in bright holiday pastels . . . the surprise . . . the inside of knit is a smooth and lovely acetate, soft to the touch. The front buttons are decoys . . . there's a zipper in the back.

and may we remind you there's 33-shopping days left until Christmas!
We Invite You To Shop Early
USE OUR EASY-PRACTICAL GIFT CERTIFICATES

Denny's
FASHION CENTER
517 N. Main BR 3-7731



THE GREYHOUND GROWL IS A SERVICE PROJECT OF THE GRUVER FUTURE TEACHERS OF AMERICA
 Editor.....Dean Lee
 Photographer.....Jeff Roper
 Sponsor.....L.J. Sparks
 Reporters.....Mary Cluck, Marion Jeffries, Sandra Riley, and Judy Hill.

Space for this project is donated by the Gruver Independent as a public service.

PERRYTON FUMBLES PAST B TEAM

by Lynn McClellan
 Perryton managed to capitalize on Gruver's fumbles and high snaps on kicks, as they downed Gruver 24-0 in the last game of the season. Gruver was unable to score on Perryton's mistakes, as Perryton fumbled six times during the game. The only other team to beat Gruver this season was Canadian. The tough defense Gruver showed last week failed to stop the Perryton squad, and Gruver's offense, lacking the services of Larry Mitchell, couldn't keep a sustained drive going.

Gruver took the opening kick-off at their 10 and ran it back to their 33. Gruver picked up a first down on the 44, but we were unable to move the ball, so Perryton took over on their 47. Then O.E. Gammill, who played a superb game all night, picked off a Perryton aerial on the 47 of Gruver. Gruver picked up a first down on the visitors 42 with the

help of a personal foul. Facing fourth and ten on Perryton's 40, Hart went back to punt, but a high snap from center went over Hart's head and Perryton took over on Gruver's 30. Perryton moved to Gruver's 3 before losing the ball on a fumble. Gruver moved to the 11 before returning the favor and fumbling. The visitors ran the next play for the touchdown. The extra points were no good.

Perryton kicked to Gruver and Gruver ran the ball back to the 25 before fumbling. Perryton moved to the Gruver 5 and Gruver recovered a fumble, and the quarter ended.

Gruver was unable to move the ball, so Gruver kicked to Perryton's 40. Gruver set up a tough defense and took over the ball on our 30. Again unable to move the ball, Hart kicked to Perryton's 30. Perryton ran the kick back to the 42, but was penalized back to their 26. Perryton moved the ball to their 45, before Gruver

took over after a fake punt attempt. With fourth and fifteen on the 50, Hart kicked to the 10, but the visitors ran the ball back to the 33. Gruver was penalized fifteen which gave Perryton a first down on the 50. Perryton tried another fumble, and it worked as Gruver took over on their 47. After three downs, Gruver went back to punt, but another high snap from center moved the ball back to Gruver's 30. With two seconds left Perryton scored their second TD. The try for extra points was no good. The half came to a close with Perryton leading 12-0.

In the second half, Perryton mounted its first sustained drive for 76 yards and another TD. Perryton put the ball in play at their 26, to start the second half. Jim Beck recovered a fumble on Perryton's 34. Gruver's drive was stopped short as Perryton took over on their 25. Gruver stepped in and recovered another fumble on Perryton's 29. Perryton's

tough defense stopped Gruver and took over on their 30. Perryton pulled its most popular play of the night, as they fumbled on their 30. Perryton set up another tough defense, and took over on their 24. Then their 24 Perryton started their drive. They picked up three first downs on the drive, before they scored from the 5. Their try for points was no good. Gruver put the ball in play on their 35, after Perryton kicked off. Facing fourth and three, Hart tried a fake punt, to pick up a first down. Perryton intercepted a pass on Gruver's 48. The visitors then drove in for a touchdown. Again, the extra points were no good.

The ball changed hands several times but neither team was able to move the ball very far, or score. Gruver ended the season with this loss, but the team has had a real good year losing only two games. Gruver lost this game to Perryton 24-0.

F.H.A. FOOTBALL GAME A SUCCESS

by Arlene Barkley

A blazing battle between the mighty Chicks and the ferocious Terrors, took place November 5 in the Gruver Greyhound Stadium. The Terrors managed to slip by the Chicks with the final score 28-12. There was much ability shown in this game which no one ever dreamed existed.

This game was promoted by the Future Homemakers of America Chapter of Gruver. The members chose this occasion to crown their annually elected F.H.A. Beau. The Beau is selected each year from the members of the F.F.A. Chapter. There are no nominees in the election; each girl just votes for the F.F.A. member she feels is most deserving of this honor. They try to choose a boy who has been very active in F.F.A. work, and who is a credit to his organization as well as to the high school. This boy is presented with an identification bracelet bearing his name and F.H.A. Beau.

The girls feel that this year they made a very wise choice by selecting as their beau, Lynn McClellan. Lynn has been an outstanding F.F.A. member throughout high school. He is currently a State Chapter Farmer and secretary of the Gruver Chapter. Lynn is an active



Lynn McClellan

member of other high school organizations and is a credit to each.

The profits from this game which amounted to about \$558 after expenses were taken out, went to the F.H.A. department. These funds are to be used to buy equipment for the homemaking department of the new school.

The members of the F.H.A. would like to thank you for your attendance and cooperation at their Powder Puff Football Game. This is the first year such a thing has ever been attempted and the F.H.A. hopes to continue it in future years. Special thanks are due to the coaches, the F.F.A. boys the band, the Senior class, the referees, and announcer, and the owners of the cars used for helping to make this project such a huge success.

F.F.A. Sweetheart Was Crowned

by Lynn McClellan

Each year the members of the Gruver F.F.A. Chapter elect a F.F.A. Sweetheart. The Sweetheart is elected not only on her beauty, but on her personality. On Tuesday November 12, 1963 the 1963-64 F.F.A. Sweetheart, LaNetta Blankenship, was crowned.

She was escorted to the front of the auditorium by the Sentinel, Donnie TeBeest. The chapter president, Bob Gillispie, presented her with the official Sweetheart Jacket.

LaNetta succeeds, last year's Sweetheart, Bonnie Sullins. Bonnie has truly represented the Gruver Chapter in fine fashion, and it is



LaNetta Blankenship

greatly appreciated. Included in her activities, LaNetta will enter the Top of Texas Sweetheart contest on January 9, 1964 at the District Banquet.

Musical Moments

by Bonnie Sullins

Throughout the school year we have Southern Assemblys given by a variety of talented people from different parts of our country as well as the world. This month we were entertained with a variety of Musical Moments by Patti and Bud Imig from Denver Colorado.

They entertained with a wide selection of instruments which can un-

believably make beautiful music. We heard "Oh Suzanna" on skills along with a number of other popular songs on cow bells, a tubless redwood zylphone, organ shake chimes, spinning metal discs, and Swiss bells. Bud Imig also played some fine tunes on his electric accordion.

The entire program proved to be highly educational as well as entertaining.

Presenting The 1964 Seniors



Karen Clawson



Kenneth Bateman

by Glenda Hoel
 Karen was born on April 19, 1946 in Beaver Oklahoma. After she was born, she lived on a farm for two years east of Hitchland Texas. At the age of two, she moved to a farm and ranch west of Gruver.

Karen has four brothers and three sisters who are Max Clawson of Gruver, Wanda Stevens of Odessa, Rodney Clawson of Gruver, Kirby Clawson of Santana, Kansas, Ella Mae Gatten, Canyon, Texas, Margaret Ormon of Borger and Chuck Clawson who is a seventh grader. She is the daughter of Mr. and Mrs. C.H. Clawson.

Karen was treasure of her Freshman class, a member of the band and the F.H.A. She was in the Junior Play, a librarian for her Junior and Senior years and is Secretary-Treasurer of the band her senior year. She is a member of the Community Bible Church.

Karen plans to attend Panhandle A and M College at Goodwell, Oklahoma. She wants to major in elementary education because she enjoys working with children and feels it would be a rewarding experience.

by Kathy Fletcher
 Kenneth Olene Bateman was born October 2, 1945 in Pampa, Texas as a new son to proud parents, Mr. and Mrs. H.O. Bateman. Kenneth has one sister, Miss Jennifer Kay Bateman who is now living in Skellytown, Texas.

The first seven school years for Kenneth were spent in Perryton, Texas. But in 1959 Gruver Schools was very honored to have Kenneth added to their enrollment. He began his eighth grade here. Each year at Gruver High School proved to be an interesting one for Kenneth.

When a Freshman, Kenneth was the class favorite and he also played in the High School Band. Then came that all-important Sophomore year for Kenneth. He was elected President of the class and also served on the Student Council. When a Junior the Annual Staff elected him as Advertising Editor and he is also serving in this office this year. The "Big G" football team was very fortunate to have Kenneth as their manager this year. He did a very fine job and is to be highly commended for this excellent work.

Kenneth plans to attend Howard Layne College which is located at Brownwood, Texas. Kenneth's main ambition is to become a religious artist.

Behind the Scenes

by Bonnie Sullins

There are several people that contribute to our school who go unnoticed or without recognition. This column is intended to salute those people.

Football season is over and we are all mighty proud of our boys. I believe that we have let them all know about it, except one. This one is perhaps the biggest backer on the team. The manager, Kenneth Bateman, has done more than wipe the sweat off their faces, carry ice to them, make sure they had all their equipment and bandage their wounds. He was there to pat them on the back and put in a good word when things were going extra rough and to bandage their inner wounds when they felt they had made some bad plays. Yes, Kenneth has truly been a valuable player to our team.

The school spirit has been great this year so far. The halls have been decorated every week with signs of all kinds urging our boys on to victory, keeping their spirits up and letting them know we were behind them all the way. These signs didn't just appear every week someone had to spend hours upon hours painting them and hanging them. This work was done, not during school, but on weekends and free time. Because of Judy Holt we have had some great signs this year. Judy has gotten a lot of assistance from Glenda Purvis. We owe a great amount of gratitude to these girls.

Spirit has not only been shown among the student body it has been among the town folk too. We deeply appreciate the signs which were painted on the store windows every week by R.L. Kirk. Gruver has backed the Greyhounds tremendous-

ly. We realize this takes much time and work on their part and we wish to thank the merchants. We also wish to thank the people who supported the Greyhounds in their ads in the paper.

This is one organization which has been growing a great deal during the last two years. This is our Student Council which is made up of the President and an elected representative from every class. They meet to discuss problems in the school and ways of making improvements. This year they have completed a very fine job on the Halloween Program which they help to organize. They also had control of the Homecoming Bonfire which added much to the school spirit.

This year they have been working on a clean-up campaign to keep our campus clean and something of which to be proud. A speech by Jim Cooksey during an assembly has lingered in the students minds for everytime someone drops a piece of paper on the campus, they usually pick it up.

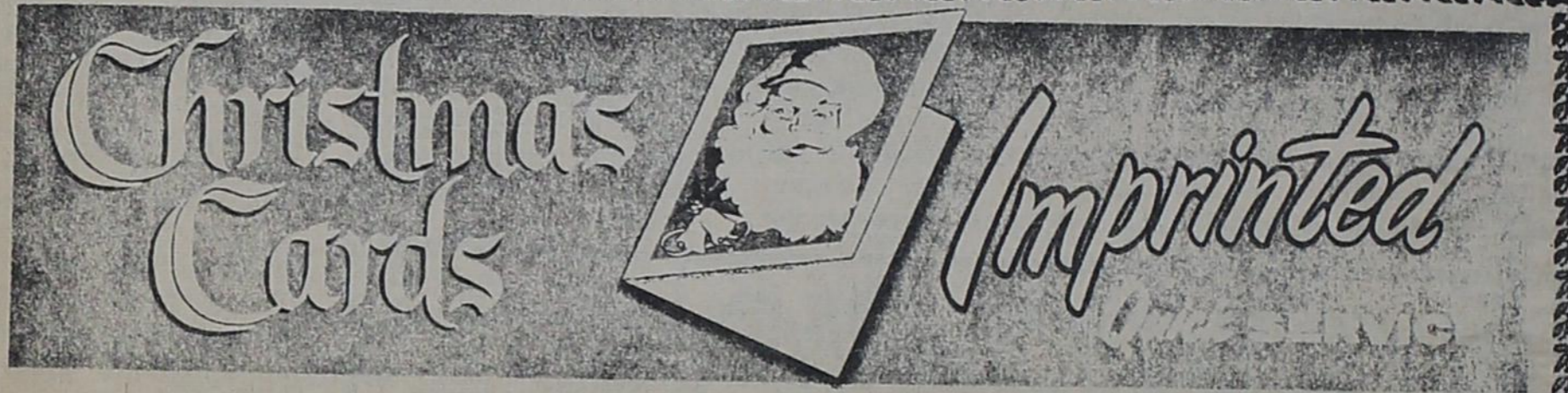
Senior Party

by Bonnie Sullins

Last Tuesday night the Senior Class had a wonderful party at the Community Building at Michigan-Wisconsin Plant. It was given by the Seniors who live at the plant and sponsored by Mrs. Blankenship and Mrs. Hardesty. Throughout the evening the Seniors played ping pong and table suffice board.

The highlight of the evening came when Jeff Roper showed some of his slides which he took at football and basketball games as well as at school and home.

Everyone enjoyed the refreshments which included sandwiches, cookies, dips and chips.



GRUVER DRUG CO

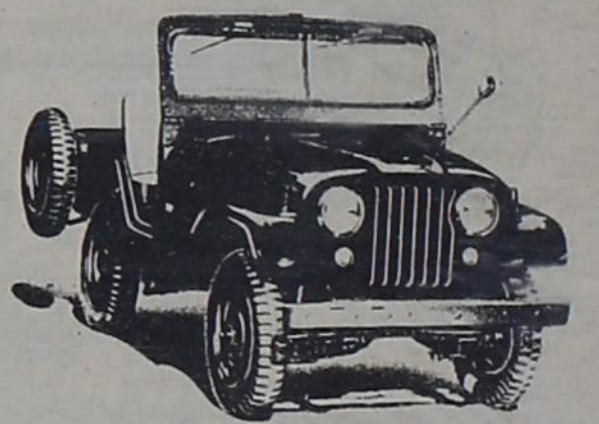
NEW '64's are here!

THE 1964 MODELS ARE NOW ON DISPLAY AT RENTFROW MOTOR COMPANY IN BORGER COME IN AND VISIT WITH US AND LOOK OVER THE ARRAY OF AUTOMOBILES



DODGE MOTOR HOME

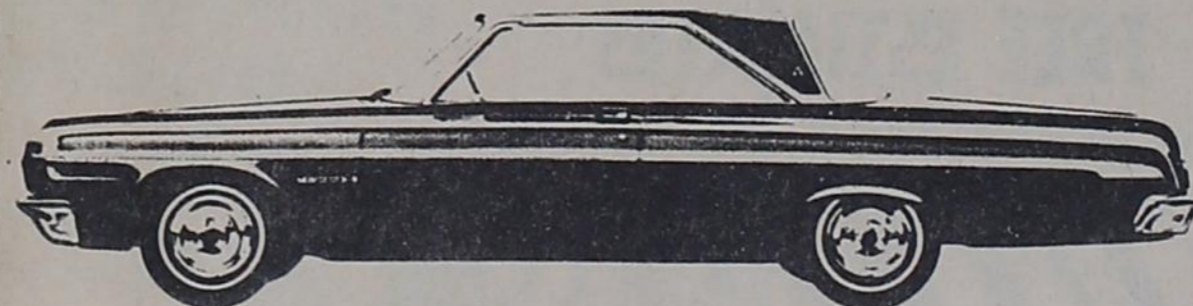
PREVIEWING FOR THE WEEK OF NOVEMBER 25 THROUGH THE 30TH



Jeep



Dodge Pickup



Dodge



Comet



Mercury



Continental

RENTFROW MOTOR CO

611 S. Main

Borger, Texas

CODES FROM MORSE

Mrs. Desmond Kelly

Mrs. J.H. Davis is now home from the hospital following a fall which broke her wrist. Her sister, Mrs. Edgar Womble of Spearman also broke her arm on Sunday and is in the Hospital in Amarillo on Monday to be with Mrs. Womble on Monday were Mr. and Mrs. L.M. Womble.

Mr. and Mrs. A.C. Womble are in Hot Springs, New Mexico for a week or so taking baths and resting.

Mr. and Mrs. Grant Miner had as their guests over the weekend, his parents, the George Miners of Hereford. Stan returned home for a visit with his grandparents.

Miss Gloria Price, former teacher in the Morse school and now from near Lubbock, visited over the week-end with Joyce Schick and the Dixons.

Mr. and Mrs. Jim Hensley and children of Texline, former coach in Morse, visited with the Gene Brothers and other friends over the weekend.

Among those that have deer hunting are Al Carter, Henry Reid, Charles Reid, Joe Reiswig and J.W. Chesser. Mr. and Mrs. Desmond Kelly and Don and Joe Reiswig visited in the Corum Dortch home in Stratford Friday night.

Reverend Vance Zinn pastor of the Baptist Church has gone this week to Anna, Texas near McKenny to hold a revival meeting.

Desmond Kelly flew to Sweetwater, Texas over the weekend with a cousin Manis Cline of Los Angeles

California who was here visiting. They visited on Sunday in the Wayne Kelly home of Lubbock.

Mr. and Mrs. James Steje and Lynn of Gruver and Mr. and Mrs. Desmond Kelly, Evelyn and Elaine attended the Gold Star 4-H Banquet in Amarillo on Saturday night. This was held in the YWCA. The Kellys also visited in the home of her brother, the Jack Dortchs.

Mr. and Mrs. Jerry Womble are proud to announce the arrival of their first child, a girl named Sherri Lee and weight was 7 lbs. 8 oz. She was born early Monday morning, in the Borger Hospital. The proud grandparents in Morse are the R.C. Wombles.

PTA MEETS

Regular meeting of the P.T.A. was called to order by president Harold Fleming. The devotional was given by Dorsey Schad and the band under the direction of Mr. Moohr gave the program.

Mrs. Robin Giblin stated that a P.T.A. Book Shelf was being organized in the Community building in connection with the Library there. The magazines from 1960 would be on file along with other reference materials that anyone can use for talks or programs.

Harold Fleming, delegate to the State convention was unable to go and Mrs. Mary Gillispie was elected to go; also, Mrs. Jack Johnson plans to go to represent the

the group.

GRANT MINERS HOST BRIDGE CLUB

On Saturday the Bridge Club met in the Community Building with the Miners as host. Refreshments were served to the Tom Dortchs, Lyn Davis, Gene Brothers, H.B. Parks, Earl Hendersons, Al Carters, Charles Reids, L.M. Wombles, Lloyd Foole, Gene and Perry Dixon and the host and hostess.

High score was won by Mrs. Gene Brothers and Perry Dixon; low went to Mrs. Earl Hendersons, and Lynn Davis; Travelling went to Earl Henderson.

JUNIOR LEADERS 4-MEET

On Wednesday the Junior Leaders met in regular session in the School Cafeteria at 4:30 p.m. The meeting was called to order by president, Patricia Henderson and the program consisted of a film on electricity shown to the group.

MORNING BIBLE STUDY ORGANIZED

A morning Bible study for Bible study for the ladies of the community has been organized to meet in various homes. On Tuesday morning the group meets in the Willard McCloy home for the ladies in that vicinity. Then on Wednesday morning the group meets from 9:00 until 10:00 in the R.C. Womble home for the town ladies. Tentative plans are for a group to meet on Thursday morning in the A.L. Marks home south of Morse which would take care of the ladies

in that area.

Reverend Vance Zinn is teaching Basic Bible Truths, and the same book is taught in all groups. This is for everyone regardless of religious affiliation as the

denominational doctrines are not gone into at these meetings.

Those attending at the R.C. Womble home last Wednesday were Mrs. Frank

Karr, Sr. and Mrs. Frank Karr, Jr., Mrs. Harold Fleming, Mrs. Dorsey Schad, Mrs.

Al Carter, Mrs. Desmond Kelly, Mrs. Walter Schick, Mrs. Mrs. David Reid, Mrs. Bill

Carter of Borger, Reverend Zinn and the hostess. Coffee and cookies were served to the group.

County Agents Report

by Robert Adamson

Following the lines of least resistance is what makes both rivers and men crooked.

BRUCELLOSIS TESTING STARTED

Brucellosis testing started this Monday on cattle in Precincts I and II of Hansford County, which is the east half. Twenty percent of the herd of 50 head, whichever is greater, will be tested. Cow owners will be contacted as to the date, their cows will be tested. Only cows will be tested. They are especially interested in testing older cows. Cattle owners are asked to cooperate in making this test as complete as possible.

BEEF BY THE SIDE OR BY THE CUT?

Despite today's trend toward smaller packages of food and more convenient foods, the sale of quarters and sides of beef is on the increase, says Ed Uvacek, livestock marketing specialist, with the Texas Agricultural Extension Service.

In some cases, says the specialist, buying beef in this form can save the consumer money, but he advises them to look carefully at the economics of such purchases. Unfortunately, all the carcass is not steak and roast. A large portion is cutting loss, fat, bone and low price cuts. In fact, Uvacek says that it takes about 2.16 pounds of a Choice grade live animal to yield just one pound of U.S. Choice beef in a retail store.

In making the decision whether to buy a side of beef first determine the price of each of the major retail cuts at the local food store. These cuts are rib roast, 8 percent of the carcass; chuck roast, 19 percent; ground beef, 18 percent; T-bone and porterhouse steak, 6 percent; round steak, 10 percent; rump roast 5 percent; sirloin, 8 percent; and stew beef, 6 percent.

To compute the total cost of retail beef, multiply the percentage of each of the cuts by the price of that cut in the retail market, explains Uvacek. Then add these individual costs and divide the total by 80 percent, the carcass minus the bone, fat and cutting loss. This gives the average retail cost per pound if the beef were purchased over the retail counter.

To compare this price one quoted for beef by the side, first divide the price per pound of side by 80 and add the price for storage of the meat, about 5 cents per pound. To decide if buying beef by the side is really a bargain, compare this figure with the retail

STILL TIME TO ORDER A M-BORN CUSTOM TAILORED SUIT FOR CHRISTMAS



Large selection of materials and patterns to choose from

tailored to your exact size

MODEL 703 3-button model with rather square shoulders and slim, high gorge lapels (no lapel button-hole). Center vent.

MODEL 273 3-button notch lapel. Flap pockets, full chest, easy waist. No center vent, high square shoulder effect.

Complete line of coats, jackets and insulated unionalls for cold weather

WESTERFIELDS

Gruver, Texas

LET'S TALK TURKEY!!

Folgers # can COFFEE 69c

Gladiola 5 # FLOUR 49c

ICE CREAM 1/2 gal 79c

MELLORINE 1/2 gal 39c

1/2 HAM 53c butt or shank end

GROUND BEEF 39c lb.

WHOLE HAM 49c lb.

Place your order now for Turkeys or Chicken Hens

HEATH FOOD MARKET

Irrigation Test Holes Farm Water Wells

FREE ESTIMATES

JULIAN WATER WELL SERVICE

P.O. Box 604 Liberal, Kansas MA4-5137

THREE ROTARY RIGS available to insure fast service

Liberal--Eddie Julian--MA-4-5137

MERCHANDISERS OF ALL TYPES OF GRAIN

BONDED STORAGE

SERVING THE FARMERS AND RANCHERS THROUGHOUT THE AREA

DAN SHRADER - Manager
P. O. BOX NO. 207
207 N. McCREE GRUVER, TEXAS

Gruver Elevators Inc.
Gruver Texas

Firestone

ON-THE-FARM TRACTOR TIRE SERVICE

as near as your phone...

- No More Long Work Stoppages
 - No More Expensive Trips to Town
- Our Service Truck Can Come to Your Farm in a Jiffy



Whatever you need — on-the-spot repairs, changeovers or Hydro-Flation service... we can do the job quickly and efficiently on your farm. Our completely equipped truck is always ready to go. Simply phone us and our farm tire expert will be on his way to handle your tire service needs.

Buy Farm Tires ON FARM TERMS



HARVEST TIME SALE

REAP the SAVINGS on this BUMPER CROP of VALUES!

BUY YOUR FARM TIRES NOW...AND SAVE

TRACTOR TIRES
Rears and Fronts Discount Priced for Farmer Days
Don't miss them!

Big Discounts on Truck and Passenger Tires
WAGON & IMPLEMENT TIRES TOO!

All tires mounted FREE
Fast, efficient service

DISCOUNT PRICES!
The Lowest in Years...we will not be undersold. You buy quality when you buy Firestone... Even at discount prices.

NO MONEY DOWN!
ON PASSENGER TIRES WHEN YOU TRADE IN YOUR OLD TIRES
take up to a year to pay on tractor tires
WIDE SELECTION...ALL SIZES & TYPES

BONUS trade-in allowance
During FARMER DAYS
Now get **\$100.00** up to...
Trade-in allowance on your worn rear tractor tires

Choose from these Big used tractor and implement tire Bargains!
(INSERT TYPES, SIZES AND PRICES OF USED TIRES)
GET HERE EARLY

Sorry...No phone quotations...Discount prices for those who come in ready to buy

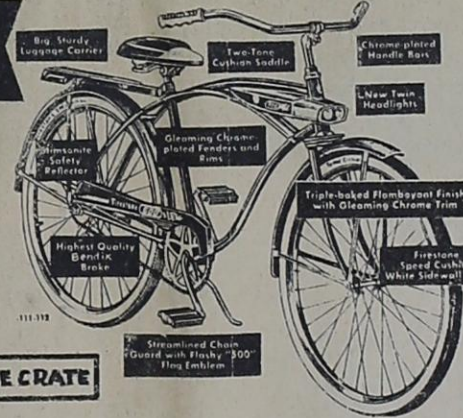


Firestone DOUBLE GUARANTEE:

- 1. honored by more than 60,000 Firestone dealers and stores from coast to coast wherever you travel
 - 2. LIFETIME GUARANTEE against defects in workmanship and materials for the life of the original tread.
 - 3. ROAD HAZARD GUARANTEE against normal road hazards (except repairable punctures) encountered in everyday passenger car use for number of months specified.
- Replacements prorated on tread wear and based on Firestone price current at time of adjustment.
- Your Firestone GUARANTEE provides protection against tire failure from dozens of road hazards like these:
- potholes
 - ruts
 - curbs
 - chippers
 - hard spots

Just Say "CHARGE IT" CHOOSE YOUR OWN TERMS
Pay weekly, Semi-monthly or monthly

Firestone '500' BICYCLES
26-inch Boys or Girls Model **\$44.95**



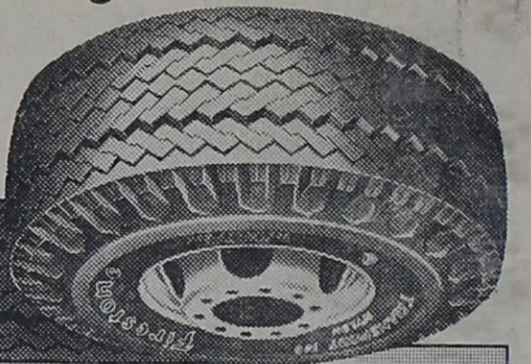
IN THE CRATE

Low Pre-Season Prices
Firestone Town & Country WINTER TIRES
Guaranteed to go thru ice, mud and snow...OR WE PAY THE TOW!



LOW PRICES EASY TERMS

NOW...More Stop-and-go TRACTION
than any other highway truck tire



The ALL-NEW Firestone TRANSPORT-100

the truck tire that has amazing traction and increases mileage by 50%...and more

- One extra mile for every two you are now getting
- More traction when half worn than previous highway tires when brand new
- Stone guards keeps tread free of gravel and stones

You're Money Ahead When You Tire-up with Transport-100's



Firestone DELUXE CHAMPION NEW TREADS

APPLIED ON SOUND TIRE BODIES OR ON YOUR OWN TIRES

4 WHITEWALLS ANY SIZE 49.49
wide or narrow tubeless or tube-type
Plus tax and 4 trade-in tires off your car

BRAKE ADJUSTMENT OFFER

Make sure your brakes are safe



Here's What We Do:

- Pull front wheels and inspect brake lining and drums
- Clean, repack and adjust front wheel bearings
- Adjust brakes and add fluid

\$119 ANY AMERICAN CAR

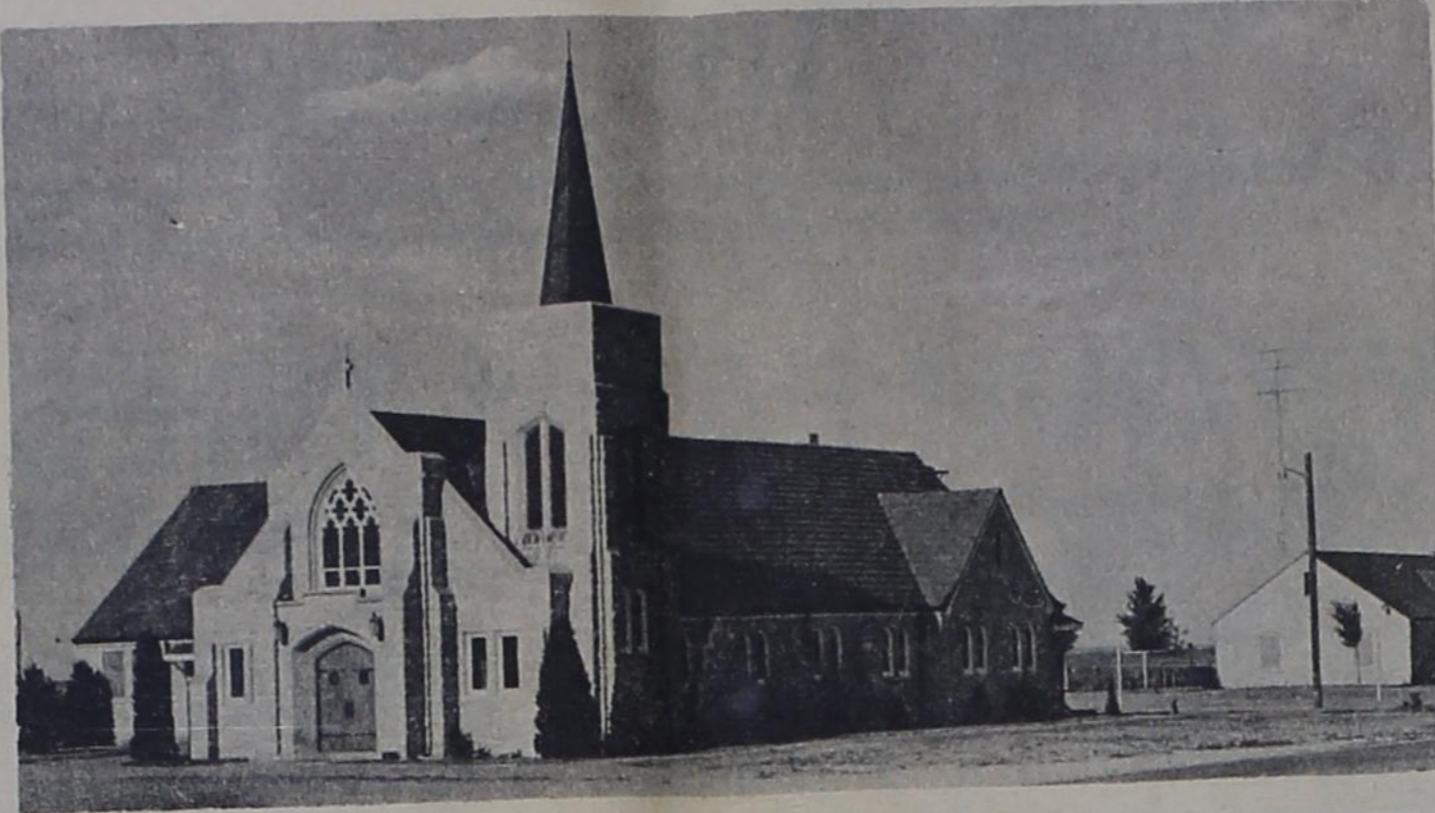
ALL WORK DONE BY EXPERTS

BYRD & DEAN TEXACO
GRUVER TEXAS

Firestone ...WHERE YOUR DOLLARS BUY MORE
GRUVER FARM SUPPLY & TEXACO SERVICE STATION
Phone FI-7-2882 Phone FI-7-2424

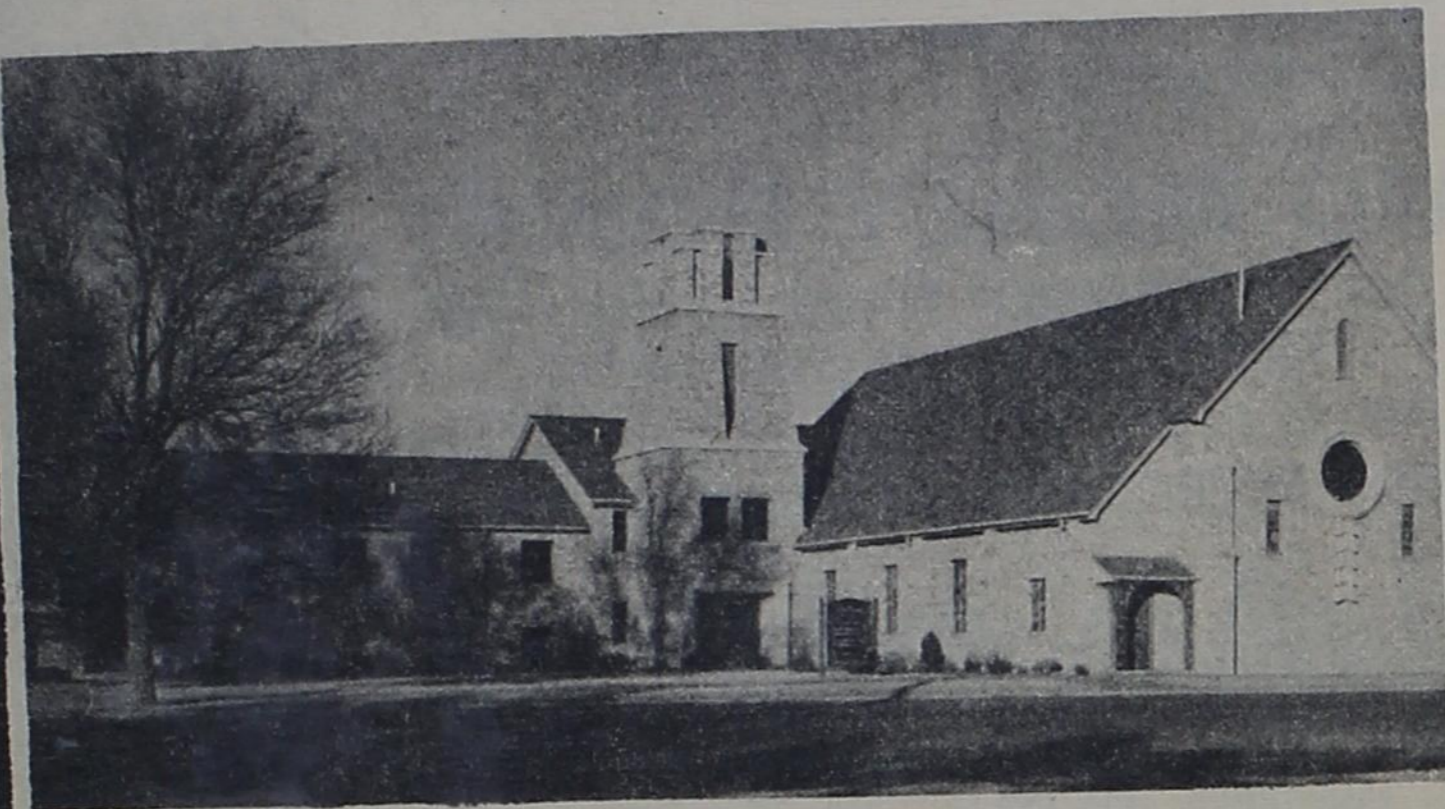
attend Church

SUNDAY



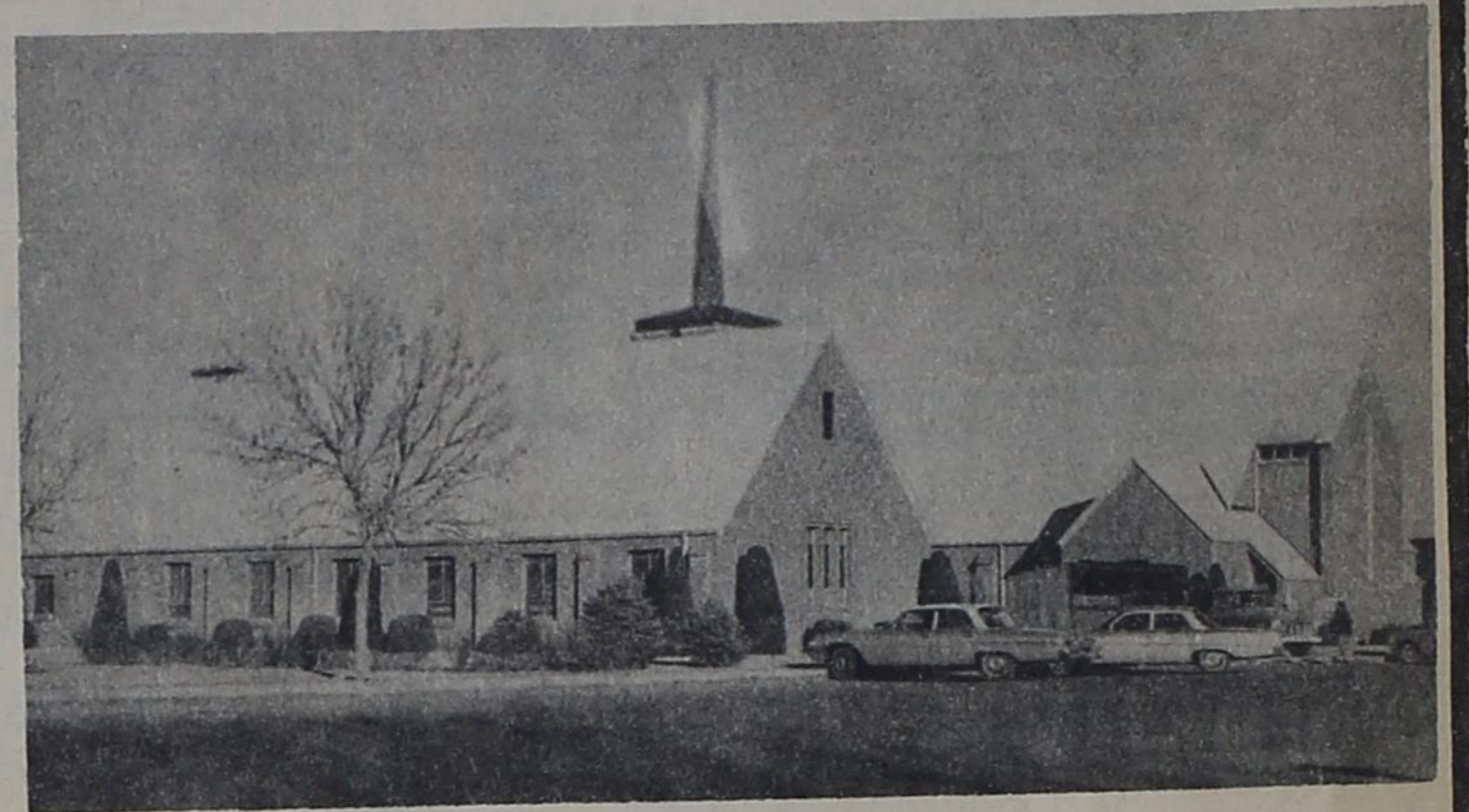
THE OSLO LUTHERAN CHURCH
pastor, Robert Cordes

Sunday School	9:45
Adult Bible Class	9:45
Morning Worship	11:00
Brotherhood 1 & 3 Thursday	7:30
Ladies Aid 2nd Thursday	2:00



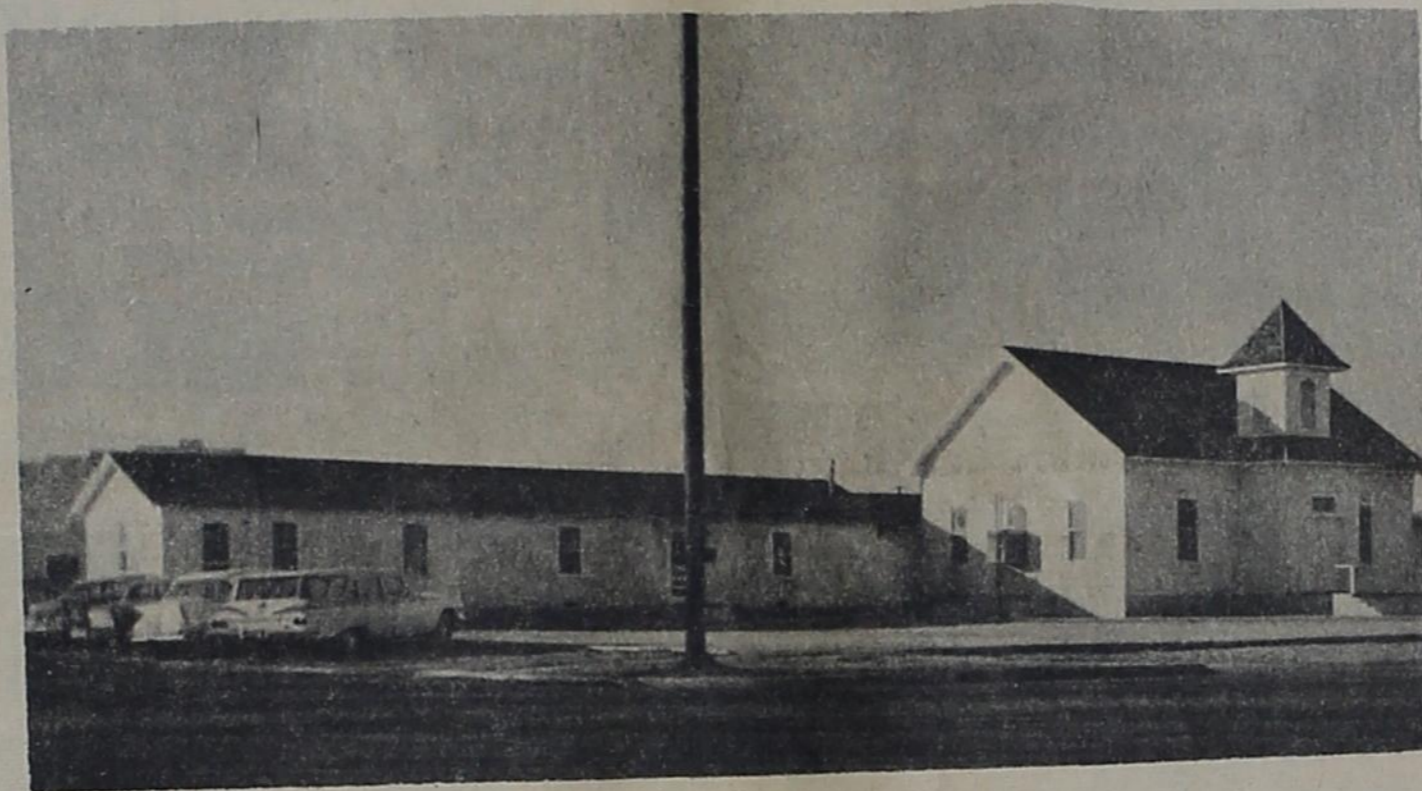
THE FIRST BAPTIST CHURCH
pastor Reverend, A.G. Purvis

Sunday School	9:45
Morning Worship	11:00
Training Union	7:00
Evening Worship	8:00
Junior & Intermediate Choirs, Sunday	3:00
Adult Choir Practice Tuesday	7:00
Wednesday Prayer Service	8:00
Wednesday Evening Lesson Study	6:45
Y.W.A., Wednesday	5:30
R.A.'s Wednesday	5:30
G.A.'s Thursday	4:00
W.M.U., Thursday	3:00
Sunbeams, Thursday Beginner & Pri. 1	3:00
Primary 2	3:30
Primary Choir, Thursday	4:30
Beginner Choir, Thursday	4:00



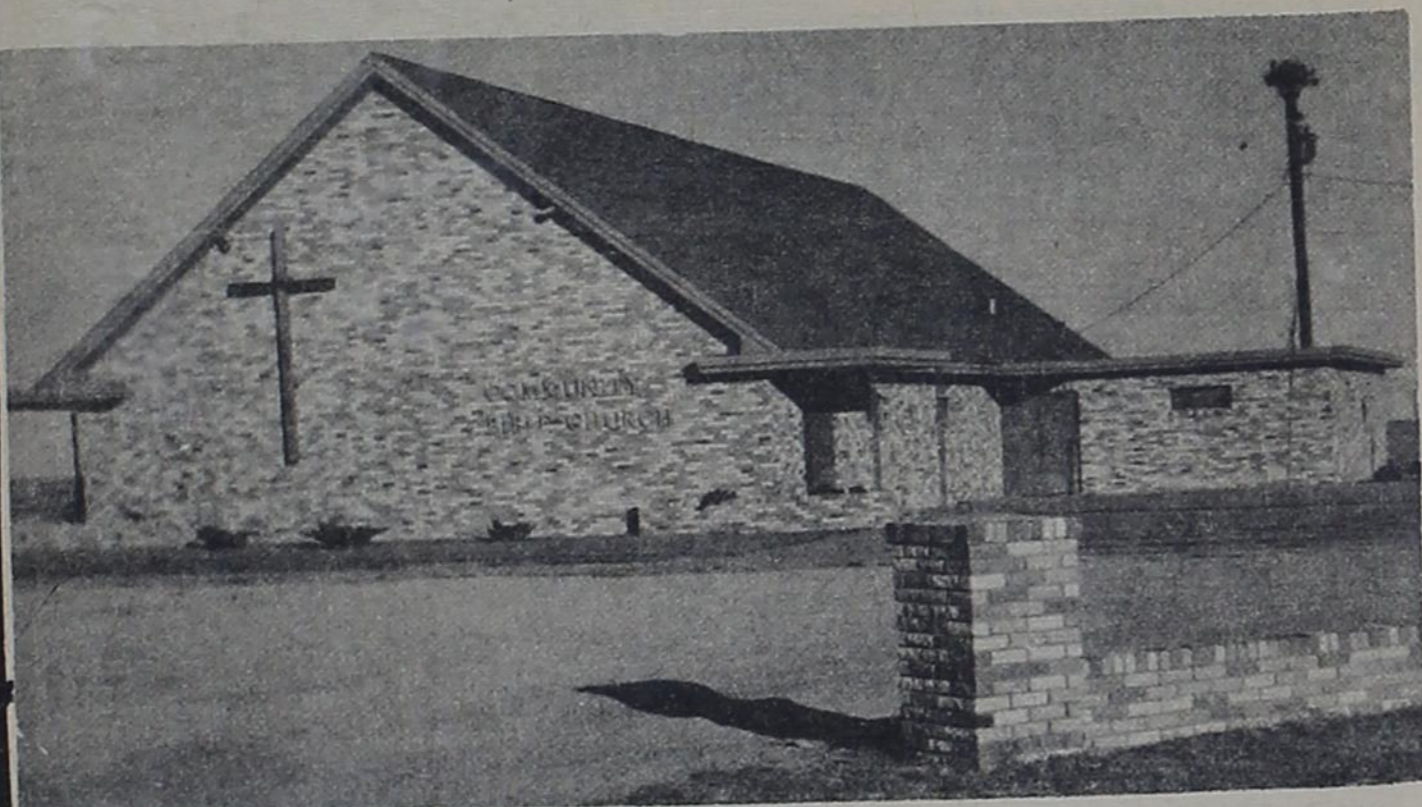
THE GRUVER METHODIST CHURCH
pastor, Reverend R.L. Kirk

Sunday School	9:45
Morning Worship	11:00
M.Y.F.	7:00
Evening Worship	6:00
Wednesday Bible Study	7:00
Wednesday Choir Practice	8:00
Thursday W.S.C.S. monthly	3:00
Dorcas Circle Thursday	9:30
Mary Martha Circle Thursday	3:00



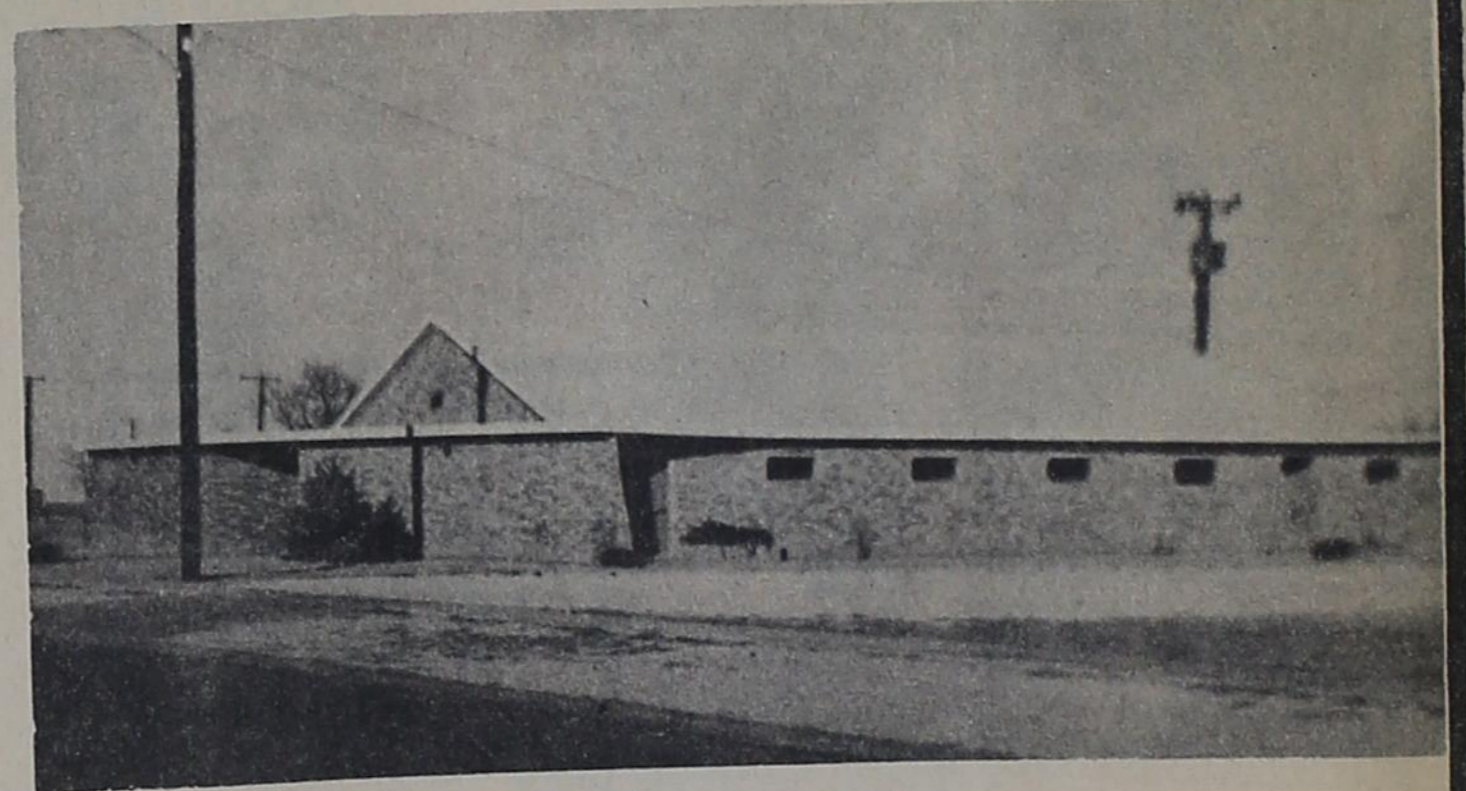
THE FIRST CHRISTIAN CHURCH
pastor, Reverend Robert Lamson

Sunday School	10:00
Morning Worship	11:00
Chi-Rho	7:00
Adult Bible Study	8:00
Wednesday Juniors	4:00
Prayer Meeting	8:00



THE COMMUNITY BIBLE CHURCH
pastor, W.L. Porterfield

Sunday School	9:45
Morning Worship	11:00
Youth Meeting	6:30
Evening Worship	7:30
Wednesday Bible Study	8:00



THE CHURCH OF CHRIST
minister, Alfred White

Bible Study	10:00
Morning Worship	11:00
Evening Worship	6:00
Bible Study Wednesday	8:00
Ladies Class Thursday Juniors	
Children Cared for	2:00
Ladies Class Thursday Senior	2:45



THE ASSEMBLY OF GOD
pastor, Robert G. Slaton

Sunday School	9:45
Morning Worship	11:00
Sunday Evening Worship	7:30
Wednesday Evening Prayer Meeting	7:45

Universal Motors
Gruver State Bank
Gruver Motor Company
RILEY BROTHERS T.V.
UNIVERSAL OIL CO.

This Church Page is sponsored by these merchants

GRUVER LUMBER CO.
PEDDY BUTANE
TEXACO SERVICE STATION
BOB CLUCK
GRUVER ELEVATOR
GRUVER 66 SERVICE

LOCALS

Mrs. Edith Odom of Marillo and Mrs. Pauline Winger have just returned from Port Aransas where they were entertained by Mr. and Mrs. A.K. Henderson and Mr. and Mrs. Sizozier. They enjoyed fishing and eating the fish. The group was visited by Gay and Lil Fletcher and saw Dave McClellans and Randolph McClellans of Gruver and the Ralph McClellans of Dumas and also Mr. and Mrs. Albert Bakelouse.

Mavis Hart had minor surgery in St. Anthony's Hospital in Amarillo last week. She is doing fine now.

Miss Phyllis Elliott has been quite ill spending several days in the Hansford County Hospital. She was later taken to her home in Lubbock where she had surgery for an appendectomy.

Mr. and Mrs. Bobby Coker and daughter Penny of Oklahoma City were guests in the Clifford George home over the weekend.

Pete Maupin is recovering nicely from surgery in St. Anthony's Hospital in Oklahoma City.

Kay Winger spent the past weekend visiting in the home of her mother Mrs. Pauline Winger.

Mr. and Mrs. Will Nobles were guests in the home of their daughter, Mr. and Mrs. Carl Cooper. The Nobles are from Springer New Mexico.

Mrs. Eula Gibson, a former resident of Gruver is recovering from surgery in the Community hospital of Elk City, Oklahoma.

Mr. and Mrs. Walter Bergin of Bonnerspring, Kansas have been guests in the home of Mr. and Mrs. Jack Taber and Mr. and Mrs. T.J. Bergin. The couple were enroute to California where they will spend the winter.

Mr. and Mrs. Sonny Blankenship and children of Amarillo were guests in the Tom Jones, Gene Reynolds and Al Blankenship homes over the weekend.

Mr. and Mrs. Larry Linde and John Ross are visiting in the home of her parents the Ross Walkers. Larry has finished college at Okmulgee Oklahoma and will go to work with his father in Guyton.

Mrs. Molly Lowry of Liberal Kansas passed away Monday. She is the mother of Hank Lowry of Gruver and Mrs. Charlie Cutter of Liberal.

Mrs. Herbert Childers of Dallas, Mrs. Newt Childers of Dalhart and Miss Sallie Childers of Dalhart were Tuesday guests in the home of Mrs. W.N. Fletcher.

Mrs. Isabelle Barnett of Perryton Texas spent a recent afternoon with her uncle Mr. Frank Fleck.

LAST LINE

But then every man needs two women. A secretary to take everything down and a wife to pick everything up.

LEGION AUXILIARY HOLDS MEETING

The American Legion Auxiliary, Sullivan R. Spivey Unit No. 154 met in the home of Mrs. Agatha Rafferty

Monday November 18, 1963 at 2:00 p.m.

The meeting was opened in regular form with Mrs. Elizabeth McClellan presiding. Mrs. Helen Truax directed the hymn of the month.

It was reported that the Poppy Sales for the Veteran Benefit amounted to \$262. The Auxiliary wishes to thank and extend a deep appreciation to all who worked with the Poppy Day and to all who contributed to the worthy cause. Mrs. Alice Walker was Chairman of the



PERMANENT BEAUTY! Here are candles with the age-old charm of wax candles, but without the unpleasant odor, smoke, messy drippings, and safety hazards. These butane fueled candles offer a world of modern advantages and come in five lovely colors. By RONSON

Poppy Sales. Mrs. Margie Barkley, membership chairman stated that new membership for the Auxiliary mounts to thirty-five. The quota is thirty-two for the year.

A beautiful memorial plaque of engraved brass on Walnut honoring Sullivan R. Spivey, for whom the post is named, has been obtained and will be presented by the Auxiliary to the Post. It will be placed beneath the picture of Mr. Spivey who was the first soldier from Hansford County to give his life for his country in World War I. Mrs. Nellabeth Alexander

was in charge of preparing the beautiful plaque.

Mrs. Agatha Rafferty reported that the remodeling of the basement of the Memorial building is coming

along very nicely, and will be beautiful when completed.

Mrs. Maude Alexander will be the representative of the Auxiliary on the Library board of the City.

Ten or twelve members and friends are planning to attend and assist with the Veterans Gift Shop at the Veterans Hospital in Amarillo December 9-12.

WHAT'S IT COST?

■ It's getting close to turkey time and, even during those gay holiday family dinners, we are all interested in saving money — certainly we don't want to waste any. ■ And, when it comes to savings your new electric range will shine. ■ You'll get little, if any meat shrinkage (and that includes the turkey). ■ You'll retain more nutrients in the vegetables you cook electrically and that contributes to better health for your family. ■ But that's what we've come to expect of modern electric living — biggest bargain in your family budget. ■ Oh yes, the average family cost for cooking the clean electric way? ■ Just 7¢ a day! ■ ■ ■

WANT ADS

FOR SALE

'61 Chevrolet, 2 ton; '62 Chevrolet 2ton, both equipped with grain bed, hoist, heavy duty bumpers; 19 ft. camp trailer 1962 model; and Model C, 20 ft. Baldwin combine. Contact Rex Williams.

FOR SALE

1 section of good farm land near Stratford. Good wheat allotment. Good water area. Gruver Agency, FI-7-2422.

FARM LOANS
LOWEST RATES
For FARM and RANCH LOANS
See GENE CLUCK

FOR SALE
Balls or Bundle feed, Sweet Sorghum or Hygeria. Call or See Clarence Kauffman FI-7-2758.



ELECTRIC SERVICE... the biggest bargain in your family budget

WE WISH TO ANNOUNCE A CHANGE IN MANAGEMENT AT THE STRAWN FARM & RANCH SUPPLY by presenting

MR. LESLIE BARKLEY as the new manager: effective Mon. Nov 11, 1963

Seed
Irrigation Supplies
Fertilizers & Chemicals

Leslie will be featuring the same, or better, good service to our customers and solicits your business.

STRAWN FARM & RANCH SUPPLY
Gruver FI 7-2633

LEE ROY MITCHELL
DIRT CONTRACTOR
P. O. BOX 103
GRUVER, TEXAS
PHONE FIRESIDE 7-2384

Mr. and Mrs. Loyd Andrews have just returned from Oklahoma where they spent several days.

'64 Jet-smooth Luxury CHEVROLET



Now how are the high-priced cars going to explain this!

Here are looks, luxury and comfort that you'd expect to set you back plenty—if they came from anybody but the people at Chevrolet. Fresh-minted styling with clean uncluttered lines that give the '64 Jet-smooth Chevrolet its feeling of new length and lowness. Rich new interiors with supple fabrics. Foam-cushioned front and rear seats and door-to-door carpeting—now standard in all models, including the modestly priced Biscaynes. And, of course, the niceties of Body by Fisher craftsmanship. You've got a wealth of power to pick from—engines from a peppery 140-hp 6 to a 425-hp V8! And you've got the '64 Jet-smooth ride to cushion you from road noise and vibration. Been promising yourself luxury like this someday? Your someday is here, as your dealer will gladly show you. *Optional at extra cost.

Ask about a SMILE-MILE Ride and the Chevrolet Song Book at your Chevrolet dealer's

GRUVER MOTOR COMPANY CHEVROLET

433 MAIN STREET GRUVER, TEXAS FIRESIDE 7-2432

713 HOUSTON	915 MIDLAND
512 SAN ANTONIO	817 FT. WORTH
806 AMARILLO	405 OKLAHOMA CITY

TAKE A NUMBER (we'll find the city)

Call those away this fast new way... use Area Codes! Save your waiting time on the line... give the operator Area Codes instead of names of cities. Calls go through faster, easier. Why not call out-of-town relatives or friends tonight? Check your phone book for Area Codes you want. Or get them from the operator and then jot them down for easy reference.

SOUTHWESTERN BELL TELEPHONE COMPANY

See... **BOSS** FOR IRRIGATION PIPE LINES

DISCO FLO-MOR OAKS

IF YOU CAN PLOW IT - WE CAN WATER IT

Dealer, PAT WESTERFIELD
Box 117 Gruver FI-7-2700

FACTORY ENGINEERED FOR IRRIGATION

The International UV-549 is a compact modernly designed V-8 valve-in-head engine built for heavy-duty work. It has the necessary weight and strength for dependable high performance with minimum operating cost.

North Plains Truck & Implement Co.
Hi-Way 15 Spearman 659-2421



HAPPY THANKSGIVING

Will be closed Thursday November 28th. **FOOD-FEST**

SAVE BUCCANEER STAMPS
Double Stamps every Wednesday

Specials for:
Thursday Nov. 21 thru
Wednesday November 27th.

TENDER PLUMP...DELICIOUS Turkeys

TOMS & HENS

18# AND UP lb. 39c

8# TO 18# lb. 45c

Blue Morrow SAUSAGE 55c
2 # pkg. \$1.10

ALL HAMS AND CHICKEN HENS
AT LOWEST MARKET PRICE



Whole Kernel
Shurfine no. 303 can
CORN 2 for 31c

TENDER CRUST
BROWN N SERVE
ROLLS pkg. 24c

Shurfine no. 300 can
CRANBERRY SAUCE 5 for \$1

Renoun Whole No. 303 Can
GREEN BEANS 5 for \$1

PRODUCE

Crispy
CELERY lb. 15c

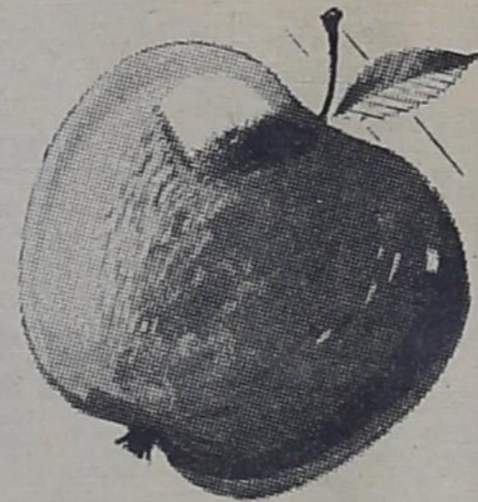
Ocean Spray
CRANBERRIES pkg. 25c

RADISHES or
GREEN ONIONS 2 for 15c

Washington Ex-Fany Red Rome
APPLES lb. 15c

Shurfine # 300 can
PUMPKIN 10c

Shurfine
COFFEE lb. 59c



Bond
STUFFING MIX pkg 29c

CRISCO 3 # can 69c

Soflin 80 count box
NAPKINS 15c

Shurfine
SWEET POTATOES 3 tall cans \$1

Shurfine
PINEAPPLE No. 2 can 25c

Sweetheart Hand
SOAP 3 bars 35c
T.V. Advertised to decorate

G&G FOODLINER

