

FINAL SUMMER SALE

Firestone ON-THE-FARM TRACTOR TIRE SERVICE

as near as your phone...

Call Gruver Farm Supply
Fireside 7-2882

- No More Long Work Stoppages
- No More Expensive Trips to Town

Our Service Truck Can Come to Your Farm in a Jiffy

Whatever you need — on-the-spot repairs, changeovers or Hydro-Flation service... we can do the job quickly and efficiently on your farm. Our completely equipped truck is always ready to go. Simply phone us and our farm tire expert will be on his way to handle your tire service needs.

Buy Farm Tires ON FARM TERMS

BUY YOUR FARM TIRES NOW...AND SAVE

TRACTOR TIRES

Rears and Fronts Discount Priced for Farmer Days Don't miss them!

DISCOUNT PRICES!

The Lowest in Years...we will not be undersold. You buy quality when you buy Firestone... Even at discount prices.

YOU DON'T NEED CASH

NO MONEY DOWN!

ON PASSENGER TIRES WHEN YOU TRADE IN YOUR OLD TIRES

take up to a year to pay on tractor tires

WIDE SELECTION...ALL SIZES & TYPES

Big Discounts on Truck and Passenger Tires

WAGON & IMPLEMENT TIRES TOO!

All tires mounted FREE

Fast, efficient service

BONUS trade-in allowance

During FARMER DAYS Now get \$100.00 up to... Trade-in allowance on your worn rear tractor tires

Choose from these Big used tractor and implement tire Bargains!

(INSERT TYPES, SIZES AND PRICES OF USED TIRES)

GET HERE EARLY

Sorry...No phone quotations...Discount prices for those who come in ready to buy

TRADE IN YOUR OLD BATTERY



Firestone Dri-Charged BATTERIES

your best buy

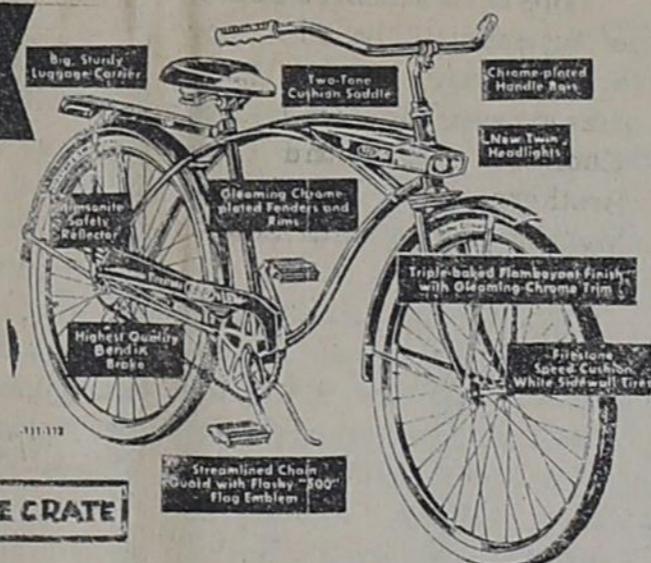
Trade now... get our generous allowance, before your battery wears out. Dri-Charged batteries are always 100% fresh. They are activated when installed in your car. You get every minute of their long life.

Just Say "CHARGE IT" CHOOSE YOUR OWN TERMS Pay weekly, Semi-monthly or monthly

Firestone '500 BICYCLES

26-inch Boys or Girls Model \$44.95

IN THE CRATE!



NOW... More Stop-and-go TRACTION

than any other highway truck tire



The ALL-NEW Firestone TRANSPORT-100

the truck tire that has amazing traction and increases mileage by 50%...and more

- One extra mile for every two you are now getting
- More traction when half worn than previous highway tires when brand new
- Stone guards keeps tread free of gravel and stones

You're Money Ahead When You Tire-up with Transport-100's



GO GREYHOUNDS WE'RE BEHIND YOU

LOW PRICES EASY TERMS



Firestone DELUXE CHAMPION NEW TREADS

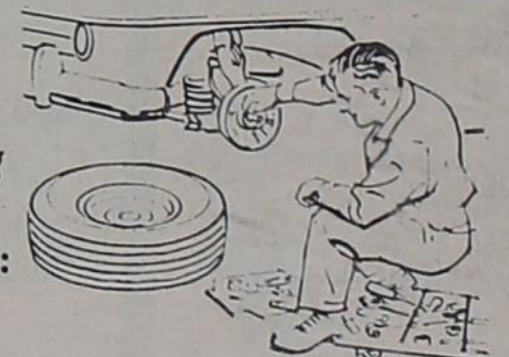
APPLIED ON SOUND TIRE BODIES OR ON YOUR OWN TIRES

4 WHITEWALLS ANY SIZE 49.49

wide or narrow tubeless or tube-type

BRAKE ADJUSTMENT OFFER

Make sure your brakes are safe for summer driving



Here's What We Do:

- Pull front wheels and inspect brake lining and drums
- Clean, repack and adjust front wheel bearings
- Adjust brakes and add fluid

\$119

ANY AMERICAN CAR

ALL WORK DONE BY EXPERTS

OPEN TILL 9 EVERY NIGHT

Plenty of FREE parking!

GRUVER TEXAS

Byrd & Dean

Firestone

GRUVER FARM SUPPLY & TEXACO SERVICE STATION

Phone FI-7-2882

...WHERE YOUR DOLLARS BUY MORE

Phone FI-7-2424



Feed Crais prospects are the best here in many years. This is a scene from the F.A. Shapley Farm north of town

FFA Chapter Meets

The F.F.A. Chapter held their regular monthly meeting September 9th at 7:30 p.m. in the vocational agriculture building. There were thirty five members present.

The Chapter will present Mr. and Mrs. Warren Reed a Bible in memory of their son Kenneth. In the Bible the F.F.A. boys names will appear.

The Chapter discussed ways of raising money and came to two conclusions. One conclusion being that they will sell trash barrels to anyone in need of them. If you are in need for all the F.F.A. boys to go to the fair.

Another project which the group will undertake is a calendar which they will give away.

The Committees of the organization have been selected and appointed for the year.

This Saturday three delegates, Mike Stedje, Tony Wells and Jerry Evans will go to Amarillo to put up the exhibit for the Tri-State Fair to represent the F.F.A. chapter of Gruver.

On Saturday the 21st F.F.A. instructor, Neal Flathers will take a bus for all the F.F.A. boys to go to the fair.

The meeting closed at 8:00 p.m.

WEATHER
The weather this week has been a bit on the rainy side compared to the past two months. Nearly each evening there has been a good shower.

The largest portion of wheat has been drilled and some is already up.

The weathermen report that the rainy condition will continue through next week.

The days are pretty and not too hot and the afternoons bring thunderstorms.

WHALES FOUND DEAD
JAKARTA, Indonesia (UPI)—A herd of 101 whales was found dead on beaches of the remote Sangir Talaut Islands in the East Indies on Aug. 31, Antara News Agency reported Sunday. The whales were apparently swept ashore and suffocated.

Football Action at Clarendon Friday Night Photos by Jeff Roper



Thinking about a new tractor?

IT'S TIME TO TEST CASE.



...and when you do, we'll present you with a handsome, dependable **TIMEX WRIST WATCH**

When did you buy your last tractor—four or more years ago? Then maybe you don't realize what a whale of a tractor a new Case is!

And it will pay you to find out. Discover the power, the performance, the handling ease, the economy a Case Tractor can give you. See what better, faster work it makes possible, and now's the time to do it.

Just tell us what tractor-power you need. Tell us when you'd like us to come over. And when you've test-driven a new Case on your own place — on any kind of job — you will get, without any obligation on your part, that good-looking Timex wrist watch free. Any bona fide tractor prospect can qualify.

Just call, or drop in. We'll schedule a demonstration to suit your convenience, wherever you say.

We're ready — are you? Why not call us NOW!



R.L. McCLELLAN & SONS, INC.

Spearman Phone 659-2343

CUB SCOUTS TO MEET

Thursday September 12th has been the date set for the Pack 50 Meeting of the Boy Scouts.

The boys will register for the coming year at 6:30 p.m. at the First Christian Church.

Hot dogs and all the trimmings will be served as refreshments. It is necessary for one parent to be present and both parents are encouraged to come.

Bright Notes For the Home

Be sure to consider the exposure of a room when planning color schemes for it.

Color is most important in making rooms seem warmer or cooler, look smaller or larger.

If you keep an eye on the sun and its shadows in your room and choose the basic color, textures, patterns and furnishings accordingly, successful color schemes and more livable rooms can be achieved throughout the house.

Since north rooms receive little direct sun, the light entering these rooms is cool. Therefore, warm colors should be used in the furnishings.

Red, the warmest of all colors, can be used very effectively but judiciously in northern exposures.

Fabrics with lots of texture should be used for upholstered furniture, draperies and floor coverings. Deep-toned mahogany furniture will also do a great deal to increase the warmth of rooms having a northern exposure.

South rooms are generally filled with sunlight most of the day and need cool colors to absorb the strong light.

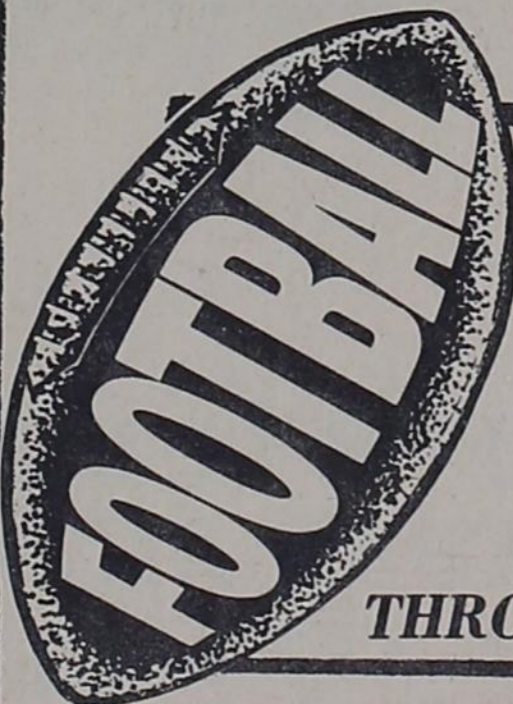
Deep green or gray walls will help make south rooms seem cooler and more restful.

During early morning sunlight favors most east rooms. Therefore, the basic color should retain the warmth during the remaining shady hours of the day.

As Old-Fashioned As A....



That's the way we treat you . . . with personal, courteous old-fashioned service!



SUPPORTING THE GREYHOUNDS THROUGHOUT THE SEASON

GRUVER STATE BANK

MEMBER F.D.I.C.

Let's Go!

Stop the Tigers Greyhounds



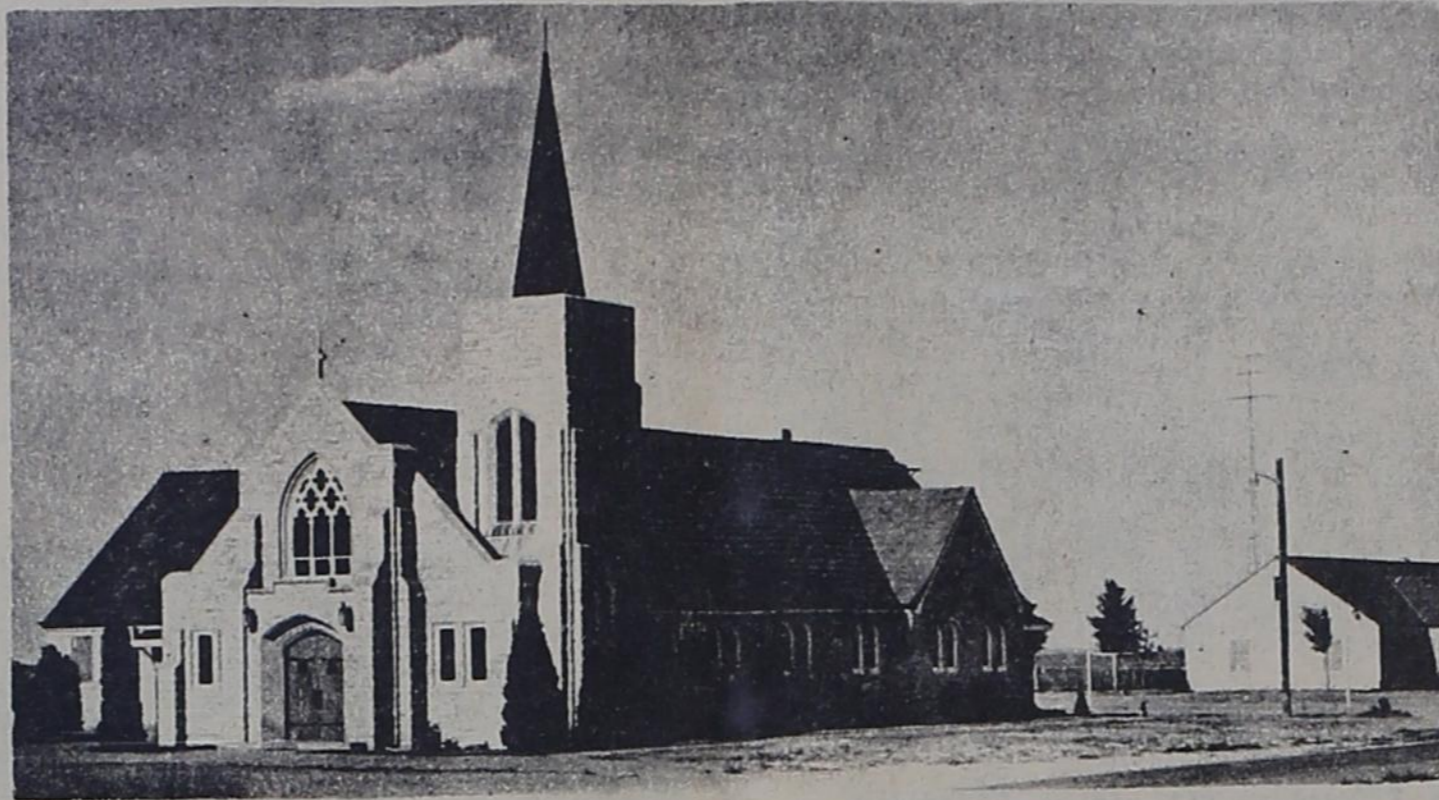
Supporting the Greyhounds throughout the year

HANSFORD GRAIN COMPANY

Located in Morse & Gruver

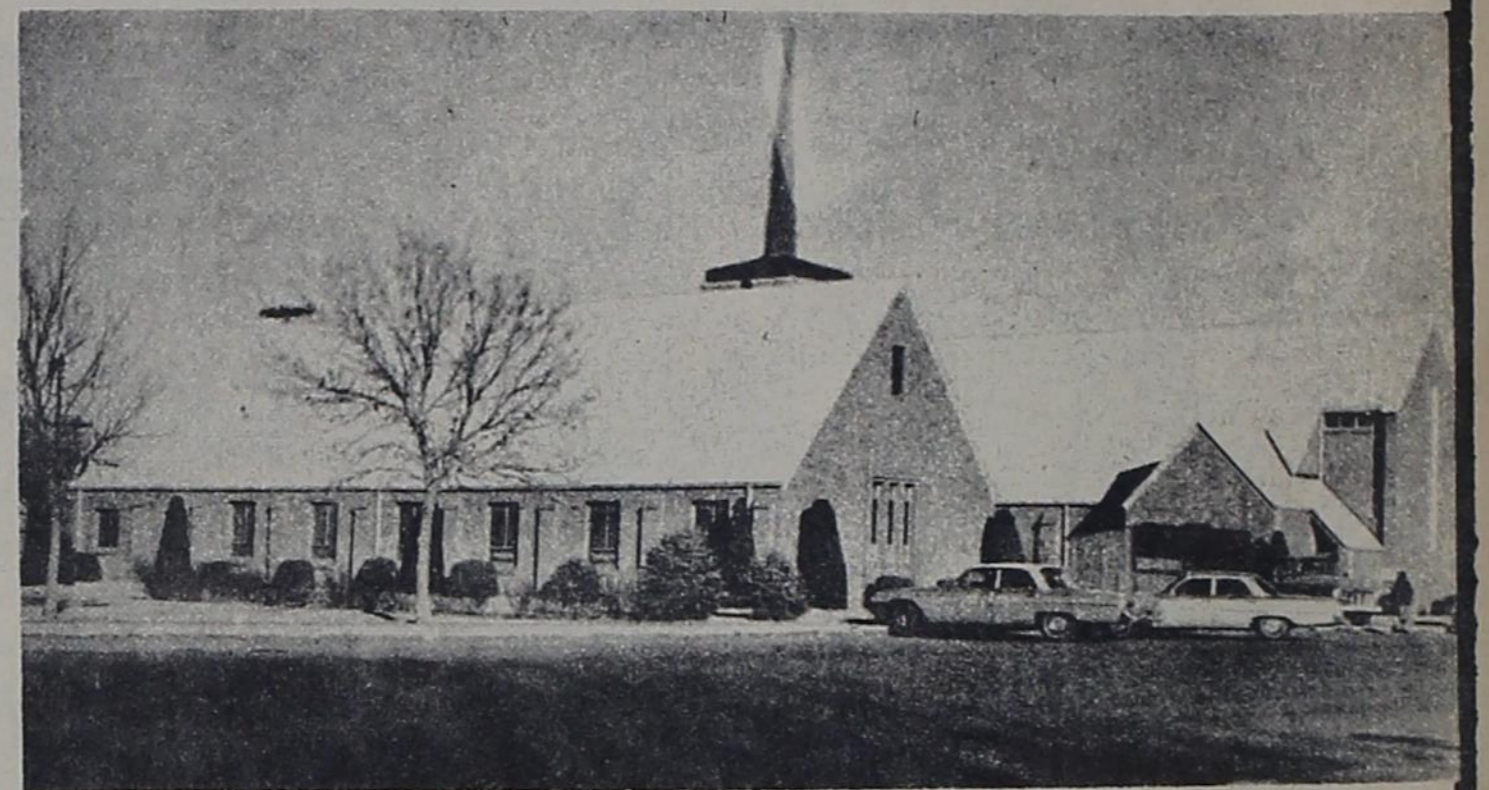
Attend Church

SUNDAY



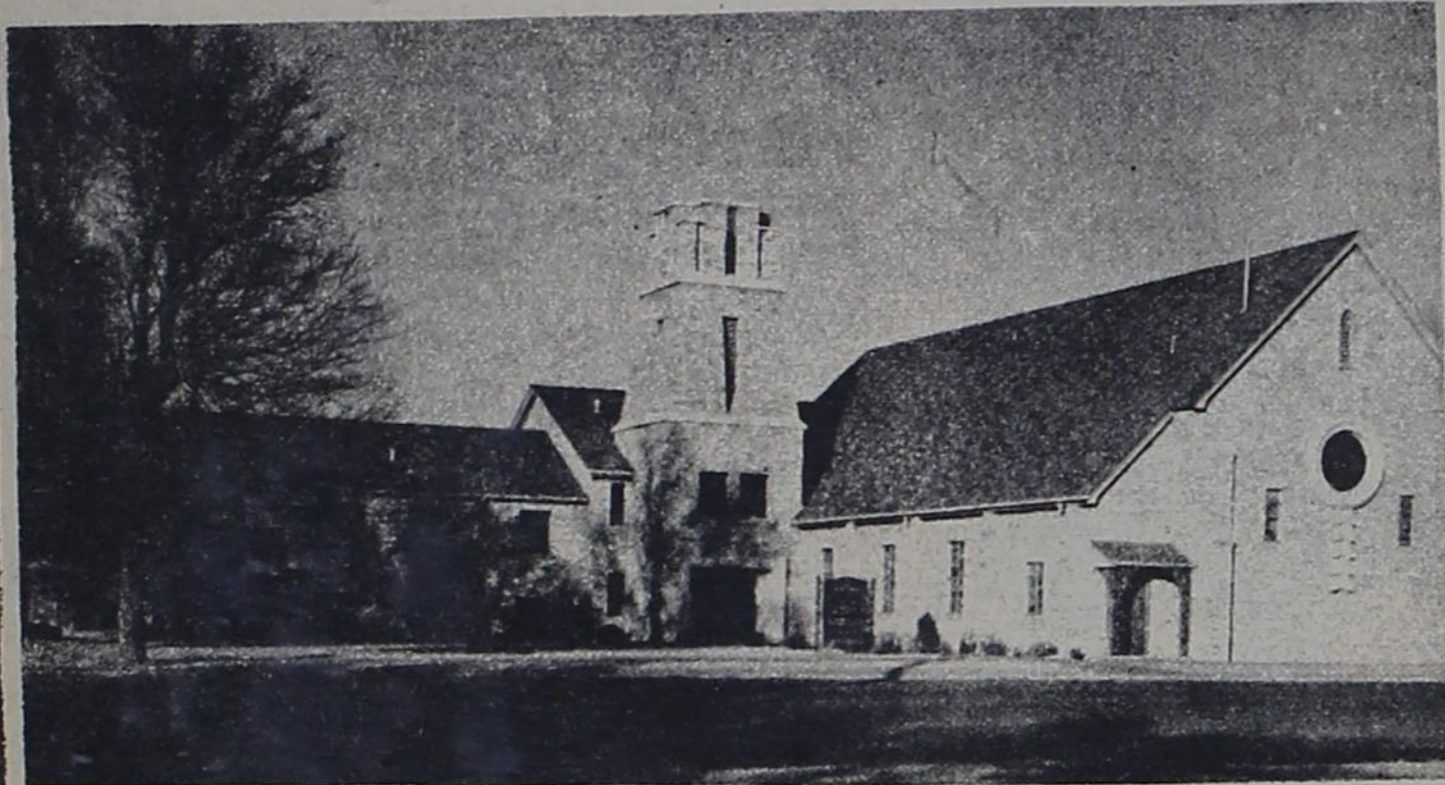
THE OSLO LUTHERAN CHURCH
pastor, Robert Cordes

Sunday School	9:45
Adult Bible Class	9:45
Morning Worship	11:00
Brotherhood 1 & 3 Thursday	7:30
Ladies Aid 2nd Thursday	2:00



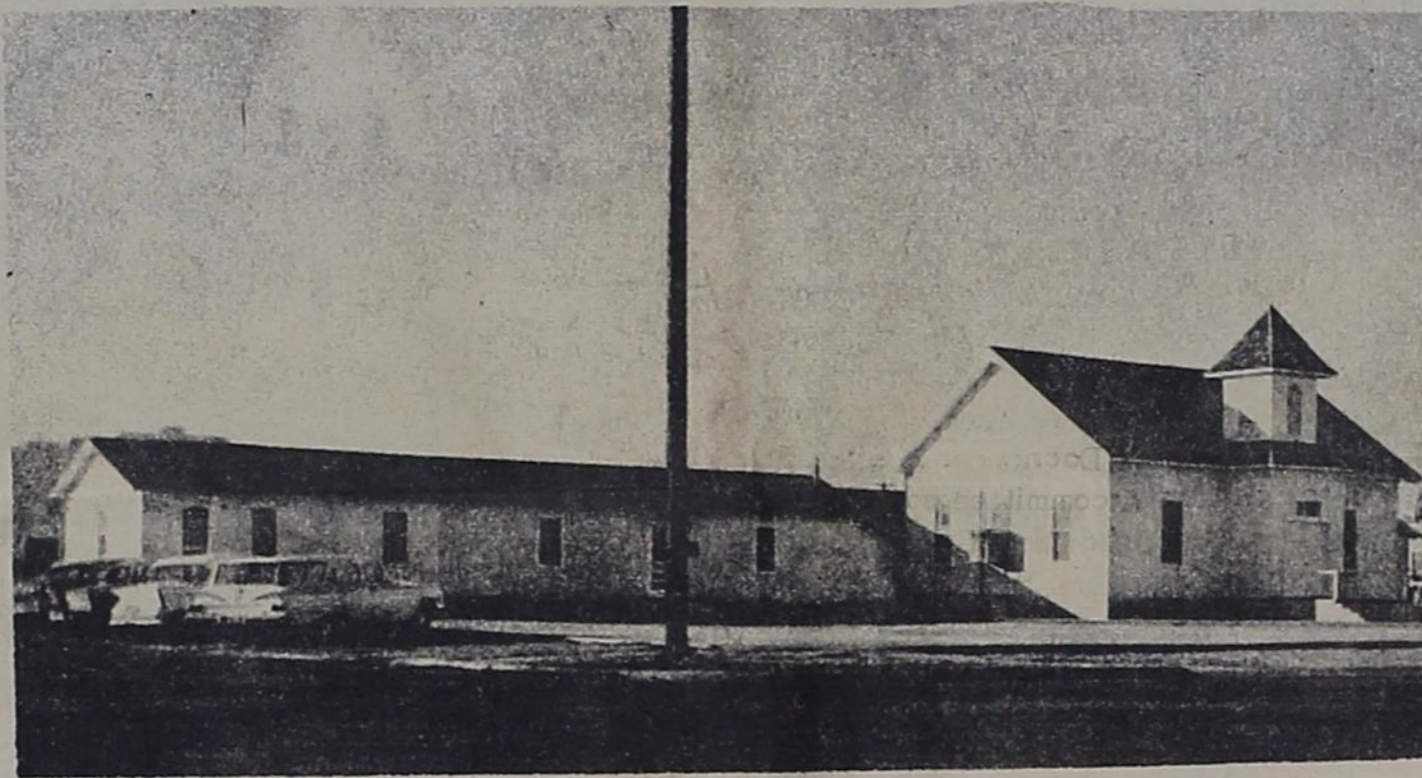
THE GRUVER METHODIST CHURCH
pastor, Reverend R.L. Kirk

Sunday School	9:45
Morning Worship	11:00
M.Y.F.	7:00
Evening Worship	6:00
Wednesday Bible Study	7:00
Wednesday Choir Practice	8:00
Thursday W.S.C.S.---monthly	3:00
Dorcas Circle---Thursday	9:30
Mary Martha Circle---Thursday	3:00



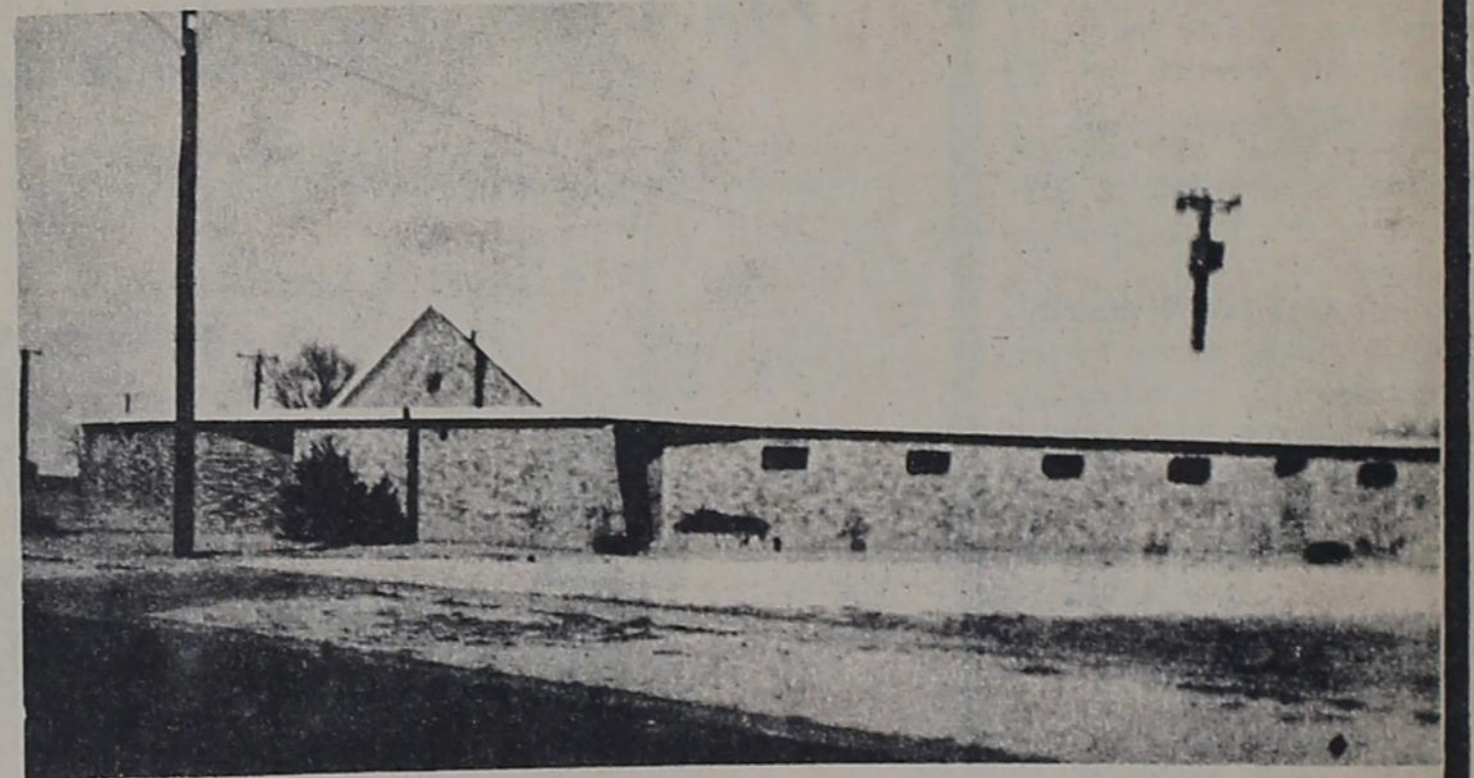
THE FIRST BAPTIST CHURCH
pastor Reverend, A.G. Purvis

Sunday School	9:45
Morning Worship	11:00
Training Union	7:00
Evening Worship	8:00
Junior & Intermediate Choirs, Sunday	3:00
Adult Choir Practice Tuesday	7:00
Wednesday Prayer Service	8:00
Wednesday Evening Lesson Study	6:45
Y.W.A., Wednesday	5:30
R.A.'s Wednesday	5:30
G.A.'s Thursday	4:00
W.M.U., Thursday	3:00
Sunbeams, Thursday Beginner & Pri. 1	3:00
Primary 2	3:30
Primary Choir, Thursday	4:30
Beginner Choir, Thursday	4:00



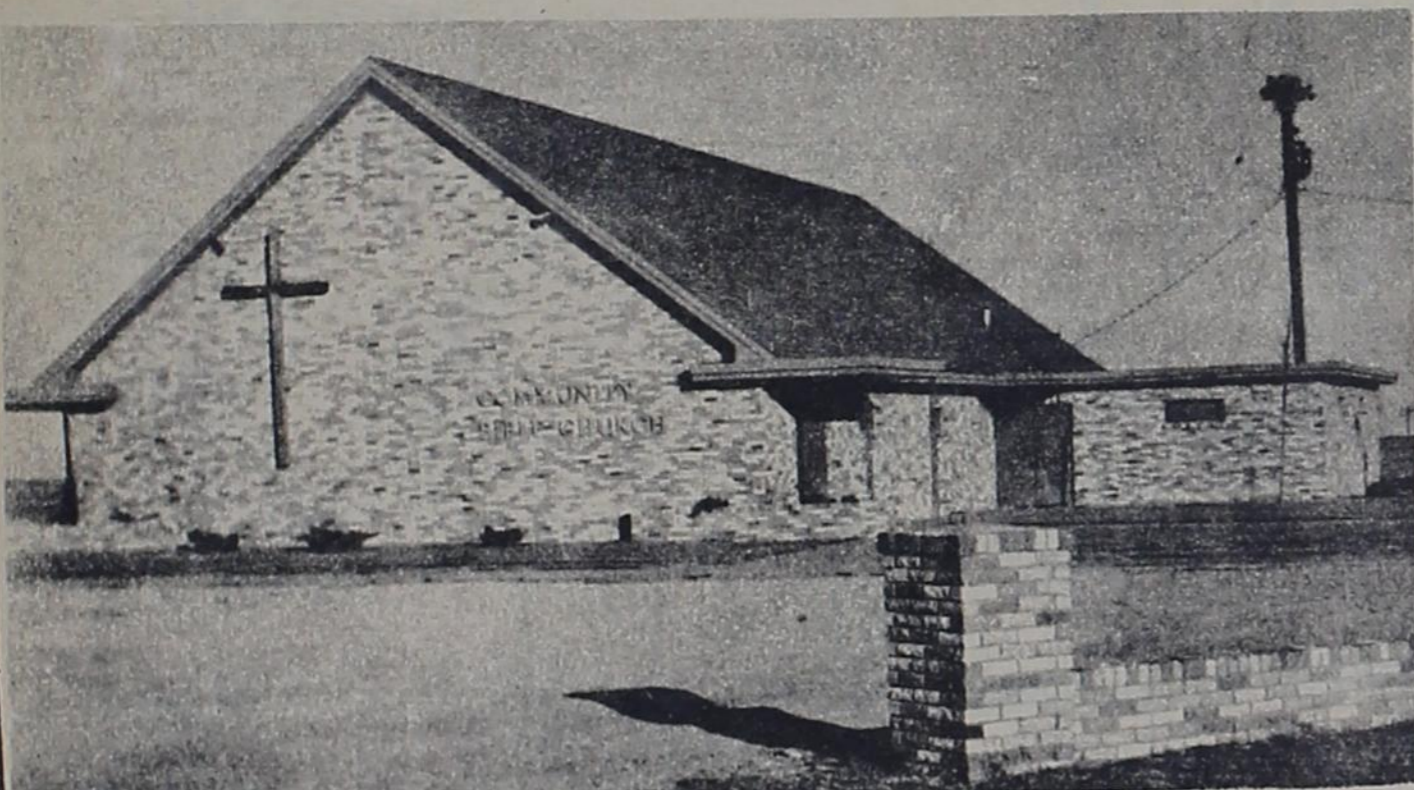
THE FIRST CHRISTIAN CHURCH
pastor, Reverend Robert Lamson

Sunday School	10:00
Morning Worship	11:00
Chi-Rho	7:00
Adult Bible Study	8:00
Wednesday---Juniors	4:00
Prayer Meeting	8:00



THE CHURCH OF CHRIST
minister, Alfred White

Bible Study	10:00
Morning Worship	11:00
Evening Worship	6:00
Bible Study Wednesday	8:00
Ladies Class Thursday Juniors	
Children Cared for	2:00
Ladies Class Thursday Senior	2:45



THE COMMUNITY BIBLE CHURCH
pastor, W.L. Porterfield

Sunday School	9:45
Morning Worship	11:00
Youth Meeting	6:30
Evening Worship	7:30
Wednesday--Bible Study	8:00



THE ASSEMBLY OF GOD
pastor, Robert G. Slaton

Sunday School	9:45
Morning Worship	11:00
Sunday Evening Worship	7:30
Wednesday Evening Prayer Meeting	7:45

Universal Motors
Gruver State Bank
Gruver Motor Company
RILEY BROTHERS T.V.
UNIVERSAL OIL CO.

This Church Page is sponsored by these merchants

GRUVER LUMBER CO.
PEDDY BUTANE
TEXACO SERVICE STATION
BOB CLUCK
GRUVER ELEVATOR
GRUVER 66 SERVICE

LOW SHELF PRICES **FALL FOOD FANFARE** **LOTS OF SPECIALS**

Shurfine
"Make Your Salads Sing"
 quart **39c**



Guaranteed Tender MEATS

fresh Grade A whole **FRYERS lb. 29c**

Fresh cut-up **FRYERS lb. 35c**

Armour all meat **BOLONGA lb. 39c**

Shurfresh **CHEESE 2 lb. box 69c**




Van Camps **VIENNA SAUSAGE 5 For \$1**

Comet **CLEANSER 2 for 29c**

White House qt. size **APPLE JUICE 3 FOR \$1**

Snowdrift 3 lb. can **SHORTENING 59c**

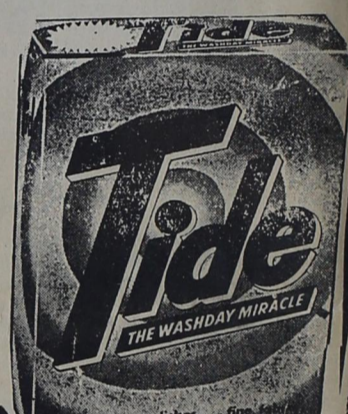
Morton frozen **CREAM PIES each 39c**

reg. **TIDE only 25c**

Soflin 80 count box white **NAPKINS each 15c**

Imperial or C. & H. **POWDERED SUGAR lb. box 15c**

Austex **TAMALES no. 303 can 25c**



Liquid-detergent **CHIFFON reg. 49c 39c**

Shurfine **TUNA 3 for 89c**



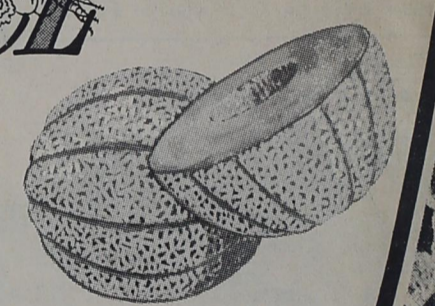


PRODUCE

Rockey Ford **CANTALOUPE lb. 7c**

pkg. **CARROTS cello pak 10c**

Colorado Firm head **CABBAGE lb. 5c**

Central America **BANANAS lb. 15c**

Del Monte **PINEAPPLE or GRAPEFRUIT DRINK 46 oz. can 3 for \$1**

Gerber's strained **BABY FOOD 3 for 29c**



SPECIALS FOR:
 Thurs.-Fri.-Sat.
 Sept. 12-13-14, 1963

G & G FOODLINER

Receive **Buccaneer Stamps** with every purchase at the G & G Foodliner