

HANSFORD COUNTY L B A  
SPEARMAN, TEXAS 79081

# Gruver Readies For Annual Livestock Show

Hansford County Livestock Show will be held March 21st and 22nd in the County Barn in Gruver.

Clubs and chapters participating in the show will be the Spearman FFA, Spearman 4-H, Gruver FFA, Gruver 4-H, and Morse 4-H.

The 1986 Bookkeepers and Auctioneers will be Jimmy Greens, Spearman; Roger Odegaard, Spearman; Alan Shields, Morse; Mary Burman Gruver; Cathy Boone, Gruver; W.B. Dickinson, Auctioneer. Olton and Carl Cooper, Announcer. Buddy Murrell, Steers, Carl Kunselman, Swine, James Schnell, Swine;

Department Superintendents will be Jerry Williams, Lynn Davis, Buddy Murrell, Steers; Carl Kunselman, D. A. Cator, David Armes, Sheep; Glen Ray Mackie, Ricky Thompson, Charles Eaton, Buddy Lowe, James Schnell, Swine.

Board of directors of the Hansford County Livestock show D.A. Cator, Chariman, Carl Kunselman, Vice-Chairman, Burt William, Secretary, Roger Odegaard, Treasurer, and Norma Jean Mackie, Assistant Treasurer.

Directors include: David Armes, Gruver D.A. Cator, Gruver

Carl Cooper, Gruver  
Lynn Davis, Morse  
Charles Eaton, Spearman  
Buddy Murrell, Steers  
Jimmy Greens, Spearman  
J.C. Harris, Gruver  
Carl Kunselman, Spearman  
George C. Lowe, Jr., Gruver  
Glen Ray Mackie, Spearman  
Buddy Murrell, Gruver  
Roger Odegaard, Spearman  
Bill Strawn, Spearman  
Charles Reid, Morse  
James Schnell, Spearman  
Bill Strawn, Spearman  
Ricky Thompson, Gruver  
Jerry Williams, Gruver  
Vocational Agriculture Teachers are Gary York, Spearman, Craig

Solomon, Gruver, David Scott, Spearman.  
Burt Williams, Extension service, Spearman is the 4-H sponsor.

Beginning on Friday, March 21st, 1986 at 8:00 a.m. Swine and Sheep will be weighed and from 10:00 am to 12, steers.

The Grand Opening of the show will be at 1:45 p.m. The Lamb show will begin at 2:00 pm followed by the Swine Show.

On Saturday, March 22, Judging of Steers will begin at 9:30 am and the Judging contest will be at 12:00. At 6:00 PM Floor prices will be autoned with presentation of

Showmanship TROPHIES awarded.

Immediately following presentation of awards the auction sale of Lambs, Swine, and Steers. Livestock will sale in order, one Lamb, One Swine, One Steer, etc.

Donor of Grand Champion Trophy - Steer, Gruver State Bank, Gruver; Donor of Reserve Grand Champion Trophy - Steer, Gruver Ford, Gruver; Donor of Grand Champion Trophy - Swine, Hansford Co. Parts and Supply, Gruver; Donor of Reserve Trophy - Swine, Thriftway, Spearman; Donor of Grand Champion Trophy - Lamb,

First National Bank, Spearman; Donor of Reserve Grand Champion Trophy - Lamb, Brock Insurance Agency; Donor of Animal Husbandry for, Hansford County Farm Bureau, Spearman; Donor of Steer Showmanship award, First State Bank, Spearman; Donor of Lamb Showmanship award, Double D Ag Center and Donor of Swine Showmanship award, Gruver Lumber Co., Gruver.



# THE GRUVER STATESMAN

Volume 15, No. 24 The Gruver Statesman, Gruver, Texas 79040 Thursday, March 20, 1986

## Heart Association Says "Thanks"

The Hansford County AHA would like to say a "Big Thank You" to each and every one of you who help make our Celebrate Waiter Dinner a big success.

To Mary Dixon and Martha McRee who were our Mistress of Ceremony and the composers of "Celebrate Waiter Shuffle" "YOU MADE IT HAPPEN."

To Mary Lamb and Candy Boxwell who donated their time and talent, to Pete Fisher who donated the cheese for the table-to the Cattleman's for their hospitality-to Reagan Baker, Mark Irwin, Aubry Rasor, Verlin Winegarner, Don Townsen, Mide Cudd, Rick Riggins, Bob Tollerson, Lynn Davis, Bob Boxwell, Perry Dixon, Jim Rattliff, and Corky Chapman, our Celebrate Waiters--Thank You, you were all great.

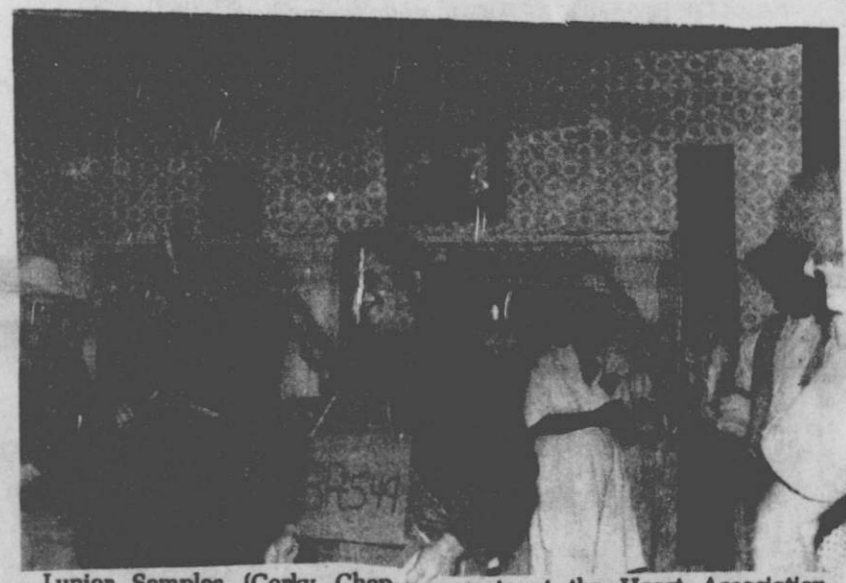
Last-But not Least-Our Supporters who bought tickets tipped generously, and were such good sports. We "Thank You" for Making our Dinner a success.

The Hansford County directors American Heart Association

**THE SUPER HEART SHUFFLE**  
We are the Super Heart Shufflin' Crew  
Raisin' big bucks, Doin' it for you  
We're so cool, We know we're good  
Blowin' your mind like we knew we would  
You know we're here just having some fun  
Struttin' our stuff for everyone  
We're not here to start no trouble  
We're just here to do the SUPER HEART SHUFFLE.



Beautiful Lulu Roman ( Aubrey Rasor) is going to be examined by Dr. Dandy (Perry Dixon) to see if she needs a new heart. At the Heart Association Fund Raiser Saturday night.



Junior Samples (Corky Chapman) and a few of his friends do a little Super Heart Shuffle for the guests at the Heart Association Fund Raiser held Saturday night.

AN OPEN LETTER TO THE GRUVER SCHOOL BOARD  
March 17, 1986

Dear School Board Members,

Probably you've heard many comments about the actions taken at your March 11th meeting. As elected officials you are to carry out the desires of the people (not a few minority) for the good of the school and our children's education. As citizens we need to let you know our desires.

Perhaps the situation resulted from citizens lack of knowledge on how to handle a complaint. I worked for the public for eleven years and know it is impossible to please everyone. As a volunteer at school for the past four years and a substitute for the last two years, I've been able to see things from the teachers' view as well as the parents. Many problems probably arise from lack of communication on all levels.

If we have a criticism we should go to the teacher first. How can anyone change a situation if they are unaware of it? If that is unsuccessful the next step would be a visit with the principal. They are fine men who are willing to listen. Why do we hire them if we won't allow them to do their jobs or follow their recommendations? Next would be a visit with the superintendent and as a last resort the school board should be contacted. School board members should refuse to hear a complaint until the proper channels have been utilized. We should tell the school board and administrators what we like about our teachers. Let's be positive.

The morale of teachers in Texas is low enough from current state pressure. How can we expect them to perform at their best if the local board won't even support them? We do have excellent teachers in Gruver and that is why we have such a good education system. As citizens and school board we should build up and encourage our teachers. They not only teach but actively participate in the churches and community. They are striving to be good citizens.

Not one person would like to have his or her means of support cut off without any warning one night when they are tired from a day's work. There must have been no compassion for a fellow human being at Tuesday night's session. To the best of my knowledge none of you has had to depend on pleasing the public for your livelihood. Try to put yourself in the shoes of a teacher. How would you feel if you made the best crop you'd ever made but it wasn't the best in the state, therefore, your equipment and land was taken away and you had to go elsewhere and start over? (With a wife and children to support.)

Our girl's basketball team did the best they've done in over 20 years. As appreciation for that, their coach lost his job without warning. (And we lost two excellent teachers.) I've never heard of a college talent scout recruiting Gruver girls for basketball so our talent must not be up to their standards. How many people from Gruver have made their living as professional athletes? Shouldn't doctors, lawyers, nurses, teachers, Ph. D.'s, etc., of whom we can be proud. Even a criminal is considered innocent until proven guilty. Our teachers deserve more than that. Why not let them be represented at each school board meeting?

I know nothing can be done to change what happened to Coach Brownlee or Mrs. Augustine but hopefully it will not happen again in the future. (I've substituted for Mrs. Augustine and she has a difficult job . . . changes rooms . . . 50 or more students per 20 minute class in a crowded classroom. If the music teacher doesn't get better facilities or schedule we may never get a teacher to stay in that capacity.) It would be sad to have our good teachers leave and no more "cream of the crop" come to replace them because of a Gruver reputation for unfair treatment of coaches and teachers.

Gruver prides itself on being a friendly, caring, Christian community. In all our relationships let's be such a community. It's the best place I've ever lived.

A concerned parent and citizen,  
Mrs. Nellie Evans  
Mrs. Welle Evans

## Waterfield to Run



Dick Waterfield

Dick Waterfield, a long time Canadian, Texas resident and businessman, has begun his campaign for the Texas House of Representatives. Waterfield has entered the race for the state's District 88 seat, which encompasses 13 northern panhandle counties.

"It's time for this part of Texas to have some leadership in Aus-

tin," Waterfield says. "It takes a businessman to make sense of today's mounting financial pressures, particularly when it comes to how they affect the panhandle region. I hope to bring some businessman's common sense to Austin in order to get our needs recognized and acted upon."

Waterfield's background includes several areas important to the panhandle, ranging from farming and ranching to petroleum industry involvement. Currently, he serves as president of Washita Investments, general manager of Follett Feed Yard and is a board member of First State Bank of Canadian.

Aside from his agricultural/petroleum business interests, Waterfield also serves on boards for the National Cattleman's Association, Texas Cattle Feeders Association and Congressional Agricultural Advisory Committee. He is a member of the Canadian School District Board and is a former Canadian City Council member.

Waterfield and his wife, Gail, have one son and one daughter.

This is a Pd. Pol. Adv. The Waterfield Campaign, Malouf Abraham, Treas., P.O. Box 30, Canadian, TX 79014.



He want That away Sheriff! Prisoner Escapee - Speedy Willy- Jim Rattliff is being pursued by our Sheriff - Mark Irwin. This man has been at large for 3 years and was being captured at the Heart Association Fund Raising Banquet held on Saturday.

## Heavy snow fall

Snow began falling in Hansford County at 8 a. m. Tuesday morning. Weather officials in the county report about .15 inches of moisture from the very heavy snow. It did not last too long, or we would have been completely snowed in in the area. Needless to say, farmers were smiling about the snow as moisture is needed for the wheat.

\*\*\*\*\*

**24 hr. prayer service**

**659-2911**



THE GRUVER PTA ASSOCIATIONAL MEETING WAS HELD FEBRUARY 13, 1986, AT 7:00 P.M. IN THE SCHOOL AUDITORIUM. PRESIDENT LEE HARPER CALLED THE MEETING TO ORDER.

PRESENTATION OF COLORS WERE MADE BY SCOUT TROOP MEMBERS DAVID GILDERT AND CORY RASOR. MINUTES WERE APPROVED.

TREASURER'S REPORT WAS FILED.

THE PRESIDENT OPENED THE FLOOR FOR ELECTIONS TO THE NOMINATING COMMITTEE. NOMINATED WERE BOB BURGOON, HARLETTA CARTHAL, AND RHONDA WARD. MOTION WAS MADE BY KATHY STEDJE AND SECONDED THAT THE NOMINATIONS CEASE. APPROVED, THE ABOVE PEOPLE WERE ELECTED BY THE AUDIENCE.

WITH FOUNDERS DAY BEING THE BIRTHDAY OF PTA, THE PRESIDENT ACKNOWLEDGED ALL WHO ARE LIFE MEMBERS OF THE LOCAL PTA.

DEVOTIONAL WAS GIVEN BY MARK GILBREATH.

PROGRAM CHAIRMAN, KATHY STEDJE, THEN INTRODUCED THE GRUVER HIGH SCHOOL BAND UNDER THE DIRECTION OF MR. BRUCE COLLINS. MR. COLLINS RECOGNIZED THOSE WHO QUALIFIED AT UIL AND THOSE WHO WILL BE COMPETING IN THE SOLO AND ASSEMBLE CONTEST.

MEETING ADJOURNED AT 7:35 P.M.

RHONDA WARD  
RECORDING SECRETARY

PTA OBJECTS

- TO PROMOTE THE WELFARE OF CHILDREN AND YOUTH IN HOME, SCHOOL, COMMUNITY AND PLACE OF WORSHIP.
- TO RAISE THE STANDARDS OF HOME LIFE.
- TO SECURE ADEQUATE LAWS FOR THE CARE AND PROTECTION OF CHILDREN & YOUTH.
- TO BRING INTO CLOSER RELATION THE HOME AND THE SCHOOL, THAT PARENTS AND TEACHERS MAY COOPERATE INTELLIGENTLY IN THE EDUCATION OF CHILDREN AND YOUTH.
- TO DEVELOP BETWEEN EDUCATORS AND THE GENERAL PUBLIC SUCH UNITED EFFORTS AS WILL SECURE FOR ALL CHILDREN AND YOUTH THE HIGHEST ADVANTAGES IN PHYSICAL, MENTAL, SOCIAL, AND SPIRITUAL EDUCATION.



The Lone Ranger is asking the whereabouts of Tonto to some of our guests. During the Fund Raising Benefit at the Cattleman's

Restaurant for the Heart Association. The Lone Ranger was portrayed by Lynn Davis of Morse.



Ladies you had better watch out because here comes the Potty Patrol Man ready to escort you to the Ladies Lounge for a modest fee. (Reagan Baker of Spearman is not

only the Potty Patrol Man but our Dashing Casinova at the Fund Raiser for the Heart Association Saturday night.

Our own Little Heart Throbs - Mary Dixon and Marth McRee are shown above doing a little Super Heart Shuffle and these lovely ladies were also the MC's for the evening.



**Every day you delay your IRA costs you money!**

ARE YOUR RETIREMENT DOLLARS GROWING FAST ENOUGH?

If not, and you would like your retirement dollars to grow faster or to assure yourself that you are getting the best possible rate available, call us at 659-3880 or 358-7133.

Integrated Resources Equity Corporation Member SIPC

MARCIA SHIELDKNIGHT & DEBBIE STOPPER  
P. O. Box 516  
Spearman, Texas 79081

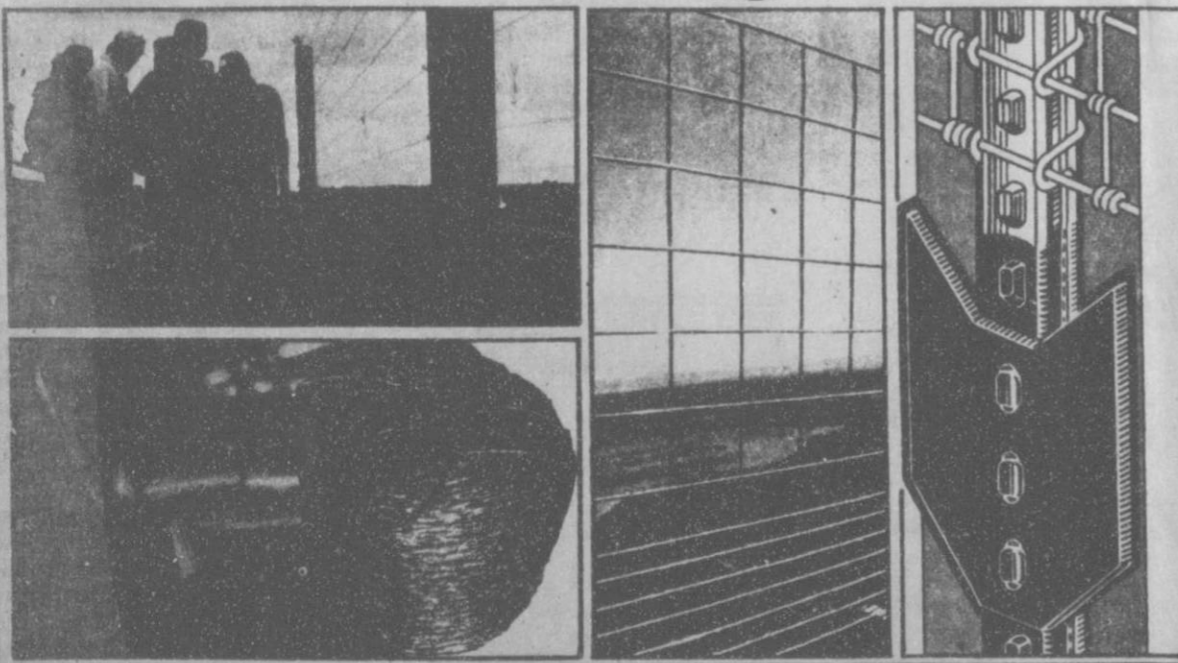
(806) 659-3880 or (806) 358-7133

**Integrated Resources**



**EQUITY** WIRE, POSTS & FENCE HEADQUARTERS

**Cash & Carry SALE**



**Barbed Wire**

American made. Uniformly twisted. Strands are full gauge. Wire is easily unrolled from non-collapsible reels. Stretches tight and stays tight. 90 rods — full 1/4-mile reels. Exceeds ASTM specifications. Full factory warranties. Heavy galvanizing. Sharp barbs, evenly spaced, well shaped. Barbs wrapped securely around line wires.

Barbed Wire ..... \$27<sup>25</sup>  
Baling Wire ..... \$34<sup>00</sup>

**Feedlot Panels**

American made. Full 1/2" rods welded together for solid strength. Full weight. Full factory warranties. Rugged, versatile, all purpose. Easy to handle and install. All purpose. Maintenance-free, long life. Sag resistant. No stretching required.

52"X16' ..... \$9<sup>95</sup>  
34"X16' ..... \$12<sup>25</sup>  
— Limited Quantity —

**Studed "T" Posts**

American made. Full weight. Full factory warranties. Rugged, versatile, all purpose. Easy to handle and install. Maintenance-free, long life. Fireproof. Neat. Finished in enamel. Heavy anchor plate. All-weather protection. High-quality, high-strength steel. Studs that help hold the fence against the post.

5 1/2 Fl. T Post ..... \$1<sup>45</sup>  
6 Fl. T Post ..... \$1<sup>95</sup>

Available at participating Double-Circle Co-ops only. Some stores may not have some of these items.

Shop your Double Circle Co-op for all your fencing needs. Field Fence • Poultry Fence • Electric Fence • Stays • Baling Wire • Wood Post

You don't have to be a member to be able to buy from your Double Circle Co-op. But when you come in to take advantage of these good buys in fencing, you may want to ask us about the many other benefits available to members of our association.

Spearman, Texas  
659-3428



**COOP**  
Standing together.  
Standing strong.

SALE DATES:  
3/17/86 to 3/22/86

**HOMESTEAD EXEMPTIONS**



**CAN LOWER THE PROPERTY TAXES ON YOUR HOME**

A homestead exemption lowers the property taxes on your home by lowering its taxable value. For example, if your home is valued at \$50,000 and you receive a \$5,000 homestead exemption, your home will be taxed as if it were worth only \$45,000.

You qualify for a homestead exemption if you owned your home on January 1 and used it as your primary residence on January 1. It doesn't matter whether your home is a house, a condominium or a mobile home.

Exemptions are available to all homeowners on their school taxes. Additional exemptions are available to homeowners who are disabled or age 65 and over. Other exemptions may be offered to homeowners by school districts, counties, cities, and special districts. All taxing units offer exemptions to disabled veterans.

Apply to your local appraisal district office at the address shown below for all exemptions you may qualify for. Application forms are available at this office.

If you received a homestead exemption on your present home in 1985, you won't need to apply again for 1986 unless the chief appraiser requires you to reapply.

However, if you passed your 65th birthday or became disabled before January 1, file a new application to receive the additional exemptions.

If you haven't received an exemption on your present home, or if you've moved to a new home, make a new application for 1986.

The deadline for applications is April 30, 1986. Contact your appraisal district before then if you need more time.

For more information, get a free copy of the pamphlet, *Taxpayers' Rights, Remedies, Responsibilities*, at your appraisal district office or from the State Property Tax Board in Austin.



ALICE PEDDY, C.T.A., R.P.A.  
Chief Appraiser

HANSFORD COUNTY APPRAISAL DISTRICT  
709 West Seventh • P.O. Box 567  
Spearman, Texas 79081

(806) 659-5575

(806) 733-5139



Box 13000 Austin 78761-3000



# WANT ADS

**NOTICE**  
Wallace Monument Co.  
Monuments, Curbing,  
Grave Covers  
Local Representative  
**LEONARD JAMESON**  
Spearman, Texas  
40-rtm

New to Area  
Give Us A Try  
Call Your Local  
**USED COW DEALER**  
As Soon As Possible  
659-3544  
659-3545  
1-800-692-4043  
22-rtm

Hansford County  
Planned Parenthood  
412 Davis  
659-2483  
Spearman  
Mon. - Fri.  
8:30 - 12:30

## OSGOOD MONUMENT CO.

Amarillo, Texas  
Dealers of Rock of Ages  
Granite, as well as all  
colored granites, marble  
and bronze memorials.

represented by  
**BOXWELL BROS.**  
**FUNERAL HOME**  
519 S. EVANS  
659-3802

Hay Swathing and Baling done -  
Call 733-2517 or Dennis at 733-5214  
31-rtm-nc

Sewing wanted, alterations etc.  
Baking and decorating cakes. I now  
have the He-Man Pan for birthday  
cakes. Call Joy at 733-2517.  
52-rtm-nc

For information and supplies for  
Tri Chem Liquid Embroidery, Contact  
Joy Henderson at 733-2517 in  
Gruver.  
8-rtm-nc

Custom Fertilizer Listing 30, 40,  
or 60. \$4.25 acre \$3.75 blank call  
733-2016  
21-4tp

## REAL ESTATE

**FOR SALE IN GRUVER**- Brick  
home, 3 bedroom, 2 bath, double  
car garage, large fenced back yard,  
about 1,500 sq.ft., 1 blk. from  
school.  
Call 733-2964  
1-rtm

**HOME FOR SALE**: 3 bedroom, living  
room, den, fireplace, double car  
garage, garage opener, 2 bathrooms,  
1/2 mile west of Gruver. Call 303-267-  
4771  
15-rtm

**TAKE UP PAYMENTS**-Double  
wide trailer lived in 7 months. 3  
bedrooms, 2 baths, fireplace, cath-  
edral ceilings, Coleman central air  
and underpinning. Must be moved  
Call 733-5269  
24-rtm-nc

**TAKE UP PAYMENTS ON TWO  
AND THREE BEDROOM HOMES.**  
Qualify by phone. Call 381-1352,  
Call Collect.  
Alliance Homes of Amarillo.  
19-3tc

**HOUSE FOR SALE**- nice starter  
home, fenced front & back yard.  
Priced to sell 222 S. Endicott. Call 8  
a.m. to 6 p.m. 9-3380 after 6 p.m.  
9-5153.  
19-4tc

**FOR SALE**: 2 bedroom partial  
basement, garage and apartment  
on lot, low equity, assumable  
payments, phone 733-2601 after 6  
p.m.  
21-2tc

**Credit Problems?**  
**Down Payment Problems?**  
For sincere help call 381-1352 call  
collect Alliance Homes Amarillo.  
18-4tc

**FOR SALE**: Repossessed Piano -  
Can assume low monthly payments  
- Will show locally - Call Brier &  
Hale Music at 316-624-8422 for  
complete details.  
21-3tc

**FOR SALE**: Well irrigated, 320  
acres, near Gruver. Modern 3  
bedroom home with fireplace good  
level dry land farm, all cultivated.  
Delano Realty 806-733-5000, or  
home phone 806-733-2291.  
rtm-c

**FOR SALE: HALF PRICE!** Flash-  
ing arrow signs \$269! Lighted,  
non-arrow \$269! Nonlighted \$219!  
Free letters! Only few left. See  
locally. 1(800)423-0163, anytime.  
22-tp

## AUTOS FOR SALE

83 SUBURBAN low mileage call  
Schneider Welding 659-3811 excel-  
lent condition.  
16-rtm

**FOR SALE**: 1977 KZ 1000, Kawasaki -  
perfered price \$950.00. Fering, both  
losers, trunk; included call 659-3206  
after 7:00 p.m. on weekdays.  
22-1tp

## MISCELLANEOUS FOR SALE

**ANNUAL HANSFORD HUTCHISO-  
FARMERS UNION SALE**-to be held  
April 17th. Please call consignments to  
Joe Morris 733-2132, T.O. Lesley  
659-2028, Homer Sutton 659-2357 or  
Burton Schubert 659-2667.  
23-5tc

**SATELITE T.V. SALE**  
(Limited supply) (only 6)  
8ft. Fiberglass dish-Boman 1200  
receiver w/\$85.00 LNA installed  
\$1,250.00  
19s-2tp  
23-1tp

10' mesh dish-uniden 7000 reciever  
(total Armchair remote) Atruelly  
fine satellite T.V. system. \$2,395  
installed. Call H & H Satellite Sales  
Guyton, OKLS 405-338-6689.  
19s-2tp  
23-1yp

**FOR SALE**: Shaklee Nutritional  
Products, household cleaners or  
skin care products, call Boris Bom  
659-2323  
20-4Tp  
20-4Tp

**COMPLETE LAWN FERTILIZER**:  
Program, applied for about cost of  
Fertilizer in bag. 806-878-3265  
22-3tc

## HELP WANTED

We need a hard- working person to  
sell our Goodyear roof products.  
Write Ed Mahon, Consolidated  
Companies, 1801 East 9th Street,  
Cleveland, Ohio 44114  
20-3tc

## FOR RENT

**FOR RENT**: small furnished apart-  
ment. Call 659-2764  
17s-6tc

## BUSINESS SERVICES

**JWN YOUR OWN JEAN-SPORTS-  
WEAR, LADIES APPAREL, CHIL-  
DRENS, LARGE SIZE\* PETITE,  
COMBINATION STORE, MATER-  
NITY, DANCEWEAR, ACCESS-  
ORIES, JORDACHE\* CHIC,  
LEE, LEVI\* IZOD\* GITANO\*  
TOMBOY, CALVIN KLEIN, SER-  
GIO VALENTE, EVAN PICONE,  
LIZ CLAIBORNE\* MEMBERS  
ONLY\* GASOLINE\* HEALTH-  
TEX, OVER 1000 OTHERS.**  
\$13,300 to \$24,900 INVENTORY,  
TRAINING, FIXTURES, GRAND  
OPENING ETC. CAN OPEN 15  
DAYS. MR. LOUGHLIN (612)888-  
6555.

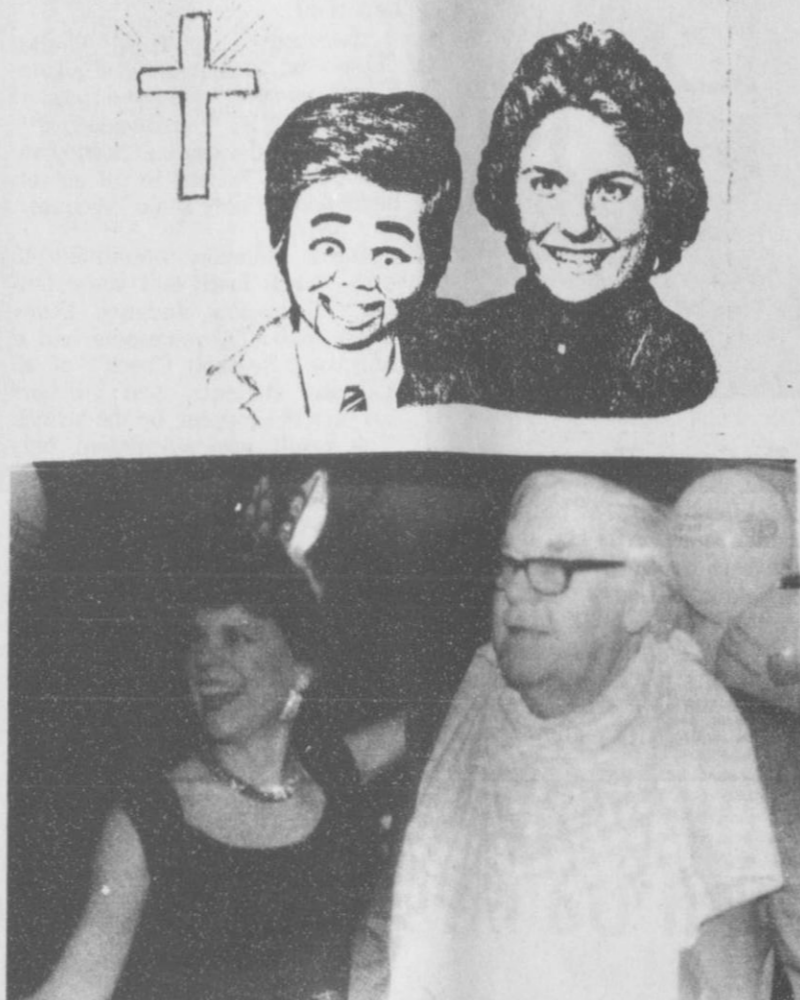
## SERVICES

**BE SLIM FOREVER**:New weight-  
loss program develops the whole  
person. Sound nutrition and posi-  
tive mental attitude. Groups form-  
ing now. Call Doris 659-2323  
20-3Tp

**SPRING CLEAN-UP** - Thatching and  
mowing - Randy Davis. 659-3818  
23-1tc

**GRADER AND LOADER WORK\***  
pit cleaning. Rimmel Enterprises  
733-5015  
23-3tc

## Lee & Nicky FIRST BAPTIST CHURCH GRUVER MARCH 23 6 - 8 P.M.



This lovely lady is the ever  
popular Entertainer "Sexy Mam-  
ma" (Candi Boxwell) is shown  
above escorting Carl Archer to the  
men's lounge where he needed to  
rest.

## City Minutes

The Gruver City Commission met in  
regular session at 2:00 pm in the city  
hall with the following members  
present: J. C. Harris, Mayor Roy  
Byrd, Commissioner A.J. Ratliff,  
City Manager  
A.J. Ratliff opened the meeting with  
prayer.

The minutes of the February 12,  
1986 regular meeting were read, Roy  
Byrd made a motion that the minutes  
be approved. J.C. Harris seconded  
the motion; motion carried.

A motion was made by Roy Byrd to  
appoint Corky Chapman as Election  
Judge and Fay Dahl as Alternate  
Judge of the April 5, 1986 General  
Election. J.C. Harris seconded the  
motion; motion carried.

Ordinance #196 regulation Junked  
Vehicles was read. Roy Byrd made a  
motion that the ordinance be approv-

ed. J.C. Harris seconded the motion;  
motion carried.

The Fourth of July Fireworks  
display was discussed. It was decided  
to send someone to take the test in  
Austin.

The City Commission is going to  
request that a representative of  
Panhandle Eastern Pipeline Company  
come to Gruver and explain why the  
price of natural gas is going up 18  
cents.

Roy Byrd made a motion that the  
bills for the month of February, 1986  
be approved. J.C. Harris seconded  
the motion; motion carried.

With no further business to come  
before the commission, the meeting  
was adjourned.

A.J. Ratliff, City Manager  
J.C. Harris, Mayor

## Groom Tiger Relays

**Boys**  
**TEAM TOTALS**: 1. Wheeler, 111; 2. Kress,  
84; 3. Gruver, 83; 4. Groom, 80; 5. Phillips, 56;  
6. Valley, 36; 7. Textline, 25; 8. Booker, 17; 9. Ve-  
ga, 14; 10. Lefors, 13.  
**VAULT**: 1. Thornton, Groom, 11-6; 2. Alva-  
rado, Kress, 11-6; 3. Smith, Textline, 11-6.  
**SHOT**: 1. R. Smith, Wheeler, 44-6 1/2; 2. Sil-  
va, Valley, 44-1 1/2; 3. McConnell, Groom, 34-2.  
**LONG JUMP**: 1. Salver, Wheeler, 21-2; 2.  
Asher, Textline, 19-11 1/2; 3. Duncan, Gruver, 19-  
7 1/4.  
**HIGH JUMP**: 1. Weaver, Happy, 5-10; 2. B.  
Smith, Wheeler, 5-10; 3. R. Smith, Wheeler, 5-6.  
**DISCUS**: 1. R. Smith, Wheeler, 138-7; 2. D.  
Miller, Booker, 133-7; 3. B. Smith, 132-10 1/2.  
**400 RELAY**: 1. Gruver, 45:0; 2. Kress, 46:2;  
3. Wheeler, 46:4.  
**3200**: 1. Tittsworth, Groom, 10:46.8; 2. Phil-  
lips, Phillips, 10:47.5; 3. Green, Gruver, 10:54.5.  
**800**: 1. May, Kress, 2:06.3; 2. Moore, Vega,  
2:06.7; 3. Uptergrove, Phillips, 2:10.8.  
**110 H**: 1. Heatley, Phillips, 15.5; 2. Johnson,  
Phillips, 16.0; 3. R. Smith, Wheeler, 16.1.  
**100**: 1. Alvarado, Kress, 11.4; 2. J. Britten,  
Groom, 11.6; 3. Asher, Textline, 11.7.  
**400**: 1. Hazel, Wheeler, 51.8; 2. Fry, Gruver,  
52.4; 3. Bridwell, Lefors, 54.0.  
**300 H**: 1. Ruthardt, Groom, 41.7; 2.  
Benefield, Wheeler, 41.8; 3. Finney, Gruver, 43.1.  
**200**: 1. Calor, Gruver, 23.1; 2. Britten,  
Groom, 23.8; 3. Frausto, Kress, 23.9.  
**1600**: 1. Uptergrove, Phillips, 5:00.0; 2. Phil-  
lips, Phillips, 5:02.2; 3. Lema, Kress, 5:09.5.  
**1600 RELAY**: 1. Gruver, 3:35.4; 2. Kress,  
3:38.5; 3. Groom, 3:39.4.

**Girls**  
**TEAM TOTALS**: 1. Groom, 117; 2. Vega,  
103; 3. Gruver, 85; 4. Miami, 65; 5. Booker, 60;  
6. Kress, 39; 7. Claude, 27; 8. Valley, 26; 9. (tie)  
Lefors 10; Wheeler, 10; 11. Phillips, 7; 12.  
Textline, 4.  
**DISCUS**: 1. Kuehler, Groom, 91-3/4; 2.  
Reinhardt, Kress, 79-7/2; 3. Hoover, Booker, 76-  
9/2.  
**HIGH JUMP**: 1. Boedeker, Wheeler, 5-0; 2.  
Burgan, Claude, 4-10; 3. Davis, Lefors, 4-6.

**TRIPLE JUMP**: 1. Eschle, Groom, 33-11 1/2;  
2. Sneller, Vega, 33-0; 3. Bohr, Groom, 30-9.  
**SHOT**: 1. Kuehler, Groom, 33-0; 2. Brittan,  
Valley, 31-9 1/2; 3. Hoover, Booker, 29-11 1/2.  
**LONG JUMP**: 1. Lisenby, Miami, 17-1; 2.  
Jackson, Vega, 17-3/4; 3. Sneller, Vega, 16-5.  
**3200**: 1. Marquez, Gruver, 14:37.4; 2.  
Dinemoore, Miami, 15:02.0; 3. Nolan, Phillips,  
15:04.6.  
**400 RELAY**: 1. Vega, 52.0; 2. Booker, 52.3;  
3. Miami, 53.3.  
**800**: 1. Ruthardt, Groom, 2:32.5; 2. Eschle,  
Groom, 2:36.8; 3. Lema, Kress, 2:38.3.  
**100 H**: 1. Shapley, Gruver, 16.9; 2. Gray,  
Vega, 18.4; 3. Story, Lefors, 19.1.  
**100**: 1. Bohr, Groom, 13.1; 2. Frank, Book-  
er, 13.3; 3. Rameriz, Booker, 13.5.  
**800**: 1. Vega, 1:49.5; 2. Groom, 1:52.9; 3.  
Booker, 1:53.4.  
**400**: 1. Lisenby, Miami, 61.5; 2. Garret,  
Gruver, 65.9; 3. Camp, Gruver, 66.7.  
**200**: 1. Eschle, Groom, 27.5; 2. Bohr,  
Groom, 27.8; 3. Scoggins, Valley, 28.2.  
**1600**: 1. Ruthardt, Groom, 6:07.3; 2. Lema,  
Kress, 6:17.7; 3. Rios, Gruver, 6:20.7.  
**1600 RELAY**: 1. Vega, 4:19.5; 2. Gruver,  
4:23.6; 3. Miami, 4:26.6.

**Junior High Boys**  
**TEAM TOTALS**: 1. Vega, 96; 2. Booker, 85;  
3. Wheeler, 64; 4. Phillips, 37; 5. Lefors, 34; 6.  
Happy, 30; 7. Valley, 26; 8. Kress, 23; 9. (tie)  
McLean, 22; Gruver, 22; 11. Silverton, 16; 12.  
Textline, 13; 13. Miami, 12; 14. Claude, 10; 15.  
Groom, 4.  
**Junior High Girls**  
**TEAM TOTALS**: 1. Gruver, 102; 2. (tie)  
Lefors, 78; Wheeler, 78; 4. Miami, 56; 5. Groom,  
43; 6. Vega, 38; 7. Booker, 30; 8. McLean, 25; 9.  
Valley, 21; 10. (tie) Phillips, 20; Claude, 20; 12.  
Happy, 18.

# The Gruver Statesman

PUBLICATION (USPS 9598-6000)  
GRUVER, TEXAS 79040  
Box 796 659-3434


Owner-Publisher.....William M. Miller  
Editor.....Joy Henderson, Gruver, Tx.  
Second Class postage paid at Gruver, Texas  
79040

Any erroneous reflection upon the character of  
any person or firm appearing in these columns  
will be gladly and promptly corrected upon  
being brought to the attention of the  
management.

POSTMASTER: Send address changes to  
Gruver Statesman, Box 796, Gruver, Tx.  
79040.

SUBSCRIPTION RATE: Hansford, adjoining  
counties, \$13.14 per year.

## Member Texas Press a Association



Out of State  
1-800-338-5871

**GUYTON**  
LIVESTOCK AUCTION  
Box 879  
Guyton, Oklahoma 73942

Office  
1-405-338-3378

Home Owned and Home Operated

SALE EVERY THURSDAY  
BEGINNING AT 12:00pm

## TECAT

### POLITICAL ANNOUNCEMENT

For: Persons who hold a Texas  
teaching certificate but are not  
currently employed full time by public  
schools.

**Date/Place**: Education Service Cen-  
ter, Region XVI  
1601 S. Cleveland, Amarillo, Texas  
Saturday, April 5, 1986  
9:00a.m.-12:00 Noon  
**Fee**: \$10.00 - To be paid at the  
workshop. **Phone Registration Requi-  
red**: Call 376-5521. Ask for Mildred or  
Marsha. Registration deadline is  
April 2, 1986.

### LOST & FOUND

**LOST**: Red Male bloodhound. Re-  
ward offered. Call 733-2219.  
24-1tp

This newspaper is authorized to  
announce the candidacy of the  
following candidates for public office  
subject to the action of the voters in  
the **MAY PRIMARY ELECTIONS**:

- DEMOCRAT**  
**FOR COUNTY TREASURER**  
HARRIETT HUTCHISON  
JEAN PEARCY  
NORMA JEAN MACKIE  
PEARL PIERCE  
**FOR COUNTY AND DISTRICT  
CLERK**  
AMELIA C. JOHNSON  
**FOR STATE REPRESENTATIVE**  
J. W. BUCHANAN  
**REPUBLICAN**  
**FOR COUNTY TREASURER**  
ESCHOL BLANKENSHIP  
**FOR STATE REPRESENTATIVE**  
DICK WATERFIELD  
**FOR SCHOOL BOARD**  
CRAIG SCHUMAN



Marilyn Hart- Membership Chairman  
of Gruver PTA awards Ann Dorman  
Life membership for her service to the  
PTA

### NOTICE TO BIDDERS

Sealed bids for the purchase of one (1) Type II,  
Class I, Floor Plan A, specialty van ambulance  
will be received by the City of Gruver, Texas,  
at the office of the City Manager up until 2:00 P.M.,  
April 15, 1986, then publicly opened and read.

The City reserves the right to reject any or all bids,  
to waive informalities and to accept the bid deemed  
to be the most advantageous to the City. All bids  
received after the above closing date will be returned  
unopened.

Specifications and bidding documents may be secured  
from the Office of the City Manager, P.O. Box 947,  
Gruver, Texas 79040-0947.

## Card of Thanks

I want to say an especial thank  
you to everyone who has been so  
sweet and good to me while I was  
so sick. Your prayers and your  
beautiful cards meant so much to  
me and I know they helped me  
recover to the point where I could  
come home and be on the road to  
recovery, even before the doctors  
could believe I could. May God  
bless each one of you.

Evalyn Hiller





Sheriff (Mark Irwin of Gruver) is in hot pursuit of a prison escapee that is roaming around at the Fund Raiser, Saturday night.

While our Sheriff is looking for our prison escapee, one of our local clowns (Mike Cudd) tells him he went that away.

## Gruver PTA



The Gruver PTA sponsored an all-out Seatbelt Safety program from March 3-13. The purpose was to educate students and the Community of the importance of wearing seatbelts. Use of seatbelts is a law subject to a \$50.00 fine. During this time we were fortunate to have Dusty Diela with us. Dusty is the Texas PTA Mascot for seatbelt safety. The following is an

account of how Dusty Diela's diary would read concerning efforts to promote seatbelt safety in Gruver:  
Day 1, Tuesday, March 3: 8:00 a.m. A "Thank-You" party was given for all Gruver bus drivers, because their driving safety is important.

Afternoon: The Third Grade Classes were shown "A Tail to Avoid" puppet presentation and a short film, "Do You Buckle-Up?" They received a Seatbelt Survey and a Buckle-Up Record to fill out at home and a Dusty Diela brochure.

Day 2, Thursday, March 5: 7:45 a.m. Coach Frick and some Driver's Education students, Dusty Diela, and PTA volunteers had a surprise "Seatbelt Check" of all parents, students, and teachers arriving or dropping by the school. The result was surprising: only 9.7% were wearing seatbelts. On this morning the Fourth and Second Grade Classes were given the same program as described on Day 1.

Day 3, Friday, March 6: The Kindergarten and First Grades were shown the puppet presentation, "A Tail to Avoid," and an

educational cartoon, "Otto, The Auto Buckle-Up." These students were given a Buckle-Up Record, a brochure, "Kids 'N' Cars, Riding Safe," and a Buckle-Up Reminder of Dusty Diela to color and cut-out to put in their parents' cars.

Day 4, Tuesday, March 11: The Gruver Jr. High was shown a short but impressive film, "Are You Convinced?" The students were given a sticker to put in their parents' car, and a brochure "Links to Safe Living."

Day 5, Wednesday, March 12:

9:00 a.m. Dusty Diela and members of "A Tail to Avoid" Puppet show made a special appearance at the local Pre-schools of Mrs. Rosie McClenagan and Mrs. Sylvia Duncan. The children were given a Seatbelt Reminder to color and cut-out, and a sticker to help them remember to "Buckle-Up!"

Day 6, March 13: Mission accomplished. Dusty Diela packs his bag and travels back to Austin.

But, Beware! He may return for another survey soon! So, BUCKLE UP! (It could save your life!)



The Lone Ranger is wondering where Tonto is? But Little does He know that Tonto stole away to be with his bride - Squating Hefer,

daughter of Sitting Bull. Tonto is being portrayed by Bobby Holleson and his lovely wife.

Make their Easter bright and beautiful!



Find your own expression of the many joys of Easter with 1-11 the right card from Hallmark! EASTER Sunday is March 13th.

SACKS THIRD AVE  
203 MAIN  
Spearman, Texas



## Call Us First For Financing On Your New Car



Roger Monzingo, Vice President

### Is This The Year You Buy That New Vehicle?

You've been wanting to trade vehicles ... to get into a new car or pickup truck. Now the waiting is over, and you've made the decision to buy. This is the year to trade. But once you pick the dealer and the vehicle you want, you have another big decision to make — the financing.

### Choose Your Financing With The Same Care You Choose Your Dealer.

There are lots of places to get your new car or pickup financed. Some deals sound like better deals than others, until you start checking and asking questions. That's what we're for ... to help you select the right type financing when it's your time to buy. We can answer your questions, showing you what you'll really pay, whether your payments fit your budget, and how to make it work.

Roger Monzingo invites you to visit with him about auto loans, and just about any type loan you may need for your family. Roger's been in the business of helping people like you for many years. Whether you want to talk about trading cars, or trading fishing stories, Roger's ready to talk.

See Roger, or Leby Crane, or Quentin Rizley. We're the Loan Officers you can depend on for helpful, honest advice when you're ready to buy that new vehicle. First National Bank wants to be your Financial Home.



First National Bank  
Perryton, Texas  
806/435-3676  
Member FDIC

## DUMAS CO-OP ELEVATOR

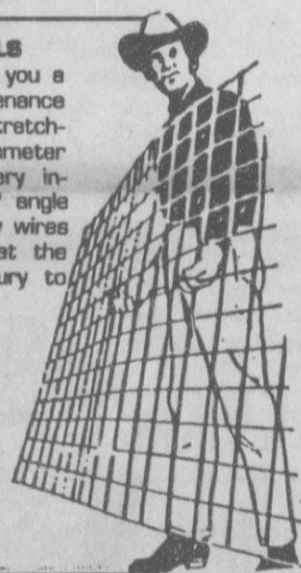
600 Twichell, Dumas, Texas Phone (806) 935-6440

### CORRAL PANELS

Sag-free panels give you a long life. Low maintenance installation with no stretching required. 1/4" diameter rods welded at every intersection at a 90° angle that stays 90°. Stay wires are trimmed flush at the ends to prevent injury to people and livestock.

16' Long  
52" High  
Reg. \$16.45  
Sale \$9.99

While supply lasts



WE HAVE OVER 86,000 ITEMS TO CHOOSE FROM  
For more information call (806) 935-6440

## HOMESTYLE Hungr-buster

If you enjoy the special taste of a juicy, tender, home-cooked burger, you'll feel right at home with our Homestyle Hungr-buster.

We start with a quarter-pound, 100% pure beef patty, cooked up fresh and hot. Then, we add your choice of toppings to make it just the way you like it — lettuce, tomato, pickles and onion. And right now, we're serving it up at a price that hits close to home.

The Dairy Queen Homestyle Hungr-buster. It's one burger that's worth leaving home for.

# 99¢ sale

Friday, March 14 thru Sunday, March 23

at participating stores.

Dairy Queen

"Better than ever"





## Engagement Announced



Mr. and Mrs. William J. Gorden of Brownwood have announced the engagement and approaching marriage of their daughter, Karen Lynn, to Harley Richard Murrell of Gruver. The bride elect is a graduate of Brownwood High School, attended Angelo State University and is employed as operator services Sup-

ervisor at General Telephone in Guymon, Oklahoma. Her fiance, a graduate of McMurray College is employed by Texaco Wholesalers of Gruver. The May 10 wedding is planned for 7:00 pm in the United Methodist Church of Gruver with the Rev. Jim Terry officiating. Friends and relatives are cordially invited to attend.



These Celebrity Waiters are taking a break and Doing a little Super Heart Shuffle before the rush on hour of waiting on their

guests at the Heart Association Fund Raiser at the Cattleman's Restaurant, Saturday night.

### NOTICE

THE SHARP PRINTING CALCULATOR ADVERTISED ON PAGE 45 OF THIS WEEK'S SALE CIRCULAR WILL NOT BE AVAILABLE. ALSO, QUANTITIES ARE LIMITED ON THE KRACO CORDLESS TELEPHONE, ADVERTISED ON PAGE 48. WE REGRET THAT NO RAINCHECKS CAN BE ISSUED FOR THESE ITEMS. WE APOLOGIZE FOR ANY INCONVENIENCE THIS MAY HAVE CAUSED.

**TGIY**  
family centers



The cast of the one act play, "The House at Pooh Corner"; presented by Gruver High School students at the PTA program Thursday March 13, 1986. The Zone play contest was

presented at Follett Saturday March 15th with Quincy Tomlinson and Clay Smith being named to the All-Star cast. Jeanne Potts received Honorable mention for all star cast. Eeyore-Jerry Martin;

The worst enemies of the human race are

nervous tension, and the fast living which causes it.

### Markets

Wheat	\$2.79
Milo	\$3.95
Corn	\$2.70

### Gruver Music Club

The Gruver Music Club met on Tuesday, March 11th at the United Methodist Church. The regular business was conducted by Mrs. Jerry Williams. The current musical note was given by Mrs. Don Hart and Mrs. Jim Terry led the club in the study and singing of the Hymn of the Month. An interesting study program was given by Mrs. Donnie Thoreson entitled "The Importance of Charlie Pride to County Music. Mr. Bob Burgoon then sang several selections that were made famous by Charlie Pride, accompanying himself on the guitar. The Meditation was then given by Mrs. Jim Terry, with lovely tea sandwiches and cookies served afterwards by the hostesses, Mrs. Glen Harris and Mrs. James Stedje.

### Bible Church

The Gruver Community Bible Church is looking forward to an upcoming Revival with Evangelist Calvin Springer. Bro. Springer is from Robinson, Texas and is a former "Cowboy Camp Meeting" speaker. He is a very dynamic preacher and is excited about the Word of God. We would like to extend an invitation to everyone in the Community to attend this Revival, April 13th - 16th.

The power of pictures is illustrated by the effectiveness of the seed catalogs.

There's a time to play, as well as a time to pray, but some people never try either.

Faith and patience are great assets and wonderful aids if you have them when you need them.

### Menu

March 24th - 27th

#### MONDAY, MARCH 24

- Fish
- Corn
- Potatoes
- Corn Bread
- Brownies
- Milk

#### TUESDAY, MARCH 25

- Western Burger
- Mix Vegetables
- Cherry Cobbler
- Milk

#### WEDNESDAY, MARCH 26

- Speg. w/Meat
- Tossed Salad
- Applesauce
- Homemade Bread
- Milk

#### THURSDAY, MARCH 27

- Corn Dogs
- Tater Tots
- Beans
- Cookies
- Milk

#### FRIDAY, MARCH 28

- Easter Break

## "55 Alive"

55 Alive Mature driving, an innovative, classroom driver retraining program designed to help older persons improve their driving skills is being offered on Saturday, March 22, 9 a.m. (8 hr. course), 1 N. Amherst, Texas New Mexico Power Co. Conference room, Peryton, Texas. Sponsored by A.A.R.P., (American Association of Retired Persons). Instructors, June Kindy and Violet Helker volunteer trained A.A.R.P. Members.

Course Material covers the effects of Aging and medications on driving. Basic driving rules, license renewal, local traffic hazards, adverse road conditions, energy saving and accident prevention measures.

Graduates of the Course are given 10% reduction in the cost of Automobile insurance by most insurance companies.

The cost of the course is \$7.00 all ages of drivers are welcome. Call 435-4578 or 435-4173 to preregister or information.



## Let's talk.

Information about your changing telephone service from Gary Stevens, Manager-Community Relations

### Diversifying the Lone Star Economy

News about tumbling oil prices is a reminder that Texas faces some knotty economic challenges. But the outlook for an upbeat economy appears good. One reason for the optimism is the state's efforts to diversify our economy.

Economic diversification may not be a new twist, but you may be surprised to learn about the new ally in this campaign. Meet your new partner: telecommunications. Yes, the telephone company. Surprised?

Consider that many businesses today, including the so-called high-technology industries, are heavily dependent on information. These firms need to move large amounts of data across the state and the world. Much of that information will zip across the telephone network — an intricate web of circuits, transmitters and lines.

Without a first-class telecommunications system, Texas cannot compete with other states vying for new jobs and industry. Remember, most every state is recruiting the same firms. How does Texas set itself apart from the crowd? One way is to parlay our telephone network into a major advantage for our state.

#### An economic edge

Homegrown Texas firms also will find it increasingly an edge to be served by a dependable communications network. For example, in the oil and gas industry, millions of dollars are riding each day on the ability of these firms to transmit and receive geological data from drilling sites. That puts a premium on fast, reliable communications.

In our homes too, telecommunications is playing a more important role. Many Texans are using computer linkups over telephone lines to start new businesses, expand their education and even receive health care — all this without leaving their homes.

Much of what we take for granted in our everyday lives would be impossible without telecommunications. Consider that in Texas there are \$15 million in goods and services sold each day by phone... more than seven million transactions between financial institutions are processed every day over the telephone network... and nearly 248 million times a year Texans use phone lines and automatic teller machines to bank at their convenience.

#### A mind-boggling figure

There's one more statistic that perhaps tells the story best. On a typical day, Southwestern Bell Telephone handles more than 82 million voice and data messages from homes and businesses across the state. And, this figure is expected to continue to grow.

Obviously, huge investments are required to meet this growth. In fact, for eight consecutive years, my company has spent more than \$1 billion annually to improve and add to the state's telecommunications network. This year will be no different.

We all have a stake in the economic future of Texas. All of us must do our share. For our part, we want to provide a telecommunications network that is second to none. We have the resources and people to achieve that goal. Given adequate earnings, there is no doubt we will succeed.

**Southwestern Bell Telephone**

Texans providing telecommunications for a growing state.

Gary Stevens  
SW Bell Telephone  
714 S. Tyler  
Amarillo, TX 79101

## St. Patrick's Day Specials

It's No Blarney!  
Our In-Store Specials  
Are Greatly Reduced  
Just For You!

PRICES EFFECTIVE  
MARCH 20-21-22, 1986

WHILE  
SUPPLIES  
LAST



**ALLSUP'S**  
CONVENIENCE STORES

USE OUR  
Money  
Orders  
19¢

FRESH & HOT <b>Corn Dogs</b> 2 FOR 89¢	ALLSUP'S <b>Hot Chocolate</b> CUP 30¢	BORDEN'S <b>Homo Milk</b> 1/4 GAL. CTN. 99¢
HERBY'S DOUBLE <b>Charbroiled Hamburger</b> ONLY \$1.59	BORDEN'S <b>Ice Cream Sandwich</b> PACK \$1.19	BORDEN'S <b>Nutty Buddies</b> PACK \$1.19
Allsup's <b>Chopped B-B-Q</b> 99¢ Beef Sandwiches	Soft Parkay <b>Margarine</b> (2 oz tub pkg) 79¢ 1 lb pkg	Decker's Sliced <b>Bacon</b> \$1.09 1 lb pkg.

**MOVIE & VCR RENTALS**  
The Very Best in Home Video Entertainment!  
**ALL YOU NEED IS YOUR TV!**



6 pak

**Caffeine Free COCA COLA, CLASSIC COKE, CHERRY, DIET AND TAB**  
12 OZ. CAN \$1.89



# Among The Neighbors

Mr. Elmer Woolley, father of the Walter and Paul Woolley, passed away early Sunday morning in Buffalo, Oklahoma. The funeral is being held in Laverne, Oklahoma Wednesday afternoon. Many grandchildren of Mr. Woolley live in Spearman as well as his two sons.

Hadley Reed and Travis Patterson are here for spring break from Tarleton State University. Both boys report that all is going well with them and they are getting cranked up to start roping on the collegiate tour.

Mr. C. M. McCord, of Gallup, New Mexico, is visiting in the home of his sister, Mrs. Doris Kitchens, for a day or two. He had been visiting other relatives in Stinnett and Borger.

Mrs. Evelyn Hiller has as guests this week Mrs. Winnie Chase, her sister-in-law and son, Ralph Bizzell. They are from Sand Springs, Oklahoma and are also transacting business during their stay.

Among the college students in Spearman on Spring break are Jana Beth Buchanan, WSTU, Canyon and Roger Buchanan, Tarleton State University, Stephenville. Jana spent only the week-end as she is employed as well as a student.

Mr. and Mrs. Willoughy Sparks visited Raymond Sparks and other relatives in Spearman on Saturday. They live in Midland and were transacting business in Sunray.

Mrs. Don (Vi) Kjos is in Rapid City, South Dakota, this week visiting her daughter. Don is "batching" as his duties at Permian Corp. prevented his going.

Mrs. Lila Hergert is happy to be home after a two weeks stay in hospitals. She was transferred from Ochiltree General at Perryton to Northwest Texas in Amarillo. She is recovering from surgery.

Many here read the interesting article in the Sunday Amarillo News-Globe concerning Roger Ayres and his success as a painter. Roger is the son of James Allen Ayres, formerly of Gruver. Beth, Roger's wife, is the daughter of Mr. and Mrs. Claude Sheets, Jr. of Spearman. The Ayres have a seven year old son, Leckie and two year old daughter, Lecl.

Mrs. Blant McGee returned recently from a months stay in Cincinnati, Ohio with her daughter. Mrs. McGee is happy to report that her daughter's serious brain surgery was a complete success and she is making a rapid recovery.

Rhonda Hall Dettman, high school senior, is back in school after emergency surgery. She was in Ochiltree General at Perryton on Monday for surgery and recovered so rapidly, she was dismissed on Saturday.

J. D. Wilbanks flew to Charlotte, South Carolina for a few days last week, gathering some information concerning antique steam engines. He visited with friends there who have been associated with him in the antique shows.

Kim Nelson, student at Texas Tech, Lubbock, is enjoying spring break with her parents, the Dennis Nelsons. Kim was recently a delegate for her sorority at a convention in St. Louis. In an elevator, she was surprised to meet a former Spearman classmate who was also a delegate. Roger Buchanan represented his fraternity at Tarleton State University, Stephenville.

Mrs. Audrey Behne drove to Ulysses, Kansas Saturday morning to pick-up her son, Hoot Lewis. Hoot is in the 7th grade and is on spring break.

Mrs. Gertrude Archer returned Mor'ay from a month's visit in Phoenix, Arizona. Her daughter, Sue and Neal Venters, now make their home in Phoenix. Freeman Beasy drove out about a week ago, and Gertrude returned with him.

Mr. and Mrs. W. L. Beck of Vacaville, California spent several days last week in the home of his sister, Mrs. Richard Gaines. Other relatives they visited were the

Allen Varnons, Owen Pendergrafts, and Purcells of Stinnett.

A number of folk from this area were proud spectators Monday night at Borger when Doyle and

Jane Jackson were awarded the 1986 Outstanding Conservation Farmer and Homemaker Award. The Hutchinson County conservation farmer banquet was held at Sutphens with a large attendance. Among those attending locally were the Raymond Kirks, J. B. Buchanans, Phil Jenkins, Robert Novaks, Dale Woffords, Richard Gaines, Allen Varnons, Owen Pendergrafts, Nolan Holt and Herbert Kirk.

Owen and Olive Pendergraft

were in Bucklin, Kansas during the week-end as guests of the Gene Squires. Both couples then drove to Dodge City to visit other friends, the Carl Turners.

To report locals, call 659-3468

### BEST OF PRESS

**Definition**  
Nonchalance: The ability to look like an owl when you've acted like a jackass.

-Argosy, Nickerson,

### No Where

There are thousands of hidden taxes these days, but alas, no place where the taxpayer can hide.

-Star, St. Louis.

### Cover-Up

Architects cover their mistakes with ivy, doctors with sod, and brides with mayonnaise.

-U.S.S. Galveston.

### Hospital

Patients in Hansford Hospital are: Martha Sloan, Bernie Vaughn, E. J. Calloway, Floyd Hays, Roy Carnett, Dan Pearson, Ronnie Bulard W.E. Jones. Dismissed are: Carma Dorton, Clara Hull, Joyos Ehrhart, Carro Redwine, David Steel, Johnnie Williams, Javier Carillo, Willie Vela.

# UNITED SUPERMARKET

THESE PRICES GOOD MARCH 19 THRU MARCH 22 IN TEXAS UNITED STORES **DOUBLE STAMPS ON WEDNESDAY**

<p><b>GROCERY</b></p> <p><b>STARKIST TUNA</b> IN OIL OR WATER</p> <p>6 1/2 OZ.</p> <p><b>59c</b></p>	<p><b>GROCERY</b></p> <p><b>KRAFT MACARONI &amp; CHEESE DINNER</b></p> <p>7 1/4 OZ.</p> <p><b>279c</b></p>	<p><b>GROCERY</b></p> <p><b>CASSEROLE PINTO BEANS</b></p> <p>4 LB.</p> <p><b>\$1.29</b></p>
<p><b>MRS. BAIRD'S PURE WHITE BREAD</b> LARGE OR EXTRA THIN</p> <p>1 1/2 LB. LOAF</p> <p><b>69c</b></p> <p>15% OFF LABEL</p>	<p><b>DR. PEPPER H-C DRINK</b> 6 PK. 32 OZ. . . . . PLUS DEPOSIT</p> <p><b>1.98</b></p> <p><b>LIPTON TEA BAGS</b> . . . . . FAMILY SIZE 24-CT. . . . .</p> <p><b>1.79</b></p>	<p><b>POST TOASTIES</b></p> <p>18 OZ.</p> <p><b>\$1.09</b></p>
<p><b>WHITE CLOUD TISSUE</b></p> <p>4 ROLL PKG.</p> <p><b>99c</b></p> <p>15% OFF LABEL</p>	<p><b>OREOS REG. DOUBLE STUF</b></p> <p>20 OZ.</p> <p><b>\$1.99</b></p>	<p><b>SANTITAS TORTILLA CHIPS</b></p> <p>14 OZ.</p> <p><b>99c</b></p>
<p><b>PRODUCE</b></p> <p><b>NEW RED POTATOES</b> SIZE A</p> <p><b>\$1.51</b></p> <p>LBS.</p>	<p><b>PRODUCE</b></p> <p><b>FRESH KENTUCKY WONDER GREEN BEANS</b></p> <p><b>78c</b></p> <p>LB.</p>	<p><b>PRODUCE</b></p> <p><b>ROMA SALAD TOMATOES</b></p> <p><b>\$2.11</b></p> <p>LBS.</p>



# Tax News

**ALICE PEDDY, C.T.A., R.P.A.**  
Chief Appraiser

HANSFORD COUNTY APPRAISAL DISTRICT  
709 West Seventh • P.O. Box 567  
Spearman, Texas 79081

(806) 659-5575 (806) 733-5139

A statewide effort is underway to inform Texas property owners of their

rights, remedies and responsibilities as taxpayers, according to Ron Patterson, executive director of the State Property Tax Board (SPTB). Patterson says SPTB is working with appraisal districts and local news media to help make taxpayers aware of property tax filing deadlines and methods to obtain exemptions or other forms of tax relief.

"The first priority for property owners is to file renditions by March 31 and apply for tax relief by April 30 this year," Patterson said. Taxpayers should file all exemption applications

and property rendition forms with the central appraisal district office. A rendition is a report a property owner makes listing taxable property owned or managed on January 1, 1986. A rendition also gives a taxpayer the opportunity to record an opinion of the property's value. "By rendering a value for property, the owner makes the appraisal district responsible for sending a notice if the district places a higher value on the property," Patterson pointed out. Certain property owners must render their property. "Anyone who

owns or manages income-producing personal property on January 1 is required by state law to file a rendition statement with the appropriate appraisal district," Patterson said. There are special rendition procedures for property when an exemption applies on January 1 but ends during the tax year. In such a case, the person who owns or acquires the property when the exemption ends must render the property for taxation within 30 days. The chief appraiser may also

require rendition of other taxable property upon notice to the property owner or manager. Rendition forms are available from appraisal district offices. Property owners must file renditions before April 1. for homeowners, tax relief is usually in the form of exemptions. "An exemption lowers tax payments by deducting part of a property's value from taxation," Patterson explained. Homestead exemptions are available for all qualified homeowners, and additional exemptions are available for disabled people and

for those aged 65 or over. Elderly homeowners who apply for the over-65 homestead exemption also get a cap, or ceiling, on taxes they pay to the school district. All taxing units offer exemptions to disabled veterans, survivors of deceased disabled veterans and survivors of those who died on active duty.

Likewise," Patterson continued, "farmers and ranchers who qualify may have their land taxed on its productive value instead of its market value, which also results in a lower tax bill." Productivity valuation comes in two forms, often referred to by the section of the Texas Constitution that provides them: open-space or "1-d-1" valuation and agricultural or "1-d" valuation.

Property owners who last year received homestead exemptions, disabled veterans' exemptions and open-space land (1-d-1) valuation need not reapply in 1986, unless the chief appraiser requests a new application to confirm the owner's current qualification.

Applications must be filed in 1986, Patterson said, by property owners who have not previously received tax relief on their present homesteads or land.

Farmers and ranchers who receive agricultural use (1-d) valuation must apply for it each year.

Patterson noted that people whose property is in more than one county appraisal district have an additional responsibility. These property owners may have to file for exemptions and productivity valuation in each appraisal district in which their property is located. Failure to do so could result in one or more taxing units taxing the property on its full market value. An example is where a taxing unit has territory in two counties, but only one of the appraisal districts appraises all the property in the taxing unit.

Applications for exemption and special valuation must be in the appraisal office before May 1.

Complete information on tax exemptions and rendition requirements is in a pamphlet produced by SPTB\* "Taxpayers' Rights, Remedies, Responsibilities." The pamphlet also tells how taxpayers can challenge the values placed on their property by protesting to the appraisal review board. The pamphlet is available free from appraisal district offices or from SPTB in Austin.

"The property tax is the primary source of local government revenue in Texas," Patterson said. "It will generate about \$9 billion this year to help fund public schools, cities, counties and special districts like hospitals, local colleges, fire protection, water and utilities."

We urge all property owners to become familiar with the tax process, to file renditions and to apply for all exemptions or other tax relief they are entitled to," Patterson concluded.

# SPECIALS

DOUBLE COUPONS EVERY THURSDAY!

<p><b>MEAT</b> <b>WILSON</b> 20% LESS FAT <b>SMOKED SAUSAGE</b> \$1.88 LB. MEAT OR BEEF</p>	<p><b>MEAT</b> <b>COUNTRY PRIDE</b> GRADE "A" <b>PIC-O-CHICK</b> 98¢ LB. CONTAINS: BREASTS • DRUMSTICKS • THIGHS</p>	<p><b>MEAT</b> <b>KRAFT</b> <b>AMERICAN SINGLES</b> \$1.68 12 OZ. PKG.</p>
---	--	--

<b>WILSON BOLOGNA</b> MEAT OR BEEF	\$1.38
<b>LEAN STEAK FINGERS</b> EXCELLENT FOR CHICKEN-FRY	\$2.28
<b>OWENS SAUSAGE N' BISQUITS</b> REG. OR HOT	\$1.48

**WISCONSIN RED RIND CHEDDAR CHEESE**  
\$1.98  
LB. HALFMOON

<p><b>MEAT</b> <b>UNITED</b> TRU TENDR OR USDA CHOICE BONELESS <b>BRISKET</b> \$1.78 LB. MARKET TRIMMED</p>	<p><b>MEAT</b> <b>LEAN GROUND BEEF</b> \$1.38 LB. THIS PRICE GOOD IN AMARILLO, PERRYTON, BORGER, DALHART AND DUMAS STORES ONLY</p>	<p><b>MEAT</b> <b>WILSON</b> 93% FAT FREE <b>HALF HAMS</b> \$2.28 LB. REGULAR OR HONEY CURED</p>
---	--	--

<b>AQUA FRESH TOOTHPASTE</b> 8.2 OZ.	\$1.79
<b>OGILVIE SHAMPOO</b> REG. • EXTRA BODY	99¢
<b>OGILVIE HOME PERMANENTS</b> REG. • EXTRA BODY SOFT BODY	\$3.29

**PLAINS SLIM & TRIM MILK**  
78¢  
½ GAL. THIS PRICE GOOD IN AMARILLO, PERRYTON, DALHART, BORGER AND DUMAS STORES ONLY.

<p><b>FROZEN FOOD</b> <b>EL CHARRITO DINNERS</b> \$1.19 • MEXICAN, 14 OZ. • QUESO, 13 OZ. • ENCHILADA, 12 OZ.</p>	<p><b>FROZEN FOOD</b> <b>MRS. PAUL'S CRUNCHY LIGHT BATTER FISH FILLETS</b> \$2.19 16 OZ.</p>	<p><b>FROZEN FOOD</b> <b>MRS. PAUL'S CRISPY CRUNCHY FISH STICKS</b> \$1.19 7 ¼ OZ.</p>
---	--	--

## Revival

Evangelist Jim and Sherral Creek will begin revival services at First Assembly of God, on Sunday March 23rd. They will be presenting special singing each night and ministering from God's word. Services begin at 10:45 a.m. and 7:00 p.m. on Sunday and at 7:30 p.m. Monday through Wednesday.

Pastor Nuckels and the Congregation of First Assembly of God invite you to attend all of these services.

## Woolley Services

### Held Sunday

Elmer Timothy Woolley, 86, died Sunday in Buffalo.

Services were held at 2 p.m. Wednesday in First Baptist Church with the Rev. Larry Combs, pastor, officiating. Burial will be in Fairmont Cemetery in Follett, Texas, by Seeger Funeral Home.

Mr. Woolley was born in Brookfield, Mo., and was reared in Leedey. He was a Baptist. He was married to Leona Elsie Dishen in 1921 in Follett. They moved to Follett in 1921 where he was a farmer. He was a customs harvester for many years from Southern Oklahoma to the Canadian border. He was preceded in death by two brothers, three sisters and three grandchildren.

Survivors include his wife; four sons, Kenneth of Laverne, Clarence of Springdale, Ark., and Walter and Paul, both of Spearman; a daughter, Leona Redinger of Laverne; a brother, Delno J. of Ponca City; a sister, Rosella Dennison of Eureka, Kan.; nine grandchildren; and 18 great-grandchildren.

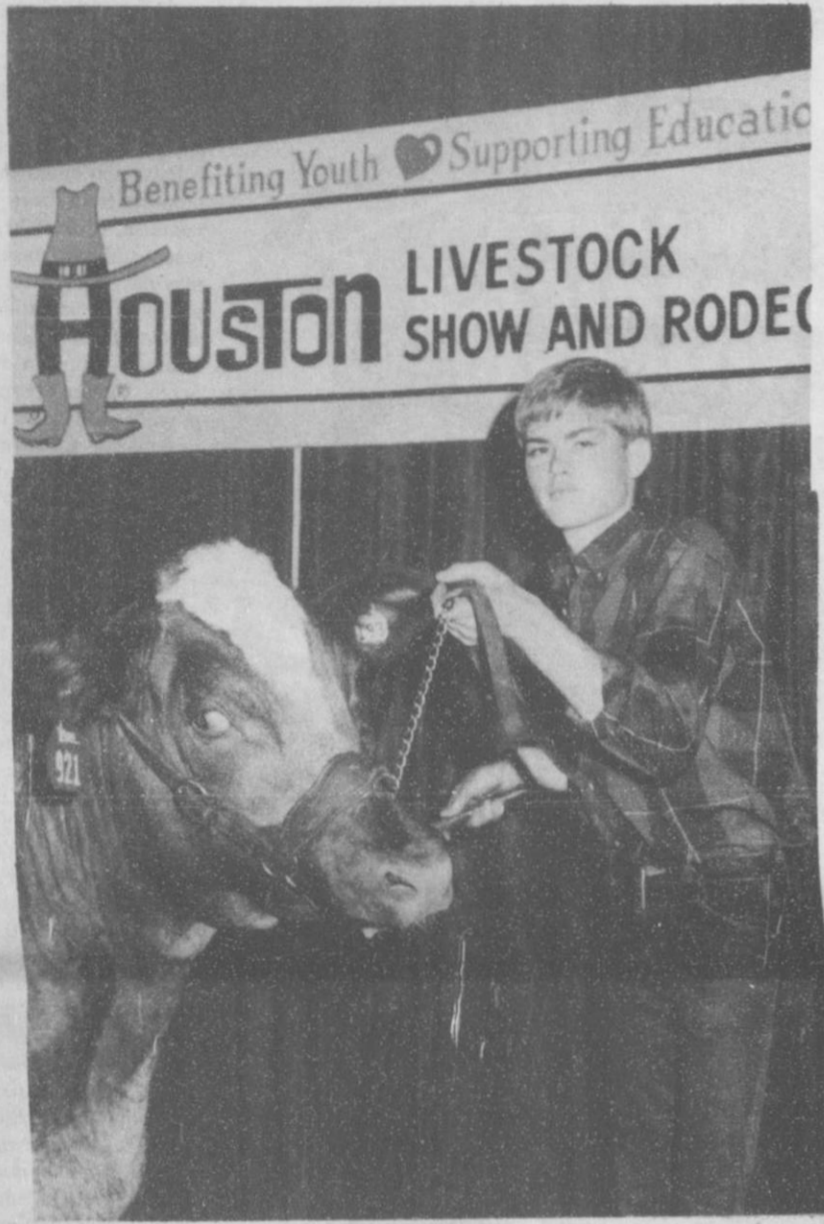
Memorials may be to Slapout Community Center c/o Seeger Funeral Home.



# HANSFORD COUNTY STOCK SHOW

*Fri. & Sat.*

**All buyers welcome  
Saturday evening!**



ROD KARLIN, Gruver - Winner, Mediumweight Shorthorn Steer - GRUVER, TEXAS-----



At the  
County Show Barn,  
Gruver, Texas

**March 21st & March 22nd**

*Support the Future  
Farmers of America  
and 4-H Clubs  
Livestock Show and Sale*



## GRUVER STATE BANK

3 Main Plaza,

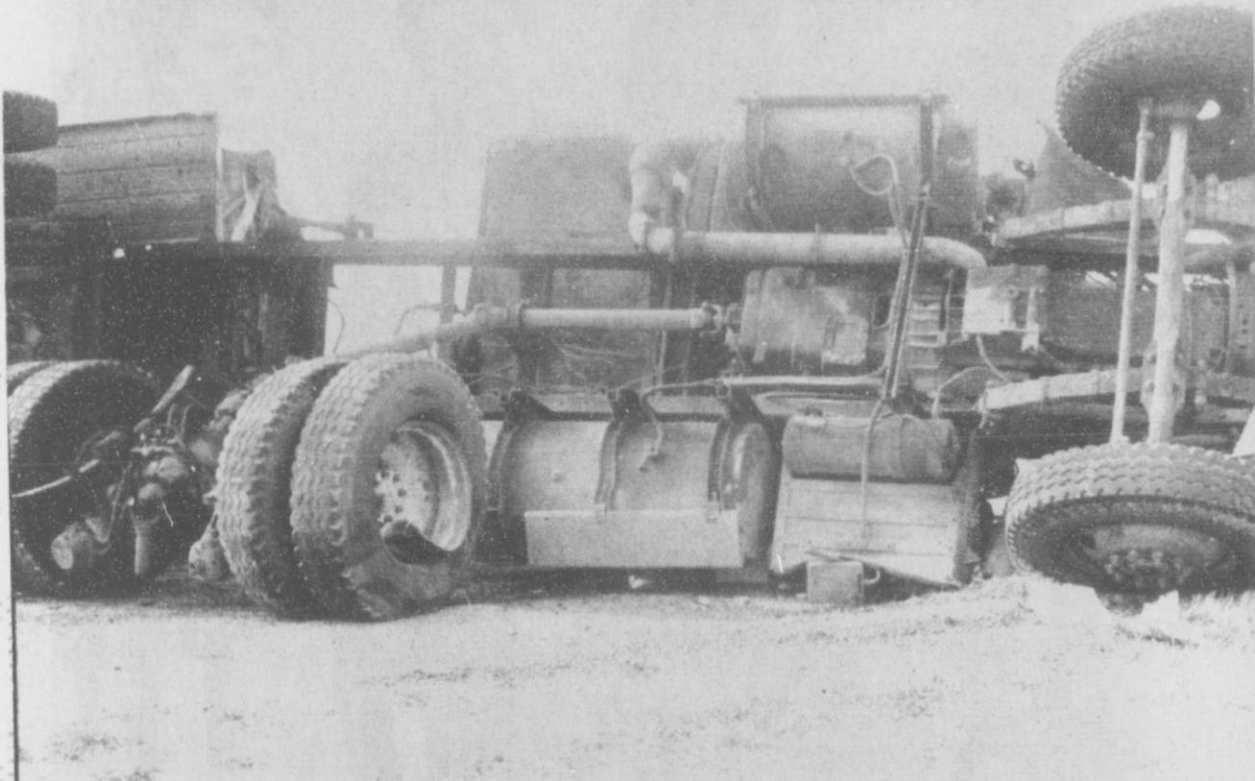
Gruver, Texas

733-5061

Member F.D.I.C.







View from South of overturned Semi-Grain Truck in accident March 10th approximately 6 miles North of Gruver. The grain truck was involved in a collision with a farm tractor

driven by Bill Hendricks. The truck driver identified as James Bedd of Phillipsburg, Kansas, employed with Snodgrass Trucking recieved facial lacerations and was treated at Hans-

ford Hospital. Hendricks was also taken to Hansford Hospital. Both men have been released.

### Karen's Kozy Korner

A simple stretch may be the only thing standing between you and an exercise program you can live with over a long period of time.

Many people get started on an exercise, jogging or walking program and stop within a short time because they get sore. The soreness comes from strained muscles that weren't "warmed up" before beginning the activity.

Stretching is easy to do, but there is a right and a wrong way to do it. The right way is a relaxed, sustained stretch. The wrong way is to bounce up and down or stretch to the point of pain.

When you begin, spend 10-30 seconds in an easy stretch. Go to the point where you feel a mild tension and relax as you hold the stretch. This type of stretch reduces muscular tightness and helps the muscles get ready for the developmental stretch.

After an easy stretch, you can move slowly into a developmental stretch, where you move a fraction of an inch further until you again feel a mild tension and hold for 10-30 seconds. The developmental stretch fine-tunes the muscles and increases flexibility.

Remember, no bouncing on either type of stretch! stretch!

Don't hold your breath while stretching either. Breathing should be slow and rhythmical. If you're bending forward to stretch, exhale, bend forward and then breathe slowly as you hold the stretch.

At first you'll want to silently count the seconds for each stretch so that you hold the proper tension for a long enough time. But later you will find it possible to stretch by the way it feels, rather than having to count.

Once you stretch, you'll be "warmed-up" and ready to do your exercise. And the next day you won't have the discomfort of sore muscles.

### EDUCATIONAL PROGRAMS CONDUCTED BY THE TEXAS AGRICULTURAL EXTENSION SERVICE, SERVE PEOPLE OF ALL AGES, REGARDLESS OF SOCIO-ECONOMIC LEVEL, RACE, COLOR, SEX, RELIGION, HANDICAPPED OR ADDITIONAL ORIGIN.

## Baby Shower

A Baby Shower was given recently to welcome Christopher Clawson, son of Rodney Dale and Angie Clawson. Special guests to help greet him were Grandmother Jo Alice Clawson, Aunt Margaret and his Great-grandmother, Mrs. C.H. Clawson.

The color blue was carried out with a lovely centerpiece containing an ivory planter with blue carnations and

ribbons setting the table theme. Napkins and cookies carried out this color scheme. Hot spiced tea and coffee were served also.

Those assisting with registering and serving the guests were: Yvette Miller and Missy Anderson. The hostesses for this fun occasion were: Lucille Schad, Rosemary McKee, Phyllis Rasor, Georgia Davidson, Melba Rasor, Christine Brandvik, Josephine Fletcher, Norma Red, Rosalyn McClenagan, Betty Roberts, Juanita Taylor, Ann Dorman, Alma Ross, Diedra Deakin, Sherri Rasor, Edith Breland, Sandra McNett, Ynese Williams, Sharon Barkley, Judy Virden, Opal Johnson, Mary TeBeest, Lee Harper, Charlen Spivey, Kathy Gillispie, Sharon Seagler, Pat Barkley, Fran Duncan, Delores Bevil, and Marion Shapley.

The friends of Larence Dossett will be glad to hear that he is out of the hospital, where he has been for 2 weeks here in the Valley.

Thank You

Mrs. Dossett

### Card of Thanks

I would like to thank everyone for their prayers, cards, visits, flowers, calls the month I was in the hospital. Also to Dr. Muthali and nurses the ambulance crew who took me. Also thanks to the Dr. and nurses at High Plains Baptist for their kindness and great care.

Thank you for the food that was brought to the house before and after I got home. Your kindness will always be remembered.

May God Bless Each One.

Sincerely,  
Mary Mesner

I would like to say thank you to everyone for the cards, visits, telephone calls, flowers and for your prayers during my stay in the hospital. A special thank you to Dr. Viola and the Hospital staff for the loving care they gave me. May God Bless each and everyone of you.

Love  
Vi Hornsby



For dryland, limited water or full irrigation... Pioneer has you covered!

#### 8493

We just can't say enough good things about the performance this hybrid has shown under dryland or limited water conditions. On farm after farm, it produced outstanding yields of high test weight, hard textured grain... even under extreme heat! 8493 has excellent root and stalk strength and outstanding resistance to Biotype C and E greenbugs. If you grow sorghum on the Plains, try this one!

#### 8333

When you're pouring on the water and pushing for top sorghum yields, this hybrid will come along with you to make the most of everything you put into the crop. And it has the heat and drought tolerance to withstand the tough summers you've come to expect. Outstanding resistance to Biotype C greenbugs, very good root and stalk strength. Performance characteristics you need to grow good sorghum on the Plains. It's all yours with 8333 from Pioneer.

See one of these Pioneer dealers right away.



H. B. Parks  
733-2606



Keith Gibson  
733-2370



Kenneth Slough  
733-2469



Registered trademark of Pioneer Hi-Bred International, Inc. Pioneer® brand products are sold subject to the terms and conditions of sale which are part of the labeling and sale documents. Pioneer is a brand name; numbers identify varieties.



## The Spotlight Is On The Annual Junior Livestock Show & Sale

County Ag Barn, Spearman, Texas

March 21 & 22, 1986  
Gruver, Texas

HANSFORD COUNTY JUNIOR LIVESTOCK SHOW and SALE "A Woman's Work Is Never Done"

March 21 & 22, 1986  
Gruver, Texas

Clubs and Chapters Participating in the Show  
Gruver FFA Spearman FFA  
Gruver 4-H Spearman 4-H  
Morse 4-H



© NRECA



That's what people used to say, in the days of the wood stove, the hand pump and a pedal-operated sewing machine worked by the light of a kerosene lantern.

Those were the days when irons really were made of iron and an ice box meant just that.

Rural electrification changed all that.

But it wasn't easy. Electricity didn't magically appear in the hills and valleys, the great plains, the deserts and mountains of our nation's countryside. Organizing and building rural electric systems like ours took lots of time and hard work from the men and women who lived in the country.

It was worth it.

It was rural electrification that made "woman's work" so easy that today, even the men can do it. Now rural electric systems like ours provide reliable electric power to more than 25 million rural Americans... and together, we make life just a little easier.



... and the work goes on.

## North Plains Electric Cooperative, Inc.



Operating in ...

Ochiltree Roberts Lipscomb Hemphill Wheeler Hansford Hutchinson



# Gruver Ministerial Alliance Presents "The Last Supper"



The living Re-enactment of the "Lords Supper". Presented by the Gruver Ministerial Alliance and the

Churches of Gruver Disciples in full costume, drama, and special singing. Gruver School Auditorium

Thursday, March 27, 7:30 P.M. Everyone is welcome (free admission) Nursery Provided



New Owners of the Main Street Store in Gruver are L. R. Kathy Gillispie, Faye Gillespie, and Judy Stedje.

An Open House will be held this summer. Basically, the same type of merchandise will be offered. Everyone is invited in to get acquainted.



Celebrity Waiter Claude Coldbody takes orders from some of the contributors at the Heart Associa-

tion fund Raiser at the Cattleman's Restaurant Saturday night.

## Gruver City Library

Some of the new books that have been received recently in your City Library are:

**Carpenters and Builders Library:** A set of four books dealing with builders math, plans specifications, millwork, power tools, painting, tools, steel square, joinery, layouts, foundations, and framing. These four volumes are written by John E. Ball, and revised and edited by Tom Philbin.

**Alzheimer's Disease, a Guide For Families,** by Lenore S. Powell and Katie Courtice:

Alzheimer's disease, an illness that is increasing in large proportions as the elderly population expands, is the fourth leading cause of death. Physicians and families alike are bewildered by the behavior of the memory-impaired person with Alzheimer's disease. The loving relatives and friends who watch their family

members decline daily are also victims. **Alzheimer's Disease: A Guide for Families** answers many of your questions about what Alzheimer's is and what is not. Whether you are the caregiver to an Alzheimer's patient or know someone who is, this book will help you to provide empathy, understanding and competent assistance as an informed relative or friend.

**Texas - Family Style,** By Ruth N. Wolverton is a parents' guide to hassle-free, fun travel with the kids. This book was written especially for all the parents out there who love to travel and who have kids 3 to 18 to take along. The author says, "I won't show you how to transform yourselves into the sparkling, carefree couple ready for the Chamber of Commerce tourism billboard, but I'll

show you how to have a great time with the kids - on your next weekend or vacation trip." **Texas - Family Style** is a tried and proven way to make your Texas travels as spectacular as Texas itself. Appropriate for traveling during the Sesquicentennial year!

**Revised 5th Edition of Modern Guns Identification and Values.** Values in this guide are for guns in the following conditions: New; Excellent and Very Good; or very Good and Good, for al second hand items. **Quilts and Other Treasures:** The editors of McCall's Needlework and Crafts magazine have assembled a superb collection of project for the home quilter - from elegant, heirloom quality bed coverings to simple pot holders. Fully illustrated with color and black and white photographs, patterns, and diagrams, the book contains complete, step-by-step in-

structions for both hand and machine quilting. "Gruver Library Has a Good Book for You!" 2:00-6:00 P.M. Monday through Friday Take advantage of our new outdoor book drop

### ABSENTEE VOTING

Absentee Voting is being conducted at Gruver City Hall through April 1, 1986.

### HD CLUB WILL MEET

The Gruver Home Extension Club will meet March 24th at Methodist Fellowship Hall 1:30 pm. Program is Rag Jackets and Vests.

**HANSFORD COUNTY**  
**Junior Livestock Show and SALE**

Clubs and Chapters Participating in the Show  
**Gruver FFA**                      **Spearman FFA**  
**Gruver 4-H**                      **Spearman 4-H**  
**Morse 4-H**

**March 21 & 22, 1986**  
Gruver, Texas

**FSB**  
First State Bank

**FDIC**

**Spearman, TX 79081**

Phone: 806-659-5565                      Spearman                      One NE Court

**HANSFORD COUNTY**

**Junior Livestock Show and SALE**

Clubs and Chapters Participating in the Show  
**Gruver FFA**                      **Spearman FFA**  
**Gruver 4-H**                      **Spearman 4-H**  
**Morse 4-H**

**PROGRAM**

**FRIDAY**  
March 21, 1986

Weighing will begin on the following schedule:  
8:00 a.m. - 10:00 a.m. .... Swine and Sheep  
10:00 a.m. - 12 noon ..... Steers

**SHOW SCHEDULE**  
Friday - March 21, 1986

1:45 p.m. .... Grand Opening of Show  
All Directors, Ag Teachers, County Agents, FFA Chapter Presidents, 4-H Club Chairman and FFA Sweetheart report to arena.  
2:00 p.m. .... Lamb Show starts  
Swine Show will follow completion of Lamb Show

**SATURDAY**  
March 22, 1986

9:00 a.m. .... Pens and stalls must be clean and rubbish removed  
9:30 a.m. .... Judging of Steers  
12 Noon ..... Judging Contest  
6:00 p.m. .... Floor prices will be auctioned  
Presentation of Showmanship Trophies

Immediately following presentation of awards the auction sale of lambs, swine and steers. Sell in order: 1 lamb, 1 swine, 1 steer, etc.

**DUMAS CO-OP ELEVATOR**  
800 Twichell, Dumas, Texas                      Phone (806) 335-6448