

HANSFORD COUNTY, TEXAS
SPEARMAN, TEXAS 79081

THE GRUYER STATESMAN

Volume 15, No 26

The Gruver Statesman, Gruver, Texas 79040

Thursday, April 3, 1986

Deadline extended to April 25th

Farm signups go slowly

Signups for the 1986 federal wheat and feed grain programs in Hansford county are moving slowly with farmers raising questions about effects the programs will have on farming operations.

Even the deadline for enrollment is in question. The date published is April 11 - about three weeks away.

But reports out of Washington D.C., from the offices of Senate and house agriculture leaders, indicate the deadline is changed.

A new date, however, has not been reported.

"So far, we've enrolled 250 farms in the program-about 40 percent," reports Keith Martin of Spearman, executive director of the Hansford county Agricultural Stabilization and Conservation office.

He estimates there are some 690 irrigated and dryland farms in Hansford county.

Hansford participation in federal programs has been averaging 90 percent.

"Most farmers are waiting on changes in the program which have been made in Washington," he explains. "But we don't know when those changes will be published."

The farm bill passed in 1985 setting out provision of the commodities program for this year is controversial at best, farm leaders have declared.

Basically the program requires wheat producers to divert 25 percent of their land from production while feed grain growers must idle 20 percent of their cropland to be eligible for federal commodity loans, land diversion payments and crop deficiency payments.

Wheat producers have the option of diverting an additional 10 percent of their land.

Grain producers also may elect to reduce production by planting 50 percent of their permitted acreages.

They will, however, be eligible for deficiency payments on 92 percent of the permitted cropland.

The acreage base is determined by an "effective yields" formula. The formula uses a 5-year period for the computation. The average, however, is based on three years after the highest and lowest production is dropped.

In addition to the commodity programs, Hansford farmers are also "bidding" land for a federal conservation reserve program.

Under the program, farmers can enroll highly erodible land in the period. However, the program hinges on how much farmers will accept in federal payments.

"Only 20 farmers have bid 4,800 Acres in the program," Martin notes. "The average bid is \$50.00 an acre. It is mostly dry farmland."

With the signup in progress, questions are still being raised and changes made by the U.S. Congress in the bill passed in late 1985 just before the Christmas recess.

"It is a sad situation that we are signing up in a program and the people in the ASCS office don't have all the information," declares Marion Garland of Sunray, president of the Texas American Agricultural Movement.

He declares that it is difficult for them to administer a program with no rules and observes "the U.S. Department of Agriculture seems to be making up the rules as they go."

Several significant changes have been made by Congress, the Texas AAM president continues.

The most significant is farmers will get 40 percent of their deficiency payment checks when they enroll in the program, he notes.

Garland also notes that grain producers in the programs will

receive an additional payment-in-kind (PIK) when "effective yields" compute by the new formula fall below proven 1985 yields.

The estimated difference nationwide is 18 percent.

"The bill provides that farmers will receive all but three percent of the difference in PIK grain," he explains.

Garland has received reports from the Congressional offices of Sen. Jessie Helms of North Carolina and U.S. Rep. Kiki de la Garza of New Mexico that the signup period has been extended beyond April 11.

"The people I talked to in their offices Friday did not have the new date," the Texas AAM president reports.

Hansford County farmers are asked to call and set appointment times, as soon as possible, for signing up into the 86 program Call 659-3036!

EDITORS NOTE: We understand that the sign-up date has been extended to April 25, but please check with Keith McLain to verify this.

Weather

Date	Hi	Lo
28th	85	51
29th	85	54
30th	87	47
31	88	49

City and School Election Saturday

CITY ELECTION
CITY OF GRUYER, TEXAS
(ELECCION DE LA CIUDAD)
(CIUDAD DE GRUYER, TEXAS)

APRIL 5, 1986
5 de abril de 1986

OFFICIAL BALLOT (BOLETA OFICIAL)

INSTRUCTION NOTE (Nota de instruccion): Vote for the candidate of your choice in each race by placing an "x" in the square beside the candidate's name. (Vote por el candidato de su preferencia en cada candidatura poniendo una "x" en el cuadro al lado del nombre del candidato).

For COMMISSIONER - Vote for one (1):
Para COMISIONADO - Vote for uno (1):

See election story page 5:

ILA JO HART

No 000

TRUSTEE ELECTION
GRUYER INDEPENDENT SCHOOL DISTRICT
(ELECCION DE REGENTES)
(DISTRITO ESCOLAR INDEPENDIENTE DE GRUYER)

April 5, 1986
(5 de Abril de 1986)

BALLOT (BOLETA) SAMPLE

INSTRUCTION NOTE (Nota de instruccion): Vote for the candidate of your choice in each race by placing an "x" in the square beside the candidate's name. (Vote por el candidato de su preferencia en cada candidatura poniendo una "x" en el cuadro al lado del nombre del candidato).

Three Year Term - Vote for three (3):
(Para REGENTE - Vote por tres (3):

- Rick Barkley
- Donald Ross
- Buck Tidwell
- Dennis Stedje
- Bob Gillispie

No 000

TRUSTEE ELECTION
GRUYER INDEPENDENT SCHOOL DISTRICT
(ELECCION DE REGENTES)
(DISTRITO ESCOLAR INDEPENDIENTE DE GRUYER)

April 5, 1986
(5 de Abril de 1986)

BALLOT (BOLETA) SAMPLE

INSTRUCTION NOTE (Nota de instruccion): Vote for the candidate of your choice in each race by placing an "x" in the square beside the candidate's name. (Vote por el candidato de su preferencia en cada candidatura poniendo una "x" en el cuadro al lado del nombre del candidato).

Two Year Term - Vote for one (1):
(Para REGENTE - Vote por uno (1):

- Monte Cluck
- Dick Murry
- Alfred Bayless
- Jon Hart

MARKETS

Wheat	\$2.82
Milo	\$3.95
Corn	\$2.70

SPS to carry power for 2 future plants

By PHILLIP FIORINI
Staff Writer

Southwestern Public Service and Valley View Energy Corp. have inked an agreement allowing electricity generated by Valley View's two planned manure

Valley View Plant Officials meet Here

plants in the Texas Panhandle to be transmitted on SPS lines.

Valley View of Dallas plans to construct 50,000 kilowatt, manure-fueled power plants at Hereford and Gruver to generate power that will be used by the city of Austin. Both units will be built near cattle feedlots.

"This is the first of several agreements we need to sign to deliver power to Austin," B.R. Farris, Valley View spokesman, said Wednesday.

Construction is expected to begin in Hereford "possibly in February and no later than April," he said.

Initially, the Hereford plant was scheduled to be operating by October 1986, but Farris said that has been pushed back to late 1987.

The Gruver plant is expected to be completed four to six months after the Hereford plant, he said.

The agreement, the first of its kind by SPS for transmitting and wheeling power owned by another

generator, was hailed Wednesday by SPS President Bill Esler as "another milestone in Southwestern's ongoing support of alternative-energy generation projects."

It is also the first wheeling contract signed by Valley View, which is spending an estimated \$100 million to build the two plants in the Texas Panhandle.

Under the agreement, SPS will transfer Valley View's power to facilities owned by Public Service of Oklahoma near Vernon. In turn, the energy will be transmitted to Austin through a direct-current interconnection and a string of other utility company lines.

Esler said Valley View is paying a "fair wheeling rate" for use of SPS transmission lines, an accord that took several months to reach.

In September, the two companies hit a blockade when officials at Valley View contended SPS was dragging its feet in the negotiations. At the same time, SPS argued Valley View was causing the delay.

Members of the Industrial and Economic Development Committee of the Spearman Chamber of Commerce met with Mr. Bill Metcalfe, project Manager for Valley View Energy Corp. and Mr. Jim Harvey, General Manager for Daniel Construction Co., at the Chamber of Commerce office April 1, 1986. Valley View hopes to begin construction after Sept. 1st on the fuel plant near Gruver. This plant will boost Hansford Co. Industry and Economic Development.

At the peak of construction this plant will employ approximately 200. As many local residents possible will be used during all stages. After construction full time employment will be a approximately 45 people.

The Chamber is in the process of compiling a business and services directory, such as welders, supply houses, electrician, etc. If you are interested in having your name and/or business

listed in this directory, please contact Cora Queener, Spearman Chamber of Commerce, 211 Main, 659-5555.

Hospital

Patients in the Hospital are: Andy Rhodes, Mary Ayres, David Arrington, Bryon Dudley.

Dismissals are: Lewis Henderson, Giles Gones, W.E. Jones, Eldon Southerland, Dee Ranteria and Son, Francis Balbarrama, and daughter

Bonds Sold for Manor Addition



It will take approximately one year to complete the project. At the completion, we feel that Hansford Manor will be an outstanding asset to our community and to the residents of Hansford County.

Pictured above is an overall view of the existing facility and the proposed expansion. The new building will contain 15,312 square feet and 2,171 square feet in the remodeling of the existing facility.

BULLETIN:

The Hansford Hospital board sold the bonds for the new addition to the Hansford Manor for 7.196755% Construction on the new addition will be-

gin in May, according to Hospital officials

In many ways our facility will be a peace setter for this area. We will be capable of offering "suites" to our residents who request such. The suites are designed primarily to accommodate residents that need only minimal supervision, assistance with medications or diets, or only the assurance that licensed medical personnel is available, if needed, 24 hours per day.

Dear Hansford Friends



Linda Evans

Dear Friends of Hansford County,

As I stood on the stage last year and heard my name called out as Miss Hansford County of 1985, it was truly a dream come true for me. Like hundreds of little girls before me, I had watched the Miss Hansford Pageant every year and dreamed of what it would be like to have the great honor of winning our County's most cherished contest.

I was born and have grown up in Hansford County, so many of the people here have been like an extension of my family and I am very proud to have represented them this past year. Therefore, pride would be the first word I would use to describe what it is like to be Miss Hansford County. Opportunity is the second word that comes to mind when I look back over the past year. Competing in the Miss Wheatheart of the Nation Pageant in Perryton was a great opportunity to be in a Miss

America Preliminary Pageant and to make new friends with many of the other participants in that pageant.

Preparing for my future is highest on my list of priorities, therefore, the most important benefit of winning this pageant will be realized June 3rd, 1986 when I enter Amarillo College with the help of the scholarship I received from the Spearman Chamber of Commerce.

Finally, I will always treasure the memories I am sure to have when I see my name on the list of past Miss Hansfords in the years to come.

I would like to encourage each and every girl thinking about entering Miss Hansford County this year to be a part of this tradition of our County and I offer my congratulations in advance to the lucky girl I will crown as Miss Hansford County 1986.

Sincerely,
Linda Evans

Miss Hansford County Pageant Coming Soon

The 1986 "MISS HANSFORD COUNTY" pageant, sponsored by the Women's Division of the Chamber of Commerce will be held June 5th, 7:30 p.m., at the Spearman High School Auditorium. Anyone interested in being a SPONSOR should contact the girl of their choice and offer their support in recruiting her to enter the pageant. Anyone interested in participating as a contestant is encouraged to pick up an application at any of the following businesses after April 1st: J. G.'s Lady Fair; Chalors; Boyds; Bunkhouse; Spearman Chamber of Commerce and Main Street in Gruver. A SPONSOR Committee will be at work and offer any assistance or information needed. A contestant must be between 16 and 21 years old and be a resident of Hansford County. (College girls are eligible.) All contestants will be judged this year, on interview, talent, swimsuit, and evening gown. The 1986 Miss Hansford will be expected to compete in the Miss Wheatheart contest and she will be sponsored by the Spearman Chamber of Commerce and the Women's Division. Prizes will be awarded in this competition for each category of talent, interview, swimsuit, evening gown and Miss Congeniality.

In conjunction with this pageant, there will be a "LITTLE

MISS" contest (ages 4 and 5 years) and a "Jr. Miss" contest (age 6 - 8 years). Only the first ten entries in each of the children's Contests can be accepted. Applications will be available after April 1st at Kid's Stuff; Spearman Chamber of Commerce and Main Street in Gruver.

The sponsor fee for Miss Hansford Contestants is \$50.00 per entry and the sponsor fee for Little Miss and Jr. Miss contestants is \$35.00 per entry. The following schedule of events should explain the additional costs in Sponsor fees as we are providing several special events for our contestants and all proceeds from this pageant will go toward scholarships for the winner and 1st and 2nd runners-up. Prizes will be awarded in all contests and any profit from this pageant will be returned to the community in various programs set forth by the Chamber of Commerce.

April 1st: Applications will be available to above named stores.

April 15th: Recruiting seminar held at the B & B Farm Industries Hospitality Room, 7:30 p.m. led by Mrs. Mike Garnett.

May 1st: Deadline for entries to be turned in to Chamber of Commerce office.

May 4th: Clinic on Hair/Make

up, Talent, Interview with Jean Tarbet, Renea Sheffield and George Bethel. Time & Place announced later.

May 21st: Deadline for talent arrangements.

June 3: Rehearsal at Auditorium 4:00 p.m. - Full Dress Rehearsal.

June 5th: Interview with judges at 4:00 p.m. at the First State Bank.

June 5th: at 7:30 p.m.: Pageant.

For any information, please contact Nancy Graves at 659-2514 or 659-3974 or Sheri Benton at 659-2441 or 659-3568. The Women's Division of the Chamber of Commerce would like to express our appreciation to the Hansford County Community for the past support and the great interest shown in making this pageant a success. We are all looking forward to this year's pageant.

Please remember: ALL APPLICATIONS MUST BE TURNED IN TO THE SPEARMAN CHAMBER OF COMMERCE OFFICE, 211 Main Street by May 1, 1986.

Vote for
Doug Seal
Democrat for Congress
1944 and 1948 by Doug Seal for Congress Committee
Lance Duncanson, Treasurer, 1701 Comara Street,
Widewater, Texas 79405

2 civil cases

Activity was brisk at the court house Monday when two jury's were being picked for two separate civil cases to be tried in Judge Chunky Blackburn's Court in Hansford County.

A Jury will be picked for; Wytex Livestock Co. Inc., vs. Cockrell Cattle Co. Inc. Nature of the suit is "Suit on Contract".

The second Jury being picked; C. V. Lowe vs. Tyrena Rogers; a "suit to Collect".

Sheriff R. L. McFarlin has a report on Criminal court in another story in the paper.



The elementary Open House at Gruver School featured the boys and girls silhouettes.

RGS Settlement is Reached

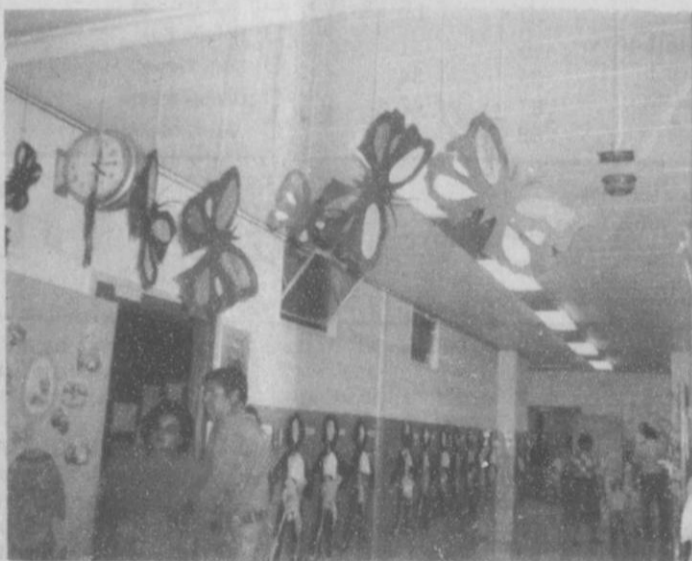
On February 28, 1986, a settlement was reached between RGS (an association of J.M.C. Ritchie, C.H. C. Gerard and Wallace A. Stanberry) and Halliburton Resource Management, a division of Halliburton Company, and Damson Oil Corporation, ending nearly two years of litigation.

As a result of the settlement, RGS received an assignment of the 38% interest previously owned by Halliburton and Damson in the Transpetco I Joint Venture. In consideration of the settlement of this litigation to determine which entity would control the Joint Venture, RGS returned to its original position as Operator. The various interests

in Transpetco I are now shared 70% by RGS and 30% by Hal R. Pettigrew.

The Transpetco I Joint Venture is a CO enhanced oil recovery project located in the Texas Panhandle, which was promoted and initially operated by RGS. Production from two of the project's three fields has increased from 60 BOPD to the present 1300 BOPD. Capital costs were approximately \$15 million. Engineering for the project is now provided by Transpetco Engineering of the Southwest, Inc., of Shreveport Louisiana.

RGS and its companion company, Transpetco, Inc., are also based in Shreveport. Hal R. Pettigrew is located in Arlington, Texas.



Esmeralda & Jesse Renteria enjoy the exhibits at Gruver Public Schools Open House.



Teachers Appreciation Coffee, enjoyed by all school personnel sponsored by PTA.

Teacher's Appreciation Coffee. Mr. Burgoon received a cup. Mrs. Ellison received a plaque.

OBITUARY

BOYD WILLIAM RENNER

Boyd William Renner, 77, of 7409 Imperial, died Wednesday.

Services were held at 11 a.m. Friday in Gruver Church of Christ in Gruver with Glen Walton, minister of North Amarillo Church of Christ, and Curtis Camp, retired minister of Bell Avenue Church of Christ, officiating. Burial was in Gruver Cemetery in Gruver by Boxwell Brothers Funeral Directors.

Mr. Renner was born in McQueen, Okla. and moved to Amarillo eight years ago from Gruver, where he had lived 50 years. He was a farmer and a member of Bell Avenue Church of Christ. He was married to Velma Hays in Guymon, Okla., in 1929. He served as county Commissioner in Hansford County 28 years. He was a former elder of Gruver Church of Christ and was a member of Gruver Masonic Lodge. He was a former trustee of Gruver Independent School Board and served on the Federal Land Bank board.

Survivors include his wife; a son, B.J. of Gruver; four daughters, Laveta Neal of Amarillo, Beryl Reynolds of Abilene, Bobby Sue Dimpsey of Matador and Wanda Jo Russell of Round Rock; 15 grandchildren and 13 great-grandchildren.

Memorials may be to High Plains Childrens Home.

Martha Doughty Sloan, 86 died Monday.

Graveside services were at 10:30 a.m. Thursday in Gruver Cemetery with the Rev. Larry Miller, pastor of First Baptist Church, officiating. Arrangements were by Boxwell Brothers Funeral Directors of Spearman. Directors of Spearman.

Mrs. Sloan was born in Marysville. She was married to William Henry Sloan in 1933 in Marietta, Okla. He died in 1963. She had lived in Gruver 43 years and was a member of First Baptist Church. She was a former schoolteacher in Cooke County.

Survivors include a daughter, Sara Wright of Gruver; a son, Bill of Spearman; two brothers, Carl Doughty of Grand Prairie and Joe Doughty of Marysville; a sister, Lula Richerson of Denton; Five grandchildren; and four great-grandchildren.

Opal Hedgecote

MORSE - Opal Hedgecote, 80, died Tuesday in Perryton.

Services are pending with Minton-Chatwell Funeral Directors in Borger.

Mrs. Hedgecote was born in Hansford County and was a lifetime resident of the Morse area. She was a Methodist.

Survivors include her husband, Dean; a son, Warren Hart of White Deer; a sister, Mrs. Cele Gamertsfelder of Morse; six grandchildren; 11 great-grandchildren; and three great-great-grandchildren.

VOTE
Saturday April 5th
FOR
ALFRED BAYLESS
Candidate for school board trustee
Gruver ISD
Your vote and support
will be appreciated

Pd. Pol. Adv
Alfred Bayless
Box 645
Gruver, Tx. 79040

BROCK'S FURNITURE
317 Main Perryton 435-2033

Shift, from the stick, to the button!

with the **Catnapper POW'R LOUNGER**

No more handles to push or pull! Just touch a button and recline!

\$499 Your choice of styles and fabrics! Never before, an automatic at this price!

The Pow'r Lounger has been tested to 50,000 cycles without failure! Over three times more than others!

- Total chair design and construction is U.L. approved.
- Infinite number of reclining positions... all within close proximity of the wall... from all the way up to all the way down.
- The only mechanism and drive specifically designed to be powerized.
- Many styles and fabrics to choose from.
- Pow'r Lounger is not only the Original Power Reclining upholstery, but the best available in the world.

WANT ADS

NOTICE
Wallace Monument Co.
Monuments, Curbing,
Grave Covers
Local Representative
LEONARD JAMESON
Spearman, Texas
40-rtm

New to Area
Give Us A Try
Call Your Local
USED COW DEALER
As Soon As Possible
659-3544
659-3545
1-800-692-4043
22-rtm

Hansford County
Planned Parenthood
412 Davis
659-2483
Spearman
Mon. - Fri.
8:30 - 12:30

**OSGOOD
MONUMENT CO.**
Amarillo, Texas
Dealers of Rock of Ages
Granite, as well as all
colored granites, marble
and bronze memorials.
represented by
BOXWELL BROS.
FUNERAL HOME
519 S. EVANS
659-3802

Hay Swathing and Baling done -
Call 733-2517 or Dennis at 733-5214
31-rtm-nc

Sewing wanted, alterations etc.
Baking and decorating cakes. I now
have the He-Man Pan for birthday
cakes. Call Joy at 733-2517.
52-rtm-nc

For information and supplies for
Tri Chem Liquid Embroidery, Con-
tact Joy Henderson at 733-2517 in
Gruver.
8-rtm-nc

REAL ESTATE

FOR SALE: 2 bedroom mobile
home. Call 659-3371, 2255 or 2220.
25-1tp

HOME FOR SALE: 3 bedroom, living
room, den, fireplace, double car
garage, garage opener, 2 bathrooms,
1/4 mile west of Gruver. Call 308-287-
4771
15-rtm

TAKE UP PAYMENTS-Double
wide trailer lived in 7 months. 3
bedrooms, 2 baths, fireplace, cath-
edral ceilings, Coleman central air
and under pinning. Must be moved
Call 733-5289
24-rtnc

**TAKE UP PAYMENTS ON TWO
AND THREE BEDROOM HOMES.**
Qualify by phone. Call 381-1352,
Call Collect.
Alliance Homes of Amarillo.

Credit Problems?
Down Payment Problems?
For sincere help call 381-1352 call
collect Alliance Homes Amarillo.

FOR SALE: Well irrigated, 320
acres, near Gruver. Modern 3
bedroom home with fireplace good
level dry land farm, all cultivated.
Delano Realty 806-733-5000, or
home phone 806-733-2291.
rtm-c

**ANNUAL HANSFORD HUTCHISON
FARMERS UNION SALE-**to be held
April 17th. Please call consignments to
Joe Morris 733-2132, T.O. Lesley
659-2028, Homer Sutton 659-2357 or
Burton Schubert 659-2687.
23-5tc

AUTOS FOR SALE

83 **SUBURBAN** low mileage call
Schneider Welding 659-3811 excel-
lent condition.
16-rtm

SERVICES

IF YOU CAN'T FIX IT "I" CAN:
Carpenter, painter, acoustics,
plumbing, fence repair, roofing,
any kind of repair. Call Dan,
659-5109.
20-rtm-c

LAWN & GARDENING Rotor
Tilling. Call 733-5242
26-4tp

FOR SALE

FOR SALE: Repossessed Piano -
Can Assume low monthly pay-
ments - Will Show locally - Call
Brier and Hale Music at 316-824-
8422 for complete details.
26-3tc

HALF PRICE!!! Flashing arrow
signs \$299! Lighted, non-arrow
\$279! Nonlighted \$229! Free let-
ters! Only few left. See locally.
1(800) 423-0163, anytime.
26-1tp

BUSINESS SERVICES

Own your Own Jean - Sportwear,
Ladies apparel, Childrens, Large
Size, Petite, Combination Store,
Maternity, Dancewear, Accessor-
ies. Jordache, Chic, Lee, Levi,
Izod, Gitano, Tomboy, Calvin
Klein, Sergio Valente, Evan Pi-
cone, Liz Claiborne, Members
Only, Gasoline, Healthtex, Over
1000 Others. \$13,300 to \$24,900
Inventory, Training, Fixtures,
Grand Opening etc. Can open 15
days. Mr. Loughlin (612) 888-6555

Card of Thanks

The family of Wilma Byrd
would like to thank the entire
community, as well as outside
friends for the visits, cards,
prayers, food, etc. during the
lengthy illness and passing
Wilma. Each of you played an
important part in her daily fight
for life.

We do hope we have not missed
thanking you personally, but if we
have the oversight was uninten-
tional. The many things you have
done have not gone unnoticed.

Thank you again for all of your
extra efforts and friendship.
The family of Wilma Boyd

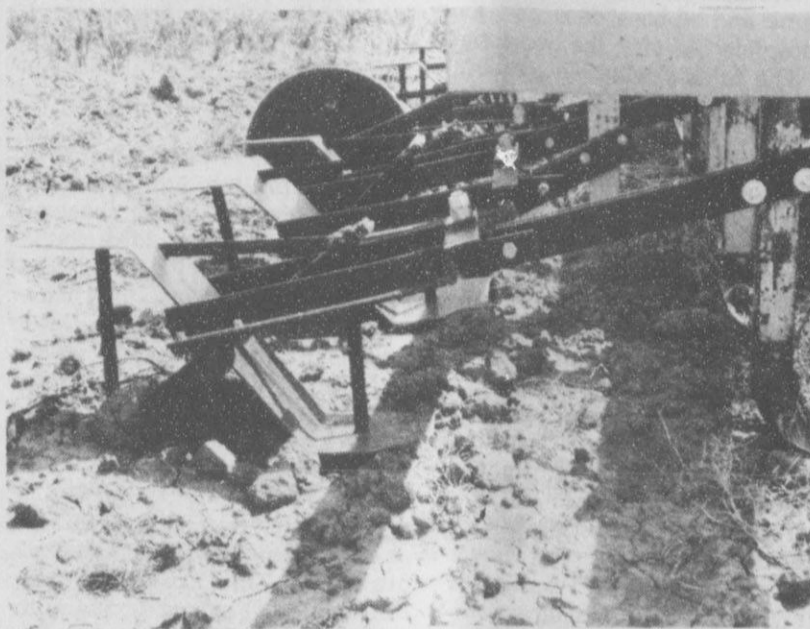
Thank you, dear ones, for the
many acts of kindness shown to us
during the loss of my husband,
our father, and grandfather. Your
visits, hugs and strong arms
around us, prayers, flowers, food
and the memorials in Dayton's
memory have helped us during
this time of great sorrow. Our
words cannot adequately express
our appreciation, but we will
never forget all the love and care
you have given us.

God bless you, we love you.
June Barkley
Rick, Peggy and sons
Dave, Regina & family
Julie & Randy Sledge
Callie Barkley

PERSISTENT LUMP
A lump or thickening in the
breast or elsewhere could be
a warning of cancer, says
the American Cancer Soci-
ety. Don't guess. Have your
physician check it out as
part of your regular cancer
examination.

**DON'T LOSE
VALUABLE TIME**
Using unproven methods
of cancer treatment can
cost you your life. Patients
lose valuable time before
getting proper treatment.
Check with your physician
or the American Cancer
Society for advice.

Furrow Diking



Furrow diking equipment used to create
dikes for utilization of water.

One cost effective conservation
practice is the use of furrow dikes.
Furrow dikes are mounds of soil
mechanically installed in the furrow.
Installation creates a small basin in
front of each dam. When rainfall
occurs in amounts exceeding the soils
infiltration rate, the dikes hold water
in the small reservoir until it has time
to soak into the soil.

Water is one limiting factor in crop
production on the High Plains of
Texas. It is obtained from precipita-
tion or by pumping water from the
Ogallala aquifer. Maximum utilizat-
ion of precipitation through the use of
furrow dikes and other conservation
techniques will: 1. reduce the with-
drawal of water from the aquifer. 2.

reduce production costs associated
with supplying the crops water needs.
3. create potential to increase crop
yields.

Furrow dikes have proven very
effective, when used during the
growing season in irrigated crops
with alternate row irrigation watering
patterns and under sprinkler systems.

Benefits are derived in irrigated
situations in the same manner as with
precipitation. Water is held in place
with the furrow dikes until it
infiltrates into the root zone soil
profile.

If you need more assistance on
applying furrow dikes on your farm,
contact the Soil Conservation
Service at 505 W. 11th. or call
659-2330.

WORD of GOD

Seek the Lord

If my people,
which are called by
my name, shall
humble them-
selves, and pray,
and seek my face,
and turn from their
wicked ways; then
will I hear from
heaven, and will
forgive their sin,
and will heal their
land.

II Chronicles 7:14

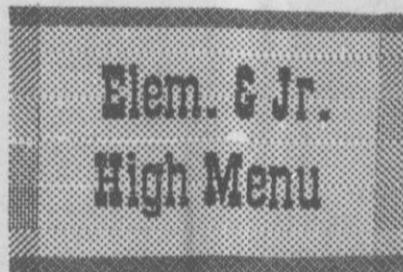
WORD of GOD

New Testament

Ye have heard that
it was said by them
of old time, Thou
shalt not commit
adultery:

But I say unto
you, That who-
soever looketh on a
woman to lust after
her hath committed
adultery with her
already in his heart.

Matthew 5:27,28



April 7th to 11th

Monday

Salisbury Steak & Gravy
Mashed Potatoes
Mix Vegetables
Pudding
Hot Rolls
Milk

Tuesday

Cheese Sandwiches
Tater Tots
Beans
Cake
Milk

Wednesday

Chicken over/rice
Corn
Cobbler
Hot Rolls
Milk

Thursday

Tacos w/lettuce & cheese
Pinto Beans
Fruit
Crustos
Milk

Friday

Hamburgers
French Fries
Lettuce, Pickles, Cheese
Cookies
Milk

POLITICAL ANNOUNCEMENT

This newspaper is authorized to
announce the candidacy of the
following candidates for public office
subject to the action of the voters in the
MAY PRIMARY ELECTIONS:

DEMOCRAT
FOR COUNTY TREASURER
HARRIETT HUTCHISON
JEAN PEARCY
NORMA JEAN MACKIE
PEARL PIERCE
**FOR COUNTY AND DISTRICT
CLERK**
AMELIA C. JOHNSON
FOR STATE REPRESENTATIVE
J. W. BUCHANAN
REPUBLICAN
FOR COUNTY TREASURER
ESCHOL BLANKENSHIP
FOR STATE REPRESENTATIVE
DICK WATERFIELD
FOR SCHOOL BOARD
CRAIG SCHUMAN

The Gruver Statesman

PUBLICATION (USPS 9698-6000)
GRUVER, TEXAS 79040
Box 796 659-8434

Owner-Publisher.....William M. Miller
Editor.....Joy Henderson, Gruver, Tx.
Second Class postage paid at Gruver, Texas
79040

Any erroneous reflection upon the character of
any person or firm appearing in these columns
will be gladly and promptly corrected upon
being brought to the attention of the
management.

POSTMASTER: Send address changes to
Gruver Statesman, Box 796, Gruver, Tx.
79040.

SUBSCRIPTION RATE: Hansford, adjoining
counties, \$13.14 per year.

Member

Texas Press a Association

APRIL 1986

- April 2 - Cheerleader Tryouts 5th period
- April 3 - Tennis Dumas:There 4:00 pm.
- April 4 - Tennis Sunray Tournament
Track Amarillo (Boys)
- April 5 - Track Amarillo (Boys)
UIL: District Writing Events
West Texas State Judging Contest
- April 8 - Band Concert Contest at Panhandle
Tennis Stratford there at 4:30
- April 9 - Band Concert Contest at Panhandle
- April 11 - Track Boys at Leveland
Track Girls at Amarillo
Tennis Amarillo
Texas Tech Judging
J.V. Boys Track Booker
- April 14 - Tennis District Canadian
Tarleton Judging
- April 16 - End 5th six weeks
- April 17 - FFA District Perryton
- April 18 - District Track Prelims at Higgins 5:30
- April 19 - District Finals at Higgins
- April 21 - Holiday - Texas Sesquicentennial
- April 22 - FFA Banquet 7:00 pm.
- April 24 - Tennis Sunray here 4:00 pm.
UIL Literary Meet Regional
- April 25 - UIL Literary Meet Regional
- April 26 - College Station Judging
Track Jr. High District here
- April 28,29, 30 - Regional Golf - Tennis

**GUYMON
LIVESTOCK AUCTION**
Box 879
Gruver, Oklahoma 73942

Out of State 1-800-338-5871 Office 1-405-338-3378

Home Owned and Home Operated

SALE EVERY THURSDAY
BEGINNING AT 12:00pm

Cargill 70.

**Sorghum you can count
on when you can't count
on the weather.**



If you need a hybrid that adapts
to your growing conditions, you need
Cargill 70. This full leaf hybrid makes
the most of ground moisture, while
offering great yield potential when
the growing season is ideal. See your
Cargill dealer for more information.

Panhandle Agri Supply
Gruver, Tx. c)
Ph: 733-2415

Vows Exchanged



Mrs. Gary Gilbreath

Ruth Ann Noah and Gary Gilbreath were united in marriage March 15, 1986, 4 p.m. in the Coronado Christian Church in El Paso, Texas with Dr. A. Dudley Dennison officiating.

The bride is the daughter of Thomas A. Noah of El Paso and the late Annie H. Noah. Parents of the groom are Zey & Charlotte Gilbreath of Gruver. Grandparents include Mrs. Ruth Noah of Eastland, Texas; Mrs. Louise Mears and Mr. & Mrs. J. C. Gilbreath of Dimmitt.

The couple exchanged vows before an altar decorated with spiral brass candle arches. Garlands of fern, baby's breath, alstromeria, and roses were strung along the altar railings.

Wedding music was played by Arlene Wilson, El Paso, organist. Damon Garbern, accompanied by Mary Alyce Appleton, pianist, sang "A long & Lasting Love."

The bride, given in marriage by her father, wore an ivory satin gown with accents of lace and pearls. The bouffant sleeves gathered at the elbows. The skirt, also accented with lace & pearls trailed into a medium-length

train. Her French illusion fingertip veil fell from a satin hat decorated with seed pearls. She carried a bouquet of pink roses highlighted by lilies-of-the-valley, baby's breath, white s'ephanotis, fern & maroon gladioli.

Maid of honor was Adrienne Noah of Stephenville, sister of the bride. Bridesmaids were Rebecca Noah of Dallas, cousin of the bride, Lynn Franklin and Valerie Wood, both of Albuquerque, N. M., and Amy Bither of Austin all friends of the bride.

Bridal attendants wore pink moiree taffeta tea-length dresses. They wore matching pink satin shoes and pearl necklaces. They carried single pink roses surrounded by baby's breath and ribbons.

Alan Gilbreath of Lubbock, brother of the groom, served as Best Man. Groomsmen were Chris Dorman of Chinle, Arizona, Mike Grotsgut of Gruver, Wayne Davis of Beaumont, and Randall Roessler of Waco, friends of the groom.

John Mark Gilbreath of Gruver, brother of the groom and Darin Winger of Keller, served as candlelighters and ushers.

Groomsmen and ushers wore gray traditionally styled tuxedos with pink rosebud boutonnieres.

Roses, gladioli, alstromeria, ferns and ribbons decorated the reception hall after the ceremony.

The bride's table was covered in pink and burgundy cloths overlaid by lace cloths. The tiered wedding cake was heart shaped and decorated with fresh flowers. Chocolate groom's cake were also served with punch and champagne.

After the reception the couple enjoyed a wedding trip to the Inn of the Mountain Gods, Ruidoso, N.M. and parts of Texas. The bride's traveling attire consisted of a flowered skirt and matching jacket with a co-ordinated sweater.

The couple will reside in College Station, Texas. The groom was graduated from Texas A&M University in 1984 with an agricultural engineering degree. He is currently working toward a Master's Degree in Civil Engineering at Texas A&M. The bride was employed by Employer's Insurance of Texas and will attend Texas A&M studying for a bachelor's degree in engineering.

PTA

ASSOCIATIONAL MEETING- April 7th at 7:00 will be the next associational meeting. The U.I.L. Speaking Contestants will be presenting the program.

SPECIAL PROJECTS- If your children have been buckling up and encouraging you to do the same, thank Mary Jane Henson, Marilyn Hart, and Kathy Lindsay for their help in the Dusty Dillo Buckle Up program. Dusty Dillo pins will be given to students who have "buckled up" on every trip the past two weeks.

APPRECIATION COFFEE- School personnel was treated to a coffee March 25th in the Methodist Church Fellowship Hall. We appreciate all those who help to make our schools the best they can be.

SPRING CONFERENCE AND WORKSHOP- The Spring PTA Workshop will be April 11th at the Fifth Season Inn in Amarillo from 9-2:00. The workshop is free and is open to all PTA members who paid a \$2.00 membership fee in September. It is full of new and creative ideas for PTA. If anyone would like to attend, contact Lee Harper by April 3rd.

THANK YOU- A special thank you is extended to Nelle Evans for the lovely Texas Sesquicentennial wall hangings in the elementary principals office and the high school library.

CHECK IT OUT!!! Just in at the jr. High Library, The Illustrated Encyclopedias of Weapons and Warfare. Great books for doing research paper or just adding to your knowledge of what happened in the war.

ELEMENTARY NEWS

U.I.L. Storytelling contestants have been selected. They are Bailey Barkley, Janyth Hart, Ryan Atwood, and Jace Dawson. We congratulate them and the other

17 hard-working finalists from 2nd and 3rd grade.

Mom, have that favorite shirt or blouse clean on April 9th. Memory Mate (all of us and me!) pictures will be taken. Preschool groups please note the time schedule that has been set up for the pictures.

The first grade Teams Test is to be given April 8th, 9th, and 10th. Grades 1-8 will be taking achievement tests on April 23rd, 24th, and 25th.

A hearty welcome to Justin Miller from Plainview, a third grader in Mr. Mayhew's class, and Darby Sue Johnson from Kansas in Mrs. Mayhew's kindergarten class.

Easter egg hunts was held March 27th.

U.I.L. Picture memory contestants in district competition April 5th will be Traci Crawford, Amy Murry, Hooy Venneman, Marquit Viola, Cody Barkley, Sharlet Slough, Kenton Odom and Matt Ethredge. School librarian Kath Lindsay reports that Weslyn Maupin was winner of a Hank the Cowdog Poster by guessing the number of candies in a large jar which was shared by the winners class. U.I.L. Personal Writing winners to compete in district competition are Will Evans, Kenton Odom, Raymond Lewellan and Sara Jones.

JR. HIGH NEWS

Congratulations 7th & 8th grade girls for winning 1st place at the Groom track meet.

Shelly Stedje, Kyle Haenisch and Stefan Dorman presented their Modern Otatory Speaking to the Lion Club before going to contest March 22 that was held at Follett.

April 23rd, 24th, and 25th-SRA Achievement Tests. Be sure to schedule appointments around this date. It is essential to be in school these days!

NOT ONLY CHILDREN

Leukemia is very often thought of as a disease of childhood. According to the American Cancer Society, it actually strikes more adults — in a ratio of about 9 to 1. Regular health checkups, including blood tests, are your best defense against leukemia and other cancers.



Mrs. Roberts 2nd grade class boys, Jason Ward & Max Frick at the Gruver Open House.



Flying Kite Winners: L. to R. Gilbert 1st, Sammy Renteria 3rd, Raymond Lewallen, 2nd, David they are all Gruver Cub Scouts.



Gruver Cub Scouts Best Appearance-Kite Derby: from L. to R. Kevin Spiney 1st, L.D. Peters 2nd, Brian Boyd 3rd.

AGE INCREASES RISK

As we get older, regular checkups become increasingly important. Because chances of prostate cancer increase with age, the American Cancer Society recommends a prostate exam as part of regular checkups for men over 50.

INDIVIDUAL TREATMENT

The American Cancer Society reported recently that the best treatment plan for the almost 120,000 women who will develop breast cancer this year is the one worked out between the patient and her physician. Examine your breasts routinely for lumps, and see your physician for regular checkups.

LIFESAVING SIGNALS

Unusual bleeding or discharge is one of cancer's seven warning signals. See your physician if you notice such a symptom. Call your local Unit of the American Cancer Society for a list of all seven of cancer's signs.

Long-term credit with no prepayment penalty.

The Land Bank
Close to the land and the people who work it

High Plains Federal Land Bank Assoc.
506 South Main
Perryton, Tx. 79070
Serving Ochiltree, Lipscomb and Hansford Counties.

Phone 806 435-4319



Every day you delay your IRA costs you money!

ARE YOUR RETIREMENT DOLLARS GROWING FAST ENOUGH?

If not, and you would like your retirement dollars to grow faster or to assure yourself that you are getting the best possible rate available, call us at 659-3880 or 358-7133.

Integrated Resources Equity Corporation Member SIPC

MARCIA SHIELDNIGHT & DEBBIE STOPPER
P. O. Box 516
Spearman, Texas 79081

(806) 659-3880 or (806) 358-7133

Integrated Resources



SNAPPER SPRING SAVINGS EVENT

FREE ATTACHMENT AT PARTICIPATING DEALERS



*Not available on Blade-Brake-Clutch models

It's a snap with **SNAPPER**
A division of Fuqua Industries

2 YEAR LIMITED WARRANTY
HURRY! OFFER ENDS SOON

Hansford County Parts & Supply
210 Main Street
Gruver 733-2469

olan mills
THE NATION'S STUDIO



One 8 x 10 Color Portrait
\$30.00 Value for only .99¢

Your choice of family group or individual
One special offer per family, one per person

GOLDEN AGE CENTER
WEDNESDAY, APRIL 9, 1986
1:00 P.M. - 9:00 P.M.

GRUVER, TX

B2 Minors must be accompanied by an adult.

Saturday is election day!

City Election for the City of Gruver will be held Saturday April 5, 1986. Only one candidate will be on the ballot. Ila Jo Hertz is running for City Commissioner. The School Board election will feature two different ballots. Monte Cluck, Dick Murry, Alfred Bayless, and John Hart, will be running a two year term. Only one of these will be elected. Another Ballot for a three year term will feature candidates Rick Barkley, Donald Ross, Buck Tid-

well, Dennis Stedje, and Bob Gillispie. Voters will elect three of these candidates for a three year term for the Gruver school board. Absentee ballots have cast in the elections but we do have the totals because of the Easter Holidays. The Gruver school and City election will be canvassed the week of April 6th.

April 28, 5 p.m. - Last day for opposed candidates to file C&E statement for period ending 4/23/86 (deadline extended since regular deadline falls on Saturday, Sunday or holiday.)
 May 3 - 1st Primary election.
 May 3 - Precinct convention to elect delegates to county and senatorial district convention for

parties holding primary election.
 May 4 - If no run-off election for office sought, 1st day an independent candidate may collect signatures for an application to have name printed on the general election ballot.
 May 8 - Last day to register to vote in run-off primary election.
 May 13 - Last day a candidate for nomination may withdraw from run-off primary.
 May 17 - County and Senatorial

District Convention for parties holding primary elections.
 June 2, 5 p.m. - Last day for non run-off candidates to file C&E statement for period ending 5/28/86.
 June 7 - Run-off Primary Election Day.
 June 8 - If run-off election sought for office, first day independent candidate may collect signatures for application.
 July 7 - Last day for run-off candidates to file C&E statement for period ending 7/2/86.
 July 7 - Last day independent candidates may file application.
 July 15, 5 p.m. - Last day for unopposed candidates to file semi-annual; C&E for period ending 6/30/86.
 Aug. 2 - Last day candidates may withdraw from general election.
 Sept. 5, 5 p.m. - Last day for appropriate authority to receive

certificate of substitute nomination from chairman of nominating committee.
 Oct. 3 - Last day to register to vote in November 4 general election.
 Oct. 6 5 p.m. - Last day for opposed candidate to file C&E statement for period ending 9/25/86.
 Oct. 28, 5 p.m. - Last day for opposed candidates to file C&E statement for period ending 10/25/86.
 Nov. 4 - General Election Day.
 Dec. 4, 5 p.m. - Last day for candidates to file C&E statement for period ending 12/31/86.

T-L-C, LBS. Gain Keep Customers Coming Back

Building repeat business for a 36,000-acre custom stocker operation amounts to a lot more than just "selling grass." It's keeping customers satisfied by putting as much gain on cattle as possible, says Terry Mills, cattle manager of L-B Land and Cattle Company's Cross Bell Ranch near Copan, Oklahoma. "But ultimately, I think a lot of it goes back to doing just a good job of caring for cattle," says Mills. That care, he notes, can include many things: breaking ice in the dead of winter... looking for a lost yearling in the heat of August... making sure all livestock are vaccinated and implanted... tackling the mountain of paper work and recordkeeping involved... not to mention supervising a busy crew-- in L-B's case, an experienced and dedicated team of eight.

"I feel that we've got good people who know how to look out after cattle," says Mills, who has been manager at the Cross Bell since 1973. "Over the years, I think that fact, plus good gain, has earned us a reputation for serving our customers well." Back in '73, Mills points out, L-B clientele was a bit different than it is today. "Back then, we were in the client cow business," he says. "We ran cows for other people-- mainly doctors, lawyers and movie stars... people interested in cattle purely from an investment standpoint. Then we gradually began to bring in cattle from other ranches. Today, most of our customers are cattlemen who need more country than they have available."

L-B annually grazes 3,500 yearlings and 1,500 cow-calf units on 36,000 acres of native pasture. Pastures range from 50 up to 2,450 acres, with most running 400 to 500 acres in size. "On the average, we figure a capacity of about one yearling per four acres and one cow-calf unit per eight acres," says Mills. The operation also includes 3,200 acres of wheat pasture, plus another 800 acres of bermuda-grass where incoming cattle are held until they are processed.

L-B's annual cattle cycle begins in late fall. "We usually start getting what cattle we're going to winter-- normally about 1,000 head-- during October and November," says Mills. "Then in spring, we'll gradually build the herd through February and March until we're filled up." For the most part, fall cattle are short yearlings around 500 pounds and come from operations in the Southwest, Florida, Tennessee, Kentucky, Mississippi, Alabama, plus West Texas.

L-B's winter pasture programs --wheat grazing from November 1 through March 1... and/or native dry grass, supplemented with high energy, low protein (17-20 percent) range cubes-- are designed simply to winter cattle until they can be run on bluestem in spring, Mills points out. "Generally, we quit feeding about April 15," he says. "We know that May is the peak month for protein in our native bluestem. That carries through to about the first of July when protein begins to drop. Beginning in early Nov., until the first of the year, I think you need to feed a high protein

feed. Then after the first of January when you get the cold, cold weather, you need to go to a lower protein, high energy feed." Runs are generally contracted on a per-head basis. "We have taken some cattle on a gain situation in the past, but most all of our business any more is figured per-head," says Mills. "The individual pays for any medication, minerals or feed," says Mills, "but we furnish the processing, minor doctoring, labor and management. They supply the inputs."

Care for the cattle begins immediately upon arrival. All arrivals pass through a collecting yard, where they are kept under close observation for two to three weeks. "We keep them in bermuda-grass traps for that period to be sure that calves are over their stress from shipping, weaning and processing. We want them over any sickness before turning them out to winter pasture," says Mills. That's also the time when cattle receive all the basic vaccinations -- IBR*BVD*PI3, seven-way Blackleg, ADB12 -- plus treatment for worms, grubs and lice.

Implanting of cattle is done only once, in spring, just prior to summer pasture. "With fall arrivals, our main objective is getting cattle straightened up and healthy as quickly as possible for turnout on dry grass wheat pasture," says Mills. "We're looking primarily at maintenance, rather than gain through the winter. We want to get cattle through strong so they're ready to go on summer grass to make the cheap gains."

Then, in spring, all cattle that are dry-wintered are rewormed and implanted. All new arrivals receive implanting as a part of processing. "In spring, our objective is getting cattle shaped up and ready to go once native summer grass is ready" (usually about April 15) "and the real push on gains begins," says Mills. Regardless of arrival time, L-B cattle will generally gain an average of 250 to 325 pounds per head during their respective 5- and 10-month grazing periods and are ready for the feedlot in early September.

Since beginning operations in the early 70's, Mills has relied on implants to help achieve those gains. "I talked with my neighbors and my vet and they were really the ones who convinced me to use implants," says Mills. "We want to move cattle through as quickly as possible and Synovex implants seem to stay in better than others that we've tried." Duration and gain, however, are the primary factors which Mills considers in an implant.

"With cattle spread over 36,000 acres, we need a product that's going to see us through on gain over the whole summer grazing period. Plus, we need a way to help make the most of available nutrition, even when protein in grass begins to drop off later in the summer," says Mills. "Ranchers we talked to in our area said they were seeing better gains with Synovex in some of their tests. We tried it liked the results and have stuck with it."

In fact, in 1985, L-B had one group of steers that gained 342 pounds from April 1 to Sept. 1-- a gain of better than two pounds per head per day over the entire 150-day grazing period. "Boosting gains is what keeps customers coming back," says Mills. But as he notes, gains depend a lot on the quality of cattle you get and the amount of moisture which grass receives for growth. Neither is controllable by a custom stocker operation. "So you manage those things you can control and use what tools you have available to ensure good gains," says Mills. "Good management and good care of cattle from processing on are what make the difference."

Hansford County 4-H

The Hansford County 4-H Horse Judging team attended the Dumas 4-H Horse Judging Field Day in Dumas on March 22.

The Junior Division won 3rd All Around; Matt Eakin won 3rd Individual and Billy Hayes won 4th individual.

In the Adult Division Wanda Eakin won 4th Individual. Those attending the Field Day were Mark Eakin, Matt Archer, Matt Eakin, Sandi Rich, Darla Black from Spearman and Billy Hayes, Bryan Boyd, Brena Hayes, Jake McCullough from Gruver, and Dawn McCullough from Gruver, and Wanda Eakin, Leader.

Selective Service System

Young men born on or after January 1, 1960 are required to register with Selective Service within a month of their 18th birthday.

The registration process takes less than five minutes at the post office. A young man fills out a simple form asking only for his name, date of birth, address, telephone number and Social Security number.

Registration helps keep our country prepared with a pool of names to draw from in case of a national emergency... without interfering with people's lives. When you think about it... that's not a lot to ask for a country as great as ours.

IT'S QUICK. IT'S EASY. AND IT'S THE LAW.

PRINTED AS A PUBLIC SERVICE.

INCLUDE CRUCIFEROUS VEGETABLES

Certain cruciferous vegetables-- so called because their flowers form a cross -- including cabbage, broccoli, brussels sprouts, kohlrabi and cauliflower, may help prevent some cancers from developing, according to the American Cancer Society. Make them a regular part of your family's diet.

Spring Arts & Crafts Festival

On May 31, 1986 during the Wolf Creek Spring Festival at Lake Fryer an Arts & Craft Festival will be held. The show will be located on the north shore of the Lake across from the Lobo Trading Post.

Only original Arts and Crafts will be accepted for the show. No food booths will be allowed. The cost for a 15 feet by 15 feet booth will be \$15.00.

All interested persons wishing to reserve a booth for the show should contact E. John Rogers at P.O. Box

1271, Perryton, Texas 79070 or call after 5 p.m. at 806/435-4498.

Other events scheduled for the weekend are a horseshoe pitching tournament, blue grass - country music festival and a barbecue cook-off and bicycle races.

There is nothing new save that which has been forgotten. -MME. Bertin.

HABITS CHANGING?

Have you noticed a significant change in your bowel or bladder habits? According to the American Cancer Society, it could be a warning of cancer. Be safe, not sorry. Call your physician if you detect a change.

COUGH, COUGH!

That nagging cough or hoarseness shouldn't always be written off as allergies or a cold. It may be a sign of lung cancer. The American Cancer Society urges you to see your physician.

A quantity of marked down merchandise is still available at our stores.

USE OUR Money Orders ONLY 19¢	FAST-n-HOT CHOPPED BBQ Sandwich EACH \$ 1.39
BORDEN'S Ice Cream 1/2 GAL. RND. CTN. \$ 1.79	DECKER DANISH Ham 6 OZ. PKG. \$ 1.39

FRESH HOT **Sausage-on-a-Stick** ONLY **99¢** FRESH HOT **Onion Rings** ORDER **59¢**

BORDEN'S Butter-Milk 1/2 GAL. CTN. **99¢**

WATCH FOR OUR NEW LOOK COMING SOON TO YOUR FRIENDLY ALLSUP'S CONVENIENCE STORE!

Everything's Coming Up Savings!

DECKER Bacon \$1.59 1 LB. PKG.	BORDEN'S ASST. Yogurt 2.69¢ CTNS.	ALLSUP'S Tallsup 49¢ CUP
--	---	--

PRICES EFFECTIVE APRIL 3-4-5, 1986

ALLSUP'S CONVENIENCE STORES

WHILE SUPPLIES LAST

ICE-MILK-SOFT DRINKS- FRESH PRODUCE- CHIPS & DIPS- BROWN & SERVE ROLLS- FILM & FLASH- HOT COOKED FOODS- DESERTS- SELF SERVE GAS- OPEN 24 HOURS- 7 DAYS A WEEK

MOVIE & VCR RENTALS

The Very Best in Home Video Entertainment!

ALL YOU NEED IS YOUR TV!

Diet Pepsi, Mountain Dew, Pepsi-Cola, Pepsi Free, Pepsi Light and Slice \$1.99

6 pak 12 oz cans

Copyright 1986, TG&Y Stores Co.

TG&Y

Family Centers

INVENTORY CLEARANCE

CLEARANCE SALE STARTS TODAY!

HURRY! QUANTITIES LIMITED TO STOCK ON HAND. SORRY, NO RAINCHECKS. INCLUDES FLOOR SAMPLES, ONE-OF-A-KINDS AND SOME IN ORIGINAL CARTONS. NOT ALL ITEMS AVAILABLE IN ALL STORES.

INCLUDES FLOOR SAMPLES

25% OFF

Entire Stock reg. 10.49 and up!

TOYS

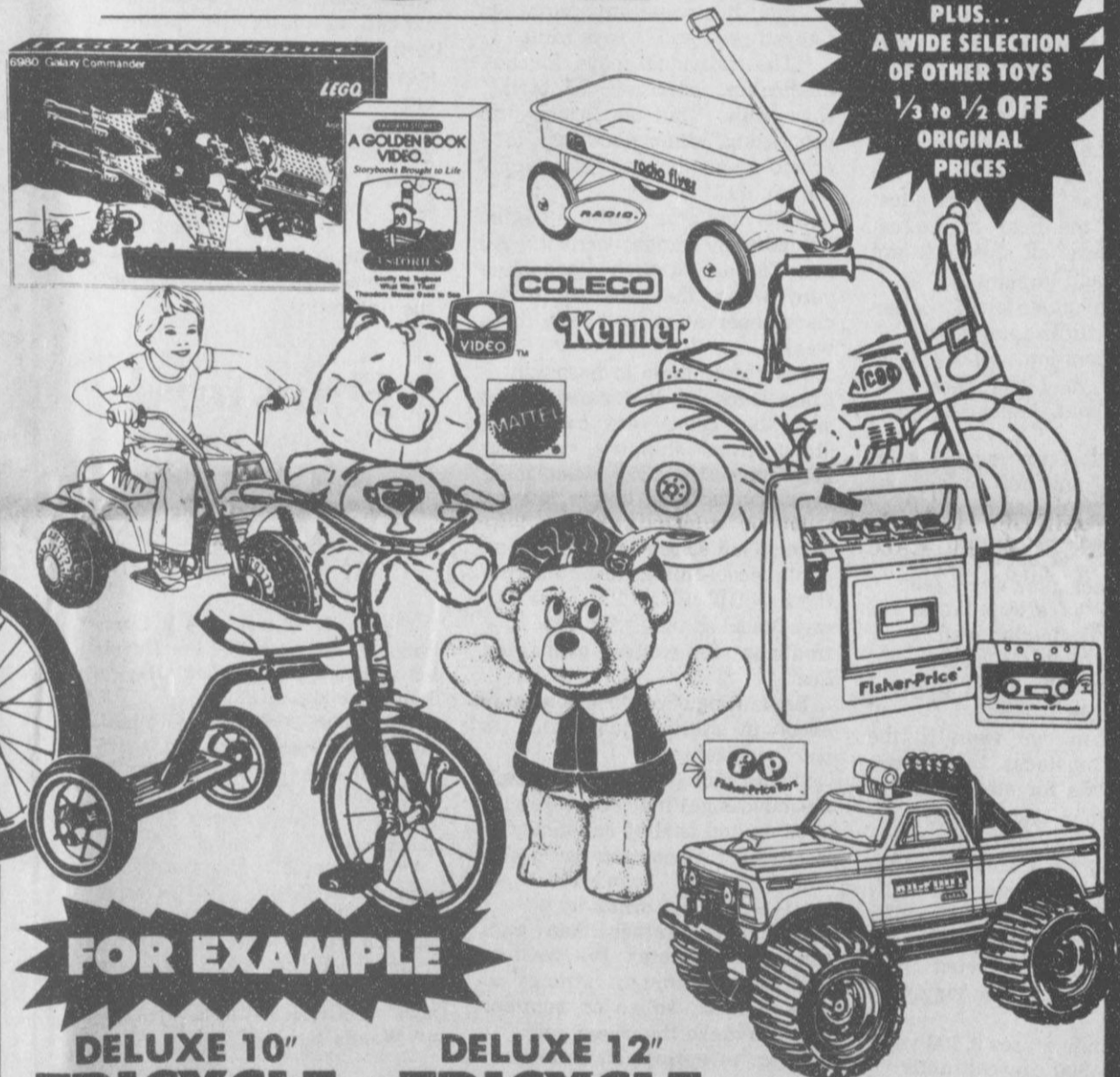
PLUS... A WIDE SELECTION OF OTHER TOYS 1/3 to 1/2 OFF ORIGINAL PRICES

OUR ENTIRE STOCK BICYCLES 25% OFF Regular Prices



FOR EXAMPLE
Mens/Ladies
Phoenix 10 Speed Bicycles
REG. 79.99
Now \$59

Choose from great name brands like Huffy and Murray!
Limit 1 per family.



FOR EXAMPLE

DELUXE 10" TRICYCLE
Was 16.99

\$12
NOW

DELUXE 12" TRICYCLE
Was 21.99

\$15
NOW

Save on games, plush toys and more for kids of all ages. Name brands like Kenner, Fisher-Price, Coleco and Mattel. We reserve the right to limit quantities.

SAYELLE YARN

ASSORTED COLORS

\$ **1**



25-50% OFF

Regular Prices

OF ENTIRE STOCK OF

Exercise Equipment

Shop early for your best selection.

Get in shape and save! Select from a great assortment of exercise bikes, weight sets and home gyms and benches.

Limit 1 per family.

FOR EXAMPLE
JOGGING TRAMP
REG. 39.99
NOW \$19

INCLUDES GENUINE SHEEPSKIN
AUTO SEAT COVERS
OUR ENTIRE STOCK
20-40% OFF
Regular Prices

Not all styles available in all stores.

ENTIRE STOCK
AUTO FLOOR MATS

30-50% OFF
Regular Prices

Assorted styles and colors for both cars and trucks.



FOR EXAMPLE
FLOOR MATS
REG. 1.99 Now 99¢

521 HWY. 207 S. SPEARMAN, TEXAS 659-3741

Not all items available in all stores. Merchandise shown is representative of actual items in store. Quantities limited to stock on hand. Sorry, no rainchecks. No sale to dealers. Intermediate markdowns have been taken.



Library

Just arrived for those of you that have "yard fever!" The Simon and Schuster Encyclopedia of Practical Gardening presents PRUNING, by Christopher Brickell. This is the most useful and comprehensive guide to pruning and gardening you could want. It shows how anyone can prune roses, evergreens, hedges, bushes, vines, fruit trees, and every other plant to perfection.

Pruning is both an art and science, and THE STEP BY STEP GUIDE TO PRUNING will show you precisely how to train bushes and trees for beauty, fullness and proper-growth. Hundreds of clear instructional drawings and lucid text illustrate every stage of pruning, from removing the branch or stem to predicting how the plant will look after each operation. There are also instructions for caring for plants grown indoors and out, plus valuable information on the best tools and equipment to use. A very informative guide to assist you in obtaining the maximum decorative effect or the best crop possible, while keeping the plant vigorous and in good health.

Appreciating that there are many who wish to carry their study of mathematics beyond the limits of their schooling, we have received a new group of books that make easy the home study of the working principles of mathematics. This series has been designed to present the various branches of fundamental mathematics so that they may be understandable without the assistance of a teacher. The author, in his experience as an engineer and as a teacher of mathematics to students and laymen in evening schools and in colleges, has heard many of these men express the desire for books that may be used for home study, and this series consists of: ARITHMETIC FOR THE PRACTICAL WORKER; ALGEBRA FOR THE PRACTICAL WORKER; GEOMETRY FOR THE PRACTICAL WORKER; TRIGONOMETRY FOR THE PRACTICAL WORKER; CALCULUS FOR THE PRACTICAL WORKER. The set of five books should prove very valuable and practical for those who must work with mathematics on a regular, practical, non-theoretical basis.

We would like to thank those of you who have donated money to the library in the past months in memory or in honor of someone you wish to remember. All monies given in this manner are used for the purchasing of new books - thus improving our local library and your own community. Please consider this as a possibility when you wish to contribute to a worthy cause.

Gruver City Library
2:00 - 6:00
Monday through Friday

THOUSANDS OF DEATHS

Learn cancer's seven warning signals, and see your physician for regular check-ups. You don't want to be one of the 160,000 people the American Cancer Society estimates will die this year who might have been saved by early diagnosis and treatment of cancer.

WARNING TO HISPANIC-AMERICANS

A recent survey done for the American Cancer Society showed that less than half of the Hispanic-Americans in this country know more than one of cancer's seven warning signals. Everyone should know and heed the signs of cancer.



A good used Grandfather clock, cheap. A lot of Antique clocks and replaces also clock repair. I. W. Ayres. Gruver, Tex. 79040 - 806-733-2267

Winners of 'What's Happenin'' contest announced

Students from Gruver Elementary School and Highland Park Junior High School in Amarillo were selected as winners in the Amarillo Daily News "What's Happenin'" Calendar contest for February.

The sixteen members of Mrs. Frick's second grade class in Gruver submitted the winning calendar notebook in the elementary grade level. Students in Highland Park's 7C English class, under the instruction of Mrs. Hall, received honors in the secondary grade level.

The monthly contest features daily newspaper activities in calendar form in all areas of study, based on the essential elements of education as prescribed by the Texas Education Agency. Activities are designed to be adaptable to all age levels. Students who enter the monthly contest do so by submitting a notebook of each day's activities. Winning entries receive \$25 cash.

Members of the second grade class from Gruver who contributed

to the notebook of activities include Imelda Arazate, Juan Arreola, Yuki Bort, Kiki Carthel, Skeeter French, Amber Gross, Doug Gurfory, Jennifer Holland, Michael Hollingsworth, Cristy Marques, Robbi Mathews, Janet Morales, Andy Morris, Jr. Munoz, Tara Shapley, and Corey Rasor.

Students from Highland Park taking honors are Stacy Walker, Billie Jo Sterling, Renita Cooper.

Krissa Mayfield, Mark Larimore, Teresa Scott, Sherri Folley, Melinda Adams, Chris Heffel, Jason Ladd, Paul Houdashell, and Brian Henderson. Participating with them were Jason Somerville, Matt Johnson, Heather Gangstead, Michael Kirkwood, Robert Eshelman, Sonia Rendon, Wendy Jennings, Casey Curtis, Tricia De Spain, Shiela Keys, Tina Hammer, Jeanea Karlin, Jake Curtis, Stephanie Cotter, and Bryan Robinson.

The monthly activity calendar is published as an educational tool for parents and teachers. The calendar of activities for April will be published in Wednesday's Daily News.

Local investors buy First State Bank of Stratford

A group of local investors has purchased the First State Bank of Stratford in what bank president B.A. Donelson described as "one of the most vanilla deals you'll ever see in the banking business."

The investors, operating under the incorporated name of Stratford Bankshares, bought 87 percent of the bank from the Whitteburg family of Amarillo, owners since the mid-1960s.

Controlling interest in the bank, with assets estimated at \$51 million, was transferred to Stratford Bankshares Tuesday.

"This isn't a risky move and that's why we made the investment," said Donelson, also president of Stratford Bankshares. "The bank is heavily capitalized and secure."

Banking hours and services will not be affected by the move, Donelson said.

Opened in the early 1900s and chartered as First State Bank in 1947, the bank is backed by \$45 million in deposits, Donelson said. This Sherman County community of 268 has one bank and one savings and loan.

Two of the 10 Bankshares investors live in Spearman, the others live in Amarillo.

They are: Kristi Buckles, Elliott Crabtree, Pat Donelson, Doug McBryde, James, Neal and Wes Spurlock and John Wilson of Stratford; and Larry Butts and Bill Pittman of Spearman.

COMPROMETASE. Sea un voluntario.



AMERICAN RED CROSS CAMPAIGN
NEWSPAPER AD NO. ARC-85-905
1 COL.

Kent Hance Co. Chairman

Bill & Ginger Pittman

Bill and Ginger Pittman of Spearman, Texas have agreed to serve as the County Chairman of the Kent Hance for Governor Committee in Hansford County. Hance, who is in a three-way race for the Republican nomination for Governor, has organized steering committees throughout the state. In his 1984 bid for the U.S. Senate, Hance carried 204 of 254 counties in Texas. The Hance for Governor Campaign reflects that support by extending throughout almost every county in Texas. "Our extensive statewide

organization is unprecedented for a Republican primary, but each county in the state is essential to winning the election," Hance said. Hance has the support of several traditional Republican leaders, including 10 of 11 State Republican Executive Committee Members in Houston, and 3 and 4 SREC Members in San Antonio. "I've always said the best form of advertising is someone actively supporting a campaign, and I'm pleased these people have enough confidence in me to support my candidacy," Hance said.

Grasslands
Hininger Farms
H
(405) 698-2235
RR1 Box 160
Woodward, Oklahoma 73801

Dustin Hininger Field Representative
Doug Hininger General Manager
Darrin Hininger Plant Manager

We Have all varieties of Old World Blue Stems at the lowest price & highest quality. We also will lease you the drill or we can drill it for you.

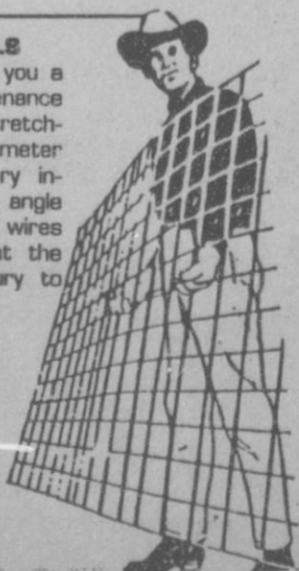
Contemporary Coolkeepers • Brokers of Old World Bluesien, Legumes • Native Grasses.

DUMAS CO-OP ELEVATOR

800 Twichell, Dumas, Texas Phone (806) 935-6440

CORRAL PANELS

Sag-free panels give you a long life. Low maintenance installation with no stretching required. 1/4" diameter rods welded at every intersection at a 90° angle that stays 90°. Stay wires are trimmed flush at the ends to prevent injury to people and livestock.



16' Long
52" High
Reg. \$16⁴⁵
Sale \$9⁹⁹

While supply lasts

WE HAVE OVER 86,000 ITEMS TO CHOOSE FROM
For more information call (806) 935-6440

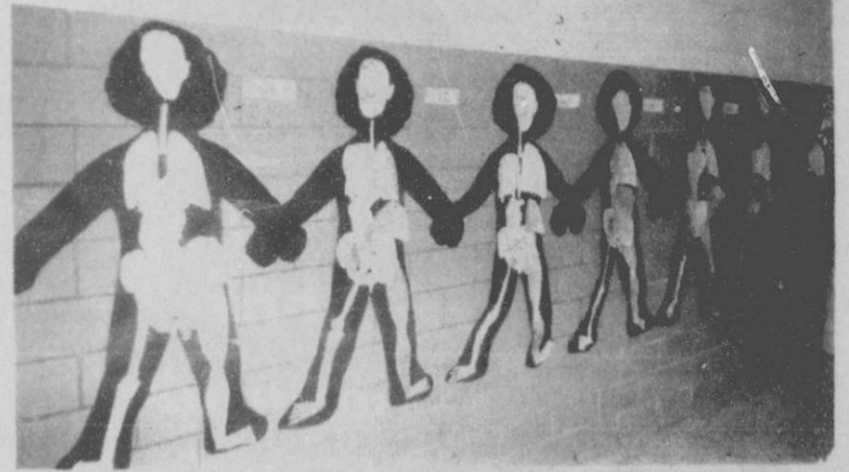
BIBLE VERSE

By this my Father glorified, that you bear much fruit, and so prove to be my disciples.

1. Who is the author of this statement?
2. To whom was he speaking?
3. What was the occasion of the statement?
4. Where may this verse be found?

1. Jesus.
2. To the eleven disciples.
3. After the Last Supper, while Jesus and the eleven were en route to the Garden of Gethsemane.
4. John 15:8.

Answers to Bible Verse



Some of the elementary students and organs. Display for Open House in the Gruver School.

OFFICIAL RULES & REGULATIONS

1. Miss Hansford Pageant is to be held June 5, 1986 at the Spearman High School Auditorium. Rehearsal will be held Tuesday, June 3. Contestants MUST BE available for this rehearsal. It will be a complete DRESS REHEARSAL so that timing can be established.
2. Entrant realizes that this is a preliminary to the Miss Wheatheart Pageant in Perryton. The winner will be expected to participate in the Miss Wheatheart Pageant.
3. Entrant agrees that if she is selected as the winner, she will represent Hansford County at ribbon cuttings, open houses, etc. detailed by the Chamber manager. Entrant will also agree to ride on the float during the Celebration provided by the WDSCC, June 7, 1986.
4. A contestant must be a single female 16 years of age, but no older than 21. She understands that to qualify for Miss Wheatheart, she must be 17 years of age on September 1, 1986.
5. Contestant must display talent in not more than 2 minutes 50 seconds routine presented live. This does not apply to instrumental recordings used in conjunction with presentations. Talent may be singing, dancing, musical instrument, dramatic reading, art display, dress designing, etc.
6. Entrant will be judged in swimsuit, talent, evening gown, interview and personality speech during the contest.
7. Entrant agrees to be available for a clinic on talent, interview, hair and makeup. This is provided by specialist to get each contestant prepared for the contest.
8. Entrant must submit a fully completed fact sheet and entry blank, on stage personality sheet, and 3 pictures of the head and shoulders for publicity and use by the Judges. Photographs with crowns, flowers, trophies, etc. are not acceptable.
9. In the event the winner is unable to carry out her duties, she shall relinquish her title and privileges to her successors in order (first runner up, etc.).
10. Miss Hansford, First Runner-Up and Second Runner-Up will each receive scholarships. This must be used by one year after graduation from High School. This can be used at the university, college, or trade school of your choice. Half will be paid the first semester and half the second semester. If the scholarship is not used as stated, it will be forfeited and placed in the Miss Hansford County Savings account for future use.
11. The Spearman Chamber of Commerce and the Women's Division of the Chamber of Commerce will not be responsible in case of accidents, injuries, or damage occurring to the contestant before, during or after the pageant, on or off the premises.

If any questions come up later concerning any of the above rules & regulations, please refer your questions to the Pageant Committee for discussion or decision. This committee consist of: Nancy Graves, Sheri Benton, Loretta Cook, Linda Butt, and Charolette Jackson.

¿QUE SON LAS EXENCIONES DE RESIDENCIA?

La exención de residencia es una reducción en el valor sujeta a los impuestos de su residencia hogar. Varios tipos de exenciones de residencia se encuentran disponibles en Texas y, si usted califica, pueden reducir su cuenta de impuestos sobre la propiedad. Los detalles incluyen los siguientes.

¿Cuáles exenciones están disponibles?

Los distritos escolares ofrecen una exención de residencia a todos los dueños de hogar y exenciones adicionales para personas incapacitadas o personas de 65 años de edad o más.

Los condados ofrecen exenciones de residencia de los impuestos dedicados a las carreteras de granja a mercado y al control de inundaciones. Algunos condados también ofrecen exenciones adicionales a ancianos y personas incapacitadas.

Las ciudades y otros gobiernos locales pueden ofrecer exenciones adicionales a ancianos y personas incapacitadas.

Todos los gobiernos locales ofrecen una exención a veteranos incapacitados que cumplan con los requisitos a cierta propiedad designada.

Además, los gobiernos locales pueden conceder un tanto por ciento en las exenciones de residencia a los dueños de residencias hogares.

¿Cómo puede solicitarse?

Si usted recibió una exención de residencia para su residencia actual en 1985, no es necesario hacer una solicitud nueva para 1986 en este distrito de valuación.

Si usted tenía 65 años de edad o

fue incapacitado el 1º de enero y no había solicitado previamente para exenciones de incapacidad o de 65 años, necesita llenar un formulario nuevo este año. O, si usted nunca ha recibido exención de residencia en su hogar actual, necesita hacer una solicitud original en 1986.

Solicitudes para estas exenciones deberían hacerse en la oficina del distrito de valuación de su condado, la cual se ubica en la dirección escrita abajo. También, formularios de exenciones en español se encuentran disponibles en la oficina del distrito de valuación.

¿Hay un limite de tiempo?

Para el año 1986, debería solicitarse antes del 1º de mayo. Aunque se aceptan solicitudes tardes en ciertas instancias, al solicitarlas antes del 1º de mayo usted podrá proteger sus derechos.

La Oficina Estatal de Impuestos sobre la Propiedad (State Property Tax Board) ahora tiene un folleto en español, Los Derechos, los Remedios y las Responsabilidades del Contribuyente a los Impuestos, que puede ayudarle a comprender sus impuestos locales sobre la propiedad. Puede obtenerse una copia gratuita en la oficina de su distrito de valuación o por medio de la Oficina Estatal de Impuestos sobre la Propiedad en Austin.



ALICE PEDDY, C.T.A., R.P.A.
Chief Appraiser



State Property Tax Board
P.O. Box 15900
Austin 78761-5900

HANSFORD COUNTY APPRAISAL DISTRICT
709 West Seventh • P.O. Box 567
Spearman, Texas 79081

(806) 659-5575

(806) 733-5139

Starts
Thursday,
April 3
thru
Saturday,
April 12!

BEDDY FURNITURE'S SPRING INVENTORY REDUCTION SALE

We are overstocked & need to move some merchandise! For 10 days we are offering you a tremendous savings on our complete inventory.

STORE HOURS:

Monday
Thru Saturday
8:30 a.m. -
5:30 p.m.

- Patio Furniture
- Bedroom Furniture
- Dining Room Furniture
- Sofas & Sleepers
- Loveseats
- Recliners — La-Z-Boy & Lane
- Entertainment Centers
- Lamps



Every Item
In Stock

30%

OFF

Our Loss — Your Gain

New Merchandise Arriving Daily

NOBODY Sells for LESS!

- Occasional Tables
- Accessories
- Simmons Bedding
- Curios
- Trundle Beds
- Desks
- Wall Units
- Chairs & Rockers
- Bedspreads
- Gun Cabinets



Bank Rate Financing
90 Day Account

Beddy FURNITURE CO.

*plains
shopping
center*

659-3701
Spearman, Texas