

Extracurricular eligibility, participation...

24 hr. prayer
service, 659-2911

THE GRUVER STATESMAN

Volume 14 Number 14

THE GRUVER STATESMAN, GRUVER, TEXAS 79040

Thursday, January 10, 1985

FIRST BABY



Noe Flores, number 1 son of Jose and Amelia Flores of Gruver was also the number 1 baby of Hansford County for the year 1985. Noe weighed in at 9 lbs. 7 ozs. at 9:35 a.m. on January 2nd, 1985. He was 21½ inches long. The Flores family, which also

includes sisters, Erica and Brenda live 15 miles out of Gruver. The Spearman Reporter, the Hansford Plainsman, and the Gruver Statesman would like to take this opportunity to Welcome Noe and to congratulate the Flores family and Dr. Viola.

25 make All-Region Bands

The Gruver Band Department took 41 students to compete for chairs in the All-Region Bands. Of these 41 students competing, 25 students were placed in the -groups. Gruver HS Band placed 4 and the Junior High School Band placed 21. The Junior High took more seats than any of the 18 schools participating. The closest band behind Gruver's 21 was Fritch with 14. "Forty-two percent of our Junior High Band made the all region band, that speaks well of the determination and commitment that the kids have made," said Band Director Jim Taliaferro. Both the HS and the the JH All-Region Bands will give a concert on January 19, at WTSU. Those from the Junior

High Band are: Todd Shaply, 1st chair cornet, Cindy Barkly, 2nd chair cornet, Tony Sotelo, Troy Seagler, Krista Stedje, and Theron Park fill out the section of cornets; Christy Brown, 2nd chair Clarinet, Jennifer Price, Amy Sparks, Mercedes Salazar, Clarinet; Jeanne Potts, 1st chair Flute, Anne Marquez, Shiloh Finney, flute; John Creaey, Vance Scarbrough, Londa Bradley, trombone; Manda Winger, 1st chair Alto sax, Tasha Haight, 2nd chair Alto sax; Andrew Burgoon, 1st chair Tuba, Justin Armes, tuba; Lance Sparks, percussion. Those participating from the HS band include: Andrea Whitaker, 1st chair Flute; Tracy Salzman, flute; Pam Doty, percussion; Cheryl Tebeest, tenor sax.

WEATHER

The New Year started out white for 1985. Spearman and Gruver residents woke up to find less than 1 inch of snow on the ground.

New Years eve many residents stayed home because of the heavy fog and ice on the highways.

The Cattleman's Restaurant in Spearman reported a large turn out for the New Year's festivities. The local restaurant and private club is one of the most beautiful in the area featuring a fireplace and outstanding New Year's decor.

HOSPITAL

Patients in Hansford Hospital are: Reba Bennett, Oselia Vela, Gertha Forrester, Grace Bennett, Owen Montgomery, Joy Werick, Ella Hull. Dismissed were: Ruth Orm, Amelia Flores and son, Billy Zinc, Ray Gibson, Jim Eitelman, Missty Hand.

MARKETS

WHEAT \$3.18
MILO 4.30
CORN 2.95

Hounds scalp Kiowas

The Gruver Greyhounds looked very impressive in a district contest at Booker Tuesday night. Both boys and girls won over the classy Booker Kiowas.

Melanie Morris led the Lady Greyhounds with 14 points followed by Ann Potts who scored 12 as they defeated the Booker team 51-34.

Kelon Morley scored a fantastic 32 points for the Greyhounds followed by Kip Pittman who scored 10 as the Dogs swamped the Kiowas 63-39.

The Varsity and JV teams do not have a game this Friday. The 7th and 8th grade teams will be going to Spearman to play in the Spearman Junior High Tournament.

GRUVER (G) 9 24 39 51
BOOKER 7 16 25 34
G—Melanie Morris 14, Ann Potts 12; B—Shanda Ammons 16, Diane Willmouth & Nicole Albright 5.
GRUVER 16 34 43 43
BOOKER 8 18 29 39
G—Kevin Morley 32, Kip Pittman 10; B—Shawn Ammons 19, Dennis Miller 8.

New school rules go into effect

A new game plan for extra curricular participation went into effect last week in Texas schools—one that Hansford County schools believe will be workable once the problems are determined and ironed out.

And, the method of determining eligibility for participation will be changed beginning with the fourth and fifth six weeks grading periods of the school year.

The whole thing is part of the 1984 education reform bill passed by the Texas Legislature and now in the interpretive stages by the Texas Education Agency and the State Board of Education.

Primarily, starting January 1, the number of hours an individual student may spend on extra curricular participation after school hours is specified and definite—no more than 8 hours in any one activity or 20 hours over-all.

Actually, though, it is a little more complicated than that. The first "performance" at the beginning of the week, including travel time, will be counted as a flat 2 hours. As an example, if basketball teams travel to Perryton for Tuesday night games, only two hours will go on the record even though six hours may be spent going to Perryton, playing the game, and coming home.

Then if the team must travel again this week, on Friday to Canadian, or the farthest point in the district, and leave at 2:00 p.m., the time charged will be only from departure, about 2:00 p.m. until regular classes are dismissed at 3:45 p.m., a total of slightly less than 2 hours.

With the two trips during that week counting four hours the coaches are left with four hours for after school workouts. Class time does not count.

"Every coach will keep a record—on a calendar—of time spent after school." The athletic directors in each school will provide coaches with the calendars and all they will

have to do is make notes on the days.

Where the rub comes in—and officials are not certain how rough it will be—will be on those Spearman and Gruver students who are involved in more than one activity in a week or weeks.

Schools will be starting one-act plays—and some of those practices will be before school. Teachers suppose that before school counts the same as after school, so there is a possibility that an athlete who has practice in the afternoon could spend time in another activity before school.

Teachers, then, will have to keep records of student participation—and, believe administrators, students would have to stay up with the time they spend.

Teachers do not know, nor do TEA guidelines tell, whether the time records will be on an "honor" systems or will have to be accounted for.

Since a ten day absence rule on extra curricular activities became effective with the opening of the fall term, some changes may have to be made in certain areas.

For instance, the Hansford County Junior Livestock Show and Sale is an integral part of the vocational agricultural program at both Spearman and Gruver Schools.

And, participation by some students in the show is through the Hansford County Extension Service 4-H Youth Program. When the show opens, students will not be in the community buildings with their animals except during after school hours or during the Vo-Ag classes. School officials probably will advise stock show entrants that no absences from school will be requested during the day. Most teachers say their students will not miss any class work during the livestock show.

There is a difference in co-curricular and extra curricular, and we

probably are in the co-curricular part.

Co-curricular activities are defined as an "extension of class room instruction in which participation is by the entire class or a significant portion thereof," the TEA regulations state.

However, absence from classes other than the co-curricular course would be counted in the 10-day rule, according to the TEA guidelines.

Now, another thorn that has been irritating some school officials throughout the state is determining the eligibility for participation in extra curricular activities.

Extra Curricular takes in a whole range from athletic competition to literary events, in University Interscholastic League in addition to school-related clubs and organizations.

In the past, eligibility has been checked weekly on such as athletic teams—a student was required to have a passing grade in at least four classes to be able to compete.

Beginning with the fifth six weeks of the school year, March 4, a student must post a passing mark in every course for the previous six weeks, to be eligible.

In other words, implementation actually begins with the fourth six weeks, which starts Jan. 21, because UIL eligibility for the next

six weeks will be based on a student's classroom performance in the fourth six weeks.

The only exception to this rule is an option to be exercised by a principal if a student has an average of less than 70 in an honors class, the principal may allow participation.

Strangely enough, the rules have a quirk that some school officials find slightly amusing—eligibility for the first six weeks of the fall semester will not be based on the last six weeks of the previous spring.

So, while the rules run through

the school year, the summer vacation just wipes out everything, it's a whole new ball game every fall.

ACP signup

deadline Jan. 18

ACP Signup—Farmers of Hansford County have until Jan. 18, 1985 to signup for cost share on conservation practices. Producers who wish to receive cost share on Irrigation pipeline, waterways and other conservation practices must sign up by Jan. 18, 1985 at the ASCS office in Spearman. If you have any questions please contact this office.

The cheese and butter distribution will be

Wednesday, January 16 from 1:00 p.m. until

5:00 p.m. at Judge McClellan's office in the

courthouse, Spearman, Texas.

Services Saturday

J.R. Beck, 80, of Sulphur Springs, Texas, a former resident of Spearman, died Tuesday. The funeral is scheduled to be at 2:00 p.m. Saturday, in the Tapp Funeral Home Chapel in Sulphur Springs.

J.R. was born on May 25, 1904 and is survived by his wife, Bonnie; 5 sons—James Beck, Roy Beck, and Gerrell Beck, all of Sulphur Springs, Wayne Beck of Palestine, Texas and Kenneth Beck of St. Louis, Missouri; 3 daughters—Billie Henry of Hot Springs, Arkansas, Joy Sullivan of Mt. Pleasant, Texas and Martha Hard of Sulphur Springs, Texas; 24 grandchildren and 13 great-grandchildren.

Burial will be in the Pleasant Grove Cemetery in Sulphur Springs.

Gruver beat out of Stratford Tournament

In the Stratford Tournament the Gruver Greyhounds lost in the 2nd round games to Sanford Fritch with a score of 64/39, and the Lady Hounds lost to Sanford Fritch by a score of 50/36.

The remaining tournament went as follows: Dalhart/Gruver 43/40; Stratford/Dalhart 45/41; Hartley/Sunray 35/20; and the final game found Sanford Fritch winning 1st place over Stratford 45/40.

In the boys division the games went: Gruver/Stratford 83/48; Dalhart/Stratford 71/49; Hartley/Sunray 53/32; and Sanford Fritch winning 1st place over Dalhart 87/56.

Telephone directories to be distributed

The 1985 Gruver telephone directory is being distributed through the week of January 19, 1985, according to Gary Stevens, Manager-Community Relations for Southwestern Bell Telephone Company.

Gary Stevens said a total of 1,121 directories will be mailed to area residents. Each residential customer is to receive one directory. For additional copies, customers may call their Southwestern Bell business office during business hours Monday through Friday, Stevens said.

Stevens requested that customers not call right away. "If your friend across town gets a directory

before you receive yours, please be patient since all directories are not delivered the same day," Stevens said.

This year 8 white pages and 24 Yellow Pages make up the Gruver telephone directory. There are 1,133 white page listings.

Emergency telephone numbers have been placed on the inside front cover of the new directory. In the "Customer Guide" at the front of the directory customers will find tips on how to save money on their phone service and a new map illustrating long-distance service areas within Texas.

The directory contains listings for Gruver.

Wrestlers say thanks



Cooper Cox draws the winning ticket to the Cotton Bowl as Toni Atwood looks on.

The Gruver Wrestling Club would like to thank everyone who donated to our project. It was very, very successful.

Our winner for the trip to the

"Cotton Bowl" game was Archie Nelson. Drawing the winning ticket was Cooper Cox, grandson of Vivian and J.C. Harris.

Glass Slipper baby competition

Glass Slipper Cinderella Baby Competition to be held Saturday, Jan. 26, 1985 at White Deer High School Auditorium, White Deer, Texas.

Babies ages 0 to 12 months, 1 year olds, and 2 year olds invited to enter - Competition open to all babies from all towns and states - Girls may compete in a dress for beauty or enter a picture for photogenic. Entry Deadline - Tuesday, Jan. 15, 1985. All contestants will receive a trophy. For information contact: Diana Tekell, Diana's Dance Studio, 215 N. Hedgecooke, Borger, Tx. 79007. Phone: 274-3960, 857-3845 or 273-9963.

Agenda

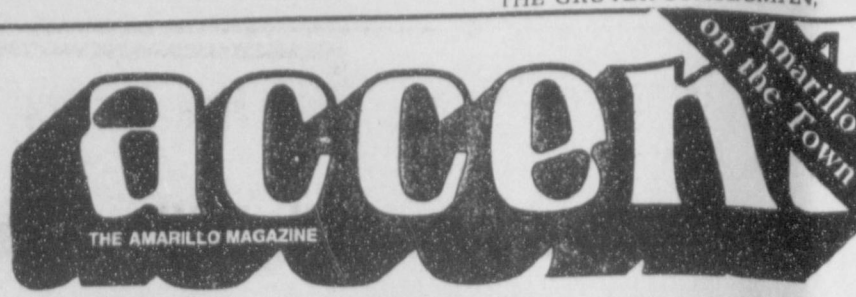
NOTICE OF MEETING OF THE GOVERNING BODY OF City of Gruver

Notice is hereby given that a regular meeting of the governing body of the above named City or Town will be held on the 10th day of January, 1985, at 2:00 P.M., in the City Hall at 108 East Broadway Street, Gruver, Hansford County, Texas, at which time the following subjects will be discussed, to-wit:

1. Open Meeting.
 2. Read the minutes of the previous meeting.
 3. Consider an ordinance prohibiting trees on corners.
 4. Consider an account owed to the City.
 5. Renew a Jail contract with Hansford County.
 6. Appoint an official representative to P. R. P. C.
 7. Discuss the Swimming pool project.
 8. Consider placing street light on Cooper Street.
 9. Approve the bills.
- Dated this the 7th day of January, 1985.

City of Gruver
by A. J. Raliff

Murphy's law: Connie Roux, a wallpaper hanger in Riverside, Calif., received a strange call from one of her customers. The woman asked Roux, "Where are my paper towels?" "I used them up," Roux replied. "Where is the empty roll?" "I threw it in the trash." "Where is your trash?" "The garbage men took it away." The woman began to sound hysterical before she explained that she and her husband had hidden \$2,500 inside the roll. Roux and the homeowners went to the dump, where they sifted through mounds of trash for 45 minutes before Roux found the roll - with the \$2,500 inside. One person's trash is another's treasure.



PMS comes out of the closet

Newspaper woman

T-SHIRT TALES



You've come a long way Baby! Lori Fletcher, of Gruver, posed for Cover of Accen West magazine and T-Shirt Tale's article in January, 1985 edition.

Lori Fletcher, daughter of Mr. and Mrs. Ritchie Fletcher of Gruver is covergirl material. Lori, sixteen year old Gruver High

cheerleader, took time out to pose for shots for cover and story in Accen West, the Amarillo Magazine, January, 1985 issue. She posed in three different Amarillo t-shirts from Texas Apparel. The photos were by Ralph Duke with hair and makeup by Dugg Kirkpatrick of Illusions.

A two-vehicle accident near Hardesty claimed the life of a Hardesty resident Monday evening.

Glen R. Gum, 56, was driving a 1961 GMC truck westbound on a county road three miles south of Hardesty. He failed to yield at a stop sign and hit the left center of a southbound 1977 International semi tractor-trailer driven by Maynard D. Inderlied, 42, of Buffalo.

Gum was ejected from the right side door of the pickup after it came off of the vehicle. He was taken to Memorial Hospital in Guymon, where he died from head and chest injuries. Inderlied was not injured.

The pickup truck was not equipped with seat belts. Seat belts were in the semi but were not in use at the time of the accident.

The accident was investigated by Trooper Larry Warlick of the Guymon detachment of the Oklahoma Highway Patrol.

Gum was born Oct. 14, 1928 at Hardesty. He was the son of Ernest and Bessie Gum. He was married to Virginia Bruce on April 24, 1949 at Spearman, Tex. and was a life long resident of the Hardesty community.

Besides his wife, Virginia, of the home, survivors include two daughters, Carolyn Whiteside of Amarillo, Shirley Smith of Turpin; three sons, Bruce Gum of Guymon, Ted Gum of Hardesty, Jerry Gum of Hardesty; one sister, Beryl Rimmel of Phoenix, Ariz.; one brother, Buster Gum of Amarillo; and seven grandchildren.

Funeral arrangements are pending and will be announced by the Henson Funeral Home of Guymon.

Our Heritage of Faith

Our Lutheran view of baptism holds that baptism benefits infants because the power of baptism lies not in what humans do, but in what God does.

In fact, we as Lutherans, do not bring anything to our baptism except our need. It is God who acts through this water, performing his miracle of grace. Nothing bars the infant from this benefit since the child neither rejects nor despises baptism or the grace of God. Jesus said, "To such

belongs the kingdom of God" (Mark 10:13-16).

NEXT TOPIC: Baptism as a gracious gift of God.
Bill Schardin, Pastor
Faith Lutheran Church
Spearman, Texas

Can't win situation: By the time your teeth are so far gone a little sugar can't hurt 'em, you're not going to be able to afford the sweet stuff.

Sugar cane first sprouted on the island of new Guinea in the South Pacific and was carried north to India in prehistoric times. The Indians gave it a name; the sugar their crude methods produced looked like gravel or in Sanskrit "sarkara" recognizable today as "sukkar" in Arabic, "sachar" in Russian, "zucker" in German, "sucre" in French and "socker" in Swedish.

Sturgeon, whose roe (eggs) is washed and salted to make caviar, has been considered a royal fish since ancient times. In Roman days, it was bedecked with flowers and borne to the emperors tables in grandeur. A law enacted in the reign of King Edward II made any sturgeon caught in England the property of the king.

Growing pains are what parents suffer in trying to bankroll clothes for their fast-sprouting progeny.

The boss grumps that when he calls for teamwork all we do is horse around.

© 1984 Suburban Features

FIBER CUES - Add fiber to your family's diet in non-noticeable ways. Use wheat germ, bran or oats as filler in meatloaf and in stuffings; substitute these for some of the flour in bread. Serve brown rice instead of regular; whole wheat pasta instead of plain, and improvise small shredded wheat biscuits as croutons and casserole toppings. Start small and you'll soon be able to slip in a meatless meal.

It's costing a lot less to fill winter's potholes in our state. All they have to do is pave over the small cars trapped in them.

The Robert E. Lee Memorial is a historic residence, Arlington House, on a hilltop above Arlington National Cemetery. It was built by George Washington Parke Custis, grandson of Martha Washington and father of Mary Ann Randolph Custis, who married Lee in the house in 1831. The house was confiscated during the Civil War, but was returned to George Washington Custis Lee, grandson of the builder, who sold it to the government in 1883 for \$150,000.

© 1984 Suburban Features

Art Classes

Tom Beasley art classes

begin

Tuesday, January 15 at 7:30 p.m.

at Gruver Library.

Cross Stitch Corner is now open

- ★ Complete line of DMC Floss.
- ★ Large selection of evenweave fabric.
- ★ Books, Books, Books!!
- ★ Lots of finishing accessories.
- ★ Supplies for all your counted Cross Stitch needs.

Located in the country home of Marilyn Cline 1 mile east of the High School in Spearman Call for directions if you need to!

Open Tuesdays, Thursdays and Saturdays or any evening by calling first. 10 a.m. - 6 p.m. 659-2480

Winter Sale

Now in progress

30 - 50 % off all winter merchandise



J. G.'s

306 Hancock

Spearman

659-3424

GRUVER STATE BANK GRUVER, TEXAS

REPORT OF CONDITION
(dollar amounts in thousands)
DECEMBER 31, 1984

ASSETS

1. Cash and balances due from depository institutions:		
a. Noninterest-bearing balances and currency and coin	6,692	
b. Interest bearing balances	NONE	
2. Securities	7,217	
3. Federal funds sold and securities purchased under agreements to resell	5,300	
4. Loans and lease financing receivables:		
a. Loans and leases, net of unearned income	17,621	
b. LESS: Allowance for loan and lease losses	174	
c. LESS: Allocated transfer risk reserve	NONE	
d. Loans and leases, net of unearned income, allowance, and reserve	17,447	
5. Assets held in trading accounts	NONE	
6. Premises and fixed assets	209	
7. Other real estate owned	3	
8. Investments in unconsolidated subsidiaries and associated companies	NONE	
9. Customers' liability to this bank on acceptances outstanding	NONE	
10. Intangible assets	NONE	
11. Other assets	804	
12. Total assets	37,672	

LIABILITIES

13. Deposits:		34,386
a. In domestic offices:		
(1) Noninterest-bearing	15,131	
(2) Interest-bearing	19,255	
14. Federal funds purchased and securities sold under agreements to repurchase		NONE
15. Demand notes issued to the U. S. Treasury		NONE
16. Other borrowed money		NONE
17. Mortgage indebtedness and obligations under capitalized leases		NONE
18. Bank's liability on acceptances executed and outstanding		NONE
19. Notes and debentures subordinated to deposits		NONE
20. Other liabilities		676
21. Total liabilities		35,062
22. Limited-life preferred stock		NONE

EQUITY CAPITAL

23. Perpetual preferred stock		NONE
24. Common stock		600
25. Surplus		600
26. Undivided profits and capital reserves		1,410
27. Cumulative foreign currency translation adjustments		NONE
28. Total equity capital		2,610
29. Total liabilities, limited-life preferred stock, and equity capital		37,672

I, Laurie Boyd, Asst. Cashier of the Gruver State Bank do hereby declare that this Report of Condition has been prepared in conformance with the instructions issued by the appropriate Federal regulatory authority and are true to the best of my knowledge and belief.

Laurie Boyd
Signature

January 8, 1985
Date

Keith Annin
Director

Bob Best
Director

Janet Lewis
Director

WANT ADS

SERVICES

SERVICES: Pits cleaned, wet or dry. Dragline or loader. Also, dozer, grader, carry-all service. Lee Roy Mitchell, 806-733-2384, Gruver, Texas 79040. 9-rtm

New to Area? Give Us a Try Call Your Local USED COW DEALER As Soon as Possible 659-3544 659-3545 1-800-692-4043 22-rtm

NOTICE
Wallace Monument Co. Monuments, Curbings, Grave Covers Local Representative LEONARD JAMESON Spearman, Texas 40-rtm

OSGOOD MONUMENT CO.
Amarillo, Texas Dealers of Rock of Ages Granite, as well as all colored granites, marble and bronze memorials.
represented by
BOXWELL BROS. FUNERAL HOME
519 S. EVANS
659-3802

Hansford County Planned Parenthood 412 Davis 659-2483 Spearman Mon.-Fri. 8:30-12:30

SEARS BLOWN IN ATTIC INSULATION. Now 10% off. Completely installed. For FREE ESTIMATE at your convenience dial 659-2573. Sears Roebuck and Co. 517 S. Hwy. 207. 50-rtm

Sewing done—little darling and Cinderella dress types a specialty. Call Joy 733-2517. nc

FOR SALE

CONCERT QUALITY piano tuning and repair. Free estimates. Write Elson Clark, Box 1016, Dalhart, Tx. 79022 or call collect 806-249-2783. 6-4tp-rtm

FOR SALE: Pies, desserts, breads and Birthday cakes. New novelty pans available. Cabbage Patch, Rainbow Brite. Also "Mr. T" pattern for cakes. Plan special novelty cakes for Christmas place orders early. Call Joy at 733-2517. 6-nc

Piano For Sale
Wanted: Responsible party to assume small monthly payments on piano. See locally. Write: [include phone] Credit Manager, P.O. Box 327, Carlyle, Illinois or call Mr. Powers, 618-594-4242. 13-1tp-2tc

PUBLIC NOTICE

Guymon Elks Supper Club is open to the public. Our hours are Wednesday-Thursday 6-10 p.m. Friday-Saturday 6-10:30 p.m. We have a prime rib special every Friday. 51-rtm

GARAGE SALE

MOVING SALE: Jan. 11, 12, 13. 710 Womble, Gruver, Tx. Furniture, appliances, clothes. 13-2tc

The Museum of New Mexico, Santa Fe, maintains the oldest public building in the United States. The Palace of the Governors (built 1610), a hall of modern Indian culture, collected works of artists of the Southwest and folk art exhibits.

LEGALS

NOTICE TO CONTRACTORS

Sealed proposals addressed to the Mayor and City Commission will be received at the Gruver City Hall, Gruver, Texas, until 3:00 P.M.* CST on the 24th day of January, 1985 and then publicly opened, read and considered by the Gruver City Commission, for the furnishing of all necessary materials, machinery, equipment, labor, superintendence and all other services and things required for the construction of certain park facilities in the city of Gruver, Texas, as follows:

SWIMMING POOL and related facilities and of pertinence complete.

The City reserves the right to reject any and/or all bids, to waive objections based on failure to comply with formalities, and to allow the correction of obvious or patent errors.

Bidders must submit a satisfactory cashier's or certified check, or a bidder's bond, payable without recourse to the order of the Mayor of the City of Gruver, Texas, in an amount not less than five (5%) per cent of the total bid, which check or bond shall be submitted as a guaranty that the bidder will enter into a contract and execute a performance bond and a payment bond within fifteen (15) days after notice of award of contract to him. Bids without required check or bond will not be considered.

The successful bidder must furnish a satisfactory performance bond in the amount of 100% of the total contract price, and a satisfactory payment bond in such amount, both duly executed by such bidder as principal and by a corporate surety authorized so to act under the laws of the State of Texas as surety. Also, a five (5) year maintenance shall be required against structural defects.

All lump sum and unit prices must be stated in both script and figures. The contract, if awarded, will be awarded to the lowest responsible bidder.

Bidders are expected to inspect the site of the work and to inform themselves regarding all local conditions under which the work is to be done. The Contractor shall comply with all state and federal regulations regarding wages and conditions of employment; including but not limited to those rules and regulations set forth or referred to in the specifications. A scale of prevailing minimum rates of wages is set forth in these specifications.

NON-DISCRIMINATION IN EMPLOYMENT

BIDDERS ON THIS WORK WILL BE REQUIRED TO COMPLY WITH THE PRESIDENT'S EXECUTIVE ORDER NO. 11246 AND OTHER ACTS, LAWS AND REGULATIONS. THE REQUIREMENTS FOR BIDDERS AND CONTRACTORS UNDER THESE ORDERS ARE EXPLAINED IN THE SPECIFICATIONS.

Information for bidders, proposal forms, specifications and plans are on file with the City Clerk of Gruver, Texas and copies may be secured at the office of MERRIMAN & BARBER, Consulting Engineers, Inc., 117 North Frost Street, Pampa, Texas 79065.

CITY OF GRUVER, TEXAS, OWNER
BY /s/ J.C. HARRIS, MAYOR
13-2tc

HELP WANTED

TEXAS REFINERY CORP. needs mature person now in Gruver area. Regardless of experience, write, A.D. Sears, Box 711, Fort Worth, TX 76101. 13-1tc

A bang-up performance: The Wild West show "Calamity Jane," performed by a London amateur operatic society, had a near tragedy averted by police. A prop gun was loaded with live cartridges, instead of blanks. The police alerted the cast minutes before the curtain went up at the Watford Palace Theater, north of London, that a gun shop had accidentally supplied the real thing, not blanks. How's that for live action?
©Suburban Features

BUSINESS OPPORTUNITIES

Own your own Jean-Sportswear, Ladies Apparel, Combination, Accessories, Large Size Store. National Brands: Jordache, Chic Lee, Levi, Vanderbilt, Izod, Esprit, Britannia, Calvin Klein, Sergio Valente, Evan Picone, Claiborne, Members Only, Organically Crown, Healthtex, 900 others. \$7,900 to \$24,900 inventory, airfare, training, fixtures, grand opening etc. Can open 15 days. Mr. Loughlin (612) 888-6555

FRAME FANCY — Change a collection of framed family photos from ordinary to rich and elegant by wrapping picture frames with fabric. Measure frame, then buy four times the amount of fabric. Cut it in strips. Choose cotton or other fabric that won't ravel and wrap frame edges after taking them apart. Add colored cardboard mats to give some photos extra importance. Paint slim edged frames a contrasting color and group or hang your new photo collection.

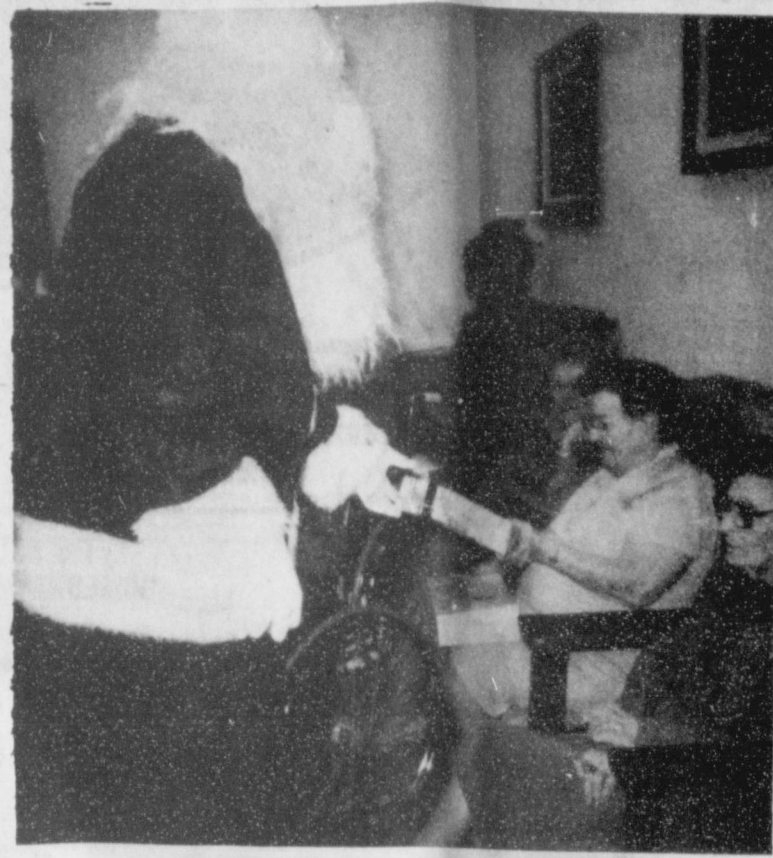
Christmas 84 at Hansford Manor

Hansford Manor residents had a very Merry Christmas thanks to the support of Spearman residents. A total of \$1,824.19 was collected from the Empty Stocking Fund.

Many gifts were purchased for our needy residents. The remaining money will be used for the residents as necessities arise throughout the year.

We would like to thank everyone for the cards, fruit, flowers, food, visits, gifts and prayers. Also, a special thank you to Mary Lou Wysong and Martha Boyd for their help in making this such a success. Thanks again for the contributions.

Hansford Manor Residents & Staff



Elizabeth McClellan looks on as Santa gives Nina Evans a present.



Leon Bowling, center, and John Lackey, left, attend Christmas '84 party at Hansford Manor.



Opal Beck expresses Christmas cheer as Santa delivers one more gift.

The Gruver Statesman

PUBLICATION (USPS 9598-6000) GRUVER, TEXAS 79040

Box 796 69-3434
Owner-Publisher.....William M. Miller
Editor.....Joy Henderson, Gruver, Tx.
Second Class postage paid at Gruver, Texas 79040

Any erroneous reflection upon the character of any person or firm appearing in these columns will be gladly and promptly corrected upon being brought to the attention of the management.

POSTMASTER: Send address changes to Gruver Statesman, Box 796, Gruver, Tx. 79040.

SUBSCRIPTION RATE: Hansford, adjoining counties, \$12.50 per year.

MEMBER

Texas Press Association

TSTI to sponsor CRS review course

Texas State Technical Institute and the Amarillo Chapter of Professional Secretaries International will co-sponsor Certified Professional Secretary (CPS) Review course to assist secretaries aspiring to attain the CPS rating or to improve their knowledge and skills.

The CPS Review courses will be held on Monday evenings from 6:00 to 7:30 p.m. in the Executive

Room of the First National Bank of Amarillo. Each course will require a \$15.00 fee.

Scheduled courses are Office Technology—January 14, 21, 28 and Feb. 4; Office Administration and Communications—February 11, 18 and 25; and Accounting—March 4, 11, 18 and 25.

For more information contact Yvonne Goodnight at 335-2318, extension 500 or Mary Moble at 378-3000, extension 2302.

The alchemists weren't smart enough to turn base metal into gold. But our plumber has discovered the secret.

Catch the brass ring on the merry-go-round of life, and it will stick in the dispenser and pull you off the horse.



Let's talk.

Information about your changing telephone service from Gary Stevens, Manager-Community Relations

Expense cutting saves millions

If you're like me, you've probably been hearing a lot lately about expense and budget cutting on the national and state levels.

Southwestern Bell Telephone is also cutting expenses. These cuts saved the company millions in 1984.

Just like on the national and state levels, we know financial health begins by holding down expenses. We're doing that by ensuring every dollar we do spend provides maximum benefit.

The buck stops here

- Here's how we're tightening our belt in Texas:
 - reducing our work force — by not hiring behind retirements and other losses. On an annual basis this is saving us more than \$50 million.
 - mechanizing jobs and procedures — where there are potential savings and efficiencies.
 - holding the line on overtime — we've cut these expenses by 33 percent since 1983 for a savings in Texas of \$25 million.
 - renegotiating contracts — with outside office equipment suppliers. Compared to previous contracts, we're spending \$5 million a year less on office supplies and machinery.
 - reducing customer telephone-line reports — our statewide effort is paying off. Total trouble reports are down 88,000 a month compared to last year. Savings in report processing costs exceed \$45 million a year.

On top of all these measures and others, we'll take up the spending belt a few more notches in the coming months. Our major operating departments in Texas have already committed to doing their jobs in 1985 with a zero budget increase. That means they'll have to absorb the traditional expenses — inflation and growth.

Additional mileage from the network

Beyond expense measures, we recognize there's also an important revenue side of running a well-managed, self-sufficient business.

We're continuing to look for new sources of revenue outside of the "rate arena." And we're also constantly seeking opportunities to get additional mileage from the telephone network investment already in place.

It takes months, and sometimes years, to bring a new service on line, successfully market it, and then realize a revenue stream. But we're working on developing these new services. In fact, we have a number of them in the works which should produce new revenue in Texas in the near future.

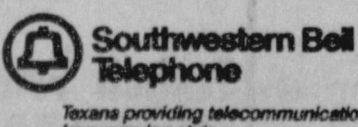
Providing you with quality service

So, as you can see, there's plenty going on in Texas to improve our business from within. These internal efforts have helped us provide you with more efficient and responsive telephone service than ever before.

Southwestern Bell Telephone — meeting your telecommunications needs today and tomorrow. We're at your service.

Do you know a Southwestern Bell Telephone employee who should be honored for performance above and beyond the call of duty?

If so, Southwestern Bell Telephone is accepting nominations for the Rider Service Award. If you'd like to nominate someone, please write us for a nomination form (deadline for all forms is February 15): Rider Award Nomination Forms; Southwestern Bell Telephone; 308 S. Akard, Room 1409; Dallas, Texas 75202.



Gary Stevens
SW Bell Telephone
714 S. Tyler
Amarillo, TX 79101

Texas providing telecommunications for a growing state.

On the go with Joy

Boy! Am I really inspired this morning! Here I have been up since a little after 5 A.M. in order to go to two jobs at once. Thank goodness this doesn't happen very often (more than once a week anyhow). Anyhow, as usual, I have to search and turn the house upside down for a newsletter I received in the mail yesterday. An hour later, still haven't found it and I'm getting very unhappy. I'm about to do something real drastic-like throw all this mess out the back door, but by the time I get it all together, the clean up job gets post-poned for another week, or month, or year. However, I'm going to have to start doing a better job or my cook may quit and the secretary is threatening to go on strike and the bookkeeper is asking for a raise, and my general flunkie has already requested a vacation. That only leaves one person around my house to do the work and he has announced his retirement from active duty.

If I had known 36 years ago what I was in for in my "Golden" years, I would have taken my mother's advice and found a good paying job instead of 10 "good paying" jobs. Well so much for Tuesday morning depression. I could have been unlucky enough to have born in India, Africa or Ethiopia.

Now to the further adventures of the Ronald McDonald House in Amarillo. Since last week, I have heard from a friend about supporting this organization by purchasing watches from the McDonald restaurants and part of the money went to the House in Amarillo.

If some of the ladies clubs, Bible classes and individuals would like to plan a project to help them, give me a call for suggestions. I have a list of items that are needed and some of the things that are requested now are:

a Trivial Pursuit Game, vacuum cleaner, tissue, coffee, tea (both instant and bags). Naturally, there is always a need for all types of food, household items, tools, toiletries, etc. I plan on making a trip to Amarillo on the 17th and if you would like to send anything let me know.

So far, as of Mid-June of 1984, after being in operation for 10 months, 131 families have made the RMH of Amarillo their home, with visits ranging from one day to several months. These families came to Amarillo to seek medical treatment for critically ill children, or patients in intensive care.

According to Sharon Dodd, the resident manager, they have had families from as near as Canyon and as far away as Argentina and guests have represented 69 different home-towns and 11 different states in the United States. Although the majority of the RMH residents come to Amarillo from Panhandle locations, some of the people who have used the facilities were traveling through the area from more distant locations and suddenly found emergency medical aid necessary because of an accident or sudden illness.

Mrs. Dodd stressed the fact that RMH always is available to all area and non-area as well. "You can never know when an illness or an accident will happen to a child," she said "It can happen to anyone..." and that is why this Ronald House is here—to offer the comfort, support and friendship that any family needs to get through a most critical time in their lives.

Yet despite the urgency of those families needs, Mrs. Dodd emphasized the "giving and taking" at the Ronald House is not a one way situation. Each of the 131 families has contributed to what she calls the real character of the Ronald House. The families who stay here give it life and personality," she said. "Each one leaves a little bit of themselves with us. Without that giving on the part of the families, the Ronald House would never be complete."

Razor to speak at High Plains Irrigation Conference

Water issues in Texas will be given special emphasis at the High Plains Irrigation Conference here on January 17, 1985. S. M. True of Plainview and president of Texas Farm Bureau will discuss the importance of planning for the future.

State leaders in government say water for Texas will be given special consideration during this year's legislative session. Water shortages in many Texas cities in 1984 created new interest in water

plans for the state. High Plains farmers have a lot at stake by who controls water in Texas.

The conference will be at the Texas A&M Research and Extension Center, 6500 Amarillo Boulevard, West. Registration and display of equipment will begin at 8:30 a.m. The program will conclude at 3:00 p.m. It is sponsored by the Texas Agricultural Extension Service and Panhandle Economic Program.

A popular feature of this conference each year is the discussion by a panel of growers, said Leon New, Extension agricultural engineer who is conference coordinator.

Addressing the topic of "Managing Irrigation and Soil Moisture on My Farm," will be Willie Wieck of Etter, A. W. Razor of Gruver and Tom Dennis of Panhandle.

The 1985 conference will also include an irrigation equipment panel. New equipment and management techniques are made available to growers each year.

Surge, LEPA, soil moisture, furrow diking and center pivot equipment will be addressed by James Mitchell of Wolfforth, Dick Cook of Dumas and Dick Laursen of Stephenville.

Managing furrow irrigation will be addressed by Jack Musik, USDA research agricultural engineer, headquartered at Bushland. New will speak on LEPA irrigation with center pivots.

Exhibits at the conference will include components for center pivots, surge valves and control units, furrow dikes, modified engines for greater pumping efficiency and other irrigation equipment.

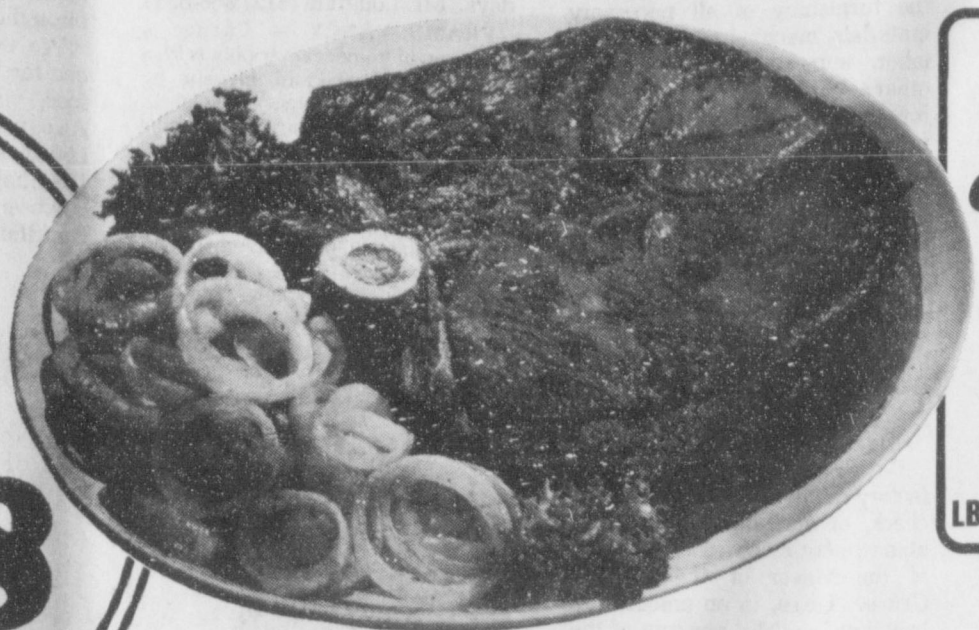
Nose jewels or nose rings were metal rings that were passed through the partition between the nostrils or through the right nostril. Coral, beads or jewels were strung on it. Isaiah lists nose jewels among the ornaments the Lord will take away from women.

VALUE TRIMMED FULL CUT SLICES

Round Steak

1.48

LB.



LEAN TENDER

Boneless Chicken Fry Steak

1.98

LB.

VALUE TRIMMED BONELESS RUMP ROAST... 1.89

VALUE TRIMMED PIKES PEAK ROAST... 1.79

HICKORY SMOKED SLICED SLAB BACON... 1.28

Prices effective thru Jan. 15, 1985 QUANTITY RIGHTS RESERVED.

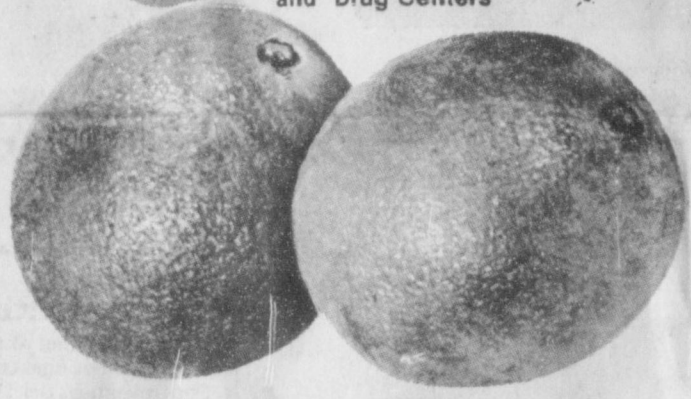
Humpty & Ideal

Supermarkets and Drug Centers



LET'S HELP SEND SOMEONE SPECIAL TO

SPECIAL OLYMPICS



FANCY CALIFORNIA NAVELS

Oranges

5 LB. BAG 1.69

KRAFT REG. OR LIGHT

Miracle Whip

32-OUNCE JAR

1.58

MEADOWDALE

Enriched Flour

5 LB. BAG

68¢



SWEET JUICY RUBY RED

Grapefruit

5 LB. BAG 1.69

FANCY RED DELICIOUS-GOLDEN DELICIOUS or RED ROME

Apples

4 LB. BAG 1.69

ALL PURPOSE RUSSET

Potatoes

10 LB. BAG 1.69

U.S. NO. 1 YELLOW

Yellow Onions

3 LB. BAG 99¢

CALIFORNIA - FULL OF JUICE

Lemons

2 LB. BAG 99¢

KRAFT

Macaroni & Cheese

DINNERS

2 85¢

7 1/4-OZ. BOXES

DUNCAN HINES

Choc. Chip Cookies

12-OZ. PKG. 1.49

18 1/2 OZ. PKG. 1.89

FROZEN FOOD

Mexican Dinners

PATIO ALL VARIETIES 13 1/2 OZ. PKG.

1.19

ONE-IDA

French Fries

5 LB. BAG 3.49

MURPHY JACK-REG. OR BUTTER

Microwave Popcorn

1.49

DAIRY FOODS

Cheddar or Colby Cheese

KRAFT 1/2-MOON LONGHORN 16 OZ. PKG.

2.49

BUTTERMILK OR SWEETMILK

Mel-O-Crust Biscuits

6 OZ. CANS 1.00

KRAFT TWIN TUB MARGARINE

Soft Parkay

10-OZ. TWIN TUB 98¢

SAVE GREAT BUYS SAVE

CAMPBELL'S CREAM OF MUSHROOM SOUP 11 oz. 29¢

HORMEL CHILI WITH BEANS 79¢ WITHOUT BEANS 89¢

SHASTA POP 6 for 79¢

Come dance with us tonight

The Boots and Slippers Square Dance Club will be dancing tonight January 10th, 8:00 P.M. at the Golden Age Center in Gruver with Murry Beasley calling. Come join the fun!!!

Sunrise Oilfield Supply Opens 9th Store

Sunrise Oilfield Supply Company has just opened its 9th store, this one in Guymon, Oklahoma, on North Highway 54. Tom Schmidt, a seventeen year veteran in the oilfield, heads store operations as store manager. Rick Pratt, moves to Guymon from Woodward, Oklahoma, as salesman for the new store area. "The Guymon store will be a strong base for drillers and producers in the area," states Don Pumphrey, Sales Manager. "Schmidt and Pratt will strengthen the store with their knowledge

of the oilfield and the supply business in the Oklahoma Panhandle area."

Gary Hackney, Sunrise Oilfield Supply Company District Operations Manager, who has fourteen years experience in the oilpatch, expands his territory of management to include the Panhandle area of Texas, Oklahoma, and Southwest Kansas. "Hackney will oversee store operations for our Booker, Texas; Guymon, Oklahoma; and Garden City, Kansas stores, making it easy to get the

supplies the Panhandle and Southwestern Kansas oil industry depend on from Sunrise," states Tim Booze, Vice President of Operations. Hackney, moves to Guymon from the Sunrise Oilfield Supply company Sales Office in Woodward, Oklahoma.

The Wichita based oilfield supply business started operations in 1980 and presently serves the oilfield with locations in Booker, Texas; Garden City, Great Bend, Hays, Medicine Lodge, Ness City, Pratt and Sitka, Kansas; and

Guymon, Oklahoma. Sales offices are located in Amarillo, Texas; Denver, Colorado and Oklahoma City, Oklahoma. Headquarters are at 104 S. Broadway, Suite 1400, Wichita, Kansas 67202. The Toll Free Number is 1-800-362-1187.

"The chains, and the bracelets, and the muffers, the bonnets, and the ornaments of the legs, and the headbands, and the tablets, and the earrings, the rings, and nose jewels."

— Isa. 3:19-21

COLOR CUES — If you're planning to paint a room and wondering how much of a change it will be, think in terms of seasonal colors. Consider how mood changing are the hot, intense shades of summer — red, yellow, orange. They're perfect for kitchens since these stimulate activity. Fall brings the browns, russets, golds — perfect for cozy, warm nooks. Winters' creamy white palette creates a mood of space and sparseness. Use these shades in a formal room. And for prettiness and ease, try the soft pastels of Spring. They'll change a room's mood to soft.

Keep your eye on the ball and someone will make off with your set of clubs.

PDWA voting by absentee opens Monday

Absentee voting began last Monday and will continue through January 16 on Moore County annexation to the Palo Duro Water Authority.

The election is set for Jan. 19 in Moore voting precincts. Absentee voting will be handled in the office of Rhonnie Mayer, county clerk, in the courthouse.

Voters will mark a 2-part ballot in the election and both parts must be approved if the county is to be annexed to PDWA.

First on the ballot is annexation and the second item is authorization of a tax levy for maintenance purposes.

Voting at the same time will be the City of Stinnett on the same proposals.

PDWA proposes to construct a dam across Palo Duro Creek in Hansford county, at a cost of \$22 million, and later to build a water treatment plant and transmission facilities.

Letter to the editor

Dear Sir:
I will be teaching a course in your area very shortly on the Commodities markets. The course is designed to teach the basics of the Commodities markets expelling some of the falsehoods of Commodities and providing people with hard facts. For the speculator, we will examine the use of technical and fundamental analysis, proper money management, and sound trading principles needed to make money in today's markets.

For the Farmer or Hedger, we will concentrate on how to make the Commodity markets work for you to protect your producing against adverse price moves enabling you to greatly improve your marketing program. We will also look into the new agricultural commodity options.

The course at Frank Phillips begins: Wednesday, January 16th from 7-9 p.m. and will continue for a 10 week period (every Wednesday). The cost will be \$20.00. To enroll stop by at Frank Phillips or phone 274-5311. You can also phone me at 1-800-692-4444.

The course at Clarendon College begins: Tuesday, January 15th is an 8-10 week course (every Tuesday night). The cost will also be \$20.00, and you must be registered by the 10th of January. To register you can phone Clarendon College at 874-3571. For further information you can also phone me at 1-800-692-4444.

I feel that the information contained in this course will benefit the public greatly and any assistance that you might give to me to get the word out to the people in your area would be greatly appreciated.

Sincerely,
Scott W. Doll
Account Executive

Childbirth

preparation classes

Childbirth Preparation Classes are to start January 8th, 1985, from 7:00 to 9:00 P.M. The classes last for 6 weeks. They will be in the Hospitality Room of the First State Bank. For More Information Call: Carol Stavlo, RN, home 882-4476, work 659-2535 OR Carol Fletcher, RN, home 659-3172, work 659-3761.

Citizens of Athens scratched their votes on pieces of broken pottery. Potsherd ballots cast more than 2,400 years ago have been unearthed by archeologists. Such ballots were known as ostraka, from which the work "ostracize" is derived.

Regional Chiropractic Center

Dr. Darrell D. Duke

Complete Chiropractic and nutritional services.

Open Mon.-Fr. 9:00-4:30
221 Sanders 659-5585

Golden Country Fresh Fryer

Legs & Thighs



49¢

LB.

DELICIOUS PRE-COOKED

Potato Patties 98¢

DELICIOUS PRE-COOKED

Chicken Nuggets 3²⁹

STATE FAIR

Corn Dogs 1⁹⁸

6-CT. PKG. 10-CT. 3.09

DOUBLE YOUR MONEY BACK MEAT GUARANTEE

LEAN GROUND BEEF

5 lbs. or more

1 49

lb.

SEAFOODS

BONELESS

CHUCK ROAST

1 79

lb.

SAVE 89¢ lb.

DECKER'S ALL MEAT **Skinless Wieners** 12 OZ. PKG. **89¢**

DECKER'S RANCH STYLE-WHOLE **Boneless Hams**...LB. **1 69**

BLUE MORROW BREADED & COOKED **Beef Patties**...16-OZ. PKG. **1 59**

Redeem your Procter & Gamble Special Olympics coupons now! These coupons came in your mail in the Publishers Clearing House Sweepstakes Envelope. For each of these coupons you redeem by Sunday, January 20, 1985, Procter & Gamble will donate 10¢, up to \$750,000 to help Special Olympics programs.

International Winter Special Olympics Games
Park City/Salt Lake City, Utah
March, 1985

CAMELOT 'AA'

Large Eggs

1-DOZEN CTN.

49¢



NABISCO PREMIUM

Saltines

1 89¢

LB. BOX

GREEN GIANT-WHOLE OR CREAM STYLE

Golden Corn




3 1 00

17-OZ. CANS

AMERICAN BEAUTY **Elbo Roni** 45¢

ALL FLAVORS - MEADOWDALE **Dog Food** 15 OZ. CANS **4 15**



13 Reasons to Shop Humpty/Ideal

1. Fast, Friendly service.
2. Low, low prices.
3. Senior Citizen 10% discount.
4. Trusted to fill over 15 million prescriptions.
5. Convenient store hours with emergency prescription service after regular hours.
6. Full line stores featuring health and beauty aids, prescriptions, franchised cosmetics, greeting cards, photo centers and many more.
7. Prescription transfer service.
8. Convenient store locations for one-stop shopping.
9. Only fresh, high quality name-brand drugs to fill your prescription, just as the doctor ordered.
10. Honor all 3rd party prescription plans.
11. Prescription tax receipt service.
12. All our "Men & Women in Blue" pharmacists must have at least 5 years college plus a bachelor degree in pharmacy and be registered by testing by the State.
13. Pharm-Data prescription computer.

LIQUID **Pepto Bismol** 12 OZ. BTL. **2 09**

CHECK THESE VALUES!

Griffen Waffle Syrup 32 OZ. BTL. **1 39**

Heinz Keg Ketchup 32-OZ. BTL. **1 29**

DOUBLE MANUFACTURERS COUPONS SEVEN DAYS A WEEK

CHARMIN ASSORTED COLORS



Bath Tissue

4 1 08

ROLL PKG.

ASSORTED PUFFS **Bounty Towels** 79¢

ALL VARIETIES **Pringles Chips** 7-OZ. CAN **1 09**

JIF - CREAMY OR CRUNCHY **Peanut Butter** 28 OZ. JAR **2 49**

INSTANT COFFEE **Folger's Crystals** 3 89

100% PURE VEGETABLE **Puritan Oil** 32-OZ. BTL. **2 29**

FABRIC SOFTENER **Bounce Sheets** 40 CT. BOX **2 19**

DISH DETERGENT **Dawn Liquid** 32 OZ. BTL. **2 09**

LAUNDRY DETERGENT **Era Liquid** 64 OZ. BTL. **3 79**

LAUNDRY DETERGENT **Bold III** 49-OZ. BOX **2 19**

DISPOSABLE DIAPERS **Pampers** 8 69

REG. MINT or GEL **Crest** 6.4-OZ. TUBE **1 29**

SHAMPOO & CONDITIONER **Ivory** 15-OZ. BTL. **1 69**

REGULAR or UNSCENTED **Wondra** 10-OZ. BTL. **1 49**

REG. OR UNSCENTED **Secret Solid** 2-OZ. SIZE **1 69**

NORMAL - DRY - OR OILY **Pert** 15-OZ. BTL. **1 99**

REG. OR CONDITIONING **Head & Shoulders** 15-OZ. BTL. **2 69**

ALWAYS REG OR THIN DEOD. OR NON-DEOD. **Maxi Pads** 30 CT. BOX **2 89**

will inter ntral en- ef- quip- etal the ough wels take

THURSDAY 1/10/85

CABLE PM	ESPN	KAMR	HBO	KVII	WTBS	OETA	KFDA	WGN
3	4	5	6	7	8	9	10	11
Sports Network	Home Box Office	Home Box Office	Home Box Office	Amarillo	Atlanta	Oklahoma City	Amarillo	Chicago
00 SportsCenter	News	Prog Cont'd	Prog Cont'd	News	Gomer Pyle	Nightly Business Report	News	Barney Miller
00 ESPN's Speechweek	M*A*S*H	Braingames	Braingames	Wheel of Fortune	Andy Griffith	Three's Company	Three's Company	Benson
00 Super Bowl XVIII Highlights	Cosby Show	Inside the NFL	Inside the NFL	Thom Birds Conclusion	Movie: "Good Guys Wear Black"	Wild America (CC)	Magnum, P.I.	Movie: "The Herk Rock"
00 Top Phishes Bowling from Lake Tahoe, NV	Cheers	Movie: "The Fear of a Lonely Lady"	Movie: "The Fear of a Lonely Lady"	Lake Tahoe, NV	Movie: "The Fear of a Lonely Lady"	Mystery (CC)	Simon & Simon	
00 Hill Street Blues	Hill Street Blues	Dangerously	Dangerously		NBA Basketball: Seattle at Golden State	All Creatures Great and Small	Knot's Landing (CC)	News
00 News	News	Movie: "Amityville: The Demon"	Movie: "Amityville: The Demon"	News		Dr. Who	News	WKRP in Cincinnati
00 College Basketball: Washington State at UCLA	Tonight Show	Movie: "The Lonely Lady"	Movie: "The Lonely Lady"	Hart to Hart		Golden Years of Television	Barney Miller	Love Boat
00 Fishing Hole	Late Night with David Letterman			Nightline		Sign Off	Newhart	Movie: "House of Cards"
00 ESPN's Speechweek	Muppet Show			Guilty or Innocent			Movie: "Puma Hunt"	
				Mary Tyler Moore				

FRIDAY 1/11/85

CABLE PM	ESPN	KAMR	HBO	KVII	WTBS	OETA	KFDA	WGN
3	4	5	6	7	8	9	10	11
Sports Network	Home Box Office	Home Box Office	Home Box Office	Amarillo	Atlanta	Oklahoma City	Amarillo	Chicago
00 SportsCenter	News	Inside the NFL	Inside the NFL	News	Gomer Pyle	Nightly Business Report	News	Barney Miller
00 Super Bowl IX Highlights	M*A*S*H	NFL	NFL	Wheel of Fortune	Andy Griffith	Three's Company	Three's Company	Benson
00 College Basketball: Kansas at South	V	Movie: "Children of the Corn"	Movie: "Children of the Corn"	Benson (CC)	Movie: "Bounty Hunter"	Washington Week/Rowan Week	Dukes of Hazzard	Movie: "The Kentucky Fried Movie"
00 Alabama	Hunter			Street Hawk		Frontline (CC)	Dallas (CC)	
00 Super Bowl X Highlights	Miami Vice	Movie: "Oh, God! Book II"	Movie: "Oh, God! Book II"	Matt Houston (CC)		Oklahoma Wee in Review	Falcon Crest	News
00 Chicago's Top Home Billiards	Classic			News		Dr. Who	News	WKRP in Cincinnati
00 Classic	SportsCenter	News	News	Hart to Hart		Sneak Previews	Barney Miller	Love Boat
00 Top Rank Bowling from Lake Tahoe, NV	Top Rank Bowling from Lake Tahoe, NV	Elvis: One Night with You	Elvis: One Night with You	Nightline		Sign Off	Movie: "Cotton Candy"	Movie: "Force 10 From Navarone"
00 Classic	Friday Night Videos			Guilty or Innocent				
00 Classic				ABC Rocks				

SATURDAY

CABLE PM	ESPN	KAMR	HBO	KVII	WTBS	OETA	KFDA	WGN
3	4	5	6	7	8	9	10	11
Sports Network	Home Box Office	Home Box Office	Home Box Office	Amarillo	Atlanta	Oklahoma City	Amarillo	Chicago
00 Prog Cont'd	Star Trek	Prog Cont'd	Prog Cont'd	High Chaparral	Tulsa Week/Review (Ch 11)	Fame	Fame	Puttin' on the Hits At The Movies
00 SportsCenter	Teleshop: '85 West Double Trouble	Men at Work in Concert	Men at Work in Concert	T.J. Hooker (CC)	Movie: "The Untouchables"	Austin City Limits	Airwolf	Movie: "Lady in Cement"
00 Super Bowl XI Highlights	Super Bowl XI Highlights	Movie: "Scarface" (CC)	Movie: "Scarface" (CC)	Love Boat (CC)		Fear a Song Comes On	Mickey Spillane's Mike Hammer	
00 Super Bowl XII Highlights	Super Bowl XII Highlights			Finder of Lost Loves (CC)			Cover Up	News
00 College Football All-Star Game, 1985	College Football All-Star Game, 1985			News				
00 Rioch Japan Bowl from Yokohama, Japan	Rioch Japan Bowl from Yokohama, Japan	Not Necessarily a Movie: "One Flew Over the Cuckoo's Nest"	Not Necessarily a Movie: "One Flew Over the Cuckoo's Nest"	ABC News (CC) Movie				
00				Movie: "The Untouchables"				
00				Movie: "The Untouchables"				
00				Movie: "The Untouchables"				



"Your checking account isn't as overdrawn as your explanation."

NIGHTLIFE by *Georgeson*



Caring For Children
BY ANDREA PAUL

Dear Andrea:
I have a ten year old son and a twelve year old daughter. My problem is my ten year old son. His father died last year, and though it has been hard on us all, and though it is impossible for me to talk to him. He will not communicate. He does poorly in school. Last week he turned in an essay in his English class. His teacher called me. My ten year old son had written a filthy story.

I've tried everything I know to do for my son. We are poor. I have to work two jobs to make ends meet. That means I must leave him at night. But I cannot trust him any more.

My brother and his wife live in another state. They have always been especially fond of my boy. They want him to come live with them. My son adores them, especially his uncle. Should I send him? I worry that he is not all right and I should get help for him. I also worry that he might see the move as a rejection. What should I do?

Sincerely, Linda

Dear Linda:
Sounds as though your son is desperately trying to be the man in the house. But being a man is too much pressure on a ten year old. He is obviously going about it in childish way — filthy English papers.

I think having him stay with your brother and his wife might just be the answer. Since there is already a warm bond there, he should not feel rejected. Since it seems that much of the problem seems to be the need of a father figure, your brother should be able to fill that need.

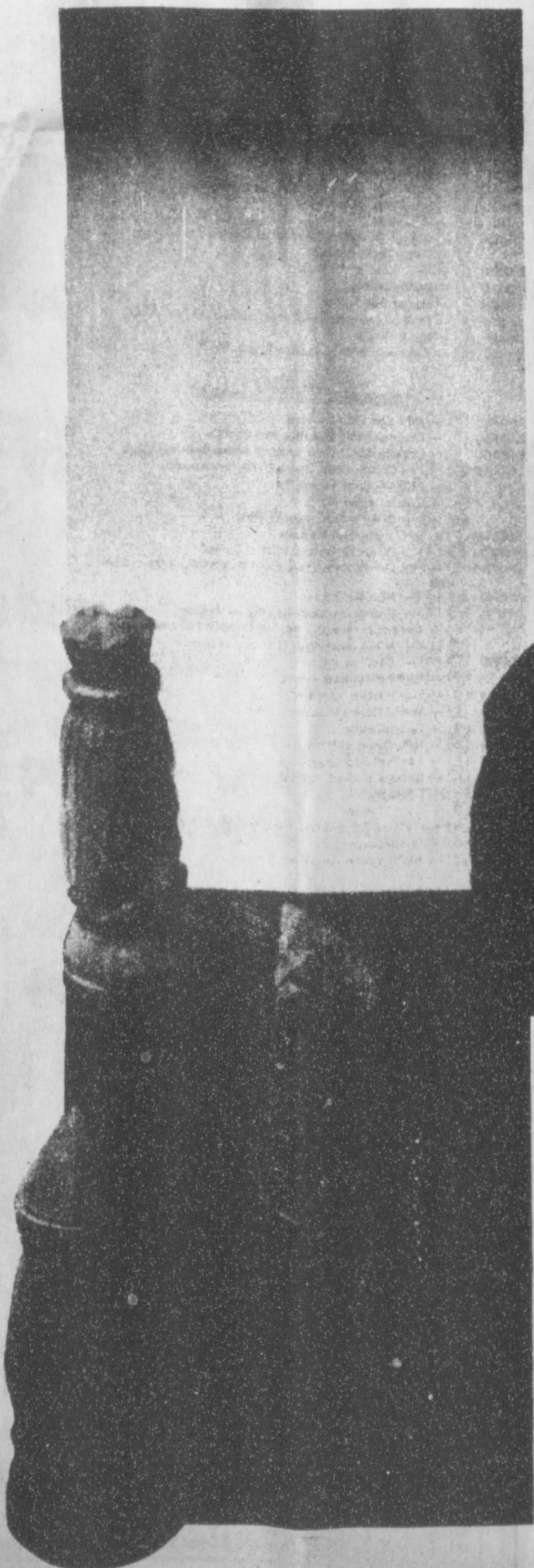
Search your own heart. Talk to your son. If you feel that he would be better off with your brother, by all means, send him.

That father figure may be all he needs. However, if in six months after living with your brother, he is still having problems, you may want to seek professional help.

Good luck to you both.

STRATEGIES

A financial game plan for retirement.



DEVELOPING A PLAN

There is an important way you can help your financial strategy now and at retirement time.

It's with an IRA. Individual Retirement Account from First National Bank in Perryton.

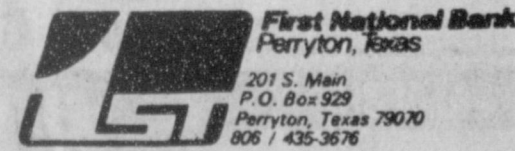
You can help now because it's the biggest tax break ever. Every wage earner can subtract up to \$2,000 yearly from your gross annual income with an IRA. Married couples with a non-working spouse may deduct up to \$2,250 or when both work up to \$4,000.

PROTECT YOUR INVESTMENT

Of course, at the First National Bank in Perryton your IRA is protected up to \$100,000 by the FDIC. And, we charge no maintenance fee.

REACH YOUR GOAL

Then an IRA helps you later because your money draws interest at the highest rates available until you start making withdrawals at retirement. It is remarkable how much momentum an IRA can gather as you head towards retirement. If you start before 30 it can accumulate more than a million dollars.



201 S. Main
P.O. Box 529
Perryton, Texas 79070
806 / 435-3676

If you have a business, ask us about Keogh and SEP.

WEDNESDAY 1/16/85

CABLE	(3)	(4)	(5)	(7)	(8)	(9)	(10)	(11)
PM	ESPN	KAMR	HBO	KVII	WTBS	OETA	KFDA	WGN
	Sports Network	CH.4	Home Box Office	CH.7	CH.17	Oklahoma City	CH.10	CH.9
		Amarillo		Amarillo	Atlanta		Amarillo	Chicago
6:00	College Basketball: Holy Cross at Notre Dame	News M*A*S*H	Prog Cont'd	News Wheel of Fortune	Gomer Pyle Andy Griffith	Nightly Business Report Oklahoma Report	News Three's Company	Barney Miller To Be Announced
7:30		Highway to Heaven	Movie: Tender Mercies	Fall Guy (CC)	NBA Basketball: LA. at Boston	People's Business	Charles in Charge E/R	
8:30	College Basketball: North Carolina	Facts of Life (CC) Jump	Video Jukebox	Dynasty (CC)		National Geographic Special (CC)	Movie: Revenge of the Pink Panther	
9:30	State at North Carolina	St. Elsewhere	Great Pleasure Hunt U.S.A.	Arthur Hailey's Hotel (CC)	World at War	In Search of Excellence		News INN News
10:00	Inside the PGA Tour SportsCenter	News Tonight Show	Movie: Children of the Corn	News Hart to Hart		Dr. Who	News Barney Miller	WKRP in Cincinnati Love Boat
11:30	College Basketball: Purdue at Northwestern	Late Night with David	Movie: Sudden	ABC News Nightline	Movie: Sunset Boulevard	Business of Management Sign Off	Magnum, P.I.	Movie: The Black
12:00		Letterman Muppet Show	Impact (CC)	Guilty or Innocent Mary Tyler Moore			Movie: The Crimson Pirate	Windmill

City receives sales tax payment

State Comptroller Bob Bullock Monday sent checks totaling \$51.6 million in local tax payments to the 997 cities that levy the one-percent local sales tax.

"Statewide payments are up more than 15 percent over last January's checks, mostly because of the new items brought under the sales tax by the Legislature last summer," Bullock said. Bullock cautioned city governments not to expect similar increases for

the rest of 1985. "The cuts we've had to make in expected state revenues are coming from the slump in the oil industry and reduced receipts from oil companies aren't yet reflected in these payments," Bullock added that sales taxes from a disappointing Christmas retail season are due in payments to cities next month.

January checks represent taxes collected on sales in November and reported to the Comptroller by

December 20.

Gruver's net payment for this period was \$1,742.00 compared to last year's \$2,113.79. 1985 payments to date are \$1,742.00 compared to last year's \$2,113.79. The percentage change to date is -17.59%.

Spearman's net payment this period is \$14,290.19, compared to last year's \$10,240.43. The 1985 payments to date are \$14,290.19 compared to last year's \$10,240.43. Percent change to date 39.55%.

Hansford County was sent a net

Cator named to President's honor list

Durward Cator of Gruver has been named to the President's Honor List at South Plains College for the 1984 fall semester.

To qualify for the President's List at SPC, students must maintain a 4.00 or "straight A" grade point average while enrolled for at least 12 semester hours.

"Given our commitment to academic excellence, we feel there is no greater honor we can bestow on a student than to recognize outstanding achievement in the classroom," said Dr. Bud Joyner, vice president for academic affairs. "Thus, we congratulate these fine students on their college accomplishments."

A total of 165 students were named to the President's List, and 310 students to the Dean's List for the 1984 fall semester at SPC.

GUYMON LIVESTOCK AUCTION
WE SELL BOTH CATTLE & HOGS
"A FAST GROWING MARKET"

PRIVATE TREATY EVERY DAY
FRESH CALVES OFFERED
SALE WEDNESDAY AT 10:00 a.m.
SALE THURSDAY AT 1:00 p.m.
Phone us about your consignments
Office 1-405-338-3378

Out of State 1-800-338-5871
Gary Cobb - General Manager
Res. Phone 1-405-545-3470
Bill Blackmore - Field Representative
Res. Phone 1-405-349-2254

The U.S. Mint system has coined money for more than 20 foreign countries.
© 1984 Suburban Features

Pluto, discovered in 1930, is the most distant planet in our solar system. It takes 248 Earth years for Pluto to orbit the sun.

All fall and winter merchandise

1/3 to 1/2 off

Rumors

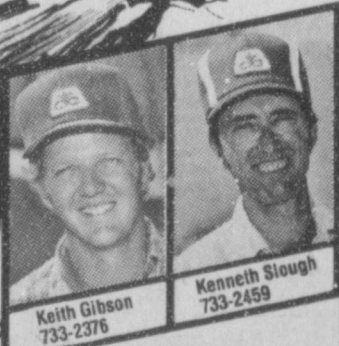
Perryton, Texas

NEW
3377
3380

Early Corn Hybrids That Yield!

These are the hybrids we've been waiting for in irrigated corn country. New 3377 and 3380 from Pioneer have both delivered outstanding yields. And, in many cases they did it on fewer irrigations than the fuller-season hybrids.

Pioneer has always taken the lead with corn hybrids to help you make the most of your conditions. Now, we have early corns that yield! See your Pioneer dealer right away.



PIONEER
BRAND SEEDS

Registered trademark of Pioneer Hi-Bred International, Inc. Pioneer is a brand name, numbers identify varieties. The Limitation of Warranty and remedy appearing on the label is part of the terms of sale.

COCA COLA
REG. DIET
CAFFEINE FREE
\$1.19
2 LITER
PLASTIC BOTTLE

DECKER SALAMI, BOLOGNA,
LUNCHEON LOAF P & P LOAF
LUNCH MEATS
8 OZ. PKG. **69¢**

ROYAL RAISIN CAKES, CREAM FILLED
SNACK CAKES
OATMEAL COOKIES,
OATMEAL KRUNCH
KAKES DEVILS FOOD
CAKES & APPLE CAKES
10 CT. PKG. **79¢**

Fast Hot
SAUSAGE & BISCUITS
CT. PKG. **2.99**
REG. \$1.29

BORDEN'S
HOMO MILK
\$2.69
GAL. CTN.

BORDEN'S DRUMSTICKS OR
ICE CREAM SANDWICHES
\$1.19
6 PACK

COOKED FOOD SPECIAL AS FEATURED ON TV
HOT LINKS
ALLSUP'S QUALITY
2.99
FOR

ALLSUP'S
CONVENIENCE STORES

PRICES EFFECTIVE
JANUARY 10-12, 1985

OPEN 24 HOURS EVERYDAY
ICE- MILK- BREAD- SOFT DRINKS-
CHIPS & DIPS- SELF SERVE GAS-
COOKED FOODS- MONEY ORDERS- GROCERIES
WHILE SUPPLIES LAST

Obituary



Bertha H. Tarbox

Bertha H. Tarbox, 85, died Monday.

Services will be at 2 p.m. Wednesday in First United Methodist Church with the Rev. Lane Boyd, pastor, officiating. Burial will be in Ochiltree Cemetery by Boxwell Brothers Funeral Home in Spearman.

Mrs. Tarbox was born in Haven, Kan. She had lived in Spearman since 1928. She married Waldo Tarbox in 1930 at Clovis, N.M. She was a member of First United Methodist Church, Spearman Home Demonstration Club, United Methodist Women and Golden Spread Senior Citizens Center.

Survivors include three daughters, Rose Mary Robbs of Wilcox, Ariz., Ruth Holt of San Diego, Calif., and Ruby Lair of Spearman; a sister, Rose Field of Groom; six grandsons, Mathew Lair of Dallas, Phil Lair Perryton, Alan Robbs of Bakersfield, Calif., Steven Robbs of Coameron, West Africa, Roderick Holt of Santa Clara, Calif., Douglas Holt of Carlsbad, Calif., 2 grandchildren deceased Nancy Lair and Tony Holt, and four great-grandchildren.

Karen's Kozy Korner

The latest in all-weather clothing is "bion-coated" fabric that is waterproof, yet breathable. Developed by Biotex Corporation, bion-coated fabric has been tested in ski jackets and found to keep skiers dry and comfortable.

This new fabric coating differs from the brand of breathable fabrics now found in clothing for sailors, skiers, and joggers. The brand now in use contains a thin sheet of Teflon-like material sandwiched between a fabric and a lining.

Bion-coated fabrics are also breathable and waterproof. Winter skiers can look for the first Bion-coated one-piece ski suits under the Robert John label. Next year Biotex will make available Bion-coated tents, running suits and rugged outerwear such as hiking jackets, mountain climbing and foul weather gear.

The coating material was developed by a chemical engineer working on polyurethane materials to make the ideal wound dressing for surgical incisions, cuts and burns. He came up with a wound dressing by changing the basic molecular structure of polyurethane film and then realized it had many other uses. The wound dressing, when sprayed on as a fabric coating, produced a breathable, waterproof fabric.

EDUCATIONAL PROGRAMS CONDUCTED BY THE TEXAS AGRICULTURAL EXTENSION SERVICE SERVE PEOPLE OF ALL AGES REGARDLESS OF SOCIO-ECONOMIC LEVEL, RACE, COLOR, SEX, RELIGION, HANDICAP, OR NATIONAL ORIGIN.

FARNSWORTH—Edwyn Kenneth Doores, 92, of 4602 S. Bryan, died Friday.

Services were held at 2:00 p.m. Sunday in Boxwell Brothers Chapel in Perryton with the Rev. Tracy Wilson of the First Christian Church officiating. Burial will be in Ochiltree Cemetery by Boxwell Brothers Funeral Directors in Perryton.

Mr. Doores, born in Lewistown, Mont., had lived in Farnsworth for many years before moving to Amarillo five years ago. He was a retired carpenter, a veteran of World War I, a member of the American Legion, Amarillo Senior Citizens, Carpenters Local No. 665 and a lifetime member of Perryton Masonic Lodge.

In-laws, the way of referring to one's relations by marriage, is short for the term "in canon law," the reference being to the degrees of affinity within which a marriage was allowed or prohibited by the church.

Sale Ends January 12

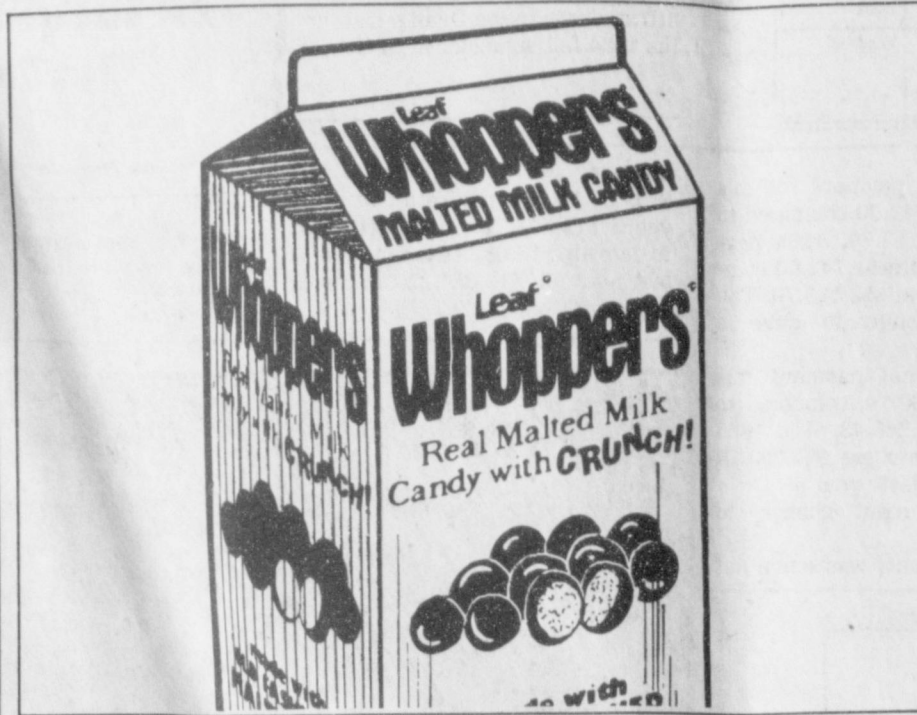
TG&Y
Family Centers

Copyright 1985, TG&Y Stores Co.

A HOUSEHOLD INTERNATIONAL COMPANY

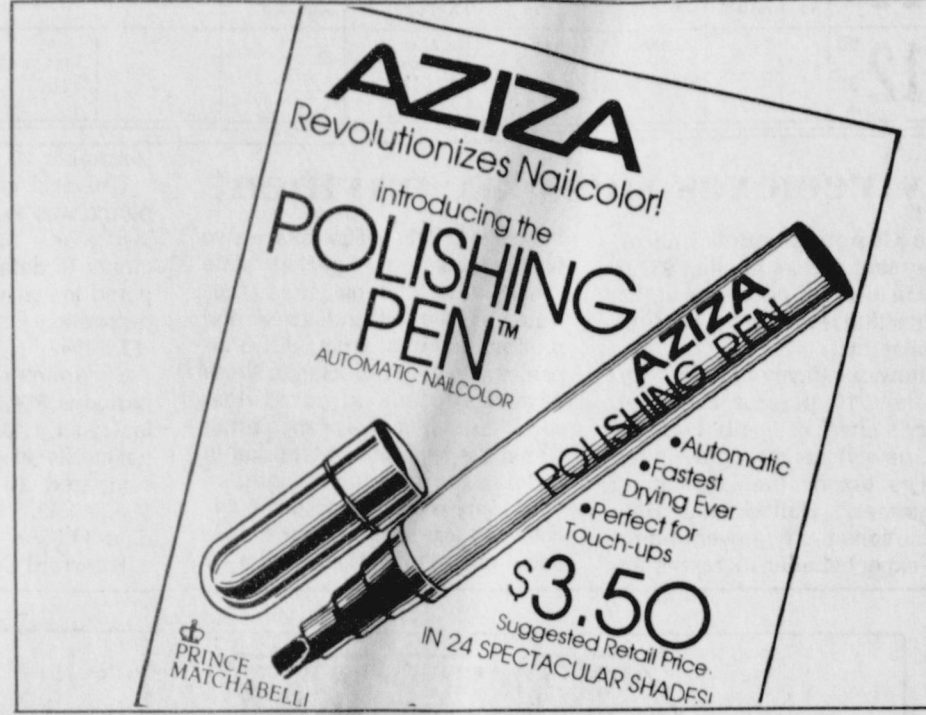
January Super Sale

Hurry in today! Look for these and other super values.



.88 13 ounces

Whoppers Malted Milk Balls
Real, old fashioned malted milk candy with crunch. Covered with delicious milk chocolate. Great snacks your whole family will love. Large family-size carton.



2.99

New Aziza Nailcolor Pen!
The Polishing Pen™ Automatic Nailcolor. Available in 24 spectacular colors. Dries fast and is perfect for touch-ups. Just the right size to keep in your purse or desk.



\$3 \$4 \$5
Rubbermaid Household Accessories: almond laundry basket, 2-piece dish 'n sink set or lift-lid 13 gallon wastebasket.



\$1 16 ounces
Clean and shine your no-wax floors with Brite. New, improved formula cleans and shines without wax build-up.



1.77 32 ounces
Shout, liquid soil and stain remover. Put it on your clothes, then wash. Helps remove tough stains.



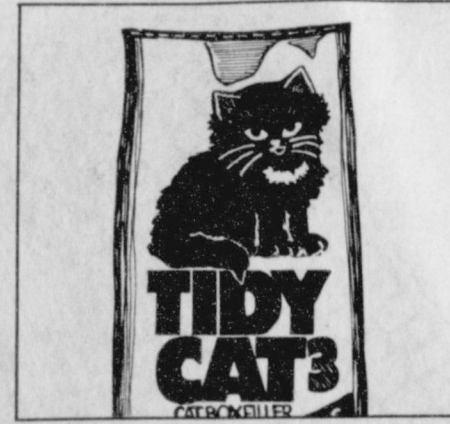
5 \$4 FOR 6.5 ounces
Pepsodent Toothpaste is specially formulated to help get your teeth their whitest. Price reflects 50% off label.



\$1 200 swabs
Johnson's Swabs have layers of soft cotton and flexible blue sticks for safety. Stock up today.



2 \$3 5 lb. BAGS
Red Cedar Shavings make perfect pet bedding for hamsters, gerbils and more. Helps prevent fleas.



\$1 10 lb. bag
Tidy Cat 3 Cat Box Filler controls odors 3 ways. Deodorizes, absorbs faster and leaves a clean, fresh scent.

Cannon
3 pc. Towel Set
Reg. 7⁹⁹
2/\$8⁰⁰

Solo 10 oz. Clear Plastic Cup Reg. 66¢ 2/88¢	Barbasol Shave Creme Reg. 77¢ 2/\$1⁰⁰	Penn Pride Gasline Antifreeze 12 oz. Reg. 44¢ 4/\$1⁰⁰	Stanley 6 pc. Screwdriver set Reg. \$3 ⁶⁶ \$2⁰⁰	APC 551 Jigsaw Puzzle Reg. \$3 ⁹⁹ \$1⁷⁵
Arvin Heater Model 30430-01 Reg. \$24 ⁹⁹ \$17⁹⁹	Breuer Side Chair Reg. \$24 ⁹⁹ \$10⁰⁰	Mylar Framed Pictures 16 x 20 Reg. \$6 ⁹⁹ \$3⁰⁰	Asst. Mens Belts Limited Styles 50% off	Mens Insulated Coveralls Reg. \$44 ⁹⁹ \$29⁹⁹

659-3741 -- Spearman, Texas--521 S. Hwy. 207