





I got Conoco's NEW 1-2-3  
**"50,000 Miles  
 No Wear"  
 Service!**

Now is the time for all smart motorists to discover how Conoco's great new "50,000 Miles—No Wear" Service helps engines last longer, perform better, use less gasoline and oil!  
 This is exactly the same service that kept test cars new in Conoco's spectacular "50,000 Miles—No Wear" road test!  
 In that famous 50,000-mile test, with 1,000-mile drains and proper filter service, test car engines showed no wear of any consequence: in fact, an average of less than one one-thousandth inch on cylinders and crankshafts. Gasoline mileage for the last 5,000 miles was actually 99.77% as good as for the first 5,000.  
 Now you can get this same 1-2-3 "50,000 Miles—No Wear" Service, at your Conoco Mileage Merchant's, today!

**Here's the Famous "50,000 Miles—No Wear" Service!**

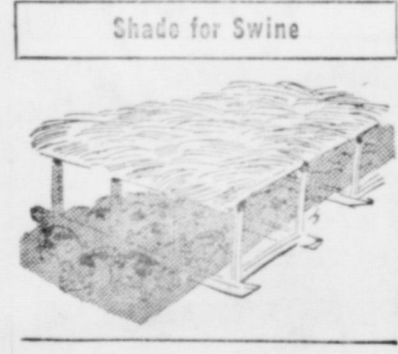
- 1 Your Conoco Mileage Merchant Will Drain Out Grit and Sludge, preferably while engine is hot! "Hot-oil" drains every 1,000 miles flush out grit, dirt, acid and contamination—leave your engine sparkling clean!
- 2 He'll Recondition Air and Oil Filters! He'll clean filter elements, replace dirty cartridges, record mileage. Every time hood is lifted, he'll check mileage to be sure filters have been serviced at proper intervals.
- 3 He'll refill with great Conoco Super Motor Oil! Conoco Super is fortified with additives that curb dangerous accumulation of dirt and contamination—protect metal surfaces from corrosive combustion acids—fight rust—and OIL-PLATE against wear.

This is a **HEAVY DUTY OIL**

©1952 CONTINENTAL OIL COMPANY

**Food Supply Appears Plentiful for 1952**

The food outlook indicates that larger supplies will be available at somewhat higher prices in 1952. Incomes are expected to be higher also, so consumers will have more money to spend for food, according to the Department of Agriculture's bureau of agricultural economics.  
 An increased output of beef and veal is expected to more than offset military requirements. Just how much more meat will be available to consumers will depend upon producer's decisions about marketing their livestock.  
 Fish supplies will be about the same as in 1951, except there will be less canned and more fresh and frozen fish available.  
 Eggs, chicken and turkey are expected in larger supply than last year.  
 Among the dairy products more fluid milk and ice cream will be available, but less butter. Other dairy supplies about the same as 1951.  
 Fresh vegetables may continue in short supply, but high 1951 prices should encourage big spring plantings.



Every swine producer knows that hogs need shade. How to provide it, however, is sometimes a problem. An upright frame, constructed on skids so it can be moved easily, may be the answer some producers are seeking. The top is covered with old wire fence and straw, weeds, etc., piled on top of that. It is inexpensive and can be made to dimensions to fill individual needs.

**Sheep Become Popular With Midwest Farmers**

Sheep are seen more and more on midwest farms. Many of these farmers are finding that the "woolies" make good use of soil-conserving crops and can be produced with less labor than other livestock.  
 According to Successful Farming magazine, the long-time price outlook for a native-sheep flock is excellent compared with that for beef and dairy cattle. The total number of sheep has fallen so much in recent years that consumer demand should take all lamb and mutton production at relatively high prices for a long time to come.  
 Most farmers prefer to start in the sheep business with a small flock. This has advantages, for it does not seriously disrupt other farm work. A small flock can bring in additional income, help clean up odd corners about the farm, and use roughage.  
 The same amount of pasture is needed for five ewes and their lambs, as for one cow and calf. A cow needs a half-acre of hay during the winter—a ewe needs about one-quarter acre. The carrying capacity of a good alfalfa-brome pasture is around five ewes and their lambs per acre.  
 What will it cost to go into the sheep business? Compared to beef, the cost is lower. For instance, one beef cow will cost from \$300 to \$375. One calf from this cow per year will be worth about \$160. Five ewes will cost anywhere from \$125 to \$200. Five ewes probably will give you seven lambs worth about \$170.

**REAL ESTATE BARGAINS** in irrigated district at Hereford, Texas: 320 and 640 acre tracts. Perfectly level land all in cultivation \$125 per acre, good terms. See J. G. Weir or J. G. Evans. Mailing address 109 N. Main St., Office phone 200. Res. Phones 802 and 1163, Hereford, Texas.

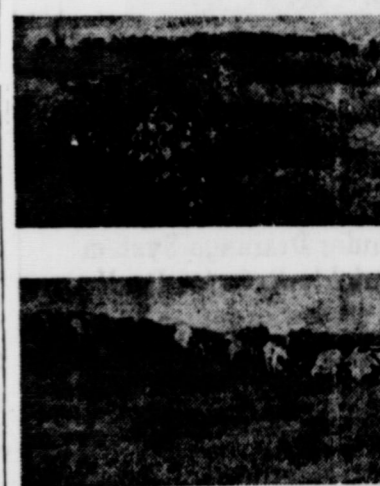
For Water well drilling, windmill and well work see Bud Pugh 41

**Mrs. H. L. Wood**  
 Makes Belts, Buckles, Buttons, Buttonholes and Drapries. See me on South 12th St.



**Good Management Can Build Pastures Renovation Program Should Be Well Planned**

These "before and after" photos taken on the John Fleischenreim farm near Watkins, Minn., show how good soil management methods can build productive, high yielding pasture on wornout, undernourished fields.  
 Buck brush and June grass were about all that would grow on the field in the upper photo. Fleischenreim says he got only one month's grazing a year out of this pasture.  
 The lower field shows what happens on such land when a renovation program is undertaken, supported by the use of plenty of fertilizer.



Fleischenreim plowed and disced this field in the fall. As soon as frost was out of the ground in the spring, he seeded a mixture containing mostly brome and some alfalfa-tescue with a fertilizer spreader. He didn't seed a nurse crop.  
 He added fertilizer at the rate of 250 pounds per acre of 0-20-20, then followed with 100 pounds of ammonium nitrate.  
 The first year, Fleischenreim got two crops of brome. The second year he didn't need it, because he had 80 tons of hay in reserve, in case of trouble.  
 Fleischenreim pastures 33 head of dairy cows—mostly Holsteins for most of the summer on this pasture.

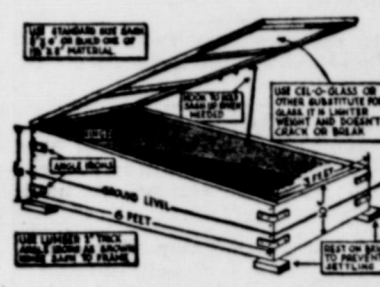
SEE Index for all rubber stamps

**POLIO**  
 And 9 Other Dread Diseases  
 \$10,000 COVERAGE  
 For each Family Member  
 SEE:  
**Fuzzy Moore**  
**CHAS. CATHEY**  
**LIFE INSURANCE**  
 REPRESENTING THE  
**AMICABLE LIFE INS. CO.**



**Cold Frame Is Still Best Garden Helper Most Valuable Space In Any Garden Area**

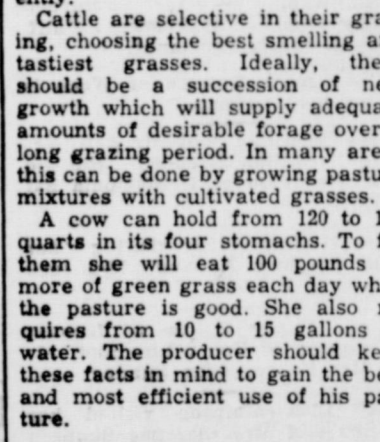
The most valuable 18 square feet in any garden area is that which is covered with a cold frame. And the smaller the garden, the more rewarding will be this ancient device.  
 It began as a pit, some thousands of years ago. Today it is an enclosure, partly below ground, with a protective covering which admits daylight.  
 Anyone who can drive a nail, and operate a saw, can build a cold frame. The boards can be cut in the basement or garage, and put together in a short time as soon as possible to work outdoors.  
 The above illustration is a practical working-drawing of a standard one-sash cold frame. Standard glazed sash is 3 by 6 feet; but a frame can be made of any convenient dimensions, if sash of a



suitable size is available. Sash covered with transparent plastic materials will be much lighter than glazed-sash, and also will allow ultra-violet rays to pass through to the plants.  
 The usual practice is to sink the frame into the ground about six inches, and to pile earth around it outside, for insulation. Inside it may be filled to ground level with the best top soil available, or the floor may be covered with two or three inches of cinders or gravel, on which shallow seed boxes (flats) are placed.

**Efficient Grass Feeding Builds Profitable Herds**

Grass-fed cattle going to market with a moderate finish may never top the market, but nine times out of 10 they make the stockman most for his investment. Grass-feeding is the natural way to grow cattle, livestock specialists believe.  
 A major line between the soil and man's food, grass can be grazed directly, made into hay or silage. It offers a year-around supply of forage or feed for your herd. Cattle are able to convert forage into beef most effectively if the producer manages his range wisely and efficiently.  
 Cattle are selective in their grazing, choosing the best smelling and tastiest grasses. Ideally, there should be a succession of new growth which will supply adequate amounts of desirable forage over a long grazing period. In many areas this can be done by growing pasture mixtures with cultivated grasses.  
 A cow can hold from 120 to 180 quarts in its four stomachs. To fill them she will eat 100 pounds or more of green grass each day when the pasture is good. She also requires from 10 to 15 gallons of water. The producer should keep these facts in mind to gain the best and most efficient use of his pasture.



A new type gate that eliminates the problem of opening a gate when sheep crowd into a corner is illustrated above. The gate is 16 feet long. The height of the pole at the top is determined by the balance. The gate pivots near the center at both ends. It locks at both ends near the bottom and can be released with the one lever shown. The gate may be opened in either direction, is easy to operate and no lifting is required.

**CHURCH OF THE NAZARENE**  
 Sunday School at 9:45. A  
 Morning Worship 11:00 a. m.  
 Young people service 7:15 p. m.  
 Evening worship 7:30 p. m.

**METHODIST NEWS**  
 Rev. H. A. Longino, pastor  
 Sunday school 10:00 a. m.  
 Morning worship 11:00 a. m.  
 Evening worship 7:30 p. m.  
 W. S. C. S. Faith Circle Mondays at 9:30 a. m. and Martha Martha Circle Tuesday 9:40 a. m.

**Nobel Prize Winner Says the Moon Is Just a Lump of Dust**

NEW HAVEN, Conn.—That moon that means so much to lovers and poets is nothing but a large lump of dust.  
 At least that's the opinion of Nobel Prize-winning chemist Harold C. Urey who theorizes that the moon was formed from accumulated dust particles.  
 Urey's new book upsets the idea held by most scientists that the moon is a torn-off fragment of the earth, lost ages ago when the earth was molten. His theory is that the moon was independently born from a cosmic dust cloud.  
 Putting first things first, he adds that the surface of the moon was formed over three billion years ago or at the end of the formation of the moon's core.  
 Urey is one of the few men who knows both the chemistry and the astronomy on which this knotty problem hinges. It seems that in the past, few astronomers have known enough chemistry and few chemists have bothered to look up from their test tubes.  
 Urey also has something to say about the origins of the entire solar system.  
 In the very beginning, he says there was a cloud of cosmic dust from which the sun and a churning disk of gas and dust was formed. The dust particles, called planetesimals, contained enough water to allow crystallization.  
 All this, Urey says, took place at extremely cold temperatures. His view differs sharply from the popular notion that the solar system began under conditions of extreme heat.  
 Condensations of the dust formed embryonic planets. This was followed by a period of very high temperature during which chemical changes formed the cores of the planets.  
 Urey concludes that things were wrapped up nicely when the temperature took a sharp drop and left the earth and the moon in their present form.

**Kills Self Because He Loves Brother's Wife**

SAN PEDRO, Calif. — Dean Dickey, 18, had been in love with his brother's wife for a year.  
 Dean made the headlines last year when, twice in a week, he tried to kill himself—once by swallowing liniment, again by inhaling gas.  
 He told police the reason was a secret love for Laurita Dean, wife of his brother, Alvin, 23.  
 "I didn't know," Alvin said at the time. "Dean didn't say a word. He hardly came near me."  
 The youth recovered, and joined the navy. His family thought his young-love crush was over.  
 Back in port, he visited the home of a sister, Mrs. Blythe McKee, and her husband, Wesley. They chatted late and then retired.  
 The McKees were awakened by a shotgun blast. They found Dean dead. Police Detective W. A. Hallway quoted McKee: "I think Dean killed himself in despondency over thinking he still loved his brother's wife."

**Plane Bounces and Flies After Slipping Into Sea**

TOKYO—The story of a plane sliding off the icy deck of a carrier, bouncing on the water and then flying was reported recently by the navy.  
 The pilot was Lt. Com. William H. "Buck" Rogers, Austin, Tex. The plane was a Skyraider Guppy with a total crew of three.  
 Rogers jockeyed his ship onto the port catapult of the aircraft carrier Valley Forge and blinked lights for launch.  
 Something went wrong with the catapult. Suddenly the Skyraider began skidding down the ice-coated deck of the carrier with no help from the still-cocked catapult. Rogers tramped on the brakes and turned the power.  
 The plane didn't stop, so he turned on full power. The plane dropped off the bow of the ship and hit the water with a thud.  
 It bounced into the air, and started flying.  
 Rogers eased the craft along eight inches above the waves until he could gain altitude. Then he and his crew completed their mission.

**United States Troops Blamed for Jap Waifs**

TOKYO—U.S. troops have fathered 200,000 waifs in Japan since the war ended. That's the assertion of the newspaper Yomiuri.  
 It said the figure was based on off-the-record data supplied by Japanese government officials. The officials, it said, declined use of their names because they feared the "displeasure" of the occupation.  
 Another Japanese newspaper, Tokyo Shimbun, said the 200,000 children were listed on government food ration rolls.  
 A U.S. occupation official and a Japanese government authority said the figure was far too high.  
 "It's way off the beam," said an American officer in the public health and welfare division of occupation headquarters. He said the situation was "no worse here than in any seaport in our own country."

**Extra! Extra!**  
**NORGE**  
 APPLIANCES  
 Most Convenient on Market  
 Liberal terms; before you buy  
 SEE —  
**Cicero Smith**  
 LUMBER COMPANY  
 Don Edwards, Mgr.

**Wet Water' Valuable Weapon to Fight**  
 A valuable new weapon in the fight against fire is the "wet water" — now the use of rural fire safety expert report.  
 The new "wet water" fires incorporates a detergent, familiar to housewives. However, the detergent, about 2 per cent, dissolving variety for and extinguishers.  
 Dale K. Auck, fire engineer for the Federal Fire Insurance Company, said the detergent breaks the surface oils and gets heart of a fire immediately. The ordinary water many burning substances until entirely consumed of water poured on Auck said. Experiments shown, however, that the work of 300 gallons of water in fire.

**Elvin R. M...**  
 Representing  
**Southwestern Insurance**  
**TOM GARRA**  
 ATTORNEY  
 Practice All State Courts. Land Title

**Stanley**  
**Funeral Home**  
 And Burial Association  
 phone 233 Bx 18

**FIRST BAPTIST CHURCH**

Preaching Service 11 a. m.  
 Singing Union 7 p. m.  
 Evening worship 7:30 p. m.  
 Wednesday night 7 p. m.  
 Teachers meeting 7:30 p. m.  
 Prayer Meeting 7:30 p. m.

FOR RENT 2 very nicely furnished apartments, summer rates, fully conditioned. Smith Apts., see ad.



**Protect Every Side**  
 CASTLES were built for protection against attack from all sides. When you buy your automobile insurance be sure it will protect you from any financial loss when you have an accident. Ask this Agency to place complete Automobile Insurance on your car.

**CLAYTON INSURANCE AGENCY**  
 - LOANS -  
 PHONE 148

**FLOWERS**  
 FOR ANY OCCASION  
 Come and see us or order from our local agent: CORNER Drug THE HOUSE OF FLOWERS  
 Mr. and Mrs. J. B. BILLMAN  
 Phone 330 - Tahoka

**VAN'S**  
 SOFT WATER  
**Laundry**  
 WET WASH  
 RUFF DRY  
 FREE Pickup And Delivery

Stanley - Jones  
 Funeral Home  
 and Burial Association  
 Phone 233 Bx 185 Tahoka

Dr. M. Lehman, M. D.  
 Medicine and Surgery  
 Hours 8 a. m. to 6 p. m. daily  
 Sunday: 9 a. m. to 11 a. m.  
 Office phone 134; Home 209

Dr. O. H. NANCE  
 Optometrist  
 528 N. 1st Lamesa; ph 554

**Real Estate**  
 - FARMS - RANCHES -  
 CITY PROPERTY  
 Leases and Royalties

**B. M. Haymes**

The Prescription Your Doctor Gives You Is ...  
**Yours**  
 You may have it filled at the Drug Store of your Choice.  
 We solicit your Prescriptions  
 Prompt Service and Careful Attention At All Times  
**ARVIL CRAVEN, Registered Pharmacist**  
**Corner Drug**

**'Induced Insanity' Reported at Duke**

PINEHURST, N.C.—A case of "induced insanity," a rare behavior phenomenon, was reported here by a Duke University psychiatrist. Dr. Leonard J. Ravitz told the Southern Psychiatric association about a strange case of fraternal twins, one of whom became the "echo" of the other's deluded ideas. This case of "contagious insanity" has been recorded by Dr. Ravitz's newly announced electronic theory of psychiatry, linked with the solar system. By means of a microvoltmeter Dr. Ravitz measures the changes in a person's emotional disturbance from second to second, from one day to another, and from season to season. Once, after twin "A" mentioned that he had produced many earthquakes, tornadoes, hurricanes, and floods, "B" thought a while, agreed, then asked, "Did you have anything to do with the snowfall 28 inches deep?" This belief in A's power was clearly induced in B by A's suggestion, Dr. Ravitz said. However, B was much more suggestible to A's delusions when B's measurements—"electrical potentials"—were high. As his potentials decreased, B's suggestibility to these delusions decreased despite the fact that A's potentials were high and A himself behaved much more normally as his potentials decreased.

**Assembly of God**

R. T. Peck, pastor  
 Sunday School 10 a. m.  
 morning worship 11:00 a. m.  
 Evening worship 7:30 p. m.  
 For sale: 2 room house, garage, 408 Standifer St., consider small down payment or trade for Lamesa property. J W Blackstock, Phone 909 - J Lamesa xc

**15% OFF**  
 On Your  
**Coleman**  
 FLOOR FURNACE

Do It Now! Save money, be ready for winter before the rush. And get the famous Coleman that gives you Automatic Heat—Clean Heat—Warm Floor Heat.

**FREE**  
 WIN A COLEMAN GAS FLOOR FURNACE  
 Nothing to buy! Nothing to do! Come in today and register!

See A Demonstration Today

**Cicero Smith Lumber Co.**  
 Don Edwards, Mgr.

**Political Announcers**

**Borden County**  
 FOR COUNTY JUDGE:  
 C. C. NUNNALLY  
 C. S. HARRIS

**Dawson County**  
 Commissioner, Pet. 2  
 W. T. (Bill) Snellgrove, re-election  
 G. C. "Cleve" ATEN

**Lynn County**  
 SHERIFF  
 B. M. "Ben" JAMES  
 NORVELL "Booger" REDWINE  
 STATE REPRESENTATIVE, 90th District  
 CARROLL COBB  
 J. R. EARNEST

**BOGGAN TRACTOR CO.**

FERGUSON TRACTORS and Ferguson System Implements  
 1015 North Lynn Lamesa  
 Paul Boggan, Owner



**Farm Topics**

**Farm Welder Becomes Standard Equipment**

**Quick Repairs Reduce Loss of Time and Profit**  
 The welder is fast becoming standard farm equipment. It answers the farmers prayers for quick repair jobs that would otherwise mean a great loss of time and profit. It is also being used to make equipment that means greater production. As an example, one corn belt farmer used his welder to construct the inclined plane, portable elevator shown in the above picture. The conveyor, which has a large hopper at the ground end, is operated by a 1/4 horsepower electric motor. In order to provide electric service for cribs which might be located at some distance from the barn, the farmer built a portable reel on which he wound about 100



feet of cable. This gives him an "extension cord" of the proper strength to carry the current needed from a 230-volt outlet in the barn. On the work side of production, he discovered that little more labor was needed to increase his yield. Figuring this out on a dollar and cents basis, labor costs, on a 40 bushel yield, are about 25 cents a bushel, whereas on 100-bushel yields the cost is just 10 cents per bushel—the selling price having taken care of the differential in labor rates. Many a farm welding outfit has paid for itself during harvest time when quick repairs were made to machinery.

**Lack of Deep-Rooted Legumes Cuts Yields**

**Legumes Give Organic Matter to Worn Fields**

"Corning" some soils year after year without restocking the organic matter via deep-rooted legumes in the rotation, will cut yields to the vanishing point even if you add fertilizer and install drain tiles.

Ohio soils specialists demonstrated that in tests at the Paulding experiment farm. The results of the tests are shown in the accompanying photographs taken on adjoining fields.

Both fields had been fertilized and tile-drained. The top field was continuously in corn. The lower field had a rotation of corn, small grains and two years of alfalfa.

Year after year of corn crops had robbed the top field of its organic matter. The soil became packed down and stuffy. It was so



tight that water could not get down below the surface. The middle rows of corn were drowned out by ponded rain. In other rows the roots couldn't get sufficient nutrients, oxygen and moisture to feed the stalks, leaves and ears.

The lower field shows a healthy, vigorous growth. Over the period of the tests yields averaged 30 bushels more than in the other field. The deep-probing taproots of the alfalfa kept the soil open to air and water. The mineralized organic matter left in the soil by the legumes improved soil tilth and furnished plant food for the corn and small grains. The organic matter improved the soil's drainage and water holding capacity. More moisture was stored for the use of the corn crop.

**CHURCH OF THE NAZARENE**

Sunday School at 9:45 a.  
 Morning Worship 11:00 a. m.  
 Young people service 7:15 p. m.  
 Evening worship 7:30 p. m.

**METHODIST NEWS**

Rev. H. A. Longino, pastor  
 Sunday school 10:00 a. m.  
 Morning worship 11:00 a. m.  
 Evening worship 7:30 p. m.  
 W. S. C. S. Faith Circle Mondays at 9:30 a. m. and Martha Martha Circle Tuesday 9:30 a. m.

**SEE Index for all rubber stamps**

For Water well drilling, windmill and well work see Bud Pugh 44

Mrs. H. L. Wood  
 Makes Belts, Buckles, Buttons, Buttonholes and Drapries. See me on South 12th St.

REAL ESTATE BARGAINS in irrigated district at Hereford, Texas: 320 and 640 acre tracts. Perfectly level land all in cultivation \$125 per acre, good terms. See J. G. Weir or J. G. Evans. Mailing address 109 N. Main St., Office phone 200, Res. Phones 802 and 1163, Hereford, Texas

**POLIO**  
 And 9 Other Dread Diseases  
 \$10,000 COVERAGE  
 For each Family Member  
 SEE:  
 Fuzzy Moore

**FLASH . . .**

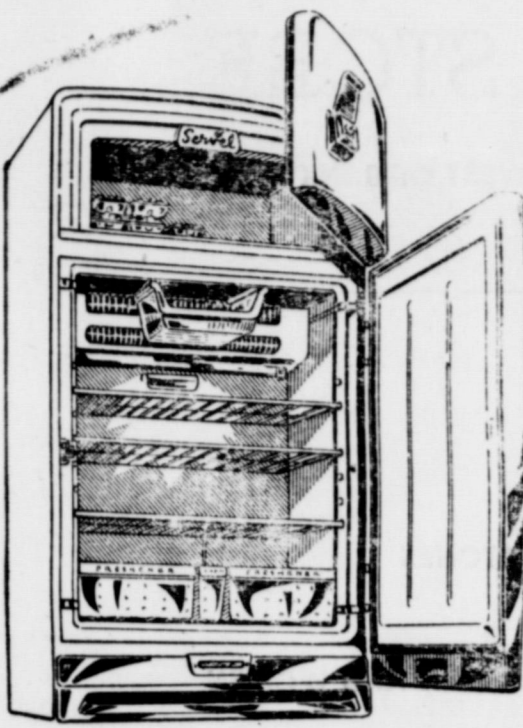
Use The NEW Tarnish Remover without rubbing. Just dip and watch tarnish disappear. For Silver, Gold, Copper, Brass Jewelry, etc.

Water and shock proof watches, reg. \$32.50  
 Values now on SALE at \$19.95 . . . Hurry

**Lott Pharmacy**

Hugh Lott, Registered Pharmacist

NOW—enjoy the advantages of a



**GAS Refrigerator**

A Servel Gas Refrigerator will assure you dependable, trouble-free service for years and years. The modern design of the 1952 models will add new beauty to your kitchen. Too, the cost of operation is so low that your savings will help you pay for it. See the Servel Gas Refrigerator at your dealer's today. Buy a Servel Gas Refrigerator.

SERVEL'S FREEZING SYSTEM is backed by a **10-YEAR WARRANTY!**

See Your Servel Dealer Today  
**West Texas Gas Company**  
 HELPING BUILD WEST TEXAS SINCE 1927

**Get Acquainted Special!**

TO INTRODUCE YOU TO **REAL FORD CARE**

**FOMOCO CLEANER-POLISH**  
 This fine Ford product performs two operations in one—not only removes dirt and road scum, but leaves car finish with a lasting film of wax-polish for long, safe operation.

**FORD RYMPLECLOTH**  
 Ford's Rymplecloth has a large lintless polishing surface which absorbs moisture and dust. Excellent for household use, too—soft texture won't harm delicate finishes.

**PERFORMANCE AND ECONOMY ANALYSIS**

- \* Check accelerator pump linkage for proper seasonal setting.
- \* Check ignition timing, engine idle, and manifold vacuum.
- \* Check operation of carburetor controls.
- \* Clean sediment bulb.
- \* Check exhaust system for obstructions and leaks.
- \* Check for leakage of gasoline, oil, water, brake fluid, transmission and rear axle lubricants.

All 3 for a special low price!

We'll be losing money on this special offer. But we're doing it for this reason: Once you get acquainted with real Ford Service, you won't settle for anything less. So come in. Get acquainted with us now!

**LET'S GET ACQUAINTED!**

YOU'LL FIND **FORD DEALERS KNOW FORDS BEST!**

FORBES Motor Co.

FORD Sales and Service Phone 92; O'Donnell, Texas

# Announcing . . .

THE OPENING OF

# Tunnell

## JEWELRY STORE

ACROSS STREET WEST OF BANK

TOWLE AND HEIRLOOM SILVER

CHINA POTTERY AND CRYSTAL

HAMILTON, ELGIN AND LONGINES WATCHES

A Beautiful Line Of DIAMONDS

COMPLETE LINE OF JEWELRY For MEN AND WOMEN

Community and 1847 ROGERS PLATED SILVER

SHEAFFER PENS AND PENCILS

GREETING CARDS

GIFTS AND COSTUME JEWELRY

## To Voters of Lynn Co.;

Your Vote for

# BEN JAMES

FOR

# SHERIFF

## Is Earnestly Solicited

He will enforce the law without prejudice, and will cooperate in every way to make Lynn County a better and a safer place in which to live and to rear our children.

This Ad. Paid For By -

The 1946 Study Club Of O'Donnell

### Scene of Bethel Tent Revival



The public is cordially invited to attend the Revival at Bethel beginning Friday nite

### Brownfield Baptist Association

#### Worker's Conference

Meeting With  
Mexican Baptist Church  
Brownfield, Texas  
August 14, 1952



#### Program

- 6: P. M. - Board Meeting and W. M. U. Meeting
- 7:00 P. M. - Supper
- 8:00 P. M. - Song Service ..... Alton Webb
- 8:15 P. M. - Devotional and Prayer ..... A. G. Gage
- 8:30 P. M. - The Origin, Purpose, Proposal Of  
Transfer Church Membership Week ..... D. D. Shaw
- 8:50 P. M. - The Responsibility of The Pastor and The  
Church in This Campaign ..... Merle Grigsby
- 9:15 P. M. - Organizer's Report ..... C. E. Waincott
- 9:25 P. M. - Special Music
- 9:30 P. M. - Message ..... L. C. Simmons

### Poultry Industry May Set New Record

#### Output in 1952 May Hit Fourfold of Decade Ago

The poultry industry may break all production records during 1952. Production of broiling chickens, for instance, which makes up over half the chicken population, is expected to jump this year to more than 850 million birds. Last year's production was 784 million. Just a decade ago, fewer than 200 million broilers were raised in a year.

Turkey production is forecast at 11 per cent higher than the record 53 million of last year, about 80 per cent above the pre-war 1941 output.

Egg production is expected to stay about the same as last year when some 60 billion were produced. That was 40 per cent above the production of 1941.

Poultry production gains have far outdistanced the U.S. population increase. That means some huge jumps in per-capita consumption.



More and more flocks like the one above will be seen on the nation's farms this year.

Last year, the average American downed over 400 eggs, against less than 300 yearly in the 1935-39 period. Chicken eating per person was nearly 30 pounds in 1951, against a 1935-39 average of under 19 pounds. Turkey consumption more than doubled in the same period.

### Liming Acid Soils Is Must for Good Legumes

If your alfalfa fields show yellow streaks where growth is sparse and puny, the cause is probably a shortage of lime in the soil.

The light, bare streaks on the alfalfa field near Evansville, Wisconsin, shown in the above photograph, were due to soil acidity that hadn't been corrected by liming. The spreader truck had lapped too wide when the field was being limed and some areas didn't get any.

The thick alfalfa growth came from parts of the field that were limed.

Agronomists emphasize that liming acid soils is a "must" if you want to get efficient results from the fertilizer you add. Acid won't produce good legume yields, they say, even if plenty of fertilizer is used. They point out that the entire alfalfa field was fertilized with 400 pounds per acre of 0-20-20.



Note the thick and light alfalfa growth in the above picture caused by uneven application of lime.

Liming helped the fertilizer increase alfalfa hay yields 4 1/2 times and the protein yields by 5 1/2 times.

Hay yields on the limed soil averaged 6,100 pounds per acre, compared with 1,400 pounds on the acid soil. Alfalfa hay from the limed soil had a 14.5 per cent protein content, with a total yield of 886 pounds per acre; from the unlimed soil the hay had an 11.5 per cent protein content, with a total protein yield of 161 pounds per acre.

We INVITE you to see our TELEVISION SET

Reception is not regular but from time to time Television Stations have been tuned in.

Drop by any time, and we may can get a picture on the screen.

We invite you to use our Catalogue service

"One Of The Most Complete Appliance Stores In West Texas"



HAL SINGLETON, 3rd

PRB



Here's

SIZE	BUY TIRE REG. P.
6.00-16	20
6.50-16	24
6.40-15	21
6.70-15	22
7.10-15	24
7.60-15	26
8.00-15	29
8.20-15	30

For Lo

Fi  
CH

SI

EAS  
HE

ELLIS

**LABOR DAY SALE - AUGUST 13<sup>th</sup> Through SEPT. 2<sup>nd</sup>**

# Firestone slashes Tire Prices

## 1/2 OFF

### ON TOP QUALITY De Luxe Champions



You'll find the lowest prices in town at Firestone during this Pre-Labor Day Sale.

**Come In And Save -**

We've slashed prices on top quality Firestone De Luxe Champions—the *Masterpiece of Tire Construction*—the tire that is original equipment on America's finest cars.

Never before have we offered this famous tire at such great savings. This is your opportunity to have the BEST at a sensational sale price.

Don't wait!—come in today and equip your car with safe, new tires for your Labor Day trip.

**You SAVE -**

BUY TIRE EG. REG. PRICE	YOU PAY FOR 2 TIRES PLUS TAX	YOU SAVE ON 2 TIRES
20	30 <sup>15</sup>	10 <sup>05</sup>
24	37 <sup>20</sup>	12 <sup>40</sup>
21	31 <sup>50</sup>	10 <sup>50</sup>
22	33 <sup>08</sup>	11 <sup>02</sup>
24	36 <sup>68</sup>	12 <sup>22</sup>
26	40 <sup>13</sup>	13 <sup>37</sup>
29	44 <sup>03</sup>	14 <sup>67</sup>
30	45 <sup>98</sup>	15 <sup>32</sup>

Buy 1<sup>st</sup> Tire at Regular Price

Get 2<sup>nd</sup> Tire at 1/2 off

**\$20<sup>10</sup>**  
SIZE 6.00-16 EXCHANGE PLUS TAX

**\$10<sup>05</sup>**  
SIZE 6.00-16 EXCHANGE PLUS TAX

Low Mileage Reg. ~~\$14.60~~  
 over Cost  
**Firestone \$11.95**  
**CHAMPIONS**  
PLUS TAX  
 \$12.00 x 16 EXCHANGE

Safe, Long Wearing Reg. ~~\$9.30~~  
**Firestone \$7.95**  
**NEW TREADS**  
APPLIED ON GUARANTEED TIRE BODIES OR ON YOUR OWN TIRES  
 SIZE 6.00 x 16 EXCHANGE

**WEEKLY PAYMENTS - LOW AS 75¢ PER WEEK**  
 DEDUCTION FOR YOUR OLD TIRES WILL MAKE THE DOWN PAYMENT

**CHEVROLET Co. FORBES MOTOR Co.**  
**O'DONNELL IMPLEMENT CO.**  
 O'Donnell, Texas

Calvary Baptist Church

Sunday school 10:00 a m
Morning service at 11:00
B T C 7:00 p m
Evening worship hour 7:30 p m
Wednesday prayer meeting 7 p m

4-H club members in every section of Texas are studying shrubs and their uses as a part of their 4-H training program.

Sanitation is the number one item in a successful fly control program. Insecticides should be used as a supplement.

Last year farmers plowed under more than a million and half acres of legumes as an aid to their soil improvement program.

Your Paper Expired ??

FILM MENU

LYNN

REX

DRIVE IN

Show Starts 7:00 p. m
Box Office Opens 6:45

ADMISSION

Adults 50c Child 9c

Wed. and Thurs. Aug 13 and 14th
Tony Curtis and Piper Laurie in

No Room for the Groom

Friday and Saturday Aug. 15th and 16th
Dane Clark and Ben Johnson in

Fort Defiance

In Cinecolor

Sunday Aug 17th
Rod Cameron and Jane Hight in

Fort Osage

Fri. nite, Sat. Mat. Aug. 15, and 16th
REX ALLEN in

The Last Musketeer

Sat. nite Aug 16th

Tyrone Power and Henry Fonda in
Jesse James

Sun. and Mon. Aug 17, 18
LEX BARKER in

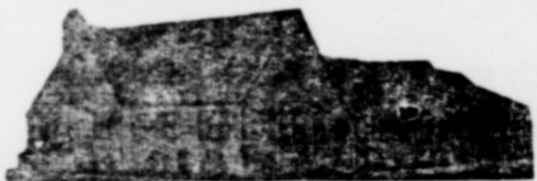
Tarzan's Savage Fury

Tues. Aug. 19th
Eddie Albert and Gale Storm in

The Dude Goes West

Wed. and Thurs. Aug 20 and 21st
Tony Curtis and Piper Laurie in

The Price Who Was A Thief



HIGGINBOTHAM FUNERAL HOME

"Dedicated to Helpfulness"

Phone 223 403 N. Austin St. Lamesa
24 Hour Ambulance Service

Burial INSURANCE "Bonded Protection"
L. T. Brewer, Local Representative

Vernon Cook

EXPERT RADIO REPAIRS

LYNN COUNTY FARM BUREAU

Office at Tahoka Co-op gin on Post Highway; P. O. Box 297

Phone No. 528

We Attend to Your Insurance Needs
Gas Exemption Forms Filled Out for any Farmer FREE!

Office hours: 1 to 5 P. M. and Saturday Mornings

NEED A ...

ELECTRICIAN?

CALL

W. D. REESE

House Wiring, Commercial, Pressure Pumps, Electric Motors

Free Estimates

Ph. 223

O'Donnell

CALL OR COME BY

Moore Insurance

"For All Your Insurance Needs"
Phone 220

Windows



Large windows of double-pane insulating glass, admit an abundance of sunshine and daylight into the poultry house. Pictured above is the poultry house on the Henry Zumstein farm near Fairview, Ill. Agricultural engineers say this design helps to reduce moisture and sanitation problems.

Minnesota Farm Receipts, Expenses Hit New Highs

Both cash receipts and expenses of Minnesota farmers reached new high marks in 1951. Receipts from the sale of farm products reached a peak of 1,391 million dollars, topping 1950 by 14 per cent and the previous record, in 1948, by 4 per cent. At the same time, cash expenses in 1951 rose nearly 12 per cent above 1950. The actual increase in net cash income over 1950 was only moderate.

Gibson's

CLEANERS

CLEANING

PRESSING

Alterations

CHAS. CATHEY

LIFE INSURANCE

REPRESENTING THE AMICABLE LIFE INS. CO

Elvin R. Moore

Representing The Southwestern Life Insurance Co.

TOM GARRARD

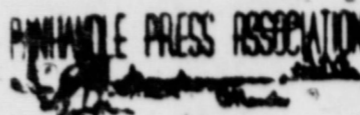
ATTORNEY

Tahoka, Texas
Practice All State and Federal Courts. Land Title a specialty

O'Donnell Index Press

Published Every Thursday by O. G. SMITH, OWNER

Box B, O'Donnell, Texas
Entered as second-class matter Sept. 28, 1923 at post office at O'Donnell, Texas, under the Act of



NATIONAL 45C

ADY. RATES: 40C LOCAL

Subscription Rates:
In first zone (Dawson, Lynn... and Borden counties \$1.50
Beyond first zone \$2.00



Liberty Gardens Vital to Defense

Good Kitchen Garden Can Cut Food Costs

The Department of Agriculture has approved a plan of the National Garden and Food Preservation Committee for a national Liberty Garden campaign in 1952.

The general plan is to encourage the cultivation of home gardens as insurance against shortages, to relieve transportation facilities, enlist labor in food production, and maintain health and moral values.

On the local level the all-out program provides for using all available means to arouse the whole population to the need for gardens, to teach novices how to make gardens, make suitable land available in city, town and suburban areas,



plow the land and insure the availability of seed, plant food and equipment.

A good kitchen garden may also be the answer to many a family's high food costs. The program gains merit in the light of past experience, because it has been shown that a garden and a home food preservation program is essential to the success of any home defense program.

An average garden can mean as much as \$200 to a family's food bill during one year with a reasonable amount of time and effort.

There are home demonstration or 4-H clubs in 3,447 of the 5,776 communities in Texas. Through these clubs, 364,183 different families received information on home economics.

Woodkill Insecticides

SEE US FOR INSECTICIDES OF ALL KINDS ...

LIQUID AND DUST

We are a Stockholder, Director and

Distributor for

WOOD Chemical Co.

OF LUBBOCK

See Us First and Last for your needs

FORBES Motor Co.

America Is Lawless Nation, Reports Criminal Authority

NEW YORK—America's soaring crime rate is a direct reflection of the state of our national conscience and present-day moral standards. This is the opinion of Dr. Austin H. MacCormick, noted criminologist and professor of criminology at the University of California, reporting on the history of crime in America recently to the "Conference on the Future" arranged in New York by 2500 mutual fire and casualty insurance companies.

"A climate of crime is created by the moral standards of our contemporary officials and citizens, our tolerance of wrongdoing, and our attitude toward law enforcement and the social controls opposed to crime," MacCormick said.

Because of the national lapse in moral standards, MacCormick reported, America today "has earned the unenviable title of 'the most lawless nation on earth!'"

We now have an estimated total of nearly two million major crimes and 15 million minor offenses committed in the United States each year, he said.

He outlined the transition of crime in America from the "need and greed" theory of motivation to present "highly organized criminal syndicates operating on a national level, skillfully integrated and distorting the latest advances in science and communication facilities to their unlawful uses."

A generation or two ago, he said, investigation of the youth caught holding up the corner grocer revealed he wanted the money for food or shelter or to impress his girl friend. "When that thief is captured today, all too often we find he got the gun from a higher-up who was selling him dope and three-by stood to gain from a successful robbery. And this intermediary in turn was being supplied with dope wholesale by a third member of a criminal hierarchy."

"Our present social and economic situation is producing a predominant motivation to crime," MacCormick said. "And today we must face up to the presence of organized crime, committed by predatory racketeers combined in powerful syndicates with a greed for money and a greed for power."

Almost as important as supporting and strengthening our law-enforcement agencies, MacCormick said, "is a national moral renaissance, a return to the moral precepts of our founders, a return on all levels to the old-fashioned principles of teaching and believing in the intrinsic difference between right and wrong."

Dr. MacCormick was one of 11 outstanding scientists and educators speaking at the Conference on the Future.

Beat The Rush on

Cotton Sprays, Dusts

D. D. T. Spray Concentrate, Toxaphene D. D. T. Spray Concentrate

COTTON DUSTS: 2-10-40, 3-5-40, 10-40

Kidwell-Rogers

John Deere Sales & Service, O'Donnell

Turner Rogers W. T. Kidwell

# Elect J. R. EARNEST Your State Representative 99th District



## J. R. EARNEST is FOR:

An efficiency survey of our State Government to remove excess employees, overlapping bureaus, commissions and boards.

The Texas Highway Department having full control over all highway building in Texas, with emphasis on arterial highways.

A STRICT law against all those found guilty of Driving While Intoxicated.

No diversion of proceeds from gasoline taxes to uses other than the upkeep of our highways, subject to constitutional limitations.

Refunding the gasoline tax to farmers and other non-highway users.

Fair and just compensation to our school teachers in accordance with ability and experience.

## J. R. EARNEST will OPPOSE:

1. A State Sales Tax, State Income Tax, and an increase in gasoline tax.
2. The CENTRALIZATION of GOVERNMENT.
3. ANY legislation designed to limit or destroy FREE COMPETITION.

- CHARACTER
- INTEGRITY
- SINCERITY

## J. R. EARNEST BELIEVES:

1. That economic justice can best be won by FREE MEN through FREE ENTERPRISE.
2. That "He who is governed LEAST is governed BEST."
3. Each measure should be judged on its individual merits.

### VOTE RIGHT! VOTE FOR . . .

# J. R. EARNEST for STATE REPRESENTATIVE

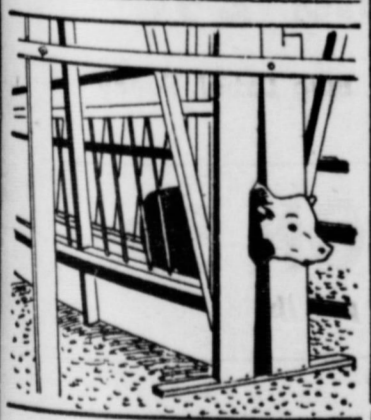
(Paid Political Adv.)

Will laundry and finish your curtains with curtain stretchers and guarantee your satisfaction. Mrs. Oscar Veach.

FOR SALE: five room house and bath, very modern, hardwood floors, a very nice house, if you move the house. W W Williams tfe

For rent: 3 room house, bath, floor furnace, Dawson Heights Clyde Edwards, Phone 57 or 71, 2p

### Stock Chute



The above stock chute or squeeze is the idea of a Future Farmer of America boy. He built it from salvaged iron and lumber for use on his father's farm. The steel rods were secured in such a manner they could be removed for branding, vaccinating, etc. A farmer handy with tools could use the above sketch as the starting point for a stock chute to fill his own needs.

**FLOWERS**  
FOR ANY OCCASION  
Come and see us or order from  
Your local agent: CORNER Drug  
THE HOUSE OF FLOWERS  
Mr. and Mrs. J. B. BILLMAN  
Phone 980 - Tahoka  
Your Paper Expired ??

### FIRST BAPTIST CHURCH

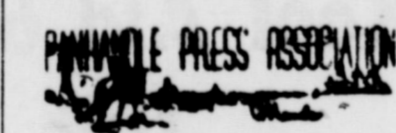
Preaching service 11 a m  
Training Union 7 p m  
Evening worship 7:30 p m  
Wednesday night  
Teachers meeting 7 p m  
Prayer Meeting 7:30 p m

### BOGGAN TRACTOR CO.

FERGUSON TRACTORS and  
Ferguson System Implements  
1015 North Lynn Lamesa  
Paul Boggan, Owner

### O'Donnell Index Press

Published every Thursday by  
**G. G. SMITH, OWNER**  
Box B O'Donnell, Texas  
Entered as second-class matter  
Sept. 28, 1923 at post office at O'Donnell, Texas, under the Act of



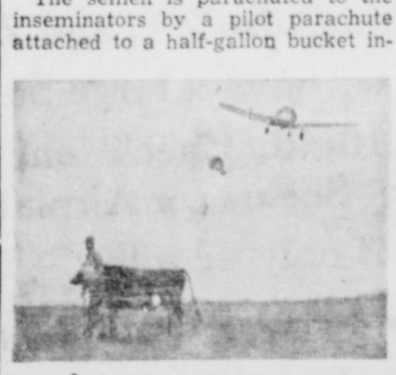
**NATIONAL 45C**  
**ADV. RATES: 40C LOCAL**  
Subscription Rates  
in first zone (Dawson, Lynn, and  
order counties) \$1.00  
in 2nd zone \$2.00

### More Meat for Year Is USDA Prediction

The average American may eat even more meat and poultry in 1952 than in 1951, if advance production figures are any indication.  
According to a forecast of the U.S. Department of Agriculture, meat production this year may be large enough to provide an average of 144 pounds per person as compared with 141 pounds in 1951.  
Most of the meat increase will be in beef and veal. Much of the step-up in beef will be in medium and lower grades, although some of it probably will be in the better grades from grain-fed cattle. Veal consumption per person in the country last year was a 19-year low of 6.7 pounds.  
The amount of lamb and mutton eaten by the average American is expected to go up slightly, as is production. Last year consumption of lamb and mutton was the lowest on record—only slightly over 3 pounds per person.  
A little more pork may be on the market in the first few months of 1952, but production for the last part of the year may be somewhat smaller.  
Increased production may cause a slight price decline in some lines.

### Missouri Dairy Stud Outstanding

Planes Used to Speed Delivery of Semen  
Artificial insemination of dairy cows has received such wide acceptance in the highly developed Ozark dairy section that the Missouri Farmers Association has established a shipping schedule by three planes which cover approximately 66 counties daily.  
The association's stud at Springfield is composed of 55 of the nation's finest dairy bulls.  
The semen is collected in early morning and the airplanes take off with it at 5 a.m. the same day. It takes the planes approximately 3 1/2 hours to cover three routes of 350 miles each.  
The semen is parachuted to the inseminators by a pilot parachute attached to a half-gallon bucket in



In the picture above a Missouri Farmers Association plane has just parachuted semen to a technician after a quick trip from the association's stud at Springfield.  
Although most often planted in straight rows in the midwest, there is no reason it can not be planted on contour to fit the individual farm conservation plan.  
As first championed by the sportsmen, it provides cover for small animals and birds. In this respect, song birds thrive in this kind of cover and thereby reduces insect damage to crops.

### Multiflora Rose Is Popular in Midwest

Natural Fence Protects Crops and Game Birds  
In recent years the multiflora rose as a permanent, living fence has gained popularity in many areas of the west.  
The fast growing multiflora rose was first championed by sportsmen who had watched natural cover for birds and small animals decreasing steadily through the years. Now, farmers in many sections of the country have found the multiflora rose the answer to a number of problems, the least of which is its use as a fence.  
Farmers report multiflora rose acts as an ideal windbreak and reduces wind erosion and protects



young crops. It does not grow tall enough to shade crops and does not sap strength from nearby crops as farmers first feared when it was introduced.  
Although most often planted in straight rows in the midwest, there is no reason it can not be planted on contour to fit the individual farm conservation plan.  
As first championed by the sportsmen, it provides cover for small animals and birds. In this respect, song birds thrive in this kind of cover and thereby reduces insect damage to crops.

### Calvary Baptist Church

Sunday school 10:00 a m  
Morning service at 11:00  
B T C. . . . . 7:00 p m  
Evening worship hour 7:30 p m  
Wednesday, Prayer meeting 7 p m

### Assembly of God

R. T. Peek, pastor  
Sunday School 10 a. m.  
Morning worship 11:00 a m  
Evening worship 7:30 p. m.

FOR RENT 2 very nicely furnished apartments, summer rates, air conditioned. Smith Apts., see Index

## Thanks a Million

We wish to thank our Friends and customers for your very fine Response to our Summer Clearance Sale of last week end.

Every one of us at the store hopes that you found many values and were well pleased. Again our sincere thanks.

Drop by any time and see our fall line of clothes for every member of the family. We are always glad to see you and appreciate your patronage.

Floyd Thompson

## Thompson's Toggery

See that your news gets to your home town paper!

ty soaring action of inscience andards. Justin H. inologist ry at the reporting America e on the York by ally in- created our con- citizens, ing, and enforce- rolls op- ick said. lapse in nick re- earned he most ted total : crimes es com- es each of crime sed and to pres- inal syn- national and dis- ces in n facil- he said, caught ocer re- sney for res his f is cap- we find igher-up id three- cessful diary in th dops of a conomic redomi- "Mac- we must redatory powerful money support- ar law- Cormick renais- ral pre- turn on el prin- ving in between e of 11 ucators on the

# BLOCKER GROCERY

"Trade Goes Where Invited, Stays Where Treated Best"  
**SPECIALS For Friday and Saturday**

- Crisco 75c**  
3 lb Can
- Tomato Juice**  
3 for 35c  
No. 2 can "Del Monte"
- Tissue 4 for 35c**  
Charmin
- Sugar 10 lb 87c**  
10 lb bag pure cane
- Peas 3 for 25c**  
15 1/2 oz can Diamond with bacon
- Tea 29c**  
Lipton's 1-4th lb box
- TIDE 25c**  
Large Box

- Soap 5c**  
Jergens per bar
- sliced bacon 49c**  
Crisprite lb
- beef roast 69c**  
choice cuts chuck lb
- Fresh dressed battery FRYERS**

**TRADE WHERE MA SAVES MONEY FOR PA**  
 We Reserve The Right to Limit. Nothing Sold to Merchants to be re-sold

**GENERAL CONTRACTING**  
**MODERN HOMES**  
 No job too small for a free estimate  
**BENNY MOORE**  
 Box 498 O'Donnell Ph. 111

---

THANKS . . .  
 For Your Support  
**REMEMBER TO VOTE**  
**SATURDAY, AUGUST 23rd**  
 And RE-ELECT  
**W. T. "BILL" SNELGROVE**  
 Commissioner of Precinct 2 Dawson County  
 Paid Pol. Adv.

**Come along, girls . . .**  
**Make your appointment now for that . . . PERMANENT**  
 You will be needing me when school starts.  
 All Beauty Services offered. Merle Norman Cosmetics. Please call 39 for Appointments.  
 (Vernie will be out of shop on Mondays 'till further notice  
**Vernie's Beauty Shop**  
 Merle Norman Cosmetics  
 Vernie, Hattie and Mattie

We suggest you buy your Daskocil weeders now: the supply has been limited for past 3 years; this weeder fits all cultivators.  
 We have ready for delivery the HM-20 International Cotton Stripper. The Supply is limited again this year.  
 See the Culti-Leveler A grand leveling attachment. Fits all cultivators. Levels soil behind front wheels so on second cultivation tractor steers easily.  
 One leveler after each of your large tires will make your cotton stripping much easier. See this labor saving device See us for your Chemicals for spraying

## COTTON SPRAYS AND DUSTS

We have 6 lb Toxephine, also 2-1, and 25 per cent D.D.T. See us for your Dust: we have a large Supply: in stock now 3-5-40, 2-10-40, and 10-40. Check our prices on Cotton Poison before you buy. See us for Airplane Dusting Service labor for this Service is only 4c a lb  
 Ready for Delivery: used 4 row cultivator Listers, and planters; also several 4 row Tractors.  
 New listers, planters, and cultivators,  
 Again this year we have the . . .  
**JOHNSON DUSTER only \$295**  
 Also the Speedy Front or Rear Tractor Mount Sprayer; also the Comfort Sprayer. See the Aven Tow Type Sprayer. We have a good price on this.  
 If you need a refrigerator . . . we have some **CHEAP**

## O'Donnell Implement Co

For sale: Practically new Lime Oak bed room suit, range stove, see Mattie Fluty at Vernie's Beauty Shop

For sale: An International large size canner and a Burpee Sealer, almost new, both for \$15 see Mrs C. L. Tomlinson ph. 167

For sale: A MirrorMatic small size 5 pint pressure cooker, very reasonable, see Index

For sale, Aluminum building, next door west H. and S., fixtures and stock all for \$500 Mrs Bud Pugh at Holcomb Apts.

### New Moore News

We had moisture measuring 2-10ths of inch Sunday, cooled the atmosphere but did not do the burning crops much good; the sandy land crop is still doing good

S. L. Walters visited his brother at Carlsbad over the week end

Carey Moses visited with his uncle R D Moses of Leveland Friday

Mr and Mrs L O Licht visited in Roscoe the first of the week

Mrs. G. H. Crutcher of Tokio visited relatives Sunday

Grandma Wilson has moved back to her home here.

Mrs. Hamilton of Waco arrived for a visit with her daughter Mrs Moses.

Mr and Mrs O P Crutcher Jr of Lamesa visited their parents here over the week end.

Jude Taylor was in Bryan and Austin Tuesday and Wednesday

Mrs Sonny Ford is in a Lamesa hospital

Mr and Mrs Orbin Rushing carried Sherria Lynn and Sandra Kay Pierce home Sunday after a two week visit with them.

Visitors in the Tom Moore home over the week end were Mr and Mrs Carl Careton and daughter, Carla and Mrs W P Moore, all of Stamford. Mr and Mrs Billy Careton of Leveland, Mr and Mrs. Jack Eicke of Brownfield

Mr and Mrs Lee Townzen of Ft Worth, Mr and Mrs Andy Townzen and baby of Lamesa, visited their sister Mrs Lula Barnett Sunday

Cleon Eason and Willie Joe Barnett were in San Antonio Monday on business.

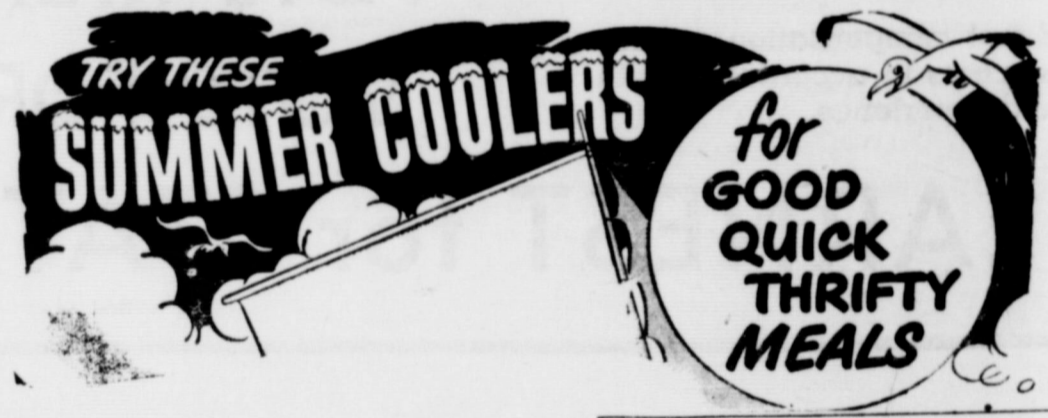
## Specials For Friday and Saturday

- Big Golden Bananas per lb . . . . . 15c
- Fresh Green Beans, Kentucky lb . . . . . 18c
- Good firm Cabbage lb . . . . . 6c
- 14 oz. Libby's Catsup . . . . . 19c
- 1-2 gal. Brer Rabbit Syrup . . . . . 59c
- Flat Sardines 3 cans for . . . . . 25c
- 3 lbs Pure Lard . . . . . 53c
- 1 lb 3 oz. Wolf Chili . . . . . 69c
- Jen Tel Tissue . . . . . 3 for 25c
- 1 Qt. Gulf Fly Spray . . . . . 49c
- 1 lb Assorted Lunch Meats . . . . . 49c
- 1 lb Round Cheese . . . . . 49c
- 1 lb Sun Spun Oleo . . . . . 21c

## Line Cash Grocery And Market

Plenty of parking behind the store; come in and shop with us . . . . . **WE DELIVER PHONE 118**

**TO THE CITIZENS OF LYNN COUNTY**  
 I wish to thank you for your support in the past and the present.  
 Any time I can be of service to you in any way, please feel free to call on me.  
**J. E. "Red" BROWN**  
 YOUR  
**TAX ASSESSOR and COLLECTOR**



- Gum 3 for 10c**  
All Kinds
- Kool Aid 6 for 23c**
- Ice Cream 13c**  
Pint Box
- Shortening 59c**  
3 lbs Kimbells
- Hominy 7c**  
No. 303 size can white
- TEA 31c**  
1-4th lb Lipton
- Peaches 4 for 96c**  
No 2 1/2 can; Great Value
- Tuna 29c**  
Star Kist, Blue Label, Fancy
- BACON 59c**  
Banner per lb
- Hams lb 47c**  
Pic'n/c per lb
- Beef Liver 69c**  
per lb

# MANSELL BROS

**SPECIALS FOR FRIDAY AND SATURDAY**  
**PHONE 50 FREE DELIVERY PHONE 50**