

**Orchid Beauty Shop**  
For Beauty Work that Really Beautifies Call 145 for appointment

# The O'Donnell Index

## SERVING O'DONNELL TRADE TERRITORY THOROUGHLY

Read Index Ads and Save Money

Volume XVIII

O'Donnell, Lynn County, Texas, Thursday, September 26th, 1940

Number 2

### Eagles Show Up Well in First 1940 Game

Though the Eagles brought home the little end of a 26-6 score in their first game this season, the Leveland Lobos knew they had been to a football game Friday night. The hundred or more home fans who went along with the team were not discouraged in the least because the boys failed to win; they played head-sap football from start to finish, clicking together remarkably well for an inexperienced team.

For O'Donnell, the highlight of the game was quite naturally in the last few minutes of the fourth quarter, when a pass from Teeter to McLaughlin was good for a sixty-yard run for a touchdown, but to your writer there was no player to whom it could be said: "He was the star of the game." They all played, and the entire team deserves the commendation of the home town.

We wish to thank the Leveland team, school and citizens for the cordial reception accorded the O'Donnell party, from the welcome to the team and Coaches DeBusk and

Alderson down to the salute presented by the pep squad and band.

**Play Crosbyton Tonight**

Tonight the Eagles meet another strong team when they go to Crosbyton. While Crosbyton was defeated 12-0 by Tahoka last Friday, that team is considered one of the best in this section, and the local boys are expecting a struggle.

Go along with them, if you can possibly make the trip, and boost those Eagles from start to finish. Let's help them beat Crosbyton in a clean football game; and if they lose let's back them just the same.

**1941 AUTOMOBILE SHOW ATTRACTS MUCH INTEREST**

Showrooms of the Lynn County Motor Company and Ellis Chevrolet Company were well-filled all day Saturday, say managers Oil D. Harris and John Ellis, as residents of this territory came in to see the 1941 Fords and Chevrolets.

The new models of both cars are handsome and convenient, with many changes and improvements. If you did not see them Saturday, make it a point to visit both showrooms this week-end.

Miss Aubra Lee Shook spent the week-end in Lubbock with Miss Lucy Alice Baucum.

Blewett Davis has recently been added to the staff at Whitsett Drug.

**\$177,000 IN PARITY CHECKS RECEIVED**

Government cotton parity checks have been pouring into the office of C. A. Lawrence, secretary of the county A. A. committee and are being distributed among the farmers.

Last Thursday morning 1,067 checks had been received for 675 farms for the total amount of \$176,962.56.

Checks are coming in practically every day and will be delivered to the payees just as rapidly as the clerical work can be done in the office.

These checks are payable to 3 classes of beneficiaries: landlords, tenant, and other operator of cotton farms.

Mr. Lawrence estimates that when all of these cotton checks have been received and delivered to the payees a sum of money amounting to about \$400,000 will have been poured into the pockets of Lynn county land owners and cotton producers.

The Primitive Baptist church at New Moore is moving to O'Donnell and will have preaching services at the Presbyterian church on the first Sunday in October, at 11 o'clock. Dinner at the church and preaching again at 2:30. Will have some visiting preachers. Everyone is invited to come and hear salvation by grace preached once again. Tyne W. Smith, Pastor.

### LYNN COUNTY TEACHERS ELECT NEW OFFICERS

Approximately 210 teachers attended the Lynn County Teachers association convention Saturday in Tahoka High school auditorium.

At conclusion of the meeting, W. T. Hanes, Tahoka school superintendent was named chairman of the group. Mrs. Lenore M. Tunnell, county superintendent, presided at Saturday's session.

Included in the program was a safety talk by Capt. G. E. Schauer of Austin, in charge of the traffic safety lane touring the state. He was accompanied by Sergeant C. B. Walling of the Lubbock district office.

### THREE LOCAL BOYS ENLIST IN ARMY

Charles D. McAuly, Malcolm Coats, and Louis Dolloff of O'Donnell were among the 83 South Plains boys who enlisted in the U. S. Army last week, according to reports from the recruiting office.

McAuly was assigned to the infantry, Fort Ord, Cal., Coats to the 3rd infantry at the same place, and Dolloff, quartermaster corps, Fort Bliss.

Miss Vergie Luttrell spent the week-end in Floydada with relatives and friends. She was accompanied by Jack Sloan.

### R. E. STOKES AND MISS WHITE MARRIED

Of wide interest to O'Donnell people, and particularly football fans, was the marriage on Sunday, Sept. 15, of R. E. Stokes of this place and Miss Cebe White of Mesquero. The ceremony was read at noon in the home of the bride's parents, Mr. and Mrs. J. W. White, with Rev. S. A. Ribble officiating.

The couple will be at home here, where Mr. Stokes is employed at the Arizona Chemical plant. They have an apartment in the home of Mr. and Mrs. Ben Moore.

The groom, familiarly known as Lizard, is a graduate of the local school and was for several years one of the outstanding football men for the Eagle squad.

The bride, a charming and attractive young lady, graduated in 1937. The index is very happy indeed to welcome them home, and to extend for the community best wishes for their happiness and prosperity.

### DISTRICT COURT IS CONVENED MONDAY

September term of district court convened at Tahoka Monday morning. Officers report that an unusually light docket is promised, only nine indictments being returned up Wednesday.

Prospective grand jurors and petit jurors have been summoned. On the list drawn for grand jury service are: Fred McGinty, C. E. Campbell, John A. Anderson, Jim Burleson, Roy Askew, L. Cobb, N. S. Parker, J. E. Sherrill, R. O. Miles, H. E. Huffaker, W. P. Lester, Dan L. Carpenter, A. D. Schaffner, E. B. Tunnell, E. E. McManus, M. M. Bruster.

### McCABLEY - BROUGHTON

Of wide interest to Lynn county people was the marriage on Sunday Sept. 15 of Mrs. J. C. McCabley and Mr. Joe Broughton of Littlefield, the ceremony having been read at Morton.

Mrs. Broughton was for many years a resident of this section of Lynn county, and has scores of friends. Mr. Broughton is a member of a well-known Terry and Lynn county family. He will follow his profession as barber here, while Mrs. Broughton will have active charge of the Army Store, which will open Saturday in her building on the north side of the square.

The index joins with other friends in extending best wishes for the happiness and prosperity of the newlyweds.

Mrs. John Earles returned Saturday from Denton, where she had taken her mother, Mrs. G. A. Honey, earlier in the week.

### OCTOBER 2 DESIGNATED O'DONNELL DAY AT FAIR

Wednesday, October 2, is O'DONNELL DAY and CHILDREN'S DAY at the 27th annual Panhandle South Plains Fair which will be held this year September 30 to October 5, according to an announcement made this week by C. E. Maedgen, President of the Fair association.

Special band concerts will be given each afternoon on the band stand in front of the Merchants' Building and radio broadcasts of these concerts will be made.

The Goodman Wander Shows, a thirty-five-car carnival, will cover the more-than-a-mile long midway, offering varied entertainment for young and old.

A special delegation from O'Donnell will visit the Fair in Lubbock and all those who would join are asked to contact the paper.

### MESSES HAFER, WELLS ENTERTAIN FRIDAY

Mrs. E. T. Wells and Mrs. C. L. Hafer were hostesses Friday afternoon at the home of the former when they entertained with a bridge party honoring a number of guests from Tahoka.

Cut flowers were used as decorations in the reception rooms where five tables were placed for games. High score prize for the visitors was won by Mrs. Henderson and for the local club by Mrs. Hafer.

A delicious salad course was served with iced tea and cake, favors being dainty corsages.

Guests were Mmes. Hanes, Hill, South, Henderson, McLroy, Turley, Gagnant, Smith and Turner of Tahoka, and F. E. Norton of Dallas; Bradley, Campbell, Henderson, Hughes, Hoffman, Jordan, Noble, Robinson, Whitsett, and Miss Thelma Palmer.

### BRIDGE PARTY MONDAY CELEBRATES BIRTHDAY

Mrs. B. J. Boyd and Mrs. Harvey Jordan were much-surprised honorees Monday afternoon when Mrs. Fred Henderson, the L. E. Robinson entertained with bridge celebrating birthdays of the honor guests.

Gifts were presented before games Mrs. J. M. Noble, jr., won high score.

Guests were Mmes. Cabool, Campbell, Bradley, Hafer, Gardenhire, Hughes, Whitsett, Noble.

Mr. and Mrs. Joe Brewer are parents of a son, born Sunday morning in a Lamesa sanitarium. The young man weighed 7 1/2 pounds. The parents and the newborn are doing nicely and attending physicians report that Grampa Tom Brewer will probably improve with time and care.

# Announcing the big NEW FORD 1941 FORD

In some years, some cars take a big jump ahead. The Ford does that for 1941.

It has jumped ahead in size. It's the biggest Ford we've ever built, inside and out. It's wider. It has a longer wheelbase. Its seating room is wider by as much as 7 inches. It has new wide doors and semi-concealed running boards.

You'll notice also a new beauty, achieved by a skillful blending of mass with longer flowing lines. Larger windshield and windows give better vision all around.

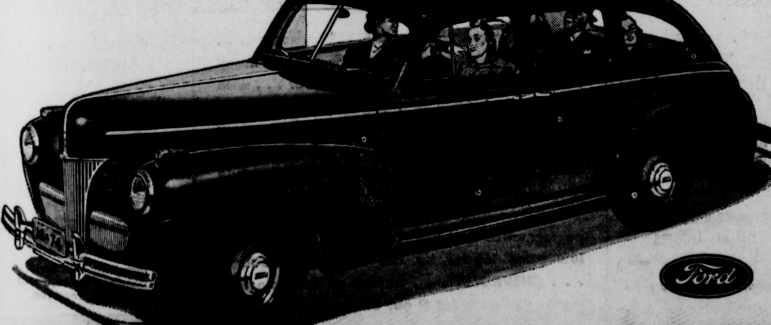
One of its biggest advantages is the new soft ride.

New, slower-action springs give a slow, gentle, gliding movement. A newly designed stabilizer helps absorb road shocks, and maintains balance on sharp curves and in cross winds.

More rapid acceleration to match its familiar speed and power makes this new Ford an even livelier car to drive.

These are only a few of this new car's outstanding features. It represents all the rich experience gained in building more than 28 million motor cars.

Any Ford dealer can give you many good reasons for making this your 1941 car.



Get the Facts and You'll Get a Ford!

**LYNN COUNTY MOTOR CO.**

**FLOWERS FOR EVERY OCCASION**  
EXPERT DESIGNING — WEDDINGS A SPECIALTY  
FLOWERS AND PLANTS OF ALL DESCRIPTION  
GROWN IN GREENHOUSE  
A Complete Line of Shrubbery and Pot Plants in Season.  
SEE US BEFORE YOU BUY  
**LAMESA FLOWER SHOP AND GREENHOUSE**  
511 South 4 St. — Phone 194 O'Donnell Agent— Corner Drug

**LADIES . . .**

Whether it's a frock of the shrewdest fabric, an evening wrap, a coat, or a sweater, you'll want it cleaned at Modern Cleaners, where careful workmanship and prompt service are a tradition.

**and GENTLEMEN**

The warm days of summer aren't over in O'Donnell yet—and you need to look your best at all times. Let Us help you to keep that right-out-of-the-handbox appearance!

"It pays to keep your clothes cleaned and pressed"

**MODERN CLEANERS**  
M. THOMPSON'S MEN'S STORE  
Better Tailoring for Those Who Care  
Phone 133

# THE O'DONNELL INDEX

Entered as second class matter September 28, 1923, at the post office at O'Donnell, Texas, under the Act of March 3, 1879.

PUBLISHED EVERY THURSDAY AT O'DONNELL, TEXAS

SUBSCRIPTION RATE—\$1.00 PER YEAR IN ADVANCE

FAULINE CAMPBELL Owner

ADVERTISING RATES ON APPLICATION

### MRS. JORDAN ENTERTAINS ENTRE NOUS CLUB

Mrs. Harvy Jordan was the charming hostess last Thursday evening to members of the Entre Nous bridge club, with two tables in play.

**C. N. WOODS**  
"Gifts That Last"  
JEWELER  
WATCH REPAIRING  
TAHOKA, TEXAS  
1st Deer North of Bank

**B. M. HAYMES**  
Real Estate and Insurance  
O'DONNELL, TEXAS

Mrs. Pauline Campbell won high score, consolation and bingo prizes going to Miss Beverly Wells. A delicious salad course was served with ice cream to Misses Campbell, Cathey, Westmoreland; Misses Wells, Claire Ruth Nichols, Hope Shook and Katherine Teeter.

Rev. and Mrs. W. K. Horn visited friends here a short time Monday. They were accompanied by their daughter, Jewel, who is now Mrs. O. A. Hendon.

FOR TRADE FOR O'DONNELL PROPERTY: 5-room frame house, 2 lots, double garage, outbuildings in Quahan. See J. M. Long, at Farmers' Co-Op station.

**OCCUPATION TAXES**  
An Ordinance levying an Occupation Tax on every person, firm, corporation or association of persons pursuing any Occupation Taxed, or that may be hereafter taxed, by the Occupation Tax Law of the State of Texas; Fixing the amount of such tax at

one-half the State Tax; and providing a penalty for its violation. BE IT ORDAINED BY THE CITY OF O'DONNELL, TEXAS THAT: Section 1. There shall be and is hereby levied, and there shall be collected from every person, firm, company or association of persons pursuing any occupation taxed by the general laws of the state of Texas, an annual occupation tax equal in each instance to one-half

of the State Occupation Tax, which said taxes shall be paid annually in advance except where otherwise provided by the State law, in which event the same may be paid as is provided by the State law. Section 2. There shall be levied and there shall be collected from every person, firm, company or association of persons pursuing any occupation that may hereafter be taxed by the General Laws of the State of Texas, an amount equal to one-half of such said State Occupation Tax, which shall be levied and collected as provided in Section 1. Section 3. That any person who may violate any of the provisions of this ordinance shall, upon conviction thereof, be fined in any sum not less than One Dollar nor more than One Hundred Dollars.

Passed and approved, this 6th day of Sept., 1940.  
Signed: B. M. HAYMES  
Mayor, City of O'Donnell  
ATTEST:  
TREVIA PAYNE  
City Secretary

## CAUTION

Use judgment in buying Burial Policies. Be sure that the Company is building up the necessary MORTUARY FUND. If it is not, the time will surely come, when it will not be able to pay its claims. You are taking no risk when you insure in—

### THE RIX BURIAL ASSOCIATION

Phone 3 0 0 Lubbock.

## REAL ESTATE

Farm and City Loans

Rentals

Oil Leases and

Royalties

**DEEN NOWLIN**

Residence Phone 183

Office Phone 57

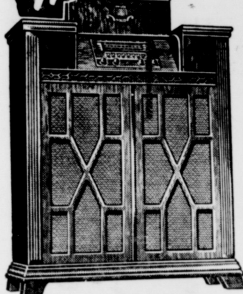
### HOW TO GET A JOB

Thousands of young people find Draughon training and South-wide placement service the shortest way to good starting positions and growing incomes. Send for catalog today.

**Draughon's BUSINESS COLLEGE**  
Lubbock, Abilene, Dallas, Wichita Falls

checks **MALARIA** in 7 days and relieves **COLDS** **666**  
Liquid - Tablets  
Salve - Nose Drops  
Try "Rub-My-Thim" - a Wonderful Liniment

*It's Here!*  
**1941 PHILCO**  
with Amazing  
**NEW INVENTIONS!**



Get Europe  
5 Times Easier,  
Stronger, Clearer!

Philco brings you sensational new inventions—a new kind of Overseas Wave-Band, Brand, new Radio Circuit, Built-in American and Overseas Aerial System, more tubes for the money including Philco XXL Noise-Reducing Tubes, Electric Push-Burton Tuning with "On-Off" Button, and many others. And only Philco has them. See it now!

### Authentic Period Design

Blends equally well with antique or conventional furniture styles. Exquisitely designed in costly, highly-figured Walnut woods, hand-rubbed to a piano finish; controls covered with a graceful hued Walnut lid. This model 28"X is only \$000.00

**Easy Terms**  
Liberal Trade-in Allowances!

## SINGLETON APPLIANCE

# WHAT?

BOX SUPPER — PIE AND CAKE WALK

## WHERE?

HIGH SCHOOL AUDITORIUM

## WHEN?

FRIDAY NIGHT, 8:00 P. M., OCT. 4TH

Proceeds to be Used for Football Queen Race and Athletic Association.

## EVERYBODY COME!

Sponsored by O'DONNELL PUBLIC SCHOOLS

SEE . . .  
**THE ENTRADA OF CORONADO**  
At The 27th Annual  
**SOUTH PLAINS FAIR**  
Sept. 30—Oct. 1-2-3-4-5

6 BIG DAYS **LUBBOCK, TEXAS** 6 BIG NIGHTS  
Each Afternoon **FREE** Grandstand  
Bightime—  
• Circus & Vaudeville Acts  
• Clowns  
• Animals  
• Thrills - Chills

A \$100,000.00 Federally Backed show on the world's largest stage . . . THE ENTRADA OF CORONADO an hour and half show.  
Gen. Admission . . . 25c  
Res. Seats . . . 50c  
Box Seats . . . \$1.00

**Free!** SCHOOL CHILDREN Wednesday and Thursday, Oct. 2 & 3 (See School Supt. for Free Tickets) **Free!**

EXHIBITS Hereford, Shorthorn, Dairy Cattle & Swine Exhibits, newest in farm implements and equipment . . . county, community, and individual agricultural exhibits, merchandise displays . . . home and fine arts exhibits.

FUN FOR EVERYONE—ON THE MIDWAY!  
GOODMAN WONDER SHOWS

EXCITEMENT — THRILLS — FUN GALORE!

Now on Display  
**NEW 1941 CHEVROLET**

Eye It..Try It..And You'll Say It's  
**"FIRST BECAUSE IT'S FINEST!"**

- \* THRILLING NEW BIGNESS  
IN ALL MAJOR DIMENSIONS
- \* DASHING NEW "ARISTOSTYLE" DESIGN  
WITH CONCEALED SAFETY-STEP-PTS AT EACH DOOR
- \* DE LUXE KNEE-ACTION ON ALL MODELS  
WITH BALANCED SPRINGING FRONT AND REAR AND IMPROVED SHOCKPROOF STEERING
- \* ORIGINAL VACUUM-POWER SHIFT EXTRA COST  
BUILT AS ONLY CHEVROLET BUILDS IT

It's a SIZE sensation . . . a STYLE sensation . . . a DRIVE and RIDE sensation ☆ Bigger in all major dimensions both inside and out . . . with 3" longer wheelbase and 3-couple roominess in all sedan models ☆ With dashing new "Aristostyle" design and longer, larger, more luxurious Fisher Bodies that set the new style for the new year ☆ With a mighty 90-h.p. Valve-in-Head "Victory" Engine that lifts performance and lowers costs ☆ It's the new low-price leader by the builder of leaders . . . CHEVROLET . . . holder of first place in motor car sales for 9 out of the last 10 years!

- \* NEW LONGER WHEELBASE
  - \* LONGER, LARGER, WIDER FISHER BODIES WITH NO DRAFT VENTILATION
  - \* 90-H.P. VALVE-IN-HEAD "VICTORY" ENGINE
  - \* SAFE-T-SPECIAL HYDRAULIC BRAKES
- Plus many more outstanding comfort, safety and convenience features.

Again **CHEVROLET'S** the LEADER

**EYE IT.. TRY IT.. BUY IT!**

# ELLIS CHEVROLET CO.




**O  
A  
T  
E  
S**



**THESE SPECIALS FOR FRIDAY, SEPT. 27, SATURDAY, SEPTEMBER, 28  
MAKE NO MISTAKE—YOU CAN SAVE MONEY HERE WITH THESE PRICES**

**TENDER JUICY MEATS**



<b>STEAK</b>	LOIN or T-BONE Pound	<b>22c</b>
<b>GROUND HAMBURGER MEAT</b>	Pound	<b>10c</b>
<b>SAUSAGE</b>	PORK Pound	<b>12½c</b>
<b>BACON</b>	SALT PORK Pound	<b>12½c</b>
<b>HOT BAKED BARBECUE</b>		
<b>LARD</b>	1 Pound Carton, Each	<b>10c</b>
<b>BACON</b>	Sugar Cured Squares. Lb.	<b>16c</b>

<b>SUGAR</b>	LIMITED Not Sold Alone, 10 Lb. Bag	<b>42c</b>
<b>PEANUT BUTTER</b>	While They Last Full Quart	<b>19c</b>
<b>CRACKERS</b>	2 Pound Box Each	<b>12c</b>
<b>OXYDOL</b>	GIANT SIZE Only	<b>53c</b>
<b>CORN FLAKES</b>	JERSEY'S Large Box 3 For	<b>25c</b>
<b>FLOUR</b>	Guaranteed 48 Lb. Bag, Each	<b>90c</b>
<b>COOKIES</b>	Regular 15c Size 3 Pkg. For	<b>25c</b>
<b>GRAPEFRUIT JUICE</b>	1-2 Gallon Cans Each	<b>19c</b>



**Tokay**  
Pound **5c**



**Potatoes**

No. 1  
10 Pounds **14c**

**BANANAS** Doz. **9c**

**LETTUCE** 3 Hds. **10c**

**FREE DELIVERY** **PHONE 71**  
**OATES FOOD STORE**  
**S-T-R-E-T-C-H YOUR FOOD DOLLAR**

**NEW ARRIVALS**



**WE HAVE THIS WEEK HAD AN ADDITION TO OUR  
STOCK—SHIPMENT OF ROSEVILLE POTTERY**

Bowls, Bud Vases, Pitchers, Book-ends, Candle-holders, and many other beautiful and useful items. Values range from—

**49c to \$2.50**

New Arrivals in the Gift Department Include Floating Candles, Hurricane Lamps, Glassware, Etc.

**WE CORDIALLY INVITE YOUR INSPECTION**

**WHITSETT'S  
DRUGS AND JEWELRY**

"Always ready to serve you"

Mr. and Mrs. Theron Anderson of Lubbock were guests Friday of Mr. and Mrs. Hervey Gardenhire. They brought his mother, Mrs. Gertrude Anderson, home from the hospital where she has been recovering from injuries received several days ago in a highway accident.

Misses Juanita Luttrell and Bernice Holt of Floydada are guests this week of Miss Vergie Luttrell.

Dr. and Mrs. Kenneth Campbell and son were here from Midland Sunday, visiting his parents, Dr. and Mrs. F. Campbell.

Miss Toylee McClinton of Lamesa spent the week-end here with Miss Beverly Wells.

Miss Nila Rae Miller spent the week-end in Turkey with friends.

Mrs. C. C. Schooler and Mrs. Bobbie Sloan were in Lubbock Monday.

Mr. and Mrs. J. L. Adams of Lubbock were guests of Mr. and Mrs. E. T. Wells Sunday.

Mrs. Gladys M. Stokes of Tahoka was here on business Monday.

Mrs. Burley Brewer will return from Fort Worth this week-end.

Mr. and Mrs. Elmer Burka were guests Sunday of her parents, Mr. and Mrs. R. E. Golightly.

Caech Ray DeBusk attended a special meeting of coaches and athletic directors in Lubbock Monday evening.

W. L. Palmer made a business trip to Fort Worth this week.



**The Santa Fe's 80th Birthday**

The Santa Fe was born September 17, 1860, in a tiny, one-story brick building in Atchison, Kansas. There thirteen men met to form "The Atchison and Topeka Railroad Company," with Cyrus K. Holliday, founder of Topeka, Kansas, as its first President.

**Beginnings**

Cyrus Holliday envisioned a great railroad that would supplant the slow and dangerous traffic over the old Santa Fe Trail—a railroad reaching deep into the prairies, piercing the mountains, ever serving and growing with the Southwest.

Those were stern, hard times on the new frontier. The drought of 1860, the Civil War and the post-war chaos, prevented construction until November, 1868, when ground was broken at Topeka. On June 23, 1869, the first Santa Fe train was operated from Topeka to Carbondale. The line was extended to Emporia in August of 1870.

**Westward**

Settlement quickened along the new right-of-way, as Santa Fe's land and immigration department pushed surveys west of Emporia. The rail reached Newton in July, 1871, and Hutchinson, Great Bend, Larned, Dodge City and the Colorado line in 1872.

**San Diego, Galveston, Chicago**

After 1876, many branch lines were constructed in Kansas. Settlers poured in. The main line was pro-

jected across New Mexico, Arizona and California. Colonization continued westward into those states and into Texas and Oklahoma. Santa Fe, New Mexico, was reached in 1880; San Diego, California, in 1885; Galveston, Texas, in 1886, and Chicago in 1887. Thousands of tourists followed the early settlers. The Santa Fe became the outlet for the innumerable products of a vast Southwestern area.

**Today**

Today, with 41,000 employes and 13,414 miles of track, the Santa Fe directly serves Illinois, Iowa, Missouri, Kansas, Oklahoma, Texas, New Mexico, Colorado, Arizona and California.

**The Santa Fe and the Southwest**

Down through the years the Santa Fe has endeavored to develop Cyrus Holliday's dream—a great pioneer's dream of that swift, sure transportation without which no frontier, no matter how rich, can hope to fulfill its destiny. In that effort we have marched shoulder to shoulder with the people of the Southwest, in good times and bad, in friendship and understanding.

On our 80th birthday, we of the Santa Fe pledge a continuation of the service ideals of its founders.

*E. E. Egan*  
PRESIDENT

# FOOD Specials

FRIDAY AND SATURDAY

SPUDS 10 Pounds <b>18c</b>	POST TOASTIES 2 Boxes <b>21c</b>	MATCHES 6 Boxes, No. 4 <b>12½c</b>
MACARONI or SPAGHETTI 3 For <b>10c</b>	CATSUP 14 Oz. <b>9c</b>	SOAP P & G or Crystal White 6 Bars <b>19c</b>
CLEANSER Can <b>4c</b>	OXYDOL 2½ Size <b>17c</b>	PAPER TOWELS 2 Packages—150 Sheets <b>25c</b>
PEANUT BUTTER ½ Oz. Jar <b>19c</b>	PRUNES Gallon <b>25c</b>	FRUIT COCKTAIL WHITE SWAN 2 Cans <b>25c</b>
PEACHES White Swan, No. 2½ 2 Cans <b>25c</b>	Ranch Style Beans 3 Cans <b>25c</b>	PORK & BEANS No. 1 Can <b>5c</b>
SYRUP Open Kettle, Pure Ribon Cane ½ Gal. <b>33c</b>	SALMON PINK—2 Cans <b>29c</b>	MUSTARD Quart Jar <b>10c</b>
TOILET TISSUE NORTHERN 3 For <b>19c</b>	RIPPLED WHEAT 3 Boxes <b>25c</b>	CORN Concho Brand 3 Cans <b>25c</b>
SWEET POTATOES New Crop, Pound <b>2½c</b>	PLENTY OF FRESH VEGETABLES	MACARONI or SPAGHETTI Franco-American Cream Sauce and Cheese 3 Cans <b>25c</b>

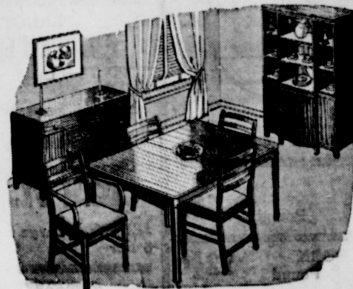
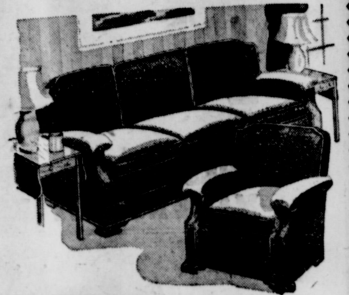
PHONE 50 **MANSELL BROS.** PHONE 50  
FREE DELIVERY WE DELIVER

## HERE'S THE NEW MODERN TREND

2 PIECE LIVING ROOM SUITE

For only—

**\$37.50**



A REAL BARGAIN

Eight Piece Walnut Dining Room Suite for—

**\$65.00**

COME IN AND LET US DEMONSTRATE THE NEW 1941 CROSLLEY RADIOS

**MANSELL BROS.**

### THE BIGGEST STOCK OF 100% NEW MERCHANDISE

Why go out of town to buy when you can get it at Sam's for Less SHOES FOR THE FAMILY

"A shoe for every foot—a style for every eye"



#### WEDGES

Patent and suede in straps. Regular \$2.98,

Now only—  
**\$1.98**

Wedge-heel pumps in Black suede, alligator trim.

**\$2.98**

#### JOLENE SHOES

Seamless pumps, all leather sole—

**\$2.98**

Genuine Alligator tie, military heel, regular \$6.00 value—

**\$2.98**

#### Children's Shoes

School shoes, dress shoes, all sizes—

**98c Up**

#### MEN'S SHOES

For Dress or Work  
**\$1.98 Up**

#### MEN'S CLOTHING

Matched Khaki Suits, Horse Hide Brand, sanforized, suit  
**\$1.98**

GABERDINE Suits \$2.98  
Walker Togs

#### OVERALLS

Con-ro Brand, 8 oz. **98c**  
Sanforized  
Boys sizes, 4 to 10 **59c**  
Boys sizes, 12 to 16 **69c**

#### SHIRTS

Mylan Brand Dress Shirts, \$1.25 value **79c**  
Chambray Work Shirts **49c**

#### MEN'S HATS

Davis and Beaver  
**\$1.95 TO \$4.95**

#### DRESSES

For all occasions, values up to \$5.00—  
**\$1.98**

Values up to \$1.25—  
Lady Fair Brand—  
**79c**

#### COATS

For Ladies', Misses' and Children—  
**\$3.95 to \$9.95**

#### HATS

Newest Models—  
**98c to \$1.98**

BAGS—\$1.98 values  
**\$1.00**



**SAM'S DRY GOODS**

## A VERY SIMPLE PROBLEM

Any school child can understand that there should be no school lunch problem or "what to eat" problem in a community where there is a Red & White Store.

Red & White food plus very little expense assures excellent meals just as surely as 2 plus 2 makes four.

Begin today to use your Red & White stores to supply your table or lunch box with the very best foods on the market, and at low cost.

The child who goes to school well-fed from pure foods, such as are always sold at your neighborhood Red & White stores, is better equipped to study and to learn.

So, for the sake of your family's health and happiness and for the sake of your pocket-book, begin now to save money and protect health and happiness by marketing the Red & White way!



**B & O CASH STORE**