

**Lots for Sale -- Down
Town area Ph 428-3832**

WHITE FUNERAL HOME

TAHOKA, TEXAS

DIAL 998-4433 DAY OR NIGHT AT TAHOKA

FOR RELIABLE and PROMPT SERVICE TO EACH and ALL

Martin and Billie White, Borden Davis, Sicensed F. D.'s

Tahoka Girls In Bi-District Play

Tahoka High girls, basketball champions of District 5-A, will meet the Wylie girls, champions of District 6-A there on Tuesday night March 1. Wylie is in the outskirts of Abilene.

Coach Jim Littlefield says arrangements were completed for the playoff game Thursday.

In a warm-up game Tuesday night at Post, the Tahoka girls lost to the Post Does 48 to 42. Post girls led all the way, but

the Tahoka girls almost caught up. Scores by quarters were 17-7, 29-25, and 37-30.

For Tahoka, Teresa Mason scored 15, Robbie Biggerstall 10, and Sue Woodall 9. On defense a good job was turned in by Linda Hale, Joy Thomas, Leah Short, and Brenda Foster.

For the Does, Marilyn Jones had 14 points and Johnson 12.

Mrs. Roy F. Smith had surgery at Lubbock last week.

Population of Phoenix, Arizona, quadrupled between the census of 1950 and that of 1960.



THE RIGHT NUMBER—Secretary of State Crawford C. Martin draws numbers from a hat to determine the sequence of 16 Constitutional Amendments on the general election ballot. The amendments, which contain a total of approximately 14,300 words, will be published four times each in Texas newspapers in August. Holding the hat is Mary Mae Hartley, associate editor of The Texas Press Messenger, official magazine of the Texas Press Association. The portrait is of Stephen F. Austin, the first Secretary of State for Texas in 1836.

Building or remodeling? Enjoy the wonderful, healthful comfort of

FLAMELESS ELECTRIC HEATING

LUXURIOUS WARMTH
Users say they enjoy a wonderful new feeling of comfort with flameless electric heat. It's so gentle, so even — without cold spots, drafts or sudden blasts of hot air. Just delightful warmth.

CAREFREE CLEANLINESS
Electric heat is clean because electricity is an energy, not a fuel. No flame! No soot! No fumes! Walls, curtains, woodwork and furnishings stay fresh and new-looking longer.

WORRY-FREE CONVENIENCE
No "get ready for winter" worries. No pilot to light. No change-over chores. You simply set the thermostat and let electricity take over the heating job, automatically, for winter-long warmth.

ALL-ELECTRIC ECONOMY
Electric heat is economical, especially when your home is all-electric and qualifies for our low Total Electric rate. This rate not only assures low-cost electric heating, but also year-around economy for other home energy uses.

Interested in truly modern heating for your home? Join the more than two and one-half million families in all geographical areas of the United States who now enjoy electrically heated homes. There is a size and type of flameless electric heating to fit your home and your budget. Come in and let us give you full information . . . soon!

TEXAS ELECTRIC SERVICE COMPANY

W. B. MITCHEL, Manager 428-3322

erase bumps



Chevrolet Impala Sport Sedan with Body by Fisher

JET-SMOOTHER THE CHEVROLET WAY



Soft contoured new Strato-bucket front seats come standard in Super Sports for relaxing comfort on every trip.

We added new bushings and softened body-to-frame mounts to smooth Chevrolet's ride. We put in soft-acting shock absorbers and soft-working coil springs at every wheel. By soft, though, we don't mean mushy. Chevrolet's Way makes for a smooth, solid ride. Very steady on curves. A bump jumps from the supple springs and shocks—and pffff! It all but disappears.



The powerfully smooth new Turbo-Jet V8 is available in all '66 Caprice, Impala SS, Impala, Bel Air and Biscayne models.

Eight features now standard for your added safety—including seat belts front and back (always buckle up!) and an outside rear-view mirror (always check in back before passing).



All kinds of cars, all in one place . . . at your Chevrolet dealer's: Chevrolet • Chevelle • Chevy II • Corvair • Corvette

ELLIS CHEVROLET CO.

Box 124 — Phone 8-3345 — O'Donnell, Texas



**delectable chic:
candy stripes**

Slimming shirtwaister tailored classically by Marcy Lee for casual wear this Spring. The fly front bodice conceals button fasteners. The drip dry fabric is 50% Arnel® triacetate and 50% Fortrel® polyester which resists wrinkles. White with brown, blue, gold or cherry stripes. Sizes 10 to 20.



Ellie's Fashions



24 Hour AMBULANCE SERVICE
403 N. Austin Ave., Lamesa, Texas, Phone 872-8335
OXYGEN EQUIPPED AIR CONDITIONED
BRANON - PHILIPS FUNERAL HOME
"DEDICATED TO HELPFULNESS"

Always . . .

A Complete Stock of
AUTO parts

WE ALWAYS APPRECIATE YOUR TRADE

**O'Donnell
Auto Supply**

BUCK ELLIS, OWNER

KNOW YOUR NAVY

HSS-1 HELICOPTER



THE "WHIRLY BIRDS" HAVE CUT THEMSELVES AN IRREPLACABLE NOTCH IN THE ANNALS OF NAVAL AVIATION. RESCUE WORK, CARGO CARRYING, SUBMARINE HUNTING, AIRBORNE INVASION AND CARRIER PLANE GUARDING (ANGELS) ARE ONLY A FEW OF THE TASKS TAKEN ON BY OUR "HELLO'S". THE HSS-1, LARGE AND MANEUVERABLE, IS USED PRIMARILY AS A SUBMARINE HUNTER... HOVERING OVER PREY LIKE A CAT STALKING A MOUSE.

Child Welfare Helpin gMany

(From Lynn County News)

Work of the Dawson-Lynn Child Welfare Unit of the State Department of Public Welfare since being set up in March, 1964, was told Rotarians at their meeting Thursday by Mrs. Jerry (Sandra) Cain, local case worker from the branch office in Lynn county court house.

The Agency works with unfortunate children when referred to them by the courts, other welfare agencies, doctors, schools, parents and others; but do not go out seeking cases.

These include a number of case types including such as abandonment, mentally retarded, physical handicap, trouble in school, conflict with the law, lack of love broken homes, exploitation, and unwed mothers and their children.

Child welfare operates on the thesis that every child is entitled to basic rights, opportunity, and protection against neglect, abuse, rejection, and exploitation.

Assistance is given in rehabilitation of children, placing of children in foster homes away from own home when necessary, planning for the unwed mother and child, helping solve delin-

quency and serious behavior problems, assisting the courts in adoption and contested custody cases, planning care for physically and mentally handicapped, seeking foster parents, etc.

One great need now in Lynn county is prospective foster parents.

Child Welfare is financed in this unit by Dawson and Lynn counties and the State on a 50-50 cost basis.

The first year, 423 children from 123 families were handled by the unit in the two counties at a cost of \$40.95 a year per child, which should be considered very economical compared with a cost of \$1,300 to \$1,800 in the state training schools.

Mrs. Vernon Cook is home from the hospital and improving nicely.

Mrs. Sid Jones visited at Lubbock Monday.

Mrs. S. A. Mensch is in a Lamesa hospital.

Guests in the home of Mrs. J. W. Gates last Monday and Tuesday were her brother and sister-in-law, Mr. and Mrs. Fred Gates, of Recluse, Wyo.

Mrs. Tom Tyler spent several days last week in Lamesa Hospital.

War On Weevil Proves Success

Lubbock—The 1965 High Plains Boll Weevil Control Program has been deemed highly successful by Texas A&M University entomologists who have monitored effectiveness of the project since it began in 1964.

The latest spraying effort resulted in a 99 percent reduction in overwintering boll weevils, according to Dr. Perry L. Adkisson, professor of entomology at Texas A&M and head of the research effort behind the program.

In 1964, the diapause control program resulted in a 90 percent reduction in overwintering weevils.

pest is credited to a two-phase spray program developed from research findings of Texas A&M entomologists.

The first phase of the new system in the second phase of the attack, applications were scheduled at 10 to 14 day intervals as in the 1964 effort, he said.

Adkisson presented the report Jan. 4 at a luncheon here hosted by Plains Cotton Growers, Inc. for cotton compress officials. The compress men have been instrumental in helping gather farmer's contributions for the program.

The control effort is designed to keep the weevil from attacking the rich cotton of the South Plains area. Under the program, aerial made to kill diapausing or hibernating weevils in an eight county zone bordering the eastern edge of the South Plains.

Adkisson estimated that with latest campaign against the cotton applications of insecticide are

The greater effectiveness of the gram almost 4,800 weevils per acre the last two year's control program would have gone into hibernation.

Bud Cross was home over the week end.

St. Pius X Catholic Church
 Sunday Masses: O'Donnell, 9:00
 Monday and Tuesday, 7 a. m.
 a. m., Tahoka, 11:00 A. M.
 Thursday, 7:30 P. M.
 Friday: 7 A. M., Sat. 8:30 A. M.

FIRST BAPTIST CHURCH
 T. Partain, Pastor
 Morning Worship 10:55 a. m.
 Sunday School 9:45 a. m.
 Training Union 8:00 p. m.
 Evening Worship: 7:00 p. m.
 Wednesday 7 P. M.

FIRST METHODIST CHURCH
 Church School 10:00 a. m.
 Morning Worship: 10:50 a. m.
 MYF and Children's groups at 8 p. m.
 Evening worship 7 p. m.

DR. O. H. NANCE
 Optometrist
 210 N. Houston Ph. 554
 OFFICE PHONE 8016

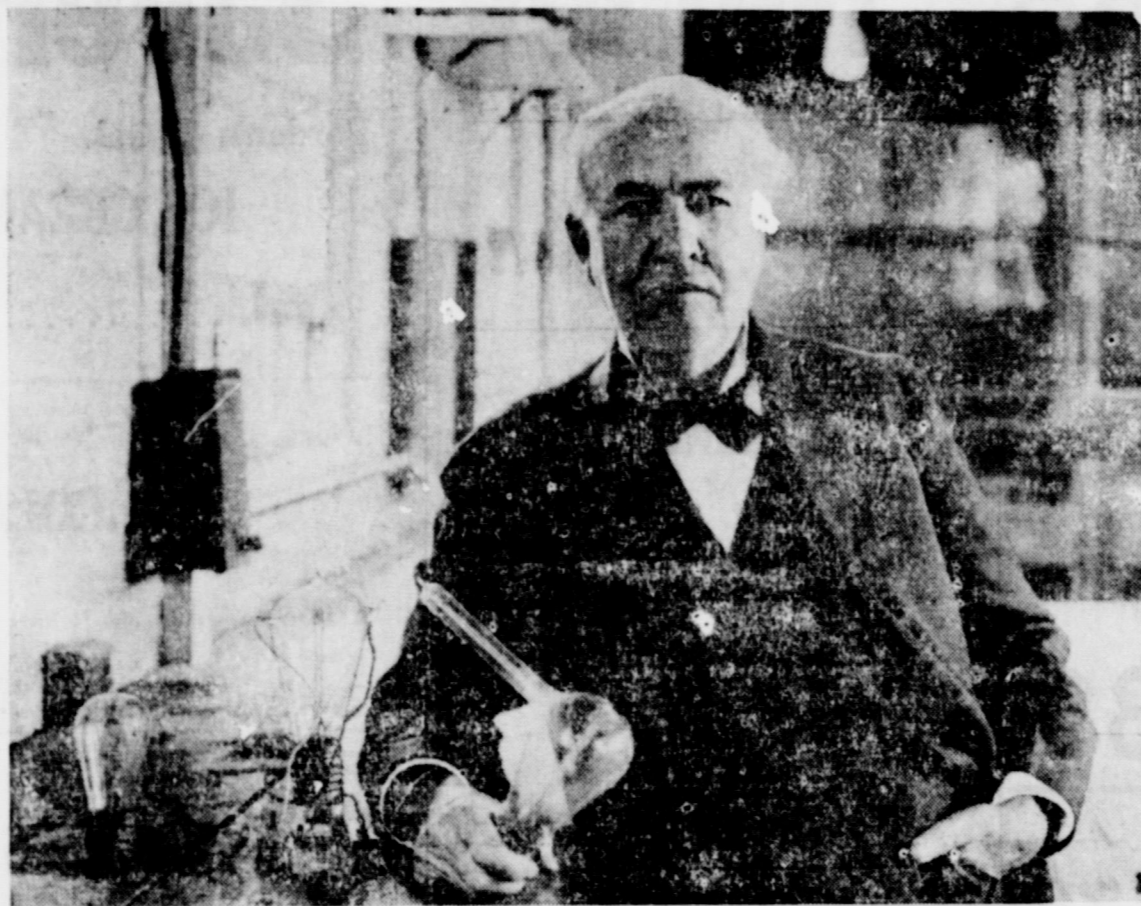
ASSEMBLY OF GOD
 W. E. HAHN, Pastor
 Sunday School 10 a. m.
 Morning worship 11 a. m.
 Evening worship 7 p. m.
 Thursday worship service 7 p. m.

SUBSCRIPTION rates \$2 a year in Lynn, Dawson and Borden counties - else where \$2.50 a year

BUY YOUR DAILY PAPER (BY MAIL) AT INDEX OFFICE:

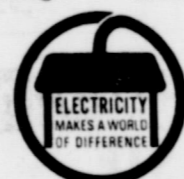


ZIP CODE 79351



He invented a better way of living...electrical living!

Thomas A. Edison, whose birthdate each year signals the observance of National Electrical Week, brought electricity out of the laboratory and into practical use for the benefit of mankind. His invention of the first practical incandescent lamp, and his many other inventions in the field of electric power generation and distribution, created a new way of life and a new



NATIONAL ELECTRICAL WEEK
 FEBRUARY 6-12

industry. Edison foresaw great things for electricity and for the electric industry he founded. And today business-managed electric companies, like Texas Electric Service Company, are making his vision come true... constantly planning, building and working to provide more and better electric service... for continued progress and for better living.

TEXAS ELECTRIC SERVICE COMPANY

W. B. MITCHEL, Manager 428-3322

YOU SAVE ENOUGH TO BUY

TWO MONTHS SUPPLY OF MILK

SAVE ON INSTALLATION AND MAINTENANCE, TOO.

A GAS clothes dryer costs less to install and maintenance costs are the lowest of any dryer. A GAS burner, the heart of your dryer, carries a lifetime guarantee.



WHEN YOU DRY WITH GAS

When you dry your clothes with GAS, you can save \$29.76 a year on your utility bill! That's enough to buy twenty-five gallons of milk... a two months' supply for an average family of four. You get quality performance, too. GAS dries your clothes faster... yet gently... and leaves them as fresh as springtime.

Pioneer Natural Gas Company



Moore Insurance Complete Insurance Service

Phone 428-3335 O'Donnell, Tex

ALL Fall Coats, Jackets, Suits and Dresses Now 1/2 PRICE ALSO Sportswear 1/2 Price Still a GOOD Selection ! ! Ellie's Fashions

QUALITY WORK AT REASONABLE PRICES

Kleenall

LAUNDRY AND CLEANERS Also Automatic Coin Operated Dry Cleaning Free Pickup and Delivery CALL 428-3744 (Across Street City Hall)

Ground Hog Day or Not O'Donnell has 3 More months of WINTER The Thrifty House wife will buy now on SALE for fall of '66 and winter Keep in amoth'proff bag with an odorles Spray from Hash CLENANERS OR CECIL ROYE BUY NOW FOR NEXT FALL

ELLIE'S

Blocker Grocery

SPECIALS FOR FRIDAY And SATURDAY
Your S. and H GREEN Stamp Store

Choice Chuck	2 Lb. Sack
Beef Roast 59¢ lb.	Sausage \$1.39
Choice Arm	All Meat
Beef Roast 69¢ lb.	Bologna 49¢ lb.

Jumbo Size Detergent
DASH \$1.89

6 Bottle Carton — Plus Deposit
Soda Pops 33¢

1/2 Gal. Carton — Borden's
Buttermilk 35¢

8 Lb. Bag — Idaho Russetts
POTATOES 39¢

12 Oz. Carton — Borden's
Cottage Cheese 19¢

No. 2 Can — Kimbell's — Plain, No Beans
Chili 55¢

1 Lb. Box Saltines — Cracker Barrel
CRACKERS 19¢

Flat Can — Del Monte Green Label Chunk Style
Tuna 29¢

Morton's Frozen — 8 Kinds to Choose From
T. V. DINNERS 3 for \$1.

12 Oz. Can — Frozen — Donald Duck
Orange Juice 3 for \$1.

Medicare Open To Citizens 65

College Station (Spl.) — More than 900,000 Texans over 65 are eligible for coverage under the Medicare program according to Mrs. Patsy Yates, Texas A&M University Extension family life education specialist. Mrs. Yates states that of this number, more than 55,000 Texans over 65 who are not now receiving social security or on welfare rolls are eligible. All persons concerned with the Medicare program should contact their local Federal Social Security Office now to obtain de-

tailed information. All senior citizens should know the provisions of the program. If you are 65 years of age or over—and not receiving Federal social security or State old-age assistance—it is important that you visit your Social Security office soon, the specialist says. "This means you, even if you are working full-time or if you are not receiving any social security benefits," Mrs. Yates explains. The Social Security Administration has advised that such persons are eligible for Medicare. Qualified persons will need to make a decision concerning the program before March 31.

We are interested in the sen-

ior citizens of Texas understanding any program that affects them—and the Federal Medicare program is one that is extremely important to them. Because of this, we urge that senior citizens who are not drawing State welfare or Federal social security contact their social security offices to learn the significance of the program to them", Mrs. Yates says. The local county Extension Service office advises eligible persons who desire detailed information about Medicare to contact their social security officer. He is Mr. Gerald Schantz, who maintains an office at Tahoka county courtroom on 1st and 3rd Mondays from 9:00 a. m. to 5 p. m.

Political Announcements

The following have authorized the Index-Press to place their names in the political announcements for the offices indicated:

For District Judge, 106th Judicial District:
TRUETT SMITH
For District Clerk:
W. M. MATHIS
For County Clerk:
C. W. ROBERTS
For Commissioner, Prec. 2:
GUS SHERRILL
For County Judge:
V. F. JONES
WOODROW (Ode) BREWER
For Justice of Peace:
HORACE BRUNETT
DAWSON COUNTY
For Commissioner, Prec. 2:
A. B. FURLOW

Mrs. Jack Brewer had surgery at Lubbock last week.

Mrs. Ruth Holman is in Lamesa Hospital.

LINE GROCERY & MARKET
— LINE UP WITH LINE —
WE GIVE FRONTIER STAMPS
Wednesdays — Double Stamps
O'Donnell, Tex. Phone 428-3841

1 Lb. Diamond OLEO, quarters	18c
1/2 Gal. Borden BUTTERMILK	35c
Pt. Borden COTTAGE CHEESE	19c
Sloppy Joe Beef - Pork BARBECUE	59c
5 Lb. Light Crust Yellow MEAL	39c
4 Lb. Dried PINTO BEANS	63c
Box of 12 JUMBO PIES	39c
303 Kimbell's Fruit Cocktail - 2 for	45c
2 Lb. COMET RICE	47c
Large PET - CARNATION	16c
All 5c CHEWING GUM — 3 for	10c
1 Lb. Maryland Club COFFEE	79c
1 Lb. Neuhoff Preferred BACON	89c
1 Lb. SMOKED JOWLS	49c
Good Lean PORK ROAST, Lb.	59c
CABBAGE, Good Firm, Lb.	27c
Large Pkg. Cello CELERY	7c
FRESH ONIONS, 2 bunches	15c

Money Savers

Sara Lee — Frozen
CAKES 79c

Morton Frozen
T. V. DINNERS
2 for 79c

Twin Pack — Decorated
PAPER TOWELS
39c

Folger's Instant — 6 Oz. Jar
COFFEE
Only 98c

Stripe — Family Size
TOOTHPASTE
Only 69c

Cannon
NYLON HOSE
2 Pr. — 99c Pk.
Only \$1.68

Borden's 1/2 Gal.
BUTTERMILK
35c

SUGAR
5 Lbs. 49c

Idaho No. 1
POTATOES
Pound 6c

Borden's 1/2 Gal.
ICE CREAM
1/2 gal. 59c

6 Crt. Pkg.
R. C. COLA
Only 31c
Plus Bottle Deposit

Kim — 200 Count
NAPKINS
200 Ct. 29c

MEATS
Chuck Wagon —
BACON
1 Lb. Pkg. 29c

Choice — Lb.
BEEF RIBS
Lb. 25c

Cudahy's —
BACON SQUARES
Lb. 49c

Choice — Lb.
CHUCK STEAK
Lb. 49c

MANSSELL BROS.

New Avail
New will go county letters The letters and Cl three range George sor and Com 4475 to be SF Mr. a grae license ty last 10,435 In c issued cars, and p and pi 61; n cycles, 504; a Tex factur Hunts of Col job of plates 11:10 prison on 19
Jol Ma
The missi recru cants. sion i cy fr Job (Qu inclu exam tiona boy 1 17 at rollm as a for 4 in al able his 1 rollm Th has ond catio the type Corp wect truci man; to li
M: ters City Snyder attos ten (M: movt pastc M: vielt Stand M: Seelt Smit Hu char ice t Ld gran Smit M: Mr a Frid