

CHURCH OF THE NAZARENE
 Sunday School 10 a. m.
 E. C. Pace, Supt.
 Morning Worship 11 a. m.
 N. Y. P. S. Service 7 p. m.
 Evangelistic Service 7:45 p. m.
 Mid Week Prayer Meeting
 Wednesday 8 p. m.

METHODIST NEWS
 Rev. H. A. Longino, pastor
 Sunday school 10:00 a. m.
 Morning worship 11:00 a. m.
 Evening worship 7:30 p. m.
 W. S. C. S. Faith Circle Mondays
 at 9:30 a. m. and Martha Marha
 Circle Tuesday 9:30 a. m.

FOR RENT: Very nicely furnished apt., air conditioned, no children, please; see Index
For sale 2 Maytag Mangles, one is almost new. Van's Laundry
Good line of feed and hay; price is right; W. R. Gibson Sep. 1
Send us your NEWS



Cashmere Twins
 THE CLOTHES MAKE the smiles, they say, especially on vacation and travel jaunts. Thanks to the new scientifically-made fiber fabrics, one's suit makes a smart landing in as fresh and neat a condition as when it started. This one, of Celanese acetate and rayon in a fine pin check features the shorter jacket-length, a double row of buttons, and a removable white linen collar.



Happy Landing
 THE CLOTHES MAKE the smiles, they say, especially on vacation and travel jaunts. Thanks to the new scientifically-made fiber fabrics, one's suit makes a smart landing in as fresh and neat a condition as when it started. This one, of Celanese acetate and rayon in a fine pin check features the shorter jacket-length, a double row of buttons, and a removable white linen collar.

Anyone having houses 4 rooms up to move, please see Joe Kirkpatrick Phone 98

For Rent: 7 houses, \$25 and \$30 per month; see Marvin Herman 208 N. 18th Lamesa, phone 3314 or see Mrs. Clyde Edwards in O'Donnell 4-p

Wanted to buy: used 2 row binders and broadcast binders, see Clyde Edwards.

For Sale: Alfalfa Hay, \$1.10 per bale. Harvey McKee 3tp

Wanted: your ironing. Mrs. Carroll Davis.

For sale: modern home, 4 rooms and bath, 150 ft. front, good well water, extra good buy. Walter Teeter.

Houses for rent: for sale 6 in. pump and 110 feet pipe; J. I. Scholer or Clayton Ins. Agency, 4tp

O'DONNELL UPHOLSTERY
 Draperies, Belts, Buttons, Buttonholes and Cornices
 Next door north of Index
Mrs. H. L. Wood

WELL AND WINDMILL
 REPAIRS
 JIM STOKES AND BUD PUGH
 BOX 514 O'DONNELL 4tp

Are you walking your legs off?



If so... it's time you modernized with a step-saving New Freedom Gas Kitchen. Write for your copy of the "10 Key Pieces to Modern Kitchen Planning." Address your card or letter to West Texas Gas Company in your city.



West Texas Gas Company
 HELPING BUILD WEST TEXAS SINCE 1927

Always . . .
A Complete Stock of
AUTO parts
 WE ALWAYS APPRECIATE YOUR TRADE
O'Donnell
Auto Supply
 BOYD SMITH, OWNER



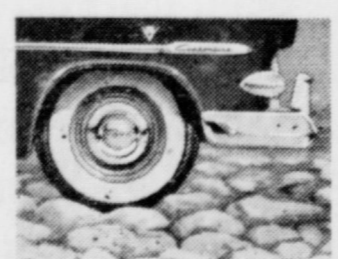
Parking's a pushover with Ford Power-Steering

It's a brand new Ford "Worth More" feature—costs up to \$40 less than any other power steering in its field and it's the newest and finest power steering.

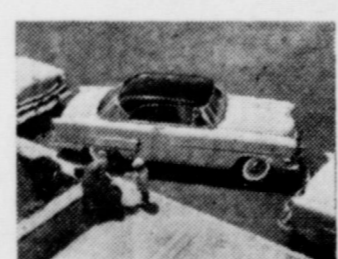
With one finger, while the car is standing still, a woman can turn the steering wheel. No longer will rough road ruts "throw you". Should ever a tire blow out, power steering assistance helps you to keep safe straight-line control. Ford Power Steering does up to 75% of the work; and it has a more natural "feel" than many others. You don't have to change your driving habits radically. The steering gear ratio is the same as without power steering and the hydraulic system gives you just the right assistance when you need it.



No change in driving habits! You would drive off in a Ford with Power Steering with absolutely no radical change in the way you ordinarily drive a car... just a lot less effort!



"Wheel Shock" reduced! With a hydraulic "cushion" between your steering wheel and the front wheels, Ford Power Steering noticeably reduces "wheel shock" on rough roads.



Parking is a pushover with Ford Power Steering. In fact, all driving is a lot easier and so much more relaxing. You can easily turn the wheel with one finger while the car is standing still.



You're safer! Even if a front tire should blow out, Ford Power Steering comes to your assistance... gives you the "muscle" to keep the car under control. That's really extra security!

TEST DRIVE THE POWER STEERING IN **Ford**
Forbes Motor Co.
 FORD Sales and Service Phone 92; O'Donnell, Tex.

Care Of Impetigo Given

Most parents know exactly what State Health Officer Geo. W. Cox means when he says "there is no such thing as natural resistance to impetigo."

They know, perhaps from bitter experience, that the same child can suffer repeated attacks of what Dr. Cox calls an "offensive, annoying skin infection."

Impetigo, a purulent, highly infectious ailment can be found in any age group at any time of the year. But children are unusually susceptible and most cases occur during summer. It isn't too serious, except on new born babies, but it can cause days of itching misery to afflicted youngsters and adults alike.

It's caused by a pus forming bacteria called staphylococcus, the same sort of germ found in boils and sores where pus is present. Usually it forms an unsightly crust over wide areas of the body and the material underneath is very infectious if allowed to get on other body parts. It can easily be transmitted to anyone who used the towel of an infected person since towel moisture permits the germ to survive. Children living in the most hygienic homes frequently get impetigo, although it probably is more common in homes where personal sanitation isn't considered too important. The best way to minimize the ill effects of impetigo is to keep the infection localized by preventing the serum under crusts from exuding into "clean" skin surfaces.

Church Of Christ

Raymond L. Copening, Preacher
 Sunday Services:
 Bible School at 10:00 a. m.
 Communion: 11:00 a. m.
 Preaching: 11:15 a. m. and 8 p. m.
 Young People meeting: 7:15 p. m.
 Tuesday: Ladies Bible Class at 3:00 p. m.
 Wednesday: Regular Bible Study at 8:00 p. m.
 All are welcome and encouraged to attend the classes pertaining to you.

FIRST BAPTIST CHURCH

Preaching Service 11 a. m.
 Praying Union 7 p. m.
 Evening worship 7:30 p. m.
 Wednesday nite
 Teachers meeting 7 p. m.
 Prayer Meeting 7:30 p. m.

Calvary Baptist Church

Sunday school 10:00 a. m.
 Morning service at 11:00
 B. T. C. 7:00 p. m.
 Evening worship hour 7:30 p. m.
 Wednesday, prayer meeting 7 p. m.

Assembly of God

Sunday School 10 a. m.
 Morning worship 11:00 a. m.
 Evening worship 7:30 p. m.

NOTICE
 EFFECTIVE THIS DATE WE ARE DISCONTINUING THE PICK-UP AND DELIVERY OF LAUNDRY.

VAN'S
 SOFT WATER

Laundry

Real Estate
 FAIRMS — RANCHES — CITY PROPERTY
 Leases and Royalties

B. M. Haymes

Lowest Priced and Finest Quality

PRINTING
 In West Texas
 (24 Hour Service)
 All prices 25 to 40 per cent less than elsewhere
THE INDEX

Donnell Index Press
Published Every Thursday by
O. G. SMITH, OWNER
Box B, O'Donnell, Texas
Entered as second-class matter
Oct. 25, 1923 at post office at O'
Donnell, Texas, under the Act of

NATIONAL 45C
RV. RATES: 40C LOCAL
Subscription Rates
First zone (Dawson, Lynn, and
Jordan counties) \$1.50
Other first zone \$2.00

MINIATURE PRESS ASSOCIATION

Drouth damaged ranges should
be restocked until the plants
have had a chance to make ade-
quate root growth and regain some
of the vigor which they have lost.

Recent studies show that rainfall
is short one year in five in the
eastern section of the state and
two out of five in the western
part or twice as frequent.

Stanley - Jones
Funeral Home
And Burial Association
Phone 233 Bx 185 Tahoka

Dr. Celeste Schaal
CHIROPRACTOR
Lubbock Highway
Phone 30 :: Tahoka

V. A. Quiz

Q. I expect to graduate from law school under the Korean GI Bill. After I finish, would I be allowed to take further training on the job in a law office for the study of clerkship?
A. You would be permitted to take this job training under the Korean GI Bill only if your State requires it as a condition that must be met before you may be admitted to the bar examination and to practice.

Q. I am a widow of a World War I veteran and I have a daughter, age 20, who is in school. The VA has been paying us a pension that covers us both. My daughter is planning to get married and drop out of school. Will she still be entitled to a pension?
A. No. Under the law she may not be paid a pension after she marries or drops out of school or both.



LOST YOUR POLICY?

IF you are one of our clients, do not worry. You are still protected. Just call on us for a FREE replacement. And while you are here, let us give you the advantage of another free service... a review of your present protection needs.

CLAYTON INSURANCE AGENCY
— LOANS —
PHONE 143

A. No. One of the requirements that must be met, for VA to pay premiums out of compensation is that your monthly compensation pay be at least equal to the amount of the premium.

Q. I have a 20 year endowment GI insurance policy. I have elected to receive installment payments, after the endowment period is up. What would happen if I die before I receive all the payments and I fall to name a beneficiary?
A. In such a case, the unpaid installments would be paid in one sum to your estate.

See me for house moving and general trucking; Bud Pugh

Sandblasters Defer To Washerwomen

FRANKLIN, Ind. — Housewives complained that grit from sandblasting operations at First Presbyterian church soiled washday clothes hanging on lines in the vicinity. The sandblasting contractor promised that operations would be halted each Monday—traditional washday. If it rains Monday, the work will be stopped on Tuesday.

Honor System Cools Elk Rapids, Mich.

ELK RAPIDS, Mich.—Residents here beat the heat on an honor system. The only ice house in town is a self-service affair. Prices are posted and a scale is provided. You step inside, select a block, weigh it and drop the money in a tin can.

Dr. O. H. NANCE
Optometrist
528 N. 1st Lamesa; ph 554

Now Available . . .
Safety Deposit Boxes
\$3.60, \$7.20, \$18
Annually, Tax Included
FIRST NATIONAL BANK
Of O'Donnell
Less Than A Penny A Day
Keeps Your Valuable Safe

Joe M. Lehman, M. D.
Medicine and Surgery
Hours 8 a m to 6 p m daily
Sunday: 9 a m to 11 a m
Office phone 134; Home 209



... PROVIDE PROPER STUDY LIGHTING

Your child's precious eyes will be protected from fatigue and eyestrain if you provide proper lighting for study and other seeing tasks in your home. Children cannot be expected to appreciate fully the importance of good lighting and what it will mean to them . . . but you will earn their gratitude in years to come by making sure they have the advantage of good lighting during formative years when it is so important.

Poor lighting and eyestrain can contribute to poor grades in school and the unhappiness that comes with a feeling of failure. Don't let this happen to your child. Provide the right size bulbs and study lamps, and enjoy the satisfaction of knowing that you are protecting the eyesight and happiness of your child.



It's easy and inexpensive to provide the proper study lamps and bulbs for sight-saving. See your favorite dealer today!

TEXAS ELECTRIC SERVICE COMPANY
J. H. LEMONS, Manager

LYNN COUNTY FARM BUREAU
Office at Tahoka Co-op gin on Post Highway; P. O. Box 297
Phone No. 528
We Attend to Your Insurance Needs
Gas Exemption Forms Filled Out for any Farmer FREE!
Office hours: 1 to 5 P. M. and Saturday Mornings

Vernon Cook
Expert Radio and T. V. Technician; Repairs of all Electrical Appliances; Wiring.
"No Job Too Large, Nor Too Small"
All Work Is Guaranteed

CALL OR COME BY
Moore Insurance
"For All Your Insurance Needs"
Phone 220

HIGGINBOTHAM FUNERAL HOME
"Dedicated to Helpfulness"
403 N. Austin St. Lamesa Phone 4535
24 Hour Ambulance Service
Burial INSURANCE "Boned Protection"

Look, Feel and Stay Young
DeLafield Reducing Plan
The 10 Day Quick Way
Wafers and Vitamins
Always A Line of Elizabeth Arden Products
Lott Pharmacy
Hugh Lott, Registered Pharmacist

Gibson's
CLEANERS
CLEANING
PRESSING
Alterations



You're "sitting pretty" behind the wheel
Take this Bel Air model. First thing you'll notice is the quality of the interior. Rich-looking appointments. Roomy seats with foam rubber cushions. Turn the key to start the engine and you're ready to go.

You can see all around
You look out and down through a wide, curved, one-piece windshield. The panoramic rear window and big side windows provide a clear view in all directions.

And it's the lowest-priced line
A demonstration will show you that Chevrolet offers just about everything you could want. Yet it's the lowest-priced line in the low-price field.



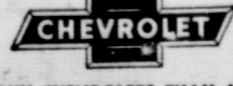
Biggest brakes for smoother, easier stops
An easy nudge on the pedal brings smooth, positive response—right now! Chevrolet's improved brakes are the largest in the low-price field.



I figure this demonstration saved me many hundreds of dollars!

I expected to pay that much more for a new car until I discovered I was better off in every way with this new Chevrolet!

Let us demonstrate all the advantages of buying a Chevrolet now!



MORE PEOPLE BUY CHEVROLETS THAN ANY OTHER CAR!



You get greater getaway with the new Powerglide*
A lot finer performance on a lot less gas. That's what you get with the new Powerglide automatic transmission. There's no more advanced automatic transmission at any price.

You get more power on less gas
That's because Chevrolet's two great valve-in-head engines are high-compression engines. In Powerglide* models, you get the most powerful engine in Chevrolet's field—the new 115-h.p. "Blue-Flame." Gearshift models offer the advanced 108-h.p. "Thrifty-King" engine.



It's heavier for better roadability
You're in for a pleasant surprise at the smooth, steady, big-car ride of this new Chevrolet. One reason is that, model for model, Chevrolet will weigh up to 200 pounds more than the other low-priced cars.

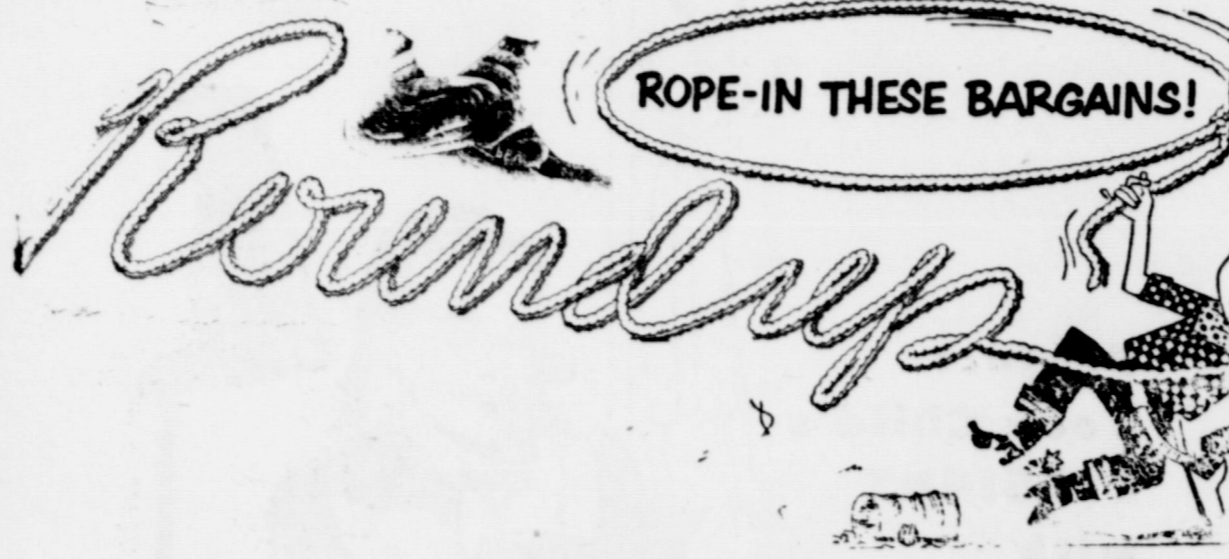
*Combination of Powerglide automatic transmission and 115-h.p. "Blue-Flame" engine optional on "Two-Ten" and Bel Air models at extra cost.

Ellis Chevrolet Co.
Chevrolet Sales and Service—: O'Donnell, Texas

BLOCKER GROCERY

"Trade Goes Where Invited, Stays Where Treated Best"

SPECIALS For Friday and Saturday



TEA 29c Lipton's; 1-4th lb box	Kleenex 19c 300 Count
Blackberries 2 for 45c No. 2 can	Beef Roast 39c Choice cuts lb
Peas 19c 303 can; "Del Monte" Early Garden	Beef Ribs 25c PER LB
Tomato Juice 25c 46 oz. can "Del Monte"	Hamburger 29c FRESH GROUND per lb
Coffee 86c "Admiration" 1 lb can Reg. or drig	Fresh dressed Fryers
FAB 25c Large Box	

TRADE WHERE MA SAVES MONEY FOR PA
We Reserve The Right to Limit. Nothing Sold to Merchants to be re-sold

Nutrition Expert Sees No More 'Three Meals'

AUBURN, Ala.—The usual American custom of three meals a day is not necessarily the best eating schedule.

Mary Hulsey, API extension nutritionist, explains that some people, often the elderly, feel better if they eat more frequently, but less at a time. They may prefer to divide their daily fare into four or five meals instead of three. Or some food may be saved out for snacks between meals or at bedtime.

"However," warns Miss Hulsey, "older people who eat frequently need to guard against two hazards. First, don't spoil the appetite for milk, fruit, vegetables, and other needed food by filling up on toast and tea or cake and coffee. Second, don't overeat and become overweight."

The specialist adds that growing children, active workers, and underweights also may benefit by between-meal snacks. Non-appetite spellers that give children nourishment for active play are a glass of milk, a sandwich, fruit, or a hard-cooked egg.

The best fertilizer dollar which is spent is the one going for a soil analysis.

Country Editor

We have heard estimates as to the loss in town and area population run as high as 35 to 40 percent. However it seems from current school enrollment, a check of vacant houses (69) in town, utility connections and staking with rural mail carriers that the above estimate is on the high side.

"Weighing" the 16 percent drop in school attendance from last May we believe the town has lost not more than 25 percent in population while while the rural area is slightly higher at not more than 27 percent. Considering the 3 year drought and especially the economic conditions of this year, it is surprising that the drop has not been more.

Last week's rain of 1.7 in. will insure some sort of feed crop for a large part of this trade area and a late freeze may see a very GOOD feed crop and a LACK of labor to harvest it. Could be!

The B. B. Foremans have moved to near Plainview.
Odie Line of Dallas spent Labor Day here.

Assembly of God Continued from front page.

you called "The Parson's Prayer." I do not ask That crowds may throng the temple That standing room be priced: I only ask that as I voice the message They may see Christ!

I do not ask For church pomp or pageant, Or music such as wealth alone can buy; I only pray that as I voice the message He may be nigh!

I do not ask That men may sound my praise, Or headlines spread my name abroad; I only ask that as I voice the message Hearts may find God!

Sincerely, Yours in the Master's Service, Rev. and Mrs. Louis O'Donnell Assembly of God Church Methodist Church

Methodist Church Continued from front page

the community. Other churches were loyal in their attendance and contributions to the evangelists. We are grateful for the fine spirit of cooperation thruout.

The remaining important meetings of this week are: The Methodist Men on Wednesday evening at 8:00 p. m. and the official board having each of the commissions meet jointly on Thursday night at 8 p. m. "Methodist Men" is open to any man who wishes to attend. The Board is calling for its members.

Now that the evangelists have gone on their way, it is our task to carry on from this high vantage point to other achievements. We invite any person, without a church home to worship with us, and we will sincerely try to do you good.

H. A. Longino, pastor.

IRRIGATION AND TEST WELL DRILLING

A. and C. Pumps
Waukesha Motors
A. and M. Sprinkler Systems
Complete Turn Key Job
For a free Estimate Call
Jimmy Schooler or
Elmo Davis at 4556 Lamesa.
WATER WELL SUPPLY
508 So. Dallas St.
LAMESA

Wanted to buy: used 2 row binders and broadcast binders, see Clyde Edwards.

For Sale: Alfalfa Hay, \$1.10 per bale. Harvey McKee 81p

FOR RENT: Very nicely furnished apt., air conditioned, no children, please; see Index

For sale 2 Maytag Mangles, one is almost new. Van's Laundry

Good line of feed, prairie alfalfa hay; W. R. Gibson

Get In our BIG LAY AND PAY CONTEST

Pick The Best Pullet And WIN A PRIZE

Come in and see the pullets who will be competing in this Purina egg laying contest until November 30th. These birds were selected from flocks managed by your friends and neighbors in this area. All you have to do is pick the pullet that will lay the most eggs in September, October, November and December. Entry blanks are available at our store.

TRY FOR ONE OF THESE FINE PRIZES:

Electric Corn Popper, 1st prize
Electric Alarm Clock, 2nd prize
Salad Bowl Set, 3rd Prize

This contest is just our way of proving the value of feeding the Purina Way for lots of big early eggs.

ENTER NOW . . . Entries must be in by November 30th. Contest Closes December 31, 1953

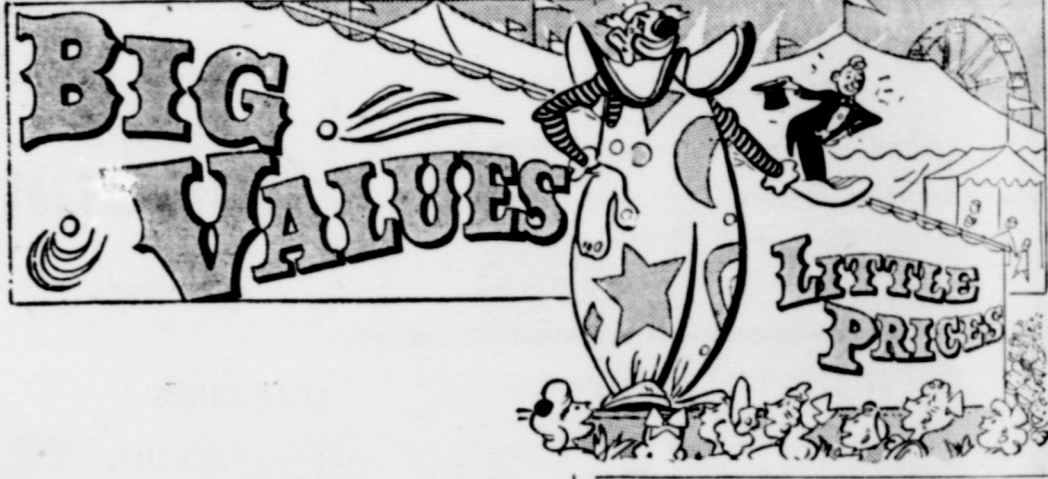
ED JAMES FEED STORE

Specials For Friday and Saturday

10 lb Aunt Jemima Flour	98c
LEMONS, big and juicy lb	15c
Cantalope, home grown lb	15c
Fresh Corn per ear	4c
1-4th lb Monarch TEA	15c
1-2 gal. Pure ribbon cane syrup	59c
KIM Dog food 3 cans for	25c
1 lb 8 oz. Tex-O-Maid pure peach preserves	33c
3 lb Swift's Jewel Shortening	70c
14 oz. Kuner Catsup	18c
Colored Oleo lb	20c
Good, lean, pork chops lb	59c

Line Cash Grocery And Market

Plenty of parking behind the store; come in and shop with us WE DELIVER PHONE 118



Biscuits 2 for 25c

Crackers 24c
...1 lb box Sunshine

Milk 4 for 25c
PET; Small cans

Raisins 18c
15 oz. pkg, new crop, A. P. Brand

Cheese 2 lb 89c
Kraft; Velveeta

Catsup 2 for 49c
14 oz. Bottle Heinz

Tomato Juice 2

for 25c
No. 2 can Del Monte

Treet 49c
Armour's lunchmeat 12 oz. can

Tuna 19c
Tuxedo Brand

TIDE 27c
Large Box

AJAX 2 for 25c
Cleanser

Beef roast 49c
U. S. Good per lb

Ground meat 29c
Good lean, per lb

Lunch meat 59c
Assorted, per lb

FRESH FRYERS

MANSSELL BROS

PHONE 50

SPECIALS FOR FRIDAY AND SATURDAY
FREE DELIVERY

PHONE

Modernize Your Home

From \$60 to \$2,500.00
No Down Payment
No Red Tape
Lower FHA Rate
Up To 36 Months To Pay
Small Monthly Payments
Add Rooms
Garage
Insulation
Painting

Reroofing
Plumbing
Weatherstripping
Miscellaneous
Repairs

BRING US YOUR NEEDS TODAY

Cicero Smith

LUMBER COMPANY
Don Edwards, Mgr.

John A. ...
Mrs. N. Sal ...
Bill Schoo ...
Mrs. W. ...
Mrs. Lydi ...
Mr and M ...
Mrs. Dais ...
Mrs. Era ...
Mrs. E. ...
Mrs. Hof ...
Mrs. Chas ...
Mr and N ...
Mrs. J. O. ...
Mr. and P ...
Dr. J. F. ...
Mrs. E. L. ...
C. L. L. ...
Look ...
Congratul ...
Bully Har ...
He is nam ...
Congratul ...
Earl Wingf ...
He weigh ...
David Pa ...
Visitors ...
Home last ...
Command ...
fn. Sandr ...
who have ...
two year ...
ama and ...
Corpus Ch ...
Lawson and ...
Lubbock, ...
Long Beach ...
H. M. Nix ...
Cocher of ...
and Mrs. C ...
and Mrs. C ...
Don of here ...
Visitors ...
Mrs. C. C. ...
week were ...
Christopher ...
Six and boy ...
Coward, Lt ...
R. Giffin ...
Sunnally ...
The P. T. ...
High school ...
at 2:30 ...
the Thirti ...
ent. Plans ...
were set for ...
and social ...
parents an ...
attend these ...
Tom Holc ...
rising his ...
monds. ...
Borden P. ...
The Bor ...
School P. T. ...
Mrs. Ben ...
presiding. Th ...
lined. The ...
and the man ...
The by-laws ...
proved. A \$...
the room wh ...
and fathers ...
the Family ...
ings. Projec ...
Supervised ...
Co. youths a ...
books to the ...
shelf. ...
Announce ...
Family Fun ...
at 8 p. ...
Hertenber ...
creation lea ...
for and by ...
are to be ...
and cups to ...
P. T. A. Th ...
vited to atte ...
W. S. C. ...
The W. S. ...
odist Chure ...
being presen ...
Joint meetin ...
vice Guild ...
covered dist ...
8:30 p. m. ...
the next fou ...
W. Gardenh ...
W. S. C. 8.