



## Deep Breaking

**ROOT CUTTING**      **BULL DOZING**  
**IHC TD24 TRACTORS**      **TOWNER PLOWS**  
 PHONE 4983 - 3818      **LAMESA, TEXAS**  
**M. C. ROBERTS**      **MANAGER**

**PREINVENTORY SALE**  
**QUALITY MERCHANDISE**  
 --We Buy By Carload And Can Sell Like Wholesale  
 Everything In Hot Point Appliances  
 Tappan Ranges  
 We Specialize In Home Freezers  
**\$100.00 OFF On All Home Freezers**

## Amos Supply, Lamesa

See . . .

## Singleton Appliance

For All Your Needs In

- ★ Plumbing Fixtures and Supplies
- ★ Gas And Electric Ranges
- ★ T. V.'s And Radios
- ★ Refrigerators And Deep Freezers
- ★ Lineolium Rugs

. . . Our staff includes Vernon Cook and Joe Burkett for T. V., Radio and other Electrical Work, and wiring, and Joe Mahurin, for Plumbing.

## Singleton Appliance

Come to see us at our New Location

### CHURCH OF THE NAZARENE

F. M. Page, Supt.  
 Jack C. Pischel, Pastor

'The Church That's Interested in YOU'

Sunday School . . . . . 10 a. m.  
 Morning worship . . . . . 11 a. m.  
 N.Y.P.S. . . . . 7 p. m.  
 Evangelistic service . . . . . 7:30 p. m.  
 Prayer Service, Wed. . . . . 7:30 p. m.

House Moving: Bud Pugh 3-13

### Assembly of God

Sunday School . . . . . 10 a. m.  
 Morning worship . . . . . 11 a. m.  
 Evening worship 7:30 p. m.

---o---

Want to sell, buy or trade . . . . . four bits will tell your story to 925 guaranteed readers in this area. No other medium of advertising has this CONCENTRATED coverage. The Index.

### Church of Christ

V. J. Cullum, Minister

Sunday  
 Bible School . . . . . 10 a. m.  
 Morning Worship . . . . . 10:45 a. m.  
 Young People . . . . . 6:15 p. m.  
 Evening worship . . . . . 7 p. m.  
 Tuesdays: Ladies Bible Class at 2:30 p. m.  
 Wednesday: Bible Study and Worship at 7:30 p. m.

### FIRST BAPTIST CHURCH

'The Friendly Church With A Message'

Sunday  
 9:45 a. m.: Sunday School  
 10:55 a. m.: Morning Worship  
 5:30 p. m.: Youth Choir Practice  
 6:30 p. m.: Training Union  
 7:30 p. m.: Evening worship  
 8:30 p. m.: Youth Fellowship

Monday  
 3:00 p. m. Women's Missionary Society  
 2:30: School Age Sunbeams  
 3:00: Pre-school age Sunbeams  
 First and Third Tuesdays: 7:30 p. m. Brotherhood  
 Wednesdays  
 7:30 Officers and Teachers meeting  
 7:30: Prayer meeting  
 8:30 Choir Practice

### METHODIST NEWS

J. Marvin Menefee, Pastor

Sunday school . . . . . 9:45 a. m.  
 Morning Worship . . . . . 10:55 a. m.  
 Evening Fellowship for all age groups . . . . . 6:15 p. m.

Evening worship . . . . . 7 p. m.

The Wesleyan Service Guild meets each first and third Thursday nites at 7:30 p. m.

The W.S.C.S. Faith circles meets Monday mornings at 9:30

Mary Martha circle meets on Tuesday mornings at 9:30

Choir practice each Wednesday nite at 8 p. m.

Methodist Men meet each Third Monday for supper meetings and program at 7 p. m.

Laugh a little every day- it is the straight road to the best there is in life.

Some men's idea of practicing economy is to preach it daily to their wives.

The greatest trouble with this modern living is to keep our ambitions pinned down to our salaries.

Considerations for the rights of others is the strongest link in the chain of human friendship.

### O'Donnell Index - Press

Published Every Wednesday  
 (Rain Or Shine)  
 O. G. SMITH, JR.  
 Box B, O'Donnell, Texas

Entered as second class matter September 23, 1923 at Post Office at O'Donnell, Texas under Act of Congress March 3, 1879.

Advertising rates: Local 45c and National 45c per column inch.

SUBSCRIPTION RATES  
 In Lynn, Dawson and Borden Counties . . . . . \$1.50 per year  
 Elsewhere . . . . . \$2.00 year  
 Card Of Thanks 50c Classified Advertising 2c per word with minimum charge 50c  
 Read label at top of paper to see when your paper expires.

## Arthur L. GOLDEN

★ ★ ★



**OF PERRYTON**  
 Former Minister of the Local  
**CHURCH OF CHRIST**

Will begin a **GOSPEL MEETING** in  
**O'DONNELL CHURCH OF CHRIST**  
**FEBRUARY 28th and continue thru March 9th**

★ ★ ★

★ Services will be conducted daily at 7 a. m. on Week Days and at 7:30 p. m.  
 On Sunday services will be as follows:

Bible School . . . . . 10 a. m.  
 Worship ( Morning) . . . . . 10:45 a. m.  
 Young People's Class . . . . . 6:15 p. m.  
 Evening Worship Services . . . . . 7 p. m.

★★ We cordially invite everyone to attend these Gospel Meetings with us.

### TIP TO MOTORISTS

Every time you run a traffic light you're betting your life against a few seconds time.

People cannot be judged by what others say about them, but they can be judged by what they say about others.

Any person who accepts favors from others is placing a mortgage on his peace of mind.

## REX

Wed. and Thurs.

Feb. 23rd and 24th  
 Jane Russell and Gilbert Roland in  
**The French Line**  
 In Technicolor

Friday and Sat.

Feb. 25th and 26th  
 Sterling Hayden in  
**The Asphalt Jungle**

Sunday and Mon.

Feb. 27th and 28th  
 Margaret Lockwood and Orson Welles in  
**Trouble in the Glen**  
 In Trucolor



The beautiful Bel Air Sport Coupe with Body by Fisher

## It's highway robbery!

For sheer fun out on the road, Chevrolet's stealing the thunder from the high-priced cars!

Up to this year, maybe there were reasons for wanting one of the higher priced cars. If you demanded something extra in driving fun . . . something really special in the way a car handled and felt and responded to your wishes . . . you simply had to pay a premium to get it.

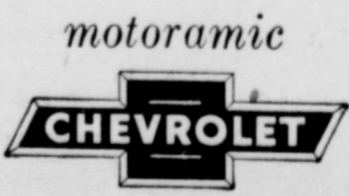
Not any more! The Motoramic Chevrolet for 1955 has changed all that. In fact, it's stealing the thunder from the high-priced cars on their own home-grounds—out on the highway.

Talk about excitement! You have 162 high-compression horsepower under the hood with the

new "Turbo-Fire V8" (180 h.p. is optional at extra cost in all V8 models if you want it.) Or you can take your pick of two new "Blue-Flame" 6's—the hottest, highest powered sixes in the low-price field! Any one of these three engines brings you all the good things that come from Chevrolet's long leadership in valve-in-head design.

As for drives, just name it. Chevrolet offers new Overdrive, Super-Smooth Powerglide (extra-cost options), or a new and finer Synchro-Mesh transmission.

You're headed for fun in the Motoramic Chevrolet! You're headed for a ride such as you'd expect only in highest priced cars. You're headed for "heads up" stopping, too, and easier steering. All this, with Chevrolet's traditional economy. Come in and put this "show car" on the road!



## ELLIS CHEVROLET CO.

CHEVROLET SALES AND SERVICE

O'Donnell, Texas

### McILROY CLINIC

R. D. McILROY, N. D.  
 Phone 538      2200 N. Main St  
**Tahoka**

---

Dr. O. H. NANCE

Optometrist

528 N. 1st Lamesa ph. 554

---

Try Our Old Fashion  
**PIT BARBECUE**  
 We are prepared to  
 Barbecue your Chickens  
**LAMBERT'S Grocery**  
 Barbecue Lunches 75c  
 Mellorine 1-2 gal. 59c  
**M. L. ISSACS, Mgr.**

---

Joe M. Lehman, M. D.

Medicine and Surgery  
 Hours 8 a m to 6 p m daily  
 Sunday: 9 a m to 11 a m  
 Office phone 134; Home 209

Stanley - Jones  
**Funeral Home**  
 And Burial Association  
 phone 233 Bx 185 Tahoka

---

## VAN'S

SOFT WATER  
 Help-Your - Self  
**Laundry**

### Real Estate

FARMS — RANCHES —  
CITY PROPERTY  
Leases and Royalties

B. M. Haymes

We all have to play life's game with the hands dealt us, so why expect a reshuffle.  
It's much better to look ahead and prepare than it is to look back and regret.

For qualified plumbing . . .

JOE MAHURIN at  
SINGLETON APPLIANCE

#### SHOP OUR . . .

February 15th thru 28th

Here's a few of our many bargains:

- ★ 3 Big Boxes of Tissue only 67c
- ★ S1 Hair Brush only 67c
- ★ Cara Nome Hand Cream reg. \$1.25 Value on sale at only 63c

\$4.49 Heating Pad on Special at only \$2.99

And Many other special values

**PRESCRIPTIONS**

## Lott Pharmacy

Hugh Lott, Registered Pharmacist

### O'Donnell FARM AND RANCH STORE

L. G. Clark Owners C. A. Doss

Complete Line PAYMASTER FEEDS

A Complete Line of FIELD SEEDS

"In Business to save you money"

## Lynn County Farm Bureau

Office in McElroy Bldg; 1649 Sweet St.

Tahoka Phone 528

We Attend to Your Insurance Need.

Gas Exemption Forms Filled Out for any Farmer FREE!

BRACEROS FOR YOUR FARM LABOR

FARM BUREAU INSURANCE SERVICES

Auto - Fire - Life - Polio - Blue Cross, Blue Shield Farm Liability

Office Hours: 9 to 5 Six Days a Week

Effective Jan. 8th the Office Hours Will be changed to 9 to 12 on Saturdays.

### DENTAL WORK IMPORTANT

There are some 300 million dental cavities in United States children, and the backlog is increasing at the rate of about 40 million a year. The toll of dental disease is a particular tragedy because the knowledge to reduce the high incidence



ONE - POINT LANDING:

THE POINT?

It may cost you hundreds of dollars if someone is injured on your premises!

Before that someone lands on your wallet, let us provide you with Comprehensive Personal Liability Insurance. Approximately \$10,000 of protection for about \$10.

#### LOANS —

CLAYTON

INSURANCE AGENCY  
PHONE 148

## Gibson's

CLEANERS

CLEANING

PRESSING

Alterations

of tooth decay is at hand, according to Dr. Henry A. Holle, State Health Officer.

One of the chief reasons for the decay toll is the heavy consumption of sweets, he said. Sweets are readily fermentable and offer a good nutrient for bacteria to manufacture enamel-destroying acid.

Dr. Holle urged that parents offer fruit or popcorn or cheese to children instead of jams and pastries for between-meal snacks.

The ritual of toothbrushing is still one of the most effective methods of preventing decay, Dr. Holle said. However, he added, the brushing should be done immediately after eating rather than on arising in the morning and on retiring at night.

"In addition to the toothbrush, fluoridation of water promises to help reduce substantially throughout a lifetime the dental crippling that now plagues the adult generation," Dr. Holle said.

As part of the preventive program, children should be taken to the dentist as soon as their first teeth are in, said Dr. Holle.

The dentist and the young patient can thus become acquainted under favorable circumstances, free of any discomfort. This type of introduction is much better happier and more productive than one in which the child is suffering from a tooth ache caused by dental neglect, he added.

Many a fellow knocks himself out trying to keep up with his good intentions.

Often the fellow with money to burn lives to rake the ashes.

A man's character can be judged by the elevation of his head.



The Methodist Church is opening a crusade for all members to attend Church and Sunday School every Sunday.

Lowest Priced and Finest Quality PRINTING In West Texas All prices 25 to 40 per cent less than elsewhere

THE INDEX

### For CAR CARE

2 OUT OF 3 MOTORISTS MISTAKENLY RE-USE "PERMANENT-TYPE" ANTI-FREEZE LONGER THAN ONE WINTER!

CORROSION DAMAGE CAN RESULT UNLESS.....

RADIATORS ARE FLUSHED AND CLEANED EACH SPRING. NATIONAL BUREAU OF STANDARDS WARNS.....

AGAINST CONTINUED USE OF OLD ANTI-FREEZE. HOSES, RADIATOR, THERMOSTAT, PUMP, ETC. SHOULD BE CAREFULLY EXAMINED DURING SPRING CHECKUP

FRESH WATER AND A RUST INHIBITOR SHOULD BE ADDED TO COOLING SYSTEM TO INSURE TROUBLE-FREE SUMMER DRIVING.

RENEW YOUR SUBSCRIPTION

## 20 New Maytags

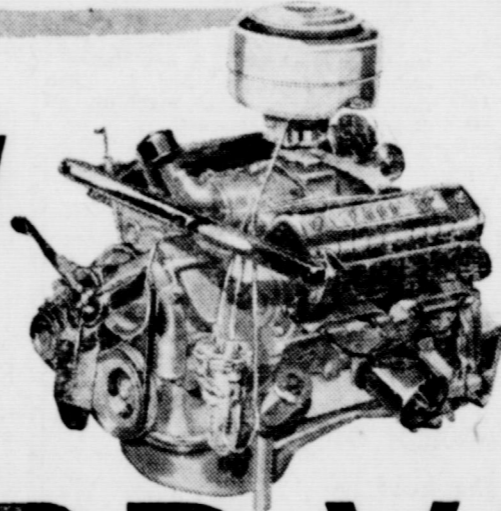
★ For Your Washing Pleasure PLENTY OF SOFT, HOT WATER ENJOY YOUR WASH DAY AT

### Shillingburg Laundry

308 South 4th St. In Lamesa

# Get a proved V-8

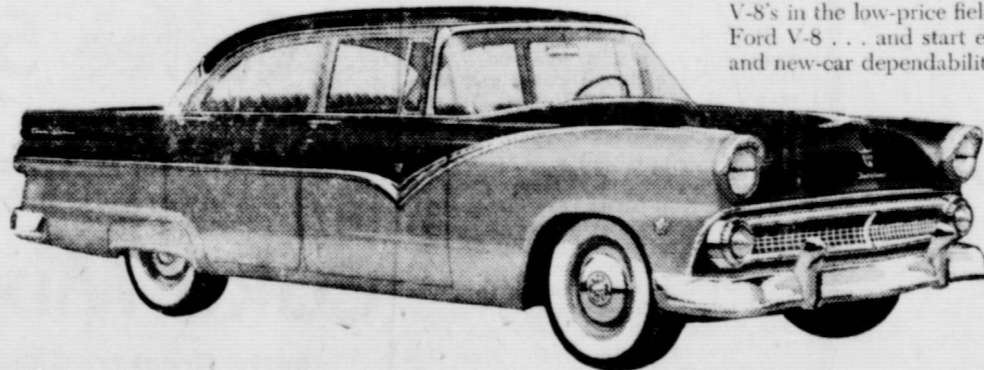
# NOW



# ... a FORD V-8

Built by the world's greatest builder of V-8's

Ford has built more V-8 engines than all other manufacturers combined . . . over 14,000,000! And this tremendous V-8 experience has enabled Ford in '55 to turn out in quantity the finest V-8's in the low-price field. So why wait? You can get a proved Ford V-8 . . . and start enjoying its brilliant new performance, and new-car dependability right now!



Enjoy Ford's new Trigger-Torque Power

For '55, Ford offers the brilliant-performing new Y-block V-8 and the even more powerful Y-block Special V-8. Both deliver Trigger-Torque power, which means you get the power you want when you want it, throughout the entire driving range of your car. With new Trigger-Torque Power you can have split-second starts . . . faster passing ability for a greater feeling of security . . . top-notch response at all speeds. And with Ford's high-compression, low-friction design and

deep-block construction, you can enjoy smooth performance and long engine life.

Relax in the smooth comfort of new Angle-Poised Ride

Ball-Joint Front Suspension, which Ford introduced in its field last year, has proved itself over billions of miles. For '55 it is still better. Springs are set at an angle to absorb shock from the front as well as straight up. This provides delicate

responsiveness to cushion tiny bumps as well as husky "muscle" to flatten big bumps.

Take your pick from 16 brilliant new Ford Models

This year, you get Thunderbird-inspired styling in any Ford you choose. And there's a variety of exciting new single and two-tone body colors with charmingly color-keyed Luxury Lounge Interiors.

Come in for a Trigger-Torque Test Drive!

F.C.A.

## FORBES Motor Co.

FORD Sales and Service

Phone 92, O'Donnell, Texas

PAY BY CHECK

and save money

When you pay by check you automatically have a record of your spending. So you can quickly discover and eliminate any leaks that take part of your money without an adequate return. This is but one of the benefits of carrying a convenient checking account at this bank.

MEMBER OF FEDERAL DEPOSIT INSURANCE CORPORATION

## First National Bank Of O'Donnell



HIGGINBOTHAM FUNERAL HOME

"Dedicated to Helpfulness"  
408 N. Austin St. Lamesa Phone 4586  
24 Hour Ambulance Service  
Burial INSURANCE "Bonded Protection"

# BLOCKER GROCERY

"Trade Goes Where Invited, Stays Where Treated Best"

## SPECIALS For Friday and Saturday



**Coffee 89c**

Reg. or Drip; "Folgers" 1 lb can

**Biscuits 4 cans 29c**

"Ballard" or "Pillsbury's" 4 cans

**Potatoes 29c**

U. S. No. 1 Red 10 lb bag

**Oranges 29c**

Texas; 5 lb plastic bag

**Tomato Juice 3 for 35c**

No. 2 can "Del Monte"

**Tissue 4 for 33c**

Charmin 4 roll pkg.

**Peaches 25c**

"Hunt's" No 2 1/2 can. Sliced or halves, in heavy syrup

**Club steak lb 53c**

**sliced Bacon 47c**

CORN KING LB

**beef roasts 47c**

Choice cuts per lb

**Fryers**

TRADE WHERE MA SAVES MONEY FOR PA  
We Reserve The Right to Limit. Nothing Sold to Merchants to be re-sold

### BARGAIN DAY RATES NOW ON

Lubbock AVALANCHE

7 days a week \$12.95

Week days only \$11

Agent for over 500 Magazines

The Index Sells Reading Pleasure

Wanted: Baby sitting by the hour or day, Mrs. Ted Fulton, 1st Cottage in the Gates Courts, ph 80.

A big part in any man's religion consists in getting along with other people.  
For sale: 2 wheel trailer, 9 ft., 1 girl's bicycle, 1 wringer type washing machine, 1 new inner-spring mattress and bed, 5 fish tanks, 1 spray paint machine, all cheap. Rochell Howard

### New Moore News

Mr and Mrs. E. H. Conrad and boys visited her parents Mr and Mrs. Charlie Menix at Sparenburg Sunday.

Mr and Mrs. Paul Turner and girls of Halfway spent the week end with Mr and Mrs. W. J. Tyler. Mr and Mrs. Travis Blair and family of Roswell and Ed Armstrong of Webb F. P. B. at Big Spring spent the week end with Mr and Mrs. Olan Blair and family.

Mrs. J. F. Rogers, jr and Frances Mae visited Mr and Mrs. J. V. Webber at Brownfield Sunday nite

Mr and Mrs. Bobby Lester of Welch visited her parents Mr and Mrs. Ted Rogers Sunday.

Mr and Mrs. S. L. Walters were in Brownwood visiting their daughter over the week end.

There were 27 ladies present at the pink and blue shower given in honor of Mrs. Toyebelle Sullivan Usie Friday afternoon at the home of Mrs. W. J. Tyler. Several sent gifts. Everyone brought a surprise gift for Mrs. Tyler who has recently moved in her new home. Games were enjoyed and refreshments of cake and punch were served. Hostesses were Mrs. W. J. Tyler, Mrs. J. F. Rogers, jr, Mrs. Doyle Moss and Mrs. Paul Turner.

J. F. Rogers, jr of here, Doyle Moss and Frank Smoot of Union community are in Rio Grande valley on business this week.

### Card Of Thanks

We wish to take this means of thanking each and everyone, also the Sunday School Classes and Women's Missionary Societies of the churches for the donations, for the food and groceries brought in, the care of our boys and care of our son while he was in a Lamesa hospital, the get well-cards, the nice gifts, and each encouraging word spoken during my stay in hospital at Lamesa and Temple.

We also send thanks to the kind friend who drove us to Temple. We thank each and every one from the bottom of our heart. May God bless each one is our our humble prayer.

Mr and Mrs. J. E. Dickey and boys

Ronald Roberts

RADIO AND T. V SERVICE

Will Make Calls In

★ O'DONNELL

On Tuesdays and Fridays

Phone 341W

Box 434A, Tahoka

## Friendship Nite

The O'Donnell O. E. S. met in a called meeting Monday for Friendship Night. A delicious salad supper was served to the guests and members after which a very enjoyable program was presented. Guests were from Lubbock, Post, Southland, Tahoka, Lamesa, Ruidoso, N. M., Sulphur Springs, Ark. Musical selections were given by Jessie Clayton, Wanda Jean McLaurin and Mary Pelts.

### Methodist News

The M. Y. F. Sub-district met at Grassland Methodist Church Monday evening at 7:00 p.m. Officers were elected.

The Methodist Men's Club met at the Church at 7:30 p.m. Monday for a supper meeting and a program.

The Woman's Society of Christian Service entertained with an all day meeting of this Sub-District Tuesday at 9:45 with registration and at 10:00 for the program.

Friday Feb. 25th is "WORLD DAY OF PRAYER" The W.S.C.S. and W. G. ladies have prepared a very challenging and helpful service for that nite and invite all the family to attend. The time is 7:30 Sunday Rev. Vernon Henderson, district superintendent, will speak at the morning worship hour.



**CRISCO 69c**

3 lb can

**Sugar 5 lb 49c**

**Fab 2 for 59c**

Large boxes plus 1 can Ajax Free

**Cheese 2 for 83c**

Velveeta 2 lb box

**Pet milk 25c**

2 Large or 4 Small cans

**Coffee 59c**

Maxwell House Instant 2 oz. jar

**Cake Mix 33c**

Betty Crocker; Chocolate, White, Yellow or Marble 1 lb 1 oz.

**Grape Jam 33c**

20 oz. Zestee

## Specials For Friday and Saturday

- Full Fat Milk 2 cans for only ..... 25c
- Lion Macaroni or Spagetti 3 cans for ..... 25c
- Sun Spun Tuna ..... 25c
- American Sardines 3 cans for ..... 25c
- Sun Spun Cherries ..... 25c
- Libby's Tomato Juice ..... 29c
- Large Box TIDE ..... 27c
- 300 Size Kleenex ..... 18c
- 1 lb box Supreme Crackers ..... 25c
- 10 lb bag White Spuds ..... 49c
- Longhorn Cheese lb ..... 49c
- U. S. Graded Good Roast lb ..... 49c

## Line Grocery And Market

Plenty of parking behind the store; come in and shop with us ..... WE DELIVER PHONE 118

**Salmon 33c**

Honey Boy 1 lb tall can

**Salad dressing Pint 29c**

Kraft Miracle Whip pint size

**Finest Quality MEATS**

**Bologna lb 39c**

ALL MEAT

Fresh Fryers and Hens

**Beef roast 49c**

Home Killed per lb

**Banner Bacon 53c**

per lb

## Special Prayer MEETING

O'DONNELL CHURCH OF CHRIST

- ★ For Salvation of the Lost
- ★ For Strengthening of Christians in the Com-Gospel Meeting

FRIDAY EVENING AT 7:30 P. M.

● A WELCOME TO ALL

## Need Printing?

May we suggest you look over your supply of:

- Imprinted Checks
- Statements
- Letterheads
- Envelopes
- Tabulated and Registered Forms
- Poster Forms
- Rubber Stamps

"A dollar spent in O'Donnell CIRCULATES 7 times before going inactive... trade at home"

If we can't save you from 10 to 25 percent, we don't want your job!

The Index

# MANSSELL BROS

SPECIALS FOR FRIDAY AND SATURDAY FREE DELIVERY PHONE 50 PHONE 50