

ANNOUNCING —
CARL SANDERS
 Representative Of —
GIFFORD-HILL-WESTERN
 FOR THE BEST —
 * SPRINKLER SYSTEMS * UNDERGROUND LINES * FLOW LINES
 PHONE — 902F11, O'DONNELL, TEXAS

STANLEY FUNERAL HOME
 AND BURIAL ASSOCIATION
 Day or Nite Call WY 84433 At Tahoka
 "Thoughtful, Courteous Service"
 We Accept Burial Policies Of All Companies



Light-HEARTED OUTDOOR LIVING CALLS FOR Gas Lights

NEW! *the Pioneer* DUAL-MANTLE LIGHT

Provides MORE light illumination at the SAME low cost of operation — only \$49.50 installed — NO MONEY DOWN — TWO YEARS TO PAY!

fuel for a growing empire Pioneer Natural Gas Company

CHURCH OF THE NAZARENE
 A friendly Church serving a friendly community in a needy world invites you, Sunday school at 10 a. m. Morning Worship at 11:00 a. m. Evening Worship at 7:30 p. m. Prayer meeting each Wednesday at 8 p. m.

O'DONNELL INDEX - PRESS
 Established in 1933
 Box 546, O'Donnell, Texas
 Published Every Wednesday
 O. G. SMITH, JR., Owner
 Advertising Rate: 60c col. in. Second class postage paid at O'Donnell, Texas.

SUBSCRIPTION RATES
 In Lynn, Dawson and Borden Counties \$2 per year. Elsewhere in U. S. \$2.50 per year.
 Card of Thanks \$1.00. Classified advertising 4c per word, with minimum charge of 50c.
 Your label at top of paper tells date your subscription expires.

The Texas Farm and Ranch Safety Council calls attention to several recent accidents involving farm tractors. Fatalities have occurred in the state. The Council urges tractor operators never to go to the field with the safety shields removed from the tractor nor forget the power machine can quickly become a killer if handled carelessly.

The really good resolutions lead to reform — and reform soon becomes a habit.

COTTON BURS INCREASE CROP YIELDS
 Every year more and more Texas cotton is machine harvested resulting in a larger supply of cotton burs at the gin. To dispose of these burs, most ginners burn them, thereby increasing the fire hazard.

Research by the Texas Agricultural Experiment Station has proven, however, that there is a better use for this gin waste. These burs, when applied to the land, will increase cotton yields. In a 4-year study at Lubbock, the use of cotton burs under nonirrigated conditions increased lint yields by an average of 27 pounds per acre and the residual effect increased yields by 28 pounds per acre for five years.

Liberal application of burs results in a better soil-water relationship, thus letting crops use the available moisture more effectively. Soils to which cotton burs have been added are also more resistant to wind and water erosion and they may have a better infiltration rate.

Angular leaf spot, verticillium wilt or cotton seedling diseases have not shown any increase on land receiving six annual applications of burs at Lubbock. In years favorable to angular leaf spot infection, it was more serious where no burs or fertilizers were applied. Cotton insects which reduce yields and lower grades have not built up to a point in the bur-treated soil that they nullify the advantage of using burs. In 1951 cotton burs were released by the State Department of Agriculture and the Department of Plant Quarantine for use on the land, provided certain standards in methods of handlings were met by ginners in order to destroy pink bollworms present.

CROP MEASURING IN PROGRESS OVER AREA
 The largest group of reporters hired in the Tahoka ASC office in several years began measuring cotton, grain sorghum, and soil bank acreage in Lynn County last week.

According to information from Charles Bragg, ASC office manager, about 30 reporters and four supervisory assistants have been assigned the task of measuring the 1465 farming units in the county. Ten young ladies have been hired to serve as planimeter operators, the machines which compute the acreage from aerial photographs and to prepare and mail notices of acreage to the farmers concerned.

As a result of the enactment of the new Feed Grain Program this spring, Mr. Bragg says the job of measuring crops in the county has more than doubled in size and difficulty. In addition to the 204,062 acres of cotton allotment, the ASC office must account for 56,625 1/2 acres diverted from the production of crops under the Feed Grain program and approximately 92,166 acres of grain sorghum on the 993 farm units taking part in that program.

Research studies by the Texas Agricultural Experiment Station at Lubbock have established the value of using cotton burs for soil improvement. John Box, extension agronomist, advises cotton producers to make arrangements with their ginners now for burs for use this fall. Local county agents have a new extension publication available on the subject.


O'Donnell Barber Shop
 NOW AT NEW LOCATION
 EAST OF REX THEATRE
 LATEST STYLES CUT BY
 BEST METHOD
 Specialize In Flat Tops
 Prompt Service

Saleh And Saleh
 ATTORNEYS AT LAW
 GENERAL PRACTICE IN COURTS
 502 N. 1st St. — Phone 211
 LAMESA, TEXAS

ASSEMBLY OF GOD CHURCH
 A welcome and service for all
 Sunday School 9:45 a. m.
 Morning Worship 11 a. m.
 Evangelistic service 7:30 p. m.
 Young people service 6:30 p. m.
 Midweek Service 7:30 p. m.
 Large enough to know you — small enough to serve you.

Send us your NEWS
 Chronic respiratory disease, the number one problem of broiler growers, can also cut deeply into the laying flock's production if the flock becomes its victim. Good flock management and a vaccination program for the disease complex which goes with CRD are the best preventives.

NEW! FAST-ACTING FORMULA
 Rexall
SUPER ANAPAC COLD TABLETS



SUPER ANAPAC
 SINUS CONGESTION
 HEADACHE
 COLDS

24's 98¢
 50's...1.69

Relieves Colds, Sinus Area Congestion

Fights colds at any stage. Helps reduce fever...relieve headache, ache-all-over misery, nasal drip, sneezing, clogged breathing...all seem to disappear as never before. Contains Vitamin C.

SUPER ANAPAC JUNIOR, New Formula for children. 24's .89

New! SUPER ANAPAC THROAT LOZENGES, anesthetic, antibiotic. With Vitamin C. 12's .98

AT OUR Rexall DRUG STORE

Ranchmen in western Texas are advised to be on the alert for a range invading plant that spreads rapidly. It is an evergreen plant and is known as threadleaf groundsel and is a member of the senecio family. It is especially toxic to cattle.

G. O. Hoffman, extension range specialist, says it is now too late to control the plant with chemicals because the seed are maturing. The best control method at this time of the year is to grub the plants, remove them from the pasture and pile and burn them.

The week of July 23-29 has been designated by President Kennedy as National Farm Safety Week in the United States. In Texas, plans are going forward for special programs on the local and county levels with statewide activities being planned by the Texas Farm and Ranch Safety Council.

Agriculture is the Nation's 3rd most hazardous occupation with almost 12,000 deaths and more than a million crippling injuries each year in the nation.

About 2,000 boys and girls, their leaders and friends attended the annual Texas 4H Roundup at Texas A and M College last week.

Turkeys and fresh peaches are featured items on the USDA's July Plentiful Food List. They are supported by a refreshing array of summer vegetables, fresh plums, watermelons, cantaloupes, eggs and shrimp.

For rent — nice 4 room apt. air conditioned, carpet thruout, all new furniture. Call Mrs. Smith 8-3885

See Us For Famous Brand Names Of —
AIR CONDITIONERS
 ★ Alpine ★ Artic Circle ★ Essick and others
 Amos can afford to sell at lower prices because he buys in greater quantities. He has four carloads of Air Conditioners in stock now and more on the way. He must sell. Check competitive prices then hurry down to Amos Supply. He will not be undersold. Bring your old cooler and we will trade with you.

Amos Supply
 "Your Furniture Discount House"
 North Lynn at Dallas, Lamesa Phone 4010

HIGGINBOTHAM FUNERAL HOME
 "Dedicated To Helpfulness"
 408 N. Austin St. Lamesa Phone 4585
 24 Hour Ambulance Service
 Burial Insurance "Bonded Protection"

CLAUDE'S
 All Kinds Cowboy and Wellington BOOTS — WESTERN SHIRTS
 MOCCASINS — LOAFERS — ALL KINDS FINE LEATHER GOODS
 EXPERT REPAIR ON ALL SHOES AND BOOTS
 Phone 428 - 3416



Ask your dealer about a real cool extra-cost option—Chevrolet air conditioning.



Impala Convertible

Summertime—and the savin' is easy!

It'll pay you plenty to pad over to your Chevrolet dealer's One-Stop Shopping Center and get in on all the excitement there. Because Jet-smooth Chevrolets are outselling every other make of car, he's able to turn on the savings like nobody else in town. Have him fit you with an elegant Impala, a popular Bel Air or a budget-wise Biscayne. Or maybe with one of those six sweet-going, cargo-craving Chevy wagons. Just bring along your desire to own a lot of car at an easy-to-own price. Chevy and your Chevrolet dealer will look after the rest nicely, thank you. **Jet-smooth Chevrolet**



Save-a-bundle buys on Corvairs, too! The climate couldn't be better for getting into one of these. Yessirree, juicy July buys on the Monzas with their family-style sports-car spirit... on the nimble, nickel-nursing Corvair 500's and 700's... on the 6-Passenger Lakewood Wagons... and on those Greenbrier Sports Wagons with up to twice the space of regular wagons. Need more be said? Your Chevrolet dealer is the man to talk to.

See the new Chevrolets at your local authorized Chevrolet dealer's
ELLIS CHEVROLET CO.
 BOX 124, O'DONNELL, TEXAS

Always . . .
 A Complete Stock of
AUTO parts
 WE ALWAYS APPRECIATE YOUR TRADE
O'Donnell Auto Supply
 BUCK ELLIS, OWNER

Fancy... Yet Quick and Easy



THIS FRUIT CREAM CAKE is quite fancy and looks and tastes like a dessert that has been fussed over. But good news... it can be made quickly and easily. Cake layers... made from a mix, or store-bought... instant lemon pudding mix and canned or fresh orange sections prove the point. The instant lemon pudding mix takes one minute to mix, then it sets to perfect consistency for filling the cake while you split the sponge layers and whip the cream. Arrange orange sections in a decorative swirl and serve the cake proudly to the family or guests!

FRUIT CREAM CAKE

1 1/2 cups cold milk or light cream **1 cup fresh or drained canned orange sections**
1 package Jell-O Lemon Instant Pudding **1/2 cup cream, whipped and sweetened to taste***
2 eight-inch cake layers

* Or use 1 cup prepared dessert topping mix.

Pour milk or light cream into mixing bowl. Add pudding mix and beat slowly with egg beater just until well mixed, about 1 minute. Let stand to set—takes 5 minutes.

Split cake layers horizontally to make 4 layers. Stir filling until creamy. Spread between layers. Chill about 1 hour. Just before serving, spread whipped cream on top of cake and garnish with orange sections. Makes 10 to 12 servings.

- 7:30 Hotel de Paree
- 8:00 Video Village
- 8:30 December Bride
- 9:00 Tombstone Territory
- 10:00 News and Weather
- 10:30 Adventures in Paradise
- 11:30 Life Of Riley
- 12:00 Sign Off
- SATURDAY**
- 7:45 Sign Off
- 7:50 News
- 8:00 Captain Kangaroo
- 9:00 Heckle and Jeckle
- 9:30 Mighty Mouse
- 10:00 Lone Ranger
- 10:30 Saturday News
- 11:00 Sky King
- 12:05 News and Weather
- 12:20 Names In the News
- 12:30 As The World Turns
- 1:30 Houseparty
- 2:00 The Millionaire

See H. and S. Auto and Home Supply for all your supplies, repairs and parts on air conditioners 5-24

Take a look into your wife's purse if you want proof that money isn't everything.

A hen pecked husband is just an average man who gets too much of a good thing in the way of a better

For the nation as a whole, eggs sold per farm increased 94 percent from 1954-59 but for the South Central States, including Texas, it increased by 300 percent.

USDA scientists are developing a new method for dehydrating potatoes, carrots and other vegetables so they will be ready for consumption after simmering in water for about five minutes. It is more good news for the busy homemakers.

you can't steal second base with one foot on first

Attention Ladies — anyone interested in making money in spare time as a beauty counselor Cosmetic Demonstrator. Call or write Mrs. J. C. Veach, Zone Manager, Box 567, Abernathy, Texas Phone CY8-2261

Dr. O. H. NANCE

Optometrist

528 N. 1st Lamesa ph. 554

For T V and Radio Repairs call Jim Burkett at Aten 2366 5-10

Noble L. Rumbo, M.D.

Medicine and Surgery
RUMBO CLINIC
OFFICE TELEPHONE 61
RESIDENCE PHONE 180

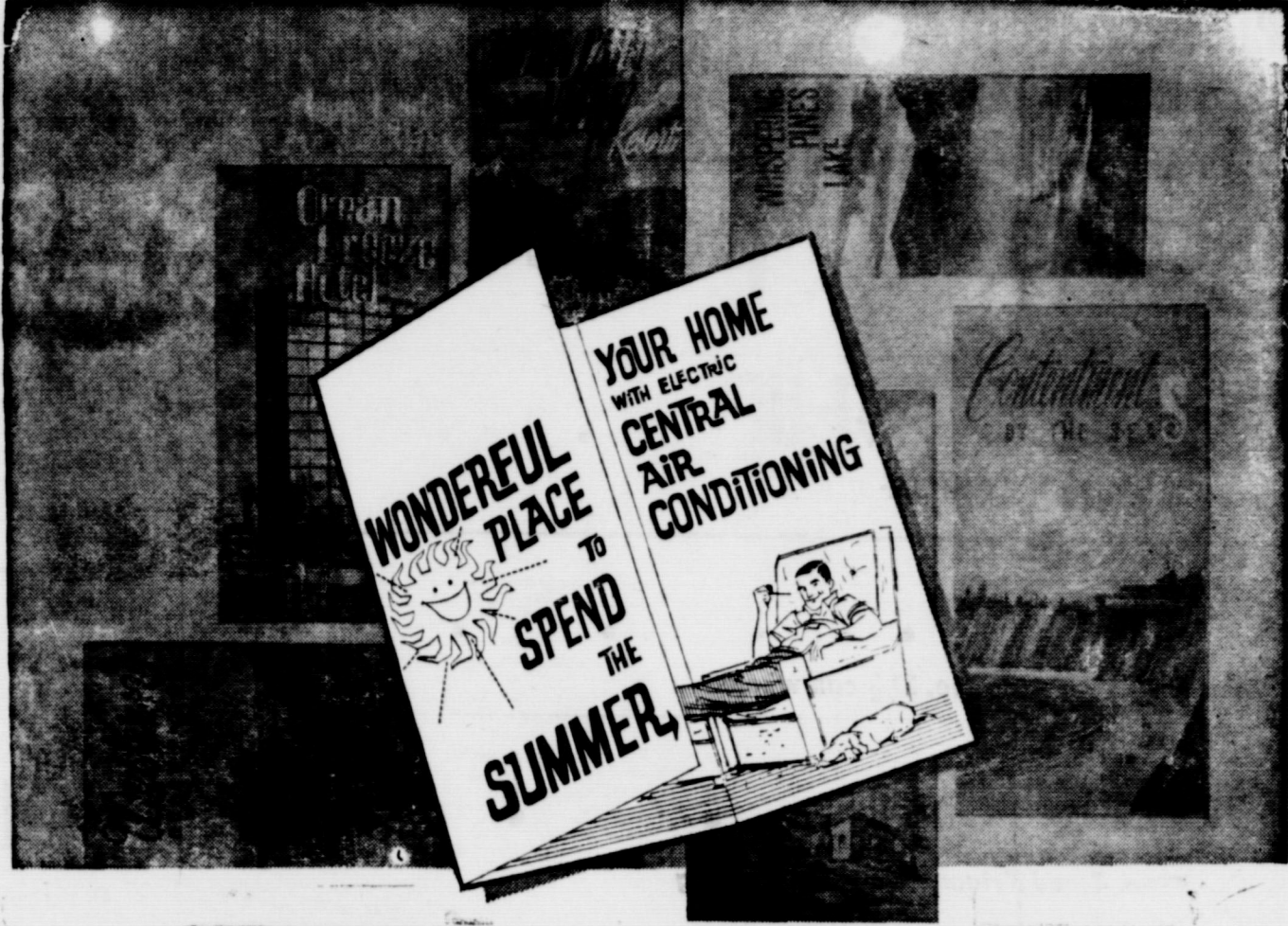
BUY YOUR DAILY PAPERS AT INDEX OFFICE —

LUBBOCK AVALANCHE

Morning and Sunday — \$14.95
Morning without Sunday \$13.00

BUY, SELL OR TRADE —
GUNS AND PISTOLS
WATCHES CLEANED \$2.05
All Work Guaranteed

★ Hale Variety



We'll be glad to provide you any information that will be helpful, and by knowing of your plans in advance, we'll be ready to serve your new system promptly.

Every hour of the day in every room in your home, you'll enjoy resort-like cool comfort with electric central air conditioning. You'll sleep better, work without wilting, really enjoy living at home.

The completely air conditioned home is not only delightfully cool in every room, it's cleaner, quieter and more healthful. It's an investment in comfort that adds lasting value to your home.

Your air conditioning contractor will gladly recommend an electric central air conditioner of the right size to fit your needs. See him soon. Live better... keep cool... electrically!



TEXAS ELECTRIC SERVICE COMPANY

Speed and death are two words that always travel hand in hand on the highways.

Taxes never die — they just stick and grow and all the old ones remain with us.

With the cost of living so high today, a great many people find they can't afford to work for what they are worth.

PUT **Springtime Freshness** into your garments

FREE Sanex mothproofing with new additive **Dex***

Protects garments against perspiration odors between drycleanings. This new bacteriostat builds a bacteria barrier and leaves all garments with a lasting freshness.

Hash Cleaners



Homeowning Can Be Hazardous Too!

No matter how long the bronc-buster has been riding, he can never be sure the next horse won't throw him.

Such is the case with the homeowner. No matter how careful he tries to be, an unnoticed frayed electric cord, overloaded circuit, or smoldering cigarette can leave his home in cinders.

It's too late then to realize his insurance is "too little—and the wrong kind."

Be sure when you insure. Call on your local independent agent for a thorough appraisal of your needs.

MOORE INSURANCE AGENCY
Phone 220, O'Donnell

CHANNEL 13, KDU-TV SUNDAY

- 10:45 Sign on
- 10:50 Church service
- 12:00 Industry On Parade
- 12:15 Baseball Lead-off
- 12:25 Baseball Game
- 3:00 This is the Life
- 3:30 Walsh Talent Varieties
- 4:30 Lawrence Welk
- 5:09 Doug Edwards
- 5:30 20th Century
- 6:00 Lassie
- 6:30 Dennis the Menace
- 7:00 The Ed Sullivan Show
- 8:00 GE Theatre
- 8:30 Alfred Hitchcock (to be announced)
- 9:00 U. S. Marshall
- 10:00 What's My Line
- 10:30 Sunday Night News
- 10:45 Sunday Weather
- 10:50 Movietime
- 12:30 Sign Off

- MONDAY**
- 7:45 Sign On
 - 7:50 News
 - 8:00 Richard Hottelet News
 - 8:15 Captain Kangaroo
 - 9:00 December Bride
 - 9:30 Video Village
 - 10:00 I Love Lucy
 - 10:30 Clear Horizons
 - 11:00 Love Of Life
 - 11:30 Home Fair
 - 12:00 CBS News

- THURSDAY**
- (7:45-5:00 same as Monday)
 - 5:30 Huckleberry
 - 6:00 News
 - 6:15 Doug Edwards
 - 6:30 Whirlybirds
 - 7:00 Playhouse of Stars
 - 7:30 Johnny Ringo
 - 8:00 Zane Grey Theatre
 - 8:30 Markham
 - 9:30 So This is Hollywood
 - 10:00 News and Weather
 - 10:30 Star Performance
 - 11:00 Life Of Riley
 - 11:30 Playhouse of Stars
 - 12:00 Sign Off

- FRIDAY**
- (7:45-5:00 same as Monday)
 - 5:30 Bugs Bunny
 - 6:00 News
 - 6:15 Doug Edwards
 - 6:30 Rawhide

How's Your Line?



THIS charming two piece dress with its off-side diagonal jacket fastening and stand away collar is deliberately planned to enhance your line. The skirt, with soft pleats partially covered by the jacket, is held in place with Talon's Magic-Zip 7-in. skirt zipper and creates the illusion of a smaller waistline and slimmer hip lines as you move gracefully through the season. It's Modes Royale pattern No. 1755, shown here in a brand new glamour tapestry jacquard.

Ask your dealer about a real cool extra-cost option—Chevrolet air conditioning.



Corvair 700 Club Coupe. A 2-door budget-minded beauty with thistledown handling, rear-engine traction and quick-stepping, sassy performance.



Nomad 9-Passenger Station Wagon. Chevrolet's the full-sized wagon more people are picking. A choice of six to save on from nifty Nomads to thrifty Brookwoods.



Bel Air 4-Door Sedan. Priced just above the thriftest full-sized Chevrolets, Bel Airs give you the full treatment of Body by Fisher craftsmanship.



Impala 2-Door Sedan. Like all Chevrolets, this Impala gentles rough roads (or any other kind) with Jet-smooth magic.

See the new Chevrolets at your local authorized Chevrolet dealer's One-Stop Shopping Center

Ellis Chevrolet Co.

O'Donnell, Texas

BLOCKER GROCERY

Your S. & H. GREEN STAMP store
SPECIALS For Friday and Saturday

Ground Beef lb 49c Bologna lb 39c

Beef roast lb 49c
Choice Chuck per Lb

Rath's All Meat Lb
Beef Liver . 29c
Baby Beef per Lb

Biscuits per can 5c
"White Swan" per can

MIRACLE WHIP . . . 25c
Pint Jar

Apricots 25c
no. 2 1/2 can whole

Spuds 49c
no. 1 red Triumphs 10 lb polly bag

PEAS 2 for 25c
303 can "Diamond" Sweet

Luncheon Meat . . . 39c
12 oz. can "Kimbell's"

Pineapple . . . 6 for \$1.
Flat can Del Monte, Crushed

Fish Sticks 25c
oz. "Keith's" frozen, breaded

TRADE WHERE MA SAVES MONEY FOR PA

Weekend Specials

SPECIALS FOR FRIDAY AND SATURDAY
OPEN ON SUNDAYS

Pork Steak & Pork roast lb 39c

BEEF RIBS Lb 29c
Bacon, Korn Kist 1 lb sliced . . . 36c
OLEO 5 Lbs for only \$1
Whole Spiced Peaches
no. 2 1/2 cans 4 for . . . \$1
SPUDS, California White Rose
No. 1's 10 lb Bag 29c
Fresh Grade "A" Eggs 3 doz . . . \$1
Ellis Spaghetti and Meat
Balls 5 cans for only \$1

Frozen Strawberries 10 oz. Pkg. 19c
Giant Size TIDE 69c
Lunch Meat Oscar Myers
12 oz. can 39c
Cake Mix, White, Yellow, Devil's
Food, and Pound cake . . . 2 boxes 49c
Avacodas, Large, Calif. 3 for . . . 25c

JACKSON'S GROCERY & MARKET
We Give Double Trist Stamps
FREE DELIVERY SERVICE ANYTIME
Where Customers Send Their Friends
AT THE NORTH Y. PHONE 150

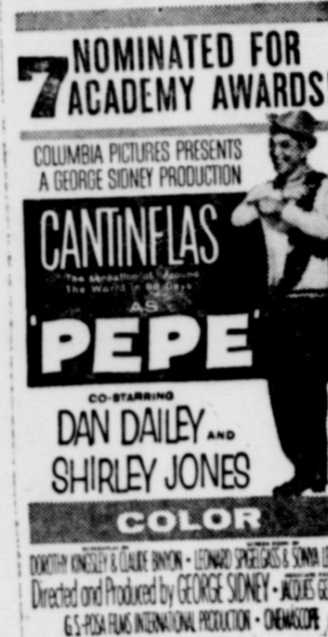
SPECIAL ON 670 x 15 Nylon Tires only \$10.95 with Exchange
All Sizes in Recapable Tires a very Low \$8.95 plus exchange
★ Register at our station for a new Corvair Chevrolet to be given away

Jackson Bros. Station

Attention Ladies — anyone inter-
ested in making money in spare
time as a beauty counselor Cosmet-
ic Demonstrator. Call or write Mrs
J. C. Veach, Zone Manager, Box 567,
Abernathy, Texas Phone CY8-2261
—O—
For rent — nice 4 room apt, air
conditioned, carpet throuth, all new
furniture. Call Mrs. Smith 8-3885
—O—



TAHOKA
Friday, Saturday, Sunday, Monday
and Tuesday



Specials For Friday and Saturday

4 Lb Jar Peach - Apricot Preserves
9 oz. Plastic GLASSES 3 for only
Chuck Time Vienna Sausage
12 oz. Welch Chocolate Covered Cherries
6 oz. Maryland Club Coffee
KELLOGGS VARIETY PACK CEREAL
Quart CLOROX
3 LB CAN Mrs. Tucker's SHORTEN'NG
12 oz. Wapco CATSUP
California Cantalope Lb
CELLO PKG CARROTS
FRESH ONIONS . . . 2 bunches
Chuck Roast LB
Neuhoff or Pace Sliced Bacon 2 lb pkg.
ALL MEAT BOLOGNA LB



★ ★ Double Frontier Stamps On Wednesday
WE GIVE FRONTIER SAVING STAMPS

Line Grocery And Market

Money Savers

OLEO 15c
Diamond per Lb

Biscuits 5c
Kimbells, per can

Flour 49c
5 lb Gladiola

Tomato Juice 19c
29 oz. can Ashley's

whipped potatoes 15c
Instant, Gateway Farms 10 big
servings

Sun 2 for 39c
New, detergent, for brighter family
washes

Frolic 69c
New aqua liquid detergent 1 qt.

Mr. CLEAN 36c
pint size, 4c off bottle

COFFEE 59c
KIMBELLS per Lb

TEA 31c
SALADA 1-4th Lb

Plan now to attend the Cem
Supper Saturday nite at School
teria from 5 to 8 p. m.

Finest Quality MEATS

Round Steak lb 7
Choice cuts lb

Bacon lb 49c
Neuhoff's Lone Star Lb

Ground meat lb

Bologna lb

★ 50 Top Hit Records
Visit Our Record Rack

1 day film developing

\$\$\$\$\$\$\$\$\$\$\$\$
SILVER DOLLAR
THRIFT STAMPS



★ ★ WE GIVE DOUBLE SILVER
DOLLAR THRIFT STAMPS
EVERY WEDNESDAY

MANSELL BROS

PHONE 50 SPECIALS FOR FRIDAY And SATURDAY
FREE DELIVERY