

PARSON'S
FUNERAL HOME
Oxygen Equipped
Ambulance Service
Ph. 285-2621 Collect, Olton

THE HART BEAT

measuring the pulse of a growing community

FARMERS STATE
BANK
Member F.D.I.C.
HART, TEXAS

VOL. 5-NUMBER 35

HART, CASTRO COUNTY, TEXAS, THURSDAY, MARCH 9, 1967

10 CENTS A COPY

Hart 'Man Of The Year' Named

David D. Harris To Go To State

Hart American Legion has chosen David D. Harris, son of Mr. and Mrs. Duard Harris, who are farmers in the Hart Community, to attend the University of Texas Boys State Program for 1967.

Alternate will be Danny Rice, son of Mr. and Mrs. L. J. Rice of Hart.

The local unit has sponsored some youth from the Hart Community for many years.

The objective of the Boys State Program is to educate our youth in "Duties, Privileges, Rights, and Responsibilities of American Citizens".

It is wholly a plan for training in the practical aspects of Government. They learn the duties of the various City, County and State Officers. They learn to introduce and argue their own bills in Legislature.

In Boys State, the young citizens have the opportunity to learn for themselves that their Government is just what they make it. Also each boy learns to do things by doing.



E. E. Foster

Hart Lions named E. E. Foster their "Man of the Year" at the Ladies' Night banquet Tuesday.

Foster, a resident of Hart since 1955, is currently serving as mayor of Hart.

Lion secretary-treasurer Willis A. Hawkins Jr. introduced Foster, calling him, "One of the pioneers of the Plains country."

Foster is a charter member and past president of the Hart Lions Club and is Adjutant of the Hart American Legion Post.

He also holds a 40-year pin in the Legion.

Foster is past president of the Methodist Men in Hart and is a member of the Official Board of First Methodist Church.

He has also acted as church school superintendent and teacher and has been manager of the Hart Little League baseball program.

A former Hart School Board member for six years, Foster is now a member of the Committee on Economic Opportunity in Castro County and has served on the board of the High Plains Underground Water District.

Foster has been mayor of Hart for the past two years and served for six years as the manager of Hart Co-Op Gin until his retirement in May of last year.

He and his wife, Lena, were married in August, 1919, after he had settled near Petersburg shortly before.

He came to the Plains in 1915 after growing up at Bowman Ridge and Alexandria. He first moved to Floydada.

He served in France during World War I for 13 months before returning to Floyd County.

Entertainment was provided by a group of musicians from Plainview called, "The Masters of Swing." ("But only by our friends," one remarked.)

Members of the group included Dr. Clovis Clough, Dr. Curtis Baldwin, Wilmot Eaton, Arch Keys, Dalton Wood, Dr.

CONTINUED PAGE 2

Buyers Club Is Formed

A Hart Buyers Club was formed Wednesday night at a meeting held in the Community Room of Farmers State Bank.

The group was formed to allow businesses to contribute to a pool which would then purchase animals at the annual Castro County Stock Show. The show is set to start today and run through Saturday.

W. T. Sanders was named to head the organization.

Persons wishing to contribute may contact David Willis, Sanders or leave donations at Farmers State Bank.

Names of persons contributing to the fund will be listed on the buyers sheet.

Deadline for contributions will be noon Saturday, with the sale slated for that afternoon.

HART SHOW TONIGHT

Castro Co. Stock Show Begins

The annual Castro County Fat Stock Show got underway with weigh-ins beginning at 1 p. m. today, with Hart Fat Stock Show to begin at 7 p. m. tonight.

The county junior livestock show, sponsored by the Castro County Chamber of Commerce, will display calves, barrows, and lambs raised by county 4-H and FFA members.

All animals must be in their proper place by 5 p. m. today and sifting will begin at 9 a. m.

Friday morning.

Judging of lambs will start the show off at 1 p. m. Friday, followed by judging of barrows. Steers will be judged Saturday, March 11 at 9 a. m.

Judges will be Chile Smith, Jerry Stockton and E. G. Gaston.

Grand and reserve grand champions will be awarded banners and first five place winners will be presented ribbons.

Sale of the prize winning animals is scheduled for 1 p. m.

Saturday. Auctioneers will be Dean Sanders, Jack Howell and Joe Newman.

Youngsters from Hart 4-H and FFA will exhibit approximately 12 steers, 20 lambs, and 55 barrows.

The Hart show to be held at the Dimmitt show barns, will be judged by Buddy Winter, swine breeder at Idalou and Billy Hawkins, Vocational Agriculture teacher of Tulia.

Reserve Grand Champion Shown By Bob Crick At Houston

A dream came true for Bob Crick, local FFA boy, last week in Houston, as the crossbred barrow he was exhibiting was named Reserve Grand Champion barrow of the Houston Fat Stock Show.

Bob Crick, son of Mr. and Mrs. Verle Crick, had earlier shown the barrow at the Junior Show, having won Grand Champion honors. The barrow sold for \$2000 to Mrs. R. T. Herrin of Houston.

Other Hart boys placing include:

Jerry Smith - Champion Poland barrow, junior show.

Smith & Bennett - Champion Poland barrow, open show.

David D. Harris - Reserve Champion Poland, open show.

Clifford Ray - 2nd place lightweight Hampshire, 9th place lightweight Duroc.

Larry Parker - 3rd place Berkshire, 3rd place Duroc.

David D. Harris - 3rd place Yorkshire, 3rd place Poland.

Jim Swindle - 2nd place heavy Poland China.

Jim Kendrick - 3rd place Chester White

Jerry Smith - 1st place heavy Poland China.

Joe Quiroz - 4th place mid-

dleweight Duroc.

W. A. Hawkins - 4th place heavyweight Duroc.

Danny Rice - 5th place lightweight Poland China.

Gary Cole - 6th place middleweight Poland China.

Donnie Irwin - 7th place lightweight Poland China.

Bob Crick - 5th place Crossbred, 6th place Hampshire, 8th place Hampshire, 9th place Hampshire.

Phil Davis - 16th place heavyweight Hereford, 20th place lightweight Duroc.



Bob Crick

CONTINUED PAGE 2

THE HART BEAT

Published each Thursday at Hart, Texas, 79043, P. O. Box 311, with offices in Hart, Phone 938-2247.

Entered as second-class matter at the Post Office in Hart, Texas.



Mike Wall ..Editor-Publisher
Lela GallionNews Editor

Any erroneous reflection upon the character, firm or corporation which may appear in the columns of The Hart Beat will be gladly corrected upon being brought to the attention of the publisher.

CAR INSPECTION DEADLINE SET

The director of the Texas Department of Public Safety reminded motorists today that only five weeks remain before enforcement begins on the 1967 vehicle inspection stickers.

Col. Homer Garrison, Jr., DPS Director, said that the law allows for no extension of the April 15 deadline and urged drivers to have their vehicles inspected before the last minute lines begin forming.

Garrison pointed out that some two and one-quarter million vehicles in Texas remain to be inspected in order to comply with state law. This amounts to approximately 14 vehicles per working day for each of the 5,500 official inspection stations.

"Undoubtedly," Garrison stated, "many motorists will wait until the last day, and it may be very difficult to find an inspection station that is not swamped with late-comers."

"In order to secure an orderly flow of the remaining un-inspected vehicles through the inspection stations we would urge each motorist to have the inspection attended to as soon as possible. This can easily be taken care of during a routine visit to an authorized neighborhood inspection station."

VISIT IN OLTON

Mrs. Thelma Davis of Hart visited in the home of Mr. and Mrs. Duane Eby of Olton, Tuesday afternoon.

MAN OF YEAR

Continued from Page 1

Gale Seigler and Tracy Seigler.

Guests included Deputy Dist. Lion Gov. Milton Laurie and the Rev. Carl Hudson, golden anniversary Chairman of Lion District 2-T-1, both of Kress.

Approximately 60 persons attended the event, presided over by Lion Boss W. T. Sanders.

The banquet was held at the Hart school cafeteria.

BOB CRICK

Continued from Page 1

Assisting in the hauling of the animals were Verle Crick, Bill Hill and Doyle Davis.

Attending the show and sale from Hart were Evelyn Hill, June Davis, Ruth Crick, Evon Parker and F. A. and Lucille Smith.

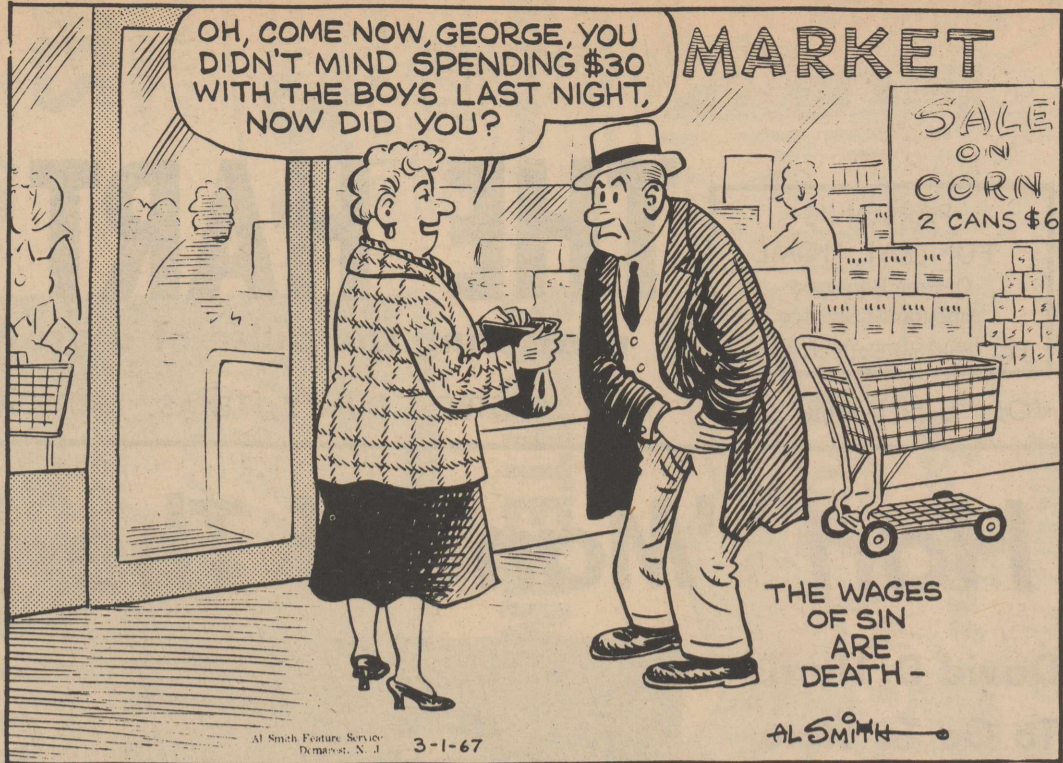
The boys from Hart placed every animal they exhibited and have proved once again, that they can compete against the best and still come out on top.

TRADE SHOW SLATED

The Tri-State Hardware and Implement Trade Show will be held at the Municipal Coliseum in Lubbock Friday and Saturday, March 10-11. Latest in farm equipment and associated products by all major equipment manufacturers will be shown. All farmers are invited to attend.

Community Capers

By Al Smith



EDITORIALS

High Ideals Of Scouting

Seek the highest ideals of character, conduct, patriotism, service. Find fulfillment in the arts, the home, the world outside. Dare to do the improbable and dream the impossible.

This was the challenge that Juliette Gordon Low, founder of Girl Scouting in the United States, gave to her original band of twelve girls 55 years ago.

Times change and the joyful world of the young has moved from madcap to mod cap. But the values and goals Mrs. Low established for Girl Scouts endure. Today,

more than 3 million girls, ages seven through 17, participate in the March 12 birthday of Girl Scouts of the U. S. A. and in the way of life envisioned by Mrs. Low.

Now, as always, Girl Scouts set the pace for their generation, moving with ease from the timely to the timeless -- from frugging to farming, surfing to serving.

Mrs. Low would be amazed and proud of her Girl Scout family, 55 years later. But all of us who have seen the family grow are just plain proud.

Happy Birthday, Girl Scouts. Long may you glow!

READ and USE your Neighborhood

WANT ADS

Rates on classified advertising are: Four cents per word, first insertion; two cents per word second insertion and each additional consecutive insertion. Minimum 36 cents first insertion, 18 cents each additional insertion. The Hart Beat is not responsible for mistakes after first insertion. Please read your ad.

All classified accounts are due and payable the 10th of the month following insertion. A flat rebilling fee of \$1 will be charged for all accounts past due for 30 days, and for all successive rebillings.

SHORT ON WATER?
LET US DEEPEN YOUR
EXISTING WELLS
BONDLD & LIGLNSLD
BLEEKER & SON'S
DRILLING CO.
PHONE 285-2672
P. O. BOX 134
OLTON

WE BUILD —
● **New Homes**
YOUR PLANS
OR OURS

● **Remodeling**
LARGE OR
SMALL JOBS

CALL US FOR
COMPETENT
BUILDERS



Mound City Paints

Ed Harris
LUMBER CO.

Hart, Texas

It's A Good Policy
To Insure With
The Newman Agency
938-2161 Hart, Texas

"DICKY'S DOZER SERVICE"

Dirt Work—All Kinds
Bulldozers—Scrapers
Motorgrader
Crane—Dragline—Clamshell
And Backhoe
SEE OR CALL
FLOYD DICKEY
S. E. 4th & Belsher
DIMMITT, TEXAS

Bus. Ph. 647-4553 Res. Ph. 647-4565

DIMMITT
ENGINE SERVICE

IRRIGATION ENGINE
REPAIR & OVERHAUL
MAGNETO SERVICE
Phone 647-2573
P.O. Box 576

MONUMENTS

Winnsboro Blue Granite
White Georgia Marble
and others
See Percy Parsons
Call Collect Olton-285-2621

NOTICE

Relaxacizor reduces hips,
tummy and thighs. For free
demonstration, write Alice
Johnson 1508 38th St. Lubbock,
or call Sh 4-1345. 35-4tc.

FOR RENT

FOR RENT- 2 Bedroom farm
house 5 1/2 miles southwest
of Hart. \$25 a month for house
\$3 for water. You pay gas and
lights. Call Claude Ray. 938-
2352. 35-1tc.

FOR RENT-House located on
farm 3 miles north 4 east
1/2 north of Hart. Call Wy5-
2169 or write Mrs. Audrey O'-
Daniel, 404 Apache Trail, Tulia,
Texas. 35-tfc.

FOR SALE

FOR SALE - 1 - 4020 John
Deere Tractor 1964 model -
800 hrs. E. L. Hochstein. Phone
945-2391. 35-2tc.

FOR SALE-Nice 2 bedroom
house - newly carpeted. Call
938-2131 or 938-2289. 35-tfc.

FOR SALE--General farm sup-
ply needs, including livestock
supplies of all types. See us
for your herbicide and ferti-
lizer needs. Jones Seed and
Farm Supply, Hart, Tex.
34-3tc.

FOR SALE- Rambler 4-door
station wagon 6 with overdrive
and good tires. Call Jim Reid
at 938-2427. 21-tfc.

WANTED

WANTED-- Your insurance
business. All lines. Insurance
at cost. Castro County Farm
Bureau branch office, Hart,
Texas. E. L. "Sonny" Hoch-
stein, agent. Office hours, Mon-
day through Friday, 9-12. Lo-
cated at the Sun View Fertilizer
office, phone 938-2307. 27-tfc.



At a directors meeting Feb. 23, Plains Cotton Growers President J. D. Smith of Littlefield appointed a four-man committee to look into the rising flood of textile imports to the U. S. and consider the effects on markets for U. S. cotton in general and cotton grown on the Texas High Plains in particular.

He placed PCG Vice President Don Anderson of Crosbyton, Board Chairman Roy Forkner of Lubbock, E. O. Willingham, Morton, and J. W. Borders of Whitharral on the committee.

The action came as a result of a letter received by Smith from Sadler Love, secretary-treasurer of the American Textile Manufacturers Institute headquartered in Charlotte, N. C.

Love's letter pointed out that U. S. imports of textiles made of cotton and man-made fibers have reached the "staggering equivalent of more than 1,400,000 bales of cotton," and represent cotton that is not grown by American farmers and yarn, cloth and garments that are not made by American employees.

He requested that PCG adopt a resolution which would stress the interest of the cotton producer in sensible limitations on textile imports and call upon the federal government to impose and enforce such limitations. He also asked that copies of the resolution, if adopted, be sent to congressmen, senators, the Secretary

of Agriculture and the governor.

The 1966 textile imports amount to a 37.4 per cent increase over 1965.

Perhaps of even greater significance is the fact that 162,000 bales, or 57 per cent of this one-year increase, is in the form of yarn, and came almost entirely from countries that produced the cotton from which the yarn was made.

This of course means a reduction of that same amount in the consumption of American cotton by domestic mills.

Some observers feel that this is the great remaining difficulty in cotton's domestic market, and that it threatens to cancel out the cotton gains being made under the current cotton program and those that are expected under the new Cotton Research and Promotion Act.

The National Cotton Council, at its annual meeting recently in San Francisco decided to "support appropriate action to provide reasonable protections against excessive imports of textile products, including apparel."

As the PCG Board discussed the matter, Vice President Don Anderson of Crosbyton expressed concern that a strong effort to restrict or shut off imports from some foreign countries might have an adverse effect on High Plains cotton, much of which goes into export markets.

He said he felt the subject was deserving of additional

study before official action was taken, and suggested the possibility that textile import quotas for the various countries might in some way be correlated with the amount of U. S. cotton they bought.

Forkner commented that he believed the bulk of textile imports was coming to the U. S. from countries which were net exporters of raw cotton. But he agreed with Anderson that no action should be taken without first looking at all the pertinent facts.

The motion which led to the appointment of the committee read: "That the PCG president appoint a committee to work with ATMI toward the development of specific proposals for action by the appropriate agencies of the federal government which will accomplish the textile import limitations sought by ATMI without in any way jeopardizing export markets for U. S. cotton, and that the com-

mittee present to the PCG Board or Executive Committee for approval any proposal or proposals agreed upon."

There was unanimous approval of the motion.

"The role of the cotton producer organization in the improvement of High Plains cotton is that of getting things done through organized action that either cannot be done at all or cannot be done as effectively through individual action."

Those were the words of Donald A. Johnson, executive vice president of Plains Cotton Growers, Inc., when he spoke recently at a cotton quality meeting sponsored in Lubbock by the Texas Agricultural Extension Service.

He went on to say "A cotton producer organization such as Plains Cotton Growers is charged with looking after producer interests on all fronts, and some of the ways we can

meet this responsibility are: By attempting to keep adequate and balanced funds going into research and development for the various things which affect cotton quality;

"By supplying some of these funds, particularly for new projects which might not otherwise be funded;

"By helping to educate our membership to the advantages of adopting new varieties, cultural practices, ginning standards and marketing methods as they are developed by the specialists;

"By playing watch-dog over federal and state legislation, which if left to the wiles of urban legislators could very well make unprofitable even the production of the Highest quality cotton and

"By promotion of the area's cotton production, which amounts to letting buyers know what there is to buy on the High Plains and the advantages of buying it."

UNDERGOES SURGERY

Leslie Preston, son of Mr. and Mrs. Orville Preston, underwent surgery in Plains Memorial hospital in Dimmitt last Thursday following an injury. He will get to come home some time this week.

VISIT MOTHER

Mrs. Nora Ray and her daughter, Mrs. Perry VanVliet, were in Lubbock Sunday to visit Mrs. Ray's mother, Mrs. Cora Hacker.

LIGHT SNOWFALL

Light snow fell Sunday night here but melted almost as fast as it fell. What little remained on the ground melted quickly Monday. So we missed some much needed moisture again.

BI COUNTY MEET

A Bi-County meeting of the PT-A will be held March 29 in Hart. Plans for the meeting will be told at a later date.

CONGRATULATIONS

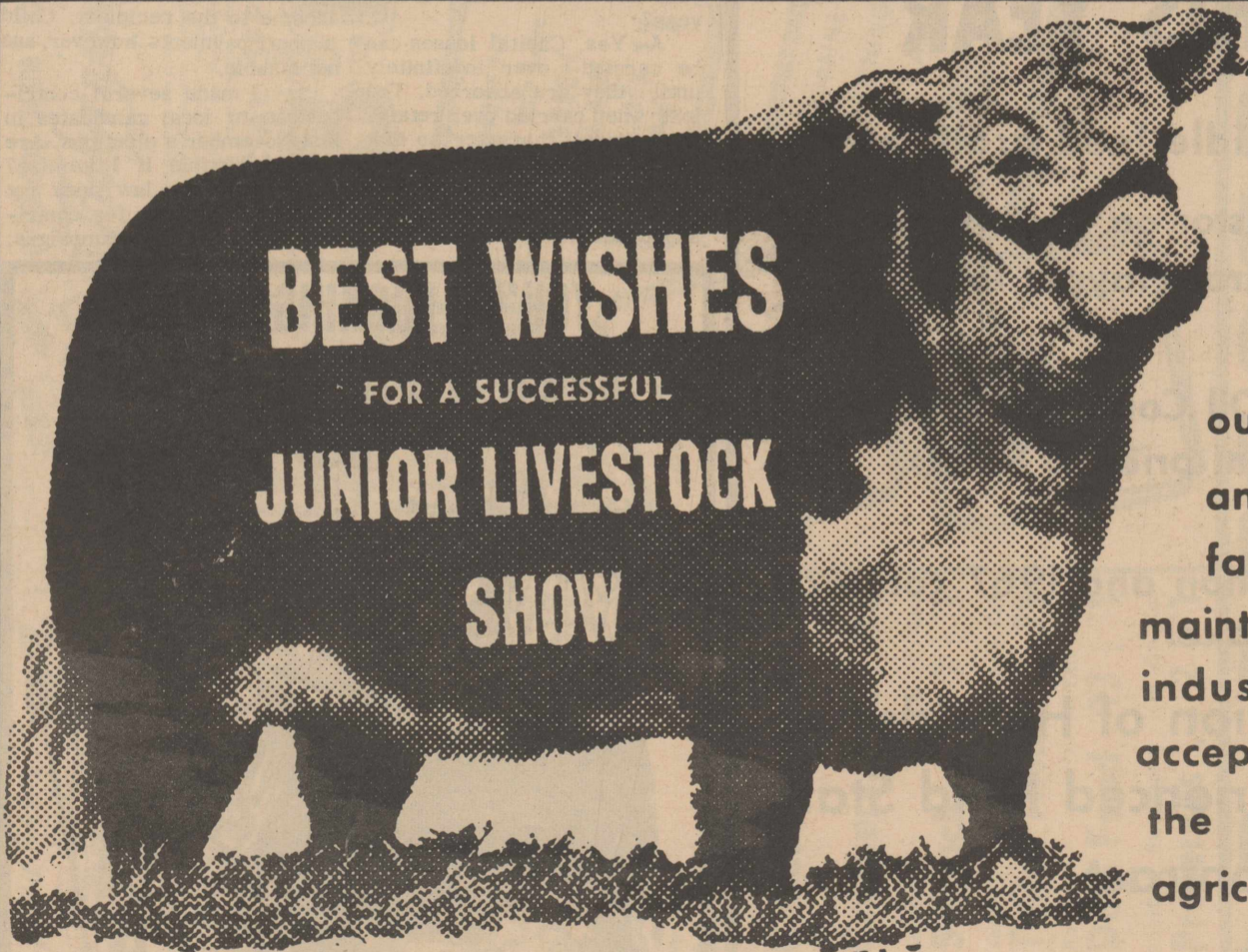
To The FFA Boys

We Appreciate Your Business

WE WILL BE READY TO SLAUGHTER AND PROCESS ALL FFA LIVESTOCK ON MONDAY, MARCH 13.

HART LOCKER

A. L. Talley, Mgr.



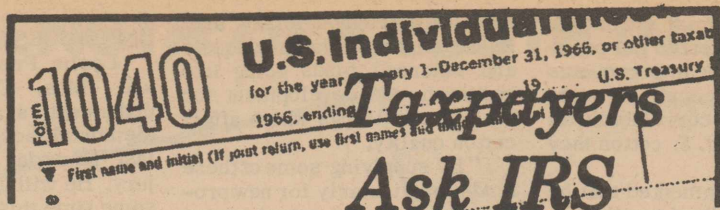
The future well being of our country depends upon an uninterrupted flow of farm products that can be maintained only by educated, industrious farmers who use accepted scientific practices in the management of their agricultural business.

Attend The Castro County Stock Show

FARMERS STATE BANK

Member F.D.I.C.

Hart, Texas



This column of questions and answers on federal tax matters is provided by the local office of the U. S. Internal Revenue Service and is published as a public service to taxpayers. The column answers questions most frequently asked by taxpayers.

Q - Do I add the 6 per cent surcharge mentioned by the President in his State of the Union address to what I owe on this year's return?

A - No, the surcharge must be approved by Congress before it becomes law.

Q - I started work on my '66 tax return and find the new withholding rates have left me greatly overpaid. Is there anything I can do to reduce my withholding?

A - Yes. When the graduated withholding rates were adopted by Congress last year, provision was made to allow additional withholding allowances to taxpayers with large itemized deductions. These allowances take into account the size of the taxpayer's income and deductions as reported on 1966 tax returns as well as income and deductions expected for 1967.

Procedures for claiming these allowances are outlined on Schedule A (Form W-4) available at local IRS offices. This schedule and a corrected W-4 must be filed with the taxpayer's employer who will make necessary withholding adjustments. These allowances cannot be claimed until you file your 1966 return.

Q - I just turned 65. Will my boss stop withholding Social Security taxes from my pay if I go on working?

A - The law requires the employer to withhold Social Security taxes on the first \$6,600 in wages paid each employee during the year. The age of the employee does not change this requirement.

Q - There is one deduction I forgot to claim when I filed my 1965 return. Can I include it when I file this year?

A - No, you cannot. An amended return or claim Form 843 must be filed for 1965 to claim the deduction.

Q - Too much was withheld for Social Security tax as I held several jobs last year. Can I get this refunded or credited to any income tax I might owe?

A - Yes, you can. A special line has been added to Form 1040 where you can list excess Social Security tax withheld.

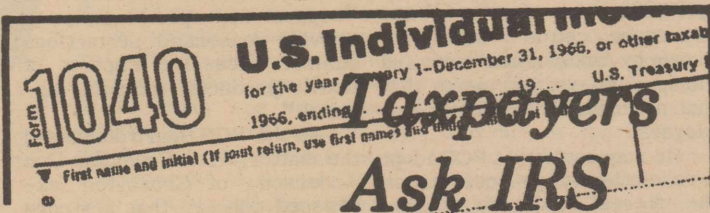
This is Line 19 on Page 1 of the 1040. If you had two or more employers, use it to list amounts in excess of \$277.20 withheld for Social Security taxes.

Q - I understand that the first \$100 in dividends is not taxable. Does that mean I don't have to list that on my return?

A - All dividends received should be reported on your return. Page 2 of Form 1040 has a line where you may take the exclusion you refer to. Note that this is \$100 for dividends of qualifying domestic corporations. On joint returns where both husband and wife receive dividends, each may exclude up to \$100 of such dividends.



MAN OF YEAR gets award from W.A. Hawkins Jr.



Q - How do I figure my state gas tax deduction?

A - Page 9 of the 1040 instruction booklet contains a table that may be used to figure this deduction.

Q - I had a capital loss in 1966. Can I carry it over to next year if I don't use all of it this year?

A - Yes. Capital losses can be carried over indefinitely until they are absorbed. The loss when carried over retains its original character so that if it was a long term loss it remains a long term loss while a short term loss remains a short term loss.

Q - I have GI insurance. Are the yearly dividends taxable?

A - No, veterans insurance dividends are not taxable.

Q - Do I have to report the alimony I receive from my ex-husband?

A - Yes, alimony is taxable income to the recipient. Child support payments, however, are not taxable.

Q - I made several contributions to local candidates in last November's elections. Are they deductible if I itemize?

A - No. The law does not permit deductions for contributions to political campaigns.

CASTOR TERMS ARE BETTER THIS YEAR

✓ Make use of your idle feed grain acres

✓ U.S.D.A. permits castor on your mandatory 20% feed grain layout for a small per-acre fee

✓ The Baker Castor Oil Company has increased its minimum price to \$5.00 per cwt.

✓ Additional information and 1967 contracts are available at Baker

For The Best Selection of Hybrids
The Most Experienced Field Staff
The Best Contract

See

THE BAKER CASTOR OIL CO. OF TEXAS

1401 N. Columbia Plainview CA3-2581

-Or-

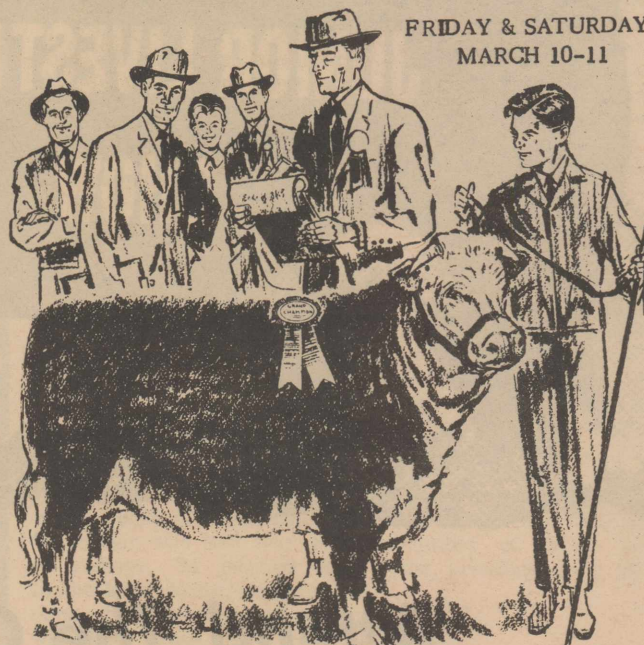
SUN-VUE FERTILIZER

Hart

938-2307

YOU'RE LOOKING GREAT JUNIOR LIVESTOCK SHOWMEN

FRIDAY & SATURDAY,
MARCH 10-11



GOOD LUCK HART ENTRIES
in the annual
COUNTY STOCK SHOW
THE NEWMAN AGENCY

Joe & Glenna Newman

Hart, Texas

A TICKET! A TASKET!
FOOD SAVINGS BY THE BASKET!

Shurfine Young Mother Hubbard Sale

Introducing for the 1st time

Taskit Basket

The handiest new product in years! All purpose "Disposable" Decorative! It's a laundry hamper! Toy Box! Catchall! Note Box! It's a Storage Box! It's a Waste Basket! Shipping Carton!

SPECIAL OFFER!

UNTIL MAR 11

ONLY — **\$3.00** FOR

WITH \$5.00 FOOD PURCHASE



Shurfresh Sw. Milk or Butter Milk 8 Oz. Can	\$1
Biscuits 13	\$1
Shurfine 24 Oz. Bottle	\$1
Grape Juice 3	\$1
Shurfine Cream Style No. 300 Can	\$1
Golden Corn 5	\$1
Shurfine No. 300 Can	\$1
Pork & Beans 9	\$1
Shurfine 14 Oz. Bottle	\$1
Catsup 5	\$1
Shurfine Waffle 32 Oz. Glass	\$1
Syrup 2	79c
Shurfine 6 1/2 Oz. Can	\$1
Chunk Tuna 3	89c
Shurfine Alaska Sockeye Tall Can	\$1
Red Salmon 89c	
Shurfine Big 2 1/2 Can	\$1
Purple Plums 4	\$1
Shurfine Fresh Shelled No. 300 Can	\$1
Blackeyes 6	\$1

Shurfine Qt. Jar	39c
Dressing 39c	
Shurfire 25 Pound Print Bag	\$2.19
Flour 2.19	
Energy Powdered 49 Ounce Box	\$1
Detergent 2	\$1
Shurfresh	\$1
Margarine 5	\$1
Shurfresh 2 Lb. Loaf	\$1
Cheese Spread .89	
Shurfresh 1 Lb. Box	\$1
Crackers 2	45c
Shurfine No. 303 Can	\$1
Spinach 7	\$1
Soflin 2 Ply White 10 Roll Pak	\$1
Toilet Tissue 79	
Roxey Tall Cans	\$1
Dog Food 13	\$1
Shurfine Strawberry 18 Oz. Jar	\$1
Preserves 2	\$1

SHURFINE Cut Blue Lake GREEN BEANS 5 No. 303 \$1 CANS

SHURFINE SHORTENING 3 LB. CAN 69c

SHURFINE TOMATO JUICE 46 OZ. 4 CANS \$1

SHURFINE PINEAPPLE JUICE 46 OZ. 4 CANS \$1

SHURFINE 12 OZ. JAR		
PEANUT BUTTER	3 for \$1	
SHURFINE TALL CANS		
EVAPORATED MILK	7 for \$1	
SHURFINE 2 POUND BOX		
PANCAKE MIX	3 for \$1	
SHURFINE HALVES NO. 303 CAN		
BARTLETT PEARS	4 for \$1	
SHURFINE NO. 303 CAN		
APPLE SAUCE	6 for \$1	
SHURFINE Y. C. SLICED OR HALVES BIG 2 1/2 CAN		
PEACHES	4 for \$1	
SHURFINE 28 OZ. JAR		
APPLE BUTTER	3 for \$1	
SHURFINE WHOLE 22 OZ. JAR		
SWEET PICKLES	2 for 89c	
SHURFINE 12 OZ. CANS		
LUNCHEON MEAT	2 for \$1	
SHURFINE SOLID PAK NO. 303 CAN		
TOMATOES	4 for \$1	
SHURFINE ALL GREEN NO. 300 CAN		
CUT ASPARAGUS	3 for \$1	
SHURFINE EARLY HARVEST NO. 303 CAN		
SWEET PEAS	5 for \$1	
SHURFINE FRESH PAK 16 OZ. JAR		
CUCUMBER CHIPS	4 for \$1	
SHURFINE 8 OZ. CANS		
TOMATO SAUCE	9 for \$1	
SHURFINE NO. 2 CAN		
CRUSHED PINEAPPLE	4 for \$1	
SHURFINE 303 CANS		
FRUIT COCKTAIL	5 for \$1	
SHURFINE DEVILS FOOD, SPICE, WHITE, YELLOW 19 OZ. BOX		
CAKE MIXES	4 for \$1	

VIENNA SAUSAGE

SHURFINE
4 OZ. CANS

5 \$1

COFFEE

SHURFINE
1 LB. CAN

65c

• TASTE

• QUALITY

• FRESHNESS

SHURFRESH MILK

B & K GRO & MKT.

Trade At B&K Where
You Get Bargains Every Day

Double Gunn Bros. Stamps On Tuesdays
With Purchase of 2.50 of More

DR PEPPER

FREE DR. PEPPER SERVED
ALL DAY SATURDAY

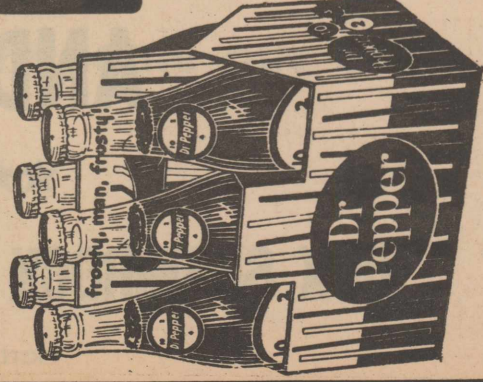
6 BOTTLE CARTON
PLUS DEPOSIT

29c

MILK

1 GALLON

98c



Society NEWS

Rush Party By Chi Psi Given Here

ALLOWANCE IS GOOD INVESTMENT

Giving children allowances may be an investment in common sense training, says Mrs. Wanda Meyer, Extension home management specialist at Texas A&M University.

The youngsters not only get a feeling of sharing in the family income, but an allowance gives them some practical lessons in handling money--and they will be doing that all their lives, Mrs. Meyer explained.

Many child guidance experts recommend starting a child's allowance fairly young, around five or six years old. It doesn't have to be a large amount. Ten or fifteen cents a week will meet their small requirements.

Once the precedent is established, of course, you've got to stay with it and the obligation grows with the kids. At the age of ten, for example, allowances may range from 50 cents to a dollar a week. When the youngsters become teens, the range goes higher -- from two dollars upward, depending upon how much of their personal expenses are the responsibility of the children.

Many parents let their children take over things like scout club dues, church contributions, haircuts, school supplies, and similar fixed expenses.

Every child has his own pace, Mrs. Meyer points out. But don't be surprised to find your youngsters planning, saving and making consumer choices. These are basic money management tools and this is where your initial decision to let them handle smaller amounts really begins to make sense.

Chi Psi Chapter of Beta Sigma Phi had a salad supper and rush party Thursday March 2 at 7 p. m. in the community room of the Farmers State Bank.

Carrying out the theme, "A Backward Party", guests dressed and acted accordingly. Prizes were given to the "best dressed" for the theme used.

Following the supper, games were played.

One guest, Mrs. L. D. Williams, was present.

Members present were Mmes. Paul Armstrong, Melvin Aven, Bob Bennett, Charles Black, Joe Edd Carson, Wister Clevenger, Ronnie Davis, Richard Franks, Jack George, Bob Reed, Bill Rich, Newlon Rowland and David Willis.



DEBBIE NEWSOM

HOP RIGHT OVER TO THE



Castro County Junior Stock Show

--- And Support

Our Hart Entries

Friday and Saturday

March 10-11



**BEST WISHES
TO THE HART FFA -FHA
AND 4-H**



COX SHAMROCK & AUTO PARTS

Hart, Texas

Recipe Of The Week

Debbie Newsom, 15-year-old daughter of Mr. and Mrs. Stewart Newsom, has submitted a recipe for our readers this week.

Debbie has two sisters and three brothers, Vickie, Rhonda, Johnny, Keith, and Kerry. Activities at school include

participation in FHA, basketball, volleyball and track.

CHILI CASSEROLE

1 12-ounce can corned beef, finely diced
1 pkg. chili mix
1/2 c. water
1 1-pound can whole tomatoes
1 1-pound can kidney beans
1 pkg. refrigerated biscuits
1 T. melted butter or margarine
1/2 c. chopped peanuts

Heat oven to 450 degrees. Mix together corned beef, chili mix, water, tomatoes and kidney beans; pour into a shallow 2-quart casserole. Bake 15 minutes. Remove from oven and top with biscuits; brush biscuits with butter and sprinkle with peanuts. Return to oven and bake 8 to 10 minutes. Serves 6 to 8. Cooking time: 25 minutes.

RETURNS HOME

Mrs. Marvin Reed returned home Monday evening of this week after spending a week visiting her daughter and family, Mr. and Mrs. David L. Jones in San Jose, Calif. and seeing her son, Eddie, off to Viet Nam.

VISIT WELTYS

Mr. and Mrs. J. W. Putman of Lamesa, Mr. and Mrs. J. D. Putman of O'Donnell and Miss Ruby Putman of Lubbock spent Saturday and Sunday here visiting Mr. and Mrs. Leonard Welty and family.

VISIT IN LUBBOCK

Mr. and Mrs. Bill Yaeger visited their daughter, Mr. and Mrs. Ralph Newton and family on Sunday.

VISIT MOTHER

Mr. and Mrs. Robert Brooks were in Plainview Sunday visiting her mother Mrs. A. T. Matsler.

GOOD NEIGHBORS

The Good Neighbors Club will meet at Mrs. Percy Harts Friday, March 10 for a salad supper at 7 p. m. for members and their families.

SEAGOS VISIT


Mr. and Mrs. Wayne Seago and Dale were in Milan N. M. to visit Mr. and Mrs. Bill Bragg and Mr. and Mrs. Lloyd Webster.

VISIT MCGILLS

Mrs. J. L. Nivens of Hale Center visited her daughter and family, Mr. and Mrs. Sam McGill last week.

VISITS BROTHER

Gerald Franks of Perryton visited his brother, Mr. and Mrs. Richard Franks and family on Sunday.



**LONG TERM
LOW INTEREST RATE
SOUND LENDING POLICIES**

Since 1917 the Federal Land Banks have been leaders in extending farm and ranch real estate credit. Approximately two million loans have been made. Many advantages are offered in a Land Bank loan. Come in and get full information. No obligation, of course.

**Federal
Land Bank
Of Dimmitt
Dimmitt, Texas**

WHO'S NEW

Mr. and Mrs. Guy Ford Jr., are the parents of a baby boy, born March 2 in Plainview Hospital. The baby was named John Guy III and weighed 8 pounds, 2 ounces. Maternal grandparents are Mr. and Mrs. Jack Smitherman and paternal grandparents are Mr. and Mrs. Guy Ford Sr. of Canyon.

Mr. and Mrs. Bobby McLain are parents of a baby boy, born Feb. 27, weighing 4 pounds, 13 ounces. He was named Chris Allen. Maternal grandmother is Curtis Scruggs of Olton and paternal grandparents are Mr. and Mrs. Hubert McLain of Hart.

REV. SPENCER GUEST SPEAKER

The Rev. James Spencer and wife, Jane were guest speakers at a meeting held in Tulia Saturday night.

Attending from Hart were Mr. and Mrs. E. E. Foster and the Rev. and Mrs. Douglas Gossett.

Rev. Spencer, a native of Arkansas and his wife, a native of Oklahoma, have been in Brazil, serving as missionaries.

There are some 800,000 people and only three protestant churches. Spencer was pastor of a church with 138 members. Slides were shown on Brazil at the meeting.

WSCS Meet For Study

The study of the book "Affluence and Poverty" was completed at the last meeting of the WSCS in the fellowship Hall of the First Methodist Church at Hart.

Opening prayer was led by Mrs. C. B. Landers, followed by a short business meeting, conducted by Mrs. H. H. Parker.

In the business session, the ladies voted to sponsor a girl from Girlstown, discussed the purchase of a sewing machine for use at the Hart school in the special education class, and made plans to prepare and serve the noon meal, Sunday March 12 for the sub-district MYF meeting to be held at the local church. The WSCS and Wesleyan Guild will work together to prepare this meal.

Mrs. Ed Bennett gave an inspirational devotion, "How A Better World Begins With Me."

Mrs. Bennett and Mrs. W. A. Hawkins Sr., presented the closing chapters of the book which the group has been studying as a series of lessons.

Members present were Mmes. W. A. Hawkins Sr., C. B. Landers, Ed Bennett, Bill Yeager, Mabel Aven, W. C. Crick, Douglas Gossett, L. L. Swindle, Bob Bennett and H. E. Loman.

CARD OF THANKS

We wish to take this opportunity to thank everyone for the flowers, visits and cards, during Roni's stay in the hospital and since being home. God Bless all of you.

Mr. and Mrs. Sam McGill Roni and Kim.

HAPPY BIRTHDAY

MARCH 12
Mrs. Zella Height Coffelt
Carol Miller
Mindy Mosley

MARCH 14
Claude Ray
Cathy Sharp

MARCH 17
Jerry Heller
Erma Lee Kennedy

HAPPY ANNIVERSARY

MARCH 12
Mr. and Mrs. William Gallion

WRONG SIDE OF ROAD

Fifteen per cent of the fatal accidents on the rural highways of Texas occurred last year when somebody was driving on the wrong side of the road, according to the records of the Texas Department of Public Safety.

DRIVER EDUCATION NEEDED

"Texans fro Traffic Safety" urges all Texans to actively support Governor Connally's plan for driver education for all young drivers. An integral part of the Governor's highway safety program, completion of driver education would give additional experience and bolster the confidence of each youngster.

COLLEGE BIDS REJECTED-- After extensive hearings, the Higher Education Coordinating Board again declined to give its blessing to creation of four-year colleges in Midland-Odessa, Texarkana and San Antonio.

Midland-Odessa and Texarkana groups want to elevate existing junior colleges to senior college rank. San Antonio legislators propose a new institution to be built "from the ground up."

Board said all such proposals must await the statewide master plan for higher education, expected to be completed by the spring of 1968.

SHORT SNORTS

Texas' travel exhibit, designed to attract tourists to the state, has won top honors in the first of six North American travel shows in which it entered.

Ground has been broken for \$10,000,000 Institute of Texan Cultures building at San Antonio's HemisFair '68.

VISITS HAWKINS

Mrs. Cuby Kitchens and children of Hereford visited Sunday in the home of Mr. and Mrs. W. A. Hawkins Jr. and family.

VISIT SANDERS

Mr. and Mrs. Robert Sanders of Lubbock and Mr. and Mrs. Furche Riley of Sunny-side were visitors in the home of Mr. and Mrs. Frank Sanders last week.

COMING EVENTS

MARCH 13
Co-Op Gin
School Board
Lions Club

MARCH 16
W.S.C.S.
Beta Sigma Phi

MARCH 17
St. Patricks Day

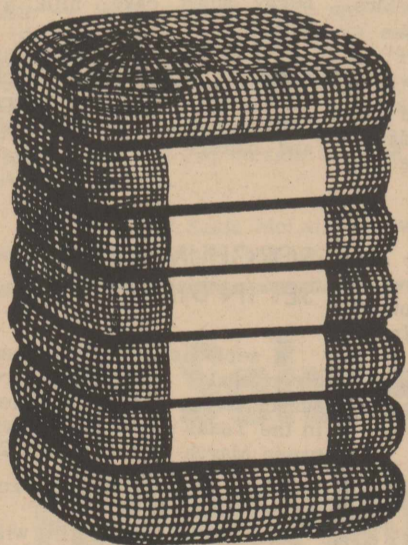
Songs of Satisfaction



KITTRELL ELECTRONICS

ZENITH TELEVISION | Kelvinator APPLIANCES

NO. BROADWAY-HART 105 S.W. 2nd-DIMMITT
Phone 938-2197 Phone 647-2197



WE SALUTE YOU FUTURE FARMERS, FUTURE HOMEMAKERS AND 4-H MEMBERS

WE LOOK FORWARD TO SERVING THE FUTURE FARMERS OF OUR AREA WITH TOP NOTCH GINNING SERVICE... JUST AS WE NOW SERVE THEIR FATHERS... AND WE WANT TO SAY...

THANK YOU

To our many friends and customers who have come our way for ginning service in the past.

HART GIN

Rosa and Roland Shepard

To Make SWPS Area Survey

Olton customers of the Southwestern Public Service Company will receive a "Prosperity Through You" prospect card in their next electric statement. "Prosperity Through You" is a program launched by the electric company in an effort to attract new industries to the communities which the company serves.

Ralph Glover, local manager for Southwestern Public Service Company, requests that if local people have any industrial prospects or even the slightest rumor that an industry is interested in this area that the information be placed on the prospect card and that it be mailed or brought to the local chamber of commerce office or to their home town Public Service office.

All of the tips provided by the program, which is designed

to help local citizens realize their importance in industrial and community development, will be followed up by the chamber of commerce with the assistance of Southwestern Public Service Company.

INFANTS FREQUENT TRAFFIC VICTIMS

Infants one year old and under are the fourth most frequent traffic fatalities while riding as passengers in motor vehicles, according to records at the Texas Department of Public Safety.

HOME FROM VIET NAM

Royce Talley, son of Alvin Talley, will be home from Viet Nam this week to spend 20 days before going to Virginia where he will be stationed for awhile.

CELEBRATE BIRTHDAY

Mrs. Harry Kleman, Mrs. Raymond Annen, Mrs. Tom Annen and Mrs. August Huseman all of Nazareth, sisters of Mrs. Frank Bauman and Mrs. Gus McLain and Mrs. Lyndall Warren were all guests on Monday in the home of Mrs. Bauman to celebrate her birthday.

BIRTHDAY DINNER

Mr. and Mrs. G. T. Reed, Mr. and Mrs. Robert Edwards and Mr. and Mrs. Beverly Reed and son, Roy Glenn, all of Plainview, were guests Sunday in the home of Mr. and Mrs. Bob Reed and family, honoring Bob Reed and his father G. T. Reed with a birthday dinner.

TO VIET NAM

Mike Morrison, son of Mr. and Mrs. Theron Morrison, has been at home on leave before going to Viet Nam March 10. Mike and Theron were in Dallas a couple of days this week.

NAZARETH NEWS

By Mrs. Gus McLain

Ph. 945-2337

Order of Martha met in the home of Mrs. Ed Drerup Tuesday, Feb. 28 at 2 p. m. with 18 present. No linens were on hand to be sewn so the afternoon was spent playing cards and visiting.

Catholic Daughters meeting was held Wednesday night after Lent services. Mrs. Dora Albracht and Mrs. Francis Wilhelm showed slides of Father Elmer Albracht's ordination.

Clem Neibur is recuperating at the home of Mrs. Anna Albracht.

Hugh Wayne Acker, son of Mr. and Mrs. Anthony Acker, was burned last week when he poured gas on a trash fire.

Mr. and Mrs. Joe Jesko of Muleshoe spent Sunday here with their daughter, Mr. and Mrs. James Acker and family. The occasion was their granddaughter Sherri making her first communion.

Marlin Durbin, two year old son of Mr. and Mrs. Paul Durbin, was kicked by a horse last week and suffered a broken leg.

Mrs. John Smith and Shawn of Amarillo spent the weekend with Mrs. Lew Hindman.

Sunday March 5 at the 10 a. m. Mass 38 second grade students made their first Holy Communion and were enrolled with the Scapular. Many visitors were seen at church including The Robert Ring family of Amarillo, the Ronnie Schillings of Slaton, the Dutch Robison's of Amarillo, the Tom Simants of Lubbock, Mr. and Mrs. Harold Stephens of Dimmitt and Mrs. Ethel Womack of Dimmitt.

Mrs. Frances Hyland suffered a stroke last Monday at her home. She is some improved.

Mrs. Anthony Acker was able to attend their son's communion services Sunday but still has a terrible swelling in her knees.

Mrs. Frank Bauman of Hart celebrated her birthday Monday March 6 with a dinner for her relatives. Those enjoying the occasion were her sisters, Mrs. Harry Kleman, Mrs. Raymond Annen and Mrs. Tom Annen, Mrs. August Huseman and Mrs. Gus McLain, and her daughter Mrs. Lyndall Warren and Bill.

On the occasion of his first Communion little Jess Womack and his family had dinner with his godparents, Mr. and Mrs. Tom Annen, Sunday. Those present were his parents, Mr. and Mrs. John L. Womack, Rita Del and Lester; his grandmother, Mrs. Ethel Womack, his aunt and uncle, Mr. and Mrs. Harold Stephens of Dimmitt.

School Menu

March 13 through 17, 1967
MONDAY-Dandy Steaks and gravy, whipped potatoes, tossed salad, buttered carrots, hot rolls, apple sauce cake with whipped topping, milk and butter.

TUESDAY-Lima Beans and ham shanks, chopped turnips and greens, onion slice, whole pickle, cornbread, peanut butter brownies, milk and butter.

WEDNESDAY-Hamburgers, mustard onion pickle relish, catsup, french fries, ice cream bar, milk and butter.

THURSDAY- Tuna fish on lettuce leaf, english peas, potato salad, hot rolls, strawberry short cake, milk and butter.

FRIDAY- Meat balls and spaghetti, baked potato, black-eyed peas, tossed salad, cornbread, lime jello squares, milk and butter.

SORGHUM MEETING SET IN DIMMITT

A series of educational and directional meetings are scheduled for several counties in the Texas South Plains between March 15 and March 28 by the Grain Sorghum Producers Association.

Castro County meeting will be held March 23 at the Dimmitt High school cafeteria, with Melvin Barton, director, in charge.

Elbert Harp, a farmer of Abernathy and GSPA President said that farmers have done the best job ever in supporting the organization and this is a series of meetings to inform them of the programs and projects currently being worked on by GSPA and to seek added direction on new activities for grain sorghum betterment.

Y. F. Snodgrass of the GSPA staff will be discussing the possibility of changing county loan rates on sorghum as well as the new labor laws affecting producers.

Rudie Tate of the GSPA North Plains staff will talk on current new developments in livestock feeding and processing in the sorghum area as well as possibilities for food and industrial use of grain sorghum.

During the "new business" sessions county GSPA directors and officers will be elected.

BE SURE TO ATTEND

The Annual Castro County Stock Show



Friday And Saturday
MARCH 10-11

Best Wishes to all our youngsters!

Ed Harris Lumber Co.

Hart, Texas

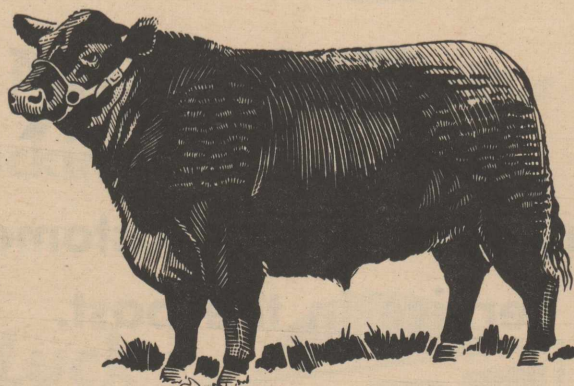
YOU CAN DEPEND ON HART FFA,

FHA & 4-H FOR QUALITY

LIVESTOCK

Good Luck

At The Castro County Show This Weekend.



BOB'S FARM SUPPLY

Hart, Texas

Handicapped Are Helped Through Easter Seals

"Do you know a handicapped person who needs help and isn't getting it?" is the question being asked Mrs. Walter Maynard who is Castro County's Easter Seal Representative and the person to contact for services from the Easter Seal Society for Crippled Children and Adults of Texas. The Easter Seal Society offers rehabilitation services to help disabled persons and their families to find and make the most effective use of resources which will be helpful to them in developing their abilities and living more purposeful lives, Mrs. Walter Maynard said.

This is accomplished through direct treatments, services, education, research, and cooperative efforts with all other health agencies, private, state and federal. The Easter Seal Society does not duplicate services, but strives to fill all unmet needs of the disabled, he added.

The Easter Seal Society is carrying out its thirty-seventh annual Easter Seal Appeal to finance a program of rehabilitation services for crippled children and adults. The Texas Easter Seal Society helps support 23 treatment facilities where children and adults are treated regardless of ability to pay. Physical therapy and speech and hearing programs are offered to help the disabled

make their lives fuller, despite their handicaps.

Mrs. Walter Maynard urged every person in Castro County to increase their support of the Texas Easter Seal Society and its program of services to the crippled children and adults.

He added that anyone who could benefit from rehabilitation services should contact her at the First State Bank in Dimmitt to request services for the Easter Seal Society.

HART P-TA MEETS AT GRADE SCHOOL

Hart Parent-Teachers Association met Monday, March 6 in the grade school auditorium, with a program presented by the fourth grade, entitled "Gypsies Reward", an operetta.

The short business meeting was conducted, with fourth grade having high room count, for grade school and seventh grade high room count in junior high.

The entertainment was presented by Mrs. Bell's and Mr. Bledsoe's students, and directed by Mrs. Carl Rambo.

TIME MARCHES ON--Legislators had time on their hands and their minds as House State Affairs Committee conducted the longest hearing of this legislative session on the bill to outlaw daylight saving time in Texas.

Committee heard witnesses for nearly seven hours, until after 2 a. m., arguing both sides of the proposed act by Reps. Will Smith of Beaumont and Ralph Wayne of Plainview.

Federal Uniform Time Act of 1966 will place all states on daylight saving time from May to October unless a state's special legislation exempts it.

Lining up in favor of the bill were restaurant and theater owners and the farm bureau.

STATE KINDERGARTEN--Sen. Don Kennard of Fort Worth is sponsoring a bill to provide free public education for five-year-olds, with the state sharing the expense with local school districts on a 50-50 basis.

Kennard said the program would cost \$34,500,000 for the first two years and that 50 per cent of the five-year-olds would attend classes next year, 60 per cent the second year and as many as 80 per cent by 1970-71.

"A kindergarten program established under rules set up by the Texas Education Agency, is the most vital step Texas should take in improving our school system," the senator said.

MISS DIMMITT CONTEST SET

"Miss Dimmitt" contest has been slated for May 6 at Dimmitt in the High School auditorium, according to an announcement received from the Dimmitt Jaycees.

All Castro County girls from ages 16 to 21 are eligible to enter this competition, which will be judged on talent and beauty.

Sportswear and formal wear will be used this year in the contest, with no swim suit competition.

There will also be a "Little Miss Dimmitt" contest at the same time for pre-school girls from ages 3 to 6 years.



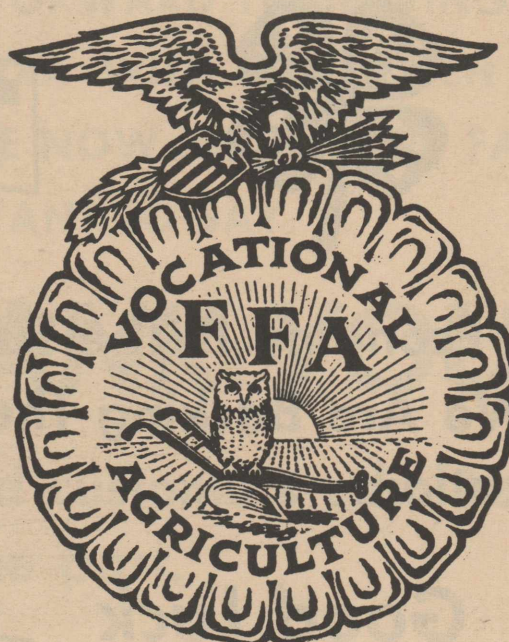
FFA-FHA AND 4-H YOUNGSTERS

The future of farming lies in your hands.

WE SALUTE THE CASTRO COUNTY FUTURE FARMERS

ATTEND THE STOCK SHOW

March 9-11



HART GRAIN CO.

Hart, Texas

In Memory Of Susie

Lord and Master of the heavens -- you have called a friend of ours -- and our hearts are deeply saddened -- By a loss of one so fine -- I am sure that you have reasons -- Which are good as they can be -- For your act in taking Susie -- Very suddenly from us -- As the years that count a lifetime will be drawing to an end. We discover just a handful -- You can truly hold as "Friend" So when one of them some twilight -- Takes his daily smile away -- Emptiness and deepest sorrow -- Lingers through each passing day. Lord and Master of the heavens -- You have called our friend above and I'm certain that the angels now her smile will come to love.

In memory of Susie McLain who was taken one year ago March 12. Gone but not forgotten.

We Salute The FUTURE FARMERS OF AMERICA

And the role of agricultural leadership they are assuming



JONES SEED and FARM SUPPLY

Worth & Othella Jones

STATE CAPITAL Highlights AND Sidelights by Vern Sanford

Three pieces of major legislation passed by the House now have landed on the Senate's doorstep.

These include:

* Local option authority for financially - distressed Texas cities to levy a one-per-cent sales tax. (Vote: 85-63)

* A stiff code of ethics for legislators and other state officials and employees. (Vote 140-6)

* Repeal of "emergency purchase" provisions to put teeth in Sunday closing laws. (Vote 132-14)

Before passing the city sales tax bill, sponsored by Rep. John Traeger of Seguin, the House spent nearly three hours of continuous debate and waded through more than 30 amendment attempts.

Advocates predict a majority vote in the Senate, too. But no action is expected across the rotunda until after rules suspension eases with passage of the session's 60 day mark.

Code of ethics bill, by Rep. Jim Nugent of Kerrville, made its third trip through the House. Substantially the same bill has been approved by representatives in two prior sessions but died in the Senate. Same fate is anticipated this time for what advocates term "one of the strictest codes in the United States."

Measure would require lawmakers to disclose personal interest in legislation, force legislators and state officials and employees to reveal substantial interests in private businesses and require identi-

fication of relatives on the State payroll.

Surprisingly, the strengthened Sunday closing law, introduced by Rep. Willis J. Whatley of Houston, cleared the House in seven minutes. Only one comment was made. Smooth sailing also is anticipated in the Senate. (what this law will do to tourist spending has never been mentioned.)

TIME OUT--First big break in one of the session's closest-fought contests-- over whether Texas should go on Daylight Saving Time -- came when the Senate state affairs committee approved the exemption bill.

Theatre owners, restaurant operators and farmers backed the bill, by Sen. Joe Christie of El Paso, to continue Texas on Central Standard Time. (After April 1, the new federal Uniform Time Act goes into effect everywhere except where state legislators vote otherwise. Only one state, South Dakota, so far has passed an exemption act.)

Panel was unimpressed with arguments of television broadcasters, railroad and airline spokesmen that the state must stay in time with the rest of the nation.

Same bill, heard in House state affairs committee, was referred to sub-committee and has not yet emerged.

VETERINARY LABORATORY-- Bill to create a Veterinary Medical Diagnostic Laboratory for Texas farmers and ranchers at Texas A&M University has been sent to the

Governor for his signature.

Rep. Dick Cory of Victoria and Sen. Bill Patman of Ganado, sponsors of the bill, said the laboratory will be located on property which will be given to the state by the A&M Board of Regents. Purpose of the laboratory is to give speedy and accurate anal-

yses of samples from possibly diseased animals to help local veterinarians diagnose and treat the animals.

MIGRANT LIVING--House Public Health Committee--considering a bill to set up state standards for farm-worker housing-- heard testimony last week from state officials of the insanitary living conditions of the 162,000 migrant farm workers in Texas.

Committee sent the bill along to a sub-committee, after such officials as Col. Egon Tausch of the migrant section of the Texas Good Neighbor Commission gave case studies of migrant conditions and pointed out that cases of infant dysentery often range as high as 30 per cent among the children of farm workers.

FEED LOT BILL MOVES-- A feed lot license bill was approved by the House agriculture committee. Sponsor is Rep. Tom Holmes of Granbury.

It sets standards of sanitation in livestock feeding operations under authority of the Texas Animal Health Commission and fixes these annual licensing fees: \$25 for lots that feed under 1,000 head; \$100 for 1,000 to 3,000 head; \$150 for 3,000 to 10,000 head; and \$200 for over 10,000 head. Licenses are optional for lots feeding under 1,000.

Under amendments, the Commission would have to act in 30 days on license applications.

Water Pollution Control Board and Air Control Board regulations would prevail in "Matters falling within their

jurisdiction."

Committee also approved a bill to raise fines and penalties (up to \$200 per head) for improperly transporting animals from fever tick quarantine areas.

LOCAL OFFICIALS' RAISE-- County auditors and precinct officials would make substantial monetary gains under a pair of bills being sponsored in the House by Reps. Vernon Beckham of Denison and Dick Cory of Victoria.

Beckham's bill would let county commissioners courts pay mileage reimbursement to county auditors for travel in their line of duty. House Committee on Counties referred that measure to a sub-committee for further consideration.

Cory's bill would allow commissioners courts to raise the salaries of justices of the peace and constables up to 20 per cent over what they now earn. Committee favorably reported this one back to the House floor where it now is awaiting action.

LIVESTOCK MARKETS-- Sen. Wayne Connally of Floresville and Rep. Charles Jungmichel of La Grange have introduced legislation to place greater emphasis on encouraging the construction, development and expansion of services and facilities of livestock markets in Texas.

Connally's bill would establish a charter-fee system to govern livestock markets and to create a seven-member Public Livestock Board in the state government to grant charters and supervise the markets where livestock are auctioned.

"We have seen in the last 10 to 15 years a vast improvement in bank facilities and an expansion of their services," the Senator said. "The same results can be obtained by providing the proper basis for establishing and developing livestock markets."

MOVIE REGULATION --

Every incorporated city and town in Texas would be required to set up a "Motion Picture Classification Board" to preview every movie to be shown in that city and classify it as "suitable" or "not suitable" for persons under age 18 by a bill introduced in the House by Rep. Cordell Hull of Fort Worth.

Hull said that cities now have the authority for such regulation, but his bill would make the board mandatory and would provide guidelines for classifying movies. Board would be composed of nine members appointed by the city's governing body for two-year terms.

TEACHING OF SPANISH--

Rep. Ralph Wayne of Plainview has introduced a bill requiring public schools to offer courses in Spanish to students in the second, third and fourth grades.

Wayne's bill, now in the House Education Committee, would require that within five years after passage of the bill, every elementary school in the state begin teaching Spanish to students in at least those three grades.

It also provides that the State Board of Education furnish textbooks and recorded Spanish exercises to the school districts without cost to the students.

COURTS SPEAK--U. S. Supreme Court rejected a challenge of the Texas law which provides penalties up to \$1,000 a day for operating slant hole oil wells.

High court wrote no opinion in ruling that it would not hear arguments on the state law dealing with violators of the prohibition against angle drilling across another property owner's or leaseholder's boundary.

A total of \$304,800 in fines are involved in appeal. But petitioners claimed the state is seeking fines and penalties ranging into millions of dollars in 100 similar cases.

ATTORNEY GENERAL SPEAKS--

A \$5,000,000 appropriation for the Institute of Texas Cultures at San Antonio's HemisFair '68 can be spent any time up to February 19, 1969, and may be used for operating expenses, Atty. Gen. Crawford C. Martin held in an official opinion.

In other opinions, Martin concluded:

* Legislature may authorize a grant or loan of state funds to a governmental entity for sewer facilities and water quality control program planning and facilities.

* Board of Registration for Professional Engineers does not have the power to amend rules to permit the licensing of persons with degrees other than engineering.

* McLennan County commissioners court may permit an applicant for a county depository contract to replace a cashier's check (required in bidding) and award the contract to the applicant.

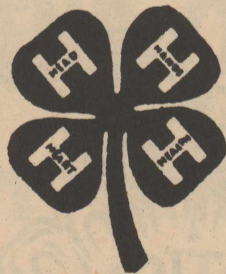
* No exemptions from an inheritance tax on bank accounts in Texas where account belongs to a non-resident citizen can be allowed under the unconstitutional retroactive provision of a 1959 law.

MUSEUM FUND RAISED--

A \$200,000 private contribution was turned over to Governor Connally for a museum at Washington State Park near Brenham. This releases \$500,000 more previously appropriated by the legislature under a matching arrangement.

Museum plans will begin immediately at the state's first capitol site.

EMBLEMS TO REMEMBER

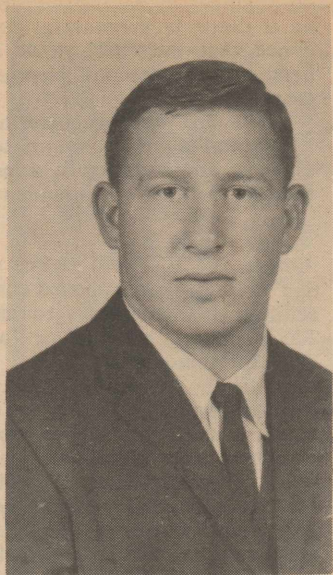


A Good Farming Economy Is The Future Of Our
Community And We Are Backing The Future
Farmers Organization.

ATTEND THE SHOW
Friday & Saturday
MARCH 10-11

Good Luck
At The
Show





LARRY LEE

Larry Lee To Get Degree

Larry Lee, son of Mr. and Mrs. Lorenzo Lee, will be graduated in May from the Angelo State College, with a degree in business administration, majoring in accounting and minoring in economics.

Lee has recently been elected president of Delta Sigma Pi fraternity, an international business administration fraternity.

ATTEND WORKSHOP

Mrs. Lowell Richburg, troop leader for the girl scouts and assistant leader, Mrs. Alvis Bryant attended the leaders workshop in Plainview last week.

PRIMARY CLASS

The primary class of the First Baptist Church will sing in Church Sunday March 19.

VISIT WELTYS

Mr. and Mrs. Rubert Wayne Welty and daughter of Hobbs, N. M. visited Monday with Mr. and Mrs. J. W. Welty.

Cotton Cues

Stylish room divider: an old folding screen brightened with paint + panels of flowered color.

ATTENTION!
CORN GROWERS
 ARE YOU INTERESTED IN

1. High Yields
2. Early Maturity
3. Good Standability
4. Combining In The Field
5. Proven For This Area

Also Have Excellent Quality, High Yielding Enslage Corn

SEE
ROY TAACK
 Ph. Edmonson 864-3378
 Hart, Texas

SHORT SNORTS

Governor Connally has appointed Sherman Birdwell of Austin as chairman of the Governor's Committee on the Status of Women and Mrs. Mary Ann Faust of Beaumont as vice-chariman.

Department of Public Safety is reminding Texas motorists that only six weeks remain before the April 15 deadline on the 1967 vehicle inspection stickers.

House Parks and Wildlife Committee favorably recommended a bill introduced in the House by Rep. Leroy Wieting of Portland authorizing the Parks and Wildlife Department to negotiate with the federal government for the eradication of vegetation in Texas streams and lakes.

Water Development Board withdrew a \$15,000,000 bond offering because of an "Unsatisfactory" market.

Lindsey Enderby of Gainesville has been designated chairman of "Opportunities, Unlimited," a career-political education conference set for April 22 on the UT campus. Sen. John Tower and GOP National Chairman Ray C. Bliss are sponsors of the conference.

Driving isn't a PICNIC



Keep your eyes on the road . . . and the mirror . . . know your traffic position

Good Luck, Hart Entries

In The

ANNUAL CASTRO COUNTY STOCK SHOW



Friday

and

Saturday

March 10-11

Best Wishes On A Successful Show

We are proud to be of service to the farmers. We look forward to serving the Future Farmers of America in their agriculture business.

FARMERS GRAIN CO.

DeWayne Brown, Mgr.

HART, SUNNYSIDE AND KRESS HIWAY

STATE CAPITAL HIGHLIGHTS

Legislative redistricting reared its ugly head suddenly and formidably for Texas' House of Representatives. A U. S. Supreme Court decision invalidates the carefully-stuck-together reapportionment act of 1965 for representative districts.

This unexpected court action has changed redistricting from a routine cleanup chore into a major task. It could very well mean the end of the political line for some representatives and possible shaking of House unity.

Court found population variances among representative districts (up to 26 per cent) too great to meet its one-man-

one-vote standard and sent the 1965 districting plan back to Houston federal judges for recheck.

Representatives had figured all that was necessary this year was elimination of the 11 flatorial districts criticized by the Houston federal district court. Now, they are faced with wholesale redrawing of lines to equalize population discrepancies statewide.

Speaker Ben Barnes acknowledged "It is a difficult situation."

Big city lawmakers said they soon would introduce a bill to give Bexar, Dallas and Harris Counties one more representative each (high court held they

were entitled to that) and adjust other variances.

Sensing that congressional reapportionment also might be struck down, redistricting acts in this area were introduced by Reps. R. L. Vale and Jake Johnson of San Antonio and Rep. Frank Cahoon of Midland.

LIQUOR-BY-JIGGER-- A bill to legalize sale of liquor by the drink in Texas was introduced this week.

Reps. John Field and Dick McKissack, both of Dallas, are House authors. Sen. Joe Christie of El Paso is the Senate sponsor.

Highlights of the bill are:
 * Open saloons (banned by constitution) are defined as places devoted exclusively to sale of liquor for on-premise consumption. Bill would legalize mixed-drink permits for qualified hotels, private clubs,

restaurants and lodges -- businesses or organizations NOT engaged exclusively in the business of selling liquor.

* Measure would authorize mixed drink sales in some 122 counties where on-premise consumption of beer and wine and package store sales already are permitted. Provision is made for local elections in these areas on specific issue of mixed drinks. Failure of election would not affect status of other alcoholic beverages. In other areas, affirmative vote would be required for mixed drinks.

* Drinks would be subject to five-cents-an-ounce tax, plus two per cent sales tax. Retail drink permits would cost \$1,000 at state level. Cities and counties could assess fees of \$500 each. Beverage servers would pay an annual fee of \$12. Private clubs in wet areas must operate under the same regulations as retail drink establishments and pay the permit fee. Those in dry areas will pay a special registration fee and a 10 per cent gross receipts tax.

* Texas Liquor Control Board would administer permits and enforce the law.

SHEEP DIP BILL--A bill to relax state standards for importation of sheep from other states has passed both houses of the Legislature. But each house passed its own bill -- though they say the same -- so one must do it again.

Senate passed its SB 183, House passed its HB 396. Now, either the Senate must pass the House version, or the House the Senate version, in order for the measure to be ready for Governor Connally's signature.

Present law requires mandatory dipping of sheep brought into Texas, except those going to slaughter. New bill would allow the Animal Health Commission to accept certificates from other states that shipments are free from scabies.

ABORTION BILL -- Sen. George Parkhouse of Dallas has introduced a bill to expand the circumstances under which women can get legal abortions in Texas.

Present law allows an abortion only if delivery of the child would endanger the life of the mother. Parkhouse's bill also would allow abortions in the case of rape or incest, if the health of the mother would

be impaired by having the baby, or if there is substantial evidence that the child would be born with a serious physical or mental defect.

This bill would require that a hospital abortion committee approve any abortion by a majority of the five members.

Sen. V. E. (Red) Berry of San Antonio has proposed constitutional amendments to take Texas either "all wet" or "all dry" for liquor sale.

Bills by Rep. Joe Allen of Baytown would ban the use of oyster shell in road construction and restore the old shell dredging line at 1,500 feet from live reefs; construction feet from live reefs; Allen also recommends enlarging Parks & Wildlife Commission from three to six members.

Senate passed a bill to outlaw job discrimination in state and local government due to race, religion, color or national origin.

Senate committee approved proposed constitutional amendments to extend veterans land program and authorize local revenue bonds to finance industrial plants to be operated by private interests.

Gov. John Connally named Harry Jersign, San Antonio brewing company head, to the State Parks and Wildlife Commission, succeeding A. W. Moursund of Johnson City, who did not seek re-appointment.

Albert Allison of Dallas is new executive director of the Republican Party of Texas, succeeding Marvin Collins, formerly of Corpus Christi, who held the job since 1963.

Legislation to stiffen Sunday closing law (removing emergency purchase provision) cleared Senate committee.

In Other Opinions, Martin concluded that:

* A prisoner who received a suspended sentence under the old criminal code may not have his sentence reduced or terminated under provision of the new code.

* A bill to provide benefits to survivors of firemen and law enforcement officers killed in line of duty cannot be made retroactive.

WE'LL BE PULLING FOR YOU

HART FFA, FHA & 4-H

In The
**Castro County
 Stock Show**

Friday & Saturday



NEWSOM FOOD

Hart, Texas

BEST WISHES

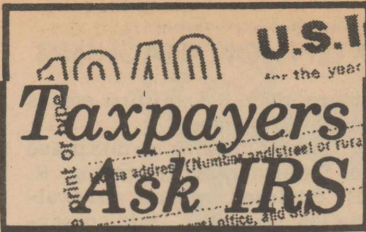
To Hart Entries In The
**Castro County
 Junior Stock Show**

March 10-11

At Dimmitt

THE HART BEAT





This column of questions and answers on federal income tax matters is provided by the local office of the U. S. Internal Revenue Service and is published as a public service to taxpayers. The column answers questions most frequently asked by taxpayers.

Q - Are you going to put out a table showing what my 1966 tax should be when the 6 percent surcharge is added in?

A - The 6 percent tax surcharge proposed by the President does not affect 1966 income tax returns. Therefore, the tax tables and schedules in the 1040 instructions need not be changed for this year's returns.

Q - I'm over 65 and I've heard that starting this year my medical expenses will not be fully deductible. Does that affect my 1966 return?

A - No, it does not. Allowable medical expenses for taxpayers 65 and over will be fully deductible on 1966 returns. The change will come next year when you file a return on 1967 income. Then the medical expenses of older taxpayers will be treated the same as those of taxpayers under 65.

Q - My wife is visiting her mother for a few weeks. Can I file our return without her signature as most of our income is from my salary?

A - No, your wife's signature is required as well as yours on a joint return. Failure to have her sign the return will hold up processing and any refund due.

Q - I was off the job for about 2 months last year because of illness. Doesn't some of the pay I received during this period qualify for the sick pay exclusion?

A - Yes, it very well might. There are two rules governing when and how much sick pay may be excluded from income for federal tax purposes.

First, if the amount you received as sick pay is more than 75 percent of your weekly rate of pay, there is a 30 day waiting period before you are entitled to a sick-pay exclusion.

If the amount you receive is 75 percent or less, the waiting period is 7 days unless you are hospitalized for at least one day during your absence from work. In that event, there is no waiting period.

The exclusion under both rules is limited to \$75.00 per week for the part of the first 30-day period in which you are entitled to the exclusion. After that, it becomes \$100.00 per week.

Q - Where should I list the alimony income I receive?

A - Use line 7 on page 2 of Form 1040. Prizes and awards, state tax refunds and other miscellaneous items should be entered here.

Q - My wife and I are filing a joint return and the Social Security withheld from both our salaries exceeds the maximum. Can we take a credit for this?

A - The maximum applies to the Social Security tax withheld from each taxpayer. Only the amounts in excess of \$277.20 withheld from your salary, or your wife's, may be claimed as a credit against income tax liability.

Q - I just completed my return and sent it in. What records should I keep in case I'm audited?

A - Keep whatever you need to substantiate the income and deductions on your return. Cancelled checks, paid bills, Forms

W-2 and 1099, bank books and similar records will be helpful.

Q - My salary was about \$6,000 last year and my wife earned about \$1,500 doing part-time office work. Which return would be the best for us to file--a joint return or separate returns?

A - bases on income alone, your question is impossible to answer. The deductible expenses each of you have are the determining factors.

Generally, joint returns are more advantageous for married couples. Compute your tax both ways and then file the return that results in the lower tax.

Q - Can I use my 1966 income as the basis for a declaration of estimated tax?

A - Yes, this is one of the methods that may be used in filing a declaration of estimated tax. You may also use your 1966 tax or an actual estimate of 1967 income as the basis for filing estimated tax declarations.

Q - I moved and didn't get my 1040 tax package. What should I do?

A - Copies of forms and instructions are available at any local IRS office as well as at many banks and post offices.

Q - How should I make out my check for the balance of tax I owe?

A - Checks should be made out to the Internal Revenue Service. Never send cash through the mails. Use a check or money order.

Q - Do you need to have records of your medical bills, contributions and other items when you take the minimum standard deduction?

A - No, you don't. The minimum standard deduction, like the 10% standard deduction, makes it unnecessary for taxpayers to itemize or substantiate deductions.

Q - How can you tell a "fly-by-night" tax return specialist from one who is reliable and honest?

A - avoid the man who "guarantees" you a refund

2 - be on guard if he suggests that the refund be sent to his address

3 - never sign a blank tax form

4 - don't sign a form that has been prepared in pencil; the figures could be easily changed.

5 - ask the advisor to sign the return he has prepared. Remember that when you ask someone to help you prepare a return you are still legally responsible for every item on the return.

Q - How do you figure out how much to report as interest when you cash in U. S. Savings bonds?

A - Report as interest the difference between what you paid for the bonds, the issue price, and what you received when you turned them in. Some cash basis taxpayers elect to report the interest earned each year on their bonds rather than all at once when they redeem the bonds. Either way of reporting this interest income is acceptable.

BEST WISHES

TO THE
HART
ENTRIES
IN THE



CASTRO COUNTY STOCK SHOW

MARCH 9-11

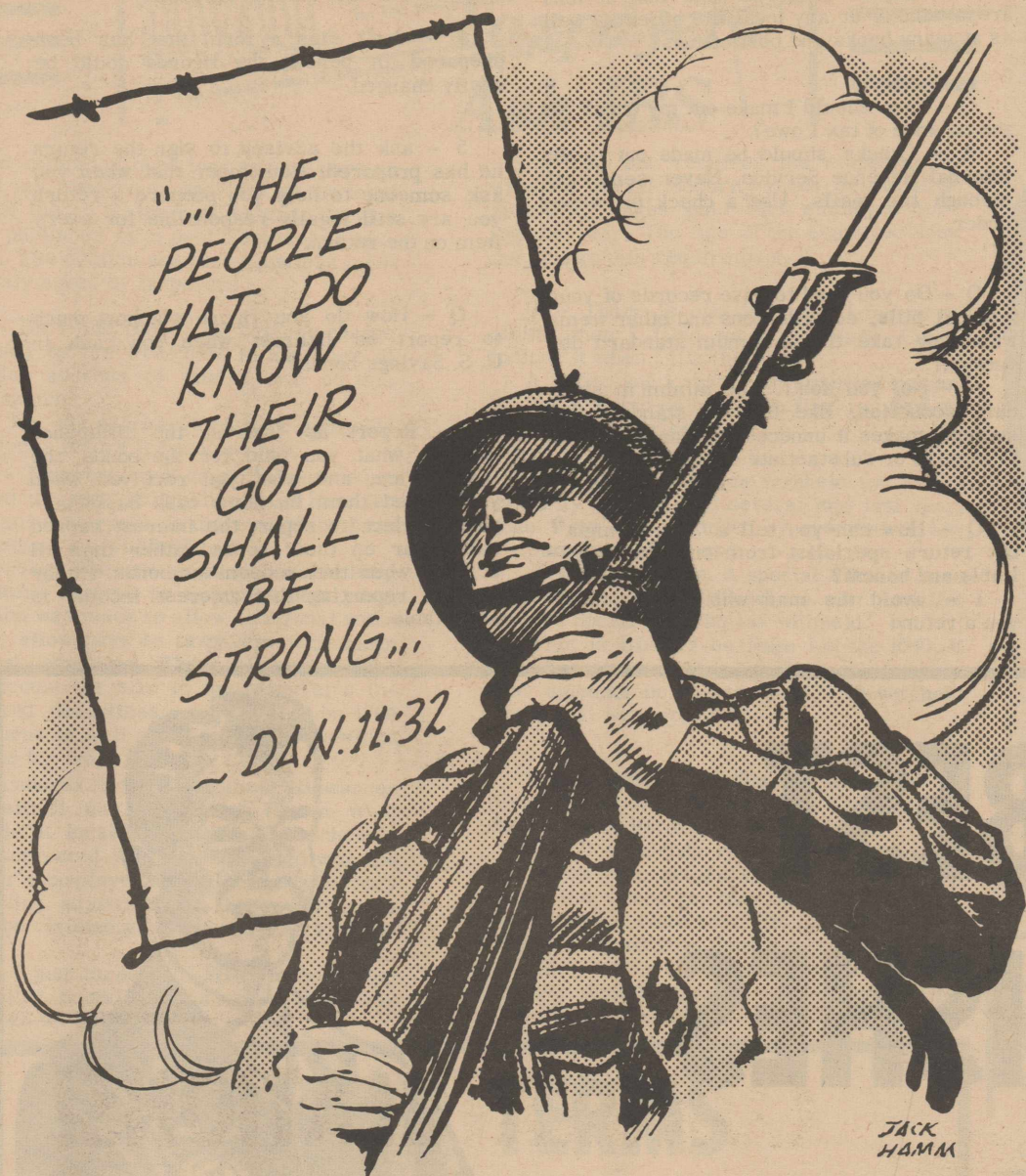
Agriculture is the nation's largest and most basic industry. Forty per cent of our working people are engaged in the production, processing and distribution of agricultural products or in producing supplies and services for farmers. Producers Co-Op Gin salutes the Future Farmers Of America.

Let's All Go To The Stock Show!
HART PRODUCERS CO-OP GIN

IKE BENNETT, MGR.

HART, TEXAS

STRENGTH OF A YOUTH IN SERVICE MASS MEDIA AID TO EXTENSION TEACHING



The printed word continues to be a major teaching aid of the Texas Agricultural Extension Service for reaching both rural and urban audiences.

A yearend summary of the A&M University-based agency, cooperatively financed by county, state and federal funds, shows the extensive use of mass media outlets by the Service in getting latest farming and ranching and home economics information to the residents of the state.

Extension workers, including those in the Department of Agricultural information, prepared and released directly to the newspapers and magazines of the state 53,129 different stories dealing with subjects of importance in practically every field of agriculture, agribusiness and homemaking during 1966.

They appeared as guests or principal participants in 26,649 radio broadcasts and utilized 2,178 television appearances to further their educational programs for both adults and 4-H Club members.

A total of 2,163,763 publications, most were prepared by specialists and agricultural information editors at A&M, were distributed during 1966. Most of the distribution was through the county Extension offices.

In addition, subject matter and program outlines and guides to meet rather specific needs of the many and varied educational programs conducted by the Service were widely used. The yearend summary shows that almost 260,000 different sets of material were prepared for mass distribution, and that

more than 3.3 million copies were distributed.

In commenting on this phase of Extension programming, R. E. Burleson, reports and evaluation specialist, said cooperation from the state's mass media outlets plays a major role in getting new or vital information to those who can use it.

"CONVENIENCE" OF CONVENIENCE FOODS RELATIVE

Although the phrase "convenience food" is widely used, the fact is that no one has defined it precisely, according to Mrs. Gwendolyn Clyatt, Extension consumer marketing specialist at Texas A&M University.

When they think of convenience foods, most people refer to the ease and speed of preparation, lack of waste, and the minimum of clean-up. However, the term "convenience," when applied to foods, is necessarily relative to the product concerned and the current idea of what is convenient.

An item considered to be the "last word" in convenience today may be outmoded by products hitting the market tomorrow. The main factors to be considered when evaluating convenience foods are cost, time, quality, nutritive value, acceptability, variety and versatility, says Mrs. Clyatt.

Cost factors are hard to arrive at when comparing quality and quantity. Some of the new convenience foods cannot be duplicated at home, since the ingredients may not be available for retail sales.

When most people discuss quality of food they are really referring to their own standards based on past experiences. Standards of quality vary between individuals, sections of the country, religious groups and other ethnic divisions. The quality of a convenience food may or may not be equal to home-prepared foods, depending to a large extent on who did the home preparation.

The wide acceptance of convenience foods has been evidenced by their great popularity and rise of sales throughout the country in the past few years. Food processors and manufacturers spend much time and money finding out what consumers want and will pay for, and the form they want it in.

1966 CALF CROP

The Texas Crop and Livestock Reporting Service says the 1966 calf crop for the state was up 1 percent from 1965 and totaled 4,695,000 head. The increase, they said, was the result of the larger percent calf crop. Nationally, the calf crop was down very slightly but it was the first decline in the number of calves born from the previous year since 1958.

FARM SAFETY MEETING

The Texas Farm and Ranch Safety Council will be meeting as the Farm and Ranch Section of the Texas Safety Association and the Governor's Highway Safety Conference in Houston's Rice Hotel, March 22. The meeting is scheduled to begin at 9:30 a. m. in the Gold Room. The meeting is open to anyone interested in farm and home safety.

FEED YOUNG LAMBS DURING DROUTH

Feeding extra young lambs may offer one way for sheep producers to whip the drouth. Because of current drouth conditions many producers are faced with a problem of what

to do with fall or winter dropped lambs, according to J. E. Huston and Maurice Shelton, of Texas A&M University's Livestock and Forage Research Center here.

They say whwre it's necessary to feed both the ewe and the lambs their total feed intake, it's best to wean the lambs and put them in dry lot on a high energy ration.

They say lambs may be weaned to a dry lot any time

after they are two months old or weigh 40 pounds, without a serious slow-down in their growth rate.

For best results, say Shelton and Huston, the lambs should be put on feed before they become "doggied."

The researchers say a large number of ration formulations can be devised to give good results on young lambs. Anyone interested in the ration being used at the research center may write for it there.

HISTORY REPEATED IN CLOTHING

Today's fashionable young woman would be mistaken for a boy back in 1490, according to Miss Rhea Boyles, Extension clothing specialist with Texas A&M University.

Miss Boyles, quoting James Laver, curator of the Victoria and Albert Museum, says fashion is undergoing a transition period. Laver has analyzed fashions since "the beginning of history," and concludes that women's clothing appears to have gone full cycle.

"Today's short skirts, long hose, and flat shoes are almost exactly what young boys wore in 1490," he said. He also observed that today if one were to walk down the street in back of a young couple, their clothing--and hair length-- might be enough alike to really confuse which was which.

Right now, he states, men's and women's clothing tends to look alike because history is at a meeting point of a patriarchy and a matriarchy.

According to the U. S. Department of Labor, 72 percent of all women who had completed five years or more of college were working in March, 1965. Of women who had four years of college, 54 percent were in the labor force. At the same time, 24 percent of all women with less than eight years of elementary school were employed or actively seeking work.

When the matriarchy becomes an established fact, women will be less interested in fashions and men's fashions will become more prominent, said Laver. The beginning signs of this are the new fashions for men--with more color, high style, more attention to details, accessories, and the "Total Look."

READ and USE WANT ADS REGULARLY

CONGRATULATIONS



FFA-FHA AND 4-H

Attend The
Stock Show

MARCH 9-11

We'll see you at the stock show

KING BLACKSMITH

WELDING AND GEARHEAD REPAIR
Hart, Texas

THE FAMILY LAWYER

Which House Is Your Castle?

Three centuries ago, an English judge proclaimed that "a man's house is his castle."

Almost two centuries ago, the Fourth Amendment to the Constitution forbade any "unreasonable search" of a private dwelling.

And today, the safety of a person's house from governmental intrusion still ranks as one of the most distinctive hallmarks of a free land.

But which "house" is the law talking about?

Obviously it means a house that you own and live in. And it includes a house or apartment that you occupy as a tenant.

Summer cottage? House trailer? Hotel room? All these too, since they are places of dwelling, ordinarily share the constitutional guarantee of privacy.



The protection may also reach beyond the house itself. Courts have held it to include a householder's adjacent garage and a farmer's nearby barn. In both cases, the courts felt that the constitutional shelter should cover all areas reasonably within the ambit of family life.

Does this mean that the home is a privileged sanctuary for crime? Not at all. A house may indeed be searched under proper circumstances—for example, if the police first obtain a warrant, or are in the process of making a lawful arrest.

For then the search is "reasonable," not forbidden by the constitutional ban. As a United States Supreme Court justice said in upholding rightful searches:

"The framers of the Constitution only intended to restrain the abuse, not abolish the power."

But without such justifying circumstances, a house stands secure against the inroads of officialdom. An English statesman, Sir William Pitt, gave the doctrine its classical expression:

"The poorest man may in his cottage bid defiance to all the force of the Crown. It may be frail; its roof may shake; the wind may blow through it; the storms may enter; the rain may enter—but the King of England cannot enter; all his forces dare not cross the threshold of the ruined tenement!"

A public service feature of the American Bar Association and the State Bar of Texas. Written by Will Bernard.

TEXAS CASH FARM RECEIPTS UP FOR JAN. DEC.

Texas farmers and ranchers received \$2,676 million during Jan.-Dec. period from the sale of crops and livestock and livestock products. Receipts were up 8 percent from a year earlier, said the Texas Crop and Livestock Reporting Service. The cash receipts were almost equally divided between crops and livestock.

Girl Scouts Celebrate 55th Birthday

More than 5,000 girls of the Caprock Girl Scout Council will join more than three million Girl Scouts throughout the country in celebrating Girl Scout week from Sunday, March 12, through Saturday, March 18. "Values to Hold--Worlds to Explore" is the theme of Girl Scout Week and of the Girl Scouts' 55th birthday March 12. This date marks the anniversary of the first meeting of the first troop organized in Savannah, Ga., by Juliette Gordon Low, founder of the movement in the U. S. A.

Since that first troop of a few girls, more than 20 million members have made the Girl Scout Promise to do their duty to God and country, to help other people at all times, and to obey the Girl Scout Laws of loyalty, honesty, courtesy, cheerfulness, usefulness, kindness, and thrift.

TO SUPPORT MISSIONARY

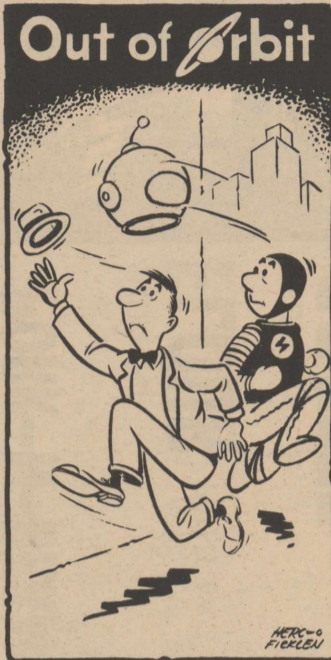
The Plainview District of the First Methodist Church has been supporting a missionary in Japan, Dr. Hilburn, who returned to the States Oct. 31. It was decided to support Leonard Bloomquist in Africa.

GUESTS OF COLES

Mr. and Mrs. Gene Davis and children of Plainview, Mr. and Mrs. Danny Richardson from Post, and Mr. and Mrs. Nathan Pevehouse of Hart were all Sunday guests in the home of Mr. and Mrs. Everette Cole and family.

GETS HONOR

Mr. and Mrs. Charles Martin were notified this week that their son, Doug was a distinguished student at Texas A and M College for the first semester.



W.T. Brown Possessions Destroyed In Fire

All furnishings and clothing of the W. T. Brown family were consumed in a fire at their home, Friday, March 3, at 4:30 p. m.

The home, located on the Duff farm and belonging to Claude Ray, had the whole interior razed by the fire and

damage was estimated at \$300. The fire reportedly started from faulty wiring in a clothes closet.

The Browns, who have three children under school age, have been helped by the people of the community, who have donated furniture and clothing.

8 X 10 COLOR

Easter Portrait
\$2.50



Remember This Easter For Years To Come With Living Color Portraits of Your Loved Ones By

H & W of Hart
EASTER SUNDAY

March 26 12:30 to 3:30

In the Community Room of

FARMERS STATE BANK

Kenneth Warren

John Holloway



CONGRATULATIONS! FFA-4-H-FHA

Let's go to the annual
Castro County stock
show and support our
Hart youngsters

March 9-11

Good Luck
To Hart Entries

HART OF THE PLAINS GIN

"BENNY"

