

PARSONS  
FUNERAL HOME  
Oxygen Equipped  
Ambulance Service  
Ph. 285-2621 Collect, Olton

# THE HART BEAT

Consolidated With The Hart Dispatch, July 26, 1962

FARMERS  
STATE BANK  
Member F.D.I.C.  
HART, TEXAS

VOLUME 1

HART, CASTRO COUNTY, TEXAS, THURSDAY, NOVEMBER 14, 1962

NUMBER 18

## SEWAGE HEARING IS SLATED

*Rudy's  
Ramblings*  
BY RUDY HARRELL

Last Tuesday afternoon I happened onto the scene of an accident that makes a fellow a believer in safety!

I was over at the Olton Enterprise when Parsons Funeral Home informed Bill Turner that a wreck had taken place outside of Olton. Turner and I went to the accident and what I saw sent chills up my spine.

I have seen a lot of wrecks and I have been upset before, but this time we were only minutes away from a death.

A man was killed in a truck that struck a school bus.

The truck was a complete loss and the bus turned over twice. A Negro girl in the bus had been thrown out and by some strange twist the bus missed crushing her to death.

The gentleman in the truck had not been missed! He was killed instantly.

His son was driving and is presently in critical shape in the Littlefield hospital.

The sight of an accident with loss of much blood can never be a "familiar" scene.

Only a few hours had elapsed when I was called to the scene of an accident just outside of Hart in which a 1962 Ford overturned. The Ford had the top crushed in after skidding almost 100 yards. The passengers escaped.

Patrolman Ed Richards happened to mention that it was a miracle that either passenger was still living. I considered then just how close I had come to another death in the same day!

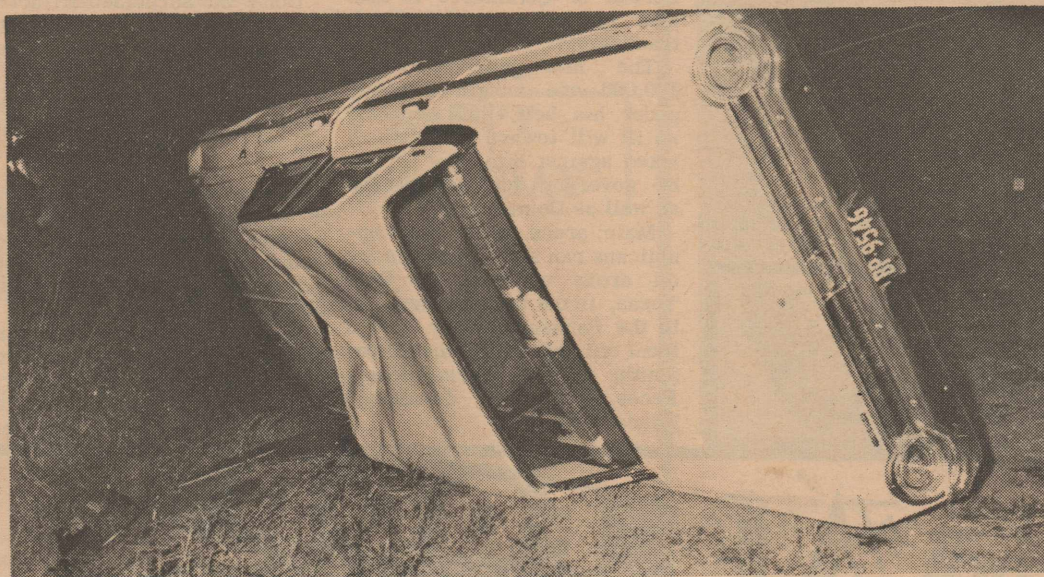
Perhaps this sounds rather silly to you but I drove the speed limit all the way home that night.

In the next few days I will most likely be called to the scene of another accident. Wonder who it will be next time.....

The senior class is sponsoring a Thanksgiving supper Friday, Nov. 16, from 5:30 to 8:30 p.m. at the school cafeteria.

There will be a choice of turkey or ham.

The price is \$1.25 for adults and \$.75 for children per plate.



THIS 1962 FORD overturned five miles South of Hart on farm road 168 late Tuesday evening.



HIGHWAY PATROLMEN Charles Skinner (foreground) and Ed Richards inspect the gravel near the scene of the accident.

### Accident Near Hart

Curtis Dyer, Star Route, Fieldton, was involved in an auto accident Tuesday evening at 9:45 when a 1962 Ford he was driving failed to make a curve five miles south of Hart on FARM ROAD 168.

Highway Patrolmen Ed Richards and Charles Skinner reported that the auto went out of control on the curve and skidded about 100 yards.

Elwood Prentice, passenger in the car, received severe lacerations about the head when he struck the windshield of the auto. Prentice was taken to Castro County Hospital in Dimmitt.

### INSIDE

STATE CAPITAL

PAGE 2

SPORTS NEWS

PAGE 3

### Methodist Pastor Likes Work Here

The Rev. Elra H. Phillips came to Hart on Sept. 19, 1962 and assumed duties at the First Methodist Church of Hart. Phillips came here from Cooper Methodist Church in Lubbock where he had served for three years.

Phillips has been preaching full time for over 15 years. He began preaching almost 27 years ago but retained his job as a barber.

He was licensed in May of 1948 in Lubbock at the Annual Meeting of the North West Texas Convention of Methodist Churches.

In June of 1948 he entered McMurray College and grad-

uated in 1952. Later that year he began seminary work by correspondence and attended Summer Pastorate school at Perkins School of Theology at Southern Methodist University.

Phillips was awarded a scholarship in 1957 to do six weeks work in rural sociology. He was later elected vice president of the Town and Country Conference.

He worked for 11 years in rural churches and received the District Rural Preacher of the Year Award nine out of a possible 11 times. He also received two conference awards.

The Rev. Phillips feels that "Hart is one of the grandest communities I've ever worked in. There is a grand spirit of co-operation and the church people are very close."

It is interesting to note that the Rev. Phillips was converted in a Church of God meeting, baptized by a Baptist preacher and joined the Methodist Church.

### Board Receives Protests

The City of Hart's application to set up a sewage disposal plant will come before the Texas Water Pollution Control Board in a public hearing on Dec. 18 at Austin. The City has made plans to run the discharge water into Running Water Draw.

Many protests have reached the Board including one from the Hale County Soil Conservation District.

F. F. Calhoun, chairman, wrote to call the board's attention to plans for a watershed on the draw and asked that this be considered by the board in making their decision.

The land where the plant would be built, two miles southeast of Hart, is owned by Clements Corporation of Plainview. J. R. Barnes of Austin water geologist, has been employed to protest on their behalf.

Barnes made the request that a formal hearing be held. A number of other downstream landowners have written letters of protest.

Hugh Yantes, chief engineer for the Pollution Control Board, said it has been suggested that water discharge from the plant be used for irrigation.

Proposed plans for the plant include an eventual maximum plant capacity of 72,500 gallons per day.

### School Board Meets

The school board met Monday Nov. 12 at the school. The board elected Mrs. Dub Cleveland as a special service teacher work part time.

The board has also given authority to Mr. Kennedy to employ another teacher.

Kennedy gave the enrollment as 554 compared to 486 at this time last year.

### PTA Meet

The PTA met Monday night at 8:00 p.m. in the school auditorium. Mrs. Bell and Mrs. Nivens fourth grade rooms gave a musical program with a western theme.

Ralph B. Drake of Portales, New Mexico gave a talk on good citizenship.

Mrs. Bell's fourth grade and the 11th grade rooms won the room count.

The next PTA meeting will be held Monday Dec 10 in the school auditorium.

# STATE CAPITAL Highlights AND Sidelights by Vern Sanford

TEXAS PRESS ASSOCIATION

AUSTIN, Tex.—Republicans have turned Texas into a two-party state.

The heavy vote for Jack Cox against John Connally, election of two members to the national House of Representatives and seven members to the Texas House, plus substantial Republican votes in nearly all areas, are being interpreted by many State Capitol observers as meaning that never again will the Democratic nomination be "tantamount to election."

Dallas County elected every Republican candidate for county and legislative office they had on their ballot, and gave Cox a 25,000-vote lead over Connally. Tarrant and Harris were close. Bexar, El Paso, Travis and Nueces, the next four of the big counties, went Democratic.

Unofficial and incomplete returns indicate that Connally carried 204 counties and Cox carried 50. But it was the substantial Cox votes in the 204

counties he lost which makes this election significant.

Connally is conferring with legislators and with state boards and commissions. He will not make complete budget recommendations, since outgoing Gov. Price Daniel is required, under the Constitution, to make budget recommendations, to the Legislature.

But Connally will make his own budget proposals in his message to the Legislature.

Industrialization, tourism, higher education and water conservation are the areas of state activity which Connally stressed most in his campaign. He will propose the creation of a Bureau of Commerce to take over tourist and industry-attracting.

The new governor with 120,000-vote margin of victory under his belt, said he holds no ill will toward areas which voted against him, that he will be governor for Republicans as well as Democrats.

Main areas where the Republicans ran strong were in the oil areas of West and East Texas, in the major cities, and in the Panhandle. They elected local officials in Midland, Ector Smith, Dallas, Kerr, Bexar, Pecos, Hutchinson, Zavala and Randall Counties.

**CAMPAIGNS TOO LONG**—After the longest political campaign in Texas history there is a desire—on the part of many candidates, newspaper reporters who travel with the candidates, and the voting public—to return to the shorter campaign periods.

The old late-in-July, late-in-August and early-in-November voting months were far less strenuous than the present early-in-May, early-in-June and early-in-November dates.

Campaigning in the heat of the summer now is very much preferred over the cold winter months and the long, tedious battle period that extends from December to November.

Don't be surprised if there is a big demand to return to the old election dates. They consumed only about 120 days, compared with this year's long, drawn-out, pace-killing, man-killing, more-than-300-day battle.

Governor-Elect John Connally has been quoted as saying he would favor moving the primary elections to August or September, as they are in most two-party states.

Under the present system the various party organizations close shop during the summer. Then it becomes necessary to re-organize and re-vitalize

each setup for the General Election campaign. Heretofore the momentum generated carried them through to the November election. They got it all done in one big swoop.

Another reason for reverting to the old dates is that the cost of maintaining a long campaign naturally is much greater than the expense involved in a short one.

**ISLAND UNDER FIRE**—Officials of state and federal government had a heated discussion about land values on Matagorda Island in a preliminary round in the General Land.

Main bout will take place during the November 19 session of the U. S. District Court at Victoria, where the federal government has filed a suit to condemn a lease on some 16,000 acres of land on the island.

State of Texas will contest the suit.

U. S. has leased land on Matagorda Island since 1942 for Air Force bombing practice. But when Land Commissioner Jerry Sadler was notified on May 31 that a new 5-year lease was in the offing, he raised objections.

Uncle Sam leases state-owned land there for less than six cents an acre annually. Some of it is subleased for grazing at 25 cents per acre.

In last week's Austin meeting between representatives of the U. S. Department of Justice, the State Attorney General and the Land Office, it was learned that federal appraisal of the disputed property was made from an airplane.

Government appraiser placed a 44-cent-per-acre value on beach and grass land owned outright by the U.S.; set a six-cent value on some state land; and a zero value on other state-owned property—to reach a 25 cent rental rate.

State land was described as "marshy and boggy," but Rep. Grainger McIlhany, chairman of a legislative committee on state-owned lands, said he'd like to win "some of that worthless land," which is thought to be rich in mineral value.

Land Office questioned the government's need for all the land it seeks to lease.

An assistant to the U.S. Attorney General replied that U.S. Air Force and Navy bombing and strafing operations were subject to error—both human and mechanical—and simultaneous use by the public and armed forces would be "impractical."

**EMPLOYMENT UP**—Unemployment in the state dropped in September to its lowest level since October, 1959. September showed 155,400 unemployed, compared to 170,100 in August.

Employment increased from 3,471,300 hired workers to 3,472,800. Texas Employment Commission predicted an overall gain in employment between September and November, with a heavy concentration in non-factory industries.

ADVERTISE IN THE HART BEAT

**Henderson TV**

Repair Service At Night In Hart

Phone MI 7-3636 in Dimmitt

FOR DAY OR NIGHT CALLS

**JIMMIE H. DAVIS**

Livestock Dealer — Order Buyer  
Phone 938-3522

HART, TEXAS



## FESTIVAL OF FOOD VALUES

Specials For Nov. 16-21, 1962

<b>MIRACLE WHIP</b> Qt. Jar	<b>49¢</b>	<b>COFFEE</b> Maryland Club Reg Or or Drip	<b>65¢</b> lb
<b>CELERY</b> Large Stalk each	<b>10¢</b>	<b>CATSUP</b> 18 oz Diamond	<b>19¢</b>
<b>FLOUR</b> 10# Bag Gold Medal	<b>98¢</b>	<b>CRISCO</b> 3# Can	<b>79¢</b>
<b>DOG FOOD</b> 10# Bag Kasco \$1.49 size	<b>\$1.19</b>	<b>SWEET</b> Potatoes New Mexico	<b>10¢</b> lb
<b>COCA-COLA</b> 12 Bottle Crt.	<b>59¢</b>	<b>GREEN ONIONS</b> Fresh	<b>5¢</b> Bu

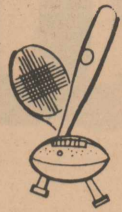
<b>TURKEY</b> 10# to 14# Hens	<b>43¢</b> lb	<b>TURKEY</b> 14# to 18# Toms	<b>39¢</b> lb
<b>HENS</b> 4-5# Fresh Dressed	<b>29¢</b> lb		

<b>CRANBERRY SAUCE</b> 303 can Kimbells	<b>2 for 29¢</b>	<b>PICNIC</b> Shoulders 6-8# Smoked	<b>39¢</b> lb
<b>GRAPEFRUIT</b> Florida Ruby Red	<b>10¢</b> lb	<b>PECANS</b> 12 oz pk DEL CERRO	<b>98¢</b>
<b>PUMPKIN</b> 303 can Del Monte	<b>2 for 25¢</b>	<b>COCOANUT</b> Shredded 14 oz Bag	<b>43¢</b>

Hart, **WALT HANSEN GROCERY** Texas

# HORNS MEET LONGHORNS

## SPORTS



### Last Game Of Season

#### NOTES



JOHNNY KITTRELL has his foot on the goal line Friday night as he scores against Lazbuddie. Kittrell ran 23 yards for the score.



DENNIS MCLAIN lugs the football for a ten yard gain against Lazbuddie. Gary Mac Brown (22) comes up to stop him.

### Longhorns Run Over Lazbuddie

The Longhorns of Hart High School overcame poor officiating and a spirited Lazbuddie team to notch their second win of the season. It was the Hart Longhorns against the Lazbuddie Longhorns but Hart had the better team in a 13-0 victory.

Coach Dub Cleveland's boys unleashed one of their best, efforts of the season. They gained 256 yards and were penalized over 100 yards. The officials admittedly made several mistakes but the Horns did not allow the errors to stop them.

Bill Farris took a pass from Joe Rubalcaba and loped twenty yards for a score in the second period. At halftime the scoreboard read 6-0, Hart.

Both teams were unable to cross the goal line in the third period. Lazbuddie shook loose Gary Mac Brown several times but Brown was not fast enough

to escape the Horn secondary. Johnny Mabry almost broke on long runs but again Hart backs refused to allow a score.

Johnny Kittrell, Hart senior, racked up long gains all night but penalties played havoc with his average. Kittrell broke loose in the second period on a 20 yard scoring jaunt that brought fans to their feet and Lazbuddie Horns to the ground. Kittrell ran over several Lazbuddie players to reach pay dirt.

Ken Fincher booted the extra point and Hart took a 13-0 lead with 10:16 left in the game.

The rest of the game saw each team come near the goal line. Hart had two opportunities to score but fumbles held them back.

Dennis McLain raised his running average with several long runs. McLain broke loose for runs of 25, 20, 34, 15 and 12 yards.

Cleveland praised his entire team but indicated that the last game would be tough. The Hart boys need this game badly to break even in the district race.

**BEAT VEGA!**

**DEAN PHILLIPS**

LIVESTOCK DEALER - ORDER BUYER

CANYON, TEXAS

PHONE CLETA, TEXAS HU-83145

**TELEPHONE  
BIG TALK FOR  
SMALL  
FRY**



Teaching children good telephone manners plays an important part in their becoming good neighbors. It also means better telephone service for everyone. The gratitude of all telephone users, as well as your telephone company, goes to parents who teach their young children the correct way to use the telephone.

**West Texas  
Telephone Company**

DISTRICT 1 B

SEASON						DISTRICT					
Happy	8	1	0	236	106	Happy	3	0	00	87	20
Bovina	7	2	1	314	123	Bovina	3	1	0	170	47
Vega	3	6	0	164	212	Vega	1	2	0	66	107
HART	2	7	0	81	175	HART	1	2	0	51	101
Lazbuddie	2	7	0	124	240	Lazbuddie	0	3	0	20	119

### Hart Cleaners And Men's Wear

PRESENTS

- ★ Expert Dry Cleaning
- ★ Master Bilt Slacks
- ★ Rose Sport Coats
- ★ Davis Hats
- ★ Jerk Socks

TRADE AT HOME

FOR

CONVENIENCE

HOME TOWN GROWTH

GOOD PRICES

## If You Want A New Or Used Car....

**Cure and Son  
Can Give You  
The Car You Want  
at the  
Right Price**



We Want To Invite All Our Customers Old And New To Visit With Us In Our New Location On Hwy. 70.

**CURE AND SON**

OLTON, TEXAS

NEW & USED CARS. PICK-UPS & TRUCKS

Phone 285-2861  
Anytime  
Home & Office

Alton  
And  
Dan

# THE HART BEAT

MEMBER OF

## TEXAS PRESS ASSOCIATION

Published each Thursday at Hart, Texas, c/o Box 311, with offices in Hart. Phone number 938-3547.

Entered at the post office at Hart, Texas, Second Class postage paid at Hart, Texas.

Any erroneous reflection upon character, firm or corporation which may appear in the columns of The Hart Beat will be gladly corrected upon being brought to the attention of the publisher.

Subscription rates: \$2.50 per year plus five cents tax in Castro and neighboring counties. \$4.00 plus eight cents tax else where in Texas. Out of Texas, \$4.00 per year.

### Bovina Wallops Vega

Bovina's Mustangs ended the 1962 football season with a victory as they walloped the Vega Longhorns, 56-8.

Mustang halfback Jerry Frazier scored three times and end Mac Glasscock passed to QB Don Cumpton for two TD's to lead Bovina past the Longhorn's in the District 1-b tilt. Cump-ton also connected with half-back Pat O'Brien on a 21-yd. touchdown pass. Fullback Tally Kelso ran 9 yards for a TD in the fourth quarter to round out Mustang scoring.

Vega's lone touchdown came on a 38-yard run by halfback Wayne Taylor. Fullback Rex Catt successfully ran for two points after the third quarter.

### Bub Holt Wins Hart Contest

Bub Holt of Olton took first place money this week in the Hart Beat football contest. Holt was the only entry to miss a single game. He picked SMU to defeat Texas A&M but all of the other games were correct. He also picked Hart over Lazbuddie 13-12.

Connard Riddles of Wichita Falls placed and edged out three other contestants in the tie-breaker. Riddles missed on his choices of Kress over Hale Center and SMU over Texas A&M. He picked Hart 16-0.

Third place position was decided with a flip of a coin by the Hart Beat editor between three possible winners, Monte Phillips, Todd Varner and Calvin Alexander all missed the Kress-Hale Center and SMU-Texas A&M tilts. The three also missed the Hart-Laz-

buddie game by only seven points. Monte Phillips came out as winner.

Congratulations to the winners! Checks will be mailed at the end of this week.

### Elementary Night Planned

The Hart-Vega encounter this Friday evening will present an added attraction to the home town fans. At halftime fans will view an "elementary night" with a short football game between the Pee Wee Longhorns and the Pee Wee Shorthorns.

The two teams have been practicing under the direction of "Coaches" Paul Kennedy and W. C. Graves. Kennedy will lead the Shorthorns while Graves will guide the Longhorns.

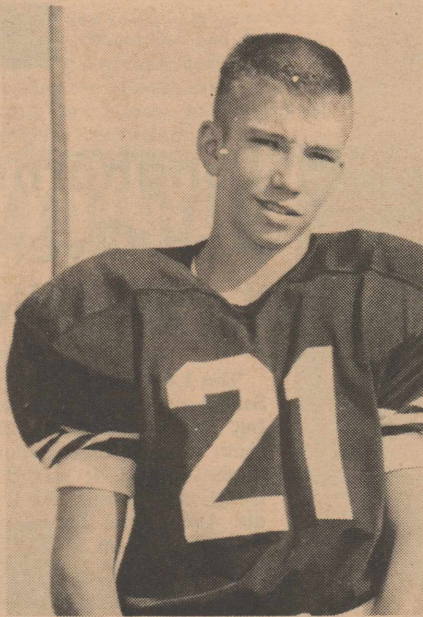
Graves announces the following boys as members of the Longhorns: Carlos Martinez, Mark Gaither, Joe Guzman, R. Ed Bell, Donny Shive, Rodney Glesion, Rudy Valadez, Paul Ramirez, Richard Garcia, James Jackson, Johnny Sanchez, Charles Alford, Juan Trans and Mark Porter.

Boys playing with the Shorthorns include Ricky Farris, Celestine Gonzales, Gracier Catano, Martin Atwood, Vic Nelson, David Warren, Danny Reyna, Pancho Diaz, DTerry Fincher, Kim McGill, Steve Hankins, Victor Lara, Jesse An-dondo and Santos Guana.

Both teams will have cheerleaders. Joan Dudley and Roni Cox will cheer for the Shorthorns while Sharon Sue Aven and Sandy Bennett cheering for the Longhorns.

IT PAYS TO ADVERTISE IN THE HART BEAT

# GO LONGHORN LET'S



### CONTEST WINNERS

BUB HOLT  
CONNARD RIDDLES  
MONTE PHILLIPS

## VEG FOOT CONTEST

### WIN CASH

1ST PLACE \$6 2ND PLACE \$

### CONTEST

Winners selected in each ad must Tie-breaker winner must be circled spaces made available for them.

Each week's entry must be turned sponsoring the contest. Contestants and turn in their entries. When they day, they have until the next Friday at 4

Sponsoring merchants may accept mail ed directly to The Hart Beat will be a be discarded.

In case of ties, a coin will be flipp The contest is open to everyone ex Beat and their families.

Name \_\_\_\_\_  
Address \_\_\_\_\_  
Tiebreaker BAYLOR \_\_\_\_\_  
Game SMU \_\_\_\_\_

**FARMERS STATE BANK**  
Member F.D.I.C.  
TCU AT RICE

**HI-POINT GRAIN & FERTILIZER INC.**  
Phone 938-3741  
NEBRASKA AT OKLAHOMA

**HART PRODUCERS CO-OP GIN**  
Phone 938-3539  
LSU AT TULANE

**COX SH**  
Phone  
**COX AU**  
Phone  
HEREFORD A

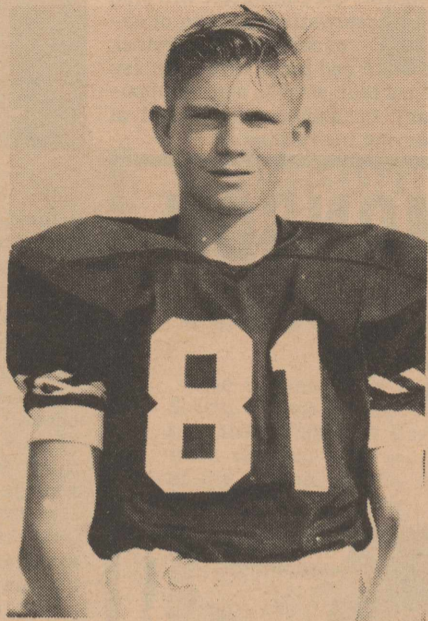
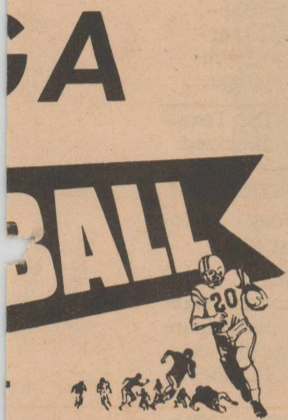
**HART GRA**  
Phone  
PALA DUR

**HART OIL &**  
Phone 9  
ARKANSAS AT

**MADE GOOD SINCE 1880**  
TRADE MARK  
**MOUND CITY**  
HORSE SHOE BRAND  
PAINTS \* VARNISHES \* ENAMEL  
**ED HARRIS LUMBER CO.**  
BUILDING MATERIALS.  
CAPABLE-DEPENDABLE  
Phone 938-3281 Hart, Texas

# HORNS GO!

## BEAT



**PRIZES!**  
**\$4** 3RD PLACE **\$2**

**RULES**  
 be circled in ink or pencil, and scores printed in the  
 in to one of the merchants given a week to prepare receive their paper on Fri- p.m. to turn in their entries, filed entries, but none mail- accepted. All late entries will  
 ed to determine the winners, cept employes of The Hart

### LONGHORN SCHEDULE

Sept. 7	Hart 12, Canyon B 0
Sept. 14	Hart 0, Springlake 19
Sept. 21	Hart 14, New Deal 16
Sept. 28	Hart 0, Kress 37
Oct. 5	Hart 0, Anton 26
Oct. 12	Hart 28, Silverton 36
Oct. 19	Bovina Here
Oct. 26	Open
Nov. 2	Happy There
Nov. 9	Lazbuddie There
Nov. 16	Vega Here

See Us For All Types Of

- Blacksmithing
- Welding

Portable Welding Services are Available

**KING BLACKSMITH**



WILL THEY FIT? Dixie Kendrick seems to wonder as she received her basketball uniform last Monday.



CONNIE BOWDEN sinks a crib shot in practice Monday. She has been one of Hart's top defensive players in pre-season games.

**AMROCK**  
 938-3755  
**TO PARTS**  
 938-3231  
 AT LEVELLAND

**HART OF THE PLAINS GIN**  
 Phone 938-3235  
 FLORIDA STATE AT AUBURN

**IN CO. INC.**  
 938-3241  
 O AT AMARILLO

**FARMERS GRAIN CO.**  
 Phone 938-3271  
 TASCOSA AT PLAINVIEW

**BUTANE CO.**  
 938-3282  
 TEXAS TECH

**HART GIN CO.**  
 Roland & Rosa  
 Phone 938-4451  
 MINESOTA AT WISCONSIN

**THANKS**  
 Our appreciation to the Hart Volunteer Fire Department for answering our call last week. The promptness and effort of the boys in handling the fire saved the building.  
**HART PRODUCERS CO-OP GIN**

## Ed Bennett Meets Britisher

Two dollars and sixty-eight cents a hundred for grain sorghum! That's what Keith Barrett, Chief Economist with J. Bibby and sons, feed manufacturers of Liverpool, England, pays for it to mix with his company's livestock and poultry feeds. Ed Bennett, Association staff members, last week showed Mr. Barrett grain sorghum production, marketing and use in the High Plains. The British visitor was particularly interested in establishing new lines of infor-

mation relative to grain sorghum price and availability for use by his company as it plans its long-range feed purchases from the world market.

England and the other United Kingdom countries imported over 43,000 tons during this year. Barrett pointed out that his and other feed compounding companies had not turned against grain sorghum but that during this period sales policies of the Commodity Credit Corporation in the United States made U.S. corn more favorable priced to them than other feed grains including milo. He said that this past year milo generally ranged from \$1 per ton lower to \$1 per ton higher than

corn but even at this unfavorable price relationship, his company continued to buy grain sorghum because of its recognized value in producing quality broiler meat.

**EMERGENCY RESOURCES---** Gov. Price Daniel appointed Major General James E. Taylor chairman of a 35-member Texas Emergency Resources Planning Committee.

In answer to a presidential request, the committee will plan for conservation and use of essential resources and services at state and local levels in case of nuclear attack, and a temporary breakdown of control of service operations.



ED BENNETT (L) OF HART, Secretary-Treasurer of the Grain Sorghum Producers Association discusses grain sorghum price and availability problems with Keith Barrett (R), Chief Economist of J. Bibby and Sons, Liverpool, England, and Bill Dean, Manager of Uhlmann Grain Company, Amarillo, in the company's Commodity Exchange.

## LEON MELTON OF EDMONSON INVITES YOU TO DROP BY FOR QUALITY PHILLIPS 66 PRODUCTS

- ★ Gas & Oil
- ★ Tractor Tires
- ★ New or Used Auto Tires
- ★ Car Wash
- ★ Flats Fixed
- ★ Propane & Butane
- ★ Road Service



UN-43211

EDMONSON

**FARM INCOME DOWN--** Between 1929 and 1961, farmers' and farm laborers' incomes showed a percentage decrease of 12.8 per cent, according to the Bureau of Business Research.

Percentages are up in mining, contract construction manufacturing and retail trade, but down in transportation, property income and proprietors' income.

**FISH CREEK DAM--** The Texas Water Commission authorized a permit to the City of Gainesville to build a \$1,724,143 dam system on Fish Creek a tributary of the Red River.

**FFA WILL COMPETE**  
Five teams from the Hart FFA Chapter will participate in the district leadership contest to be held at Plainview, Saturday, Nov. 17.

## WAYNE'S

— OFFICE SUPPLIES —

PRINTING And LITHOGRAPHING

PHONE 285-2225

--

Olton, Texas

<b>BEEF</b>	FRESH GROUND	LB	<b>49¢</b>
<b>FRANKS</b>	WILSON'S CERTIFIED ALL MEAT		49¢
<b>BOLOGNA</b>	WILSON'S CERTIFIED		39¢
<b>CHICKENS</b>	ROASTING WILSON'S CERTIFIED		45¢

### FROZEN FOODS

<b>CATFISH</b>	OCEAN 1 LB. PKG.	<b>59¢</b>
<b>LEMONADE</b>	LIBBY'S PINK 6 OZ. CAN	15¢
<b>STEAKS</b>	THRIFT FROZEN 1 1/4 LB. PKG	79¢

### PRODUCE

<b>POTATOES</b>	RUSSETT NO.1 10 LB. BAG	<b>39¢</b>
<b>RADISHES</b>	BUNCH	5¢
<b>AVACADOS</b>		2 FOR 35¢
<b>ORANGES</b>	MEXICO HAMLIN 5 LB.	59¢

## Feast Foods for Thanksgiving

<b>SHORTENING</b>	MRS. TUCKER'S 3 LB. TIN	<b>59¢</b>
-------------------	-------------------------	------------

<b>PORK &amp; BEANS</b>	WHITE SWAN 16 OZ.	2 FOR 25¢
-------------------------	-------------------	-----------

<b>SALAD DRESSING</b>	WESTERN GOLD QT.	39¢
-----------------------	------------------	-----

<b>TOMATO JUICE</b>	WHITE SWAN 46 OZ.	4 FOR \$1
---------------------	-------------------	-----------

<b>MARSHMALLOW CREAM</b>	WHITE SWAN HIP-O-LITE PT.	19¢
--------------------------	---------------------------	-----

<b>CHEESE SPREAD</b>	WILSON'S 2 LB. BOX	69¢
----------------------	--------------------	-----

<b>ICE CREAM</b>	CLOVERLAKE DELUXE 1/2 GAL.	59¢
------------------	----------------------------	-----

<b>MILK</b>	WHITE SWAN TALL CAN	2 FOR 25¢
-------------	---------------------	-----------

<b>COFFEE</b>	WHITE SWAN LB.	59¢
---------------	----------------	-----

<b>JELLO</b>	ALL FLAVORS	3 FOR 25¢
--------------	-------------	-----------

<b>DETERGENT</b>	SWAN LIQUID 2 oz PLASTIC	49¢
------------------	--------------------------	-----

<b>SOAP</b>	ZEST TOILET BATH SIZE	19¢
-------------	-----------------------	-----

<b>BATH BRUSHES</b>	REG. 79¢	59¢
---------------------	----------	-----



# NEWSOM FOOD SPECIALS GOOD THRU MON. NOV. 19

## WE GIVE BUCCANEER STAMPS DOUBLE ON WEDNESDAY

PHONE 938-3717

HART



ADVERTISE IN THE HART BEAT

# Society NEWS

**VISIT NEWMANS**

Mr. and Mrs. O. O. Breland and Mrs. R. H. Reedy of Lubbock visited with Mr. and Mrs. Joe Newman and family Monday.

**VISIT SON**

Mr. and Mrs. Henry Pigg visited her son, Donald Pigg, and his family in Levelland over the weekend.

**VISIT MULESHOE**

Sunday afternoon Mr. and Mrs. J. P. Armstrong of Hart and Mr. and Mrs. G. S. Armstrong of Earth visited in the home of Mr. and Mrs. J. J. Redwine in Muleshoe.

**ATTEND CONVENTION**

Mrs. Carl Rambo, Mrs. C.B. Martin Jr. Mrs. W. B. Rogers and Mrs. Earnest Lee Brooks attended the PTA Convention in Fort Worth Tuesday.

**VISIT FATHER**

Earnest Davis, Sam Davis and their uncle, Andrew Davis of Springlake, are visiting Sam and Earnest's father in Holdenville, Oklahoma this week.

**VISIT CARLSBAD**

Mr. and Mrs. Bill Rich and son, Tracy visited in the home of Mr. and Mrs. Ray Don Newman and family in Carlsbad, New Mexico over the weekend.

**SUNDAY GUESTS**

Sunday guests in the home of Mr. and Mrs. J. P. Armstrong were Mr. and Mrs. Deward Armstrong and children of Hereford, Mrs. and Mrs. Sonny Armstrong of Dimmitt, Lloyd Davis and Kim and Truman Swopes of Vinita, Oklahoma, Mrs. Judd Davis, Mrs. Owen Hankins and children and Mr. and Mrs. Freddie Lilley and children, all of Hart.

**SUNDAY GUESTS**

Sunday dinner guests in the home of Mr. and Mrs. Jimmy Davis were Mr. and Mrs. Judd Davis of Hart, Lloyd Davis, Kim and Truman Swopes all of Vinita, Oklahoma.

**ROWLANDS VISIT**

Mr. and Mrs. Newlon Rowland and children, Rhonda and Ricky, visited friends and relatives in Plains over the weekend.

**FLOYDADA VISITORS**

Mr. and Mrs. Ray Moore of Floydada were guests of Mrs. Moore's sister, Mrs. Ena Bowden over the weekend.

**VISIT CRICKS**

Mr. and Mrs. E. E. Foster visited Mrs. C. C. Crick Sunday afternoon. Mrs. Crick was recently released from the Lubbock Hospital.

**VISIT CLOVIS**

Mrs. Otte Dinwiddie, Mrs. Nora Ray, Mrs. S. E. Wallace and Mrs. John McLain visited in Clovis Monday.

**VISIT GRANDDAUGHTER**

Mr. and Mrs. Ray Warren visited their granddaughter, Janice Warren, in Plainview Sunday. Janice is recovering from a tonsilectomy.

**RIDDLES VISIT**

Mr. and Mrs. Connard Riddles and Belinda visited friends and relatives in Hart over the weekend. The Riddles are from Witcha Falls.

**VISITS SON**

Mrs. Lester Richburg is visiting her son and family in Hale Center this week.

**INSCORE ILL**

Homer Inscore is in the Veterans Hospital in Amarillo.

**VISIT RELATIVE**

Mr. and Mrs. Miles Cox, Mr. and Mrs. Wade Cox and Mrs. Tommie Simpler were visited relatives in Plainview Sunday afternoon.

**VISITS HART**

Morris Jobe of Tulia visited friends in Hart Monday.

**LUBBOCK SHOPPERS**

Mrs. Miles Cox and Mrs. T. B. Cox shopped in Lubbock Saturday.

**HAPPY ANNIVERSARY**

NOVEMBER 23  
Mr. and Mrs. Joe Newman.

**HAPPY BIRTHDAY**

NOVEMBER 16  
Nola Myrick,  
Lester Lancaster

November 19  
Malcolm Atwood  
Kathy Cheves

November 22  
Mike Leonard

**School Menu**

Nov. 19 thur 21

MONDAY-Lima beans with peppers, cabbage slaw-whole kernel corn, cornbread-butter, milk, apricot cobbler.

TUESDAY-Fancy Frank fry, fresh new potatoes, seasoned blackeyed peas, dixie cup, biscuits, butter, milk.

WEDNESDAY- Tacos, pinto beans, cheese, and lettuce, butter, milk, bread, pumpkin custard with topping.

**COX SHAMROCK**

**Aqua Flow** \$44.00- 55 gal. dm.  
**Motor Master** \$34.10  
**Eco Tube** \$37.95

**ROAD SERVICE \$29.15**

**BUTANE PROPANE**      **TIRES WHOLESALE GAS**  
**NEW TUBES \$2.50**

Phone 938-3755      Hart, Texas

**FINEST QUALITY FOODS**  
 AT EXTRA LOW PRICES

<b>PUMPKIN</b> SHURFINE 303 CAN 4 FOR 49¢	<b>POTATOES</b> SHURFINE 23 OZ. 4 FOR \$1
<b>PORK &amp; BEANS</b> SHURFINE 303 CAN 9 FOR \$1	<b>CORN</b> SHURFINE CREAM OR WHOLE KERNAL 16 OZ. 6 FOR \$1
<b>PINEAPPLE</b> SHURFINE CRUSHED NO. 2 CAN 3 FOR 89¢	<b>BEANS &amp; POTATOES</b> SHURFINE 303 CAN 6 FOR \$1
<b>SHORTENING</b> SHURFINE 3 LB. 59¢	<b>TUNA</b> SHURFINE 6 1/2 OZ. 3 FOR 89¢
<b>TOMATO JUICE</b> SHURFINE 46 OZ. 4 FOR \$1	<b>PEACHES</b> SHURFINE YELLOW CLING CLING 29 OZ. 4 FOR \$1
<b>GRAPE JUICE</b> SHURFINE 24 OZ. 3 FOR \$1	<b>B &amp; K GRO. &amp; MKT.</b> <b>DOUBLE GUNN BROS. STAMPS ON TUESDAY</b> With Purchase of \$2.50 or More HART, TEXAS

**BLUE-CHIP INVESTMENT**

A Gas clothes dryer is more than a purchase. It's an investment that pays real dividends. Clothes last longer because nothing is gentler to even the most delicate fabrics. Gas drying is safer — authoritative statistics say so. And when you can save up to \$25 a year on utility costs, isn't this an investment in smart housekeeping? See your Gas Appliance Dealer now, during his Fall Sale of Dryers.

**PIONEER NATURAL GAS COMPANY**

# Edmonson Echoes

By Doris McCurry



THE 1963 CHRYSLER on left is owned by Rene Witten of Edmonson. The car on the right owned by Barnebe Sarabia struck the Witten car Friday.

## Slight Accident In Edmonson

An accident occurred Friday at noon in Edmonson when a 1959 Chevrolet driven by Ber-

nabe Sarabia collided with 1963 Chrysler driven by Mrs. Rena Witten.

Mrs. Witten was traveling southeast and had stopped in front of Leon Melton's Service Station to make a right hand turn but gave no signal. Sarabia assumed that she was going to turn left and attempted to pass on the right. The Witten car pulled in front of him before he could stop.

No one was injured in the mishap.

## H.D. Exhibit Day Held

The Northwest HD Club captured first place with their booth at the annual Home Demonstration Club Exhibit Day held at the Southwestern Public Service Building in Plainview Thursday. There were 13 clubs in the county that displayed booths.

Second place went to Snyder Serving Club and third went to the Harmony Club. Prizes were \$15, \$10, \$5.

The Northwest exhibit was entitled Home Hazard Hunting. A clever poster bearing the title and the following information was above the display: Four major causes of home accidents—Falls; fires, poisons and firearms.

On the table beneath were these areas depicted by various items and dolls with these hazards.

A greentable cloth carried out the safety colors of white and green.

The exhibit was set up by Mrs. Clyde Witten, Mrs. Bill Pinkerton, and Mrs. Bayne McCurry.

Mrs. Eldon McEachern was chairman of the event.



MRS. R. C. WILLIAMSON

Mr. and Mrs. R. C. Williamson first came to the Edmonson community in 1952. The Williamsons moved from Halfway where they had resided for six years.

Williamson is a farmer in this area while his wife is very active as a member of the Halfway Methodist Church.

Living with them of their farm southeast of Edmonson is their daughter, Omega McDowell and grandson, Danny McDowell.

They have one other daughter who is married and lives in Plainview. Their only son resides in Seminole.

Mrs. Williamson gives the Hart Beat one of her "special" recipes this week.

### Alaskan Bakeless Cake

1/2 cup butter  
3 egg yolks  
1 cup broken pecans  
3/4 pound vanilla wafers  
1/2 cup sugar  
1 small can crushed pineapple  
Cream butter and sugar, add beaten egg yolks, Mix thoroughly. Add pecans. Mix well. Add crushed wafers. Then press into layer pan. Cill overnight.

## Danny McDowell

### Is Honored

Danny McDowell was honored on his tenth birthday Saturday with a party given by his mother, Mrs. Omega McDowell in the home of his grandparents, Mr. and Mrs. R.C. Williamson.

Games were played and birthday cake and cookies with ice cream was served.

Favors of party blowers were given each one attending.

Those present were Randy Stennett, David and Mike Degge of Plainview, Jeanie and Jan Fisher of Halfway, Rocky Kay of Dimmitt, Gl enda and Karen Kay of Finney, Don James, Roger and Baynetta McCurry of Edmonson and the honoree. P Parents present were Mrs Charles Stennett of Plainview, Mrs. Charles Kay of Finney, Mrs. Bayne McCurry, Mrs. Williamson and Mrs. McDowell.

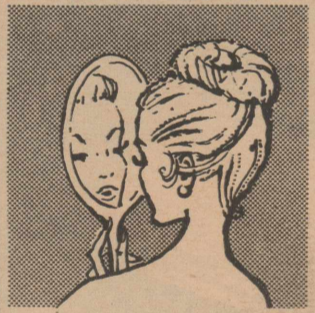
## Sunbeam Meet Held

The Sunbeams met at the Baptist Church Wednesday night. Each youngster brought a personal gift for Mrs. Ethyl Paulson of Edmonson for a sunshine basket.

Mrs. Albert Painter met with the group.

Those present were Gregg Goree, Sandra Belk, Teresa Bennett, Lana Mae Grisham, Kay Row and Baynetta McCurry.

Beauty begins at MILDRED'S



SHAMPOO & SET \$2.00

BEAUTY SHOP

# LOANS

From \$100.00 to \$1,500.00

CONSOLIDATE ALL YOUR BILLS

Into One Easy Monthly Payment Loan. On:

FURNITURE - AUTOMOBILES - MOBILE HOMES



Plains Finance Corp.

822 Austin Street

CA 4-2786

Plainview, Texas

# THINK, IRRIGATION FARMER!

WATER is a commodity so precious that no tyrant has ever dared deny it to his people.

The earliest records of our civilization are linked to the spring and the waterhole, the river and the well.

The Children of Israel faltered in the wasteland and were ready to revolt until Moses struck the rock and brought forth a spring.

Wars have been fought over water rights and mighty nations have vanished because their water resources failed.

In view of these facts, can you afford the luxury of irrigation "TAILWATER??"

High Plains Underground Water Conservation District

## Groceries THAT GIVE YOUR MEALS "LIFT"

Friday & Saturday

HONEY BOY Reg. 79¢ **69¢**  
**SALMON**

**KRAFT**  
Mac. & Cheese DINNER  
Reg. 51¢ **39¢**

KARO Blue Lable  
**SYRUP**  
Reg. 29¢ **19¢**

WYMANS  
**BLUEBERRIES**  
300 size can **29¢**

SUREFINE GRAPEFRUIT  
**JUICE**  
300 size can **11¢**

SCHRAFFTS  
**CANDIES**  
9 flavors  
Reg. 39¢ **39¢**

**DIAPER SWEET**  
Reg. 39¢ **29¢**

WESTONS VANILLA  
**WAFERS**  
Reg. 39¢ **29¢**

**Town & Country Shopping Center**  
Kenneth & Ross Tipps  
Edmonson, Texas

### IN EDMONSON

Finas Edwards Is Ready To Serve You!

Auto Parts

Tractor Parts

Gas And Oil

Gotcher Flame Cultivators

Butane and Propane

**Gene Bumpus Incorporated**

Edmonson,

Specialist In Service

Texas