

Serving the Pheasant Capitol of Texas

# The Stratford Star

Number 32 35 Cents Publishing for 89 Years in Stratford, Sherman County, Texas 79084

USPS 523-108 Aug. 9, 1990

## 4-H Exchange Student



Naoko Hongo helps Kimberly Bouldin put on her "Yukata" a gift from Naoko's native Japan.

Naoko says "Everything is BIG in Texas! Pizza, hamburgers, sky houses, trees, rainbows, stars - everything is bigger than in Japan, Naoko's country."

Naoko Hongo, 14, is from Toyama, Japan, and is visiting the Ted Bouldin family as a Labo-4-H exchange student. Labo, Japanese equivalent of U.S. 4-H, sends prospective names and vitas to U.S. 4-H

members. Kimberly Bouldin Ted and Judys 14 year old daughter, saw Naoko's information in 4-H literature. Kimberly applied for and received one Japanese sister!

Real sisters could have no more fun than Kim and Nikki (Naoko's nickname). Communication is no problem. Although Naoko's English is very good, it is limited. However, she carries a tiny

dictionary in her pocket which sometimes comes in handy.

Naoko shares all the family activities such as attending church, visiting friends and relatives, and playing games. she has also enjoyed boating, horseback riding, and attending 'TEXAS' where she received a dinner bell triangle for traveling the farthest and had her picture taken with Calvin Armstrong, the male lead. Naoko is looking forward to going to Wonderland Park with Lautz 4-H Club this Thursday.

Naoko's American family will say 'good-bye' to her August 19th. Kimberly says that she will really miss her Japanese sister, and is considering being a 4-H exchange student herself.

Naoko's favorite phrases just about sum up her American experience: "Cool" (with thumbs up gesture) and "Thanks a lot!"

## E. L. Bass Selected Regional Superintendent Of The Year

The Board and Staff of the Texas Association of School Boards has announced that former Superintendent of Schools E.L. Bass has been selected as the Regional Superintendent of the Year. The Regional winners will be honored at the TASB/TASA convention in September in Houston. The local Board and Superintendent Brite will also be present at the convention to see the State Superintendent of the Year be chosen from the Regional

SOTY Winners.

Our local Board is proud of Mr. Bass's honor of being chosen Region XVI Superintendent of the Year and we wish him the best of luck in being chosen Superintendent of the Year in the State of Texas. Mr. Bass retired in the spring of this year after being the Superintendent in Stratford for 21 years. Congratulations, Mr. Bass, from your school and your community.

## NOTICE

NOTICE

THE STRATFORD STARS' DEADLINE IS 12 NOON ON MONDAYS.

NOTICE

Coffee Memorial Blood drive will be in Texhoma Monday, August 13th at the First Christian Church from 4 until 7 p.m.

NOTICE

The County Judges office reports, There will be no commodities for the month of August. Next commodities available will be in October.

NOTICE

The Plainview School Alumni celebration will be held Sun. Aug. 12th at 1 p.m. in the school gymnasium. A covered dish lunch will be served with a short business meeting following. All graduates, former students and faculty members are invited to attend the celebration.

NOTICE

Tops # 897 meets every Thursday at 7:30 a.m. at the Sherman County Barn.

NOTICE

The Golden Needle is hosting a fabric show Thursday, Aug. 9, from 5-7 p.m. The public is cordially invited to come. 319 N. 9th.

## School Starts August 27th

The first day of instruction for the students of the Stratford Independent School District will be August 27, 1990. Buses will run at the regular times on August 27 and the cafeteria will begin serving meals. School will begin at 8:30 A.M. and will dismiss at 3:45 P.M. Steve Haynes, High school Principal has announced the following schedule for registration for High School Students: Thursday--August 16, Seniors--9:00 to 11:00, Juniors--1:00 to 3:00. Friday--August 17, Sophomores--9:00 to 11:00, Freshmen--1:00 to 3:00.

James Taliaferro, Middle School Principal, has announced that those students who will be in grades 5,6,7 and 8, and who did not

attend Stratford Schools last year, may begin registration on August 14. This may be done in the Middle School Principals office from 9:00 A.M. to 12:00 noon, and from 1:00 to 3:00 any week day. Returning students from last year will report to school on August 27 at the regular time.

Jim Bob Brown, Mary Allen Principal, has announced that students who will be in grades K-4, and did not attend Stratford Schools last year, may begin their registration at the Mary Allen Elementary School on August 14 from 9:00 A.M. to 12:00 noon, and from 1:00 to 3:00 P.M. Students may register any week day during these times. All new students should have an

immunization record with them at the time of enrollment. Students are required to have three DPT or TD immunizations with the last being after their 4th birthday. One immunization is required for Rubella, measles, Mumps and TB. Kindergarten students must be 5 years old prior to September 1, 1990.

We are looking forward to an outstanding school year and are anxious to begin. If you have any questions, please do not hesitate contacting the building principals. The respective numbers are as follows: High School, 396-2341, Middle School, 396-5690, and Mary Allen, 396-5305.

## Kerrick Community Reunion

Kerrick Community will have their biennial reunion on Sunday, August 19 at Kerrick Community Center.

All former residents and current residents are invited to attend. There will be awards for the oldest man, woman and the one traveling the longest distance for the reunion.

Registration begins at 10:30 a.m. A covered dish luncheon is slated for 12:30 p.m. Drinks, service & bread will be provided. Those attending are asked to bring a large covered dish of their choice.

If you've ever lived in or near Kerrick or have anything connected with Kerrick, come and visit!

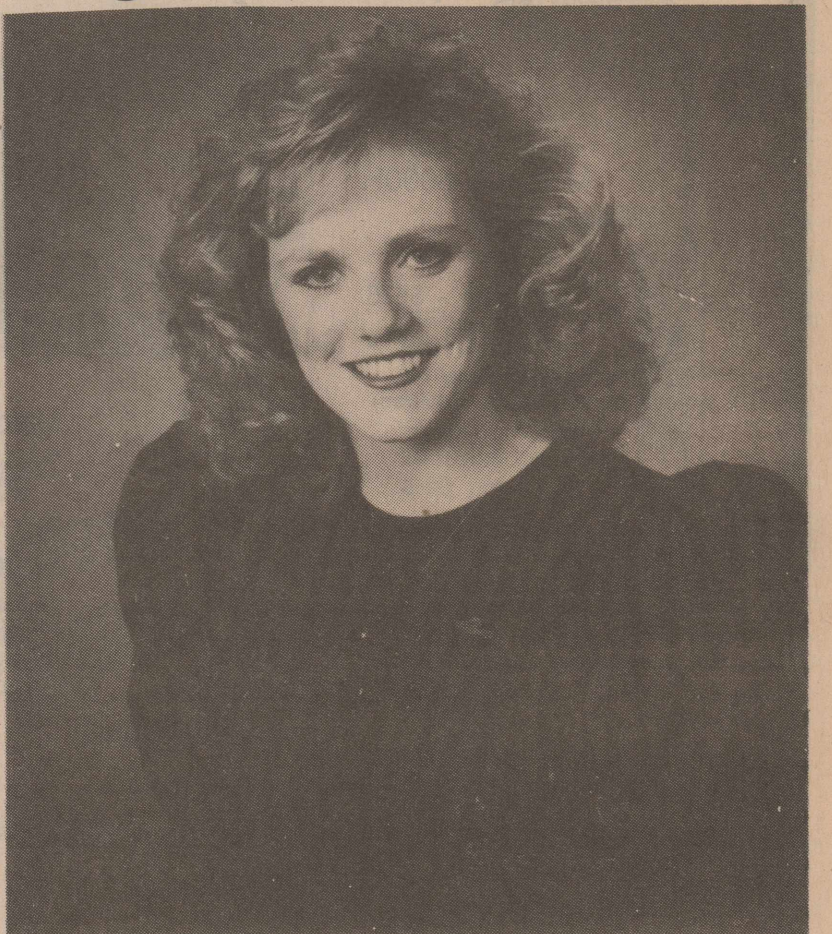


## SHERMAN COUNTY AG DAY TUESDAY, AUGUST 14

- 8:30 - 9:00 A.M. Registration and Coffee - Sherman County Barn (Coffee courtesy of Western Gas Interstate Company)
- 9:00 A.M. Leave County Barn to begin Field Tour and Demonstrations
- 9:00 - 11:30 A.M. Tour Stop Schedule (subject to change)
  - Sorghum Silage Test Plot - Gary Lundberg
  - Medium Maturity Milo Test Plot - Stan Macias
  - Medium/Late Maturity Test Plot - Bill Durham
  - Irrigation Well Measurements - Sherman County SCS
  - Chain Diking Field Demonstration - Rick Culler, Jones Mfg. Vernon, Texas
- 12:00 - 1:00 P.M. Lunch (Courtesy of Southern Union Gas Company)
- 1:00 P.M. Establishment and Management of Improved Grasses  
Chet Dewald, Research Agronomist, ARS Southern Plains Research Station, Woodward, Oklahoma
- 1:30 P.M. Chemigation - Dr. Carl Patrick, TAEX
- 2:00 P.M. Center Pivot Irrigation - Leon New, Area Irrigation Specialist, TAEX
- 2:30 P.M. Natural Gas Availability - Joe Watson, Souther Union Gas Co
- 3:00 P.M. Sprayer Calibration Application and Nozzeling - Dr. Brent Bean, Area Agronomist, TAEX
- 3:30 P.M. Implement Display.

The information given herein is for educational purposes only. References to commercial products or trade names is made with the understanding that no discrimination is intended and no endorsement by the Cooperative Extension Service is implied.

## Tillery To Compete In Miss Palo Duro Area Pageant



Trisha Tillery, the eighteen year old daughter of Sandy and Ellen Tillery of Stratford will compete in the Miss Palo Duro Area Scholarship Pageant in Spearman, Saturday, August 11. Areas of judging include swimsuit, evening gown, interview and talent. Miss

Palo Duro Area will compete in the 1991 Miss Texas Pageant. Trisha's sponsors are Stratford Grain Company First State Bank of Stratford, The Girls Next Door, Mungia's Heating and Air Conditioning, Family and Friends and The Elk Pharmacy.

## Rifle Tournament

Stratford Rifle and Pistol Club will conduct an NRA Approved Highpower Rifle Tournament on Sunday, August 12 at the range 7 miles S.W. of town on Highway 54.

The first relay will start at 10:00 a.m. with participants firing a total of 50 shots at 100 yard targets from standing, sitting, and prone positions.

Rifles and ammunition will be provided for club members on a first come basis.

Entry fee for the match will be \$8.00 and will be accepted until 1:00 p.m.

Anyone wanting to shoot or watch is welcome. For more information contact David Brown.

Good

Luck

Trisha

# Legal Notice

## PUBLIC NOTICE

Stratford Independent School District offers vocational programs in Home Economics, Agriculture Service and Technology, Cooperative Education. Admission to these programs is based on student request for admission, completion of pre-requisite courses when applicable, and meeting the state age requirements for Cooperative Education.

It is the policy of the Stratford Ind. School District not to discriminate on the basis of race, color, national origin, sex, or handicap in its vocational programs, services or activities as required by Title VI of the Civil Rights Act of 1964, as amended, Title IX of the Education Amendments of 1972, and Section 504 of the Rehabilitation Act of 1973, as amended.

It is the policy of the Stratford Independent School District not to discriminate on the basis of race, color, national origin, sex, handicap or age in its employment practices as required by Title VI of the Civil Rights Act of 1964, as amended, Title IX of the Education Amendments of 1972, the Age Discrimination Act of 1975, as amended, and Section 504 of the Rehabilitation Act of 1973, as amended.

Stratford Independent School District will take steps to assure that lack of English Language skills will not be a barrier to admission and participation in all education and vocational programs.

For information about your rights or grievance procedures, contact Steve Haynes, at 503 8th, (806) 396-2341, and of the Section 504 Coordinator Sam Brite, at 503 N. 8th, (806) 396-5571.

Published in The Stratford Star Thursday August 8, 1990 and Thursday August 16, 1990.



Second Class postage paid at Stratford, Texas, 79084. Subscription rates are \$13.00 per year in Sherman and adjoining counties; all other \$20.00 per year.

Martha Robertson  
Janis Tillery  
Sharon McCarver  
Shari Hudson

Editor & Publisher  
Darkroom & Advertising  
Darkroom & Advertising  
Bookkeeper



MEMBER 1990

TEXAS PRESS ASSOCIATION

### Donation of Legendary Jim Thorpe Medal



Michael Koehler, grandson of the late Jim Thorpe, displays Thorpe's gold medal.

The United States Olympic Committee and Coca-Cola USA have announced that one of the world's most-legendary Olympic gold medals, won by the late Jim Thorpe 78 years ago, will be donated to the U.S. Olympic Hall of Fame.

The medal is being donated by Mr. Thorpe's grandson, Michael Koehler, his wife Pat and his mother Charlotte Thorpe, who is Jim Thorpe's daughter.

James (Jim) Francis Thorpe became the international headliner of the 1912 Olympic Summer Games in Stockholm with his astounding triumph in the decathlon and pentathlon events. He was the only Olympic athlete to win gold medals in both of these track and field events.

However, in 1913, the International Olympic Committee (IOC) stripped him of his medals, and removed his name from Olympic

records due to a violation of the amateur standing rule. Thorpe had been paid \$15 a week for expenses to play baseball for two minor league teams in North Carolina prior to his Olympic participation.

For decades, Jim Thorpe, his family, friends and supporters from around the world petitioned the IOC to ask that his medals be reinstated.

Finally, in January 1983, the IOC bestowed duplicate medals of the original medal design to Jim Thorpe's surviving family members. Thirty years after his death, the world-renowned athlete was formally restored to Olympic glory.

The medal eventually will be displayed in the to-be-constructed U.S. Olympic Hall of Fame facility in Colorado Springs, the home of the USOC. The annual Hall of Fame induction ceremony is presented by the USOC and Coca-Cola USA.

## Your Right To Know

By Terry Kennedy

Raymond Rodriguez and Wayne Merrill, from General Telephone, came up to the courthouse on Wednesday to hook up the phone lines to the cable tower for the new Alert System. When we asked the phone company to donate their services, they put in a work order (on their own) for installation on Aug. 1st. They told us to call on July 1st, to verify the date.

We did not call because the construction at the courthouse is not ready. We told Raymond that we had not heard from the phone company regarding our newspaper article, and gave him a copy to send to his immediate supervisor in Guymon. He said he had already mailed him a copy. We have not heard from him or W.E. 'Bob' Wilson in Broken Arrow. We sure would like to hear from them. If any of you in Stratford get a chance to talk to them, please let them know how you feel.

THE STRATFORD STAR DOES NOT ASSUME ANY RESPONSIBILITY FOR AN AD BEYOND THE COST OF THE AD ITSELF. WE ARE RESPONSIBLE FOR THE FIRST INCORRECT INSERTION ONLY. ADVERTISERS ARE ADVISED TO CHECK THEIR AD IMMEDIATELY AFTER IT APPEARS IN THE PAPER AND REPORT AT ONCE ANY ERRORS. CLAIMS FOR ADJUSTMENTS MUST BE MADE IMMEDIATELY AFTER THE AD IS PUBLISHED.

The first airplane purchased by the U.S. government was called the *Miss Columbia* and bought from the Wright brothers in 1909.

\*\*\*\*\*  
**Thompson Photo**  
*Will be in Stratford*  
**Thursday, August 16 3:00 to 6:00**  
*to take pictures at the Farm Bureau*  
**Building. For appointment call**  
**Charlene Harris at 396-2812**  
*If no answer, leave message on recorder*  
 \*\*\*\*\*

Convenient Cash

Over 400,000 Prizes Available Win Up To \$1000 In Cash!

Stop by your favorite Allsup's Store to pick up your game piece and game rules. Up to \$50,000 in-cash and over 400,000 free instant prizes will be given away. You can win one of 5 top cash prizes of \$1,000 playing Allsup's Convenient Cash. Come play Allsup's Convenient Cash and become a winner with us.

COKE

6 PACK/12 OZ. CANS

\$1.99

LAUNDRY DETERGENT

SUPER SUDS

32 OZ. BOX

\$1.29

FRITO ASSORTED SNACK

CRACKERS

3 \$1

FOR

HAM EGG AND

BISCUIT

69¢

EACH

NICE & SOFT

BATHROOM TISSUE

4 ROLL PKG.

99¢

PAGE PAPER

TOWELS

JUMBO ROLLS

2 \$1

FOR

KRAFT

MIRACLE WHIP SALAD DRESSING

32 OZ.

\$1.99

KRAFT

MAYONNAISE

32 OZ.

\$1.99

ALLSUP'S

ICE CREAM

1/2 GAL. CTN.

\$1.49

BAR-B-Q BEEF

SANDWICH

89¢

EACH

ALLSUP'S FRESH

CHIMICHANGAS

89¢

EACH

PRICES GOOD AT Allsup's 52

101 S. Poplar Stratford, Texas

PRICES EFFECTIVE AUGUST 8-14, 1990

SALE

SALE

Don't Pay More For Less!

Make Your Choice A Motorola Phone

Prices Good Thru August

SALE

SALE

Motorola 8000H Portable

Reg. Price - \$575

Sale Price - \$489

(Activation with XIT Cellular Required)

Motorola Carry Phone Transportable

Reg. Price - \$389

Sale Price - \$329

(Activation with XIT Cellular Required)

Motorola 260 Permanent Mount

Reg. Price - \$399

Sale Price - \$339

(Activation with XIT Cellular Required)

XIT CELLULAR

P.O. BOX 1391 DALHART, TEXAS 79022

■ DALHART (806) 384-3333 ■ DUMAS (806) 935-8777

■ TOLL FREE 1-800-232-3312 ■ FAX 1-806-384-3340

A service of XIT Telecommunication and Technology, Inc.

A subsidiary of XIT Rural Telephone Cooperative, Inc.

# SCOT Notes

by Timmie Brown

Happy Day to you Sherman County Older Texans, Friends, Neighbors and Scotters this brand-new Monday A.M. August 6, 1990. There is a fiery red streak at the horizon as sunrise is nearing, there are dark clouds with a cool wind out of the N.E. No moisture. However, a few minor showers have fallen lately.

Scot Calendar reminds us that all regular activities at Scot Hall will be in progress. Also Friday Aug. 10th at 7P.M. is Birthday Party and game playing time with cake and ice cream for takers. Be a taker!

On Sat. evening Aug. 11, 1990 the Scotter Toe-tappers will be bound for Guymon for fun and frolic. Friday, Aug. 17, at 7P.M. is Game Night at Scot Hall.

There are some August Circuits and July and August reports available to bring members up to date on "Scot Doins", the "Stay Young" Challenge and Pie-vendor pictures are an added feature in the Circuit. Both good!

Director Vicki Gore needs responses on interest in Branson Color Tour in the Ozarks. Vicki is chairperson of Sherman Co. Fair and needs our support. The theme for the Fair is Sherman Co. Texas, U.S.A. the date is Sept. 6,7,8. There will be booths and floats to be considered, made and tended. Volunteers are a big help at times like these in community activities.

Old Timer King and Queen are Scotters Ted Reynolds, Sr. and Marguerite Terrell.

They will be crowned on the evening of September 7, 1990. Registration will begin at 6:15 at High School Auditorium. The Program begins at 7P.M. Since this is a drastic change of events-we suggest that each one marks the calendar carefully and change gears of mind and movement. Be at High School Auditorium on Friday Sept 7th at 6:15 to register. Program begins at 7P.M.

Back to the August Calendar and mark Aug. 18th as that is the date for the Bridge Tournament. We hope the mini-blinds will be in place. Max is busy about them and other improvements.

Chas and Eloise Adins Bensley, San Diego, Cal. were honored Sun. July 29, 1990 at the Beauchamp Family Reunion held at the home of her sister, Viola and Junior Springfield. Attending were Rebecca B. Lavake,

Guy, Irma B. Drennan and grandsons Patrick and Andrew, Goodland, Ks; Mike and Winnie B. Burgess, Stratford; B.B. and Jeanne Adkins, Lake Brownwood; Christa Adkins Harris and daughters, Borger; Billy Bennett and Cheryl and daughters, Borger; Mary Lou L. Walden, John Robert Walden, Phillip, Kristi and 3 sons, Stratford; Laura Walden Evans and children, Borger; Duane and Nancy Springfield, Hewitt, Tx; Brian and Deanne Kidder and sons, Dumas; Rick, Elaine and Tiffany Wrestley Amarillo. Eloise, a former Stratfordite, and husband were here to attend S.H.S. Reunion. They are in the U.S. Navy and will be leaving for another 3½ yrs. in service, so this was an opportune time for a reunion.

Timmie Brown's guest Sun. A.M., July 29 at Headquarters for breakfast were Mary Helen Higginbottom Goodwin, Weaverville, Ca. Paula Clark, Dennison; Sylvia and Lew Higginbottom Norwalk, Ca. They were in Stratford attending S.H.S. Reunion and renewing friendships. Paula is Helen's daughter. Lew's talk entitled "We are Survivors" given (read in Star Aug. 2.) at the Reunion Dinner July 28 was well received. Helen received the award for greatest distance traveled. We understand 10 G.G.G. VII were awarded as prizes to other attendants at the dinner.

Mr. and Mrs. C.D. Holmes breakfasted as guest of Juanita and Cone Donelson.

Henry and Ruth Harrison White, Bartlesville - who were here to attend the Pronger-Harrison Reunion - joined us. This group had their own private reunion that morning.

Eldon Plunk presented the Museum with an edition of his life story, Thank You Eldon.

Dorothy Haile attended a Family Reunion for former close friends in Booker last weekend. "Sis" Steinberger visited Gay and Gary in Follett. The Jim Bob Brown family vacationed in Colo. Springs, Co. The high-light of the vacation for Ashley was riding an elephant. Caleb and Ashley spent a few days with grandparent, Mr. and Mrs. Lloyd Harris in Follett, also. Jerry and Winnie Gore, Texoma, are visiting their children in Ariz. Steve and Carrie Harris Albert have moved to Fritch, Tx where Carrie will be teaching. Karen Waters is a member of the school faculty in Petersburg, Tx.

While the Stratford Community was busy enjoying various reunions, two of Sherman County's outstanding business men - namely J. Baskin Brown and Joe Pete Flores - were in Nashville, Tenn. being honored by International and National Organizations for their leadership accomplishment in the business world.

According to taped recordings of American Association Meat Processors the organization is the largest of its kind in the Western Hemisphere with affiliates in several European Countrys. The achievement award A.A.M.P. is the highest award given and Quote "goes to the greatest leaders men and women in the meat business. Lately the organization has realized that the achievement is a joint-venture since the recipient is aided and abetted by the other half - in this case a much lovelier half" end of quote. Baskin served A.A.M.P. in various offices from 1974 to 1984 when he became President. Baskin bought the locker business from Geo. Allen in 1955 and it has indeed been a joint-venture of Baskin and Betty until the present time.

Joe Pete has been an outstanding Sherman Co. Farm Bureau insurance agent since 1964 when he secured the business from Mr. Divine. This year in Nashville Joe was presented the 1990 All Star Winner Award.

These men are 4th and 3rd generation members of Sherman Co. Older Texan Families. S.C.O. Texans honor and appreciate them for their contribution to the business world, both locally and otherwise.

Chas and Myrna Hester and daughters are visiting their parents Mae Plunk and Joy and Dwight Hester.

John Woods, Bess Stone, Kenneth Kendrick, Audrey Gamble, Mildred James are all recovering nicely health-wise. Mildred remains in High Plains Hospital.

Hoping for an easier and quieter time for Senior Citizens we remind all to be sure to pass out Scotter's luv and pats this week.

### Consumer Buying Habits Can Help Improve Environment

In 1970, Earth Day was created to raise consciousness about the health of our planet. This year, on its 20th anniversary, Earth Day was once again commemorated, as testimony to America's heightened environmental awareness and the beginning of the "Green Decade."

Earth Day organizers and other concerned environmentalists hope consumers will realize that we are each responsible for doing our share to protect the Earth—and can start immediately by making environmentally smart decisions when we shop.

Environmental engineers for Chinex®, one of the few lines of biodegradable paper plates available today, have compiled a list of tips to keep in mind on your next trip to the supermarket:

- Buy larger sizes of products. You'll save money and reduce the amount of packaging you throw away.
- Look for products that are labeled biodegradable and/or carry the "recycled" logo.
- Try to avoid products with too many layers of packaging.
- Choose molded paper disposable tableware. For instance, Chinex is even sturdier than plastic or foam plates, yet is made from recycled fibers. In a recent independent study, it also proved to degrade faster than any other type of disposable tableware.

The message for the coming decade is clear: Individuals can make a difference!

# Kerrick News

by Marylou McDaniel

Kayo & Jo June McDaniel accompanied by her brother Penny & Linda Whitson of Clayton, made a visit to St. Cloud, Minn. to see their aunt and uncle, Louise & Mel Ramacher. They all went on to Pelican Rapids and Lake Lida for fishing. At Barnsville, there was a mini-Whitson family reunion. Last weekend they went to Dallas for a Yates Reunion.

On the 29th Kayo & Jo June took grandson Nicholas with them to the McDaniel Reunion at Felt, Ok.

If you missed the notice in last week's Stratford Star, we are looking for copies of

all of Janet Riffe's meller drammers. If you were in one of them, did you keep a copy that we might borrow. If you can't reach me, contact Betty Brown, please!

Florencia Eslinger's parents, Shorty and Louise Hudgens of Stinnett, stop by for a visit nearly every week as they go fishing.

July 28-30 Martha Ellison, Mildred Crabtree, Ida Leonard & Minnie Hampton went to the Job Crabtree family reunion in Athens, Tex. Job was B.R. Crabtree's brother. The ladies had a historical tour of the country with Ida as their guide.



Every million years an entire thin surface layer of the Moon's soil is turned over 100 times by meteorites that land on the planet.

### First Christian Church

Scripture Judges 7:1-8  
Sermon "Soldiering in the Lord's Victorious Army!"  
God Loves His World Today!

## What Is Chiropractic ?

What is a D.C.? What do they do? A D.C. is a Doctor of Chiropractic" or a "Chiropractor". Simply stated, a Chiropractor works to help you get well and stay well. They do this with natural treatments that emphasize spinal manipulations. They don't use drugs or needles or surgery. For this reason, Chiropractic is called a conservative therapy.

When giving a manipulation, a Chiropractor will locate areas of nerve pressure—maybe tight joints or muscle spasms—and remove the pressure. They work on joints, but only to relieve pressure on nerves. When the nervous system is working fully, the body will also function completely.

A D.C. treats a wide variety of conditions including back pain, headaches, stiff necks, colic in babies, injured shoulders, sore ankles and many others. Studies have shown that Chiropractic treatments often cost less since many patients get well faster. However, if you have a condition which Chiropractic cannot help, you will be readily referred to the type of doctor that you need.

If you should have any questions about this article or about Chiropractic in general, feel free to call Dr. Mike Flores at 396-5604.

### Stratford Chiropractic Clinic

Office 396-5604 212 N. Poplar Home 396-2245

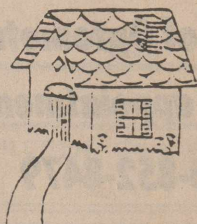
## SAFE PLACE, INC.

24 Hour Crisis Hot Line  
For Battered Women



YOU ARE NOT ALONE

935-2828



# Attend Services

The Churches of Stratford Welcome Your Family

### ASSEMBLY OF GOD

Rev. Terrance Fred  
Corner of Purnell & Fulton  
Sunday School 9:45 am  
Morning Worship 10:45 am  
Evening Worship 6:00 pm  
Wednesday Bible Study 7:30 pm

### CHURCH OF CHRIST

Minister John Wearden  
N. 3rd & Chestnut St.  
Sunday School 10:00 am  
Morning Worship 11:00 am  
Evening Worship 6:00 pm  
Wednesday Bible Study 7:30 pm

### CALVARY BAPTIST

David Jones  
302 S. Main St.  
Sunday School 10:00 am  
Morning Worship 11:00 am  
Evening Worship 6:00 pm  
Wednesday Prayer Service & Bible Study 7:00 pm

### FIRST BAPTIST

Dr. Derral Lewis  
702 North 3rd  
Sunday School 9:45 am  
Morning Worship 10:50 am  
Church Training 6:00 pm  
Evening Worship 7:00 pm  
Wednesday Bible Study 7:30 pm

### FIRST CHRISTIAN

Rev. David Harker  
5th & N. Main St.  
Sunday Coffee Fellowship 9:00 am  
Sunday School 9:45 am  
Morning Worship 10:45 am  
Evening Worship 6:00 pm  
Wednesday, Adult Choir 8:00 pm

### FIRST UNITED METHODIST

Rev. John Wagoner  
520 N. Main  
Sunday School 9:40 am  
Morning Worship 10:50 am  
Junior High UMY 5:30 pm  
Senior High UMY 6:00 pm  
Evening Worship 6:00 pm

### ST. JOSEPH CATHOLIC

Father Arturo Meza  
Phone: 396-2119  
Mass 9:00 a.m. Sunday



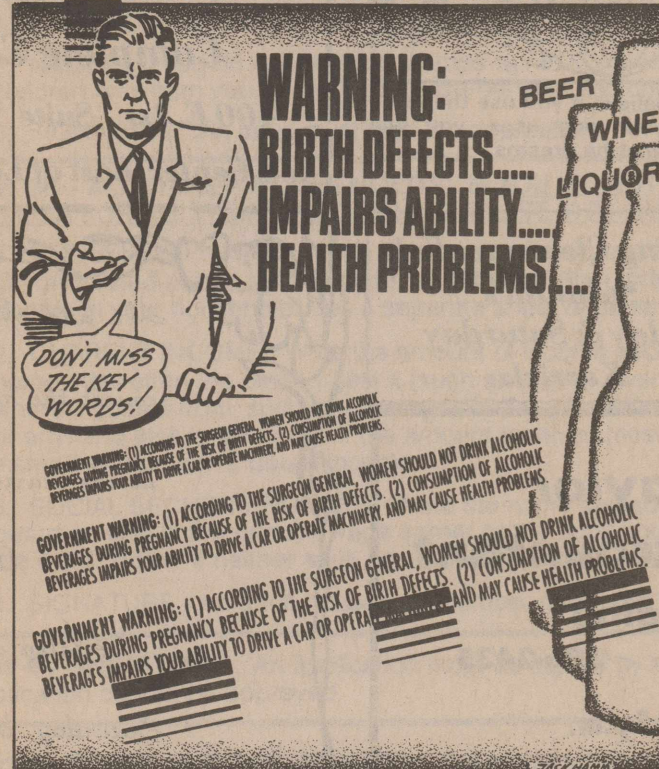
People who own 'em... love 'em!

## Dual Fuel Heat Pump

The number of people who are heating and cooling their homes and businesses with the Dual Fuel Heat Pump continues to grow. In the past five years, sales have increased nearly 800%! Folks love Dual Fuel Heat Pumps for their economy, dependability and cleanliness.

Call your Dual Fuel Heat Pump Dealer.

### ON ALL ALCOHOLIC BEVERAGE CONTAINERS



- Stratford Grain Co. 396-5541
- Lautz 769-4485
- Thriftway 396-5586
- Ellie M's 396-2092
- Consumers Co. 396-2261
- Stratford Star 396-5885

- Williams Repair Service 396-5330 396-2429
- North Plains Savings & Loan 396-5534
- Walter Lasley & Sons, Inc. 753-4411
- Smith & Smith Well Co. Inc. 396-2111

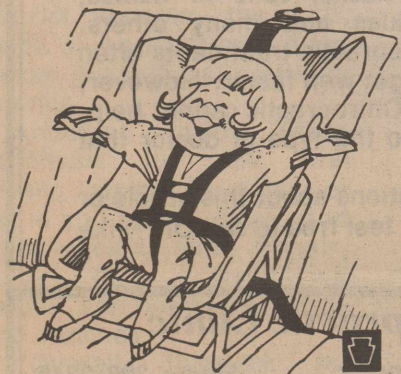
# Society



Missy Williams and son Dillynn were honored with a baby shower Saturday, July 28th at the First Christian Church from 2:00 to 4:00 PM. Shown above with Missy and Dillynn are Linda Young of Stratford and neices Jamie and Amlee Finch both of Ada, OK.

## Car Seat Safety Tips From The American Academy of Pediatrics

In 1988, 690 child passengers under age five were killed in car accidents and more than 100,000 were injured. About 250 of these deaths and 53,000 of these injuries could have been prevented with car seat use. The following common questions about car seat use and their answers are based on recommendations from the American Academy of Pediatrics (AAP).



**Q: When should I start using a car seat?**

**A:** Start using a car seat on the first ride home from the hospital, and for every ride thereafter. Keep a newborn comfortable by padding the sides of the seat with rolled towels or blankets to prevent slouching. Do not put extra padding under the child's buttocks.

**Q: What kind of seat should I use for my child?**

**A:** Use an infant car seat to protect your baby from birth to 20 pounds. A convertible seat also can be used from birth until 20 pounds — facing rearward — and then it can be turned around and used for a child weighing 20 to 40 pounds — facing forward. A booster seat is recommended for a child weighing 40-60 or 70 pounds.

**Q: Which seat is the best/safest?**

**A:** The "best" car seat is one that fits properly in your car, is easy to

use, and is appropriate for your child's size and weight. A "safe" seat must be used correctly and meet current federal safety standards. Check the label for manufacture after 1/1/81.

**Q: Can't I just hold my child securely in my arms, especially on short trips?**

**A:** This is the most dangerous place for a baby in the car. Experts call this the "child crusher" position. If a car crashes at only 30 miles per hour, a small baby can be ripped from your arms and slammed into the windshield or dashboard with the force of almost 300 pounds. If you aren't wearing a seat belt, the force of your body being thrown forward could crush the child against the dashboard.

**Q: Are booster seats really safe?**

**A:** When a child outgrows a convertible car seat, a booster provides better protection than a poorly fitting seat belt. If the car has rear seat lap/shoulder belts, use a booster with a removable shield — with the lap/shoulder belt in the back seat of the car. If the car only has rear seat lap belts, use a shield-type booster with the car's lap belt.

**Q: I've heard millions of car seats fail safety tests and are recalled. How safe are car seats?**

**A:** Many children owe their lives to the use of car seats. Even with high rates of incorrect use, the National Highway Traffic Safety Administration (NHTSA) estimates that infant seats were 69% effective in reducing fatalities and toddler seats were 47% effective. Get recalled seats replaced or repaired. Some crashes are unsurvivable, whether car seats are used or not. However, using a car seat — even one that has been recalled — is always better than using no car seat. To find out if your seat has been recalled, call NHTSA's auto safety hotline, 800/424-9393.



People believe if you use the same pillow your dog uses, you will dream what he dreams.

**Clothing Clearance Sale**  
Susanah's  
Friday & Saturday  
Kerrick

**Catherine D. Taylor**  
Certified Public Accountant  
North Plains Building  
401 N. 3rd 396-2435  
Monday - Friday 9 a.m. - 5 p.m.

**ALL DAY CLEANERS**  
Dalhart, TX  
Quality Drycleaning Service  
Pick up at Ellie M's Floral & Gifts  
on Monday & Thursday

## Out The Library

By Dorothy Haile

AN AMERICAN HERO, THE RED ADAIR STORY is a new book in the library.

Back in the days of the great Texas oil fields when fortunes were made and lost overnight, they said that derricks were built out of wood but the men were carved from steel. Red Adair is such a man.

A genuine American hero, the daredevil firefighter, now seventy-three years old, has been fighting the most terrifying force of nature all over the world for more than fifty years. An AMERICAN HERO takes us from Adair's

desperately poor origins in east Houston during the Depression to the early days in the Texas oil patches when the West was still wild. With a you-are-there narrative so vivid one can feel the suffocating heat, the story places us on the front lines with Adair and his unique brand of firefighters.

HOLLYWOOD, A NOVEL OF AMERICA IN THE 1920's by Gore Vidal is new to the library.

The time is 1917, and Woodrow Wilson is about to lead the United States into the Great War in Europe. In California, a new industry has been born: "picture plays", and with it has come an unprecedented ability to manipulate reality. America is on the eve of a dramatic and irreversible transformation.

Gore Vidal has written five plays, six collections of essays and twenty novels. HOLLYWOOD is the sixth book of this series. preceded by Burr, Lincoln, 1876, Empire, and Washington, D.C.

## Yams Deluxe



The special taste of yams have made them a holiday table mainstay for many years. However, we at Trappey's think that this versatile and delicious vegetable should be a healthy, tasty part of family dinners year round. Yams are nutritious, rich in beta carotene and a great source of dietary fiber. Trappey's and Sugary Sam Yams can be used in many ways, in many recipes, but we would like you to try this simple, very attractive recipe the next time you would like to serve your family a special side dish.

- |   |                                   |
|---|-----------------------------------|
| 2 cans (1 lb. each) Trappey's Whole or Sugary Sam Cut Yams, drained (reserve syrup) | 1 teaspoon baking powder          |
| 3/4 cup crushed pineapple   | 1/2 teaspoon salt                 |
| 1 tablespoon flour  | 1 egg, beaten                     |
|   | 1/4 cup melted butter             |
|   | 8 whole marshmallows, cut in half |

Drain yams, reserve syrup. Arrange yams in buttered baking dish 12 x 8 x 2. Spoon pineapple over each yam. Combine flour, baking powder and salt with 1/4 cup syrup. Stir in egg and melted butter; pour over yams and pineapple. Bake in 350° oven 30 minutes, dot with marshmallows. Return to oven until marshmallows melt and brown. Serves 8.

**Dr. Tory W. Moore is announcing the opening of his office of Optometry and is currently taking appointments.**

935-2020 or 1-800-852-8479

Monday thru Friday 8:00 - 5:00  
Saturday 8:00 - 12:00 Noon

Complete Eye Examination ★ Glasses  
★ Eye Health ★  
Complete Contact Lens Care

400 E. 1st Suite 7  
Jets Center East of Love's Dumas, Texas

Mr. and Mrs. David R. Hass  
request the honour of your presence  
at the marriage of their daughter  
Darci Kay  
to  
Galen Alvinger Knight  
Saturday, the eleventh of August  
nineteen hundred and ninety  
at seven o'clock  
First Christian Church  
Texhoma, Oklahoma  
Reception to follow

## Foliage Tour Cards of Deadline September 1

In cooperation with the Dumas Travel Agency, the Sherman County Older Texans is sponsoring a foliage tour to Branson, Mo. October 11-15. this trip is open to anyone who is interested in going. The proceeds netted from the trip will be partially donated to S.C.O.T. by Jack Vincent.

The information listed below is subject to minor change. If you are interested in signing up to go on this trip, the deadline is Sept. 1, and the sign-up sheet is posted at S.C.O.T. Hall. For more information, call Jack Vincent.

Ozark Mountain Autumn

Arrival Date: Thursday, October 11, 1990. Departure Date: Sunday, October 14, 1990. Trip includes: 3 nights lodging, Mr. Tucker Inn (or similar property), baggage handling included, reserved seat admission (Shoji Tabuchi Show), all you can eat breakfast buffet, Mill Restaurant, admission to Silver Dollar City, reserved seat admission, (Box Car Willie Show), open menu dinner (Wooden Nickle Restaurant), reserved seat admission (Mel Tillis Music Show), tour campus (College of the Ozarks), Edwards Grist Mill, Williams Memorial Chapel, admission (Ralph Foster Museum), buffet lunch (Jack's Clubhouse), reserved seats admission (Jim Stafford Matinee), buffet dinner (Roy Clark Celebrity Theatre reserved seat admission, your choice (Roy Clark Celebrity Theatre with Boots Randolph performing, or the Mickey Gilley Family Theatre with Doug Kershaw performing), Australian

Thanks to all of you who helped to make our grand opening a success. The flowers, balloons and, most of all your support mean so much to all of us.

Dennis, Sherry, Jan & Joan  
Trails West Trading Post

We would like to thank the following businesses for donating items for our trips: A&I Parts, Stratford Grain, THE General Store, Joe Pete Flores Insurance, the Chamber of Commerce.

You helped us represent Stratford while visiting Georgia and Florida.

Sincerely,  
Emily and Sarah Graham

I would like to let everyone of the baseball coaches, Earl Griffin, the boys and girls, who played and everyone involved know how much I enjoyed the games this year. I think it is a very worth while summer activity for our young boys and girls. Keep up the good work.

Grandmother, Jane Willey

style breakfast, Outback steak and Oyster Bar, admission and tram ride through the Fantastic Caverns, services of OMTT Host/Guide/Escort, all gratuities on included meals, all applicable state and local taxes.

All prices net:(price does not include bus fare). Single: \$292.00 person, Double: \$253.00 person, Triple: \$236.00 person, Quad: \$228.00 person. \*\*\* Note: to add one more night and a drive through the country to Eureka Springs, Ar. please add \$75.00/person to the above pricing. Example with bus fare: 1 person staying in a room of 4 for the 5 day trip would cost \$391.30.

Mr. and Mrs. Floy Harrison  
and  
Mr. and Mrs. Dennis Davis  
invite you to share in the joy  
of the marriage uniting their children  
Kristi Leigh  
and  
Michael Dirk  
on Friday, the tenth of August  
nineteen hundred and ninety  
at seven o'clock in the evening  
First United Methodist Church  
Stratford, Texas

Reception following

**YOUR HOMETOWN  
INDEPENDENT BANK**

dedicated solely to the prosperity of this community and the territory it serves. Keep us in mind. We're easy to find.

The **FIRST** State Bank of Stratford  
P. O. Box 48 Phone 806-396-5521  
STRATFORD, TEXAS 79084  
MEMBER F.D.I.C.

# Income Eligibility Guidelines

## For 1990-91

### Free And Reduced Meals

ATTACHMENT A

(These guidelines should be used by the school to determine eligibility for free or reduced-price meals and should be provided the media for public release.)

Family Size	Annual:		Monthly:		Weekly:	
	Free	Reduced-Price	Free	Reduced-Price	Free	Reduced-Price
1	\$ 8,164	\$11,618	\$ 681	\$ 969	\$157	\$224
2	10,946	15,577	913	1,299	211	300
3	13,728	19,536	1,144	1,628	264	376
4	16,510	23,495	1,376	1,958	318	452
5	19,292	27,454	1,608	2,288	371	528
6	22,074	31,413	1,840	2,618	425	605
7	24,856	35,372	2,072	2,948	478	681
8	27,638	39,331	2,304	3,278	532	757
Each Additional Family Member:						
	\$ 2,782	\$ 3,959	\$ 232	\$ 330	\$ 54	\$ 77

ATTACHMENT C - APPLICATION

#### APPLICATION FOR FREE AND REDUCED-PRICE SCHOOL MEALS

To apply for free and reduced-price meals for your child, read the instructions and complete this form. Sign your name and return the application to the school.

##### PART 1 - STUDENT INFORMATION:

Child's Name: Last First MI Grade School

##### PART 2 - FOSTER CHILD: Complete this Part and sign the application in Part 4.

If this is a foster child, check this box  Write the child's income and how often it is received here: \$ /

##### PART 3A - HOUSEHOLDS NOW GETTING FOOD STAMPS OR AFDC FOR THEIR CHILDREN - Complete this Part and sign the application in Part 4 - DO NOT complete Part 3B.

Food Stamp Case Number AFDC Case Number

##### PART 3B - ALL OTHER HOUSEHOLDS - If you did not write a Food Stamp or AFDC case number, complete this Part and sign the application in Part 4.

Sample Mary Smith	CURRENT INCOME/FREQUENCY			
	Earnings from Work (Before Deductions), Job 1.	Welfare, Child Support, Alimony.	Payments from Pensions, Retirement, Social Security	Job 2 or Any Other Income
1.	\$ /	\$ /	\$ /	\$ /
2.	\$ /	\$ /	\$ /	\$ /
3.	\$ /	\$ /	\$ /	\$ /
4.	\$ /	\$ /	\$ /	\$ /
5.	\$ /	\$ /	\$ /	\$ /
6.	\$ /	\$ /	\$ /	\$ /
7.	\$ /	\$ /	\$ /	\$ /
8.	\$ /	\$ /	\$ /	\$ /

Name and Social Security Number of Primary Wage Earner or Household Member who signs this form (See Privacy Act Statement)

Name Social Security Number

##### PART 4 - SIGNATURE: An adult household member must sign the application before it can be approved.

**PENALTIES FOR MISREPRESENTATION:** I certify that all of the above information is true and correct and that the Food Stamp number or AFDC number is correct or that all income is reported. I understand that this information is being given for the receipt of Federal funds. If school officials may verify the information on the application and that deliberate misrepresentation of the information may subject me to prosecution under applicable State and Federal laws.

SIGNATURE OF ADULT: PRINTED NAME OF ADULT:

Date Signed Home Telephone Work Telephone Home Address Zip Code

##### PART 5 - RACE/ETHNIC IDENTITY: You are not required to answer this question.

WHITE, not of Hispanic Origin  BLACK, not of Hispanic Origin  HISPANIC  ASIAN or PACIFIC ISLANDER  AMERICAN INDIAN or ALASKA NATIVE

Section 9 of the National School Lunch Act requires that, unless your children's food stamp or AFDC case number is provided, you must include a social security number on the application. This may be either the social security number of the parent or guardian who is the primary wage earner or the social security number of the adult household member signing the application, or an indication that neither household member possesses a social security number. Provision of a social security number is not mandatory, but if a social security number is not provided or an indication is not made that neither the primary wage earner nor the adult household member signing the application has one, the application cannot be approved. This notice must be brought to the attention of the household member whose social security number is disclosed. The social security number may be used to identify the household member in carrying out efforts to verify the correctness of information stated on the application. These verification efforts may be carried out through program reviews, audits and investigations and may include contacting employers to determine income or contacting a food stamp or welfare office to determine current certification for receipt of food stamps or AFDC benefits, contacting the State employment security office to determine the amount of benefits received and checking the documentation produced by the household member to prove the amount of income received. These efforts may result in a loss or reduction of benefits, administrative claims, or legal actions if incorrect information is reported.

MONTHLY INCOME CONVERSION WEEKLY X 4.33. EVERY 2 WEEKS X 2.15 TWICE A MONTH X 2

FOOD STAMP/AFDC HOUSEHOLD  INCOME HOUSEHOLD Total household monthly income Household size

Application approved for: Free meals, Reduced price meals, Free meals expires, Reduced Price meals expires

Application denied because: Income over allowed amount, Incomplete/missing, Other

Temporary approval for: Free meals, Free meals expires, Reduced Price meals expires

Date notice sent Signature of determining official Date

ATTACHMENT B - LETTER TO PARENTS

#### LETTER TO HOUSEHOLDS

#### National School Lunch Program/School Breakfast Program

Dear Parent/Guardian:  
The Stratford ISD takes part in the National School Lunch Program/School Breakfast Program. Meals are served every school day. Children may buy lunch for (Elem./Jr. High) \$1.25 and (High School) \$1.35 and all breakfasts for \$1.00. Meals are also available free or at reduced-price.

- If you now get Food Stamps or Aid to Families with Dependent Children (AFDC) for any of your children, those children can get free meals.
- If your total household income is at or below the amounts on the Income Chart, your children can get free meals or reduced-price meals for \$ .40 cents for lunch and \$ .30 cents for breakfast.
- If you have a foster child, that child may be eligible for benefits regardless of your household income.

##### INCOME CHART

Effective from July 1, 1990 to June 30, 1991

Household Size	Annual	Month	Week
1	11,618	969	224
2	15,577	1,299	300
3	19,536	1,628	376
4	23,495	1,958	452
5	27,454	2,288	528
6	31,413	2,618	605
7	35,372	2,948	681
8	39,331	3,278	757
For each additional family member add +3,959 +330 +77			

##### HOW TO APPLY:

To get free or reduced-price meals for your children, carefully complete the application and return it to the school. If you now get food stamps or AFDC for any children, the application must have the children's names, your food stamp or AFDC case number and the signature of an adult household member. If you do not list a food stamp or AFDC case number for all your children, the application must have the names of everyone in the household, the amount of income each household member now gets, where it comes from and how often it is received, the social security number of either the primary wage earner or the household member who signs the application or the word "none" if the member does not have a social security number and the signature of an adult household member. An application that is not complete cannot be approved.

##### OTHER INFORMATION:

- VERIFICATION:** Your eligibility may be checked by school officials at any time during the school year. You may be asked to send information to prove that your children should get free or reduced-price meals.
- FAIR HEARING:** If you do not agree with the school's decision on your application or the results of verification, you may wish to discuss it with the school. You also have the right to a fair hearing. You can do this by calling or writing the following official:  
Name \_\_\_\_\_ Phone \_\_\_\_\_  
Address \_\_\_\_\_
- REPORTING CHANGES:** If your children get meals based on income information, you must tell the school if your household size decreases or your income increases by more than \$50 per month or \$600 per year. If your children get meals based on AFDC/food stamp information, you must advise the school if you no longer get AFDC or food stamps for your children.
- CONFIDENTIALITY:** The information you give on the application will be used only to allow your children to get free or reduced-price meals and to verify eligibility.
- REAPPLICATION:** You may apply for free and reduced-price meals at any time during the school year. If you are not eligible now but have a change, such as a decrease in household income, an increase in household size, become unemployed or get food stamps or AFDC for your children, fill out an application then.
- In the operation of the child feeding programs, no child will be discriminated against because of race, sex, color, national origin, age, or handicap. If you believe you have been discriminated against, write to the Secretary of Agriculture, Washington, D.C. 20250.

You will be notified when the application is approved or denied.

Sincerely,

*Sam Brite*

#### APPLICATION INSTRUCTIONS

To apply for free and reduced price meals, complete this application using the instructions below, sign your name and return the application to the school. If you need help, call the school at this number:

**Part 1 - STUDENT INFORMATION:** Write the names, grades and schools of all your children who go to school in this district.

**Part 2 - FOSTER CHILD:** A FOSTER CHILD who is the legal responsibility of the welfare agency or court may get meals regardless of your household income. Complete a separate application for each foster child. COMPLETE THIS PART AND PART 4. DO NOT COMPLETE PART 3A OR PART 3B

- FOSTER CHILD: Put a checkmark ( ) in the box if you are applying for a foster child.
- INCOME: Write the child's personal use income and how often it is received (such as weekly, every two weeks, twice a month or monthly). Write "0" if the child has no income. Personal use income is (a) money given by the welfare office identified by category for the child's personal use, such as for clothing, school fees and allowances; and (b) all other money the child gets, such as money from his/her family and money from full-time or regular part-time jobs.
- SIGNATURE: An adult household member must sign the application in Part 4.

**Part 3A - HOUSEHOLDS NOW GETTING FOOD STAMPS OR AFDC FOR THEIR CHILDREN: COMPLETE THIS PART AND PART 4. In addition, complete Part 3B if there is any child in your household for whom you do not get food stamps or AFDC.**

- CASE NUMBER: Write your Food Stamp or AFDC Case Number.
- NAMES: If you do not get food stamps or AFDC for all your children, write the names of the children for whom you do NOT get these benefits and complete Part 3B.
- SIGNATURE: An adult must sign the application.

**Part 3B - ALL OTHER HOUSEHOLDS: IF YOU DID NOT GIVE A FOOD STAMP/AFDC CASE NUMBER FOR ALL YOUR CHILDREN, COMPLETE THIS PART AND PART 4.**

- HOUSEHOLD NAMES: Write the names of everyone in your household. Include yourself and the children listed above, your spouse, all other children, grandparents, other relatives and unrelated people in your household. Use a separate sheet of paper if you do not have enough space.
- CURRENT INCOME: Write the amount of income each person now gets on the same line as their name, how often the person gets it (such as weekly, every two weeks, twice a month or monthly) and where it comes from, such as Earnings, Welfare, Pensions or Other. Income is all money before taxes or anything else is taken out. If the amount received most recently is higher or lower than usual, write instead that person's usual income.
- SOCIAL SECURITY NUMBER: Write the name and social security number of either the parent/guardian who is the primary wage earner or the adult household member who signs the form. Write the word "none" if neither adult household member has a social security number.
- SIGNATURE: An adult household member must sign the application in Part 4.

**Part 4 - SIGNATURE:** An application must be signed by an adult household member or the application cannot be approved.

**Part 5 - RACIAL/ETHNIC IDENTITY:** Put a checkmark ( ) next to the racial/ethnic group of your children. We need the information to be sure everyone gets benefits on a fair basis. You do not have to answer this question to get free or reduced price meals.

##### Income to Report

<b>Earnings From Work</b> Wages/salaries/tips Strike benefits Unemployment compensation Workman's compensation Net income from self-owned business or farm	<b>Pensions/Retirement/Social Security</b> Pensions Retirement Income Social Security Veteran payments Supplemental Security Income	<b>Other Income</b> Earnings from second job Disability benefits Interest/Dividends Cash withdrawn from Savings Income from Estates/Trusts/Investments Regular contributions from persons not living in the household Royalties/Annuities/Rental income Any other monies that may be available to pay for the child's meals
<b>Welfare/Child Support/Alimony</b> Public assistance payments Welfare payments Alimony payments Child support payments		

# County Agent

by Jim Allison, Sherman County Extension Agent

Higher cattle prices and strong broiler, egg and mild prices helped Texas farmers & ranchers round up \$11.2 billion in cash receipts last year, up 2 percent from 1988.

"Texas is expected to remain in second place nationally (in cash receipts) behind California," said Dr. Carl Anderson, a marketing economist with the Texas Agricultural Extension Service. California's farm receipts last year totaled \$17.7 billion, up from \$16.6 billion in 1988. Texas had \$11 billion in receipts in 1988.

In terms of net income, however, Texas farmers and ranchers experienced a decline last year. Estimated net income was \$3.60 billion, down from income of \$3.67 billion in 1988.

Anderson said last year's devastating drought and lower government payments estimated at just under \$1 billion compared with about \$1.5 billion in 1988, lowered net income.

Texas' 1989 gross farm income, including the cash receipts plus government payments and non-farm income to farmers, was \$13.3 billion. Gross income the previous year was \$12.98 billion.

Cash receipts include such agriculture-related items as horses, hunting & fishing leases, outdoor recreation & aquaculture & fish production.

The estimated totals were compiled by Extension Service, based on information provided by County and district sources, the U.S. Dept. of Agriculture and the Texas Agricultural Statistics Service.

Anderson said Texas continues to rank first among states in sales of cattle and calves, sheep and wool, goats and mohair, cotton, farm acreage and values, and number of farms and ranches.

"Overall, livestock receipts in 1989 registered strong gains partly because of higher prices & forced drought sales, while estimated total crop marketings were down because of drought-reduced yields," Anderson said.

Livestock receipts showed a 3 percent increase, rising by \$150 million to \$5.25 billion to lead all commodity categories. By contrast, cotton receipts, the second largest category at \$1.19 billion, declined last year by 15 percent, or \$215 million.

Sales from vegetables, fruit and nut crops, oil products and timber increased in 1989, Anderson reported. Declining in estimated income were wool, mohair and nursery products.

Farm assets in Texas—including land, buildings, machinery, crops & livestock on hand & financial assets—totaled \$78 billion last year, Anderson said. This down from a peak of \$108 billion in 1984. Texas had 186,000 farms that averaged 710 acres last year.

Anderson said Texas agriculture in 1989 had an economic impact of about \$35 billion, including agribusinesses and all segments of the food industry.

"Business related to agriculture employed more than 20 percent of the state's work force, making the general health of farming & ranching important to many Texans," he said.

Anderson gave this review of 1989 farm receipts:

\*Beef. Strong prices & drought herd sales pushed marketings of cattle & calves to an estimated \$5.05 billion, or 45 percent of agricultural receipts. Sales in 1988 were \$4.9 billion. Worsening drought last year forced many ranchers to sell their herds or resort to costly feed programs.

\*Hogs. Marketings, with prices down from 1988 were estimated at \$94 million. Sales in 1988 totaled \$99 million.

\*Sheep & Goats. Sheep numbers continued to decline, & marketings are estimated at \$77 million. This compares with \$65 million in 1988. Goats, with numbers expanding slightly, had sales of \$29 million, down from \$31 million in 1988.

\*Dairy Products. Texas' expanding dairy industry ranks sixth nationally in milk production & had milk sales estimated at \$725 million. This compares with \$643 million in 1988.

\*Poultry Products. Egg marketings were down slightly, but strong prices all year for egg, broiler & turkey sales resulted in receipts estimated at \$750 million. Total receipts the previous year were \$651 million.

\*Cotton. With fewer planted acres & less production, cotton & cottonseed marketings declined to \$1.2 billion, down from \$1.4 billion the previous year. The cotton crop was harvested from 3.7 million acres, 30 percent less acreage from the season before, again partly because of drought.

\*Food Grains. Sales from wheat & rice harvests totaled about \$374 million, down from \$432 million in 1988.

Cash receipts from 1989 wheat were \$228 million &—rice, \$146 million.

\*Feed crops. Cash receipts totaled about \$787 million, with grain sorghum accounting for \$299 million & corn sales, \$302 million. Sales from hay crops, barley, oats & ensilage totaled \$186 million. In 1988, feed drop sales amounted to \$741 million.

\*Oil crops. With greater soybean production, oil crop sales increased to an estimated \$203 million last year, up from \$155 million previously. Soybean sales were estimated at \$59 million, peanut crop sales at \$136 million & sunflower and other oil crop receipts totaled \$8 million. \*\*Vegetables.

Texas continues to rank among the top states in value of vegetable crops, with all vegetables, including melons & watermelons, having an estimated value of \$382 million. This compares with sales of \$425 million in 1988.

\*Fruits & Nuts. Sales were estimated at about \$82 million, up from \$75 million the previous season.

\*Nursery Crops. With estimated sales of at least \$477 million, the nursery industry produced about half of the plants and turf materials sold in Texas last year. Sales in 1988 were \$430 million for nursery crops plus \$84 million for floriculture.

\*Timber Products. Estimated cash receipts for the pine & hardwood harvests were estimated at \$441 million, compared with \$336 million the previous year.

\*Miscellaneous Livestock. Wool & mohair sales totaled & estimated \$52 million, down from \$65 million the previous year. Sales of other livestock & honey were estimated at \$33 million, compared with \$42 million in 1988.

\*Other resources. Estimated agriculturally-related income from hunting leases, aquaculture & fish production, horses & outdoor recreation was \$401 million, down from \$423 million in 1988.

## Tips & Topics

By Susie Spurlock County

### Helping Your Child Acquire

#### Language Skills

Oral language skills are important predecessors to reading and writing. How parents talk to their children about the experiences the child has influences the amount and kind of knowledge the child will gain from the experience. When children begin to read, they draw upon the experiences they have had and the knowledge they gained from those experiences.

Parents can aid their children in acquiring literacy skills in a number of ways: \* Talk about things in which children are interested. \* Patiently answer their questions in ways they can understand. \* Encourage children to develop their interests and talk about them. \* Do things together and talk about your activities: going to the store; visiting the museum or the

zoo; attending a movie, a concert, or church together; watching television and talking about what is happening; checking out books at the library and discussing how many books there are; participating in or watching sporting events; and engaging in hobbies together. \* Allow children to direct the conversation; don't tell them they are stupid or what they're saying is wrong. \* Listen to children so you can learn about them, show that you care and are interested in what they have to say. \* Provide young children with a play telephone and let them talk to friends and relatives on the phone. \* Encourage children to describe the objects or things they see. \* Look at a picture together and talk about the objects in

Cont. On Page 8

### Williams Repair Service

Phone 396-5330 or 2429

Ditching & Backhoe Work

Plumbing & Supplies

Eddie Williams Res. 396-5330

## Women's Health Center

Normal and high risk pregnancies  
Gynecologic cancer screening  
Breast cancer screening  
Infertility and family planning  
Menopause and hormone problems



Dr. Turhan I. Baykan M.D.

Specializing In

OBSTETRICS-GYNECOLOGY

Monday-Friday 9 a.m.-6 p.m.

Appointments 935-6599  
Emergencies 935-7171

## STRATFORD I.S.D. TAX RATE SUMMARY

1989 - 1990 TAX RATE - .73¢ per \$100 VALUATION  
PROPOSED 1990 - 1991 TAX RATE - .73¢ \$100 VALUATION

The percentage increase as listed in the required public notices are a result of increased values in the District. The proposed tax rate is intended to hold the line on taxes and keep our rate well below the state average of .91¢ per \$100 value.

In general, values of farmland have been reduced and the values of most homes have remained constant which in most cases holds the line on an individual's tax liability to the district. The increase listed in the public notices is due to increased royalty values.

The "Effective Tax Rate" is computed by applying a formula to the values for the upcoming year and the preceding years rather than using the actual tax rate approved by the Board.

## NOTICE OF VOTE ON TAX RATE

The Stratford Independent School District conducted a public hearing on a proposal to increase your property taxes by 11% on July 31, 1990 at 8:00 PM.

The Stratford Independent School Trustees are scheduled to vote on the tax rate at a public meeting to be held on August 9, 1990 at 8:00 PM at the Board Room of Stratford Independent School District.

# 4-H News



Sue Baeza, Sherman County 4-H'er [back row, left] placed in the Top 4 at the District 1 4-H Fashion Show recently. Sue was entered in the Senior Construction Division Evening Wear.



Representing Sherman County at the recent District 1 4-H Fashion Show in the Junior Construction Active Sportswear was Kyle Ellison [front]. Kyle placed in the top 4 of his category.



T. D. Baskin representing Sherman County at the District 1 4-H Fashion Show in the Junior Construction Casual Daywear. T. D. [far right] placed in the top 4 of his Division.

## Yard Of The Month



The Yard of the Month for August belongs to Carl and Centa Luther at 101 S. Pearl. Both front and back yards are beautiful.



Dede Vandiver, photography superintendent, and Tana Pemberton, handwork superintendent, encourage all Sherman County residents to participate in the Sherman County Fair & Jamboree on September 6, 7 & 8.

<p><b>Business Directory</b> Call The Stratford Star 396-5885</p>	<p><b>Moor-Mans</b> Moorman Mfg. Co. Tommy R. Ames Sales Representative Will be in Stratford every Wednesday. Phone: 806-249-4796 BOX 204 DALHART, TX 79022</p>	<p>Elect <b>JUDGE DAVID G. LEWIS</b> 69th District Judge Pd. for by Comm. to Elect Judge David Lewis, Jordan Mills, Treas. Box 1474, Dumas TX. 79029</p>	<p><b>Stratford Auto Electric</b> Specialize in Starter, Alternator &amp; Magneto Repair AUTOMOTIVE ★ TRACTOR ★ IRRIGATION Check with us for trailer wiring Champion &amp; Stitt Sparkplugs 119 South Wall 396-5941</p>
<p><b>Stratford Printing &amp; Office Supply</b> • PRINTING • OFFICE SUPPLIES &amp; FURNITURE • COMPUTER SUPPLIES <b>Bestnet</b> Copiers &amp; Fax Machines <b>swintec.</b> Typewriters &amp; Calculators 806-396-5371 208-211 N. MAIN ST. STRATFORD, TEXAS 79084</p>	<p>THIS SPACE AVAILABLE CALL 396-5885</p>	<p><b>case IH</b> OGLESBY INTERNATIONAL, INC. PARTS &amp; SERVICE EQUIPMENT SALES &amp; LEASE 806-935-4104 - Office Hwy. 287 N. 800-458-4836 - Watts Dumas, Texas 79029</p>	<p><b>Mungia's Heating &amp; Air Conditioning</b> We Also Do Hot Water Heater Replacement, Remodeling, Plumbing &amp; Roofing 396-2007 If No Answer Call 396-2403 Payne HEATING COOLING 206 N. Main</p>
<p><b>SMITH AGENCY Insurance</b> 319 N. Main Stratford, TX 79084 SHARON BROWN Home 806-396-2356 MILES SMITH Home 806-396-2540 806-396-2031 396-2379</p>	<p><b>AMERICAN SPRAYERS OF STRATFORD</b> Aerial Ag. Service For Farm and Ranch CHARLEY &amp; VIRGINIA LAMB (806) 396-2036 Stratford, Texas</p>	<p><b>Ellie's and M's Meet &amp; Eat</b> For all your gift and floral needs Baby &amp; Bridal Registry 209 S. Main 396-2092</p>	<p><b>BROOKS MOTOR COMPANY</b> 396-2470 802 S. 1st</p>
<p><b>ELK PHARMACY</b> 317 N. Main Stratford, TX 79084 806-396-5505 We Honor . . . P.C.S. P.A.I.D. BC/BS Texas Medicaid Gifts &amp; Decorative Accessories • UPS Shipping Center • One-Day Photo Processing • Visa and MasterCard Welcomed • Helium Balloons • Bridal Registry • Baby Shower Registry • Toys</p>	<p><b>ALL POINTS TRAVEL</b> Airline - Cruises - Rail - Tours - Hotels - Cars PAT JOHNSON Travel Consultant 400 E. First 806-396-2243 Dumas, Texas 79029 Stratford, TX 790 JOAN BELL Travel Consultant 806-396-5958 Stratford, TX 79084</p>	<p><b>THRIFTWAY</b> Big Town Selection ★ Small Town Friendliness Wide Selection Frozen Food Quality Foods Fresh Produce Hwy 54 East 396-5586</p>	<p>Golden Spread Implement Company, Inc. <b>case IH</b> A Fresh Team for Today's Farmer 396-5520 396-5529</p>
<p><b>WALTER LASLEY &amp; SONS INC.</b> THE Feedyard Since 1953 753-4411</p>	<p><b>COUNTRY CUTS</b> 301 N. Main 396-2424 Leah Washburn</p>	<p><b>J's Cut &amp; Curl</b> Sun Glitzing Perms Manicures Pedicures We carry a complete line of Nexxus hair care products for all types of hair Sat. by appointment only Shop - 396-2520 Res. 396-2139</p>	<p><b>Stratford Grain Co.</b> Stratford 396-5541 Lautz 769-4485 4 North Main</p>
<p><b>The Allen Agency</b> Health Insurance Specialist 302 N. Main 396-5810</p>	<p><b>North Plains Savings &amp; Loan</b> Stratford - 396-5534 Dumas 935-4184 Dalhart 249-5513 401 N. 3rd</p>	<p><b>Consumers Company</b> 396-2261 Hwy 287 &amp; 54 MORE GOING FOR YOU.</p>	<p><b>Brown's Meat Locker</b> Custom Wholesale &amp; Retail Meat Federally Inspected Hwy 287 South 396-2513</p>

# IT PAYS TO LOOK IN THE **Star** CLASSIFIEDS

'THE BEST SALESPERSON AROUND'

Phone 396-5885 to place your Star classified ad

★ **For Sale** ★

Bindweed, Jointgrass, cheat and mustard cost lots of money to control and take away from wheat yields. Let us clean your wheat seed and help control these problem weeds as well as better more even stocks of wheat. To prevent delays at planting, please schedule your cleaning as soon as possible.

Howard Shelley Seed Co.  
Phone: 806-396-2090 Office  
806-727-4248 Home  
8-30-c

"BEER TO GO"  
Susanah's At Kerrick  
5-17-tfn

For Sale: Koeler and Campbell Piano, make an offer. Dumas 935-3534.

8-9TFN

For Sale: Scout 66, Tam 105 200, all grown from registered seed, Double cleaned, weed free, ready to load on your truck. Also registered Tam 201 and the more popular Pioneer and NAPB varieties on order. Custom clean service available. Book your Wheat Seed or schedule your wheat to be custom cleaned now, to avoid delays at planting time.

Howard Shelley Seed Co.  
Stratford, Texas  
Phone: 806-396-2090 office  
806-727-4248  
8-30-c

Ellies has bridal shower selections for Jo Dawn Shields and Joe LaFlamme with free delivery to the shower Aug. 12.

8-9-c

For Sale: 1000 gal. propane tank, 200 lb. working pressure, wet line for filling tractors, pickups, etc. \$500.00 Located in 4-way area. If interested call 935-3534.

8-9c

For Sale: Dining Room table and 4 chairs with China Cabinet. 396-2411.

8-16p

For Sale-4-Wheel Trailer, roll bars for pickup. Call 396-5806.

8-9-tfn

1 - 2 story house to be torn down for the lumber. Call 396-2181.

8-16c

Sweet Corn is ready, 10 ears for \$1.00 Call Christopher or Mandi Bell. 396-2576.

8-9-c

For Sale: 1 telescoping television tower with antenna. \$45.00 1 Triangular Antenna tower with antenna \$75.00 If interested, please call 396-2510.

8-9-p

**WANTED**

WANTED: CRP land to Shred. 396-2118 or 396-5617.  
9-27-c

**WANTED**

Expert cement work, slabs, sidewalks, driveways, patios. Free estimates, no job too large or small. Call day or night 396-2293. Ask for John.

8-9-c



Yard Sale - Fri. 10th and Sat. 11th at the corner of N. 4th and Pine. Stereo, clothes, and Misc.

8-9c

★ **Services** ★

Decorated Cakes by Janis Tillery. Call 396-2508.  
2-1TFN

Custom made draperies, bedspreads, slipcovers, and also furniture refinishing. Call Billie Knight 384-2136.

6-21-tfn

Call your Local Used Cow Dealer for 7 day a week dead Stock Removal Toll Free 1-800-692-4043. 20 years of Service to the Texas Panhandle.

9-22-tfn

For Termite Control Call Leo Russell at 1-383-7075 Amarillo. Have been working Stratford for 28 years. Have City and State License for the City of Stratford.

4-24-tfn

**DUMAS TRAVEL CENTER**  
For your convenience, We now have a new 800 number 1-800-635-8415. Call Toni or call Jack Vincent at 396-5388.

1-19-tfn

**SERVICES**

Have Dust Rag Will Travel House cleaning wanted. No job to big. Call Marie Sladek 396-2037 after 6 p.m. Call 2596.

5-24-tfn

Wanting to keep 3 children in my home. Contact Charlotte at 396-2152.

6-21-tfn

Susanah's Cafe and Gift Shop, collectibles, antiques and Southwest clothing. 9:30 a.m. to 9:00 p.m. Monday thru Saturday. Kerrick

6-28 TFN

National Farm Life Insurance Company agent for Stratford, Texas, Molly Griffin, **MORTGAGE CANCELLATION INSURANCE.** Call 396-5612.

7-5-p

Elk Pharmacy has bridal shower selections for Jo Dawn Shields and Joe LaFlamme Call or come by and let us help you with your selections. We have free delivery to the shower Aug. 12.

8-9-c

THE General Store has canning jars and lids, jelly jars for all you "Do It Yourself Home Canners".

7-19-tfn

WANTED TO DO Interior and Exterior Painting, Home repairs, yard work, Call 806-249-6269.

8-9-c

M's Meet & Eat Open 8:00 a.m. to 8:30 p.m. Monday - Friday Serving Luncheon and Evening Specials along with regular menu.

8-16c

I will provide child care in my home at Reasonable Rates. Contact Zenith at 101 N. 4th.

8-16c

We have bridal shower selection for Jo Dawn Shields and Joe LaFlamme at Trails West, Hwy 54 and 287.

8-9-c

**Stratford Appliance Repair**

Repairs to Electric and Gas Ranges, Refrigerators, Freezers, Washers and Dryers.

WAYNE MERRILL  
396-2129

★ **Misc.** ★

For the lowest fares available anywhere, Call Joan at 396-5958 or Pat 396-2243. Let us make your travel plans at no cost to you.

3-8TFN

Girls Next Door has bridal selections for Jo Dawn Shields and Joe LaFlamme with free delivery to the Shower Aug. 12.

8-9-c

Centennial Bricks on sale until Aug. 24th Contact Chamber office or Martha at Ellie M's 396-2092.

8-23-c

M's Meet & Eat Open 8:00 a.m. to 8:30 p.m. Monday - Friday Serving Luncheon and Evening Specials along with regular menu.

8-16c

**VETERANS**-Land purchase, housing purchase, disability benefits, pensions. For assistance in applying for these and other VA benefits, contact Max Stephenson, CSO at 396-5348.

8-30-p

**GOLD CREDIT CARD** Visa-Mastercard guaranteed \$2,500.00 unsecured credit line Cash Advance 1-900-446-0028 \$19.95 fee.

8-9-p

**ATTENTION: POSTAL JOBS!** Start \$11.41 hour! For application info call 1-602-838-8885, Ext. M-17671 6 a.m. to 10p.m., 7 days.

8-23-p

**VISA/MASTERCARD**

Easy, fast! No deposit. No credit check. also \$5000 Gold Card Guaranteed! Cash advances! Free info! 1 (800) 234-6741, anytime.

8-6p

**AUCTION**

Hazel Diehl Estate (lots of guns) and THE General Store (excess merchandise). Saturday August 25th, 10A.M., 217 Texas, (Old Boston Building). Watch for the Sale Bill in the Aug. 23 Star issue.

8-9c

THE General Store has bridal selections for Jo Dawn shields and Joe LaFlamme. Free delivery to the Shower Aug. 12.

8-9-c



"The Star Spangled Banner," when it was first published, bore the title "The Defense of Fort Mchenry."

★ **For Rent** ★

For Rent: 1 bedroom furnished apartment, clean and neat. 6th and Fulton. Hud Approved. Call Bill Riffe 396-5541 to look.

2-22-tfn

Apartment for Rent: Call 396-2102.

12-21-tfn

For Rent: Two bedroom house, call Leonda Fedric, 396-5538; or 396-5992, nights.

8-16-p

3 bedroom, 1 bath, fireplace. \$280 a month, \$125.00 deposit. Firm. Call 935-3534 Dumas after 5:30 p.m.

8-9TFN

1 and 2 bedroom apartments for rent, water and gas paid, no children please. 101 N. Main. Gillis Apartments 396-2386 ask for Joan Palmer or come by Apt. #2.

8-6TFN

For Rent: 2 bedroom unfurnished Apartment. Built in stove w/ washer and dryer hookup. Call 396-2374 AFTER 5P.M.

9-13c

**ALCOHOLICS ANONYMOUS** and **AL-ANON** meet each Thursday at 8:00 pm in the old County Barn

8-9-c

★ **HOUSES FOR SALE** ★



Must sell, 3 bedroom, 2 bath, brick. Central Heat and Air. Call today 396-5660, 1308 Putnam.

4-19-tfn

The first baby to be born in the White House was James Madison Randolph, born Jan. 17, 1806. He was a grandson of then President Thomas Jefferson.

Member American Optometric Association  
Family Vision Care Specialists  
**Dr. J.W. McCormick**  
**Dr. David Riddlespurger**  
**OPTOMETRISTS**  
396-5516  
Hours: 10:30 to 4:00  
The Stratford Office will be open Aug. 9th & 23rd  
Hours: Mon. - Thurs. - 9:00 - 5:30  
Fri. 9:00 - 12:00 Noon  
Sat. - 9:00 - 1:00  
Dumas - 935-6491

Stratford Lodge No. 874  
**BILL COX**  
Worshipful Master  
Third Thursday 8 p.m.

P. O. BOX 779  
212 N. POPLAR  
STRATFORD, TEXAS 79084  
(806) 396-5665

*Dan H. Loving, D.D.S.*

GENERAL DENTISTRY  
HOME: (806) 381-2212

*Blair G. Loving, D.D.S.*

GENERAL DENTISTRY  
HOME: (806) 935-9086

212 S. BLISS  
DUMAS, TEXAS 79029 (806) 935-9212

\*\*\*\*\*  
**Classified Ad Rate**  
16' per word after 25 words  
\$4.00 minimum up to 25 words  
16 cents each additional word first week  
8' per word on subsequent insertions  
\$1.00 discount if paid in advance  
**Deadline Noon Mondays**  
\*\*\*\*\*

★ **Homes For Sale** ★  
House for Sale: 4 bedroom, 2 bath, 2 story, large garage and shop \$35,000 300 N. Spruce. 396-2161.  
6-14-tfn

**House For Sale**  
Make an offer, must sell. Would consider lease purchase with down payment. Located on North Main in Stratford. 1275 sq. ft. 3 bedroom, den, fireplace, kitchen, small basement. For information or bid call 935-3534, Dumas after 5:30 p.m.  
8-9TFN

★ **TO GIVE AWAY** ★  
Lab pups to give away. 396-2033 after 6.  
8-9c

Beautiful blue Papa Parakeet and yellow mama parakeet to give away. Make great companions Call 396-5958.  
8-9-c

**Sponsor of the Week**  
Service, Quality & Fair Value  
**RADIO STATION KXIT**  
AM 1240 RADIO STATION FM 95.9  
249-4747  
FEATURED ON YOUR WHITE & GREEN PHONE BOOK COVER

Cont. From Page 6  
the picture. Then hide the picture and see how many objects the child can recall. \* Sing to and with children. \* Make up games using language such as spontaneous rhymes or silly words and phrases or chants and raps. Talking with children and having fun with language will help them develop language skills and an understanding of words to assist them in reading, writing and conversing.

*Ad Rem Land Co.*  
710 S. Dumas Ave. 935-7364  
Prime business location Hwy 54 and Hwy 287 intersection. If you need location with large showroom and storage--work rooms--and high number traffic--This is It! Call for details.  
3 bedroom. LARGE garage, corner lot, \$39,900.  
1,840 acres grass, located north of Clayton. Offered in cooperation with New Mexico Real Estate Broker. Call Pat or Tom.  
Great 4 bedroom 3 bath-house- fireplace, double Anderson windows-ref. air/Cent. heat. with Steel bldg. 96x60 with all utilities and 1/2 bath. All on lot 401 x 150. 1.420 acres.  
Corner lot-nice 3 bedroom-2 bath-brick garage; central heat & cooling, fireplace-\$45,000.  
Need a place for your horse or 4-H stock? 5 acres with barn, stalls, water and electricity-edge of town \$20,000.  
Marty Bain 396-2053 Tom Ferguson, Broker Pat Johnson 396-2243