

Phone 3971
CONSUMERS
BUTANE, INC.
OLTON, TEXAS

THE OLTON ENTERPRISE

"The Golden Gate To The Golden Road"



VOLUME 34

OLTON, LAMB COUNTY, TEXAS, THURSDAY, JANUARY 12, 1961

NUMBER 49



IT'S BEEN almost seven months since the Turners moved to Olton and started putting out the Enterprise.

I started thinking the other day that maybe folks would like to know how we're getting along. Then, too, maybe you'd like to know how your newspaper's coming along.

The answer is pretty simple: I think we're doing okay. If we're not, I'm not smart enough to know any better.

A few folks tried to tell me when I left Littlefield that I wouldn't last a week in Olton.

Well, I fooled 'em I guess. Nobody tried to run me off until I'd been here two weeks!

THE ENTERPRISE took on a new look eight weeks ago. We changed from letterpress printing process, where you do it with hot metal, type and ink, to the offset printing process, where you do it with paper, glue and photo-offset equipment.

I said we had already switched to offset, but in reality we are still in the process of changing.

In between the beginning of the change and the completion of it, we are selling some of our old equipment and we are buying several thousand dollars' worth of new machinery.

The last eight weeks have been hectic ones. We've been forced to wait for new equipment to arrive.

Two highly precise machines called "justwriters" have been ordered. They are so highly technical that they can't be built on an assembly line basis. In fact, the salesman told us that his company doesn't start the manufacture of a single new justwriter until an order for it has been placed.

GETTING BACK to the idea of this newspaper business being hectic, the reason for it has been the fact that we've been doing a lot of the job by "long distance."

During the past eight weeks, we've had our printing done at Friona in an offset plant that produced numerous newspapers in the Plains area.

Our first piece of new equipment, called a "headliner," is scheduled to arrive Monday. We hope to have justwriters the latter part of next week.

We're also scheduled to get some new desks especially adapted to offset work during the next few days. We'll have one new employee, starting the latter part of next week.

If all goes on schedule, we'll be producing the paper by ourselves by Jan. 26, the last issue of the month.

It's been a big job, but it's all designed to give Olton—a town we expect to call home for many, many years—a better newspaper.

We hope you like the paper now, and we feel like you'll enjoy it more and more in the months and years to come.

Paving Plans Spelled Out



MR. AND MISS OHS—Elected by Olton High School's student body as "Mr. and Miss OHS" this year are Robert Priest and Sharon Smith, both seniors. Robert is the son of Mr. and Mrs. Weldon Priest and Sharon is the daughter of Mr. and Mrs. Leo Smith.

PERSONALITY PIN-UPS—Kenneth Blades and Lonna May are Olton High School's "personality pin-ups" for 1961. Kenneth, a junior, is the son of Mr. and Mrs. Amos Blades. Lonna, a senior, is the daughter of Mr. and Mrs. Leon May.

Per-Foot Costs Set By Council

Olton city council Tuesday night approved an ordinance spelling out property owner costs on improvements scheduled in the biggest paving program in the city's history.

At the same time, the council called a hearing on the project, setting Jan. 27 at 7 p. m. at the city hall as the time and place for property owners to have their say on the program.

The ordinance sets property owner costs at \$4.30 per front foot on "front lots," those areas where streets run in front of homes, and \$3.95 on "side lots," or side streets.

This is in line with a promise the council made at the beginning of the paving campaign last year. At the outset, the council said costs per foot would not average more than \$4.25.

Prices set by the ordinance will make per-foot costs average a little less than \$4.25.

Approval of the ordinance actually orders that the improvements be made. It is not anticipated, however, that all units covered in the ordinance will be paved. (As required by law, the ordinance itself is being published and can be found on Page 6.)

The ordinance covers about 125 blocks of paving and the council expects only about 70 of that number will be included in the actual construction.

The Jan. 27 hearing, required by law, gives those property owners who are included in the program but do not want paving a chance to register their protest.

The council will determine after the hearing those blocks or units in which the greatest interest is shown, or in which a majority of the owners desires paving.

Total cost of the improve-

ments, as estimated in Engineer Bill McMorris' report, would be \$458,012.83 if all 125 blocks were paved.

Cost on the 70 blocks actually expected to come through the hearing and go under construction would be considerably less, probably about \$300,000.

On that basis, the city council agreed Tuesday night that its share of the costs will be \$65,000, or about 20 per cent.

That leaves \$15,000 from the \$80,000 bond issue approved last September by the voters. This money will be used on seal coating (about \$6,000

(Continued on page 2.)

Announce Chairmen For MOD

Ralph Glover, manager of Southwestern Public Service, and Eldon Franks, farmer, have been named as co-chairmen of Olton's 1961 "New March of Dimes," which will begin Monday.

Coin containers for the drive will be placed in Olton businesses late this week, the co-chairmen said.

"We hope the 1961 drive will go over \$1,000," Glover said. "The March of Dimes in Olton has always been successful," he added.

A "Mothers' March" is planned later this month, with women from various Olton clubs scheduled to take the lead in this phase of the campaign.

The drive will continue through a 30-day period, the co-chairmen said.

The National Foundation, which sponsors the March of Dimes annually across the United States, is seeking to prevent crippling diseases, with its sights set at birth defects and arthritis and at continued work in polio.

Birth defects cripple one out of every 16 babies in the United States, arthritis and rheumatism afflict 11 million Americans, and polio can still strike down any one of more than 85 million unvaccinated persons in the country.

Green Elected In Water Vote

Willie Gene Green, Olton area farmer, was elected Tuesday as precinct one county committeeman of the High Plains Underground Water Conservation District.

Green edged another Olton farmer, Bill Langford, in the balloting.

Green became a member of a five-man county committee. He was elected for a three-year term.

Redinger Wins School Science Medal

Nicky Redinger, Olton High School senior, has been awarded the 1961 Bausch and Lomb Honorary Science Award for the highest scholastic standing in science subjects at OHS.

Announcement of the winner was made this week by Joe Turner, high school principal. The award, evidence of superior scientific aptitude, is presented annually in more than 7,000 schools in the United States.

Winners are eligible to compete for science scholarships sponsored by Bausch and Lomb, Inc., at the University of Rochester.

A medal will be presented to Nicky during high school graduation exercises Tuesday, May 23.

Ballot Loss 6.3 Per Cent

Sixty-eight voters in Lamb County precinct 1 failed to have their vote counted in the general election Nov. 8, 1960—approximately 6.3 per cent of the turnout.

The votes were disqualified mainly because the voters failed to scratch out the Constitution and Prohibition Party candidates.

These figures were released this week from Republican State Headquarters in Houston.

Over the county, 286 citizens, representing 4.5 per cent of the total vote, failed to have their ballots counted, the report says.

Results of the study were revealed in an effort to apprise Texans of the dangers of careless voting, and to point up the peculiarities in our state election laws which have contributed to an abnormally high vote disqualification according to Thad Hutcheson, State GOP Chairman.

The report states that there are two election laws which contradict one another, Art. 6.06 of the Election Code provides that the voter shall mark out the names of all candidates he does not wish to vote for, but that the failure to do so shall not invalidate the ballot if the intention of the voter is clear in the opinion of the election judge. Art. 8.21, however,

provides that no ballot shall be counted if the candidates for more than one party are left unscratched.

Since, apparently, both laws cannot be applied, the individual precinct judge is left with the burden of deciding which law is just. This inconsistency in the law has contributed to the irregular pattern of vote disqualification between not only

(Continued on page 2.)

Bank Deposits Up \$200,000

Bank deposits in Olton, considered by many as a barometer of the community's economy, are up almost \$200,000 over a year ago.

Olton State Bank reported deposits of \$5,356,177.37 as of Dec. 31, 1960, the date of a call by banking authorities.

This compared with \$5,165,861.12 in deposits reported at the same time a year ago.

Loans and discounts were up from \$635,108.28 in 1959 to \$881,561.11 at the end of 1960. Total resources are \$5,848,788.66, compared with \$5,640,304.14 at the end of 1959.

Schools End First Semester

Joe Turner, principal of Olton High School, has announced that all schools will be dismissed at 2 p. m. Friday. Classes were dismissed at the regular time Wednesday afternoon and at 2:30 p. m. Thursday.

Turner also announced that the first semester will end Friday. The second semester will begin Jan. 16. This is effective for all schools and for Mrs. Calvin Horn's kindergarten here the past three years.

Final semester exams were given Wednesday and Thursday of this week in the H.P. Webb Elementary School, Olton Junior High School and Olton High School.

Lamb Welfare Pay Near \$350,000

Lamb County needy received almost \$350,000 from four federal-state welfare programs during the last fiscal year, the annual report of the Public Welfare Department shows.

The total Lamb County allocation of \$338,671 included \$298,969 for 479 receiving old-age assistance.

The 79 children and 25 families under the aid to dependent children program received \$24,553. Another \$6,927 aided 12 blind people, while the 14 permanently or totally disabled were paid \$8,222.

Only a little over one-fourth of this money came from the state government. The costs of the four programs in Texas totaled \$167.1 million, with 120.4 million, or 72 per cent, coming from the federal government. The State paid 46.6 million.

Other counties in this area and their total welfare assistance included: Hale, \$491,886; Castro, \$47,825; Swisher, \$86,637; and Floyd, \$185,196.

Hospitalized At Lubbock

Mrs. Fred Gordon and Mrs. Alva J. Spain both are hospitalized in the Methodist hospital, Lubbock.

Bontke Case Due For Trial

A case which involved the jailing of a Lockney man in connection with a traffic accident and the serious injury of an 11-year-old Olton boy may come to trial next week in county court.

The man is Carl John Bontke, 22, who was charged almost a year ago with driving while intoxicated. Bontke pleaded not guilty and has been free on \$1,000 bond since Feb. 29, 1960, two days after the complaint was filed.

The boy hurt in the accident was Rudy Urrea, who was 11 and lived with his grandmother, Mrs. Jessie Falas, on the O.E. Patterson place east of Olton at the time.

He suffered a skull fracture, severe lacerations, fracture of the right leg and internal injuries.

Accounts of the case say Rudy

was struck by a pickup truck as he walked westward on Highway 70 about 8:30 p. m. Feb. 27, 1960. The mishap occurred on the highway between the Dairy Mart and Olton Courts.

County Attorney Curtis Wilkinson said Bontke's case is one of 43 on the docket for a county court term beginning Monday.

Wilkinson said the Bontke case probably will come to trial next week.

A panel of 36 prospective jurors has been called for the term, including two from the Olton area, T. B. Wheeler, Rt. 3, Hart, and A. C. Loftis, Springlake.

A sidelight to the case saw Olton Attorney Andrew W. Stroebel charged with interfering with an officer when he

(Continued on page 2.)

County Approves Budgets, Salaries

In their first meeting of the new year, Lamb County commissioners Monday held the line on departmental budgets and salaries of county officials.

The first 1961 meeting was also a debut in county government for Olton's Alva J. Spain, precinct 1 commissioner who was elected in 1960 and took office Jan. 2.

County officials' annual salaries, set at the same rate as last year, include: County Judge Pat Boone Jr., \$6,000 plus \$300 per year as juvenile court judge; County Clerk Charles Jones, \$5,400; District Clerk Ernest Owens, \$4,600; County Attorney Curtis Wilkinson, \$5,400; Sheriff Dick Dyer,

\$5,700; Tax Assessor-Collector Herbert Dunn, \$5,400 plus \$300 per year for administration of state title act; County Treasurer Lucy Moreland, \$5,000; and all four county commissioners, \$4,250 each.

Departmental budgets, also with no change, include: sheriff's office, \$3,900 annually for each of five deputies and \$2,700 for office deputy; county attorney's office secretary, \$2,460; county clerk's office, four deputies at a total of \$10,570 per year; tax collector's office, two deputies at \$3,600 each and three at \$3,300 each.

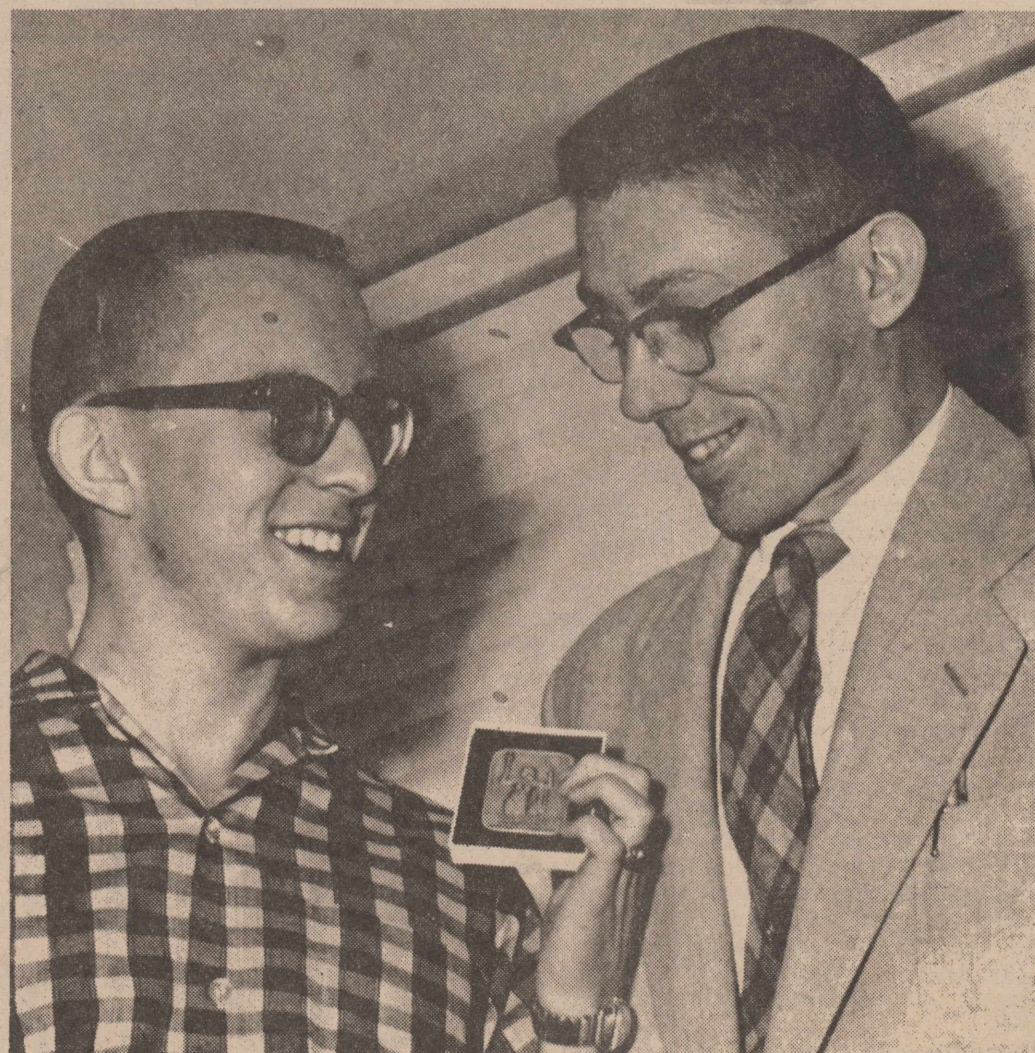
In addition, the court approved the county's portion of the district attorney's budget, which

is set up on a three-county basis. The county's share is \$119.86 per month.

Also approved by the court was the county treasurer's quarterly report, which appears in The Enterprise on page 5 of this section.

In other action, the commissioners set the date for hearing on selection of a county depository as Monday, Feb. 13, at 10 a. m. First National Bank of Littlefield is the present depository.

The court also passed a resolution for a quit-claim deed to clear title on property owned by C. V. Venable near the Nazarene Church in Olton. Venable has built a home on the property.



SCIENCE AWARD WINNER—Nicky Redinger, left, is congratulated by his science teacher, James Caley, after announcement this week that Nicky had won the 1961 award as Olton High School's top student in science. He receives a handsome bronze medal from Bausch and Lomb, Inc., sponsors of the award.

LCC Freedom Forum Begins Here Feb. 6

"Freedom Forum," a six weeks course designed to present the facts on Communism's threat to the American way of life, will be offered in Olton beginning Feb. 6.

That announcement came Wednesday from Buddy Hedges of Olton, representing Lubbock Christian College, which presents the course.

Hedges said the Chamber of

Commerce and the Olton P-TA are co-sponsors of the course. Signing up for the study will begin next week, Hedges said. Sessions will be held each Monday night for six weeks, with the school cafeteria scheduled to be the scene of the meetings. Instructor for the course will be C.L. Kay, LCC's vice-president in charge of public services.

State-Licensed Elevators Total 16 In Lamb County

Sixteen Lamb County elevators have met the requirements of the State law regulating public grain warehouses and have been issued licenses, Agriculture Commissioner John C. White reported this week.

The 16 are among about 800 licenses issued by the State Department of Agriculture. Other applications are being processed.

White said the increase "gives evidence of the continuing progress of our vast and important grain industry that is assuming a more and more vital role in the agriculture economy of our state and nation."

Under the state law, no person firm, corporation or cooperative "receiving for others nonperishable grain or field seeds for storage in bulk, or for handling or restorage in bulk" may do business in Texas without either meeting the state or federal warehouse regulation. A bond of \$5,000 is re-

quired to obtain a Texas license, and White may require bonds as high as \$50,000 if he thinks they are needed. An individual storing his own grain need not obtain a license.

In the Olton area, these firms were listed as licensed by the state: Olton Grain, Inc., with an 864,000-bushel capacity; Hart Camp Grain Co., with a 600,000-bushel capacity; Sanders-Paris Co., with a 125,000-bushel capacity; and Springlake Elevator, with a 991,000-bushel capacity.

Ballot--

counties, but between precincts within counties.

For instance, within this county, returns from Precinct 3 showed 5 voters disqualified from a total of 307 votes cast, for a low rate of about 1.6 per cent.

Precinct 15 on the other hand had 20 votes "thrown out" of a total of 208 cast or about 9 per cent disqualified. Precinct 14 had 8 votes thrown out of total of 77, 9.4 per cent.

The report pointed out that even under ideal conditions it's reasonable to expect a small percentage of votes to be improperly marked. However, in the opinion of the investigating group, human error could not be responsible for such fluctuations in vote "throw out." Instead, they credit the ambiguous election laws for these wide variances.

Purpose of the report to each county from Republican Headquarters was described as non-partisan, and in no way intended to reflect on the recent election contest. The objectives of the report, which would benefit either party, were:

1. Make the public aware of the necessity of voting carefully and properly.
2. Arouse public sentiment for modernization and simplification of existing Texas election laws through action by the Texas Legislature.

Paving--

went to the police station to see Bontke the night of Feb. 27, after the accident.

Stroebel was held in city jail about three hours after his arrest by Night Officer Ernest Holland.

At the time, Stroebel said he first was refused permission to see the client, and then jailed when he insisted. Bontke is Stroebel's cousin.

Stroebel was jailed about 9 p.m. and released later on \$25 cash bond. The attorney did visit with his client, for about three hours.

Bontke

worth), purchase of new street maintenance equipment (about \$4,000 worth) and other costs anticipated in the project.

A Lubbock paving firm, Hodges and Tierney Co., is contractor for the project. Actual construction is scheduled to begin in late February.

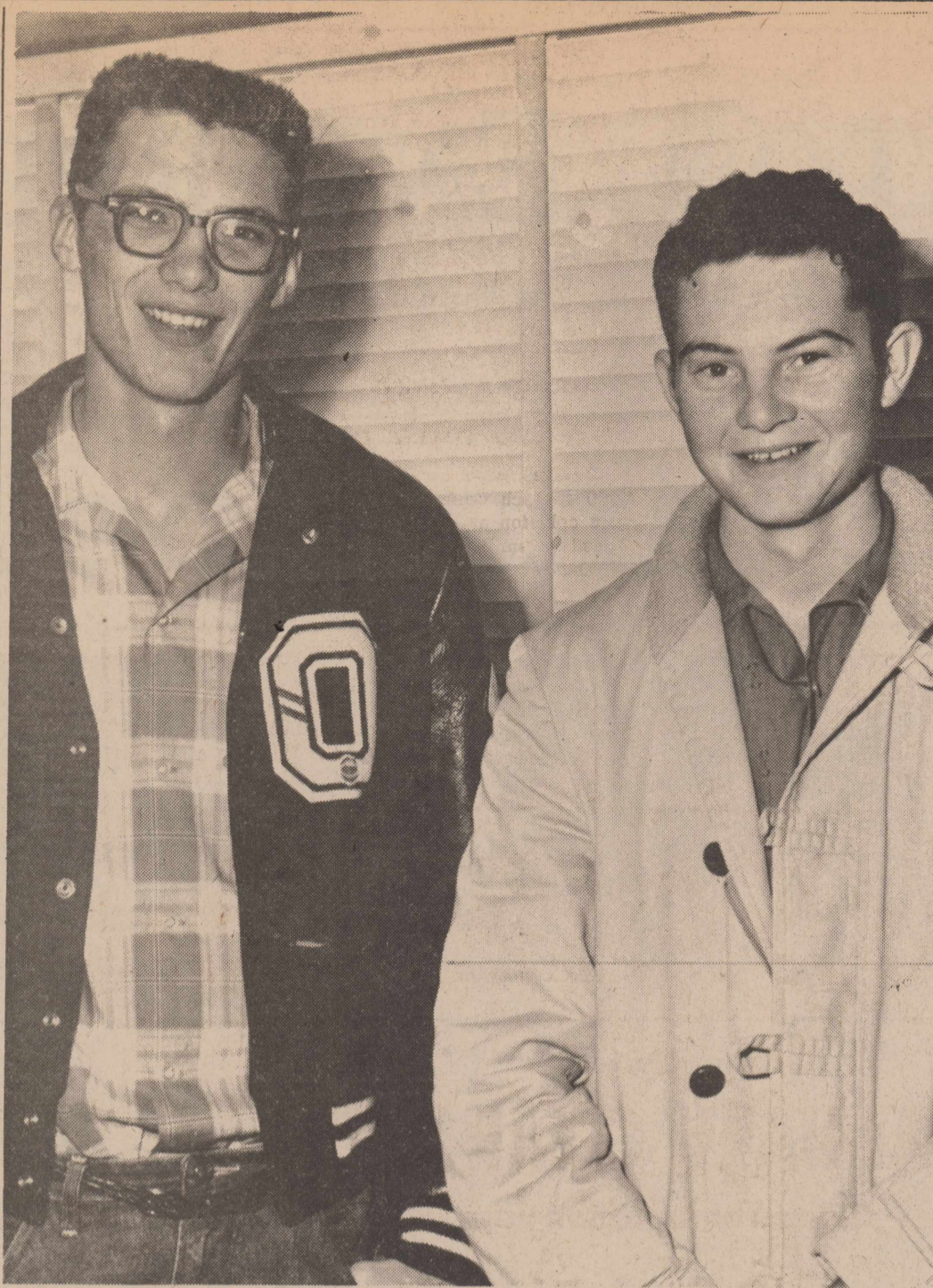
Assessment in the program will be payable in five equal installments, the first on or before 10 days after acceptance of the paving by the city, and the others, 1, 2, 3 and 4 years from the date of acceptance.

North Plains Council

A meeting was held yesterday in San Antonio to finalize the state-wide organizing. Work has been carried out for more than a year to organize the Texas Council.

Membership dues for the South Plains Area were set during the meeting Thursday at \$20 per year. Of this amount, \$8 will be paid into the Texas Vegetable Growers Council to be used in furthering the association and objects for which it is formed. The Area's money will be used to pay delegates' activities while carrying out the Association's work.

President Poteet said he could call meetings over the Area in the near future to report on the San Antonio meeting and begin a membership campaign in the Area.



MUSTANG CAPTAINS--Leading the Olton Mustang cagers as captains this year are Wendell Scribner, left, and Jarold Simmons. Olton's cagers won their opening district game against Morton Tuesday night, 66-58.

Ponies Take Morton, Play Lockney Next

Olton's Mustang cagers, who opened district 2-AA play Tuesday night with a 66-58 victory at Morton, will play host to Lockney Friday night at 8.

The OHS girls' team lost its game with Morton, 59-48.

Next competition for the girls is Lockney. They play here Friday night at 7.

The victory over Morton brought the boys' record to 3-6 for the year.

Gary Johnson paced the Mus-

tang attack with 31 points, the highest tally by a Mustang this season. Johnson hit 13 field goals and five free shots.

Johnny Schenck had his best night of the year against Morton, scoring 16. James Lawson hit for 10 and Robert Priest added 8. Morrison led Morton scorers with 19.

In the girls' game, Olton was close at the half, behind 29-24, but a hot third quarter put Morton out of reach. Jeanavon Harper led Olton with 12 points. Bobbie Campbell got 9. Sylvia Nicholas 11, and Gayle Nicholas 9.

After the Lockney games here, the Olton teams will play Abilene here next Tuesday night.

Last weekend, both teams fell in the Hale Center tournament. The boys lost to Hale Center, 64-37, and Anton, 52-46. Wendell Scribner led the attack against Hale Center with 13, while Johnson paced the Mustangs with 17 against Anton.

The girls lost to Hale Center, 47-27, but then beat Hart, 43-33. They lost to Lockney in the consolation finals, 34-33.

Miss Harper topped the Olton scorers with 12 against Hale Center, while Tommy Witten and Gayle Nicholas led the attack against Hart with 14 each. Miss Harper got 15 to lead Olton against Lockney.

CLASS AA TEAMS

Coffey Tops All-Regional

Talented Junior Coffey, the all-state fullback, heads the Amarillo Daily News' Class AA All-Regional dream team for the third successive year.

Coffey, a 6-0, 195 pounder, has been a member of the "paper" team since his sophomore year when he was chosen as an end. Last year he made both the offensive and defensive teams as he did this year.

The modest Negro youngster firmly entrenched himself on the offensive team after scoring 126 points in 11 games and was one of the most talked about defensive linebackers in the state. He was the first Negro player ever to be chosen to the Class AA all-state team.

Coffey tops a list of fine backs which also includes Bill Mangold, Lockney, Jerry Jernigan, Shamrock and Floydada's Rodney Teague, the only junior in the backfield.

The 1960 all regional team is possibly the highest one in many years. The offensive unit averages 178 pounds while the defensive team scales only 170 pounds.

Johnny Schenck, Olton's safetyman, is the lightest member of the team, tipping the scales at 125 pounds.

On the offensive unit, Ray Channing of Dalhart steps in at 160 pounds at a guard position

OFFENSIVE TEAM
 End—Charlie Mitchell, Tulla, 180 pounds, senior.
 End—Fred Riney, Olton, 170 pounds, senior.
 Tackle—Bobby Brown, Olton, 170 pounds, senior.
 Tackle—Leroy O'Brien, Dimmitt, 190 pounds, senior.
 Guard—Ray Channing, Dalhart, 160 pounds, senior.
 Guard—Don Doyis, Floydada, 164 pounds, senior.
 Center—John Smith, Perryton, 165 pounds, junior.
 Quarterback—Rodney Teague, Floydada, 173 pounds, junior.
 Halfback—Bill Mangold, Lockney, 173 pounds, senior.
 Halfback—Jerry Jernigan, Shamrock, 175 pounds, senior.
 Fullback—Junior Coffey, Dimmitt, 195 pounds, senior.

DEFENSIVE TEAM
 End—Jimmy Patton, Muleshoe, 180 pounds, senior.
 End—Jimmy Chavers, Dimmitt, 180 pounds, junior.
 Tackle—Mike Garrison, Dalhart, 185 pounds, senior.
 Tackle—Bill Valentine, Shamrock, 185 pounds, junior.
 Middle guard—Mike Goodwin, Dimmitt, 170 pounds, senior.
 Linebacker—Ronnie Harris, Canyon, 165 pounds, senior.
 Linebacker—Robert Duncan, Olton, 160 pounds, junior.
 Linebacker—Coffey, Ledbetter, Dalhart, 155 pounds, junior.
 Halfback—Blockie Wade, Quanah, 150 pounds, senior.
 Safety—Johnny Schenck, Olton, 125 pounds, senior.

while John Smith of Perryton scales out only 165 at center.

Dimmitt and Olton, a pair of district winners, placed the most individuals on the two teams. Dimmitt paced the pack with five by counting Coffey twice since he made both teams. Olton put four members on the team.

Big January

Shoe Clearance

Absolutely Final!

Savings Up To

75%

On Men's, Women's And

Children's Shoes!

This Is Your Chance To Buy

3 Pair For Price Of 1

SHOP

Haydon's Shoes

Littlefield — Plainview

What Does Your Chamber Of Commerce Do For You?

Here Are Some Of The 1960 Projects.

Agriculture:

Sponsored trip to San Antonio for four so as to obtain information on vegetables.

Obtain 200 more acres of cucumbers.

Helped in Sweet Corn project. 100 acres planted.

Assisted Fat Stock Show. Showmanship and clean pen awards.

Assisted Shetland Pony show.

Assisted FFA Pig Sale.

Held two meetings on sugar beets, attended two other area meetings on sugar beets. Doing preliminary work on obtaining a law which will enable Olton to receive some acreage.

Work done on possibility of a cattle feeding operation for Olton.

Sponsored trip to Houston and San Antonio to obtain Sweet Corn information.

Civic Affairs Committee:

Helped promote paving project.

In the process of obtaining Low-Rent Housing project for city.

Obtained information for new Post Office--found that Olton is on the list for a new Post Office of which we hope to get in the near future. Project to continue.

Obtained federal help in mosquito control--Spraying of lakes and city.

Wrote Otho Dent and George Mahon on the possibility of a dam being erected on Running Water Draw, 6 miles north of Olton. Mr. Mahon stated that there might be some money appropriated this session of congress to make a survey of this draw, will let us know as soon as possible.

Retail Trades Committee:

Sponsored Crazy Days program

Assisted in obtaining money to put on the Mexican Fiesta about 1500 Mexicans were fed at this program.

Studied the possibility of Olton having its own community stamps.

Trip made to Crane, Monahans and Kermit where this type of program is being carried on successfully.

Sponsored "Mustang Day" in which every merchant closed for game in Floydada.

Christmas Committee:

Sponsored Santa Claus for two Saturdays.

Helped put up lights.

Sponsored residential lighting contest.

Sponsored service club lighting contest.

Gave thousand candy stockings to children.

Industrial Committee:

Obtained two acres of land with option for two more acres to help entice industries to Olton. Numerous companies written for possibilities.

Glen Godsey sponsored by the Chamber of Commerce and Agriculture as Rural Minister of the year carried on by the Progressive Farmer, National Farm Magazine.

Helped sponsor the Annual Basketball tournament.

Held Annual Chamber of Commerce and Agriculture Banquet.

Sponsored outstanding citizen award.

Attended leadership course in Colorado City.

Helped sponsor Little League Baseball team.

Sponsored visit from five foreign students.

Sponsored manager's trip to two-week school in Houston.

Sponsored community clinic in March--from which came the program of work.

Join Your Chamber Of Commerce And Agriculture

It Works For You!

Be Sure To Attend The Annual Chamber Of Commerce Banquet February 3



CLOVIS POTEET

Growers Organize

PLAINVIEW--High and South Plains vegetable producers voted here Thursday afternoon to join a state-wide organization to be known as the Texas Vegetable Growers Council. This area, which is comprised of 20 counties and includes an estimated 15,249 acres of vegetables, has been designated as the South Plains Area, or Area IX.

Clovis Poteet of Olton was elected president of the Area, with Jack Schuster of Muleshoe and Jeanne Browning of Plainview being named to serve as vice president and secretary-treasurer, respectively. Kenneth Probasco of Lockney was named alternate to the state council. Poteet will be the representative. Probasco has served the past three years as president of the Texas High Plains Vegetable Council.

Purpose of the new state organization will be to promote production, distribution, consumption and continued improvement of Texas vegetables. Members m.s. reside within the designated boundaries of the state's 10 councils, and their major source of income must be regularly derived from vegetable and crop production on land actually owned and operated by him or on which he is a bona-fide tenant.

Counties included in the South Plains Area Council, and their 1960 estimated vegetable acreage, are: Swisher, 355; Briscoe, 100; Bailey, 300; Lamb, 1200; Hale, 4345; Floyd, 2737; Cochran, 455; Hockley, 1280; Lubbock, 985; Crosby, 1500; Yoakum, 445; Terry, 185; Lynn, 2; Garza, 30; Gaines, 1210; Dawson, 100; Mitchell, 20; Borden, Scurry and Howard, no acreage reported. Other counties north of this Area are included in Area X, or the

Last Services Read For Mrs. Perry, 73

Final services for Mrs. Crola Lee Perry, 73, of Olton, were conducted Jan. 6 at the Olton First Baptist Church, where she was a member. The Rev. John E. Lewis, pastor of the church, officiated at the services.

A long-time resident of Olton, Mrs. Perry was born Jan. 4, 1888. She died at 5:25 p.m. Jan. 4 at Hillhaven, Amarillo.

Survivors include three sons, W. C. Perry of Amarillo, T. J. Perry Jr., of Lubbock and Bob Perry of Needles, Calif.; three daughters, Mrs. J. O. Edwards of Amarillo, Mrs. Earnest Jones of Hart and Mrs. H. W. Moore of Lawton, Okla.; two sisters, Mrs. H. A. Bell of Wichita, Kan. and Mrs. G. N. Tillery of Vernon, and two brothers, William Pugh and Cecil Pugh, both of Wichita

Falls.

Burial was in the Plainview Cemetery under the direction of Parsons Funeral Home of Olton.

One Injured In Car Accident

One person suffered minor injuries Tuesday night in a collision of a car and pickup at the intersection of Avenue G and Highway 70.

Officers said Mrs. Charles Gibson an Arkansas resident, a car driven by her husband, received lacerations and bruises in the mishap.

Gibson's car and a pickup, driven by Jackie Gray of Olton, collided at the intersection. Gray was unhurt.

Final Rites Held For C. B. Winders

Funeral services for Lebon Dudley Winders, 74, were held Sunday in the First Baptist Church in Earth under the direction of Dennis Funeral Home in Dimmitt.

Officiating were the Rev. Cecil Meadows, pastor of the First Baptist Church, J.W. Douglas, Olton Nazarene Church minister; and F. E. Graham, retired Nazarene minister.

Winders, a retired Earth farmer, died at 3:30 p.m. last Friday in Littlefield Hospital-Clinic.

Survivors include the wife, five sons, Monk, Jay, Dud, Dale, all of Earth and Leon of Clayton, N.M.; five daughters, Mrs. C. Layman, Earth; Mrs. Gene Stephens, Lubbock; Mrs. Craig Kennedy, Wichita, Kan. Mrs.

Olton Woman's Mother Dies

Mrs. W. W. Newton, mother of Mrs. R. W. Green of Olton, died last Wednesday at her home in Stamford.

Eighty years of age, she had been in poor health since last February.

Services were conducted last Thursday at the McKinney Funeral home, Stamford. Interment was in the Haskell Cemetery.

Other survivors are a brother, Ed Newton, a sister, Mrs. Maggie Morgan, both of Stamford and TSgt. J. W. Newton, of Lubbock.

Bill Simmons, Amarillo; and Mrs. M.H. Brinerhoff, Denver, Colo.; a brother, Sam of Pontotoc, Miss., and 15 grandchildren.

Visiting OHS Grads Listed

OHS graduates home for the weekend were:

From West Texas State-- Terry Gail Hooper, daughter of Mr. and Mrs. Elbert Hooper; Peggy Sluder, daughter of Mr. and Mrs. Tom Sluder; John Lynn Burrow, son of Mr. and Mrs. Brent Burrow; David Morrison, son of Mr. and Mrs. Bob

Fisher; James Carson, son of Mr. and Mrs. Raymon Carson; and Hayden Hankins, son of Mr. and Mrs. W. T. Hankins.

From South Plains Junior College--Freddie Gordon, son of Mr. and Mrs. Fred Gordon; Roy Neal Jones, son of Mrs. Pauline Jones; Jerry Mathis, son of Mr. and Mrs. Henry Mathis; Jimmie Moss, son of Mr. and Mrs. K. L. Moss, and James Hukill, son of Mr. and Mrs. T. H. Hukill.

From Draughon's Business College -- Janice Campbell, daughter of Mr. and Mrs. Marshall Campbell; Charlene Taylor, daughter of Mr. and Mrs. M. E. Taylor; Joyce Gray, daughter of Mr. and Mrs. Virgie Gray.

From Texas Tech -- Ken Prestridge, son of Mr. and Mrs. Barton Prestridge.

From Eastern New Mexico University--Marty Singleterry, daughter of Mr. and Mrs. Glen Singleterry.

Bohner Teams Win 2 Games From Floydada

The Bohner Demons and Demonettes both won basketball games Jan. 6 with Floydada. Final score in the boys' game was 64 to 34.

The girls' game was decided in overtime, 31-25.

Brownfield's basketball teams will be the next opponents for Olton's teams. The game will be played at 7:30 p.m. Thursday at Bohner School. The Demonettes play first with the boys' game immediately following.

Another home game, this time with Slaton, will be played Friday night. The girls play first at 7:30 and the boys' game will follow.

E.C. Wood is coach of the Demons. Coach of the demonettes is C.M. Williams.

Stock Show Jaunts Near For Ag Boys

Olton FFA boys will begin their annual quest for top awards and prizes at stock shows across the state later this month.

First on the list is the Amarillo Stock Show, Jan. 22.

Several boys will go to El Paso the first week in February.

Olton's annual show is set for Feb. 9-10.

In mid-February, Olton FFA members will be in San Antonio. They'll show stock at the annual Lamb County show Feb. 17-18 at Littlefield.

Also on the list is the annual show at Lubbock and the Houston Fat Stock Show Feb. 27-March 5.



This Is Your Lucky Day BARGAINS!

SALE

This Is Your Lucky Day BARGAINS!



Boy's JEANS Sizes 12-13-14 \$2	All CAR COATS $\frac{1}{2}$ Price
Boy's WESTERN SHIRTS \$2	One Rack DRESSES 2 for Price of 1

BIG \$1 TABLE

Includes \$2.98 Cotton Plisse Slips And Many Other Items For Only \$2.

Our
JANUARY CLEARANCE
Lasts Through Sat. Jan. 14

Many Good Buys Left!

Men's Topcoats Reg. \$45 Reduced To \$29.99	Boy's Slacks Sizes 6-18 $\frac{1}{2}$ Price
--	---

KELLEY'S
Clothiers For Men And Boys

All Ladies DRESSES Closing Out At $\frac{1}{2}$ Price	All Men's Dress COATS And JACKETS Closing Out At $\frac{1}{2}$ Price
---	---

Many Other Big Values While They Last!

SMITH & STRUVE

DINETTE SPECIAL!



5, 6, 8
Piece Sets
Single Leaf
And 2 Leaf
Tables.

\$59⁵⁰ Up

PARSONS FURNITURE

LUCKY SEVEN - - - LUCKY SEVEN

One Group DRESSES Many Good Blacks Other Assorted Sizes & Colors. \$7	CAR COATS Broken Sizes Only \$7
MOUTON COATS 2 In Small Sizes Reg. \$49.95 \$17.77	Two Thermo Jac SUITS \$7.77

One Short
COAT
Reg. \$29.95
\$17.77

Thermo Jac Wool Pants
Buy One Pair For \$7
Pay \$4 More Get Another
These Sell Regularly For \$14.95

JEANNES

SPECIAL - SPECIAL - SPECIAL
General Electric Frost Guard 13 Ft.
REFRIGERATOR FREEZER
No Defrosting Ever!

Reg. \$589.95 Has All Those "Extras"
You Look For Such As Magnetic Safety
Door, Slide Out Shelves, Swing-Out
Vegetable Bins and Automatic Butter Conditioner.
Only
\$359

3 Ft. Roll Out
Freezer.
Use Your Old Box
As Down Payment

Terms And Trade

THOMAS FURNITURE

WHILE THEY LAST!

Timex Watches Reg. \$15. \$10 Plus Tax	3 Piece Luggage Sets \$19⁹⁵
Engine Powered AIR PLANES Reg. \$10.98 to \$15.98 \$7²⁵	Movie Cameras And Projectors Slide Projectors 1/3 Off
TV Tables Reg. \$12.95 \$8.95	Electric Blankets \$12.95

Boxed Candy
Reg. \$2. to \$10.
30% Off

1 English
BICYCLE
Reg. \$49.95
For Cash **\$25**

Plastic JACKETS Reg. \$5.95 \$2.98 Reg. \$4.95 \$2.49	Girls White JACKETS Reg. \$3.98 \$1⁹⁸	One Group RECORDS 4 for \$1
Lustre Creme SPRAY NET Reg. \$2. 99c Plus Tax	Style SPRAY NET Reg. \$2. 98c Plus Tax	SWEAT SHIRTS Reg. \$1.49 \$1
1 English BICYCLE Reg. \$49.95 For Cash \$25	Jergens All Purpose FACE CREAM \$1 Size 69c Plus Tax	1 Portable Electric Sewing Machine Reg. \$100 \$49.95

Specials You Missed Last Week

1959 GALAXIE 4 Door Real Clean \$1795	1958 FORD 6 Cylinder 4 Door \$895
1959 FORD Custom 4 Door \$1295	1958 FORD 4 Door Good Buy \$1085
1957 FORD Victoria - A Sport Car Beauty Now Only \$875	

News Of Interest To Women

Mrs. DeBerry Feted With Bridal Shower

Mrs. Gary DeBerry, the former Miss Becky Bearden, was honored with a bridal shower Tuesday afternoon. The Owen Jones home was the setting for the "come-and-go" event.

Miss Kay Gregory received the 80 guests. One hundred and forty gifts were registered by Miss Marilyn Jones.

White net covered the round-shaped reception table. The pink and white three-tiered wedding cake formed the centerpiece. Cake, nuts and spiced tea were served to the guests by Misses Jeanavon Harper and Ronda Robertson.

The hostesses presented the

honoree with a cream pitcher and sugar bowl to match her china, an electric mixer, cooking ware and a 52 piece service of silver plate.

Pink carnation corsages were presented to Becky and to her mother, Mrs. Faye Bearden, and her mother-in-law, Mrs. Rufus DeBerry.

Hostesses were Meses. J.F. Milles, Lloyd Graham, Ray Montgomery, C.F. Golden, D.H. Ball, Tom Smith, Jim Hyatt, C.S. Silcott, Ancil Miller, Frank Struve, Vernon Gosdin, Martin Phillips, Kenneth Harper, Jim Kemp, Jim Gregory, C.D. Kirkpatrick, Drexel Lawson, Brent Burrow, E.D. Harper, H. B. Carson, C.E. Bley, Owen Jones, Witt Laceywell, Cloys Fancher, Tom McGill, J.L. Carson Jr., W.E. Miller, L.G. Elkins, Cleo Smith, Bob Worley, Roy Hooper, Clovis Poteet, J.C. Hines, Tom Stansell and E.W. Mitchell.

Box Supper Set By FFA, FHA Chapters

A box supper, sponsored jointly by the Olton Jr. and Sr. FFA's and FFA will be held Monday, Jan. 16 in the lunchroom of the Olton Schools at 7:30 p.m.

All the FHA girls will furnish a box supper to be auctioned to the highest bidder by W. B. Dickerson, Jr. Prizes of \$5, \$3 and \$1 will be given to the girls whose boxes are judged the prettiest.

The Tilson Magicians of Matador will present 50 acts of illusions, mystery and comedy.

This project is designed to raise money for the Joint FFA and FFA Sweetheart Banquet set for Feb. 24.

Young Ladies Class Meets

Fifteen members of the Young Ladies Bible Class met Wednesday morning. The meeting was held at the Main Street Church of Christ.

A review about "Esther, Jehoshaphath and Vashti--Women of the Old Testament" was presented by Mrs. Elmer McGill.

Mrs. D. M. Granbery taught the first chapter of "Women of the New Testament." She gave the lesson in the absence of the teacher, Mrs. I. B. Holt.

Members present were Meses. Bud Huckabee, Jay Rainey, Jim Evans, Don Williams, Tom Carlisle, G. B. Stanley, George Kidd, Howard Phares, Robert Phares, Billy Smith, McGill, Joe Clark, Jack Thomas, Glen Exter and Miss Helen Locke.

Ousbourne-Ross Engagement Is Announced

Mr. and Mrs. Aubrey Ousbourne of Olton announce the engagement and approaching marriage of their daughter, Peggy Juanel, to John Forest Ross of Lubbock.

Wedding vows will be solemnized Jan. 28 at Olton.

Miss Ousbourne is a 1958 graduate of Olton High School. She attended Draughton's Business College at Lubbock and was employed this fall at the Co-Op Gin, Olton.

Ross lived at Danvers, Mass. before joining the United States Air Force. An Air Force Cadet, he now is stationed at Reese Air Force Base.

VISIT IN COLORADO

Mrs. T.D. Lewis is visiting in Denver, Colo., with her daughters, Mrs. Roy Pointer and Mrs. Saul Epstein and her son, Earl Lewis.

VISITORS IN DIGBY HOME

Recent visitors in the Troy Digby home were Mr. and Mrs. Edwin Huckabee, Mr. and Mrs. Horace Huckabee, Mr. and Mrs. Tom Sluder, Mr. and Mrs. B.D. Brown, Mr. and Mrs. Earnest Self of Olton and Mr. and Mrs. Harold Autry of Tulla.

RECOVERING FROM FALL

Arch Curry is recovering from a fall which occurred in December.



MRS. OWEN NORFLEET WAS HONORED last Friday night at an Epiphany Program for the members of the First Methodist Church. The program which was held in the church's youth chapel, also honored 20 new members. A life membership and pin to the Women's Society of Christian Service were presented to Mrs. Norfleet. She now is serving as president of the group. Members of the Women's Society of Christian Service and the Wesleyan Service Guild also attended the meeting.

Recipe Of The Week

Fruit Cocktail Cake "Perfect"

Another recipe of the week was submitted by Mrs. Paul Burrus, a recipe for fruit cocktail cake. It is one of Mrs. Burrus' favorite recipes--one that she would like to share with others.

"I had never seen the cake before, or even heard of it before until my sister gave me the recipe," said Mrs. Burrus. She also said that everyone who eats the cake likes it. It is perfect for club meetings or other social gatherings.

FRUIT COCKTAIL CAKE
Mix these ingredients:
2 cups flour
1 1/2 cups dark brown sugar
2 teaspoons soda
and juice from one No. 2 can of fruit cocktail
When you have mixed these ingredients, add the fruit to the mixture. Bake in long flat pan. Sprinkle top of the batter with this mixture: 1 cup nuts, two-thirds cup brown sugar and coconut (if desired.) Bake 40 minutes at 350 degrees.
Remove from oven and spoon

the following topping over top.
1 1/2 cup sugar (white)
1 stick butter
Two-thirds cup milk or one small can of condensed milk.
Bring to a rolling boil and spoon onto the top of the cake.

Methodist Youth To Be Honored At Banquet Here

Methodist youth of the Plainview district will be honored Saturday night at a banquet in the First Methodist Church Fellowship Hall, Olton. Time for the banquet is 6:30 p.m.

The Rev. James P. Patterson of Cotton Center, will attend the banquet. He is the district youth director.

About 200 young people from throughout the area are expected to attend. Theme for the banquet is "Come and See."

The banquet will be sponsored by members of the Woman's Society of Christian Service and the local Methodist Youth Fellowship.

Boverie Wins

Trip To School

Bill Boverie, son of Mr. and Mrs. J. A. Boverie of Olton, was one of 400 engineers selected to attend an Advanced Design School. Twenty-eight men were chosen from 400 candidates to attend the school.

The school is sponsored by Westinghouse and the University of Pittsburgh. Boverie will attend the school 15 weeks and he will receive 15 hours credit toward a master's degree in electrical engineering.

He graduated from Olton High School in 1956. Also, he attended Texas Tech four years and received a bachelor's degree of science.

Mrs. Boverie is the daughter of Mr. and Mrs. J. M. Crawford of Olton, the former Miss Johnnie Beth Crawford. She was graduated from Olton High School in 1960.

9,000 known avalanche paths have been charted in the Alps.

PARSONS Furniture

"Where A House Becomes A Home"

New Officers Are Elected By Bykota Club

Officers of the 1956 Bykota Study Club were elected Thursday night. The meeting was held at the Joe Hall residence.

Mrs. Bobby Copeland was elected the new president with Mrs. R. V. Allcorn as vice-president.

Other officers are Mrs. Andy Stroebel, corresponding secretary; Mrs. Walter Bryan, recording secretary; Mrs. James Martin, reporter; Mrs. Wally Stewart, treasurer; Mrs. Daryl Machen, parliamentarian; Mrs. Bill Lunsford, federation counselor; Mrs. Max Malone, credit chairman and Mrs. Billy Smith, historian.

Other members attending were Meses. J. P. Nafzger, Jerry Dennis, Billy Guy Thomas, Roger Bartling, Dan Quigley, Basil Johns and the hostess, Mrs. Hall.

Royal Service Program Held

Mrs. Lacy Armstrong served as chairman for a WMS Royal Service program Monday at the First Baptist Church.

Mrs. C.W. Leathers, Mrs. Joe Miller, Mrs. Bob Hipp, Mrs. R.A. Burgess and Mrs. Duward Price also appeared on the program.

Others attending were Mrs. Garner Ball and Mrs. W.E. Andrews.

The Women's Missionary Union will meet next Monday at 4 p.m. at the church. Mrs. Bob Hipp will be in charge of the program.

VISITS HERE SUNDAY

Miss Judy Smith of Friona visited friends here Sunday.

Area Leader To Speak To New Century Club

Mrs. A. E. Boyd, Caprock president of the Women's Federated Clubs, will be guest speaker Jan. 17 at a New Century Study Club meeting.

Finland will be the subject of Mrs. Boyd's speech. She will speak at 7:30 p.m. at the high school cafeteria.

Guests are to be the members of the Olton Study Club and the Bykota Study Club.

Mrs. Owen Jones will serve as hostess for the special meeting.

Ladies Bible Class Meets

Nineteen members of the Ladies Bible Class met last Wednesday at the Main Street Church of Christ. The lesson from the sixth chapter of Matthew was taught by Mrs. G.W. Locke.

Those attending were Meses. Sidney Allen, Paul Burrus, Bill Bennett, Jack Caphart, J.C. Dear, T. Combest, Jack Edwards, Fred Hicks, Earl Hy-singer, W.H. Leathers, R.A. Lewis, Locke, C.M. Owen, Lee Poteet, J. C. Scruggs, L. D. Smith, J. A. Stiles, Bill Smith and W.L. Thomas.

Pre-Nuptial Event To Honor Miss Powell

A pre-nuptial shower Jan. 19 will honor Miss Marlene Powell of Olton, the daughter of Mr. and Mrs. Andy Powell.

The Jim Brown home will be the scene for the event. Calling hours are from 2:30 until 5 p.m.

Miss Powell will become the bride of Melvin Hall Jan. 22 at the Main Street Church of Christ, Olton. He is the son of Mr. and Mrs. Floyd Hall, Springlake.

The public is invited to attend the shower.

WMA Meeting Attended By 10

"The Martyr, Stephen" was taught last Wednesday night at a Women's Missionary Auxiliary meeting. Ten ladies attended the meeting at Hope-well Baptist Church.

Mrs. Everett Huckabb gave the opening prayer. The closing prayer was led by Mrs. Lynn George.

Other members attending were Meses. Will Russell, A.P. Rolls, D.D. Brown, Nat Bearden, Raymond Rudd, Oscar Scheller and J.D. Lively.

Shower To Honor Mrs. Bryant

Mrs. Billy Bryant will be honored with a bridal shower Thursday at the L. G. Elkins home. Calling hours for the event are from 2:30 until 5:30 p.m.

The public is invited to attend.

Olton Junior Boys Beat Spade

Olton Junior High boys' basketball team won over Spade Junior High, 28-26, in a two-minute overtime Wednesday, Jan. 4 at Spade. Olton Junior High Girls lost to the Spade Junior High 40-14, also on Wednesday.

The next junior games will be Friday, Jan. 13, here with Nazareth.

Mary Scribner To Be Married

Mr. and Mrs. Albert Scribner announce the engagement and approaching marriage of their daughter, Mary Ellen, to Jack G. Keeble of Athens.

Parents of the prospective bridegroom are Mrs. Cecil Harris, Athens, and Jack Keeble, Athens.

Wedding vows will be exchanged Thursday, Jan. 26, at 8 p.m. The public is invited to attend the ceremony.

Miss Scribner and Keeble both are students at North Texas State College, Denton.

Eastern Star Meeting Set

A meeting of the local order of the Eastern Star will be held Thursday night. The members will meet at the Masonic Lodge Hall.

Meeting time is 7:30. Mrs. E.E. Burrows, worthy matron, will preside over the meeting.

Painting Party In Struve Home

Mrs. Frank Struve was hostess Tuesday, Jan. 10, for a Dresden Painting Party in her home. Instructor for the painting was Mrs. Louis Juzack of Plainview.

Ladies attending the party were Mrs. Clovis Poteet, Mrs. K.L. Moss, Mrs. D.B. Adair, Mrs. A.D. Smith, Mrs. Tom Smith, Mrs. Fred Shaw, Mrs. Clarence Mason, Mrs. C.B. Hines, Mrs. J. L. Snider and Mrs. Virgil King.

F. L. Burrows To Undergo Surgery

Parsons Ambulance took F. L. Burrows, Olton justice of the peace, to the Methodist Hospital, Lubbock, Tuesday. Burrows, who still is hospitalized, will undergo an abdominal operation.

Mrs. Pasquel Ramos of Olton was taken to the Plainview Hospital and Clinic Foundation last week by Parsons Ambulance.



BOWLING

is a world of fun -- especially here

FREE

Bowling Instructions

Qualified Instructor

Friday, Jan 13, 6 P. M.

Also Bowling Instructions Will Be Given

Each Monday At 2 P. M.

Olton Bowling Center, Inc.

Phone 2731

Olton, Texas






The Yardstick's

January Clearance

Is Now In Progress.

Save 30% To 80%

Our Fine Selection

Of Fall Fabrics

All Reduced To Clear.

You Will Want To Take

Advantage Of The Fabulous

Prices Now Offered At

The Yardstick

Plainview's First And Most

Complete Fabric Headquarters

THE STATE OF TEXAS
COUNTY OF LAMB

Before me, the undersigned authority, County Clerk of Lamb County, Texas, on this day personally appeared Pat Boone, Jr., County Judge; A. J. Spain, Commissioner of Precinct No. 1; H. W. Lewis, Commissioner of Precinct No. 2; J. L. Yeager, Commissioner of Precinct No. 3; and Hubert Dykes, Commissioner of Precinct No. 4, constituting the Commissioners' Court of Lamb County, Texas, who, being first by me duly sworn, each upon oath severally stated:

That they and each of them have fully complied with the laws of the State of Texas relating to the matters set forth herein; that they and each of them have fully inspected the quarterly report of the County Treasurer of Lamb County, Texas, submitted to them at the regular term of the Commissioners' Court of Lamb County, Texas, held on the 9th day of January, A. D. 1961, which report covers the receipts, disbursements and ending balances of all county funds for the year's quarter ending on the 31st day of December, A. D. 1960, and they and each of them have actually counted and fully checked the amount of money and other assets in the hands of said treasurer and have found the amounts shown in such report, attached hereto, true and correct.

PAT BOONE, JR., COUNTY JUDGE
A. J. SPAIN, COMMISSIONER, PRECINCT NO. 1
H. W. LEWIS, COMMISSIONER, PRECINCT NO. 2
J. L. YEAGER, COMMISSIONER, PRECINCT NO. 3
HUBERT DYKES, COMMISSIONER, PRECINCT NO. 4

Sworn and subscribed before me this 9th day of January, A. D. 1961.

CHARLES D. JONES, COUNTY CLERK OF LAMB COUNTY, TEXAS

TREASURER'S QUARTERLY REPORT

TO THE COMMISSIONERS' COURT OF LAMB COUNTY, TEXAS:

I, Mrs. Lucy Moreland, County Treasurer of Lamb County, Texas, hereby submit for your inspection and approval, as provided by law, my report of Receipts, Expenditures, and Ending Balances of all moneys and assets coming into my hands to the credit of the funds named below, during the year's Quarter ending December 31, 1960.

JURY FUND	
Amount received during quarter	\$ 5,186.70
Amount paid out during quarter	124.67
Balance January 1, 1961	6,665.44
GENERAL FUND	
Amount received during quarter	56,819.22
Amount paid out during quarter	27,838.33
Balance January 1, 1961	67,801.93
OFFICERS SALARY FUND	
Amount received during quarter	37,948.99
Amount paid out during quarter	30,221.08
Balance January 1, 1961	43,979.26
LAW LIBRARY	
Amount received during quarter	87.50
Amount paid out during quarter	608.31
Balance January 1, 1961	47.43
PRECINCT # 1	
Amount received during quarter	14,289.76
Amount paid out during quarter	9,947.37
Balance January 1, 1961	21,575.92
PRECINCT # 2	
Amount received during quarter	19,753.98
Amount paid out during quarter	28,934.39
Balance January 1, 1961	35,287.91
PRECINCT # 3	
Amount received during quarter	18,404.44
Amount paid out during quarter	21,240.51
Balance January 1, 1961	32,218.10
PRECINCT # 4	
Amount received during quarter	8,870.15
Amount paid out during quarter	12,501.36
Balance January 1, 1961	29,051.21
SOCIAL SECURITY FUND	
Amount received during quarter	2,991.70
Amount paid out during quarter	3,005.46
Balance January 1, 1961	5,505.58
ROAD BOND SERIES 1936, INTEREST & SINKING	
Balance January 1, 1961	1,728.78
GENERAL ROAD AND BRIDGE	
Amount received during quarter	28,487.33
Amount paid out during quarter	46,642.92
Balance January 1, 1961	15,033.28
LATERAL ROAD FUND	
Amount received during quarter	33,269.15
Amount paid out during quarter	512.51
Balance January 1, 1961	512.51
ROAD DISTRICT 1-A, SERIES 1946, OPERATING	
Amount received during quarter	702.02
Amount paid out during quarter	108.53
Balance January 1, 1961	108.53
ROAD DISTRICT # 6, OPERATING	
Balance January 1, 1961	57.53
ROAD DISTRICT 1-A, SERIES 1941, INTEREST & SINKING	
Amount received during quarter	4,347.37
Amount paid out during quarter	30,637.56
Balance January 1, 1961	1,115.94
ROAD DISTRICT 1-A, SERIES 1946, INTEREST & SINKING	
Amount received during quarter	18,368.48
Amount paid out during quarter	158.19
Balance January 1, 1961	51,267.44
ROAD DISTRICT # 3, INTEREST & SINKING	
Amount received during quarter	5,616.37
Amount paid out during quarter	655.50
Balance January 1, 1961	11,225.52
ROAD DISTRICT # 4, INTEREST & SINKING	
Amount received during quarter	15,140.19
Amount paid out during quarter	124.10
Balance January 1, 1961	43,717.60
ROAD DISTRICT # 6, INTEREST & SINKING	
Amount received during quarter	11,824.27
Amount paid out during quarter	118.73
Balance January 1, 1961	34,332.37
COURTHOUSE & JAIL, SERIES 1953, INTEREST & SINKING	
Amount received during quarter	23,012.05
Amount paid out during quarter	203.66
Balance January 1, 1961	46,581.48
COURTHOUSE & JAIL, SERIES 1953-A, INTEREST & SINKING	
Amount received during quarter	20,146.33
Amount paid out during quarter	35,057.45
Balance January 1, 1961	57,031.01
GENERAL ROAD AND BRIDGE, INTEREST & SINKING	
Amount received during quarter	25,594.16
Amount paid out during quarter	21,537.41
Balance January 1, 1961	22,105.35
VECTOR CONTROL FUND	
Amount received during quarter	1,963.59
Amount paid out during quarter	1,705.96
Balance January 1, 1961	1,705.96
ROAD DISTRICT 1-A, OPERATING	
Amount received during quarter	239,000.00
Amount paid out during quarter	239,000.00
Balance January 1, 1961	239,000.00
ROAD DISTRICT 1-A, SERIES 1960, INTEREST & SINKING	
Amount received during quarter	27,365.41
Amount paid out during quarter	231.48
Balance January 1, 1961	27,133.93

I hereby certify the above and foregoing to be a full, true and correct statement of all matters to which the same relates, in testimony whereof, witness my hand this 31st day of December, A. D. 1960.

Lucy M. Moreland
County Treasurer
Lamb County, Texas



GIRLS' CAPTAINS--Co-Captains of the Olton High School girls' basketball team this year are Welda Edwards, left, and Bobbie Campbell. Both the girls are seniors.

Olton Mustang Band Members To Lubbock

Three Olton Mustang Band members will appear in the All-Regional concert Saturday Jan. 14, in the Monterrey High School auditorium at 7:30 p.m. The auditorium is located on 47th and Gray Street in Lubbock.

Appearing will be Robert Priest, baritone player, Ronald Fancher, trombone, and Harvie Jordan, bass.

Guest conductor for the concert will be Dean Killion, band director at Texas Tech.

Priest will compete in the Area tryouts for the All-State Band, Jan. 21, at Texas Tech.

District Head To Speak Sunday To Methodists

Dr. J. E. Shewbert of Plainview, will preach at the 10:55 worship service Sunday morning at the First Methodist Church, Olton. He is the district superintendent of the Plainview District of the Methodist Church.

This will be his first official preaching visit to the church this year. Prior to his appointment to district superintendent, he was pastor of the First Methodist Church, Vernon.

Shewbert took the office the first of June, succeeding Dr. Luther Kirk.

Dr. Shewbert will be accompanied on the trip to Olton by his wife.

The public is invited to attend.

School Chiefs Attend Meeting

Three Olton men, Elmer Moore, Dorman Thomas and Joe Harper, attended the Texas Education Agency's Mid Winter Conference for school administrators. The conference was held from Wednesday to Friday of last week at Austin.

Problems studied at the state meet were curriculum revision, guidance, financing and transportation.

Another introduction: "I don't know anything about the speaker you are about to hear, The head office sent him out here and I hope he doesn't talk as long as the one we had last year."

A man worries about what the future had in store, but a woman worries about what the stores have in the future.

53 Attend Church Meet

Fifty-three persons attended the first session of a study course "Stumbling Block," Sunday night at the First Methodist Church.

Teachers are Mrs. Joe Harper, Jim Williams and the Rev. W. F. Gaede, pastor of the church.

The second session of the course will be taught Monday night at 6:30 at the church. It is a 28 minute feature showing the pressure placed on our society today. Another highlight of the meeting will be a snack supper at 6.

Los Angeles is about half as large, in area, as Rhode Island, and thus classes easily as our largest city--in area, at least.

Second Semester Kindergarten Begins

Monday, Jan. 16

Mrs. Calvin Horn

Phone 4266

Olton, Texas

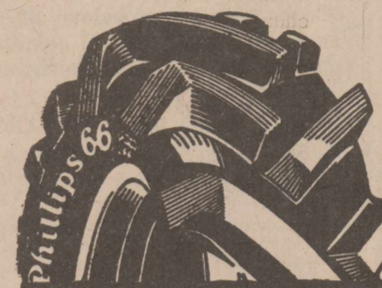
QUESTION OF THE WEEK ...

What is it a farmer can't do without?



ANSWER

TRACTOR TIRES



Phillips 66 rear tractor tires give time, work and money! Reason: They grip firmly, run cleaner and wear longer! Dual-Action bars work in pairs for the pull you need. Open Center Flex-Action Tread Cleans as it bites as it rolls!



Then, You Might Ask ... How Can I Afford To Buy New Tires?

ANSWER

SEE US ABOUT OUR Fall Payment Plan

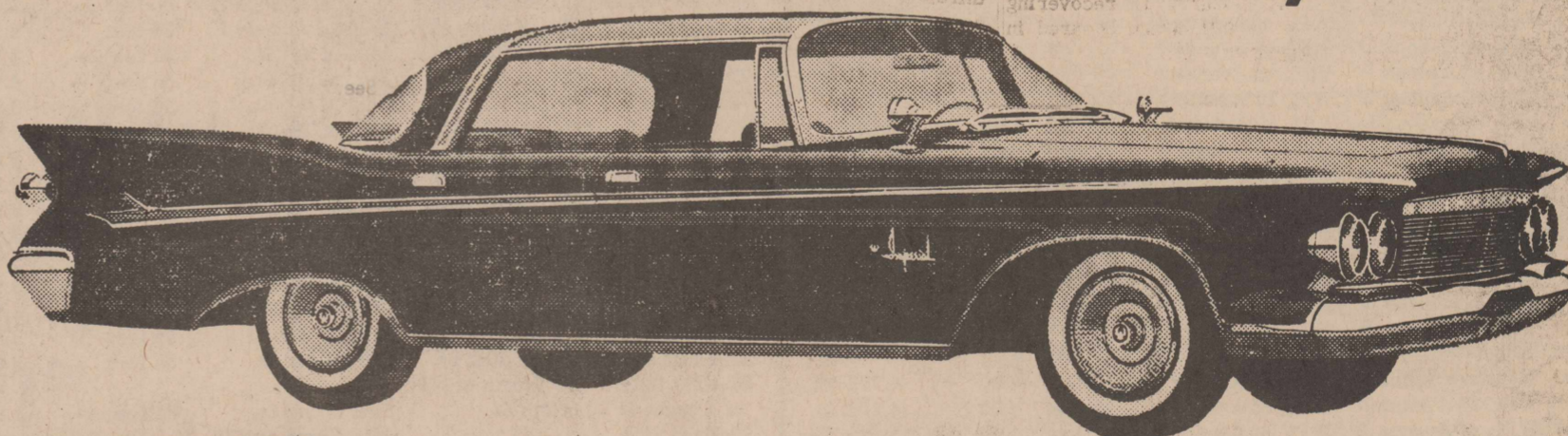
G. H. BLEY

PHONE 2721

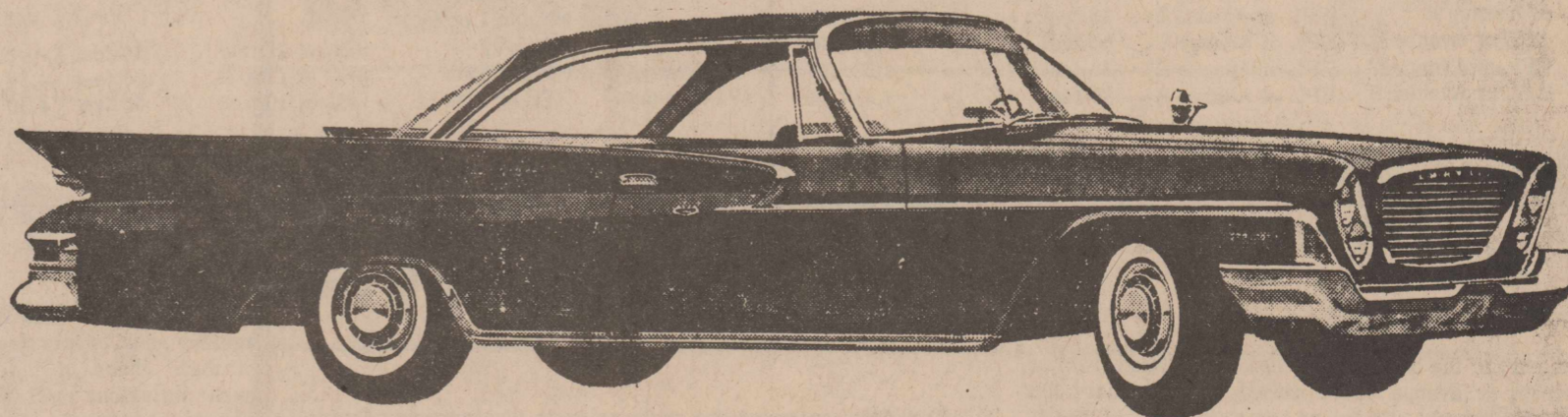
OLTON, TEXAS

Leighton Maggard And Hall Nall Invite You To Meet

The New Cars In Our Family!



IMPERIAL America's most carefully built car



CHRYSLER featuring the new Newport-- a full-size Chrysler in a new, lower price range

We'd like to meet you--to tell you how happy we are about our recent appointment as Imperial and Chrysler dealers...how proud we are that we've met Chrysler Corporation's standards of dealer quality.

We want to show you around our showroom and spotless shop. We want to introduce you to our staff of factory-trained mechanics.

But, most of all, we'd like to demonstrate all that's new about the new Imperial and Chrysler.

Whether you're after the best buy in new cars or the best service for the car you're driving now, we're in business to see that you get it. Stop in soon and say hello.

Maggard - Nall Motor Co., Inc.

307 West 6th St.
Plainview, Texas

LEGAL NOTICE

NOTICE OF HEARING ON SPECIAL BENEFITS TO BE RECEIVED FROM PROPOSED STREET IMPROVEMENTS, AND ON OTHER MATTERS WITH REFERENCE THERETO, WHICH HEARING IS TO BE HELD IN THE CITY HALL OF THE CITY OF OLTON, TEXAS, BEGINNING AT 7 O'CLOCK PM, ON JANUARY 27 1961.

TO ALL OWNERS AND TO ALL PERSONS OWNING OR CLAIMING ANY INTEREST IN OR LIEN UPON ANY PROPERTY ABUTTING THE STREETS OR AVENUES OR PORTIONS THEREOF OF THE CITY OF OLTON, TEXAS, HEREINAFTER NAMED, WITHIN THE LIMITS HEREINAFTER SET FORTH, AND TO ALL OTHER INTERESTED PARTIES AND TO THEIR AGENTS AND ATTORNEYS (INCLUDING THE OWNERS AND ALL PERSONS OWNING OR CLAIMING ANY INTEREST IN OR LIEN UPON ANY PROPERTY LYING OUTSIDE OR PARTIALLY OUTSIDE THE CITY LIMITS OF SAID CITY, WHICH PROPERTY ABUTS ANY OF SUCH STREETS, AVENUES OR PORTIONS THEREOF WITHIN THE LIMITS HEREINAFTER SET FORTH AT A POINT WHERE A PART OF THE BOUNDARY OF THE CITY OF OLTON IS UPON OR ALONG SUCH STREET OR AVENUE, REGARDLESS OF WHETHER SUCH STREET OR AVENUE AT THAT POINT LIES WHOLLY WITHIN, PARTIALLY WITHIN AND PARTIALLY WITHOUT OR WHOLLY OUTSIDE THE CITY OF OLTON, AND TO ALL OTHER PARTIES INTERESTED IN ANY OF SUCH PROPERTIES, INCLUDING THEIR AGENTS AND ATTORNEYS):

YOU ARE HEREBY NOTIFIED that the City Council of the City of Olton, Texas, has determined the necessity for and ordered the improvement of certain streets and avenues or portions thereof hereinafter described within the limits hereinafter defined, the nature of which improvements is hereinafter generally set forth; and that said City Council has approved and adopted the estimate, statement and report of the City's Engineer and has taken other proceedings with reference to the making of such improvements, all of which are of record in the Minutes of the City Council of the City of Olton, and has by ordinance ordered that a hearing be held, and notice thereof given, NOW THEREFORE,

PURSUANT TO SAID PROCEEDINGS AND SUCH ORDINANCE, NOTICE IS HEREBY GIVEN:-

I That a hearing shall be given to the owners and to all

persons owning or claiming any interest in or lien upon any property abutting the streets and avenues or portions thereof of the City of Olton, Texas, hereinafter named, within the limits hereinafter set out, and to all other interested parties including their agents and attorneys (including the owners and all persons owning or claiming any interest in or lien upon any property lying outside or partially outside the city limits of said City, which property abuts any of such streets or avenues or portions thereof within the limits hereinafter set forth at a point where a part of the boundary of the City of Olton is upon or along such street or avenue, regardless of whether such street or avenue at that point lies wholly within, partially within and partially without or wholly outside the City of Olton and all other parties interested in any of such properties, including their agents and attorneys), before the City Council of the City of Olton, Texas, which hearing shall begin on the 27 day of January, 1961, at 7 o'clock PM, and shall be held in the City Hall of Olton, Texas, at which hearing all of said owners and other interested parties, their agents or attorneys, shall have the right to be heard on any matter as to which hearing is a constitutional prerequisite to the validity of any assessment sought to be imposed and to contest the amounts of the proposed assessments, the lien and the liability thereof, the special benefits to the abutting properties and the owners thereof by means of the improvements for which all of such assessments are to be levied, the accuracy, sufficiency, regularity and validity of the proceedings and contracts in connection with such improvements and proposed assessments, or concerning any matter or thing connected therewith. The said hearing may be continued from time to time and day to day until a fair opportunity for hearing has been afforded to all desiring to contest the said assessments or proceedings, and the City Council shall have the power to and shall correct any errors, inaccuracies, irregularities and invalidities, and shall determine the amount of assessments and all other incidental matters and shall have the power by ordinance to close such hearing, and by the same or by a later ordinance or ordinances to levy such assessments before, during or after the construction of such improvements, but no part of any assessment against abutting properties shall be made to mature prior to acceptance by the City by ordinance of the improvements abutting the property for which the assessment is levied. It shall not be necessary to levy all of the assessments at one time or by a single ordinance, and said hearing may be closed as to each portion of a street or avenue constituting a unit of improvement (as such units are designated below), after a fair opportunity for hearing has been afforded to all desiring to contest the assessments proposed to be levied against the owners and their properties

abutting on the portion of each such street or avenue constituting a unit of improvement; and the City Council shall then have the power to levy such assessments against such abutting properties and against the owners thereof, as provided herein and in the prior proceedings of the City Council herein referred to. No assessment will be made against any abutting property or the owner thereof in excess of the special benefits to such property and its owner in the enhanced value thereof by means of such improvements as determined at such hearing. All of such owners, claimants, and other interested parties, their agents or attorneys, are hereby referred for further information to the proceedings with reference to said improvements on file and/or of record with the City Secretary of the City of Olton, and particularly to the estimate of the City's Engineer, and to the proposed assessment roll wherein the exact amount proposed to be assessed against each abutting property and the owner thereof is set forth; said City's Engineer's estimate and said proposed assessment roll being on file in the office of the City Secretary.

II

The nature of the improvements for which assessments are proposed to be levied and to which this notice relates is the filling, grading, raising, paving, repaving of said streets or avenues or portions thereof within the limits herein stated, except where there is existing paving which can be utilized, and by the construction or reconstruction and the realigning of curbs and gutters where adequate curbs and gutters are not now in place, and by the construction of such other necessary incidentals and appurtenances as the City's Engineer has found to be necessary or advisable, all as shown by the plans and specifications of the City's Engineer, and by widening where necessary so as to attain the paved width from back of curb to back of curb which is set out below, utilizing existing paving where practical; said paving to consist of a triple inverted penetration asphalt surface course on a six (6") inch compact caliche flexible base, the exact nature of such improvements being more particularly shown in the plans and specifications which are on file in the office of the City Secretary of the City of Olton.

III

The streets and avenues or portions thereof to be improved within the limits fixed by the City Council are listed below as they have been divided by the City Council into separate and distinct improvement units. There is stated in connection with the listing of each street or avenue or portion thereof within the limits herein defined constituting each improvement unit

the estimated amount or amounts per front foot to be assessed against the owner or owners of properties abutting such street or avenue or portion thereof and against such properties, the estimated total cost of the improvements as to each improvement unit, and the width of paved surface to be attained from back of curb to back of curb.

Where one side of a street or avenue has existing paving which can be utilized and there is no such existing paving abutting the property on the opposite side of the street or avenue, no portion of the cost of the improvements will be levied against the property abutting the side of the street upon which there is existing paving which can be utilized; similarly, where there is existing curb and gutter which can be utilized abutting certain properties no assessment for curb and gutter will be levied against such properties.

The City Council has determined that the strict application of the front foot plan or rule in apportioning the cost of the improvements will result in injustice or inequality in those particular cases where as shown on the City map all or some of the abutting lots in the unit abut the street or avenue being improved along the side of such lots (i.e., lengthwise), which lots meeting such description are hereinafter referred to as Side Lots, unless the City pays a greater portion of the cost of the improvements abutting such lots than it pays toward the cost of the improvements of lots which abut endwise, such lots being hereinafter referred to as Fronting Lots. It has, therefore, proposed that a different rate per front foot be established for the improvement of that portion of each such street or avenue abutting Side Lots than for the portion of such street or avenue abutting Fronting Lots. For this reason, the proposed amount to be assessed per front foot is shown in two (2) separate columns below, one such column reflecting the amount to be assessed per front foot against Side Lots and the owners thereof, and the other such column reflecting the amount to be assessed per front foot against Fronting Lots and the owners thereof. Included in the front foot assessment rate in each unit as shown below is the sum of \$1.65 per front foot for curb and gutter. Where there is existing curb and gutter which can be utilized the front foot rate will be reduced by the sum of \$1.65 per front foot.

There is included in the estimated amount to be assessed against abutting properties and the owners thereof a proportionate part of all costs incidental to the construction of the improvements.

The designation of such streets and avenues or portions thereof and such other information is as follows:

Col. I	Col. II	Col. III	Col. IV	Col. V	Col. VI	Col. VII	Col. I	Col. II	Col. III	Col. IV	Col. V	Col. VI	Col. VII	Col. I	Col. II	Col. III	Col. IV	Col. V	Col. VI	Col. VII
1-2nd Street	WPL of Avenue I	WPL of Avenue H	36 feet	4.30	-	\$4,848.54	44-8th Street	WPL of Avenue M	WPL of Avenue L	36 feet	4.30	-	4,109.99	95-Avenue G	NPL of 10th St.	SPL of 9th St.	43 feet	4.30	3.95	1,272.31
2-2nd Street	Centerline of Avenue H	WPL of Avenue G	36 feet	4.30	-	4,864.66	45-8th Street	WPL of Avenue L	WPL of Avenue K	36 feet	4.30	-	4,710.15	96-West Side of Avenue G	NPL of 9th St.	SPL of 7th St.	43 feet	4.30	3	3,470.01
3-2nd Street	EPL of Avenue G	WPL of Avenue F	50 feet	-	3.95	3,579.25	46-8th Street	WPL of Avenue K	EPL of Avenue J	36 feet	4.30	-	5,452.45	97-Avenue G	NPL of 9th St.	SPL of 6th St.	50 feet	4.30	3.95	3,639.57
4-2nd Street	EPL of Avenue F & WPL of Lot 12, Block 71	WPL of Avenue E	50 feet	-	3.95	3,593.65	47-8th Street	75' East of EPL of Avenue E	WPL of Avenue D	50 feet	-	3.95	2,684.84	98-West Side of Avenue G	NPL of 6th St.	160' North of NPL of 6th St.	50 feet	4.30	-	835.72
5-2nd Street	EPL of Avenue E	EPL of Avenue D	36 feet	-	3.95	4,293.02	48-8th Street	EPL of Avenue D	EPL of Avenue C	36 feet	4.30	-	4,837.76	99-East Side of Avenue G	Centerline of 4th St.	150' North of NPL of 4th St.	50 feet	4.30	-	983.77
6-3rd Street	WPL of Avenue H	WPL of Avenue G & WPL of Lot 2, Block 94	36 feet	4.30	-	4,246.69	49-8th Street	EPL of Avenue C	EPL of Avenue B	36 feet	4.30	-	4,837.76	100-West Side of Avenue G	50' North of NPL of 3rd St.	140' North of NPL of 3rd St.	50 feet	4.30	3.95	378.46
7-3rd Street	EPL of Avenue G	WPL of Avenue F	50 feet	-	3.95	3,735.35	50-8th Street	EPL of Avenue B	EPL of Avenue A	36 feet	4.30	-	3,314.34	101-Avenue E	NPL of 13th St.	SPL of 12th St.	50 feet	4.30	-	4,924.64
8-3rd Street	EPL of Avenue F	WPL of Avenue E	50 feet	-	3.95	3,579.25	51-9th Street	WPL of Avenue M	WPL of Avenue L	36 feet	4.30	-	3,866.20	102-Avenue E	Centerline of 11th St.	NPL of 10th St.	50 feet	4.30	-	4,497.05
9-3rd Street	EPL of Avenue E	WPL of Avenue D	36 feet	-	3.95	2,807.37	52-9th Street	WPL of Avenue K	WPL of Avenue J	36 feet	4.30	-	4,773.13	103-Avenue E	NPL of 10th St.	SPL of 9th St.	50 feet	4.30	3.95	2,807.37
10-3rd Street	WPL of Avenue D	WPL of Avenue C	36 feet	4.30	-	4,773.69	53-9th Street	WPL of Avenue L	WPL of Avenue K	36 feet	4.30	-	4,917.62	104-Avenue E	NPL of 10th St.	SPL of 9th St.	50 feet	4.30	3.95	2,807.37
11-3rd Street	WPL of Avenue C	WPL of Avenue B	36 feet	4.30	-	4,849.25	54-9th Street	WPL of Avenue J	WPL of Avenue I	41 feet	4.30	-	5,287.50	105-East Side of Avenue E	NPL of 9th St.	SPL of 8th St.	50 feet	4.30	-	1,790.44
12-North Side of 4th Street	WPL of Avenue I	WPL of Avenue H	36 feet	4.30	-	2,425.21	55-9th Street	WPL of Avenue I	EPL of Avenue H	41 feet	4.30	-	5,271.49	106-West Side of Avenue E	NPL of 7th St.	SPL of 6th St.	50 feet	4.30	-	1,790.44
13-North Side of 4th Street	EPL of Avenue H	WPL of Avenue G	36 feet	4.30	-	2,260.29	56-9th Street	EPL of Avenue J	EPL of Avenue I	41 feet	4.30	-	5,287.50	107-West Side of Avenue E	SPL of 6th St.	Centerline of 5th St.	50 feet	4.30	-	2,716.46
14-4th Street	EPL of Avenue G	WPL of Avenue F	50 feet	-	3.95	3,336.51	57-9th Street	WPL of Avenue I	EPL of Avenue H	41 feet	4.30	-	5,271.49	108-Avenue E	Centerline of 5th St.	Centerline of 4th St.	50 feet	4.30	-	4,389.56
15-4th Street	EPL of Avenue F	WPL of Avenue E	50 feet	-	3.95	3,579.25	58-9th Street	EPL of Avenue F	EPL of Avenue E	36 feet	-	3.95	3,912.83	109-West Side of Avenue E	Centerline of 4th St.	Centerline of 3rd St.	50 feet	4.30	-	2,941.84
16-4th Street	EPL of Avenue E	EPL of Avenue D	36 feet	-	3.95	2,878.10	59-9th Street	EPL of Avenue E	EPL of Avenue D	36 feet	4.30	-	4,773.13	110-Avenue E	Centerline of 3rd St.	SPL of Lot 9, Block 44 & SPL of Lot 2, Blk 71	50 feet	4.30	-	3,137.44
17-4th Street	EPL OF & EPL OF Lot 10, Block 40	EPL of Avenue C	36 feet	-	4.30	4,607.60	60-9th Street	EPL of Avenue D	EPL of Avenue C	36 feet	4.30	-	4,837.76	111-East Side of Avenue E	NPL of 2nd St.	SPL of 1st St.	50 feet	4.30	-	1,790.44
18-4th Street	EPL of Avenue C	EPL of Avenue B	36 feet	4.30	-	4,744.19	61-10th Street	EPL of Avenue C	EPL of Avenue B	36 feet	4.30	-	4,773.13	112-Avenue D	NPL of 11th St.	SPL of 10th St.	36 feet	4.30	3.95	2,807.37
19-4th Street	EPL of Avenue B	EPL of Avenue A	36 feet	4.30	-	3,762.56	62-10th Street	WPL of Avenue H	WPL of Avenue G	36 feet	4.30	-	4,849.25	113-Avenue D	NPL of 10th St.	SPL of 9th St.	36 feet	4.30	3.95	2,807.37
20-5th Street	WPL of Avenue I & WPL of Lot 14, Block 100	WPL of Avenue H	36 feet	4.30	-	3,196.53	63-10th Street	WPL of Avenue G	WPL of Avenue F	36 feet	-	3.95	4,090.02	114-Avenue D	NPL of 9th St.	SPL of 8th St.	36 feet	4.30	3.95	4,147.05
21-5th Street	Centerline of Avenue H	WPL of Avenue G	36 feet	4.30	-	4,545.99	64-10th Street	EPL of Avenue F	WPL of Avenue E	36 feet	4.30	-	3,912.83	115-Avenue D	NPL of 8th St.	NPL of 7th St.	36 feet	4.30	3.95	3,912.83
22-5th Street	EPL of Avenue G	WPL of Avenue F	50 feet	-	3.95	3,681.93	65-10th Street	EPL of Avenue E	EPL of Avenue D	36 feet	-	3.95	3,912.83	116-Avenue D	NPL of 7th St.	NPL of 6th St.	36 feet	4.30	3.95	3,912.83
23-5th Street	EPL of Avenue F	WPL of Avenue E	50 feet	-	3.95	3,579.25	66-10th Street	EPL of Avenue D	EPL of Avenue C	36 feet	4.30	-	4,917.62	117-Avenue D	NPL of 6th St.	Centerline of 5th St.	36 feet	4.30	3.95	3,749.34
24-5th Street	EPL of Avenue E	WPL of Avenue D	36 feet	-	3.95	2,807.37	67-10th Street	EPL of Avenue C	EPL of Avenue B	36 feet	4.30	-	4,570.37	118-East Side of Avenue D	Centerline of 5th St.	Centerline of 5th St.	36 feet	4.30	-	747.68
25-5th Street	EPL of Avenue D	EPL of Avenue C	36 feet	4.30	-	4,785.15	68-10th Street	EPL of Avenue B	EPL of Avenue A	36 feet	4.30	-	3,623.46	119-East Side of Avenue D	160' South of SPL of Avenue D of 3rd St.	SPL of 3rd St.	36 feet	4.30	3.95	747.68
26-5th Street	EPL of Avenue C	EPL of Avenue B	36 feet	4.30	-	4,855.18	69-11th Street	WPL of Avenue H	WPL of Avenue G	36 feet	4.30	-	4,773.13	120-Avenue D	NPL of 2nd St.	SPL of 2nd St.	36 feet	4.30	3.95	2,807.37
27-5th Street	EPL of Avenue B	EPL of Avenue A	36 feet	4.30	-	3,314.34	70-11th Street	WPL of Avenue G	WPL of Avenue F	36 feet	-	3.95	4,051.93	121-Avenue D	NPL of 1st St.	SPL of 1st St.	36 feet	4.30	3.95	2,807.37
28-5th Street	EPL of Avenue A	WPL of Avenue H	36 feet	4.30	-	3,973.08	71-11th Street	WPL of Avenue F	WPL of Avenue E	36 feet	4.30	-	3,742.12	122-Avenue C	NPL of 10th St.	SPL of 9th St.	36 feet	3.95	2,807.37	
29-6th Street	EPL of Avenue G	WPL of Avenue F	50 feet	-	3.95	3,681.93	72-12th Street	EPL of Avenue H	WPL of Avenue G	36 feet	-	3.95	3,982.17	123-Avenue C	NPL of 9th St.	SPL of 8th St.	36 feet	3.95	2,807.37	
30-6th Street	EPL of Avenue F	WPL of Avenue E	50 feet	-	3.95	3,579.25	73-12th Street	EPL of Avenue G	WPL of Avenue F	36 feet	-	3.95	3,849.25	124-Avenue C	NPL of 8th St.	SPL of 7th St.	36 feet	3.95	2,807.37	
31-6th Street	EPL of Avenue E	WPL of Avenue D	36 feet	-	3.95	2,999.93	74-12th Street	EPL of Avenue F	EPL of Avenue E	36 feet	-	3.95	2,807.37	125-Avenue C	NPL of 7th St.	SPL of 6th St.	36 feet	3.95	2,807.37	
32-6th Street	EPL of Avenue D	EPL of Avenue C	36 feet	4.30	-	4,837.76	75-13th Street	EPL of Avenue E	EPL of Avenue D	36 feet	4.30	-	4,917.62	126-Avenue C	NPL of 6th St.	SPL of 5th St.	36 feet	3.95	2,807.37	
33-6th Street	EPL of Avenue C	EPL of Avenue B	36 feet	4.30	-	4,837.76	76-Avenue M	NPL of 9th St.	SPL of 8th St.	36 feet	-	3.95	2,495.36	127-Avenue A	NPL of 10th St.	SPL of 9th St.	36 feet	3.95	2,807.37	
34-6th Street	EPL of Avenue B	EPL of Avenue A	36 feet	4.30	-	3,314.34	77-Avenue M	NPL of 8th St.	SPL of 7th St.	36 feet	-	3.95	2,807.37	128-Avenue A	NPL of 9th St.	SPL of 8th St.	36 feet	3.95	2,807.37	
35-7th Street	WPL of Avenue M	WPL of Avenue L	36 feet	4.30	-	3,970.20	78-Avenue L	NPL of 8th St.	SPL of 7th St.	36 feet	-	3.95	2,807.37	129-Avenue A	NPL of 8th St.	SPL of 7th St.	36 feet	3.95	2,807.37	
36-7th Street	WPL of Avenue L	WPL of Avenue K	36 feet	4.30	-	4,773.13	79-Avenue L	NPL of 7th St.	SPL of 6th St.	36 feet	-	3.95	2,807.37	130-Avenue A	NPL of 7th St.	SPL of 6th St.	36 feet	3.95	2,807.37	
37-7th Street	WPL of Avenue K	WPL of Avenue J	36 feet	4.30	-	4,773.13	80-Avenue K	NPL of 6th St.	SPL of 5th St.	36 feet	-	3.95	2,807.37	131-Avenue A	NPL of 6th St.	SPL of 5th St.	36 feet	3.95	2,807.37	
38-7th Street	WPL of Avenue J	WPL of Avenue I	41 feet	4.30	-	5,366.77	81-Avenue K	NPL of 5th St.	SPL of 4th St.	36 feet	-	3.95	2,807.37	132-Avenue A	NPL of 5th St.	SPL of 4th St.	36 feet	3.95	2,807.37	
39-7th Street	WPL of Avenue I	WPL OF Avenue H & WPL of Lot 12, Block 90	41 feet	4.30	-	4,916.50	82-Avenue J	NPL of 4th St.	SPL of 3rd St.	36 feet	-	3.95	2,807.37	133-12th St.	EPL of Avenue I	EPL of Avenue H	36 feet	4.30	-	4,837.76
40-7th Street	25' East of EPL of Avenue E	WPL of Avenue D	36 feet	-	3.95	2,573.23	83-Avenue J	NPL of 3rd St.	SPL of 2nd St.	36 feet	-	3.95	2,807.37	134-11th St.	WPL of Avenue J	WPL of Avenue I	36 feet	4.30	-	4,855.18
41-7th Street	EPL of Avenue D	EPL of Avenue C	36 feet	4.30	-	4,837.76</														

Charter No. 1608

BANK'S OFFICIAL STATEMENT OF FINANCIAL CONDITION of the

Olton State Bank

at Olton, Texas at the close of business on the 31 day of Dec., 1960, pursuant to call made by the Banking Commissioner of Texas in accordance with the Banking Laws of this State.

RESOURCES

1. Loans and discounts, including overdrafts	1,496,138.79
1a. Commodity Credit Corporation loans (grain) fully guaranteed	1,410,947.13
2. United States Government Obligations, direct and guaranteed	1,193,118.75
3. Obligations of states and political subdivisions	228,904.75
4. Other bonds, notes, and debentures	None
5. Corporate stocks, including (none) stock in Federal Reserve Bank	None
6. Cash, balance due from other banks, including reserve balances, and cash items in process of collection (including exchanges for clearing house)	1,412,414.74
7. Banking house, or leasehold improvements	89,100.12
8. Furniture, fixtures, and equipment	19,002.38
9. Other real estate owned	None
10. Other assets	1,182,000.00
11. Total Resources	5,848,788.66

LIABILITIES AND CAPITAL ACCOUNTS

1. Common Capital Stock	187,500.00
2. Surplus: Certified \$ 187,500.00 Not Certified (none)	187,500.00
3. Undivided profits	117,611.29
4. Capital reserves (and debenture retirement account)	None
5. Demand deposits of individuals, partnerships, and corporations	4,572,207.44
6. Time deposits of individuals, partnerships, and corporations	457,142.76
7. Public funds (Incl. US Govt., states and political subdivisions)	289,832.93
8. Deposits of banks (excluding reciprocal balances)	None
9. Other deposits (certified and cashier's checks, etc.)	36,994.24
10. Total all deposits	5,356,177.37
11. Bills payable, rediscounts, or other liabilities for borrowed money	None
12. Other liabilities	None
13. Total Liabilities and Capital Accounts	5,848,788.66

SCHEDULE A—LOANS AND DISCOUNTS (including rediscounts and overdrafts) Item (1) of Resources.

1. Commercial and industrial loans	673,638.85
2. Loans secured by agricultural commodities, covered directly or indirectly by purchase agreements of Commodity Credit Corporation (C.C.C. Loans)	1,410,947.13
3. Other agricultural loans (including loans secured by livestock)	632,812.43
4. Bills of exchange	None
5. Consumer loans to individuals (including retail installment paper and personal cash loans to individuals)	11,017.50
6. Real estate loans (on farm land, residential, or other property)	148,861.56
7. Loans for purchasing or carrying stocks, bonds and other securities	None
8. Loans to banks	None
9. All other loans (including overdrafts)	29,808.45
10. Gross Loans and Discounts	2,907,085.92
11. Less valuation allowances or reserve for bad debts	None
12. Total Loans & Discounts (to agree with item (1) of "Resources")	2,907,085.92

SCHEDULE B—MATURITY SCHEDULE OF US GOVERNMENT OBLIGATIONS, Item (2) of Resources

1. Direct Obligations:	
a. Treasury bills, cert. of indebtedness, notes, bonds, incl. US Savings Bonds maturing within 5 years from date of call	1,193,118.75
b. US Bonds maturing after 5 but within 10 years from date of call	None
c. US Bonds maturing after 10 but within 20 years from date of call	None
d. US Bonds maturing after 20 years from date of call	None
e. Total Direct Obligations of US Government	1,193,118.75
2. Obligations Guaranteed by US Government	None
3. Total items (1-e) and (2); (Must agree with item (2) of "Resources")	1,193,118.75

SCHEDULE E—CONTINGENT LIABILITIES, Not shown in statement on the reverse side hereof.

3. Unissued Series "E" Bonds held for sale under issuing agency agreement	25,612.50
5. Total	25,612.50

STATE OF TEXAS)
COUNTY OF LAMB)

I, Gene Trotter, being Cashier of the above named bank, do solemnly swear that the foregoing statement of condition is true to the best of my knowledge and belief.

GENE TROTTER

Subscribed and sworn to before me this 9th day of January 1961.

MINNIE SCOTT
Notary Public, Lamb County, Texas

(SEAL)

CORRECT ATTEST:

W. N. YATES -- OWEN NORFLEET -- FRANK CORNELIUS

(Directors)

By Betty Matlock

Springlake News

Mr. and Mrs. W.B. Hucks and children visited Sunday in Hereford with his sister and family, Mr. and Mrs. Edwin Bollinger.

Danny Boone was honored with a party on his eighth birthday Saturday at his home. Cake and ice cream were served to the following guests, David Holt, Gene and Lloyd Cook, Johnny Kelly, Bogle Ernest, Kent Coker and Buster Watson. Mrs. Ashley Davis left Sunday with Mrs. Nova Melton, Littlefield, to attend a Stanley convention in Oklahoma City, Okla.

Mrs. Thelma McClanahan spent Thursday night with the Doug Averys of Muleshoe. Mr. and Mrs. Billy Rudd, Pam and Ricky of Lubbock, spent the week-end with his parents, Mr. and Mrs. Ralph Rudd, Mr. and Mrs. Eldon Hestand, Janis and Gary were dinner guests Sunday of the Rudds.

Mrs. Myrtle McNamara remained in California for a longer visit with relatives. She accompanied the Frank McNamaras to California for Christmas.

The Bob Boones and Bill Perkins families both are driving new Fords.

Mr. and Mrs. Wayne Davis, Tommie and Del spent the week-end in Lubbock visiting Mr. and Mrs. Claude Davis and Mr. and Mrs. Lloyd Patterson.

The Traveling League bowled in Littlefield Sunday. Mrs. Wiona Boone is a member of the team.

The W.B. Hucks spent the Christmas holidays in Childress with her parents and in the Rio Grande Valley with his parents. They also visited in Old Mexico.

Mrs. Hucks reports that their son, Lonnie, who is attending school in Lubbock, will be on TV this week.

Mr. and Mrs. Ernest Baker and the Rev. and Mrs. M.B. Baldwin and Jimmy left Monday morning for Fort Worth where they attended the evangelistic conference until Wednesday.

Donna Watson spent Sunday with the Arnold Washingtons.

Mr. and Mrs. Doug Avery visited Monday and Tuesday with Mrs. Thelma McClanahan. Tuesday, Doug and Bill Matlock were in Lubbock on business.

Mrs. Wiona Boone and Mrs. Lavern George of Olton were in Plainview Thursday.

Mrs. James Washington, Mrs. Bill Watson and Mrs. Weldon Owens visited in Tulla Friday with Mrs. Mae Washington.

Connard Has Eye Operation

Frank Connard of Hart, father of Mrs. E.E. Burrows of Olton, underwent an eye operation last Wednesday at the Saint Anthony's Hospital at Amarillo. Mrs. Burrows reported that her father is in good condition.

Women's Golf Group To Name New Officers

Officers to head the Women's Golf Association will be elected at the next regular meeting. This announcement was made by Mrs. R.W. Malone, reporter. Another highlight of the meeting will be a luncheon at 12 in the First Methodist Church Fellowship Hall. The group will meet Thursday, Jan. 17. Other outgoing officers are Mrs. R.V. Allcorn, president;

Rev. Lewis Will Speak At OHS Friday

The Rev. John E. Lewis, pastor of the Olton First Baptist Church, will speak to Olton High School students Friday at 10 a. m. at the auditorium. Also, the presentation of the football district trophy will be made at the assembly.

Following the assembly, high school students will meet in their respective rooms for class meetings. Class meetings also will be held for the Junior High Students.

CLASSIFIED ADS

FOR SALE--Porter Market Place, east side of square, Olton. 49-2tp

CORN SHELLING--JD95 Combine. Phone 5989, Marion Green. 49-3TP.

FOR RENT--Modern 3 room house on East 8th. On Pavement, Phone 4503. 49-4tc

Max Wozencraft Feted At Dinner

Max Wozencraft was honored with a dinner party Sunday in the home of his parents, Mr. and Mrs. Orfan Hackler.

Friends attending the party were Mr. and Mrs. Drexel Lawson, Gary and Jimmie, Mrs. Carolyn Watson, Drexel Jr. and Deedie, Jerry Mathis, Mr. and Mrs. Pink Lawson Mr. and Mrs. Fred Burgess, Sherry and Janice, Mrs. James Martin, Kent Wozencraft of Lubbock and Jon C. Little of Springlake and the honoree's parents Mr. and Mrs. Hackler.

Hey! Mrs. Sew and Sew!

IT'S dollar day

Time For Fabric Saving

CORDUROY

Large Assortment Of Colors \$1.00 YARD

WOOLENS

54 to 60 INCHES WIDE
\$3.98 Values Now \$2.49 Yd.
\$4.98 Values Now \$2.97 Yd.
\$5.98 Values Now \$3.79 Yd.

DRIP DRY COTTONS

Values To \$1.49 Yard 79¢ YARD

One Table of Blends

COTTON & DACRON VALUES TO \$2.29
COTTON & ARNEL \$1.37 YARD
COTTON & CUPOINI



606 Broadway CA 4-4627

Springlake Baptist Church Slates Revival

SPRINGLAKE--The Rev. M.B. Baldwin, pastor, will be preacher Jan. 15-22 at an evangelistic revival of the Springlake Baptist Church.

Ted Rowan will be the song-leader for the services. Morning services will begin at 10. Prayer services, at 6:30 p.m., and regular services at 7 p.m., will be sponsored by the brotherhood.

Each morning at 6:30, the brotherhood will serve breakfast to the men. Prayers and meditation for the services will be conducted during this hour.

Cottage prayer meetings are being held this week in preparation for the revival. The meetings are sponsored by the W.M.U.

Everyone is cordially invited to attend.

Patrol Leaders Are Named By Troop 205 Girl Scouts

Patrols and patrol leaders were elected last Thursday afternoon at a Troop 205 Girl Scout meeting. The meeting was held at the American Legion Hut.

Jo Reta Duncan is leader of Patrol No. 1. Other members of the group are Sherry Caddell, assistant leader; Ledelle Kersh, Cheryl Yandell, Carla

Hedges, Anne Hedges and Denna Scruggs.

Leader of Patrol No. 2 is Nancy Buchenau with Susan Norfleet serving as assistant leader. Francine Struve, Donna Carlisle and Carla Choate are the other members.

A film pertaining to girl scouting was shown. Refreshments of cookies, spice tea and ice cream were served.

Rojas Family Has New Child

Mr. and Mrs. Adan Rojas became the parents of their third girl, Maria Dolores, Friday, Jan. 6.

Maria Dolores weighed 7 pounds 10 ounces at birth at 9:20 p.m. in the Community Clinic.

Rojas is employed by D. H. Ball of Olton.

CARD OF THANKS

We wish to thank everyone who helped make our auction sale and luncheon at the Harper Farm a big success.

Also we want to thank the auctioneers for their free auctioneering services. Especially, we would like to thank Lewis Schreier for his contribution.

Olton Garden Club

GS Troop 205 Schedules Birthday Party

Members of the Olton Girl Scout Troop 205 will have a party next Monday to observe a birthday of the troop. A membership card ceremony will be one of the highlights of the meeting.

Mothers of the girl scouts will be special guests. The meeting will be held at the junior high school building after classes have been dismissed.

Mrs. Paul Burrus is leader of the Girl Scout troop.

Most of the fences in Ireland are of stone, gathered from the adjacent fields.

WANTED!

Someone With Good Credit To Make Small Payments On Fine Spinnet Piano

Nothing Now First Payment In February

Write At Once.

McFARLAND MUSIC CO.

722 W. 3rd. - Elk City, Okla.

Top Quality Low Prices

MEATS

FRYERS

Fresh Dressed Lb.

29¢

STEAKS

Baby Beef Clubs And Sirloin

2 Lbs. For \$1

ROAST

Beef Chuck Arm Lb.

39¢

BEEF

Fresh Ground

3 Lbs. For \$1

SAUSAGE

Homemade Pure Pork

4 Lbs. For \$1

EGGS

Grade A Guaranteed Fresh

2 Doz. For \$1

CHEESE

Wisconsin Long Horn

2 Lbs. For \$1

PURE LARD

3 Lb. Carton

39¢

OLTON MEAT CO.

Phone 3741

Complete Locker-Freezer Service

Olton, Texas

Number Of Firms Increases In Lamb

Amarillo office of Dun & Bradstreet, Inc., has announced that requests for financial statements were mailed to 528 businesses in Lamb County.

These figures, obtained from physical count of the names listed in the Dun & Bradstreet Reference Book for January, 1961, reflect a one per cent increase when compared with the 523 concerns listed one year ago.

Each January, business concerns in all parts of the United States are asked by Dun & Bradstreet for copies of their financial statements. This year requests are being sent to approximately three million business concerns—to the corner grocery store worth a few thousand dollars as well as to businesses worth millions.

The Dun & Bradstreet Reference Book, published bi-monthly, lists manufacturers, wholesalers, and retailers as well as certain service businesses who seek or grant commercial credit, but does not

include service and professional businesses such as beauty and barber shops, security dealers, and real estate brokers. Therefore, the figures for total businesses in the United States would be somewhat higher than the three million quoted above.

The changes occurring in Lamb county are about the same as in the rest of the country where the rate of change is about every five seconds.

Back of each listing of a business in the Reference Book is a Dun & Bradstreet credit report. The report includes a history of the business a description of what the business does, a record of how the business pays its bills, and a financial section which usually includes the latest financial statement.

Joe Green In Germany

Joe M. Green, son of Mrs. Katie P. Corn, Olton, recently was promoted to specialist four in Germany, where he is serving with the 2d Amored Cavalry.

Specialist Green, assigned to the cavalry's Troop E in Bamberg, entered the Army in August 1958 and was stationed at Fort Sam Houston, Tex., before arriving overseas in August 1959.

The 19-year-old soldier attended Littlefield High School,

Olton School Lunch Menu

Jan. 16-20, 1961
Subject to Change

MONDAY--Chicken fried steak, catsup, creamed gravy, steamed rice, grape fruit sections, hot rolls, butter and jelly and milk.

TUESDAY--Beef goulash, french fried potatoes, lettuce, fruit jello and cookies, bread and butter sandwiches and milk.

WEDNESDAY--Brown beans, vienna sausage, potato salad, apple pie, corn bread and butter and milk.

THURSDAY--Ham and cheese on toast, mashed potatoes, buttered peas, waldorf salad, strawberry shortcake and chocolate or white milk.

FRIDAY--Fried fish and lemon, buttered corn, tomatoes and macaroni, spiced beets, cinnamon roll, bread and milk.

Brownie Troop Has Meeting

Eleven members of Brownie Scout Troop 132 were present Tuesday for a regular meeting. The meeting was held at the scout house.

A guest, Jean Yvonne Williams, and the counselor, Mrs. Wayne Carson, also attended. Others attending were Kathline Carson, Brenda Ellis, Debra Walden, Jan Ross, Judy Stanley, Cherle Thompson, Judy Neinst, Gayle Williams, Sophie Powell and Cheri Dorris.

Girl Scout laws will be studied Jan. 17 at the next meeting. Meeting time is 3:45 p.m.

Rev. John Lewis Has Devotional

The Rev. John E. Lewis, pastor of the First Baptist Church, will be guest speaker Friday at a devotional for the Olton Junior High School students.

Scene for the devotional will be the high school auditorium.

Freddie Warren Now In Germany

Army Pvt. Freddie N. Warren, recently was assigned to the 82d Artillery in Germany.

A radio-teletype operator in the artillery's Headquarters and Service Battery in Glessen, Warren entered the Army last May and completed basic training at Fort Hood, Texas.

The 25-year-old soldier, son of Mrs. Callie F. Miller, Olton, is a 1953 graduate of Olton High School.

GUEST FROM DALLAS

Mr. and Mrs. H. A. Hysinger recently returned home from Dallas where they visited in the Jimmy Lee home. Their daughter, Mrs. Lee, made the trip with them. The Hysingers also visited at Crowell with relatives.



Van Camp No 2 Can
PORK & BEANS 2 For 35¢

Mission Sliced Or Halves PEACHES 2½ Can 3 For 79¢	Derby TAMALES 15 Oz. Can 23¢	Maxwell House COFFEE 1 lb. Can All Grinds 59¢
---	--	---

Kimbell 303 Can BLACKBERRIES 19¢	Kimbell 300 Can BLACK EYE PEAS AND SNAPS 2 For 27¢	Green Giant PEAS 303 Can 19¢	Kimbell White HOMINY 300 Can 9¢	Curtiss Baby Ruth 5¢ Bars CANDY BARS 3 For 10¢
MEATS				
Swift Premium FRANKS 1 Lb. Cello Pkg. 49¢		Swift Sweet Rasher BACON 1 Lb. Pkg. 49¢		
Choice Pen Fed Beef STEAK T-Bone Lb. 75¢		Choice Pen Fed Beef CLUB STEAK Lb. 55¢		

Bordens ½ Gal. ICE CREAM 67¢	Giant Box CHEER 69¢	Golden Brand OLEO 1 Lb. Carton 15¢	Pard 1 Lb. Can DOG FOOD 2 For 29¢	Sunshine Hi-Ho CRACKERS 1 Lb. Box 35¢
--	-------------------------------	--	---	---

Del Monte TUNA Flat Can 25¢	Gladiola FLOUR 10 Lb. Print Bag 89¢	Bremmers Jumbo Pies 49¢ Box 39¢	Duncan Hines Deluxe Cake Mixes 33¢
---------------------------------------	---	---	--

FRUITS & VEGETABLES		FROZEN FOODS	
Large Stalk CELERY Lb. 10¢	Red Emperor GRAPES Lb. 15¢	Libbys Broccoli Spears 10 oz. Pkg. 21¢	Patio ENCHILADO DINNERS 12 Oz. Pkg. 49¢

Specials Begin Friday Jan. 13

DOUBLE GUNN BROS STAMPS EVERY WEDNESDAY

Phone 3581 **Free Delivery**

CASH WAY FOOD STORE
Where Friends Meet and Prices Talk



more and more people are **CHEERING** about our **SANITONE SOFT-SET Dry Cleaning**

Cheering because it brightens soil-dulled colors, puts body in limp fabrics; whisks away droop and drabness to make clothes look and feel like new. See for yourself. Call on us today for service.

Pollard's Cleaners

Pickup & Delivery Service Anytime
Phone 5241 Olton

Texas 1 Lb. Cello Bag
CARROTS 9¢

THE OLTON ENTERPRISE

Section 2



Jan. 12, 1961



COUNTRY BOYS--Out on the farm, boys still climb through barbed wire fences and some of them get their pants hung on a barb. Here, Robin Spain, 3, gets an assist from brother Steve, 11, after a minor accident. The boys are the sons of Mr. and Mrs. Don Spain, who farm west of Olton.

'Pounding' Honors Troy Digby Family

The members of Hopewell Baptist Church were host Sunday night of a "pounding" honoring the Troy Digby family.

A cake was presented to Digby, who was also celebrating his birthday. Cake and coffee were served to the honorees and the guests.

Those attending were Mr. and Mrs. Ernest Ellichman, Annette, Mr. and Mrs. Thomas Lively, Terry and Teresa, Mr. and Mrs. James Sisemore, Elaine and Jimmy, Mr. and Mrs. Eddie Thommarson, Mr. and Mrs. Lynn George, Mr. and Mrs. Everett Huckabee, Lynn, Mrs. W.P. Winn, Jerry and Larry, Mrs. A.P. Rolls, Mr. and Mrs. Will Russell, Mr. and

Mrs. D.D. Brown, Mr. and Mrs. J.D. Lively, James and Paul, Steve, Sharon and Debra Sherfy, all of Olton; Mr. and Mrs. Oscar Scheller, Springlake; the Rev. and Mrs. Paul Burch and Miss Darla Sanders, Lubbock and the honorees.

GUESTS IN CALEY HOME

Mr. and Mrs. Cocke were guests Sunday in the home of Mr. and Mrs. Jim Caley. The Cockes are Mrs. Caley's parents.

VISITS HERE

Mr. and Mrs. Raul Montez are visiting with his mother, Mrs. Joe Martinez and family.

HAIRS VISIT IN TEXICO

Mr. and Mrs. Louis Hair visited with their sisters, Mrs. Fred Cornelius in Texico and Mrs. Limey Thomas of Clovis, N.M., Sunday.

VISIT IN LUBBOCK

Mrs. Barton Prestridge and Mrs. Joe Miller visited in Lubbock with Mrs. Mildred Macon Sunday and Monday.

VISIT MRS. O. J. LEE

Mr. and Mrs. F.W. Skinner of Roswell, N.M., visited in the home of their daughter, Mrs. O.J. Lee Tuesday.

CANYON VISITORS

Recent visitors in the H. A. Hysinger home were Mr. and Mrs. Jimmy Lee, Dallas, and Mr. and Mrs. W. E. Lee of Canyon.

RETURN FROM SAN ANTONIO

The Tom Billy Hankins family has returned from San Antonio where they spent Christmas and New Years with Mrs. Hankins' family.

VISIT AT CROWELL

Mr. and Mrs. Earl Hysinger visited recently at Crowell with relatives.

VISITORS IN OWENS HOME

Mr. and Mrs. Charlie Ikard of Lubbock visited in the C.M. Owens home Sunday.

Just Keep Coming, Folks

And tell your friends the best place to stop is at the new store on the highway, for convenience, gas, plenty of parking room and you are always welcome.

West Side Cash Grocery

JANUARY CASH SPECIALS

The Prices On All Items Listed Below Will Be Good Through The Rest Of This Month.

SHEET ROCK

1/4" 4x8	1.36 sheet
3/8" 4x8	1.44 sheet
1/2" 4x8	1.68 sheet

PLYWOOD

1/4" 4x8 AD fir	10 1/2 sq. ft.
3/4" 4x8 AD fir24 sq. ft.
5/8" 4x8 CD fir	16 1/2 sq. ft.
3/8" 4x8 AC fir exterior	15 1/2 sq. ft.
1/4" 4x8 AC groove birch	35 sq. ft.
1/4" 4x8 plain birch30 sq. ft.
3/4" 4x8 plain birch50 sq. ft.

LUMBER

2x4 and 2x6 #3 Native fir	9.25 per 100 ft.
1x10 #4 W.P. Sheathing	8.95 per 100 ft.
2x4 and 2x6 #1 dimension	13.00 per 100 ft.
1x12 s4s Parama Pine #1	35.00 per 100 ft.
1/6 Rough Kiln Dried	13.00 per 100 ft.
1/8 #2 Y. Pine Kln Dried S/lap.	12.95 per 100 ft.
2x8 - 2x10 - 2x12 #1 Fir K.D.	14.00 per 100 ft.

ROOFING-SIDING

#2 - 16" Cedar Shingles	10.50 sq.
220# - White Double Coverage Loc-on Shap.	7.95 sq.
Corrugated Galvanized Iron	10.50 sq.
90# - Mineral Surface Roofing	3.50 roll
30# - and 15# Felt	2.45 roll
25/32" 2x8 Insulated Sheathing	10 1/2 ft.
Asbestos Siding (White)	16.95 sq.
Composition Brick Siding	4.25 roll
1/8" 2 KD Y.P. #105 SDQ.	13 1/2 ft.

PIPE AND ELECTRIC WIRE

	Black per ft.	Galv. per ft.
1/2" Pipe12	.14
3/4" Pipe16	.18
1" Pipe22	.26
1 1/4" Pipe30	.34
1 1/2" Pipe36	.40
2" Pipe47	.53
4" Orangebury Sewer Pipe33 ft.
12/2 Romex Wire	4.25 per 100 ft.	
14/2 Romex Wire	4.00 per 100 ft.	

PLUMBING

30 Gal. 10 Yr. Hot Water Heaters	62.50
3 Tube Mission Wall Heaters Unitrol	85.00
Commodos	27.50 and up
Bath Built In Wall Heaters	17.50

MOVE OUT HOUSES

14'x24'	725.00	12'x30'	745.00
16'x24'	795.00	20'x30'	1295.00
		2 Holers	37.50

PAINT AND SUNDRIES

SPRAY PAINT	1.15 can
Kemtone50 gal.
Kemglo75 gal.
Old South--House Paint	2.50 gal.
Thinner85 gal.
Linseed Oil	2.50 gal.
250' Roll Perfatape	75. ea.
Best Grade Jones Blair House Paint	5.45 gal.
9'x12' Plastic Drop Cloths50 ea.

BARB WIRE

----- Spool \$8.95

Do Not Forget We Have Aermotor Submersible Pumps

NEW HOMES FOR OLD

Now Is The Time For Home Improvement. We Have Everything You Need For The Job. Come In And See Us Soon!

Up To \$3500.00 Available _____ 5 Years To Pay
No Down Payment _____ Low FHA Rates

Higginbotham-Bartlett Co.

"Good Lumber"

Phone 3511

Olton, Texas



RECIPE OF THE WEEK--

Yum! Chocolate Pie

The recipe of the week was contributed by Mrs. Max Malone. It is a recipe for chocolate pie, topped with seven-minute frosting and it is both delicious and different.

Florence says that her husband is strictly a "steak and potatoes man"--with this chocolate pie as his favorite dessert.

CHOCOLATE PIE FILLING

1 1/2 cup sugar
3 squares unsweetened chocolate (cut up)
3 tablespoons cornstarch
1/2 teaspoon salt,

3 cups milk
1 tablespoon butter
1 1/2 teaspoons vanilla
Mix these ingredients in a saucepan. Stir the milk gradually, cooking over medium heat until the mixture thickens and boils. Boil one minute, then remove from heat. Then gradually stir in three beaten egg yolks. After the egg yolks are added, boil one more minute or until mixture has thickened. Remove from heat and blend in one tablespoon butter and 1 1/2 teaspoons vanilla. Pour mixture into baked pie shell.

SEVEN-MINUTE FROSTING

(Enough for two pies)

2 egg whites
1 1/2 cups sugar
few grains of salt
1 teaspoon light corn syrup
one-third cup water
1 teaspoon vanilla
Mix all ingredients except vanilla and beat over boiling water until mixture stands in soft peaks, or for about seven minutes. Remove from heat and add vanilla. Beat mixture until thick, then spread icing on top of the chocolate filling.

Place in a moderately hot oven, 375 degrees, until the topping is light brown.

HOOPERS HAVE GUEST

Judy Smith of Friona visited in the Elbert Hooper home over the weekend. Judy is the room mate of the Hooper's daughter, Terry, at West Texas State College.

LUBBOCK VISITOR

Mrs. L. H. Paxton of Lubbock is visiting in the home of Mr. and Mrs. V. J. Carlisle and also in the L. H. Green home.

NOTICE

I will be at the City Hall of the following towns on the dates indicated for the purpose of collecting State and County taxes:

Amherst Jan. 16
Sudan Jan. 17
Earth Jan. 18
Olton Jan 19 & 20

Jan. 31 is the deadline for payment of State and County taxes without penalty, and is also the deadline for securing Poll Tax receipts.

Poll Tax receipts may be obtained from the City Secretary of the above named towns during January.

Herbert Dunn

TAX ASSESSOR-COLLECTOR
Lamb County.

CLEARANCE

Hunting Coats & Pants Reduced 25%

Several Groups Coats & Jackets Reduced Up To 40%

Insulated Underwear. Was 7.95 NOW 5.95

Many other off-season items reduced.

New Filing Cabinets 4 Drawer Metal 39.95

Also Good Used Desks

Army & Navy Store

122 E. 5th - CA 4-9440
Plainview

Bowling Scores


LADIES LEISURE THURSDAY, 9 a.m.			Circle Gin 4 8		
Olton Co-Op Gin	9	3	Olton Grain	7	5
Ed Thompson Imp.	6	6	Higginbotham-Bartlett	5	7
Hatley & Machen	5	7	Olton Lions Club	3	9
Olton Delinting	3	9	Olton State Bank	3	9
TEAMS			High men's game, Jim Brown, 201; High men's series, Jim Brown, 547; High women's game, Lorene Perkins, 176; High women's series, Bill Richards, 463; High team game, Mac's Hardware, 587; High team series, Beauty Shop, 1709.		
Olton Drug	7	1	TEN PIN BOWLERS WEDNESDAY, 9:00 p.m.		
White Auto	7	1	TEAM	W	L
Gray Grocery	6	2	Roberson-Givens	8	4
Tasty Cream	5	3	Chitwood Insurance	7	5
Bizzells	4	4	Olton State Bank	7	5
Jeffrey Lumber	2	6	Whittington	7	5
Smith & Struve	1	7	Williams Insurance	6	6
Botkin Food	0	8	Campbells Texaco	5	7
High Game, Mabel McFadden, 197; High series, Pat Harrol, 496; High team game, Gray Gro., 631; High team series, Jeffrey Lumber, 1715.			Thomas Speed Wash	4	8
High game, C. J. Doris, 234; High series, Wesley Nienast, 574; High team game, Doris Mackinery, 695; High team series, Hart Camp Gro., 1948. Womens high game, Lee Nienast, 208; High series, Lee Nienast, 487.			Sanders Paris	4	8
High game, Ruth Dorris, 200; High series, Ruth Dorris, 555; High team game, Dennis Builders Supply, 602; High team series, Dennis Builders Supply, 1672.			High men's game, James Hall, 216; High men's series, James Hall, 542; High women's game, Jolene Givens, 215; High women's series, Jolene Givens, 513; High team game, Roberson & Givens, 660; High team series, Roberson & Givens, 1870.		
High game, Frank Carlisle Sub; High series, Frank Carlisle; High team game, No. 3; High team series, No. 2.			TRIP TO BALTIMORE Mrs. J. A. Boverie and her son, John Boverie and family of San Antonio, visited two weeks in Baltimore, Md., with Mr. and Mrs. Bill Boverie. Mrs. Bill Boverie is the former Miss Johnny Beth Crawford, daughter of Mr. and Mrs. J. M. Crawford, Olton.		
High game, Frank Carlisle Sub; High series, Frank Carlisle; High team game, No. 3; High team series, No. 2.			ATTEND MARKET Mr. and Mrs. Tom Smith and Mr. and Mrs. Walter Struve of Hale Center attended market Sunday at Lubbock.		
High game, Ruth Dorris, 200; High series, Ruth Dorris, 555; High team game, Dennis Builders Supply, 602; High team series, Dennis Builders Supply, 1672.			CARD OF THANKS Judy Annette Green, daughter of Mr. and Mrs. R. W. Green, wishes to express her thanks and appreciation to all of her friends who have sent cards and flowers and gifts to her during her illness.		
High game, Ruth Dorris, 200; High series, Ruth Dorris, 555; High team game, Dennis Builders Supply, 602; High team series, Dennis Builders Supply, 1672.			ATTEND FUNERAL Mr. and Mrs. Ray Slatten attended funeral services Jan. 3 for John W. Turner, father of Joe Turner. The services were conducted at the First Baptist Church, Weatherford.		
High game, Ruth Dorris, 200; High series, Ruth Dorris, 555; High team game, Dennis Builders Supply, 602; High team series, Dennis Builders Supply, 1672.			LIVELY'S HAVE GUESTS Guests last Sunday in the home of Mr. and Mrs. J. D. Lively were the Rev. and Mrs. Paul Burch of Lubbock, Mrs. Lively's parents, Mr. and Mrs. Otto Zeiss of Hale Center, and Mr. and Mrs. Tommy Lively and children of Olton.		
High game, Ruth Dorris, 200; High series, Ruth Dorris, 555; High team game, Dennis Builders Supply, 602; High team series, Dennis Builders Supply, 1672.			CARD OF THANKS We wish to thank our friends for their many expressions of kindness and sympathy during Lila Lee's illness due to her accident. The Paul McFadden family		
High game, Ruth Dorris, 200; High series, Ruth Dorris, 555; High team game, Dennis Builders Supply, 602; High team series, Dennis Builders Supply, 1672.			CARD OF THANKS The family and relatives of Walter Schreier wish to express their thanks to all of those who were so kind to us during our bereavement. The prayers, words of sympathy, food, flowers, cards, and many acts of thoughtfulness helped so much to lighten our burden. Mrs. Pearl Schreier Mr. and Mrs. Archie Sorley, Sunya and Dora Mr. and Mrs. Louis Schreier Mr. and Mrs. Fred Schreier Mr. and Mrs. Loyd Cowart Mr. and Mrs. Bill Schreier Mrs. Ruth Schreier		
High game, Ruth Dorris, 200; High series, Ruth Dorris, 555; High team game, Dennis Builders Supply, 602; High team series, Dennis Builders Supply, 1672.			VISIT IN PLAINVIEW Mr. and Mrs. Earl Robertson, Ronda, Carmen, Aaron and Kelby visited in the Guy Watson home in Plainview Sunday.		
High game, Ruth Dorris, 200; High series, Ruth Dorris, 555; High team game, Dennis Builders Supply, 602; High team series, Dennis Builders Supply, 1672.			HOUSE MOVING and MAINTAINER and BULLDOZER WORK ALL TYPES OF WORK - Phone CA 4-7652 Austin Mallow 3102 West 5th Plainview, Texas		
High game, Ruth Dorris, 200; High series, Ruth Dorris, 555; High team game, Dennis Builders Supply, 602; High team series, Dennis Builders Supply, 1672.			SHERMAN FOOD Double Gunn Bros. Stamps Wednesday With \$2.50 Purchase FREE DELIVERY QUALITY MEATS PHONE 370		

LADIES LEISURE THURSDAY, 9 a.m.			Circle Gin 4 8		
Olton Co-Op Gin	9	3	Olton Grain	7	5
Ed Thompson Imp.	6	6	Higginbotham-Bartlett	5	7
Hatley & Machen	5	7	Olton Lions Club	3	9
Olton Delinting	3	9	Olton State Bank	3	9
TEAMS			High men's game, Jim Brown, 201; High men's series, Jim Brown, 547; High women's game, Lorene Perkins, 176; High women's series, Bill Richards, 463; High team game, Mac's Hardware, 587; High team series, Beauty Shop, 1709.		
Olton Drug	7	1	TEN PIN BOWLERS WEDNESDAY, 9:00 p.m.		
White Auto	7	1	TEAM	W	L
Gray Grocery	6	2	Roberson-Givens	8	4
Tasty Cream	5	3	Chitwood Insurance	7	5
Bizzells	4	4	Olton State Bank	7	5
Jeffrey Lumber	2	6	Whittington	7	5
Smith & Struve	1	7	Williams Insurance	6	6
Botkin Food	0	8	Campbells Texaco	5	7
High Game, Mabel McFadden, 197; High series, Pat Harrol, 496; High team game, Gray Gro., 631; High team series, Jeffrey Lumber, 1715.			Thomas Speed Wash	4	8
High game, C. J. Doris, 234; High series, Wesley Nienast, 574; High team game, Doris Mackinery, 695; High team series, Hart Camp Gro., 1948. Womens high game, Lee Nienast, 208; High series, Lee Nienast, 487.			Sanders Paris	4	8
High game, Ruth Dorris, 200; High series, Ruth Dorris, 555; High team game, Dennis Builders Supply, 602; High team series, Dennis Builders Supply, 1672.			High men's game, James Hall, 216; High men's series, James Hall, 542; High women's game, Jolene Givens, 215; High women's series, Jolene Givens, 513; High team game, Roberson & Givens, 660; High team series, Roberson & Givens, 1870.		
High game, Ruth Dorris, 200; High series, Ruth Dorris, 555; High team game, Dennis Builders Supply, 602; High team series, Dennis Builders Supply, 1672.			TRIP TO BALTIMORE Mrs. J. A. Boverie and her son, John Boverie and family of San Antonio, visited two weeks in Baltimore, Md., with Mr. and Mrs. Bill Boverie. Mrs. Bill Boverie is the former Miss Johnny Beth Crawford, daughter of Mr. and Mrs. J. M. Crawford, Olton.		
High game, Ruth Dorris, 200; High series, Ruth Dorris, 555; High team game, Dennis Builders Supply, 602; High team series, Dennis Builders Supply, 1672.			ATTEND MARKET Mr. and Mrs. Tom Smith and Mr. and Mrs. Walter Struve of Hale Center attended market Sunday at Lubbock.		
High game, Ruth Dorris, 200; High series, Ruth Dorris, 555; High team game, Dennis Builders Supply, 602; High team series, Dennis Builders Supply, 1672.			CARD OF THANKS Judy Annette Green, daughter of Mr. and Mrs. R. W. Green, wishes to express her thanks and appreciation to all of her friends who have sent cards and flowers and gifts to her during her illness.		
High game, Ruth Dorris, 200; High series, Ruth Dorris, 555; High team game, Dennis Builders Supply, 602; High team series, Dennis Builders Supply, 1672.			ATTEND FUNERAL Mr. and Mrs. Ray Slatten attended funeral services Jan. 3 for John W. Turner, father of Joe Turner. The services were conducted at the First Baptist Church, Weatherford.		
High game, Ruth Dorris, 200; High series, Ruth Dorris, 555; High team game, Dennis Builders Supply, 602; High team series, Dennis Builders Supply, 1672.			LIVELY'S HAVE GUESTS Guests last Sunday in the home of Mr. and Mrs. J. D. Lively were the Rev. and Mrs. Paul Burch of Lubbock, Mrs. Lively's parents, Mr. and Mrs. Otto Zeiss of Hale Center, and Mr. and Mrs. Tommy Lively and children of Olton.		
High game, Ruth Dorris, 200; High series, Ruth Dorris, 555; High team game, Dennis Builders Supply, 602; High team series, Dennis Builders Supply, 1672.			CARD OF THANKS We wish to thank our friends for their many expressions of kindness and sympathy during Lila Lee's illness due to her accident. The Paul McFadden family		
High game, Ruth Dorris, 200; High series, Ruth Dorris, 555; High team game, Dennis Builders Supply, 602; High team series, Dennis Builders Supply, 1672.			CARD OF THANKS The family and relatives of Walter Schreier wish to express their thanks to all of those who were so kind to us during our bereavement. The prayers, words of sympathy, food, flowers, cards, and many acts of thoughtfulness helped so much to lighten our burden. Mrs. Pearl Schreier Mr. and Mrs. Archie Sorley, Sunya and Dora Mr. and Mrs. Louis Schreier Mr. and Mrs. Fred Schreier Mr. and Mrs. Loyd Cowart Mr. and Mrs. Bill Schreier Mrs. Ruth Schreier		
High game, Ruth Dorris, 200; High series, Ruth Dorris, 555; High team game, Dennis Builders Supply, 602; High team series, Dennis Builders Supply, 1672.			VISIT IN PLAINVIEW Mr. and Mrs. Earl Robertson, Ronda, Carmen, Aaron and Kelby visited in the Guy Watson home in Plainview Sunday.		
High game, Ruth Dorris, 200; High series, Ruth Dorris, 555; High team game, Dennis Builders Supply, 602; High team series, Dennis Builders Supply, 1672.			HOUSE MOVING and MAINTAINER and BULLDOZER WORK ALL TYPES OF WORK - Phone CA 4-7652 Austin Mallow 3102 West 5th Plainview, Texas		
High game, Ruth Dorris, 200; High series, Ruth Dorris, 555; High team game, Dennis Builders Supply, 602; High team series, Dennis Builders Supply, 1672.			SHERMAN FOOD Double Gunn Bros. Stamps Wednesday With \$2.50 Purchase FREE DELIVERY QUALITY MEATS PHONE 370		

SPARK UP MID WINTER MENUS

Bama 18 oz. Jar Peanut Butter 39¢	Shurfresh Biscuits 3 for 25¢
Libby 4 oz. Can VIENNA SAUSAGE 5 for \$1	Bordon's All Flavors ICE CREAM 1/2 Gal. 69¢
Skinner's 7 oz. Box MACORONI SPAGHETTI Or 2 For 27¢	National Oreo COOKIES 1 lb. Bag 49¢
Folger's 10¢ Off Label COFFEE 2 lb. Can \$1 ²⁹	Sunshine Krispy CRACKERS 1 lb. Pkg. 27¢

Fresh Dressed No. 1 Grade



FRYERS lb. 33¢

Wilson Crisprite BACON 1 lb. Cello 49¢	Libby Whole Kernel or Cream Style CORN No. 303 Can 5 For \$1
Libby 14 oz. Bottle CATSUP 2 For 33¢	

Morton's SALT 20 oz. Box 2 for 29¢	NEW BOOK OFFER Starts Monday, Jan. 16 Deluxe 20 Volume Set Of Standard Treasury Of Learning With Funk & Wagnalls Dictionary For Young People. Buy A Book-At-A-Time Vol. 1 29¢ Vol. 2 To 20 99¢ Each The Best Buy You Can Make For Your Children!	Golden Brand OLEO 1 lb. 15¢
--	--	---------------------------------------

12 Bottle Carton DR. PEPPER 49¢ Plus Deposit	Gold Medal FLOUR 10 lb. Bag 89¢
--	---

Rome Beauty APPLES 4 lb. Bag 49¢
--

Large Firm Heads CABBAGE 5¢	Red McClures POTATOES 10 lb. Bag 49¢
---------------------------------------	--

Delsey TOILET TISSUE 4 Roll Pkg. 49¢	ARTIFICIAL 3-BUD ROSE 93¢	Gleem TOOTH PASTE 12¢ Off Label Economy Size 39¢
--	----------------------------------	--

Specials Good Friday Jan. 13 Through Thursday, Jan. 19

SHERMAN FOOD

Double Gunn Bros. Stamps Wednesday With \$2.50 Purchase
FREE DELIVERY QUALITY MEATS PHONE 370

"I Can Bank On Purina"

.....Says
S. R. Hutto,
Duroc Breeder



ONLY THE BEST is good enough for the championship Duroc Breeding Stock of S. R. Hutto, who farms west of Hart, His hogs are founded in the nationally known Oral Long herd at Elnora, Ind. It takes the use of a proper Purina feeding program combined with excellent stock to produce results like this:



Average Daily Gain 1.46 Lbs.

MR. HUTTO is shown above with four of 14 head which were farrowed Sept. 14, 1960. They were weighed Dec. 22, 1960, at an average of 143 pounds . . . an AVERAGE DAILY GAIN of 1.46 POUNDS. Mr. Hutto has his sows on D & F Chow five days before farrowing and they are left on it until 10 days after farrowing. Only clean water is given on the farrowing day. The pigs were put on Baby Pig Chow and clean water at five days, then on Pig Startena until they ate 50 pounds each. They then went on a Check-R-Mix Ration mixed at Olton Farm Supply according to the size and age of the pig. It all added up to big gains at low costs.

Feed Cost Less Than 9¢ A Lb.



DON SPAIN checks Mr. Hutto's Purina results as they look over some more of the fine stock at the Hutto farm. Drop in at Olton Farm Supply and let them show you how the Purina program combines with your production to prove, time after time, that "IT PAYS TO FEED PURINA."

Olton Farm Supply

Phone 2281 Don Spain, Owner Olton, Texas

THURSDAY, JANUARY 12, 1961

SE LO HE

CLA

Rates advertising first issue second issue additional Minimum section, sections respons first in your ad All due and following billing be charge days past cessive r

FO

FOR laundry Laundry, Jones, P

FOR SA 1/2-ton with alt radio, he tact Billy Texas, P

FOR S 1960 Doo older car Seago, ph

FOR S lster for Phone 50

HO TE

RI TV PI For Ex

CO

P

S

S

G. A REI

PA Bar

LOCAT T

HAVE I RADIAT CLOSING

Stov Radiat 1019.

PI

Phone

PION

Nebra

411 Broo

SELL · BUY · TRADE · HIRE · SERVICE · HELP WANTED · EMPLOYMENT · WANT ADS!

CLASSIFIED ADS

Rates on classified advertising are: 6 cents per word first insertion; 3 cents per word second insertion, and each additional consecutive insertion. Minimum 50 cents first insertion, 25 cents additional insertions. The Enterprise is not responsible for mistakes after first insertion. Please read your ad.

All classified accounts are due and payable 10th of month following insertion. A flat rebilling fee of \$1.00 will be charged for all accounts 30 days past due and for all successive rebillings.

FOR SALE

FOR SALE--Coin-operated laundry formerly Douglas Laundry. Call or see Pauline Jones, Phone 4521. 47-3tc

FOR SALE -- 1960 heavy duty 1/2-ton V8 Chevrolet pickup with aluminum hunting cab, radio, heater, like-new. Contact Billy Clayton, Springlake, Texas, Phone 986-2027. 48-2tp

FOR SALE OR TRADE -- 1960 Dodge 6-cylinder R&H for older car. Can finance. C. W. Seago, phone WE 8-3217, Hart, 48-2TP

FOR SALE -- One push type lister for International tractor. Phone 5061, Raymond Motley, 48-2TP

HOFFMAN TELEVISION
at
RILEY'S TV SERVICE
Phone 5131
For Expert Repair Service

MAKE A CAREFUL COMPARISON OF PRODUCTS AND YOU WILL BUY SEAL-TITE CONCRETE PIPE STANDARD CONCRETE PIPE CO.

G. A. BODKIN
REPRESENTATIVE
Phone 3776

PARLEY'S Barber Shop
LOCATED NEXT DOOR TO LESTER'S
Olton, Texas

HAVE IN STOCK 400 NEW RADIATORS. OLD MODELS CLOSING OUT AT 50 TO 75% DISCOUNT.

Stovall-Booher
Radiator Sales & Service
1019-25 N. Broadway
CA 4-2865
Plainview, Texas

WAYNE'S
-- OFFICE SUPPLIES --
PRINTING And LITHOGRAPHING
Phone 2561 Olton, Texas

PIONEER DRILLING & MACHINE CO. SALES & SERVICE
-- Nebraska Western Pumps -- Irrigation Well Drilling --
411 Broadway Phone CA 4-7595

The Olton Enterprise

Published each Thursday at Olton, Texas.

Entered as second class matter at the post office at Olton, Texas, under the act of Congress, March 3, 1897.

Any erroneous reflection upon the character, firm or corporation which may appear in the columns of The Olton Enterprise, will be gladly corrected upon being brought to the attention of the publisher.

Subscription rates: \$3.00 per year in Lamb and neighboring counties; \$5.00 per year elsewhere.



BILL TURNER PUBLISHER
LANA HAIR REPORTER
JOLINE WARREN SOCIETY EDITOR
AMY TURNER ADVERTISING
HERMAN HARRISON APPRENTICE

For Sale

THROUGH WITH IT? Sell it to Price Wrecking Phone 5371. 44-tfc

FOR SALE--Hotpoint Deep Freeze, See Jean Maxey. 47-tfc

FOR SALE OR TRADE -- Frame sheet iron building 20x46 to be moved. Priced right. L. E. Silcott. 49-3tc

FOR SALE -- Stark Fruit Trees -- 25% off through January. 49-3tp

TRASH BARRELS delivered. \$3. Price Wrecking. Phone 5371. 23-tfc

Notice

SEE BILL BENNETT for Humphrey Tension 100 per cent wool sealed aluminum silicone treated storm windows and doors, custom made. 20-tfc

\$100.00 de recompeso por informacion que ilene a el arresto y conviccion de cualquier persona que distrulla o h remueva algo en la propiedad de las barracas de el Tri-County Co-Op Gin. 38-tfc

\$100.00 REWARD for information leading to the arrest and conviction of anybody destroying or removing property from the Tri-County Co-Op Gin barracks. 38-tfc

For Rent

FOR RENT -- Four rooms and bath, modern, nice; 2 west, three fourths north. Call 3556, Olton. 48-TFC.

FOR RENT -- Furnished house see or call Mrs. W. C. Dennis. Phone 4135. 49-3tc

Wanted

WANTED -- To rent some land. Would buy some equipment. W. R. Bean, Phone 4382. 47-3tp

REGISTERED Polled Herefords Quality Calves
MITCHELL HADDAD
Box 154 Olton, Texas

FOR ALL GEAR HEAD Service and Repair SEE W. M. Whitesides
207 East 5th Street
PLAINVIEW, TEXAS

OLTON LODGE NO. 1257 A. F. & A. M.
Stated Meetings 3rd Thursdays
DOYLE PINSON, W. M.
W. G. FINNEY, secretary
Visitors Are Welcome
Members Urged To Attend.

Wanted

WORK WANTED -- Steady farm work references. C. E. Timmins, Hart Camp. 47-3tp

WANTED: To make buttons, button holes, buckles, belts, children's garments. Dress making Willena Gordon. Ph. 3081. 27-tfc

WANTED--To rent a farm near Olton. Contact Bill Walden, Phone 2181. 41-tfc

WANTED -- Year around farm work. Nine years experience. Irrigation 4-row equipment. 1 1/2 mile south and 1/2 mile west of Mayfield Coop Gin. R. R. Lancaster. 48-2TP

WANTED -- Sewing, preferably children's, ironing in my home. Phone 5251. 1402 West 9th. 48-2TC

WANTED -- Child care in my home. Mrs. Frank Criswell, 806 West 12th. 48-2TP.

LEVI'S Smith & Struve
OLTON, TEXAS

"We need your head in our business."
HUBERT'S BARBER SHOP
Hubert - Duward - Charles

JOIN OUR DINNERWARE CLUB

Only One Free Place Setting Per Account As a Club Member You Receive a Reward of a 5-Piece Place Setting in Renowned **ROYAL JOCI DINNERWARE**

Just open your savings account with \$25.00 or add \$25.00 to your present account, and receive FREE a 5-piece place setting (only one premium per account). Thereafter, as you add \$25.00 or more to your account, you may obtain another 5-piece place setting for only \$2.50--a fraction of its regular value.

MEMBERSHIP IS LIMITED--SO JOIN NOW!

Safety of your investment insured up to \$10,000 by the Federal Savings and Loan Insurance Corporation, a permanent agency of the United States Government.

EARN 4% PER ANNUM OPEN YOUR ACCOUNT BY MAIL

Amarillo Savings & Loan Association
401 West 8th (P.O. Box 2948), Amarillo, Texas
Gentlemen:
Please send me all details regarding an account with you.
Name _____
Address _____
City _____ State _____

Amarillo SAVINGS & LOAN ASSOCIATION
401 W. 8th Phone DR4-4668

50 Attend P-TA Meeting, Hear Stanley

Fifty members of the Olton Parent-Teacher's Association attended a meeting Jan. 5 at the school cafeteria.

A prayer by Mrs. Bob Worley opened the program. Mrs. S. K. Platt was program leader.

Following the business session, G. B. Stanley, minister of the Main Street Church of Christ, spoke to the group. The topic of his speech was "Moral Values--What are They?"

Joe Harper, superintendent of Olton Schools, will be speaker at the February PTA meeting.

Science Club Visits Studio

Eleven members of the Olton Science Club toured the KDUB television and radio stations Saturday, in Lubbock. The tour was one of several field trips planned by the club throughout the year.

Members of the club making the tour were Geneva Curry, Bitsy Maxey, Barbara Kirkpatrick and Lana Hair, Nicky Redinger, Harvie Jordan, Barry Prestridge, Joe Price, Bennett Worley, Robert Priest, Sammy Kendall and James Caley sponsor.

Olton Boy Named To H-SU Group

Charter members of Tau Alpha Phi, a new organization on the Hardin-Simmons University campus have been announced. They include Jackie Pinson of Olton and James Pressley, of Littlefield.

The social organization has been approved by the H-SU General Affairs Committee and the Student Council. Officers for the club have not been elected.

30 OHS Students To Go On Trip

Approximately 30 Olton High School students who are taking the Spanish course will make a field trip to Monterey High School, Lubbock Jan. 24. They will attend a Spanish workshop at Monterey.

Lunch will be served to the group at a Mexican restaurant. The students will be accompanied by Mrs. Ardath Smith, sponsor.

290 Students Get Diphtheria Shots

Two hundred and ninety diphtheria shots were given to students of Olton Schools last week by Leta Bell, school nurse. Miss Bell visits Bohner School

one morning each week and gives the students vision and hearing screening. She also gives dental checks at the school.

Golfing starlet, Myrtle Munn Had two husbands, just for fun "Till she thought: "What have I done? Bigamy, and with a gun Myrtle made a hole in one.

NOTICE TO PARENTS OF SCHOOL AGE CHILDREN

The school census is being taken during the month of January this year. All children who are six years old or before Sept. 1, 1961 but will not be 18 or older on or before that same date should be counted in this census. It is very important that all children six to 18 years be counted in this census. The child should be counted even though he may not be in school and even though he or she may be married.

If you, as a parent, have not received and filled out a school census blank on or before January 21 you are being overlooked and should do one of the following:

1. Phone Superintendent or the School Tax Office No. 3611 and ask for a census blank.
2. Call in person at the school Tax office and get a census blank and fill it out.

Remember, if your child will be six years old next Sept. 1st he should be counted in the census now, even though he is not in school now. If he is six but not 18 or older on next Sept. 1st he should be counted now. All children from six to 18 should be counted. The six year olds who start next September to school are the ones most often overlooked in the census. Failure to count them costs the school and taxpayers extra money. Please help us not to overlook anyone.

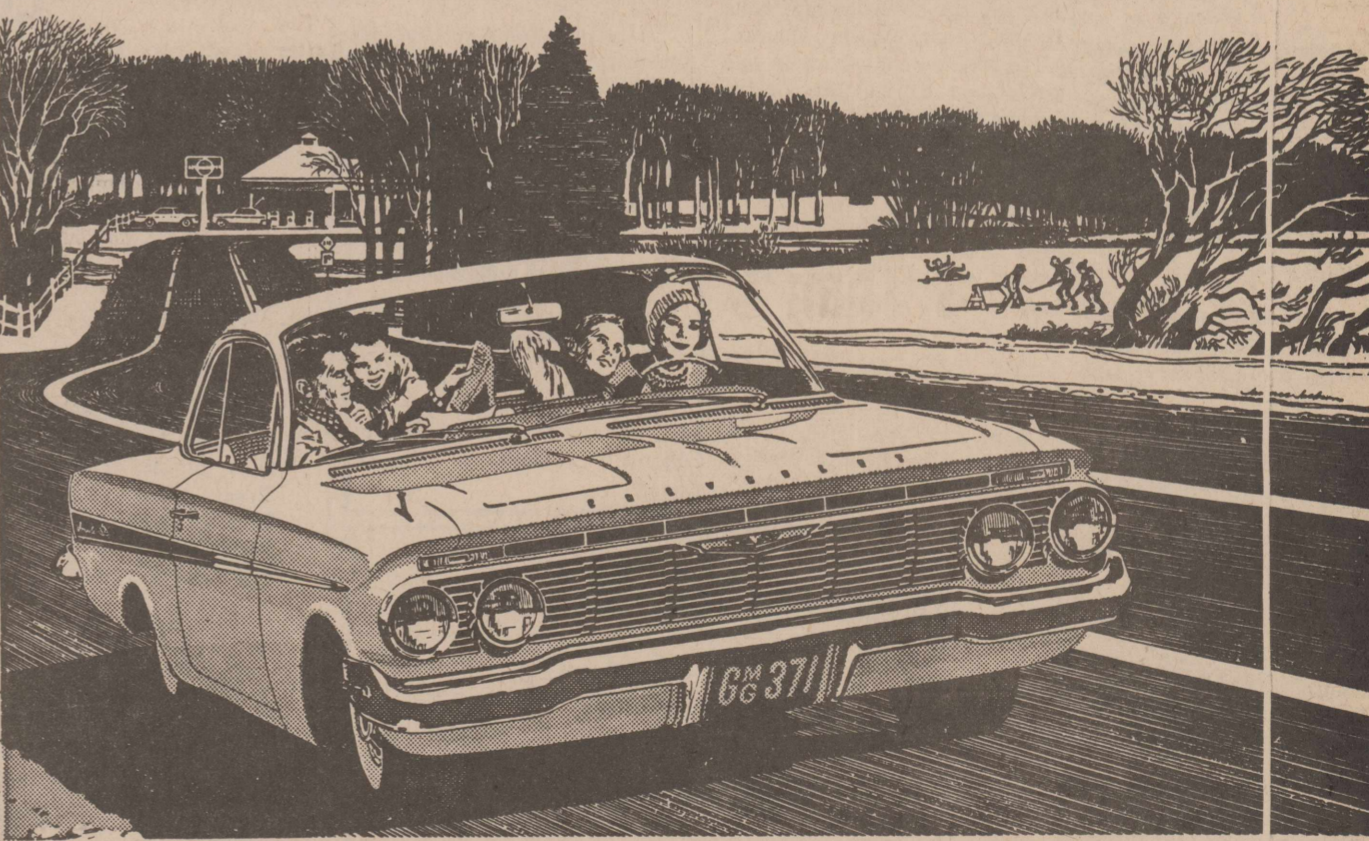
Please read the census blank carefully, fill it out completely, and return it by your child next day to the teacher. Thank you.

On back side of Census Blank, please list all children in your family Under 6 Years of Age, giving month, day, and year of birth. This will give us more concrete information on long range school planning.

Don't Wait 'till Feb. 1st to turn your blanks in--as that will be too late.

Olton Public Schools
Dorman Thomas, Census Officer

Important news for new-car buyers-- THE '61 CHEVY BRINGS JET-SMOOTH TRAVEL DOWN TO EARTH



HERE'S WHAT GIVES CHEVY ITS JET-SMOOTH RIDE--

- Full Coil suspension--Chevy's one of the few cars with a coil spring at every wheel. Precision-balanced wheels
- For smoother rolling with less vibration. Sound-insulating insulation--Sheet metal is carefully insulated against drumming and vibration. 51 built-in "shock absorbers"
- Cushion the chassis against shock and shake. Live rubber body mountings--Extra-large butyl rubber cushions that further isolate the ride from the road.

Better just circle your dealer's block the first time you try a Jet-smooth '61 Chevy. Get anywhere near an open highway and he's liable never to see you again.

What we mean, Chevy's ride whets your yen to travel. Wins you over with its delightful coil-spring smoothness, its hushed comfort and light steering. You find yourself feeling sorry for people who buy higher priced cars, thinking they have to pay premium prices for a luxury ride.

That may have been true at one time, but not any more. Chevrolet's ride, its roadability, just doesn't take second place to anybody's. Drive one soon and see.

See the new Chevrolet cars, Chevy Corvairs and the new Corvette at your local authorized Chevrolet dealer's

THOMPSON CHEVROLET CO.
Phone 5551 Olton, Texas

THE HART BEAT

Hart To Hart

Mr. and Mrs. Ed Barbee and family of Lubbock enroute to Hereford stopped Sunday for a short visit with Mr. and Mrs. Earl Hacker and family.

Mr. and Mrs. Jack Hankins and grandson Johnny Smith left for Dallas Friday to spend the weekend.

Mrs. Bid Oler and family of Happy visited friends and relatives in Hart Sunday evening.

Mr. and Mrs. Hubert Maples had lunch Sunday in Hereford with her sister and husband, Mr. and Mrs. Bones Hunter.

Kenneth Warren, Army Reservist has returned to Ft. Leonardwood, Mo., for about six weeks more of basic training. He spent the holidays in Hart with his parents, Mr. and Mrs. Ray Warren, and other relatives and friends.

Bill Sharp is improving in an Amarillo Hospital, where he has received treatment the past two weeks.

Mrs. Jim Height received gum surgery in Lubbock Hospital Friday.

Mrs. T. B. Cox was hospitalized two days last week with an infection in a finger.

Recent visitors in the home of Mr. and Mrs. Fred Hamm were their children and grandchildren. Mr. and Mrs. W. P. Holland Jr., Mr. and Mrs. Gerald Coffey and children of Amherst, Mrs. Evelyn Hamm and children of Dallas and Cecil Hamm of Amarillo.

Claude Ray attended the funeral of a cousin, Charles Burke, at Seymour, Burke was killed in a plane crash.

Mr. and Mrs. Bud Roberson and Tonya were Sunday dinner guests of her parents, Mr. and Mrs. O. C. Kittrell. The families later drove to Lubbock to visit another daughter of the Kittrells, Mr. and Mrs. M. A. Davis and son.

Mr. and Mrs. Paul Brooks, Neoma and Sharon were Sunday dinner guests of Mr. and Mrs. Joe Newman and family.

The Hart Gun Club held a Gun Shoot Sunday afternoon with Melvin Aven winning second place.

Cub Scouts and all parents are urged to attend the Cub Scout Pack meeting Monday at 8 p.m., at the Legion Hall.

Colored pictures of school children and those of pre-school age will be taken at the school Jan. 17 at 1 p.m.

Frank Conrid is doing nicely in Amarillo Hospital after undergoing eye surgery last week.

A. R. Townsend has been in Castro County Hospital with pneumonia.



MONTA KENNEDY

Miss Kennedy To Wed Feb. 11

The engagement and approaching marriage of Miss Montana Jean Kennedy has been announced by her parents, Mr. and Mrs. Paul Kennedy of Hart. Monta Jean will marry Tony R. Smitherman, Feb. 11, in the Methodist Church, Hart.

Parents of the prospective bridegroom are Mr. and Mrs. M. M. Smitherman, also of Hart.



MRS. RALPH MYRICK

Miss Rice, Ralph Myrick Are Married

Miss Virginia Alleene Rice and Ralph Myrick were united in marriage Saturday afternoon in the Hart Baptist Church. The double-ring ceremony was performed by the Rev. Denzil Leonard, pastor of the church. For her wedding, the bride chose a black suit and a white corsage.

Mrs. Myrick is a junior in high school. Her husband is a senior student. Mr. and Mrs. Myrick have made their first home at Hart.

VISIT IN CANYON
Mr. and Mrs. H.R. Curtis visited in Canyon with relatives Sunday.

Smitherman-Ford Nuptials Are Read

Miss Edith Rue Smitherman and John Guy Ford Sr. were married Saturday afternoon at the Hart Methodist Church. Performing the double-ring ceremony was the Rev. Lee Crouch, pastor of the church. Parents of the newly-wed couple are Mr. and Mrs. M. M. Smitherman of Hart and Mr. and Mrs. John Guy Ford Sr., of Canyon.

The bride, escorted and given in marriage by her father, was attired in a beige dress of satin brocade. She wore a tiny bone colored hat and matching gloves and shoes.

Her bridal bouquet was composed of white gladiolas and mums with lemon leaves and white net streamers.

Attending the bride as maid of honor was Miss Mona Jean Kennedy of Hart. She wore a gold two-piece jersey dress and she carried a bouquet of bronze mums.

Willis A. Hawkins Jr., also of Hart, served as best man. The fellowship hall of the Hart Methodist Church was the scene of the reception following the wedding ceremony. A white cake decorated with white roses formed the centerpiece for the table. An ecru lace cloth over white covered the reception table.

Following a wedding trip to points of interest in West Texas, the couple is now at home in Canyon.

Mrs. Smitherman is a graduate of Hart High School. She attended Jessie Lee's Beauty School at Lubbock.

The groom is a Canyon High School graduate. He served two years in the United Marine Corps, and now is employed by the DeKalb Feed-Seed Store, Canyon.

Relatives of the bride and bridegroom attended the wedding.



MRS. GUY FORD

Hart Senior HD Club Has Meeting

Mrs. Buster Aven served as hostess Jan. 3, for a Hart Senior Home Demonstration Club meeting. The meeting was held at the Aven home.

"Goals for 1961" were discussed by Mrs. W. A. Hawkins Sr. Committees were appointed for the new year.

Members attending were Mmes. Paul Brooks, Hawkins, Percy Hart, T. U. Smith, A. L. Aven, Fred Hamm, J. D. Murray, E. E. Foster and the hostess.

The A. L. Aven home will be the setting Jan. 17 for the next meeting. Time for the meeting will be 2:30.

Farmers Union To Meet At Hart

The public is invited to attend a Hart Farmers Union meeting at 7:30 p.m. Jan. 20 at the Legion Hall.

A film, "Mechanized Frontier," made in Canada, will be shown.

Hart Lions Club Hears Slide Program

At the regular meeting of the Hart Lions Club this week, 26 members and 9 guests observed a slide program presented by Charles Hottel, Castro county agent.

Hottel's program was concerned with the "4-Point Farm Program" (1) soil testing, (2) fertility balance, (3) soil and water management, and (4) crop testing.

The club also heard a report on their adoption of a European war refugee child at one of the Lion S. O. S. Children's Villages near Vienna, Austria. The club has adopted one of these children for a year, and negotiations are now in the mail. Two new members, Lee Purcell and Cell Kendrick, were taken into the club.

Hart Classified

LISTINGS WANTED--Hart Real Estate, Norlan Dudley. 44-TFC

ALL KINDS of insurance--Hart Insurance Agency, Norlan Dudley. 44-TFC



"Some experts believe that if all the polls taken were laid end to end they would still lie."—Bert Kruse.

"A jury under the American system is a group of twelve citizens who could not exert enough influence to be excused."—Franklin P. Jones.

"If children didn't ask questions, how could they find out that we know so little?"—Herbert V. Prochnow.

Hills Parents Of New Daughter

Mr. and Mrs. Bill Hill are the parents of a little girl born to them in their home at 4:15 a.m. Monday. She was named Tama Jean and weighed 7 pounds and 12 ounces.

Mrs. Hill and daughter were taken to Medical Center in Plainview Monday.

Grandparents are Mr. and Mrs. John Stark of Nazareth and Mr. and Mrs. Homer Hill of Hart.

The Bill Hills have three other children, all boys.

New Daughter Born To Hicks

A baby girl, Sharla Denise, was born to Mr. and Mrs. Joe Hicks of Hart Tuesday, Jan. 3, at 2:34 a.m. in the Community Clinic.

Sharla Denise weighed 7 pounds, 10 ounces at birth. Mr. and Mrs. Hicks have two other children.

Grandparents are Mr. and Mrs. Earl Hacker of Hart and Mr. and Mrs. H. L. Hicks of Dallas.

HINES VISIT IN BEAUMONT
Mr. and Mrs. Clifton Hines visited in Beaumont with Arnold Hines, last week and then toured the Rio Grande Valley.

GUESTS IN BROWN HOME
Dec. 27 guests in the Elsie Brown home were Mrs. Mary Taylor of Lubbock, Mrs. Bill Schreier and Linda of Abernathy, Mr. and Mrs. J. J. Vineyard also of Abernathy and Mr. and Mrs. A. J. Brown of Truth or Consequences, N.M.

Henderson TV Repair Service At Night In Hart

Phone MI 7-3636 in Dimmitt

Hart WE-8 3234

We Appreciate Your Business See Us For Repair Of Car, Tractor And Irrigation Motors Sweeps, Chisels And Deep Mulchers
HART TRACTOR SUPPLY
Call WE 8-5328

Loyalty Dinner High School Gymnasium Jan. 19, 1961, 7 P. M.

The First Baptist Church of Hart, Texas, is having a Loyalty Dinner Thursday night, Jan. 19, in the High School Gymnasium. The F.H.A. girls of the Hart High School will have charge of the preparation and serving of the dinner. There is no charge for this dinner and no drive will be made for funds. It is a time when the members and their families will get together for a good time with one another. Mr. Charlie Martin is chairman of this Loyalty program and the steering committee consists of Mr. Glenn Reed, Rodney Smith, and Jimmy Davis.

Dr. Neil Record of Tulsa will be the speaker of the evening. Music will be under the direction of Mr. Milton Sharp. A Nursery will be provided for all children through 3 years of age. A "Children's Party" will be held in the Fellowship Hall for the Beginners and Primaries. Juniors up will meet in the gymnasium.

Others helping with this program are Weldon Davis, Mrs. Lloyd Davis, Mrs. Myrt Loman, and Mrs. Charlie Martin.

If you are a member of the Hart Baptist Church and plan to attend and have not signed a card, please call Mr. Weldon Davis or Mrs. Lloyd Davis immediately.

First Baptist Church
Hart, Texas.
Dinzel Leonard, Pastor

CARD OF THANKS
I wish I could thank each of you personally for your kindness shown me during my recent illness. Your cards, letters, calls, flowers, visits and blood helped me to a speedy recovery. May the Heavenly Father bless each of you as I have been blessed.
Mrs. Evelyn Davis

BASEBALL PLANS
The First Baptist Church is organizing a R. A. baseball club for the coming season. The club is under the direction of Harmon Bishop. Any boy wishing to play on the R. A. team should contact Bishop or Preston Upshaw.

PARSONS Funeral Home
"AS NEAR AS YOUR NEAREST TELEPHONE"
Oxygen equipped ambulance Service.
We accept any funeral home burial policy.
Phone 5211 Olton

TO KANSAS REVIVAL
The Brotherhood of the Hart First Baptist Church is leading in a revival in the First Baptist Church in Haysville, Kansas, this weekend. Those going will be Preston Upshaw, Milton Sharp, B. H. Rogers, Mr. and Mrs. Weldon Davis, and Rev. Dinzel Leonard.

B. W. Armistead, O. D.
Glenn S. Burk, O. D.
OPTOMETRISTS
406 LFD Drive - PH. 385-5147
Littlefield, Texas

ARE YOU ONE OF THE 3 TYPES OF WOMEN WHO DOESN'T USE A GAS CLOTHES DRYER?

MRS. SEMORE CASH
Money means nothing to her. Has a wealthy husband who pays all the bills without batting an eye. She just buys... and, of course, uses nothing but the most expensive, whether it's automobiles or appliances. (What else can a woman of her social position do?) She's not concerned with the phenomenal savings in operating costs of a Gas Dryer. Twenty-five dollars a year? Trivia, my dear Cavendish!

MRS. I. M. CAREFREE
Time means nothing to her. No kids to keep up with... belongs to no clubs or organizations... doesn't have to fit her hours to any particular schedule. She's not impressed by the fact that the faster performance of a Gas Dryer provides precious minutes to the harried homemaker with an over-crowded schedule.

PRUNELLA HARDTACK
You can't convince HER that the clean, live flame in a Gas Dryer is completely isolated from the clothes... that National Fire Underwriters statistics prove Gas near the bottom of the list as an accident cause... that the low heat—high air flow principle of Gas Drying is completely safe for even the daintiest of synthetic fabrics. No matter how valid the advantages, she'll stick with her prejudices.

RIGHT NOW, YOUR GAS APPLIANCE DEALER IS OFFERING THE YEAR'S BEST BUYS ON FAMOUS-NAME GAS DRYERS. IF YOU'RE NOT ALREADY USING GAS FOR DRYING, THIS IS THE TIME TO CHECK THE FACTS. LIVE MODERN... FOR LESS... WITH GAS!
Fuel for a growing empire Pioneer Natural Gas Company



But rather seek ye the kingdom of God, and all these things shall be added unto you.—(St. Luke 12:31)

Those who love God with all their hearts and souls, who surrender their will to His and trust Him completely, will find that all their just and good needs are met abundantly. There is always more at the fount than we can absorb.

Auctioneer Dean Sanders
Phone WE 8-4557
Hart, Tex.

Income Tax Returns
Claude Cox
Hart, Texas
Phone WE - 83231

Vera's Green Frog Cafe
Under New Management
Formal Opening Jan. 18
2 To 5 P. M.
Good Coffee And Home Cooked Meals.
Bring The Family And Come See Us.

My Neighbors



"All Mom got was that one present, and she didn't even cry!"

JOE NEWMAN Auction Service
Farm Or Commercial Sales

Office	Hart	Home
Phone		Phone
3218		3727