



**TIME TO WRITE SANTA**—Bryan and Brynae Allcorn, son and daughter of Mr. and Mrs. R.V. Allcorn, mail their letter to Santa as Postmaster I.B. Holt looks on approvingly. The eye-catching mail box and display at the Post Office was prepared by Mr. and Mrs. Bub Holt. The Enterprise will carry all letters mailed to Santa in the next two editions.

## Board Notes Gains, OK's New Contract For Clark

Record Take At Bowling Center

### Burglars Haul Off Cash

Burglars made off with the biggest cash haul in at least 17 years here Sunday night. Someone took \$1,456.09 from Olton Bowling Center sometime during the night.

"It's the largest amount of money taken in a burglary since I've been a deputy here," V.L. Smith said. Smith has been on the job 17 years.

Asked how the investigation was going early this week, Smith said: "We may be able to clear it up soon."

The money was taken from a cash drawer which had been placed in a steel filing cabinet in Manager H.C. Stewart's office.

The cabinet apparently was unlocked, because it was not damaged in any way when it was opened. Officers were told it was thought to be locked, but apparently had not been pushed to the locking point.

Smith said entrance to the bowling alley was gained through a back door, where a pry bar or screwdriver apparently was used to pry open the door to a point where it would unlock.

Fingerprints were obtained from the filing cabinet by the investigating officers, Smith and Elson McNeese, deputy sheriff from Littlefield.

### Financial Situation Improved

Olton school trustees, making note of big improvements in the school district's financial status, gave Supt. Johnny Clark Jr. a vote of confidence in the form of a three-year contract with a salary boost Tuesday night.

The board, meeting in regular session, made the three-year pact with a raise of \$700 per year effective July 1, when Clark's present contract expires.

The 33-year-old Clark came here last summer from Wilson, succeeding Joe Harper, who went to McKinney.

Employed at \$9,000 here last summer and now receiving \$10,300 per year as a result of the state's new school legislation, Clark will be paid \$11,000 per year under the new contract.

The action on the superintendent's contract came toward the end of a session which finally broke up about 1:30 a.m. Wednesday.

Prior to that the board had: 1. Heard a report on credits for state funds picked up in 1961-62 which will mean an additional \$30,000 in money for the local district this year.

2. Approved a salary increase of \$500 per year for Dorman Thomas, school business manager, making his annual salary \$7,000.

The board said the action was being taken to bring Thomas' salary more in line with those of comparable positions of other school districts, and up to a level indicated by new school legislation.

In other action, the board approved its annual audit, heard average daily attendance reports, appointed Bud Scribner to fill a custodial vacancy, named Wandie Hutson as a new school bus driver to replace Mrs. Elmer Lewis, and appointed a textbook committee and a census trustee, Mrs. Rex Chitwood.

Explanation of how the school district would be credited with an additional \$30,000 was probably the best school news the board has heard in months.

Until Tuesday night, it was generally understood that the district's share of school costs would be up \$21,532 in 1961-62, although Clark had been working for months to get that situation improved.

With the passage of the new school law by the legislature and the state-wide increase of teachers' salaries, it appeared the local district's share of costs would rise from \$43,789 in 1960-61 to \$65,321 in 1961-62.

However, credits were picked up in the homemaking and vocational agriculture departments, totaling about \$3,000;

CONTINUED PAGE 2

## Hepatitis Hits Olton, But No Epidemic Seen

"There is no indication that the disease will reach epidemic proportions," one doctor said this week after two cases of infectious hepatitis were reported in the Olton schools.

One case was reported in the first grade and one in the seventh grade, according to Johnny Clark, superintendent. Shots are being given by some doctors to their patients in grades one through junior high.

It was not felt that the shots should be recommended for anyone other than those in these grades unless a special condition in the individual indicated it.

The shots are said to be effective in lessening the chance of getting the disease or in modifying the case.

There is, generally, no reaction to the shot. The effectiveness lasts approximately one month.

"There is no reason for alarm," one doctor said. "It is simply something to be guarded against."

Another said that several cases of hepatitis were treated every year in the hospital with which he is associated.

Doctors contacted said early symptoms of hepatitis were fever, aching and upset stomach. One doctor described the first symptom as a "feeling of feeling bad." Another compared the first symptoms to those of influenza.

"A patient will usually be sick for three or four days with these symptoms and then they will sometimes start turning yellow," one doctor explained.

He added that many people have the initial stage but the body overcomes it and they never actually have hepatitis.

The disease is said to be transmitted from person to person or by contamination of food or water.

never actually have hepatitis.

The disease is said to be transmitted from person to person or by contamination of food or water.

### SANTA ARRIVES HERE SATURDAY

Old St. Nicholas will make his annual arrival in Olton this Saturday at 2 p.m. at the Olton square.

According to reliable sources, Santa will be well supplied with candy for the kiddos.

The visit is sponsored by the Olton Chamber of Commerce and Agriculture.



**LOTS OF LITTER**—County Commissioner A.J. Spain, in front, displays an old overshoe which he found on an area road. Deputy Sheriff V.L. Smith stands beside a truck load of trash Spain picked up on one mile of road east of Olton. A Litterbug Campaign, sponsored by the Olton Garden Club, got underway here this week.

### Garden Club Leads Project

## Litterbug Campaign Launched

A "Litterbug Campaign," designed to clean up the city and area, was kicked off in Olton this week by the Olton Garden Club.

Working with the club in the campaign will be the Girl Scouts, Boy Scouts, schools, Chamber of Commerce and Agriculture, County Commissioner A.J. Spain, and various local clubs.

Mayor M.T. James said the city planned to furnish men and trucks to help with the work.

Students in Olton schools are making posters to be displayed in the schools and are taking as their project, the cleaning up of classrooms and school grounds.

Deputy Sheriff V.L. Smith

said the fine for littering roads is from \$10 to \$200.

Smith said there have been occasions where people were caught and fined in Justice of Peace court for littering roads. He added that anytime he receives a complaint on littering, he will enforce the law.

The Garden Club plans to put posters in local firms promoting the campaign.

CONTINUED PAGE 2

## More Investigation Indicated After Welfare Change Made

More thorough investigations in Lamb County welfare cases were indicated this week after the announcement that the offices of County Welfare and American Red Cross in Littlefield will be separated come Jan. 1.

Mrs. Lyle Brandon, director of the County Welfare, said this week that with more time to devote to welfare cases, it is hoped to have investigations that will give better service to those really in destitute circumstances and to prevent those who are not from taking unfair advantage of the program.

Mrs. Brandon will be working full time with County Welfare and will no longer be connected with Red Cross.

### GINNERS BEHIND 'JUST A LITTLE'

"We're just a little bit behind," was one ginner's wry comment this week with 5,144 bales sitting on local yards waiting to be ginned.

Ginnings Wednesday afternoon totaled 22,275 bales ginned with the six area gins going full blast. A total of 27,419 bales had been weighed in at the gins.

This time last year, ginnings stood at the 32,000 mark.

The County Welfare office will remain in the same location in the court house.

The Red Cross will occupy one of the offices in the basement of the courthouse vacated

by the ASC office with Mrs. Norman Frey as executive secretary.

Mrs. Frey has had three and one half years experience in the Littlefield Red Cross office.

## Home Building Decrease Noted

Although private home building in Olton in the past year was not at the previous year's pace, it held up better than it did in many parts of the country.

In dollar value, private home building in Olton during the past year totaled approximately \$150,721, a still sizeable figure.

Nationally, the home building industry suffered a setback as the amount of new construction dropped to nearly the lowest level in a decade.

The letdown, which was about 18 percent, represented a decrease of \$2.4 billion in the year.

Private home building in Olton in the previous year totaled \$194,652. This is \$43,931 more than was shown during the past 12 months.

According to building permits issued during the period, 24 new dwelling units locally were listed.

Median construction cost was \$6,280.

This cost price was somewhat below the average for what in the rest of the United States, the median being \$11,290 per unit.

This can be attributed to the fact that many of the new units in Olton were low cost, one or two room dwellings.

In relation to population, the amount of new housing in Olton was at the rate of approximately 12 dwelling units per 1,000 people.

The rate throughout the

CONTINUED PAGE 2

## Applications For Golf Pro Being Taken

Applications for a combination golf pro-greens keeper-manager of the Olton Recreation Center are now being accepted by the ORC board.

One application had been received Wednesday. Fred Pendergrass, formerly associated with the Canyon and Andrews country clubs, has applied for the job here.

A nominating committee for new officers was appointed at a meeting of the ORC board Monday night.

Owen Norfleet is chairman with members, Nig James, Shirley Roberson, Dan Gregory and Carrol Cox.

The committee will report to the board at the January meeting and the new officers will be elected at the general meeting in February.

## Christmas Trees Now On Sale

The annual Christmas tree sale, sponsored by the Olton Fire Department, is now underway.

Trees are displayed on the lot next to the fire station.

Prices range from \$2 to \$5 for selections which include spruce and pine.

Proceeds will be used to sponsor the cub scouts.



**RECEIVE HONORARY DEGREES**—Bill Dickenson Sr., Olton, standing at left, and Guy Nichols, Mulleshoe, center, were presented plaques as honorary Lone Star Farmers by Kenneth Blades of Olton FFA, right, district FFA president. The awards were made last Thursday night at the annual district FFA banquet. Seated at left is Bob Stephens, Lubbock radio man, main speaker of the evening.



**NEW C-CA DIRECTORS**—Announced this week as new directors of the Chamber of Commerce and Agriculture were, from left, Dan Gregory, Ed Thompson, Owen Jones, Johnny Clark and Delmer Givens. Gregory, Thompson

and Clark are businessmen named to the board and Givens, Jones and George Redinger (not pictured) are new farmer-directors.

# The Olton Enterprise

Published each Thursday at Olton, Texas.

Subscription rates: \$3.00 per year in Lamb and neighboring counties; \$5.00 per year elsewhere.



BILL TURNER... PUBLISHER  
AMY TURNER... NEWS EDITOR  
KAY CHERRY... SOCIETY EDITOR  
MAENETTE HOUSTON... OPERATOR  
DUANE WHITELEY... COMPOSITOR  
LANA HAIR... PASTE-UP  
GENEVA CURRY... PASTE-UP

Entered as second class matter at the post office at Olton, Texas, under the act of Congress, March 3, 1897.

Any erroneous reflection upon the character, firm or corporation which may appear in the columns of The Olton Enterprise, will be gladly corrected upon being brought to the attention of the publisher.

## This Is Freedom?

"Government of the people, by the people and for the people..."

These are great words, but if they are only words with little or no meaningful application, we had better find some new ones.

Something like this might strike nearer home:

"Government, regardless of the people." The recent incident at Slaton were the Department of Labor has ordered the city to open its swimming pool to Latinos is just another example of this "free" government of ours.

Just what the Department of Labor has to do with an integration problem is not exactly clear to us.

Mexican Nationals do not pay any of the taxes to support this pool.

Yet the Department of Labor is threatening to blacklist the city unless they "remove the discriminatory restrictions" in 30 days.

You might say that this is not exactly any of the Labor Department's business. If they make it stick, however, they've made it their business.

The surprising thing is not that this thing happened, but that so many people were surprised by it.

Our federal government, with our silent permission, has year after year continued to become more powerful. It follows that

you, as the individual citizen, continue to become weaker.

A representative of the federal government can walk into your place of business or home on any day of the year and give you your orders.

Of course you have the right to appeal. But it's little more than a delaying action. Your chances of winning any case against the federal government today are, conservatively speaking, less than good.

If you think you're in a "free" country today, just try planting a few more acres of cotton.

You have your constitutional rights? Let's amend that to say you have those constitutional rights which the federal government decides to let you have.

According to the Constitution, the matter of education is a state concern. But those troops in Little Rock were certainly federal. Who got us into this mess, anyway?

You did. We did. The truth of the matter is that we have been too lazy to do our own thinking. It's easier to let someone else work out all these problems.

Could be.

We can still do just that. All we really need is a good dictator.

And, as we all know, our government likes to take care of all our "needs."

## Safety Measures For Farm Vehicles On Roads Told

BY C.A. DEMPSEY  
Safety Officer, Lubbock (SPECIAL TO THE ENTERPRISE)

Using the farm tractor for an all-purpose runabout is a dangerous practice. No one should use a tractor for trips not directly related to field work.

Slow moving vehicles are one of the major problems of rural highway travel. Many of them are inadequately lighted or lack proper identification with which to warn motorists.

It is up to the operators of slow moving farm vehicles to practice courtesy whenever they can. When it is possible the farm operator should pull his equipment onto the shoulder and allow faster moving traffic to pass.

Although the farm operator has a privilege to move his farm vehicles and equipment upon the roadway, he should be willing to pull off the roadway for his own protection. This may prevent him, his farm vehicles and farm equipment from being involved in an accident.

It has been observed that many farm tractors, vehicles, and motorized equipment, while upon the roadway, are so designed or are pulling other vehicles and equipment that the operator is unable to ascertain the approach of traffic from the rear. Under such conditions these vehicles and equipment should have a rear view mirror like those used on a truck and bus, enabling the operator to see the approach of traffic from the rear.

However, in many instances where there were no such obstructions in rear of the operator, it has been observed the operator has been negligent in failing to turn his head to check for the approach of traffic from the rear.

This type of operator becomes a "road hog," creating traffic congestion, and endangering the lives of others as well as himself. Farm vehicles should be operated only by mature, responsible persons upon the highway.

## Gin Helper Injured Here

Manuel Canales, gin helper at Smith Gin, was taken to the Plainview Hospital Nov. 29 by an ambulance from Parsons Funeral Home after an accident at the gin.

The man's hand was amputated after it was caught in a gin saw.

In another ambulance call Thursday, Mrs. R. W. Cox of Hart was taken home from the Methodist Hospital in Lubbock.

Dear Santa Claus,

My name is Kathy and I would like for you to bring me a stove, doll and a play hair dryer. I am two years old.

Dear Santa, Please send me some shoulder pads, thigh pads, jersey, pants, helmet, and hipp pads for Christmas. Send me some that are size 10. Thank you. Sincerely yours, Andy Castillo

Dear Santa Claus, I am six years old and would like to have a Thumbelina doll and clothes for her too. Merry Christmas. Truly yours, Leti Renaud

mobile one mile behind it traveling 60 mph, or 88 feet per second can overtake the farm tractor in one minute and 20 seconds. The automobile has an overtake rate of 66 ft. per second or 45 mph.

The farm tractor operator should be alert for approaching traffic to his front, making sure the car behind can pass safely to the tractor's left. If there is a chance that the car from behind cannot see until it has caught up with the tractor, that will prevent his passing safely usually the farm tractor will be ran into from the rear. In this case, the farm operator should pull the tractor off onto the shoulder to prevent congestion and save lives, injuries and property.

### PROBLEMS INVOLVING FARM VEHICLES, EQUIPMENT AND OTHER VEHICLES

Most rural two-lane roadways are 16 to 20 feet wide. In this problem let's use the 20 foot width. The stop sign on the side road is 40 feet from the pavement edge plus about 12 feet for the length of the tractor, adding up to a total of 72 feet the tractor operator must go in order for the rear of his tractor to clear the pavement edge on the far side of the roadways.

Here are some actual results that were conducted using a tractor 12 feet in length with no equipment attached.

It took anywhere from 7 to 8 seconds, occasionally 9 seconds, to cover this 72 feet.

An approaching automobile traveling 60 miles per hour or 88 feet per second is approaching from the tractor's right side, taking the minimum second count of 7 (7 x 88 is 616 feet), the automobile would have to be 616 feet back down the roadway when the tractor started in motion from the stop sign. In other words just as the tractor cleared the pavement on the far side the car would whiz by, close shavel

The second test involving the same tractor crossing over a distance of 100 feet. This represented the 20 foot pavement width plus 40 feet to the stop sign, plus 12 feet length of the tractor plus 26 feet for a cotton trailer and coupling adding up to a distance of 98

feet, so 100 feet was used for practical purposes. No attached trailer was used in this test. Only the tractor itself was traveling the distance of 100 feet. The time tests varied anywhere from 11 to 12 seconds, occasionally 13 seconds. If an approaching automobile traveling 60 miles per hour or 88 feet per second is approaching from the tractor's right side taking the minimum second count of 11 (11 x 88 equals 968 feet), the automobile would have to be 968 feet back down the roadway when the tractor started in motion from the stop sign.

Again, as the tractor cleared the pavement on the far side the automobile would whiz by.

Equipment mounted, attached to the tractor plus pulling other equipment and trailers will increase the time length in crossing the roadway. The engine may sputter, or die in the process of crossing. So Mr. Tractor Operator, allow plenty of time and distance for crossing roadways.

### SCHOOL BOARD

CONTINUED FROM PAGE 1

an additional teacher operational allotment was gained for Bohner school totaling \$600; and a credit of \$15,262 was picked up in local fund assignment, which determines local districts' actual share of total costs.

In addition, the state approved additional credits for an administrative assistant's position, the business manager spot held by Thomas.

With that approval, actual cost to the local district for the position was dropped from \$6,500 to \$4,646, a decrease of \$1,854. With the \$500 increase in salary given Thomas, local cost for the position will be \$5,146.

Finally, the state allowed, under new legislation, an additional \$200 per classroom teacher unit (46 in the local district) for operational expenses. This meant \$9,200 more to the local district.

With those gains, totaling \$30,012, the district is about

\$8,480 "better off financially" than it was in 1960-61.

The board had started the year thinking its financial position would be worse than last year by \$21,532.

### BUILDING----

CONTINUED FROM PAGE 1

United States as a whole was 6.7 per 1,000.

Some observers attribute the national decrease in residential building to a tight mortgage money market and to high interest rates.

Others feel that the market for new homes has become saturated, at least temporarily. They say that supply has finally caught up with demand, following a number of years of feverish building.

However, the present oversupply, if that is what it is, is not expected to last very long. Somewhat of a pickup, in fact, is being noted this year.

The real spurt, though, will not come until later. According to forecasts by the industry and by government, there will be a large-scale building boom beginning in 1965.

That is when the huge post-war baby crop will arrive at the marrying age and will start looking for homes of their own.

### Church Meeting For Area Set

An area wide young peoples meeting will be held in the Main Street Church of Christ Monday night, Dec. 11. Approximately 25 area congregations have been invited to attend this gathering.

The Lubbock Christian College Chorus will provide the entertainment at the meeting. Jack Bates from LCC will be guest speaker.

After the devotional, the young people will go to the school cafeteria and be served refreshments. Entertainment will also be provided there.

### ATTEND WEDDING

Mr. and Mrs. Tom Smith attended the wedding of a nephew, Eddy Smith, of Hale Center Friday afternoon.

## Letters To Santa Claus

Dear Santa, I am six years old and I go to Olton Grade School. I have many little friends that I wish you would remember at Christmas time. If you have enough toys to go to all little boys and girls, I would like to have a small "Thumbelina" doll, a drawing slate and a small piano. I have a sister that is ten and a brother that is fourteen, please remember them and my mother and daddy. Lots of love, Christy Cade

Dear Santa, I would like a doll for Christmas. I would also like a ice-box and washer. Bring all the other kids something too. Christmas Eve, we'll have soda pop and cookies for you. Carla Sue Moses 5 years old Rt. 1, Olton, Texas

Dear Santa, Please send me a little red spinning wheel for Christmas. Thank you. Truly yours, Nora Castillo

Dear Santa, I do not ask for much but it will cost a lot. I want a dictionary, a steam engine and a sweater. Thank you a lot. The reason I am writing like this is because don't want you to know who I am. Always, P.S. I love you

Dear Santa, I want a Gunsmoke suit, shine of gold set, Cheyenne pop gun, Battle of Blue and Gray, wagon, bow and archery, Zorro watch, and a PT-19 Trainer. Jackey Kemp

Dear Santa Claus, I am six years old and would like to have a Thumbelina doll and clothes for her too. Merry Christmas. Truly yours, Leti Renaud

DeKalb Sorghum  
Will Make You  
DOLLARS!



# BATTERY FAILURES LOST TIME

Your battery may be in fine shape. But it pays to be sure. Drive in regularly for our free battery check-up service. Need water . . . we have it, free. Need recharging . . . we do it. Need a new battery . . . we have one for you.

And when you need quick battery service . . . phone us. We'll be there in a jiffy to get you started.



## G. H. BLEY

Your Phillips 66 Jobber

Hwy. 70

Olton

# Olton Farm Supply

Don Spain, Owner

Olton, Texas

Phone 285-2404

# News Of Interest To Women

## Luncheon Honors Miss McFadden

A bridal luncheon honoring Miss Lila Lee McFadden, bride-elect of Herman Harrison, was given Saturday, Dec. 2 at 1 p.m. in the R. V. Allcorn home.

Mrs. R. V. Allcorn received the guests and then presented the honoree with a blue satin garter enhanced by lace and a white and blue satin hostery purse.

The guests were seated at tables covered with white cloths. In the center of each of the three tables a centerpiece surrounded with angel hair with two angels and a blue churchhouse in the middle was placed. The room was decorated by a huge aluminum Christmas tree decorated in bright shining colors and other

Christmas decorations. Mrs. Allcorn served the guests an appetizer of soup and tiny crackers. The meal consisted of chicken salad sandwiches, potato chips, coffee, cokes and pecan dessert.

Special guests attending the luncheon were Mrs. Paul McFadden, mother of the bride-elect; Mrs. Anna Martenn, grandmother of the bride-elect, and Mrs. J.W. Harrison, mother of the prospective groom.

Others attending were Mrs. Tommy Green, Nancy Brown, Barbara Nicholson, Shirley Cole, Nancy Critchfield, Lonna May, Sharon Smith, Hazel Harrison and Kay Cherry.

**CARD OF THANKS**

We wish to express our gratitude for all the flowers, cards and sympathy extended to us during the loss of our loved one.

The Family of Archie Hall

## Bykota Meeting Held Thursday

The Bykota Club held their regular meeting at 7:30 p.m. Thursday in the Billy Guy Thomas home.

Plans were made for the Christmas dinner that will be held Friday night, Dec. 15 at the Parkway Manor Motel in Lubbock. Husbands of the Bykotas and other guests will also attend the dinner.

The members were reminded to bring their donations for the Christmas basket for needy families to the next meeting which will be Tuesday, Dec. 12 in the Larry Witten home.

Mrs. Bobby Copeland led the prayer at the meeting.

Cake and spiced tea were served by the hostess, Mrs. Billy Guy Thomas, to Mmes. Charles Tussy, Bobby Copeland, R. V. Allcorn, Larry Witten, J. P. Nafzger, Andy Stroebel, Dan Quigley, Basil Johns and Joe Hall.

## First Methodist Bazaar Planned

The First Methodist Church women will hold their Annual Bazaar Saturday, Dec. 9 in the Roy Granbery Insurance building.

Food and handwork will be on sale and the proceeds will go to buy something for the Methodist Church or parsonage.

## Mrs. Allcorn Is Honored At Birthday Party

A surprise birthday party for Mrs. Gerald Allcorn was given Friday morning at 9 a.m. in the R. V. Allcorn home.

Coffee and birthday cake were served to the guests. A Christmas theme was used.

Ladies attending the party were Mmes. Larry Witten, Paul McFadden, Uil Gunter, Wayne Carson, Harlan Carson, H. B. Carson, Jack Allcorn, J. P. Nafzger, Garland DePrang, Harold Mills, Johnny Hodges, C.S. Silcott and Gene Don Harrel, also the hostess, Mrs. R. V. Allcorn and the honoree, Mrs. Gerald Allcorn.

## Sunday School Class Meeting Held Wednesday

The Rebecca Sunday School Class of the First Baptist Church met Wednesday morning in the Fellowship Hall with members of Golden Circle Class as guests.

Mrs. C.S. Silcott gave a book review, "A Recipe For A Merry Christmas," by Handel H. Brown.

The group sang Christmas carols led by Mrs. William DeBerry.

Present were Mmes. William DeBerry, W.D. Holley, M.T. James, Vernon Britton, C.W. Leathers, W.A. Andrew, A.G. Huguley, Walter Lewis, Duward Price, Royce Collins, Bobby Hodges, Mrs. Silcott and Mrs. Roy Hooper, teacher.

## Bible Class Meeting Held

Ladies' Bible Class No. 1 met Wednesday morning in the Main Street Church of Christ. Alfred White, minister, taught the class on Matthew 24.

Ladies present were Mmes. D. R. Davis, Bill Bennett, T. Combest, R.A. Lewis, M.R. Cavett, J.H. Capehart, Lee Potett, Ed Hestand, C.M. Owen, Elmo Bryant, Sidney Allen, J. C. Deare, M. L. Armstrong, O.B. LaFrance, W.H. Leathers, W.B. Rose, Jack Edwards, Fred Hicks, G.F. Parker, C.T. Hulse, C.E. Hysinger, R.L. Chitwood, Authur Couch, W. M. Smith, J.C. Barkhalter, W. L. Thomas and Sallie Copeland.

## Golden Agers Plan Party

The Golden Agers will hold their annual Christmas Party at 2:30 p.m. Friday, Dec. 15 in the American Legion Hut.

Each member is asked to bring a gift not to exceed the price of one dollar.

## Visit Petersons

Visiting in the G. L. Peterson home over the weekend were their two daughters, Mr. and Mrs. Wendell Cavett of Fritch, and Mr. and Mrs. Bob Ballard and Robert Carl of Dimmit.

## Yours..... FREE

...with your subscription to

# THE OLTON ENTERPRISE

There are no strings attached to this offer. Any one of these books is absolutely free with a new subscription or a two-year renewal to this newspaper.

Each of these books is one of the most popular books written on the subject covered. Each contains over 800 pages and many illustrations. Well-printed, durable—they are books you will use for reference for years to come.

To get your book, simply fill in the coupon, check your choice of books, and mail coupon with your check for \$3.00 plus 6 cents state tax for a new subscription or \$6.00 plus 12 cents tax for a two-year renewal.\* Or better yet—come in to the newspaper office and see the books to make your choice.

If you want more than one book, you may get as many as you wish by extending your subscription for an additional year.

Your choice of volumes is absolutely free with a new subscription or two-year renewal to the Olton Enterprise. Additional volumes may be bought for \$2.00.

Why not stop in the newspaper office today and make your selection. Or, if you prefer, simply mail the coupon, tell us which book or books you want and enclose your check for \$3.06 for a new subscription or \$6.12 for a two-year renewal.

\*These prices apply to subscriptions in Lamb and adjoining counties only. In other parts of Texas, new subscriptions are \$5.00 plus 10 cents tax and two-year renewals are \$10.00 plus 20 cents tax. These prices also apply to out-of-state subscriptions, less state tax.

Any one of these

# \$3.98

books

Give The Christmas Gift That Lasts The Entire Year... And Take Advantage Of This Bonus At The Same Time

Send Me The Following.....

The Cook Book       Webster's Dictionary

The Garden Book       Holy Bible

NAME \_\_\_\_\_ ADDRESS \_\_\_\_\_

My Check For A New \_\_\_\_\_ Or Two-Year Renewal \_\_\_\_\_

Subscription Is Enclosed.

## HOLIDAY HAIR-DO



STYLE WITH A SMILE—Mrs. Pat Meinecke seems pleased with this bouffant hair style created for her by Sue Hair. The style features a forward movement on the sides over the ears. COLONIAL SALON specializes in creating a style for the individual.

## Miss McFadden To Be Honored

A bridal shower honoring Miss Lila Lee McFadden, bride-elect of Herman Harrison, will be held in the Ray Culwell home Tuesday, Dec. 12 from 3 to 5 p.m.

The public is invited to attend the come and go shower.

## Study Club Meeting Held

The Olton Study Club met Monday, Dec. 4 at 7:30 p.m. in the D.M. Granbery home. The theme of the meeting was "No entertainment is so cheap as reading nor any pleasure so lasting," quote from Lady W.M. Montague.

A book review, "The Night They Burned the Mountain," by Dr. Tom Dooley was given by Mrs. Glen Singletary. Mrs. Jack Straw led the prayer.

Ladies present were Mmes. Roye Aikman, Jack Allcorn, Brent Burrow, Paul Burrus, H.B. Carson, Jim Fuller, D.M. Granbery, Bailey Hiar, Carl Hooper, Basil Sherman, Glen Singletary, Ray Slatten, Marshall Stone, Jack Straw, Jim Williams and Bill Yates.

The next meeting of the Olton Study Club will be Monday, Dec. 11, in the Brent Burrow home. It will be a Christmas party and dinner. Mrs. Brent Burrow will be hostess with Mrs. Truitt Sides and Mrs. Bailey Hair serving as co-hostess.

## Church Work Day Is Held

Tuesday was the regular monthly work day for the ladies of the Olton Main Street Church of Christ. Each lady brought a covered dish and they served lunch at the church.

Quilting, re-arranging of materials for classrooms and arranging of flannel-graph material was some of the work done by the ladies.

## Ladies' Bible Class Meets

Ladies' Bible Class No. 2 met Wednesday morning in the Main Street Church of Christ. Mrs. D. M. Granbery taught the class on "Women of the New Testament."

Ladies attending were Mmes. Robert Nickerson, Jimmie Priest, Alfred White, Willie Green, Bud Huckabee, Don Williams, Bob Williams, Jay Rainey, Elmer McGill and Billy Guy Thomas.

## WSCS Meeting Held Monday

The Women's Society of Christian Service met Monday, Dec. 4 at 9:30 a.m. in the Olton First Methodist Church. The program was on Christmas. Mrs. Delmer Givens had charge of the program. Mrs. J.C. Brown had the devotional. A story, "No Room", was given by Mrs. Leo Ross Bryant.

Ladies present were Mmes.

## Church Here Has Speaker From Denmark

Earl D. Danley of Denmark spoke at the Main Street Church of Christ Wednesday night.

Danley showed slides and talked about the ways of the Denmark people.

because she loves luxury give her

Henson Riecknick

# LINGERIE

From \$1.65 To A Frivolous \$25

Bizzell's

say "MERRY CHRISTMAS" with

# Flowers

Order Potted Plants Now For Delivery Dec. 23rd. Flowers By Wire

## House of Flowers

Phone 285-2388

# GIFTS for Good Knights

Stetson Hats  
Sport Shirts By Jayson  
McGregor & DaVinci  
Complete Selection of Accessories

Tom Sawyer Sport Shirts, Jackets, Sport Coats And Dress Shirts For Boys

Suits by Stylemart \$55.00 to \$69.95

# HEAVENLY GIFTS

for your Christmas angels

Thermo-Jac Taper Pants, Blouses, Coats.  
Marcy Lee Dresses  
Ship 'N Shore Blouses

Wide selection of Handkerchiefs, Robes, Jewelry, Gloves

Fluffy Ruffles Dresses And Honey Togs Sportswear For Misses

Lingerie by Kayser Complete Selection

Gift Certificates For Both Men & Women Free Gift Wrapping

# KELLEY'S

Olton

# THE HART BEAT

Thursday A SUPPLEMENT TO THE OLTON ENTERPRISE Dec. 7, 1961

## HART TO HART

Mrs. Ethel Brown has been in the hospital in Plainview.

Mr. and Mrs. Eldon Towery of Friona visited Mr. and Mrs. Billy Gallion Sunday night.

Mr. and Mrs. Billy Gallion and Roxanna of Olton visited Mr. and Mrs. Bill Gallion Sunday.

Gail Wall spent last week with her grandparents, Mr. and Mrs. R. J. Wall.

Mr. and Mrs. R. J. Wall have sold their farm to Ray Bennett and will be moving to Plainview around the first of January. They will have a farm sale Dec. 14.

Mr. and Mrs. B.E. Shepard visited in Midland this weekend.

Mr. and Mrs. John Holloway were in Spur to take Mrs. Ladd to visit her daughter, Mr. and Mrs. Conley Smith, for a few days.

Mr. and Mrs. R. J. Wall visited in Olton Friday night with their daughter, Rev. and Mrs. Gene Palser and Mrs. Wall's brother, Mr. and Mrs. Charlie Gibson and family.

The Norlan Dudley's visited in Silvertown this weekend with relatives.

Mr. and Mrs. Robert Brooks were in Big Springs Friday through Sunday attending a Post Masters meeting.

Home Ec. Girls II made a field trip to the Hart Cleaners Wednesday.

Rev. and Mrs. Sidney Goodwin and family are leaving Hart Assembly of God Church to be Missionaries in Africa. Sunday was the last day for the Goodwin's at Hart.

Rev. and Mrs. Ben Adams and daughter, Freda, will move into the Assembly of God parsonage this week. Rev. Adams has accepted the position as full time pastor of the church.

## Letters To Santa Claus

Dear Santa Claus, My name is Mike Warren. I have a baby sister and her name is Sherry Warren. I have been a real good boy and would like to have a real nice wagon and a real nice boat for Christmas. My little sister would like to have a train and a dolly. Please be good to us. All my love, Mike Warren P.S. I am four years old.

## Judy Humphrey Is Honored At Birthday Party

A birthday party honoring Judy Humphrey on her fourteenth birthday was given Saturday, Dec. 2 from 7 to 11 p.m. in Lilly's Dining Room. Mr. and Mrs. A.L. Talley and Judy Humphrey received the guests.

Blue and white streamers hanging from the ceiling decorated the room.

White cake decorated in blue and with blue candles was served to W.A. Hawkins III, Geo. Ed Bennett, Becky Burruss, Bobby McLain, Judy Graves, Billy Bob Bell, Donna Dale, Connie Bailey, Steve Myrick, Kaylyn Porter, Joy Talley, Richard Humphrey, Caroline Young from Dimmitt and Mr. and Mrs. Al Talley.

## Sharon Rodgers Is Honored At Birthday Party

A surprise eighth birthday party was given for Sharon Rodgers by her mother, Mrs. J.D. Rodgers, Monday, Dec. 4 at 3:30 p.m. in Mrs. Nivens second grade room.

Mrs. Futrell's room also came to the party. Cake, pop and favors were given to the two classes of second graders.

## Ordinance Closes Street By School For Noon Hours

The City of Hart has passed an ordinance closing the street directly in front of the schoolhouse from 11 a.m. to 1 p.m.

The City was requested to pass this ordinance by the School Board, due to the fact that the lunchroom is now located across the street from the schoolhouse. It is felt this would provide a safe and efficient way for the children to get to and from the lunchroom.

"This was done, not to inconvenience anyone, but to safe-

guard the lives and wellbeing of the children. We do understand that this will work a hardship on some of our citizens, but those hardships would not compare to a life or permanent injury of one of our children," said Superintendent Paul Kennedy.

Kennedy also requested that the citizens of the Hart District observe the ordinance, with the thought in mind that they are protecting the lives and happiness of children.

## Hart FFA Team Wins Fifth In State For Leadership

The Hart FFA Junior Chapter Conducting Team represented Hart High School at the State Leadership Contest held at Huntsville. The top ten teams of the state of Texas were selected from approximately 700 chapters. Hart placed fifth in the top ten teams.

Team members making the trip were Garry Heller, Mark Martin, Tarry Davis, Harvey

Sullivan, Kenneth Sharp, Tommy Morrison, Steve Sharp, Kenneth Bailey and Danny Godfrey. The boys were accompanied by Lanny Tucker and Malcolm Atwood.

The team expressed appreciation to the Hart Lions Club for their financial assistance and to Malcolm Atwood for furnishing transportation.

## School Menu

HART SCHOOL LUNCH MENU Dec. 11 to Dec. 15

MONDAY - Steak and gravy, creamed potatoes, celery and carrot stick, peach half, butter, milk and bread.

TUESDAY - Brown beans, lettuce and tomato salad, whole kernel corn, cornbread, butter, apple crisp and milk.

WEDNESDAY - Meat balls and spaghetti, spinach, tomato wedge, hot biscuits, butter, jelly and milk.

THURSDAY - Turkey pie, blackeyed peas, beet pickle, lettuce, orange cranberry salad, bread, milk and butter.

FRIDAY - Cold cuts, french fried potatoes, catsup, pork and beans, applesauce cake, butter and bread and milk.

## CARD OF THANKS

It is with sincere gratefulness that I wish to say "Thank You" to my friends and loved ones for their loving concern and prayers. Thank you for the lovely flowers, beautiful cards and other kindness shown me during my recent illness. May God bless each of you. Mrs. Ellen Cox and family

## New Rulings On Sales Tax In Agriculture Are Due

COLLEGE STATION, Dec. 7-- Several questions concerning the application of the State Sales Tax to agricultural production goods have been received by C.H. Bates, extension farm management specialist.

Bates reports that the Comptroller's office has not made rulings on some of these specific items, but Ruling No. 13 does cover certain items.

According to this ruling, "Persons engaged in the business of selling tangible personal property to those engaged in agricultural pursuits in the State of Texas shall be required to collect the tax imposed by this law. However, there are items specifically exempt from the taxes imposed by this statute when sold to those persons engaged in agricultural pursuits."

Articles exempted from the sales tax under Ruling No. 13 include "The sale of, storage, use or other consumption of any form of animal life of the kind which ordinarily constitutes food for human consumption." This would include beef cattle, poultry and swine, explains Bates. Also exempted is feed for these animals. Dog food, horse feed and bird seed are examples of feeds not ex-

empted. Seeds and annual plants which produce food for human consumption, and fungicides, insecticides and fertilizers applied to them are also exempted under the ruling. Trees, bedding plants, household insecticides and lawn fertilizer are examples of commodities not exempted.

Bates says the ruling also exempts "Farm machinery or equipment exclusively used or employed on farms or ranches in the production of food for human consumption, feed for any form of animal life or other agricultural products to be sold in the regular course of business." It has been ruled,

however, that parts for farm machinery and equipment will be taxed.

It will require some time for the State Comptroller to issue rulings on the multitude of items that fall into the "gray" areas of the statute's meaning, Bates continues. As soon as specific rulings can be had, they will be passed on to the public.

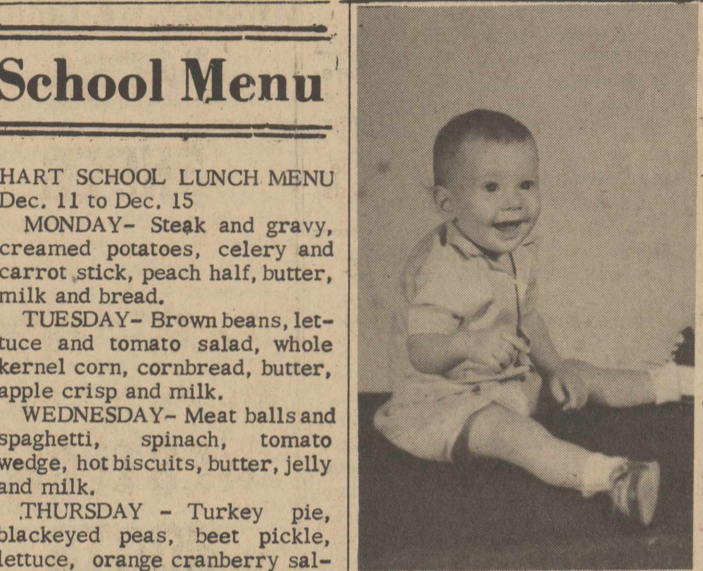
**Henderson TV**  
 Repair Service At Night In Hart  
 Phone MI 7-3636 in Dimmitt  
 Hart WE 8-3234

**PARSONS Funeral Home**  
 "AS NEAR AS YOUR NEAREST TELEPHONE"  
 Oxygen equipped ambulance Service.  
 We accept any funeral home burial policy.  
 Phone 285-2621 Olton

**Jimmie H. Davis**  
 LIVESTOCK DEALER  
 ORDER BUYER  
 Phone 938-3522  
 Hart, Texas

**ED HARRIS LUMBER CO.**  
 BUILDING MATERIALS CAPABLE-DEPENDABLE  
 Phone 938-3281 Hart, Texas

**W. T. KING**  
 • Blacksmith • Welding  
 • Hard Facing • Portable Welding  
 1 1/2 Miles East of Hart On Plainview Highway  
 Phone WE 8-5151 Hart

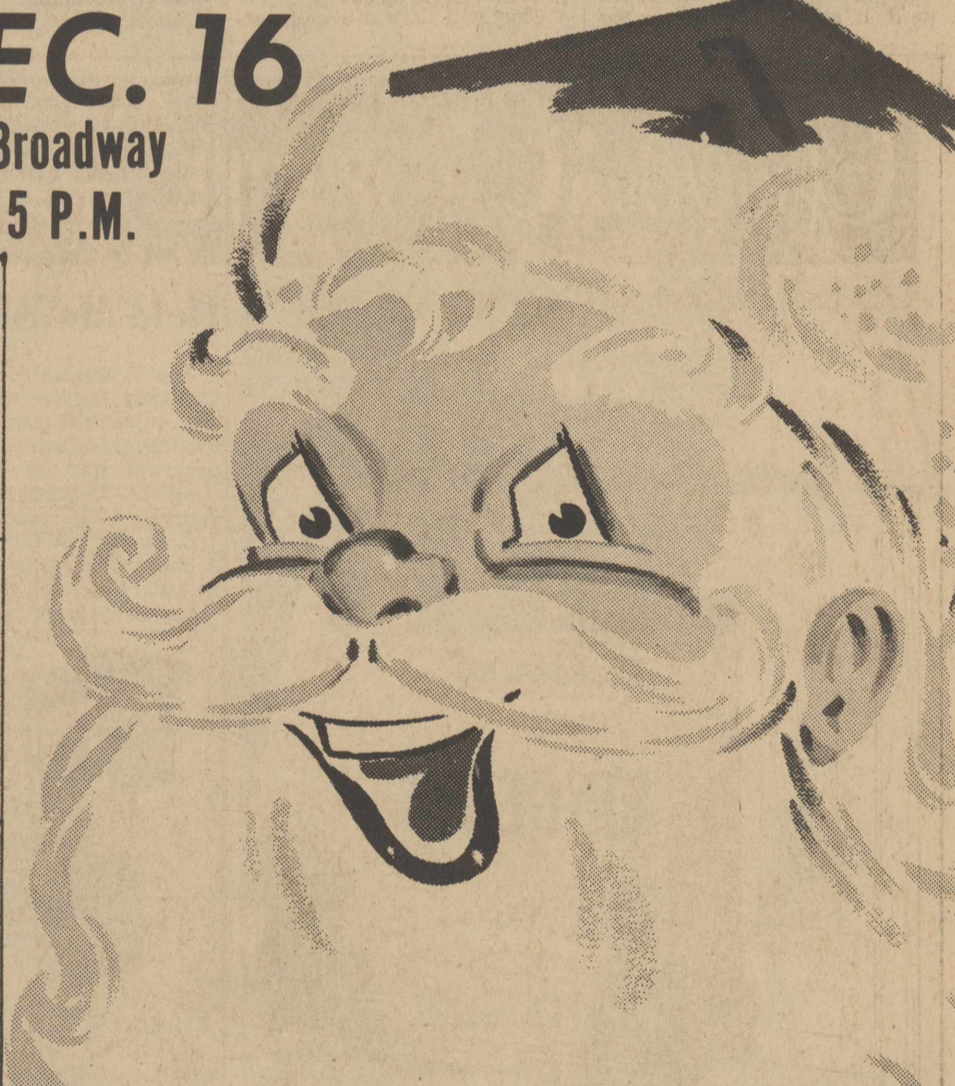


HART PRESENTS Clinton Duane English, ten month old son of Mr. and Mrs. Connie Mack English of Hart. Grandparents are Mr. and Mrs. Hubert English of Hart and Mr. and Mrs. A.W. Shugart of Adrian.

**Protect Yourself And Your Family**  
 from both atomic fallout and tornados  
 with a combination  
**Storm Cellar And Fallout Shelter**  
 See Our Model Shelter At The  
**Gene Mitchell Farm 1/2 Mile North On FM 168**  
 Leave your name and address with Mr. Mitchell if you are interested in protection from these destructive forces.  
**Trans-Lubbock Construction Company**  
 For Custom Built Homes or Commerical Construction  
 Call Us For Estimate  
 Town & Country Shopping Center  
 Lubbock, Texas PO 2-0888

# SANTA'S COMING TO HART DEC. 16

Be Sure And See Him! Sponsored By Rhoda Guild He Will Be On Broadway From 3:30 To 5 P.M.



<b>HART TRACTOR SUPPLY</b> Farm Supplies New & Used Cars Phone 938-3528	<b>LILLY'S CAFE</b> And Dining Room Where Friends Meet For Your Convenience Down Town Hart	<b>HART OIL CO.</b> We Serve The Farmer Gas, Oil and Tires	<b>HANSEN GRO.</b> Let Us Serve You Better. Double Green Stamps Wednesday
<b>HART LAUNDRY</b> Wringer Type And Automatic Washers--Dryers Open Mon.-Tues. -Thurs.-Fri.-Sat.	<b>HART CLEANERS</b> Men's Clothing and Accessories Gift Wrapping Drawing- 4:30 p.m.	<b>BAILEY MOTOR SERVICE</b> We Appreciate Your Business	<b>ED HARRIS LUMBER CO.</b> Every Thing For The Builder
<b>NEWSOM GRO.</b> Phone 938-3717	<b>B AND K GRO.</b> Fresh Meats, Fruits And Vegetables	<b>HI-WAY GARAGE</b> Fast Service-- Guaranteed Work Reasonable Prices	<b>NEWMAN DUDLEY AGENCY &amp; REAL ESTATE</b>
<b>AL'S GARAGE</b> State Stickers Come In And See Us Phone 938-3540	<b>COX BUTANE</b> We Strive To Please	<b>HI-POINT FERTILIZER CO.</b> We Appreciate Your Business	<b>PANHANDLE COMPRESS &amp; WAREHOUSE</b> Give Cotton Products For Gifts
<b>HART VARIETY STORE</b> A Gift For Every Member Of The Family	<b>HART GRAIN CO.</b> We Appreciate Your Business	<b>HART GIN CO.</b> Faster Service-- Cleaner Cotton	<b>COX AUTO PARTS</b>
<b>L AND A DRESS SHOP</b> For The Best Buy Give Us A Try	<b>ROZANNA'S SCHOOL OF MUSIC</b>	<b>HART BLACKSMITH</b> Blacksmithing Welding Hard Facing A.B. Thornton, Owner	<b>COX SHAMROCK SERVICE</b>
		<b>SOILA BEAUTY SHOP</b> Try Our Shampoo And Set Courteous Service	<b>FARMERS STATE BANK</b>
		<b>WEST TEXAS TELEPHONE CO.</b> Extensions Save Steps	<b>PRODUCERS CO-OP GIN</b> We Try To Please
			<b>FARMERS GRAIN</b> See Us For Seed And Feed



THE WINNAHSI—Sue Willman, left, of Muleshoe, who was selected Littlefield District FFA sweetheart here last Thursday night after the annual district banquet.

At right is Beverly Kelly of Springlake, runner-up. They're shown with Ethel Glasscock of Lubbock, South Plains Maid of Cotton, who assisted with the sweetheart event.

## Teen-Agers Spend \$2,332,000 Per Year In Lamb County

NEW YORK, Dec. 7—How big is the teen-age market in Lamb County? How much is spent locally each year for food, clothes, beauty care, entertainment and the other needs and wants of teen-agers by them and their parents?

Based on the latest figures, it amounts to no less than \$2,332,000.

Most parents of teen-age children would be unable to state just how much their particular costs are in this direction. They have never figured them out.

A guide to what they amount to at each teen-age stage is contained in surveys and studies made by the U.S. Chamber of Commerce, by the Bureau of Labor Statistics and by U.S. News and World Report.

They show that the costs go up rapidly as children get older. It takes twice as much, for example, to support a 15-year-old as it does an infant.

The Chamber of Commerce reports that the consumption of food, milk, soft drinks, chewing gum and candy increases until it reaches a peak in the

late teens. As to clothing, the pattern is similar except that the change is most marked when the child enters into his teens.

A breakdown shows that \$790 a year is required to maintain the average 13-year-old youngster, that the cost is \$855 for a 15-year-old, \$910 at age 17 and \$940 at age 19. This is without college costs for those in their late teens. At the midway point, which is at age 16 1/2, the average annual expenditure is \$890.

On the basis of this average, the overall amount spent in Lamb County per year in behalf of the teen-age population, which the 1960 census set at 2,620, is estimated at \$2,332,000.

The nation's teen-age population will be growing rapidly in the next few years, it is pointed out. Between now and 1967 there will be an additional 1,100,000 of them each year. If Lamb County follows this national rate of increase, the number of teen-agers locally in 1967 will be 3,850.

They will make an even greater

er impact on the local economy than they are making today. Already, retailers are finding it worth while to cultivate this booming market.

### Bohner Demons Down Plainview

The Bohner Demons defeated Plainview here Thursday night, Nov. 30, by a narrow margin of 49 to 47. George Ray Thomas led the Demons in scoring with 17 points. Julius Sheffield hit for 14 points, and C.L. Logan made 12.

The Demonettes lost their game to the Plainview girls by a score of 29 to 9. Carolyn Porch led the girls with six points. Darlene Porch led Plainview with 11 points.

The Demons' record for the year is 3 wins and 1 loss. The girls lost to Levelland and Plainview for a 2 and 2 record.

Bohner will play Levelland here Friday night at the Junior High Gymnasium.

Bohner, also, is planning an

invitational tournament here Dec. 16. Teams invited are Levelland, Floydada, Brownfield, Sudan and Slaton.

Girl's coach is J.D. Steptoe. Boy's coaches are E.C. Woods and A.R. Cook.

### Three Methods Developed For Stretch Fabrics

COLLEGE STATION, Dec. 7—Texas cotton producers could profit materially from recently announced U.S. Department of Agriculture research. Three methods for manufacturing all-cotton stretch yarns and fabrics have been developed, according to Dr. C.H. Fisher, who heads the Department's Southern Utilization Research and Development Division, New Orleans.

He listed the methods as slack mercerization of fabric to impart specific amounts of stretch; backtwisting resin-treated yarns, which causes them to take the shape of tiny helical coil springs and crimping yarns first made thermoplastic by chemical treatment.

The first method is now undergoing industrial evaluation by one company for use in plastic-coated automobile upholstery and interior linings. Other manufacturers plan to evaluate the three methods in making fabrics for knit bathing suits and dresses, hosiery, foundation garments, sweaters, knit shirts and furniture slipcovers.

Consumer demand for high-stretch fabrics is increasing rapidly, and imparting stretch to cotton can help increase consumption of this agricultural commodity, Dr. Fisher said. These developments are a result of the broad program conducted by the USDA's Agricultural Research Service to find new uses and new markets for cotton.

VISIT IN PLAINS  
Mr. and Mrs. Elmer J. Houston visited in Plains Sunday with Mr. and Mrs. Ira Tidwell and family.

# SMITH & STRUVE'S PRE CHRISTMAS SALE

Ladies' & Girl's SWEATERS      Men's, Ladies & Boy's JACKETS

All Men's, Women's & Children DRESS SHOES      All Men's and Boy's SPORT SHIRTS

All Men's & Boy's WESTERN BOOTS      Ladies' SPORT CLOTHES

Some Styles of Boy's 1/2 Price

All MENS HATS

Check our store for Christmas items which will be marked **25% OFF**

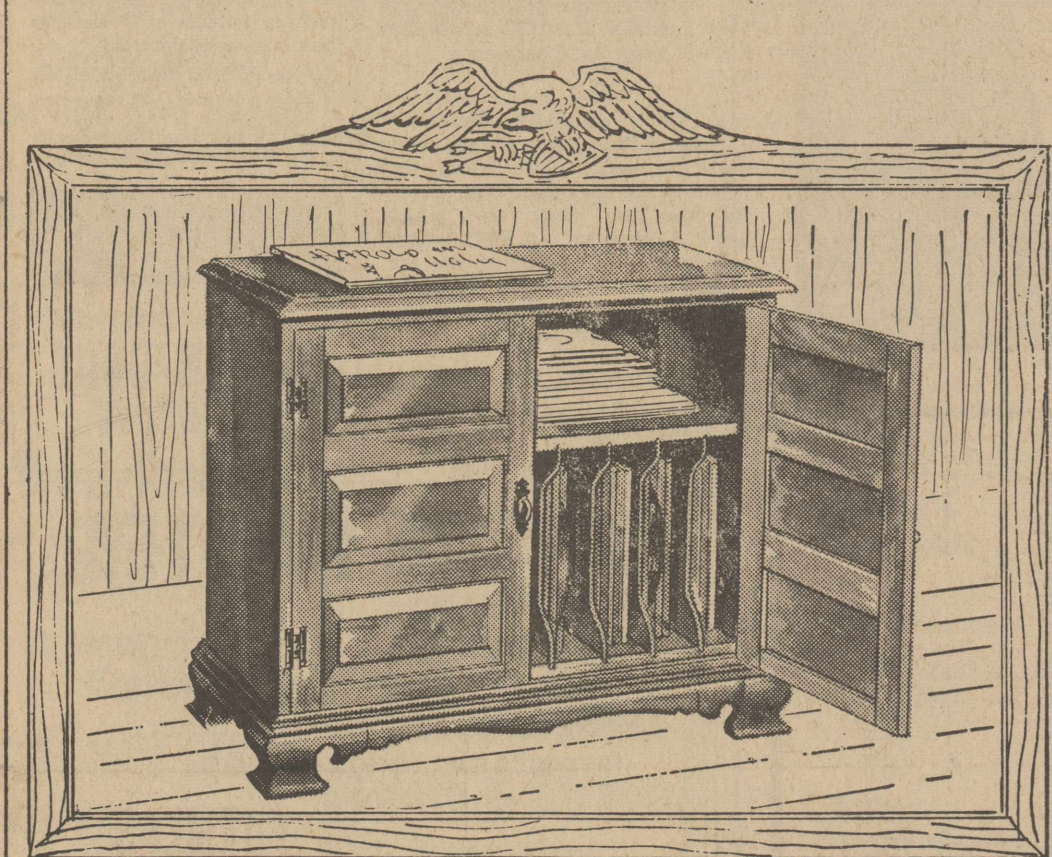
Prices Good Saturday, Monday, and Tuesday

**SMITH & STRUVE**  
"WE HANDLE NATIONALLY ADVERTISED BRANDS"

MAIN STREET      OLTON, TEXAS

## Gracious Gifts FOR THE Home

perfect to own    perfect to give



### SPRAGUE & CARLETON MAPLE ... in the Mood for Music

As pretty as your musical collections, and just as mellow in the tone it creates in your home. This Sprague & Carleton record cabinet is a "collector's item," too ... generous in size, lovely to look at, and a joy to live with. It's finished in damage-resistant MAPLELUX\* to stay beautiful despite accidents. And it's the finest solid rock maple, through and through. See our complete Sprague & Carleton maple collection today ... for living rooms, bedrooms, and dining rooms. All finest quality ... all pleasantly low in price.

\*MAPLELUX is the trademark of Sprague & Carleton Maple.



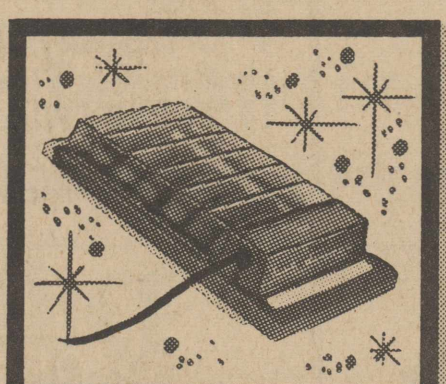
Free Parking Lot West of Store

205-11 West 5th      Plainview

## GIVE THIS ELECTRIC JOJAN READY-LITE FOR CHRISTMAS AND GET THIS PRESTO HOT DOG COOKER FREE!

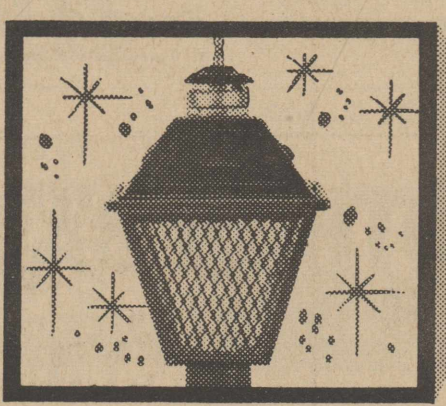
### PRESTO HOT DOG COOKER

You get this speedy Presto electric hot dog cooker with every Jojan Ready-Lite you buy, either as a gift or for yourself. You'll love the flavor of hot dogs cooked this easy, fast way — cooks up to 6 hot dogs to perfection in just one minute. Easily cleaned, too. Top just wipes off and bottom may be immersed in water — washed just like you wash a dish.



### JOJAN READY-LITE

You'll please 'em if you give a beautiful black Jojan electric Ready-Lite complete with post, electric eye, outlet for outdoor uses and completely installed — all for \$59.50 anywhere in the area served by Southwestern Public Service Company. Reddy supplies a beautiful gift certificate in an attractive envelope, then, after Christmas, installs the Jojan for your gift receiver. Use the order form — take or mail it to your Public Service office.



TO: SOUTHWESTERN PUBLIC SERVICE COMPANY

This is my order for a beautiful, black JOJAN Ready-Lite, including control by photo-electric cell, and complete installation for the following person who is served by you:

NAME \_\_\_\_\_

ADDRESS \_\_\_\_\_

CITY \_\_\_\_\_ STATE \_\_\_\_\_ PHONE \_\_\_\_\_

You are authorized to bill me on my electric bill in the following manner:

Full amount of \$59.50 (plus state sales tax) included on my electric service bill.

A maximum of 24 monthly payments (no interest, no carrying charge and no down payment) on my monthly electric service bill. Number of months desired: \_\_\_\_\_

MY NAME IS: \_\_\_\_\_

ADDRESS \_\_\_\_\_

CITY \_\_\_\_\_ STATE \_\_\_\_\_ PHONE \_\_\_\_\_

MY SIGNATURE \_\_\_\_\_

SOUTHWESTERN PUBLIC SERVICE COMPANY

It's not enough to love flowers- you have to hate weeds.

**Jones FINA Station**

Shurhit Ignition Parts And Repair

**Wash & Grease All Oils Flats Fixed**

Phone 285-9947  
Olton, Texas

### School Menu

OLTON SCHOOL LUNCH MENU December 11-15, 1961

MONDAY- Pork chops and cream gravy, mashed potatoes, green beans, applesauce, cookie, rolls and milk.

TUESDAY- Pressed ham sandwich, meat stew, spiced peach, pickles, cinnamon roll and milk.

WEDNESDAY - Frito pie, french fries and catsup, buttered peas, fruit salad, chocolate cake, rolls and milk.

THURSDAY- Chicken Tetrazzini, parsley potatoes, blackeyed peas, cranberry sauce, tangerine and milk.

FRIDAY - Fish sticks and lemon, buttered corn, jello Waldorf salad, apricot pie, rolls and milk.



OOPSI!—Robert Nickerson, boy's basketball coach takes a tumble on a mechanical donkey during the Donkey Ball Game held here Saturday night. These make-believe donkeys proved to be just as stubborn as the real ones.

### Hart Camp Happenings

Judy Hurt has been a guest in the Blanton Martin home several days while her aunt, Mrs. Willard Loman, was at the bedside of her grandmother during her illness and death.

A Royal Service program was given at the regular WMU meeting this week. Mrs. Edwin Oliver was in charge of the program. Ladies present were Mrs. H.V. Lynch, Blanton Martin, Jack Moore, Junior Muller, Martin Wheeler and Edwin Oliver. Plans were made to have a Christmas Program at church Wednesday night, Dec. 20, during the regular preaching hour.

### First Methodist Church School Service Planned

The Olton First Methodist Church will have a Church School Christmas worship Sunday night at 6 p.m. in the Methodist Church.

A choir composed of children, youth and adults will sing Christmas carols. Christmas scripture will be given by Lana Hair. Terry Gail Hooper will give a reading. The devotional will be given by Rev. Wilbur Gaede.

December 17, the First Methodist Choir will present a Concert. It will be directed by Don Spain, with Mrs. Delmer Givens at the organ.

An auction is where if you're not careful you'll get something for nodding.

A group of 4-H girls met Friday afternoon in the home of Mrs. L. A. Smith for a required meeting. The girls made muffins as their project for this meeting. A short business meeting was then held in which the group discussed the method used in mixing the recipe for the muffins.

Girls present for the meeting were Cheri Dorris, Marilyn Cade and Debra Walden of Olton; Helen Ruth and Bess Smith, Cindy Cade, Kathy Moore, Linda Mayfield and Wanice Neeley of Hart Camp and one visitor, Christy Cade. Also attending was their leader, Mrs. L. A. Smith.

Mr. and Mrs. J. A. Talburt visited in Wichita Falls with a sister of Mrs. Talburt and in Olney with a sister of Mr. Talburt several days last week.

Guests in the home of Mrs. Lee Holden over the weekend were her brother, Mr. and Mrs. W. T. Kidwell, and Tommy of Tahoka, Mr. and Mrs. Wayne Cadenhead, Cathy and John Carlton of Meadow, and Mrs. Jack Mixon, Kelly Jean and Karen of Hart Camp. W. R. Holden, a brother-in-law of Mrs. Lee Holden arrived Friday from New Mexico to spend a few weeks with Mrs. Holden and Lee Edward.

Several members of the Baptist Church were in Littlefield Monday night to attend a Training Union Mobilization Service. A training union King and Queen for this association was crowned. Sue Moore and Kerwin Oliver were the King and Queen candidates from Hart Camp. Others attending from Hart Camp were the families of the Rev. Jack Moore, Blanton Martin, Edwin Oliver and Elma Burleson. Also Mrs. R.S. Moore, J. Faye Moore, Judy Hurt and Gary Parkey.

The ladies of the Baptist Church WMU had their Week-of-Prayer Program for Foreign Missions last week in three meetings. They presented their program Wednesday at Prayer Meeting before the entire congregation. Other meetings were held Monday and Thursday afternoons.

C.E. Timmins, a former resident of Hart Camp, now living near Whitharral, is in the Littlefield Hospital suffering with a badly injured hand and forearm. The accident occurred when his hand was caught in the machinery of a cotton stripper Saturday. The doctors think the hand can be saved but they expect to have to graft skin on the hand and arm in a few days.

Mrs. Willard Loman's grandmother, Mrs. G.C. Kesey of Chickasha, Okla., passed away in a rest home there Sunday. Among relatives attending the funeral services were Mr. and Mrs. Willard Loman, Mrs. Bill Mitchell, Mr. and Mrs. M.V. Kesey and Mr. and Mrs. Claiborne Kesey.

Mrs. Lonnie Neinst was in a Lubbock Hospital a few days last week for treatment.

The Southside Church of Christ in Lubbock was the scene of a wedding ceremony that united in marriage Miss Charlotte Ann Kiser and Johnny W. Clemmons last Friday night. Parents of the bride are Mr. and Mrs. Burl H. Kiser of Lubbock who are former residents of Hart Camp.

The Rev. R.L. Howell, Leveland, visited in the community Monday. He is a former pastor of the Baptist Church.

Ivan Ray Gibson, small son of Mr. and Mrs. Joe Gibson was treated at the Littlefield Hospital Tuesday for an injury he received when he slipped and fell while in the bath tub.

**NORGE**  
Hot Water Heater  
20 Gal.--\$39.95  
30 Gal.-- 49.95  
40 Gal.-- 64.50

10 yr. guarantee  
Glass Lined  
**TV LAB**  
Plainview, Texas  
Norge Sales & Service

**BEE GEE'S Butane Gas**

YOU'LL FIND THAT GAS WILL DO THE TRICK, TO GIVE YOU WATER, HOT - AND QUICK!

ONE SIDE  
WATER  
GAS

**Consumers BUTANE inc**  
2 WAY RADIO SERVICE  
Barton Prestidge Mfg.  
Phone 285-2240  
BUTANE GAS CARBURETION IGNITION PARTS  
OLTON, TEXAS

**HOW OLD IS OLD?**

Bexel M Vitamin Insurance helps make the older years more active—the active years more fun!

Are the years slowing you down—or are you slowing down from a lack of vitamins? Older people especially need plenty of vitamins in their diet. Don't stop doing the things you enjoy. If you need vitamins, Bexel M guarantees you the vitamin insurance you need for "get-up-and-go!" It's a super-potency formula of 11 vitamins plus iron, trace minerals.

\*If your trouble is functional, organic or due to other causes, see your doctor.

There's the Right Bexel Vitamin Formula For Every Member of Your Family

**Bexel**  
BETTER... by McKesson

**OLTON DRUG**

ONE OF *The Plainsmen*

Sez: "Won't it be nice when we're all elevated above the working class?"

**Plan Your Feeding Program Around Caddo Pellets**  
Storage Available

*The Plainsmen*  
FARM & RANCH  
Phone 285-2255 Hwy. 70

**AMERICAN FOUNDERS LIFE**

Don Williams, Agent

*A Gift for Your Home*  
Will Make a Hit with the Whole Family

Give the Christmas Gift that will be remembered for many years to come....

**Beautiful New Carpet By Firth**

New Patterns! New Colors! New Designs! By Firth

If you've wanted finer carpeting, why not have it installed as a Christmas gift for the whole family? Choose from new patterns, new colors and new designs that are RIGHT for your rooms.

**NEW HOMES FOR OLD**

Now is the time for home improvement. We have everything you need for the job. Come in and see us soon.

**Up to \$3,500.00 Available - 5 Yrs. To Pay**  
**No Down Payment - Low FHA Rates**

Don't Forget - We have Aermotor Submersible Pumps.

**PLUMBING**

30 Gal. 10 yr. Hot Water Heaters- \$62.50  
3-Tube Mission Wall Heaters Unitrol- \$85.50  
Commodos - - - - - \$27.50 & Up  
Bath Built-In Wall Heaters- - - - - \$17.50

**PIPE AND ELECTRIC WIRE**

	Black per ft.	Galv. per ft.
1/2" Pipe	.13	.15
3/4" Pipe	.17	.19
1" Pipe	.24	.27
1 1/4" Pipe	.32	.36
1 1/2" Pipe	.38	.43
2" Pipe	.50	.57
4" Orangebury Sewer Pipe		.40 ft.
12/2 Romex Wire	.05	4.25 per 100 ft.
14/2 Romex Wire	.4 1/2	4.00 per 100 ft.

**BARB WIRE-----SPOOL \$8.95**

See Us For All Your Needs- - - -Sheet Rock, Lumber, Roofing, Siding, Plywood, Paint and Sundries.

**COTTON WANTED**

As Agent For PLAINS COTTON COOPERATIVE ASSN, Lubbock, Texas, we are offering cotton farmers the following deal:

1. Top price for all grades and staples.
2. We pay you your money now here at Olton.
3. No charges for handling through PCCA.
4. You can sell any amount of bales as you wish, choice is up to you.
5. PCCA is owned by you the farmers who patronize them.
6. All savings made by PCCA are paid in dividends back to the farmers who patronize them.
7. PCCA saved the farmers \$3.50 per bale dividend last season.

See us now and compare PCCA prices with anybody's prices before you sell.

**NOLAN HOLLAND & CO .**  
401 - 4th Street  
Olton, Texas

Open 8:00 A.M. to 10:00 P.M. Phone 285-2909

**HIGGINBOTHAM BARTLETT CO.**  
"GOOD LUMBER"

Phone 285-2937 Olton

SELL • BUY • TRADE • HIRE • SERVICE •  
LOST and FOUND • SERVICE • T  
HELP WANTED • EMPLOYMENT OPPORTUNITIES  
**WANT ADS!**

**CLASSIFIED ADS**

Rates on classified advertising are: 6 cents per word first insertion; 3 cents per word second insertion, and each additional consecutive insertion. Minimum 50 cents first insertion, 25 cents additional insertions. The Enterprise is not responsible for mistakes after first insertion. Please read your ad.  
All classified accounts are due and payable 10th of month following insertion. A flat rebilling fee of \$1.00 will be charged for all accounts 30 days past due and for all successive rebillings.

**NOTICE**  
DON'T TAKE OLD PAINT off your furniture, kitchen cabinets, T.V. Refinish in wood-grain or antique with Old Masters. Easy. Just paint it on. Hobby House, Littlefield. 37-tfc.

**OLTON LODGE NO. 1257**  
A. F. & A. M.  
Stated Meetings  
3rd Thursdays  
JOE NEWMAN, W.M.  
C.D. KIRKPATRICK, secretary  
Visitors Are Welcome  
Members Urged To Attend.

**PARLEY'S**  
Barber Shop  
LOCATED NEXT DOOR  
TO LESTER'S  
Olton, Texas

**IRRIGATION WELL SERVICE**  
PULLING AND SETTING  
PERFORATING CASIN IN WELL  
CLEAN OUTS  
DIGGING DEEPER  
**JACK MCFARLAND**  
PH CAPITOL 46554  
PLAINVIEW, TEXAS

FOR ALL  
GEAR HEAD  
Service and Repair  
SEE  
**W.M. Whitesides**  
207 East 5th Street  
PLAINVIEW, TEXAS

**Water Well Drilling**  
NO MONEY DOWN  
3 YEARS TO PAY  
Pressure Pump Service  
**CALVIN COOK**  
CA-4 4498 2519 Gladney  
(5th Ward)  
PLAINVIEW, TEXAS

**WAYNE'S**  
— OFFICE SUPPLIES —  
PRINTING And LITHOGRAPHING  
PHONE 285-2225 Olton, Texas

See us for rebuilt standard transmission, 3 or 4 speeds.  
**Price Wrecking**  
Olton, Texas  
Phone 285-2235

**For Sale**

FOR SALE: Tascosa wheat seed. Cleaned and bagged. First year from certified. Hodges and Cowart Bean and Seed. Phone 285-2747. 35-tfc.

FOR SALE: Two bedroom house 125 foot front, cellar, and fruit trees. 812 W. 11th Street. J.W. Huggins, 44-2tp.

FOR SALE: Three bedroom house. 1404 9th. Call 285-2111 or 285-2280. 42-tfc.

FOR SALE: 57 Ford Station Wagon. Clean, all equipment. Phone 285-2494. 13-tfc.

FOR SALE: Nice two bedroom house, kitchen, living room or den, and bath. Approximately 1,000 sq. feet floor space. Clean inside and out. Priced to sell. Phone 285-2939. 31-tfc.

FOR SALE: One GMC 1 1/2 ton truck with grain bed. \$400. 42-tfc.

FOR SALE: Bargain, new Encyclopedia Britanica, 15 junior volumes, 24 volumes for advanced work, Atlas, 2 dictionaries, one for 5 foreign languages, bookcase. Nice for Christmas gift. Lois Turner. 1 1/2 miles north of Olton. 43-tfc.

FOR SALE: Small upright piano. Good condition. J.W. Dale. Phone 285-2542. 43-3tp.

FOR SALE: Good 160 acre farm for sale, near perfect. Two wells, one 8 inch and one ten inch. Contact E.A. Hestand, Olton, Texas. Phone 285-2061. 43-2tc.

FOR SALE: CAR PORTS, any size or color. All steel. See at Roberson Mobile or call 285-2131. 27-tfc.

FOR SALE: Small upright piano. Phone 285-2422 or 285-2861. 44-2tc.

**Notice**

TRASH BARRELS delivered. \$3 or \$3.50 with lids. Price Wrecking. Phone 285-2235. 36-tfc.

NOTICE: I am taking listings for Hamp McCary Real Estate and Loans. If you have a farm or house for sale or want to buy either, please see me. Farm loans from 5 1/2 to 6%, depending on the location and grade of land. If you want to sell or buy, we can furnish the best loan. Property can be appraised in 24 hours. I need your help. . . and I can help you. Opal Janes, 618 E. 8th Street, Littlefield. Phone 385-3174 or 385-4809. 43-2tp.

**FARM FOR SALE**  
142 A. Improved.  
Good 8-inch well on natural gas.  
4,061 feet underground tile.  
41 1/2 acres cotton.  
19 1/2 acres wheat.  
On pavement. No bindweeds.  
Price \$375 per acre. Terms.  
5 1/2 miles east of Halfway on Plainview Highway.  
Arthur Waldrop

**LEVI'S**  
**Smith & Struve**  
OLTON, TEXAS

NOTICE: Call Thomas Beauty Shop for latest hair styles and lovely permanents. Phone 285-2029. 28-tfc.

FREE PUPS—Two male dogs of mixed breed. Bill Kelley. 44-1tp.

NOTICE: THROUGH WITH IT? Sell it to Price Wrecking. Phone 285-2235. 44-tfc.

**For Rent**

FOR RENT: Three bedroom house. Call 285-2676. 42-3tc.

**Wanted**

WANTED: Custom combining and cotton stripping. See R.W. Green or Phone 285-2556. 34-tfc.

WANTED: To make buttons, button holes, buckles, belts, children's garments. Dress making. Wilena Gordon. Phone 285-2401. 27-tfc.

WANTED: Self-feeder cattle feeder. Phone 285-2459. 42-3tp.

**Public Education Needed For Control Of Hepatitis**

Each year, the number of cases of viral hepatitis, a contagious disease of the liver, increases. Cases reported to the Texas State Department of Health during the first eight months of this year were averaging 97 cases more per month than during the same period last year.

Symptoms of hepatitis are, in general, an extreme tiredness or weakness, loss of appetite, abdominal pains, nausea, diarrhea, fever ranging from 101 to 104 degrees, and weight loss of 10 to 20 pounds.

Writing for her fellow Texas physicians in an article in the November issue of Texas State Journal of Medicine, Dr. Francine Jensen, assistant director of the Harris County Health Unit, reports evidence that the disease is spread through person-to-person contact and transmission via the fecal-oral route.

With no known vaccine for viral hepatitis, the control of the disease centers primarily around intensive educational efforts to improve personal and community hygiene. Epidemics have been related to contaminated food and water. Dr. Jensen states. Recently an outbreak of 77 cases were reported, and the source of infection was found to be raw oysters which had been obtained from the mouth of a contaminated river.

It is important that infectious hepatitis be detected not only to allow prompt treatment, but also to prevent further spread of the disease. Evidence exists to prove that "carriers, both sick and healthy, are important in the maintenance of virus in nature and the spread of disease."

An educational program has been offered recently for public health workers. Health department personnel can identify the source of infection (usually a school age child), can detect other possible cases of the disease within the family, and can emphasize measures the family needs to take to prevent spread of the disease within the household or community. Health departments also distribute gamma globulin to phys-

**Work Set For Four County Farm Roads**

Four Farm to Market Roads in Lamb County are to receive improvements under a state highway expenditure program totaling \$15,000,000 for the state.

Approximately nine and one half miles will receive seal coat on FM 1928 from FM 54, north and east to FM 303. Estimates cost is \$8,000.

Seal coating will also be applied to FM 168 from the Castro County Line to Olton, a distance of approximately eight and seven-tenth miles, at an estimated cost of \$8,000.

Work estimated at \$280,000 will be done on FM 168 from Hart Camp to the Hockley County line. The distance is approximately 14 miles.

Seal coating will be applied to FM 37 from US 84 at Amherst to FM 1072, a distance of approximately 12 and one-tenth miles, at an estimated cost of \$12,500.

icans who request it for contacts of patients with viral hepatitis. This treatment effectively controls the disease and prevents its occurrence in other members of the patient's household.

Private physicians have been encouraged to report cases of viral hepatitis promptly and to use the health department's resources to aid the controlling the disease.

**Darryl Dennis' Southdown Wines Honors**

A Southdown lamb belonging to Darryl Dennis won Reserve Grand Champion of all breeds of lambs at the Chicago International Livestock Show and Expedition in November.

John Crow of Oklahoma City, Okla., showed the lamb for Dennis who is now serving in the army.

**FTA Members Attend Meet At Lubbock**

Eighteen members of the Olton FTA attended a District FTA meeting at Texas Tech in Lubbock Saturday, Dec. 1.

Attending from Olton were Joanna Lewis, Lavon Estes, Janice Gallaway, Tanya Bryant, Elaine Lewis, Bobbye Tollett, Elaine Averitt, Coye McGill, Lindy Ray, Pat Thompson, Suzanne Martin, Renee Givens, Sue Moore, Carolyn Bley, Billie Beasley, Lana Hair, Sammie Clark, and the sponsor, Mrs. John Campbell.

Mr. and Mrs. FTA for the District were selected, also district officers were elected. Tanya Bryant of Olton was elected Chaplin.

The theme of the meeting was "The Teacher - Guardian of Tomorrow."

Sudan held a workshop on programs. The moneymaking workshop was held by Plainview and Olton held a workshop on service and scrapbook. Texas Tech, Student Education Association, presented a workshop to the senior students. A workshop was also held for the sponsors.

Dr. Morris Wallace, Head of the Department of Education at Texas Tech, spoke at the luncheon.

**VISIT IN LITTLEFIELD**  
Mrs. D.B. Adair spent Sunday night, Nov. 26, with her son and his family, the James Adairs, in Littlefield.

**VISIT EDWARDS**  
Mr. and Mrs. Jarrell Edward of Lubbock visited in the home of his parents, Mr. and Mrs. Jack Edward, over the weekend.

**VISIT HAIRS**  
Mrs. Gary Smith and Stephanie of Lubbock spent last week in the home of Mr. and Mrs. Louis Hair.

**FOR SALE**

**160 Acres--**  
Good well, good cotton allotment, one-half minerals. In Olton School District. Priced to sell at \$325 per acre.

**129 Acres--**  
42-acre cotton allotment, 8 and 10-inch wells. Near perfect. Priced to sell with terms.

**Choice 160 Acres--**  
Near Earth. 60 acres cotton, two wells, 8 and 10-inch. Priced to sell with terms.

**Good Half-Section--**  
Near Earth. Four 10-inch wells, 130 acres cotton, well-improved. This place near perfect.

SEE  
**J. C. HOOD**  
Box 194  
Olton, Texas  
Phone 285-2055



**PANTRY-STOCKING SALE**

**BISCUITS** SHURFRESH **13** for \$1  
**FLOUR** GLADIOLA 5 LB. BAG **39¢** | **PEACHES** HUNT'S SPICED NO. 2 1/2 CAN **27¢**

**FRUIT COCKTAIL** DEL MONTE NO. 2 1/2 CANS **3** for \$1  
**ANGEL CAKE MIX** DUNCAN HINES DELUXE LARGE BOX **2** FOR **89¢**

**NEW! Post OAT FLAKES** 10 OZ. PKG. **29¢**  
**DOG FOOD** ROXEY 1 LB. CAN **5** FOR **39¢**  
**MACARONI** AMERICAN LARGE ELBO 10 OZ. BAG **2** FOR **33¢**

**COFFEE** FOLGER'S 1 LB. CAN **59¢**  
**DOG FOOD** DASH 1 LB. CAN **6** FOR **79¢**

**PINEAPPLE** DEL MONTE CRUSHED FLAT CAN **15¢**  
**ORANGE JUICE** MINUTE MAID FROZEN 6 OZ. CAN **6** FOR **\$1.19**

**CATSUP** DEL MONTE 14 OZ. BOTTLE **19¢**  
**ICE CREAM** CLOVERLAKE ALL FLAVORS 1/2 GAL. **89¢**  
**MILK** SHURFINE LARGE CAN **15¢**

**PEANUT BUTTER** 12 OZ. REFRIGERATOR JAR SMOOTH OR CRUNCHY **33¢**  
**BACON** WILSON CORN KING 1 LB. CELLO PKG. **47¢**  
**CHEESE** SHURFRESH 2 LB. BOX **79¢**

**SIRLOIN STEAK** CHOICE CUTS LB. **79¢**  
**LETTUCE** LARGE FIRM HEADS LB. **19¢**  
**APPLES** WASHINGTON GOLDEN DELICIOUS LB. **19¢**

**WE HAVE ALL NEW XMAS CANDY**  
Phone us your special orders for BAR-B-Q -- Parties or company.  
**SHERMAN FOOD**  
Dougie Gunn Bros. Stamps Wednesday With \$2.50 Purchase  
Free Delivery Quality Meats Phone 285-2787

**We Are Taking Orders For HAMS - DUCKS - GEESE - TURKEYS And HENS Now At Popular Prices. Check With Dwain Eby In Our Market.**

**WE HAVE ALL NEW XMAS CANDY**  
Phone us your special orders for BAR-B-Q -- Parties or company.  
**SHERMAN FOOD**  
Dougie Gunn Bros. Stamps Wednesday With \$2.50 Purchase  
Free Delivery Quality Meats Phone 285-2787

**WE HAVE ALL NEW XMAS CANDY**  
Your Postmaster says: Be sure your Christmas cards and packages arrive on time; please shop and mail early.  
**SHOP AND MAIL EARLY**  
USE POSTAL ZONE NUMBERS

**PECANS**  
LARGE STEWARTS  
1 LB. CELLO BAG  
**49¢**

there are no beans quite like **RANCH STYLE BEANS**  
**2** FOR **25¢**

**RANCH STYLE BEANS**  
**NEW! and HIGHLY UNSATURATED!**  
3 lbs. **79¢**

**VISIT POTEETS**

Mrs. Loren C. Jones returned to Columbus, Ohio, Saturday after spending some time here visiting her brother and his family, the Clovis Poteets, and her mother, Mrs. Lee Poteet.

**VISIT IN PLAINVIEW**

Mrs. Jethro Pinkerton and Miss Helen Locke visited Sunday in Plainview in the home of Mrs. Pinkerton's parents, Mr. and Mrs. D.D. McLaurin.

**ATTEND FUNERAL**

Walter Struve of Hale Center and Mr. and Mrs. Tom Smith attended the funeral of Bertha Richter Tuesday in Marble Falls.

**IN OKLAHOMA**

Mr. and Mrs. Bert Stewart are in Fort Sill, Okla., visiting with their daughter, Mr. and Mrs. Jack Hysinger and daughter, Kenetha Lorene.

**Olton Women Attend State PTA Meeting**

Mrs. Hubert Waldrop, Mrs. Melvin Hines and Mrs. Garland Long were Olton delegates to the 52nd annual state convention of the Texas Congress of Parents and Teachers in Houston. Meetings were held in the Sam Houston Coliseum, Nov. 29 to Dec. 1 with Mrs. T.W. Whaley of Kosse, state president, presiding.

"Homes Create Community Strength Through Effective Learning" was the convention theme. This was developed by pupils of the Houston public schools and was stressed throughout the session to approximately 2,865 delegates and visitors who attended the convention.

The delegates returned to Olton Saturday afternoon, Dec. 2.

**"B" Girls Lose To Abernathy**

Abernathy's B team ran over the Olton Fillies B team here in a tilt Nov. 30, 51-25. Linda Brezal had 24 points for Abernathy.

Oketa Follis scored 19 points for Olton followed by Deanna McKnight and Linda Frazier with 3 each.

	F.	G.	F.T.	P.F.	T.P.
Follis	6	7	0	19	
McKnight	1	1	0	3	
Frazier	1	1	2	3	
Cross	0	0	1	0	
Carson	0	0	5	0	
Hair	0	0	1	0	
McGill	0	0	3	0	
Miller	0	0	4	0	
	8	9	16	25	

**50 Attend Box Supper**

Approximately 50 people attended the FHA-FFA Box Supper which was held Monday night, Dec. 4 in the cafeteria.

Sandra Cox was recognized as having the most attractive box and Cherry Langford as having the most original. W. B. Dickerson, Jr. was the auctioneer for the boxes.

Sponsors for the supper were Miss Gayle Scott and Mrs. E.J. McKnight, FHA; Calvin Horn and Max Malone, FFA.



**TIRED COWBOY**—Tommy Hankins, 5-year-old son of Mr. and Mrs. Tom Billy Hankins, takes time out from a fast game of cowboys and Indians for a quick nap. Tommy is the grandson of Mr. and Mrs. W.T. Hankins of Olton and Mrs. Pat Trevino of San Antonio.

**FOR A TRULY MERRY HOLIDAY**



**GIVE A GIFT OF COTTON**

The most practical, the most useful gifts are made of cotton. They'll please any member of the family.

It only stands to reason - when you purchase goods made of cotton, the market for cotton is increased. The larger the cotton market, the more prosperous our area's economy will become.

**PLAINVIEW CO-OP COMPRESS**

Located 2 1/2 Miles East of Plainview

**CHRISTMAS AT HOME**

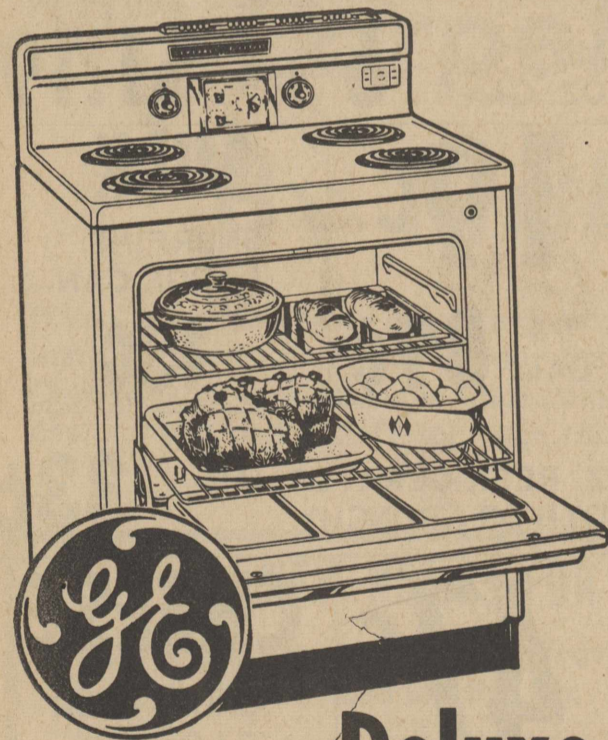
Can Be Year-Round Time With Wonderful G.E. Appliance Gifts

Buy One OR All

Low Down Payment Up To 24 Months On Balance

Now Down Payment With Trade-In

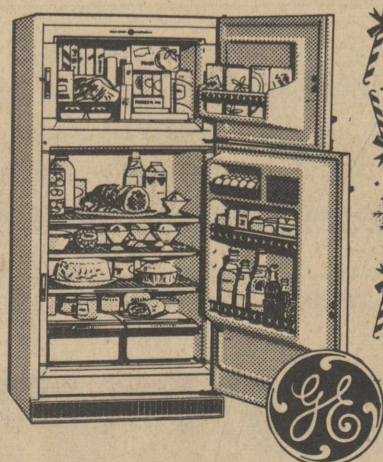
Close-Out Prices On 1961 Models



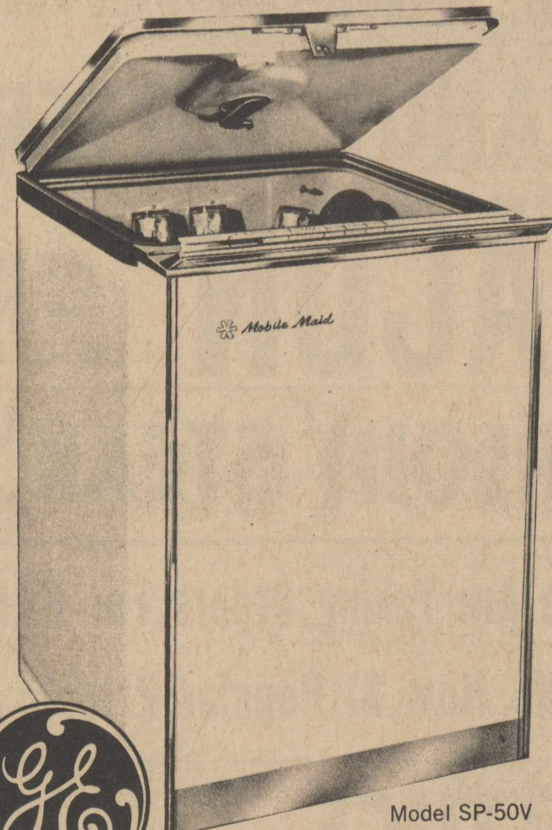
**Deluxe Range**  
Reduced To **\$169.95** With Trade

Automatic Oven Control  
23-Inch Wide-Opening Oven  
Push Button Controls  
Focused Heat Broiler  
Reg. \$289.95

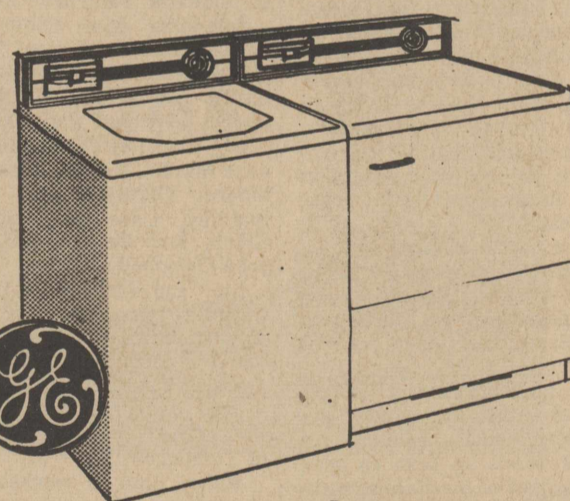
**Frost Guard**  
13 Cubic Feet Refrigerator



Reg. \$399.95  
Reduced To **\$299.95** With Trade



**Mobile Maid Automatic Dishwasher**  
Rolls On Wheels—Needs No Installation  
Reg. \$249.95  
Reduced To **\$189.95**



**Washer Just \$199.95**  
**Dryer Just \$129.95**

**GENERAL ELECTRIC FREEZER**



A supermarket in your home!  
Reg. \$239.95  
Only **\$199.95**

- Convent Door Shelves
- 4 Fast Freezing Surfaces
- 9-Position Temperature Controls
- Capacity 12.2 Cubic Feet

**TOO LATE TO CLASSIFY**

FOR RENT: Furnished house. Call Mrs. W. C. Dennis, 44-tfc

**RECIPE**

Mrs. R.V. Allcorn donated her recipe for Party Pecan Pie to the Enterprise this week.

"It's very low in calories," laughed Mrs. Allcorn. The truth the matter is that it couldn't hold many more calories.

Crush 21 Ritz crackers, Add 1 teaspoon baking powder, 1 cup pecans, and 1 teaspoon vanilla. Beat 3 eggs whites until peaks are formed and add 1 cup granulated sugar.

Fold cracker mixture into egg whites and pour into lightly greased pie pan.

Bake at 350 degrees for 25 minutes.

Serve when cool with whipped cream or ice cream.

**Mazie Bath Services Held Here Wednesday**

Funeral services for Mazie Bath, 69, were held Wednesday afternoon at 2 p.m. in the Olton Negro Church of Christ. Bro. Ellis Mayberry, minister, from Dimmitt, officiated. Mrs. Bath was born Aug. 26, 1892, in Robertson and died Dec. 4. Burial was in the Olton Cemetery under the direction of Parsons Funeral Home.

**Jack Hysingers Have Baby Girl**

Mr. and Mrs. Jack Hysinger became the parents of a baby girl Tuesday, Dec. 5 at Fort Sill, Okla. She is the Hysinger's first child and they named her Kenetha Lorene.

Maternal grandparents are Mr. and Mrs. Bert Stewart and paternal grandparents are Mr. and Mrs. H.A. Hysinger. Mrs. Maude Cure of Riverside, Calif., is the maternal great-grandmother and Mrs. J.C. Hysinger of Crowell is the paternal great-grandmother.

**7th Grade Girls Down Muleshoe**

Olton seventh grade slipped by Muleshoe 9 to 8 here Monday night. Karen Hipp was Olton's leading scorer with 4 points followed by Donna Smith and Brenda Kirkpatrick with 2 each.

Muleshoe's eighth grade dropped Olton's eighth grade 25-18. Muleshoe's scoring was led by Gross scoring 11. Sherry Caddel had 11 for Olton and Brenda Hyatt had 7.

In a game played here last Thursday night, Nov. 30, Olton's eighth grade lost to Abernathy 28-14. Sherry Caddel and Sharon Busby had 11 and 3 respectively.

**GIFTS FOR HIM**

- Sweaters
- Shirts
- Slacks
- Underwear
- Handkerchiefs
- Ties & Tie Sets
- Socks



We Feature Manhattan

**Superior Cleaners**  
"We Clean Clean"



**THOMAS FURNITURE**

East Side of Square

Olton, Texas



**Springlake News**

Mrs. Charles Ledger and Mrs. Johnny King of Lubbock, visited last Sunday with Mr. and Mrs. George Choate.

A film, "Good Tidings to all People", was shown during the Prayer meeting Hour Wednesday night. Mrs. Herbert Miller read the calendar of prayer and Mrs. Billie Walden lit a candle for each missionary mentioned. Then the G.A. girls sang "Christ for the Whole Wide World."

Myrtle Clayton visited Friday with Mr. and Mrs. Roscoe Thomas of Olton.

Mr. and Mrs. Solon Brown visited Sunday at Muleshoe with her daughter and family, Mr. and Mrs. Wimberly.

Mr. and Mrs. R.L. Byers Jr. were called to Amarillo Wednesday due to the serious illness of her niece, Tonya Perkins of Amarillo. She was in a diabetic coma at Northwest Texas Hospital. She was somewhat improved this week.

Mrs. Herbert Miller entertained in her home Thursday morning with a products party at 9:30. Cookies, coffee and punch were served to Mes. Joyce McClure, Henry Conner, Onita Nunn, A.B. Smith, Mac McGowan, the hostess and dealer.

Ray Banks was admitted Wednesday to the Littlefield Hospital for tests. He returned home Friday.

Mr. and Mrs. Darrell Kenemer, Ricky and Debbie of Muleshoe spent the weekend with her parents, Mr. and Mrs. Lowell Walden.

Mrs. Thelma McClanahan and Mrs. Betty Matlock attended funeral services for their cousin, Bill Whalin, of Muleshoe at the First Baptist Church, Muleshoe.

Andy Starkey was admitted Tuesday to the West Plains Hospital, Muleshoe, with pneumonia.

Mrs. Billie Walden and her sisters, Mrs. Cooper of Morton and Mrs. Williams of Bula, visited with their sister-in-law, Mrs. R.L. Swanner, who is a surgical patient in a Plainview Hospital.

Mr. and Mrs. Herbert Miller visited Saturday night and Sunday afternoon in the Littlefield Hospital with Charlie Timmons of Whitharral. He received a severe injury to his arm when he got it caught in a bollpuller.

Mr. and Mrs. Ernest Green entertained in their home Friday night with an Adult II Training Union Social at 8 p.m. Several games were played and hot spiced tea, cake and coffee were served to Mr. and Mrs. Herbert Miller, Mr. and Mrs. Solon Brown, Mr. and Mrs. Robert Huckabee, Mr. and Mrs. Ernest Baker, Rev. and Mrs. Milton Baldwin, Myrtle Clayton and Thelma McClanahan.

Mrs. Mary Clayton, Susan and Keith visited Saturday with Mrs. Roscoe Thomas of Olton.

Mrs. Marvel Carruthers accompanied by Mrs. McKenzie of Olton left for Corpus Christi Friday. Mrs. Carruthers will spend a month with her daughter and family, Mr. and Mrs. Pete Campbell and Mrs. McKenzie will spend a few days with her daughter.

Myrtle Clayton and Susan visited Saturday with Mrs. Ann Kelly and girls of Earth.

The Christmas Canata, "Stars in the Sky" will be presented Wednesday, Dec. 13, at 8 p.m. at the Baptist Church. A reception will follow in the Fellowship Hall.

Dinner guests of Mr. and Mrs. Ernest Green Friday were Mr. and Mrs. John Bridges and Brad.

Pam Rudd, daughter of Mr. and Mrs. Billie Rud of Lubbock, is visiting in the home of her grandparents, Mr. and Mrs. Ralph Rudd.

Mrs. Lois Rudd and Pam and Mrs. Ledford Enloe visited Sunday with Mrs. Lavern Fennell and Lexie of Earth.

Mr. and Mrs. Jess Matlock visited Andy Starkey at West Plains Hospital, Muleshoe, Tuesday night.

Mr. and Mrs. Ralph Rudd were honored with a combined surprise housewarming and anniversary party Tuesday night on their 29th anniversary.

Eighty-five friends and relatives gathered at the Community Building and carried gifts and the cake, decorated in blue and white, with "29" and Lois and Ralph" inscribed on it, out to their new home to surprise them. Coffee and soft drinks were also served.

Out of town guests were Mr. and Mrs. Ledford Enloe, Mr. and Mrs. Enloe and Mr. and Mrs. Horace Neeley, all of Amherst; Mr. and Mrs. Floyd Collop of Phoenix, Ariz.; Mr. and Mrs. Bert House and Mr. and Mrs. Cecil Cain of Clovis, N.M., and Mr. and Mrs. Barney Snodgrass of Portales, N.M.

Hostesses for the occasion were Mmes. Sonny Pickrell, Orlan Bibby, Ernest Goforth, Myrtle Clayton, Jimmy Winder, James Packard, Bill Perkins, W. B. Bryant, Frank White, Littlefield, Lewis Bohinger, Max Goforth, Leon Sanders, Donnie Clayton, B. V. Padon and Frank Bozeman.

Mr. and Mrs. Herb Robertson, Amherst, visited their daughter and family, Mr. and Mrs. Pete Tiffie, Thursday.

Mr. and Mrs. Doug Avery, Muleshoe, came by Mrs. Thelma McClanahan's Sunday to take Pam and Diane to Olton with them, where they were dinner guests of Mr. and Mrs. Irving Avery.

Mr. and Mrs. Jeff Perkins, Littlefield, visited Sunday afternoon with Mr. and Mrs. R.L. Byers Jr., Ricky and Danny.

Kevin Hinson received two severely cut fingers Wednesday, when he accidentally got them cut in a belt on a boll puller. He was taken to Littlefield Hospital and remained overnight.

Mrs. John Bridges and Brad visited Thursday with Mrs. Howard Bridges of Sunnyside.

Monty Watson spent Monday with his grandparents, Mr. and Mrs. G. Kellar of Earth.

Mr. and Mrs. Arnold Washington left Tuesday morning for Lamar, Colo., to attend funeral services for her uncle, Beman Matthews, 62, of Lamar. They were accompanied by her sister, Mrs. Ann Vincent of Muleshoe. Matthews died last Saturday night while visiting relatives at Woodson. They returned home Tuesday night.

Mrs. Ann Hedges was honored with a surprise party Friday night on her birthday at the home of Mr. and Mrs. J.W. Dear. The guests gathered at the home of Mr. and Mrs. Bill Phillips and then went on to the Dear home to surprise her. Birthday cake, coffee and punch were served to Mr. and Mrs. Bill Phillips, Mr. and Mrs. Jerry Barden, Mr. and Mrs. Sam Barden, Mr. and Mrs. Dee Lott, Mr. and Mrs. Eldon Hestand and Buddy Hedges.

Mrs. Bobie Banks entertained in her home Friday night with a Mexican supper. This was the climax of their mission study book. Those present were Jenna and Jimma Banks, Susan Parish, Kathy Bibby, Debbie Watson, Linda Packard, Becky Parish, Dalpha Banks, Brenda Clayton, Ann Bearden, Debbie Matlock, Jamie Washington and Cretia Washington. Marie Bibby helped with the serving.

The WMU began their week of prayer for Foreign Missions Monday at 2:30 p.m. Mrs. Herbert Miller was in charge of each day's program. Ladies attending during the week were Mmes. Thelma McClanahan, Bonnie Green, Herbert Miller, Frances Watson, Evelyn Bridges, Betty Matlock, Alice Huckabee, Billie Walden, Viola Baldwin, Velma Baker and Myrtle Clayton.

Mr. and Mrs. Ledford Enloe of Amherst visited Sunday with Mr. and Mrs. Ralph Rudd.

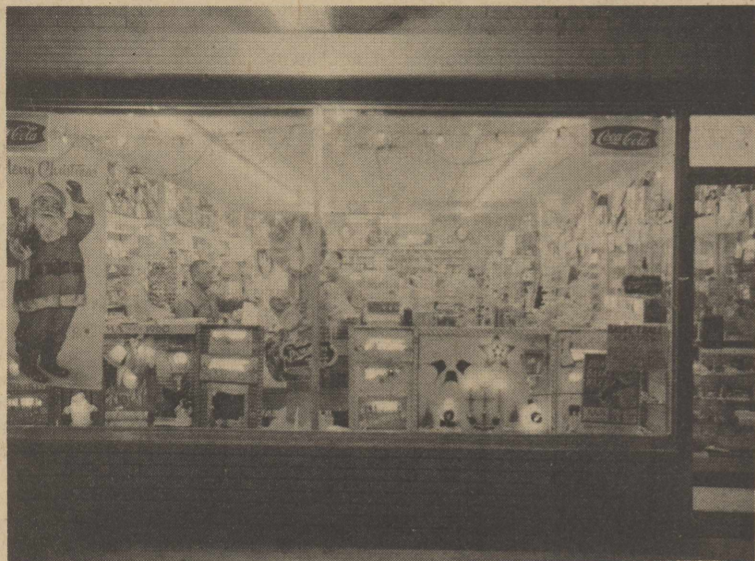
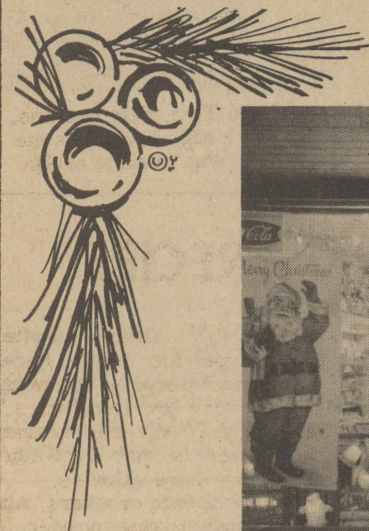
Mrs. Thelma McClanahan and Mrs. Bill Matlock, Jeff and Hoby attended the Christmas Parade at Muleshoe Saturday afternoon. Pam and Diane Avery came home with them to spend the night.

Mrs. Illa Stinson of Littlefield visited Wednesday with Mr. and Mrs. George Choate.

Mrs. O.B. Whitford visited with her mother, Mrs. Goodman, of Littlefield Monday.

*Christmas Comes To*

**OLTON DRUG**



**GIFT SUGGESTIONS**

- \* Perfume
- \* Cologne
- \* Cosmetic Sets
- \* Shaving Sets
- \* Ash Trays
- \* Lamps
- \* Ladies' Hosiery
- \* Transistor Radios
- \* Jewelry
- \* Watches
- \* Clocks
- \* Billfolds
- Ladies' and Men's
- \* Stationery
- \* Luggage

- \* Christmas Cards
- \* Christmas Lights
- \* Tree Decorations
- \* Pangburn Candies
- \* Toys
- \* Games
- \* Electric Appliances
- \* Electric Shavers
- \* Pipes
- \* Humidors
- \* Cigarettes
- \* Cigars



**WRAP UP THIS ONE for that Special Gift!**

BRENTWOOD MODERN WALNUT

**The Beautiful Packard-Bell 23-Inch CONVERTIBLE TABLE TELEVISION**

Brighter, Clearer Pictures  
Hardwood Cabinet  
Convertible To Remote Control

With  
Operating  
Trade

**\$199<sup>95</sup>**

Reg. \$289.95

**Riley TV**

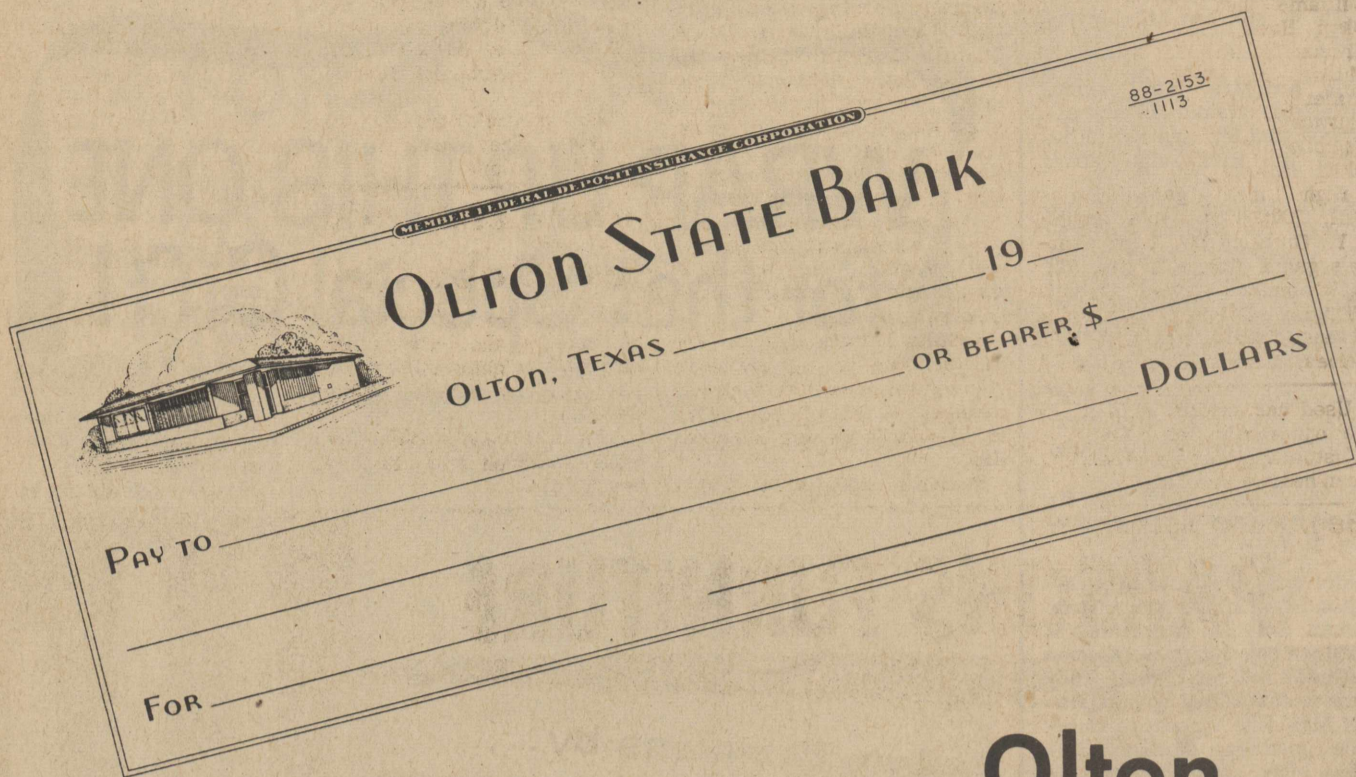
Phone 285-2285

Olton, Texas

**"It Is Profitable To Patronize Your Co-Op Gin"**

**OLTON CO-OP GIN**

# The second most important name on your check.....



## Olton State Bank

Member F.D.I.C.  
Open Your Checking Account Now!

The second name on your check - that of your bank - is important to you.

Your signature on an Olton State Bank check is something special. It not only says, "Here is a person of sound, financial judgement," but also "here is a person who enjoys the extra conveniences, complete safety and other advantages of an association with Olton State Bank."



HAYES CAMPAIGNS HERE—O.W. (Bill) Hayes of Temple, GOP candidate for lieutenant governor, hands campaign sticker to Buddy Hedges of Olton.

### GOP Candidate Stops Here

O.W. (Bill) Hayes, a Republican who describes himself as "slightly to the right" of Sens. Barry Goldwater and John Tower, brought his campaign for lieutenant governor to Olton Monday afternoon. "The Republican Party is the only major factor standing between the United States and complete and utter socialism," the GOP candidate declared. Hayes, 43, made his coffee-

break stop here prior to a talk he made in Littlefield Monday night.

Bob Manley of Littlefield is Hayes' campaign manager in Lamb County.

In an interview Monday, Hayes said if elected he would work to set up a "Little Hoover Commission" to investigate "waste and duplication" in state government. He said he would favor es-

tablishing the commission on a non-salaried and bi-partisan basis.

The lieutenant governor candidate said he advocates an across-the-board sales tax as opposed to the "mumbo-jumbo mess of pottage handed us by the professional politicians in Austin."

He said he favored a general sales tax because of the expenses necessary in adminis-

tration of a selective sales tax. Taking task with Gov. Price Daniel, Hayes specifically criticized a \$10,000 appropriation for a limousine for the governor. "Actually he needs that \$10,000 to put up the fences he has been riding all these years."

"I am a conservative Republican," Hayes said, "whether I am in West Texas, East Texas or South Texas. I hold no brief for deluded Americanism."

Hayes is running for the first time in Texas politics although he was elected to the New Hampshire Legislature in 1940 for a two-year term at the age of 22. He entered the Armed Forces at the end of his term.

He was a player and manager in professional baseball for 13 years. Hayes is now vice-president of the Continental Belton Co., manufacturers of post hole diggers in Belton. He is 43 years old. His wife, Helen, is a member of the Republican State Executive Committee.

Hayes said he decided to run for lieutenant governor because he was worried about socialistic trends in the state and nation and wanted to help provide a remedy.

"I intend to make the voice of conservative government and Americansim heard throughout Texas," Hayes said. "I am running firmly on a platform of less government control for municipal rights, states rights and national sovereign rights."

Everyone needs a warm personal enemy or two to keep him free from rust in the movable parts of his mind.—Gene Fowler.

Pedestrian: One who walks from the house to the garage.

KIDDOS,

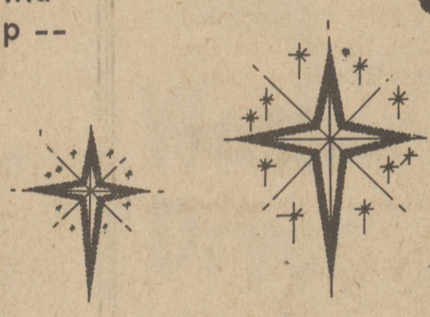
# I'M COMING TO OLTON SATURDAY

2 p.m. at the Square

I've got a bag of candy especially for you, so be sure and come and tell me what you'd like for Christmas.



You'll find all the gifts you want, at the prices you want to pay, in Olton. You'll save time, by shopping within minutes of your home -- you'll find free parking space quickly -- you'll find fast service and friendly help -- you'll find everything here to make shopping pleasant.



Santa's visit sponsored by the Olton Chamber of Commerce & Agriculture. The following members invite you to visit with Santa.

SMITH & STRUVE  
POLLARDS CLEANERS

JEFFREY LUMBER  
ADAMS TRACTOR

HALL-SIDES MOTOR  
KENNETH CAMPBELL TEXACO

CHITWOOD INSURANCE  
CONSUMER'S BUTANE

OLTON GRAIN  
OLTON PAINT & BODY SHOP

K. DEPARTMENT STORE  
J.C. JONES CO.

CASHWAY FOOD  
OLTON STATE BANK

WHITE AUTO STORES INC.  
OLTON BAKERY

LESTER'S CLEANERS  
THOMPSON IMPLEMENT

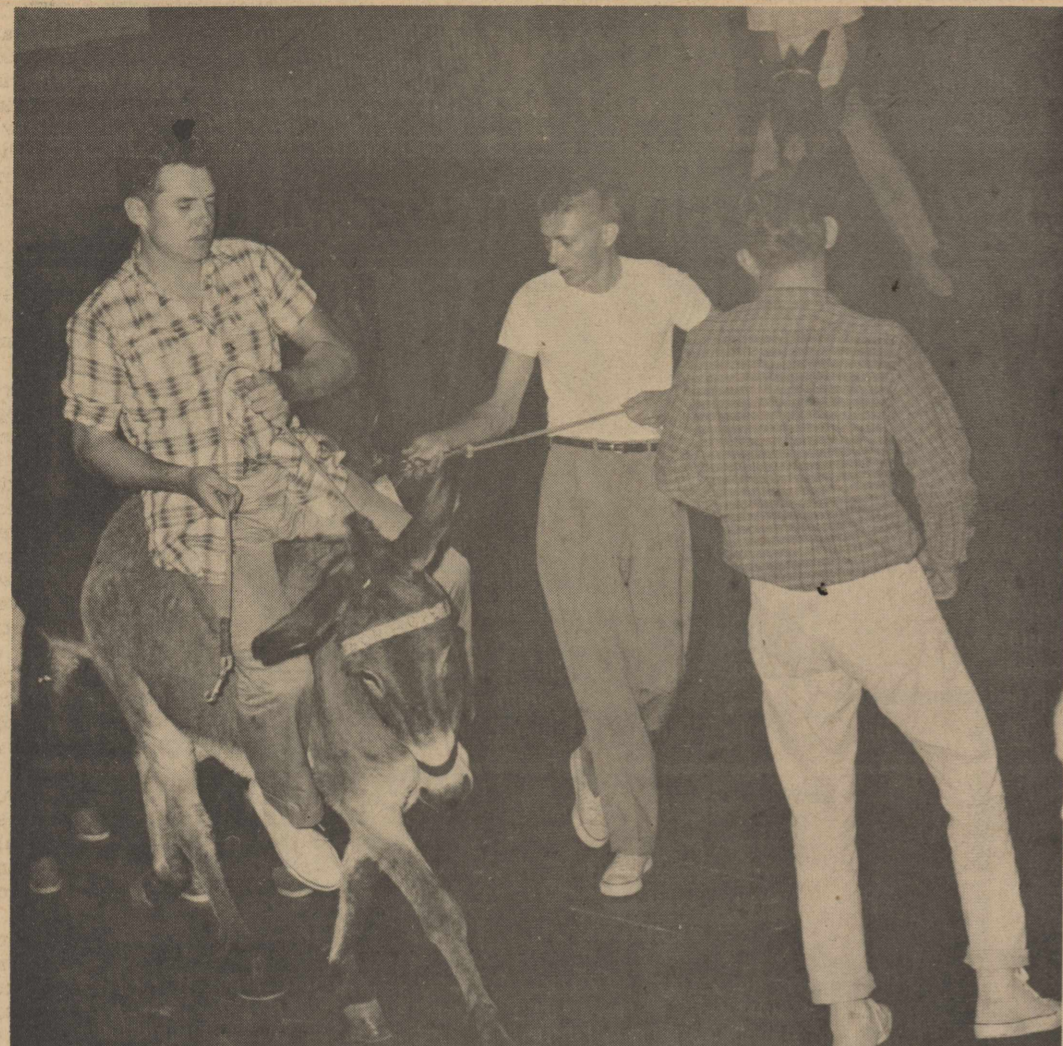
PARSONS FURNITURE  
HARRISON-JOHNSTON COMPANY

WHITTINGTON'S INC.  
OLTON ENTERPRISE

OLTON BOWLING CENTER  
OLTON DRUG

WAYNE'S HI-PLAINS PRINTING  
FARMERS GIN INC.

OLTON CO-OP GIN  
HOWARD HALL INSURANCE



**BASKETBALL?**—It was supposed to be, anyway. Johnny Clark, school superintendent, is, for a moment, on top of his donkey while James Caley, science teacher, leads his beast during the Donkey Basketball game here Saturday night.

## BOWLING SCORES

### MEN'S CLASSIC LEAGUE

TEAM	W	L
Fitts, Inc.	0	4
Thompson Chev.	4	0
Thompson Imp.	0	4
Lions Club	4	0
Olton Co-Op	4	0
Jeffrey Lumber	4	0
Higg.-Bart.	0	4
Watson Bros.	0	4

High game, John Montgomery, 213; high series, John Montgomery, 590; high team game, Olton Co-Op Gin, 862; high team series, Olton Co-Op Gin, 2496.

### OLTONETTES PLUS

TEAM	W	L
Farmers Gin	1	3
Consumers Bu.	3	1
Williams Potato	0	4
Shed		
Hart Camp Co-Op Gin	4	0
Dorris' Mach.	1	3
Phillips P&B	3	1

High men's game, H.C. Stewart, 232; high men's series, H.C. Stewart, 612; high women's game, Ruth Dorris, 192; high women's series, Ruth Dorris, 523; high team game, Consumers Butane, 734; high team series, Consumers Butane, 1993;

### LADIES LEISURE LEAGUE

TEAM	W	L
Jeffrey Lu.	1	3
Smith & Struve	3	1
White Auto	2	2
Gray Gro.	4	0
Botkin Food	0	4
Tasty Cream	2	2
Bizzells	1	3
Olton Drug	3	1

High game, Lavern George, 171; high series, Maxine Struve, 463; high team game, Jeffrey Lumber, 601; high team series, Jeffrey Lumber, 1672.

### HART WOMEN'S LEAGUE

TEAM	W	L
H & S Pro.	6	2
Hart Locker	4	4
Hart Lumber	4	4
Hansen Gro.	4	4
Newman Dudley	4	4
Davis Livestock	2	6

High game, Ruth Crick and Eloise Malone, 155; high series, Ruth Crick, 446; high team game, Hart Locker, 444; high team series, Hart Locker, 1240.

### MAJORETTE BOWLING

Monday, 6:30 p.m.

TEAM	W	L
Phillips P&D	0	4
Spotlite Cafe	3	1
Lester's	3	1
A.C. Light Cu.	4	0
Dennis Bldr.	3	1
Stoll Ins.	1	3
Lois' Beauty	1	3
Grant Ins.	1	3

High game, Jolene Givens, 202; high series, Ruth Dorris, 495; high team game, Dennis Builders Supply, 612; high team series, Spotlite Cafe, 1733.

## OHS Students Take College Entrance Tests

High School students from the surrounding area assembled Saturday morning at the Physical Plant Building at Texas Tech in Lubbock to take the SAT college entrance board test. The test is similar to a placement test and if taken now, or later in the spring, the student will not have to take it upon entering college.

The test is divided into four parts, vocabulary, mathematics, English, and advanced mathematics. It lasted approximately three hours.

Results of the test scores will be sent to the student's high school as well as the three colleges of his choice which he indicated on his entrance slip.

Students participating in this

test from Olton are Sandra Cox, Bitsy Maxey, Alice Bryant and Geneva Curry.

## Jimenezes Have Baby Boy

Mr. and Mrs. Ramon Jimenez became the parents of a baby boy weighing six pounds and six ounces Saturday, Dec. 2 in the Community Hospital and Clinic.

The Jimenezes have five other children. They work for the Raymon Carsons.

## Ramon Escovedos Have Baby Girl

Mr. and Mrs. Ramon Escovedo became the parents of a baby girl weighing eight pounds and fourteen ounces Sunday, Dec. 3.

The Escovedos have four other children and are from San Angelo.

## Thomasases Have Baby Daughter

Mr. and Mrs. Sammy Thomas of Olton are the parents of a baby girl, Christi Shay, born Nov. 30 in the Littlefield Hospital and Clinic.

The infant weighed six pounds, nine ounces at birth. Grandparents are Mr. and Mrs. Ray Copeland and Mr. and Mrs. Gordon Thomas.

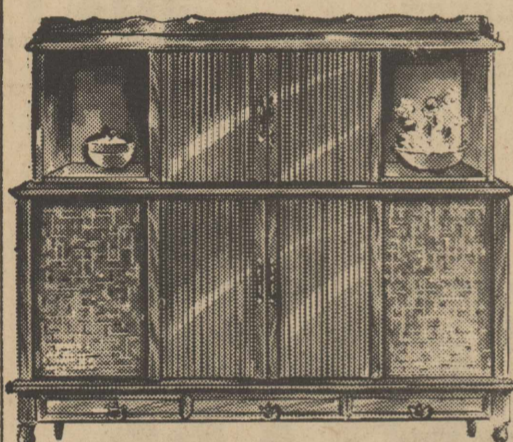
Mrs. Annie Campbell and Mrs. W.T. Copeland are great-grandmothers and A.J. Malone is great-grandfather.

## Basketball Season Tickets Now On Sale

Basketball season tickets are now on sale at the school business office.

Price of the tickets is \$3.75.

## Exciting Home Entertainment Center



Hand Wired-Power Transformer Television & Radio Chassis  
23 inch aluminumized picture tube  
AM-FM Radio with tuning eye  
4 speed stereo changer with automatic shutoff  
Diamond needle  
6 speakers  
Record storage cabinets

### CABINETS

Hard Rock Maple  
Mountain Cherry  
Danish Modern Walnut

The Stratford



\$499.95 with your old T.V.

The Business That Service Built

## T.V. LAB

CA 4-2776

Plainview, Texas

704 Broadway

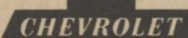
704 West 5th

LIVELINESS AND LUXURY AT A LOW, LOW PRICE

# NEW CHEVY II

Never before such a team of totally new cars! Sedans, hardtop, station wagons, even a convertible... you name it, Chevy II has it. Nine models in all now in production. They're easy on the eyes, easy on the road and easy on your pocketbook. Two spunky engines, a four and a six (your choice in most models), purr along merrily on regular gas—and darn little of it, too. Thanks to Mono-

Plate rear springs, the ride reminds you of the big Chevrolet—and you know how smooth that is. The space and cushy comfort inside put you in mind of big cars, too. But Chevy II parts company from anything else around when it comes to offering all these fine features—at a sensible low price. Check your Chevrolet dealer and see for yourself.



CHEVY II 300 4-DOOR 3-SEAT STATION WAGON. Packs a whopping 76.2 cu. ft. of cargo.

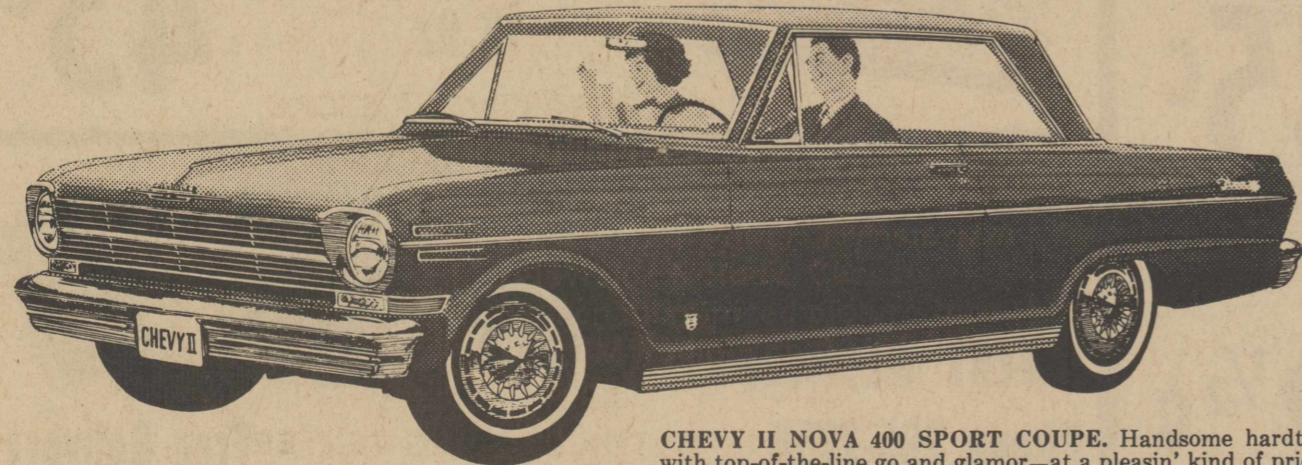


CHEVY II NOVA 400 CONVERTIBLE. It's Chevrolet's newest and lowest priced convertible.



CHEVY II 300 4-DOOR SEDAN. Chevy II's saving ways in a practical 6-passenger family model.

Now... look 'em over and try one out!



CHEVY II NOVA 400 SPORT COUPE. Handsome hardtop with top-of-the-line go and glamor—at a pleasin' kind of price.

A NEW WORLD OF WORTH—Chevrolet • Chevy II • Corvair • Corvette at your local authorized Chevrolet dealer's

## THOMPSON CHEVROLET CO.

Phone 285-2646

Olton, Texas

## PARSONS FURNITURE

Lifetime Stainless by...  
**INTERNATIONAL SILVERWARE CO.**

# 50 Pc. Service for \$3<sup>88</sup>

Modern table luxury... treasured beauty!  
A reproduction of a famous sculptured Star sterling pattern. One set to a customer — offer good for 30 days only.

With any furniture or appliance purchase of \$49.95 or more.

**DELICIOUS GOLD COAST FRUIT CAKE**

Chock full of the finest fruits, crisp nuts, raisins, etc. Rum-butter flavored, perfectly delicious. In beautifully decorated reusable container to seal in flavor.

special at **99c**

Shop  
**PARSONS FURNITURE**  
FOR  
**CHRISTMAS BARGAINS**

Give **FRIGIDAIRE** APPLIANCE **GIFTS**

## FRIGIDAIRE 2-Speed, 2-Cycle Washer at a budget price!

- 2 speeds, 2 cycles! Tailors washing to the fabric! Choice of wash water temperatures!
- Today's most advanced washing action—bathes deep dirt out without beating—for a sparkling clean wash!
- Safe, automatic laundry aid dispensing—detergent (liquid or powder), bleach, dyes, too!
- Two fresh water Lint-Away rinses—float lint away with the dirt, automatically! No filter to clean!
- Rapidry Spin gets clothes dryer than other washers!

Ask about the Frigidaire 15-year Lifetime Test!

Custom DeLuxe Model WCDA-62

# ONLY \$199<sup>95</sup> easy terms

**FRIGIDAIRE** PRODUCT OF GENERAL MOTORS

SAVE UP TO \$100!!!

## CLEARANCE SALE OF 1961 MODELS FRIGIDAIRE FROST-PROOF REFRIGERATORS

Sale includes all inventory of new 1961 models, as we must make room for new models on the way. Hurry, for we must make room quickly. Convenient Terms.

**FRIGIDAIRE** PRODUCT OF GENERAL MOTORS

## PARSONS FURNITURE

Phone 285-2767 "Where A House Becomes A Home" Olton

**250 Attend Senior Play Friday Night**

Approximately 250 attended the senior play, "The Groom Said No," last Friday night in the high school auditorium.

The play was centered around the problems of one Steve Cameron, portrayed by Kenneth Blades, who has returned from two years in the South Pacific to find his mother, played by Joanna Lewis, and the girl he left behind, played by Geneva Curry, making final preparations for the immediate marriage.

The boy had other ideas, however, and in order to extricate himself from this situation, he decided to pretend that he had been a psycho-neurotic patient.

Jeanavon Hapner portrayed the navy nurse who was his real love.

A neighborhood busybody, portrayed by Janice Galloway, added to the confusion as did the neighborhood brat, played by Bitsy Maxey.

Two young girls in the family were portrayed by Marilyn Jones and Sandra Cox. Eddy Carson played the part of one of the girls' boyfriend and Gary Johnson portrayed a local chicken farmer.

James Lobaugh was the nonchalant father.

As in all good stories, the boy got the girl and everybody lived happily ever after.

The play was directed by Clifford Curry, speech teacher at OHS. Assistant directors were Lana Hair and Johnny Schenck.

**"Twirp Week" Set At OHS**

Olton High School Student Council will sponsor the annual "Twirp Week" Dec. 10-16.

Each girl wishing to ask for a date must buy a Twirp license from one of the class representatives on the council. They are Lana Hair, Johnny Schenck, Robert Struve, Paul Hernandez, and Suzanne Martin. Price for the license is ten cents.

David Howton is sponsor of the Olton Student Council. The Council recently received affiliation with the National Association of Student Councils.

Another project recently undertaken by the council was purchasing a new United States flag for the auditorium. The School Board purchased half of the flag and the council the other half.

The Council has also placed a "calendar of events" in the hall for students to follow club meetings, assemblies, basketball games and other school activities.

**Jimmy Snow Entertains At High School**

Mr. and Mrs. Jimmy Snow of Nashville, Tenn. presented an assembly to Olton High School Wednesday morning at 10 a.m. Jimmy is the son of Hank Snow.

In past years, he has traveled over the United States and in Canada with rock and roll stars such as Elvis Presley and Tommy Sands.

He is 25 years of age. When he was 21, he stopped traveling and became an Assembly of God evangelist.

He is now holding a revival at the First Assembly of God Church in Plainview. The revival will continue through this week. Rev. Don George from the Church in Plainview and his wife were also present at the assembly.

"Neither Do I Condemn You", written by Snow, was sung by him and his wife. A musical "The Bells of St. Mary", was played by them.

**County's Cotton Allotment Down; Referendum Tuesday**

Lamb County's 1962 cotton allotment has been cut to 205,846 acres in comparison with the 1961 allotment of 211,406 acres.

This is more than the nationwide 1.9 per cent drop.

The cut was expected in Lamb County due to the fact that the figure is based on a five year average. A big year, 1955 with 203,165 acres, was dropped and a small year, 1960 with 180,677 acres, was picked up.

Cotton allotments have been in effect every year since 1953, the last time that farmers were permitted to plant all the available land they wanted to in the crop.

The referendum on the 1962 crop of upland cotton to determine whether marketing quotas will be in effect on the crop is set Tuesday from 8 a.m. to 6 p.m.

If more than two-thirds of the farmers voting over the nation approve marketing quotas, penalties will apply on farms having excess cotton ac-

**Muleshoe Girl Named Sweetheart**

A Muleshoe girl, only recently elected as Muleshoe High School's "most beautiful girl", was crowned sweetheart of the Littlefield FFA District at the district's annual banquet here last Thursday night.

Sue Willman, Muleshoe senior, won the honor and was presented a bouquet by Ethel Ann Glasscock of Lubbock, South Plains Maid of Cotton.

The sweetheart contest was conducted in the high school auditorium following a banquet in the school cafeteria.

Beverly Kelly, Springlake FFA sweetheart, was runnerup in the contest, which was judged by delegates from each of the district's chapters.

One of the highlights of the banquet was the presentation of plaques to Bill Dickenson Sr., Olton, and Guy Nichols, Muleshoe. They both were named honorary Long Star farmers, highest state degree for FFA.

Speaker for the event was Bob Stephens, farm director for a Lubbock radio station, who told the Future Farmers: "Always reach for a star, at least you won't come up with a handful of mud."

Invocation was by Donald Oursbourn of Olton FFA. Welcome was by Bobby Allen of Olton and response was by Johnny Kittrell of Hart. Charlie Burrus of Olton gave the benediction.

Chapters from throughout the district and special guests were recognized. Awards were presented by Kenneth Blades of Olton, president of the district.

These awards were banners which were won by the various chapters at the district leadership contests earlier this year.

**Six Named As Directors On C-CA**

Six new directors were named to the board of Olton Chamber of Commerce and Agriculture this week.

Five of the six were on hand Tuesday morning for the regular monthly meeting of the C-CA board at the Ideal Cafe.

The six--Farmers George Redinger, Delmer Givens and Owen Jones and Businessmen Dan Gregory, Ed Thompson and Johnny Clark--became members of the board officially on Jan. 2, 1962.

Going off the board will be Percy Parsons, Don Spain, and Allen Johnson, businessmen; and Lacy Armstrong, Roy Roberts and Melvin Hines, farmers.

At Tuesday morning's meeting, the board named committees for the annual C-CA banquet, scheduled Jan. 26 in the school cafeteria. Louis P. Throgmorton, Dallas banker-humorist, will be the speaker. Named to the foods com-

mittee were Johnny Clark, Bill Turner and Owen Jones. Appointed as a committee on decorating were Elmer McGill, James Cowart and Dan Gregory.

Banquet tickets, which will be \$2 per plate, will go on sale right after the first of the year.

The board also voted to endorse the Olton Garden Club's "Litterbug Campaign" and pledged to help in any way possible.

C-CA directors also gave the go-ahead to the Retail Merchants committee to plan a January Clearance promotion for Olton.

"We want to encourage not only our members, but also all other merchants who are interested to take part in this promotion," manager Dick Whiteley said.



*Cut Yourself a Slice of these*

**Savings**

**BIG BEEF SALE**

**STEAKS**

ALL CHOICE HEAVY PEN FED BEEF

<b>ROUND</b>		
<b>SIRLOIN</b>		
<b>T - BONE</b>		
<b>CLUB STEAK</b>	CHOICE HEAVY PEN FED	LB. 59¢
<b>ARM ROAST</b>	CHOICE HEAVY PEN FED	LB. 49¢
<b>CHUCK ROAST</b>	CHOICE HEAVY PEN FED	LB. 45¢
<b>BACON</b>	PINKNEY HARVEST TIME	79¢
	2 LB. PKG.	

**MEAT BUYS**  
for Your freezer!



**CUT AND WRAPPED FOR YOUR HOME FREEZER.**

<b>HIND QUARTER</b>	CHOICE HEAVY PEN FED BEEF	LB. 53¢
<b>FORE QUARTER</b>	CHOICE HEAVY PEN FED BEEF	LB. 39¢
<b>HALF BEEF</b>	CHOICE HEAVY PEN FED BEEF	LB. 49¢

**TOMATOES**

LIBBY STEWED 303 CAN **19¢**

**CHERRIES**

KIMBEL R.S.P. 303 CAN **19¢**

**COFFEE**

FOLGER'S 1 LB. CAN **65¢**

**TOILET TISSUE** BEST VALUE 4 ROLL PKG. **25¢**

**PEANUT BRITTLE** 14 OZ. BOX KRAFT **29¢**

**FLOUR** 25 LB. BAG PURASNOW **\$1.98**

**FACIAL TISSUE** 200 COUNT BOX SCOTTIES **10¢**

**LIMA BEANS & HAM** KIMBEL 300 CAN **29¢**

**TREET** ARMOUR 12 OZ. CAN **43¢**

**SILVER CLEANER** NEW TWINKLE CREAM **29¢**

**PEACHES** LIBBY 303 CAN SLICED OR HALVES **19¢**

**NAVY BEANS** KIMBEL 300 CAN OLD FASHION **10¢**

**OLEO** 1 LB. CTN. BLUE SEAL **15¢**

**ASPARAGUS** 303 CAN DEL MONTE EARLY GARDEN **35¢**

**TIDE** REGULAR SIZE **29¢**

**CRACKERS** 1 LB. BOX RITZ **35¢**

**CORN** 303 CAN LIBBY YELLOW WHOLE KERNEL **19¢**

**HERSHEY DANTIES** 12 OZ. PKG. **39¢**

**PINEAPPLE** 211 CAN DEL MONTE CRUSHED OR CHUNK JUST **21¢** EACH

**SHORTENING** JEWEL 3 LB. CAN **65¢**

**STRAWBERRIES** 10 OZ. CAN **2 FOR 35¢**

**MEXICAN DINNER** El Chico 16 Oz. **43¢**



**POTATOES** 10 LB. BAG RED **35¢**

**BANANAS** GOLDEN RIPE LB. **12 1/2¢**

**APPLES** FANCY RED DELICIOUS LB. **17¢**

**ORANGES** CALIFORNIA SUNKIST LB. **15¢**

**FOR SALE**

Lots 25, 26, 27 Block 101 Good residential Location Across from High School **OLIVER BIER** Plainview

SPECIALS BEGIN FRIDAY, DECEMBER 8

**DOUBLE GUNN BROS. STAMPS EVERY WEDNESDAY**

Phone 285-2250

Free Delivery



**CASH WAY**

Where Friends Meet and Prices Talk

**FOOD STORE**

SPECIALS EVERY DAY