



The Olton Enterprise

CONSUMER'S
BUTANE CO.
Phone 3971
Olton, Texas

"Land of Abundant Water, Fertile Soil and Diversified Farming"

Volume 30

OLTON, LAMB COUNTY, TEXAS, THURSDAY, OCTOBER 13, 1955

Number 35

Commissioners Vote Hike; Raise Retroactive To Oct. 1

Buff-Arizona Film To Show At QB Club

A movie of last Saturday night's 20-20 tie game between West Texas State and Arizona University will be shown to Quarterback Club members at their regular meeting on Monday night, Oct. 17.

Meeting time will be 7:30 p. m. QB Club President Bill Kelley arranged for the film in telephone conversation yesterday morning with Frank Kimbrough, West Texas State head football coach.

Everyone—whether or not they are Quarterback Club members—is invited to attend the meeting and see the film.

Showing of the film will have special interest here because Archie Souter, former Mustang grid great, is seeing lots of action at fullback for West Texas this fall.

At Monday night's meeting, members voted unanimously to send \$10 checks as partial repayment to each of the 18 men who made \$25 loans to the Quarterback Club in September of 1954.

A box supper, planned for later in the fall, will be sponsored by the QB Club as a means to paying off the remainder of the loans.

Coach Joe Turner spoke briefly on the upcoming district opener against Muleshoe on Friday, Oct. 21. Turner pointed out that Muleshoe is always keyed high for the Olton game. The Mules, though winless in five starts, held Abernathy to a scoreless tie during the first quarter last Friday and trailed by only 7-0 at halftime. The final score was Abernathy 34, Muleshoe 7.

Local Youths In KC For FFA Conclave

Two members of the Olton High School FFA Chapter are attending the national Future Farmers of America convention in Kansas City this week.

They are Wayne Bodkin and Jack LaFrance. Wayne is president of the local chapter, Jack is secretary.

The boys left Sunday and expect to return to Olton on Friday.

SO THE PEOPLE MAY KNOW

We understand that a group from Littlefield is circulating a petition for the widening of Highway 84 and Highway 70.

Now from what we can learn, Highway 70 will be widened AFTER Highway 84. And if past experience is any example the widening of our stretch of road will be much, much after the improvement to Littlefield's stretch of road.

Let us hasten to add that our information upon the Littlefield petition passing is ALL hearsay because the folks behind the petition have not seen fit to announce their plans in this newspaper.

In fact a recent "called" meeting of folks along Highway 70 was kept so quiet that Olton did not even have a delegation at the meeting.

We hold this petition suspect until more can be learned about it. We may go for it in a big way when we become acquainted with its contents but until then we must go on record as being against anything which has not been fully explained to the people.

Chamber Gives Green Light To Local Credit Bureau Plan

Olton Chamber of Commerce members Thursday night gave their unanimous endorsement to the establishment of a credit bureau here.

The Olton credit bureau would be established as a branch of the Credit Bureau of Plainview, according to arrangements discussed at the Thursday night meeting.

It would, however, have an office here in Olton with a full-time worker, it was explained to C. of C. members by R. L. McClure, who owns and operates the Credit Bureau of Plainview.

Establishment of the credit bureau hinges chiefly upon the willingness of about 40 local merchants to become credit bureau members.

Membership cost is \$4.50 per month dues, McClure explained. Additionally, a member gets four free oral credit reports per month, and pays 50c each for every oral report above four, he said.

McClure has requested that the credit bureau be provided office space here. He was expected to contact local merchants during this week to ascertain how many will sign as credit bureau members.

"Essentially, a credit bureau is a place where all merchants can pool their ledger information, and all member merchants may draw from that information," Mr. McClure said.

He explained that Lockney has

a credit bureau which is operated as a branch of the Credit Bureau of Plainview.

"A credit bureau does not itself make recommendations on whether to sell to a person on credit, but merely furnishes information on that person's credit record," McClure said.

Access To Records
McClure has operated the Credit Bureau of Plainview for a year. Prior to that, he had 15 years' experience with Sears-Roebuck.

Under terms of the arrangements discussed Thursday night, the local credit bureau would have complete access to all of the records of the Credit Bureau of Plainview.

McClure estimated that the Plainview bureau already covers approximately 70 per cent of Olton's trade territory.

"A credit bureau can be extremely useful to its members, but it's no good if it just has members—it will die unless they use it regularly," McClure said.

Even though the credit bureau here would legally and technically be a branch office of the Credit Bureau of Plainview, McClure explained that local merchants may use any name they wish. "Retail Mercants Association of Olton" was among the names discussed.

"If we can get office space and about 40 members, you could have a strong credit bureau here within 30 days," he said.

FIRE CHIEF EMPHASIZES CAUTION

You can live across town from a fire but it still can hurt you, it was pointed out this week by Tom Smith, chief of the Olton Volunteer Fire Department.

"If there are enough of those fires, and if they are bad enough, you're going to be hurt in your pocketbook," Chief Smith said.

The amount of premium a person pays each year for fire insurance can vary with the fire losses the city has, the chief explained.

Credit Or Penalty
The State Fire Insurance Commission credits or penalizes each municipality in the state according to its total fire damage.

A credit means you buy fire insurance for less. A penalty means you must pay more.

At one time, Mr. Smith said, Olton had a 15 per cent penalty, meaning that if you bought \$100 in fire insurance, it cost \$115.

Good Credit
Olton now has a credit of 25 per cent, he said. Thus \$100 fire insurance now costs \$75.

In most cases, eliminating fire hazards means eliminating carelessness, Chief Smith asserted. Ninety per cent of all fires are caused by carelessness.

Mr. Smith pointed out that "obvious parental laxity" is to blame in many fires... particularly ones caused by children playing with matches.

Fire Causes
Smoking in bed and failing to snuff out a cigarette is another major cause, the chief said. So are failing to check heating equipment and careless handling of inflammable materials. During this week—Fire Prevention Week—Chief Smith is urging that each resident check his premises for such obvious fire hazards as accumulated trash, piles of newspapers, stacks of wood, etc.

IS SELECTED TO PLAY AT STATE FAIR

Olton High School band is one of 22 bands in the state selected to play at the State Fair of Texas this week.

"This Is Your Music" was the eighth annual Cotton Bowl Music Festival's theme for the free show presented at the State Fair. Familiar music from nursery rhymes to symphonies were played.

Other than the 22 bands, there were 10 orchestras and 14 choruses. The groups presented concerts at different locations over the fair grounds during Tuesday.

The entire group, some 4,500 student musicians, took part in the gigantic music and marching spectacle in the Cotton Bowl. The musical program was topped off by a fireworks display.

ATTENDS SERVICES

Tom Beard attended funeral services in California the early part of this week for a brother-in-law, Sydney Westray. Mr. Beard, operator of The Farm Agency here, was expected to return to Olton the latter part of this week.



BIG GUN—No. 2 ball carrier in the West Texas State College backfield this fall has been Archie Souter, hard-driving sophomore fullback from Olton. Souter and his Buffalo teammates have compiled a record of three wins, no losses and one tie so far this year. Next Buff home game is on Saturday night, Oct. 22, against Hardin-Simmons.

Olton Faces Open Date Friday Before Tackling District Foes

The Olton Mustangs, 20-0 victims of Spur last Friday in their final non-conference clash of the season, face an open date this week-end before entering Dis-

trict 2-AA play here on Oct. 21 against Muleshoe.

The Mustangs have won two and lost three against a tough slate of non-conference opposition. Their record to date follows:

- Olton 0 Abernathy 13
- Olton 20 Morton 0
- Olton 52 Slaton 0
- Olton 0 Dumas 6
- Olton 0 Spur 20

It is significant that all three of the teams which have beaten Olton are still undefeated.

And a look at the performance of 2-AA teams to date shows that Olton's 2-3 record is better than that of most other teams in this district. Only Dimmitt, with a 2-2 record in non-conference play, has managed to play .500 ball thus far this fall.

Here's the schedule for Mustang conference play:
Oct. 21—Muleshoe here
Oct. 28—Tulia away
Nov. 4—Lockney away
Nov. 11—Littlefield here (afternoon game)
Nov. 18—Dimmitt here
Here are the 1955 records of other District 2-AA teams:

- MULESHOE (0-5)
Muleshoe 7 Hereford 47
Muleshoe 0 Sudan 39
Muleshoe 0 Canyon 52
Muleshoe 0 Springlake 28
Muleshoe 7 Abernathy 34

- TULIA (0-5)
Tulia 6 Memphis 19
Tulia 6 Abernathy 45
Tulia 0 Hereford 46
Tulia 6 Canyon 59
Tulia 0 Childress 44

- LOCKNEY (1-4)
Lockney 6 Hale Center 34
Lockney 6 Spur 41
Lockney 12 Frenship 6
Lockney 13 Ralls 20
Lockney 2 Floydada 38

- LITTLEFIELD (1-4)
Littlefield 6 Clovis 19
Littlefield 13 Hereford 14
Littlefield 7 Levelland 39
Littlefield 45 Brownfield 7
Littlefield 12 Tahoka 26

- DIMMITT (2-2)
Dimmitt 18 Silverton 0
Dimmitt 33 Turkey 0
Dimmitt 0 Hale Center 34
Dimmitt 14 Abernathy 34

Boost Based On New Law By Legislature

Lamb County Commissioners granted themselves and other elective county officials raises ranging from \$600 to \$1200 Monday.

This move by the court was made in the face of widespread disapproval of the measure.

The commission held a public hearing on the matter about two weeks ago. Several citizens attended the meeting and some spoke out against the raise.

County Judge Robert Kirk said the raises were in accordance with state law which went into effect last month.

The court fell short of the raises proposed prior to the public hearing on the matter.

Here's how the raises stack up:

County Judge, former \$4800, present \$6000, proposed \$7200; Commissioners, former \$3400, present \$4250, proposed \$5100; Sheriff, former \$5400, present \$5700, proposed \$6000; Tax Assessor, former \$4800, present \$5400, proposed \$6000; County Clerk, former \$4800, present \$5400, proposed \$6000; Treasurer, former \$4100, present \$5000, proposed \$5500; Attorney, former \$4800, present \$5400, proposed \$6000; District Clerk, former \$4000, present \$4600, proposed \$5000.

County commissioners also draw \$600 a year for car expenses.

Commissioners Court approved a \$300 a year increase in the salary of Emil Macha, sheriff's office radio dispatcher. This brings Mr. Macha's salary to \$2700 a year.

Non-Conference Slate 'Rugged' For Next Year

It appears likely that the 1956 Olton Mustang football team will play one of the most rugged non-conference schedules in the history of Olton High School.

Supt. Carl Macon has announced that Abernathy, Floydada and Littlefield have already been scheduled as 1956 non-conference foes.

Negotiations are underway to resume contracts with both Dumas and Spur as non-conference opponents. Both clubs were to take part in district meetings this week, and it is considered likely that both will renew their series with Olton.

The Mustangs will open here against Abernathy, then will meet Floydada and Littlefield, in that order, away from home. Both Spur and Dumas, if signed, would be home games for Olton.

Olton, which will be a District 2-AA member next year as result of a statewide realignment by the Texas Interscholastic League, will have as conference foes next year the following teams: Canyon, Dalhart, Dimmitt, Muleshoe and Tulia.

Lockney will be a District 2-AA member (along with Abernathy, Floydada, Post, Slaton, Spur and Tahoka). Dumas, Hereford, Phillips, Levelland and Littlefield will be members of District 1-AAA because of larger enrollments.

Grain Harvest Underway; Cotton Awaits More Sun

Olton's grain harvest got underway in full swing this week and gathering of the area's late-planted cotton crop should be going at a merry clip by the end of next week, local gin men say.

As of Wednesday night, Olton gins had processed a total of 382 bales of cotton. This time last week, they had ginned only 69 bales. This time last year, local gins were running night and day.

Ginners concur in the opinion that the cotton harvest will "really open up" by the latter part of next week... if the weather holds good.

Cotton Discolored
Cotton being ginned now is cleaning up good and turning out good, but is suffering on classification because of discoloration. Much of it is being

classed strict low middling.

At this time most of the cotton being brought to the gins is from north, northeast and west of Olton. Cotton east and south of Olton was planted latest because of the deluge of spring rains in those areas, and is expected to be the latest to be harvested, one ginner pointed out.

Grain Sprouting

At Ben F. Smith Grain Co., Louie Mack Hardy reports that some of the softer varieties of grains have discolored and sprouted, making them ineligible for government loan.

Grain must be graded at least No. 2 grade to meet government loan specifications, he explained. Some of the softer varieties have sprouted, killing the germ, and No. 2 grain must not exceed 5

per cent dead germ, or total damage, he explained.

Most Martin maize, Hardy said, is meeting government loan specifications.

\$1.53 Net

Net on the government loan is \$1.53. That figure will go to \$1.54 on Oct. 14 and will advance one cent every 10 days thereafter, Hardy said.

"Some farmers have been trying to combine grain too early in the morning and have been having trouble meeting the moisture requirements," Hardy asserted. Grain moisture must not exceed 13 per cent to meet government loan standards.

"Grain which has been harvested after noon has been checking out pretty much okay," Hardy said.

OHS ENGLISH TEACHER HAS LOTS OF EXPERIENCE

BY YVONNE HUFF

Mrs. E. R. Higgins, who has taught in colleges and schools in Oklahoma, California, Texas, and Florida, is an English and Literature teacher in Olton High School this year.

After receiving her Masters degree from Oklahoma A & M, Mrs. Higgins began her teaching career. She received her Bachelor of Science degree from East Central Teachers College, Ada, Okla.

For the past ten years, Mrs. Higgins has been teaching altogether in colleges, but she has had several years of experience teaching in high schools.

"I stress visual aids in teaching as much as possible," she said, "because it explains more thoroughly and is more interesting to the students."

Collects Teaching Material
Collected from her teaching experience, Mrs. Higgins has such work as poetry collections with photographs or original drawings to illustrate each poem.

The American Literature class this six-weeks, Mrs. Higgins explained, is working on a project to be based on poetry and their grade will be determined by their originality and contents of the project.

Freshman literature classes are studying different countries and make displays from each country they study. "They (the students) have produced some very attractive displays," Mrs. Higgins said.

Help Establish Colleges
Mr. and Mrs. Higgins have had the experience of assisting in establishing two colleges, one in Tampa, Fla., and another in Bartlesville, Okla.

A member of the Delta Kappa Gamma sorority and the Kappa Delta Pi, she was chosen by the Southern Association to serve on the evaluating committee for schools.

In addition to this, she has directed reading workshops with the goal to create a desire in young people for good reading and literature, she remarked.

Mrs. Higgins, who is the wife of the Main Street Church of Christ pastor, is presently teaching four Bible classes in Olton outside of teaching English and literature in high school.

the week-end. What were you doing with Waylan's class ring, Sue? Not keeping us in the dark about anything, are you?"

I hear Krueger Johnson still has interests in Cotton Center, Right, Krueger?"

Mr. and Mrs. Bill Rogers were ill over the week-end.

Wynne Lee Young and Weldon Schaefer are still on the go, together. Weldon is attending Tech his fall.

What's this about Laquita Huckabee and Deverly telling Becky Herndon she could have her pick of the boys from Wayland, who were sitting in front of them Saturday night?

Barbara Jones and Donald Powell are still on the list of "couples."

Congratulations to Wayne Bodkin on his election to the office of president over the district in F.F.A. work. We're proud of you, Wayne, keep up this splendid work!

Latrell Stewart was recently chosen F.F.A. Sweetheart. Congratulations, Latrell.

The Olton F.H.A. girls will leave Friday at noon for the Dallas Fair. They plan to go on a chartered bus and they will stay in the stock barns in Fort Worth, which have been furnished for the girls who come. They will return Sunday. Have a good time, girls!

Judy Price has a crush on a "certain" Olton newcomer. What is all the "hush-hush" about, Judy?

TO SPEND WEEK
Mrs. John Watt of Odessa is visiting in the home of her parents, Mr. and Mrs. Floyd Gray, this week.

FARMERS UNION MEET
Raymond Cooper and Paul Nafzger attended the State Farmers Union meeting in Wichita Falls last week. They heard talks from National Farmers Union men.

Hospital News

Surgical
Ernestine Tiner, Olton.

Medical
C. B. Hines, Olton.
Mrs. Edna Hart, Hart.
Elvis Hatley, Olton.
Henry Miles, Hart.
Judy Hurt, Littlefield.
Mrs. C. E. Brown, Olton.

Births
Mr. and Mrs. Charles Lewis, Olton, a daughter, Helen Elizabeth, Sept. 8.
Mr. and Mrs. Bob Tiner, Olton, a boy, Neal Ray, Sept. 9.

Slade Wins Magazine Contest

HART—James Slade, Amarillo, formerly of Hart, has been named winner in a nation-wide subscription contest sponsored by Time Magazine and Sports Illustrated.

Mr. Slade, a senior at West Texas State College, will receive expense-paid a year of study abroad.

Charles Lewises' Have Baby Girl

A baby girl was born Saturday in the Olton Memorial Hospital to Mr. and Mrs. Charles Lewis.

Helen Elizabeth is the Lewises' first child.

BEL CONTO CHOIR SETS TALENT SHOW

The Olton Bel Conto Choir, OHS Choir, will sponsor a talent show Friday at 11:15 a.m. in the high school auditorium.

There will be two divisions: grade school, 1-8 and high school, 9-12 grades. Prizes will

be given to first, second, and third place winners in each division.

Twenty-five cents admission ATTEND CHURCH SUNDAY



COTTON SACKS AND FARM LABOR SUPPLIES

- Steel Bunks
- Mattresses
- Blankets
- Cooking Utensils

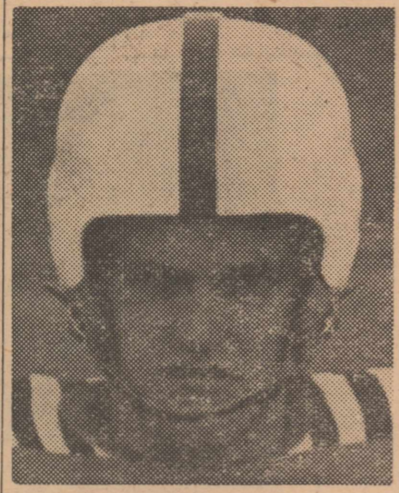
THE Farm Agency

Olton, Texas

The Littlefield Art Club invites all of the artists, professional, non-professional, and amateurs and especially children to participate in the exhibit in observance of American Art Week, November 10, 11, and 12.

Rules are being announced so that area artists may still have time to get exhibits ready.

- The rules are as follows:
1. Artists are urged to exhibit originals.
 2. Paintings must be framed or matted and wired for hanging.
 3. Each exhibitor may enter only two paintings for competition in each medium. Pairs will be considered one entry. Mediums may be oil, Tempera, watercolor, pastel, charcoal, ink, pencil and crayon.
 4. Articles that have been exhibited in the Downtown Exhibit before, will not be accepted.
 5. The work will be classified: Junior—6 years through 12 years; Intermediate—13 years through 18, and adults—professional and non-professional.
 6. No exhibits will be accepted after 6 p.m., November 9.
 7. Winning exhibits will be decided by popular vote. Each person casting one vote each for first, second and third. Voting closes at 12:00 noon, Saturday, November 12.
 8. China, ceramics, pottery, copper foil, aluminum, wood, leather, textile painting, and handwork will be for display only.



JERRY DENNIS MAKES COLLEGE TOUCHDOWN

Jerry Dennis, one of the star backs on the Mustang football team last year, made a touchdown for Murray College at Tishomingo, Okla., last Friday night.

Jerry, who ran 49 yards to make the touchdown, had been unable to play until last Friday night because of ill health. It was Jerry's first time to carry the ball.

He is a freshman student at Tishomingo college where he is going on a football scholarship.

Learn The Latest
OLTON TEEN-AGE NEWS
BY YVONNE HUFF

Starting this week off with a bang was the taking of the pictures for the high school annual. This year an entirely new idea is being used for the high school pictures. All the boys wore white shirts with dark jackets and black bow ties. The girls wore dark sweaters with white collars or beads. This way the pictures will be uniform, thus, making a much more attractive annual.

Janice Ford and Jack Hysinger were seen together at the Community Concert in Plainview Saturday night.

Olton was well represented at Plainview Saturday night for the Community Concert program. It was a wonderful program, so if you have tickets, don't miss any of these wonderful programs.

Mustangs, let's fight when we meet Muleshoe a week from Friday. We can take Muleshoe if we want to, so let's go! Fans, let's back our coaches and encourage our team. They are a swell team.

The Olton Mustang Band represented this region at the Dallas Fair this week along with two other neighboring bands. We hope you had a swell time, kids. Good going, we're proud of you.

Been seeing Kay Sherman with Edward Feathengill.

What's this about Teddy Jack Estes and Doniece Silcott? A little bird said the two are on the "steady" list.

Clyde Rhodes, what's this I hear about you and Elaine Jones? You right, Clyde, she's a mighty pretty and sweet girl.

Sue Sullivan and Waylan Hukill were together again over

now... the **Seamless Opera**

like a rolled collar...no top-line seam visible outside!

\$9.95

as seen in **MADMOISELLE**
Jacqueline

Glovelier, softer, smoother... it's news in shoemaking, and now yours for so little! "The seamless" is soft-toed, cork-insoled, tissue-leather lined... fits like a sheath dress! In chestnut, brown calf or black calf.

Paynes
PLAINVIEW

SPECIALS BEGIN FRIDAY, OCT. 14

PER CARTON **79c** *Thrifty Boys*

CHEWING GUM

Biscuits BORDEN'S CANNED **2 For 25c**

PIE APPLES, Comstock, No. 2 Can **21c**

PET MILK	TALL CANS	CRISP CARROTS	POUND CELLO BAG
ASSORTED LUNCH MEAT	PER POUND	PURE PORK-FRESH SAUSAGE	PER POUND
	2 For 25c		12c
	43c		35c

Syrup Kimbell's Waffle Syrup 24-Ounce Bottle **31c**

LARGE TOKAY GRAPES	PER POUND	BEST MAID SALAD DRESSING	PINT JAR
	12 1/2c		29c

Crisco 3-Lb. Can **79c**

Botkin Food Store

Phone 3591 — We Deliver — Olton, Texas — Louis Botkin, Owner
We Give S. & H. Green Stamps—Double on Tuesdays with Purchase of \$2.50 or More

Springlake News

BY MRS. ERNEST BAKER

Mr. and Mrs. Carter of Earth visited Sunday afternoon in the home of their daughter and son-in-law, Mr. and Mrs. Gus Parish.

Harvest is in full swing since the rains have ceased. The Springlake elevator is a very busy place with big trucks of grain ready to be unloaded.

Mr. and Mrs. Tommy Leidkie of Amarillo visited Sunday in the home of Mr. and Mrs. Billy Watson.

Mr. and Mrs. Melvin Parks and family, Mr. and Mrs. J. C. Parks and family, Mr. and Mrs. L. A. Parks and family and Mr. and Mrs. Amos Tomlin, all of Houston, and the Tomlin's daughter and family of Quanah were visitors in the home of Mr. and Mrs. Jim Stone last week.

Billy Watson and his mother, Mrs. W. O. Watson left Monday night by plane for Herkimer, N. Y., to visit their sister and daughter, Mrs. Bob Holt, and family.

Mr. and Mrs. Almon Whitford and family and Mr. and Mrs. Bill Struve and family attended the circus in Plainview Wednesday night.

Mrs. Wanda Hall and son, Gene, spent the week-end in Ropesville with Mr. and Mrs. Robert Hall. While there she talked by telephone to her husband, Delbert Hall, who is serving army duty in Korea.

Rev. Claude Withrow of Quitaque visited Thursday with Rev. and Mrs. J. T. Williams.

Mr. and Mrs. Ernest Green, Mr. and Mrs. W. T. Clayton and Donnie returned home Wednesday from Van Horn with four antelope they killed while hunting there.

Mrs. A. J. Jones of Hereford is visiting in the home of her mother, Mrs. Almon Whitford, this week.

Frank McNamara was ill this week.

Mr. and Mrs. J. W. Harris of Corpus Christi are visiting their daughters, Mrs. Jim Stone and Mrs. Leslie Watson and their families.

Mr. and Mrs. Ernest Baker transacted business in Plainview Friday.

Mr. and Mrs. Frank Sitton and children of Hart visited in the home of Mr. and Mrs. W. B. Hucks last week.

Mrs. Horace Huckabee and Mrs. Lewis Willis visited in the home of Mr. and Mrs. A. C. Loftis last week.

Mr. and Mrs. Art McFatter and daughter and Rev. and Mrs. C. T. Jordan and Charlotte of Earth

were Sunday dinner guests of Mr. and Mrs. Gus Parish. Mr. and Mrs. Jimmy Ray Banks and children visited Sunday at Vega in the home of Mr. and Mrs. Ray Banks. Laquita Huckabee attended a concert at Plainview Saturday night.

Baby Son Is Born Sunday To Bob Tiners'

Neal Ray Tiner was born to Mr. and Mrs. Bob Tiner Sunday. The baby was born in Olton Memorial Hospital.

ATTEND THE CHURCH OF YOUR CHOICE SUNDAY

YOU'LL SAVE OVER HALF THE COST OF SOAP AND HOT WATER AUTOMATICALLY



with the greatest economy feature of them all... SUDS-MISER

Exclusive, built-in, fully-automatic Suds-Miser pumps hot sudsy water out of washer into tub for storage at end of washing time; returns only clean hot sudsy water for re-use, all automatically!

NEW 1956 Whirlpool FULLY-AUTOMATIC WASHER \$299.95

EASY TERMS
TALK TO THE WOMAN WHO USES A WHIRLPOOL THEN COME IN FOR A DEMONSTRATION

Olton Building Supply

SHERMAN FOOD



HAMS Longhorn Cured Whole—Per Lb. **49c**

KIMBELL'S CHILI NO BEANS—NO. 2 CAN 39c	HUNT'S TOMATO JUICE 46-OUNCE CAN  25c	HERSHEY'S COCOA HALF-POUND BOX 33c
------------------------------------------------------------	--------------------------------------------------------------------------------------------------------------------------------------------------	--------------------------------------------------------

HIPOLITE MARSHMALLOW CREAM, Pint Jar 2 For 49c

CHEER GIANT SIZE 69c

WATCH FOR THE MORTON "MERRY-GO-ROUND" . . .
... at our store Friday and Saturday, October 21-22.
Free rides for all the kiddies!!

BISCUITS GLADIOLA. PER CAN 10c

COMET—Pre-Fluffed RICE 12-OUNCE BOX 4c	HERSHEY'S Chocolate Syrup 16-OUNCE CAN 19c	THREE-POUND CAN SPRY SAVE AT . . . 79c
------------------------------------------------------------	----------------------------------------------------------------	------------------------------------------------------------

OLEO KIMBELL'S. Yellow Quarters 2 Lbs. 35c

HUNT'S SIZE 300 CAN YELLOW CORN Whole Kernel or Cream Style 2 For 23c	HERSHEY DAINTIES SIX-OUNCE PACKAGE 2 For 49c
-------------------------------------------------------------------------------------------	------------------------------------------------------------------

DOUBLE GUNN BROS. THRIFT STAMPS ON WEDNESDAY WITH PURCHASE OF \$2.50 OR MORE



SHERMAN FOOD



QUALITY MEATS

PHONE 3701
WE RESERVE THE RIGHT TO LIMIT QUANTITIES

FREE DELIVERY

Notice

For the convenience of the people who wish to pay their taxes in October, I will be at the City Hall in the following towns on the dates indicated for the purpose of collecting State and County taxes:

AMHERST, OCTOBER 18.

SUDAN, OCTOBER 19.

EARTH, OCTOBER 20.

OLTON, OCTOBER 21 and 22.

3% discount allowed for October payments of State and County taxes.

Signed,
Herbert Dunn
Lamb County Tax Assessor and Collector

"WOMEN, WIDE PROCLAIM" IS WMU PROGRAM

"Come, Women, Wide Proclaim" was the title of the program for the W. M. U. of the First Baptist Church Monday.

Mrs. Robert Edwards brought the devotional and Mrs. Hubert Waldrop was in charge of the program. Others on program were Mesdames Glenn Gibson, Travis Bundick, Clury Phillips, and Robert Hipp.

"Hark, the Voice of Jesus Calling," was the solo sung by Mrs. William DeBerry.

Mesdames present were Waldrop, Edwards, DeBerry, Phillips, Hipp, Bundick, Gibson, Gene Cade, Barton Prestridge, C. B. Turner, Marshall Tabor.

C. E. Bley, W. P. Holley, O. L. Langley, Wilbur Andrew, Gene Cottrell, Tom Perry, Milford Lambright, Fred Long, Lewis Clark, Kenneth Campbell.

Garner Ball, Erschel Johnson, E. D. Harper, J. A. Phillips, R. G. DeBerry, Carl King, R. A. Burgess, Louie Cross, J. F. Miller, Fred Burgess, Brent Burrow, Duward Price, Roy Thurman and Joe Hatley.

"Mpengo of the Congo," a story of a boy in Africa who ran away from a mission school, is being taught to the Sunbeams.

Mrs. Archie Sorley and Mrs. Beverly Stewart are teaching the Sunbeams. Approximately 26 youngsters attended Monday.

F. T. A WILL INSTALL NEW OFFICERS TUES.

An installation of officers for the Olton chapter of the Future Teachers of America will be held Tuesday night at 8:00 in the high school auditorium.

The Canyon chapter of the F. T. A. will assist the Olton chapter in the installation.

The public is invited to attend, announced Jo Ann Buckner, reporter.

GIVE PARTY FOR BRIDE-TO-BE

HART—Mrs. D. L. McLain and Mrs. Ed Todd favored Miss Shirley Todd with an engagement tea Friday in the home of Mrs. Curtis Malone.

Miss Todd is the bride-elect of Cleve McLain.

Centering the serving table was an arrangement of a large engagement ring and wedding band made of plastic foam and trimmed in blue net ruffles with white carnations. The table was laid with a lace cloth over pastel blue.

Mrs. Wendell Taylor of Plainview and Mrs. Cecil Ray Jones presided at the punch service. Registering the names of the guests was Miss Geneva McLain.

Miss Todd and Mr. McLain will exchange wedding vows on October 22.

Mrs. Oliver Has Program

HART CAMP—Mrs. E. P. Oliver was in charge of the Royal Service program at the meeting of the W. M. U. of the Baptist Church Monday.

"Come, Women, Wide Proclaim" was the name of the program.

The thirteen members present were Mesdames E. P. Oliver, Homer Worley, R. S. Moore, H. V. Lynch, Dewey Parkey, L. W. Sullivan, Charles Vanlandingham, Roy Osthus, James Ball, C. E. Timmins, Blanton Martin, Junior Muller, and Rev. C. H. Vanlandingham.

Y. W. A.'s Will Present Playlet

"Aunt Tillie Learns to Tithes" is the title of the playlet to be presented at the First Baptist Church Oct. 30 by the Y. W. A. girls, who practiced the playlet at their meeting Tuesday night.

Mrs. Eugene Ball, who is assistant Y. W. A. leader, served refreshments to Misses Helen Oursbourn, Dorothy Gray, Sue Macon and Mrs. W. D. Holley, leader.

Next meeting will be in the home of Mrs. W. D. Holley on Tuesday at 6:15 p. m.

COLLEGE STUDENT HERE

Eugene Edmonson was in Olton over the week-end. Eugene is a freshman student at Texas Tech, Lubbock.

News For Women



MRS. RICHARD ROBERSON

WEDDING VOWS ARE SOLEMNIZED IN LAS VEGAS, N. M., CEREMONY

Miss Jo Lene Keasler, daughter of Mr. and Mrs. Cecil Keasler, became the bride of Richard Roberson, son of Mr. and Mrs. Bill Roberson of Plainview, Monday in Las Vegas, N. M.

S. A. Freeman, minister of the Church of Christ in Las Vegas, former pastor of Olton Main Street Church of Christ, officiated.

Wears Blue Taffeta
The bride was attired in a street-length blue antique taffeta dress, fashioned with a fitted bodice and a full circular, pleated skirt. The bodice was styled with a sweetheart neckline with a tiny insert of tucks and large pleats making cap sleeves.

She wore navy accessories and carried a bouquet of baby carnations. For luck, the bride carried a blue wish-bone and wore a penny in her shoe and for something old, she carried a handkerchief.

Will Live in Olton
After a wedding trip to Santa Fe, N. M., the couple are making their home in Olton, where the bridegroom is a co-owner and operator of the Texaco Roberson & Givens Service Station.
Mrs. Roberson is a 1952 graduate of Olton High School and has attended Abilene Christian College where she was a member of the Alpha Alpha, a social sorority.

COMPLIMENT RECENT BRIDE WITH SHOWER

Mrs. Wendell Cavett, the former Miss Yvonne Peterson, will be honored tomorrow (Friday) in the home of Mrs. W. T. Hankins at 2:30 p. m.

The hostess list includes Mesdames Henry Mathis, Herman Meyer, Virgle Gray, Jackie Powell, W. T. Hankins, Lenville Hines, Barton Prestridge, Johnny Durham.

Freddie Warren, Guy Vaughn, Jim Brown, Earl Dodd, Wayne Hair, Meredith Crawford, C. T. Williams, J. Gibbs, J. D. Glenn, Tom Smith, W. M. Smith.

Bill Phillips, McAdams, and Misses Doreen Young, Betty Lou Sides, and Juanice Hendrix.

SET "TRICK OR TREAT" PROGRAM

Methodist Youth Fellowship are making plans for a "trick or treat" program Halloween in cooperation with C. R. O. P.

Last year, the youth collected approximately \$79 and the government multiplied that amount by 20 and bought milk for the people in Korea.

Garden Club Has Discussion

A round-table discussion on "Putting the Garden to Sleep" was the program at the Thursday meeting of the Olton Garden Club.

Mrs. Preston Sampler was hostess and Mrs. Walter Struve was co-hostess.

The club is placing orders for spring flower bulbs.

Those wishing to place orders for spring flower bulbs should contact Mrs. Rufus DeBerry.

Peach ice cream and angel food cake was served to 18 members and five visitors.

Eight Girl Scouts Meet

Olton Home Economics Cottage was the scene for the Girl Scout Troop 16 meeting this week.

The girls discussed badges with their counselor Mrs. W. T. Hall, Jr.

Lonna Kay May served refreshments to the eight members present.

Springlake Future Homemakers of America Hold Installation Service

SPRINGLAKE—Study hall in Springlake High School was the scene for the installation of the officers and new members for the Springlake chapter of the Future Homemakers of America Monday night.

June Gregory was installed as president and Anita Messer, vice-president. Secretary is Barbara McCaskill and Carol Hamilton is treasurer.

Is Reporter
Other officers installed were Nelda Roach, who is teen-age columnist for the Enterprise, reporter; Charlene Hamilton, historian; Kay Haberer, song leader; and Janis Jones, parliamentarian.

WILL STAGE SPECIAL SERVICE

"Week of Prayer and Self Denial" service will be held at the Olton Methodist Church Tuesday night at 8 o'clock.

The program will be given by the W. S. C. S., but all circles of the women's circles will be included in the service.

Mrs. Perry Speaks On Recent Trip

HART—Mrs. Tyline Perry of Plainview was guest of honor Monday afternoon at the home of Mrs. W. A. Hawkins, Sr.

Hostesses were Mrs. Hawkins and Mrs. O. D. Dinwiddie.

Mrs. Perry recently returned from a trip to Europe. She showed slides and talked about her trip. Mrs. Perry lives in Plainview.

Guests were friends and members of the Hart Zealot Club.

Geneva Curry Is Troop Secretary

Geneva Curry was elected secretary for the Girl Scout Troop 20 last week.

A new secretary was the only new officer elected during the scout meeting. The girls talked about Girl Scout badges and practiced raising the flag.

For refreshments, the girls were feted at the Tasty Cream drive-in. Mrs. Leamon Bryant is the troop's leader.

Scouts To Hold Bake Sale Saturday

Girl Scout Troop 6 will hold a bake sale Saturday.

The troop will have booths at Bodkin Food, Gray Grocery, Sherman Food, and Cashway Grocery.

WED IN DOUBLE-RING SERVICE



MR. AND MRS. WENDELL CAVETT were married recently in a double-ring ceremony in the home of the bridegroom's parents. Mrs. Cavett is the daughter of Mr. and Mrs. G. L. Peterson and Mr. and Mrs. H. A. Cavett are the parents of the bridegroom.

Mrs. Campbell Is On W. S. C. S. Conference

Mrs. R. H. Campbell was in Abilene Saturday for the Conference for the Women's Society of Christian Service of the Methodist Churches.

The women will select officers for the entire conference.

Mrs. Campbell is coordinator for the W. S. G. and the Youth and Students and is a member of the Status of Women committee in the Olton Methodist Church.

Springlake WMU Has Program & Installation

SPRINGLAKE—"Music" was the theme for the installation service held for the WMU of the First Baptist Church Monday.

Mrs. Barker of Littlefield, as social WMU president, had charge of the installation service.

Before the installation, the

women held their Royal Service program titled, "Come, Women, Wide Proclaim."

A covered dish dinner was held.

Those present were Mesdames Robert Huckabee, J. T. Williams, Delbert Hall, G. H. Miller, James Sanderson, Ernest Baker, Harlon Watson, Bill Matlock, H. A. McClanahan, Troy Blackburn, and Barker.

Is Feted With Party On Birthday

HART CAMP—Mrs. C. E. Timmins feted her son, Larry, on his birthday with a surprise party.

Larry was 13 years old. Cake and ice cream was served to the 14 guests.

WMU Meeting Is Wednesday

HART CAMP—Mrs. Junior Muller will be hostess for the young married women's circle of the WMU of the Baptist Church Wednesday.

Meeting time is 2:30 p. m.

PLAINVIEW'S COMPLETE YOUTH SHOP . . . specializing in Sizes 1 to 14. Sub-Teen, Junior, and Maternity. Boys' wear thru Size 12. Such famous brands as Kate Greenway, Prissie Missie, Junior Age, Teena Paige and Tuff-Nut Jeans. Shower gifts a specialty.

TEEN TOWNE

"CRADLE TO COLLEGE"

South Side of Square in Plainview.

Olton Bakery

SPECIALS

Friday—Saturday, Oct. 14-15.

Doughnuts

Regularly 50c per dozen. ON SPECIAL FOR **39c**

Delicious **COFFEE CAKES** Reg. 39c **29c**

Brown 'N Serve **ROLLS** Reg. 20c Dozen **15c**

Chocolate Drop **COOKIES** Reg. 30c Dozen **23c**

PHONE 3756

october *Teena Paige* exclusives

EXCLUSIVES

twin torso charmers

left: torso dress in mystere - from the looms of schwarzenbach . . . the crush resistant fabric that has a worsted-textured, skin-soft surface. scoop neckline framed in loop braid with velvet ribbon pull-through repeated at the torso atop the wide skirt. belt included. in smoky blue, mystic brown, turquoise, red pepper or blue sapphire.

sizes 5-15 \$14.95

right: torso dress in milliken's cuenella crease resistant sheer wool with detachable lace collar and cuffs. front zipper closing. belt included. peri blue, navy, turquoise and coral.

sizes 5-15 \$22.95

Bentley's
a nice place to shop

plainview, texas

New Century Studies Child Development

Hostess for the New Century Study Club Wednesday was Mrs. Elmo Bryant.

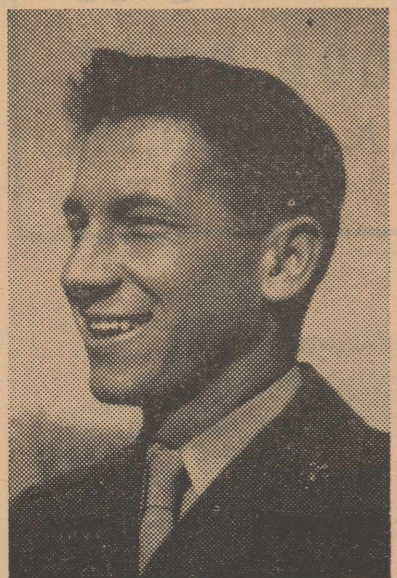
Mrs. Raymon Carson was co-hostess.

"Imbuing Your Child With A Thrill For Knowledge," was the talk given by Mrs. Carson. Mrs. Tom Carlisle presented a part, "Installing A Love of Fair Play In Your Child" and Mrs. Brent Burrow spoke on "Making the Home a Place of Treasure and Memories."

The 16 members present were Mesdames Bryant, Carson, Burrow, Carlisle, Wilton Bodkin, Major James, Glen Exter.

Bill Kelley, Troy Martin, Don Spain, Murry Snyder, Gilbert Roberson, Ben Souders, Carroll Brown, Fred George, and R. A. Burgess.

Has Teaching Job At Texas Tech College



GENE SPAIN

An Olton boy has been made an instructor at Texas Technological College.

He is Gene Spain.

Gene is a Tech graduate. He served in the Marine Corps for two years after completing his studies at Tech and then attended the University of Wisconsin where he received his masters degree only recently.

Gene teaches in the Agronomy department and is concerned chiefly with soils.

FOR SCHOOL SUPPLIES OF ALL KINDS—DROP BY THE ENTERPRISE

Coaches Small Hart Gridders



PAUL ROBERTSON

School Superintendent Paul Robertson has taken over the chore of coaching Hart small fry football players.

Superintendent Robertson is right at home on the football field. He was a coach before being employed as Hart superintendent.

Macon Hears Top Speakers At Meeting

Supt. of Schools Carl Macon returned Tuesday from a two-day meeting at Austin of the Texas Association of School Administrators.

Speakers at the meeting included Boyd Campbell, president of the United States Chamber of Commerce, and Dr. J. W. Edgar, Texas Commissioner of Education. Mr. Campbell spoke on "Education and Business—An Imperative Partnership." Dr. Edgar reviewed new policies concerning evaluation and accreditation.

An accreditation team from the Texas Education Agency will survey the Olton school system on Dec. 13, Mr. Macon said.

During the school year, the Olton Classroom Teachers Association will make a thorough study on improvement in instructional procedures, the superintendent explained. Classroom teacher associations throughout the state are making such studies. All findings will be forwarded to the Texas Education Agency.

Mr. Macon was accompanied to Austin by Leo Purvis, Petersburg supt.; Jerry Lumsden, Lamb County supt. of school; and O. E. Lumsden, Springlake supt.

C. B. Hines In Improved Condition

The condition of C. B. Hines was reported as "slightly improved" Thursday morning by a son, Melvin Hines.

Mr. Hines, a longtime Olton resident, remains in near critical condition at Olton Memorial Hospital, and is not being allowed visitors other than members of the family.

He is under oxygen part of the time, Melvin Hines said.

Mr. Hines was admitted to the hospital two weeks ago after suffering a heart attack. He suffered another attack a week ago Tuesday, and relatives report that he has suffered none since.

State-County Taxes Payable Here Oct. 21-22

Herbert Dunn, Lamb County Tax Assessor-Collector, will be here Friday and Saturday, Oct. 21-22, for the purpose of collecting state and county taxes, it was announced this week.

State and county taxes paid during October are subject to a 3 per cent discount, Mr. Dunn explained.

Mr. Dunn will be at City Hall while in Olton.

He will be in Amherst on Oct. 18, in Sudan on Oct. 19 and in Earth on Oct. 20.

Olton Talent Show Is Set; Need Entries

Talent from the Olton community will be presented in the form of a talent show Tuesday, Nov. 8, in the high school auditorium by the Olton Classroom Teachers Association.

There is no age limit, anyone can enter, Miss Louise Boyles, publicity chairman for the organization, announced. Entries should be turned in to Mrs. John Campbell as soon as possible.

FFA Members To Exhibit At State Fair

Eight members of the Olton High School FFA chapter will exhibit livestock next week at the State Fair in Dallas.

The young stockmen will leave Sunday, and will return the latter part of next week. They will be accompanied on the trip by J. W. Brown, local vocational agriculture instructor.

Those who plan to make the trip are Sammy Thomas, Jackie Pinson, Wayne Bodkin, Houston Hamby, Dewey Hukill, Lonnie Miller, Dale Miller and Don Edwards.

The boys will show 14 hogs and 4 commercial and milk-fed steers in junior livestock class. They will be showing stock of their own, as well as stock belonging to other members of the Olton FFA chapter who will not make the trip.

Actual showing dates, Mr. Brown said, will be Thursday and Friday, Oct. 20-21.

"Ghost" Play Is Teachers' Program Tues.

"The Ghost of Meg and Susan" was the name of the play presented to the Olton Classroom Teachers Association Tuesday

night in the Home Economics Cottage.

The play was stressing the importance of joining different teacher organizations. Cast members were Mesdames Roye Aikman, Bill Rogers, Fred Gordon, and John Campbell.

Plans were being made for a workshop for teachers entitled, "Improvement in the Instruction Program."

Refreshments were served by Mesdames Aikman, Lee Brice, Dennis Barnett, and Mr. and Mrs. Harry Ford.

WOLVERINE BOOSTER CLUB IS ORGANIZED

SPRINGLAKE—Organized this fall to assist in the promotion and backing of the Wolverine football squad is the Wolverine Booster Club.

Membership is open to anyone interested in the clubs work and membership dues are \$10.

Meetings are held each Monday night during football season at Springlake High School.

Plans call for Booster Club members to carry the football team in cars to the games that are very far away. The club is also assisting in the filming of the Wolverine football games.

Ag Dept. Asks Return Of Farm Levels

Olton agriculture department instructors J. W. Brown and J. C. Lane asked this week that all farm levels which have been borrowed from the ag department be returned as soon as possible.

"The levels are not accurate in their present condition, and we need to get them back so that we may have them repaired," Lane and Brown said.

Kin Of Olton Folks In Chorus

Kenneth Gene Moss of Elk City, Okla., grandson of Mr. and Mrs. J. O. Bledsoe of Olton, has been named a member of the Oklahoma City University chorus.

Approximately 250 students auditioned for the chorus and only 48 were selected.

Kenneth will accompany the chorus to Hollywood where it will appear at the premiere of the movie, "Oklahoma."

Olton School Menu

The following menus will be served at the Olton school lunch room, Oct. 17-21, 1955. 850 students are being served daily. Each lunch includes ½ pint whole milk with choice of white or chocolate milk on Thursdays. All menus are subject to change.

Monday

Sliced ham, baked potato and butter, black eyed peas, cabbage and cranberry salad, and cinnamon roll.

Tuesday

Roast beef and gravy, candied sweet potatoes, green beans, pickled beets, strawberry shortcake with whipped cream, and hot rolls.

Wednesday

Hamburger on bun, vegetable beef soup and crackers, lettuce, onion and tomato salad, mustard pickle mix, and apples.

Thursday

Fried chicken, cream gravy, buttered peas, carrot sticks, apple crisp, and whole wheat rolls.

Friday

Meat balls and spaghetti, brown beans, green salad, butter, hot biscuits, peaches and cookies.

Williams Child Much Improved

Frances Williams, daughter of Mr. and Mrs. J. A. Williams, was much improved according to her doctor Wednesday.

Frances, four years old, was stricken with Bacterial Meningitis and admitted to the Plainview Hospital and Clinic Foundation last week.

"The child is out of the oxygen tent and the doctors are very pleased with her improvement," Mr. Williams said.

Doctors say the disease was caused from an infected ear and throat.

To Speak At Baptist Church Sunday Services

Rev. John Lewis, pastor of the First Baptist Church of Seymour, will fill the pulpit Sunday at both the morning and evening services at First Baptist Church here.

Rev. Lewis is a graduate of Baylor University and of Southwestern Baptist Theological seminary. He has pastored in Oglesby and Henrietta before moving to Seymour.

Rev. and Mrs. Lewis have three children.

C-C MEMBERS STUDY SUNDAY CLOSINGS

The long-standing problem of Sunday business closings here during the fall months was discussed at last Thursday night's Chamber of Commerce meeting.

C. of C. members agreed that Sunday business closings are the desirable thing, but pointed out that the decision must of necessity be left to each individual merchant.

Mrs. Barton Prestridge and Mrs. Clury Phillips, representing the First Baptist Church, met with the group to discuss the matter.

They explained that car stickers saying "I'm Not A Sunday Shopper" have been printed and that everyone in favor of Sunday business closings will be asked to put the stickers on their car windows.

One member pointed out that some farmers have asked that stores remain open part of the time on Sunday so that they may bring their field workers to town to do their shopping.

Another put it this way: "If our businesses staying open on Sunday helps the farmers get the crop out, I say let them stay open."

Some merchants explained that they have been threatened with loss of customers trade if they do not stay open on Sunday afternoons during the fall for the convenience of farm hands.

Others pointed out that if it were generally known and publicized that everything would be closed on Sunday, people would make arrangements to do their shopping on weekdays.

"Layman's Day" Is Observed At Springlake

SPRINGLAKE—Layman's Day was observed at the First Baptist Church Sunday by the men of the church.

The men met at the church at 7 a. m. for breakfast. At the morning worship hour, the Laymen filled the choir and presented the program.

NEED NEW WARM-UP JACKETS

Olton girl's basketball team is beginning a campaign to buy new warm-up jackets, according to Coach Miss Louise Boyles.

The girls will sell concessions at the basketball games and sell "Olton Mustang" tags to go on car license plates.

Ask To Try In Your Own Field The . . .

Roto-Speed Stalk Shredder

Cuts 7½-ft. Belt-driven. Shreds from 2" to 14" height.

Choice of Three-Point Hitch, IHC Fast Hitch or Drag Type.

ASK FOR A DEMONSTRATION.

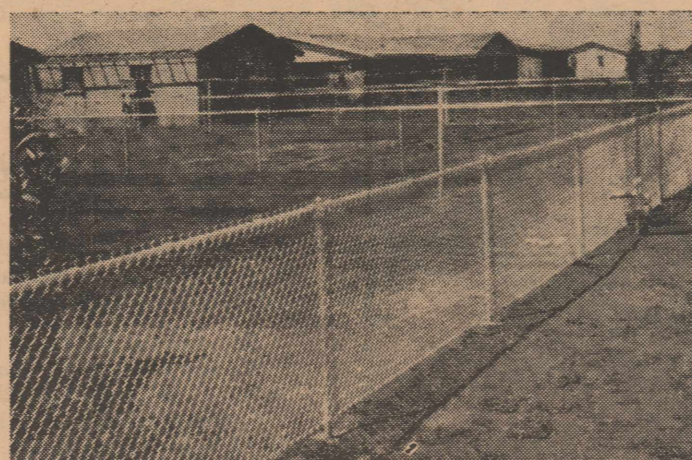
Bodkin & Nixon

"YOUR OLIVER DEALER"

Phone 3151

Olton, Texas

CHAINLINK STEEL FENCE FIRST COST—ONLY COST



FREE!

Special offer until October 22. One Walk Gate FREE with your order for 150 feet of chain link steel fence.

Affords safety and privacy—adds to the value of your home. Any height you desire. Expert installation. Free estimates.

- NO DOWN PAYMENT
- 36 MONTHS TO PAY

PLAINVIEW FENCE CO.

STORM WINDOWS & DOORS

611 W. 24th St. Box 1494

Dial CA 4-7967 Plainview, Texas

Announcing . . .

* We have bought Pool's Family Shoe Store in Littlefield and will operate the firm under the name of HAYDON-WINKELS SHOES.

* Many of you are already familiar with our Haydon & Winkels shoe store in Plainview, which we will continue to operate. At both our Plainview and Littlefield stores, you can be assured of high quality merchandise at the lowest possible prices.

* Our Littlefield store will be under the management of Mr. Ballard Winkels, who cordially invites all of you to visit the new store at your earliest opportunity.

Haydon & Winkels
FAMILY SHOES
LITTLEFIELD
PLAINVIEW

Notes To You

BY NELDA ROACH

F. H. A. freshman initiation is as follows:

On Wednesday they are to wear their dad's old pants cut off two inches above the knees, gathered around the waist with a belt. Long sleeve sweater tucked inside with suspenders. Long socks with bows at top, high heels, wear three necklaces, earbobs, and bracelets on each arm. Wear a toothbrush around their neck in order to scrub the sidewalks in front of school.

Thursday: Wear men's overalls, shirts, shoes, socks and straw hat. Wear one work glove, 10 pigtales with ribbons on each one. Bring a toe sack to carry books in and carry a fishing pole about three feet long, hooked to the collar. Write "fish" on each arm and on forehead with lipstick.

Friday: Wear short dresses two inches above knees, one high heel and one low heel shoe. Wear bobby socks rolled down as far as possible and knee-length hose. Carry a doll and

baby bottle to all classes. Have a two-foot string tied to both wrists. Wear hair rolled up and wear a dressy hat.

All three days they must wear no make-up—wear a bone at least five inches long in their hair and must wear the emblem pin all three days.

It is a stiff initiation but they had best carry out these plans or else take the consequences in kangaroo court.

The band left school at two o'clock Thursday and journeyed to Plainview to march in the Fair parade. Other bands beside Springlake were Kress, Petersburg, Lamesa, Plainview Junior High and Plainview High.

A gift of ten dollars was given to each band to cover expenses to and from Plainview. It was a very nice parade and we all enjoyed attending.

The seniors got off to a good start early Monday morning to sell advertisements for the 1956 annual. Several groups went to different towns and all came home satisfied with the amount sold.

John Blackwell and Shirley Green and A. L. Cody and Helen Salsman were seen making the usual rounds Saturday night.

Bob Angeley can never stick with one girl for very long. He and Carolyn Parish were together Saturday night.

Seymour Evans and Sharon Hay were seen together Friday night.

Madame Day, Phrenologist of Earth, seems to be getting lots of customers and most of them are high school kids. Charlene Hamilton has an interesting fu-

ture. Seems as though Madame Day predicts Charlene to be married soon. Wonder how it will end?

Harvey Kendrick and Yvonne Loudder and Charlyne Ellis and Leroy Bolinger are new couples of SLH. What did you young ones do Saturday night?

Jerle Taylor was so dressed up Sunday night—tie and all. He says it happens every Sunday night but could it be that you are wearing your best just to influence a certain girl from Littlefield? Her name is Linda Filde.

Dorothy Kaisinger is happy this week because her guy, Ed Bell, is home from the Air Force for a few days. Now you two can make up for lost time!

MARKET SUNDAY

High school students attending the market at Lubbock Sunday were Alisse Smith, Douglas Smith, Jimmy Stone and Danny Cure.

FISH IN N. M.

Mr. and Mrs. Bill Dickenson returned Sunday from a three-week trip to Truth or Consequences, N. M. They reported a catch of approximately 100 pounds of catfish.

VISIT HERE SUNDAY

Mr. and Mrs. Roy Bartlett Granbery of Lubbock were in Olton Sunday visiting in the home of his parents, Mr. and Mrs. Roy O. Granbery and Kay.

ATTEND MARKET

Mr. and Mrs. S. E. Whittington, Mr. and Mrs. Gerald Bizzell, Mr. and Mrs. Tom Smith, Mr. and Mrs. Leslie King and Bill Kelley were among the Olton residents who attended the dry goods buyer market held Sunday at Lubbock.

OLTON WEEK-END

Junior Carlisle and family of

Paducah spent the week-end visiting in the home of his parents, Mr. and Mrs. Vernon Carlisle.

METHODIST BROTHERHOOD

The Brotherhood of the First Methodist Church met Thursday night for a supper, fellowship, and program.

ATTEND CHURCH SUNDAY

JUST RECEIVED . . .

Fresh Shipment

OF

JONATHAN CANNING APPLES

AND

COLORADO DELICIOUS APPLES

BOB'S

FRUIT MARKET

— East Side of the Square —

DEER HUNTERS . . .

Let us process your kill. You can store your game with us night or day.

DID YOU KNOW . . .

. . . That you can rent a frozen food locker box for as little as \$1.25 a month?

SAVE MONEY!!

We have choice quality beef for sale at wholesale prices.



OLTON FOOD BANK

R. A. and CLINTON

Olton, Texas

Phone 3741

FOR SALE

John Deere G. MM Tandem Disc, Cotton Trailers, Oliver Stripper, Cotton Stripper.

Louie Mack Hardy

Ben F. Smith Elevator



Add to Your Cotton Profits...
DEFOLIATE Like This!

Use liquid CHEM-FROST DEFOLIANT to defoliate your cotton and boost your profits. Drop the leaves before picking time to reduce trash and leaf stains and better the lint grade. Chemical defoliation hastens the opening of mature bolls . . . can mean a reduction in boll rot and lessened late insect infestation. And, of course, stripping or picking operations improve in a defoliated field.



- WON'T CORRODE EQUIPMENT
- FOR AERIAL OR GROUND APPLICATION
- DROPS COTTON LEAVES FAST!

Yes, liquid CHEM-FROST DEFOLIANT produces quick results . . . it's the next best thing to actual frost conditions for defoliating . . . and you control the timing of it! Available in 5-gallon and 55-gallon drums.

We Also Have . . .

SHED-A-LEAF

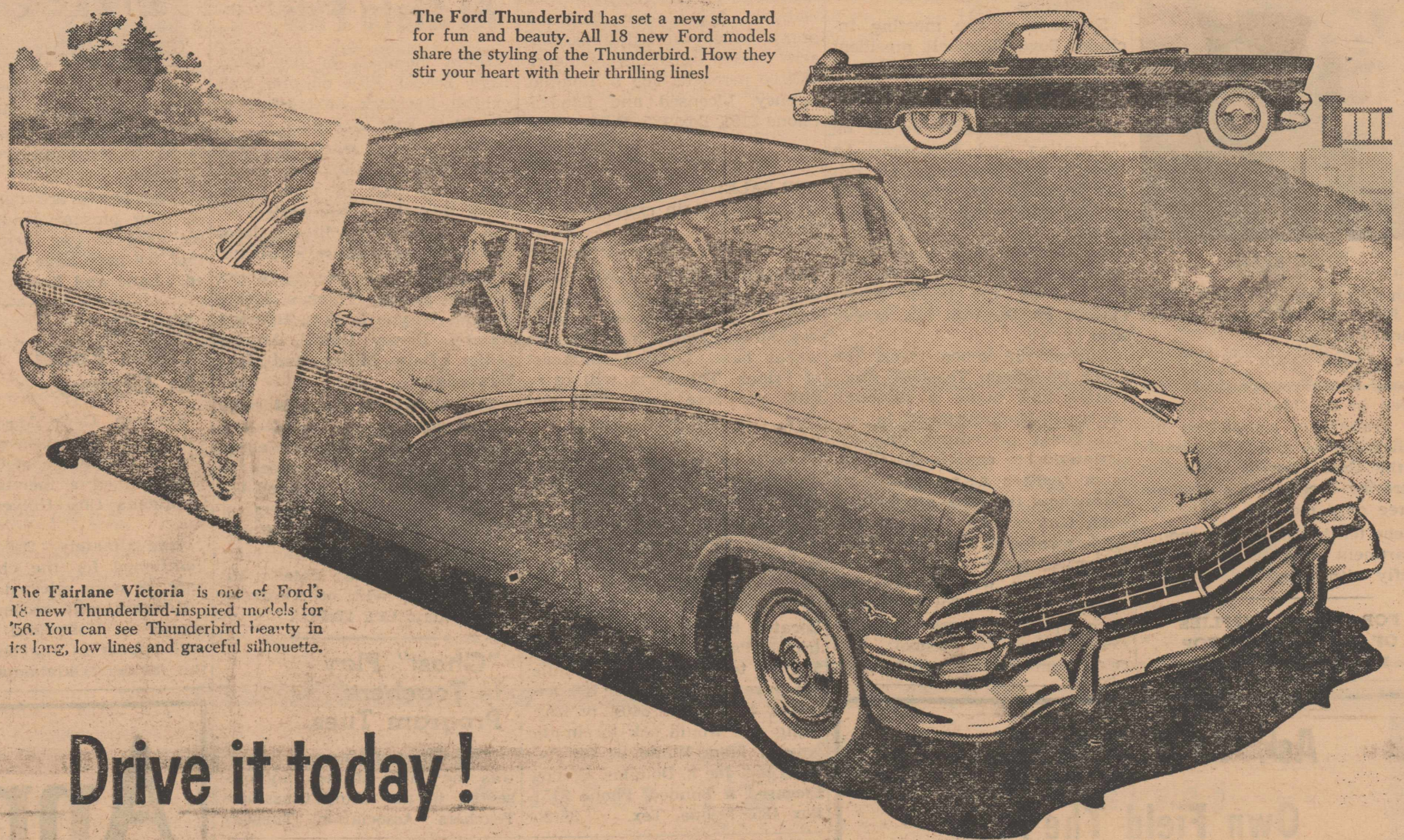
And

AERO-CYANAMID COTTON DEFOLIANTS

Olton Farm Supply

DON

PAUL

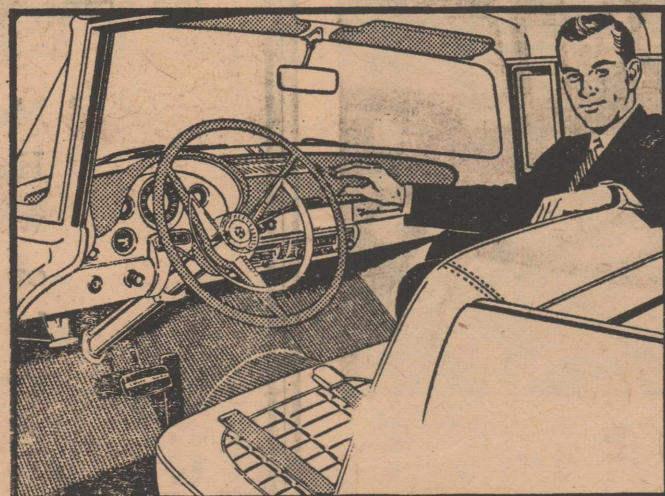


The Ford Thunderbird has set a new standard for fun and beauty. All 18 new Ford models share the styling of the Thunderbird. How they stir your heart with their thrilling lines!

The Fairlane Victoria is one of Ford's 18 new Thunderbird-inspired models for '56. You can see Thunderbird beauty in its long, low lines and graceful silhouette.

Drive it today!

'56 FORD...with new 202-h.p. Thunderbird Y-8



4 NEW LIFE GUARD FEATURES—new deep-center steering wheel, new double-grip door locks, optional new padded instrument panel and sun visors, and optional new Ford seat belts.

with new Thunderbird Styling
with new Lifeguard Design

A glance tells you that the '56 Ford has the long, low lines . . . the dazzling beauty of the fabulous Ford Thunderbird.

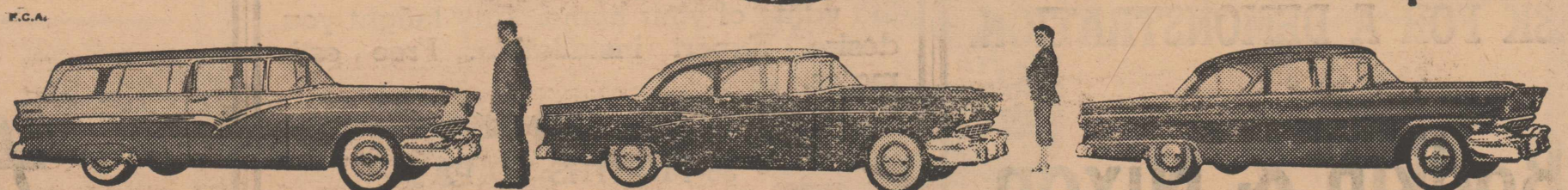
But wait till you touch the gas pedal! Then you'll know that Ford goes like the Thunderbird, too. With the new 202-h.p. Thunderbird Y-8 engine, available in Fordomatic Fairlane and Station Wagon models, you'll pass with new confidence, smile at hills.

And there's even bigger news! It is Lifeguard Design. With the cooperation of leading universities, medical associations and safety experts, Ford found that most serious accident injuries were caused by the driver being thrown against

the steering post, occupants being thrown forward against hard surfaces, or from the car. So, Ford developed a new Lifeguard steering wheel with a deep-center structure to help protect you from the steering post . . . Lifeguard double-grip door locks to give added protection from doors springing open under shock . . . optional Lifeguard cushioning for instrument panel and sun visors, to help lessen injury from impact . . . optional seat belts that help keep occupants securely in their seats.

Come in soon! See the '56 Ford, test its power, and learn what Lifeguard Design means for the greater safety of you and your family. Then you'll know exactly why the '56 Ford is . . .

the fine car at half the fine-car price!



Parklane, luxurious new 6-passenger "wagon" is one of six new and handsome Ford Station Wagons for '56.

Customline Tudor and its Fordor companion feature a new and distinctively contoured body molding for 1956.

Mainline Fordor is a refreshingly clean-lined beauty as are its "running mates" the Tudor and Business Sedan.

HINES MOTORS

HIGHWAY 70

OLTON, TEXAS

PHONE 4711



THIS NEWSPAPER . . .

. . . goes into approximately 1,400 homes each week. Many of those families, just like the one pictured here, have four or five members. So it's reasonable to assume that upwards of 5,000 people read the Enterprise each week. All of them look to their hometown newspaper as a shopping guide. Thoughtful, consistent advertising in the pages of The Olton Enterprise takes your message right into their homes, lets them know about your products and services . . . brings you more business.



Coffee  **MAXWELL HOUSE POUND CAN 83c**

Biscuits

PUFFIN OR GLADIOLA PER CAN

10c

Peaches

HUNT'S- Sliced or Halves SIZE 2 1/2 CAN

27c

Oleo

BLUE SEAL POUND CTN.

17c

APRICOTS, Hunt's Whole Unpeeled, Size 2 1/2 Can **2 For 49c**

FLOUR **GOLD MEDAL** 10 LB. PRINT BAG **75c**

STALEY'S **WAFFLE SYRUP**

4 Lb. Decanter Bottle

59c

HUNT'S **TOMATO JUICE**

Size 300 Can

10c

SUNSHINE - LB. BOX **CRACKERS**

FLAKY-THIN *Sunshine* **KRISPY** CRACKERS

23c

HERSHEY'S **COCOA**

Pound Can

59c

TIDE  **GIANT SIZE 67c**

KOUNTY KIST **CORN**

12 Ounce Can

2 For 25c

HUNT'S **CATSUP**

14 Ounce Bottle

19c

WHITE SWAN **POPCORN**

2 Lb. Cello Bag

29c

WILSON'S **CHEESE**

2 Lb. Box

59c

SHORTENING **SWIFT JEWEL** 3-POUND CAN **69c**

BIG TOP **PEANUT BUTTER** 18 OUNCE JAR **49c**

HUNT'S **TOMATO JUICE** 46 OUNCE CAN **25c**

HUNT'S **ENGLISH PEAS** SIZE 300 CAN **15c**

BAKER'S NEW **ANGEL FLAKE COCOANUT** 4 OUNCE CAN **15c**

Free Delivery

Phone 3581

CASH WAY

Where Friends Meet and Prices Talk

FOOD STORES

SPECIALS EVERY DAY

SPECIALS BEGIN FRIDAY, OCTOBER 14

MEATS

Smoked Hams



(While They Last) Whole - Per Pound

43c

Pork Chops

FRESH CUT PER POUND **47c**

TASTY **BACON SQUARES** PER POUND **39c**

YOU'LL LIKE THEM **BEEF RIBS** PER POUND **17c**

WILSON'S FULLY COOKED **HAMS** PER POUND **59c**

CHOICE **ROUND STEAK** PER POUND **79c**

WE FEATURE ONLY **GRADED CHOICE BEEF** IN OUR MARKET

FROZEN FOODS

Fish Sticks

A TASTY TREAT, TEN-OUNCE PKG. **29c**

FROZEN **PEACHES** 10 OUNCE PKG. **19c**

FROZEN **GRAPEFRUIT JUICE** 6 OUNCE CAN **15c**

PRODUCE

Potatoes

WHITE POTATOES, 10 LB. PLASTIC BAG **43c**

LARGE STALKS **CELERY** EACH **15c**

FANCY **LETTUCE** PER POUND **10c**

NEW MEXICO DELICIOUS **APPLES** PER POUND **10c**



DOUBLE GUNNE BROS STAMPS EVERY Wednesday

with purchase of \$2.50 or more

Abernathy 34 Muleshoe 7	Tahoka 26 Littlefield 12	Sudan 51 Slaton 12	Anton 40 Hart 7	Phillips 73 Hereford 27	Rotan 19 Post 9	Hale Center 51 Petersburg 20
Floydada 38 Lockney 2	Spur 20 Olton 0	Springlake 34 Dalhart 13	Childress 44 Tulia 0	Ralls 30 Idalou 13	Happy 54 Silverton 7	Crosbyton 32 New Deal 7

SPORTS

Vicious Ground Game Powers Bulldogs Past Olton Eleven, 20-0

Wolverines Trap Dalhart Wolves To Keep Unbeaten Season Record

DALHART—Springlake was scored upon for the first time here Friday night but not until they had dulled the fangs of the Dalhart Wolves.

The green and gold Wolverines rolled over the Wolves 34 to 13. The win maintained the Wolverines perfect season and gave them a record of 182 points compared to 13 scored by opponents this year.

From a scoring standpoint it was no contest from the start. Springlake led their hosts 32 to 0 before the Wolves were able to push across a touchdown in the third quarter.

Rex Loftis scored the first Wolverine touchdown in the opening quarter on a 5 yard plunge. He scored the second on much the same play in the second period and then Ronald Sandel galloped 35 yards to paydirt.

In the third period Bobby Angeley intercepted a Wolf pass and went 50 yards to score.

The Wolverines drew a 15 yard penalty which set up the first Dalhart touchdown. It was fourth down and eight yards to go for the Wolves when the penalty moved the ball to the Springlake one yard line.

The Wolves had a new lease on life and went over from there. They scored again in the fourth period.

It also was in the fourth period when the Wolves fielded and then fumbled a Wolverine punt which spurted on into the end zone where it was recovered by Dalhart giving the visitors two more points.

It was not without casualties that the Wolverines emerged victorious. Quarterback Max Goforth suffered a knee injury as did Jimmy Herring.

The Wolverines played before a nice Springlake crowd which made the long drive to Dalhart to see their favorites in action.

The Wolverines have an open date next week-end and then they will tangle with their toughest opponents to date—Sudan's Hornets—in what may be the deciding contest of District 2-A.

Sudan has lost only once and that to Sundown 13 to 12. They walloped Denver City 13 to 6, Morton 40 to 6, Muleshoe 39 to 0 and Slaton 51 to 12.

FOR THE FINEST IN COMMERCIAL PRINTING COME TO THE ENTERPRISE

SHORT GRASS

By G. P. T.

Sixteen right, two wrong (Olton over Spur and Miami of Florida over Notre Dame) and two ties on last week's predictions.

This week, with little AA schoolboy action of interest slated for our area, the college games look like this from our corner:

- Arkansas over Texas
- Rice over SMU
- Washington over Baylor
- TCU over Texas A & M
- West Texas over New Mexico A & M
- Colorado over Kansas State
- Arizona over Texas Western
- Notre Dame over Michigan State
- UCLA over Stanford
- Purdue over Iowa
- LSU over Florida
- Ohio State over Duke
- Mississippi State over Kentucky

Oregon over California
Michigan over Northwestern
Wisconsin over Southern California
Georgia Tech over Auburn
Illinois over Minnesota
Missouri over Iowa State
Mississippi over Tulane

The many Olton residents who saw Texas Christian's recent 32-0 whitewash of Texas Tech saw a TCU back who may well emerge from the ranks of the Southwest's unsung to season-end All-American listings. He is Jim Swink, whose cavortings in TCU's four outings to date certainly should establish him as among the nation's top ball carriers. In four games (against Kansas, Texas Tech, Arkansas and Alabama), Swink has gained a total of 484 yards on 54 carries for a fantastic 9.0 yard average. He has 62 points to his credit. And TCU uses two offensive platoons almost equally, so Swink has rolled up his record on a limited duty basis. He is a junior.

Against non-conference foes, Southwest Conference teams this year have won 14, lost 7, and tied 1. Three of those losses have been suffered by the Texas Longhorns. SMU has lost two, Baylor and Texas A & M one each.

West Texas State, which surprised most everybody by holding Arizona to a 20-20 deadlock last Saturday, has fielded a good ball club this year, and they may have greater things in store for them next year. The unbeaten and once-tied Buffs have only three seniors (End Dub Cleveland and Backs Joe Walden and Delmer Tuggle) on their squad, 18 juniors and 14 sophomores.

Olton's Archie Souter and his Buff teammates, incidentally, will next play at Canyon next Saturday night (Oct. 22), against Hardin-Simmons, and it looks

like a good opportunity for local grid fans to see some good college football. The game looms as a toss-up, and if you're a WT Ex, you can get some free barbecue around 5 or 5:30 p. m., because it will be homecoming. Reserved seat tickets for Buff games are \$2.25 each, somewhat less than you pay at most college football games.

Texas Tech's Red Raiders (and who knows what to predict for them anymore?), incidentally, will be playing away down Houston way that night, against Houston University.

We don't think Olton's 20-0 loss to Spur was the result of any "big letdown" by the Mustangs. There may have been some letdown. But Spur has one of the best running games we have seen exhibited in the past two years, and in Fullback Eddie Haggins, one of the hardest runners on the South Plains. We have seen Abernathy in action, but not Tahoka. Even so, we like the looks of Spur to emerge as the winner of rugged District 5-AA, with Tahoka the likely runner-up.

B Team Edges Floydada, 27-25

Dan Wallace scored three touchdowns and Arno Hall tallied one as Olton's B team edged by the Floydada junior varsity here last Thursday night, 27-25. Wallace scored on runs of 5, 60 and 40 yards. Hall galloped 20 yards.

The win gives the Olton B team a 2-1 record for the season. The Mustang junior varsity will meet the Hale Center B team at Hale Center this Thursday night. Game time will be 7:30 p. m.

ATTEND CHURCH SUNDAY

Paced by fullback Eddie Haggins, the Spur Bulldogs exhibited a crunching ground attack Friday night to grind out a decisive 20-0 verdict over the Olton Mustangs before a near capacity Spur homecoming crowd of about 3,000.

Haggins, who runs something like a jet-powered tank, scored on romps of 1, 9 and 50 yards, and was big trouble for the Mustang defense throughout the game. Altogether, he carried 28 times for a total of 223 yards, or 7.9 yards per try.

The Mustangs, who lacked the lustre displayed in their gallant 6-0 stand last week against powerful Dumas, could never get going. Final figures showed that they gained only 111 yards for their night's effort. Spur, still unbeaten, gained 332.

Held At Bay
The Mustang defensive unit bottled up a Bulldog scoring threat on the Olton 10 midway in the first period, and a booming 52-yard kick off the toe of Bobby Johnson held the Bulldogs at bay for the remainder of the quarter.

On the first play of the second period, however, Spur halfback Don Snodgrass intercepted a jump pass from Teddy Estes to give the Bulldogs possession at midfield. Then Haggins took a handoff from Bulldog quarterback Alton Williams, cut around right end and reversed his field for a 50-yard scoring bolt. Williams' conversion put the Bulldogs out front, 7-0.

Bulldog Recovery
The Mustangs countered with a sustained drive midway in the second canto that moved all the way to the Bulldog 7. It went awry at that point, though, when an attempted left end sweep on a pitchout play to Jack Royce Straw resulted in a fumble and a Bulldog recovery. Then with Haggins leading the way, the Bulldogs moved to the Mustang 12 as the half ended.

The District 5-AA Bulldogs got another big break early in the third quarter when end Bobby Dyess broke through to block an attempted punt by David Price giving Spur possession at the Olton 24. Four plays moved the ball to the Mustang 14, and the first down measurement was so close that all four officials spent a full two minutes surveying the situation before they eventually signalled a Spur first down. Two plays later, Haggins slammed over his own right guard slot and went 9 yards to paydirt to put Spur ahead 13-0. Williams' placement attempt was high enough but wide.

Sustained Drive
The Bulldogs, turning loose a vicious ground game that showed why they are highly regarded for 5-AA honors this fall, unleashed another sustained drive late in the third period that carried them to the Mustang 20 as the period ended. Haggins and Snodgrass moved Spur to the Olton 1 in four car-

ries, and Haggins bolted thru the middle for the final Bulldog tally. Williams' conversion put Coach Sam Hawkes' team in front, 20-0.

With Coach Joe Turner alternating first and second team offensive units, the Mustangs did some marching of their own late in the game, and with the help of an unnecessary roughness penalty against Spur, moved to the Bulldog 18 with less than two minutes of play remaining.

Fess Interception
The effort went for naught, however, when a Jackie Gray pass for Donald Powell was intercepted by Spur halfback Max Gabriel at the Bulldog 14. The game ended four plays later with Spur in possession at their own 31.

Haggins, who seems a virtual certainty for all-district honors, was not the whole story. He got plenty of help from Spur's big, fast line. The Bulldog line, which averaged about 175 pounds per man, time and again cleared yawning avenues for Haggins' vicious thrusts and sweeps, and effectively hampered Olton's running game.

Clyde Rhodes, Clinton Billingsley and Edward Featherngill turned in top line performances for the locals, who now face an open date before they launch into district play here on Oct. 21 against Muleshoe.


Statistics		Olton	Spur
8	First Downs	16	
111	Rushing Yardage	332	
0	Passing Yardage	21	
111	Net Offense	353	
5	Passes Attempted	5	
0	Passes Completed	1	
5	Punts	2	
28.8	Punting Average	28	
2	Fumbles Lost	2	
10	Yards Penalized	45	

Bulldogs Rip Longhorns At Hart Friday

HART—Coach W. S. Talley's Bulldogs from Anton kept a solid ground attack going in all four quarters here Friday night to rip the Hart Longhorns 40-7 in a District 3-B thriller played at Longhorn Stadium.

Anton opened its siege in the initial quarter with a double touchdown. Right halfback Ronald Lambeth ripped through the Hart line on a four-yard run to the goal-line. Left end Johnny Bass kicked the extra point. Bulldog quarterback Robert Burdette followed with another six points on a one-yard sneak play.

Hart came back with its only touchdown of the game in the opening of the second quarter when left halfback Melvin Aven scored on a 48-yard run around left end. Aven also converted. (Continued on Back Page)



A Backfield That Scores Every Time!!

TROP-ARTIC
THE ALL-WEATHER MOTOR OIL

ZEREX
Anti-Freeze

LONGER WEARING
LEE TIRES
REGULAR OR TUBELESS

PHILLIPS 66 FLITE FUEL

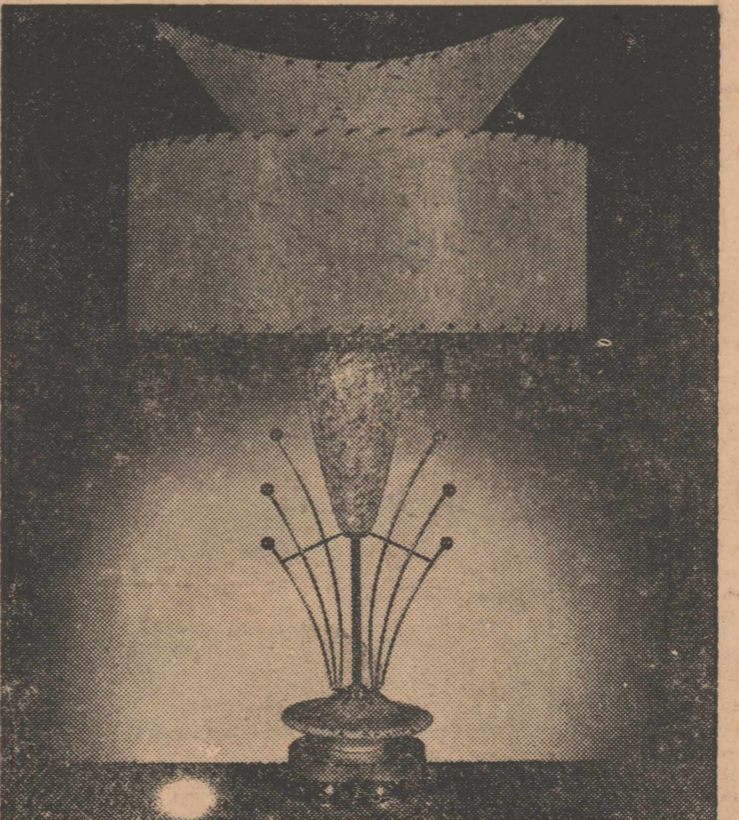
Let Us RE-TRU YOUR OUT-OF-ROUND TIRES By The Revolutionary "BEAR" METHOD.

- GET RID OF TIRE THUMP!
- GET A SMOOTHER RIDE!
- GET LONGER TIRE LIFE!
- GET SAFER STEERING!



G. H. BLEY


Modernistic Lamps . . .



Exclusively designed china and metal table lamps, floor lamps and boudoir lamps.

\$2.95 to \$49.95

THOMAS FUNITURE
OLTON, TEXAS



Wanted . . . FARM LISTINGS

I will sincerely appreciate your listings on farm and city property. I will handle every transaction to your satisfaction.

S. M. BRELAND
LICENSED AND BONDED REALTOR
Phone TU 9-3772 Halfway Exchange

The Olton Enterprise

Published each Thursday at Olton, Texas.
Troy F. Martin Publisher
Gordon P. Tompkins Editor
Miss Sue Macon Woman's Editor
Roy Melancon, Sr. Mechanical
Wayne Moore Mechanical

Entered as second class matter at the post office at Olton, Texas, under the act of Congress, March 3, 1897.

Any erroneous reflection upon the character, firm or corporation which may appear in the columns of The Olton Enterprise, will be gladly corrected upon being brought to the attention of the Publisher.

Subscription rates: \$2.00 per year in Lamb County; \$2.50 per year elsewhere.

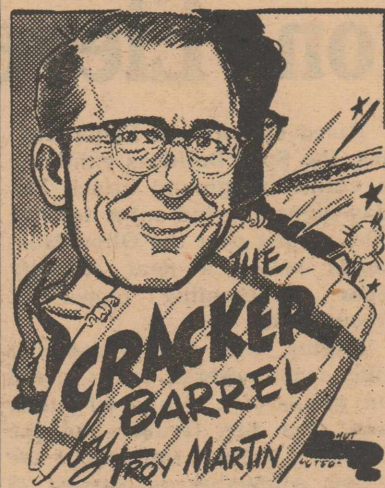


VISITING IN HOME

Mrs. Lee J. Guice and children of Gatesville are visiting in the home of Mr. and Mrs. Roy Melancon. Mrs. Guice is a sister of Mrs. Melancon.

TO FLORAL SCHOOL

Mrs. Ann Blythe will leave Sunday to attend a three-day floral school at Albuquerque, N. M.



Mrs. W. A. Hawkins, Sr., has resigned as The Olton Enterprise correspondent at Hart. We certainly are sorry to lose her. Mrs. Hawkins did a fine job in reporting the news for her community.

Mrs. Paul Robertson has agreed to send in the news from Hart. We hope the folks at Hart will call in a lot of news for her.

Mrs. Robertson's daughter, Robbie, will be writing a teen age column for Hart High School also.

Well, to date we have only two entries for the "Why I like to live in Olton" contest. They are from Doug Owen and Mrs. Tom Smith. We're offering \$10 for the best and the contest will close November 1. Get busy and tell us why you like our town. We think it's a great place to live.

Archie Souter is making a good hand at West Texas State College. He's playing most of every game now and the Enter-

prise is proud to be featuring his picture on page one this week. How we used to love to watch Archie blast out that yardage. He used to be good for four yards every carry down the middle during the high school

FLOWER & WHAT-NOT SHOP

MRS. ANN BLYTHE
 "FLOWERS BY WIRE"
 ANYWHERE - ANYTIME
 For Weddings - Sick Rooms and Funerals
 Day Phone 4116 or Night 2281
 Olton, Texas

days. In fact, we think he compiled a record of something like that—about four yards a carry.

And speaking of the Souter clan, Archie has an uncle, Harry, who lives in Santa Fe, N.M. Harry formerly was Pontiac dealer in Santa Fe. He's one of the most interesting people we have ever met. We hope to do a full-length feature story on his exploits one day.

Among other things, he was a soldier of fortune in South America when he was a youngster and then went on to fly for a commercial air line down there.

He and his young son both are pilots.

When some women "entertain" they work themselves to a frazzle and you can't enjoy yourself for being sorry for them.

Oh how we wish we could go to Dallas or Austin on business. Some folks are always going there or to Fort Worth on business trips. When we go to these

towns its just to loaf. Our business is always at home, darn it!

PARENTS HERE

Guests in the J. T. Tollett home over the week-end were Mrs. Tollett's parents.

CROSBYTON VISITORS

Recent visitors in the H. E. Owens home were Mr. and Mrs. Bob Dillard of Crosbyton.

A KILLER IS DRIVING THIS CAR

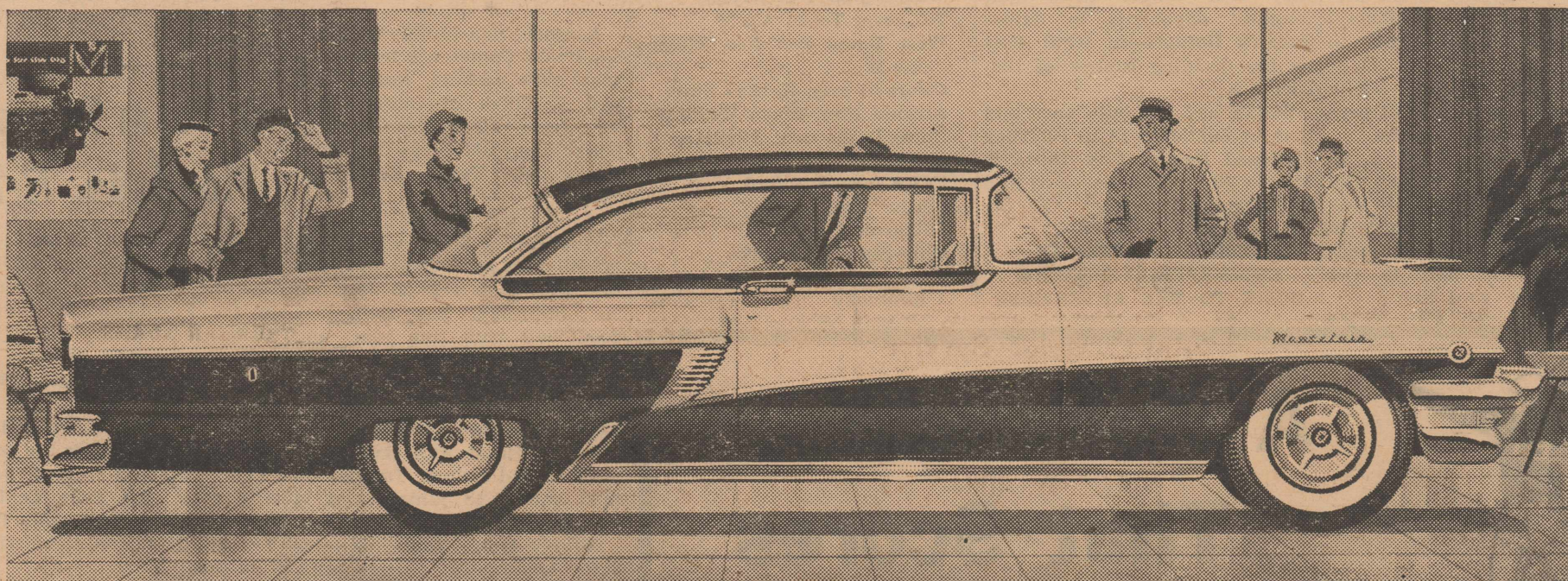


"DOHERTY the KILLER" is determined to wipe out Bindweed; alias "Possession Vine"; alias "Creeping Jenny". This vine is covering the Panhandle in the amount of 32,000 acres. If you have seen Bindweed on your farm STOP THIS MAN for free estimates—no obligation. You can always catch "Doherty the Killer" at his office in Plainview, 118 East 5th., Phone CA 4-7450.

FRANK CUMMINGS, Agent

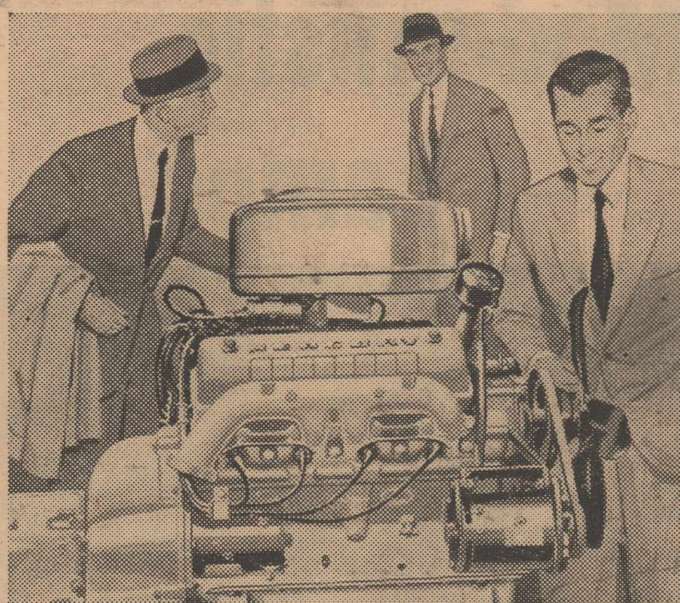
Southland Life Insurance Co.

Why THE BIG M makes the big news for 1956

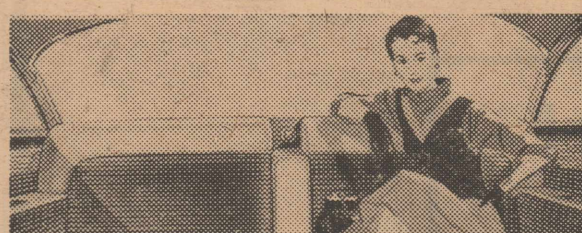


NEW DISTINCTIVE FLO-TONE COLOR STYLING plus pleasing two-tones and solids for every taste! Greatest horsepower in Mercury's history—with a new high in usable power! A brand-new group

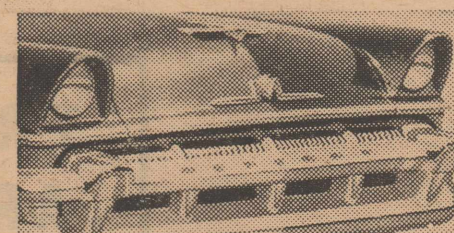
of ten Safety-Engineered features for your greater safety and security! New improvements in famous Merc-O-Matic Drive and ball-joint front suspension. New wider-than-ever choice of models!



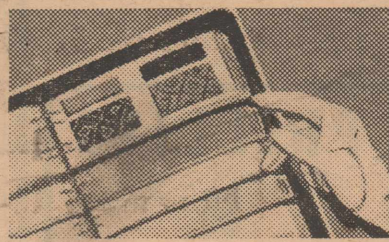
NEW 225- AND 210-HORSEPOWER SAFETY-SURGE V-8 ENGINES—A new high in torque and surging power. 225 hp available in Montclairs and Monterey with 9 to 1 compression. 210 hp in Customs. A new 12-volt electrical system provides hotter ignition.



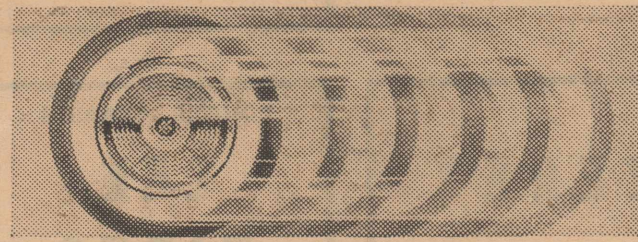
NEW RICHNESS AND LUXURY—THE BIG M is a car that makes you whistle twice—once outside, once inside. The colors, fabrics, and patterns rival the finest custom-built cars for dramatic impact. They are exclusively Mercury's.



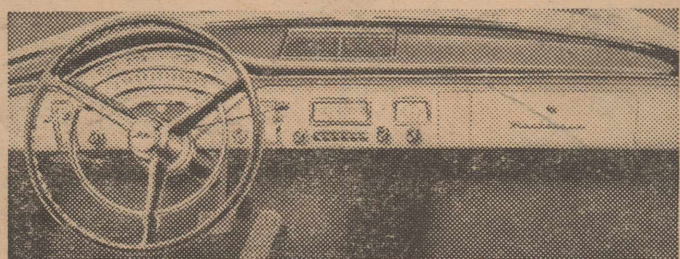
DISTINCTIVE NEW GRILLE—From blocks away you can tell it's a Mercury. With the new BIG M crest and newly designed bumper-grille, there is no mistaking this beauty.



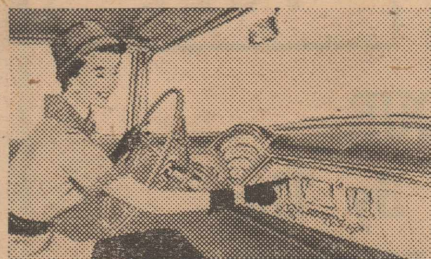
NEW FLO-TONE STYLING AND TWO-TONES—Mercury introduces a whole new palette of sparkling colors, in new Flo-Tone styling, two-tones and solids.



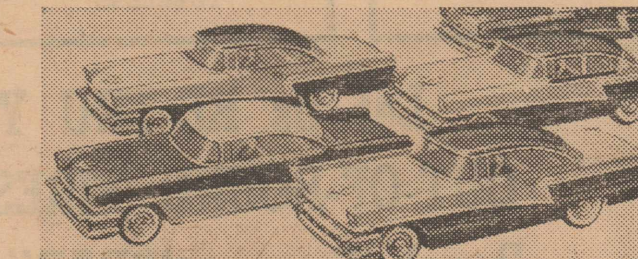
NEW HIGH IN USABLE POWER. Not just higher horsepower, but greater torque (wheel-turning power) for thrilling performance in the everyday driving ranges where you need it most. New SAFETY-SURGE V-8s deliver greater acceleration than ever.



NEW MERCURY SAFETY-ENGINEERED FEATURES—Mercury leads its field with ten new features. A new impact-absorbing safety steering wheel, safety door locks, safety-grip brakes, safety-beam head lamps, and optional safety seat belts and a padded instrument panel.



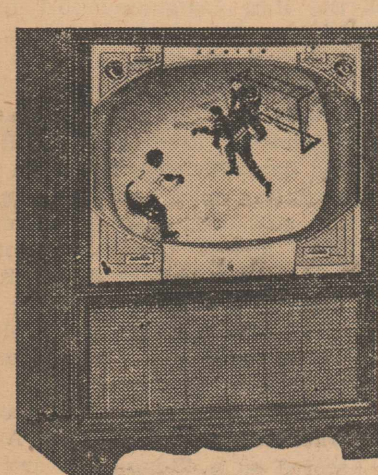
FINGER-TIP LUBRICATION is just one option. Widest choice in the field also includes power steering, brakes, windows, 4-way power seats and Merc-O-Matic Drive.



12 STUNNING MODELS, NEW FLEET OF HARDTOPS. Now Mercury's distinctive low-silhouette styling is available in every price range. New hardtops in every series—only 58 1/2 inches high. See THE BIG M in our showroom—now!

A FLASH OF LIGHT ACROSS THE ROOM TUNES YOUR TV!

NEW 1956 ZENITH TV with FLASH-MATIC TUNING!



THE BISMARCK X2264RQ. 21 inch TV. Handsome grained Mahogany color. Famous Zenith Royal "X" chassis with 16,500 volts of picture power! Convenient Top Tuning. Big 10-inch Zenith speaker! Also available in Blond Oak color.

\$409⁹⁵

SEE THE COMPLETE LINE OF ZENITH QUALITY TV

EASY TERMS...

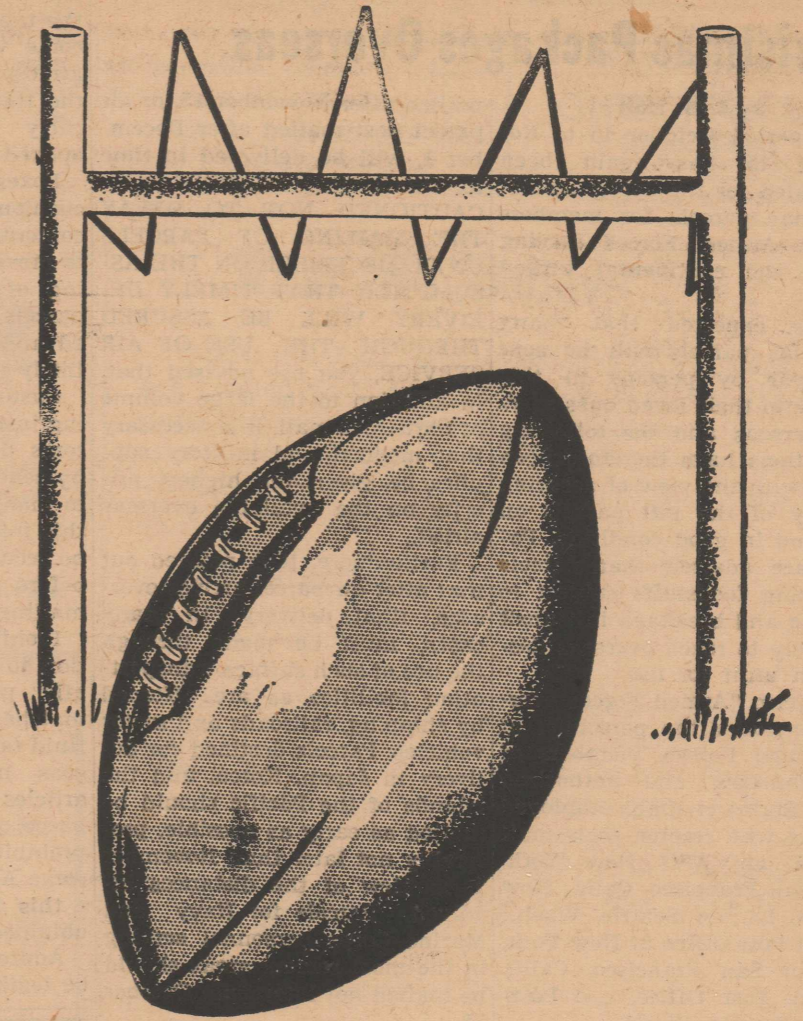
K & S Television Service
 ED "SLIM" KING AND WILLARD SMITH
 PHONE 3016 OLTON, TEXAS
 Across From City Hall

For 1956 — the big move is to **THE BIG MERCURY**
Homer Garrison Motors, Inc.
 HOMER GARRISON LITTLEFIELD, TEXAS TEVE CAVINESS



OPEN DATE THIS WEEK

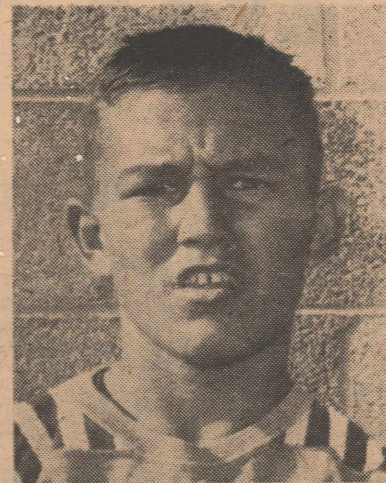
We are proud of the fight and determination shown by the Mustangs in non-conference play. We're backing them all the way to become District 2-AA champions this fall. Let's all make plans to be on hand for their first district game here against Muleshoe on Friday night, October 21.



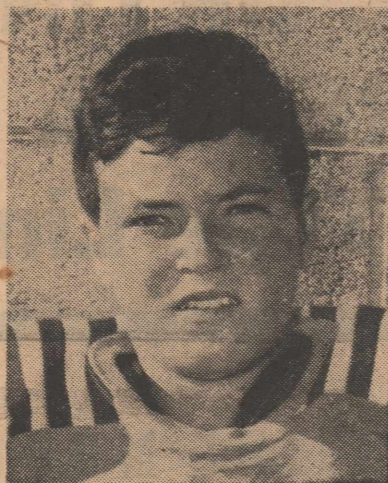
SUPPORT THE TEAM Know Your Mustangs



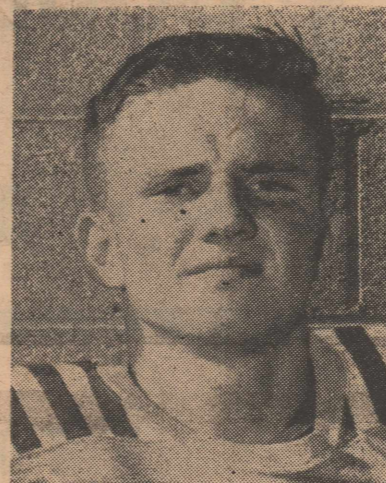
LARRY BENNETT



THURMAN ADAMS



LARRY GRANT



KIRK McADAMS

REMAINING SCHEDULE

- October 14—OPEN DATE.
- October 21—MULESHOE (Conf. Game) Here
- October 28—TULIA (Conf. Game) There
- November 4—LOCKNEY (Conf. Game) There
- November 11—Littlefield (Conf. Game) Here
(AFTERNOON)
- November 18—DIMMITT (Conf. Game) Here

1955 Record

Olton 0	Abernathy 13
Olton 20	Morton 0
Olton 52	Slaton 6
Olton 0	Dumas 6
Olton 0	Spur 20

Last Seasons Record

Olton 21, Abernathy 0	Olton 6, Sundown 47
Olton 32, Morton 6	Olton 14, Floydada 26
Olton 13, Slaton 0	Olton 13, Tulia 13
Olton 6, Dumas 0	Olton 40, Lockney 0
Olton 13, Spur 14	Olton 14, Muleshoe 7

THE FARM AGENCY

PHONE 4581

Olton

Texas

SMITH GIN CO.

For Better Sample
and Turnout.

PHONE 4311

Olton, Texas

FARMERS BUTANE CO.

Print-O-Meter Service

More Fuel

For Your Money.

PHONE 4001

Olton, Texas

CONSUMERS BUTANE CO.

PHONE 3971

OLTON

TEXAS

OLTON CO-OP GINS

PHONE 3091

OLTON

TEXAS

DENNIS BUILDERS SUPPLY

"We Are Helping Build

A Bigger, Better Olton."

— GENERAL CONTRACTING —

Phone 2431

Olton, Texas

STRAW-BURROW GIN CO.

PHONE 3991

OLTON

TEXAS

OLTON BUTANE COMPANY

DIAL 2191

Olton

Texas

HIGGINBOTHAM-BARTLETT COMPANY

"GOOD LUMBER"

Phone 3511

OLTON

TEXAS

FARMERS GIN COMPANY

Our gin is equipped with
new Moss-Gordin Lint Cleaners
and 1955 Mitchells.

LAUIS AND SHORTY

Phone 3191

OLTON

TEXAS

HOSPITAL PHARMACY

- PRESCRIPTIONS
- SICK ROOM SUPPLIES
- CRUTCH RENTALS

Lon Alexander, Pharmacist

Olton

Phone 2111

Texas

Holt Instructs On Mailing Christmas Packages Overseas

By I. E. Holt

The period October 15 to November 15 has again been designated for the acceptance of Christmas parcels for members of our Armed Forces serving outside the continental United States.

It is expected that many Christmas parcels will be sent this year by persons in this country to their loved ones serving overseas and the following instructions have therefore been issued with the view of assuring delivery of the gift parcels on time and in good condition. Patrons are advised that parcels containing foodstuffs subject to spoilage and breakage in transit are likely to reach overseas destination unfit for use.

The term "Armed Forces overseas" includes the personnel of our Armed Forces, members of their families, and authorized United States civilians employed overseas who receive their mail through an APO New York, N. Y.; San Francisco, Calif.; New Orleans, La.; or Seattle, Wash.; or Fleet Post Office at New York, N. Y.; or San Francisco, Calif., or Navy Post Office, c/o Postmaster, Seattle, Wash.

The importance of mailing Christmas parcels during the designated period (Oct. 15 to Nov. 15) cannot be emphasized too strongly - the earlier the better. The public can be reasonably assured that parcels mailed through the regular surface mails prior to November 15 will reach their destinations before Christmas. However, no assurance can be given that surface parcels

mailed after November 15, or air parcel post mailed after December 1, will be delivered in time for Christmas. SENDERS ARE CAUTIONED NOT TO DELAY THE MAILING OF PARCELS UNTIL DECEMBER ON THE ASSUMPTION THAT TIMELY DELIVERY WILL BE ASSURED THROUGH THE USE OF AIR SERVICE, you are advised that, in addition to the large volume of Christmas mail, it is necessary that medical and military supplies be given the highest priority on the available overseas airlift.

Furthermore, it is pointed out that after air parcel arrives overseas, final delivery, in many cases, must be made through the use of such surface transportation facilities as are afforded by shipping, railroads and motor vehicles. Parcels destined for delivery in Japan, Korea, and the islands of the Pacific should be mailed as early as possible, preferably not later than November 1, in view of the distances involved. Parcels for Navy and Marine Corps personnel serving in the most remote areas should be mailed not later than October 15.

Size and weight - Air parcel post is limited in size to 30 inches in length and girth combined and 2 pounds in weight. The maximum sizes and weights of surface parcels vary as to the APO or Fleet PO address, this information can be obtained from your Postmaster, and should be obtained before preparing parcels for mailing.

Preparation - Boxes for overseas transmission must necessarily be of strong construction on account of the great distance these parcels must be transported and the handling and storage they must undergo. It is absolutely necessary that all articles for overseas delivery be packed in boxes of metal, wood, solid fiberboard, or strong double-faced corrugated fiberboard testing at least 275 pounds.

Each box should be securely tied with strong cord. Sealing the flaps with gummed tape

where they meet strengthens the box, but the use of such tape alone is not satisfactory, since the tape loosens if the boxes become wet or exposed to moist atmosphere. Sealed parcels of the third to fourth class should carry the inscription "May be opened for postal inspection."

Boxes should contain sufficient cushioning material so that the contents will be tightly packed to prevent any rattling or loosening of the articles within the parcels. Unless completely packed and tightly filled, boxes are likely to be crushed.

Customs declarations - Existing instructions require that customs declarations be completed by senders for parcels addressed to many APO's and Navy PO's - this information can and should be secured from your Postmaster before presenting the parcel for mailing.

Prohibited articles - In addition to the usual articles normally prohibited in the mails, matches of all kinds and lighter fluid may not be mailed to overseas military addresses, other articles such as cigarettes, tobacco products, and coffee are prohibited when addressed to some APO and Navy post offices - this information can also be obtained from your Postmaster.

Addressing - Addresses must be legible and prepared in type-

writing or ink. It is preferable that the outside addresses be hand printed directly on the wrappers of the boxes rather than on labels pasted to the wrappers, since experience has shown that the labels frequently fall off when subject to moisture.

It is highly desirable that a slip of paper containing the names and addresses of the sender and addressee, together with a list of the contents be enclosed in each parcel so as to provide identification and proper disposition of the mail (in the event the addresses on the outside become defaced in transportation, or the parcel becomes broken open.)

Christmas cards - Greeting cards for Armed Forces personnel overseas may be mailed at any time, but patrons should deposit such cards prepaid at the first class rate prior to November 15, 1955; and at the airmail rate prior to December 1, 1955, if they are to have a reasonable expectation of delivery prior to Christmas.

Registry and insurance services - Matter, except that specifically prohibited in the mails, addressed to members of our Armed Forces serving outside the continental United States may be accepted for registration or insurance.

The use of postal money orders is recommended to transmit gifts of money to members of the Armed Forces outside the continental United States. Domestic postal money orders can be cashed at APO's and NPO's wherever the forces are located.

Patrons are informed that the exportation of currency to overseas military post offices or between such military post offices where the dollar is not the accepted medium of exchange is prohibited.

Currency cannot, therefore, be accepted for mailing at a domestic post office when addressed to overseas military post offices or when mailed at and addressed to overseas military post offices except those APO's and NPO's which are branches of the

post offices at New Orleans, La., and Seattle, Wash.

The foregoing prohibition applies to currency enclosed in letters or parcels sent as ordinary or registered mail.

- Expert Dry Cleaning
- Pressing and Finishing
- Hats Cleaned and Blocked
- All Types of Alterations

Prompt, courteous service at . . .

Olton Cleaners

L. L. DENTON, Owner

Paymaster

WESTERN COTTON OIL CO.

PLAINVIEW, TEXAS

- Basketball Shoes and Gym Shoes
- Gym Clothing
- Footballs
- All Types of Sporting Goods.

"EVERYTHING FOR SCHOOL NEEDS"

The Sport Shop
620 Broadway Plainview



IT'S YOUR BUSINESS . . .

to check your residential and business property for dangerous fire hazards.

IT'S OUR BUSINESS . . .

to write complete fire insurance coverage. Does your fire insurance cover the full replacement value of your property?

CHECK WITH US TODAY!

HUNTERS:

Ask us about low-cost insurance coverage for your hunting trips. Timed to fit your trip . . . whenever you go, wherever you go. Pays up to \$50,000 for accidental death, up to \$25,000 for permanent total disability, up to \$5,000 for medical injury expense.

HOWARD HALL INSURANCE AGENCY

PHONE 3601 OLTON, TEXAS

Mr. Farmer

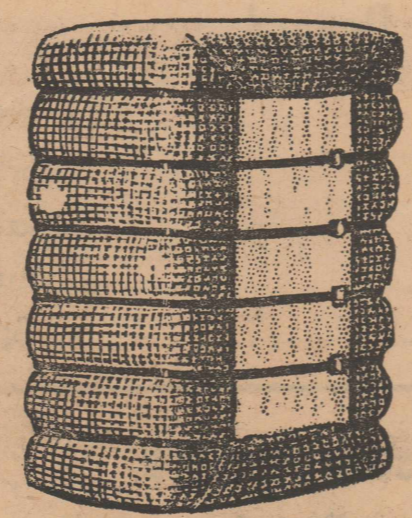
We have installed extra drying equipment this summer, and now have the most modern and fully equipped gins on the South Plains to gin your cotton.

DOUBLE DRYING FOR GREEN & WET COTTON

• Air Type Lint Cleaners •

TO GET THE MOST MONEY FROM YOUR 1955 COTTON CROP . . .

Gin Your Cotton With YOUR



OLTON CO-OP GIN

Phone 3091 Olton, Texas
LLOYD GRAHAM, MANAGER

HART CAMP NEWS

By Yvonne Huff

Mr. and Mrs. C. T. Parkey of Mangum, Okla., visited in the Dewey Parkey home Sunday.

Mr. and Mrs. Kenneth Sorsen were Saturday evening guests in the home of Mr. and Mrs. James Ball.

Mr. and Mrs. Roy Osthus and family were Sunday evening guests of Mr. and Mrs. Aubrey

Nienast and daughter. Michel Osthus visited with Mark Muller Sunday afternoon.

Patty Muller was ill over the week-end with a throat infection. She is feeling better now.

Mrs. H. R. Monroe, who recently underwent surgery at Muleshoe Hospital, is doing fine and will be home in about a week.

Mark Muller will celebrate his fourth birthday, October 13.

Mr. and Mrs. J. C. Muller and Mr. and Mrs. Jerry Lanford and daughter returned home from their trip to Nocona and Pauls Valley, Okla., last Saturday. Enroute they had an accident which damaged both cars although no one was hurt.

Sammy Wheeler is in school again after being at home for a week with a broken arm.

Betty Wheeler was home Friday night from school in Lubbock.

Mr. and Mrs. R. C. Franklin had guests from Clovis, N.M., Sunday.

Mr. and Mrs. Oliver Byers of Plainview were Sunday guests in the H. V. Lynch home.

Gene Riney visited with Sonny Huff Saturday.

Sunday dinner guests in the W. C. Huff home were Mr. and Mrs. A. H. Huff of Amarillo, W. I. Huff of Fort Worth, and Don Oliver from Hale Center, W. I.

Huff will be visiting in his son's home for a few weeks.

Mr. and Mrs. H. V. Lynch are the owners of a new 1956 aqua-blue and white Ford Victoria. This is the first '56 car in our community.

Mr. and Mrs. Harley Jones of Anton visited Mr. and Mrs. Willard Jones and family Sunday.

The revival at Hart Camp Baptist Church closed Sunday evening. There were numerous rededications and two baptisms.

Mr. and Mrs. L. N. Burleson moved into our community from Rochester this week. Mr. Burleson is employed at the gin. Their daughter, Sue, will continue to attend school at Rochester.

Mrs. C. P. Montgomery and Linda Kay visited in the W. C. Huff home Saturday.

Suzanne and Mr. and Mrs. Blanton Martin visited in Southland over the week-end.

Waylan Hukill was home over the week-end. He is attending school in Amarillo.

Sue Sullivan and Mary Scribner went to the Dallas Fair this week with the band.

M. Armstrongs' Have Baby Girl

Baby daughter was born to Mr. and Mrs. Melvin Armstrong Tuesday at Abilene.

The girl is the granddaughter of Mr. and Mrs. M. L. Armstrong and Mr. and Mrs. Alva Miller of Stafford, Kan.

Hart Methodist Have New Pastor

HART—Rev. S. A. Sifford of Hermleigh in Scurry County has assumed duties of pastor at Hart Methodist Church.

He succeeds Rev. R. H. Coston who has been transferred to Estelline.

HERE VISITING

Sgt. and Mrs. Billy Joe Applewhite and Gaylia of Oceanside, Calif., are visiting here with her parents, Mr. and Mrs. Buford Adams, and his mother, Mrs. Estella Applewhite of Plainview. The Applewhites' baby daughter, who is five months old, had not been seen by her grandparents.

FOR THE FINEST IN COMMERCIAL PRINTING COME TO THE ENTERPRISE

HART HIGH CHOOSES FAVORITES

HART—School favorites have been named this week at Hart High School.

They are Melvin Aven, Mr. Hart High; Beth Lewis, Miss Hart High; Ione Van Vliet, most popular girl; Sonny Armstrong, most popular boy; Rue Smitherman, most athletic girl; Pancho Rubalcaba, most athletic boy; Gayland Anderson, boy most likely to succeed; San Jones, girl most likely to succeed; Peggy Beavers, most beautiful girl; Johnny Hindman, most handsome boy; Joyce Bowden,

best all-around girl; Eddie Savage, best all-around boy; Rowan Shepard, most friendly girl; James Holloway, most friendly boy; Peggy Beavers, FFA sweetheart; FHA pin-up boy, Darrell Dunham; and Norman West, pep squad king.

ATTEND CHURCH SUNDAY



BOOT & SHOE REPAIR
Complete Western Store.
RAGLAND'S
WESTERN WEAR
622 Broadway Plainview

TAKE COLLEGE COURSE

Mrs. Marguerite Covert and Mrs. Carl Macon are attending an education course at Clovis, N.M., each Monday. The course is a course from Eastern New Mexico University, Portales.

ATTEND CHURCH SUNDAY

GUARANTEED WATCH REPAIR
JONES JEWELRY
Olton, Texas

MUSTANG DRIVE-IN

THURS. — FRI.

October 13 & 14

"Human Desire"

SATURDAY

October 15

"The Gun That Won The West"

(Technicolor)

SUN. — MON.

October 16 & 17

"Hondo"

(WarnerColor)

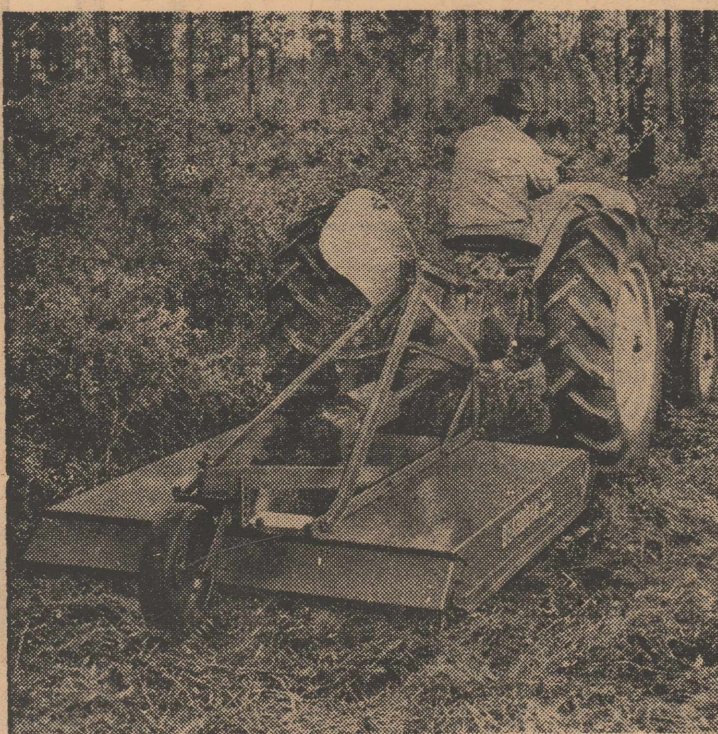
TUES. — WED.

October 18 & 19

"Down Three Dark Streets"

ECONOMICAL AND EFFECTIVE . . .

THE DEARBORN ROTARY CUTTER



The 5-Foot Rotary Blade . . .

. . . is ideal for shredding cotton and other crop residues, and heavy weed growths. The machine is shown above cutting underbrush.

Here is a mighty useful piece of farm machinery at the low price of **\$397**

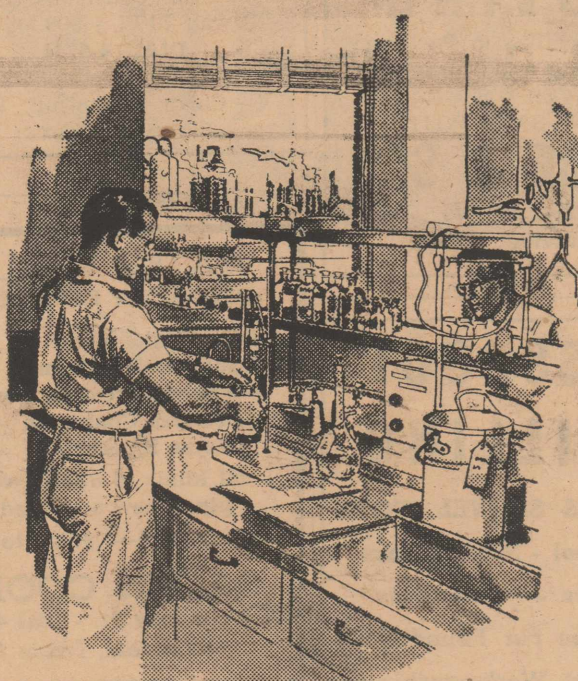
We also have the F. & F. Pull-Type Stalk Shredders.

ADAMS TRACTOR CO.

PHONE 3751

OLTON, TEXAS

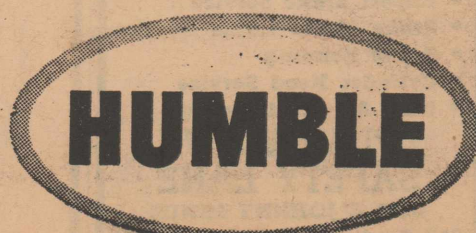
The Humble Research Laboratory in Houston.



Inside the Research Laboratory at Humble's Baytown, Texas, Refinery.

Oil Serves You

OIL PROGRESS WEEK
OCTOBER 9-15



Research Paces Oil's Progress

There are three reasons why America's petroleum industry has been able to supply the ever-increasing demand for energy called for by our mechanized way of life: 1, it has fearlessly invested its capital in the hazardous search for oil and gas; 2, it has steadily expanded its facilities; and 3, it has conducted endless research to find better, more efficient ways to make the oil products America needs.

Research! That's the key to the petroleum industry's progress. And the Humble Company assures itself a place of leadership in this field with two great research laboratories.

In the Humble Research Center in Houston scientists and engineers study all phases of finding, producing, and conserving oil and gas.

In the Research Laboratory at Humble's Baytown, Texas, Refinery, highly skilled technicians seek to develop new and better petroleum products, to improve those we already have, and to develop methods for making these products more efficiently.

Just as America's progress depends on oil, so oil's progress depends on research.

HUMBLE OIL & REFINING COMPANY

Fastest Way to Find A Read and Use the WANT ADS

Classified Ads Rates

Rates on classified advertising are: 4 cents per word first insertion; 2 cents per word second insertion, and each additional consecutive insertion. Minimum 40 cents first insertion, 25 cents additional insertions; The Enterprise is not responsible for mistakes after first insertion. Please read your ad.

For Sale

FOR SALE: Anhydrous ammonia and dry fertilizers. Farmers Butane. Phone 4001. 43-tfc

FOR SALE: Complete line of Sheaffer fountain pens. Olton Drug. 34-3tc

FOR SALE: 1954 Chevrolet, Bel Air, 4-door sedan, radio & heater. See J. D. Thomas at Thomas Agency. 15-tfc

FOR TAILOR-MADE seat covers and furniture upholstery, go to McCormick Bros. Trim Shop, Main Street, Littlefield. 6-tfc

DON'T RUN OUT of adding machine tape. Let us keep you stocked Two-inch, three-inch, 3 1/2-inch. The Olton Enterprise, phone 3361.

FLOWERS AND GIFTS for all occasions. Flower & What-Not Shop. 47-tfc

FOR SALE: Good used 1948 Jeep. Cloys Fancher, Phone 3962. 34-3tp



YOUR HEAD IN THE CLOUDS AFTER WE GET IT OUT OF THE BRUSH!
City Barber Shop



Smith & Struve
OLTON, TEXAS

Body & Fender REPAIRING
Seat Covers — Upholstering
Windshield and Door Glass Installed
Newman Motor
Chrysler Plymouth
623 Austin St. Dial 4-2768
Plainview

Storm Windows
Storm Doors
Metal Awnings
Chain Link Fencing
No Money Down
36 Months To Pay.

WEST TEXAS RUSCO CO.
611 W. 24th Ph. 4-7967
PLAINVIEW, TEXAS

IRRIGATION PUMP PULLING AND SETTING.
CLEAN OUT SERVICE.
Windmill Repair and Casing pulling.
Winch Work of All Kinds

LAMB COUNTY IRRIGATION SERVICE
G. H. BUCHENAU
Box 408 Phone 2351
Olton, Texas

For Sale

FOR SALE: Hamilton, America's most trusted watch. Yandell Jewelry. 20-tfc

FOR SALE: Four rooms and bath, six lots for \$5,000. Only \$1,000 down and the rest like rent. V. L. Smith, phone 2131. 21-tfc

FOR Sale: Sheaffer pen and pencil sets. Choose a pen to fit your individual writing requirements. Olton Drug. 34-3tc

National Farmers Union Insurance, a stock company. The Farm Agency Box 741, Phone 4581, Olton, Texas. 9-tfc

FOR SALE: A. C. combine, '51 model. H. H. Parker, Rt. 2, Hart. 35-2tp

FOR SALE: Three-room house, located 4 miles east, 3 north of Olton. J. A. Johnson. 33-tfc

FOR SALE: 80 acre farm with 8 inch pump and 1200 foot of irrigation pipe. See Milford Lambright or call 4258. 33-3tp

Drs. Woods & Armistead

OPTOMETRISTS

B. W. Armistead, O.D.

Glenn S. Burk, O.D.

Ira E. Woods, O.D.

J. J. Coats, O.D.

406 LPD Drive Phone 1000
Littlefield, Texas

FOR FLOWERS

CALL 3536

Mrs. Chas. A. Loveless

—Representing—

Arch Keys Flowers
PLAINVIEW

Our Only Business

Is

RADIATORS

Stovall-Booher Radiator
SALES & SERVICE
Phone 4-2865 - Plainview, Texas

OPEN BOWLING

Every night and Sunday
afternoon

Four fine alleys

Plainview Bowling Club

827 Broadway

Phone 3-9077

Shop Every Thursday Nite 'till 9

—at—
Meinecke Bros.

205-11 West 5th

Plainview, Texas

We are the official

SCOTTIE STAMP

REDEMPTION CENTER

We are remaining open
every Thursday nite until
9 p. m.

WE CLOSE AT
6 P. M. SATURDAYS

For Sale

FOR SALE: 1954 25-horsepower Johnson Seahorse outboard motor complete with gear shift. Tri-County Implement Co. 25-tfc

FOR SALE: International Harvester 2-row binder, International Harvester thrashing machine. Two John Deere chassis three-bale trailers. Berniece Smith. 31-tfc

FOR SALE: Regular duplicating stencils and church bulletin stencils. All kinds of duplicator supplies. The Olton Enterprise. 31-3tc

FOR SALE: Fresh shipment of delicious Pangburn's chocolates. Olton Drug. 34-3tc

FOR SALE: Pangburn's candy is a welcome gift in any home. We keep a big, fresh stock of Pangburn's at all times. Olton Drug. 34-3tc

FOR SALE: All kinds of poster supplies—Tempera colors, artist brushes, posterboard, lettering stencils and Higgins India ink. The Olton Enterprise. 35-2tc

FOR SALE: Spanish-English and English-Spanish dictionaries at \$1.95 each. The Olton Enterprise. 35-3tc

FOR SALE: All types of rubber stamps and notary seals. The Olton Enterprise. 35-2tc

BUY A PRESSURE PUMP OR DRILL A WELL.

No Money Down!

Pay in the fall or by the month.

Don R. Cook Drilling & Supply

2401 N. Columbia Ph. 4-9204
(On Amarillo Highway)
PLAINVIEW, TEXAS

We Write All Kinds of

INSURANCE

All losses paid Promptly

We need your Business

GRANBERY INSURANCE AGENCY

FURNITURE UPHOLSTERING

- Custom Built Furniture
- Wide Selection of Latest Materials Available
- Free Pickup and Delivery

Draper Furniture Mfg. Co.

510 E. 9th Phone 4-5605
PLAINVIEW, TEXAS

OLTON LODGE NO 1257

A. F. & A. M.

Stated Meetings 3rd Thursdays

ERNEST BAKER, W. M.

C. D. Kirkpatrick, Secretary

Visitors Are Welcome. Members Urged to Attend.

For Sale

CHOICE MILCH COWS, eight all fresh. E. E. Burrows, 5 miles east and three miles north of Olton. 34-2tp

FOR SALE OR TRADE: Dixie Dog Cafe. Bargain. Some terms. Hale Center. 3tdh

FOR SALE: 492 acres unimproved, smooth, no breaks. 140 acre wheat base, 15 acre cotton base 11 miles northwest of Friona. 2 irrigation wells. \$250.00 per acre. Contact E. M. Jack (owner), 19 miles northwest of Friona. Phone 3163, Hereford, Farmer exchange. 34-2tp

FOR SALE: 26 model Massey-Harris, jet propelled combine. One 14 foot 27 Massey-Harris combine in excellent condition. See Gene Mitchell. 34-2tc

FARMS FOR SALE: 320 acres, good 8" well, 93 cotton allotment, 30 acres wheat, \$225.00 per acre, terms. Close to town; 160 acres, 2 wells, every foot waters good. On pavement. \$15,000.00 will handle; 320 acres, perfect. Best 10" well, good cotton allotment. Close to town. New three bedroom home and out buildings. Terms. Many other good buys to choose from, \$100.00 per acre up. R. D. Jefferies and Bill Woodley, Friona Ins. & Real Estate Agency, Box 461, Phone 2231 or 4491, Friona, Texas.

FOR SALE: Redi-Planted Flower Bulbs, fresh from Holland. Fifteen different varieties. Flower & What-Not Shop. 35-2tc

FOR SALE: 1954 BelAir Chevrolet. Excellent condition. Low mileage. See Truman Moore at Olton State Bank. 35-1tc

FOR SCHOOL SUPPLIES OF ALL KINDS—DROP BY THE ENTERPRISE

ANIMAL HOSPITAL VETERINARIAN

1601 Columbia
PLAINVIEW, TEXAS

WELCOME TO... Alcove Restaurant

Full Course Dinners
Featuring — Delicious Steaks, Chicken & Mexican Foods
Reasonable Prices —
Courteous Service
Hi-way 70-W. - 908 W. 5th
DIAL 4-5744
Claude Carter and
Curtis Nicholson, Props.
Plainview, Texas

Local & Long Distance MOVING

We Specialize in Packing Crating and Storage
TRANSFER & STORAGE
"MOVE SAFE WITH"

BRUCE & SON

DIAL 4-6349
Plainview, Texas

CESSPOOL DRILLING

CRANE & SHOVEL WORK
Cesspool - Septic Tanks
Cellars — Basements
Pier Holes For Foundations
Expert Workmanship

UTE DRILLING COMPANY

1608 S. Date Ph. 4-4260
Plainview, Texas

WATER WELLS DRILLED & REPAIRED

—Fairbanks-Morse Submersible Pumps
—Peerless Pressure Pumps
—Peerless Champion Water Systems.
All kinds of 6-inch well pipe—new and used.
10% DOWN—3 years to pay
CALVIN COOK
2519 Gladney St. - Dial 4-4498
Plainview, Texas

BEAR WHEEL ALIGNMENT

• Wheel Balancing
• Expert Brake Service
• Brake Drum Lathe Service
• Brake Bonding
• Cylinder Head Service
• Novi Air Conditioning
PLAINVIEW SAFETY LANE
DOC & JOHNNY HINDS
615 Austin Ph. CA 4-5421
Plainview, Texas

Miscellaneous

COME AND GET your salesbooks before you run out again. We have plenty on hand. The Olton Enterprise, phone 3361. 35-2tp

IRONING WANTED. Mrs. Bob Starritt, south of Olton. 33-3tp

Lady to do housework. Call 3967. 33-tfc

Will trade my home in Littlefield for one in Olton. Inquire at South Side Service Station in Olton. 29-tfc

For Beauty Counselor Cosmetics and free demonstration see Mrs. Emmitt Harper, 3 1/2 miles east of Olton, Phone 3848. 23-tfc

Notice

NOTICE—Need more farm listings. If you are interested in buying a farm, see us. We buy cotton. The Farm Agency. 34-tfc.

NOTICE: If your teeth need struck, set or filed to go through a two by four with ease, bring your saw to C. M. "Polly" Owen. tfech

PHOTOSTATIC COPIES

Made promptly and economically at...
HALE COUNTY ABSTRACT CO.
512 Ash St. Ph. 4-9306
Plainview, Texas

DIAL 3016

For Prompt, Dependable Television Repair

K. & S. TV SERVICE

Across from City Hall
Olton, Texas

WELCOME TO... Alcove Restaurant

Full Course Dinners
Featuring — Delicious Steaks, Chicken & Mexican Foods
Reasonable Prices —
Courteous Service
Hi-way 70-W. - 908 W. 5th
DIAL 4-5744
Claude Carter and
Curtis Nicholson, Props.
Plainview, Texas

WATER WELLS DRILLED & REPAIRED

—Fairbanks-Morse Submersible Pumps
—Peerless Pressure Pumps
—Peerless Champion Water Systems.
All kinds of 6-inch well pipe—new and used.
10% DOWN—3 years to pay
CALVIN COOK
2519 Gladney St. - Dial 4-4498
Plainview, Texas

CESSPOOL DRILLING

CRANE & SHOVEL WORK
Cesspool - Septic Tanks
Cellars — Basements
Pier Holes For Foundations
Expert Workmanship

UTE DRILLING COMPANY

1608 S. Date Ph. 4-4260
Plainview, Texas

WATER WELLS DRILLED & REPAIRED

—Fairbanks-Morse Submersible Pumps
—Peerless Pressure Pumps
—Peerless Champion Water Systems.
All kinds of 6-inch well pipe—new and used.
10% DOWN—3 years to pay
CALVIN COOK
2519 Gladney St. - Dial 4-4498
Plainview, Texas

BEAR WHEEL ALIGNMENT

• Wheel Balancing
• Expert Brake Service
• Brake Drum Lathe Service
• Brake Bonding
• Cylinder Head Service
• Novi Air Conditioning
PLAINVIEW SAFETY LANE
DOC & JOHNNY HINDS
615 Austin Ph. CA 4-5421
Plainview, Texas

Help Wanted

Sales work, man or woman over 20, part-time or full time. Write Box 150, Plainview, Texas. 35-2tp

Help Wanted: Good all-around mechanic. Lamb County Implementation Co. 35-1tc

HELP WANTED: Man and wife to do farm work. Must be dependable and capable of doing any kind of work. S. M. Breland. Halfway exchange phone TU 9-3772. 30-tfc

Good income, \$56 a week, housewife, 30 to 50. Four hours a day, 5 days a week, college graduate, teaching experience helpful, give name, phone, address, and brief experience record. Write Box 498. 35-1tp

WANTED: House work by the hour or day. Mattie Talley, East 9th. 35-1tp

Wanted

WANTED: House work by the hour or day. Mattie Talley, East 9th. 35-1tp

VISIT AT H-S-U.

Mr. and Mrs. W. E. Miller and Terry and Elza visited their daughter and sister, Elizabeth, at Hardin-Simmons University, Abilene, over the week-end.

VISITS AMARILLO

Mrs. Troy Martin, Jamie and Kay, are visiting in the home of her parents in Amarillo this week.

For Office Supplies Of All Kinds

Come To The Enterprise

SCIENTIFIC WEIGHT REDUCTION MEDICAL MANAGEMENT

ENDOCRINOLOGY — NO DIET — NO EXERCISE
Tedford Clinic
410 W. 11th St. Phone Capitol 4-2365
PLAINVIEW, TEXAS

CESSPOOL DRILLING

• STORM CELLARS • PIER HOLES
30" 36" 42" 48" Holes
H. E. WARREN
1006 El Paso Plainview Dial 4-9210

3% For Your SAVINGS

Whether you have \$100 or \$10,000 to invest, this association offers you a convenient investment plan with INSURED PROTECTION. Let us discuss this insured investment plan with you.

Plainview Savings & Loan Ass'n

Plainview, Texas
716 Broadway Dial 4-6236

LUMBER and BUILDING SUPPLIES

Higginbotham-Bartlett Co.
"Good Lumber"
PHONE 3511
OLTON, TEXAS

ARMY & NAVY STORE

122 East Fifth Street — Plainview, Texas
C. L. BAYLEY, Owner
All Kinds of Camping Supplies, Including
Camp Stoves — Sleeping Bags — Air Mattresses, Folding Cots, Comforts & Blankets; Also Tarps, irrigation Dams and Rolls of Canvas to be sold by the Yard.

BEAR WHEEL ALIGNMENT

• Wheel Balancing
• Expert Brake Service
• Brake Drum Lathe Service
• Brake Bonding
• Cylinder Head Service
• Novi Air Conditioning
PLAINVIEW SAFETY LANE
DOC & JOHNNY HINDS
615 Austin Ph. CA 4-5421
Plainview, Texas

"Saunter With Sue"

by Sue Macon

My best wishes to Jo Lene Keasler and Richard Roberson, who were married Monday!

How About These?
If the holes in a board are knot holes, what are they?—An owl's wisdom is not due to the fact that he stays out all night.—A slap on the back is worth six on the nose, except in extreme cases.—Don't buy thermometers now, advises a wise one, they'll be lower next winter.

Wrong Pew
Paul Edwards: "Have you read the book called 'Man, the Master of Woman'?"

Vernon Nixon: "I haven't read a fiction book in eight years!"

I've been told that Bill Dickerson and Alton Cure run a close race on being the best barbeque-ers in town! . . . Nora Lee Wozencraft has gone into the taxi business or is it that she is just driving people to see the new house she and James Martin are building? I don't blame you, Nora Lee. Not every couple can build a new house to move into when they get married.

When a little girl begs for food for her own little tea party, fruit flavored gelatin is a wise choice. It's pretty and perky and awfully good to eat.

WE MAKE SMART MATCHING BELTS BUCKLES BUTTONS

from scraps of our own material

- Buckles 1/2 to 3 inches.
- Ivory Rim Buttons
- Veritkin Buttons
- Combination Buttons

Willena Gordon
PHONE 3081
Northeast Corner of Ave. E and Sixth Street.

the very first time, fruit flavored gelatin is fortified with vitamin C—the vitamin so important to everyday good health.

Duty Done
Teddy Jack Estes was puzzled over the girl problem and discussed it with his pal, John Jefferies.

"I've walked Doniece Silcott home three times" he told John, "and carried her books. I bought her ice cream sodas twice. Now, do you think I ought to kiss her?"

"Naw, you don't need to," John decided after thinking a moment. "You've done enough for Doniece already."

The natural-look is becoming more and more the style for women today. Slight touches of make-up seem to have replaced that "painted" look. It's true, too, that the more natural a person looks and acts, the more beautiful they become!

BACK AT WORK
Elvis Hatley is back at work after having been hospitalized here for about three days last week with pleurisy pains in his back.

SEE STATE FAIR
Lauris Hair, Truitt Sides, Eldon Franks and Dr. Jim Fite visited the State Fair at Dallas over the week-end, and saw the SMU-Missouri and Texas-Oklahoma football games.

ROOMMATE HERE
Miss Gayle Ann of Three-Way was in Olton visiting with Miss Gwen Phillips in the home of Miss Phillips' parents over the week-end. Miss Ann is Miss Phillips' roommate at Texas Tech.

TT STUDENTS HOME
Texas Tech students in Olton over the week end were Travis Walden, son of Mr. and Mrs. E. W. Walden; Bobby Bryant, son of Mr. and Mrs. Leamon Bryant; Max Keating, son of Mr. and Mrs. Mac Keating; Kenneth Harper, son of Mr. and Mrs. E. D. Harper; and Joel Meyer.

VISITING HERE
Mrs. Mary Adams of Burkett, Tex., is visiting in the home of her son and daughter-in-law, Mr. and Mrs. A. D. Adams.

Cpl. Billy Buck Participates In Marine Brigade

Marine Cpl. Billy R. Buck, son of Mr. and Mrs. A. R. Buck of Fieldton, participated with the 1st Western Marine Air-Ground Brigade in an amphibious training exercise conducted at Camp Pendleton, Calif., by the 1st Marine Division recently.

The brigade is a special command consisting of the Division's 1st Regiment, supporting ground elements, and aviation units based at El Toro, Calif. After five days of training at sea, the Leathernecks made a pre-dawn amphibious landing north of nearby Oceanside. Two days of maneuvers ashore followed.

In addition to conventional ship-to-shore assault in landing craft, the exercise included a helicopter operation in which an entire battalion was air-lifted in an attack on an "enemy" position.

VISIT DAUGHTER
Mr. and Mrs. Albert Walthall visited their daughter and husband, Mr. and Mrs. James Bledsoe, in Odessa last week.

VISIT IN CHILDRESS
Mrs. Albert Walthall and Mrs. Ira Foster visited friends and relatives in Childress week-end before last.

HERE ON LEAVE
Max Malone, son of Mr. and Mrs. R. W. Malone, is home on leave from the US Navy.

"We need your head in our business"

HUBERT'S BARBER SHOP
Hubert - Parley - Morlex

SUNDAY GUESTS
Sunday guests in the John Campbell home were Mr. and Mrs. Fred Sudduth of Lubbock

and Mr. and Mrs. Denny Barnett. Mrs. Sudduth and Mrs. Barnett are daughters of Mr. and Mrs. Campbell.

FOR SCHOOL SUPPLIES OF ALL KINDS—DROP BY THE ENTERPRISE

Ben F. Smith Grain Co.

Always In The Market For Your GRAIN

Olton, Texas

OUR PRODUCT IS PROPERTY PROTECTION AND WE SELL THE BEST.

We take pride in what we sell you. We're an insurance agency—an independent business. You name the kind—we have it for you—always.

Most insurance policies look alike. But that's not what we sell. We don't sell policies—WE SELL PROTECTION AND SERVICES—our own and the companies we represent. Together we provide the most in value for every insurance dollar.

PROTECTION ALWAYS PAYS!

GRANBERY INSURANCE AGENCY
OLTON, TEXAS

Phone 2921 Or Night 2271
P.S.: We Finance Insurance Premiums—ANY KIND.

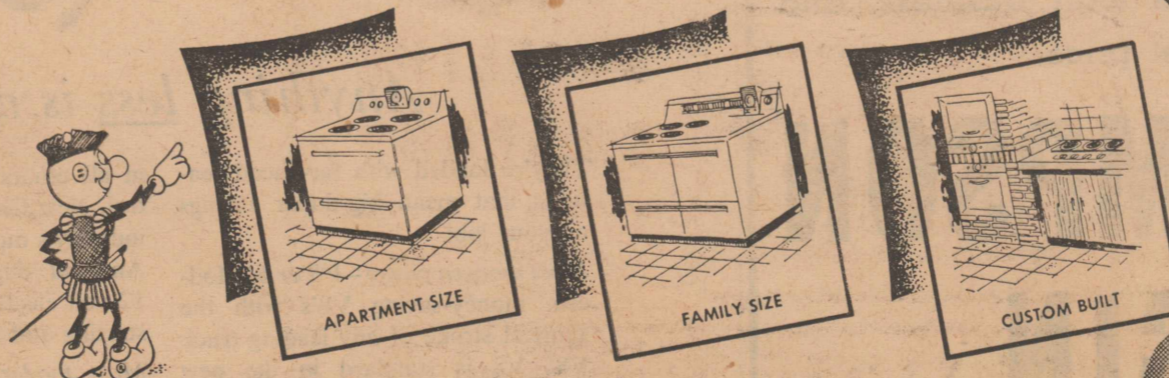
discover
COOKING PERFECTION

of course, it's Electric!

It doesn't make any difference whether you live in an apartment, a little house, a mansion, an old home, or are building the most modern house in town. If you want to discover cooking perfection, cook electrically.

Electric cooking is versatile, and so are electric range sizes and styles. There are 30 inch apartment models for the small kitchen, standard sizes for regular kitchens — and then, the built-ins. Why with built-ins, you can have as many surface units as you want — and have the oven high or low, depending on your height.

Eventually, you'll buy the modern electric range. Why not now?



SEE YOUR REDDY KILOWATT ELECTRIC APPLIANCE DEALER



WHEN YOUR CAR NEEDS A FRIEND, CALL ON US!

When your car runs smack into trouble, bring it here. We'll iron out those crumpled fenders, restore that smashed front, rear or side in jig-time . . . at charges not hard to take! Our services also include expert painting and prompt, efficient glass installation.

"We Meet by Accident"

OLTON PAINT & BODY SHOP

JIMMIE JENKINS—Owner-Operator
In Warehouse Behind Olton Motor Co.



Local Church Members Enroll In Bible Course

Nineteen members of the Main Street Church of Christ have enrolled in 10-week Bible courses.

under the auspices of the Texas Tech Bible Chair.

Each person may take two courses. Classes each Monday night from 7:30 to 8:30 and from 8:30 to 9:30 in the facilities of the Broadway and T Avenue Church of Christ.

The following courses are offered: Bible Geography; More Than Conquerors; Christian Wife and Mother; Gospel Singing Series; How to Build Up the Church; Church-Worship; The Lord Is My Shepherd.

How to Teach Primary Grades; The Person and Work of the Holy Spirit; Following in His Steps; Spiritual Power Through Prayer; How to Do Personal Work; Establishing The Convert; The Early Centuries of Christianity; and How to Be a Good Teacher.

Those who have enrolled in the courses up to the present are: Mr. and Mrs. Sidney Allen, Mrs. Florence Daniels, Mr. and Mrs. Doyle Davis, Mrs. Ineta Dennis, Mrs. D. M. Granbery, Mr. and Mrs. E. A. Hestand, Mr. and Mrs. E. R. Higgins, Mrs. H. M. Langford, Mr. and Mrs. Glen Exter, Mr. and Mrs. W. M. Smith, Mr. and Mrs. Don Williams and Mrs. Euel C. Jones.

Now I live in Maryland. But it's strictly temporary. I long for the fertile fields.

Where once was only prairie. This land is fairly pretty. With lots of woods to roam. But I'm not used to hills and trees. So it can't compare with home. When my two years are over I'm heading back to stay. Our Texas Plains are greatest. The heck with Chesapeake Bay.

WHY I LIKE TO LIVE IN THE OLTON COMMUNITY
Who could resist liking to live

in one of the most progressive little communities on the South Plains, where the atmosphere of friendliness is felt by everyone and the "Golden Rule" is practiced in all the schools, churches, civic organizations and business firms; where the diversified farming, fertile soil and plenty of water makes this the "garden spot" of the U.S.A.

Mrs. Tom Smith

IN SON'S HOME

Mrs. C. W. Shelley of Haskill spent last week in the home of her son, A. W. Shelley.

Bulldogs Rip
(Continued from Sports Page)

Anton Scoring—Touchdowns by Ronald Lambeth (4-yard run); Robert Burdette (1-yard sneak play); William Detwiler (59-yard run, 41-yard run, 2-yard plunge); Richard Howard (45-yard run). Extra points: Johnny Bass (one by kicking); Ronald Lambeth (three by running).

Hart Scoring—Touchdown by Melvin Aven (48-yard run). Extra point—Aven (one by kicking).

FOR SCHOOL SUPPLIES OF ALL KINDS—DROP BY THE ENTERPRISE

Andy W. Stroebel
General
LAW PRACTICE
Olton
Across the street from City Fire station.
PHONE 4661

ACCORDING TO THE WORD OF GOD—HOW MANY FAITHS ARE THERE?

ACCORDING TO THE WORD OF GOD there is ONE FAITH. Turn to Ephesians, chapter 4, verse 5, "there is—one Lord, ONE FAITH, one baptism." Then the question may arise in the mind of some, "Are there not many hundreds of FAITHS throughout the world?" These MANY HUNDREDS OF FAITHS may exist—according to men. But the question under consideration is: ACCORDING TO THE WORD OF GOD—HOW MANY FAITHS ARE THERE? The word of God still says there is "ONE FAITH." Notice the following scriptures and see how many FAITHS are indicated:

ONE FAITH: "One Lord, ONE FAITH, one baptism" (Eph. 4:5).

THE FAITH: "And so were the churches (churches of the Lord) established in THE FAITH, and increased in number daily" (Acts 16:5). "That ye stand fast in one spirit, with one mind striving together for THE FAITH of the gospel" (Phil. 1:27). "And exhort you that ye should earnestly contend for THE FAITH which once delivered unto the saints."

Someone may be ready to ask, "Are there not MANY FAITHS in God's word?" Here are some listed as follows: little faith (Mat. 17:20), weak faith (Rom. 14:1), vain faith (I Cor. 15:14), dead faith (James 2:17), and a faith that is lacking (I Thes. 3:10). Would you like to have anything to do with any of these? Then notice the following: GREAT FAITH (Mat. 8:10), HOLY FAITH (Jude 20), PERFECT FAITH (James 2:22), A FAITH THAT WORKS (Gal. 5:6), RICH FAITH (James 2:5), and A PRECIOUS FAITH (II Pet. 1:1). This FAITH is the ONE FAITH, one reads about in God's word. If everyone hears and obeys the word of God then there will be but ONE FAITH. "FAITH cometh by hearing, and hearing by the word of God" (Rom. 10:17). God's word has never produced but ONE FAITH. "Whatsoever is not of FAITH (produced by God's word) is sin" (Rom. 14:23).

WELCOME TO THE

Main Street Church of Christ

SUNDAY: BIBLE STUDY 10:00 a.m.—6:30 p.m.
WORSHIP 10:50 a.m.—7:30 p.m.
TUESDAY: LADIES BIBLE STUDY 4:00 p.m.
BIBLE STORY HOUR 4:00 p.m.
WEDNESDAY: BIBLE STUDY: 7:30 p.m.

E. R. HIGGINS, Preacher

LETTERS to the EDITOR

August 29, 1955
1637 D Rickenbacker Road
Baltimore 21, Maryland

Dear Troy,

I've been laying off to write and tell you how much I enjoy the paper, and your little offer of ten dollars brings on this little epistle. You know you are safe because no one can tell why they like to live in Olton in less than 100 words!

I particularly appreciate your "Cracker Barrel" and the weekly "Saunter With Sue" and of course "Short Grass."

I do wish to use my privilege to disagree with you about your editorial on the division of our State. I think with all the Texans pulling together, no one will try to tell the other fellow how to run his business. Dividing would probably solve some local problems, but it would undoubtedly raise countless others. I'm not particularly sentimental but I'm proud I'm a Texan and I want to continue to be numbered among "The Greatest" in every way, size included.

So much for one man's opinion—now here is my stab for your ten bucks. I don't really expect to win, but I've said what I feel.

Yours truly,
Douglas Owen

WHY I LIKE TO LIVE IN OLTON
By Douglas Owen
Why do I like Olton?
You really want to know?
Because I was born and raised there,
And love the people so.

Condensed Statement of Condition of OLTON STATE BANK

OLTON, TEXAS

at the close of business October 5, 1955.

RESOURCES		LIABILITIES	
Loans & Discounts	\$1,897,707.46	Capital Stock	125,000.00
Overdrafts	10,360.34	Surplus	125,000.00
U. S. Government Bonds	342,281.25	Undivided Profits	80,609.28
Other Bonds & Warrants	176,761.88	Deposits	2,686,695.19
Government Commodity Loans (Cotton & Grain)	4,460.63		
Banking House & Equip.	93,301.75		
Furniture & Fixtures	37,500.00		
Other Assets	1.00		
Cash & Due From Banks	454,930.16		
TOTAL	\$3,017,304.47	TOTAL	\$3,017,304.47

The Above Statement is Correct — Gene Trotter, Cashier

MEMBER FEDERAL DEPOSIT INSURANCE CORPORATION

OFFICERS

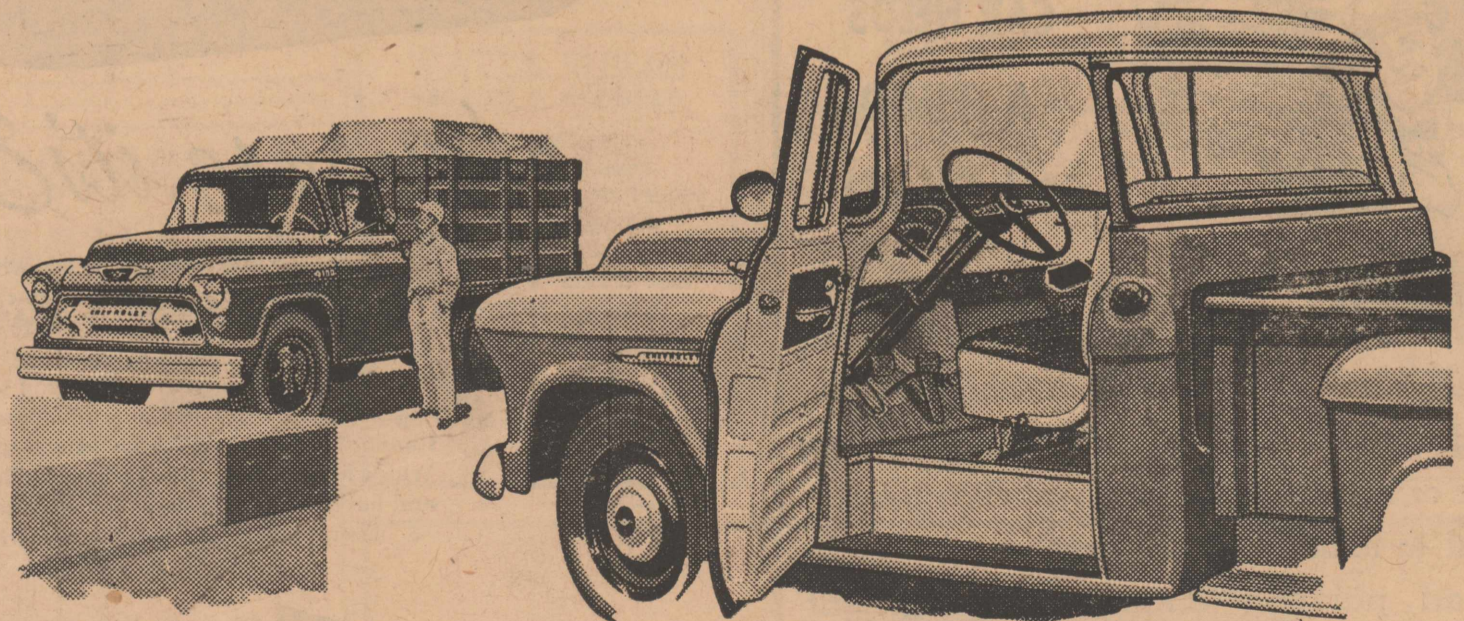
D. M. Granbery
President
W. N. Yates
In-Act. Vice-President
James O. Norfleet
Vice-President
Gene Trotter
Cashier
Roy Linker
Asst. Cashier
(Stationed in Germany with U.S. Army)

DIRECTORS

W. N. Yates
Gene Trotter
James O. Norfleet
D. M. Granbery
Frank Cornelius
L. D. Smith
Charlie Jones

Most Modern Truck Features of All!
New Chevrolet Task-Force Trucks

New concealed Safety Step! New High-Level ventilation!
New panoramic windshield! You get the most modern features in today's most modern trucks!



Anything less is an old-fashioned truck!

They're loaded with far-ahead features that mean big-dollar savings on your job!

Most modern power—V8 or 6! Modern, money-saving V8's with the shortest stroke of any leading truck V8! V8 is standard in the new L.C.F. models, an extra-cost option

in all others except Forward Control. New Chevrolet trucks offer the industry's most advanced sixes, too. And all engines have a modern 12-volt electrical system for quicker starting and smoother going.

Most modern styling! New Chevrolet trucks are the only Work-

Styled trucks, with a fresh, functional appearance that's tailored to the job. Two distinctly different styling treatments are offered—one for light- and medium-duty models, another for heavy-duty. Come on in and see how far ahead you'll be with a new Chevrolet truck!

Year after Year America's Best Selling Truck



THOMPSON CHEVROLET COMPANY

OLTON

HIGHWAY 70

TEXAS

Plan Now To Do Your Ginning
At the Friendly, Efficient...

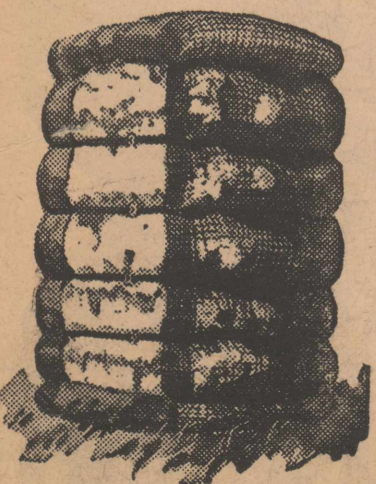
THOMPSON GIN

(Formerly The Simmons Gin)
SIX MILES NORTH OF CIRCLE

A Murray Gin throughout, with Continental Lint Cleaners. Completely new saws and new style ribs.

We offer as good a turnout as you can get anywhere. And we sincerely appreciate your business.

We can take care of your government loan business, and will buy your cotton at the highest market price.



THOMPSON GIN

GEORGE THOMPSON, Co-Owner and Manager

Six Miles North of Circle

PHONE 2900

Our Motto Is "Service That Satisfies"