

# THE PLAINS RIDE

PLAINS, YOAKUM COUNTY, TEXAS

VOLUME 10, NUMBER 9

WEDNESDAY, JUNE 1, 1994

30¢

## Oil painting classes to be offered here

Oil painting classes will be taught by Jimmie Bayer, local artist and art instructor.

Instruction will be offered to children, at least eight years of age or older and adults are welcome to enroll also.

Each two-day class is limited to four students at a cost of \$21 each, which includes all supplies, except paper towels.

The first class begins June 2-3. There will be six other classes held, including June 7-8, June 9-10, June 14-15, June 21-22, June 23-24 and June 28-29.

Classes begin at 8:30 and conclude at 11:30 each morning. Afternoon classes will be considered if there is enough interest.

For more information or to enroll in a class, call Jimmie Bayer at 456-4567.

## New irrigation management software now available

A new spreadsheet, SPIMS, designed to calculate irrigation needs throughout the growing season is being offered to producers in the Texas High Plains. According to Yoakum County Extension Agent-AG, Terry J. Millican, South Plains Irrigation Management Software trainings will be available at the Texas A&M University Computer Training and Education Center at Halfway on June 10 to learn how to use the software package.

The spreadsheet's main purpose is to calculate the amount of irrigation needed to replace water as it is used by a crop. SPIMS requires that PET, rainfall and sometimes a crop coefficient be entered.

SPIMS is a compiled LOTUS 1-2-3 spreadsheet, so any 1-2-3 or EXCEL users will be very comfortable with the format. It does require LOTUS 1-2-3 to operate the program, and it runs on IBM compatible PCs.

Jackie Smith, Bill Lyle and Rose Mary Seymour, all of the Texas A&M University Agricultural research and Extension Center at Lubbock, worked together to design this software. It

## Hospice Inc. to sponsor Golf Tournament Saturday

Hospice Services, Inc. will sponsor a Memorial Golf Tournament Saturday, June 4 in Hobbs Country Club. Entry deadline is May 27.

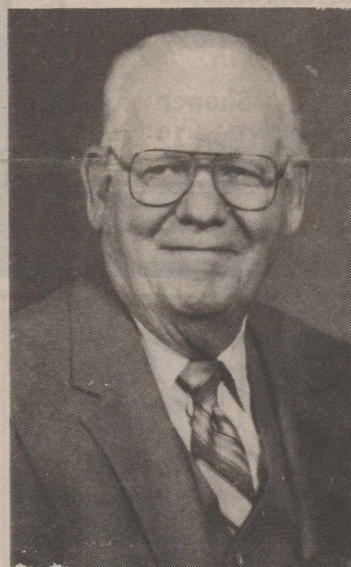
Entry fees for the four person scramble are \$50 per person which includes green fees, cart and lunch. A hole-in-one contest will feature a 1994 Cadillac golf cart with retail value of \$14,500.

Proceeds from the tournament will assist Hospice Services, Inc. to continue providing special care for the terminally

ill of the area. Additional information may be had by calling the Hospice Office, 505-393-4717.

Sponsor categories are tee box, \$250; putting green, \$125; and birdie, less than \$100.

Prizes are \$500, first place; \$300 second place; and \$200, third place, subject to a 30 team field, flighted by handicap. There will also be awards for men and women long drive and closest to the pin.



ROBERT EDWARDS

## Services conducted for Robert Edwards

Robert (Bob) Edwards, 76, of Plains, died Tuesday, May 24, 1994 in Lubbock's St. Mary Hospital.

Services and burial were held in Minster, Ohio, Friday, May 27, 1994.

Edwards was born on April 3, 1918, in Fort Loramie, Ohio. He moved from Ohio to Hobbs, NM in 1962, where he was cemetery supervisor for the city of Hobbs until retiring in 1984. He married Rhuey Crutcher on Feb. 3, 1984, in Denver City. He was a member of the Church of God.

Survivors include his wife; a son, James Robert of Sidney, Ohio; three daughters, Norma Loepp of Sanford, Fla., and Betty Thompson and Janie Isensee, both of Piqua, Ohio; a stepson, Dennis Crutcher of Plains; a stepdaughter, Caroline Yeager of Carlsbad, NM; a brother, Len of Piqua, Ohio; 12 grandchildren, nine great-grandchildren, five step grandchildren and four step great-grandchildren.

## Basketball Camp set for June 20-24

The fourth annual Plains Basketball Camp will be June 20-24 at the high school gymnasium. The camp is open to both boys and girls ages eight through 15.

The camp features fundamental skill development, individual shooting competition and team competition. Individual and team awards and camp tee shirts will be presented on conclusion of camp.

Cost is \$10 for Plains ISD students and \$40 for non-Plains students. Applications may be picked up at the Plains Library.

Camp directors this year include Edwin Brink, Jack Baucom, Michael Davis and Steve Osborne.

## A.B. Williams services held

Services for A.B. Williams, 75, of Welch, formerly of Plains, was held at 10 a.m. Monday, May 23, 1994 in First Baptist Church of Welch. Officiating was Revs. Ron Wiseman, Horace Kennedy, Alton West and Terry Horton, pastor.

Burial was in Terry County Memorial Cemetery under the direction of Brownfield Funeral Home.

Williams died Thursday, May 19, 1994 in Welch.

He was born on July 31, 1918, in Terrell, Okla. He married Mona Claudine Cunningham on Dec. 13, 1937, in Brownfield. They farmed in Tokio and Welch, and he was a U.S. Army veteran of World War II. He was a member of Welch Baptist Church and Tokio Baptist Church.

Survivors include his wife; a son, Don of Hart; two daughters, Sharon Stephens of Lubbock and Loretta Roberts of Welch; nine grandchildren; and 12 great-grandchildren.

Pallbearers were Dell Knight, Lance Williams, Ace Williams, Mickey Roberts, Ken Stephens, Brian Stephens, Daniel Stephens and Dayne Antwine.

Honorary pallbearers were deacons of the Tokio and Welch Baptist Churches.





**renaissance**  
Flowers & Gifts

M-F 456-3939 10-5:30

*soft*  
New acrylic afghans in popular colors and style.

Root candles for all occasions  
votives, pillars, jar, beeswax

Arches/swags for doors & mirrors

\$5.99 & up  
Clay pots in wooden planter boxes for window sills & porches

\$1.29 & up  
Scent packages for car/drawers  
country wooden magnets, plaques

**satisfaction guaranteed**

Let us refurbish your arrangements with new silk flowers, greenery

Shower  
Selections for Doyle Baby - June 19

## Child safety seats recalled according to Extension Agent

Information concerning child safety seat recalls was recently received in the Yoakum County Extension Office, according to Joan Chandler, Yoakum County Extension Agent-HE.

Child safety seat recalls are issued by the National Highway Traffic Safety Administration. Recalls involve serious safety problems that should not be ignored. The repair kits are "FREE" of charge and to delay in requesting them could put children at risk needlessly.

Owners who have questions about recalls or any safety recall should call NHTSA's toll-free Auto Safety Hotline at 1-800-424-9393.

The manufacturer should be contacted if one owns a safety seat that has been recalled. In most cases, the defect is a small part on the safety seat. The manufacturer will supply the replacement part or kit for no charge. The child should continue using the safety seat until the repair kit arrives. An unrestrained child is at far greater risk than using a seat that needs some adjustment.

Recent recalls include:

Dream Ride seats manufactured by Cosco, Inc. - 1-800-221-6736 - light blue and pink plaid fabric, manufactured from 1/1/89 thru 1/1/94, seat cover material does not meet fed. safety standard for flammability.

Renolux child safety seats produced by FBS, Inc. - 1-800-476-5273 - blue tweed seat covers, manufactured from 5/89 thru 6/93, seat cover material does

not meet fed. safety standard for flammability.

Century child safety seats 1-800-837-4044 - red harness release button on all 3000STE, 3500STE, and 5500STE models may jam in a sudden stop or crash. Century will send replacement kit for free.

Fisher Price 1-800-845-8813 - plastic part inside buckle fails so that the buckle will not fasten and the child will not be restrained. Contact FP for new shield with buckle assembly.

Gerry Guardian - Takata-Gerico Corporation, 1-800-845-8813 - buckle assembly fails to meet release force requirements, too easy for children to release themselves. New buckle replacement kit available.

Owners should be able to find the manufacturer, model number, etc. attached to the safety seat and have the information. If you have any questions concerning any of the recall information, call the Ext. Office, 456-2263.

### Card of Thanks

It is so gratifying to know that so many people care and are praying for you. I plan on whipping this cancer with the grace of our Lord and the love of so many friends and family. The cards, telephone calls and words of encouragement have meant so much to us. Thank you and God bless you all.

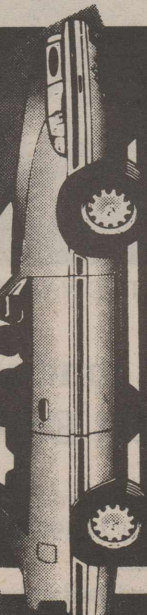
Pat & 'Crip' Henard

**START WINNING TODAY!**

WIN UP TO \$1000 INSTANTLY!

**OVER 250,000 PRIZES!**

Win a 1994 Ford Escort LX!



Win Free Gas for a Year!



**INSTANT WIN GAME**

PRICES EFFECTIVE  
MAY 31 - JUNE 6, 1994  
PLAINS, TEXAS

SAVE ON  
**CORN KING FRANKS**  
12 OZ.

**49¢**



ALLSUP'S 1.5 LB. LOAF  
**SANDWICH BREAD**  
69¢ EACH OR

**2\$1** FOR

ALL TYPES  
**PEPSI-COLA**  
6 PAK  
12 OZ. CANS

**\$1.39**

**Gotta Have It!**

**ALLSUP'S**  
\$50.00 WORTH OF GASOLINE FREE!!!

TAKE THIS COUPON TO BIG COUNTRY FORD 2400 MABRY DR. CLOVIS, NEW MEXICO 88101. IF YOU PURCHASE A NEW VEHICLE BEFORE AUGUST 13, 1994 YOU WILL RECEIVE \$50.00 WORTH OF FREE GASOLINE COURTESY OF ALLSUP'S.

ALLSUP'S

**HONCHO**  
BIG 44 OZ. CUP FILLED WITH YOUR FAVORITE FOUNTAIN DRINK!

**59¢** PAPER ONLY

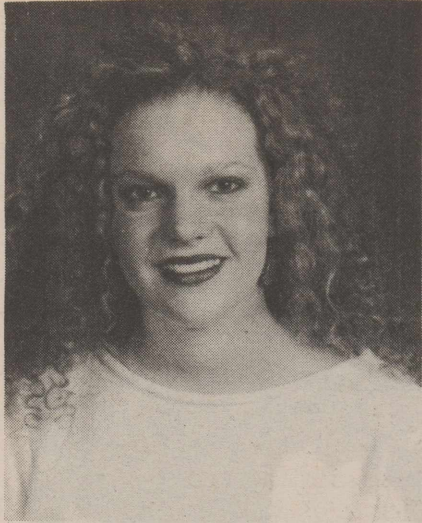
TOOTSIE ROLL  
LUNCH  
POP

FAMILY SWEETS  
BAG  
CANDY

ALLSUP'S  
BBQ BEEF SANDWICH

ALLSUP'S  
SAUSAGE, EGG, & BISCUIT SANDWICH





TRACY CHOATE, great-granddaughter of Bill and Burve Overton, was invited to sing at Carnegie Hall in New York City on May 15 along with fellow choir members of Abilene Cooper High School. Tracy is the daughter of Mark and Daleta Choate of Abilene.

### FOR SALE

LOTS 39 AND 40, BLOCK E, BEANE ADDITION, PLAINS, TEXAS (East of ASCS Office). NO MINIMUM BID. TO BE SOLD TO HIGHEST BIDDER. FOR FURTHER INFORMATION CONTACT WAYNE HOUSE AT (806) 456-2022. WEDNESDAY, JUNE 15TH 10:00 A.M. 9/2TC

### NOTICE

ITALIAN HIGH SCHOOL EXCHANGE STUDENT, boy 16, needs host family. Likes soccer, tennis and volleyball. Arriving in August. For more information, call 1-800-SIBLING.

## School Board meets May 19

The Plains ISD board of trustees met in a called meeting on Thursday, May 19 at 7:30 p.m. in the board room of the administration building.

Members present were Tim Addison, Stanley Ashburn, Danny Bell, Anna Gonzalez, Brad Palmer, Jerry Parrish and Gary Six. Also present were Pete Simmons, superintendent; and Eric Banfield, business manager.

Invocation was given by Tim Addison.

The board was reorganized with the following officers selected: president, Jerry Parrish; vice president, Stanley Ashburn; and secretary, Gary Six.

An orientation was given to the new board members, Brad Palmer, Anna Gonzalez and Tim Addison; and board policy was reviewed.

A finance orientation was given with information pertaining to school finance, purchase of WADA, and alternative schools.

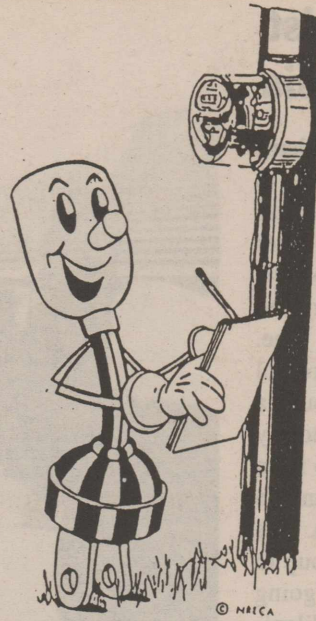
Ashburn moved and Addison seconded that the WADA generated by the proposed coop alternative school be purchased. Motion carried 7-0.

Bell moved and Six seconded that all of Meadow ISD's WADA be purchased for the 1994-95 school year. Vote carried unanimously.

Discussion followed about purchasing the remaining WADA from New Deal and other schools.

### NOTICE

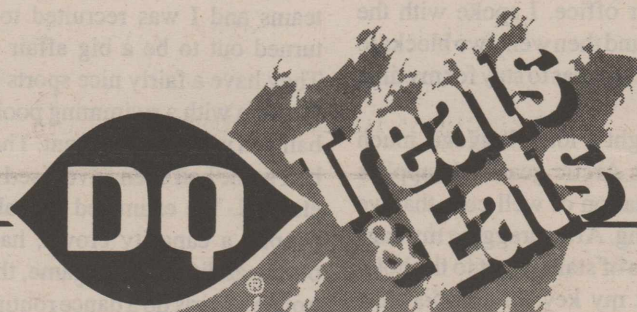
BEAUTICONTROL cosmetics. Call Holly Dyer, 456-8451.



### HOW YOUR ELECTRIC BILL IS FIGURED....

- (1) Your meter is read.
- (2) Your previous reading is subtracted from your current reading. This tells how many kilowatt hours of electricity you have used during this period.
- (3) Your bill is figured using rates set by the electric company and government regulatory agencies.

LEA COUNTY ELECTRIC COOPERATIVE, INC.



Limited Time Only!

## DQ® Strawberry Shortcake

An old favorite is back for a limited time! With creamy soft serve or frozen yogurt, moist shortcake, and rich strawberry topping. Only at Dairy Queen®!

©Reg. TM Am. D.Q. Corp. ©Tx. D.Q. Op. Coun. At participating Dairy Queen stores.

ALLSUP'S SAUSAGE, EGG, & BISCUIT FOR ONLY <b>99¢</b>	ALLSUP'S BBQ BEEF SANDWICH MADE TO ORDER!!! <b>99¢</b>	BAG CANDY ASSTD. BAGS <b>79¢</b>	LUNCH POP 7 CT. <b>59¢</b>
HERSHEY'S MILK CHOCOLATE ASSORTED HERSHEY'S CANDY 55¢ BARS <b>3 \$1 FOR</b>	ASSORTED FLAVORS REG. WAVY LAYS® REG. \$1.49 SIZE <b>99¢</b>	ASSORTED TRIDENT VAL UP AK PKG <b>89¢</b>	THRIFTY 20 LB. HOUND DOG FOOD BAG <b>\$2.99</b>
LIBBY'S 3 OZ. POTTED MEAT CAN <b>39¢</b>	ASSORTED TRIDENT VAL UP AK PKG <b>89¢</b>	FAMILY SCOTT 4 ROLL PKG. BATHROOM TISSUE EACH <b>99¢</b>	SHURFINE 28 OZ. SQUEEZE BTL. TOMATO KETCHUP EACH <b>\$1.29</b>
	SHURFINE 17 OZ. FANCY SWEET PEAS CAN <b>39¢</b>	14 OZ. PKG. SUNNY SANDWICH COOKIES EACH <b>99¢</b>	

Win Your Share of  
**\$85,000 in Cash Prizes!**





## California geologist does work in Russia

by Matt Williams

In February, I traveled to Russia to review data for a project Occidental has in the Komi Republic of Russia. After flying from Bakersfield to Moscow via Dallas and Frankfurt, Germ., I arrived in Moscow about 3 p.m. local time. After going through passport control and customs, I made my way through a crowd and caught a shuttle bus to my hotel. I had the opportunity to go from the airport to the center of town and go by Red Square and the Kremlin. The next morning a van took our group to another part of the airport. After going through security and riding in a dilapidated bus out to the plane, we flew on a 15 passenger Aeroflot jet from Moscow to our destination of Pechora.

We flew about one hour out of Moscow and landed in Volgda for jet fuel. Apparently its cheaper outside of Moscow, and it's common for the pilots to find a cheaper supply of fuel enroute.

After about 45 minutes, we flew on to Pechora. Pechora is a town of approximately 40,000 people, which was originally established for dissents in the late 1940s. The airport was small and after getting our gear off the plane, we took a truck-like passenger transport from the airport to our office. I spoke with the people there and then went two blocks to the hotel, where I was to stay for my time in Pechora.

I had brought a lot of luggage, much of which was Arctic gear and supplies for our evaluation of well core that we were analyzing. After dragging my bags up five flights of stairs, I got to the hotel desk and got my key. In addition, the hotel clerks took my passport and gave it, as required, to the local militia. I was assigned to a room on the fourth floor. The bathrooms were down the hall and the bed was about six inches off the floor. More importantly, about two inches of ice had formed on the window.

It was about minus forty degrees Fahrenheit in Pechora, which was even colder than Moscow. I settled in as best I could and had dinner. I wanted to go to the office to call Bakersfield and since I didn't know the way, I asked for a driver. He came in the truck carrier that had carried us from the airport which has a passenger compartment separate from the driver's cab. I thought he understood where I wanted to go, but instead of taking me to the office he took me out to

the airport hotel. I was finally able to explain where I needed to go. He had me get in the cab with him to go back, and after pushing two nearly empty vodka bottles out of the way, he drove me back to the office. After that I learned the way to the office and I walked, regardless of the temperature.

I spent a week looking at core in a "heated" warehouse. This meant that it was about 30 degrees warmer than outside. This resulted in an inside temperature of about minus five degrees to ten degrees. It's usual to spray water on the rock to view it better, but the water froze in about 30 seconds. It kept getting colder, but we finally finished our review. The core was cut using rock saws



MATT WILLIAMS, senior petroleum geologist for Occidental International Exploration and Production Company, and son of Mary Dale Forbus of Plains and Charles Williams of Tokio was recently sent to Russia to review data on an ongoing project. He is pictured standing in front of the "free market" at Pechora, Komi Republic, Russia. Tables under metal stalls were set up to sell whatever they had procured. Some would sell sweaters, others would sell frozen chickens - everything outside was frozen, due to the -25 degrees Fahrenheit. Inside the market, they had bananas and engine parts for sell. (Photo was made courtesy of Matt's tour guide and translator, Sveta.)

and water, and while the water stayed liquid, it was very hard on saw blades, using up a year's supply in what time we were in Pechora.

In addition to the work that also included review of the rest of our operation, the local company had been challenged to a basketball game by the local teams and I was recruited to play. It turned out to be a big affair in town. They have a fairly nice sports center in Pechora with a swimming pool, volleyball and weight equipment. The basketball game had been advertised and tickets sold. We estimated that about 400 people, a capacity crowd, had turned out. In addition to the game, they had a troupe of girls do a dance routine before the game and at half-time. One group was 18-25 year old girls and another was composed of 12-15 year old girls. We were defeated by the local team; however, the crowd cheered for both sides and it was quite an event. After the game, both teams were invited to the director's office for caviar and vodka, which is a traditional requirement. In addition, I also went with a lady from our office to the local markets. The regular markets had staples, including food, toys and clothing. The "free market" had anything someone had to sell. These included sweaters, auto parts, frozen chickens (everything outside was frozen) and fruit.

After the game on Sunday, I went to our field operations where we were testing one well, drilling another and shooting a 3-D seismic survey. My driver spoke no English, and I knew only some greetings in Russian. However, we were able to communicate after a while and exchanged language lessons. It was very cold, and as it began to snow, we discussed how to say snow, tree, etc., in the various languages. The countryside was gently rolling with dense spruce and birch forests. It was very pretty in the snow cover. The wells and seismic camps were composed of about 20 trailers joined by a central covered hallway. I had lunch at the seismic camp and spent the rest of the time at the wells. It was about -45 degrees Fahrenheit during the day, and colder at night. However, a snow storm came in and it warmed up sub-

stantially, to about -10 degrees. I had an individual driver going to the field, but rode back on the passenger truck with about five or six Russians. The trip back was generally uneventful.

The next day we took the Yak-40 jet back to Moscow without a stop. After another night in Moscow I flew back to Bakersfield via Frankfurt and Dallas.

THE PLAINS PRIDE: The Plains Pride (USPS 757-130) is published weekly at 716 Main Street, Olton, Lamb County, TX 79064. Second Class Permit paid at Olton, TX 79064 POSTMASTER: Send address changes to The Plains Pride, P.O. Box 774, Olton, TX 79064-0774.

### HOSPICE SERVICES, INC.

serving  
Lea, Gaines & Yoakum Counties

Hospice care focuses on pain management and symptom control and is designed to support the family as well as the patient. It neither hastens nor delays death but works instead to make every day as comfortable as possible for the dying person.

901 E. Bender Box 249  
Hobbs, NM 88241  
505/393-4717

321-B N. Main  
Denver City, TX 77323  
806/592-2901



#### WE NOW HAVE:

- 40 LB. POTTING SOIL \$3.35
- 20 LB. ZIPP ALL-PURPOSE FERTILZER 16-8-8 \$3.49
- FLOWER AND VEGETABLE SEEDS 79¢
- 25' ARROW "THE BRUTE" MEASURING TAPE \$14.95
- 1 LB. BERMUDA GRASS SEED \$4.45
- 3 LB. BERMUDA GRASS SEED \$12.95
- 4 LB. BONSAI GRASS SEED \$8.95

## BAYER LUMBER

1018 AVE E  
PLAINS, TX 79355  
456-4800