

# Reese to hold initial assignment briefings

Reese is beginning the process of helping military and civilian personnel relocate with a series of briefings over the next two weeks.

A briefing of the civilian Priority Placement Program is scheduled for Monday from 8 to 11:30 a.m. in the Simler Theater.

Priority Placement Program registration will begin here on Tuesday. A memorandum on the Priority Placement Program was sent to all Reese permanent appropriated fund employees earlier this month. Call the Reese Civilian Personnel Office at 3801 for additional information.

The Air Education and Training Command base closure assignment team will be at Reese Nov. 1-2 for a series of initial assignment briefings in the Simler Theater.

Enlisted assignment briefings will be held Nov. 1 at 8 a.m., 9:30 a.m., 12:30 p.m., 2 p.m. and 6 p.m.

Officer assignment briefings will be held Nov. 2 at 10 a.m. and 1 p.m.

For more information about the military assignment briefings call Master Sgt. Karol Hughes at 3714.

Reese civilian and military personnel officials strongly recommend attendance at these briefings.



## CFC update

As of Wednesday, Reese people have contributed \$63,686 to the Combined Federal Campaign. The contributions represent 98 percent of the wing goal.

# ROUNDUP

"Air Force people building the world's most respected air and space force ... global power and reach for America"

Vol. 47, No. 41

October 20, 1995

Reese AFB, Texas

## General Griffith discusses mission Vice commander says new challenge builds leaders

The next two years at Reese will be a period that builds leadership, according to the vice commander of Air Education and Training Command.

Lt. Gen. Clark Griffith, AETC vice commander, made that point while addressing the wing's officer corps during Officers Call here Oct 13.

The general noted that the addition of base closure to the joint training mission here will present many challenges.

"This is the time when real leaders step forward," Griffith said. "Anyone can lead when times are easy ... when you are in a situation such as base closure, it gets tough. But, you will all be better officers because of it."

The general talked at length about the base closure process, assuring people that it was natural to wonder what the future will hold.

"Don't be embarrassed to ask about what will happen. You need to know what is going on," said Griffith.

Reese is scheduled to close by the end of September, 1997. The general said some specific timelines have been established for closure, but could be modified.

"We develop charts with estimated closure timelines. But these, like a flying schedule, are based on many things happening in sequence. If something in that sequence gets off



Lt. Gen. Clark Griffith, AETC vice commander, addresses Reese officer corps here Oct. 13.

schedule, the timeline shifts," he said.

Griffith cited the requirement for environmental assessments as an example of something that could affect the timelines.

"You don't just wave a magic

wand and absorb a training function at another base. We have to complete environmental studies here and at the other pilot training wings. Sometimes these go very quickly ... often they do not," he said.

"What I can tell you is what

I know based on the information we have today. That is that we expect flying to end in early 1997 and the base to close later that year."

One thing the general said he could assure Reese person-

## Inside

AF leaders cite importance of Combined Federal Campaign drive. Page 2

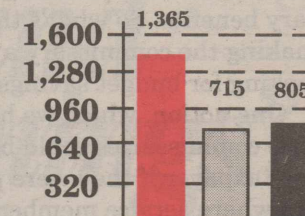
64th SPS offers tips on how to keep Halloween from becoming a nightmare. Page 3

Two Reese squadrons welcome new commanders. Page 4

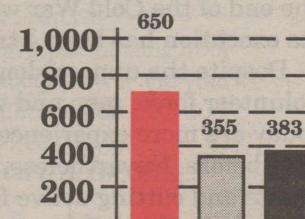
Reese slates more roadwork. Page 8

## Mission

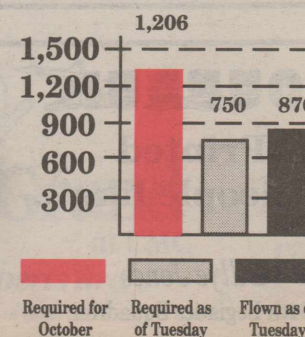
### T-37 Sorties



### T-38 Sorties



### T-1A Flying Hours



Required for October    Required as of Tuesday    Flown as of Tuesday

(Continued on Page 4)

## Commissaries key to strong defense

by Frederick F.Y. PANG  
Assistant Secretary of Defense,  
Force Management Policy

Service members keep us free. Making groceries available is the least we can do.

Commissaries support our men and women in uniform and their families by providing access to convenient discount grocery shopping.

Overseas, military commissaries often are the only source of American grocery products. In the United States, they often are on bases where there are no easily accessible grocery stores in the civilian community.

They are an important part of our military communities. When military members arrive at an installation, they know that certain central support systems like the commissary are there to support them and their families. They know that when they deploy, they need not worry about the families they leave behind.

We want them to be focused on military duties and not distracted by concern over their families' welfare. The military commissary system provides such assurance.

As a non-cash benefit, the commissary ranks second only to military health-care benefits in value to military members.

It says to military members that their service, which often requires sacrifice of some freedoms civilians take for granted, is appreciated.

It says that although we can never pay them enough to stand in harm's way, we are willing to provide a basic benefit to sustain a decent standard of living.

I believe most Americans do not begrudge commissary benefits. So what's the beef? It has to do with making the commissary a target for those simply looking for budget savings.

One notion, which we have explored and rejected, is that commissaries could be operated at lower cost to the taxpayer if they were privatized. But commissaries are where service members are. That's not an attractive business proposition unless you pick and choose the most profitable locations.

Downsizing our nation's military forces following the end of the Cold War was an enormous challenge. Its execution has been a tremendous success.

Despite the unprecedented task of shrinking an all-volunteer force, men and women in our armed forces today are more experienced and of higher quality than ever before. Nevertheless, base closures and realignments and cutting active forces by more than 600,000 have caused significant turbulence.

We are taking steps necessary to secure a greater sense of stability in our armed forces. Securing the commissary benefit is an important part of that effort. (Reprinted with permission of *USA Today*.)

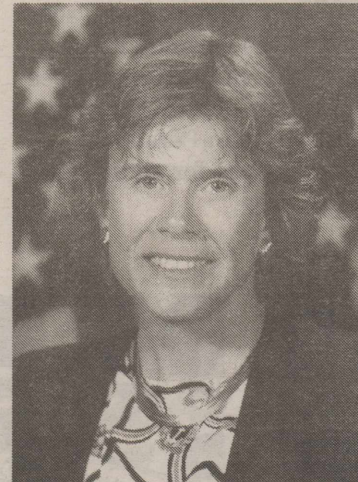
## Combined Federal Campaign AF leaders urge support of annual fund drive

by Shiela Widnall  
Secretary of the Air Force  
and Gen. Ronald  
Fogleman  
Chief of Staff

The 1995-96 Combined Federal Campaign again gives the military and civilian members of the Air Force the opportunity to support the voluntary charitable organizations that provide critical health and welfare services in the communities we live.

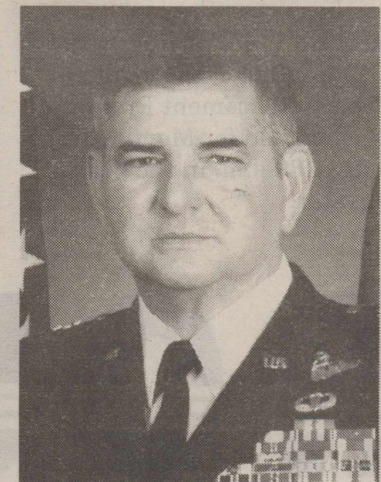
Rising costs and federal, state and local government budget reductions make our generous donations more important than ever.

The military and civilian



Widnall

personnel of the United States Air Force are historically strong contributors to this annual CFC appeal demonstrating our civic mindedness and appreciation.



Fogleman

Your personal interest will ensure a successful campaign and continue our tradition of reaching out to assist the communities that support our Air Force families.

## Self-exams best cancer detection

by Capt. Lee Alexander  
64th MDG staff nurse

Breast cancer is the most common form of cancer among American women. According to the American Cancer Society, one in nine women will develop breast cancer in her lifetime.

What is cancer? Cancer is really a number of diseases caused by the abnormal growth of cells.

Normally the cells that make up the body divide and reproduce in an orderly manner, so that our bodies can grow, replace worn out tissue, and repair any injuries. However, sometimes cells grow out of control, divide more than they should, and form masses known as tumors.

Who is likely to be affected? Several factors increase the chance that a woman will develop breast cancer. These include:

- Being over age forty

- Personal history of breast cancer (already have had cancer in one breast)
- Family history of breast cancer in a close blood relative (mother, sister, aunt)

- Having never given birth, or, giving birth after age thirty
- Long menstrual history (started early or ended late)
- High fat diet

The most common sign of breast cancer is a lump or thickening in the upper outer portion of the breast; a lump that does not go away and does not seem to change the way it feels. Other signs to look for are swelling, puckering, dimpling, redness, tenderness or discharge from the nipple. Any of these signs should be brought to the attention of your health care provider.

Most breast lumps are found by women themselves. The best way for a woman to discover a lump early is to become familiar with her

breasts and examine them monthly for changes. Classes in breast self-examination are available weekly at the 64th Medical Group.

In addition to breast self-exams, women from 20 to 40 years old should have a breast exam by a health care professional every three years. Those over 40 should have an annual exam.

Mammography is another important step in early detection.

Although mammography can find lumps that cannot be felt, it cannot show everything. That is why it is so important for women to continue to examine their breasts regularly.

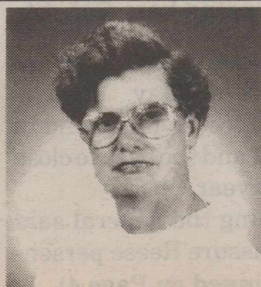
By following these simple steps — breast self-exam, professional exams and mammography — women can help ensure that developing breast cancers are caught in their earliest, most curable stages.

(Courtesy American Cancer Society)

**ROUNDUP**

Printed  
for people like ...

Billye Jones  
64th Logistics Squadron



Published by Chandelle Publications, a private firm, in no way connected with the Department of Defense or Reese Air Force Base, Texas, under exclusive written contract with Reese Air Force Base's 64th Flying Training Wing. This commercial enterprise newspaper is an authorized publication for members of the military services.

Contents of Roundup are not necessarily the official views of, or endorsed by, the U.S. Government, the Department of Defense or the 64th Flying Training Wing at Reese Air Force Base, Texas. The appearance of advertising in this publication, including inserts and supplements, does not constitute endorsement by the Department of Defense or Chandelle Publications of the products or services advertised.

Services and products advertised in this publication will be made available for purchase, use, or patronage without regard to race, color, religion, sex, national origin, age, marital status, physical handicap, political affiliation, or any other nonmerit factor of the purchaser, user or patron.

Roundup's content is edited, prepared and provided by the Public Affairs Office of Reese Air Force Base, Texas. The editorial staff reserves the right to edit submissions based on Associated Press journalistic style and space requirements. Deadline for short notices is noon Monday the desired week of publication; full articles are due by close of business the preceding Friday.

All photos are U.S. Air Force photos unless noted.

Reese AFB Editorial Staff  
Bldg. 11, 3843 or 3410

Wing Commander \_\_\_\_\_ Col. Randy Gelwix  
Vice Commander \_\_\_\_\_ Col. Kodak Horton  
Chief, Public Affairs \_\_\_\_\_ Bill Tynan  
Editor \_\_\_\_\_ Ralph Monson  
Sports Editor \_\_\_\_\_ SrA. Tim Dempsey  
Photo Support \_\_\_\_\_ Mike Parrish  
\_\_\_\_\_ Bill Allen

# 64th SPS offers tips for safe Halloween

by 2nd Lt. J. P. Kury  
64th Security Police Squadron

As Reese families prepare for Halloween activities, there are several safety tips that will help keep the holiday from becoming a real nightmare.

Trick-or-Treating in Reese Village will be held from 6 to 8 p.m., Oct. 31.

Starting at 5 p.m., access to Reese Village will be limited to people with Department of Defense identification cards and bonafide guests of Reese Village residents.

Some common sense ideas for a safe Halloween are:

### Safe costumes

□ Check that the costumes are flame-retardant, so the little ones aren't in danger near burning jack-o'-lanterns and other fire hazards.

□ Keep costumes short to prevent trips, falls and other bumps in the night.

□ Try make-up instead of

a mask. Masks can be hot and uncomfortable and, more importantly, they can obstruct a child's vision — a dangerous thing when kids are crossing streets and going up and down steps.

□ Make sure kids wear light colors or put reflective tape on their costumes.

### Friendly haunting

□ Trick-or-treaters should be in groups so they aren't a tempting target for real-life goblins.

A parent or responsible adult should accompany young children.

□ Make sure kids know not to enter strangers' houses or strangers' cars.

□ Make sure older kids trick-or-treat with friends. They should map out a safe route together so everyone will know where they'll be. Tell them to stop only at familiar homes where the outside lights are on.

□ Try to get your kids to trick-or-treat while it's still light out. If it's dark, make sure someone has a flashlight and pick well-lit streets.



### Edible treats

□ Kids need to know not to eat their treats until they get home. One way to keep trick-or-treaters from digging in while they're still out is to feed them a meal or a snack before the leave.

□ Check out all treats at home in a well-lit place.

□ Let children eat only

unopened candies and other treats that are in original wrappers. Don't forget to inspect fruit and homemade goodies for anything suspicious.

### Home safety

□ Make sure your front exterior lights are turned on.

□ Have a responsible adult answer the door for

trick-or-treaters.

□ Consider using a flashlight instead of a candle in the jack-o'-lantern.

□ Keep the front yard free of pets, toys and bicycles to reduce chances of injury and theft.

□ Remember, if there is an emergency call 911.

### Aggressive dress

□ Sometimes dressing up as a superhero, a swashbuckling pirate or an alien from outer space — coupled with the excitement of Halloween — brings out aggressive behavior.

Even fake knives, swords, guns and other costume accessories can hurt people. If these objects are part of a child's costume, make sure they are made from cardboard or other flexible materials.

Better yet, challenge kids to create costumes that don't need "weapons" to be scary and fun.

For additional information about Halloween activities at Reese, call the 64th Security Police Squadron at 3949.

## John V. Ward, Jr., DMD

General Dentistry - Orthodontics

2712 82nd St.

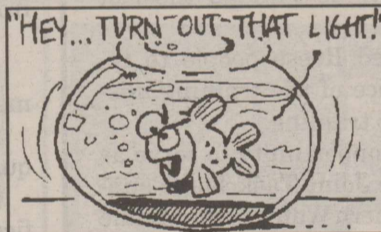
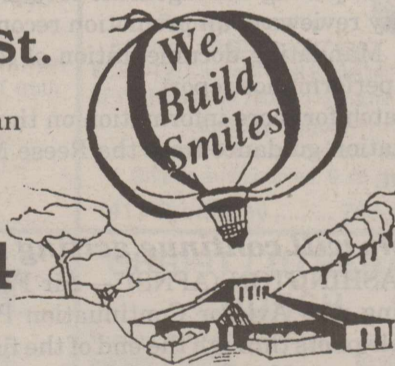
Member: Delta Dental Plan

Delta Insurance  
Gladly Welcomed

745-6644

M-Th. 7:30 - 4:30

Fri. 7:30 - 1:30



Shade must be provided in a goldfish tank because goldfish have no eyelids.

\*\*\*

Man is not the sum of what he has but the totality of what he does not yet have, of what he might have.

—Jean Paul Sartre

# "Grand Beginnings"

## An Early Pregnancy Brunch

Baby Grand at UMC invites parents-to-be to hear informal presentations on topics ranging from nutrition and exercise to home safety for you and your baby. Please join us for a complimentary brunch, door prizes, a tour and your free copy of "What to Expect When You're Expecting."

Saturday, November 11, 1995

10 am to 1 pm

McInturff Conference Center

Please RSVP by Thursday, November 9, 743-1912 or 743-3170



Where the experts are.

Now a proud provider of HMO Blue

## BRITE-WAY CLEANERS

### Laundry Special

Plain Shirts  
\$1.19 each

Jeans  
\$2.39 each

"The World's Greatest Dry Cleaning Process" In 16 Locations

Hours for Your Convenience  
Mon-Fri 7 am - 7 pm & Saturday 8 am - 5 pm

20% OFF

OUR ALREADY LOW PRICES ON:

• Dry Cleaning • Furs • Leathers  
• Suedes • Wedding Gowns • Formal Dresses

Coupon Must Be Presented  
With Soiled Garments

Will Not Be Honored at Pick-Up Time  
Limit One Coupon Per Customer - Expires 10-31-95

8004 Indiana • 797-8034  
5718 W 4th • 795-9463  
707 University • 744-5614  
5444 A 50th • 792-0118  
7020 Quaker • 792-1116  
8102 University • 745-0947  
3806 50th • 799-0309  
3331 70th • 792-9948  
86th & Brownfield Hwy • 866-4003  
1602 59th • 762-6325  
4404-A 19th • 799-4859  
6602 Slide Rd. • 798-1318  
4935-B Brownfield Hwy • 795-7390  
4709 I-27 • 765-9545  
4433 50th • 785-5107  
5811 34th • 785-3105

## New squadron commanders

The 64th Mission Support Squadron and the 64th Services Squadron welcomed new commanders last week. At near right, Col. Edward De Iulio passes command of the 64th MSS to Lt. Col. Jean Dailey. At far right, De Iulio passes command of the 64th SVS to Capt. Jonathan Grammer.



## General Griffith discusses mission

(Continued from Page 1)

nel is that they are not in the closure process alone.

"Who is looking out for the people at Reese? You're looking at one of them," said Griffith.

"My heart is here," said the general, in reference to his tour as the 64th Air Base Group commander from 1985 through 1986. "We are going to take care of our people."

A positive point for Reese in the closure process is the experience at the top of the command.

"No one knows the personnel system better than our boss (Gen. Billy Boles, AETC commander)," said Griffith.

The bottom line, according to the general, is that the command knows how to handle base closures successfully.

He validated that by citing two recent examples.

"When Reese converted from blue-suit maintainers to contract we sent an assignment team here. Everyone affected by the conversion, nearly 1,000 people, got one of their top three preferences. Sixty percent got their first preference," he said.

Griffith said this success was a result of the command asking for assignment preferences with enough lead time to make the system work. He also said it was because people approached the assignment process realistically.

"If every instructor pilot here asks for an F-15 to Langley (Air Force Base, Va.) ... it's not going to happen. But with cooperation and hard work, we can provide quality assignment opportunities for everyone."

As for civilian employees, the general talked about recent closure at Lowry AFB, Colo.

"We started out with about 884 civilian employees at Lowry," he said. "Through some

very innovative programs we were able to provide a variety of employment opportunities. The bottom line is that when Lowry closed, only six people went out the gate without a job. And all six obtained employment within two weeks of separation."

"We (the AETC leadership) know how to do this. It (closure) is an orderly process," he stressed.

The general also challenged the corps to remain focused on the training mission.

"Reese has been training top-notch pilots for decades," said Griffith. "I know that tradition of excellence will continue through the last student."

The general charged Reese people to remember the importance of the training mission — especially joint training.

"I recently had the opportunity to serve as the commander of the Joint Task Force supporting operation Southern Watch in the Middle East. I was struck by the realization that these professional men and women, enlisted and officers, were each the product of a military training program. It all starts here," he said.

"In Southern Watch we didn't care about style of uniform, the color of the wings or, for that matter, what nation you represented. The focus was on combat capability," he said.

That combat capability ... interoperability ... is what is being developed at Reese today. The general said the friendships and the spirit of cooperation being built through the Joint Specialized Undergraduate Training Program at Reese will be an essential element in joint operations of the future.

"I can promise you that, 15 years from now, when you are wearing three stars and responsible for a joint operation, this building of friendships and cooperation will be invaluable," he said.



PEOPLE FIRST

### Feedback mandatory for all officers

The Air Force now requires performance feedback to be given all officers in the grade of colonel and below.

□ Initiative reinforces senior leaders' commitment to feedback

□ Sends a clear signal to all officers about their performance

□ This is the final recommendation to be implemented from the Officer Evaluation System Review Group

Other approved recommendations include:

□ Using whole-person factors in promotion recommendations

□ Requiring management level reviews to perform quality reviews of all promotion recommendation forms

□ Mandating documentation of feedback on the officer performance report

Watch for more information on time lines and implementation guidance from the Reese Military Personnel Flight.

### Pilots will continue getting ACP

WASHINGTON (AFNS) — Air Force plans to begin offering new Aviator Continuation Pay agreements to eligible pilots through the end of the fiscal year when the fiscal year 1996 National Defense Authorization Act passes, said Air Force personnel officials here.

□ Eligibility for ACP, also known as the pilot bonus, has been expanded, and for the first time will include rotary-wing as well as fixed-wing pilots.

□ This is due to a steady decline in helicopter pilot retention and the continuing overall pilot shortage, personnel officials said.

□ Additional eligibility requirements include: completion of undergraduate flying training active-duty service commitment, rank of lieutenant colonel or below, a minimum of eight years of total active federal commissioned service but less than 13 years of total active federal military service, and qualification for operational flight duties.

The use of ACP is estimated to reduce the long-term pilot shortage — projected to exceed 1,700 pilots in fiscal year 2001 — by more than 650 pilots, officials said.

**SEATBELTS**  
Everybody's Wearing Them

Advertisement

### Citibus — A Proactive Approach To Keeping The Environment Safe

In Texas, over 900 million pounds of exhaust pollutants are released into the atmosphere each year. Citibus is declaring October "Clean Air Month" and encourages everyone to become more environmentally conscious.

Citibus contributes to Lubbock's clean air by using jet fuel in all of their busses. Jet Fuel, also called jet-A1, helps Citibus engines operate much more efficiently. This reduces emissions released by exhaust which helps contribute to keeping the environment clean.

Scott Neeley, manager of transportation at Citibus, feels that mass transportation in general helps keep air more clean.

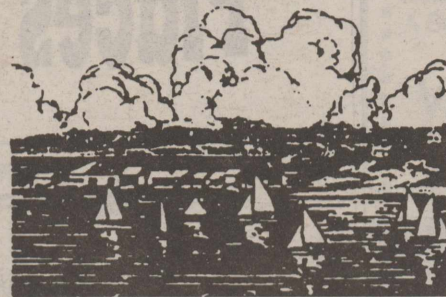
"By providing citizens with public transportation opportunities, vehicles on the road are reduced substantially," he said. "This helps in lowering the amount of harmful fumes released into the air."

Citibus is also ordering 36 new buses that will have computer controlled engines. These engines run more efficiently and will be safer for the environment.

Reese people are special to us - ask us!

### Le Chateau apartments

"On Maxey Lake"  
4345 28th 795-6583



Owned & Managed by experienced local professionals

### WESTERN OAKS

Two Bdr. Unfurnished Apartments  
• Washer/Dryer Connections • Backyard  
4601 52nd 792-9423

4602 54th Street  
797-2656



## Come Join A Church Or Synagogue Of Your Choice

*In belief there is power:  
our eyes are opened;  
our opportunities  
become plain;  
our visions  
become realities.*

#### FIRST BAPTIST CHURCH

501 Main  
Wolfforth

Pastor:  
Mark  
McMillian  
866-4260

"Knowing Him and Making Him Known"

**SUNDAYS:**  
Sunday School 9:30 a.m.  
Worship 8:15 a.m.  
10:45 a.m.  
6:30 p.m.  
Men's Bible Study 5:30 p.m.  
Women's Bible Study  
Youth & Children's Activities

**WEDNESDAYS:**  
Fellowship Meal 6:00 p.m.  
Adult Bible Study 7:00 p.m.  
Youth & Children's Activities

#### HURLWOOD BAPTIST CHURCH

Military Families' Home Away  
From Home

Sunday School 9:45 a.m.  
Worship 11:00 a.m.  
Evening Service 6:00 p.m.  
Wed. Bible Study 7:00 p.m.  
Nursery Available During All Sessions  
9417 W. 4th St.  
(across from Reese Base Housing)  
Pastor: Billy C. Collins  
885-4862

#### Shepherd King Lutheran Church



ELCA  
• Sunday School All Ages  
• VBS  
SS 9:00 am  
• Worship 10:30 am  
Choir & Wed. Evening  
Nursery Available  
Mel Swoyer - Pastor  
2122 - 18th St • 762-5080  
(4 Blks. East of TexasTech)

*Come Share the Spirit!*  
**Gloria Dei Lutheran Church**  
(ELCA)  
1706 Slide Road  
8:30 & 10:30 Worship  
Sunday School at 9:15 Sept.-May  
Nursery Available  
Robert Bardy, Pastor  
795-2283

#### A Religious Alternative

#### First Unitarian Universalist Church

2801 42nd, Lubbock 79413  
799-1617  
A loving community affirming a free and responsible exploration of truth and meaning.  
• Sunday Services •  
10:00 Classes/Forum  
11:00 Worship

#### First United Methodist Church

Cliff Wright Jr.  
Senior Pastor  
Sunday Worship  
8:30 a.m., 10:50 a.m., & 7 p.m.  
KCBD-TV, Channel 11 at 8:30 a.m.  
KFYO-Radio, AM 790 at 11:00 a.m.  
Sunday School  
A variety of classes are offered for singles and couples. 9:40 a.m.  
1411 Broadway ..... 763-4607

#### LAKERIDGE

#### UNITED METHODIST CHURCH

4701 82nd Street  
Lubbock, Texas 79424  
(806)794-4015  
BILL COUCH, Pastor  
Worship 9:15 and 10:30  
Sunday School 9:15 and 10:30

#### CHRIST LUTHERAN CHURCH

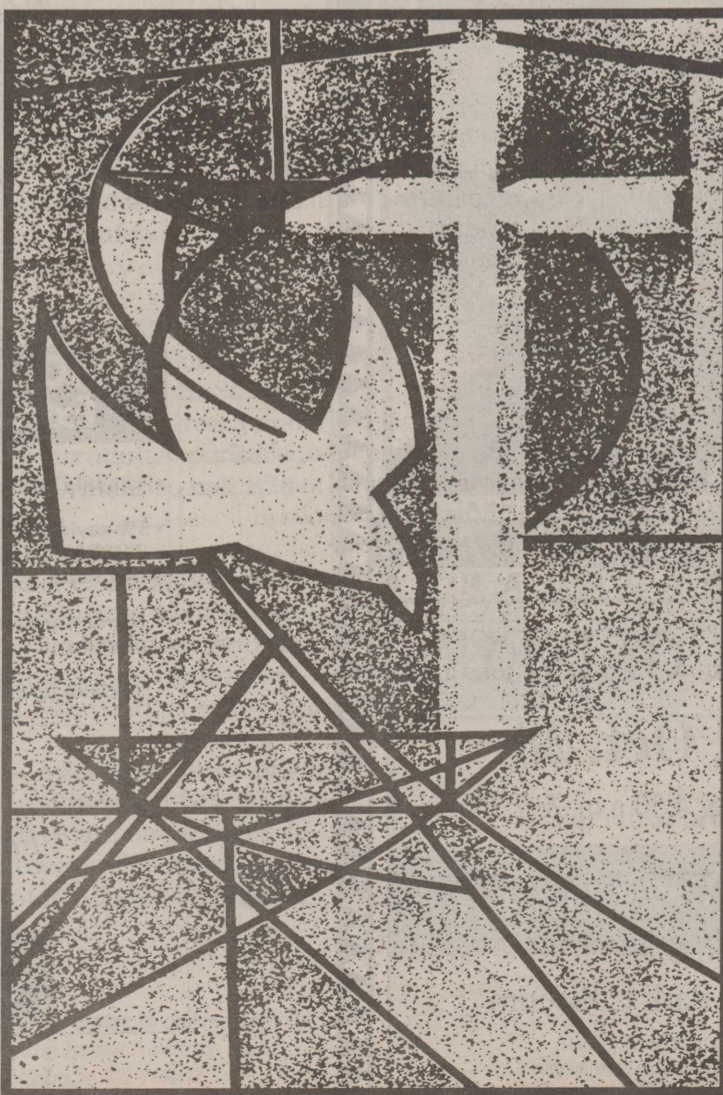
Sunday School/Bible Class 9:00 a.m.  
Sunday Worship 10:00 a.m.  
Wed. Midweek School 6:30 p.m.  
(when public school is in session).  
Adults, Youth, Kids, Marrieds, Singles..  
ALL are Welcome in Christ's family!  
Ronald L. Jenkins, Pastor  
Established & Growing at  
7800 Indiana  
799-0162

#### PILGRIM BAPTIST CHURCH

Extends to You a Welcome  
Sunday School ..... 9:45 a.m.  
Morning Worship ..... 11:00 a.m.  
Church Training ..... 6:00 p.m.  
Evening Worship ..... 7:00 p.m.  
Mid-Week Service  
Wednesday ..... 7:00 p.m.  
Leon Anderson, Pastor  
6111 19th St.

#### FIRST CHRISTIAN CHURCH

**WORSHIP**  
10:40 a.m. Sundays  
Contemporary Worship  
Broadway & Ave. X  
Traditional Services  
8:30 & 10:40 a.m.  
Michael S. Passmore, Senior Minister  
763-1995  
\*Come Into His Presence with Joyful Praise\*



#### SOUTH PLAINS CHRISTIAN FELLOWSHIP

3602 Frankford Ave. Lubbock, TX 792-3229  
SCHEDULE OF SERVICES  
SUNDAY  
Sunday School ..... 9:30 a.m.  
Morning Worship ..... 10:30 a.m.  
Children's Church ..... 11:00 a.m.  
Evening Services ..... 6:00 p.m.  
WEDNESDAY  
Adult Service ..... 7:00 p.m.  
Youth Service ..... 7:00 p.m.  
Kid's of the Kingdom ..... 7:00 p.m.  
Pastors Hugh & Lola Dean Harris \* Nursery Provided for all services

#### FIRST CHURCH OF CHRIST, SCIENTIST

Sunday School .. 9:45 a.m.  
Church Service ... 11:00 a.m.  
Reading Room  
Mon., Tues., Thurs., Fri., Sat. 1-3  
Wed. Evenings .. 6:30 - 7:20  
2202 Broadway

#### Trinity Church

Reaching the Heart of West Texas  
Randal Ross, Senior Pastor  
TRINITY CHRISTIAN SCHOOLS  
TRINITY COUNSELING CENTER  
Services on Saturday, 6 p.m.  
Sunday - 9 a.m., 10:45 a.m., 6 p.m.  
Wednesday, 7 p.m.  
7002 CANTON AVE.  
Loop 289 & So. Canton  
792-3363

Fine Dining Comes To Lubbock...

**Portafino**  
RISTORANTE

Italian and French Cuisine



DAILY FRESH FISH SPECIALS  
INTIMATE ATMOSPHERE  
FLAMING DESSERTS  
RESERVATIONS SUGGESTED

TABLE SIDE CAESAR SALADS  
COCKTAILS AND IMPORTS  
EXTENSIVE WINE LIST

Lunch: Mon.-Sat. 11am-2pm  
Dinner: Mon.-Thurs. 5pm-10pm  
Fri.-Sat. 5pm-11pm

8201 Quaker #120  
Kingsgate Shopping Center  
794-9818

# Weekend Roundup

## Places to go and things to do in Lubbock

**Now Open**  
**Full Service His and Hers Salon**  
Flexible Hours Monday-Saturday

Haircuts ..... \$5    Hair Color ..... \$15  
Shampoo & Style ..... \$8    Perms with Cut & Style .... \$25 & up

**Coylene's Place**  
Call 792-9834 for appointment.  
Formerly at Base Beauty Shop.

**\$50 Total Move**

Bargain priced new brick homes  
Close to Reese, Frens

**Model at 6102 10th St.**  
Open Mon-Sat 12 to 6 Sun 2 to 6  
**2, 3 & 4 Br. Plans**  
**\$43,950 to \$62,950**

**Below Market Rate For Tenants**  
First Time Buyers

**Sewing & Alterations**

- Tailoring • Machine Embroidery
- Custom Made Curtains

Carolina Merry  
5034 Quitsna Ave. • 807-983-1111  
(1 mile South of Reese on Quitsna Ave.)

**KHIVA SHRINE TEMPLE 1995**

**SHRINE CIRCUS**

PRODUCED BY GEORGE CARDEN CIRCUS INTERNATIONAL  
**SPECTACULAR**  
**3-RING EXTRAVAGANZA**

**FAIR PARK COLISEUM**  
**Saturday, Oct. 28**  
Shows at 10 a.m. & 1 p.m. & 4:30 p.m. & 7:30 p.m.

Adult \$8 <sup>00</sup>	Child 1 yr. to 12 yrs. \$4 <sup>00</sup>
-------------------------	--

Tickets on Sale  
Show Day at Fair Park Coliseum

This Shrine Circus for Benefit of Khiva Temple.  
Payments are not deductible as charitable contributions.

**Announcing... TRICARE**  
**For CHAMPUS eligibles**

*New health care options for families of active duty military and retirees and their family members.*

**TRICARE Extra**

- Annual Deductible
- 5% savings over TRICARE Standard cost share
- See any network provider
- No claim forms

**TRICARE Prime**

- No Deductible
- Wellness Classes
- Preventive care coverage
- Low copayments for civilian office visits

**TRICARE Standard**

- Annual Deductible
- See Any CHAMPUS provider
- 20%-25% cost share

**FOUNDATION HEALTH**  
FEDERAL SERVICES, INC.

*For more information please call:*  
◆ 1-800-406-2832 ◆

**Cinemark Theatres**

NO PASSES / NO SUPERSAVERS  
ALL THEATRES HANDICAP ACCESSIBLE  
BARGAIN MATINEES BEFORE 6 PM  
(SAT., SUN., SHOW TIMES)

11:50	M
12:00	◆ STR
12:00	◆ STR
12:00	◆ THE SC
12:00	◆ THE SC
12:30	BELLI
12:11	NOW A
12:00	DEAD I
1:00	TO
12:20	TO W
12:05	HOW TO MAI
12:05	SOMETHING
12:10	DANGEI
1:00	A WALK IN
11:4	THE BI
12:3	MORTAL
11:30-1	◆ NEVER TI
11:00-1	DEVIL
11:25-1:	HALLOWE
11:00-1	THE LAST
11:00-1	AS

Show times  
Brackete

# Review in Lubbock this weekend

**Don's Hobbies & More**  
 □ Model Kits & Supplies  
 □ Promotionals, Diecasts, and  
 □ Antique & Collectible Toys  
 Don Abbe, Buy, Sell & Trade  
 owner 5101-B 34th St. • 791-1615

## Total Move In V.A.

ced new brick homes now under construction  
 Close to Reese, Frenship Schools  
 at 6102 10th St.  
 Sat 12 to 6 Sun 2 to 6  
 & 4 Br. Plans **Betenbough & Co.**  
 50 to \$2,950 789-3388 or 748-1282

Market Rate For Texas Veterans and  
 First Time Buyers

**Sewing & Alterations**  
 • Tailoring • Machine Embroidery  
 • Custom Made Curtains & Drapes  
 Carlina Merry  
 5034 Quitsna Ave. • 885-1159  
 (1 mile South of Reese on Quitsna Ave.)

# WHAT'S HAPPENING

**Friday, Oct. 20, 7:30 p.m.** — "Ivan and Abraham" will show in the University Center Allen Theatre on the Texas Tech Campus. The black and white film is a haunting tale of flight and friendship amid the twilight of prewar Polish Jewry. Tickets are \$4. Call 742-3610 for more information.

**Saturday, Oct. 21, 2 p.m.** — Football Game - Texas Tech Red Raiders vs. Rice University. Homecoming game. Tickets available by calling the ticket office at 742-3341.

**Wednesday, Oct. 25, 8 p.m.** — Patrick Ball, The Celtic Harpist and Story teller will perform at the UC Allen Theater. Tickets are available from the UC Ticket Office, Tech students \$4, others \$8. He is the modern version of the ancient bard. For more information call UC Activities Office at 742-3621.

**Saturday, Oct. 28** — Punkin Day Arts & Crafts Festival, in Floydada, Texas, Punkin Capital USA. Fun for the whole family and activities scheduled the entire day, from 8:30 a.m. to 10 p.m. For more information, call 806-983-3434.

**Saturday, Oct. 28, 7:30 p.m., Oct. 29, 30, & 31, 7 to 10 p.m.**, Haunted House in Slaton, Texas. Slaton Chamber of Commerce, S. 9th St. & West Garza in Slaton. Admission is \$2 per person or 3 for \$5. Children 9 and younger must be accompanied by an adult. Sponsored by the Slaton Lions. For more information, call 828-6201.

**Sunday, Oct. 29, 5 p.m.** — Vesper Concert Series begins at the First United Methodist Church, 1411 Broadway in Lubbock. The program of sacred duets and solos will feature Karl Dent, tenor and Gerald Dolter, baritone. For more information, call 763-0781.

**Monday, Oct. 30, 4 to 6 p.m.** — Auditions will be held for Missoula Children's Theatre production of *Jack And The Beanstalk*. Students ages 5-18 are encouraged to audition. No preparation is necessary. For more information, call the University Center Activities Office at 742-3621.

"What's Happening" is brought to you as a service to our readers by Chandelle Publications, publisher of the Reese Air Force Base Newspaper, 5760 40th St., Lubbock, TX 79407

## VIDEO VISION

410 Frankford

791-5533

10 a.m. to 12 midnight • 7 Days A Week

**Rent 1  
Get 1 FREE**

Rent Any Movie And Receive  
A Second Movie Of Equal Or  
Lesser Value FREE

**VIDEO VISION**

• One Coupon Per Customer •  
Expires October 31, 1995

**Rent 1  
Get 1 FREE**

Rent Any Movie And Receive  
A Second Movie Of Equal Or  
Lesser Value FREE

**VIDEO VISION**

• One Coupon Per Customer •  
Expires October 31, 1995

If you haven't by now...  
Isn't it time you started?

International Film Series presents "Indochine"



October 27, 7:30pm - UC Allen Theatre

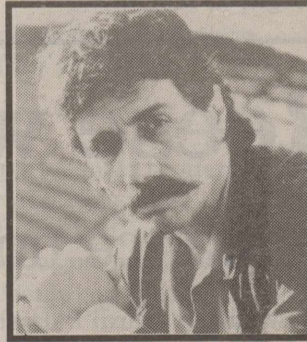
Missoula

Edward James Olmos

Children's Theatre



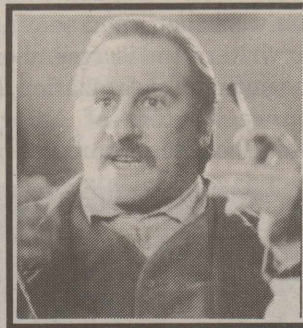
"Jack & The Beanstalk"



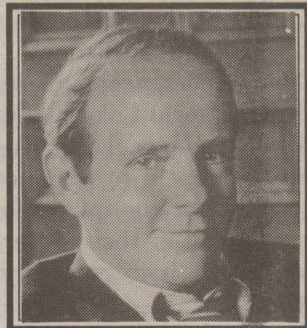
November 5

"Germinal"

Michael Moriarty



Nov. 10, 7:30pm



November 14

For a free brochure call 742-3610

NightLife 1995-96 SERIES

**Cinemark Theatres**

55.75 Adults \$3.50 Children & Seniors  
 \$3.50 Matinees Starting Before 6 p.m.  
 (R)-Rated Movies - No one under 17  
 will be admitted unless accompanied  
 by a parent. Proof of Age required.

**Movies 16** 792-0357  
 5721 58th Street

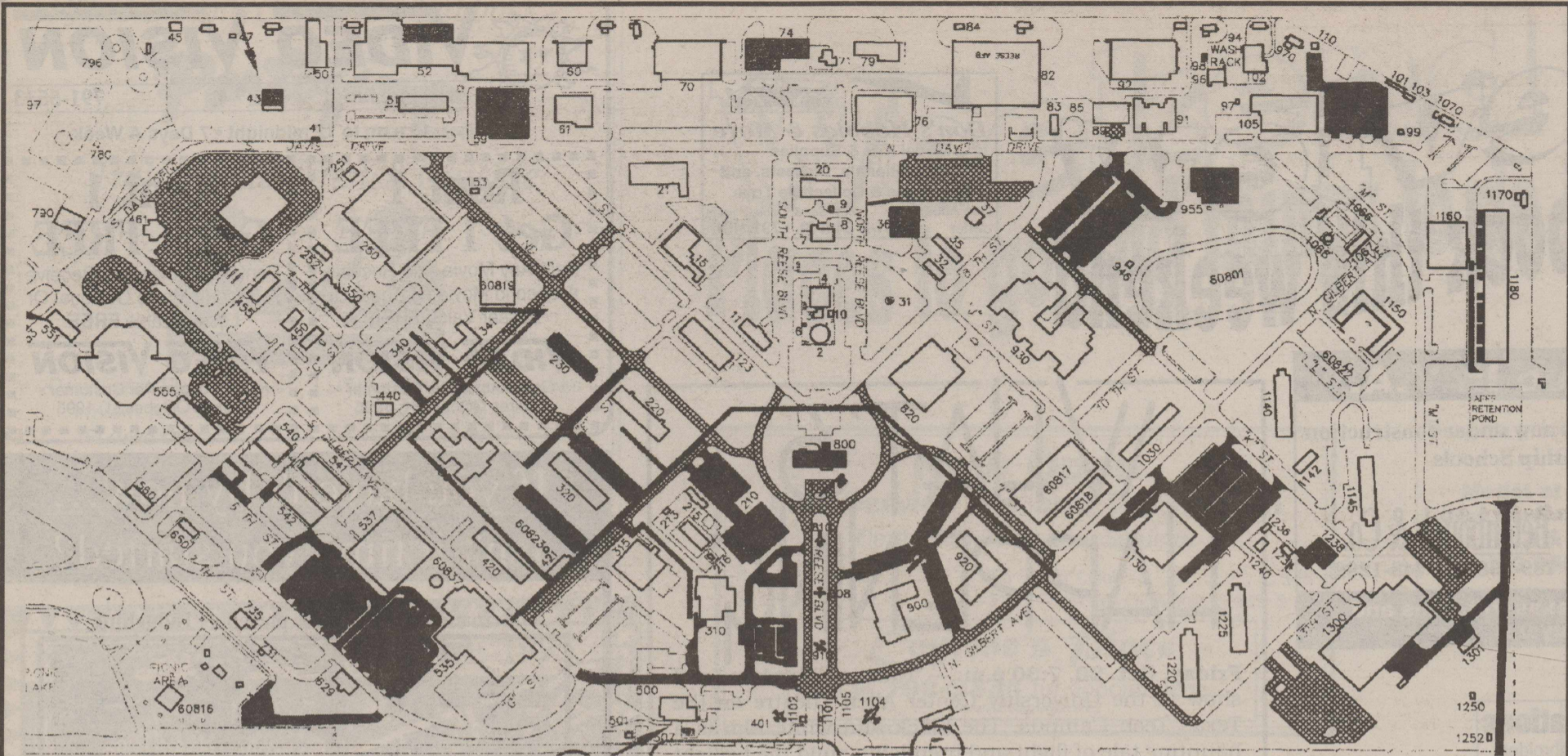
**MALLRATS (R) DTS**  
 11:50-2:15-4:30-7:05-9:35  
 ♦ **STRANGE DAYS (R) DTS**  
 12:15-3:35-6:50-10:10  
 ♦ **STRANGE DAYS (R) Stereo**  
 1:00-4:20-8:10  
 ♦ **THE SCARLET LETTER (R) Stereo**  
 12:30-3:40-7:00-10:20  
 ♦ **JADE (R) Stereo**  
 12:30-2:55-5:20-7:50-10:25  
**BELLE DU JOUR (R) Stereo**  
 12:10-2:30-4:50-7:20-9:50  
**NOW AND THEN (PG-13) Stereo**  
 12:00-2:25-5:05-7:45-10:30  
**DEAD PRESIDENTS (R) Stereo**  
 1:05-4:00-6:55-10:00  
**TO DIE FOR (R) Stereo**  
 12:20-2:40-5:05-7:40-10:15  
**TO WONG FOO (PG-13) Stereo**  
 1:15-4:10-7:00-9:45  
**HOW TO MAKE AN AMERICAN (PG-13) Stereo**  
 12:05-2:35-5:10-7:45-10:30  
**SOMETHING TO TALK ABOUT (R) Stereo**  
 7:10-9:40  
**BABE (G) Stereo**  
 12:25-2:35-4:50  
**DANGEROUS MINDS (R) Stereo**  
 12:10-2:25-5:00-7:35-10:15  
**A WALK IN THE CLOUDS (PG-13) Stereo**  
 1:00-3:10-5:30-8:00-10:25  
**THE BIG GREEN (PG) Stereo**  
 11:45-2:25-4:55-7:30-9:50  
**MORTAL KOMBAT (PG-13) Stereo**  
 12:35-2:50-5:05-7:25-9:55

**Movies 4** 793-3344  
 6205 Slide Road

♦ **NEVER TALK TO STRANGERS (R) Stereo**  
 (11:30-1:50) 4:25-7:55 (7:20-9:40)  
**DEVIL IN A BLUE DRESS (R)**  
 (1:40) 7:40 (7:10)  
**HALLOWEEN: THE CURSE (R) Stereo**  
 (11:25-1:55) 4:10-7:45 (7:30-10:00)  
**THE LAST OF THE DOGMEN (PG-13)**  
 (11:10) 4:30 (9:30)  
**ASSASSINS (R) Stereo**  
 (11:00-1:35) 4:15-7:25 (7:05-9:50)

Show times in parentheses ( ) Sat.-Sun. only.  
 Bracketed times [ ] Fri.-Sat.-Sun. only.

♦ NO PASSES / NO SUPERSAVERS  
 ALL THEATRES HANDICAP ACCESSIBLE  
 BARGAIN MATINEES BEFORE 6 PM  
 (SAT., SUN. SHOW TIMES)



## Reese schedules several street, parking area renovations

The map above reflects all of the street and parking lot resurfacing that will be done at Reese over the next few months.

This map shows additional construction not depicted in the map published in last week's Roundup. Construction on several areas will begin on Monday.

Those sites which will begin construction Monday are: 64th Medical Group gate road; the Reese Park parking area; parking lots at Bldgs. 76, 36, 37 and 89; and K-Street between 8th and 10th Streets.

Construction which will begin on Thursday or Friday include: North Gilbert Ave between North Reese Boulevard and I Street; 2nd Street between

Bldg. 800 loop and South Davis Drive; the north half of the 64th MDG patient parking lot; and the north half of the 64th MDG staff parking lot.

Phase 1 repair of War Highway will begin on Oct. 30.

Additional construction schedules will be published as available.

## Reese writer's book hits Lubbock shelves

### Romance novel spins tale of intrigue at Lubbock Lake Landmark

New author Mardi Parrish will be signing her novel, *A Find For All Time*, at Barnes & Noble bookstore Saturday, from 2 to 4 p.m.

Mardi's husband Mike is a photographer at Reese.

A contemporary romance set at the Lubbock Lake Landmark archaeological site, this novel will appeal to romance fans and amateur archaeologists as well as those interested in the history of the Plains.

The novel is about a New York socialite who decides she needs a little freedom before settling down with her fiance. She accepts a position at the Lubbock Lake Landmark, where she uncovers more than archaeological artifacts.

Parrish is a long-time resident of Lubbock. She attended Coronado High School, South Plains College, and Texas Tech University. She lived in Israel

for a summer where she attended Akiva Ulpan school, located on the shore of the Mediterranean Sea.

She has attended numerous workshops and seminars for writers and is a member of the national organization, Romance Writers of America which boasts a membership of



over 5,000 writers. Romance Writers of the Texas Panhandle has recently notified her that she is a finalist in their 1995 contest. The publication of her first novel, *A Find For All Time*, has earned her a membership in the distinguished Published Authors Network.

The setting of *A Find For All Time* is the Lubbock Lake Landmark archaeological site on the northern edge of Lubbock. Parrish says she was inspired to write a story set at this fascinating site after her son had attended classes at its visitor's center.

The landmark is one of the largest hunter-gatherer sites currently known in North America, and has evidence of human habitation that dates as far back as 11,500 years ago.

A second novel will be published soon.





# Community notes

## Enlisted Call set

The quarterly Wing Enlisted Call is scheduled for Thursday at 2:30 p.m. in the Simler Theater. Attendance is mandatory for all enlisted personnel.

## Commissary to be closed Nov. 11

The Reese Commissary will be closed Nov. 11 in observance of Veterans Day. The commissary will next be open on Nov. 14.

## Chapel needs coordinator

The Reese Chapel is seeking a Ecumenical Children's Church coordinator. It is a paid contract position. For information on the position and qualifications, call 6127.

## Enlisted Awards Banquet meetings set

The Enlisted Awards Banquet is just weeks away. There will be meetings every Wednesday at 2 p.m. in the 64th Logistics Squadron Conference Room.

Anyone interested in helping with the banquet should attend. The committee is seeking someone to sing the national anthem at the banquet.

For more information, call SMSgt. Marion Tate, 3561, or MSgt. Janielle Fameree, 3752.

## SPs list lost and found items

The 64th Security Police Squadron has the following found property: One AM/FM radio, one 18-inch necklace and one "Crusaders" T-shirt. Call 3999 or 3333 for additional information.

## Private weapons firing scheduled

The base firing range will be open for private weapons firing Oct. 28 from 9 a.m. to 1 p.m. For a firing reservation, call TSgt. Richard Owens at 3848.

## House selling seminar set

The Reese Family Support Center and the Reese Housing Office will co-sponsor a seminar on selling homes here Wednesday, from 9:30 to 11 a.m.

Representatives from the Lubbock Board of Realtors and the U.S. Corps of Engineers will participate in the seminar, which will be held in Bldg. 310.

Call 3305 today for a seminar reservation.

## VA offers free flu shots

The Lubbock Veterans Affairs clinic is offering free flu shots to veterans and their spouses.

Flu shots are available at the clinic, 4902 34th Street, Suite 10, today (9 a.m. to noon) and Monday (5 to 8 p.m.)

Call 796-7900 for additional information.

## Junior Smooth Move class planned

The Reese Family Support Center will sponsor a Smooth Move class for youngsters 6 to 12 years old on Oct. 30.

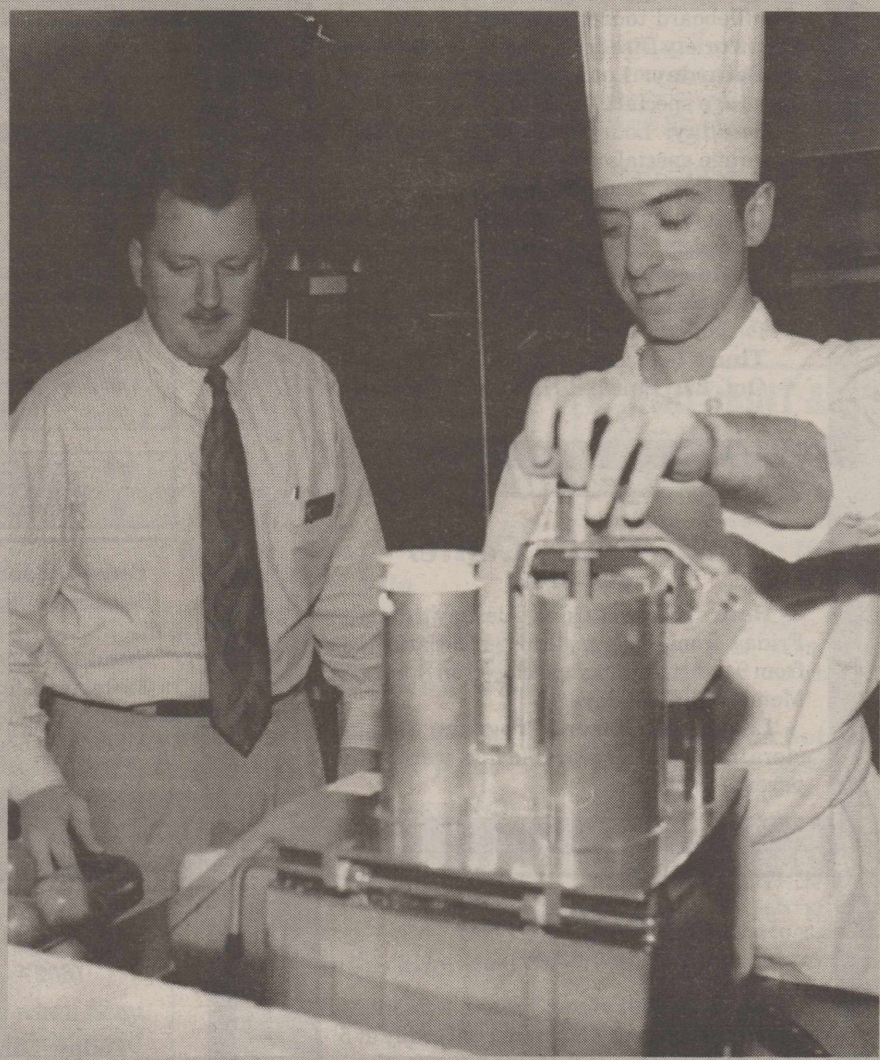
The class will be held at the youth center from 10 to 11 a.m.

## Energy tip

Reduce energy consumption by ensuring that oversized and nonessential lamps and bulbs are removed from lighting fixtures.

## New Reese Club manager

Chris McIntire watches John Buttoni, club chef, chop onions. McIntire recently became the manager of the Reese Club. He was previously the manager of the Officer's Club in Panama.



To reserve a spot in the class, call 3305 by Oct. 25.

## Blood drive scheduled

A blood drive will be held at Reese Nov. 8.

The drive will be conducted in the Reese Family Support Center from 10 a.m. to 5 p.m.

Contact TSgt. Martina Craig, 3521, for additional information.

## Retraining opportunity offered

AFSC 3E9X1, Readiness, is currently a shortage field.

If interested in retraining, please call MSgt. John Klemmer at the Reese Education and Training Flight at 3634.

## EWC Fall Festival scheduled

The Reese Enlisted Wives Club will host its Fall Festival at the Reese Manor, Monday at 7 p.m.

The event is open to all enlisted spouses and their families. There will be special games and prizes for children.

## Talent contest auditions set

Talent auditions will begin soon for the 1996 Tops in Blue troupe. Call SSgt. Joe Jackson, 6322, for details.

## Civilian positions available here

The Reese Civilian Personnel Office is accepting applications for the following positions:

- Maintenance Worker WG-4749-08
- Engineering Draftsman GS-0818-05
- Firefighter GS-0081-04
- Billeting Clerk GS 1101-03

For eligibility and application information, call the Civilian Personnel Office at 3801.

## FSC offers two classes

The Reese Family Support Center is offering two special classes in October and November.

**The Very Quick Job Search** -- It's not easy finding a job. But research has proven that by using the right methods, most people can reduce the time it takes to find one.

This class is designed to cover the basics of looking for work. The class will be taught on Nov. 2.

**Taking Charge of Change** -- This class is specifically designed to help people cope with the stressors associated with upheavals like lifestyle or career change.

Whether you are related to a person distressed by a life-altering change, this class will give you a specific, detailed, proven method to allow you to take charge of your change to a better life.

This class will be taught on Tuesday and again on Nov. 30.

All classes will be held in the Reese Family Support Center. Each class runs from 8 a.m. to noon. Call 3305 to register.

## Reese needs school mentors

Reese and the Frenship Intermediate School have formed a partnership in order to provide a one-on-one support system to help improve math and reading skills and self-esteem.

Mentors are needed to spend one hour a week interacting with their student in the academic setting of the school.

If you are interested in serving as a Reese Mentor, call Cheryl Ortiz at 3305.

**Ruby's Lounge**

(885-3156)

**Today:** Social hour begins at 4:30 p.m. with hors d'oeuvres and beverage specials. Shuffleboard tournament with prizes at 7 p.m. Variety Disc Jockey begins at 9:30 p.m.

**Saturday:** Lounge opens at noon with beverage specials.

**Sunday:** Lounge opens at noon with beverage specials.

**Monday:** Lounge open from noon to 7 p.m. Monday Night Football specials.

**Tuesday:** Lounge opens at 3 p.m.

**Wednesday:** Taco night from 5 to 9 p.m. There is no charge for members. The cost is \$4 for nonmembers.

**Thursday:** Lounge opens at 3 p.m.

**Oct. 27:** Enlisted Halloween Bash at 9 p.m.

**Auto Skills Center**

(885-3142)

**Hours of operation:** Tuesday through Friday from 11 a.m. to 6 p.m.; Saturday from 9 a.m. to 4 p.m.; and closed on Sunday, Monday and holidays.

**Learn with Parent Program:** Youngsters from 14 to 16 years old may work with parents in the center.

**Reese Chapel**

(885-3238)

**Catholic services:** Mass -- Monday through Friday at 11:30 a.m., Saturday at 5 p.m. and Sunday at 9:45 a.m. Confessions -- Saturday from 4:15 to 4:45 p.m. and weekdays by appointment. Religious education -- 11 a.m.

**Protestant services:** Sunday worship -- 11:15 a.m. Sunday school -- 9:45 a.m.

**Chapel Organizations:** Women of the Chapel, Men of the Chapel, Protestant Youth of the Chapel and Chancel Choir.

**Skills Development Center**

(885-3141)

**Tech ticket drawing:** Win a pair of tickets to the Texas Tech game against Texas Christian University.

Call the plaque and engraving shop for details.

**ITT**

(885-3141)

**Six Flags tickets:** Season passes to all Six Flags amusement parks available for just \$37. Daily tickets are also on sale -- \$22 for one-day and \$29 for two-day tickets. Children under 48 inches tall can get in for just \$12.

**Equipment Rental**

(885-3141)

**Equipment rental:** Camping equipment, pop-up trailers, gardening tools and camcorders with tripod available for rent.

**Around Reese****Simler Theater**

(885-4888)

**NOW SHOWING****BABE****LORD OF ILLUSIONS****DESPERADO**

**Today:** "Babe" (G) 7:30 p.m.

**Saturday:** "Lord of Illusions" (R) 7:30 p.m.

**Sunday:** "Desperado" (R) 7:30 p.m.

Ticket price for adults is \$1.50 and \$1.25 for children under 12 years old.

All movies begin promptly at 7:30 p.m.

**Caprock Cafe**

(6027 - voice / 6028 - menu)

**Today:** Lunch -- Beef ball Stroganoff, Cantonese Spareribs, Mustard Dill Fish. Dinner -- Pepper Steak, Baked Italian Sausage, Oriental Chicken Stir Fry

**Saturday:** Lunch -- Country Style Steak, Baked Ham, Macaroni and Tomato, Cajun Baked Fish. Dinner -- Spinach Lasagna, Fried Chicken Fillets, Simmered Corned Beef

**Sunday:** Lunch -- Steamship Round, Grilled Bratwurst, Onion Lemon Baked Fish. Dinner -- Stuffed Flounder Creole, Salisbury Steak, Mexican Baked Chicken

**Monday:** Lunch -- Baked Stuffed Pork Chops, Tamale Pie, Herbed Baked Fish. Dinner -- Lasagna, Roast Veal, Szechwan

**Tuesday:** Lunch -- Teriyaki, Savory Baked Chicken, Turkey Nuggets. Dinner -- Grilled Salisbury Steak, Italian Style Veal Steaks, Oriental Chicken

**Wednesday:** Lunch -- Meat Loaf, Creole Pork Chops, Chicken Nuggets. Dinner -- Swedish Meatballs, Creole Pork Chops, Baked Fish Portions

**Thursday:** Lunch -- Spaghetti with Meatsauce, Baked Fish Nuggets, Chicken Parmesan. Dinner -- Stuffed Cabbage Rolls, Tomato Meat Loaf, BBQ Spareribs

**Thrift Shop**

(885-3154)

**Hours of Operation:** The Reese Thrift Shop will be open Tuesday and Thursday from 9:30 a.m. to 1:30 p.m. Consignments end at 12:30 p.m.

**Reese Club**

(885-3466)

**Today:** Land and Sea Buffet from 11 a.m. to 1 p.m., \$3.95.

Social hour begins at 5 p.m.

**Saturday:** Closed.

**Sunday:** Closed.

**Monday:** Specialty Buffet, 11 a.m. to 1 p.m., \$3.95.

**Tuesday:** Italian pasta bar from 11 a.m. to 1 p.m. Pasta bar costs \$3.95.

**Wednesday:** Mexican Bar from 11 a.m. to 1 p.m. Cost is \$3.95. Taco Night with beverage specials in lounge. No charge for members. Cost for nonmembers is \$4.

**Thursday:** Chicken fried steak served from 11 a.m. to 1 p.m. Cost is \$3.95. Mongolian Barbeque, 5:30 to 8 p.m., \$6.25, \$7.25.

**Oct. 20:** Land and Sea Buffet from 11 a.m. to 1 p.m. Cost is \$3.95. Social hour with free hors d'oeuvres and beverage specials at 5 p.m.

**Mamma Reesione's:** Monday through Friday from 11 a.m. to 1 p.m. Eat in or carry out. Call 3466 for lunch delivery service until 1 p.m.

Evening dining Thursday from 5:30 to 8 p.m. No evening delivery available.

**Youth Center**

(885-3820)

**Today:** Kids' Video Movie Day from 5 to 7 p.m. featuring "Major Payne" (PG-13).

**Saturday:** Teen baby-sitting clinic from 9 a.m. to 3 p.m., \$10

**Oct. 27:** Harvest Carnival from 7 to 10 p.m. Features games, prizes, goody bags and magic show.

**Bowling Center Buffet**

(885-6555)

**Monday:** Chicken Fried Steak and Chicken Strips

**Tuesday:** Salisbury Steak and Beef Stroganoff

**Wednesday:** Fried Rice and Lumpia

**Thursday:** Fried Chicken and Polish Sausage.

**Friday:** Spaghetti and Lasagne

The buffet is open from 11 a.m. to 1:30 p.m. and costs \$4.95.

**Child Development Center**

(885-3541)

**Oct. 28:** Give parents a break respite care program from 9 a.m. to 1 p.m.

**Library**

(885-3344)

**Contest:** Count the pumpkins contest. Come closest to guessing the number of candy pumpkins in a container and win the pumpkins plus a prize.



Rico Dyer, 64th LS, scampers past the out-reached arms of Jim Franks, 64th SPS, in intramural flag football here Oct. 12. The 64th LS won the game 28-7.

## 64th LS upends 64th SPS, 28-7

The 64th Logistics Squadron offense exploded in the second half to defeat the 64th Security Police Squadron, 28-7, in intramural flag football here Oct. 12.

Quarterback Pete Adams threw for three touchdowns in the victory as the 64th LS improved to 4-0.

Adams connected with Darrin Robinson on a 33-yard touchdown strike in the second quarter to break the scoreless gridlock. Robinson was on the receiving end of another Adam's pass for the point after attempt (PAT).

The 64th SPS offense responded on its following possession going 60-yards and converting a fourth-and-one play to keep the drive alive. From the 3-yard line, quarterback Michael Carter swept around the right end for a 3-yard touchdown. Carter found Harold Little for the PAT to end the half knotted 7-7.

To open the third quarter the 64th LS started on its 20-yard line and quickly reached the red zone. On third-and-goal from the 10-yard line, Adams found Mike Seay in the back of the end zone for a touchdown and a 14-7 lead.

The 64th SPS offense was threatening to score after the 64th LS touchdown. However, Seay intercepted Carter's pass on his 10-yard line and lateraled the ball to Rico Dyer for a 21-yard return.

The interception set up a fourth quarter touchdown drive for the 64th LS. Adams hit John Murrell on a 37-yard bomb for the score. The PAT was complete to Robinson, 21-7.

The final score in the game came when Seay replaced Adam's as quarterback and hit Murrell on a 43-yard touchdown pass. The PAT was complete to Robinson, 28-7.

The 64th SPS fell to 3-3 on the season.

## Sports Update

### Bowling schedule

**Today:** TGIF bowling for \$1 per game.

**Saturday:** Young American Bowling Alliance at 9:30 a.m. Poor boy special, 3 games for \$2 from noon to 6 p.m.

**Sunday:** Bowl 10 games for \$5 from noon to 6 p.m.

**Monday:** Intramural league at 4 and 7 p.m.

**Tuesday:** Local law enforcement league at 7 p.m.

**Wednesday:** Mixed league at 7 p.m.

**Thursday:** Industrial league at 6:30 p.m.

**Oct. 28:** Halloween Rock and Bowl for \$10 at 7 p.m.

### Golf standings

American League	
64th OSS	72
LMLM 2	56
54th FTS	54
52nd FTS	53
64th SPS-A	51
64th LS-B	29
64th CS	26
64th MDG-B	20

64th SVS	18
National League	
35th FTS	72
64th CES	68
64th LS-A	67
64th MDG-A	42

### Flag football standings

National League	
64th MSS	6-0
64th LS	4-0
64th MDG	1-0
35th FTS	0-2
LMLM	0-2
American League	
54th FTS	3-1
52nd FTS	2-1
64th SPS	3-3
64th CS	1-3
USMC	1-4
64th OSS	1-6

Results	
Oct. 10	
64th OSS	12
LMLM	7
64th MDG	27
USMC	26
Oct. 11	
64th LS	7
35th FTS	6

54th FTS	35
64th OSS	30
Oct. 5	
64th LS	28
64th SPS	7
54th FTS	20
52nd FTS	12

### YABA standings

Jr./Sr. division	
Team 3	11-5
Team 1	8-8
Team 2	8-8
Team 4	5-11

**High games:** Renee Chambers-201, Gene Hunter-159, Tina Hunter-158 **high series:** Chambers-504, Josh Bray-391, G. Hunter-388

### Prep division

Team 3	12-4
Team 1	7 1/2-8 1/2
Team 2	6 1/2-9 1/2
Team 4	6-10

**High games:** Mike Santellan-146, Jamie Huston-128, Elizabeth Stevens-110 **high series:** Santellan-333, Stevens-307, Huston-304

# Want Ads

### Guitar Lessons

Concert Artist. Beginners/Advanced. All styles. Reasonable rates. 30% Discount startup month! Elegant Park Tower location. Grisanti Guitar Studio. 747-6108. Tapes at Blockbuster Music! 10-27

### 1992 Pontiac Grand AM

1992 Pontiac Grand AM SE Coupe with V-6, 42K, 5spd, A/C, Cruise/Tilt, Tinted windows, AM/FM w/cassette, 4-wheel ABS. Moving overseas. Asking \$9000, willing to negotiate. Call 885-2843. 10-27

### Sectional Couch

Dark brown sectional couch with 2 recliners. Asking \$500. Negotiable. Almost new. 885-4340. 10-20

### 1983 Datsun Pickup

1983 Datsun Pickup. \$700. Phone 796-0662 (leave message). 10-20

### For Sale

For Sale — Stereo Cabinet \$25; Weight Bench with 125 pounds of weights \$50; Vacuum \$25, Moving Boxes real cheap! Call between 10 a.m. and 9 p.m., 794-8022. 10-20



Get your message out to Reese...

Advertise in the Roundup.

Call 797-3495.

Don't miss the only market in town where everyone has a job and everyone has money to spend!

### Relocating to Vance AFB?

For your free relocation packet call Michelle Banks. 1-800-355-2670. Nicholas Real Estate, Enid, OK. 10-27

### Buying & Selling . . .

Good used furniture, antiques, collectibles. Layaways & credit cards accepted. Bobo's Treasures, 202 Avenue S (2 blocks north of 4th St. on Ave. S) 744-6449, 10 a.m. to 5:30 p.m. Monday through Saturday; 1 to 5 on Sunday. 10-27

### ECONO PAINT & BODY

Complete Paint Jobs Starting At \$375.00 Insurance Claims Welcome SPECIALIZING IN  
• Autos & Pickups • Trailers • Camper Shells  
• Body Repair • Frame Alignment • Auto Glass  
2122 19th St. • 763-2212

### CAT

Cat — free to good home. Six months old, gray and white, shorthair, spayed. Good with children and other animals. Call 885-2687. 10-20

### Mattress Sets

Brand New, Still In Plastic. Any Size Mattress Set. Free Frames or Free Delivery! Call 795-8143. 3-22-96

### '87 BMW K75

1987 BMW K75 Motorcycle, deep blue, meticulously kept, second owner, all records. \$3,245 includes hard-sided saddle bags and removable front windscreen. Call Matt, 885-3858. 10-20

Support your Reese Roundup advertisers, they are supporting you.

## Moving to CAFB?

For Real Estate Information

### Patti Johnson

Home: (601) 327-5009  
Office: 1-800-844-0596

P.O. Box 9279  
Columbus, MS 39705

Each office independently owned and operated.



Deep South Properties

## SECRETARY WANTED

Patient / Physician Relations Office  
Texas Tech University Health Sciences Center

Excellent benefits, competitive salary. Must be a high school graduate with three years of clerical/secretarial experience and typing of 60 wpm. Required skills include word processing, (WordPerfect, Word), taking of meeting minutes and staffing of committees. Above average organizational skills preferred. Apply at TTUHSC, Office of Human Resources, 3601 4th Street, Room 1B100, Lubbock, Texas 79430.

TTUHSC is an EEO/AA Employer and In Compliance with ADA

# Life Goes On

## Reese Closure Survey Team Visits Oct. 10-13

Reese Air Force Base, Texas — Headquarters Air Education and Training Command (AETC), the parent command for Reese's 64th Flying Training Wing, will send a 16-member site survey team to Reese, Oct. 11-13. Following the stop at Reese, the survey team will also visit AETC's three other undergraduate pilot training bases before mid-November.

The visit marks the beginning of Reese's closure process and the redistribution of Reese assets and mission to the other three bases. According to Major Mike Connolly, survey team chief, "The objective of our visit is to identify all assets requiring redistribution from Reese, to determine Reese closure costs, to validate data gathered during Base Realignment and Closure (BRAC) site surveys in March and April, to assess the capability of all remaining bases to accept the increased workload generated by Reese closure, and to review beddown plans for additional resources. In addition to these BRAC '95 requirements, we will also determine the military construction required to allow the three remaining bases to accomplish peak pilot training production in future years."

According to Colonel Randy Gelwix, 64th Flying Training Wing commander, "The fact of Reese's closure became law Sept. 28 and the official closure date is set for Sept. 30, 1997. After the survey team completes its visits to each base, a time line will be developed for the orderly, phased drawdown of the base's mission and personnel from Reese."

The team will visit Vance AFB, Enid, Okla., Oct. 23-26; Columbus AFB, Miss., Oct. 30-Nov. 2, and Laughlin AFB, Del Rio, Texas, Nov. 6-9.

Team representatives will work with their Reese counterparts in the areas of aircraft maintenance; airfield operations, civil engineering; command, control, communications, and computers; contracting; services, supply and equipment accounts.

*News Release, Oct. 6, 1995*

Yes, Reese will close Sept. 30, 1997.  
**But for now, life at Reese Air Force Base goes on as usual.**

Flying missions continue as usual and new people are arriving at Reese each month. Orientation sessions are being held to acquaint newcomers with Reese and Lubbock. Reese continues to be a vital part of Lubbock and the area.

Reese workers — officers, enlisted men and women, civilian employees and contractors — will earn combined **salaries of more than \$80 million** this year. Most of this payroll will be spent in Lubbock and the surrounding area. Air Force people with their stable income can afford quality goods and services.

You can increase your chances of winning Reese customers by advertising in *The ROUNDUP*, the base's weekly newspaper. Because of the advertising dollars generated in the *Roundup*, no tax dollars are used in the printing of the newspaper. As long as the advertisers' support is there, the newspaper will continue in its current format.

Local businesses can increase their chances of tipping the profit scales in their favor by placing ads in the base paper.

The *Roundup* has always been a vital part of Reese in helping the commander keep in touch with the "troops." The paper also keeps Reese folks informed about what is going on for entertainment on the base as well as in Lubbock.

Don't miss the only market in town where everyone has a job and everyone has money to spend!

Get your message out to Reese . . .  
**Advertise in the Roundup. Call 797-3495.**



The ROUNDUP is Published weekly by  
Chandelle Publications • P.O. Box 16243 • Lubbock, TX 79490-6243 • Phone: (806) 797-3495 • Fax: (806) 792-6387