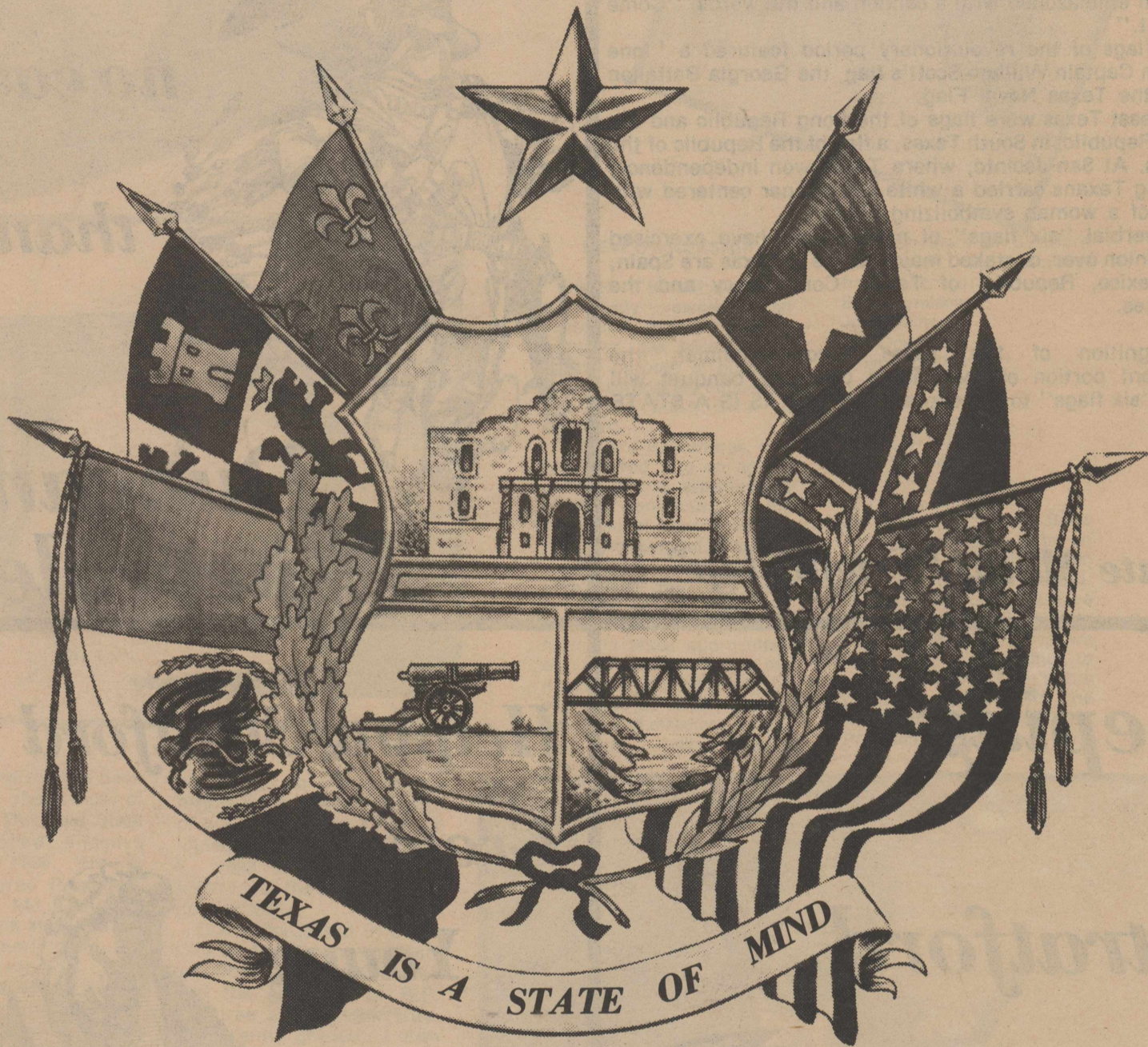


Stratford
Chamber of Commerce



Annual Banquet

MARCH 21, 1986

7:00 P.M.

SHERMAN COUNTY BARN

Did You Know?

Historians note that during more than four centuries of recorded history in the area that became Texas, many more than six flags have flown at significant times and places. One of the first Anglo-Texan banners was associated with the opening shots of the Texas Revolution at Gonzales.

In 1835, Mexican troops demanded return of a small cannon they had loaned to Texans for defense against hostile Indians. But relations between settlers and Mexican authorities were already volatile, and the Texans refused, creating a banner of white cotton emblazoned with a cannon and the words, "Come and Take It."

Several flags of the revolutionary period featured a "lone star", as on Captain William Scott's flag, the Georgia Battalion Flag, and the Texas Naval Flag.

In Northeast Texas were flags of the Long Republic and the Fredonian Republic; in South Texas, a flag of the Republic of the Rio Grande. At San Jacinto, where Texas won independence, the charging Texans carried a white silk banner centered with the figure of a woman symbolizing liberty.

The proverbial "six flags" of nations that have exercised actual dominion over, or staked major claims to Texas are Spain, France, Mexico, Republic of Texas, Confederacy and the United States.

In recognition of the Texas Sesquicentennial, the entertainment portion of the annual Chamber banquet will salute the "six flags" to the expression --TEXAS IS A STATE OF MIND!

State Motto "Friendship"

Texas Independance

weren't

no easy

thang



Duncan Chevrolet

Keeping

Stratford

on the

Move

A & I Parts



Helping Stratford

Grow

Young



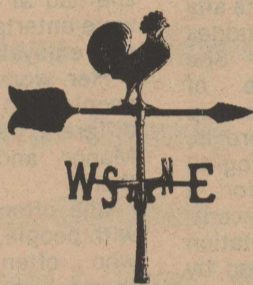
Coldwater

Manor

Stratford Chamber

Knows The

Direction



Empire

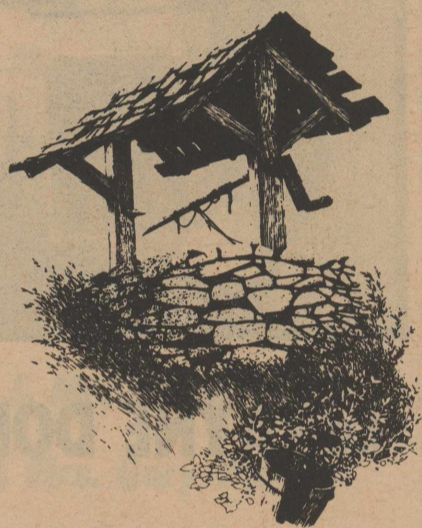
*North Plains
Savings & Loan*

Together We Can

Help Stratfords

Dreams

Come True



Elk Pharmacy

Stratford Chamber of Commerce
Annual Banquet

Friday, March 21, 1986
7:00 p.m.

SHERMAN COUNTY BARN

Tickets:

Advance Sale, Adults—\$10.00

Advance Sale, Under 12 or Over 60—\$8.00

At the Door—\$12.00

Banquet tickets will be available

from the Chamber office at

advance sale price until noon,

Friday, March 21.

1984 CITIZEN OF THE YEAR



LeRAYNE DONELSON

LeRayne Donelson, 1984 Citizen of the Year honoree, was chosen for her concern for people.

One of her greatest contributions to those who need someone who cares, is her work on the Child Welfare. She is on the Sherman County Child Welfare board, has served as president of the Regional Child Welfare Board and travels to Austin monthly as a member of the State Child Welfare Board. She was instrumental in the organization of the Bunk House in Dalhart, which is a facility that serves Dallam, Hartley and Sherman Counties in foster child care. She also serves on the committee governing that facility.

At state meetings, she sits in conference with judges and congressmen. She makes them aware of Stratford and they end up knowing where Stratford is, even if it includes coming all the way up here for a pheasant dinner. She recently took the slide presentation on child abuse produced by Stratford High school students, to Austin. This was well received and will serve as an example of what can be done to make the public more aware of this distressing nationwide problem.

Another way she shows her concern for children is in

teaching swimming to the children in Kindergarten who fear the water. This requires a great deal of time and patience. She maintains her interest in these youngsters even as far as attending all of their junior high ball games.

It is not only the children who are her concern, but Sherman County Older Texans as well. She attends their meetings, their special occasions and adds much interest to their programs. A letter nominating her read, "I had the pleasure of attending 'Texas' with the SCOT group in 1980, when we had bus trouble. She worked just as hard at seeing that each one their was comfortable and secure as she had at seeing that they were entertained and having an enjoyable time."

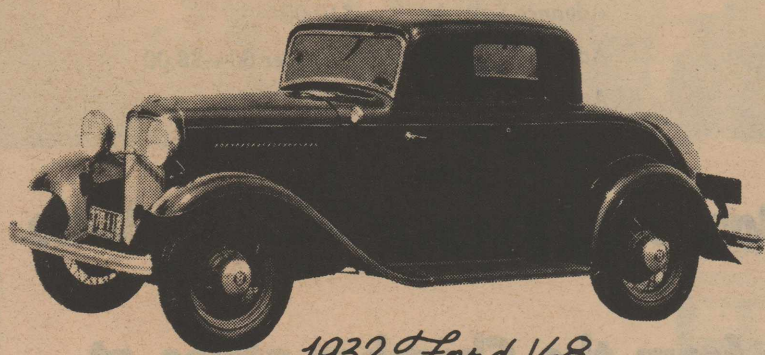
Her work with the older people also involves her in different ways at Coldwater Manor and the residents there.

She often works not just with people, but with people who often cannot help themselves; those who are most in need of a helping and caring hand.

She is a member of the Baptist Church and Choir, the Community Choir and the Stratford Country Club.

Her and her husband B.A. have two married daughters.

Stratford Supporters



1932 Ford V-8

C & D Body Shop

Our future citizens become better citizens with the help of our Chamber



Scott Cable

Hopes

*For
A
Bright
Future*



*Ellison's
Floral &
Kids Korner*

*Chamber
of
Commerce
Supporters*



Stratford Grain

FORMER RECIPIENTS

**BUSINESSPERSON
OF THE YEAR**

1979 Darla Moon
1980 Ole Olson
1981 Kathleen King
1982 Joyce Ann Lasley
1983 Robbie Yates
1984 Ronnie and Esther
Ferguson

1985

FARMER OF THE YEAR

1979 Paul Chesmer
1980 L.B. Blake
1981 Ronald Engelbrecht
1982 Bert Steffens
1983 Horace Sneed
1984 Jodie Reesing
1985

CITIZEN OF THE YEAR

1966 Walter Lasley
1967 Gail Carter
1968 Joan Bell
1969 V.O. Lasley
1970 A.E. Pronger, Jr.
1971 Bill Kent
1972 Bill Sladek
1973 Don Riffe
1974 Shirley Plunk
1975 H.T. Galloway
1976 Bill Frizzell
1977 Fern Gupton
1978 Cindy Crabtree
1979 Gaynelle Riffe
1980 B.A. Donelson
1981 MariHoward
Engelbrecht
1982 Janice Sladek
1983 Lorraine Mehner
1984 LeRayne Donelson
1985

Progress

*Support Our
Chamber*

Teamwork



*C's Male Box
&
The Girls Next Door*

1984 BUSINESSPERSONS OF THE YEAR



**ESTHER & RONNY
FERGUSON**

Traditionally only one person is chosen as Business Person of the Year. In this business, when you think of one person you think of both, as a business they are one. Ronny and Esther Ferguson, owners of Stratford Printing and Office Supply are the 1984 Business Persons of the Year.

Twenty-three years ago Ronny and Esther moved to Stratford along with their two sons. They came with the Dave McReynolds family to run the Stratford Star and do some printing. After the Star became a separate business, they started Stratford Printing. They operated the printing office on the site where the First State Bank of Stratford now stands.

After some time they purchased the Cowdry Building and moved the Print shop there. They added office supplies and overflowed that location. In 1984, they expanded by purchasing the old First State Bank Building.

Ronny and Esther's son, Gary, operates the Dumas store, while their other son, Donovan works in the Stratford office in the printing division. Their daughter, VIAnn Ferguson

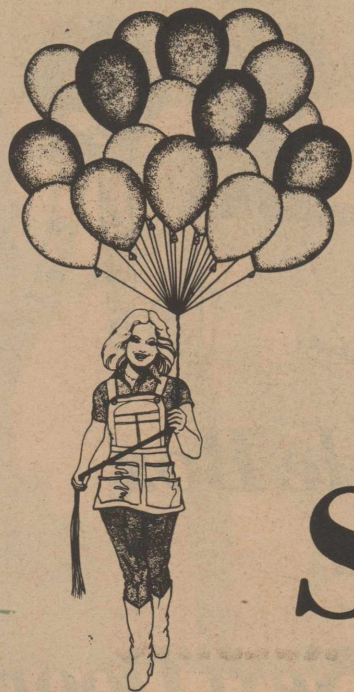
Reed helps when needed as well as Donovan's wife Ann.

The Fergusons have raised three children in Stratford, all graduating from Stratford High school. Ronny and Esther are active in the Baptist Church. They belong to the Chamber of Commerce, where Esther has served on the Women's Division board and also on the General Chamber Board. Ronny is now on the Board and has served as Chairman of the Retail Merchants Committee for two years.

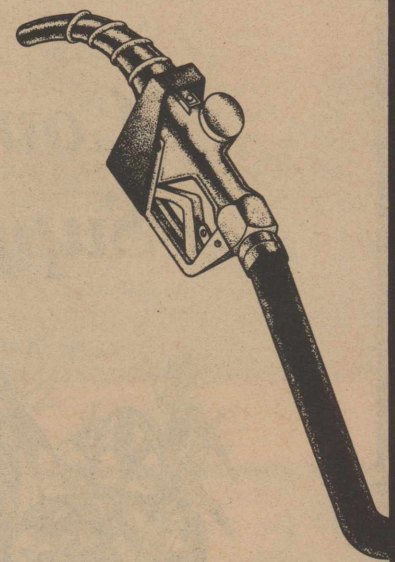
Many long, hard hours have been put in by both of these people to assure the best possible service and merchandise for the community. People in Stratford and the area have learned to count on Ronny for good ideas for their printing. If something is needed from the office supply store, Esther is always there with a helping hand and a "What can we do for you today?"

By expanding their business during these days of economic stress, illustrates their faith in Stratford. This faith illustrates on reason these two are truly deserving recipients of the 1984 business Person of the Year honors.

*The Chamber
Helps Keep
Stratford
Flying
High
Something
Special*



*Fuel
Up
For
Another
Great
Year
Consumers*





The Chamber

Keeps On

Rollin'

To Better Things



Sherman Implement

1984

FARMER OF THE YEAR

Farmer of the Year, Jodie Reesing came to Sherman County from south Texas in 1944 and has been a resident of Sherman County for more than 40 years. He began his farming career when he went to work for Glen Reed. He farmed for Glen for 11 years. In 1955 he leased 350 acres of dryland from Mary Peach Smith and began farming on his own. Over the years he gradually increased acreage and changed to irrigation. When he retired from farming in late 1984, he was farming over 1200 acres.

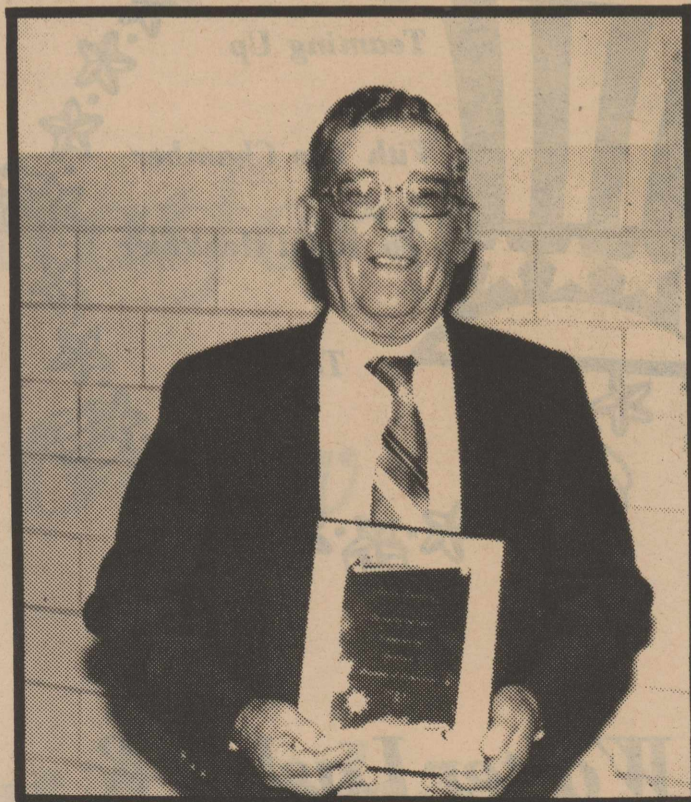
He attributes his success to hard work and always honoring his obligations. Although the weather and conditions were not always favorable, he seemed to manage to produce a crop - whether it were dryland or irrigated.

Always using his resources wisely, Jodie managed by having a vegetable garden, keeping livestock and doing work for neighbors to keep

his family provided for. He produced primarily wheat, corn, and milo. On most occasions he seemed to produce yields considerably above average.

Jodie and his wife, Madeline, raised their three children in Stratford, with all three graduating from Stratford High School. They have seven grandchildren. He has always supported Stratford in many ways - from personal support to financial contributions, to purchasing all of his farm and personal needs in the Stratford business community.

Jodie has earned the respect by most people who know him or know of him, although he is a quiet person just going about his own business. He is known to be a considerate person and is always willing to stop and lend a helping hand. This worthy farmer is also a dedicated patron and a good citizen of Stratford.



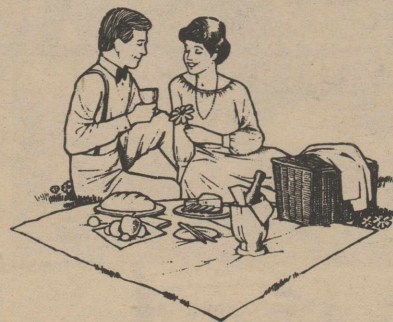
JODIE REESING

PAST PRESIDENTS

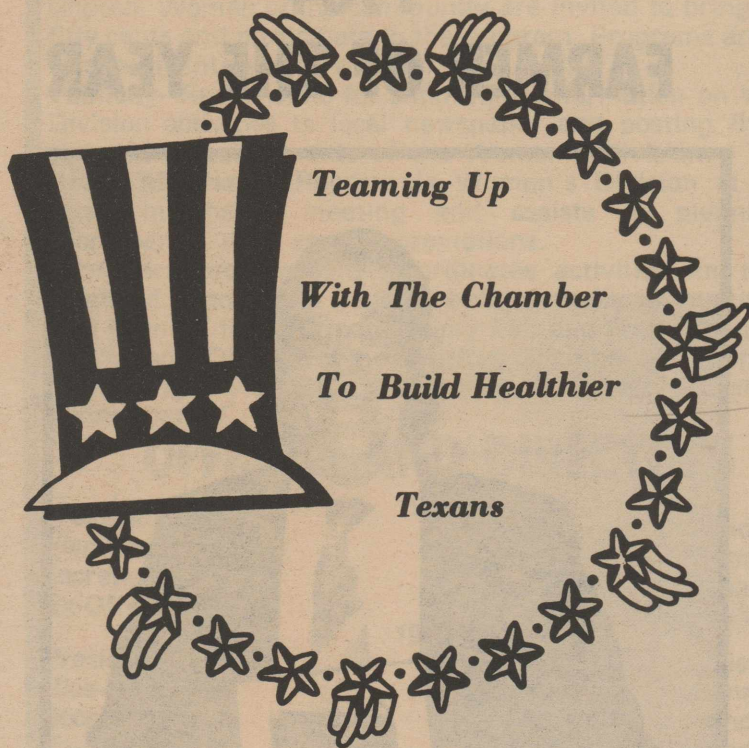
1965	W.L. Pendleton
1966	W.L. Pendleton
1967	E.R. Bell
1986	C.C. Plunk
1969	Jack Davis
1970	Joe Wells
1971	Bill Riffe
1972	Bill McMinn
1973	B.A. Donelson
1974	Lance Harrington
1975	Greg Pye
1976	T.J. Messer
1977	Don Owens
1978	Don Owens
1979	Jerry Dyess
1980	Lance Harrington
1981	Steve Dettle
1982	B.A. Donelson
1983	Steve Haynes
1984	Ronald Engelbrecht

Happy Times Around Stratford

With The Chamber



Thriftway



**Walter Lasley &
Sons Inc.**

CHAMBER OF COMMERCE OFFICERS AND DIRECTORS

OFFICERS AND DIRECTORS

1985

President	W.L. "Bill" Pendleton
Vice-President	Rick Reinart
Treasurer	Howard Naugle

1986

President	Howard Naugle
Vice-President	Martha Mitts
Treasurer	Homer L. Haile

1985 Outgoing Directors

Paul Chesmer	Ronny Ferguson
Bill Pendleton	Rick Reinart

1986 Expiring Term

Jim Allison	Cindy Crabtree
Pat Johnson	Howard Naugle

Jess Willard

1987 Expiring Term

Billy Bell	Homer L. Haile
Martha Mitts	Chuck Wilson



AP LASERPHOTO

Debbye Turner

MISS AMERICA DEBBYE TURNER RAPS

Debbye Turner is the new Miss America. 24-years old, Miss Turner is originally from Jonesboro, Arkansas. She moved to Missouri to study veterinary medicine and became Miss Missouri. She is the third black woman to wear the Miss America crown. In her first news conference she performed a religious rap song. "Well, I love the Lord . . . with all I know . . . gonna sing his song . . . everywhere I go. Gonna sing about the love . . . sing about the faith . . . sing about seeing Him face to face." And she continued for seven more verses.

Turner will put her education on hold for a year to serve as Miss America 1990. She said she will work on "motivating the youth of this country to excellence." She said, "My mom taught us how to do things not because we're female or black or Southern, but because we have what's on the inside to do it." She said her goal for the next year was to set an example for all young people. "If you dream about being an aeronautics (space) engineer, you can be an aeronautics engineer. I don't care if you grew up in a ghetto."

(Taken from The Associated Press and Knight Ridder News)

will be at 5908 S. Tyler.

Loretta Cernohouz, 88, of Amarillo, died Thursday, Sept. 28, 1989.

Services are pending with Schooler-Gordon Colonial Chapel.

Mrs. Cernohouz, born in Stuttgart, Germany, had lived in Amarillo 68 years. She was a homemaker and a member of First Presbyterian Church. She was preceded in death by her husband, Laddie M. Cernohouz.

Survivors include a daughter, Jan Abrahamson of Amarillo; a son, L.J. Cernohouz of Oceanside, Calif.; a sister, Elsie McMurray of Dumas; four grandchildren; and two great-grandchildren.

Thelma D. Goad

Thelma D. Goad, 83, of Amarillo, died Thursday, Sept. 28, 1989.

Services will be at 10 a.m. today in Memorial Park Funeral Home Chapel of Memories with the Rev. Gerald Petsch, pastor of Trinity Lutheran Church, officiating. Burial will be in Memorial Park Cemetery.

Mrs. Goad, born in Annona, Red River County, had lived in Amarillo since 1949. She had lived in Tahoka most of her married life where she and her husband, Ernest Arnold Goad, farmed. He died in 1954. She was a retired school teacher.

Area

Tiff William Thomason

Tiff William Thomason, infant son of Seth and Susie Thomason, was stillborn Friday, Sept. 29, 1989.

Memorial services will be at 11 a.m. Monday in the Evangelical Fellowship with the Rev. Mike Bellah, pastor, officiating. Arrangements are by Dawson-Welch Funeral Home of Texhoma, Okla.

Survivors, other than his parents, include a sister, Erin Thomason of the home; grandparents, Mr. and Mrs. Jerry Thomason of Bella Vista, Ark., and Mr. and Mrs. Bill Kinyon of Clovis, N.M.

The family requests memorials be to the Elder's Fund at Evangelical Fellowship.

Clarence E. Wiley

PERRYTON — Clarence E. Wiley, 71, died Wednesday, Sept. 27, 1989.

Services will be at 11 a.m. today in Full Gospel Church with the Rev. Harrol Waterbury, pastor, officiating. Burial will be in Ochiltree Cemetery by Boxwell Brothers Funeral Directors.

Mr. Wiley, born in Independence, Kan., moved to Perryton

Even though the state's contract with Panhandle Community Services expired Friday.

Lindemann said the state's contract with Vernon Home Health Care Agency took effect Friday, leaving no gap in home care for the roughly 980

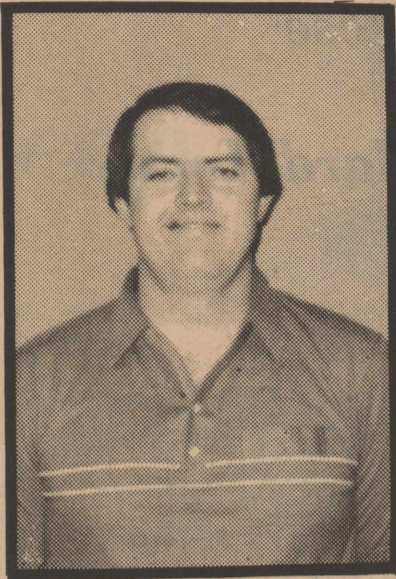
by delayed reimbursement from DHS, the PCS board of directors voted several weeks ago to discontinue its home-health division, a move that forced DHS to find another contractor.

Lindemann said the Vernon Home



PRE-INVA

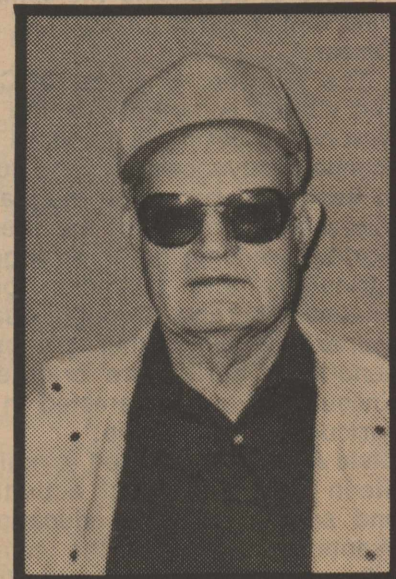
Meet Your Directors



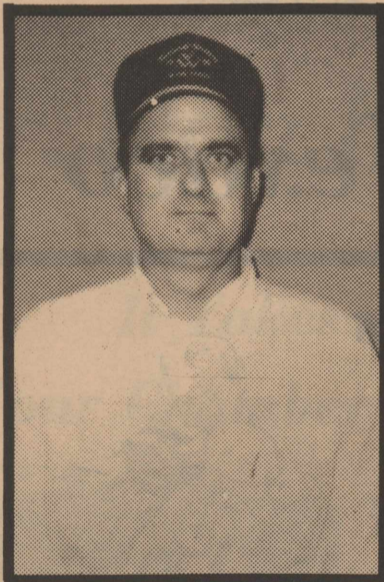
**HOWARD NAUGLE
PRESIDENT**



**MARTHA MITTS
VICE PRESIDENT TRANSPORTATION**



**HOMER L. HAILE
TREASURER MEMBERSHIP**



**JIM ALLISON
LEGISLATIVE**

**PHOTO
UNAVAILABLE**

**BILLY BELL
AGRICULTURE**



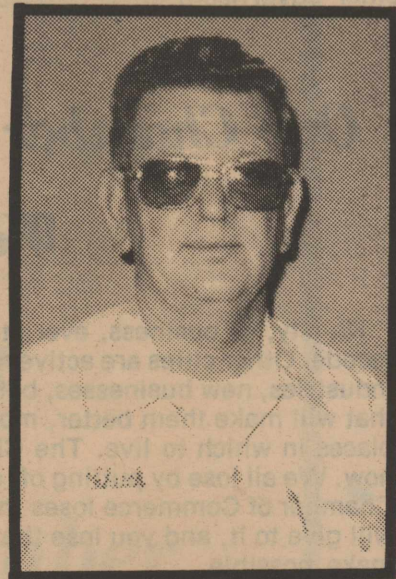
**CINDY CRABTREE
CIVIC AFFAIRS**



**PAT JOHNSON
CIVIC AFFAIRS**



**JESS WILLARD
ECONOMIC DEVELOPMENT**



**CHUCK WILSON
RETAIL MERCHANTS**

Program of Work Committees

The Stratford Chamber of Commerce is organized for the purpose of advancing the commercial, agricultural, industrial, civic and general interests of Stratford and Sherman County, Texas.

The Stratford Chamber of Commerce believes that a strong and vibrant community is the basis for providing our citizens with both a desirable standard of living and the opportunity for economic advancement. The quality of life in any community is in danger of becoming stagnant without continuing efforts to improve and maintain the lifestyle of its citizens.

Agriculture-Develop a stronger understanding between the agriculture and business community. Promote agriculture related programs through quarterly breakfasts and work in cooperation with other groups on programs of interest and benefit to agriculture oriented businesses and individuals. Encourage youth interested in agriculture through the annual agriculture scholarship.

Civic Affairs-Committed to maintain and improve the quality of life in Stratford through activities in areas of recreation, health and safety, cultural, education and special events. Special events contribute to the community character, image, and fellowship. Through activities such as the basketball tournament, collector's image, one of fellowship and community spirit.

Economic Development-Search for business which can utilize products or services available locally and continually evaluate area assets and look for business which can benefit from advantages of Stratford. Keep community profile updated with current tax, utility, transportation, etc. information.

Legislative-Keep abreast of legislative events affecting Sherman County on the local, state and national levels. Work for the enhancement of community interests and encourage citizen participation. Represent the Chamber membership in communication with officials in matters pertaining to legislation affecting Stratford and Sherman County interests.

Membership-Seek to sustain the quality of life in Stratford by encouraging every professional, individual and business to become involved in their community with an investment of time, enthusiasm and dollars. Strive to maintain communications with all aspects of membership and promote the membership as the strength of the Chamber.

Retail Merchants-Work to further the business climate in Stratford and Sherman County by encouraging citizens to shop locally. A retail trade analysis will be tabulated which will enable the retail community to better serve the wants and needs of Stratford consumers. Responsible for many promotions (graduation, sidewalk sale, etc.) throughout the year.

Transportation-Works toward good transportation to serve Stratford and Sherman County. Promotes, in cooperation with other organizations, an ongoing effort to keep city streets and highway areas neat in order to present a pleasing appearance to tourists and visitors. Working with Chamber resources and motel tax funds, promotes tourism through signs, billboards and other advertising.

Our Chamber

Works For You !

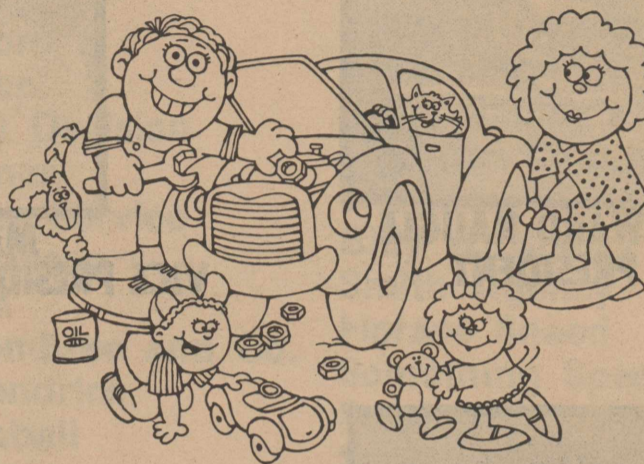
No city, or business, ever stands still; you either proceed or recede. Other cities are active now competing for trade territory, industries, new businesses, better highways and everything else that will make them better, more prosperous and more pleasant places in which to live. The Chamber of Commerce needs you now. We all lose by putting off our membership investment. The Chamber of Commerce loses the prestige that your membership will give to it, and you lose the contacts you participation would make possible.

Use "Aye" to begin Interested and Involved. JOIN TODAY!
Call your Chamber office and become a member of the team.

The Future Belongs

To Those

Who Work Hard Today



C & C Texaco

Progress



Stratford

Animal

Hospital

Keep



Stratford

Smiling

Dr. Dan Loving

**WHY BELONG TO THE
CHAMBER OF COMMERCE ?**

Because

YOU are a citizen doing business in this city and sharing in its prosperity. The obligations of business citizenship challenge every man and institution to subscribe actively to the advancement of the community of which he is a part. because...

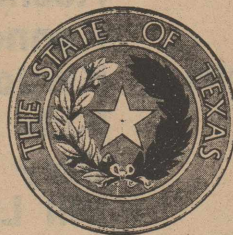
YOU prosper as our community prospers. By helping to build a thriving community your investment is strengthened and your opportunities are broadened. You have a personal interest in these objectives. because...

Progress and prosperity depend on the development of a sound economic and social structure. These result from vigilant aggressiveness and a continuing program of activities designed to cultivate opportunities and capitalize on advantages. because...

The support of all business and professional individuals is necessary to bring about the economic improvement of our city and the civic and business development demanded by our modern standards of living. because...

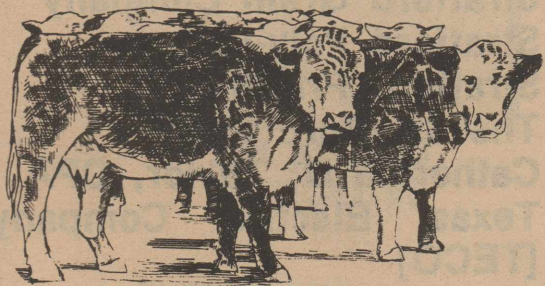
These goals can be reached only by united effort through an organization equipped to study and conduct a sound program of community progress. because...

The Chamber of Commerce is consistently engaged in promoting the civic and economic development of Stratford.



Since the earliest days of Texas, a five-pointed "lone star" has been prominent among Texas symbols. The state seal features the star wreathed by live oak (left) and olive, adopted by the Congress of the Republic, December 1836.

*It Takes Two
Your Chamber and You*



Ronnie

Pickens

Livestock

Hauling

Helping the

Chamber

Keep Stratford



Clean

Leila Shelleys

Lumber

MEMBERSHIP LIST

- | | | |
|------------------------------|-----------------------------|--------------------------------|
| A & I Parts Center | H.T. Galloway | W.S. "Bill" Frizzell |
| Marillyn Albert | Garoutte & Lasley | Tumbleweed Taxidermy |
| William Allen | Gaskill, Pharis and Pharis | G & W Industrial Supply, |
| Jim Allison | General Telephone Company | Inc. |
| Amarillo Coca-Cola Bottling | [The] Girls Next Door | Rick Reinart |
| Barbie Bailey | Homer L. Haile | Wanda Riffe |
| Elwyn L. "Sam" Bass | Hart Start | William L. Riffe |
| Billy C. Bell | Steve W. Haynes | Mary J. Reese |
| Brenda Bell | Headquarters Restaurant | Felix Saenz |
| Homer Blake | J.D. Hester | Elizabeth Sanders |
| L.B. Blake | Gary Hudson | Scottcable |
| Blake and Sons | Lynn Hudson | Leila Shelley's Lumber |
| Boston Hardware | [The] Initial Decision | Sherman County Real Estate |
| Don Butler | IGA Foodliner | Sherman Implement Co. |
| C & C Texaco Products | Jim's Engine Service | Billy G. Sladek |
| C & D Body Shop | Jerry B. Johnson | Smith Agency |
| C's Male Box | Arthur Judd | Horace Sneed |
| H.H. Caraway | Keeney, Hembree and Co. | Something Special |
| Cargill, Inc. | Kenneth Kendrick | Southern Union Gas Co. |
| W.D. Brannan and Sons | Kenton Kimball | Southwestern Public Service |
| Brown's Meat Locker | Kids Korner | Susie E. Spurlock |
| Joyce Brown | Gary B. Laramore | Max Stephenson |
| Mrs. W.O. Bryant | Bill Lasley | Stratford Animal Hospital |
| Buckle & Bow Shoe Store | Walter Lasley & Sons, Inc. | Stratford Bi-Products |
| Buckles Farms | Dan H. Loving, DDS | Stratford Butane Company |
| Elliott Crabtree | Gary Lundberg | Shelley Seed and Supply |
| Rex Christian | Moore Implement Company | Stratford Clinic |
| Coldwater Manor | Morrison Funeral Directors | Stratford Feedyard |
| Consumers Company, Inc. | Moorman's Feeds | Stratford Grain Company |
| Newton Crabtree | Doug McBryde | Stratford Poly-Clean |
| W.E. Cummings | Kirk McWilliams | Stratford Printing |
| Wayne Cummings | J.L. Naylor | The Stratford Star |
| Steve Dettle | Howard Naugle | Catherine D. Taylor, CPA |
| Les Dodson | North Plains Savings and | Texas Electric Company |
| B.A. Donelson | Loan | [TECO] |
| Duncan Chevrolet, Inc. | North Plains Water District | Thriftway |
| Duncan Oil Company | Olson Automotive | Total Entertainment |
| Ellison's Floral | O.H. Oquin | Systems [TES] |
| Elk Pharmacy | Larry Parsons | Ulysses Irrigation [R.J. Hill] |
| Empire Construction | Ronnie Pickens Livestock | Valu-Line of Amarillo |
| Empire Wholesale | Hauling | Mike Vincent |
| Ron Engelbrecht | Zelda Pickens | Tom Wade |
| Equity Elevator | Shirley Plunk | Jess Willard |
| Fat Albert's | Powell Abstract Co. | Wilson Electric & Appliance |
| Leonda Fedric | Pronger Brothers Ranch | Woolsey Appliance |
| The First State Bank of | Rafter J. Boot and Saddle | Archie Wright |
| Stratford | Robert Ragsdale | Yates Drug/Robbie's Gift |
| First State Insurance Agency | Ranger Motel | Shop |
| Joe P. Flores | Jodie Reesing | |



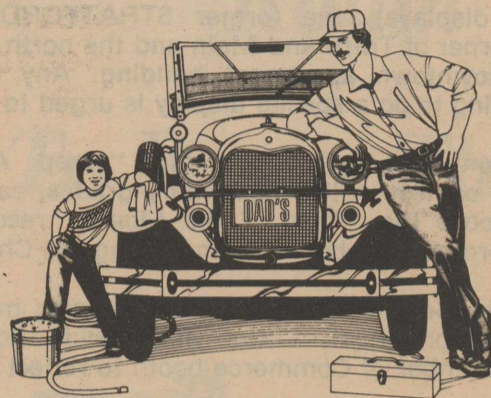
*Helping
The
Chamber*

Protect

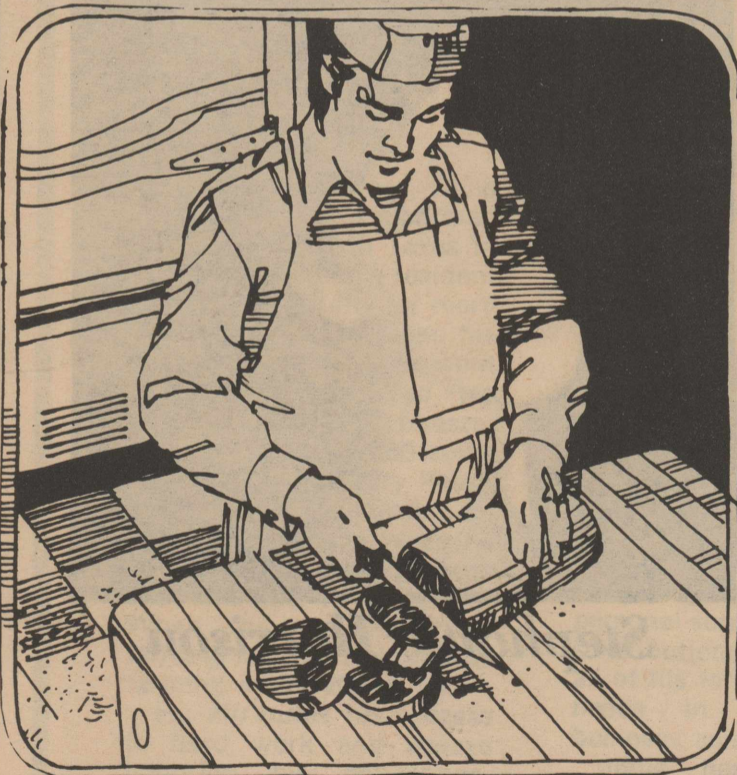
Our Goods

Smith Agency

*Together We
Can Keep
Things Running*



*Olson's
Automotive*



*Helping
Stratford
Grow*

Brown's Meat Locker

WOMEN'S DIVISION

The Women's Division of the Stratford Chamber of Commerce was organized for the purpose of assisting the general board in areas that support and promote the general welfare of the community. Each member of the Chamber of Commerce is entitled to a representative in the Women's Division.

Banquet and Social--Plans the decorations for the annual Chamber banquet and is responsible for the Ice Cream Freeze Off and games and races during the Independence Day celebration. coordinates the "Ladies Only" luncheon held the opening day of pheasant season in December.

Bulletin Board--Utilizes empty windows in the downtown area for promoting special events and a community calendar. Current windows being used are the Brown building north of the post office (THANK YOU TRI-CORNER ART ASSOCIATION for your continuing displays), the former STRATFORD STAR building on the corner of Third and Main and the north display window in the downtown apartment building. Any club or organization wanting to do a special display is urged to contact this committee.

City Beautification--Responsible for the "Keep America Beautiful" poster contest in the elementary grades, assigning individuals to choose the "Yard of the Month" recognition promoted April through October and organizing the Christmas lighting contest.

Fair and Jamboree--Sets work schedule and obtains materials for the Miss Stratford float, Little Miss Revue float and coordinates the Chamber of Commerce booth to reflect the fair theme.

Historical, Arts, Government--Advises members of cultural opportunities in our area, encourages involvement in legislative concerns and maintains the scrapbook.

Membership--Responsible for sending reminders for the monthly luncheons and other activities of the Women's Division. If you are not on the mailing list, please contact membership chairman.

Park Project--Responsibilities include calling work days as needed to keep park on Highway 287 cleaned and watching for problems with insects in shrubbery and trees. This small, but attractive, park, is frequently used by tourists and presents a positive image of Stratford.

Programs--Arranges for speakers for the bi-monthly luncheons. These luncheons are held the last Tuesday of even numbered months in the fellowship hall of the First United Methodist Church. Women of the community are invited to bring a salad, fifty cents and participate in the program. Programs are usually of special interest to women.

Publicity--Responsible for submitting information on Women's Division activities to local newspaper and posting flyers and signs for special events of the Women's Division.

Retail Merchants--Represents Women's Division at monthly retail merchants meeting and assists in planning and coordinating their special promotions.

Miss Stratford Pageant--Coordinates activities for the Miss Stratford Scholarship Pageant held annually in August as the first event of the Sherman County Fair and Stratford Jamboree.

Women's Division of the Stratford Chamber of Commerce will be hosting the regional conference of Women's Divisions on September 27, 1986.

OFFICERS AND DIRECTORS

President	1985	Leonda Fedric
Vice-President		Gennell York
Secretary		Dana Buckles
Ex-Officio		Debbie Vandiver
President	1986	Ellen Tillery
Vice-President		Gennell York
Secretary		Andy Norris
Ex-Officio		Leonda Fedric
1985 Outgoing Directors		
	Marilyn Albert	
Cathy Taylor		Barbara Walls
1986 Expiring Term		
Olene Caraway		Leonda Fedric
Jane Sizemore		Gennell York

Miss Stratford



Krisann Reese

Junior Miss Stratford



Stephanie Harrison

State Gem Topaz



Topaz, a brilliantly transparent, pastel blue variety, is the state gem of Texas. Collected in several areas of the Llano Uplift, a region of ancient igneous formations, the most prized, gem-quality specimens are found near the town of Mason.

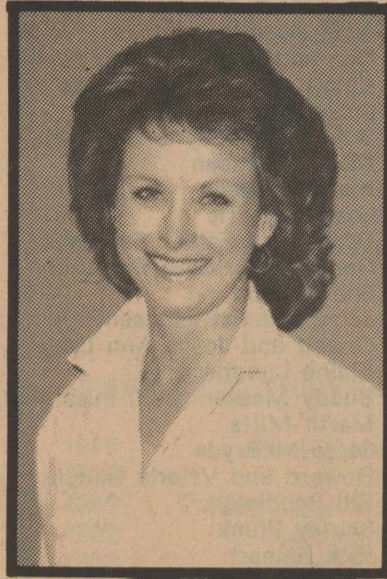
Women's Division Directors



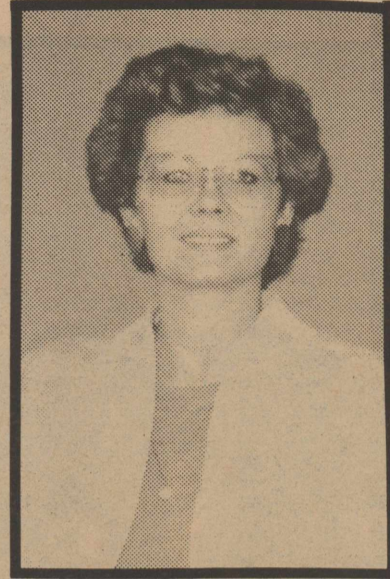
**ELLEN TILLERY
PRESIDENT**



**GENNELL YORK
VICE PRESIDENT
PROGRAMS**



**ANDREA NORRIS
SECRETARY
HISTORICAL**



**LEONDA FEDRIC
MEMBERSHIP
EX—OFFICIO**



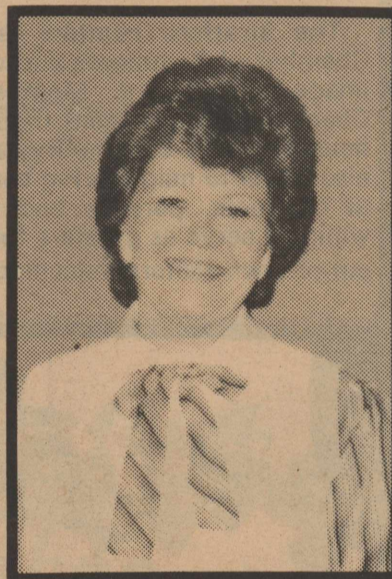
**PENNY BOYD
FAIR AND JAMBOREE**



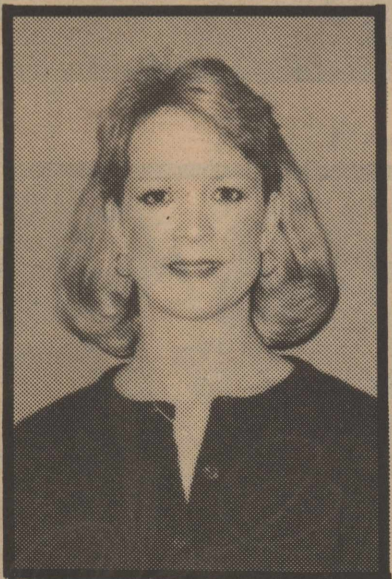
**OLENE CARAWAY
CITY BEAUTIFICATION**



**LOUISE DETTLE
PUBLICITY**



**JUDY GRIFFITH
BULLETIN BOARD**



**JOYCE McBRYDE
BANQUET & SOCIAL**



**PEGGY ROBERTSON
PARK PROJECT**



**JANE SIZEMORE
RETAIL MERCHANTS**



**LAURA SPURLOCK
MISS STRATFORD
PAGEANT**

STRATFORD HUNTERS



MAX STEPHENSON

- HUNTER MEMBERSHIP**
 Marillyn Albert
 Billy C. Bell
 Joan Bell
 Mrs. W.O. Bryant
 Scott Buckles
 Don and Sherri Butler
 Elliott and Cindy Crabtree
 Steve Dettle
 B.A. and LeRayne Donelson
 Martha Duncan
 Martha Ellison
 Leonda Fedric
 Ronny and Esther Ferguson
 Gary and Orlanda Garoutte
 Sue Hudson
 Jerry and Pat Johnson
 Orland and Joyce Ann Lasley
 Elaine Lundberg
 Buddy Messer (we'll miss you!)
 Marth Mitts
 Joyce McBryde
 Howard and Valerie Naugle
 Bill Pendleton
 Shirley Plunk
 Rick Reinart
 Bill Riffe
 Don and Gaynelle Riffe
 Wanda Riffe
 Elizabeth Sanders
 Max Stevenson
 Gayland and Debbie Vandiver
 Don and Gennell York

The Stratford Hunters is the ambassador group for the Chamber of Commerce and were organized to promote a good image of Stratford. Members are official delegates of the Chamber and represent the Chamber at ribbon cuttings, open houses, special community events and Chamber functions. They also travel to neighboring communities and represent Stratford at banquets, parades and other functions. This group will willingly serve as greeters for any club or organization wanting out-of-town visitors welcomed. Look for the rust colored jackets.

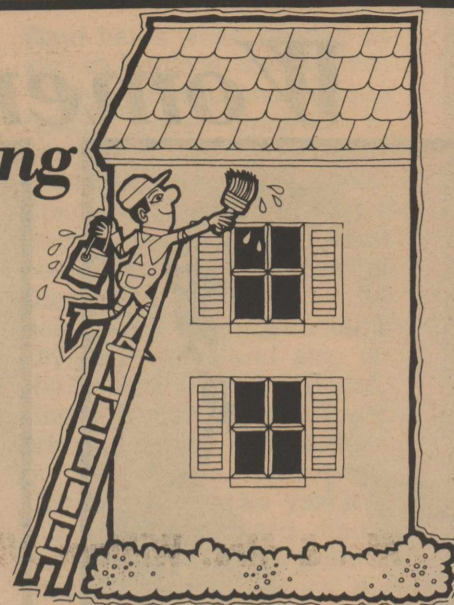
Were Helping

Keep

Stratford

A Beautiful

Place



G & W

Industrial



Stating that "Stratford" is home means more than referring to a location. If the spirit of Stratford could be bottled and sold, the label of ingredients would include friendliness, courage, achievement, cooperation, honesty, fairness, enthusiasm, and that special "Let's Get the Job Done" spirit. Whether Stratfordite or Texan by birth, choice or circumstance, being proud to be from Stratford, Texas is a natural, modest statement that requires no explanation. TEXAS IS A STATE OF MIND and the embodiment of traits which the people of Stratford possess sets them apart and just naturally makes STRATFORD a "SPECIAL TOWN IN TEXAS".

WE SALUTE STRATFORD

- | | | |
|---|------------------------------------|--------------------------------------|
| Mr. & Mrs. William Allen | Wanda Riffe | Bill & Selma Pendleton |
| Mr. & Mrs. Joe Taylor | Joyce Brown | Mr. & Mrs. Max Stephenson |
| Mr. & Mrs. Steve W. Haynes | Susie Spurlock | Mr. & Mrs. Jodie Reesing |
| Mr. & Mrs. H.H. Caraway | Robbie Yates | Mr. & Mrs. Kenton Kimball |
| Mr. & Mrs. Rex Christian | Leonda Fedric | Mr. & Mrs. H. T. Galloway |
| Mr. & Mrs. Elwyn L. "Sam" Bass | Marillyn Albert | Mr. & Mrs. W. S. Frizzell |
| Mr. & Mrs. Billy C. Bell | Mary Reese | Mr. & Mrs. Homer Blake |
| Mr. & Mrs. Ronald Engelbrecht | Mr. & Mrs. Doug McBryde | Mr. & Mrs. Gary Hudson |
| Mr. & Mrs. Steve Dettle | | |

*If You Want A Picture
Of Sherri You Have To
Jump Out In Front
Of Her Car !!*



SHERRI BUTLER

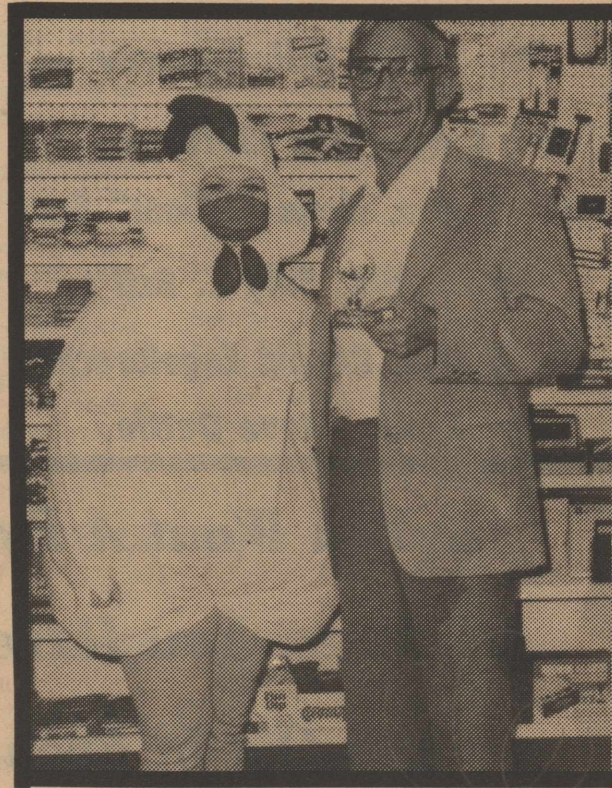


**Moore
Implement**



Geologic ages ago, palm trees thrived throughout most of Texas in a moist, jungle-like climate. Today, **petrified palm wood**—from jet black through a rainbow of delicate colors to white—is the popular state stone of Texas.

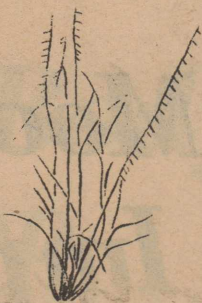
State Song "Texas Our Texas"



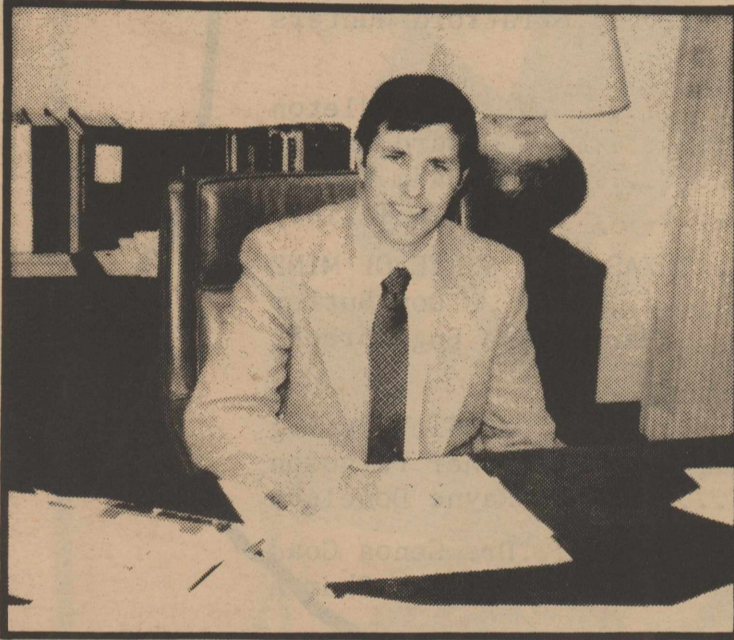
Pecan trees, (many specimens are centuries old) thrive beside Texas rivers and streams. A former Texas governor so loved the tree, he directed one be planted by his grave, and the nuts distributed to the people for planting throughout the state.



A state grass? Don't be surprised; without grass there'd be no ranching industry. Compared to dark-green Kentucky bluegrass, **sideoats grama** may appear thin and yellowish, but it's invaluable—richly nutritious and drought-resistant.



*Why I Like
Stratford*



B.A. Donelson has been promoted to the office of President of The First State Bank of Stratford, effective January 1, 1986. He is replacing retired President, O.H. Oquin. Mr. Donelson joined the bank staff in 1967 and has formerly held the office of Executive Vice President and Trust Officer. He also holds the office of President of Stratford Bancshares, Inc, which has an application pending for the purchase of The First State Bank.

B.A. and his wife LeRayne have two daughters, Blynn Bryson of Edmond, Oklahoma and Barrie Breed of San Marcos, Texas.

The First State Bank is

also happy to announce the hiring of the newest member of our staff. Doak Crabtree joined the bank staff January 6, 1986 and will begin training for the position of ag loan officer.

Doak was raised in Boise City and is the son of Mr. and Mrs. W. Roger Crabtree and the grandson of R.P. Crabtree all of Boise City. He recently graduated with honors from southern Methodist University with a degree in finance and accounting. Doak has done intern work at Sun Belt Savings of Dallas, Interfirst Bank of Dallas and The First State Bank of Stratford.

Doak and his wife Lisa will be making their home in Stratford.

NEW OWNERSHIP

Stratford Bancshares, Inc. a locally owned and controlled, one bank holding company, has been formed for the purpose of purchasing the controlling interest in The First State Bank of Stratford.

Stratford Bancshares, Inc. has entered into an agreement with J. A. Whittenburg III et al, contracting for the purchase of control of the First State Bank of Stratford.

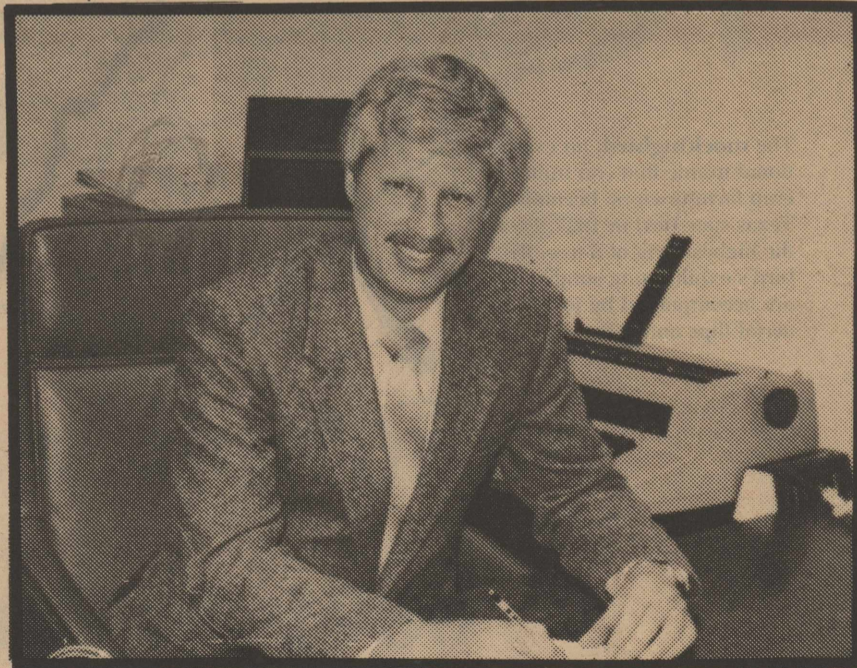
Change of ownership will take place with the final approval of all regulatory authorities. Final approval normally takes approximately 6-9 months. In the meantime, business will be conducted as usual with all officers and directors continuing in their present positions.

Stockholders in Stratford Bancshares, Inc. include,

- from Stratford:
- B.A. Donelson
- John Wilson
- Pat Donelson
- Kristi Buckles
- Doug McBryde
- Wes Spurlock
- James Spurlock
- Elliott Crabtree
- Neal Spurlock

and from Spearman:
Bill Pittman Larry Butts

"It is our desire to be an active part of Stratford and the surrounding areas. Stratford and the area have been good to the First State Bank of Stratford, and we want that relationship to continue as it has been in the past and to grow in the future said B.A. Donelson, President Bancshares, Inc.

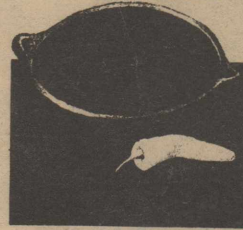


Rick Reinart began working March 10th

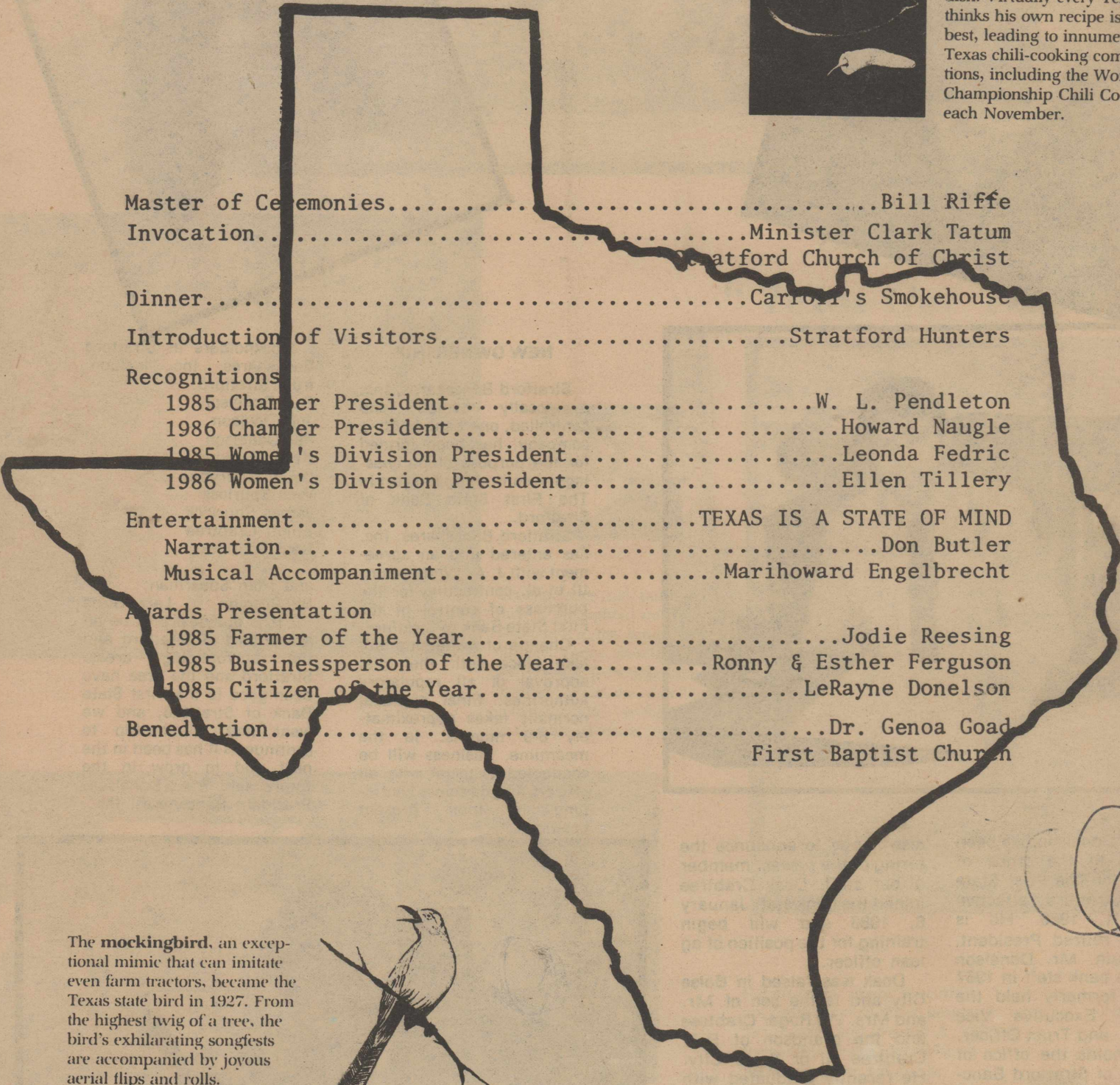
The FIRST State Bank of Stratford
MEMBER FEDERAL DEPOSIT INSURANCE CORPORATION

Texas Is A State Of Mind

State Dish Chili



Texans love a bowl of red . . . that is, **chili**, the official state dish. Virtually every Texan thinks his own recipe is the best, leading to innumerable Texas chili-cooking competitions, including the World Championship Chili Cookoff each November.



Master of Ceremonies.....Bill Riffe
 Invocation.....Minister Clark Tatum
 Stratford Church of Christ
 Dinner.....Carroll's Smokehouse
 Introduction of Visitors.....Stratford Hunters
 Recognitions
 1985 Chamber President.....W. L. Pendleton
 1986 Chamber President.....Howard Naugle
 1985 Women's Division President.....Leonda Fedric
 1986 Women's Division President.....Ellen Tillery
 Entertainment.....TEXAS IS A STATE OF MIND
 Narration.....Don Butler
 Musical Accompaniment.....Marihoward Engelbrecht
 Awards Presentation
 1985 Farmer of the Year.....Jodie Reesing
 1985 Businessperson of the Year.....Ronny & Esther Ferguson
 1985 Citizen of the Year.....LeRayne Donelson
 Benediction.....Dr. Genoa Goad
 First Baptist Church

The **mockingbird**, an exceptional mimic that can imitate even farm tractors, became the Texas state bird in 1927. From the highest twig of a tree, the bird's exhilarating songfests are accompanied by joyous aerial flips and rolls.



Bluebonnets, several species of Lupine native to wide areas of the state, are the beloved state flower of Texas. In late March-early April, masses of them mantle roadsides, meadows and hillsides with acres and acres of sky-blue color.

The Stratford Star